

Georgia Southern University

## Georgia Southern Commons

---

Bulloch County Newspapers (Single Issues)

Bulloch County Historical Newspapers

---

12-24-1937

### Bulloch Herald

Follow this and additional works at: <https://digitalcommons.georgiasouthern.edu/bulloch-news-issues>

#### Notes

Condition varies. Some pages missing or in poor condition.

Originals provided for filming by the publisher.

Gift of Statesboro Herald and the Bulloch County Historical Society.

---

#### Recommended Citation

"Bulloch Herald" (1937). *Bulloch County Newspapers (Single Issues)*. 4064.

<https://digitalcommons.georgiasouthern.edu/bulloch-news-issues/4064>

This newspaper is brought to you for free and open access by the Bulloch County Historical Newspapers at Georgia Southern Commons. It has been accepted for inclusion in Bulloch County Newspapers (Single Issues) by an authorized administrator of Georgia Southern Commons. For more information, please contact [digitalcommons@georgiasouthern.edu](mailto:digitalcommons@georgiasouthern.edu).

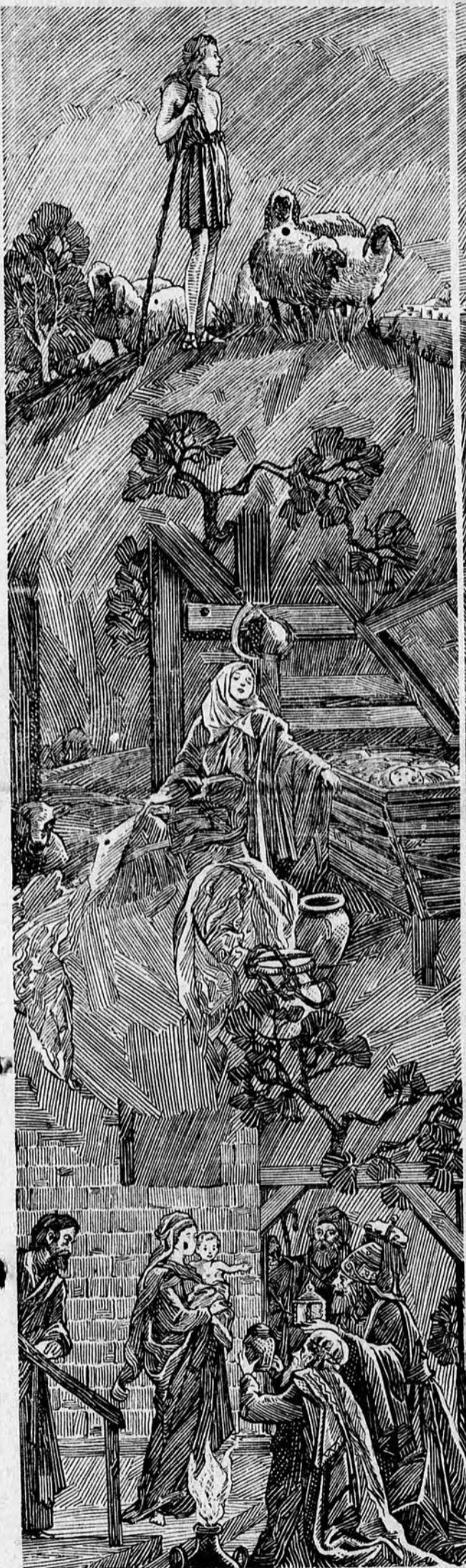
# THE BULLOCH HERALD

DEDICATED TO THE PROGRESS OF STATESBORO AND BULLOCH COUNTY

VOLUME 1

STATESBORO, GEORGIA FRIDAY, DEC. 24, 1937.

NUMBER 40.



## The Song of Christmas

**T**HE long journey from Nazareth to Bethlehem . . . a new Star in the sky . . . heavenly music above the hills of Judea . . . the flutter of angel wings . . . the swift journeying of the Shepherds . . . Mary and Joseph and the new-born Child . . . the coming of the Wise Men, with their gifts of gold, frankincense and myrrh . . .

From these inspiring things the Song of Christmas was fashioned more than twenty centuries ago. The years have added new notes of happiness. Carols and song upon the air . . . candles gleaming into the night . . . secret whisperings and laughter in the home . . . greetings going from friend to friend . . . deeds of love and mercy done in the name of a Child.

No great symphony or composition can match the Song of Christmas. It rises above the clatter and roar of the city; it throbs through the scattered town and hamlet; it sings through the sunlit islands of the South; it permeates the frozen wastes of the Northland. In ever-widening volume its strains echo around the world.

Before its magic the hosts of darkness take flight. It touches the slumbering chords of memory; it heals old hurts and scars; it binds loved ones in a closer and deeper tie. There are no friendless or forsaken within its sound; under its influence the strong reach out to help the weak. Peace and Love and Joy, these are its loudest notes, and they are for all men. For the Song of Christmas is the greatest of all songs because it is understood by every heart.



PEACE ON EARTH..

CHRISTMAS 1937





WITH THE COUNTY AGENTS

BYRON DYER ELVIE MAXWELL

Uncle Jim Says



I's better business for Georgia farmers to store fertility in the ground until it can grow crops at a profit than it is to mine the earth...

FARM TO FARM

With the outlook anything but bright J. A. Metts started in the fall of 1937 to meet the cotton situation in 1938...

County Agent J. A. Maudlin, of Dodge county, has just given a very interesting report of the only regular co-operative livestock auction in Georgia...

The county has built one of the most modern barns in Georgia. The Junior Chamber and county officials are now completing a large market warehouse adjoining the stock yards...

In his annual report, Agent Maudlin reports that the livestock sales of hogs and cattle to date this year totaled \$25,093.46, and these sales are becoming larger each week...

How well strip-cropping and terracing go together in an erosion-control program is illustrated on farms of co-operators in the Gainesville erosion control demonstration area...



What Makes a Home?

Aside from family and friends the really inviting home is made by articles of comfort and taste that create an atmosphere of coziness and charm.

Too often a home suffers because income seems insufficient to provide the needed things. Here is where the ads in this newspaper help overcome obstacles...

Georgia farmers who co-operated in the Agricultural Conservation Program in 1936 received \$10,744...

The CHRISTMAS HARVEST

OLD SANTA CLAUS—Some don't believe in him because he makes them spend. They like to borrow, but never lend...

They are tight-fisted cynics, these. They never know how presents please. The little kids, and others:

They never learned to live. Because they never learned to give. You've got to bleed before you reap...

Albert Goss, LandS Bank Commissioner of the Farm Credit Administration, has warned Georgia farmers not to be intimidated into paying old debts already settled from refinancing loans made by the Feder-

BROOKLET NEWS

BY MRS. JOHN A. ROBERTSON

CHRISTMAS PAGEANT TO BE GIVEN AT BROOKLET

Sunday night at 7:30 at the Methodist Church a Christmas Pageant "The Light of the World" will be presented with the following characters: Reader, Miss Mary Ella Alderman...

Others who will spend the Christmas holidays here are: F. W. Earbee, superintendent of the Irwington schools; Miss Nina McElveen...

He Sure Was Here

by school in Savannah and Elizabeth Hagan from a Beauty school in Atlanta.



Folk Songs of Jamaica have their origin in the distant past, although a few have a distinctly modern note.

Maine, Florida Coastline If small indentations are counted, Maine has more than twice as much coastline as Florida.

RECITAL GIVEN AT THE BROOKLET HIGH SCHOOL

Brooklet—Tuesday night at 7:30 o'clock in the High School auditorium Mrs. W. D. Lee presented the following high school pupils in a Christmas recital...

MARtha ROBERTSON ENTERTAINS WITH A FAMILY DINNER

Miss Martha Robertson entertained at her home Sunday with a family dinner party. Her guests were Mr. and Mrs. H. G. Parrish, Mr. and Mrs. John A. Robertson, H. M. Robertson...

Arabs in Africa

The first of the alien peoples to enter Africa and to leave a permanent mark on the continent were the Arabs.

Greeks Liked Love Stories To the Greeks of olden days every plant and flower had a story, and nearly always a love story; the sun rose wept because she was still young; the moon was not moon but an orbed maiden; the stars were human souls...



So good it's used daily in 1,500,000 CARS

Agent Sinclair Refining Company (Inc.) W. L. WALLER Statesboro, Ga.

Method of Controlling Blue Mold In Tobacco Beds

WHEN PROPERLY APPLIED, THE TREATMENT DELAYS THE DISEASE, LESSENS ITS INTENSITY, AND HASTENS PLANT RECOVERY.

One of the most effective sprays for controlling blue mold is a mixture of cuprous oxide (red copper oxide) and emulsified cottonseed oil diluted in water.

Equipment for Spraying Hand sprayers capable of maintaining a working pressure of over 100 pounds have proven satisfactory.

How To Spray From 25 to 30 gallons are sufficient to cover -900 yards one time when the leaves are only one-fourth inch across (40 gallons when applied through the cloth).

When and How Often To Spray Begin spraying before blue mold appears in the bed; as soon as first reported in the state will be early enough in most locations.

Spray Materials To Use Material: Cuprous oxide, for 50 gallon mixture, 8 ounces; for 25 gallon mixture, 4 ounces; for 12 1/2 gallon mixture 2 ounces; Lethane sprayer, for 50 gallons 1 quart, for 25 gallons 1 pint, for 12 1/2 gallons, 1/2 pint; Cottonseed oil for 50 gallons, 2 quarts, for 25 gallons 1 quart, for 12 1/2 gallons 1/2 pint; Water (to make) 60 gallons, 50 gallons, for 25 gallons, 25 gallons, 12 1/2 gallons, 12 1/2 gallons.

Never mix the copper oxide and oil until they have been properly treated with lethane sprayer and diluted with water. It is necessary to emulsify the oil, or break it up into very fine particles, so that it will mix with water.

MOTHERS OF PRE-SCHOOL AGE CHILDREN ORGANIZED IN CLUB The mothers of the pre-school age children met at the pre-school classroom the first of December and organized a Mothers Club.

Brooklet Beta Club GIVE CHRISTMAS PROGRAM Brooklet—Wednesday morning the Beta Club of the Brooklet High School presented the following Christmas program at the high school auditorium: Devotional, Grace McEl-

Dear Santa Claus: I am a little girl. I want a doll and a bicycle for Christmas. My teacher is Miss White. From your little friend, Deloris Anderson.

Dear Santa Claus: I am a little boy. I want a doll and a bicycle for Christmas. My teacher is Miss White. From your little friend, Deloris Anderson.

Dear Santa Claus: I am a little girl. I want a doll and a bicycle for Christmas. My teacher is Miss White. From your little friend, Deloris Anderson.

Dear Santa Claus: I am a little boy. I want a doll and a bicycle for Christmas. My teacher is Miss White. From your little friend, Deloris Anderson.

Letters To Santa Claus

Dear Santa: I am a little girl. I want a doll and a bicycle for Christmas. My teacher is Miss White. From your little friend, Deloris Anderson.

Dear Santa: I am a little boy. I want a doll and a bicycle for Christmas. My teacher is Miss White. From your little friend, Deloris Anderson.

Dear Santa: I am a little girl. I want a doll and a bicycle for Christmas. My teacher is Miss White. From your little friend, Deloris Anderson.

Dear Santa: I am a little boy. I want a doll and a bicycle for Christmas. My teacher is Miss White. From your little friend, Deloris Anderson.

Dear Santa: I am a little girl. I want a doll and a bicycle for Christmas. My teacher is Miss White. From your little friend, Deloris Anderson.

Dear Santa: I am a little boy. I want a doll and a bicycle for Christmas. My teacher is Miss White. From your little friend, Deloris Anderson.

Dear Santa: I am a little girl. I want a doll and a bicycle for Christmas. My teacher is Miss White. From your little friend, Deloris Anderson.

Dear Santa: I am a little boy. I want a doll and a bicycle for Christmas. My teacher is Miss White. From your little friend, Deloris Anderson.

Dear Santa: I am a little girl. I want a doll and a bicycle for Christmas. My teacher is Miss White. From your little friend, Deloris Anderson.

Dear Santa: I am a little boy. I want a doll and a bicycle for Christmas. My teacher is Miss White. From your little friend, Deloris Anderson.

Dear Santa: I am a little girl. I want a doll and a bicycle for Christmas. My teacher is Miss White. From your little friend, Deloris Anderson.



EXECUTIVE DEPARTMENT ATLANTA

To the People of Georgia: Christmas offers a season of the year for everyone to participate with an understanding heart and attitude of mind...

Since it is physically impossible for me to send each friend in Georgia a personal Christmas card, I take this method of extending each of you on behalf of Mrs. Rivers, myself and our family...

Know Your Timber Seventy years ago on December 4, 1867, a baby boy was born at Mill-Edgeville.

And what, if you please, does that have to do with this business of KNOWING YOUR TIMBER in Georgia?

A tremendous lot. For that baby boy was Charles Holmes Herby, and Charles Holmes Herby, more than any other human being, is responsible for making it important for Georgia timberland owners and all other Georgians to know Georgia's timber.

Charles Herby says, as he busies himself with test tubes and the history making grinding in his little laboratory in Savannah.

The Job isn't finished," Charles Herby says, as he busies himself with test tubes and the history making grinding in his little laboratory in Savannah.

Charles should recognize and honor Georgia Herby. The finest recognition and tribute that could be paid him would be a South that knows its Timber—a South freed of economic shackles,—a South intelligently awakened to the potential wealth of its forests.

Georgia should recognize and honor Charles Herby. The finest recognition and tribute that could be paid him would be a South that knows its Timber—a South freed of economic shackles,—a South intelligently awakened to the potential wealth of its forests.

They have gotten excellent results from using 100 pounds of Murate of Potash, or 200 pounds of Kainit per acre. Other farmers use nitrogen-potash mixed goods top dressers. All of these materials are on sale by leading fertilizer men. Potash top-dressing should be applied when you chop cut.

Early English Pottery In the Eighteenth century some of the most charming productions of the English potteries took the form of River scenes, such as pastoral groups, nymphs and shepherds, courting couples, gallants and their ladies, historical, mythological and fiction characters, birds, animals, even cottages with a bit of green grass and climbing roses over the porch—all of these realistically portrayed in the same materials of which your cups and saucers and plates are made.

Dyed Hair 4,000 Years Ago The custom of tinting the hair dates back some 4,000 years in Egypt, as is evidenced by pictures in ancient monuments and by mummies.

