

Georgia Southern University

Digital Commons@Georgia Southern

The George-Anne

Student Media

10-31-2017

The George-Anne

Georgia Southern University

Follow this and additional works at: <https://digitalcommons.georgiasouthern.edu/george-anne>



Part of the [Higher Education Commons](#)

Recommended Citation

Georgia Southern University, "The George-Anne" (2017). *The George-Anne*. 3217.
<https://digitalcommons.georgiasouthern.edu/george-anne/3217>

This newspaper is brought to you for free and open access by the Student Media at Digital Commons@Georgia Southern. It has been accepted for inclusion in The George-Anne by an authorized administrator of Digital Commons@Georgia Southern. For more information, please contact digitalcommons@georgiasouthern.edu.

GA

THE GEORGE-ANNE

TROUNCED AT TROY

Eagles struggle against
Spartans but show signs of
improvement
Page 10

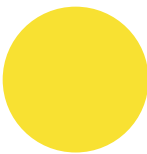
LIFE AT SOUTHERN ABLE

A student's daily commute
with a disability
Page 5

BIODIVERSITY ON CAMPUS

Biology
students
and
faculty
identify
over 200
species at
GS
Page 8

Tuesday



High: 77°
Low: 47°

Wednesday



High: 78°
Low: 56°

Thursday



High: 79°
Low: 57°

Weather Bar

You can put away those sweaters for the next couple of days because it's back into 70s for the highs. Have a spooky Halloween!

MEDIA CAREER DAY

NOVEMBER 2, 2017
10 a.m.-12 p.m.
WILLIAMS CENTER
MULTIPURPOSE ROOM

OFFICE OF CAREER SERVICES

CONTACT THE OFFICE OF CAREER SERVICES AT
GeorgiaSouthern.edu/career • 912-478-5197

@gsucareers

History Fall Film Series

Join us for this showing of
“Luther”, introduced by
Dr. Kathleen Comerford

Nov. 1
TOMORROW
6 p.m.
Sanford Hall
Room 1002

Botanic Garden Poinsettia Sale

Choose from large, florist quality specialty varieties as well as traditional colors for holiday decorating and gift giving.

View varieties and order at www.georgiasouthern.edu/garden/events until Nov. 15. Pick up Dec. 1 at the Garden between 10 a.m. and 5:30 p.m.

807 S MAIN ST. STATESBORO, GA • 912-681-1900
Hours: Sun - Thurs 11 a.m. - 10 p.m. • Fri & Sat: 11 a.m. - 11 p.m.

9" PIZZA \$5.00 Offer valid from 9:00 p.m. - close. Offer expires 11/9/17	STUDENT DEAL 10% OFF WITH STUDENT ID Offer expires 11/9/17	FREE FREE APPLE PIE With delivery orders through Boro Takeout Offer expires 11/9/17	14" PIZZA \$5.00 OFF Offer valid from 8:00 p.m. - close. Offer expires 11/9/17
--	---	--	---

Seen At Southern
@SeenAtSouthern

Follow

#TheMysticalArtsOfTibet has come to GS. Opening Ceremony was today at noon, and the Closing Ceremony is Friday November 3rd at noon. Throughout the week, Tibetan Monks will construct a sand mandala.

...
 : Kelly Lowery

3:09 PM - 30 Oct 2017

Holiday Helper Tree Kick-Off!

Join the Office of Leadership and Community Engagement in the Union **TOMORROW** at **10 a.m.** as we light the tree and kick-off this tradition! This year's tree contains tags for more than 800 individuals and 17 community organizations.

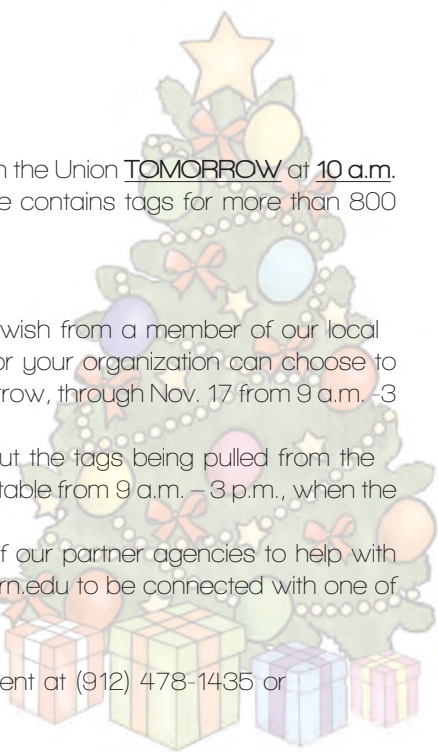
You can get involved by...

Giving a Gift: Pull a tag from the tree! Each tag has a gift wish from a member of our local community. You can pull as many tags as you would like, or your organization can choose to adopt one of the families on the tree. Tags can be pulled tomorrow, through Nov. 17 from 9 a.m. -3 p.m. Gifts are due Nov. 27 at 5 p.m.

Volunteering at the Tree: Volunteers are needed to check out the tags being pulled from the Holiday Helper Tree. The office needs volunteers to work this table from 9 a.m. - 3 p.m., when the tree is open.

Donating funds for unclaimed tags: Donate directly to one of our partner agencies to help with any tags that are not claimed. Email rwilburn@georgiasouthern.edu to be connected with one of their partner agencies.

Contact the Office of Leadership and Community Engagement at (912) 478-1435 or Leader@georgiasouthern.edu for more info.



FOLLOW US!

FACEBOOK

@GeorgiaSouthernStudentMedia
@thegeorgeanne
@thecirclegsu
@reflectorgsu

TWITTER

@TheGeorgeAnne
@SeenAtSouthern
@TheCircleGSU
@ReflectorGSU

INSTAGRAM

@gsustudentmedia
@thecirclegsu
@reflectorgsu

SNAPCHAT

@thegeorgeanne
@SeenAtSouthern
@thecirclegsu
@ReflectorGSU

UPB Movie SPIDERMAN: HOMECOMING

Friday, Nov. 3
7 p.m. at the RAC Pool

This event is open to GS students only, so please bring your Eagle IDs and your own towel. Concessions are not provided or permitted at this movie. Bleachers are also available for those that do not wish to get in the pool. For more information, contact UPB@GeorgiaSouthern.edu.



AMERICAN Bites 1212 Brampton Ave	DELI Panera Bread 810 Buckhead Dr	PIZZA Little Italy 450 S Main St
Cracker Barrel 216 Henry Blvd	McAlister's Deli 1100 Brampton Ave	Mellow Mushroom 1098 Bermuda Run
Dingus Magee's 3 Georgia Ave	FAST FOOD Jimmy John's 100 Brampton Ave	Primos 609-9 Brannen St
Fordhams Farmhouse 23657 U.S. 80	Krystal 781 Brannen St	Stoner's Pizza Joint 10706 GA-67
McDonald's 810 Archway Dr	Steak n Shake 244 Henry Blvd	Your Pie 701 Piedmont Loop
Subway 1550 Chandler Rd	Wendy's 500 Fair Rd	SEAFOOD The Boiling Shrimp 12218 US-301
Wild Wing Cafe 52 Aspen Heights Dr	GRILL & PUB Locos Grill & Pub 91 Briarwood Ln	SOUL FOOD Sisters of the New South 721 S Main St
BARBEQUE Bourbon Grill & More 718 Northside Dr E #10	ITALIAN Olive Garden 201 Henry Blvd	SUB SHOPS Jersey Mikes 721 S Main St
Vandy's BBQ 725 Northside Dr. East Suite	JAPANESE Tokyo 100 Brampton Ave	SWEETS & TREATS Bruster's 995 Lovett Rd
CHINESE Chinese Kitchen 456 S Main St	MEXICAN Barberitos 1100 Brampton Ave	Daylight Donuts 455 S Main St
Panda Express 101 Brampton Ave	El Jalapeno 711 S Main St	PITA Son's Donor Kebab 17 College Plz
COFFEE Cool Beanz 58 East Main St	El Riconcito 2 College Plaza	Pita Pit 609 Brannen St
Ellianos 598 Brannen St	Moe's 608 Brannen St	
Three Tree Coffee 441 South Main St		

If you want to add your free listing, contact ads1@georgiasouthern.edu.



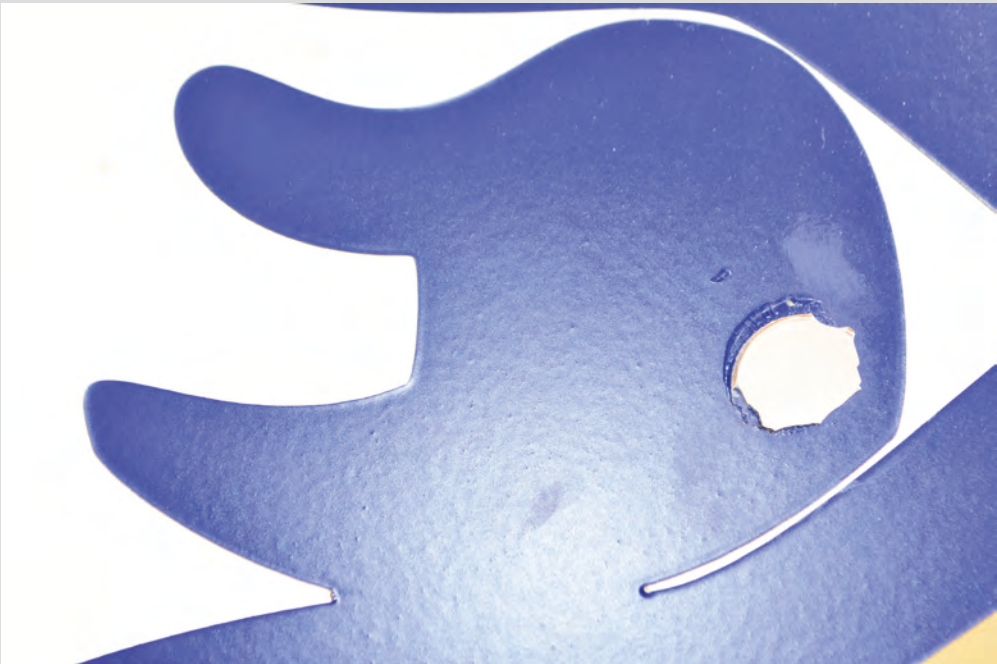
Post
Sell
Browse
or
Buy

thegeorgeanne.com

#WhereAtSouthern

Where was this photo taken?

Keep checking @gsustudentmedia on Instagram or @SeenAtSouthern on Twitter every Tuesday for new puzzles. Guess correctly and you could be featured in the paper!



CLAYTON HARDEN

THE GREATEST SHOW ON EARTH



RYAN REDDING

Ryan is a senior marketing major from Bloomingdale, Ga.

What do you get when you mix a reality TV star with the highest political office in the free world?

The Greatest Show on Earth!

Putting an orange billionaire who has a wife 25 years younger than him in the oval office sounds like it could be a primetime sit-com. When Donald Trump first announced he was going to run for president in 2015

it seemed as if everyone just laughed it off. This was surely another publicity stunt from the host of "The Apprentice". But as the months went on and it became clear that this was real, Americans could not turn away.

Advertisers noticed America's obsession and quickly tried to capitalize on the debates which were getting as many viewers as primetime television shows. According to AdAge, CNN was charging 40 times their normal rate for commercial time during the debates they hosted. The first Republican debate became the most watched cable telecast of all time (excluding sports programming).

CNN was charging
40 TIMES
their normal rate for
commercial time during
the debates they hosted.

Source: AdAge

Why is America so obsessed with Donald Trump's political venture? It is the same reason we binge the whole second season of "Stranger Things" the night it is released; we love the entertainment. Watching the presidential debates had

nothing to do with the actual politics and everything to do with the amusement of seeing Donald Trump yell "Wrong, wrong, wrong!" into Hillary Clinton's ear.

Let's face it, politics are boring. Many of us get uninterested when real topics are discussed. However, we can spend a full afternoon watching candidates insinuate their competitors have small genitalia. When Rep. Marco Rubio was still in the running for president, the amount of air time that he was getting compared to Trump was very small. Then Rubio decided to call out Trump for his "miniature hands" and that was all CNN talked about the next day.

The way television makes money is by companies paying for ad time. The more popular the show, the more the advertisers will pay. With the rise of popularity in streaming services, the amount of commercials being seen by people (especially millennials) has decreased significantly which has meant less revenue for networks.

In order to fix this problem, the television companies decided to run a nightly unscripted show that you cannot see on Hulu or Netflix. The main character is wacky and easy to make fun of, which is just what this meme obsessed generation wants. Then plan obviously worked because the first 2016 Republican Debate drew 6.7 million viewers in the 18-49 demographic. That figure is more than double the total amount of people that watched the same debate in 2012.

News programs are not the only shows that are on the Trump bandwagon, there are now multiple spin-offs. This season of "American Horror Story" is based on how people began to go crazy following the results of the election. Alec Baldwin won an Emmy this year for his reoccurring portrayal of Trump on "Saturday Night Live". Then of course there are the multiple late night talk shows that seem to include him in every monologue.

Is it scary to think that a man who looked directly at the sun during the eclipse is leading the country? Sure. Is it annoying that he can say racist things and gain popularity? Of course. Is it sickening that he can get away with outrageously sexist comments? Without a doubt, but man does it make for good TV!

In a time where a tragedy will turn into a meme the next day, maybe Donald Trump is the president this generation deserves. Our own obsession with drama induced entertainment is what keeps us glued to the screen. It is also the reason we are letting a man while absolutely no political experience run our country.

STATEMENT OF OPERATIONS

The George-Anne is the official student newspaper of Georgia Southern University, operated by GSU students using facilities provided by the university. The newspaper is the oldest continuously published newspaper in Bulloch County.

The newspaper is published twice weekly, on Tuesdays and Thursdays, during most of the academic year. Any questions regarding content should be directed to the student editor by phone at 912.478.5246 or at gaeditor@georgiasouthern.edu.

ADVERTISING: The newspaper accepts advertising. Inquiries may be made by calling 912.478.5418 or 912.478.0566. For questions e-mail ads1@georgiasouthern.edu.

The George-Anne receives additional support, in part, from the Student Activities Budget Committee. For more information, rate cards, or sample publications, contact the advertising manager or student media director. The advertiser is responsible for any errors in advertisements and its liability for adjustments is limited to the amount of space the error occupied in the ad. Further, the newspaper is not responsible for any damages caused due to an ad's omission from a particular edition and its responsibility solely is to reschedule the ad in the next regular edition at the regular advertising rates.

STUDENTS BEWARE: The George-Anne screens all advertisements prior to publication. The newspaper strives to accept ads for legitimate products and services only. Students are urged to exercise caution when replying to ads-- particularly those that require personal information. Students are also urged to report to the newspaper any suspicious offers which they might see in an ad.

PUBLICATION INFORMATION: The newspaper is printed by The Statesboro Herald in Statesboro, Ga.

NOTICE: Unauthorized removal of multiple copies from a distribution site constitutes theft under Georgia law, a misdemeanor offense punishable by a fine and/or jail time.

CORRECTIONS: Contact the editor at gaeditor@georgiasouthern.edu for corrections and errors.

STAFF LIST

Editor-in-Chief Jozsef Papp
Coverage Managing Editor Tandra Smith
Enterprise Managing Editor Ian Leonard
Daily Managing Editor Blakeley Bartee
Engagement Managing Editor Annie Mohr
News Editor Matthew Enfinger
Features Editor Ashley Jones
Sports Editor Thomas Jilk
Opinions Writer Ryan Redding

Creative Editor-in-Chief Lauren Grizzell
Creative Managing Editor Rebecca Hooper
Photo Editor Kelly Lowery
Design Editor Cayley Creekmore
Features Designer Shelby Cuaron
News Designer John St. Lewis
Sports Designer Ra'Kel Brown

Marketing Manager Haley Clark
Business Manager Kenyatta Brown

The George-Anne welcomes letters to the editor and appropriate guest columns. All copy submitted should be 350 words or fewer, typed, and sent via email in Microsoft Word (.doc/.docx) format to letters@georgiasouthern.edu. All submissions must be signed and include phone number for verification. GSU students should include their academic major, year and hometown. The editors reserve the right to reject any submission and edit submissions for length. Opinions expressed herein are those of the Board of Opinions, or columnists themselves and DO NOT necessarily reflect those of the faculty, staff, or administration of GSU, the Student Media Advisory, Student Media or the University System of Georgia.

MAJOR SLACKERZ



JD MCCARTHY

Georgia Southern ACCOUNTS FOR STUDENT DISABILITY

BY ISAAC TAYLOR

The George-Anne contributor

Kayla White, freshman multimedia communications major, begins her Wednesdays by waking up at 5:30 a.m. for her 8 a.m. class.

White uses this block of time before class to get dressed and mentally prepare for the day. At 7:05 a.m. she catches the bus to go to her first class. Herein lies her first struggle of the day.

MOBILITY

"I have a spinal tumor which they found at the age of three," White said. "It was the size of a baseball. It hindered me from walking. I've been in a chair for about 15 years now."

White is one of many disabled students at Georgia Southern University. Although the Student Disability Resource Center provides services to 624 students, some areas of campus are difficult to traverse for chair reliant students.

When attempting to take the bus, White has to wait for the bus driver to lower the bus, let down the ramp, lift up the seats and safely strap her in.

If there are too many people on the bus to comfortably accommodate White's chair, she has to wait for another bus to come and hope there will be enough space available on the next one.

"To be honest, I feel kind of bad because I always have to make them stop what they are doing just to strap me in to make sure I'm safe and everything," White said. "If I had a choice, I wouldn't take the bus to be honest. I would walk there."

ACCESSIBILITY

Multiple academic buildings on GS' campus provide accessibility options for students.

For example, The Zach S. Henderson Library has sliding glass doors to allow an easy entrance and exit to the building. The four-story building also has an elevator that goes to all floors so that disabled students can avoid the stairs.

Also, the football stadium provides special seating arrangements for students who need wheelchairs.

The majority of the buildings on campus are accessible, but a few are frustrating to get into, according to White.

Getting into the Public Safety building poses a particular problem for White. The sidewalk ends prior to the building's entrance.

"You have to find another way to get there or you have to go into the street; the Public Safety building isn't really safe despite the name," White said.

Overall, White is pleased with GS's accessibility options and willingness to help. Different students have different needs, White said.

The Student Disability Resource Center is housed on the second floor of Cone Hall and has business hours of 8:00 a.m. to 5:00 p.m., Monday through Friday.



PHOTO COURTESY OF KAYLA WHITE

Despite her disability, Kayla White stays positive and approves how accessible most of Georgia Southern's campus is.



University Programming Board



GEORGIA SOUTHERN UNIVERSITY
OFFICE OF ADMISSIONS

Presents

Fall FAMILY Weekend



Block Party

November 3, 2017
5PM
In Front of The University Bookstore
Rain Location: RU Commons
Free Food, fun, games, & prizes

Outdoor Movie

Spider-Man: Homecoming
November 3, 2017
7:30 PM
Sweetheart Circle Rain
Location: RU Theater



YOUR STUDENT ACTIVITY FEES AT WORK!

    **@GSUPB | Please bring your Eagle ID**

If you need accommodations related to access, please contact the University Programming Board at UPB@georgiasouthern.edu or by phone at 912.478.2603 at least two weeks prior to the event.

Brinner

IT'S WHAT'S FOR DINNER

BY DANA LARK
The Reflector staff



These maple pecan pancakes are perfect for any meal. Watch out pumpkin spice, a new fall flavor is on the rise!

Fall is now synonymous with pumpkin spice everything. You can partly thank Starbucks for starting this trend in 2003 with the unveiling of the beloved pumpkin spice latte. Since then, many of the mainstream brands have jumped on the bandwagon with their own twist on the flavor. However, this year pumpkin spice has been forced to share the seasonal spotlight. Maple has had an increasing number of name-drops on menus this season. Rumor has it that maple pecan could be the new pumpkin spice. So, let's welcome maple pecan with open arms and while we're at it, let's break the dinner routine wide open. It's a nice change in taste, pace and monotonous procedure. Brinner: breakfast plus dinner, or breakfast in the place of dinner, is one of my favorite ways to change a necessary daily meal into something magical. I rarely eat breakfast and I know I'm not alone in that habit. It's unfortunate, but if you substitute breakfast for dinner, are you even missing out on "the most important meal of the day?" I think not. *The New York Times* has a tasty recipe for Maple Pecan Pancakes. Pancakes from scratch, people! The recipe also had a few ingredients that I knew for a fact I would never use again and you probably wouldn't either. I took the risk and decided to sub-out a few for items I had on hand. As I have no need for 15 pancakes, I cut the recipe in half. If you do, just double the recipe. The adjusted version is here:

INGREDIENTS

- ¾ cup flour (NYT includes part whole-wheat, part almond. I used all white flour.)
- 1 teaspoon baking powder
- ½ teaspoon baking soda
- ⅛ teaspoon salt
- 1 egg
- ½ tablespoon maple syrup
- ¾ cup unsweetened almond milk (NYT includes buttermilk, but I had almond milk.)
- 1 tablespoon canola oil
- ½ teaspoon vanilla extract
- ¼ cup chopped pecans
- ½ cup mini chocolate chips (NYT stated dried cranberries, but nah.)

DIRECTIONS

1. Butter or oil the pan.
2. Mix the flour, baking powder, baking soda and salt in a small bowl.
3. In a separate medium-sized bowl, whisk the eggs. Whisk in the maple syrup, milk, oil and vanilla.
4. Then, whisk in the flour quickly until no lumps are present.
5. Add the pecans and chocolate chips, but don't overwork the batter. (Basically, after you've stirred in those last two ingredients, chill.)
6. Set the batter to the side and preheat your pan, griddle, or skillet on medium. (Note: The original recipe said to cook them on medium-high and I burned the first two pancakes beyond the point of redemption. After that point, the pan was still way too hot. Even after reducing the heat, the remaining pancakes had a charred look.)
7. Using a ladle, or ¼ cup, drop them in the pan. When the bubbles subside on the top of the batter, it's time to flip them with a spatula.
8. Continue that process until you're out of batter. Bam! You've got yourself some maple pecan pancakes. Pumpkin spice who?

HAWTHORNE



4 bedroom
3 bathroom
townhouse
starting at
\$295
/month per person

www.hendleyproperties.com
912-681-1166



Like this story? Read more like this on reflectorgsu.com and also come and pick up a copy of the Reflector magazine at our launch event on Wednesday, Nov. 15 from 11 a.m. - 1 p.m. at the Rotunda!

JOINT RESPONSIBILITY

EXPLAINING THE POLICY, PROCEEDINGS AND PUNISHMENT

BRENDAN WARD

The George-Anne staff

WHAT IS IT?

In the Georgia Southern University code of conduct, there are two lines on the joint responsibility policy.

The code of student conduct defines joint responsibility as:

1. Students who knowingly act or plan to act in concert to violate University regulations have individual and joint responsibility for their behavior

2. Any student who knowingly allows another person to violate University regulations without reporting to a University Official.

This means that if a student willingly knows that someone is violating a university rule, they are obligated to report it to a university official or they are equally responsible for the violation.

For example, if a student's roommate has marijuana in their personal room and the student knows about the marijuana then they are expected to report the drugs. If the student does not report the drugs and his roommate is caught then they may also face discipline for not originally reporting the drugs.

It is important to note that joint responsibility applies to all GS students, both on and off campus and does not only apply to drug and alcohol possession, but any violation of the code of conduct. Though the full extent of GS' jurisdiction on violations that happen at off campus housing is currently unknown.

THE INVESTIGATION PROCESS

According to documents from 2015, any students who is accused of a code of conduct violation through joint responsibility is notified of their alleged violation via email.

At this point, students have a week to schedule a meeting with the Office of Student Conduct to prove their innocence.

Students are then sent a form detailing the charges brought against them. Followed by an adjudication form where students must plead guilty or not guilty to the charges.

This is followed by the meeting with the Office of Student Conduct where students answer questions based on the police reports.

Finally, the student is given the ruling on their case and at this point students may request a hearing with either the university conduct board or a hearing officer. Students

also have the right to forgo a hearing and accept the university's decision.

While students can participate in the investigation process, if they chose not to weigh in on their case, the office will find a ruling without them.

If a student is found to be guilty, the minimum punishment is three months of disciplinary probation and an educational task based on GS's VALUES.

GS's VALUES can be found on page four of the code of conduct.

STUDENT EXPERIENCE

John St. Lewis, junior graphic design major, who is also a designer for Student Media, is one student who has dealt with GS' joint responsibility policy.

During the second week of classes this semester, St. Lewis came home to find police at his dorm.

According to St. Lewis, police searched his dorm and found marijuana and around \$18,000, as well as alcohol in his roommate's room.

Police arrested the roommate, but he was back at the dorm the next day and as of Oct. 31, he is still living in the dorm.

Because of the joint responsibility policy, St. Lewis and his other roommates were all forced to go to hearings to prove their innocence.

This hearing caused St. Lewis to miss his scheduled advising appointment because he was told if he did not appear at the hearing a decision would be made about his innocence without his input.

St. Lewis recently had another issue with joint responsibility this month. Someone tampered with the smoke alarm in their shared living area and all the roommates had to go to another hearing.

In both cases, he was ruled to not be responsible for the code of conduct violation.

AWARENESS

In a Twitter poll conducted by the George-Anne, of 75 students, 77 percent, or about 58 students, said they did not have a firm understanding of GS's joint responsibility policy, with only 12 students claiming they had sufficient understanding of joint responsibility.

The Office of Student Conduct declined to directly comment on if they felt the university had sufficiently informed students of joint

responsibility, but according to Torres, students are first informed of joint responsibility at SOAR and then representatives from the Office of Student Conduct are invited to first year experience classes to further educate students on the code of conduct.

Torres added that it is the student's responsibility, not the universities' to be informed on the code of conduct.

"As a Georgia Southern student, students are expected to be aware of the regulations and what is expected of them through the course of their time as a Georgia Southern student," Torres said. "Not knowing what the policies are does not excuse any alleged behavior."

GUILTY UNTIL PROVEN INNOCENT?

St. Lewis felt that joint responsibility was as a guilty until proven innocent situation.

"They say if you don't go they're making a choice about your innocence without you being there and I just feel like, 'how can you make that decision if I'm not there?' I feel like they're kind of setting people up to go down for things they're not doing," St. Lewis said.

The Office of Student Conduct was contacted for comment on St. Lewis' claim, but decline to comment.

THE RULINGS

In joint responsibility cases there are three rulings: responsible, not responsible and other.

A student is responsible if they knew about a policy violation and did not report it.

While a student is not responsible if they did not know about the violation.

Both the Office of Legal Affairs and the Office of Student Conduct were reached for comment. The former had no knowledge of the meaning of other and the latter was unable to be reached for comment.

STATISTICS

Between Aug. 15, 2016 and Oct. 1, 2017, there were 767 charges for joint responsibility.

Of those cases, 400 or just over 52 percent of students were found to be "responsible" and 255 or 33 percent of students were found to be not "responsible."

The remaining 112 cases were ruled as "other."

Matthew Enfinger contributed to this report.

767

Joint responsibility charges between

06/15/2016 -

10/01/17

52 PERCENT

of those students were found to be "responsible"

33 PERCENT

of those students were found not to be "responsible"

15 PERCENT

of the remaining cases were ruled as "other."



PHOTO COURTESY OF WWW.INATURALIST.ORG
A Killdeer bird was spotted in the grass along the RAC ponds.



PHOTO COURTESY OF NEWS.GEORGIASOUTHERN.EDU
Students can be seen netting through Eagle Creek seeking unique species.



PHOTO COURTESY OF WWW.INATURALIST.ORG
This Western Lesser Siren was identified in Eagle Creek.

GS BIODIVERSITY STUDY

IDENTIFIES OVER 200 SPECIES ON CAMPUS

BY GEORGE ANDERSEN
The George-Anne staff

A two-year study to identify vertebrate species on campus, conducted by Georgia Southern University professors and students, has come to an end.

The project titled "Georgia Southern Biological Survey," was directed by GS biology professors Michelle Cawthorn, Ph.D., Ray Chandler, Ph.D., Lance Mcbrayer, Ph.D., and Jamie Roberts, Ph.D.

Using the help of dozens of students, they were able to catalog a list of over 200 vertebrates on campus and document where they were spotted.

THE PROCESS

Lissa Legee, Center for Sustainability director, said, there were two phases to the project.

The first phase was documenting for all of the vertebrate species on campus. Students and professors gathered this information through cameras, live trapping, netting and audio recording the species on our campus.

The second phase consisted of making the information available for all students on nature observation app, iNaturalist.

Leege said, the first phase of the project cost \$30,200 and the second phase cost \$32,572. Funding for this project was provided by student sustainability fees through the center of sustainability.

INATURALIST APP

Created in 2008, iNaturalist is an app that allows users to record observations of nature, get help with identifying species, collaborate with others collecting information and access the observational data collected by iNaturalist users, according to the app's website.

The app currently has nearly 2,800 sightings and 208 species logged for the GS campus.

Students can add to the observations by spotting animals on campus and documenting them by taking a picture and sharing the location on campus.

From this research project, GS now has one of the most comprehensive and detailed lists of vertebrates on a college campus in the nation, and is the only school in Georgia to have done this, according to GS News.

"I think it's really beneficial to our campus as a whole just to know what we have here," Legee said. "It's really something that can be used as a model for other universities."

EXPANDING THE SURVEY

"A logical next step is to expand the survey from campus to the city of Statesboro to help them with their environmental planning and sustainability," Cawthorn told GS news. "We would like our campus and community to be leaders in the conservation of biodiversity."

While Legee is not sure of whether or not this study and awareness of species on campus will affect the way the university operates, she is hopeful that the information will have a positive impact.

"That's the ultimate goal," she said. "You have to do a study first, now that that study has been done the information will be available."

The Georgia Southern Biological Survey encourages any interested members of the community to get out and look for animals on the GS campus, upload observations to their project and help GS expand their knowledge of biodiversity on the GS campus.

BORONESTS.COM

Whose house? Your house!

Customize

Search

Compare

Verizon 10:16 AM 50%

BORONESTS.COM

Distance

Bedroom

Bathroom

Price Min

Price Max

Management

Search

GEORGIA SOUTHERN'S RIFLE TEAM LOOKS TO CONTINUE RECORD-BREAKING SEASON

BY MIKHAEL TOMLINSON
The George-Anne contributor

The Georgia Southern Women's Rifle team won at The Citadel Saturday and looks to carry momentum into competition at home this Saturday.

The Eagles' Rifle team has been shooting lights out this fall, setting school records consistently during competition.

According to the Georgia Southern Women's Rifle page, the Eagles set six school records and placed first in the five-team match during their campaign this past weekend in Charleston, S.C. In addition to the record-setting scores and earning first place, the Eagles defeated the Citadel's co-ed team by two points.

Continuing their momentum from their season opener at the University of Tennessee Martin, the Eagles have continually broken and then set new school records for Georgia Southern University.

Looking to continue their record-breaking season, the Eagles turn their focus to compete against the University of Alabama Birmingham Blazers and company.

The Blazers are currently ranked 25th in the nation and look to knock off the 23rd ranked Eagles at home. A talented Blazer team will test the impressive season the Eagles have pieced together.

The 2017 Eagles' Rifle team has recorded a staggering 17 all-time top scores in the categories of small bore, air rifle and aggregate. From freshman Lily Wade to Senior Chastity Price, every Eagle on the team has contributed to either a record-setting performance or a victory in competition this season.

The competition will be held on Nov. 4, at the Shooting Sports Education Center at 8 a.m., located at 3271 Old Register Road, Statesboro, Ga. 30458.

WOMEN'S SOCCER FALLS TO TROY, SECURES SIXTH SEED

BY ANDREW WEIMER
The George-Anne contributor

As a result of their 5-0 loss against Troy on Sunday afternoon, the Georgia Southern women's soccer team was able to capture the No. 6 seed heading into the Sun Belt Conference Tournament.

The Trojans came out fast, with the team's leading scorer, Julia Winters, putting one in the back of the net in the 6th minute to give Troy a 1-0 lead. For the next 35 minutes, the Eagles' defense was able to hold the powerful Trojan offense before the Trojans added another goal preceding halftime.

As the Eagles came out in the second half, they were unable to take control of the game. The Trojans were able to get past the defense for three consecutive goals in four minutes. The Eagles could not put one past the Trojan goalkeeper, finishing the game with nine shots taken.

Senior Sarah Price and Sophomore Lauren Karinshak showed impressive individual performances for the Eagles. Price was able to get through the Trojan defense in the game, accounting for four of their nine shots. Karinshak had six saves during the game, extending her save total for the season to 66.

The next matchup for the Eagles will once again be against Troy in the Sun Belt Conference Tournament. Georgia Southern will travel to Foley, Alabama on Wednesday and play at 8 p.m.



EAGLES MAKE CHANGES, STILL FALL TO TROY

38-16

BY THOMAS JILK
The George-Anne staff

On a soggy Saturday in Alabama, Georgia Southern fell to 0-7 this season by losing 38-16 at Troy after giving up 28 points in the first half.

FIRST HALF

The Trojans scored a touchdown on their first offensive possession on the second play of the drive. They ran a trick play as receiver John Johnson threw deep and connected with fellow receiver Travis Eafford for a 40-yard touchdown.

Georgia Southern University came back with a scoring drive of its own, capped by junior running back Monteo Garrett's second touchdown run of the season.

It was also notable from the start that GS interim head coach Chad Lunsford made some adjustments to the game plan offensively along with coordinator Bryan Cook.

The Eagles lined up under center more often, and Shai Werts and Kado Brown split playing time at quarterback. As the game progressed, Brown seemed to take over the lead role at quarterback.

As the rain picked up, Troy running backs Josh Henderson and Jamarious Anderson scored long rushing touchdowns in the first half, and receiver Clark Quisenberry also caught a touchdown from Silvers.

With a Tyler Bass career-long 46-yard field goal also in the scoring mix for GS, the halftime score was 28-10 in favor of Troy.

The Trojans out-gained the Eagles with 264 total yards to 139 for GS in the half.

SECOND HALF

Both defenses came out more stout in the third quarter as the rain continued.

Late in the third quarter, Troy kicked a field goal that would wind up being the lone scoring play in the third.

Neither offense could find a real rhythm, but Troy already had a sizable cushion to work with, as many opponents of GS have enjoyed this season.

Early in the fourth quarter, Troy, up 31-10, put in backup quarterback Kaleb Barker to signal their belief that the game was well in-hand.

GS junior running back Wesley Fields punched in a touchdown from three yards out to cut the lead to 31-16 just before the two-minute warning.

Running back B.J. Smith tacked on another touchdown for the Trojans with just over a minute to go and Troy extended its lead to the final score, 38-16.

ANALYSIS

The Eagle offense was again formidable, but their option style prevents them from coming back when an offense like Troy's

comes out and scores big in the first half.

It seems a two-quarterback approach is going to prevail going forward for Cook and Lunsford, with Brown and Werts sharing the load, partially under center.

A balanced running attack on Saturday was led by Fields, who amassed 18 carries for 83 yards and a touchdown. Garrett saw more action than he is perhaps used to, and the ground game was distributed nicely between all the weapons in the GS backfield.

GS managed more first downs than Troy in what one commentator called a "weird football game."

The key going forward will be the GS defense's ability to shut down big plays. The Eagles avoided turnovers and too much self-destruction against Troy, which is a step in the right direction. However, the long rushing touchdowns and the trick play out of the gate had destructive impacts for GS.

Falling to 0-7 going into Georgia State week was another downer for GS fans, but Lunsford showed he was willing to make some changes in his head-coaching debut.

Nonetheless, the Eagles head into November winless.

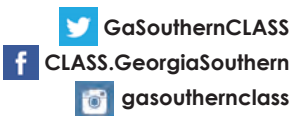
NONETHELESS, THE EAGLES HEAD INTO NOVEMBER WINLESS.



COLLEGE OF LIBERAL ARTS
AND SOCIAL SCIENCES

Ahead in
CLASS

All events are open to the public, and admission is free except where otherwise indicated. For more information, please visit GeorgiaSouthern.edu/class.



Art Exhibits

Georgia Artists Collection 50th Anniversary Exhibition

Curated by Betty Foy Sanders
Georgia Artist Gallery | Center for Art & Theatre | Now-3/9

Betty Foy Sanders: Fluid Structures

Georgia Artists Gallery | Center for Art & Theatre | Now

Visit Beautiful Roach Town

Exhibit by alumna Xed Blankenship.
Rosengart Gallery | 11/3-11/24

Jessamy McManus: Neon Nature

University Gallery | Center for Art & Theatre | 11/7-11/14

History Fall Film Series

Historical drama "Luther" with an introduction by Kathleen Comerford, Ph.D.
Sanford Hall, Room 1002 | 11/1 | 6 p.m.

Percussion Ensemble Concert

Carol A. Carter Recital Hall | 11/1 | 7:30 p.m.

Visiting Artist Lecture Series

SCAD Museum Curator Ben Tollefson will discuss the range of ways to build a creative career and what he looks for when putting together an exhibition.
Arts Building, Room 2071 | 11/2 | 5 p.m.

Sociology's Fall Film Series

The Sociological Society presents "Class Divide" with free popcorn.
Russell Union Theater | 11/2 | 6 p.m.

French Week

19th Annual celebration of the francophone world's culture, history, and diversity. Week long celebration with contributions and events across campus. Visit the Georgia Southern Calendar for full details.
11/3-11/9

Symphonic Wind Ensemble & Wind

Symphony Concert

Performing Arts Center | 11/7 | 7:30 p.m.

An Octoroon

An Obie Award winning, radical adaptation of Dion Bouicault's 1859 melodrama "The Octoroon," where the Antebellum South and 21st century cultural politics collide. Written by Branden Jacobs-Jenkins and directed by Nicholas Newell.

Tickets are \$6 for youth and \$12 for faculty, staff, and community and can be purchased by calling 912-478-5379. Mature themes and language.

Black Box Theatre | 11/8-11/15 | 7:30 p.m., 11/12 2 p.m.

Southeast Model African Union

Nessmith-Lane Center & Russell Union | 11/9-11/11

Southern Gentlemen & 13th Colony Sound Bar

Carol A. Carter Recital Hall | 11/11 | 7:30 p.m.

Jazz Ensemble

Performing Arts Center | 11/14 | 7:30 p.m.

Choral Christmas Concert

First United Methodist Church | 12/3 | 3 p.m. & 6

Puzzles

10-31-17

11

The George-Anne 10/31/17 Crossword

PuzzleJunction.com

Across

- 1 Cronies
5 Manacles
10 Surrounded by
14 Auth. unknown
15 Lagoon
surrounder
16 Without a doubt
17 Restaurant type
19 "Quit it!"
20 Chiang Kai-shek's capital
21 Conclude
22 Family member
23 Apprehensive feeling
25 Itinerary word
26 Liquefy
30 Miner's load
31 Worked the land
34 First-stringers
36 Auspices
38 Swelter
39 Tribal V.I.P.'s
41 Bon vivant
43 Lend a hand
44 Chicken
46 Copier need
47 Polar sight
49 Toupee, slangily
51 Chances
52 Greek consonant
53 Assail
55 Model
57 Implore
58 Prove wrong
63 Distress signal
64 Indian Ocean arm
66 Poker holding
67 Andrea Doria's domain
68 Broadcasts

1		2	3	4		5	6	7	8	9		10	11	12	13
14						15						16			
17					18							19			
20							21					22			
					23		24				25				
26	27	28	29		30				31					32	33
34					35		36		37			38			
39						40			41			42			
43				44			45			46					
47			48				49		50		51				
		52				53				54					
55	56					57				58		59	60	61	62
63						64			65						
66						67						68			
69						70						71			

Copyright ©2017 PuzzleJunction.com

- 69 Nile reptiles
70 Bar seat
71 Covet
- 11 Investment choice
12 Pressing need?
13 Cabinet div.
18 Vacation locale, with "the"
24 Comprehend
25 Call upon
26 Kenyan tribesman
27 Body of values
28 General's forte
29 Flat hat
31 Tout's offering
32 Guessed wrong
33 Fabric workers
35 Brazilian palm, coco de ____
37 Taxonomic group
- 40 Forty winks
42 Bill and ____
45 Sauce ingredient
48 Toast word
50 Agreeable
53 Special Forces cap
54 Kind of party
55 Sobriquet for Haydn
56 Wood sorrels
57 Captures
59 Nibble away
60 Java is in it
61 Beach bird
62 Bridge position
65 Ghost's cry

Down

- 1 Actor's goal
2 Dwarf buffalo
3 French novelist
Pierre
4 Cut short
5 Vegas attraction
6 Shoshonean
7 Divine
8 City near Detroit
9 Husky burden
10 Tear into

		4	6		1	8		3
1			2	5		4		
	4	6						5
				7				
7						3	2	
		8		1				4
		1	8		7	2		
2								

		9	2				1	
			8		1		3	
	5	1					2	
		3	1		4			
		2		9		5		
			5				6	
	9						3	7
	4		3		9			
	7				2	9		

Free coffee & hot chocolate
with your Copy

Located between the Russell
Union and the University Store

Every Thursday
8 a.m. to 10 a.m.

GA
THE GEORGE-ANNE



FIRST AMENDMENT

FREE FOOD FESTIVAL

★ ★ ★



FREE FOOD OR FREE SPEECH. YOU CAN'T HAVE BOTH.

11 AM - 1 PM
NOVEMBER 1, 2017
WILLIAMS CENTER PLAZA

Live On!

University Housing provides students of Georgia Southern University with housing options that fit a wide variety of lifestyles. Students living in housing get the benefit of **around-the-clock maintenance staff**, no **overages or fees** for utilities, and **live-in staff** ready to assist you. Stick with the community you know and love!

Visit GSUHousing.com/RSSU to Sign Up!
Applications are **live now!**



ROOM SELECTION
BEGINS
JANUARY 2018

