

Georgia Southern University

## Digital Commons@Georgia Southern

---

The George-Anne

Student Media

---

12-1-2015

### The George-Anne

Georgia Southern University

Follow this and additional works at: <https://digitalcommons.georgiasouthern.edu/george-anne>

---

#### Recommended Citation

Georgia Southern University, "The George-Anne" (2015). *The George-Anne*. 3186.  
<https://digitalcommons.georgiasouthern.edu/george-anne/3186>

This newspaper is brought to you for free and open access by the Student Media at Digital Commons@Georgia Southern. It has been accepted for inclusion in The George-Anne by an authorized administrator of Digital Commons@Georgia Southern. For more information, please contact [digitalcommons@georgiasouthern.edu](mailto:digitalcommons@georgiasouthern.edu).



# CA

THE GEORGE-ANNE

# GET BACK UP

BRANDON WARNOCK THE GEORGE-ANNE

# GET KNOCKED DOWN

*Catch up on the Action on Page 10*

## EAGLES KEEP GROWING UP

*The team took  
on the SEC over  
the break*

HAVE STUDENT  
FINANCE  
QUESTIONS?

WE HAVE  
EXPERT  
ANSWERS!

EDUCATE YOURSELF  
ON PAGE 14

**PAGE 7**

KIARA GRIFFIN THE GEORGE-ANNE





## Wednesday, December 2nd 5pm-9pm Dining Commons

Dining Commons will be closed from 3pm-5pm to prepare for this event

### Food Theater

- Oysters Rockefeller on the Half Shell
- Shrimp Cocktail
- Panko Fried Stuffed Mushrooms
- Spinach and Artichoke Dip w/ Pita Points
- Meatballs
- Coconut Shrimp with Orange Dipping Sauce

### Backyard

- Grilled Duck Breast with Tasso Gravy
- Prime Rib with Fresh Horseradish Demi Glaze
- Broccoli Cheese Casserole
- Squash Casserole

### Brick Oven & Signatures

- Seasonal Pasta Dishes
- Variety of Pizza choices
- Lobster Bisque
- Corn Crab Chowder

### Traditions

- Grilled Swordfish with Basil Butter
- Crab Cakes with Creole Remoulade
- Spinach Stuffed Pork Loin
- Lobster Mac N' Cheese
- Loaded Mashed Potatoes
- Glazed Carrots



**EAGLE DINING SERVICES**

LEARN MORE AT [GEORGIA.SOUTHERN.EDU/DINING](http://GEORGIA.SOUTHERN.EDU/DINING)



EDSATGSU

Spread and cover designed by Alex Smith

### WEATHER BAR

Tuesday



High: 77°  
Low: 59°

Wednesday



High: 75°  
Low: 50°

Thursday



High: 63°  
Low: 41°



"TODAY IT 'WILL' BE TOO HOT FOR NOVEMBER"

## INTERNATIONAL AMBASSADORS FOLLOW-UP

by Christopher Carter

International Ambassadors is an organization associated with the Office of Admissions composed of students from around the world. They are 30 members strong and try to keep their numbers between 25 and 30.

International Ambassadors give tours of campus and participate in campus events. According to Jade Pinder, the president of International Ambassadors and senior Multimedia Journalism major from the Bahamas, the organization has three main functions.

To represent International students on Georgia Southern's campus. Should any International Student need support, help or guidance of any kind they can reach out to the International Ambassadors.

To recruit more International Students to come to Georgia Southern. When they return to their home countries they will go to their old high schools and tell people about Georgia Southern.

To participate in activities on campus and in the community.

Recently they participated in a project with Habitat for Humanity where they had decorated a door which was then auctioned off. The money received from the auction will go to buying supplies for building houses. The door was decorated with the colors of all of the different flags represented within International Ambassadors and the hand prints, names and countries of origin of the members.



PHOTO COURTESY ANTONIO DAHL

## GEORGIA SOUTHERN'S CHRISTMAS BOXES REVEALED

by Johnny Lu

It's that time of the year again as maintenance staff and crews are decking the halls of Georgia Southern University with boughs of holly.

Christmas decorations go up right before students are let out for Thanksgiving break and stay up into the new year. Buildings such as the Russell Union, Deal Hall and the Marvin Pittman Administration Building are laced with wreaths and Christmas greenery. Dining halls like Lakeside and Dining Commons join the festivities by decorating their cafeterias with trees and gift boxes. Iconic parts of Georgia Southern such as Sweetheart Circle are decorated as well.

Christmas decorations arrive to the school in the form of big, tall wooden boxes painted in gold and blue with white stripes across them. Newcomers to GSU may wonder what's inside while students familiar with the school's traditions are simply reminded that Christmas is right around the corner.



JOHNNY LU THE GEORGE-ANNE

# R

**REFLECTORGSU.COM**  
by Yasmeen Waliaga



PHOTO COURTESY THEREFLECTORGSU.COM

## Dingus Magee's: AN ICON AMONG COLLEGE STUDENTS IN STATESBORO

Every town with a dense college student population has that place; that environment where young people choose to meet up more often than not. That "place" cannot be just any restaurant or bar. There is a certain level of hospitality, a mutual understanding among the entire space and the individuals who occupy it on a Thursday night. That understanding is what makes these types of places different than the bars that make a quick appearance before vanishing and the chain restaurants that instantaneously appear.

See the full story on [ReflectorGSU.com](http://ReflectorGSU.com)



# Surviving Finals Week

BY KURT HANLON  
The George Anne staff

With finals just around the corner, students begin their usual scramble to study. They prepare with cramming, all-nighters, and gargantuan amounts of coffee. We asked students to share their tips for making finals week just a bit less stressful.

SEAN PATTERSON

UNIOR MULTIMEDIA JOURNALISM MAJOR

"Don't wait until finals week to study. Study the week before, little by little so you separate your time between classes. One night you study for biology, the next night study for history, things like that. Don't spend all your time studying. Take a study break, go to the gym, watch a movie, or take a big nap."



SYDNEY BUSBY

SOPHOMORE EXERCISE SCIENCE MAJOR

"Chew the same flavor of gum while studying, and then while your taking the test, chew that same flavor. I just chewed mint flavor while studying, and chewed the same while taking the final. Don't doubt yourself. You know it's gonna be hard but also know you're gonna do well. Think positive."



ZACH DANIEL

JUNIOR MATH MAJOR

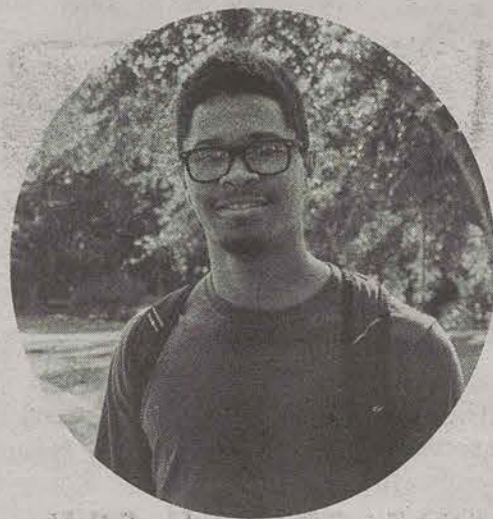
"Don't start late, be prepared early. The sooner you can start, the better. Don't wait until the last minute, even though that's probably gonna happen anyway. Try your best, hope for the best! Find a good place to study. I stay away from my apartment, away from things that could distract you."



RIVER KEENAN FRESHMAN

CIVIL ENGINEERING MAJOR

"Caffeine. Starbucks is a must. I listen to my favorite podcast. Music is also a must. Lots of time in the library. Club Hendy is always the move on finals week. Lots of hours and sacrifice are put into it. No going to the RAC, no hanging out with friends. Go ghost for at least seven days."



VALERIE SIMON

SENIOR PUBLIC RELATIONS MAJOR

"Wake up early. Start your day really early, and maybe even start the day before. Do a lot of index cards, that's a good tip, and go to Monarch and get free coffee. I do a lot of all-nighters, it works for me, but also read a lot. It's not about memorizing. If you understand the material you'll be good."



SIHAN HUANG

JUNIOR BUSINESS MANAGEMENT MAJOR

"Study a lot, that's what everyone should do. That's what it comes down to. I studied all Thanksgiving break as well."





# A class to consider

Career Service to offer career exploration course

BY RACHEL KELSO

The George-Anne contributor

Finals are right around the corner, and before you know it the spring semester add/drop week will be here. If you're still in need of a class to fill your schedule and want to learn some good tips and tricks to landing your dream job, consider this.

Career Services is offering GSU 2121: Career Exploration, a two-credit-hour course, to any student interested in learning professional skills regarding how to land any job, whether it's your dream job or summer job.

"The class is kind of like a crash course in career services," Jenna Tyson, coordinator of Experiential

Learning and a Georgia Southern alumna, said. "Résumé writing, interviewing skills, networking, everything you could potentially have questions about [we cover]."

Tyson says that she has noticed students leave the class feeling more confident about their futures and prepared to do whatever it takes to get the job they want. "Generally the overall feeling at the end is 'wow, I didn't know this [class] was here', or 'this really helped me in figuring out my career path and now gives me the confidence to pursue this and take the steps to make that happen.'"

"I learned how to write a résumé, how to upload it to Eagle Career Net, proper

interviewing techniques like how to shake a hand well and answer questions...just practical hands-on information that is really important when it comes to looking for a job or internship," sophomore Justin Doil, a former student of the class, said. "I have been offered several internship opportunities since posting my résumé on Eagle Career Net and I've been able to use the tips that we were taught."

Career Exploration is offered every semester, including both summer terms, and is currently only taught by Jenna Tyson. Spots are limited, so make sure to keep GSU 2121 in mind for your future schedules.

# FASTER INTERNET COMES TO THE BORO

Northland Communications takes the lead as the fastest Internet provider in Statesboro

BY CHRIS ROSSMANN

The George-Anne staff

Northland Communications, one of two primary Internet, TV and phone providers in Statesboro, announced two new internet packages that greatly increase the speed available to residents in the area. The two packages offer 50 MBPS and 100 MBPS speeds, and double or quadruple, respectively, the speeds currently offered. The company also increased its upload speeds available to 5 MBPS and 10 MBPS respectively.

The increase in speed is partially in response to the FCC's recently announced broadband standard speed of 25 MBPS. The FCC decided to upgrade its broadband benchmark after advances in technology made the previous standard of 4 MBPS download, and 1 MBPS upload obsolete. The agency recently found that 17 percent of all Americans, or over 55 million people, lacked access to internet speeds at least 25 MBPS. These numbers increased greatly among rural Americans, with 53 percent of Americans in rural areas lacking access to standard broadband speeds.

"As the local Internet, TV, and Phone provider for Statesboro,

our goal is to offer our community the most advanced products for the best value," said Tim Kelley, Northland's Statesboro Business Manager. "We have made a significant investment to our fiber-optic infrastructure and we're proud to offer 50 and 100 MBPS Internet to the residents and businesses of Statesboro."

In addition to the increase in speed, Northland is investing over 2.1 million dollars into their new system infrastructure to improve reliability and performance for their customers. Northland included a proactive network management system that is designed to solve problems and recognize opportunities to improve the network to avoid problems in the future.

Faster internet speeds are currently available to over 50% of Northland's current service area in Statesboro and residents are recommended to either call or walk in to see if speed increases are available. Northland currently has plans to expand the access area to all of Statesboro in the near future.

Northland Communications can be reached at (912) 489-8715 and they have an office at 32 East Vine Street.



**MyScholarships Applications**  
Open for Fall 2016

Log into  
**MyGeorgiaSouthern**  
and click on  
**MyScholarships**

Minutes of your time can equal  
thousands in scholarship money!

Why wait? Apply today!



**myGeorgiaSouthern**

Log In

Access for: Parents Student Organizations & Department Assistants Georgia Southern

Instructions for: Parents

**My News**

International Fashion Show Hits the Parkway this October  
Staff Council Warns Cashing Out on Kicks Out This Week  
Landscape Design Competition Central Oct. 14  
Wines, Sausages, award-winning author M.J. Aronoff present at Georgia Southern  
Husky T-shirt Available for Georgia Southern vs. Iowa Hawkeyes

**Upcoming Events**

Oct 25 6:00 PM Play Football Quarter Registration Begins  
Oct 26 Andie Coffee Hour  
Oct 28 Open House Challenge Course  
Oct 30 Andie and Maudie Inaugural 12.5  
Pleaseen Guitars with Dr. Jack G. Stephens  
Oct 30 Thanksgiving Celebrations

**GEORGIA SOUTHERN UNIVERSITY**



# Puzzles

12-1-15

The George-Anne 12/1/15 Crossword

PuzzleJunction.com

## Across

- 1 Healing sign  
5 Ant, in dialect  
10 Cops and robbers, e.g.  
14 River to Donegal Bay  
15 France's longest river  
16 Western blue flag, e.g.  
17 "\_\_\_ that in mind ..."  
18 Big picture  
19 Caesar's farewell  
20 Bird feature  
22 Flea market deal  
24 Blood vessels  
26 Swelled head  
30 Plywood layer  
33 Bowling target  
34 Born  
35 Reply to a captain  
36 Ruminative

- 39 \_\_\_ amis  
40 Journey segment  
41 Believer's suffix  
42 Money dispenser  
43 High note  
44 Bat additive  
48 Genteel affair  
49 Lunar New Year  
50 Santa \_\_\_, Calif.  
51 Regulate  
53 Has the wheel  
55 Push  
57 Underweight  
59 Cupid, to the Greeks  
62 Paddles  
65 Top competitors, often

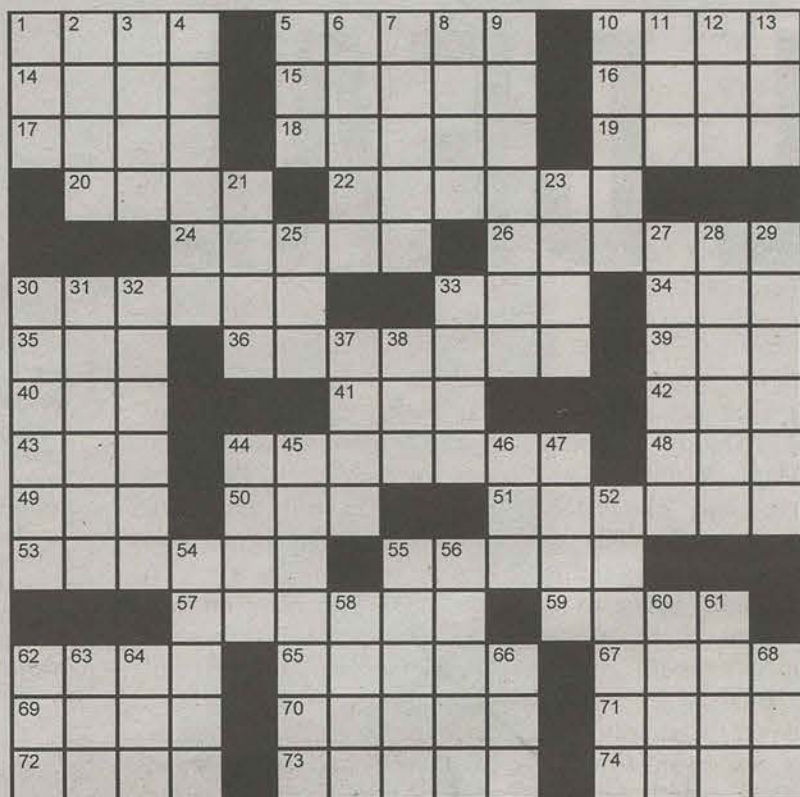
- 67 Bygone blade  
69 Kind of collar  
70 Pipsqueak  
71 Greek letters  
72 Like some sums  
73 Digress  
74 Work with mail

## Down

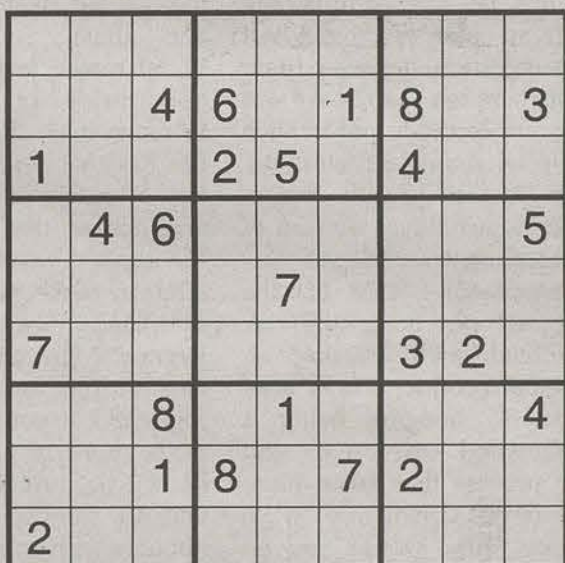
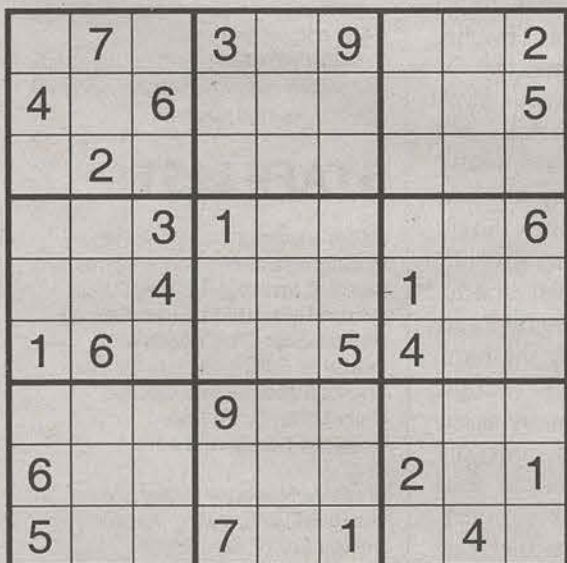
- 1 Patch up  
2 Plagiarize  
3 Advance amount  
4 Do as told  
5 Furniture wood  
6 Bewail  
7 Sticks in the mud  
8 Baseball stats

- 9 Israeli financial center  
10 Inclined  
11 Bird genus  
12 "Cool" amount  
13 Compass pt.  
21 Hoard  
23 Rural route  
25 Outrage  
27 Con  
28 Show instability  
29 Sycophant  
30 Hotel employees  
31 Shoe part  
32 Nullify  
33 Big East team  
37 Semitic deity  
38 Compass dir.

- 44 Village green  
45 Maintains  
46 Give it \_\_\_  
47 Gad about  
52 Poetry  
54 Piece in Harper's  
55 Look of disdain  
56 Greek monster with nine heads  
58 Colorful salamander  
60 Aware of  
61 Scorch  
62 Poetic adverb  
63 \_\_\_ Baba  
64 Bloodshot  
66 Stratego piece  
68 "C' \_\_\_ la vie!"



Copyright ©2015 PuzzleJunction.com



# THE HAMPTONS STATESBORO



ADDRESS: 815 S MAIN ST.  
STATESBORO, GA 30458  
PHONE: (912) 290-9595





# THE REEL DEAL



**IAN LEONARD**

Ian is a sophomore writing and linguistics major from Johns Creek, Ga.

They say all good things must come to an end. In this case we'll make an exception and end this incredibly ordinary, pseudo-series I've been writing on storytelling. And what better way to send us off than with my personal favorite medium? That's right, it's time to talk about movies. Now I must admit that there isn't much left to be said about this art form that hasn't already been savagely beaten to death, therefore I'm not going to sit here and talk about how great movies are. You already know that. And I'm not going to try to communicate to you why I love movies so much. You don't care, and honestly why should you? Instead, I'm going to attempt to explain an issue I've found cropping up in this once, hallowed field that I care for oh so much. Not quality, not quantity, hell not even diversity. My issue with modern movies is, effort.

Now if you follow the

Hollywood box office, or have any semblance of connection to the outside world, you would know that there is actually a huge slate of movies coming to theaters not only this winter, but also in the upcoming spring and summer. There is something for nearly every movie fan to enjoy. "Star Wars," James Bond, Marvel films, or even the recently released "Hunger Games," there seems to be no shortage of movies for us to entertain ourselves with. However from this short list you may have noticed something. Every single one of the movies I just listed belongs to a standing franchise. In fact, each of these films is a sequel to a previous movie. That's fine, let's look at some upcoming movies that aren't a part of a franchise. "The Revenant" with old Leo DiCaprio, "Joy" starring Jennifer Lawrence and apparently the rest of the cast from "Silver Linings Playbook," "In the Heart of the Sea" featuring Chris Hemsworth and his abs, "Point Break" starring no one worth mentioning, and "Snowden" with one Joseph Gordon-Levitt. Now that doesn't sound too bad does it? Well maybe not, until you realize that none of these movies are originals either. "Joy" and "Snowden" are both biopics, "In the Heart of the Sea" is an adaptation of a novel, and "Point Break" is a remake of the 1991 thriller of the same name. And even I was surprised to learn that "The Revenant" is inspired by true events. Eliminating all of these movies, we're left with, as far as original

screenplays go, "Sisters" starring Tina Fey and Amy Poehler, "Daddy's Home" with Mark Wahlberg and Will Ferrell, and "The Hateful Eight" directed by the enigmatic Quentin Tarantino.

So what am I trying to say exactly? Are these movies automatically bad simply because they aren't original screenplays? Certainly not, many of the greatest movies of all time aren't original, nor do they belong to a franchise, and many of them are even sequels. However everything is only good in moderation, and frankly, the field is saturated with these types of films. According to [shortoftheweek.com](http://shortoftheweek.com), in 1981 seven of the top ten grossing movies of that year were original scripts, as opposed to 2011, with a grand total of zero. And again, don't get me wrong, I'm not implying that these films are somehow lesser because of this fact, but that I long for a little originality to return to the silver screen. Of course, there's no use complaining without offering some sort of suggestion, however I fear that there isn't much we can do, and certainly not in such an isolated area as Statesboro. You see, as in all things, there is actually a myriad of factors contributing to this phenomenon, one of the biggest ones being the risk involved with creating an original product. For a brief moment, imagine being a Hollywood executive and the process that takes place before you decide to produce a new film. Would you go with a film that already has a

dedicated

fanbase, a large portion of its background and script basically already completed, and the majority of the main cast already committed, or would you take a risk and invest in a film with no previous recognition, no cast, and no guarantee of success. Of course even sequels and adaptations can fail, but they have a much larger safety net than a new, untested, and unknown property that could potentially fall flat on its face. There's a lot riding on these movies, time, money, careers even. I honestly can't blame someone for wanting to play it safe in the cutthroat world of cinema. So how can we help? Well I would tell you to go to the theaters and support original productions, but even if you did the impact would just be too little. Yes, most executives vote with their wallets, but the amount of people who will have picked up this paper, and read this piece would have relatively no influence on the numbers. We do however, have another tool to aid us in this fight, and that's social media. Social media has created an opportunity for many films to reach new audiences and heights that were originally out of reach. Many of you may know that the movie "Deadpool" was only greenlit after a fierce social media campaign led by the star Ryan Reynolds and many die-hard fans of the lovable mutant rogue. So, if you really want to see more original concepts in cinema, and I insist that you do, show your support, not only with your wallet, but with your tweets, likes and shares.

## STATEMENT OF OPERATIONS

The George-Anne is the official student newspaper of Georgia Southern University, operated by GSU students using facilities provided by the university. The newspaper is the oldest continuously published newspaper in Bulloch County.

The newspaper is published twice weekly, on Tuesdays and Thursdays, during most of the academic year. Any questions regarding content should be directed to the student editor by phone at 912.478.5246 or at [gaeditor@georgiasouthern.edu](mailto:gaeditor@georgiasouthern.edu).

**ADVERTISING:** The newspaper accepts advertising. Inquiries may be made by calling 912.478.5418 or 912.478.0566. For questions e-mail [adst1@georgiasouthern.edu](mailto:adst1@georgiasouthern.edu).

The George-Anne receives additional support in part, from the Student Activities Budget Committee. For more information, rate cards, or sample publications, contact the advertising manager or student media director. The advertiser is responsible for any errors in advertisements and its liability for adjustments is limited to the amount of space the error occupied in the ad. Further, the newspaper is not responsible for any damages caused due to an ad's omission from a particular edition and its responsibility solely is to reschedule the ad in the next regular edition at the regular advertising rates.

**STUDENTS BEWARE:** The George-Anne screens all advertisements prior to publication. The newspaper strives to accept ads for legitimate products and services only. Students are urged to exercise caution when replying to ads-- particularly those that require personal information. Students are also urged to report to the newspaper any suspicious offers which they might see in an ad.

**PUBLICATION INFORMATION:** The newspaper is printed by The Brunswick News in Brunswick, Ga.

**NOTICE:** Unauthorized removal of multiple copies from a distribution site constitutes theft under Georgia law, a misdemeanor offense punishable by a fine and/or jail time.

**CORRECTIONS:** Contact the editor at [gaeditor@georgiasouthern.edu](mailto:gaeditor@georgiasouthern.edu) for corrections and errors.

## STAFF LIST

**Editor-in-Chief** Lauren Gorla  
**Managing Editor** Erinn Williams  
**Content Strategist** Casey Cargle  
**Content Visualist** Lauren Grizzell  
**News Editor** Chris Rossmann  
**Features Editor** Rashida Otunba  
**Sports Editor** Robert George  
**Daily Editor** DJ Fullmer  
**Opinions Editor** Ian Leonard

**Creative Manager** Hailey Smith  
**Photo Editor** Brandon Warnock  
**Design Editor** Alex Smith  
**Features Designer** Rebecca Davis  
**News Designer** Erin Fortenberry  
**Sports Designer** Margarita Suarez  
**Opinions Designer** Rebecca Davis

**Distribution Manager**  
**Marketing Manager** Cydney Long  
**Business Manager** Taylor Norman

The George-Anne welcomes letters to the editor and appropriate guest columns. All copy submitted should be 350 words or fewer, typed, and sent via email in Microsoft Word (.doc/.docx) format to [letters@georgiasouthern.edu](mailto:letters@georgiasouthern.edu). All submissions must be signed and include phone number for verification. GSU students should include their academic major, year and hometown. The editors reserve the right to reject any submission and edit submissions for length. Opinions expressed herein are those of the Board of Opinions, or columnists themselves and DO NOT necessarily reflect those of the faculty, staff, or administration of GSU, the Student Media Advisory, Student Media or the University System of Georgia.





**KIARA GRIFFIN** THE GEORGE-ANNE  
Sophomore Mike Hughes is averaging 11.4 points per game so far. The team sits at 2-3 on the season.

## EAGLES STAY BUSY OVER THE BREAK

BY ROBERT GEORGE  
The George-Anne staff

### GAME 1 @ OLE MISS (L 72-82)

The Eagles began the break with a trip to Oxford, Miss. to take on the Rebels in the Tad Smith Coliseum. The Eagles fought hard but came up short in their first road game of the season. The Rebels attempted a whopping 53 free-throws compared to just 27 attempts for the Eagles. Three different Eagles fouled out, and three more finished with four fouls.

Ike Smith led the team with 14 points and six rebounds in just 18 minutes. Mike Hughes and Devonte Boykins added 13 points a piece. The team shot just 31 percent from the field.

### GAME 2 @ AUBURN (L 62-92)

The Eagles then traveled to Auburn for the second consecutive matchup against the SEC team. Despite trailing by just one heading into halftime, the Tigers outscored the Eagles 55-26 in the second half and ran away with the 30-point victory.

"We were scoring in the first four minutes of the second half, but we turned it into a pickup game and that is not going to favor us," head coach Mark Byington said in an interview following the game.

Mike Hughes, Ike Smith and Toookie Brown were the only Eagles to hit double-digits in points. The team committed 18 turnovers and shot just 23 percent from behind the arc, their worst mark of the season.

Freshmen guards Toookie Brown and Ike Smith lead the team in scoring with 14.6 and 13.2 points per game respectively. Smith is also tied with Mike Hughes with an average of 5.6 rebounds per game. The young team will continue to learn and improve over the next few weeks as they compete in their non-conference schedule. They will travel to take on Savannah State on Wednesday before taking on Duke University on Dec. 15 in Durham, NC.

THE MEN'S BASKETBALL TEAM TOOK TO THE ROAD OVER THANKSGIVING BREAK AS THEY TOOK ON A PAIR OF SEC TEAMS AND COMPETED IN THE PALMETTO STATE SHOOTOUT. THE TEAM WENT 1-3 OVER THE BREAK.

### GAME 3 @ THE CITADEL (L 90-95)

The offense found its rhythm again behind a career-high 26 points from Toookie Brown, but was outlasted by The Citadel in the first game of the Palmetto State Shootout. The Citadel shot 50 percent from the field and knocked down 18 shots from behind the arc.

Brown shot 7-13 from the field and converted on 11 free throws. The freshman stuffed the stat sheet with five assists, two steals and five rebounds.

"He was able to get by guys and finish at the rim. He embraced the game and wasn't afraid to make plays, and we expect more and more things like this out of him," Byington said in an interview following the game.

### GAME 4 @ USC UPSTATE (W 84-80)

The team picked up its first road win with a close win over Upstate on Friday night. The Eagles knocked down 14 shots from downtown and went 16-18 from the charity stripe in the wire-to-wire victory.

The game was tied at 78 with 90 seconds remaining when Ike Smith nailed a pair of clutch free throws to give the Eagles the lead for good. Smith added another bucket with nine seconds left to help seal the win. He finished the game with 17 points and a pair of steals. Jake Allsmiller scored 18 points, all of which came from behind the arc. Toookie Brown put together another solid performance with 16 points and four assists in 25 minutes.

## EAGLES COMPETE OVER THANKSGIVING BREAK

The women's basketball team continued their nonconference schedule in a pair of road games. They take to the road again this Wednesday in a matchup against Savannah State.

BY DANIEL WAUGH  
The George-Anne staff

### GAME 1 @ MERCER (L 50-62)

The Eagles competed in their first road game of the season at Mercer University in Macon, Georgia. The beginning of the game went back and forth, but a jumper from Sydney Means gave Mercer a 10-7 lead with two seconds to in the first quarter. The Eagles were able to obtain the lead one time in the second quarter, when sophomore Trellanie English-Lurry made a three pointer with 2:53 remaining before halftime, giving Georgia Southern a 21-20 lead. Mercer would then go on a 10-5 run and take the lead 30-26 at halftime.

The Eagles were able to regain the lead and extend it to five points, the largest lead for the team, in the third quarter with a three pointer from redshirt junior Alexis Sams. After Mercer tied the game back up, a jump shot by Kahlia Lawrence gave Mercer a 47-45 lead to end the third quarter. Mercer's offense was able to dominate in the fourth, outscoring the Eagles 15-5 in the quarter including a 12-0 run to start the period. Angel McGowan and English-Lurry both scored a team high 11 points in the game.

### GAME 2 @ GEORGIA ( 28-75)

Following the road game at Mercer, the Eagles traveled to Athens to take on The University of Georgia. Georgia Southern scored 15 points in the first half and shot just 7-28 from the field. The Eagles shooting woes would continue in the second half, making only 5 of their 26 shots and scoring

13 points. UGA's Merritt Hempe would shine for the Bulldogs, scoring 20 points and lead the Bulldogs to a 75-28 win.

The Eagles (0-3) travel to Savannah State on Wednesday before returning home to face Jacksonville State on Friday.



**KIARA GRIFFIN** THE GEORGE-ANNE  
Alexis Foulks is averaging 4.7 points per game on the season. The young team remains winless in its first three games.







# GAMES







BRANDON WARNOCK THE GEORGE-ANNE  
The Eagles took down South Alabama 55-17 on Saturday. They moved to 6-1 in the conference.

# 2015 REGULAR SEASON NEARS THE END

After falling in overtime to the Georgia Bulldogs, the Eagles bounced back with a resounding win over South Alabama. They have just one team left on the regular season schedule: Georgia State University.

BY HAYDEN BOUDREAUX  
The George-Anne staff

Thanksgiving is a time we all get to head home and enjoy the company of our family and friends while sharing food, stories, and of course, watching football. If you didn't get a chance to keep up with the Eagles while you were away, we are here to update you on what you missed.

Many probably witnessed the Eagles go toe-to-toe with the University of Georgia. After controlling most of the game the Eagles were bested in overtime by the Bulldogs. While they didn't pull off the win, the team showed again that they had the ability to take on an SEC opponent and if a few more plays went their way,

they would have been able to take home the victory. The loss would end up being made up for this weekend, but before we get there, there is a rumor that should be put to bed.

Last week, there were reports that Eagle head coach Willie Fritz had expressed interest and was in talks with Iowa State regarding their vacant coaching position. In his two years at Georgia Southern, Fritz has won 16 games with only six losses, had the best rushing offense in the country, and most importantly the first bowl eligible team in Georgia Southern's history. He certainly will go down as one of the best coaches the Eagles have seen, but he won't be leaving just yet. Iowa State announced over the weekend that they hired Toledo Head

coach Matt Campbell. Fritz spent his weekend leading the Eagles to a huge win over the South Alabama Jaguars.

Having a game during fall break typically leads to lower attendance, and the game against South Alabama was no different. The Eagles played in front of a crowd of 15,000 which is around 9,000 less than a usual home game. Despite this, the team put on quite the performance. Eagle quarterback Kevin Ellison had three total touchdowns, with one through the air to Derrick Keaton and two on the ground. Matt Breida ran free for 187 yards and two touchdowns on 21 carries which included a huge 75 yard touchdown run. L.A Ramsby has his typical dominant performance with 13 carries

for 85 yards and a score. The Eagles ended up taking the game 55-17 with another 500 yard performance from the offense and an amazing defensive onslaught that held back one of the top offensive programs in the conference.

There are a few other interesting things going on with the Georgia Southern program that merits mention. First off, it has been announced that Paulson Stadium is officially converting to artificial turf and the sod is being sold by the athletic department. Also, Eagle assistant head coach Dell McGee has been nominated for the Broyles Award, which is given to the top assistant coach in college football. McGee was recently promoted from his position as running back coach where he has crafted an elite stable of running backs. Finally, Eagle tailback Matt Breida is five yards away from the milestone of achieving 1,500 rushing yards, and only 18 yards from reaching the 3,000 career rushing yards mark.

Moving forward, the Eagles have a rare opportunity in the world of FBS football: the opportunity to become a 10 win team. They currently have eight wins with games coming up against Georgia State and the inevitable bowl game that awaits. However, we shouldn't sell the in-state competition short as they travel to Statesboro this Saturday. The Panthers have picked up five wins this season and with the FBS not having enough six win bowl teams, a win for Georgia State would almost certainly guarantee a bowl appearance, their first in five years in the FBS. The Eagles will need to handily put down the Panthers and move on to their first ever bowl appearance.

## PLAYERS OF THE WEEK



### KEVIN ELLISON

ELLISON ACCOUNTED FOR 118 TOTAL YARDS AND THREE TOTAL TOUCHDOWNS IN THE GAME, INCLUDING A 56-YARD SCAMPER THAT SET UP A SHORT SCORE FOR MATT BREIDA ON THE NEXT PLAY.



### DEREK KEATON

KEATON NEARLY RETURNED A PUNT FOR A SCORE BEFORE STEPPING JUST SHORT OF THE GOAL LINE. HE ALSO HAULED IN A 23-YARD RECEPTION FOR A TOUCHDOWN, HIS FIRST OF THE SEASON.



## WE ARE HIRING!

Course Hero is looking for  
Business Development Interns.

✓ Paid    ✓ Flexible    ✓ Resume Builder

Apply at: [www.coursehero.com/business-internship](http://www.coursehero.com/business-internship)



# Season ends: volleyball falls to Arkansas State 0-3

The volleyball team was defeated in the first round of the Sun Belt Championships. The team said goodbye to three seniors: Bernetta Moore, Kat Minnerly and Crysten Curry

BY DERIK WUCHTE  
The George-Anne staff

The dream fell short on Friday, Nov. 20 when women's volleyball competed against Arkansas State in the first round of the Sun Belt Championship. In a deceptively close 0-3 match with the score going 20-25, 22-25, 24-26, the Eagles almost earned the necessary points to overtake the Red Wolves. Things didn't completely fall through and Georgia Southern ends the year on a 10-19 season.

"Obviously disappointed," said Head Coach Dustin Wood. "A lot of [the Eagles] came out with some fire. They competed really hard against a really good team. I knew they were good, but I felt that we were just as good."

The first set looked like a lost

match for the Eagles when the team fell down 4-12. Arkansas State seemed to be a team set on easily claiming the Sun Belt Championship. When the misplays started coming out, the momentum changed greatly. Redshirt-junior Katie Bange didn't immediately adjust to her playstyle for the night, but once she started to get into the flow of the game, she earned 31 assists and upset the Red Wolves' tempo with her six kills.

"[Arkansas State] won the bigger points tonight," said Wood. "That was the difference. Our passing broke down. Our outsides didn't get the job done. On the bright spot, Katie had a great game plan. She executed well. Chevalier had a great night. We knew we could score out there."

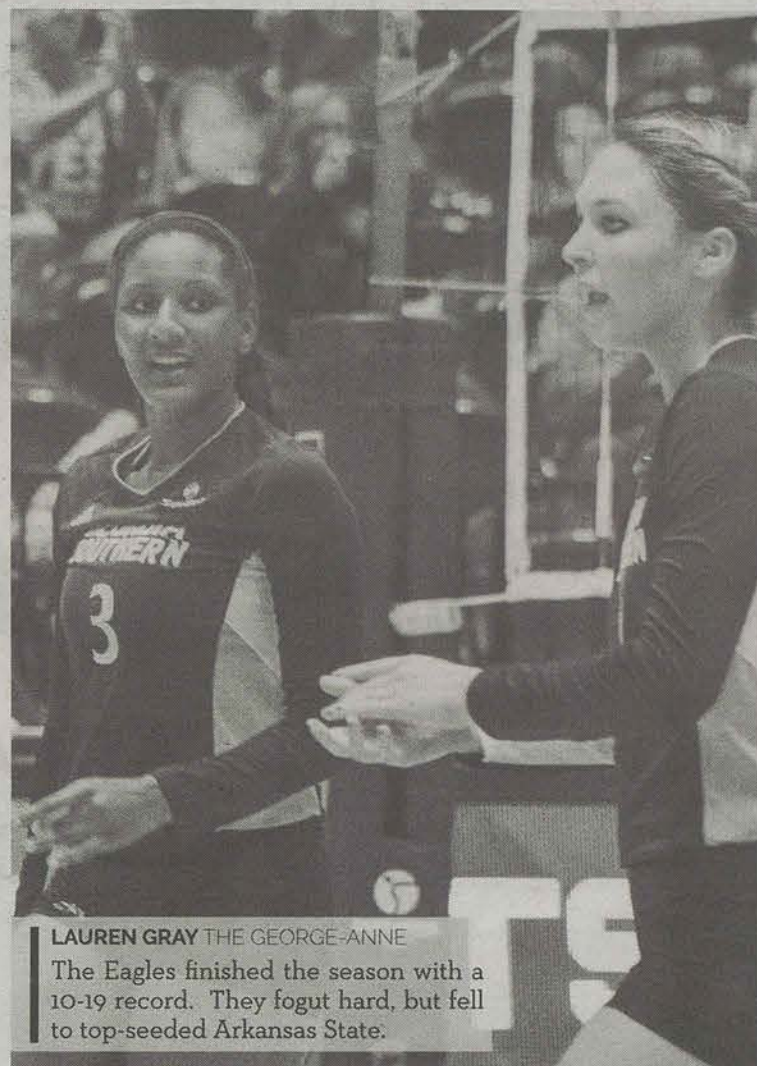
Redshirt-sophomore Megan

Chevalier, the right side hitter, led the Eagles with 13 kills on the night. Freshman Lauren Reichard also played well with 10 kills. Sophomore Cathrine Murray was behind them with eight kills.

With that match being the final one of the season, the three seniors of Southern are now finished with their collegiate careers. Seniors Kat Minnerly, Crysten Curry and Bernetta Moore have finished their last season as an Eagle volleyball player at Southern.

"That's always a coach's toughest talk when it ends the season," said Wood. "I was more concerned about the seniors. The somberness wasn't about them. Their heads were in the right places, and they were thinking about the right people, especially those three."

"It's the fundamentals: serving and passing. When we served well, they outplayed us. We didn't pass well. We made a change in personnel and the freshman stepped up. Beecher had an up-and-down night. They served well. They put pressure on us. That was the difference: serving and passing. And their outsides.



LAUREN GRAY THE GEORGE-ANNE

The Eagles finished the season with a 10-19 record. They fought hard, but fell to top-seeded Arkansas State.

Their outsides were good. Our outsides hurt us."

Freshman Joscelin Morrow stepped in as a replacement for one of the players during the second set. She keyed in on a dig that earned the Eagles tempo for a time in the set. Southern ended up not taking the set, but Morrow played up to par, especially in the most important match of the season for the team.

"It was a good atmosphere," said Wood. "They competed

hard. It was very competitive. I wish I would've seen them more earlier in the season. But I'm proud of the way they came out. Most kids execute, but some didn't. Next man in and next one did a good job."

Arkansas State would go on to win the Sun Belt Championship by defeating App State 3-2. The Red Wolves will be playing in the NCAA tournament. They will hear their bracket matchup on Sunday, Nov. 29.

## Look into women's tennis and where the Eagles are heading this spring

*The team will not compete again until January 23. The team is comprised of two seniors, two juniors and two freshmen.*

BY DERIK WUCHTE  
The George-Anne staff

Last weekend, women's tennis finished their last individual tournament of the 2015 season. The team lost a few players over the offseason to graduation and other means. Six players are currently assigned on the roster with two more freshmen incoming before the spring. Southern will be heading into the team season with three returning players and the rest being complete new ones.

"We're definitely a young team," said Head Coach Michele Stanford. "We had three new girls come in this semester and then before season begins next January, we're going to have two more that are going to be joining the team as well."

"We've been very young, but it's been a great semester so far. Result-wise, we're not quite where we want to be, but they've all been working hard every practice. Each tournament, you can see some improvements as well. We're feeling good moving mid-spring."

The Eagles have collected wins here and there throughout the fall season. Their biggest success was found at the Georgia Southern Invitational on the weekend of Oct. 2. Four out of six of the players earned a win. Senior Mary Phillips Smith and senior Francisca Norregaard were among two of them to win.

The team met some tough competition at the ITA Regionals and Kitty Harrison Invitational a few weeks back, but they picked up on a lot

and know the type of potential they have.

"We have two seniors on the team: both Fran and Mary-Phillips have done a great job being leaders so far," said Stanford.

"Right now, we've been trying to focus on our confidence and getting these extra matches under our belt. With two new kids coming in the spring, every time you add something new to the team, team chemistry and everything will change. It's hard to say what kind of team we're going to look like heading into January."

"With where things have been going so far, I've been happy and I'm hoping we can keep that momentum going forward."

Tennis teams with smaller rosters are composed a

bit differently. In spring, all matches will be team competitions, best of four. There is one doubles competition between the two teams to earn one team point and then six singles matches to decide the other six team points.

Southern will have eight players on their roster, meaning a lot of players will be seeing playing time this year. Since four of those players will be freshmen, the team should be in for some interesting developments this year.

Last year, the Eagles had a freshman who went undefeated in singles play. There is no telling how this year will go or if the Eagles will find that same type of success this season.

"From my experience right now, this has been one of the closest teams that we've had at least for the last three years that I've been here," said Stanford.

"They're very, very tight-knit. They're very goal-oriented. Every time they step on the court, they're cheering each other on; they're building each other up. I think that's going to carry them a really long way heading into the season. It's definitely one of the most determined teams that we've had."

Women's tennis will take to the courts on Jan. 23 against South Carolina State. The match will be the season opener for the spring and be featured at home at the Wallis Tennis Center next to Hanner.



# UNDISCOVERED TREASURES

## SOUTHERN ADVENTURES OFFERS AFFORDABLE TRIPS

BY ASHLEE GILLEY

The George-Anne contributor

Do you have dreams of going on grand adventures with your friends, but just can't seem to fit it into your budget? You're in luck, because GSU offers many affordable trips that you may not have known about.

In certain places around campus there are little stickers stating "Your student fees at work," this is exactly how Southern Adventures keeps their trips so affordable. You might be wondering to yourself 'what do they

consider affordable?'. well, there are trips for every budget with the prices ranging from \$15 to \$250.

Just in case you aren't sold already, to make it even better, the cost of the trip not only secures your spot but also pays for the equipment usage and in some cases a meal. Now that I have your attention, I bet you're wondering what kind of trips are

available.

The variety of trips offered is sure to catch the interest of most students, unless you just don't like being outdoors. They offer trips such as canoeing, backpacking, kayaking, skiing and much, much more.

Wait, what if you don't have any experience doing outdoor activities? "It's a no experience

necessary kind of thing," Gene Sherry, executive director of campus recreation and intramurals said.

In my interview with Sherry, he said skill building is a huge part of the trips, and each trip is headed by an experienced staff member as well as a student assistant. So, even if you are extremely inexperienced you have the opportunity to learn those new skills in a safe environment.

Sherry said this is a great way for students to broaden their horizons, meet new people and that they have

overwhelmingly positive feedback.

Whether you go on the trips alone or with a friend you are bound to meet some new people. The intimate group size of 8 to 10 people allows for a better chance to get to know the other trip goers as well.

Though the main reason for the small group size is to support the idea of 'leave no trace'. Leave no Trace is a campaign that promotes respecting the environment and lessening the impact you have on the outdoors.

If you would like to know what trips are available they post a trip schedule at the beginning of each semester. You can view the types of trips and the prices to make your decision at [recreation.georgiasouthern.edu/southern-adventures/adventure-trips/](http://recreation.georgiasouthern.edu/southern-adventures/adventure-trips/).





### Other Benefits Offered by Southern Adventures

If you and a group of friends want to go on a trip by yourselves and you either don't know where to go, or don't have the money to buy all the equipment the staff at Southern Adventures can help you out.

They can offer not only well-informed advice, but they can rent you equipment for extremely affordable prices. For example, if you were to go out and buy a brand new kayak it would be anywhere from \$200 to \$500, but through The Bike Shop, you can rent it for just \$10 for one to two days, \$20 for three days, and \$40 for an entire week.

If you're wanting to go on a one time kayaking trip, or maybe just want to try it out, the affordable prices at The Bike Shop seem like a much better deal than jumping in and paying hundreds of dollars for one.

Those are just a few of the available equipment rentals, and on their website they have

pictures to give you a visual idea as to what each item is and looks like. If you are unsure as to what you are going to need the staff at Southern Adventures can help you out with that as well.

They can help you plan trips, figure out locations, and even give you advice about how to go about camping in certain areas. Another useful service they provide is a section of links to helpful how to videos on YouTube.

If you rent the equipment and then realize you aren't exactly sure how to mount that bike rack onto your car, or how to use the two-burner stove just head over to their equipment page and scroll down to the bottom to find them.

If you have any additional questions you can either visit Southern Adventures at the location inside the RAC or call them at 912-478-5436.

Southern Adventures's hours are posted below in a chart taken from their website.

Meg Elwood contributed to this article.

### BELOW ARE SOME OF THE OTHER EQUIPMENT AND PRICES AVAILABLE:

#### TENTS

DAY 1 3 7

2-PERSON TENT \$6 \$12 \$24

3-PERSON TENT \$8 \$14 \$28

4-PERSON TENT \$9 \$18 \$30

6-PERSON TENT \$10 \$22 \$34

TARP \$4 \$8 \$16

#### SLEEPING BAGS

BASIC SLEEPING BAG \$4 \$8 \$16

SLEEPING PAD (FOAM OR INSULITE)  
\$1 \$2 \$4

SLEEPING PAD (INFLATABLE) \$2 \$4 \$8

#### OTHER

CRASHPAD \$5 \$10 \$15

LANTERN (PROPANE) \$3 \$6 \$9

COMPASS \$1 \$2 \$4

BACKPACK \$4 \$8 \$16

"THE ONLY THINGS THAT I KNOW OF IS THE GROUP BUILDING EXERCISES LIKE THE HIGH ROPES CORSE...SOMETHING LIKE HIKING I PROBABLY WOULDN'T DO, BUT I MIGHT DO HORSEBACK RIDING."

- KIANA COLQUITT

SENIOR MULTIMEDIA JOURNALISM

"I'VE NEVER BEEN, BUT I WANT TO GO. I'D LIKE TO GO ON THE KAYAKING WITH MANATEES. I LIKE WILDLIFE, NATURE AND ANIMALS, PLUS KAYAKING IS FUN."

- DEZIREA WILKES

SENIOR BIOLOGY MAJOR

"I'VE NEVER HEARD OF THEM, CANOEING SOUNDS FUN, BUT YOU KNOW WHAT THEY SHOULD HAVE? THEY SHOULD HAVE SKYDIVING. I'VE ALWAYS WANTED TO DO THAT FOR THE THRILL."

- DEANGELO YOUNG

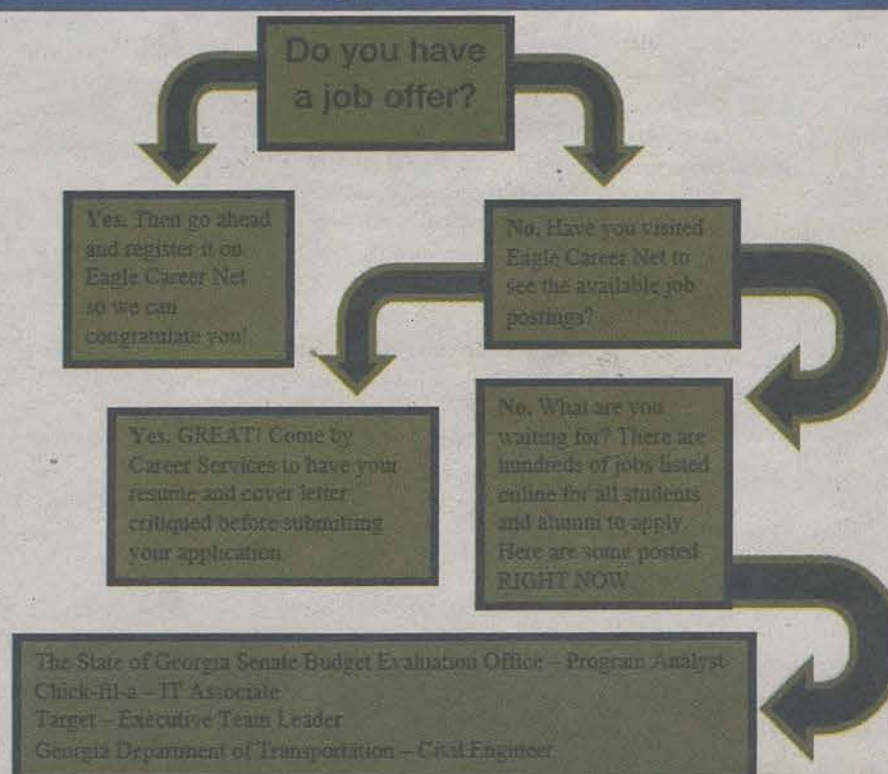
JUNIOR MULTIMEDIA

"I KNOW THEY GO ON A LOT OF OUTDOOR TRIPS, BUT IT'S SOMETHING THAT'S NEVER REALLY INTERESTED ME, I'M MORE OF AN INDOOR GUY. CAMPING AND HIKING WERE NEVER REALLY MY THING SO I'VE NEVER BEEN ON ONE OF THOSE TRIPS. IF I WERE TO GO I WOULD GO SCUBA DIVING IN KEY WEST. A LOT OF MY FRIENDS ARE LICENSED SO I'D LOVE TO GO OUT AND TAKE THAT OPPORTUNITY WITH THEM."

- JAMES BRASWELL

SENIOR MULTIMEDIA JOURNALISM

## Graduating In December?



**GEORGIA SOUTHERN UNIVERSITY**

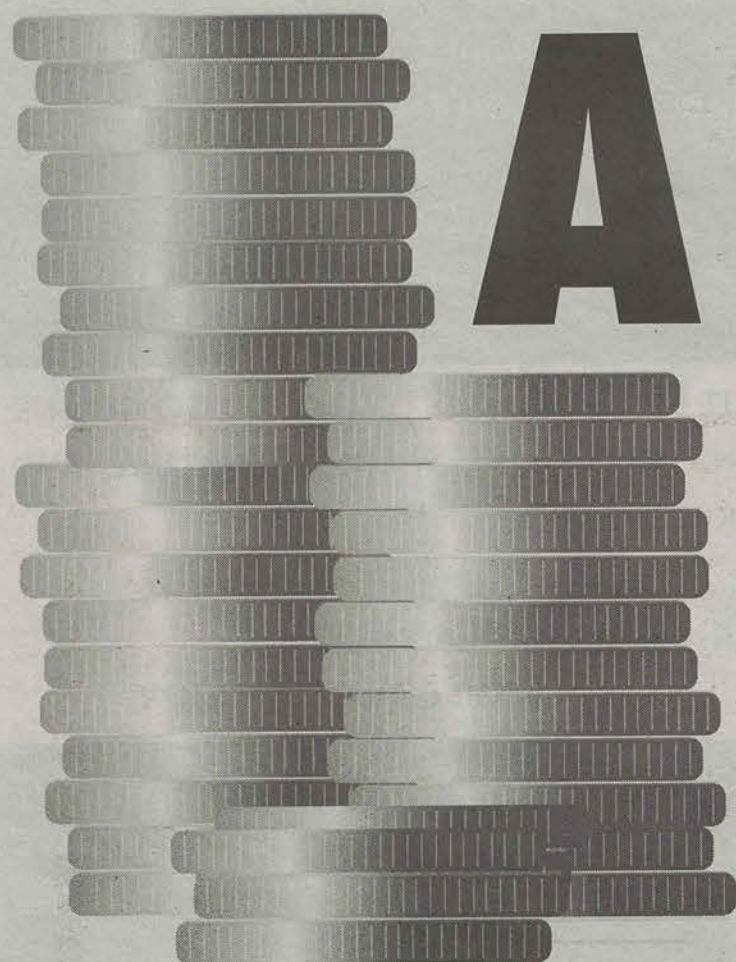
OFFICE OF CAREER SERVICES

CONTACT THE OFFICE OF CAREER SERVICES AT  
GeorgiaSouthern.edu/career • 912-478-5197



@gsucareers





# A PENNY FOR YOUR THOUGHTS

BY CHERYL NUZUM

The George-Anne contributor

Money is the topic on everybody's mind and for many college students, it can be confusing one. College is the first time for a lot of us where we're responsible for our own money. We have tuition, bills, credit cards, loans, all sorts of things and learning to juggle the ins and outs isn't always easy. Dr. Joseph Ruhland, an associate professor of finance here at Georgia Southern, offered some insight into the money madness for young adults.

**Q:** What would be the number one tip for budgeting in college?

**A:** I think the biggest tip while you're in college is probably to be conservative. Particularly if you're on a job, where you're hourly or your income is based primarily on tips, assume that your income is usually a little less than what you have and assume your expenses are a little more. So hopefully if things turn out as you expected, you'd have some extra money rather than coming up short.

**Q:** Many young adults get their first credit cards in college. What exactly is credit?

**A:** Credit is your ability to borrow money at favorable terms. So the better your credit, the cheaper it'll be to access borrowed money.

**Q:** People always say college is the best time to build credit. Is that true?

**A:** I would agree with that. Part of that credit score is built on how long you've had that credit. So the earlier you start, the better it's ultimately going to be for your score.

**Q:** Are there concerns students/young adults should be aware when it comes to credit cards?

**A:** I think that while you're in college you're still going to get a fair amount of credit card solicitations because credit card companies understand that even though you may not have income right now, there's still a fairly decent chance your parents will bail you out if you got into trouble with credit cards. So there's probably no easier time to get access to credit cards than when you're in college and I think it's a good idea not necessarily to use them heavily but to have one and use it maybe for a tank of gas or one grocery run a month, and then just pay that balance off.

**Q:** There are many debates concerning whether to pay credit cards off in full each month or roll over a small sum. Which would you say is the best option?

**A:** My advice would be to keep your balance relative to your limit as low as possible. Simply running a balance isn't going to help your credit score, so paying off every month is the cheapest and I would say most effective way to positively build your credit score.

**Q:** What about rumors

that you should only spend a portion of your credit limit each month otherwise it hurts your credit score?

**A:** The credit scoring companies do look at the ratio of how much of your line of credit you have used, so how much proportion of your limit that you've spent. They keep that formula pretty secret so I can't say for sure the magic number is keeping it below 50 percent or 40 percent . . . But generally speaking, the lower portion of your limit you can use, the better.

**Q:** Many students have to take out loans to pay their way through school. What advice would you have concerning loans and lenders?

**A:** I would try to limit the amount that you borrow specifically to your school-related expenses. Often times lenders will be willing to offer you enough in loans to offer you a pretty comfortable lifestyle, more than you need, so just because someone will lend you the money doesn't mean you should take it.

**Q:** Interest and interest rates are a big deal when it comes to student loans. What exactly is interest?

**A:** The cost to borrow money that is not yours.

**Q:** Do you have any advice regarding student loans and interest?

**A:** Credit unions can be a good course of loan proceeds. Credit unions are non-profit

financial institutions that are owned by their members and, because of their nonprofit status and not having to answer to stockholders, a lot of times they're going to offer lower rates than other institutions might be able to do.

**Q:** What exactly is the difference between a credit union and a bank?

**A:** A credit union is going to be member-owned and its mission is to serve its membership, whereas a bank is going to be either owned by shareholders or individuals and the mission of a bank is going to be to maximize profits to its owners.

**Q:** Are there any tools you recommend for budgeting?

**A:** Excel is a very good tool, if you can use it. There's some pre-packaged websites like Mint.com that has a very good budgeting feature and it's free to use. And that also incorporates all the existing information from your bank accounts so you don't have to retype a lot of stuff. You can set budget goals and it will e-mail you alerts when you're getting close to your budget of the month for a particular category.

**Q:** What's something you want to warn students about when it comes to budgeting?

**A:** I have seen a lot of students fail because they've gotten themselves in a position where they have these big monthly bills, whether it be a big monthly car payment or something beyond what they

might need, and then they're working 40+ hours a week and suffering in school, failing classes, and then having to pay that tuition back, and it's kind of a vicious cycle that's hard to get out of.

**Q:** Do you have any tips for earning money in college?

**A:** Graduate assistantships. A lot of graduate programs, in exchange for working a fixed number of hours per week so maybe 20 hours per week, you're offered reduced or free tuition as well as a stipend, so if you're not ready for the real world yet, it's a nice transition.

**Q:** Do you have any tips for saving money in college?

**A:** I think if you can have accounts set up where part of your paycheck flows into an account that you don't necessarily have ATM access for or checks you're carrying for, to make the money that much harder to get too. If it's taken out of your check, you never miss it in the first place. So direct deposit to a separate account.





Buyback Discount Coupons expire on December 23, 2015. Void where prohibited.

# DECEMBER 7-10

LOCATIONS: UNIVERSITY STORE,  
FOREST/PLANT DR. BUS STOP,  
CENTENNIAL PACE, & PAULSON STADIUM

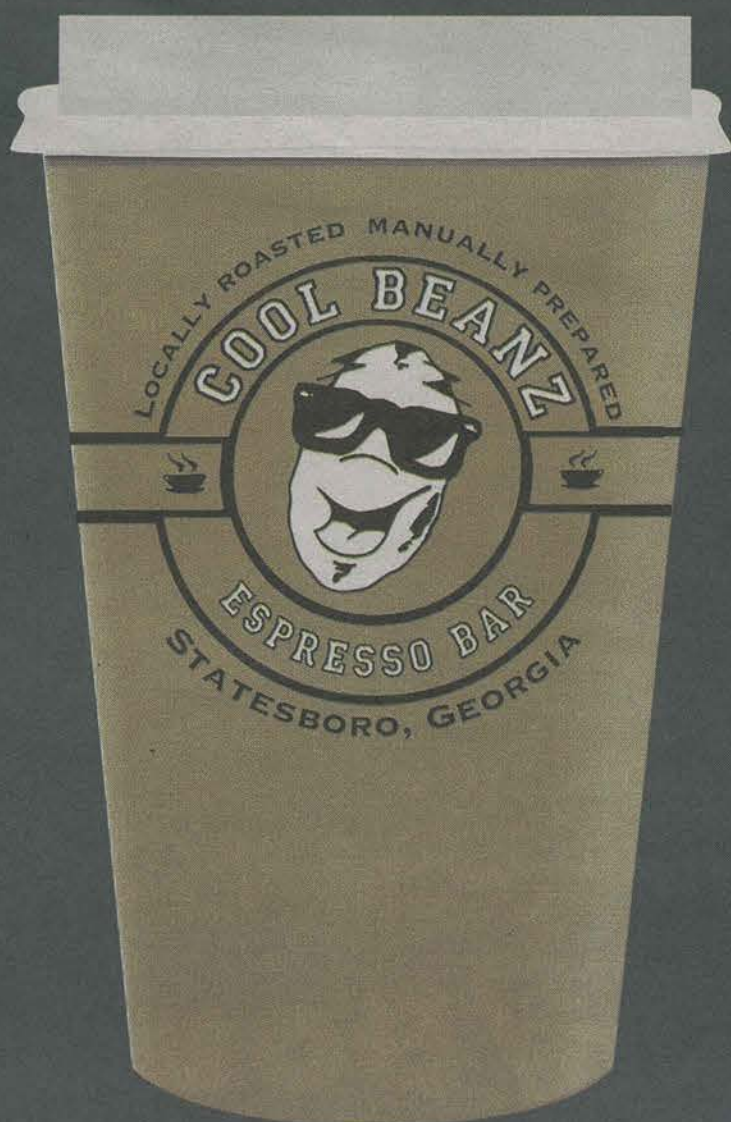
UNIVERSITY  
STORE



UNIVERSITY  
STORE



COLLECT  
CASH FOR YOUR  
USED TEXTBOOKS  
JUST



# GA Joe

THE GEORGE-ANNE

*Free coffee & hot chocolate  
with your Copy*

*Located at the Russell Union  
Every Thursday  
8 a.m. to 10 a.m.*





# EAGLES FOOTBALL **FIRST BOWL EVER**

WHERE WILL YOU BE?



Student Tickets on Sale  
Monday, December 7 at 8:30 a.m.

**GSEagles.com/Bowl**