

Georgia Southern University

Digital Commons@Georgia Southern

The George-Anne

Student Media

9-5-2013

The George-Anne

Georgia Southern University

Follow this and additional works at: <https://digitalcommons.georgiasouthern.edu/george-anne>



Part of the [Higher Education Commons](#)

Recommended Citation

Georgia Southern University, "The George-Anne" (2013). *The George-Anne*. 3174.
<https://digitalcommons.georgiasouthern.edu/george-anne/3174>

This newspaper is brought to you for free and open access by the Student Media at Digital Commons@Georgia Southern. It has been accepted for inclusion in The George-Anne by an authorized administrator of Digital Commons@Georgia Southern. For more information, please contact digitalcommons@georgiasouthern.edu.

RENT BIKES
FROM
RAC

PAGE 7

LEGEND
RETURNS
STRONG

PAGE 11

WELCOME
WOMEN'S
GOLF

PAGE 15

Thursday, September 5, 2013
Georgia Southern University
www.thegeorgeanne.com
Volume 84 • Issue 18

THE GEORGE-ANNE

Car accident survivors search for GSU heroes

BY LAUREN GORLA

The George-Anne staff

Five friends from Georgia Southern University were driving back late Monday afternoon for the start of another week of school, but their trip was brought to a halt by a horrific car accident that should have killed them.

"The doctors said that it was literally

a miracle we didn't die. I don't really believe in God but God was with us; something was with us," Racheal Lamb, junior biology major, said.

A boy and girl from GSU stopped along the highway to help those in the accident but those injured were not able to get their names before driving off in the ambulances.

Four of the passengers are current students and the fifth is

an alumnus, graduating last spring.

After a weekend camping trip in Blue Ridge, the friends were driving back to Statesboro and were about 25 minutes out of Macon when the accident occurred.

The passengers all recognized that the car had been rocking on the way up to Blue Ridge and was still rocking on the way to Statesboro.

"At one point, we were in the middle lane and I needed to get into the left lane and so once I turned left, it started to rock really badly," Cristy York, sophomore biology major and driver of the vehicle, said. "Then I realized it was rocking a lot more than it had before, so I tried to turn the wheel right just a little bit but because of the momentum it swerved way too far right."

In about 20 seconds, the car turned so that the left side faced the road and then went airborne, flipping two times before coming to a stop upside down.

Chandler Mitchell, junior psychology major, was thrown from the car but managed to walk away from the accident with a sprained neck and road rash covering three-fifths of her body.

First Friday to explore 'Boro flavor

BY ALEXANDRA MCCRAY

The George-Anne staff

This edition of downtown Statesboro's monthly celebration, First Friday, will give attendees a chance to try food from downtown Statesboro's new and old restaurants in "Taste of Downtown."

Guests will be able to explore shops and businesses downtown while sampling appetizers from a vast array of local restaurants.

The event will take place from 5:30-8:00 p.m. Tickets will be sold the day of the event on the courthouse lawn for \$5. The fee will include a wristband and map of participating businesses.

"It's one of our largest First Friday's of the year, we have 31 businesses and partners that participate in the event and it's always a great turnout," Andrew Mullen, executive director of Main Street Statesboro/Downtown Statesboro Development Authority, said.

First Friday is held every month at the courthouse lawn and is organized by Downtown Statesboro Development Authority in an effort to draw out Statesboro residents and showcase Main Street and Statesboro community events.

See ACCIDENT, Page 2

See FIRST FRIDAY, Page 10



thegeorgeanne.com



Follow us on
Twitter



Newsroom 478-5246
Advertising 478-5418
Fax 478-7113

PO Box 8001
Statesboro, GA
30460

Biology program qualifies for award

BY LAUREN GORLA

The George-Anne staff

One of Georgia Southern University's science programs has qualified as a finalist for the 2013 Science, Technology, Engineering and Math (STEM) Education Awards.

The Molecular Biology Initiative (MBI) Program at GSU is a finalist in the Post Secondary Outreach category for the 2013 STEM Awards, according to a news release.

GSU's MBI program works with teachers

to bring hands-on as well as new technologies into schools, focusing mainly on sciences like biotechnology, chemistry, biology and forensics.

"The 2013 Georgia STEM Education Awards finalists are helping to prepare the tech-ready workforce to fill these jobs, and we applaud them for standing out as leaders in Georgia's educational community," Tino Mantella, president and CEO of the Technology Association of Georgia



(TAG), said in the news release.

TAG presents the award to recognize schools, programs and companies for outstanding efforts

and achievements in STEM education.

"The university provides resources and technological expertise and the teachers frame the delivery to maximize student learning and to align content with state standards," Laura

Regassa, director of the MBI Program, said in the news release.

The MBI Program graduate students work with in-service teachers, K-12 students and students pursuing advanced STEM degrees.

Each semester, the program reaches out to more than 900 students every week, according to the news release.

The winner will be announced at the second annual Georgia STEM Education Awards on Sept. 27 at the Savannah International Trade and Convention Center.

ACCIDENT, from page 1

"We slid two hundred ninety-four feet down the highway and I did not have a seatbelt, so after the car finished flipping I slid out the window and slid another ten to twelve feet on the asphalt," Mitchell said.

No other cars were hit in the accident and all of the passengers walked away from the accident with minimal injuries such as a strained neck and skin graft surgery.

However, a dog owned by Lamb and Mitchell that was traveling in the car did not survive the accident.

"I remember my dog hitting me and barking and I remember lying on the ground, not knowing what had just happened," Lamb said. "I got out and I saw my dog had died, and I started to scream and I thought I was dying."

It was at that point that the two GSU students walked up to Lamb and tried to calm her down.

The girl had long, curly blonde hair and was wearing a blue GSU pocket shirt. The boy was very tall and had on bright colored clothing.

"In my head I kept thinking I was going to die," Lamb said. "The girl held my hand and told

me it was going to be okay and to calm down and to breathe."

The boy, a biology major with a pre-medical concentration like Lamb, tried to readjust her focus by asking her about her classes, particularly about how hard genetics was, Lamb said.

"I did not talk to them as much as Racheal did but the guy did give me his sunglasses because I was just standing there with my face all bloody," Mitchell said.

The couple waited at the scene until the ambulances arrived and took those injured to the hospital. No one was able to catch either of their names before leaving the scene.

"They saved my life. I know if I hadn't stopped panicking, I would've had a panic attack and I didn't want anybody to touch me but they held my hand and made me stop and breathe," Lamb said. "I would tell them that they are their own kind of heroes."

Lamb is now working to find the couple and thank them for staying by her side through such a traumatic event.

Lamb said, "I really want to find them because what they did not a lot of people would've done. And they were in front of us. People like them are what inspire people like me to do what I want to do in life."



Racheal Ann

So four of my closest friends and I were in a severe car crash on I-75 yesterday afternoon. Two of the people to stop and help us were from Georgia Southern. I was freaking out and panicking thinking I was going to die and these two Southern students helped calm me down and held my hand through the entire thing. They didn't leave me until I was put into the ambulance. I don't remember their names but whoever they were I just wanted to say thank you so much. I honestly don't know how I would have calmed down if you two weren't there! Hopefully this post will get to you and you can know that you helped me and in a way you're heroes! #sticktogethereagles #HailSouthern

Courtesy of Racheal Lamb

GSU student Racheal Lamb and her friends were in a car accident on I-75. **Top:** No one was seriously injured in the accident. **Bottom:** Lamb is looking on Facebook for the two fellow Eagles that stopped to help. Her post in Free and For Sale currently has 175 likes.

Police Beat

Saturday, Aug. 31

1:11 a.m.: Officers conducted a traffic stop at Lanier Drive. Raul Anthony Delgado, 22, Eagle Court, was arrested and charged with DUI (.141 bac) and fail to maintain lane.

3:08 a.m.: An incident report was taken for found property at Lake Ruby.

5:40 a.m.: Officers responded to a motor vehicle accident at Olympic Blvd. A motor vehicle accident report was taken.

5:42 a.m.: An incident report was taken for a theft at the Dining Commons area. This case was assigned to criminal investigations.

11:07 p.m.: An incident report was taken for found property at Paulson Stadium.

Sunday, Sept. 1

12:22 a.m.: Officers observed a subject having problems walking near Lanier Drive. Officers made contact with the subject and determined he was intoxicated. Donald Paul Sorrow, Jr., 20, Jenkinsburg, was arrested and charged with underage possession of alcohol. During the same incident, Nicholas R. Knight, 20, Stambuk Lane, was arrested and charged with DUI (.021 BAC)

2:20 a.m.: Officers responded to a report of an intoxicated person at Southern Pines. Robert Hugh Johnson, 17, Augusta, was arrested and charged with underage possession of alcohol.

2:22 a.m.: An incident report was taken for entering auto in J-Parking Lot. This case was assigned to criminal investigations.

3:05 a.m.: Officers responded to a sick person at Freedom's Landing. EMS responded but did not transport.

10:57 a.m.: Officers responded to a

panic alarm at Freedom's Landing. It was determined have been accidentally activated.

12:29 p.m.: An incident report was taken for an entering auto in J-Parking Lot. This case was assigned to criminal investigations.

12:44 p.m.: An incident report was taken for a motor vehicle theft at Freedom's Landing. This case was turned over to criminal investigations.

4:30 p.m.: An incident report was taken for criminal trespass in J-Parking Lot.

5:31 p.m.: Officers responded to a panic alarm at Centennial Place where a resident was having a medical issue. EMS responded but did not transport.

5:35 p.m.: Officers responded to a motor vehicle accident at Dorman Drive. A motor vehicle accident report was taken.

9:58 p.m.: Officers responded to a panic alarm at Centennial Place that had accidentally been activated.

10:53 p.m.: Officers conducted a traffic stop at Georgia Avenue. Vidal Perre' Jones, 19, Bermuda Run, was arrested and charged with DUI (.211 BAC), driving too fast for conditions and driving without license on person.

Monday, Sept. 2

3:55 a.m.: Officers assisted SPD with an incident at the Cambridge at Southern Apartments.

5:39 p.m.: Officers responded to a fire alarm at the Nursing/Chemistry Building. The building was checked and it was determined to be a false alarm.

9:31 p.m.: An incident report was taken for a theft at the RAC. This case was assigned to criminal investigations.

10:35 p.m.: An incident report was taken for a theft at Southern Courtyard. This case was assigned to criminal investigations.

Tuesday, Sept. 3

11:10 a.m.: Officers responded to a motor vehicle accident in Lot 42. A motor vehicle accident report was taken.

2:10 p.m.: Officers responded to a panic alarm at the Rosenwald Building 2303C. The panic alarm was activated due to a sick person. Maintenance responded. EMS responded but did not transport the sick person.

4:01 p.m.: An incident report was taken for lost/mislaid property at the Russell Union.

5:13 p.m.: Officers assisted the Bulloch County Sheriff's Department with an incident that occurred in their jurisdiction.

5:41 p.m.: An incident report was taken for lost/mislaid property at Brannen Hall.

6:30 p.m.: An incident report was taken for the theft of a bike at the Russell Union. This case was assigned to criminal investigations.

8:57 p.m.: An incident report was taken for theft of unattended property at the M.C. Anderson Sports Complex. This case was assigned to criminal investigations.

10:52 p.m.: Officers conducted a traffic stop on O'Neal Drive and Georgia Ave. The driver of the vehicle, Kayla Nichole Giles, 24, Statesboro, Ga., was arrested and charged with Headlights Required, Driving Without License on Person & DUI 1st.

11:04 p.m.: An incident report was taken for theft of unattended property at the RAC. This case was assigned to criminal investigations.

Statement of Operations

The George-Anne is the official student newspaper of Georgia Southern University, owned and operated by GSU students using facilities provided by the university. The newspaper is the oldest continuously published newspaper in Bulloch County. The newspaper is a designated public forum for the Georgia Southern community. The newspaper is published twice weekly, on Tuesdays and Thursdays, during most of the academic year. Any questions regarding content should be directed to the student editor by phone at 912.478.5246 or at gaeditor@georgiasouthern.edu.

ADVERTISING: The newspaper accepts advertising. Inquiries may be made by calling 912.478.5418 or 912.478-0566. Fax any questions to 912.478.7113 or e-mail ads1@georgiasouthern.edu.

The George-Anne receives additional support, in part, from the Student Activities Budget Committee.

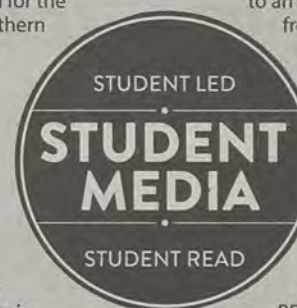
The deadline for reserving space and submitting advertising copy is noon, one week prior to the intended publication date. For more information, rate cards, sample publications, contact

the advertising manager or student media director. The advertiser is responsible for any errors in advertisements and its liability for adjustments is limited to the amount of space the error occupied in the ad. Further, the newspaper is not responsible for any damages caused due to an ad's omission from a particular edition and its responsibility solely is to reschedule the ad in the next regular edition at the regular advertising rates.

STUDENTS BEWARE: The George-Anne screens all advertisements prior to publication. The newspaper strives to accept ads for legitimate products and services only. Students are urged to exercise caution when replying to ads-particularly those that require personal information. Students are also urged to report to the newspaper any suspicious offers which they might see in an ad.

PUBLICATION INFORMATION: The newspaper is printed by The Brunswick News in Brunswick, Ga.

NOTICE: Unauthorized removal of multiple copies from a distribution site constitutes theft under Georgia law, a misdemeanor offense punishable by a fine and/or jail time.



Editorial Staff

Editor-in-Chief Shelby Farmer
Managing Editor Jackie Gutknecht
Multimedia Editor Lindsay Gaskins
Opinions Editor James Farmer
News Editor Cydney Long
News Chief Alanna Navin
A&E Editor Will Price
A&E Chief Kimeko McCoy
Sports Editor Shakeem Holloway
Sports Chief Robert Huitt
Football Editor Randall Hampton

Copy Chief Anna Wells
Copy Editor Taylor Cooper
Business Manager Chloe Douglas
Sr. Account Executive Jeremy Williams
Marketing Manager Marissa Martin
Distribution Manager Bradley York
Production Manager Jose Gil
Photo Editor Jessica Stanfield
Design Editor Matt Veal
Web Editor Darius Alexander
Ads Designer Kelly Slyfield

Corrections

Contact the editor at gaeditor@georgiasouthern.edu for corrections and errors.

To contact the news editor, email ganews@georgiasouthern.edu.

Our View

GSU needs to be prepared

Over the past months, the Statesboro community has experienced multiple cases of severe weather. From the flooding in August to the storm that knocked down power lines to start off September, the weather has not always been kind to the region. While students and residents of Bulloch County cannot control the weather, they can control how well prepared they are.

Having a solid collection of non-perishable foods properly stored is a great way to make sure that food doesn't run low if you can't leave the house due to multiple days of inclement weather. Having battery-powered electronics is another great way to prepare for the worst. Alarm clocks with batteries and wall clocks can help you to tell the time when most of your electronic methods are out.

If you live in a multi-level apartment complex, it is never a bad idea to make friends with neighbors on different floors. For certain weather events, such as tornados, it is better to be on the bottom floor of a complex. However, flash floods are best waited out on an upper-floor. Apartment complexes themselves can help with preparedness and disaster safety by designating safe rooms for each kind of natural disaster.

While the school and even the apartment complexes have a responsibility to ensure that their students and residents are as protected as possible from disasters, at the end of the day, disaster preparedness lies squarely on the individual's shoulders. Take it upon yourself to give yourself and your belongings the best possible chance to make it through a natural disaster unscathed.

The George-Anne welcomes letters to the editor and appropriate guest columns. All copy submitted should be 350 words or fewer, typed, and sent via e-mail in Microsoft Word format to letters@georgiasouthern.edu. All submissions must be signed and include phone number for verification. GSU students should include their academic major, year and hometown. The editors reserve the right to reject any submission and edit submissions for length.

Opinions expressed herein are those of the Board of Opinions or columnists themselves and DO NOT necessarily reflect those of the faculty, staff or administration of GSU, the Student Media Advisory Board, Student Media or the University System of Georgia.

OBAMA'S GAS MASK



New dining options worth a try

I've been lukewarm at best about eating at the dining halls under this new meal plan system. The fact that you have to pay more just to enter the building and can't just stop in and buy an apple or something kind of irked me.

I was pretty set on boycotting the new Lakeside and the dining hall formerly known as Landrum, and their Skynet eye-scanners (Ok, technically cameras). But as fate would have it, I've tried out the Main Dining Commons (formerly Landrum) twice now, and I have to admit, it is more than I expected.

Last Monday, some coworkers convinced me to spend \$8.50 of my EAGLEXPRESS money on the Main Dining Commons. I walked in and went to the pizza station, because I love fulfilling college student stereotypes. The pizza was ok - a little on the small side - but you can get unlimited slices, so it's not all bad. But as I go to the other side of the circle that the pizza station is housed, an unusual sight greeted my

THE FARM LIFE



JAMES FARMER

eyes. There was steak and shrimp.

Whoever thought of serving surf 'n turf on a college campus is possibly a genius. That combination is something that costs you like \$20 at a fancy restaurant, or even Applebee's, but here it is, minding its own business at \$8.50 for unlimited servings. I'm not even going to complain that my steak was cooked well done and sort of tasted like a hamburger.

Making unlimited steaks to order is probably beyond the abilities of the limited staff, and besides, undercooked steak, while delicious, is a lawsuit waiting to happen.

The only issue I had with the whole trip was the dessert. Not that it was bad or anything. Rather that in an unlimited all-you-can-eat cafeteria, they only give out one cookie at a time. I mean seriously, I'm 6-foot-1, 200 pounds, and you think that one cookie is going to make me a happy camper?

And is making me walk the 20 feet back to the dessert station for that second cookie really going to make me that much more healthy? Nah. I grabbed ice cream out of pure spite and brought it back to the table with my one lonesome cookie.

Despite the "dessert Nazi" policy of the Commons, I was really impressed. I'm still not going to pay \$8.50 for two meals a day with my EAGLEXPRESS, but I'm definitely recommending everyone to try it at least once.

Farmer is a senior international studies and political science double major from Thomasville. He is the Opinions Editor.

Are rivalries becoming extinct?

Yesterday morning, ESPN's feature story was entitled "Tradition vs. Money" and called into question which was more important: the football rivalries that the fans hold dear, or the money that is to be made by branching out and playing new teams.

With all of the divisional and conference changes that are being made throughout college football, it has come to the attention of both ESPN and sports fans alike that certain rivalries between football teams might not become a staple in the schedule anymore.

With the loss of rivalries comes a range of emotions. One might simply not be able to imagine a world where the Iron Bowl (Auburn vs. Alabama) or The World's Largest Outdoor Cocktail Party (Georgia vs. Florida) does not take place.

With teams moving up and down the divisions across NCAA football, it seems that some rivalries will simply no longer exist. For example, this 2013 season is the last

THE SPORTS SCOOP



BRIAN STONE

time that Notre Dame University and the University of Michigan (a game many felt to be historic) will meet for a long, long time due to the Big-10 expansion and the addition of ACC teams to Notre Dame's schedule.

While this loss of a rivalry might be upsetting for some, there are several examples of mighty rivalries that no longer exist. Some sports fans that have been around the block a little longer than I might remember a rivalry between the Georgia Tech Yellow Jackets and Auburn University.

These two teams have met more than 80 times and often had to play in neutral territory because the

rivalry was so heated. However, in the span of my lifetime these two teams have never played, so the loss of this rivalry meant virtually nothing to me.

In conclusion, it is important to remember that despite the loss of some traditional rivalries, new ones will always occur. Ten years ago, no one would have ever imagined that Alabama University and Texas A&M would have had such tension after only one game, but that is the case nowadays.

And 10 years in the future, fans might look forward to Alabama and A&M playing with the same intrigue they look for while watching Ohio State vs. Michigan. Don't criticize the schools for wanting a change of schedule, but look forward to the future and see what great rivalries might come forth.

Stone is a senior journalism major and former sports reporter from St. Mary's who enjoys football and the GSU Eagles.

Farmer's Market is win-win

Tuesday marked the first day of the on-campus farmer's market for fall semester. If you haven't checked out this one or the off-campus one, I highly recommend both. Farmer's markets are a win-win for everyone. The environment, the local economy and individuals all greatly benefit from farmer's markets.

Food travels an average of 1,500 miles before it reaches the grocery store. This one fact exemplifies how the environment, local economy and individuals all benefit more from the food sold at a local farmer's market rather than from a grocery store chain. Firstly, fossil fuels are guzzled by semis as the food travels across the nation to reach our local Wal-Mart or BILO. Secondly, when food is bought at a grocery store chain, most of the profits

THE GREEN VIEW



BRITTANY WALKER

are funneled back to the corporation headquarters rather than supporting the local economy. Lastly, as your fruit or vegetable travels for days – or even weeks – vital nutrients break down and are lost.

Another personal health benefit is that there are more organic options at farmer's markets than at grocery stores. Non-organic produce contains health-harming pesticides and herbicides, and the way it is grown is

often less sustainable for the soil.

I know as college students we are all concerned about money, but the prices are actually very reasonable and comparable to buying it from a grocery store, especially for the produce.

The market accepts cash and debit/credit cards. If you are interested in checking it out, the on-campus farmer's market will be Sept. 17, Oct. 1 and 15 and Nov. 5 from 10 a.m. – 1 p.m. The off-campus market is every Saturday from 9 a.m. – 12:30 p.m. and will run until November. Shopping at a local farmer's market is easy and good for everyone. Hope to see you there!

Walker is a senior sociology major with a specialization in sustainability from Brunswick. She is an officer in the Green Ambassadors.

Flaunt what your Momma gave ya

Hello my lovers. We have quite nearly made it through Week 3, and let me just say it has been a miraculous week. That day off was a dirty trick, and I had (and lost) all the ambitions for the week when Tuesday snuck up on me. What a hideous sneaky trick.

This week I'd like to turn your attention to a growing issue among students that I have had shoved all up in my face. I am, as we've established, a hefty purdy princess. That is, I am fluffy. I have been since I was 10. I've had a while to get used to my physique and realized after quite a struggle that it is perfectly okay for me to love myself. Some people spend their lives trying and never get there. People with the money for it sometimes spend more money on reconstructive surgery than I will ever get in financial aid (can I get an amen?).

So help me get to the bottom of the confusion that is teeny-tiny young ladies not doing the "I love my body" strut. I realized a long time ago that I had every reason to be moderately full of myself. I have a presence onstage; I enjoy singing, probably too much; and I can get a large group of people networking in no time. So I eat a sandwich (or several)...that's no reason I shouldn't be a little sassy. So why is it that there are folks walking around campus not feeling the way I do? I will take it upon myself to heal and bless you all.

Every last one of you has something sexy going on. You read a lot of books, you did something beyond epic for DragonCon, you dance like a champ in the shower, etc. My song for this week is "Applause" by Lady Gaga, because she does anything and everything she wants in a performance and she doesn't care what anyone thinks. She appreciates the applause of her fans, but her creations are her own, and she owns them. I want you guys between now and next week's column to just focus on being in love with yourself. People like people who carry themselves well, and the only way to do that is flaunt what you've got. I don't mean that you should be cocky. Those guys get ignored. Flaunt what you've got, and don't sell yourself short. You are all amazing for 5,000 different reasons. Now act like it. Healin's and blessin's, y'all.

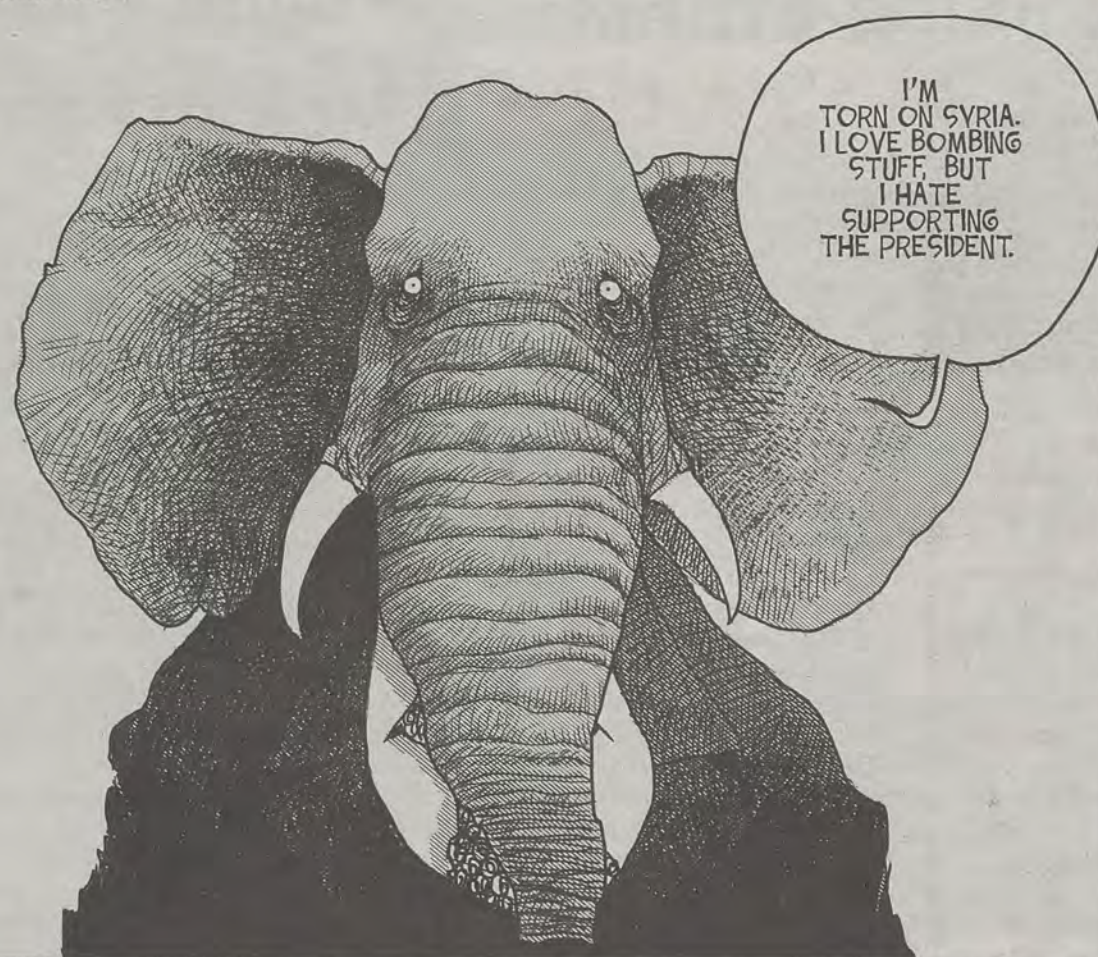
HEALIN'S AND BLESSIN'S



SAVANNAH ROGERS

Rogers is a super senior theatre major from Eufaula, Ala.

SHENEMAN TRIBUNE CONTENT AGENCY



Brazil does not need our help

Brazil's congress, not known for its transparency, has seen a bill that will cut down on corruption take the first steps toward approval. The bill would take the right of the secret vote away from the Brazilian congress. For those of you who don't pay much attention to our South American counterparts, Brazil has a governmental structure very similar to our own. They have a congress composed of two houses and an executive branch.

The secret vote that Brazil's congress currently enjoys is not that distant from our own Congressional closed and executive sessions. The key difference between the two, however, is that all proceedings from a closed or executive session must be published as public record once the session ends. Any details of a secret vote that Brazilian deputies and senators participate in do not have to be disclosed to the public. The bill to do away with it is the result of the huge protests a few months back.

THE COOP SCOOP



TAYLOR COOPER

Recently, I have heard it said that our government should be working to right the wrongs that are being committed closer to home. The Brazilians are indeed facing much corruption in their government, but they aren't the only ones, and they won't be the last. We made a promise during our more imperialist phase to defend the rights of the citizens of countries in our own hemisphere. It seems like the only people we're defending now are those outside our hemisphere. It can't be said that the injustice of the secret vote is worse than

the atrocities that are being seen in the Middle East, but it is something that we should address as a nation just the same.

I don't agree with this view. The Brazilians have been over the worst bumps on the road to being a developed country. The massive protests and seeming-confusion being exhibited by their congress as to how to react aren't new. The United States has experienced many of the things that the Brazilians are going through already. We didn't start out with the government structure we have today. Our history is full of cases such as *Marbury v. Madison*, from which came the judicial review, where the finer points of our governmental structure were hammered out.

Brazil will be all right without us, and their government will turn out fine in the end, just as ours (arguably) has.

Cooper is a senior journalism major from Rincon. He is the current Copy Editor and former Opinions Editor

'Be patient' with work

GUEST COLUMN



TOM KLEINLEIN

Eagle Nation,

I want to thank you for attending Saturday's football game against Savannah State and understanding that most of Allen E. Paulson Stadium is currently a construction zone.

Please be patient with us this season as we work through this so that we can bring you an even better Paulson Stadium in 2014. Our night started with a bang as we had to put our lightning policy into action, and I appreciate everyone's cooperation with exiting the stadium.

I want to thank our stadium personnel for all their efforts Saturday night including the one who stopped to check my credentials. I appreciate a person who does their job professionally!

I do realize that there are some things we need to continue to improve to enhance our Eagle Nation game experience. I am working with the University Store to fully stock the bookstore with official adidas team merchandise. As we get product delivered, we will get the bookstore shelves stocked for our fans. I know our fans want to wear what the Eagles are wearing. We appreciate your feedback.

I have gotten positive feedback regarding our new version of Eagle Walk and the addition of smoke to our team entrance. We will continue to improve these as we move forward.

Our game experience is important, and we will keep working to make it an awesome experience for our fans and all of Eagle Nation.

See you on Saturday at 6 p.m.

Tom Kleinlein
Athletics Director, Georgia Southern University

RAC promotes use of recycled bikes

BY JENNIFER ARTHURS

The George-Anne contributor

Georgia Southern University is a bike-friendly campus to students that own their own bicycles and rent them.

Students that want to ride bicycles to class, but do not have their own, can rent bikes from the RAC.

Campus Cycle is an organization on campus that allows students to rent recycled bicycles for a fee of \$30.

"From what I have seen and what heard from my staff, it does seem like there are a lot of people biking on campus," Jenn Velie, Southern Adventures program director, said.

There many students who use this method of transportation on campus, Velie said.

With the amount of people biking on campus, pedestrians and other hazards are being noticed.

"It doesn't seem there is a great area to bike on campus," Velie said.

Student cyclists have noticed the issues of biking in a crowd of pedestrians.

Nick Shaffer, mechanical engineering major, believes that pedestrians can be a danger to bikers on campus.

"I've had a few close calls but luckily they were just close," Shaffer said. "It's mainly just watching out for people and of course when it comes to the time you have to go off road, you have to go off road to avoid hitting them."

People are not the only problem, however, students who bike on campus also have to deal with car traffic around campus.

Nathan Barker, political science major, and Ian Berson, mechanical engineering major, said that the cars are the main danger.

"Over by fraternity row some of the crosswalks in that region are not safe because nobody pays attentions to you," Barker said.

Berson says that one of the main dangers for bikers is student-driven cars.

The intersection in front of the engineering building is another dangerous location for bikers, Berson said.

Many pedestrians do not see cyclists as a real danger.

Katie Wakefield, biology graduate



student, believes that the cyclists are attentive while on campus.

"[Cyclists] are relatively considerate," Wakefield said. "I've never seen an interference problem."

Terri Scott, senior economics major, also believes that cyclists on campus are safe when it comes to riding near pedestrians but has some concerns about the cyclists' safety.

"I kind of just wish that sometimes there was a more separate bike lane for them so that they're not ditching and dodging pedestrians," Scott said.

Velie is happy that GSU has biking lanes, but thinks there always could be more.

"There are some campuses that don't have [bike lanes]," Velie said. "So I do think it is beneficial we do have some."



Heather Yeomans | The George-Anne

Many students ride bicycles on campus. **Left:** Campus Cycle rents out bikes to students who do not have their own. **Right:** Bike racks are provided for students who choose cycling as their mode of transportation to and from classes.

minor injury minor illness major convenience

The Doctor will see you now!

**SOUTH GEORGIA
IMMEDIATE
CARE CENTER**

1096 Bermuda Run Road
(next to Mellow Mushroom)
Statesboro, GA 30458
p - 912-871-5150
getIMMEDIATEcare.com

**WELCOME EAGLES!
CONVENIENTLY LOCATED CLOSE TO GSU.
CARING AND CONFIDENTIAL TREATMENT.**

Monday - Friday 9:00 am - 8:00 pm
Saturday 9:00 am - 5:00 pm
Sunday 12:00 pm - 5:00 pm

Most insurance, cash and credit cards accepted.

THE 'BORO BEAT



HAPPY HOUR



LIVE BAND



SPECIAL EVENT

THURSDAY

Retrievers

- Happy Hour 5-8 p.m.
- \$1.50 Miller, Coors, PBR
- \$2 Bud, Yuengling
- \$2.25 Imports
- \$2 Shots
- 1/2 Priced top shelf
- Crown, Jack, Absolut,
- Jim Bean, Jose Cuervo
- \$2.50 Singles, \$3
- Doubles, \$4.50 Quads
- ★ Beat the Clock at 10 p.m.
- Ent. DJ Hurricane

Dingus

- Happy Hour 5-7 p.m.
- 2-for-1 appetizers ad
- bombs
- \$2 Well drinks

GATA's

- Happy Hour 5-8 p.m.
- \$1.50 Draft beers
- \$2 Bourbon, vodka,
- domestic beers and
- margaritas
- \$7 Pitchers
- All-You-Can-Eat Wings
- \$5 Drink Specialties
- Ent. Stephen Sugars
- & Forrest O'Quinn

Millhouse

- Happy hour
- \$2 Margaritas
- \$2 Draft beer
- \$2.75 Draft pints

Loco's Bar and Grill

- \$2 Draft Pints

Gnat's Landing

- Happy Hour 5-7 p.m.
- and 9-11 p.m.
- \$3 Doubles
- \$10 Pitchers

Chili's

- Happy Hour 5-7 p.m.
- \$2.99 Margaritas

South and Vine Public House

- \$3 Wells
- \$5 Craft beers
- \$4 Bottle beers

Van Gogh's

- Happy Hour
- Half off Craft beer

SATURDAY

Retrievers

- ★ Opens @ 12 Game Day
- Happy Hour 5-8 p.m.
- \$1.50 Miller, Coors, PBR
- \$2 Bud, Yuengling
- \$2.25 Imports
- \$2 Shots
- 1/2 Priced top shelf
- Crown, Jack, Absolut,
- Jim Bean, Jose Cuervo
- \$2.50 Singles, \$3
- Doubles, \$4.50 Quads
- \$1 Bourbon
- \$3 Bombs

Dingus

- Happy Hour 5-7 p.m.
- 2-for-1 appetizers ad
- bombs
- \$2 Well drinks

GATA's

- Happy Hour 5-8 p.m.
- \$1.50 Draft beers
- \$2 Bourbon, vodka,
- domestic beers and
- margaritas
- \$5 Drink Specialties

Millhouse

- Happy hour
- \$2 Margaritas
- \$2 Draft beer
- \$2.75 Draft pints

Loco's Bar and Grill

- \$6 Miller Lite Pitchers
- 11-3 p.m. Bloody Mary
- Bar

Van Gogh's

- Happy Hour
- Half off Craft beer

Gnat's Landing

- Happy Hour 5-7 p.m.
- and 9-11 p.m.
- Ent. Live Music, Kermit
- and Bob

El Sombrero

- \$2.25 Margaritas

South and Vine Public House

- \$3 Wells
- \$5 Craft beers
- \$4 Bottle beers

FRIDAY

GATA's

- Happy Hour 5-8 p.m.
- \$1.50 Draft beers
- \$2 Bourbon, vodka,
- domestic beers and
- margaritas
- \$7 Pitchers
- \$5 Drink Specialties
- Ent. live music, John
- Belt

Millhouse

- Happy hour
- \$2 Margaritas
- \$2 Draft beer
- \$2.75 Draft pints

Van Gogh's

- Happy Hour
- Half off Craft beer

Retrievers

- Happy Hour 5-8 p.m.
- \$1.50 Miller, Coors, PBR
- \$2 Bud, Yuengling
- \$2.25 Imports
- \$2 Shots
- 1/2 Priced top shelf
- Crown, Jack, Absolut,
- Jim Bean, Jose
- Cuervo
- Ent. live music, Brian
- Davis with special guest
- Trea Landon
- ★ 9-11 p.m. \$1 Vodka
- \$3 Fireball shots all
- night

Dingus

- Happy Hour 5-7 p.m.
- 2-for-1 appetizers ad
- bombs
- \$2 Well drinks

Gnat's Landing

- Happy Hour 5-7 p.m.
- and 9-11 p.m.
- Ent. Live Music, PB&J

El Sombrero

- \$3 Sex on the Beach

South and Vine Public House

- \$3 Wells
- \$5 Craft beers
- \$4 Bottle beers

SUNDAY

Loco's Bar and Grill

- 12-3 p.m. Bloody
- Mary Bar

Gnats' Landing

- Happy Hour All Day
- ★ Chance to win two
- home-game Falcon's
- tickets

El Sombrero

- \$3 Tequila Sunrise

GATA's

- Happy Hour All Day
- ★ NFL Sunday Ticket

MONDAY

Retrievers

- ★ Beer Bingo

Millhouse

- Happy hour
- \$2 Margaritas
- \$2 Draft beer
- \$2.75 Draft pints

GAMEDAY MAYDAY

MATCHUP

GAMEDAY | Page 6

HISTORY

GAMEDAY | Page 7

Thursday, September 5, 2013 | Volume 3 Issue 2

GSU Football 2013



**GEORGIA
SOUTHERN**

VS.

**SAINT
FRANCIS**

GSU takes on the Red Flash at Paulson Stadium

By Randall Hampton
The George-Anne staff

After a 77-point explosion to start the season, the Georgia Southern University football team will welcome the Saint Francis University Red Flash to Allen E. Paulson Stadium for the first time ever.

GSU put up plenty of points, but head coach Jeff Monken was not satisfied with intensity and execution he saw out of his team at certain points in the first half of last week's game.

Some of the lack of fire was attributed to the Eagles not getting up for Savannah State

University like they would for a conference opponent.

"It's my job as the head coach to make sure that happens and to make sure we have the right attitude, to make sure that we are prepared and we go out there and play up to our standard," Monken said.

SFU is coming to Paulson Stadium to play the first game of its season. The team may have lost its last five season openers, but it is still strong at different phases of the game.

"[SFU is] a well-coached football team," Monken said. "A tough team, they run the ball very effectively."

That running game will be led by redshirt senior running back Kyle Harbridge. Harbridge was named to the College Football Performance Awards watch list for the 2013 CFPA Football Championship Series National Performer of the Year Trophy.

He missed the entire 2012 season with a knee injury, but when Harbridge was healthy in 2011 he rushed for 1430 yards and 14 touchdowns.

SFU posted a 5-6 record last year, but the last time a team from the Northeast Conference played GSU, Central Connecticut State University pulled off the upset. The 17-13 loss came back in 2006 during the second week of the season.

CCSU has traditionally been a stronger football team than SFU, but last season SFU posted a better overall record.

"I'm sure they are going to come down here like a ball of fire. It's their opening game," Monken said. "They get a chance to play a team that has been highly ranked the last few years, and that always excites a team."

The lack of history between the two teams makes forming a solid game plan more difficult than it usually is.

Monken said, "We don't often play teams out of that league, so I really don't know what to expect."

ADVANTAGES

BY THE

NUMBERS

OFFENSE

	GSU	VS.	SFU
Scoring	✓		
First Downs	✓		
Rushing Yardage	✓		
Passing Yardage			✓
Total Offense	✓		
Time of Poss.	✓		
3rd Down Conv.	✓		
4th Down Conv.	✓		
Touchdowns	✓		
Field Goal Attempts			✓
Red Zone Scores	✓		
Red Zone Touchdowns	✓		
PAT Attempts	✓		

DEFENSE

	GSU	VS.	SFU
Points Allowed	✓		
Yards Allowed	✓		
Rushing Allowed	✓		
Passing Allowed			✓
Forced Turnovers	✓		
Sacks	✓		
Interceptions			✓

Information from GSeagles.com and SFUathletics.com



File Photo

Swope hits the hole hard for some tough yardage. Swope gained 134 yards and scored two touchdowns against Samford.

Swope adds another accolade

By Will Cheney

The George-Anne staff

Georgia Southern University junior running back Dominique Swope was named Southern Conference Offensive Player of the Week for week one.

Swope, coming off an All-American season in 2012, picked up where he left off in the season opener on Saturday against Savannah State University. Swope gained 100 yards with two scores on 17 carries.

The performance marked his eighth career game with multiple touchdowns and his 10th career game with at least 100 rushing yards.

This is also the second time in his career he has been named the SoCon Offensive Player of the Week. In 2011, Swope was named SoCon Freshman of the Week three times and claimed SoCon Freshman of the Year award at the end of the season.

The last time Swope was named SoCon

Offensive Player of the week was for his performance against Wofford College in 2012. In that game, Wofford, which was ranked fourth in the FCS at the time, Swope rushed for 137 yards and two touchdowns.

GSU redshirt freshman quarterback Kevin Ellison was a finalist for SoCon Freshman of the Week for his performance against SSU on Saturday. In his first career collegiate game, Ellison ran for 78 yards and a touchdown and threw for 65 yards.

Freshman linebacker John Law of Appalachian State University ended up winning the Freshman of the Week award, in a losing effort Law recorded 12 tackles and one sack against the University of Montana.

GSU's next matchup is scheduled for 6 p.m. Saturday against Saint Francis University at Allen E. Paulson Stadium. St. Francis gave up an average of 196.5 rushing yards per game against opponents in 2012.

#1	JERICK MCKINNON
	QB Senior
#6	DOMINIQUE SWOPE
	RB Junior
#26	TRAY BUTLER
	RB Junior
#23	JOHNATHAN BRYANT
	RB Junior
#81	B.J. JOHNSON
	WR Sophomore
#89	DA'QUAN HEARD
	TE Freshman
#58	GARRETT FRYE
	LT Junior
#76	TREVOR MCBURNETT
	LG Junior
#75	MANREY SAINT-AMOUR
	C Junior
#62	ZACH LONAS
	RG Senior
#71	DORIAN BYRD
	RT Senior

OFFENSE

	CAPRI THOMPSON	#5
	QB Freshman	
	KYLE HARBRIDGE	#22
	RB Senior	
	ANTHONY DAMIANO	#32
	FB Sophomore	
	TERELL SMITH	#87
	WR Junior	
	FRANK FAILACE	#45
	TE Sophomore	
	DANE DOMONKOS	#2
	WR Senior	
	THURSTON KINO	#67
	LT Junior	
	BRANDON BUNTING	#66
	LG Junior	
	MICHAEL BOYD	#77
	C Freshman	
	LLOYD HILL	#79
	RG Senior	
	COLIN GDULA	#52
	RT Junior	

GEORGIA
SOUTHERN

STARTERS

SAINT
FRANCIS

#90	JOSH GEBHARDT
	DE Senior
#52	JAVON MENTION
	DE Senior
#96	BLAKE RILEY
	DT Senior
#91	JUSTICE EJIKE
	NT Junior
#15	CARLOS CAVE
	OLB Senior
#40	EDWIN JACKSON
	MLB Junior
#38	KYLE OEHLBECK
	OLB Senior
#30	VALDON COOPER
	CB Junior
#18	LAVELLE WESTBROOKS
	CB Senior
#29	DEION STANLEY
	SS Junior
#7	MATT DOBSON
	FS Sophomore

DEFENSE

	JOE LAUKAITIS	#49
	DE Senior	
	ASALEMO FRUEAN	#2
	DE Senior	
	KAENA LOPAKA MOOSE	#75
	DT Junior	
	BRODY MAUGHAN-EVANSON	#99
	DT Junior	
	BISHOP NEAL	#11
	OLB Junior	
	MAX MA'AFALA-MAIABA	#6
	ILB Sophomore	
	SEMO SILA	#10
	OLB Sophomore	
	LORENZO JEROME	#1
	CB Freshman	
	MICHAEL DENNIS	#17
	CB Junior	
	JAKE DEMEDAL	#26
	SS Senior	
	TER'SHAUDNEY PHILLIPS	#24
	FS Sophomore	

Information from GSeagles.com and SFUathletics.com

IN CASE YOU MISSED IT
LAST WEEK...

- Junior running back Dominique Swope was named Southern Conference Player of the Week.
- The Eagles scored 77 points against Savannah State University, which is the second highest single-game total in program history.
- Redshirt freshman quarterback Vegas Harley scored a 30-yard rushing touchdown on his first collegiate snap.
- Redshirt senior running back Torrance Hunt scored his first career collegiate touchdown.
- Last Saturday's 576 rushing yards is the eighth highest single-game total in program history.
- Eight different Eagles scored rushing touchdowns in the contest against Savannah State University.

Information from GSeagles.com

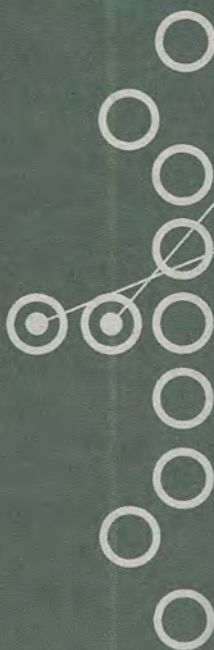
The Sir Shop
Statesboro Mall
912.764.6924

SOUTHERN MARSH

HIGH COTTON™
A True Southern Accent

KEY PLAYERS

GSU OFFENSE



#1

Jerick McKinnon
QB Senior

12 carries 109 yards and one touchdown in week one



#6

Dominique Swope
RB Junior

17 carries 100 yards and two touchdowns
Southern Conference Player of the Week



#11

Bishop Neal
OLB Junior

Second on team with 75 total tackles



#26

Jake DeMedal
Senior SS

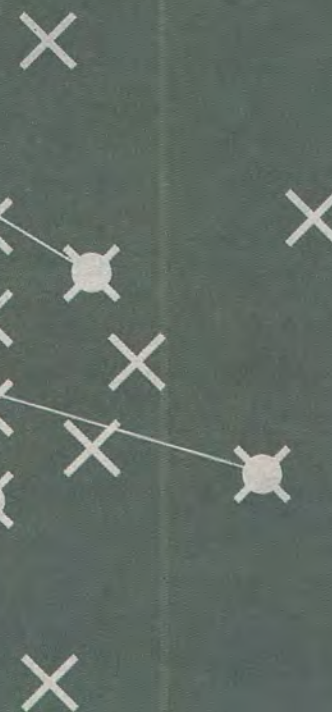
Led SFU with 88 total tackles last season
Led team in forced fumbles with three



#49

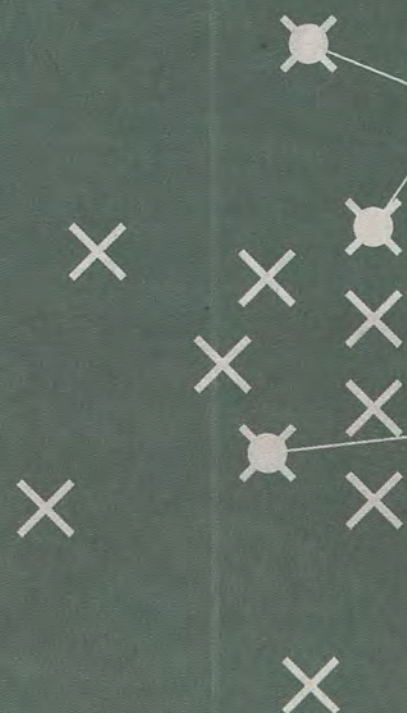
Joe Laukaitis
DE Senior

led SFU with eight tackles for loss
Led all defensive lineman at SFU with 62 total tackles



SFU DEFENSE

GSU DEFENSE



#52 Javon Mention DL Senior

6.5 sacks, 10.5 tackles for loss in 2012
2013 College Football Performance Awards watch list



#18 Lavelle Westbrook CB Senior

100 solo tackles, 135 total, in career, two interceptions
and tied fifth in SoCon in passes deflected



#38 Kyle Oehlbeck LB Senior

28 solo tackles, 51 total, one sack in 2012



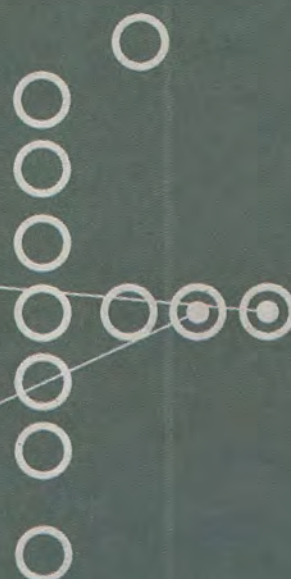
#22 Kyle Harbridge RB Senior

1430 rush yards and 14 TD in 2011
missed 2012 with a knee injury



#5 Capri Thompson QB Freshman

Starting his first ever collegiate game for SFU.



SFU OFFENSE

KEY PLAYERS



DOMINIQUE SWOPE

Junior
RUNNING BACK

HEIGHT 5'11" **WEIGHT** 218 LBS.

17 carries
100 rushing yards
2 touchdowns

*Information from previous week

HEIGHT 5'11" **WEIGHT** 191 LBS.

75 total tackles
2 interceptions
3 fumble recoveries

VS

At 5'11" and 218 pounds, Swope is a load for opposing defenders to try and bring down. Swope earned Southern Conference Player of the Week thanks to 100 yards and two touchdowns last week. SFU line backer Neal Bishop could have his hands full bringing down an opponent that outweighs him by more than 20 pounds.



NEAL BISHOP

Junior
LINEBACKER

MAYDAY MATCHUP

Mayday Match up takes a look at how the opponent's best player on offense and defense will match up against Georgia Southern University. This week will focus on two line backers vs. running back match ups.



KYLE HARBRIDGE

Redshirt
Senior
RUNNING BACK

HEIGHT 5'10" **WEIGHT** 195 LBS.

1430 rushing yards in 2011
14 TD in 2011
Redshirted 2012

HEIGHT 5'10" **WEIGHT** 201 LBS.

51 tackles
9 starts last season
5 tackles for loss

VS

*Information from previous week

Senior line backer Kyle Oehlbeck has experience at multiple line backer positions, and that will come in handy when he finds himself lined up across from Kyle Harbridge. Harbridge missed last season with a knee injury so he could be a little more fired up for his first real contact since 2011.



KYLE OEHLBECK

Senior
OUTSIDE LINEBACKER

The running game is rolling

By Randall Hampton
The George-Anne staff

The running game has carried the Georgia Southern University football team to three straight post-season appearances and two straight Southern Conference titles.

GSU had two players go over the 1,000 yard plateau with senior quarterback Jerick McKinnon rushing for 1,817 yards and junior running back Dominique Swope going for 1,246 yards.

Combined, that was the highest total of rushing yards ever for a pair of teammates.

The players are talented, but the system is what allows them to shine. GSU has cranked out many 1,000 rushers, including Robert Brown and Adrian Peterson.

The triple option offense is a handful for teams that are not used to seeing it. Even conference opponents struggle to stop the Eagles' ground attack.

The motion in the backfield and some slick ball handling by the quarterback makes it hard to tell who is carrying the ball. McKinnon is elusive, and at 5 feet 9 inches, he is hard to spot behind his big offensive line. He breaks a lot of tackles

because of his underrated lower body strength.

Swope has a much more bruising style of running, and his 5-foot-11-inch, 218-pound frame makes him hard to tackle one-on-one.

Last week the duo picked up where it left off with a combined 209 yards and three touchdowns.

Swope ran his way to Southern Conference Player of the Week for week one with 100 yards and two touchdowns on 17 carries.

So how much trouble will GSU give SFU on the ground? I see 480 rushing yards and six touchdowns in Saturday's game for the Eagles.

Savannah State University allowed 576 yards on the ground and SFU has a slightly better defense than the Tigers, so I don't see a repeat performance.

576 yards was the eighth highest total in school history and would be hard to surpass the very next week.

Swope and McKinnon will spear head the attack, but if GSU rolls like it did last week, then senior fullback William Banks and redshirt senior Torrance Hunt could see more action.

A blowout is in order if SFU has no answer for the Eagles' ground game.



File Photo

McKinnon and Swope survey the line of scrimmage. The two combined for 296 rushing yards against Samford University.

HISTORY OF THE GAME

Who is SFU?

By Will Cheney
The George-Anne staff

Georgia Southern University's matchup against Saint Francis University on Saturday will be a first ever meeting between the two programs.

The SFU football program is almost as old as GSU itself. The first SFU varsity football season took place in 1909, three years after GSU was founded and 73 years before Erk Russell brought football back to GSU.

SFU did not field a football team in the 1916, 1918, 1932-1937, 1942-1946 and 1954-1968 seasons.

The mascot for SFU, the Red Flash, was first created for the 1927 football team. This was because of its fast-paced offense and predominantly red uniforms. The SFU student newspaper, "The Loretto," coined the moniker.

SFU is currently a member of the Northeastern Conference. Since joining the NEC in 1996, SFU has posted a 17-98 conference record. SFU's all-time football record 216-396-16. The team posted an 8-2-1 record in 1992. The eight wins stands as the most in a single season in program history.

For a more recent sample, SFU posted a 5-6 record in 2012 while going 4-4 in conference play. SFU has finished sixth or lower in the NEC standings in every season since 1996.

Former SFU head coach Art Martynuska's 45 wins all time are the most wins by a single head coach in program history. The next closest totals are 25 and 23 by Frank Pergolizzi and Joe Savage, respectively.

The only recent common opponent GSU and SFU share is North Dakota State University. SFU lost to NDSU in 2009 by a score of 30-0 and again in 2011 by a score of 56-3.

**Voted Best Mattress Store
in the 'Boro!**

Deal's

Furniture and Mattress Outlet

17083 GA Hwy 67, Statesboro, GA
(912)681-3824 (Near Fairgrounds)
Mon-Fri: 10am-6pm
Sat: 10am-5pm

**2nd Great Location Now Open
Deal's Downtown**

64 E. Main Street
(912) 243-9999

• Honest, Dependable
Same Day Delivery

• Locally Owned &
Operated by GSU
Graduate

• Serving GSU Students
for 35 years

**Best Furniture, Mattress
& Gift "DEALS" in the 'Boro**



Complete
Mattress
Outlet

See Craig before you
buy any Serta
mattress!

New Name
Brand Furniture
at Discounted
Prices

Used Furniture,
Smalls, and
Antiques!

Guaranteed
best prices in
the 'Boro

Great Gift Shop
GSU: Decals, Flags
Jewelry, Tervis,
& other Great
GSUGifts

Tervis Tumbler
Headquarters

Great selection
of tin signs
& magnets

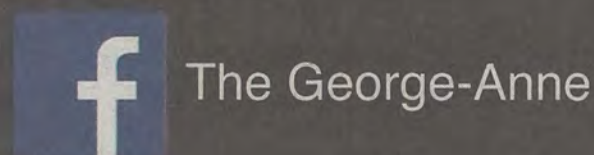
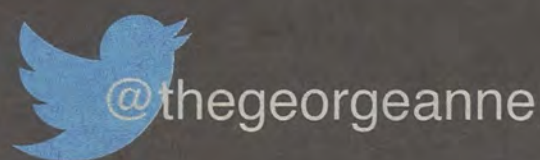
Outdoor
garden flags & mats

Special "Rednek"
section
&
other Great
unique gifts



There's more where this came from

There is more game coverage online at thegeorgeanne.com. If you're looking for the latest sports coverage online our website has what you need. You can also find us on Twitter and Facebook for minute-by-minute updates. Wherever you are, we're there with you. Enjoy the game.



UPB brings new free movies

BY ERINN WILLIAMS

The George-Anne staff

Students now have the chance to see a variety of different movies before they hit the shelves as the University Programming Board brings unreleased movies to block parties on Fridays.

The Late Night Committee of UPB is known for showing a free movie that is not out in stores yet every Friday.

"After the Block Party we have a movie outside on a blow up screen. We had never had an outdoor movie at Paulson before but having it there gets people more pumped and brings out the community. It gives us an opportunity to see a different aspect of campus," Shatise Smith, spirit and traditions chair for UPB and sophomore public relations major, said.

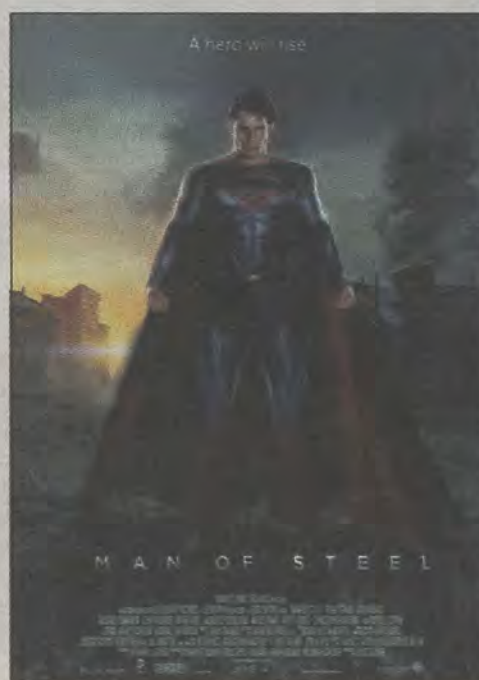
A variety of movies have been shown by UPB including "Now You See Me" and "The Great Gatsby," which were shown in the last two weeks.

"We go through a media company by the name of Swank Entertainment. They send us the movies through a digital download or a rented physical copy that only works for a specific amount of time," Steven Dziama, late night committee chair for UPB and senior management major, said.

"The UPB Late Night Programming Committee looks through the available movies in the company's database and then brings them to the general body meeting where we vote on the four or five that will be shown that month," Dziama said.

Movies have previously been shown in the Russell Union or at Sweetheart Circle but this semester the Friday movie series has been moved to Allen E. Paulson Stadium and is shown right after the tailgate block parties.

"We decided to make the movies part of the block parties so that we do not have to compete with ourselves by having the movie series and the block party going on at the same time," Dziama said.



The movie UPB will be showing this Friday is "Man of Steel" at the Outdoor Block Party at Paulson Stadium.

It is advertised to start at 8 p.m. but they plan to show it whenever it becomes dark to allow student to have the best visual movie experience possible.

Rebecca Pollack, president of UPB and junior psychology major, said, "Having the movies and block parties at Paulson gets the GSU spirit higher. It also allows us to have partnerships with the athletic teams so that we can have a collaborative effort in pumping people up for the games."

The Buzz List

■ **Beyoncé's** celebrated her 32nd birthday yesterday. There's nothing funny about that. She's Beyoncé. Beyoncé.



Kimeko McCoy

■ **Katy Perry's** 'Roar' passed Robin Thicke's 'Blurred Lines' on the Billboard Hot 100 list. Good. Miley Cyrus ruined that song for us anyways.

■ **William Nye** will be a contestant on 'Dancing with the Stars'. That's Bill Nye the Science Guy for those of us who haven't seen a science video in a while. Snooki will be a contestant as well.

■ **Kanye West** and his baby mama have decided to ban the color pink from baby North's closet. If she's anything like her mother, black it a good choice. It's slimming.

■ **Austin Mahone** failed his driver's test twice in one day. It seems that him and Bieber not only have "swag" in common, but terrible driving skills as well.

Information compiled Arts & Entertainment Chief Kimeko McCoy from perezhilton.com, huffingtonpost.com and buzzfeed.com.

FIRST FRIDAY, from page 1

"Main Street restaurants and vendors greatly support and enjoy First Friday, it gets the essence of the Main Street and downtown community," Seni Alabi-Isama, owner of South and Vine Public House, said.

"First Friday captures what we're about, local and well executed food and service. That's what you want to see from any establishment, especially a local one," Alabi-Isama said.

Along with food, shopping and crafts Pladd Dot School of Rock will host two free concerts. One of which will feature Sean Kent, who will be performing in front of Sweet Cheeks Bakery.

Local blues band, The Chris Mitchell Band, will be performing a free concert at 7p.m.

"He's very well known in the area. He's done shows at Van Gogh's and places like that, so he's got a big local following," Mullen said.

By having popular bands perform, arts and crafts and special entertainment for children, Taste of Downtown is offering something for all attendees.

The main goal this year with the lower price will attract budget conscious Georgia Southern University students who may

have never even driven downtown to come and see what the local businesses have to offer, Mullen said.

"Just the opportunity to have something fun to do downtown and go hang out with girl friends or on a date or something makes it something I'd be interested in going to," Nicole Nielson, a sophomore child and family development major, said.

Mullen said, "It'd be a shame to go to Georgia Southern University and never explore down town."



McALISTER'S
DELI

OUR MENU ITEMS ARE FRESH AND DIVERSE

CHOOSE TWO!

CREATE YOUR OWN VERSION OF PERFECTION.

1100 BRAMPTON AVE., SUITE A • STATESBORO, GA • (912) 681-3354



**WE ACCEPT
THE EAGLE
EXPRESS CARD**

Country Potato Soup
with Horseradish Roast
Beef & Cheddar Sandwich

WWW.MCALISTERSDELI.COM



Andy Morales | The George-Anne

Statesboro eateries come together for a day of sampling in First Friday's "Taste of Downtown." **Top:** 40 East Grill is a contemporary American style restaurant on East Main Street. **Second from top:** Daylight Donuts is a donut shop located on South Main Street. **Bottom left:** Vandy's Bar-B-Que has held the BBQ crown in Statesboro since moving here in 1943, they're located on West Vine Street. **Bottom right:** South & Vine Public House opened its doors near the close of 2012 offering a classic yet upscale bar atmosphere to downtown's restaurant scene.



'We're the Millers' worth a watch

Film Review



BY PEYTON CALLANAN

The George-Anne contributor

A successful run on "Saturday Night Live" doesn't always turn into a stellar movie career.

For every Adam Sandler ("Grown Ups") or Will Ferrell ("Step

Brothers") there are several former SNL alums who failed to get their movie careers off the ground.

Everyman Jason Sudeikis ("Horrible Bosses"), the latest SNL alum taking his shot at silver screen stardom, seems to have stacked the odds in his favor with the delightful stoner comedy where no one is actually stoned, "We're the Millers."

After being a part of several ensemble comedies like "The Campaign" and "Horrible Bosses," Sudeikis landed his first leading role as

David Clark, a small time drug dealer who gets conned into smuggling a large amount of pot across the Mexican border.

After realizing that families look less suspicious when traveling, David sets out to create a fake family by enlisting a stripper, a runaway and a lonely virgin to play his wife, daughter and son.

If his years on SNL have taught Sudeikis anything, it's how to land a joke. He is completely in his wheelhouse as a sarcastic down on his luck pot dealer. A leading man is only as good as his leading lady though, and lucky for Sudeikis he scored one of the best in the business with Jennifer Aniston ("Friends").

As Rose, the stripper-turned-fake-housewife, Aniston flaunts her many assets including great comedic timing. Aniston and Sudeikis have enough chemistry to carry the movie through the few bland moments in the script including David's inevitable screw up and redemption.

The cast is rounded out by Emma Roberts

("Scream 4") as the "daughter," Casey, and Will Poulter ("Chronicles of Narnia") as the "son," Kenny. In his comedy debut, Poulter gave a scene stealing performance of Mclovin proportions.

Director Rawson Marshall Thurber ("Dodgeball") walked the fine line of using the quirky character of Kenny just enough for audiences to find him loveable instead annoying and the rest of the movie seemed to play out similarly.

There was a spark between David and Rose but their relationship never becomes the main focus and the movie is chock full of raunchy jokes without ever crossing the line into outrageous.

This leaves Thurber and Sudeikis with a slightly above average comedy sure to please any viewer. It is a great starting ground for Sudeikis's new role as leading man and firm reminder of why Aniston will always be one of our favorite friends.



jakes-take.com

Legend returns, still going strong

Music Review



BY ANNA WELLS

The George-Anne staff

John Legend's new album might just be parallel with Legend's reality.

With his impending marriage to model Chrissy Teigen, later this month, it seems that Legend has found a new inspiration for his music, and thus brings us his fourth studio album "Love in the Future."

As opposed to his previous album "Evolver," which featured more of an experimental R&B feeling, Legend seems to return back to his original sound of soul.

While the songs on the album might not be the most exciting, his tracks deliver a sound that could almost be called beautiful. With the combination of piano and drums throughout the majority of the album, it's a recipe that Legend can't go wrong with.

In the title song "Love in the Future (Intro)," Legend sets the mood, telling his listeners, "It's a new year for love, love in the future, not the love I lost." This message carries throughout his track list, and it is only when he abandons this motto

that his songs lose a bit of their Legend-esque traits.

Perhaps the album only truly falters in "Who Do We Think We Are" featuring Rick Ross. While Legend shines with his baritone croons over the distorted guitars and continuous harmonies, his lyrics proclaiming, "We can't run out of music / It's the only way we know," Ross seems to fall flat in comparison. Ross's grunts of "pink champagne" and "trees that I inhale" just don't seem to fit in with the mood that Legend so meticulously created in the track.

However, whatever missteps Legend may make he redeems himself with "All of Me." By telling his listeners "you're my end and my beginning," you can hear the sincerity behind his voice, almost as if he is singing to his bride-to-be and not into a microphone.

While this album might not be the most adventurous, it is Legend's genuine emotions that fuel the album and makes it endearing.

Listeners can almost see the progression

Legend has made throughout his career with this album, as opposed to other R&B singers of the day who seem to stumble over the idea of love.

It seems as if Legend has realized that the real meaning of love lives within stability, a stability that he delivers in the majority of "Love in the Future's" tracks.



CLASSIFIEDS

This page brought to you by Career Services
Explore • Experience • Excel

12 Thursday, September 5, 2013

The George-Anne

Miscellaneous

Statesboro Main Street Farmer's
Market Open every Saturday from
9am – 12:30pm through October. 2
East Main Street (in the Sea Island
Bank parking lot). For more infor-
mation on vendors and seasonal
produce: [www.statesborofarmers-
market.com](http://www.statesborofarmers-
market.com)

2008 Volkswagen (VW) Passat Komfort
Sedan 4D. \$12,000 negotiable. Mileage:
40,500, Blue Exterior Black Leatherette
Interior One Owner. Email [designjj@
gmail.com](mailto:designjj@gmail.com) or call at 912-478-2343


Nanny needed for 3 energetic kids
(7,5,3) at least 2 to 3 afternoons a
week, some weekends, family lives
15 miles outside of Statesboro. Email
school schedule and resume to south-
erntan@gmail.com

Email classifieds to
ads1@georgiasouthern.edu.



**Have something
to get rid of?**

**Make some money by putting it in
The George-Anne's classifieds ads.**



FREE
**to students,
faculty and staff!**

PUZZLES&COMICS

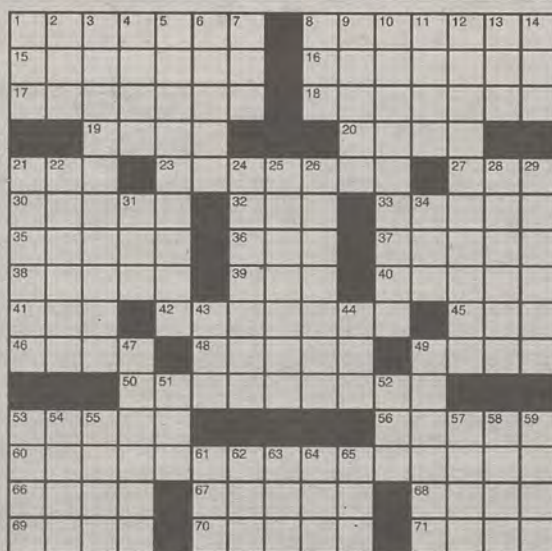
www.thegeorgeanne.com

Thursday, September 5, 2013 13

Los Angeles Times Daily Crossword Puzzle

Edited by Rich Norris and Joyce Lewis

- ACROSS**
- Like the Knights Templar
 - Performers, e.g.
 - In
 - Kiss offerer
 - Unit often counted
 - Big rigs
 - Cowboy Tony
 - Writer of creamy messages
 - Lion's prey
 - Ancient Greek storage vessel
 - Hook, line and sinker
 - Mantegna's "Criminal Minds" role
 - The Once-... "The Lorax" character
 - March of Dimes' original crusade
 - Leaded fuel component
 - Rush discovery
 - Pizza places
 - Wimbledon champ before Pete
 - It didn't get its no. until 1939
 - Urban cruisers
 - "see"
 - Determination
 - Alp ending
 - Fleece sources
 - People
 - Lines at the hosp.
 - Oscar winners' lines
 - On top of things
 - Make it right
 - H.G. Wells classic, and a hint to this puzzle's theme found in the answers to starred clues
 - "... by yonder blessed I swear": Romeo
 - Muse of Hughes
 - Author Bagnold
 - Squealed
 - Sharp rival
 - Thickness measures



By Joe Samulak and Peter A. Collins

DOWN

- Buddy
- Mobile home?: Abbr.
- "Midnight's Children" author
- "Typee" sequel
- "Armies of the Night" author
- Hit the road, say
- Hard part of mathematics?
- "What a relief!"
- Show again
- "Breakfast at Tiffany's" author
- Royale: Lake Superior national park
- "The Lone Ranger and Tonto Fistfight in Heaven" author
- Thrice, in Rx's
- Part of CBS: Abbr.
- monkey
- "This is a bad time"
- Continues despite hardship
- "The Caine Mutiny" author
- Radar of TV

Last Edition's Puzzle Solved

T	O	T	A	L	O	H	M	P	H	A	S	E
A	R	E	N	A	C	A	B	R	E	C	U	R
B	E	A	T	W	I	T	H	A	H	A	M	M
S	O	L	E	C	A	N	O	N	S	E	T	S
S	T	R	A	Y	D	O	G	S	H	E	L	T
W	H	A	L	E	O	V	A	E	R	N	E	
A	R	I	E	S	G	N	P	T	R	I	O	S
R	O	T	C	F	E	Z	P	O	N	C	A	
M	E	A	S	U	R	E	O	F	W	E	I	G
E	F	F	E	T	E	A	A	A	C	U	S	P
B	R	I	T	I	S	H	C	U	R	R	E	N
B	E	R	N	E	I	N	N	A	L	T	A	R
S	T	E	A	D	P	E	T	G	L	O	B	E

- Common boot feature
- They affect stock prices
- UAR member
- Fertility clinic cells
- That, in Oaxaca
- Brandy letters
- Quaint memory aid
- Respect
- Farm female
- "Friendly skies" co.
- Casino fixtures
- "Halt!"
- Near-eternity
- Upscale hotel chain
- Get exactly right
- Culminates
- Annoy
- Anger
- Men's patriotic org.
- Skater Midori
- Enclose, in a way



	8	5	9				3	2
		3				9		
	1			6				7
1			7					6
		7				5		
5					8			9
8				3			9	
		1				6		
9	5				6	8	4	

Sudoku

THE GEORGE-ANNE

<http://www.thegeorgeanne.com>

see more online



High scoring game creates opportunity



WILL CHENEY

Georgia Southern University's 77-9 thrashing of Savannah State University last Saturday left almost no questions on the table, but it did leave one.

In the postgame press conference, a reporter asked GSU head coach Jeff Monken if he and his players had been playing with a chip on their shoulders, which was a way of beating around the bush to the infamous "were you running up the score" question.

"Yep, I called it," Monken said. "I promised our kids we would not back down."

Monken went on to make a reference to the game in 2011 against the University of Alabama.

"They were beating our fannies," he said. "The last play of the game, they threw a touchdown pass. It did not bother me. Nick Saban coaches his team, and I coach mine."

To an extent, I agree with coach Monken. A game like the one against SSU is an opportunity for coaches to see the future of their football program and award playing time to players that otherwise would not see it.

Guys like redshirt freshmen quarterbacks Kevin Ellison and Vegas Harley received ample playing time last week. Redshirt senior running back Torrance Hunt was able to notch his first career collegiate touchdown. Every one of those moments was made possible because of the big lead.

It would have been one thing if Monken had kept the starters in the game, but late in the second half it was more inexperienced players getting a chance to show their stuff. Because of that, I have no problem with how Monken coached the second half.

If growing up watching Steve Spurrier and Nick Saban coach college football has taught me anything, it is that coaching with their "my job is to run my offense and their job is to stop me" type of mentality leads to success.

Cheney is a senior journalism major from Augusta. He is the current football reporter.



Georgia Southern University senior quarterback Jerick McKinnon (1) crosses midfield and leaves defenders in the dust. McKinnon was named to the 2013 watch list for the Walter Payton Award.

File Photo

Stetson hopes to prevent GSU's first win of season

Women's soccer (0-3)

BY SHAKEEM HOLLOWAY

The George-Anne staff

After dropping its first three games of the regular season, the Georgia Southern University women's soccer team (0-3) has the opportunity to bounce back in its first game at Eagle Field as they take on the Stetson University Hatters (1-1-1).

These two teams are similar, each having managed to score only once in three games, however it's the Hatters who have a better record and a consistent defense. The Hatters are coming off their first loss of the season, a loss they suffered at home. The matchup against GSU will be the first away game of the season for the Hatters.

SU provides GSU with a formidable offensive matchup. The Hatters currently boast a shot on goal percentage of .425, whereas GSU has a shot on goal percentage of .313.

So far this season SU has managed to

score only two goals on 40 shot attempts. Conversely, the Hatters have held their opponents to three goals on 37 shot attempts.

GSU's offense has only made one shot on 16 attempts on the season, while they have given up an average of 3.67 goals per game. GSU has also taken 36 less shot attempts than its opponents this season.

The Eagles' defense is a work in progress, as they give up a shot on goal percentage of .558 and allow their opponents to get off 17.3 shots per game.

Having not seen any action her freshman year, sophomore goalie Heather Kirkover has tried to hold down the fort for GSU's defense. Kirkover has 18 saves this season to go along with a save percentage of .621.

Senior goalkeeper Victoria Troccoli, in comparison to Kirkover, has less saves with 10, but produces a better save percentage at .769.

On both sides of the ball, SU is the better team, own paper that is. GSU will get the chance to prove to Eagle fans that it is the better team tomorrow night at 7.



File photo

Senior midfielder McKenna Storey battles the defender for possession of the ball. Storey was named Academic All-SoCon last year.

GSU adds women's golf

BY WILL CHENEY

The George-Anne staff

Georgia Southern University athletic director Tom Kleinlein announced yesterday that GSU will be adding a women's golf team.

The women's golf program is set to begin in the 2015-2016 academic year and it will hold six scholarships. The program will also compete in the Sun Belt Conference.

"Women's golf will give Georgia Southern another opportunity to attract quality student-athletes from our region as well as around the globe and across the country, and we believe we have the resources to become competitive in the Sun Belt in a short period of time," Kleinlein said in a news release.

"The strength of our men's golf program, the Bennett-Ramsey Golf Center, our continued relationship with Forest Heights Country Club and Georgia Southern's University Park Golf Course, which will be completed this fall, all factored into our decision to add women's golf," Kleinlein said in the news release.

In addition to the announcement of the women's golf program, Kleinlein also announced that the men's golf coach Larry Mays will be promoted to director of golf and oversee both the men's and women's teams. The men's assistant coach Carter Collins will be promoted to associate head coach of the men's team.

GSU also plans to hire an associate coach for the women's team in the spring of 2014. An assistant coach position, which will aid both teams, will be created in the future as well.

Plans are in place to modify the Bennett-Ramsey Golf Center to accommodate a women's team.

"We had the foresight when we planned the construction of the Bennett-Ramsey Golf Center to build it so it could be modified to provide first-class accommodations for both a men's and women's program," Mays said in the news release.

262 schools offer women's golf teams at the Division I level. Six are located in the state of Georgia and 11 in the Sun Belt Conference.

TRUE BLUE
GEORGIA SOUTHERN

Volleyball vs. UGA
Sept. 10 @ 6 p.m.



Womens Soccer vs. Stetson
Sept. 6 @ 7 p.m.

Football vs. St. Francis
Sept. 7 @ 6 p.m.



GSU volleyball team heads to Oxford, Mississippi

Volleyball (3-1)

BY ZAKYRA COLVIN

The George-Anne staff

Georgia Southern University's volleyball team will play this weekend in Oxford, Miss. at the Mongolia Invitational, where they will face Arkansas State University, the University of Mississippi and Kennesaw State University.

The Eagles will open the weekend against the Arkansas State Red Wolves and Ole Miss on Friday at 1:30 p.m. and 7:30 p.m. and play KSU on Saturday at 11 a.m.

Junior outside hitter Jamie DeRatt, junior middle Kym Coley and sophomore right side Katie Bange all recorded double-digit kills for GSU against Troy University on Monday but still lost, making it the team's first loss of the season.

The Eagles had 11 service errors and 23 hitting errors which ultimately gave Troy the win since the game was tightly-contested for all three sets.

At the Jaguar invitational the Eagles dominated and finished with a 3-0 record. They did not drop a set against Southern Utah University 3-0 (25-22, 25-17, 25-17) and Tennessee State University 3-0 (25-19, 25-20, 25-10), but dropped one to the University of South Alabama 3-1 (25-13, 18-25, 25-16, 25-23).

Sophomore setter Katalin Minnerly earned all-tournament honors with 43 assists, seven digs and three blocks. Coley tallied eight kills and four blocks in the final game of the invitational and was also named all-tournament. DeRatt was named the Most Valuable Player of the tournament with 14 kills and 15 digs in the final match against South Alabama.

The Red Wolves' record

dropped to 0-4 after losing to South Dakota State University 3-1 (25-23, 25-16, 23-25, 25-18) and the University of Missouri 4-0 (25-18, 25-19, 25-16) at the University of Missouri Tiger Invitational.

Ole Miss holds a 2-1 record in the season after their recent victory over George Washington

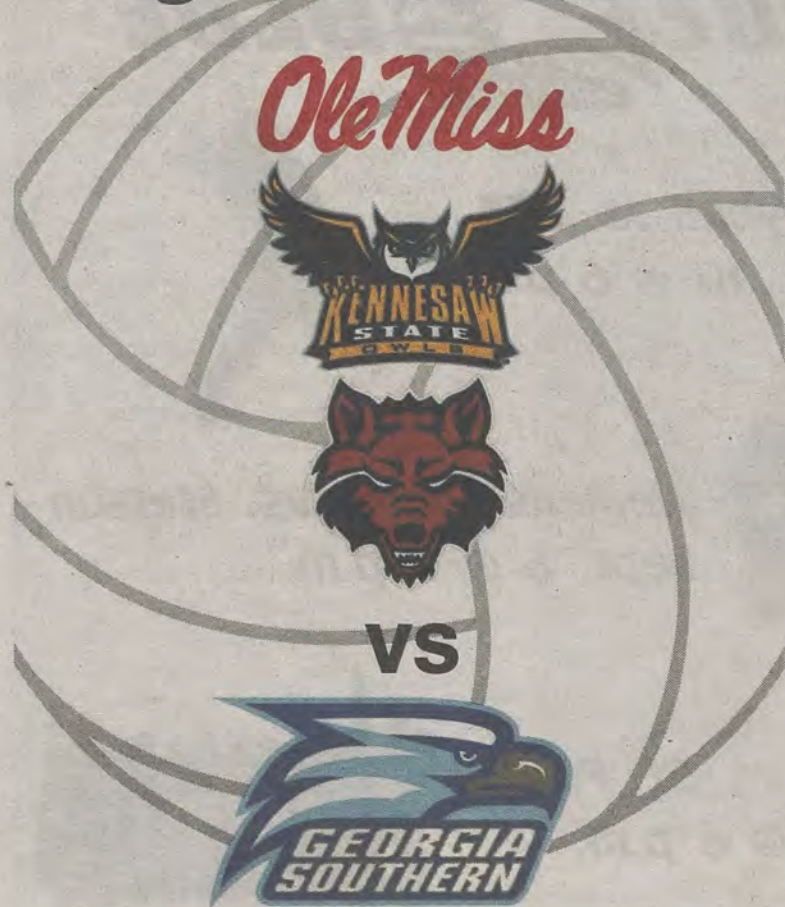
University 3-1 (25-19, 26-28, 25-20, 26-24) and University of Maryland Baltimore County 3-1 (17-25, 25-19, 25-23, 25-14) at the George Washington Invitational.

KSU starts of the season with a 1-2 record after its stint at the La Quinta Inn and Suites Highlander Invitational this past weekend. The Owls lost to

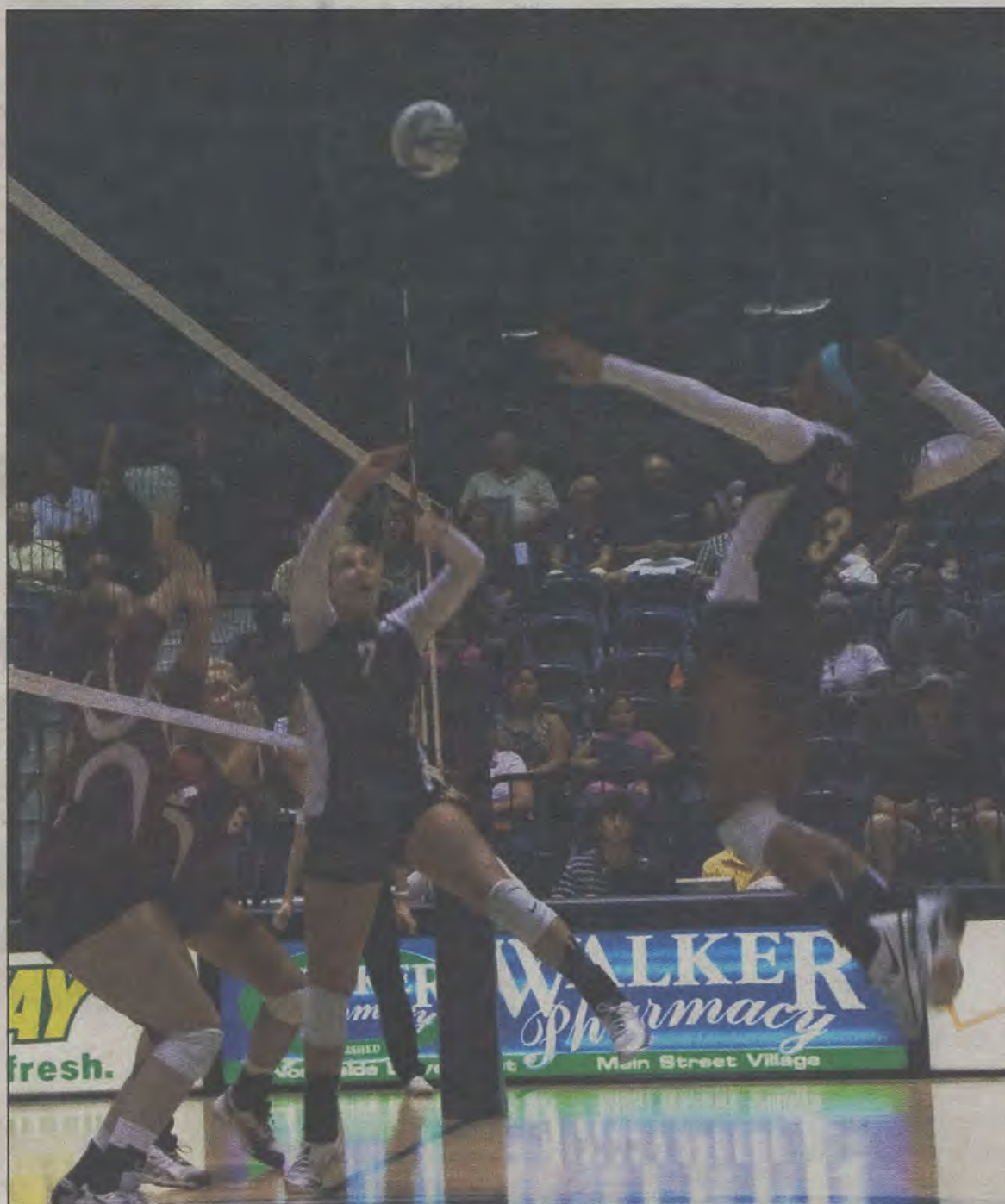
the Radford University Highlanders 3-1 (25-22, 19-25, 21-25, 14-25) and Eastern Kentucky University 3-2, but defeated North Carolina State Agricultural & State University 3-0.

The Eagles will take on the Red Wolves first to start off their time in Oxford, Miss. at the Mongolia Invitational.

Magnolia Invitational



Brittni Favorite | The George-Anne



File Photo

Georgia Southern University sophomore middle Christen Curry (3) rises high for a kill. Curry has 17 kills so far this season.