

Georgia Southern University

Digital Commons@Georgia Southern

---

The George-Anne

Student Media

---

2-7-2012

## The George-Anne

Georgia Southern University

Follow this and additional works at: <https://digitalcommons.georgiasouthern.edu/george-anne>

---

### Recommended Citation

Georgia Southern University, "The George-Anne" (2012). *The George-Anne*. 3180.  
<https://digitalcommons.georgiasouthern.edu/george-anne/3180>

This newspaper is brought to you for free and open access by the Student Media at Digital Commons@Georgia Southern. It has been accepted for inclusion in The George-Anne by an authorized administrator of Digital Commons@Georgia Southern. For more information, please contact [digitalcommons@georgiasouthern.edu](mailto:digitalcommons@georgiasouthern.edu).





## BSA HOSTS CONCERT

PAGE 10



## BUFFALO'S BECOMES GATA'S

PAGE 7



## EAGLES FALL TO DAVIDSON

PAGE 19

Tuesday, February 7, 2012  
Georgia Southern University  
www.thegeorgeanne.com  
Volume 87 • Issue 54

# THE GEORGE-ANNE

## Snooky's to close

Local hangout to be replaced by drug store

BY TAYLOR COOPER

The George-Anne staff

Snooky's closing Feb. 18, to be replaced by CVS Snooky's, a locally owned restaurant, will be closing down on Feb. 18 after 41 years of operation and will be replaced by a CVS Pharmacy.

"I've been at this for 41 years. I knew one day that it would have to end. I'll be 65 soon, and I just

feel like it's time," Bruce Yawn, owner of Snooky's, said. "I regularly have children of people who were here in the seventies."

Yawn said that he worked at a Minute Mart down the road after he graduated from the University of Georgia in 1969, until he opened Snooky's in 1971, buying out the take-out chicken restaurant that had previously been there.

See SNOOKY'S, page 8

## Multicultural Student Center's Consuela Ward leaving GSU

BY TJ JACKSON

The George-Anne staff

Dr. Consuela Ward, Ph.D. in curriculum studies and director of the Multicultural Student Center will be leaving Georgia Southern University on Feb. 17 to pursue a career at Georgia Institute of Technology.

Ward has been at GSU for seven-and-a-half years, ever since coming during Hurricane Charlie in August 2004. Ward will be a Human Resources Business Partner for Culture and Inclusion at Georgia Tech in Atlanta. Ward graduated from GSU with her doctorate in May 2011.

"The amount of professional and educational clothe that I have been afforded during my time here has been a phenomenal

experience," Ward said. "The one thing about being a diversity educator is helping people to see life from different lenses."

One of Ward's proudest accomplishments at GSU has been the development of multicultural diversity calendars and the faculty incorporating it into their academic curriculums.

"Students started coming to our programs, not just because they thought they were great programs, but the faculty found academic value in them and so it became a part of the campus culture," Ward said. "I actually partner with faculty at times to actually execute some of these programs."

The diversity calendar celebrates and informs faculty and students about different

See WARD, page 8

## FIGHTING FURMAN



Lindsay Hartmann/ The George-Anne

Eric Ferguson (3) battles for a rebound on Monday night. At press time, the game was tied at 34. For full coverage, check thegeorgeanne.com.



thegeorge  
anne.com



Follow on Twitter  
@GeorgeAnneNews



Newsroom 478-5246  
Advertising 478-5418  
Fax 478-7113

PO Box 8001  
Statesboro, GA  
30460



IT'S YOUR LIFE...

**LIVE IT**

FORUMSTATESBORO.COM

COMING TO:

831 South Main Street  
Statesboro, GA 30458

LEASING  
OFFICE HOURS:

Monday-Friday 9-6  
Saturday 10-5  
Sunday 12-5

**FORUM**

AT STATESBORO

A PREMIER STUDENT  
HOUSING COMMUNITY

**NOW  
LEASING  
FOR FALL 2012**

- Tennis Court
- Lap Pool & Spa
- Pet Friendly
- Pet Park
- Two Free Tanning Beds
- Indoor Basketball Court
- Indoor Volleyball Court
- Car Care Center
- Modern Faux-Wood Floors
- Private Bathroom in Bedrooms
- Convenient Individual Leases
- Free High Speed Internet in Bedrooms
- 24 Hour Fitness and Training Center
- Kitchens with Full Size Appliances
- Full Size Washer / Dryer Included
- Wi-Fi Cyber Cafe with Coffee Bar
- Outdoor Sand Volleyball Court
- High Speed Internet Access
- Student Center and Lounge
- Roommate Matching
- Expanded Cable
- Media Room



**912-489-3676**

**ForumStatesboro.com**

**GET A FREE T-SHIRT WITH THIS AD!**



## Police Beat

### Monday, Jan. 30

- Officers issued one traffic citation, one traffic warning, assisted one motorist, responded to one injured person report, assisted another agency, responded to one alarm and investigated one accident.
- A counterfeit \$20 bill was discovered at Deal Hall.
- A drug complaint was reported at Eagle Village.
- A drug complaint was reported at Centennial Place.

### Tuesday, Jan. 31

- Officers issued five traffic citations, seven traffic warnings, assisted four motorists, responded to one injured person call and one sick person call.
- Someone spray painted some letters on a GSU golf cart near Anderson Hall

### Wednesday, Feb. 1

- Officers issued seven traffic citations, six traffic warnings and assisted six motorists.
- Roya Nicole James-McLean, 18, was charged with simple assault.
- Shadaha F. Anderson, 18, was charged with simple assault.

- Stephan Mark Dehaan, 18, was charged with possession of marijuana.

### Thursday, Feb. 2

- Officers issued 13 traffic citations, eight traffic warnings, assisted three motorists and responded to two alarms.
- A phone was taken from the RAC.
- Chimidi Nnaemeka Ojibe, 17, was charged with theft by taking.
- Stephen Wesley Rodgers, 23, was charged with pedestrian under the influence and obstruction of an officer.
- Jeffrey Michael Shirling, 20, was charged with underage possession of alcohol and possession of a false I.D.

### Friday, Feb. 3

- Officers issued one traffic citation, four traffic warnings and assisted four motorists.

### Saturday, Feb. 4

- Officers issued two traffic citations, three traffic warnings, assisted one motorist and responded to one alarm.
- A drug complaint was reported at Southern Pines.

- An alcohol violation was reported at Eagle Village.
- Steven Craig Beall, 25, was charged with DUI and failure to maintain lane.
- Thomas Jordan Wesse, 18, Martinez, was charged with simple battery, criminal trespass, underage possession of alcohol, obstruction of an officer and possession of a false I.D.
- Joshua Aaron Frazier, 17, was charged with driving with suspended license.

### Sunday, Feb. 5

- Officers issued four traffic warnings and assisted two motorists.
- A vehicle was keyed at the RAC.
- Jehan Lamar Calhoun, 18, Hinesville, was charged with wanted person.
- Wayne Robert Knittle, 18, was charged with DUI, underage possession of alcohol, possession of a controlled substance, original container required and giving false information to an officer.
- Arin Ray Dhanani, 19, was charged with underage possession of alcohol, public drunk and possession of a false I.D.

## Statement of Operations

The George-Anne is the official student newspaper of Georgia Southern University, owned and operated by GSU students using facilities provided by the university. The newspaper is the oldest continuously published newspaper in Bulloch County. The newspaper is a designated public forum for the Georgia Southern community. The newspaper is published twice weekly, on Tuesdays and Thursdays, during most of the academic year. Any questions regarding content should be directed to the student editor by phone at 912.478.5246 or at [gaeditor@georgiasouthern.edu](mailto:gaeditor@georgiasouthern.edu).

**ADVERTISING:** The newspaper accepts advertising. Inquiries may be made by calling 912.478.5418 or 912.478-0566. Fax any questions to 912.478.7113 or e-mail [ads1@georgiasouthern.edu](mailto:ads1@georgiasouthern.edu).

The George-Anne receives additional support, in part, from the Student Activities Budget Committee.

The deadline for reserving space and submitting advertising copy is noon, one week prior to the intended publication date. For more information, rate cards, sample publications, contact the advertising manager or student

media director. The advertiser is responsible for any errors in advertisements and its liability for adjustments is limited to the amount of space the error occupied in the ad. Further, the newspaper is not responsible for any damages caused due to an ad's omission from a particular edition and its responsibility solely is to reschedule the ad in the next regular edition at the regular advertising rates.

**STUDENTS BEWARE:** The George-Anne screens all advertisements prior to publication. The newspaper strives to accept ads for legitimate products and services only. Students are urged to exercise caution when replying to ads-particularly those that require personal information. Students are also urged to report to the newspaper any suspicious offers which they might see in an ad.

**PUBLICATION INFORMATION:** The newspaper is printed by Signature Offset in Jacksonville, Fla.

**NOTICE:** Unauthorized removal of multiple copies from a distribution site constitutes theft under Georgia law, a misdemeanor offense punishable by a fine and/or jail time.

**Editor-in-Chief** Arielle Coombes  
**Opinions Editor** Alex LaSalle  
**Copy Chief** Matthew D'La Rotta  
**News Editor** Jessie Reese  
**Asst. News Editor** Courtney Tielking  
**Arts Editor** Quaniqua Epps  
**Asst. Arts Editor** Gianna Carme  
**Sports Editor** Jannah Bolds  
**Asst. Sports Editor** James Farmer

**Business Manager** Holly Hillhouse  
**Asst. Business Manager** Vicki Tucker  
**Marketing Manager** Aria Gabol  
**Production Manager** Mallory McLendon  
**Photo Editor** Lindsay Hartmann  
**Design Editor** Kelsey Paone  
**Multimedia Editor** Jennifer Curington

## Corrections

Contact the editor at [gaeditor@georgiasouthern.edu](mailto:gaeditor@georgiasouthern.edu) for corrections and errors.





# The Sir Shop

## Statesboro Mall

912.764.6924

**RUSH SPECIAL**  
NAVY BLAZER +  
STRIPED GEORGIA  
SOUTHERN TIE

# SALE

REGULARLY PRICED \$200  
**NOW \$125**



## Our View

### A set process is necessary for criminal charges

Since last semester, we have been covering the investigation and felony charge of theft by deception that has been placed against Randall McClure, who stepped down from his position as writing and linguistics chair after an audit revealed misspent funds.

McClure is still teaching online classes this semester.

In recent weeks, we have also been covering the charge of animal cruelty against GSU biology professor Lance Durden.

Durden is still employed by the university. According to President Keel, "We have no plans to do anything with his employment at this time, pending the full investigation of exactly what happened."

We understand the concept of "innocent until proven guilty," and agree with it in principle. However, we also believe that there needs to be a process in place in the event of a faculty member being charged with a crime, not simply one for after a verdict.

The recent charges against McClure and Durden highlight the need for a process that will also ensure that students' interests are protected in the case of violent criminal charges or if a professor is unable to effectively teach while being charged with a crime.

We understand our obligation to assume innocence, but the university needs to have a set process in place for the sake of consistency and so students and other faculty can avoid worry when criminal charges are made.

The George-Anne welcomes letters to the editor and appropriate guest columns. All copy submitted should be 350 words or fewer, typed, and sent via e-mail in Microsoft Word format to [gaeditor@georgiasouthern.edu](mailto:gaeditor@georgiasouthern.edu). All submissions must be signed and include phone number for verification. GSU students should include their academic major, year and hometown. The editors reserve the right to reject any submission and edit submissions for length.

Opinions expressed herein are those of the Board of Opinions or columnists themselves and DO NOT necessarily reflect those of the faculty, staff or administration of GSU, the Student Media Advisory Board, Student Media or the University System of Georgia.



Jasmine Nielsen/The George-Anne

## Student Views on News



Sruti George  
Sophomore, multimedia  
communications major

### How do you feel about the Pickel Barrell reopening?

"As a college student with no car, it's extremely hard to find fresh produce that's easy to get to. I usually have to get someone to drive me to Wal-Mart so I love the fact that I can just walk across the street and get fresh fruit"



Miah Glover  
Sophomore, fashion  
design major

### How do you feel about the new bus stop on Sweetheart Circle?

"If you have classes in Veazey or the FACS building, you need it. Maybe they could do a third route, and that could help a lot"



Brittany Johnson  
Sophomore, engineering  
major

### How do you feel about the new bus stop on Sweetheart Circle?

"I really think the bus should run over there because it's too long of a walk"



Jason Major  
Junior, accounting major

### How do you feel about the new bus stop on Sweetheart Circle?

"The bus stop on Sweetheart Circle is a terrible idea. The buses are slow enough already. Plus, the bus stop at Eagle Village is unnecessary. If you're a freshman, you should walk to campus. I just think it's a bad idea"



## From the left

### Planned Parenthood essential

There has been a lot of buzz recently about Planned Parenthood. This is likely due to the publicity drawn by the Susan G. Komen Foundation's decision to continue funding breast cancer screenings at Planned Parenthood offices nationwide.

The initial decision was to withdraw funding from the wrongly demonized organization, likely in a political move. There is so much anger and hate spewed at Planned Parenthood because it offers abortions at its offices.

While this is true, abortions are one of the least used services it offers. Most of what Planned Parenthood does is birth control and sex education, trying to reduce the number of abortions by educating and protecting the youth from unplanned pregnancies.

Still, many people overlook the fact that Planned Parenthood offers so many services, and focus solely on the fact it is performing abortions and instantly have that strong negative association with the organization. This prevents people from even having an informed discussion on whether the Komen Foundation should continue giving money to Planned Parenthood or not.

The Komen Foundation folded under pressure from Republican decision makers and almost let that pressure hurt an organization that is trying to help people. Because it offer one service that some people oppose — mainly on a religious level — people seem to overlook the cancer and STD screenings the organization offers.

People seem to forget that Planned Parenthood also offers birth control and sex education services. It does more work



ROB ROBERTS @Robert\_ARoberts

to prevent unwanted pregnancy it does terminating pregnancies, and that needs to be realized.

This is an argument that will never be won by either side. It should be an easy decision, but it will always be a battle. Roe V. Wade legalized abortion, which should have ended the discussion. Women have the right to attain these services as they see fit. Is it right?

While you may oppose, you are not in their situation. For some people, this is their only choice.

The right to picket and protest abortion is as solid as the right these women have to make their own decision.

What should really be focused on is increasing the quality and quantity of sex education in our schools. If children are aware of the consequences of their sexual behavior, this could lead to decreased numbers in abortions, unplanned pregnancies and STD's. Before we scrutinize Planned Parenthood for what the media depicts it as, we should look at all the good it does.

*Roberts is a senior public relations major from Warner Robins, Ga.*

## From the right

### Komen should not give in

Last week, breast cancer awareness charity Susan G. Komen Foundation decided to revoke its contributions to Planned Parenthood, citing the reason being that parts of the services offered by the group didn't fit with Komen's ever-changing standards and views on how its resources should be used for women's health.

This caused a huge uproar and caused Komen to not only lose a lot of funding, but also its spine. Earlier this week, the foundation reneged on its campaign and sent out an apology for the action and sent a sizable, yet unknown, donation to Planned Parenthood.

It really didn't matter though. Planned Parenthood received not only some of the largest donations to date from groups angry at the cancer awareness giant, but also, Komen will have this blemish to deal with for the unforeseeable future.

I personally don't see why Komen decided to lose all credibility by going back on its belief. If the foundation didn't feel like Planned Parenthood is worthy of its donations, then it shouldn't get them.

Those donations should go to help the one in eight women who need it to fight this ugly and deadly disease, so they don't become like the over 34,000 women who lost their lives to it last year. If people want to have their money go to "family planning services," one option being abortion, then they need to donate to Planned Parenthood directly.

Personally, I'm more upset that Obamacare is trying to force its will on religion-based healthcare providers, namely those of the Catholic Church and its charities, by



FRITZ CHAPIN @GrandOldPartier

threatening to pull their federal funding if they don't provide services that are in direct opposition of their beliefs.

According to House Minority Leader Nancy Pelosi in a press conference, "If a medical facility does not comply with the law to supply FDA-approved contraception, including those that induce abortions, by August of next year their federal funding will be taken away."

Forcing Catholics to take on these new mandates would be in direct conflict with their spiritual teachings and conflict with their First Amendment rights for freedom of religion.

The law would also require that people of the Catholic faith purchase federal health insurance, which would pay for sterilizations and artificial contraceptives, including those which induce abortions.

I understand that, under the current legal system, women have the right to choose what they do with their bodies, but by the same token, shouldn't women have the choice not to pay for and support something they find morally reprehensible?

*Chapin is a senior political science major from Roswell, Ga.*

**Charlies**  
**Fried Chicken**  
**WE DELIVER**  
4 UNIVERSITY PLAZA  
(912) 681-2222 (912) 681-6666

**Charlies Fried Chicken**  
**\$1.00 off**  
Walk in Only

Full Menu		BURGERS & SANDWICHES (comes with fries)	FRIED CHICKEN
<b>APPETIZERS</b> Cheese Stix (6) - \$3.99 Chili Cheese Fries - \$5.99 Hot Dog - \$1.89 Fried Pickles (6) - \$5.50 Chili Dog - \$2.50 Fried Jalapenos (5) - \$5.50	<b>CHICKEN FINGERS</b> (3) Fingers w/ Fries - \$5.95 (5) Fingers w/ Fries - \$7.50 (8) Fingers w/ Fries - \$9.50 (10) Fingers w/ Fries - \$11.50 (12) Fingers w/ Fries - \$13.50	Hamburger - \$5.50 Cheeseburger - \$5.95 Bacon Cheeseburger - \$6.50 Mushroom Swiss - \$6.50 Philly Cheese Steak - \$6.95 Roast Beef & Cheese - \$4.95 BUT - \$5.95 Grilled Chicken - \$5.95 Ham & Cheese - \$4.95 Turkey & Cheese - \$4.95 Club - \$6.50	<b>Basket:</b> (comes with (2) Sides) (2) Pc Dark - \$6.50 (2) Pc White - \$7.50 (3) Pc Dark - \$8.00 (3) Pc White - \$8.50 (4) Pc Mix - \$9.00
<b>BASKETS</b> Tilapia (2 filets) - \$7.99 Pork Chop Basket (2) - \$6.25 Hotdog Basket - \$4.50	<b>DRINKS</b> Coke - \$3.00 Sprite - \$3.00 Bottled Water - \$1.00 Pepsi Products - \$2.00	<b>WINGS</b> (6) Wings - \$4.95 (12) Wings - \$8.95 (18) Wings - \$11.95 (6) Wings w/ Fries - \$5.95 (8) Wings w/ Fries - \$6.95 (10) Wings w/ Fries - \$8.50 Mild, Hot, X-Hot, Lemon Pep, Teriyaki, Honey Mustard, BBQ All drums or flats: 100 Mix Flavors: 100	<b>Snack Box:</b> (includes fries) (2) Pc Dark - \$4.50 (2) Pc White - \$5.50 (3) Pc Dark - \$6.00 (3) Pc White - \$6.50 (4) Pc Mix - \$7.00
<b>DESSERT</b> Chocolate Pie - \$3.00 Strawberry Cheesecake - \$3.00		<b>SIDE ORDERS</b> French Fries - \$1.89 (Large: \$2.99) Fried Okra - \$2.79 (Large: \$3.50) Baked Beans - \$1.89 (Large: \$2.99) Mac and Cheese - \$2.79 (Large: \$3.50) Onion Rings - \$1.89 (Large: \$2.99) Mash Potatoes - \$1.89 (Large: \$2.99)	



## Letters to the Editor

# Sweetheart Circle stop is a bad idea

Dear Editor,

I do not think that there should be a bus stop added at Sanford Hall. Having lived at Sanford previously, I know that there is plenty of time to make it between classes without a bus. Even from the Chemistry building, you can make it easily in 10 minutes. Our campus is not big at all, and I do not think that it needs a large bus system.

I also think that having a bus rolling around Sweetheart Circle would detract from the

tranquility. It's great to sit on Sweetheart

Circle and have a quiet afternoon away from all the hustle and bustle of the rest of campus. If a bus stop was added, it should be added by the Hanner Fieldhouse or the Library. Then, the bus system would not ruin the serenity of Sweetheart Circle and people who felt they couldn't make it to class would be able to.

Molly Stough

Sophomore nutrition/food science major  
Duluth, Ga.

Dear Editor,

I think adding a bus stop to Sweetheart Circle would be a terrible idea. I understand that students want an easier way to get to class, but by adding another stop to the route, it will make a bus ride across campus slower than walking. Sanford and Brannen aren't any further from Russell Union than it is from the Library!

Not to mention that it will also ruin the essence of relaxation that is Sweetheart Circle. If I go to sit on the Circle to study, the last thing I want to hear is a bus roaring up around the circle every five minutes. A lot of the community also visits the circle with their families and children. Often, they pack a picnic or let their dogs or kids run around. I don't see that happening with the addition of the buses' noises and smells.

The bus system altogether needs a re-do. I never ride the bus. What's the point when I go faster on my bike? Our campus is not big enough to have a bus system with lots of stops. The buses' purpose should be to get students who live in off-campus apartments to campus. The bus should stop along Lanier Drive and then Russell Union, the Chemistry building and the RAC. Let's face it — once you're on either end of campus, you're a five to ten minute walk from anywhere. Wouldn't you rather walk in the fresh air than be stuck on the bus surrounded by a bunch of your closest friends with no personal space?

Don't ruin Sweetheart Circle just because you feel lazy! Think about what you're saying before you give up Georgia Southern's treasure.

Shelby Marzen

# Innocent until proven guilty is essential

Dear Editor,

As a group of upper-level science students at Georgia Southern University, we feel it is necessary to respond to Ms. Rachel Mulder's letter to the editor in The George-Anne (Feb. 2, 2012) concerning the purported 'dog attacks feral cat' incident. In her letter, Ms. Mulder stated that Dr. Lance Durden "commanded the killing of a cat." However, the only two humans present at the scene were Dr.

Durden and a GSU police officer. Only they know what transpired during that campus incident and, up to this point, we have not heard both sides of the story. According to the Declaration of Human Rights (1948), people accused of a crime are presumed innocent until proven guilty. We suggest that the GSU community allow the legal process to follow its natural course before making unwarranted accusations against one of our own distinguished faculty.

Respectfully submitted,

Tiffany Addison  
Jasmene Akles  
Sylvanus Anuforo  
Megan Babula  
Daniel Bartlett  
Kacy Bennett  
Joshua Bloodworth  
Phillip Boatright  
Christopher Brewer  
Taylor Britton  
Natika Byse  
Alexis Campbell  
Lauren Clark  
Cassie Corbin  
Alli Coursey  
Jasmine Denson  
Rebeca Donahue  
Daisy Durden  
Kody Franks  
Jackson Geonis  
Kristy Gierke  
Haley Gilreath  
Hardy Gray  
Kelly Hadden

Ivory Harding  
Ashley Harris  
Ashley Henderson  
Geneva Hendrix  
Nicole Infarinato  
Crystal Ivey  
Lauren Jackson  
Zachary Johnson  
Derez Jones  
Brandon Lane  
Alexis Lanser  
Kiley Lightle  
Mary Ludwig  
Jordanna Lundgren  
Skye Mainer  
Savannah Mathis  
Erica May  
Emily McManus  
Matthew Monaco  
Chelsea Moore  
Marcus Moraru  
Christa Murray  
Nhung Nguyen  
Inez Parker

Brian Peebles  
Valerie Plummer  
Cheyenne Puryear  
Mattie Raiford  
Kyle Robillard  
Eautreana Robinson  
Ward Sachs  
Taylor Sanders  
Bryan Sandler  
Brittany Sapp  
Sheri Shillingford  
Jana Simmons  
Cody Simpson  
Leonard Sims  
Micah Spivey  
Kathryn Stewart  
Matthew Stroud  
Koren Tate  
Ashley Vanlede  
Joycelyn White  
Abby Wilson  
Ciegi Wingard  
Amy Yawn

## SINGING VALENTINES!

order now just **\$20** for feb 10-14

3 songs, stuffed animal, candy and balloon!

**912-681-2241** [georgiasouthernbcm.com](http://georgiasouthernbcm.com)

proceeds support student missions



# GATA's transitions with Super Bowl party

BY TAYLOR COOPER

The George-Anne Staff

Buffalo's Café has officially made the transition into GATA's Sports Bar and Grille, celebrating the change with a Super Bowl party Sunday night.

"Today was our inauguration of Buffalo's into GATA's," Jeff Stewart, general manager of GATA's, said. "This is an annual thing, and it will also be GATA's birthday, I guess."

"So far I've enjoyed it — the game is on, people cheering and the giveaways. It's great," Carlton Hendrix, an undeclared sophomore, said.

At halftime, most of the restaurant turned to the many televisions in the bar area to watch the halftime show.

GATA's is planning to add more televisions so that more people will be able to view them during events.

"We are adding six or seven more TVs, but while we are re-painting the dining room, we haven't been able to hang them yet," Chloe Douglas, a hostess at GATA's, said.

"During the Super Bowl, the bar got crowded, but people didn't want to sit in the dining room because the booths surrounding the two televisions were already full," Douglas said.

The Super Bowl halftime show, performed by Madonna and featuring Nicki Minaj, M.I.A., LMFAO and Cee Lo Green, seemed to catch everyone's attention.

"It freaked me out a little bit," Thomas Bonner, a junior business major said.

"I thought it was cool. Nicki Minaj

was bringing it down," Randal Brunson, a graduate student, said.

Not everyone found it interesting, however.

"I stopped paying attention and went back to talking after a minute," Stew Davis, a junior graphic design major, said.

The events of the night included prizes after every quarter of the game, as well as during Budweiser commercials and the first ever GATA Challenge.

"To enter into the giveaway contest, you need to buy a Budweiser. If you buy a bottle, you get one ticket, buy a pitcher, you get more. You take the tickets and bet on what you think the score will be at the end of each quarter. If you guess right, you win," Mike Hall, general manager of GATA's, said.

Among the items in the giveaway were a Budweiser grill, a cooler, tickets to a Pink Floyd concert in Savannah and tickets to a Bad Boys of Rock Concert.

The GATA Challenge is a 20 minute challenge where the contestant has to eat 10 of GATA's hottest wings and then endure the after burn for five minutes.

"We're also doing our first GATA Challenge tonight. You have to eat ten super-hot wings in fifteen minutes, then, let them sit for five minutes without water," Hall said. "If you win, you get your picture up on our wall of fame, and a free t-shirt."

The first winner of the challenge was sophomore business major Adi Vaknin.

"It feels like my mouth is on fire. It's worse than it was when I was eating them," Vaknin said. "If you really like

spicy food like I do, then go ahead and try it."

"I honestly didn't expect him to complete it. You could tell he was hurting early on," Hall said.

"Whenever the GATA Challenge started, we had around fifty to seventy-five people pushed up against the stage cheering. That's the kind of thing people go tell their friends about," Hall said.

Overall, the party was a success, Hall said.

"It was a phenomenal success. We had well over two hundred people and we were able to showcase GATA's with great success," Hall said.

"Being Super Bowl Sunday, it was a success, considering it was our first Super Bowl Sunday. We have been open on Sundays since Christmas break because of the Sunday alcohol sales," Douglas said.

The guests agree with the change as well as the event.

"It's been really fun. We had a blast," Gregory Griffin, a nurse at Eastwood Regional Medical Center and GSU alumnus, said.

"The atmosphere was great. No one was afraid to cheer for their team, and the giveaways were cool," Will Ofray, senior English major, said.

"There were plenty of white girls, and that's never a bad thing," Chris Shirley, a senior psychology major said.

"This is just the first day of GATA's, there's plenty more to come," Stewart said.

Hall said, "Changing over has been a slow process, and this was a huge step."



Lauren Davis/The George-Anne

GATA's celebrated its "birthday" on Super Bowl Sunday. This day marked the transition from Buffalo's Southwestern Café to GATA's Sports Bar and Grille.

## Suzuki Polaris SeaDoo CanAm

22681 HWY 80 EAST 1.5 MILES PAST LOWES

### AREA'S LARGEST ACCESSORY SHOW ROOM

SERVICE & REPAIR ALL MAJOR BRANDS

pick up and delivery

WWW.SPSCstatesboro.com

912.764.2547

# 20%

Off parts and accessories  
With this coupon



# New park to be built in downtown Statesboro

Director of Development Authority: Park to be 'activity, family and student friendly'

BY TAYLOR COOPER

The George-Anne staff

A new park will be built downtown that will be both student and family friendly and will serve as Statesboro's signature park.

"We want it to be a place where students can come and get into the downtown area," Allen Muldrew, director of the Downtown Statesboro Development Authority, said. "We also want to provide a regional venue for activity, family and student friendly. It will be a new place for the farmers' market and we'll host a Southern Day, where the president will come and speak."

"We're trying to make a signature park for Statesboro, something that gives us an identity and makes us unique, and give a quality-of-life improvement," Muldrew said.

"We want to have it open to organizations, families and groups, like having a pavilion people could use for meetings," Muldrew said.

Among other things, the park will feature

“ We’re trying to make a signature park for Statesboro, something that gives us an identity and makes us unique, and give a quality-of-life improvement. ”

- Allen Muldrew,

Director of Downtown Statesboro Development Authority

an amphitheater and fountains, Muldrew said.

"We're looking at parks that have fountains and other decorations, like Rome, and taking cues from them," Muldrew said.

"It's still in the planning stages. We'll probably put a group together to get input on landscape and decoration and architecture, and having the farmers market," Muldrew said.

One of the locations where the park could potentially be built is where the old seafood market now stands, by the railroad track on

East Main Street, Muldrew said.

Having the park would also help Statesboro's real estate business, Muldrew said.

"It will help the real estate too, because property around a park is always more valuable," Muldrew said. "Making this park could also have an effect on downtown. People would want to renovate their building to make them look nicer."

"We want it to increase quality of life. It also helps if you've got businesses looking. When you're competing with other areas,

people look at your quality of life, among other things," Muldrew said.

Students think the idea is good, but the placement could be better.

"I probably wouldn't go because it's downtown — Not a lot to do there. It would be better if they built it closer to campus, especially with all the freshmen that don't have cars," Adrian Barnes, a senior history major, said.

"I think it would be a good thing. Any opportunity to socialize is good," Marco Ossorio, a sophomore business management major, said.

"I feel like the campus has all that, so students wouldn't necessarily want to go," Emma Mathews, a senior political science major, said.

"I like the idea, but not the placement," Jessica Smith, a freshman biology major, said.

Muldrew said "I don't see any downside to having a park, and the downtown seems to represent your community."

## SNOOKY'S, from page 1

Many people of note have eaten at Snooky's, including Tony Barnhart, Zell Miller, Jimmy Carter, Jim Trussel, Vince Dooley, Erk Russel and Vince Gill, Yawn said.

"When it first started, we had the idea of catering, being on the perimeter of the college," Yawn said. "I didn't start out trying to make a lot of money, I wanted to make a difference in the community."

Yawn was approached by CVS before about buying the restaurant from him.

"CVS has been looking at this property for a while. They want to build a pharmacy here, when they asked me if they could buy it ten years ago, there was no way," said Yawn.

Students expressed disappointment that this Statesboro landmark will be closing.

"I've only been there once or twice. I don't want to see any businesses close, but in this economy it can't be helped," Chaz N., a senior accounting major, said.

"It's a tradition that we're losing, but I'm sure he has a good reason for closing," TJ Holley, a junior political science major, said.

"Going from Snooky's to a CVS, sucks. It's a well-known, tradition place," Zach Smith, a junior IT major, said.

Phillip Stringer, an undeclared sophomore, said, "I feel like it does open new up the area for more business, but it's not so good for the community."

## WARD, from page 1

groups throughout the year.

"We no longer celebrate different diversity months or weeks. You'll see a celebration or acknowledgement of challenges and accomplishments of many different groups throughout the year. You'll see our programs sprinkled out throughout the academic year for a lot of groups," Ward said.

Christopher Pugh, assistant director of MSC and in charge of Minority Advisement Program will resume Ward's place as interim director.

Pugh first met Ward when he volunteered for MSC in 2006 while performing in the play, "Montage of Blackness."

"I've never had a professional mentor before, so she was my first professional mentor," Pugh said. "She taught me how to make my work count for something — to not only work hard, but to work smart."

"I teared up a couple of times, I'm not afraid to say that," Pugh said. "She meant so much to so many people. She deserves a lot. We knew this day was coming, but that does not make it easy to deal with. We're not looking forward to saying bye to her at all. Dr. Ward means more to people than they realize. She is the world to a lot of students around here."

Ward has pushed the standard for this university when it comes to programming, Pugh said.

"She has really made everyone really not only believe what she believes in, as far as work ethic and having a purpose in your work, but she believes in them strongly and deeply," Pugh said.

This will be a great loss for GSU, President Brooks Keel said.

"Dr. Ward cared deeply for our students and her student centered passion will be missed. However, we certainly appreciate that this is an excellent career opportunity for her and we wish her the very best," Keel said.

Seeing her leave is bittersweet, William Hill, a senior general studies major, said.

"She plays a big role here at GSU. You want to see her succeed, but don't want to see her go at the same time," Hill said.

"I'll miss her," Kashaunnah Sledge, a senior health education and promotion major, said. "I enjoyed having her insight and experience planning the Women's Empowerment Conference."

"She has really left a legacy. I think the school will know when she leaves. You will definitely feel her absence," Pugh said.

A going-away reception will be held for Ward today from 11 a.m.-1 p.m. in Room 2080 in the Russell Union. It is open to everyone.



# Eagles for Eagles to help students

Southern Legacy creates program to help students financially in emergencies

BY COURTNEY ESCHER

The George-Anne staff

Southern Legacy has created Eagles for Eagles, a program designed to help students in need of financial assistance for emergencies or educational purposes.

The program was created when Southern Legacy realized that Georgia Southern University is under no legal obligation to assist students in need of financial assistance.

"We have been planning to launch Eagles for Eagles since November, and then when that fire happened to the student in ROTC, we were like, 'Yes.' This is what Eagles for Eagles is for — helping students like him in ways that the school can't," Cordero Curry, a senior political science and geography major and president of Southern Legacy, said.

Eagles for Eagles has two parts — one designed to help students dealing with hardship and one designed to help students gain more opportunities in their education, Curry said.

"There are two parts to Eagles for Eagles and I really love them both," Curry said.

"The first is designed to help students in hardships, like the student in ROTC whose house burnt down recently, it is called the Eagle Care Award," Curry said.

"The second is Eagle Opportunity, which is designed to help students who want to do unpaid internships, or study abroad, or alternative spring break or something like that," Curry said.

Eagles for Eagles is designed to help students graduate, no matter what the financial need, Curry said.

"Our main goal is to help students graduate with their degree. So if that means that we have to help them financially just so they can stay in school, then we'll do it," Curry said.

"If that means we help a student expand on their degree by helping them do an unpaid internship or study abroad then we'll do that too," Curry said.

Eagles for Eagles was simply started by the members of Southern Legacy, Curry said.

"Anyone can create a fund. You just need five hundred dollars. So our members each contributed fifty dollars to create the Eagles

for Eagles fund," Curry said.

Southern Legacy has created funds in the past designed to allow students to see their efforts at work, however students have been confused by the purpose of these funds, Curry said.

"Southern Legacy created 'A Day for Southern' so students would have the opportunity to help Georgia Southern in whatever way they wanted. But what happened was, students were getting confused by 'A Day for Southern' since they couldn't see where their funds were going directly. So we created Eagles for Eagles because it's easier for us and easier for students to understand," Curry said.

Thus far, Southern Legacy has been raising money solely through friends and acquaintances, Curry said.

"So far, to raise money, our members have been targeting people they know for larger gifts, on a personal level. But on a student organization level, we've been trying to get other student leaders to make large gifts, like SGA, Southern Ambassadors, the Leadership Program and CL's," Curry said.

Southern Legacy will be taking public donations on campus within the next few weeks, Curry said.

"At the end of February and beginning of March, we'll have a site on campus where we'll be collecting smaller gifts, like one dollar or five dollars," Curry said.

Southern Legacy is looking for volunteers to join and help them raise money for this cause, Curry said.

"We are currently looking for volunteers to help raise money. We meet Tuesday's at five-thirty in the Williams Center," Curry said.

Southern Legacy will be raising funds for Eagles for Eagles every spring. Curry is confident that students will accept Eagles for Eagles easier than "A Day for Southern."

Curry encourages students to donate, because Southern Legacy cannot award its funds until it reaches its goal of \$14,000.

Southern Legacy will be accepting donations online and in person, Curry said.

"To make a donation, contact Southern Legacy members, or you can go online or you can give on campus during those weeks that we'll be set up," Curry said.



## EAGLES FOR EAGLES

- Encourage
- Equip
- Empower

Helping students with  
ROTC      Alternative spring break  
internships      Study abroad

Kelsey Paone/The George-Anne

## Student Organization Fair

# 2012

Wednesday, February 8  
11am - 2pm, Russell Union

With nearly 300 student organizations at GSU, which one will YOU choose? Come explore the possibilities at the Student Organization Fair and GET INVOLVED!

Georgia Southern University  
Office of Student Activities  
[students.georgiasouthern.edu/sac](http://students.georgiasouthern.edu/sac)

Your Student Activities Fees at Work



## Benefit concert spreads word for Invisible Children

### Music

BY JAZMIN DAVIS

The George-Anne staff

Georgia Southern University's Black Student Alliance shed light on a good cause at the Invisible Children benefit

concert Friday night.

Students came together in the Russell Union Ballroom to witness a performance from their peers and raise awareness. The Invisible Children documentary filmmaking organization fights to take child soldiers in Uganda out of war and educate them for a bright future.

The Lord's Resistance Army and the Government of Uganda have been in a 23-year war that has put their own young citizens in the line of combat. According to their website, the members of Invisible Children "are supporting and equipping a generation ravaged by war so that they can finally know peace."

BSA's philanthropy for this semester is to get the word out about this issue. The group picked up the inspiration for giving back by putting on a concert in hopes of raising funds.

"I feel that it's vital to serve people every way we possibly can," Breana Mitchell, a senior sociology major and member of the BSA executive board, said.

Set up with a 91.9 "The Buzz" table at the left and a band to the right, the show kicked off in low light with a heart-felt slideshow presentation about the history and goals of Invisible Children.

The evening featured eight performances by singers, dancers and rappers, all of who are students at GSU. Performers like Euphoria, The Commotions, and Khrys Dent raised the spirit of the audience as they raised awareness.

"(The performance) was slightly about promotion, but it was definitely for a good cause. I'm always up for charity," Dent, a senior public relations major and rapper, said.

Euphoria started the line of performances for the evening. After, well known campus organizations like Adrenaline Show Choir and Soul'd Out Campus Choir took the stage. With their collection of voices, the groups reminded the audience of the original purpose for the concert.

"We love doing philanthropy, especially for Invisible Children, because it's something people should know about," Katie Crenshaw, senior early childhood education major and vice president of Adrenaline, said.

The viewers of the show found it to be stimulating. Each of the acts kept students singing and clapping along to the music. Nothing but positive energy resonated the walls of the ballroom that evening.

"They were pretty entertaining. Especially Soul'd Out, I believe they were very motivational," Rai Gethers, sophomore journalism and public relations major who attended the show to support BSA and Invisible Children, said.

The event turned out to be a way to bring entertainment to campus while making GSU students aware of the Invisible Children.



Lauren Davis/The George-Anne

**Choir and dance groups** help raise awareness for Invisible Children, an organization that fundraises for children in Uganda. **Top left:** Adrenaline show choir performs a string of hits by different artists at the BSA benefit concert. **Top right:** Soul'd Out lifts their voices in harmony at the concert for the Invisible Children. **Bottom:** Euphoria dance team performs a high-energy dance routine at the charity event.



# Euphoria dance team to host tryouts

## Performing arts

BY KIMEKO MCCOY

The George-Anne staff

The Georgia Southern University Euphoria dance team is looking for new talent as it hosts auditions this week.

The dance team has had success in winning competitions such as 2011's Doo/Dah Step show. Made up of students from different backgrounds, Euphoria has high hopes for this year's dancers.

The group is similar to GSU's Dyverzion dance team in some ways and different in others.

"Our style is similar, with creative twists, but we have two totally different atmospheres," Racqueal Peters, a senior majoring in finance and director of the Euphoria team, said.

Though the teams are similar, Euphoria hopes to break away from the association and make a name for itself here on campus.

"Historically, we're a hip hop crew. We tick, break dance and do isolation," Peters said. The

## EUPHORIA DANCE TEAM TRYOUT



Studio 2 @the R.A.C

Feb. 7-9 9:00pm

Akeem Hill/The George-Anne

team started from scratch with anyone who was interested, but now the competition is greater.

"The bar has been raised," Peters said.

Other members of the dance team enjoy

learning new moves and being a part of something they love with other friends and dancers.

Jasmine Ochoa, who is a freshman majoring in nursing, has been dancing with Euphoria and

this is her first semester.

"I like it a lot," Ochoa said. "They take time with us. Practice makes perfect."

Other members, like Atolani Quadri, a senior chemistry and biology major, also like the dance team. Quadri has been with the crew for about three semesters and sees it as a great opportunity for everyone.

"I love it. It's a great experience and everyone here is like family," Quadri said.

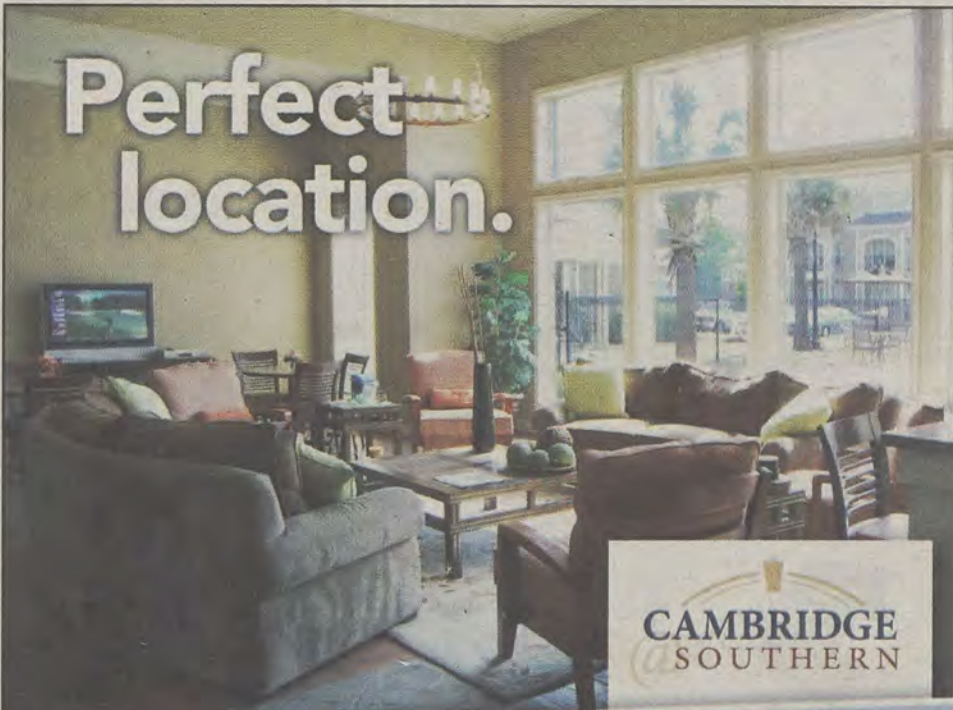
Though the bar has been raised for this year, the dance crew is still inviting those who are interested to attend tryouts.

"We're looking for anyone who's interested. We're really looking for talent," Peters said.

There are a few requirements for those who try out. All of the participants in the tryouts are taught a routine and expected to be able to replicate it. In addition to this, there is a 30 second to one minute routine that each individual needs to have ready to be judged.

Tryouts are this week, Feb. 7-9, at the RAC in studio 2 at 9 p.m.

## Perfect location.



CAMBRIDGE SOUTHERN



912.681.1300

Cambridge-Southern.com

## THANKS, TROY!



TROY MARSH  
THE MARSH LAW FIRM

WHAT: **FREE** LEGAL HELP

WHERE: ROOM 2073 IN THE RUSSELL UNION

WHEN: EVERY TUESDAY 3:00-5:00 PM

TO SCHEDULE AN APPOINTMENT, CALL (912) 764-7388

SPONSORED BY



STUDENT GOVERNMENT ASSOCIATION  
YOUR STUDENT ACTIVITY FEES AT WORK.



# 'Of Ebony Embers' to be held at Williams Center

GSU to celebrate the Jazz Age and Harlem Renaissance through musical theater

## Performing arts

BY KIMEKO MCCOY

The George-Anne staff

The Harlem Renaissance will re-emerge as the Georgia Southern University Multicultural Student Center presents the musical 'Of Ebony Embers.'

The Harlem Renaissance, which serves as inspiration for the musical 'Of Ebony Embers' is a period of time in which black artists, poets and musicians found innovative ways to express themselves through their talents.

"Of Ebony Embers: Vignettes of the Harlem Renaissance" is a music theater work that celebrates and focuses on the lives, history and works of three well-known black poets.

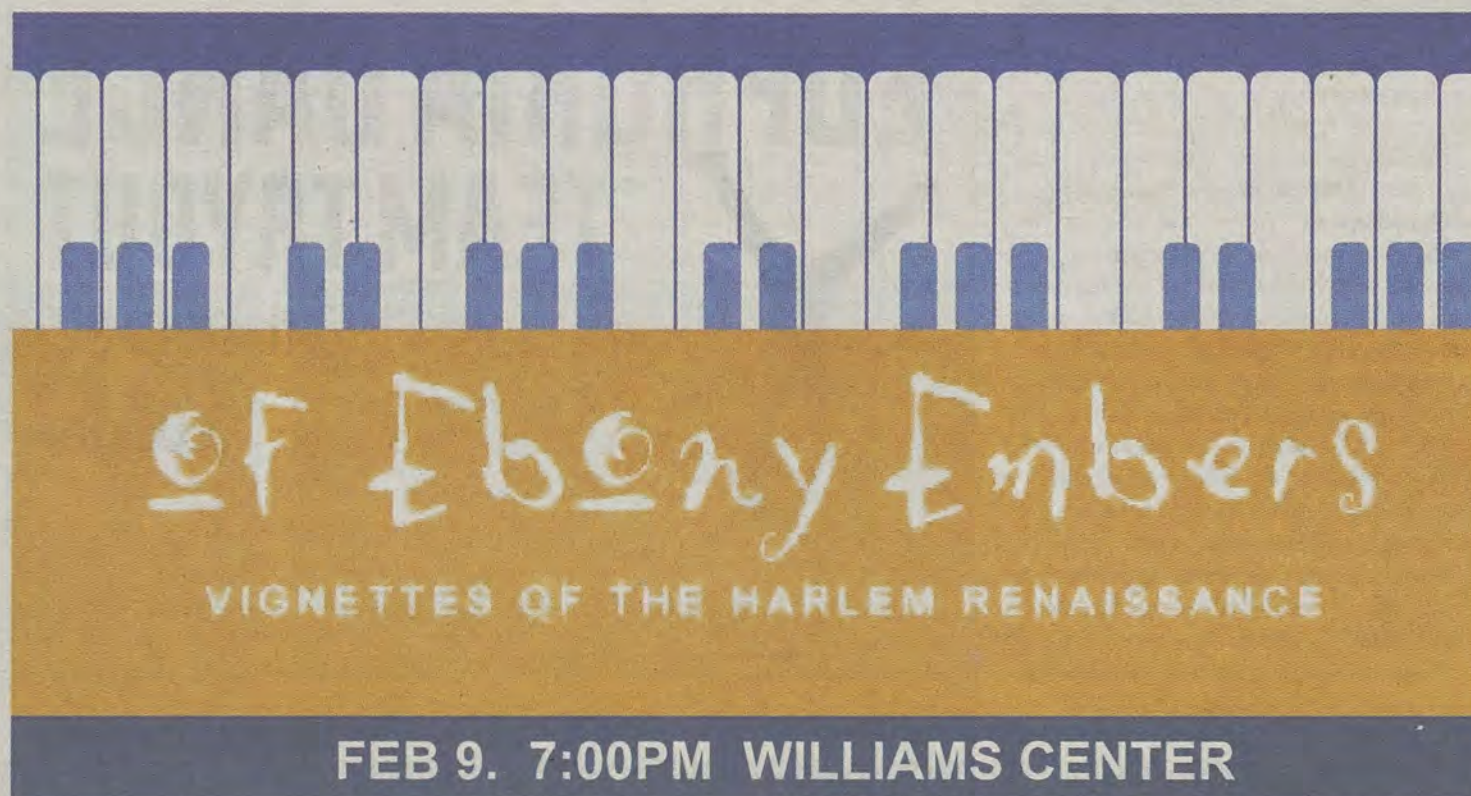
Langston Hughes, Countee Cullen and Claude McKay will be characters portrayed on stage with the help and creative abilities of the painter, muralist and the "Father of Black Art," Aaron Douglas.

Darius Robinson, a second semester graduate assistant and employee at the Multicultural Student Center said, "It's an opportunity for students to get a glimpse at the different music and poetry of the Harlem Renaissance."

This is the second year that the production "Of Ebony Embers" has been presented here at GSU. The Multicultural Student Center has always worked hard to bring diversity events to GSU for students and faculty alike to take part in.

This show which is one that portrays characters that have left their own landmark on American history is no different.

"Of Ebony Embers" ties together the spirit and celebrities of that era with the music of that time period.



Akeem Hill/The George-Anne

It ranges from poets that were inspired by the movement of the Harlem Renaissance, like Hughes, to musical talents that sang their way to the top of the charts during the Jazz Age, such as pianist Duke Ellington, Jelly Roll Morton and other black composers.

Many students in America's educational system have previous knowledge of the Harlem Renaissance and its influences that spread and touched people's lives of various backgrounds. Poets like Hughes, Cullen and McKay are familiar names, but this time it is different.

"Of Ebony Embers" is portrayed how Douglas would have seen it.

Music and words come to life and collaborate to tell the story of the Harlem Renaissance again.

Those who attend this presentation will be sure to walk away with a new perspective on that same historical event.

"The main message is a better understanding and a glimpse into the artistic side of the Harlem Renaissance," Robinson said.

It is hoped that many students and faculty will attend this event produced by the Multicultural

Student Center and support its efforts to push diversity here on campus.

"It's meant for all students," Robinson said. "We want to increase diversity because we are the Multicultural Student Center. It's meant for no one particular group."

The group works to bring diversity events to campus. "Of Ebony Embers: Vignettes of the Harlem Renaissance" will take place this Thursday, Feb. 9, at 7:00 p.m. in the Williams Center. For this event, admission is free and proof of attendance will be provided.

UT&ABOUT

## Express Tune & Lube

**Tire, Alignment & Exhaust Center**

612 S. Zetterower Avenue  
**489-4444**

www.expresstuneandlube.com  
Monday - Friday 7:30am - 6:30pm

Located a half block north of Wendy's.

### OIL CHANGE SPECIAL

\$25
<sup>95</sup>

Includes up to  
5 qts of Castrol  
5W20, 5W30, 10W30,  
or 20W50

price applies to most vehicles. Expires 3/31/12

www.expresstuneandlube.com

Follow us on  
Facebook

Free cookie with purchase of  
a large Signature Drink

Expires: 2/29/2012

\*Now accepting Eagle Express!\*

NEW TO STATESBORO!

598 Brannen St. Statesboro, Ga 30458  
912.225.9922

\*Must present coupon upon Purchase\*



## Intramural Scores

### Basketball Scores

The Cadets 45, Team Got Toooo 54  
 Court 1 46, Cool Shoes Bro 48  
 F.A.M.E 31, Tau Athletics 17  
 Vogel Party of 5 54, Stone and the Hood Rats 43  
 RUF 45, PF Change 48  
 UV Brawlers 34, 3 the Hard Way 33  
 FLY AF! 50, The Dream Team 55  
 NIKE Select 56, Why Are You Here 52  
 Southern Spliffs 47, CP Nothin But Net 40  
 Hibachi Makin Mariachi 34, M.O.B (Muffins Over Bagels) 29  
 Under Dogs 32, Strokegame 37  
 Self Check 37, DRIVE 16  
 Forgiven 17, Raw Talent 65  
 Original Stokers 34, Austin's Team 32  
 Camp Coke 56, WE2REAL 53  
 Swagger Hounds 51, The Roy Orbisons 31  
 Shawt Bread 40, The Great Whites 23

Multiple ScoreGasims 60, Five Guys 30  
 Sour Diesel 28, Crack Baby Basketball 45  
 Five White Guys 39, Dwight Men Can't Jump 58  
 Jose Mesa and Friends 21, The Hardwoods 46  
 Delta Chi 18, Phi Kappa Phi 59  
 Alpha Tau Omega 28, Alpha Phi Omega 43  
 Pi Kappa Alpha 51, Delta Sigma Phi 26  
 Sigma Phi Epsilon 23, Sigma Nu 63  
 Kappa Alpha Psi 43, Delta Tau Delta 22  
 Sigma Alpha Epsilon 23, Kappa Sigma 44  
 GSU Eagles 45, 2Legit2Quit 36  
 SLASHERS 40, Skins 63  
 Juice Babies 50, UV Villa Thrillas 26  
 Splash in the Boro 28, Skip Bayless Hates Us! 55  
 Alpha Super Awesome Cool Wolf Swagg Squadron 9, Eagle Alert Sports 45  
 Balls N Dolls 31, The South Butt 58  
 The 69ers 52, Hoop! I Did It Again! 38  
 MonStars 35, Toon Squad 52


Malicious Prostitution 31, ATLiens 61  
 The Fistin' Pistons 20, Fast & EZ 43  
 Glacial Speed 32, Ragin' AlchoBalls 36  
 The Math Debaters 26, Black Mamba 56  
 Five Black Guys 41, Pressure D 85  
 GSU Football 53, Caucasian Invasion 23  
 Ducks 50, World Domination 44  
 Space Cadets 39, NSBE Ballas 16  
 Ball-Stars 45, #TEAMJABOY 34  
 Showtime 44, The Newcomers 24  
 BCM Hoops! I Did It Again 10, Junkyard Divas 31  
 RAC'n Crew 27, Just Do It 57  
 We Winning 54, Our Balls Always Drop 30  
 Pippin Aint Easy 38, My Dixie Wrecked 41  
 Zeta Tau Alpha 13, Kappa Delta 17  
 Phi Mu 26, Kappa Kappa Gamma 8  
 The Asian Guy Sucks 52, Fully Torqued 35  
 Flint Michigan Tropics 10, 6ft Swag 51  
 Alpha Delta Pi 34, Kappa Delta 11  
 576ers 31, Pat Barker's Old Friends 62

Tropics 55, Rocket Power 42  
 GSU Workers 35, Polo Gang 65  
 Sorry Babe I Fell Asleep 37, Team Perfection 35  
 3 Ballin' 60, Backyard Studs 51  
 Violent By Instinct 32, Polo Gang 62  
 Hand Down Man Down 74, Team iPhone 64  
 Eastbound & Down 21, SpaceJam 42  
 Diligaf 50, Fallopian Swim Team 33  
 Sp Baby Swingers 53, Viscious and Delicious 54  
 A.M Lumber 47, The Young and The Rest of Us 27  
 BCM Ballers 14, Philosoraptors 73

### Wheelchair Basketball Scores

Ducks Eat Free At Subway 4, Cat Daddy 23  
 HotWheelz 0, Reina Cookies 10  
 King CoBRAHS 8, Shredding Queso Balls 4  
 Professor X Dance Team 6, I Hate Hills 15  
 Free Wheely 0, Really Stairs \_\_\_\_ 10

# What's Happening at CRI



**Tomorrow**  
 Inner Tube Water Polo Free Play, 8-10pm

**Thursday**  
 Belay Clinic, 7pm


**Sunday**  
 Canoe Clinic, 2pm

**Monday**  
 Belay Clinic, 6pm  
 CRI Job Fair Begins  
 Registration Opens for Intramural Softball

**CAUTION**  
**MAY CAUSE**  
**INVALUABLE**  
**WORK EXPERIENCE**

**CRI**

**CRI JOB FAIR**  
 FEBRUARY 13 - MARCH 4

**FOLLOW US!**   
[www.cri.com](http://www.cri.com) [facebook.com/CSUCampusRec](http://facebook.com/CSUCampusRec)  
[twitter.com/CSUCampusRec](http://twitter.com/CSUCampusRec)

**CRI**

YOUR STUDENT ACTIVITY FEES AT WORK

**\$1500 SCHOLARSHIP**


**THE 64<sup>TH</sup> ANNUAL**  
**MISS**  
*Georgia Southern University*

**GEORGIA SOUTHERN'S SWEETHEART**

**SATURDAY, FEBRUARY 11**

7:00 P.M.  PERFORMING ARTS CENTER

**FREE ADMISSION**

**BRING YOUR EAGLE ID**

  
**UNIVERSITY PROGRAMMING BOARD**  
**TRADITION'S COUNCIL**



# CLASSIFIEDS

14 Tuesday, February 7, 2012

The George-Anne

## For Sale

Scooter for sale! 2005 Honda Ruckus. Black, 49cc, 85+mpg. Fantastic condition; original (faculty) owner, garage kept. No special license or insurance required. \$1,500 OBO. Contact (912) 678-6052

Firewood for Sale. Delivery available! Call 912-690-0872 or 912-690-4956.

For sale: 2009 BMW 328i, hard-top convertible in great condition. Black with tan interior. Call 912-293-1909.

## Misc.

Will proof papers (grammar, spelling, punctuation, sentence structure). Quality work, reasonable prices. Will also type short projects. Must have ample lead time to schedule. Email [auntre01@gmail.com](mailto:auntre01@gmail.com)

BARTENDERS WANTED! \$250 a day potential. No experience necessary. Training provided. Age 18 and up. Call 1-800-965-6520 ext. 296

## Subleases

Subleasing 3 BR/2BT house on Parker Avenue in downtown Brooklet. Extremely large media room! Located on two city lots. Contact Joyce at (912) 842-9479.

2 Bedroom 2 Bathroom apartment in Hawthorne 2. Very close to campus. \$350/month. Sublease through July. Contact Shannon at 678-468-9407

Subleasing master bedroom in Planter's Row for \$365/month; utilities not included, pet friendly. For more information contact Anna-Marie at [at01770@georgiasouthern.edu](mailto:at01770@georgiasouthern.edu) or call (770) 546-6560

Home Away From Home 3BR/2BT within 2 miles of Georgia Southern campus. You can sublease the other 2 rooms. No smoking or pets. Call (706) 951-1427.

Sublease at Cambridge for Reduced Price 1 BR/BTH available in a 3 BR, bus stop directly across from campus, all utilities included, furnished, washer/dryer, amenities. \$350/month \*Regular price-\$459/month.\* Email [iecutie102@yahoo.com](mailto:iecutie102@yahoo.com)

## Subleases, cont.

2 BR/2 BT sublease in Georgia Villas. \$475/month for both rooms, utilities not included. Available Jan-May, pet friendly. Right across from Greek Row on Chandler. Email [t100212@georgiasouthern.edu](mailto:t100212@georgiasouthern.edu)

Female to sub-lease Spring Sem. 5 BR, \$280 a month. Last month's rent is paid. Less than a mile from campus off of Gentilly Rd. Call, text or email Kristina: (678)-770-6251 [kf01606@georgiasouthern.edu](mailto:kf01606@georgiasouthern.edu)

Subleasing 626 B at the Exchange. Female Roommate needed. \$519.00 per month. All utilities included, free tanning, free Wi-Fi, 24 hr gym included. Available now. Contact (706) 523-6001

Room available for male or female in a 3 BR/2 BT house on Catherine Avenue. Fully furnished; bed needed. \$367/mo per person, utilities not included. Spacious house. Contact Yale at (404) 272-7652 or [yale8754@bellsouth.net](mailto:yale8754@bellsouth.net)

Subleasing a 2 BR/2 BR at the Woodlands of Statesboro for Spring 2012. \$399 a month, utilities not included. Contact Adrian at (678) 230-5144.

## Subleases, cont.

Subleasing my room for Spring 2012 in a fully furnished 4 BR/4 BT 3-story town home. Walking distance from the stadium and bus stop. Contact Alex at (770) 712-5377 or [ao00837@georgiasouthern.edu](mailto:ao00837@georgiasouthern.edu)

Spring 2012 1 BR/1 BT in a 2 BR/2.5 BT townhouse at The Avenue. Furnished and utilities included. \$495/month, but I will pay \$30 for each month. Or I could put \$210 towards the first month's rent. Contact Cherelle at [chollan4@georgiasouthern.edu](mailto:chollan4@georgiasouthern.edu)

All inclusive, two story, fully furnished; 4 BR townhouse for \$330/month! Includes trash, utilities, cable, wi-fi, pet park, 24/7 gym, recreation courts, computer lab, new appliances and washer/dryer! Contact (229) 326-4291.

Subleasing a 1 BR/1 BT in 4 BR apartment in Copper Beech for Spring 2012 starting Christmas Break. Washer/dryer included. Next to pool/volleyball court. \$389/mo plus utilities. Contact Singer (404) 680-7240

## Subleases, cont.

SPRING 2012! Female roommate wanted. 1BR/1BT in a 3BR/3.5BT townhome. Walking distance to the stadium and bus stop. \$400/mo., gym and pool included. Cheaper rate can be arranged. Contact Emily at 404-444-8987 or [ec01442@georgiasouthern.edu](mailto:ec01442@georgiasouthern.edu)

SPRING 2012! 1 BR/1BT available in 4 BR/4 BT at Campus Club for Jan or earlier. Bus stop next to stadium. Utilities included. Rent is \$419/month; CHEAPER RATE CAN BE ARRANGED. Email Skyler at [sh02071@georgiasouthern.edu](mailto:sh02071@georgiasouthern.edu)

1 BR/1 BT available in a 3 BR at The Grove, for Spring 2012. Available after Dec. 20. \$450/mo, utilities included. Pet friendly, pool. I will pay last month's rent. Female preferred. Call Ellen 404-694-1394 or email [ej00034@georgiasouthern.edu](mailto:ej00034@georgiasouthern.edu)

Female roommate needed for Spring 2012; 3BR/3BT at Cambridge; \$449/mo all inclusive and furnished; one building away from bus route, 1st floor. Contact Angelica 404-921-4988.

## Subleases, cont.

Subleasing a room in 4 BR/2BT in The Avenue for Spring 2012, but available as early as Dec 16 and Dec will be paid for. \$325/MO. Furnished, utilities included with free Wifi and Cable. Contact Nikki at (678)525-0297.

Sublease available ASAP. at Copper Beech. \$389 rent monthly. Utilities not included. 3 roommates. Great neat and clean girls to live with. Fully furnished. 478-957-1005 for more information.

## Houses for Rent

ATTENTION ALL STUDENTS 2, 3, 4, 5, 6, and 7 bedroom houses available Aug 1, 2012 24 hr repairs guaranteed 912-682-7468

## Help Wanted

MODELS of all weights/sizes/ages needed for figure drawing class on T&R, 2-4:30 PM. Fall and spring openings. Must be 21 and able to sit still for long periods of time. Call 912-478-2793 or email [jburke@georgia-southern.edu](mailto:jburke@georgia-southern.edu)

## Hot Jobs Cool Internships

Job Title	Company	Deadline to Apply
Liability Claims Rep	GEICO	Feb. 11th
Area Manager	Briggs & Stratton	Jan. 20th
Sales & Leadership Program	JB Hunt	May 15th
Financial Services Intern	JP Turner	Apr. 11
Intern	Georgia Aquarium	Mar. 9th
Marketing and Communications Internship	GA Dept. of Economic Dev.	Feb. 29
Candler County Public Health Nurse	Southeast Health District	Feb. 29
IT-SAP Co-op	Gwinnett County	Feb. 3rd
Implementation Analyst	McKesson Provider Tech.	Mar. 4th
Rotational Leadership Program	Schneider National	Feb. 29th
Management Trainee	Toys R Us	Jan. 31st
Distribution Dept. Supervisor	PetSmart, Inc.	Mar. 30th
Material Planner	Gulfstream	Feb. 3rd
Radio Internship	Cumulus Media	Apr. 01st
IT Assistant - Atlanta	GradStaff	Feb. 28,
Account Executive	Calvert Labs	Feb. 29th
Sports Advertising Sales Executive	National Sports Publications	Jan. 10,
Stores Executive Intern	Target Stores	Jun. 30th
Marketing & Communication Internship	Make-a-Wish Foundation	May 1st

To view the detailed job descriptions application instructions or additional postings, log into the Eagle Career Net/NACELink system found at [www.georgiasouthern.edu/career](http://www.georgiasouthern.edu/career).

## STEM Fair

TUESDAY, FEBRUARY 7

11 a.m. to 2 p.m. | Nessmith-Lane Building

- Professional attire required
- Bring multiple copies of your resume
- Network with potential employers

For more info, call Office of Career Services at (912) 478-5197 or visit [www.georgiasouthern.edu/career](http://www.georgiasouthern.edu/career)

## Quit Monkeying Around

Academic advisement can sometimes cause anxiety for students. Some wonder if the classes they are taking will prove to be beneficial on their career path. Students who have been at Georgia Southern University for a couple of semesters may find themselves wondering if the major they have chosen is really the major they want.

Students who are unhappy with their major are likely to change it several times throughout their college career. On average, each time individuals change their major, an additional semester of courses is added on.

Don't monkey around with your future. The Office of Career Services provides assistance in areas including career counseling and

assessments to help students choose a major and pursue the career that is right for them. In addition, we can even assist in identifying new paths to career goals due to unmet GPA requirements or limited space.

Come to Career Services to talk with a Career Advisor before your academic advisement meeting to choose a major and decide your career path. If you are not sure of what your interests are, Career Services provides resources that can help in the important decision-making process.

For more info, call (912) 478-5197 or visit [www.georgiasouthern.edu/career](http://www.georgiasouthern.edu/career). Career Services is located in the Williams Center room 1047 -- Office hours are weekdays from 8 a.m. - 5 p.m.



# PUZZLES/COMICS

www.thegeorgeanne.com

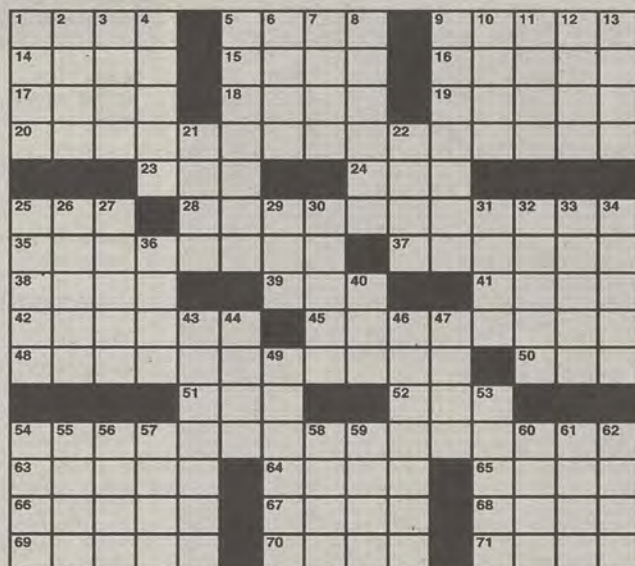
Tuesday, February 7, 2012 15

## Los Angeles Times Daily Crossword Puzzle

Edited by Rich Norris and Joyce Lewis

### ACROSS

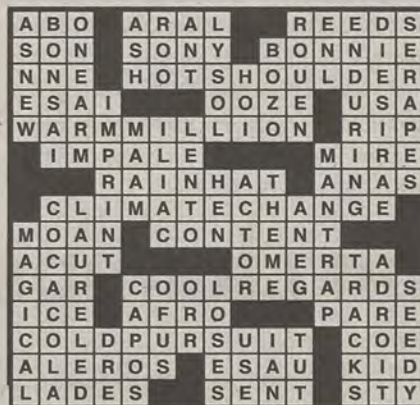
- 1 Hook or Cook: Abbr.
- 5 For the calorie-conscious
- 9 Purse handle
- 14 Fairy tale baddie
- 15 Ugandan baddie
- 16 Remove pencil marks
- 17 Completely destroy
- 18 Rikki-Tikki-...: Kipling critter
- 19 Carlo: Grand Prix setting
- 20 Reason consumers purchase certain brands
- 23 Ankle artwork, briefly
- 24 Fathers and grandfathers
- 25 Bks.-to-be
- 28 "Bumbling" beginner
- 35 Historic WWII bomber
- 37 Threat punctuator
- 38 Timber wolf
- 39 Mil. detainee who may reveal only the starts of the answers to starred clues
- 41 Paper purchase
- 42 Poll findings
- 45 Island state of Australia
- 48 "Hookups for computer peripherals
- 50 Dadaist Jean
- 51 Wish undone
- 52 Opposite of 'neath
- 54 "Financial analysts
- 63 Inventor Howe
- 64 Winslet of "Titanic"
- 65 "The rest \_\_\_ to you"
- 66 Insurance giant
- 67 "Did You \_\_\_ See a Dream Walking?"
- 68 Int'l alliance
- 69 "Our Gang" dog
- 70 Ph.D. hurdle
- 71 Remove from power



By Bruce Venzke and Gail Grabowski 2/7/12  
February 2nd Puzzle Solved

### DOWN

- 1 Ear on your plate
- 2 Isla surrounder
- 3 Stiffly neat
- 4 Religious belief
- 5 Infielder's untimely move
- 6 1998 Apple debut
- 7 DVR pioneer
- 8 Tough nut to crack
- 9 Advanced study group
- 10 Relaxed pace
- 11 Hindu princess
- 12 Regarding
- 13 Rounded end of a hammer
- 21 Uncommon, avis-wise
- 22 Much sought-after clownfish of film
- 25 Gets all gooey
- 26 Nocturnal noise
- 27 Clearheaded
- 29 Brit: lie-down :: Yank: \_\_\_
- 30 Former Japanese capital
- 31 Trillion: Pref.
- 32 Kagan of the Supreme Court
- 33 TWA competitor
- 34 Plot a new route
- 36 Actress Anderson
- 40 Serious conflict
- 43 Assume as probable
- 44 Disparaging remark
- 46 Habitual pot smokers
- 47 Fraction of a min.
- 49 Ate like a bird
- 53 Thick-skinned beast
- 54 Kind of tide
- 55 Fonda's beekeeper
- 56 Oven user's accessory
- 57 Thorn in one's side
- 58 Shankar with a sitar
- 59 Western natives
- 60 Biblical twin
- 61 Grooves in the road
- 62 Carpet cleaner's concern



## AGENT X PRESENTS: THE STORY BEHIND THE REAL SCIENCE NEWS!



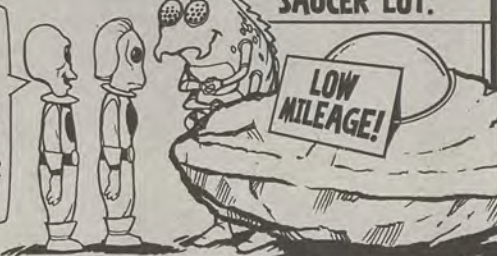
Welcome to Falling Rock National Park by Josh Shalek



NEWS ITEM: A hail of meteorites fell to Earth in July 2011. Scientists confirmed in January that the rocks were of Martian origin.

## THE REAL STORY! DATELINE: MARS

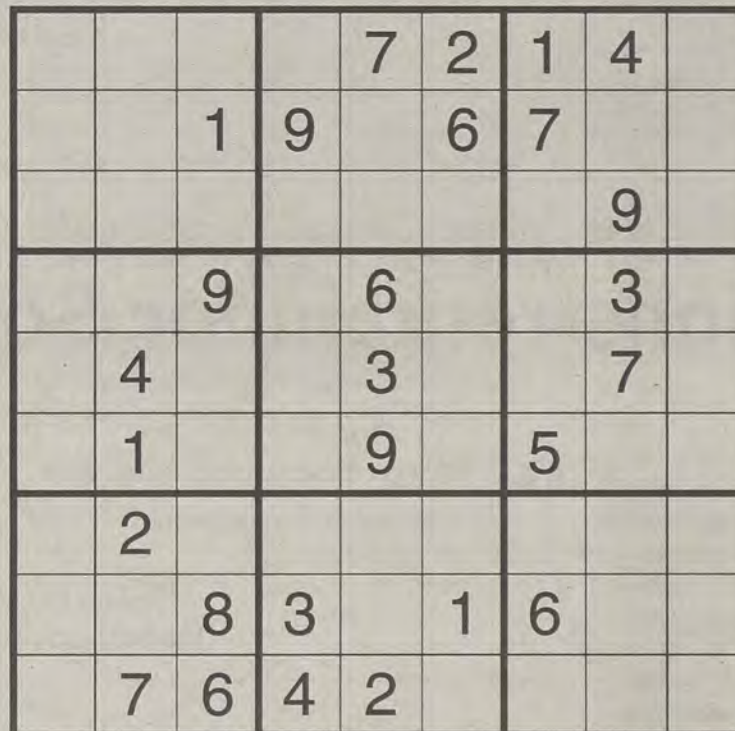
DID YOU HEAR THAT, DEAR? IT'S MADE OF ROCK! THAT SHOULD BE STURDY ENOUGH FOR OUR TRIP TO EARTH!



## CRAZY AL'S USED SAUCER LOT.

LOW MILEAGE!

## Sudoku



# Planters ROW

By Hendley Properties

912.681.1170  
www.hendleyproperties.com

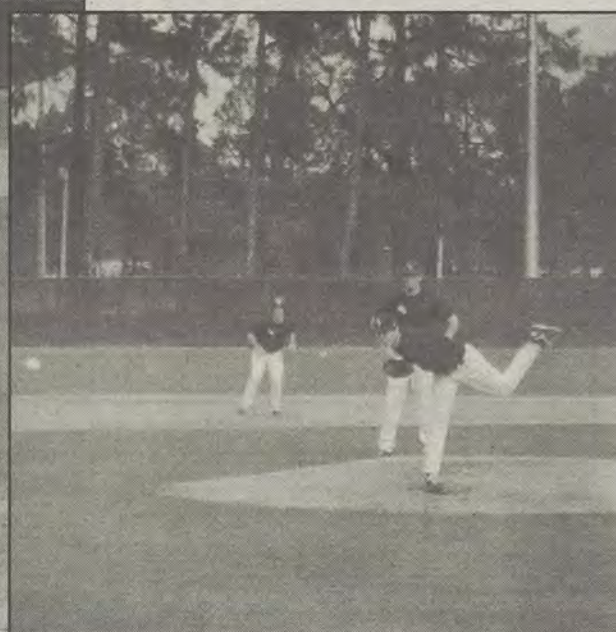
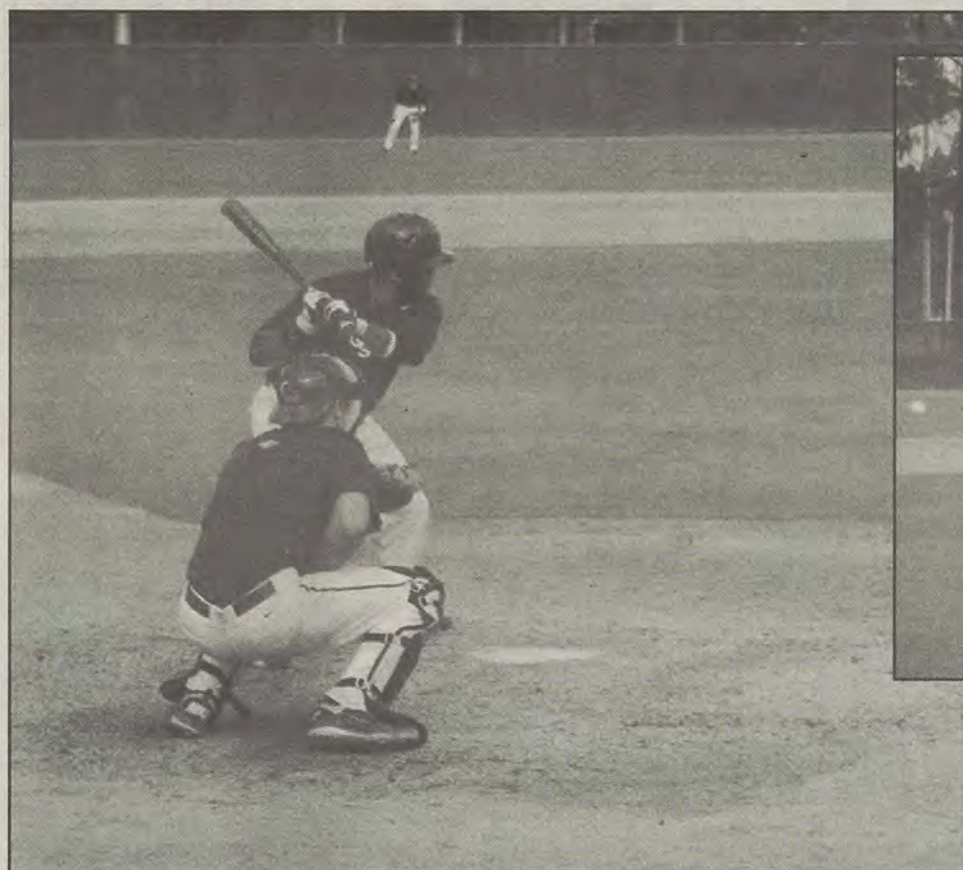
4 bedroom cottage house

\$365/month per person

## 4 Bedroom Cottage







Rebecca Farris/The George-Anne

**The Georgia Southern University baseball team** held its first pre-season scrimmage last weekend. Expectations are high for the Eagles, who won the SoCon tournament last season and notched a 7-0 victory over No. 1 Florida as well.

## Questions remain for SoCon champs

BY COLIN RITSICK

The George-Anne staff

Fans, scouts and even coaches caught their first glimpse of this year's Georgia Southern University baseball team in action this weekend.

The team held three inter-squad scrimmages over the weekend, with the starting position players hitting against the starting pitchers and the second string players hitting against the backup pitchers. This was the first live pitching the team has seen in a real game environment this year.

"It's very important for us to have these scrimmages," head coach Rodney Hennon said. "Today, for instance, we moved some guys around just to try to get a feel for what they can do to try to define some roles before opening day."

Opening weekend for the Eagles will be a three-game

“ They all have a great work ethic and want to continue to get better. ”

- Rodney Hennon  
Baseball head coach

home stand beginning Feb. 17 against University of Tennessee-Martin. The defending Southern Conference Champions are aiming to continue the success they experienced last year.

"We are a long way away from that right now, and certainly I think we are capable of doing that, but I think the most important thing is just for us to focus on getting better and trying to be as good as we can be on February seventeenth."

In order for the team to be as good as it can be, it is going to need some younger guys to pull through

on the mound. Two of the team's four starters, not to mention the two with the lowest ERAs, Andy Moye and Matt Murray, graduated last year leaving quite a hole in the GSU pitching staff.

Pressure will be placed on younger players like junior Justin Hess and sophomore Will Middour to perform, in addition to the two returning starters, junior Chris Beck and senior Josh Adams.

"We've got a lot of young guys that are going to contribute and have an opportunity to play this year, and the good thing is that we have some

veteran guys around that are going to help them adjust to this level of competition. They all have a great work ethic and want to continue to get better," Hennon said.

Some of those veteran players Hennon spoke of include SoCon All-Tournament Team Shortstop Eric Phillips, SoCon All-Tournament Team Designated Hitter Michael Burruss, and Pre-Season All-American Outfielder Victor Roache.

All of the team's players will need to continue to make a big impact, not only with their bats but also in the field. GSU finished last year with impressive defensive statistics but needs to work on its ability to make the plays every time, every game.

When asked what the one thing he has been working on with his team from last year to this year, Hennon simply said, "Consistency."

### Baseball Schedule

vs UT Martin	Feb 17 at 6:00
vs UT Martin	Feb 18 at 1:30
vs UT Martin	Feb 19 at 1:30
vs Georgia Tech	Feb 22 at 6:00
vs Radford	Feb 24 at 6:00
vs Radford	Feb 25 at 2:30
vs Radford	Feb 26 at 1:30
vs Mercer	Feb 28 at 6:00
@ North Florida	March 1 at 6:00
@ North Florida	March 2 at 6:00
vs North Florida	March 3 at 6:00
vs North Florida	March 4 at 1:30
@ Charleston Southern	March 6 at 2:00
@ Elon	March 9 at 4:00
@ Elon	March 10 at 2:00
@ Elon	March 11 at 1:30
@ Wake Forest	March 13 at 4:00
vs UNC Greensboro	March 16 at 6:00
vs UNC Greensboro	March 17 at 2:30
vs UNC Greensboro	March 18 at 1:30
vs Jacksonville	March 20 at 6:00
@ Furman	March 23 6:00
@ Furman	March 24 4:00
@ Furman	March 25 1:00
@ Georgia Tech	March 27 6:00
@ Georgia Tech	March 27 6:00



# GSU golf riding momentum into spring season

## Golf

BY KEVIN GREGAN

The George-Anne staff

The winter is just about over, and for many Georgia Southern University students the spring-like weather here in February is sure to bring up the urge to play golf.

The GSU golf team has felt that urge, and it will be competing in its first golf tournament of the new year in Gainesville, Fla. to show its skills in the Gator Invitational this weekend.

The tournament will be held at the Mark Bostic Golf Course. The 6,701-yard par-70 course is short by professional standards but is still considered a very physically and mentally challenging course.

Even though this tournament will be the first of this semester, it isn't the first of the golf season. The Eagles have already participated in five tournaments last semester.

GSU, as a team, achieved three top-five finishes amongst those five tournaments.



Courtesy of georgiasoutherneagles.com

The GSU golf team looks to continue their winning ways during their spring season.

Business major Lewis Gruber is the only senior on the team and he's expected to lead his team to impressive scores throughout the rest of the season.

Gruber has made three top-10 finishes out of the five tournaments so far this season. Last

year, he made second place in the Southern Conference tournament with his career low 54-hole round of 208 strokes. This helped the Eagles win the tournament.

As the defending SoCon tournament champions, the Eagles are currently fifth in

conference rankings with six tournaments to go.

The head coach of the Eagles, Larry Mays, has been coaching the team for 11 years. During his first year in the 2000-2001 season, he led the team to its first postseason appearance since 1988.

Due to that performance, Mays earned the 2001 "Coach of the Year" award. An award he'd later win for a second time during the 2008-2009 season.

Since starting his tenure at GSU, Mays has led the Eagles to three SoCon championship victories and nine NCAA Regional Championship appearances.

Performances in those regional championships earned the Eagles the chance to play in four NCAA National Championships.

Students will have the chance to cheer for their team here in Statesboro later this season in March at the 33rd annual Schenkel Invitational. Teams in the field include University of Alabama, Auburn University, University of Florida, University of Notre Dame, the University of Mississippi, and University of Kentucky.

## Fans can go 'Loco' with coach Young on Tuesdays



Lindsay Hartmann/The George-Anne

Coach Charlton Young takes fans questions every Tuesday at Loco's Grill and Pub at 7 p.m.

## Men's basketball

BY CLINTON HINELY

The George-Anne staff

Every Tuesday night at 7 p.m., fans have an opportunity to ask men's basketball head coach Charlton Young a question concerning the Eagles' recent performances.

At Loco's Grill and Pub, Young will be on-air live with Chris Blair for the "Inside Georgia Southern Basketball" hour-long radio show and is available to answer live audience questions about this year's team.

"It has been great," Young said. "We are very intimate and informative with our fanbase. I think that is important to building the program."

"Our fans are very well informed and pay attention to what is going on," Young said, "and Chris Blair is fabulous, and it's like we are just having a conversation in the locker room or his living room. It really, really works and we have a good time."

For those who cannot attend, the show is on 103.7 The Boomer and available online at [www.georgiasoutherneagles.com/eaglevision](http://www.georgiasoutherneagles.com/eaglevision), with fans able to submit questions

via e-mail at [askthecoach@georgiasouthern.edu](mailto:askthecoach@georgiasouthern.edu), Twitter @GaSouthernRadio or phone in at 1-855-478-4040.

"Our faculty, staff and the community have been behind us even when we were having rough times, and I think they see what is coming down the road," Young said. "I am very thankful and appreciative for all the love and support we have gotten since taking on this huge rebuilding process — it really was rebuilding from rock bottom."

There is extra incentive for Student Eagle Club members to attend, as they will receive a 25 percent discount on the night.



Chris Blair



# Eagles salute service, take on Paladins

## Men's basketball

BY CLINTON HINELY

The George-Anne staff

The Georgia Southern University men's basketball team went into the half tied with Furman University 34-34.

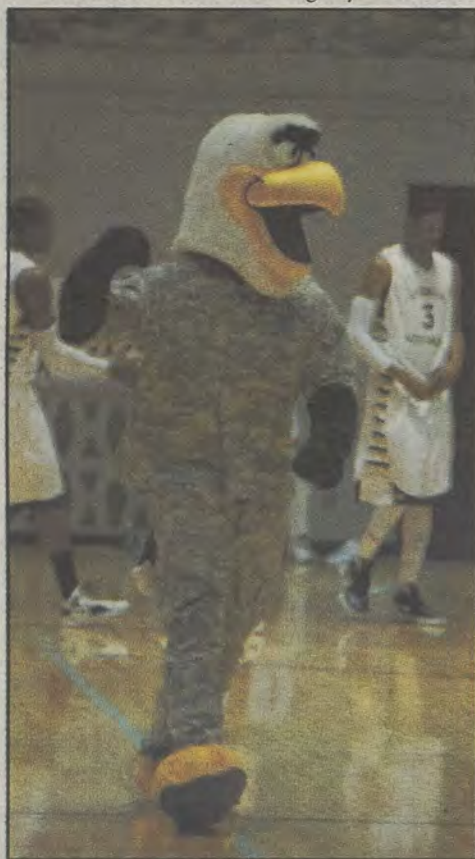
The Eagles entered the game with a perfect 5-0 home record in the Southern Conference. GSU was looking to maintain its home record and avenge the previous loss this season to the Paladins, losing 54-64 in Timmons Arena on Jan. 19.

GSU fell behind 10-0 within the first three minutes of the game before it went on a 13-0 run of its own to give the Eagles the lead.

The first half was tightly contested

throughout, with each team going through up and down moments. Neither team was able to grab the momentum and sustain a lead. The Paladins shot 48 percent from the floor, with the Eagles not far behind at a 44.8 percent rate. The teams were tight on rebounds, with the Eagles leading that category 16-14. The only statistic remotely different was the Eagles had 10 fouls and Furman only had five.

Willie Powers III led his team with eight points and added four assists. Freshman Jessie Pernell had a solid first half, adding seven points, while sophomore Jelani Hewitt tried to keep his hot streak going. Hewitt is averaging 19 points a game over the past three games. He posted six points in the first half.



As the game was not over by press time, please check [thegeorgeanne.com](http://thegeorgeanne.com) for a full review.

Lindsay Hartmann/The George-Anne

**The Eagles** took on the Paladins during Monday's Military Appreciation Day double header. **Left:** Georgia Southern mascot, Gus, pumps up the crowd in his combat fatigues. **Center:** Junior forward Cameron Baskerville and senior guard Willie Powers III trap a Furman ball handler. **Right:** Sophomore guard Tre Bussey drives the lane against Furman.



# Lady Eagles fall shy of win to Davidson

## Women's basketball

BY ANNA WELLS

The George-Anne staff

The Georgia Southern University women's basketball team experienced a close loss against Southern Conference opponents Davidson College on Monday's Military Appreciation doubleheader, falling 69-62.

The Lady Eagles came into the contest 3-10 in the Southern Conference, and after experiencing a winning month of January were looking to snap a three-game losing streak. Davidson came into the contest ranked third and a 10-2 record in the SoCon. The Lady Eagles fell to Davidson 48-72 in their last meeting in December and have a 19-21 record against Davidson in the all-time series.

The starting five for GSU were sophomore Danielle Spencer, junior Meredyth Frye, freshman Anna Claire Knight and sophomore Mimi Dubose. Guard Janay Wilson put the Lady Eagles on the board early, but they were unable to capitalize on the momentum and Davidson began to take over.

The Wildcats scored the next nine points, until Dubose went to the arch to give the Lady Eagles three, making the score 7-17 with 13 minutes left in the first half. Sophomore guard Lacie Dowling scored a three-pointer off the bench, putting GSU within 13 points of the Wildcats with five minutes left in the first half. Davidson muscled its way to 18 points in the paint, as opposed to GSU's four. The Lady Eagles were unable to overcome Davidson's tough offense and ended the half 24-43.

The Lady Eagles came in the second half ready to play, holding the Wildcats to four points while GSU was able to score seven during the first five minutes of the second half, cutting Davidson's lead to 16 points. However, Davidson was able to score the next seven points before Frye scored three more points for the Lady Eagles, making the score 34-54 Davidson.

With ten minutes left in the game, the Lady Eagles went on an eight-point scoring streak, including a jumper from Spencer and two free throws from Frye. Dubose scored her fourth three-pointer of the night followed by another from Jordi Cook to bring the Lady Eagles within nine points of the Wildcats with 7:25 left to play.

With two minutes left in the game, the Lady Eagles were down 57-69, until Knight was able to score a layup and bring the Lady Eagles within 10 points of the Wildcats. In the final seconds, Wilson scored the final basket of the night, also her of first three-pointer of the night, making the



Rebecca Farris/The George-Anne

**Junior guard Meredyth Frye (25)** goes for a layup inside the paint after dribbling through a crowd of defenders.

final score 69-62.

Dubose continued to lead the Lady Eagles in points with 14, and Frye was not far behind her with 11 points.

"I certainly would have loved a win — not happy with a loss by any stretch of the imagination, but at the same time we just took two of the top teams in the conference down to the wire," said head coach Cram.

"It's one thing when you're playing hard against the last place team, but when you're doing that against the top teams and competing, and you continue to see improvement in the attitudes there, that's all I can ask for as a coach," said Cram.

The Lady Eagles will hit the road for a two-game series, the first on Saturday, Feb. 11 at 2 p.m. against the Samford Bulldogs and the second on Monday, Feb. 13 at 7 p.m. against Chattanooga.

## Lady Eagles overpowered by Wildcats

BY COLIN RITSCIK

The George-Anne staff

The Georgia Southern University women's basketball team was out-muscled on Monday, scoring only 14 points in the paint.

The Eagles finished the first half with only four points from under the basket. This allowed the Davidson College Wildcats easy access to a head start, getting out to a 28-13 lead after only 10 minutes and 42 seconds had elapsed.

This number wouldn't have necessarily been worthless, if it did not pale in comparison to the Wildcats' number of points in the paint. Davidson opened up the first half with 18 points in the paint.

The Wildcats dominated GSU's defense down low, finishing the game with 30 points in the paint, giving them the edge in the 69-62 victory.

However, in the Eagles' defense, Davidson's two starting post players were much bigger than GSU's — Sarah Davis, a 6'3 junior, and Sophia Aleksandravicious, a 6'4 junior.

GSU rushed too many shots, shooting 37.9 percent from the field, instead of looking down low for assistance.

It seemed like just about every time that the Eagles did get a good look under the basket, the long arms of the Wildcats' tall defenders came from nowhere to swat the ball away.

Monday's game was the first game of the Military Appreciation Double-header which was followed by the men's game against Furman University.

The Eagles will look to bounce back against the Samford University Bulldogs on Saturday at 5 p.m., at Samford.

The Lady Eagles lost to the Bulldogs 53-47 the last time they met in Statesboro on Jan 7.





# ANY LARGE PIZZA

including our Specialty Pizzas

ONLINE PROMO  
CODE: P1ALL  
LIMITED TIME ONLY

## \$11

EACH

**THE WORKS**

John N. Schmitt  
"Papa John," Founder

CELEBRATE SUPER BOWL XLVI

46

# FREE PIZZA

## EVERY 46 SECONDS

EVERY WEEKEND UNTIL SUPER BOWL XLVI.

ORDER ONLINE @ [PAPAJOHNS.COM](http://PAPAJOHNS.COM) FOR A CHANCE TO WIN!

OFFICIAL PIZZA SPONSOR OF SUPER BOWL XLVI

Offer good for a limited time at participating Papa John's restaurants. No double toppings or extra cheese. Additional toppings may be excluded from special offer or incur additional charges. Offer valid with any other coupons or discounts. Limited delivery area. Delivery fee may apply. Customer responsible for all applicable taxes. Prices may vary in Alaska and Hawaii. © 2012 Papa John's International, Inc. All Rights Reserved. 11. P1ALL P1ALL P1ALL. Offer only in legal residents of the U.S. (United States & D.C.) ages 13 years or older. Entry period begins 1/26/12 and ends 2/29/12. For complete details, restrictions, and all legal rules, visit <http://www.papajohns.com>. Void where prohibited. 02/07/12

Follow us on  
Facebook!

# Statesboro

620 Fair Rd.

## 871-7272



## STUDENT SPECIAL

Medium 2 Topping & Two  
20 oz. Pepsi® products

## \$7.99

Use promo code  
SSM2TC799

CARRYOUT OR DELIVERY EXPIRES 2/29/11. No double toppings or extra cheese. Offer good for a limited time at participating Papa John's restaurants only. Additional toppings extra. Not valid with any other coupons or discounts. Limited delivery area, charges may apply. Customer responsible for all applicable taxes.



## LARGE DEAL

Large One Topping  
Pizza

## \$10.00

Use promo code  
RHHLCT10

CARRYOUT OR DELIVERY EXPIRES 2/29/12. Offer good for a limited time at participating Papa John's restaurants only. Additional toppings extra. Not valid with any other coupons or discounts. Limited delivery area, charges may apply. Customer responsible for all applicable taxes.



## PIZZA &amp; DESSERT!

Cinnapie & Any Large Pizza  
(life's uncertain, eat dessert first!)

## \$14.99

Use promo code  
RHHLST4

CARRYOUT OR DELIVERY EXPIRES 2/29/12. Offer good for a limited time at participating Papa John's restaurants only. Additional toppings extra. Not valid with any other coupons or discounts. Limited delivery area, charges may apply. Customer responsible for all applicable taxes.

