

Georgia Southern University

Digital Commons@Georgia Southern

The George-Anne

Student Media

2-2-2012

The George-Anne

Georgia Southern University

Follow this and additional works at: <https://digitalcommons.georgiasouthern.edu/george-anne>

Recommended Citation

Georgia Southern University, "The George-Anne" (2012). *The George-Anne*. 3181.
<https://digitalcommons.georgiasouthern.edu/george-anne/3181>

This newspaper is brought to you for free and open access by the Student Media at Digital Commons@Georgia Southern. It has been accepted for inclusion in The George-Anne by an authorized administrator of Digital Commons@Georgia Southern. For more information, please contact digitalcommons@georgiasouthern.edu.

NEW BUS STOP PROPOSED

PAGE 7

BRANNEN
HALL

O3C

HICKS HURTLES OVER COMPETITION

PAGE 20



SUPER BOWL XLVI
PAGE 21

Thursday, February 2, 2012
Georgia Southern University
www.thegeorgeanne.com
Volume 87 • Issue 53

THE GEORGE-ANNE

EAGLES RELOAD

24 football signees join Eagles

BY CLINTON HINELY

George-Anne staff

The 2012 Signing Class for the Georgia Southern University football team was all about building depth.

"The class is a large class, we are losing 22

seniors off the team and some key players — guys we are really going to miss," head coach Jeff Monken said.

"With those positions that are being vacated, we tried to make an effort to fill those spots with young guys, as well as go heavy in some areas where we didn't have as many as we

like," Monken said.

Coming off two back-to-back semi-final playoff appearances, GSU's recruiting outreach has broadened, bringing in four players from South Carolina, seven from Florida and thirteen from Georgia.

"Last year's recruiting class only had two

guys, I think, from out of Georgia," Monken said. "Now, we have more from South Carolina and Florida and it just so happened that, as we evaluated, they happened to be the guys ranked at the top of those positions."

The Eagles signed a total of 24 players,

See **SIGNEES**, page 18



Christian Washington/STAFF



Courtesy of Orlando Sentinel

24 high school seniors sign letters of intent to play for the Eagles. **Left:** Head coach Jeff Monken announces the newest Eagles. **Middle:** Three-star recruit Vegas Harley comes to the Eagles from Mount Dora High School. **Right:** Fellow three-star recruit Irving Huggins from Hargrave Military Academy will play B-back for the Eagles.



thegeorge
anne.com



Follow on Twitter
@GeorgeAnneNews



Newsroom 478-5246
Advertising 478-5418
Fax 478-7113

PO Box 8001
Statesboro, GA
30460

Police: McClure hosted unauthorized guests

Unknown hotel suite guests were unrelated to Georgia Southern, cancelled symposium

BY TJ JACKSON

George-Anne staff

Randall McClure, former department chair of writing and linguistics, stayed in a hotel with two other guests unrelated to Georgia Southern University or the cancelled writing symposium, according to recent findings from Public Safety.

"(The guests) were not associated with that particular symposium or Georgia Southern University," Terry Briley, captain of Public Safety, said.

After McClure's visit to Streetsboro, Ohio, where a writing symposium held at Kent State University had been cancelled, Audit and Advisory Services reviewed McClure's travel expenses, including meal and hotel expenses, according to the audit report.

McClure's hotel bill showed that he stayed in a two-bedroom suite with two other guests, according to the audit report.

McClure stayed at TownePlace Suites



RANDALL MCCLURE

in Streetsboro where his hotel bill totaled to \$1,018.15 for a two-bedroom suite at a rate of \$129 a night, according to the audit report.

When questioned by Accounts Payable as

“(The guests) were not associated with that particular symposium or Georgia Southern University.”

-Terry Briley
Captain of Public Safety

to why he got a two-bedroom suite, McClure stated that it came with a kitchen, according to the audit report.

All suites offer a full kitchen with refrigerator, microwave, stove/oven and dishwasher, including the one-bedroom suites, according to the TownePlace Suites in Streetsboro's website.

McClure met with Dr. Huot, who was in charge of the symposium on the morning of June 20, 2011, and stayed in Streetsboro until June 26, according to the audit report.

McClure is from Hudson, Ohio, which is approximately 10 miles from Streetsboro

where the cancelled symposium was to be held, according to the audit report.

Briley was unaware of any other meetings that Huot and McClure may have had or if he had been visiting family in Ohio.

Briley interviewed McClure on November 2, 2011, after Audit and Advisory Services turned over the case to Public Safety.

McClure was subsequently arrested on November 14, 2011, and charged with theft by deception, according to the audit report.

Jess Johnson, McClure's lawyer, said the Pate Lawfirm wishes to make no comment at this time.

Baker & Owens Computer Solutions
a division of Pineland Technology Solutions

**WE NOW REPAIR
MAC
COMPUTERS!**

ALONG WITH PERSONAL COMPUTERS

OTHER SERVICES INCLUDE:

REMOTE SUPPORT BY A LOCAL TECHNICIAN • DROP OFF SERVICE
SPYWARE & VIRUS REMOVAL • MAINTENANCE & UPDATES
OPERATING SYSTEM INSTALLATION • FILE SYSTEM REPAIR
DATA RECOVERY AND/OR TRANSFER • HARD DRIVE CLONE

CALL US TODAY AT: (912) 764-2741 OR TOLL FREE (888) 276-2411
9 N. ZETTEROWER AVE. SUITE C. IN STATESBORO
WWW.PINELANDTECH.COM

CAMBRIDGE SOUTHERN

Style. Features. Location.

912.681.1300 Cambridge-Southern.com

SGA: Pickle Barrel re-opens

BY COURTNEY ESCHER

George-Anne staff

Student Government Association announced the grand re-opening of The Pickle Barrel in Landrum in last night's meeting.

The Pickle Barrel will now be a fresh produce market where students can use meal plans for healthy options.

"Now instead of making a trip out to Harvey's or Wal-mart or waiting until the Statesboro farmers market comes to campus, you can get all your vegetables and fruits at Pickle Barrel," Vice President of Auxiliary Affairs Garrett Green, said.

The Pickle Barrel accepts both meal plans and Eagle Express, and is a one-stop shop for all types of produce, Green said.

"It's great because you can just run in, grab your fruits and vegetables, swipe your meal plan or Eagle Express and go," Green said.

The specifics of The Pickle Barrel are unclear but will be clarified soon through discussions with Director of Eagle Dining Services Jeff Yawn, Green said.

"I am meeting with the director (today) to talk about the specifics, like when (are) their hours," Green said.

SGA has noticed the request from students for more healthy food options on campus, Green said.

"The Pickle Barrel re-opened because students wanted everyday

“ The Pickle Barrel re-opened because students wanted everyday healthy food options. ”

-Garrett Green
Vice President of Auxiliary Affairs



GARRETT GREEN

Green said.

"The peanuts will probably be the number one thing, especially in the South," Green said.

Other members of SGA are glad to see healthy food options finally making their way to campus.

"I'm glad students finally have the opportunity to get fresh produce. This has been a long-standing issue for much of the student body. And, this is what SGA is about — making student opinions heard," College of Liberal Arts and Social Sciences Senator Charles Glover, a sophomore psychology major, said.

Some anticipate The Pickle Barrel's welcoming atmosphere along side the new, fresh produce options.

College of Business Administration Senator Dante Porter, a junior marketing management major, said, "I definitely like what it's become. I came here with EIP when the Pickle Barrel was open and the Market wasn't. And, going into the Pickle Barrel was just such a nice adjustment and a really comfortable setting. I also really like the produce idea."

healthy food options," Green said.

The layout of The Pickle Barrel will feature a center stand for all types of peanuts, surrounded by fruits and vegetables, Green said.

"When you walk in, they have a center stand for roasted and plain peanuts. Then as you walk around to your left, you'll see all of the fruit you can imagine and to the right will be all the veggies," Green said.

The anticipated big seller of The Pickle Barrel is the variety of peanuts,

Statement of Operations

The George-Anne is the official student newspaper of Georgia Southern University, owned and operated by GSU students using facilities provided by the university. The newspaper is the oldest continuously published newspaper in Bulloch County. The newspaper is a designated public forum for the Georgia Southern community. The newspaper is published twice weekly, on Tuesdays and Thursdays, during most of the academic year. Any questions regarding content should be directed to the student editor by phone at 912.478.5246 or at gaeditor@georgiasouthern.edu.

ADVERTISING: The newspaper accepts advertising. Inquiries may be made by calling 912.478.5418 or 912.478-0566. Fax any questions to 912.478.7113 or e-mail ads1@georgiasouthern.edu.

The George-Anne receives additional support, in part, from the Student Activities Budget Committee.

The deadline for reserving space and submitting advertising copy is noon, one week prior to the intended publication date. For more information, rate cards, sample publications, contact the advertising manager or student

media director.

The advertiser is responsible for any errors in advertisements and its liability for adjustments is limited to the amount of space the error occupied in the ad. Further, the newspaper is not responsible for any damages caused due to an ad's omission from a particular edition and its responsibility solely is to reschedule the ad in the next regular edition at the regular advertising rates.

STUDENTS BEWARE: The George-Anne screens all advertisements prior to publication. The newspaper strives to accept ads for legitimate products and services only. Students are urged to exercise caution when replying to ads—particularly those that require personal information. Students are also urged to report to the newspaper any suspicious offers which they might see in an ad.

PUBLICATION INFORMATION: The newspaper is printed by Signature Offset in Jacksonville, Fla.

NOTICE: Unauthorized removal of multiple copies from a distribution site constitutes theft under Georgia law, a misdemeanor offense punishable by a fine and/or jail time.

Editor-in-Chief Arielle Coambes
Opinions Editor Alex LaSalle
Copy Chief Matthew D'La Rotta
News Editor Jessie Reese
Asst. News Editor Courtney Tielking
Arts Editor Quanyia Epps
Asst. Arts Editor Gianna Carme
Sports Editor Jannah Bolds
Asst. Sports Editor James Farmer

Business Manager Holly Hillhouse
Asst. Business Manager Vicki Tucker
Marketing Manager Aria Gabol
Production Manager Mallory McLendon
Photo Editor Lindsay Hartmann
Design Editor Kelsey Paone
Multimedia Editor Jennifer Curlington

Corrections

Contact the editor at gaeditor@georgiasouthern.edu for corrections and errors.





The Sir Shop

Statesboro Mall

912.764.6924

RUSH SPECIAL

NAVY BLAZER +
STRIPED GEORGIA
SOUTHERN TIE

SALE

REGULARLY PRICED \$200
NOW \$125

Our View

Steak 'n Shake will be good for the community

In Tuesday's paper, we covered the plans for a Steak 'n Shake that is to be built in Statesboro. It will be located next to the Cracker Barrel on Brannen Street.

The establishment has been in the works since June of last year, however plans have now been finalized. Ground has already been broken and construction is expected to be complete in time for an opening by the end of May or by August at the latest.

A general manager has already been hired, and four other manager positions will be filled within the next four weeks. Hiring for other positions will begin in the next five to six weeks.

This new establishment is going to be full of positives for both Georgia Southern University and the Statesboro community.

Steak 'n Shake is a popular, well-known establishment that will boost the local economy with both the increased revenue and the much-needed jobs that will be available for students. Students should not hesitate to apply for jobs, and otherwise support this addition to the local economy.

It will also provide another dining option for those who are tired of waiting in crowded lines.

We hope GSU will join us in welcoming Steak 'n Shake to the Statesboro and GSU community for a delicious future.

The George-Anne welcomes letters to the editor and appropriate guest columns. All copy submitted should be 350 words or fewer, typed, and sent via e-mail in Microsoft Word format to gaeditor@georgiasouthern.edu. All submissions must be signed and include phone number for verification. GSU students should include their academic major, year and hometown. The editors reserve the right to reject any submission and edit submissions for length.

Opinions expressed herein are those of the Board of Opinions or columnists themselves and DO NOT necessarily reflect those of the faculty, staff or administration of GSU, the Student Media Advisory Board, Student Media or the University System of Georgia.



Jasmine Nielsen/STAFF

Weekly SGA Column

SGA continues positive changes

Over the past three years, I have seen so many changes and different phases of growth university-wide. There has been a new university president, changes in HOPE and we have reached a student population of over 20,000 students. However, what I would really like to focus on is the changes in SGA over the past few years.

Firstly, Shuttle Gus, our safe rides program, is doing better than ever. Last year President Standifer changed the number to 912-GSU-RIDE, which is much easier to remember than the previous number and it really boosted our calls. Furthermore, Shuttle Gus has never gone a weekend without volunteers because of our new program to allow student organizations to earn money through volunteering, which particularly helps some organizations who are not usually available for SGA funding.

Also, our Shuttle Gus headquarters are now located on



CHRISTINA BELGE

format and make senate meetings more productive, so we streamlined the fund request process so that each member of a college would attend the original proposal meeting, share the information with their college and vote on it in senate. This takes approximately 15 minutes instead of the usual 45 minutes.

Also, we have made SGA more reflective of real government and have changed elections so that

the president and executive vice president (EVP) run together, and also that the EVP runs the meetings as the Head of Senate. Lastly, we have coordinated meetings that allow colleges to have time with each other to discuss plans for the coming week and what they want to work on for their college in conjunction with regular senate meetings.

We have, overall, been a more productive senate and I can tell you from experience, the most efficient cohort I have seen.

These changes, although only a few listed, have made a strong impact but we are still looking to do MORE. There is always work to be done and improvements to be made.

Do you want to make a difference? If this seems like something that interests you and that you want to get involved with, please visit georgiasouthernsga.com and apply to be a senator for this coming fall. Represent!

From the left

Romney wins as expected

Well, Florida ended up going exactly how anyone who has been following this dirty primary race would have anticipated. Mitt Romney won and Gingrich is once again facing an uphill battle. The final tally was Romney — 46 percent, Gingrich — 32 percent.

I call this a dirty race because that's exactly what it is. It's been a lot of mudslinging and a little campaigning. The Campaign Media Analysis Group reported that 92 percent of the campaign advertisements in Florida were negative ads targeting a candidate's opponent. I'm finding it difficult to determine whether the candidates are campaigning based on their platforms and ideologies, or whether they are campaigning on the platform that "I'm better than the other guy because he did such and such."

Not only did Gingrich not give the customary congratulatory call after the Florida primary, but he wouldn't even say Romney's name afterwards. Santorum even went out of his way to congratulate Romney on Tuesday night after pulling in a modest 13 percent of the votes. He also took the time to point out how dirty the race in Florida was.

I think it's great. As far as I'm concerned, they should keep tearing at each other. This reminds me of something I would see on Animal Planet, where two males would fight over territory. In the end, there is always a winner, but the winner is usually banged up a bit from the battle.

I believe that this kind of campaigning will ultimately hurt whichever candidate may win. The citizens of the United States will have seen plenty of negative campaign ads for each candidate and that could deter some voters.



ROB ROBERTS @Robert_ARoberts

Also, the manner in which the campaigning has been conducted thus far could turn some voters off to the Republican Party.

I understand that every election has its fair share of trash talk and smearing of candidates' character and reputation, but there's not even a balance here. For only 8 percent of the ads in Florida to not be attacking somebody is embarrassing for the individuals running the campaigns, and the GOP as a whole.

It seems like the candidates are either lacking confidence in their ideas or feel that they have to discredit the other candidates to have a chance. I would respect them much more if they would run based on their principles and ideals rather than riding on the flaws of others.

Roberts is a senior public relations major from Warner Robins, Ga.

REPUBLICAN PRIMARIES

FLORIDA*

MITT ROMNEY	46.4%
NEWT GINGRICH	31.9%
RICK SANTORUM	13.4%
RON PAUL	7.0%

*statistics taken from nytimes.com

going to win this race, he needs to appeal to the base of conservatism. While he is doing well with moderates and independents, those are typically not the ones who volunteer and donate to the cause.

According to the Republican National Committee, only one out of every 20 volunteers for a candidacy label themselves as a moderate or independent, and one out of every 30 donors is a moderate or

From the right

Romney still too moderate

While Romney won in Florida on Tuesday, the gaining of 50 delegates was pretty much the only victory he can claim coming out of that state. While he got 46 percent of the vote, almost the same amount of people at 45 percent said the reason was not because of any particular policy or stance, but because he had the best chance to beat Obama. He came in last among voters who claimed to be "very conservative,"

which is where Speaker Gingrich had the largest amount of support.

Even Ron Paul, a candidate who really isn't a Republican, got a better number of the true conservative vote. He also lost to Gingrich among the voters who supported the Tea Party movement by almost double.

If Romney is going to win this race, he needs to appeal to the base of conservatism. While he is doing well with moderates and independents, those are typically not the ones who volunteer and donate to the cause.

According to the Republican National Committee, only one out of every 20 volunteers for a candidacy label themselves as a moderate or independent, and one out of every 30 donors is a moderate or



FRITZ CHAPIN @GrandOldPartier

independent. And when 41 percent of your base says that Romney needs to be more conservative, that shows that he is not the right candidate for this most important of elections.

With these kinds of numbers coming out, Newt just needs to stay in the game and keep pushing himself as the Reagan era conservative that he is. He also needs to keep the conservative endorsements going. From Sarah Palin to Mike Reagan, son of Ronald Reagan, the more support he can get from time-tested conservatives the better. Rick Santorum has a possibility of getting the nomination only if the GOP base opinion keeps turning against Mitt and Newt implodes. He just needs to keep getting people to donate so he can keep going.

And for the last time, Ron Paul needs to drop out and stop sucking away votes from the guys who are really in it. He has some good ideas and some radically loyal followers, but sometimes you just need to know when to stop.

Chapin is a senior political science major from Roswell, Ga.

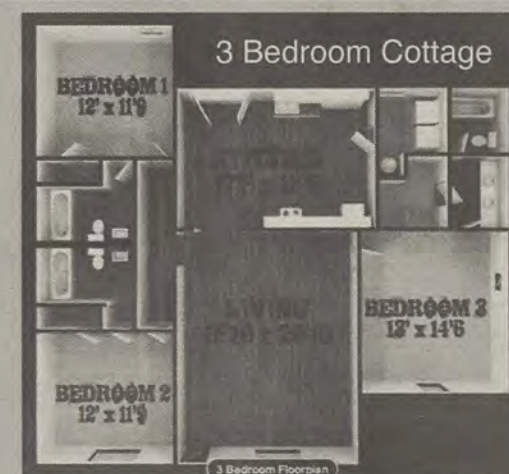
Planters ROW

By Hendley Properties

912.681.1170
www.hendleyproperties.com

3 bedroom
cottage
house

\$
365
/month per person



Letters to the Editor

Cat abuse and eating meat are not the same

Dear Editor,

Being a vegetarian myself, I agree with having a meatless diet. Choosing to not eat meat was one of the best decisions I have made. I am now feeling stronger, healthier and happier after a year and a half without meat.

But the letter to the editor in Tuesday's paper was absolutely ludicrous.

Arguing that the "entertainment" people get by eating meat is equivalent to the entertainment a person gets from killing a defenseless animal is like saying a policeman shooting a criminal involved in a hostage situation is equivalent to a serial killer shooting a random person on the street.

While I completely agree that animal

cruelty is wrong, not every factory is like the ones portrayed in films like Food Inc. There are definitely a select few who do it the wrong way, but for the most part, a large percentage of the 10 billion land animals who suffered like the cat are probably killed ethically. This is partially due to groups like PETA becoming more prevalent with their watchdog activities. Saying that every factory makes their animals suffer is an ignorant statement.

Furthermore, did Lance Durden pick up the cat and eat it in order to sustain his life? No? Because that's what the millions of meat eaters are doing around the world when they consume animals that are killed.

The letter to the editor also stated that the consumption of meat is justified on "pleasure, amusement and convenience."

Through my experience, it takes a lot of effort to replace the protein and iron you would normally get from meat into my vegetarian diet. In fact, meat is really healthy for you in the right amounts. I would absolutely agree it's convenient, especially since it helps you live.

I would agree even more that you get pleasure from it, just like you would get pleasure from using the restroom after holding your bladder for a long time or finally crashing and sleeping after staying up all night. But when it comes to amusement, I haven't necessarily seen people laughing at their hamburger as they ate it.

You could argue that people play with their food, but most of the time that's probably in lieu of being bored or feeling

awkward, not a frequent act you do to relieve stress and have a good time.

Whether you believe what Durden did is right or wrong, claiming that eating meat is equivalent to watching a cat get torn to pieces is outrageous.

The slaughter of animals for consumption is regulated and performed by people who have been working in that business for a long time.

The commanded killing of an animal by a biology professor, whose job it is to teach students (not kill animals), is pointless and unnatural.

Rachel Mulder
Sophomore
Chemistry
Warner Robins, GA

G-A shows liberal bias

Dear Editor,

As a long term student at GSU, I've come to enjoy the George-Anne before class on Tuesday and Thursday and still attempt to finish at least one cross word puzzle a week. However, the ever-encroaching liberal bias of the paper is becoming a difficulty to bear as I enjoy the non-news aspects of the paper. Perhaps even more disconcerting, is the sheer naiveté of said liberal view as expressed in the paper.

Firstly, saying that Justin Bieber is more influential than the Canadian military is insulting. The Canadians are resolute and loyal allies of the United States and have steadfastly served alongside American forces in Afghanistan for 10 years. In fact, it was a Canadian sniper who achieved the longest ever recorded shot in military history, putting effective fire on a Taliban machine gunner half a mile away in support of American troops, an unheralded feat in military arms. This is on top of the glorious history of the Canadian 3rd Infantry Division in the face of heavy resistance on Juno Beach during the Normandy Landings in World War II. This operation was pivotal

in securing the flank of the Allied advance into Nazi Occupied Europe.

Furthermore, printing a letter comparing America's consumption of dairy products and the American agricultural industry to wanton animal cruelty is just plain offensive, if not outright wrong. Cats are bred as pets. Dairy cattle are bred as dairy cattle. Encouraging a dog to fight other dogs or to assault a stray cat is of such a different order of magnitude than America's dairy industry, it is hard to comprehend the comparison. And the view encouraged in the letter of a vegan and vegetarian diet fails to take into account the enormous demand for dairy products outside of human consumptions and the logistical problems of said diet. Also, agriculture accounts for one percent of America's total GDP, eliminating dairy and beef from that would be disastrous. Stephen King once said that "country don't mean dumb," and by that same token "conservative doesn't mean wrong."

Mack Culverhouse
Senior
Political Science
Thomaston, Georgia

Represent.

Student Government Association

Apply to be a part of the Student Government Association

January 30th - February 12th
www.georgiasouthernsga.com



Demario Cullars/STAFF

The Department of Psychology will be moving offices, research labs and computer labs to Brannen Hall after summer 2012.

New bus stop discussed

BY TJ JACKSON

George-Anne staff

Students and faculty are hoping to see a new bus stop located on Sweetheart Circle in response to academic departments and offices relocating to former residence halls.

Due to the communication arts department moving into Sanford Hall and the psychology department adding research labs and relocating offices to Brannen Hall, both department chairs would like to see a new bus stop placed on Sweetheart Circle so that students may have an easier time getting to their classes.

"It does make sense that, at some point I'm sure, they will be looking and reviewing the bus schedule and it would be pretty easy to just swing around Sweetheart Circle," Pam Bourland-Davis, Ph.D. in mass communication and public relations and department chair of communication arts, said.

The psychology department will be relocating offices, research and computer labs in former residence facility Brannen Hall by the end of summer 2012, Department Chair of Psychology, Michael Nielsen, Ph.D. in psychology, said.

The process of installing a new bus route on Sweetheart Circle is already being discussed, said Student Government Association as well as Parking and Transportation.

"Since comm arts is moving over there where Sanford is, I definitely see it being a necessity," Garrett Green, vice president of auxiliary affairs for Student Government Association, said. "You can walk over there but sometimes it can be inconvenient, so to have a bus route over there

would be more helpful for students."

"The really big issue is that a lot of the higher administration doesn't want the bus going around the circle because it kind of takes away the effect of it being kind of as prestigious as it looks. So, maybe if they thought of some alternate way where they won't go all the way around the circle, then the process would start sooner," Green said.

Communication arts, psychology and art students think it would be a good idea and convenient for there to be a new bus stop on Sweetheart Circle that will be closer to their classes.

"That would be wonderful if there was a bus stop on Sweetheart Circle. It would help me get to my classes," Shanna Felix, sophomore psychology major, said.

"I think it would be a good idea so students wouldn't have to walk so far, because that could be a long walk," Gina Missini, junior public relations major, said.

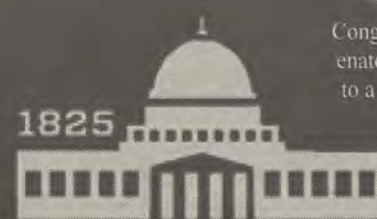
"I know for other people, it would be pretty convenient just because there's nowhere to really park over there," Allison Bright, junior graphic design major, said.

Other factors that would involve installing a new bus route onto Sweetheart Circle include research and statistics, Bryant said.

Bryant said, "First you have to look at infrastructure. Are the roads wide enough? Is the asphalt stable enough? Can we load and unload passengers safely? Those are your first questions. What students would we be serving? That number would determine how many busses we would need and the frequency of the busses."

Did you know?

The Greek system is the largest network of volunteers in the U.S., with members donating over 10 million hours of volunteer service each year



Every U.S. President and Vice President, except two in each office, born since the first social fraternity was founded in 1825 have been members of a fraternity



Congressmen/Senators belong to a fraternity



Supreme Court's Justice since 1910 were fraternity members



Those listed in "Who's Who in America" belong to a fraternity

Greeks on our Campus have a higher GPA than Non-Greeks



Approximately 80% of the executives of the 500 largest corporations in America are fraternity men.

Of the Nations 50 largest corporations, 43 are headed by fraternity

Sign up for Recruitment Today!
Tinyurl.com/GSUIFC

Paid for by
Your Recruitment Fees at
Work

*Numbers based on national statistics

Kappa Alpha Psi to hold anti-hazing forum

BY LINDSAY GASKINS

George-Anne staff

The Georgia Southern University Omicron Phi Chapter of Kappa Alpha Psi has prepared a new Hazing Risk Avoidance Forum to take place Friday, Feb. 3 at 7:30 p.m. in the Williams Center.

"The primary reason for this is, as a fraternity, we have had issues nationwide with hazing," Reginald T. Mosley, polemarch (president) of Statesboro Alumni Chapter, said.

"The fraternity itself has made a decision that we are going to stop (hazing)," Mosley said.

The forum will contain perspectives from both legal and practical sides of hazing risks, such as effects it has on victims, colleges and communities, according to the press release sent out by the Omicron Phi Chapter.

Guest Moderator and keynote speaker of the event will be former President of the Bar Association and current Southern Polemarch Linnes "Pete" Finney, Jr., according to the press release.

The Hazing Forum is crucial to get through to these members of fraternities that hazing can

come with serious consequences, Mosley said.

"If you engage in these clandestine activities, if you do these things, there is a danger of someone getting hurt," Mosley said.

It is also important for hazing avoidance to become widespread because many of these members are encouraged to be student leaders to their peers and around campus, Mosley said.

"I know my fraternity, and I know that unless I make sure that these guys understand the total ramifications of what they are doing, they will think they are slick just like everyone else," Mosley said.

The alumni chapter of this fraternity is going to take every possible step to make sure hazing stops, Mosley said.

"We are going to take every step that we can, as an alumni chapter, to make sure that they fully understand, as well as their peers," Mosley said.

The most recent hazing allegation on GSU campus that occurred last semester was against the Pi Kappa Phi fraternity, according to the police report from last year.

The Pi Kappa Phi fraternity will be facing



Lindsey Rowland/Contributor

social restrictions as well as probation for this term, Director of Student Affairs in the Dean of Students office, Patrice Buckner said.

"They are on in-term suspension right now, and that is from the national office so we will be supporting that at this time," Buckner said.

These are the consequences set in place as of right now, but nothing is definite until the

investigation comes to a close, Buckner said.

The hazing forum is open to everyone in the Greek system, fraternities and sororities alike, Mosley said.

"We would like to have the entire Greek system come out, but it looks like we are only getting participation from the black groups. We want everyone to come out," Mosley said.



Company hours

7:30 A.m. - 6:00 P.m.
Monday - Friday

912-489-2222

102 N Zetterower Ave
Statesboro, GA 30458



Students create app for campus navigation

BY DERREK ASBERRY

George-Anne staff

Two Georgia Southern University students have created a new GSU Mobile app that is intended to help students find their way around campus.

The two creators, Jordan Steene, a junior business major, and Jim Ashachik, a computer science major, said the idea started when they entered an Android app contest.

"Over Christmas break, we spent hours and hours passing ideas back and forth to each other," Steene said.

"We entered an app to help students find their way around campus and we called it the Class Finder," Ashachik said. "Right before Christmas break, we started thinking of an idea to help students get around campus, go to the post office and to find restaurants."

The creators spent the break writing out information for the app, getting input from friends and testing it on their phones.

"We came back to school early and created the app in about a month and a half," Steene said.

The app will help students find any location on campus, Steene said.

The app will be especially beneficial for incoming freshman who have not yet figured out where things are on campus, Steene said.

For viewers, the app offers building lists of the campus, as well as an actual map of the campus, Steene said.

The app will also give walking and driving directions to locations on campus. Including details like what the building is used for, a help desk number and a website link for the building Steene said.

"It's a huge Google map that is zoomed in on the Georgia Southern campus," Ashachik said. "As you view the map, there are pins that identify the buildings and give information about the buildings, including which departments are located there."

The app should be ready for use in about two months, Steene and Ashachik said.

"All we are waiting on is permission to use the logos from restaurants on campus and the Georgia Southern logo," Keene said. "Other than that, we just have minor details to work out."



Lindsey Rowland/ Contributor

The app will never be fully finished because of how it is customized to fit a campus that is constantly expanding, said the creators.

The two hope to update the app each time something new is added to campus.

"We're all about user-friendly apps," Steene said. "It will never be done, but it will be available

for use in the next month or two. We want to keep it constantly updated, so if new buildings pop up it will be there as soon as it happens."

Steene said, "We're just packaging it all together so it's in one easy place for students to find. All the information you need to know about Georgia Southern is on this app."



434 South Main Street Statesboro, GA 30458

912.489.8658

\$3 off

\$10 Purchase

Bring student id
and redeem coupon

\$5 off

\$20 Purchase

Bring student id
and redeem coupon



Hungry Howie's

FLAVORED CRUST PIZZA

MEAL DEALS

<p>\$5</p>  <p>ONE SMALL TWO-TOPPING PIZZA OR ONE MEDIUM CHEESE PIZZA</p>	<p>\$10</p>  <p>ONE LARGE 3-CHEESER PEPPERONI PLEASER PIZZA OR ONE LARGE TWO-TOPPING PIZZA</p>
<p>\$15</p>  <p>TWO MEDIUM ONE-TOPPING PIZZAS WITH HOWIE BREAD AND DIPPING SAUCE</p>	<p>\$20</p>  <p>TWO LARGE ONE-TOPPING PIZZAS WITH A 2 LITER OF PEPSI® AND HOWIE BREAD WITH DIPPING SAUCE</p>

Pick Up or Delivery

607 Brannen Street, Unit #4 (912)764-6565

WEEKLY BUZZ

A weekly calendar listing sponsored by The Division of Student Affairs and Enrollment Management

FEBRUARY 2-FEBRUARY 8

THURSDAY

2.2.2012

2:30 PM

JOB SHADOW INFO SESSION

WILLIAMS CENTER, CAREER SERVICES, RM 1047

If you are interested in learning more about job shadowing or how Career Services can connect you with a job shadow mentor, then you don't want to miss our information sessions.

Each info session will last approximately 35-40 minutes, and will be held in the Career Services Resource Library located on the first floor of the Williams Center unless otherwise indicated.

Attending an info session is not mandatory to job shadow. If you are unable to attend one of these sessions, please stop by Career Services call Career Services to schedule an appointment. The is event will be continuing into next week. Sponsored by Career Services.

5:30 PM

WOMEN & WEIGHTS

BODY CONDITIONING ROOM AT THE RAC

Another class will be held next Tuesday. Sponsored by Campus Recreation & Intramurals.

FRIDAY

2.3.2012

7 PM

FREE MOVIE

RUSSELL UNION THEATER I

Sponsored by the Office of Student Activities.

MONDAY

2.6.2012

2:30 PM

JOB SHADOW INFO SESSION

WILLIAMS CENTER, CAREER SERVICES, RM 1047

Sponsored by Career Services.

6 PM - 7 PM

CLUB SPORTS COUNCIL

THE RAC

Sponsored by Campus Recreation & Intramurals.

TUESDAY

2.7.2012

2:30 PM

STEM CAREER FAIR

NESSMITH LANE CONTINUING

EDUCATION BUILDING, SOUTHERN BALLROOM

Career Services will be hosting the bi-annual STEM Career Fair from 11:00 am - 2:00 pm at the Nessmith-Lane Conference Center Ballroom (next to the PAC). The is event is open to all students and alumni in Science, Technology, Engineering & Math programs.

Students are encouraged to take advantage of this great opportunity to network with employers and potentially obtain a co-op, internship or full-time job.

Professional/business casual attire along with professional critiqued resumes are required of all attendees. Attendees are also encouraged to research registered companies before attending to develop appropriate questions. To view companies registered to attend, please visit the Career Services website at www.georgiasouthern.edu/career

Are you interested in registering to attend the STEM Career Fair to recruit students for co-op, internship, or full-time jobs? If so please register for this event at <https://georgiasouthern-csm.symplicity.com/events/index.php/pid706431>? Sponsored by Career Services.

WEDNESDAY

2.8.2012

2:30 PM

JOB SHADOW INFO SESSION

WILLIAMS CENTER, CAREER SERVICES, RM 1047

Sponsored by Career Services.

7 PM

GSU Unplugged

RUSSELL UNION STARBUCKS

Open Mike Night. Sponsored by Eagle Entertainment.

8 PM - 10 PM

INNERTUBE WATER POLO FREE PLAY

RAC

Sponsored by Campus Recreation & Intramurals.

UPCOMING EVENTS....

THURSDAY

2.9.2012

2:30 PM

PUBLIC SERVICE AND NON-PROFIT CAREER FAIR

RUSSELL UNION

Sponsored by Career Services.

5:30 PM

WOMEN & WEIGHTS

BODY CONDITIONING ROOM AT THE RAC

Another class will be held next Tuesday. Sponsored by Campus Recreation & Intramurals.

FRIDAY

2.10.2012

7 PM

FREE MOVIE

RUSSELL UNION THEATER I

Sponsored by the Office of Student Activities.

8 PM - 10 PM

INNERTUBE ONLINE REGISTRATION

RAC

Sponsored by Campus Recreation & Intramurals.

MONDAY

2.13.2012

11 AM - 12 PM

INTERNSHIP INFO SESSION

WILLIAMS CENTER, CAREER SERVICES, RM 1047

This presentation is targeted to students who want to learn how to prepare, search and obtain internship experience. Student will also learn about the Career Services Internship Program - a non-academic credit University recognized internship program. Sponsored by Career Services.

SOFTBALL ONLINE REGISTRATION

RAC

Sponsored by Campus Recreation & Intramurals.

Student Affairs
Enrollment
Management

Brought to you by Georgia Southern University VALUES. Georgia Southern V.A.L.U.E.S. is the culture shared by our students, faculty, and staff. We endeavor to share our V.A.L.U.E.S. inside and outside of the classroom with faculty, staff, students, alumni and all other community members. In order to produce productive citizens with an informed set of ethics and community standards as well as create an environment of respect and civility, we pledge to live by our V.A.L.U.E.S.

School radio gives GSU 'The Buzz'

BY JAZMIN DAVIS

George-Anne Staff

Georgia Southern University's own radio station, 91.9 The Buzz, seeks to heat up the spring with a great line up of new shows for this semester.

Sitting in a radio booth with no one around but the listeners to motivate them, the program director, the promoters and the station manager have worked hard to ensure that they exceed their goal. Since The Buzz is all about giving GSU students what they want, when they want it, the goal is to reach out to every type of student and give them something to listen to.

"We get very complimentary feedback from listeners — they like the variety," Kristy Maxwell, junior multimedia communications major and program director for The Buzz, said.

To receive this feedback, the promotion team treks across campus in search of student suggestions. The group typically makes this trip once a month, asking questions like, "What's your favorite radio station?" or "What kind of music do you like?" They then compile helpful student opinions and make changes to the station accordingly.

The radio station offers a blend of very diverse music in its upcoming schedule for the spring of 2012. From dubstep, to Christian music on Sunday morning, The Buzz makes sure that listeners are up to date. The collection of shows varies from local music, to talk shows, to sports.

A couple of the most popular shows are "The Gare-Bear Show" and "Infamous Radio." One thing they have in common is the possession of charisma and personality that goes into creating a successful radio show. It also involves much preparation.

"(The show) sounds more natural when people are prepared," Maxwell said.

"The Gare-Bear Show" features Gary Barton, who enjoys shaking things up in the booth. This season, entitled "Affari," meaning business, includes impersonations, prizes and music, of course. The DJs are getting into character already.

Malik McGee, who plans to work with Gary, said he plans on learning, working on production and doing everything he can to help.

The team has been laboring to make the productions "run smoothly," as it likes to say. The producers are busy going out and getting interviews while the program director journeys to find on air talent and the station manager makes the station more music oriented. There



N'Vante Santos gives students entertainment during the evening hours.

seems to be so much to do in so little time. But they managed to put together a working schedule of contrasting shows.

A 91.9 original news show, "The Focal Point" with host Bradley Smith, began to air freshly Monday afternoon. On the show, the girls relay the latest news information from around campus and Statesboro. Another great way for GSU students to get what they want is by opening their minds and broadening their choice of music.

Station manager and multimedia communications major Brandon Anderson

plans to seek out modern musicians with a story to tell and a song to sing. He will be interviewing artists such as Chris Williams, a local hip hop artist, and J.K. and the Lost Boys from Atlanta.

Even though it's not possible to adhere to everyone's interests, Anderson said "Dedicated listeners make a successful radio show."

Since the station airs shows every day of the week, it's not likely that students could miss one. WVGS 91.9 FM The Buzz is broadcasting in an area near GSU. Don't miss it.



The Focal Point
Mondays @ 2-3:00 pm
Thursdays @ 2-3:00 pm

The Gare Bear Show
Tuesdays @ 9-10:30 pm
Fridays @ 1-3:00 pm

Infamous Radio
Thursdays @ 8:30-10:00 pm
Fridays @ 7-9:00 pm

The Buzz List

■ **Simon Cowell** has reportedly fired Paula Abdul, Nicole Scherzinger and Steve Jones from his show "The X-Factor." He claimed that their work ethic was "absolutely horrendous. Terrible."



Gianna Carme

■ **Nicole "Snooki" Polizzi** proclaimed on twitter that she will not be voting for Chris Christie for president. Christie isn't actually running, but at least we know now that he will not be getting the Oompa Loompa vote.

■ **Christina Aguilera** performed at Etta James funeral wearing a hooker dress. This just goes to show that no matter how much she tries to clean it up, Christina will forever be "Dirty."

■ **Chris Brown** has been declared "The World's Worst Dressed Man" by the British version of GQ Magazine. Looks like this award can sit comfortably on the shelf next to his "Best Woman Beater" award.

■ **The music industry** lost an icon yesterday as the news of the alleged suicide of 'Soul Train' creator Don Cornelius was reported. RIP Mr. Cornelius, your legacy will live on.

■ **Octavia Spencer** from award-winning movie "The Help" let the entire world know that she is at an unhealthy weight on the night that she won her SAG award. She definitely should have stuffed her foot in her mouth for pointing out the obvious.

Information compiled by Arts Editor Quanyia Epps and Assistant Arts Editor Gianna Carme from TheHollywoodReporter.com.

THE 'BORO BEAT

YOUR GUIDE TO OFF-CAMPUS ENTERTAINMENT

THURSDAY

Applebee's

-\$3 margarita, Long Island, domestic drafts

-\$3 Jose

-\$2 Corona

-\$3 appletini

-\$1 jello shots

Ruby Tuesday's

-\$5 appetizers 4:00p.m. to 6:00p.m.

-dollar of drafts and wines 6 p.m. to close

Millhouse

-Happy Hour 5 p.m. to 7 p.m.

Manny's

-\$2 wells

-\$3 doubles

-\$6 domestic pitchers

-\$10 domestic buckets

Gnat's Landing

-\$3 doubles, bombs, beers

-Happy Hour 6 p.m. to 8 p.m.

El Sombrero Downtown

-Happy Hour 5 p.m. to 7 p.m.

FRIDAY

Dingus Magee's

-Happy Hour 5 p.m. to 7 p.m.

-2 for 1 wells

-\$3 bombs

Ruby Tuesday's

-\$5 appetizers 4:00p.m. to 6:00p.m.

-dollar of drafts and wines 6:00pm to close

Millhouse

-Happy Hour 5 p.m. to 7 p.m.

Manny's

-\$2 wells

-\$3 doubles

-\$6 domestic pitchers

-\$10 domestic buckets

-Happy Hour 5 p.m. to 7 p.m. 1/2 select wine

Gnat's Landing

-\$10 bucket beers

-Happy Hour 5 p.m. to 7 p.m.

Applebee's

-\$3 margarita, Long Island, domestic drafts

-\$3 Jack and Jim

El Sombrero Downtown

-\$2 sex on the beach

myth:

drinking is central to the
social lives of georgia
southern university
students

fact:

64% of georgia southern
students have 0-4
drinks per week

presented by the dean of
students office

for more information visit:
<http://students.georgiasouthern.edu/eod>
data collected from georgia southern
university core survey 2010

INTEGRATION
EDUCATION

THE 'BORO BEAT

YOUR GUIDE TO OFF-CAMPUS ENTERTAINMENT

SATURDAY

Dingus Magee's

-Happy Hour 5 p.m. to 7 p.m.

-2 for 1 wells

-\$3 bombs

Ruby Tuesday's

-\$5 appetizers 4 p.m. to 6 p.m.

-dollar off drafts and wines 9 p.m. to close

Millhouse

-Happy Hour 5 p.m. to 7 p.m.

Manny's

-\$2 wells

-\$3 doubles

-\$6 domestic pitchers

-\$10 domestic buckets

Gnat's Landing

-\$10 bucket beers

-Happy Hour 5 p.m. to 7 p.m.

MONDAY

Ruby Tuesday's

-\$5 appetizers 4 p.m. to 6 p.m.

-dollar off drafts and wines 9 p.m. to close

Millhouse

-Happy Hour 5 p.m. to 7 p.m.

Manny's

-\$2 wells

-\$3 doubles

-\$6 domestic pitchers

-\$10 domestic buckets

Gnat's Landing

-Happy Hour all day

Applebee's

-\$3 margarita, Long Island, domestic drafts

-\$1 Natural Light

TUESDAY

Dingus Magee's

-Happy Hour 5 p.m. to 7 p.m.

-2 for 1 wells

-\$3 bombs

Ruby Tuesday's

-\$5 appetizers 4 p.m. to 6 p.m.

-dollar off drafts and wines 9 p.m. to close

Manny's

-\$2 wells

-\$3 doubles

-\$6 domestic pitchers

-\$10 domestic buckets

Applebee's

-\$3 margarita, Long Island, domestic drafts

-\$Jack and Jager

El Sombrero Downtown

-\$2.25 imported beer



**FREE DRINK WITH PURCHASE
OF SANDWICH & SIDE ITEM**

Offer Expires 2/19/2012

LOCATION: WOODLAND SQUARE ACROSS FROM GEORGIA SOUTHERN STATESBORO, GA, 30458

PHONE: 912.681.3597



"BAD TO THE BONE"
LOCATED NEXT TO WAL-MART
912-764-6556

\$2.00 OFF
REG. \$6.49

**CHICKEN TENDER SALAD
GRILLED OR FRIED**

MUST PRESENT COUPON
EXPIRES: 3-30-2012

DeJa'vu offers upscale resales

Consignment shop gives students fashionable choices for less

BY TANIQUA RUSS

George-Anne staff

Selling clothes for extra money and buying designer brands at affordable prices seems to be every student's dream, which makes DeJa'vu a hot spot for Georgia Southern University students.

DeJa'vu is an upscale resale consignment shop located in downtown Statesboro. Conveniently located near a college campus, the shop offers many name brand items at affordable prices that can fit into any college budget.

"I like being able to afford things. It's amazing to find a one hundred and fifty dollar pair of jeans for fifteen bucks," Casey Arnett, the 23-year-old boutique owner said about why she started DeJa'vu.

The boutique only sells gently worn name

“ I like being able to afford things. It's amazing to find a one hundred and fifty dollar pair of jeans for fifteen bucks. ”

-Casey Arnett
Owner of DeJa'vu

brand clothing that students can enjoy being able to afford. Well known fashions in the store include Lucky Brand jeans, Louis Vuitton, Hollister, Polo and Juicy Couture.

"While there, [DeJa'vu] I found a one of a kind black dress for a really cheap price," Lisa Rambert, a junior multimedia communications major, said.

GSU students not only appreciate the great prices but also the great selection of clothing that the boutique has to offer. Arnett said that there is something for everyone.

"Everything from the selection of clothes, shoes and accessories, to the customer service was absolutely extraordinary," Rambert said. "It almost feels like you are at home in your

own closet."

Arnett carefully selects each item that is being sold in the store to ensure that each customer is choosing from the most up-to-date items. Students have said that it does not feel like a consignment shop, according to Arnett.

"If I'm not going to wear it, I'm not going to put it out," Arnett said about the selection of clothing found in her boutique.

"Quality was excellent. It's like you're getting a two-for-one deal, which is name brand items at cheap prices," Rambert said.

Students also have the option of selling their clothing to make some extra money. Students can bring in their gently worn brand names and receive 40 percent of the sale on their item.

DeJa'Vu is open Tuesday through Friday from 10 a.m. to 6 p.m., and Saturday from 10 a.m. to 3 p.m.

SINGING VALENTINES!

order now

just \$20 for feb 10-14

3 songs, stuffed animal, candy and balloon!

912-681-2241 georgiasouthernbcm.com

proceeds support student missions

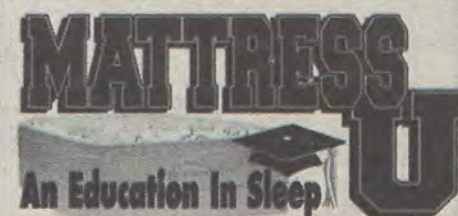
You Deserve to Sleep In Comfort!

\$199 Queen Pillowtop

\$399 Memory Foam Sets

\$699 Spring Air Cool Max

Don't Forget Your Memory
Foam Pillow Only \$49.00!



Come and visit our showroom in College Plaza Shopping Center
(behind Zaxby's) OR CALL: (912) 681-2337

Voted Best Mattress Store in the 'Boro!

Student Housing Available

New, Used & Antique
Furniture

Complete Mattress Outlet

Deal's

Come See the Dealmaker!

17083 GA Hwy 67, Statesboro, GA
(912)681-3824 (Near Fairgrounds)

Mon-Fri: 10am-6pm

Sat: 10am-5pm

Sun: 1Pm-5pm

- Honest, Dependable
Same Day Delivery
- Locally Owned &
Operated by GSU Graduate
- Serving GSU Students
for 34 years

Tervis Tumbler Headquarters

- Collegiate Gifts
- Jewelry
- Handbags
- Placemats
- Diaper Bags
- Men's Gifts
& Much More

Best Furniture Mattress & Gift "DEALS" in the 'Boro

'Mooz-lum' to come to Russell Union Theater

BY TANIQUA RUSS

George-Anne staff

Students will have the opportunity to gain understanding and awareness of a different culture this Friday as the Multicultural Student Center presents the movie "Mooz-lum."

"Mooz-lum," which is directed and written by Qasim Basir, is an independent film that follows a young college student by the name of Tariq, played by Evan Ross, who comes from a strict Muslim background. As Tariq adjusts to his new college environment the events of 9/11 occur, causing him to make drastic changes in his life.

The Multicultural Center decided to bring this film to the GSU theater this spring during one of the annual meetings.

"Every spring, our office has a program planning, so we invite the entire campus, faculty, staff and students to come out and share ideas with us. This movie came up," Consuela Ward, the director of the Multicultural Center said.

"When I looked at all the movies that were recommended, I realized that this movie is something that we haven't seen before."

The film encourages people no matter what race, ethnic background, or culture to be proud, love and be appreciative of who they are.

"This is lived experience for people, not just on that day, but after that day. In January, this person is still Hindu," Ward said. "This person is still African American and perhaps identifies as Jewish or Muslim or whatever. So, we want to be able to open up our minds intellectually to accept that people can have their own identity all throughout the year and not to only be reminded of it on one specific month, day or week."

"Mooz-lum" has a varying array of actors and actresses in the film that students can recognize, which makes it easier for students to understand the movie's message.

"What makes the movie relevant is because some of the actors and actresses are pretty well known. Nia Long, Danny Glover, just to name a few. Once we can identify with people, we get the message a lot easier," Ward said. "When you look at the whole Bollywood industry, when you look at those films, they are great but because Americans don't know those actors and actresses more intimately as we know American ones.

They don't get the attention. But I guarantee you, if more of us started watching foreign films, we would get it."

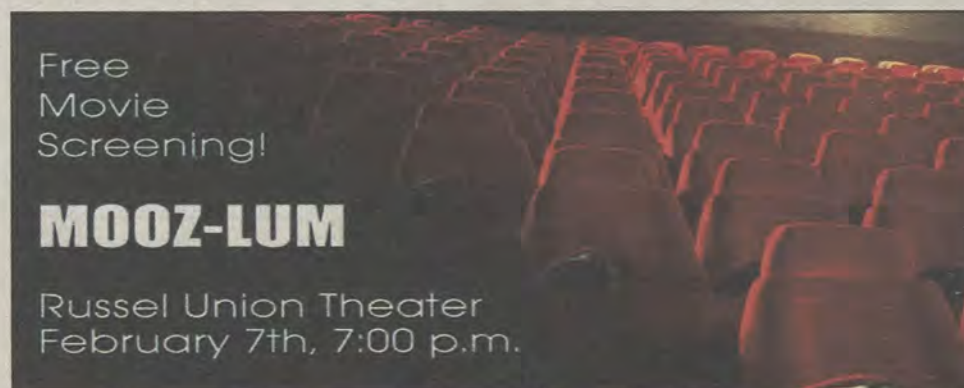
Although the film deals with the topic of 9/11, it's being shown in January in order to convey another central issue.

"I think the caution in showing or doing programs surrounded by a celebration around a particular date only tells people not to think about it till that time of year. I think we should be cautious to not forget, because we don't want to forget," Ward said.

"Mooz-lum" is a film that will make students think about the way they view Muslim people in America, as well as inspire others to be true to themselves.

"I think it's so important for people to know that being Muslim means that you can identify with any part of the world or any hue of your skin or any other ethnic identity. It doesn't limit you to one portion of the world," Ward said.

"Mooz-lum" is going to be shown in the Russell Union Theater on Tuesday, Feb. 7, at 7 p.m.





\$20 FEEDS TWO

EAT BIG. SPEND SMALL.

All Day Everyday \$2.99 Margarita Deal, old time Tuesdays and Fajita Monday.

SHARE AN APPETIZER	SELECT TWO FULL-SIZE ENTREES
<ul style="list-style-type: none"> • FRIED CHEESE • CRISPY ONION & JALAPEÑO STACK • TOSTADA CHIPS & SALSA • TOSTADA CHIPS • HALF ORDER OF TEXAS CHEESE FRIES 	<ul style="list-style-type: none"> • QUESADILLA EXPLOSION SALAD • CLASSIC BACON BURGER • MARGARITA GRILLED CHICKEN • HALF-RACK BABY BACK RIBS W/ HOMESTYLE FRIES • BACON RANCH CHICKEN QUESADILLAS • CHICKEN CRISPERS* • CRISPY CHICKEN CRISPERS* (ORIGINAL OR HONEY-CHIPOTLE) • 6 oz SIRLOIN

OUT & ABOUT



Jerry's Salon & Day Spa

SALON SPECIAL

\$25 FOR ONE MONTH OF UNLIMITED TANNING & FREE BOTTLE OF LOTION

300 East Main St. Suite C, Statesboro, GA 912.489.6972
(Across from old Video Warehouse on Hwy. 80)

Express Tune & Lube

Tire, Alignment & Exhaust Center

612 S. Zetterower Avenue
489-4444
www.expresstuneandlube.com
Monday - Friday 7:30am - 6:30pm
Located a half block north of Wendy's.

OIL CHANGE SPECIAL

\$25⁹⁵

Includes up to 5 qts of Castrol 5W20, 5W30, 10W30, or 20W50
price applies to most vehicles. Expires 2/31/12
www.expresstuneandlube.com

CLASSIFIEDS

16 Thursday, February 2, 2012

This page brought to you by Career Services
Explore • Experience • Excel

The George-Anne

For Sale

AKC registered lab puppies, 3 chocolate at \$400 each, 7 black at \$350 each, 4 male and 6 female, parents on site, taking deposits now. Ready March 1st. Call 912-754-3065 or 912-663-4225.

Scooter for sale! 2005 Honda Ruckus. Black, 49cc, 85+mpg. Fantastic condition; original (faculty) owner, garage kept. No special license or insurance required. \$1,500 OBO. Contact (912) 678-6052

2 male and female English bull dog up for adoption to a good home. You can contact Rev. Smith on Julianasmith63@yahoo.com for more details

Firewood for Sale. Delivery available! Call 912-690-0872 or 912-690-4956.

For sale: 2009 BMW 328i, hard-top convertible in great condition. Black with tan interior. Call 912-293-1909.

Subleases

Subleasing 3 BR/2BT house on Parker Avenue in downtown Brooklet. Extremely large media room! Located on two city lots. Contact Joyce at (912) 842-9479.

2 Bedroom 2 Bathroom apartment in Hawthorne 2. Very close to campus. \$350/month. Sublease through July. Contact Shannon at 678-468-9407

Subleasing master bedroom in Planter's Row for \$365/month; utilities not included, pet friendly. For more information contact Anna-Marie at at01770@georgiasouthern.edu or call (770) 546-6560

Home Away From Home 3BR/2BT within 2 miles of Georgia Southern campus. You can sublease the other 2 rooms. No smoking or pets. Call (706) 951-1427.

Sublease at Cambridge for Reduced Price 1 BR/BTH available in a 3 BR, bus stop directly across from campus, all utilities included, furnished, washer/dryer, amenities. \$350/month *Regular price-\$459/month. Email shortiecutie102@yahoo.com

Subleases, cont.

2 BR/2 BT sublease in Georgia Villas. \$475/month for both rooms, utilities not included. Available Jan-May, pet friendly. Right across from Greek Row on Chandler. Email t100212@georgiasouthern.edu

Female to sub-lease Spring Sem. 5 BR, \$280 a month. Last month's rent is paid. Less than a mile from campus off of Gentilly Rd. Call, text or email Kristina: (678)-770-6251 kf01606@georgiasouthern.edu

Subleasing 626 B at the Exchange. Female Roommate needed. \$519.00 per month. All utilities included, free tanning, free Wi-Fi, 24 hr gym included. Available now. Contact (706) 523-6001

Room available for male or female in a 3 BR/2 BT house on Catherine Avenue. Fully furnished; bed needed. \$367/mo per person, utilities not included. Spacious house. Contact Yale at (404) 272-7652 or yale8754@bellsouth.net

Subleases, cont.

Subleasing my room for Spring 2012 in a fully furnished 4 BR/4 BT 3-story town home. Walking distance from the stadium and bus stop. Contact Alex at (770) 712-5377 or ao00837@georgiasouthern.edu

Spring 2012 1 BR/1 BT in a 2 BR/2.5 BT townhouse at The Avenue. Furnished and utilities included. \$495/month, but I will pay \$30 for each month. Or I could put \$210 towards the first month's rent. Contact Cherelle at chollan4@georgiasouthern.edu

All inclusive, two story, fully furnished, 4 BR townhouse for \$330/month! Includes trash, utilities, cable, wi-fi, pet park, 24/7 gym, recreation courts, computer lab, new appliances and washer/dryer! Contact (229) 326-4291.

Subleasing a 1 BR/1 BT in 4 BR apartment in Copper Beech for Spring 2012 starting Christmas Break. Washer/dryer included. Next to pool/volleyball court. \$389/mo plus utilities. Contact Singer (404) 680-7240

Subleases, cont.

SPRING 2012! Female roommate wanted. 1BR/1BT in a 3BR/3.5BT townhome. Walking distance to the stadium and bus stop. \$400/mo., gym and pool included. Cheaper rate can be arranged. Contact Emily at 404-444-8987 or ec01442@georgiasouthern.edu

SPRING 2012! 1 BR/1BT available in 4 BR/4 BT at Campus Club for Jan or earlier. Bus stop next to stadium. Utilities included. Rent is \$419/month; CHEAPER RATE CAN BE ARRANGED. Email Skyler at sh02071@georgiasouthern.edu

1 BR/1 BT available in a 3 BR at The Grove, for Spring 2012. Available after Dec. 20. \$450/mo, utilities included. Pet friendly, pool. I will pay last month's rent. Female preferred. Call Ellen 404-694-1394 or email ej00034@georgiasouthern.edu

Female roommate needed for Spring 2012; 3BR/3BT at Cambridge; \$449/mo all inclusive and furnished; one building away from bus route, 1st floor. Contact Angelica 404-921-4988.

Subleases, cont.

Subleasing a room in 4 BR/2BT in The Avenue for Spring 2012, but available as early as Dec 16 and Dec will be paid for. \$325/MO. Furnished, utilities included with free Wifi and Cable. Contact Nikki at (678)525-0297.

Sublease available ASAP. at Copper Beech. \$389 rent monthly. Utilities not included. 3 roommates. Great neat and clean girls to live with. Fully furnished. 478-957-1005 for more information.

Misc.

Will proof papers (grammar, spelling, punctuation, sentence structure). Quality work, reasonable prices. Will also type short projects. Must have ample lead time to schedule. Email auntre01@gmail.com

Help Wanted

MODELS of all weights/sizes/ages needed for figure drawing class on T&R, 2-4:30 PM. Fall and spring openings. Must be 21 and able to sit still for long periods of time. Call 912-478-2793 or email jburke@georgiasouthern.edu

HOT JOBS

Cool Internships

Job Title	Company	Deadline to Apply
Co-op & Internships (Summer/Fall 2012)	Southern Company	Jan. 29th
Liability Claims Rep	GEICO	Feb. 11th
Area Manager	Briggs & Stratton	Jan. 20th
Sales & Leadership Program	JB Hunt	May 15th
Financial Services Intern	JP Turner	Apr. 11
Intern	Georgia Aquarium	Mar. 9th
Marketing and Communications Internship	GA Dept. of Economic Dev.	Feb. 29
Candler Country Public Health Nurse	Southeast Health District	Feb. 29
IT-SAP Co-op	Gwinnett County	Feb. 3rd
Implementation Analyst	McKesson Provider Tech.	Mar. 4th
Rotational Leadership Program	Schneider National	Feb. 29th
Management Trainee	Toys R Us	Jan. 31st
Distribution Dept. Supervisor	PetSmart, Inc.	Mar. 30th
Material Planner	Gulfstream	Feb. 3rd
Radio Internship	Cumulus Media	Apr. 01st
IT Assistant - Atlanta	GradStaff	Feb. 28,
Account Executive	Calvert Labs	Feb. 29th
Sports Advertising Sales Executive	National Sports Publications	Jan. 10,
Stores Executive Intern	Target Stores	Jun. 30th
Marketing & Communication Internship	Make-a-Wish Foundation	May 1st

To view the detailed job descriptions application instructions or additional postings, log into the Eagle Career Net/NACElink system found at www.georgiasouthern.edu/career.

Mark off your to-do list with the help of Eagle Career Net

- ✓ Update your resume and cover letter
- ✓ Learn about our job shadow info sessions
- ✓ Explore various job and internship postings
- ✓ Find out what employers attend career fairs

To sign up or log in to Eagle Career Net, visit:

www.georgiasouthern.edu/career

Click on the left drop-down box and select students to begin exploring!

Career Services Hosts STEM Fair – Tues. February 7

By Sarah Dixon, PR/Marketing Intern

Are you currently searching for internship, co-op or full-time opportunities in the fields of Science, Technology, Engineering or Math? If so, then the STEM Career Fair is the perfect chance for you to meet with potential employers in your field of study.

This event will take place on Tuesday, February 7 from 11 a.m. – 2 p.m. in the Nessmith Lane Continuing Education Building. Employers from various companies will be looking for students who are driven and dedicated to their work. This is event is free to all level students looking for spring and summer co-op, internship and full-time jobs.

Be sure to research the companies in attendance before the event to learn about them and develop

a list of questions regarding their job and internship opportunities.

Make sure to bring multiple copies of your critiqued resume to the STEM Fair and don't forget to dress professionally (no shorts, pajamas or flip flops).

Career Services has walk-in hours daily from 9a.m. – 12p.m. and 1p.m. – 4p.m. to critique student's resumes. No appointment necessary, just stop by our office located on the first floor of the Williams Center room 1047.

To view a complete list of companies who have registered to attend the STEM Fair, log into the Eagle Career Net system found on the Career Services website: www.georgiasouthern.edu/career. For more information, call Career Services at (912) 478-5197 or email us at careersv@georgiasouthern.edu.

PUZZLES/COMICS

www.thegeorgeanne.com

Thursday, February 2, 2012 17

Los Angeles Times Daily Crossword Puzzle

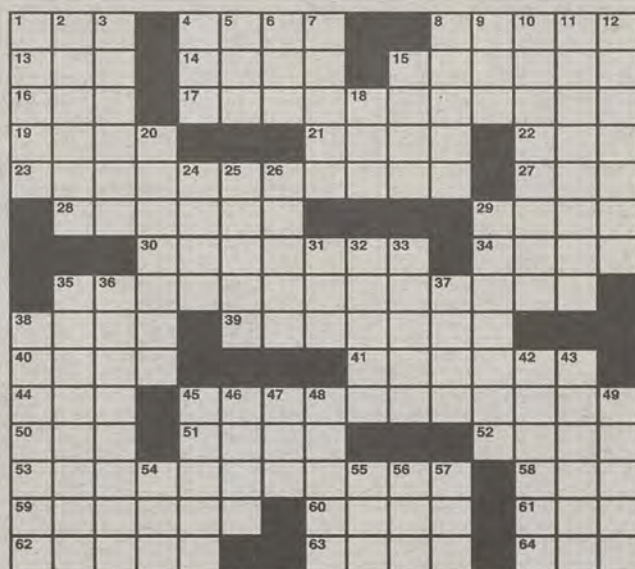
Edited by Rich Norris and Joyce Lewis

ACROSS

- 1 Blood typing system
- 4 Sea once dotted with 1,500-plus islands
- 8 Some winds
- 13 Prince, to Cecil Fielder
- 14 Discman maker
- 15 Name that means "pretty"
- 16 Topeka-to-St. Paul direction
- 17 Tropical roadside area?
- 19 Morales of "Jericho"
- 21 Exude
- 22 Ryder Cup team
- 23 Roughly, San Jose's population acting friendly?
- 27 Hazardous current
- 28 Stick on a stake
- 29 Bog
- 30 Unfair wear?
- 34 Literary miscellanea
- 35 Environmental concern ... and what's happening in 17-, 23-, 45- and 53-Across?
- 38 Sound of pain or pleasure
- 39 Satisfied
- 40 ___ above
- 41 Don's code
- 44 Sharp-toothed fish
- 45 Sentiments from a hepcat?
- 50 Curling venue
- 51 Frizzy do
- 52 Peel
- 53 Polar exploration?
- 58 London-born miler
- 59 Olds models
- 60 Birthright seller
- 61 Tease
- 62 Works at the docks, say
- 63 Email folder
- 64 Hovel

DOWN

- 1 Comparably fresh



By Don Gagliardo and C.C. Burnikel
January 31st Puzzle Solved 2/2/12

C	O	U	R	T	C	A	R	P	A	C	M	E
A	P	N	E	A	O	M	O	O	P	L	O	P
M	U	F	F	I	N	P	A	N	S	E	U	R
P	S	A	L	O	S	T	T	E	X	M	E	X
S	P	O	U	T	S	I	S	P	L	Y		
A	F	T	E	R	N	O	O	N	N	A	P	S
R	E	E	D	S	V	I	G	I	L			
M	Y	N	A	A	B	E	T	S	E	E	K	S
	N	E	V	E	R		E	A	M	E	S	
A	T	T	E	N	T	I	O	N	S	P	A	N
C	A	M	A	R	T	M	O	T	E	T		
Z	S	A	Z	S	A	S	I	Z	E	Y	M	A
A	C	N	E	G	I	N	G	E	R	S	N	A
R	O	D	S	E	V	A	H	E	L	E	C	T
S	T	A	T	S	S	G	T	D	O	T	E	S

- 2 Tree in a tray
- 3 Like macho push-ups
- 4 Lenten symbol
- 5 Short hopper
- 6 Scout on the floor, perhaps
- 7 It helps you clean up
- 8 Where Monet's cathedral series was painted
- 9 Commercial development done in one hr.?
- 10 Permanent
- 11 Judgment Day poem
- 12 Colorful shawls
- 15 Clod
- 18 ___ polloi
- 20 Evidence in a rug
- 24 Polite address
- 25 Like a pelvic artery
- 26 Slow, to Yo-Yo
- 29 Femme fatale
- 31 Layer
- 32 Player
- 33 Amusement park focus
- 35 Minute Maid parent company
- 36 Adorned with a wreath
- 37 Rare blood type: Abbr.
- 38 Like a charm, maybe
- 42 Evidence in the snow
- 43 Skillful
- 45 Guitar tone changers
- 46 "Just the Two ___": 1981 hit
- 47 Immortal among hockey defensemen
- 48 Wins the battle of the bulge, ironically
- 49 Five-star opposite?
- 54 Rap's Dr. ___
- 55 "What's the ___?"
- 56 Author Fleming
- 57 "For shame!"

AN IMPORTANT PART OF ANY POLITICAL CAMPAIGN IS CELEBRITY ENDORSEMENTS



DARTH VADER
THE FORCE IS STRONG WITH THIS ONE.



3RD GUY FROM LEFT ON LEIA'S CORELLIAN SHIP



Welcome to Falling Rock National Park by Josh Shalek



5				7	6			4
7			2				1	3
2								
				7	3		8	
			8				5	
		6		4	5			
						1		2
9					2			7
			3	9				

Sudoku

8	9	4	7	6	8	1	2	9
7	9	3	2	8	1	5	7	6
2	6	1	9	2	7	3	8	4
1	2	7	5	4	8	9	6	3
6	3	5	1	2	9	8	7	4
9	8	4	6	3	7	2	5	1
5	7	9	1	4	4	6	8	2
3	1	6	8	5	2	7	9	7
4	8	2	9	7	6	1	5	3

FRANKLIN
CHEVROLET - CADILLAC
PONTIAC - BUICK - GMC
912.764.6911



Our experienced Body Shop can fix all of the "Dents & Dings" that your vehicle may have! We service all makes and models and accept all insurance claims, and will give you **FREE ESTIMATE** on your body & paint repair

GSU STUDENTS - Show your ID and receive **10% OFF** any purchase in Parts and Service

Check out our website
www.franklinchevrolet.com

@coachjeffmonken

- CoachJeffMonken** Jeff Monken
Ironhead Gallon. He's earned that name. Hard hitting, aggressive player. Proud that he's an Eagle.
- CoachJeffMonken** Jeff Monken
Irving Huggins. Joins a line of some of the best to ever play at GSU.
- CoachJeffMonken** Jeff Monken
Daquan Heard. Tall, athletic player who will have potential to play both positions. Newest Eagle!
- CoachJeffMonken** Jeff Monken
Jermaine Morris. Attended our camp and did a great job. Great kid.
- CoachJeffMonken** Jeff Monken
Corey Neely. Two returns for TD in state title game. Hope there's more of that to come.
- CoachJeffMonken** Jeff Monken
Montay Crockett. Fast...fast...WR on state championship team. One of three from that school to sign today.
- CoachJeffMonken** Jeff Monken
Tay Hicklin. State Champion QB. Excited about him playing in our secondary.
- CoachJeffMonken** Jeff Monken
Tre Griffin. Eagle fans remember another N. Cobb plyr, Freddie Pesqueira. Hope Tre will follow in All-American fashion.
- CoachJeffMonken** Jeff Monken
Jamal Johnson. Thrilled to have this kid stay right here at home. He was our first commitment of the class.
- CoachJeffMonken** Jeff Monken
Deonte Dempsey. Big potential for this kid. He's going to keep growing. Excited to see him develop.
- CoachJeffMonken** Jeff Monken
Diego Rodriguez. With the loss of three starters on the OL, we are excited to get an athletic guy like Diego to develop.
- CoachJeffMonken** Jeff Monken
Vegas Harley. Battled even this morning to get him on the Eagle Train. Thrilled to get his commitment.
- CoachJeffMonken** Jeff Monken
James Dean. Georgia Southern throwback player. Will be a fan favorite.
- CoachJeffMonken** Jeff Monken
Michael Young. State champion this past season. Let's get him some rings while he's here.
- CoachJeffMonken** Jeff Monken
Dequan Clark. Quick, athletic big man. Hope he will be as difficult for our opponents to handle as he was for opponents in HS.
- CoachJeffMonken** Jeff Monken
Devonte Wheaton. He can fly!
- CoachJeffMonken** Jeff Monken
Grady Redding. Fast and physical. He will be fun to watch.
- CoachJeffMonken** Jeff Monken
Wintz Terrell. Same home town and HS as Ezayi Youyoute. Hope he'll throw some blocks so Izzy can score a bunch of TD's.
- CoachJeffMonken** Jeff Monken
Matt Dobson. State champion QB with great leadership qualities and a ton of talent. He's in!!
- CoachJeffMonken** Jeff Monken
Lanard Govan. Don't know what position he will play for us but Eagle fans are going to love this kid!
- CoachJeffMonken** Jeff Monken
Darien Foreman. Big guy who can knock 'em off the ball.
- CoachJeffMonken** Jeff Monken
Patrick Flowe. Tough, Georgia Southern-style player. Excited about him.
- CoachJeffMonken** Jeff Monken
Kevin Ellison. Ran the option in HS. Attended our camp this summer. Great fit for our offense.
- CoachJeffMonken** Jeff Monken
New Eagles coming in. Shun Tribble, A-back, Woodrudd SC. Signed!!



Christian Washington/STAFF

Coach Jeff Monken speaks to the public at Georgia Southern's National Signing Day press conference about the new recruits.

SIGNEES, from page 1

adding depth and strength to every position, except special teams, which were left void by the record-setting placekicker Adrian Mora and punter Charlie Edwards.

However, most special team players, such as kickers, usually make the team as walk-ons and earn their scholarship over time.

"I feel like we got the right ones here for us at Georgia Southern," Monken said. "We are anxious to get them here and develop those kids, and then get them ready to contribute to our success here."

The team filled needs in the defensive secondary position with four defensive back recruits that now have the challenge of filling mighty big shoes left by graduating senior Laron Scott, among others.

Quarterback Jaybo Shaw's graduation leaves an opening at quarterback, allowing players like Jerick McKinnon, Ezayi Youyoute and Prince McJunkins fighting for the new starting role. The current players didn't deter Monken from signing three quarterback recruits — Matt Dobson from North Florida Christian High School/Monticello, Fla., Kevin Ellison from Habersham Central High School/Cornelia, Ga. and Vegas Harley from Mount Dora High School/Mount Dora, Fla.

"Hopefully the guys we signed at that position (quarterback) will be good enough athletes that if they aren't the quarterback, they

can line up somewhere else and contribute," Monken said.

"Kevin Ellison ran our offense in high school from under center and will be very familiar with the mechanics, footwork and the reads," Monken said.

"Matt Dobson is just a tremendous athlete, and was a high school state champion," Monken said. "And, he led that football team. A good runner and a good thrower — we are really excited to get him in our program."

"We battled even this morning on Vegas Harley," Monken said. "Vegas was going back and forth between us and another school, and we are very fortunate he chose Georgia Southern. He played in a Border War all-star game in Valdosta (between Georgia and Florida high school athletes) and was the offensive player of the game for Florida."

It's hard to tell before spring and summer practice which arriving players will have the most impact in the fall 2012 season and beyond.

"We have guys on our team that played as true freshman each of the last two years, and some of those guys may not have been some of the guys I would have picked off the list," Monken said. "We will find out when they get here what kind of condition they are in and what they can handle mentally."

"There is a lot that goes in to that, none of them may make it onto the field as freshman," Monken said. "Then again, we may see all of them."

Meisenhelder finds home, success at GSU

Swimming and diving

BY OLIVIA CLEMENTS

George-Anne staff

Georgia Southern University swimming and diving team diver Sara Meisenhelder was named the Costal Collegiate Swimming Association Diver of the Week on Jan. 25.

Meisenhelder broke two school records during GSU's home meet against Florida Gulf Coast University on Jan. 21.

New records were set by Meisenhelder in both the 1-meter and 3-meter diving events. In the 1-meter, Meisenhelder's dive score of 263.25 replaced a score of 269.01 set 14 years prior by Mindy Hall.

In addition, Meisenhelder's dive score of 265.35 on the 3-meter replaced the nine year legacy of Leslie

Williams' dive score of 283.57.

Meisenhelder was proud to have achieved her personal goal of breaking the school record in the 3-meter.

"I just focused on doing the best that I could on every single dive and hoped that right when I took off everything turned out for the best, and luckily it did, so I was really proud," Meisenhelder said. "I wasn't expecting to break the one on one-meter at all, so I was pretty happy about that."

Meisenhelder is a sophomore at GSU whose dedication to pursue college diving brought her to Statesboro from Carmel, Ind.

"I've been a diver for twelve years and I knew I wanted to do it in college," Meisenhelder said. "I looked at schools and I fell in love with this one because of the team and the coaches."

Meisenhelder draws her motivation to succeed on the diving board from her teammates.

"I love every one of those girls, they're all like my best friends, they're my family and everyday when I see them it just makes me a lot happier to come to practice," she said.

Meisenhelder's goals for the rest of the season are to succeed in the championship meets and make conference for the second year in a row.

"I would like to at least place first on either one of the boards and do well scoring-wise, not just place-wise," Meisenhelder said.

Meisenhelder will be competing, along with her teammates, in Davidson, N.C. on Jan. 28.

GSU will continue its travels Feb. 16-18 for the Costal Collegiate Swimming Association 2012 Championship Meet in Athens, Ga.



Rebecca Farris/STAFF

Sara Meisenhelder was named swimmer of the week for Jan. 25.



Sports EMPORIUM

Statesboro's Intramural Sports Headquarters

**Show your Eagle ID to receive a student discount*

840 BC Buckhead Drive, in Buckhead plaza (912)764-4449



New
spinach artichoke dip

McALISTER'S
DELI

Introducing
two fresh new tastes

*For a limited time only

1100 Brampton Ave., Suite A • (912) 681-3354

www.mcalistersdeli.com f McAlister's Deli - Statesboro, GA
We Accept the Eagle Express Card

Rich and tasty
turkey florentine



Super sophomore paces track and field team

Track and field

BY KEVIN GREGAN

George-Anne staff

There are many members of the Georgia Southern University track and field team that contribute to the success of the team, and sophomore sports management major Stephanie Hicks is no exception.

Hicks participates in five events and has had a great season so far, boasting seven top-10 finishes and another seven top-20. Last year, she made 51 top-10 finishes.

The event that she has the most success in is the 60-meter hurdles. This year alone she has had three top-five finishes out of four meets.

"I love the hurdles, that's my baby," Hicks said.

Stephanie has been running for six years. At her high school in Trenton, N.J., she was No. 1 in the state for the 60-meter hurdles her senior year. So far she loves the South, especially the weather.

Her parents are extremely proud and her father is her No. 1 fan. If it were possible, he'd be at every meet.

Last semester there was no track season so she loaded on her classes. The heavy workload allowed her to only take 13 hours this semester, which allows her to devote the time she'd like to her team.

"I like being an Eagle," Hicks said. "I love my team. I'm always with them and it's a strong sisterhood."

The team spends a lot of time together and the Eagles are fortunate enough to be a close squad.

That's a good thing because Hicks, along with her team, practice six days a week and they also have designated gym times.

The hard work for Hicks is not a problem and it works toward her goal of winning first place in the pentathlon in the Southern Conference and putting GSU on the map.

"In the end, all the work is worth it, and a SoCon championship is worth it. You get what you put in," Hicks said.

One person on the team that she looks

up to is senior Millicent Brooks-Millender. Hicks looks to her for proper technique and ways to get better at her long jumps.

"I think she's great and a hard worker. I think she'll be better than me by the time she's done," Brooks-Millender said.

In her free time, Hicks enjoys taking the all too important power nap and hanging out with her teammates.

"I live with my team and we all go out together to make sure we have fun," Hicks said.

The SoCon indoor championships are on a banked track this year, which has her feeling confident.

In high school, Hicks ran on a banked track called The Armory in Manhattan a lot, so she's used to it, she said.


When she's done with school, Hicks is aspiring to be a sports agent or a public relations executive.

The next meet for Hicks and the Eagles will be Virginia Tech Elite at Virginia Tech in Blacksburg, Va. this Friday and Saturday, Feb. 3 and 4.



Jessica Stanfield/STAFF

Stephanie Hicks has seven top-10 finishes.




YAMAHA

Statesboro Yamaha

10% Off Parts & Accessories


with your student ID



22815 US Hwy. 80 Statesboro, GA 30461 912-764-RIDE
(1 mile past Lowe's on Right)

South 301 Auto Body Collision Center

In business for 16 years



- Auto body collision repair
- Jet lube quick oil change
- Mechanical/Auto repairs
- Wheel alignments

- 24 hour towing
- Auto sales
- Life time warranty on all repairs
- Student discounts available with an eagle I.D.

www.south301autobody.com

12229 Highway 301 South
Statesboro, Ga. 30458

(912) 871-5181

How the Super Bowl affects students



Nathan Rogers
Sophomore I.T. major

"Patriots probably going to win this!"

"Brady baby!"



Mesha Russell
Junior Bio-chemistry major



Stephen Herold
Freshman Education major

"I'll be pretty upset if the Giants lose!"

"They deserve it because they lost in 2007, so this is the team's chance to get it back."



Cameron Ross
Junior Sports Management major



Adrian Green
Sophomore Business major

"The English are coming, the English are coming!"

"Let's go Brady Bunch!"



William Jackson
Senior Exercise Science major

Tyler Fleider/STAFF

Superbowl affects students

BY KEVIN GREGAN

George-Anne staff

The New York Football Giants and the New England Patriots are set to compete in the Super Bowl in Indianapolis on Sunday and it's sure to be a memorable one for many Georgia Southern University Students.

While the Atlanta Falcons aren't in it this year, many students who celebrate the Super Bowl here in Statesboro will have a different experience that has never been possible in Georgia.

In the past, local sports restaurants have not had the ability to sell alcoholic beverages and, with the law changed, businesses are understandably excited.

Many students will be watching the game with friends at parties around town. That's

not unusual for the Super Bowl weekend, but this time students will also be able to go to restaurants and watch the game and have a drink.

One of the many restaurants here in town that's looking to capitalize on this unprecedented Sunday, Buffalo's Café on Lanier Drive, will be holding contests and doing giveaways for the game. They've already got over 100 confirmed guests for the event on Facebook.

"We're planning on a pretty big crowd. We've got our whole Budweiser crew coming to take pictures and do giveaways," general manager Michael Hall said.

Heavy celebrators will not have to stress about stocking up, because if they run out businesses all over Statesboro will be able to satisfy any beer deficiencies.



George-Anne & Joe
brought to you by

Williams Center Gazebo
From
8:15a.m.-10:00a.m.

Don't forget to stop by Starbucks at Georgia Southern for great coffee, pastries, sandwiches, parfaits, and fresh fruit cups!

twitter.com/GSUStarbucks

GSU signs twenty-two new players

Dequan Clark - DL

Buford, Ga.
Buford High School
6'1"/275



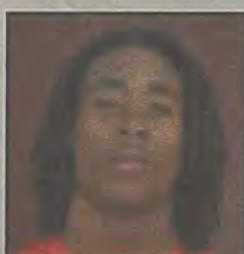
Patrick Flowe - LB

Lilburn, Ga.
Parkview High School
6'1"/210



Montay Crockett - WR

Rock Hill, S.C.
South Pointe High School
6'0"/175



Darien Foreman - OL

Ellenwood, Ga.
Dunwoody High School
6'4"/285



James Dean - RB

Brunswick, Ga.
Glynn Academy
6'1"/195



Deshawntee Gallon - DB

Madison, Fla.
Madison County HS
5'11"/190



Deonte Dempsey - DL

Lakeland, Fla.
Victory Christian Academy
6'3"/245



Tre Griffin - DL

Powder Springs, Ga.
North Cobb High School
6'2"/235



Matt Dobson - QB

Monticello, Fla.
North Florida Christian School
6'0"/205



Vegas Harley - QB

Mount Dora, Fla.
Mount Dora High School
6'0"/185



Kevin Ellison - QB

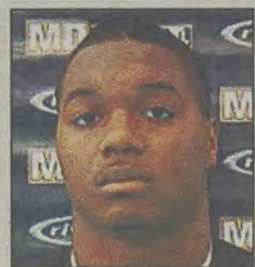
Cornelia, Ga.
Habersham Central HS
6'0"/180



Tay Hicklin - DB

Rock Hill, S.C.
South Pointe High School
5'10"/175

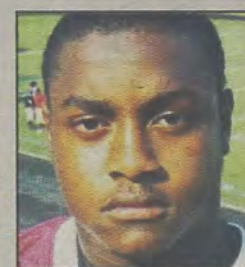


**Irving Huggins – RB**

St. Cloud, Fla.
Hargrave Military Academy
6'1"/215

**Grady Redding – DB**

Cocoa, Fla.
Cocoa High School
5'11"/190

**Michael Young – OL**

Stone Mountain, Ga.
Tucker High School
5'11"/265

**Jermaine Morris – DL**

Dacula, Ga.
Archer High School
6'1"/235

**Diego Rodriguez – OL**

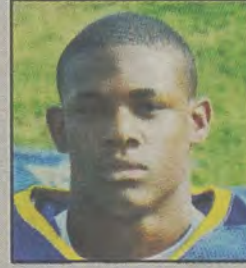
Dacula, Ga.
Dacula High School
6'3"/250

**Shun Tribble – RB**

Enoree, S.C.
Woodruff High School
5'9"/170

**Wintz Terrell – OL**

Hardee, Fla.
Hardee Senior High School
6'2"/297

**Devonte Wheaton – RB**

Woodstock, Ga.
Etowah High School
5'9"/170

Corey Neely – DB

Rock Hill, S.C./South Pointe High School
6'1"/190

Jamal Johnson – DL

Statesboro, Ga./Southeast Bulloch HS
6'3"/240

Daquan Heard – TE

Washington, Ga./Washington-Wilkes HS
6'3"/245

Lanard Govan – ATH

Garden City, Ga./Savannah Christian School
6'2"/230

Intramural Sports Scores

Basketball

The Cadets 45
Team Got Toooo 54

Court 1 46
Cool Shoes Bro 48

F.A.M.E 31
Tau Athletics 17

Vogel Party of 5 54
Stone and the Hood Rats 43

RUF 45
PF Change 48

UV Brawlers 34
3 the Hard Way 33

FLY AF! 50
The Dream Team 55

NIKE Select 56
Why Are You Here 52

Southern Spliffs 47
CP Nothin But Net 40

Hibachi Makin Mariachi 34
M.O.B (Muffins Over Bagels) 29

Under Dogs 32
Strokegame 37

Self Check 37
DRIVE 16

Forgiven 17
Raw Talent 65

Original Stokers 34
Austin's Team 32

Camp Coke 56
WE2REAL 53

Courtesy of CRI

WELLNESS NEWSLETTERS

ARE NOW AVAILABLE ONLINE



SMARTPHONE?
USE QR SCANNER
FOR QUICK LINK

<http://services.georgiasouthern.edu/cri/universityWellness>

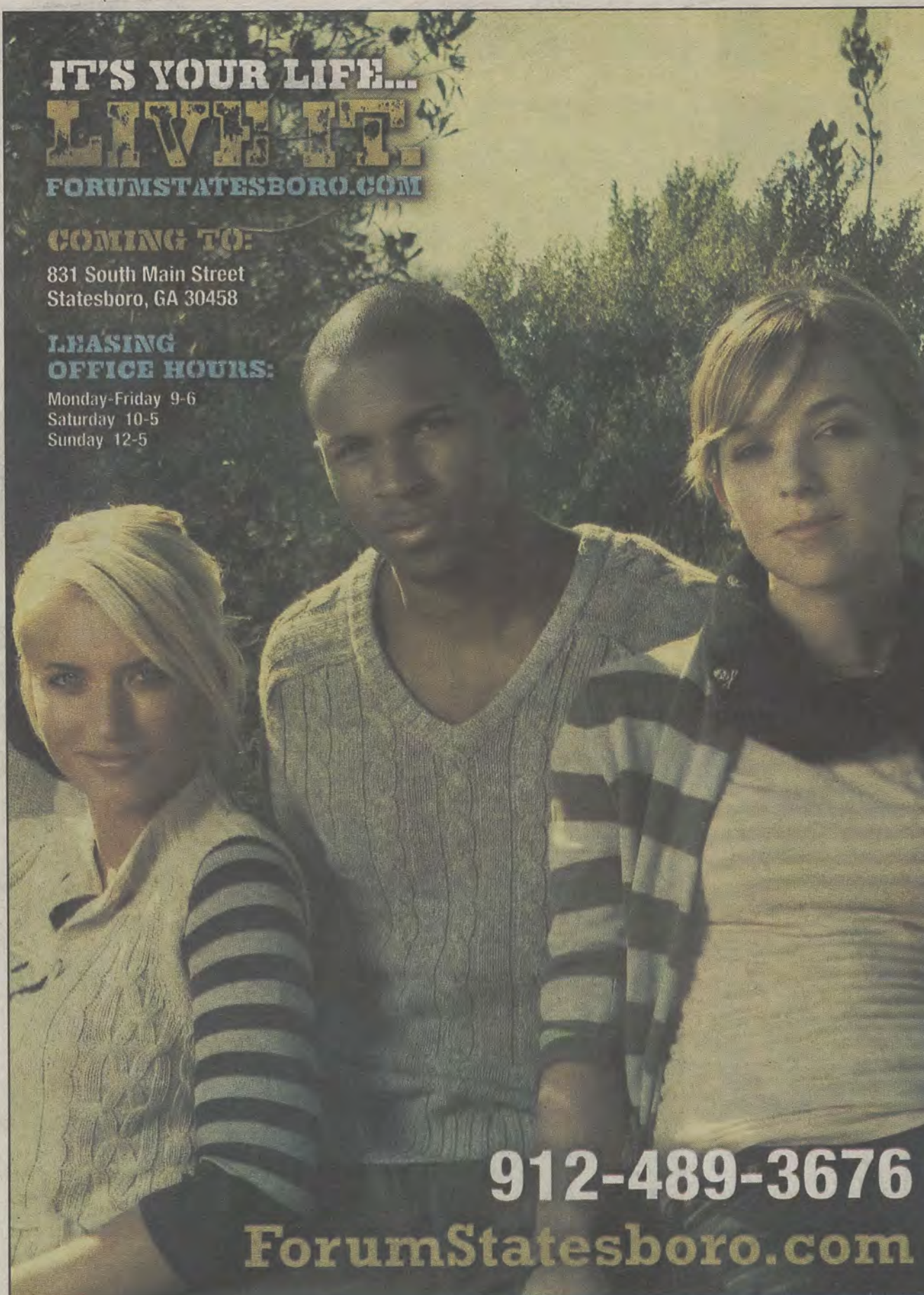
**IT'S YOUR LIFE...
LIVE IT!**
FORUMSTATESBORO.COM

COMING TO:

831 South Main Street
Statesboro, GA 30458

**LEASING
OFFICE HOURS:**

Monday-Friday 9-6
Saturday 10-5
Sunday 12-5



912-489-3676

ForumStatesboro.com

GET A FREE T-SHIRT WITH THIS AD!

FORUM

®

AT STATESBORO

**A PREMIER STUDENT
HOUSING COMMUNITY**

**NOW
LEASING
FOR FALL 2012**

- Tennis Court
- Lap Pool & Spa
- Pet Friendly
- Pet Park
- Two Free Tanning Beds
- Indoor Basketball Court
- Indoor Volleyball Court
- Car Care Center
- Modern Faux-Wood Floors
- Private Bathroom in Bedrooms
- Convenient Individual Leases
- Free High Speed Internet in Bedrooms
- 24 Hour Fitness and Training Center
- Kitchens with Full Size Appliances
- Full Size Washer / Dryer Included
- Wi-Fi Cyber Cafe with Coffee Bar
- Outdoor Sand Volleyball Court
- High Speed Internet Access
- Student Center and Lounge
- Roommate Matching
- Expanded Cable
- Media Room



Some restrictions apply. Call 912-489-3676 for details.