

Georgia Southern University

Digital Commons@Georgia Southern

The George-Anne

Student Media

12-1-2011

The George-Anne

Georgia Southern University

Follow this and additional works at: <https://digitalcommons.georgiasouthern.edu/george-anne>



Part of the [Higher Education Commons](#)

Recommended Citation

Georgia Southern University, "The George-Anne" (2011). *The George-Anne*. 3182.
<https://digitalcommons.georgiasouthern.edu/george-anne/3182>

This newspaper is brought to you for free and open access by the Student Media at Digital Commons@Georgia Southern. It has been accepted for inclusion in The George-Anne by an authorized administrator of Digital Commons@Georgia Southern. For more information, please contact digitalcommons@georgiasouthern.edu.



**FACULTY
PERFORM
CLASSICAL
MUSIC**
PAGE 22



**ON THE
ROAD
TO
APP STATE**
PAGE 11

**GAMEDAY
MAYDAY**

SPECIAL PULL-OUT SECTION

Thursday, December 1, 2011
Georgia Southern University
www.thegeorgeanne.com
Volume 87 • Issue 45

THE GEORGE-ANNE

KICKFLIPPING THE PEDESTRIUM



Christian Washington/ STAFF

Johnny Lesh practices a kickflip near Centennial Place down a seven-step staircase. Local skateboarders have proposed construction of a skate park near Statesboro to meet practicing needs. **To read the full story, see page 9.**

Lakeside, Landrum to be remodeled

Lakeside to close for 6 — 9 months in July

By **COURTNEY TIELKING**

George-Anne contributor

Georgia Southern University's Eagle Dining plans to reconstruct and remodel both Landrum Dining Center and Lakeside Café.

Funding for the projects will come from meal plan revenue from past and present students.

"It will come from the money that students pay for dining plans. There are no fees involved in what we will do. Students that have been on dining plans for, I guess 50 years now, will have

contributed and students that will have them in the future," said Jeff Yawn, director of Eagle Dining.

"We solely survive on meal plans. We get no money whatsoever from anywhere else to operate on," said Kent Tatum, manager of Lakeside Café.

If plans continue to proceed, groundbreaking on the buildings will begin in July, said Yawn.

"It should take two years to do everything, which is to renovate Lakeside and to build a new

See REMODEL, page 7

Occupy Wall Street movement comes to Georgia Southern

By **TAYLOR COOPER**

George-Anne contributor

A group of Georgia Southern University students and staff are working on forming an Occupy Wall Street chapter in Statesboro.

The group met for first time on Nov. 15 to discuss the group's focus, said Jason Blizzard, graduate student in clinical mental health counseling.

"This is still a group in the fledgling stages," said Blizzard. "We talked about what

the occupy movement means on a larger scale and what we could do as a smaller chapter."

"Using the strategies of the Civil Rights movement as a guide, we discussed the effective method of focusing on specific issues in which we would like to make a change," said Rebekah Cole, a Special Projects Assistant in Collection and Resource Services at the Henderson Library.

"We decided our focus would be the educational side, information dissemination,

See OCCUPY, page 3



thegeorge
anne.com

Thurs.	Fri.	Sat.	Sun.
H 61	H 65	H 67	H 71
L 30	L 32	L 39	L 45



Newsroom 478-5246
Advertising 478-5418
Fax 478-7113

PO Box 8001
Statesboro, GA
30460

IT'S YOUR LIFE...

LIVE IT.

FORUMSTATESBORO.COM

COMING TO:

831 South Main Street
Statesboro, GA 30458

LEASING
OFFICE HOURS:

Monday-Friday 9-6
Saturday 10-5
Sunday 12-5

FORUM

®

AT STATESBORO

A PREMIER STUDENT
HOUSING COMMUNITY

**NOW
LEASING
FOR FALL 2012**

- Tennis Court
- Lap Pool & Spa
- Pet Friendly
- Pet Park
- Two Free Tanning Beds
- Indoor Basketball Court
- Indoor Volleyball Court
- Car Care Center
- Modern Faux-Wood Floors
- Private Bathroom in Bedrooms
- Convenient Individual Leases
- Free High Speed Internet in Bedrooms
- 24 Hour Fitness and Training Center
- Kitchens with Full Size Appliances
- Full Size Washer / Dryer Included
- Wi-Fi Cyber Cafe with Coffee Bar
- Outdoor Sand Volleyball Court
- High Speed Internet Access
- Student Center and Lounge
- Roommate Matching
- Expanded Cable
- Media Room



912-489-3676

ForumStatesboro.com

GET A FREE T-SHIRT WITH THIS AD!

OCCUPY, from page 1

getting information out to the people. Sort of a balance between being vocal about broader and more national things and being effective in our own community," said Blizzard.

"We also do not want to be anarchists or associated with anarchy. We want to have appeal beyond party lines. We are a movement about people. We do want to work for change," said Cole.

"We want to find people who are likeminded who have similar ideals and values and act as a group, because a group is much more powerful than an individual," said Blizzard.

"Our main agenda right now is to raise awareness in our community. The guiding statement we developed for Occupy Statesboro is as follows: 'We are a nonviolent educational movement.' Keep in mind that as we grow we are also open to change and development," said Cole.

"We agreed that we can use Facebook to spread news about issues, national, but more importantly local, issues. Such as living wages, our local, state and national representatives, economic inequality and substandard

living conditions," said Cole.

Some students said the group should increase their on-campus visibility.

"I joined the Facebook group, but they didn't publicize the meeting that much, so I wasn't able to make it," said Xavier Best, senior mechanical engineering major.

The group agrees with many of the messages that have been attributed to the Occupy Wall Street movements, but not with the violence that some see as necessary.

"It's starting to become unconstructive. It's moving away from where I thought it was," said Blizzard.

"I am sympathetic with their message, but not with violence. It's unfortunate, and I don't think it helps anyone," Blizzard said. "I personally am glad that certain situations have occurred. It's helped move it past a protest."

The group aims to bring attention to Statesboro's wealth gap.

"Statesboro is number 23 in wealth gap out of all the cities in the nation, so we have income disparity. It's not a thing of wanting handouts or of wanting sympathy," said Blizzard.

"America has throughout its history

struggled with differences among people, like race or class or nationality. What I see is that it's more difficult for people who have less money, or are young, or have disabilities. They have a harder time getting into a better economic standing," said Blizzard.

The Amnesty International chapter on GSU's campus is also trying to bring attention to the movement, but with a different focus.

"We're not so much trying to spread the message of the movement as trying to bring attention to the human rights being violated in some of the cities," said Ifadul Huq, junior civil engineering major and president of Amnesty International at GSU.

While there is not another meeting or a protest planned yet, there will be an Occupy Wall Street discussion that will be held in the College of Information Technology building 5-6 p.m. on Dec. 1.

"I feel that this thing on Dec. 1 will be a good platform to get the word out," said Blizzard. "To me personally, the occupy movement is a platform to talk about economic inequality and ways that Americans can get an opportunity to better their economic situation."

Statement of Operations

The George-Anne is the official student newspaper of Georgia Southern University, owned and operated by GSU students using facilities provided by the university. The newspaper is the oldest continuously published newspaper in Bulloch County. The newspaper is a designated public forum for the Georgia Southern community. The newspaper is published twice weekly, on Tuesdays and Thursdays, during most of the academic year. Any questions regarding content should be directed to the student editor by phone at 912.478.5246 or at gaeditor@georgiasouthern.edu.

ADVERTISING: The newspaper accepts advertising. Inquiries may be made by calling 912.478.5418 or 912.478-0566. Fax any questions to 912.478.7113 or e-mail ads1@georgiasouthern.edu.

The George-Anne receives additional support, in part, from the Student Activities Budget Committee.

The deadline for reserving space and submitting advertising copy is noon, one week prior to the intended publication date. For more information, rate cards, sample publications, contact the advertising manager or student media director. The advertiser is responsible for any errors in advertisements and its liability for adjustments is limited to the amount of space the error occupied in the ad. Further, the newspaper is not responsible for any damages caused due to an ad's omission from a particular edition and its responsibility solely is to reschedule the ad in the next regular edition at the regular advertising rates.

STUDENTS BEWARE: The George-Anne screens all advertisements prior to publication. The newspaper strives to accept ads for legitimate products and services only. Students are urged to exercise caution when replying to ads—particularly those that require personal information. Students are also urged to report to the newspaper any suspicious offers which they might see in an ad.

PUBLICATION INFORMATION: The newspaper is printed by Brunswick News at Brunswick, Ga.

NOTICE: Unauthorized removal of multiple copies from a distribution site constitutes theft under Georgia law, a misdemeanor offense punishable by a fine and/or jail time.

Editor-in-Chief Arielle Coambes
Views / Copy Editor Shauntel Hall
News Editor Jennifer Curington
Asst. News Editor Jessie Reese
Arts Editor Quaniqua Epps
Asst. Arts Editor Alex LaSalle
Sports Editor Matthew D'La Rotta
Asst. Sports Editor Jannah Bolds
Football Editor James Farmer

Business Manager Tiffany Larkin
Asst. Business Manager Holly Hillhouse
Marketing Manager Aria Gabol
Production Manager Mallory McLendon
Photo Editor Randy Hudgins
Design Editor Kelsey Paone
Web Editor Jonathan Law

“ We also do not want to be anarchists or associated with anarchy...We do want to work for change. ”

-Rebekah Cole, Special Projects Assistant in Collection and Resource Services at the Henderson Library

Corrections

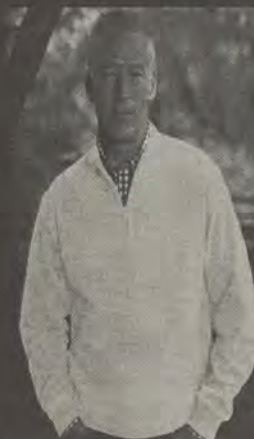
Contact the editor at gaeditor@georgiasouthern.edu for corrections and errors.

In Tuesday's edition, The George-Anne reported the last home playoff game was in 2004. It was in 2010. Also, the Center for Wildlife Education Director Steve Hein's name was misspelled.

ORVIS®



The Sir Shop
Statesboro Mall
912.764.6924



Our View

City council should respect votes

Statesboro city council held a work session Tuesday night to discuss further stipulations of the alcohol ordinance and to vote on the ordinance's second reading, according to an article written in Tuesday's paper.

The delay of the alcohol ordinance offended some Georgia Southern University students.

"I'm in no hurry to get stupid drunk on Sunday, but the fact is we voted for it and council is disrespecting the city's opinion by not letting it pass," said Brian Simonson, senior computer science major.

The delay of city council to pass the alcohol ordinance is unacceptable to the GSU students, the community and businesses.

For weeks leading up to the voting, GSU student organizations rallied together to get students prepared to register to vote.

Voting exists as a way to have your voice heard in your community, state and nation.

For GSU students, voting is extremely critical. These students make up for the majority population and revenue generator for Statesboro.

The fact that students came out to the polls in numbers to vote on things that they felt strongly about and happened to be a delay in putting it into action is unacceptable.

This delay that was extended out by the city council makes students and voters less confident and trusting in their local government.

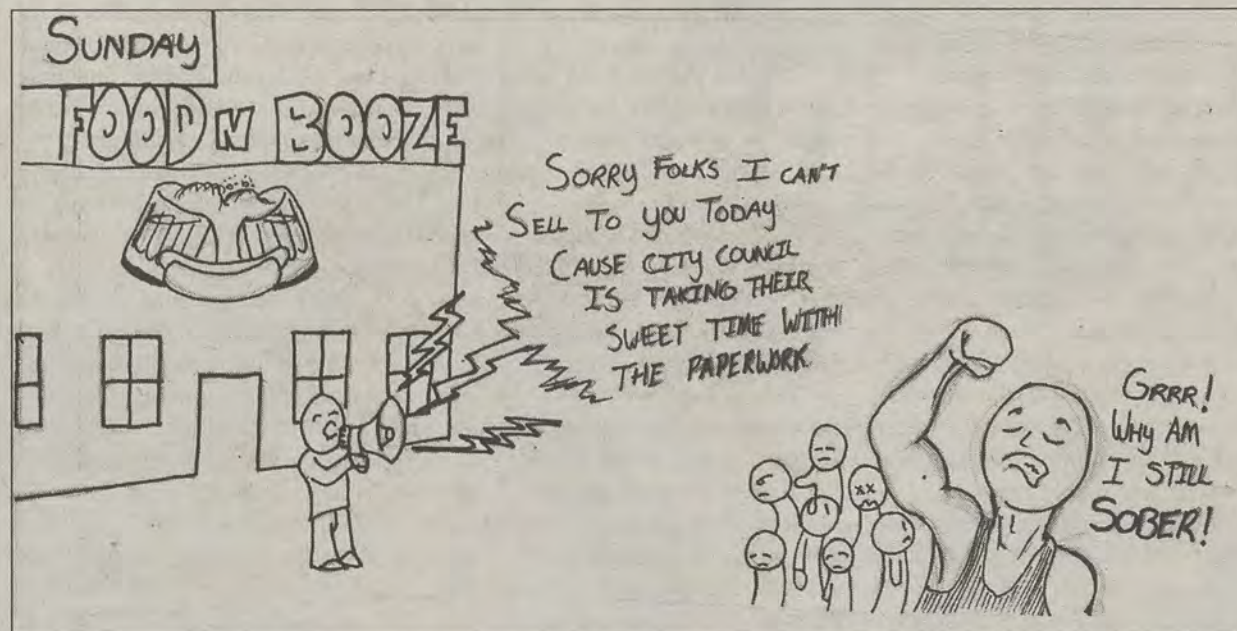
If laws are passed and not put into order it makes voters wonder why they even participate in the voting process. Their voices are being ignored.

Because this alcohol law has had such a delay, the businesses in the city have suffered financially in relation to alcohol sales in surrounding counties.

During Thanksgiving break, students traveled back to their prospective hometowns and spent money on liquor that could have easily benefited the city of Statesboro instead.

This postponing of alcohol sales could have a negative affect on the way that GSU students visit the polls in the future.

City council should respect the votes of students and the community in order to maintain the belief of students in their local government.



Marcus Barkley/STAFF

Weekly SGA Column

Fees, healthcare important to students

At the beginning of this year the Student Government Association set out to attain several goals for the upcoming year. One of those goals was to make the students of the university much more aware of the things that will affect them in the coming year.

As a governing body one of our responsibilities is to be a part of the decisions that are made concerning new fees and the increase in current fees.

I am happy to announce that nearly two weeks ago we were notified that there will not be an increase in mandatory auxiliary fees for students in the next academic year.

This is great news for a time such as this when the economy has made times hard for several people, including students. We recognize the rising cost of higher education and seek to do all that we can to alleviate the oncoming of any undue financial strain that the students would have to bear.

With this in mind I would like to point out something that I find to



ALTON STANDIFER

be of importance and may warrant a future fee for the students of our university.

You may not realize it but we have a vast amount of students on campus that do not carry health insurance. With that being the case, the university health center is one of the only places that they can go to receive medical attention.

With the growing number of students that we have the current facility is becoming insufficient in its ability to accommodate the needs of our students. In speaking

with university administration there is research being done on what it would cost to construct a facility that would address this critical need on our campus.

I have made it clear to the leaders of our university that this is an area that we need to address and they have been extremely helpful in doing their part to collect the information that we would need to move forward.

The mental, emotional and physical health of our student body is something that we should all be committed to preserving; having a suitable facility is just one step in accomplishing this goal.

If you have any comments, concerns, or questions regarding this I would encourage you to contact me directly via email at as00469-gw@georgiasoutherne.edu or visit the SGA office on the second floor of the Russell Union. And remember, "The Eagle continues to fly on Saturday, but no Eagle Flu on Monday."

Standifer is a senior middle grades education major from Monticello, Ga. He is the president of SGA.

The George-Anne welcomes letters to the editor and appropriate guest columns. All copy submitted should be 350 words or fewer, typed, and sent via e-mail in Microsoft Word format to gaeditor@georgiasouthern.edu. All submissions must be signed and include phone number for verification. GSU students should include their academic major, year and hometown. The editors reserve the right to reject any submission and edit submissions for length.

Opinions expressed herein are those of the Board of Opinions or columnists themselves and DO NOT necessarily reflect those of the faculty, staff or administration of GSU, the Student Media Advisory Board, Student Media or the University System of Georgia.

Local government shuns students

Good news Georgia Southern, we can finally get our alcohol fix on Sunday without having to stock up on Saturday.

An article came out in Connect Statesboro today saying that the City Council has finally allowed the law to take effect. This is great news for us students, the community and everyone who voted this law in. The process, however, should raise some concern.

Courtney Escher wrote a fantastic article on Tuesday on this issue and some quotes in it raised some concern in my eyes.

If you haven't been around long enough to figure it out, Statesboro politics are a different monster than you're probably used to. If you want something to get done around here, it'll be extremely difficult. If you want something done in a timely manner, forget about it.

What I've observed during my time here is that they get done what they want done in their own time. Few representatives



ROB ROBERTS

have acted on the interest of the students, and that is appalling.

As Georgia Southern University students, we represent a large portion of the Statesboro population and it is an injustice for our needs not to be served. There have been representatives who have actually outright said they aren't in the business of servicing students.

This is shown in our most recent pursuit of a polling place on campus. This would be great for us students because we would have an easily accessible polling station. Having a polling station on campus would result in a larger number of voters, which

would benefit the country as a whole when it came to voting for national office.

The city isn't as excited at the prospect of having a polling place on campus though. It's as if the local government wants to shun the student population as passerbys. It makes sense in a way because we are only here for four, five, maybe six years, but it's also our home for the time we are here.

The students are a large component to the local economic success. We pay for housing, buy gas, food, see movies and pay for utilities. We are a big reason Statesboro is the size it is and we should be respected as a key stakeholder, not the red headed stepchild of the bunch.

We need to use our strength in numbers and influence the Statesboro community to our liking. We have the power, let's use it.

Roberts is a senior public relations major from Warner Robins, Ga.

Student Views on News



Jordanna Lundgren

Senior biology major
How do you feel about city council saying that they want to make changes the alcohol laws before they can be put into effect?

"I think if that if the law passed, it passed. They shouldn't be trying to make any alterations to it. It should just be alcohol on Sunday. That's it."

Do you feel like businesses are upset?

"Absolutely. When it was voted for everybody was excited and happy and now they are taking that away from them. It's sort of like a false hope."

Savannah Rogers

Senior music major

How do you feel about city council saying that they want to make changes the alcohol laws before they can be put into effect?

"I like booze on Sunday. I'd like that to go ahead and happen. They need to just get over it."

How do you think the businesses that were looking forward to alcohol sales feel?

"I think they have some idea of how much they could make. I feel like they would easily make it profitable."

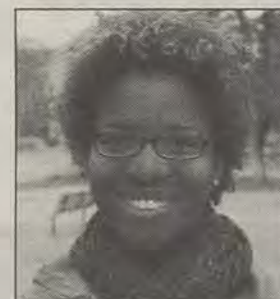


Saliyah Johnson

Senior education major

How do you feel about city council saying that they want to make changes the alcohol laws before they can be put into effect?

"I think it's ridiculous because Bulloch County is one of the poorest counties in Georgia and since you have the third biggest school in the state, you should sell alcohol just out of student revenue because most of our money goes to different counties for alcohol. It goes to Chatham County for everything else because I mean people don't buy anything in Bulloch County except for Wal-Mart. That's an international corporation so they're not making money off of us and we're their biggest revenue generator. And they're not trying to take advantage of that so it's their loss really."



Devaughn Sidisall

Senior biology major

How do you think the businesses feel?

"The businesses probably feel like they are affected as well because they're not getting any benefits from the law being passed. They are trying to make money off us. They could be putting into effect all kind of different drink specials and stuff like that for the alcohol to bring in revenue for their businesses to help them thrive off the college students but it's not helping them at all because they can't do anything."



Talisha Rice

Junior psychology major

Do you think this will have an effect on the next big thing that we have to vote for in the future?

"I think a lot of people will be less motivated to vote if it doesn't matter. People feel that way already so the fact that you go and prove it to them, it just validates their point and they are not going to vote. We'll just be in the same position we were in before."



onto and use against the anointed one in Obama and get him out of office.

The problem is there is so much infighting amongst the candidates; they are too busy making each other look bad as opposed to focusing on the real target. Another problem is that every last one of them has failed to do what Reagan did back in 1979, which is to capture the essence of America and jumpstart the imaginations of Americans to envision an America that is economically stable, prosperous and essentially brought back the feelings of pride in being American.

And I hope one of them can do it because if this year is 1979 all over again than hopefully next year will be 1980 all over again.

Chapin is a political science major from Roswell, Ga.

America strongly resembles past

Is it just me, or does it feel like 1979 all over again? Granted I wasn't even close to being born then, but a lot of the same things are happening again.

We have a destined one term president in office who can't seem to get anything done, troubles with Iran including an embassy takeover, a fuel dependency problem and a stagnate economy.

The only difference between now and then is no Ronald Reagan figure on the horizon coming to capture the imagination of the country and bring it back on track to being the land of prosperity that it once was.

A Gallup poll Wednesday shows that Obama's approval rating right now is the lowest in history at this point in his presidency with a total approval rating of only 43 percent of Americans.

At this point back in 1979



FRITZ CHAPIN

Carter had an approval rating of 51 percent.

Also in 1979 around this time the Iran hostage crisis happened where 52 Americans were held hostage for 444 days. Just this week, Iranian students took over the UK embassy and forced the workers out and were brought home by the UK government. This is just another sign that Iran is up to something and does not want the West to find out what it is.

These are all things that Republican leaders need to latch

Letters to the Editor

Crime rates inaccurate; city is unsafe

Dear Editor,

Hey, my name is Brian Rice and I am a senior here at Georgia Southern University. I was really upset with your article about crime rates decreasing. I have lived down here for five years and this year has by far the most burglaries in this town I have ever seen.

If you watch the Savannah news, Statesboro burglaries are on there almost every day. How can you say crime has gone down? I was just robbed over Thanksgiving break and I know five friends that have been robbed this semester.

Girlfriends of mine at school for the first time here at GSU, don't even feel safe to walk on campus at night and I don't blame them. I feel like you are not reporting the real issues.

Burglaries are a HUGE

problem with this campus and it is even making students transfer to other schools because they are tired of feeling unsafe. I'm sorry for venting but I think that article is absolutely absurd.

Why don't you give statistics on burglaries this year? I guarantee you they are higher than ever before. You also said many students feel safe, that's just ridiculous. If you ask more than one person I'm sure you will get the majority of the students saying that they feel unsafe.

I just felt like this article was written, to try to convey to the public that it's (burglaries) not as bad as it seems when really it is.

I usually enjoy reading your articles but am going to be very weary of picking up a paper from you again. Of course this is my own personal opinion but everybody I have talked to

agrees. One student even said a comment that there was more crime going on here then at Penn state.

Now that's pretty bad since they have been in national news for the past month. Thank you for reading this, I am not trying to offend people I just wish you would report the real news, not what we would like to hear.

Brian Rice
Senior Logistics Major
Tallapoosa, Georgia

Editor's note: As reported in Tuesday's edition, the city rating of Statesboro shows that violent crime decreased in the past three years and is predicted to do so through this year. Also, there were 25 on-campus burglaries in 2010 as opposed to 11 so far in 2011.

Wildlife Center is a great tool for GSU

Dear Editor,

In response to the article concerning the Georgia Southern University Wildlife Center, I would like to express my gratitude to the Wildlife Center for all it has offered for the community and Georgia Southern students. I think it is a great educational tool for people to learn about the assortment of species in our environment.

Additionally, the GSU Wildlife Center is the only one of its kind to be located in the center of a major university campus.

Although there are many advantages to having the Wildlife Center on campus, the parking is very limited.

Surrounding the Wildlife Center are faculty and student parking, therefore people cannot park in these lots before 4 p.m. or they will be waiting with a GSU parking ticket on their windshield.

I am unsure if the Wildlife

Center has special parking during these times, but if so, I would advise them to publicize this to the community and students.

The article also spoke of the mascot for Georgia Southern University, Freedom, who has become an icon among the student community.

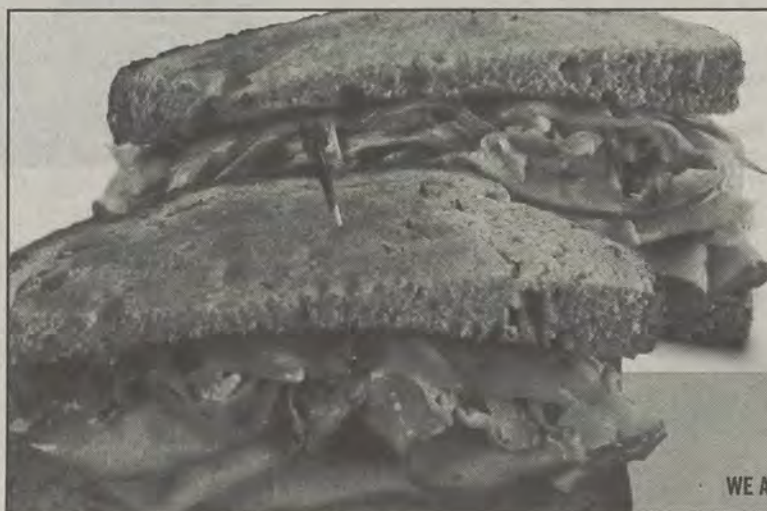
I know from personal experience that students enjoy the interaction with Freedom at GSU football games when he comes into the stands.

The students in the stands constantly want to take pictures with Freedom to show their school spirit.

I think the Georgia Southern University Wildlife Center is a fun and educational way to expand your knowledge on species and their native habitats. So if you have not visited the GSU Wildlife Center, you should go!

Sarah Gricius, Senior
Public Relations Major
Alpharetta, Georgia

Comment on articles in The George-Anne or send
in your opinions by submitting a Letter to the
Editor to gadaily@georgiasouthern.edu.



New california turkey reuben

Butterball™ smoked turkey breast, housemade cole slaw,
Swiss and Thousand Island dressing on toasted rye.

A classic with a Fresh twist.

1100 Brampton Ave., Ste. A • 912-681-3354

Find us on Facebook! Search "McAlister's Deli - Statesboro, GA."

WE ACCEPT THE EAGLE EXPRESS CARD • To see our full menu and more visit www.mcalistersdeli.com.

McALISTER'S
DELI

Available for a
Limited Time Only!

How much will it cost to renovate both dining halls?

\$20,000,000

Paid for by meal plans since the 1950s

REMODEL, from page 1

Jose Gil/STAFF

Landrum. It's not going to be called 'Landrum,' but it will be a completely new dining facility," said Mills.

The cost of the two projects will be about 20 million dollars, said Yawn.

"Lakeside will actually have to be shut down for somewhere

between six and nine months. Landrum will be operational pretty much the whole time," said Mills.

There are many reasons to renovate the two building, but space and environment are the most predominant factors, said Yawn, Tatum and Director of Auxiliary Services Eddie Mills.

"First of all, we don't have

enough space nor do we have the facilities to adequately serve students as we believe they should and do expect. We want to be able to provide the students with the dining choices that they expect," said Yawn.

"I think the university is kind of missing a crown jewel, so to speak. I think we have fantastic housing

facilities, we have a beautiful campus, but our dining facilities have lagged behind," said Mills.

"We want to give the students an area to socialize, to gather. We believe that with all food there is a quality aspect, a service aspect, but there is a community aspect to what we do and we want to be able to provide the students with the community that they deserve in a dining facility," said Yawn.

Construction on the two buildings is necessary to accommodate the continued growth of GSU's student enrollment, said Tatum.

"As far as feeding the amount of students we feed, which is astronomical, this building wasn't really designed to fit that many people. Our kitchen is so tiny, so the space is what we are most excited about. In our dining room right now we can fit about 400 and with the renovations we will go up to about 600," said Tatum.

This project will also bring the standards of GSU dining to where they should be, said Tatum.

"Most of the other schools have really updated dining facilities, said Tatum. "Students expect more now when they go to eat at a dining facility and ours has gotten kind of old."

Lakeside Café

will be closed for

6 MONTHS

starting in July 2012.

Seating at Lakeside and Landrum will increase by

965 seats

Jose Gil/STAFF

New graduation tracker introduced at SGA meeting

By TJ JACKSON

George-Anne contributor

At last night's Student Government Association meeting, Associate Registrar Velma Burden and Assistant Registrar Wallace Brown introduced a new tool for students to use on WINGS to track their graduation progress.

The program, Degree Works, will be launched spring semester 2012,

said Burden.

Degree Works will allow students to check how their class credits will change and what courses they will need to take if they were to change their major under the "what if analysis," said Burden.

"Degree Works is a web based program that will allow easy access for you to see how your requirements toward your degree can make. It's a fully integrated academic planning

tool," said Burden.

Brown instructed SGA executive board members and college senators how to use the new program on an overhead projector.

Brown demonstrated how different areas within the academic curriculum were to look like if they were to be completed or uncompleted.

Senators from different colleges raised questions concerning

advisors and Eagle Incentive Program students.

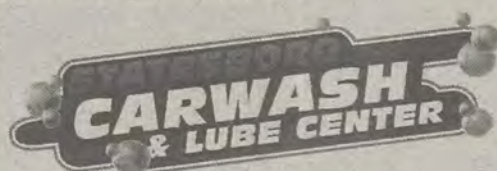
"Once students have access to this program, will this replace the need for advisors?" said Patrick Teate senator from College of Science and Technology.

"There will always be a need for advisors and that's not the intent of this," said Burden. "We need advisors to keep making it available as much as we can."

Degree Works will also be available to freshmen taking EIP courses once they have registered for classes in the summer, said Brown.

The launch of Degree Works began in June 2010 and was available to advisors in September of this year.

A guide to operating the Degree Works system for advisors and faculty can be found on the Georgia Southern University website.



HALF PRICE FOR SHARING WITH A FRIEND!

Bring This Ad, and Two Cars
and Both Cars Get Half Price Ultimate Washes*

*NOT VALID WITH ANY OTHER DISCOUNT

10% off All Car Wash, Detail, And Oil Change Services
WITH GSU STUDENT OR EMPLOYEE ID



GSU tightens enforcement on spice usage

By **AMBER GORDON**

George-Anne Contributor

This fall, Georgia Southern University is taking a stronger stance against the newer form of synthetic marijuana called spice.

"In a resolution supported by the Student Government Association, the use of synthetic marijuana is now considered a violation of the Student Code of Conduct. Those found in violation will be subject to sanctions through the Office of Student Conduct. These sanctions will include 6 months of disciplinary probation, a \$150 fine, mandated marijuana education, and the potential for removal from University Housing," said an e-mail sent by President Keel to Georgia Southern students about the dangers of Spice and the disciplinary actions concerning the use of synthetic marijuana.

Synthetic marijuana goes by several different nicknames such as K2, fake marijuana, and Yucatan Fire. Unlike regular marijuana, Spice is chemically created said the administrative coordinator of the office of Alcohol and Other Drugs Programs, David McDermott.

"Spice is a chemically created product that is then sprayed on herbs and spices," said McDermott. "Herbs and spices by themselves do nothing, but the chemical that is sprayed on them is what causes the reaction."

Spice, like marijuana, is smoked. However, spice users typically have different reactions when they use spice rather than marijuana said McDermott.

"It's supposed to mimic the way that THC works so they took a similar structure of THC and they made some chemical changes to it," said McDermott. "However, the reactions haven't always been the same. People react to marijuana differently than they react to spice as far as most reports go. I would say that in general from what I've seen in the research and what I've heard talking to students is that people tend to have worse reactions when using spice rather than marijuana."

Unlike marijuana, the spice drug is usually sold in places such as convenience stores, gas stations, and herb shops. This leads to several legal problems because spice is illegal according to McDermott.

"Yeah, traditionally spice has been sold over the counter and that's why the legal piece is complicated," said McDermott. "Basically, there are five of these chemical compounds which are illegal and then there's sometimes others that fall outside of those legal parameters so they haven't been made illegal yet. That's why sometimes there are still products available and sold at gas stations or convenience stores or herb stores.

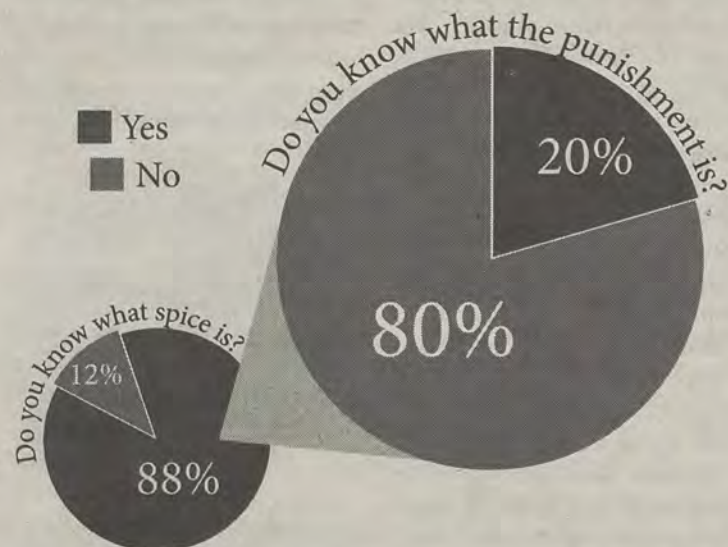
However, if students are found with it they get in all kinds of trouble."

One of the main problems with monitoring the use of spice is that there isn't a lot of research dealing with the new drug.

"The one thing that's a problem is that spice is relatively new, there's very little research on it," said McDermott. "There have been a lot of anecdotal reports of people having bad experiences. So, some of those reports of students reacting more strongly to spice than they do to marijuana, but it is kind of tough to say because it is so new and that it's coming from anecdotal reports rather than actual research."

Because of the lack of research and the fact that it is new it is rarely tested for on a standard drug test said McDermott.

"For a lot of people, the main reason why they use spice is because it won't show up on a drug test. I think that's one of the motivations for using it, to still use something when you have to take a drug test. Now there are more and more people testing for it," said McDermott. "It's not being tested for regularly, but as it becomes more of an issue I would sort of expect that to follow. There was a player at LSU who was suspended from the team for using spice, not marijuana. That was based off a drug test that came back, so it can happen."



David McDermott

Administrative Coordinator of the Office of Alcohol and Other Drugs Programs

What is spice?

"Spice is a chemically created product that is then sprayed on herbs and spices. Herbs and spices by themselves do nothing, but the chemical that is sprayed on them is what causes the reaction."

President Brooks Keel

What are the punishments?

"Those found in violation will be subject to sanctions through the Office of Student Conduct. These sanctions will include six months of disciplinary probation, a \$150 fine, mandated marijuana education and the potential for removal from University Housing."



Charlie's Fried Chicken

WE DELIVER

4 UNIVERSITY PLAZA

(912) 681-2222 (912) 681-6666

Ask about our Tailgate Specials!

10% off
Walk in Only

Full Menu

APPETIZERS

Cheese Stix (6) - \$3.99
Chili Cheese Fries - \$5.99
Hot Dog - \$1.89
Fried Pickles (6) - \$5.50
Chili Dog - \$2.50
Fried Jalapenos (5) - \$5.50

CHICKEN FINGERS

(3) Fingers w/ Fries - \$5.95
(5) Fingers w/ Fries - \$7.50
(8) Fingers w/ Fries - \$9.50
(10) Fingers w/ Fries - \$11.50
(12) Fingers w/ Fries - \$13.50

BASKETS

Tilapia (2 fillets) - \$7.99
Pork Chop Basket (2) - \$6.25
Hotdog Basket - \$4.50

DRINKS

Coke - \$3.00
Sprite - \$3.00
Bottled Water - \$1.00
Pepsi Products - \$2.00

DESSERT

Chocolate Pie - \$3.00
Strawberry Cheesecake - \$3.00

BURGERS & SANDWICHES

(comes with fries)

Hamburger - \$5.50
Cheeseburger - \$5.95
Bacon Cheeseburger - \$6.50
Mushroom Swiss - \$6.50
Philly Cheese Steak - \$6.95
Roast Beef & Cheese - \$4.95

BLT - \$5.95
Grilled Chicken - \$5.95
Ham & Cheese - \$4.95
Turkey & Cheese - \$4.95
Club - \$6.50

WINGS

(6) Wings - \$4.95
(12) Wings - \$8.95
(18) Wings - \$11.95
(6) Wings w/ Fries - \$5.95
(8) Wings w/ Fries - \$6.95
(10) Wings w/ Fries - \$8.50

Mild, Hot, X-Hot, Lemon Pep, Teriyaki, Honey Mustard, BBQ
All drums or flats: 100
Mix Flavors: 100

SIDE ORDERS

French Fries - \$1.89
Fried Okra - \$2.79
Baked Beans - \$1.89
Mac and Cheese - \$2.79
Onion Rings - \$1.89
Mash Potatoes - \$1.89

(Large: \$2.99)
(Large: \$3.50)
(Large: \$2.99)
(Large: \$3.50)
(Large: \$2.99)
(Large: \$2.99)

FRIED CHICKEN

Basket:
(comes with (2) Sides)

(2) Pc Dark - \$6.50
(2) Pc White - \$7.50
(3) Pc Dark - \$8.00
(3) Pc White - \$8.50
(4) Pc Mix - \$9.00

Snack Box:
(includes fries)

(2) Pc Dark - \$4.50
(2) Pc White - \$5.50
(3) Pc Dark - \$6.00
(3) Pc White - \$6.50
(4) Pc Mix - \$7.00

Skatepark to be proposed

By KAYLA HURLEY

George-Anne contributor

Members from a community of skaters, roller bladers and BMX riders called South and East will present a skate park for Statesboro to Statesboro City Council on Jan. 6, 2012.

Georgia Southern University had a skate park on campus where it was mandatory for riders to wear protective gear, according to the GSU Skate Park Club website.

"GSU had high expectations for the park. Most people who skate don't wear pads and helmets," said member of the South and East community Austin Hendrix.

Some Statesboro residents argue that there is no place to skate, said member of the South and East community Jack Bevevino.

"Everywhere we go, we get kicked out. GSU gives us a hard time for it, but security guards recognize we have nowhere to go," said Bevevino.

Having a skate park near campus will give skaters a place to go that is designated specifically for them, said member of the South and East community Paige McDaniel.

"Many students quit skating and others



Christian Washington/STAFF

Parker Grumbar, member of South and East, does a kickflip down a staircase.

find places to skate that aren't necessarily legal. Having a park will give many students a positive environment to go and skate," said McDaniel.

Hendrix and Bevevino plan to provide the council with statistics showing that members of the community need a facility to skate in.

Bevevino said, "We want to get as many people as we can there to support us. The interest is there, the skaters are there, whether people see it or not."

Choices of the Heart

Pregnancy Center

Pregnant?

**Free and Confidential Testing and Counseling. Off Campus Location.
Hot Line: 9AM-9PM 912.764.4303
Appointments Only.**

106-B Oak Street, Statesboro, Georgia • www.choicesoftheheart.org • 912.764.4303



Company hours

7:30 A.m. - 6:00 P.m.
Monday - Friday

912-489-2222

102 N Zetterower Ave
Statesboro, GA 30458



Eagles to take on Mocs

Men's basketball

By **KEVIN GREGAN**

George-Anne contributor

The Georgia Southern University men's basketball team is set to start Southern Conference play against the University of Tennessee at Chattanooga on Thursday.

In the last match-up between the two teams, Chattanooga edged out a 66-75 victory but this time the Eagles will enjoy home court advantage.

The Eagles are 1-4 this year and they look to improve to a 2-1 record at home after losing two on the road during Thanksgiving break. The Mocs are going into the game with a 2-4 record for the season.

Georgia Southern is shooting 46 percent from the field this season, which provides the Eagles with some confidence as Chattanooga is only shooting 37 percent.

Chattanooga does not take care of the ball as well as GSU does either. They've committed 96 turnovers this season as opposed to Georgia Southern's 85.

The Eagles will need to protect the boards since Chattanooga holds an edge. The Mocs average 37.9 rebounds per game while the Eagles average only 33.2 per game.

Sophomore guard Eric Ferguson is expected to provide a huge boost to the Eagle offense as he looks to extend his early season success.

He is the team's leading scorer averaging 16 points per game and he is also the leading rebounder with 7.2 per game. The Moc's will be sure to pay close attention to him.

Other players expected to contribute to a GSU victory include Jelani Hewitt and Willie Powers whom are both averaging in the double digits for points

scored per game.

Last year, senior guard Ben Drayton III had a great game against Chattanooga scoring 28 points, 4 rebounds and 5 assists. With the support of his teammates, Drayton and the Eagles could pull through with a win.

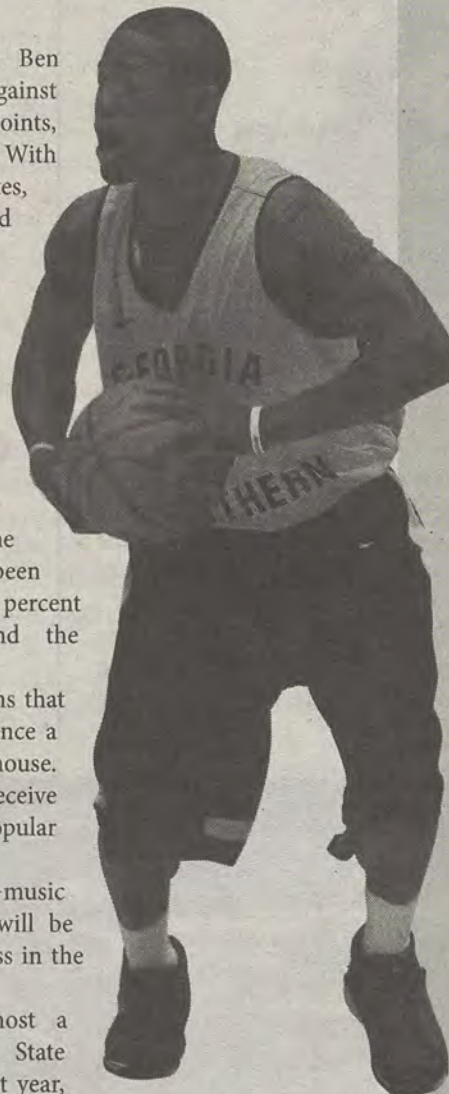
A major challenge for the Eagles will be containing Chattanooga's leading scorer, guard Omar Wattad, who shoots 36 percent from three point range.

Luckily, the GSU defense has been effective against the three-point shot and has been holding opponents to a 25 percent shooting percentage behind the three-point line this season.

Tipoff is at 7 p.m. and fans that attend the game will experience a 1990s theme at Hanner Fieldhouse. The first 100 who arrive will receive a slap bracelet that was a popular fashion item at the time.

During the game, 1990s music will be played and prizes will be given out to people who dress in the best 1990s attire.

The Eagles will also host a game against Appalachian State on Saturday at 7:30 p.m. Last year, Georgia Southern lost both of their games against the Mountaineers.



2011-2012 HOME SEASON

@ HANNER FIELDHOUSE

- 12/1 **Chattanooga**
7:00 p.m.
- 12/3 **Appalachian State**
7:30 p.m.
- 1/2 **Brewton Parker**
7:30 p.m.
- 1/12 **Samford**
7:00 p.m.
- 1/21 **College of Charleston**
7:30 p.m.
- 1/23 **The Citadel**
7:00 p.m.
- 2/6 **Furman**
7:30 p.m.
- 2/9 **Wofford**
7:00 p.m.
- 2/18 **UNCG**
7:30 p.m.
- 2/25 **Davidson**
7:00 p.m.

Kelsey Paone/STAFF



Sports EMPORIUM

Your largest selection of athletic
footwear in Statesboro



840 BC Buckhead Drive, in Buckhead plaza (912)764-4449

Lady Eagles prepare to take on App. State

Women's basketball

By OLIVIA CLEMENTS

George-Anne contributor

The Georgia Southern University women's basketball team continues to travel today with its fifth consecutive away game of the season at Appalachian State University.

The Lady Eagles will be tipping off against the Mountaineers for their first Southern Conference game of the 2011-2012 season after just getting back from the Southern Mississippi Tournament in Hattiesburg, Miss. on Nov. 25 and 26. The Lady Eagles came away with a close loss of 40-49 to Stephen. F. Austin State University and a 72-49 victory over Jacksonville State University.

The Lady Eagles currently hold a four game winning streak against their opponent of the evening, App. State. The all time statistic of women's basketball games won among the total number of games played between the two schools is currently 33-13, GSU.



Lindsay Hartmann/STAFF

Junior guard Meredyth Frye (25) looks to make a play against the University of Arizona.

While the Lady Eagles were hard at work in Hattiesburg, the Lady Mountaineers were continuing a winning streak of their own at the Georgia State Thanksgiving Classic in Atlanta

on Nov. 25 and 26. The Mountaineers have won five consecutive games so far this season. The team is led by junior Anna Freeman, who currently averages 14.6 points per game.

The Eagles are being led in total game points for the season by junior Meredyth Frye. Frye contributed 16 points to the eagle's 72-49 victory over Jacksonville State during the Southern Mississippi Tournament last weekend.

The GSU women's basketball team is under the leadership of head coach Rusty Cram. Cram has been coaching the Lady Eagles to victories ever sense he became a member of the staff back in 1990. According to GeorgiaSouthernEagles.com, Cram became the "winningest coach in GSU history" after his 200th win over Elon in 2007.

Cram believes a win against App. State can be achieved through minimizing turnovers, recovering rebounds and utilizing the offense.

Upon leaving Boone, the Eagles will be hosting their following two games at the Hanner Fieldhouse. The team will be playing Furman Dec. 5 at 7 p.m. and Stetson Dec. 8, also at 7 p.m.



OUTDOORS
YOUR HUNTING & FISHING HEADQUARTERS

Your Hunting and Fishing Headquarters

246B Northside Drive East Statesboro, Ga 30458
Between Deloach's Music and the Tile Center

TC-OUTDOORS.com • 912-489-3474



YAMAHA

Statesboro Yamaha

10% Off Parts & Accessories
with your student ID



22815 US Hwy. 80 Statesboro, GA 30461 912-764-RIDE (1 mile past Lowe's on Right)

Eagles prepare for season



Lindsay Hartmann/STAFF

Above: Kayla Upchurch (11) looks for the open play.



Randy Hudgins/STAFF

Top: Tyrone Brown (25) hones his defensive skills.

Right: Eric Feguson (3) shoots from behind the paint.

Free Chips and Medium Drink with Purchase of a Sub.

600 Brannen Street, Suite B
912.764.2876

**FIREHOUSE
SUBS**

©2011 Firehouse Subs. This offer valid with coupon at participating restaurants. Prices and participation may vary, see restaurant for details. Limit one per customer, per visit. Not valid with any other offer. Valid only at the Statesboro location. Expires 12/31/11.

**FIREHOUSE
SUBS**

Our Way Beats Their Way. If You Don't Agree, It's FREE.

THE FIREHOUSE SECRET

Massive Flavor, Powered By Steam.



We steam our premium meats and cheeses
to enhance their flavor, then stuff our
toasted private-recipe sub rolls over code.
The flavor is just too big to hide.

SunChips and SunChips Logo are trademarks of Frito-Lay North America, Inc. ©2011 Firehouse Subs.

Coca-Cola Freestyle® is coming to your Statesboro location.

Intramural Sports Scores

Indoor Volleyball

Haymakers 0 (13-16) Alpha Delta Pi 2 (25-25)

Blue Lightning 0 (15-16) Las Bailey 2 (25-25)

CP Sets on the Beach 0 (24-17) Spiker Chicks 2 (26-25)

Kappa Kappa Gamma 0 (19-10) Size Matters 2 (25-25)

How I Set Your Mother 0 (14-19) Amazeballs 2 (25-25)

Balling! 0 (23-21) Good Volley Ms. Molly 2 (25-25)

Unprotected Sets 2 (25-24-15) Set It Off 1 (23-15-6)

Setting Ducks 2 (25-21-15) Team X 1 (20-25-13)

Spiked Punch 2 (25-25) The Southern Woppers 0 (11-17)

Kiss My Ace (10-11) Set to Kill 2 (25-25)

Southern Smoke 0 (22-9) Spike This (25-25)

Bad Ace Ballers 0 (0-0) Spikers Ultd 2 (25-25)

Las Baileys 0 (9-18), Alpha Delta Pi 2 (25-25)

Spiker Chicks 0 (21-8), Size Matters 2 (25-25)

Safe Sets 2 (10-10), The Megalodons 0 (0-0)

Amazeballs 0 (21-22), Practice Safe Sets 2 (25-25)

Setting Ducks, Your Chicks Dig Our Balls 2 (25-25)

Spiked Punch 0 (17-17), No Scrubs 2 (25-25)

Spikers Unlimited 0 (17-19), Back that Ace Up 2 (25-25)

Set To Kill 2 (25-25), Hot Sets 0 (22-23)

I'd Hit That 0 (21-19), We Always Get It Up 2 (25-25)

Unprotected Sets 0 (15-14), The One Hit Wonders 2 (25-25)

Indoor Soccer

Multiple Scoregasms 0 Kicking and Screaming 5

Sour Diesel 9 The B.A.L.L. Kickers 4

Keystone United 6 Slammin Salmons 5

John FC 7 Big test Icicles 1 Whispering Eye 2 Los

Leones 4

Liquor in the Front Poker in the Back 2 Thunderblast 4

Fiesty Goats 2 Jager Bombs 11

Catholic Eagles FC 7 Green Street Hooligans 4

Unreal Madrid 2 Five Dollar Footlongs 9

Kicking and Screaming 6 Charismatic Camels 15

The Stepfathers 0 Catholic Eagles 10

Zales 2 Awesome Forever 10

Stache in the Boro 2 Haymakers 7

#YouPlaySoccer? 3 Green Street Elite 2

Scorgy 8 Anonymous 4

Dino & Friends 5 Racks and Sacks 4

Centennial Pound-Town 0 IS 8

University Villians 0 Swagitus Maximus 14

Delta Sigma Phi 5 Delta Chi 10

FRANKLIN

TOYOTA • SCION

10% OFF
service with your Student ID

888-695-8165

500 Commerce Drive
beside the new Holiday Inn

PROTECT YOUR VEHICLE!

Regular maintenance and upkeep is crucial to your car's optimal performance, best possible gas mileage, and highest resale value.

Our service department offers the best in automotive service for all makes and models.

PLUS we provide a free shuttle to and from campus!

- Oil Change
- Tire Services
- Tune-Up & Transmission Service
- A/C & Radiator Service
- Brake Service
- Engine Repair
- Body Shop Services

**BUY OR LEASE
A NEW TOYOTA, GET A**

\$1,000

COLLEGE GRAD REBATE

See Dealer for Details

SCHEDULE YOUR SERVICE ONLINE! www.FranklinToyota.com

What's Happening at CRI

FITNESS

- Fitness Assessments end Dec. 8, 2011
- Spring Biggest Loser Applications Due Dec. 9, 2011
- Last day of Fall Group Fitness classes is Dec. 9, 2011

INTRAMURAL SPORTS

- Pre-season Basketball, Basketball, and Wheelchair Basketball sign up is Jan. 9, 2012

CRI
CAMPUS RECREATION
& INTRAMURALS

FOLLOW US!



facebook.com/CSUCampusRec
twitter.com/CSUCampusRec



THE STUDENT MEDIA

Pitch-In

SOFTBALL
INVITATIONAL



The Major leagues are finished. Eagle baseball doesn't start until February. To get your fix, join your classmates and colleagues from the Division of Student Affairs & Enrollment Management as we play.

Friday, December 8, 2011

6-9 PM @ the RAC

All proceeds go to a local charity

Sponsored by Papa John's, University Store, and more

CLASSIFIEDS

14 Thursday, December 1, 2011

This page brought to you by Career Services
Explore • Experience • Excel

The George-Anne

For Sale

FOR SALE - 17 inch custom Ford Mustang rims and 17 inch custom Chevy Impala rims. Contact Ron: (912) 486-6611

Scooter for sale! 2005 Honda Ruckus. Black, 49cc, 85+mpg. Fantastic condition; original (faculty) owner, garage kept. No special license or insurance required. \$1,500 OBO. Contact (912) 678-6052

Firewood for Sale. Delivery available! Call 912-690-0872 or 912-690-4956.

For sale: 2009 BMW 328i, hard-top convertible in great condition. Black with tan interior. Call 912-293-1909.

Misc.

Will proof papers (grammar, spelling, punctuation, sentence structure). Quality work, reasonable prices. Will also type short projects. Must have ample lead time to schedule. Email auntre01@gmail.com

Subleases

Subleasing 3 BR/2BT house on Parker Avenue in downtown Brooklet. Extremely large media room! Located on two city lots. Contact Joyce at (912) 842-9479.

2 Bedroom 2 Bathroom apartment in Hawthorne 2. Very close to campus. \$350/month. Sublease through July. Contact Shannon at 678-468-9407

Subleasing master bedroom in Planter's Row for \$365/month; utilities not included, pet friendly. For more information contact Anna-Marie at at01770@georgiasouthern.edu or call (770) 546-6560

Home Away From Home 3BR/2BT within 2 miles of Georgia Southern campus. You can sublease the other 2 rooms. No smoking or pets. Call (706) 951-1427.

Subleasing a 2 BR/2 BR at the Woodlands of Statesboro for Spring 2012. \$399 a month, utilities not included. Contact Adrian at (678) 230-5144.

Subleases, cont.

2 BR/2 BT sublease in Georgia Villas. \$475/month for both rooms, utilities not included. Available Jan-May, pet friendly. Right across from Greek Row on Chandler. Email t00212@georgiasouthern.edu

Female to sub-lease Spring Sem. 5 BR, \$280 a month. Last month's rent is paid. Less than a mile from campus off of Gentilly Rd. Call, text or email Kristina: (678)-770-6251 kf01606@georgiasouthern.edu

Subleasing 626 B at the Exchange. Female Roommate needed. \$519.00 per month. All utilities included, free tanning, free Wi-Fi, 24 hr gym included. Available now. Contact (706) 523-6001

Room available for male or female in a 3 BR/2 BT house on Catherine Avenue. Fully furnished; bed needed. \$367/mo per person, utilities not included. Spacious house. Contact Yale at (404) 272-7652 or yale8754@bellsouth.net

Subleases, cont.

Subleasing my room for Spring 2012 in a fully furnished 4 BR/4 BT 3-story town home. Walking distance from the stadium and bus stop. Contact Alex at (770) 712-5377 or ao00837@georgiasouthern.edu

Spring 2012 1 BR/2 BT in a 2 BR/2.5 BT townhouse at The Avenue. Furnished and utilities included. \$495/month, but I will pay \$30 for each month. Or I could put \$210 towards the first month's rent. Contact Cherelle at chollan4@georgiasouthern.edu

All inclusive, two story, fully furnished, 4 BR townhouse for \$330/month! Includes trash, utilities, cable, wi-fi, pet park, 24/7 gym, recreation courts, computer lab, new appliances and washer/dryer! Contact (229) 326-4291.

Subleasing a 1 BR/1 BT in 4 BR apartment in Copper Beech for Spring 2012 starting Christmas Break. Washer/dryer included. Next to pool/volleyball court. \$389/mo plus utilities. Contact Singer (404) 680-7240

Subleases, cont.

SPRING 2012! Female roommate wanted. 1BR/1BT in a 3BR/3.5BT townhome. Walking distance to the stadium and bus stop. \$400/mo., gym and pool included. Cheaper rate can be arranged. Contact Emily at 404-444-8987 or ec01442@georgiasouthern.edu

Subleasing a room in 4 BR/2BT in The Avenue for Spring 2012, but available as early as Dec 16 and Dec will be paid for. \$325/MO. Furnished, utilities included with free Wifi and Cable. Contact Nikki at (678)525-0297.

1 BR/1 BT available in a 3 BR at The Grove, for Spring 2012. Available after Dec. 20. \$450/mo, utilities included. Pet friendly, pool. I will pay last month's rent. Female preferred. Call Ellen 404-694-1394 or email ej00034@georgiasouthern.edu

Female roommate needed for Spring 2012; 3BR/3BT at Cambridge; \$449/mo all inclusive and furnished; one building away from bus route, 1st floor. Contact Angelica 404-921-4988.

Subleases, cont.

SPRING 2012! 1 BR/1BT available in 4 BR/4 BT at Campus Club for Jan or earlier. Bus stop next to stadium. Utilities included. Rent is \$419/month; CHEAPER RATE CAN BE ARRANGED. Email Skyler at sh02071@georgiasouthern.edu

Help Wanted

MODELS of all weights/sizes/ages needed for figure drawing class on T&R, 2-4:30 PM. Fall and spring openings. Must be 21 and able to sit still for long periods of time. Call 912-478-2793 or email jburke@georgiasouthern.edu

Receptionist/admin assistant position available at established construction Management/real estate development firm. Flexible 30 hours M-F.. Please send your resume to; ffbenneth@gmail.com

HOT JOBS Cool Internships

Job Title	Company	Deadline to Apply
Advertising Coordinator	Graduate Marketing & Media	Dec. 31, 2011
Telecommunications Inform. Sys. Officer	Central Intelligence Agency	March 17, 2012
Business Development Intern	Course Hero, Inc.	Dec. 5, 2011
Mechanical Project Engineer	Walker White, Inc.	Jan. 3, 2012
Environmental Interpretation Internships	Patuxent Research Refuge	Dec. 23, 2011
Business Analyst	Vensoft Inc.	Jan. 31, 2012
Shipping & Warehouse Supervisor	Hormel Foods Corp.	Dec. 31, 2011
Marketing and Communications Internship	GA Dept. of Economic Dev.	Feb. 29, 2012
Candler County Public Health Nurse	Southeast Health District	Feb. 29, 2012
Software Engineer	Vensi Inc	Dec. 11, 2011
Teacher	Georgia Teaching Fellows	Dec. 18, 2011
Entry Level Sales/Recruiter	TEKsystems	Dec. 26, 2011
Store Management Internship	Kohl's Department Stores	Dec. 31, 2011
Summer Intern	Pace Academy Summer Prog.	Feb. 29, 2012
Subscription Sales Rep.	Black Book	Dec. 31, 2011
Consumer Insights Internship	Hormel Foods Corp.	Dec. 31, 2011
Internship	Cumulus Media	Dec. 31, 2012
Store Management Internship	Kohl's Department Stores	Dec. 31, 2011
Summer 2012 IT Internship	Chick-fil-A	April 30, 2012
IT Assistant - Atlanta	GradStaff	Feb. 28, 2012

To view the detailed job descriptions application instructions or additional postings, log into the Eagle Career Net/NACELink system found at www.georgiasouthern.edu/career.

Advertisement

Advice From Graduating Seniors

By Noelle Crooks

Graduation is just around the corner for seniors. This means portfolio building, resume sending, and interview practicing is all on their to do list. The job search has begun. Next stop, a career.

Three seniors, Drew Cheshire, Skyler Henry and Jackson McGahee give their advice on following your passion, and how to prepare for life after college.

Drew Cheshire, is a multimedia communications major with an emphasis in information. Graduating in the December, Cheshire will then complete his internship at East Carolina University in the broadcasting department.

When asked why it is important to follow your passion Cheshire says, "Because you'll never be happy unless you're doing what you want to do. For example, I love sports, talking about sports, and being the center of attention so broadcasting was a natural fit."

He advises students to do something they enjoy, "Find something. Be persistent. Find out what it is you want to do and don't stop until you're there."

Students are often faced with the indecision of what they want to major in and their future career goals. By exploring different majors and completing skills and values assessments, students can have better luck in finding their passions.

Another important part of graduating, and beginning the job search is the importance of the resume.

"Your resume is very, very important because it's not enough to just have good grades," Cheshire said. "You need to come into the field with some edge, and something more to bring to the table." The resume will allow you to market and highlight that edge to potential employers.

Skyler Henry, another multimedia communica-

tions major with an emphasis in information agrees.

"Resumes are important, but so is having a great interview and many examples of your work," Henry said. "In my particular field, they also want to see what you can do, like a portfolio."

Henry has completed a mock interview at Career Services, begun the job search, and also has advice for students.

"Do everything that you possibly can on campus, whether it be student organizations or volunteering," Henry explains. "You never know who knows who and what those experiences in college will lead you to."

Jackson McGahee, a senior public relations major, explains the importance of networking.

"I feel that involvement and networking is crucial to achieve success in a field, but it assists in immersing yourself in the field," McGahee said. "Yes, a professional resume can speak volumes on the talent that you as an individual bring to a company; but quality recommendations from leaders in the field shouldn't be forgotten."

By following your passion, getting involved to gain experience for yourself and your resume, and practicing your interview, the stress level one faces while job searching can be lowered.

When searching for a job, websites such as Monster.com, Indeed.com, USAjobs.com and Eagle Career Net (offered only to Georgia Southern students/alumni) you are required to upload a resume and a cover letter. Since the application is online, it is imperative that your cover letter and resume get you noticed.

The Office of Career Services offers both cover letter and resume critiques during walk-in hours from 9 a.m. to 12 p.m. and from 1 p.m. to 4 p.m., Monday through Friday.

PUZZLES/COMICS

www.thegeorgeanne.com

Thursday, December 1, 2011 15

Los Angeles Times Daily Crossword Puzzle

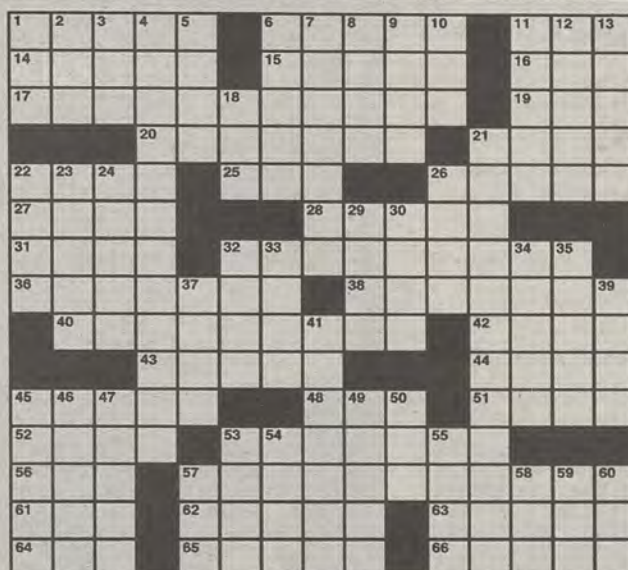
Edited by Rich Norris and Joyce Lewis

ACROSS

- 1 Up in the air
- 6 Runner's woe
- 11 "Very funny" TV station
- 14 Instrument for the musically challenged
- 15 Panting, perhaps
- 16 Art, now
- 17 1-Down follower
- 19 Ad
- 20 "Public distribution
- 21 Subject to debate
- 22 "2011 NBA finals runner-up
- 25 Mao follower?
- 26 Garden purchases
- 27 A pop
- 28 "Golly!"
- 31 "Loose
- 32 Routes for two-wheelers
- 36 1962 NASA launch
- 38 Hairstyle with an appendage of sorts
- 40 Modern information sources
- 42 "Java" jazzman
- 43 "Bond, for one
- 44 Scratched (out)
- 45 Hightails it
- 48 Stephen of "Citizen X"
- 51 Causes of grins and groans
- 52 "Champagne, e.g.
- 53 Wall-mounted safety device
- 56 Baby carrier
- 57 Prevailing tendencies
- 61 72, at Augusta National
- 62 Door support
- 63 Time piece?
- 64 Take a shot
- 65 Of yore
- 66 Stage device

DOWN

- 1 Letters before a
- 17-Across
- 2 Cruces



By Don Gagliardo and C.C. Burnikel 12/1/11
November 29th Puzzle Solved

B	O	W	L	T	O	P	P	S	L	A	D	S
A	A	A	A	S	H	A	R	P	A	R	E	A
S	T	R	I	K	E	O	V	E	R	H	I	S
T	E	R	R	I	E	M	U	S	D	I	P	
E	R	E	S	P	A	R	E	C	H	A	N	G
S	S	N	S	E	T	D	E	E	P	E	N	D
				D	T	S	L	O	S	E	R	
I	M	P	P	I	N	B	A	L	L	S	R	O
M	O	I	R	A	A	G	E					
A	N	N	E	T	T	E	R	A	P	O	P	T
G	U	T	T	E	R	S	N	I	P	E	L	E
I	M	S	N	A	P	A	A	M	E	N	S	
N	E	I	L	L	A	N	E	B	R	Y	A	N
E	N	Z	O	A	N	A	M	E	T	R	E	E
S	T	E	W	S	A	S	S	Y	H	Y	D	E

- 3 Wt. units
- 4 21-Down group
- 5 Heavy reading?
- 6 Yields
- 7 Went ape
- 8 Turkish titles
- 9 Unit of cultural information
- 10 Fix opening
- 11 Chevy SUV
- 12 Group of chicks
- 13 Doctrinal offshoots
- 18 "The Book of ...": 2010 film
- 21 Interview show since 1947 ... and what this puzzle's starred answers do in two ways
- 22 Test by lifting
- 23 Dog- page
- 24 Speedy Amtrak train
- 26 Relief for a commuter
- 29 "Take it!"
- 30 3.0 and 4.0: Abbr.
- 32 Pig movie
- 33 Founding member of OPEC
- 34 17-syllable work
- 35 Emergency indicator
- 37 Puts out, in a way
- 39 Old Fords
- 41 Adjective for Ripley
- 45 Won all the games
- 46 Gag that might explode
- 47 Explosive
- 49 Clampett player
- 50 NYC dance troupe
- 53 Author Godwin
- 54 Fruit cover
- 55 Met excerpt
- 57 Old reciprocal electrical unit
- 58 " always say
- 59 Pie material?
- 60 Reference word

HOW CAN I BE GETTING WHITE HAIR? THERE'S STILL SO MUCH I HAVEN'T DONE IN MY LIFE!



I CAN'T BE THIS OLD YET! WHERE DID ALL MY TIME GO? SOMEONE'S BEEN STEALING TIME FROM ME!



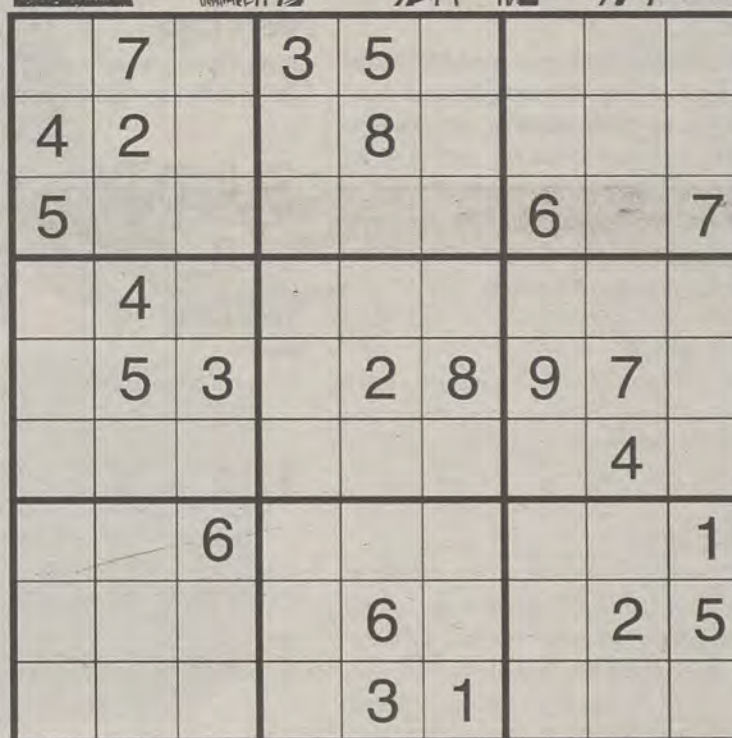
THERE'S A TIME THIEF SOMEWHERE WHO OWES ME PLENTY!



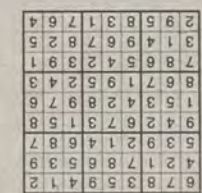
OK, LET'S PUT THE CRAZY BACK IN THE BOX.



Welcome to Falling Rock National Park by Josh Shalek



Sudoku



FRANKLIN
CHEVROLET - CADILLAC
PONTIAC - BUICK - GMC
912.764.6911



Our experienced Body Shop can fix all of the "Dents & Dings" that your vehicle may have! We service all makes and models and accept all insurance claims, and will give you **FREE ESTIMATE** on your body & paint repair

GSU STUDENTS - Show your ID and receive **10% OFF** any purchase in Parts and Service

Check out our website
www.franklinchevrolet.com

Page designed by Holly Hillhouse

WEEKLY BUZZ

A weekly calendar listing sponsored by The Division of Student Affairs and Enrollment Management

DECEMBER 1- DECEMBER 7

THURSDAY

12.1.2011

Apply to GSU Biggest Loser

RAC

The Biggest Loser Challenge is designed to help improve exercise and nutrition habits in order to improve total wellness along with reducing the risk of chronic disease. In order to do this, you will receive assistance and guidance to implement healthy behavior changes that will increase your quality of life. We invite you to learn more about the challenge at <http://cri.gs/rsibt7> as well as those on campus who have lived it - then decide if you are ready to accept the challenge yourself! To learn more and submit your application online visit <http://cri.gs/rsibt7> Sponsored by Campus Recreation & Intramurals.

Holiday Helper Tree is OPEN!

Come visit the Holiday Helper Tree! Take a look at the requests, pull a tag for a gift that you would like to buy, buy the gift and let an underprivileged person have a happier holiday season! Sponsored by Office of Student Activities

4 PM

Lighting of Sweetheart Circle

The Lighting of Sweetheart Circle is the official Georgia Southern kick-off for the holiday season. This event brings together GSU students, faculty, staff, and administration, as well as the Statesboro community. Santa Claus is available to take pictures with anyone. There are craft tables for decorating cookies and holiday cards as well as free refreshments including hot chocolate and candy. This past season we even had snow! The climax of the event comes when President Keel and First Lady Dr. Schalue flip the switch that turns on all the lights to light up campus!

6 PM

Cooking Series

Russell Union 2047

Sponsored by Eagle Entertainment.

FRIDAY

12.2.2011

Spring Break Boot Camp Registration

RAC

Are you looking to get in shape for Spring Break or be apart of the toughest workout on campus? This 7 week program will take you through a variety of challenging and vigorous hour long workouts. Each week we will lead you through a different type of workout designed to jumpstart your fitness routine by Spring Break. Hurry! Space is limited to the first 30 paying participants. Class is held every Wednesday from 5:30pm-6:30pm starting January 26, 2012 in the Multi-purpose room of the RAC. Open to all current RAC members. SIGN UP To register for the Spring Break Training Camp program, simply complete the regisition form (<http://cri.gs/veHOjx>) and return it along with \$10 registration fee to member services in the RAC. Member services is located to the right as you enter the RAC by the Oasis Smoothie Bar. Don't delay! Class is limited to 30 participants! Sponsored by Campus Recreation & Intramurals.

7 & 9 PM

Movie Night

Russell Union, Russell Union Theater

Sponsored by Eagle Entertainment.

SUNDAY

12.4.2011

7 PM

Yoga Clinic

RAC

Sponsored by Campus Recreation & Intramurals.

TUESDAY

12.6.2011

6 PM

CLUB SPORTS COUNCIL

RAC

Sponsored by Campus Recreation & Intramurals.

7 PM

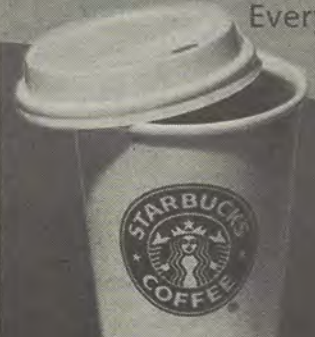
GSU Unplugged

Russell Union Starbucks

Open Mike Night. Sponsored by Eagle Entertainment.

George-Anne & Joe
Sponsored by: Starbucks

Every Thursday morning
at the Gazebo



Magazines and Muffins
Sponsored by Lette Da Coffee Cafe

Every Thursday
in November
@ the Williams Center Gazebo



V.A.L.U.E.S.

VOICES • ACCOUNTABILITY •
LASTING TRADITIONS • UNITY •
ETHICAL BEHAVIOR • SCHOLARSHIP

Student Affairs
Enrollment
Management

Brought to you by Georgia Southern University VALUES. Georgia Southern V.A.L.U.E.S. is the culture shared by our students, faculty, and staff. We endeavor to share our V.A.L.U.E.S. inside and outside of the classroom with faculty, staff, students, alumni and all other community members. In order to produce productive citizens with an informed set of ethics and community standards as well as create an environment of respect and civility, we pledge to live by our V.A.L.U.E.S.

Christmahanakwanzika feeds the 'Boro

By KIMEKO MCCOY

George-Anne Contributor

Get ready to fill your belly and start the holidays off right this year. Regardless of what holiday you celebrate, all are invited to the first Christmahanakwanzika Spaghetti Dinner.

The special dinner will be presented by Georgia Southern University's Alternative Break Board and the Office of Student Leadership and Civic Engagements.

The two have joined forces and coordinated this special event in order to raise funds for alternative break trips and to provide funds in support of fighting poverty, homelessness and housing, global service and education.

Shelby McCarter, Education Chair on the Alternative Break Board, is the coordinator of the event and she hopes that many will come out and enjoy the dinner.

This is the first Christmahanakwanzika Spaghetti Dinner held by the two groups in their mission to solve some of the world's problems such as hunger, education and many more through fundraising at GSU.

In addition to raising the funds for the world's causes, the proceeds will also go to support the Alternative Break Board's break trips by expanding the options for travel areas and sites.

"All proceeds go to making more alternative break trips available to more people, so including helping with things like scholarships for trips and travel expenses," said McCarter.

McCarter hopes students who attend the Spaghetti Dinner will walk away not only with satisfied appetites, but also with the feeling that they did something positive for their community and world.

"[The good thing students walk away with] is being able to know you helped students in the



Lindsey Rowland/CONTRIBUTOR

community and a full belly," said McCarter.

This festive meal will consist of a plate of spaghetti topped with a homemade sauce with a beverage of lemonade or sweet tea with a side of garlic bread. For desert, an assortment of cookies will be served up.

The groups were also sure to keep in mind the vegetarian individuals who might partake in

the event.

The vegetarian meal option of spaghetti with meatless sauce will also be provided as a substitute at the dinner.

In addition to the holiday spirit and appetizing meal, entertainment will also be provided at the Spaghetti Dinner with performances from GSU's own Adrenaline Show Choir.

Tickets can be purchased today

at the Russell Union Rotunda from 11 a.m. until 2 p.m. in addition to the Russell Union Rotunda, tickets can also be purchased in the new office of Student Leadership and Civic Engagement in the Russell Union room 1056.

The Christmahanakwanzika Spaghetti Dinner will be held in the Williams Center Multipurpose Room on the evening of Monday December 5 from 6:00 p.m. to 8:30 p.m.

The Buzz List

■ CBS's annual showing of nostalgic delight 'Rudolph the Red-Nosed Reindeer' put



Alex LaSalle

viewers in the holiday mood, a different, and slightly less family-friendly, mood arose when the 'Victoria's Secret Fashion Show' paraded scantily-clad ladies in front of 10.3 million viewers, its most since 2011. The economy may suck, but pretty girls prancing around in fancy underwear never go out of style.

■ **The Twilight Saga: Breaking Dawn** is now making headlines in the medical community as reports of seizures caused by the film continue to surface. It hasn't fazed fans of sparkly vampires, as the movie has reportedly made of \$500 million since its opening. Reviews, while meager at best, have still improved over the previous films. Rumour has it that actress Kristen Stewart shows an emotion or two during the course of the film.

■ **The drama continues:** Kim Kardashian's ex, Kris Humphries, let loose with accusations of Kim being a fraud, and lying about her love for him (presumably for financial gain). Forgive my skepticism, but I imagine her saying the that she "loves" him like I say that I "love" eating sausage. I may really enjoy it, but that doesn't mean I think I should marry a sausage.

Information compiled by Arts Editor Quania Epps and Assistant Arts Editor Alex LaSalle from TheHollywoodReporter.com.

Holiday star gazing to benefit local residents

By JAZMIN DAVIS

George-Anne Contributor

Students and the Statesboro community will get a chance to reach for the stars and beyond as the Georgia Southern University Department of Physics hosts Holiday Stargazing this Friday night.

Astronomers from both the department and members of the Statesboro Astronomy Club will be teaching all attendees about the many constellations and planets on the roof of the Math/Physics Building.

As the "little elves" escort people to the roof top, big and little telescopes will already be set up and star and moon maps will be given out to everyone for hands-on learning during the event.

The goal of the coordinators is to not only educate the attendees about our solar system and history behind the constellations but to also help individuals learn how to properly use star gazing equipment such as telescopes and binoculars.

"We want to share these beautiful sights with the community so they can star gaze from their own back yard," said Becky Lowder, astronomy laboratory coordinator.

In addition to exploring the sky, the coordinators will bring out the holiday spirit in everyone, not just with lights and holiday music, but with charity too.

In order to leave no families without food this Christmas, the department is asking for the public to bring canned foods as well as other non-perishable food items to donate to the Statesboro Food

Bank.

Aside from doing outreach programs at Georgia State Park and going to elementary schools with telescopes, Lowder said, "We love getting donations for the food bank."

At the event, the community will learn to star-hop, find four of Jupiter's 63 moons, view the Andromeda Galaxy constellation and more.

With the GSU Planetarium closed for renovations, this event will give students more information about the planetarium and the chance to become involved with astronomy at our school.

"Students respond wonderfully, a lot of them become members of the astronomy club," said Lowder.

The coordinators want attendees to leave this event with knowledge



Kelsey Paone/STAFF

of the stars, the planets and solar system in general so that they may go home during the holiday season

and share everything that they recently learned at the event with their families and loved ones.

Planters ROW

By Hendley Properties

912.681.1170
www.hendleyproperties.com

3

bedroom
cottage
house

\$ 365

/month per person

Voted Best Mattress Store in the 'Boro!

<p><i>Student Housing Available</i></p> <hr style="width: 50%; margin: 10px auto;"/> <p style="text-align: center;"><i>New, Used & Antique Furniture</i></p> <hr style="width: 50%; margin: 10px auto;"/> <p style="text-align: center;"><i>Complete Mattress Outlet</i></p>	<h2 style="font-size: 2em; margin: 0;"><i>Deal's</i></h2> <p style="font-style: italic; margin: 5px 0;">Come See the Dealmaker!</p> <p style="font-size: 0.8em; margin: 0;">17083 GA Hwy 67, Statesboro, GA (912)681-3824 (Near Fairgrounds) Mon-Fri: 10am-6pm Sat: 10am-5pm Sun: 1Pm-5pm</p> <div style="display: flex; justify-content: space-around; margin-top: 10px;"> <ul style="list-style-type: none"> • Honest, Dependable Same Day Delivery • Locally Owned & Operated by GSU Graduate • Serving GSU Students for 34 years </div>	<p><i>Tervis Tumbler Headquarters</i></p> <ul style="list-style-type: none"> • Collegiate Gifts • Jewelry • Handbags • Placemats • Diaper Bags • Men's Gifts & Much More
--	--	--

Best Furniture Mattress & Gift "DEALS" in the 'Boro

Multicultural Student Center holds auditions for play

By QUANIQUA EPPS

George-Anne Staff

Passion, heartache and drama were brought to the Russell Union Theater as the Multicultural Student Center held its auditions for a play to be showcased early next semester.

Students brought their all to the main stage on both Tuesday and yesterday evening as they battled it out for a spot in the well-known play "For Colored Girls Who Have Considered Suicide when the Rainbow is Enuf."

Set in the 1960s, the 20-part poem that was eventually turned into a play, book and award-winning movie was written by playwright and poet Ntozake Shange.

"For Colored Girls Who Have Considered Suicide when the Rainbow is Enuf," focuses on the many issues, trials and tribulations that many African American women face such as abortion, rape, infidelity, disease, murder, mental illness and physical abuse.

"It is important that this play is shown on campus because it presents a lot of issues that women in the past faced, and it correlates to what women in the modern day era face, every woman can find a character in this play that she can relate to. Everyone should come out to see this play," said senior education major Saliya Johnson.

The MSC is very excited about the play auditions and the buzz generating around them.

"The student reception to the play auditions has been really great. A lot of students have shown up for the play auditions, and we have also had individuals come up to the office and express their excitement and interest in the play," said Graduate Assistant Jada Holsey.

The initial idea to do this play was thought of by Dr. Consuela Ward, the director of the MSC.

The idea was brought up in an event planning session during the spring when the MSC was deciding what events to do this fall.

Dr. Ward in turn collaborated with the theater department and Professor Emeritus Michael Whitaker to come up with plans to bring the play to campus.

The play is actually meant to build up anticipation for The Women's Empowerment Conference, which happens on March 3rd, the day after the last showing of the play.

At this conference, the playwright, Ntozake Shange will be appearing as a guest speaker.

"Dr. Ward thought it would be great to not only have the play, but to also use it as a means to garner attention for the Women's empowerment conference, at which the playwright will be featured," said Johnson.

"For Colored Girls Who Have Considered Suicide when the Rainbow is Enuf" will be showing on both March 1st and 2nd 2012 in the Williams Center multipurpose room.



Lindsay Hartmann/STAFF

Senior sociology major Raissa Drew performs a monologue for the theater auditions.

WELLNESS NEWSLETTERS

ARE NOW AVAILABLE ONLINE



SMARTPHONE?
USE QR SCANNER
FOR QUICK LINK



<http://services.georgiasouthern.edu/cri/universityWellness>

You are invited!



What: Two upcoming Shooting Sports Education Center information sessions to learn about and ask questions regarding this project. This is an open forum to the Georgia Southern University campus community to ask the panel anything.

Who: Vice president for Student Affairs and Enrollment
Executive Director of Campus Recreation
Associate Vice President for Legal Affairs
Director of Public Safety

Where: Williams Center Multipurpose Room (2nd Floor)

When: Staff and Student accommodated session:
Friday, December 2nd at 12:00 pm

Faculty accommodated session:
Wednesday, December 7th at 4:00 pm

THE 'BORO BEAT

YOUR GUIDE TO OFF-CAMPUS ENTERTAINMENT

THURSDAY

Applebee's

-\$3 Jose Cuervo shots, \$2 Coronas, \$3 Appletini's

Buffalo's

-The Movement & Domino Effect

-\$1 shots, \$3 doubles, \$3 well bombs

Dingus Magee's

-Dr. Dan and the Looters

-Happy Hour 5-7 p.m., half price well shots

Dos Primos

-International Dance Party: everyone free before 11, DJ Kap-eesh, Cross Breedz Productions, \$1 tequila shots, \$3 margaritas, \$3 32 oz. beer, \$2 well shots, \$2 single wells, \$4 double wells

El Sombrero (Downtown)

-Any 32 oz. draft \$2.50

Gnat's Landing

-\$1.75 Natural Light, \$2 Coors Light and Michelob Ultra Bottles, \$10 Liquor Pitchers

Latte Da

-Chocolate raspberry chai tea, grilled cheese with chips \$4, small coffee and muffin \$3

Millhouse

-Nun-gazers

-Happy Days all day

Moe's

-Happy Hour 5-7 p.m. buy one get one free beer

Ruby Tuesday

-(8 p.m.-close) \$2 Miller Light, \$3 Blue Moon draft, \$4 Jack and Coke, \$1 Ruby Mini's

FRIDAY

Applebee's

-\$3 Sam Adams, \$3 Jim Bean & Jack

Buffalo's

-The Vertigo Jazz Project

-5-7 p.m. stimulus hour 1/2 off draft, 2 for 1 apps.

Dingus Magee's

-Tent City

-Happy Hour, 5-7 p.m., half price well shots

Dos Primos

-Happy Hour 5-7 p.m., \$2 domestic bottle and draft beer, \$4.50 pitcher, 2 for 1 mixed drinks and shots, \$1 Keystone tallboys
-\$3 32oz., \$3 margaritas, \$1 bartender shots

El Sombrero (Downtown)

- \$2 wells

Gnat's Landing

-\$1.75 Natural Light, \$2 Coors Light and Michelob Ultra Bottles, \$10 Liquor Pitchers

Latte Da

-Chocolate raspberry chai tea, grilled cheese with chips \$4, small coffee and muffin \$3

Millhouse

-Harry Canary

-Happy Days all day

Moe's

-Happy Hour 5-7 p.m. buy one get one free beer



"BAD TO THE BONE"

Located next to Wal-Mart

10% OFF
any order

- Wings
 - Homestyle Tenders
 - Homemade Salad
 - Garden Salad
 - Unique **WM** Sauces
- ...and the best tea in the Boro

expires 12-31-2011
*Must present coupon

THE 'BORO BEAT

YOUR GUIDE TO OFF-CAMPUS ENTERTAINMENT

SATURDAY

Applebee's

- \$3 Appletini's, \$3 Jose Cuervo shots

Dingus Magee's

- Tent City

- Happy Hour 5-7 p.m., half price well shots

Dos Primos

- Happy Hour 5-7 p.m., \$2 domestic bottle and draft beer, \$4.50 pitcher, 2 for 1 mixed drinks and shots, \$1 Keystone tallboys

- \$3 32oz., \$3 margaritas, \$1 bartender shots

Buffalo's

- Playoff Party

El Sombrero (Downtown)

- \$2 Margaritas

Latte Da

- Chocolate raspberry chai tea, grilled cheese with chips \$4, small coffee and muffin \$3

Millhouse

- Daniel Johnson Band

- Happy Days all day

Moe's

- Happy Hour 5-7 p.m. buy one get one free beer

Ruby Tuesday

- College Football "pick 'em" contest

- \$2 Miller Light, \$3 Blue Moon draft, \$4

Jack and Coke, \$1 Ruby Mini's

MONDAY

Buffalo's

- 5-7 p.m. happy hour 1/2 off draft,

\$3 martini's, 2 for 1 apps.

Dingus Magee's

- Happy Hour 5-7 p.m., half price well shots

Dos Primos

- Happy Hour 5-7 p.m., \$2 domestic bottle and draft beer, \$4.50 pitcher, 2 for 1 mixed drinks and shots, \$1 Keystone tallboys

- \$3 32oz., \$3 margaritas, \$1 bartender shots

El Sombrero (Downtown)

- \$2 Margaritas

Latte Da

- Chocolate raspberry chai tea, grilled cheese with chips \$4, small coffee and muffin \$3

Moe's

- Happy Hour 5-7 p.m. buy one get one free beer

Ruby Tuesday

- 8 p.m.-close \$2 Miller Light, \$3 Blue Moon draft, \$4 Jack and Coke, \$1 Ruby Mini's

- Free jello shots

TUESDAY

Dingus Magee's

- Happy Hour, 5-7 p.m., half price well shots

Dos Primos

- Happy Hour 5-7 p.m., \$2 domestic bottle and draft beer, \$4.50 pitcher, 2 for 1 mixed drinks and shots, \$1 Keystone tallboys

- \$3 32oz., \$3 margaritas, \$1 bartender shots

El Sombrero (Downtown)

- \$2.25 imported bottles

Latte Da

- Chocolate raspberry chai tea, grilled cheese with chips \$4, small coffee and muffin \$3

Moe's

- Happy Hour 5-7 p.m. buy one get one free beer



Lindsay Hartmann/STAFF

Robert Mercier (left) plays the piano while Larisa Elisha (middle) performs on the violin along side her husband, Stephen Elisha on the Chello. The husband-wife duo make up the Elaris Duo, who perform across the nation and overseas.

Faculty trio entertains with classical recital

By **ALEX LASALLE**

George-Anne staff

On Tuesday evening, listeners at the Foy Building were treated to the beautiful sounds of Brahms and Mendelssohn by a trio of Georgia Southern University faculty members.

With faculty members Richard Mercier on piano, Steven Elisha on cello and Larisa Elisha on violin, a receptive audience was treated to performances of Felix Mendelssohn's "Piano Trio No. 2 in C minor" and Johannes Brahms' "Piano Trio in B major," both of which contain four separate

movements.

"It went very well. It was wonderful to have a chance to play with The Elaris Duo," said Rich Mercier, the Dept. of Music chair at GSU.

The Elaris Duo is the husband and wife team of Steven Elisha, the current director of low string studies at GSU, and Larisa Elisha, the director of upper strings.

Selected for the Kansas Arts on Tour Program roster and awarded Musicians of the Year 2003 by the Kansas Federation of Music Clubs, the Elaris Duo received the highly coveted 2008 Kansas Governor's Award in the category Artist.

"I enjoyed it. I enjoyed playing with wonderful musicians and colleagues and playing wonderful music," said Larisa Elisha.

Richard Mercier has been at Georgia Southern since 2008, and has performed extensively as a collaborative pianist and soloist throughout the United States as well as in Canada, Europe and China, where he has an open invitation for future performances and master classes.

"There was a very good audience, they were very receptive. We received a standing ovation at the end," said Mercier.

Further information on performances and schedules is available online.

OUT&ABOUT

Express Tune & Lube

Tire, Alignment
& Exhaust Center
912.5.2266
489-4444
www.expresslube.com
Monday - Friday 7:00am - 6:30pm
Located a half block north of Wendy's.

OIL CHANGE SPECIAL

\$25

Includes up to
5 qts of Castrol
5W-20, 5W-30, 5W-40

offer applies to most vehicles. Excludes 11/2011

www.expresslube.com



Formerly known as
Dale's Transmission

25% off oil change
50% if you bring a friend
AND your friend can have
25% their oil change
ALL MODELS

(912) 489-3498 6763 Cypress Lake Rd Statesboro, GA 30458

Jerry's
Salon & Day

\$10 Feathers, \$7 Tinsel



Bring Student I.D., get
\$2 for tanning, haircuts,
colors & highlights

300 East Main St. Suite C, Statesboro, GA 30458
(Former Site of Video Warehouse Hwy. 80)

myth:

drinking is central to the
social lives of people
at Georgia Southern
University

fact:

78% of Georgia Southern
students typically drink
once a week or less often



The Lighting of **SWEETHEART CIRCLE**

Sponsored by Traditions Council and the Office of Student Activities

Join the campus community as Georgia Southern University
kicks off the holiday season during the ceremonial
lighting of Sweetheart Circle. Please join us at
the Marvin Pittman Administration Building
to experience this annual tradition.

Thursday, December 1st at 4:00p.m.

2011

You are invited to bring a new, unwrapped toy to donate to the
Ronald McDonald House

Your Student Activity Is... at Work!



It's Back! **LARGE DOUBLE LAYERED PREMIUM PEPPERONI PIZZA**
or Tuscan Six Cheese Pizza

ONLINE PROMO CODE: P12PZA **\$11 EACH**
LIMITED TIME ONLY

TWO LAYERS of pepperoni with a layer of 100% mozzarella in-between and Italian herb seasonings on top.

ORDER DOUBLE LAYERED PEPPERONI PIZZA ONLINE & GET DOUBLE PAPA REWARDS POINTS!

PAPA JOHN'S MILLION PIZZA GIVEAWAY* JUST GOT BIGGER!
WIN A TRIP TO SUPER BOWL XLVI**
ENROLL IN **Papa Rewards** @ PAPAJOHNS.COM FOR YOUR CHANCE TO WIN

*NO PURCHASE NECESSARY. A PURCHASE WILL ENTRY IN TO GIVE YOUR CHANCES OF WINNING. LEGAL RESIDENTS OF THE 48 UNITED STATES (U.S.) 18 YEARS AND OLDER. WHEREVER PAPA JOHN'S. Sweepstakes ends 1/1/12. For Official Rules, to opt-out, prize descriptions and odds disclosure, visit <http://www.papajohns.com/superbowlgiveaway>. Sponsor: Papa John's International, Inc. 2002 Papa John's Blvd., Louisville, KY 40201. **NO PURCHASE NECESSARY. Legal residents of the 48 United States (U.S.) 18 years or older. Ends 12/31/11. To enter visit www.papajohns.com for Official Rules, including odds and prize descriptions. Visit www.papajohns.com. If you are already a Papa Rewards member, you will automatically receive one (1) entry into the Sweepstakes, or three you opt out of this Sweepstakes. Void where prohibited. Offer good for a limited time at participating Papa John's restaurants. Additional toppings may be substituted based upon local pizza or require additional charge. Not valid with any other coupons or discounts. Limited delivery area, charges may apply. Customer responsible for all applicable taxes. Prices may vary in Alaska and Hawaii. © 2011 Papa John's International, Inc. All Rights Reserved. 001111 FC.

PAPA JOHN'S
Better Ingredients.
Better Pizza.

OFFICIAL PIZZA SPONSOR OF SUPER BOWL XLVI

Statesboro
620 Fair Rd.
871-7272

WE ACCEPT EAGLE EXPRESS!

Follow us on Facebook!

<p>LARGE DEAL</p> <p>Large One Topping Pizza</p> <p>\$10.00</p> <p>Use promo code RHHLC1T10</p> <p><small>CARRYOUT OR DELIVERY EXPIRES 12/31/11. Offer good for a limited time at participating Papa John's restaurants only. Additional toppings extra. Not valid with any other coupons or discounts. Limited delivery area, charges may apply. Customer responsible for all applicable taxes.</small></p>	<p>ANY WAY YOU WANT IT!</p> <p>Large Specialty or up to Five Toppings for only</p> <p>\$12.00</p> <p>Use promo code LS12RHH</p> <p><small>CARRYOUT OR DELIVERY EXPIRES 12/31/11. No double toppings or extra cheese. Offer good for a limited time at participating Papa John's restaurants only. Additional toppings extra. Not valid with any other coupons or discounts. Limited delivery area, charges may apply. Customer responsible for all applicable taxes.</small></p>	<p>TAILGATE SPECIAL</p> <p>Large One Topping, Breadsticks or Garlic Parmesan Breadsticks & a 2 Liter of Coca-Cola®</p> <p>\$15.99</p> <p>Use promo code L1TBSGP2L</p> <p><small>CARRYOUT OR DELIVERY EXPIRES 12/31/11. Offer good for a limited time at participating Papa John's restaurants only. Additional toppings extra. Not valid with any other coupons or discounts. Limited delivery area, charges may apply. Customer responsible for all applicable taxes.</small></p>
---	---	---

GAMEDAY MAYDAY

OLD DOMINION VS ³GEORGIA SOUTHERN

@PAULSON STADIUM, 1:00 PM

PLAYOFF BLASTOFF



#31 -DOMINIQUE SWOPE

**CO-SOCON FRESHMAN
OF THE YEAR**



★★★
GSU
FOOTBALL
2011
★★★★★★★★★★



#66 -BRENT RUSSELL

**SOCON DEFENSIVE
PLAYER OF THE YEAR**

SPECIAL PULL-OUT SECTION

FOLLOW @THEGEORGEANNE ON TWITTER FOR LIVE GAME UPDATES

GEORGIA SOUTHERN EAGLES

No.	Name	Pos.	Year	Hometown	No.	Name	Pos.	Year	Hometown
1	Jerick McKinnon	QB	So.	Marietta, Ga.	50	Garrett Brewer	OL	Fr.	Dixie, Ga.
2	A.J. McCray	S	Sr.	St Marys, Ga.	51	William Maxwell	OG	Sr.	Quitman, Ga.
4	Derek Heyden	S	Sr.	Atlanta, Ga.	52	Javon Mention	DT	So.	Tampa, Fla.
4	Prince McJunkins	QB	Fr.	Wagoner, Okla.	53	Marcus Duvall	ILB	Sr.	Griffin, Ga.
5	Robert Brown	FB	So.	Macon, Ga.	54	Koretheus Bailey	DT	Jr.	Lula, Ga.
6	Zeke Rozier	FB	Sr.	Cochran, Ga.	55	Austin Hagan	OL	Fr.	Dacula, Ga.
7	Darreion Robinson	RB	Jr.	Bishop, Ga.	56	Luke Cherry	PK	So.	Jacksonville, Fla.
9	Zach Walker	WR	Fr.	Wrightsville, Ga.	57	Brett Moore	OL	Sr.	Warner Robins, Ga.
10	Josh Rowe	ILB	Jr.	Opelika, Ala.	58	Garrett Frye	OL	Fr.	Cumming, Ga.
11	Ezayi Youyoute	QB	RFr.	Wauchula, Fla.	59	Zach York	LB	Jr.	Hartwell, Ga.
12	Russell DeMasi	QB	Jr.	Savannah, Ga.	60	Chris Gray	OT	Jr.	Landrum, S.C.
13	Darius Eubanks	OLB	Jr.	Harlem, Ga.	61	Jacob Bagley	TW	Jr.	Waycross, Ga.
14	Jaybo Shaw	QB	Sr.	Flowery Branch, Ga.	62	Zach Lonas	OG	So.	Acworth, Ga.
15	Carlos Cave	OLB	So.	Macon, Ga.	63	Brandavious Mann	C	Sr.	Forsyth, Ga.
15	Aaron Griffin	QB	Fr.	Rincon, Ga.	64	Hunter Lamar	OL	Fr.	Statesboro, Ga.
16	Antonio Glover	FS	Fr.	Atlanta, Ga.	65	Kyle Stroud	OL	RFr.	Tucker, Ga.
17	Billy Greer	PK	Sr.	Crosby, Texas	66	Brent Russell	DT	Jr.	Comer, Ga.
18	Charlie Brower	WR	Unk	Dacula, Ga.	67	Matt Mills	OL	Fr.	Johns Creek, Ga.
18	Lavelle Westbrook	CB	So.	Riverdale, Ga.	68	Matthew Gilbert	C	RFr.	Marietta, Ga.
19	JJ Wilcox	SLOT	Jr.	Cairo, Ga.	69	Cole Peebles	OL	Fr.	Conyers, Ga.
20	Nico Hickey	SLOT	Sr.	Columbus, Ga.	70	Raymond Klugey	OT	Jr.	Norcross, Ga.
21	Hudson Presume	DB	Sr.	Bradenton, Fla.	71	Dorian Byrd	OT	So.	Macon, Ga.
22	Seon Jones	FB	Fr.	Flowery Branch, Ga.	72	Zach Reckers	DT	Jr.	Atlanta, Ga.
23	Johnathan Bryant	SLOT	Jr.	Cairo, Ga.	73	Maurice Hunt, Jr.	OL	Fr.	Lyons, Ga.
24	Riyahd Jones	CB	Fr.	Columbus, Ga.	74	Logan Daves	OL	RFr.	Blue Ridge, Ga.
25	Emmanuel Orange	CB	Fr.	Naples, Fla.	75	Manrey Saint-Amour	OL	Fr.	Suwanee, Ga.
26	Tray Butler	WR	So.	Stockbridge, Ga.	76	Trevor McBurnett	OL	RFr.	Lawrenceville, Ga.
26	Josh King	CB	Fr.	Stockbridge, Ga.	77	Blake DeBartola	OL	Jr.	Fayetteville, Ga.
27	Javonte Martin	DB	So.	Tampa, Fla.	78	Josh Petkovich	OT	Sr.	Palm Harbor, Fla.
28	Devin Scott	SLOT	So.	Tucker, Ga.	79	Oliver Kraemer	OT	RFr.	Marietta, Ga.
29	Deion Stanley	SS	RFr.	Dry Pond, Ga.	80	Kentrellis Showers	WR	RFr.	Dublin, Ga.
30	K.R. Snipes	LB	RJr.	Opelika, Ala.	81	Mitchell Williford	WR	Jr.	Duluth, Ga.
31	Dominique Swope	FB	Fr.	Buford, Ga.	82	Wilson Hudgins	TE	Fr.	Loganville, Ga.
32	Nick Wright	CB	Fr.	Lithonia, Ga.	83	Martin Weatherby	WR	Jr.	Roswell, Ga.
34	Laron Scott	DB	Sr.	Warner Robins, Ga.	84	Patrick Barker	WR	Jr.	Ponte Vedra, Fla.
35	Miguel Gilmore	SLOT	Sr.	Orlando, Fla.	85	Allen Lee	WR	Jr.	Savannah, Ga.
35	Michael Spaulding	LB	So.	Fayetteville, Ga.	85	Brian Wilcher	SLOT	Jr.	Dublin, Ga.
36	Connell Reddick	DB	RFr.	Hephzibah, Ga.	86	Markus Farmer	WR	Jr.	Savannah, Ga.
37	Antwione Williams	LB	Fr.	Lovejoy, Ga.	87	Willie Burden	TE	Jr.	Statesboro, Ga.
38	Kyle Oehlbeck	LB	Jr.	Gainesville, Fla.	88	Trevor Shaw	DL	So.	Alpharetta, Ga.
39	DeVonte Lewis	SLOT	Fr.	Dacula, Ga.	88	Tyler Sumner	TE	Jr.	Pooler, Ga.
39	Deonté Watkins	DB	Sr.	Walkersville, Md.	89	Carter Jones	LS	Sr.	Moultrie, Ga.
40	Michael Butler	DB	Sr.	Stone Mountain, Ga.	90	Josh Gebhardt	DE	So.	Douglasville, Ga.
41	John Stevenson	OLB	Jr.	Stone Mountain, Ga.	91	Justice Ejike	DT	RFr.	Covington, Ga.
42	Boyd Sasser	S	Jr.	Millen, Ga.	92	John Douglas	DE	Sr.	Augusta, Ga.
43	Eric Worthen	LB	Fr.	Swainsboro, Ga.	93	Rashad Williams	DE	RFr.	Roswell, Ga.
44	Quaun Daniels	OLB	Fr.	Moultrie, Ga.	94	Roderick Tinsley	DT	Sr.	Soperton, Ga.
45	Adrian Mora	PK	Gr.	Dalton, Ga.	95	Edwin Jackson	LB	RFr.	Atlanta, Ga.
46	Brent Thomas	FB	Sr.	Tampa, Fla.	96	Blake Riley	DT	So.	Crescent, Ga.
47	Omari Jones	DE	RFr.	Jonesboro, Ga.	97	George Osunde	LB	Jr.	Alpharetta, Ga.
48	Charlie Edwards	P	Sr.	Tifton, Ga.	98	Forrest Kelleher	DE	Fr.	Ft. Lauderdale, Fla.
49	Brandon Lane	DB	Jr.	Marietta, Ga.	99	Terico Agnew	DE	Jr.	Stockbridge, Ga.

OLD DOMINION MONARCHS

No.	Name	Pos.	Year	Hometown
1	Prentice Gill	WR	Sr.	Los Angeles, Calif.
2	Tommy Reamon	TE	RJr.	Newport News, Va.
3	Marquel Thomas	WR	RSO.	Va. Beach, Va.
4	Reid Evans	WR	RJr.	Hampton, Va.
5	Antonio Vaughan	WR	RFr.	Ahoskie, N.C.
6	Alex Arain	LB	RJr.	Virginia Beach, Va.
7	Nick Mayers	WR	RJr.	Virginia Beach, Va.
8	Tyler Clark	QB	Fr.	Chesapeake, Va.
9	Larry Pinkard	WR	RFr.	Washington, D.C.
10	Devon Simmons	S	RJr.	Newport News, Va.
11	Nate Ong	QB	RJr.	Escondido, Calif.
12	Craig Wilkins	LB	RJr.	Washington, D.C.
13	Rashad Manley	RB	So.	Hampton, Va.
14	Taylor Heinicke	QB	Fr.	Atlanta, Ga.
15	Aaron Evans	CB	So.	Newport News, Va.
16	Fred Credle	S	RJr.	Chesapeake, Va.
17	Thomas DeMarco	QB	RSr.	Palm Desert, Calif.
18	Akil Jones	CB	Fr.	Fairfax, Va.
19	A.J. Bordley	CB	Fr.	Va. Beach, Va.
20	Paul Morant	S	So.	Hampton, Va.
21	J.C. Wiggins	CB	So.	Richmond, Va.
22	T.J. Cowart	CB	RJr.	Virginia Beach, Va.
23	Reggie Owens	CB	Fr.	Va. Beach, Va.
24	Lorenzo Smith	RB	Fr.	Lynchburg, Va.
25	Mario Crawford	RB	Jr.	Detroit, Mich.
26	Eriq Lewis	CB	RFr.	Washington, D.C.
27	Carvin Powell	S	Jr.	Chesapeake, Va.
28	Markell Wilkins	CB	RSO.	Hampton, Va.
29	Alex Johnson	DE	RSO.	New Canton, Va.
30	Neal-Anthony Hale	S	Fr.	Norfolk, Va.
31	Jonathan Plisco	P	RJr.	Newport News, Va.
32	Angus Harper	RB	RFr.	Alexandria, Va.
33	Tyree Lee	RB	Fr.	Hampton, Va.
34	J.J. Williams	LB	RSr.	Derby, Kan.
35	Aquante Thornton	CB	Fr.	Va. Beach, Va.
36	Colby Goodwyn	RB	So.	Hampton, Va.
37	Malik Jackson	RB	Fr.	Washington, D.C.
39	Jarod Brown	K	RSO.	Yorktown, Va.
40	B.J. McLaughlin	DE	RJr.	Columbia, Va.
41	Brandon Bacchus	CB	Fr.	Hampton, Va.
42	Keenen Terry II	CB	So.	Hampton, Va.
43	Darius Jennings	S	Fr.	Chesapeake, Va.
44	Darryl Brown	LB	RFr.	Virginia Beach, Va.
45	Rob Mahan	LB	Fr.	Merchantville, N.J.
46	John Darr	LB	RSO.	Forestville, Md.

No.	Name	Pos.	Year	Hometown
47	Mike Lennox	LB	Fr.	Bristow, Va.
48	Preston Smith	DE	RFr.	Chesapeake, Va.
49	Dillon Morrow	TE	Fr.	Orange, Va.
50	Rick Lovato	LS	Fr.	Middletown, N.J.
51	Michael Colbewrt	LB	RJr.	Fayetteville, N.C.
52	Xavier Duckett	LB	RSO.	Roanoke, Va.
54	Dominique Guinn-Bailey	DT	RFr.	Portsmouth, Va.
55	Erik Saylor	DT	RJr.	Ijamsville, Md.
56	James Faircloth	LB	Fr.	Chesapeake, Va.
57	Robbie Duncan	OL	RJr.	Sterling, Va.
58	Jeremy Hensley	OL	Sr.	La Palma, Calif.
59	Eugene Bazemore	DE	Fr.	Portsmouth, Va.
60	Josh Mann	OL	Fr.	Va. Beach, Va.
61	Wes Moulton	OL	RFr.	Virginia Beach, Va.
63	Kevin Marley	LS	Fr.	Manassas, Va.
64	Rodney Hunter	LB	So.	Miami, Fla.
65	Perry Owens	OL	RSO.	Edenton, N.C.
67	Dustin Burdick	K	Fr.	Staunton, Va.
68	Orion Hall	P	RFr.	Norfolk, Va.
69	Josh Williams	P	Fr.	Keysville, Va.
70	Brandon Carr	OL	RJr.	Chesapeake, Va.
71	Connor Mewbourne	OL	Fr.	Va. Beach, Va.
73	Jack Lowney	OL	RSO.	Narberth, Pa.
74	Jonathan McLean	DE	Fr.	Hampton, Va.
75	Bryan Morrison	OL	RJr.	Ashburn, Va.
76	Ryan Jensen	OL	RSr.	Petaluma, Calif.
77	David Born	OL	RSO.	Bakersfield, Calif.
79	Mike Justice	OL	So.	Springfield, Va.
80	Blair Roberts	WR	Fr.	Rochester, N.Y.
81	Jakwail Bailey	WR	Fr.	Haddonfield, N.J.
82	Kirk Spellman	WR	Fr.	Chesapeake, Va.
83	Kai Blanco	TE	RJr.	Alexandria, Va.
84	Dorian Jackson	WR	RJr.	Colonial Heights, Va.
85	Chris Lovitt	WR	RJr.	Stafford, Va.
86	Daniel Wray	TE	Fr.	Newport News, Va.
88	Mitch Castleberry	TE	Fr.	Herndon, Va.
90	Chris Burnette	DT	RJr.	Baltimore, Md.
91	Andrew Turner	DE	RJr.	Virginia Beach, Va.
92	Kevin Buchanan	DE	Fr.	Va. Beach, Va.
93	Chad King	DE	RSr.	Springfield, Va.
94	Jagger Blehm	DT	RFr.	Virginia Beach, Va.
95	Nate Barnes	DT	RSO.	Newport News, Va.
96	Ronnie Cameron	DT	RSr.	Westbury, N.Y.
97	Edmon McClam	DT	Sr.	Coward, S.C.
99	Dontez Tyler	DE	F	Ahoskie, N.C.

Eagles to face Old Dominion in second round of playoffs

Football

By JAMES FARMER

George-Anne staff

Georgia Southern University faces its first opponent in the NCAA playoffs on Saturday versus Old Dominion University.

ODU is a program that is shaping up to resemble GSU in the 1980s.

After being without a football program for 69 years, head coach Bobby Wilder has guided the Monarchs to an impressive 27-7 record in three years, including 10-2 so far this season.

This is their first year in the postseason, and they started their playoff history with a 35-18 win over Norfolk State University.

GSU should be feeling refreshed after their first bye week since week three of the regular season. The team practiced most of Thanksgiving break, but could not game plan for ODU completely because ODU had to defeat Norfolk State to get to this point.

Special Teams: ODU brings a unique approach to special teams. Last game, they lined up in shotgun on fourth down and punted and also lined up to punt on fourth down and passed.

They also blocked two field goals, bringing their season block total to 10.

GSU's special teams had mixed results in their last game. Adrian Mora missed his first field goal of the season on a block, but Laron Scott ran a kickoff back for a touchdown.

The Eagles will not want to give up a blocked field goal in consecutive games after not allowing one all season.

Stat to watch: 6. Edmon McClam has blocked six PATs in his career, one shy of the NCAA Division-I record.

Adrian Mora has the FCS record for consecutive PAT makes.

Advantage: Even.

ODU offense versus GSU Defense: Old Dominion has a simply dominant offense. The Monarchs roll up over 420 yards a game and score 35.8 points per game.

They are led by quarterback Taylor Heinicke, who passes for over 254.9 yards per game on the year and has thrown 20 touchdown passes versus one interception in eight games.

Angus Harper and Colby Goodwyn combine for 117 yards per game and 12 touchdowns rushing, but will have a hard time against Brent Russell and the GSU run defense.



Lindsay Hartman/ STAFF

Darius Eubanks (13), Roderick Tinsley (94) and Brent Russell (66) line up against the University of Alabama on November 19. The Eagles learned the next day that they clinched the No. 3 seed and a first-round bye in the NCAA playoffs. They play Old Dominion on Saturday.

Five different receivers for ODU have caught for over 400 yards, which could pose problems for the GSU pass defense, which has been suspect this year.

GSU will look to shut down the run like they always do against the Monarchs, but it is questionable if the Eagles can keep up with the passing game of ODU.

GSU will have to play great pass defense if it wishes to keep up the strong performances it has been giving this year.

Stat to watch: .1. The difference in scoring between GSU and ODU is one point per game. GSU averages 35.9 ppg, and ODU averages 35.8 ppg.

Advantage: (slightly) GSU

GSU offense versus ODU defense: GSU's offense was a major storyline in college football two weeks ago, as they ran 21 points against the University of Alabama.

The Eagles showed courage and determination in a game that they were outmatched in.

The offense is very good for GSU this year. Dominique Swope has been running around and through defenses the last two games, and Robert Brown can still be a factor from the B-back position.

Jerick McKinnon is a threat both running and receiving from his A-back position, and Jaybo Shaw has been making the right decisions when running the triple option this year.

GSU's passing game has been hit or miss of late, connecting on a low percentage of passes for a high amount of yards. But the quarterbacks from GSU still rank in the top five nationally in efficiency.

ODU's defense gives up 25.5 points per game, which is not bad, but is not good either. The defense ranks second in the Colonial Athletic Association in run defense at 116 per game.

The defense's strength lies in its ability to create sacks and turnovers.

The Monarchs have 36 sacks and 26 takeaways on the year. If ODU can force GSU to relapse into some bad fumbling habits, it can turn the game into a nightmare for GSU.

However, the GSU offense can negate the pass-rushing strength of ODU by not passing the ball much, even if they fall behind.

Stat to watch: 9. In nine of the 11 games ODU has played this season, their opponents' yards per rush average has gone down.

Advantage: GSU.

Final Analysis: GSU should be excited to have another home game at Paulson Stadium, where they are undefeated this year.

The fans will be showing up in huge numbers to watch their Eagles in a home playoff game for the second time in two years.

ODU would love nothing more than to spoil the hopes of GSU and start building their own playoff legacy in their first appearance.

A win against GSU would truly be a great win both on the field and symbolically for the Monarchs.

However, the friendly confines of Paulson Stadium will give the Eagles a great advantage over a talented, but inexperienced Monarch team.

Stat to watch: 9-2. In the spirit of comparing ODU to GSU in the 1980s, Erk Russell led the 1985 team to a 9-2 regular season record.

They then won their first ever playoff game at home to start the playoffs and then won on the road from there out. That is the exact path ODU will have to take to make the title game.

Final Score: 36-34 GSU