

Georgia Southern University

## Digital Commons@Georgia Southern

---

The George-Anne

Student Media

---

10-27-2011

### The George-Anne

Georgia Southern University

Follow this and additional works at: <https://digitalcommons.georgiasouthern.edu/george-anne>



Part of the [Higher Education Commons](#)

---

#### Recommended Citation

Georgia Southern University, "The George-Anne" (2011). *The George-Anne*. 3183.  
<https://digitalcommons.georgiasouthern.edu/george-anne/3183>

This newspaper is brought to you for free and open access by the Student Media at Digital Commons@Georgia Southern. It has been accepted for inclusion in The George-Anne by an authorized administrator of Digital Commons@Georgia Southern. For more information, please contact [digitalcommons@georgiasouthern.edu](mailto:digitalcommons@georgiasouthern.edu).



## LILY'S CAFE CHARMS

PAGE 18

## GAMEDAY MAYDAY

SPECIAL PULL-OUT SECTION

## BASKETBALL BEGINS

PAGE 10

Thursday, October 27, 2011  
Georgia Southern University  
www.thegeorgeanne.com  
Volume 87 • Issue 37

# THE GEORGE-ANNE

## SURFING THE PEDESTRIUM



Christian Washington/STAFF

A student skateboarder cruises in front of the University Store while performing a kick flip.

## Student remembered

### Cause of death still under investigation

By JESSIE REESE

George-Anne staff

On Oct. 20 at 1 p.m., East Georgia student Andrew Lauder passed away in his apartment at the Avenue at Southern.

The cause of death has not yet been confirmed. The case has been turned over to the Criminal Investigation Bureau, according to an incident report from the Statesboro Police Department.

"We responded to the Avenue at Southern in reference to a possible deceased person. The case is currently under investigation," said Statesboro Police Captain Scott Brunson.

"I unfortunately went to his house and found him that day around 1 p.m. I called 911 and then

started CPR. They tried to walk me through it over the phone, but then the ambulance got there and they said he was gone," said Jeremy Hill, a senior general studies major at Georgia Southern University. "They said he had a history of seizures, but I know he had meds for it. They're thinking that his death was most likely related to the seizures."

"It was just one of those awful situations. He was a best friend to me. We both got down here in the fall of 2007, and we worked together throwing events in the Statesboro area, Atlanta and Savannah and that's how we met each other," said Hill.

Lauder was a junior sports management

See STUDENT DEATH, page 3

## Faculty concerned by dean's leadership

BY ARIELLE COAMBES

George-Anne staff

Dean of the College of Liberal Arts and Social Sciences Michael Smith distributed army leadership manuals to each chair in CLASS this semester, causing faculty concern over his leadership style.

The US Army Leadership Field Manual, which emphasizes direct, first-line leadership, is for face-to-face leaders, according to the book's

description.

"I think it's very authoritarian. I think it's a very top-down sort of model and I don't think that's appropriate for an academic community," said an anonymous faculty member in the department of political science. "I think academic communities are supposed to be characterized by the freedom of thought and the freedom to defend when appropriate as opposed to the idea that individuals should

See CONCERN, page 8



thegeorge  
anne.com

Thurs.	Fri.	Sat.	Sun.
H 81	H 72	H 66	H 67
L 54	L 44	L 39	L 44



Newsroom 478-5246  
Advertising 478-5418  
Fax 478-7113

PO Box 8001  
Statesboro, GA  
30460



IT'S YOUR LIFE...

**LIVE IT.**

FORUMSTATESBORO.COM

COMING TO:

831 South Main Street  
Statesboro, GA 30458

LEASING  
OFFICE HOURS:

Monday-Friday 9-6  
Saturday 10-5  
Sunday 12-5

**FORUM**

®

AT STATESBORO

A PREMIER STUDENT  
HOUSING COMMUNITY

**NOW  
LEASING  
FOR FALL 2012**

- Tennis Court
- Lap Pool & Spa
- Pet Friendly
- Pet Park
- Two Free Tanning Beds
- Indoor Basketball Court
- Indoor Volleyball Court
- Car Care Center
- Modern Faux-Wood Floors
- Private Bathroom in Bedrooms
- Convenient Individual Leases
- Free High Speed Internet in Bedrooms
- 24 Hour Fitness and Training Center
- Kitchens with Full Size Appliances
- Full Size Washer / Dryer Included
- Wi-Fi Cyber Cafe with Coffee Bar
- Outdoor Sand Volleyball Court
- High Speed Internet Access
- Student Center and Lounge
- Roommate Matching
- Expanded Cable
- Media Room

**PETS  
WELCOME!**



**912-489-3676**

**ForumStatesboro.com**

**GET A FREE T-SHIRT WITH THIS AD!**



# Student organizations to merge

Eagle Entertainment and Traditions Council will combine in 2012

By **COURTNEY TIELKING**

George-Anne contributor

Eagle Entertainment and Traditions Council will merge into one organization in January to generate higher participation and to utilize funds.

"We come from the same budget, so it just makes sense. The merge will make things run more smoothly. All events will still be here, they will just be under one name. We're also keeping all of our members," said Brittany Bullock, vice president of Traditions Council.

Laila Abdallah, membership coordinator of Eagle Entertainment, said that the two organizations have been working together for a while.

"We work really close to each other all the time. We've worked in the same office for years and we share the same resources," said Abdallah.

A name for the merged organization has not been decided upon yet because the name "Eagle Entertainment" has

been paid for and trademarked, said Abdallah.

The consensus was reached by both organizations. With recent cuts in funding the decision was clear, said Bullock and Abdallah.

"Every decision we were able to make together," said Abdallah. "There have been a lot of budget cuts at Georgia Southern. It was silly for us to split things when we could just work together and make better use of the money."

"I think that the merge is really smart. They can do more things and make our student activity fee dollars stretch farther," said Savanna Ullman, sophomore psychology major.

The merge will yield more involvement and will better inform students of the events, said Abdallah.

"Some of the Traditions Council's events aren't well known to students because they tend to think that tradition isn't as fun as entertainment, but Traditions Council has really, really

cool events so if we can have PR on both ends we'll have more participation," said Abdallah.

The intention of the merge is not for one organization to prevail, but for both organizations to benefit, said Abdallah. All members will still have a position even after the two groups join together.

"Basically what we're doing is incorporating everybody that we have. Everybody will have a role. No one is going to lose their job. The ones in leadership might have different roles, or different titles, but nobody is losing their job," said Abdallah.

Both organizations feel as though they will be able to better serve the student body after they start working under the same name.

"Our main goal is to provide entertainment," said Bullock. "Even though we are traditions based, we provide entertainment and even though Eagle Entertainment is entertainment based, their activities become traditions."

## STUDENT DEATH, from page 1

major from Atlanta.

"He was a student at East Georgia but he was taking classes on-campus. He wasn't that involved on-campus, but I know how I'm feeling right now is how a lot of other people are feeling on-campus. Drew reached a whole outside part of campus. He was involved with students on-campus and also students

at East Georgia and students in the community. He was always out having a good time somewhere," said Hill.

"He was just an all around good guy. He was one of the most trustworthy and honest people I have ever met. He told it how he saw it and didn't sugar coat anything. (His death) has been hanging over everything. It's been kind of tough

to deal with," said Hill.

Hill said the service will be held Saturday at 11 a.m. at Rainbow Park Baptist Church in Decatur. The first viewing will be Friday from 5 p.m. to 8 p.m. in Eternal Hills Funeral Home in Snellville on U.S. Highway 78. The second viewing is Friday from 9 to 11 a.m. before the funeral.

## Statement of Operations

The George-Anne is the official student newspaper of Georgia Southern University, owned and operated by GSU students using facilities provided by the university. The newspaper is the oldest continuously published newspaper in Bulloch County. The newspaper is a designated public forum for the Georgia Southern community. The newspaper is published twice weekly, on Tuesdays and Thursdays, during most of the academic year. Any questions regarding content should be directed to the student editor by phone at 912.478.5246 or at [gaeditor@georgiasouthern.edu](mailto:gaeditor@georgiasouthern.edu).

**ADVERTISING:** The newspaper accepts advertising. Inquiries may be made by calling 912.478.5418 or 912.478-0566. Fax any questions to 912.478.7113 or e-mail [ads1@georgiasouthern.edu](mailto:ads1@georgiasouthern.edu).

The George-Anne receives additional support, in part, from the Student Activities Budget Committee.

The deadline for reserving space and submitting advertising copy is noon, one week prior to the intended publication date. For more information, rate cards, sample publications, contact the advertising manager or student media director. The advertiser is responsible for any errors in advertisements and its liability for adjustments is limited to the amount of space the error occupied in the ad. Further, the newspaper is not responsible for any damages caused due to an ad's omission from a particular edition and its responsibility solely is to reschedule the ad in the next regular edition at the regular advertising rates.

**STUDENTS BEWARE:** The George-Anne screens all advertisements prior to publication. The newspaper strives to accept ads for legitimate products and services only. Students are urged to exercise caution when replying to ads—particularly those that require personal information. Students are also urged to report to the newspaper any suspicious offers which they might see in an ad.

**PUBLICATION INFORMATION:** The newspaper is printed by Signature Offset in Jacksonville, Fla.

**NOTICE:** Unauthorized removal of multiple copies from a distribution site constitutes theft under Georgia law, a misdemeanor offense punishable by a fine and/or jail time.

**Editor-in-Chief** Arielle Coambes  
**Views / Copy Editor** Shauntel Hall  
**News Editor** Jennifer Curington  
**Asst. News Editor** Jessie Reese  
**Arts Editor** Julia Welch  
**Asst. Arts Editor** Quaniqua Epps  
**Sports Editor** Matthew D'La Rotta  
**Asst. Sports Editor** Jannah Bolds  
**Football Editor** James Farmer

**Business Manager** Tiffany Larkin  
**Asst. Business Manager** Holly Hillhouse  
**Marketing Manager** Aria Gabol  
**Production Manager** Mallory McLendon  
**Photo Editor** Randy Hudgins  
**Design Editor** Kelsey Paone  
**Web Editor** Jonathan Law

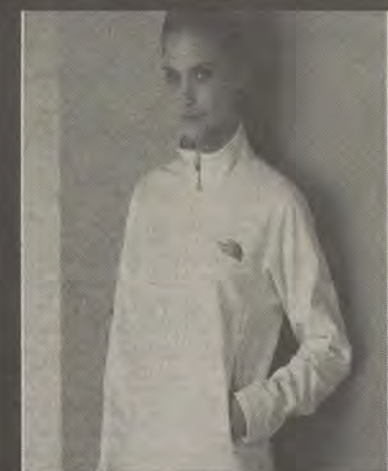
## Corrections

Contact the editor at [gaeditor@georgiasouthern.edu](mailto:gaeditor@georgiasouthern.edu) for corrections and errors.

THE  
NORTH  
FACE



The Sir Shop  
Statesboro Mall  
912.764.6924





## Our View Career fair should cater to more majors

The Eagle Career Fair, held by the Office of Career Services, occurred yesterday at 10 a.m. at the Recreation Activities Center.

The event hosted companies like Aflac, Target, Wells Fargo, Goodrich, and Verizon.

Despite the increasing student population at Georgia Southern University, the number of employers attending the Eagle Expo Career Fair is decreasing.

According to Heather Scarboro, recruitment coordinator of the office of career services, there were 800 students last year and 70 plus employers in the spring, now only 48 employers attended.

The Eagle Expo Career Fair should make changes in the future to include more employers to match the diversity of majors at GSU.

Based on the employers who attend the Eagle Expo Career fair, there is not sufficient representation available for students who are liberal arts majors.

Students within those majors deserve to be able to attend the fair and feel like they are being represented adequately.

These students who are not apart of the science or technology fields have to search harder to find available jobs and internships. This addition to the career fair would help liberal arts majors in their job search.

If the Eagle Expo Career Fair were to include more employers that catered to liberal arts majors that could also solve the issue of a decrease in employers attending the fair and could increase student attendance.

Because getting students employed is one of the career fair's main purposes this change should be made to satisfy the needs of all GSU students.

As a university that is ranked as one of the highest in the U.S., students who attend should be able to go to a career fair where their major or field is accurately represented.

The George-Anne welcomes letters to the editor and appropriate guest columns. All copy submitted should be 350 words or fewer, typed, and sent via e-mail in Microsoft Word format to [gaeditor@georgiasouthern.edu](mailto:gaeditor@georgiasouthern.edu). All submissions must be signed and include phone number for verification. GSU students should include their academic major, year and hometown. The editors reserve the right to reject any submission and edit submissions for length.

Opinions expressed herein are those of the Board of Opinions or columnists themselves and DO NOT necessarily reflect those of the faculty, staff or administration of GSU, the Student Media Advisory Board, Student Media or the University System of Georgia.

## Robberies on Halloween.



It's a pure guessing game.

Jasmine Nielson/Contributor

## Weekly SGA Column

### SGA shares on-campus accomplishments

The Student Government Association has been working hard to improve our campus.

The following gives a list of what has been accomplished thus far:

Freshman:

- Survival Guide for Freshman, in SOAR binder, anticipated Fall 2012
- SGA Advertising in Residence Halls
- SGA Senator information in SOAR binder, anticipated Fall 2012

At Large:

- Don't feed the animal signs in front of Lake Ruby
- Handicap accessibility for Landrum and coming soon at Lakeside

CHHS:

- Suggestion box in student services
- SGA Bulletin Board in CHHS buildings
- Supplies for Hollis
- Fixed technology problems in Hospitality building

CIT:

- SGA column in CHHS Newsletter
- Searching for donors for new buildings for CHHS
- SGA advertising on computers



KATHERINE HILSON

- Began campaign for new computers and software
- Facebook and LinkedIn group for CIT students
- Senator information on CIT website

CLASS:

- SGA bulletin board
- Working to revamp Carroll
- Evaluating CLASS Advisement
- COBA:
- SGA Bulletin Board in COBA
- Meet the Senators table outside of COBA
- SGA Section in the COBA Connection Newsletter

-Met with COBA Orgs and COBA Student Advisory Board

-Trimming hedges in front of building

-More newspapers in COBA

-Advisement has been modified

COE:

-Suggestion box online for the new website

-George-Anne now available in the COE building

-Tech Fee Committee proposal for IRC materials

-Working on censored lights in each classroom

COGS:

-Petition for GA parking on campus

-Questionnaire to be sent out to Grad. Students

-Collaboration with GSO (Graduate Student Organization)

COST:

-Meet the COST Senators

-Meeting with college clubs and organizations regarding COST

**Hilson** is a public relations major from Augusta, Ga. She is the current SGA executive vice president.



# GSU should compromise on tobacco policy for all students

The Staff Council sent out an online survey to measure student's thoughts on tobacco use on campus last week.

The results of the survey will be used to help Staff Council determine what the next step should be in the process they began in the fall semester of 2010 to make Georgia Southern University's campus tobacco free.

Personally, I am not a smoker and I do not appreciate being exposed to cigarette smoke on a daily basis just for walking to my classes.

Students who wish to endanger their health by smoking cigarettes have that right when they are over



JENNIFER CURRINGTON/  
NEWS EDITOR

18 years of age, however, I feel that students also have the right to breathe clean, fresh air.

Making GSU a tobacco free

campus would not upset me, since I am a non-smoker. However, I do think that making GSU campus tobacco free could impede on the rights of some students that wish to smoke on a cancer stick.

I think the best way for a compromise to be reached for all is to have heavily enforced smoking areas.

These smoking areas should be clearly marked and a comfortable location for students who wish to smoke. If an area designated for smokers does not provide benches or does not provide coverage for students on rainy days, then the area will not be utilized.

For students that do not wish to be exposed to smoke and health hazards, the smoking areas should be far away enough from the sidewalks so that it does not interfere with the health of others.

The survey also asks students about their feelings of what tobacco products do for the environment.

I think it is rude and an insult to GSU and its groundskeepers when smokers drop their cigarette butts wherever they please.

Also, walking along the sidewalk and having to avoid a big lump of dip that someone decided to leave behind for all the pedestrians is disgusting and unfair

for students that enjoy a clean campus. If GSU becomes tobacco free then dip would also become outlawed on campus.

Therefore, the smoking areas I previously mentioned should accommodate students who wish to use smokeless tobacco.

I would not want rights that I feel I have earned to be taken away, so I don't think the same should happen to my fellow students.

GSU should provide a compromise for everyone's health and the cleanliness of campus.

*Currington is a sophomore writing and linguistics major from Warner Robins, Ga.*

## America must unite for strength

Last night while I was channel surfing, I stumbled upon a late night preacher talking about how great America was and if we needed proof to just look at the Pledge of Allegiance.

Not the guy dressing up in all American flag apparel, but the actual words that we said everyday before school, a government function, or in my case College Republicans meeting.

This made me think and look back on it and actually think about what each word meant. I'd like to take the time to share with you what I found.

"I": a body of one, individual.

"Pledge": a solemn promise or undertaking, given as a token of love, favor or loyalty.

"Allegiance": loyalty or commitment given to a superior entity.

"To the flag": Old Glory, our standard and symbol of freedom. "Of the United States of America": a coming together of 50 individual communities to make one great nation.

"And to the Republic for which she stands": a group of officials elected to represent the people



FRITZ CHAPIN

whom elected them, because power comes from the people to the officials and not the other way around.

"One nation": a single large aggregate of people who share a common decent, history, culture, or language and inhabit a particular country or territory.

"Under God": a nation protected and guided by a supreme being, whether they be real or metaphoric.

"Indivisible": unable to be separated from its counterparts for any reason.

"With liberty": the state of being free within society from oppressive restrictions imposed by authority on one's way of life, behavior or political views, the power or scope to act as one pleases.

"And justice": the quality of being fair and reasonable, the administration of the law or authority in maintaining this.

"For all": refers to the whole quantity or extent of a particular group or thing.

This pledge is what America is about at it's core. It's a statement saying that no matter what, we are all Americans and regardless of political or religious affiliation, point of view or any other dividing factor.

While we have the wonderful freedom to express all these things, we need to do so in a way that doesn't polarize people. We need to remember this now more than ever as our country continues to slip into mediocrity.

We need to do as we do in times of emergency and band together and stand strong as a country just as we did that terrible September morning in 2001.

If we can't do that, then we might as well accept the defeat of America and watch this great country fall by the wayside.

*Chapin is a political science major from Roswell, Ga.*

## Americans need better paying jobs

If you plan on being in the top one percent, congratulations because the average household income has tripled over the past three decades.

The middle class income grew by just 40 percent since the 1970s and has fallen by seven percent in the past decade.

The American middle class is fading and fast. The poverty rating has risen to include 15.1 percent of Americans.

It is obvious that the recession has hit the lowest earners the hardest, while the richer groups have prospered during these hard times.

CNN Money reports that 14.2 percent of people ages 25 to 34 are living with their parents, compared to the 11.8 percent it was before the recession started in 2007.

If our young people can't get out of their parents' homes and become successful, what hope is there for them to build up our diminishing middle class?

We already knew there were no jobs, but we're learning now that within the coming decades,



ROB ROBERTS

that we will no longer be able to identify as wealthy, middle class or impoverished.

Prices are rising for homes, healthcare, college, groceries, gas and movies. With the rising prices it is the lower income individuals will be hit the hardest and feel the most adverse effects.

The middle class average income has increased by 40 percent over the past three decades compared to the 275 percent increase the top one percent has seen.

We need jobs, and better paying jobs. The economy needs to be stabilized so we can reduce inflation.

*Roberts is a senior public relations major from Warner Robins, Ga.*



## Letters to Editor

# Iraq is now ready to stand alone as a sovereign nation

Dear Editor,

The George-Anne published an editorial by Fritz Chapin criticizing the President's decision to withdraw troops from Iraq.

He argued that Iraq does not have enough military power to defend itself from Iran or terrorists. If we withdraw, according to Chapin, extremists will "take over and begin a new dictatorial regime." He argues that the real reason for the withdrawal

is to increase the President's poll numbers.

If this is true, the military power of Iraq today must be less than what it would have been if we had not invaded. If the Iraqi military is in the same shape or better than we can justify a withdrawal.

Before the war, Fox News reported that Iraq's air force only had 132 aircrafts; most which were built prior to the 1980s. The army had 350,000 poorly trained soldiers. Its reported purpose was "to

prevent popular uprisings" and was "suffering serious equipment losses, damage to production facilities and continuing supply problems."

A Global Securities report stated that the Iraqi navy was inoperable, unable for use in training exercises. Was Iraq ready to defend itself from Iran in 2003? Would it be ready today if it had continued on this path?

CIA reports show that the Iraqi military today is stronger than it was in 2003. The air force has over 200

workable aircrafts, with U.S. trained pilots. The army has over 270,000 active personnel, trained with a program developed by our military.

The navy has 15 working ships that serve in defending the shore of Iraq. So, is the Iraqi military more prepared today as a regional hegemon than under Saddam? The evidence appears to show that the Iraqi military is in better shape today than it would be otherwise.

By moving almost all troops out of Iraq, we are not abandoning our

new ally, we are simply allowing the government to control itself and protect itself.

Obama does not have plans to withdraw all troops from the Middle East. In the event Iran was to attack Iraq, we would come to their aid - like when Iraq attacked Kuwait in the early 1990s.

David Greenberg  
Political Science and Philosophy  
major  
Stockbridge, Ga.

## Anti-semitic claim made is invalid

Dear Editor,

I would like to respond to writer Fritz Chapin's article stating that Occupy Wall Street is Anti-Semitic. I say as a Jew that Chapin's claim is utterly bull.

This is perpetuated by right wing pundits, like Glenn Beck, a man who offended many people in the Jewish community for his innuendo that Jewish billionaire, George Soros collaborated with Nazis as a youth and accused The Union of Reform Judaism of being primarily political rather than religious.

When an open letter criticizing his statements signed by several rabbis, including the rabbi that

guided me at my Bar Mitzvah, was sent to him it was callously dismissed as a 'George Soros plot to discredit him'.

The only major Jewish commentator making this claim is Bill Kristol, a man who advocated the nomination of Sarah Palin for vice president in 2008 (who's comments about small towns being the "real America" hurt the McCain campaign in my community). Please Mr. Chapin be original.

Also, I would bring up that Jews have participating in the protest and have practiced.

I could bring up my brethren who have engaged in our sacred rites and services. A Kol Nidre

service that was attended by 700 Jews in New York, a number larger than many synagogues as reported by The Jewish Daily Forward, was held by a Jewish Occupy Wall Street "Occupy Judaism."

Also during the holiday of Sukkot, tents celebrating the holiday called Sukkahs sprang up and were used by Jewish OWSers provided by the Hasidic group CHABAD.

While there are Anti-Semites in the crowds their signs are often tailed by signs saying things like 'This Does Not Represent Us.'

A Proud Jew,  
Merritt Skidmore-Hess

## Gender is important

Dear Editor,

First of all I'd like to say that the article The George-Anne published in Tuesday's paper on the Gay Prom was great. It's lovely to see the paper covering LGBT events and issues.

However, I do have one problem with the article. I was quoted but the article used female pronouns for me.

As someone who is a female-to-male transgender person it hurt to be incorrectly identified like that and it took my statement out of context.

I believe I told the person who took my statement that I am transgender and if I did not I apologize. If you are not aware of what transgender means, it means

that my gender identity does not match my biological sex.

I considered not writing this letter in fear of what responses I might get but I realized that no one else should be able to dictate my gender identity or pronouns, even if it is an honest mistake.

As someone who is male-identified, uses a male name and presents myself as male, I feel I have the right to have people use my preferred pronouns concerning me. And this publication is no exception.

Carson Hendrix  
Sophomore  
History Major  
Statesboro, GA



(912) 489-6655  
in front of Lowe's

# \$50 OFF

## ONE COMPLETE PAIR OF GLASSES

Coupon must be presented at time of sale. Not valid on previous sales. Minimum price of \$119.95 after discount. Cannot be combined with any other eyeglasses offer or discount. Limited time offer.

Valid through: October 29, 2011

## EYE EXAMS • GLASSES • CONTACTS

[www.boomersvisioncenter.com](http://www.boomersvisioncenter.com)

GSU



# SGA to provide shuttles for Sunday shopping

By TAYLOR COOPER  
George-Anne Contributor

Beginning spring semester, shuttles will take students from Southern Pines to Wal-Mart on Sunday using the Shuttle GUS program.

Student Government Association will use the cars they already rent from Enterprise for the Shuttle GUS program on Friday and Saturday night for the Sunday shuttles, said Dominique Quarles, vice president of finance for SGA.

"It won't require any additional funds. We'll use cars that we already have that are just sitting around on Sundays," said Alton Standifer, president of SGA.

The Shuttle GUS service is paid for through student activity fees, said Vice President of Auxiliary Affairs for SGA Garrett Green.

"The majority of the time we get at least five-seaters. We get about four or

five cars that can carry five or more," said Green.

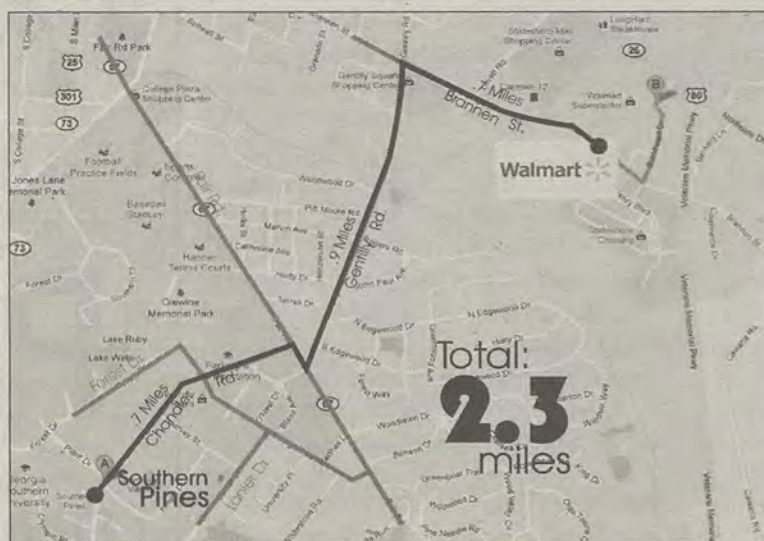
SGA is working out the details for a shuttle route that will take students to Wal-Mart from Southern Pines, said Quarles.

"This is all projected. It's not solid. They're projected to run to and from Wal-Mart from 2-6 p.m.," said Quarles. "Every 45 minutes someone will be leaving Southern Pines and driving to Wal-Mart and vice versa. You have the option to stay at Wal-Mart for 45 minutes, one hour and 30 minutes, two hours and 15 minutes, etc."

Students don't have to worry about how to get to Pines either, said Quarles.

"The plan is to have three (shuttles) going to Wal-Mart and the rest picking people up from their apartment and going to Pines or taking them from Pines to their apartments to drop off their groceries," said Quarles.

The shuttles are driven by students



Tyler Fleider/STAFF

organizations that sign up to do so, said Green.

"Organizations sign up to drive the shuttles for a weekend and earn money that way. They would be driven by the organization that drives

the Shuttle GUS that weekend," said Green.

We probably won't be giving the organizations any more money because we feel like \$300 is enough to drive a car for a few hours on the

weekend," said Green.

SGA rents four or five cars from Enterprise every weekend for use by Shuttle GUS, said Standifer.

Several students think the Sunday shuttles are a great idea.

"I think it'd be great. A ton of my friends don't have cars, so they get rides from me," said Alex Jameson, sophomore computer science major.

"I just lost my car," said Toan Tran, junior biochemistry major. "I really need a ride, I've been relying on my roommates for rides."

"I've seen a lot of people riding bikes to Wal-Mart, it'll make it safer for them, and it will help a lot of freshmen stuck on campus," said Hannah Oswalt, sophomore pre-nursing major.

Luigi Clendening, senior general studies major said, "I think it's awesome. Statesboro is pretty big, if you don't have a car you're stuck on campus."



## Your Hunting and Fishing Headquarters

246B Northside Drive East Statesboro, Ga 30458

Between Deloach's Music and the Tile Center

TC-OUTDOORS.com • 912-489-3474



*Voted Best Mattress Store in the 'Boro!*

Student Housing Available

New, Used & Antique  
Furniture

Complete Mattress Outlet

## Deal's

*Come See the Dealmaker!*

17083 GA Hwy 67, Statesboro, GA  
(912)681-3824 (Near Fairgrounds)

Mon-Fri: 10am-6pm

Sat: 10am-5pm

Sun: 1pm-5pm

- Honest, Dependable  
Same Day Delivery
- Locally Owned &  
Operated by GSU Graduate
- Serving GSU Students  
for 34 years

Tervis Tumbler Headquarters

- Collegiate Gifts
- Jewelry
- Handbags
- Placemats
- Diaper Bags
- Men's Gifts  
& Much More

*Best Furniture Mattress & Gift "DEALS" in the 'Boro*



**CONCERN,** from page 1

simply get in line behind their leader, right or wrong."

Other CLASS faculty agreed with the anonymous political science professor, calling the CLASS environment militant. Most CLASS faculty members remained anonymous to protect their positions at Georgia Southern University.

"I am very concerned that the administrative culture here is changing," said professor Debra Sabia, who has a Ph.D in political science. "We have had a long tradition in the academy that has embraced a shared governance model, a model that is transparent, democratic and inclusive. The last time I saw the military in action, that model was not democratic, inclusive and transparent."

However, other faculty members found the manual and Smith's leadership style effective.

"What I appreciate is that our dean is working to talk about leadership and develop leadership among his chairs," said David Dudley, chair of the department of literature and philosophy. "I've heard people say okay, so it's a militant leadership style. I think it shows maybe, kind of a no-nonsense style."

During their last meeting, Smith instructed CLASS chairs to begin reading the manual, said Dudley.

"We had an hour-long discussion about some of the principals of leadership that are outlined in that manual. I don't recall that I agree with every single point, but it talks about different levels of leadership. It talks about taking care of your people. It talks about integrity and fairness and all of that, so I've got no problem with it," said Dudley.

Concerns like these have been aired multiple times this semester, first after the removal of former political science department chair Richard Pacelle and then after the political science department took a motion of no confidence in Smith.

"What makes the environment hostile? A lack of civility by leaders who should know better," said the anonymous faculty members of CLASS.

Provost Ted Moore, at that time, responded to the concerned faculty of CLASS's grievances against Smith.

"The reaction by some Departmental faculty . . . is misguided and contrary to responsible university governance," said Moore in an email to CLASS faculty.

The concerned CLASS faculty said they found Moore's response insulting and inaccurate.

The concerned faculty of CLASS said, "Many, many departments in this College have unique and significant grievances against Dean Smith."

*Choices of the Heart*

Pregnancy Center

# Pregnant?

**Free and Confidential Testing and Counseling. Off Campus Location.  
Hot Line: 9AM-9PM 912.764.4303  
Appointments Only.**

106-B Oak Street, Statesboro, Georgia • [www.choicesoftheheart.org](http://www.choicesoftheheart.org) • 912.764.4303



## Company hours

7:30 A.m. - 6:00 P.m.  
Monday - Friday

912-489-2222

102 N Zetterower Ave  
Statesboro, GA 30458



Present this Coupon at the time of service to receive a free tire rotation with a full priced oil change.

*Super Service at a Super Price*

**489-2222**

Some Restrictions may apply. Call for more details.



Present this coupon at the time of service to receive an oil change for the low price of \$19.95.

*Super Service at a Super Price*

**489-2222**

This price is for 5-quart oil changes. It also excludes diesel, synthetic oil changes, and special oil filters. Ask more for details.



# GSU discourages profanity at football games

By **AMBER GORDON**

George-Anne contributor

On Oct. 15, students were escorted out of the Georgia Southern University football game vs. Furman University for using profanity in their cheers.

"As a member of the community, I believe that everything Georgia Southern does affects everyone else," said Assistant Dean of Judicial Affairs Patrice Buckner. "By chanting obscenities at the game, we are portraying a certain picture of what we think is okay. I believe that we can find other ways to communicate our passion in football without the need for obscene language."

The incident could be considered as disorderly conduct based on the student conduct handbook said Buckner.

The crowd should not have used profanity when cheering at the game because of the family environment, said GSU parent Darron Miles.

"I understand that it's a college campus, but

typically families come down for the football games and with all the little kids running around, it starts to become a problem," said Miles. "You would think that at this level of football, there would be a higher level of maturity from the crowd."

There should be a limit to the profanity used in cheering, said senior philosophy major Wes Green.

"If you're at a private place, it's fine. However, if you're in a public place where there are kids and family around, then you should still be able to say what you want, but it has to be censored," said Green.

Even though the code applies everywhere, it rarely becomes an issue during football games, said Buckner.

Students should be removed from the game for using profane language, said several students and parents.

"Technically, we've already paid for the football games even though we only use our ID so (students) should definitely be warned first," said senior information technology



Lindsay Hartmann/STAFF

Students cheer on the Eagles at last weekend's GSU vs. Presbyterian College.

major Chris Walker. "If it doesn't stop, though, then the people who started it should definitely be escorted out of the game."

Some students believe that there shouldn't be any punishment concerning cheering at football games.

"No, I don't think students should be punished for using profanity while cheering," said freshman computer science major David Fitzsimmons. "I mean, we're at a football game so it should definitely be within a student's right to trash talk."



## Hungry Howie's

FLAVORED CRUST PIZZA

Pick Up or Delivery

**\$7.77 LARGE 1  
TOPPING PIZZA  
(\$3 more - make  
it a works!)**

**Free Flavored Crust!**

607 Brannen Street (912)764-6565

G.A.T.A. do the right thing!  
Vote

**HAYDEN  
HARRISON**

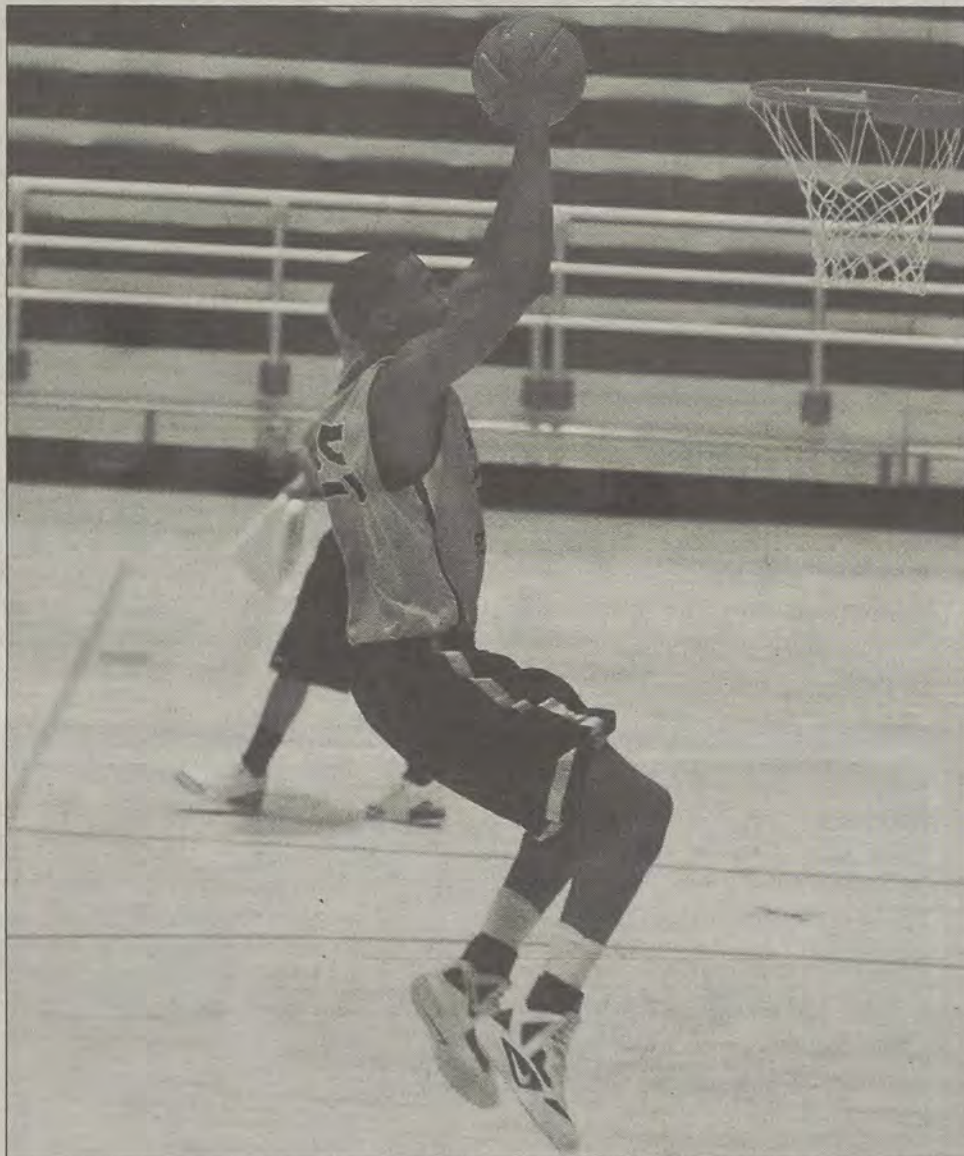
for homecoming queen  
2011

VOTE ON "WINGS" 10/31-11/3

SUPPORTED BY:  
kappa kappa gamma



## Coach Young has high expectations for Eagles



Randy Hudgins/STAFF

Freshman forward Tyrone Brown (25) dunks during on of the Eagles' pre-season practices.

### Men's basketball

By CLINTON HINELY

George-Anne contributor

The Georgia Southern University men's basketball team looks to veteran leadership and young talent for the upcoming season.

The basketball team has been stuck in a rebuilding process over the past few seasons, but with new talent and now having young players with game experience, the Eagles have big dreams for the upcoming 2011-2012 season.

"We have some really good young talent," said head coach Charlton Young. "I don't think many people know that Jelani Hewitt, who was a freshman last year, led all freshmen in the country in steals, or that Eric Ferguson was the 19th rated freshman in the country and is a legitimate NBA prospect."

The Eagles will receive a boost this year in returning senior guard Willie Powers, who was out all of last year due to a torn ACL.

"Willie Powers went down before the season ever started — never played a game, which really hurts," said Young. "It was a huge injury to have to try and overcome, and we have had to overcome so much adversity since we've gotten here."

Powers's return also aids senior guard Ben Drayton, who together could form the best backcourt in the Southern Conference.

"This season is about those two seniors," said Young. "With everything those guys have gone through, with injuries and coaching changes, they deserve to ride out of here on their white horse. We plan to send them out the right way, by winning

a championship and hanging a banner in Hanner."

The two senior guards will receive help from a sophomore class that got a lot of needed game experience last year.

"Eric Ferguson, Jelani Hewitt, and Marvin Baynham as sophomores are bigger, better and stronger. That whole freshman class got a lot of cooperative education last year and was thrown into the fire, so they are going to be a lot better this season," said coach Young.

A group of talented freshman will also have the opportunity to aid the team.

"The incoming freshman class has a chance to help us," said Young. "But, the beauty of it is that they are talented, but we don't have to depend on freshman anymore."

The whole conference is very strong and competitive throughout, but a couple of tough teams lost a significant amount of depth and talent from their graduating classes.

Coach Young said that Wofford College, The Citadel and Furman University lost some key players, and that's good news for GSU.

"Every year we expect to win a Southern Conference championship. We didn't have the greatest year last year, but the good news is we are a totally different basketball family than we were a year ago," said Young. "We are bigger, faster, stronger and we have more depth and veteran leadership."

The Eagles have two exhibition games at home against Voorhees College and Paine College respectively on Oct. 27 and Nov. 4 before beginning the new season against Valparaiso University in Hanner Fieldhouse at 7:30 p.m. on Nov. 11.

**vibram**  
**fivefingers®**

# Sports EMPORIUM

Your largest selection of athletic  
footwear in Statesboro

Free T-Shirt with a \$75 purchase

840 BC Buckhead Drive, in Buckhead plaza (912)764-4449





# Intramural Sports Scores

## Flag Football

BCM 0, Centennial Guys 40  
 Victorias Secret 6, RUF Girls 32  
 Dial 7 For More Options 20, Follow Me @ 13  
 My Dixie Wrecked 13, BCM Stack 14  
 Big Fudge 0, Diligaf 19  
 Top Gun 0, Wacky Waving Inflatable Flailing Arm Tube Men 19  
 4th and Scholng 32, You Mad Bro? 20  
 Backyard Studs 13, All Out Blitz 35  
 Dirty Birds Like Roddy 6, Krimson Kartel 26  
 We Go Deep 14, The Beatles 0  
 The Replacements 6, SAAB 13  
 Delta Tau Delta 13, Alpha Tau Omega 28  
 The Usuals 6, Dolls and Balls 19  
 Burden's Ballers 19, Unprotected Sets 0  
 Grab The Pillow 6, Vinegar Strokes 27  
 Alcoballics 40, iTouchdown There 35  
 Delta Sigma Phi 0, Woodies 39

Those Guys 0, Team Swagg 32  
 Zeta Tau Alpha 19, Alpha Omicron Pi 0  
 Phi Mu 18, Kappa Kappa Gamma 7  
 iTouchdown There 21, Macon Babies 28  
 Dolls and Balls 25, Southern Assassins 0  
 Alpha Delta Pi 14, Kappa Delta 0  
 Sigma Nu 26, Kappa Alpha Order 20  
 Kappa Sigma 25, Sigma Phi Epsilon 20  
 Pi Kappa Alpha 19, Delta Tau Delta 0  
 Delta Chi 6, Sigma Chi 25  
 Alpha Tau Omega 20, Pi Kappa Phi 14  
 Tapout 41, Seven Jerks and a Squirt 0  
 Red Rockets 8, Lights Out #1 18  
 My Dixon Cider 22, Bridge Squad 0

## Volleyball

Set it Off 0, Hot Sets 2  
 EV Bodonkadonks 1, GSATA Volleyball 2  
 CP Safe Sets 1, Bad Ace Ballers 2  
 Hot I Set Your Mother 0, The One Hit Wonders 2

Delta Force 2.0 0, Average Joes 2  
 Nuckin' Futs 0, Hit-Men 2  
 Southern Adventures 2, Size Over Everybody 1  
 Sets on the Beach 2, Delta Sigma Phi 0  
 EV Can Dig It 0, Size Matters 2  
 Spike My Drink 0, CP Sets on the Beach 2  
 Omega Phi Alpha 2, Spike My Drink 0  
 CP Sets on the Beach 0, Spiker Chicks 2  
 The Southern Woppers 2, Unprotected Sets 1  
 Spikers Unlimited 2, Who Gives a Hit 0  
 No Scrubs 2, CRI Lifeguards 0  
 Spike This 0, UV Volleybrawlers 2  
 10 Points for Gryffindor 2, I'd Hit That 0  
 The Megalodons 1, Safe Sets 2  
 Talk Sets with Sue 0, Bob Squad 2  
 We Always Get it Up 2, Holes and Poles 0

## Indoor Soccer

Kickin' It Old School 5, Big Bag of Ballers 3  
 Sour Diesel 7, Sorry Babe I Fell Asleep 3  
 Shredsters 7, Mitchell 2  
 Ashton Manpoolhamingtonlivercity Utd 7, Team Howie Feltersnatch 6  
 T.R.E.O.S. 4, STRIKERS FC 7  
 Mike Ann Deathwalkers 4, Winning 5  
 Multiple Scoregasms 6, F.C. Hondoras 5  
 Kicking and Screaming 1, Haymakers 7  
 Mighty Ducks 4, Scorgy 9  
 Womb Raiders 6, Charismatic Camels 7  
 Fiesty Goats 3, Big Test Icicles 8  
 Green Street Hooligans 4, Monster Milk 2  
 Snatchaholics 2, Jager Bombs 8  
 No Glove No Love 8, #swag FC 9  
 Lady Bugs 5, #YouPlaySoccer? 4  
 Alocballics 4, Green Street Elite 6  
 Dubriders 2, Balls and Dolls 6

## They're coming...

More delicious reasons to come back to Starbucks in the afternoon.



FREE COFFEE WITH  
 GEORGE-ANNE & JOE

Every Thursday morning at  
 the Williams Center Gazebo

## What's Happening at CRI

### Show of Strength

November 12 @ 11am



### Bouldering Night Out

Zombies vs. Humans  
 TONIGHT @ 7pm



### Sports Trivia

REGISTRATION CLOSES on Tuesday

FOLLOW US!



facebook.com/GSUCampusRec  
 twitter.com/GSUCampusRec  
 WWW.GEORGIA SOUTHERN.EDU/CRI





# Eagles defeated by Bulldogs 3-1

## Volleyball

By COLIN RITSICK

George-Anne contributor

'Dig - Pink' Breast Cancer Awareness weekend opened up with a loss for the Georgia Southern University volleyball team against Samford University at Hanner Fieldhouse on Saturday night.

"We just need to execute better," coach Chad Callihan said shortly after his team's nail-biting loss to the Bulldogs 3-1.

The Eagles had several unforced errors against the Bulldogs, a team that boasts of some skilled players in FCS volleyball. For example Lauren Hutchinson, last week's Southern Conference Player of the Week, as well as touting the nation's leading hitting percentage at .448, in addition to Katie Murphy who

is right behind Hutchinson in the ranks with a .440 percentage.

Despite the daunting numbers against the Eagles, GSU came out of the gate on fire and playing point for point with Samford. An already large and loud crowd of 350 became even more active during the first set while the teams traded leads. Both teams had multiple set points at the end, but eventually the Bulldogs' attackers wore out the Eagles' defense, winning the set 31-29.

"We need to work on our blocking and defense and executing more," sophomore middle blocker Enjoli Johnson said.

In the second set GSU was simply outplayed by a bigger, smoother Samford squad; dropping the set 16-25.

"We weren't as clean and crisp as we needed to be, and that's kind of been a theme this season," coach

Callihan said in regards to how his team handled the game.

Despite being down two sets to none, the Eagles came out of the locker room ready to bounce back. GSU played a stellar third set, overcoming more lead changes to come out on top, 25-23. The Eagles took the set mostly due to timely digs and emphatic kills off of the hands of senior Hannah Nelson, senior Bethany Sanford and Johnson.

The level of energy reached a maximum during the fourth set. As with the first and third sets, GSU was playing back-and-forth with the Bulldogs. However Samford's attackers proved yet again to be too much for the Eagles' defense. Samford polished off the final set 25-23 with an emphatic kill delivered by junior Elizabeth Niesler.



Christian Washington/STAFF

Parker Small (13) attacks against the Bulldogs' defense in GSU's Saturday night upset.

**SAVANNAH**  
**FILM FESTIVAL**  
OCT. 29-NOV. 5  
scad.edu/filmfest

CHASE  
CITY OF SAVANNAH  
SCAD  
The University for Creative Careers

**FRANKLIN**  
TOYOTA • SCION

**10% OFF**  
service with your Student ID

**888-695-8165** 500 Commerce Drive  
beside the new Holiday Inn

**PROTECT YOUR VEHICLE!**

Regular maintenance and upkeep is crucial to your car's optimal performance, best possible gas mileage, and highest resale value.  
**Our service department offers the best in automotive service for all makes and models.**

- > Oil Change
- > Tire Services
- > Tune-Up & Transmission Service
- > A/C & Radiator Service
- > Brake Service
- > Engine Repair
- > Body Shop Services

**\$1,000 COLLEGE GRAD REBATE**

**WHEN YOU BUY OR LEASE A NEW TOYOTA.**

**SCHEDULE YOUR SERVICE ONLINE! www.FranklinToyota.com**





Courtesy of Southern Adventures

The Iron Eagle Challenge tests racers' mental and physical strength throughout the event.

# Iron Eagle Challenge to be held this Friday

By BRIAN STONE

George-Anne contributor

Southern Adventures will host the seventh annual Iron Eagle Challenge on Friday, Oct. 29 from 3 to 6 p.m.

In the past, the Iron Eagle Challenge has been compared to the television show "The Amazing Race," with competitors having to complete both physical and mental challenges.

"You have to be willing to expand your horizons. There is a lot of non-traditional type of training that goes into this," said Adam Sardinha, a marketing graduate assistant for Campus Recreation and Intramurals. "To do the challenge, competitors' cardiovascular conditioning needs to be in check. The race is super intense."

While most of the mental challenges remain a mystery until the race, the physical challenges will include biking, running and canoeing.

"People doing the challenge need to be in decent shape," said CRI graduate assistant Jenn Velie. "Competitors need to bring a bike, and be ready to have fun."

Competitors will need a cycling helmet and a partner to compete. Bikes can be rented from Southern Adventures for the challenge.

The race will be done in two person teams, and teamwork will play a very important part in the Iron Eagle Challenge.

"Everything is done in partners," said Velie. "Nothing in the challenge is really done individually. Competitors have to be able to rely on their teammates."

The mental challenges have been varied in the past, and will not be revealed until the race.

"The mental part of the Iron Eagle can be anything from completing one side of a rubix cube, to solving memory puzzles," said Velie.

Sardinha added that on the CRI blog, there is a clue to one of the mystery challenges.

The race will span about four to five miles, with most of the distance being covered by bicycle.

Food and drink will be provided after the race by sponsors such as the Mellow Mushroom and Moe's Southwest Grill.

Awards will be given out after the Iron Eagle is completed along with a raffle that will be held at the RAC Amphitheater. Prizes will be donated from various sponsors of the Iron Eagle.

Volunteer positions are also available through Southern Adventures's Volunteer Coordinator for those who would like to help with the event.

Traditions Council  
and The Office of Student Activities Present:

Rue Southern  
2011  
HOMECOMING

Let the good times soar!

**Saturday, October 22**  
True Blue 5k  
RAC 8am  
Come one, come all, win a class ring if you're the best student ever all. You don't have to be the fastest to be the first in the parade, the student org with the most runners will come in first that day!

**Monday, October 31**  
Paint the Campus Blue  
8am-2pm  
Decorate the windows, decorate the doors, students will decorate campus from the ceilings to the floors.

**T-Shirt Swap**  
Williams Center 10am-2pm  
To be a true Eagle, you must bleed blue, so trade in another collegiate t-shirt for one that supports GSU!

**Thursday, November 1**  
Sculpt It for the Hungry  
Rotunda 12am-2pm  
Organizations lend their helping hands by sculpting it with cans.

**Doo-Dah/Step Show**  
Planner 7pm  
Watch our talented organizations try with all their might as they dance, step, and shake it to the music of the night!

**Wednesday, November 2**  
Blood Drive  
Williams Center 11am-5pm  
Give blood. Save a life. Help reduce the shortage state.

**GSU Idol**  
RUE Ballroom 7pm  
Be the next GSU star, show the campus who you really are!

**Friday, November 3**  
Swampin' at the Rotunda Tailgate  
Rotunda 11am-2pm  
Practice for Saturday and tailgate with friends, what YOL you an YOLB get it all depends. Which student org has the most spirit? Bring out your biggest fan to make sure we hear it!

**Masquerade Casino Night**  
Williams Center 7pm  
Black jack, poker, roulette, oh my... if your luck isn't up, prizes will fall from the sky. Trips to Atlantic City and so much more, you can even make your own mask when you walk through the door!

**Saturday, November 4**  
Parade and Celebration  
Sweetheart Circle 4pm-7pm  
It's a parade, then a celebration, it's all in one, watch the parade as it ends on Sweetheart Circle with loads of fun!

**Movie: 30 Minutes or Less**  
Sweetheart Circle 7:15pm  
Just when you think the activities are through, Eagle Entertainment has a movie just for you!

**Saturday, November 5**  
Eagle Football vs. Citadel  
Paulsen 2pm  
Watch the Eagles take them down, send those Bulldogs to the pound.

**Crowning**  
Halltime  
A king and a queen, who will it be? Come to the game and you will see!

MISSEZ LES BON TEMPS SURVOLER!

your student activity fees at work



# YOU'RE INVITED TO A HALLOWEEN COSTUME CONTEST

When: October 31st, 2011

Time: Between 9am– 4:00pm Drop-in and get your Picture Made

Where: THE UNIVERSITY STORE

## Prizes

Student/Individual:

1st Place: \$100 Gift Card

2nd Place: \$50 Gift Card

3rd Place: \$25 Gift Card

Faculty/ Staff/Individual:

1st Place: \$50 Gift Card

2nd Place: \$25 Gift Card

Office Prize:

Pizza Party for Contestants

Winners will be announced November 4, 2011 on Facebook



# WEEKLY BUZZ

A weekly calendar listing sponsored by The Division of Student Affairs and Enrollment Management

OCTOBER 27- NOVEMBER 2

## THURSDAY 10.27.2011

6 PM

### MIDNIGHT BOWLING

THE CLUBHOUSE

Sponsored by the Office of Student Activities.

10 AM

### GEORGE-ANNE & JOE

GAZEBO

Get your free copy of the George-Anne and a cup of Starbucks coffee.

Sponsored by Student Media.

7 PM

### CHRISTINA CHAN – “UNBINDING OUR LIVES”

WILLIAMS CENTER MULTIPURPOSE ROOM

ADMISSION IS FREE!

Unbinding Our Lives shatters the exotic, subservient, China doll image. In this powerful one woman show, Christina portrays three real Chinese American women from China in the 1800s and their personal stories of being sold into slavery, prostitution, and abandonment in the streets of China. PROOF OF ATTENDANCE WILL BE PROVIDED. Sponsored by Office of Multicultural Student Center.

11 PM - 12 AM

### BOULDERING NIGHT OUT

RAC

Sponsored by Campus Recreation & Intramurals.

9:30 PM

### WOMEN & WEIGHTS

BODY CONDITIONING ROOM AT THE RAC

Another class will be held next Tuesday. Sponsored by Campus Recreation & Intramurals.

## FRIDAY 10.28.2011

3 PM - 6 PM

### IRON EAGLE

Sponsored by Campus Recreation & Intramurals.

7 PM

### FREE MOVIE: HORRIBLE BOSSES

RUSSELL UNION

Sponsored by the Office of Student Activities.

## SATURDAY 10.29.2011

10 AM

### 5K RUN TO BENEFIT LUPUS FOUNDATION

RAC

A 5K run to benefit the Lupus Foundation of America, Georgia Chapter Please e-mail lupus5K@gmail.com for more information. Sponsored by Campus Recreation & Intramurals.

## MONDAY 10.31.2011

8 AM - 5 PM

### HOMECOMING PAINT THE CAMPUS BLUE

WILLIAMS CENTER MULTIPURPOSE ROOM

Decorate the windows, decorate the doors, students will be decorating campus from the ceiling to the floors! Student orgs pick up window assignments at the Williams Center! Let the Good Times SOAR! Visit: 2011 Homecoming Calendar for a full list of events! <http://www.georgiasouthern.edu/homecoming/Calendar.pdf> contact spiritandtraditions@georgiasouthern.edu or 912-478-7270 for information. Sponsored by Office of Student Activities.

10 AM - 5 PM

### HOMECOMING T-SHIRT SWAP

WILLIAMS CENTER MULTIPURPOSE ROOM

To be a true Eagle, you must bleed blue, so trade in another collegiate t-shirt for one that supports GSU! Let the Good Times SOAR! See Calendar. Sponsored by Student Activities.

## TUESDAY 11.1.2011

11 AM - 2 PM

### HOMECOMING SCULPT IT FOR THE HUNGRY

ROTUNDA

Organizations lend their helping hands by "Sculpting It" with cans! Let the Good Times SOAR! See Calendar. Sponsored by Student Activities.

11 AM - 2 PM

### NEW STUDENT ORGANIZATION CHARTERING WORKSHOP

ROTUNDA

Interested in starting a new student organization? Attend this workshop to see how! Sponsored by Office of Student Life.

5:30 PM

### WOMEN & WEIGHTS

BODY CONDITIONING ROOM AT THE RAC

Another class will be held next Tuesday. Sponsored by Campus Recreation & Intramurals.

7 PM - 10 PM

### HOMECOMING DOO-DAH/STEP SHOW

HANNER

Watch our talented organizations try with all their might, as they dance, step and shake it to the music of the night! Let the Good Times SOAR! See Calendar. Sponsored by Student Activities.

7 PM

### GSU Unplugged

RUSSELL UNION STARBUCKS

Open Mike Night

## WEDNESDAY 10.19.2011

11 AM - 5 PM

### HOMECOMING BLOOD DRIVE

WILLIAMS CENTER, STUDENT CENTER MULTIPURPOSE SPACE

Give blood. Save a life. Help reduce the shortage strife. Let the Good Times SOAR! Participants must sign up on [redcrossblood.org](http://redcrossblood.org) using the code: gasou. See Calendar. Sponsored by Student Activities.

6 PM

### MADNESS IN THE MEADOW

RAC

Sponsored by Campus Recreation & Intramurals.

7 PM - 10 PM

### HOMECOMING GSU IDOL

RUSSEL UNION BALLROOM

Be the next GSU star, show the campus who you really are! Let the Good Times SOAR! Tickets are \$5 in advance (available through SGA) and \$7 at the door! See Calendar. Sponsored by Student Activities.

Student Affairs  
Enrollment  
Management

Brought to you by Georgia Southern University VALUES. Georgia Southern V.A.L.U.E.S. is the culture shared by our students, faculty, and staff. We endeavor to share our V.A.L.U.E.S. inside and outside of the classroom with faculty, staff, students, alumni and all other community members. In order to produce productive citizens with an informed set of ethics and community standards as well as create an environment of respect and civility, we pledge to live by our V.A.L.U.E.S.



# CLASSIFIEDS

This page brought to you by Career Services  
Explore • Experience • Excel

16 Thursday, October 27, 2011

The George-Anne

## Subleases

Subleasing 3 BR/2BT house on Parker Avenue in downtown Brooklet. Extremely large media room! Located on two city lots. For more info, contact Joyce at (912) 842-9479.

All inclusive, two story, fully furnished, 4 BR townhouse for \$330/month! Includes trash, utilities, cable, wi-fi, pet park, 24/7 gym, recreation courts, computer lab, new appliances and washer/dryer! Contact (229) 326-4291 for more information.

Subleasing master bedroom in Planter's Row for \$365/month; utilities not included, pet friendly. For more information contact Anna-Marie at 01770@georgiasouthern.edu or call (770) 546-6560

## Subleases, cont.

Looking for female to sublease Spring Semester! 5 BR, \$280 a month. Last month of rent is paid for. Less than a mile from campus. Right off of Gentilly Rd. Amazing roommates! Call, text or email Kristina: (678)-770-6251 kf01606@georgiasouthern.edu

SUBLEASE NEEDED FOR SPRING 2012 SEMESTER 1 BR/1BT available as part of a 4 BR/4 BT at Campus Club apartments for Jan 2012 (possibly earlier). All 3 roommates are clean and tidy. Bus stop next to stadium. Utilities come in a one package payment. Rent is \$419/month; CHEAPER RATE CAN BE ARRANGED. Please call email Skyler Henry at sh02071@georgiasouthern.edu!

## For Sale

FOR SALE - 17 inch custom Ford Mustang rims and 17 inch custom Chevy Impala rims Contact Ron: (912) 486-6611

Scooter for sale! 2005 Honda Ruckus. Black, 49cc, 85+mpg. Fantastic condition; original (faculty) owner, garage kept No special license or insurance required. \$1,500 OBO. Contact (912) 678-6052

For sale: 2009 BMW 328i, hard-top convertible in great condition. Black with tan interior. Call 912-293-1909.

Weider Platinum Home Gym. Sell for \$300 (Paid \$900+ new). Like new - never used. Pick up in Statesboro at Ladybugs Frame Shop 912-601-2075.

## Help Wanted

MODELS of all weights/sizes/ages needed for figure drawing class on T&R, 2-4:30 PM. Fall and spring openings. Must be 21 and able to sit still for long periods of time. Call 912-478-2793 or email jburke@georgiasouthern.edu

## Misc.

Will proof papers (grammar, spelling, punctuation, sentence structure). Quality work, reasonable prices. Will also type short projects. Must have ample lead time to schedule. Email auntre01@gmail.com

Something to sell?  
Visit  
thegeorgeanne.com  
or email  
GaClass@georgiasouthern.edu.  
It's free for students, staff  
and faculty!

## Advertisement



Georgia Southern University  
Graduate School Fair 2011

Wednesday, November 9th

9:00 a.m. - 1:00 p.m.

@ Russell Union Ballroom

Obtain information from over 60 graduate & professional programs.

## HOT JOBS Cool Internships

Job Title	Company	Deadline to Apply
Account Executive Trainee	PLS Logistic Services	Nov. 26, 2011
Supply Chain Management	Southern Company	Nov. 23, 2011
Dept. of Commerce Intern	Department of Commerce	Nov. 15, 2011
Sports Internship	Orlando Magic	Feb. 29, 2012
Ticket Sales Manager	Augusta Green Jackets	Nov. 4, 2011
Account Executive	Beasley Broadcasting	Nov. 22, 2011
Recreation Manager	Hyatt Regency Coconut Point	Nov. 5, 2011
Summer Language Program Intern	National Security Agency	Nov. 15, 2011
Assistant Financial Examiner	Ga Dept. of Banking & Finance	Nov. 19, 2011
Market Development Internship	Houston Astros Baseball	Nov. 7, 2011
Communications Intern	GA Historical Society	Nov. 11, 2011
Production Assistant	WRDW-TV News 12	Dec. 31, 2011
Atlanta Convention Ctr. Sales Intern	AmericasMart	Dec. 2, 2011
Fashion Office Intern	AmericasMart	Dec. 2, 2011
Brand Marketing Manager	Callawassie Island Club	Nov. 30, 2011
GIS Intern	Glynn Co. Board of Commissioners	Nov. 29, 2011
Traveling Internship	American Junior Golf Association	Nov. 7, 2011
Health Care Consultant	Oncology Solutions, LLC.	Nov. 2, 2011
NFL 2012 Jr. Rotational Program,	National Football League	Oct. 30, 2011
News Content Operation Mgr.,	WTOG-TV 1	Oct. 28, 2011

To view the detailed job descriptions application instructions or additional postings, log into the Eagle Career Net/NACElink system found at [www.georgiasouthern.edu/career](http://www.georgiasouthern.edu/career).

## Graduate School Fair, Wed. November 10th, 9am - 1pm, RU Ballroom

By Sarah Dixon, PR/Marketing Intern

Considering graduate school? Don't miss the bi-annual Graduate School fair where you can ask questions regarding the graduate school application process, programs offered and what schools look for in potential candidates.

This is a great opportunity to obtain information from numerous graduate and professional programs. The event will include representatives from the following:

- MBA programs
- Professional programs
- Law schools
- Medical schools

- Veterinary schools
- GSU Graduate Programs

For a complete listing of universities attending the fair log into Eagle Career Net found at [www.georgiasouthern.edu/career](http://www.georgiasouthern.edu/career).

Also, make sure to attend the law school panel discussion Tuesday, November 7th from 5:30-7 p.m. Students will learn about unwanted communications from applicants and how to dodge making the same mistakes.

Admission is free and no advance registration is required for either event. For more information, call Career Services at (912) 478-5197.



# PUZZLES/COMICS

www.thegeorgeanne.com

Thursday, October 27, 2011 17

## Los Angeles Times Daily Crossword Puzzle

Edited by Rich Norris and Joyce Lewis

### ACROSS

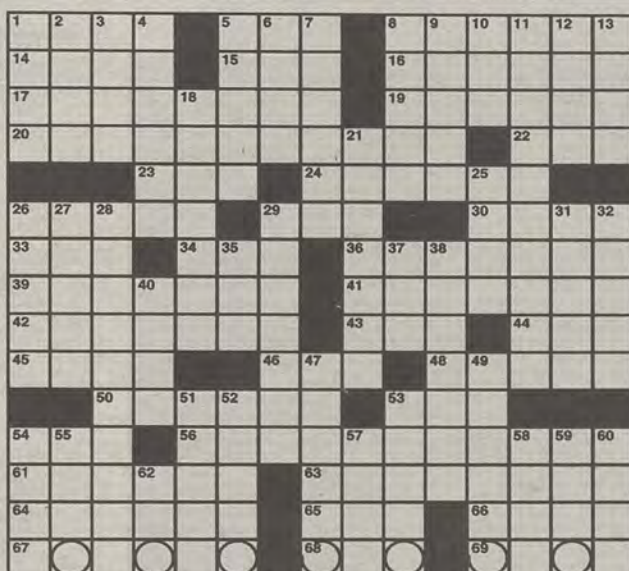
- 1 Mystery writer Nevada  
5 Penny profile  
8 "Tao Te Ching" author  
14 1986 Nobelist Wiesel  
15 China's Chou En-

- 16 Fixed for all time  
17 Treating again, as an ankle injury  
19 Take turns  
20 With 56-Across, pair named in a puppy-love rhyme that ends with the circled letters

- 22 Farmer's  
23 QB's dread  
24 Government IOUs  
26 Getting on  
29 Drain-clearing chemical

- 30 "Are not!" retort  
33 Bug-eyed toon  
34 OPEC member  
36 Shove off  
39 More of the rhyme  
41 More of the rhyme  
42 Micronesia's region  
43 Rocky peak  
44 1930s power prog.  
45 Standard  
46 Scotland's longest river  
48 Cleveland Indians legend Al

- 50 Promo  
53 Sloth, for one  
54 Punch line?  
56 See 20-Across  
61 Oh-so-stylish  
63 Not very potent potable  
64 Assateague denizens  
65 River that rises in the Bernese Alps  
66 Bone used in pronation  
67 Yarn units  
68 Word with run or jump  
69 Nutmeg-flavored drinks

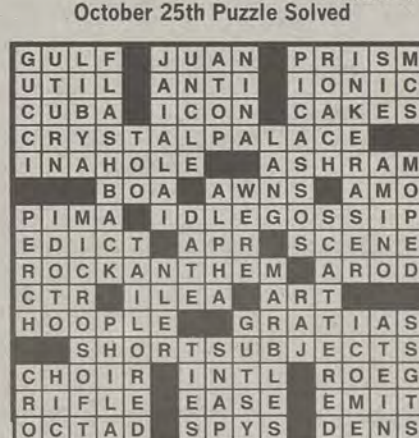


By Peter A. Collins

### DOWN

- 1 Glacier breakaway  
2 A or Jay, e.g.  
3 Funny Rudner  
4 Transfer to memory, as data  
5 Top-tier invitees  
6 Judge's seat  
7 Mercury's atomic number  
8 "Vive \_\_\_!"  
9 Any of the Marshall Islands  
10 Mo. for leaf-peeping  
11 "Yeow!"  
12 \_\_\_ precedent  
13 Place that means "delight" in Hebrew

- 18 Black-and-white critter  
21 "The Biggest Loser" concern  
25 Go the distance  
26 Bad lighting?  
27 Insurance company founded in 1936 for government employees  
28 Weave together  
29 Named beneficiary



- 31 It won't hold water  
32 Fat substitute  
35 Singer DiFranco  
37 David Byrne collaborator  
38 Slowpoke  
40 Rein in  
47 Hippodromes  
49 How Sloppy Joes are served  
51 Far from ruddy  
52 \_\_\_ chard

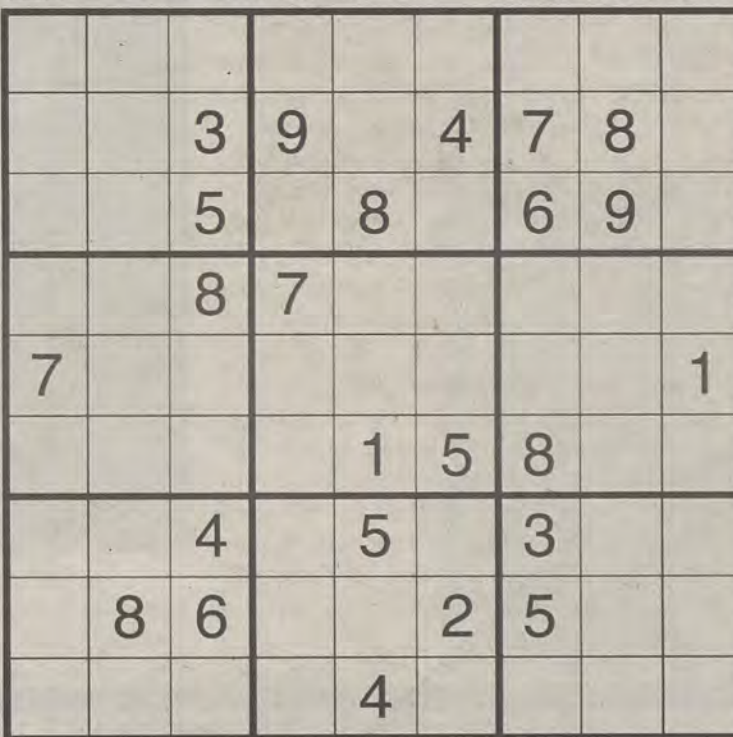
- 53 Emmy-winning Lewis  
54 General MDs, to insurers  
55 "Aw, what the heck, let's!"  
57 Shipbuilder's wood  
58 Move, in brokerese  
59 1% of a cool mil  
60 Madrid Mmes.  
62 VI x XVII

## THE "OCCUPY EARTH" PROTEST: DAY 4.

WE'VE SENT OUR SPOKESMAN TO NEGOTIATE WITH THE EARTHLINGS.



## Welcome to Falling Rock National Park by Josh Shalek



## Sudoku



**FRANKLIN**  
CHEVROLET - CADILLAC  
PONTIAC - BUICK - GMC  
**912.764.6911**



Our experienced Body Shop can fix all of the "Dents & Dings" that your vehicle may have! We service all makes and models and accept all insurance claims, and will give you **FREE ESTIMATE** on your body & paint repair

**GSU STUDENTS** - Show your ID and receive **10% OFF** any purchase in Parts and Service

Check out our website  
www.franklinchevrolet.com



## Lily's serves up charm for breakfast and lunch

### Restaurant Review

By **JULIA WELCH**

George-Anne staff



A dessert display case that looks like it popped out the 1960s is the first thing you see when entering Lily's Café.

The second is the bloody pumpkin-headed chef that temporarily guards the door.

Lily's Café is on East Main Street in downtown Statesboro, across from the Averitt Center for the Arts.

It's a longer restaurant than expected. The back hall leads to a bar area that would fix up nicely, but for now sits unused.

The open kitchen takes up half of the front area but let's you see into the fresh chef area where the owner prepares all the sandwiches, pancakes and cheesecake.

Pictures of his family decorate the walls and show patrons where the titles of many menu items came from.

The "lil j-stack" which is a short stack of 2 pancakes, an egg, and sausage named for his grandson.

The "Hen Pecked" sandwich was on special and came with fries for \$7.95.

The sandwich is a grilled

chicken breast topped with bacon, fresh veggies, and cheese.

I got the "Chick Philly" and was satisfied when strings of melty cheese came pulling out with my first bite.

The cut up chicken pieces were seasoned and grilled. The red and green bell peppers were sautéed with sweet onions.

A side dish of house made pasta salad with a very tasty dressing on it and fresh red onions and peppers mixed in.

The noodles were a bit past al dente, but the cute ramekin it came in still made me happy.

Other sides included french fries, potato chips and potato salad.

Chicken and tuna salad come on the salad menu that also has Caesar and Greek style options.

All the veggies are fresh daily. I could taste the bell peppers that made my hot sandwich a little sweet.

Although they are only open for dinner Thursday and Friday nights, I think this restaurant might benefit from a few late night meal options and a bar menu to go with the open patio area in back.

With the potential for growth and a few little kinks that will work out with time, Lily's café is only half way to being five stars and gets another half star for being so unique.



Lindsay Hartmann/ STAFF

Eclectic art and family photos decorate the walls of Lily's Café in downtown Statesboro.

## The Buzz List

■ **Twilight's** lead guy, Robert Pattinson just decided

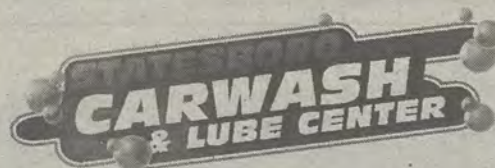


to take up a musical career singing. Actors that can't act seem to become singers that can't sing. Is the next step "Dancing with the Stars"?

■ **Speaking of** "Dancing with the Stars," Chaz Bono, Cher's son, just got voted off the show. Now there's no reason to watch. He's the reason most people tuned in. Nancy Grace and Ricki Lake are going to have to step it up on the gossip level to keep people watching.

■ **Adele's** "21" album just reached its thirteenth week at No.1 on the Billboard Hot 100. It just goes to show that people still like an artist that can actually sing, even if they aren't half-naked.

Information compiled by Arts Editor Julia Welch and Assistant Arts Editor Quaniqua Epps from TheHollywoodReporter.com.



**HALF PRICE FOR SHARING WITH A FRIEND!**  
Bring This Ad, and Two Cars  
and Both Cars Get Half-Price Ultimate Washes\*

\*NOT VALID WITH ANY OTHER DISCOUNT

**10% off All Car Wash, Detail, And Oil Change Services  
WITH GSU STUDENT OR EMPLOYEE ID**





# DJ Gare Bear brings an avant-garde style to 91.9 the Buzz

By **DUSTIN TILLIGKEIT**

George-Anne contributor

Diversity is a part of Georgia Southern University and this is no different for 91.9 the Buzz, the student run radio station on campus.

One of the DJs at the Buzz aspires to bring uniqueness and creativity to the station.

Gary Barton, junior multimedia communication major, better known as "DJ Gare Bear," hosts a radio show on the Buzz on Thursday afternoons from 4-5 p.m. and Friday afternoons from 1-3 p.m. Barton said that his show is "about being ambitious, avant-garde and creative."

Barton plays mostly 90s music from the genres of hip-hop and rock, specifically grunge, pop, R&B, jazz, alternative, and trip-hop.

Barton said, "Ever since I was little I've been listening to and collecting music and I'm glad it paid off."

Barton also said that his show features friends and acquaintances discussing current events and how they compare to events from the past. He said, "I go nostalgic on my audience."



Akeem Hill/ STAFF

**Gary Barton**, junior multimedia communications major, hosts a talk show as DJ Gare Bear on 91.9 the Buzz, Georgia Southern University's radio station.

Barton defined his mission as spreading the word that there is a radio station on campus.

His show started after he saw an ad at the radio station calling for people who wanted to work with the Buzz.

He was inspired to put in an application because of a speech impairment diagnosis from his childhood. Barton took speech classes and he said that this largely influenced him to use speaking on the radio as a tool to

better himself.

When he first heard that he would be working for the radio, Barton didn't know that he would have his own show. At first he was nervous and had to use a script but after three episodes, Barton had no trouble developing his style into the radio show that he has today.

Barton said that his goal is to make everyone comfortable and to make sure that everyone gets a chance to be heard.

He said, "I really want radio stations to express themselves freely, artistically and vocally."

He enjoys interviewing and he even hinted that there would be a very important guest for his Nov. 4th show. It is meant to be a big surprise.

He was confident that his show will be better in this current season after his debut season last spring thanks to learning from mistakes.

"I love my audience," he said. "You never know what is going to happen."

He was surprised when he was first told how many people listened to his show and hopes to inspire other students to take the risk.

Posters, tapestries,  
Hemp and glass jewelry,  
Bohemian clothing and  
purses,  
We even teach glass  
blowing classes!



418 s main st across from baymont inn

★ 912 764 6606 ★

**15% OFF**  
**SMOKING**  
**ACCESSORIES**  
**APPAREL AND**  
**DECOR**

**Charlies**  
**Fried Chicken**  
**WE DELIVER**  
**4 UNIVERSITY PLAZA**  
**(912) 681-2222 (912) 681-6666**

**Ask about our  
Tailgate Specials!**

**10% off**  
**Walk in Only**

## Full Menu

### APPETIZERS

Cheese Stix (6) - \$3.99  
Chili Cheese Fries - \$5.99  
Hot Dog - \$1.89  
Fried Pickles (6) - \$5.50  
Chili Dog - \$2.50  
Fried Jalapenos (5) - \$5.50

### BASKETS

Tilapia (2 fillets) - \$7.99  
Pork Chop Basket (2) - \$6.25  
Hotdog Basket - \$4.50

### CHICKEN FINGERS

(3) Fingers w/ Fries - \$5.95  
(5) Fingers w/ Fries - \$7.50  
(8) Fingers w/ Fries - \$9.50  
(10) Fingers w/ Fries - \$11.50  
(12) Fingers w/ Fries - \$13.50

### DRINKS

Coke - \$3.00  
Sprite - \$3.00  
Bottled Water - \$1.00  
Pepsi Products - \$2.00

### DESSERT

Chocolate Pie - \$3.00  
Strawberry Cheesecake - \$3.00

### BURGERS & SANDWICHES

Hamburger - \$5.50  
Cheeseburger - \$5.95  
Bacon Cheeseburger - \$6.50  
Mushroom Swiss - \$6.50  
Philly Cheese Steak - \$6.95  
Roast Beef & Cheese - \$4.95

### WINGS

(6) Wings - \$4.95  
(12) Wings - \$8.95  
(18) Wings - \$11.95  
(6) Wings w/ Fries - \$5.95  
(8) Wings w/ Fries - \$6.95  
(10) Wings w/ Fries - \$8.50

*Mild, Hot, X-Hot,  
Lemon Pep,  
Teriyaki,  
Honey Mustard,  
BBQ*

*All drinks or flats: 100  
Mix Flavors: 100*

### SIDE ORDERS

French Fries - \$1.89  
Fried Okra - \$2.79  
Baked Beans - \$1.89  
Mac and Cheese - \$2.79  
Onion Rings - \$1.89  
Mashed Potatoes - \$1.89

(Large: \$2.99)  
(Large: \$3.50)  
(Large: \$2.99)  
(Large: \$3.50)  
(Large: \$2.99)  
(Large: \$2.99)

### FRIED CHICKEN

#### Basket:

*(comes with 12 Sides)*

(2) Pc Dark - \$6.50  
(2) Pc White - \$7.50  
(3) Pc Dark - \$8.00  
(3) Pc White - \$8.50  
(4) Pc Mix - \$9.00

#### Snack Box:

*(includes fries)*

(2) Pc Dark - \$4.50  
(2) Pc White - \$5.50  
(3) Pc Dark - \$6.00  
(3) Pc White - \$6.50  
(4) Pc Mix - \$7.00



# THE 'BORO BEAT

## YOUR GUIDE TO OFF-CAMPUS ENTERTAINMENT

### THURSDAY

#### Applebee's

- \$1 Jello Shots, \$2 Coronas, \$3 Jacks, \$3 Long Island Ice Tea, \$3 draft, \$3 Jim Bean, \$4 Yager bombs

#### Buffalo's

-3rd Annual Halloween Deck Bash & costume contest ft. Machine Funk  
-Happy Hour 5-7 p.m. 2 for 1 draft beer, \$2 Light Tall Boys, \$2 Margaritas, \$2.75 Landsharks, \$3 domestic beers

#### Dingus Magee's

-Ashuttomirra, 9:30 p.m.  
-Happy Hour 5-7 p.m., half price well shots

#### El Sombrero

-Happy Hour 5-7 p.m., \$2 Margaritas, \$2.50 draft beers \$3 Pina Colada, \$6.50 Margaronas

#### Millhouse

-\$2 Margaritas, \$2 Bud Light, Miller Light, Michelob Ultra

#### Emma Kelly Theater

-The Rocky Horror Picture Show, \$5/advance, \$7/door 7:30 p.m.

### FRIDAY

#### Applebee's

-Trivia 10 p.m.  
-\$1 Natty Brewtus, \$3 other Brewtus, half priced Margaritas and Apps

#### Buffalo's

-Saltwater Grass 10p.m.  
-Happy Hour, 5-7 p.m., \$2 Light Tall Boys, \$2 Margaritas, \$2.50 Yuenglings, \$2.75 Landsharks, \$3 Domestic Beers, \$3 Jim Bean

#### Dingus Magee's

-Betsy Franck  
-Happy Hour, 5-7 p.m., half price well shots

#### Dos Primos

-Rave Party for GSU Show Choir 9 p.m.  
-Happy Hour 5-7 p.m., \$1 Bartender choice shot, \$3 Big beer, \$3 Marganta

#### Millhouse

-\$2 Margaritas, \$2 Bud Light, Miller Light, Michelob Ultra

#### Locos

-\$5 Bud Light pitchers

#### Gnat's Landing

-Halloween Pregame with Those Cats 10 p.m.

### SATURDAY

#### Applebee's

- Do Good DJs, 10 p.m.  
-\$3 Jacks, \$3 Long Island Ice Tea, \$3 Draft, \$3 Jack Daniels, \$4 Jager bombs

#### Buffalo's

-The Deck Divided 3:30 p.m.  
-Happy Hour, 5-7 p.m., \$2 Light Tall Boys, \$2 Margaritas, \$2.50 Yuenglings, \$2.75 Landsharks, \$3 Domestic Beers, \$ 6.99 All you can eat wings, 5-8 p.m.

#### Crabby Joes

-Wesley Bragg 9 p.m.

#### El Sombrero

-\$2 Margaritas

#### Gnat's Landing

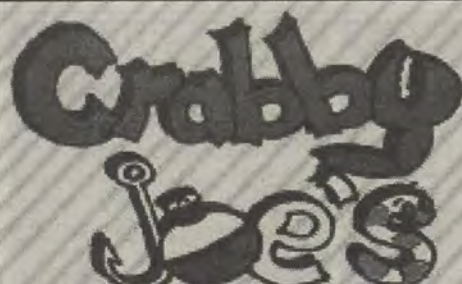
-Halloween Party ft. the Bastard Suns, Skinny Mountain, and a live DJ

-Wings & Beer \$.45 wings,

-Happy Hour 5-7 p.m., \$2 Margaritas, \$4 Bloody Mary's, \$6 Pitchers

#### Moes

-Happy hour buy one get one beers



SEAFOOD, BAR & GRILL

11218 HWY 301 SOUTH  
Statesboro, GA 30458  
(912)225-3004

If you are under the age of 21, it is against the law to buy alcoholic beverages.

### GAME DAY SATURDAY

\$1 SHOTS

40¢ WINGS

\$6 PITCHERS

\$9.99 MARGARITA PITCHERS



"BAD TO THE BONE"

**10% off**

any Order

- Wings
  - Homestyle Tenders
  - Homemade side
  - Garden Salad
  - Unique **WM** Sauces
- ...and the best tea in the boro

expires 12-31-2011  
\*Must present coupon



# THE 'BORO BEAT

## YOUR GUIDE TO OFF-CAMPUS ENTERTAINMENT

### MONDAY

#### Applebee's

- \$1 Jello Shots, \$2 Coronas, \$3 Jacks, \$3 Long Island Ice Tea, \$3 draft, \$3 Jack Daniels, \$4 Yager bombs

#### Buffalo's

-Happy Hour 5-7 p.m. 2 for 1 draft beer, \$2 Light Tall Boys, \$2 Margaritas, \$2.75 Landsharks, \$3 domestic beers

#### Dingus Magee's

-Happy Hour 5-7 p.m., half price well shots

#### El Sombrero

-Happy Hour 5-7 p.m., \$2 Margaritas, \$2.50 draft beers \$3 Pina Colada, \$6.50 Margaronas

#### Millhouse

-\$2 Margaritas, \$2 Bud Light, Miller Light, Michelob Ultra

#### Mill Creek Park

-Scare in the Boro 7:3-10 p.m. \$3

#### KBob Kelly's

-Cornhole Tourney 8 p.m.

#### Locos

-\$5 Bud Light pitchers

### TUESDAY

#### Applebee's

-Karaoke 10 p.m.

-\$1 Natty Brewtus, \$3 other Brewtus, half priced Margaritas and Apps

#### Buffalo's

-Beer Pong tournament

-Happy Hour, 5-7 p.m., \$2 Light Tall Boys, \$2 Margaritas, \$2.50 Yuenglings, \$2.75 Landsharks, \$3 Domestic Beers

#### Dingus Magee's

-Happy Hour, 5-7 p.m., half price well shots

#### Dos Primos

-Poker 8 p.m.

-Happy Hour 5-7 p.m., \$1 Bartender choice shot, \$3 Big beer, \$3 Marganta

#### Millhouse

-Amy Taylor 9-9:30 p.m.

-\$2 Margaritas, \$2 Bud Light, Miller Light, Michelob Ultra

#### Gnat's Landing

-Trivia with Jake Hallman 6:30 p.m.

-Happy Hour, 5-7 p.m.

#### El Sombrero

-\$2 Margaritas

### WEDNESDAY

#### Applebee's

-\$3 Jacks, \$3 Long Island Ice Tea, \$3 Draft, \$3 Jack Daniels, \$4 Jager bombs

#### Buffalo's

-Happy Hour, 5-7 p.m., \$2 Light Tall Boys, \$2 Margaritas, \$2.50 Yuenglings, \$2.75 Landsharks, \$3 Domestic Beers, \$ 6.99 All you can eat wings, 5-8 p.m.

#### Dingus Magee's

-Tent City

-Happy Hour, 5-7 p.m., half price well shots

#### KBob Kelly's

-Karaoke 9 p.m.

#### El Sombrero

-\$2 Margaritas

#### Gnat's Landing

-Wings & Beer \$.45 wings,

-Happy Hour 5-7 p.m., \$2 Margaritas, \$4 Bloody Mary's, \$6 Pitchers

#### Dos Primos

-Karaoke 9 p.m.

#### Locos

-\$1 PBR and Natty Light tall boys

The  
**Pita Pit**

FRESH THINKING  
HEALTHY EATING

WE ACCEPT  
EAGLE EXPRESS



Mention this ad and get  
**10% OFF**



# 'Vampirates of Penzance' combines horror with humor

By WILDA THRIFT

George-Anne contributor

The opera "Vampirates of Penzance" will bring a more modern and relatable version of a famous opera to Georgia Southern University tonight.

"Vampirates of Penzance" is a parody of the Gilbert and Sullivan pirate opera set in 2011 with a Halloween twist for the spirit of the season.

The opera will be performed at the Performing Arts Center today through Saturday, Oct. 29 at 7:30 p.m.

Jillian Pashke, graduate assistant with the vocal department and a vocal performance major said, "It's a good opera for people who have never seen opera before. It's in English, and there's super-titles in English so if you can't understand what we're saying you can read it."

The super-titles will be displayed above the stage.

With all the hard work that has gone into making this play appealing for a modern audience, Pashke hopes that it will bring in a wide audience.

Pashke said, "I think the people in Statesboro and the school don't know about the opera, but it really is great and there's so many good students. I hope everyone can see it and learn more about opera from it."

The play has been modified to fit more in line with Halloween.

Pashke said, "We took the original Gilbert and Sullivan opera



Jessica Stanfield/ STAFF

**Above:** Performers in pirate garb replace the traditional vampires that usually star in the "Vampires of Penzance" play.

**Left:** Brian Strickland, a senior vocal performance major, acts as a contemporary character to give the play a more relatable and modern style that students can relate to.

and put a little Halloween twist on it. All the pirates are vampires. So you'll be able to see their fangs and everything. And we set it in 2011 instead of when it was written in the 1800s. So there'll be some scary moments."

The changes to the play were made by its director so it is an experience unique to GSU.

Pashke said, "It's completely original. Our director, Erica Gregory, she completely rewrote some of the

dialogue and words for the songs to that it could be about vampires, not just regular pirates."

While the theme uses elements from horror films, there are also aspects of comedy.

The actors have embraced the idea of existing in a horrific plot while presenting comedy to the audience.

Brittany Luberd, a junior with a double major in music and anthropology, said, "I love

the performing side, and also the comedy. As an actress you take your character seriously but at the same time you try to ham it up as much as possible."

Luberd said, "For two hours, you get to look and act ridiculous, like how you'd never act in real life."

Further, the opera will explore a sense of surreal unusualness by warping the timeline between when it was originally written and when Gregory rewrote the play to

accommodate modern audiences.

Brian Strickland, a senior with a double major in vocal performance and music education said, "The show's going to be funny; it's got plenty of recent jokes, plenty of old timey jokes, there's something in there for everybody to enjoy. So everyone should come out and help support it."

"Vampirates of Penzance" will be at the PAC tonight, Friday and Saturday at 7:30.

UT&ABOUT

myth:  
fact:

drinking is central to the social lives of georgia southern university students

78% of georgia southern students typically drink once a week or less often

Express Tune & Lube

Tire, Alignment & Exhaust Center

812 S. Zellerbach Avenue

489-4444

www.expresslunelube.com

Monday - Friday 7:30am - 6:30pm

Located a half block north of Wendy's

OIL CHANGE SPECIAL

\$25<sup>95</sup> includes up to 5 qts of Castrol 5W20, 5W30, 10W30

price applies to most vehicles. Excludes 1400cc

www.expresslunelube.com



Formerly known as Dale's Transmission

25% off oil change  
50% if you bring a friend  
AND your friend can have  
25% their oil change  
ALL MODELS

(912) 489-3499 6762 Cypress Lake Rd Statesboro, GA 30458



## Scare on the Square thrills

By **GIANNA CARME** and  
**TANQUA RUSS**

George-Anne contributor

The dead will dance the "Thriller" downtown this Saturday at Statesboro's annual Scare on the Square.

Assistant professor Brent Wolfe and students from his Leadership Programming in Leisure Services class are assisting the Statesboro Development Authority with the planning and execution of the event.

Scare on the Square will feature a haunted house, a costume contest, vendors from local businesses and many activities for youth and young adults.

The students are working with the event for a service-learning project required for the course.

They are responsible for designing a hayride and various other activities for children.

The students are also creating a haunted house for adults. All of the activities at the event are free of charge.

Wolfe and his students were aided financially in the production of the event.

"We received a grant from the Office of

Leadership and Civic Engagement which allows us to put on this event," said Wolfe.

Wolfe also said that his students have been putting a great amount of time and effort into Scare on the Square.

"It will be a great time for students. It is going to be college students scaring other college students," said Wolfe.

Scare on the Square will conclude with the crowd anticipated "Thriller" parade.

The parade starts in a flash mob style and dancers move down the streets of the square.

Participants have been practicing for the performance since the beginning of October.

"One year we were asked to do Thriller and it got such a rave review that the next year they decided to bring it back," said Jessica Gibbs, education graduate student.

Participants dress in full costume on the night of the performance.

"They've [the performance] had dead ballerinas and dead dentists. I remember seeing zombies in general," said Gibbs.

Scare on the Square will take place this upcoming Saturday, Oct. 29 at 5:30 p.m. in downtown Statesboro. The "Thriller" parade will begin at 9 p.m. to conclude the night.

## Southern Explosion TRYOUTS!



Southern Explosion, Georgia Southern's official Dance Team, is hosting a tryout on October 29th from 10am till 2pm in the dance studio at the RAC. There is a \$5 tryout fee and Jazz or lyrical shoes are strongly preferred. All Georgia Southern Students, freshmen through graduate level, both male and female, are encouraged to attend. Please visit our website at [www.gsudanceteam.com](http://www.gsudanceteam.com) for more information.



IN A JOB MARKET SATURATED WITH APPLICANTS...

# STAND OUT!

Let OTC give you an  
**EXTRA EDGE** in the job hunt.

Ogeechee Technical College  
provides tools to **ENHANCE** your education,  
**STRENGTHEN** your employability,  
and **ENERGIZE** your resume to help you  
be on top of the list of applicants!

Consider a certificate, diploma, or associate degree such as:

Hospitality Events Specialist  
Photovoltaic Systems Installation and Repair  
Comp TIA A+ Certification preparation  
Geographic Information Systems  
Basic Law Enforcement (POST certification)

And many more!



One Joseph E. Kennedy Blvd. | 912.681.5500 | [www.ogeecheetech.edu](http://www.ogeecheetech.edu)

Equal Opportunity Institution | A Unit of the Technical College System of Georgia





**New CLASSIC**  
**SAUSAGE & PEPPERS PIZZA**  
*or Tuscan Six Cheese Pizza*

**LARGE \$11**  
 LIMITED TIME ONLY  
 ONLINE PROMO CODE: P11PZ

*John W. Schmatz*  
 "Papa John," Founder

Covered with mild Italian sausage, fresh sliced onions, red & green peppers, and a blend of three cheeses.

Offer good for a limited time at participating Papa John's restaurants. Additional toppings extra. Not valid with any other coupons or discounts. Limited delivery area. Delivery fee may apply. Customer responsible for all applicable taxes. Prices may vary in Alaska and Hawaii.  
 © 2011 Papa John's International, Inc. All Rights Reserved. 10/11/2011

## MILLION PIZZA GIVEAWAY!

Enroll in **Papa Rewards** for your chance to WIN!  
 @PAPAJOHNS.COM

NO PURCHASE NECESSARY. A PURCHASE WILL NOT INCREASE YOUR CHANCES OF WINNING. LEGAL RESIDENTS OF THE 48 UNITED STATES, 18 AND OLDER, WHO WHERE PROHIBITED. Sweepstakes ends 12/1/11. For Official Rules, to opt-out, prize drawing location and odds, please visit <http://www.papajohns.com/rewards/giveaway>. Sponsored by Papa John's International, Inc., 20012 Papa John's Blvd., Louisville, KY 40238.  
 © 2011 NFL Properties LLC. All NFL-related marks and logos are the trademarks of the National Football League.



OFFICIAL PIZZA SPONSOR OF THE NFL



Follow us on  
Facebook!



**Statesboro**  
 620 Fair Rd.  
**871-7272**



**WE ACCEPT**  
**EAGLE**  
**EXPRESS!**

### LARGE DEAL

Large One Topping  
Pizza

**\$10.00**



Use promo code  
RHHLC1T10

CARRYOUT OR DELIVERY EXPIRES 12/31/11. Offer good for a limited time at participating Papa John's restaurants only. Additional toppings extra. Not valid with any other coupons or discounts. Limited delivery area, charges may apply. Customer responsible for all applicable taxes.

### ANY WAY YOU WANT IT!

Large Specialty or up to  
Five Toppings for only

**\$12.00**



Use promo code  
LS12RHH

CARRYOUT OR DELIVERY EXPIRES 12/31/11. No double toppings or extra cheese. Offer good for a limited time at participating Papa John's restaurants only. Additional toppings extra. Not valid with any other coupons or discounts. Limited delivery area, charges may apply. Customer responsible for all applicable taxes.

### TAILGATE SPECIAL

Large One Topping, Breadsticks *or*  
Garlic Parmesan Breadsticks & a  
2 Liter of Coca-Cola®

**\$15.99**



Use promo code  
L1TBSGP2L

CARRYOUT OR DELIVERY EXPIRES 12/31/11. Offer good for a limited time at participating Papa John's restaurants only. Additional toppings extra. Not valid with any other coupons or discounts. Limited delivery area, charges may apply. Customer responsible for all applicable taxes.



# GAMEDAY MAYDAY

<sup>1</sup> GEORGIA SOUTHERN VS <sup>5</sup> APP. STATE

@KIDD BREWER STADIUM, 3:00 PM

## RIVALRY RENEWED



#1- JERICK MCKINNON



#10- JOSH ROWE

	RUSH	YARD	TD	LONG	AVG.
RUSHING:	48	394	7	75	8.0
	REC				
RECEIVING:	2	71	1	38	35.5



35 TACKLES  
3 TACKLES FOR LOSS  
7 PASS BREAK UPS

### SPECIAL PULL-OUT SECTION

FOLLOW @THEGEORGEANNE ON TWITTER FOR LIVE GAME UPDATES



# GEORGIA SOUTHERN EAGLES

No.	Name	Pos.	Year	Hometown
1	Jerick McKinnon	QB	So.	Marietta, Ga.
2	A.J. McCray	S	Sr.	St Marys, Ga.
4	Derek Heyden	S	Sr.	Atlanta, Ga.
4	Prince McJunkins	QB	Fr.	Wagoner, Okla.
5	Robert Brown	FB	So.	Macon, Ga.
6	Zeke Rozier	FB	Sr.	Cochran, Ga.
7	Darreion Robinson	RB	Jr.	Bishop, Ga.
9	Zach Walker	WR	Fr.	Wrightsville, Ga.
10	Josh Rowe	ILB	Jr.	Opelika, Ala.
11	Ezayi Youyoute	QB	RFr.	Wauchula, Fla.
12	Russell DeMasi	QB	Jr.	Savannah, Ga.
13	Darius Eubanks	OLB	Jr.	Harlem, Ga.
14	Jaybo Shaw	QB	Sr.	Flowery Branch, Ga.
15	Carlos Cave	OLB	So.	Macon, Ga.
15	Aaron Griffin	QB	Fr.	Rincon, Ga.
16	Antonio Glover	FS	Fr.	Atlanta, Ga.
17	Billy Greer	PK	Sr.	Crosby, Texas
18	Charlie Brower	WR	Unk	Dacula, Ga.
18	Lavelle Westbrook	CB	So.	Riverdale, Ga.
19	JJ Wilcox	SLOT	Jr.	Cairo, Ga.
20	Nico Hickey	SLOT	Sr.	Columbus, Ga.
21	Hudson Presume	DB	Sr.	Bradenton, Fla.
22	Seon Jones	FB	Fr.	Flowery Branch, Ga.
23	Johnathan Bryant	SLOT	Jr.	Cairo, Ga.
24	Riyahd Jones	CB	Fr.	Columbus, Ga.
25	Emmanuel Orange	CB	Fr.	Naples, Fla.
26	Tray Butler	WR	So.	Stockbridge, Ga.
26	Josh King	CB	Fr.	Stockbridge, Ga.
27	Javonte Martin	DB	So.	Tampa, Fla.
28	Devin Scott	SLOT	So.	Tucker, Ga.
29	Deion Stanley	SS	RFr.	Dry Pond, Ga.
30	K.R. Snipes	LB	RJr.	Opelika, Ala.
31	Dominique Swope	FB	Fr.	Buford, Ga.
32	Nick Wright	CB	Fr.	Lithonia, Ga.
34	Laron Scott	DB	Sr.	Warner Robins, Ga.
35	Miguel Gilmore	SLOT	Sr.	Orlando, Fla.
35	Michael Spaulding	LB	So.	Fayetteville, Ga.
36	Connell Reddick	DB	RFr.	Hephzibah, Ga.
37	Antwione Williams	LB	Fr.	Lovejoy, Ga.
38	Kyle Oehlbeck	LB	Jr.	Gainesville, Fla.
39	DeVonte Lewis	SLOT	Fr.	Dacula, Ga.
39	Deonté Watkins	DB	Sr.	Walkersville, Md.
40	Michael Butler	DB	Sr.	Stone Mountain, Ga.
41	John Stevenson	OLB	Jr.	Stone Mountain, Ga.
42	Boyd Sasser	S	Jr.	Millen, Ga.
43	Eric Worthen	LB	Fr.	Swainsboro, Ga.
44	Quaun Daniels	OLB	Fr.	Moultrie, Ga.
45	Adrian Mora	PK	Gr.	Dalton, Ga.
46	Brent Thomas	FB	Sr.	Tampa, Fla.
47	Omari Jones	DE	RFr.	Jonesboro, Ga.
48	Charlie Edwards	P	Sr.	Tifton, Ga.

No.	Name	Pos.	Year	Hometown
49	Brandon Lane	DB	Jr.	Marietta, Ga.
50	Garrett Brewer	OL	Fr.	Dixie, Ga.
51	William Maxwell	OG	Sr.	Quitman, Ga.
52	Javon Mention	DT	So.	Tampa, Fla.
53	Marcus Duvall	ILB	Sr.	Griffin, Ga.
54	Korentheus Bailey	DT	Jr.	Lula, Ga.
55	Austin Hagan	OL	Fr.	Dacula, Ga.
56	Luke Cherry	PK	So.	Jacksonville, Fla.
57	Brett Moore	OL	Sr.	Warner Robins, Ga.
58	Garrett Frye	OL	Fr.	Cumming, Ga.
59	Zach York	LB	Jr.	Hartwell, Ga.
60	Chris Gray	OT	Jr.	Landrum, S.C.
61	Jacob Bagley	TW	Jr.	Waycross, Ga.
62	Zach Lonas	OG	So.	Acworth, Ga.
63	Brandavious Mann	C	Sr.	Forsyth, Ga.
64	Hunter Lamar	OL	Fr.	Statesboro, Ga.
65	Kyle Stroud	OL	RFr.	Tucker, Ga.
66	Brent Russell	DT	Jr.	Comer, Ga.
67	Matt Mills	OL	Fr.	Johns Creek, Ga.
68	Matthew Gilbert	C	RFr.	Marietta, Ga.
69	Cole Peeples	OL	Fr.	Conyers, Ga.
70	Raymond Klugey	OT	Jr.	Norcross, Ga.
71	Dorian Byrd	OT	So.	Macon, Ga.
72	Zach Reckers	DT	Jr.	Atlanta, Ga.
73	Maurice Hunt, Jr.	OL	Fr.	Lyons, Ga.
74	Logan Daves	OL	RFr.	Blue Ridge, Ga.
75	Manrey Saint-Amour	OL	Fr.	Suwanee, Ga.
76	Trevor McBurnett	OL	RFr.	Lawrenceville, Ga.
77	Blake DeBartola	OL	Jr.	Fayetteville, Ga.
78	Josh Petkovich	OT	Sr.	Palm Harbor, Fla.
79	Kentrellis Showers	WR	RFr.	Dublin, Ga.
80	Mitchell Williford	WR	Jr.	Duluth, Ga.
81	Wilson Hudgins	TE	Fr.	Loganville, Ga.
82	Martin Weatherby	WR	Jr.	Roswell, Ga.
83	Patrick Barker	WR	Jr.	Ponte Vedra, Fla.
84	Allen Lee	WR	Jr.	Savannah, Ga.
85	Markus Farmer	WR	Jr.	Savannah, Ga.
86	Willie Burden	TE	Jr.	Statesboro, Ga.
87	Trevor Shaw	DL	So.	Alpharetta, Ga.
88	Tyler Sumner	TE	Jr.	Pooler, Ga.
89	Carter Jones	LS	Sr.	Moultrie, Ga.
90	Josh Gebhardt	DE	So.	Douglasville, Ga.
91	Justice Ejike	DT	RFr.	Covington, Ga.
92	John Douglas	DE	Sr.	Augusta, Ga.
93	Rashad Williams	DE	RFr.	Roswell, Ga.
94	Roderick Tinsley	DT	Sr.	Soperton, Ga.
95	Edwin Jackson	LB	RFr.	Atlanta, Ga.
96	Blake Riley	DT	So.	Crescent, Ga.
97	George Osunde	LB	Jr.	Alpharetta, Ga.
98	Forrest Kelleher	DE	Fr.	Ft. Lauderdale, Fla.
99	Terico Agnew	DE	Jr.	Stockbridge, Ga.



# APPALACHIAN STATE MOUNTAINEERS

No.	Name	Pos	Year	Hometown
2	DeAndre Presley	QB	Sr.	Tampa, Fla.
3	Steven Miller	RB WR	Jr.	Piscataway, N.J.
4	Simms McElfresh	WR	Fr.	Charlotte, N.C.
4	Rodger Walker	DB	So.	Thomasville, Ga.
5	Jamill Lott	WR	So.	Kannapolis, N.C.
6	Kalik Barnes	QB	Fr.	Atlanta, Ga.
7	Travaris Cadet	RB/WR	Sr.	Miami, Fla.
8	Brian Quick	WR	Sr.	Columbia, S.C.
9	Troy Sanders	DB	Jr.	Chester, S.C.
10	Demetrius McCray	DB	Jr.	Covington, Ga.
10	Seth Sloan	WR	Fr.	Boone, N.C.
11	Andrew Peacock	WR	So.	Durham, N.C.
12	Jamal Jackson	QB	So.	Atlanta, Ga.
13	Michael Frazier	RB	Jr.	Conway, S.C.
14	Sean Price	WR	Fr.	Reston, Va.
15	Tony Washington	WR	So.	High Point, N.C.
16	Logan Hallock	WR	Fr.	Ferguson, N.C.
17	Kameron Bryant	QB	Fr.	Cary, N.C.
18	Dominique McDuffie	DB	Jr.	Chattanooga, Tenn.
19	Jey Yokeley	TE	Jr.	Charlotte, N.C.
20	Henry Barnes	DB	Fr.	Newton Grove, N.C.
21	Justin Wray	LB	Jr.	Covington, Ga.
22	Ingram Bell	DB	Jr.	Murrell's Inlet, S.C.
24	Brandon Grier	LB	Jr.	Charlotte, N.C.
25	Rod Chisholm	RB	Jr.	Charlotte, N.C.
25	Terrence McLean	RB	Jr.	Laurinburg, N.C.
26	Joel Ross	DB	Fr.	Damascus, Md.
27	Sam Martin	P/PK	Jr.	Fayetteville, Ga.
28	Ed Gainey	DB	Sr.	Winston-Salem, N.C.
29	Cedric Baker Boney	RB	Sr.	Wilmington, N.C.
30	Drew Davies	DB	Fr.	Charlotte, N.C.
30	Brandon Olden	DB	Sr.	Conyers, Ga.
31	Mo Gore	WR	Fr.	Boone, N.C.
31	Doug Middleton	DB	Fr.	Winston-Salem, N.C.
33	Jeremy Kimbrough	LB	Jr.	Decatur, Ga.
34	Patrick Blalock	DB	So.	Asheville, N.C.
35	Phillip Strickland	TE	Sr.	Clinton, N.C.
36	Justin Lloyd	LB	Jr.	Charlotte, N.C.
37	Jamal Ware	LB	Fr.	Tyrone, Ga.
39	Travis Wilson	RB	So.	Rose Hill, N.C.
40	Drew Stewart	PK	So.	Gastonia, N.C.
41	Brandon McGowen	LB	Fr.	Suwannee, Ga.
42	Darius Smith	RB	Fr.	Reston, Va.
42	Brandon Thompson	TE	Sr.	Kingsport, Tenn.
44	Drew Bailey	TE	Fr.	Spartanburg, S.C.
45	Karl Anderson	LB	So.	Pilot Point, Texas
46	Adam Scott	DL	So.	Greensboro, N.C.
47	Mark Moll	TE	So.	Charlotte, N.C.
48	Stephen Machanic	LB	Fr.	Summerfield, N.C.
48	Matthew Watson	RB	Jr.	Bailey, N.C.

No.	Name	Pos	Year	Hometown
49	Ronald Blair	DL	Fr.	Greensboro, Ga.
49	Chris Shaffer	DB	Fr.	Charlotte, N.C.
50	Cougar Norris	LB	Sr.	Naples, Fla.
51	Sherman Holt	OL	Sr.	Leicester, N.C.
52	Demery Brewer	LB	Sr.	Lincolnton, N.C.
53	Drew Dowdy	LB	Fr.	Lewisburg, W. Va.
53	Brett Heimrich	LS	Fr.	Southern Pines, N.C.
54	Ron Henderson	OL	Fr.	Greenville, S.C.
55	Graham Fisher	OL	Fr.	Waynesville, N.C.
56	Thomas Bronson	DL	Fr.	Brooksville, Fla.
57	Stephen Burns	DL	Fr.	Taylorsville, N.C.
58	Zac Baker	DL/LB	So.	Tunnel Hill, Ga.
59	Wilson Fitchett	LS	Sr.	Summerville, S.C.
60	Jesse Chapman	OL	Fr.	Cookeville, Tenn.
62	Xan Thomas	OL	Sr.	Durham, N.C.
63	Shaq Counts	OL	Fr.	Irmo, S.C.
64	Orry Frye	OL	Sr.	Charlotte, N.C.
65	Tucker Lee	OL	Fr.	Pinehurst, N.C.
66	Derek Evans	OL	Fr.	Alcoa, Tenn.
67	Ian Barnard	OL	So.	Norcross, Ga.
68	Robert Wallace	OL	So.	Raleigh, N.C.
69	Alex Johnson	DL	Sr.	Knoxville, Tenn.
70	Matt Ruff	OL	Sr.	Charlotte, N.C.
72	Regan Dufort	OL	So.	Fredricksburg, Va.
74	Kendall Lamm	OL	Fr.	Charlotte, N.C.
75	Kalan Jones	OL	Fr.	Cornelia, Ga.
76	Anthony Wilson	DL	Sr.	Essex, Md.
77	Alex Acey	OL	Fr.	Clay, Ala.
78	Chris Marshall	DL	Sr.	Hiddenite, N.C.
80	John Sullivan	WR	Fr.	Lake Worth, Fla.
81	Bobo Beathard	WR	Fr.	Haymarket, Va.
82	Zack Pickard	PK	So.	Burlington, N.C.
83	Nathan Dorton	WR	So.	Columbia, S.C.
84	Ben Jorden	TE	Sr.	Weddington, N.C.
85	Zach Matics	PK	Fr.	Jacksonville, N.C.
86	Mark Powell	P/PK	Fr.	Asheville, N.C.
87	Trey Kavanaugh	WR	Fr.	Boone, N.C.
88	Jonathan Shively	WR	Jr.	Hayesville, N.C.
89	Trevor Sawyer	TE	Fr.	Asheville, N.C.
90	Nick Canepa	DL	Jr.	Hubert, N.C.
91	Chris Aiken	DL	Sr.	Austin, Texas
92	Davante Harris	DL	Fr.	Blythewood, S.C.
93	John Rizor	DL/LB	Jr.	Fayetteville, N.C.
94	William Corbin	DL	Fr.	Dunn, N.C.
95	Gordy Witte Jr.	DL	Sr.	Salisbury, N.C.
96	James Robinson	DL	Fr.	Blythewood, S.C.
97	Dan Wylie	DL	Sr.	Washington, Ga.
98	Derrick Shuemake	DL	Jr.	Swainsboro, Ga.
99	Lanston Tanyi	DL/LB	Jr.	Shelby, N.C.



# Georgia Southern to take on rival Mountaineers in key game

## Football

By JAMES FARMER

George-Anne staff

Appalachian State University versus Georgia Southern University is a rivalry that is one of the best in the Football Championship Subdivision.

The only two schools in Southern Conference history with six straight championship seasons will go head to head on Saturday in Boone, North Carolina. App. State comes into the game with a 5-2 record, including 3-1 in the conference. All-SoCon senior quarterback DeAndre Pressley was recently removed as starting quarterback, and was replaced by Jamal Jackson.

**Special Teams:** Georgia Southern has blocked three kicks in the last two games as well as recovering a bad punt snap in the end zone for a touchdown last week.

The Eagles missed their first field goal of the season last week, when Billy Greer could not connect on a 44-yard attempt. However, starting kicker Adrian Mora has yet to miss a field goal or extra point this season.

App. State has an average special teams unit, besides its field goal kicking game. The Mountaineers are around the middle of the conference in all areas except field goals, where they are dead last, hitting only three of their eight attempts.

**Stat to watch:** 3-4. Sam Martin, the Mountaineer place kicker is 3-4 from beyond 40 yards, but 0-4 on tries less than thirty yards.



**Jevon Mention (54)** blocks a field goal versus Presbyterian College last Saturday at Paulson Stadium during a 48-14 victory for the Eagles. The Eagles will take on the App. State Mountaineers in Boone, North Carolina Saturday.

Akeem Hill/STAFF

### Advantage: GSU

**App. State offense versus GSU defense:** The Mountaineers have posted totals of 552 and 519 total yards after making their quarterback change. In only two starts Jackson has exceeded Pressley's passing touchdown total of the year and is only 102 yards shy of his total yardage.

The Mountaineers bring star receiver Brian Quick who has recorded 231 yards and two touchdown receptions since the quarterback

change to the matchup. App. State is, averaging 199.3 rushing yards per game and 201.6 passing yards per game.

The Eagles will try to counter the explosive Mountaineer offense by shutting down Quick with Laron Scott. Brent Russell and the GSU defensive line will try to overwhelm the App. State offensive line, but will be in for a challenge against the Mountaineers' linemen.

**Stat to watch:** 287. App. State

running back Travaris Cadet has rushed for 287 yards in his last two games after rushing for 213 in his previous five games.

### Advantage: Even

**GSU offense versus App. State:** The Eagles have put up over 500 yards of offensive four times in seven games this year.

The Eagles' passing game is an explosive facet to the ground-based triple option. GSU averages over 19 yards a reception and has caught five

touchdowns.

App. State's defense has been a little weak against the run so far this year, giving up over 177 yards per game on the ground. The defense is advantageous, scoring three touchdowns off of turnovers this season.

**Stat to watch:** 6. GSU has started six backs (quarterbacks, B-backs, A-backs) this season, also the number of backfield starters who have scored a touchdown this season.

### Advantage: GSU

**Final Analysis:** App. State has been playing lights out since they made their quarterback change. If Jackson plays at the level that he has been playing, then the GSU defense will have its hands full trying to contain an offensive juggernaut.

GSU has been rolling and building up momentum all season. The defense gives up the fewest points in the conference and the offense scores the most points. However, the Mountaineers are the best team that GSU has faced thus far.

The crowd at Kidd Brewer Stadium is consistently one of the best in the SoCon and this weekend will be no exception. The Mountaineers and their fans will be looking for revenge after GSU broke their 27-game conference winning streak last year in overtime.

**Stat to watch:** 13-12-1. The Eagles trail the Mountaineers by one game in the all-time series record. They are the only current team in the SoCon that the Eagles do not hold a winning record against.

**Final Score:** 38-35 GSU



Pimp, Priest, or Indian Chief  
(Costumes @ \$1)



FUNTASTIC STUFF FOR A GREAT PARTY!

(912) 489-9946

Located across from campus at Old Register & South Main