

Georgia Southern University

Digital Commons@Georgia Southern

The George-Anne

Student Media

8-21-2003

The George-Anne

Georgia Southern University

Follow this and additional works at: <https://digitalcommons.georgiasouthern.edu/george-anne>

Recommended Citation

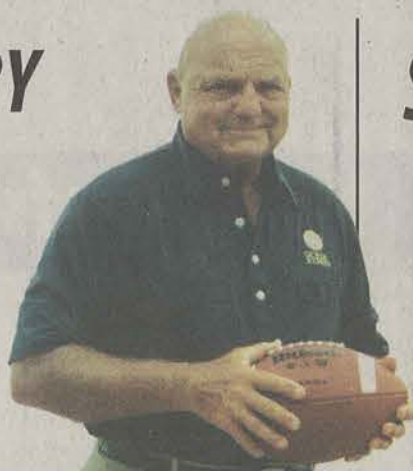
Georgia Southern University, "The George-Anne" (2003). *The George-Anne*. 3024.
<https://digitalcommons.georgiasouthern.edu/george-anne/3024>

This newspaper is brought to you for free and open access by the Student Media at Digital Commons@Georgia Southern. It has been accepted for inclusion in The George-Anne by an authorized administrator of Digital Commons@Georgia Southern. For more information, please contact digitalcommons@georgiasouthern.edu.

GSU HISTORY

Learn about the rich tradition of a little school in the South.

Section B



SPORTS

Serving up previews for both Eagle Soccer and Volleyball

Page 6

The GEORGE-ANNE

www.stp.gasou.edu

August 21, 2003

Thursday

Volume 76, Number 17

Freshmen Enrollment On The Rise

By Brittany Gates

tycoongameslover@yahoo.com

The freshmen are taking over! Ok, they aren't really taking over. It is just that there are more freshmen on campus this year than in the past year. This year, the freshmen class will cap at around 2800-3000 students.

Last year, GSU saw around 2500 freshmen. However, some were not "true" freshmen. "True" freshmen are those that meet the minimum SAT scores that GSU mandates. Those that applied to GSU that didn't meet the requirement went into a learning track to improve their skills. These freshmen are counted in the total population, but not in the "true" freshmen category. The number of "true" freshmen increased by 200 from last year's numbers.

Dr. Teresa Thompson, associate vice president of Admissions, said there were many reasons for the increase of freshmen enrollment. The new IT and Nursing buildings along with the newly constructed residence halls are some of the items that appealed to them. Plus, most of them see what alumni are doing and it gives them the push to come to GSU, seeing that they achieve much success from here. One good example is the recent announcement of a GSU alumni becoming the director of the Kennedy Space Center.

Thompson also said that GSU possesses what she calls the "personal touch." Larger colleges in Georgia, according to Thompson, don't give freshmen the care they deserve, causing some to leave because they feel like a number instead of a productive member on campus. GSU has faculty and staff that treat freshmen like people and help them through their first year at college. Thompson said that if students weren't made to feel comfortable in every sphere, not just in academics or student life, they would become disinterested and leave. As Thompson put it, "GSU is very student-centered."

But the new buildings on campus and word of mouth aren't the only things that helped enrollment increase. According to Thompson, the Admissions Office did much to recruit students and make them feel welcome at GSU. They developed more programs, such as Scholars' Day (in which students with SATs above 1200 come to campus and meet with different faculty and staff and learn about what GSU has to offer and use current students in their recruitment strategy.)

Operation Move-In 2003

Faculty and staff help to move nearly 3,000 students into GSU's 12 residence halls

By Luke M. Hearn

lheard@gasou.edu

Saturday was a very exciting day for many students here at Georgia Southern, as well as for the school itself, as Operation Move-In kicked off for another year, with nearly 3,000 students moving into the residence halls. Operation Move-In is a continuing tradition here at GSU and takes place on the day that the residence halls open their doors for the fall semester. While the students were enthused to finally be able to move into their new rooms, GSU was celebrating the opening of the two new residence halls on campus: Southern Courtyard and Southern Pines.

On this very monumental day for many students, faculty and staff members volunteer their time to assist the students who are moving into the halls. From helping to unload cars and carry boxes to working information desks in each hall, the faculty and staff volunteers do all that they can to make this day run smoothly. "They act to facilitate the moving process into the residence halls," says Vickie Hawkins, director of University Housing. "It really shows the caring staff that we have here at GSU," she said.

There were other campus groups involved Saturday, including the Christian Campus Fellowship, as well as a couple of fraternities.

While talking with students and parents, all had very positive comments to share. Cathy Carter, the mother of Freshman Amanda Carter who was moving into Southern Pines, said that she was impressed with the very friendly

See Move-In, Page 5



Dallas Oliver/STAFF

From RA's to President Grube, members of the Georgia Southern community all turned out last Saturday to assist the thousands of students moving into their new homes. Over the past few years, Operation Move-In has grown to become the defining activity of many students' first day here at GSU.



Special Photo

WWW.GEORGIASOUTHERN.EDU

GSU's website gets a new name - and a new look

By Brittany Gates

tycoongameslover@yahoo.com

Frequent visitors to GSU's website may have noticed a few subtle changes on Monday that made it look a little different.

It looks different because GSU's entire site was updated through the hard work of Webmaster Scott Taylor in Information Technology Services, the Web Oversight Policy Committee, and the Office of Marketing and Communications.

The reason for the change, according to Taylor, was because the old website had many issues such as difficulty of finding certain sites or links. They wanted to revamp the site to organize information so it would be easier to find and be as useful as possible.

The site has many improvements, such as different sites for different audiences. Prospective students and parents see all the

See Website, Page 5

Week of Welcome brings Comicview to GSU

By Bryan Forman

Whiteishop59@hotmail.com

All the signs of a new semester have begun to emerge.

The flood of students attempting to buy books, the resurgence of Statesboro's local economy, the chicken fingers a la Landrum, Big E licking his fist to some smooth jazz. If that last one doesn't seem so familiar it's probably because you weren't at the B.E.T. Comicview special that took place on Monday in the Student Union, where students were presented with two hours of stuff so funny it would make you want to cry.

B.E.T., which stands for Black Entertainment Television, is a channel devoted to African-American music and programming. The program Comicview showcases a number of comedians from all races who are given a chance to perform shows in front of a large audience. Big E, Tre Love, J Baby, and Dexter Angry are four comedians who have appeared on the show previously and gave a smaller performance for the enjoyment of Georgia

See Comicview, Page 5



David Caselli/STAFF

Comedians from B.E.T.'s Comicview performed Monday as part of the University's Week of Welcome.

'Blackout 2003'

How safe is our power?

By Luke M. Hearn

lheard@gasou.edu

"Blackout 2003," as it is being called by some in the Northeastern United States, was the largest blackout in history. Eight states and an estimated fifty million people were affected by the power outages that literally shut down that region of the nation.

Experts are still working to find exactly why the power grid failed which serves most of the Northeast. One possible cause could be due to the out-dated technology and equipment that are currently in place. According to an article in the New York Times, it costs billions of dollars to implement the necessary upgrades and to replace equipment, and consumers can only see rising prices in their energy bills as a result. Another possibility could be that Americans are using many new products that require

electricity.

As more and more evidence is uncovered and as experts find new leads to the source of the problem, one question still looms in everyone's mind: "Could it happen here in the Southeast?"

According to Sakis Meliopoulos, an electrical engineering professor at Georgia Tech, as quoted in The Macon Telegraph, "The outage hit the most densely populated part of the country. Because Georgia's population is more spread out than the Northeast, the state puts less demand on its distribution systems. The risk is less than that up North."

In a report released by Georgia Power, the company stated that it is, in fact, possible that the South could have an outage similar to the one in the Northeast, but that their

See Blackout, Page 5

Today's Weather



HIGH
89°

LOW
71°

Isolated
Thunderstorms

Only in America

• Savannah man survives what lightning never does twice



• Paintball shooting turns deadly in Pennsylvania

• California banks now accepting babies for deposit



Page 3

Sports

• Real Fast Quick Briefs from the world of Sports

• The Falcons' worst fears are realized with Vick's injury



Page 9

A&E

• The Performing Arts Center schedule is loaded with events for everyone this Fall



Page 12

Inside

Police Beat	2A
News Briefs	2A
Classifieds	10A-11A
Crossword	11A
Horoscope	10A
Comics	10A
Sports	6A, 9A
A&E	12A

Police Beat

08-13-2003

A Raptor Center employee reported finding what appeared to be marijuana on some steps.

Officers investigated three traffic accidents, issued two traffic warnings and assisted five motorists.

08-15-2003

Officers issued two traffic citations and three traffic warnings, assisted three motorists and responded to one fire alarm.

08-16-2003

Victor L. Sweet, 38, of 400 Knight Drive, Statesboro, was charged with improper turn and driving with a suspended license.

Officers issued three traffic citations and two traffic warnings, investigat-

ed two traffic accidents, assisted two motorists and responded to one fire alarm.

08-17-2003

Officers assisted the Housing staff with an incident involving open containers. Three citations were issued.

Officers issued seven traffic citations and nine traffic warnings, investigated one traffic accident, assisted four motorists and one sick person, and responded to three fire alarms.

08-18-2003

A cell phone was taken from the Henderson Library.

A cell phone and two CDs were taken from a car in the Landrum

Center parking lot.

Officers issued one traffic citation and two traffic warnings, investigated one traffic accident, assisted six motorists and one sick person, and responded to two fire alarms.

08-19-2003

Officers issued one traffic citation and three traffic warnings, investigated six traffic accidents, assisted three motorists and responded to two fire alarms.

Editor's Note: Police Beat appears in every edition of the George-Ann in an effort to inform the GSU community of the amount and nature of crime. All reports are public information and can be obtained at either the GSU Division of Public Safety or the Statesboro Police Department.

- All Police Beat information is compiled by J. Wright, news editor.

Campus Calendar

August 21

Theater and Performance Student Organization Meeting
Blackbox Theater
5:00p.m.
Elect officers and select agenda for the year

August 24

Equestrian Team Information Session
Russell Union Room 2084
8:00 p.m.
No riding experience needed. If you love horses come and see us.

August 25

"The Closet,"

Russell Union Theatre

7:15 p.m.

Cinema Arts - French, with English subtitles, \$2

August 27

Back to School Pool Party and 2003 Jeep Wrangler Giveaway
The Woodlands at the clubhouse and Pool of the Woodlands of Statesboro

August 27-October 8

"Children Growing Vegetables for the Hungry," (Summer session two)
Georgia Southern Botanical Garden
Wednesdays only, 4 p.m. - 5 p.m.

August 28

Pre-Law Open House

Room 2213 of the Carroll Building

4:30 to 6:30 p.m.

Help kick off the opening of the University's Office of Pre-Law Advising.

The open house is open to attorneys, judges, faculty, parents and any students interested in pre-law.

For more information, contact Davis at (912) 681-5765 or bdavis@gasu.edu.

Senior Day

Nessmith-Lane continuing Education Building
9 a.m. to 3 p.m.

Open to anyone 55 and older. Exhibits, previews of classes offered by "Live and Learn: Senior Class," light luncheon "Legislative Update." Please

FBI raids offices of former state Sen. Charles Walker

AUGUSTA, Ga. — Federal law officers raided former state Sen. Charles Walker's office Monday, hauling out boxes belonging to the former Democratic Leader in the Senate.

The FBI joined agents from the Internal Revenue Service and the Georgia Bureau of Investigation at the office Monday morning. The agencies would not say what they were looking for.

But Ed Reinhold, an FBI supervisory senior resident agent, said agents executed a federal search warrant at the office, which houses Walker's weekly newspaper, the Augusta Focus.

Walker's attorney, Don Samuel, said the warrant did not list records for any of Walker's other businesses.

"The search warrant doesn't provide any information as to why they want it," Samuel said. "Since the beginning of this investigation many, many, many months ago, we've cooperated and given them everything they've asked for—dozens of banker's boxes of accounting records ... correspondences. The prosecutor has not told me that they have uncovered one shred of evidence of any criminal conduct by anybody."

call the federal seal the state's highest court. The federal grand jury in Savannah, Ga., and the U.S. District Judge Dudley Bowen Jr. in Augusta.

"The judge felt we had probable cause to search for the items that we were looking for and issued the warrant for us," Reinhold told The Augusta Chronicle.

Samuel said investigators have interviewed virtually all Walker's employees, but not the former sena-

News Briefs

tor himself.

"The grand jury is allowed to investigate all they want," Samuel said. "They don't tell you when you're done. They don't give you a clean bill of health. You aren't allowed to present evidence."

Charles Walker served five terms in the Georgia Senate, rising to become the first black majority leader. He led the Democrats in that chamber until he was defeated for re-election last fall by Republican Randy Hall.

While in office, the Democrat was the subject of several ethics probes about state grants to charities he oversaw.

A state audit last year showed that Walker and several other members of a group in Augusta oversaw the spending of nearly \$20 million in state grants and used some of the money to do business with themselves.

In January 2002, he was fined \$8,500 by the state Ethics Commission for failing to disclose his financial interest in a company that held lucrative hospital contracts with the Medical College of Georgia in Augusta and Grady Health Systems in Atlanta. The hospitals paid one of his companies \$2.5 million from 1996 to 2000.

In Georgia, soggy summer heightens fear of repeat of 1994 floods

ALBANY, Ga. — With soggy soils and higher-than-normal lake and river levels, Georgia officials say the state is especially vulnerable to tropical storms like the one that triggered widespread flooding that killed 31 people in 1994.

Like much of the South, Georgia has been swamped with rainfall this year. Its 39 inches so far is more than the yearly totals for all but one of the last five years.

That's of particular concern to Georgia's Emergency Management Agency because similar conditions existed in July 1994 when Tropical Storm Alberto stalled over the state and dumped 15 inches of rain within 24 hours, triggering the state's worst natural disaster.

"We're in the hurricane season. All it would take is a slow-moving tropical storm to ... cause some severe flooding," GEMA spokeswoman Lisa Ray said Monday.

It took only heavy rain, not a tropical storm, to cause more flooding in March 1998.

"Our biggest concern is the amount of rain (this year)," said David Stooksbury, the state climatologist. "It's increased the flood potential. If we do have any tropical storms or hurricanes impacting the state, since the soils are already very wet, the reservoirs are full and the streams are well above normal, flooding is a major concern."

In 1994 and 1998, flood victims benefited from national disaster assistance, but the standards have changed.

GEMA officials said it's now harder to qualify for federal disaster aid, making flood insurance more important than ever for residents of areas with a low-to-high risk of flooding.

Home and business owners should also consider flood insurance, which runs from about \$200 to \$500 per year, since most homeowner's policies don't cover flood damage, officials said. The insurance is available in about 400 Georgia communities that participate in the National Flood Insurance program and the coverage is not limited to those who live in flood-prone areas.

Voting in the recall election

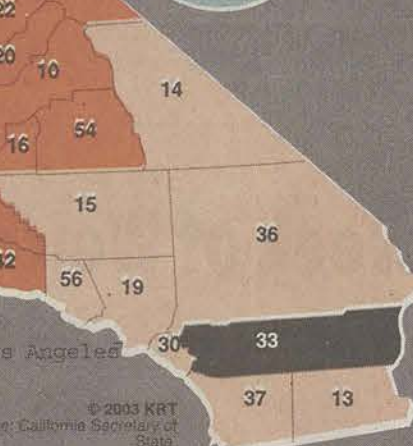
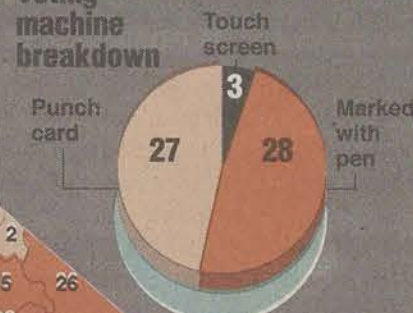
California's 58 counties will use three different types of voting machines in the Oct. 7 recall.

■ Touch screen ■ Marked with pencil ■ Punch card

*Type of ballots that caused controversy in the 2000 presidential election

1. Alameda
2. Alpine
3. Amador
4. Butte
5. Calaveras
6. Colusa
7. Contra
8. Costa
9. Del Norte
10. El Dorado
11. Fresno
12. Glenn
13. Humboldt
14. Imperial
15. Inyo
16. Kern
17. Kings
18. Lake
19. Lassen
20. Los Angeles
21. Marin
22. Mariposa
23. Mendocino
24. Modoc
25. Mono
26. Monterey
27. Napa
28. Nevada
29. Orange
30. Placer
31. Plumas
32. Riverside
33. Sacramento
34. San Benito
35. San Bernardino
36. San Diego
37. San Francisco
38. San Joaquin
39. San Luis Obispo
40. Santa Clara
41. Santa Cruz
42. Shasta
43. Sierra
44. Siskiyou
45. Solano
46. Sonoma
47. Stanislaus
48. Sutter
49. Tehama
50. Trinity
51. Tulare
52. Tuolumne
53. Ventura
54. Yolo

Voting machine breakdown



© 2003 KRT
Source: California Secretary of State



We're Almost Full;
Come See Why!

TWO BEDROOM/TWO BATH
THREE BEDROOM/THREE BATH
FOUR BEDROOM/FOUR BATH



Great Amenities, Including
Two Sparkling Pools!

Roommate
Matching Service

Call (912) 681-6994

Ask about our Move-in Specials!

Fax: 912/871-7904 • E-mail: bermuda@frontiernet.net
Located next to East Georgia Medical Center off Fair Road



EagleNet
Internet Services

DIAL-UP SPECIAL FOR GEORGIA SOUTHERN STUDENTS

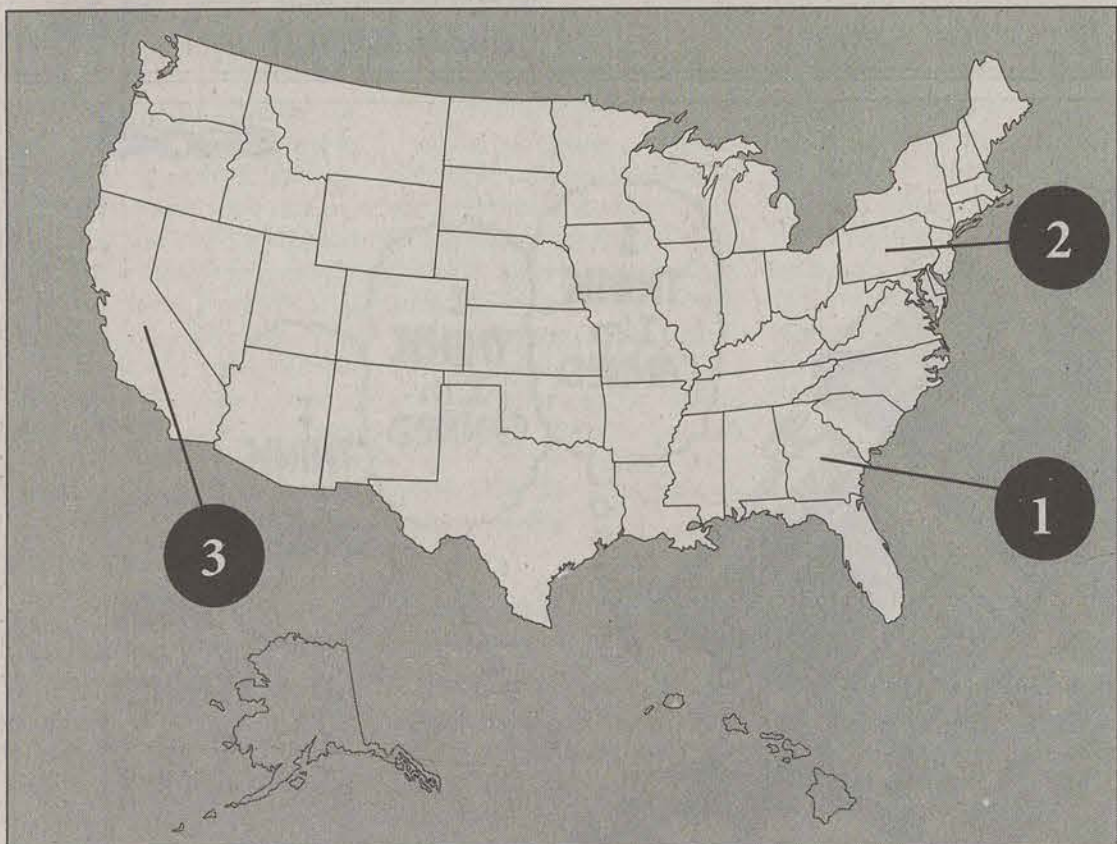
Prepaid Service: \$140 for the entire academic year
Save over \$21 – Over one month of free service!

- Unlimited Access
- No Activation Fee
- Virus & Spam Filtering
- Local Tech Support
- Immediate Activation by Phone with Credit Card

WE ALSO HAVE HIGH-SPEED DSL SERVICE

- 30-40 times faster than dial-up
- Does NOT tie up your phone line!
- Always on – no delays!
- No Activation Fee
- Call today to place your order!

764-7335 • 9A N. Zetterower Ave. • www.enia.net



2003-2004 Phonathon



Now Hiring Dedicated Students!

The Office of Development is now accepting applications for student Phonathon callers. Successful applicants will have strong communication skills, a passion for Georgia Southern University and a great work ethic. Selected applicants will be asked to participate in a group interview for additional screening. Hours are Monday through Thursday 4:00 p.m.- 9:00 p.m. and Sunday 10:00 a.m.- 2:00 p.m.

Applications will be available and accepted between 1:00 p.m.- 5:00 p.m. Monday through Friday at the Alumni House (across from the Herty Building at the corner of Georgia Avenue and Herty Drive) Deadline for applications is August 29, 2003.

1 Georgia

Savannah man survives two lightning strikes

SAVANNAH - Joe Sauers gets a chill down his spine whenever he sees storm clouds approaching. But that's better than getting struck by lightning.

That's happened twice to the Savannah man, the last time in 1998. Since then, he's protected himself by installing surge protectors "on everything in the house," from the refrigerator to the television.

"I don't take baths in a storm no more or stay on the phone," Sauers said.

Because of his history, his co-workers at the Georgia Ports Authority gave him the nickname Sparky. He also gets to go home early when a storm hits near the Port's tall cranes.

"When I hear thunder, I'm gone," Sauers said.

The 51-year-old first got struck by lightning in June 1997 while he was standing by his backyard pool. He saw dark clouds in the distance, but the sky was clear above him. Then, lightning hit a nearby tree.

"I heard the crack and saw the flash," Sauers said.

The jolt blasted a hole in his right shoe, and left him with pain from head to toe. He got kidney damage and a hairline fracture to his jaw.

Just a year later, lightning struck again, hitting a tin-roofed shed by his home. He felt a strange feeling running down his right side. "Not hot, but tingly" _ and his right ear was damaged.

Still, he's better off than Randy Davis, a truck driver from nearby Richmond Hill. He was struck by lightning six years ago and remains disabled because of it, according to Davis' wife, Phyllis.

Lightning is more prevalent in the Southeast than in other areas of the country, mainly because the area receives moist, unstable air from the Atlantic Ocean and Gulf Stream, said National Weather Service meteorologist Jerry Harrison.

In June, Savannah Electric recorded 7,712 lightning strikes in its five-county service area.

And lightning can jump several miles away from the storm.

"If you can see the lightning, you're within range of being struck," Harrison said.

2 Pennsylvania

Police: Paintball prank turns deadly

PITTSBURGH - Two teens who drove around the city shooting passers-by with paintball guns were hospitalized after they were shot with real bullets for apparently targeting the wrong group, police said.

Nineteen-year-old Tracey Smedley and a 17-year-old were being treated at a Pittsburgh hospital for gunshot wounds they suf-

fered Tuesday night when someone they hit with paintballs fired back with bullets.

Pittsburgh police Lt. Philip Dacey said Smedley, the 17-year-old and an 18-year-old man drove around a city neighborhood armed with paintball guns and wearing helmets and paintball vests.

During their drive, the teens pelted children at a playground and shot at another group down the street, Dacey said.

When the teens turned around to tell the group on the street they were only shooting paintballs, someone returned fire with a gun, peppering the driver's side of the car with more than a dozen bullets, Dacey said.

Smedley was shot in the left arm, while the 17-year-old was hit in the buttocks. The teens then drove themselves to the hospital, Dacey said.

3 California

Firefighters work to free child trapped in bank vault

REDWOOD CITY - A 21/2 year old girl wandered into a bank vault Thursday night and became trapped when employees closed the vault door, which operates on a time-locked system that prohibits it from being opened until morning, authorities said.

The toddler's mother works as a teller at the Washington Mutual

Bank branch, and while she and the rest of the staff were closing the bank for the night, the little girl apparently went into the vault to play, said Menlo Park Fire Chief Paul Wilson.

The adults did not realize the child was inside the vault until after someone had closed the heavy steel and concrete door at 6:30 p.m., Wilson said, but by then it was too late.

"The vault doors are on time lock, meaning they are not able to be opened until 6 a.m.," he said.

After Washington Mutual security determined there was no way to override the door lock, fire fighters were summoned to the scene just before 7:30 p.m. Working with a federal search and rescue team, they set to work drilling a two-inch hole so they could insert a surveillance camera and drinking water into the vault, along with a microphone that allowed the girl's mother to communicate with the trapped youngster.

That process was completed at about 10 p.m.

"At this point, she is doing fine," Wilson said. "She hasn't been crying or anything."

Fire officials had originally feared that the girl would have to stay inside the vault until morning. But a private concrete boring firm was brought in and determined it would be possible to drill a hole big enough for the child to crawl out through, Wilson said.

Wilson said that if everything went according to plan, the toddler might be freed by 1 a.m. Friday.

Redwood City is 26 miles south of San Francisco.



\$2.00 Tanning

-CHECK OUT OUR VARIETY OF LOTIONS AND MOISTURIZERS AT GREAT PRICES

-NEW BULBS

Walking distance from Campus!!

MONTHLY MEMBERSHIPS
ALSO AVAILABLE

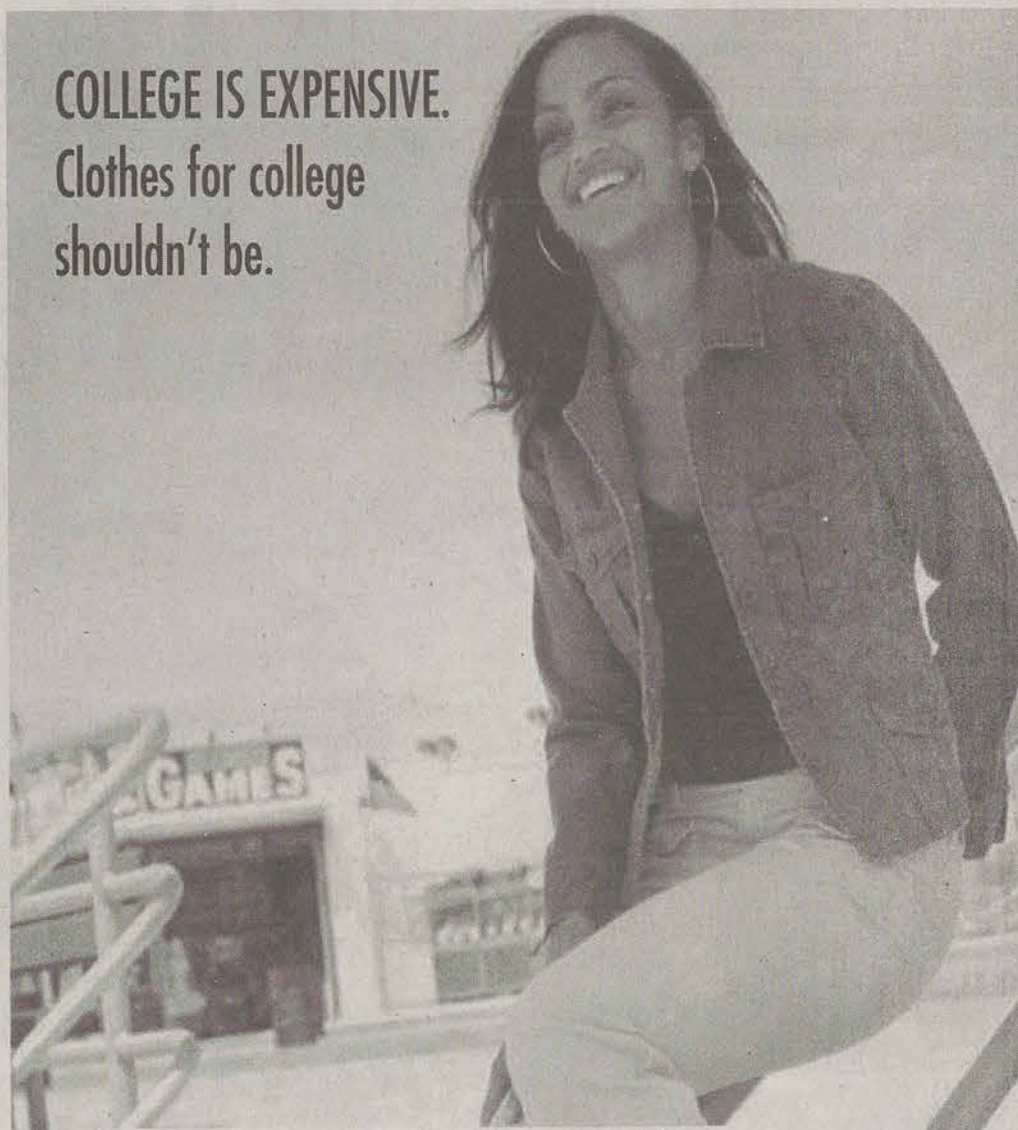
ASK ABOUT OUR REFER
A FRIEND DISCOUNT
PROGRAM



**In touch
communications**
1596 Chandler Road
(Next to University Books)
Statesboro, GA 30458
912-871-5555

GOODY'S

COLLEGE IS EXPENSIVE.
Clothes for college
shouldn't be.



GOODY'S WELCOMES STUDENTS BACK!

present this coupon for EXTRA SAVINGS
TAKE AN EXTRA 10% OFF YOUR ENTIRE PURCHASE*

*Good on almost everything in the store! Excludes denim, clearance, Dockers, athletic shoes, Goody's Giftcard purchases, YES! value items, fine jewelry, fragrances and tuxedo rentals. One coupon per customer. May not be used with any other coupons or discount offers. Offer expires Wednesday, Oct. 1, 2003.



527

OPINIONS

The
GEORGE-ANNE
Thursday, August 21, 2003

4A

Our Opinion

America lets its light shine

Just as the latest Welcome Back edition of *The George-Anne* was being issued to countless businesses and newsstands throughout Statesboro, several of our northeastern states were being pitched into the greatest period of darkness since the Dark Ages.

Over 30 million people were made powerless (in more ways than one) simultaneously in less than three minutes. Subways stopped just as they entered tunnels, elevators halted between floors. Panic was widespread.

But, in spite of what people may have expected based on previous experiences, such as the riots and widespread looting which occurred during the 1960s and '70s, New Yorkers and others remained relatively calm. What began on a Thursday afternoon and officially ended sometime during Saturday also marked one of humanity's greatest accomplishments: the ability to think unselfishly in a crisis.

News stations all over the country reported on the "surprising" helpfulness of strangers to others in situations where there were children involved, elderly, medical conditions, and just plain fear. We know now that the power outage was not due to any kind of terrorist plot, yet for those people stuck in the dark, there was no telling what kind of madness waited for them in the light. Yet they still managed to come together.

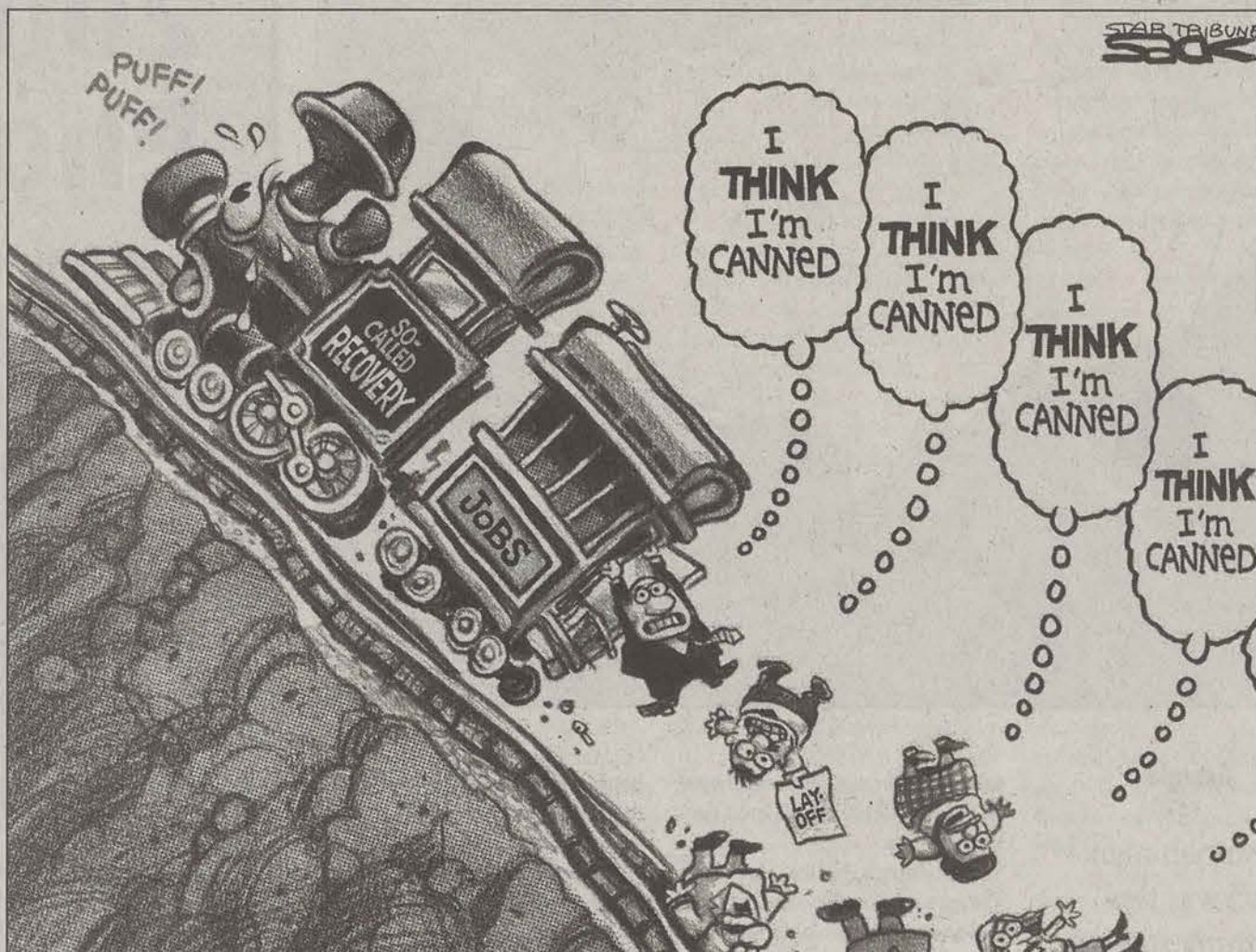
Fact: Millions of people were thrown into the greatest blackout in our history. Millions of people helped millions of other people survive the greatest blackout in our history without a single loss of life and few casualties. Also fact.

So what does this say about the state of our own humanity in a world that so many people would say is going to hell in a hand basket?

Well, We'd say there's hope.

Thoughts of the Day

- "More and more of our imports are coming from overseas." – President George W. Bush, Jr.
- "When policy fails, try thinking." – Anonymous
- "The difference between stupidity and genius is that genius has its limits." – Albert Einstein
- "When you feel in your gut what you are and then dynamically pursue it - don't back down and don't give up - then you're going to mystify a lot of folks." – Bob Dylan



Politicians: Wake up and smell the economy

KRT Campus

It's such a yawner of a topic that few politicians, Democrat or Republican, bring it up any more except to blame the other political party for the sluggish state of the post-9-11 economy.

People need a wake-up call. The record federal budget deficit – \$455 billion this fiscal year – drags the nation's economy and makes job creation difficult to accomplish.

President Bush argues that tax breaks will rev up the economy, but so far the recovery has been in fits and starts since the recession officially began in March 2001 and officially ended by the end of that year. In fact, government figures show the economy has lost 2.7 million jobs under Bush's watch, but new numbers produced last week show a leveling off of unemployment claims and signs that the United States is gaining on the foreign-trade gap.

The problem with Bush's tax cuts is that they weren't designed to be a job-stimulus program. They simply rework the tax system, changing it from a progressive system that rewarded middle- and working-class Americans for their hard work into a 19th-century retro-system that rewards the privilege of the very rich.

We're not getting much "trickle down" from Bush's ambitious 10-year, \$1.7 trillion-plus tax-cut

proposals. But we have seen signs of a trickle-down burden – both to middle-class taxpayers and to state governments. More and more working people will be socked with a higher alternative-minimum-tax burden in later years as millionaires get to keep more of their investment riches. Meanwhile, strapped states have been forced to cut services and/or raise taxes and college tuition payments.

Bush has used the war on terrorism as an excuse for piling on more debt and growing annual budget deficits, which had been wiped out during the Clinton administration. Certainly, during war it's not unusual to operate in the red, but there's much more to current budget deficits than the costs of national defense and the war against terrorism. Tax cuts have taken a big bite out of the federal budget, too.

The government must borrow to pay its bills when there's a deficit, and it is borrowing from all the wrong places, including Social Security and Medicare funds that face their own challenges down the road as more baby boomers retire.

Bush said last week that he's convinced tax cuts will boost the economy by encouraging people to spend the money they get back from Uncle Sam. Meanwhile, people's personal debt is growing.

I don't know of any financial planner who would tell a client to borrow more and more to grow a home

budget. Because we all know that the more we borrow, the more we owe in interest payments until we're working just to pay off interest and little more.

It works the same way for government, except it can print its own money at the peril of inflation. Over time, deficits can slow down economic growth or worse, and rising deficits can boost interest rates higher. That makes business investment and growth more difficult to attain.

During the 1980s, Republicans in Congress, along with moderate Democrats, kept pointing to the deficit as an economy buster. By 1993, Democrat President Bill Clinton set out to eliminate annual deficits, and a Republican Congress tried to outdo him. The economy overheated at times, and certainly the dot.com craze showed how over-exuberance in investments could spiral out of control, but the bottom line was that the government operated without a deficit for much of Clinton's tenure, and private-sector jobs were plentiful – almost 21 million new jobs over eight years.

As more jobs were created, more working people paid taxes, producing budget surpluses to help pay off the debt quicker than planned. All of that ended with Bush's tax cuts and the war on terror. Tax cuts without spending controls just don't add up to prosperity.



LETTER AND SUBMISSION POLICY

The George-Anne welcomes letters to the editor, story submissions and guest columns from people both inside and outside the GSU community. All copy submitted should be typed, preferably via email or on Macintosh disk in Microsoft Word format. All submissions must be signed and include a mailing address and phone number for verification. The editors reserve the right to reject any submission. There is no word limit on submissions. A writer may request to remain anonymous. However, it will be the editor's decision whether or not to print the name. Submissions are run on a space-available basis.

THE GEORGE-ANNE STAFF

For 76 years, Georgia Southern's Official Student Newspaper

THE 2002-03 EDITORIAL BOARD

AMANDA PERMENTER, EDITOR-IN-CHIEF
ADAM BRADY, MANAGING EDITOR
J. WRIGHT, NEWS EDITOR

THE 2002-03 EDITORIAL STAFF

BRANDON SPARKS, ASSISTANT NEWS EDITOR
WILL JOHNSON, DEPUTY MANAGING EDITOR
LA VENE BELL, PHOTO EDITOR
DALLAS OLIVER, ASSISTANT PHOTO EDITOR
JEWEL DENSON, COPY EDITOR
ERIN NEASE, A&E EDITOR
BOBBY LINDSEY AND ANDREW LASH, SPORTS EDITORS

Energy Department strategy for waste disposal needs reevaluation

KRT Campus

U.S. Energy Secretary Spencer Abraham would do well to simmer down and work with the states on cleanup of nuclear wastes rather than to try to go around them to Congress.

After losing in federal court last month, Abraham is trying to ice out state regulators by asking Congress to amend the Nuclear Waste Policy Act. His amendment would let the federal government reclassify some highly radioactive waste at three nuclear sites as low-activity waste requiring less vigorous and cheaper disposal methods.

In a letter to Speaker of the House Dennis Hastert, Abraham argues the federal court ruling in Boise, Idaho, will slow down cleanup, run up the bill and produce more high-level waste than the planned long-term repository

at Yucca Mountain will be able to hold.

Most stupefying is that Abraham seems to assume – erroneously – that would be OK with the states of Washington, Oregon, Idaho and South Carolina, which have a major stake in the decision and whose citizens have to live with the consequences. State officials say Abraham's predictions are exaggerated.

Last week, the directors of the relevant agencies in the four states, including Washington's Ecology Director Tom Fitzsimmons, reiterated their now 9-month-old offer to work with Energy on these issues within the current law and outside of court.

The states want faster and cheaper cleanup as long as it is safe and effective. They certainly would be remiss if they didn't push Energy for more

answers and assurances.

Abraham need only look at Hanford for examples of state regulators' willingness to be open to new and better ways of pursuing cleanup. Ecology is considering being more flexible on front-end deadlines for the Hanford Waste Vitrification Plant in return for Energy processing more waste faster after it's operating.

State officials make a persuasive argument that they and the current law are flexible enough to accommodate Energy's accelerated cleanup plans while ensuring the processes are safe and effective.

That Energy officials are so adamant about excluding state regulators from a decision with such major repercussions for the citizens of those states is galling. The energy secretary should reconsider the strategy.

MOVE-IN, FROM PAGE 1

and helpful staff. "I will feel safe when I leave my daughter here in such a caring and safe environment," Carter said. Just as she said that, a staff volunteer came by and asked if they needed any more help. "See what I mean, I love it," Carter exclaimed with a huge grin.

Junior Samuel Pierre said that his move into Southern Courtyard went well. He said that the new complex was "really nice, I really like it."

After getting settled into her new room at Southern Pines, Junior Kristen Swain said, "it's cozy; very nice for campus housing."

Just as there were very excited students moving in on Saturday, there were also many who were nervous. Gina Rivera, an incoming freshman, said that she was "excited and scared," as this is her first time living away from home.

Freshman Vaneshia Henry shared a similar feeling. "Everything is good, I'm just nervous," she said.

Many parents were surprised to see so many staff members available to help them with their moving-in. A parent asked Dr. Deal why he, as a Chemistry Professor, was out helping students move into their dorms. "The brains don't kick in until Tuesday," he said jokingly, "today it's the muscles." Dr. Deal's high spirits were very common among all

of the volunteers Saturday.

At the information table inside each residence hall volunteers talked with the parents and provided them with pertinent information about the whole move-in process. Carol Smith, the Programs and Research Graduate Assistant for the Department of University Housing, was working the information table in Johnson Hall. "Everyone has been really calm; even when I ask about the Meningitis shots, the parents do not seem worried."

- Dr. Todd Deal

The GSU Parents Association hosted a "break session" at the Russell Union for all parents to come, have a snack, and talk with other parents and members of the Parents Association about any questions or concerns. The Parents Association, founded last fall during Family Weekend, "serves to give a vehicle for parents who have questions a chance to ask other experienced parents," explained Larry Gore, a member of the Parents Council.

"Everything went very smoothly," said President Grube about Operation Move-in. "The Department of Housing deserves a big round of applause for all of the hard work they did to get ready for this event."

The day was rounded out with a cookout on Sweetheart Circle for all of the parents, students, and volunteers.

COMICVIEW, FROM PAGE 1

Southern Students.

The shows host, the apply named Big E, regaled the crowd with his advice on wooing women through reverse psychology. The shows first performer J Baby asked the question, exactly how much marijuana must one smoke before they call a friend with their cell phone to ask if that friend had seen their cell phone. The next performer, Tre Love, gave a less than stellar thirty minute performance, as was exemplified by his use as a threatening tool by Big E, who said "...ya'll better clap or I'll bring that last guy out here for another 45 minutes."

But the show's headliner, Dexter Angry, more than picked up the slack for anyone else on stage, with his sharp wit and random off the wall comments about life in general. After telling the crowd that as an African-American male over 25 who

has a steady job and no children, he should be officially named an endangered species, he launched into a half an hour of non-stop laughter. Sometimes that laughter came from him as well, which launched the crowd into another fit as well, then to top it all off he left with a perfectly timed plug of his new CD which was being sold out in the lobby and simply walked off stage.

However the most memorable joke of the night came from the host Big E as he walked on stage at the closing point of the show with a dollar bill peeking out over the rim of his belt. Big E calmly addressed the women of the audience and asked them, "Hey, y'all know what this is?" The ladies of course replied "a dollar," to which he replied "No, it's all you can eat under a dollar."

Free Ads*

DID YOU KNOW?

Campuslinx.com

is your online college classifieds!



We bring your local campus community a little bit closer by providing an online bulletin board devoted to your college. It's cheap! It's easy! It can put cash in your pocket!

Check out...

Campuslinx.com

Remember your trash is another student's treasure.

*All ads posted by 9/30/03 are free.

WEBSITE, FROM PAGE 1

information they need to see such as housing and admissions. Current students have in front of them sites they need like the Registrar's Office. Faculty and Staff would see the links that involve them such as the Faculty Handbook. Alumni and Donors have instant access to links dedicated to them.

Other improvements include a constant color scheme and navigation system. On the homepage, visitors choose the right link for them, taking them to the corresponding page. On every page are links most students use, such as WINGS, campus email, WebCT and search.

One improvement that most won't see is the reduction of the number of links on the homepage. Taylor said the old homepage contained over 120 links, and it now has 21.

Also updated in the process was GSU's domain name. Taylor said that they change

from the www.gasou.edu to www.georgiasouthern.edu was a brand issue. The old domain name wasn't descriptive enough for GSU.

This whole process took over a year, and involved The Web Oversight Policy Committee along with the Office of Marketing conducting surveys of what students and faculty and staff wanted to see changed on the site. Marketing also helped with defining the image of the new site. After their answers were compiled, Taylor took what the Web oversight Policy Commission found and started working to overhaul the site, doing all the coding, graphics and reorganization himself.

The new webpage will allow it to grow and be redesigned as GSU grows, according to Taylor.

You can still use the old website name and in emails until July 1, 2004. After that, you must use the new domain name.

Phi Mu Congratulates their New Ladies

Anne Adams
Courtney Akins
Melissa Anderson
Amanda Beasley
Renee Bonnell
Jessica Brignet
Christina Brownlee
Ashley Cantrell
Maria Collins
Abby Davidson
Courtney Dentler
Rebekah Edwards
Michelle Flanders
Melissa Gray
Paxton Gehle
Lacie Guy
Natalie Hall
Rachel Headlee
Maggie Holmes
Jackie Hovarth
Summer Ivie

Lauren Jiles
Jennifer Jones
Anna Lipsey
Amanda Lovvorn
Ashley McDonald
Sarah Moffett
Stacia Mooney
Lauren Patrick
Jamie Phillips
Jessica Pitts
Erin Rock
Megan Schoch
Lindsay Sikes
Erin Smith
Dottie Strickland
Rachelle Taylor
Cameron Thompson
Samantha Thompson
Melissa Webb
Jessica White
Sarah Wilde



SRP \$99.99



CELL PHONE!

Motorola T722i

SRP \$249.99

Mail In Rebate \$100.00

\$149.99

Motorola T722i

- Large Color Screen
- Photo Messaging
- Downloadable Ringtones
- FM Radio

FREE Digital Camera

IN TOUCH Communications

1596 Chandler Road • Statesboro
871-5555

General Terms: Coverage only available on our domestic GSM network and that of our roaming partners ("Get More Network"), but not in all locations. Credit approval, activation fee and 1 year service agreement required with \$200 early cancellation fee per line. Use of the service means you accept the T-Mobile Terms and Conditions including mandatory arbitration. Taxes, fees, tolls, roaming and other charges additional. Unused minutes, megabytes and other allotments do not carry forward to the subsequent billing cycles. Partial minutes used are rounded up and charged at the full minute rate; calls or sessions measured from the time the network begins to process the call (before the phone rings or the call is answered) through its termination of the call. Rates are for domestic usage. Billing of roaming charges and minutes of use or services may be delayed or applied against included minutes or services in a subsequent billing cycle, which may cause you to exceed your allocated minutes or services in a particular billing cycle. Limited time offer; revocable without notice. Devices sold for use on our GSM or GPRS systems and may not be compatible with other systems. Additional restrictions apply; see Terms and Conditions at t-mobile.com and rate plan brochure for details. T-Mobile is a registered trademark of Deutsche Telekom AG. Get More America is a service mark of T-Mobile USA, Inc. All applicable to your rate plan: Domestic long distance (but not for credit card, calling card or operator-assisted calls) and roaming are provided: a) for regional plans, in your regional calling area or by for national plans, on the Get More Network. Weekends defined as midnight Fri. through midnight Sun. Nights defined as 9pm to 6:59am Mon-Thurs. and 9pm to 11:59pm Fri. Mobile to Mobile minute means a call to or from a T-Mobile subscriber while on our domestic network. See written materials for information about your rate plans or features.

T-Mobile
authorized dealer

UNLIMITED NIGHT & WEEKEND MINUTES

\$39.99
Only A Month

600 Whenever Wherever Minutes & Unlimited Night & Weekend Minutes With Nationwide Long Distance & Roaming in U.S.

PLUS...1 Free Phone Must Present Coupon At Time of Purchase

UNLIMITED WEEKEND MINUTES

\$29.99
Only A Month

300 Whenever Wherever Minutes & Unlimited Weekend Minutes With Nationwide Long Distance & Roaming in the U.S.

PLUS...1 Free Phone Must Present Coupon At Time of Purchase

3000 Neighborhood
Whenever Minutes
ALL DAY, ANY DAY
Only \$49.99 A Month

SHARE 2 PHONES

2 Lines For Just
\$69.99 A Month

800 Plus
Whenever, Wherever Minutes
UNLIMITED Weekend Minutes
Includes Long Distance & Roaming in the U.S.

PLUS...2 Free Phone! Must Present Coupon At Time of Purchase

SHARE 2 PHONES

2 Lines For Just
\$99.99 A Month

1200 Plus
Whenever, Wherever Minutes
UNLIMITED Weekend Minutes
Includes Long Distance & Roaming in the U.S.

PLUS...2 Free Phone! Must Present Coupon At Time of Purchase

Eagle Volleyball seniors set to repeat SoCon title

By Eli Boorstein
Nietsoob17@hotmail.com

In 2000, Lady Eagle Volleyball finished at 11-19, failing to qualify for the Southern Conference Tournament for the third time in four years.

After the season, Kerry Messersmith was hired in 2000 to take over the reigns of a program that had only managed three winning seasons in 16 years.

Since that time, Messersmith has brought the volleyball team well beyond the expectations of many, winning their first-ever SoCon Tournament in 2001 and finishing with the league's top record last season at 26-9.

As the Eagles glided to the best record in the program's history, they were dominant at home in Hanner Fieldhouse with a 13-1 mark at home, the only loss coming against Memphis in the season-opening Georgia Southern Classic.

The team had some troubles, starting the year off 4-5, but from there won 20 of their final 23 matches heading into the conference tournament.

The 2003 Lady Eagle campaign will include nine new players, including five freshmen. Despite the arrival of so many new players into the program, Messersmith said that building cohesiveness among the team has not posed much of a problem, yet.

"The new kids fit right in," remarked Messersmith, the 2002 SoCon Coach of the Year. "There was a little concern, but the veterans helped to make the transition easier."

Leading the veteran corps will be the reigning SoCon Player of the Year, senior Martina Veiglova. Veiglova, a native, Slovakia, dominated the league with a .326 hitting percentage and ranked seventh in the nation with 686 kills. She also became one of four Eagles to top 1,000 kills for their careers. The bond between player and coach has been strong ever since Veiglova played for Messersmith as a freshman at Arizona Western College in 2000, before both came to GSU.

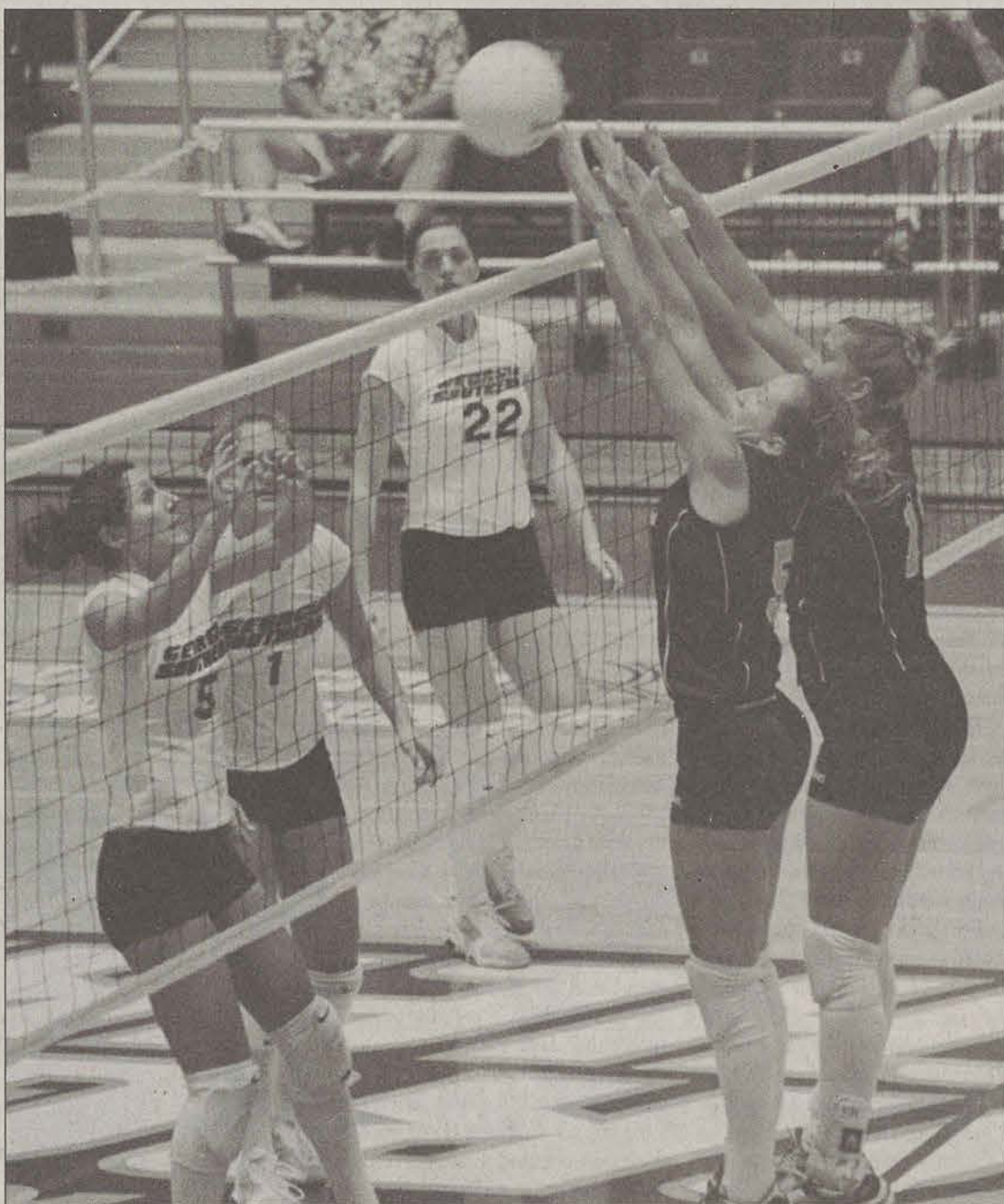
Joining Veiglova will be three other returning seniors libero Megan Lippi and outside hitters Christina Lentz and Erin Martin. Playing the newly created defensive position for the first time last year, Megan Lippi was named to the all-conference first team. The Idaho native finished with a personal best 425 digs. "I loved the [libero] position when I first started," said Megan Lippi. "It was the perfect position for me because I love to play defense." The 5-foot-11 Martin will be counted on to help on the attack. Martin finished third on the team with 315 kills last season, but prospered in the conference tournament as she was named to the all-tournament team.

A Savannah native, Lentz fought with a nagging back injury through much of 2002, but hopes to go out on a more positive note. The tallest player on the team at 6-foot-2, she could provide an imposing force at the net. Among the juniors, Kristin Kasprak stands as the only returning player, along with transfers Jessica Lippi, Janice Pressley and Kristen Tinsley.

The five freshmen on this year's team - middle blockers Jennifer Schenk and Jennifer Charles, outside hitters Staci Anderson and Ashley Warren, and libero Cole Chabra - will have to fight to build a reputation for themselves on a crowded roster.

As the Lady Eagles aim for another strong year, they will have to go through some challenging opponents, as they play in four different invitationals in the first month of the season, starting Aug. 29 in the High Point Tournament. From there, GSU will participate in the James Madison Tournament. After a single match at Georgia, the Lady Eagles will then take part in the UCF and Crimson Tide Tournaments.

Georgia Southern will kick off their home schedule as they welcome SoCon rival The Citadel to Hanner Fieldhouse on Sept. 23. Other visitors to Statesboro will include Southern Conference and even non-conference rival Savannah State.



File Photo

A three-peat? This year's Eagle squad has all the makings of a third consecutive Southern Conference Title. Seniors include: Erin Martin, Christina Lentz, Megan Lippi, Martina Veiglova.



Brian Saxton/STAFF

Coach Norton hopes to lead experienced lady Eagles on to victory. Pictured above: Coach Norton instructs Lady Eagles in the art of blocking free kicks.

No.	Name	Pos.	Yr.	Hometown (Previous School)
01	Kari Gast	GK	Sr.	Ormond Beach, FL
1	Tanya Woehr	GK	Sr.	Sellersville, PA
2	Nadine Guediri	MF	Sr.	Statesboro (Statesboro)
3	Genevieve Ward	S	Sr.	Mississauga, Ontario
4	Katy Znosko	S	Jr.	Lawrenceville (St. Pius X)
5	Christie Nipaver	D	Jr.	Marietta (Sprayberry)
6	Jennifer Myers	S	Sr.	Decatur (Lakeside)
7	Katie Szeghalmi	MF	Jr.	Oshawa, Ontario
9	Colleen Znosko	MF	Fr.	Lawrenceville (St. Pius X)
10	Emily Churchill	S	So.	Fairfax, VA
11	Christina Ruta	MF	Sr.	Mississauga, Ontario
13	Jessica Rice	MF	So.	Pipersville, PA
14	Mary-Kate Talbott	MF	Sr.	Mt. Pleasant, S.C.
15	Tera Kudrasov	D	Sr.	Mississauga, Ontario
16	Ellen Suler	S	Fr.	Gainesville (North Hall)
21	Stacy Moore	MF	Fr.	Evans (Lakeside)
22	Faith Joslin	S	Sr.	Fayetteville (Wingate University)
24	Vikki Corbett	D	Jr.	Lilburn (Brookwood)

Lady Soccer Eagles ready to improve on recent success

By Brian Saxton
bsaxton681@hotmail.com

The Lady Soccer Eagles practiced through the humidity and the dragonflies Wednesday afternoon as Coach Norton instructed them on defending corner and free kicks.

Head Coach Tom Norton is building quite a prestigious career here at Georgia Southern. As the only women's soccer coach in the program's ten-year history, Norton has 112 wins and just 76 losses and six ties, and for the last three years the Lady Eagles have enjoyed unprecedented success, posting a 38-16-3 overall record, and a 20-7-2 SoCon record. Despite losing six seniors from last year's squad and three of the top five scorers the Lady Eagles are poised to surpass their recent success.

With nine seniors, Norton has his largest and most experienced senior class ever. Genevieve Ward, who was all-SoCon first team last year, is the leading returning scorer with six goals and three assists last season. Ward will head up a senior packed midfield, while Christie Nipaver leads the defense. Nipaver, who also made first team all SoCon last year, has started all but one game in her GSU career.

The defense also has the great fortune of returning two of the most accomplished goalkeepers in the team's history. Tonya Woehr and Kari Gast have shared time on the pitch and have enjoyed dual, outstanding careers. Woehr, with one season left, is the all time shutout leader in GSU history with 14, while Gast is fourth on the list with 8.5. Woehr also led the Southern conference last season with .80 goals against average.

Up front the Lady Eagles will count on two strikers to step up and repeat the success they have had

in past seasons. Junior Katy Znosko led the team in scoring two seasons ago with 11 goals, and red shirt Junior Katie Szeghalmi scored 10 goals in 2000. If the Eagles hope to step it up this year and win the SoCon title these two will have to duplicate their best seasons.

This year's Lady Eagle team has a chance to do a lot more than duplicate their previous success. According to Coach Norton his squad has the talent and experience to play with and beat anybody they face this season. Senior Christina Ruta feels that the Eagles are "playing with a lot more confidence this year" and are "110 percent more fit... we have good chemistry and everyone wants to win... we're playing with our hearts." Ruta believes that the secret to success for her team is to "finish the season with the same intensity we start with." Coach Norton agrees, citing the fact that his team defeated College of Charleston 4-0 at home in the regular season but lost to the Lady Cougars in the first round of the conference tournament 1-0 last year.

Staying healthy is another key to GSU's success. The lady Eagles have only 19 players on the roster this year and only 17 field players. In the past they have fielded at least 25 players, but this year Norton wanted to focus on a smaller group. As revealed by practice Wednesday, Norton spends a lot of time on the field working with all of his players at once. Maybe that's why he has had so much success with such a young program, and why he and his women's soccer team are on the verge of having their most successful season ever, a Southern Conference championship.

The eagles open the 2003 season Friday, August 29 when they travel to Macon to take on Tennessee Tech in the opening match of the Mercer Tournament.

MEN'S EAGLE SOCCER LOOKS FOR A NEW BEGINNING DOWN BY EAGLE CREEK

By Ian McDowell/Bobby Lindsey
trlindsey@gasou.edu

Coming off a 2-16-2 season the Georgia Southern Eagles Soccer team has a lot to look forward to, and a lot to try and forget.

The Eagles are looking to change the minds of people around the conference and prove to everyone that last season was just a disappointing fluke.

Head coach Kevin Chambers has brought in seventeen new, fresh faces to the team. He is asking a lot from his new, young team, but he knows that this class has a lot of potential. With only thirteen returning players, the Eagles Soccer program has a task of combining old and new players to one solid unit.

Expectations for the team are up in the air with so many new players and the loss of so many seniors from last year. With a strong and difficult schedule of twenty games, starting August 30 against top ACC teams Duke and NC State at the Adidas/Wolfpack Classic, the Eagles hope to gain a few wins and some national recognition. At the 2002 Classic, the Eagles played some of their best soccer, coming away with a 2-1 victory against NC State and a 3-0 loss to the

Duke Blue Devils. Duke later went on to participate in the NCAA tournament.

However, it was to be the brightest spot of the Eagles 2002 season. GSU finished the year with only Junior Midfielder and 2003 Captain Tommy Irwin is looking toward the upcoming season with high hopes.

"I'm looking forward to our schedule this year. We will see what the team is made of with early tough opponents NC State and Duke." Returning starting forward Devin Mizell speaks on the new season saying, "There's a big improvement in team unity and dedication to the team and with unselfish play we will be able to post a good season."

There are big expectations for the new players coming in and stepping up to major roles on the team. With only three seniors on this year's squad the Eagles look to all players for leadership and the willingness to play. The Eagles' home opener is Saturday September 13 against Campbell University at Eagle Field across from Wendy's.

The Eagles will play Southern Conference foes Appalachian State, College of Charleston, Wofford, and Davidson at home this year, with hopes that this year's home field advantage gives the Eagles a shot at their first conference championship.

Men's Soccer Roster

No.	Name	Pos.	Yr.	Hometown (High School)
0	Brian Young	GK	Fr.	Roswell (Roswell)
00	Adam Webb	GK	Fr.	Melbourne, FL
2	Devin Mizell	F	Jr.	Alpharetta (Marist)
3	Clayton Zelin	D	So.	Albuquerque, NM
4	Brad Meader	D	Sr.	Atlanta (St. Pius X)
5	Greg DiVito	MF	Jr.	Kennesaw (Sprayberry)
6	Sean Farley	MF	So.	Smithville (Lee County)
7	Jason Schultz	F	Jr.	Snellville (Central Gwinnett)
8	Tony Moffat	F	Sr.	Stone Mountain (Shiloh)
9	Andrew Crabbe	D	Jr.	Stone Mountain (Tucker)
10	Tommy Irwin	MF	Jr.	Myrtle Beach, S.C.
11	Chad Kilpatrick	MF	Jr.	La Grange (La Grange)
12	Ryan Sutton	MF	Jr.	Lilburn (Shiloh)
13	Mack Bryson	D	Jr.	Ridgeway, VA
14	Lawrence Smith	MF	Fr.	Mt. Pleasant, S.C.
15	Stephen Jensen	D	Fr.	Madison (Heritage)
16	Tyler Mullen	MF	Fr.	Roswell (Pope)
17	Nick Edmond	D	So.	Augusta (Lakeside)
18	Brad Mitchum	D	Fr.	Snellville (Shiloh)
19	Joel Herbert	D	Fr.	Bradenton, FL
20	Patrick Gillen	MF	Fr.	Marietta (Lassiter)
21	Kirk Latibeaudiere	GK	Sr.	Mississauga, Ontario
22	Nathan Umberg	D	Fr.	Suwanee (North Gwinnett)
23	Josh Chatraw	MF	Jr.	Lake Park (Lowndes)
24	Justin Gonzales	MF	Fr.	Charleston, S.C.
26	Brian Graham	MF	Fr.	Mississauga, Ontario
27	Tommy Smith	F	So.	Stowmarket, England
28	James Walker	F	So.	Stowmarket, England
29	Chris Hopkins	GK	Fr.	Cartersville (Cartersville)
30	Carlos Gomez	F	So.	Santa Cruz, Bolivia

Multicultural Student Center to host open house today

By Erik Howard
evonamos@hotmail.com

As the new school year begins the Multicultural Student Center prepares with much excitement. This school year the center has a new location in the Russell Union (which they moved into at the end of last spring). George Lewis the director of the MSC and newly appointed interim dean of students believes the new location will provide better exposure for the department, and give the center more opportunities to work with other parts of student programming.

This Thursday from 11:30 to 2 p.m. the staff of the MSC will host an open house that will serve as an opportunity for the GSU community to view its new home. Among newly added features is a new resource room with tapes, videos, and pamphlets on diversity and different cultural events.

The center also has a new conference room that according to Lewis can be used by student organizations to hold executive board meetings. This year the center will also send out a newsletter to the campus that will keep everyone informed about its upcoming events.

The Multicultural Student Center handles four main areas of student programming at GSU: Multicultural Programs, Diversity Presentation, GLBT (or Gay Lesbian Bisexual Transgender) resource center, and the Minority Advisement

Program. Throughout the year the center helps to plan and organize all heritage and diversity programming, including national women's month, GLBT awareness week, and Black history month.

Within the resource room at the center is information related to the GLBT culture. Lewis also said that the staff of the MSC provide presentations on diversity and hate crime prevention.

Lewis says that the message he wants to deliver through the MSC is that everyone owns diversity. He says that he wants to provide students with an experience that would better prepare them for interactions with diverse groups in the future. Of the many goals that he has set for the MSC, one is to provide diversity programming in months that aren't usually reserved for such. "We want to show that black history and other events isn't just reserved for February."

He also stated that he was looking forward to working with new and different offices on campus to bring forth the center's message.

Perhaps the most popular program at the MSC is the Minority Advisement program. It has a new coordination this year, Ms. Amy Anderson who took over the program this summer, says that she and her 18 MAP sponsors are very excited about the school year. She says there are approximately 315 Mapees and still counting. The Map

program is a program that pairs incoming freshmen with an upper class student that has a similar major or interest. Lewis points out that the program is open to all students, but that there is a focus on minority student issues.

"Some of the goals that Ms. Anderson expressed were for retention of student in the program from fall to spring. Ms. Anderson also wants to keep faculty involved with the students in the program. One added feature to the program this year will be a tutoring aspect. According to Lewis the Map Sponsors will be certified tutors and help keep the mapees on a positive track.

For more information on the Multicultural Student Center or the Map Program they can be reached at 681-5409.

Open House
Thursday
11:30 a.m.-2 p.m.
The Multicultural
Student Center
Russell Union

BLACKOUT, FROM PAGE 1

their system was planned "with this possibility in mind, so it is designed to handle concurrent incidents. Our operators are trained to handle multiple problems at one time."

Also included in the report is a list of protections that are currently being implemented to keep a power outage incident from happening in the south. This list includes operators who

monitor the system 24/7; an automated system of transmission that is able to isolate problems in order to retain power where there are no complications; and an interconnected system between state and utility transmissions to enable assured assistance between different utilities in responding to incidents.

Despite the curiosities and possible

fears of some that the South could face some sort of blackout, "The Georgia Power and Southern Company system continues to operate in a stable and secure mode," Georgia Power states in their report. "System reliability is one of our top operating goals, and just about everything that we do is focused on ensuring our customers have a reliable, economical supply of power."

E-Cinema Now Showing...

Date: October 20-25



Tonight!

Thursday, August 21

7:00 pm Matrix

9:30 pm Matrix Reloaded

Russell Union Theater

\$2.00 with GSU Student ID

Other Student Activities Center and EE Upcoming Events:
Wednesday, August 27
Student Organization Fair and Business Expo

Tuesday, September 30
Homecoming Captains Meeting, RU Room 2047

Date: October 22-25 Homecoming 2003
Theme: "Space Age Eagles"

Monday, October 20 GSU Idol, 7:00pm

Tuesday, October 21 Doo Dah/ Step Show, 7:00pm

First Wednesdays Dates : Oct. 1, Nov. 5, Dec. 3

**Get Involved
Today!**



Join an Eagle Entertainment Committee by attending one of our weekly meetings beginning...

Spirit and Traditions
(Homecoming, Miss GSU, GSU Idol)
Tuesday, August 26, 6:00pm

E-Travel/Novelty
(Spring Break Trip, Wax Hands, etc.)
Sunday, August 31, 8:00pm

P/R & Promotions
Wednesday, August 27, 5:00pm

Global Awareness
(Women's awareness, Black History etc.)
Tuesday, August 26, 8:00pm

Major Campus Programming
(First Wednesdays etc.)
Monday, August 25, 8:00pm

E-Cinema
Wednesday, August 27, 6:00pm



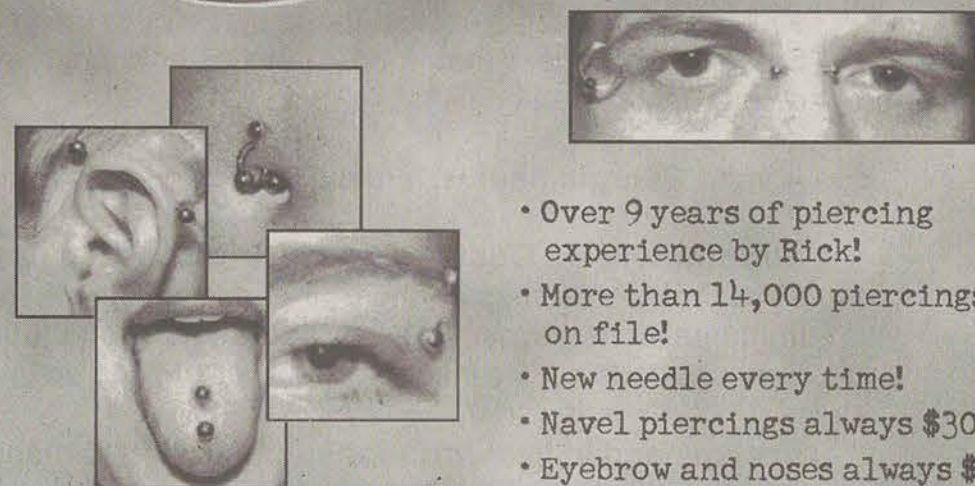
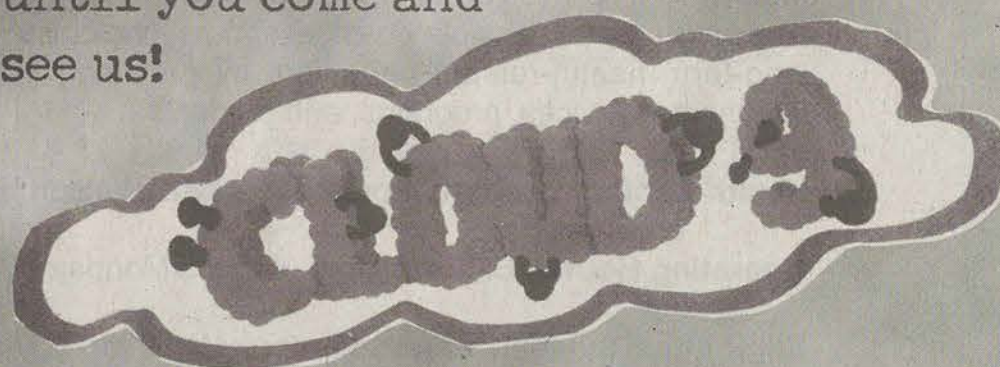
WVGS 91.9 FM
"The Student-Run Radio Station"

We're looking for competent, quality DJ's and people interested in working in our Public Coordination Department.

If you're interested, please attend the information session:

August 26, 2003
7:00 - 8:30pm
Russell Union Theatre

Don't get pierced or TATOOED anywhere until you come and see us!



- Over 9 years of piercing experience by Rick!
- More than 14,000 piercings on file!
- New needle every time!
- Navel piercings always \$30!
- Eyebrow and noses always \$25 with hoop!

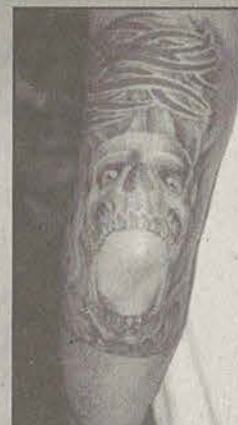
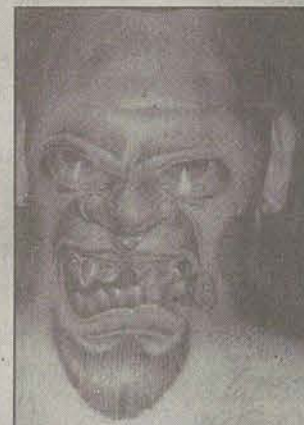
Tattoos by Jesse

- Six years of experience
- Single-use needles
- Autoclave on site
- Members of the Alliance of Professional Tattooists



We also carry...

- Adult novelties, DVDs & Gifts
- Smoking accessories
- Lava lamps
- Leather and vinyl lingerie
- Beaded curtains
- Candles and incense
- Blacklights
- Zippo lighters
- Fishnets



Check out the newly remodeled Cloud 9!

Campus ministries help to make new students feel welcome

By Media Medrano
Dia12682@aol.com

The Baptist Student Union is getting involved in Welcome Week and strongly encourages freshmen or any new students to follow suit.

This year, the organization has a focus on "Getting Real" by comparing the new reality show fad to the deeper meanings of life, and acknowledging that these shows are not really reality.

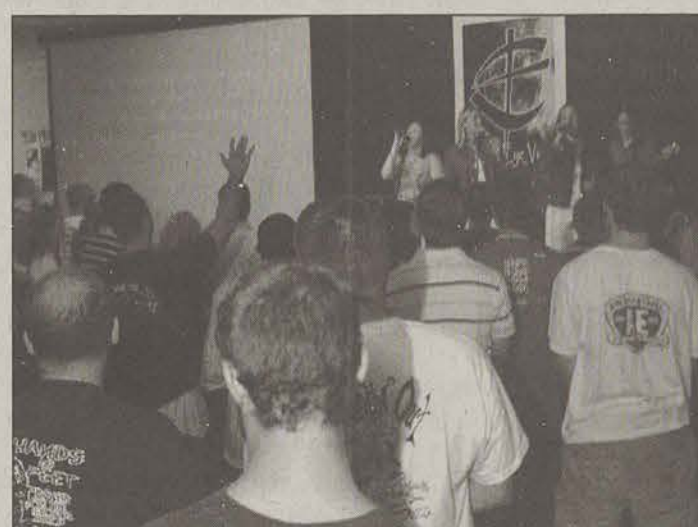
Among many of the functions planned to welcome students, Angela Hipps, the one in charge of the Welcome Week festivities, organized a "Reality Fear" earlier in the week involving games similar to those in the hit T.V. show, "Fear Factor." They had a great turn out, just as they had expected, and hope to continue

reaching students.

Along with the concentration on reality, the BSU is also trying to help new students feel more at home by getting into "family groups." These groups consist of an upper-class "mom" and "dad" and new students or freshmen. These families will be meeting every Thursday and those students not yet belonging to a BSU family are encouraged to come and will be welcomed into an existing family.

The BSU meets regularly throughout the year on Tuesdays for Prime Time. Anyone not already among the four hundred and counting members are welcome to join in and be apart of the fun.

Finishing off Welcome Week is a free concert Friday night at 9:00 with the band, Replica. Anyone and everyone is invited to join the fun and get "real" with the Baptist Student Union.



Ryan Moore/STAFF



Luke Hearn/STAFF

Many Campus Ministries had events to welcome new and old students alike, back to campus. (Top) The Baptist Student Union sponsored their annual Survival Daze, including cook-outs and praise and worship sessions. (Bottom) Life Ministries sponsored a concert at the Rotunda, with Funkblade a band from Valdosta taking the stage.



*If you think God is too big a mystery
for one solution, you might be a UU.*

Sept. 7: "Let it be a Dance"
Jane Page and Laura Kallonitis

Sept. 14: "Palestinian Perspective"
Ms. Rana Bishara

Sept. 21: "Why I'm a UU"
Panel of Members

Sept. 28: Fundamentally Unsound
Rev. Maureen Killoran

We invite visitors to worship with us at 10:30 every Sunday morning.
Nursery and children's classes provided.

UNITARIAN UNIVERSALIST FELLOWSHIP OF STATESBORO

www.uufs.statesboro.ga.uua.org • 912/489-8338 • 609 E. Grady Street • P.O. Box 2453 • Statesboro

HEALTH SERVICES

Quality * Caring * Convenient
www.gasou.edu/health

For Appointments Call 681-5484

Mission: The mission of Health Services is help Georgia Southern University students achieve the best possible physical and psychological health and to positively impact their long-term health-related behaviors by providing them with high-quality, cost-effective healthcare services, programs, and products

Health Center Location: Forest Drive near Watson Hall and Lakeside Café.

Operating Hours: 8:00 a.m. to 5:00 p.m., Monday - Friday during semesters.

Eligibility: Students enrolled in four (4) or more semester hours prepay the health fee each semester. This entitles those students to unlimited office visits during the semester. Students taking less than four (4) semester hours may choose to prepay the health fee to receive the same benefits.

A valid Georgia Southern identification card is required for service.

Supplemental Costs: Although the health fee allows students unlimited visits throughout the semester, there are additional costs for such services as prescriptions and immunizations. Payment for these services is due at the time of the visit. Health Services does not file insurance, but will provide an invoice for insurance purposes.

Recommended Immunizations: In addition to required immunizations, Health Services strongly encourages all students to be immunized against **Meningitis, Hepatitis B, Hepatitis A, Varicella (Chicken Pox), Tetanus-Diphtheria (Td), and Polio** and to be tested for Tuberculosis (TB). For information on these diseases, visit our web site.

Health Insurance: Students are encouraged to maintain health insurance coverage and to carry their insurance card with them at all times. If students are no longer covered by their parent's policy or if they are not covered by their parent's HMO or PPO in this area, Health Services has a policy available. For more information, contact Student Resources, Inc. at 1-800-767-0700 or on the web at www.StudentResources.net.

DIRECTORY

Appointment Office	681-5484
Main Office	681-5641
Main FAX	681-0792
Immunization Office	681-0743
Health Education and Promotion	871-1732
Allergy Injection Services	486-7782
Respiratory Services	681-0012
Pharmacy	681-5780

Rocking at the Rotunda

Luke M. Hearn
lhearn@gasou.edu

Rocking at the Rotunda is exactly the way to describe the scene at the Russell Union on Sunday night.

And despite the muggy heat and the untamable swarm of gnats, a decent sized group of GSU students came out to listen to the sounds of Christian-rock groups The Kilpatrick Project and Funkblade. The concert, sponsored by the campus group Life Ministry was put on to do something good to get people around to meet other people, said Ryan Dhent of Life Ministry.

The Kilpatrick Project, a four-man group out of Augusta, graced those in attendance with their very lively and up-beat tunes.

Their guitarist and lead vocalist, Miles Kilpatrick, who is also a graduate of Georgia Southern, said "I'll write my songs about spirituality and Christ, but I don't try to preach anything from the stage."

Kilpatrick started his music career as a solo guitarist but has been playing with his full band for about a month. "We really don't care to make it big" he says, "We just want to play music."

Everyone seemed to enjoy The Kilpatrick Project, including sophomore Joanna Stanton. "The Kilpatrick Project rocked," she said after they had finished their set.

Funkblade later entertained the crowd with their unique sounds that were akin to what one might expect from Bill Monroe meets The Allman Brothers and the B52's.

Guitarist and singer Jonathan Craig described their music as a mix of southern rock, bluegrass, and a little funk. "People say they've never heard a style like ours before."

From Valdosta, the group plays gigs in Florida, South Carolina, and Georgia, and played for their first time Sunday here at GSU.

A distinct quality about this group was the mandolin that their lead singer played. This bluesy instrument added quite a spice to their music.

Although the crowd didn't seem to warm up to this group as they did the other, everyone seemed to still have a great time. Graduate student Fernando Matute said, "Funkblade was pretty good, and I think it's cool that they incorporate a mandolin."

Overall, the night was a success according to Jennifer Eddinger, coordinator of the event. "I think we had a good outcome," she said.

Falcon's Season abruptly interrupted

Atlanta's worst fears came true Saturday night at The Dome

KRT Campus

Quarterback Michael Vick, the team's most dominant player and a likely MVP candidate, fractured the fibula in his right leg in the first quarter of the Falcons' preseason game with Baltimore.

Vick is not expected to have surgery on the leg but will miss at least six weeks, head coach Dan

Reeves said. "We're just going to have to wait and see," Reeves said. "It's a tough break for us." Said Vick: "I'm terribly disappointed." Falcons' head athletic trainer Rod Medlin said Vick would be re-evaluated this morning.

If Vick is out for six weeks, he will miss the Falcons' first four regular-season games and return and would return Oct. 5 against Minnesota.

Atlanta opens its regular season Sept. 7—three weeks from Sunday—at Dallas in Bill Parcells' debut as the Cowboys coach.

On 3rd-and-6 from his own 5-yard line, Vick scrambled out of the pocket and was collared by Baltimore defensive end Adalius Thomas after a gain of four yards. Vick fell awkwardly on his right leg and reached for his

ankle as soon as he hit the turf.

Trainers quickly rushed out, and minutes later carted a visibly pained Vick off the field with 4:20 remaining in the first quarter. He was 0-for-4 passing with an interception and two rushes for eight yards in the game.

Doug Johnson replaced Vick and will be the team's starter until Vick returns. Johnson started one game in place of an injured Vick last season and led the Falcons to a victory on the road against the Giants.

"This is the ultimate team sport and we will have to keep playing," Vick said. "I have confidence that these guys and these coaches can get it done."

Vick, the No. 1 pick in the 2001 draft, had a breakout season last year—his first as a starter. In 15 games, Vick, a left-hander out of Virginia Tech, completed 231-of-421 passes (54.9 percent) for 2,936 yards and 16 touchdowns. He also rushed for 777 yards and eight touchdowns on 113 rushes.

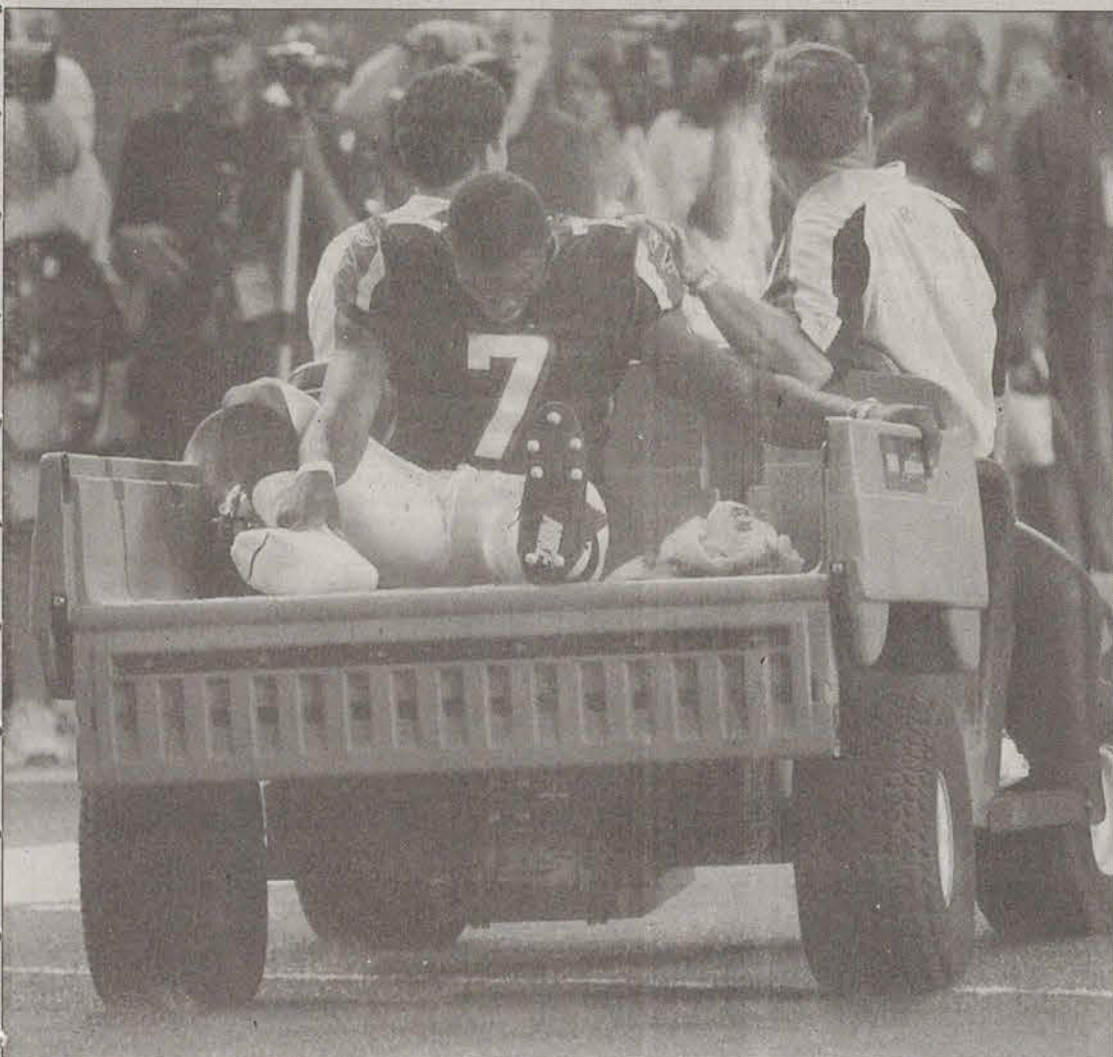
His 6.9 yards per carry was the highest average in the NFL last season. "That hurts our league and the Falcons, and I feel for him," Baltimore linebacker Ray Lewis said.

"He's my friend, and he'll be back. I'll call him and give him encouragement." After years of playing to a half-empty stadium, the

Falcons sold out all eight home games last year and sold every ticket for this year's home schedule in less than 30 minutes.

"Mike is an exceptional talent and we hate to lose him. There are a lot of people out there who say he is our whole team," defensive end Patrick Kearney said.

Now we have to go out there and prove those people wrong. We definitely wish him the best on a fast recovery and hope he comes back as soon as possible."



KRT Campus

Atlanta's Micheal Vick is carted off the field at the Georgia Dome Saturday after breaking his fibula during a preseason game against the Baltimore Ravens. Vick, labled the NFL's most exciting player, is expected to miss at least the first four games of the season. The Falcons must rely on veteran back-up Doug Johnson to carry the team during Vick's absence. Atlanta fans are hoping their star recovers quickly enough to keep their team in the playoff hunt.

Real Fast Quick Sports Briefs

Perfect-Game Pitched in LLWS

Shigeki Umeda, Masato Komuro, Ippei Endoh and Yuutaro Tanaka of Tokyo combined for a perfect game Tuesday, each pitching one inning in a 17-0 win over Saudi Arabia at the Little League World Series. It was the first time more than one pitcher combined for a perfect game at the series and the first perfect game at the series since Kiyoshi Tsumura pitched one for Chofu, Japan, in 1976. Danny Almonte of Rolando Paulino Little League in the Bronx, New York, pitched a perfect game against Apopka, Florida, in 2001, but that game was erased from the record books when Little League learned Almonte was too old to play. The game was shortened because of a rule halting games in which a team is winning by at least 10 runs after four innings.

Braves' Franco hurt in weight room accident

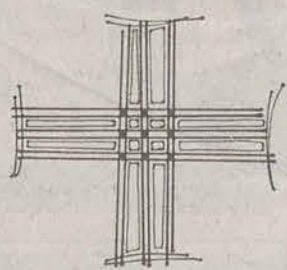
Braves first baseman Julio Franco was put on the 15-day disabled list Monday after breaking a finger in a freak accident. Franco, who is batting .297 with three homers and 27 RBIs in a part-time role, was talking with a teammate in the weight room when an 80-pound dumbbell rolled over the middle finger on his left hand. He also needed four stitches to close a cut, which will keep him out a week to 10 days.

Olympian Carl Lewis Arrested

Nine-time Olympic gold medalist Carl Lewis pleaded innocent Tuesday to a charge of drunken driving. A pretrial hearing is scheduled for Sept. 16. The charge stemmed from an early morning crash on April 21 involving Lewis' 2004 Maserati. Lewis allegedly lost control of the car and struck a sound wall on the side of the Harbor Freeway in South Los Angeles, said city attorney spokesman Frank Mateljan. Lewis was arrested by the California Highway Patrol after allegedly failing field sobriety tests. A breath test administered at a police station allegedly showed a blood-alcohol reading of .08 percent, the level at which a driver is considered intoxicated in California. Lewis was cited and released. Rafferty said he hoped the incident would not go to trial, but that "at this stage of the game, we're not in the position to settle."

A's To Retire Reggie Jackson's No. 9

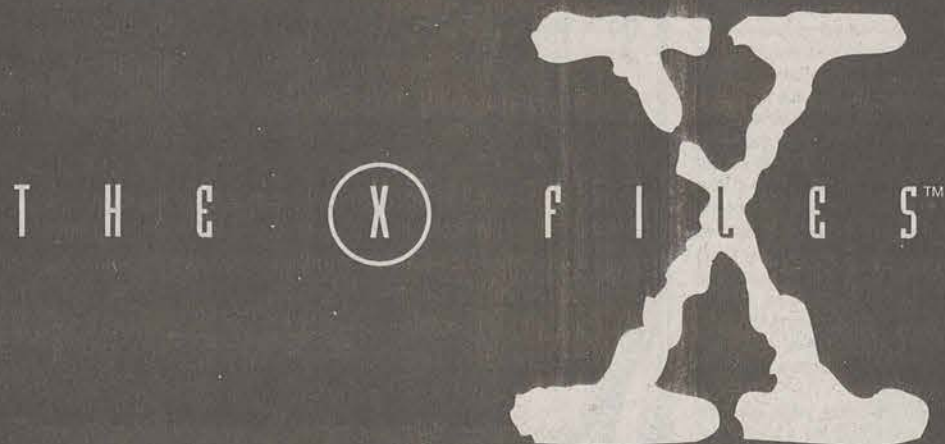
The Oakland Athletics will retire the No. 9 of Hall of Famer Reggie Jackson next season. "When I look out there to the outfield wall, I always wonder why Reggie's number isn't retired," owner Steve Schott was quoted as saying in Tuesday's San Francisco Chronicle. "Having him consent to this is a real positive thing. He's an integral part of the franchise's tradition, and his number ought to be retired." Jackson will join Catfish Hunter (27) and Rollie Fingers (34) as the only former A's to have their numbers retired by the club. Jackson played his first nine major league seasons in Oakland, where he won his only regular-season MVP award and hit 269 of his 563 home runs. The Yankees retired Jackson's No. 44 in 1993, the year he was inducted into the Hall of Fame as a Yankee.



Lutheran Student Fellowship

Welcome Back, Students!

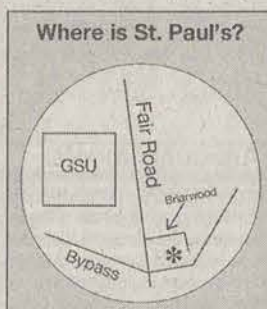
Join us on Wednesday nights at 6pm for **FREE DINNER** and a Devotion for:



*I Want to Believe:
A Christian Examination of The X-Files*

St. Paul's Lutheran Church

18098 GA Hwy 67
stpaul@bulloch.com
681-2481



Community Agency Fair

Tuesday, August 28
10:00am – 1:00pm
Russell Union Rotunda

"Come play
Community
Agency Fair
Bingo"



Representatives from local non-profit agencies will be on-campus.

Please come by to see
which ones interest you!

Healthy Living

Cutting board tips

Wood and plastic cutting boards can both harbor germs if they are not cleaned and sanitized well.

Washing

- Use hot soapy

Sanitizing

- Put board into dishwasher for a full cycle or pour boiling water on it

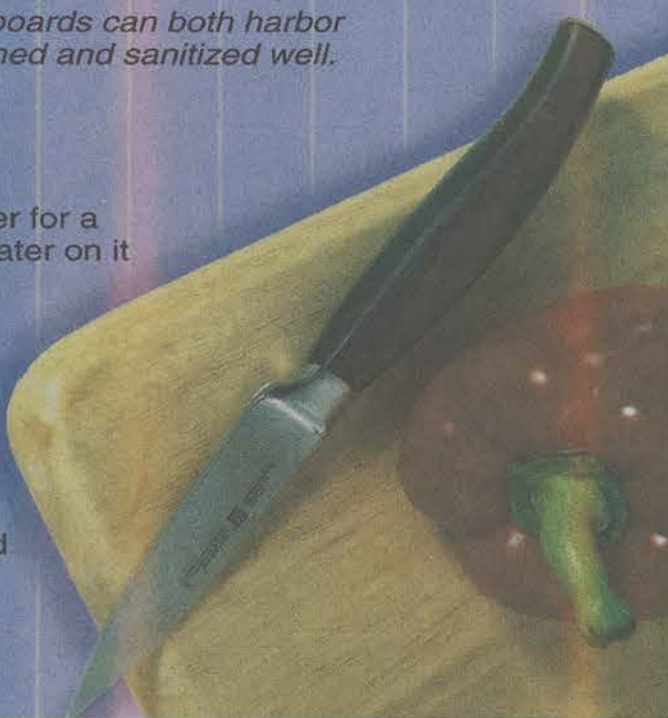
Drying

- Air-dry board; avoid recontaminating it

Two-board technique

- Use separate boards for cutting cooked, ready-to-eat foods and uncooked foods, which are more likely to carry bacteria

© 2003 KRT
Source: Mayo Clinic, KRT Photo Service



CAPTAIN RIBMAN in Tele-Visions

by Sprengelmeyer & Davis



ONE OR TWO female roommates needed. Hawthorne Apts., located near school. Availability immediately. Call for more details 770-584-3390.

WANTED: ONE Female sublease beautiful 3BR/3Bath house. Planter's Row. \$325/mo. 1/3 utilities, washer/dryer included. Quiet patio, yard, porch. Please call Kristen 681-6712.

FEMALE ROOMMATE needed to share 3BR/1BA house. Rent \$225 plus half utilities available August 1. Call Katie, Leave message. 690-6222 or 489-5785.690-6222.

FEMALE ROOMMATE needed 3 bedroom 3 bath house \$225 deposit, \$225/mo rent plus 1/2 utilities. Please call Christy 839-4022. Available now!

ROOMMATE WANTED 3BR 2BA House 160 acres 18 acre lake 5 minutes from GSU call 687-6894.

240 Services

DISTRESSED?
NOWHERE TO TURN?
Financial Independence!
We can help!
Toll-Free 1-800-617-5392

260 Stereo & Sounds

FOR SALE 2 JL-Audio XR component

systems, not asking much, free amp included. Call 681-8865, ask for Jordan or leave a message.

290 Travel

FUN & STUFF Visit our Web site for list of places to visit and things to do that are both educational and fun. Online at <http://www.stp.gasou.edu/funstuff/>

SPRING BREAK 2004. Travel with STS, America's #1 Student Tour Operator to Jamaica, Cancun, Acapulco, Bahamas and Florida. Now hiring campus reps. Call for group discounts. Information/Reservat

120 Furniture & Appliances

FOR SALE: bedroom suit: bed, dresser, nightstand, end tables, entertainment center, dining room suit set. Asking \$400 for all, will sell individually. Call 481-0545 ask for Jovan

NEW WASHING achine \$300 OBO. Also older dryer and microwave for sale. Everything works great. Can sell separately. For details call 531-5474

WASHER AND Dryer for sale. \$150.00 for pair. Ask for Jonathan 601-2626.

FOR SALE bedroom suit, bed, dresser, mirror, nightstand, entertainment center. Asking \$500 for all — will sell individually. Call 481-1915 and ask for Brandi.

FOR SALE: love seat, full size bed with frame, and bar stools. 681-5415.

ROUND DINING table with wooden top and black metal base. Glass topper included. Like-new condition \$190. 681-7356

140 Help Wanted

HANDYHELPER. PAINT scraping, sanding, yardwork, pressure-washing, miscellaneous. \$6/hour if dependable, hard-working and good-natured. 8-15 hours/wk. Carpentry skills a plus. 488-2323.

165 Mobile Homes

STUDENTS WELCOME BACK. Downtown Nevils 2BR-2BA Singlewide \$350/mo; 3BR-2BA Dblwide \$450/mo and 3BR Home \$450/mo. Call 681-2423.

170 Motorcycles

HONDA NIGHTHAWK CB 250 motorcycle 5500 miles. 1994. Outstanding condition. 80 mpg. New tires. \$1500. 912-488-2217 or 912-681-5828.

180 Musical

VOICES IN Ministry is looking for singers, directors and musicians for upcoming year. For further details contact Taurance Hurst, vice president at 681-2059 or 601-2293.

BREAK INTO LOCAL MUSIC SCENE
Local Bar Looking for Musical Acts
Please Call 681-2200

200 Pets & Supplies

RED NOSE pitbull puppies for sale. 4 males, 3 females. Males \$200. Females \$150. Available July 18th. Call George 681-9887

EIGHT REDNOSE pitbull puppies for sale. 4 males \$200 each; 3 females \$150 each. No papers. Call George 681-9887.

FREE FIVE Month old puppy, pure bred. Doberman puppy, to a good home. Ears and tail clipped. Shots up to date. Call Nina at 678-860-7689.

220 Rentals & Real Estate

HOUSE FOR RENT. 1 block from GSU. Student seeks 2 roommates for 3 bdrm house. Pets allowed. 2 rooms = \$415/450. Call Matt 404-434-8165

APARTMENT AVAILABLE: fall sublease: Statesboro Place, fully furnished, utilities included & cable — \$335 per month. Private room and bath. Call Kisha 706-437-8135

3 BDRM house for rent. Walk to campus. Pets require additional deposit. Total rent for all 3 bdrms is \$625. Call Dave @ 770-354-2334

3 BED 2 Bath Townhouse Park Place. No deposit \$235/mo. Move-in date now! Please call 678-595-9399 to inquire. Perfect Place for friends.

\$500 SIGNING bonus sublease needed ASAP! Call Ashley 688-9883.

230 Roommates

FEMALE ROOMMATE to share 3 bedroom house. Nice neighborhood near campus. \$208 per month. Call 764-3121.

FEMALE ROOMMATE needed. Rent \$230/mo. Park Place 2 Bed 2 Bath Now Available! Call 681-1663 or 531-5197

ROOMMATE WANTED: two bedroom apartment. Walking distance to campus. Only \$237.50 plus utilities per month. Call Eric at 678-1347.

NEED A place to live for fall 2003 semester only! 3BR 2BA house for rent. Male or female roommates welcome. \$275 plus utilities. Call Michael 682-4379.

FEMALE ROOMMATE needed! 3 BR 3 BA house \$225 deposit and \$225/mo rent plus 1/2 of utilities. Please call Christy 839-4022. Available August 1st.

FEMALE ROOMMATE needed for very nice 3 bedroom house ASAP. If interested, call 489-8227.

Placing a G-A Action Ad is as Easy as...

Commercial and Non-Student Advertising

1. Compose your ad -- write down what you want to say concisely and clearly. Please include telephone numbers or addresses as warranted.
2. Count the words and multiply by 20¢ per word. Please note: There is a \$4 minimum per ad. And if your want a copy of you ad as it appears in the paper mailed to you, please include \$1 per ad for mailing and handling.
3. Pick a category header under which your ad will appear.
4. Pay for your ad (checks or money orders, only, please)
5. Send it to us. By mail: G-A Action Ads, POB 8001, Georgia Southern University, Statesboro, GA 30460; or in person: visit Room 2023 or 2022 Williams Center (top floor) during normal business hours (9am to 4 pm daily)

Commercial and Non-Student Display Advertising

Call 681-5418 for assistance. The display classified rate are \$7 per column inch. ADS representatives will be happy to help you.

Student, Faculty and Staff Action Ads

Current students, faculty and staff members may place a free classified ad in the newspaper at no charge. To qualify, advertisers messages must be 25 words or less in length, non-commercial in nature, and the advertiser MUST provide their name, Landrum Box and telephone numbers for our records. (Or use the "Tip Us Off" free classified coupon which appears periodically in the newspaper). Free classified may be mailed to G-A Action Ads, POB 8001, or brought by Room 2023 Williams Center on campus. Please no phone calls for free ads... at this price we don't take dictation.

COMMERCIAL ADVERTISING ORDER FORM

Name _____

Address _____

City, State, ZIP _____

Telephone Number _____

Category of Ad (Circle One Only)

- | | | |
|---------------------------|---------------------------|-----------------------|
| 01•Announcements | 11•Help Wanted | 21•Services |
| 02•Arts & Crafts | 12•Lost & Found | 22•Sports & Stuff |
| 03•Autos for Sale | 13•Miscellaneous for Sale | 23•Stereo & Sound |
| 04•Auto Parts, Repair | 14•Motorcycles | 24•Swap & Trade |
| 05•Business Opportunities | 15•Musical | 25•Television & Radio |
| 06•Child Care | 16•Personal | 26•Vans & Trucks |
| 07•Education | 17•Pets & Supplies | 27•Wanted |
| 08•Freebies | 18•Photography | 28•Weekends & Travel |
| 09•Furniture & Appliances | 19•Rentals & Real Estate | 29•Etcetera |
| 10•Garage Sales | 20•Roommates | |

Ad Message _____

Use Additional Paper if Necessary

Amount \$ _____
Enclosed _____

SEND IT TO: G-A Action Ads, POB 8001, Georgia Southern University, Statesboro, GA 30460; or in person: visit Room 2023 or 2022 Williams Center (top floor)

GET OUR
MOST
POPULAR
VALUE PAK
FREE!
FOR **3 MONTHS**
A \$149 VALUE

DISH NETWORK VALUE PAK

OVER **130** CHANNELS

INCLUDING

HBO

8

CHANNELS

cinemax

5

CHANNELS

Discovery

THE HISTORY CHANNEL

ESPN

Lifetime

USA

Animal Planet

TBS Superstation

PLUS, MANY MORE!

PLUS!

CONNECT UP TO 4 TVS
WITH FREE STANDARD PROFESSIONAL INSTALLATION

Come by and see us today!

ALLTECH - Main Street Village (next to Hospital) 871-7522

ASAP - 406 S. Main Street..... 764-2337

IN TOUCH - 1596 Chandler Road 871-5555

dish
NETWORK

HOME OF THE LOWEST ALL-DIGITAL
PRICE IN AMERICA... EVERY DAY!

A \$49.99 programming credit will be applied to the 2nd, 3rd and 4th month of service.

Three Months Free offer is valid only on America's Top 100 Value Pak or higher and requires participation in Digital Home Plan.

Digital Home Plan requires Social Security Number, valid major credit card and 12-month commitment to the Digital Home Plan of your choice.

Pay a one-time \$49.99 Activation Fee and receive a \$49.99 credit on your first bill. Participation is subject to credit approval.

Offer ends 9/30/03. For new, first-time DISH Network residential customers only. All prices, packages and programming subject to change without notice. Local and state sales taxes may apply. Where applicable, receiver rental fees and programming are taxed separately. All DISH Network programming, and any other services that are provided, are subject to the terms and conditions of the Residential Customer Agreement, which is available at www.dishnetwork.com or upon request. Significant restrictions apply to DISH Network programming and programming availability, and for all offers. See your DISH Network Retailer, DISH Network product literature or the DISH Network website at www.dishnetwork.com for complete details and restrictions. A \$240 Cancellation Fee applies for early termination of services contract. Social Security Numbers are used to obtain credit scores and will not be released to third parties except for verification and collections purposes only. All service marks and trademarks belong to their respective owners.

THE PAC IS BACK: *Performing Arts Center shines in its second season*

By Tiffany Helmly
ducky4682@yahoo.com

Everyone knows where Paulson Stadium and the RAC are, but the Performing Arts Center is more of a mystery.

The PAC is fairly new here on campus and many people haven't made it out there yet. It is across from the Forest Building and the Technology Building on the corner of Chandler Road and Plant Drive.

Last year's inaugural season for the PAC was a huge success. Many talented artists traveled to perform at one of the newest additions to Southern's campus as well as many fans. Some of the Lonesome River Band fans traveled from Chicago to hear them play. The director of the Performing Arts Center, Dagmar Bardo, is just as excited about the upcoming season. This year is sure to be filled with just as much talent.

The Broadway Series will start off with "Seussical the Musical" in December. "The Cat in the Hat," "Horton the Elephant," "Gertrude McFuzz," and many other favorite Seuss characters join together to save the Jungle of Nool.

"Seussical" is a host of inventive characters and allows playgoers to rediscover Seuss' gently sly political messages and playful cadences embedded in a broad entertainment format," said *The Seattle Times*.

In January, the Aquila Theatre Company's production of "Othello" will hit the stage. Shakespeare's masterpiece explores the destruction of a noble man through racial hatred, jealousy, and mistrust. Othello, a Moor and mercenary for the Venetian army, secretly marries Desdemona, the daughter of a high-powered senator. Othello's trusted friend, Iago, becomes jealous of Othello's conquests and begins his revenge by questioning Desdemona's fidelity.

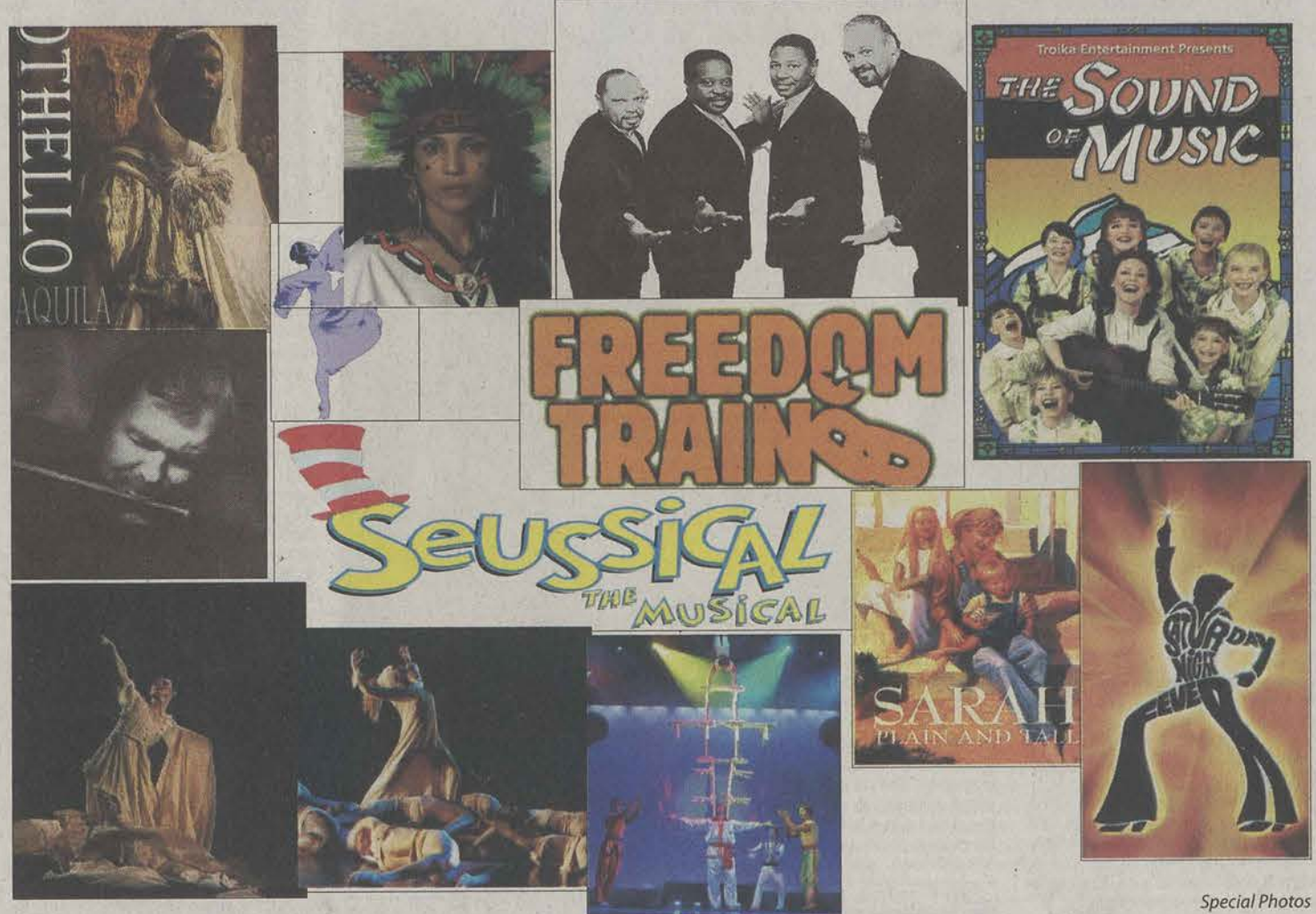
The classic "The Sound of Music" arrives in March. The true story of a widowed father of seven and the young Maria who left the abbey to care for them and their flight from Nazi rule into the Austrian Alps captures audiences' attention with a memorable score including "My Favorite Things," "Sixteen Going On Seventeen," "So Long, Farewell," and many other favorite tunes.

The Concert Series will start off with Cornell Gunter's Coasters and The Platters in January. These fifties stars have delighted fans for years. The Platters had four number one songs, sixteen gold records, and were made famous for songs such as "Only You," "The Magic Touch," "I'm Sorry," and "The Great Pretender." The Coasters, supreme comedians of rock and roll, sold millions of records including "Charlie Brown," "Yakety Yak," "Little Egypt," "Love Potion #9," and "Down in Mexico."

Jim Walker and Free Flight will be performing in February. Jim Walker is an extremely talented flutist that crosses different styles of music: from jazz to classical. Free Flight's sound has turned jazz fans into classical fans and vice versa playing anything from Bach and Beethoven to Miles Davis and the Beatles. They've performed on the Tonight Show and Today Show, as well as at the Hollywood Bowl and New York City's Lincoln Center.

Ricky Skaggs and the Kentucky Thunder will be rolling in the 'Boro in May. Traditional elements such as bluegrass, gospel, honky-tonk, and western swing mixed with contemporary songs and state-of-the-art production techniques have earned Skaggs eighteen Top Ten singles, four Grammys, and eight trophies from the Country Music Association as well as the Horizon award and Male Vocalist award for the year 1982 and later the Entertainer of the Year award.

The Dance Series will present Deeply Rooted Dance Theatre in February. The performance is based on African traditions influenced through contemporary African-American experience and broader American culture.



Special Photos

"Deeply Rooted is spiritual fervor, physical prowess, and sheer, unalloyed joy in movement," *Chicago Sun-Times*. Ballet Magnificat!, the world's premier Christian ballet company, will perform in April. This company is dedicated to presenting Christian gospel to the world and using dance as a means of worship.

A new series has been added this year: the Heritage Series. The Heritage Series will include Native Trails in November and The Peking Acrobats in February. Native Trails explores cultural similarities between American tribes and the indigenous tribes of Mexico through music and dance. Flute solos and fast paced pieces with Aztec musicians and dancers will entertain the audience culminating with World Champion hoop dancers.

The PAC presents "Native Trails" in conjunction with the Georgia Southern Native American Festival. For more information on other festival events, call 912-681-5444 or 912-681-0570. The Peking Acrobats hail from the People's Republic of China. This elite group of gymnasts, jugglers, cyclists, and tumblers leaves audiences spellbound by their graceful athleticism. These performers start training as early as the age of 5 and begin mastering disciplines that were being taught during the Ch'in Dynasty (225-207 BCE).

In the School Matinee Series, elementary and middle school students can

enjoy the performances of both Native Trails and The Peking Acrobats as well. Well known books are also brought to the stage: "Amelia Bedelia 4 Mayor! & Other Story Books," "Freedom Train," and "Sarah, Plain and Tall."

Georgia Southern's Special Event is the presentation of Saturday Night Fever based on the movie which prompted a cultural revolution and became the largest selling sound track in history. The score will include well known favorites "Night Fever," "Jive Talkin'," and "Stayin' Alive." This performance will take place November 9.

Along with the different professional series, many student and faculty performances will be held at the PAC. The GSU Theatre & Performance will be presenting "Much Ado About Nothing" on October 1-4 and GSU Opera will perform October 30-31. The Music Department will be performing throughout the semester at the PAC including the Faculty Showcase on September 9 and many other performances by the GSU Wind Ensemble, the Jazz Band, and other Concert bands.

Tickets go on sale for the general public beginning September 15 and all GSU faculty/staff/students will receive 10 percent off single ticket prices. For more ticket information, you can call the box office at 912-486-7999 or toll free at 866-PAC-ARTS.

Looking for a hot date?*

*Then mark your calendar with one of these.

Career Development Workshops

Dates:	Time:	Workshop Title:
September 15	5:00 - 6:00 PM	Choosing A Major
September 16	5:00 - 6:00 PM	Resume Writing
September 17	5:00 - 6:00 PM	Job Search Strategies
September 18	5:00 - 6:00 PM	Interviewing Skills
September 22	5:00 - 6:00 PM	Resume Writing
September 23	5:00 - 6:00 PM	Choosing a Major
September 24	5:00 - 6:00 PM	Interviewing Skills
September 25	5:00 - 6:00 PM	Job Search Strategies
September 29	5:00 - 6:00 PM	Preparing for Grad School

Time for a check-up?

Your Career Doctor and the members of the Career Services team are taking appointments for the Fall. Call the office at 681-5197 to schedule a visit today!

Rachel Barrett	rabarrett@gasou.edu	COBA Career Doctor
Wallace Brown	wbrown@gasou.edu	COST Career Doctor
Pearl Middleton	pmiddleton@gasou.edu	CHHS Career Doctor
Karen Townsend	townsend@gasou.edu	CLASS Career Doctor
Amy Williams	awilliams@gasou.edu	COE Career Doctor

Students that are undeclared or in the College of Graduate Studies or College of Information Technology are welcome to visit our Williams Center office location in Suite 1058 for career guidance from one of our professional staff members.



Spanning (nearly) a Century:

 Georgia Southern's roots grow deep in Statesboro soil

By Cory Cunningham

cory_cunningham@gasou.edu

Far from what it has become today, Georgia Southern University began as a small rural college when it was founded in 1906 as the First District Agricultural and Mechanical School.

The school opened on February 5, 1908 on 300 acres of land with only 15 students enrolled. The total cost of enrollment at the school was only \$150.50 for the entire nine-month school year.

Most of the students that attended grew up on farms around the area and had never left home before heading off for the "Culture," as it became known by locals.

From the beginning, both boys and girls were allowed to attend the school, and the general study classes were co-educational. However, they attended separate specialized classes. While the boys went off to learn about farming and repairing machinery, girls studied mostly cooking, sewing, etiquette and how to properly set a table.

When The George-Anne was founded in 1927, the name was chosen because it sounded like "Georgian," but also to reflect this co-educational aspect of the school.

The three original buildings from this time are still used by GSU faculty. The Marvin Pittman Administration Building, which housed the classrooms and administrative offices back in 1908, is now home to the Office of the President, as well as many other offices. This building is usually the centerpiece in brochures or pamphlets about GSU.

The two other original buildings are Anderson Hall and Deal Hall. Anderson Hall, which was called East

Hall at that time, was home to the girls' dormitory and is now the location of the Financial Aid Office. Deal Hall, formerly West Hall, was the boys' dormitory. Today, this building houses the Cashier's Office, where students go to pay their tuition, among others.

In 1924 the school's name was changed to the Georgia Normal School, due to the fact that the school was now offering more classes other than those dealing with agriculture or housekeeping. Specifically, the school began to offer many classes in education.

The sports teams at this time were collectively called the "Aggies," but that would change in 1929 when the school's name was changed again to the South Georgia Teacher's College and the sports teams were now called the "Blue Tide."

Guy H. Wells was president of the school from 1926 to 1934 and was instrumental in bringing a four-year degree program to the school and also in getting the name changed and the school recognized as a college. Lake Wells, across from Henderson Library, was named after him.

Named president in 1934, Marvin S. Pittman had been educated across the country, receiving his Ph.D. from Columbia University in New York. Pittman got the South dropped from the school's name to make it simply Georgia Teacher's College because, by this time, students were attending the school from other areas of Georgia. The school's team's names were also changed again to the "Professors."

Pittman also worked to acquire the funding for the school's first library, the Rosenwald building, in 1937. This building now houses the GSU Museum.

Despite these accomplishments, Pittman, who believed that the college should be desegregated, was fired

Index

GSU History	2B
New Hotspots	3B
Clubs & Organizations	4B
Places of Worship	5B
On Screen	6B
Restaurants	7B
Leisure & Recreation	8B



HISTORY, FROM PAGE 1B

fired as president in 1941 after being accused by then Governor of Georgia, Eugene Talmadge, who was strongly in favor of segregation, of teaching "racial equality" and "communism." Pittman was also accused of embezzling money from the school for his farm.

The backlash from the students, who protested after Pittman's firing, and the lack of evidence in the case, led to Pittman's reinstatement as president in 1943, where he served until his retirement in 1948.

In 1959 the school's name was changed once again to Georgia Southern College and the mascot was changed one last time to the Eagle.

Under the new mascot, the college continued to grow. In 1978, Dale Lick was named president and brought Erk Russell to the school to create a football team in the hopes that it would help to continue the

growth. It did.

Thanks in part to the football team's popularity and success, the college was renamed once more to Georgia Southern University in 1990, 84 years after it was founded.

GSU has continued to grow by leaps and bounds ever since. In only the last few years the campus has seen new buildings for the College of Education and College of Business Administration, and a brand new building was just completed this summer for the College of Information Technology.

Despite the fact that the original three First District Agricultural and Mechanical School buildings are all still intact and in use, the campus of Georgia Southern University now bears little resemblance to the school it was when it began.

SATURDAY
OFF

The George-Anne

PUBLISHED BY THE STUDENTS OF GEORGIA TEACHERS COLLEGE
COLLEGEBORO, GA., MONDAY, JANUARY 13, 1941

SATURDAY
OFF

STUDENTS MAKE THE HONOR LIST

Students who have made the honor list for the first time are: ...

John Temple Graves II Speaks To Students Friday Morning

Mr. Graves, a well-known lecturer and author, will address the students of Georgia Teachers College at the assembly ...

ADMINISTRATION ADOPTS NEW SYSTEM OF CLASS SCHEDULE

STUDENT COUNCIL'S PLAN GOES OVER

One-Sided Vote of 306 to 38

READING MATTER POLL TABULATED

NEWS AND FICTION LEAD THE LISTS

First in Second Choice of Students



STUDENT COUNCIL'S PLAN GOES OVER

One-Sided Vote of 306 to 38

In Tabulated



Guy H. Wells



Marvin Pittman

Javacup: The Boro's newest coffee shop



File Photo

Java Cup, pictured above, is located on Chandler Road across from Johnson Hall.

By Erin K. Nease

erinnire96@hotmail.com

Javacup, the Boro's newest coffee shop celebrated its grand opening last Saturday.

Owners Brooke and Britney, both 19, are sophomores at GSU. Their grand opening and neither was nervous about the prospect of sacrificing much valued social time to dedicate themselves to the hard work that will come with running a business and attending college classes simultaneously.

The girls said that the idea for the coffee shop came to them in the wee hours of the morning when they were studying for exams and had to go to the gas station to get some coffee to help them stay awake. It was then that

they decided that the students at GSU could really use a place to go get coffee and hang out and study.

The atmosphere at Javacup is friendly and casual. Its brightly painted walls are done in yellow, lime green, red, and blue. There is a comfy couch, an overstuffed chair, and a television.

Need to check your email? They've also got three computers with Internet access. In addition to the expected coffees, (espressos, and cappuccinos) Javacup also offers ice cream, smoothies, muffins, bagels, biscotti, a variety of chips and sandwiches.

Britney's mother owns a beauty shop in Effingham County and is currently being filmed by the Discovery Channel for some kind of

reality segment on salons.

I spoke briefly with the producer responsible for the show and he couldn't tell me the name of the show or even if it would be a series or a special. But he did say that the reason that he chose this particular salon was because it was a mother/daughter business (Britney's mother and sister worked there together) and because of the opening of Javacup.

The best part of all is that Javacup is located right across from campus in the building where Scumma Records used to be. Javacup's regular hours are currently from 7 am to 8 pm. However the girls assured me that they would be staying open 24 hours during exams weeks. It's so close that you can walk there, so go check it out!

It's All About You!

Everyday discounts for students

I-Topping Pizza

\$5.99*

Medium

\$7.99*

Large

*Valid only with Student ID.

©2003 Pizza Hut, Inc. The Pizza Hut® name, logo and related marks are trademarks of Pizza Hut, Inc. Delivery where available; charges may apply. Delivery drivers carry no more than \$20 cash.



Love the Pizza!
Love the Price!

129 South Main Street
764-5489

Dine-In/Delivery/Carryout



File Photo

Baja Burrito Band Bash 2003

By Stephen Cunningham

stephen@captainweenie.com

Three multi-influenced bands come together for the Baja Burrito Bash this Thursday thru Saturday between 9:30 and 10:00 p.m. and goes until 1:00 a.m. Elohsa will take the stage on Thursday, followed by Lyka Champ on Friday, and closing with Middle Ground on Saturday. The cost of the shows will be three dollars at the door.

Elohsa takes the stage on Thursday and plays 90's hard rock style show. Their influences range from Tool to Alice in Chains to Weezer to Stone Temple Pilots. The band members are Sam Jameson, bass, who has been playing guitar for over nine years and bass for over two.

Robby Tachney, drums, received his first drum set in seventh grade. Brandon Kunka, guitar and back up vocals, can play drums, bass and currently plays lead guitar for Elohsa. Travis, the lead singer, has wanted to

perform music since his birth. They met through Georgia Southern's music department several years ago, decided to form a band and have been playing since. They won the "Most original" award at the 2002 Battle of the Bands. This is their first time playing at Baja Burrito.

Lyka Champ plays on Friday and puts on a high-energy show. Sanj, the rhythm guitarist, says they are influenced by everything but mainly classic rock, metal, and heavy metal. He says that they are a hard rock band, which brings loads of excitement to the crowd.

Their members include the aforementioned Sanj Singh. Matt Yogus on bass, Paul Eubanks on lead guitar, and B.J. Brush on lead vocals. Their drummer for the night is Elohsa's Brandon Kunka. Sanj also stated saying, "it's fun to see what music the band brings together and it's fun to see the crowd's reaction". Elohsa won the "Best Stage Presence" Award at the 2002 Battle of the Bands.

The last band performing is Middle Ground, whom takes the stage on Saturday. Their influences are all sorts of rock music ranging from Ozzy to Bon Jovi to Metallica. They also met through the music department and they've been playing for around three years. B.J. Brush is the lead singer, Michael Avant is the Rhythm guitar and back-up vocals, Josh Robert is the drums, and Matt Yogus, also of Lyka

Champ, plays the Bass.

Their first show was at Horizons and they've been playing around Georgia since. Matt recalls his most memorable show being at St. Patrick's Day in Savannah in 2001 when they played in front of a huge crowd that seemed to enjoy themselves thoroughly.

Look for covers of their influences at their shows and some original work.

TRIPLE PLAY Cafe

2 Large Thin Pizzas
12 Wings
2 Liter of Coke
Delivered

\$20

764-1575

206 North Side Dr
Driver Gratuity Not Included

CHINA SUPER BUFFET

Business Hours
Mon-Thurs 11:00am-10pm
Fri & Sat • 11:00am-11:00pm
Sun • 11:00am-10:00pm

Tel. 764-3666

Intersection of Hwy 301 & Hwy 67
(Formerly Western Sizzlin)
Statesboro, Ga.

Buffet & Menu TO GO! MENU ITEMS AVAILABLE!

Map showing location at intersection of Hwy 301 & Hwy 67.

The Largest Chinese Buffet in Town

More Than Just A Chinese Buffet!

Snowcrab, Grilled Steaks, Salmon, Cocktail Shrimp, Fried Shrimp, Mussels, Sushi



Please Call For Reservations
For Business Meetings, Birthdays
OR Anniversary Parties

Lunch Buffet \$5.50
Dinner Buffet \$7.99
w/o Snow Crab

<p>HALF PRICE CHINA SUPER DINNER Buy 1 Adult Buffet and 2 drinks at reg. price, get 1 Buffet at HALF PRICE Dinner Only EXCL. CRAB BUFFET</p>	<p>FREE CHINA SUPER BUFFET Buy 3 Buffet and 4 drinks at reg. price, get 1 Buffet FREE! EXCL. CRAB BUFFET</p>	<p>HALF PRICE CHINA SUPER LUNCH BUFFET Buy 1 Lunch Buffet and two drinks at reg. price get another of eq. or less, value for HALF PRICE EXCL. CRAB BUFFET</p>	<p>FREE CHINA SUPER BUFFET Buy 3 Buffet and 4 drinks at reg. price, get 1 Buffet FREE! EXCL. CRAB BUFFET</p>
---	---	--	---

Excludes Snow Crab Buffet. Not to be combined with any other offer. Limit one per party, per table per visit. exp. 9/30/03

2003-2004 Phonathon



Now Hiring Dedicated Students!

The Office of Development is now accepting applications for student Phonathon callers. Successful applicants will have strong communication skills, a passion for Georgia Southern University and a great work ethic. Selected applicants will be asked to participate in a group interview for additional screening. Hours are Monday through Thursday 4:00 p.m.- 9:00 p.m. and Sunday 10:00 a.m.- 2:00 p.m.

Applications will be available and accepted between 1:00 p.m.- 5:00 p.m. Monday through Friday at the Alumni House (across from the Herty Building at the corner of Georgia Avenue and Herty Drive) Deadline for applications is August 29, 2003.

**Franklin Covey's
"Seven Habits of
Highly Effective
People."**

**Don't
miss out!**

The EAGLE Summit
Georgia Southern University
Empowerment Action Growth Leadership Excellence

The Fourth Annual EAGLE Summit Leadership Retreat,

September 12th through the 14th is THE opportunity to join together for a weekend of leadership, collaboration, and goal setting. Don't miss your chance to enhance your leadership skills, the leadership of your organization, and the student leadership at Georgia Southern.



SIGN UP TODAY!



This year Eagle Summit will feature professional facilitation of **Franklin Covey's "Seven Habits of Highly Effective People."** Deadline for application is **Friday, September 5th**, along with the \$45 registration fee.

What to expect...

- Indoor/Outdoor activities
- Networking with campus administrators and other campus leaders
- Brain-storming and goal-setting

Who should attend...

- Student organization officers
- Student organization members
- Anyone interested in developing their leadership skills

For registration information, contact the Center for Student Leadership Development at (912) 871-1435, stop by Russell Union Suite 2022, or visit us on the web at:
<http://students.gasou.edu/leadership>

4B

The GEORGE-ANNE
Thursday, August 21, 2003

Clubs & Organizations

AITP/CIS	Michael Walker	871-5331
Accounting Association	Scott Blair	871-7738
African Student Association	Mary Caudley	681-6440
Alpha Delta Pi	Blair Riley	871-7986
Alpha Kappa Alpha	Michelle Ingram	681-2674
Alpha Omicron Pi	Amy Swindell	688-3336
Alpha Phi Omega	Jeremiah Chapman	681-4324
American Marketing Assn.	Harvey Wadsworth	681-8499
American Society of Interior Design	Dustin Tate	871-5693
American Society of Mechanical Eng	Tasha Taylor	488-2476
Antioch Crew	Jason Borden	688-2254
Anthropological Society	Christina Huey	681-5443
Association for Computing Mach.	Ryan Curran	871-6000
Baptist Student Union	Adam Ham	681-2241
Baseball Club	Brad Mercer	486-3684
Best Buddies	Clifford Ellrich	681-4069
Beta Alpha Psi (Accounting)	Kelley Offenbacher	541-4433
Beta Beta Beta (Biology)	Robert Eldson	871-5378
Beta Gamma Sigma (Bus. Admin)	Shauna Wilson	681-5336
Billiard Club	Dr. Bill Bolen	681-2656
Black Student Alliance	Brian Sadowski	871-7339
Campus Single Parent Assn.	Aziza el-Sharr	512-9550
Chemistry Club	Deone Rogers	601-2688
Chi Sigma Iota (Counseling)	Donald Powell	489-4839
Chinese Student and Scholar Assn.		
Christ Full Gospel Ministries	Amanda Stewart	681-1240
Christian Campus Fellowship	Xiao Xiong	681-1184
Climbing Club	Dele Olowoyo	688-2924
College Republicans	Erin Layton	
Collegiate 4-H Club	Charles Edwards	871-3035
Construction Guild	Jess Warren	871-7414
Creative Writers' Club	Melissa Odom	842-5802
Cycling	John Wells	764-2045
D.I.M.E.S.	Holly Gilliano	871-2189
Debate Team	Shanta Harper	678-9099
Delta Chi	Jordan Billinger	681-4927
Delta Sigma Pi	Wes Neal	681-2151
Dietetic Association	Raymond Richards	688-9689
Ducks Unlimited	April Finley	481-2740
Dyverzion Dance Team	Jason Butler	681-1572
Eagle Entertainment	Michael S. Terrell	486-7270
Eagle Motorsports	Janelle Lunsford	871-6645
Eagle Student Athletic Training A	Jerel Scott	681-3283
Eagle Student Official Associatio	Jonathan Parke	489-6056
Equestrian	Nick Cochran	486-3458
Eta Sigma Gamma	Patty Crow	531-4421
Family and Consumer Science	Becky Rimer	
Fellowship Christian Athletes	Kassie Roberts	
Fencing Club		
Finance Association	Tracie Bond	863-5935
Focused	Brandon Milford	871-4279
Full Contact Dodgeball	Justin Sample	489-0640
Gamma Beta Phi (Interdisciplinary)	Pete Johnson	688-2110
Gamma Sigma Sigma	Sean Mannion	688-2791
Geocub	Tameyer Evans	681-6142
George Anne	Jenny Hawkins	767-0947
German Club/Delta Phi Delta	Amanda Permenter	681-5246
Golden Key (Interdisciplinary)	Angela Ford	871-3515
Graduate Student Organization	Brittany Deal	764-6443
Graphics and Printing Assn.	Bryant Smalley	764-9836
Habitat for Humanity	Garrett Smith	688-2120
Health and Physical Education	Jessica McCubbins	681-7442
Hillel Counselorship	Cassie Battle	871-4157
Hispanic Student Association	Aaron Feldner	688-3139
History Club	Jose Castro	833-3918
Hotel and Restaurant Managemen	Deborah Barr	681-5617
Inst. Elec. and Electronic Eng.	Michelle Nichols	681-1067
Institute of Industrial Eng.		
Interfraternity Council	Brendan Watson	871-4015
International Student Club	Josh Hall	601-1632
Japanese American Friendship	Othynell Pinder	489-4908
Joker's Wild	Christina Huey	688-2963
Judo/Jiu-Jitsu	Steven Austin	681-5436
Justice Studies Club	Robert Ketterman	681-7649
Kappa Alpha	Eva Gaines	871-7596
Kappa Delta	Justin Harvey	681-8723
Kappa Kappa Gamma	Katie Lindsay	681-9948
Kappa Sigma	Jennifer Hernandez	871-3084
Lacrosse	Michael Crawford	681-1975
Lambda Alpha Epsilon	Jonathan Thomas	681-8573
Latter Day Saints	Briana Holloway	681-1065
Life Ministries	Lisa Hartman	681-5967
Liquid Effects Breakdance Crew	Jennifer Burns	541-1560
Lutheran Student Fellowship	Brian Nelson	
Martial Arts Club	Cara Niehoff	681-8259
Media Communication Assn-Internat'l	David Duke	842-4745
Miscellany	Jennifer N. Gordon	681-8149
Muslim Student Association	Jerome Powell	
NAACP		
National Pan-Hellenic Council	Jesus Furqan	486-3358
National Society of Black Engineers	Christopher Brown	871-5354
Native American Students Org.	Justin Morgan	678-1556
Omicron Delta Kappa	Sonia Dickey	764-8237
Order of Omega	Michele Stusak	489-1738
Paintball Club	Billy Reese	681-5185
Panhellenic Council	Thomas Davis	871-5420
Phi Alpha Theta Honor Society	Jessica Deckert	681-1308
Phi Beta Lambda	Matt Boone	681-0238
Phi Beta Sigma	Jessica Pope	
Phi Eta Sigma (Freshmen)	Warren Goosby	688-2919
Phi Mu	David McCollum	681-6370
Phi Mu Alpha Sinfonia (Music)		681-6675
Phi Sigma Pi (Interdisciplinary)	Merri Ellen	
Phi Sigma Tau Philosophy Honors		681-2113
Phi Upsilon Omicron	Shunqua Posey	764-4356
Philosophy Club	Christina Altman	754-4415
Pi Kappa Alpha	Catrina Rustin	
Pi Kappa Phi	Joshua Mote	871-6899
Pi Sigma Epsilon	Daniel Rice	871-7221
Presbyterian Student Fellowship	Sean Santiago	
Prestige		871-6859
Psi Chi (Psychology)	Eric Anderson	
Psychology Coalition	Twyla Mancil	938-9240
Pub. Rel. Student Society/America	Alexis Gallo	541-1946
Queens	Joleen Quenga	688-9243
ROTC Cadet Association	Nigel Hunter	681-1886
Reflector	Phillip Boldt	681-5305
Reformed University Fellowship	Terrance McDonalds	489-2919
Remnant College Ministries	Bradford J. Brown	764-4539
Residence Hall Presidents' Council	Efua Brown	
Revision	J. Wright	489-5498
Rugby (Men's)	Melanie Satterwhite	871-3478
Sigma Alpha Epsilon	Scott Meader	681-6958
Sigma Alpha Iota (Music)	Sim Bridges	
Sigma Chi		681-3052
Sigma Nu	Bo Boyer	681-6541
Sigma Phi Epsilon	Gary Fothoe	681-1901
Sigma Pi	Jonathan Farrar	489-5516
Sigma Tau Delta	Paul Kelley	871-6479
Sigma Tau Phi	Jessi Dunlap	688-3035
Skate Park Club	Chris Winters	489-8299
Soccer Club (Men's)	Ryan Cochell	871-4070
Soccer Club (Women's)	Richard Danaie	163-5338
Society for Human Resource Mgmt	Rebecca Ingalls	486-3530
Society of Communication Scholars	Ryan Foley	681-1423
Society of Manufacturing Engin.	Andrew Franklin	240-3812
Journalists	Glenn Stubbs	688-9621
Sociological Society	Katrina Wood	688-2829
South Asian Student Assn.	Sondra Hicks	678-1659
Southern Exercise Science	Giri Andukuri	688-9963
Southern Explosion	Lindsay Mooring	681-2594
Southern Society of Rec. Leaders	Sheryl Sheppard	
Southern Sportsman's Assn.		541-2928
Spanish Club	Jeremy Farr	681-4429
Sport Management Majors Club	Christina Ramos	486-3086
Striking Eagles at Georgia Southern	Shannon Leach	654-9433
Student Alliance for a Green Earth	David Dukes	764-3121
Student Alumni Council	Hannah Goddard	
Student Council Except. Children	Ziena Clarkson	871-4364
Student GA. Assoc. of Educators	Hannah Helton	871-7095
Student Government Association	Angela Mitchell	681-0655
Student Nurses' Association	Reginald Brown	
Student Photographic Society	Timothy A. Deavor	871-7211
Submission Grappling Club	Chace Hawk	489-0973
Swim Club		
Swing Cat Society	Sarah Caron	764-7499
Tau Beta Sigma	Jacob Dierdorff	871-6687
Tau Kappa Epsilon	Jason Ross	842-5696
Technology Education Collegiate	Aaron Feldser	688-3139
Theatre and Performance	Nicholas Middlekauff	614-7457
Track and Field Club	Amber Wilhoit	
Triangle	Crystal Elkins	681-5523
United Caribbean Association	Jason Enlette	481-2118
United Student Honors Assn.	David Horvath	688-3846
United in Christ Ministry	Irwin Peralta	688-3127
Vision Ministries	Brian Middleton	
Voices in Ministry	David Hanak	
Volleyball Club		764-8158
Wesley Foundation	Dennis Hightower	681-0877
WVCS 91.9	Swan Robins	688-9516
Young Democrats	Matt Castanien	541-2372
Young Independents	Melissa Charron	681-8198
Zeta Tau Alpha		

Places of Worship

Abundant Life Pentecostal Holiness. Address: 411 East Main. Phone: 764-5972

Agape Worship Center. Address: 810 W. Grady St. Phone: 764-3202

Baptist Student Union. Address: 401 Chandler Rd. Phone: 681-2241

Believer's Church. Address: Statesboro, GA. Phone: 682-3190

Bethel AME. Address: Peachtree St. Phone: 764-3641

Bethel Primitive. Address: Williams Rd. Phone: 764-3202

Bethlehem Baptist. Address: Hwy 80 East. Phone: 764-9398

Bethlehem Primitive. Address: Westside Rd. Phone: 865-5466

Bible Baptist. Address: 151 Northside Dr East. Phone: 764-5615

Brannen United Methodist. Address: 20 Elm St. Phone: 764-7009

Calvary Baptist. Address: 238 West Main Streer. Phone: 764-3277

Church of God. Address: 23923 Hwy 80 East. Phone: 764-4539

Church of Jesus Christ of Latter Day Saints. Address: Hwy 67 South. Phone: 681-4637

Church of Restoration. Address: 967-B Hwy 24 east. Phone: 842-5262

Community Baptist. Address: 1200 Clito Rd. Phone: 842-2767

Community Christian. Address: 213 Aldred Ave. Phone: 764-2015

Cornerstone Church. Address: 201 Savannah Ave. Phone: 764-2869

Eastern Heights Baptist. Address: 23805 Hwy 80 East. Phone: 764-9151

Elm Street Church of God. Address: 29 Elm St. Phone: 764-3904

ElmerGrove Baptist. Address: 1567 Emit Grove rd. Phone: 587-5737

First Assembly of God. Address: 302 Turner St. Phone: 764-9026

First Baptist. Address: 108 North Main Street. Phone: 764-5627

First Pentecostal. Address: 124 South Main Street. Phone: 681-2053

First Presbyterian. Address: 1215 Fair Rd. Phone: 681-2053

First United Methodist. Address: 101 South Main St. Phone: 764-7589

Fletcher Memorial Baptist. Address: 720 North Main Street. Phone: 489-8581

Friendship Baptist. Address: 4025 Friendship Church rd. Phone: 489-4165

Georgia Southern Hillel. Address: Campus Jewish Organization. Phone: 681-5696

Grace Community Church. Address: Statesboro, GA. Phone: 685-4307

Grace Temple Baptist Church. Address: Hwy 80 East. Phone: 587-5039

Gracewood Baptist. Address: Hwy 301 South. Phone: 681-2762

Greater Mt. Sinai Mission-

ary. Address: 2227 Mallard Pond Rd. Phone: 489-1626

Harmony Baptist. Address: 98 Harmony Church Rd. Phone: 839-3713

Historical First African. Address: 227 Institute St. Phone: 764-7779

Hodges Grove Baptist. Address: Miller Street Extention. Phone: 764-7657

Hope Community Baptist. Address: 134 Continental Rd. Phone: 587-5989

Immanuel Baptist. Address: 10290 Hwy 80. Phone: 823-3181

Islamic Center of Statesboro. Address: 321 Johnson St. Phone: 764-2915

Kingdom Hall Jehovah's Witness. Address: Hwy 67 Statesboro. Phone: 587-5323 and 681-6089

Langton United Methodist. Address: 104 Langston Chapel rd. Phone: 871-3333

Lower Mill Creek Primitive. Address: Lee Hwy 80 East. Phone: 764-2383

Magnolia Baptist. Address: 760 Magnolia Church rd. Phone: 587-5432

Merrywood Baptist. Address: 23366 Hwy 80 East. Phone: 764-6423

Middeground Primitive. Address: Harville Rd. Phone: 681-6800

Miller Grove Missionary. Address: 7829 Hwy. 24. Phone: 587-5356

New Birth Baptist. Address: 513 Woodrow Ave. Phone: 489-4881

New Corinth Baptist. Address: Rt. 5. Phone: 839-2235

New Hope United Methodists. Address: 9559 Hwy 24. Phone: 587-5115

New Life Church of God. Address: Hwy 80 West. Phone: 489-3673

Original African Baptist. Address: 227 Institute St. Phone: 764-7779

Pentecostal Church of God. Address: 125 Morris St. Phone: 764-7692

Piney Grove Missionary. Address: 1579 Bragan rd. Phone: 839-3676

Pittman Park United Methodists. Address: 1102 Fair Rd. Phone: 681-3213

Sandhill Full Gospel. Address: 915 Mixon Rd. Phone: 865-2614

Second St. John Baptist. Address: Fair Rd/Hwy 67. Phone: 681-3514

Seventh day Adventist. Address: 543 East Main. Phone: 764-2915

St Paul Lutheran. Address: 18098 Hwy 67. Phone: 681-2481

St. Mary's Missionary. Address: 25990 Hwy 80 West. Phone: 865-2067

St. Matthew's Missionary. Address: Puaski Hwy. Phone: 685-2061

St. Matthew's Parish Catholic Church. Address: 221 John Paul Ave. Phone: 681-6726

Statesboro Free Will Baptist. Address: Hwy 80 East. Phone: 764-2150

Statesboro Hebrew Congregation. Address: Russell Union

Phone: 764-2929

Statesboro New Covenant. Address: 701 Gentilly Rd. Phone: 681-6777

Statesboro Primitive Baptist. Address: 4 S. Zetterower. Phone: 764-6058

Tabernacle Baptist. Address: Bulloch St. Phone: 764-4240

Tabernacle of Praise Church of God. Address: 403 East Main St. Phone: 489-5381

Temple Baptist. Address: 516 Northside Dr. East. Phone: 764-3837

The Unitarian Universalist. Address: 609 E. Grady St. Phone: 764-2915

Thomas Grove Baptist. Address: E. Olliff St. Phone: 764-4062

Trinity Baptist. Address: 1172 Nevils-Denmark Rd. Phone: 839-3389

Trinity Episcopal. Address: Chandler Rd. Phone: 681-2527

Trinity Presbyterian. Address: 571 East Main St. Phone: 489-8186

United Pentecostal. Address: 1316 Old register way. Phone: 488-2264

Westside Baptist. Address: 538 Pulaski Hwy. Phone: 764-7815

Special Note: All information was correct as of press time.

EAGLE EXPRESS CARD ACCEPTED AT BILO !



Welcome Back Students!

**Saturday, August 23
& Sunday, August 24
10 am to 6 pm each day
Show your Student ID and
your BONUSCARD® get
a FREE Hotdog, FREE chips
and a FREE Coke!**

Eleventh Annual Business Information Expo

and Student Organization Fair

**Students,
Staff & Faculty
Come meet
Statesboro's
Business
Community**

**What to Do??
Join an Organization!
(or two or three...)
Meet the 'Boro!
Get Free Stuff!
Samples, Coupons and
much, much more!**

Where?? Russell Union Rotunda and Pedestrium

When?? 10:00 am - 1:00 pm

Wednesday, August 27

**Sponsored by the Russell Union
and Auxiliary Services**

The boys of summer hit theatres again

By: V.A. Patrick Slade
vapatrikslade@yahoo.com

Just a few years ago the head of Columbia Pictures thought casting two inexperienced black actors as the leads in a new action film was a risky idea.

Years later that risk has paid off as the sequel to the highly successful "Bad Boys" blazed into theaters this summer. Full of action, suspense and comedy, this film met high expectations.

Starring Will Smith ("Men in Black," "Ali") and Martin Lawrence ("Big Mama's House," "A Thin Line between Love and Hate"), this film exuded a certain charisma that only these two could bring to the screen. Smith's Mike Lowrey matched with Lawrence's Marcus Burnett lit the screen on fire with a perfect mixture of humor and humanity not seen very often in the action genre.

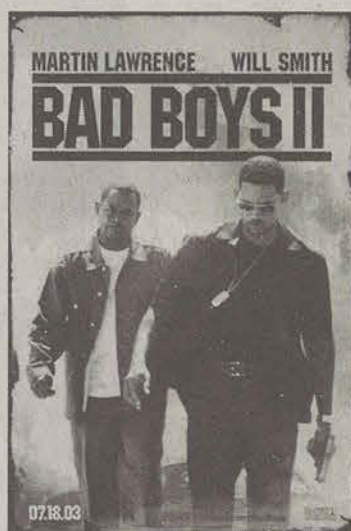
The story this time around finds the two narcotics detectives on the search for an illegal designer ecstasy ring. The two find themselves in dangerous and intriguing situations that ensue in comedy that only Smith

and Lawrence can bring to life. Added to the mix is Gabrielle Union ("Cradle to The Grave," "Deliver Us From Eva") as Marcus's (Lawrence) sister Syd, who is an undercover DEA agent. As Mike (Smith) tries to keep his relationship with Syd a secret from Marcus, he also must try to keep his partnership with Marcus from breaking up.

As Mike and Marcus get closer to the head of the drug ring, Syd also gets involved, which puts her life in jeopardy. The case is changed as the two detectives have a more personal reason for catching the drug lord: Syd.

The film overall is decent. The comedy and action seem to seamlessly blend together for a tight film without many gaps. It does drag slightly, as can be proven with the running time of two hours and twenty-six minutes. With this elongated time, the film appears to take on two storylines that only have one real common element: Syd, the sister/girlfriend.

With this element in place, the film takes its audience for a ride that puts them right in the middle of all the action. This is a double edged sword, though, because many of the



Special Photo

actions scenes are shot in close-ups.

The vision is precise, and the picture quality is pristine. His cinematic achievements in this film warrant a look. "Bad Boys II" is that rare sequel: it actually is a continuation in story and character with limited change and flow.

Weekly Numbers

Cinema Box Office

1. *Freddy vs. Jason*
2. *S.W.A.T.*
3. *Open Range*
4. *Freaky Friday*
5. *Uptown Girls*
6. *Pirates of the Caribbean*
7. *American Wedding*
8. *Sea Biscuit*
9. *Spy Kids 3D: Game Over*
10. *Bad Boys II*



Special Photo

DVD/Video Sales

1. *Bringing Down The House*
2. *Daredevil*
3. *Final Destination 2*
4. *Phone Booth*
5. *The Life of David Gale*
6. *Agent Cody Banks*
7. *Basic*
8. *What A Girl Wants*
9. *Shanghai Knights*
10. *How To Lose a Guy in 10 Days*



Special Photo

Weekend Preview



Marcie X

Lisa Kudrow stars as an image consultant for her father's record company. When one of the label's rappers, portrayed by Daman Wayans, causes controversy, she must clean up the situation in this Paramount Pictures comedy.



The Medallion

After an accident that nearly caused him his life, a Chinese Immigration officer finds himself endowed with amazing powers. Jackie Chan stars in this supernatural-themed action/cop thriller.



My Boss's Daughter:

Ashton Kutcher and Tara Reid star in this film about an employee's weekend house-sitting for his boss. The house-sitter, Kutcher, wants to use this situation to get closer to the boss's daughter, Reid. An ensuing series of events during the weekend may ultimately cost him his job.

Center for Student Leadership Development

provides opportunities for Georgia Southern students to develop their skills and abilities.

Eagle Leadership EDGE

Eagle Leadership EDGE (Experience, Develop, Grow, and Emerge) is a great way for new students to take the first step toward becoming a leader at Georgia Southern. This 10-week leadership development program includes training in communication, personality, team building, diversity, and much more. EDGE is offered during both the Fall and Spring Semesters.

Sign up by September 5th for the FALL CLASS:
Tuesday, September 17 - December 2
3:30 - 5:00 p.m.

Leadership Accent is designed for students who were in EDGE or who have previous leadership training. This is an advanced leadership class that focuses on leadership theories and their application into practice.

Sign up by September 5th for the FALL CLASS:
Wednesday, September 18 - December 3
3:30 - 5:00 p.m.

The very essence of leadership is that you have to have vision.
You can't blow an uncertain trumpet. - Theodore M. Hesburgh



Eagle Summit is a fall weekend leadership retreat September 12th through the 14th. This year Eagle Summit will feature professional facilitation of Franklin Coveys "Seven Habits of Highly Effective People." Deadline for application is Friday, September 5th, along with the \$45 registration fee.



INSPIRE, Student Leadership Consultants, is the third level of EDGE. These advanced leaders meet bi-weekly for facilitators' training, where they learn to share their leadership skills with their peers through the workshops and conferences they present.

Other programs:

- Spring Collegiate Leadership Conference
- Flying High Newsletter
- Leadership Speaker Series
- Leadership Resource Room (Russell Union 2022)

RESTAURANT GUIDE

The
GEORGE-ANNE 7B
Thursday, August 21, 2003

Special Note: All information was correct as of press time

V = Visa, Dis = Discovery, MC = Master Card, AX = American Express, EE = Eagle Express

- Angie's Restaurant.** Address: 105 Hwy 80 W, Brooklet, GA 30415. Phone: 912.842.4005. Payment Methods: Check. Specialty: Southern-style Cooking
- Applebee's.** Address: 804 Hwy 80 East, Statesboro, GA 30458. Phone: 912.489.5656. Payment Methods: MC, V, AX, Dis. Specialty: Burgers, Steaks, Pastas
- Arby's.** Address: 622 Fair Road, Statesboro, GA 30458. Phone: 912.681.6782. Payment Methods: MC, V, AX, EE. Specialty: Roast Beef Sandwiches
- Archibald's.** Address: 470 South Main Street, Statesboro, GA 30458. Phone: 912.764.6597. Payment Methods: MC, V, AX, Dis. Specialty: Burgers, Steaks, Seafood
- Bash's.** Address: 120 Lanier Dr., Statesboro, GA 30458. Phone: 912.681.9464. Payment Methods: MC, V, AX, Dis, EE. Check. Specialty: Chicken Fingers, Wings, Burgers
- Baskin Robbins.** Address: 606 Fair Road, Statesboro, GA 30458. Phone: 912.681.2227. Payment Methods: MC, V, AX, Dis, EE, Check. Specialty: Ice Cream
- Baja Burrito.** Address: 8 University Plaza, Statesboro, GA 30458. Phone: 912.681.2242. Payment Methods: MC, V. Specialty: Mexican
- Beaver House Inn & Restaurant.** Address: 121 South Main Street, Statesboro, GA 30458. Phone: 912.764.2821. Payment Methods: MC, V, AX, Dis, Check. Specialty: Family Style Southern Cooking
- Blimpie Subs & Salads.** Address: 715 Northside Dr., Statesboro, GA 30458. Phone: 912.764.4126. Payment Methods: EE, Check. Specialty: Sub Sandwiches
- Blue Moon Café.** Address: 40 East Main Street, Statesboro, GA 30458. Phone: 912.489.1094. Payment Methods: MC, V, AX, Dis, Check. Specialty: Deli Style Cold Sandwiches
- Boyd's Barbecue Pit & Steakhouse.** Address: Hwy 80 West, Statesboro, GA 30458. Phone: 912.764.9995. Payment Methods: MC, V, AX, Dis, Check. Specialty: Bar-B-Q Burgers, Chicken Fingers
- Burger King.** Address: 550 Fair Road, Statesboro, GA 30458. Phone: 912.681.6436. Payment Methods: Cash, EE. Specialty: Fast Food Burgers
- Captain's D's.** Address: 304 South Main Street, Statesboro, GA 30458. Phone: 912.764.3636. Payment Methods: MC, V, AX, EE, Check. Specialty: Fast Food Seafood
- Captain Joe's Seafood.** Address: 12218 US Hwy 301, Statesboro, GA 30458. Phone: 912.681.3482. Payment Methods: MC, V, AX, Dis, Check. Specialty: Steak, Seafood
- Checker's.** Address: 701 Northside Dr., Statesboro, GA 30458. Phone: 912.489.8800. Payment Methods: Check. Specialty: Fast Food Burgers, Hot Dogs
- Chicken Run.** Address: 6 College Plaza, Statesboro, GA 30458. Phone: 912.871.7123. Payment Methods: Cash, Check. Specialty: Variety of Wing Flavors, Chicken Subs
- Chick-fil-A.** Address: 703 Northside Dr. East, Statesboro, GA 30458. Phone: 912.764.7941. Payment Methods: Check. Specialty: Chicken Sandwiches
- China Super Buffet.** Address: 409 Fair Road, Statesboro, GA 30458. Phone: 912.764.3666. Payment Methods: MC, V, AX, Dis. Specialty: Chinese and American Buffet
- Chinese Kitchen Inc..** Address: 456 South Main Street, Statesboro, GA 30458. Phone: 912.764.4828. Payment Methods: Check. Specialty: Chinese
- Dairy Queen.** Address: 1 Northside Dr. East, Statesboro, GA 30458. Phone: 912.764.2949. Payment Methods: EE, Check. Specialty: Fast Food Burgers, Ice Cream
- Dan G's Wings N Things.** Address: 301 East Main Street, Statesboro, GA 30458. Phone: 912.489.3264. Payment Methods: Check. Specialty: Wings, Chicken Fingers
- Daylight Donut Shop & Gourmet Sandwiches.** Address: 455 South Main Street, Statesboro, GA 30458. Phone: 912.764.9536. Payment Methods: MC, V, AX, Check. Specialty: Donuts, Breakfast, Soup, Sandwiches
- Dingus Magee's.** Address: 103 GA Ave., Statesboro, GA 30458. Phone: 912.681.3207. Payment Methods: MC, V, AX, Dis, Check. Specialty: Sandwiches, Burgers, Chicken Fingers
- Dominos's Pizza.** Address: 17 College Plaza, Statesboro, GA 30458. Phone: 912.681.4326. Payment Methods: MC, V, AX, Dis, EE, Check. Specialty: Pizza, Wings
- Dosprimos.** Address: 200 Lanier Dr., Statesboro, GA 30458. Phone: 912.681.1372. Payment Methods: MC, V, AX, Dis, EE, Check. Specialty: Mexican
- Dragon Chinese Restaurant.** Address: 600 Northside Dr. East, Statesboro, GA 30458. Phone: 912.764.6460. Payment Methods: Check. Specialty: Chinese
- Dunkin' Donuts.** Address: 606 Fair Road, Statesboro, GA 30458. Phone: 912.681.1227. Payment Methods: MC, V, AX, Dis, EE, Check. Specialty: Donuts
- El-Sombrero Restaurant.** Address: 406 Fair Road, Statesboro, GA 30458. Phone: 912.764.9828. Payment Methods: MC, V, AX, Dis, Check. Specialty: Mexican
- El-Sombrero Restaurant.** Address: 600 Northside Drive E., Statesboro, GA 30458. Phone: 912.489.1935. Payment Methods: MC, V, AX, Dis, Check. Specialty: Mexican
- Franklin's Restaurant.** Address: 221 North Main Street, Statesboro, GA 30458. Phone: 912.764.2316. Payment Methods: MC, V, AX, Dis, EE, Check. Specialty: Southern-style Cooking
- Freddie's.** Address: Hwy 301 South, Statesboro, GA 30458. Phone: 912.681.4394. Payment Methods: MC, V, AX, Dis, Check. Specialty: Homestyle Cooking
- Hachi Restaurant.** Address: 7 College Plaza, Statesboro, GA 30458. Phone: 912.681.1759. Payment Methods: MC, V, Check. Specialty: Japanese, Sushi
- Hardee's.** Address: 612 Northside Drive, Statesboro, GA 30458. Phone: 912.764.3802. Payment Methods: EE. Specialty: Fast Food Burgers, Fried Chicken
- Helen's Fast Food Restaurant.** Address: 2645 Hwy 67, Statesboro, GA 30458. Phone: 912.839.2470. Payment Methods: Check. Specialty: Homestyle Cooking
- Holiday Pizza.** Address: 406 Fair Road, Statesboro, GA 30458. Phone: 912.764.7669. Payment Methods: MC, V, AX, Dis, EE, Check. Specialty: Greek and Italian, Pizza, Pastas, Gyros
- Hungry Howie's.** Address: 607 Brannen Street, Statesboro, GA 30458. Phone: 912.764.6565. Payment Methods: MC, V, AX, Dis, EE, Check. Specialty: Pizza, Wings
- International House of Pancakes.** Address: 800 Hwy 80 East, Statesboro, GA 30458. Phone: 912.764.4341. Payment Methods: MC, V, AX, Dis. Specialty: Breakfast Foods, Burgers, Steaks
- Kentucky Fried Chicken.** Address: 202 North Main Street, Statesboro, GA 30458. Phone: 912.764.6197. Payment Methods: MC, V, AX, Check. Specialty: Fried Chicken
- Krystal Kwik of Statesboro.** Address: 732 Northside Drive E., Statesboro, GA 30458. Phone: 912.489.4000. Payment Methods: Cash Only. Specialty: Small Fast Food Burgers, Hot Dogs
- Larry's Giant Subs.** Address: 620 Fair Road, Statesboro, GA 30458. Phone: 912.681.7827. Payment Methods: MC, V, Check. Specialty: Sub Sandwiches, Salads
- Lee's Restaurant.** Address: 458 West Jones Ave., Statesboro, GA 30458. Phone: 912.764.4746. Payment Methods: Check. Specialty: Homestyle Cooking
- Leigh Ann's Café.** Address: 609 Brannen Street, Statesboro, GA 30458. Phone: 912.764.7858. Payment Methods: MC, V, AX, Check. Specialty: Wraps, Gourmet Entrees
- Little Caesar's Pizza.** Address: 503 Northside Drive E., Statesboro, GA 30458. Phone: 912.764.8198. Payment Methods: MC, V, EE, Check. Specialty: Pizza, Wings
- Locos Deli & Pub.** Address: 91 Briarwood Lane, Statesboro, GA 30458. Phone: 912.681.2002. Payment Methods: MC, V, AX, Dis, Check. Specialty: Sandwiches, Salads, Wings, Burgers
- Longhorn Steakhouse.** Address: 719 Northside Drive E., Statesboro, GA 30458. Phone: 912.489.5369. Payment Methods: MC, V, AX, Dis, Check. Specialty: Steaks, Seafood
- McDonald's.** Address: 611 Northside Drive E., Statesboro, GA 30458. Phone: 912.764.7381. Payment Methods: Check. Specialty: Fast Food Burgers
- Mellow Mushroom.** Address: 6 University Plaza, Statesboro, GA 30458. Phone: 912.681.8788. Payment Methods: MC, V, Dis, EE, Check. Specialty: Pizza, Calzones
- Middleground Café.** Address: 3443 Middleground Road, Statesboro, GA 30458. Phone: 912.587.2353. Payment Methods: Check. Specialty: Burgers, Vegetables, Homestyle
- Nikko Japanese Steak & Seafood House.** Address: 609 Brannen Street, Statesboro, GA 30458. Phone: 912.489.4007. Payment Methods: MC, V, AX. Specialty: Japanese
- Ocean Galley Seafood.** Address: 503 Northside Drive E., Statesboro, GA 30458. Phone: 912.489.4145. Payment Methods: MC, V, AX, Dis, EE. Specialty: Seafood
- Papa John's Restaurant.** Address: 620 Fair Road, Statesboro, GA 30458. Phone: 912.871.7272. Payment Methods: MC, V, AX, EE, Check. Specialty: Pizza, Chicken Fingers
- PK's (Formerly Peking).** Address: 102 Brannen Street, Statesboro, GA 30458. Phone: 912.764.6661. Payment Methods: MC, V, AX, Dis, EE, Check. Specialty: American and Oriental, Sushi, Oyster Bar
- Pizza Hut.** Address: 129 South Main Street, Statesboro, GA 30458. Phone: 912.764.5489. Payment Methods: MC, V, AX, Dis, EE, Check. Specialty: Pizza
- Pizza Inn.** Address: 711 South Main Street, Statesboro, GA 30458. Phone: 912.681.9066. Payment Methods: MC, V, AX, Dis, EE, Check. Specialty: Pizza, Wings, Sandwiches, Chicken Fingers
- Popeye's Chicken & Biscuits.** Address: 526 Fair Road, Statesboro, GA 30458. Phone: 912.681.6655. Payment Methods: Check. Specialty: Fried Chicken
- Retriever's Steakpit & Shellhouse.** Address: 1 University Plaza, Statesboro, GA 30458. Phone: 912.681.2444. Payment Methods: MC, V, AX, Dis, EE. Specialty: Burgers, Steak, Shrimp, Oysters
- RJ's Steak & Seafood.** Address: 434 South Main Street, Statesboro, GA 30458. Phone: 912.489.8658. Payment Methods: MC, V, AX, EE, Check. Specialty: Steaks, Seafood
- Rooster's Café.** Address: 20864 Hwy 301 North, Statesboro, GA 30458. Phone: 912.587.3569. Payment Methods: Check. Specialty: Southern-style Cooking
- Royal Waffle King.** Address: 12399 South Hwy 301, Statesboro, GA 30458. Phone: 912.681.8951. Payment Methods: Cash Only. Specialty: Breakfast Foods
- Ruby Tuesday's.** Address: 724 Northside Drive E., Statesboro, GA 30458. Phone: 912.764.4333. Payment Methods: MC, V, AX, Dis. Specialty: Burgers, Steaks, Pastas, Seafood
- Ryan's Grill & Steakhouse.** Address: 806 Hwy 80 E., Statesboro, GA 30458. Phone: 912.489.9481. Payment Methods: MC, V, AX, Dis, Check. Specialty: Large Buffet, Steaks, Seafood
- Shell House.** Address: 1601 Statesboro Place Circle, Statesboro, GA 30458. Phone: 912.681.1371. Payment Methods: MC, V, Dis, Check. Specialty: Seafood
- Shoney's of Statesboro.** Address: 222 South Main Street, Statesboro, GA 30458. Phone: 912.764.9693. Payment Methods: MC, V, AX, Dis, EE, Check. Specialty: Burgers, Seafood, Soups, Salads
- Snooky's Restaurant.** Address: 11 East Kennedy, Statesboro, GA 30458. Phone: 912.764.7190. Payment Methods: Check. Specialty: Southern-style Cooking, Buffet
- Sonic Drive-In.** Address: 322 South Main Street, Statesboro, GA 30458. Phone: 912.489.4544. Specialty: Fast Food Burgers, Hot Dogs
- Southern Palace Restaurant.** Address: 602 Brannen Street, Statesboro, GA 30458. Phone: 912.489.8813. Payment Methods: MC, V, AX, Check. Specialty: Chinese
- Statesboro Inn & Restaurant.** Address: 106 South Main Street, Statesboro, GA 30458. Phone: 912.489.8628. Payment Methods: MC, V, AX, Check. Specialty: Chicken, Seafood, Burgers
- Subway.** Address: Hwy 80 East, Statesboro, GA 30458. Phone: 912.764.8500. Payment Methods: MC, V, AX, Dis, Check. Specialty: Sub Sandwiches
- Subway.** Address: 12399 Hwy 301 South, Statesboro, GA 30458. Phone: 912.871.3348. Payment Methods: MC, V, AX, Dis, Check. Specialty: Sub Sandwiches
- Subway.** Address: 510 South Main Street, Statesboro, GA 30458. Phone: 912.764.9878. Payment Methods: MC, V, AX, Dis, Check. Specialty: Sub Sandwiches
- Taco Bell.** Address: 224 South Main Street, Statesboro, GA 30458. Phone: 912.764.2501. Payment Methods: MC, V. Specialty: Fast Food Mexican
- Thee Bar B Q Place.** Address: 20860 Hwy 301 North, Statesboro, GA 30458. Phone: 912.587.2776. Payment Methods: Check. Specialty: BarBQ, Ribs, Burgers
- The Sandwich Shop.** Address: 28 Statesboro Mall, Statesboro, GA 30458. Phone: 912.764.4868. Payment Methods: Check. Specialty: Sandwiches, Wings, Chicken Fingers
- Triple Play Café.** Address: 206 B Northside Dr., Statesboro, GA 30458. Phone: 912.764.1575. Payment Methods: EE, Check. Specialty: Pizza, Subs, Wings, Breakfast
- Uncle Shug's Chicken Barn.** Address: 201 West Main Street, Statesboro, GA 30458. Phone: 912.764.7115. Payment Methods: Check. Specialty: Fried Chicken
- Vandy's Bar-B-Q.** Address: 22 West Vine, Statesboro, GA 30458. Phone: 912.764.2444. Payment Methods: MC, V, Check. Specialty: Bar-B-Q, Chicken Fingers, Seafood
- Vandy's Bar-B-Q.** Address: Statesboro Mall, Statesboro, GA 30458. Phone: 912.764.3033. Payment Methods: MC, V, Check. Specialty: Bar-B-Q, Chicken Fingers, Seafood
- Waffle House.** Address: 609 Northside Drive E., Statesboro, GA 30458. Phone: 912.489.3020. Payment Methods: Cash only. Specialty: Breakfast Foods, Burgers
- Waffle House.** Address: 446 South Main Street, Statesboro, GA 30458. Phone: 912.489.8556. Payment Methods: Cash Only. Specialty: Breakfast Foods, Burgers
- Wendy's Old Fashioned Hamburg-ers.** Address: 500 Fair Road, Statesboro, GA 30458. Phone: 912.681.4289. Payment Methods: EE, Check. Specialty: Fast Food Burgers
- Willie's Fast Food.** Address: 139 Blitch Street, Statesboro, GA 30458. Phone: 912.764.5001. Payment Methods: Check. Specialty: Southern-style Cooking
- Zaxby's Restaurant.** Address: 502 Fair Road, Statesboro, GA 30458. Phone: 912.681.2000. Payment Methods: MC, V, Dis, EE. Specialty: Chicken Fingers, Wings

- Wendy's Old Fashioned Hamburg-ers.** Address: 500 Fair Road, Statesboro, GA 30458. Phone: 912.681.4289. Payment Methods: EE, Check. Specialty: Fast Food Burgers
- Willie's Fast Food.** Address: 139 Blitch Street, Statesboro, GA 30458. Phone: 912.764.5001. Payment Methods: Check. Specialty: Southern-style Cooking
- Zaxby's Restaurant.** Address: 502 Fair Road, Statesboro, GA 30458. Phone: 912.681.2000. Payment Methods: MC, V, Dis, EE. Specialty: Chicken Fingers, Wings

Carry-Out Specials

\$4.99 + tax
Medium 1-topping

\$6.99 + tax
Large 1-topping

\$12.99 + tax
2 large 2 topping

©2003 Domino's Pizza, LLC. Not valid with any other offer. Valid with coupon only at participating stores. Cash value 1/20¢. Prices may vary. Minimum purchase required. Delivery charge may apply. Limited delivery areas. Deep dish extra.

Delivery Special

Large 1-topping pizza & 2-liter of Coke®

\$9.99 + tax
Delivery only

©2003 Domino's Pizza, LLC. Not valid with any other offer. Valid with coupon only at participating stores. Cash value 1/20¢. Prices may vary. Minimum purchase required. Delivery charge may apply. Limited delivery areas. Deep dish extra.

Party Deal

Two large 2-topping pizzas, 20 Domino's Buffalo Wings, an order of Cheesy Bread and a 2-liter of Coke®

\$25.99 + tax

©2003 Domino's Pizza, LLC. Not valid with any other offer. Valid with coupon only at participating stores. Cash value 1/20¢. Prices may vary. Minimum purchase required. Delivery charge may apply. Limited delivery areas. Deep dish extra.

What a Deal!

Two large 1-topping pizzas delivered

\$13.99 + tax
Delivery only

©2003 Domino's Pizza, LLC. Not valid with any other offer. Valid with coupon only at participating stores. Cash value 1/20¢. Prices may vary. Minimum purchase required. Delivery charge may apply. Limited delivery areas. Deep dish extra.

We accept

EAGLE EXPRESS

& all major credit cards

17 College Plaza

681-4326

Don't forget our delicious side items!

Bread Sticks

Cheesy Bread

Domino's Dots™

Buffalo Wings

Domino's Pizza Buffalo Chicken Kickers™

Get the door. It's Domino's.®

Georgia Southern University's

Multicultural Student Center

cordially invites you to their upcoming

Thursday
August 21, 2003
11:30 am - 2:00 pm

Open House

The Multicultural Student Center is now located on the second floor of the Russell Union - Room 2070.

Please come by and see our new location and learn about available resources and services.

Light refreshments will be served!

Multicultural Student Center
Russell Union Room 2070
PO Box 8068
Georgia Southern University
(912) 681-5409



EAGLE EXPRESS™

Continues Traveling Off-Campus

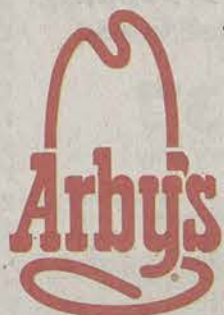
Be sure to check out these new additions to the EAGLE EXPRESS™ family:



Little Caesars®



Auxiliary Services is pleased to announce the availability of EAGLE EXPRESS™ at these businesses:



Leisure & Recreation

Ways to get up off the couch and do something



Special Photo

Try Hackers Golf Park for a fun night out with a group of friends. The putt-putt course is un'fore'gettable.

ATA Black Belt Academy. Address: 406 Fair Rd. Phone: 764-3844. Specialty: Karate.

Carmike 10. Address: 511 Stephenson Ave. Savannah. Phone: 912-353-8683. Hours: Noon-Last showing at Midnight on weekends. Specialty: Movie Theater.

Department of Parks and Recreation. Address: One Max Lockwood Drive. Phone: 764-5637.

Eagle Creek Golf Club. Address: 7436 Hwy 46. Phone: 839-3933. Hours: 7am-5pm. Payment method: V, MC, Check, Eagle Express. Specialty: Golf Club.

G&B Family Skateway. Address: 5 College Plaza. Phone: 681-9797. Specialty: Skating Rink.

Gallop's Comics and Games. Address: 17066 Hwy 67 South. Phone: 681-2592. Hours: Mon-Sat 9-6 Thurs and fri until 10. Payment method: V, MC, D, AMEX. Specialty: Comics and roleplaying games.

Georgia Southern Museum. Address: Sweetheart Circle. Phone: 681-5444. Hours: Mon-Fri. 9am-5pm, Sun. Specialty: Museum.

Georgia Southern University Botanical Gardens. Address: 1505 Bland Avenue. Phone: 871-1149 or 871-1114. Hours: Mon-Fri 9am-6pm; Sun 2pm-5pm. Specialty: Botanical Garden.

Hackers Golf Park. Address: 2802 Old Register Road. Phone: 871-4653. Hours: Mon-Thu Noon-11pm; Fri Noon-Midnight, Sat 10am-Midnight; Sun Noon-11pm. Payment method: V, MC, D, AMEX, CK. Specialty: Putting Cages, Miniature Golf, Putting Ranges.

Magnolia Spring State Park. Address: 1053 Magnolia Springs Drive, Millen. Phone: 478-982-1660. Specialty: Camp site, pool, aquarium.

Martial Arts Academy. Address: 18 S Broad St. Phone: 685-2418. Hours: Mon and Weds 7-9. Payment method: Cash or Check. Specialty: Karate.

Mill Creek Regional Park. Address: Georgia Highway 24. Phone: 489-9078. Specialty: Softball/baseball complexes/ Soccer/football fields.

Movie Gallery. Address: 600 Brannen Street. Phone: 764-8496. Hours: 10am-Midnight. Payment method: V, MC, D, AMEX, CK. Specialty: Video

Rental.

Plantation Carriage Company. Address: 1000 Jefferson Street Savannah. Phone: 912-201-0001. Hours: 9 am-until. Payment method: V, MC. Specialty: Tour of Historic Savannah.

Savannah Golf Courses. Address: <http://www.coastalgolcourse.com>.

Savannah Sand Gnats. Address: 1401 E. Victory Dr. Savannah. Phone: 912-351-9150. Hours: Games start Mon-Sat 7:05, Sun 5:05. Payment method: V, MC, D, AMEX. Specialty: 1-A professional Baseball team.

Southern Links Golf Club. Address: 1031 Golf Club Road. Phone: 839-3191. Hours: Mon-Fri 7:30am-dark; Weekend 7am-dark. Payment method: V, MC, D, Eagle Express. Specialty: 18 hole, driving range, putting green, chipping green, pro shop.

Statesboro Mall Cinema Nine. Address: 610 Brannen Street. Phone: Movie Info Line 489-4492. Hours: 11:30 am -. Payment method: V, MC, D. Specialty: Movie Theater.

Total Entertainment. Address: 603 W Northside Drive. Phone: 764-3733. Hours: Mon-Thi Noon-9pm; Fri Noon-10pm; Sat 10am-10pm; Sunday Noon-8pm. Payment method: Cash or Check. Specialty: Video Rental/Pizza.

Twisted Halo Paintball. Address: 1140 hwy 24. Phone: 764-7830.

University Bowling Center. Address: 12572 Hwy 301 South. Phone: 681-7382. Hours: Mon-Thurs 6 pm-11 pm FRI 6 pm-1 am SAT 11 am-MIDNIGHT SUN 1 pm-10pm. Specialty: Bowling Alley.

Video Warehouse. Address: 199 Northside Drive. Phone: 489-4279. Hours: Sun-Thurs 8:30 am-11pm; Fri-Sat 8:30 am-Midnight. Payment method: V, MC, Check. Specialty: Video Rental.

Wildlife Education Center. Address: Forest Drive. Phone: 681-0831. Hours: Weekdays 9-5, Sat. 1-5.

Wynnsong 11 Movie Theater. Address: 1150 Shawnee St, (behind Savannah Mall) Savannah. Phone: 912-920-1227. Hours: Noon-Last showing at Midnight on weekends.



File Photo

The GSU Botanical Garden's aim is to connect people to the natural and cultural heritage of the region. They offer a number of workshops during the year for members of the community.