

Georgia Southern University

Digital Commons@Georgia Southern

The George-Anne

Student Media

10-11-2000

The George-Anne

Georgia Southern University

Follow this and additional works at: <https://digitalcommons.georgiasouthern.edu/george-anne>

Recommended Citation

Georgia Southern University, "The George-Anne" (2000). *The George-Anne*. 2965.
<https://digitalcommons.georgiasouthern.edu/george-anne/2965>

This newspaper is brought to you for free and open access by the Student Media at Digital Commons@Georgia Southern. It has been accepted for inclusion in The George-Anne by an authorized administrator of Digital Commons@Georgia Southern. For more information, please contact digitalcommons@georgiasouthern.edu.



SPORTS

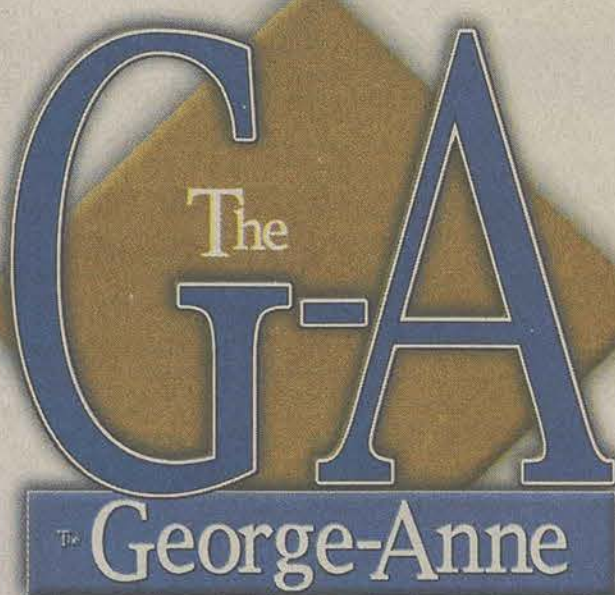
Men's Soccer falls to College of Charleston

GSU men's soccer falls 1-0 to College of Charleston yesterday. Find out more inside.

RECEIVED

OCT 11 2000

HENDERSON LIBRARY
GEORGIA SOUTHERN
UNIVERSITY



LIFE

Hypnotist Tom DeLuca returns to GSU

Tom DeLuca is sure to put on another amazing performance tonight in Russell Union at 8 p.m. Find out more inside.



Page 9

Vol. 73 No. 36

Wednesday, October 11, 2000

Homecoming packed with events for everyone

By Jason Kemp
Staff Writer

Students, faculty and staff at GSU will have plenty of opportunities to show their school spirit as Homecoming activities come into full effect this week. Homecoming at GSU is an annual event that is produced by Eagle Entertainment in conjunction with The Russell Union, The R.A.C. and The Search for Southern Leaders.

The Theme for this year's Homecoming is "Heroes of 2000", a theme that allows the individual to determine who they believe is a hero at GSU.

"It can be a football player or anybody at GSU, it is up to the individual to decide who their hero is," April Bugarin, activities coordinator for the Russell Union said.

Bugarin believes that the two major changes to Homecoming at GSU this year are the implementation of voting online for Homecoming King and Queen and the increased size of the Homecoming Carnival that is going to be held on Thursday, October 12th at Sweetheart Circle, from 5 to 7 p.m.

Activities for Homecoming this week include a Career Services Dining Etiquette Dinner today at 6 p.m. at the Russell Union in rooms 2070 and 2080. Also, tonight Hypnotist Tom DeLuca is making his seventh appearance at GSU. His performance is scheduled to begin at 8 p.m. in the Russell Union Ballroom.

Thursday from 9 a.m. to 1 p.m. there will be a Career Services Eagle Expo held in the R.A.C. The expo will give GSU students the chance to talk to employers about their plans after college.

The Eagle Olympics begins at 5 p.m. in Sweetheart Circle, followed by the Carnival and the Pep Rally. The Carnival starts at 5 p.m. and the Pep Rally begins at

7 p.m. Both activities will be held at Sweetheart Circle.

On Friday October 13th, the main event will be the Homecoming Parade, which will begin at Paulson Stadium at 4 p.m. The parade will continue through

GSU students and faculty will get a chance to get a first glimpse of the GSU basketball team on Friday night in a Homecoming event called "Midnight Mania." The event begins at 9 p.m. at the Hanner Fieldhouse.

Saturday is the final day of Homecoming activities and they begin with the CRI 5K Walk Run, beginning at 8 a.m. at the R.A.C. At 1 p.m., the Best Tailgate Party judging will begin at Paulson Stadium. Finally, Homecoming will

end with the football game (GSU vs. Appalachian State), which begins at 3:30 p.m. at Paulson Stadium. The 2000 Homecoming King and Queen will be announced during halftime of the game.

Bugarin believes that Homecoming is the perfect time for everyone at GSU to show support for the school.

"It is a time for all the students, the faculty and the staff to get together and show our support for Georgia Southern," Bugarin said.

Classes after 2 p.m. on Friday October 13th will be canceled so that students, faculty and staff can attend the Homecoming Parade.

Students with questions about Homecoming and its activities can go to the Eagle Entertainment office in Room 2022 of the Russell Union.

Students get into the Homecoming game for free before halftime by showing their students ID. After halftime they must purchase an eight dollar ticket to enter or return to the stadium.



File Photo

"IT IS A TIME FOR ALL THE STUDENTS, THE FACULTY AND THE STAFF TO GET TOGETHER AND SHOW OUR SUPPORT FOR GEORGIA SOUTHERN,"

--APRIL BUGARIN, HOMECOMING COORDINATOR

Chandler Road, ending on Forest Drive by the Health Services building. Residents living off Chandler Road need to remember that the road will be closed from 3:30 until 5:30 p.m. on the day of the parade.

New foreign language assistant enjoys the American way of life

By Leigh-Anne Burgess
Assistant News Editor

GSU's new foreign language staff Assistant Sophie Bureau is experiencing culture shock.

"Things are so different here," she says of her first visit to the United States.

Born and raised in Angoulême, France, it is no surprise that Bureau has had some difficulty adjusting to the American way of life.

Before coming to GSU, Bureau studied Anglo-Phone Relations for three years in France. Her courses included studies in American History, Politics, the Roaring 20's, American Cinema, and her favorite, New York Jewish literature.

She then received a Masters degree in Medieval England while studying at Canterbury, England.

Bureau's father teaches English to middle and high school students and her mother is a kindergarten teacher.

Although Bureau is well-educated in American studies, she says the American way of life is extremely opposite to that of her native France.

"All of the fast food, so many churches, the size of supermarkets, and the architecture of houses," Bureau says are just a few of the differences that she's experienced here.

In Bureau's hometown, which is located in the central western part of France, she is accustomed to seeing century-old castles, small villages with houses made of stone, and very few, but ancient,



John Bryson

SOPHIE BUREAU: GSU's new foreign language staff assistant comes from Angoulême, France and is experiencing a bit of culture shock in the U.S, however she has adapted well.

churches. There's also not a McDonald's on every corner. Bureau is used to fine dining.

However, American slang with its probably the hardest aspect for Bureau to grasp.

"I'm used to British slang, but the slang here is so strange," she said.

Another thing throwing her off is the southern accents that she hears everyday.

Although she admits to finding "drawls" amusing, she says that it makes it difficult for her to understand some words.

Despite the language barriers, Bureau has adapted to America well. "I've made some good friends that I didn't expect to because of cultural differences," she said. "People are interested in knowing about where I am from."

Bureau began teaching French 1001 on Aug. 22 after applying for an exchange program in France. Her application was then distributed throughout the United States and examined by Professor Jean-Paul Carton, a French professor here at GSU. After a brief interview, she was chosen to come to GSU.

When she leaves at the end of May, she will return to her native France. There she will continue her career as an English teacher to 11-17 year old children at Poitiers, alma mater to the famous Descartes.

Bureau also plans to eventually receive her PhD in American Culture and Literature when she returns to France, and maybe become a teacher at one of the universities.

As for now, Bureau is enjoying her new position at GSU and the American experience.

"It's a good university, and it's a dream for me," she said.

Career Connections offers a variety of services for students

By Teresa Southern
Staff Writer

Upperclassmen, are you having trouble getting into the world of work?

Do you have a resume' and don't know what to do with it? Career Connections, which is a part of Student Affairs, has the answers to all your questions.

Career Connections is a program that is available on college campuses around the country. Career Services allows you to upload your resume' from Microsoft

Word to a database which companies around the country can access.

This service also helps GSU students sign up for on-campus interviews with various companies. Many companies have decided to access the database instead of doing on-campus recruitment.

Students have been taking advantage of this service but not as many as coordinators would like. This service has been on campus for about three years and it started out as a program called Resume' Expert or RE-Web and then it became Career Connections.

"Many students have a misconception of the service, they think that they have to come to our office to upload their resume' and sign up for campus interviews," Theresa Beebe, Career Service Specialist in the College of Business Administration, said. "The only time they need to come to our office is to obtain a password to access career connections, have their resume' critiqued for form and participate in mock interviews. If a student utilizes all the services provided by the office they will have a better chance of securing their first job position out of school."

Students are also free to come to the Career Service office in the Williams Center Rm. 1058/1047 and receive

Most companies are starting to do this instead of coming on campus. Beebe and others are also encouraging GSU alumni to refer the companies they work for to access the database and to do more on-campus recruiting.

Career Connection also offers the following services to assist students even more: Co-op opportunities, graduate school information, on-campus interviews, web job listing, videotaped mock interviews and suits for students to wear on job interviews. Students can also drop off their already typed resume with no ap-

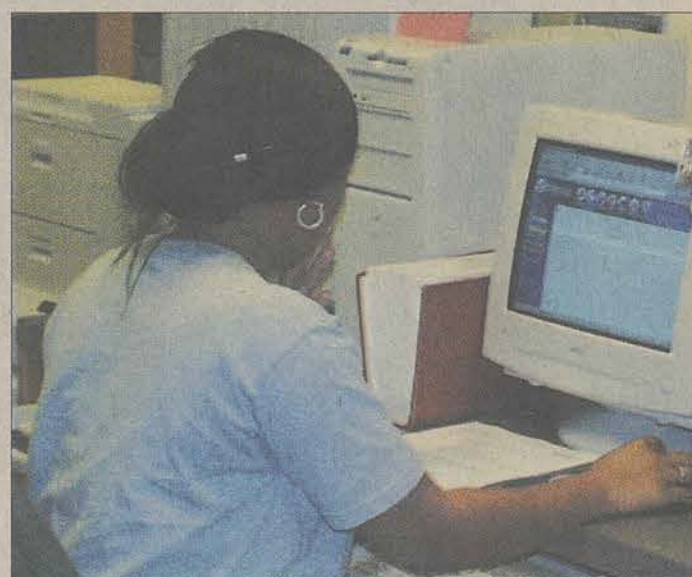


John Bryson

Career Connections: Robin Wade, left, a graduate assistant for Career Services helps Angela Hazlip, right, an undeclared freshman. Career Connections is a program designed to help students gain a greater perspective of the job-hunting field.

pointment and get it critiqued within 48 hours. Again to access this wonderful service contact Career Services at this web page: <http://www2.gasou.edu/sta/career> or call 681-5197 or see Theresa Beebe in COBA 1101B.

Over 1000 companies utilize the database recruiting students of all majors.



GETTING HELP: Monique Gabriel, a senior majoring in marketing looks up information in the Career Services Center. Career Connections provides students with help from building a resume to applying for a job.

Now Playing...



IN THE BLACK BOX THEATER: "Tartuffe, Born Again" is now playing. The production held its opening night Tuesday. The play is performed in the Black Box Theater in the Communications Arts Building at 8:00 p.m.

POLICE BEAT

GSU Public Safety

October 7

• Laura K. Misuraca, 23, 1707 Chandler Rd. Apt. 88, was charged with DUI and failure to maintain lane.

• Steven R. Dixon, 21, 512 Pittmore Rd., was charged with DUI and failure to maintain lane.

October 8

• Natalie D. Allen, 18, Johnson Hall, was charged with possession of marijuana.

• A student reported damage to his vehicle

while it was parked in B-Lot.

October 9

• Willie Ayers reported a missing book bag from the Recreational Activity Center.

Statesboro Police Department

October 8

• Nekey Odoms, 23, 309B North Main St., reported criminal trespass.

October 9

• Demetrius Pate, 22, 138 Campus Courtyard, reported receiving harassing communication.

Editor's Note: Police Beat appears in every edition of the George-Anne in an effort to inform the GSU community of the amount, nature, and location of crime. All reports are public information and can be obtained from the GSU division of Public Safety or at the Statesboro Police Department.

—All Police Beat information is compiled by Leigh-Anne Burgess, assistant news editor.

Things To Do at GSU

Ongoing

• **Free Tutoring** in several subjects: English, history, sociology and psychology, all maths, chemistry, biology, and college reading/study skills. Each subject has different hours of operation. Call 681-0321 for more information.

• **The Christian Faculty/Staff** meets every Monday at noon in the Russell Union Room 2044.

• **The NAACP** meets every Monday at 6 p.m. in the Russell Union Room 2048.

• **BSU** meets every Tuesday at 7 p.m. at 401

ANNOUNCEMENTS

Chandler Rd. across from Johnson Hall and Watson Hall. BSU also has lunch every Wednesday from 12 to 1 p.m. Everyone is invited. For more information, contact the BSU at 681-2241.

• **GSU Chapter of Habitat for Humanity** meets every Tuesday at 5:30 p.m. in the Russell Union Room 2044.

• **The Young Democrats of Georgia Southern** will hold meetings every Thursday night at 6 p.m. in the Russell Union. Call Zach Rushing at 871-7701 for more information, or email him at zachrushing@mail.com for more details.

• **The American Society of Mechanical Engineers (ASME)** meets the first and third Tuesday of every month at 2 p.m. in the Technology Building Room 1116.

• **The Institute of Electrical and Electronic Engineers** meets the first and third Tuesday of every month at 5 p.m. in the Technology Building Room 2117.

• **The GLBT Resource Center** is offering a support group for gay, lesbian, bisexual, and transgender students, faculty, and staff. Meetings will be on Thursday nights from 5 - 6:30 p.m. in Russell Union room 2072. Contact the GLBT Resource Center at 681-5409 for more information.

October 9-11

• **The Academic Resource Center** will be hosting a workshop, "Review of Factoring." On the 9, it will be in the North Building Rm. 1001 at 5:30 p.m., on the 10, it will be held at the North Building Rm. 1001 at 7 p.m., and on the 11 it will be held in the North Building Rm. 1001 at 6 p.m.

October 11

• **The Academic Resource Center** will be hosting a workshop, "Marking the Regent's Reading Exam" in the Forest Drive Building, at 12 p.m. in Rm 1218 and at 2 p.m. in Rm. 1231.

October 10-14

• **GSU presents "Tartuffe: Born Again"** in the Black Box Theatre. For ticket information call 681-0123.

October 12-14

• **The South Georgia District Export Council** will sponsor an International Trade and Logistics Workshop at the Coastal Georgia Center in Savannah. The program runs from 8 a.m.-5 p.m. on Thursday and Friday and from 8 a.m. to noon on Saturday. The course registration fee, lunches, and materials cost \$50 dollars. Call (912) 681-5551 to register.

October 12

• **The Eagle Expo Career Fair** will be held from 9 a.m. to 1 p.m. at the RAC. For more information, call 681-5197.

• **The Statesboro Regional Library** will sponsor a free financial workshop especially for women. Magan Bullock will present "Financial Wellbeing: What Every Woman Should Know" in the community room at the library. Contact Lyn Hagensmith at 764-1334.

• **GSU Diamond Girls** will be having an informational session at 7 p.m. at the Wiggins Center. All interested ladies are welcome to attend.

• **GSU Health Services**, in conjunction with VACCESHealth, will conduct the "Meningitis Immunization Outreach Program" from 1-7 p.m. in the Russell Union room 2070. It is a walk-in clinic and the fee is \$75 for the vaccine. For any questions call 1-877-482-2237 or 681-5641.

October 13

• **Commissioner of the Southern Conference** Alfred White will hold a brown bag lunch open to the GSU campus at 12 p.m. in the Russell Union.

October 14

• **GSU CRI and area businesses** will sponsor the "Hoofin'" for Habitat Road Race. Activities will begin at 8 a.m. at the Recreation Activities Center. For more info call Kelly Brooks at 681-5436.

October 16-17

• **The GSU Center for Continuing Education** will offer three Red Cross Classes. The fee is 20 dollars for any individual class, 35 for any two, and 45 for all three. Adult CPR will meet 6-10 p.m. on

Monday, Oct. 16 in Russell Union Room 2041. Infant and Child CPR will meet 6-10 p.m. on Tuesday, Oct. 17 in Russell Union Room 2041. Advance registration and payment is required. Register in person at the Continuing Education office in College Plaza, 8 a.m.-5 p.m. or call 681-5551.

• **Auditions for The Miracle Worker** will be held in McCroan Auditorium at 7 p.m.

October 17

• Last chance to join **Pi Sigma Epsilon**. Orientation will be held in COBA room 2208 at 6 p.m. Open to all majors.

October 18

• **The Academic Resource Center** is hosting a workshop "Correcting Common Sentence Errors" at 3 p.m. in the Henderson Library Rm. 1042.

October 20-21

• **The Department of History** will sponsor "The Conference on Global Currents in Southern History." For more info please contact Vicki A. Smith-Davis at 681-0405.

October 21

• **The Spanish Club** will hold a car wash at Arby's beginning at 10 a.m.

October 23

• **The Academic Resource Center** will present academic success workshops: "Preparation for the Reading CPE" by DeLoach at 10 a.m. in Library room 1042, "Preparation for the Regents' Exam" by Tuggle at 2 p.m. in Forest room 1231, "How to Study History Effectively" by Downs at 11 a.m. in Forest room 1218.

October 24-25

• **The Academic Resource Center** will present a Regents' Essay Review on the 24th at 2 p.m. in Library room 1042 and on the 25th at 3 p.m. in the Library room 1042.

October 24

• **GSU Student Nurses** will sponsor a blood drive from 11 a.m. to 4 p.m. behind the Russell Union.

October 27

• **The Center for Latino Outreach and Research Services** will be hosting a Halloween party for Hispanic children at Sparkleberry Farm from 2:30-5 p.m. Please call Dr. Debra Sabia at 681-5725 for any questions.

• **New Student & Parent Programs, Eagle Athletics, and the GSU Foundation** will sponsor GSU Family Weekend. Several packages are available including game tickets and a pre-game barbecue. Please call 871-1987 for more info.

October 31

• **Beta Beta Beta** will sponsor a blood drive from 10 a.m. to 4 p.m. behind the Russell Union.

November 3

• **The GSU planetarium** will present a star show of the current night sky and current space missions. Telescopic viewing of the Moon, Jupiter and Saturn outdoors, if clear, following the presentation. The Statesboro Astronomy Club will meet following the presentation/observing. For more info, contact the Physics Dept. at 681-5292.

• **The Spanish Club** will hold a car wash at Arby's beginning at 10 a.m.

December 2

• **The GSU planetarium** will present a star show of the constellations, planets, meteors and other sky objects visible during the holiday season. A partial solar eclipse will occur on Christmas Day and instruction will be given on how to safely view it. The Statesboro Astronomy club will meet before the presentation. For more info, contact the Physics Dept. at 681-5292.

The George-Anne
Williams Center room 2023
P.O. Box 8001
Statesboro, GA 30460

How to reach us

ADVERTISING:

681-5418

STORY OR PHOTOS:

681-5246

FAX NUMBER:

486-7113

E-MAIL TO:

gia@gasou.edu

Editorial Board

David Koepke

Editor-in-Chief

gaeditor@gasou.edu

Justin Johnson

Managing Editor

gamed@gasou.edu

John Bryson

News Editor

ganewsed@gasou.edu

It is a desire of The George-Anne to print the news of Georgia Southern University as accurately as possible. If you believe that something covered is in error, contact the editor at 681-5246 as soon as possible.

*Liked By Many,
Cussed By Some ...
Read By Them All.*

This Week's Weather

Today



Mostly Sunny
with a high of
77 and a low
of 48.

Thursday



Mostly Sunny
with a high of
77 and a low
of 49.



Sandwiches

Chicken Sandwich

99¢

Open 'til 1AM
Thursday-Friday-Saturday



Statesboro Only
Limit Two per Coupon
Expires 12/15/00

All New: All Yours: All Free

**MadAdz
welcomes**

Georgia Southern University

The first three students
in each category to place ads
will get a **free T-shirt**.
Just another way in which
MadAdz.com will
hook you up.

Limit one T-shirt per student.

No Brainer.

\$500 cash
that you can put towards
rent, tuition, books, or whatever,
awarded to two students a day,
five days a week, just for
posting a classified on
www.madadz.com.

Live & Learn.

MadAdz.com hooked me up.
Your Classifieds. Your Campus. Free.

No purchase necessary. Void where prohibited.

Homecoming T-Shirts

Available at The University Store

MOW-DOWN THE MOUNTAINEERS

HALP!!!!

OCT
14
2000



PAULSON STADIUM HOMECOMING 2000

681-5181 • 1 (800) 861-7059

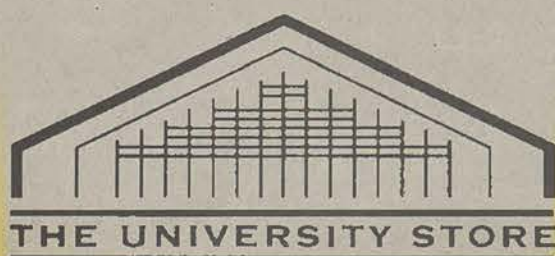
<http://www.gsustore.com>email: ustore@gasou.edu

Monday - Thurs. 7:45am - 6:00pm

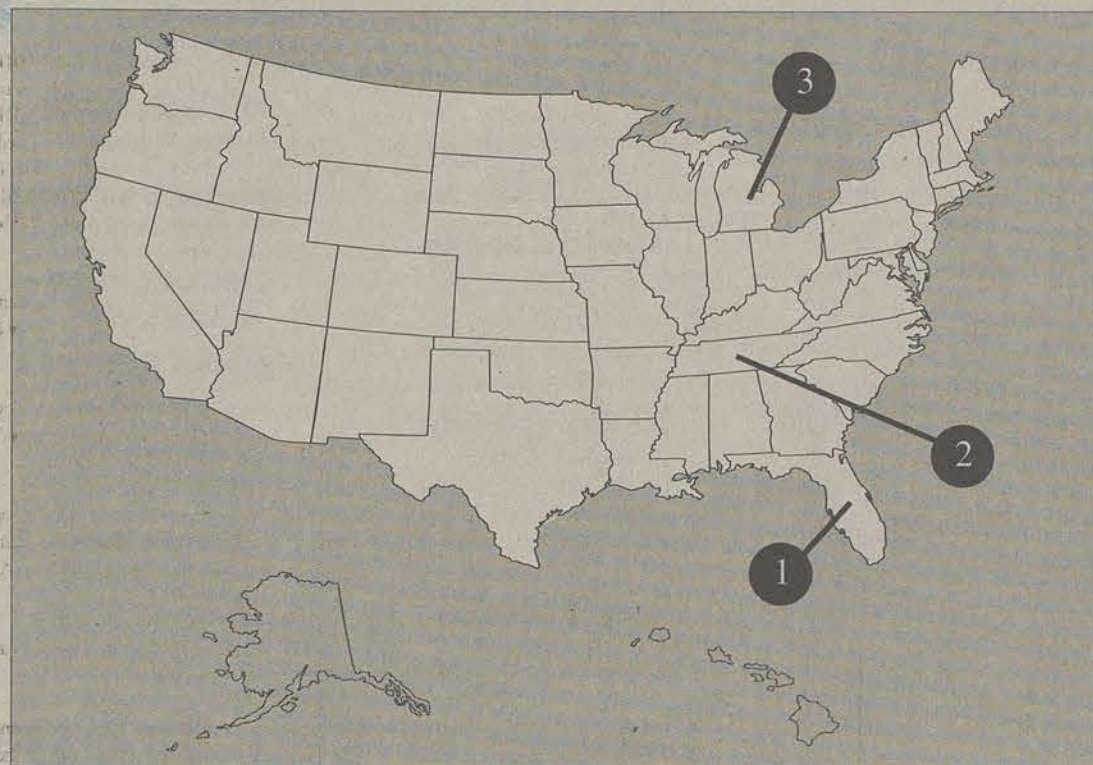
Friday 7:45am - 5:00pm

Saturday 11:00am - 5:00pm

A Member of the National Association of College Stores



ONLY IN AMERICA...



1 Florida

Trailer full of alligator carcasses overturns

The Associated Press

FORT LAUDERDALE — A trailer carrying 26 alligator carcasses to a processing plant overturned Wednesday, spilling its cargo onto the highway and closing a lane for an hour.

Robert Collins was driving a pickup truck and towing the refrigerated trailer on Interstate 595 when the trailer began to sway and he lost control of it, the Florida Highway Patrol said.

Collins drove into the median, where the trailer overturned.

The carcasses, which weighed approximately 10,000 pounds, were put on a flatbed truck and taken to All American Alligators Processing in Pembroke Park.

2 Tennessee

Couple seeks \$125,000 for pickle burn on chin

The Associated Press

KNOXVILLE, Tenn. — A woman who claims she was permanently scarred after a hot pickle from a McDonald's hamburger fell on her chin is suing the restaurant for more than \$100,000.

Veronica M. Martin claims in a lawsuit filed in Knox County Circuit Court that the burn also caused her physical and mental pain. She is seeking \$110,000. Her husband, Darrin Martin, is seeking \$15,000, because he "has been deprived of the services and consortium of his wife."

The hamburger "was in a defective condition or unreasonably dangerous to the general consumer and in particular to (Veronica Martin)," according to the two-page law-

suit, which was reported in The Knoxville News-Sentinel on Saturday.

Representatives with Mar Inc., owner of the McDonald's franchise, did not return a telephone call from the newspaper.

The lawsuit says the Martins bought hamburgers at the McDonald's on Oct. 6, 1999.

"While attempting to eat the hamburger, the pickle dropped from the hamburger onto her chin," the lawsuit reads. "The pickle was extremely hot and burned the chin of (Mrs. Martin)."

Mrs. Martin had second-degree burns and is permanently scarred, according to the lawsuit.

In 1994, a New Mexico woman was awarded \$2.7 million after suing McDonald's for burns she suffered when coffee she bought at a drive-through window spilled in her lap.

A judge later lowered the award to just under \$500,000.

3 Michigan
Police seize counterfeit sports apparel from warehouse

The Associated Press

DEARBORN — Sterling Heights police say they have confiscated more than \$1 million worth of counterfeit sports apparel and watches from a clothing warehouse here.

Sterling Heights Detective Capt. David Vinson said police made the raid on Saturday, the result of a six-week investigation aided by Detroit

Red Wings security officers. Officers confiscated three truck loads of items with Red Wings and Detroit Tigers logos, Tommy Hilfiger shirts, designer watches, caps, Pokemon jackets and more.

None of the materials found were actually manufactured by the designers or companies named, police said.

"I've had a secretary doing nothing over the past three days but logging all of the items we confiscated," Vinson told The Macomb Daily for a Thursday story. "There was over \$100,000 worth of clothing just in one corner of the warehouse."

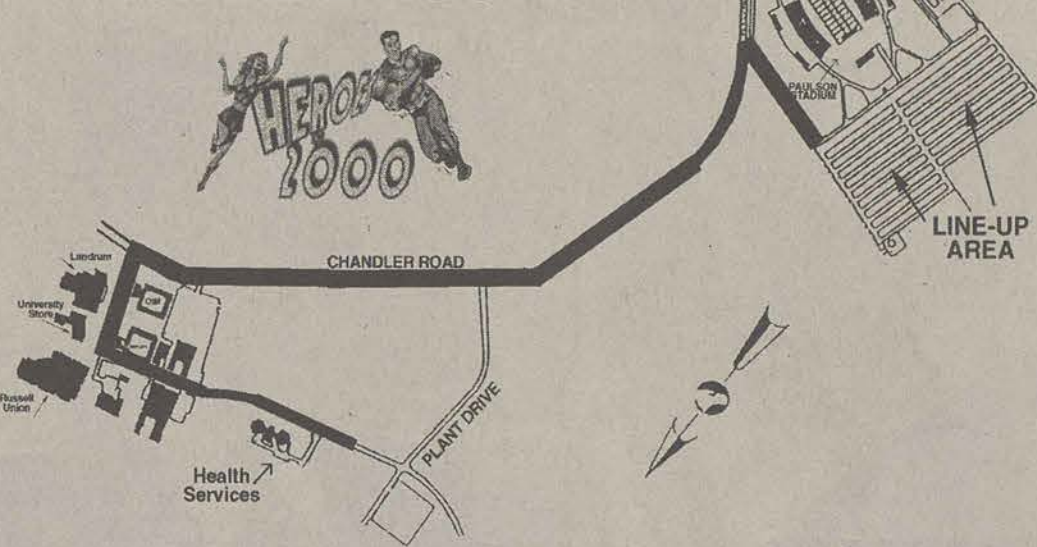
Vinson said no arrests have been made, and the matter con-

tinues under investigation. Vinson said police received a tip several weeks ago that a business in Sterling Heights was selling cloned cellular phones and narcotics.

He said police spent some time in the business and found unlicensed sports shirts, jackets and caps and sunglasses and watches being sold.

The items were being sold at stores and gas stations in the Detroit area and at the Gibraltar Trade Center, Vinson said.

- Only In America
compiled by Nicole Bella.

HOMECOMING
PARADE ROUTE

!ATTENTION!

All Residents Living Off Chandler Road.
Chandler Road will be closed from
3:30-5:00pm for the Parade!



OPEN FOR
LUNCH!
OPEN LATE!

Hungry Howie's Pizza

Statesboro

(Across from Winn Dixie)

764-6565

Original • Sesame • Buttered • Rye • Poppy Seed • Garlic • Cajun • Buttered Cheese

Pizza

ORIGINAL ROUND PIZZA	Small	Medium	Large	X-Large
Cheese.....	5.35	6.45	7.55	8.60
1 Topping.....	6.16	7.32	8.60	9.70
2 Topping.....	6.97	8.19	9.65	10.80
3 Topping.....	7.78	9.06	10.70	11.90
4 Topping.....	8.59	9.93	11.75	13.00
Add a 2nd Pizza (pizza of lesser or equal Value)	4.00	5.00	6.00	7.00
Add a Topping.....	.81	.87	1.05	1.10

ITEMS TO CHOOSE FROM

Pepperoni • Mushrooms • Italian Sausage • Ham
Green Peppers • Onion • Ground Beef • Jalapenos
Black Olives • Pineapple • Anchovies • Mild Pepper

THE WORKS.....	8.65	10.85	13.05	15.25
Pepperoni, Mushroom, Ham, Italian Sausage, Green Pepper & Onion.				

SPECIALTY PIZZAS.....	8.65	10.85	13.05	15.25
Choose from Bacon Cheddar Cheeseburger, Vegetarian, Howie Maul, Philly Steak, Meat Eaters.				

STICKY FINGERS.....	9.75	11.95	14.15	16.09
Cheese, Pepperoni, Mushroom, Ham, Italian Sausage, Green Pepper, Onion, Ground Beef & Black Olives.				

Subs & Stuff

OVEN-BAKED CALZONE

DELUXE ITALIAN.....	5.49
Sliced Ham, Salami, Cheese, Lettuce, Tomato, Onion, & Mild Pepper.	
STEAK CHEESE & MUSHROOM.....	5.49
Steak, Cheese, Mushroom, Lettuce, Tomato, Onion & Mild Pepper.	
HAM & CHEESE.....	5.49
Ham, Cheese, Lettuce, Tomato, Onion, & Mild Pepper.	
PIZZA SUB.....	5.49
Pizza Sauce, Pepperoni & Cheese.	
PIZZA SUB SPECIAL.....	5.49
Cheese, Pepperoni, Ham, Mushroom, Onion, Green Pepper & Pizza Sauce.	
VEGGIE SUB.....	5.49
Cheese, Mushroom, Onion, Green Pepper & Black Olives.	
TURKEY SUB.....	5.49
Sliced Turkey Breast, Cheese, Lettuce, Tomato & Mild Pepper.	
TURKEY CLUB.....	5.49
Sliced Turkey Breast, Ham, Bacon, Cheese, Lettuce, Tomato & Mild Pepper.	
HOWIE BREAD.....	2.49
HOWIE BREAD W/ SAUCE.....	2.49
3-CHEESER BREAD W/ SAUCE & CHEESE.....	3.99
EXTRA SAUCE.....	.75¢

Beverages..... 16 oz. — .89¢ • 32 oz. — \$1.09
Coke, Diet Coke, Sprite, and others... 2 Liter 1.99

Wings & Salads

HOWIE WINGS

Chicken Wings served with Celery, Blue Cheese & Spicy Howie Sticks

10 WINGS.....	5.49
20 WINGS.....	9.49
30 WINGS.....	12.99

SALADS

	Small	Large
ANTIPASTO SALAD	2.99	4.99
Lettuce, Ham, Salami, Cheese, Pepper Rings, Onions, Tomatoes, Black Olives & House Dressing.		
CHEF SALAD	2.99	4.99
Fresh Crisp Lettuce, Tomatoes & Onions topped with Diced Ham, Mozzarella Cheese & Black Olives.		
GREEK SALAD	2.99	4.99
Lettuce, Tomato, Onion, Feta Cheese, Sliced Beets, Finger Peppers & Black Olives.		
TOSSED SALAD	1.95	3.15
Lettuce, Tomato & Onion with your choice of Dressing.		
EXTRA DRESSING	.39	.39

Greek Dressing, Italian, French, Blue Cheese, Ranch & Fat Free Ranch & 1000 Island

Party Time

Three Pizzas with
One Topping

3 Mediums	\$13.99
3 Large	\$18.99

Hungry Howie's Pizza
Plus Tax • Limited time • Limited Area

Delivery
Extra

Carry out Special

Sundays & Mondays

1 • Medium
1 • Topping Pizza

\$3.99

Tuesdays & Wednesdays

1 • Large
1 • Topping Pizza

\$5.99

Hungry Howie's Pizza
Plus Tax • Limited time • Limited Area

Delivery
Extra

Howie Combo

1 • Large Pizza
1 • Topping
1 • Order Breadsticks
W/ Sauce
Free 2 liter of Coke

\$9.98

Hungry Howie's Pizza
Plus Tax • Limited time • Limited Area

Delivery
Extra

Your Best Pizza Deal

1 • Large
2 • Topping
Pizza

\$7.99
2nd \$6

1 • Extra Large
1 • Topping
Pizza

\$8.99
2nd \$7

Hungry Howie's Pizza
Plus Tax • Limited time • Limited Area

Delivery
Extra

Lunch Special

\$4.99

Value Menu
11am-3pm

- 1) Any Oven Baked Sub "Calazon Style"
- 2) 10 Wings w/ Celery
- 3) 1 Small • 1 topping Pizza
- 4) 1 Jr. "Personal Pan" Woks Pizza

Hungry Howie's Pizza
Plus Tax • Limited time • Limited Area

Delivery
Extra

Carry out Special

Two Mediums

\$9.99

Large One Top

\$6.99

Hungry Howie's Pizza
Plus Tax • Limited time • Limited Area

Delivery
Extra

Pizza and Wings

1 • Medium Pizza
1 • Topping
10 • Chicken Wings
Celery, Blue Cheese Dressing
and Spicy Howie Sticks

\$9.99

Hungry Howie's Pizza
Plus Tax • Limited time • Limited Area

Delivery
Extra

3 ON 3

Your 3 Favorite toppings
on a 3 Cheeser Pizza

1 Medium
2nd Pizza

\$7.99
\$5.00

1 Large
2nd Pizza

\$8.99
\$6.00

Hungry Howie's Pizza
Plus Tax • Limited time • Limited Area

Delivery
Extra

Expires
Sept. 30, 2000

Save \$1 on any of these coupons

valid for pick-up
or carry out only

Have some class, and show respect for our guests

Last year, in Boone, N.C., the Appalachian State Mountaineers hosted Georgia Southern in their annual Southern Conference matchup. App. State fans at the game, it was widely reported, were unruly and rude towards those Eagles supporters who made

Our Opinion

the long drive up from Statesboro. Altogether, the experience was not one of reciprocal sportsmanship.

This year, Appalachian State must travel to 'Our House' and deal with the conditions here in Statesboro. While some fans may be tempted to exact revenge for those in Boone who showed their lack of decency, the George-Anne would like to ask all fans of the Eagles to not display the same lack of respect for them that they gave us a year ago.

The reasoning is simple. The NCAA has issued an ultimatum to GSU: clean up the behavior of your fans or risk losing the right to host playoff games. Which is more important: treating the App. State fans like trash (which they did to us), or behaving in an appropriate manner so that GSU will be able to host important playoff games at season's end?

That's not to say that GSU fans shouldn't cheer their team on or boo when necessary (often the referees need a reality check). But don't throw things at the ASU bench, taunt the visiting fans or, most importantly, engage in physical violence.

We will be the showcase game of the weekend in Statesboro, and all eyes are on us. Let's show the rest of the Southern Conference, Appalachian State and the nation that we know how to conduct ourselves like 'championship fans for a championship team.'

For 73 years, Georgia
Southern's Official Student
Newspaper

The 2000 Editorial Board

David Koepke
Editor in Chief

Justin Johnson
Managing Editor

John Bryson
News Editor

The 2000 Editorial Staff

Nick Crouch
Deputy Managing Editor

Leigh-Anne Burgess
Assistant News Editor

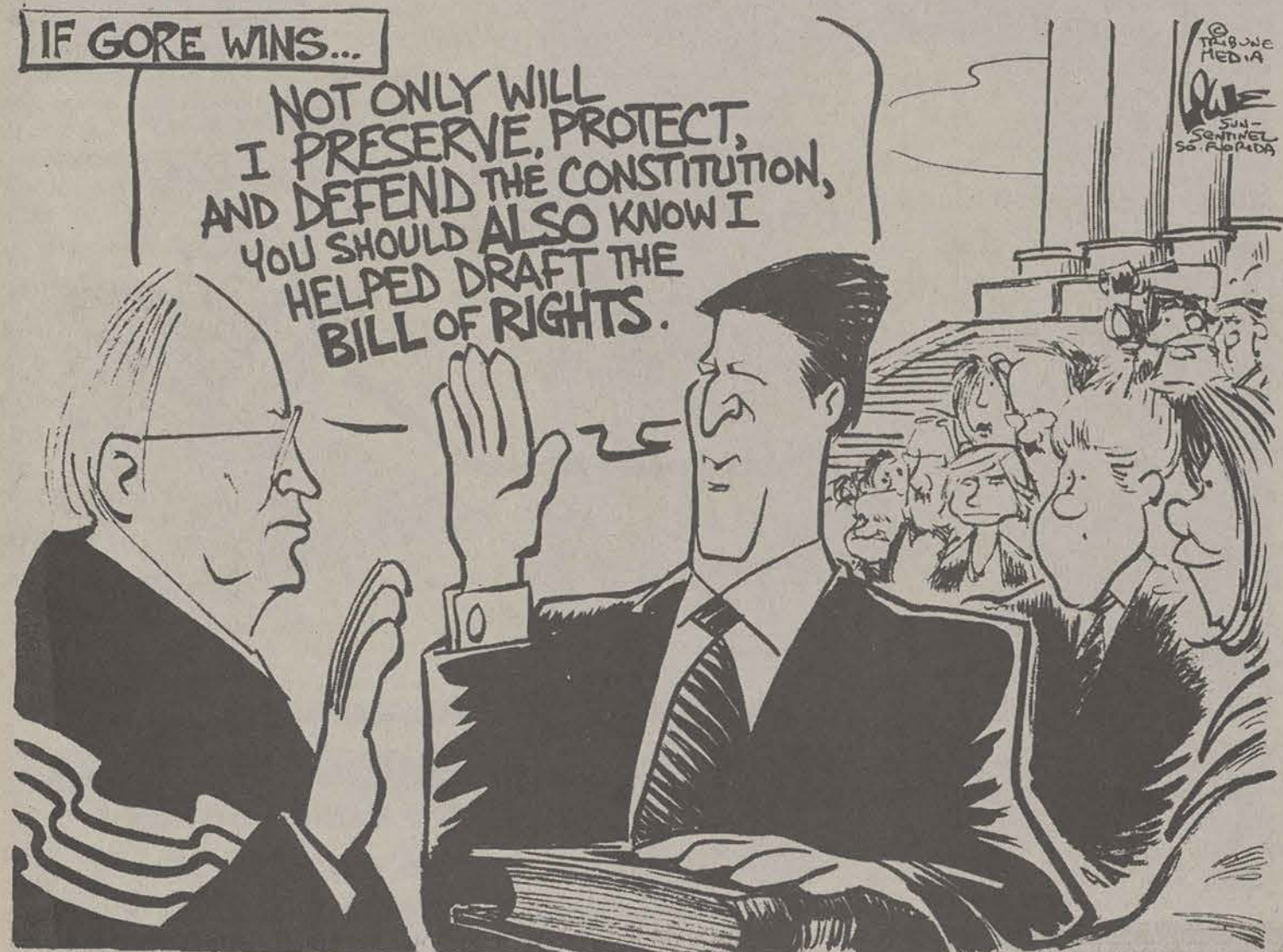
Lindsay Wise
Photo Editor

Melissa Connors
Sports Editor

Erin Merritt
Assistant Sports Editor

Tim Prizer
Lifestyles Editor

Dana Mackay
Assistant Lifestyles Editor



"Immediate family" rule needs reconsideration



RANDY
DOBSON

I received a telephone call last Wednesday evening at about 10 PM, with the Caller I.D. revealing a number unfamiliar to me. Upon answering the telephone I realized it was a friend of mine, a former roommate.

Sadly, the first thought that went through my mind was, "Oh brother! Now what?" You see, she and I had gotten into a really big tiff over something fairly ridiculous, so we had not parted on the best of terms.

At any rate, within seconds, she informed me that her 25 year-old cousin had lost his battle with cancer... all of a sudden, our little squabble didn't seem to matter much anymore. Know what I mean?

His parents had been at his side in Atlanta when he passed, but my friend had returned to Statesboro right before that, so she was not there with him when he died. And it sucks for them both that she had to be here at school.

In November 1998 we lost a man who was darn near as close to me as my own daddy. He was in Viet Nam with my daddy, and I grew up with his only son. I was there the day both of his grandchildren were born, and he was there for, well, everything I can remember.

The week Curt died I was told by a professor that I "...had to get my priorities in line", or I was in danger of "not making it in college." Well, my priorities were in line, and in a few hours I was sitting at his side as he lay dying on his bed. The damnable thing was that, after two days, I came back to school and he passed away...three hours after I had left.

He had lymphoma-all three kinds-and the intravenous drugs had him

so out of it he could barely recognize his wife. But, and I thank God for this, for the two days I was there, he would talk to me and I would hold his fragile hand, telling him how much I loved him.

I cried those two days. Lord knows I cried: with his wife, his son, his grandchildren, with my parents, and with him. This once stout man of 6'4", 245 pounds had been reduced to 120 pounds the day he died, but he was still strong enough to cry. Again, thank God for that. I missed many days of school those two weeks, but was not permitted to make up work because Curt was not "immediate family".

My friend has not complained to me about this issue, and she probably wouldn't anyway. But I wonder if she had to deal with that scenario. Or, in fact, how many of you have had to deal with that issue since you have been here?

I remember the very first night she told me about her cousin's illness. We were sitting outside of Pizza Inn and I noticed she seemed a bit down. I hardly knew her, but asked if there was anything I could do to help, like listen. What she said to me I will never forget: "My cousin is dying." And then she cried.

Mike Tyson has never hit me. But at that moment, I felt the pain of her entire family cover me like a blanket. The soft, yet pain-filled look on my soon-to-be-friend's face broke my heart and all I could do was sit there and listen as she told me of a guy she loved as much as life itself.

Now here we are, almost a year to the day later, and Lauren was calling and telling me, "Randy, I know we didn't end on a good note last time, but...Brent died Saturday." And again, she cried.

Randy Dobson is a senior at GSU and can be reached at redobson2000@frontiernet.net.

Take a tip from the squirrels



DANA
MACKAY

Today I saw some squirrels procreating, doing the horizontal mambo, the freaky nasty, the dirty deed. Now it isn't the

actual act that weirded me out (although I admit I have never seen squirrels do it), but it was the fact that they were doing it on the side of a tree outside of the Williams Center. So I guess I should call it the vertical instead of horizontal mambo.

Do these squirrels have no couth? And can you imagine, before our world became a modest society that people were out doing it wherever they wanted to?

Now, I am sure that doing it on the side of a tree has an interesting quality to it, that as humans, we cannot feasibly experience. Unless of course some sicko out there came out with some new "toy."

Maybe there has been someone that came up with blueprints for a product, the only trouble was where to put the UPC code seeing as how it would probably be made of velcro and bungee cords. I am sure that the new "Strap To It and Do It" would be the replacement of the Kama Sutra.

You wouldn't need thousands of ways to do it; you

could do it in a tree! Of course, they wouldn't be allowed to be used in public trees, but only trees in the privacy of a couple's own home. And you couldn't place the "toy" more than six feet up a tree or the neighbors might see you over the privacy fence. Cosmo would have some creative new material, and I am sure that it would be advertised in Playboy.

It may even spark a new craze of freaky vacation sites, like the one portrayed in "Exit to Eden". It would be a new trend at nudist colonies. "Come see us at We Be Naked: We offer 'Strap To It and Do It' rentals." And maybe smaller models would be sold on QVC for those that live in the city and don't have any access to trees. They would have a "Strap To It and Do It" ceiling version, and refrigerator door version.

The fantasy that you have always had of doing it on the wall of your hallway can finally come true, thanks to this great new "toy."

As for the future of the product, as technology improves, you will be able to do it on the outside of an airplane, while in flight. It will put a whole new meaning to the "mile high club." Just imagine driving down the interstate and seeing a loving couple strapped to a light pole.

Squirrels watch out. Come soon we will be invading your stomping ground.

Be sure to stop by the Student Media tailgate party at the Homecoming game Saturday!

LETTER AND SUBMISSION POLICY

The George-Anne welcomes letters to the editor, story submissions and guest columns from people both inside and outside the GSU community. All copy submitted should be typed (double-spaced, please), preferably on Macintosh disk in Microsoft Word or Microsoft Works format. All submissions must be signed and include a mailing address and phone number for verification. The editors reserve the right to reject any submission. There is no word limit on submissions. A writer may request to remain anonymous. However, it will be the editor's decision whether or not to print the name. Submissions are run on a space-available basis.

THE GEORGE-ANNE STAFF

NEWS

Liegh-Anne Burgess, Jake Hallman, Shawntineal Hughes, Jason Kemp, Neusomba Long, Teresa Southern, Malcom Travers

LIFESTYLES

Julie Allen, Andrea Bernier, Amanda Davis, Colin Dube, Jessica Garcia, Christina Newman, Madelyn Paxon, Amanda Permenter, Zane Thomas, Michael Russo, Ashlee Whelan

SPORTS

Edmund Coley, Bilal Malik, Jennifer Martin, Taryn Price

PHOTOGRAPHY

Alisha Fulton, Jordan Fidanza, David Whiddon, Neusomba Long, Laura Cox, Phillip Murphy, Gabriel Childers, Jeff Dion, Laura Calvert, Liz Smith, Latonya Rayner, Luke Renfro

STUDENT PUBLICATIONS

News, Editorial Advisor

General Manager
Bill Neville

CIRCULATION

Supervisors
David Panowicz, Chris Rhyne

ADVERTISING/DISTRIBUTION SERVICES (ADS)

Advertising Manager
Vic Cuvo

Business Manager
Courtney Williams

Ad Reps
Jonathan Brooks, Tiffany Domingas, Calvin Rick, Scott Campbell, Tommy Horrine, NicoleBella, Brooks Clements

PRODUCTION AND GRAPHICS EDITORIAL SERVICES (PAGES)

Marketing Director
Brooks Clements

Production
Calvin Rick, Jonathan Brooks, Nicole Bella, Adam Drew

WebMaster
Segio Waldring

College Algebra is of the devil



CHRIS
BRENNAMAN

There is one thing that brings every single person on this campus together. English majors, journalism majors, education majors and music majors all have to pass one trial before moving on to what I feel are the important classes, classes that actually matter to those outside of the math science departments.

That's right, I'm talking about college algebra.

For some reason, the University system has deemed it necessary to force each and every student to pass through the hell that is college algebra. Whether you will ever need to use it or not according to your major, you have to sit through and try to make at least a C to escape.

Here's a GSU Fun Fact:

College Algebra is the most failed course offered.

It's True.

Going into it, the odds are that you will not make it out with a salvageable grade. I'm a senior and currently enrolled in an algebra class. I'd bet that there are more of us in the class than there are freshmen.

Why? Well, there was a time when I would have said that it was because I was not mathematically inclined.

However, I have recently learned that that is not the case.

I have a teacher that is hailed far and wide as being the best teacher of college algebra on campus. Most of her students pass. This is a good thing, right?

Not according to the math department. My teacher says that according to the math department, college algebra is nothing more than a weed out class. It gets us idiots out who don't belong in college. Forget the fact that we may be A students in all of our other classes, if we're not good at math then we must have no right to an education.

This teacher also told us that certain important aspects were not going to be taught. Not because the teachers did

not want to teach them but because the math department decided that we should already know "things" going in. We're talking things like factoring that are essential to passing the class. Sure you math majors don't see a problem with this, but the rest of us, let's just say we're sweating.

This teacher also informed us that the department is a bit upset with her because too many people pass her class.

That's right. The math department wants you to fail. This is nothing short of sick.

The sad truth is that the math department has everyone of us backed into a corner. Like I said, we all need at least one math class to graduate and the department in charge is in the middle of having some sort of dictatorial power trip that no one seems to mind. Sure, students complain about it but what else?

It's obvious that the university is becoming more and more cold, distant and machine like the bigger it gets. This trend only serves as a testament to this.

One of two things needs to happen.

The first and best option is that the top brass of the university's administration step in and do something about this. They have the power, there is a need, now it is time for action. Step away from the committees for just a few minutes a give us a hand. This is a problem far worse than parking, construction-site class rooms, and union birthday parties.

The second option is to design a math class for students who don't think mathematically. There was a class like this called mathematical modeling. Not every one thinks in a way that allows them to easily grasp the quadratic equation. There are liberal arts majors on this campus, not just Georgia Tech bound engineers.

There are probably better solutions out there. We need to use them. There is no excuse for students to be held back by one little department. There is no excuse for one department to have this much control.

Chris Brennaman can be reached for contact at GSU_jeon@hotmail.com

Sanford Stadium will now host battles 'between the chain link fence'

Fans who stormed the field following UGA's 21-10 victory over Tennessee destroyed hallmark hedges

The Associated Press

ATHENS, Ga. - When Georgia fans mobbed the field to celebrate a memorable victory over Tennessee, they also damaged one of college football's most hallowed traditions.

The hedges that have surrounded Sanford Stadium since it opened in 1929 will be cut back to stubble after getting trampled Saturday night.

For the final three home games, including this weekend's homecoming contest against Vanderbilt, the Bulldogs will take on their opponents "Between the Chain Link Fence" instead of "Between the Hedges."

The damaged shrubs will be pruned so they can grow back in time for next season. In the meantime, an unsightly chain-link fence that had been hidden from view will provide a barrier between fans and the field.

"It's going to be ugly," athletic director Vince Dooley said Monday. "We hope this will be a good lesson for the future."

Dooley criticized those who took part in the post-game melee, which left one student seriously injured, a dozen others with minor injuries and the stadium itself with at least \$70,000 in damage.

Fans ripped out seats, vandalized alarm systems and destroyed wheelchair ramps in the hoopla over a 21-10 victory that ended a nine-game losing streak to the Volunteers.

"What really disappoints me is the destruction of other parts of our stadium," Dooley said. "You could see a total disregard for the pride and tradition we have in our own place."

The mob scene at Georgia was only the latest in a series of incidents plaguing Southeastern Conference schools this season.

South Carolina fans have twice stormed the field at Williams-Brice Stadium, while LSU and Mississippi State have cleaned up from similar celebrations.

SEC presidents discussed the issue during a regularly scheduled meeting in

Atlanta on Monday. They announced a spring summit involving athletic directors and coaches to discuss ways of controlling unruly fans.

"It's a concern," SEC commissioner

high, 1,400-foot-long hedge served as a buffer to keep celebrating fans off the field.

Dooley, who came to Georgia as football coach in 1964, said he could

way down and we asked them to stop. They did."

But thousands of fans stormed the field Saturday night, overwhelming about 60 uniformed police officers and some 250 members of the stadium security force.

Dooley defended the school's preparations, saying more officers wouldn't have made a difference.

"You would have to use police dogs and horses to keep that many fans off the field," he said. "We don't want to go to that."

The English privet hedge received minor damage in 1998 from Georgia Tech fans celebrating a victory over the Bulldogs.

Georgia replaced the damaged sections with reserves grown for the 1996 Olympics, when the original hedge was removed to accommodate a larger field for soccer. A new hedge was planted in time for football season.

This time, there's nothing left to plant. On Tuesday, workers will begin cutting

back the damaged remains.

"We're going to have stubble," said associate athletic director Ray McEwen, the main hedge caretaker for 24 years. "How would you feel if someone came into your home and destroyed it?"

The hedge was almost completely destroyed in front of the Georgia student section. Large chunks were missing in other areas. The only section that didn't have major damage is behind the Georgia bench; it will be left intact.

On Monday, a few people stopped to look at the damage as they walked along a bridge that runs behind the west stands.

"I understand everybody being excited," said 22-year-old Chuck Duncanson, a senior who watched the game on television. "I wish people had shown a little more respect for the hedges."

The injured student, 18-year-old Kristine Yu of Roswell, was upgraded to good condition Monday at St. Mary's Hospital. Witnesses said she was trampled by fans when one of the goalposts began to fall.

"WHAT REALLY DISAPPOINTS ME IS THE DESTRUCTION OF OTHER PARTS OF OUR STADIUM. YOU COULD SEE A TOTAL DISREGARD FOR THE PRIDE AND TRADITION WE HAVE IN OUR OWN PLACE."

**- VINCE DOOLEY,
UGA ATHLETIC DIRECTOR**

Roy Kramer said. "We're going to take a hard look at it. We need to work with student bodies and fans."

There's not a magic potion here."

In addition to being a revered part of Georgia's football history, the 4-foot-

remember only one other time when fans got around the hedge—a 21-0 victory over Bear Bryant-coached Alabama in 1976.

"About 20 people came on the field and started to tear the goalposts down," Dooley recalled. "They got one part of the

Viterbo U. President pulls plug on 'Sexual Diversity Awareness Week'

TMS Campus

The times, they were a-changin' at Viterbo University in LaCrosse, Wis. But not anymore.

Viterbo president William Medland announced on Friday that the school would cancel its Sexual Diversity Awareness Week Symposium, scheduled for Nov. 8-15, and return a \$5,500 grant that was to help fund a theatre department production of a controversial musical.

Upon hearing Medland's announcement, students made plans to stage a rally this week in protest of the cancellation. Medland said that after several community groups issued "strong reactions" to the event, he met with event planners, members of the theatre department and his cabinet.

After discussing the concerns and detailing the nature of the event, the group, event planners included, was "unanimous" in its decision to cancel the symposium, Medland said.

In announcing his decision to the Viterbo community, Medland referred to

the mission statement drafted by the symposium's planning committee, which stated that the goal of the weeklong event was to provide a "safe, educational and supportive environment that promotes meaningful dialogue, open communication, understanding, respect and greater appreciation among the sexually diverse members of our communities."

"Given the existing climate, Viterbo could no longer fulfill the mission as stated," Medland said.

The decision follows months of planning for the event on behalf of students, administrators, faculty and members of the LaCrosse community, along with a \$5,500 donation from the LaCrosse Foundation's Building Bridges Program that was to be used to fund a production of "Splendor."

"Splendor" documents the journey of a young man's return to a town that had once ostracized him for his effeminate ways. In order to find acceptance from his former neighbors, Timothy returns disguised as a woman named Jessica. The local minister falls head over heels for

Jessica, while Timothy falls head over heels for the minister as he ponders telling him his big secret and possibly ruining the entire relationship.

Viterbo was one of 10 schools that received funds from the LaCrosse Foundation in order to put on the production.

Medland told the Viterbo community that while the current scenario is unfortunate, it should not be interpreted as a token of the school's attitude toward diversity.

"I wish to express my support and extend my sincere empathy to all the committee members who have given unselfishly of their time and talents over these past several months to a program intended to reduce hate for our fellow human beings," he said. "I understand and feel the hurt of those involved."

Founded in 1890, Viterbo University is a Catholic, Franciscan school rooted in the teachings and faith of the Roman Catholic Church. In September, Viterbo made the transition from college to university status.



The CRI Game of the Week Champions
The Zebra Cakes



The Zebra Cakes prepare to score again!

The Zebra Cakes Win CRI Flag Football Game of the Week

Congratulations to the Zebra Cakes for their 20-0 victory over the Wangsmen in the CRI Game of the Week Tuesday night. The Zebra Cakes scored one touch down in the first half and two more in the second, while a strong defense kept their opponents scoreless. Make sure you check out the excitement of next week's game on Monday, October 9th: Alpha Delta Pi battles Alpha Omega Pi at 9:00pm at Multiplex Field #2.



Ellis Farm Fresh Meats

Come In And See "The Biggest Little Meat Market In Statesboro Is Growing"

117 W. MAIN DOWNTOWN (Across from the Post Office)

HOURS: Monday - Saturday 8:00 AM - 7:00 PM

Call For Case Prices 489-4216 • Statesboro 489-8032



Gift Certificates Available

Now ACCEPTING THE EBT CARD.

Robbins
Homestyle
Smoke Sausage
\$1.55
1.25 Lb. Box

Ellis Choice
Round Steak
\$2.19
LB.

Half or Whole
Pork Loin
\$1.79
LB.

Claxton Fresh
Chicken
Leg Quarters
\$14.99
40 LB. Case

4-6 oz. Ellis
Beef Patties
Lean Ground Chuck
\$1.69
LB.

Ellis Country
Smoke Bacon
\$9.95
5 Lbs.
SLICED FREE

Farm Rich Battered
Apple Sticks,
Vegetable
Sticks,
or Yam Sticks
\$3.99
2 LB. BAG

5 lb. Bag Monarch
Cooked
Meat
Balls
\$12.99
81 ct.

Fresh
Chicken Wings
99¢
LB.

Meat For The Month

- 6 - 8 Oz. Ribeyes
- 3 Lb. Sirloin Steak
- 3 Lb. Chuck Roast
- 4 Lb. Ground Chuck
- 3 Lb. Bacon
- 10 - 4 Oz. Pork Chops
- 3 Lb. Shoulder Roast
- 3 Lb. Cut Up Fryers
- 3 Lb. Sausage

\$69.95

Vegetable For The Month

- 2 Lbs. Butter Beans
- 2 Lbs. Speckled Butter Beans
- 2 Lbs. Cut Green Beans
- 2 Lbs. Cut Squash
- 2 Lbs. Cut Okra
- 2 Lbs. White Acre Peas
- 2 Lbs. Zipper Peas
- 2 Lbs. Silver Queen (White Corn on Cob) 8 Pk.
- 2 Lbs. Mixed Vegetables
- 2 Lbs. Field Peas & Snaps
- 4 Lbs. John Cope's Silver Queen Cream Corn

FREE
5 Lbs.
Smoked
Hocks

SAVE \$10.00
\$39.95 Value

\$29.95

Your Choice

- 3-Lbs. Beef Roast
- 3-Lbs. Ground Beef
- 3-Lbs. Cube Steak
- 3-Lbs. Chicken
- 3-Lbs. Fresh Sausage
- 3-Lbs. Smoke Sausage
- 3-Lbs. Beef Patties
- 3-Lbs. Boston Butt
- 3-Lbs. Sliced Picnic Ham
- 3-Lbs. Spare Ribs
- 3-Lbs. Beef Ribs
- 3-Lbs. Hot Dogs
- 3-Lbs. Fish
- 3-Lbs. Bacon
- 3-Lbs. Bologna
- 3-Lbs. Spice Ham
- 3-Lbs. First Cut Pork Chops
- 3-Lbs. Beef Stew
- 3-Lbs. Ox Tail

\$39.95
Any 6 Items

\$59.95
Any 9 Items

\$74.95
Any 12 Items

70 LB. Variety Pack

- 5-Lbs. Cube Steak
- 5-Lbs. Ox Tail
- 5-Lbs. Cut Up Chicken
- 5-Lbs. Turkey Wings
- 5-Lbs. Pork Chop
- 5-Lbs. Pork Neck Bones
- 5-Lbs. Leg Quarters
- 5-Lbs. Ground Chuck
- 5-Lbs. Smoke Sausage
- 5-Lbs. Pig Feet
- 5-Lbs. Whiting Fillets
- 5-Lbs. Beef Ribs
- 5-Lbs. Beef Roast
- 5-Lbs. Bacon
- 2.5-Lbs. Rice
- 5-Lbs. Potatoes

\$99.95

Beef Freezer Pack

- 10 - 12 oz. T-Bone Steaks
- 20 - 4 oz. Cube Steaks
- 3 - 16 oz. Boneless Stew
- 20 - 1 lb. Pack Ground Beef
- 5 - 12 oz. Sirloin
- 2 - 3 lb. Chuck Roast
- 6 - 12 oz. New York Strips

\$159.95

Discount Deluxe

- 6 - 8 Oz. Ribeyes
- 2 - 16 Oz. Boneless Stew
- 3 Lb. Chuck Roast
- 10 - 4 Oz. Chuck Patties
- 10 - 4 Oz. Center Cut Pork Chops
- 5 Lbs. Ground Chuck Beef
- 3 Lbs. Pork Spare Ribs
- 3 Lbs. Cut Up Fryers
- 2-16 Oz. Pkgs. Ellis Sausage

\$69.95

Ron's Choice Pack

- 6 - 8 Oz. Chuck Eye
- 3 Lb. Round Steak
- 3 Lb. Chuck Roast
- 4 Lb. Ground Chuck
- 3 Lb. Pork Steak
- 3 Lb. Chicken
- 3 Lb. Fresh Ham
- 6 - 8 Oz. Chuck Patties
- 3 Lb. Picnic Ham

\$59.95

50 Lb. Budget Pack

- 5-Lbs. Pork Chops
- 5-Lbs. Pork Neckbones
- 5-Lbs. Bacon
- 5-Lbs. Hot Dogs
- 5-Lbs. Cubed Steak
- 5-Lbs. Beef Patties
- 5-Lbs. Turkey Necks
- 5-Lbs. Sausage
- 5-Lbs. Ground Chuck
- 5-Lbs. Cut Up Fryers

\$69.95
2 1/2 Lbs. Rice or 5 Lbs. Potatoes
FREE

Appalachian State University (4-1, 3-0 SoCon)

Georgia Southern University (5-1, 4-0 SoCon)



VS



Just Another Day At The Office For Southern

By Randy Dobson
Staff Columnist

(Editor's Note: This column appeared in the Tuesday edition of The Appalachian, ASU's student newspaper courtesy of The George-Anne.)

Well, here we go again. Right? Appalachian State University travels to Statesboro, Georgia (where even the football gods go to watch good football) to battle the Eagles of Georgia Southern University.

But, even with App. State coming in ranked no. 5 (and GSU no. 1), and even though ASU is the hated rival of GSU, and even though ASU is the only I-AA team in the country to hand the

mighty Eagles a loss last season, and even though it is Southern's Homecoming, will anything be different for Southern this coming Saturday?

Doubtful.

You see, last year's loss to the Mountaineers was painful, for all of the above reasons, but also because Georgia Southern turned the ball over and because the game may have been one of the worst officiated games in history. But I digress.

Yes, the same things could happen this year, especially with the Eagles uncharacteristically penalty happy this year. Yet I do not think even 200 yards in penalties will help the Mountaineers this year.

Nope. This is about pride. This is about the kind of rivalry known only to those who have played football in the South. For Yankees just don't get the emotion, the charge, the competitiveness, or even the hatred that comes with being part of college football in the South.

Kindred spirits though we may be down here in Dixie, there is one thing that stands between brothers like us: a battleground known only as "Our House". It needs no other name, yet still carries another: Home of the Defending National Champions!

Get it? I hope so because, in all honesty, the trip south to Georgia will not be an all-together pleasant experience for you App. State fans;

that much we can promise you.

You want to party? Fine. You want to have a good time after the game? You are welcome to join us. However, for approximately three hours next Saturday afternoon, um, how should I say this? How can I put it politely?

Knowing the guidelines for sportsmanship set forth by the Southern Conference, how can I properly relay to you the feeling of rage that befalls all who walk the hallowed grounds on the Eagles sidelines?

Ask UMass, or Illinois State, or Furman, or VMI, or Wofford, or, for that matter, your own players? They know. They feel it innately within the pits of their

stomachs, like a virus that is taking their bodies over... it is fear.

They may not admit it publicly, but when they are alone? Yep. It is definitely there. And you know what? When it boils right down to it, you, the reader, you know it as well. I know you do.

But, hey, it's cool. And do you know why? Because every man, woman and child on earth, at one point in their lives, have felt fear. It's okay to admit it. Really. Just do yourselves a favor and get help before Saturday's game.

Talk to yourselves in the mirrors across campus if you must; but come to grips with reality prior to your arrival in Statesboro. 'Cause if you don't, it

is gonna be a long ride home to Boone.

As for us, we thank you in advance for your kind participation in our Homecoming festivities this year, and respectfully ask your forgiveness for the whipping you are about to receive.

As the saying goes, "It'll be just another day at the office" for us. But hey, we're use to it. And by now, you should be, too.

Randy Dobson is the senior columnist for the George-Anne, and can be reached at redobson2000@netscape.net and, yes, he will still respect you in the morning.

GSU vs App. St. is the deciding game for SoCon supremacy

By Doug Kidd
Senior Sports Writer

Last weekend's 18-17 victory by Appalachian State over Furman means that this week's game between App. State and GSU will decide who stays perfect in Southern Conference action and is put in the driver's seat for the rest of the season. A Mountaineer win would put ASU in the enviable position of having to play UTC and Wofford, their toughest remaining in-conference opponents, for the SoCon championship while a GSU victory would still leave the Eagles to face Furman in order to capture the league title. A distinct possibility would be that each team beat each other, like last season when GSU, Furman and Appalachian State shared the conference crown.

Other league games include Furman and The Citadel, in a get-well game for the Paladins while Wofford hosts Western Carolina. The Terriers have won three in a row after dropping the first two to nationally-ranked teams. UTC hosts VMI in what appears to be another laugher, while ETSU has the week off.

Predictions - Last Week: 3-1. Overall: 21-7

Georgia Southern (5-1, 4-0)

Last Week: J.R. Revere threw for 165 yards and two touchdowns while adding 122 yards and another score on the ground in leading GSU to the 42-24 victory over Western Carolina. Adrian Peterson added 181 yards and a touchdown while Andre Weathers chipped in with 59 yards and a score while leading GSU to over 500 yards of total offense for the third straight game. Defensive tackle Freddy Pesquiera picked up the SoCon's defensive player-of-the-week award for his nine tackle, two sack performance against the Catamounts.

Appalachian State (4-1, 3-0)

Last Week: Joe Burchette, the Mountaineer's third-string quarterback coming into the season, passed for 290 yards and led ASU to the winning score with less than three minutes remaining to beat Furman 18-17. Karim Razzak led the ASU ground attack with 82 yards and Troy Albea caught three passes for 111 yards to pace the receiving corps. But the story of the game was the Mountaineer defense,

which shut down Paladin tailback Louis Ivory, holding him to a season-low 58 yards. Ivory entered the contest as the leading rusher in I-AA football. The Mountaineer defense picked off two critical passes, one in the endzone by Du'Shon Martin that allowed ASU to drive for the winning touchdown and the other by Corey Hall on the Paladin's final drive.

This Week: Georgia Southern hosts Appalachian State this weekend for a 3:30 p.m. contest. The Eagles are looking to avenge last season's 17-16 loss to the Mountaineers, which forced GSU to share the Southern Conference championship in '99. This season it is again the Eagles and Mountaineers battling for the league lead, with both squads entering the contest perfect in the conference and with only one loss overall. App. State's only loss this season was a 34-28 defeat to Troy State, a team that held first place in I-AA for three weeks this season. After Daniel Jeremiah went down with an injury and David Reaves struggled against ETSU, sophomore Joe Burchette has been spectacular, leading ASU to wins against the Bucs and the Paladins. Karim Razzak leads the Mountaineer ground attack with over 300 yards this season, but has seen his carries per game cut from '99, a season that saw him gain nearly a 1,000 yards. Troy Albea, who has seen sporadic duty at tailback this season, is ASU's main target at receiver. Joe Best, Jason Sowell and Corey Hall are the leaders of an outstanding defense. The Mountaineer rush defense is one of the best in I-AA and gave fits to GSU in last season's win. GSU counters with a prolific rush offense that is tied for first in I-AA for yards per game. As always, Adrian Peterson leads the Eagles ground attack. After a slow start, the junior is now the nation's fourth-leading rusher at 945 yards and

has gotten more help from quarterback J.R. Revere in the running game. Revere has picked up over 273 yards in his last three games while tossing for another 461 yards and seven touchdowns in that span. Although the GSU defense was disappointing last week against WCU, they are still giving up only 16 points per game this season. All-American candidates Freddy Pesquiera and Jason Neese lead a defense up front that has a strong secondary

yards in 10 plays for the 18-17 win. Louis Ivory, I-AA's leading rusher coming into the contest, was stopped by a tough ASU defense that held him to 58 yards. Hill did pick up the slack in the running game, gaining 115 yards on the ground while also passing for 156 yards on eight-of-13 passing. But Hill's two interceptions were the cause of Furman's undoing.

The Citadel (2-4, 1-2)

Last Week: The Citadel

Travis Stephens led the Citadel with 13 and 11 tackles respectively.

This Week: Furman looks to get back on track against a weak Citadel squad. After being slowed down offensively by the Mountaineer defense, the Paladins will try to get Louis Ivory and the rest of the offense back to where they were earlier this season when they averaged more than 300 yards rushing a game. The Citadel hasn't too much luck on offense this season against SoCon teams and it appears this week will be no different whether Scooter Johnson or Joe Call make the start behind center.

Prediction: Furman 45 The Citadel- 7

Wofford (3-2, 2-1)

Last Week: Wofford won their third straight game with a 42-28 decision over VMI behind the running of sophomore Jesse McCoy who rushed for 133 yards and three touchdowns. Quarterback Travis Wilson added 96 yards on the ground while tossing for 147. Wofford's offense rolled up 502 yards, including 355 on the ground in the win.

Western Carolina (2-4, 1-3)

Last Week: Despite getting a career-high 213 yards from freshman tailback Fred Boateng, the Catamounts fell to Georgia Southern 42-24 at home. Quarterback David Rivers threw for 151 yards and two touchdowns in the loss.

This Week: Things don't look well for the Catamounts as they travel to Spartanburg to take on Wofford. After giving up 400 yards rushing to Furman two weeks ago then another 373 against GSU, Western Carolina must face one more running team. Wofford, which struggled offensively in their back-to-back losses to start the season, has done well in their three past wins, gaining over 400 yards total in each of them.

Quarterbacks Travis Wilson of the Terriers and David Rivers of the Catamounts are key to their team's success although running backs Jesse McCoy and Tony Hudson for Wofford and Fred Boateng of Western Carolina will be pivotal as well.

Prediction: Wofford 28 WCU- 17

Tennessee-Chattanooga (2-3, 0-2)

Last Week: The Mocs were off last week.

VMI (0-6, 0-4)

Last Week: VMI put up some points at home last week against Wofford but came up short 42-28. Quarterbacks Aaron Mitchell and Dave Poldiak led the Keydet passing attack with 122 and 113 yards respectively. Running back Gene Cauthen added 67 yards rushing to lead VMI while Teray Frost caught six balls for 100 yards in the loss.

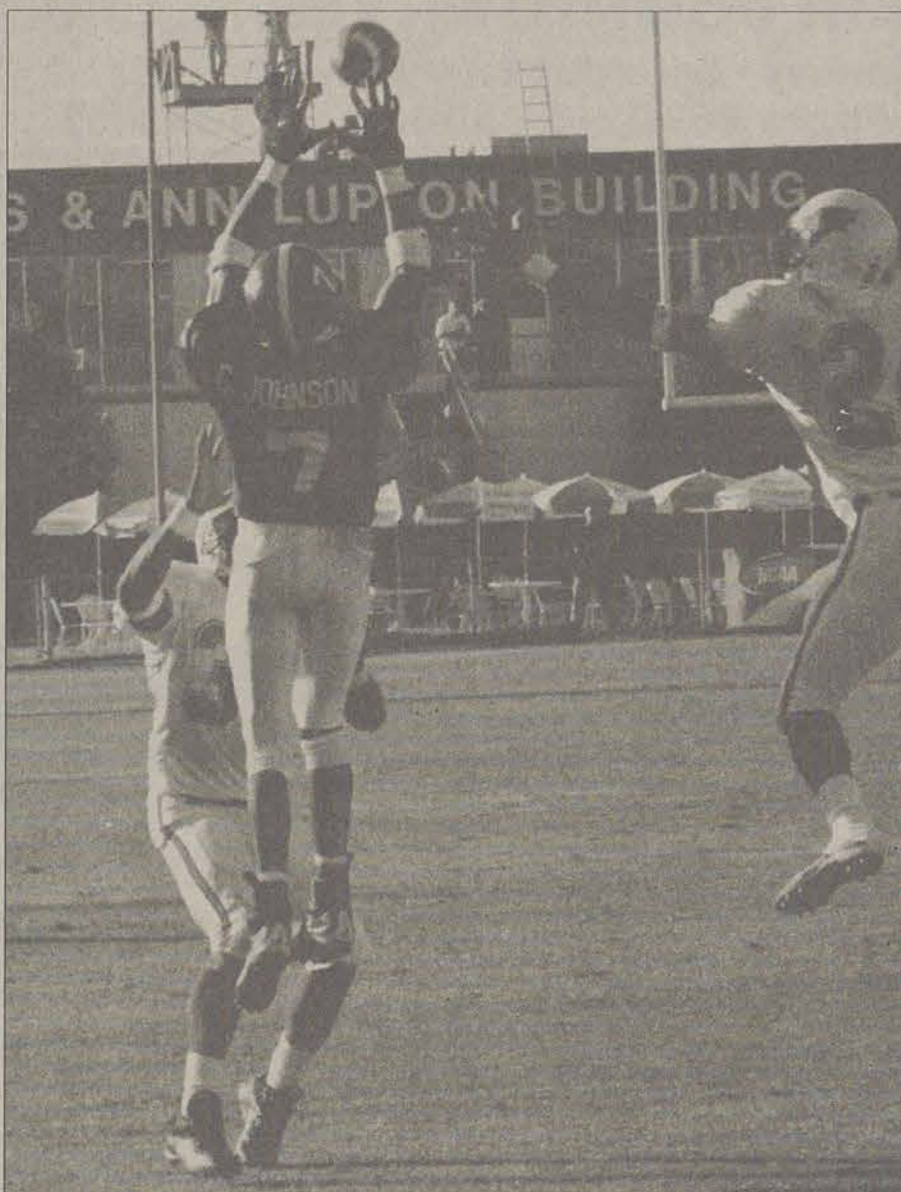
This Week: UTC will try to right the ship after dropping consecutive games before last week's bye week. They'll have to do it without the SoCon's leading receiver in Cos DeMatteo, who's suspension for an altercation against GSU was upheld by the league office after UTC's appeal. Quarterback Chris Sanders will now look towards Richmond Flowers as his go-to guy. With Joey Gibson out, VMI's offense hasn't gotten much worse with Mitchell and Poldiak stepping in, but that just goes to show how anemic it was to begin with. The Keydet secondary will be hard-pressed to cover the more athletic Moc receivers.

Prediction: UTC 38 VMI-13

East Tennessee State (3-3, 2-2)

Last Week: The Bucs got 275 yards and a touchdown from quarterback Todd Wells in their 20-7 win against the Citadel. Receivers Corey Martin (seven catches for 112 yards) and Cecil Moore (five for 71 and a td) led the ETSU passing game. Placekicker Con Chellis hit field goals of 38 and 42 yards but missed three others on the day. The Bucs defense caused four turnovers on the day and were led by safety Ocasio Cofield with 15 tackles.

This Week: ETSU has the week off and will resume play next week when they host Furman.



File Photo

as well in corners Lavar Rainey, Nate Gates and Ryan Hadden.

Prediction: GSU 24 App. State- 20

Furman (5-1, 2-1)

Last Week: Furman saw their chance at an undefeated season wash away when Mountaineer defensive back Du'Shon Martin intercepted Justin Hill's pass in the endzone when the Paladins were ahead 17-11 with 6:58 left in the game. ASU later drove 80

dropped a 20-7 decision to East Tennessee State last week despite 76 yards and a touchdown from fullback Maurice Murphy. Quarterback Scooter Johnson, who two weeks ago led the Bulldogs to a win against South Carolina State, couldn't get going against the Bucs. The freshman was held to 8-of-15 passing for 45 yards while rushing for just 24 yards on eight carries. Linebackers Denny Haywood and

Eagles fall to 1-3-1 in SoCon Participate this week!

G-A News Service

Jeff Files scored late in the second period as the College of Charleston shut out Georgia Southern University, 1-0, in men's conference college soccer action at Patriots Point Field Tuesday night.

With the win the Cougars improve to 5-7-2, (3-3 SoCon), while the Eagles fall to 4-7-2

(1-3-1 SoCon).

Files, a freshman, got the assist from teammate and Georgia Southern transfer Marc Gaskins at the 77:31 mark and nailed the game-winner from right to left.

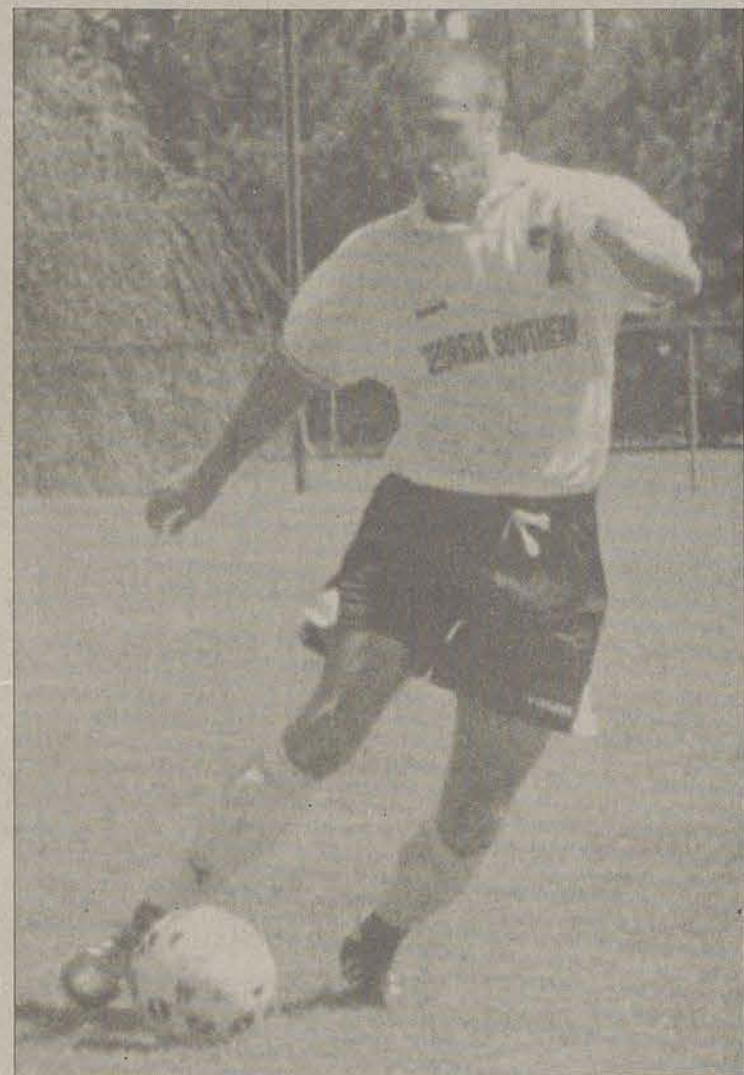
The Cougars out-shot the Eagles 10-7 and had five corner kicks while Georgia Southern had three. Both

teams me a total of three saves.

The College of Charleston's Wes Martino earned the shutout, his first of the season, while Garrett Lazenby garnered the loss.

The men's soccer team returns to action Saturday, October 14, when the Eagles travel to Davidson for a 3:30 pm contest.

	Period 1	Period 2	Total
Georgia Southern	0	0	0
Charleston	0	1	1



THEY FALL SHORT: The men's soccer team falls short to the College of Charleston Cougars in a match that ended with a score of 1-0. The men will take on Davidson this Saturday in Davidson, NC.

Gabriel Childers



By Melissa Connors and Erin A. Merritt
Sports Editor and Assistant Sports Editor

Yes the time has come, Homecoming. The time of parades, football games, crownings, and parties. There are tons of activities going on this weekend, and we encourage you to participate. That's what they are there for. This is a Georgia Southern celebration, and Georgia Southern is you! Come out, have fun with your friends,

and take advantage of the fact that there are free events for you to participate in.

Starting today, there is hypnotist Tom DeLuca in the Union Ballroom at 8 p.m. Thursday's activities include Eagle Olympics, a carnival, a pep rally, a step-show and FREE FOOD at the homecoming cookout. Who doesn't want free food?!? Friday join in watching the homecoming parade and midnight mania,

which starts off the basketball season with DJ's and you guessed it, more free food. Saturday, prior to the football game, there is a 5k walk/run and a best tailgate party judging.

Don't be a bum and sleep all day and miss the activities. Take advantage of what GSU has to offer this weekend, who knows you might even have fun. Hope to see you there, especially all you cute guys!

Filling a prescription should be painless

Friendly smiles and fast service is our prescription for good business at Georgia Southern's College Pharmacy. It doesn't matter if your prescription is from your hometown doctor or one of the doctors here in Statesboro, you will always receive your student rate (which is always BELOW marketplace pricing) on all of your pharmaceuticals.

COLLEGE PHARMACY
GEORGIA SOUTHERN UNIVERSITY

Located inside Health Services • 681-0807 • www.cornerdrugstore.com

REGISTER TO WIN!

Weekly Drawing for a

\$25

Shopping Spree

(Drawing Held Every Friday)



681-5181 • 1 (800) 861-7059

<http://www.gsustore.com> • ustore@gasou.edu
Mon-Thurs 7:45am-6:00pm • Fri 7:45am-5:00pm • Sat 11am-3pm

A Member of the National Association of College Stores

GEORGIA SOUTHERN UNIVERSITY

HOMECOMING DANCE

-featuring-
The Swingin' Medallions

Recreation Activity Center,
GSU Campus

Sat., Oct. 14, 2000
8 p.m.-Midnight

Limited Tickets
\$10 each

Call the Georgia Southern Office of Alumni Relations at 912-681-5691 to order your tickets. VISA and MC accepted. Or stop by the office, located at the corner of Herty Drive and Georgia Avenue on the Georgia Southern campus.

Tickets are only sold in advance. None will be sold at the door!

Sponsored by the GSU Office of Alumni Relations.

Monday, October 9

— 10:00am-3:00pm —

Fielding D. Russell Union 10th Anniversary
In The Russell Union

Tuesday, October 10

— 5:00pm —

CRI WallyBall Tournament • R.A.C.

— 7:00pm —

1939 Night Club Murders
Russell Union Ballroom

Wednesday, October 11

— 11:00am-2:00pm —

Search For Southern Leaders
Russell Union Rotunda

— 6:00pm —

Career Services Dining Etiquette Dinner
Russell Union Rooms 2070 and 2080

— 8:00pm —

7th Appearance of Hypnotist Tom DeLuca
Russell Union Ballroom

Thursday, October 12

— 9:00am-1:00pm —

Career Services Eagle Expo • R.A.C.

— 11:00am-2:00pm —

Search for Southern Leaders • Lakeside Café

— 5:00pm —

Eagle Olympics • Sweetheart Circle

— 5:00pm-7:00pm —

Carnival and Homecoming Cookout • Sweetheart Cir.

— 7:00pm —

Pep Rally • Sweetheart Circle

— 7:30pm —

Doo-Dah and Step Show • Sweetheart Circle

Friday, October 13

— 4:00pm —

Homecoming Parade • Starts @ Paulson Stadium

— 9:00pm —

Midnight Mania • Hanner Fieldhouse

Saturday, October 14

— 8:00pm —

CRI 5K Run/Walk • R.A.C.

— 1:00pm —

Best Tailgate Party Judging • Paulson Stadium

— 3:00pm-7:00pm —

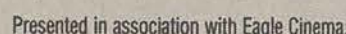
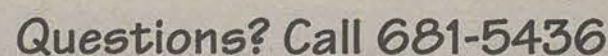
Video Buttons • Behind Student Section • Stadium

— 3:30pm —

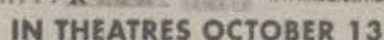
Georgia Southern Eagles vs. Appalachian State
Homecoming King & Queen Crowning @ Halftime

EVENT SCHEDULE

For further information, call 681-9000.



zippos Use it to start something.



Hypnotist, Tom DeLuca comes to the Union tonight to wow students with imagination

By Tim Prizer
Lifestyles Editor

For Tom DeLuca, "playing" with people's minds doesn't involve brain teasers, rubik's cubes, or any illegal substances. No, DeLuca uses no strings, mirrors, or smoke to perform his magic. Instead, he uses the power of his own mind to make others believe that they are bodybuilders, that a pair of shoes consisting of one Nike Air Jordan and one Payless high heel is normal, or that they are small children in a toy store once again.

So when Tom DeLuca appears in the Russell Union ballroom tonight, will he be performing hypnotism? "People always ask me, 'Are you a hypnotist?,' DeLuca explains on his official web site (www.tomdeluca.com). "In turn I tell them about Imaginism, the term I coined years ago to describe what I do."

Imaginism sounds a bit like a combination between imagination and hypnotism, and it is in a way. Only Imaginism runs much deeper than either of the two alone. DeLuca is one of the only living souls that is able to spark the imagination that is so commonly lost with age. By practicing the power of suggestion and influence, DeLuca forces individuals to search deep within themselves to find the most creative planes of the imagination.

By psychologically sending people into a dreamy state of mind that walks the wobbling rope between consciousness and unconsciousness, DeLuca exhibits the inventiveness that people can reach when completely relaxed, free of pressure, and unaware of the world we consider "real."

He is very careful not to humiliate any individual while they are in this altered state, and he never forces anyone to join him on stage for his practice of Imaginism. The participants are volunteers from the audience, who DeLuca promises to entertain, while entertaining the entire crowd of onlookers as well.

His performance at GSU will be his seventh, and will begin at 8 p.m. A large turnout is expected for the event in hopes to grasp his incredible talent, his wit, and his side-splitting humor.

DeLuca is a Master of Psychology from the University of Illinois, and began his work as a therapist. Over the years, he has climbed the ladder from performing for local civic groups, to colleges and universities



Special Photo

WILD IMAGINATIONS: Tom DeLuca's 'Imaginism' has become a success on college campuses and in many large corporations.

across the country, and now is a major hit with large corporations all over the world. DeLuca has also become widely known as America's most outstanding college entertainer.

Perhaps DeLuca's biggest success has stemmed from his trademarked program, "Power Napping," which he presents often to global corporations.

In today's workforce and economy, Americans are always on the go, DeLuca explains, as we "work longer hours, eat erratically, raise children, and use our beds as an extension of our desk." All of these things invade on our necessary sleep time.

Power Napping features DeLuca's one of a kind ability to revive individuals from the many social stresses facing them, and offer a resolution to the sleep-deprivation that often comes as a result.

Tom DeLuca has been stirring the minds of believers and skeptics alike for a number of years now, and isn't afraid to prove his ability to the strongest of non believers.

He won't flash any lights, wave any dangling objects while saying, "You are getting sleeepy," and he

won't ask anyone to stare into a twisting spiral. DeLuca's work comes strictly from his mind and into the imagination of the participant.

Don't Miss Anything: Your guide to what's going on

Today, Career Services will be hosting a Dining Etiquette Dinner at 6p.m. in Russell Union rooms 2070 and 2080. On Thursday, from 9a.m.-1p.m. at the RAC, Career Services is hosting the annual Eagle Expo. There are many activities on Sweetheart

Circle starting with Eagle Olympics, a carnival, and a cookout at 5p.m. Then at 7p.m. there will be a pep rally, and at 7:30p.m. there is a doo-dah and step show at 7:30p.m. The Homecoming Parade will be on Friday beginning around 4p.m. and the start-

ing point will be at Paulson Stadium. And don't forget about Midnight Mania at Hanner Fieldhouse at 9p.m. On Saturday, there will be an 8a.m. 5K run/walk at the RAC. Whatever you do, go cheer on your Eagles at the football game on Saturday at 3:30p.m.



Monday Night Football

\$2.25 wings
\$4 pitchers (Bud & Bud Light)

Tuesday Night

Burger and Beer \$5.00

Wednesday Night

Fiesta Noche
Mexican Dishes
Jimmy Buffet's Margaritaville Specials

Live Entertainment Thursday and Saturday Nights
5th Quarter after GSU Games!

We Now Accept Eagle Express!!!

Students, Alumni, Staff & Faculty

Looking for information on careers, jobs, and internships? Want to learn more about career opportunities in different majors?

**"Prepare to be
a Hero in your Career"
by Joining us for**

Eagle Expo

Now featuring a Majors Fair Addition!

Part of Homecoming Week Festivities

Thursday, October 12, 2000

RAC, 9:00am-1:00pm

A shuttle will run every 20 min. from near the Rotunda Area of the Russell Union to the RAC beginning at 9:00am.

Before Attending the Career Day, Don't Forget to Attend:

Making the Most of Eagle Expo

Monday, October 9, 4:00pm

Russell Union, Rm. 2044

- ◆ Dress for the Career Fair should be business attire (suit) or snappy casual
- ◆ Bring your University ID
- ◆ Sponsored by Career Services and the Academic Advisement Council

'National Coming Out Day' is today

By Amanda Permenter
Staff Writer

In recognition of National Coming Out Day, a series of day and night events will be hosted by the Russell Union today and this evening.

National Coming Out Day is an effort to encourage and provide information to gays and lesbians about "coming out."

With a focus on self-honesty, the event hopes to help people identify themselves as gay, lesbian, bisexual, or transgendered, and guides them through the process of revealing this to others. The program is a helpful solution to those who are considering opening up to the public.

Between 11 a.m. and 3 p.m., tables will be set up at the Union for GLBT (Gay Lesbian Bisexual and Transgendered) Resource

Office, Triangle Club, and the local Amethyst Project. The Amethyst Project seeks to provide the community with education about AIDS.

At 7 p.m. tonight, Gay Lesbian Straight Educators Network will be sponsoring the play, "Teachers In and Out in the Rural South: Avoiding the Lash of the Bible Belt."

The play, based on research by education professors Jane Page, Delores Liston, Chris Bowen, and Bill Reynolds, combined with the performing talents of Will Schmidt, will be an artistic presentation of the opinions of homosexual teachers.

Refreshments will be provided in room 2047 of Russell Union for tonight's events, and everyone interested is encouraged to attend.



**Habitat for Humanity
Hoofin' for Habitat 5K Race**



Hey there road runners! It's that time of year again to come out and support Habitat for Humanity. On October 14th, at Georgia Southern, CRI, The Statesboro Pacers, GNC, Sea Island Bank, Emack & Bolio's, Subway and Coca-Cola will be sponsoring the Hoofin' for Habitat 5K race. Half of the registration fees go to support Habitat for Humanity. The race is an excellent way to get out and benefit not only for yourself, but others as well. A kiddie run will begin at 8:00am with a 5K shortly following at 8:30am. Registration fees range from \$10-\$15. Savannah Striders will receive a \$2 discount. All participants will receive a t-shirt and race packet. These items can be picked up on October 13th from 4:00pm to 9:00pm or on the morning of the race. If you wish to pay by check, please send your entry for and check payable to: CRI 5K Race, P.O. Box 8078, Statesboro, GA 30458. For more information about the Hoofin' for Habitat 5K race, please contact Kelly Brooks at (912) 681-5436.

B&J Awards

Emack & Bolio's

GNC

Sea Island Bank

Coca-Cola

FIT FOR LIFE

SUBWAY

5 Years Piercing Experience New Needle Every Time

Don't Get Pierced Anywhere Until You Come & See Us

CLOUD 9

Over 5000 Piercings on file

Naval Piercings Always \$30.00

Eyebrows & Noses Always \$25.00 With Hoop

We don't run specials or put our piercings on sale. For the best quality work by the most experience piercer in Statesboro, come to Cloud 9.

Novelties, Gifts & Body Piercing by Rick

- Adult Novelties
- Sterling Silver Jewelry
- Smoking Accessories
- Lava Lamps
- Leather and Vinyl Lingerie
- Beaded Curtains
- Candles & Incense
- Black Lights
- Zippo Lighters
- Fish Nets

#3 University Plaza

871-4054

CHILLS

test PURE

GA

Page 10 — Wednesday, October 11, 2000

Ogeechee Fair offers free 'College Night'

By DJ Butter
Staff Writer

The wind is blowing, it is starting to get cold, and you can see your breath as it rolls out of your mouth. These characteristics in the early Fall can only mean one thing: the fair is in town!

That's right, the Ogeechee State Fair opened this past weekend and will remain open throughout this coming weekend. There are games, prizes, rides, and food. Everyone knows that the only place to get the best funnel cakes, candy apples, and cotton candy is at the fair.

Despite the cold weather, there has still been an excellent turnout to get in on the fun, and tonight should be the largest attendance yet. The Ogeechee State Fair

is having College Night tonight, and every student with a college ID gets in absolutely free.



Jordan Fidanza

RIDES, FOOD, AND GAMES: The Ogeechee Fair opens in Statesboro to large crowds.

So, take your special someone with

you, or go in a big group of friends, and have a blast. Be sure to try out the Gravitron, the Ring Toss, the Hall of Mirrors, and even the dunking booth with the obnoxious clown inside. Also, try your hand at the many games they offer, and win a big fuzzy stuffed animal.

Remember the middle school and high school days when the fair was so fun? Well, the fair in Statesboro is equally as entertaining.

Relash your golden memories and let loose for a while. You are never too old to enjoy the fair, especially when it is free like it is tonight.

The Ogeechee State Fairgrounds are located in Statesboro, right off of Highway 67 (Fair Road).

WWF match more impressive this week

By Michael Russo
Staff Writer

After weeks of speculation, Stone Cold's assailant was finally revealed. All in all, I thought the show was solid.

It contained elements of comedy, drama, and suspense and brought back a few familiar faces as well as the ever so popular GTV.

It was great to see Shawn Michaels back in the WWF, even though it was only for a brief moment. The fans in Anaheim no doubt further emphasized that HBK is a legend with the welcome he received.

It's just too bad that Shawn couldn't have been more involved in this past Monday's programming. WWF fans have been deprived of the WWF's first and only Grand Slam Champion, and in my opinion, really should have been compensated.

Raven's loss really surprised me. Not to take anything away from the Lethal Weapon, but due to the fact that Blackman was somewhat out of his element, since the match was not a Hardcore match, I really thought that Raven would pick up the vic-

tory. His debut has been okay, but I can't say that I've been impressed.

Once again, GTV strikes WWF programming. The result? Heartbreak. I do like the idea however that Mr. Ass and Chyna might form a bond. These two will work well together if the WWF decides to follow through with the idea. It also may well be what Billy Gunn needs to help push him to the top.

Speaking of making impressions, William Regal has done an excellent job, and is rapidly becoming one of my favorites. Regal's commentary is every bit as entertaining as his character.

I dare say that Regal plays his character better than anyone in Sports Entertainment.

If you're a Kurt Angle fan, you had to be somewhat disappointed in this past Monday's RAW. Not only did our Olympic Hero not get any mic time, but he barely broke a sweat in his match. It seems to me that Angle was more or less forgotten about in the mix of the investigation.

Will Austin hold The Rock somewhat responsible for Rikishi's actions? With the way things look now, Austin may very well decide to lash

out at The Rock at No Mercy causing him the WWF Championship.

In turn, both The Rock and Rikishi will have a common enemy allowing them both to turn heel. Interesting idea, isn't it?

There are mixed reviews concerning Stone Cold's assailant. Some liked the unpredictable element that went along with pointing the finger at Rikishi, while the majority, myself included, thought the WWF tried too hard to find someone on their roster who would never be suspected.

Now before we start complaining about the lack of creativity on the part of the WWF's Creative Team, let's think about the long term effect that goes along with naming Fatu the assailant.

Not only will a feud with Rikishi be interesting and entertaining, but it has the potential to establish Rikishi as a main eventer, as well as make The Rock a heel without damaging his reputation to the extent that the WWF would have a difficult time making him a face again.

Whatever the case, what's done is done. Smackdown! will no doubt be interesting.

Just keep watching...

NEW LINE CINEMA
A TIME WARNER COMPANY
©MM NEW LINE PRODUCTIONS, INC. ALL RIGHTS RESERVED.

in
association
with

sixdegrees®
www.sixdegrees.com

FREE ADVANCE SCREENING

STARRING THE GREAT NEGRO ACTORS

DAMON WAYANS
SAVION GLOVER
JADA PINKETT-SMITH
TOMMY DAVIDSON
MICHAEL RAPAPORT

BAMBOOZLED

A SPECIAL PRESENTATION BY NEW LINE CINEMA

NEW LINE CINEMA PRESENTS A FILM BY SPYGLASS ENTERTAINMENT DAMON WAYANS SAVION GLOVER JADA PINKETT-SMITH TOMMY DAVIDSON MICHAEL RAPAPORT "BAMBOOZLED" BY SPYGLASS ENTERTAINMENT

**Wednesday,
October 18**

Tickets Available
on Tuesday at 8AM

9:00pm @ Russell Union Theater

Free passes available at 2022 Russell Union.

EAGLE CINEMA
AT THE RUSSELL UNION

Passes required. Seating is limited
and not guaranteed. Please arrive early.

NETWORK
EVENT
THEATER

HEAD-RUSH ENTERTAINMENT

PRESENTS
**Freaky Friday
The 13th**

9:00pm until when you
Must Be 21 To Party! I.D. Required
POOL TOURNAMENT FOR LADIES AND GENTLEMEN
CASH PRIZES
MISS THUNDER THIGH COMPETITION
CASH PRIZES

SPECIAL THANKS TO:

LOCAL SUPPORTING BUSINESSES
FOR THEIR CONTRIBUTION!

GSU
HC 2000

IF YOU SCARED SAY YOU SCARED

Getting in Shape is a Fight You Can Win



Let's face it. Getting in shape IS a fight. But with our Fitness Kickboxing program, you'll be a winner.

Though we don't actually spar, we do everything a top kickboxer does to get in championship shape. Kicking is great for the abs, buns, and thighs. Punching is great for the back, arms, and shoulders. It's the perfect full-body workout, and it's fun.

So why not give Fitness Kickboxing a try with a free class? Let us help you win the fight to get in shape. **Call now!**

EDDIE LOTT'S
ATA
BLACK BELT ACADEMY

**406 Fair Road
764-3844**

MEMBER: National Association of Professional Martial Artists

Young songwriter releases beautiful solo debut 'Tartuffe' opens as first play of the year for Theater Arts Department

By Tim Prizer
Lifestyles Editor

As the singer, songwriter, and rhythm guitarist for one of America's best roots rock bands, Ryan Adams has decided to call Whiskeytown quits. But the future is still burning bright for this 25-year old North Carolina native.

A Tarheel at heart, Adams formed his country rock outfit, Whiskeytown, in the state's capital of Raleigh at the age of 18. Beginning nearly every tour since then in an intimate, closet-sized club called the Brewery on NC State University's campus, Adams and Whiskeytown caught the attention of the passionate music fans that still hear Gram Parsons' lonesome voice echo in their dreams at night, and miss hearing Paul Westerberg slash his guitar as the frontman for the Replacements.

With Whiskeytown's fate seeming to only lead them down a dead-end street, Ryan Adams has gone solo, and is alone in more than one way. After leaving his beloved home state to be with his girlfriend, Amy, in New York City, he has now decided to move once again, breaking up with Amy and moving to Nashville. Adams' debut solo album is stripped down folk, with little of the polished rock that could be found on Whiskeytown's "Strangers Almanac."

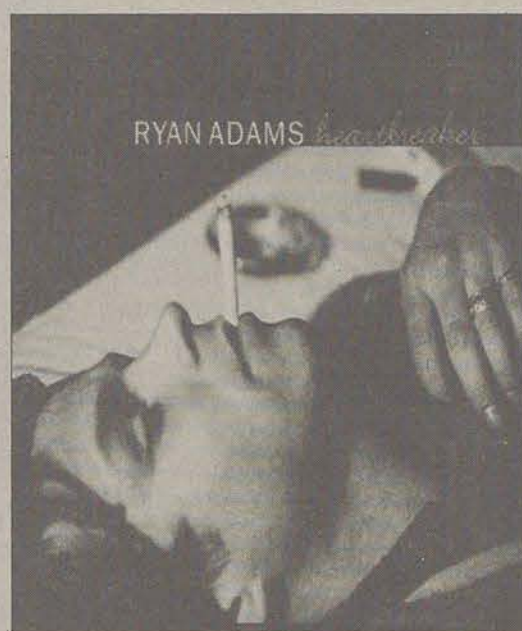
"Heartbreaker" revolves around his recent experiences, his moving away from the only state where he feels at home, and the only girl that he's ever truly loved. The album is entitled "Heartbreaker."

"Oh my sweet Carolina, what compels me to go? Oh my sweet disposition, may you one day carry me home." These are the words that construct the chorus of "Heartbreaker's" fifth song, "Oh My Sweet Carolina." The tune is slow, heartfelt, and is laced with the angelic backing vocals of the "Queen of Alternative/Country Music," Emmylou Harris. The track's last verse ends with Adams' chilling, raspy voice almost whispering, "You know the sweetest winds they blow across the South."

"When you laid me down into your beautiful garden/Flowers in the love of my arms/Is God playing evil tricks on me? Oh, I love you Amy/Do you still love me?" Taken from the track boldly entitled "Amy," this type of romantic poetry reveals that Adams values influences like Blake and Wordsworth in the same vein as Townes Van Zandt and the Rolling Stones. Adams incorporates many elements to his songs, combining love, nature, and even hinting at religion.

Three of the album's best songs fall right in the "heart" of the record, including "Call Me on Your Way Back Home," "Come Pick Me Up," and "Damn, Sam."

These three act as the glue of the record, holding the beginning and the end tightly in place. More of Adams' flowing, color-



File Photo

GENIUS YOUTH: Ryan Adams is one of America's best young songwriters.

ful poetry is exhibited in these tunes.

"Call Me on Your Way Back Home" is likely another ode to Amy, as he sings, "Oh baby way did I treat you like I did/Honey, I was just a kid/Bubblegum on my shoe/But you loved me, and I loved you."

Adams has unfortunately become well-known on the underground scene for

continuous changes in the firing and hiring of his band's lineup, along with minor alcohol abuse, and the vulgar language that erupts when the alcohol takes over. But Adams has matured, performing mostly sober of late, and his live shows have received only positive feedback. However, one of the most beautiful songs on "Heartbreaker" was written by Adams after seeing a most attractive female at a bar where Adams was of course becoming intoxicated. The song, "Come Pick Me Up," is Adams' way of telling this girl that if she would be his, he wouldn't care how he was treated. "Come pick me up/Take me out/F#%* me up/Steal all my records/Screw all my friends/They're all full of s#%*/With a smile on your face/And then do it again/I wish you would," he sings.

Guest appearances by Gillian Welch and Kim Richey also add elegant texture to "Heartbreaker," and show that even in Adams' youth, he has an impact not only on listeners, but also on his talented peers.

Perhaps Adams' youth is what makes him so good, so vibrant, and so unpredictable. He recognizes his wild, youthful ways in "Damn, Sam." "I'm as calm as a fruit stand in New York, and maybe as strange."

By Dana MacKay
Assistant Lifestyles Editor

The GSU Theater and Performance Department started up their season with a bang yesterday.

Last night was the opening night for their latest project, "Tartuffe: Born Again" directed by James Harbour. Moliere's wrote the original "Tartuffe" 400 years ago, but has been given a modern twist, with this variation taking place in a 1980s televangelist studio.

The main character, Tartuffe, is a liar and a hypocrite. The only person, however, that doesn't see him for who he really is, is Orgon. Orgon's wife is even put in a possibly compromising position by Tartuffe right under Orgon's nose.

Tartuffe comes across to Orgon at first as an honest man who lives in poverty, not a worthless beggar. But everyone but Orgon can see that Tartuffe has a lot he is hiding.

"Tartuffe" features many interesting characters that tie in with each other beautifully.

The play is funny even in its original format, so it certain to be even funnier set in a modern context.

The Theater Arts Department at GSU has done another great



Phillip Murphy

A HYPOCRITE: "Tartuffe" opens in Black Box Theatre.

job in getting classic plays translated to a modern setting.

The play is being performed in the Black Box Theater in the Communications Arts building at 8 p.m. through Saturday. Call 681-0123 for ticket information.

Check out Friday's edition of the *George-Anne*, for a cast list and a full review.



Dining & Entertainment

Appearing Exclusively
in the George-Anne

PIZZA • CALZONES • LASAGNA • SPAGHETTI • STEAK GRINDERS • MEAT & CHEESE RAVIOLI • STROMBOLI • BUFFALO WINGS & MUCH MORE!

2 Medium 1-Topping

Pizzas for only

\$9.99

Lunch Buffet

11 am to 2 pm

only 3.99

Dinner Buffet 4.99

(weekdays only 6-8)



HOLIDAY PIZZA

405 Fair Rd.

Next to Recreation Dept.

Open Daily 11am-11:30pm

FREE DELIVERY

764-7669

Credit Cards Accepted
Ask About Our Phone Card Specials

• BUFFALO WINGS & MUCH MORE! • CHICKEN FINGERS • GREEK SALADS • CHICKEN PARMESAN • BAKED ZITI

Monday

\$1.00 Pitchers
No Cover Charge

Tuesday

Dime Draft Night
\$1 Cover til 10 pm

Wednesday

Pool Tournament
Call for Drink Specials

**HORIZONS
BAR & GRILL**

Open Daily 11:30am - 1am

681-3533

All-New Menu!

**Food Specials
4:30 to 10 p.m.**

Monday

Chicken Fingers and Fries\$4.50

Tuesday

Philly Steak and Cheese\$3.50

Wednesday

Cheeseburger with fries\$2.95

Thursday

All You can Eat Wings\$5.00

Friday & Saturday

Bucket of Oysters\$7.00

Thursday

All-You-Can-Eat Wings

Friday

\$9 Buckets of Beer
\$7 Buckets of Oysters

Saturday

\$9 Buckets of Beer
\$7 Buckets of Oysters

**All Day
Wednesday**

**All-You-Can-Eat
Hot Wings**

764-9007 • 764-9748



\$5.69 - Lunch

\$6.69 - Dinner

Wednesday

Beer Bingo

\$5.95 Fajitas

\$3 Pitchers

Thursday

All You Can Eat Wings \$7.95

\$1 Margaritas

Friday

GIN's Request

Call for Daily Specials

681-3030

Saturday

Live Entertainment

25¢ Wings Until 6 pm

Sunday

25¢ Wings Until 6 pm

Monday

\$2 Big Mug Refills

\$8 PBR Buckets

Dart Tournament

Tuesday

Trivia

Two for Tuesday

Buy 10 Get 10 Free

\$2 Coronas

EAGLE CINEMA

At the RUSSELL UNION

A Division of Student Affairs

All Movies Show in

Russell Union

Theater

Upcoming Schedule

The Patriot

Thursday, 10/19 • 7pm

Friday, 10/20 • 5:30 & 9:30pm

Saturday, 10/22 • 5:30 & 9:30pm

Me, Myself & Irene

Thursday, 10/26 • 7pm

Friday, 10/27 • 7 & 9:30pm

Saturday, 10/28 • 7 & 9:30pm

Mission Impossible 2

Friday, 10/27 • 9:30 pm • Drive-In Movie • Paulson Stadium (FREE)

For more info., call 486-7270

'Grow your own' says Mendocino County's measure G

The Associated Press

MENDOCINO, Calif. - The burning issue on Mendocino County's ballot, a grow-your-own marijuana measure, is a bit of a moot point since state and federal anti-drug laws will still apply.

Still, backers have high hopes for Measure G, which could become the first such law in the country. Alaska voters also will vote on legalizing pot but there is considerable contention over that measure, which includes offering restitution for time spent in prison for marijuana crimes.

Mendocino County's cannabis campaign faces no organized opposition.

"Measure G is a political statement by the people of Mendocino County that we think that the war on marijuana is hugely wasteful. We want to move political opinion and that's really what this initiative is all about," said Dan Hamburg, a former Democratic congressman turned Green Party activist who is among the marijuana measure's backers.

Lovely and remote, Northern California's Mendocino County is the land of a thousand postcards. But beyond the white-gabled inns and soaring redwoods is another country.

The "Emerald Triangle," where Mendocino, Humboldt and Trinity counties converge about 150 miles north of San Francisco, produces a pot crop with a street value of around \$1 billion annually. And it's no ordinary smoke. Prized by connoisseurs,

growers a low priority.

Authorities here already do that; Sheriff Tony Craver is among the 5,900 residents - twice the required number - who signed the petition to get Measure G on the ballot.

Pass or fail, Craver said he will

But support is not universal.

"I think it's going to give a mixed message to kids. And I think it's a bad message," said Ukiah schools superintendent Gary Brawley.

During lunch hour at the outdoor deck of a cafe in rural Boonville, some residents expressed mixed opinions.

County resident Eddie Pardini is against it. "Sure, there may be people that need it for medicinal purposes or whatever, but somewhere down the line it's going to be abused. Kids are going to get it," he said.

One table over, Hugh Hamilton thought he'd vote for it.

"I would say 'why not?' I think there are good cases for medical use and I really think a lot of time and money's being wasted in the war on drugs in going after the little stuff. I kind of see it as Prohibition all over again," Hamilton said.

Measure G backer Ann Deirup is old enough at 82 to remember Prohibition.

A tree farmer near the seaside village of Mendocino, Deirup has never smoked a joint. But she thinks the current approach to marijuana makes no sense.

"I am not into the thing. I don't grow it. I don't smoke it. But I don't think it's as dangerous as alcohol," she said.

"MEASURE G IS A POLITICAL STATEMENT BY THE PEOPLE OF MENDOCINO COUNTY THAT WE THINK THAT THE WAR ON MARIJUANA IS HUGE WASTEFUL."

**- DAN HAMBURG,
MEASURE SUPPORTER**

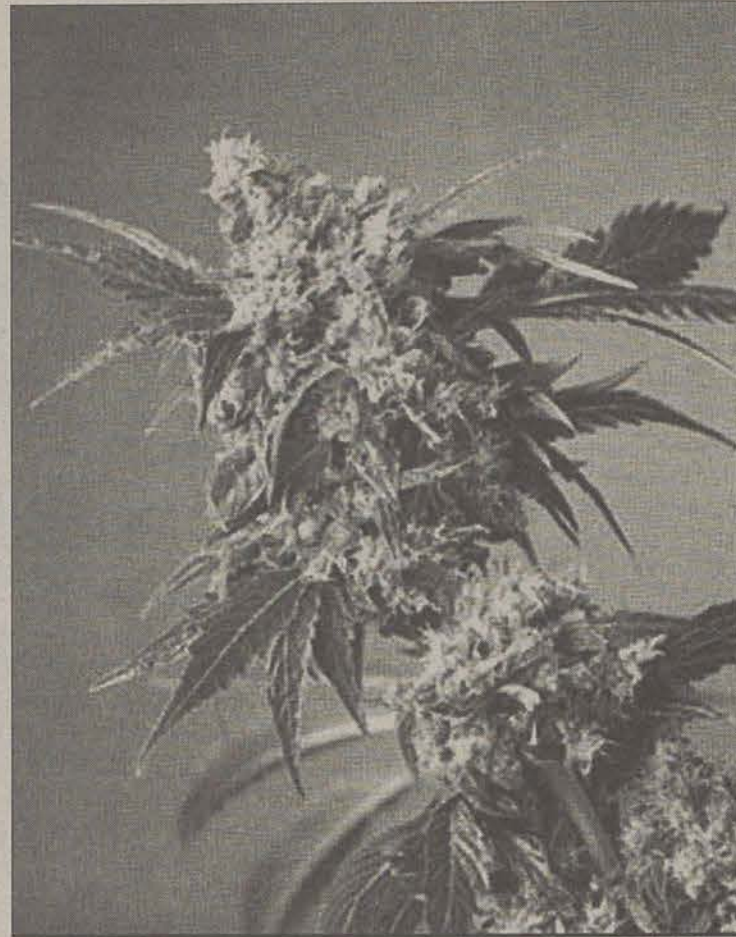
Emerald Triangle marijuana commands up to \$5,000 a pound.

Last year, state anti-marijuana forces raiding Mendocino's illicit pot farms seized more than 63,000 plants valued at more than \$250 million.

Measure G would prohibit sale or transportation of marijuana. But it would legalize uncultivated pot YIMBYs - Yes in my backyard - by allowing residents to grow up to 25 plants for their own use. It also would direct county law enforcement to make busting small-time

enforce state and federal bans on marijuana - something he suspects will come as an unpleasant surprise to would-be pot farmers who interpret Measure G as a license to till. "I'm sure there'll be some political turmoil surrounding this issue."

Most expect Measure G to pass, considering that voters were 64.5 percent in favor of the 1996 state initiative allowing use of marijuana for medical reasons. That measure passed but is still being fought over in the courts.



Special Photo

BIG BUSINESS: It is estimated that the 'Emerald Triangle' located in Mendocino County, California produces a crop of marijuana worth \$1 billion annually and goes for \$5000 a pound. Supporters of the measure want to see people be allowed to grow it for their own use, not for resale.

New study discovers puzzling discrepancy in sex survey

The Associated Press

WASHINGTON, D.C. - For years scientists have puzzled over why surveys show that the overall population of men has more sex partners than does the women's population. It should come out even.

Now they think they have the answer: the surveys didn't measure the activity of prostitutes.

"The number of partners that (heterosexual) men have had must be equal to the number of partners that (heterosexual) women have had," said Devon D. Brewer of the University of Washington. "Each new partner for a man is also a new partner for a woman. So, in reality, it must be equal. By definition."

But the General Social Surveys, conducted by the University of Chi-

cago, and the National Health and Social Life Survey, funded by private foundations, found that men were claiming up to 74 percent more partners than women.

The government uses this data to design public health programs to combat sexual diseases.

Brewer said social scientists, scrambling to explain the embarrassing inconsistency, suggested one of two basic problems - survey subjects were lying, or there was some fundamental flaw in the way the data was being collected.

"One explanation was that men are boasting or bragging about their number of partners and that women were being modest," said Brewer.

That may be a factor, he said, but a study he co-authored in the Pro-

ceedings of the National Academy of Sciences says the biggest cause of the discrepancy is that the surveys ignored the professionals: women who perform sex for profit.

"We found these high activity women, prostitutes, were inadvertently excluded by the design of the surveys," said Brewer, whose study appears Tuesday in PNAS.

Brewer said the national surveys sought answers from people who lived in "households," and left out dwellings like jails, motels, shelters and rooming houses where prostitutes are more apt to be.

Also, in order to find people in the households, the surveys rang doorbells during evening hours, and on weekends and holidays. Although those are the times when most people

are at home, but it is also the time when most prostitutes are working, said Brewer.

To test this theory, Brewer and his colleagues analyzed other studies to gain an estimate that there are about 23 prostitutes for every 100,000 people in America.

A second study, Brewer said, concluded that the average prostitute had 694 male partners a year.

"That is an average," said Brewer. "Some have far more and some have far fewer, but that is a representative sample."

Applying these estimates of prostitute activity to the national surveys put the final numbers for sexual partners about into equal balance between the genders, said Brewer.

Mississippi makes plans for teen drinking money

The Associated Press

JACKSON, Miss. - Oxford Police Chief Stephen Bramlett says combatting underage drinking in a college town can be frustrating.

He hopes a new federal grant will help.

Law enforcement departments around the state can apply for a share of \$360,000 from the U.S. Justice Department that was announced Monday. Every state got the money, but the uses are varied.

Bramlett, whose city is home to the University of Mississippi, said he needs money to pay officers overtime to do compliance checks in nightclubs and stores.

He said catching minors who drink and drive as well as people who sell the alcohol to them is a priority in the 44-officer agency, but "we've got other things we have to tend to."

U.S. Rep. Ronnie Shows said statistics show more Mississippi teens are drinking, and that nearly 80 percent of high school students have tried alcohol.

"It is pretty scary," said Shows, D-Miss. "We need to educate that generation of young people."

Although underage drinking is a problem in most communities, "it seems to be more spotlighted in college towns," Bramlett said.

"This issue has been there

since I was kid at Ole Miss," said Bramlett, who attended the university in the 1970s. "You get a bunch of kids who are out from parents' control, they get their first taste of freedom and here you go."

Gov. Ronnie Musgrove said he wants to see Mississippi reduce the number of young people getting access to alcohol by this time next year. He praised the work of Attorney General Mike Moore, who has 10 officers assigned to keep alcohol and tobacco away from children.

In September, those officers checked 30 bars in college towns and more than half sold beer to minors. In Oxford, Cleveland and the Columbus area, undercover minors were successful every time in buying beer. Cleveland is home to Delta State University, while Columbus has the campus of Mississippi University for Women and is near Mississippi State.

Moore, whose office will get \$50,000 of the latest grant, said his officers will try to make more than 7,000 alcohol compliance checks in the next year.

The Department of Public Safety is in charge of dispersing the money.

Public Safety Commissioner David Huggins said the department is curbing accessibility by giving different style driver's licenses to people under 21. He said license tampering had been a problem in the past, but that the new format has stopped that. It shows the information in a vertical style instead of the current horizontal format.

Also Monday, Huggins announced that Mississippi is getting \$560,000 from the U.S. Justice Department for a criminal database.



Mass Immigration or Moderation?

Immigration can make — or break — a country. The key issue is numbers. The U.S. Census Bureau projects that U.S. population may double within fifty years — to more than half a billion — if the current unprecedented levels of immigration continue.

Long before then, such explosive growth will place serious strain on the environment, natural resources, and social harmony. For more information, contact the American Immigration Control Foundation on the net at www.aicf.org or www.aicf.org.

Of special interest to college students: Current immigration policies may keep you from getting good high-tech jobs after you graduate. Check out the site: <http://heather.cs.ucdavis.edu/itaa.html>



American Immigration Control Foundation
Box 525, Monterey, VA 24465
(540) 468-2022

OCTOBER 13th, 2000
FOR THE FIRST TIME AT GEORGIA SOUTHERN
MIDNIGHT MANIA!!!

LIVE D.J.'S!
FOOD AND
DRINKS!



CONTESTS!

GIVEAWAYS!

BEGINNING AT 9:00 PM - 12:30 AM
COME RING IN THE NEW BASKETBALL SEASON
AND MAKE SOME NOISE AT HANNER FIELDHOUSE
FESTIVITIES INCLUDE:

THE GEORGIA POWER SLAM DUNK CONTEST

THE BELL SOUTH THREE POINT CONTEST

A CHANCE TO WIN FREE BOOKS FOR A YEAR

FROM THE UNIVERSITY STORE!!!

AND MUCH MORE! MORE DETAILS T.B.A.!!!

Today's Quote
"A Thousand Dollar Car will
let you down more than it
will ever get you around...."
-- Bottle Rockets



Classifieds, etc.

Wednesday, October 11, 2000

Page 13

Crossword

ACROSS
1 "Silkwood" co-
star
5 Kitchen utensils
9 Hobo
14 Spout nonsense
15 Oodles
16 Bizarre
17 Tai -- Jaffa
18 Bamboo stem
19 Church honoree
20 Saw, basically
22 Outline
23 Catch
24 School groups
26 Photo
30 Cheerio!
33 Turn to the right!
34 Enters
39 Cain's victim
40 Mythical
strongman
42 Lose control of a
tirade
43 Discarded odds
and ends
45 Creative drive
46 Irritating tingle
47 "Thais"
composer

12 13 14 15 16 17 18 19 20 21 22 23 24 25 26 27 28 29 30 31 32 33 34 35 36 37 38 39 40 41 42 43 44 45 46 47 48 49 50 51 52 53 54 55 56 57 58 59 60 61 62 63 64 65 66 67 68 69 70 71 72 73 74 75 76 77 78 79 80 81 82 83 84 85 86 87 88 89 90 91 92 93 94 95 96 97 98 99 100

9/25/00

© 2000 Tribune Media Services, Inc.
All rights reserved.

Solutions

Across
1. Silkwood
5. Kitchen
9. Hobo
14. Spout
15. Oodles
16. Bizarre
17. Tai
18. Bamboo
19. Church
20. Saw
22. Outline
23. Catch
24. School
26. Photo
30. Cheerio
33. Turn
34. Enters
39. Cain
40. Mythical
42. Lose
43. Discarded
45. Creative
46. Irritating
47. Thais

Down
1. Crude
2. Sanctuary
3. Madonna
4. Walk
5. Unfortunate
6. Negatives
7. Nanette

48. Tramples
49. Roaring
50. Brag
51. Bronze
52. Fired
53. Slack

55. Eye shade
56. Think
57. Facial
60. Reprobate
61. Unadulterated
62. Support

or Bill Neville, Student Media Coordinator,
(912) 681-0069.
PROOFING/ERRORS/OMISSIONS: The
newspaper makes every reasonable effort
to present correct and complete information
in advertisements. However, the advertiser
is responsible for proofing the ad upon
publication and should notify the newspaper
immediately in the event of an error. The
newspaper is not responsible for any errors
in advertisements and its liability for
adjustments is limited to the amount of
space the error occupied in the ad. Further,
the newspaper is not responsible for any
damages caused due to an ad's omission
from a particular edition and its responsibility
solely is to reschedule the ad in the next
regular edition at the regular advertising
rates.

CLASSIFIED ADS: Free classified ads from
students, faculty and staff must be non-
commercial in nature and submitted in
writing, with the name of the sender, local
address, and phone number. **No free ads
taken via telephone - at this price we
don't take dictation.** One free ad per
person per week. Commercial classified are
20 cents per word with a \$4 minimum per
insertion. Tearsheets are \$2 extra per
insertion.

CIRCULATION INFORMATION:
Subscription rates for home delivery of The
George-Anne are \$35 per semester, or \$60
per year, delivered by third class mail.
Please address all inquiries to Courtney
Williams, Business Manager. The George-
Anne is distributed free of charge on the
Georgia Southern University campus
through delivery sites located in campus
buildings, at off-campus sites, and in
residence halls.

NOTICE: Readers may pick up one free
copy, and a second for a roommate or
acquaintance, at distribution sites.
Additional copies are 35 cents each and are
available at the Williams Center. However,
unauthorized removal of additional copies
from a distribution site constitutes theft
under Georgia law, a misdemeanor offense
punishable by a fine and/or jail time. Editors
will seek to have any person(s) who
removes more than the authorized number
of copies from distribution sites prosecuted
to the full extent of the law.

NOTE: We gratefully acknowledge the theft
of our slogan - "Liked by Many, Cussed
by Some, Read by them All" - from Robert
Williams of the Blackshear Times. Call Bob
and he can tell you who he stole it from
originally.

20 Announcements

HEAD RUSH Entertainment presents
Freaky Friday the 13th at Horizons from
9:00p.m. until. Enter pool tournament for
cash prizes. HC 2000. If you are scared
say it.

WICCANS, PAGANS or New Ager's
Sannhain is two weeks away and then
winter solstice. Contact Elizabeth for
discussion and groups at
gsi30402@gsai2.cc.gasou.edu.

SUBLEASE Eagle's Nest. No deposit down.
\$450/2 bedroom. \$350/1 bedroom.
Available immediately. Call Ken at 681-
7823.

GET RICH ONLINE! Receive full cash
Rebates on Fuel, Groceries, Telephone,
Cellular, Mortgages, Auto Purchase/Lease
and Medical! Plus, earn OVER \$4,022 +
monthly income! No Selling! Lowcost! Free
details. <http://www.coreclub.com/AH4045>.

JOIN THE GSU Diamond girls. For more
information call 871-5178 or attend an
information session on October 9, 10th or
12th at 7p.m. at the Wiggins Building.

VISION MINISTRIES church service to be
held on Sunday, October 15th in the Russel
Union Theatre.

ONCE UPON a time I had this super duper
roommate! She is a nice and crazy girl...
the coolest roommate in the world is
Jessica!

VISION MINISTRIES Bible Study to be held
every Wednesday at 7:00 p.m. in Williams
Center dining hall.

HAPPY 21ST birthday Pinky!! From
Candace, Tracy and Jaime.

VOLUNTEER TUTORS needed for GS Top
Step grades 2nd - 12th. For more info and
workshop schedule contact Volunteer
Services at 871-1435.

CLUB BASEBALL meeting on Tuesday
October 10th in the RAC conference room.
Everyone is welcomed. Questions or
concerns please call Joe Camarata at 681-
2103.

**WANT RECOGNITION FOR YOUR
BAND?** Call Andrew Fogal at (912) 681-
3490 for details.

EAGLE EXPO Career Fair Thursday,
October 12, 2000 9:00 a.m. - 1:00 p.m. at
the RAC Please Call 681-5197 for
information

40 Autos for Sale

FOR SALE 1993 Dodge Shadow ES 4-door
with tinted windows, blue with grey trim.
\$5000 obo. Call 531-0384.

1994 CAMARO Burgundy in mint
condition. 84K. CD player, AM, FM Radio.
\$5200 obo. Call Ali at 871-6667.

FOR SALE 1993 Saturn. \$4000. Call 871-
7669 leave message.

1989 HONDA CRX 5-speed, manual, 108K,
great condition. Inside and outside new
tires, clutch, timing belt. Runs great! Must
see to appreciate. Call 486-3183. \$3200
obo.

FOR SALE 1996 Hyundai Accent. \$1750
obo, and take over payment. Call 681-2886
for more information.

SATURN SLI 4-dr sedan, CD, PS, PDL/W,
A/C, 124k miles, engine kept up very well,
very dependable, great gas mileage, \$2500.
Call 681-1067.

1992 ACURA Vigor for sale. 160k. Price
reduced to \$5000. Please call (912) 494-
2266.

FOR SALE 1989 4-door Honda Accord. 5-
speed cruise control. \$1500 obo. Call 489-
1932 after 2pm or leave message.

80 Computers & Software

TOP GUN computer joystick for sale. New
- still in the box. \$20. Call 489-8073 and
ask for John.

FOR SALE 4200 bubble jet printer with
discs. \$55. Call Lee Ann at 681-4189.

90 Education

FUN & STUFF Visit our Web site for list of
things to do that are educational and fun.
On-line at <http://www.stp.gasou.edu/funstuff/>

120 Furniture & Appliances

KING-SIZED waterbed with solid wood
headboard. Heater and washing machine
included. Call 489-5007 Tues - Thur 9-5.

140 Help Wanted

EARLY-CHILDHOOD education major to
keep a 3-year-old in my home. Close to
Campus MWF 8:45a.m.-12p.m. Serious
inquiries only. Must have references. Call
489-6237.

150 Lost & Found

DOG FOUND across from Fairfield Inn.
Small brown and black female who appears
to have had puppies. Call 681-9222 to
identify.

170 Motorcycles

For Sale - A 1995 Suzuki Savage LS 650.
This black and chrome cruiser is perfect for
around town. Under 4000 miles and looks
great for only \$2400 dollars. Call Gerald at
489-2544.

195 Personal Electronics

PLAYSTATION FOR sale! Only \$75
(negotiable). It's almost brand new! 2
controllers and demo game included. Call
871-4671.

GPX HOME music system. AM/FM stereo,
cassette recorder, vertical CD player, and
remote control. New - in box. \$100. 489-
8073.

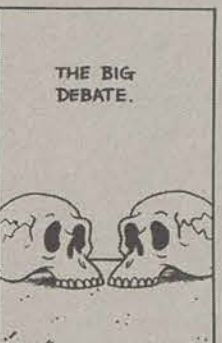
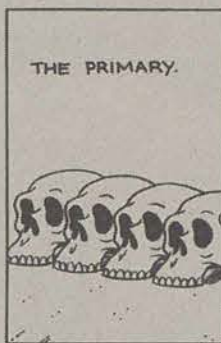
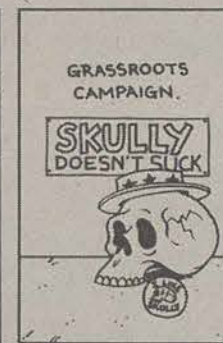
RCA SHELF system for sale. 27" floor
speakers, dual cassette, cd player, tuner.
\$200 obo. Call 489-8073 and ask for John.

200 Pets & Supplies

AKC REGISTERED German Shepherds
puppies black/tan, Sable, white males and
females 6 weeks old \$200-\$250 call in
evenings shots and wormed.

SPRING BREAK 2001
Jamaica, Cancun, Florida, Barbados, Bahamas.
Now Hiring Campus Reps. Earn 2 Free Trips.
Free Meals... Book by Nov. 2nd. Call for FREE info
pack or visit on-line sunplashours.com
1-800-426-7710

Skully



Paul



Adam

**ANOTHER SIGN YOU MAY
BE RUNNING OUT OF FUN
SUMMER ACTIVITIES**



220 Rentals & Real Estate

ONE BEDROOM in Park Place available.
No Deposit!! \$200/month + 1/2 utilities.
Available during 2000-2001 school year.
Personal bathroom. Fully furnished. 871-
6208 or leave a message.

SUBLEASE: One bedroom starting
December or Spring semester. Located
across from campus. \$300/month includes
cable. Email wie81@hotmail.com for more
info.

LOOKING FOR someone to take over lease
starting January for spacious 2bd 2ba apt
in Eagle Court. \$250/month. Please call
681-1243.

LOOKING FOR someone to sublease
Safesboro Place apartment. Available
immediately. Personal bathroom,
furnished, great roommates. Please call
486-3355 or 541-0188.

ONE BEDROOM apartment for sublease
in December. Great location across from
campus. Rent \$300/month and includes
cable. wie81@hotmail.com

SPACIOUS 2BEDROOM 2 1/2 bath
townhouse available for rent at Greenbriar
Apts. For more info call 871-7004 or 681-
1166.

SEASON'S APARTMENT sub-lease
A.S.A.P. Personal bathroom, w/d, \$250/
month plus 1/2 utilities. Very spacious
private room. Leave a message at 681-
7236.

LOOKING FOR someone to take over lease
starting January for spacious 4 bd 3ba apt
in Hawthorne II. \$250/month. Please call
681-1013.

230 Roommates

ROOMMATE NEEDED to take over lease
for Colony Apartments starting in January.
Rent is \$200 plus 1/2 utilities. If interested
call Jahmel at 681-3363.

Roommate needed to share 3BR house.
Across from Hanner-Fieldhouse. Large
backyard, Pets welcome. No Deposit. \$295
plus 1/3 utilities. Call Jamie 912-925-4306.

FEMALE ROOMMATE needed 4BR Apt.
Players Club. January-August or thru May.
\$260 first then \$210/month. Call 681-9222

SEEKING ROOMMATE to share spacious
house on Savannah Avenue. Cheap Rent!
Please call 489-0963 or 489-4777.

Non smoking female 6 months lease
required. No deposit. One male and one
female live in the house. Close to campus.
Please call 871-7337 or 706-254-1731.

TWO ROOMMATES needed to sublease very
nice house in very nice neighborhood. Only
\$215 a month rent plus 1/4 utilities. Please
call Mike at 681-5071 or Stacy at 489-9405.

LOOKING FOR A FEMALE ROOMMATE to
SHARE APARTMENT COSTS? I am
looking for a female roommate to move in with
a.s.a.p. call me at 312-557-3532 ask for
Maggie

240 Services

NEED PRODUCTION? Music, Beats,
Radio Commercials. Virtually anything.
Professional quality, sampling and
sequencing. E-mail me at space-man.com.

Charlie



"Two 'Happy Meals', please - and can you
put them in a plain brown bag?..."

WE DO research projects for you! History
and related classes. Customized research
with rap lyrics or standard format.
www.wsl.com/nbrms77nbnms7457@cs.com or (216)283-
8485.

EXPERIENCED CHILDCARE provider
would like to care for your child in my home.
Call Cassandra at 681-1181 and leave a
message.

260 Stereo & Sounds

10' MTX sub with box made for extendend
cab Chevrolet truck. \$150. 681-7217.

FOR SALE 620 watt 4-channel coustic
Amp. \$200. 681-7217

310 Wanted

ALGEBRA TUTOR needed immediately for
a 15-year-old. Must have own
transportation. References preferable. Call
Carol @ 688-0399 between 4 & 5p.m. or at
489-8433 after 5p.m.

Wanted: A tennis opponet to play singles
on Thursdays at 2 p.m. and possibly other
days. Preferably male with some tennis
experience. Contact me by email at
sashquach1@yahoo.com

BAND LOOKING for bass guitarist to jump
into the group. Music is similar to Creed,
Collective Soul and mostly originals. Call
Mike anytime at 489-4354.

MUSICIANS NEEDED for band! Style to
be Space Rock and Pink Floyd based.
Need guitarist, drummer and bassist. Goal
is psychadelia revival. Call Matt at 681-
7024.

**Eagle Volleyball
Action!**

Georgia Southern
vs.
College of Charleston

Thursday, October 12
7:00 pm @ Hanner Fieldhouse

Participate in the serving contest between
games 2 and 3 and win some great prizes!!

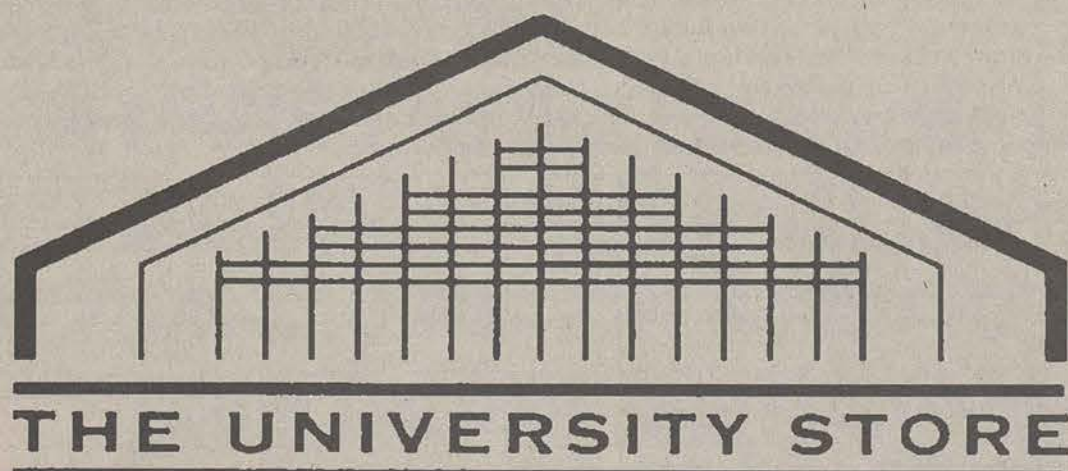
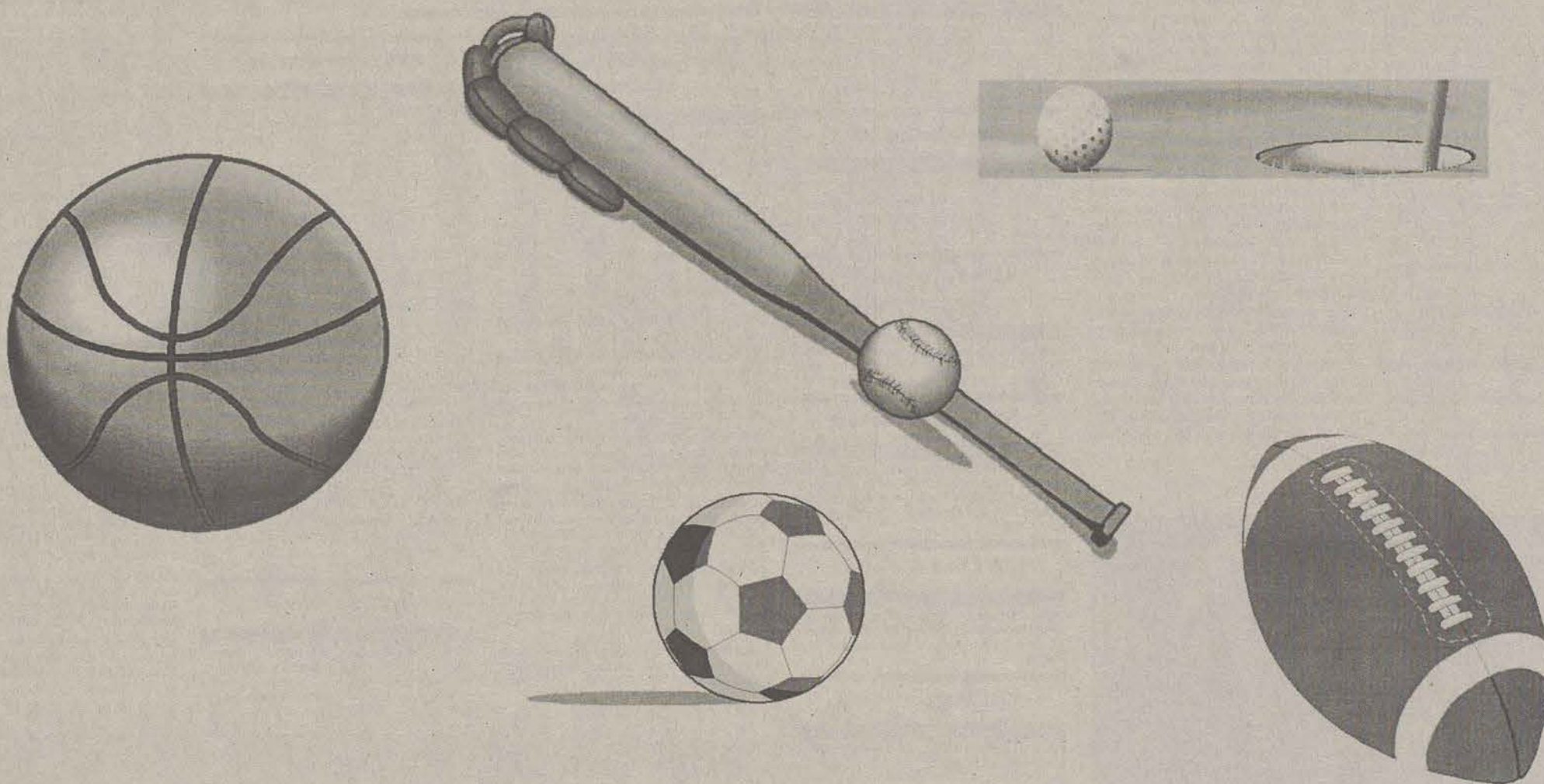
FREE ADMISSION!

HOMECOMING 2000

FALL SPORTS FESTIVAL

Coke & Popcorn • Radio
Prizes, Prizes & More Prizes!

Friday, October 13th
2:00pm — 4:00pm



681-5181
1 (800) 861-7059

<http://www.gsustore.com>
email: ustore@gasou.edu

Monday - Thurs. 7:45am - 6:00pm
Friday 7:45am - 5:00pm
Saturday 11:00am - 5:00pm

A Member of the National
Association of College Stores