

Georgia Southern University

## Digital Commons@Georgia Southern

---

The George-Anne

Student Media

---

8-28-2000

### The George-Anne

Georgia Southern University

Follow this and additional works at: <https://digitalcommons.georgiasouthern.edu/george-anne>

---

#### Recommended Citation

Georgia Southern University, "The George-Anne" (2000). *The George-Anne*. 2960.  
<https://digitalcommons.georgiasouthern.edu/george-anne/2960>

This newspaper is brought to you for free and open access by the Student Media at Digital Commons@Georgia Southern. It has been accepted for inclusion in The George-Anne by an authorized administrator of Digital Commons@Georgia Southern. For more information, please contact [digitalcommons@georgiasouthern.edu](mailto:digitalcommons@georgiasouthern.edu).



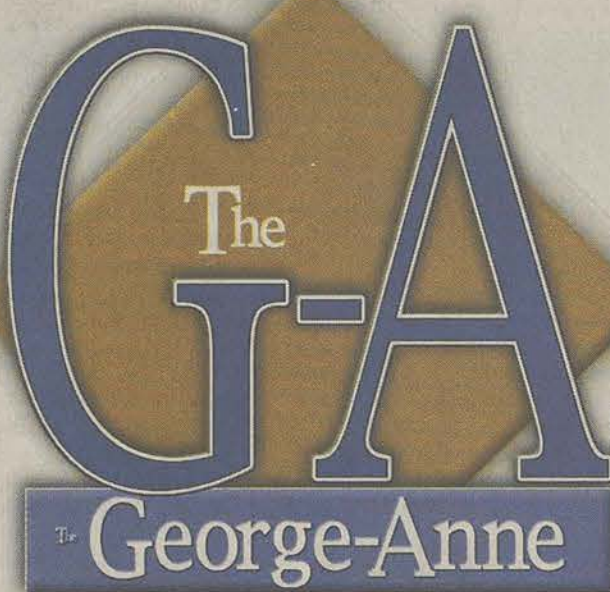


## SPORTS

### GSU football team holds preseason game

GSU had a much better practice run this week than last. Is it enough to overtake Georgia?

Page 6



## LIFE

### Botanical gardens to offer children services

The botanical gardens will offer "Children Growing Vegetables for the Hungry" September 5.



RECEIVED

AUG 30 2000

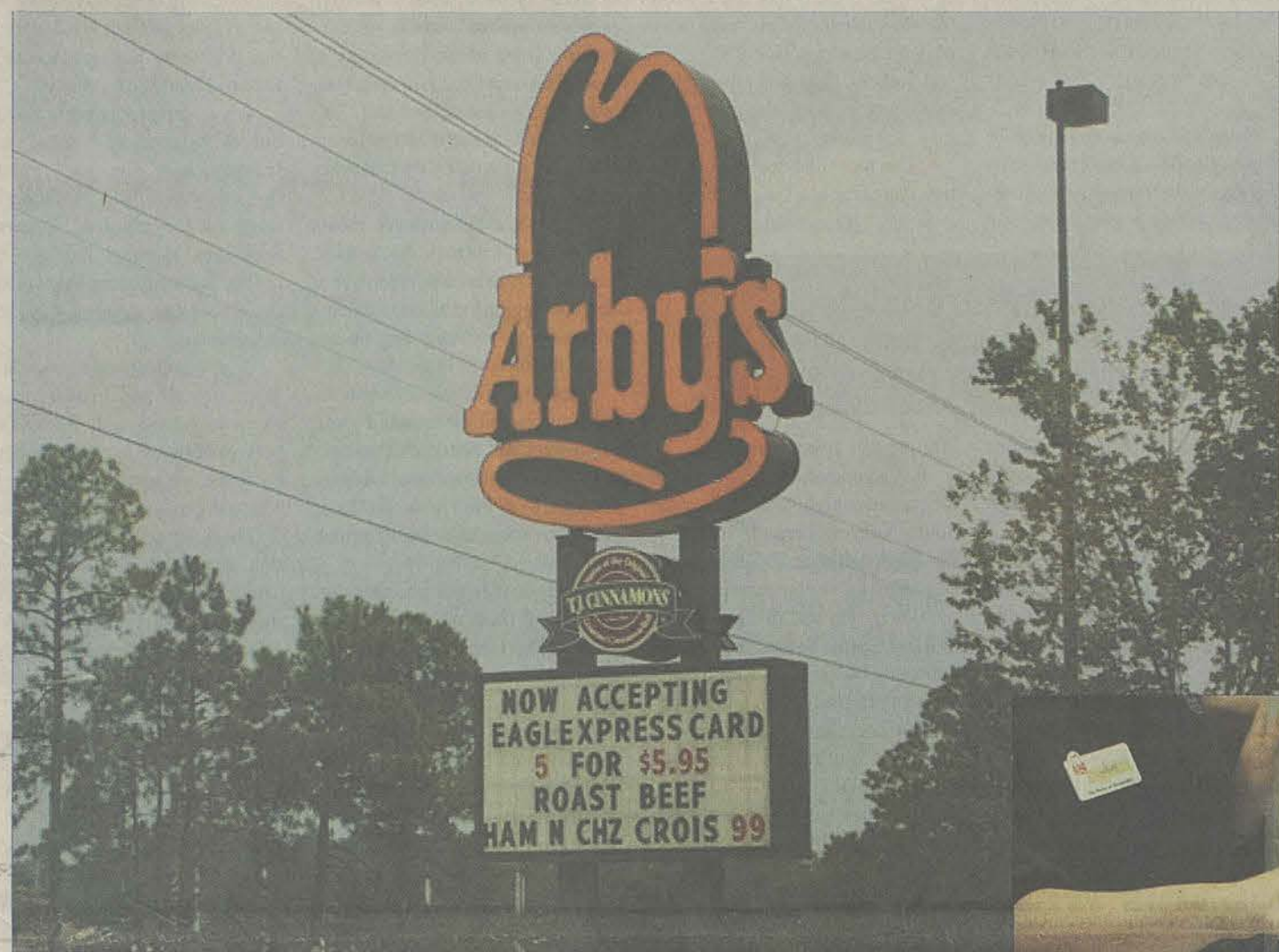
HENDERSON LIBRARY  
GEORGIA SOUTHERN  
UNIVERSITY

Page 5

Vol. 73 No. 18

Monday, August 28, 2000

# Two local restaurants now accepting Eagle Express



Arby's and Archibald's are now accepting Eagle Express, which marks the first time that GSU students will be able to use their cards off-campus.

All photos taken by Dana MacKay.

By Jason Kemp  
Staff Writer

Students at GSU will now be able to use their eagle express card off-campus, and at the Henderson Library thanks to a new test program by Auxiliary Services. Students can use the card to purchase food at Arby's and Archibald's and to make copies and use the vending machines in the library.

Tom Palfy, director of GSU food services, believes that this will be a beneficial program because students can now use their eagle express card at more food venues and for an expanded amount of time.

"This broadens the access to different food venues for the students and it expands the hours of operation for the students, who will now be able to use their eagle express card

on the weekends and after 10 p.m. on the weekdays," Palfy said.

Earl Williams, co-owner of Arby's restaurants believes that the implementation of eagle express will be good for everyone involved. Williams has seen an immediate growth in sales since the eagle express machine was installed on August 22<sup>nd</sup>. Plus, Williams says that he has been hearing nothing but praise from the students who have been using the card at Arby's this week.

"One student asked for a receipt, because she was so impressed she wanted to fax the receipt to her mom, so she could see that her daughter could use her card to eat on and off campus," Williams said.

Arby's is currently working on setting up a line that is only for eagle express, which will allow students to

get in and out at a faster pace. However, students can not use their eagle express at the drive-thru, an inconvenience that Williams plans to resolve in the near future.

Jeff Yawn, co-owner of Archibald's and a GSU graduate is looking forward to having eagle express because he feels that it will give Archibald's the opportunity to serve more students.

"We want students to feel like Archibald's is a place where they can come and eat and still feel like they are part of the university atmosphere," Yawn said.

Archibald's will begin accepting eagle express on Monday, August 28<sup>th</sup>.

If the test program is successful this semester, then auxiliary services will look at the possibility of expand-

ing the program in the spring semester. However, Mr. Palfy stressed that there will be restrictions on the use of eagle express.

"We have the contract structured so that there will be no purchasing of beer, tobacco products, fire-arms, ammunition, body-piercing or tattoos on eagle express," Palfy said.

GSU, which has seen eagle express deposits drop \$400,000 dollars over the past few years, will be receiving eight percent of the revenue generated from the use of eagle express from Arby's and Archibald's.

Beginning September 1<sup>st</sup>, students

are going to be able to use their eagle express card to make copies and use the vending machines in the library. They will also be able to make cash deposits on the card, and trade in the value of their old copying cards for equal value on their eagle express in the library. If the implementation of eagle express is successful at the library, auxiliary services has the capability to install the use of eagle express in up to three more buildings in the spring.

Eagle Express deposit centers are located in the Russell Union at the ID and Deposit Center, and beginning

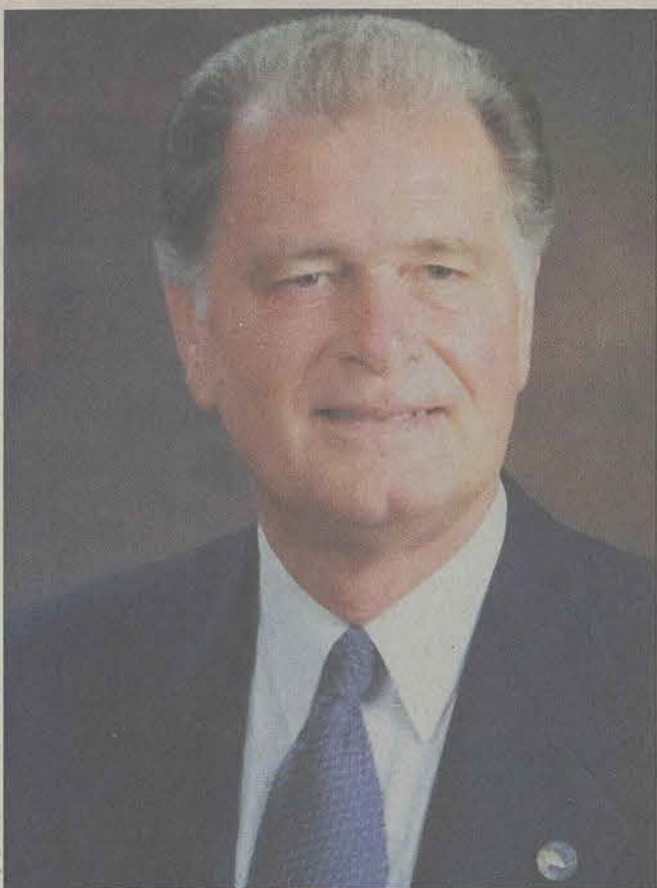
September 1<sup>st</sup> in the Henderson Library. Eagle express also accepts credit card deposits over the phone by calling 912-681-5311 or toll-free at 1-888-346-3478.

Arby's hours of operation are Monday thru Thursday 6 a.m. to 12 a.m., Friday and Saturday 6 a.m. to 1 a.m. and Sunday 8 a.m. to 12 a.m.

Archibald's is open Monday thru Wednesday 11 a.m. to 11 p.m., and Thursday, Friday and Saturday 11 a.m. to 12 a.m. Archibald's is closed on Sunday.

A student's ID card is also their eagle express card.

## Britt named president of GSU Foundation



James M. Britt

G-A News Service

James M. Britt, vice president for University Advancement at GSU, was recently named president of the GSU Foundation.

In addition to duties as vice president for those University areas involved in academic fundraising programs and alumni activities and services, Britt assumes responsibility

for overseeing the daily operation of the 46-plus member board. Working with Foundation Chairman Jimmy Franklin and various committees, Britt will develop and supervise implementation of a strategic plan to broaden GSU's base of private support. Activities include the 27<sup>th</sup> annual A Day for Southern campaign in September and a major capital campaign leading up to the University's centennial in 2006.

"I'm pleased with the opportunity to serve the University in this capacity," Britt said. "It presents a wonderful opportunity to complement the other role I've been in for the past four years. I welcome the opportunity to work with the high

...WE'RE LOOKING  
FORWARD TO BUILDING  
UPON THAT SUCCESS,"

caliber of individuals who serve on the Foundation board."

Britt succeeds Bill Golden, who served as Foundation president for six years. Golden has been named director of Governmental Relations for GSU.

"Bill has left a legacy of success, and we're looking forward to building upon that success," Britt said.

Britt came to GSU in July 1996 from the Chicago area where he had served as vice president of Institutional Advancement and Marketing at two private colleges.

## WVGS back on air...



Lindsay Wise

WVGS: DJ Taz of the "Taz and E-man Show" are part of this semester's line up at WVGS. Their show is six to nine p.m. on Sundays



## ANNOUNCEMENTS

## Things To Do at GSU Ongoing

• **Free Tutoring** in several subjects: English, history, sociology and psychology, all maths, chemistry, biology, and college reading/study skills. Each subject has different hours of operation. Call 681-0321 for more information.

• **The Christian Faculty/Staff** meets every Monday at noon in the Russell Union Room 2044.

• The NAACP meets every Monday at 6 p.m. in the Russell Union Room 2048.

• **BSU** meets every Tuesday at 8 p.m. at 401 Chandler Rd. across from Johnson Hall. BSU also has lunch every Wednesday from 12 to 1 p.m.

• **GSU Chapter of Habitat for Humanity**

meets every Tuesday at 5:30 p.m. in the Russell Union Room 2044.

• **The American Society of Mechanical Engineers (ASME)** meets the first and third Wednesday of every month at 2 p.m. in the Technology Building Room 2116.

• **The Institute of Electrical and Electronic Engineers** meets the first and third Tuesday of every month at 5 p.m. in the Technology Building Room 2117.

## August 29

• **The Black Student Alliance** will meet at 7 p.m. in room 2047 of the Russell Union.

• **Phi Kappa Phi** will hold a meeting at 4:15 p.m. in room 2042 of the Russell Union.

## September 6

• **Gamma Beta Phi** will hold its first

meeting in Russell Union room 2048 at 7 p.m.

## September 9

• **The Association of Georgia Southern Women** will hold its annual membership coffee on Saturday, Sept. 9, 2000 at 10 a.m. at the Lamar Q. Ball, Jr. Raptor Center. Refreshments will be served until noon. Membership is open to all wives of, or women who are, active or retired faculty members, administrators and staff of GSU. Call Linda Rhodes at 681-5373 for more information.

## September 19

• **Focus on Excellence** lecture given by Dr. David Stone will be held at 4 p.m. in the GSU museum lecture hall.

## POLICE BEAT

## GSU Public Safety August 21

• Carron Elizabeth Hampton, 20, 506 South College Street, was charged with DUI (.143) and failure to maintain lane.

• Cory Aaron Murdoch, 17, Lawrenceville, was charged with possession of marijuana.

• Lavada Sykora reported a Dictaphone cassette player was missing from the Administration Building.

• Greg Waggner reported his Cannondale bicycle was missing from the College of Business Administration bike rack.

## August 24

• Gary Crosby reported a Motorola

radio was taken from the Landrum Center.

• Allison Bakstab reported a Huffy bicycle taken from the Political Science Building bike rack.

• Jeremy Franklin reported a cell phone was taken from a bench in front of the University Store.

• Dione Brooks-Charleston reported a set of keys were taken from her room in Olliff Hall.

## August 25

• Corey Alexis Fallen, 19, Atlanta, was charged with possession of marijuana.

• A case of harrasment was reported at the Kennedy Complex.

*Editor's Note: Police Beat appears*

*in every issue of the George-Anne in order to inform the GSU community of the amount, nature and location of crime. All reports are public information and can be obtained from the GSU Division of Public Safety or at the Statesboro Police Department.*

*--All Police Beat information is compiled by John Bryson, News Editor.*

## GEORGIA NEWS BRIEF

## Once male-dominated UGA campus is now overwhelmingly female.

The Associated Press

ATHENS, Ga. - The University of Georgia is known for wild fraternity parties that make "Animal House" look tame and a devotion to college football so great that bulldog mascots are buried in a shrine at the stadium.

Even the lyrics of the alma mater leave no doubt whom the state's flagship university was meant to serve - "the sons of Georgia."

But the sons of Georgia are an endangered species on this once male-dominated campus.

The proportion of women in the

student body has grown each year since 1993, and this year's freshman class is just 39 percent male. In a student body of about 30,000, women outnumber men by more than 3,000.

The dramatic, if gradual, demographic shift has left its mark all over this college town.

Nervous 18-year-old women wearing name tags flood Tate Student Center by the busload for sorority rush week activities. Across campus, women crowd into high-rise dormitories once intended only for men. And women's clothing stores in Athens' downtown village are thriving.

"This used to be kind of a macho school. Not anymore," said F.N. "Nash" Boney, the university's official historian, who has spent three

decades on campus. "When I first came here, a female vet student was almost unheard of. Now they're in the clear majority. Law school, too."

There's no reason to believe the trend is slowing. Last year, facing discrimination lawsuits, administrators removed a small statistical

**"THIS USED TO BE KIND OF A MACHO SCHOOL. NOT ANYMORE."**  
- NASH BONEY, UGA HISTORIAN

boost for men from the admissions formula. And high schools are sending more women to higher education each year.

Still, even Rusty Heery, who runs a downtown boutique popular among sorority members, was surprised to hear the incoming freshman class is so overwhelmingly female.

"Sixty-fourty?" he said. "Is it that high? If I was in school now I'd be thinking about how the odds were in my favor for dating."

Not that Heery is complaining

about the present-day ratio. More female students means more business for his store, Heery's

Clothes Closet, and other downtown women's clothing retailers that are thriving.

"The more the female population increases at UGA, the better it is for us," Heery said.

It wasn't always this way.

Just a generation ago, just as at other state universities across the South, women were the minority, rarely populating schools other than education and home economics.

"There was sort of a stereotype of Betty Coed," Boney said. "Georgia coeds had kind of a reputation for being charming and good-looking but not taken too seriously. A pretty girl was more of a party girl than a scholar."

But times have changed. On a campus once jokingly called a

drinking school with a football problem, women's sports rule.

Now some of the University of Georgia's most recognizable athletes barely clear 5 feet tall. Students pack Stegeman Coliseum each year for women's gymnastics meets.

And while the primary men's programs - football, basketball, baseball - have been competitive at best and flagging at worst, women's programs have been piling up national championships.

Fans are flocking to women's swimming, golf, soccer and gymnastics not just because of success but because women are a bigger presence than ever in the fan base, gymnastics coach Suzanne Yoculan said.

"They're the ones who are dragging along their boyfriends," she said. "Fathers don't come on their own now. They come because wives and daughters drag them to a meet."

The Athens campus reflects a national trend in higher education. Women are an increasing presence at universities across America, making up a projected 55 percent of the national student body this year, according to the National Center for Education Statistics. That number is expected to creep up to 56 percent by the end of this decade.

Still, the trend is exaggerated at the University of Georgia. The

male-female breakdown of incoming classes passed break-even in the 1970s and has tipped steadily toward females ever since.

It's a campus growing farther out of balance with the gender breakdown of Georgia's population every year. But that's the last thing on the mind of university President Michael Adams, embroiled in a legal battle over whether the school can use race as a factor in admissions.

"I'm never going to get into a discussion of are there too many women," Adams said. "These numbers sometimes move in cycles. I do think we can do a better job educating males than we do now."

The numbers are even higher at smaller schools in Georgia. Men barely made up 30 percent of the student body last year at Armstrong Atlantic State University, Waycross College and Georgia Southwestern State University.

Still, some men can take heart in their dwindling presence on campus - at least according to a popular men's magazine.

Men's Health put the University of Georgia on a list of the 10 most "male-friendly" universities in the country for its top-ranked student recreation center, a "psychological climate in which men feel welcome and relaxed" and what it called a "peachy" male-female ratio.

**POPEYES**  
CHICKEN & BISCUITS

**Shrimp Dinner Combo**

with Fries, Biscuit, and Coke

**\$3.99**

Open 'til Midnight  
Friday and Saturday

Statesboro Only • Limit Two per Coupon  
Expires 12/15/00

The August 16th and August 23rd advertisements for "Big Lots Furniture" ran in error.

The George-Anne Apologizes for any inconvenience this may have caused. The correct copy is in today's edition

## This Week's Weather



**Today**  
Partly cloudy with a high of 93 and a low of 72.



**Tuesday**  
Partly cloudy with a high of 92 and a low of 71.

THIS BANK ROCKS

(WELL, AT LEAST THE CD WE'RE GIVING AWAY DOES)



FREE TUNES WHEN YOU OPEN A WACHOVIA COLLEGE ACCOUNT. And a free check card, free use of Wachovia ATMs (they're all over the place) and free Online Banking. Try to find another bank that gives you all this, plus the music of Train, Josh Joplin, Stir and 10 other artists.

TO OPEN A COLLEGE ACCOUNT AND RECEIVE A FRESH CD,\* STOP BY ANY BRANCH. OR FOR MORE DETAILS, CHECK OUT [WWW.WACHOVIA.COM](http://WWW.WACHOVIA.COM).

**WACHOVIA**

Let's get started.®

\*One CD per account, while supplies last. Wachovia Bank, N.A., is a member FDIC. Account subject to approval. ©Wachovia Corporation



## ONLY IN AMERICA...

## 1 Oklahoma

## 82-year-old man dragged to death by wife

SHAWNEE — An 82-year-old legally blind man was killed in his driveway when his wife backed over him with the couple's car while attempting to drag him to the house with an extension cord.

This is how Pottawatomie County Sheriff's Detective Tracy Warkentien said the accident happened Thursday.

Franklin Gray, who uses a cane, was going for one of his regular walks along the driveway when his 87-year-old wife, Leta, noticed him fall. She went outside to try to help him up, but couldn't.

Gray asked his wife to drag him back to the house with a rope attached to the couple's car. She came back with an extension cord and tied it off around his belt. The car started making its way up the 44-foot driveway when Gray's belt broke. Gray then asked his wife to tie the extension cord around his ankle, and again the car started up the driveway.

Police said 20 feet from the house, the extension cord broke. Gray asked his wife to back the car closer to him so he could reattach the cord, but her foot apparently was on the gas instead of the brake. When she put the car in reverse, it backed over him.

Warkentien said the death has been ruled accidental.

"It was just one of these freak accidents, but one that's hard to believe," Warkentien said.

## 2 West Virginia

## Emu escapes from owner...again

MARTINSBURG -- A 6-foot tall, 60-pound flightless bird has been eluding Berkeley County residents and animal control officers for most of this week.

The wily emu was first spotted near the Eastern West Virginia Regional Airport near Martinsburg on Monday. Some were concerned the bird could become a hazard to navigation, said County Commissioner Robert Burkhart. Animal control officers, however, could not find it. On Tuesday, it was spotted near a mobile home park five miles away.

A resident chased the bird for more than two hours, said Berkeley County Animal Control Officer Ray Strine. Although the bird can't fly, it can run about 40 miles an hour, Strine said.

The resident finally roped it and called the officers to come get it.

"It wasn't easy getting him into the truck," Strine said. The bird is not naturally dangerous, but "If he's cornered, he has these long claws and he'll use them to slash."

The found him a home with a woman who keeps ostriches. She put him in a pen with the ostriches to see how he liked it.

Apparently, he didn't.

As of Friday, "He's on the loose again," Strine said.

## 3 Washington

## Box of artificial human limbs stolen

KIRKLAND — A box containing seven artificial arms and hands that were meant for children in Vietnam who lost their limbs to leftover land mines has been stolen.

Arden Norvold, 52, founder and co-director of Kids First, said the box was taken Tuesday after it was delivered by United Parcel Service to the porch of her home in this Seattle suburb.

As a result, she said she would have to leave for Vietnam on Friday without the state-of-the-art prosthetic devices that had been intended for six poor children in Dong Ha, including one missing both arms.

A triple amputee doctor in North Carolina built and donated the child-sized prosthetics, charging only for materials, Norvold said.

"I don't care who took them. I just want them back," she said.

If the prosthetics are returned, they will be taken to Vietnam on the group's next trip, she said.

Norvold and Roger Ferrell started Kids First on Bainbridge Island in 1997 to improve the education of poor and disabled Vietnamese children. Their current trip is to dedicate a 12-classroom school for 100 students, the first in Vietnam with access for disabled youngsters, Ferrell said.

Dong Ha was an outpost for U.S. troops about 15 miles from the demilitarized zone that divided North and South Vietnam during the war, which ended in 1975.

"It was probably the most fiery battleground of the war," Ferrell said.

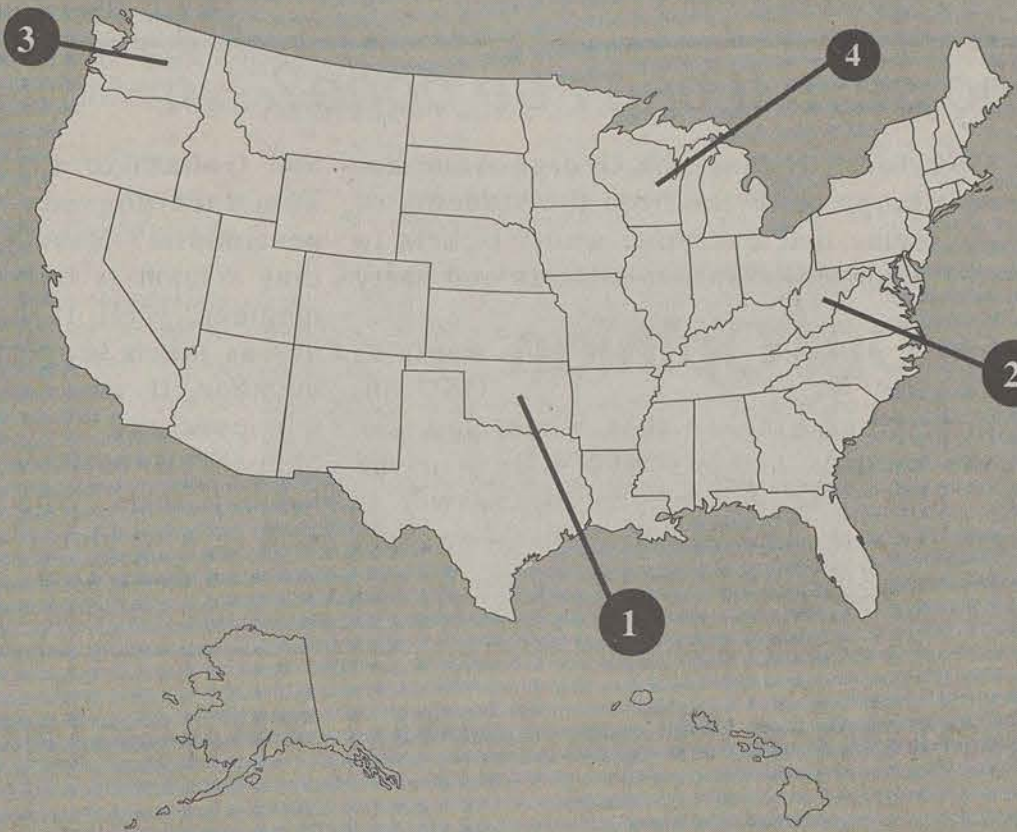
"Kids die there every week from the land mines that we left behind," Norvold said.

## 4 Illinois

## Man accused of drunk driving reports to jail drunk

MARION — Jury selection in the trial of a Stirtz man accused of driving drunk and causing a fatal car accident was postponed after authorities said the man showed up to court legally drunk.

Michael D. Bennett, 46, was sent back to jail after a breath test determined his blood alcohol level was more than twice the legal limit in Illinois.



Bennett faces drunk driving and reckless homicide charges in an accident that happened last December when he drove his pickup truck into another vehicle, killing the driver and badly injuring a passenger. He has been free on \$1,500 bond.

Bennett's blood-alcohol level at the Eagle Entertainment Event Hotline - 681-5442 • Eagle Entertainment Event Hotline - 681-5442

time of the crash was .314, nearly four times the state's legal limit of .08.

On Tuesday, Bennett's attorney asked that another breath test be administered after his client appeared at the Williamson County courthouse for jury selection visibly impaired.

That test showed a blood-alcohol

level of .185. Judge Ron Eckiss revoked Bennett's bond and sent him back to jail, setting an Aug. 31 status hearing in the case. So far, no other charges have been filed.

This time, Eckiss set Bennett's bail at \$50,000, requiring a \$5,000 bond.

Eagle Entertainment Event Hotline - 681-5442 • Eagle Entertainment Event Hotline - 681-5442

# Eagle Entertainment

"Your Student Entertainment Connection"

## TONIGHT

### Informational Meeting

#### Find out all about Eagle Entertainment!

Eagle Entertainment is the programming council for Georgia Southern. Eagle Entertainment plans and promotes a wide variety of programs throughout the year to enhance the social and educational setting at the University.

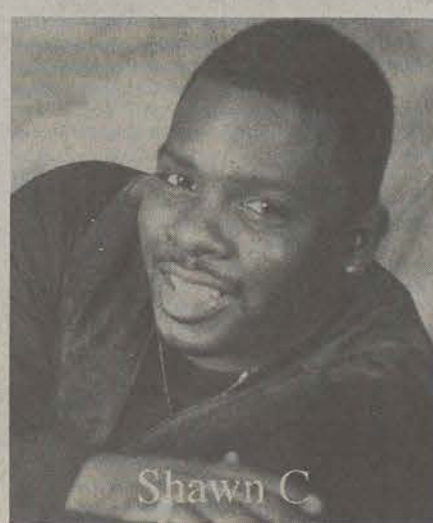
**Monday,  
August 28, 2000  
7:00 pm  
Russell Union Room 2084**

#### Eagle Entertainment Teams:

Big Time	Nooners
Crowns & Fashion	Public Relations
Eagle Cinema	Travel & Tourism
Spotlights	

For more information, please call 486-7270

### Our Next Show

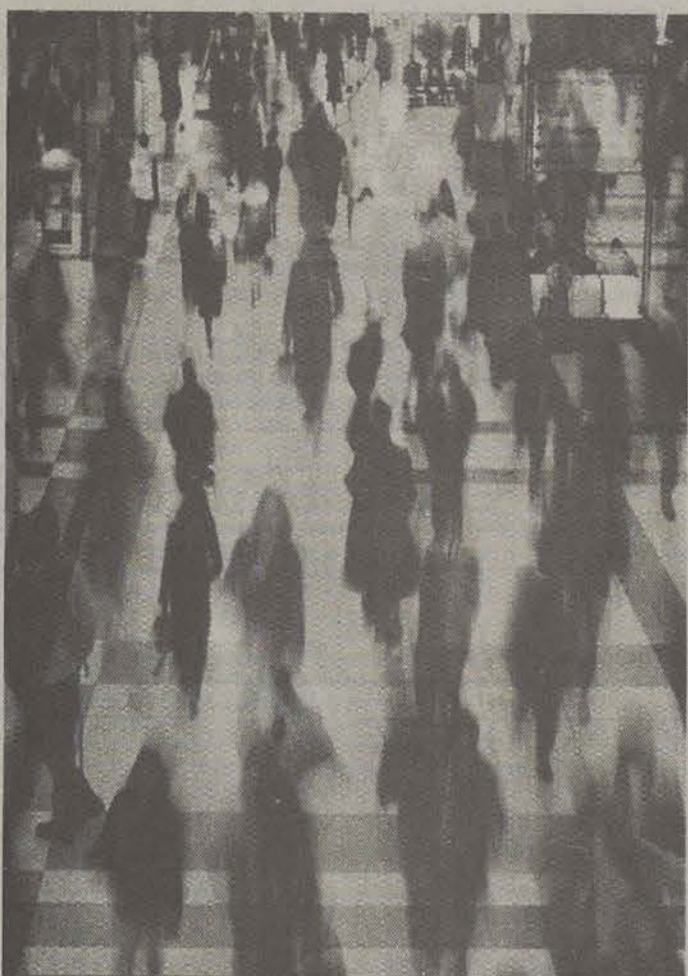


**Thursday,  
September 7  
7:00 pm  
Russell Union  
Ballroom**

For more information call: 486-7270  
**Event Hotline 681-5442**

Eagle Entertainment Event Hotline - 681-5442 • Eagle Entertainment Event Hotline - 681-5442

# Join the 30 million Americans who e-file



Thirty million Americans use IRS e-file to file their federal tax returns.

Expecting a refund? Get it back in less than half the usual time with IRS e-file. Even faster if you specify Direct Deposit!

Do you owe more tax? You can e-file your return well ahead of the deadline, but wait until April 17<sup>th</sup> to pay the balance due.

You can even charge the balance to a credit card. Or ask us to withdraw it from your bank account.

IRS e-file is fast, simple and secure. So accurate, there's less chance you'll get one of those letters from the IRS.

Ask your tax preparer to e-file your return, or use your own computer. You'll find more options than ever to e-file it yourself.

For details, see your tax professional or visit our Web site at [www.irs.gov](http://www.irs.gov)



The Internal Revenue Service Working to put service first



## Who says it can't be done?

As GSU football fans, the George-Anne has noticed strange behavior from the students of GSU. It seems that everyone wants tickets to the game, everyone wants to tailgate and party a n d

everyone wants to cheer GSU on. The surprising thing is that when you ask someone on this campus who will win the game... nine times out of ten the answer is Georgia. Now, we are not saying that we expect GSU to blow Georgia out of the water. We do, however, want GSU to win. Ever heard of David

and Goliath or Erin Brockovich and PG&E? The underdog can win. So, why are we so pessimistic? Have you ever heard the saying that a team is only as strong as its weakest member? Well, if that holds true a school only has as much support for itself as its weakest member. If we keep saying that Georgia will win over and over, what do you expect will happen? Have faith in your school and your football team. Who says GSU won't win, and who says we don't have a chance? Go eagles, you can do it. Don't be too intimidated to kick some ass and take some names.

For 73 years, Georgia  
Southern's Official Student  
Newspaper

### The 2000 Editorial Board

**David Koepke**  
Editor in Chief

**Justin Johnson**  
Managing Editor

**John Bryson**  
News Editor

### The 2000 Editorial Staff

**Hannah Helton**  
Sports Editor

**Lindsay Wise**  
Photo Editor

**Dana Mackay**  
Assistant Lifestyles Editor

**Tim Prizer**  
Lifestyles Editor

**Nick Crouch**  
Deputy Managing Editor

## Clinton a Wonderful Thespian



RANDY  
DOBSON

Act One: (1992) Clinton named "Comeback Kid" after losing New Hampshire Primary and still winning the Democratic Presidential Nomination.

Act Two: Clinton screws Jessie Jackson of prominent role after Jackson swings black vote to Clinton.

Act Three: Democrats don't back down; Clinton "forced" to choose Gore as running mate.

Act Four: Clinton wins Presidential election over George Bush.

Act Five: Whitewater-gate.

Act Six: Paula Jones...nuff said.

Act Seven: O.J. receives "locker room" call from Clinton, congratulating him on his victory.

Act Eight: Clinton woos intern, but says he "...did not have sexual relations with that woman." (Note to script: Scene needs...something!)

Act Nine: Clinton sends U.S. Troops to Bosnia in hopes of ending war started during The Crusades.

Act Ten: Prelude to "Primary

Colors". Act Eleven: Clinton testifies, wins second term, impeached. (Cut to Clinton walking Buddy in Rose Garden, smoking a Cuban cigar.)

Such was the plot of the off-Broadway hit, "William Jefferson Clinton, An American President", a comedy written and directed by the talented Clinton(s).

What a skit! It was, if not funny, quite an entertaining play. And it had a better run than has been seen in years.

This masterpiece was not put on without great effort either. The list of talented actors employed to put on this production is simply too large to print.

The storyline, however, though extremely entertaining through Act Ten, fizzled in the end, with the star performer sensing the audience's restlessness and appearing to struggle to keep his composure.

No doubt he was drained from the rigors of such a long and arduous performance. And who can blame him? It takes a marvelous actor to hold his audience in rapt attention for eight years. But, consummate warrior that he is, he forged on:

Final Act: (2000) Clinton vows to veto bill cutting taxes by \$248 billion and eliminating Estate

Taxes of up to 55 percent. (Note to Script: Remember to show debate after which, on the floor of the House, the bill overwhelmingly passed by vote of 279-136, with 65 Democrats joining the Republican Majority.)

Bill Clinton: "Knock, knock." American Public: "Who's there?"

Bill Clinton: "Screw." American Public: "Screw who?"

Bill Clinton: "Screw...YOU." (Cut to Clinton ROFLHAO, chat room slang for Rolling on Floor, Laughing His Ass Off.)

And so ends this real life satire that appears worthy of every Tony Award ever imagined. It is rare when a production puts forth this much effort, pays this much attention to detail, when portraying the life of an American president. And yet it has been aptly done.

I enjoyed the entertainment. Again, the level of performance displayed by all the actors, more than one of which are sure to get Oscar nominations, was indeed captivating. The only problem is that I didn't see the humor in it...did you?

Randy Dobson is a senior at GSU and can be reached at redobson@bulloch.net

## The definition of a "true friend..."



JUSTIN  
JOHNSON

Webster says that the definition of a friend is: a person attached to another by respect or affection; one who is not hostile; and one who supports or favors something.

Friends are one of the keystones in our lives. They are there for you when you can't talk to your family, and they are there for you when you need a shoulder to lean on. Friends are a Godsend, but have you ever had friends that didn't even fit into one of those categories I mentioned above? If you have ever had to wonder why you call them your friends, then more than likely, they are not. If you don't have their respect or support, why waste your time on them? Have you convinced yourself they can change, that they have your best interest at heart except for the fact that they just ended up hurting you more in the end? Just give them a chance you say, they really are a good person.

There are times in our lives when we desire friends so badly to the point that we associate ourselves with people that we know aren't the type of people that we should be hanging around. We surround ourselves with people who are, well, unhealthy for our mental well being.

After a while, we usually have that wake up call and check out of that relationship and try to never ever remember what you did.

However, there are other types of friends that can be just as bad for you, yet aren't so obvious. There is the just as common, hard to define type of "friendship" that I seem to get myself into quite often. See, I'm the type of person who always sees the good in someone. I usually find it hard to believe that people would lie to my face, that there are people who are only opportunists or that these are people are only hanging around me because they can get something out of me.

Of course I don't want to see that. Who wants someone to do that to you. Beware of false friends, they can only drag you down. You are the first person who knows your self worth, yet you are something the last person to admit how worthy you really are. Well, unless you have a huge ego and there are people like that. But, most people need some sort of reinforcement in their lives to reassure them that they are good people. You deserve that. Why? Everyone deserves a real friend. I feel so lucky to have a handful of them.

My personal definition of a friend is someone who remembers things about you and you never have to repeat it again. A friend is

someone who does things for you without asking them to be done. A friend is someone who you can turn to and count on in any given situation. A friend is someone who lifts you up, never brings you down and is there for you no matter what sort of hell you may be going through. Friends are supposed to be there to help you become a better person. If yours don't fit the bill, check out. I guarantee you there are others out there, and they are willing to be your REAL friend, not your friend with the quotations.

As a friend, your job is not to be a source of income for others. It isn't supposed to be a dating service, you are not responsible for their love life. If they want to pay you to play matchmaker, ok. Your job is not to be walked all over and taken advantage of. Your job doesn't entail being lied to over and over.

Your job is to be you. Your only duties are to be yourself, to be honest, to be a rock to lean on. A friend is there in good times and bad times, through thick and thin and all of that emotional stuff. Hey, they are your real friends. They are supposed to be there for you. The key thing in knowing that someone is your friend is that they won't ever have to know what their responsibility as a friend is, they already know.

Justin Johnson can be reached at jacksonswims@goplay.com

## Midgets need a more active role in the United States military



JAKE  
HALLMAN

Midgets don't get enough respect. Sure, people look on them for sure-fire entertainment, but the "little people" just don't receive their props for other valuable contributions they can make to society.

To that end, I'm a big supporter of a larger midget role in the American military.

That's a tall order, but think about it, folks. First, there's the obvious psychological scare factor. Any army worth its salt is prepared to deal with normal-sized opponents. But let's face it, midgets are scary to everyone on some deep-seated, bottom-of-the-brain level. Now picture company upon company of them coming over

a hill, armed to the teeth and lusting for blood.

The rout in Iraq would pale in comparison.

Midgets are ideal for defensive positions, too. First, smaller bodies mean smaller foxholes. That leads to more foxholes, more quickly. Should said foxholes get overrun, then midget forces could gain valuable consolidation time while the enemy has to spend time digging deeper trenches.

For quick and easy insertion of special forces, midgets have everybody beat. It's a lot easier to be all sneaky-like when you're only 3 feet tall. Parents, just think of all the times you've found your toddler somewhere really, really unexpected.

Can you imagine Saddam Hussein opening up his refrigerator, only to find Spike, the midget Navy

SEAL, Ka-bar knife in hand, where the pastrami-on-rye used to be?

If trouble breaks out in a UN-controlled area, just drop in a big crate marked "RED CROSS." The insurgents break out the crowbars, open it up, and five midgets with M-16s jump out! Can't do that kind of sneaky stuff with normal-sized soldiers.

Airborne operations are made for midgets. By fitting twice as many troops as normal in a C-130, it'd be easy to overwhelm positions deep inside enemy territory.

Aircraft carriers equipped with midget crews and itty-bitty planes and helicopters could rush to a trouble spot at twice the speed of their big-size counterparts. Think speedboat versus an oil tanker.

And c'mon, isn't the idea of tiny little tanks with tiny little tank driv-

ers just plain cool?

Then, there are the logistical issues. Herve Villechaize never ate as much as Sgt. Slaughter. As far as war materiel goes, midgets use pretty much less of everything. Smaller uniforms, smaller guns, the savings to the taxpayer are endless!

Granted, there are a few problems with the idea. Midgets in hand-to-hand combat would probably come out on the losing end. More like foot-to-head combat, given the size mismatch with your average Russian or Chinese grunt.

The respect factor comes into play, too. When the world thinks of the proud, strong, American G.I., they're envisioning John Wayne, not Gary Coleman. After a few battles with the mini-Marines, however, they'd be changing their tune.

The obvious question is where do all the midgets come from? Currently, there just don't seem to be enough of them to comprise a viable fighting force. The solution is preparation, folks.

We start early. Provide generous cash incentives for parents to give up their two-year-olds to a couple of decades of military service. Then, those kids stay hopped up on espresso and nicotine for a few years to stunt their growth.

The use of growth-reducing substances has its battlefield advantages, too. A couple of days before the tiny warriors are sent in to kick bootie,

we cut off the cigarette supply. That'll get 'em nice and mean.

At the same time, the coffee ration gets doubled. Whammo! Instant hyperactive killing machines! Caffeine jitteriness has another added benefit—a target vibrating rapidly is harder to hit.

Some people may find my suggestions unsettling. Should midgets be relegated to the sideshow and Mike Myers movies, however? I feel it's time we give these individuals their shot at martial glory. I mean, after all, as long as they're not gay they'll fit in just fine in the military, right?



## Letter to the editor:

I want to take this opportunity to thank all the students who camped out to purchase Georgia Southern vs. Georgia tickets. Your behavior throughout the wait and the sale of the tickets was exemplary. Those of us who worked to accommodate the students were most appreciative of the manner in which everyone conducted themselves. Your spirit and enthusiasm to support your football team is much appreciated. It is easy to see why Georgia Southern's student support is the envy of schools throughout the country.

We look forward to hosting six home games during the regular season and certainly hope the students will be in force to cheer on the Eagles throughout the year at Paulson Stadium.

Yours Truly,  
Sam Baker

## THE GEORGE-ANNE STAFF

### NEWS

### LIFESTYLES

Kathy Bourassa, Chris Brenneman, Melissa Denby, Mark Metter, Jeremy Nix, Tim Prizer, Mary Render, Michael Russo, Zane Thomas,

### SPORTS

Edmund Coley, Bilal Malik, Jennifer Martin, Taryn Price

### PHOTOGRAPHY

Cory Brooks, Hans Knoepfel, LaVene Bell, Mellone Gibson

### STUDENT PUBLICATIONS

News, Editorial Advisor

General Manager  
Bill Neville

### CIRCULATION

Supervisors

### ADVERTISING/DISTRIBUTION SERVICES (ADS)

Advertising Manager  
Vic Cuvio  
Business Manager  
Brooks Clements  
Ad Reps  
Jonathan Brooks, Tiffany Domingas, Pamella Smith

### PRODUCTION AND GRAPHICS EDITORIAL SERVICES (PAGES)

General Manager  
Jonathan Brooks  
Production Managers  
Will Thigpen  
WebMasters  
Segio Waldring



## Georgia Museum of Art in Athens highlights 'Large Drawings from the Arkansas Art Center'

By Madelyn Pavon  
Staff Writer

Run, don't walk, to the largest and most respected collection of large drawings in the United States. The Georgia Museum of Art in Athens is presently hosting a selection of works from the Arkansas Arts Center on view from August 26-October 25, 2000, entitled "Large Drawings from the Arkansas Arts Center Foundation."

Before the 1970's, drawings were not large in size or public exposure. During this decade, the art world underwent major changes, among them, the emergence of

monumental drawings as an independent art form. The Director of the Arkansas Arts Center made a bold decision to focus the Center's collection on large, unique drawings. Never before had an Arts Center focused on such a narrow emphasis of works. The AAC not only focused its collection on monumental drawings, but also pioneered the scholarly research of large drawings to further enhance the scope of their collection.

"Large Drawings from the Arkansas Arts Center Foundation" features the Center's best examples of 20th Century works, consisting of forty drawings, all exceeding forty inches and many exceeding heights of seven feet.

According to Townsend Wolfe, curator of the exhibition, "the size of the drawings adds a physical and psychological value, which communicates a sense of power to the viewer." When confronted by these large-scale drawings, the observer has the ability to become immersed in the work. The size of the drawings gives the viewer the



Internet Photo

Georgia Museum of Art

opportunity to enter the physical space of the work of art.

The large drawings in the exhibition represent a variety of media, including the more traditional drawing media of pencil, charcoal, ink, pastel, and silverpoint. They also include untraditional drawing media, which emerged in the 1970's as media used for works on paper. The selected works represent drawings executed in acrylic, oil, and watercolor, along with the mixed media's of collage, photography, and printmaking.

The exhibition includes a diverse representation of works from artists who were mainly active in the 1970's and 80's. They include William Beckman, Joan Brown, Adolf Benca,

Robert Colescott, the photo-realist Ida Korman, Heidi Fasnacht, Dieter Hacker, Diane Edison, Stephen Talasnik, Nancy Grossman, Robert Stackhouse, Elizabeth Murray (known for her abstract compositions of color, lines, and shapes), Donald Sultan, Tom Wesselmann, and Irvin Tepper (who enlarges ordinary objects into large

compositions). The Arkansas Arts Center's exhibition, which is tied together by size, chronology, and loosely by media, expands the definitions of "drawing" and "exhibition".

The Georgia Museum of Art

is one stop on the exhibition's three-year tour of the country. There is also a catalogue, which accompanies the exhibition, with an essay written by esteemed Professor of Art, Ed Feldman of the University of Georgia.

The Georgia Museum of Art holds a permanent collection focused on American paintings, Works on Paper ranging from the 16th to the 20th Centuries, and Decorative Arts which include 18th Century Chinese exportware.

The Georgia Museum of Art is located in the Performing and Visual Arts Complex on the East Campus of the University of Georgia at 90 Carlton Street, University of Georgia, Athens. Be sure to stop by if you live in Athens, or when you are visiting for the big game this weekend.

## Botanical Gardens present 'Children Growing Vegetables for the Hungry'

G-A News Service

Starting Tuesday, September 5, 2000, Georgia Southern Botanical Garden is offering children a new opportunity to help the needy in our community. The program, "Children Growing Vegetables for the Hungry," will teach children about gardening and volunteering. All produce grown by the children in the Garden's Children's Vegetable Garden will be donated to the food bank in Statesboro.

In the Garden's organic vegetable garden, children learn how to cultivate

the soil, nurture needs, and finally harvest vegetables. They learn about

fun while getting dirt under the fingernails. And now, they will also learn the value of volunteering and helping less fortunate families get the food they need.

Space in the program is limited. This is a volunteer program so there is no charge; however, children must commit to working for a six-week period, every Tuesday from 3:30-4:30, beginning September 5. Children of any age can participate but children under 6 years old should be



Tim Prizer

compost and other natural fertilizers, discover how beneficial earthworms and ladybugs are, and best of all, have

an adult. To register call Public Programming, Georgia Southern Botanical Garden, 871-1114.

## Friendly smiles and fast service is our prescription for good business

Friendly smiles and fast service is our prescription for good business at Georgia Southern's College Pharmacy. It doesn't matter if your prescription is from your hometown doctor or one of the doctors here in Statesboro, you will always receive your student rate (which is always BELOW marketplace pricing) on all of your pharmaceuticals.

**COLLEGE PHARMACY**  
GEORGIA SOUTHERN UNIVERSITY

Located inside Health Services • 681-0807 • [www.cornerdrugstore.com](http://www.cornerdrugstore.com)

## BIG LOTS FURNITURE Back To College

Affordable Furniture for Your Dorm or Apartment

503 Northside Drive East • Across from Wachovia Bank  
489-5520

### COMPUTER DESK

Desk/Hutch  
Pull-out Keyboard Tray  
2-shelf Bookcase

**\$49<sup>99</sup>**

### FUTON

Your Choice  
Includes  
Mattress or Frame

**\$79<sup>99</sup>**

### COMPUTER CART

**\$79<sup>99</sup>**

### DELUXE COMPUTER WORK CENTER

**\$139<sup>95</sup>**

### ENTERTAINMENT CENTER

47 1/4" Tall  
Holds a 27" TV Set

**\$89<sup>99</sup>**

### BOOKCASES

Oak or White

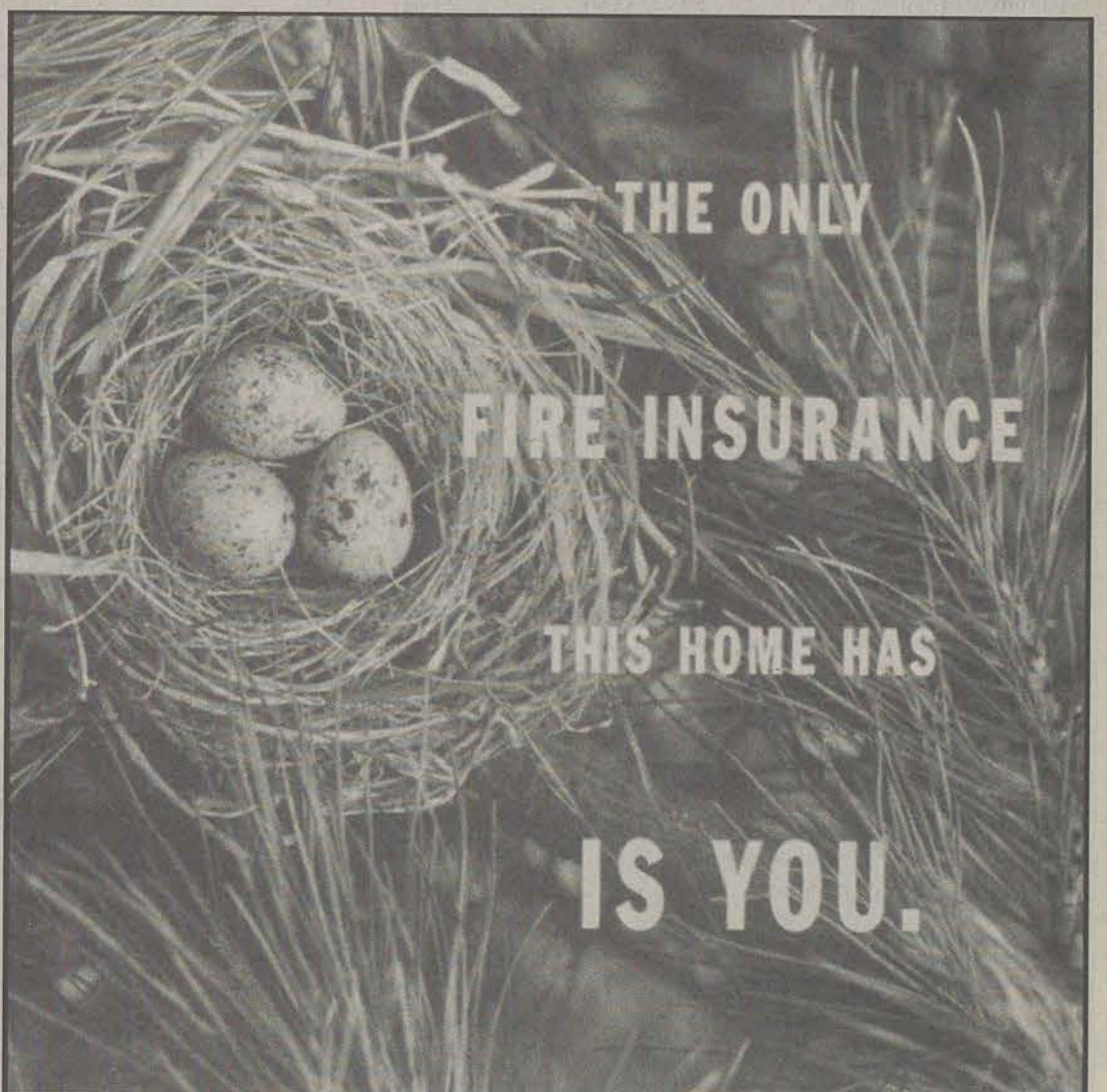
**\$19<sup>99</sup>**  
and up

### YOUR CHOICE

**\$19<sup>95</sup>**

Small Desk • CD Storage Tower  
TV Cart • Utility Cart

HURRY IN FOR OTHER GREAT BACK-TO-SCHOOL SPECIALS!  
QUANTITIES ARE LIMITED!



THE ONLY

FIRE INSURANCE

THIS HOME HAS

IS YOU.



ONLY YOU CAN PREVENT FOREST FIRES.  
[www.smokeybear.com](http://www.smokeybear.com)

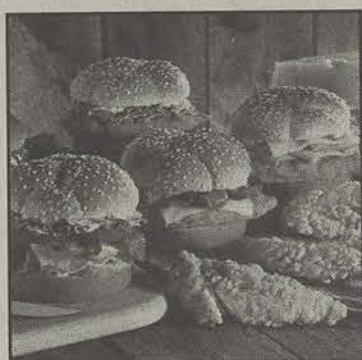


# Get Your Meal

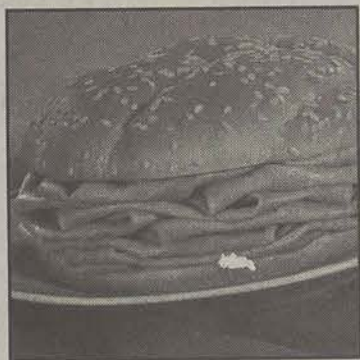
# SWIPEd.

Arby's is now accepting the Eagle Express card.

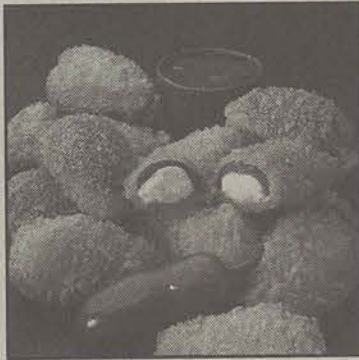
**EAGLE EXPRESS**



Chicken Sandwiches & Fingers



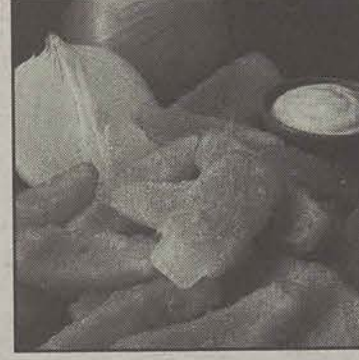
Giant Roast Beef



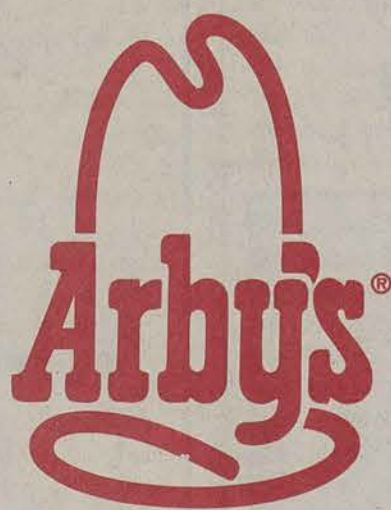
Jalapeño Bites



Mozzarella Sticks



Onion Petals



622 Fair Road



## Eagles improve during Friday scrimmage

By Doug Kidd  
Senior Sports Writer

After noticeably struggling in last weekend's scrimmage, the GSU offense picked things up Friday gaining 244 yards on 33 plays, an average of 7.4 yards per attempt. The scrimmage, which pitted the GSU starters and top reserves against scout teams emulating Georgia's offensive and defensive schemes, was the final full intra-squad scrimmage of the 2000 pre-season.

Leading the way for the Eagles offensively were juniors Adrian Peterson and J.R. Revere with 94 and 50 yards respectively. Revere who went 3-of-9 passing for 39 yards and a score, also added two touchdowns on the ground. Peterson (one yard) and Mark Myers (14) also added touchdown runs.

"I was pleased with the way the offense handled itself for the most part,"

said head coach Paul Johnson. "There were some good things and some not so good things as always. We'll just evaluate and look to set the two-deep [depth chart] and get ready to play."

Offensive coordinator Mike Sewak felt similarly about Friday's effort. "It was a little better [than the previous scrimmage], we were a bit sharper but we've got some work to go," Sewak later added, "I think we're carrying on well. I like the tempo of practice and I think the progress of the offense was evident today."

Although the GSU offense looked sharp Friday, the Eagle players on the defensive side of the ball have been impressive all pre-season. The Eagle defense followed up last week's stand-out performance by limiting the White scout team to just 162 yards on 60 plays while picking up and interception and two fumbles.

Defensively, linebacker Jason Neese led all tacklers with 10 stops. Gino Tutera and Nick Kearns each added eight tackles while Michael Ward had seven hits.

"Our defense has constantly given us a great look," said Sewak. "We're blessed with some good, young defensive linemen that are pretty big and they've fought and really made us work hard."

One of those defensive linemen is sophomore Freddy Pesquiera, who is one of the Eagle defenses main returnees after posting 103 total tackles and 9.5 sacks as a true freshman last season. Other starters returning for GSU include the leading tackler from '99 in linebacker Jason Neese, who collected 107 stops, plus other LB's Michael Ward, Jamar Jones and Michael Youngblood. Defensive tackle Robert LeBlanc and free safety

Ryan Hadden also return.

GSU must replace key figures from a defense that led the SoCon in rushing defense, total defense and scoring defense in '99. Gone from last season's squad include defensive linemen Voncellies Allen and Eugene Phillips, linebackers Josh Smithers and Dante Harrow and defensive backs Kiwaukee Thomas, Earthwind Moreland and Arkee Thompson.

"The defense is looking really good," said Pesquiera. "We have a lot of speed. We lost a lot of people from last year, a few All-Americans, but we've done a good job filling the spots for them. We've got a good defense coming back this year."

Looking to step up this season are Gino Tutera and Tyrie Williams, who are battling to take over Allen's vacated nose tackle position, as well as defensive backs Lavar Rainey, David Young, Nick Kearns and Nate Gates.



Staff Photographer

**PREPARING FOR THE BIG GAME:** The GSU football team practiced against a scout squad on Friday to simulate the offense and defense of the Georgia Bulldogs. The offense showed much improvement, averaging 7.2 yards per play.



### A VIEW FROM THE CHEAP SEATS HANNAH HELTON

Sometimes inspiration comes in the most unusual ways.

I never imagined that I would be a sports editor, of all things. Last year, I decided to be a Diamond Girl, (essentially a bat girl), for the baseball team. I am notoriously a "joiner", one of those people who is a member of too many activities to count and who cannot be happy without a million things to do all at one time. So I decided to be a Diamond Girl because I had a friend who did it, and it sounded like fun.

I not only got to see all the time and effort that goes into making a successful team, but I also got to see what all of the people who make the team "tick" do. And by that I mean all of the people involved in writing press releases, scheduling interviews, making sure ticket sales are up and making sure that the people who aren't at the game get to feel like they are. I must admit that I was fascinated by it all (no, it is not hard to impress me).

Since I like to write and feel like I am pretty good at it, I decided that I would give sports writing a go.

I do not spend all of my free time watching ESPN or Sports South, but I am excited to have this job and have the opportunities that it entails.

As anyone who reads this page will notice, I was the assistant sports editor only a week ago, so along with my excitement comes quite a bit of nervousness. I am having to "learn the ropes" a little faster than I had anticipated, but I feel up to the challenge. Throughout high school, I worked as a writer and editor for the Macon Telegraph, so writing is nothing new to me. Layout, however, is a whole new ballgame (no pun intended), so bear with me these next few weeks.

There are a lot of new ideas that I hope to incorporate into the sports page. Two of them are, in fact, included in today's page.

First, you will notice that all of the articles on this page involve GSU and were written by actual students of GSU.

Second, three of the four writers featured on today's page are girls. This has nothing to do with feminism; however, it is fairly rare to see a girl write sports.

Sports should be for everyone to enjoy, and by having a few female writers, I hope to encourage more girls to read the sports page.

Another goal that I hope to reach is that of covering sports that have, in previous years, been neglected. For example, how many times do you remember reading an article about GSU's cross country team? What? We have a cross country team? That is exactly my point. There are many more GSU sports and sporting news that hasn't been covered, and it is my goal to develop a strong sports writing staff and change that fact.

Lastly, I want to improve school pride. Whether you realize it or not, sports and academics at GSU are rapidly gaining national attention. Specifically in sports, not only are we current football champions in the I-AA division, with Kiwaukee Thomas playing for the Jacksonville Jaguars and Earthwind Moreland for the Tampa Bay Buccaneers, but our baseball team currently holds the title of Southern Conference champions, with Matt Easterday drafted by the Florida Marlins.

It is my opinion that if you are aware of what's going on in sports and you understand the game itself, then you will attend more games, which raises school pride.

In the future, look for profiles of players, previews of all sports, including their schedules, interviews with coaches and information on former students that now play professional sports.

As I mentioned before, sports are for everyone to enjoy. Playing or watching sports can be a social activity, a bonding experience or just plain stress relief.

Hopefully, this year's sports section will encourage students to be more interested in, support, and be proud of all of the sports that GSU has to offer.

## Women's soccer optimistic about upcoming season

By Hannah Helton and  
Holley Hickson  
Sports Editor and Staff Writer

On August 30th, the GSU women's soccer team kicks off their 2000 season with a home matchup against Georgia State.

Head coach Tom Norton is certainly optimistic for a good season, but admits that this season will be a challenge. "Our 2000 schedule will certainly be a challenge," Norton said. "We're playing in two tournaments and we've got four teams that we have never played before. We need a good start and we need to stay healthy to prepare for the conference run."

The team has had several major accomplishments that will help to meet this challenge head on. The women's soccer team has been awarded the National Soccer Coaches Association of American/Adidas Team Academic Award for the fourth consecutive year. This means that the ladies have earned an overall grade point average of 3.11. Two

of the team's seniors, Robin Thirsk and Janis Milne, were also honored for their academic achievements on the South Region Academic All-America list.

In addition to academic awards, the team was successful last year with an overall record of 10-9-1. A new year in soccer should prove to be a great accomplishment for the women's team.

"Obviously, we're excited to get the season started. We have a lot of freshmen newcomers that we are counting on and excited about," says Norton.

The team has been working hard to prepare for the upcoming season. Hard work should indeed put the ladies into a good state of mind for the season at hand.

"At this point, the team has worked very hard and I feel like we got some of the preseason jitters out of the way in the scrimmage game against North Florida [on Aug. 22]. We'll be prepared and ready to go against Georgia State," said Norton.



File Photo

**READY FOR THE SEASON:** GSU will host Georgia State in their first game of the season at Eagle Field on August 30.

## 2000 Women's Soccer Schedule

Aug. 30 - Georgia State-Statesboro

Sept. 2 - Mercer-Macon

Sept. 3 - Northern Illinois-Atlanta

Sept. 8 - Belmont-Jacksonville, Ala.

Sept. 10 - Stephen F. Austin-Jacksonville, Ala.

Sept. 12 - Charleston Southern-Statesboro

Sept. 15 - Mississippi State-Greenville, S.C.

Sept. 6 - Elon-Greenville, S.C.

Sept. 20 - College of Charleston-Statesboro

Sept. 23 - Coastal Carolina-Statesboro

Sept. 26 - Jacksonville State-Statesboro

Sept. 29 - UNC Greensboro-Statesboro

Oct. 1 - Davidson-Statesboro

Oct. 6 - Wofford-Spartanburg, S.C.

Oct. 8 - Furman-Spartanburg, S.C.

Oct. 13 - Appalachian State-Statesboro

Oct. 15 - East Tennessee State-Statesboro

Oct. 20 - Western Carolina-Cullowhee, N.C.

Oct. 22 - Chattanooga-Chattanooga, Tenn.

Oct. 31 - Southern Conference Tournament-TBA

## Limelight awaits for Revere

By Becky Crowder  
Staff Writer

After serving two years as Greg Hill's top understudy, J.R. Revere will be thrown into the limelight this year as starting quarterback.

"I'm up for the challenge," Revere says about heading up GSU's offensive unit. "It's not easy coming up after a legend, but somebody has to do it. It's my job."

Naturally, there will be comparisons of Revere to his predecessor, and granted, they share many of the same characteristics.

Revere, however, doesn't seem too worried about being compared to Hill.

"Every guy is compared to the guy before him, especially a great player like Greg," Revere says. "Until I prove myself, I'll be compared to him. I have to make a name for myself."

Revere should have no problems making a name for himself, having played in 11 games, and being responsible for 11 touchdowns during the 1999 championship season.



File Photo

**READY TO RUMBLE:** J.R. Revere will make his first start against UGA on Sept. 2.

Revere's main goal this season as quarterback is to be productive. He wants to help his team to be successful and lead them to victory. Taking into account Revere's quickness, extremely strong arm and firm knowledge of GSU's triple option offensive attack, victories should be numerous.

It's no surprise that Revere's biggest inspiration on the team is junior fullback Adrian Peterson. "We've been roommates for four years. I am closest to him."

Revere's aspirations on and off the field have him headed for success. He wants to play professional ball one day, whether it is football or baseball (Revere is GSU's starting center fielder).

"If I don't go pro, I want to get my Master's degree in Sports Management. I want to be a General Manager or Athletic Director."

With the season opener in Athens less than a week away, Revere is set to start in his first game against the Georgia Bulldogs. However daunting that may seem, Revere takes it in stride.

"I accept the challenge," Revere says. "In previous years, we've opened against teams that, on paper, we could beat. This year, we're just going to go out there and try our best. The only way a team can improve itself is to play better teams."

Polo & Tommy Hilfiger \$39.90 and up

**R.J. Pope**  
TRADITIONAL MENSWEAR  
5 South Main Street • (912) 764-4306



**Cobbler's Bench**

LADIES CLOTHING, SHOES, & ACCESSORIES  
7 South Main Street • (912) 764-9489

Van-Eli • Pine Cove

Sharon Young • Michael Simon

Hart Schaffner Marx • Cole Hoan



## Today's Quote

"Never try to teach a pig to sing. It wastes your time and annoys the pig."

-- Robert Heinland



# Classifieds, etc.

Monday, August 28, 2000

Page 8

## Crossword

ACROSS  
1 Current units, for short  
5 Armed services grp.  
9 Mends by reweaving  
14 Sail support  
15 Reputation  
16 Distant Nin  
17 Winklike  
18 Large amount  
19 Catchers' gloves  
20 Shopper's levy  
22 Painter Salvador  
23 Visible evidence  
24 Dupes  
27 Representative example  
29 Believe it, or  
30 Inexpensive  
34 Soil turner  
35 Ring of light  
36 Raise  
37 Worker's equipment  
39 Bator, Mongolia  
40 Facility  
41 Legendary Bruin  
42 Very small  
43 Double over  
44 Unity  
47 Gets away  
49 Falls for honey-mooners  
54 Hurries  
55 Humorist Keilor  
56 Discover  
58 Lady's title  
59 Promised Land  
60 Bay window  
61 Stove chamber  
62 "Auntie"  
63 Late  
64 Cave-dwelling fish  
65 Banded chalcidony

DOWN  
1 Accumulate  
2 Language of Kuala Lumpur  
3 Sacred song  
4 Throat infection, briefly  
5 Pull the plug  
6 Del purchase  
7 NYSE alternative  
8 Not many  
9 Injury  
10 Old-womanish  
11 Justification  
12 Future louse  
13 Draft letters  
21 Dance movement  
22 Roosevelt coins  
24 Car or typing follower  
25 Pitcher Ryan  
26 Unfeeling  
28 Rose sticker  
30 Thin pancake  
31 Cures  
32 Recliner  
33 Exist  
35 Shade  
37 Shades  
38 Mineral deposits  
42 Russian sovereign  
44 Frankly  
45 Tooth covering  
46 Tempresses  
48 Broadcasted  
50 Gadget  
51 Thai or Korean, g.  
52 Spacious  
53 Auxiliary building  
55 Contributed  
56 Fate  
57 Notable time  
58 Unknown's last name

## Solutions

ACROSS  
1 XANON  
5 GRP  
9 REWEAVE  
14 SAIL  
15 REPUTATION  
16 NIN  
17 WINK  
18 LOT  
19 GLOVES  
20 LEVY  
22 SALVADOR  
23 EVIDENCE  
24 DUPE  
27 EXAMPLE  
29 OR  
30 INEXPENSIVE  
34 TURNER  
35 LIGHT  
36 RAISE  
37 EQUIPMENT  
39 BATON  
40 FACILITY  
41 BRUIN  
42 SMALL  
43 OVER  
44 UNITY  
47 AWAY  
49 FALLS  
54 HURRIES  
55 KEILOR  
56 DISCOVER  
58 LADY  
59 LAND  
60 WINDOW  
61 CHAMBER  
62 AUNTIE  
63 LATE  
64 FISH  
65 CHALCIDONY

DOWN  
1 ACCUMULATE  
2 KUALA LUMPUR  
3 SACRED  
4 THROAT  
5 PLUG  
6 DEL  
7 NYSE  
8 NOT  
9 INJURY  
10 OLD-WOMANISH  
11 JUSTIFICATION  
12 FUTURE LOUSE  
13 DRAFT LETTERS  
21 DANCE  
22 ROOSEVELT  
24 CAR OR TYPING FOLLOWER  
25 RYAN  
26 UNFEELING  
28 ROSE  
30 THIN  
31 CURES  
32 RECLINER  
33 EXIST  
35 SHADE  
37 SHADES  
38 MINERAL DEPOSITS  
42 RUSSIAN  
44 FRANKLY  
45 TOOTH COVERING  
46 TEMPRESSES  
48 BROADCASTED  
50 GADGET  
51 THAI OR KOREAN  
52 SPACIOUS  
53 AUXILIARY BUILDING  
55 CONTRIBUTED  
56 FATE  
57 NOTABLE TIME  
58 UNKNOWN'S LAST NAME

1987 /SUZU Pick-up. Has new alternator, starter, and battery. New descent radio. Five speed transmission and good tires. Needs new engine. Asking \$400 (negotiable) 489-7177

## 80 Computers & Software

COMPUTER COMPAQ Deskpro 32X CD rom external speakers, printer, monitor, two keyboards, FAX Modem, running Windows 95. Printer is a Cannon Color bubblejet. \$500 Call Jeff at 871-7789.

## 90 Education

FUN & STUFF Visit our Web site for list of things to do that are educational and fun. On-line at <http://www.stp.gasou.edu/fun-stuff/>

## 120 Furniture & Appliances

DORM REFRIGERATOR \$70 call 486-9911 before noon.  
SOLID WOOD Coffee table \$50 and desk \$30 OBO. Call Rachel at 871-4317.

## 140 Help Wanted

WINDOW CLEENERS NEEDED: Flexible schedule. Reliable vehicle a must. Call 842-5681 for an appointment  
TYPIST NEEDED to transcribe interview tapes. Please call 681-8574 or 681-5316 ASAP

## 170 Motorcycles

BLACK & GOLD 1997 Suzuki Katana 600. Immaculate with only 3300 miles. Extended manufacturer's Warranty, two helmets and tank bag. \$4650. Call 489-1001

## 180 Musical

USED GEMEINHARDT 3SB flute. Near perfect condition. \$600. For more information please call 681-5523.

## 220 Rentals & Real Estate

2 ROOM efficiency apt. utl. and washer/dryer included, central heat and air too! \$425 monthly

4 BED, 2 bath Campus Courtyard Townhouse, furnished, \$250 deposit, 1/4 utl. call Kelly 871-5659

## 230 Roommates

I AM looking for a clean and quiet female roommate to share a two bedroom two bath furnished (w/d also ) apartment in Park Place/Villas for the fall. The rent will be 270 /month plus 1/2 utilities. For more information stop by Park Place Villa #152 or call 871-7317 or 912-541-2016 and ask for Hannee.

ROOMMATE NEEDED to share 3 bed house across from Hanner Fieldhouse. Located in a quiet neighborhood. Large backyard! Pets welcome! \$295, no deposit. 871-7337 or 541-1731

ROOMMATE NEEDED ASAP \$220/month, 1/3 utilities, full kitchen, washer, dryer, pool, 3 bedroom, 2 bath. Smokers OK. Male or female doesn't matter. Call 764-3836 anytime.

FEMALE NEEDED to share spacious 16X80, 2 bed, 2 bath, about 5 miles from GSU. \$225 a month + 1/2 utl. Call Melissa at 852-5033 after 6pm or leave message.

2 BED, 2 bath, apartment in Park Place and looking for a roommate to move in for fall and spring 2000-2001.

SEEKING FEAMLE roommate in 2 bedroom, 2 bath mobile home. \$350 a month, includes utl. Must have separates phone line and must like cats. Call 681-1471

## 250 Sports & Stuff

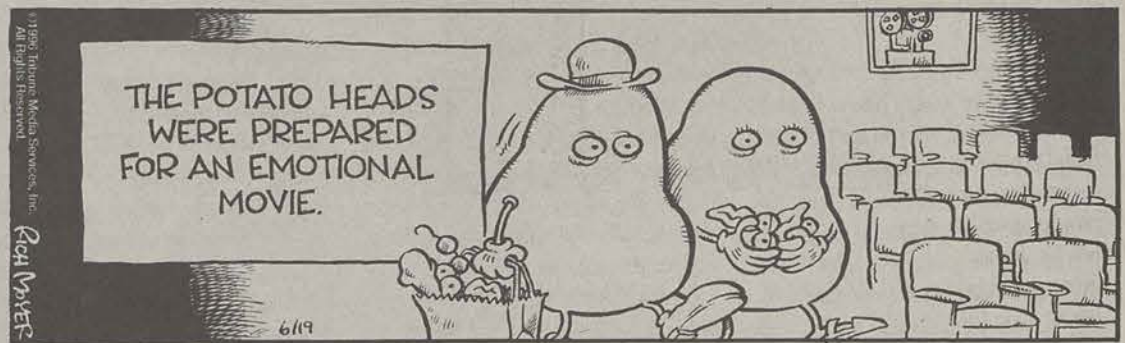
VISIT MY web page.. "THE BLUE EAGLE FAN PAGE" (<http://homestead.juno/gseagle87/>) I've included many great links and information about our EAGLE football team's weekly opponents. Even a picture of our beloved PETERSON running over a UGA defender. Join us on the WEB, learn about our opponents and enjoy sites with many of your fellow EAGLE fans. I think you might enjoy this unofficial Eagle website. Also you can send me your photos of you and your friends at the Games & Tailgating and I'll post them on the site for the other TRUE BLUE EAGLE FANS to see! GO EAGLES!

VOLUNTEER SOCCER Coach needed! Ogechee Soccer League. Call Roger Doty at 687-2340 or 764-socc. Rogerdoty@ml.com

## Gongfarmers



## Ick



## Mother Goose & Grimm



## WVGS Radio Positions Open for 2000-2001

WVGS -- Your Campus Radio Station -- is looking for talented and creative people for the following positions:

- News Director
- Sports Director
- Promotions Director
- Assistant Music Directors (2)
- Operations Assistant
- Office Manager



How to Apply: Fill out the application below, and include a letter of application and/or a resume citing experience and qualifications.

Deadline: Applications are due by Friday, September 1, 2000 to WVGS/FM in care of Josh Sagel, station manager or Bill Neville, adviser, POB 8067 or delivered in person to Room 2022 Williams Center.

Interview Date: Interviews will be scheduled by a member of WVGS management team

Payment: Those selected for a position will receive a honorarium for their work.

**WVGS 91.9**  
raDiOActive

## APPLICATION FORM AND WAIVER

INFORMATION: Questions regarding these positions should be directed to WVGS /FM Josh Sagel, WVGS Station Manager, or Bill Neville, adviser, at 681-0069 or Box 8067.

- A student interested in applying for an elected position is required to present a **resumé** and/or a **letter of application** explaining the candidate's qualifications and their plans or objectives for the media position sought; and a **signed waiver** (included below) which gives permission to validate the candidate's academic standing.
- A student seeking a paid position must have a **CUMULATIVE GRADE POINT AVERAGE of at least 2.0 and must not be on scholastic or disciplinary probation**. If at any time the employee drops below these standards, he or she must relinquish the position.

I, \_\_\_\_\_ do hereby authorize the WVGS adviser, in relation to the above criteria for these positions, to contact the GSU student records representatives to validate my academic standing for compliance. This validation may be at a time of application and at any time during the period I would hold a board position.

Signed \_\_\_\_\_ Box No. \_\_\_\_\_

Name (printed) \_\_\_\_\_

Social Security No. \_\_\_\_\_ Date \_\_\_\_\_

E-Mail address \_\_\_\_\_

## Rip Us Off.

That's right -- you heard right. Rip us off. Get something for nothing. Say hello to a friend. Find a roommate. Get a job. Find a home for a litter of kittens. Buy a wombat. Or sell your Beamer (right, like you expect us to believe that you -- and not your folks -- actually have the title to that BMW). Regardless of your purpose (or even if you are a congenital liar like the Beamer owner), Georgia's liveliest classified ad section is for you. Students, faculty and staff can have their 20-word action ads published for nothing (non-commercial listings only, please). Fill out the little rectangles below, and send your ad to G-A Action Ads, POB 8001, GSU or drop them by our offices in the Williams Center, Room 2023. **You MUST include your name and P.O. Box number to qualify for a freebie.** Remember, keep it short: students, faculty and staff must pay 20¢ per words for those which exceed the 20-word limit. And, please -- no telephone calls... at this price we don't take dictation.


YOU MUST COMPLETE THIS PART TO QUALIFY FOR FREEBIE

Name \_\_\_\_\_ POB \_\_\_\_\_ Phone # \_\_\_\_\_



## With no twists, 'Bless the Child' is overly predictable

By Tim Prizer  
Staff Writer

If God's grace is in the hands of a thumb-sucking Kindergartner, we're all in deep trouble. "Mankind's last hope just turned six," suggests the newly released movie "Bless the Child." Oh dear, Hollywood has really done it this time.

Adapted from Cathy Cash Spellman's novel of the same title, Kim Basinger's new film is a simple story of good overpowering evil. When a small girl who is thought to be autistic is actually found to possess exceptional powers given to her by Jesus, a

group secretly devoted to Satan attempts to kidnap her and convert her. The girl, named Cody and played by Holliston Coleman, is abandoned by her mother (Angela Bettis) as a baby and then raised by her aunt (Kim Basinger) until she is realized to be "the one." Numerous kidnappings and numerous killings complete the film with very few twists and turns to keep the audience intrigued.

The casting of "Bless the Child" was poorly composed, and the movie itself seems to have been thrown together and out onto the shelves as quickly as possible. What would seem like major events in the story line happened in the film out of the blue, and with little emotion from the characters. The only decent acting job came from Jimmy Smits, who plays the investi-

gating officer of the kidnapping case.

Some of the best movies in the world are the simplest of films, due to Hollywood's tendency to overdo their special effects and to add so many twists that the film becomes unbelievable and carried away. "Bless the Child"

about once it is finished. None of "Bless the Child" happens in symbolism or under the surface, but rather all in front of your face.

In order for the film to have been respectable, director Chuck Russell could have started with better actors, and writer Cathy Cash Spellman could have made her story wind through different unexpected occurrences. Every time the audience expected someone to jump out from their hiding place, it happened. Predictability sums up "Bless the Child" perfectly, and the film itself is so bad, it is almost comical.

In the end, God's power prevails of course, and the devil is defeated, because the public would tolerate nothing less. Graphics of devils, evil spirits, and killer rats were used to make the film border a horror, but the unconvincing computerized animations made "Bless the Child" a dry unthrilling "thriller."

is simple, but not in the way that makes a film subtle and brilliant. The movie is extremely unbelievable, and it seems that its whole purpose is to satisfy the brainwashed public, rather than make them analyze the story.

Most movies, even bad ones, at least give the viewer something to think



Internet Photo

## Thank you for reading the George-Anne.

### Buy One...Get One Free!

Enjoy the freshtastic taste of our exciting, true-to-life flavors. Buy one at the regular price and get another for free!

Offer good only at participating stores. Limit one coupon per customer. Not valid with any other coupon or discount.

Of Equal or Lesser Value



SnoBiz Shave Ice

Expires Oct. 1, 2000



SnoBiz Shave Ice

### Hours

Tues.- Fri.

2 pm - 8 pm

Sat.

12 pm - 8 pm

Sun.

1 pm - 6 pm



SnoBiz Shave Ice



407 Fair Rd • Statesboro  
Behind Western Sizzlin  
489-3171

## LET US HEAR FROM YOU!

In an effort to give you, the students, what you want out of your school paper, we are flat out telling you- we want to hear from you! Maybe you don't think you have the time to complain about the things we cover or don't cover. Maybe you feel like there is no reason to give us a high five for something you thought we did well. The George-Anne staff values your opinion- it's as simple as that.

And maybe you haven't realized how painlessly easy it would be to drop us your comments. So let me spell it out for you. Take a sheet of paper and write down whatever it is you feel the need to say. Fold it in half and write "LTE PO Box 8001" on the outside. Then drop it in the appropriate slot in Landrum Post Office next time you go through there to eat.

Or next time you are e-mailing your friends, you could zap us a little note. You can e-mail us at [letters@gasou.edu](mailto:letters@gasou.edu).

You, voicing your opinions to your paper all without any stamps, any money and any hassle is all we ask.

We just want to hear from you and we are trying to make it as simple and uncomplicated as possible. We know you could use a break or two.

It's a

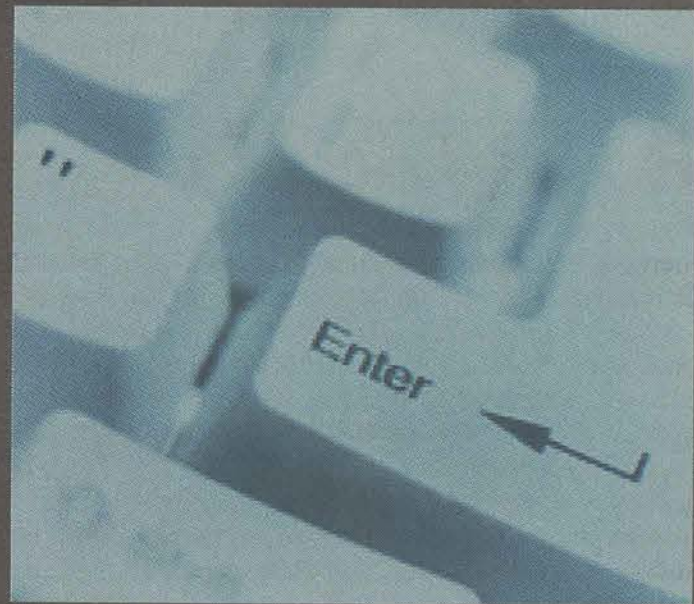
win, win,  
win, win,  
win  
situation.



## AT&T Take the Money and Rock Sweepstakes\*

You could win one of 500 cool prizes—including the grand prize of **\$10,000 cash** and a **trip** for you and three friends to the **Hard Rock Hotel** in Orlando, FL. Enter today at [att.com/college](http://att.com/college).

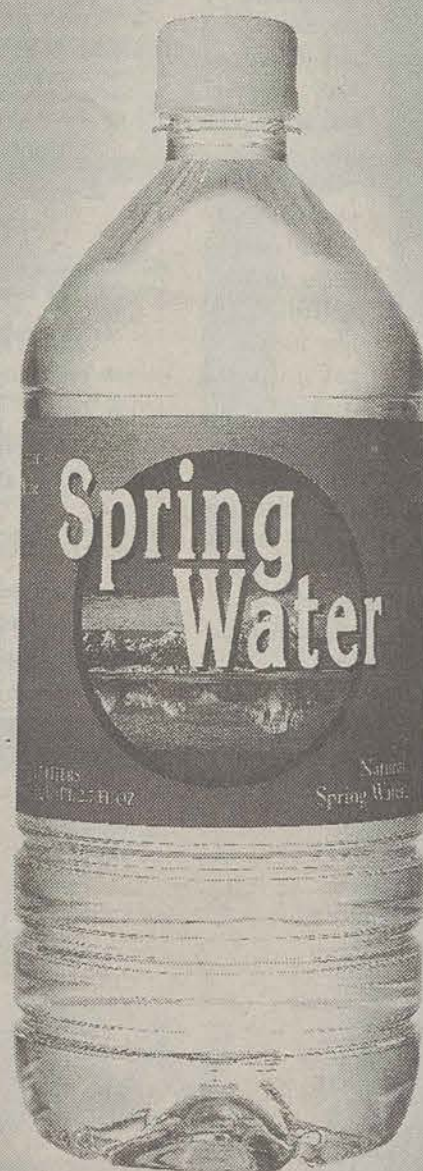
It's soooooo easy to increase your odds. If you live off campus, you can get **10 extra chances to win**. Just register for the sweepstakes at the site, and sign up for long distance with the AT&T One Rate® Off-Peak II Plan. You can sign up right then and there, online. Or call 1 877 COLLEGE. Either way, you'll get up to **100 free minutes<sup>†</sup>** of talk time. Sounds good, huh?



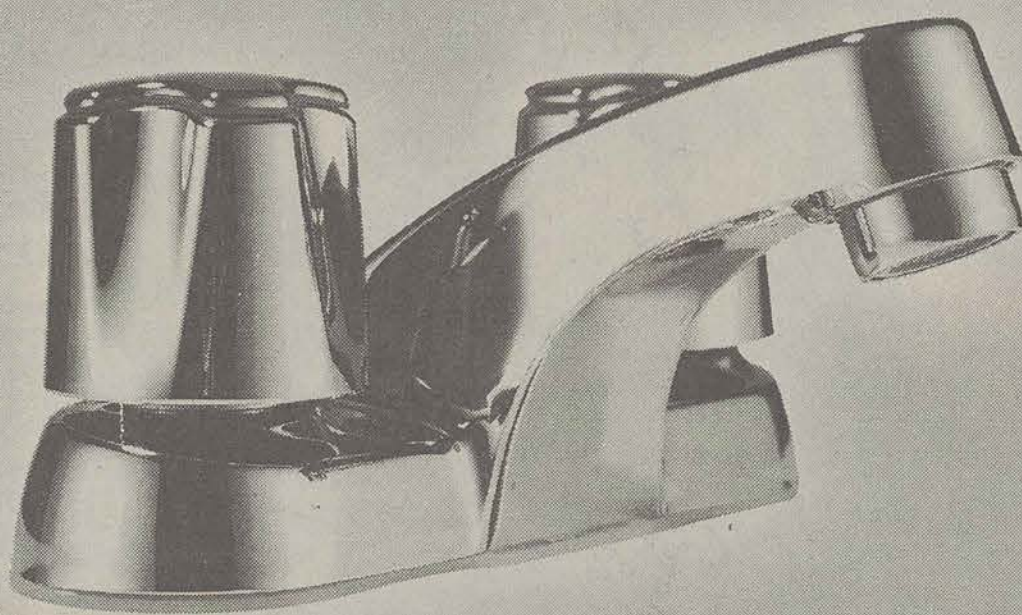
[att.com/college](http://att.com/college)

\*TO PLAY GAME: Take your AT&T Instant Win Game Decoder Card and go to [att.com/college/takethemoney](http://att.com/college/takethemoney). Follow the directions by inputting the Entry Code that appears on your Decoder Card to see if it reveals an instant-winner message. To play without a Decoder Card, visit [att.com/college/takethemoney](http://att.com/college/takethemoney) and follow instructions on how to receive an Entry Code for a chance to win instantly. Game ends 10/31/00. HOW TO CLAIM: If your Decoder Card or Entry Code reveals a prize message, mail your original Decoder Card, along with a 3" x 5" card with your name, address, phone number and Entry Code (if you don't have a Decoder Card) to "Take the Money and Rock" Prize Winner c/o National Judging Institute, Inc., 100 Marcus Dr., Melville, NY 11747-4229 by 11/30/00. FOUR WAYS TO ENTER SWEEPSTAKES: 1) To enter online, visit [att.com/college/takethemoney](http://att.com/college/takethemoney). Complete the registration form by filling in your complete name, address, phone number, area code and e-mail address to be entered into the Sweepstakes. Or if you have an Entry Code that does not reveal an instant-winner prize message, you will be automatically entered. 2) To enter by providing referrals, complete online registration and include each e-mail address you want to refer. Each legitimate referred e-mail address provided will earn you an entry into the Sweepstakes. 3) To enter via sign-up, complete online registration and sign up for the AT&T One Rate® Off-Peak II Plan to receive 10 entries. Each additional mailed entry is worth one entry. Sweepstakes ends 10/31/00. SWEEPSTAKES DRAWING: The Sweepstakes Grand Prize winner will be selected in a random drawing about 11/13/00 from among all eligible entries received. Odds of winning Sweepstakes Grand Prize depend on total number of eligible entries received. PRIZES: INSTANT WIN PRIZES AND APPROXIMATE ODDS OF WINNING: (100) Prizes of a \$15 Gift Certificate from CDNOW.com (ERV: \$15/ea.); odds of winning Gift Certificate are 1 in 8,500. (400) Prizes of a T-shirt (ERV: \$10/ea.); odds of winning a T-shirt are 1 in 2,125. Unclaimed prizes will not be awarded. SWEEPSTAKES PRIZE: GRAND PRIZE (1): \$10,000 and a 7-day/6-night trip for 4 to Orlando, FL including roundtrip coach air transportation, deluxe hotel accommodations at The Hard Rock Hotel (2 rooms, double occupancy), ground transportation to and from the hotel/airport in FL (ERV: \$14,215). GENERAL CONDITIONS: Trip must be taken between 3/1/01 and 8/31/01. Sweepstakes Grand Prize winner will be required to execute and return an affidavit of eligibility and liability/publicity release within 14 days of notification attempt or the prize may be forfeited and an alternate winner selected. Acceptance of prize constitutes permission to use winners' names and likenesses for promotional purposes (including posting name on website), without further compensation except where prohibited by law. By entering this promotion, you agree to be bound by the Official Rules. ELIGIBILITY: Open to residents of the U.S., 18 years of age or older as of 7/19/00, except employees and their families of AT&T, its affiliates, subsidiaries, contractors, advertising agencies, and Don Jagoda Associates, Inc. Void where prohibited or restricted by law. Subject to all federal, state, local laws and regulations and to the Official Rules available at [att.com/college/takethemoney](http://att.com/college/takethemoney). Sponsor: AT&T Corp., Basking Ridge, NJ 07920. Instant Win Game and Sweepstakes subject to Official Rules; for Official Rules visit [att.com/college/takethemoney](http://att.com/college/takethemoney). NO PURCHASE NECESSARY. Instant Win Game and Sweepstakes ends 10/31/00. Void where prohibited. <sup>†</sup>100 free minutes offer based on becoming a new AT&T Residential Long Distance customer and selecting the AT&T One Rate Off-Peak II Plan. 100 free minutes of AT&T domestic, direct-dialed long distance and local toll calls will be credited against qualifying usage on your first full monthly bill after all discounts and credits are applied. Unused minutes cannot be carried over. Qualifying calls do not include conference calls, AT&T Calling Card, Directory Assistance, Operator-Handled calls, 700 or 900 number services, or mobile, marine or cellular services. ©2000 AT&T. All Rights Reserved.





college bookstore



e campus.com

# CHEAPER

**ecampus.com** SAVE UP TO 50% ON TEXTBOOKS AND STUFF. WITH FREE SHIPPING.