

Georgia Southern University

Digital Commons@Georgia Southern

The George-Anne

Student Media

3-10-2016

The George-Anne

Georgia Southern University

Follow this and additional works at: <https://digitalcommons.georgiasouthern.edu/george-anne>

Recommended Citation

Georgia Southern University, "The George-Anne" (2016). *The George-Anne*. 2929.
<https://digitalcommons.georgiasouthern.edu/george-anne/2929>

This newspaper is brought to you for free and open access by the Student Media at Digital Commons@Georgia Southern. It has been accepted for inclusion in The George-Anne by an authorized administrator of Digital Commons@Georgia Southern. For more information, please contact digitalcommons@georgiasouthern.edu.

GA

THE GEORGE-ANNE

**Bracket
breakdown,
players to
watch and
conference
storylines**

**PAGES
14 & 15**

SUN BELT TOURNAMENT PREVIEW



**GSU
ENROLLMENT
RATE**

**The state of
university
admissions**

Page 7

*Feeling lucky
on Pages 8-10*



- ✱ Study abroad in Ireland
- ✱ Discover Irish traditions
- ✱ Great brews
- ✱ Half-asleep history

Thursday



High: 86°
Low: 59°

Friday



High: 89°
Low: 59°

Saturday



High: 85°
Low: 63°

Sunday



High: 83°
Low: 61°

It is looking like a cloudy weekend, however, by the time Spring Break is here, the weather should clear up once the weekend ends.

Weather Bar

MOCK MEDIATION CLUB TO HOST INVITATIONAL TOURNAMENT

The Georgia Southern Mock Mediation Club Invitational Mediation Tournament will be start on April 8 and April 9. This is an open tournament between all GSU organizations with teams of 3 to 4 people.

They will have to go required training either March 25 or 26 in order to learn the structure of mediation and different techniques to able to show off their conflict resolution skills and spread the mediation mindset across campus.

The training session is open to the public, so even if someone is not in an organization they can pick up a few debate tips.

Registration for GSU teams are \$15 and non-GSU are \$25. For the full story check out The George-Anne after Spring Break.

RYAN'S IN STATESBORO HAS CLOSED

Ryan's buffet in Statesboro has officially closed its doors. It is one of 40 other locations that have closed, including the location in Augusta. Sunday March 6 was the buffet's last day of operation. The closing was cited as happening because of financial reasons. On Monday, the parent company in Texas that owns Ryan's and other related restaurants filed for bankruptcy.

The unusual thing about the closing of the location is that the restaurant was continuing to get new items. According to WTOC, one employee Jennifer Beaulieu, describes the closing as a total surprise. 74 stores had just closed in February, but when the Statesboro location didn't close, Beaulieu and her 50 co-workers thought that everything was okay.

"We just got a new heating and air system installed. They had just brought us a new ice cream machine. They kept bringing us new equipment," Beaulieu says. Yet, at 5 a.m. on Sunday management came to inform her of it's closing.

The workers are now forced to look for new employment. "It is awful because most of the staff didn't even know about it and woke up the

next morning without a job, Jonathan Baggett, sophomore It major, said.

Ryan did have a loyal customer base, with patrons disappointed at its closing. "I loved Ryan's! Were they better than Golden Coral? No, but man they had some good rolls," Christina Catchings, sophomore, Pre-Nursing major, said.

Some others were not as surprised their closing. "Thank God. I've never been one for dumpster food," Gregory Eason, junior Mechanical Engineering major, said.



NUMBER OF GEORGIA HATE GROUPS INCREASED IN 2015

28

2014

39 PERCENT

39

2015

Featuring 2, 3 & 4 Bedroom Apartment Homes & Townhomes

SOUTHERN DOWNS APARTMENTS

- Washer & Dryer Included in Every Home
- Fully Appliance Kitchens
- Central Heating & Air Conditioning
- Walk to GSU, The Stadium & The Plaza
- Furnished Options Available
- Rent Includes Cable with HBO, Internet & Electric (to a cap)
- Swimming Pool with Sundeck
- Clubhouse with Computer Lounge
- Pets Welcome - Large Breeds, too!
- FREE Roommate Matching
- Full-Size Basketball Court
- Game Room
- Beach with Hammock Garden
- Volleyball Court
- 24-Hour Fitness Center
- 24-Hour Emergency Maintenance



Save Up To One Month **FREE!** 710 Georgia Ave., Statesboro (912) 373-8118

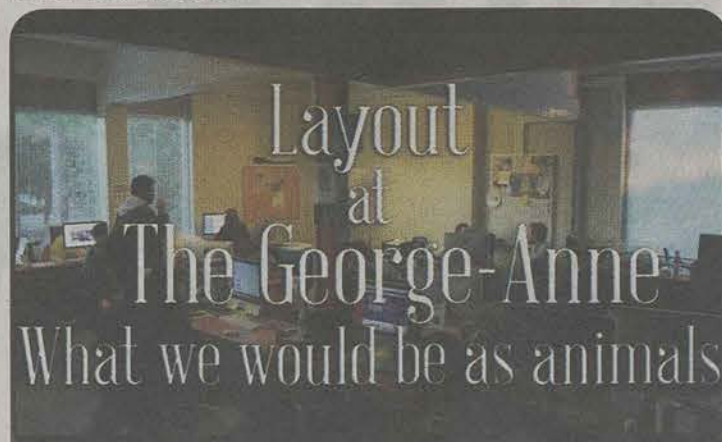
By Gabe Thomas

The AJC is reporting that the number of hate groups located in Georgia increased in 2015.

According to a study by the Southern Poverty Law center (SPLC), the number of hate groups in Georgia increased from 28 in 2014 to 39 in 2015, an increase of approximately 39 percent.

The amount of hate groups across the nation rose as well, though not at the rate in Georgia. The number of hate groups rose from 784 to 892, an increase of almost 14 percent. Almost 10 percent of new hate groups were started in Georgia.

While most Georgia hate groups are located in the Atlanta area, there are a few in the Southeast Georgia area. The closest hate group located to Georgia Southern is located in Savannah, Georgia.



In this week's layout video, we try to figure out what animal most personifies us. Jozsef will be dancing into our hearts and Lauren will reenacting a classic meme.

Go to thegeorgeanne.com/multimedia to check out the video!

Puzzles

3-10-16

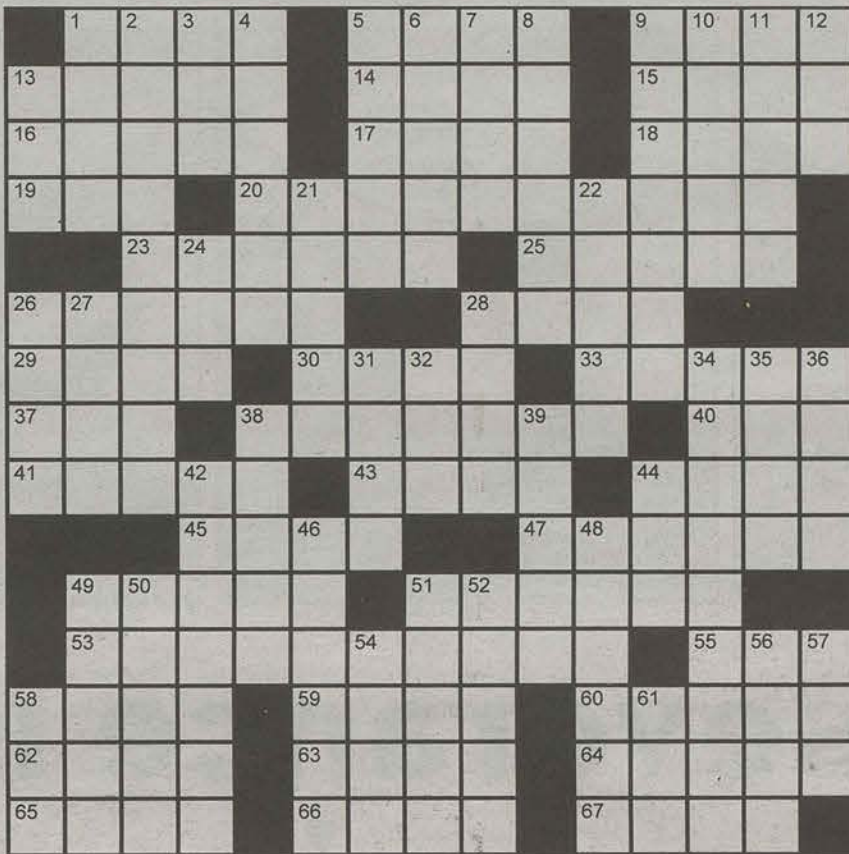
3

George-Anne 3/10/16 Crossword

PuzzleJunction.com

Across

- 1 Putting woes
5 Logs Z's
9 Mail deliverers
13 Demolish
14 Aid in crime
15 Student of Seneca
16 Mentally quick
17 Waxy covering of a bird's beak
18 Auspices (Var.)
19 Fortify
20 Chernobyl natives
23 High regard
25 Kind of drive
26 Deserving
28 Sharpen
29 On the road
30 Sugarcoat
33 Working day
37 Hideout
38 Ancillary
40 Rarer than rare
41 Lay to rest
43 Penny, perhaps
44 Sea predator
45 Look like a wolf
47 Tooth decay
49 Overthrow
51 Lucky charm
53 Web site necessity
55 Bruiser
58 Eric of Monty Python fame
59 Slave away
60 Automaton
62 Astute
63 Brewer's kiln
64 Oklahoma city
65 Start with while



Copyright ©2016 PuzzleJunction.com

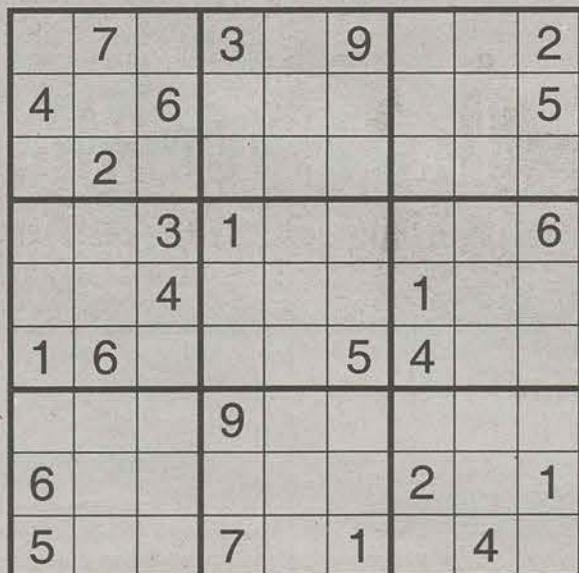
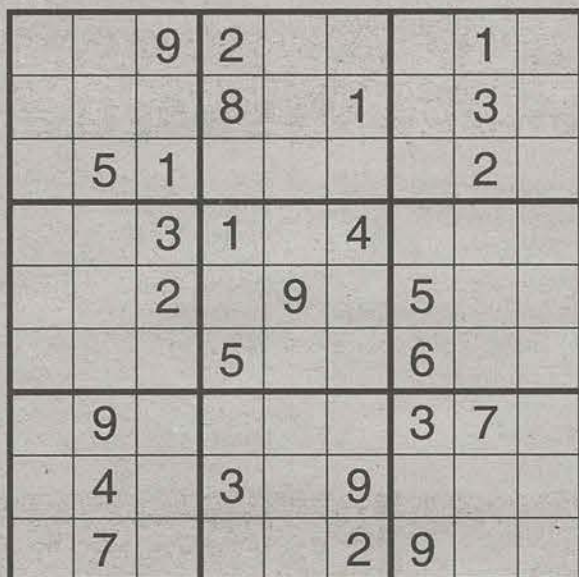
- 66 Poseidon's mother
67 Leave in, as text

Down

- 1 Eastern discipline
2 Gypsy
3 Goombah
4 Investigator
5 Mother-of-pearl
6 Crosswise, on deck
7 Persian spirit
8 Feter
9 Discover
10 Musical notation
11 Light refractor
12 "Send help!"

- 13 Scottish cap
21 Like a piano
22 Latin clarifier
24 Eye infection
26 Dry riverbed
27 John Irving's "A Prayer for _____ Meany"
28 Left
31 Like some doors
32 Overhead light?
34 Peevish
35 Type of card
36 "_____ the night before..."
38 Hippodrome, e.g.
39 Bodily cavity

- 42 Ingredient
44 Bonanza find
46 Newspaper worker
48 Advisories
49 Milk dispenser
50 Ends of the earth
51 Biscotto
52 Gozo Island is part of it
54 Genesis skipper
56 Assignment
57 LAX info
58 Mamie's man
61 Loophole



Live Smart. Live Statesboro

133 Lanier Drive, Statesboro, GA 30458 | 912.225.0098 | livestatesboro.com

To contact the creative manager, email prodmgr@georgiasouthern.edu.



Perseverance is a young man's game



IAN LEONARD

Leonard is a sophomore writing and linguistics major from Johns Creek Ga.

Full disclosure, I'm pretty steamed at the moment. I've had a couple things not go my way lately and, like most other people, it's starting to get to me. This is coming from somebody who, if nothing else, likes to believe he can keep a cool head in most situations. But I can tell, maybe better than anyone else, when I'm reaching the boiling point.

I hate it. My voice gets shaky, my limbs weak, I become significantly less coherent and worst of all, I seem to lose all capacity for reason. So what right? Is it wrong to be passionate, even extremely so? Well no of course not, as a matter of fact I think it's great if you care so much about something that it affects you on multiple levels. But this isn't about how you feel on the inside, but rather how you project those feelings and ideas to those around you when your patience is wearing thin.

Like I said beforehand, there's certainly nothing wrong with caring. Personally, I believe if you don't have at least one thing, in which you are extremely invested, you need to go find it. Whether that be your studies, a hobby, sports, philanthropy or even another person (though I don't recommend it this early in your life), it's important that we all have something that we feel gives us purpose. However, like many things in this world, those things that give us the greatest pleasures, also have the

potential for causing us the greatest harm and distress. And as dramatic as it may sound, it's almost inevitable that you will feel frustrated, hurt, maybe even betrayed by someone or something that you've devoted your time and effort to.

That's where your character comes in. You see, most of us are at a dynamic and formative moment in our lives. We're starting careers, forging relationships that could last a lifetime, some of us are still even trying to figure out who we are and what we want out of life. Like I said, many of us are still trying to find our passion or purpose in life, so it's only natural we may get frustrated when we start to feel like things aren't going quite as planned. However it's important to consider what kind of person you want to be. There are going to be times where you feel as if your only option is to quit, but you have to think about the others around you may be letting down and above all else you have to make sure you aren't cheating yourself out of a chance to grow and gain

some valuable experience.

Now of course you shouldn't force yourself into doing something you really don't want to do. Sometimes you'll find that something simply may not be for you and if really do feel that way, you should simply move on to your next endeavor. I'm simply suggesting that before you consider giving up on anything, you should really take a step back and contemplate all of the possibilities and consequences of your actions. You may find that, even though a certain activity may be tough right now, further down the road you'll truly benefit from having experienced this hardship.

Ultimately it's up to you to decide how you spend your time and talents. There are plenty of wonderful things to dedicate yourself to and college is a perfect chance for you to gain tons of diverse and unique experiences. However, it may prove useful to thoroughly exploring each option before you move on or give up.

STATEMENT OF OPERATIONS

The George-Anne is the official student newspaper of Georgia Southern University, operated by GSU students using facilities provided by the university. The newspaper is the oldest continuously published newspaper in Bulloch County.

The newspaper is published twice weekly, on Tuesdays and Thursdays, during most of the academic year. Any questions regarding content should be directed to the student editor by phone at 912.478.5246 or at gaeditor@georgiasouthern.edu.

ADVERTISING: The newspaper accepts advertising. Inquiries may be made by calling 912.478.5418 or 912.478.0566. For questions e-mail ads1@georgiasouthern.edu.

The George-Anne receives additional support, in part, from the Student Activities Budget Committee. For more information, rate cards, or sample publications, contact the advertising manager or student media director. The advertiser is responsible for any errors in advertisements and its liability for adjustments is limited to the amount of space the error occupied in the ad. Further, the newspaper is not responsible for any damages caused due to an ad's omission from a particular edition and its responsibility solely is to reschedule the ad in the next regular edition at the regular advertising rates.

STUDENTS BEWARE: The George-Anne screens all advertisements prior to publication. The newspaper strives to accept ads for legitimate products and services only. Students are urged to exercise caution when replying to ads-- particularly those that require personal information. Students are also urged to report to the newspaper any suspicious offers which they might see in an ad.

PUBLICATION INFORMATION: The newspaper is printed by The Brunswick News in Brunswick, Ga.

NOTICE: Unauthorized removal of multiple copies from a distribution site constitutes theft under Georgia law, a misdemeanor offense punishable by a fine and/or jail time.

CORRECTIONS: Contact the editor at gaeditor@georgiasouthern.edu for corrections and errors.

STAFF LIST

Editor-in-Chief Lauren Gorta
Managing Editor Ian Leonard
Content Strategist Casey Cargle
News Editor Jozsef Papp
Features Editor Meg Elwood
Sports Editor Robert George
Daily Editor DJ Fullmer
Opinions Editor Skyler Black

Creative Manager Hailey Smith
Photo Editor Brandon Warnock
Design Editor Alex Smith
Features Designer Rebecca Davis
News Designer Margarita Suarez
Sports Designer Erin Fortenberry
Opinions Designer Margarita Suarez

Distribution Manager
Andrew McCarthy
Marketing Manager Cydney Long
Business Manager Taylor Norman

The George-Anne welcomes letters to the editor and appropriate guest columns. All copy submitted should be 350 words or fewer, typed, and sent via email in Microsoft Word (.doc/.docx) format to letters@georgiasouthern.edu. All submissions must be signed and include phone number for verification. GSU students should include their academic major, year and hometown. The editors reserve the right to reject any submission and edit submissions for length. Opinions expressed herein are those of the Board of Opinions, or columnists themselves and DO NOT necessarily reflect those of the faculty, staff, or administration of GSU, the Student Media Advisory, Student Media or the University System of Georgia.

“

Personally, I believe if you don't have at least one thing in which you are extremely invested, you need to go find it.”



Many of the fraternities and sororities on Greek Row hold events throughout the year. Events range from fundraisers to 5k runs and community service projects.

BY TANDRA SMITH
The George-Anne staff

To many organizations in Georgia Southern University's Greek community, philanthropy is a huge deal. In fact, according to Georgia Southern's Greek Life website, more than 20,000 hours of volunteer time and \$80,000 dollars were raised through philanthropic events in 2012.

"Most Greek organizations stand for community service. Even though we are all different, we all stand for the same cause. It is very important to reach out to

each other and make our community better," Stanley Heard, President of the Pi Rho chapter of Phi Beta Sigma Fraternity Incorporated, said.

One of the things Heard's chapter stands for is service and he says that he takes it very seriously as president. His chapter has set up Service Saturdays, in which he and other members of his chapter go out for at least 2 Saturdays a month and volunteer in the community. Currently they are working with Butler Home Projects.

"With this project, we are working with children from

all age groups to help keep them out of trouble and clean up the projects," Heard said. "We are also looking to work with the local Food Bank."

Phi Beta Sigma has also teamed together with Tau Kappa Epsilon to raise money for Flint, Michigan families. They have raised a total of \$733.70, so far.

Not only fraternities participate in philanthropy. A multitude of sororities host their own events that range from taking donations to give to less fortunate families, to cleaning up the environment. Sigma Lambda Gamma is one

such sorority.

"Most of the time, we tend to work on our own philanthropy events, but enlist our F.I.R.M. family for support," Ariadne Lowe, President and Vice President of Entity Operations for Sigma Lambda Gamma National Sorority Incorporated, said.

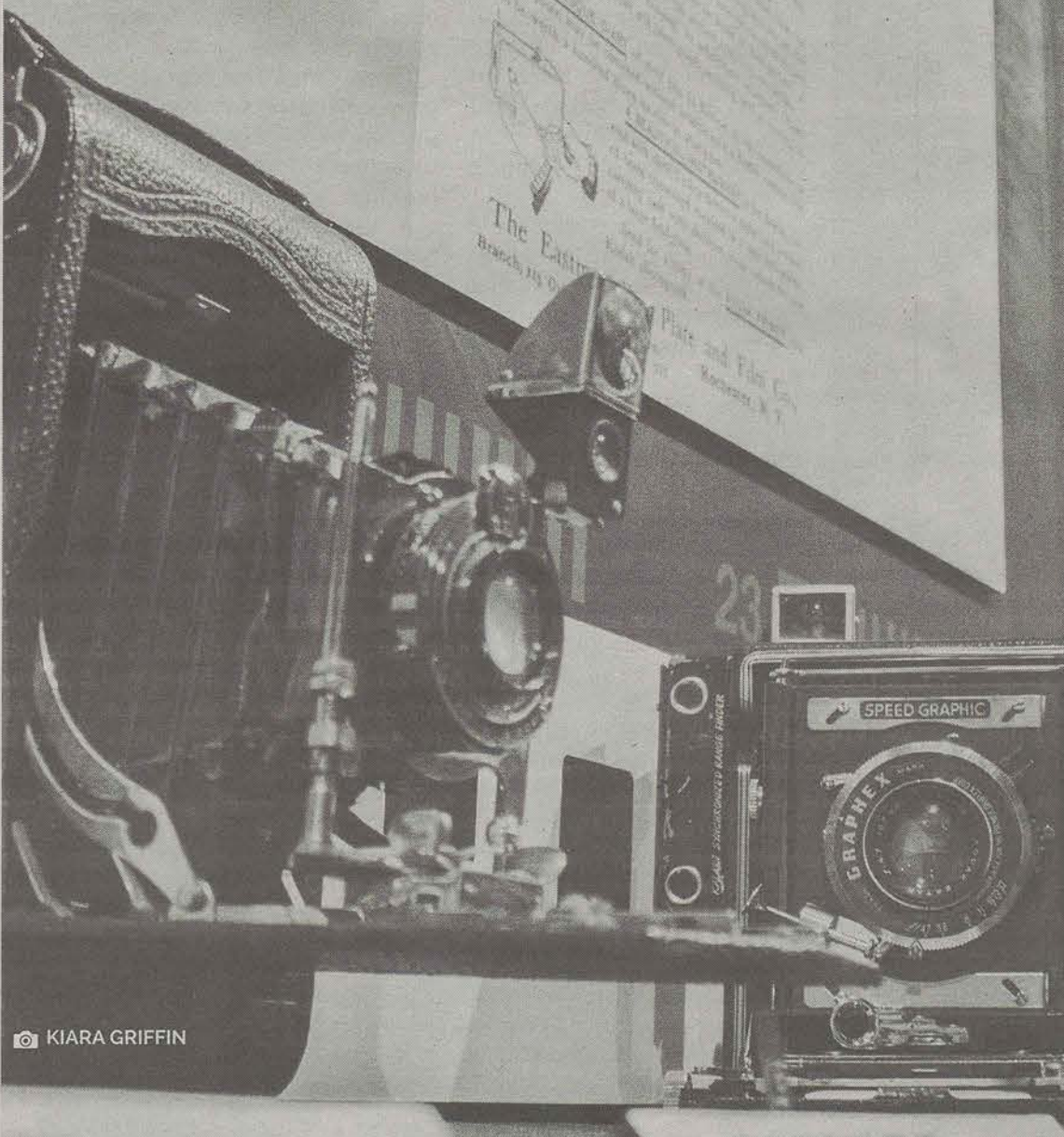
F.I.R.M. stands for "First Inter-Racially Mixed Family" and is represented by the men of Sigma Lambda Beta International Fraternity, Incorporated, Phi Beta Sigma Fraternity and the ladies of Zeta Phi Beta Sorority, Incorporated.

Though the sorority hasn't participated in any philanthropic events lately, they are planning a Women's Health Week during the week of March 21, participating in the Statesboro Pink Power 5K Run and fundraising to donate money to the local Breast Cancer foundation.

Lowe said, "As Greeks, we need to understand that we are leaders of our community and we need to carry on the mission that each of our organizations were built on by serving as role models and bettering our communities."

Say cheese

Museum exhibit features history of cameras



BY CHYNA JAMES
The George-Anne contributor

The Georgia Southern Museum welcomed a new exhibit called "Click! Exploring the History & Science of Cameras" on Feb. 16, 2016.

Throughout the last four years, the graphic design professional practice class has partnered with the museum to create exhibits for everyone to enjoy and to give students experience with designing and executing projects.

Each year there is a "changing" themed exhibit that creates the opportunity for research to bring change to the campus through different multidisciplinary topics.

Visitors of the Click! exhibit have the chance to explore the art, history and science of photography through a wide variety of historic cameras, creative hands-on activities about how they work and how they have changed overtime.

Graphic design professor, Santanu Majumdar and his students were a big part of making the exhibit available.

"The current generation has no idea how cameras work and they just take a picture with their camera phone," Majumdar said. "They don't understand cameras and how it's a science, so they should go and see it. There are a lot of old cameras with the original packing and it's very

interesting. It's enjoyable because of the look but we were also able to bring certain elements that are important for the community and students."

Museum director, Brent Tharp, works with the graphic design class to produce the exhibit.

"It's important to make students a part of the creation and fabrication and not just visitors," Tharp said. "It's great that we were able to use a core collection of cameras that had been donated by alumni. We wanted to bring those back for the exhibit, seeing as though we're in a distinct time today."

Students around campus are interested in seeing the new exhibit as well. Junior graphic design major, Lyanna Mitchell plans to learn a little more about cameras by visiting the exhibit.

"Even if you only use cameras for social media, the new exhibit would help students learn how to better document what they're trying to express," Mitchell said. "We all have to know how to use cameras, professionally and recreationally."

Designing usually takes a month and half and execution takes about 2-3 weeks.

The exhibit will stay in the museum for one year. The next exhibit the committee is already working on will be "The Great War that Changed Georgia."

The museum's exhibit showcases various cameras throughout history. The exhibit will remain at the museum until the 2017 Spring Semester.

Page designed by Margarita Suarez

To contact the news editor, email ganews@georgiasouthern.edu

WHY SUMMER SCHOOL?

300+ FULLY ONLINE COURSES

Core, elective and major courses—search for your classes now!

LIVE ON CAMPUS

University Villas is a great place to live. The apartments feature spacious rooms, a swimming pool and more!

NOW HIRING

Need some extra cash to pay for school? Check out job openings ON CAMPUS!

SHORTER TERMS

A 15-week course with FULL CREDIT condensed into FOUR WEEKS? Let's do this.

STUDY ABROAD

Take your summer courses on a different continent! Both core and major classes offered.

GRADUATE ON TIME

Nearly 1,600 classes to make sure you stay on track. Search for your classes now!

- REGISTER NOW -

GeorgiaSouthern.edu/summer

choose
Southern
FOR SUMMER



GSU's inaugural canoe race to be hosted by UPB

© KELLY LOWERY

The canoe race will take place at Lake Ruby. This will be the first time the event will be implemented after its proposal last year.

BY TANDRA SMITH
The George-Anne staff

The University Programming Board (UPB) at Georgia Southern University will be hosting their first Canoe Race on March 30 from 3 p.m. until 5 p.m. at Lake Ruby, right beside Lakeside Dining Commons.

The race is a competitive water sport event, in which student organizations that have signed up will compete against each other for a prize.

"This event is to get the campus excited about GSU and have fun on the water. It also allows student organizations to collaborate," Ashlynn Jenkins, Spirit and Traditions Chair for UPB, said.

Interested organizations must be in good standing to participate. Only 20 organizations will be allowed to sign up for this event, where four people from each organization will be seated, two to a canoe.

Those not apart of an organization, aren't allowed to take part in the race, but are encouraged to cheer on their friends, eat some free food and enjoy the music.

"I think it's cool but it's definitely more of an obscure event that might

attract some different interests. I like the diversity of it," Brooks Robins, senior education major, said.

The Canoe Race was proposed last year, but was unable to be executed due to some unforeseen events. Jenkins' goal is to make this event an annual one. Some students feel that the reason some events don't do as well is due to a lack of advertising.

"I think that if the events were advertised more then it would be a good thing for the students, but we aren't informed very well on a lot of the activities that are going on around the school," William Pope, senior exercise science major, said.

Currently, registration is still open for interested organizations and will close on Friday, March 25 at 5 p.m.

In addition to meeting this deadline, at least one member will have to attend one captain's meeting, which will be held on March 8 from 6 p.m. until 7 p.m. in room 2052 in the Russell Union, March 23 from 6:30 p.m. until 7:30 p.m. in RU 2048 and March 29 from 5:30 until 6:30 p.m. in RU 2073.

GSU enrollment stagnates over past five years

BY TASHA WHITE

The George-Anne contributor

Every year, Georgia Southern's admission office welcomes numerous amount of people, regardless of qualification, to campus to begin their college careers.

Since 2006, GSU's enrollment has increased for the fall semester, however, over the past five years, the numbers have been relatively stagnant, ranging from its lowest of 19,691 students in 2010 to its highest of 20,574 students in 2012.

Amy Smith, director of undergraduate admissions, discusses possible answers to why GSU enrollment rates have been unchanging.

"The number of qualified students graduating from a Georgia high school has decreased or remained steady," said Smith. "Also, there is also an increase in competition from schools within our state to top students and growth."

Although the graduation rate for high schoolers in Georgia has increased over the years, the average required scores are low. According to GSU's admissions, the requirement to attend GSU for freshman is higher than Georgia's average statistics.

Smith pinpoints specific demographics that admissions would like to focus on when it comes to

bringing in more students for the upcoming fall semester.

"We are placing an emphasis on recruiting transfer students to Georgia Southern," said Smith. "We are also working harder to recruit out-of-state students too."

Although admissions has its approach of how to bring in students, others have their own perspective on how to bring more students into GSU.

Sophomore public health major Chidinma Uzoagu, who is also an international student, has a suggestion on how to bring in more students from around the world.

"In the view of being an international student, I know the school has an international student diversity waiver and it helps international students in terms of financial situations and they have a limited number of people that can use it," Uzoagu said. "If they can increase the number a little, it might help."

Others believe in the method of reaching out to others.

Sophomore criminal justice major Emily Jackson recommends GSU bring more of its own to others, "Representatives from clubs and organizations should go to different schools, have a table set up and tell everyone about GSU."

GSU Admission Requirements

Required SAT
score of at least
1010
(math + critical
reading only)

State of Georgia
requires at least a
430 in critical
reading and 400
in math

Required ACT
score of at least
21

State of Georgia
requires at least
17 in English and
a 17 in math

Average GPA for
admitted
freshmen in 2015:
3.29

High School
diploma is
required; GED
not accepted

Legislative Internship Programs

Now accepting applications!

Eagles in D.C.

Georgia House and Senate
Georgia Governor's Office



legislative internship opportunities

Fall Application Deadline

April 15th

Open to Any Major

Must have completed 48 credit hours.

For More Information:

GeorgiaSouthern.edu/LegislativeInternships

LegislativeInternPgm@georgiasouthern.edu

OFFICE OF STUDENT ACTIVITIES

CONSTITUTION AND BYLAWS WORKSHOP

Have your Constitution and Bylaws critiqued
in time for renewals in April!

Tuesday, March 22 @ 5:30pm

Russell Union 2054

FROM STATESBORO TO IRELAND THE WEXFORD-SAVANNAH AXIS PROJECT

BY KAT SHUMAN

The George-Anne staff



PHOTO COURTESY OF BRITTANY SEALEY

History student, Brittany Sealey, reads the 1848 Wexford Independent newspaper at the Wexford County Archive.

With Saint Patrick's Day right around the corner, many Georgia Southern students will head to Savannah for the Saint Patrick's Day Parade. Savannah's parade is the second largest Saint Patrick's Day celebration in North America, but why would Savannah, of all places, boast such an esteemed parade every year?

The Center for Irish Research and Teaching (CIRT) at Georgia Southern has been searching for the answer through the Wexford-Savannah Axis project.

The project looks at Savannah in the year 1860. Savannah's population at the time was 14 percent Irish; a quarter of its white population was Irish-born. Even more astounding, Wexford, one of Ireland's 32 counties, was where 56 percent of Savannah's Irish immigrants at the time came from.

CIRT Director, Dr. Howard Keeley, who co-directs the project, defines the importance of the two year old project and how it allows students to research and study these

connections between Ireland and Savannah.

Unlike typical Study Abroad experiences, in this program students spend a few weeks in the United States researching before traveling to Ireland for two weeks to continue their research abroad.

This program is unique because of its research aspect. Rachel Doggett, a sophomore double major in writing and linguistics and english with a minor in Irish Studies, participated in the Wexford-Savannah Axis project last summer and is returning again this summer.

"I think [the project] stands out among typical study abroad programs because it is research based," Doggett said, "It's not just taking other classes abroad. We did research every day and traveled to different places. We weren't just sitting in classrooms, and that makes it really valuable."

Keeley agrees that the research students are doing is extremely significant in that

"Migration is as relevant then is as it is now." He also said that this research was important economically. The migration of the Irish to Savannah certainly brought more business to the area which still impacts Savannah to this day.

Keeley mentioned that some are interested in the economics of the story, but that uncovering the "human story" is equally important. Either way, Keeley believes that the Wexford-Savannah Axis project is a meaningful study abroad that had a "higher level of value" than other typical excursions because of its research aspect.

CIRT partners with the University Honors Program to learn about our region and its Irish history in the Wexford-Savannah Axis project. Although CIRT is partnered with the Honors Program, one need not be in the Honors Program to apply and be part of it. To learn more, visit the Center for Irish Research & Teaching at: <http://class.georgiasouthern.edu/irish/>

DISCOVER: IRISH STUDIES CLUB FUN FACTS:

BY ASHLEY GILLEY

The George-Anne staff

If a student is interested in special access to lecturers, a chance to gain networking skills and the opportunity to learn about as well as travel to Ireland, the Irish Studies Club can offer all of this and more.

"A large portion of the Irish people who settled in Savannah are from Wexford," Dr. Howard Keeley, Irish native and past adviser for the Irish Studies Club, said. This is why one of the study abroad trips to Ireland has a research focus on the historical relationship between Wexford and Savannah.

Members not only network, but can "meet people you would not otherwise meet" according to Keeley. For instance, this year in April they will be having their 5th distinguished talk.

The distinguished talks are when the club brings someone

of importance in the Irish community to campus. This year the speaker is going to be Patricia Harty, the founder and editor of Irish America Magazine.

Harty also created the Irish Hall of Fame, which has honored people such as Hilary Clinton for her work to help with peace efforts in Northern Ireland. Harty will be giving a public lecture in April, but members of the Irish Studies Club will have the chance to interact with her more personally on a smaller scale.

Along with lectures and networking the students also get to interact with the Irish community in our region. An event club members can go to is the annual Savannah Irish Festival which is two days full of music, vendors, and showcases.

"It's a fun celebration of Irish and Irish American heritage," Keeley said.

GREEN: We all associate St. Patrick's Day with two things, beer and the color green. This is why it is so surprising to find out that the national color of Ireland is actually blue. The color green is most likely associated with Ireland because that is the color that supporters of the Irish Rebellion of 1798 wore.

BOWL FULL OF LUCK: The Prime Minister of Ireland is never actually in Ireland on St Patrick's Day. Oddly enough, he visits the White House in order to present the President of the United States with a crystal bowl full of Shamrocks. President Obama will be receiving his eighth bowl of shamrocks this year. What a lucky guy!

PINCH OF THE IRISH? Many children grew up wearing green on St. Patrick's Day not just to celebrate, but to avoid being pinched. What does pinching have to do with the holiday? The answer is absolutely nothing. "I grew up in Ireland and we never ever had that experience. I had never heard of that until I came to America," Keeley said

BEER: According to Dr. Keeley the stereotype of the 'drunk Irishman' is offensive. The idea of drinking on St. Patrick's Day most likely comes from how people used to meet in Public Houses, or Pubs, which people associate with drinking.

TWO GUYS AND A FEW IRISH BREWS

© TAHIR DAUDIER

Two Guys is a beer and wine store located in the College Plaza. For each holiday or season, they offer special brews accordingly.

BY ARAYA JACKSON AND TOM BARSZCZ

The George-Anne staff and contributor

For many college students, beer is an important staple of celebratory and daily life. Sometimes it's difficult to decide which beer is suitable for certain situations: whether it be preparing for a party, choosing a special brew six pack to enjoy at home or grabbing a cold one by the pool.

When trying to decide what to enjoy on St. Patty's Day, it may be best to go for an Irish beer to get into the holiday spirit.

If you are unsure about Irish beers, or beers in general for that matter, seeking a professional's opinion isn't that far out of reach. Luckily, there is a beer provider in Statesboro that can help you with your important beverage decision.

Two Guys, which has been open for about two years now, has an extensive selection for both domestic and craft beers, wines and tobacco.

To keep customers in a festive style of thought, Two Guys offers beers suitable to all seasons and holidays. For the upcoming festivities, Two Guys has set up a small stand in their store displaying Irish beers, both imported and locally brewed, to offer different beers to drink other than the typical Guinness stout.

"I always try to push people to try something new," Paige McClure, sales associate for Two Guys, said. "Guinness is always the best seller for the holiday, but my Irish beer of choice has to be Innis and

Gunn Original."

Innis and Gunn is an Irish style beer that matures in whiskey casks before being sold. It has flavor with hints of toffee, creamy vanilla and oak. At 6.6%, it's an appropriate beer to drink while celebrating the holiday.

If Innis and Gunn doesn't sound like a personal style but drinking like the Irish is the goal, Two Guys has much more to offer. They now carry a selection from the Sam Adams Nitro Project, which varies in several different types of Irish style brews. They also carry Highland Gaelic Ale and an Irish beer made by Monday Night brewing company called the Drafty Kilt, which was described as tasting "kind of like a campfire" by McClure.

With all of these Irish beers available, why stick with only Guinness to sip on during the holiday? For the hardcore Guinness fan's out there, try their new Nitro IPA which is similar to that classic Guinness taste, but stronger.

In Savannah during the big celebration, the 'green beer' that one can see everywhere is actually Guinness Blonde, a smoother, light Irish beer, with green food coloring.

Whatever the plans may be for the holiday, drink like the Irish. They take this holiday very seriously, so respect the beer. What they don't mention is that it's really craft beer at the end of the rainbow, not just pots of gold. Happy drinking (responsibly)!



**PRE LEASING
FALL 2016!**

STUDIO

2BR

3BR

FREE Internet
FREE Cable
Pets Welcome
Washer & Dryer

**CARIBE
COURT**

912-681-7873 | 210 Caribe Court • Statesboro, GA 30458 | CaribeCourt.com



Keeping you in the know about Student Affairs and Enrollment Management events, designed with you in mind.

Choose Southern for Summer! On campus or online, smaller classes and shorter terms help you graduate on time. Get ahead with more than 300 online courses, and 100+ summer jobs available for students taking summer classes. Register today! Deadline is April 1, 2016. Visit: GeorgiaSouthern.edu/summer

Student Conduct: V.A.L.U.E.S. Photo Contest!

Time: Monday, February 29th- April 15th

Do you know YOUR GSU VALU.E.S. (Voices, Accountability, Lasting Traditions, Unity, Ethical Behavior, Scholarship)? VALU.E.S. aims to produce productive citizens with an informed set of ethics and community standards, and to create an environment of respect and civility. This is your chance to show us your VALU.E.S.! Find what you think represents each value and take a photo. Each value has its own submission date so be sure to submit your photo before the deadline for a chance to win some GREAT prizes!

Photo Contest Submissions OPEN NOW!

Time: Monday, March 7th- March 11th

It is an expectation that we will hold each other accountable. Show us how you capture this value! Find something that you think represents that "ACCOUNTABILITY" and take a photo.

****To submit your photo** send it in to one of these three places and make sure to include your contact information:

Email: studentconduct@georgiasouthern.edu

Facebook: GSU Office of Student Conduct

Twitter: @GSU_Conduct

****Photo submissions may be used by the Office of Student Conduct****

Apply for Student Support Services!

Student Support Services (SSS) is a federally funded program through the U.S. Department of Education that provides comprehensive services to first-generation students, limited income students, and students with disabilities. The primary goal of SSS is to help transition, retain, and graduate college students. For more information please visit the SSS website at em.GeorgiaSouthern.edu/SSS.

Applications are currently available under the "Apply" tab.

Contact information - (912) 478-8746

SSS@georgiasouthern.edu.

YOUR STUDENT ACTIVITY FEES AT WORK

The Weekly Buzz is sponsored by the Office of the Vice President for Student Affairs and Enrollment Management.



THIS DAY IN HALF-ASLEEP HISTORY: ST. PATRICK'S DAY

BY MEG ELWOOD

The George-Anne staff

Aye wee lads and lasses, 'ere is the story of St. Patrick's Day, a day dedicated to the a man who wasn't originally named Patrick at all. Awkward.

It's fifth century Britain. The hills are green and rolling, with little cows and sheep frolicking here and there. A 16-year-old boy named Maewyn Succat (mah-when Sug-goot) was hangin' out with his dad Calpurnius and his grandpa Potitus. It was probably a nice day, they didn't have any global warming to worry about, but unfortunately, they did have pirates. One day, young Maewyn was snatched away from his family by a band of Irish Pirates. He was brought to Ireland and sold into slavery.

They didn't have amber alerts back then.

He was bought by a man named Milchu, who was a hot-shot priest in the country at the time, and tended to his sheep for six years. While in the fields one day he sat there and thought, "God. This sucks. WHY God, Why!?" Of course, God didn't answer, because I mean, he's God -- he isn't very much of a talker, so Maewyn was like "Challenge accepted bro," and decided this was all to test his faith.

He would pray every night, and then he had a dream. He was like "I Have A Dream, that --" wait. Wrong story.

A voice promised him he would find his way home to Britain. So, off he went. He met some sailors and was like

"Salutations gentleman, think you could hook a guy up with a quick trip to Britain?" It was a mess. After days of sailing, the crew abandoned ship and Maewyn ended up in France alone, completely lost.

Luckily France had some pretty good schools, so he studied his butt off, became a priest and decided to rename himself Patrick. At least its a timeless name right?

Happy St. Maewyn Day! No, that would never catch on.

Pat's first mission was to spread the gospel to the nonbelievers of Ireland. People weren't very educated back then, so he used a shamrock to teach the Holy Trinity. People started to like his funny little clover stories and managed to spread Christianity far and wide. He was the man back then because of it, you kind of have to be in order for millions of people to celebrate your death day every year. Our main man Pat died around 461 and took his place in heaven among the greats - so the legend says.

And that's the gospel truth. Check out Pat's bibliography called "Confessio" for more of his adventures.

This was written around 4 a.m. Yes, it's incredibly cheesy, but it's a true fact that a brain shuts down after a certain hour. For the most part, this story is true and fact-checkable on History Channel, but is totally satirical. Enjoy!



PHOTO COURTESY OF WIKIPEDIA

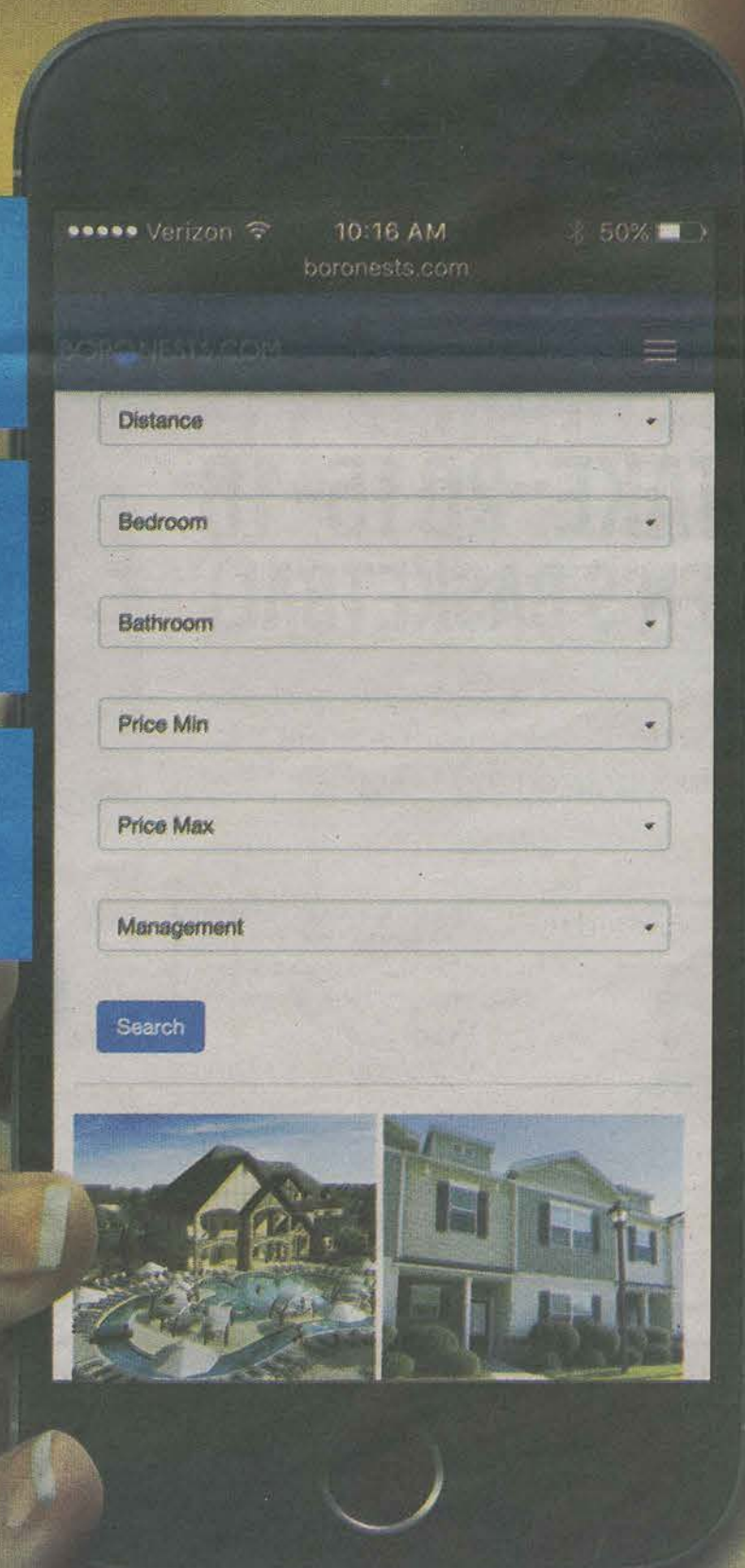
BORONESTS.COM

Whose house? Your house!

Customize

Search

Compare





TAHIR DAUDIER

CJ Brazil connects on a pitch. He went 1-4 with a double in the game against KSU.

Georgia Southern outlasts Kennesaw State in longest game of the season

Georgia Southern took on in-state rival Kennesaw State Tuesday night in a one game series and came away with a 10-9 victory after the 4 hour and 50 minute contest. They will begin Sun Belt play this weekend at Appalachian State.

BY KEVIN KENEELY
The George-Anne staff

Just 13 days after falling to Georgia Tech in 16 innings at J. I. Clements Stadium, GSU beat KSU on a walk-off balk off by Owls relief pitcher Drew Reeves that brought in Eagle 2B Eric Furphy.

This was the longest game ever played between Kennesaw State and Georgia Southern. The contest also beat out the game against

Georgia Tech earlier in the season as the longest game of the season. This one lasted 4 hours and 50 minutes.

"It would've been easy to let that one get away tonight, but I thought the guys hung in there and continued to play," head coach Rodney Hennon said.

Anthony Paesano picked up his first win of the season tonight for the Eagles. He only pitched one-third of an inning but he did his job when it mattered most.

"Anthony Paesano fell behind but then made some critical pitches, some big pitches in critical time. I was glad to see that," Hennon said.

The team had a great offensive game tonight with 10 hits and seven stolen bases. GSU 1B Ryan Cleveland led the way on the base paths for the Eagles, setting a career high in stolen bases with three on the night. Will Hudgins also kept a hot bat, extending his hitting streak to five games.

Coming into Tuesday night's game, KSU was 5-0 on

the season when scoring first. GSU gave them their first loss in that category. It was also the first time GSU had beat KSU at home since 2012.

Coach Hennon was very pleased with how his team was able to overcome adversity and grind out the win.

"This is a game where you've really gotta focus and concentrate on every pitch. It's a long game.... This game will test ya," Coach Hennon said.

The Eagles begin Sun Belt Conference play this weekend with a three-game series

against App State.

GSU has managed to win six of their last seven games, and is riding tremendous momentum as they prepare to begin Sun Belt play against App State this weekend.

GSU is starting conference play at 8-5 and only a game behind from having the most wins in the conference.

GSU won't be home again until March 18 when they take on Troy.

MY TAKE: 2015-16 WOMEN'S BASKETBALL

The Eagles finished 7-22 overall and 4-16 in the Sun Belt. Our reporter offers his thoughts on the season.



KEITH SMILEY

Smiley is a senior journalism major from Hampton, Ga.

The team will only lose two seniors to graduation this offseason. The team averaged 53 points per game this season.

As young players, adjusting to a new coach can be the most challenging thing in collegiate sports and for the Georgia Southern women's basketball team, it was just that.

The team finished the season with a 7-22 overall record and closed out the

year on a seven game losing streak. The disappointing part about that isn't their record, but the fact they controlled their destiny leading up to tournament placement. It was an opportunity that slipped out of their hands.

With all the adversity the team faced, the new head coach Kip Drown and every player on the team that I interviewed appeared to always keep a positive mindset. The team went out every game and played to win, no matter who the opponent was.

To me, the most memorable game of the season was against the No. 1 team in the Sun Belt Conference, Arkansas State. It was their second meeting

between the two and GSU was the host. Arkansas State came in as the undefeated big bully in the conference with a (21-3, 15-0) record and was looking to steam roll GSU.

They did just that with a 27 point blowout win. Of course that wasn't what made this game memorable; it was a nightmare to watch. What made it memorable was the heart and effort GSU showed all the way to the buzzer. The game started ugly for GSU going down 24-12 in the first quarter. It looked like there was no fight in them until a series of shots made by the Eagles led to them taking the lead in the second quarter 28-27 over the best team in

the conference. The potential upside they showed in the second quarter convinced me this team could compete with anybody.

They also showed many flashes with four games this season losing by five points or less. The Eagle's potential success awaits them next season, knowing they have a solid scorer in guard Angel McGowan. She is ranked in the top 10 in points in the conference and also scored her 1000th point in her collegiate career this season.

Leading up to this point with the season over and time to grow, I know GSU will eventually get better with time.



MADISON REYNOLDS

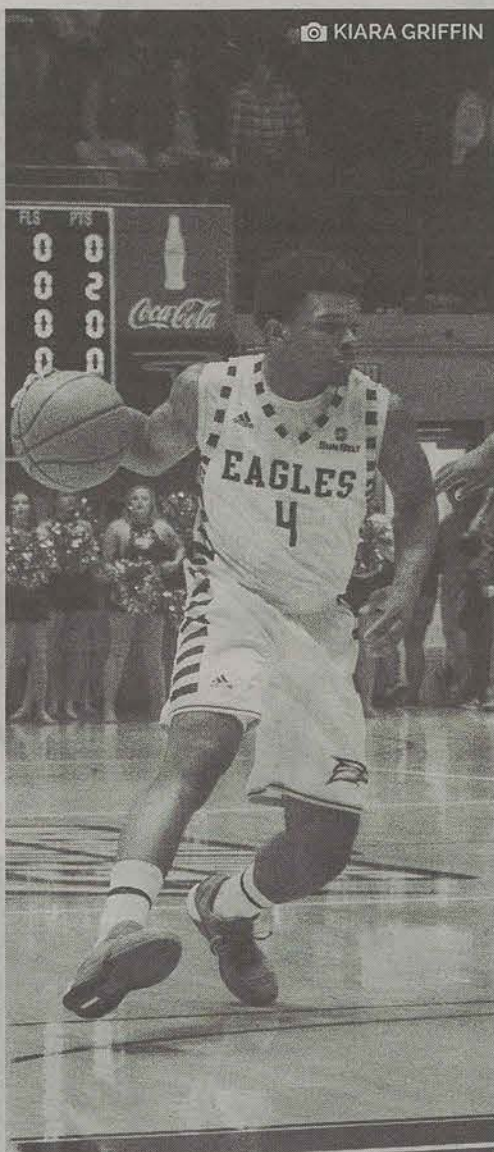
Looking for a great summer job?

Apply Today: NAUTIXPOOLS.COM

NOW HIRING LIFEGUARDS FOR SUMMER 2016

- Fun Summer Job
- Flexible Schedules
- Full and Part Time
- Competitive pay
- Bonuses Available
- Employee Events
- Cobb, Cherokee, & other area locations





Freshman Tookie Brown is ranked eighth in the nation among freshmen in scoring this season. He has averaged 17.9 points per game.

MEN'S BASKETBALL EARNS TWO ALL-SUN BELT SELECTIONS

Tookie Brown was named Sun Belt Freshman of the Year and Mike Hughes was selected to the third-team All-Sun Belt.

BY MARQUS WILLIAMS
The George-Anne staff

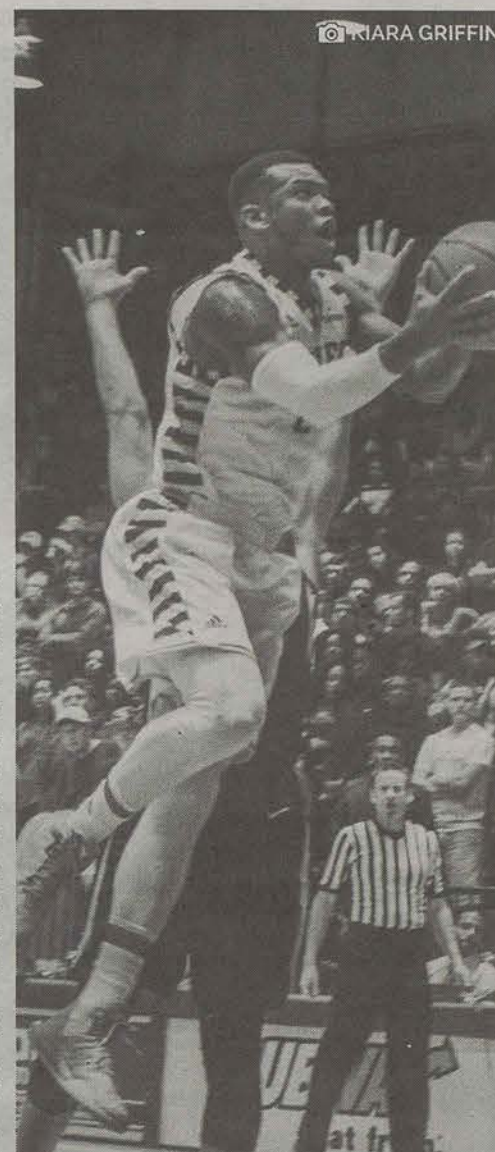
Standout guards Tookie Brown and Mike Hughes were given All-Sun Belt honors on Tuesday morning. They have been important members of the team this season.

Brown earned First Team All-Sun Belt honors while also capturing the Sun Belt Freshman Player of the Year award this season. He is fourth in the conference in scoring averaging 17.9 points per game with 3.1 rebounds and 3.4 assists. He has been a steady shooter for the Eagles all season as fellow guard Hughes has said it's a toss-up between Brown and Jake Allsmiller for best shooter on the team.

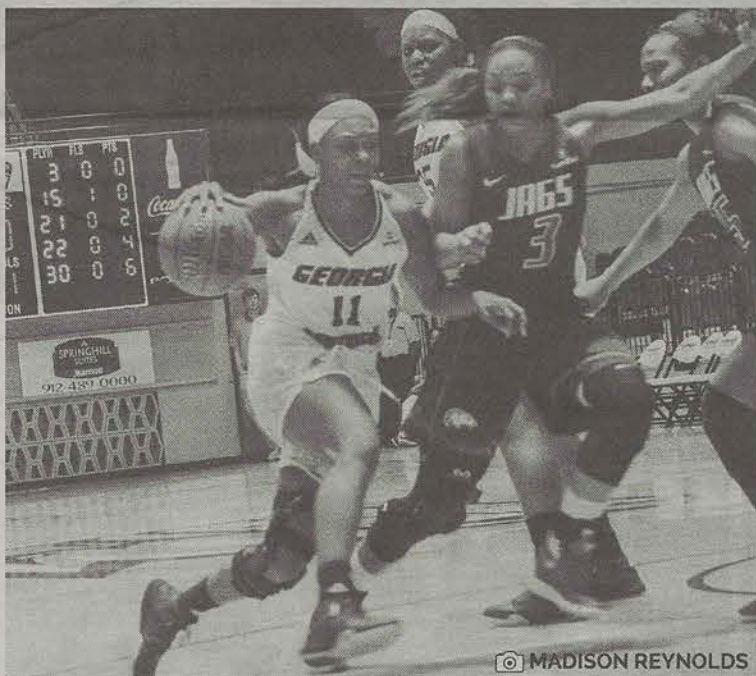
He is also an under-the-radar talent when it comes to free throw shooting as he's tied sixth in the conference shooting 81 percent from the line. Brown is also the record holder for most points by a freshman in the history of Georgia Southern basketball.

Hughes earned a spot on the Third Team All-Sun Belt list. He was one of the most experienced players playing for the Eagles this season. Hughes is an essential leader for the Eagles ranking ninth in the conference in points with 15.1 points per game while also capturing 4.8 rebounds per game, ranking second on the team. Though his offensive prowess is recognized by many, his defensive talents are just as good, as he leads the Sun Belt in steals with 2.1 per game.

These two players have earned these respective accomplishments, but the season isn't over yet. With all the accolades they have received, the objective in sight is to win today against South Alabama in the Sun Belt tournament and find the magic to win it all.



Sophomore Mike Hughes has consistently led the team in scoring this season. The shooting guard has averaged 15.1 points per game this season.



McGowan ranks seventh in the Sun Belt in scoring. The junior guard averaged 14.7 points per game and collected 60 steals on the season.

BY CHRIS SMITH
The George-Anne staff

The Sun Belt conference announced their all-team selections for women's basketball and Georgia Southern guard Angel McGowan was named to the Sun Belt All-Conference Second Team. McGowan is a junior from Greenville, S.C., and she is the first player in the history of Georgia Southern women's basketball to be named as an All-Sun Belt selection.

McGowan had a terrific season; stamping her name in the record books here at GSU. McGowan was able to score her 1,000th point against UL Lafayette. She averaged a team high 14.7 points per game

along with 4.5 rebounds and 2.1 steals per game. McGowan finished sixth in the Sun Belt conference in points per game and tied for second in the steals category in conference play.

She is a player that every coach has had to game plan against, because she could go for 20 points on any given night. She has dealt with numerous injuries and bumps in the road this season, but she did not let it stop her. She kept letting the game come to her and it payed off.

McGowan has already created a legacy and she still has one more season left to play with Eagles. She has a chance to repeat another performance like this and possibly be better next year.

ANGEL MCGOWAN NAMED TO ALL-SUN BELT SECOND TEAM

McGowan is the first Georgia Southern player to be selected for an All-Sun Belt honor. She also joined the 1,000 point club earlier this season.

MISCELLANY

Now accepting submissions!

Your work will be judged and placed in an exhibition that will move throughout campus. Visit our website for more information.

Early Bird Submissions: Feb. 29-Mar.11
Reg. Submissions (\$5): Mar. 12th-25th
Judging Dates: Mar. 26th-April 8th
Unleashed Event: Monday, April 18th

Submit your work and unleash your creativity at miscellany.reflectorgsu.com

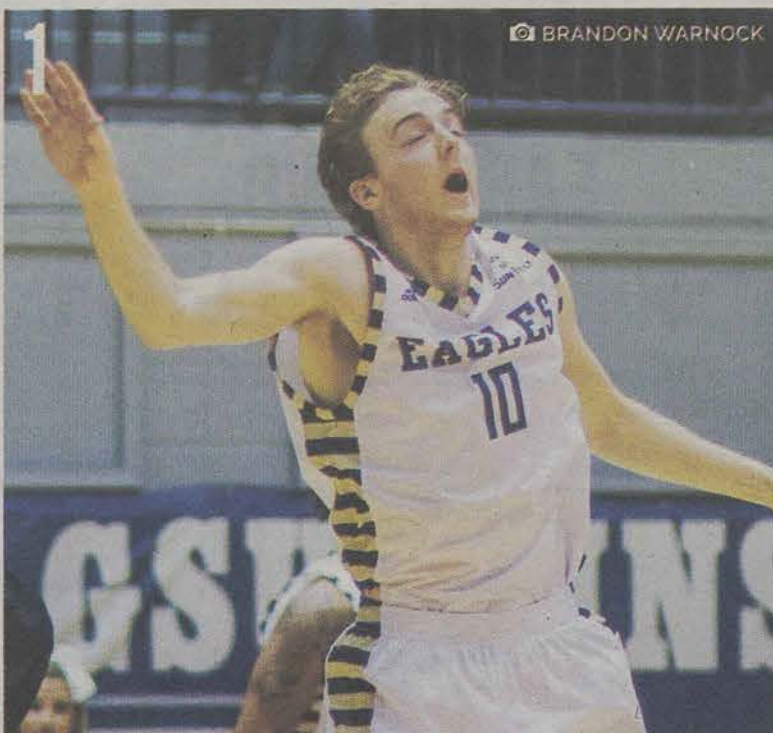
Categories include:
Poetry
Short fiction & nonfiction
Song lyrics
Photography
Paintings
Graphic design
Sculpture

TAHIR DAUDIER

8

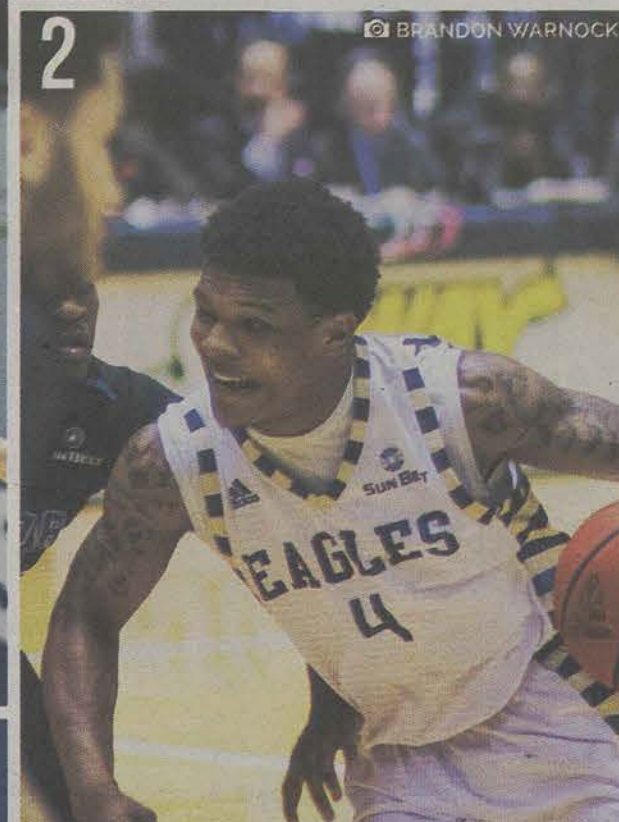


BRANDON WARNOCK



BRANDON WARNOCK

2



TAHIR DAUDIER

3



BRANDON WARNOCK

4



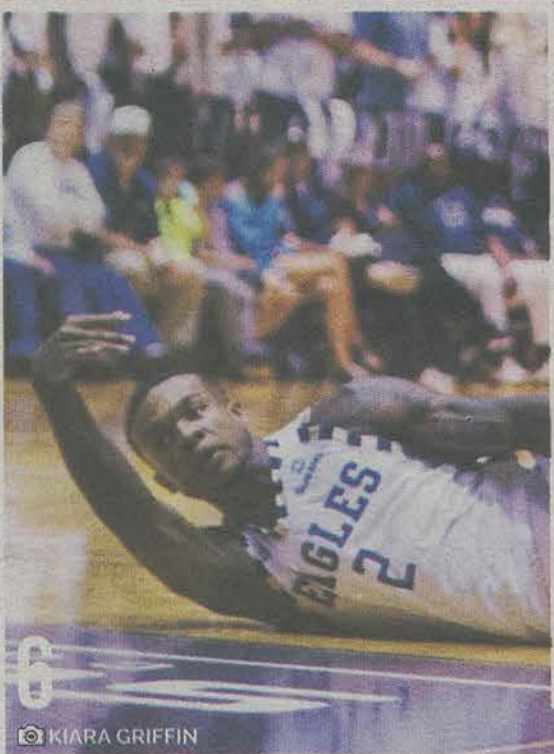
TAHIR DAUDIER

5



6

KIARA GRIFFIN



THE MANY FACES OF EAGLE BASKETBALL

BY LAUREN GORLA
The George-Anne staff

The college basketball season is a long and often times grueling endeavor. Student-athletes are trying to balance the pressures of handling schoolwork and competing at a high level on the court. Coaches are operating year-round with recruiting, offseason

workouts and practicing while the rest of the program's staff is hard at work doing whatever they can to support the team.

After the season and hard work is over, fans and athletes remember the killer three-pointers and crucial final points made. But what are only faint memories are the faces of these athletes-- and sometimes those faces can be

quite comical. Luckily, our team of photographers have been there for every funny expression and side-eye glance.

As we move out of regular season and into the Sun Belt Tournament, let's look back at those moments forever memorialized in our photos.

1. Forward Jake Allsmiller
2. Guard Tookie Brown
3. Forward Shawn O'Connell
4. Forward Ike Smith
5. True Blue fan, avid dancer Mark Garno
6. Guard Mike Hughes
7. Guard Tookie Brown
8. Head coach Mark Byington

GEORGIA SOUTHERN ENTERS SUN BELT TOURNAMENT

AS NO. 5 SEED

The Eagles face off against the University of South Alabama today at 5 p.m. in the first round of the tournament.

BY MARQUS WILLIAMS
The George-Anne staff

The Georgia Southern Eagles are going into the Sun Belt tournament as the fifth seed. They play this Thursday against South Alabama in New Orleans, heading back to the state of Louisiana after losing to Louisiana-Lafayette and Louisiana-Monroe last weekend.

The Eagles have to go through South Alabama, Louisiana-Lafayette, and Arkansas-Little Rock in order to advance to the Sun Belt Championship. The road for last year's team to this year's team is completely flipped, but the end goal is still the same.

The Eagles' first opponent is the South Alabama Jaguars, who swept the Eagles this season going 2-0 in conference play. The Eagles lost both games by a combined 12 points and are hoping that the third time will be the charm this time around.

"We lost to them twice, but they're a good team and both times we played them we just weren't ready and we know we can be better" sophomore forward Jake Allsmiller, who put up 29 points in the last game against the Jaguars, said.

The Eagles know they have the skill set to match up with the Jaguars, but they have to put it all together and set it in motion. Last weekend's matchups reminded the Eagles just how tough conference play can get at any moment and having lapses during games can be the deciding factor in winning or losing.

"[We] need to stay consistent on defense, there [were] times we had lapses in our defense and we gave up some easy baskets. We should just stay focused and stay consistent with it and we should be good to go," Mike Hughes, sophomore guard, said on how to survive in the tournament.

If the Eagles beat South Alabama on Thursday they

square off against two teams who have also had their number this season. The Eagles are 0-4 this season against Louisiana-Lafayette and Arkansas-Little Rock. They have struggled with Lafayette, partly because of the Sun Belt Player of the Year, Shawn Long, who averages a double-double with 18.8 points and 12.9 rebounds per game. He is also a highly regarded NBA prospect and arguably the best talent in the league.

Arkansas-Little Rock will likely be the toughest of the Eagles challenges as the Trojans are number one in the conference and have asserted themselves as the best team in the Sun Belt, hands down. The Eagles were beaten by double-digits in both games against them this season. Creating momentum early with quick scores and catching the Trojans off guard will be a major key if the Eagles want to pull off the upset.

The Eagles' tournament draw has been unfortunate as they are 0-6 this season against the teams on their side of the bracket, but they still have a chance.

"Winning a tournament game is special, and we've been fortunate going on my third year here to win a couple in Nashville and going to the Finals last year. It's such a fun ride once you start winning and going on and winning another one and keep on moving forward. I love it watching the guys and how they react, so you just gotta catch some magic and play well," head coach Mark Byington said.

The Eagles need some tournament "magic" to win the Sun Belt and hope is far from lost. The conference tournaments this year have already seen five upsets on number one seeds this season and if the trend continues, GSU could be another team with a Cinderella story waiting to be told.

NO. 5 GEORGIA SOUTHERN

5PM (CT)

NO. 8 SOUTH ALABAMA

5PM (CT)

NO. 4 UL LAFAYETTE

1 PM (CT)

NO. 1 LITTLE ROCK

12 PM (CT)
ESPN 2

NO. 2 UL MONROE

3:30PM (CT)

NO. 3 UT ARLINGTON

7:30PM (CT)

NO. 6 GEORGIA STATE

7:30PM (CT)

NO. 7 TEXAS STATE

OPENING ROUND
THURSDAY, MARCH 10

QUARTERFINALS
FRIDAY, MARCH 11

SEMIFINALS
SATURDAY, MARCH 12

CHAMPIONSHIP
SUNDAY, MARCH 13

Like us on facebook at
BLACKWATER PRESERVE INC.

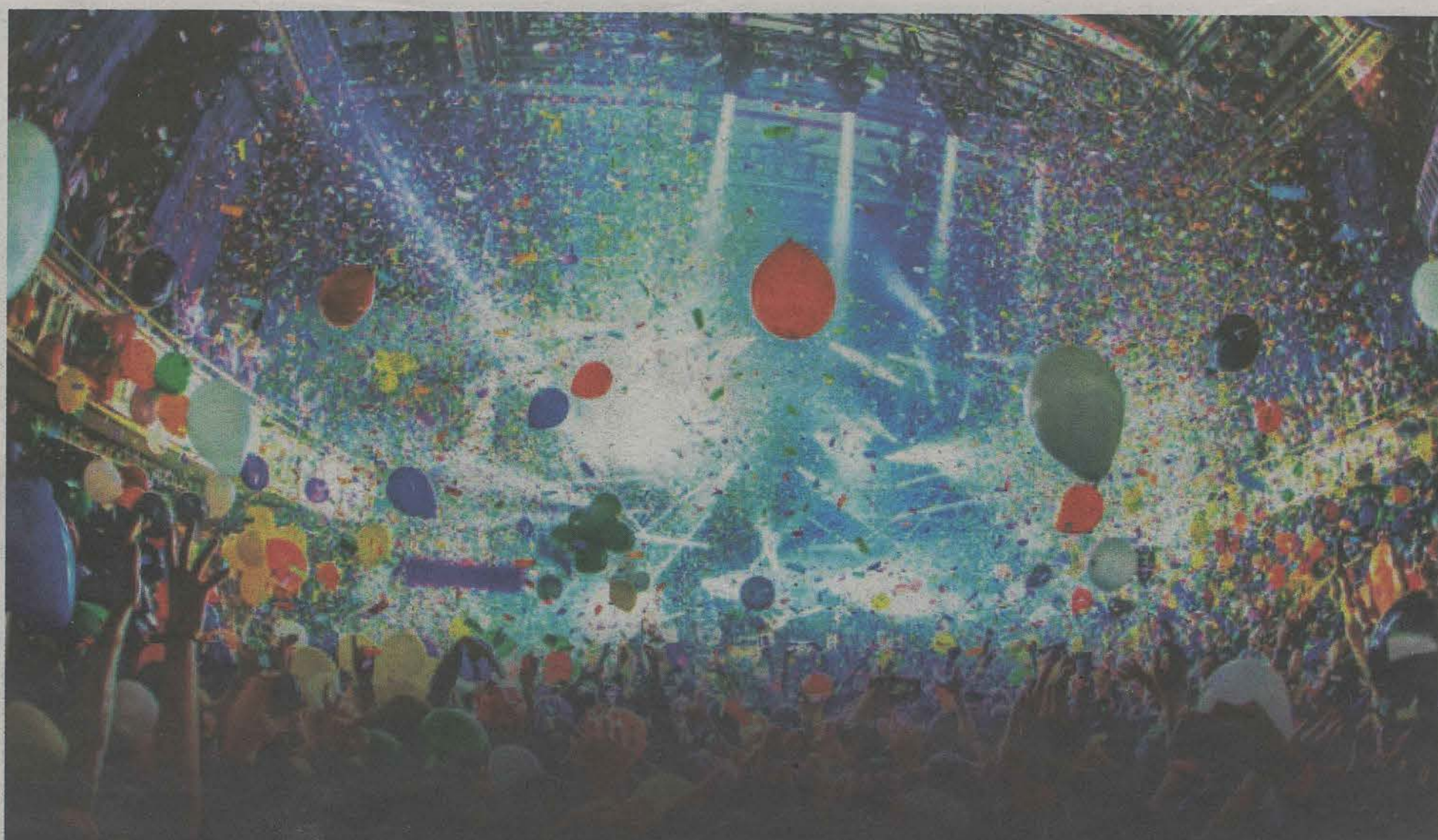
Follow us on instagram
@BLACKWATER.PRESERVE

**Blackwater
PRESERVE**

420 ACRES OF PRISTINE WILDLIFE AND CYPRESS SWAMP
Only 15 minutes from campus!

FIRST 50 CALLERS RECEIVE 4 HOUR
ALL ACCESS PASS! (912)486-4477

780 MCELVEEN POND RD, REGISTER, GA 30452
WWW.BLACKWATERPRESERVE.COM



PROJECT VUW

APRIL 23, 2016 @ SMITH FIELD

7:30-10:00 PM // DOORS OPEN @ 6PM

SAM TILLMAN RD, STATESBORO, GA

YOU & 3 FRIENDS COULD WIN A FREE TRIP TO HAWAII

PAINT PARTY
EDM/HIP-HOP DJS
MECHANICAL BULLS
BUNGEE JUMP TRAMPOLINE
THE MELTDOWN

BYO DRINKS & FOOD!

EARLY BIRD PRICES
TICKETS \$10
LOTS \$30

WANT A SPOT FOR YOU &
YOUR FRIENDS TO HANG
OUT? GET A LOT!

**LOTS ARE PAINT FREE!

BUY TICKETS HERE:

<https://www.universe.com/projectvuw>

BROUGHT TO
YOU BY
VIEWUWIN



SPONSORED BY
PAINT RAVE



A PORTION OF THE
PROCEEDS WILL
BENEFIT THE DC/MD/VA &
GEORGIA CHAPTERS
OF THE ALS ASSOCIATION.



WANT TO VOLUNTEER?
SEND RESUMES TO:
volunteers@advinup.com