

Georgia Southern University

Digital Commons@Georgia Southern

The George-Anne

Student Media

3-8-2016

The George-Anne

Georgia Southern University

Follow this and additional works at: <https://digitalcommons.georgiasouthern.edu/george-anne>

Recommended Citation

Georgia Southern University, "The George-Anne" (2016). *The George-Anne*. 2930.
<https://digitalcommons.georgiasouthern.edu/george-anne/2930>

This newspaper is brought to you for free and open access by the Student Media at Digital Commons@Georgia Southern. It has been accepted for inclusion in The George-Anne by an authorized administrator of Digital Commons@Georgia Southern. For more information, please contact digitalcommons@georgiasouthern.edu.

GA
THE GEORGE-ANNE

Georgia House passes campus carry bill to the Senate

Page 6

© KIARA GRIFFIN

SPRING BREAK '16

Popular destinations on-campus and off

PAGE 8

**2016 FOOTBALL
SCHEDULE
RELEASED**
*see
analysis
on
PAGE 10*



**Men's
Tennis
improves
to 9-4 on
the season**

Page 11

© KIARA GRIFFIN

Tuesday



High: 82°
Low: 52°

Wednesday



High: 82°
Low: 58°

Thursday



High: 87°
Low: 59°

Friday



High: 89°
Low: 62°

Who likes short shorts? Well we might have to. With temperatures peaking at 89 degrees, things are heating up this midterm week.

Weather Bar

GAS PRICES ON THE RISE

By Gabe Thomas

After almost a year of falling gas prices, prices have begun to take a slight jump.

According to NPR, the national average of a price of gas has jumped 10 cents in a week from \$1.70 and \$1.80. The price of gas is rising in Georgia according to GasBuddy.com, but is still below average at \$1.73.

The rise in gas prices has a lot to do with the change in seasons.

As springtime gets here, gas prices rise for a variety of reasons. One is the government oil regulation that requires companies to use a more expensive blend of gasoline to reduce smog.

Gas prices also rise in the spring time due to demand. There are more people traveling on the roads for spring break and summer vacations.

As gas prices begin to rise in Statesboro, here are the five cheapest locations according to GasBuddy.com.



ZIP N GO
\$1.59

1803 Chandler Road & Olympic Boulevard

VALERO
\$1.62

56 Northside Dr W & W Parrish St

ALLEN'S FOOD MART
\$1.62

218 N Main St & Northside Dr E

ENMARKET
\$1.63

604 Northside Dr E & Lester Rd

MURPHY USA
\$1.63

728 Northside Dr E near Buckhead Dr

SPORTS SHORTS

-Men's basketball lost to UL Lafayette 78-87 on Saturday.

-Women's basketball also lost to UL Lafayette 49-56 on Saturday.

-Baseball won 2 of their 3 games against Memphis this weekend: beating them Friday (3-2) and Saturday (5-0) and losing against them Sunday (4-6).

TODAY IN WOMEN'S HISTORY

According to the National Women's History Project, International Woman's Day was created on March 8. It is celebrated in both the US and Europe to honor the courageous women who have protested for woman's rights.



PHOTO COURTESY OF REFLECTORGSU.COM

How to Get the Perfect Glow Without the Tanning Bed

Spring Break approaching in just a few short days has many of us frantically searching for a quick tanning solution. Tanning beds can be expensive among having several harsh long-term affects on our skin and health. Check out the results students got from testing a few popular at home tanning solutions.

Read the rest on reflectorgsu.com

BARK FOR LIFE COMING TO GEORGIA SOUTHERN UNIVERSITY

By Chris Carter

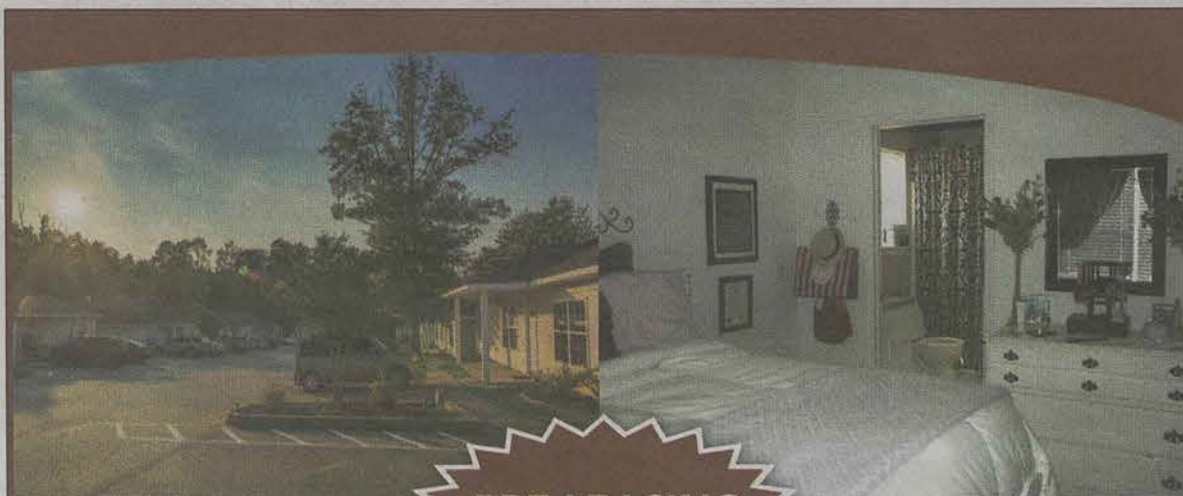
Bark for Life is a one mile walk for your dog that benefits the American Cancer Society. It will take place at the RAC Pavilion/Field from 1 p.m. - 5 p.m. on April 16, 2016.

The event will not only benefit the American Cancer Society, but also the Statesboro Humane Society with dogs available for adoption

Your dog and you can enjoy a band, food, games, vendor booths and caricature artists

to draw you and your dog enjoying a day out in the sun.

There will be competitions for the dogs in the categories of best dressed, longest tail, best name, best trick and softest with each winner taking home a prize.



PRE LEASING
FALL 2016!

STUDIO

2BR

3BR

FREE Internet
FREE Cable
Pets Welcome
Washer & Dryer

CARIBE
COURT



912-681-7873 | 210 Caribe Court • Statesboro, GA 30458 | CaribeCourt.com

Puzzles

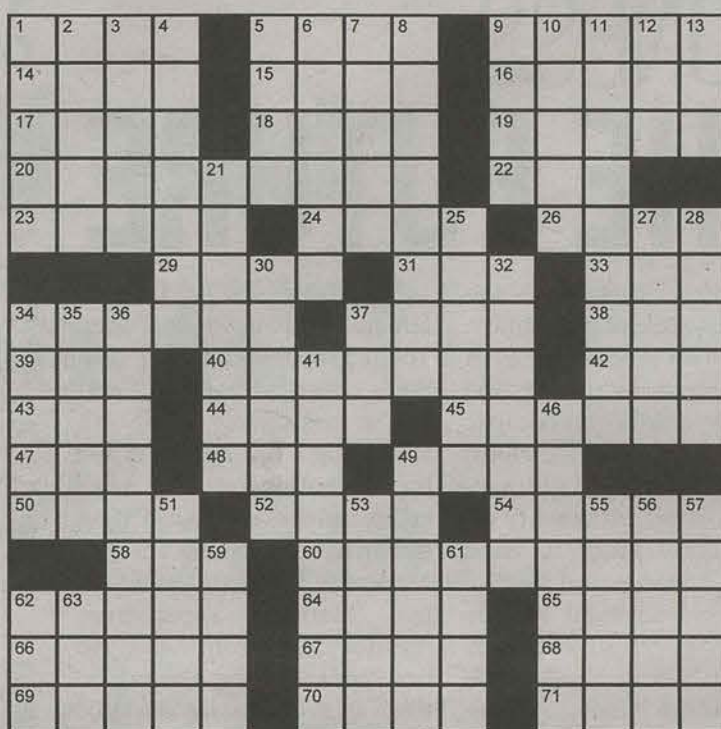
3-8-16

The George-Anne 3/8/16 Crossword

PuzzleJunction.com

Across

- 1 Parking place
- 5 "Goldberg Variations" composer
- 9 Grassy areas
- 14 Coin in Cancun
- 15 Dwarf buffalo
- 16 Blockhead
- 17 Spherical triangle sides
- 18 Dejected
- 19 '50s dance
- 20 Here and there
- 22 Rocker Nugent
- 23 Mimicking bird
- 24 Seed coat
- 26 Red letters?
- 29 Evenfall
- 31 Part of some uniforms
- 33 One of the five W's
- 34 Languorous
- 37 Fill to the gills
- 38 Absorb, as a cost
- 39 Mudder's fodder
- 40 Faux pas
- 42 Old hand
- 43 Keats creation
- 44 Wicked
- 45 Sheen
- 47 "My country" follower
- 48 Hectoliter part
- 49 Dermatologist's concern
- 50 Letter after theta
- 52 Actress Foch or Dobrev
- 54 Clear the slate
- 58 Glass component
- 60 Stock woes
- 62 New moon, e.g.

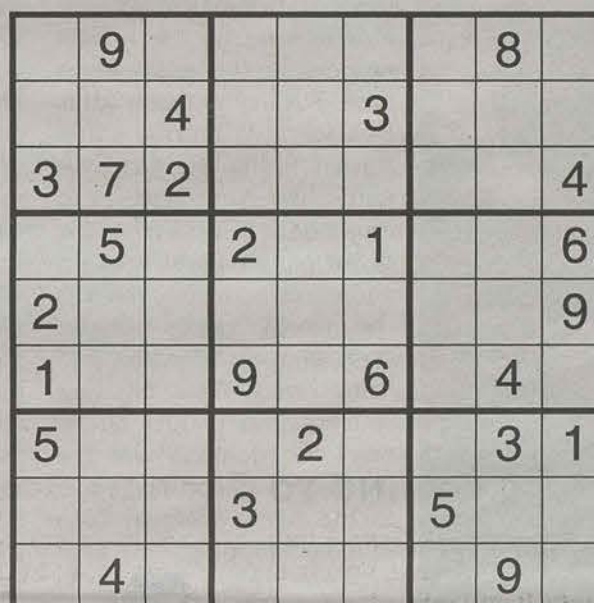
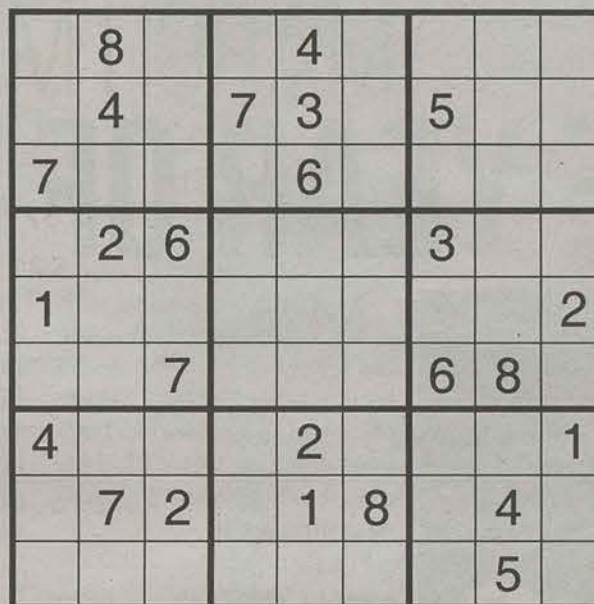


Copyright ©2016 PuzzleJunction.com

- 64 Children's author Blyton
- 65 Set aside
- 66 Flip response?
- 67 E-mail command
- 68 Lackawanna's lake
- 69 Actress Moorehead
- 70 Ancient colonnade
- 71 Telephone button
- 5 Summoned
- 6 Hooded jacket
- 7 Show fear
- 8 Poor golfer's advantage
- 9 Cheery tune
- 10 French farewell
- 11 Like a mountain peak, maybe
- 12 Silent assent
- 13 Hog heaven?
- 21 Hitchhiked
- 25 Recently
- 27 Portion
- 28 Chopper part
- 30 Wooded
- 32 Examined
- 34 Hindu loincloth
- 35 Dashboard feature
- 36 Computer user's problem
- 37 Peruvian money
- 41 Smug self-serving earnestness
- 46 Ump's calls
- 49 Vegas attraction
- 51 Supermarket section
- 53 Fair-sized musical group
- 55 Stave off
- 56 Old photo color
- 57 Oil of wintergreen, e.g.
- 59 Imbroglio
- 61 Icelandic epic
- 62 School org.
- 63 Witch

Down

- 1 Involuntary twitch
- 2 Poet ____ Bysshe Shelley
- 3 Extinct Italic language
- 4 Taqueria offering



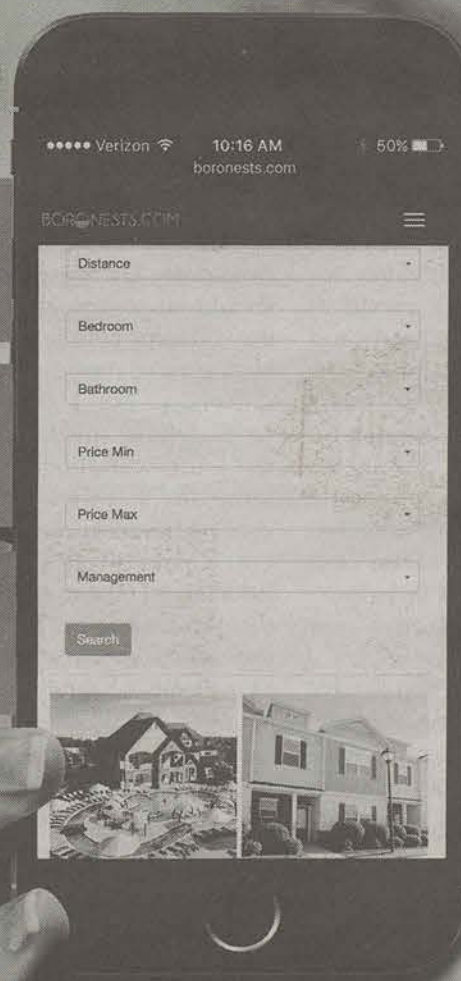
BORONESTS.COM

Whose house? Your house!

Customize

Search

Compare



To contact the creative manager, email prodmgr@georgiasouthern.edu

MARCH MADNESS THE YEAR OF THE FUTURE



JOHNNY LU

Lu is a senior journalism major from Brooklyn, NY.

March is here and so is the future. Following the release of his third studio album *Dirty Sprite 2 (DS2)*, the past 12 months have been one long victory lap for one Atlanta-based hip hop recording artist.

His promotion of Codeine, Ciara's daddy issues, and the typical rapper come-up story we've heard millions of times has managed to land him as one of the hottest rappers in the game right now. Future, or Nayvadius DeMun Wilburn, first started filling the airwaves with his Auto-Tune trap music back in 2012 when his debut album *Pluto* brought audiences from across the world catchy singles such as *Tony Montana* and *Same Damn Time*. His first collaboration with Drake on *Tony Montana* was the antecedent stepping stone to the two's eventual 2015 Billboard-topping, joint mixtape *What a Time to Be Alive*. Prior to his current, temporary 'rise' to the top, Future was your typical southern, up-and-coming, somewhat relevant rapper with a couple of mixtapes and radio show interviews to his name.

From those very radio show interviews at radio stations no one has ever heard of to the world's most popular video games using his music

in soundtracks, Future is the perfect example of probability. I don't mean probability as in he got famous because he was lucky or anything, because anyone can win the lotto or get struck by lightning, twice. I mean probability as in he's quite lucky to have both the quantity and quality of acknowledgement he has in such a lyrically critical industry with colleagues like Kendrick Lamar, Drake and Machine Gun Kelly and alumni such as Eminem, Jay-Z and Fabolous. You know that one random rapper every year who steals the spotlight with cool beats, but no meaningful lyrics or word play?

And that's what's so fascinating about the rap game. You can have the most basic lyrical skills and styles, absolutely no positive or morally-conscious messages in your music, and catchy songs about how you used to deal drugs on Marta and harass people to purchase your demo in a Kroger parking lot, and you're instantly sitting next to Gabourey Sidibe at the Grammy's.

In terms of the entertainment scene, categories such as music, television, Internet and fashion can easily impact a variety of audiences, one being this youthful generation. It doesn't take much, for instance, to get someone to start wearing the

same shoes his or her favorite athlete or musician sponsors. You're probably thinking "duh that's called advertising," and you're completely right. It's also called influence. While there's nothing wrong with being influenced by a certain celebrity or trend, because my entire house is drenched in Marvel superheroes merchandise from attic to basement, the hype won't be there forever. Similar to Migos last year, T.I. and Lil' Wayne a few years ago, Soulja Boy in 2006 and G-Unit in the early 2000s, rappers arrive, influence a couple of ideas, and get back to work while leaving us with a few nixes to the ways we dress, have fun and sometimes think.

Whatever legacy a rapper cements throughout his or her career is forever, but hype isn't. It's all about relevance and it's all about opinion. Like him or not, credit's given where it's due.

I'm not bashing the guy, because I do find myself jamming to his music sometimes. I don't like him, nor do I dislike him. I'm simply summarizing what a wonderful year the guy's had. It only leaves us to wonder who's next to take the throne where you don't have to be that good to sit in while better, deserving artists are standing up.

STATEMENT OF OPERATIONS

The George-Anne is the official student newspaper of Georgia Southern University, operated by GSU students using facilities provided by the university. The newspaper is the oldest continuously published newspaper in Bulloch County.

The newspaper is published twice weekly, on Tuesdays and Thursdays, during most of the academic year. Any questions regarding content should be directed to the student editor by phone at 912.478.5246 or at gaeditor@georgiasouthern.edu.

ADVERTISING: The newspaper accepts advertising. Inquiries may be made by calling 912.478.5418 or 912.478.0566. For questions e-mail ads1@georgiasouthern.edu.

The George-Anne receives additional support in part, from the Student Activities Budget Committee. For more information, rate cards, or sample publications, contact the advertising manager or student media director. The advertiser is responsible for any errors in advertisements and its liability for adjustments is limited to the amount of space the error occupied in the ad. Further, the newspaper is not responsible for any damages caused due to an ad's omission from a particular edition and its responsibility solely is to reschedule the ad in the next regular edition at the regular advertising rates.

STUDENTS BEWARE: The George-Anne screens all advertisements prior to publication. The newspaper strives to accept ads for legitimate products and services only. Students are urged to exercise caution when replying to ads—particularly those that require personal information. Students are also urged to report to the newspaper any suspicious offers which they might see in an ad.

PUBLICATION INFORMATION: The newspaper is printed by The Brunswick News in Brunswick, Ga.

NOTICE: Unauthorized removal of multiple copies from a distribution site constitutes theft under Georgia law, a misdemeanor offense punishable by a fine and/or jail time.

CORRECTIONS: Contact the editor at gaeditor@georgiasouthern.edu for corrections and errors.

STAFF LIST

Editor-in-Chief Lauren Gorla
Managing Editor Ian Leonard
Content Strategist Casey Cargle
News Editor Jozsef Papp
Features Editor Meg Elwood
Sports Editor Robert George
Daily Editor DJ Fullmer
Opinions Editor Skyler Black

Creative Manager Hailey Smith
Photo Editor Brandon Warnock
Design Editor Alex Smith
Features Designer Rebecca Davis
News Designer Margarita Suarez
Sports Designer Erin Fortenberry
Opinions Designer Margarita Suarez

Distribution Manager Andrew McCarthy
Marketing Manager Cydney Long
Business Manager Taylor Norman

The George-Anne welcomes letters to the editor and appropriate guest columns. All copy submitted should be 350 words or fewer, typed, and sent via email in Microsoft Word (.doc/.docx) format to letters@georgiasouthern.edu. All submissions must be signed and include phone number for verification. GSU students should include their academic major, year and hometown. The editors reserve the right to reject any submission and edit submissions for length. Opinions expressed herein are those of the Board of Opinions, or columnists themselves and DO NOT necessarily reflect those of the faculty, staff, or administration of GSU, the Student Media Advisory, Student Media or the University System of Georgia.

The need for student involvement in the presidential selection process



SKYLER BLACK

Black is a senior writing and linguistics major from Warner Robins, Ga.

Four of the candidates for Georgia Southern's president have been announced and have begun visiting the campus. While your inbox may have thousands of unread messages piling on top of one another, you should probably be paying attention to these candidates. The GSU community should be helping to determine who the next leader of the campus will be.

The main issue that I have noticed from asking students on campus is the fact that none of them really know who the candidates are and when they are coming. Our university has been sending out emails a week before a new individual is to visit the campus and a few days before an open forum for a prior named

candidate. I am aware that I should be paying attention to the different people who may be the next president of this university. But I opened an email letting me know who the fourth candidate was the same day that they would be visiting the campus.

This isn't a rare occurrence for a large amount of students that I know. A few of them have thousands of unread messages in their inboxes and unless the email is drastically important they will not open them. There needs to be a more effective way of letting students know when a possible president of the university will be available to ask question to.

Our student body is not paying attention to important information that can affect

the rest of their college going experience. I try to pay attention to situations that directly influence me in my collegiate career more often being so close to graduation.

GSU is trying to remedy that because they are aware that it is important for the students to be paying attention. On the homepage of MyGeorgiaSouthern, underneath my messages, there are links to the videos from the open forums that were held. But honestly, there has never been a moment when I have seen an email for the candidates that I wanted to open. GSU should be making the importance of this more obvious for the students.

Third and fourth GSU presidential candidates announced

BY BLAKELEY BARTEE
The George-Anne staff

Georgia Southern University announced the third and fourth candidates, Carl Stockton and Kelli McCormack Brown, in the search for a new university president, in addition to the first two candidates, Timothy Caboni and David Brennen.



© KIARA GRIFFIN

Carl Stockton visited campus from March 2 through March 4. Stockton currently serves as the provost and senior vice president of Academic Affairs for the University of Houston - Clear Lake.

Carl Stockton

Stockton has served as the provost and vice president of academic affairs at the University of Houston-Clear Lake since 2007. At UHCL, he is a professor of health sciences.

Stockton began his teaching career as a high school teacher at Gainesville High School in Florida, where he taught biology, chemistry and health. Since then, Stockton has taught at Florida State University, the University of South Alabama, Radford University, the University of North Carolina at Wilmington, the University of Texas

at Brownsville, and the University of Houston-Clear Lake.

Stockton has held administrative positions at Radford University, the University of North Carolina at Wilmington and the University of Texas at Brownsville.

Stockton earned his doctoral degree in health education from the University of Tennessee, with a major in public health and a minor in school health education. He earned both his M.S. and B.S. in health education from the University of Florida.

On sustainability: "I think it's important for universities to be role model in sustainability."

On faculty research: "It's important for faculty and staff to be scholastically active."

On GSU: "The more I hear about Georgia Southern, the more I feel I would be a good fit for [Georgia Southern]."

On leadership: "I've been described by my colleagues as a transformative leader."

On Wellness on campus: "Wellness is important, it encourages productivity...I support wellness activities on campus."



Kelli Brown spoke on campus on March 7. Brown is scheduled to leave campus on March 8.

Kelli McCormack Brown

Since 2013, Brown has served as the provost and vice president of academic affairs at Georgia College and State University. At GCSU, Brown is a professor at the College of Health and Human Performance.

Brown has taught at the Western Illinois University, Illinois State University, the University of South Florida, the University of Florida, and Georgia College and State University. She has held administrative positions at the University of South Florida and the University of Florida.

Brown's pursuit of higher education began with an associate's degree in applied sciences: dental hygiene from Michael J. Owens Technical College. Next, she earned both her B.S. in public health services and her M.S. in education in public health from the University of Toledo. Finally, Brown earned her

Ph.D. in education from Southern Illinois University at Carbondale.

On sustainability: "You may spend a little money, but over time, it's the right thing to do for the community [and the] environment."

On faculty research: "I think that good teachers make good scholars, and good scholars make good teachers."

On GSU: "Faculty, staff, alumni, and students seem very committed to Georgia Southern."

On leadership: "To have a productive workplace, you have to have strong communication."

On graduation rate at GSU: "We have to make it a priority [as an institution] to graduate students in a reasonable time."

For updates concerning the presidential search visit thegeorgeanne.com

HOW TO FOLLOW-UP AFTER A JOB INTERVIEW

When it comes to finding a job, generally the résumé, cover letter, and interview are at the forefront of people's minds. But what about after you have completed the interview? What comes next? If you plan on waiting around silently for a job offer from the employer, you can kiss your chances goodbye. The follow-up to a job interview can be just as crucial as the interview itself.

According to Levo, a career building website, there are some simple rules to follow after an interview. It is important to thank your interviewer on the day of, or at the very least, the day after your interview. Writing a follow-up letter will leave a lasting impression on those who interviewed you. When writing a follow-up letter, it is important to personalize it by mentioning something you talked about with that person. It is best to send individual thank-you emails or notes. While a handwritten letter is thoughtful, only do so if you can hand deliver it; using snail mail is not always the most timely.

After a thank you note, follow-up with the employer within two weeks with a phone call or email. When making this follow-up, it is important to choose the right person. You want to choose the person who will be informing you on whether or not you will receive a job offer. In all interactions with employers, you want to be careful with your language. It is important to choose your words wisely and be wary of sounding impatient. Just like in an interview, you want to portray yourself in the best manner in the follow-up process.

Following up after an interview is essential to completing the job search process. Please come by the Office of Career Services during walk-in hours, Monday through Friday 12-4 p.m. or schedule an appointment with your Career Development Specialist for help with the follow-up process. For more information on Career Services call 912-478-5197 or visit us at georgiasouthern.edu/career.



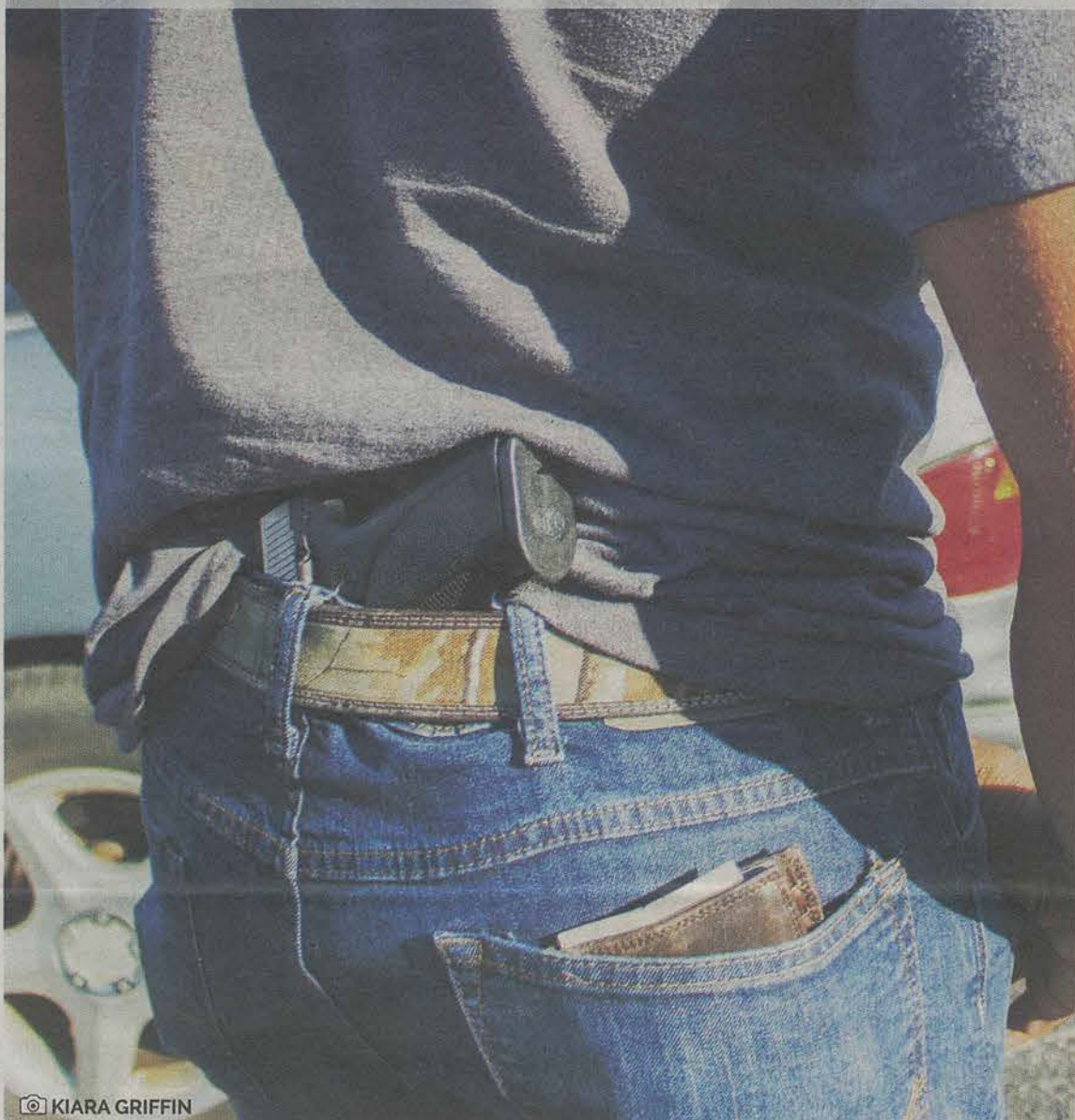
OFFICE OF CAREER SERVICES

CONTACT THE OFFICE OF CAREER SERVICES AT
GeorgiaSouthern.edu/career • 912-478-5197

[f](https://www.facebook.com/georgiasouthern) [t](https://twitter.com/georgiasouthern) [u](https://www.instagram.com/georgiasouthern) @gsucareers

Campus carry awaits Senate approval

BY ERIN MCGUINESS
The George-Anne contributor



© KIARA GRIFFIN

The bill would allow licensed students over 21 years of age to carry their gun on-campus. The Georgia House of Representatives has voted in favor of the bill, sending it to the Senate for approval.

The Georgia House of Representatives passed a bill, HB 859, Monday that would allow students and staff to carry guns on state colleges and university campuses.

The House voted 113-59 on the campus carrying bill and it's currently being discussed in the Senate, awaiting a vote.

The bill would allow anyone 21 and older with a gun permit to carry a concealed handgun on public college campuses excluding athletic facilities, student housing and fraternity and sorority houses.

A recent string of robberies at Georgia State University, has been an influential factor in the increased support among students and lawmakers to push the bill in the Georgia House, according to 11Alive in Atlanta.

If the Senate passes the campus-carrying bill, it will require students and staff to obtain a concealed carrying permit in which that person is subjected to a background check and is fingerprinted for safety precautions.

The Board of Regents, which regulates the state's 29 public colleges and universities, has "fiercely opposed campus carrying," according to reports from 11Alive in Atlanta.

Gov. Nathan Deal and House Speaker David Ralston have defended the bill and think that the opposition "lacks validity," according to a statement from Deal.

Laura McCullough, Interim Chief of Police at Georgia Southern University, says that the campus police department will abide by all laws of the State of Georgia as well as any direction given to them by the Board of Regents but says she is not sure that the school environment is the best place to have guns.

McCullough also said that the campus police department at GSU believe that proper education and training are essential for any and every person who wishes to own a gun adding that campus police will be working closely with the new Shooting Sports Education Center to ensure students learn basic gun safety.

"We currently are teaching how to respond in the case of an active shooter to anyone who is interested. Our crime prevention officer regularly teaches this course to anyone who requests it," McCullough said.

Many people, including the Georgia Board of Regents, are in opposition to the bill saying that it could create unsafe environments for students and faculty.

"I applaud the Board of Regents and their efforts to keep the students in the University System of Georgia safe. I think the Senate should consider all the feedback that

they receive from groups and bodies such as the Board of Regents," Glover said.

Georgia Southern sophomore civil engineering major, Gregory Strachan is in opposition to the campus-carrying bill saying it will only escalate a dangerous situation.

"You can pass a background check and still lose your sanity the next day, so the background checks are not really going to help you with that sense," Strachan said in regards to gun owners having to obtain a background check to get a concealed carry permit.

Some students agree with Strachan that the bill is not safe to be carried on-campus.

"I think it's not safe because a lot of violence is already going around so that (campus carrying) wouldn't help the cause," Kingsley Ukaogo, sophomore chemistry major, said. "I think it would increase the amount of shooters, honestly, on campus because more people being allowed to have guns is going to provoke more violence and what not."

If the bill gets passed in the Senate, Georgia would join nine other states – Texas, Colorado, Idaho, Arkansas, Kansas, Mississippi, Oregon, Utah, Wisconsin – who have adopted some sort of a campus carry law.

A few states such as Texas and Kansas are still in the transition process of implementing their version of a campus carrying bill.

The University of Texas's (UT) Associate Vice President of Campus Safety & Security, Gerald Harkins, said that there is "concern and strong opposition" from the students and staff at UT but believes this is greatly attributed to a lack of understanding of the law and the bill.

Although there is some opposition, some students support concealed campus carrying at Georgia Southern University.

"If another civilian comes on campus with a gun we need to be able to protect ourselves at all times not just hide so I think that's a good bill to be passed, I think it should be lowered honestly to 18 but that's just me," Hayden Vicer, sophomore business major, said.

Vicer argues that if someone was crazy enough to shoot an individual over a dispute, that person is going to gain access to a gun regardless if they have a carrying permit to have a gun on campus or not.

"All I'm looking at is it benefits this campus as a whole because it makes it safer," Vicer said. "I would say a person coming on campus would think twice if there's a lot more people who have guns because they're more prone to get shot at."

DRESS IN THE PRESS TEAM SUBMISSIONS

**DRESS IN THE PRESS
6TH ANNUAL NEWSPAPER DRESS-MAKING COMPETITION
NOW ACCEPTING TEAM APPLICATIONS!**

YOU AND THREE OF YOUR FRIENDS CAN CREATE AN OUTFIT FROM RECYCLED STUDENT MEDIA PUBLICATIONS, DISPLAY IT IN A FASHION SHOW, AND WIN PRIZES!

TEAMS OF FOUR CONSIST OF 1 MODEL AND 3 DESIGNERS. THE EVENT WILL TAKE PLACE ON THURSDAY, MARCH 31ST. THE THEME FOR THIS YEAR'S DRESS IN THE PRESS IS GREEK MYTHOLOGY! EACH TEAM WILL BE ASSIGNED A DIFFERENT CHARACTER TO BE THE INSPIRATION FOR THEIR OUTFIT.

SUBMIT TEAM MEMBER NAMES, ALL CONTACT INFO AND ANY QUESTIONS YOU HAVE TO LAUREN LITTLE, PR COORDINATOR
LL01932@GEORGIASOUTHERN.EDU

DEADLINE: MARCH 9TH



Statesboro High School student to hold bone marrow drive on-campus

Photo courtesy of Deborah Walker



PHOTO COURTESY OF DEBORAH WALKER

Last fall, the marching band hosted a bone marrow drive. Over 100 students registered to become potential donors.

BY BAILEY ADCOCK
The George-Anne staff

Dual-enrolled student Matthew Walker, in partnership with Tau Beta Sigma and national organization Be the Match, is hosting a bone marrow donor registration drive on Wednesday, March 9 at the rotunda from 11 a.m. until 2 p.m.

Local representative Ashley Collier will be present at the drive, explaining to students what the procedure for registering is and who registration can help.

Registration should not take very long, since students will only need to fill out paperwork and get their cheek swabbed.

Students, who take part in the registration will go on the national registry of donors, giving them a chance to help out patients across the nation who are in need of a bone marrow transplant or donation.

"The mission of Be the Match is to save the lives of those battling blood cancers and blood disorders who need a life-saving bone marrow transplant," Collier said.

Some bone marrow diseases,

which lead to the need of a transplant, include leukemia, aplastic anemia and other bone marrow disorders that affect the white blood cells within a person.

As an added bonus, students who register will be given a coupon for a free Chick-Fil-a sandwich.

Walker decided to partner with Colin McKenzie, director of the Southern Pride Marching Band and Tau Beta Sigma, after their successful drive last semester.

"The Georgia Southern marching band had about 200 or so students come out last

semester and I thought it was a really great thing, so I decided to bring it back," Walker said.

According to the official Be the Match website, donors between the ages of 18 and 45 are the most called upon donors for patients.

There is an overall lack in younger, more diverse donors which is what spurred the creation of Be the Match's branch Be the Match On Campus.

"They need, first of all, younger and more diverse people to donate. Apparently there aren't so many minorities donating," Walker said.

Once you register, you will be placed on the national list until you are 61 years old, because of the greater need for younger donors.

However, students are only making the commitment to consider donating to a patient and can refuse to donate if they are ever called upon.

The Be the Match website says that about 1 in every 540 Be the Match members will go on to donate, but there is about a 1 in 70,000 chance that a member will be contacted.

More information on Be the Match can be found at bethematch.org.

“

The mission of Be the Match is to save the lives of those battling blood cancers and blood disorders who need a life-saving bone marrow transplant,”

ASHLEY COLLIER
Be the Match local representative

Featuring 2, 3 & 4 Bedroom Apartment Homes & Townhomes

SOUTHERN DOWNS APARTMENTS

- Washer & Dryer Included in Every Home
- Fully Appliance Kitchens
- Central Heating & Air Conditioning
- Walk to GSU, The Stadium & The Plaza
- Furnished Options Available
- Rent Includes Cable with HBO, Internet & Electric (to a cap)
- Swimming Pool with Sundeck
- Clubhouse with Computer Lounge
- Pets Welcome - Large Breeds, too!
- FREE Roommate Matching
- Full-Size Basketball Court
- Game Room
- Beach with Hammock Garden
- Volleyball Court
- 24-Hour Fitness Center
- 24-Hour Emergency Maintenance



Save Up To One Month **FREE!** 710 Georgia Ave., Statesboro (912) 373-8118

PCB NO MORE

GSU students seek alternative spring break trips to replace popular destination

BY ARAYA JACKSON
The George-Anne staff

It's that time of the year when college students try to save more than just beer money, attempt to put down the milkshake and strive a little harder to get through midterms. The light is at the end of the tunnel.

A light none other than Spring Break. Student's inner 'spring breakers' are just scratching from the inside, ready to get out and release the beast.

Unfortunately, due to many, many years of ruining the public beach that made its mark as the ultimate spring break destination, Bay County has changed their alcohol laws for the entire month of March. Basically, no more drinking on Panama City Beach.

By now, this is old news. But come on, one can't expect a county to deal with excessive public intoxication, illegal drug use and sexual activity forever. That kind of stuff doesn't wash away with the tides. Just blame the inner rachetness that comes out of people for some reason on this particular week. The new question here is, where to now?

Word-of-mouth around campus seems as though Gulf Shores has it coming for them this year. From recent social gatherings, to on the Blue Route,

to just sitting in class, there has been continuous buzz about the Alabama shore lines all around Statesboro.

"We hope that it's a little bit bigger this year, we anticipate bigger crowds," Grant Brown, Gulf Shores Public Information Officer said in a phone interview. "A lot of rules and regulations we have in Gulf Shores are similar to what Panama City just recently added, so there's no way for spring breakers to come here and do what they did over there...We're a family friendly beach destination and we have good rules and regulations in place to make sure we protect that."

So yes, they are preparing for the arrival. But don't be so sure that this family-friendly beach will be the next PCB.

Alabama isn't the only place students will be traveling to, however. When asked about personal plans, students answered with a variety of answers, versus just the typical drunk beach trip. Gulf Shores may be popular, but people are also finding other destinations to make the most of their break. Some trips probably ending with a more memorable week then those going to Gulf.

OTHER PLACES STUDENTS SAID THEY WERE GOING INCLUDED:

Disney World	Switzerland
Houston Texas rodeo	Elton John Concert
Pittsburgh	Annapolis, Maryland
Destin, Florida	Arkansas
Savannah for St. Patty's Day	Staying in Statesboro/working
Kayaking in North Georgia	



"I'm going to Colorado because I have a few buddies that live there and snowboarding is one of my favorite things to do. My mom manages a few hundred condos in PCB and Destin, and she thinks within the next few years it won't be a spring break destination at all."

PETER SHANK
freshman finance major

College Health Tip #5

Don't eat too much junk.



Aim for mostly fruit, veggies, grains, protein ... and a little ice cream.



**SOUTH GEORGIA
IMMEDIATE
CARE CENTER**

1096 Bermuda Run Road
in Statesboro's Market District
p - 912-871-5150
getIMMEDIATEcare.com

Walk-in medical care close to campus.
Caring and confidential treatment.
Most insurance, cash and credit cards accepted.

Monday - Friday 9:00 am - 8:00 pm
Saturday 9:00 am - 5:00 pm
Sunday 12:00 pm - 5:00 pm



"I'm going on a cruise to the Bahamas and Grand Turks with my mom and sister, because it'll be relaxing and we won't have to worry about all them crazy college kids in Florida."

RIKKI HAGERTY
sophomore graphic design major



"I'm going to Universal in Orlando, Florida with a couple friends. I've been to PCB three times and it's definitely a good time. I'd probably go back but not anytime soon. There's been a lot more violence related accidents, like that shooting incident that lead to alcohol being banned."

LUIS MENDOZA
senior exercise science major

A STATESBORO SPRING BREAK

BY SHAWNIA VANDERHORST
The George-Anne contributor

Spring Break, the most anticipated week in spring semester, is just around the corner. While students are getting a break from classes, the decision on exactly where to spend that break may be difficult. Some students will work, some will be vacationing nearby or internationally and others will be right here in Statesboro.

"I'm staying on campus because I have to work through the break," Devin Duinker, sophomore construction management major said. Duinker works with the HVAC Air filter team in the residence halls. While it may not be the most glamorous job in Statesboro, he enjoys working to make a bit of cash doing something he finds very simple.

"If I stay, I'm going to chill in my room, catch up on some good Netflix, cook, eat... and listen to Beyonce," Aaron Keenan, Kennedy Halls Community Leader, said.

Keenan shared a few tips of advice for the students staying on campus. Students must make sure to bring their Eagle ID for the interior corridor buildings because most of the housing staff will be on break as well. Most importantly, everyone should be prepared to buy groceries because the dining halls have some weird hours.

"It's best to stock up on non-perishables from Gus Mart now, so you won't be starving later," Keenan said.

"I plan to [stay on campus and] take the CPIM (Certified in Production and Inventory Management) test," Ewere Osa, senior logistics and intermodal transportation major, said. Being a transfer student, she would love to do something entertaining like go to the movies and interact with other students as well as learn more about Georgia Southern after completing her exam.

Statesboro has many local places within walking and driving distance that can be an affordable and entertaining trip alternative

THE SHOOTING SPORTS EDUCATION CENTER

(3101 Old Register Rd)

 8 MINS
 27 MINS

The Shooting Sports Education Center is 8 minutes away driving and 27 minutes walking distance from campus. The new facility offers a chance for students to become educated about shooting sports and gun safety. They offer instructional programs to perfect one's aim, training classes to practice shooting and special events with archery. Go out and be Katniss Everdeen for a day.

BOTANIC GARDEN

(1505 Bland Ave)


 10 MINS
 29 MINS

The Botanic Garden is 29 minutes walking distance and 10 minutes driving distance from campus. The garden is an option to get away from campus and explore nature. Also, it's free for students which makes it a great destination to check off of the bucket list before graduation.

The Botanic Garden has trails to explore, as well as multiple gardens that house endangered and rare flowers.

THE JUMPING PLACE SKYDIVING CENTER

(127 Airport Rd)


 16 MINS

The Jumping Place Skydiving Center is 16 minutes driving distance from campus and is a spontaneous way to spend a day of Spring Break for students who want to be adventurous and experience something completely out of their comfort zone.

"I would like to go skydiving because if I'm not going to Panama I may as well do something just as exciting," Charyian Statham, sophomore fashion major, said.

THE CENTER OF WILDLIFE EDUCATION

(1461 Forest Drive)

 16 MINS

The Center of Wildlife Education is approximately 16 minute walking distance from campus and is a good place to explore the varieties of wildlife on campus. The Center of Wildlife Education is home to eagles, raptors, reptiles, amphibians and mammals.

"The Center of Wildlife Education is an excellent place to not only learn about wildlife and environmental education but to also experience the outdoors without ever leaving campus," Casey Corbett, Wildlife Center representative, said.

HEALTHY TOUCH DAY SPA

(221 S Zetterower Ave, Statesboro)

 8 MINS
 31 MINS

Healthy Touch Day Spa is approximately 8 minutes away driving distance and 31 minutes walking distance from campus. This is the perfect place to unwind from classes, stress and professors. They offer massage and body therapies, spa packages as well as skin treatments. Spas are not always the cheapest but if the funds are available, treat yo' self.

**All times approximate and calculated starting from the Russell Union*





MISCELLANY

Now accepting submissions!

Your work will be judged and placed in an exhibition that will move throughout campus. Visit our website for more information.

Early Bird Submissions: Feb. 29-Mar. 11
Reg. Submissions (\$5): Mar. 12th-25th
Judging Dates: Mar. 26th-April 8th
Unleashed Event: Monday, April 18th

Submit your work and unleash your creativity at miscellany.reflectorgsu.com

Categories include:
Poetry
Short fiction & nonfiction
Song lyrics
Photography
Paintings
Graphic design
Sculpture

2016 SUN BELT FOOTBALL SCHEDULES RELEASED

BY ROBERT GEORGE
The George-Anne staff

The Georgia Southern University's 2016 football schedule was released last Thursday. The Eagles will face two Power 5 opponents, five teams that played in bowl games last season and the defending Sun Belt Champs, Arkansas State.

POWER 5 MATCHUPS

The Eagles will travel to Ole Miss and Georgia Tech this season. It will be the second contest in three seasons facing the Yellow Jackets. The Nov. 5 date with Ole Miss probably will be the toughest opponent they face all season. The Rebels are coming off a 10-win

season, an Allstate Sugar Bowl victory and landed the 2016 fourth-ranked recruiting class according to ESPN.

SUN BELT'S ELITE

The Eagles won't play the cellar-dwelling Texas State or Idaho this season. They'll instead face traditional Sun Belt power UL Lafayette and reigning conference champions Arkansas State. It will be their first contest against the Red Wolves since joining the Sun Belt.

40 DAYS WITHOUT A HOME GAME

The team and the fans will endure the longest stretch

without a home game in the program's history. Following the Sept. 17 game versus UL Monroe, the Eagles won't return to Paulson Stadium until Oct. 27, which is the Thursday night meeting with rival Appalachian State.

PLENTY OF REVENGE GAMES IN 2016

The Eagle's only conference losses last season came to App State and Georgia State. The App State game will once again be televised on ESPNU. The Eagles will also look to upset Georgia Tech, a feat they almost accomplished two seasons ago. The Yellow Jackets defeated the Eagles 42-38 in the final minute in 2014.

2016 GEORGIA SOUTHERN FOOTBALL SCHEDULE

SEPT. 3- SAVANNAH STATE

SEPT. 10- @ SOUTH ALABAMA

SEPT. 17-UL MONROE

SEPT. 24- @ WESTERN MICHIGAN

OCT. 5- @ ARKANSAS STATE
(WEDNESDAY NIGHT GAME ON ESPN2)

OCT. 15- @ GEORGIA TECH

OCT. 22- @ NEW MEXICO STATE

OCT. 27- APPALACHIAN STATE
(THURSDAY NIGHT GAME ON ESPNU)

NOV. 5- @ OLE MISS

NOV. 12 UL LAFAYETTE

NOV. 19- @ GEORGIA STATE

DEC. 3-TROY



© KIARA GRIFFIN



The Eagles record is now 12-7. They will open Sun Belt play this weekend.

Georgia Southern sweeps the Eagle Classic

The softball team hosted the Eagle Classic this weekend. The team went 4-0 in the tournament.

BY KELLY STROJNY
The George-Anne contributor

The Eagles softball team swept their opponents in the Eagle Classic this past weekend.

On Friday, they played North Dakota and took home the win 8-1. It was a big win for the team. Alesha Mann and Morgan Robinson both homered in the game, and Dixie Raley threw a complete game and struck out nine batters.

"We have continued getting better and better," head coach Annie Smith said.

The team had a doubleheader against ND and Harvard on Saturday. The Eagles took both games, beating ND 4-3 and Harvard 12-2 in a shortened 5-inning game.

"Kierra Camp and Dixie Raley had a great week of pitching," Smith said. "I was happy with the way both Kierra and Dixie pitched for us all weekend."

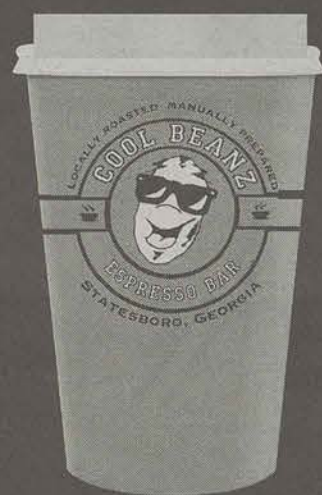
They wrapped up the weekend Sunday with a 1-0 victory over Eastern Kentucky.

After this weekend, the GSU softball team left themselves with a five-game winning streak.

"My goals for the team were to go out and play the best game we can. When we play the game the right way and do good things, good things happen," Smith said. "We have been really working to be good teammates, communicating, working on the field together and you can see that on the field when you watch us play."

The team has an upcoming trip to Texas for a game against Texas State this coming Saturday. It will be the first matchup against a Sun Belt team.

Smith said, "I'm looking forward to the opening conference and seeing where we stand and how we are doing."



GA
2016
THE GEORGE-ANNE

Free coffee & hot chocolate
with you Copy

Located at the Russell Union
Every thursday
8 a.m. To 10 a.m.

Men's Tennis off to strong start in 2016 season

BY DERIK WUCHTE
The George-Anne staff

The season started with a 4-3 win over Davidson. Since that first meet in January, men's tennis has earned a 9-4 record with a 4-1 record at home. There are 11 matches left until the Sun Belt Championship in late April. Fundamentally, the team isn't much different from last season, but the guys have been working more and believing stronger in the program.

"We've been working hard throughout the fall and also throughout the spring," Head Coach Sander Koning said. "We had some success in the fall and the guys really bought into the identity of this program which is being competitors."

Men's tennis participated in several individual tournaments during the fall. Multiple members of the team are playing at the top three positions right now, such as senior Rise Lanne and sophomore Eddie Landin. Translating their hard work into success not only elevated

their performances on the courts, but it has helped the entire team's performance, especially for this spring season.

"The good thing is that, especially our core group of guys, the guys that lead this team, Rise Lanne, the captain, our upperclassmen; they really set a good example for the freshmen that we have," Koning said. "By doing that, everybody gets on board."

Last season, the team was 8-14. The Eagles have already eclipsed that record after their win this weekend against Troy, a fellow Sun Belt Conference team. Three of the team's four losses this season have been by a score of 3-4. The fourth loss was by a score of 2-5.

"That's what I think the main success is," Koning said. They fight for each other. You see guys that have a couple of points that they don't play well and then they get lifted up by the teammate that's next to them. That's so huge because that's not something that I can coach. I wish I could because that would be awesome. Them embracing the culture that

we have within the team and really fighting for each other; I think that's the main key to our success up till now."

When GSU played Troy on Saturday, Lanne was able to win his singles match and get off the court early. Florida Gulf Coast on Sunday may have resulted in a loss for the Eagles, but it was close. Redshirt-junior Daniel Casablancas was one of the last matches to finish on Sunday as he was able to pull out a last set win over Oliver Landert 6-2, 4-6, 6-4.

"No matter, win or lose, when the guy gets down a set, and he sees his teammate next to him running and going for balls, making sure that he keeps his energy up, it lifts him up as well," Koning said. GSU will be playing the University of North Carolina at Greensboro on Saturday, March 12 at 10 a.m. This will be the last home match until the team returns to Statesboro to play Mercer on March 29.

"They know that what we do is all geared towards our main goal which is winning the Sun Belt Conference,"



© KIARA GRIFFIN

The Eagles are 9-4 on the season and 1-0 in the Sun Belt. Their next match is Mar. 12 against UNCG.

Koning said. "They don't just stare themselves blind on one match. We do all this work so we can peak at the end. I think that's very important to

keep that going and not being satisfied with what we've done so far."

Eagles take weekend series over Memphis

The Georgia Southern University baseball team hosted the Memphis Tigers this past weekend for a three-game series. The Eagles took two games out of three from the Tigers and improved their season record to 7-5.

BY STEPHANIE MATZELLE
& CAMERON DUNN
The George-Anne contributors

Game 1

On Friday, GSU defeated UM in a 3-2 win over the Tigers. Logan Baldwin led the Eagles with three hits and a

run scored. Evan Challenger went 7.1 innings and struck out eight batters and gave up just two hits. Adam Kelly and Chris Brown came on in relief and combined to shut out the Tigers in the final frames.

Game 2

The Eagles played a more complete game on Saturday, shutting out the Tigers 5-0. GSU finished with 7 hits and 4 RBI's. Freshman Chase Cohen went 6.1 innings on the mound and gave up just one hit and struck out seven. Head coach Rodney Hennon was proud of the team's performance.

"We got an outstanding

pitching performance from Chase Cohen, he was on top of his game tonight. We did a good job. I think they had one lead-off man on all night and when you can do that it takes a lot of pressure off your defense," Hennon said.

Game 3

GSU dropped the final game of the series on Sunday, losing 6-4. The loss broke the Eagles' five-game winning streak.

Kent Rollins led the team with two hits and 3 RBI's from the leadoff spot in the lineup.

UM RF Jake Little scored in the top of the third to give the visitors the first lead of the series.

After falling behind 5-1, the Eagles scored three runs in the bottom of the eighth to bring them to within a run. They got a runner on base in the final frame, but couldn't push him across, making the final score 6-4.

"Little things were the difference today," Hennon said. "We have to learn to finish a weekend off. When you get into position after winning the first two and having an opportunity to sweep, you have to be able to finish the deal. Hopefully we can learn a lesson from this moving forward."



COLLEGE OF LIBERAL ARTS
AND SOCIAL SCIENCES

Ahead in
CLASS
MARCH 11-APRIL 11

All events are open to the public, and admission is free except where otherwise indicated. For more information, please visit GeorgiaSouthern.edu/class.

2/23-3/25: GALLERY Zoetic: MFA Thesis Show MFA Graduate Student, Brooke Fremeau, presents her MFA Thesis Show, Zoetic. Zoetic is a brand created to demonstrate the design elements needed for corporate branding.; University Theatre, Center for Art & Theatre; 912.478.5358

2/23-3/25: GALLERY Allison Tierney: The Things We Keep "The Things We Keep" employs found materials and non-traditional applications of paint to question structure, material integrity, consumerism, D-I-Y, and the throwaway culture.; Contemporary Gallery, Center for Art & Theatre; 912.478.5358

3/21: CONCERT General Student Recital #4; 1:25 p.m.; Carol A. Carter Recital Hall; 912.478.5396

3/21: CONCERT Faculty Series Recital Steven Elisha, cello.; 7:30 p.m.; Carol A. Carter Recital Hall; 912.478.5396

3/22: GREAT MINDS Selling a Healthy Lifestyle in Late Qing China: Commercial Advertisements for Hygienic Products in the Dagong bao, 1902-1911 Juanjuan Peng continues the Great Minds Lecture Series.; 5:30 p.m.; Russell Union, room 2048; 912.478.2527

3/28: CONCERT General Student Recital #5; 1:25 p.m.; Carol A. Carter Recital Hall; 912.478.5396

3/29: CONCERT Endowed Honors Recital; 7:30 p.m.; Carol A. Carter Recital Hall; 912.478.5396

3/30: CLUB La Table Francaise The French Conversation Table.; 5:30 p.m.; Outside Russell Union Theater; 912.478.5281

3/30: CONCERT Faculty Series Recital Linda Cionitt, clarinet, Matt Fallin, percussion, and Diane Kessel, flute will perform.; 7:30 p.m.; Carol A. Carter Recital Hall; 912.478.5396

4/1: CONCERT Faculty Strings at Southern Music Festival; 7:30 p.m.; Carol A. Carter Recital Hall; 912.478.5396

4/2: CONCERT Strings at Southern Chamber Music Festival; 7:30 p.m.; Carol A. Carter Recital Hall; 912.478.5396

4/3: CONCERT Strings at Southern Music Festival Gala; 3 p.m.; Carol A. Carter Recital Hall; 912.478.5396

4/5: CONCERT Guest Artist The Marine Corps All Star Jazz Band will perform.; 7:30 p.m.; Carol A. Carter Recital Hall; 912.478.5396

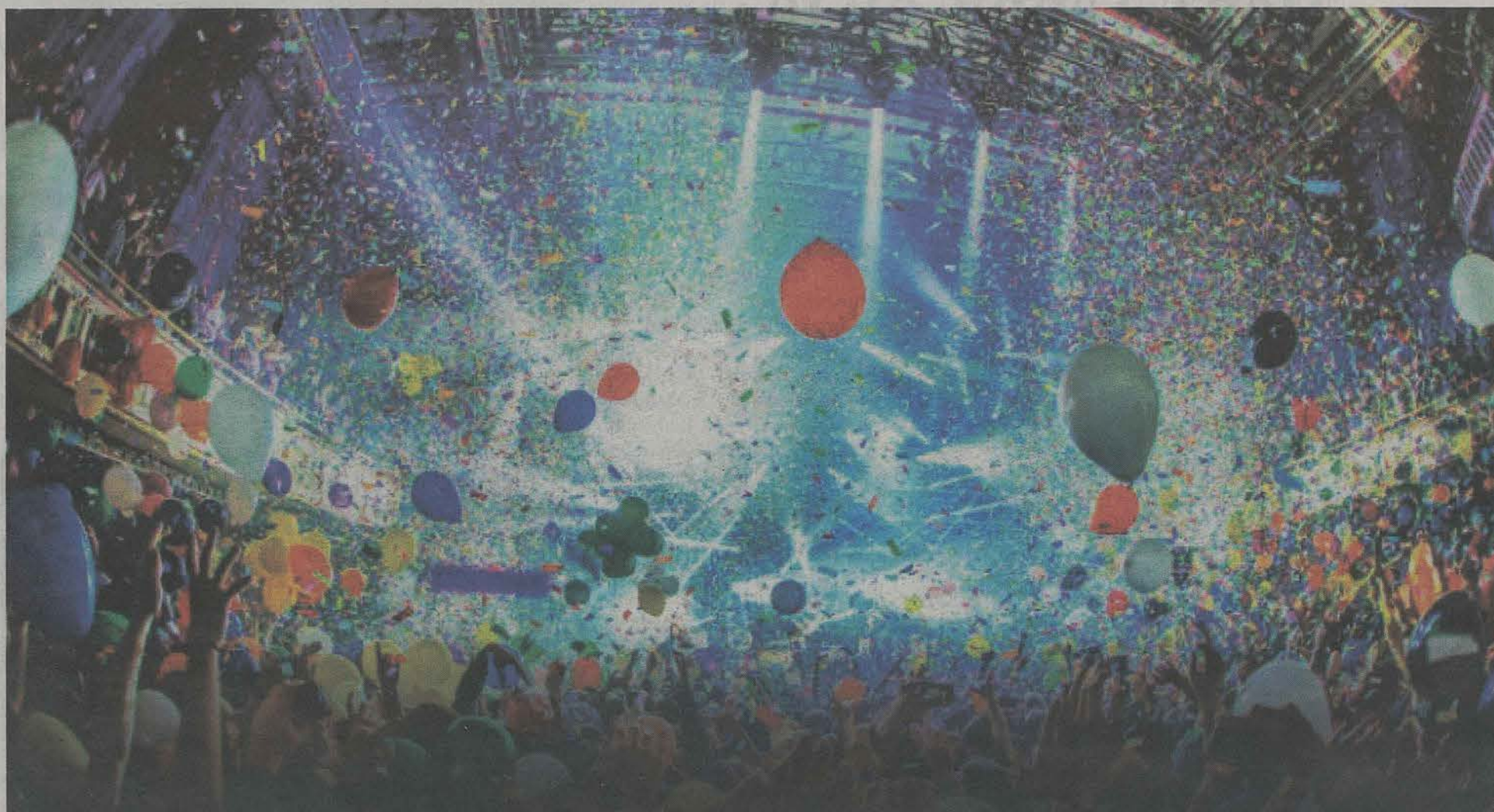
4/6-13: THEATER A Game of Love and Chance Romantic Comedy by Pierre Marivaux and directed by Lisa L. Abbott; 7:30 p.m.; Tickets \$6 for students and \$12 GA; Black Box Theatre; 912.478.5379

4/6: CONCERT New Music at Southern; 7:30 p.m.; Carol A. Carter Recital Hall; 912.478.5396

4/7: CONCERT Brass Studio Chamber Recital; 7:30 p.m.; Carol A. Carter Recital Hall; 912.478.5396

4/9: CONCERT Night of Wild Sax; 7:30 p.m.; Carol A. Carter Recital Hall; 912.478.5396

4/11: CONCERT General Student Recital #6; 1:25 p.m.; Carol A. Carter Recital Hall; 912.478.5396



PROJECT VUW

APRIL 23, 2016 @ SMITH FIELD

7:30-10:00 PM // DOORS OPEN @ 6PM

SAM TILLMAN RD, STATESBORO, GA

YOU & 3 FRIENDS COULD WIN A FREE TRIP TO HAWAII

PAINT PARTY
EDM/HIP-HOP DJs
MECHANICAL BULLS
BUNGEE JUMP TRAMPOLINE
THE MELTDOWN

BYO DRINKS & FOOD!

EARLY BIRD PRICES

TICKETS \$10

LOTS \$30

WANT A SPOT FOR YOU &
YOUR FRIENDS TO HANG
OUT? GET A LOT!

****LOTS ARE PAINT FREE!**

BUY TICKETS HERE:

<https://www.universe.com/projectvuw>

BROUGHT TO
YOU BY
VIEWUWIN



SPONSORED BY
PAINT RAVE



A PORTION OF THE
PROCEEDS WILL
BENEFIT THE DC/MD/VA &
GEORGIA CHAPTERS
OF THE ALS ASSOCIATION.



WANT TO VOLUNTEER?
SEND RESUMES TO:
volunteers@advinup.com