

Georgia Southern University

Digital Commons@Georgia Southern

---

The George-Anne

Student Media

---

9-29-2015

## The George-Anne

Georgia Southern University

Follow this and additional works at: <https://digitalcommons.georgiasouthern.edu/george-anne>



Part of the [Higher Education Commons](#)

---

### Recommended Citation

Georgia Southern University, "The George-Anne" (2015). *The George-Anne*. 2879.  
<https://digitalcommons.georgiasouthern.edu/george-anne/2879>

This newspaper is brought to you for free and open access by the Student Media at Digital Commons@Georgia Southern. It has been accepted for inclusion in The George-Anne by an authorized administrator of Digital Commons@Georgia Southern. For more information, please contact [digitalcommons@georgiasouthern.edu](mailto:digitalcommons@georgiasouthern.edu).



## GA

THE GEORGE-ANNE

EAGLE  
EXPO

Meet with dozens of  
potential employers  
and get your move out!



Creative and looking for a  
new hobby? Discover the  
Graphic Communication  
Association!

PAGE 9

THE  
PILLOWMAN

TAHIR DAUDIER THE GEORGE-ANNE

FOR MATURE  
AUDIENCES ONLY!

Black Box Theatre presents "The Pillowman,"  
a show that reminds us all that "there are no  
happy endings in real life."

Page 9

EAGLES MASH  
THE VANDALS

THE EAGLES WON THEIR FIRST  
SUN BELT GAME OF THE  
SEASON OVER IDAHO 44-20

PAGE 6

Photo Courtesy of FRANK FORTUNE



By Christopher Carter

## FREE CONCERT BY SYMPHONY ORCHESTRA AND STRING CAMERATA

The Georgia Southern Symphony Orchestra and String Camerata are to perform a free concert on Tuesday the 29th. It will take place at the Performing Arts Center at 7:30 p.m.

The performance is free to the public and will be lead by Adrian Gnam, the director of the Symphony Orchestra, and Dr. Seven Elisha, director of the String Camerata.

The Orchestra and String Camerata is entirely composed of students who will perform a variety of music from different eras including Baroque, Classical, Romantic periods, as well as William Boyce's "Symphony in B-flat" and Enrique Granados's "Intermedio" from the opera Goyescas.

There will also be performances by Dr. Brian Luckett, Georgia Southern's Classical guitar instructor, and the Statesboro Youth Chorale show choir.

By Simeon Ike

## CONCUSSION DISCUSSION

Mark your calendars for Tuesday, September 29 at 7:30 p.m. in the Nessmith-Lane Conference Center. Renowned concussion expert, Dr. Russell Gore will be delivering a lecture entitled "Brain Injury and the Limits of Human Performance: From Fighter Planes to Football Games."

Gore is the medical director for the Sports Concussion Institute in Atlanta and will be delivering this lecture with 15 years of experience on this subject, as well as in related fields. He serves as an associate professor at Emory University and at Georgia Tech in the Engineering Department after his years as a neurologist and biomedical engineer.

To add to his resume, Dr. Gore is also part of the interdisciplinary team, jointly

WEATHER BAR

Wednesday



High: 84°  
Low: 68°

Thursday



High: 75°  
Low: 64°

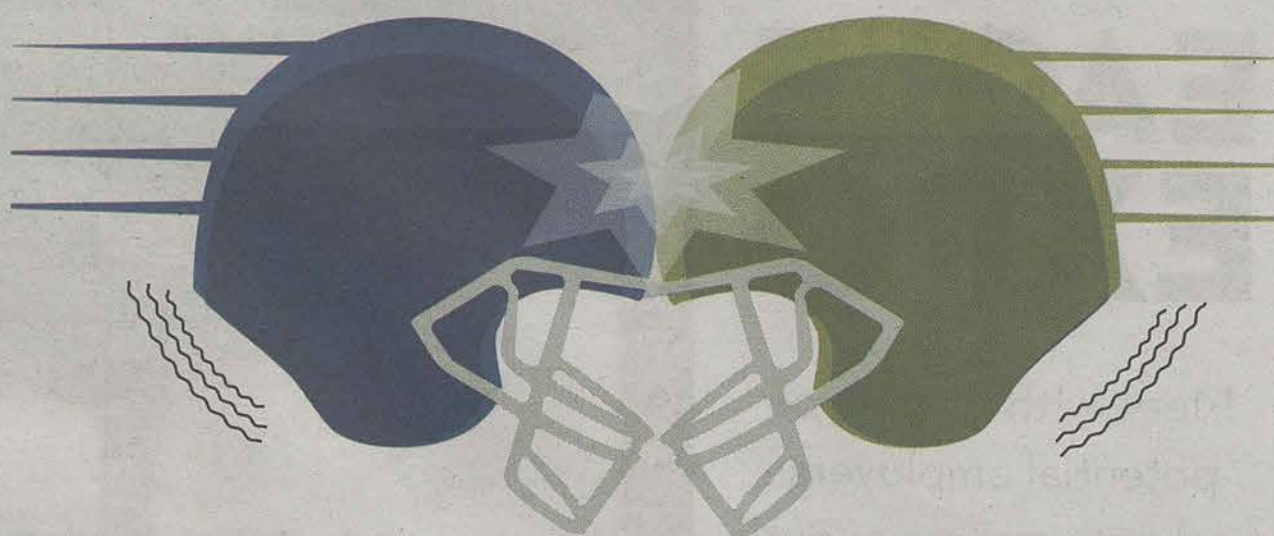
Friday



High: 71°  
Low: 59°



"HAPPY BIRTHDAY TO EDITOR-IN-CHIEF LAUREN GORLA!"



funded by the Department of Defense and the National Football League, that develops wearable tech to aid in identifying brain injuries in the military and in football.

Receiving his biomedical degree from Vanderbilt and medical degree from Emory University, Gore was also a flight surgeon in the U.S. Air Force. Additionally, he completed neurology residency training and a vestibular neurology fellowship at Emory University. He continued to work on research at Georgia Tech pertaining to how technology can improve human health.

This event is free and open to the public.

## SPORTS SHORTS

-Women's Volleyball lost against Florida Gulf Coast Friday (2-3).

-Woman's Soccer lost to UL Lafayette Friday (0-1).

-Women's Volleyball lost against South Alabama on Saturday (1-3).

-Women's Soccer won on Sunday against UL Monroe (3-0).

-Men's Soccer lost on Sunday against North Florida (1-2).

## GRE TEST PREPARATION REVIEW SESSIONS

ACADEMIC SUCCESS CENTER- GEORGIA SOUTHERN UNIVERSITY

Thank you for considering registering for the GRE review classes. Please read all registration information carefully prior to submitting your registration form and payment.

### GRE MATH REVIEW SESSIONS

M & T, October 12, 13  
W & Th, October 21, 22, 2015  
6:00 - 8:00 pm  
INSTRUCTOR: Mr. Jeff Taylor  
Instructor of Mathematics,  
DeVry University

### GRE ENGLISH REVIEW SESSIONS

W & Th, October 14, 15  
M & T, October 19, 20, 2015  
6:00 - 8:00 pm  
INSTRUCTOR: Ms. Laura Chambers  
Instructor of Writing and Linguistics,  
Ogeechee Technical College

ALL SESSIONS WILL MEET IN THE HENDERSON LIBRARY, ROOM 1308

### REQUIRED BOOK

Barron's NEW GRE Study Guide (21st Edition) by Green and Wolf (2013)  
University Store has copies

### REGISTRATION FEE (NO REFUNDS)

Registration Fee due by 5:00 pm on Friday, October 9, 2015  
GRE Math: \$80  
GRE Verbal: \$80  
GRE Math & Verbal: \$100

### REGISTRATION DEADLINE

Friday, October 9, 2015, by 5:00 pm

### AVAILABILITY

Seating is limited for the review sessions. Availability is on a first come, first serve basis.

### FORMS OF PAYMENT

You will need to pay for these GRE Review Sessions at the **Cashier's Office**. They accept checks and money orders. Payment must be submitted with the confirmation e-mail you receive after you submit your registration. No payments can be accepted at the Academic Success Center.

CONTACT: Academic Success Center | asc@georgiasouthern.edu | 912-478-5371

## Things to



**Brady throws 400th career touchdown pass**

**Hotel Transylvania 2 breaks September box office record**

**Super Blood Moon Eclipse**

**NASA announces discovery of flowing water on Mars**

**Netflix October releases now online**



# Puzzles

9-29-15

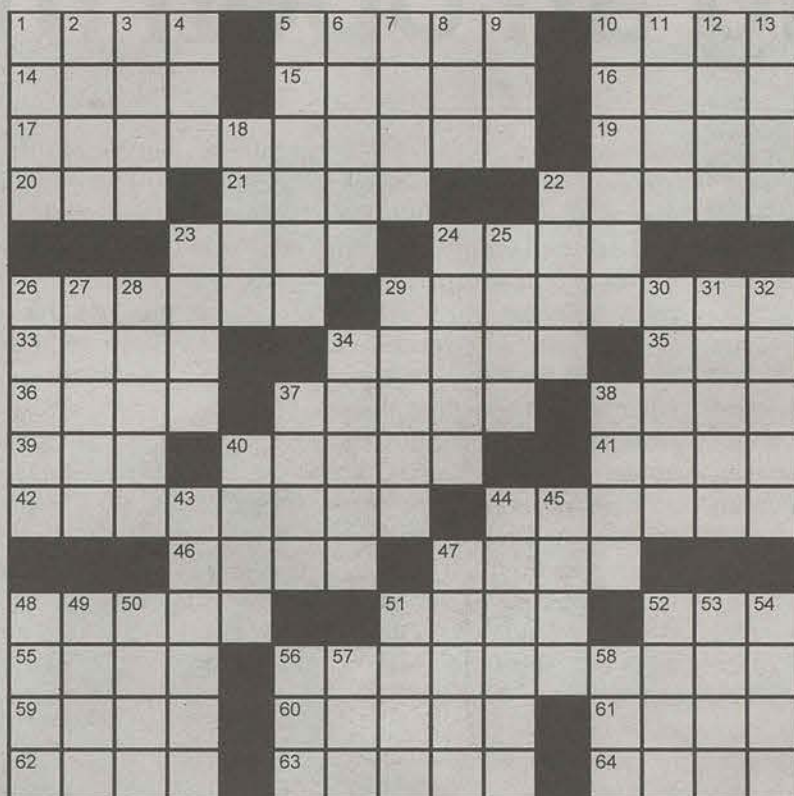
3

The George-Anne 9/29/15 Crossword

PuzzleJunction.com

## Across

- 1 Molt  
5 Pool shot  
10 Fictional wirehair  
14 Trifling  
15 Overhead  
16 Weaver's apparatus  
17 Decorative  
19 Cabbagelike vegetable  
20 Heating alternative  
21 Brings into play  
22 Noblemen  
23 Ivan the Terrible, e.g.  
24 Formal dance  
26 Respond  
29 Bad guy  
33 Bananas  
34 Domestics  
35 Well-kept secret, for some  
36 Is beholden to  
37 Uncovers  
38 Hebrew for "delight"  
39 Thai river  
40 Joltless joe  
41 Patch up  
42 Vision  
44 Clothing store buys  
46 Mexican money  
47 Borscht vegetable  
48 African dry riverbeds  
51 Not looking good  
52 Allen of "Wild Hogs"  
55 It's south of Georgia  
56 Fresh start



Copyright ©2015 PuzzleJunction.com

- 59 Margarita fruit  
60 Eagle's home  
61 Circle segments  
62 Survive  
63 Property claims  
64 Scornful cries

## Down

- 1 Urban haze  
2 Juno's Greek counterpart  
3 Coastal raptors  
4 Narc's org.  
5 Kind of salad  
6 One of the Yokums  
7 Deteriorates  
8 Lab eggs

- 9 Actor Gibson  
10 Acid neutralizer  
11 Go parasailing  
12 Kind of call  
13 City on the Skunk River  
18 Cogitate  
22 Stately trees  
23 Terrible time?  
24 Succinct  
25 Supports  
26 Single-handedly  
27 "Forget it!"  
28 Public row  
29 Jeweler's unit  
30 Political activist Ralph  
31 Go-between  
32 Imparts  
34 Virile  
37 Petitions  
38 Discharge  
40 Goes kaput  
43 Small piano  
44 Fishing nets  
45 Fashion lines  
47 Genius  
48 Heir's concern  
49 "Tosca" tune  
50 Farm mothers  
51 "Primal Fear" star  
52 Skater Lipinski  
53 Hankering  
54 Difficult situation  
56 Ariz. neighbor  
57 Hawaiian wreath  
58 Chemist's workplace

	8			7		3	
5	4			2		1	8
					6		
		6	2		1	7	
	5						8
		1	7			3	
		4					
9	3			8		7	1
	7		1			4	

	7		3		9		2
4		6					5
	2						
		3	1				6
		4				1	
1	6				5	4	
			9				
6						2	1
5			7		1		4

## STATEMENT OF OPERATIONS

The George-Anne is the official student newspaper of Georgia Southern University, operated by GSU students using facilities provided by the university. The newspaper is the oldest continuously published newspaper in Bulloch County.

The newspaper is published twice weekly, on Tuesdays and Thursdays, during most of the academic year. Any questions regarding content should be directed to the student editor by phone at 912.478.5246 or at gaeditor@georgiasouthern.edu.

**ADVERTISING:** The newspaper accepts advertising. Inquiries may be made by calling 912.478.5418 or 912.478.0566. For questions e-mail ads1@georgiasouthern.edu.

The George-Anne receives additional support, in part, from the Student Activities Budget Committee. For more information, rate cards, or sample publications, contact the advertising manager or student media director. The advertiser is responsible for any errors in advertisements and its liability for adjustments is limited to the amount of space the error occupied in the ad. Further, the newspaper is not responsible for any damages caused due to an ad's omission from a particular edition and its responsibility solely is to reschedule the ad in the next regular edition at the regular advertising rates.

**STUDENTS BEWARE:** The George-Anne screens all advertisements prior to publication. The newspaper strives to accept ads for legitimate products and services only. Students are urged to exercise caution when replying to ads-- particularly those that require personal information. Students are also urged to report to the newspaper any suspicious offers which they might see in an ad.

**PUBLICATION INFORMATION:** The newspaper is printed by The Brunswick News in Brunswick, Ga.

**NOTICE:** Unauthorized removal of multiple copies from a distribution site constitutes theft under Georgia law, a misdemeanor offense punishable by a fine and/or jail time.

**CORRECTIONS:** Contact the editor at gaeditor@georgiasouthern.edu for corrections and errors.

## STAFF LIST

**Editor-in-Chief** Lauren Gorla  
**Managing Editor** Erinn Williams  
**Content Strategist** Casey Cargle  
**Content Visualist** Lauren Grizzell  
**News Editor** Chris Rossmann  
**Features Editor** Rashida Otunba  
**Sports Editor** Robert George  
**Daily Editor** DJ Fullmer  
**Opinions Editor** Ian Leonard

**Creative Manager** Hailey Smith  
**Photo Editor** Brandon Warnock  
**Design Editor** Alex Smith  
**Features Designer** Rebecca Davis  
**News Designer** Erin Fortenberry  
**Sports Designer** Margarita Suarez  
**Opinions Designer** Rebecca Davis

**Distribution Manager**  
**Marketing Manager** Cydney Long  
**Business Manager** Taylor Norman



## The importance of keeping an open mind



**MEG ELWOOD**

Meg is a junior multimedia journalism major from Savannah Ga.

Dear reader: You may hate this, but that's ok. You have the freedom to turn the page whenever you like. I was asked to write this article about anything, so I started typing away the many random things that run through my mind. I thought this would make for interesting thoughts or conversation. I talk about religion, but know I very much enjoy the concept of all religions coexisting, I simply use it as a relatable example. Please do not take anything in this article offensively. I just want to open the minds of the readers to different ways of thought.

Personally, I feel like many of my opinions are pretty neutral, except when it comes

to chances to save money. My inner "Mommy Dearest" reveals itself when it comes to electricity overages or a clean kitchen, and don't even ask about wire hangers.

When I was asked to write an article for this little chunk of paper you're holding, I had no idea what to write about because I don't really have an unbearably strong opinion on anything. I feel like I'm always open to new ideas and ways of thought.

Opinions are pretty cool things, but they can cause so much hate. It sucks when you and someone you care about don't see eye to eye. Sometimes it's easier to just agree, trust me, I do it, but you never know what you can learn from just listening to an opinion.

Just listening, or reading, doesn't mean you have to accept it.

Sometimes it can just be interesting to think about.

I feel like opinions can be so strong that it just shuts down one's ability to grow, to try new things, learn new skills or think in different ways. This could be applied to anything from food to

religion.

Pope Francis. Now there's a man with an openmind. He's said some pretty amazing things recently, and I'm not really religious, but the things he says just make you sit and think. I was on Facebook when a friend of mine shared an image with the following quote;

"It is not necessary to believe in God to be a good person. In a way, the traditional notion of God is outdated. One can be spiritual, but not religious. It is not necessary to go to church and give money - for many, nature can be a

church. Some of the best people in history did not believe in God, while some of the worst deeds were done in His name."

Is this guy not the essence of peace? Better yet, I think he describes the original idea of America pretty well. We are the

melting pot. We are the new world. We are the land of the free.

So why do we hate on opinions so often? Why do we still see in color, in gender, in appearance? Why do we not try that fish dish on the menu? What if we opened our minds and tried that fish dish, it could be our new favorite thing. I'm no zen master, but I think if we each had an open mind, an open heart, an open opinion on opinions, then we could literally make this campus, this nation, this world a new peaceful place.

Hopefully that makes your mind whirr a little bit. If you thought it was crap that's ok, I understand. I've always wanted to write something like this, so why not try.



KIARA GRIFFIN THE GEORGE-ANNE

## Why genres aren't as different as you think



**IAN LEONARD**

Ian is a sophomore writing and linguistics major from Johns Creek Ga.

Music is one of those things that nearly everyone seems to enjoy, regardless of race, religion,

gender, nationality; music transcends all. Even the most morose of people can't resist a little toe tap when "their" song comes on. Although music may have started off very similar, as with any other art form, it expanded and evolved over time, eventually leading to the plethora of genres that currently flood the musical world. I'm not saying this is a bad thing, as a matter of fact I think it's great. I grew up in a household that listened to every style, genre, and type of music available. I heard it all, from classical to RnB, hip hop to classic rock, country to gospel. My parents had some pretty eclectic taste, and it most certainly rubbed off on me. As a result I came to notice the commonalities

and similarities between these genres. I'm confident in saying that I have one of, if not the most, diverse music libraries of anyone I know. I don't say this just to gloat, just that one of life's greatest pleasures is discovering a new song that just feels right.

Now, as a generation, we have done a much better job of expanding our horizons than those before us. Luckily most of us don't bar ourselves to one genre of music. However there are definitely one or two genres that stand out. Now I've met all sorts of people with all different kinds of musical tastes, but that was due largely in part to the fact that I've spent the majority of my life playing instruments and surrounded myself with

those that played them as well. These people tend to have a much broader taste in music. This is due to the fact that most people can't hear or appreciate the more subtle aspects of music. Things like harmonies, melodies, even bass lines tend to go unnoticed by the more casual listener.

Of course genres exist for a reason. They have plenty of differences that make them unique, however I've noticed that they may have more in common than people may have initially realized. For example, two genres that are often hip hop and electronic. These genres share a lot of obvious connections, hip hop tends to sample electronic songs for their beats and both genres share a

similar feature in the form of bass dropping. Another maybe not so obvious connection would be something like country and RnB. While their similarities are more emotional than anything else, the country listener that tunes in to the more sentimental side of the music would notice that RnB often sing on similar topics.

To be honest, at the end of the day there's really no telling what other forms of music you may find alluring, but hopefully now you can make the conscious effort of finding the characteristics of the genre you enjoy, and where else they may be present.

The George-Anne welcomes letters to the editor and appropriate guest columns. All copy submitted should be 350 words or fewer, typed, and sent via email in Microsoft Word (.doc/.docx) format to [letters@georgiasouthern.edu](mailto:letters@georgiasouthern.edu). All submissions must be signed and include phone number for verification. GSU students should include their academic major, year and hometown. The editors reserve the right to reject any submission and edit submissions for length. Opinions expressed herein are those of the Board of Opinions, or columnists themselves and DO NOT necessarily reflect those of the faculty, staff, or administration of GSU, the Student Media Advisory, Student Media or the University System of Georgia.



## CENTER FOR SUSTAINABILITY TO HOST THIRD-ANNUAL GREENFEST

BY JOZSEF PAPP  
The George-Anne staff

The Center for Sustainability will host their third-annual Greenfest 2015: Sustainable Solutions for Your Life at the Bulloch County Courthouse Lawn on Oct. 3 starting at 9 a.m.

The event consist of a wide range of vendors and exhibitors from the region that use sustainable technology, products, or provide useful information.

"We are trying to get them all in the same place, so that people can have a one-stop place for sustainability shopping of information and solutions," Lissa Legee, Director of the Center for Sustainability said. "We have different workshops and a lot more different vendors compared to last year. We have 40 plus vendors representing a wide-range of sustainable solutions."

The event is open to the general public and will include live music from the School of Rock, a live broadcast from 94.9 Radio with JD Strait and a wide variety of workshops.

"We have things for homeowners, apartment living, resident hall living, and activities for children," Legee said. "It's really a fun sort of celebration atmosphere where



CENTER OF SUSTAINABILITY

you can go with sustainability questions and return home with answers and solutions."

Although the event has different workshops every

year, the focus this year is on "Build Your Own Native Bee House", "Aquaponics - Grow Food without Soil", and Habitat for Humanity.

In addition, the First Annual Pallet Challenge will take place at this year's Greenfest. The challenge consist of teams or individual

participants using used pallets to build something new or creative and have it critique by a set of judges.

"We teamed up with Georgia Southern Business Innovation Group and STEM institute. We have gotten the word out to people in high schools, the community, university classes, and teams. We have quite a collection of people participating in the first-annual Pallet Challenge. It's going to be a lot of fun," Legee said. "It's just a great reuse project and way to engage people in recognizing that you don't have to throw things away that you only used once."

The event offers volunteer opportunities for students. If you would like to volunteer, please visit the Center for Sustainability website, click on the sign up tab and put your name and information on the boxes provided. Volunteers will receive Greenfest t-shirts made from plastic bottles.

The Center for Sustainability will have a wide range of events, such as Environmental Community Cinema, speakers, and No-Impact Week, throughout the year that will assist students, faculty, staff, and the Statesboro community in learning how to live in a more sustainable way.

## Find your future at Eagle Expo

BY KURT HANLON  
The George-Anne staff

Hundreds of Georgia Southern students will soon be able to meet face to face with dozens of potential employers. On Wednesday, September 30, students can attend the Eagle Expo career fair, where they can get the chance to be recruited by employers that represent a wide variety of industries. The event will take place in RAC from 12pm-4pm.

The Expo is attended by industries from all fields, and is held both in the fall and spring semester. Companies attending the Eagle Expo include automotive giant General Motors, jet aircraft developer Gulfstream Aerospace, snack developer Frito-Lay, insurance company GEICO, and international banking company Deutsche Bank.

Students looking to

attend will need to dress in professional attire, and should bring several copies of their resume to hand to potential employers. The Office of Career Services recommends students looking to be hired by a specific employer should cater their resume by highlighting experience relevant to that employer. Students can set an appointment with Career Services to review their resume and ensure it is up to a professional standard.

Mary Lu Adams, Coordinator of Career Programs and Events, says this is prime opportunity for students seeking to be hired in their field of study. "It's where students are going to get the most bang for their buck," says Adams. "You'll be able to talk to different types of companies, who are looking for different types of employees for all kinds of jobs."

Adams went on to stress

that hiring opportunities might not be apparent to students in some fields from a glance at the list of employers, which is all the more reason to attend the Expo. "Just because an employers in a certain industry, doesn't mean that they're only looking for people studying in that industry," Adams explains. "Even if it's not an industry you immediately think of in your field, doesn't mean they won't hire you. Just go and see what they have to offer, because you never know."

Usually taking place at the end of October, Career Services moved the date up to the end of September in order to keep up with employer demand. According to Adams, employers are hiring more in September than in October, leading to an adjustment in the schedule.

Eagle Expo is the largest and oldest career fair offered

by the university, attended by over 700 students each year. Over 20 years old, the fair was

moved to the RAC in 2001 after it grew too large to be hosted in the Russell Union.

### NEED TO KNOW

WHEN: WEDNESDAY  
9/30

WHERE: 12-4 P.M.  
@ RAC

WHAT YOU NEED: DRESS TO IMPRESS  
BRING RESUMES



## EAGLES OPEN SUN BELT PLAY WITH BIG WIN



PHOTO COURTESY OF FRANK FORTUNE  
Freshman Wesley Fields hurdles an Idaho defender on one of his eight carries. He rushed for 47 yards and added a two yard score for the Eagles.

BY HAYDEN BOUDREAUX  
The George-Anne staff

After a 2600 mile trip to Idaho, the Eagles were able to beat down the Vandals with a daunting offensive and defensive performance to extend their three game win streak and 11 conference win streak.

When the clock hit zero, junior running back Matt Breida and the rest of the offense ran for 441 yards along with 127 yards through the air, both of which were season highs. The offensive line was able to get a huge push and frequently bowled over defenders to clear paths for the runners.

After stalling on their first couple drives, Breida rung the touchdown bell by ripping through the middle for an 83 yard touchdown run which was facilitated largely by his speed. He would go on to make another big run of 66 yards in all-star fashion by out running defenders until being cornered on the sideline, reversing field, running perpendicular to the goal line until he was clear of defenders, then getting north and south to collapse into the end zone. He finished his day with 12 carries for 179 yards along with two touchdowns. Redshirt sophomore L.A.

Ramsby added to the attack with 64 yards on 11 carries in a performance that could only be described as devastating and punishing. Also, the young runner Wesley Fields was able to scamper for 47 yards and a touchdown on eight carries.

Junior quarterback Kevin Ellison gave a truly inspiring performance at the helm for the Eagles. He began a bit shaky, but the one-two punch delivered by Favian Upshaw was too much for the Vandal defense to keep up with. Ellison lived up to his twitter handle (MrAllPurpose4) as he threw and ran for over 100 yards. A huge chunk of his rushing yards came on a 53 yard scamper that included shoving an Idaho defender to the ground. Ellison finished the day completing 6 out of his 14 passes for 105 yards, coupled with 134 yards rushing on 13 carries with two touchdowns.

B.J. Johnson led the Eagles in receiving with 93 yards on four receptions, including a 36 yard leaping catch that set the Eagles up for a score. Wesley Fields, Ryan Longoria, and Derek Keaton each added one reception.

Chris DeLaRosa and Antwione Williams led the Eagles in tackles with nine a piece. Caleb Williams had two

tackles and an interception, his first of the season. One of the most exciting plays was an interception by 6'1", 310lb junior defensive lineman Jay Ellison, the first one of his career. Jamal Johnson, Ironhead Gallon and Antonio Glover each had six tackles.

It's always great to be riding a win streak, but along with sitting at the top of the conference the Eagles lead college football in several categories. The offense as a whole currently leads all of the FBS with 1432 yards rushing, leading the second school (Arizona) by over 100 yards. Breida is sitting pretty as he leads the country in yards per carry, with 10.9 yards. That's not a misprint, Breida averages a first down every time he touches the ball. He is currently tied for second in rushing touchdowns and sixth in the country in rushing yards. It is important to note, he trails the nation's leading rusher by less than a hundred yards and has half the number of carries.

The Eagle offense is primed and in mid-season form. They will need this momentum as they head into their next game against ULM, the team they narrowly beat to win the conference championship at the end of last season. The

### SUN BELT CONFERENCE

Georgia Southern  
Appalachian State  
South Alabama  
Georgia State  
UL Lafayette  
UL Monroe  
Troy  
Arkansas State  
Texas State  
Idaho  
New Mexico State

### OVERALL

3-1  
2-1  
2-2  
1-2  
1-2  
1-2  
1-2  
1-3  
1-3  
1-3  
0-3

### STREAK

W 3  
W 1  
L 1  
L 1  
L 1  
L 1  
L 1  
L 1  
L 2  
L 1  
L 3

## PLAYERS OF THE WEEK



MATT BREIDA  
#36

With two huge runs and averaging nearly 15 yards a carry, the junior is a hands down player of the week, only rivaled by his quarterback.



KEVIN ELLISON  
#4

Ellison set the tone for the rest of the season by going for over 100 yards through both the air and the ground. His 53 yard run was the capitalization to his player of the week performance.

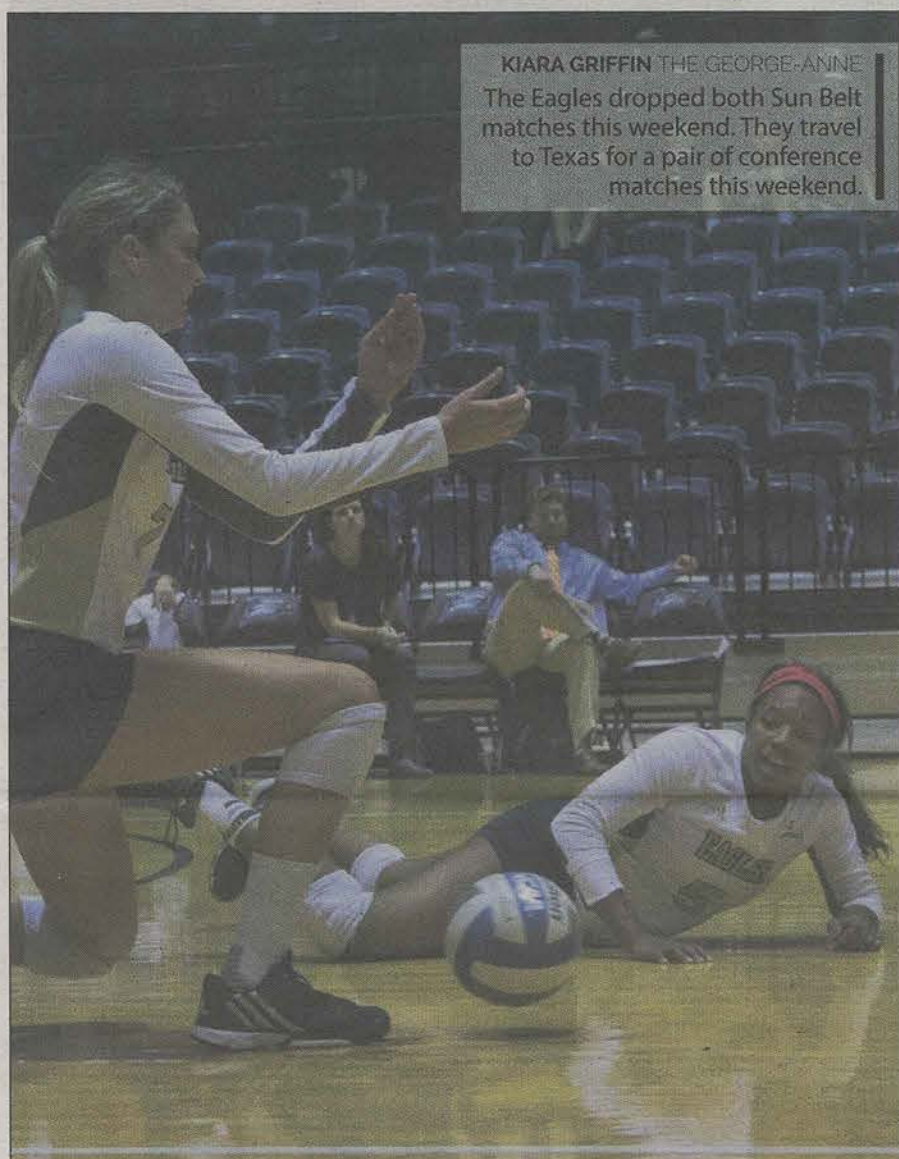


CHRIS DELAROSA  
#34

The standout sophomore linebacker was a terror to the Vandal offense as he picked up 8 solo tackles as well as 9 total tackles.



# DISAPPOINTING WEEKEND PUTS EAGLES 5-10 ON THE SEASON



**KIARA GRIFFIN THE GEORGE-ANNE**  
The Eagles dropped both Sun Belt matches this weekend. They travel to Texas for a pair of conference matches this weekend.

**BY DERIK WUCHTE**  
The George-Anne staff

Volleyball was in for a close weekend as they competed against Florida Gulf Coast and South Alabama on Friday and Saturday. Although the matches were competitive, the Eagles were unable to find a win. Their record dropped to 5-10 on the season, and 0-3 in conference play.

"Disappointing, but there were some improvements that we made that we saw all week," said Head Coach Dustin Wood said after losing to FGC 2-3. "Offense got going the two sets that we won. Even in the first set, we did pretty well—the set that we lost. But we're just inconsistent. Fourth and fifth set, we didn't look good at all."

It was a highly contested game between the two teams. The first set was lost, 20-25. But as Wood mentioned, there was a lot of good play to be noticed. Redshirt junior Alex Beecher played stellar defense. She ended with 27 digs on the game. Freshman Lauren Reichard also played impressively, totaling 13 kills in the match.

The two sets the Eagles won, the second and third, were driven by momentum. Especially in the second set, when the Eagles were ahead in scoring, they made sure to keep the intensity up and not let go. Redshirt sophomore Megan Chevalier and redshirt junior Crysten Curry began putting up numbers. The tangent of freshman Stephanie Spencer and junior Avery Stephens also played well when they rotated in.

When the momentum shift slowed down for the Eagles in the fourth set, the match took a turn downhill. The pace the Eagles had earlier started slowing down. They were unable to secure a wide lead as they had done in the previous sets. This eventually led to a fifth set where the Eagles found themselves unable to find an opening. 7-15 was the fifth set scoring, leading the Eagles to their defeat.

South Alabama was another game of tempo. It featured a lot of player rotations and player changes. The synchronization of those player changes varied, resulting in different outcomes for each set. In the end, the Eagles couldn't find what they wanted and they were defeated, 1-3.

## EAGLE EXPO CAREER FAIR

Wednesday, September 30

12 - 4 p.m.

Recreation Activity  
Center (RAC)

SEE REGISTERED EMPLOYERS AT:  
[GEORGIASOUTHERN.EDU/CAREER](http://GEORGIASOUTHERN.EDU/CAREER)

\*PROFESSIONAL DRESS REQUIRED





**CRISTEN GULLAT THE GEORGE-ANNE**  
Melinda Lukas pushes the ball upfield. She has three goals and an assist on the season.



**CRISTEN GULLAT THE GEORGE-ANNE**  
Nora El-Shami fights off a defender for control of the ball. She leads the team in assists with 10.



**CRISTEN GULLAT THE GEORGE-ANNE**  
The Eagles split a pair of Sun Belt matches over the weekend. They trounced ULM 3-0 on Sunday.

# Eagles go 1-1 in Sun Belt weekend opener

**BY DANIEL WAUGH AND KEVIN KENEELY**

The George-Anne staff and The George-Anne contributor

The Eagles kicked off Sun Belt competition for the 2015 season this past Friday against Louisiana Lafayette.

The game began at a fair pace between both teams. The Eagles opened up with aggressive offense and continued to play at that same pace throughout the first half. Lafayette matched that intensity, creating a competitive atmosphere for both teams. In the 11th minute of play, the Ragin' Cajuns took a 1-0 lead when Cassandra Reyes scored from outside with the assist from Ashleigh Cade.

The second half, offensively-

speaking, was all Eagles. They spent a majority of their time on the offensive end and had great ball movement. They had many opportunities to score, taking a total of 15 shots in the game with nine of those shots being shots on goal. However, they were not able to hit the back of the net.

The final score of the game was 1-0 Louisiana Lafayette. This was the first home loss in Georgia Southern women's soccer history in the FBS. Their last home loss was on October 30, 2013, while competing in the FCS, to Davidson in a 2-0 loss.

Head Coach Brian Dunleavy was not upset with the way that the Eagles played in this match-up. He said that the team played great soccer in this game, and continuing

to play and execute at this level will eventually lead to better results.

The Georgia Southern Eagles came out Sunday with an aggressive mindset. Coming off a three game losing streak, the Eagles looked as if they were playing with a chip on their shoulders. They seemed to be in complete control of the game as they shut out the University of Louisiana-Monroe 3-0.

The Eagles came out strong in the first half giving up only two shots on goal, both of which were saved by Keeper Emily Egan. Early on in the half, the Eagles had plenty of opportunities to score, but could not seem to get it going. They didn't let those missed opportunities hinder the way the game played out. They

were eventually able to score a goal late in the 45th minute of play. Georgia Southern got on the board with a goal by Cori Dulmage, assisted by Hallie Huff, which gave the Eagles a 1-0 lead going into the second half.

At the beginning of the second half, the Eagles came out looking to keep their momentum rolling. In the 49th minute of play, El-Shami scored off a penalty kick, which gave the Eagles a 2-0 lead. El-Shami kept playing strong by assisting Paige Hoover with a goal in the 65th minute, which extended the Eagles lead to 3-0. The assist by El-Shami gives her 10 assists on the season, which is a career high for her.

Offense was not the only thing going for the Eagles

in the second half. On the defensive front, they gave up only one shot on goal. This was the second time all season that the Eagles were able to shut out the opposition, and they did it in a dominating fashion. The defense kept playing aggressive all game which seemed to have gotten in the head of the Warhawk players. As the game came to an end, the Warhawks looked drained and the Eagles kept dominating the time of possession as they looked to drain the clock.

The Eagles are now 4-6-1 overall and 1-1 in conference play. They look to carry their momentum forward next weekend as they travel to Little Rock on Friday and Arkansas State on Sunday.



## DISCOVER: Graphic Communications Management



BY MEG ELWOOD  
The George-Anne staff

Here's a major for those who want to mix creativity with business. If you have ever wanted to take a shot at creating your own key chains, decals, stickers or even tote bags, check out GCM Technologies. Graphic Communication Management, also known as GCM, focuses on every step in print production from the design to the finished product. The program offers multiple hands-on classes such as GCM Technologies, taught by Hope Carroll, a passionate instructor who wishes to expose students to a little bit of everything the program is truly capable of.

"They [students] really get a wide range of experience," said Carroll. "We teach them all of the printing process and they really have to understand what the plate looks like, how the image gets to the plate to the paper... we teach them all of the processes and they design

for those processes and then they actually come and print them and they have a finished product when their done."

The class introduces students to designing through Adobe Creative Cloud programs as well as the basics of effective typography. While graphic design is an important step in the production process, GCM focuses on what happens after the design process, so it's a perfect class for someone who is wanting to go in and get creative for the fun of it in order to gain technical knowledge of machines.

"The students who come into this program love the hands-on part of it [the class]. They don't mind getting ink on their hands, they don't mind that they have to cut their own paper, it's a design to finished product," Carroll, said.

Using their own designs fit for the project, students are then able to gain hands-on experience using small hand

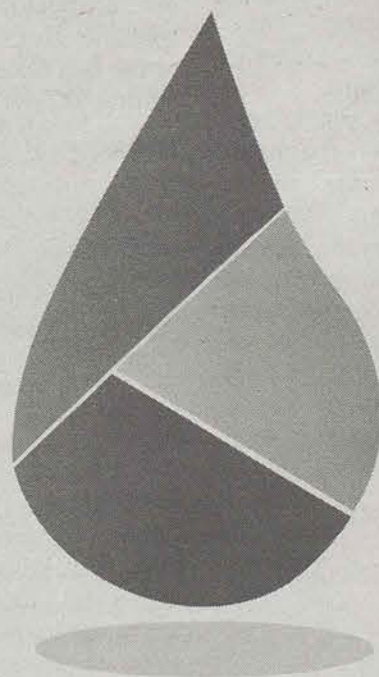
printers like screen printers, and even large machine printers like flexographic and lithographic printers to turn their digital creation into an actual item.

"Students are really getting an introduction to the breadth of the industry. What printing processes are out there, what

kind of job opportunities are out there for them," said Carroll. "They get an understanding that it doesn't stop at design, in design you have to understand how it's going to be finished, how's it going to be printed. There's a lot of technical knowledge involved with that."

It is a creatively challenging class where you actually have all of the materials in front of you as you would in a real job position and learn how to use them, which can be very valuable.

Check back next week for information on the GCM student organization, GCA.



Graphic  
Communications  
Association  
@ Georgia Southern



# "THE PILLOWMAN" TO HAUNT THE CAT

BY MATT SOWELL AND RICKY VEASLEY

The George-Anne staff and The George-Anne contributor



With a tagline like "there are no happy endings in real life," it's clear that the latest show inside of the Black Box Theatre, "Pillowman," is not one of the comforting bedtime stories that mothers tell their children.

The show is perfect to kick off a haunting Halloween season, but may not be appropriate for all audiences due to the fact that the story contains intense situations and is intended for mature audiences only.

The story follows a writer held in an interrogation room in an unnamed state run by a totalitarian government. The writer is under trial over the murders of various children which echo the gruesome and twisted stories he's written.

"In the stories, on a couple of them, the children die in the end. And in this town there have been a number of child murderers that are occurring and they're tying closely to his short stories. So they bring him in thinking he has something to do with it. He's sitting there like 'I write stories', but then things start to unfold throughout the play," Gregory Hernandez, senior theater major, said.

Hernandez plays one of the lead characters, Katurian. Katurian has a brother named Michael, played by David Jackson, who suffers from child abuse.

"I like playing troubled characters. I think I've had a habit for it and just being able to tap into that, I think



is just fun and experimental," Jackson, sophomore theater major, said.

Other characters in "The Pillowman" include Ariel, the bad cop and Tupolski, the good cop.

"Ariel is not your typical policeman. He's rough around the edges and he's kind of a violent guy. He doesn't interrogate with words as much as action," Jake Hunsbusher, multimedia film production major, said.

"The Pillowman" will run in the Center for Arts and Theatre from Sept. 30 through Oct 7. The show begins at 7:30 p.m. with a 2 p.m. matinee on Sunday. Tickets are \$6 for students and can be purchased at the box office or reserved by calling 912-478-5379.

KIARA GRIFFIN THE GEORGE-ANNE

Set in a totalitarian government, "The Pillowman" tells the story of Katurian a man who makes his living writing horrifying short stories. When children in his town start getting murdered, he is brought in for questioning by authorities.

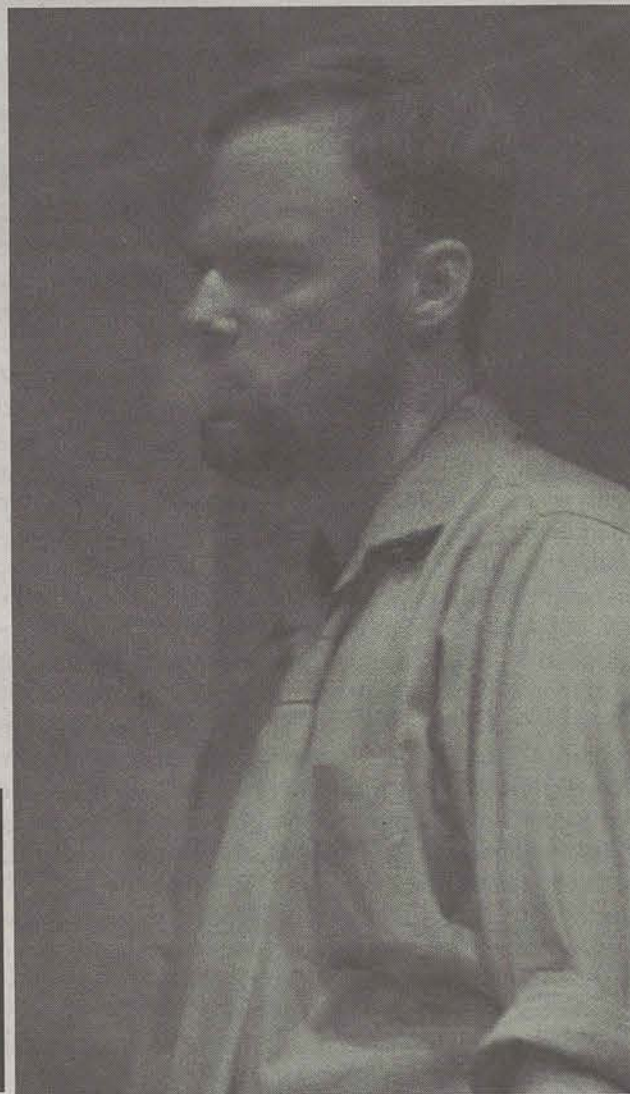




PHOTO COURTESY OF DONNA JONES

This content was originally published on reflectorgsu.com

# Stomping Out Stigmas

BY JULIA FECHTER  
The George-Anne staff

Mental health is something few people want to talk about, but needs to be discussed, especially with a student body as large as Georgia Southern's.

"We just want to raise awareness for mental health. We want to make it okay to talk about. The more often we talk about it, the more normal it becomes to do that. Perhaps people would feel less intimidated the more awareness and programs we

do on the issue," Michelle Martiñ, the University Wellness Program Director said.

Martin gave some guidelines for talking about mental health. He said it is important to ask your friend if they're okay. If you are concerned about a friend or peer,

don't be afraid to ask them if there's any way you can help.

According to the National Alliance on Mental Illness, one fourth of college students struggle with mental health problems. If we have 21,000 students at Georgia Southern, that means a quar-

ter of our student enrollment struggle with this. Martin said mental health is a national issue right now that is connected to sexual assault, violence and alcohol and it is not going to go away.

## Hurting and Healing From Stigmas

Dr. Marieke Van Willigen, the chair of the Sociology and Anthropology, provided her take on stigmas about mental illness. Willigen elaborated on the social consequences of people ignoring and stigmatizing mental illness.

"It can affect people's social relationships. It might be hard to maintain a romantic relationship or start a romantic relationship if somebody knows you have a mental illness. If you have a mental illness that is not being treated and you're really struggling, you can be with the most understanding person in the world. But, if your behavior is erratic, or your mood is always really negative, then that's going to be hard to maintain that relationship," Dr. Van Willigen said that people are heavily influenced by the media. Dr. Van Willigen

commented on some of the difficulties associated with working and having a mental illness. It might be hard to get to work regularly, or it might be difficult to do the job that is required and struggle to do it. Alternatively, a person might be doing a great job, but other people might find out that they have a mental illness. If they see the medication someone is taking they might treat them differently because of that. "The tough thing is that when we talk about mental illness, people think about the extremes. There's lots of people that are living with low-grade things that psychologists or psychiatrists would diagnose as a mental illness, and they're doing fine," Dr. Van Willigen said. "We have all these violent images of people who committed these horrible acts, who are mentally ill. And

then people think, well that's what mentally ill people are like. I think combatting that with images of people who are doing well, who say that they have mental illness [is better]. When Betty Ford admitted that she had a drinking problem that was a huge deal. Now, there's the Betty Ford Clinic now for people who have alcohol abuse problems," Dr. Van Willigen said.

Dr. Van Willigen said that seeing somebody that's successful would ideally ripple down to other people in the community.

"If you knew that one of your friends took medication for depression, but was a successful student and a lot of fun to be around, it would change your opinions about people with depression," Dr. Van Willigen said.

## How You Can Get Involved

Brian Sawyer, a senior psychology major and president of the Active Minds club at Georgia Southern, says there are several ways students can get involved in the 'Stomp Out Stigma' activities. Sawyer hopes to break the taboo about talking about mental illness and the confusion and fear surrounding it. Sawyer said getting people comfortable talking about mental health would help break the taboo.

Active Minds is spearheading a couple of events for 'Stomp Out Stigma' week. On Tuesday and Wednesday, the organization will be eating in silence at the Dining Commons at 12:30 p.m. for 'Day

of Silence'. 'Day of Silence', which is Tuesday, September 29, seeks to bring awareness to the 1,100 students lost to suicide each year. Active Minds members and other participants will wear 'Day of Silence' buttons. These buttons will be given out at the Rotunda for the 'Stomp Out Stigma' week kickoff.

Active Minds will also be sponsoring the Shed the Light Walk, which is Thursday from 11 p.m. to 1 a.m. at the RAC pavilion. As part of the walk, lanterns will be released in support of those who struggle with mental health issues.

This week can serve as a starting point for initiat-

ing conversation with one's friends, family and peers about mental health. Such conversations can enlighten people and let them know they have support if they are dealing with a mental health challenge.

The Counseling Center, the Wellness Program and Health Services all coordinate doing various events related to mental health throughout the semester. Information on those events can be found on the official GSU calendar, weekly E-BUZZ emails or by contacting the department or organization hosting an event.

## SAVE THE DATE



OCT. 26-30



860 BUCKHEAD DR | 912-764-5489





# WEDNESDAY, SEPTEMBER 30

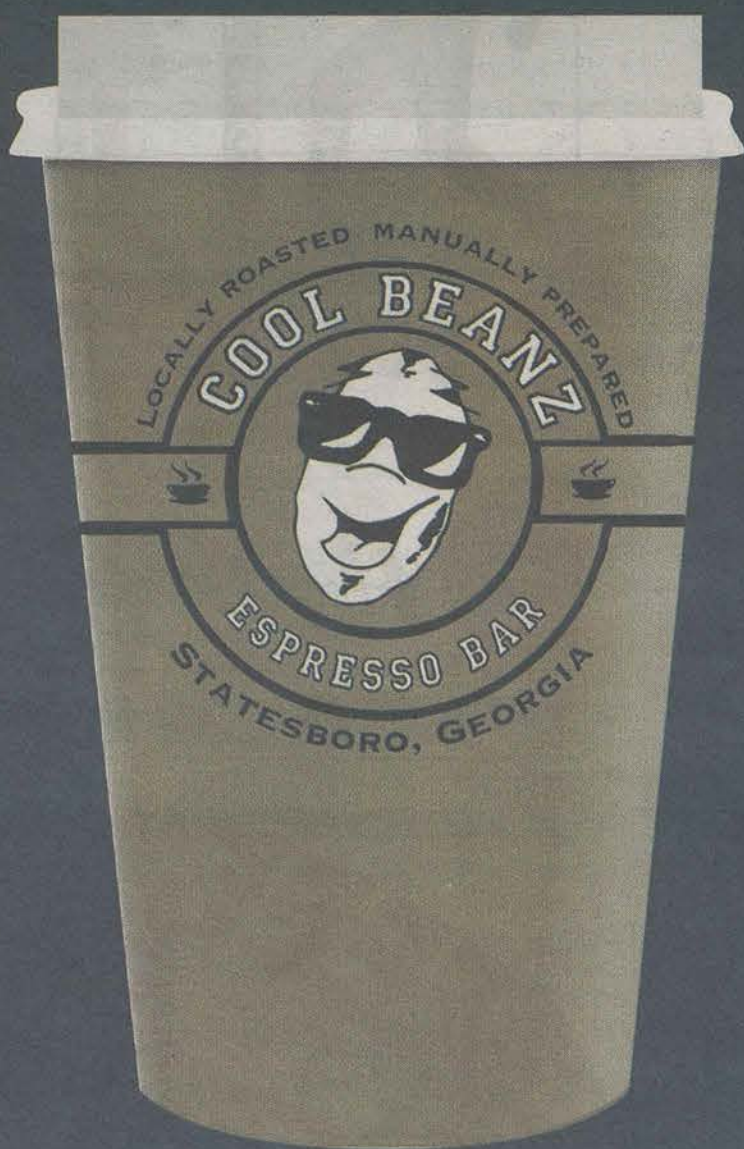
## RUSSELL UNION COMMONS, 11 AM - 1 PM

Time management, heavy workload, relationships and finances can all lead to stress while you're in college. Relax and relieve some stress by attending Worry-Free Wednesdays. At each monthly event, participate in de-stressing activities such as making stress balls, coloring pictures or even finger nail painting.

also throughout the semester:  
OCTOBER 28, NOVEMBER 18  
& DECEMBER 2

# WORRY-FREE WEDNESDAY

**BE WELL.  
DO WELL.**



# GA

*Joe*

## THE GEORGE-ANNE

*Free coffee & hot chocolate  
with your Copy*

*Located at the Russell Union  
Every Thursday  
8 a.m. to 10 a.m.*