

Georgia Southern University

Digital Commons@Georgia Southern

The George-Anne

Student Media

9-8-2015

The George-Anne

Georgia Southern University

Follow this and additional works at: <https://digitalcommons.georgiasouthern.edu/george-anne>



Part of the [Higher Education Commons](#)

Recommended Citation

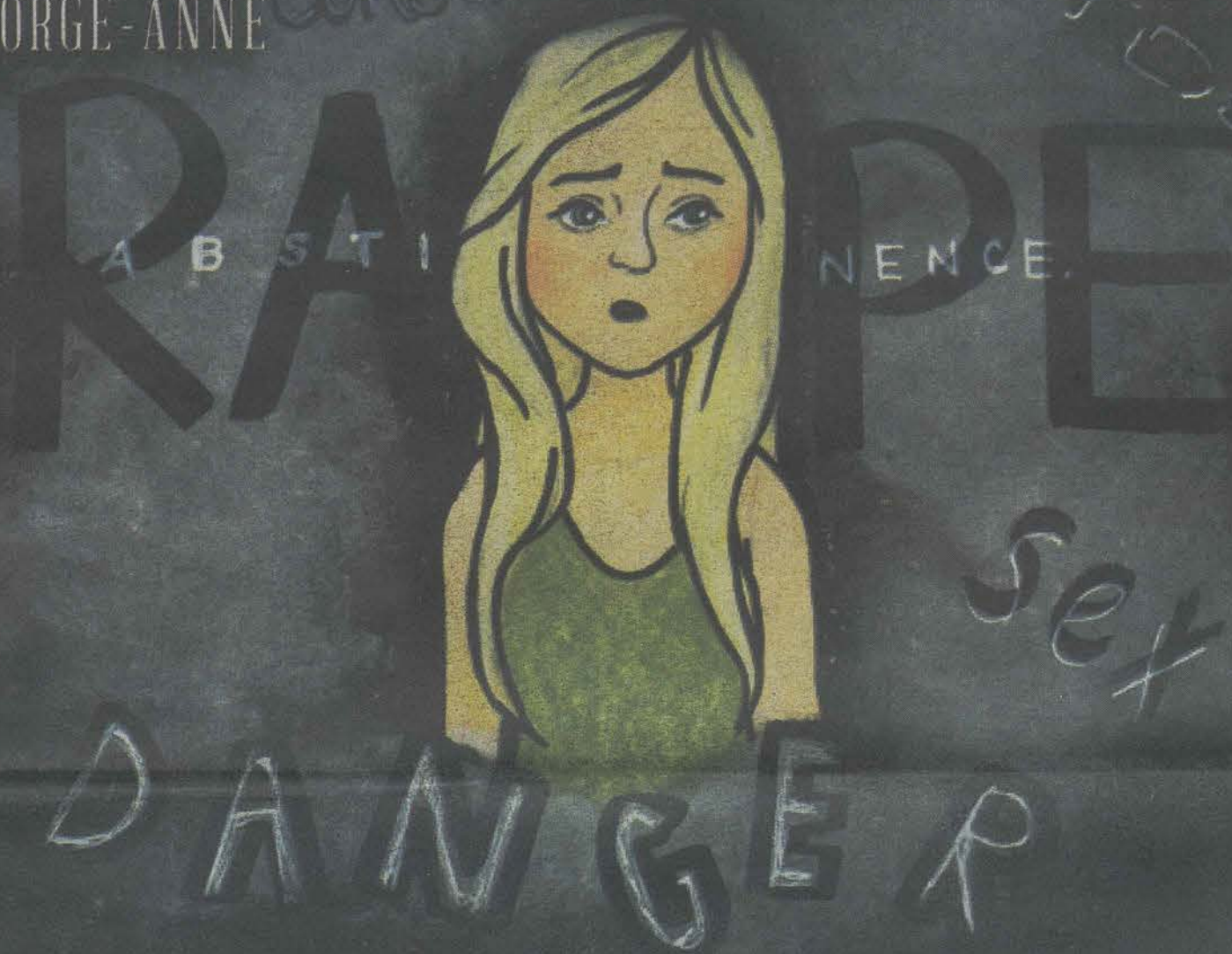
Georgia Southern University, "The George-Anne" (2015). *The George-Anne*. 2884.
<https://digitalcommons.georgiasouthern.edu/george-anne/2884>

This newspaper is brought to you for free and open access by the Student Media at Digital Commons@Georgia Southern. It has been accepted for inclusion in The George-Anne by an authorized administrator of Digital Commons@Georgia Southern. For more information, please contact digitalcommons@georgiasouthern.edu.

GA

THE GEORGE-ANNE

SEXUAL ASSAULT, PT. II
PAGES 8 & 9



WHAT IS THE RED ZONE?

How lack of discussion and the college environment lead to increased rates of sexual assault

Need an early morning pick-me-up?
Daylight Donuts is there to help!

PAGE 7

EAGLES SHUTOUT IN MORGANTOWN
PAGES 12 & 13

EAGLE EYE

Practice your aim at the SSEC

BY CAITLYN OLIVER and CHRISTOPHER CARTER
The George-Anne staff

The newest addition to our campus here at Georgia Southern is a Shooting Sports Education Center (SSEC). It is a facility meant for education and practice with firearms and bows, as well as recreational target shooting.

The facility is a brand new building that was constructed over the summer. Housed inside is a firing range separated into bays, an archery range, and classrooms for safety lessons. There will also eventually be an outdoor archery field.

Students and the general public will be able to come in and rent various firearms, buy ammunition, or bring in their own weapons, ammunition and bows. Students living on campus will be able to store their firearms and bows at the Shooting Sports Education Center in lockers. Semester passes for using the facilities will be available to students and annual passes will be available to the general public.

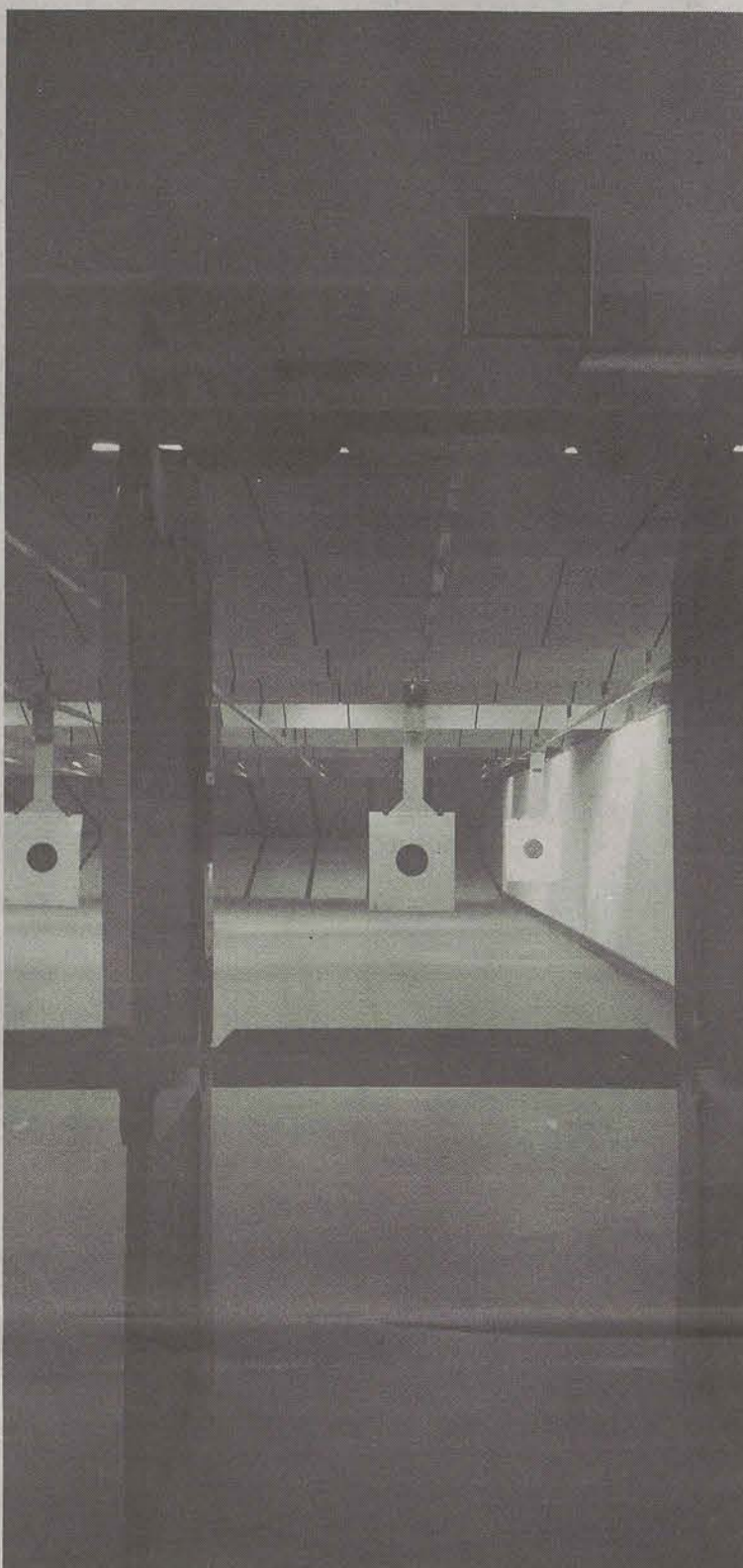
The Women's Rifle team has been using the gun range while clubs and intramurals associated with archery will be using the other side of the

facility. Shooting and archery clubs unaffiliated with Georgia Southern will also be allowed to use the facility.

Safety and proper procedure are of the utmost importance at the Shooting Sports Education Center. In order to use the facility, you must first fill out an application and pass a background check. Then there is a 15 minute video and a 15 question test on what you watched. You must get 13 questions correct to pass the test. Then there is a practical test to show that you are proficient with which ever weapon you are applying for, bow or firearm.

There will also be a safety officer constantly on duty in the ranges in case of any problems. The gun range maintains a pressurized system and filters to prevent high levels of lead. The application process and other contingencies assures that everything will be safe and legal.

Open house for the SSEC started on September 1st and will go to September 8th. The SSEC will officially be open September 14.



CAITLYN OLIVER THE GEORGE-ANNE

An example of one of the many gun targets at the SSEC. The facility also has archery targets that you can use to hone your eagle eye.

WEATHER BAR

Wednesday



High: 88°
Low: 71°

Thursday



High: 90°
Low: 70°

Friday



High: 89°
Low: 69°



"I HAVE NO HANDS TO
HOLD MY UMBRELLA"

COOKOUT
10 AM - 3:30 AM

TACO BELL
7 AM - 4 AM

WENDY'S
10 AM - 4 AM

JIMMY JOHN'S
11 AM - 2 AM

STEAK 'N SHAKE
10 AM - 3 AM



**GRUB WITH GUS
AFTER HOURS**

BY JOHNNY LU

WHOSE CAMPAIGN IS IT ANYWAY?

Name: Marco Rubio
Party: Republican
Current position: Senator, Florida
Polling percentage: 8%



WILL PRICE

Will is a senior multimedia journalism major from Atlanta, GA.

For all intents and purposes Marco Rubio, the 44-year-old son of Cuban immigrants, runs fairly consistently with Republican party ideals. In an Op-Ed published in the Wall Street Journals Rubio outlines his taxation plan, which makes a point to simplify the system by utilizing only two income tax brackets, 15 percent for those making under \$75,000 and 35 percent for those making over \$75,000 respectively, in addition to cutting corporate tax rates to 25 percent.

Along with party lines, Rubio plans to freeze federal spending entirely apart from

the defense budget, which he proposed to increase earlier this year. Also in the realm of defense spending, Rubio has gone on the record saying he supports a permanent US presence in Iraq to help repel and defeat ISIS.

Rubio also believes that the nuclear deal with Iran is what's keeping the US from properly intervening in Iraq and Syria.

"I believe that much of our strategy with regards to ISIS is being driven by a desire not to upset Iran so that they don't walk away from the negotiating table on the deal that you're working on,"

Rubio said in a senate hearing in March of this year.

As far as social issues go Rubio is a fairly typical Republican candidate. He believes that marriage is between a man and a woman, but maintains that Americans should abide by the law of the land. In 2013, Rubio co-sponsored a bill outlawing abortion after 20 weeks of pregnancy, with exceptions to incest, rape and danger to the mother.

Strangely, Rubio has stated he is open to restricting birthright citizenship, which grants citizenship to those born in the United States,

despite being a citizen based on this very principle.

Rubio joined the race in mid-April hovering around seven percent on Real Clear Politic's aggregated poll average. The following month he jumped up to his peak at 14 percent and has since leveled off between seven and eight percent. Most of his decline falls in line with the rest of the GOP field's decline with the exception of frontrunner businessman Donald Trump. To learn more about Rubio and his bid for president, you can visit his campaign site: <https://marcorubio.com/>

Name: Martin O'Malley
Party: Democrat
Current position: Former Governor of Maryland
Polling percentage: 2%



IAN LEONARD

Ian is a sophomore writing and linguistics major from Johns Creek, GA.

According to O'Malley's campaign site, his policies will focus on many current hot topic issues in America today. He is dedicated to raising the minimum wage to \$15 an hour and the threshold for overtime pay to \$1,000 a week. He also apparently plans on "bringing accountability to Wall Street" and apparently plans on accomplishing this by reinstating the Glass-Steagall Act of 1933. For those of you who aren't familiar with this legislation, it was created in the wake of the 1929 stock market crash and separated the

investment and commercial banking industries, and was repealed in 1999.

O'Malley is also an advocate of "expanding equality of opportunity for the next generation" His site describes this as providing universal access to safe and affordable childcare, and making pre-K a requirement. He also expresses his desires to make college debt free, and to "modernize" high school, which would entail encouraging students to graduate with either at least a year of college credit, an apprenticeship, or a certificate of

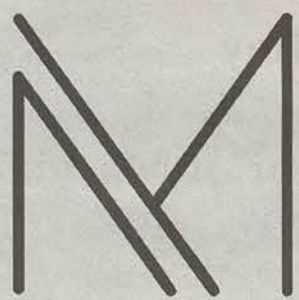
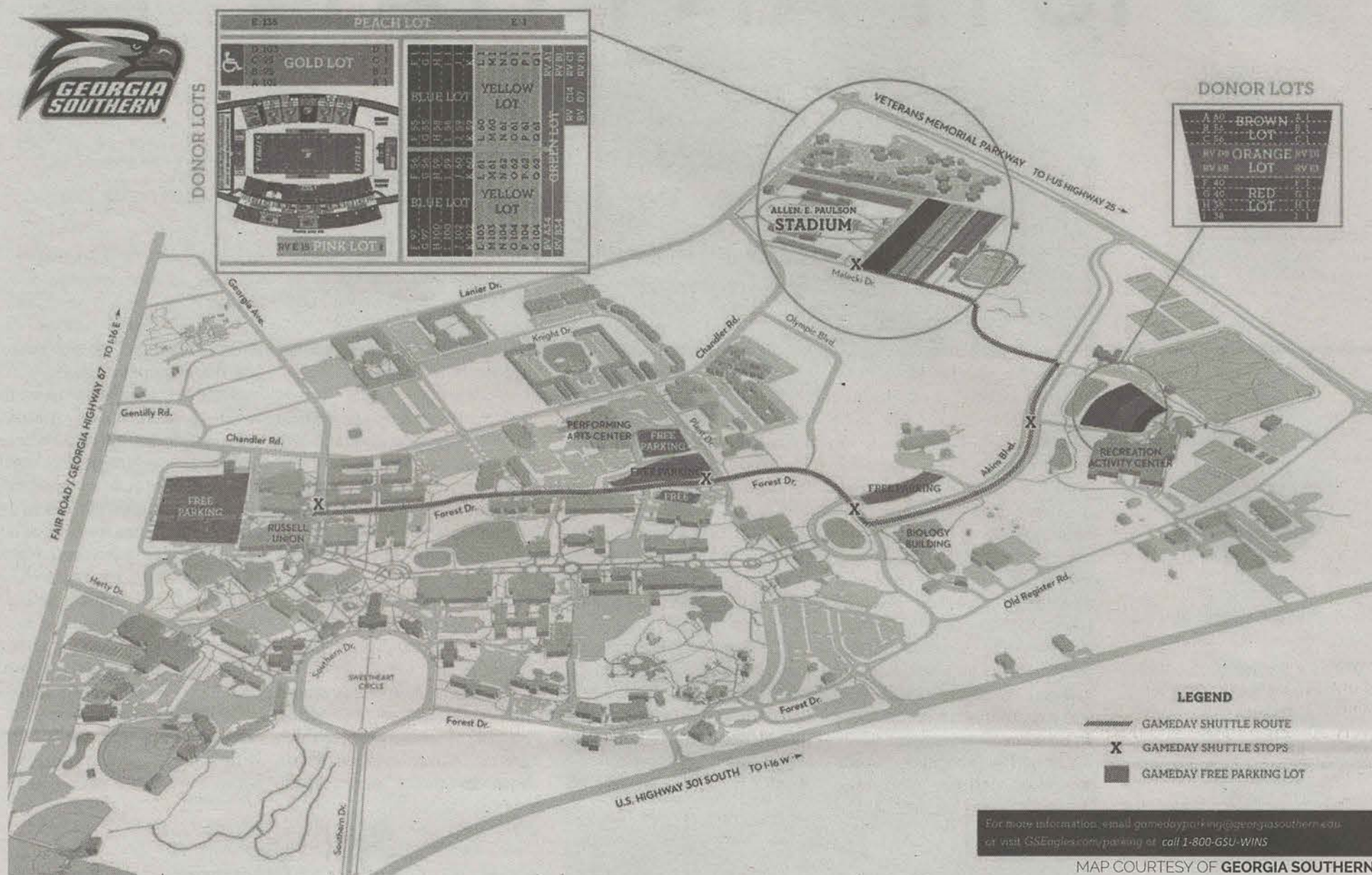
credential for a high paying, high skill career. O'Malley's campaign site also conveys his ambitions to support women and families, eliminate poverty barriers, and reform our current immigration system, to name a few.

O'Malley has also made clear his eagerness to engage in debate with his fellow democratic nominees. He has slammed fellow candidate Hilary Clinton for not participating in debates, and criticized the Democratic National Convention for the relatively low amount of debates sched-

uled before the primaries in February. He has even gone as far as to challenge his fellow party members to non-DNC sanctioned debates and joined the over 300,000 activists who are currently petitioning for Jon Stewart, former host of The Daily Show, to moderate a presidential debate in 2016.

If you are interested in learning more about O'Malley and his bid for the democratic nomination, you can visit: <https://martinomalley.com/>

GEORGIA SOUTHERN GAMEDAY PARKING AND TICKETS



MISCELLANY MAGAZINE OF THE ARTS

NOW ACCEPTING SUBMISSIONS
FOR FALL 2015 GALLERY

Free Early Bird Submission Deadline
September 4th

**THREE
SUBMISSION
LIMIT** **700
WORD
LIMIT**

\$5 Regular Submission Deadline
September 11th

\$10 Final Call Submission Deadline
September 18th

ALL PRINTABLE MEDIUMS ACCEPTED. ALL GSU
STUDENT, FACULTY, AND STAFF WELCOME TO SUBMIT.

Check out miscellany.reflectorgsu.com for more information.

BY JOZSEF PAPP
The George-Anne staff

Georgia Southern's home football season begins on Sept. 12, 2015 at Paulson Stadium against Western Michigan University. The following information will assist you for this game and the following home games.

Students are allowed free access to all sporting events with their Eagle ID. In addition, Georgia Southern students can bring a companion who is not enrolled at Georgia Southern with the purchase of a "Buddy Ticket". Tickets

can be purchased at the Georgia Southern Athletics Ticket office for \$17 and at the University Store on game day until 5 p.m.

In addition, Students and "Buddy Ticket" holders can enter the Student Tailgate Zone (STZ) through Gate 14 using their Eagle ID and a government issued document. The STZ will open at 1pm for Saturday games and 3pm for Thursday games.

There are some changes compared to last year in regards to parking, please see the parking map above.

Parking Map Information

- Tailgating allowed in commuter lots 11, 12, 13, 21, 30, 31, 32, 33, 42
- RAC and Stadium reserved for athletic donors
- No charge to park
- Buses are running a modified Gold route, start 2 hours before the game, end 1 hour after the game
- No parking in residential areas

New Georgia amnesty law to save lives

BY JOZSEF PAPP
The George-Anne staff

A law, commonly known as the "Amnesty Law", was signed by Gov. Nathan Deal, last year, in an attempt to reduce the number of deaths from drug or alcohol overdose.

The House Bill 965, also known as Georgia 911 Medical Amnesty Law, grants immunity and protection to people who call seeking medical help if they or someone they know overdoses on a drug or alcohol, however it doesn't mean arrests can't be made.

"It is not a get out of jail free card. I know a lot of folks that's how they see it. They think that if I ask for this [amnesty law], the police can't arrest me for that," Interim Chief of Police, Lauren McCullough, said. "It is put in place for a very specific purpose, and it is to save lives."

The law changes some aspects regarding arrest of

intoxicated students who need medical attention. However, McCullough stated that the law will not change the way things are done in the Public Safety office.

"We are still are going to do our job, the way we are expected to do our job. Part of our job is to make sure that the health of our students is being taken care of and being looked after," McCullough said.

Although the law was signed last year, the only known case regarding the law occurred at the University of Georgia. According to KSL.com, an officer refused to arrest two drunk underage students who needed medical help because of the law. The officer was fired and is threatening to sue the state Board of Regents.

No case of the amnesty law has occurred in Statesboro or Georgia Southern University, but McCullough expects there to be some.

"Now I fully expect, people will want to try and take advantage of that and use that

as their get out of jail free card and try to use that law. I know that we will have some cases in which we will take that into effect," McCullough said.

McCullough urges students to not hesitate to call 911 for assistance if someone they know is in need of immediate medical attention.

"We are a fairly good-sized campus, our department is a decent size, but we are always short-handed certain times of the night. We get really busy, so we always try to tell folks that if you for sure know you need an ambulance or a police officer, the easiest way to get them is to call 911," McCullough said.

If you or someone you know is suffering from a drug or alcohol overdose, don't hesitate to call 911 or the Office of Public Safety, at (912) 478-5234, to receive help. In addition, please contact the Alcohol and Other Drugs Office, at (912) 478-0108.

“

"It is not a get out of jail free card. I know a lot of folks that's how they see it. They think that if I ask for this [amnesty law], the police can't arrest me for that," Interim Chief of Police, Lauren McCullough, said. "It is put in place for a very specific purpose, and it is to save lives."

LAUREN MCCULLOUGH

Interim Chief of Police, Statesboro, GA.

NOW ACCEPTING SUBMISSIONS FOR FALL 2015 GALLERY

Free Early Bird Submission Deadline
September 4th

\$5 Regular Submission Deadline
September 11th

\$10 Final Call Submission Deadline
September 18th

M I S C E L L A N Y
MAGAZINE OF THE ARTS

THREE SUBMISSION LIMIT
700 WORD LIMIT

ALL PRINTABLE MEDIUMS ACCEPTED. ALL
GSU STUDENT, FACULTY, AND STAFF
WELCOME TO SUBMIT.

Check out miscellany.reflectorgsu.com for more information.

Sex & Chocolate

BY MEG ELWOOD
The George-Anne staff

Tonight at 7 p.m. Health Education Services is holding "Sex and Chocolate," a sweet, totally free, student-led event about sexual life for college students. It's normal to have tons of questions, let's be honest, sex is a curious thing. Talking to doctors can be intimidating, talking to parents? That can be worse than doctors, but talking, or even just listening, to students your age may just be the best way to find the answers to your mind-boggling questions.

"You all are at an age where you have a lot of choice, with those choices come a lot of responsibility," LaShanda Johnson, assistant director of Health Services, said. "So my aim is to allow you all to talk back and forth about your sexual practices and then I will interject and give the responsibility piece."

Johnson is aware that this is already a very sensitive topic. The key is to have an open mind. It's perfectly ok to be shy, the whole event is anonymous. No one will ever know your questions or thoughts unless you say so.

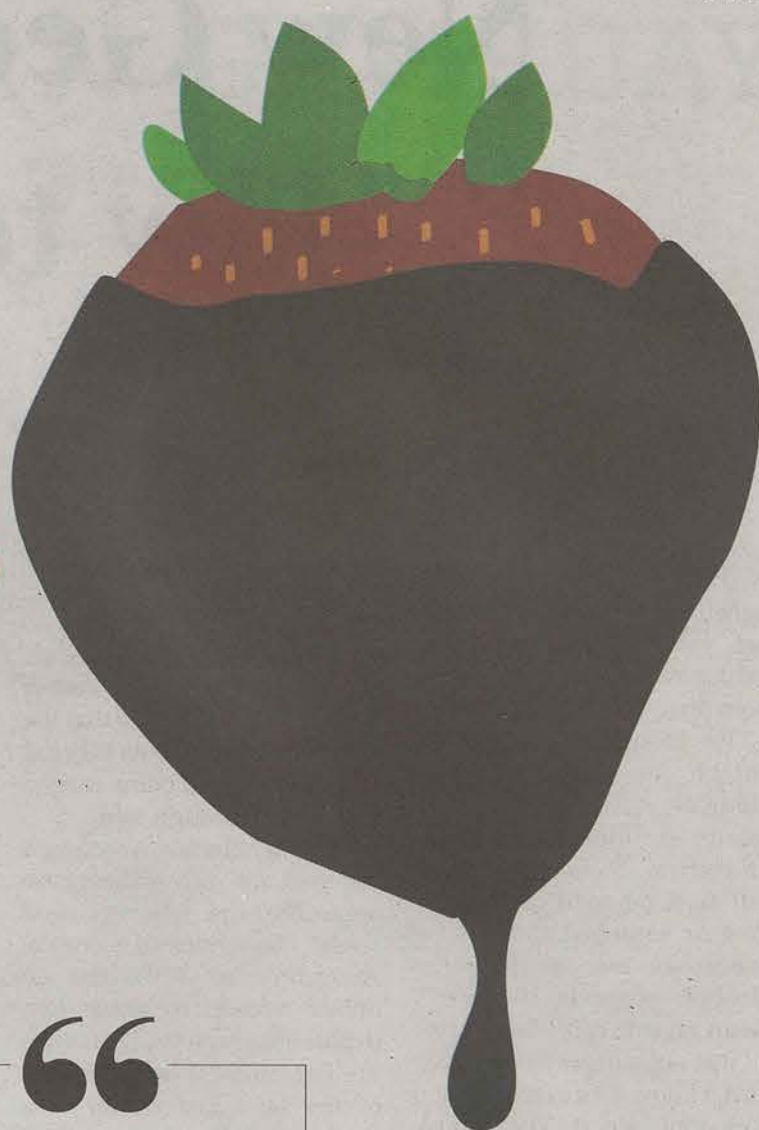
"If a person is shy about talking about it, that's totally fine. I'm just

happy that you're there. Being there means you're getting some type of education that would not be getting otherwise," Johnson said. "I can almost assure you that whatever question a shy person had in their head, someone else who is not as shy is going to ask that same question."

So, what's the process?

Basically, a lecture-free learning experience while snacking on chocolate covered strawberries, marshmallows, various cheeses and even enjoying some faux champagne. Students will anonymously write down their questions, Johnson will read out those questions and students will have the opportunity to answer the question based on their own experience or give small nuggets of advice. This will be an inclusive event with men and women intermingling, but don't let that intimidate you. Hearing all sides of a question can further enhance the answer.

The event will be held at 7 p.m. in the Williams Center. Come as you are, there is no dress code, only free sweets and tidbits of knowledge. The whole point is to have a good time, learn something new and as Johnson said, "to create a positive dialogue amongst our students as it relates to sexual health and relationships."



“
I CAN ALMOST
ASSURE YOU
THAT WHATEVER
QUESTION A SHY
PERSON HAD
IN THEIR HEAD,
SOMEONE ELSE
WHO IS NOT AS
SHY IS GOING TO
ASK THAT SAME
QUESTION.”

LASHANDA JOHNSON
ASSISTANT DIRECTOR OF
HEALTH SERVICES

AHEAD IN CLASS UPCOMING EVENTS



COLLEGE OF LIBERAL ARTS AND SOCIAL SCIENCES

All events are open to the public, and admission is free except where otherwise indicated. For more information, please visit GeorgiaSouthern.edu/class.

9/5-10/1: GALLERY Department of Art Visual Art Scholarship and Award Recipients Exhibition Come see work from some of the top art students at GSU at the Blick Gallery in Savannah; 318 East Broughton Street, Savannah, Ga.; 912.234.0456

9/15: CLUB Arabic Coffee Hour Open to students interested in Arabic culture and language. Meets every Tuesday; 4 p.m.; Forest Drive Building, Room 1311; 912.478.5281

9/16: CLUB Mesa de Conversación Open to students interested in Spanish culture and language. Meets every other Wednesday; 5:30 p.m.; El Rinconcito; 912.478.5281

9/17: CONCERT Faculty Showcase Department of Music faculty will display their talents in this performance.; 7:30 p.m.; Performing Arts Center; 912.478.5396

9/17: CLUB French Club Open to students interested in French culture and language. Meets every other Thursday; 5 p.m.; Forest Drive Building, Room 1311; 912.478.5281

9/25-9/26: CONFERENCE Georgia International Conference on Information Literacy This two-day conference

provides opportunities to share research and best methods in teaching and learning. Registration Fees apply. For more information please visit <http://bit.ly/GSULit>; 7:30 a.m. to 4:30 p.m.; Coastal Georgia Center; 912.478.1763

9/29: CONCERT Georgia Southern Symphony 7:30 p.m.; Performing Arts Center; 912.478.5396

9/30-10/7: THEATRE The Pillowman Olivier and Tony Award winning play directed by Nicholas Newell. Suggested for mature audiences only; 7:30 p.m. (Sun. 2 p.m.); Center for Art & Theatre, Black Box Theatre; \$6 students, \$12 GA; 912.478.5379

10/6: CONCERT Georgia Southern Wind Symphony 7:30 p.m.; Performing Arts Center; 912.478.5396

10/9: CONCERT Georgia Southern Jazz Ensemble 7:30 p.m.; Performing Arts Center; 912.478.5396

10/11: CONCERT Georgia Southern Wind Ensemble 3 p.m.; Performing Arts Center; 912.478.5396

10/13: CONCERT Piano Area Recital 7:30 p.m.; Foy Building, Carol A. Carter Recital Hall; 912.478.5396

DAYLIGHT DONUTS

YOU "DONUT" WANT TO MISS THIS STORY

BY KAT SHUMAN
The George-Anne staff

What are you up to at one o'clock in the morning? For the staff at Daylight Donuts, it's time to start the day's work. Since 1991, Daylight Donuts's staff has been up in the early hours of the morning preparing fresh, made-from-scratch donuts.

At the mention of Daylight Donuts, sophomore mechanical engineering major, Chandler Avery's face lit up:

"You mean 'bae-light' donuts?" said Avery, "Daylight Donuts is a Statesboro staple! It's a smaller franchise, so they're not just mass-producing donuts to make revenue. They believe in making their customers happy."

Randy Linto, part-owner of Daylight Donuts, confirms Avery's statement; He aims to please his customers:

"We will do just about anything for our customers. We do party trays for Christmas and birthdays. We also like to do seasonal things for Halloween and Easter. Honestly, we'll try anything our customers want to try!"

“

YOU MEAN
"BAE-LIGHT"
DONUTS?
DAYLIGHT
DONUTS IS A
STATESBORO
STAPLE!"

CHANDLER AVERY

Sophomore Mechanical Engineer

Linto shared that owning a private business was not always the easiest, but it was always worth it. Rather than cooking frozen donuts each morning, the staff at Daylight Donuts work long hours to complete the donut making process. Linto admitted that he was never sure how many customers he would have on a given day, however, he sees around 450 customers each weekday morning, on average.

Senior electrical engineering major, Chase Lakhani, is one of these 450 "regulars" that frequent Daylight Donuts:

"When I have to schedule early meetings, I bribe my team members to come with Daylight Donuts. How else could I get twenty college students to meet with me at 7:30 in the morning?"

Linto shared that though the Statesboro community tended to be his biggest customers, the students in Statesboro have been picking up recently. Linto hopes this trend will continue.

What's the secret to Daylight Donuts' success? Linto shares a few reasons the business is successful.

"Keeping the same cook is so important," Linto said. "It is the key to a successful restaurant, and my kitchen staff is great! Secondly, we try to treat our customers with respect. If you can keep your customers happy, you've got it made. Thirdly, I couldn't do what I do without the Lord. He gives me strength; I thank Him for every customer that walks through that door. Finally, the work here is tough. I lost my wife about a month ago; she loved this place and, so do I. Whatever your job is, you've got to love what you do."

MORE THAN 20 TYPES OF DONUTS:

- FRIED&BAKED CINNAMON ROLLS
- TWISTS
- FILLED DONUTS
- APPLE FRITTERS
- BEAR CLAWS
- MINI-CINNIS
- CREAM CHEESE DANISHES
- FRIED CROISSANTS
- TURN OVERS
- GOOEY BARS
- BROWNIES
- BISCUITS
- SAUSAGE ROLLS
- COFFEE AND OTHER DRINKS
- BACON, EGG AND CHEESE DONUT
- PUMPKIN SPICE DONUT (FALL)
- PUMPKIN BARS (FALL)

ADDRESS:

455 S MAIN ST., STATESBORO, GA 30458

HOURS:

M,T,R,&F: 5 A.M.-3 P.M.

W: 5 A.M.-2 P.M.

SA: 5 A.M.-12 P.M.

SU: CLOSED

Illustrations by Emily Øren



Sexual Assault in our community

Why early education matters

BY WILL PRICE

The George-Anne staff

Note to reader: The following story and its accompanying series may contain retellings of stories from sexual assault survivors. These stories may contain graphic imagery or word use. If you're interested in reading previous installments in our coverage visit thegeorgeanne.com.

"I need a pick-up line from the audience, anybody got one for me?" Phillip asked the crowd.

"What dat mouf' do?" hollered one new Georgia Southern University student sitting to the right of the stage, to the viral applause of the crowd.

"Ok, we can work with that," Phillip said, now joining the crowd in laughter.

Phillip, along with his partner performer Anne, began to reenact a scene from a would-be college party: Phillip, playing the clichéd alphamale, and Anne playing the equally clichéd naive freshman girl.

Eventually, after a long and cringe-filled wooing, Phillip, now effectively sitting on top of Anne, blurts out his secondhand pick-up line.

"What dat mouf' do?"

Three-hundred and fifty strong, the crowd, along with the performers, erupted in laughter.



Phillip Sheridan and Anne Dufault are actors and activists brought in by GSU for the annual Sex Signals shows. The shows, which are required viewing for freshmen, employ a light-hearted and comedic approach to discuss alcohol, gender, bystander intervention and sexual assault in the college environment.

Demanding the attention of the audience in sometimes awkward subject matter and always entertaining presentation style, the two performers poke holes in stereotypes and question social norms.

"If a guy has sex with ten girls in a week he's the man," Phillip said after the opening act of the show.

"But if a girl has sex with ten guys she's a slut, what's that about?" AnnWe quickly rebutted.

But wedged between the serious discussion, caricature denying and sex jokes lies an uncomfortable truth for Phillip and Anne.

"For some of the folks in the room at our show it's their first open discussion about sex, ever, period," Sheridan said after the show was over, "That's pretty concerning from our perspective,

that's why we do it."

Sex Signals stands as the only mandatory programming, class or other form of required education that includes discussion and information on sexual assault in a student's first semester at GSU; however, for most incoming freshmen, the hour-long show is a far cry from the schooling they've received before that point.

The state of Georgia maintains a hazy record on sexual education, particularly education and programming around sexual assault and rape. Since the early '80s, the state has followed the lead of the federal government in promoting abstinence-only education, which, according to research conducted and compiled by the Harvard Law School's Human Rights Program, is generally found to fail at addressing sexual assault.

"Most abstinence-only texts fail to meaningfully discuss rape, sexual assault, or coercion, and even fewer give guidance to victims of sexual violence," the report reads.

Starting in 1982, former President Ronald Reagan implemented federal funding to states that mandated abstinence-only education with the Adolescent Family Life Act, which laid the brickwork for multiple other federal funding efforts to take root to promote abstinence-until-marriage to K-12 students.

National abstinence-only guidelines address

KEY TERMS

There may be a few things in the article that are unfamiliar or you want to know more about. We'll touch on a few of them here!

Statesboro Regional Sexual Assault Center (SRSAC): provides emotional support and advocacy for individuals who have been sexually assaulted

Sexual Assault Response Team (SART): dedicated to raising awareness and educating students about sexual assault in our community. SART organizes Sex Signals, Take Back the Night, Walk a Mile in Her Shoes and the Clothesline Project.

Sexual Assault Student Educators (SASE): a student-run organization at Georgia Southern University aiming to increase awareness and provide an outlet for discussion about sexual violence

the subject of sexual assault in a provision made in 1996. One of the eight new statutes in the provision states:

"...teaches young people how to reject sexual advances and how alcohol and drug use increase vulnerability to sexual advances..."

What the statute does not do, however, is address how that is to be done and to what extent, leaving states in a bind.

Much of the federal funding offered to states teaching abstinence-based sex education curriculums was eliminated or has expired since former President George W. Bush made way for President Barack Obama, who supported a comprehensive health education overhaul when campaigning in 2007 and 2008.

Georgia, which fluctuates between first and third in teen dating violence as well as a middle-of-the-pack reported sexual assault rate according to the Center for Disease Control, has one mention of preventative sexual assault education or programming in its state's Department of Education code.

According to O. G. C. A § 20-2-314, which was updated in 2006 to add rape prevention to teen dating violence, the State Board of Education is required to establish "a rape prevention and personal safety education program and a program for preventing teen dating violence for grade eight through grade 12..."

"I've sat through Sex Signals and seen these students' faces when they go 'That's not cool?' How have they not had the chance to learn [consent] in 18 years, learn that consent is enthusiastic and throughout and it isn't unclear?" said Suzanne Shurling.

Shurling, who is a graduate assistant for SART, certified SRSAC victim's advocate and operator for SRSAC's crisis hotline, says the lack of education opportunity and understanding of the dangers of the college environment are often lost on new freshmen.

"Sometimes people think all of [SART's]

programming and events and discussion make Statesboro seem dangerous. People say 'that doesn't happen in Statesboro, we don't need that.' But we know that to be false, and it folks don't hear it in school they need to hear it somewhere," Shurling said.

Other than Sex Signals, GSU requires all students to take the Healthful Living course (HLTH 1520) as a precursor to graduating. However, students are not required to take the class in any specific time period, so long as the requirement is filled prior to graduation.

"The curriculum does its best to be comprehensive," said Dr. Bridget Melton, associate professor of exercise science and Healthful Living instructor at GSU.

According to Melton, the first topic covered in the class is sexual violence and sexual assault.

"We cover sexual violence the first week of school, we talk about safety; that's the first things they need and just being safe on campus. We know that is very high risk for women to be sexually assaulted early in the semester," Melton said.

This phenomena has earned the unofficial title of the "Red Zone."

The term, coined by Robin Warshaw in 1988, is the abbreviated way of describing the most statistically dangerous time of a college student's career in regards to sexual assault and violence.

Researchers pinpoint various specific timeframes in a student's first semester. Whether defined as the first three weeks, the first six weeks, the first two months or the whole first semester, all signs in research point to the early stages of a college career being the most susceptible to sexual assault.

The logic goes that as a student graduates high school and moves on to college, they are placed in a new and catalytic university environment that they are not acclimated to. Whether it be easier access to alcohol, new location, more parties, less time spent in class or lack of authority figures, the newly enrolled college freshmen is at a higher risk than the average college student.

The 2007 Campus Sexual Assault Study prepared for the National Institute of Justice found that more than half of sexual assaults occur in the first three and a half months of class in the fall term. Similarly, a 2008 study published by a group of researchers at Middlebury College found that far more reports of unwanted sexual experiences took place in the early parts of the fall semester.

According to UPD reports, seven out of the 15 sexual assaults, rapes or sexual violence incidents reported in the last three years occurred within the first three months of fall semesters. However, it is not possible to tell from the reports what academic year the students who reported were at the time of their report.

"I didn't rape her, it's as simple as that," Phillip said in Sex Signals' final act, which depicted Phillip's character on a question & answer game show with Anne playing the host.

The crowd booed, having had the details of the incident spelled out, even through an unreliable narrator like Phillip's intentionally despicable character, made the situation clear to them.

"So you got her drunk, took her to your room and then had sex with her after she said no?" a student asked down the right wing of the stage.

"Yeah, but she didn't fight back or anything. She just sat there, it wasn't like that, it wasn't rape," Phillip responded.

More boos.

This story, its subsequent stories and last Tuesday's story on the subject of sexual assault, sexual violence and rape on campus are part of an ongoing series to be published in The George-Anne over the course of the next few Tuesdays.



Did you have to sign one of these in high school?

Many schools in the state of Georgia have their students sign abstinence contracts at the conclusion of their health classes. According to a 2005 study in the Journal of Adolescent Health, students who take virginity pledges or sign abstinence contracts very rarely begin having sex at a later date than their non-contracted counterparts. The study also showed that those who do sign their sex life away are one-third less likely to use contraceptives and have equivalent rates of STIs.

If you or anyone you know has been affected by sexual assault, sexual violence or rape, contact one of these numbers for assistance:

(912) 478-5541: GSU Counseling Services (student can confidentially report cases of sexual misconduct or interpersonal violence here).

(912) 478-5136: GSU Equal Opportunity and Title IX Office

(912) 478-3326: GSU Dean of Students Office

(912) 478-0059: GSU Office of Student Conduct

(912) 478-5234: GSU Public Safety

(912) 764-9911 or 911: Statesboro Police Department

(912) 764-8888 or 911: Bulloch County Sheriff's Office

(912) 489-6060: SRSAC

(866) 489-2225: SRSAC Hotline

O.G.C.A § 20-2-314: The State Board of Education code mandating that the Board create programs for rape prevention, personal safety and teen dating violence for grades eight through twelve. The code also states that local boards can choose to implement these programs as they deem appropriate.

Opt-out policy: gives parents of K-12 students the ability to not have their child go through a health education course. This policy is present in the Georgia code.

Red Zone: period of time early in a student's college career when he or she is most at risk for experiencing sexual assault. This period can range from the first two weeks of school to the entire first semester.

Georgia Challenge

Eagles defeat the Bulldogs for the first time in program history

BY DERIK WUCHTE
The George-Anne staff

The Eagles competed in the Georgia Challenge this past Thursday and Friday in Athens. They played against Kennesaw State, Georgia and Georgia Tech, and went 1-2 in the Georgia Challenge, where they picked up some lessons and also made history as their record moves to 3-4 on the season.

A close 2-3 loss to Kennesaw State made for early disappointment to the Eagles on Thursday. Given their velocity and style of play, the team was confident entering that match. Coach Dustin Wood knew some factors working against the team, but not enough to keep them from winning.

"We knew we shouldn't have

lost that first match," Wood said. "We were the only team to play twice that day. We outplayed them in every aspect, but when it came down to crunch time, we couldn't pull through. It was one of those letdowns we had mentally. We're going to learn from that match."

Despite not getting a victory against Kennesaw State, Southern earned a historic program first later that night: defeating Georgia in volleyball.

"We really prepared for Georgia in the scouting reports," Wood said. "It was good to finally them in our program's history. Steph Spencer led the way. She was the best player in that gym that night. Lauren Reichard played really well that night as a freshman. Crysten Curry also had big plays. Just to beat them on their home court was great."

The match was televised on ESPN, giving people a chance to see what Southern was bringing to the table this season. The atmosphere for the match was good and it got Southern's product out there, as Wood explained.

Going from the 3-1 win over Georgia on Thursday night to the early match against Georgia Tech on Friday at 10 a.m., the Eagles felt some fatigue.

"We came out a little flat against Georgia Tech," Wood said. "It's tough playing a night match and then playing in the morning. We had three swings, but just couldn't do it. We physically just withered a bit."

The 0-3 defeat to Georgia Tech was tough, but it didn't set the Eagles back. They get an opportunity to host a tournament with three other teams in the

Hanner Fieldhouse this coming weekend. Tennessee State, Winthrop and Chicago State will be the competition, and the Eagles are happy to be playing somewhere comforting.

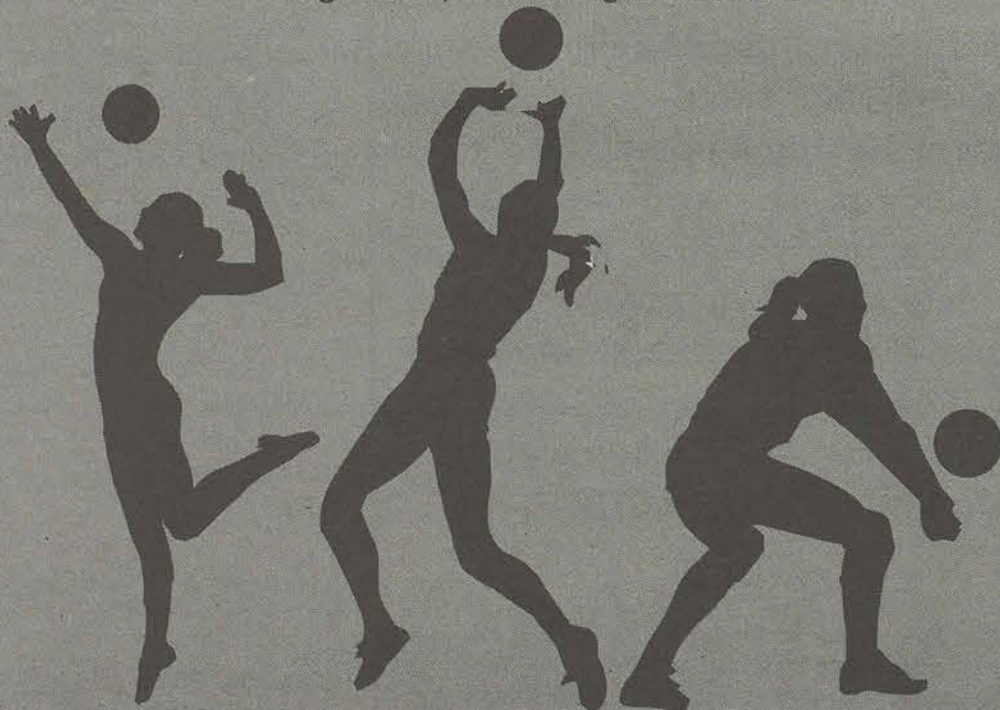
"We're looking forward to hosting a tournament this weekend. It'll be nice to be home for once," Wood said. "We got a really good schedule. Hopefully more fans will turn out. We're looking forward to getting better each and every day."

Play begins on Friday, Sept. 11 at noon. The Eagles will compete against the 0-4 Tennessee State Tigers then they will have a second match that day at 7 p.m. against the 0-7 Winthrop Eagles. Their final tournament match will be on Saturday at 10 a.m. as they face the 0-6 Chicago State Cougars.

Georgia Challenge

Teams:

Kennesaw State, Georgia,
Georgia Tech, and Georgia Southern



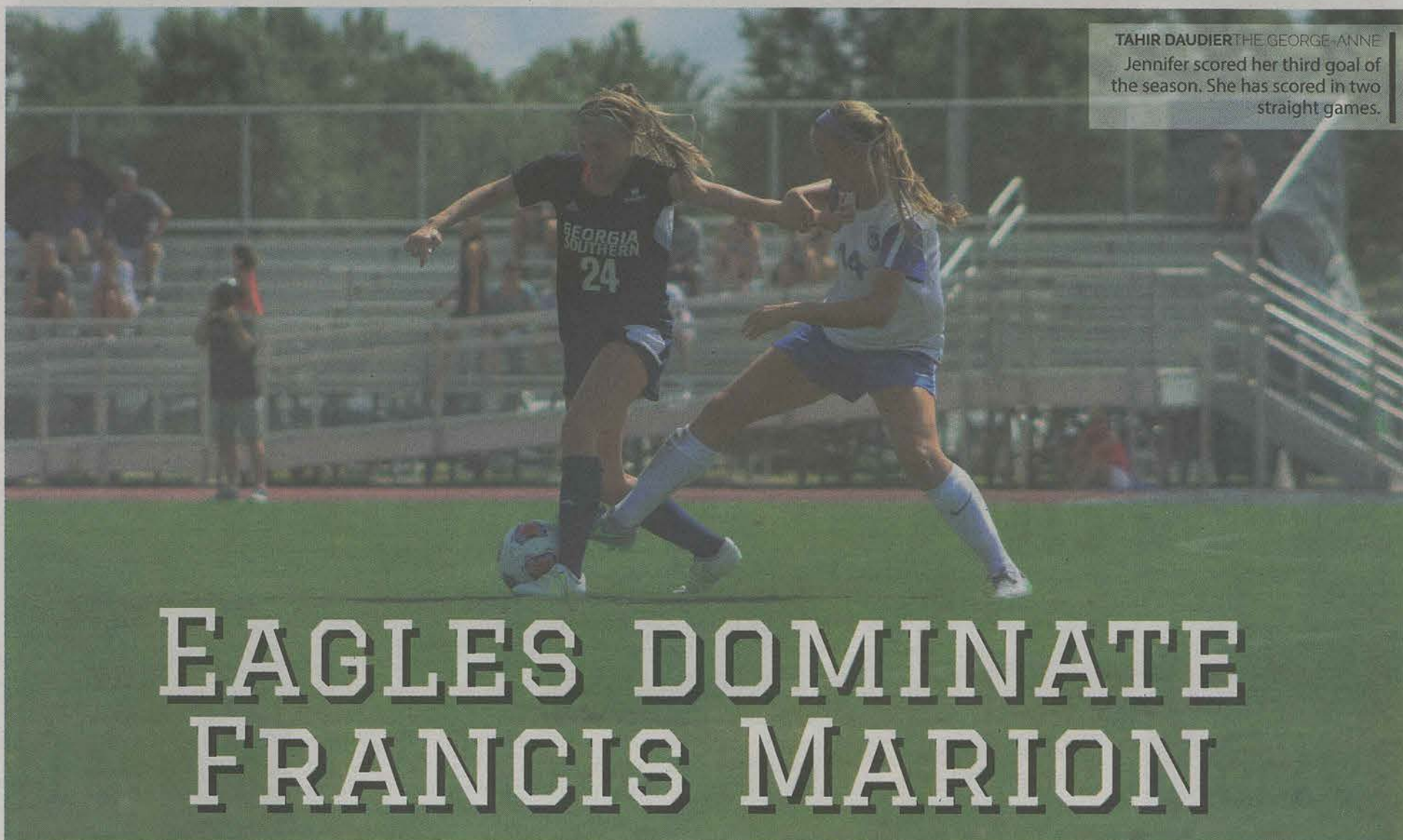
Georgia Southern Overall:

1-2

Georgia Southern-Kennesaw State
2-3

Georgia Southern-Georgia
3-1

Georgia Southern-Georgia Tech
0-3



TAHIR DAUDIER THE GEORGE-ANNE
Jennifer scored her third goal of the season. She has scored in two straight games.

EAGLES DOMINATE FRANCIS MARION

BY DANIEL WAUGH
The George-Anne staff

The Georgia Southern Eagles dominated on all fronts this past Friday in their 5-1 victory over Francis Marion University.

The first half began with aggressive play on offense from the Eagles. In the 10th minute, Angelica Wallerstedt scored off the corner with an assist from Nora El-Shami, giving the Eagles a 1-0 lead.

Throughout the half, defense was a major factor for the Eagles, allowing no shots on the goal from Francis Marion. Coach Brian Dunleavy said at the end of the game that defense played a big part in the game and led the Eagles to victory.

"A lot of what we did this week [in practice] was defensive stuff, particularly since we came off a weekend where we gave up six goals," he said.

Later in the first half, Paige Hoover scored in the 36th minute off an assist from El-Shami. Less than three minutes later, Jessica Scales scored with an assist from Cori Dulmage. At halftime, the score was 3-0.

The second half of play was all Ga Southern all the way. In the 51st minute of play, El-Shami scored off a penalty kick that gave the Eagles a dominating 4-0 lead. Jennifer Wittick followed with a goal of her own in the

67th minute, extending that lead to 5-0.

Defensively, Georgia Southern maintained great position in the second half, allowing only one goal, in the 85th minute, off four shots on goal.

The Eagles cruised to victory with a 5-1 win. Coach Dunleavy was proud of his team getting their first win of the season.

"It's nice to have that winning feeling," he said.

"This team has been playing really good soccer, so for them to get rewarded with the win, it should make them feel a lot better about themselves, and hopefully it should carry on to Wednesday night."

The Eagles next game is this Wednesday September 9 against Winthrop University at 6 p.m. at Eagle Field.

TAHIR DAUDIER
THE GEORGE-ANNE

Paige Hoover scored her first goal of the season against Francis Marion. She also has two assists in 2015.



Advertisement

Take Your Career Search To The Next Level

By Abigail Ormsby

The Office of Career Services has recently launched a new and improved Eagle Career Net for all students and alumni to utilize.

Eagle Career Net offers users many helpful resources. In order to access Eagle Career Net, one must log into my.georgiasouthern.edu and click on Eagle Career Net under the Student Employment tab.

To effectively utilize Eagle Career Net, it is important to learn about all it has to offer. Several new features of Eagle Career Net allow users to create a profile, connect with Career Services, watch career prep videos, chat with Career Services professionals, receive résumé critiques, and much more. Also, through the site students and alumni can search through hundreds of jobs, internships, and co-ops. There are helpful links that can provide users with more information on the posting as well as its application.

The Office of Career Services frequently hosts events; all of which are available to students and alumni. Because there are so many events, it can be hard to keep the details in order. To ease the confusion, Eagle Career Net has a helpful calendar to keep track of events, career fairs, on-campus recruiting, and any other events.



With the new updates that Eagle Career Net has received, the staff at Career Services is confident users will be able to easily access resources to help them prepare for career success.

Please come by the Office of Career Services during walk-in hours, Monday through Friday 12-4 p.m. for help on how to create your profile, search for an internship, co-op, full-time and part-time opportunities, and on how Eagle Career Net can help you!

CAREER SERVICES
Your Life. After College.

Brickstreet

Coca-Cola
2015

0 W 101

THE MOUNTAINEERS' AIR-RAID OFFENSE DOWNS THE EAGLES

BY ETHAN FLYNN
The George-Anne staff

The campus of West Virginia offered a true taste of what fall football is all about. The mountains, tailgates and fans decked out in West Virginia gear was a sight to see. An even better sight was Georgia Southern's True Blue fans who made the journey to root on their Eagles as they took the field to battle the Mountaineers. This was the first time the Eagles played the Mountaineers and first time ever competing against a Big 12 opponent.

Up front, the Eagles defensive line wanted to cause havoc by lightening up the strain on the linebackers and the secondary. However, they were significantly challenged by the Mountaineers offensive line. They gave up three touchdowns to three different running backs. Furthermore, this gave the Mountaineers the opportunity to run more easily and throw the ball and place a heavier strain on the linebackers and secondary.

In the middle, the linebackers needed to play both the run and the pass more equally because of the lack of pressure from the

defensive line. Throughout the game the linebackers were having problems keeping up with both the running and passing game.

"It was a team thing. They had a lot of deep plays against us. It's our job to apply pressure to the quarterback," linebacker Antwione Williams said.

The secondary would bear most of the burden of stopping the Mountaineer offense. In doing so, they looked gassed and outmanned against this "Air-Raid" style of offense. Mountaineers quarterback Skyler Howard completed 16-of-25 passes for 325 yards. The three longest passes were two for 57 yards and one for 26 yards.

"When you're playing three deep and you have a guy get behind you, that's a lack of execution. We had a lack of execution. We gave up too many deep passes," Coach Fritz said.

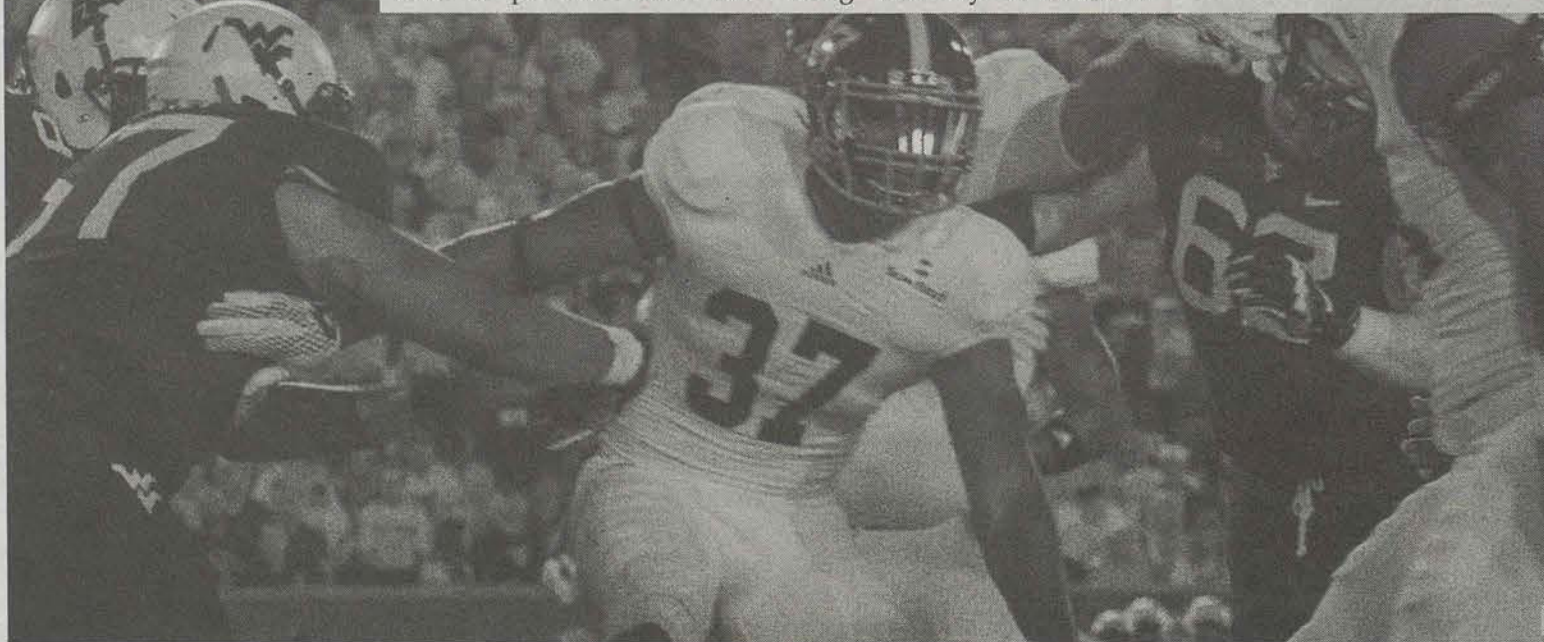
"They're a good football team. I didn't play good enough. I don't know if anybody did," safety Matt Dobson said.

However, Dobson felt there was a lot to learn from being beat by a talented

offense like the Mountaineers displayed in full offensive force. Dobson lead the Eagles in tackles for the secondary with eight total tackles.

This was the first time the Eagles had been kept from scoring since a 45-0 loss playing Montana in the 1995 I-AA playoffs. With that being said, the Eagles have some work to do both offensively and defensively. Defensively, the Eagles need to bounce back and prepare for another offense that likes to pass the ball. Western Michigan will be a difficult opponent just like West Virginia. The Eagles look to rally back and continue improving both mentally and physically on the defensive side of the ball. Coach Fritz knows the team needs to put this one behind them and get ready for the Western Michigan.

"We'll move on because that's the way you've got to do it. You don't want this game to beat you twice. We have a quality opponent we're playing next weekend," he said.



KIARA GRIFFIN THE GEORGE-ANNE



What Went Wrong

BY HAYDEN BOUDREAUX
The George-Anne staff

Losses in the season opener are tough on fans, coaches and players alike. A team must be able to move on and not let one mishap result in the loss of a season. To turn things around, it is important to understand what went wrong and how to fix it.

We can start with the most obvious problem with the offense last Saturday, the struggle to establish the pass. To state the obvious, things did not go well. Redshirt junior quarterback Favian Upshaw, playing in his first full game since high school, finished the game with two completions on 13 passes and four interceptions. There was a mix of dropped passes and poorly placed balls that just can't happen in big games. The interceptions were complete momentum killers that sucked the air out of the offense.

It is a rare feat for an opposing team to hold the Georgia Southern offense to less than 200 yards rushing and West Virginia allowed just 195. Looking at the statistics of the two main running backs may seem unimpressive at first glance. Junior Matt Breida rushed 17 times for 73 yards and redshirt sophomore

L.A. Ramsby picked up 28 yards and 10 carries. While the numbers may not seem impressive, the runners were typically carrying defenders and fighting for every inch.

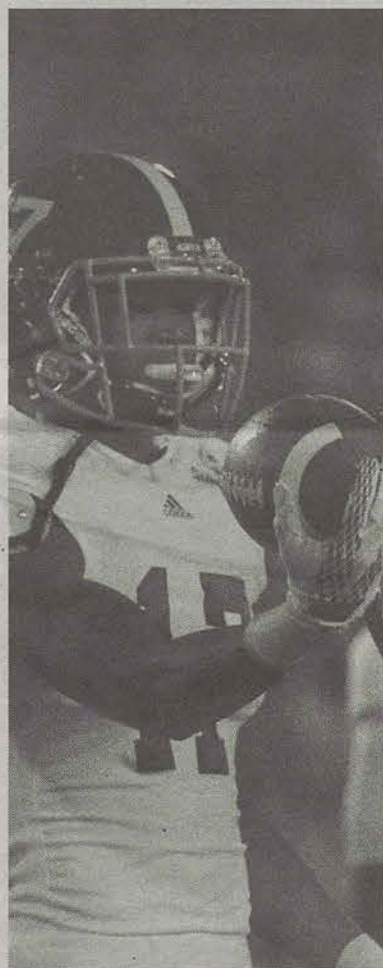
If it wasn't the running backs ability, there is one another place to look, and it is the offensive line. The issue wasn't so much the skill of the offensive lineman, but more how West Virginia's defense was able to implement their bread and butter defense to successfully stop the run. The Mountaineer defense is set up in a 3-3-5 where they use their defensive line to hold up the line, which clogs the gaps to force the running back outside where their linebackers make the tackle. They were able to execute this perfectly against the Eagles.

This trickles down to the running backs and really shows how much of their success is reliant on the big guys up front. Last season, we would see Breida get past the first level of defensive lineman, elevate to the linebackers and use his momentum to run through and arm tackle, then take the ball on a ride to the end zone. Saturday, fans could see Breida nearly break free several times, but because he was held up at the first level, he wasn't able to run through

the arm tackling linebackers. This could also be seen when Upshaw would carry the ball. When he was able to get around the outside and away from the line, he picked up two of the biggest plays of the night.

On the subject of Upshaw, many were down on the backup who was asked to fill the role against a great West Virginia team. It left several whispers of whether or not the addition of suspended quarterback Kevin Ellison would have made a difference. Ellison may have made quicker reads at times and made better decisions through the air but overall the results couldn't have been too much better with the problems up front. Upshaw is a capable quarterback and it is up to the offensive line to open up the running lanes against a tough defensive front.

West Virginia certainly has a great defense and that had a lot to do with the shutout last weekend. There is plenty of room for improvement in the Eagle offense and a humbling non-conference loss may set a tone of revenge moving forward against the Sun Belt opponents. The home opener is this Saturday against Western Michigan at 6 p.m.



BRANDON WARNOCK THE GEORGE-ANNE

TICKETS AVAILABLE SOON...

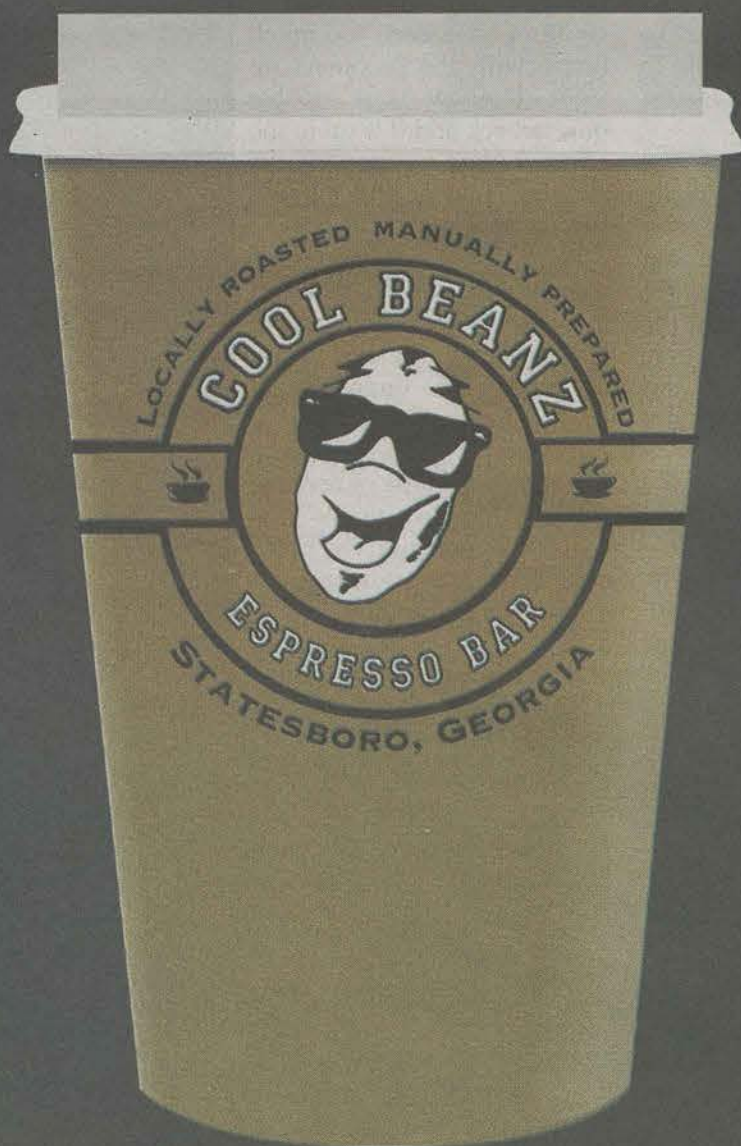
GEORGIA SOUTHERN EAGLES VS. UNIVERSITY OF GEORGIA BULLDOGS

STUDENT TICKETS SALES TO BE AVAILABLE FRIDAY, SEPTEMBER 11TH
TICKET PRICE PER STUDENT: \$52 (LIMIT 2 PER EAGLE ID)

ROAD RALLY

INCLUDES TRANSPORTATION TO AND FROM GAME + TICKET: \$75 PER STUDENT

TUNE INTO THURSDAY'S EDITION OF THE GEORGE ANNE FOR PURCHASE INFO.



GA *Joe*

THE GEORGE-ANNE

*Free coffee & hot chocolate
with your Copy*

*Located at the Russell Union
Every Thursday
8 a.m. to 10 a.m.*

Puzzles

9-8-15

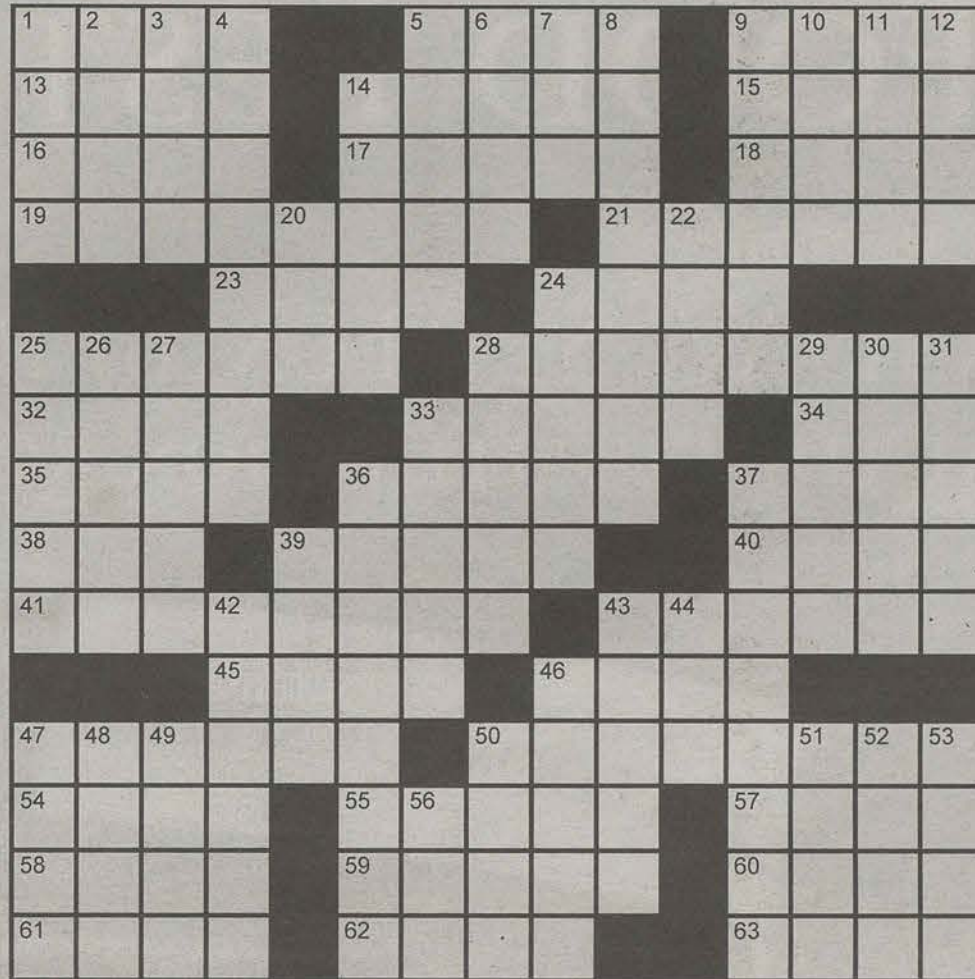
15

The George-Anne 9/8/15 Crossword

PuzzleJunction.com

Across

- 1 Without, on the Seine
- 5 Sp. ladies
- 9 Time to beware
- 13 Ship's front
- 14 Kind of mail
- 15 Manner
- 16 Teen affliction
- 17 Bay of Naples isle
- 18 Tell it to the judge
- 19 Beats badly
- 21 Primps
- 23 Songbird
- 24 Parroted
- 25 You can shoot them
- 28 Excessively agitated
- 32 Valhalla chief
- 33 Military chaplain
- 34 Harem room
- 35 Caroled
- 36 Lure
- 37 Expressed
- 38 "I" problem
- 39 Jogger
- 40 Skunk's defense
- 41 Like some models
- 43 Modest
- 45 Kind of seal
- 46 Bloke
- 47 Merry
- 50 Old two-seater
- 54 Coffee choice
- 55 Slangy denial
- 57 Impulse
- 58 Unadorned
- 59 Looks at lustfully



Copyright ©2015 PuzzleJunction.com

Down

- 60 Cameron of "In Her Shoes"
- 61 Catch sight of
- 62 Intimates
- 63 Pop
- 10 Big name in pineapples
- 11 1950's British P.M.
- 12 Salty septet
- 14 Blemishes
- 20 Schoolboy
- 22 Surrealist
- 24 Passion
- 25 Anniversary bouquet, at times
- 26 Words of wisdom
- 27 Low-growing pine
- 28 Confronts
- 29 Batrachians
- 30 Dummkopf
- 31 Close-knit group
- 33 Animate
- 36 Entrance improver
- 37 Lather
- 39 Molokai meal
- 42 Rundown
- 43 Chews the fat
- 44 "I've ___ it!"
- 46 Highway markers
- 47 Agree
- 48 Wood sorrels
- 49 Squeal
- 50 Lunar trench
- 51 Small combo
- 52 Quaint outburst
- 53 Iran's ___ Shah Pahlavi
- 56 ___ Khan

STATEMENT OF OPERATIONS

The George-Anne is the official student newspaper of Georgia Southern University, operated by GSU students using facilities provided by the university. The newspaper is the oldest continuously published newspaper in Bulloch County.

The newspaper is published twice weekly, on Tuesdays and Thursdays, during most of the academic year. Any questions regarding content should be directed to the student editor by phone at 912.478.5246 or at gaeditor@georgiasouthern.edu.

ADVERTISING: The newspaper accepts advertising. Inquiries may be made by calling 912.478.5418 or 912.478.0566. For questions e-mail ads1@georgiasouthern.edu.

The George-Anne receives additional support, in part, from the Student Activities Budget Committee. For more information, rate cards, or sample publications, contact the advertising manager or student media director. The advertiser is responsible for any errors in advertisements and its liability for adjustments is limited to the amount of space the error occupied in the ad. Further, the newspaper is not responsible for any damages caused due to an ad's omission from a particular edition and its responsibility solely is to reschedule the ad in the next regular edition at the regular advertising rates.

STUDENTS BEWARE: The George-Anne screens all advertisements prior to publication. The newspaper strives to accept ads for legitimate products and services only. Students are urged to exercise caution when replying to ads-- particularly those that require personal information. Students are also urged to report to the newspaper any suspicious offers which they might see in an ad.

PUBLICATION INFORMATION: The newspaper is printed by The Brunswick News in Brunswick, Ga.

NOTICE: Unauthorized removal of multiple copies from a distribution site constitutes theft under Georgia law, a misdemeanor offense punishable by a fine and/or jail time.

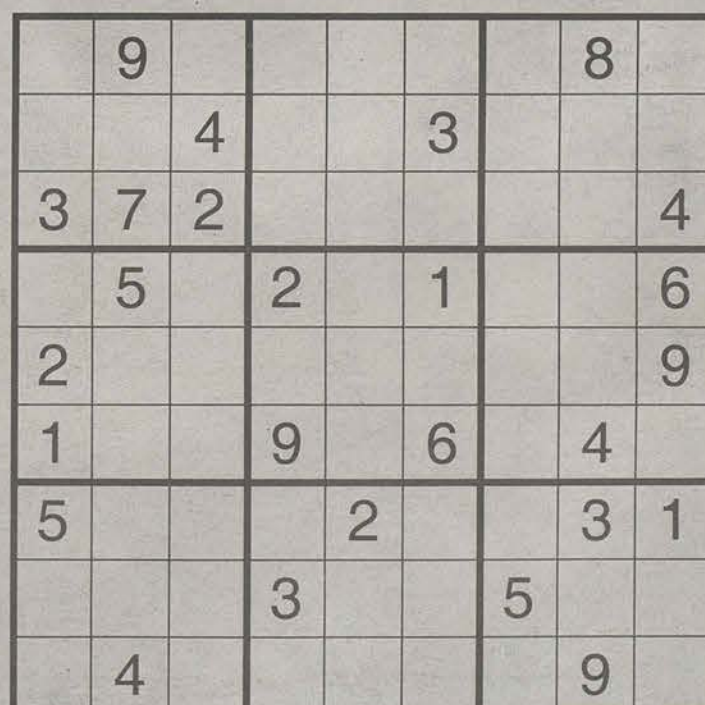
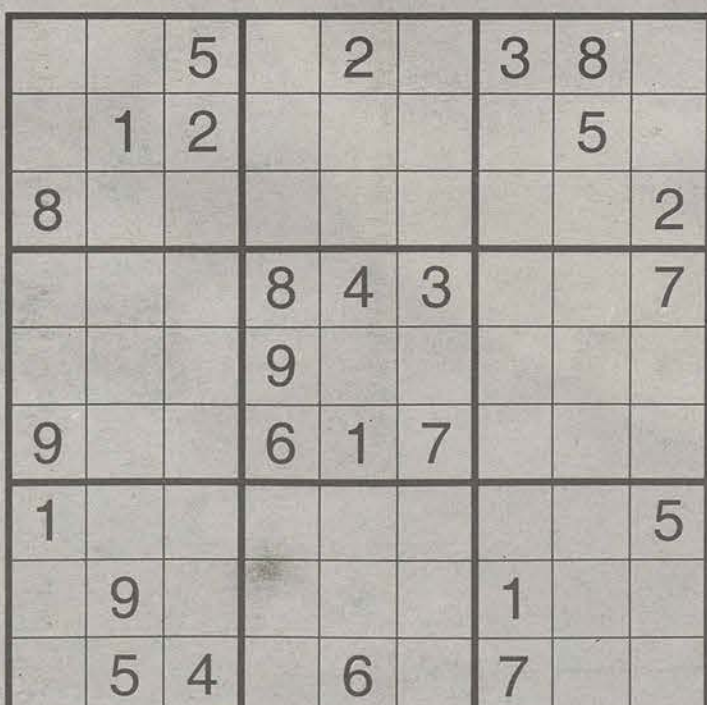
CORRECTIONS: Contact the editor at gaeditor@georgiasouthern.edu for corrections and errors.

STAFF LIST

Editor-in-Chief Lauren Gorla
Managing Editor Erinn Williams
Content Strategist Casey Cargle
Content Visualist Lauren Grizzell
News Editor Chris Rossmann
Features Editor Rashida Otunba
Sports Editor Robert George
Daily Editor DJ Fullmer
Opinions Editor Ian Leonard

Creative Manager Hailey Smith
Photo Editor Brandon Warnock
Design Editor Alex Smith
Features Designer Rebecca Davis
News Designer Erin Fortenberry
Sports Designer Margarita Suarez
Opinions Designer Rebecca Davis

Distribution Manager
Marketing Manager Cydney Long
Business Manager Taylor Norman



FIRST AMENDMENT FREE FOOD FESTIVAL

— THURSDAY, SEPTEMBER 17 —
11 - 2 PM AT THE RUSSELL UNION ROTUNDA

FREEDOM OF SPEECH

A large, close-up photograph of a sandwich on a checkered paper liner. The sandwich is cut in half, revealing a human skull inside instead of meat. A small white flag with the words "FREEDOM OF SPEECH" is stuck into the top of the sandwich. The background is dark.