

Georgia Southern University

Digital Commons@Georgia Southern

The George-Anne

Student Media

9-3-2015

The George-Anne

Georgia Southern University

Follow this and additional works at: <https://digitalcommons.georgiasouthern.edu/george-anne>

Recommended Citation

Georgia Southern University, "The George-Anne" (2015). *The George-Anne*. 2885.
<https://digitalcommons.georgiasouthern.edu/george-anne/2885>

This newspaper is brought to you for free and open access by the Student Media at Digital Commons@Georgia Southern. It has been accepted for inclusion in The George-Anne by an authorized administrator of Digital Commons@Georgia Southern. For more information, please contact digitalcommons@georgiasouthern.edu.

GA

THE GEORGE-ANNE

MARCHING THROUGH MOUNTAINEER COUNTRY

PAGE 8 AND 9

GSU makes big steps towards sustainability
Go Green on Page 4
Interview with Public
Information Officer
Q&A on Page 9

MILLENNIAL FINANCE: GETTING AHEAD

BY CHRISTOPHER CARTER
The George-Anne staff

Millennials, they say you will save the world but right now it seems you can't even fix your own finances. This generation is not saving for retirement, spending more than it earns and is afraid of the risk involved with investing in stocks.

According to the Wall Street Journal and Pew Research Center analysis, millennials are now the the largest generation in the American workforce. Here's advice from the professionals on how to handle your money.

Don't spend more than you earn.

A majority of millennials already have student and auto loans to deal with; do not rack up credit card debt as well. Rachel Ritlop, SISU Programs founder, suggests creating a

budget for yourself, saving for things you want and, when using a credit card, making sure you can pay off the balance within a month.

Start saving for retirement.

It's never too early and, with compound interest, the earlier you start the better. Ritlop said, "My two personal favorite ways to save for retirement (there are more): Roth IRA and a 401k. A 401k

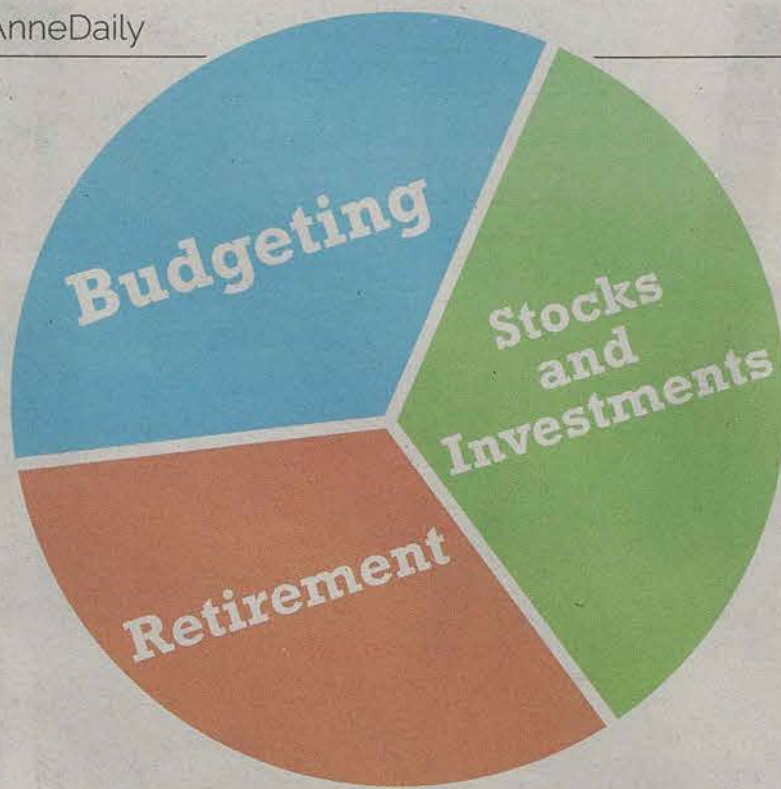
program is typically through your place of employment. Find out if your company has a matching program, you should be putting in as much money as they will match (Hello free money!)."

Don't be afraid of stocks and investments.

CNBC, in reference to a Bankrate.com survey, finds that only 26 percent of people under the age of 30 have investments in the stock market. On Monday, the stock market took a bit of a scary downturn with the Dow Jones industrial average

plummeting 1,000 points, which may be a little scary to people who don't know much about stock. However, CNBC said the dip is good news because you can get more "bang for your buck" when you buy low.

<http://socalledmillennial.com/2013/11/05/why-are-the-generation-x-and-millennial-birth-years-so-muddled/>
<http://blogs.wsj.com/economics/2015/05/11/millennials-become-the-biggest-generation-in-the-u-s-workforce/>
<http://www.cnbc.com/2015/08/25/millennials-may-benefit-most-from-the-selloff.html>
<http://sisuprograms.com/worst-money-mistakes-broken-down-by-age-groups/>
<https://mail.google.com/mail/u/1/#inbox/14f65be3d4f6e6c1>



It's an intimidating world but play it smart and you'll do just fine.

What's Gus Watching?

by Johnny Lu

ORANGE IS THE NEW BLACK
BATES MOTEL
THE WALKING DEAD
AMERICAN HORROR STORY
DAREDEVIL

HOUSE OF CARDS
BLOODLINE
HALT AND CATCH FIRE
BOB'S BURGERS
THE KILLING



WEATHER BAR

9-3-15

Friday



High: 93°
Low: 70°

Saturday



High: 87°
Low: 68°

Sunday



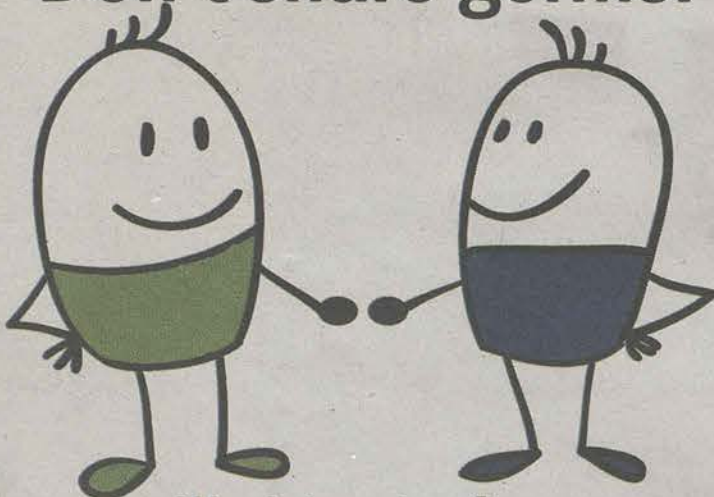
High: 84°
Low: 67°



"FALL IS SO CLOSE I CAN TASTE THE PUMPKIN SPICE!"

College Health Tip #1

Don't share germs.



Wash hands often.

Use fist bumps instead of handshakes.



SOUTH GEORGIA
IMMEDIATE
CARE CENTER

1096 Bermuda Run Road
in Statesboro's Market District
p - 912-871-5150
getIMMEDIATEcare.com

Walk-in medical care close to campus.
Caring and confidential treatment.
Most insurance, cash and credit cards accepted.

Monday - Friday 9:00 am - 8:00 pm
Saturday 9:00 am - 5:00 pm
Sunday 12:00 pm - 5:00 pm

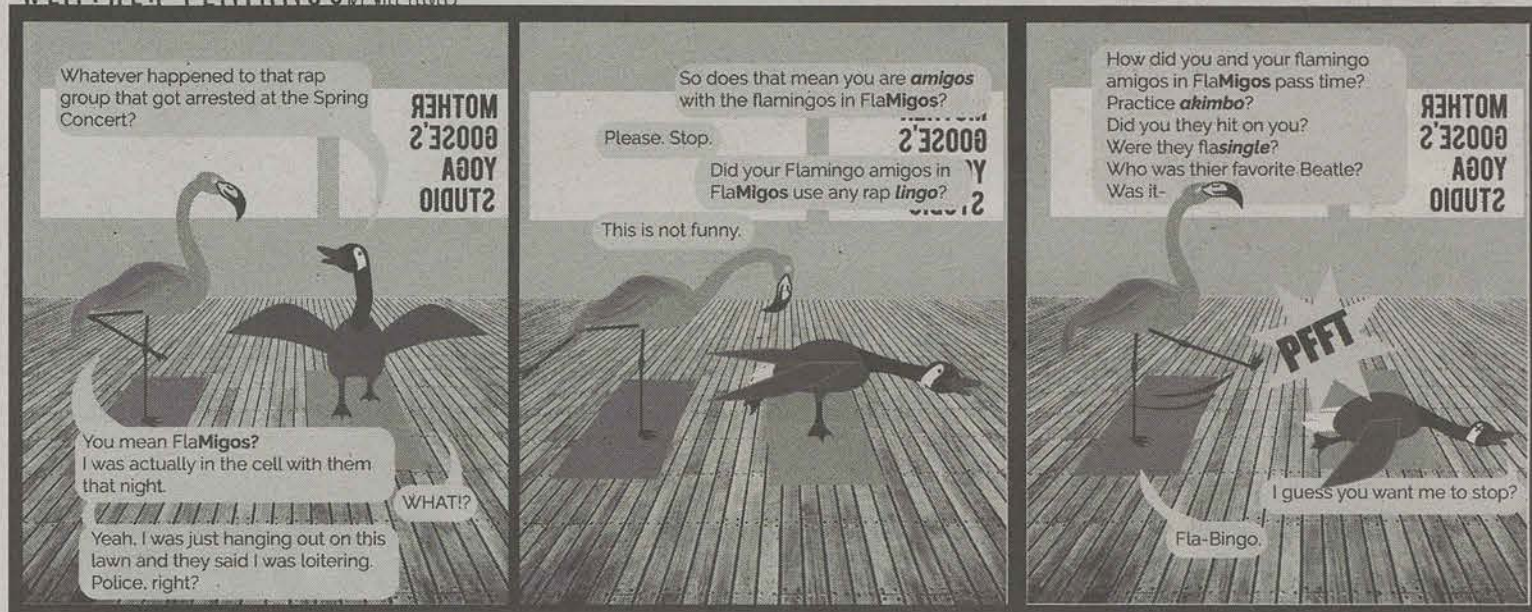
The Circle

GSU
TRIVIA

We quizzed some Georgia Southern University students with trivia from some of the top things you should know about GSU. How much do you really know about your school?

- 1 Who was the first African-American to deliver a major address to GSU's campus?
- 2 Who was the first band to play their first U.S. college act at GSU?
- 3 What restaurant was originally started by two GSU students?
- 4 Which GSU alum appeared on Big Brother 6?

WEATHER FLAMINGO! PUN POLICE BY WILL REEBLES



STATEMENT OF OPERATIONS

The George-Anne is the official student newspaper of Georgia Southern University, operated by GSU students using facilities provided by the university. The newspaper is the oldest continuously published newspaper in Bulloch County.

The newspaper is published twice weekly, on Tuesdays and Thursdays, during most of the academic year. Any questions regarding content should be directed to the student editor by phone at 912.478.5246 or at gaeditor@georgiasouthern.edu.

ADVERTISING: The newspaper accepts advertising. Inquiries may be made by calling 912.478.5418 or 912.478.0566. For questions e-mail ads1@georgiasouthern.edu.

The George-Anne receives additional support, in part, from the Student Activities Budget Committee. For more information, rate cards, or sample publications, contact the advertising manager or student media director. The advertiser is responsible for any errors in advertisements and its liability for adjustments is limited to the amount of space the error occupied in the ad. Further, the newspaper is not responsible for any damages caused due to an ad's omission from a particular edition and its responsibility solely is to reschedule the ad in the next regular edition at the regular advertising rates.

STUDENTS BEWARE: The George-Anne screens all advertisements prior to publication. The newspaper strives to accept ads for legitimate products and services only. Students are urged to exercise caution when replying to ads-- particularly those that require personal information. Students are also urged to report to the newspaper any suspicious offers which they might see in an ad.

PUBLICATION INFORMATION: The newspaper is printed by The Brunswick News in Brunswick, Ga.

NOTICE: Unauthorized removal of multiple copies from a distribution site constitutes theft under Georgia law, a misdemeanor offense punishable by a fine and/or jail time.

CORRECTIONS: Contact the editor at gaeditor@georgiasouthern.edu for corrections and errors.

STAFF LIST

Editor-in-Chief Lauren Gorla
Managing Editor Erinn Williams
Content Strategist Casey Cargle
Content Visualist Lauren Grizzell
News Editor Chris Rossmann
Features Editor Rashida Otunba
Sports Editor Robert George
Daily Editor DJ Fullmer
Opinions Editor Ian Leonard

Creative Manager Hailey Smith
Photo Editor Brandon Warnock
Design Editor Alex Smith
Features Designer Rebecca Davis
News Designer Erin Fortenberry
Sports Designer Margarita Suarez
Opinions Designer Rebecca Davis

Distribution Manager
Marketing Manager Cydney Long
Business Manager Taylor Norman

Sexual assault in our community

Letter from the Editor



LAUREN GORLA

Lauren is a senior multimedia journalism from Warner Robins Ga.

Think about how many women you come in to contact with each day. You stand next to them in line at Chick-fil-a. You pass by hundreds of them each week on the pedestrian and hang out with them on the weekends either at home, in a bar or run into them around Statesboro.

Have you ever thought that for every five college women you see, one of them will be sexually assaulted while in college? If you're reading this in a class right now you're probably sitting around 20 women, four of which will go through this experience; a terrible, horrible, possibly life-threatening experience that did not have to happen.

I am a 20-year old female student on our campus who has been fortunate enough to never experience sexual

violence, sexual assault or rape, but I know that women who have gone through it exist all around me. I'm not the type to anger easily, but in recent weeks of discussing sexual assault on our campus I have grown more and more upset at the unfortunate reality we live in.

Most of us had some form of sex education in high school, middle school or even elementary school depending on where you grew up. Sure we learned how to put a banana on a condom, but did any teacher lay out how to deal with the attractive guy in the bar that keeps placing his arm lower and lower on your waist? Or the confident, older junior that buys you shot after shot and offers you her couch to sleep on for the night? These are the types of people you will come into contact with more than a creepy attacker with a knife in an alleyway.

Being forced into a sexual act is never okay, man or woman. And yes, I include both men and women in that statement because rape against men by women does happen. It may not be as prevalent, but it's just as worth noting. No one should feel unsafe around their peers or feel like they always have to be on guard against being raped. If you were drunk and didn't want to have sex with someone, "it's college" is not an acceptable excuse.

Sexual assault happens to

our students and to students all over the country. Period. By trying to deny this isn't a problem or that it can be swept under the rug for young men and women to deal with on their own, you dear reader are incorrect.

We need to ask ourselves what we can do to make a difference. Maybe it means taking care of the girl in the bar by herself that can't walk in a straight line anymore. Maybe it's about educating young men and women about what consent really means, and how the word no will always and forever mean no. Maybe it's about fostering a safe community for our students to feel like they can speak up if an assault happens, whether that be to a friend or someone within the University.

It's up to our community to make this happen. From the president all the way down to the new freshman on campus, we all have to do our part in helping each other.

**1 IN 5
WOMEN
WILL BE
SEXUALLY
ASSAULTED
WHILE IN
COLLEGE.**

Our series on sexual assault will continue this upcoming Tuesday. Send us your comments or questions to [@TheGeorgeAnne](https://twitter.com/TheGeorgeAnne) with [#HearTheirStories](https://twitter.com/HearTheirStories).



The George-Anne welcomes letters to the editor and appropriate guest columns. All copy submitted should be 350 words or fewer, typed, and sent via email in Microsoft Word (.doc/.docx) format to letters@georgiasouthern.edu. All submissions must be signed and include phone number for verification. GSU students should include their academic major, year and hometown. The editors reserve the right to reject any submission and edit submissions for length. Opinions expressed herein are those of the Board of Opinions, or columnists themselves and DO NOT necessarily reflect those of the faculty, staff, or administration of GSU, the Student Media Advisory, Student Media or the University System of Georgia.



KIARA GRIFFIN THE GEORGE-ANNE

GEORGIA SOUTHERN GOES GREEN, GROWING GREENER

BY MATT SOWELL
The George-Anne staff



KIARA GRIFFIN THE GEORGE-ANNE



KIARA GRIFFIN THE GEORGE-ANNE

When plans were made to build a new biology building, Georgia Southern University had one goal in mind: make it energy efficient. The same plan helped create the Recreation Activities Center and the renovation of Lakeside Dining Commons.

The university as a whole has received national attention for their efforts in creating a more ecologically friendly environment for students. The Center for Sustainability is thriving, constantly coming up with new and innovative ways to make GSU a green place.

According to Doctor Lissa Leege, the director of the Center for Sustainability, it all started in 2012 when students of GSU voted to create a sustainability fee. The entire project was student lead, from the proposal to the voting.

"There was a 75 percent majority in favor, which is incredible," Leege said. "It was the highest majority of anything else being voted on at the time. Since then, we've been able to allocate funds to all kinds of sustainability

projects around campus."

Leege explained that when students pay the \$10 green fee, the money is split in two ways. Half of the funds are used specifically to support the Center for Sustainability. The other half goes to sustainability grant projects.

"Any student, employee, or staff member can apply for a grant to take-on a sustainability project. In our first year we allocated \$428,000 to campus projects, which is just mind blowing" Leege said.

Some of the money went to make some adjustments to the electric golf carts on campus. They were upgraded with solar panels so that they can charge while they are driven. Another portion of the money went to a new "storm water park" located near Forest Drive. The area collects rain water runoff to protect the watersheds from various toxins. There's even a new bridge to make it aesthetically pleasing.

"A lot of planning goes into all of this, especially the buildings," Leege said. "Our architects have worked hard to make these

“
ANY STUDENT,
EMPLOYEE, OR
STAFF MEMBER
CAN APPLY
FOR A GRANT
TO TAKE-ON A
SUSTAINABILITY
PROJECT.”

DR. LEEGE
THE DIRECTOR OF THE
CENTER OF SUSTAINABILITY

buildings as sustainable as possible. They produce as little construction waste as possible, recycle waste, buy materials from nearby radiuses, choosing sites that aren't knocking down forest, specific lighting, choosing materials that don't release toxins inside of the buildings, water conservation geared bathrooms, even the landscaping."

In October, the Center for

Sustainability will celebrate Greenfest, a celebration of all things sustainable held in downtown Statesboro. Melanie Sparrow, a graduate assistant for the center, is planning this year's event.

"It's our sustainability event, it's gotten bigger and better every year," Sparrow said. "We're hoping to have at least 30 vendors this year."

The event happens in tandem with the farmer's market, which makes for an exciting Saturday morning in downtown Statesboro.

One of the draws of this year's Greenfest is the "Pallet Challenge." A competition to see who can make the most impressive innovation out of used wooden pallets. Guests are invited to form teams of five to participate, entry is free and prizes will be given to the winners.

Another exciting event put together by the Center for Sustainability is the new Student Community Garden, located across from the Williams Center.

"The idea started with the Green Ambassadors and CFS.

Scott Blair and volunteers over the summer started the process of the garden," Alexcia Taylor, an intern with the Center for Sustainability, said.

"It works by Scott and I choosing seasonal seeds for the garden. CFS sends out emails to volunteers and we have a work day of planting and maintaining the garden. The weeds or vines clipped are added to the mini compost bin beside the greenhouse. The garden is important to campus because students are able to be a part of their food. They get to see it from the beginning as a seed and then harvest it. It also provides a shorter route to enjoy local food. Students can get involved by contacting CFS through email or looking out for the cfs Instagram," she explained.

The Center for Sustainability isn't slowing down, with new projects beginning soon, they will continue to make the Georgia Southern campus a greener place for everyone.

DISCOVER: LET'S TALK FIRE

A HOBBY, A LIFESTYLE, A NEW GEORGE-ANNE SERIES

Undeclared? Unhappy with a major? Bored?

'Discover' is a new article series here to help give a voice to student clubs, societies, and opportunities that are unknown to much of the campus.

BY MEG ELWOOD
The George-Anne staff

"Fire's flashy, fire's fascinating, fire's sexy and everybody likes fire," Dr. Wood, professor of anthropology, said. "An understanding of fire is important to being a human being".

It could have been a usual class taught in a classroom about how humans survived in the early days of our times. Instead, 11 students stuffed themselves in a campus van to go off and experience early survival skills themselves. The van was filled with chatter about past field schools and memories the students shared as they drove to the Recreational Fields. It felt like the classic 90's movie "bus to camp" experience.

The Statesboro summer air was hot and humid as usual, but a cool breeze would pass

through the corridors of the picnic cover, making the gnats and heat a little more bearable. Dr. Wood arranged various sizes of wood on the floor of the covered area and began to wrap a pencil shaped piece of wood between rope connected to the ends of a large stick fashioned into a bow. He pulled out a small bundle of pine straw with a white fluffy material inside and placed it beside a small block of wood. It looked as if he had plucked a bird's nest right out of a tree.

Placing the large pencil into a hole of a board, he began to pull the bow back and forth. Faster the bow moved. The friction sent loud, squealing chirps. As a breeze blew, one could smell a hint of smoke. It smelled like survival.

"When you see a little bit of smoke, that's when you get after it – that's the time to not quit," Dr. Wood said. Then a crackle was heard and the ear-piercing chirps went silent. Quickly and quietly, Dr. Wood held the small nest in his hands and blew. The students waited quietly.

A long wisp of grey smoke rose from the nest, crackles

came from inside the bundle he held in his hands and the trail of grey turned bright orange into a flame. It is a craft for those with patience and in the wild, desperation.

THE MATERIALS:

Bow Drill: A slightly bent and sturdy piece of wood with rope connected to both ends.

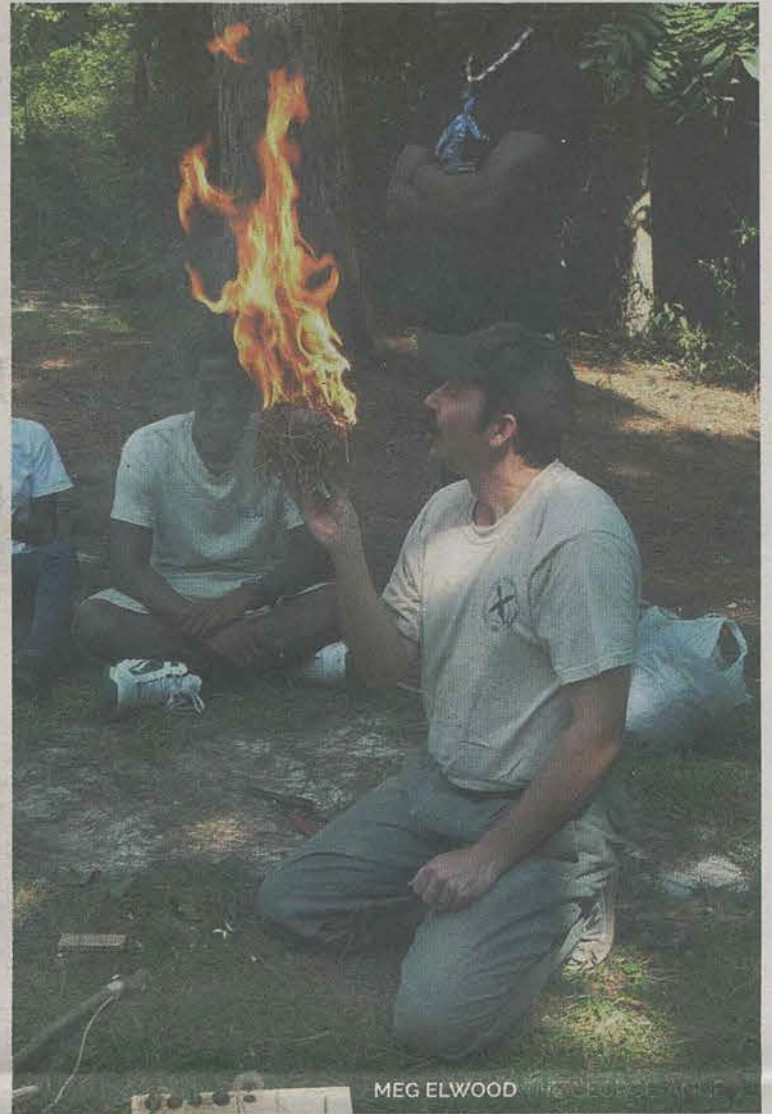
Spindle: A pencil shaped piece of wood used as the drill-bit to create friction.

Bearing Block: Rock, wood, or even bone with a small groove to hold your spindle in place while driving the bow back and forth.

Hearth Board: A rectangular block of wood with two cone-shaped holes and small divots to allow ember's to collect from the spindle.

Welcome Mat: A small square piece of wood, or even bark, placed under a groove of the board to catch the embers.

Tinder Nest: A bundle of usually dried pine straw stuffed with cattail fluff to hold the embers and create a fire.



MEG ELWOOD

SEX & Chocolate



This is not your run of the mill sexual health presentation. Ask all of your burning sexual health and relationship questions in a fun, no holds bar atmosphere while eating chocolate.

TUESDAY, SEPTEMBER 8 @7PM
WILLIAMS CENTER MULTIPURPOSE ROOM

EAGLES OPEN IN MORGANTOWN

Defense

BY ETHAN FLYNN
The George-Anne Staff

The highly anticipated 2015-2016 football season is nearly here for the Georgia Southern Eagles. In two days' time, the Eagles plan to shut down the West Virginia Mountaineers offense from the opening whistle. Considering this is the first game of the season, the Eagles are looking more than capable of taking the field defensively to "GATA" in primetime form. After a legendary season last year, the Eagles are poised to once again win the Sun Belt Championship.

Last season, the Mountaineers ranked 13th in the FBS with total offense, averaging almost 500 yards per game. With the opportunity to play a solid offensive Big 12 school like WVU, this is once again a proving ground for why the Eagles are more than capable of contending with the "big dogs" and how they can easily show them up at Milan Puskar Stadium. However, this will be no easy task for the Eagles defense. Last season, the Mountaineers demonstrated their capability of scoring against some of the better competition they played. For example, the Mountaineers played the University of Alabama their first game and scored 123 points. They would lose the game by a mere 10 points, 33-23 but threw the football for 365 yards.

As far as the rushing game goes for the Mountaineers, they tallied up 2,376 yards the ground and 4.2 yards per carry. Running back

Wendell Smallwood was credited with 722 yards rushing and looks to do the same, if not better, this year. On the Mountaineers offensive line, they've got the size. The leader of the offensive line this year is 6-foot-4, 297-pound center, Tyler Orlosky. However, their best offensive lineman is 6-foot-5, 312-pound left tackle, Adam Pankey. The rest of their offensive line is relatively inexperienced and presents a weakness for the Eagles defensive line to attack. In particular, from the defensive tackle positions, Jamal Johnson and Jay Ellison will be looking to apply pressure on the inside. On the outside, from the defensive end positions, Bernard Dawson and Lennie Richardson will look to make it past the offensive line to force some sacks to slow down the passing game. Behind the big men, from the linebacker positions, Antwione Williams and DeShawntee Gallon look to prevent the rushing game from getting past the second level. Chris DeLaRosa also looks to make a contribution as well.

Considering the passing game was the best aspect of the Mountaineers offensive game plan last year, the Eagles secondary will have to make big time stops to prevent the points from racking up. The Mountaineers offense was credited with 4,121 passing yards on last season. At the Mountaineers quarterback position this season will be first-year starting junior, Skyler Howard. In four games last season,

Howard was credited with 829 yards passing and 8 passing touchdowns. The Mountaineers veteran wide receiver to watch will be Jordan Thompson. The other wide receivers, Shelton Gibson and Daikiel Shorts, are potential threats as well.

The Eagles safeties, Matt Dobson and Antonio Glover, will look to disrupt the wide receivers from ever getting on track in the "air-raid" offense WVU Coach Holgorsen implements. Also looking to play a major role, from the corner positions, Darrius White and Caleb Williams, will need to step up and play to their best abilities.

The entire Eagles defense is looking forward to the opportunity of proving they can play consistently at the FBS 1-A level. The Eagles ranked 49th against the run and 59th overall in FBS play. Led by defensive coordinator, Coach Jack Curtis, the experience that he has in

situations will prove invaluable as he begins another season with the Eagles. As far as the defense goes, the Eagles are looking healthy and have lots of depth at every position.

With all things considered, the Eagles

defense has a really solid chance to make primetime plays and shut down the Mountaineer offense. Yes, the Mountaineers are a more recognized team, but it doesn't matter when it comes to Georgia Southern football. We will play any opponent, anywhere, at any time. Looking back on a couple of the big games last season, I wanted to further reiterate what I previously

primetime

BRANDON WARNOCK THE GEORGE ANNE

2015 SEASON

Offense

BY HAYDEN BOUDREAUX
The George-Anne staff

The wait is finally over. In just two days, junior quarterback Favian Upshaw and the Eagles will take on the West Virginia Mountaineers in Morgantown to see which team will pick up their first win of the season.

On offense, the Eagles will certainly have their hands full with the Mountaineer defense that returns nine starters, including eight seniors and two juniors. Last season, they allowed an average 27.6 points and 168 yards rushing per game which led them to a 7-6 record including a win over #4 Baylor. A lot of offseason work has been focused

around improving upon their established defense. They believe that last year was their rebuilding year and now all the pieces are in place to make a successful run at their schedule.

One of the games reviewed for this upcoming matchup was a game last year between the Mountaineers and TCU. While it does have its differences, TCU lines up similarly to the Eagles and does take advantage of the spread offense. Reviewing game footage from last year will give hints on what the Mountaineers may do this year to combat Georgia Southern.

For example, we know that they will line up in their 3-3-5 defense but we can also observe that they like to stand up their defensive linemen when the opposing offense switches into the spread. Standing up at the line of scrimmage can give them the ability to see into the backfield better and be able to read where the ball is going.

However, this makes it easier for a skilled offensive lineman to get under their pads and drive them off of the line of scrimmage.

The defensive line is more likely to

clog up holes than make tackles. Their jobs rely more on slowing down the running backs and allowing for the athletic linebackers to come in and make the tackles. The defensive line will see two of its three starters return in this opening contest. Senior nose guard #93 Kyle Rose will be the anchor as the only senior on the line. Rose totaled for 35 tackles last season after starting every game for West Virginia.

Once sophomore running back Matt Breida clears the defensive line, his next concern will be the linebackers. With the way their defense is arranged, the linebackers are meant to be the powerhouses of the defense and make big plays. Most notable among these linebackers is redshirt senior #35 Nick Kwiatkoski, who led the team last season with 103 tackles and 11.5 tackles for loss. Kwiatkoski, who started every game last season, will be assisted by two other seniors at linebacker who combined for 45 tackles.

In order to free up the ground game, Upshaw will have to take to the air and spread out the West Virginia defense. However, this may be a tall order against their secondary. The entire West Virginia defensive backfield consists of last season's starters and they are the stronger side of the defense. Two of the best players on the defense are senior safety Karl Joseph and junior cornerback Daryl Worley. Joseph was a hard hitting safety that was

second on the team with 92 tackles and led the team with three forced fumbles. Worley is a very athletic corner who make great open field tackles and still defend the pass. Worley compiled 52 tackles last season, including 4.5 tackles for loss and three interceptions.

The Mountaineers undoubtedly plan to start their season with a win over a team they know little about. However, I do believe the Eagles have them worried after their rushing performance last season and their Sun Belt record. West Virginia is a traditional FBS program that does not expect to lose to a newer FBS school and a win would be a devastating blow to their psyche. Moreover, a win for the Eagles could be one of the biggest victories in Georgia Southern history.

While the Eagles have played in numerous national championships, several nail-biting playoff games and most recently a win over the University of Florida, this win would be big in cementing their status in college football. The

BRANDON WARNOCK THE GEORGE-ANNE

Eagles take flight to Costa Rica

BRANDON WARNOCK
THE GEORGE-ANNE

Sophomore Mike Hughes goes for a layup against App State. He will have a major role this season.

BY MARQUS WILLIAMS
The George-Anne staff

The Georgia Southern Eagles basketball team had an international experience this past summer. They traveled to Costa Rica to play Costa Rica's national squad, its U23 team and a nationally selected group of players.

The Eagles Head Coach, Mark Byington, took this opportunity as a chance to build his team's chemistry as they work to fill in the voids of last year's team leadership.

"I wanted our team to build chemistry and I wanted to see guys step up in a role of leaders. We did lose a lot of guys last year who had that leadership role, but we have guys that can do it on this team," Coach Byington said.

He believes the team can be productive and exceed as long as they maintain the responsibilities of playing in sync and getting better everyday from walk-on to graduation.

The Eagles basketball team is comprised of all freshman and sophomores except for the graduate transfer from Marshall, DeVince Boykins, who is eligible to play right away.

"[Boykins] really the only guy on our team that has been through multiple years of college and has had plenty of in game experience throughout his years. He's very versatile, a very good athlete, and has played in numerous big venues and hopefully he steps up and helps us out this year," Coach Byington said.

Byington expects his team to work hard to become the best team they can be. He believes that as long as they can do that, the long term goals will be taken care of.

The Eagles season starts on Friday, November 13 against Webber International at Hanner Fieldhouse. They have road games against Ole Miss, Auburn, and Duke before opening up conference play on December 30 at Texas State.



SEPTEMBER 1 - SEPTEMBER 8, 2015

Come visit the newest addition to the Georgia Southern campus, our

SHOOTING SPORTS EDUCATION CENTER

The SSEC is a Public Facility dedicated to developing the knowledge and skills necessary to enjoy a life-long participation in shooting sports. Please do not bring your firearm or any archery equipment during this time.

HOURS OF OPERATION

Monday - Thursday: 9:00a.m. - 10:00p.m.
Friday: 9:00a.m. - 9:00p.m.
Saturday: 8:00a.m. - 7:00p.m.
Sunday: 1:00p.m. - 10:00p.m.

The Shooting Sports Education Center is located in a school safety zone, and Georgia Law 16-11-127.1 only allows firearms and archery equipment in a school safety zone if one of the following criteria are met:

1. For an organized sport shooting event or firearms training course
2. Law Enforcement Officers in the performance of their duties
3. Individuals authorized in writing by the University

The authorization or approved user status will include a written exam, a practical exam and a background investigation. This status will be valid for one year. Individuals new to archery or sport shooting will be able to achieve this status through an introductory training course that will be offered on a regular basis.

WWW.GEORGIASOUTHERN.EDU/SSEC
(912) 478-SSEC (7732)



INTERVIEW WITH PUBLIC INFORMATION OFFICER JUSTIN SAMPLES

Public Informations Officer Justin Samples answers questions on how the Statesboro Police Department operates

BY KURT HANLON
The George-Anne staff

Police activity seems to be higher around the campus in comparison to last semester. Why?

There's only a few more officers patrolling that area compared to last year. We have the city broken up into zones and officers are assigned to those zones. If you look at a map of the city it's basically a big circle, and the bottom corner is basically the campus area, so there's a whole lot else out there we have to patrol. However, we do targeted patrols, so if we see an increase in activity in a zone, we will put more resources into that zone. Particularly when the students come back. There's a huge influx of people in one area, so we do try to increase police presence over there as a deterrent. You have this concentration of high valuables and an area with a lot of people so we try to keep some presence up in that area to make sure that would be criminals know that we're there.

What's a good tip for a student who does break it?

If we get involved, the best thing to do is to cooperate. Any disagreements you might have with us during is totally understandable. However, the best thing to do while we're there is to cooperate with us. The disagreement and where you have your voice heard is in court. A lot of times charges escalate because a person isn't cooperating with us. A big issue with that is people lying to us about who they are, and we have to know who you are when we are out investigating a crime. You'll get an extra charge just for not telling us your name. What's the point of that? We're going to find out who you are eventually, so you might as well just not have to deal with that extra charge in court.

So does police presence decrease noticeably during Spring and Summer?

Depends. A lot of times we will increase presence during the summer when students aren't around because many students get into the habit of leaving valuables behind when they go out of town. Really anytime when [students] will be gone for a long period of time, because now you have a lot of empty apartments that no one is checking, which makes it a higher target for crimes. But it all depends on the crimes that are occurring and what we know historically when crime increases and decreases. I always use the analogy of a balloon. If you squeeze down on one side of it then all the air rushes to the other side, going back and forth where you squeeze. So wherever we concentrate enforcement, there's a chance for crime to increase in another area around the city. If you see an increase in enforcement it could be that there's a spike in crime, or historically we've had an increase in crime around that time.

What about with alcohol violations, such as underage drinking? How does the department deal with that? How does that work?

We've made some positive headway with alcohol enforcement. We do "covert" and "overt" enforcement... predominantly "covert" but we announce it before proceeding. Prior to undercover enforcement we do a press release and a Facebook blast visible to everybody, but we specifically email the bar owners and stakeholders and tell them that between "this date and this date" we're going to be doing one or two or three covert operations. We warn everyone. Our goal is to prevent the crime rather than to write citations. There's no victim if there's no crime.

Are there any new enforcement techniques the department is implementing this year?

We're doing a traffic enforcement hotspot. We're picking areas that are having a lot of accidents one week, and doing enforcement the next week. Usually we have that around Fair road, the bypass or on Northside drive, which is where accidents usually occur. We started doing it at the beginning of the summer. What we do is our patrol captain will look at accidents for the week and will pick where the most accidents were. That becomes the "hotspot." So we announce the hotspot to the city and notify our officers where the hotspots are, and what specific violations led to the accidents so they know

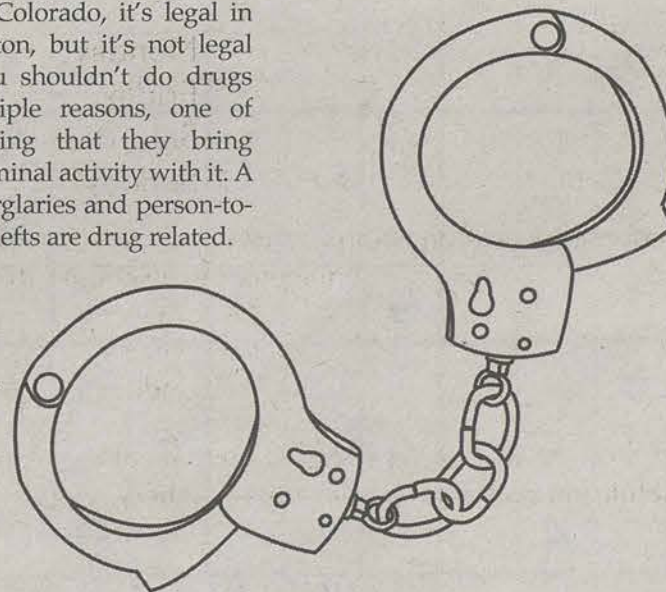
Do you have any tips for students to avoid becoming a victim of a crime?

Nothing is one hundred percent crime proof, but doing something as simple as making sure your car is locked would solve most of our car breaking problems. Close to ninety percent of our car break-ins were what we call "non-forced," which means it was unlocked. People are just walking around opening car doors and taking what's inside. They'll even check apartment doors, so make sure those are locked as well. I mean, it's never the victims fault, but let's not make it easier, right? I always tell people...we're not Gotham City, but we're also not Mayberry. We don't have any criminal masterminds, but we do have crimes of opportunity.

Do you think Michael's Law helps to reduce the amount of underage drinkers around Statesboro?

I can say to the students "don't drink when you're underage" all day long, but do you think that's going to deter them from doing it? We'd like it to, and certainly Michael's Law helped to prevent underage drinking, but a lot of crimes that occur, occur because of irresponsible consumption of alcohol, which can either be underage or over.

It goes beyond the realm of criminal consequences, it effects your health. Michael Gatto unfortunately was one of the results of that. But it doesn't even have to be violent. It could be overconsumption, you get alcohol poisoning, and pass out. You're more likely to commit a DUI the more you drink. And there's drug use. Everyone has opinions on whether or not marijuana should be legal. It's legal in Colorado, it's legal in Washington, but it's not legal here. You shouldn't do drugs for multiple reasons, one of them being that they bring other criminal activity with it. A lot of burglaries and person-to-person thefts are drug related.



Puzzles

10

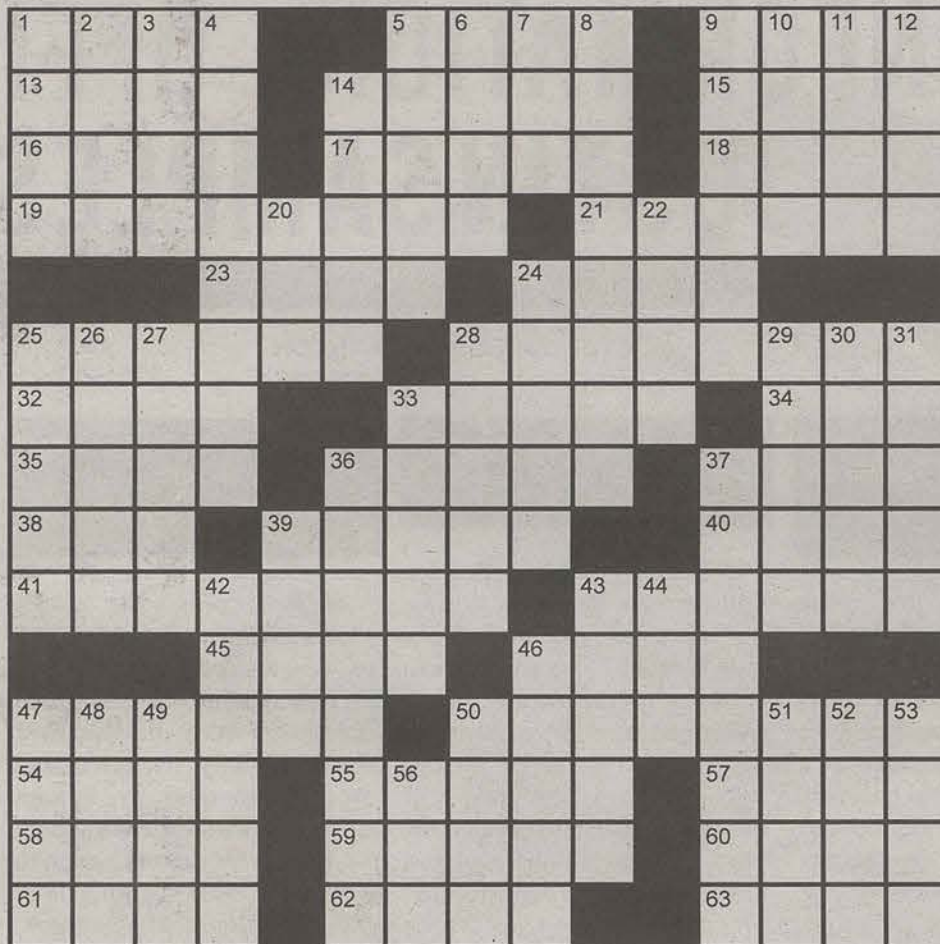
The George-Anne 9/8/15 Crossword

PuzzleJunction.com

9-3-15

Across

- 1 Without, on the Seine
5 Sp. ladies
9 Time to beware
13 Ship's front
14 Kind of mail
15 Manner
16 Teen affliction
17 Bay of Naples isle
18 Tell it to the judge
19 Beats badly
21 Primps
23 Songbird
24 Parroted
25 You can shoot them
28 Excessively agitated
32 Valhalla chief
33 Military chaplain
34 Harem room
35 Caroled
36 Lure
37 Expressed
38 "I" problem
39 Jogger
40 Skunk's defense
41 Like some models
43 Modest
45 Kind of seal
46 Bloke
47 Merry
50 Old two-seater
54 Coffee choice
55 Slangy denial
57 Impulse
58 Unadorned
59 Looks at lustfully



Copyright ©2015 PuzzleJunction.com

- 60 Cameron of "In Her Shoes"
61 Catch sight of
62 Intimates
63 Pop

Down

- 1 Luxury home features
2 Eyebrow shape
3 Zero
4 Edema
5 Candy bar, maybe
6 Emulates Eminem
7 Make public
8 Type of slope
9 Hinder

- 10 Big name in pineapples
11 1950's British P.M.
12 Salty septet
14 Blemishes
20 Schoolboy
22 Surrealist Magritte
24 Passion
25 Anniversary bouquet, at times
26 Words of wisdom
27 Low-growing pine
28 Confronts
29 Batrachians
30 Dummkopf
31 Close-knit group

- 33 Animate
36 Entrance improver
37 Lather
39 Molokai meal
42 Rundown
43 Chews the fat
44 "I've ___ it!"
46 Highway markers
47 Agree
48 Wood sorrels
49 Squeal
50 Lunar trench
51 Small combo
52 Quaint outburst
53 Iran's ___ Shah Pahlavi
56 ___ Khan

	9					8	
		4			3		
3	7	2					4
	5		2		1		6
2							9
1			9		6		4
5				2			3 1
			3			5	
	4						9

		9	2				1
			8		1		3
	5	1					2
		3	1		4		
		2		9		5	
			5			6	
	9					3 7	
	4		3		9		
	7				2 9		



Keeping you in the know about Student Affairs and Enrollment Management events, designed with you in mind.

SEPTEMBER 3RD

● UPB Presents: Silent Disco

Time: 7:00 pm

Location: Russell Union Ballroom

Looking for a way to let loose? The University Programming Board presents Silent Disco. Bring your friends and let the silent dance party begin! This event is free and open to students. Students, please bring your Eagle ID. If you need accommodations, related to access and participation, please email UPB@GeorgiaSouthern.edu at least 2 weeks prior to the event.

Contact Information: UPB@GeorgiaSouthern.edu

SEPTEMBER 4TH

● OSA: 2015 Winter Break Trip Info Session

Time: 3:30 - 4:30 pm

Location: Russell Union, Rm 2080

The Office of Student Activities is gearing up for their Annual Winter Break Trip in December! Join us for an informational session to find out how you can experience New York City or Washington, DC with 100 other Georgia Southern students! (Students MUST attend at least one information session to participate)

Dates of Trip: Saturday, December 12th-Friday, December 18th

Cost: \$180 covers transportation and hotel.

Trips are limited to the first 100 students! Don't miss out!

Contact Information: OSA@GeorgiaSouthern.edu

SEPTEMBER 8TH

● Starting A New Student Organization

Time: 5:30 - 7:00 pm

Location: Russell Union, Rm 2044

Interested in starting a new student organization? Attend this workshop to see how!

Contact Information: kvannoord@GeorgiaSouthern.edu

SEPTEMBER 9TH

● Leading, Engaging, Teambuilding, and Reflection

Time: 5:30 pm

Location: Russell Union, Rm 2042

Presenter: Spenser Herkelman, Southern Adventures

Improving cohesion within groups of people is a sign of good leadership. Learning simple ways to increase team building skills can be applied in many ways. Teams who work well together increase their ability to successfully complete group goals. This can be done through the use of activities/games and debriefing the process afterwards.

Contact: Ginger Bastian at randi-bastian@georgiasouthern.edu

YOUR STUDENT ACTIVITY FEES AT WORK

THE WEEKLY BUZZ IS SPONSORED BY THE OFFICE OF THE VICE PRESIDENT FOR STUDENT AFFAIRS AND ENROLLMENT MANAGEMENT



STATE OF THE U. ASSEMBLY

**WEDNESDAY, SEPT. 2
6:30 P.M.**

**RUSSEL UNION
BALLROOM**

FREE ADMISSION

PROOF OF ATTENDANCE PROVIDED

**PRESIDENT BARTELS AND MEMBERS OF
HER CABINET WILL ADDRESS THE
CAMPUS COMMUNITY, HIGHLIGHTING
THE UNIVERSITY'S RECENT
ACCOMPLISHMENTS AND OUTLINING
COMING CHALLENGES AND GOALS.**

**BRING YOU QUESTIONS
FOR UNIVERSITY ADMINISTRATION.**



**GEORGIA SOUTHERN
UNIVERSITY**



GSUsga



georgiasouthernsga

FIRST AMENDMENT FREE FOOD FESTIVAL

— THURSDAY, SEPTEMBER 17 —
11 - 2 PM AT THE RUSSELL UNION ROTUNDA

