

Georgia Southern University

Digital Commons@Georgia Southern

---

The George-Anne

Student Media

---

9-1-2015

## The George-Anne

Georgia Southern University

Follow this and additional works at: <https://digitalcommons.georgiasouthern.edu/george-anne>



Part of the [Higher Education Commons](#)

---

### Recommended Citation

Georgia Southern University, "The George-Anne" (2015). *The George-Anne*. 2886.  
<https://digitalcommons.georgiasouthern.edu/george-anne/2886>

This newspaper is brought to you for free and open access by the Student Media at Digital Commons@Georgia Southern. It has been accepted for inclusion in The George-Anne by an authorized administrator of Digital Commons@Georgia Southern. For more information, please contact [digitalcommons@georgiasouthern.edu](mailto:digitalcommons@georgiasouthern.edu).

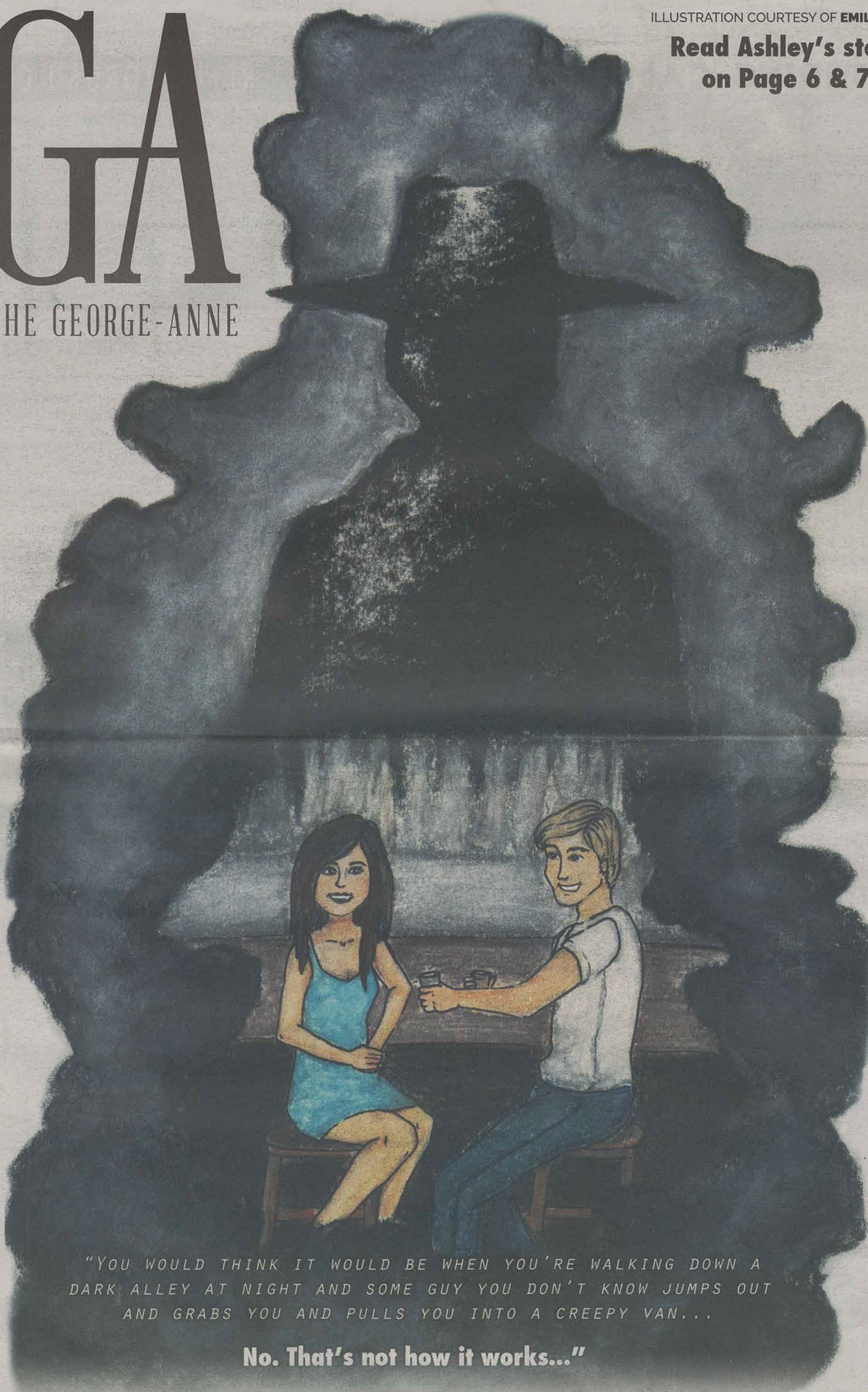


ILLUSTRATION COURTESY OF EMILY ØREN

**Read Ashley's story  
on Page 6 & 7**

# GA

THE GEORGE-ANNE



"YOU WOULD THINK IT WOULD BE WHEN YOU'RE WALKING DOWN A  
DARK ALLEY AT NIGHT AND SOME GUY YOU DON'T KNOW JUMPS OUT  
AND GRABS YOU AND PULLS YOU INTO A CREEPY VAN..."

**No. That's not how it works..."**

Looking for some good TV?  
Binge on Page 4

**RUNNING BACK / LINEBACKER  
POSITION PREVIEW ON PAGE 10**



## ALTERING CAMPUS



BY CAITLYN OLIVER  
The George-Anne staff

By September 1, Georgia Southern University will have its own alterations store on campus, funded by the Center for Sustainability.

"The funding for this grant is from sustainability fees that

student pay. It's their student sustainability fees at work," Dr. Rachel Eike, Fashion Merchandising and Apparel Design professor, said.

FMADstitch! will be open Tuesdays and Thursdays for clothes to be dropped off between 4:30p.m. and 7:30p.m. in room 1006 in the Fashion Merchandising and Apparel Design building. Drop-offs will be limited to two garments per person per day.

"[FMADstich!] started off with a class project that Apparel 1 students do to practice hemming and Amber Shelton, a student in the class, said it's something that we should really do because there are individuals on campus and people who need alterations done and we need practice," Dr. Eike said.

The way the process will work is the student bringing clothes in will be asked to try them on so the clothes can be properly measured and fitted. This process is expected to take approximately 15 to 20 minutes.

No formal dresses will be altered, but it will be possible to bring in pants, patch up shirts, and fix and/or match missing buttons.

"The great thing about this program is that it's funded through the Center for Sustainability and, since students are paying those fees anyway, is to offer those services to them for free," Amber Shelton, junior Marketing and Fashion Merchandising major, said.

A one week turnaround is currently being promised and students are asked to bring their student ID with them, as well as make sure the clothes are clean before being brought in.

This alteration shop will be available and free to all students, faculty, and staff on campus.

## WEATHER BAR

### Wednesday



High: 89°  
Low: 71°

### Thursday



High: 91°  
Low: 71°

### Friday



High: 91°  
Low: 70°

## WEATHER FLAMINGO



"UGH, THIS WEATHER  
IS KILLING MY  
FEATHERS."

## REFLECTORGSU.COM

### Gettin Jiggy with 90's fashion | Michelle Pratt

Ah, the Nineties. When we had no worries in the world except what colors crunchie matched our outfit best or making sure our Furbies were happy.

This time in history had some weird and wacky fashion trends, and it was a full time job making sure we were always staying up to date with the crazy trends of this period.

In celebration of the decade most of us were born in, The Reflector is dedicating this week to everything '90s. If you wore these top four trends in the '90s, you were one cool kid.



Advertisement

## Preparing the Perfect Resume

By: Abigail Ormsby & Dominique Dailey

Fall semester is in full gear. It is time to take advantage of some of the resources the Office of Career Services offers to you. Every month, Career Services hosts several events. This week, Sept. 2 and 3, is STEM Employer Night and STEM Fair. These events will allow those of you in the STEM field to meet with employers, network, and maybe even land an interview. One of the deciding factors on whether or not you are selected for an interview or internship, is having a great résumé.

Here are some of the top résumé tips:

- Customize your résumé to fit each employer.
- Consider the overall aesthetics of your résumé – use 1 or 2 line spaces between sections for easy reading, make sure bullets line up, and use 10-12 point font.
- Try to make your resume a full page. If you must go onto a second page, fill up at least half of that page.
- Be prepared to explain or expand in an interview.
- Chronological format is preferred by employers (start with most recent experience).

\*For a full list of suggestions, visit [GeorgiaSouthern.edu/career](http://GeorgiaSouthern.edu/career)

Career Educators play a vital role in the success of our office and helping students to

create and critique résumés. Experienced Career Educators DeJone Butler and Jonathan Chiza get great satisfaction from helping students. Chiza says, "It's my duty to help students become more appealing to employers. I take my job very seriously and love what I do." Butler explains how amazing it is to see students come in with no résumé at all and see the process they go through building it and then landing their dream job.

Monday through Friday from 12-4 p.m., Career Services offers walk-in hours for students to have their résumé and cover letters critiqued by our Career Educators and professional staff.



## CAREER SERVICES

Your Life. After College.



## MISCELLANY MAGAZINE OF THE ARTS

### NOW ACCEPTING SUBMISSIONS FOR FALL 2015 GALLERY

### Free Early Bird Submission Deadline September 4th

THREE  
SUBMISSION  
LIMIT 700  
WORD  
LIMIT

\$5 Regular Submission Deadline  
September 11th

\$10 Final Call Submission Deadline  
September 18th

ALL PRINTABLE MEDIUMS ACCEPTED. ALL GSU  
STUDENT, FACULTY, AND STAFF WELCOME TO SUBMIT.

Check out [miscellany.reflectorgsu.com](http://miscellany.reflectorgsu.com) for more information.



# Puzzles

9-1-15

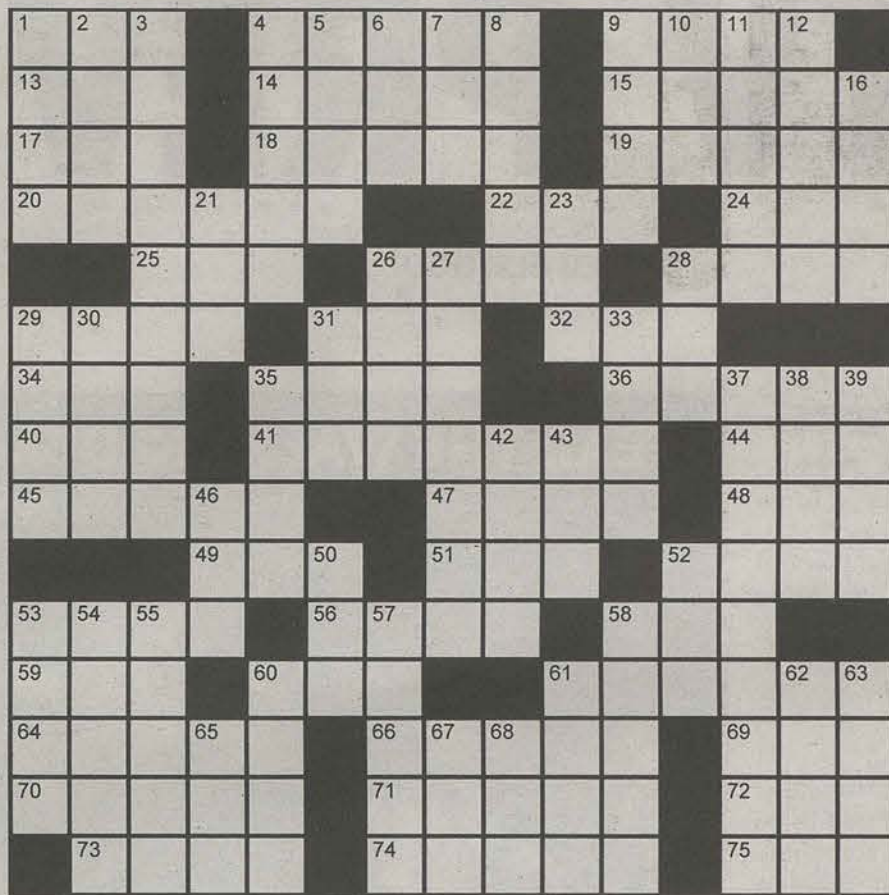
3

The George-Anne 9/3/15 Crossword

PuzzleJunction.com

## Across

- 1 Puppy's bite  
4 Springs  
9 \_\_\_\_\_ accompli  
13 Some germ cells  
14 Pismire  
15 Less young  
17 Jazzman  
18 Ammonia  
19 Track event  
20 Liveliness  
22 Little wriggler  
24 Compass pt.  
25 Cheerleader's cheer  
26 Like raw silk  
28 Cool drinks  
29 Small liqueur glass  
31 Critic \_\_\_\_\_ Louise  
32 Wood of the Rolling Stones  
34 "Boola Boola" singer  
35 Power system  
36 Perspective  
40 Lease  
41 Tackle  
44 Pacific ring  
45 Pharaoh's land  
47 Genesis skipper  
48 Crew tool  
49 Belief  
51 Low island  
52 Summer treat  
53 Self-satisfied  
56 Hebrew for "delight"  
58 Hasty escape  
59 Campaigner, for short  
60 Ended a fast



Copyright ©2015 PuzzleJunction.com

- 61 Lucidity  
64 Valuable fur  
66 Full range  
69 Baseball stat  
70 Breviloquent  
71 Cognizant  
72 Use a Singer  
73 Spanish appetizer  
74 Passover feast  
75 Sawbuck  
7 \_\_\_\_\_ Xing  
8 Navigate  
9 Garrison  
10 Schooner's cargo  
11 Went nowhere  
12 Coquette  
16 Some whiskeys  
21 Unit of hope?  
23 It's a wrap  
26 Do magazine work  
27 Poetic rhythm  
28 Cape \_\_\_\_\_, Mass.  
29 Cosmos star  
30 Cassini of fashion  
31 "A jealous mistress": Emerson  
33 It may be minced  
35 Heaters, to Capone  
37 Most dreary  
38 Thin  
39 The Old Sod  
42 Complain  
43 Foot the bill  
46 Kind of iron  
50 Intersected  
52 Hoosegow  
53 Smudge  
54 Bach composition  
55 Extreme  
57 Cézanne  
58 "Ciao!"  
60 Bailiwick  
61 Without a doubt  
62 Sloth's home  
63 Sign of boredom  
65 Sixth sense  
67 Reverence  
68 \_\_\_\_\_ cow disease

## Down

- 1 \_\_\_\_\_ the wiser  
2 "Terrible" czar  
3 Kind of suit  
4 Vivien of "Gone with the Wind"  
5 TV award  
6 "What \_\_\_\_\_ to do?"

## STATEMENT OF OPERATIONS

The George-Anne is the official student newspaper of Georgia Southern University, operated by GSU students using facilities provided by the university. The newspaper is the oldest continuously published newspaper in Bulloch County.

The newspaper is published twice weekly, on Tuesdays and Thursdays, during most of the academic year. Any questions regarding content should be directed to the student editor by phone at 912.478.5246 or at [gaeditor@georgiasouthern.edu](mailto:gaeditor@georgiasouthern.edu).

**ADVERTISING:** The newspaper accepts advertising. Inquiries may be made by calling 912.478.5418 or 912.478.0566. For questions e-mail [ads1@georgiasouthern.edu](mailto:ads1@georgiasouthern.edu).

The George-Anne receives additional support, in part, from the Student Activities Budget Committee. For more information, rate cards, or sample publications, contact the advertising manager or student media director. The advertiser is responsible for any errors in advertisements and its liability for adjustments is limited to the amount of space the error occupied in the ad. Further, the newspaper is not responsible for any damages caused due to an ad's omission from a particular edition and its responsibility solely is to reschedule the ad in the next regular edition at the regular advertising rates.

**STUDENTS BEWARE:** The George-Anne screens all advertisements prior to publication. The newspaper strives to accept ads for legitimate products and services only. Students are urged to exercise caution when replying to ads-- particularly those that require personal information. Students are also urged to report to the newspaper any suspicious offers which they might see in an ad.

**PUBLICATION INFORMATION:** The newspaper is printed by The Brunswick News in Brunswick, Ga.

**NOTICE:** Unauthorized removal of multiple copies from a distribution site constitutes theft under Georgia law, a misdemeanor offense punishable by a fine and/or jail time.

**CORRECTIONS:** Contact the editor at [gaeditor@georgiasouthern.edu](mailto:gaeditor@georgiasouthern.edu) for corrections and errors.

## STAFF LIST

**Editor-in-Chief** Lauren Gorta  
**Managing Editor** Erinn Williams  
**Content Strategist** Casey Cargle  
**Content Visualist** Lauren Grizzell  
**News Editor** Chris Rossmann  
**Features Editor** Rashida Otunba  
**Sports Editor** Robert George  
**Daily Editor** DJ Fullmer  
**Opinions Editor** Ian Leonard

**Creative Manager** Hailey Smith  
**Photo Editor** Brandon Warnock  
**Design Editor** Alex Smith  
**Features Designer** Rebecca Davis  
**News Designer** Erin Fortenberry  
**Sports Designer** Margarita Suarez  
**Opinions Designer** Rebecca Davis

**Distribution Manager**  
**Marketing Manager** Cydney Long  
**Business Manager** Taylor Norman

1		5	4			9		7
	8			5				1
		3			2			
								9
2		4		1		6		8
5								
			2			1		
3				7			9	
4		6			9	2		3

		4	6		1	8		3
1			2	5		4		
	4	6						5
				7				
7							3	2
		8		1				4
		1	8		7	2		
2								



# FALL TV PREVIEW

BY MEG ELWOOD  
The George-Anne staff

The upcoming fall season brings cold weather and quality television back into the lives of GSU students. Here are some top shows making their return to your television and computer screens this season.

## "American Horror Story: Hotel"

The wait for season five of the ever popular, ever scandalous and ever strange television series premieres Oct. 7 with a killer cast. Yes, Evan Peters is returning (tee-hee's all around), but no, Jessica Lange is not returning (tear). One can't complain too much sthough, with Lady Gaga joining the cast, who's perfect in every way for the strangeness and awesomeness of this show. As usual, the creators of AHS are keeping details of this season very hush-hush, but minute long teasers can be seen every once and a while on Facebook news streams or on TV. Pack your blanket and popcorn to check in Wednesday, Oct. 7 at 10 p.m. on FX.

## "Fear the Walking Dead"

The new prequel to 'The Walking Dead' began Aug. 23 and is set in pre-apocalyptic Los Angeles. The series focuses on the struggles faced by the two main characters Madison Clark, a school counselor, and her boyfriend Travis Manawa, an English teacher at the same school. This series sounds pretty awesome in the fact that hopefully it can shed some light onto what began the spread of zombie-disease. Of course, the best part of this new series is that everyone will get their daily dose of walkers, even after a season of 'The Walking Dead' ends. Tune in every Sunday at 9 p.m. on AMC.

## "Bob's Burgers"

The simple, yet fantastic, animated series returns Sept. 27 with season six, "Alriiiiight!" as Linda would say. The Belcher's bring back cheesy burger jokes, brownie-chair-surprise's, Tina-groans, and electric keyboard fart noises to Sunday television in 22 episodes. Unfortunately, season five is rumored to be added to Netflix sometime next year. The grill fires up Sunday, Sept. 27 at 7:30 p.m. on FOX.

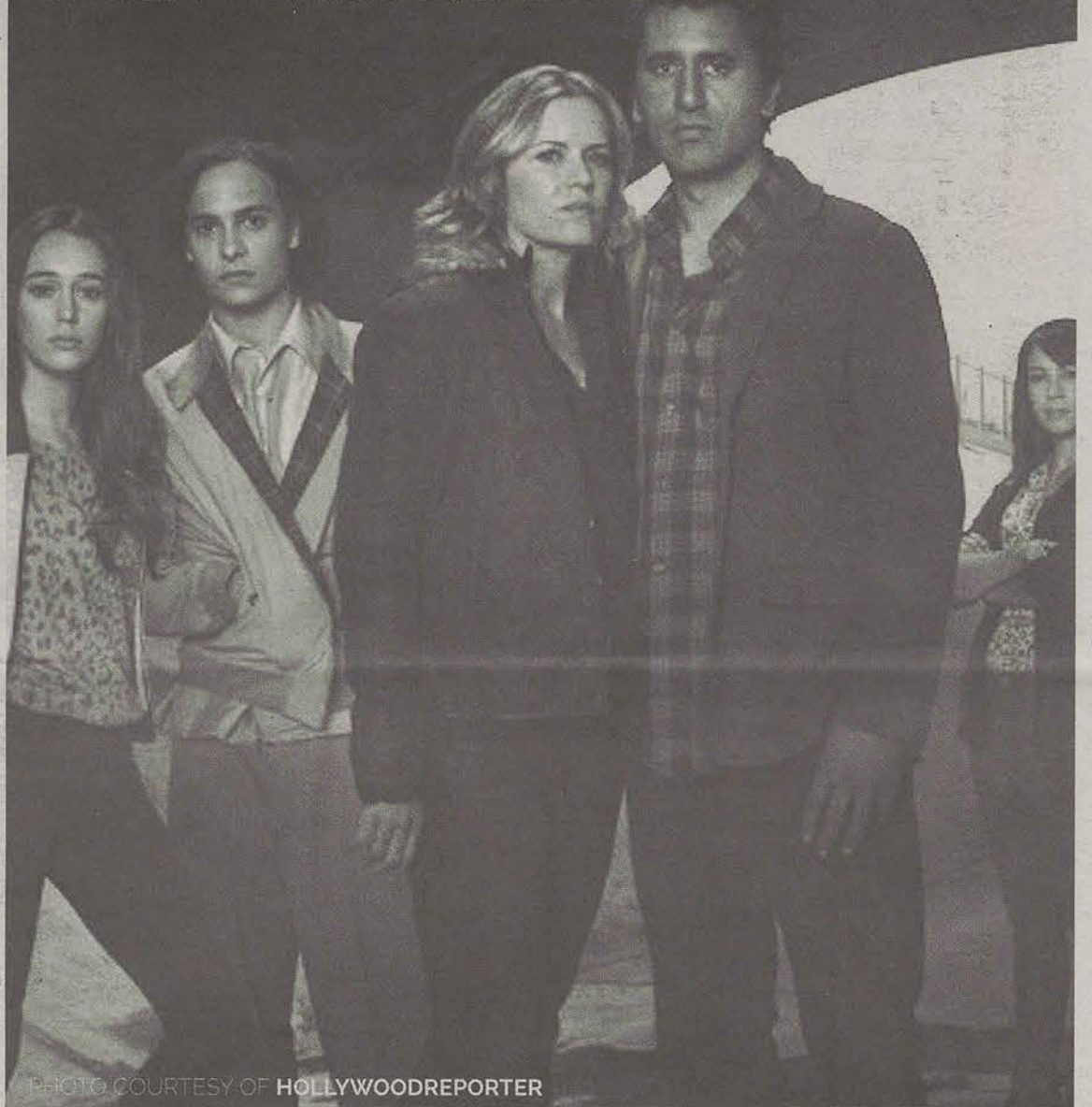
## "Arrow"

Something for the comic-fans, DC comic's 'Arrow' returns Oct. 7 with season four and apparently it's going to be a huge game changer. No serious spoilers here, but expect changes in the team, the headquarters, new villains, and even in costume. Fancy. This season is suppose to be very exciting for the 'Arrow' fans, and we're hoping to see season three on Netflix soon, the ending to season two was just too much... such a cliffhanger. Oliver Queen starts shooting his arrows once more on Wednesday, Oct. 7 at 8 p.m. on CW.

## "BoJack Horseman"

Half man, half horse and slight alcoholic BoJack returned to Netflix this past July. The snippy, yet quirky cartoon is a Netflix original which focuses on the problematic life of the 90's TV star and his adventures in LA with Mr. Peanutbutter, Princess Carolyn, Diane Nguyen and Todd Chavez. It may look stupid, but give it a chance, everyone loves cartoons. Binge on Netflix and enjoy.

## FEAR THE WALKING DEAD



## BOB'S BURGERS





# ARTIST'S CORNER

with CREYAUNA WILLIS



**BY WILL PEEBLES**  
The George-Anne staff

Creyauna Willis sits on the floor of her tidy apartment and pulls a large white storage container to her side. Her practiced hand hovers above the sea of acrylic paint bottles and plucks out a deep red color, Alizarin Crimson. She grabs a wide paintbrush and places it in the chest pocket of her overalls. She smiles as she gestures to her makeshift home studio.

"My studio back home in Augusta is a little more complete, but I have everything I need here."

Willis is both a businesswoman and an artist, though she doesn't take business or art classes. She recently began selling her custom commissioned art in a word of mouth driven business, which she is gradually moving to an online store. She is a senior psychology and child development major at Georgia Southern, but commissioned art is the path she is currently exploring.

"I've been good at art my whole life, but as far as a business,

I just started. This is me learning as I go, but if I knew then what I know now, I would've started a long time ago. I've gone from selling my pieces for like 20 bucks to actually having art be a source of income. The most I've ever sold a piece for is \$400," Willis said.

Willis's paintings are packed to the brim with bright colors and bold lines. Her canvases feature caricatures of television characters and cartoons, mothers coddling babies, professional athletes, Mickey Mouse gloves and graffiti-style lettering. The art has such drastically differing subject matter because each of her pieces is individually commissioned. They name it, she paints it - well, usually.

"I'm getting my name out there by doing commissioned, custom work. I don't think I want to do that for long, though. Sometimes the requests get a bit crazy. One guy asked me, 'Could you paint me with a towel wrapped around me standing in front of a fireplace?' I'm like, 'What? No.'"

Willis's commissions usually come from followers of her Instagram, or from recommendations made by

past customers. She bases her pricing on hours put into the piece, the size of the canvas, and the difficulty level of what her client wants. After she and her customer reach an agreement on the commissioned material and price, she gets to work. She paints on the floor of her room while she's at GSU, unless the piece is a mural or a wall in a home elsewhere.

"I have a customer in North Carolina next week, she's actually paying for a hotel. She's paying for me to go paint her living room. It's humbling and the thing is, it's just word of mouth. This is all word of mouth. When I finish one, I always have another."

Willis tries to sell a piece every one to two weeks. The income helps pay the rent, and she hopes the experience will help her better understand the art business and where she fits into it.

Willis said, "I never thought my art would be able to be sold. I eventually want to get to a place where I sell my own creative work. I pretty much make the plan as I go. Everything that has happened has been set in my path. I just kinda come across it."



**SEPTEMBER 1 - SEPTEMBER 8, 2015**

Come visit the newest addition to the Georgia Southern campus, our

## SHOOTING SPORTS EDUCATION CENTER

The SSEC is a Public Facility dedicated to developing the knowledge and skills necessary to enjoy a life-long participation in shooting sports. Please do not bring your firearm or any archery equipment during this time.

### HOURS OF OPERATION

Monday - Thursday: 9:00a.m. - 10:00p.m.

Friday: 9:00a.m. - 9:00p.m.

Saturday: 8:00a.m. - 7:00p.m.

Sunday: 1:00p.m. - 10:00p.m.

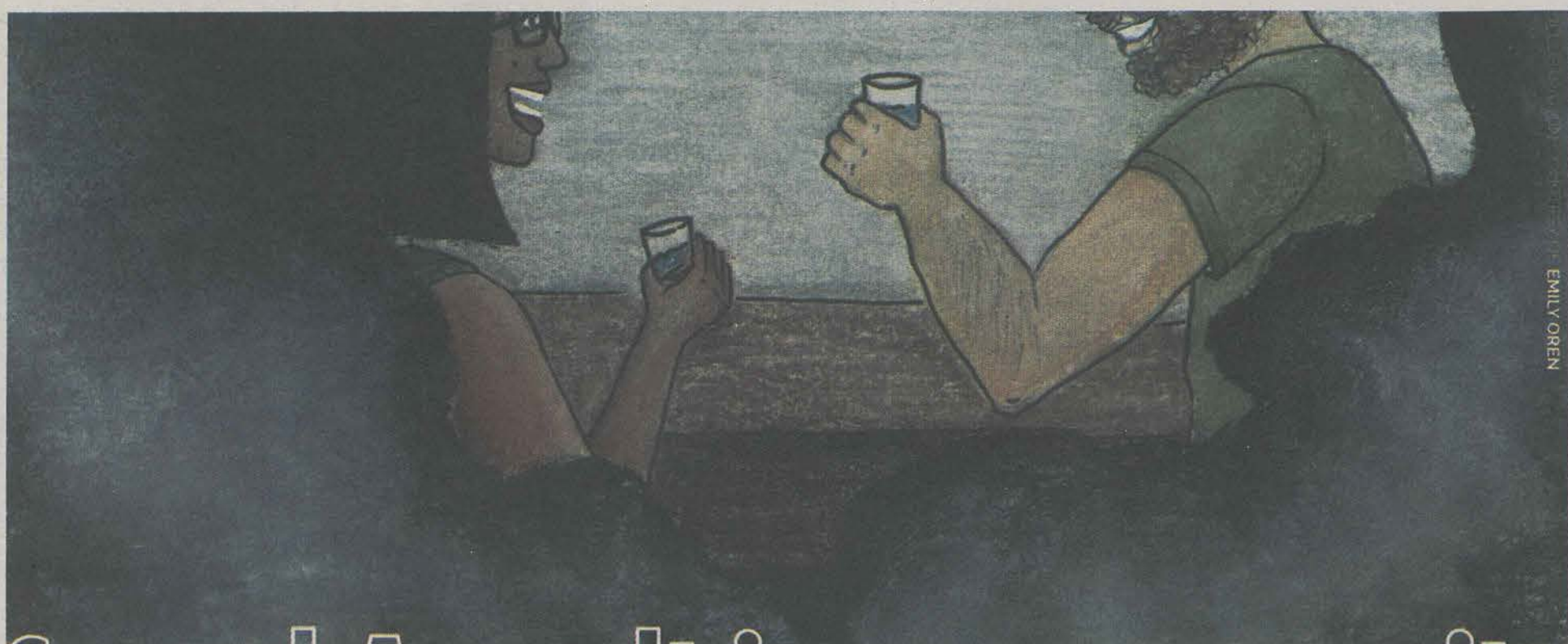
The Shooting Sports Education Center is located in a school safety zone, and Georgia Law 16-11-127.1 only allows firearms and archery equipment in a school safety zone if one of the following criteria are met:

1. For an organized sport shooting event or firearms training course
2. Law Enforcement Officers in the performance of their duties
3. Individuals authorized in writing by the University

The authorization or approved user status will include a written exam, a practical exam and a background investigation. This status will be valid for one year. Individuals new to archery or sport shooting will be able to achieve this status through an introductory training course that will be offered on a regular basis.

**WWW.GEORGIASOUTHERN.EDU/SSEC**  
**(912) 478-SSEC (7732)**





EMILY OREN

# Sexual Assault in our community

## Why students don't report it and what happens after

BY WILL PRICE

The George-Anne staff

*Note to reader: The following story and its accompanying series contain retellings of stories from sexual assault survivors. These stories may contain graphic imagery or word use. Also, "Ashley" is a fictitious name given to the survivor whose story follows; her name is being protected so that her identity may be kept private.*

One too many drinks into a long night to come, Ashley was hurried out of a Statesboro bar by two men she thought she knew.

Ashley, a 21-year-old Georgia Southern University student, was one week past a hard break up with her longtime boyfriend and was making her first attempt to climb back into a social life.

"I said to myself, 'Fine, I'll get out of my room and stop being sad,' and I just went along, didn't really think anything of it," Ashley said.

Ashley was accompanied by two other men, both GSU students themselves, one a senior and one a graduate student, who urged Ashley to go out and get over her ex. Ashley knew one of them for about two years and the other a few months.

"I made it extremely clear to both of them beforehand that I was not interested in anyone, I just wanted to get out and stop being sad," she said.

After a long night of drinking, the two men gathered Ashley and escorted her back to one of their vehicles and whisked her away from the bar. They told Ashley they were going back to their apartment to hang out and unwind. She agreed.

When the short ride was over and they drunkenly waddled into the apartment, the two men took Ashley's wallet, keys and phone from her.

Ashley, quite inebriated herself, did not think much of it at first, perhaps it was a preliminary measure to prevent her driving home drunk.

Later into the night she asked for a cup of water and one of the men jokingly demanded she flash them both to get a cup of water.

Ashley, still calm, denied the men.

Then they asked again, but said she had to kiss them both. Still no. Then again. No again.

Eventually Ashley found herself with the men sitting on either side of her on the couch in the living room of their apartment, without keys, a phone or her wallet, while the men continued their pursuit.

"You look so good tonight," one of the men said.

"You're so sexy," the other continued, "We really wanna' be with you."

Ashley let up and agreed she would kiss one of them on the cheek and when she did the men took more than the peck that was

***"They took my shirt off and, while I was sitting by myself in the bathroom trying to throw up, they started feeling me up."***

asked for.

"I'm not feeling well, I might be sick," Ashley said, trying to break the situation up in any way she could.

The men told Ashley she needed to take her shirt off in order to throw up. Initially Ashley declined, saying she could get sick with a shirt on just fine, but eventually her drunken state got the best of her and she couldn't ward off the two men.

"They took my shirt off and, while I was sitting by myself in the bathroom trying to throw up, they started feeling me up. I was sick and I was drunk and I couldn't defend myself in any way," Ashley said.

When she started to get sick the men left her, locking her in the bathroom and leaving her there for a couple hours. Eventually they came back to the bathroom, unlocked the door, picked her up off the ground and

took her to one of their beds.

When Ashley woke up the next morning, she was lying next to one of the men and wearing one of the men's clothes, her clothes from the night before nowhere to be found.

"They were being really nice, I don't think they expected me to remember what happened by the way they were acting. When I left one of them asked me, 'Do you remember anything from last night?' And I said, 'Yeah, I remember everything.'"

The men's faces turned sheet white. Over the course of the next three weeks the men barraged Ashley with threatening and demeaning texts, calls and voicemails.

"You know you wanted it," they said, "We didn't want to do any of that, you're the one that asked for it."

Eventually Ashley's incident was reported to the University Counseling Center by one of her professor's and the Student Conduct adjudication process began.

A few months later, in May, the men were found responsible by a Title IX Hearing Committee. One was expelled and the other suspended, according to Ashley.

In the months between the incident and the final hearing, Ashley became increasingly depressed.

"You start to break it down and ask yourself, 'What did I do wrong? Where did I go wrong?'" Ashley said.

She slept no more than a few hours a night in that time. She didn't leave her apartment for anything. She withdrew from all of her classes. She lost 15 pounds from not eating anything but coffee and trail mix. She had recurring nightmares spawned from the incident. She had to write what day it was on sticky notes to keep track of time. She was not, and is not, able to trust anyone deeply.

"I was afraid of what people would think, 'Why did you go out and get drunk like that? Why did you go back with them? Why didn't you try and leave?'" Ashley said, "I just kept telling myself that I'm lucky, I'm fine. I wasn't."



According to research report after research report, rape, sexual violence and sexual assault are words you can now chalk up to the "college experience."

In 2000, the Bureau of Justice Studies (BJS) surveyed just under 5,000 college-aged women and estimated that one out of every five college women experience a completed or attempted rape in their college careers. Of the women who do go through this experience, over 80 percent do not report.

"I don't think [sexual misconduct] is any more of a problem here, but it certainly isn't any less than anywhere else, it's important to be realistic about that," said director of the GSU Counseling Center, Dr. Jodi Caldwell.

Caldwell, who is also the founder of the Sexual Assault Response Team (SART) on campus as well as the president of Statesboro Regional Sexual Assault Center (SRSAC), recalls the numbers she got back after polling freshmen at Sex Signals in 2013.

The poll given to the students following GSU's Sex Signals programming, which is aimed at educating new students on consent and intervention, posed the question: "During your time at GSU, are you aware of any incidents of sexual assault?"

Though the students polled had only been at GSU for two to four weeks, more than 1,700 answered "yes," with another 264 answering "not sure." During the same time frame according to records, no sexual assault, rape or other sexual violence reports were filed through the University Police Department (UPD).

"My first thought when I think about encouraging reporting is, statistic-wise, if the number of reports go up, what's that gonna' mean? Higher reports mean we're encouraging and facilitating an open environment of reporting," Joel Wright, director of the Equal Opportunity Title IX office, said.

"So, to be clear, a higher number of reports may look bad at face value, but in reality it's a success, in a twisted sort of way?" I asked, slightly confused.

"Exactly," Wright said.

According to the Clery Report, a document the federal government requires universities to publish every year with crime statistics and policies, from fiscal year 2011 to 2013 a total of 11 forcible sex offenses were reported to UPD.

"[Sexual assault] happens, it's an inevitability. That's what I wish people would realize. It's not that Georgia Southern is unsafe, it's that it's going to happen regardless if you're in Statesboro, Athens or New York City," Suzanne Shurling, SART graduate assistant and certified SRSAC victim's advocate, said.

There is another realm of sexual misconduct incidents that do not end up in UPD records. If a victim reports their incident to another office or agency on campus, such as the Dean of Students office or the Office of Equal Opportunity, the victim is given the choice to submit a police report to the department who holds jurisdiction at the place of the incident. In other words, their case is not by default handed to a police force.

Whether a police department is involved or not, if a student's incident is reported within the University, Wright or another trained Title IX investigator is required to begin a thorough case examination, which does its utmost to keep the victim fully confidential.

Upon completing the investigation, Wright's office reviews the case and decides whether it should be pursued by the Office of Student Conduct. If it is, the report is sent to the Office of Student

Conduct, which contacts the students involved and informs them of the charges brought against them as well as hearing schedules. The hearings are held by a campus Title IX Hearing Committee and it is this committee that will eventually deem the accused either responsible or not responsible. These hearings are not to be confused with a criminal court or the traditional legal process. The hearing committee does not have the power to sentence those found responsible to jail time, only disciplinary action, suspension or expulsion.

## DEFINITIONS

**Consent:** considered clear, knowing and voluntary. Consent is active, not passive. Silence cannot be interpreted as consent.

**Force:** considered to be the use of physical violence and/or imposing on someone physically to gain sexual access. Force also includes threats, intimidation (implied threats) and coercion that overcome resistance or produce consent (example: "Have sex with me or I'll hit you. Okay, don't hit me, I'll do what you want").

**Incapacitation:** a state where someone cannot make rational, reasonable decisions because they lack the capacity to give knowing consent (e.g. to understand the "who, what, where, why or how" of their sexual interaction). A person who is incapacitated cannot give consent.

**Sexual Harassment:** unwelcome conduct of a sexual nature that is severe or pervasive enough to create a hostile work or academic environment.

**Non-Consensual Sexual Intercourse:** any sexual intercourse however slight with any object that is without consent and/or by force.

"You would think it would be when you're walking down a dark alley at night and some guy you don't know jumps out and grabs you and pulls you into a creepy van," Ashley said.

"No. That's not how it works. These were people that I knew, that I thought were trying to help me."

According to a BJS report published late in 2014, just over 80 percent of incidents involving sexual assault, rape or sexual violence are between two people who knew each other before the incident. The same study also points out that when these incidents occur between college students the report rate drops from over 30 percent of cases to 20 percent, indicating that college students are significantly less likely to report their incident.

Reasons for not reporting vary greatly. Some of the primary reasons given for not reporting are a victim's fear of retelling their story countless times in a court or hearing setting and reprisal and retaliation from their attacker. Other reasons include being questioned and ultimately blamed for the incident or that the victim believed the incident to be a personal issue, not for others to discuss and dissect.

For Ashley, it was a combination of all of these things. She chose not to participate in-person at the hearings, opting to tell the committee everything she knew separately as to not encounter her attackers again. She was petrified into depression and anxiety at the thought of seeing the two men again.

"Those few weeks [in between the incident and reporting] were equally as damaging as that one night," she said.

Between the incident and her reporting it, when a no-contact agreement was made between Ashley and her attackers, she received a slew of messages calling her humiliating names and placing the blame on her.

"Why would you blame that on us?"

"Why the fuck would you do that?"

"You're a terrible friend."

Ashley's incident was only reported as a result of a professor pulling it out of her, asking why she was missing so much class and not turning in assignments. Otherwise, Ashley may also have been one of the majority of victims whose stories are not told and attackers not found.

"If I told you someone robbed me you'd ask me, 'Are you okay? Do you need any help with anything?'" Shurling said. "But when people tell someone they were raped they're asked 'Were you drunk? Why were you out that late? What were you wearing?' We don't ask victims of other crimes what they did to prevent that crime, but it's the first things victims here are asked."

In an essay published in *The Atlantic*, Michael Kimmel, sociology professor at Stony Brook University in New York, described the variables that make certain college campuses more conducive to sexual misbehavior incidents than others.

Kimmel, whose essay was published just over a week ago, pins four variables as primary contributors to catalyzing sex crimes: a four-year institution that students live centrally around, the majority of students live off-campus with no administrator or authority figure (a CL for instance), protection and programming not targeting the first few months of the semester when most rapes and sexual assaults typically occur and, lastly, the presence of big-time sports culture.

Using Kimmel's diagnosis, GSU is an institution that would typically be conducive to sexual misbehavior. The only catalyst debatably not present at GSU is a lack of early education and programming, which takes the form of Sex Signals, Take Back the Night, the Clothesline Project and Walk a Mile in Her Shoes on campus.

While the variables that create the environment where sexual assault, sexual violence and rape are not problems in themselves, their whole is a different story. A story, though, that Shurling and other activists, officials and students don't so readily subscribe to.

Shurling said, "I don't think it has to be an uncontrollable problem. I think rape culture exists without these things, as well. But I honestly believe that through education, we can control the problem. Now, it will always exist to some extent. I believe that is unavoidable. But I believe we can make a major dent through education."

This story and its subsequent stories to come on the subject of sexual assault, sexual violence and rape on campus are part of an ongoing series to be published in *The George-Anne* over the course of the next few Tuesdays.

**If you or anyone you know has been affected by sexual assault, sexual violence or rape, contact one of these numbers for assistance:**

(912) 478-5541: GSU Counseling Services (student can confidentially report cases of sexual misconduct or interpersonal violence here).

(912) 478-5136: GSU Equal Opportunity and Title IX Office

(912) 478-3326: GSU Dean of Students Office

(912) 478-0059: GSU Office of Student Conduct

(912) 478-5234: GSU Public Safety

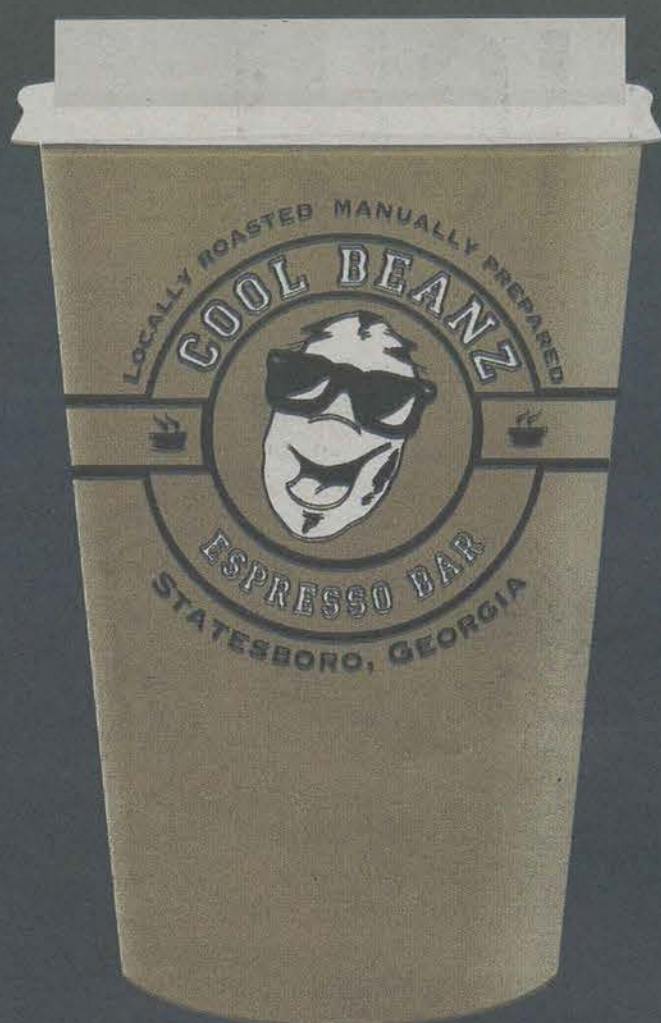
(912) 764-9911 or 911: Statesboro Police Department

(912) 764-8888 or 911: Bulloch County Sheriff's Office

(912) 489-6060: SRSAC

(866) 489-2225: SRSAC Hotline





# GA

*Joe*  
THE GEORGE-ANNE

*Free coffee & hot chocolate  
with you Copy*

*Located at the Russell Union  
Every thursday  
8 a.M. To 10 a.M.*



## OPERATION MOVE-IN

# THANK YOU!

University Housing would like to thank everyone in the campus community for pitching in and helping us to make this year's Operation Move-In weekend another success!

Nearly 5000 students moved in  
by over 800 volunteers...

## ONE EAGLE NATION!



UNIVERSITY HOUSING  
LEARN MORE AT [GSUHousing.com](http://GSUHousing.com)



GSUHousing | HousingGSU



## EXTRA-PARTICULAR:

The importance of extracurriculars to the college experience



IAN LEONARD

Leonard is a sophomore Writing & Linguistics major from Johns Creek, Ga.

As many of you more than likely don't know, I am the editor of this humble little section we call Opinions. It's only been a year since I joined Student Media on what can only be classified as a whim. After making multiple errors navigating the upper level of the Russell Union during SOAR, I ended up in the wrong breakout session. Despite realizing my mistake immediately, I couldn't muster the courage to interrupt the presentation and excuse myself. Instead I ended up staying the whole session, and in the spur of the moment decided I would try out this whole "journalism" business. Well as you can see I stuck around and I can confidently say that I haven't once regretted the mistake I made that day.

I'm not here to convince you that you should join Student Media. I mean, you should, but that's not what this is about. This organization, and the people who comprise its ranks, happened to be a perfect fit for me and my ambitions. I can

recognize\* however that this organization definitely isn't for everyone. However, I am a staunch believer that every student should be involved in some form of extracurricular activity. And the sooner you're indoctrinated, the better. In my, uh, opinion.

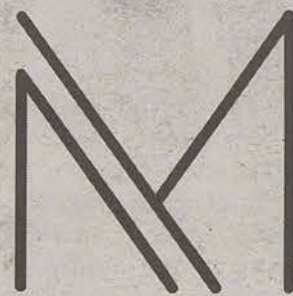
When I first arrived here at Southern, I remember spending the better half of a day sitting in my room, playing games, watching Netflix, enduring mild anxiety attacks. You know, normal freshman stuff. I simply didn't know what else to do. I was used to my time being dictated for me, and now that I had free reign to do whatever I wanted, I came to realize I didn't know what that was. Had I not been apart of something bigger than myself, I likely would have stayed that way for who knows how long. This is where the value of extracurriculars show. At the absolute least, these activities force students to venture out of their comfort zone and experience things they may have otherwise been ignorant to. I made friends fast and often working for Student Media. I learned about new aspects of this university that I probably would have never known and even learned of other organizations that I have since joined.

While it's important to take everything in moderation, I've found that the benefits of extracurriculars far outweigh any potential drawbacks. And since apparently 12 hours is the new 15, I know most of you probably have more free

time than you think and could simply direct that new found liberty to something of greater importance. It's simply about finding the right group for you. If you enjoy what you do and who you're doing it with,

it will feel infinitely better than anything you could accomplish on your own.

Devoting your time to something outside of the classroom could even end up changing your life. I know that sounds tacky, but it's true. And it doesn't even have to be a club. You could join a greek organization, academic fellowships, intramural sports, even something as simple as finding some exercise partners at the R.A.C. can be an extra-curricular. It doesn't matter what you do, so long as you do it with passion. And that is something, we have in abundance here.



MISCELLANY  
MAGAZINE OF THE ARTS

NOW ACCEPTING SUBMISSIONS  
FOR FALL 2015 GALLERY

Free Early Bird Submission Deadline  
September 4th

THREE  
SUBMISSION  
LIMIT  
700  
WORD  
LIMIT

\$5 Regular Submission Deadline  
September 11th

\$10 Final Call Submission Deadline  
September 18th

ALL PRINTABLE MEDIUMS ACCEPTED. ALL GSU  
STUDENT, FACULTY, AND STAFF WELCOME TO SUBMIT.

Check out [miscellany.reflectorgsu.com](http://miscellany.reflectorgsu.com) for more information.

“

Devoting your time to something outside of the classroom could even end up changing your life.

IAN LEONARD

Sophomore Writing and Linguistic major

The George-Anne welcomes letters to the editor and appropriate guest columns. All copy submitted should be 350 words or fewer, typed, and sent via email in Microsoft Word (.doc/.docx) format to [letters@georgiasouthern.edu](mailto:letters@georgiasouthern.edu). All submissions must be signed and include phone number for verification. GSU students should include their academic major, year and hometown. The editors reserve the right to reject any submission and edit submissions for length. Opinions expressed herein are those of the Board of Opinions, or columnists themselves and DO NOT necessarily reflect those of the faculty, staff, or administration of GSU, the Student Media Advisory, Student Media or the University System of Georgia.



## GEORGIA POWER COMPANY

BY HAYDEN BOUDREAUX  
The George-Anne staff

Famed former Georgia Southern Head coach Erk Russell gave the Eagle offense the nickname "Georgia Power Company" and with the talented running backs this season, the offense should once again live up to its name.

True Blue fans expect a big year from junior running back Matt Breida and redshirt sophomore running back L.A. Ramsby. The latter is a strong runner that would frequently break off 5-7 yard gains, the former is a member of the Doak Walker watch list and rushed for nearly 1500 yards last season. The two combined for 29 touchdowns on the ground and are expected to duplicate those numbers this season against tougher opponents. However, Breida isn't concerned with awards but has another, more

important goal.

"I try to look back at the team and what the team goals are, our main goal this year is to win the Sun Belt and go to a bowl game. All the award stuff, that might come but I want to stay focused on the team and stay humble," Breida said.

Besides those two, there are seven other running backs that are ready to break out and show that they belong in the spotlight. Of these seven running backs, three are coming off of redshirt seasons and two are entering freshman and likely to be redshirted to learn under the talent available.

Experience is a huge tool for players at any position, and redshirt senior running back Ryan Brown has five years of college football under his belt to offer. Brown played at Jonesboro High School before attending Fond Du Lac Tribal

Community College where he played two years for the Thunder. Brown transferred to Georgia Southern and has had to fight with a deep Eagle back field for playing time. Entering his senior season, he will hope to get a chance to see the field and help his team achieve their ultimate goal.

A younger member of the squad that has a bright career ahead of him is redshirt freshman running back Thomas Banks. If that name rings a bell, it is because his older brother William Banks who played B-back for the Eagles from 2009-2013 playing a critical role in his final two seasons. Thomas Banks will look to pave his own path in a new era of Georgia Southern football as he will fight to earn playing time among a deep depth chart.

Behind every successful team is successful position coaches. These coaches

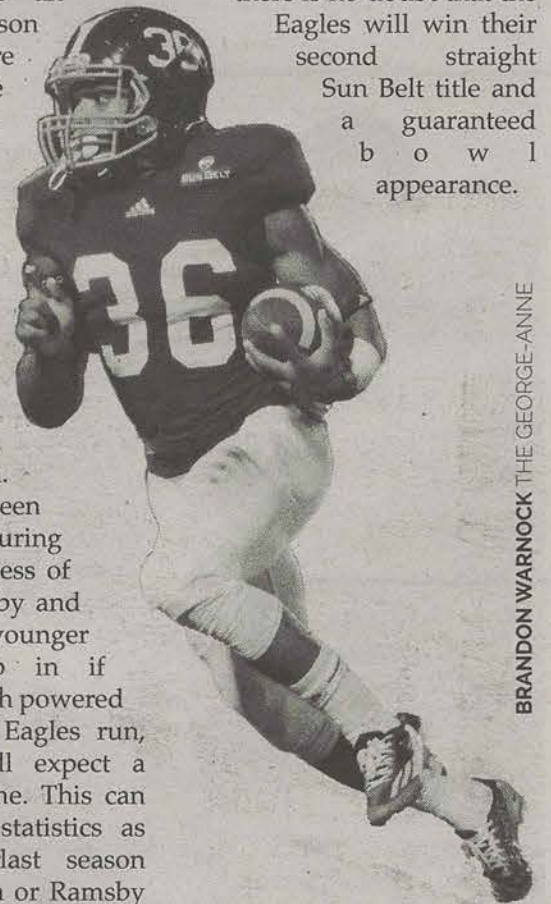
typically go unnoticed by the average fan but their work is vital to the success of the team. This remains true for running backs coach Dell McGee.

Mcgee helped make the on-field success happen with work put on the practice field. He came to Georgia Southern after serving as an analyst for a season at Auburn. Before that, McGee made his mark as a high school football coach at Columbus-Carver High School where he won a state championship and had winning seasons each year as head coach.

Mcgee has been tasked with ensuring the repeated success of Breida and Ramsby and to prepare some younger players to step in if needed. In the high powered offense that the Eagles run, backups can still expect a lot of playing time. This can be seen in the statistics as running backs last season not named Breida or Ramsby combined for 621 yards and 9

touchdowns which can make a huge difference coming off the bench.

The running backs certainly have a big mountain to climb, but they have the talent and coaching ability for the job. If they can improve on their performances from last season, there is no doubt that the Eagles will win their second straight Sun Belt title and a guaranteed bowl appearance.



BRANDON WARNOCK THE GEORGE-ANNE

BY ETHAN FLYNN  
The George-Anne staff

This year's linebacker corps will look a lot different from last season's squad.

In particular, the Eagles said goodbye to one of the greats to play the game, former All-Sun Belt linebacker Edwin Jackson. His presence at Georgia Southern will be missed. Jackson started in all 12 games his senior season as an Eagle. In addition, his accolades were: Sun Belt Conference First Team Selection, Medal of Honor Bowl

Participant and leader of the Eagles tackling ranking in the top-10 of the Sun Belt Conference with 100 tackles.

Moving on without a proven leader player like Jackson will be tough. However, stepping in to fill that void is senior linebacker, Antwione Williams. His leadership and playmaking ability are phenomenal and he should slide right in filling Jackson's shoes at the "mike" position. When it comes to size,

## A Frightening Sight: The eagles linebackers

Williams is most definitely not lacking at 6'3" 254 pounds. His performance and size is drawing the interest of many NFL scouts.

"I want to be a source of inspiration for everybody. I want to be the best I can be," Williams said about leading the defense for the upcoming season. Last

season, Williams started all 12 games and was second in tackles behind Jackson for the Eagles. He was credited with 65 total tackles, 3.0 sacks, 4.0 pass breakups and 1.0 forced fumble. In addition, Williams was an All-Sun Belt Conference Honorable Mention.

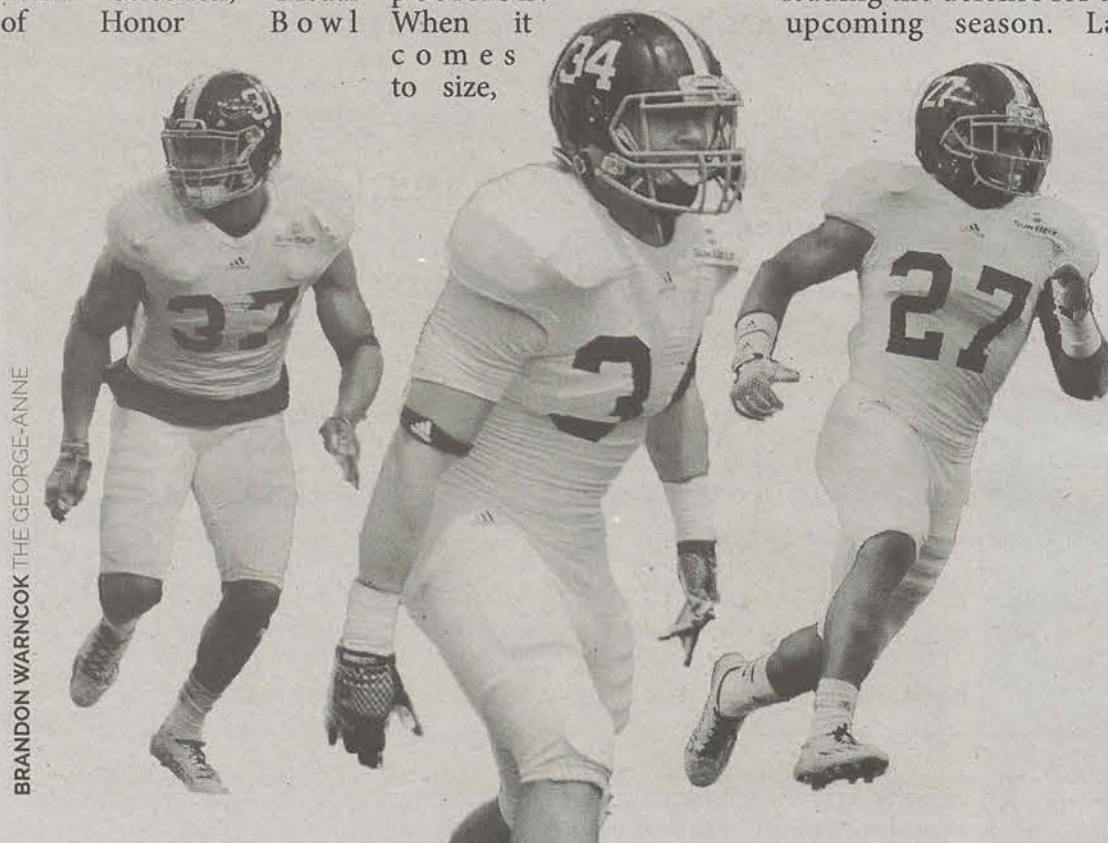
Also looking to make a significant contribution this upcoming season is junior linebacker, Deshawntee Gallon. He will be playing the "will" position. Like Williams, he also has an impressive resume to prove his play. Last season, Gallon played in all 12 games and was fifth in tackles for the Eagles. He was credited with 44 total tackles, 6.0 tackles for a loss, 3.0 sacks, 1.0 interception and 2.0 blocked kicks. Gallon will look to continue adding to his resume this upcoming season and create a dynamic tandem with Williams by his side.

Four linebackers that shouldn't be overlooked in any regards are Patrick

Flowe, Chris

DeLaRosa, Ken Butler and William Bussey. Last season, Flowe played in nine games, DeLaRosa played in 10 games, Butler played in 11 games and Bussey played in 11 games (special teams). These Eagles are experienced and more than capable of subbing in and making big time plays. With Flowe leading this young group, there's potential in this group. Expect to see these Eagles make appearances throughout the season.

The Eagles want to dominate defensively in 2015. Williams and Gallon will lead the charge with tremendous play and leadership. The tandem they form will be a nerve-racking sight for anyone who gets in their way. In addition, the availability of four talented linebackers, who have all seen playing time, will look to make an impact whenever needed. These boys are ready to battle and opponents should be frightened.



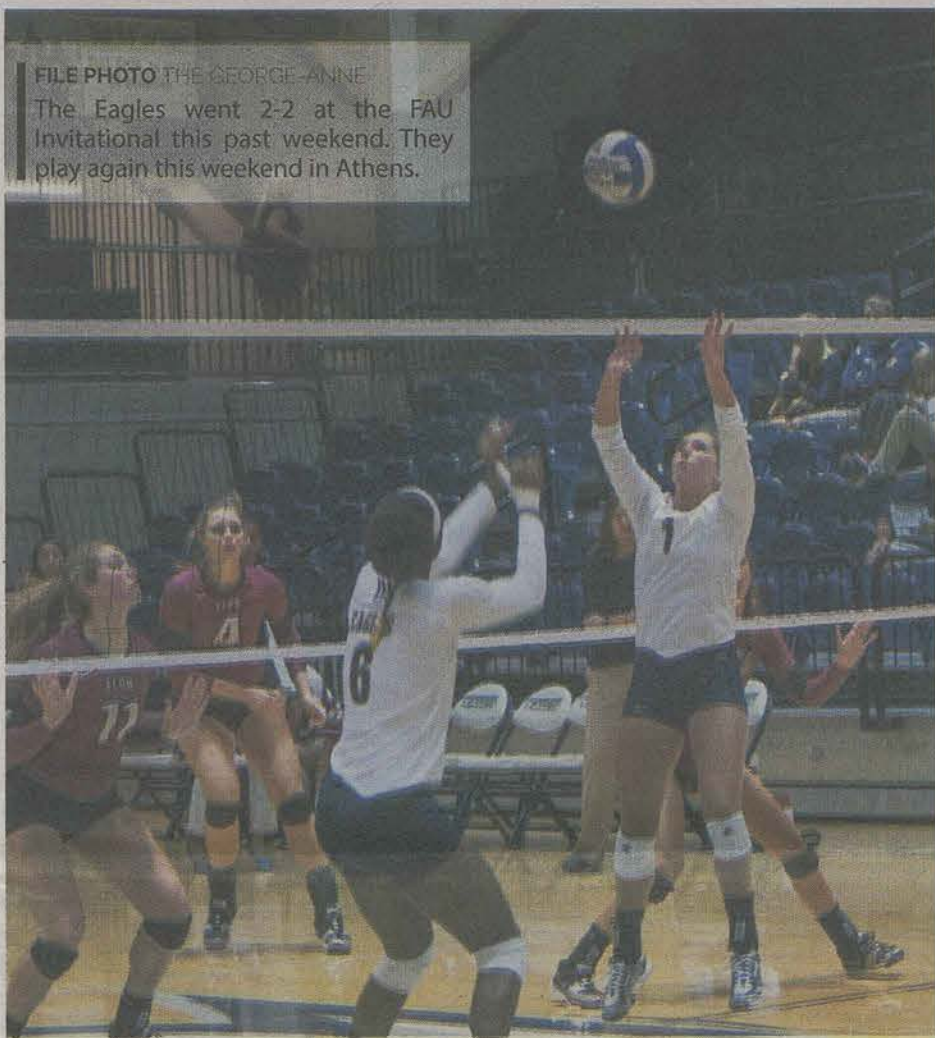
BRANDON WARNOCK THE GEORGE-ANNE



# Season Begins

## at FAU Invitational

FILE PHOTO THE GEORGE-ANNE  
The Eagles went 2-2 at the FAU Invitational this past weekend. They play again this weekend in Athens.



BY DERIK WUCHTE  
The George-Anne staff

The Eagles played an even split this weekend, going 2-2 at the FAU Invitational in Boca Raton. It was a new team compared to last year, and the Eagles were able to show some of what they had. Their wins over Binghamton and Bethune-Cookman came at 3-0. The loss to Stetson was a close 2-3. Florida Atlantic ended in a 0-3 defeat.

There were certain perks in the team's performance that Head Coach Dustin Wood noticed, but one of the major keys was that the Eagles showed potential.

"It's good to have the kids back from injury," said Wood. "We battled back from all sorts of situations. We were put in some situations that weren't too favorable, but we battled back. We'll learn from it."

2-2 is manageable, but it isn't the ideal start for the Eagles. Their sights are set ahead and they know their best volleyball has yet to be played.

"We're disappointed in the two losses," said Wood. "We really feel that we're a better team. [The team's] not hanging their heads. We're really looking forward to working hard. [This weekend was] something that we have never seen before. We're ready to get back into the gym and work on everything we need to."

Sophomore Megan Chevalier and Junior Alex Beecher competed at a very high level at the invitational. They made all-tournament, something the team is very proud for.

This played in part to the team's tempo for the weekend. Defense wound up a high point for the team. It was a lack of offense in some matches that cost the Eagles. As Wood explained, there were times the team was "one-dimensional."

"We need to make sure everyone is contributing in our offense. We relied on one or two people each match, instead of our whole team. We just need to get everyone involved in our offense."

Even with the .500 start, the Eagles are certainly intent to still make the championship run.

"There's no question about it," said Wood. "We have to get better each week. I would be concerned if we were playing our best ball right now. Everything is really fixable. We're going to be clicking on all cylinders. We're learning a lot, but we'll get there. We just got to work harder."

The Eagles will be in Athens this Thursday and Friday to face off against Kennesaw State, Georgia and Georgia Tech. Play on Thursday, Sept. 3 starts at 1 p.m. against Kennesaw State.



# STATE OF THE U. ASSEMBLY

WEDNESDAY, SEPT. 2  
6:30 P.M.

RUSSEL UNION  
BALLROOM

FREE ADMISSION

PROOF OF ATTENDANCE PROVIDED

PRESIDENT BARTELS AND MEMBERS OF  
HER CABINET WILL ADDRESS THE  
CAMPUS COMMUNITY, HIGHLIGHTING  
THE UNIVERSITY'S RECENT  
ACCOMPLISHMENTS AND OUTLINING  
COMING CHALLENGES AND GOALS.

BRING YOU QUESTIONS  
FOR UNIVERSITY ADMINISTRATION.



GEORGIA SOUTHERN  
UNIVERSITY



GSUsga



georgiasouthernsaga



# FIRST AMENDMENT FREE FOOD FESTIVAL

— THURSDAY, SEPTEMBER 17 —  
11 - 2 PM AT THE RUSSELL UNION ROTUNDA

FREEDOM OF SPEECH

A large, close-up photograph of a sandwich, likely a sub or hoagie, resting on a black and white checkered paper liner. The sandwich is filled with meat, cheese, and vegetables. A small white sign with the words "FREEDOM OF SPEECH" is stuck into the top of the sandwich. The background is dark and out of focus.