

Georgia Southern University

Digital Commons@Georgia Southern

The George-Anne

Student Media

8-27-2015

The George-Anne

Georgia Southern University

Follow this and additional works at: <https://digitalcommons.georgiasouthern.edu/george-anne>



Part of the [Higher Education Commons](#)

Recommended Citation

Georgia Southern University, "The George-Anne" (2015). *The George-Anne*. 2876.
<https://digitalcommons.georgiasouthern.edu/george-anne/2876>

This newspaper is brought to you for free and open access by the Student Media at Digital Commons@Georgia Southern. It has been accepted for inclusion in The George-Anne by an authorized administrator of Digital Commons@Georgia Southern. For more information, please contact digitalcommons@georgiasouthern.edu.

GA

THE GEORGE ANNE

GET INTO THE GARDEN

DIG INTO PAGE 8

CATCH A RIDE WITH UBER | PAGE 5

2015 FOOTBALL
PREDICTIONS PAGE 12

BRANDON WARNOCK THE GEORGE ANNE STAFF

STEP OUT OF CAMPUS AND STEP INTO STATESBORO

Hosted by the Office of Leadership and Community Engagement, Step into Statesboro gives students a chance to discover Statesboro. With emphasis on downtown Statesboro and its surrounding neighborhoods, Step into Statesboro gives students an opportunity to visit places such as the Farmers Market, The Averitt Center for the Arts, city hall, local eateries and various historical sites.

Bring some water and a good attitude because students will be walking in the Statesboro heat. Mark your calendar for Saturday August 29. Two bus tours will be departing from Russell Union at 7:45 a.m. and 8:45 a.m. Tours last approximately five hours. Be sure to register with the Office of Student Leadership and Community Engagement online as space is limited.



BY SIMEON IKE
The George-Anne staff

WEATHER BAR

Friday



High: 86°
Low: 70°

Saturday



High: 85°
Low: 70°

Sunday



High: 87°
Low: 69°

WEATHER SLOTH



flyp APP UPDATE

BY CAITLYN OLIVER
The George-Anne staff

Ever had a group project but you didn't want to give your number to people you were only talking to for the month you were working on it? Flyp will let you do that.

Released in March, this app let's you have one phone numbers for free (and a charge for every number after that) that you can use to separate your personal and professional lives. Users are able to make phone calls and receive texts through the different phone

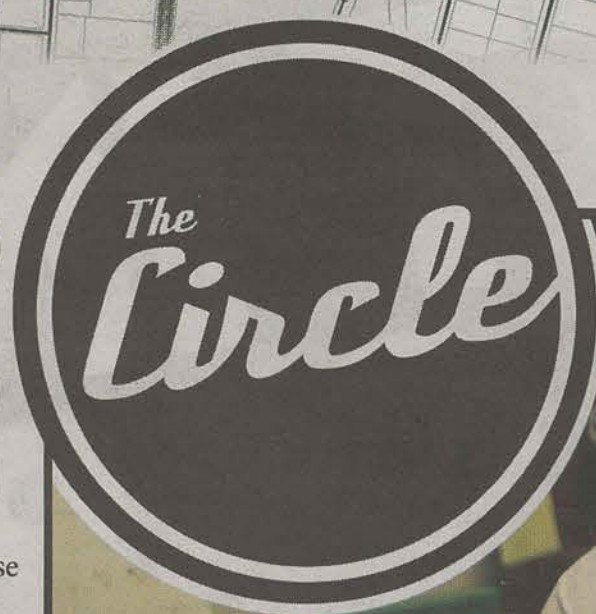
numbers but still only use one smart phone.

The layout is simple and user friendly so it's easy to navigate and users can save their contacts so people are easy to find.

Now you can give your Tinder match your number and not be worried about it haunting you later.

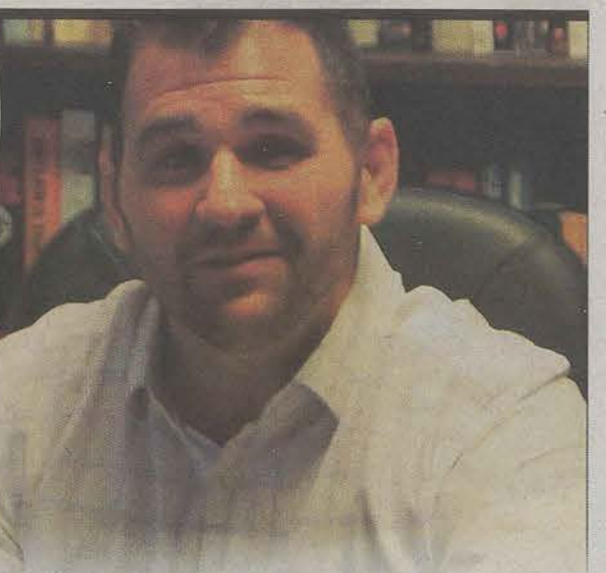
techcrunch.com/2015/03/31/flyp-lets-you-add-multiple-numbers-to-your-smartphone/

<http://getflyp.com/>



PROFESSOR'S REACT TO RATE MY PROFESSOR

BY KATIE TOLBERT



Professors Tyson Davis, Patrick Novotny, Brian Feltman and Eric Hall were good sports and read what Georgia Southern students had to say about them on Rate My Professor.

Some of the ratings were good while others were bad, but there were laughs and smiles across the board.

Tweet @TheCircleGSU if you know of a professor you would like to nominate to be in this video series!

Classifieds & Puzzles

8-27-15

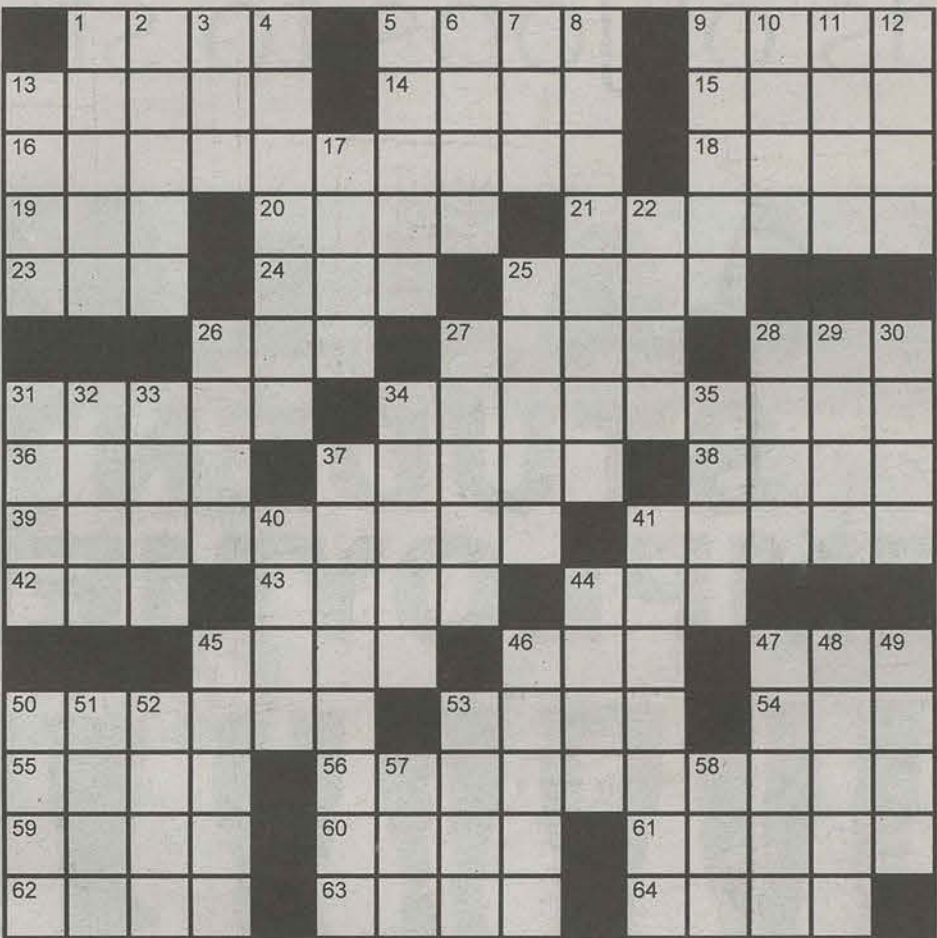
3

The George-Anne 9/1/15 Crossword

PuzzleJunction.com

Across

- 1 Night prowler
5 Eye tooth
9 Spinning toys
13 Cheapskate
14 Barbra's "Funny Girl" co-star
15 Horne solo
16 Cobalt blue
18 "Play ___!"
19 South of Spain
20 Election losers
21 Croquet item
23 In the know
24 Itinerary abbr.
25 Wild plum
26 Denebola's constellation
27 Acquire
28 "So long!"
31 Threesome
34 Poet
36 Indian queen
37 Taters
38 Dust cloths
39 Fills to excess
41 Traffic sign
42 Casual attire
43 Ionian gulf
44 Pillbox, e.g.
45 Enormous birds of myth
46 Bender
47 Recipe amt.
50 Counsel
53 Totally botch
54 Triumphant cry
55 Homeless child
56 Wile E. Coyote's nemesis
59 Glamour rival
60 Actress Purviance
61 Band necessities



Copyright ©2015 PuzzleJunction.com

- 62 Palm reader, e.g.
63 Vermin
64 Headliner

Down

- 1 Provoke
2 Take forcibly
3 ___ culpa
4 Like a money hauler
5 Strong suit
6 French friends
7 Thai river
8 Sprites
9 Dinette part
10 Kind of thermometer

- 11 Stack
12 Ice melter
13 Moonshine mix
17 Camera setting
22 Top-drawer
25 ___ of time
26 Lion's den
27 Dutch cheese
28 Grizzly
29 Safecracker
30 Highlands tongue
31 Certain horse race
32 Great review
33 Arrow poison
34 Tiffs
35 Waste allowance
37 Wizard
40 Neighbor of Vietnam
41 Some champagne bottles
44 It grows on you
45 More abundant
46 Double-crosser
47 Form of Japanese poetry
48 Like some lingerie
49 Links numbers
50 Dazzles
51 Broad valley
52 Offensive
53 Deliver a tirade
57 Harem room
58 Tiny criticism

STATEMENT OF OPERATIONS

The George-Anne is the official student newspaper of Georgia Southern University, operated by GSU students using facilities provided by the university. The newspaper is the oldest continuously published newspaper in Bulloch County.

The newspaper is published twice weekly, on Tuesdays and Thursdays, during most of the academic year. Any questions regarding content should be directed to the student editor by phone at 912.478.5246 or at gaeditor@georgiasouthern.edu.

ADVERTISING: The newspaper accepts advertising. Inquiries may be made by calling 912.478.5418 or 912.478.0566. For questions e-mail ads1@georgiasouthern.edu.

The George-Anne receives additional support, in part, from the Student Activities Budget Committee. For more information, rate cards, or sample publications, contact the advertising manager or student media director. The advertiser is responsible for any errors in advertisements and its liability for adjustments is limited to the amount of space the error occupied in the ad. Further, the newspaper is not responsible for any damages caused due to an ad's omission from a particular edition and its responsibility solely is to reschedule the ad in the next regular edition at the regular advertising rates.

STUDENTS BEWARE: The George-Anne screens all advertisements prior to publication. The newspaper strives to accept ads for legitimate products and services only. Students are urged to exercise caution when replying to ads-- particularly those that require personal information. Students are also urged to report to the newspaper any suspicious offers which they might see in an ad.

PUBLICATION INFORMATION: The newspaper is printed by The Brunswick News in Brunswick, Ga.

NOTICE: Unauthorized removal of multiple copies from a distribution site constitutes theft under Georgia law, a misdemeanor offense punishable by a fine and/or jail time.

CORRECTIONS: Contact the editor at gaeditor@georgiasouthern.edu for corrections and errors.

STAFF LIST

Editor-in-Chief Lauren Gorla
Managing Editor Erinn Williams
Content Strategist Casey Cargle
Content Visualist Lauren Grizzell
News Editor Chris Rossmann
Features Editor Rashida Otunba
Sports Editor Robert George
Daily Editor DJ Fullmer
Opinions Editor Ian Leonard

Creative Manager Hailey Smith
Photo Editor Brandon Warnock
Design Editor Alex Smith
Features Designer Rebecca Davis
News Designer Erin Fortenberry
Sports Designer Margarita Suarez
Opinions Designer Rebecca Davis

Distribution Manager
Marketing Manager Cydney Long
Business Manager Taylor Norman

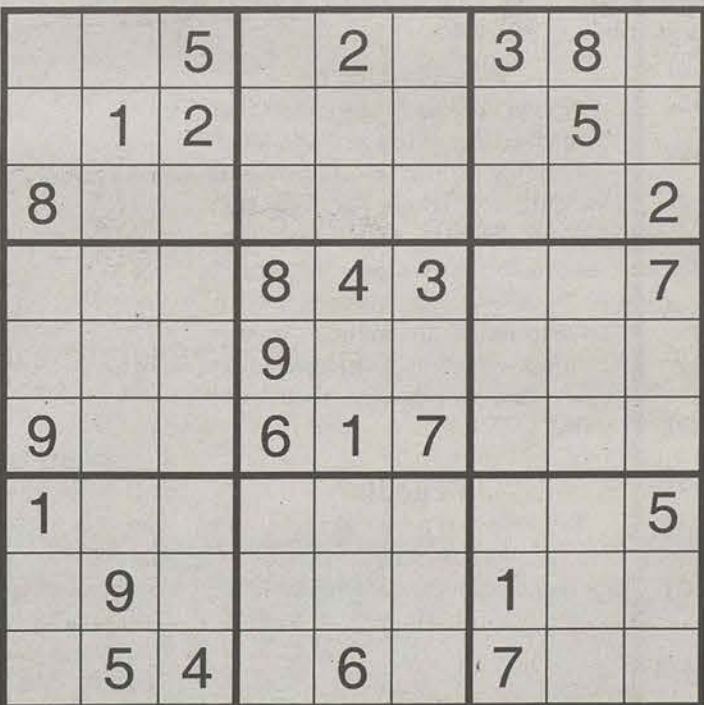
Classified Advertisement

Roommate Wanted

Brand New Home at Langley Pond.
Bedroom, private bath, & walk-in closet.
Non-smoker. No pets.

\$350/month utilities included.

Call: 404-580-5466



Georgia Southern offers thousands of jobs to students

BY TIFFANY SKINNER
The George-Anne staff

Need a job? Tired of your parents telling you to get out there and get involved? Georgia Southern University employs over 2,600 students every semester and may have just the job for you.

Students who demonstrate financial need based on their Free Application for Student Aid are eligible for Federal Work Study. After applying and being awarded Federal Work Study, students may apply for any job on campus. Anyone applying for these jobs must bring their Work Study authorization form to the interview.

Work Study students are allowed to 20 hours per week and 144 hours over the course of the semester. Positions can be retained between fall and spring semesters and students with at least one credit hour of classes over the summer may work over the summer as well. All students interested in the program must be in good academic standing to keep their positions.

"My work study position offers flexible hours that correlate with my class

schedule," Amanda Francis, a junior health education major said.

Work Study students can apply for a variety of job positions including tutor, data clerk, and customer service representative and are required to follow the dress code of their department.

Students who don't qualify for work study positions can apply for

institutional positions. These positions are not based on financial need but students must be enrolled in at least 6 credit hours and be in good academic standing. Those who work institutional positions are allowed to work 25 per week and may hold a work study job as well. Institutional student employees are paid at least \$7.25, but can be paid up to \$19 an hour in specialized positions.

Campus Recreation & Intramurals has the most student employees. If a student applies and is selected for a position in the Health Services they must take a drug test before being hired. Others may be subject to drug testing if reasonable suspicion is documented by the hiring manager with the Department of Human Resources.

The Student Employment Center encourages students seek on-campus employment while in college because it supports the experiential learning theory. We believe that employment will help students identify successful work characteristics and prepare them for full time employment opportunities.



ATTENTION!

The George-Anne is currently in the process of reporting on sexual assault, sexual violence and rape on our campus. If you or anyone you know are willing to discuss your experience anonymously, please contact gaeditor@georgiasouthern.edu. We understand that this issue is of the most sensitive nature and will do our upmost to respect your privacy.

BY OZZIE BUNBURY
The George-Anne staff

Uber has made it to Statesboro and the greater Savannah-Hilton Head area.

What is Uber:

A tech company started in San Francisco. Founded in 2009, Uber Technologies Inc. revolutionized an industry. Travis Kalanick and Garrett Camp created an app, originally known as "Ubercab" to "allow consumers with smartphones to submit a trip request which is then routed to Uber drivers who use their own cars."

Benefits?

Reliable. It's a private taxi service with the comfortability of a personal car. Cashless transaction. Easy to split cab fare.

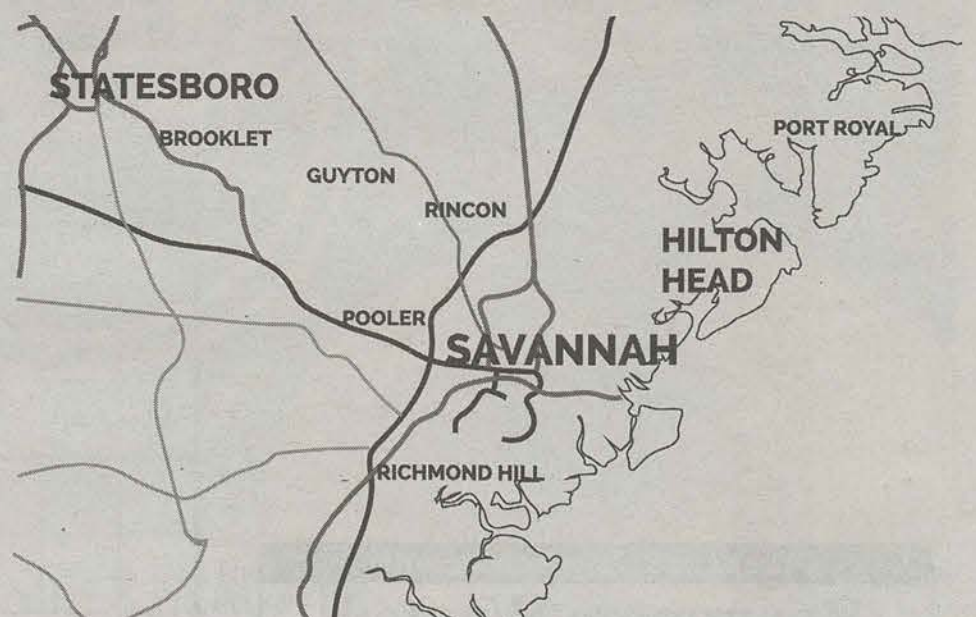
Want to be a part of it?

If you have your own car you can. Uber drivers are independent contractors with the company. You set your own hours. You set where you go and who you pick up.

Uber is expanding globally quite quickly. Within 6 years of business

operation the company has an estimated net worth of \$50 billion. Expanding to Statesboro just opened up a market of over 20,000 more students. If you are interested in an entertaining job opportunity, Uber might just be worth looking into.

Uber in the Boro'



NEW GEORGIA SOUTHERN APP STORE INTRODUCED

BY JOZEF PAPP
The George-Anne staff

Starting in Fall 2015, the Georgia Southern Information Technology Services introduced "The Georgia Southern App

Store" to the general public. The app store consists of a place where students, faculty and staff can find all the recommended mobile apps to assist them in their day-to-day activities at Georgia Southern. Some apps can be found

individually on either the Apple App Store or the Google Play store only on mobile devices, such as smartphones and tablets.

To download the app store, visit: <http://www.georgiasouthern.edu/mobile/>



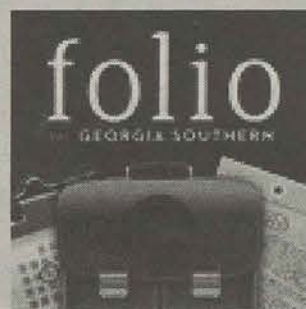
Official app for Georgia Southern University

The Eagle Mobile app will allow you to view the campus calendar to see what events are going on around campus, provide emergency contact information on campus, update games scores and team schedules, among many other things. In addition, many students have used the campus map features to get around campus.



SmartTraxx

Shows the real-time location of buses around campus



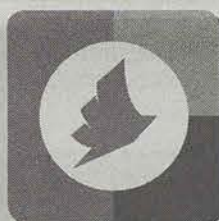
Mobile access to Folio

The Folio Mobile Web app allows instant access to Folio without having to go through mygeorgiasouthern.edu. However, the app lacks the ability to see files without changing to the desktop version at the bottom of each page. It shows the upcoming assignments on the home screen, as well as the ability to select the desired class. The app only available on the Georgia Southern App Store



Official CRI app

The CRI Mobile is the official app for all CRI events and the RAC. On the home screen, the schedule for the coming weeks is shown with some description of each event. The group fit tab demonstrates the group fitness schedule for the coming days including a description of each activity. In addition, the social app incorporates all the tweets from the CRI accounts, while the facilities tab only show the hours of operation and contact information. The app is available on both Google Play and Apple App Store.



PrintOn

Print documents from mobile device.



Tapingo

Allows ordering of food from mobile device to on campus locations

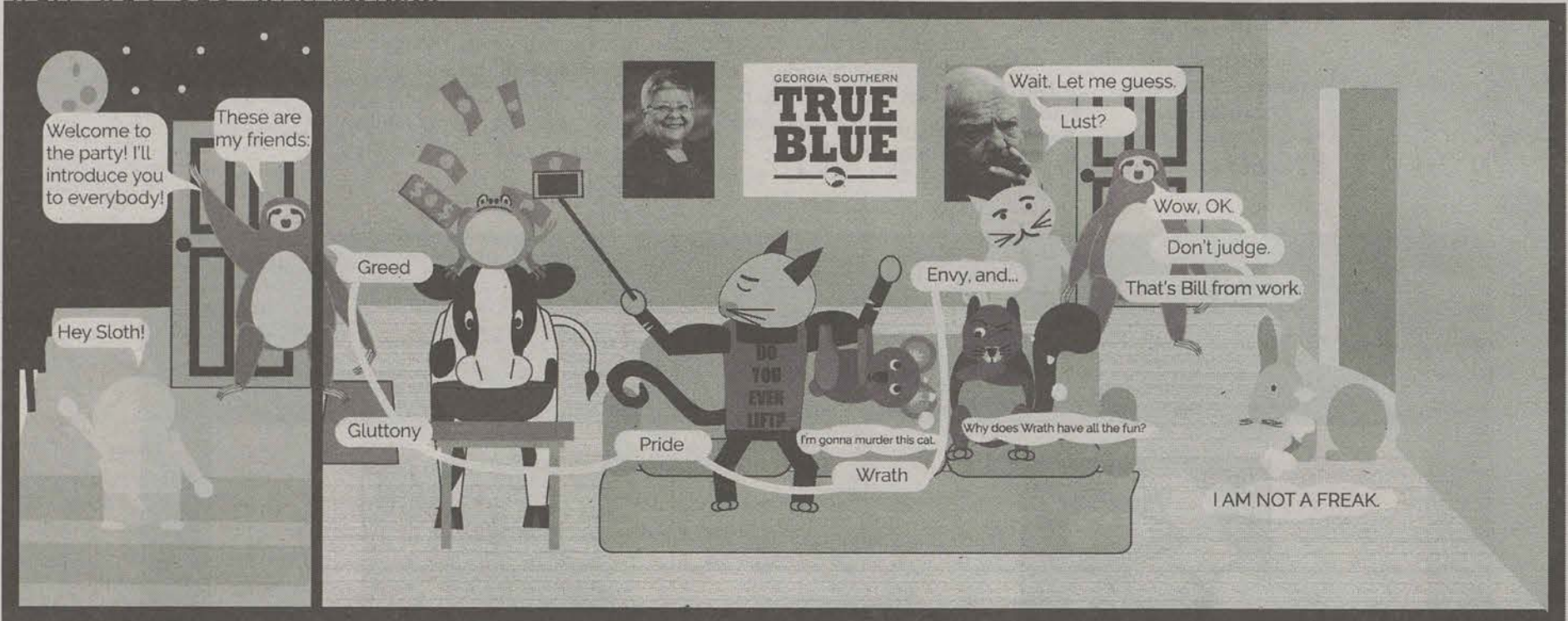


Detail information about Zach S. Henderson Library

The GSU Mobile Library app gives detail information about the Zach S. Henderson Library such as, hours of operation and contact information for all the offices in the library. Also, it allows students to chat/text with a librarian and provides driving directions to the library. However, the app's biggest feature is the ability to search the library catalog, search [Discover@GeorgiaSouthern](mailto:Discover@GeorgiaSouthern.edu), and access your GIL Account on your mobile device.

WEATHER SLOTH

THE SEVEN DEADLY FRIENDS
BY WILL PEEBLES



Don't Call It a Comeback:

The Resurgence of Plot in Modern Television.

BY IAN LEONARD

The George-Anne staff

Do you ever stop and think about how crazy it is to be human? I mean outside the usual drunk conversations you'll engage in with your friends after a long night out. I'm asking, have you ever thought about how oddly unique it is to be a part of the human race? There are so many activities and behaviors exclusive to the human race, that sometimes I think it's easy to lose appreciation for some of the abilities we may consider basic, yet is well outside the grasp of our peers in the animal kingdom. Don't worry; I'm not about to go into a spiel on all of the amazing opportunities humans have access to. Instead I'm going to focus on the one that I am most grateful for on a day-to-day basis. And that is the gift of storytelling.

Storytelling has taken many different guises over the ages, and over the course of this series, I will be analyzing and discussing the multiple different forms storytelling has taken in today's society, and hope to guide those of

you who may have missed out on, in my opinion, some of the greatest stories of all time.

Until recent memory, T.V. had long been thought of the silver screen of a lesser caliber. It was often seen as a sign of decline, if an actor went from regularly starring in movies to performing on a television show. There are many examples of television performers who simply couldn't translate their success from T.V. to the big screen. Sarah Michelle Geller and "Buffy the Vampire Slayer", Matt LeBlanc post "Friends", and the wildly ill-received spinoff "Joey." For a long time, particularly during the 1990s, television was seen as a vehicle for light comedies and family sitcoms, the field dominated by shows like "Seinfeld", "Fresh Prince of Bel-Air", "Saved by the Bell", and "The Simpsons." Don't get me wrong; I love

comedies. Seinfeld is one of my favorite T.V. shows of all time, it's just that the format didn't have the plot heavy, story reliant content that I now see, it can wield with great competency.

This of course has changed

MUST SEE TV

► Breaking Bad

► Parks & Rec.

► Orange is the New Black

dramatically, thanks to breakout performances in recent years, television began to gain recognition as a proper platform for narratives. This can be traced back to as early as "The Sopranos" premiering in 1999 on HBO,

it is a startlingly similar to the shows we view today. This is one of the first examples of America consistently being put on the edge of their seats. Up until then, T.V. was mostly littered with sitcoms, children's cartoons, and episodic television dramas like "Law & Order", which while decently suspenseful, offered little follow-up and continuation episode to episode. "The Sopranos" was one of the first television shows to try and tell one complete continuous story broken up over multiple episodes, and if not the first, probably one of the first to do it well.

The success of "The Sopranos" and its early peer "The Wire" showed creators that audiences were ready for more serious, complete tales to be broadcast on a wide scale. Many newer follow this structure. "Breaking Bad", "Game of Thrones", and "The Walking Dead" are just a few examples of the

new age of television. And this renaissance of sorts isn't exclusive to the genre of drama. There has been a sharp increase in comedies, horrors, and even documentaries have been getting similar treatments. "The League", "American Horror Story", and "Cosmos" are recent instances of shows that, while being episodic, try and maintain some semblance of an overarching plot structure.

With the rise of instant view media platforms like Netflix, Hulu, and even Yahoo joining the mix, never before has there been more quality content readily available to the general populace. With their own originals, reboots, and continuations, these streaming services have allowed for more experimentation and risk taking than possibly ever before.

So, if you haven't discovered all of the wonderful stories that T.V. has to offer, I have taken the liberty of listing a few, what in my opinion, are must see shows, not just as a television lover, but simply as anyone who can appreciate a wonderful narrative in general.

The George-Anne welcomes letters to the editor and appropriate guest columns. All copy submitted should be 350 words or fewer, typed, and sent via email in Microsoft Word (.doc/.docx) format to letters@georgiasouthern.edu. All submissions must be signed and include phone number for verification. GSU students should include their academic major, year and hometown. The editors reserve the right to reject any submission and edit submissions for length. Opinions expressed herein are those of the Board of Opinions, or columnists themselves and DO NOT necessarily reflect those of the faculty, staff, or administration of GSU, the Student Media Advisory, Student Media or the University System of Georgia.

COME SEE OUR NEW LOOK

**ALWAYS
CHEAPER THAN
CAMPUS!**

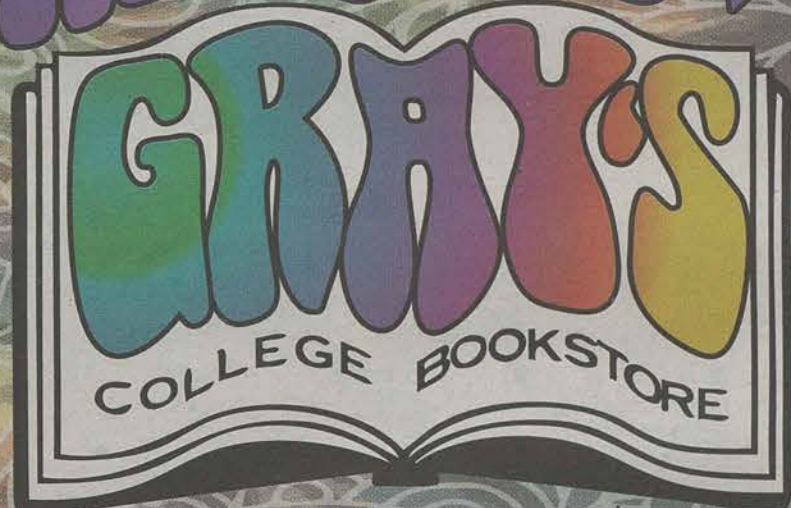
...

**PRICE MATCHING
ON PURCHASES
AND RENTALS**

**NEW LAYOUT FOR
FASTER SERVICE!**

1. Bring your schedule
2. Enter it into our lookup station
3. Browse while we compile your order
4. We will call your name when it's ready

**ALL YOU
NEED**



COME PLAY TRIVIA!

...

ANSWER QUESTIONS TO GET 10% OFF ONE ITEM!

BETTER LAYOUT • BETTER PRICES • BETTER GO TO GRAY'S!

LIKE US ON FACEBOOK.COM/GRAYSGSU FOR EXCLUSIVE DEALS & DISCOUNTS

1550 CHANDLER RD, STATESBORO • (912)681-2665 • WWW.GRAYSBOOKS.COM

INTERFRATERNITY COUNCIL

IFC

GEORGIA SOUTHERN UNIVERSITY

Fall 2015 Recruitment

Fraternity Formal Recruitment will be held

Thursday, September 3 - Saturday, September 12, 2015

Registration will close August 31st!

To Sign up, visit: <http://bitly.com/GSIFC15>

**BE
MORE.
GO
GREEK.**

Email:

Greeks@georgiasouthern.edu

Phone: (912) 478-5185

✓ Academic Excellence

✓ Lifetime Commitment

✓ Leadership Development

✓ High Campus Involvement



GET IT TO THE GARDEN!

A LOOK INSIDE GEORGIA SOUTHERN'S BOTANICAL GARDEN

BY KAT SHUMAN

The George-Anne staff



BRANDON WARNOCK THE GEORGE-ANNE

The Botanical Garden offers students a relaxing break from the hustle and bustle of campus, free of charge. In addition to its beautiful foliage, the garden provides students with fun activities and volunteer opportunities.

Time and time again I hear students complain that there's nothing to do in Statesboro. It is my mission this year to prove those students wrong, and I will start by talking about the Garden of the Coastal Plains, Georgia Southern's Botanical Garden.

The Garden of the Coastal Plains, which is located on campus, is free for students to visit. It is home to many nature trails and also offers picnic tables and plenty of grassy areas for students to sit and relax or work on their homework.

"The Garden is a great place to get away from the everyday craziness," Carolyn Altman, director of the garden, said.

The Botanical Garden is a popular meeting spot for students working in group projects, and it will soon offer WiFi. Altman has a vision that one day the garden could even sell coffee and cookies to visitors.

"It's such a pretty place. It's a nice place to relax, and it would be a great place for a picnic or a date," Kellya Guajardo, sophomore early childhood education major, said.

Altman could not express enough that The Garden is an

awesome resource for students. She has photography students and research students take advantage of The Garden and encourages others to do so. Altman also mentions that The Garden is a great place for students to collect their Christmas gifts for the holidays. They offer a variety of poinsettias and other plants available for purchase every year at Christmas.

They host a plant sale every year in the spring, and they offer a "Lunch and Learn" during the week for only \$20. The Garden also gives students many volunteer opportunities. Students can help out with the Children's Garden, wine and beer tastings, and many other events and festivals hosted by The Garden. "We could not do what we do without the help of the students," says Altman.

The Garden of the Coastal Plains is hosting a free event for students on Oct. 24 from 11 a.m.-2 p.m.. There will be a festival in The Garden with live music, drinks, and some open mic time for any students that are interested in playing an instrument, singing, reciting

poetry, etc. The first 100 students to come to the event will receive a "dorm friendly" plant (meaning you can't kill it... let's hope). Students will also have the opportunity to pot their own plants at this event as well.

"Come on out to The Garden," says Altman. "We have so much to offer students. Just take the time to get outside, look around, and be in nature. Make it part of your experience here."

“

"THE GARDEN IS A GREAT PLACE TO GET AWAY FROM ALL THE CRAZINESS"

CAROLYN ALTMAN
Director of the Gardens

HOURS

M-F 9:30 a.m. -5:30 p.m.

(Garden Buildings)

Garden Grounds close at 7 p.m.

Sun. 1 a.m.-4 p.m.



THE BUZZ LIST

MATT SOWELL

Features editor



► **Lady Gaga**, successful cult leader, is threatening legal action against a popular British ice cream company named The Licktators over their latest flavor, "Baby Gaga." It probably wouldn't be a big deal if "Baby Gaga" wasn't made of breast milk, which is all-in-all pretty gross.

► **Jared Fogle**, former five dollar footlong Subway guy and now national disappointment, is getting divorced. His wife has decided to cut their love sandwich in half following Fogle's scandal. Fogle will soon be eating fresh in jail due to drug and child pornography charges.

► **AshleyMadison.com**, gross dating site for people who should not be married, had the credit card information hacked of almost 37 million users last Tuesday. Their card info, email addresses, and other personal information was dumped into something called "The Dark Web" which is as terrifying as it sounds. Users must now decide whether they want to face the creatures of the dark web, or their angry spouse. I'm not saying they deserve it, but they totally deserve it. Bonus: internet gurus have set up sites so that people can find out if their spouses had an account. What was it that people were saying about gay people ruining the sanctity of marriage?

► **One Direction**, boy band sensation, is going into different directions as the group announced a temporary break-up which will occur in the spring. That will come just in time for Louis to take care of his bundle of joy (a baby), and Harry to take care of HIS bundle of joy (that man bun).

► There's a halloween costume on shelves modeled after **Caitlyn Jenner**, marking that trans people are now just as accepted as other minorities (Native Americans, Hispanic people, the list goes on). In all seriousness, costumes like this need to stop being a thing. If you wear, expect to end up with a picture in the Buzz List of Shame. (There's also one based off of the dentist who killed Cecil the lion, too. wtf.)

Rent, amazing musical loved by everyone except pretentious hipsters, is coming back to Broadway. Just thought I'd slip that in there, because muscials.

Disclaimer; The Buzz List is a satirical column dedicated to answering Amy Poehler's questions from 'Mean Girls'; "What is up? What's the 411? What has everybody been up to? What's the hot gossip? Tell me everything. What have you guys been listening to? What are the cool jams?" It should not be taken seriously in any way. Literally we're making fun of TMZ.

8/27- **WEEKLY BUZZ** -9/2

Keeping you in the know about Student Affairs and Enrollment Management events, designed with you in mind.

AUGUST 27

UPB: Homecoming Captain's Meeting (Option 3)

Time: 6:00 - 7:00 pm

Location: Russell Union 2041

Is your student organization interested in participating in the Homecoming 2015 week? At least two representatives from each organization wishing to participate in any Homecoming events, must select one Captain's Meeting to attend. Collaborating orgs must have one Captain from each organization. Contact Information: UPB@GeorgiaSouthern.edu

Carnival ExtRHAvaganza

Time: 6:30 pm - 9:30 pm

Location: 6:30 pm - 9:30 pm

Eagle Village Parking Lot across from Centennial Place on the corner of Harvey Dr. and Chandler RD.

Looking for a fun night out at a Carnival? Join RHA and the rest of campus as we celebrate the beginning of a new school year with Carnival ExtRHAvaganza. There will be Carnival games, Prizes, Food and Fun for all Eagles.

Rain Location: Nessmith Lane - PAC Ballroom

Contact Person: Casey Weaver cweaver@georgiasouthern.edu 912-478-1064

UPB - UNPlugged: Open Mic Night

Time: 6:30 pm

Location: Williams Center Multipurpose Room

The University Programming Board has changed the look of Thursday nights in the Borol. Our monthly UNPlugged series offers a relaxed, coffeehouse/lounge type environment for students to indulge in tasty treats and beverages while enjoying a variety of entertainment acts, provided by Georgia Southern's most talented. Faculty/staff/students, do you have a special talent that you'd like to share with the campus? You can now sign up on MyInvolvement! Click here to register to participate! This event is free and open to the public. Students, please bring your Eagle IDs. For more information on accommodations related to access or participation, please contact UPB at 478-7270 at least two weeks prior to the event.

Contact Information: UPB@GeorgiaSouthern.edu

AUGUST 28

UPB Interest Meeting

Time: 1:30pm - 2:30 pm

Location: Russell Union 2052

Interested in helping to make decisions and plan large-scaled events on campus such as concerts, comedians (or other novelty acts), Homecoming, pageants, block parties and more? Attend this information meeting to learn how joining the University Programming Board (UPB) can help you to leave your footprint on GSU's campus, while developing your leadership skills and making new friends!

Contact Information: UPB@GeorgiaSouthern.edu

SEPTEMBER 1

Student Org Renewal Workshop (Makeup Session)

Time: 5:30pm - 7:00 pm

Location: Russell Union 2044

Did your organization miss the renewal workshops in April? Attend this makeup session for another chance at regaining your active status for the 2015-2016 academic year! *Please note: Space is extremely limited and available on a first-come, first-served basis only.

Contact Information: kvannoord@GeorgiaSouthern.edu

UPB: Homecoming Royalty Meeting (Option 1)

Time: 6:00pm - 7:00 pm

Location: Russell Union 2041

Is your student organization interested in participating in the Homecoming 2015 royalty process? Each royalty candidate must select one Royalty Meeting to attend. Photos for the website will be taken at the end of the meeting. Please dress business professional.

Contact Information: UPB@GeorgiaSouthern.edu

SEPTEMBER 2

UPB: Homecoming Royalty Meeting (Option 2)

Time: 7:00pm - 8:00 pm

Location: Russell Union 2041

Is your student organization interested in participating in the Homecoming 2015 royalty process? Each royalty candidate must select one Royalty Meeting to attend. Photos for the website will be taken at the end of the meeting. Please dress business professional.

Contact Information: UPB@GeorgiaSouthern.edu

YOUR STUDENT ACTIVITY FEES AT WORK

THE WEEKLY BUZZ IS SPONSORED BY THE OFFICE OF THE VICE PRESIDENT FOR STUDENT AFFAIRS AND ENROLLMENT MANAGEMENT

DISCOVER: Anthropology Society

A HOBBY, A LIFESTYLE, A NEW GEORGE-ANNE SERIES

BY MEG ELWOOD
The George-Anne staff

Undeclared? Unhappy with a major? Bored? 'Discover' is a new article series here to help give a voice to student clubs, societies, and opportunities that are unknown to much of the campus. Who knows, you may just Discover your passion here at GSU.

Last week, the hands-on experiences of Archeology was the front page story. This week, we hear from the Alvaro Smith and Zary Manning, students of the Anthropology Society.

"Eric Wolf describes Anthropology as 'the most humanitarian of the sciences, and the most scientific of the humanities,'" senior Zary Manning, secretary of the Anthropology Society said.

Anthropology is the study of human societies, cultures,

and development. If you are shy around groups of people or feel like you don't have a place to fit in, think again. The people who make up the anthropology department, both professors and students, are possibly some of the most down to earth people (literally) you will ever meet. They always find something to talk about and are very passionate about people and the world they live in.

Manning describes the small family feel of the society as something that "exposes you to different cultures and different people and ways of living, I think that's a good quality to have as a scientist and a person."

The society is a great place for anyone, whether they are anthropology majors or non-majors, to meet new people and expand their knowledge. Manning and society president Alvaro

Smith, have big plans for this coming semester, such as a highlander trip to Stone Mountain.

"We're going to do outings, and during meetings we'll be doing presentations. Each presentation will talk about different issues in today's world and anthropology as well," Smith said.

Don't let the word "discussion" scare you.

"The presentations will be structured in a way to encourage discussion, not to limit discussion. People can always bring their thoughts and say what they want to say," Manning said.

Not only that, if you're a student in need of volunteer hours, the society has got you covered.

"There are lots of archeology volunteer opportunities that are presented to this society, it's kind of the first place the faculty or graduate students

go when they need help", said Manning.

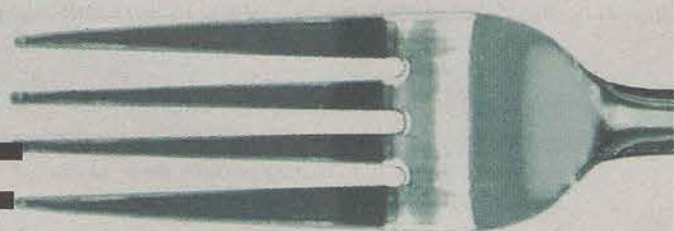
The society is also planning to volunteer at local humane societies and soup kitchens as well as holding multiple fundraisers like yard and bake sales during this coming semester.

"Naturally, as anthropologists, we want to help people," Smith said.

For the complete story, see **The George-Anne website.**



Full Plate GUIDE



Check out these local restaurant deals!

EL JALAPENO
MEXICAN RESTAURANT
711 South Main Street
Statesboro, Georgia
912-212-3400
Let us cater your special occasion.
Eagle Express Accepted

NIKKO
JAPANESE RESTAURANT
Monday-Thursday (Dine In Only)
Sushi Special: 1 Special Roll,
1 Regular Roll, 1 Salad, 1 Drink:
\$12.95
701 PIEDMONT LOOP • (912) 489-4003

FORDHAM'S
FARM HOUSE
489-3307
Homestyle Cooking
15% Discount with Eagle ID
Eagle Express Accepted
Like Us on facebook
Daily Menu • Banquet Room • Catering
Northside Drive just past Lowe's

To advertise in the Full Plate Guide, call 912-478-7459

UP WITH PEOPLE TO PERFORM IN THE 'BORO

BY MATT SOWELL
The George-Anne staff

Up with People is bringing its multicultural flair to Statesboro High School this Friday at 7 p.m. for their 50th Anniversary Celebration, a smash musical known as "The Journey."

Statesboro is one of only 15 American stops on their world tour which launched in Denver, Colo. last June. The group of performers will travel down to Florida and then to Mexico and Europe following their stop in Statesboro.

The show itself celebrates culture by bringing together 110 people who represent the culture of over 20 diverse countries. The performance is a musical that features original music, popular songs, and colorful costumes.

"The Journey" is a show that will take you on trip through time, the world and a person's life," Paty Salazar, a supervisor for the Up with People organization, said. "After every show we have a very good response from the audience, they are surprised of how much energy the cast has and how good the show and the transitions

are. They see more than they expected and get energized to take action in their communities. A lot of people that saw the show in 2013 have mentioned how pumped they were with the energy on stage," she said.

Up with People was established in 1965 by J. Blanton Belk in an attempt to aid in multicultural relations. His dream has been achieved as casts of the show have performed in four Super Bowl halftime shows, Olympic ceremonies, and many tours.

On top of performing, the group will participate in community service in Statesboro in an attempt to reach a goal of 1,000 community service hours by the end of the tour, interview people to join the cast in future tours, and stay with host families as a way to share cultures and learn about local customs.

Tickets are \$15 for adults and \$10 students, seniors & children and are on now sale at Averitt Center for the Arts.

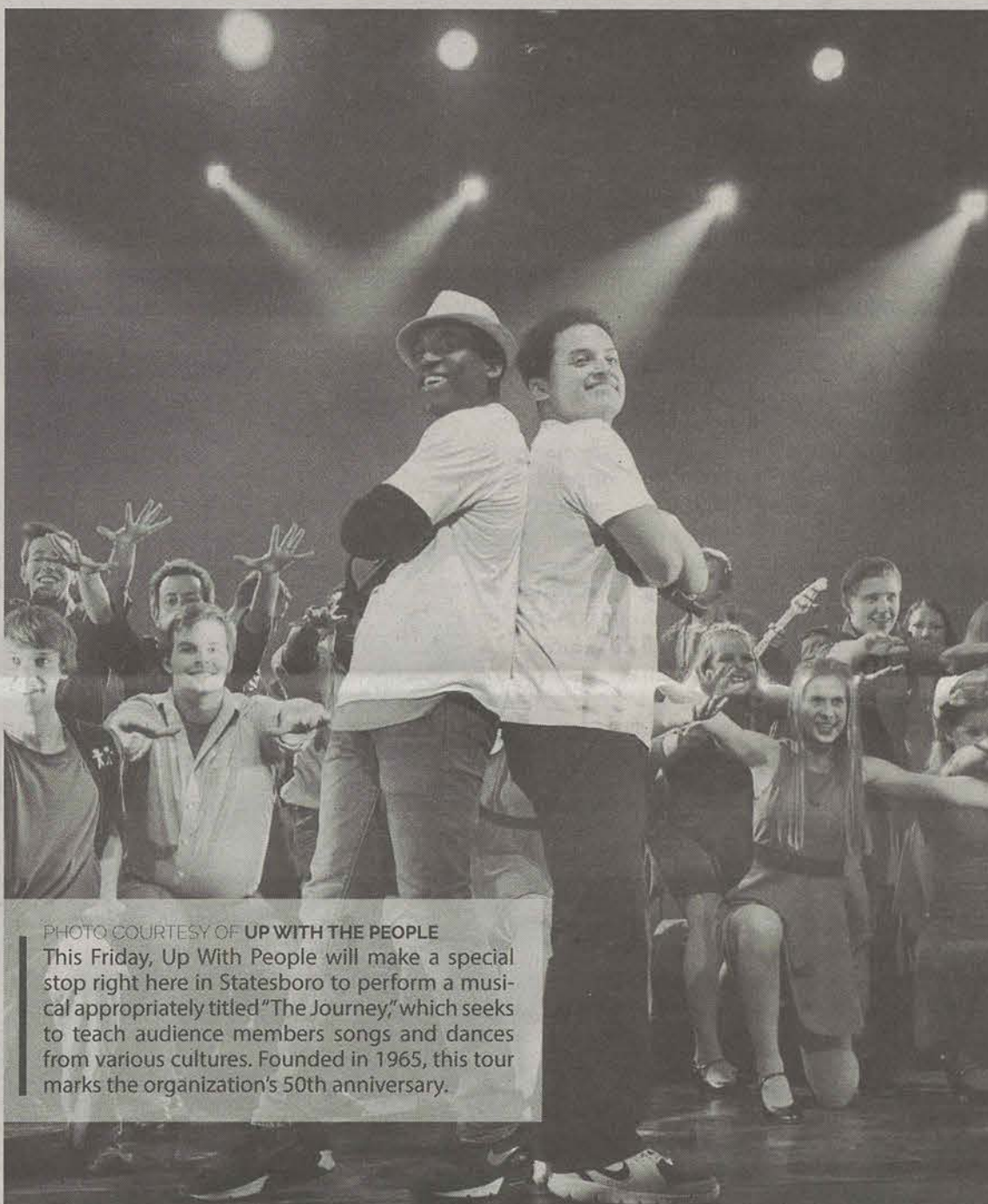


PHOTO COURTESY OF UP WITH THE PEOPLE
This Friday, Up With People will make a special stop right here in Statesboro to perform a musical appropriately titled "The Journey," which seeks to teach audience members songs and dances from various cultures. Founded in 1965, this tour marks the organization's 50th anniversary.

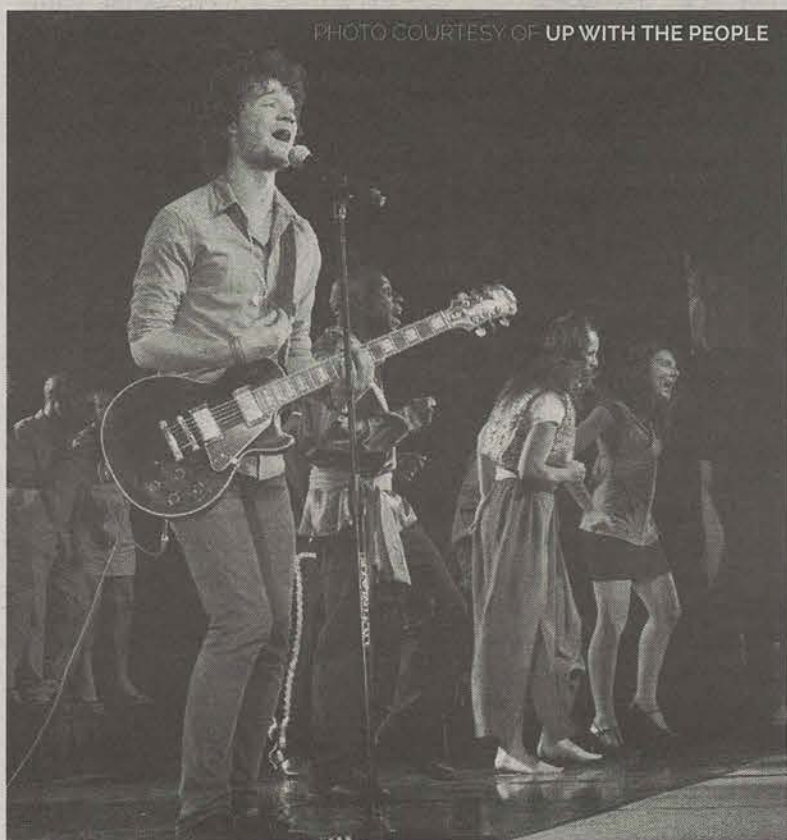
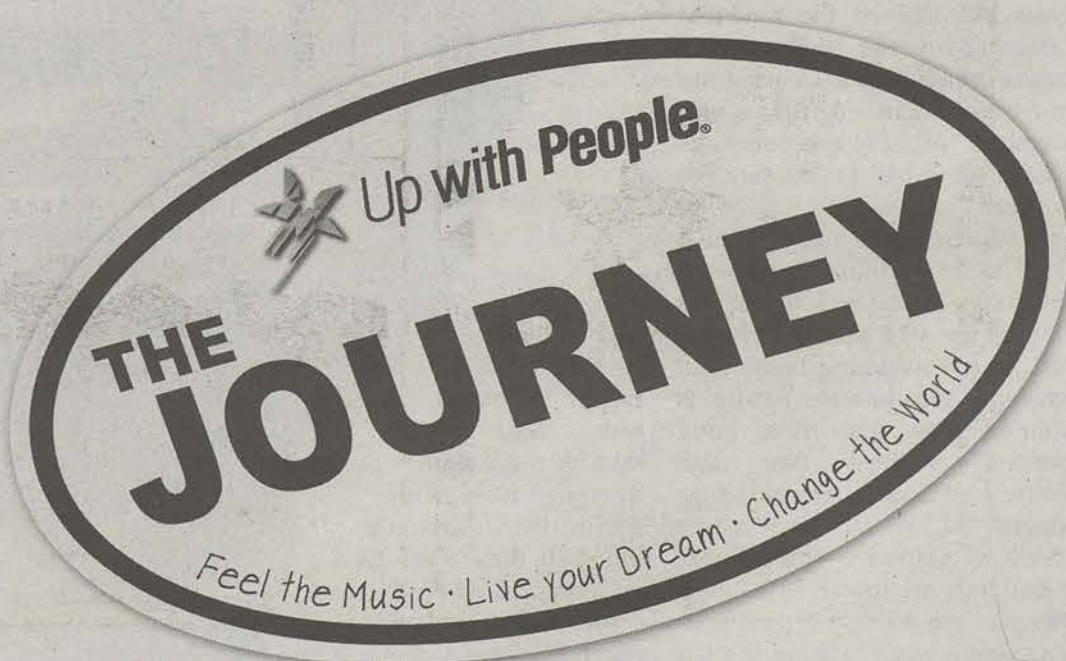


PHOTO COURTESY OF UP WITH THE PEOPLE



DEFENDING WHAT'S BEEN EARNED



BY ETHAN FLYNN
The George-Anne staff

With the upcoming football season right around the corner, there's high hopes that the Eagles will once again soar to new heights. Last season, the Eagles led a triumphant march to an undefeated record in their first year of play in the Sun Belt. The only three losses came from outside of the Sun Belt and were against opponents: NC State, Georgia Tech and Navy. Furthermore, the Eagles were only the third team ever to win a conference championship and the first team ever to go undefeated in their first year of conference play. With that being said, the level of play the Eagles will bring to the table this year is looking to be worthy of another Sun Belt Championship.

My prediction for the upcoming season is that the Eagles will finish with a 10-2 record. The two losses will be from formidable opponents within the ranks of college football: WVU and UGA.

I believe going into the upcoming season the moral for the team is high enough to compete at WVU's level. Playing the Mountaineers in Morgantown, with their home field advantage, makes it a challenging place to play. Averaging 56,686 fans per game last season at Milan Puskar Stadium, the Mountaineers will be looking to start the season off with boisterous first win at home. The Eagles have been preparing for what's to come and seem confident in their abilities going forward.

"We're very excited to play those guys. They're a great football team. We just want to go up there and play the best we can," said senior safety Antonio Glover.

With the leadership abilities of players like Glover, the potential to take down the Mountaineers becomes much easier. Coach Fritz seemed confident in his senior leadership, "All of our seniors have played a lot of ball for us, three or four years."

Unfortunately, the other game I believe to be a difficult challenge to overcome is the one the Eagles will face up at a place they call, UGA. Also considering home field advantage, this in-state rivalry is becoming more and more hotly contested amongst fans and players. Last season, the Bulldogs averaged 92,746 fans per game at Sanford Stadium. This season, the Bulldogs are touted to be even better with an AP Top 25 and USA Today Coach's poll ranking at #9 in overall in college football. The last time the two teams met was in 2012.

The final score was UGA 45- GS 14. The Bulldogs rushed for 3,352 yards compared to the Eagles who rushed for 4,573 yards. In addition, the Bulldogs passed for 2,599 yards compared to the Eagles 1,286 yards. The Bulldogs went 10-3 last season. However, with all being said, it doesn't rule out an upset.

Last season, the Eagles shocked the college football world. This year, their plans are no different. With the Sun Belt Championship to defend, the Eagles are ready for any opponent no matter the hype. With every season comes new

challenges and this talented Eagles football team looks to take on every team in their way with fire in their hearts and blood in their eyes. That is Georgia Southern football.

In the wise words of legendary coach Erk Russell, "Hey ladies, hey fellas, hey gentlemen, one more time for the greatest team in America."



BY HAYDEN BOUDREAUX
The George-Anne staff

The George-Anne likes to take a shot every year at predicting the outcome of Eagle football. Last season, I was called an optimist after predicting an 8-4 Georgia Southern team winning the Sun Belt Conference in their first year, they ended up proving me a pessimist with a 9-3 record but still a conference championship.

Believe it or not, this year I had a harder time getting together my predictions for the season. I watched film on all of our opponents this year and some of our games from last season. This led me to my biggest concern heading into the

to handle it. That being said, Coach Fritz and his staff has also had an entire offseason to change things up to keep defenses guessing.

Given the recent developments with quarterback Kevin Ellison my opinion was a bit swayed. This is not because I don't have faith in Favian Upshaw, but our depth past him is questionable. We saw the two quarterbacks get constantly banged up and switched out last season and not having that 1-2 punch could be a problem against the Mountaineers.

This prediction is, in some ways, my worst case scenario for the year. The wins are pretty self-explanatory, so I want to elaborate on why I have the losses. Starting with West Virginia, other than the previously stated reasons, the Mountaineers are a traditional FBS school with a winning history. They are consistently in and out of the Top 25 and have more depth on both sides of the ball.

After a five game winning streak (with close games against Western Michigan and ULM) I have another loss, which many won't approve. The fact is, while we embarrassed them in Paulson last year there were definitely sparks of life from App State. Those sparks will likely return as flames this season as they return 20 starters. Not to mention, traveling to App State has historically been unpredictable.

The loss to Georgia is a hard one to predict. I do think we have a chance, but the Bulldogs will likely be expecting a fight. If the game was played last season, we would have caught them off guard and might have come away with a late upset at the hands of our explosive offense. I don't see Georgia sleeping on us as opponents and will bring their 'A' game.

Overall, a 9-3 (Sun Belt 7-1) means a likely repeat as Sun Belt Champions and a bowl appearance for the Eagles. There are a few swing games that could definitely be stolen from Georgia Southern if they don't play above the level of their competition (ULM, Western Michigan, and Texas State). We are just about a week and a half from football and I couldn't be more excited to see the Eagles repeat as conference champions and make history in a bowl game. Geaux Eagles!

season, the read-option.

I understand that many are worried about the performance of the offensive line but the more of practice I see the more impressed I am with them. My biggest concern moving forward is whether or not the other teams in the Sun Belt, having an entire offseason to study our spread-option, will be far better equipped

SEASON PREDICTIONS

Ethan Flynn Hayden Boudreaux

WEST VIRGINIA

L L

WESTERN MICHIGAN

W W

THE CITADEL

W W

IDAHO

W W

ULM

W W

NMSU

W W

APP STATE

W L

TEXAS STATE

W W

TROY

W W

GEORGIA

L L

SOUTH ALABAMA

W W

GEORGIA STATE

L W

Koo's Trickshot Goes Viral



PHOTO COURTESY OF GATA LIFESTYLE

BY ETHAN FLYNN
The George-Anne staff

Until this week, junior Younghoe Koo's football reputation centered mostly around his SoCon All-Freshman Special Teams selection in 2013 and his skills as a kickoff specialist. All that changed, however, when a video of him executing an insane trick shot went viral. It was released by GATA Lifestyle, and has been

promoted by many of Koo's teammates, friends and fans. The video was featured on Sportscenter's Top 10 Plays the day after it was released.

"We talked about it but I didn't think it'd actually make it," Koo said when asked about it making the Top 10. "I didn't expect it. I was mind blown. It's just crazy"

In the video, Koo manages to flick a ball forward and makes it land upright. He then knocks the ball through the goal posts

while doing a backflip. Yeah, it was on the Top 10.

While it may seem like this trick took lots of planning and attempts, it turned out to be not that way at all.

"I tried it that day," he said. "And it was the fifth time."

This should end the notion that kickers are non-athletes. It takes skill and athleticism to pull that shot off and kickers here at Georgia Southern have both.

Eagles Hire New Women's Rifle Coach

BY DANIEL WAUGH
The George-Anne staff

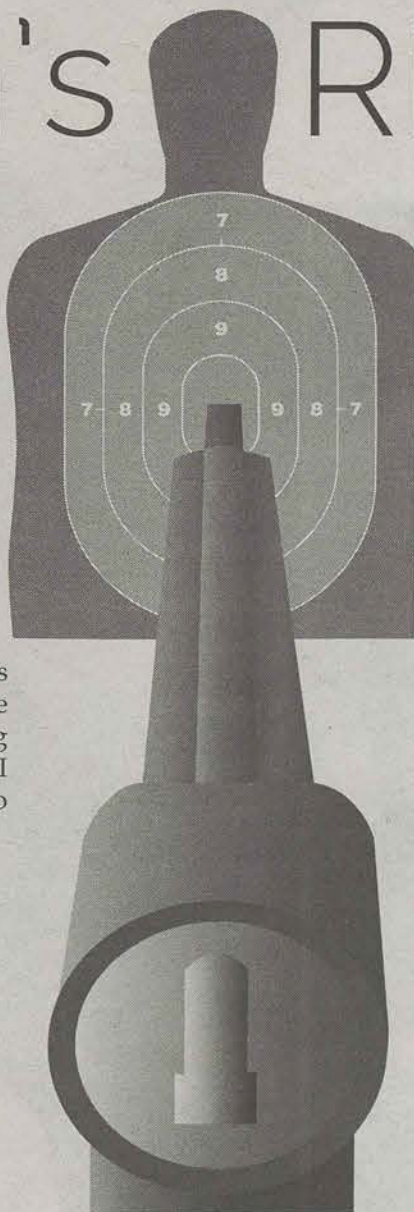
On August 17, Georgia Southern University announced the hiring of James Riggs as the new Women's Rifle Coach. Riggs spent 16 years working as a veteran law enforcement officer and is currently an investigator with the Bulloch County Sheriff's office.

"I'm looking forward to getting into the competition part of things, mentoring

the girls, and increasing the popularity of shooting sports," Riggs said.

Senior child and family development major Emmy Johnson is looking forward to competing under the leadership of Coach Riggs, and believes that the team can go far this season.

"We have a lot of great girls joining the team this year," she said. "Between the returning girls and the new members, I think we have the potential to be a very good team."



The women's rifle team is about to start its third year of competition. Last season, they competed in the South Eastern Air Rifle Conference Competition. There were several competitions that spanned throughout Georgia and South Carolina. Going up against various schools each competition, the Eagles highest ranking was when they placed 3rd in the sixth event this past February.

At the seventh event, rifle member Tori Lewis set program

records and has the highest score in Air Rifle and Overall Composite Score. Lewis also led the team in total score at the South Eastern Air Rifle Conference Championship.

While the Eagles are ready for this year's competition, they are currently waiting to practice inside the new Shooting Sports Education Center, which is set to open this September.

2015 Season Begins

at FAU Invitational

BY DERIK WUCHTE
The George-Anne staff

Georgia Southern will be taking a new and re-energized team to face off against Binghamton, Stetson, Bethune-Cookman and Florida Atlantic in the FAU Invitational. Head Coach Dustin Wood knows his team is ready and sparked for a new season with big changes.

"We're out to win a championship," Wood said. "We're capable of it. We're hungry and ready to be back where we were."

A 28-6 season in 2013 with a Southern Conference Championship win made for a monumental memory in the program's history.

2014 may not have been everything the Eagles hoped for, but they have been prepping hard in the off-season for things to come. With the return of pivotal players and a slew of newcomers, the team is ready to show what they have.

"There's lots of things," Wood said. "We have a lot of young freshmen this year. It's up to the upperclassmen to show them the way."

Losing junior Alex Beecher, junior Crysten Curry and junior Katie Bange had major drawbacks on

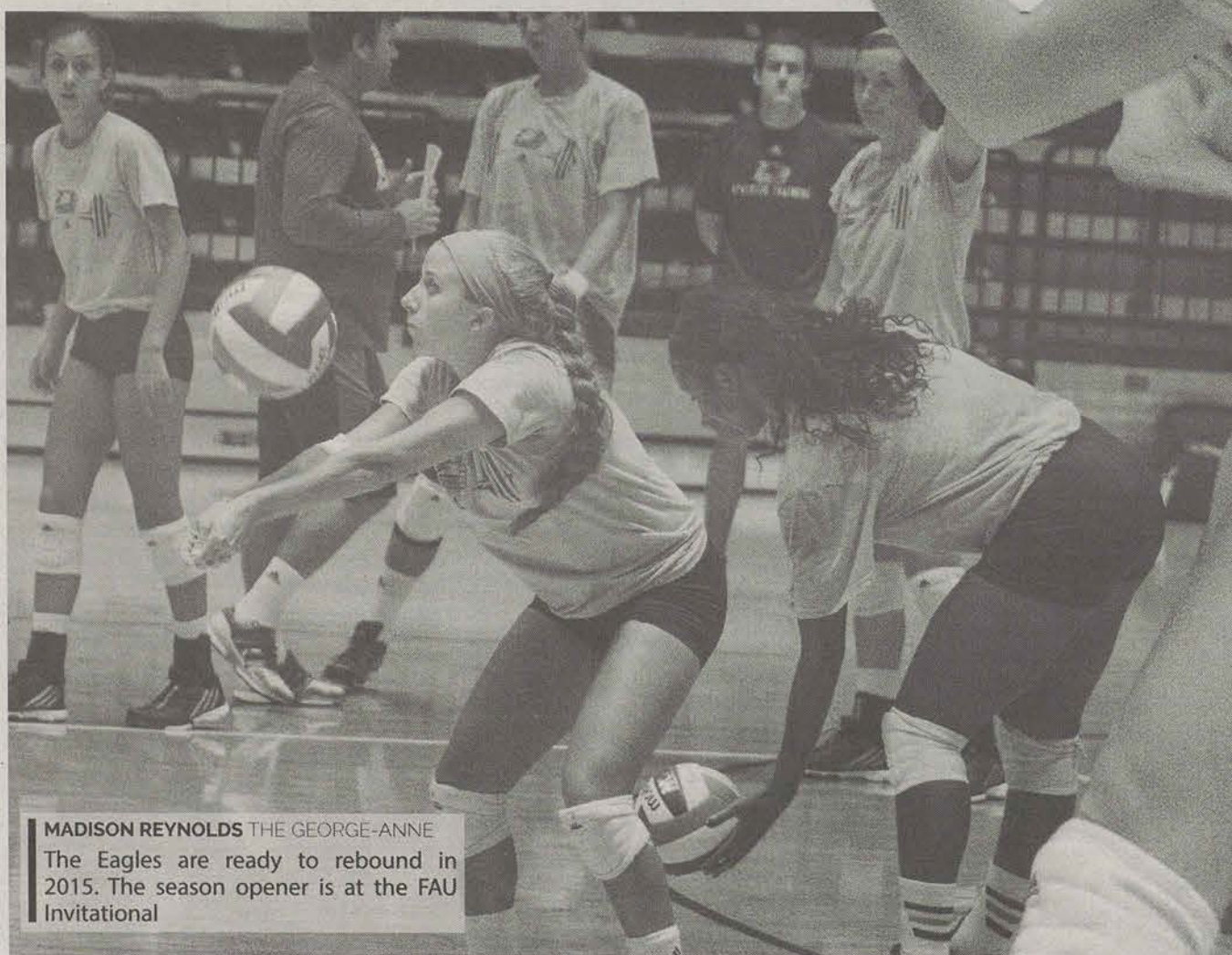
the team last season. "It was tough not having them; they were leaders," Wood said. "We were just really inexperienced last year. It was a tough schedule too. It put them to the test."

Now with 7 new freshmen on the roster, the Eagles have been bonding much better. Wood emphasized the importance of team chemistry and everyone needing to be on the same page.

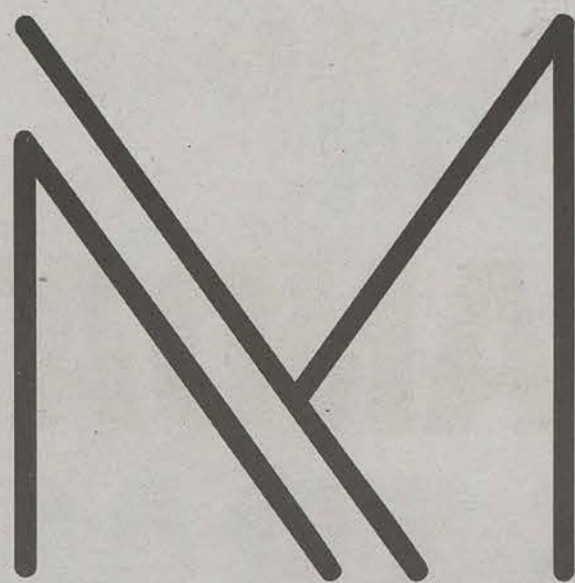
Bange, Curry and Beecher were the first players he mentioned having major potential in Florida this weekend. In addition to them, he also mentioned Freshman Lauren Reichard and Freshman Stephanie Spencer playing big.

"We got a good group this year, and we're ready to go. We're happy to be home and we're very excited hosting the Sun Belt Championship."

The season opens on Friday, Aug. 28 with the FAU Invitational. Following that will be the Georgia Cup on Sept. 3. The Eagles will have their first home meet on Sept. 11 against Tennessee State at 12 p.m. in the Hanner Fieldhouse.



MADISON REYNOLDS THE GEORGE-ANNE
The Eagles are ready to rebound in 2015. The season opener is at the FAU Invitational



M I S C E L L A N Y

MAGAZINE OF THE ARTS

NOW ACCEPTING SUBMISSIONS
FOR FALL 2015 GALLERY

Free Early Bird Submission Deadline
September 4th

**THREE
SUBMISSION
LIMIT**

**700
WORD
LIMIT**

\$5 Regular Submission Deadline
September 11th

\$10 Final Call Submission Deadline
September 18th

ALL PRINTABLE MEDIUMS
ACCEPTED. ALL GSU
STUDENT, FACULTY, AND
STAFF WELCOME TO SUBMIT.

Check out miscellany.reflectorgsu.com for more information.

COMING SOON: TWO MANDATORY ONLINE TRAINING PROGRAMS.

Courses will be available **September 1** in the "Training" section of the my.georgiasouthern portal and must be completed by **October 26**.

Both courses are **mandatory** for **ALL Georgia Southern students**.

Haven

Haven – Understanding Sexual Assault™ addresses the critical issues of sexual assault, relationship violence, and stalking, which impact countless college students across the country.

AlcoholEdu

AlcoholEdu® incorporates the latest evidence-based prevention methods to create a highly personalized user experience that inspires students to reflect on and consider changing their drinking behaviors.

If you have any questions please contact the Dean of Students office at 912.478.3326.



This process is promoted by the University System of Georgia