

Georgia Southern University

Digital Commons@Georgia Southern

The George-Anne

Student Media

11-18-2014

The George-Anne

Georgia Southern University

Follow this and additional works at: <https://digitalcommons.georgiasouthern.edu/george-anne>

Recommended Citation

Georgia Southern University, "The George-Anne" (2014). *The George-Anne*. 2867.
<https://digitalcommons.georgiasouthern.edu/george-anne/2867>

This newspaper is brought to you for free and open access by the Student Media at Digital Commons@Georgia Southern. It has been accepted for inclusion in The George-Anne by an authorized administrator of Digital Commons@Georgia Southern. For more information, please contact digitalcommons@georgiasouthern.edu.

FLOCKA

.....
THE MAN
BEHIND THE
FLAME

TURN UP ON PAGE 11

Brandon Warnock | The George-Anne

EAGLES FALL IN TITLE GAME

SEE PAGE 12



Brandon Warnock | The George-Anne

Where should you go?

A comparison of East Georgia Regional Medical Center
and Georgia Southern's Health Services Center

BY KURT HANLON

The George-Anne contributor

It's Friday night and you find your friend on the side of the road again, desperately stumbling through the effects of a high BAC on a trek home from the bars. This is not the first time it has happened and without some sort of help it probably won't be the last. So, what's the best (and cheapest) option for short and long-term treatment in our small college town?

Two of the main medical centers available to Georgia

Southern students: the Health Services Center located on campus next to the Forest Drive Building and the East Georgia Regional Medical Center, located at 1499 Fair Road.

While both institutions provide basic services and amenities such as emergency medical treatment, primary care and on-site labs, EGRMC has an advantage in being open 24/7. The Health Services Center is open from 8 a.m. to 5 p.m. on weekdays and is closed on weekends. In fact, the Health Services website provides students looking for after-hour care

directions to the EGRMC ER.

Most health services at the Health Services Center on campus are covered by the student health fee, included in general student fees to students taking four or more credit hours. Health Services Center also accepts most insurance plans to take care of services not covered by the student health fee. In general, this makes the Health Services Center a more affordable option for students.

SEE PAGE 7



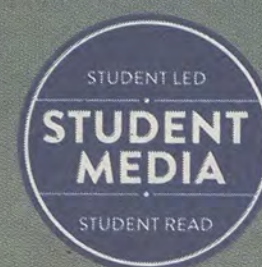
THE **GEORGE-ANNE**
& JOE

FREE COFFEE WITH YOUR COPY

LOCATED AT THE RUSSELL UNION
TODAY 11 A.M. TO 1 P.M.



ADMISSION IS ONE CANNED GOOD.
LOCATED AT THE SPORTS COMPLEX
**ALL FOOD DONATED TO
STATESBORO FOOD BANK**



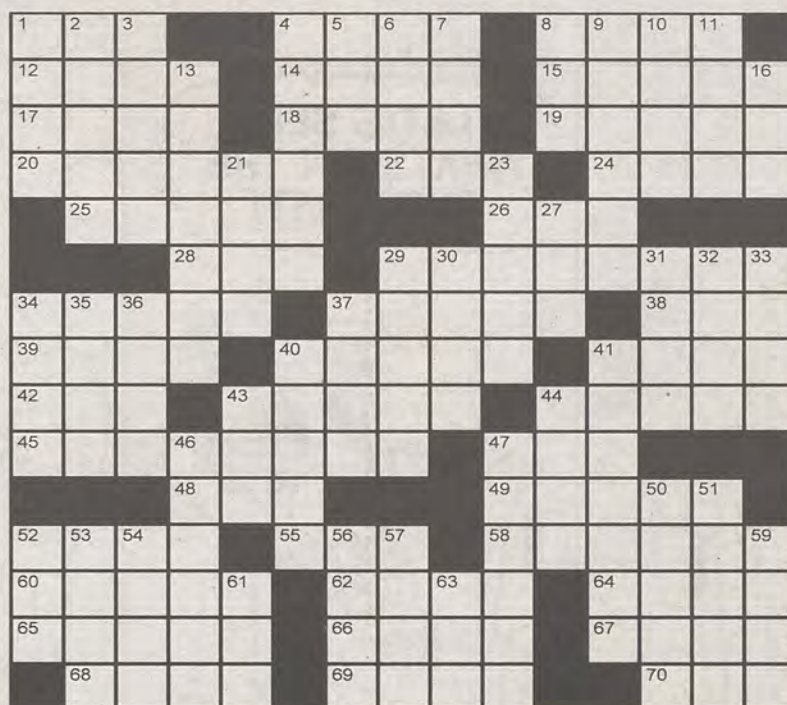
PUZZLES&CLASSIFIEDS

www.thegeorgeanne.com

Tuesday, November 18, 2014 3

Across

- 1 Three Musketeers' motto starter
- 4 Curved doorway
- 8 Slant
- 12 Goldbrick
- 14 Biblical pronoun
- 15 Up to
- 17 First-class
- 18 Shed item
- 19 Backgammon piece
- 20 Stir up
- 22 "Jackie Brown" actress Grier
- 24 Fencing sword
- 25 Utah lilies
- 26 Goof
- 28 "___ so fast!"
- 29 Poisonous ornamental
- 34 Shooting sport
- 37 Anger
- 38 Kind of trip
- 39 Uncontrolled
- 40 Apothecary weights
- 41 Bench
- 42 Punching tool
- 43 Concert venue
- 44 Range rovers
- 45 Penetrating
- 47 Dejected
- 48 Migratory fish
- 49 Benefit
- 52 Hair controllers
- 55 Fleur-de-___
- 58 Missive
- 60 Author Jong
- 62 Cliff's pal on "Cheers"
- 64 Roof part
- 65 Dividend



Copyright ©2014 PuzzleJunction.com

- 66 Nile queen, informally
- 67 Pung, e.g.
- 68 Leak slowly
- 69 Gulf port
- 70 Time periods (Abbr.)

Down

- 1 Jai ___
- 2 Primitive fish-eating diving birds
- 3 Spear
- 4 Bear witness
- 5 Pi follower
- 6 Henhouse
- 7 Maui dance

- 8 Commuting option
- 9 Apprentice
- 10 Resting on
- 11 Trig function
- 13 Pretended
- 16 Spider-Man's creator
- 21 Tugboat sound
- 23 Track events
- 27 Stadium cheer
- 29 Big ape
- 30 Priest of the East
- 31 Antler wearer
- 32 Old-time oath
- 33 Deteriorates
- 34 Cashless deal
- 35 Fuzzy fruit
- 36 Model Macpherson
- 37 Small songbird
- 40 Dentist's tool
- 41 Tranquilizes
- 43 King topper
- 44 Acquire
- 46 Save
- 47 Coho
- 50 Mount Vesuvius location
- 51 Jimmy
- 52 Colo. neighbor
- 53 "Aeneid" figure
- 54 Fork feature
- 56 Peruvian indian
- 57 Auctioneer's last word
- 59 Some wines
- 61 Venom source
- 63 Sandpiper

Statement of Operations

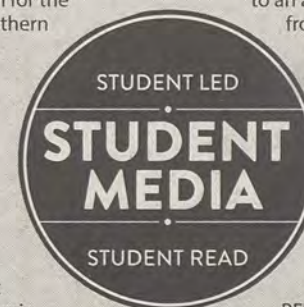
The George-Anne is the official student newspaper of Georgia Southern University, owned and operated by GSU students using facilities provided by the university. The newspaper is the oldest continuously published newspaper in Bulloch County. The newspaper is a designated public forum for the Georgia Southern community. The newspaper is published twice weekly, on Tuesdays and Thursdays, during most of the academic year. Any questions regarding content should be directed to the student editor by phone at 912.478.5246 or at gaeditor@georgiasouthern.edu.

ADVERTISING: The newspaper accepts advertising. Inquiries may be made by calling 912.478.5418 or 912.478-0566. Fax any questions to 912.478.7113 or e-mail ads1@georgiasouthern.edu.

The George-Anne receives additional support, in part, from the Student Activities Budget Committee.

The deadline for reserving space and submitting advertising copy is noon, one week prior to the intended publication date. For more information, rate cards, sample publications, contact

the advertising manager or student media director. The advertiser is responsible for any errors in advertisements and its liability for adjustments is limited to the amount of space the error occupied in the ad. Further, the newspaper is not responsible for any damages caused due to an ad's omission from a particular edition and its responsibility solely is to reschedule the ad in the next regular edition at the regular advertising rates.



STUDENTS BEWARE: The

George-Anne screens all advertisements prior to publication. The newspaper strives to accept ads for legitimate products and services only. Students are urged to exercise caution when replying to ads-particularly those that require personal information. Students are also urged to report to the newspaper any suspicious offers which they might see in an ad.

PUBLICATION INFORMATION: The newspaper is printed by The Brunswick News in Brunswick, Ga.

NOTICE: Unauthorized removal of multiple copies from a distribution site constitutes theft under Georgia law, a misdemeanor offense punishable by a fine and/or jail time.

Editorial Staff

- | | |
|---------------------------------------|--|
| Editor-in-Chief William Price | Distribution Manager Marcelo Sandoval |
| Managing Editor Will Peebles | Business Manager Virginia Byrd |
| Online Editor Lauren Gorla | Marketing Manager Emily Skolrood |
| Opinions Editor Erinn Williams | Creative Manager Heather Yeomans |
| News Editor Emily Arnold | Photo Editor Sarah Holmes |
| A&E Editor Matt Sowell | Design Editor Alexandra Tobia |
| Sports Editor Will Cheney | Ads Design Chief Kelly Slyfield |
| Copy Editor Rashida Otunba | Community Manager Cydney Long |

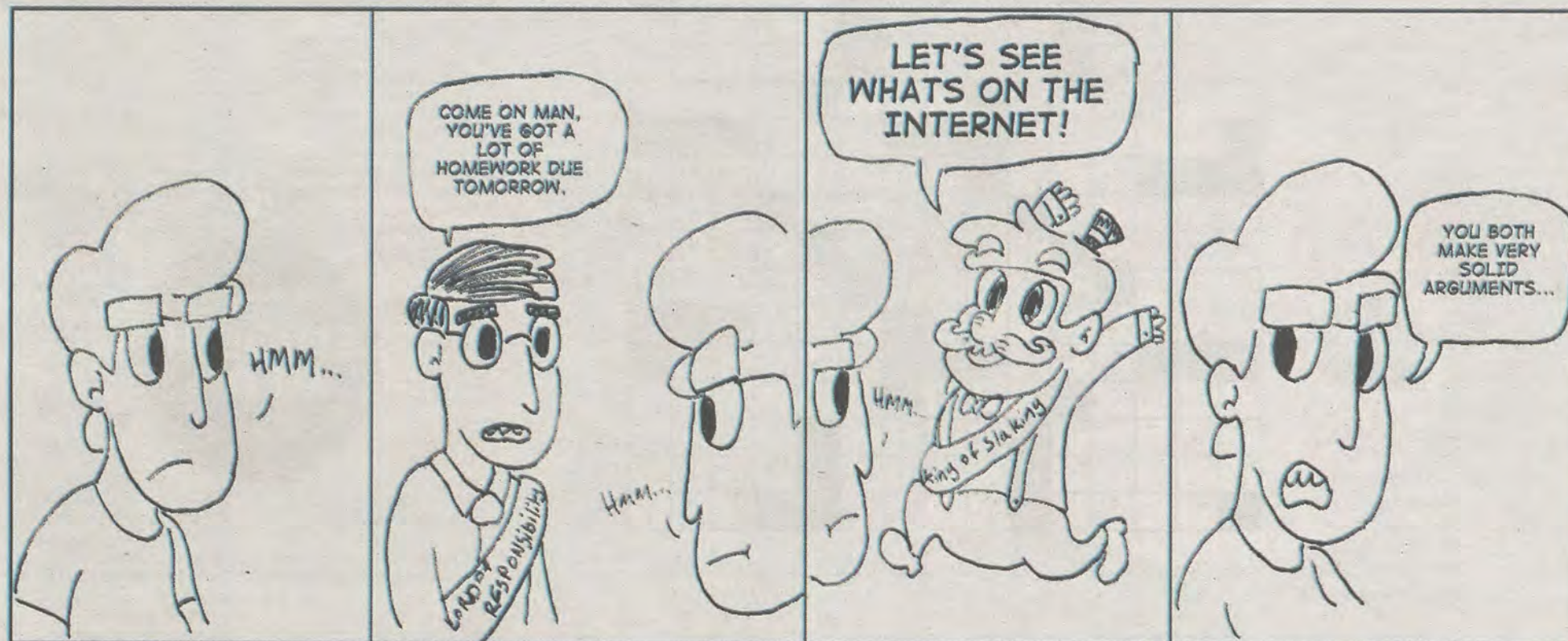
Corrections

Contact the editor at gaeditor@georgiasouthern.edu for corrections and errors.

		5		2		3	8	
	1	2					5	
8								2
			8	4	3			7
			9					
9			6	1	7			
1								5
	9					1		
	5	4		6		7		

		3		1	8	6		
7		8			2			1
	1						2	
5				7		4		9
6		7		8				5
	7						1	
9			1			3		4
		2	7	3		5		

DECISION MAKING BY TOMMY MARTIN



BE AWARE OF WHAT YOU CRITICIZE



PARISH TURNER

@parrishturner

Turner is a senior writing major from Roswell, Ga. He is involved in the Gay Straight Alliance.

Allow me to start with this #protip: If you ever say "I am not homophobic/racist/sexist," odds are you said or did something

homophobic/racist/sexist. You know what? We are all learning, growing people and we can move forward from that moment and learn from it.

Now that is out of the way, Amber Perkins's, "We need a new 'Cool'" had some important points, her communication was sloppy and ended up twisting her words into offensive ways.

First off, she is right that a lot of rap music is about getting money and women, but this is an issue which has been discussed within the rap community for many years and there are many songs addressing these issues and more.

Also, "many feminine styles have permeated into the male culture?" Perhaps we could all use

a history lesson, but fashion has always shifted between men and women. Heels and fancy hair was historically part of men's fashion. So Young Thug wore a skirt? So did Kanye West in 2012 and he looked damn good doing it. Diddy and Van Diesel also joined in the trend. Not to say that moment didn't have its controversies. But it was controversial when Kanye West started wearing skinny jeans, so there is that. The article comes off as though Perkins feels that queer individuals cannot be rappers, which I must disagree with. There're some great queer rappers talking about social issues beyond materialism, such as Angel Haze, Cakes Da Killa, and Lelf (from whom Macklemore stole the beat for "Same Love").

These are amazing artists, doing interesting and different stuff within rap.

However, I will be optimistic and say that Perkins was talking about some fans' tendency to blindly follow anyone who is doing something different. I find Young Thug to be a poor example. Perhaps Iggy Azalea would be a better fit, as someone who is "different" yet is not doing anything purposeful with that difference.

I say that we should be able to criticize art and music, but we must also be aware of what we are criticizing. Is the problem the subject matter of rap? Fashion? Gender roles? Without a clear answer to these questions, we cannot have a clear discussion.

The George-Anne welcomes letters to the editor and appropriate guest columns. All copy submitted should be 350 words or fewer, typed, and sent via email in Microsoft Word (.doc/.docx) format to letters@georgiasouthern.edu. All submissions must be signed and include phone number for verification. GSU students should include their academic major, year and hometown. The editors reserve the right to reject any submission and edit submissions for length. Opinions expressed herein are those of the Board of Opinions, or columnists themselves and DO NOT necessarily reflect those of the faculty, staff, or administration of GSU, the Student Media Advisory, Student Media or the University System of Georgia

How not to argue on social media



MAGGIE DELISLE

Sophomore writing and linguistics major from Stockbridge, Ga.

I have been on the internet for a very long time. As such, I have decided to come up some tips to make sure you win any argument you encounter, whether it be on Facebook, Reddit or even Yik Yak.

1. Bring up the fact you are offended.

If you're offended about something, you are automatically right. It isn't possible to be wrong when you are upset about something and someone else isn't. It's all about you and your feelings.

2. Everything is either black or white.

When making an argument, you should make sure to define everything in the simplest terms of right and wrong. There is no such thing as shades of gray when you're debating. Whatever side you are arguing for is right and everyone else is wrong.

3. Only focus on the bad points of the other side

If the person you are arguing against makes one bad point, make sure that's the only thing you should focus on. If they step even a little out of line, the other side is immediately wrong. It doesn't matter how good the other points being made are, the only thing that matters is that the other person made a mistake.

4. Refuse to concede any points that may make you look bad

Should your side make any bad points, ignore it. In fact, use any of your own faults as arguments in your favor. Even if both sides do the same things, it doesn't matter. Hypocrisy is okay if you're the one doing it. The only reason awful things happen in your movement is because the other side drove you to it. You're the real victim.

5. Turn the other side into a faceless group.

The easiest way to get people on your side is to make the other side look like one massive group of people who think exactly the same. It is easier to demonize a group of people when they aren't individuals, but a faceless group of enemies. This way, people will be more likely to look at your side as the way of truth.

6. Say goodbye to your friends.

It's okay to have beliefs but just because you have an opinion doesn't make you right. It's time to show some humility and realize you will disagree with other people. Nobody is right about everything and it isn't worth ostracizing your friends by refusing to see any other side but your own.

It's okay to be a feminist or a non-feminist. It's okay to be religious and it's okay to be an atheist. What isn't okay is refusing to acknowledge that yours isn't the only valid opinion. Nothing in this world is black or white and you will not be doing your side any favors by being radical about any belief. Just because you are offended by something, doesn't mean everyone else has to be and it definitely doesn't make you right.

WHY GSU NEEDS CHALK GUY



WILL PEEBLES

Peebles is a Journalism major from Wrens, Ga. He is a jack of all trades, and talks in third person.

The Pedestrium. The veins of the living, breathing thing that is Georgia Southern. Not just a way to class, but a staple for student life, and until last Thursday- an artistic medium.

Chalk Guy, as he is affectionately called, is a fairly well known GSU personality. His art was bright and vibrant against the calloused palette of browns and deep reds of the Pedestrium. His neon creatures would seemingly appear overnight, crawling from the cracks to greet students the next day.

He asked for nothing in return for his efforts. True artists only charge if they have to, for greed is the death of art.

Chalk Guy was a true artist. His creations were intricate, and

carefully measured. The colors he used and the detail he implemented in each individual piece were incredibly thought out, but the sentiment of it all was truly the most beautiful thing. Chalk Guy's art did more than entertain a large group of people for a short amount of time. He took something dingy and walked-on and turned it into something that was valuable and artistic.

Unfortunately, like his art, Chalk Guy was not a permanent fixture.

Chalk Guy posted on his Tumblr page this Sunday, and announced that his time as GSU's resident street artist was done.

Early Thursday morning around 2 a.m., Chalk Guy was busy bringing his most recent creations to life on the asphalt in front of Retrievers. He knew it was late, but he was working on what he called "a complex piece," and wanted to finish. The following is an excerpt from Chalk Guy's post about what happened:

"I heard something and looked up. I see a young black guy in a red sweatshirt running toward me rubbing his hands together. 'Damn it's cold' he said, I chuckled a bit and said 'Yeah...' as he ran past me, scooped up my tip hat, which had deep sentimental value to me, and kept on running. Before I could process what had happened he had rounded the corner towards Eagle Village and was gone."

He goes on to explain that later on, as he was browsing Yik-Yak, he came across a post asking, "What happened to Chalk Guy?"

Someone had replied with: "Me and my homies robbed that hobo bitch."

The audacity is appalling. The thought that someone would do that for what little money Chalk Guy collected leaves a bad taste in the mouth. All these things he has created for us (and would've continued creating) are washed away like chalk in the rain. For what? A few dollars and a hat?

The fact of the matter is, GSU needs Chalk Guy. No, he isn't a necessity to the university as a whole, but he is a shining example of true artistry in a world full of fast, immediate, corporate art. He was a gift to this place, and we wasted him.

Our hard days will no longer be greeted with the brief moments of respite that his creations brought. If you're reading this, Chalk Guy, please know that you were appreciated. You are an irreplaceable part of Georgia Southern's culture, and you will be missed. It's a shame that someone drove you away for a few dollars. You were art.

But greed is the death of art.

LETTER TO THE EDITOR

DEAR EDITOR:

I would like to thank my biology colleagues for their letter in the George-Anne. The idea that evolutionary biology is a debate has been debunked by over 40 years of federal court cases but remains a problem with high school biology instruction. Creationism, intelligent design, or whatever one calls it doesn't like new information while the great scientists in the biology department welcome it as their letter attests. If we do not know something for sure such as the origin of life, we cannot assign 50/50 weights to two separate explanations when one has decades of data and peer reviewed research while the other does not. Many mysteries in the past that were believed to have supernatural causes were later found to have natural explanations as scientific knowledge advanced. The reverse (a natural event later proved to have a supernatural cause) has never been found.

GREG BROCK,
Professor of Economics

GSU NEWS BRIEFS



BY SKYLER BLACK

The George-Anne contributor

● Georgia Southern's golf course was given national accolades by Golf Digest. It was featured in the 2014 Best New Golf Courses list.

● GSU began participating in International Fraud Week on Nov. 16 and will continue through Nov. 22. President Keel will be sending video messages throughout the week promoting stewardship, prevention, integrity, responsibility, inspiration and trust.

● The Gulfstream Aerospace Corp. contributed \$225,000 to Georgia Southern to support research and education at the university. Georgia Southern has had a long relationship with Gulfstream.

● This Wednesday, Nov. 19, Lakeside will be celebrating Thanksgiving with different dishes. The Thanksgiving feast will last from 11 a.m. until 2:30 p.m. and will be unlimited access for those with meal plans.

● The GSU Arabic Club is showing "Prince Among Slaves: The Cultural Legacy of Enslaved Africans." The screening will be held on Wednesday, Nov. 19 from 6 p.m. until 8 p.m. in the Russell Union.

POLICE BEAT | 11/14-16

ALCOHOL VIOLATIONS:

- 1 11/15/2014 9:23 p.m. Alcohol Violation, Drug Complaint - Eagle Village 2303
- 2 11/15/2014 11:56 p.m. Alcohol Violation, Affray/Obstruction - Big Show Burgers
- 3 11/16/2014 1:19 a.m. Alcohol Violation - Eagle Village 2424
- 4 11/16/2014 1:31 a.m. Alcohol Violation - Eagle Village 1126
- 5 11/16/2014 1:34 a.m. Alcohol Violation - Southern Courtyard 2304
- 6 11/16/2014 3:30 a.m. Traffic, Alcohol Violation - Robin Hood Trail

THEFT:

- 7 11/13/2014 8:00 p.m. - 12:00 a.m. Theft, Unattended Property -

Lakeside Cafe

- 8 11/13/2014 1:00 a.m. - Theft - C-Lot
- 9 11/11-14/2014 10:00 p.m. - 15:00 Theft - Centennial Place 4226

MISLAID/FOUND PROPERTY:

- 10 11/13-14/2014 11:00 p.m. - 11:00 a.m. Lost/Mislaid Property - Southern Courtyard 3121A
- 11 11/14/2014 2:00 p.m. - 4:00 p.m. Lost/Mislaid Property - University Store
- 12 11/14/2014 12:59 a.m. Found Property - Russell Union
- 13 11/15/2014 10:10 a.m. Found Property, Drug Complaint - Kennedy Hall Courtyard
- 14 11/15/2014 12:15 p.m. Found Property - Russell Union

- 15 11/15/2014 4:00 p.m. - 7:00 p.m. Lost/Mislaid Property - Henderson Library

MV ACCIDENT:

- 16 11/14/2014 1:00 p.m. MV Accident - Williams Center
- 17 11/14/2014 2:19 p.m. MV Accident - C-Lot
- 18 11/15/2014 6:00 a.m. - 8:12 p.m. MV Accident - RAC Parking

CRIMINAL TRESPASS:

- 19 11/13-14/2014 12:00 a.m. - 11:00 a.m. Criminal Trespass - Centennial Place #1
- 20 11/13/2014 4:30 pm. Criminal Trespass - Centennial Place #3
- 21 11/15/2014 1:41 a.m. Traffic, Alcohol Violation -

Chandler Road, Fair Road

AGGRAVATED SODOMY:

- 22 11/16/2014 2:38 a.m. - 3:55 a.m. Aggravated Sodomy, Contributing Delinquency to Minor/Child Molestation - Southern Pines 3328

VERBAL ALTERCATION:

- 23 11/16/2014 5:30 p.m. Verbal Altercation RAC

TRAFFIC CITATIONS ISSUED: 2

TRAFFIC WARNINGS ISSUED: 1

MOTORIST ASSIST: 9



* Match the numbers

STUDENT HEALTHCARE OPTIONS

CONTINUED FROM PAGE 1

Health Services Center also provides emergency care and treatment during their operating hours and has an on-site pharmacy for pick up of prescribed medication. In addition, they work closely with the GSU Counseling and Career Development Center (CDCC) to provide students with long-term mental health care in addition to physical care.

The second option for treatment would be EGRMC. Because the Health Services Center closes at 5 p.m. each day and is closed on weekends, a student looking for

immediate treatment will most often find themselves at the EGRMC ER.

EGRMC offers multiple services for their patients and can therefore treat more incidents with the proper medical care. Some of the featured services on their website include an Emergency Medicine Center, a Imaging and Radiology Center, a Heart Care Center and a Women's Health Center.

A deterrent for students going to the ER at EGRMC is the expense. The hospital will bill individual's insurance carrier, but the individual will ultimately

be responsible for the payment according to the billing and insurance page on EGRMC's website. You will likely have a larger co-pay than you would for a doctor visit, or your ER visit for a nonemergency might not be covered at all.

It seems the most economical choice for a suffering student would be to go to Student Health Services. However, unless you plan to only find yourself in a medical emergency, during weekday working hours, you'll probably end up being treated by EGRMC, with a smaller wallet to boot.

East Georgia Regional Medical Center

PRO

Available 24/7

CON

Expensive

On-campus Health Services Center

PRO

Most services are covered by student health fee

CON

Only open 8 a.m. to 5 p.m. on weekdays

WATSON: THE WHOLE STORY

BY CHANCE SHELTON

The George-Anne contributor

Watson Hall/Pods are known here at Georgia Southern for giving students the "real" college experience: community bathrooms and a box for a room shared by two people.

To some, Watson is more than just a box with amazing Wi-Fi, it is the cheapest and best option with exceptional location. However, in the eyes of the university, Watson represents the history and progression of our great university, but is still disposable if needed.

Ryan Hines, assistant

director of Occupancy and Technology Services, cleared up the rumors and speculation about the possibility of Watson closing, revealing that Watson's usage varies by situation and is based on the overall budget.

Even though Watson may be the oldest dormitory on campus and actually makes a profit for the university, its usage is not necessarily needed because of other housing options around our expanding campus.

"Since opening Freedom's Landing, we have typically opened with, or quickly melted to, enough vacancies that could make it possible to close Watson Hall," Hines said.

Hines said that Watson, in its entirety, is not highly demanded, and with spaces in other housing

options it would be the easiest to close down if it was completely necessary.

Hines said that this past summer the university had expected Watson to be open for the incoming fall students since some students had already applied for its housing. However, he noted that by mid-summer the numbers did not look as promising as before and they planned on closing it for this coming fall semester, but in a game of back-and-forth with the university, ended up keeping it open. This all happened because students had already been assigned to rooms within the dormitory, according to Hines.

"We held our commitment in placing individuals there," Hines said.

In all, Watson's continuous usage will come down to demand and GSU will take the appropriate actions needed to accommodate that.



Cristen Gullatt | The George-Anne

SmokeCity

48 W. MONTGOMERY X-ROAD SUITE 103 SAVANNAH

912-920-2255

& MORE

BRING THIS COUPON IN FOR
\$10 OFF \$50 PURCHASE

TOBACCO
HOOKAHS
BIDIS
SMOKING ACCESSORIES
VAPORIZER VAPE ACCESSORIES
E CIGARETTES & E CIG ACCESSORIES

DISK GOLF
INCENSE
TIE-DYE



Spend More, Save More

NOV. 17 - 22

GIFTS FOR THE WHOLE FAMILY

ONLINE

FREE SHIPPING ON ORDERS OVER \$50
USE PROMO CODE: BLUESHIPFREE

IN-STORE

PURCHASE \$50-99 IN MERCHANDISE
AND GET A 5% DISCOUNT

PURCHASE \$100-149 IN MERCHANDISE
AND GET A 10% DISCOUNT

PURCHASE \$150 OR MORE IN MERCHANDISE
AND GET A 15% DISCOUNT

Excludes textbooks, technology items, cosmetics, gift cards, and other specific items. Offer not valid with other discounts, coupons, or promotions. Void where prohibited. Offer expires November 22, 2014.



UNIVERSITY STORE
SHOP ONLINE AT GSUSTORE.COM



Holiday helper tree spreads cheer

Kelly Lowery | The George-Anne

BY NADIA DREID
The George-Anne staff

For 21 years, the holiday helper tree has graced the halls of Georgia Southern University during the second half of fall semester.

This year it stands in the Russell Union, and it looks like any other Christmas tree, except instead of shining glass bulbs, it's decorated with brightly colored construction paper tags – 856 tags, to be exact.

On each tag is the age and gender of a person in need and what they would like for the holiday season. People can pick a tag off the tree and bring back the gift listed on the chosen tag.

Eileen Smith, senior administrative assistant for the sociology and anthropology department, came up with idea in the fall of 1994 after being given a list of 100 needy families from the department of family and children services. She got the idea from the “angel trees” that are popular in churches, which operate in the same way.

“It was a hit,” Smith said. “Within the first three years, we doubled what we had been doing for people.”

In recent years, the program has been able to help as many as 1,000

people in the area, Smith said. Now, 15 agencies from across the county are involved, providing names for the tree and distributing the gifts to their clients.

Amber Carter is a civic engagement student assistant helping to manage the project and has had the opportunity to view all the gift requests. They are surprisingly thoughtful, she said.

“Someone wanted a fake diamond ring, that was one of my favorite gifts. And this year, the gift I chose to give was the Garth Brooks all-time hits CD,” Carter said. “You can tell these are things that they really want. It might not be a really expensive thing, but it’s something that they want.”

Others gift requests are more about need.

“You see some things come through, like children asking for jackets for cool weather or a family asking for blankets, sort of things that people of a more affluent place in life take for granted,” Carter said. “That there’s always going to be a blanket in my closet when I go to find one, but that may not be the case for some other folks in the Bulloch County community.”

For Smith, the most rewarding part of starting

the project was when she had the opportunity to see the people benefiting from the gifts provided by the GSU community.

“If you’ve ever seen the looks on those children’s faces, it’s amazing to watch,” Smith said.

The project had no problem filling the 140 volunteer spots they needed this year, with many students signing up for multiple volunteer spots. Participating in the holiday helper project is also rewarding for the person buying the gift, as well as those volunteering to help things go smoothly, according to Carter.

Carter said, “You are helping someone who is less fortunate than you. It speaks mounds to your character and what you value, and it’s just a really, really great thing to do as we start to get into the holiday season.”

DONATIONS

The holiday helper tree will be open from 9 a.m. to 3 p.m. until Friday, Nov. 21. Gifts must be returned wrapped and with their holiday helper tag to the Office of Student Leadership and Civic Engagement by Tuesday, Dec. 2.

EAGLE MOTORSPORTS

SHIFTING GEARS ON STUDENT ORGANIZATIONS

BY IAN LEONARD

The George-Anne contributor

The growl of engines, the tart scent of motor oil and the heat waves pulsing off of the hot asphalt set the scene for a perfect race day.

While there are no grandstands filled with screaming fans here at Georgia Southern, for those who still have a burning passion for all things race related, Eagle Motorsports may be a perfect fit.

This team participates in both off and on road races during the spring, using vehicles they spend the remainder of the year building themselves.

"There are usually three official competitions hosted by the Society

of Automotive Engineers each year. But often, teams from other colleges will travel to other locations, to have separate event," said Michael Santangelo, senior electrical engineering major and captain of the EMS off-road vehicle Baja.

There are off-road and on-road vehicle teams that consist of multiple team members specializing in specific parts of the vehicle.

"There's a team captain and then separate divisions that are responsible for different parts of the car, such as an electrical team, one that focuses on the frame of the car, suspension, drive controls, so on and so forth," Santangelo said.

Although racing is a huge part of the competitions, there are many

other categories that the collegiate teams must fulfill, such as manufacturability, structural integrity, performance, cost efficiency and many more.

"We really aim to try and make our cars as cost efficient and manufacturable as possible. We usually take a design that worked well in previous years and start finding areas where we can make cuts and sacrifices, without sacrificing the overall quality of the vehicle," Santangelo said.

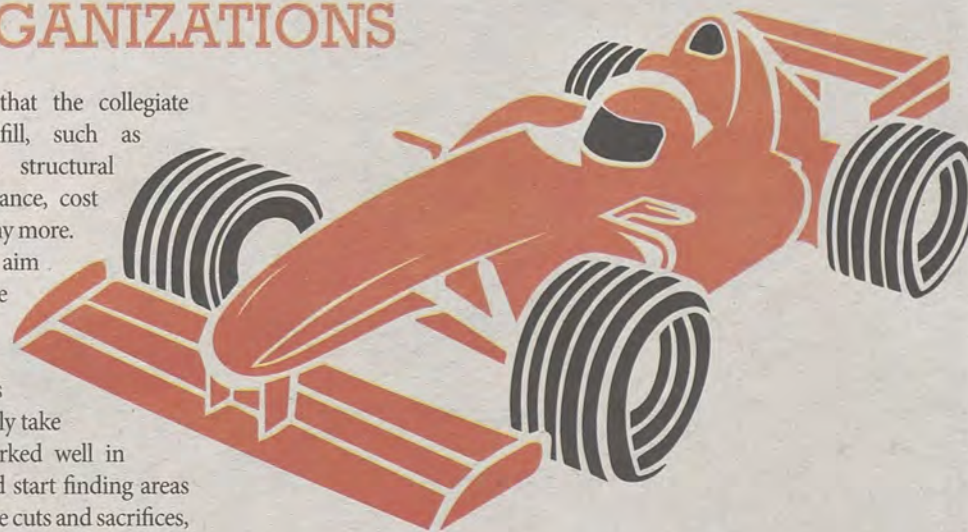
While this may all sound very difficult, Michael assures that while many students are science and math majors, it is by no means a requirement

to join the team.

"We have had graphic design majors that have helped us with design and website stuff, as well as public relations majors that helped us

promote events," he said.

He encourages anyone that's interested to complete an application, when they reopen in the spring.



WIN A TRIP FOR 2 TO NYC!

LOWEST RATES OF THE SEASON
& THEY ONLY GO UP FROM HERE!

INQUIRE TODAY TO LOCK IN THOSE RATES AND TO BE ENTERED INTO A DRAWING FOR THE CHANCE TO WIN A TRIP FOR 2 TO NEW YORK CITY 4 DAY 3 NIGHT AND \$250 CASH TO SPEND!



WAKA FLOCKA TAKES OVER CLUB 125



Brandon Warnock | The George-Anne

Waka Flocka brought down the house last Thursday at his concert at Club 125

BY MEG ELWOOD

The George-Anne staff

The night began with rounds of shots, bombs and beers at GATA's, a local sports bar and grill. In the next room, fangirls screamed in escalating chants of "BRICK SQUAAAD!" Flocka came out to happily greet his excited fans, giving high fives, handshakes and taking selfies with eager fangirls before retreating back into the heavily guarded dining area with his crew.

"Most rappers don't do it like me. I do whatever I wanna do -- like in meetings? Man, we do whatever we wanna do. We have 'em in flip flops and shit, because who gives a shit?"

Happily strutting around and high-fiving his friends, Flocka shared his wealth generously, personally pouring shots of Fireball into empty cups while he shared bits of his rapper knowledge with us.

"There's two purposes in life: being born and finding your passion."

Flocka along with his body guard, who he called "Fat Jesus," then led the way across the street to Club 125, his crew followed closely behind like tipsy little ducklings. As Flocka made his way to the back entrance, thundering bass flooded out of the open door as he was quickly ushered inside to the safe zone of a green room.

Opening acts, Drewski and Ben G, kept the crowd at bay until the man of the hour made his way onstage. Flocka jumped around, growling raps into the microphone, popping explosive bottles of champagne into the crowd and shaking sweaty dreads in faces of starstruck fans for two hours. He then left the stage and made his way out to a black Bentley, where we were finally able to get a word from him.

Q&A

ELWOOD: You're in a college town. Would you ever want to go to college and, if so, where would you go?

FLAME: I wouldn't mind. It doesn't matter, wherever education leads yo' boy.

ELWOOD: What kinds of music did you used to listen to that may have influenced you?

FLAME: What influenced me was opportunity and money. Music don't influence me.

DAUDIER (fellow photographer): You've worked with a lot of people. Who did you click with the best?

FLAME: Producers, man, I love the producers, especially 808 Mafia.

ELWOOD: Why 808 Mafia?

FLAME: It's just that bass man, that "kick," it fucks with yo' boy.

ELWOOD: Describe a day in the life of Waka Flocka.

FLAME: You might throw up by 3 p.m. By 9 p.m., you be out of your fuckin' mind, and you in bed by 11 p.m.

It's a lifestyle that many college party students are envious of.

CHRISTMAS AROUND THE WORLD

BY KATIE KEITH

The George-Anne contributor

As we approach America's favorite holiday, it's time to think about what we're getting for Christmas and what our plans will be, but have you ever thought about how other countries celebrate? You don't have to wonder

any longer, because the Averitt Center is taking Christmas global.

The Averitt Youth Programs are hosting a presentation in song, dance and skits about the different celebrations of Christmas. Come down to the Center on Nov. 21 and Nov. 22 at 7 p.m. and Nov. 23 at 4 p.m. to see these performances.

RUSSIA

Christmas in Russia is not held on Dec. 25 but on Dec. 7. Russia isn't inherently Catholic and used a different calendar, thus their holiday ended up being a few weeks earlier. Their Santa Claus is named as Ded Moroz, and he's accompanied by Snegurochka, and together they place presents under the Christmas tree.

CHINA

Christmas isn't an official holiday here, but the Chinese still get into the holiday spirit with holiday standards like Christmas trees, costumes and toys. The real party comes during the Chinese New Year, which causes quite a stir. The whole country celebrates with plenty of food and presents for good luck.

INDIA

Since India is not an inherently Christian country, not many of the citizens celebrate, but those who do make quite an effort. Christians in the area take great lengths to show their neighbors the light of Christ by lighting candles and setting out nativity scenes, decorating with whatever they can. For those who do, Father Christmas goes around delivering gifts in a horse-drawn cart.

CUBA

Can you imagine a ban on Christmas? In 1969, such a restriction existed in Cuba due to Fidel Castro's announcement that it would interfere with the harvest. However, today the holiday is perfectly legal, and the Cubans celebrate with beautiful decorations much like ours, but before the 25th they have a large dinner featuring a "lechón, asado" which is an entire roast pig.

IRELAND

The Irish celebrate much like how we do by setting up Christmas trees and inviting family over, but the days after Christmas are where Irish celebrations get interesting. The 26th is St. Stephen's Day, where most horse races and soccer matches are held. There is also the Wren Boy Procession, which involved killing a wren and then marching it around a holly bush. Nowadays, they don't kill a lot of wrens, thankfully.

FRANCE

Father Christmas, or Père Noël, is the Santa Claus of France, who comes in the night and slips presents under the tree for the good boys and girls. However, if you haven't been a kind child, his assistant Le Père Fouettard will spank you. But before the Christmas fun starts, there must be a feast: le Réveillon de Noël (The eve of Christmas) which is a grand pre-Christmas dinner where luxury foods are served.



The Sir Shop
Statesboro Mall
912.764.6924






SPORTS @GeorgeAnneSport

12 Tuesday, November 18, 2014

The George-Anne

BY ROBERT GEORGE

The George-Anne staff

The Georgia Southern men's soccer team lost a heartbreaker Sunday afternoon, falling to the Hartwick Hawks 1-0 in the Sun Belt Championship Final.

The Eagles played a tough Hartwick squad, and came up just short- giving up a lone goal in the 65th minute. Hartwick's Jamie O'Grady scored his first goal of the year on a corner kick, which proved to be the game winner.

The Eagles were outshot 11-10 in the game. Georgia Southern's Blake Wilson, Ethan LePan and Emmanuel Raji all put shots on goal but were unable to hit the back of the net. The Hawks hunkered down and played tough defense after their go ahead goal, and didn't allow the Eagles an equalizer in the final 25 minutes. The defense was led by junior goalkeeper Tom Buckner, who made two big saves in the latter stages of the game to preserve the lead.

"I was disappointed with our performance today. We weren't as sharp as we needed to be," Head Coach Kevin Kennedy said in a news release. "Congratulations to Hartwick, we told the guys that they would be dangerous on set pieces and they scored their goal off a corner kick. We weren't as dangerous in the attacking third as I would have liked, and that was the difference."

Hartwick will take home the first Sun Belt Men's Soccer Championship awarded by the conference since 1985, the last season that the sport was sponsored by the Sun Belt. The Eagles will finish the season with a 8-9-0 overall record while going 3-2-0 in the conference.

Three Eagles made the Sun Belt Conference All Tournament Team with Jack Falle, Emmanuel Raji and Eric Dinka all earning spots on the list. Raji and Dinka each scored a goal in the tournament, while Falle finished the tournament with 10 saves, capping off an excellent season for the junior goalkeeper.

HAWKS OUTLASTS EAGLES IN TITLE GAME



Brandon Warnock | The George-Anne

The Georgia Southern men's soccer team fell to top-seeded Hartwick 1-0 in the Sun Belt Conference Championship game on Sunday. This was the first season the Sun Belt sponsored men's soccer since 1995.



EAGLES DROP SEASON OPENER IN ILLINOIS



Brandon Warnock | The George-Anne

Freshman Devonte Boykins (1) and the Eagles' lost a hard-fought season opener 80-71 to Illinois on the road. Next up for Georgia Southern is Trinity College (Fla.) tonight at 7:30 in Hanner.

BY LAYNE SALIBA

The George-Anne staff

The final score didn't reflect how close this game actually was. Nonetheless, the Georgia Southern men's basketball team (0-1) gave the University of Illinois its first win of the season on Friday with a final score of 80-71.

The Eagles found themselves in a hole, trailing by 11 points during the first half. However, they were able to even out the score at 31 points going into halftime, after an exciting 11-2 run.

As the second half began, redshirt senior forward Trent Wiedeman made his presence known on the court, giving the Eagles the momentum they needed. But it was Illinois, led by Rayvonte Rice, that pulled

away late, taking the game just out of reach.

Turnovers and fouls continue to be an issue for the Eagles. Four players ended the night with four fouls each, contributing to the team's 27. These mistakes gave the Fighting Illini the opportunity to make the most of 37 appearances at the free-throw line.

In addition, Illinois was able to capitalize on 16 Eagle turnovers for 22 points before the night was over.

"We had some nervous guys make some nervous mistakes early and that is going to happen," Head Coach Mark Byington said in a news release. "I like that our guys battled through mistakes and played well tonight. Overall, I was happy with our guys out-rebounding Illinois, but we

gave up too many turnovers for points."

A veteran group of guys, joined by freshman guard Mike Hughes started the game for the Eagles. Among them, senior guard Jelani Hewitt stood out. He led the way for the Eagles and controlled the tempo throughout, scoring 22 points and recording a career-high eight rebounds.

Alongside Hewitt was Wiedeman. In his first start as an Eagle, Wiedeman was able to post 17 points and lead the team in rebounds with nine during 33 minutes of play.

Senior forward Angel Matias was there to help Wiedeman as well. Matias put up 12 points and added 7 rebounds.

The Eagles look to even their record tonight as they host Trinity College in Hanner at 7:30 p.m.

WE KNOW YOU WANT TO LIVE IN A COTTAGE.



BUT WHY LIVE SO FAR AWAY FROM CAMPUS?



LIVE AMONG THE ELITE AT THE HAMPTONS.

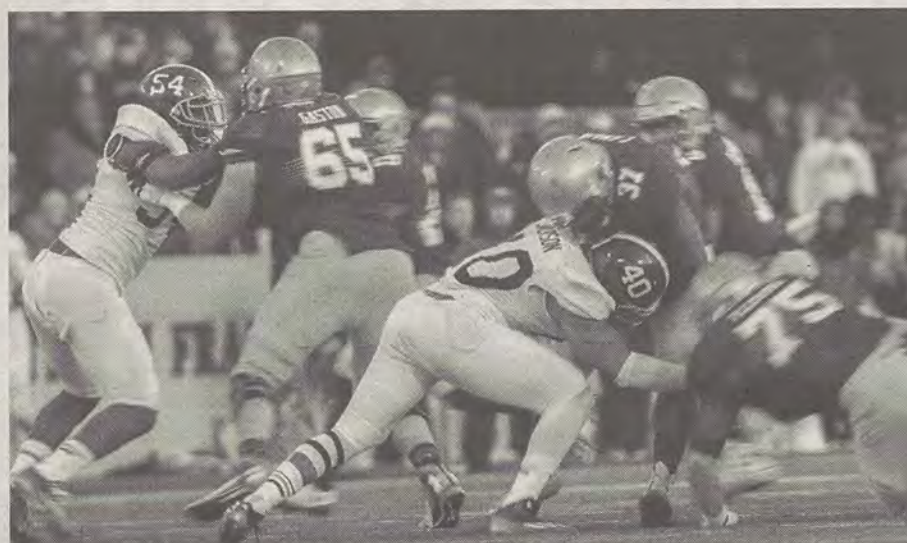


CALL TO BOOK A COTTAGE DEMONSTRATION OR VISIT US!
815 S. MAIN STREET | 912-290-9595 | @HAMPTONSGSU

SUNBELT FOOTBALL STANDINGS

Sun Belt	W-L	Overall W-L
Georgia Southern	7-0	8-3
UL Lafayette	6-0	7-3
Arkansas State	4-2	6-4
App State	4-2	5-5
South Alabama	5-3	6-4
Texas State	3-3	5-5
Troy	3-4	3-8
UL Monroe	2-4	3-7
New Mexico State	1-5	2-8
Idaho	1-6	1-9
Georgia State	0-7	1-9

AROUND THE SUN BELT



Courtesy of Ben Anderson

Georgia Southern's 52-19 loss in Annapolis on Saturday was epitomized by Navy QB Keenan Reynolds' 348 all-purpose yards and seven TDs.

App State 37 Arkansas State 32

The Mountaineers upset Arkansas State in Jonesboro behind running back Marcus Cox's 229 rushing yards and quarterback Taylor Lamb's 225 passing yards and three total touchdowns.

Troy 34 Idaho 17

The Trojans traveled to Moscow and took care of business. Troy quarterback Brandon Silvers' two touchdowns carried Troy past the Vandals.

South Alabama 24 Texas State 20

The Jags squeaked by the Bobcats in Mobile on Saturday, capped off with erasing a 10-point deficit.

UL Lafayette 34 UL Monroe 27

The battle for Louisiana ended in a one-score victory for Lafayette. The Ragin' Cajuns remain undefeated in Sun Belt play and tied atop the conference with Georgia Southern.

Idle: New Mexico State, Georgia State

ANALYZING THE BLOWOUT LOSS

BY HAYDEN BOUDREAUX &
TREVOR MCNABOE
The George-Anne staff

Offense

Two weeks ago after the Eagles whipped up on Troy, I wrote about how Troy planned perfectly against the Eagle offense. Last week, I explained that Texas State planned well and executed. This week I am writing about how Navy stopped it.

Statistically, the Eagles seemingly had another impressive performance, 375 yards on the ground, Brieda broke 200 yards and had two scores, and they even passed for 75 yards. However, it was apparent to whoever watched the

game that the Eagles were struggling.

The first drive was a thing of beauty. Ellison and Ramsby rammed their way down field and scored on a seven minute drive to suck the air out of Navy. After that, the offense was stalled for three consecutive drives. There was no one person to blame as there were slip-ups all over the field most notably a wide open drop by Walker in the middle of the field, Ramsby's fumble near the end of the first half, and the interception thrown by each quarterback.

Mistakes were a problem, for sure. However, it is obvious Navy was well prepared for everything that Georgia Southern threw at them. The outside

option plays were all snuffed out almost immediately. The area that saw the most success was early runs from Ramsby up the middle and Brieda finding his second gear in the second half with his 36 and 88 yard touchdown runs.

Questionable calls from the officiating crew, the fumble, and the interceptions were too much for the Eagles to rebound from. This looked like a completely different team from the comeback against Georgia Tech and the two 600-plus yard performances earlier in the season. For most of the season the Eagles have been one of the best teams in the country in the

turnover department, with seven total coming into the game.

Despite the preparation by Navy and the mistakes by the Eagles, there was one shining light from the offense. It didn't seem like there was ever a moment where things looked like a lost cause. Even on the final drives, Ellison and Upshaw were hurrying their offenses to the line and running heroically. Everyone ran with a purpose, but it was just not the Eagles' day.

Defense

The Eagles defense gave up a season high 52 points while allowing almost 400 rushing yards.

After taking a lead early in the game Georgia Southern allowed 31 unanswered points.

The Eagles inability to stop Navy's

junior quarterback Keenan Reynolds played a key role in the 33-point defeat. Reynolds combined for seven touchdowns on the day, six of which were rushing touchdowns. He also ran for 277 yards on 30 carries while adding 71 yards passing.

Despite holding the Midshipmen to under 100 yards passing, the Eagles were unable to force a turnover for the first time this season, while giving the ball up three times.

Navy continued to get better as the game went on and scored 21 points in the final quarter, tying the most points GS has given up in a single quarter all season.

Georgia Southern has an off week this week before taking on UL Monroe. A win against the Warhawks would guarantee at least a share of the Sun Belt Conference title.

Eagles come up short in opener

BY JORDAN TONEY
The George-Anne staff

The Georgia Southern Eagles traveled to Nashville Friday to start their season against Lipscomb. Lipscomb had a record of 6-24 last season, compared to GSU's record of 10-21.

The game started off with a steal from Angel McGowan that led to a jumpshot from Sierra Kirkland to give GSU the first lead with a score of 2-0. However, this would be the only lead that the Eagles would have all game as Lipscomb came back and came back hard.

Lipscomb had a run where they took the score from 9-7 to 25-7. The biggest point differential happened late in the first half, where Lipscomb led by 22 points with a score of 37-15. The Eagles ended up dropping that lead to 15 at the end of the first half.

The second half is really where the Eagles came back and started to shine. About halfway through the second half, the Eagles were only down by three, but they just couldn't take the lead despite multiple times when they were close to.

The game ended with a score of 80-74 but multiple Eagles had productive days despite walking away with a loss, including McGowan who led the team in points with 28. This was the highest scoring single game of McGowan's career.

"Angel is a really great player. She has a lot of confidence making plays, and she's comfortable finding them," Head Coach Chris Vozab said.

McGowan also led the team in assists with five and was perfect from the free throw line going 6/6. Anna Claire Knight and Alexis Sams tied in steals with 2.

It's important to note the difference in production for the Eagles between the first and second half. In the first half, the Eagles had a shooting percentage of 35.48 whereas in the second half, they raised that up to 50. They also doubled their shooting percentage from behind the arc going from 14.29 in the first half to 28.57 in the second.

The Eagles were outnumbered in points from the bench compared to Lipscomb. Lipscomb had 38 points from

the bench compared to the Eagles 15.

"We need to work on defending the basketball," Vozab said when asked what the team needed to work on for their next game against Jacksonville on Tuesday.

The Jacksonville Dolphins currently have the same record as the Eagles after losing to the Florida Gators 84-73. They'll travel to Hanner on Tuesday to face the Eagles in their homeopener.

“We need to work on defending the basketball.”

” - Chris Vozab
Head coach

VOLLEYBALL SWEEP ON FINAL ROAD TRIP

BY ARAYA JACKSON
The George-Anne contributor

For the Georgia Southern Eagles, this weekend was not projected to be a good one, as they took on the top two teams in the Sun Belt.

However, the Eagles did put up a fight and had the potential to take it home Friday as they played UALR in Little Rock. Georgia Southern easily took over the first set with a score 25-17. Unfortunately, the fourth set would be the last one they would take home, and the Eagles lost the match 2-3, leaving UALR undefeated

in conference play. The leaders for the game were Catherine Murray with 23 kills, Kat Minnerly with 47 assists and Jamie DeRatt with 24 digs.

Sunday, Nov. 16, the Eagles took on Arkansas State, another leader in the Sun Belt with only four conference losses. The last time the two faced each other, the Eagles lost the match 3-1, though the one set they won was a defining set in the Eagles season.

Sadly, the Eagles left Arkansas State with another match loss 3-1. GSU won the third set with a close score of 25-23, but couldn't hold up in

the fourth and final set. If the Eagles were able to keep their hitting percentages high, it may have been a different story. The Red Wolves doubled the Eagles .160 with a .331. Kat Minnerly led the team with 14 digs and 47 assists, and Catherine Murray with only 17 kills. The Eagles finish their final road trip of the season with no wins.

Georgia Southern will play its last two matches of the season at Hanner Friday, Nov. 21 at 6 p.m. against UT Arlington. Senior Day will be at Hanner Saturday, Nov. 22, at 1 p.m. against Texas State.

IT'S ON US

International Fraud Awareness Week - VALUES Week

VALUES

Voices	Accountability	Lasting Traditions	Unity	Ethical Behavior	Scholarship
--------	----------------	--------------------	-------	------------------	-------------

Monday, November 17- LASTING TRADITIONS & ACCOUNTABILITY
11am-2pm "Student Appreciation Day"

Free food at the Rotunda from SGA! Receive information on what it means to be accountable to each other and on Sexual Assault Awareness. This information will include places on campus to report violations or concerns.

Tuesday, November 18- VOICES
All Day - "Let Your Voice be Heard"

Free coffee and George-Anne newspapers to students in the Russell Union. Make a comment about using your voice on campus and have it tweeted live by @TheCircleGSU.

Tuesday, November 18 - ACCOUNTABILITY
7pm- "It's On Us" Open Mic Night-

Share your poetry, songs and other artistic expressions surrounding topics of accountability like academic dishonesty, drug/alcohol abuse, and sexual assault. Counselors will be available.

Wednesday, November 19 - UNITY
All Day- The Race Card Project

Share your six words concerning race and be a part of the community view on race.

Thursday, November 20 - ETHICAL BEHAVIOR
11am- 2pm- "Fake ID Amnesty"

Your chance to turn in your fake ID to University Police and the Office of Student Conduct without retribution and receive information on laws concerning fake identification and the consequences of breaking those laws.

Friday, November 21 - ETHICAL BEHAVIOR & SCHOLARSHIP
"Academic Dishonesty Video"

Look for your email message from the Dean of Students containing the link to a video which will explain the Code of Conduct definitions of Academic Dishonesty and consequences of academic dishonesty at Georgia Southern University.



GEORGIA SOUTHERN
UNIVERSITY

Sponsored by The Dean of Students Unit

GEORGIA SOUTHERN'S ARTS MAGAZINE

THE MISCELLANY



NOVEMBER 18 AT 7 PM



30 W MAIN ST, STATESBORO, GA 30458