

Georgia Southern University

Digital Commons@Georgia Southern

The George-Anne

Student Media

10-30-2014

The George-Anne

Georgia Southern University

Follow this and additional works at: <https://digitalcommons.georgiasouthern.edu/george-anne>

Recommended Citation

Georgia Southern University, "The George-Anne" (2014). *The George-Anne*. 2872.
<https://digitalcommons.georgiasouthern.edu/george-anne/2872>

This newspaper is brought to you for free and open access by the Student Media at Digital Commons@Georgia Southern. It has been accepted for inclusion in The George-Anne by an authorized administrator of Digital Commons@Georgia Southern. For more information, please contact digitalcommons@georgiasouthern.edu.

Thursday, October 30, 2014
Georgia Southern University
www.thegeorgeanne.com
Volume 89 • Issue 30

THE GEORGE-ANNE

HALLOWEEN EDITION

GET SPOOKED
CLASSIC HALLOWEEN
MOVIES RISE FROM
THE GRAVE
PAGE 9

UNDERGROUND
GEORGIA SOUTHERN
A GSU HORROR STORY
PAGE 4

CAMPUS OF HORROR
#SPOOKY PLACES ON
CAMPUS
PAGE 8

RIP
APP
STATE

RIP
GA.
STATE

RIP
TROY
SEE PAGE
15



IT'S THE GREAT PUMPKIN CARVING CONTEST, GEORGIA SOUTHERN!

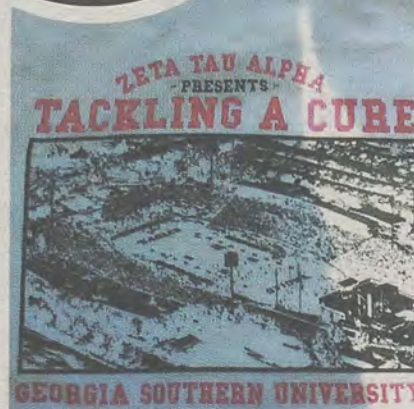
BY DJ FULLMER

Tau Kappa Epsilon is hosting a pumpkin carving contest for St. Jude's Hospital. The hospital tries to help families with childhood cancer and make the hospital as kid friendly as possible.

Any student can enter the contest and can sign up at the

their table in the Russell Union Rotunda.

For those who bring their own pumpkins, the fee is \$5. If you want to have a pumpkin purchased for you, the fee is \$10. They will be showing off all the contestants on Thursday, October 30, from 10 a.m. to 2 p.m. and winners should



TACKLING A CURE

BY ASHLEY ROBINSON

Zeta Tau Alpha Sorority is teaming up with Georgia Southern Football for Breast Cancer Awareness Month. They are selling t-shirts to be worn at Thursday night's football game against Troy University.

The t-shirts were sold at the Russell Union for \$15. Georgia Southern Football and Zeta Tau Alpha want you to "Pink Out" the game to bring awareness for Breast Cancer Awareness month.

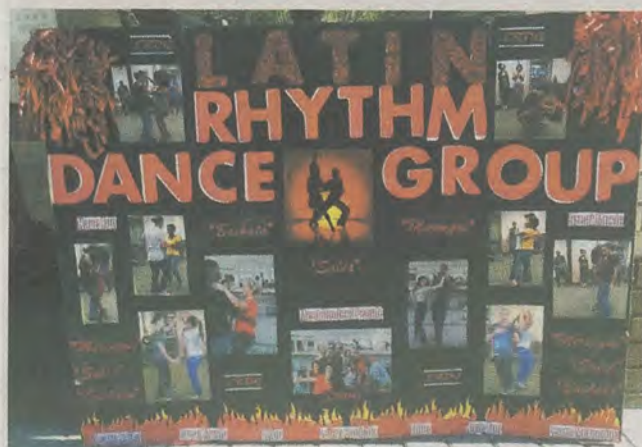
All proceeds from the t-shirts goes toward finding a cure for breast cancer.

THIS WEEK ON "WHAT'S TRENDING?" #MarvelEvent



When it comes to DC Comics versus Marvel, which is your favorite? Check out how some students answered that question on this week's edition of 'What's Trending?'

DANCE YOUR WAY TO A SUGAR RUSH



BY JORDAN FELTON

Latin Rhythm Dance Group sold cotton candy at the Russell Union Rotunda to help raise money for the club's various social events.

LRDG is an organization that teaches a variety of Latin dance styles every Wednesday from 6:30 p.m. to 8:30 p.m. at the RAC. They also have socials on Friday from 3 p.m. to 5 p.m. so people can get to know each other and practice some of their moves.

"It's just a time to dance and spread some different culture around the community of Georgia Southern," Zachary Gardner, PR of LRDG, said. "And if you don't know anything it's cool, we teach salsa, merengue, bachata and sometimes kizomba."



From Kim K to The Avengers to Johnny Depp, our reporter Armond Snowden breaks down the week's Hollywood Happenings in The Weekly Rundown.

CLASSIFIEDS & PUZZLES

www.thegeorgeanne.com

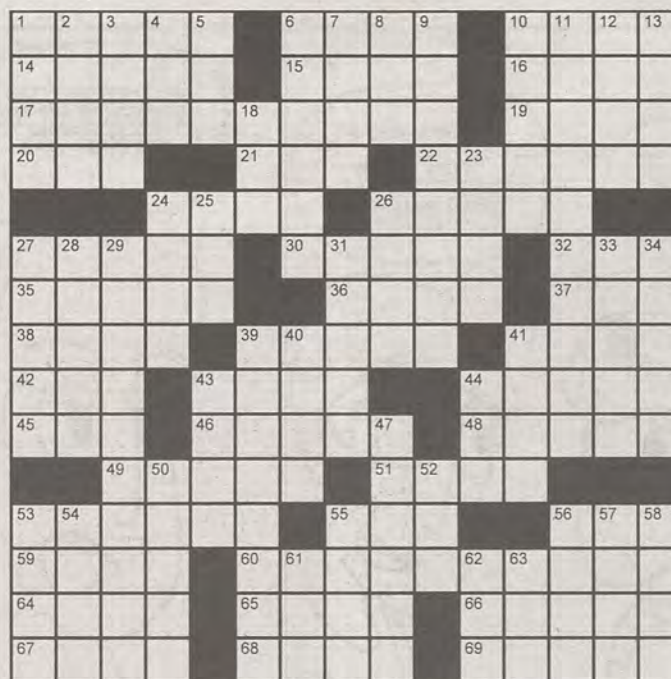
Thursday, October 30, 2014 3

Miscellaneous

Grad student with tutoring experience. Services include: English/writing tutoring, paper feed-back/editing, including reading, grammar, vocabulary, usage, punctuation, presentations/powerpoint. APA and AP style. Flexible schedule. 706.951.2444/

Across

- 1 Oregon's capital
- 6 Appraise
- 10 Poses
- 14 Small egg
- 15 Black, to Blake
- 16 Race pace
- 17 Senior's status
- 19 Slave girl of opera
- 20 Before, in verse
- 21 Soak flax
- 22 Cookout treat
- 24 Big name in mapmaking
- 26 Blender setting
- 27 Designer's concern
- 30 Brewer's need
- 32 Main
- 35 Museum piece
- 36 Mars, to the Greeks
- 37 Crow's call
- 38 Seed covering
- 39 Behind bars
- 41 Lyra's brightest star
- 42 Windsor, for one
- 43 Hollow
- 44 More rational
- 45 Cambodian coin
- 46 Color of honey
- 48 Cavern, in poetry
- 49 Scrabble pieces
- 51 Feudal worker
- 53 Type of union
- 55 ___ Baba
- 56 Something to chew on
- 59 Grade
- 60 Wine type
- 64 Downwind



Copyright ©2014 PuzzleJunction.com

- 65 Horse color
- 66 For the birds?
- 67 Hardy heroine
- 68 Circular domed dwelling
- 69 Bit of Gothic architecture
- 8 Large amount
- 9 Excited
- 10 Washington, e.g.
- 11 Multi-colored
- 12 ___ list
- 13 Buck
- 18 Sea bird
- 23 Dog bowl bits
- 24 Agitate
- 25 Kind of welder
- 26 Whittle
- 27 Mild oaths
- 28 Spooky
- 29 Customers, collectively
- 31 Golf score
- 33 Zealous
- 34 In the know
- 39 Necropolis
- 40 Priests' vestments
- 41 Windmill part
- 43 Mustachioed artist
- 44 Honshu honorific
- 47 Yield
- 50 Runs in neutral
- 52 Lady's man
- 53 Tête-à-tête
- 54 Provoke
- 55 Jewish month
- 56 Baby holder
- 57 Russian river
- 58 Physics unit
- 61 Bud's buddy
- 62 Groceries holder
- 63 Señora Perón

Down

- 1 Like some losers
- 2 Allege as fact
- 3 Cousin of a mandolin
- 4 Biblical judge
- 5 Mal de ___
- 6 Curative
- 7 Opposite of hinder

	8				7		3	
5	4			2			1	8
						6		
		6	2		1	7		
	5						8	
		1	7			3		
		4						
9	3			8			7	1
	7		1				4	

		9	2				1	
			8		1		3	
	5	1					2	
		3	1		4			
		2		9		5		
			5			6		
	9					3	7	
	4		3		9			
	7				2	9		

Statement of Operations

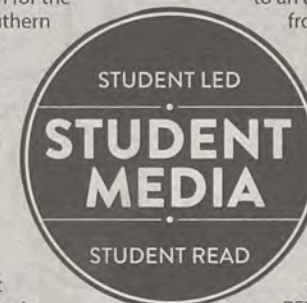
The George-Anne is the official student newspaper of Georgia Southern University, owned and operated by GSU students using facilities provided by the university. The newspaper is the oldest continuously published newspaper in Bulloch County. The newspaper is a designated public forum for the Georgia Southern community. The newspaper is published twice weekly, on Tuesdays and Thursdays, during most of the academic year. Any questions regarding content should be directed to the student editor by phone at 912.478.5246 or at gaeditor@georgiasouthern.edu.

ADVERTISING: The newspaper accepts advertising. Inquiries may be made by calling 912.478.5418 or 912.478-0566. Fax any questions to 912.478.7113 or e-mail ads1@georgiasouthern.edu.

The George-Anne receives additional support, in part, from the Student Activities Budget Committee.

The deadline for reserving space and submitting advertising copy is noon, one week prior to the intended publication date. For more information, rate cards, sample publications, contact

the advertising manager or student media director. The advertiser is responsible for any errors in advertisements and its liability for adjustments is limited to the amount of space the error occupied in the ad. Further, the newspaper is not responsible for any damages caused due to an ad's omission from a particular edition and its responsibility solely is to reschedule the ad in the next regular edition at the regular advertising rates.



STUDENTS BEWARE:

The George-Anne screens all advertisements prior to publication. The newspaper strives to accept ads for legitimate products and services only. Students are urged to exercise caution when replying to ads-particularly those that require personal information. Students are also urged to report to the newspaper any suspicious offers which they might see in an ad.

PUBLICATION INFORMATION: The newspaper is printed by The Brunswick News in Brunswick, Ga.

NOTICE: Unauthorized removal of multiple copies from a distribution site constitutes theft under Georgia law, a misdemeanor offense punishable by a fine and/or jail time.

Editorial Staff

Editor-in-Chief William Price
Managing Editor Will Peebles
Online Editor Lauren Gorla
Opinions Editor Erinn Williams
News Editor Emily Arnold
A&E Editor Matt Sowell
Sports Editor Will Cheney
Copy Editor Rashida Otunba

Distribution Manager Marcelo Sandoval
Business Manager Virginia Byrd
Marketing Manager Emily Skolrood
Creative Manager Heather Yeomans
Photo Editor Sarah Holmes
Design Editor Alexandra Tobia
Ads Design Chief Kelly Slyfield
Community Manager Cydney Long

Corrections

Contact the editor at gaeditor@georgiasouthern.edu for corrections and errors.

THE TRUE HORRORS OF HALLOWEEN BY: TOMMY MARTIN



Underground Georgia Southern: FACT OR FICTION?



WILL PEEBLES

@iamwillpeebles
Peebles is a journalism major from Wrens, Ga. He is the current Managing Editor of The George-Anne and master of fearful stories.

My freshman year, I had a terrible experience.

I was young, stupid and bored. Nowadays, I know those three adjectives are a recipe for disaster, but back then, I couldn't resist the allure of these three whispered words: Underground Georgia Southern.

My friends all talked about it at lunch. The upperclassmen that we knew told them about the entrance they "found." Fear flicked off the

tongues of my freshman friends when they called it by name.

"Underground Georgia Southern."

They all laughed it off with the feigned confidence people have at that age, saying such a place couldn't exist without someone finding it or noticing the entrance. My roommate Nathan and I weren't so convinced.

Later that night, Nate came to my room and told me he believed it. I laughed at first, but the look on his face was somber and serious. He looked at me and said words I now wish I'd never heard: "I think I've seen the entrance."

Young, stupid and bored Will couldn't say no. Nate and I donned our hoodies and walked from our Southern Courtyard home to campus, then to the walkway between Lake Ruby and Old Lakeside. We peered into the thickly wooded area near Forest Drive, and we tried not to admit how afraid we actually were.

It was dark. Not just dark-in-the-woods dark, it actually felt dark-like something was crawling on my bones. I began to get nervous, and

I turned to Nate, whose eyes were scanning the area for the entrance he believed he saw.

His flashlight hit something that glinted in the light.

"That's it."

“It was dark. Not just dark-in-the-woods dark, it actually felt dark-like something crawling on my bones.”

We turned to each other, smiled the way that people do before attempting something reckless, and trudged through the barricade of vines and brush until we eventually reached a large rusty metal circle.

The entrance looked like a manhole, but the ground was sloped under it, giving it an odd Hobbit-hole-esque demeanor- think Frodo from hell. Nate and I summoned all the courage we could muster and pushed

the heavy, cold door aside.

Before us was a tunnel, seemingly leading underneath Lake Ruby. At this point I was losing it. I didn't want to be there, but I wouldn't leave Nate, who seemed set on exploring.

In we went.

The tunnel was uncomfortable. It was almost big enough for us to stand up, but we still had to crouch. A waft of mammalian musk hit my nostrils every now and again. It didn't really bother me at first, but it got worse as we went further down the tunnel.

We came up on an opening. It was getting colder and colder. Our flashlights were dim, and our phones were practically dead (terrible planning, I know).

We went into a larger area, the tunnel spread out into what I can only describe as a room full of dead birds. There's no other way to describe it, because that's what it was: a room of dead birds. They were perfectly intact, motionless birds, and they were all over the floor. Ducks, cardinals, geese, mockingbirds, robins, every kind of

bird you can imagine was there- on the floor, dead.

Needless to say Nathan and I were frozen with fear. That fear quickly melted into panic when we heard a low, foreboding animal noise. Lower than a growl, yet somehow more piercing. We turned and ran back the way we came immediately, with higher, more shrill sounds echoing in the tunnel behind us.

We closed the door; nothing had followed us, but we were done with exploring for the evening. We walked back to Courtyard's welcoming arms and told our roommates a story they didn't believe.

But Nate and I knew it was true. We never went back, partially out of fear, mostly out of a desire to keep the mystery as terrifyingly exciting as it was the first time.

If you hear whispers about Underground Georgia Southern, strongly consider what you have read today. The accounts you hear are often exaggerated, but UGS itself is very real.

ELECTION GUIDE

BY MACY HOLLOWAY
The George-Anne staff

During the general election next Tuesday, Nov. 4, Georgia residents will be voting for the nominees for Georgia governor and U.S. Senate.



David Perdue, Senate

David Purdue, from Atlanta, Ga., is the Republican nominee for the open Senate seat. He graduated from the Georgia Institute of Technology with a master's degree in operations research and is first cousin to former Georgia Governor Sonny Perdue. Perdue is well-known for his lofty career in corporate business, most notably as Dollar General's former CEO. In the spring of 2011, Perdue started an Atlanta-based global trading firm.



Michelle Nunn, Senate

Michelle Nunn, from Atlanta, Ga., is running as the Democratic nominee. She holds a master's degree in public administration from Harvard's Kennedy School of Government and is a graduate of the University of Virginia. She is the daughter of Sam Nunn, a former U.S. senator. Nunn has been the CEO of Points of Light, a volunteer service organization derived from President George H. W. Bush's philosophy, since 2007. Points of Light is the largest organization purposed toward volunteer service in the United States.



Jason Carter, Georgia Governor

Jason Carter, from Atlanta, Ga., was unopposed for the Democratic Party's nomination for governor. He currently holds a Georgia state Senate seat and is the grandson of President Jimmy Carter. Carter graduated with a Bachelor of Arts from Duke University where he double majored in philosophy and political science. He later graduated from the University of Georgia School of Law with a juris doctor. He has been a state senator since 2010.



Nathan Deal, Georgia Governor

Governor Nathan Deal (Incumbent), from Gainesville, Ga., is the current Republican nominee and will be running for re-election to a second term. Deal has been in Georgia's political spotlight since he was elected to the Georgia Senate in 1980 as a Democrat. In 1995 he was elected to the House of Representatives and when the Republicans gained control of the House in 1995, Deal joined the Republican party. He served in the House of Representatives up until his election as Georgia governor in 2010.

A WIDE VARIETY OF SMOKING ACCESSORIES
& HOOKAH TOBACCO
OPEN DAILY
FREE WIFI
10% OFF
ALREADY LOW PRICES WITH THIS COUPON!
THE SMOKE HAVEN
HOOKAH LOUNGE AND SMOKE SHOP
912-212-2123 15 COLLEGE PLAZA, STATESBORO, GA

The Sir Shop
Statesboro Mall
912.764.6924
TRUNK SHOW
SOUTHERN PROPER &
OCT 30TH IN STORE 11-4 THURSDAY TAILGATE
AT BISHOP BUILDING BEFORE GAME

GSU OFFICIALS TALK EBOLA

BY SKYLER BLACK

The George-Anne contributor

Ebola hemorrhagic fever is a rare and deadly disease that is spread by physical contact with the blood and bodily fluids of someone showing symptoms of the disease.

Georgia Southern recently held a meeting to discuss how the campus was prepared to deal with infectious diseases such as the influenza and Ebola viruses. Officials from the GSU Pandemic Influenza and Emergency Infectious Disease Committee discussed what Ebola is and how to prevent it from spreading in detail.

In a short article, Dr. Isaac Fung, a department of epidemiology assistant professor stated, "If you have not had any symptoms of Ebola for 21 days since leaving a West African country with Ebola outbreaks, you do not have Ebola."

After Thomas Duncan, the first Ebola patient diagnosed in the United States,

passed away, the American people began to worry about their safety in regards to this disease. The fact of the matter is that only one of the nine people treated for Ebola in the United States has died. The only reason that Duncan did die from Ebola was because a he was misdiagnosed when he first arrived to the hospital.

At the meeting held a few weeks ago, Fung and his staff explained ways to prevent the disease and recognize symptoms of the infection. Steps of prevention include:

- washing your hands thoroughly
- not touching the bodily fluids of sick individuals
- avoiding unnecessary travel to affected countries.

In response to how much the United States has to worry about this virus, Fung said, "If you have not been to Liberia, Sierra Leone and Guinea, and if you have not been in contact with anyone who is infected with Ebola,

then your risk of contracting Ebola is basically zero."

That being said, if you do think that you or someone you know is infected, you should seek medical care as soon as possible. Let the doctor know what symptoms you are experiencing beforehand and if you have been to or have had contact with anyone that traveled to West Africa. On your way to the health care facility, do not come in contact with other people and do not take public transportation.

SYMPTOMS OF EBOLA

- headache
- stomach pain
- muscle pain
- vomiting
- diarrhea
- unexplained bruising or bleeding
- fever greater than 101 degrees Fahrenheit.

Be the change in public health

BY ASYA FIELDS

The George-Anne contributor

Do you know what health equity is?

Not many people do. However, on Oct. 27 Dr. Nandi A. Marshall, a College of Public Health graduate of Georgia Southern and Armstrong University professor, came to change that by fully explaining the meaning of health equity and teaching students how to get involved in spreading awareness in the community.

The Center for Disease Control (CDC) defines health equity as "When all people have the opportunity to attain their full health potential,

and no one is disadvantaged from achieving this potential because of their social position or other socially determined circumstance."

Dr. Marshall taught that this can be attained by people in the community lending a helping hand to the elderly or people who do not have the means to get treatments or testing. She encouraged students to host forums so that people can stay informed about public health and what is necessary to live a healthy lifestyle.

If a student or community leader understands the problem and where it stems from, they can create an action plan to help the community change and promote a healthy environment.



FRAUD AFFECTS EVERYONE

Interested in fraud & forensics?
During advisement, ask your advisor how you can obtain a fraud examination minor and become a Certified Fraud Examiner.

For more info, call 912.478.2228 or go to GeorgiaSouthern.edu/soa

STUDENTS OF ALL MAJORS WITH
AT LEAST 45 CREDIT HOURS

LOOKING FOR AN ELECTIVE?

WHITE COLLAR CRIME LSTD 3630

Examines the investigative steps within the U.S. criminal justice system

FRAUD AND THE LAW LSTD 3631

Examines the legal issues associated with conducting fraud investigations

INTERVIEWS AND INTERROGATIONS LSTD 4633

Examines human behavior and the signals of truth and deception

WORLD NEWS BRIEFS



BY DONNA JONES

The George-Anne contributor

● 1. A landslide occurred in south-central Sri Lanka Wednesday, Oct. 29. The landslide killed more than 100 people and covered many houses. A government minister said that the death toll is likely rise in the coming week. President Mahinda Rajapaksa deployed heavy military machinery to speed up the search and rescue mission.

● 2. The rate of Ebola in Liberia is slowly declining, according to the World Health Organization. The Red Cross reports show that in the capital, teams picked up fewer bodies than previous weeks. There are also multiple beds open in the treatment centers. Experts are still checking to be certain that all cases are being reported.

● 3. Beijing is threatening to use force in Hong Kong if the pro-democracy movement does not stop. Hong Kong's

movement has lasted one month. Although the government promised that China's military would not be called in earlier in the month, it is now hinting that the military has to take action if the protest does not cease.

● 4. A coal mine collapsed in Turkey's southern Karaman province Tuesday, Oct. 28. Hundreds of emergency workers are attempting to rescue 18 miners believed to be trapped in the mine. The miners are trapped 1,000 feet below the ground. The mine flooded with water, but it is not certain what caused the flooding.

● 5. Guy Scott will become the first white president in sub-Saharan Africa since apartheid. Scott will become Zambia's interim President following the death of President Michael Sata. The constitution of Zambia requires elections for a new president within 90 days, until then Guy Scott assumes interim presidency.

SmokeCity

48 W. MONTGOMERY X-ROAD SUITE 103 SAVANNAH 912-920-2255

& MORE

BRING THIS COUPON IN FOR
\$10 OFF \$50 PURCHASE

☰

TOBACCO
HOOKAHS
BIDIS
DISK GOLF
INCENSE
TIE-DYE
SMOKING ACCESSORIES
VAPORIZER VAPE ACCESSORIES
E CIGARETTES & E CIG ACCESSORIES

GREYSTAR

GET IN THE END ZONE WITH FORUM AT STATESBORO

FORUM

AT STATESBORO
A PREMIER STUDENT
HOUSING COMMUNITY

IT'S YOUR LIFE... LIVE IT.

• Tennis Court • Lap Pool & Spa • Pet Friendly • Pet Park •

• Two Free Tanning Beds • Indoor Basketball Court • Indoor Volleyball Court •

• Car Care Center • Media Room • Modern Faux-wood Floors •

• Private Bathroom in Bedrooms • Roommate Matching •

• Convenient Individual Leases • Free High Speed Internet in Bedrooms •

• 24-hour Fitness and Training Center • Kitchens with Full Size Appliances •

• Full-size Washer / Dryer Included • Wi-Fi Cyber Cafe with Coffee Bar •

• Outdoor Sand Volleyball Court • High Speed Internet Access •

• Student Center and Lounge • Expanded Cable •

Amenities subject to change. Please contact us for more information. Fees may apply.

831 South Main Street | Statesboro, GA 30458 | 912.489.3676

FORUMSTATESBORO.COM

SCARY MOVIES FOR HALLOWEEN

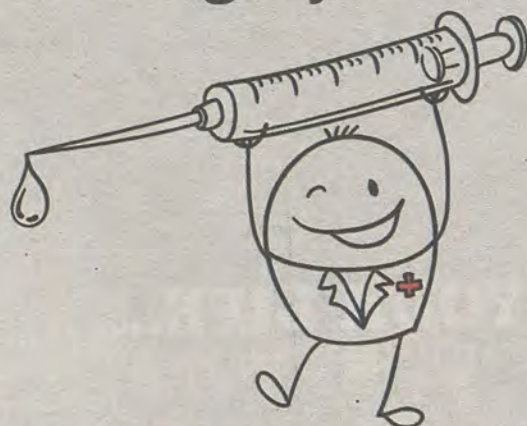
BY KENNETH LEE

The George-Anne staff

Whether you choose to spasm and shout gibberish like a lunatic in the company of friends or alone like a brave fool, watching a frightening amount of horror movies around Halloween is practically a nationwide mandate at this point in our lives.

College Health Tip #6

Don't forget your flu shot.



The shot is not bad. But catching the flu can ruin you for two weeks or more.



Walk-in medical care close to campus.
Caring and confidential treatment.
Most insurance, cash and credit cards accepted.
getIMMEDIATEcare.com

Monday - Friday 9:00 am - 8:00 pm
Saturday 9:00 am - 5:00 pm
Sunday 12:00 pm - 5:00 pm

1096 Bermuda Run Road
in Statesboro's Market District
p - 912-871-5150

"TEXAS CHAINSAW" (2013)

The gore scenes are intense, but surprisingly sporadic for a movie about a chainsaw-wielding psychopath, but they make up for it by adding in the charismatic, commanding presence of hip-hop artist Trey Songz. He's not just in the soundtrack, he's in the actual film, foolhardily entering eerie mansions, listening to Trey Songz (yes, he listens to his own music) while nonchalantly playing pool and narrowly avoiding a revving chainsaw with his friends. Halloween, chainsaws and Trey Songz: the ménage à trois of the century.

"THE STRANGERS" (2008)

Light on gore but heavy in suspense, this ominous home invasion movie is nothing but fully personified creepiness. By the end of the night, "The Strangers" will slowly but surely transform you into a paranoid, irrational nut-job who jumps and gasps at every random noise in your apartment. It may help with your hiccups, but it's definitely no cure for insomnia.

"THE WOMAN IN BLACK" (2012)

Daniel Radcliff trades Hogwarts for haunted houses and goofy-sounding spells (Leviosa?) for ghosts in this spine-chilling film. The movie is actually pretty creepy, and Radcliff is actually quite the looker without the dorky Potter glasses.

"SCREAM" (1996)

Classic, clever and captivating, "Scream" is a great Halloween movie that combines horror with a fun, tense whodunit mystery. In short, its "Scooby Doo" meets "Friday the 13th."

"PARANORMAL ACTIVITY" (2007)

In preparation for the inevitable next installment of this haunting franchise, why not watch the original? Spoiler Alert: "Paranormal Activity 6" will be a black screen, with a guy shouting "BOOGA BOO!" in a deep baritone voice, at random moments for 90 minutes.

"HOUSE AT THE END OF THE STREET" (2012)

With the phenomenal Jennifer Lawrence starring in it, this horror movie is worth a watch. But while watching, one has to wonder, what's the source of her unearthly talents? Witchcraft? Aliens? Laboratory experiments?

THINGS
YOU
SHOULD
BE
DYING TO
DO THIS
WEEKEND

HALLOWEEN
IN THE 'BORO

BY MATT SOWELL

The George-Anne staff

Georgia Southern A "HOUSE OF HORRORS"

BY MATT SOWELL

The George-Anne staff

There's a sinister chill in the air that sends ominous chills down your spine. Your breath appears in front of you as you exhale a sigh. Why? Because the professor has the temperature on -12 degrees. Let's be honest: College is a scary place, especially ours. Fellow Eagles,

as you know, we go to a school that can be quite foreboding. Without further ado (and instead of Buzzlist) I give you: The five scariest places on campus.

1. The fourth floor of Club Hendy: You walk silently and swiftly through the narrow rows of books looming around you as you realize that this place is scary. It's quiet, along the walls are seemingly-dead bodies recovering

from last night, and everyone is making suspicious eye contact because they think you *might* be the person they want to hook up with from Yik Yak.

2. The weight area of the RAC: to someone uneducated in the art of weight lifting and who is pretty adequately out of shape (me), this terrifying area looks like Frankenstein's lab. Around you are contraptions that would make "Saw" proud. Not only that, but you're surrounded by guys who could step on you and kill you.

3. The Math/ Physics Building: it looks innocent from outside, but upon entering you realize you're in a labyrinth of pure hellish terror. Dead ends, stairways to nowhere and tight

hallways surround you. It's like you're in an episode of "The Twilight Zone". Legend has it, every year at least one freshman will be damned to roam the halls forever. If you don't suffer, your GPA will. The act of passing the classes in there are even more challenging than finding them.

4. The Health Center: You're coughing, shivering from your low grade fever and Web MD told you that you probably have HIV. As if this fate wasn't bad enough, you're now locked in a former broom closet as a nurse asks you very personal questions about that one-night-stand you had a month ago. It's nightmarish as you follow her past people who probably have Ebola.

5. Statesboro Walmart: Technically, this isn't on campus, but it's as much a part of Georgia Southern as therapy is needed after watching "Human Centipede." This hellish place was (probably, but not really) alluded to in both Dante's "Inferno" and "Revelations". None shall find what they came here for, and all will suffer the trials and tribulations of waiting in a checkout line until the very soles of your feet rot away. On top of that, you're surrounded by people who look as though they belong in the family of "Honey Boo Boo" (which, by the way, is cancelled.)

Have a #Spooky Halloween, Eagle Nation.

Haunted Forest at The Clubhouse

Plaza Halloween Party on Thursday

GATA and 125's on Friday

Tybee Island Trick or Treat

Second Annual Crawl-o-ween Friday on River Street in Savannah

"Purge" Night @ Russel Union Theater

The annual costume contest will take place at the University Store on Friday, Oct. 31, from 10 a.m. until 2:30 p.m.

The Autumn String Fest is scheduled to take place on Oct. 31, in the Carol A. Carter Recital Hall at 7:30 p.m.

On Friday, there will be a Halloween rave at the University Villas clubhouse starting at 7 p.m.

Halloween Howler @ Big Show's on Friday

Ahead in

CLASS

PAID ADVERTISEMENT

COLLEGE OF
LIBERAL ARTS &
SOCIAL SCIENCES
GEORGIA SOUTHERN UNIVERSITY

Upcoming events: November 2014

Now-11/02: **GALLERIES Arnold J. Kemp: The Public, The Evidence, The Spectacle** Contemporary Gallery, Center for Art & Theatre; 912.GSU.ARTS
Now-11/02: **GALLERIES Daniel Mirer: ArchitorSpace Vacancy** University Gallery, Center for Art & Theatre; 912.GSU.ARTS
Now-11/03: **HISTORY EXHIBIT Dia de los Muertos (Day of the Dead)** Henderson Library; 912.478.4478

11/01: **COMMUNITY Super Hero 5K Run for CASA** 7:30 a.m.; Guyton

11/02: **CONCERT Faculty Recital: Carolyn Bryan, saxophone, and Karla Rocker, piano** 3 p.m.; Carter Recital Hall, Foy Bld.; 912.478.5396

11/03-11/11: **FESTIVAL 16th annual French Week** Visit GeorgiaSouthern.edu/foreign-languages

Wednesdays: **MODERN LANGUAGES' Arabic Conversation Hour** 4 p.m.; Forest Drive Bld.; Room 1227 **Mesa de Conversación** 5:30 p.m.; El Rinconcito **Chinese Club** 7 p.m.; Forest Drive Bld., Room 1217

11/03-28: **EXHIBITION In the Spirit of Dada & Surrealism** Averitt Center for the Arts, Statesboro; 912.GSU.ARTS

11/03: **CONCERT Brass Studio Solo Recital** 7:30 p.m.; Carter Recital Hall, Foy Bld.; 912.478.5396

11/04: **CONCERT Brass Studio Chamber Recital** 7:30 p.m.; Carter Recital Hall, Foy Bld.; 912.478.5396

11/04: **READING C.G. Hanzlicek, poet** 7 p.m.; College of Business Administration, Room 1124; 912.478.5566

11/05: **LECTURE New Faculty Presentation: Robert Farber** 5 p.m.; Visual Arts Bld.; 912.GSU.ARTS

11/06: **CONCERT Channel Noise XI** 7:30 p.m.; Carter Recital Hall, Foy Bld.; 912.478.5396

11/07: **RECEPTION In the Spirit of Dada & Surrealism** 5 p.m.; Averitt Center for the Arts, Statesboro; 912.GSU.ARTS

11/07: **CONCERT Guest Artists Harry Watters, trombone, & Ken Watters, trumpet** 8 p.m.; Carter Recital Hall, Foy Bld.; 912.478.5396

11/08: **CONCERT Jazz Band** 3 p.m.; Performing Arts Center; 912.478.5396

11/10-12/12: **EXHIBITIONS BFSDoA Faculty & MFA Thesis** Contemporary & University galleries, Center for Art & Theatre; 912.GSU.ARTS

11/11: **CONCERT Guest Artist Ian Altman, piano** 7:30 p.m.; Carter Recital Hall, Foy Bld.; 912.478.5396

11/13-15: **CONCERT East Meets West: Statesboro International Music Festival** Visit GeorgiaSouthern.edu/music

11/15: **CONCERT Guest Artist Ney Rosaura & Georgia Southern Percussion Ensemble** 7:30 p.m.; Averitt Center for the Arts, Statesboro; 912.478.5396

11/16: **CONCERT Southern Pride Marching Band** 7:30 p.m.; Statesboro First Baptist Church; 912.478.5396

11/17: **GREAT MINDS Dr. Julie Warner: "Place, Space, & the Digital Divide"** 5:30 p.m.; Russell Union, Room 2084; 912.478.8597

11/20: **CONCERT Opera Scenes** 7:30 p.m.; Carter Recital Hall, Foy Bld.; 912.478.5396

All events are open to the public, and admission is free except where otherwise indicated. For more information, please visit GeorgiaSouthern.edu/class.



GEORGIA
SOUTHERN
UNIVERSITY

ANNUAL
WINTER BREAK TRIP
TO
NYC AND DC
APPLY AT GEORGIA SOUTHERN.EDU/OSA/EVENTS
\$410
INCLUDES LODGING & TRAVEL
**DECEMBER
13-19**
REGISTRATION DEADLINE
NOVEMBER 7TH BY 4:00 PM
YOUR STUDENT ACTIVITY FEES AT WORK
GEORGIA SOUTHERN UNIVERSITY



ON EAGLES WINGS YOU'LL SOAR
LEAVE YOUR LEGACY
BE A **SOAR** LEADER

The deadline is approaching!

**Applications to be a 2015
SOAR Leader are due
Monday,
November 3rd!**

2015 SOAR Leader

Applications Available Online Now

<https://employment.georgiasouthern.edu/>

Posting Number: STU000281

For more information, contact the
Office of Orientation at
orientation@georgiasouthern.edu or
(912)GSU-SOAR

Follow us on Twitter! @GSU_SOAR
Like us on Facebook! Georgia Southern SOAR



Rating: 3/5 stars

BY ALIA LEWIS

The George-Anne staff

If Taylor Swift's 2012 "Red" album didn't signal the end of her country regime, her latest album, "1989" announced loud and clear that Taylor Swift has officially crossed over to pop music.

Unfortunately "1989," Swift's fifth studio album and first official pop album, falls short in pop standards. Although there were certain songs that elevated the album, overall, it only just passes as decent.

The main problem with the album is its lack of variety. From the beginning, most songs seemed extremely repetitive and almost identical in beat and song structure. It's as if Swift chose one beat that sounded like pop and stuck with it

for most of the album.

Fortunately, when a song frees itself from the pack, it is exhilarating.

"Bad Blood," for example, which is arguably one of the best songs on the album, immediately catches you with its infectious drum beat and pulls the audience into the alleged feud between Swift and Katy Perry.

Even after the song is over, "Bad Blood" will be stuck in your head.

Other songs like "Style," "You Are In Love," "New Romantics" and, of course, "Shake It Off" liven the album and make the listener want to dance, smile, sing and twirl all at the same time.

Lyrics like "the best people in life are free" and "Band-Aids don't fix bullet holes" heighten the album and remind listeners of the innocent

lyricism we know and love.

Overall, "1989" is decent for an elementary pop album. The lack of variety in beat makes the album seem a bit repetitive. However, some songs rejuvenate the album and restore our undying hope in Taylor Swift. For fans expecting an album similar to "Speak Now," it's important to note that Swift has evolved, which consequently means her music has evolved.

Of course, Taylor's honesty and desire to throw shade at her ex-lovers remain, but Taylor is establishing a new depth that differs from all of other albums. Although this album could be better, her newfound freedom makes the album fun and carefree, and can only be applauded.

THE WEEKLY BUZZ

OCT. 30 - NOV. 5

A WEEKLY CALENDAR LISTING SPONSORED BY THE DIVISION OF STUDENT AFFAIRS AND ENROLLMENT MANAGEMENT

10/30

THURSDAY

CRI Events

RAC will close at 9pm tonight.

CRI Events

GROUP FITNESS CLASSES ARE CANCELLED AFTER 1PM TODAY.

CRI Events

Come by the Rotunda to witness the Empty Bowl Project at 2pm for Be the Change Week.

For more information, visit <http://recreation.georgiasouthern.edu/wellness/special-events/be-the-change/>.

10/31

FRIDAY

Halloween Double-Feature (The Purge and The Purge Anarchy)

6:00 pm and 8:00 pm Russell Union Ballroom

Join the University Programming Board as they deliver a horror filled Halloween Movie Night with the double feature: The Purge and the Purge Anarchy. The Purge will be shown at 6:00 pm and the Purge Anarchy will be shown at 8:00 pm!

OSA Events

New Organization Charting Workshop

3:30 - 4:30 pm Russell Union 2044
Interested in starting a new student organization? Attend this workshop to see how!

Contact Information: OSA@GeorgiaSouthern.edu

11/01

SATURDAY

NO EVENTS

11/02

SUNDAY

NO EVENTS

11/03

MONDAY

CRI Events

Belay Clinic will be held at 7 pm. in the Southern Adventures room as part of the Climbing Clinic Series.

No pre-requisites are required and if interested visit <http://recreation.georgiasouthern.edu/southern-adventures/skills-clinics/climbing-clinics/>.

11/04

TUESDAY

Fall Classic Basketball registration is closing today.

So, if your team hasn't signed up yet, be sure to do so. <http://recreation.georgiasouthern.edu/intramurals/get-involved/how-to-register/>

New Organization Charting Workshop

5:30 - 7:00 pm Russell Union 2044
Interested in starting a new student organization? Attend this workshop to see how!

Contact Information: OSA@GeorgiaSouthern.edu

11/05

WEDNESDAY

SOLD Workshop: "Alternative Breaks & Services" Presented by: Katy Kaesebler

5:30 - 6:30 pm Russell Union 2047
The SOLD Workshop Series is coordinated by the Office of Student Leadership & Civic Engagement and the Office of Student Activities. The SOLD Workshop Series is designed for any student seeking to develop their individual leadership capabilities and for students who currently or aspire to hold a leadership position within a student organization.

Contact Information: OSA@GeorgiaSouthern.edu

Student Leadership Events

SOLD Workshop: "Alternative Breaks and Service"

Presented by: Katy Kaesebler
5:30 - 6:30 pm Russell Union 2047
Sponsored by: The Office of Student Activities and The Office of Student Leadership & Civic Engagement

10/25 - 10/31

SATURDAY-FRIDAY

Be The Change Week 2014 is coming Oct. 25th-31st

There are many ways you can Be the change you want to see in the world. What do you want to change? Healthier bodies, healthier lives, healthier communities. This week is about students creating positive change in their own lives and communities. Info and calendar of events available at: <http://students.georgiasouthern.edu/LeadServe/sjw/> Sponsored by the Office of Student Leadership and Civic Engagement and University Wellness

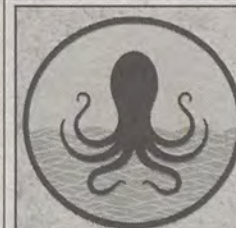
leader@georgiasouthern.edu
912-478-1435

TAILGATE CONCERT ★ SERIES

FALL 2014 ALLEN E. PAULSON STADIUM



gseagles.com/stz



OCT. 30
THE ORANGE
CONSTANT ★ 4:30-7 PM
STUDENT TAILGATE ZONE

HOSTED BY: UNIVERSITY WELLNESS PROGRAM

Student Affairs
Enrollment
Management

Brought to you by Georgia Southern University VALUES. Georgia Southern V.A.L.U.E.S. is the culture shared by our students, faculty, and staff. We endeavor to share our V.A.L.U.E.S. inside and outside of the classroom with faculty, staff, students, alumni and all other community members. In order to produce productive citizens with an informed set of ethics and community standards as well as create an environment of respect and civility, we pledge to live by our V.A.L.U.E.S.

TRUE BLUE *THURSDAY*

#TBT

EAGLES RETURN
TO THE BIG
STAGE



FOOTBALL SECTION
frontier
Communications
SPONSORED BY

NO CONTRACTS. NO FEES. JUST INTERNET.

A monthly Internet bill that won't leave you with student debt.



High-Speed Internet

— from Frontier —

34⁹⁹
per month

No home phone required

- FREE Internet activation & Wi-Fi Router
- No contract
- No early-termination fee

Switch to Frontier today.

**Call 1-912-764-3271
or visit Frontier.com**

"Frontier High-Speed Internet
is just \$34.99 per month.
Feel free to share that."



Limited-time offer for new Internet customers. Must subscribe to High-Speed Internet with speeds up to 6Mbps. Actual speeds may vary and are not guaranteed. Service subject to availability. Installation fees apply; discounted Internet install fee waived for self-install. Price guaranteed for 24 months. Shipping/handling charge applies. A \$9.99 broadband processing fee upon disconnection of service applies. Taxes, governmental and other Frontier-imposed surcharges apply. Frontier reserves the right to withdraw this offer at any time. Other restrictions apply.

©2014 Frontier Communications Corporation.

frontier
Communications

TROY... WHERE YOU AT?



BY Trevor McNaboe

The George-Anne staff

In the second of two Thursday night games Georgia Southern will play this season, the Eagles will play host to the Troy Trojans.

Troy University is located in Southeast Alabama and was founded in 1887 under the name Troy State Normal School.

The Trojan's football program first began in 1909, but has been a continuous fixture in the school's athletics since 1946. Troy has been in the Sun Belt Conference since 2004, and in that time period has won a share of five conference championships from 2006-2010.

Before making their way to the Sun Belt, the Trojans spent three seasons as an FBS Independent school going 17-18.

Troy has three national championships in the football program's history, two of which were won at the Division II level in 1984 and 1987, and one at the NAIA level in 1968.

Larry Blakeney is in his 23rd and final season as head coach for the Trojans and has the most wins in Troy history with 174.

Along with that, he has the third most victories for a college coach in the state of Alabama, just surpassing former Auburn coach

Shug Jordan.

This season is an off year for Troy as they currently are 1-7 this season, something unusual to a program that has an all time record of 504-378-37.

Troy has had some notable coaches and players to be a part of their program, including former Georgia Tech and Buffalo Bill head coach Chan Gailey, who lead the Trojans to the 1984 Division II championship.

DeMarcus Ware and Osi Umenyiora are two well known names in the NFL that hail from Troy.

Ware was selected 11th overall in the 2005 NFL Draft by the Dallas Cowboys, and holds the all time franchise sacks record for them with 117. Currently he plays for the Denver Broncos and is 15th all-time in sacks in NFL history.

Umenyiora was drafted in 2003 by the New York Giants in the 2nd round 56th pick overall and owns the Giants record for most sacks in a single game with six. Currently he plays for the Atlanta Falcons and has 83.5 sacks placing him in the top 50 all time.

Despite the down year for Troy this season, this is a very successful team historically in the Sun Belt and will be a good matchup between two teams with a pedigree for success this Thursday.



THURSDAY SHOWDOWN IN PAULSON: GSU VS. TROY

BY HAYDEN BOUDREAUX
The George-Anne staff

After the 69-31 trouncing of Georgia State, the Georgia Southern football team is working with a short week as they prepare to take on the Troy Trojans at home on ESPNU.

The Trojans are in the midst of their worst season in over 45 years with a record of one win and seven losses. Their most recent loss came at the hands of South Alabama in a 27-13 on ESPNU last week. Allowing an average of 39 points and 250 rushing yards per game, it looks like the Eagles could light up the scoreboard again this Thursday.

Offensively, the Trojans have only 17 touchdowns on the season compared to the 47 scored by the Eagles. While they can air the ball out,

they have focused on their lackluster run game to open up lanes down field.

Troy has used a stable of running backs this season with three running backs having over 35 carries. Their quick back has been junior Brandon Burks with 68 carries and 382 yards and two touchdowns. Sophomore Jordan Chunn has been the fullback-style runner with 55 carries for 228 yards and four touchdowns. It is also important to note that starting quarterback Brandon Silvers has run the ball 75 times this season but for only 127 yards.

As quarterback for the Trojans, Silvers has been accurate with a 66.8 completion percentage. He has thrown five touchdowns for the Trojans but has thrown to the wrong team three times. Junior backup Dontrel Pruitt

has played his fair share this season and has thrown for 530 yards and one touchdown. Their passing game overall has been decent this season but turnovers and Silvers average of 1.7 yards per carry has caused them to miss several opportunities.

Defensively, the Trojans lack the strength or size up front necessary to slow down the best rushing attack in college football. The biggest threat are their pass rushers with redshirt freshman Jamal Stodom and junior Tyler Roberts with four sacks each. Roberts also has accumulated eight tackles for loss through the first eight games.

The running game for Georgia Southern has been one of the best in its history. Six different players with at least 25 carries are averaging more than five yards per touch. They have

three rushers with over five hundred yards, led by sophomore running back Matt Brieda with 1032 yards and 12 touchdowns. The offense still leads the entire FBS in rushing yards and rushing touchdowns.

Senior Eagle linebacker Edwin Jackson and the rest of the Eagle defense should have a field day against the Trojans. Their running attack has relied on defenses playing soft against the run, which isn't something Georgia Southern does. Jackson will look to add to his total tackle (65) number on his road to 100 on the season.

With no hope of winning the Sun Belt, the Trojans have few motivations left in the season. However, they will end their season playing the only two undefeated Sun Belt squads, Georgia Southern and UL-Lafayette, in succession.

Their season would end on a high note if they could manage to give the Eagles their first conference loss. They will play strong until the Eagle offense puts the game out of their reach.

The athletic program has started a movement to break the 25-year-old attendance record at Paulson Stadium which sits at 25,726. Bring a friend and be a part of Georgia Southern history. Kickoff is set for 7:30 p.m. at Paulson Stadium on ESPNU.

Brandon Warnock | The George-Anne

Senior receiver Zach Walker gains yardage after a catch in GSU's 69-31 win against Georgia State last week. The Eagles will be taking on Troy tonight, in their second Thursday night game of the season. Kickoff is at 7:30, and the game will be broadcasted on ESPNU.

GAME ON!

WITH TECH CORNER

CALL OF DUTY ADVANCED WARFARE

PRE-ORDER YOUR COPY TODAY!



ATLAS PRO
EDITION ALSO
AVAILABLE!

ATLAS EDITION INCLUDES:
CALL OF DUTY®: ADVANCED WARFARE SEASON PASS
ATLAS GORGE BONUS MULTIPLAYER MAP
TWO (2) WEAPONS
THE BAL-27 AE ASSAULT RIFLE
THE ATLAS .45 AE PISTOL
ATLAS EXOSKELETON
ATLAS HELMET
ATLAS PLAYER CARD
FIVE (5) BONUS SUPPLY DROPS
SINGLE PLAYER EXOSKELETON UPGRADE TOKEN
WELCOME TO ATLAS: ADVANCED SOLDIER MANUAL
COLLECTIBLE STEELBOOK™
OFFICIAL CALL OF DUTY: ADVANCED WARFARE SOUNDTRAC



TECH CORNER

SHOP ONLINE AT GSTECHCORNER.COM



GSUSTORE

WE KNOW YOU WANT TO LIVE IN A COTTAGE.



BUT WHY LIVE SO FAR AWAY FROM CAMPUS?



LIVE AMONG THE ELITE AT THE HAMPTONS.



CALL TO BOOK A COTTAGE DEMONSTRATION OR VISIT US!
815 S. MAIN STREET | 912-290-9595 | @HAMPTONSGSU