

Georgia Southern University

Digital Commons@Georgia Southern

The George-Anne

Student Media

2-20-2014

The George-Anne

Georgia Southern University

Follow this and additional works at: <https://digitalcommons.georgiasouthern.edu/george-anne>

Recommended Citation

Georgia Southern University, "The George-Anne" (2014). *The George-Anne*. 2823.
<https://digitalcommons.georgiasouthern.edu/george-anne/2823>

This newspaper is brought to you for free and open access by the Student Media at Digital Commons@Georgia Southern. It has been accepted for inclusion in The George-Anne by an authorized administrator of Digital Commons@Georgia Southern. For more information, please contact digitalcommons@georgiasouthern.edu.

ORANGE
CONSTANT
COMPETES

PAGE 12

#TWERK

To twerk or not to twerk?

PAGE 5

EAGLES
TO SHOW
OFF SKILLS

PAGE 27

Thursday, February 20, 2014
Georgia Southern University
www.thegeorgeanne.com
Volume 84 • Issue 52

THE **GEORGE-ANNE**

Star player runs into the law



GSU junior running back Dominique Swope turned himself in to authorities Monday night for aggravated battery charges. Swope has rushed for over 1,000 yards in two of his three seasons as an Eagle.



Dominique Swope

BY JENNIFER CURINGTON
The George-Anne staff

Star Georgia Southern University football player Dominique Swope was arrested Monday after an altercation left a former teammate with serious head trauma.

Swope turned himself in to the Bulloch County Sheriff's Office Monday after Statesboro Police Department put out a warrant for his arrest.

Swope was suspended indefinitely from the football team by head coach Willie Fritz and Athletic Director Tom Kleinlein and will remain off the

roster until the legal proceedings are complete, according to a news release.

Swope and former GSU running back Cameron Lewis got into an altercation at Cambridge apartments off of Fair Road on Feb. 9, according to the incident report from Statesboro police. Friends then took Lewis to East Georgia Regional Medical Center where Statesboro police met them to begin the investigation.

GSU President Brooks Keel said that Kleinlein and Fritz made the right decision.

See SWOPE, Page 10



thegeorge
anne.com



Follow us on Twitter
@TheGeorgeAnne



Newsroom 478-5246
Advertising 478-5418
Fax 478-7113

PO Box 8001
Statesboro, GA
30460

IT'S YOUR LIFE...

LIVE IT!

FORUMSTATESBORO.COM

831 South Main Street
Statesboro, GA 30458

**LEASING
OFFICE HOURS:**

Monday-Friday 9-6
Saturday 10-5
Sunday 1-5

**SIGN TODAY FOR NO UTILITY CAPS!
LIMITED TIME ONLY!**

912-489-3676

ForumStatesboro.com

GET A FREE T-SHIRT WITH THIS AD!

FORUM

AT STATESBORO

A PREMIER STUDENT
HOUSING COMMUNITY

**NOW
LEASING
FOR FALL 2014**

- Tennis Court
- Lap Pool & Spa
- Pet Friendly
- Pet Park
- Two Free Tanning Beds
- Indoor Basketball Court
- Indoor Volleyball Court
- Car Care Center
- Modern Faux-Wood Floors
- Private Bathroom in Bedrooms
- Convenient Individual Leases
- Free High Speed Internet in Bedrooms
- 24 Hour Fitness and Training Center
- Kitchens with Full Size Appliances
- Full Size Washer / Dryer Included
- Wi-Fi Cyber Cafe with Coffee Bar
- Outdoor Sand Volleyball Court
- High Speed Internet Access
- Student Center and Lounge
- Roommate Matching
- Expanded Cable
- Media Room

**PETS
WELCOME!**



Animals subject to change. GREYSTAR # 5.
Pets subject to size and breed restrictions. Fees may apply.

Police Beat

Friday, Feb. 14

12:35 a.m.: Officers responded to Southern Pines in reference to an alcohol violation. Stephanie Rose Pappas, 18, Statesboro, Ga., was arrested and charged with Attempting to Purchase Alcohol – Under 21 Years of Age. Three other occupants were judicially referred.

2:29 a.m.: Officers responded to a panic alarm at Kennedy Hall. The panic alarm was accidentally activated by an occupant.

1:01 p.m.: An incident report was taken for criminal trespass at the Foy Building. This case was assigned to Criminal Investigation.

5:30 p.m.: A welfare check was conducted on a subject at Kennedy Hall. The subject of the welfare check was contacted and no problems were found.

9:35 p.m.: Officers responded to a drug complaint at University Villas. No action was taken at this time.

Saturday, Feb. 15

2:29 a.m.: Officers conducted a traffic stop on Lanier Drive at Robin Hood Trail. Delaney Renee Brisco, 19, Statesboro, Ga., was arrested and charged with Following Too Close, Failure to Dim Headlights and DUI 1st.

11:23 a.m.: An incident report was taken for found property at Kennedy Hall.

2:13 p.m.: Officers responded to a burglar alarm at the Museum. The burglar alarm was accidentally activated by an employee.

10:59 p.m.: Officers responded to a drug complaint at Southern Courtyard. Three occupants were judicially referred.

11:24 p.m.: Officers responded to a car horn sounding in J-Lot. Contact was made with two subjects. The two subjects were identified. No further action was taken at this time.

Sunday, Feb. 16

12:33 a.m.: Officers responded to a panic alarm at Southern Courtyard. The panic alarm was accidentally activated by an occupant.

3:01 a.m.: Officers conducted a traffic stop on Lanier Drive at Cambridge at Southern. The driver of the vehicle, Latavia Andrea Span, 24, Statesboro, Ga., was arrested and charged with Failure to Maintain Lane, Expired Driver's License and DUI 1st.

6:18 p.m.: Officers responded to Eagle Village in reference to a fire alarm. The fire alarm was activated by smoke from an occupant cooking.

4:04 a.m.: An incident report was taken for found property on the pedestrian near Interior Design.

5:30 a.m.: An incident report was taken for found property on the bike rack at the Information Technology Building.

6:13 a.m.: An incident report was taken for found property on the bike rack at the Henderson Library.

Monday, Feb. 17

9:47 a.m.: An incident report was taken for theft of mislaid property. The property was recovered and returned to the owner.

12:09 p.m.: An incident report was taken for computer forgery – criminal attempt and identity fraud – criminal attempt. This case was assigned to Criminal Investigations.

1:30 p.m.: Officers assisted the Statesboro Police with an incident at Eagle Court Apartments.

1:36 p.m.: An incident report was taken for the theft of a bike from the Southern Courtyard bike rack. This case was assigned to Criminal Investigations.

3:06 p.m.: An incident report was taken for lost/mislaid property at

111 Lanier Drive 834.

3:14 p.m.: An incident report was taken for an incident of an unknown black male with a gun in the University Villas parking lot that occurred on Feb. 17 1 a.m. – 3 a.m. This case was assigned to Criminal Investigations.

3:15 p.m.: A motor vehicle accident report was taken for a motor vehicle accident at Freedom's Landing.

5 p.m.: An incident report was taken for the theft of a bike at the Dining Commons bike rack. This case was assigned to Criminal Investigations.

5:57 p.m.: A motor vehicle accident report was taken for a motor vehicle accident – hit and run in C-Lot.

Tuesday, Feb. 18

11:32 a.m.: An incident report was taken for a suspicious person at the Russell Union.

12:50 p.m.: A motor vehicle accident report was taken for a motor vehicle accident on Forest Drive.

4:04 p.m.: Officers responded to the area of the Williams Center in reference to an affray. The subjects involved in the affray had left the area prior to officer's arrival.

6:19 p.m.: An incident report was taken for the theft of unattended property at Southern Pines building 4 laundry room. This case was assigned to Criminal Investigations.

1:33 a.m.: Officers responded to a panic alarm at Kennedy Hall. Contact was made with the occupant and no problems were found.

1:39 a.m.: Officers discovered an intoxicated subject outside the Eagle Village Clubhouse. William Alexander Kemp, 27, Sylvania, Ga., was arrested and charged with Public Drunkenness.

Statement of Operations

The George-Anne is the official student newspaper of Georgia Southern University, owned and operated by GSU students using facilities provided by the university. The newspaper is the oldest continuously published newspaper in Bulloch County. The newspaper is a designated public forum for the Georgia Southern community.

The newspaper is published twice weekly, on Tuesdays and Thursdays, during most of the academic year. Any questions regarding content should be directed to the student editor by phone at 912.478.5246 or at gaeditor@georgiasouthern.edu.

ADVERTISING: The newspaper accepts advertising. Inquiries may be made by calling 912.478.5418 or 912.478-0566. Fax any questions to 912.478.7113 or e-mail ads1@georgiasouthern.edu.

The George-Anne receives additional support, in part, from the Student Activities Budget Committee.

The deadline for reserving space and submitting advertising copy is noon, one week prior to the intended publication date. For more information, rate cards, sample publications, contact

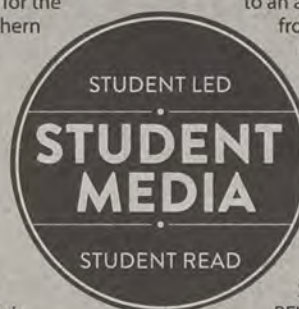
the advertising manager or student media director. The advertiser is responsible for any errors in advertisements and its liability for adjustments is limited to the amount of space the error occupied in the ad. Further, the newspaper is not responsible for any damages caused due to an ad's omission from a particular edition and its responsibility solely is to reschedule the ad in the next regular edition at the regular advertising rates.

STUDENTS BEWARE: The

George-Anne screens all advertisements prior to publication. The newspaper strives to accept ads for legitimate products and services only. Students are urged to exercise caution when replying to ads-particularly those that require personal information. Students are also urged to report to the newspaper any suspicious offers which they might see in an ad.

PUBLICATION INFORMATION: The newspaper is printed by The Brunswick News in Brunswick, Ga.

NOTICE: Unauthorized removal of multiple copies from a distribution site constitutes theft under Georgia law, a misdemeanor offense punishable by a fine and/or jail time.



Editorial Staff

Editor-in-Chief Shelby Farmer
Managing Editor Will Price
Online Chief Chase Chalker
Opinions Editor Peyton Callanan
News Editor Lauren Gorla
News Chief Tayler Critchlow
A&E Editor Kimeko McCoy
A&E Chief Will Peebles
Sports Editor Shakeem Holloway
Sports Chief Will Cheney

Copy Chief Taylor Cooper
Copy Editor Alexandra McCray
Business Manager Chloe Douglas
Business Mgr. Assistant Virginia Byrd
Marketing Manager Marissa Martin
Distribution Manager Bradley York
Production Manager Jose Gil
Photo Editor Heather Yeomans
Design Editor Matt Veal
Web Editor Darius Alexander
Ads Design Chief Kelly Slyfield

Corrections

In Tuesday's paper multiple quotations were misattributed in "Students weigh in on Plantation Room sign." The mistake occurred due to an editing error, and has been corrected online.

Our View

GSU should make emergency plans

Following last week's winter storm, and with hurricane season rapidly approaching, Georgia Southern University should take the necessary steps toward creating a strong emergency plan for students during dangerous weather conditions.

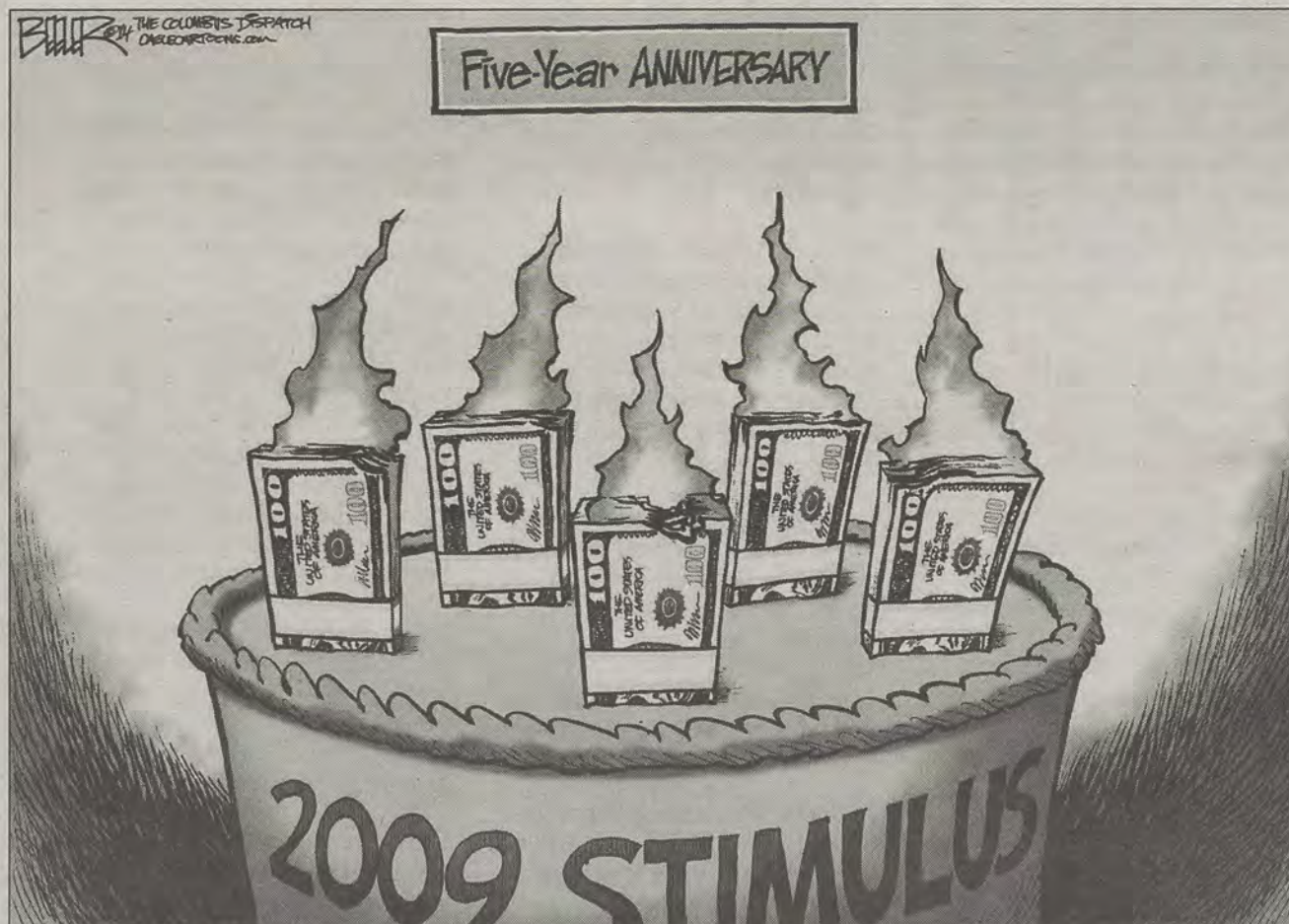
Many students on and off campus were without heat and electricity last week due to power outages caused by ice and falling tree limbs from the storm. They were also advised against driving by the sheriff's department because of poor road conditions, so they could not seek refuge somewhere else.

The Dining Commons was also closed for a period of time because its emergency generators were not powerful enough to cook full meals. Sack lunches were handed out for a brief period of the day instead.

Students who live on campus often rely on the services that the university provides for them and were left with limited resources for food and warmth. Students living on campus should have access to a designated building or buildings equipped with emergency generators that can act as a storm shelter.

While students were provided with several eagle alerts throughout the two days the university was closed, very little safety information was given to students. A more detailed emergency plan should be available for the entire Georgia Southern community.

Some students may not have had experience with the icy weather before and knowing helpful information about remaining safe during dangerous weather conditions would greatly benefit them. The emergency plan should not only include tips for dealing with the cold weather and ice but also a list of emergency contact information for the area and places that will provide students with shelter.



Share your thoughts with a letter

Take a quick glance at the bottom of this page. Right under my column is information on how to send a letter to the editor along with the email address I use as the opinions editor.

Did you know that this information is printed on page four of this paper every week? Yep, every week this information is in the same exact spot for all of our readers to see. There is also a place on our website that allows you to submit a letter.

Ever read something in our paper that you feel passionate enough to speak out about? Well that is what a letter to the editor is for. Whether you strongly disagree with an opinion piece that you read here in this section or you want to comment on something that is happening in our community that you read about in one of the other sections, you can voice your

BEHIND THE SCENES



PEYTON CALLANAN

opinion through a letter to the editor.

Even on the rare occasion you want to throw a compliment our way or back up an opinion expressed by one of our columnists, you can utilize those 350 words or less to do so. We publish these letters to give a voice to our community on the subjects that our reporters must remain impartial on or to express an opinion that may not have been shared by one of our columnist.

I know that in this digital age it is easier and quicker to express your thoughts via social media, but if you really want to get your message across and have your voice heard by not only our staff but also the student body then take the time to send us a letter. As long as the letter meets the criteria listed below, then it has a good chance of making it into our paper.

Everyone that reads this paper has an equal opportunity to send us a letter. If you see a letter in this paper you don't agree with, then be proactive and send us one of your own. If you have something to share then I want to hear it, so take advantage of this outlet. I am ready and waiting to see what you guys have to say.

Callanan is a senior communications art major from Chuluota, Fla. She is the current Opinions Editor.

The George-Anne welcomes letters to the editor and appropriate guest columns. All copy submitted should be 350 words or fewer, typed, and sent via e-mail in Microsoft Word format to letters@georgiasouthern.edu. All submissions must be signed and include phone number for verification. GSU students should include their academic major, year and hometown. The editors reserve the right to reject any submission and edit submissions for length.

Opinions expressed herein are those of the Board of Opinions or columnists themselves and DO NOT necessarily reflect those of the faculty, staff or administration of GSU, the Student Media Advisory Board, Student Media or the University System of Georgia.

Love is a maturing process To twerk or not to twerk

How often in today's culture do we hear or say the infamous phrase, "We don't love these hoes?" The answer is way too much.

For an abundance of males in today's society love is an after-thought. For most of our lives we perceive love as a weak emotion, and look down on and belittle people who show love to one another.

I myself have even called a few people derogatory terms for showing love to someone. It wasn't until recently that I realized that I was jealous of everyone else's love.

I was jealous because I felt as though I'd never experience true love. The realization of my envy sparked a huge debate within me. Can love truly and purely exist?

My thinking progression has gone from "it doesn't exist," to "it exists, but not for me," to "it can exist for me, I just won't allow it."

I have come to recognize the brainwashing we have undergone our entire lives.

From media to the radio or even regular people we look up to, everyone twists the perception on what a true man and true love actually is.

The fact of the matter is that true men don't neglect their emotions, children do.

Love is not only an emotion but also a maturing process. The understanding and accepting of love is a part of growing older and wiser. I have finally allowed love to enter my life and I am constantly inundated with feelings of bliss and joy. I have abandoned my primitive and ignorant way of thinking.

CHARLES IN CHARGE



CHARLES RUDISON

The first part of my life was an abundance of me losing love.

Now there is an abundance of me finding love, and with it finding myself. As men we tend to get lost in our egos and allow our dreams to mesh with what our reality actually is.

The truth is love is everywhere, and love is a beautiful feeling that even the best of poets can't translate into words.

Love is the world's greatest and most misunderstood emotion.

It has built and destroyed nations, started and ended wars, made rich men poor and made poor men rich.

All humans are born with love, but not all die with it. When the day comes that I take that final breath, my memories precede me, and I am of this world no longer, I want my memories to be memories of love and bliss, not hate and regret.

Rudison is a freshman pre-business major from Chicago. He is currently the Music Reporter for the Arts & Entertainment section.

College is known for its parties. In fact, in this day and age, the two words are almost synonymous.

The kickbacks, the keggers, the tailgates and even just those days when you want to go out with your friends and hit up a bar to have a good time.

If you knew me in high school then you would know that I have never been much of a wallflower, and I enjoy hitting the dance floor as soon as the beat drops.

However since college things have dramatically changed.

Long gone are the days when you could find a guy for "Back That Thang Up" and then return to your friends to scream the lyrics to "Dark Horse" at the top of your lungs.

Now you have to fight off heavily-intoxicated dudes who will literally put you in a headlock or bruise your arm to try and keep you dancing with them.

So the big question is: "to twerk, or not to twerk?"

There are many reasons not to.

Sure everyone wants to be able to be free and just live their life but in the days of smartphones, WorldstarHipHop, Youtube and GSUProblems everything you do in your youth has the chance to ruin your life.

Sure popping it on a handstand might be fun now but is that something you would want your children to see in the future?

For those with a gluteus that's not as maximus as it could be, you run the risk of public embarrassment like a certain celebrity who wears ill-fitted latex outfits.

And then there is just the simple fact

ERINN IT OUT



ERINN WILLIAMS

that twerking really isn't helping in the fight for women to be viewed as more than sex objects in our misogynist society.

But then there are reasons to twerk.

The biggest being that your body is yours and you have the right to express yourself with it as you see fit as long as you aren't breaking the law.

And I'm pretty sure the only thing breaking the law in twerking is Juicy J's destruction of the English language.

So what's a girl to do?

This is not me telling you not to live your life, because if and when my song comes on I will probably be right there with you.

This is me saying that there are consequences for every action even something as simple as twerking, so you should know what you are getting yourself into.

So if you want to twerk be my guest, and if you don't leave the gyrating to Twerk Team and dance in your circle of girlfriends.

Williams is a sophomore writing and linguistics and French double major from Winston. She is a current Arts & Entertainment Reporter.

Gas pumps provide entertainment for the captive consumer

While pumping gas the other day, I almost jumped out of my skin when a small screen above the meter suddenly flicked on, the sound on full blast. A shiny Mario Lopez grinned at me and proclaimed the blessed gospel of the tabloids. There was no mute button near the tiny prophet, who only ceased when I put the nozzle back.

I looked up one of the companies producing these little televisions— Gas Pump TV. They're still fairly new (est. 2010) and according to their website, have coverage in eight states with affiliates in thirty-one others. Their marketing rhetoric for advertisers was slightly creepy, to say

the least: "Get ready to bring your content to an audience that is both captive and alert. We occupy our viewers during what is otherwise a boring experience by giving them something to engage with. That's why they love us. And they'll love you too."

Captive audience, indeed.

The whole idea is clever in its simplicity. I'll give it that much. But it makes my stomach turn. It's just more unnecessary media stimulation for the masses. All of us devote a fairly decent amount of time consuming across various devices already — an average of sixty hours a week in fact, according to the latest Nielson report.

GOING IT MALONE



AMANDA MALONE

We're a culture addicted to the sensory overload and allowing ourselves to become easy prey for companies like GPTV. So maybe it won't kill us to find silence in the most brief and mundane activities. Not to say that I think standing at the gas pump

is necessarily a common spot for deep self-reflection. But in the three-to-six oh-so-boring minutes it takes to fill up a tank of gas, does anyone really need another screen shoved in their face?

I know I'm probably just arguing against the inevitable. I'm sure GPTV and others will continue expanding business without much trouble. But for now, I'll be taking my business up the street where I still have an option in avoiding the white noise.

Malone is a junior English major and writing minor from New York.

WEEKLY BUZZ

A weekly calendar listing sponsored by The Division of Student Affairs and Enrollment Management

Feb. 20 - Feb 26

THURSDAY 2.20.2014
FRIDAY 2.21.2014

UPB

Late Night Movie: "Friday Night Lights"

Russell Union Theater, 6 PM and 8 PM

This Valentine's day, UPB invites all students out for a free showing of the hit movie Friday Night Lights. The movie will be shown on Friday, February 21st at 6 PM and 8 PM in the Russell Union Theater.

CRI

Wilderness First Aid

9am

This course will teach you how to effectively care for emergencies and medical issues in a backcountry/wilderness environment. American Red Cross Adult CPR/AED is a required prerequisite for this course and included in the course fee of \$80. Come take advantage of this opportunity! All participants must pre register by February 21st at 8 p.m. The classes will take place starting Saturday, February 22 at 9am.

SATURDAY 2.22.2014

Office of Admissions Events

Spring Family Day-GSU Basketball

2:00 p.m. Hanner Fieldhouse.

Georgia Southern parents are invited to Pack the House in pink with their student. Cheer on the men's basketball team against Elon and the women's basketball team against App State.

SUNDAY
MONDAY
TUESDAY

2.23.2014
2.24.2014
2.25.2014

CRI

Wilderness First Aid

9am

This course will teach you how to effectively care for emergencies and medical issues in a backcountry/wilderness environment. American Red Cross Adult CPR/AED is a required prerequisite for this course and included in the course fee of \$80. Come take advantage of this opportunity! All participants must pre register by February 21st at 8 p.m.

UPB

UNplugged

Russell Union Commons, from 6:30 PM to 8:30 PM

The University Programming Board invites you to our weekly UNplugged Series! Looking for something fun to do on campus? Want to watch some live performances? Maybe even want to try out that new song of yours? Georgia Southern UNplugged is a coffeehouse series/open mic night sponsored by the University Programming Board held every Tuesday at 6:30 PM in the Russell Union Commons. Come and see the talented students of the Georgia Southern community showcase their skills. BRING YOUR EAGLE ID! Performing? Sign up early.

Office of Career Services Events

Mock Interview Day

All Day, by appointment only | IT Building, Professional Development Center (3rd floor)

Get immediate feedback from employers during practice interviews. Check your eligibility and sign up on Eagle Career Net by February 20th.

Resume Bootcamp

Tuesday, Feb. 25 | 5 pm - 8 p.m. | IT Building, Professional Development Center (3rd floor)

Students can get their resume reviewed by staff and visiting employers.

CRI

Registration Closes: Softball & Tennis Singles

This is the last day to get your team together and register to play Softball and Tennis Singles. Make sure to register by 8 p.m.!

Office of Student Leadership & Civic Engagement Events

SOLD Workshop: Transferring your Leadership Skills to Your Resume

Russell Union 2080, 5:30-6:30pm

Presented by: Philip Bruce

Legislative Internship Events

There will be an informational Sessions on:
Russell Union 2080 at 6:00

Come learn about the Eagles in D.C. internship! The program offers students unparalleled opportunities for career development while also allowing them to immerse themselves into our Capitol's unique political atmosphere. This internship provides professional development for all students regardless of major.

The application deadline for summer internships is March 1.

The application deadline for Fall internships is April 15.

WEDNESDAY 2.26.2014

Eagle Expo Career Fair

Noon - 2 p.m. | Recreation Activities Center (RAC)

This career fair will feature employers from government, retail, logistics, sales, manufacturing and other industries. See registered companies at www.georgiasouthern.edu/careernet.

CRI

Slackline Clinic

Register now to learn slackline techniques with Southern Adventures. No pre-requisites required! To register stop by the Southern Adventure's office.

Student Affairs
& Enrollment
Management



Brought to you by Georgia Southern University VALUES. Georgia Southern V.A.L.U.E.S. is the culture shared by our students, faculty, and staff. We endeavor to share our V.A.L.U.E.S. inside and outside of the classroom with faculty, staff, students, alumni and all other community members. In order to produce productive citizens with an informed set of ethics and community standards as well as create an environment of respect and civility, we pledge to live by our V.A.L.U.E.S.

'One is too many' Rate of reported rapes increases

BY JENNIFER CURINGTON

The George-Anne staff

Reported rape cases have increased in the past four years on Georgia Southern University's campus.

Four years ago there were no reported rapes, and in 2013 there were seven reported cases.

Law enforcement and victim advocates agree that sexual assault is the most underreported crime, so those numbers may not accurately reflect what is actually occurring in the Statesboro community.

"Campus sexual assault is especially underreported and is not taken as seriously just because of the age group," Shanna Felix, president of Sexual Assault Student Educators at GSU, said. "It's very difficult to report,

especially on some college campuses."

In a report provided by the White House, reporting rates for campus sexual assault are very low, on average only 12 percent of student victims report the assault to law enforcement.

"One is too many. It's like everything else to that person, to that victim, that's a huge devastation. It doesn't really matter how many other people are equally as devastated..." Chief Mike Russell, director of public safety, said. "In no way, shape or form does anyone bring this on themselves."

Many of the rapes reported to GSU Public Safety involve alcohol, but not drugs, Russell said.

It's difficult to prove that drugs were used to assist a rape because of the time window that a drug has to be tested for, Jared Akins, Chief Deputy of Bulloch County Sheriff's Department, said. He said that most will report they were using alcohol but are not willing to volunteer that any other substances were being used that could impair judgment.

Since 2010, the number of reported rapes for Bulloch County has doubled every year, according to the Georgia Bureau of Investigation's online database. Akins said that most of the sexual assault cases they deal with are at residential homes where there are incidents of child molestation or incest.

"I think a lot of times when you see the increases it's just because people are more willing to report incidents when they happen and that's a good thing. It makes the

data look like you have more of a problem than sometimes you really do," Akins said. "There's not the stigma in some people's minds that there used to be."

Felix hopes that the number of reported rapes rise because that doesn't necessarily mean that more rapes are occurring, it means that more victims are taking the time to report the assault. Russell said that most rapes in the area are committed by someone the victim knows instead of a stranger grabbing a victim off the street. Instead, many cases involve a break in the line of communication.

"The whole point is for guys no means no. A lot of this relies on very basic communication because there have been cases where there was very little communication and a lot of misread signals on both sides," Russell said.

"When you think about campus rape you're talking about date rape, you're talking about miscommunication in relationships, you're talking about people who are really young and don't know how to handle healthy relationships and so they end up abusing their partner physically or emotionally or sexually," Felix said.

Sexual assault can and has occurred in various places across campus, Russell said. This type of crime is more likely to occur in secluded areas such as a dorm room or a car.

Law enforcement insists that how far

an investigation goes into a case of sexual assault hinges on how much the victim wants to pursue the case and how willing he or she is to see the case all the way through.

Felix volunteers with the Statesboro Regional Sexual Assault center, so she's witnessed the emotional hardships victims must go through.

"I've personally have never seen somebody go all the way through [reporting an assault] in Statesboro just because so many people will stop at maybe the first or second step because it gets so hard with law enforcement. You have to understand it's like they have to relive it twelve times," Felix said.

The offender in these situations has due process both in the courts and at GSU, Russell said. Some alleged offenders could be suspended immediately while others may continue to go to class until a verdict is reached.

Russell said that men are capable of not consenting to sexual acts just as women are, however most of the cases he sees involve a male as the rapist or assaulter.

Felix pointed out that every year SASE hosts the Clothesline Project where victims of sexual assault can anonymously write on a t-shirt that is color-coded to match the type of abuse they endured. Felix suggested that this kind of event could more accurately reflect how many rapes have occurred at GSU versus the number of rapes reported to law enforcement.



SEXUAL ASSAULTS

2013

Southern Pines x2
Southern Courtyard
Eagle Village x2
Kappa Sigma house (on Olympic Blvd)

2012

Southern Pines
Centennial Place

The Sir Shop
Statesboro Mall
912.764.6924

BERETTA
PEACH STATE PRIDE

STATESBORO'S MOST UNIQUE APARTMENT COMMUNITY

Rental rates starting at

\$299

- Single-occupancy studios
- 2 bed 2 bath apartment homes
- 3 bed 3 bath apartment homes

High-speed internet, expanded cable, plus HBO, your choice of furnished or unfurnished, your choice of an optional fixed-rate utility package.

NOW LEASING

912-681-6539
17931 Hwy 67 Statesboro
www.Gardendistrictrentals.com

The Garden District



Dance Marathon aims to help children's hospital

BY YASMEEN WALIAGA

The George-Anne contributor

A Dance Marathon event is arriving as Georgia Southern University gets involved with a national charitable movement.

This Saturday, Feb. 22 from 10 a.m. to 10 p.m. in the Williams Center multipurpose room, GSU will hold its first Dance Marathon to raise money in support of the local Children's Miracle Network Hospital in Savannah.

"I have always been a huge fan of the Children's Miracle Network, and I wanted to do something for them," Rachel Mulder, president of Dance Marathon at GSU, said.

Not only will there be hours of dancing, but also food, live performances and guest speakers.

Food will be provided by Jimmy John's, Moe's Southwest Grill and Jersey Mike's Subs. Live performances will be given by Adrenaline, D.I.M.E.S., Dyverzion, Euphoria and Spotlight Jewels.

"We will also have five theme hours, which people are welcome to bring things to dress up for: superhero, Disney, circus, rave and team," Brittany Sealey, director of event operations for Dance Marathon, said.

Families that have been with the hospital will

be guest speaking and many of the hospital's children will attend the event as well.

"Something really unique about the event is that you will actually be able to see who you are helping," Mulder said.

The fundraiser emphasizes the charity's main cause, which is explained by the organization's catch phrase, "For the kids," Brandi Thompson, a member of the Dance Marathon organization at GSU, said.

There will be several activities specifically for the children to engage in throughout the event, including corn-hole and hula hooping.

Sealey said the cost to register is \$10 and students may register online through the Facebook event page or at the door. Any monetary donations would be greatly appreciated from any individuals who are unable to attend but are still interested in helping.

• This event will benefit the Children's Hospital at Memorial University Medical Center.

• Only children's hospital in southeast Georgia operates the area's largest pediatric rehabilitation outpatient facility

• Hospital cares for 25,000 children each year

EVENT INFO

When: Saturday, Feb. 22 from 10 a.m. to 10 p.m.

Where: Williams Center Multipurpose Room

Cost to register: \$10

Registration can be done online or through Facebook

Supports: the Children's Miracle Network hospital in Savannah, Ga.

What to expect:

hours of dancing, live performances, guest speakers and free food

HAWTHORNE



2 bedroom flat
\$350
/month per person

www.hendleyproperties.com
912-681-1166

Alexandra Tobia | The George-Anne

Former professor to speak on race at GSU

BY KAITLYN GLENN

The George-Anne staff

Every February Black History Month is celebrated across the nation and Georgia Southern University is hosting a critically acclaimed historic author as its Black History Month Diversity Speaker.

F. Erik Brooks will be speaking about his 2006 book, "Pursuing A Promise: A History Of African Americans At Georgia Southern University." The book tells the story about the defeats, victories and struggles faced by African Americans while integrating school systems in the South and specifically at GSU.

Race is still considered a major issue at GSU and the South as a whole.

"I think they will learn about their history, learn about the African Americans who attended Georgia Southern before them, and they'll also get a clear understanding of how far the university has come in regards to race relations," Brooks said.

Barron Dixon, a sophomore psychology major, brought up the recent issue with one of the establishments in the plaza putting



Dr. F. Erik Brooks

up the sign "The Plantation Room," which created racial tension in the Statesboro community.

"It's important to have conversations about the race issues on campus so people can be aware of it," Dixon said.

Brooks served as the assistant to the Dean of the College of Liberal Arts and Sciences and associate

professor at GSU. Brooks also taught classes in the Africana Studies program before being appointed chair of the Western Illinois University African American studies department.

Brooks was inspired to write the book while working at GSU when the university's 100th anniversary was approaching. He realized that there was not much that celebrated the contributions made by African Americans, so he set out to document and compile all of his findings.

The discussion will be held tonight in the Russell Union Ballroom from 7 to 8:30 p.m.

Brooks said, "They'll get a chance to appreciate and embrace the African-American experience at Georgia Southern."

"I think they will learn about their history, learn about the African Americans who attended Georgia Southern before them, and they'll also get a clear understanding of how far the university has come in regards to race relations."

-Dr. F. Erik Brooks

Chair of the Western Illinois University African American studies department.

EVENT INFO

Who: Dr. F. Erik Brooks

What: Speaking on race issues in the south and at GSU

Where: Russell Union Ballroom

When: Thursday, Feb. 20 7 p.m. to 8:30 p.m.

Alexandra Tobia | The George-Anne

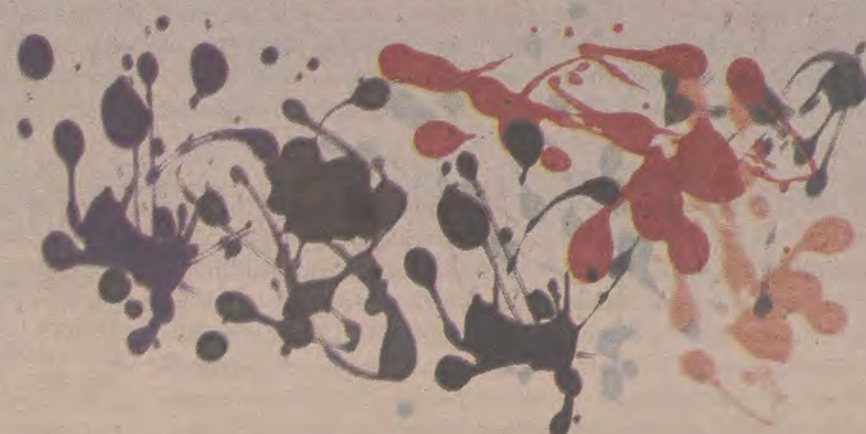


ALL GSU STUDENTS,
FACULTY, AND STAFF
WELCOME TO SUBMIT

**MISCELLANY
SPRING 2014**

EARLY BIRD DEADLINE FREE
STANDARD DEADLINE SUBMISSION FEE \$5
RELEASE PARTY

FEB. 14
FEB. 21
APR. 8



NOW ACCEPTING SUBMISSIONS

SEND TO GSUMISCELLANY.SUBMITTABLE.COM
CONTACT MISCELLANY@GEORGIASOUTHERN.EDU

Student, professor work featured in Nature magazine

BY TAYLER CRITCHLOW

The George-Anne staff

A Georgia Southern University student and professor have co-written an article that was featured on the cover of the February issue of *Nature*.

Nature is an international weekly journal of science by the Nature Publishing Group and is widely regarded as the world's premier interdisciplinary science journal, according to the news release and the Nature Publishing Group website.

Mark Edwards, Ph.D., the University Fuller E. Callaway Professorial Chair and a physics professor, and Noel Murray, a student in the joint physics and chemistry Masters of Science in Applied Physical Science degree program.

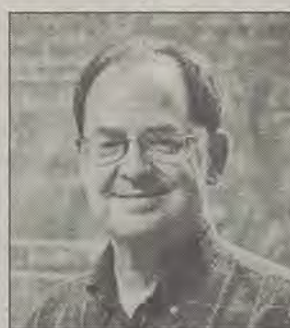
This is the first *Nature* article with authors having a Georgia Southern affiliation published since 1999 and marks the fourth time

in history this has happened according to Thomson-Reuters Web of Knowledge database, according to the release.

"Hysteresis in a quantized superfluid 'atomtronic' circuit" is the title of the published article, the article reports that there was

collaborative work between the Georgia Southern professor and student with a team of experimental researchers at the Joint Quantum Institute (JQI), according to the news release.

JQI trains scientists and engineers for future industrial opportunities and provide U.S. industry with cutting-edge research results and is an institute run by the University of Maryland and the National Institute of Standards and Technology (NIST) and the Laboratory for Physical



Mark Edwards

Sciences (LPS), according to the Joint Quantum Institutes website.

The JQI team consists of seven researchers, one of who, Bill Phillips, was a co-winner of the 1997 Physics Nobel Prize, according to the release.

NIST was started in 1901 and is a non-regulatory federal agency within the U.S. Department of Commerce and promotes U.S. innovation and industrial competitiveness by advancing measurement science, standards and technology in ways that enhance economic security and improve quality of life, according to the National Institute of Standards and Technology website.

The University of Maryland faculty and federal government

personnel collaborate on research in advanced communication and computer technologies, according to the Laboratory for Physical Sciences website.

"It's a great honor for me and primarily due to the collaborators that I worked with at the Joint Quantum Institute," Edwards said.

"It's an honor being so young to already have this accomplishment when I haven't even started my

physics career yet. I hope that it's going to help me get into a good Ph.D. school and help me with my career in the future," Murray said in the release.

According to the release, since the publication of the article in the science journal, *Nature*, the article has been featured on numerous science news websites including Science Daily, Physics News, SciTech Daily and more.

"It's an honor being so young to already have this accomplishment when I haven't even started my physics career yet. I hope that it's going to help me get into a good Ph.D. school and help me with my career in the future."

-Noel Murray

Graduate student in the Masters of Science in Applied Physical Science degree program

SWOPE, from page 1

"They made the right decision to suspend him from the team and we'll have to see what the court system does," Keel said. "I think the decision that the coach and the AD made reflects very positively on the university and the expectations that we have for all of our student athletes, and for all of our students for that matter."

The investigation that led to Swope's arrest is still ongoing. Irvin Huggins, sophomore fullback, was indicated as the offender in the incident report. When asked about Huggins' involvement in the situation, Corporal Justin Samples with Statesboro PD said he could not elaborate on the matter.

"We can't comment on any current suspects. The fact that he is in the original report, he was a name that came up during the initial investigation. Through further investigation we ended up arresting Swope."

Janada Jeter witnessed the fight and told Statesboro police that Lewis was "sucker punched" in the face, which caused him to fall to the ground and hit his head on the concrete. Lewis was transported via helicopter from East Georgia Regional to Memorial University Medical Center in Savannah because his brain was bleeding and swelling.

According to the report, Jeter told police that the football players jumped him because they blamed him for multiple break-ins that occurred last semester targeting GSU football players.

Swope is charged with aggravated battery since the charge in Georgia means that a victim has lost function of a body part temporarily or permanently, said Samples. The charge he faces is a felony and he could go to jail for a year or more and receive \$1,000 or more in fines.

Samples said he is unaware if Swope is still in custody or if he has

POLICE REPORT

Narrative

ON 2/9/14, AT 1232 HOURS, I ARRIVED AT EAGLE VILLAGE ROOM 1110, IN REFERENCE TO AN AGENCY ASSIST. CENTRAL ADVISED A MALE WAS IN A PHYSICAL ALTERCATION THE NIGHT BEFORE AND HAD BEEN PASSED OUT SINCE. UPON ARRIVAL, I MET VICTIM, CAMERON LEWIS, WHO WAS PASSED OUT IN THE BED. WITNESS, JANADA JETER, STATED AROUND 0130 HOURS THAT MORNING MR. LEWIS WAS IN A PHYSICAL ALTERCATION WITH CURRENT FOOTBALL PLAYERS AT THE PINES IN THE PARKING LOT CLOSEST TO APT 1313. MS. JETER ADVISED THAT WHEN MR. LEWIS WAS "SUCKER PUNCHED" IN THE FACE, MR. LEWIS PASSED OUT AND HIT HIS HEAD ON THE CONCRETE. MS. JETER STATED MR. LEWIS NEVER FULLY REGAINED CONSCIOUSNESS. WHEN I ARRIVED I COULD TELL MR. LEWIS HAD URINATED AND VOMITED ON HIMSELF. EMS ARRIVED AND TRANSPORTED TO EGRMC. MS. JETER STATED THE ALTERCATION AROSE DUE TO SEVERAL INCIDENTS THAT HAPPENED LAST SEMESTER INVOLVING FOOTBALL PLAYERS APARTMENTS GETTING BROKE INTO. MS. JETER STATED THE FOOTBALL PLAYERS THAT WERE INVOLVED IN "JUMPING" MR. LEWIS BLAMED MR. LEWIS FOR THE BREAK-INS. MS. JETER COMPLETED A WITNESS STATEMENT THAT WAS TURNED OVER TO INV. GARRIGUS.

I TURNED THE INCIDENT OVER TO INV. GARRIGUS AND INV. CAPT. BRILEY WHEN THEY ARRIVED TO EGRMC.

STATESBORO PD WAS NOTIFIED AND OFFICER AMANDA LANE ARRIVED TO EGRMC.

MR. LEWIS WAS LATER TRANSPORTED BY HELICOPTER TO MEMORIAL HOSPITAL IN SAVANNAH DUE TO BLEEDING IN THE BRAIN AND ALSO BRAIN SWELLING.

This is an excerpt from the police report that was filed on Feb. 9. The narrative shown was given by witness Janada Jeter who describes seeing Lewis jumped by football players and being 'sucker punched' to the ground.

been released on bond, citing that the courts would make that decision.

Sports Information Director Barret Gilham said the athletics department has no further

comment on the matter than what was in the news release.

A reporter for The George-Anne attempted to ask Fritz about the situation at his public appearance in

the University Store yesterday, but was stopped by Sports Information Director Rosemary Carter who said they would not be speaking about the issue.

Colleges across nation seek to help students with learning disabilities

BY MATT KRUPNICK

The Hechinger Report

NEW YORK - Endowed with a new freshman's hunger for independence, Alix Generous thought she could conquer college without seeking help for the learning disabilities she'd dealt with since she was 11.

She was wrong.

In her first year at the College of Charleston, Generous decided against using the school's assistance programs for students with dyslexia and other disorders, even though she'd relied on such help throughout her childhood.

"I was like, 'Now I'm 18 and can do what I want,'" she said.

"I definitely had that attitude. But a lot of it also was ignorance. It totally screwed me up," said Generous, who grew up in Maryland. "In the easiest classes, like intro to theater, I got a C."

Generous finally started accepting help, and her grades improved.

She later transferred to the

University of Vermont, where she's now a junior. She gives talks about her experiences to audiences across the country.

But tens of thousands of other college students keep their learning disabilities a secret.

Now some schools are focusing more attention on getting such reluctant students to disclose their learning disabilities before they run into severe problems in the classroom - and bring down those schools' increasingly important graduation rates.

Just a quarter of students who received help for their disabilities in high school acknowledge in college that they need the same assistance, according to the National Center for Learning Disabilities.

While 94 percent of high school students with learning disabilities get some kind of help, just 17 percent of college students do.

"Many (learning-disabled)

students first get to college and really want to do it on their own," said Sarah Williams, an East Carolina University associate professor of special education who's helping North Carolina's public universities handle learning disabilities better. "They're really tired of the whole system."

The problem is expected to only get worse.

A study that the American Academy of Pediatrics published in 2011 found that learning disabilities in children rose steadily from 1997 to 2008, while diagnoses of attention deficit hyperactivity disorder - often grouped with learning disabilities - jumped 33 percent.

Students with learning disabilities are far more likely than others to drop out of four-year colleges.

Just 34 percent complete four-year degrees within eight years of finishing high school, the National Center for Special Education Research reports.

That compares with 56 percent of all students who graduate within six years, according to the National Student Clearinghouse, a research center.

That's a growing problem for colleges, which have been pressured by the federal government to improve their graduation rates.

President Barack Obama has proposed tying federal funding for colleges, in part, to that measure of universities' success.

Few schools are doing enough to help students with dyslexia, ADHD or other disorders find the help they need, some experts say. Although the Americans with Disabilities Act requires every university and college to have a disability office, it can be hard to find or understaffed.

A set of tests used to verify whether a student has a disability, necessary for those who have no documentation or haven't been tested before, costs as much as \$5,000,

according to academic-support and disability-services coordinators at several colleges and universities - a price that K-12 schools pay but many higher education institutions won't.

While more and more colleges offer innovative programs in which staff members work closely with students who have learning disabilities, many charge extra for those, too.

Some schools have turned to grants and private donors to cover the cost, but students often are expected to pay for the programs.

At Arkansas' University of the Ozarks, the Jones Learning Center serves about 65 students and costs \$22,900 per year, on top of the university's \$23,750 tuition.

The center, which boasts a 4-to-1 staff-to-student ratio, recruits students with learning disabilities from across the country, said its director, Julia Frost.

"You wouldn't think a school would seek out students with learning disabilities, but we do that," she said. "If you've got a program and staff that serves those students, then you need students."

But programs such as Ozarks' can help only students who help themselves. With many reluctant to come forward, some schools are taking steps toward them.

The University of North Carolina system is among a growing number of higher-education institutions that are experimenting with the Universal Design for Learning, which uses alternative educational tools that help students with learning disabilities perform better in mainstream classrooms.

Professors might present materials using specific colors or interactive technology to help students with dyslexia or other disorders grasp concepts that are particularly challenging for them.

Advocates say the method also helps students who don't have disabilities. But introducing new teaching methods has its own challenges.

"I think we have to always remember that while professors are amazing experts in content areas, many of them have had no training in pedagogy," said Williams, who's introducing the Universal Design for Learning to three North Carolina campuses. "We have to find practical ways to help them know how to do that."

At several traditional schools, disability advocates said they were beginning to see students be more comfortable disclosing their problems.

"A student understands this is just about leveling the playing field," said Eve Woodman, Princeton University's director of disability services. About 2 percent of Princeton students admit to either learning disabilities or ADHD, she said.

Then there are the handful of schools that accept only students with learning disabilities, including Beacon College in Florida and Landmark College in Vermont.

Too few conventional colleges are devoting the necessary resources to helping students with disabilities, Beacon President George Hagerty said.

"It's both unfair and unethical to bring students to an institution that is not well-equipped to support those students," said Hagerty, whose campus serves about 200 students.

Schools also are being challenged to prepare students who have learning disabilities for life after college.

Paul Jarvis, an 18-year-old freshman who came to Ozarks from Milton, Ga., is counting on that. After college, Jarvis said, "I'm going to have to do stuff without the support. But these schools have prepared me."



Ryan Woodham | The George-Anne

More students with disabilities across the country are receiving better services and opportunities to help them enjoy and remain in school.



Photo Courtesy of Orange Constant

Statesboro band **The Orange Constant** was founded in September of 2012. The jam fusion group is popular at venues around Statesboro.

The Orange Constant to compete in Athens

BY CHARLES RUDISON

The George-Anne staff

The Georgia Southern University-based band, The Orange Constant, has set their eyes on making their mark at the Waka Winter Classic this Saturday in Athens.

The Orange Constant is a rock group made up of Georgia Southern students that features versatile sounds from funk and jam to reggae and jazz.

"The Wakarusa is really one of our favorite music festivals and we all would be deeply honored if we had the opportunity to play there," Nickalous Benson, the band's guitarist and senior general studies major, said.

The Orange Constant consists of four members: Lee Guentert, drummer and senior business management major, Andrew Brantley,

lead vocalist, Will Goggins, bassist, and Benson. These four will play in the Waka Winter Classic on Saturday in Athens at 9 p.m. to compete for a chance to play at the Wakarusa Music Festival in the summertime.

The competition featured a preliminary round with around 30 groups facing off. The Orange Constant was chosen along with four other bands to move on to the next round.

The second round of the Waka Winter classic is based on the crowd's popular vote of the bands.

"The winner is based entirely on popular vote so we would really appreciate it if some of the students could come to Athens and support us. We are even going to be carpooling with some of our fans," Guentert said.

The group will be performing seven different songs at the classic, including: "Squid," "Giants and Flies" and "Gravity Calls."

The Orange Constant is a band that stresses songs with lyrics of substance.

"Lyrics are definitely the main focal point in the music we write. We really want the music to connect to our fans, and we want our lyrics to hit home," Benson said.

This emphasis on fan connection drives the group to produce meaningful, substantial lyrics that their audience can relate with.

"It is the best feeling in the world when you find a fan that can really connect and feel your music on a deeper level, this is what we strive for," Brantley, said.

Benson said, "This competition is deeper than us. We are extremely honored we even made it this far. This is a once in a lifetime opportunity and it will be a beautiful thing to have our dreams manifest into reality. Come out and support us."

THE BUZZ LIST



Kimeko McCoy

■ **Teen Mom** season one stars are reuniting next week on MTV. Hopefully Farrah Abram gets some time off from her job as part-time porn star to attend the event.

■ **Nicole Scherzinger** was spotted at the BRIT awards looking paws-ively fabulous sporting a leather dog collar. Maybe her boyfriend is trying to keep her on a leash- oh wait. She doesn't have a boyfriend. Sad day.

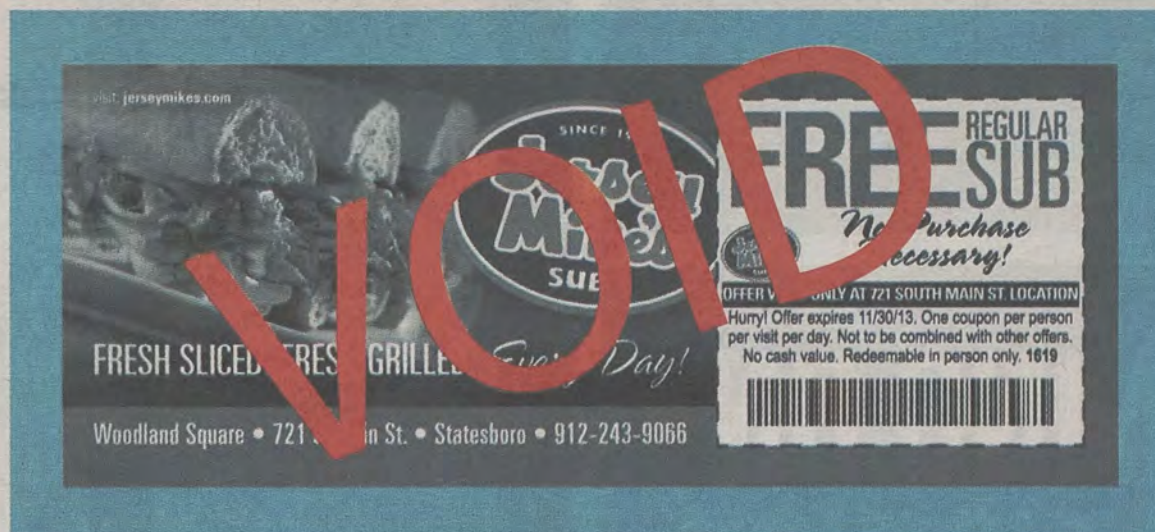
■ **Pharrell's** Smokey the Bear hat looks like it's alive and well. Literally. The musician arrived at the BRIT awards without the hat on his head and instead, it arrived on a red velvet pillow, because that's a thing now.

■ **Paris Hilton** celebrated her 33rd birthday recently with close friends and family at a restaurant in West Hollywood. While leaving, a fan got close enough to get a whiff of her locks. Tell us, did it smell like self-righteousness and sexcapades?

■ **Kanye's** baby mama claimed that TMZ is racist and that's the reason the entertainment company picks on them. Does their relationship even count as interracial? She's been trying to date her way into the black community forever.

Information compiled by Arts & Entertainment Editor Kimeko McCoy from perezhil-ton.com and TMZ.com.

LOYAL AND POTENTIAL CUSTOMERS INCLUDING
GSU STUDENTS, STAFF AND THE ENTIRE STATESBORO COMMUNITY:
MY COMPANY, CAMPUS SPECIAL, MADE A COLOSSAL MISTAKE!! WE
INADVERTENTLY PRINTED THE FOLLOWING COUPON



THIS WAS SOLELY CAMPUS SPECIAL'S MISTAKE. PLEASE DO NOT PUNISH JERSEY
MIKES SUBS FOR OUR ERROR.

THIS IS THE COUPON THAT WAS SUPPOSED TO HAVE BEEN PRINTED.



AGAIN, IT WAS MY COMPANY, CAMPUS SPECIAL, THAT PRINTED THE WRONG COUPON.

JERSEY MIKES SUBS WILL GLADLY HONOR THE BOGO AS THIS WAS THEIR ORIGINAL COUPON FOR PRINT.

PLEASE SUPPORT JERSEY MIKES SUBS AND DO NOT HOLD THEM
ACCOUNTABLE FOR CAMPUS SPECIALS MISTAKE.



**PLANNING ON
ADVERTISING?**

CONTACT:
ads1@georgiasouthern.edu

'BORO BEAT



Happy Hour

THURSDAY

Dingus Magee's
-Fat Pepper
-\$1 Burbon
-\$3 Fireball
-2 for 1 well drinks
-2 for 1 bombs

Chili's
-\$2.99 margaritas
all day/ everyday &
2 for \$20

El Sombrero
-\$2.75 domestic
beer

GATA's
-5-8 happy hour

Gnat's Landing
-Happy hour 5-7 &
-Trey Landon
-\$10 buckets
-\$3 bombs
-\$3.50 doubles

Loco's
-Christian Smith
-\$2 pints

**South City
Tavern**
-\$3 champagne
cocktails
-\$2 wells
-\$1 everything
else

FRIDAY

Dingus Magee's
-Amble
-2 for 1 well drinks
-2 for 1 bombs

El Sombrero
-\$3 Sex on the
Beach

GATA's
-5-8 happy hour

Gnat's Landing
-Soul Gravy
-\$10 buckets

Loco's
-Joseph Anderson
-\$4 crown
-\$3 white and red
sangaria

Manny's
-\$2 drafts
-\$2 sangarias

El Jalepeno
-\$2.99 bahama mama
-\$2.99 sex on the beach

**South City
Tavern**
-\$3 champagne
cocktails
-\$2 wells
-\$1 everything else

SATURDAY

Dingus M
-Sumilan
-2 for 1 we
-2 for 1 bo

El Sombr
-\$2.25 mar

GATA's
-5-8 happy

Gnat's La
-\$10 well li
pictures

Loco's
-Wally Brov
-\$6 miller l
pitchers

Manny's
-1/2 off wi

**South City
Tavern**
-\$3 champ
cocktails
-\$2 wells
-\$1 everyth

ur



Live Music



Special Events

SATURDAY

Dingus Magee's
- Milan
- for 1 well drinks
- for 1 bombs

El Sombrero
- 2.25 margaritas

ATA's
- 8 happy hour

Gnat's Landing
- 0 well liquor
- tures

co's
- ally Brown
- 5 miller lite
- chers

anny's
- 2 off wine

uth City
Tavern
- 3 champagne
- cktails
- 2 wells
- everything else

SUNDAY

Ruby Tuesday
- \$1 off all wine
- \$1 off draft beers
- \$5 margaritas,
- mojitos, & long
- islands

MONDAY

El Sombrero
- \$2.75 34 oz.
- domestic beer

Gnat's Landing
- \$3.50 doubles

TUESDAY

Dingus Magee's
- \$10 buckets

Ruby Tuesdays
- \$1 off all wine
- \$1 off draft beers
- \$5 margaritas,
- mojitos, & long
- islands

El Sombrero
- \$3.50 mixed
- drinks

Gnat's Landing
- \$10 buckets
- Trivia

El Jalepeno
- \$4.99 domestic
- beer pitchers
- \$1.99 house wells

WEDNESDAY

Dingus Magee's
- DJ Rex and kara-
- oke

Ruby Tuesdays
- \$1 off all wine
- \$1 off draft beers
- \$5 margaritas,
- mojitos, & long
- islands

Loco's
- \$2 yuengling
- \$1 natural ice cans
- \$1 TBR 16 oz.
- cans

South City
Tavern
- \$3 champagne
- cocktails
- \$2 wells
- \$1 everything else



MEXICAN RESTAURANT

711 South Main St. Statesboro • 912-212-3400

PLANNING ON
ADVERTISING?

CONTACT:

ads1@georgiasouthern.edu

GSU presents Cinderella, a night at the ballet

Theatre

BY KAITLYN GLENN

The George-Anne staff

It's not every day Georgia Southern University has a professional ballet company come and perform the classic fairytale story "Cinderella" right here on campus.

The two-act ballet will be performed by the Moscow Festival Ballet. The ballet tells the story of Cinderella and her triumph over her wicked step-sisters and step-mother. Cinderella features vibrant costumes, Russian dancers and great comedic moments.

This is a unique opportunity for everyone to relive their childhood, while getting to experience beautiful live art at its finest. The show features scenes of wild comedy between the step-sisters and sweet romance between Cinderella and her prince.

Continuing in its efforts to present diverse, quality cultural experiences to the Georgia Southern University and regional communities through the performing arts, the Performing Arts Center has teamed up with Columbia

Artist Management, Inc., who represents a number of international acts, to plan and organize special events for the campus.

"Through our director's relationship with the company we were able to bring the Moscow Festival Ballet, which is a world-renowned ballet direct from Russia," said Stacie McDaniel, house manager and administrative coordinator for the PAC.

Sergei Radchenko, legendary principal dancer of the Bolshoi Ballet, founded the Moscow Festival Ballet company in 1989 to create an ensemble that would bring together the highest classical elements of the great Bolshoi and Kirov Ballet companies. Under his direction, leading dancers from across Russia now stage exciting new productions of timeless classics such as Giselle, Don Quixote, Paquita and Carmen.

Since the beginning, the company has toured extensively throughout Europe, Asia and the United States.

Cinderella will be held Friday at 7:30 p.m. in the PAC. GSU student tickets are \$10, GSU faculty/staff tickets are \$20, patron tickets are \$24, and children tickets are \$12.



Photo Courtesy of the PAC

The Moscow Ballet, most famous for their Russian Nutcracker, will be performing the ballet "Cinderella," which features over 400 different costumes. The Moscow Ballet was founded in 1989 by Sergei Radchenko, who was then a principal dancer of the Bolshoi Ballet, in an effort to create an ensemble that would bring multiple classical elements to the table.





Available on the
App Store



ANDROID APP ON
Google play

OFFER VALID ONLY ON THE MOE'S APP OR MOES.SPICKIT.COM FROM 2/4 THROUGH 3/2, 2014. MOE'S STATESBORO LOCATION ONLY. PROMO CODE AVAILABLE AT FACEBOOK.COM/MOESBORO. NOT VALID WITH ANY OTHER OFFER. ONE PER PERSON.

FREE BURRITO

WITH PURCHASE OF LARGE DRINK

ON THE MOE'S APP OR MOES.SPICKIT.COM

GET THE
PROMO CODE
BY TEXTING:

MoesFreestyle
to 81018



FACEBOOK.COM/MOESBORO

MFA student to present 'Some Assembly Required'

Artist Corner

BY RASHIDA OTUNBA

The George-Anne staff

All that glitters definitely isn't gold, as one will see in three-dimensional ceramic artist Eric Clark's exhibit "Some Assembly Required." The exhibit will feature industrial pieces formed from clay that are fashioned to look like they are made of plastic and precious metals by being coated in special glazes.

Eric Clark is a graduate student at Georgia Southern University and hopes to earn his MFA in three-dimensional artwork. This exhibit

marks his submission into the first of GSU's MFA exhibitions in March. Clark said he is playing along the ideas of materialism, and thinks it's really about presenting a material in a new way and speaking to the contemporary idea. He said he is also playing with the idea of this handmade object versus this mass-produced, industrial item and that's probably the most important thing.

It's just mud, essentially, Clark said. So he's

taking something that has a really small amount of value, or maybe no value at all. Clark is trying to raise it to a level of something that is quite expensive. All the works he's presenting are artificial recreations of something he's familiar with. In our society, everything is artificial. It's not good or bad necessarily, but there's humor in it in a way, Clark said.

Clark is a Savannah native and received his BFA from Armstrong Atlantic State University in visual arts in 2010. Clark has previously exhibited his artwork in galleries in England, North Carolina and Virginia and received the Best in Show Award at Chowan University's Annual Juried Art Exhibition in 2013.

“It's just mud, essentially.”

—Eric Clark, MFA student, exhibit artist

“I think a younger audience will appreciate my work probably more so than an older audience. I think that to get young people's attention things have to be interesting to look at for more than a second. If I could make someone college-aged be interested in ceramics, I've done my job,” Clark said.

“Some Assembly Required” will be featured in Georgia Southern University's MFA exhibit, which will last from March 3-13.



Courtney Bonacci | The George-Anne

Graduate student Eric Clark is an artist exploring the concepts of materialism in his new collection “Some Assembly Required.”

World religions unite for one night at GSU

Culture

BY ERINN WILLIAMS

The George-Anne staff

Students will have the opportunity tonight to ask all the questions about world religions that they have not been able to in the past.

Hot Wings & Hot Topics will open up the dialogue about controversial religious topics for the audience at 6:30 p.m. in the Williams Center Multipurpose room by the Multicultural Student Center and University Wellness Center.

As students dive into controversial conversations, they will also have the opportunity to brave hot wings, ranch and barbeque wings and vegetables.

“It's been going on for more than five years now and the positive reviews from

students are what keeps us bringing it back” Christopher Pugh, assistant director of the Multicultural Student Center and event coordinator, said.

Questions on religious violence and persecution, same-sex marriage, abortion, the afterlife, sex outside of marriage, murder, creationism, evolution and more are all welcomed at this event and will be answered by a panel.

These five panelists will act as guides into understanding the unique faiths that they practice.

Two denominations of Christianity will also be represented.

Jerry Johnson, minister from Georgia Southern University Baptist Collegiate Ministries (BCM), will speak on the Baptist faith while James M. Woods, professor of history, will speak on Catholicism.

Nadia Dreid, former president of the GSU Muslim Student Association will lead the discussion on Islam.

“I am very excited to go for this event because I would like to know about other religions and their rules and how to behave myself in a manner that is respectful to all religions. I also want to understand why different religions do not like each other when we all are serving the same God,” Salam Sanou, sophomore geology major, said.

Rabbi Ruven Baken will be a representative for Judaism and Linda Adamson will share her knowledge of the Baha'i Faith.

“It's not going to be a debate, it will be an exploratory conversation. It is not about who is right and who is wrong it's about leaving with key knowledge and combating ignorance and intolerance while promoting inclusion, which is one of our goals,” Pugh said.

This is all being done in an effort to create understanding, appreciation and respect for diverse world religions.

“Understanding and learning about different religions has always been an interest of mine since I was a kid and it is the reason why I declared a religious studies minor. Going to a panel like this will allow me to be expand my own worldview and have a better appreciation for other people's points of view. Also there are hot wings. What's not to like?” Carmen Gray, sophomore English major, said.

The event will have Francys Johnson as a moderator to make sure that conversation continues to flow smoothly and respectfully.

Hot Wings & Hot Topics is just one of the many events being put on for Wellness Week in an effort to promote spiritual health.

The event is free and proof of attendance will be provided.



kjug.com

Swindell's debut album does not disappoint

Music Review

★★★★★

This album is sure to be a stepping stone in Swindell's career and a big help for him to move on to bigger and better things in the future.

BY JACKIE GUTKNECHT

The George-Anne staff

Georgia Southern University alumnus Cole Swindell released his self-titled debut album on Tuesday and it is sure to keep you 'Swayin'.

Swindell graduated from GSU in 2007 and went on to write songs for well known country artists such as Luke Bryan, Craig Campbell, Thomas Rhett, Scotty McCreery, Chris Young and Florida Georgia Line before he independently released his debut single 'Chillin' It.' Swindell then signed a record deal and began to produce his album, "Cole Swindell."

The album starts off with a love song, 'Hope You Get Lonely Tonight,' which usually wouldn't sound like a good time, but its chorus will have you singing along to it immediately.

The album features a good mix between

slower songs and party anthems.

The sixth track on the album, 'Brought To You By Beer,' seems like the party song that reflects any night in Stateboro, starting with the sun going down and a "can't wait, tailgate party on ice, chillin' in the back of a four-wheel drive." The rhythm of the song is a toe-tapper and makes you want to get up and dance immediately.

'Swayin' carries the party sound through the album and literally makes you want to sway along with the song. It is a perfect concert song and I can just imagine the crowds with their hands in the air going back and forth with the beat.

A few of the songs are, of course, dedicated to falling in love, like any good country album. There are heartbreaks and love stories throughout the entire collection that keep you listening to more.

'A Dozen Roses and a Six-Pack' is a completely relatable college break up story of a guy waiting to see if his girl will forgive him one more time. "Is she gone for good, well it's hard to say, but I'm gonna be ready either way."

This album is a good opening act for Swindell's career, and it's sure to make him a main act in the country music scene.

Swindell is currently opening up for Luke Bryan's That's My Kind of Night tour with Lee Brice with upcoming shows in Kentucky and North Dakota.



youtube.com

'Winter's Tale' a sad story

Music Review

★★★★☆

What made it so sad was the ability to see the potential of what the film could have been given the original story and phenomenal cast.

BY LAURIANNA CULL

The George-Anne staff

Adapting a beloved book for film is always a risky undertaking. Certain aspects have an appeal on the page but are difficult to translate on screen. "Winter's Tale" fell victim to this classic dilemma.

The movie jumps around from the 1890's to 1915 to present day in a jumbled-up manor that makes it quite difficult for the audience to be sure exactly who or what to focus on.

The movie begins with a thief, Peter Lake, played by Colin Farrell ("Total Recall") on the run from his previous boss named Pearly Soames, played by Russell Crowe ("Gladiator"). Peter is out of places to run when he turns a corner to find a white horse conveniently waiting for him.

The horse then pretty much turns into Pegasus and flies over a fence to help Peter escape, which was probably meant to look like a great special effect. Instead, it just looked like glittery fairy wings that for some reason went straight through Peter's leg.

Peter then decides to skip town, but stops to rob a mansion first where he meets Beverly Pinn played by Jessica Brown Findlay ("Downton

Abbey"), a stunning redhead dying from consumption, a form of tuberculosis. They share a pot of tea where Peter agrees not to rob her and instead they fall in love.

Peter becomes convinced that he can somehow save Beverly if he loves her enough. He goes with her and her family to their winter home, which Pearly is prevented from going to by magic.

This movie leaves a lot of open ends and unexplained events. For example, all we know is that something about Peter loving Beverly is one of the worst possible things that could happen to the demonic world to which Pearly belongs.

"Winter's Tale" never really says why Peter and Beverly are so important or why Pearly hates Peter to the level that he does. The entire movie focuses on Peter and his journey like he has some divine purpose and then ends with a cheesy narration about how we are all equally special. It was obvious that the idea and basis for the story was original and meaningful. But something was lost in execution while making this film. There was just too much trying to be done and because of this, ideas were unfinished and not fully explained.

The lack luster quality of the film, however, is in no way the fault of the actors.

The only redeeming quality of "Winter's Tale" was the beautiful and pure love affair between Peter and Beverly. It was the only consistent storyline and Farrell and Findlay gave raw, honest performances.

Although Farrell and Findlay gave their all to these characters, "Winter's Tale" was disappointing. It was sad to see the potential of what the film could have been given the original story and phenomenal cast.



Courtesy of Martin Gendelman

North Carolina-based contemporary ensemble Present-Continuous will be performing modern classical music in the Carol A. Carter Recital Hall as a part of the concert series "On the Verge."

Music department continues "On the Verge" series

BY MATT SOWELL

The George-Anne staff

Classical music is not always boring and the Department of Music at Georgia Southern University has set out to prove it with their latest classical concert series "On the Verge," featuring modern classical music.

Present-Continuous, a contemporary ensemble, will perform at the Carol A. Carter Recital Hall in the Foy building Monday

at 7:30 p.m. The classic music ensemble is based out of Greensboro, North Carolina. The band is advertised as dedicated to performing staples of their repertoire as well as new compositions and semi-improvised works.

The group plays music by George Crumb, Steve Reich, Olivier Messiaen, David Lang, Zhou Long, Julia Wolfe, Robert Paterson and others.

"It's a series that started last year with the idea of presenting contemporary music,"

Martin Gendelman, Ph.D. said. "I have zero funding but I have the help of the dean and the department. We've managed to get funding to two concerts last year."

In the past, music series at GSU have had low participation from the students.

"Just two weeks ago we had Carlos Rodriguez. He was an amazing pianist. He's worked with Plácido Domingo in DC for many years and he's from Venezuela originally. He presented a lot of Latin American and North

American composers," Gendelman said. "This is something that I do for the Statesboro community but also the student community."

Gendelman said, "This is going to all be music from living composers, some of them even quite young. This is a type of program that you won't hear [anywhere in this area]. People show up and get some exposure. This is basically the classical music of the twenty-first century so most people don't know what that is."

ON THE VERGE

Jorge Variego
(3/25/2013)

Dancing Hart
(4/18/2013)

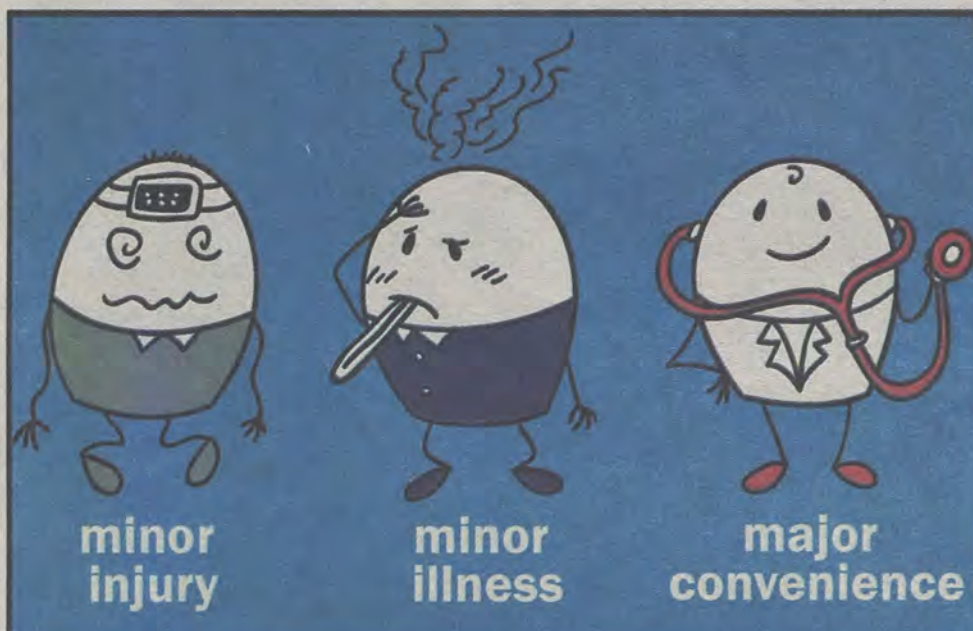
Carlos Rodriguez
(2/3/2014)

Continuous Ensemble
(2/24/2014)

MARCH 2013

APRIL 2013

FEB. 2014



minor injury **minor illness** **major convenience**

The Doctor will see you now!

SOUTH GEORGIA IMMEDIATE CARE CENTER

1096 Bermuda Run Road
(next to Mellow Mushroom)
Statesboro, GA 30458
p - 912-871-5150
getIMMEDIATEcare.com

WELCOME EAGLES!
CONVENIENTLY LOCATED CLOSE TO GSU.
CARING AND CONFIDENTIAL TREATMENT.

Monday - Friday 9:00 am - 8:00 pm
Saturday 9:00 am - 5:00 pm
Sunday 12:00 pm - 5:00 pm

Most insurance, cash and credit cards accepted.



Ryan Woodham | The George-Anne
Senior forward Marvin Baynham (10), known for his outstanding effort and hustle plays, is averaging 5.4 points per game and 4.9 rebounds this season.

GSU too small to compete with UTC

Men's Basketball (11-16)

BY COLIN RITSICK

The George-Anne staff

Unless something crazy happens tonight against the University of Tennessee-Chattanooga, Georgia Southern University basketball will likely lose its fifth straight game.

1. Winning ain't that common for GSU

The Eagles (11-16, 4-8 Southern Conference) have lost the last four games by an average margin of 10.2 points and scored just 62.25 points per game (ppg) in that span.

2. The Mocs are reeling too

The Mocs (16-11, 10-2) have hit a bump in the road as well, having lost three of their last five. But beyond these losses the last time the team dropped a game was Dec. 18 at the University of Alabama-Birmingham.

3. Got milk?

Tonight will be all about size; or perhaps, lack thereof. GSU is just too small to compete with the Mocs.

4. Z. Mason, yes that's his name, is an animal.

The most dominant force for UTC is senior forward Z. Mason. Mason is a 6-foot-6, 235 lb. beast who averages 17.4 ppg and 9.6 rebounds per game (rpg). The Eagles simply do not have anyone that can rival his strength and physicality down low.

5. Yo, Kyle, they need you.

The only player that would come close would be freshman forward Kyle Doyle. Doyle is 6-foot-6 as well, but weighs 25 pounds less than Mason. He is not the type of forward that is going to be able to fight with a 235 lb. rebounding machine all game long.

6. Tall perimeter players

Other than Mason, the Mocs start all guards. Of these four guards, two sophomores - Casey Jones and Gee McGhee - stand at 6-foot-5 and 6-foot-4, respectively.

GSU barely has forwards that tall, much less guards.

Junior guard Jelani Hewitt is averaging over 20 ppg, but he is 6-foot-2, 185 lbs. Senior guard Tre Bussey is 6-foot-3 but only weighs 170 lbs. Jones and McGhee both weigh over 200 lbs.

Size has been an issue all season long for the Eagles. But tonight it will be *the* issue.



NEWLY RENOVATED & ALL INCLUSIVE

Vaulted ceilings
New fitness center

100 Woodland Dr.
Statesboro, GA
912-681-6441
leasing@LegacyGSU.com



File Photo

Sophomore outfielder Kyle Streicher (6) and the Eagles will take on Maryland Eastern Shore University in the first home weekend series of the season. Streicher started 41 of GSU's 53 games last season in center field.

Around the diamond

GSU can easily fly past UMES

Baseball (2-1)

BY TREVOR MCNABOE

The George-Anne staff

Here are five ways that Georgia Southern University's baseball team will have an easy time with visiting University of Maryland Eastern Shore this weekend.

Home Sweet Home

GSU has been successful at home. Last season they posted a record at 16-14 while UMES went an abysmal 3-19 last season on the road.

Do you even lift, UMES?

The Hawks managed to hit a total of 5 homeruns as a team last year in 53 games, in

three games this season the Eagles as a team have hit three.

GSU offensive outburst

GSU has already scored 40 runs in their first three games to put them at an average of 13.3 runs per game, while UMES only plates 3.6 runs a game.

Out-of-the-way pitchers

Both teams' earned run averages aren't a pretty sight, as the Eagles have a 5.19 era while the Hawks had a 6.53 era.

You're supposed to hit the ball

Strikeouts have been a major problem for UMES as last season it struck out a total of 340 times in 1700 at-bats, which is good for a 20 percent strikeout ratio.

NOW LEASING

STOP BY FOR A TOUR TODAY!



TIRED OF APARTMENT LIVING?
ESCAPE TO THE ISLANDS



104 Aruba Avenue, Statesboro, Ga 30458
912-225-1387

CLASSIFIEDS

22 Thursday, February 20, 2014

The George-Anne

Miscellaneous

Scuba diving class available. 250 for open water certification. First dive will be at Ginnie springs. Great idea for spring break or the rest of your life. Certification never expires. Class will be in February. Email as07739@georgia-southern.edu for more information.

iCompute Service Repair is a small customer friendly team of college students majoring in information technology and other related fields, specializing in repairs in a wide variety of devices including iPhone's, iPad's, Galaxy's, Notes, and laptops. slogan "Premiere Smartphone and Laptop Repair Service in Statesboro, GA"

Jobs

Babysitting for Haiti! I am a babysitting to earn money for a mission trip to Haiti. I charge 5/ kid an hour. For more info email me at crystal_palmer270@yahoo.com.

For Sale

I have a late 08-09 15" Macbook pro. 250GB w/ 4GB Ram upgrade plus new battery and case 15 inch. 650 obo. 770-885-5786

FLEETWOOD MOBILE HOME For Sale. 2bed/2bath 14x65 1987. On rented private lot in Metter. Can stay or be moved. Includes central air unit, new dishwasher, fridge, stove, steps, & underpinning. REDUCED TO \$10,500 OBO Cash. Call/Text Keith 912-314-0997

Housing

CBeech Townhomes looking for Sublease. CHEAP RENT + utilities= \$465 average. Turbo Internet, Huge Bedrooms and Bathrooms, 2 very friendly Senior roommates. Please Contact Tommy Dean @ 706-993-0294 if interested!

2,3,4,5,6,7 Bedroom houses for rent. Available August 1st. Immediate repairs made. Contact Dr. Hood at 912-682-7468.

Male sublease wanted at Hawthorne ASAP! 2 bed/2 bath, washer/dryer unit, Big bedroom, 1 roommate, a mile from campus, single-level, poolside! I'm looking to move out before next semester. \$370/month+utilities if interested text/call 770-480-0181

Apartment available for sublease in 111 South. 4bd/4bth. Largest room in apartment. Huge bathroom and walk in closet. View of entire neighborhood, pool and fire pits. Access to 24hr clubhouse, lazy river and many other amenities. All for only \$444/month! Available for IMMEDIATE MOVE IN. Message me or comment if interested. Can move into brand new apartment for no extra cost. kw02345@georgiasouthern.edu

Miscellaneous

"Are you interested in playing club soccer? We are looking for committed players that have experience. Tryouts for this semester will be held the 3rd week of classes. Come find us at the Club Sports Fair or email us to extend your interest and get more information! GSUwomen-sclubsoccer@gmail.com"

Welcome Back, Students! Brainiac Studios will be accepting short stories to be considered for our "Statesboro Authors Spotlight" compilation. If you have that knack for great storytelling, send us your work and we will run it through our handpicked critics. If your work is chosen to be included in our compilation, we will publish and distribute the work absolutely free. Each chosen author will be fully credited and will even have a short bio included within the work. For details, you can head to <https://www.facebook.com/brainiacstudios.usa> where you will find a PDF with everything that you need to know. We look forward to seeing what Georgia Southern Writing can do!

Georgia Southern University will be hosting it's 2nd Annual campus Relay For Life on Friday, April 11th at 6p.m. All students, faculty, staff and associates of the University are encouraged to participate and form teams for this event! We are also in search of cancer survivors to walk our Survivor's Lap to kick off Relay. Teams can register online by searching Georgia Southern on the Relay For Life website. For more information please contact Megan White at mw05151@georgiasouthern.edu.

Need your TAXES done? Don't have much money to spend? Contact "Simply Taxes" Quick, Easy, Affordable Tax Preparation Up to 50% cheaper than Commercial Tax Preparation Services! 5% discount for ALL GSU Students, Faculty & Staff

Housing

Looking for someone to sublease my apartment in the Garden District for 2 months this summer. Rent is \$150 + Utilities. 3 bed/3bath, washer and dryer, and the largest room in the apartment. I am very flexible with payment, and am willing to work with you. For any questions contact Gil at 404-452-7457 or email at jg03784@georgia-southern.edu.

First month FREE. Furnished room/bath, walk-in closet, The Woodlands Apartments. Female only. Walk to class. Available 12/14/13 - 7/30/14. \$430 plus utilities. C 770-873-5102 hm01382@georgiasouthern.edu

One11South newest apartment complex at Georgia Southern. Two rooms available for sublease. Rent is \$354 with utilities included. If you have any question call 678-571-5795

One bedroom/one bathroom (and private downstairs living room) in a 3 bed/3.5 bath townhome in Copper Beech. Rent is \$455/month + utilities, includes extended cable and high-speed internet. Washer and dryer in unit. Access to new gym, pools, and hot tub. Call or text Alex at (912) 678-9576.

I am looking for someone to take-over my lease at The Grove. It is a 3 bed 3 bath apartment! It is available for move-in ASAP!! I will pay all of your move-in fees which is \$350!! It is the biggest room and bathroom in the apartment! Email me at ee00378@georgiasouthern.edu

Looking for someone to sublease room in Aspen Heights for this semester as well as the summer semester in a 4 bedroom house. Can be girl or boy. Rent is \$554 a month, which includes furniture as well as utilities. Willing to negotiate and work out a deal on the rent. If interested please contact me at (706) 366-2440 or email me at jc09051@georgiasouthern.edu

Have something to get rid of?

Make some money
by putting it in
The George-Anne's
classifieds ads.

FREE

to students,
faculty and staff!

PUZZLES&COMICS

www.thegeorgeanne.com

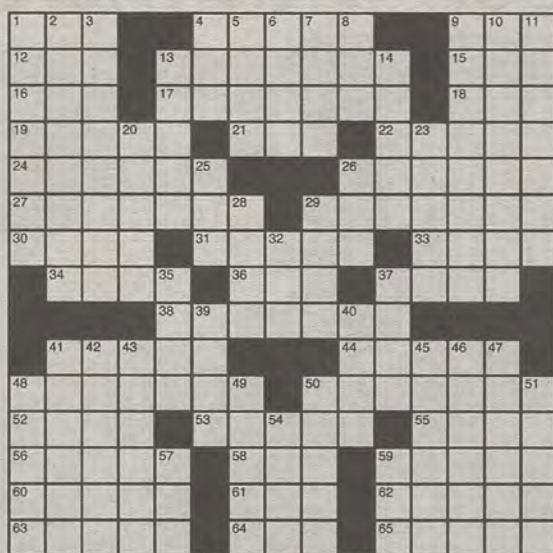
Thursday, February 20, 2014 23

Los Angeles Times Daily Crossword Puzzle

Edited by Rich Norris and Joyce Lewis

ACROSS

- 1 Float on a wave
- 4 Provide with shelter
- 9 Child seat?
- 12 Colorful card game
- 13 Sales tools
- 15 Ginger
- 16 Early initials in American cars
- 17 Longtime pop group with mostly self-named albums
- 18 La Méditerranée, e.g.
- 19 El cheapo
- 21 Med. amount
- 22 NV might be one
- 24 Lure into lawbreaking
- 26 Rich ice creams
- 27 Make foggy
- 29 North African country
- 30 Plural suffix with slogan
- 31 Classification between family and species
- 33 "South Park" kid
- 34 Tiny amt. of time
- 36 Heir, often
- 37 In the public eye
- 38 Fashion runway, or, in a way, what this puzzle's 10 perimeter answers comprise
- 41 "Holberg Suite" composer
- 44 Deep bell tones
- 48 Like some whiskey
- 50 Sun porches
- 52 Blockheads
- 53 Some garage-made CDs
- 55 Hood's honey
- 56 Brought something home, perhaps
- 58 eBay action
- 59 Someone not to deal with
- 60 Perfume with myrrh, say
- 61 Canteen gp.
- 62 Prelude or étude
- 63 Pool
- 64 Pitcher Seaver
- 65 Wander off course



By Don Gagliardo and C.C. Burnikel

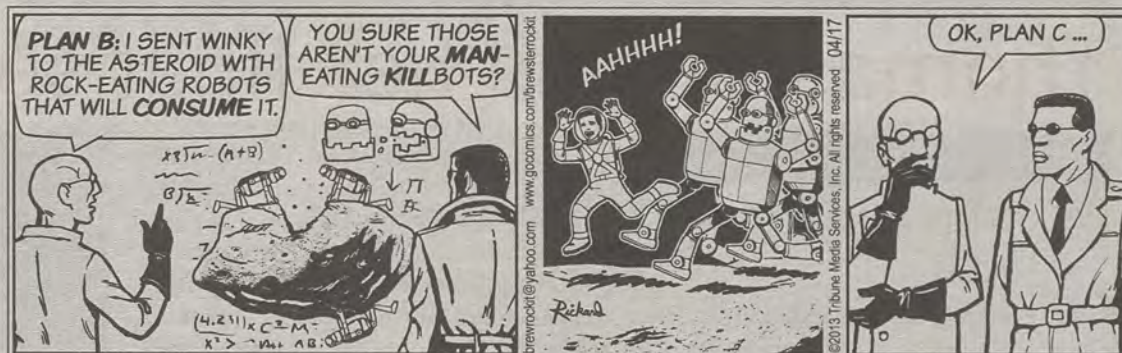
DOWN

- 1 Language spoken in Yangoon
- 2 Not much of a chance
- 3 Second shots
- 4 "Told ya!"
- 5 Forget to say
- 6 Bars on many bottles
- 7 High-five, e.g.
- 8 Neurologist's printout, briefly
- 9 Excoriate
- 10 Like Attu or Unalaska
- 11 Valuable carpet
- 13 "Buzz off!"
- 14 Deep thinker
- 20 Remove evidence
- 23 Dedicatee of Beethoven's "Bagatelle in A Minor"
- 25 Wrinkly faced canine
- 26 Gloomy fellow
- 28 Nuisance
- 29 Fish in a can
- 32 Demanding word
- 35 Used an email option
- 37 Vodka brand

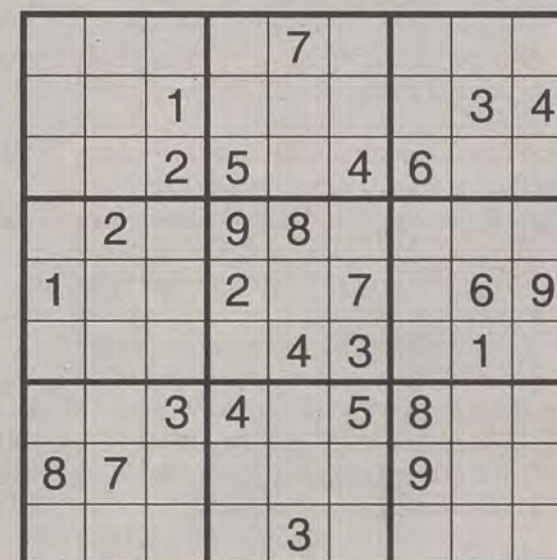
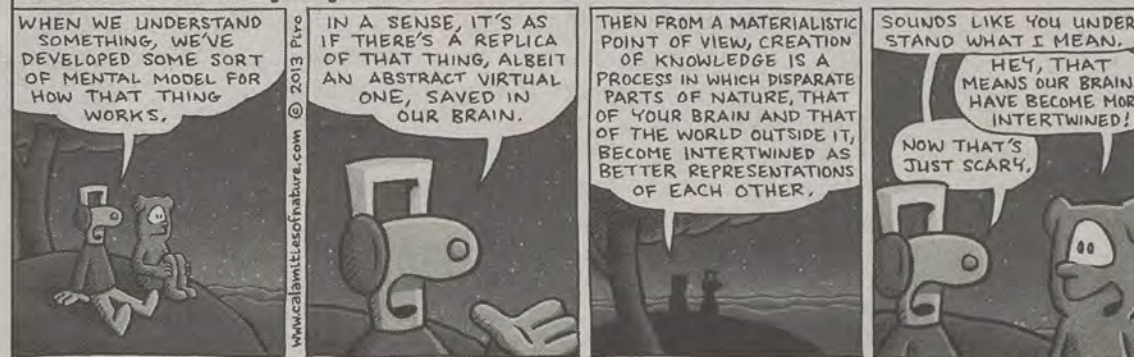
Last Edition's Puzzle Solved

E	A	C	H	P	A	C	K	S	G	O	L	F
A	C	L	U	A	R	O	N	I	O	D	O	R
S	T	U	B	D	E	M	O	N	D	D	A	Y
Y	A	B	B	A	D	A	B	B	A	D	O	O
A	S	S	A	I	L	T	E	T	R	A	D	
				L	E	S	A	R	E	E	M	I
B	A	B	E	S	C	U	B	A	D	I	V	E
O	L	I	V	A	A	K	A	S	T	E	N	T
W	E	B	A	D	D	R	E	S	S	A	N	D
E	R	L	D	I	E	E	P	S				
S	T	E	R	E	O		R	I	A	L	T	O
			B	A	D	C	O	N	N	E	C	T
A	M	E	N		E	R	I	C	A	E	A	R
T	A	L	C		S	A	L	A	D	A	N	T
M	Y	T	H		E	L	S	A	S		M	A

- 39 Like some whiskey
- 40 Wall St. deals
- 41 Seat cushions?
- 42 University officer
- 43 Demand
- 45 "Whatever you want"
- 46 President between Chester and Benjamin
- 47 Glassmaker's material
- 48 Coffee preference
- 49 Coming-out
- 50 City destroyed by fire and brimstone
- 51 Passageway
- 54 Soybean soup
- 57 Napoleonic Wars marshal
- 59 Unassisted MLB coups



Calamities of Nature by Tony Piro



SEE MORE OF THE GEORGE-ANNE

HTTP://WWW.THEGEORGEANNE.COM

Under the spotlight

Thomas begins her final season with the Eagles

Softball (7-3)

BY HAYDEN BOUDREAUX

The George-Anne staff

With her final season already underway, Kourtney Thomas has started 134 consecutive games for the Georgia Southern University softball team and she is eager to help them win their third straight Southern Conference championship.

Thomas played her high school ball at Houston County High in Warner Robins, Ga. She established herself by helping her team win four consecutive region championships and was twice voted to the GHSA All-State team. She ended her senior season with a .370 batting average, six home runs and was named The Macon Telegraph All-Middle Georgia Softball Player of the Year.

"It was a great experience (at Houston county). It was a lot like my time here, I started with the same group of girls and we stayed together all through school," Thomas said.

Since she was a sophomore Thomas went to every camp she could get into. She went to camps at schools such as Mercer University, the University of Georgia and Louisiana State University. After going on several recruiting trips she chose to play college softball at the University of Tennessee.

At Tennessee, Thomas appeared in eight games for the Volunteers. By the end of the season she scored one run and recorded a .231 batting average on twelve at-bats. She ended up leaving Tennessee after completing a full academic year.

"I didn't like the atmosphere there, I play softball for my teammates. It was a different experience there and so I decided to leave," Thomas said.

After leaving, Thomas spent a year training with her father. She had to keep up her conditioning and challenged herself so she would be ready to join a new team.

"I knew I was coming here whether I got a scholarship or not. I knew a lot of people here and my brother lives here," Thomas said.

The Eagles were ready for Thomas when she arrived. Her sophomore year she started in all 62 games at shortstop. She showed that she deserved the spot, ending the year with a .937 fielding percentage. At the plate she hit .186, totaled 26 RBIs and finished second on the team with seven home runs.

"It was a struggle getting back into the swing of things, I had only been practicing by myself for a full year. I was playing a new position than I did before, I've definitely gotten a lot better since then," Thomas said.

Her junior season Thomas remained healthy and started the full 63 games for the Eagles. Thomas was deadly at shortstop with a .967 fielding percentage. Her performance in the field coupled with a .254 batting average, 12 homers and a .486 slugging percentage earned Thomas All-SoCon honors.

After her outstanding performance in the 2013 season, Thomas was named to the Preseason All-SoCon team for her senior year.

Although it is still early in the season Thomas has made her presence felt. Through 25 at-bats she has a .360 average and is tied for first on the team with three home runs. With a fielding percentage of .968, she is poised to again make the All-SoCon team.

At this point Thomas has started every game since she enrolled at GSU. She looks forward, not to personal goals, but her team having a successful year.

"My only personal goal is to have a hit in every game, that way I can put our team in a good position to do well," Thomas said.

After the vicissitudes of her career, through high school and two colleges, Thomas has two influences that have been a huge part of her life. First, she lists her father, who came home after full days of work to practice with her through the years between schools. She also listed her Bonare Middle School Athletic Director Ron Wilson who has followed her career from the beginning.

Upon graduation, Thomas hopes to work at a recreational department. She hopes to stay relatively close to home but hasn't made any serious decisions. When asked about the possibility of softball being in her future she acknowledged the possibility of coaching.

"I would coach. As far as playing I would probably just play slow pitch. But if I was asked to coach I would definitely do that," Thomas said.

Thomas and the Eagles have a big weekend coming up as they travel to Gainesville, Fla. They will participate in the Florida Tournament against Coastal Carolina University, Troy University, Indiana University and the University of Florida. The Gators are ranked No. 1 in the country and will have to bring their best to not be upset by the Eagles. The first game of the tournament is against Coastal Carolina on Friday at 9 a.m.



Ryan Woodham | The George-Anne

Senior shortstop Kourtney Thomas (14) holds a .360 batting average, three homers and eight RBIs through the team's first nine games. The GSU softball team is heading to Gainesville, Fla., this weekend for the Lipton Invitational.

KOURTNEY THOMAS CAREER STATS

	Games Played	Batting Average	Home Runs	Runs	RBIs	Fielding
Freshman (At Tennessee)	8	.231	0	1	0	.000
Sophomore	62	.184	7	17	26	.937
Junior	63	.254	12	29	23	.963
Senior*	6	.360	3	5	8	.968

Alexandra Tobia | The George-Anne

Coach Vozab set to deliver progressive season

BY TREVOR MCNABOE

The George-Anne staff

Second-year Georgia Southern University women's basketball head coach Chris Vozab is in the midst of transition both personally and professionally.

The basketball season is a long one that stretches from games in early November all the way to March. Throughout the ensuing four months there are bumps along the road and challenges that have to be overcome.

One of the challenges that Vozab has had to overcome is the fact that she is pregnant.

"I try to make sure that I am able to have all the same physical, emotional, mental energy on the court that I have always had. I like to be high energy in practice and it's been hard not to jump out there and demonstrate something," Vozab said.

Although she has had to tone back down on her hands-on coaching approach and style, Vozab has maintained focus on the task that is at hand: the opportunity to build a program.

Despite just winning 16 games in the past two seasons, Vozab is confident the future is bright for her program.

"One of the things we talk about as a program is getting better everyday and taking care of the things that you have to take care of, the little details and the results will come," Vozab said.

Vozab hails from Amenia, N.Y., and played collegiately at Providence College where she was a captain for three years and twice the team's most valuable player as a point guard.

Since Vozab played guard throughout her playing career she provides a vast knowledge of a position that has been GSU's strength all year.

"Our staff was very fortunate to have inherited a group of players that have bought into the details and little things that we value a lot and that's allowed us to grow and move forward," Vozab said.

Although it is her second year and she has gotten two of her own recruiting classes, it still meant teaching a new system to the players that were there before her.

"One of the things we felt is that we inherited a team that was used to running a jump shooting style so what we have tried to do is recruit some height to add more balance to our inside-out style," Vozab said.

Vozab began her coaching career as a graduate assistant at the University of New Hampshire in 2002. She was an assistant at



Ryan Woodham | The George-Anne

Head women's basketball coach Chris Vozab is in her second season at the helm. Vozab has won only 16 games in her time so far at GSU, but she believes the sky is the limit for the program.

Canisius College from 2004-2007, assistant coach and recruiting coordinator at Winthrop University from 2007-2011 and an assistant for one season at Dayton University.

So what brought her down to Statesboro after a majority of her coaching career was based in the north?

"I was excited for the opportunity to build

a program, I've been a part of programs that are being built and I know how hard it is and how much goes into it, but I also know how rewarding it is when you are able to achieve a goal," Vozab said.

Being at multiple universities as both a coach and a player, one thing sticks out to her.

"When we get kids on campus to visit they

just fall in love with the beauty of it. If you do the leg work to get them here the campus sells itself," Vozab said.

So while an impending move to the Sun Belt Conference looms next season, one thing Vozab stresses to the team is to live in the moment and take it one day and game at a time.

Swim, bike, run RAC to host new event

BY MACY HOLLOWAY

The George-Anne staff

Interested in swimming, biking and running for a great cause? United Way of Southeast Georgia is bringing the first-ever triathlon to Georgia Southern University.

The triathlon will be held at the RAC on April 6 beginning at 8 a.m. Up to 154 people are allowed to sign up and it is regulated on a first-come, first-serve basis. Willing participants may register online at active.com with the key words "Georgia Southern Triathlon."

"Since this is, in fact, a fundraiser for United Way, the entry fee is \$30 for students who sign up before Mar. 23, \$40 for non-students. The registration fee will raise to \$35 for students and \$50 for non-students beginning on Mar. 24," Erick Pezoa, senior computer science major, said.

A free t-shirt and food will be available at an after party held at the RAC Pavilion for all participants.

The triathlon will consist of swimming, biking and running; it will be an indoor and outdoor event. There are expected to be seven heats of 22 participants each. Each heat will last 20 minutes, and the final winner will be based on who was able to go the furthest distance altogether in each of their heats. Swim the most laps in 20 minutes, bike the furthest distance and run the furthest. Fifteen minutes will be the allotted transition time between heats.

Swimming will take place in the RAC pool, biking on the stationary bikes and running will be outside on the large track surrounding the RAC.

There will be winners based upon separate groups divided by age and sex. The prizes have yet to be announced.

With the vast amount of events and participants, volunteers are welcomed and highly encouraged.

Pezoa has been the sole coordinator behind this entire project. With his involvement in organizations such as Student United Way and the Service-Learning program at GSU, Pezoa has been able to get this event planned and on its way to fruition.

Pezoa explained that there will be access to an additional donations tab on the website, where extra donations can be given and will be sincerely appreciated.

So, how far can you go in 60 minutes?



Brandon Warnock | The George-Anne

GSU head football coach Willie Fritz (right) signed autographs for fans on Wednesday afternoon at the University Store. GSU Alumnae Kate Rushing (second from right) raved about Fritz's willingness to approach fans.

Fritz signs autographs and smiles

BY KATIE TOLBERT

The George-Anne staff

Head Football Coach Willie Fritz took time out of his new, busy schedule to sign autographs and take pictures with students and members of the community yesterday at the University Store.

"People in this community are just unbelievably passionate about the Eagles and Georgia Southern University. It is really refreshing. I've been a few different places, not every place has this affection for the university and where they're at," Fritz said.

Right in the middle of the University Store, students and community members were anxiously waiting to get their photo with the new head coach, and most people even bought items for him to sign right before they got in line. But, of course, some people went for the classic autograph on the back of the shirt he or she was wearing.

"I met him at Loco's for the meet and greet, and he was very personable. He went table to table; he didn't just wait for people to approach

him. I thought it was good he was trying to make it a point to actually meet the people here," Georgia Southern University graduate Katie Rushing said.

Fritz is still new to the town of Statesboro and GSU, but that is not stopping him from venturing out to really make his face known and to make sure his newfound reputation is nothing but a positive one.

"I try to do as much with the community as I can, it gets a little more difficult once you get into the season to get out and do things. Right now I'm by myself; my family is not here. So, I have a lot more time than normal. I enjoy doing this, getting out and getting a chance to meet people," Fritz said.

Both students and local residents had nothing but great things to say about the new head coach, and are all eager to see what is in store for the upcoming season in the Football Bowl Subdivision.

"I think it shows that they picked the right person for the job. I think he has brought in a great staff. We had the meeting with him the other night and went to Loco's

afterwards," Statesboro local Ricky Nessmith said. "We got a chance to meet his coaches one on one with the community. It's the first time I've seen that and I have been following this program since Erk was here. I think he is going to do a great job here."

"This is awesome that he is coming out, signing autographs and getting pictures taken with people. It shows that he really cares about the community and the university as a whole," sophomore sports management major Terrance Williams said. "It's a good image to have as a new head coach. I think it was a smart move for the players; it gives the program and players an opportunity to rebuild."

With so many new changes happening at GSU, the Eagle community is staying loyal to their football program and is supporting the new head coach each and every chance they get.

"He is just redefining and reinventing Georgia Southern football," LaRodrick Harris, sophomore public relations major, said. "We need that change; we are getting a new stadium, a new conference, and now a new coach."

Opportunity comes knocking for two Eagles

BY TREVOR MCNABOE

The George-Anne staff

While thousands of students will have their name called in May at graduation, two Eagles are hopeful to hear their name called in New York City at the NFL Draft.

Seniors Jerick McKinnon and Lavelle Westbrook both have had stellar collegiate careers at Georgia Southern University that ended with an upset win at the Swamp against the University of Florida.

Now the pair are pursuing their dreams of playing professional football beginning with the invite to the selective and elite NFL Combine that will be hosted in Indianapolis starting Saturday Feb. 22.

McKinnon is known for his versatility and speed that lead him to gain over a thousand yards each in the past two seasons and 3,899 rushing yards in his career.

Despite McKinnon's lack of an aerial game he transitioned to more of an A-Back his senior year to capitalize off of his athleticism, most notably his 125-yard performance against UF.

"One player to watch for is Jerick McKinnon from Georgia Southern, he can play running back and cornerback. What I'm interested in is his footwork at the Combine," NFL analyst Mike Mayock in a conference call said.

Lavelle Westbrook has been a reliable force in the defensive backs unit for the Eagles as he started 41 career games recording over 200 tackles and six career interceptions.

Both players were invited to the 2014 Senior Bowl that took place in late January.

Scouts and GM's were impressed by McKinnon's display of power as he ran over Florida State University safety Terrance Brooks during one of the practices leading up to the Senior Bowl. Along with that, it was Westbrook's coverage ability that impressed scouts, rather than his well-known ability to make tackles.

Both are currently projected to go in the range of sixth-or-seventh round, however if history tells us anything, just one year ago another GSU player (J.J. Wilcox) was invited to the NFL Combine and boosted his draft stock to the third round after being a projected fourth- or fifth-round pick.



File photo

Seniors running back Jerick McKinnon (1) and corner Lavelle Westbrook (18) will be participating in the NFL Combine in Indianapolis, Ind., beginning Feb. 22.

STUDIO

2 BR

3 BR

NOW LEASING
FALL 2014

CALL TODAY
3BR SPECIAL

CARIBE
COURT

912-681-7873 | 210 Caribe Court • Statesboro, GA 30458

FREE Internet

FREE Cable

Pets Welcome

PACK THE HOUSE IN PINK

SATURDAY AT 2 P.M.

MEN'S BASKETBALL

VS

SATURDAY AT 4:30 P.M.

WOMEN'S BASKETBALL

VS

CAMPUS EVOLUTION VILLAGES. A 4.0 IN STUDENT LIVING!



SWEETHEART DEAL: \$375.00 MONTHLY LOW PRICE GUARANTEE! CALL NOW!



CAMPUS EVOLUTION VILLAGES

NEW FOR 2014/15 SCHOOL YEAR:

- NEW KITCHEN APPLIANCES
- BRAND NEW FITNESS CENTER
- NEW HIGHER SPEED INTERNET
- UPDATED KITCHENS AND LIVING ROOMS
- NEW BBQ GRILLING STATIONS AND FIREPIT
- SPACIOUS CLUBHOUSE AND LOUNGE AREA

TEXT: "LIVEBIGGSU" TO 47464 • 912.200.6109 • WWW.CEVILLAGES.COM • 1699 STATESBORO PLACE CIRCLE