

Georgia Southern University

Digital Commons@Georgia Southern

The George-Anne

Student Media

2-6-2014

The George-Anne

Georgia Southern University

Follow this and additional works at: <https://digitalcommons.georgiasouthern.edu/george-anne>



Part of the [Higher Education Commons](#)

Recommended Citation

Georgia Southern University, "The George-Anne" (2014). *The George-Anne*. 2826.
<https://digitalcommons.georgiasouthern.edu/george-anne/2826>

This newspaper is brought to you for free and open access by the Student Media at Digital Commons@Georgia Southern. It has been accepted for inclusion in The George-Anne by an authorized administrator of Digital Commons@Georgia Southern. For more information, please contact digitalcommons@georgiasouthern.edu.



MATIAS GETS BOARDS

PAGE 20



BAREFOOT APPARAL OPENS

PAGE 11



TOBACCO BAN DISCUSSED

PAGE 6

Thursday, February 6, 2014
Georgia Southern University
www.thegeorgeanne.com
Volume 84 • Issue 49

THE GEORGE-ANNE

First Sun Belt class announced

Fritz adds size and bulk in trenches, misses out on quarterback

BY KATIE TOLBERT

The George-Anne staff

After a week of phone calls, Head Coach Willie Fritz announced that 17 new players officially signed onto the Georgia Southern University football team.

"During this two-week time period, that was one of the first things I told our coaches we had to find out about; are these the type of people we want in Statesboro, are these the type of people we want at our university, are these the type of people we want in our

football program? And, if you can say yes to all of those things, then we felt they were guys that could be Eagles," Fritz said.

The newest members to the GSU football team include a variety of ages from freshmen to juniors moving on from their junior colleges. Also, Fritz managed to stay close to his new home by signing five players from Georgia, and his old home by signing three players from Texas.

"Obviously we feel like this is a historic day for the history of Georgia Southern football. Not only is it my first class, but, more importantly,

this is the first FBS signing class in the history of Georgia Southern football," Fritz said.

After a first glance at the new players, it is clear that Fritz had a heavy focus on building the offensive and defensive line. He recruited five offensive linemen, two defensive ends, one defensive lineman, three linebackers, one defensive tackle and two cornerbacks. Leaving three spots open for one running back, one tight-end and one wide receiver.

There was, however, one hole that this class was not able to fill, or chose not to fill, and that is the quarterback position.

"As far as the quarterback is concerned, we feel like we have quarterbacks on the roster right now that are younger guys, and you kind of like to spread that out when you are recruiting, particularly quarterbacks. So, we didn't feel like that was a pressing need for us," Fritz said. "There are a lot of senior offensive linemen that are currently going to be starting and playing a lot next season, so we really felt like we needed to beef up in that area."

See SIGNING, Page 21



thegeorgeanne.com



Follow us on Twitter
@TheGeorgeAnne



Newsroom 478-5246
Advertising 478-5418
Fax 478-7113

PO Box 8001
Statesboro, GA
30460

**IT'S YOUR LIFE...
LIVE IT!**
FORUMSTATESBORO.COM

831 South Main Street
Statesboro, GA 30458

**LEASING
OFFICE HOURS:**

Monday-Friday 9-6
Saturday 10-5
Sunday 1-5

**SIGN TODAY FOR NO UTILITY CAPS!
LIMITED TIME ONLY!**

912-489-3676

ForumStatesboro.com

GET A FREE T-SHIRT WITH THIS AD!

FORUM[®]

AT STATESBORO

**A PREMIER STUDENT
HOUSING COMMUNITY**

**NOW
LEASING
FOR FALL 2014**

- Tennis Court
- Lap Pool & Spa
- Pet Friendly
- Pet Park
- Two Free Tanning Beds
- Indoor Basketball Court
- Indoor Volleyball Court
- Car Care Center
- Modern Faux-Wood Floors
- Private Bathroom in Bedrooms
- Convenient Individual Leases
- Free High Speed Internet in Bedrooms
- 24 Hour Fitness and Training Center
- Kitchens with Full Size Appliances
- Full Size Washer / Dryer Included
- Wi-Fi Cyber Cafe with Coffee Bar
- Outdoor Sand Volleyball Court
- High Speed Internet Access
- Student Center and Lounge
- Roommate Matching
- Expanded Cable
- Media Room



Resident subject to change. Call 912-489-3676. W & FES subject to size and good print. Terms may apply.

Police Beat

Monday, Feb. 3

11:45 a.m.: A welfare check was conducted on a subject at Kennedy Hall. The subject of the welfare check received medical assistance.

1:05 p.m.: Officers responded to Dining Commons in reference to a sick person. EMS responded and transported the sick person.

1:29 p.m.: A motor vehicle accident report was taken for a motor vehicle accident in Lot 11.

7:05 p.m.: A motor vehicle accident report was taken for a motor vehicle accident in Lot 12.

8:48 p.m.: An incident report was taken for a criminal trespass in D-Lot. This case was assigned to Criminal Investigations.

9:02 p.m.: An incident report was taken for found property at the College of Business.

Tuesday, Feb. 4

11:44 a.m.: Officers responded to the Newton Building in reference to an injured person. EMS responded and transported the injured person.

11:59 a.m.: Officers assisted the Statesboro Police with an incident at Cambridge at Southern Apartments.

12:24 p.m.: A motor vehicle accident report was taken for a motor vehicle accident at Paulson Stadium.

1:20 p.m.: Officers responded to the College of Business in reference to a sick person. EMS responded and transported the sick person.

3:45 p.m.: An incident report was taken for a theft of unattended

property at the RAC. This case was assigned to Criminal Investigations.

4:08 p.m.: Officers responded to the Henderson Library in reference to a suspicious person. Contact was made with the suspicious person and he was advised to leave the campus.

4:53 p.m.: A motor vehicle accident report was taken for a motor vehicle accident – hit and run in Paulson Parking.

5:27 p.m.: Officers responded to the RAC in reference to an unwanted person. Javontis Dashawn Powell, 20, Statesboro, Ga., was arrested and charged with criminal trespass.

6:27 p.m.: Officers responded to a panic alarm at Cone Hall. No one was in the room and no problems were found.

Statement of Operations

The George-Anne is the official student newspaper of Georgia Southern University, owned and operated by GSU students using facilities provided by the university. The newspaper is the oldest continuously published newspaper in Bulloch County. The newspaper is a designated public forum for the Georgia Southern community.

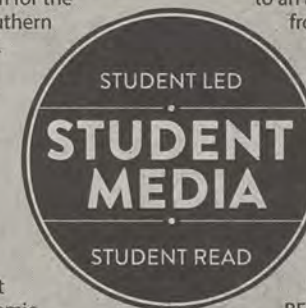
The newspaper is published twice weekly, on Tuesdays and Thursdays, during most of the academic year. Any questions regarding content should be directed to the student editor by phone at 912.478.5246 or at gaeditor@georgiasouthern.edu.

ADVERTISING: The newspaper accepts advertising. Inquiries may be made by calling 912.478.5418 or 912.478-0566. Fax any questions to 912.478.7113 or e-mail ads1@georgiasouthern.edu.

The George-Anne receives additional support, in part, from the Student Activities Budget Committee.

The deadline for reserving space and submitting advertising copy is noon, one week prior to the intended publication date. For more information, rate cards, sample publications, contact

the advertising manager or student media director. The advertiser is responsible for any errors in advertisements and its liability for adjustments is limited to the amount of space the error occupied in the ad. Further, the newspaper is not responsible for any damages caused due to an ad's omission from a particular edition and its responsibility solely is to reschedule the ad in the next regular edition at the regular advertising rates.



STUDENTS BEWARE: The

George-Anne screens all advertisements prior to publication. The newspaper strives to accept ads for legitimate products and services only. Students are urged to exercise caution when replying to ads—particularly those that require personal information. Students are also urged to report to the newspaper any suspicious offers which they might see in an ad.

PUBLICATION INFORMATION: The newspaper is printed by The Brunswick News in Brunswick, Ga.

NOTICE: Unauthorized removal of multiple copies from a distribution site constitutes theft under Georgia law, a misdemeanor offense punishable by a fine and/or jail time.

GSU to host five spring Family Days

BY TAYLER CRITCHLOW

The George-Anne staff

This spring semester, Georgia Southern University will host five Family Days for students and parents, two of which will be held in Atlanta.

The University Office of Orientation and Parent Programs has planned the events that will be on Feb. 22, March 8 and 29 and April 12 and 19, according to the news release.

"We are very excited to provide five spring Family Days and welcome parents back to campus to visit their students," Erin Butler, assistant director of admissions, orientation and parent programs, said in the news release.

The first Family Day this spring will take place during the Pack the House in Pink event at Hanner Fieldhouse during the men's basketball game against Elon University and the women's basketball game against Appalachian State University.

The deadline to register for the first Family Day event is Feb. 17, according

to the news release.

Families are invited to attend an Eagle baseball game at J.I. Clements Stadium on March 8 and April 19. The baseball team will face up against Holy Cross and Samford respectively.

Deadlines to register for those family events are March 3 and April 14.

Family Day attendees can purchase tickets for \$4 for all four sporting events held at Georgia Southern.

"We hope families will build their own experience and take advantage of all our campus has to offer," Butler said according to the news release.

The two Family Days in Atlanta will be March 29 and April 12 and

will cost \$15 per person for premium seats, according to the news release.

The March Atlanta Family Day event will revolve around watching the Gwinnett Gladiators at the Arena at Gwinnett Center; the deadline to register is March 24.

The Family Day in Atlanta in April will allow families to watch an Atlanta Braves vs. the Washington Nationals game and enjoy a pre-game tailgate; the deadline to register is March 23.

According to the release, Butler said, "The Braves event has been popular in years past, and this is our first time with the Gwinnett Gladiators. We are anticipating a lot of excitement about these events."

“ We are very excited to provide five spring Family Days and welcome parents back to campus to visit their students.

—Erin Butler,
assistant director of admissions,
orientation and parent programs

Editorial Staff

Editor-in-Chief Shelby Farmer
Managing Editor Will Price
Online Chief Chase Chalker
Opinions Editor Peyton Callanan
News Editor Lauren Gorla
News Chief Tayler Critchlow
A&E Editor Kimeko McCoy
A&E Chief Will Peebles
Sports Editor Shakeem Holloway
Sports Chief Will Cheney

Copy Chief Taylor Cooper
Copy Editor Alexandra McCray
Business Manager Chloe Douglas
Business Mgr. Assistant Virginia Byrd
Marketing Manager Marissa Martin
Distribution Manager Bradley York
Production Manager Jose Gil
Photo Editor Heather Yeomans
Design Editor Matt Veal
Web Editor Darius Alexander
Ads Design Chief Kelly Slyfield

Corrections

Contact the editor at gaeditor@georgiasouthern.edu for corrections and errors.

Our View

Skate park is a welcomed addition to GS

Though the plans for the 'Boro Skatepark Project are just beginning to be put into motion, the new skate park will be a welcomed addition to the Statesboro landscape.

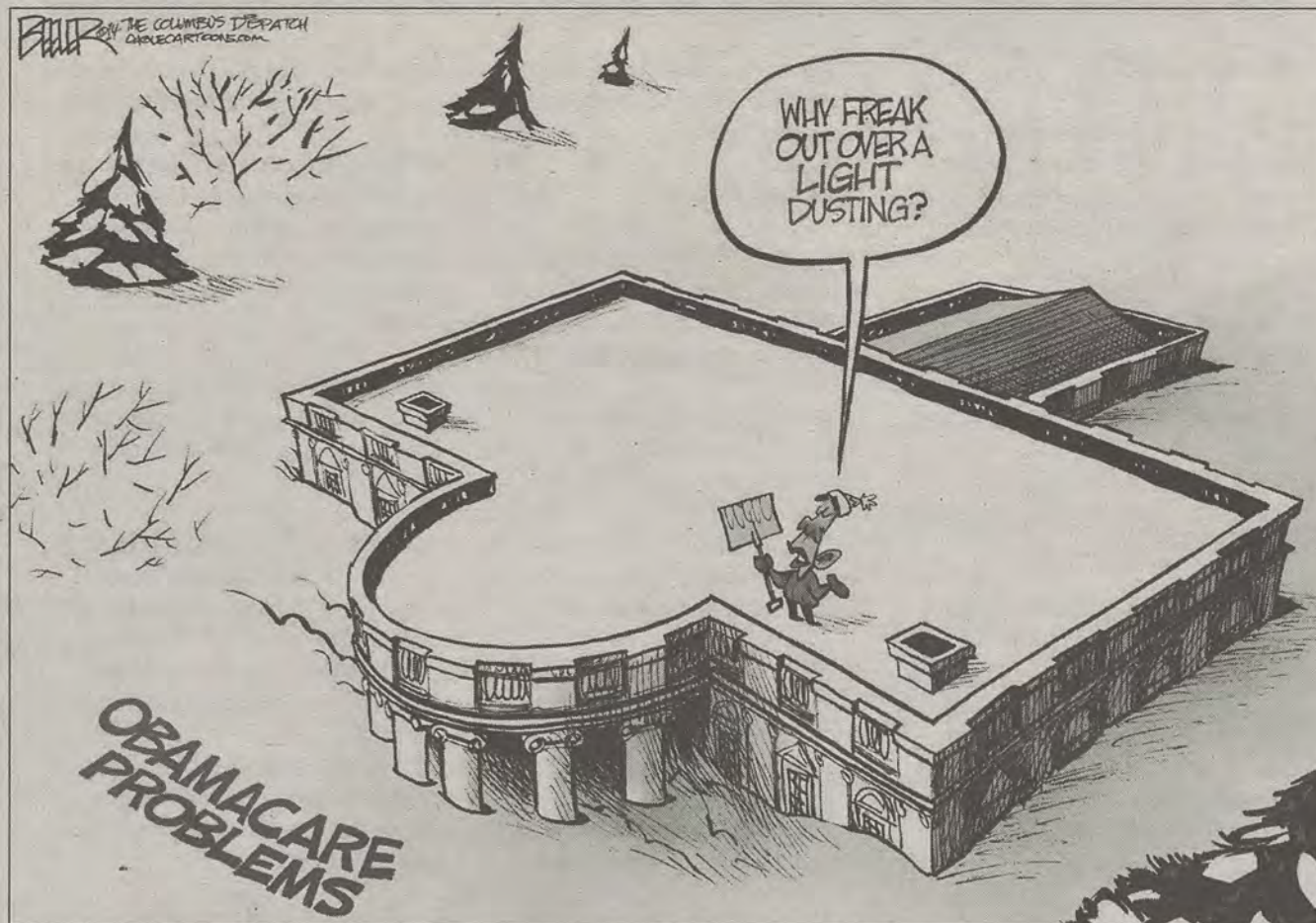
The new park, which is a collaboration between the Statesboro Parks and Recreation Department and Philip Stringer, the project leader, will give the local skateboarding community a place to enjoy skating.

This will potentially cut down the number of skaters on Georgia Southern University's campus and around the Statesboro community trying to find a suitable place to skate, which will benefit both the skaters and the pedestrians they share the sidewalks with.

It is also pleasing to see a new facility being built by the City of Statesboro rather than Georgia Southern University. Statesboro often seems to lose its individuality as the university continues to grow and spread across the city. Adding new and unique parks like this will help the city stand out.

The Statesboro Parks and Recreation Department already have several well-run facilities across the city, including the popular Splash in the Boro, and it is important that it continues to recognize the needs of growing communities within Statesboro such as the skateboarding community.

While developers are still in the beginning phases of planning and have yet to officially select a location, those working on the project have already made positive steps towards creating a quality park by reaching out to reputable organizations like the Tony Hawk Foundation and the Rob Dyrdek Foundation for funding and Team Paint Design to build the park.



Our rocky relationship with Russia

In 2012, Mitt Romney was mocked, ridiculed and labeled "ignoramus of the year" by the liberal media. Why? Well, mainly because he wasn't Barack Obama, but also because he remarked that Russia was our biggest geopolitical foe. As a result, MSNBC's self-proclaimed intelligentsias were quick to defame Romney as out of touch with reality.

Critics then proceeded to list countries who we should be far more concerned with including North Korea, Iran and Syria. Romney was incorrect about some things, but he was spot on concerning Russia.

First and foremost, how about that Vladimir Putin? This guy relinquishes the presidency to his protégé Dmitry Medvedev and assumes the role of Prime Minister. Later, he decides the PM lifestyle isn't his cup o' tea and reassumes the presidency.

THE BOOK OF ELI



ELIJAH ANDERSON

How? By altering Russia's constitution and extending presidential term limits from four to six years. This enables him to run and "win" an unprecedented third presidential term.

Putin has worked tirelessly to reduce Mother Russia to committing the oppression and human rights violations the USSR was notorious for. His accolades include imprisoning a rock band for "undermining the moral foundations"

of Russia, and passing an internationally condemned anti-gay law aimed at eliminating homosexual "propaganda." Then there is this whole Edward Snowden misunderstanding. A minor incident that can best be summed up as the single largest leak of classified U.S. documents of all time. There is no telling what info Russian authorities received in exchange for keeping Snowden safe. It is undeniable that Russia is rapidly recovering economically and militarily from the downfall of the Soviet Union. They are no longer just our former rivals of a time long gone. They've learned and adapted to become a major player in geopolitics. Romney was right.

Anderson is a senior political science major from Marietta. He is writing a thesis paper on U.S. interventions.

The George-Anne welcomes letters to the editor and appropriate guest columns. All copy submitted should be 350 words or fewer, typed, and sent via e-mail in Microsoft Word format to letters@georgiasouthern.edu. All submissions must be signed and include phone number for verification. GSU students should include their academic major, year and hometown. The editors reserve the right to reject any submission and edit submissions for length.

Opinions expressed herein are those of the Board of Opinions or columnists themselves and DO NOT necessarily reflect those of the faculty, staff or administration of GSU, the Student Media Advisory Board, Student Media or the University System of Georgia.

Bring on the tobacco ban

Have you ever been walking behind someone on campus and the smoke from their cigarette knocks you right in the face? I'm sure it happens more often than not and is quite irritating, which is why I am all for Georgia Southern University being a tobacco-free campus. In fact, all campuses should be tobacco free, simply because sidestream smoke is worse than mainstream smoke. And since the majority of students do not use tobacco products, they shouldn't be essentially forced to inhale those cancer-causing agents while walking down the pedestrian.

I know that banning the use of tobacco on campus may seem a little like the university is trying to take away a students' choice but consider this: due to banned smoking in public places, there has been a significant decline in smoking rates among people around the world. According to the World Health Organization, in 1980, 41 percent of men around the world were smokers and by 2012, the number dropped to 31 percent. Although globally the numbers are decreasing due to public banning, 20 million Americans have died in the last 50 years from smoking and 500,000 Americans will die prematurely because of smoking. As a young, vibrant, Southern eagle that has their whole life ahead of

THE SANCHEZ SNIPPET



JOYCE SANCHEZ

them, I'm sure that you don't want to be a part of that statistic nor be affected by it due to second-hand smoke.

Make a change in what you breathe or how long you live today. According to the American Nonsmokers' Rights Foundation there are currently 1,182 100-percent smoke-free campuses as of January 2, 2014. By the fall, Georgia Southern University needs to be number 1,183. Not only can this campus be known for its constant drive for environmental sustainability and graceful campus layout, but for it being the 21st smoke free campus in the state of Georgia. Let's make a change today Eagles so we can breathe better tomorrow.

Sanchez is a sophomore political science major from Vineland, N.J. She is currently the president of 100 Collegiate Women of America and was involved with the McCollar for Mayor Campaign.

Respect: A dying idea?

After a very stressful school and work week, I decided to partake in one of my favorite pastimes – El Sombrero happy hour. Although I had a fun time with friends, and received great service, my great time was soon spoiled when a fellow bystander made a comment that caught my attention. Although El Som is usually busy during dinner hours, this night in particular as the popular restaurant was crowded, and it also happened to be a Saturday night. While walking out the door, I overheard two men talking. Both seemed upset about their wait for a table, but one in particular really showed his frustration. He made the comment, "What they (El Som staff) need to do is kick out all of these college kids. Because unlike them, I tip," and he continued on speaking some kind of nonsense. I literally stopped and looked at him. Although people are free to have their opinion, I do believe this was highly exaggerated. And even though his statement was a huge assumption, it was still annoying. The way he made it sound, was that college students didn't have an ounce of respect.

My biggest issue with this man's statement was what gave his generation, and I'm sure other generations, the mindset that college students don't have respect anymore?

BROOKE IN THE 'BORO



BROOKE RABON

Now, I am not saying that I haven't met my fair share of rude people. But that's in general; people, not just students. I will not sit here and say that I don't get annoyed at that one drunken guy at the bar that spills his drink on me by accident. But, I will say that I'll probably say it's okay, and keep it moving through the crowd.

Therefore, I encourage Georgia Southern University to prove men like this wrong. Next time you see an older woman coming into a store, hold the door for her. If someone says hello, even if you do not know him or her, say it back. Share a smile. Do whatever you think is "respectful" to you, for others. And most importantly follow the Golden Rule: Treat others like you want to be treated. Oh, and for this man's entertainment; make sure you tip your waiter.

Rabon is a senior journalism major from Woodbine.

Red Hot Chili Pepper's pre-recorded song is acceptable

Let's be honest, the Super Bowl halftime show has never really been about the music. Much like the multimillion-dollar commercials before and after it, the halftime show has always been about the spectacle.

From Queen Beyoncé's reunion with Destiny's Child last year to Prince's suggestive guitar handling back in 2007, the halftime show always walks the fine line of over-the-top entertainment and complete circus.

This year's halftime show, which was headlined by Bruno Mars and featured an appearance by the Red Hot Chili Peppers, was relatively well-polished compared to years past and boasted the largest number of views in the show's history, roughly 115.3 million.

So how to do they make sure that the

most-watched event on television goes off without a hitch? Eliminate any chance for embarrassing technical difficulties, even if that means having a well-seasoned rock band pre-record their music and then mime playing their instruments.

Shortly after their performance of their song "Give It Away," the Red Hot Chili Peppers were the subject of internet chatter when fans pointed out that the instruments the band members were playing were not plugged in.

The band's bassist Flea responded to the controversy on Tuesday with a blog post on the band's website, explaining to fans that they were urged by the NFL not to play live due to the possible technical difficulties that come from a rushed set up of the instruments. The band viewed its brief performance as a once-in-a-lifetime

BEHIND THE SCENES



PEYTON CALLAHAN

opportunity and agreed to pre-record a version of the song.

Fans should appreciate Flea's attempt to be honest and straightforward with them regarding the issue, but let's face it, the Red Hot Chili Peppers are no Britney Spears or Ashley Simpson. They have been around for over 30 years and have proven many times over the course of the band's career that it can play live, sometimes wearing nothing more than tube socks.

They are hardly the first band to be asked to play along with a pre-recording song on a televised event. Bruce Springsteen and the E Street Band also reportedly played with a tape when they performed at the Super Bowl half time show back in 2009.

By now, viewers at home should understand that with all pressure riding on the "performance" part of the half time show, the musicians playing may need a little help ensuring the quality of the sound and stop addressing the issue each year. The purpose of the Red Hot Chili Pepper's appearance was to inject some variety into Mars' purely pop performance, and that mission was accomplished.

Callahan is senior communication arts major from Chuluota, Fla. She is the current opinions editor.

SGA breaks down the possible tobacco-free policy

BY LAUREN GORLA

The George-Anne staff

Student Government Association hosted a forum last night to break down the new possible policy concerning all University System of Georgia (USG) colleges that will make all campuses in Georgia tobacco-free.

If approved, the policy will go into effect on July 1 of this year and will completely cut out all tobacco use on campuses, including cigarettes and smokeless tobacco, among others.

Breaking down the policy

The policy goes along with the Georgia Smokefree Air Act of 2005 and is meant to provide a safe and amicable workplace for all employees and any persons occupying USG facilities, according to the policy.

"The use of all forms of tobacco products on property owned, leased, rented or in any way used by the USG or its affiliates is expressly prohibited," Garrett Green, president of SGA,

read from the USG policy.

Along with that, all cigarettes, cigars, pipes, all forms of smokeless tobacco, clove cigarettes and any other smoking devices that use tobacco, such as hookahs, or simulate the use of tobacco, such as electronic cigarettes.

No tobacco will be allowed indoors or outdoors, buildings or parking lots owned in any way by the USG. Private and public cars in these areas also fall under the tobacco-free jurisdiction.

Any person on USG property must follow these guidelines and, if they are found in violation, will be reprimanded depending on their role in the university.

Who is affected?

Visitors on campus that do not comply with these policies will be asked to leave the USG area.

Employees in violation will be addressed according to the disciplinary process as outlined in the human resources administrative practice manual. Along with that, the chief human

resources officer for the campus must report an employee violation to the USG office of employee benefits. The employee will then be charged a tobacco surcharge and will continue doing so until they prove in writing that they were smoke-free for a minimum of six months.

Any student on campus must comply by the regulations laid out in the policy, including students that live on-campus. If this tobacco-free policy is passed, then the current smoking zones for on-campus residents will be eliminated and any campus resident wanting to smoke must leave campus to do so.

It is still unclear how students will be dealt with if a violation does occur.

Enforcement of the Policy

If the policy is enforced, there will more than likely be a mass marketing campaign launched to educate students on the new policy and what it means for them day-to-day.

In a meeting between Green and Brooks Keel, president of GSU, the topic of how to enforce the

policy among students was addressed.

"[Keel] didn't want police officers to be walking down the pedestrian looking for nothing but people who are smoking or using tobacco products," Green said. "What he did hope for was after we start seeing changes in our tradition, people really start to enforce the policy themselves. If you see somebody smoking, you'll be able to say hey, Georgia Southern is a smoke-free campus."

If that does not work, then students can call University Police to report a smoker and it will be up to their discretion from there.

Attitudes about tobacco-use from students, faculty and staff

In Dec. 2011, survey results regarding campus attitudes about tobacco use were released and were meant to show what the next steps should be regarding tobacco use, America Minc, director of student affairs for campus recreation intramurals, said.

"We also wanted to see what does the campus feel would be the next best step for Georgia Southern to make a decision to go either completely tobacco-free, to go to campus smoking zones, or to make no change in the current policy," Minc said.

From that survey, the following results were found:

Student vote
46% tobacco zones
28% tobacco-free
26% no change to current policy

Faculty and Staff vote
46% tobacco zones
32% tobacco-free
22% no change to current policy

Further, it was found that 77 percent of reporting students are non-users of tobacco and 82 percent of faculty and staff are also non-users.

Moving forward

Green will present the opinions from students to fellow SGA presidents at a Student Advisory Council meeting today in Atlanta.

The Board of Regents will be voting on the policy at their next meeting, which is scheduled to be on Feb. 11 and 12.



Christal Riley | The George-Anne

Student Government Association used part of their regular meeting as a forum to help explain to students what the tobacco-free policy from the University System of Georgia means. Senators provided opinions on the repercussions of passing this policy.

Nine arrested on drug charges

BY TAYLER CRITCHLOW

The George-Anne staff

Statesboro-Bulloch Crime Suppression Team (C.S.T.) began operating Tuesday and hit the ground running with vehicle pursuits and marijuana felony charges and concluded in nine arrests.

Marijuana felony charges were issued at two separate times, once at a traffic stop over an expired tag when marijuana was discovered in the vehicle.

The other marijuana felony charge began at The Avenue at Southern where a traffic stop was initiated on the seller who struck two C.S.T. vehicles, a vehicle pursuit ensued before the seller fled on foot into Jalapeno's Mexican Restaurant with the intent of blending in with customers, according to the release.

During a "knock and talk" at an apartment at Copper Beach Apartments, investigators obtained probable cause to issue a search warrant where marijuana, U.S. currency and packaging material was discovered, according to a news release.

Investigation into the Copper Beach

apartment continues.

C.S.T. is a consolidation of the Sheriff's Office's Drug Suppression Team, the Sheriff's Office's STEP unit and the Police Department's Crime Suppression Unit.

The creation of the unit was the result of an understanding between Sheriff Lynn Anderson and Public Safety Director Wendell Turner, according to the news release.

Five Sheriff's Office investigators, three uniformed Sheriff's Office deputies, a K-9 and four Statesboro Police Department officers make up C.S.T., allowing for a flexible unit, according to the release.

The team exists to put unceasing pressure on criminals of all types who prey on innocent citizens, according to the release.

Focused enforcement that no single agency can provide is a benefit of the C.S.T. as well as being able to investigate and pursue criminals regardless of jurisdiction, according to the release.

According to the release, Anderson and Turner believe that the activities of the C.S.T. will continue to improve the safety of citizens of Statesboro and Bulloch County in the future.



ALL GSU STUDENTS,
FACULTY, AND STAFF
WELCOME TO SUBMIT

**MISCELLANY
SPRING 2014**

EARLY BIRD DEADLINE FREE FEB. 14
STANDARD DEADLINE SUBMISSION FEE \$5 FEB. 21
RELEASE PARTY APR. 8



NOW ACCEPTING SUBMISSIONS

SEND TO GSUMISCELLANY.SUBMITTABLE.COM
CONTACT MISCELLANY@GEORGIASOUTHERN.EDU

**STATESBORO'S MOST
UNIQUE APARTMENT
COMMUNITY**

Rental rates starting at

\$299

-Single-occupancy studios
-2 bed 2 bath apartment homes
-3 bed 3 bath apartment homes

High-speed internet, expanded
cable, plus HBO, your choice of
furnished or unfurnished, your
choice of an optional fixed-rate
utility package.

NOW LEASING

912-681-6539
17931 Hwy 67 Statesboro
www.Gardendistrictrentals.com

The Garden District



What's the difference?

Explaining what it means to be judicially referred or arrested

BY JENNIFER CURINGTON

The George-Anne staff

Two weekends ago police found seven dorms in Eagle Village that were unlocked and had students drinking or intoxicated inside.

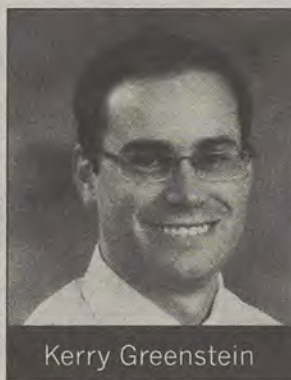
Of those seven incidents, 18 students were judicially referred while two were arrested.

The deciding factor for officers regarding whether a student receives a judicial referral or is arrested and judicially referred can vary, Chief Mike Russell, director of the Office of Public Safety, said.

It also depends on the severity of each individual situation.

"If we're doing a residence hall check and someone comes out of a room and they're holding a bottle of beer and they're nineteen and they're not overly intoxicated, that person is probably going to get referred," Russell said. "Whereas if we find someone staggering down the middle of Chandler Road that is .20[BAC] or something, that person is more than likely to be arrested."

Russell said that judicially referring a



Kerry Greenstein

“[A judicial referral] allows it to be an educational process. We know students are going to drink, we're not trying to stop that. We want students to drink responsibly if you're going to drink,”

-Kerry Greenstein,
Associate Dean of Students

student instead of arresting him or her is not being lenient, it's utilizing another option to reprimand or educate students when they would normally not be taken to jail.

Once a student is arrested by Georgia Southern University police or by Statesboro police, the Office of Student Conduct is notified and that student must then also go through the judicial referral process.

Associate Dean of Students Kerry Greenstein said the biggest difference for students that are arrested is that they have to deal with the courts and GSU instead of just a hearing through the student conduct office.

"We shouldn't look at them as criminals

and that they're bad people. Maybe they just made a bad mistake or poor choice and we can help them with that," Greenstein said.

If a student wished to show that they were not responsible for whatever situation brought them to the student conduct office's attention, he or she could present a case during a formal hearing to a board made up of faculty, staff and fellow students that have received training before becoming board members.

Greenstein said that board members are instructed to remove themselves from the hearing if they realize they know the student in question.

While the three-strike policy creates guidelines for alcohol violations, it does not apply to situations such as drug use, domestic abuse, rape or theft. Greenstein said that alcohol is the center of most cases that are referred to his office.

"[A judicial referral] allows it to be an educational process. We know students are going to drink, we're not trying to stop that. We want students to drink responsibly if you're going to drink," Greenstein said.

Most students wait a week between when the meeting is set with the student conduct office and when it will occur. For that week, the stress of possible punishments to come weighs on them while they still must go to class. This is where having an advocate becomes helpful, Greenstein said.

"When a student has been arrested, there's a lot of other stuff going on. They've got a lot of other concerns and issues," Greenstein said. "It's stressful to go through a semester and try to be successful as a student when you maybe missed a day or two because you were in jail overnight."

Greenstein said professors are not notified if one of their students is judicially referred, but parents are.

THE THREE STRIKE SYSTEM

1st Strike

1 hour group alcohol class and assessment, disciplinary probation period, letter sent to parent, fine and fee

2nd Strike

Two 1 hour individual alcohol and assessment class sessions, 6 months probation period, higher fine

3rd Strike

Suspended for a semester to a year

DaQuan Sims | George-Anne Contributor

Showing eagle spirit to Georgia representatives

BY CAITLYN OLIVER

The George-Anne staff

Georgia Southern University's Victory Eagle was under repair and receiving touch-up work before it took flight last night to Atlanta to represent GSU in the state capitol today.

Elsie Hill, professor of painting and drawing and Brandon Warnock, a junior art major, took charge of the repairs.

"Being outside, the eagle was dirty and had some sun damage. The original artist left a list of the paints she used so we recreated the colors as best as possible. We were happy to repair it," Hill said.

The sculpture was commissioned by Rose Mae Bogan Millikan in 2011 and painted by Kristina Hall, then a GSU student.

The eagle was one of three that year to be commissioned and, after being on display for the inaugural Eagle Nation on Display auction, was donated back to the university to be displayed in the Foy Building.

Originally, the Victory Eagle was part of the Eagle Nation on Parade contest.

According to their website, Eagle Nation on Parade is a public art project dedicated to the traditions and unity of the GSU campus and Statesboro area, and supports student

scholarships and research.

Today will be the first annual Georgia Southern University day in the capitol.

"It's a great way for legislators to see what we do at home and to fund higher education. It shows what the state investments are producing," Russell Keen, vice president of government relations and community engagement, said.

The point of the event in Atlanta is to show the representatives the spirit of GSU because many of them are unfamiliar with the university and what it has to offer.

"Most universities like UGA and Georgia Tech already have a represented day in the capitol. This will be the first for Georgia Southern University," said Suzanne Tatum, assistant to the vice president of government relations and community engagement.

The event will play host to approximately 70 people from GSU, including Dr. Keel, most college deans and many students. The university mascot, Freedom, will make the trip as well.

Keen said having the Victory Eagle in Atlanta at Georgia Southern's day in the capitol says 'We are the eagles' and ties in perfectly with the idea of freedom and our government. It says a lot about our country and state and will have an additional impact to the other ways the university will be presented.



Courtney Bonnaci | The George-anne

Elsie Hill (Above and Left), professor of painting and drawing, works to repair and touch-up the Georgia Southern University's Victory Eagle. The eagle was commissioned in 2011 and is in Atlanta today for the first annual Georgia Southern University day in the capitol.





The Sir Shop
Statesboro Mall
912.764.6924






Advertisement

WEEKLY BUZZ

A weekly calendar listing sponsored by The Division of Student Affairs and Enrollment Management

Feb. 06- Feb. 12

THURSDAY 2.06.2014

CRI

Lifeguard Class begins!

Interested in becoming a certified lifeguard and applying for a job at the RAC? Registration for this class will be accepted until this day.

For more information visit <http://recreation.georgiasouthern.edu/aquatics/aquatic-programs/american-red-cross-training/>

FRIDAY 2.07.2014

CCE

Rainbow Connection LGBTQ Therapy Group

with Dr. Anderson & Ms. Rickard - Fridays 2-3:30pm

For gay, lesbian, bisexual, and transgendered individuals, or those questioning their sexual and/or gender identity. The group addresses general issues like depression, anxiety, loneliness, and family concerns as well as LGBTQ-specific concerns such as coming out, homophobia, internalized homophobia/transphobia, genderism/heterosexism, and managing relationships in a predominantly heterosexual world.

UPB

Late Night Movie: "Last Vegas"

Friday, February 7th, 6 PM and 8 PM
Location: Russell Union Theater

UPB invites all students out for a free showing of the hit comedy film Last Vegas, starring Michael Douglas, Robert De Niro, Morgan Freeman, and Kevin Kline on Friday, February 7th. The movie will be shown at 6 PM and 8 PM in the Russell Union Theater.

SATURDAY 2.08.2014 SUNDAY 2.09.2014 MONDAY 2.10.2014

CRI

Registration Opens: Softball & Tennis Singles

Get your teams together for Softball and/or Tennis Singles. Choosing days for your team to play are first come, first serve!

CRI Job Fair begins

Check out the student employment website to apply for various jobs at the RAC and the Georgia Southern Golf Course.

Massage Special: \$5 off (2/10-2/14)

Inner Tube Water Polo Free Play, 8pm

Join in on a great game of water polo! No registration necessary.

If you aren't familiar with the game, watch this video to get a better idea <http://www.youtube.com/watch?v=zj8mRqXBUgw> ! For more information visit <http://recreation.georgiasouthern.edu/aquatics/special-events/polar-bear-plunge/>

TUESDAY 2.11.2014

UPB

UNplugged

Tuesday February 11th from 6:30 PM to 8:30 PM
Russell Union Commons

The University Programming Board invites you to our weekly UNplugged Series! Looking for something fun to do on campus? Want to watch some live performances? Maybe even want to try out that new song of yours? Georgia Southern UNplugged is a coffeehouse series/open mic night sponsored by the University Programming Board held every Tuesday at 6:30 PM in the Russell Union Commons. Come and see the talented students of the Georgia Southern community showcase their skills. BRING YOUR EAGLE ID! Performing? Sign up early.

WEDNESDAY 2.12.2014

CRI

Inner tube Water Polo Free Play, 8pm

Join in on a great game of water polo! No registration necessary.

Lead Clinic

These clinics are designed to help you learn lead climbing and belay technique. Attendance to the clinic is required for anyone wishing to lead climb at the RAC. Participants must be currently belay certified (for at least 2 months) and be able to climb the 5.9 test out at the RAC wall cleanly. For more information, visit <http://recreation.georgiasouthern.edu/southern-adventures/skills-clinics/climbing-clinics/>

CCE

Interpersonalities

Group 1: with Dr. Carlson & Dr. Sweeney - Thursdays 3:30-4:45pm- starting 2/13/2014

Group 2: with Dr. Anderson & Mr. Martin - Monday 10-11:30am - starting 2/25/2014

For students who would like to work on better understanding their own personality & how they interact with and relate to others. Particular issues addressed include feelings, thoughts, mood, relationships & family of origin dynamics.

Military Group

with Dr. Sweeney & Ms. Cooper - Fridays 2:45-4pm - starting 2/14/2014

For military veteran students who have been exposed to combat trauma. We will discuss general issues such as depression, anxiety, stress and anger management, along with issues specific to trauma exposure.

CRI

Belay Clinic

Register now to participate in the belay clinic on February 18 at 8pm. This clinic will help prepare you for leading safe, ethical, and enjoyable rock climbing trips. Mark your calendar! To register stop by the Southern Adventures office and for more information visit

<http://recreation.georgiasouthern.edu/southern-adventures/skills-clinics/climbing-clinics/>

CPR Adult/Child/Infant with AED

Register now for the CPR Adult/Child/ Infant with AED starting Tuesday, February 18, 5-9pm. After successfully completing this class you will receive an American Red Cross certification in CPR and AED that is valid for 2 years! Register for this class through member services.

For more information visit <http://recreation.georgiasouthern.edu/aquatics/aquatic-programs/american-red-cross-training/>

First Aid

Register now for First Aid starting Wednesday, February 19, 5-8pm. After successfully completing this class you will receive an American Red Cross First Aid certification that is valid for 2 years! Register for this class through member services.

For more information visit <http://recreation.georgiasouthern.edu/aquatics/aquatic-programs/american-red-cross-training/>

Student Affairs
Enrollment
Management

Brought to you by Georgia Southern University VALUES. Georgia Southern V.A.L.U.E.S. is the culture shared by our students, faculty, and staff. We endeavor to share our V.A.L.U.E.S. inside and outside of the classroom with faculty, staff, students, alumni and all other community members. In order to produce productive citizens with an informed set of ethics and community standards as well as create an environment of respect and civility, we pledge to live by our V.A.L.U.E.S.

New Barefoot Athletics in the 'Boro

Fashion

BY MEAGAN GREENE

The George-Anne staff

Straight out of Texas and planted directly beside Dingus Magee's Restaurant is a business that Statesboro has never seen before, Barefoot Athletics.

Barefoot Athletics sets out to cater to college students, providing clothes that can satisfy most interests.

Company owner Matt Copeland said, "We've got stuff you can wear to weddings, stuff you can wear to games, stuff you can wear to class, from basically casual college to whatever you want to do."

Outfits that can be pieced together with simple jeans or leggings for girls include well-knitted, neutral-colored sweaters and glittering fashion tanks, along with Barefoot tanks and t-shirts.

This shop sells beanies, clutches, jewelry, and scarfs that will match with any of their sweaters, t-shirts, and hoodies, Barefoot brand or Georgia Southern University attire.

For men, there are Under Armour hoodies, retro beer tees, and fishing shirts and polo's with the GSU logo on the pocket.

Along with men's apparel are hats that can accent any outfit with a GSU logo on the front.

"Our long-term goal is to build a good relationship with the University and hopefully generate a lot of revenue for them. Ten percent of revenue goes to the University," Copeland said.

Since opening day Barefoot has given free t-shirts to the first 1,000 people that have come in. They offer deals like this frequently to maintain loyalty from their customer base. Barefoot will be soon be giving a free t-shirt with any purchase of \$70 or more.

Barefoot Athletics opened on Jan. 17. While this company may be new to Statesboro, they have spent many years acquiring a fashion icon status in other cities across the southeast, primarily towns in their home state of Texas.

"Barefoot started up 13 years ago. We just opened up our seventh store, which is this one, and we're opening three more this year, possibly one more here in Georgia," Copeland said, "We looked all over the South. I've been to 28 colleges over the last 6 months and this one stood out by far,"

"It's kind of a different take, different from campus stores," Copeland said.



Courtney Bonacci | The George-Anne

Barefoot Athletics is an athletic apparel store based in Texas. Their line is spreading across the Southeast, and the Statesboro location beside Dingus Magee's is their most recent addition.

With the walls lined with antique pictures and moose heads, the atmosphere brings a unique, outfitter feel to the GSU campus.

"Every college that we're at is the same kind of small-fee college. We go to colleges that don't have anything like this," Kayla Menie, retail manager, said.

"We're not just a store here hanging out by your campus, we're trying to get involved. I'm trying to meet everybody and have emailed organizations trying to set up events," Menie said.

Barefoot Athletics apparel has had previous experience in other towns, doing events to show off their designs.

"We always try to be next to a bar because we partner with them for a bunch of events.

Last year in Huntsville, TX, we have a bar that's between us and a parking lot, we fenced in the whole thing for Marti Gras," Copeland said.

"We have another deal that we do with 49,000 people with this Larry Joe Taylor Music Festival, we party it up there and make a lot of money while doing it, it's good and that's what America is about," Copeland said.

With five stores open in Texas, one just recently opening in Conway, Ark., and now making its way to Statesboro, Barefoot Athletics has made a point to get its name out there to the GSU campus.

Copeland said, "It was a good opportunity, we are excited about it. This is a good environment. It's fun. That's what it's supposed to be. It's college."

The Buzz List

■ Janelle Evans'

baby bump is getting bigger and bigger with her second



Kimeko

child with MMA fighter boyfriend Nathan Griffith. They've decided to go with the name Kaiser for the kid, Kaiser, like Kaiser roll.

■ Kanye West and his baby mama

have decided to push back their wedding date. Maybe it's because she's started rethinking the whole bride in white thing since this is wedding three and all.

■ Selena Gomez went to rehab

last month and is blaming ex-boyfriend Justin Bieber. She was admitted for addiction to alcohol, pot and prescription Ambien but if she told the truth, it would be an addiction to being a Belieber.

■ Miley Cyrus is blaming her poor

relationship skills and split from Liam Hemsworth on porn and romantic comedy movies. She can also blame those things for her fashion sense and thing for nudity.

■ Katy Perry and boyfriend John

Mayer dropped thousands on strippers after the Super Bowl last weekend. Weird. John Mayer seems like the type to dance for the strippers instead of the strippers dancing for him.

Information compiled by Arts & Entertainment Editor Kimeko McCoy and Arts & Entertainment Chief Lilly McCann from perezhilton.com and TMZ.com.

'BORO **B** BEAT

Happy Hour

THURSDAY

Dingus Magee's
 - \$1.75 singles &
 \$3.50 bubbles all
 day/ everyday
 - Sumilan band

Chili's
 - \$2.99 margaritas
 all day/ everyday &
 2 for \$20

El Sombrero
 - \$2.75 domestic
 beer

GATA's
 - 5-8 happy hour
 - Steriotype 5-9

Gnat's Landing
 - Happy hour 5-7 &
 \$3.50 double wells
 \$3 bombs

Fuzzy's
 - 2 for 1 margaritas

Millhouse
 - \$5 house pitcher

FRIDAY

Dingus Magee's
 - \$1.75 singles &
 \$3.50 bubbles all
 day/ everyday
 - Hell Hounds

Chili's
 - \$2.99 margaritas
 all day/ everyday &
 2 for \$20

El Sombrero
 - \$3 Sex on the
 Beach

GATA's
 - 5-8 happy hour
 - The Orange
 Constant

Gnat's Landing
 - \$10 well liquor
 pictures

Loco's
 - \$4 Crowns & \$3
 sangria

South City Tavern
 - \$3 Champagne
 cocktails

SATURDAY

Dingus Magee's
 - \$1.75 singles &
 \$3.50 bubbles all
 day/ everyday

Chili's
 - \$2.99 margaritas
 all day/ everyday &
 2 for \$20

El Sombrero
 - \$3 Lime Margaritas

GATA's
 - 5-8 happy hour
 - John Belt

Gnat's Landing
 - \$10 well liquor
 pictures

Loco's
 - \$6 Miller

Applebee's
 - \$3.75 Drippy
 happy hour

PLANNING ON
ADVERTISING?

CONTACT:

ads1@georgiasouthern.edu

Live Music

Special Events

SATURDAY

Dingus Magee's
- \$1.75 singles &
- \$3.50 bubbles all
day/ everyday

Chili's
- \$2.99 margaritas
all day/ everyday &
2 for \$20

El Sombrero
- 3 Lime Margari-

ATA's
- 8 happy hour
on Belt

Gnat's Landing
- 10 well liquor
atures

co's
- 5 Miller Lite

plebees
- 3.75 Drinks
happy hour

SUNDAY

El Sombrero
- \$3 Tequila

Gnat's Landing
- Happy hour

MONDAY

El Jalepeno
- Happy hour 3-6
p.m. well drink
- \$1.99 margarita
specials

TUESDAY

Dingus Magee's
- \$1.75 singles &
- \$3.50 bubbles all
day/ everyday

Chili's
- \$2.99 margaritas
all day/ everyday &
2 for \$20

El Sombrero
- \$3.50 spider bite

Gnat's Landing
- \$2 domestics
- \$3.50 doubles
- Trivia

South City Tavern
- \$3 Champagne
cocktails all day
happy hour 4-10
p.m. \$2 wells \$1
off everything else

WEDNESDAY

Dingus Magee's
- \$1.75 singles &
- \$3.50 bubbles all
day/ everyday
- DJ at night

Chili's
- \$2.99 margaritas
all day/ everyday &
2 for \$20

Gnat's Landing
- \$9 Domestic buck-
ets \$3.50 double
welsl

Loco's
- \$3 absolute & \$1
pbr
- Trivia @ 9

PLANNING ON ADVERTISING?

CONTACT:

ads1@georgiasouthern.edu

International student shares his unique culture

BY ERINN WILLIAMS

The George-Anne staff

A fusion of two distinctly different cultures is just one of the things that one Georgia Southern University student is bringing to the community.

Freshman engineering major Insu Yun Lee is an international student of Korean descent from Tegucigalpa, Honduras.

"My parents are from Korea and they moved to Honduras because my mom was an accountant and her job opened a new branch there, and also because Honduras at that time was a good place to live," Yun Lee said.

His life has been embedded with Latin culture, Korean culture and Asian culture as a whole and he speaks English, Spanish and Korean.

"Because I have a blend of both cultures I tend to lean more into one depending on what I am doing. When something is about a Latin country I think in the Latin way of mind and become very emotional. I think like a Korean when I do things concerning family," Yun Lee said.

GSU has a large number of international

students from Honduras and surrounding Latin-American countries.

"I came to Georgia Southern because of my counselor in high school. He told me about the transfer program for engineering majors which would allow me to come here and go to Georgia Tech in two years," Yun Lee said.

"My high school and Georgia Southern also have a very good relationship with each other and I had a lot of friends and people I knew who were already here," Yun Lee said.

Latin and Asian cultures are very diverse and the difference becomes even greater when they are compared to American culture.

"The way people in America think is very different than the way we think back home. Americans tend to over-think things and complicate them," Yun Lee said. "Here, I find that there are a bunch of different races. There are white people, black people, and Asians. In Honduras there is not that much racial diversity and there is not that big of a difference between people."

On campus Yun Lee is involved with many organizations and clubs including International Club, Association of Latin



Insu Yun Lee is one of Georgia Southern University's many international students hailing from Tegucigalpa, Honduras. Yun Lee speaks English, Spanish and Korean.

American Students and Archery Club.

Yun Lee said, "Before coming here I had already been practicing archery. It has been one of my favorite hobbies since I was

little. When I got to campus I started asking around about it and I found out that there is a club. It's nice to be able to find something to do on campus that I love."



Available on the App Store

ANDROID APP ON Google play

FREE BURRITO

WITH PURCHASE OF LARGE DRINK

ON THE MOE'S APP OR MOES.SPLICKIT.COM

GET THE
PROMO CODE
BY TEXTING:

MoesFreestyle
to 81018



OFFER VALID ONLY ON THE MOE'S APP OR MOES.SPLICKIT.COM FROM 2/4 THROUGH 3/2, 2014. MOE'S STATESBORO LOCATION ONLY. PROMO CODE AVAILABLE AT FACEBOOK.COM/MOESBORO. NOT VALID WITH ANY OTHER OFFER. ONE PER PERSON.

FACEBOOK.COM/MOESBORO

Critically acclaimed poet to speak at GSU

BY KAITLYN GLENN

The George-Anne staff

The Department of Writing and Linguistics at Georgia Southern University has partnered up with the Georgia Poetry Circuit to host critically acclaimed poet Andrew Hudgins.

Andrew Hudgins' poetry is very accessible, full of dark humor and often deals with his Southern upbringing, which students will relate to and appreciate," said Eric Nelson, professor of creative writing and coordinator of the event.

In Hudgins' most recent work, a memoir titled "The Joker," he explains how humor was a big part of his life while dealing with life's trials and tribulations. He attributes his unique style of writing to growing up in as what he describes as an unhappy home.

The Georgia Poetry Circuit is an organization of ten schools that brings

nationally recognized poets to Georgia to give a reading and workshop to each of the member schools. GPC's mission is to support American poets at all stages of their careers and to foster the appreciation of contemporary poetry.

Hudgins was born in Killeen, Texas, in 1951. He's from a military family that moved around the American South for most of his childhood. Eventually he attended Huntington College and the University of Alabama. Later on he earned his MFA from the Iowa Writers' Workshop in 1983.

"For those students who have never been to a poetry reading, this one will show them that poetry is not only painless, but also enjoyable and inspiring," Nelson said.

The reading is free and open to everyone tonight at 7:30 p.m. in the Allen E. Paulson College of Engineering and Information Technology, room 1005.



Hudgins has been awarded many prestigious awards for his work including a Pulitzer Prize for "Saints and Strangers," and a Hanes Poetry Prize for "After the Lost War."

GSU gets a glimpse into the lives of American POWs

BY ERINN WILLIAMS

The George-Anne staff

The Georgia Southern Museum is bringing a heartfelt exhibit that chronicles the heroic lives of American prisoners of war to the Statesboro community.

The "Victory from Within: The American Prisoner of War Experience" will be on exhibit in the museum from Feb. 10 to June 1.

The traveling exhibit is from Andersonville National Historic Site, which is the only park in the National Park System to serve as a memorial to all American prisoners of war.

"We are excited to get this traveling exhibit. Every now and then we get the opportunity to bring one here," Brent Tharp, museum director, said.

"Victory From Within: The American Prisoner of War Experience" includes interviews, photographs and artifacts that convey the experiences of POW

“

The exhibit looks at some of the politics but really tries to focus on the experience that they [POWs] went through and the feeling of not knowing what could happen and where you would be going.”

”

-Brent Tharp

Museum Director

capture, prison life, freedom and their friends and families back home from the American Revolution to the present.

Tharp said, "The exhibit looks at some of the politics but really tries to focus on the experience that they went through and the feeling of not knowing what could happen and where you would be going."

The exhibit is 1,200 square feet and the organization of the artifacts is based

on the National POW Museum in four themes that include "Capture," "Prison Life," "Those Who Wait" and "Freedom."

"The reason we are bringing it to Georgia Southern is because of student interest. Many students have been doing continuous research at Camp Lawton and the POWs that were there. It is still a very critical issue that resonates with the public today," Tharp said.

It aims to introduce the public to

the meaningful stories of prisoners of war and for students especially to understand and appreciate the sacrifices that were made by American POWs.

"I visited the Andersonville National Historic Site when I was in high school and the whole experience changed my thoughts on war and POW camps. I think that it's good for us to learn about war since we live in a society where war is constantly on the forefront of our minds," Jessica Shanken, sophomore international studies major, said.

"It's a great chance to learn about the past and grow from it and to appreciate what many had to go through for us to live the lives we live. It's great that the museum is able to bring these opportunities to students like myself," Shanken said.

It is \$2 per person and free to all museum members, GSU students and children less than 3 years of age.

CLASSIFIEDS

16 Thursday, February 6, 2014

The George-Anne

Miscellaneous

Scuba diving class available. 250 for open water certification. First dive will be at Ginnie springs. Great idea for spring break or the rest of your life. Certification never expires. Class will be in February. Email as07739@georgiasouthern.edu for more information.

iCompute Service Repair is a small customer friendly team of college students majoring in information technology and other related fields, specializing in repairs in a wide variety of devices including iPhone's, iPad's, Galaxy's, Notes, and laptops. slogan "Premiere Smartphone and Laptop Repair Service in Statesboro, GA"

Jobs

Babysitting for Haiti! I am a babysitting to earn money for a mission trip to Haiti. I charge 5/ kid an hour. For more info email me at crystal_palmer270@yahoo.com.

For Sale

I have a late 08-09 15" Macbook pro. 250GB w/ 4GB Ram upgrade plus new battery and case 15 inch. 650 obo. 770-885-5786

FLEETWOOD MOBILE HOME For Sale. 2bed/2bath 14x65 1987. On rented private lot in Metter. Can stay or be moved. Includes central air unit, new dishwasher, fridge, stove, steps, & underpinning. REDUCED TO \$10,500 OBO Cash. Call/Text Keith 912-314-0997

42" Sony big screen TV comes on its own stand with glass cabinets. Remote included! (\$140 o.b.o) *Pick up only!!! 10" Angel eyes True Blue Halogen fog lights. Brand new/ never used in original package! (\$120 o.b.o). Alpine car radio with remote. CD/mp3/radio and XM ready! (\$20) (Iso mount kit with storage tray available.) (\$10) For pics or more info please call/text. 678-480-8927

Housing

Hello fellow Eagles! My name is Chinonya Obialo (Chi Chi) I recently signed a lease for a B2 two-bedroom at Monarch 301 for next year starting August 1, 2014! However, I am transferring and need someone to take over my lease! If you and a friend are looking to move to Monarch 301 next year, contact me by phone 770-402-0313, or email co01289@georgiasouthern.edu Thank you.

I am looking for someone to take-over my lease at The Grove. It is a 3 bed 3 bath apartment! It is available for move-in ASAP!! I will pay all of your move-in fees which is \$350!! It is the biggest room and bathroom in the apartment! Email me atee00378@georgiasouthern.edu

CBeech Townhomes looking for Sublease. CHEAP RENT + utilities= \$465 average. Turbo Internet, Huge Bedrooms and Bathrooms, 2 very friendly Senior roommates. Please Contact Tommy Dean @ 706-993-0294 if interested!

2,3,4,5,6,7 Bedroom houses for rent. Available August 1st. Immediate repairs made. Contact Dr. Hood at 912-682-7468.

Male sublease wanted at Hawthorne ASAP! 2 bed/2 bath, washer/dryer unit, Big bedroom, 1 roommate, a mile from campus, single-level, poolside! I'm looking to move out before next semester. \$370/month+utilities if interested text/call 770-480-0181

Apartment available for sublease in 111 South. 4bd/4bth. Largest room in apartment. Huge bathroom and walk in closet. View of entire neighborhood, pool and fire pits. Access to 24hr clubhouse, lazy river and many other amenities. All for only \$444/month! Available for IMMEDIATE MOVE IN. Message me or comment if interested. Can move into brand new apartment for no extra cost. kw02345@georgiasouthern.edu

Miscellaneous

"Are you interested in playing club soccer? We are looking for committed players that have experience. Tryouts for this semester will be held the 3rd week of classes. Come find us at the Club Sports Fair or email us to extend your interest and get more information! GSUwomen-sclubsoccer@gmail.com"

Welcome Back, Students! Brainiac Studios will be accepting short stories to be considered for our "Statesboro Authors Spotlight" compilation. If you have that knack for great storytelling, send us your work and we will run it through our handpicked critics. If your work is chosen to be included in our compilation, we will publish and distribute the work absolutely free. Each chosen author will be fully credited and will even have a short bio included within the work. For details, you can head to <https://www.facebook.com/brainiacstudios.usa> where you will find a PDF with everything that you need to know. We look forward to seeing what Georgia Southern Writing can do!

Housing

Looking for someone to sublease my apartment in the Garden District for 2 months this summer. Rent is \$320 + Utilities. Usually around \$400. 3 bed/3bath, washer and dryer, and the largest room in the apartment. I am very flexible with payment, and am willing to work with you. For any questions contact Gil at 404-452-7457 or email at jg03784@georgiasouthern.edu.

First month FREE. Furnished room/bath, walk-in closet, The Woodlands Apartments. Female only. Walk to class. Available 12/14/13 - 7/30/14. \$430 plus utilities. C 770-873-5102 hm01382@georgiasouthern.edu

One11South newest apartment complex at Georgia Southern. Two rooms available for sublease. Rent is \$354 with utilities included. If you have any question call 678-571-5795

One bedroom/one bathroom (and private downstairs living room) in a 3 bed/3.5 bath townhome in Copper Beech. Rent is \$455/month + utilities, includes extended cable and high-speed internet. Washer and dryer in unit. Access to new gym, pools, and hot tub. Call or text Alex at (912) 678-9576.

Have something to get rid of?

Make some money
by putting it in
The George-Anne's
classifieds ads.

FREE to students, faculty and staff!

PUZZLES&COMICS

www.thegeorgeanne.com

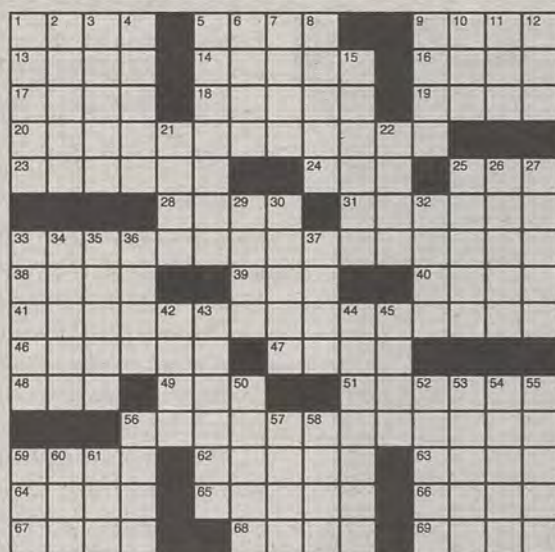
Thursday, February 6, 2014 17

Los Angeles Times Daily Crossword Puzzle

Edited by Rich Norris and Joyce Lewis

ACROSS

- 1 Part of PGA: Abbr.
- 5 Desert tableland
- 9 Character weakness
- 13 Chase away, as a fly
- 14 Plot surprise
- 16 "Queen of Country" McEntire
- 17 A psychic may read yours
- 18 Yemen's capital
- 19 With 8-Down, really simple
- 20 One who can talk you to sleep
- 23 Pellet shooter
- 24 AFL partner
- 25 Madrid Mrs.
- 28 Tabula ____ blank slate
- 31 "That's enough out of you!"
- 33 Audible sign of hunger
- 38 Cruising on the briny
- 39 Org. offering motel discounts
- 40 Chat room "Here's what I think..."
- 41 Flappers' decade
- 46 Present from birth
- 47 Salinger title teenager
- 48 Court divider
- 49 "Criminal Minds" network
- 51 Bible book of 150 poems
- 56 Weather event where you'd hear the starts of 20-, 33- and 41-Across
- 59 It might begin, "Knock knock"
- 62 Word after maternity or shore
- 63 Prefix with dextrous
- 64 Allies' opponents
- 65 City that inspired van Gogh
- 66 Banister
- 67 Old wives' tale
- 68 Lions' homes
- 69 "Bus Stop" dramatist William



By Lila Cherry

DOWN

- 1 Critters' rights gp.
- 2 Lewis with Lamb Chop
- 3 From the sun
- 4 Asian menu assurance
- 5 Where Moses received the Commandments: Abbr.
- 6 Actor McGregor
- 7 Croon a tune
- 8 See 19-Across
- 9 At no cost
- 10 Grazing area
- 11 Middle muscles
- 12 Method
- 15 Follower of Lao-tzu
- 21 Throw hard
- 22 -Rooter
- 25 Hindu guru
- 26 Rolling in French euros
- 27 Pal of Porthos
- 29 Unexpected problem
- 30 Colorful marble
- 32 Neglect to include
- 33 ____ to go: ready for action, in dialect
- 34 Me.-to-Fla. highway
- 35 Intended

Last Edition's Puzzle Solved

SHAWN TACTLESS
MOSAIC AMARILLO
AMIGLADTOSSEYOU
RED STUARTS SET
TREF ANSEL MESH
ISRESE
STATEASSISTANCE
COSMICRADIATION
UNSENTIMENTALLY
TENNESSEETUXEDO
TRUHEE
CATS READESTEP
OMY AGENDAS OAR
POPEBENEDICTXVI
AVERMARIARABIES
YEASAYER BANDS

- 36 Old-time actress Theda
- 37 Tree cutters
- 42 Restless desire
- 43 Cosmic cloud
- 44 Catherine the Great, to Russia
- 45 Eliot of the Untouchables
- 50 Wooden Mortimer
- 52 Pong producer
- 53 Fictional salesman Willy
- 54 Boss, slangily
- 55 Photographer's request
- 56 New Age musician John
- 57 Chip's chipmunk pal
- 58 Neck and neck
- 59 Traffic trouble
- 60 Natural Skin Science company
- 61 First-aid aid

IT'S TAX TIME ACROSS THE GALAXY

YOU CAN DEDUCT THE VALUE OF ITEMS DONATED TO CHARITY. DID YOU DONATE ANYTHING?



THERE WAS THAT PLANET OF POOR REBELS! REMEMBER THOSE MISSILES I DONATED?



IT WAS MORE LIKE "LAUNCHED."

PO-TAY-TO, PO-TAH-TO.



Calamities of Nature by Tony Piro

I'VE JUST HAD AN EPIPHANY! I'M LEADING SUCH A PATHETIC LIFE!!!



ALL I DO ALL DAY IS READ COMICS, PLAY VIDEO GAMES, AND WATCH SUPERHERO AND ANIMATED MOVIES.



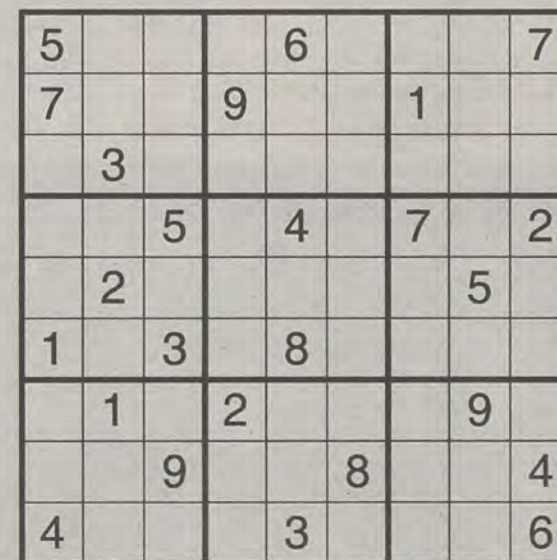
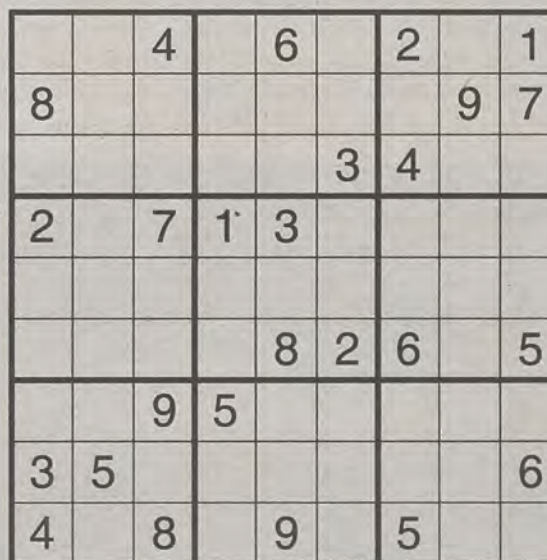
MAYBE I NEED TO DO MORE--LIKE RAISE SOME KIDS.



IS THAT SO YOU CAN HAVE A MORE FULFILLING LIFE?



HECK NO! IT'S SO I CAN DO ALL THE SAME STUFF, BUT JUSTIFY IT AS "QUALITY TIME."



THE GEORGE-ANNE.COM



SEE MORE OF THE GEORGE-ANNE
HTTP://WWW.THEGEORGEANNE.COM

'Labor Day' love story impresses in February

Film Review



BY LAURIANNA CULL

The George-Anne staff

"Labor Day" is not action packed, comedic or sexual. There are no explosions or heart-stopping moments. So, why go and see it?

"Labor Day" is a movie that focuses all of its energy on telling the story rather than distracting its audience with extravagant locations, costumes and special effects; not to say that the movie looks cheaply made.

The movie is quiet, subtle and simply lovely. It is not the typical Hollywood love story. It does not have you at hello and the actors do not kiss in the rain.

"Labor Day" tells the story of reclusive single mother, Adele, played by Kate Winslet ("Titanic") and her encounter with escaped convict Frank, played by Josh Brolin ("No Country for Old Men"), through the eyes of Adele's 13-year-old son, Henry ("Gattlin Griffith.")

As Tobey Maguire ("Spider Man")



narrates the story as the adult version of Henry, the audience is transported back to Labor Day weekend 1987 where Henry and his mother are shopping for new school clothes. They then encounter Frank, who is wounded from his escape, and asks to be

taken to the family's home.

Once at the house, it becomes clear that Frank is not a dangerous man and Adele and Henry urge him to stay until his wounds heal. As Frank stays over the holiday weekend, he begins to fill the void of husband and

father figure and, cheesily enough, heals the emotional wounds of the broken family.

The entire cast, especially Kate Winslet, give very moving performances. The beauty in this movie is definitely in the subtleties – which are Winslet's forte. She does not exclude the minor differences and progression of her character, Adele, the longer she spends with Frank.

The casting in this film was phenomenal, even down to young Frank, played by Tom Lipinski, who bears a striking resemblance to Josh Brolin.

The only casting that seemed "off" was that of the three actors chosen to play Henry throughout his life. While they all gave great performances, Gattlin Griffith ("Changeling"), Dylan Minnette ("Let Me In"), and Tobey Maguire look absolutely nothing alike.

"Labor Day" can be a bit slow-moving at times and, as mentioned before, there are no action sequences or even much comedy. But if you are in the mood for a genuine love story as we approach Valentine's Day, this is the film for you.

Tired of apartment life?

Escape to The Islands!

104 Aruba Avenue
Statesboro, GA 30458

Just one mile from Georgia Southern

Stop by for a tour today!

NOW LEASING



GSU prepares for rematch against Wofford College

Men's Basketball (11-12)

BY ROBERT HUITT

The George-Anne staff

Payback is the name of the game tonight as the Georgia Southern University men's basketball team looks to avenge a 64-74 loss to the Wofford College Terriers two weeks ago.

The Terriers (11-10, 6-3 Southern Conference) are riding a four-game winning streak and are stifling opposing offenses in the process. The Terriers have held their last four opponents, including GSU, to an average of 58.5 points per game (ppg) on 39.1 percent shooting.

"They're the best defensive team in the league, so we knew points were going to be tough to come by," GSU Head Coach Mark Byington said.

The Eagles have dropped the last three meetings against Wofford, but believe a more patient offensive approach will be pivotal in this matchup.

"We got to value each possession and understand we're not going to have career-highs," Byington said. "We got to have more patience and at the same time understand that we can't give up easy baskets because they're so tough to score against."

Junior guard Karl Cochran and sophomore guard Spencer Collins may also present some challenges for the Eagles. Cochran leads the Terriers in scoring at 14.6 ppg with Collins following close behind at 14 ppg.

"Karl Cochran is one of the best guards in the league," Byington said. "He's an extremely quick, very explosive scorer. And with Spencer Collins, he's a guy who can slash to the basket and is a very good-sized wing."

The duo of Cochran and Collins combined to score 43 points to lift Wofford over GSU on Jan. 23. The Eagles know they have to do a better job containing them this time around.

"Both of them are talented players, talented guards, and it definitely will be a focal point of ours to try to stop those guys," Byington said.

The Eagles have won consecutive games for the first time since defeating Brewton-Parker College and South Carolina State University on Dec. 4 and Dec. 7, respectively.

Redshirt junior Jelani Hewitt is starting to heat up offensively again after failing to reach the 20-point mark during GSU's three-game losing streak. He has scored a combined total of 45 points in the last two games.

Freshman forward Kyle Doyle has been showing improvement as the season progresses, especially on the boards. He recorded his second double-double of the season in Saturday's victory over the University of North Carolina at Greensboro. Doyle was named SoCon freshman of the week for his efforts last week.

"I want to keep establishing toughness," Byington said. "It's an easy thing to say, but they got to play with toughness, and that's mental and physical."



Freshman forward Kyle Doyle (35) was named SoCon Freshman of the Week after receiving his first two starts of the season, in which he totaled 19 points and 24 rebounds, helping the Eagles to go 2-0 last week.

Ryan Woodham | The George-Anne



Woodland Square • 721 S. Main St.
Statesboro, GA • 912-243-9066

Eagle Express
card now accepted!

Under the Spotlight: Angel Matias

Matias to play vital role for GSU as season progresses

BY ROBERT HUITT

The George-Anne staff

Junior forward Angel Matias' love for the game developed in Puerto Rico, and he has brought a distinct style of play with him to the Georgia Southern University men's basketball team.

Matias was born in Bayamón, Puerto Rico, but calls San Juan home. He was introduced to the game of basketball at a young age and seized the opportunity to play ball in the United States.

"I played basketball in Puerto Rico," Matias said. "I've been playing basketball since the fourth grade. I had the chance to come to the United States and try, so I took it."

Matias left Puerto Rico to play his senior year of high school at Arlington Country Day School in Jacksonville, Fla. After high school, he attended Mississippi Gulf Coast Community College (MGCC) where he helped win the state championship during the 2011-2012 season.

His experience playing in this country opened his eyes as to why the U.S. is such a powerhouse in the sport of basketball.

"We don't have the facilities at home [in Puerto Rico] to practice every day like we do here [in the U.S.]," Matias said. "That's why I feel like the United States is so successful because they prepare every day."

After transferring from MGCC, Matias landed with the Eagles and has carved out an important role on the team this season. Anyone who has been to a men's basketball game this year has probably seen No. 13 diving on the court for loose balls and wrestling rebounds away from opponents.

"The first thing that comes to mind with Angel is toughness," GSU Head Coach Mark Byington said. "He's our best rebounder, and it's admirable for him because he's only six-foot-three. He just goes after everything and tries on every possession."



Brandon Warnock | The George-Annew

Junior forward Angel Matias (13) is a beast on the boards despite his lack of size, as he leads GSU in rebounds per game averaging 6.9. Matias transferred from Mississippi Gulf Coast Community College to play for GSU.

Matias, listed at 6-foot-4, has logged the majority of his minutes this season at power forward and is often matched up against taller opponents. Despite being at a height disadvantage on a nightly basis, he leads the team with 6.9 rebounds per game.

Matias is so effective on

the glass because of his body positioning as the shot is in the air and his relentless pursuit once the ball ricochets off the rim.

"Whenever I see somebody shoot, I just go and box out and just try to get a rebound," Matias said.

Although Matias is known for his rebounding, he averages 7.9

points per game (ppg) and has flashed his scoring ability on a few occasions this season. He scored a career-high 22 points on 8-of-12 shooting against South Carolina State University on Dec. 7.

Against Furman University on Jan. 16, Matias scored 21 points on 8-of-15 shooting. He drained

two three-pointers that shifted the momentum of the game as GSU rallied to send it into overtime and eventually close out the victory.

"I just like to do what I can to help my teammates," Matias said. "Whenever I have the chance to score, I go and score. But it's not my first option."

Signing, from page 1

Moving into the new FBS division, Fritz made sure to recruit plenty of freshmen to carry GSU through the first years of new competition. But he also recruited three juniors and a sophomore from different junior colleges.

"Our 2014 signing class represents a lot of different areas; one is young men who had prior commitments. I have a lot of experience because I was also a junior college head coach, and had young men getting recruited by institutions, four-year institutions," Fritz said. "The piece of advice I always gave them was to make sure you always sign somewhere that you're really worried about the university, not the person that is recruiting you."

Fritz had to move quickly in order to cover all the recruiting ground he wanted to, but it should be mentioned that he was not alone in that effort. Before former head coach Jeff Monken left, he had at least ten men committed and ready to play for the Eagles as well as three players who committed mid-semester.

"We wanted to make sure these guys that were committed to us when we came here knew that we were committed to them as well," Fritz said. "I think the previous staff did a good job with evaluation and information gathering, as far as their background's concerned and different things like that. Quite a few of these student-athletes have been to Georgia Southern for games and have also been to one-day camps."

Along with the football team gaining these 17 new players, new head coach Fritz is gaining a lot of information himself. Moving up to FBS with a new coach, new players and a new stadium is a lot to immediately grasp.

"We had to learn about Georgia Southern. Our first weekend we had recruits in, a lot of our staff went through the visit just like the student-athletes did," Fritz said. "I think something that was interesting was that after the weekend got over, I called my wife and said this is even more of an impressive university than I first thought from going through the interview process."



Head Coach Willie Fritz announced Georgia Southern's first FBS/Sun Belt Conference signing class yesterday at the Parrish Football Center. The signing class totaled 17 players.

Andy Morales | The George-Anne

Round Robin to kick off softball season

Softball

BY HAYDEN BOUDREAUX

The George-Anne staff

The Georgia Southern University softball team begins its season this weekend with the Eagle Round Robin. GSU will take on the University of Tennessee, Oakland University and Northern Colorado University.

With the possibility of being the first GSU softball team to win a third straight Southern Conference championship, the Eagles have been working in the offseason to prepare themselves for the possibly-historic season. The first tournament of the season will give them a good chance to gauge their off-season progression.

First up for the Eagles will be Oakland University. OU is looking to have a breakout year after only winning seven games throughout last season.

Their key player is all-conference senior Erika Polidori who managed a team-high .306 batting average and a .459 slugging percentage. Polidori was also elected to the Canadian national team.

The second opponent of the weekend will be the University of Tennessee. This will be the biggest game of the weekend as the Volunteers are ranked number one in the country after being runner-up for the national title in 2013.

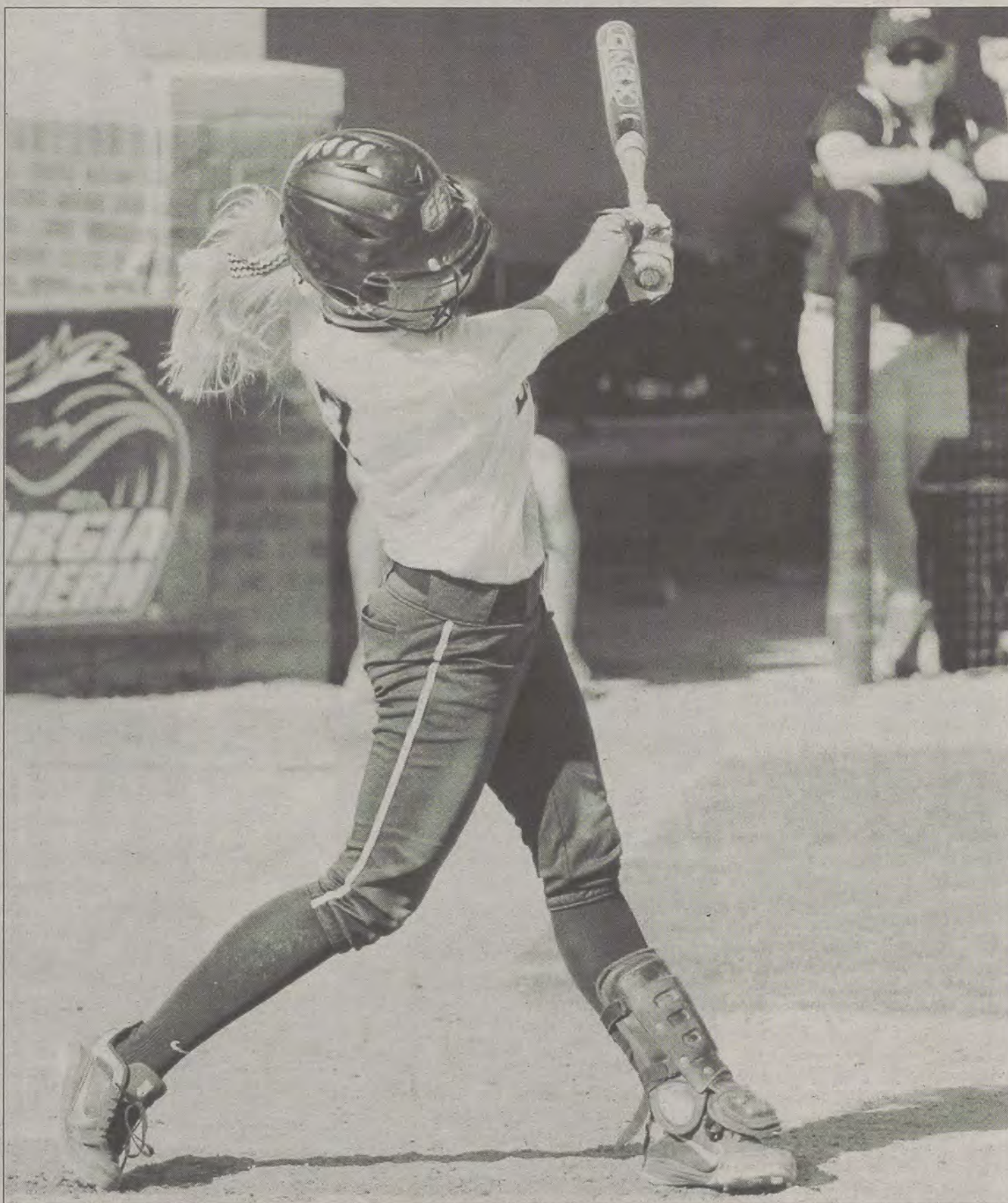
They will field two All-American seniors Ellen Renfroe and Madison Shipman along with five other returning positional starters and three pitchers.

Northern Colorado University is the final team of the Round Robin. The Bears are coming off of a 16-30-1 season and will look to challenge GSU with their junior infielder Melissa Marcovecchio. Marcovecchio led the team with a .301 batting average and was named to the Big Sky All-Conference team.

GSU has high expectations this year, largely based on the arm of senior pitcher Sarah Purvis. Purvis was elected to the first team All-SoCon and she is also a two-time SoCon Pitcher of the Year Award-winner boasting an ERA last season of 1.83. Purvis pitched two no-hitters and one perfect game last season.

Eagle Senior Shelby Morrill is returning this season after leading the team with a .340 batting average and was also named to the All-SoCon team.

The first matchup against Oakland University is on Friday at 5 p.m. Saturday will feature a double header starting at 2 p.m. against Tennessee followed by Oakland again at 4 p.m. On Sunday GSU will play Northern Colorado.



File Photo

Junior infielder Lexi Allen (7) posted a .986 fielding percentage average last year. Allen also went 3-5 in the SoCon Tournament semi-finals win over the College of Charleston.

Lady Eagles to finish season .500 in-conference

In My Opinion

The final stretch of basketball season is here and soon the madness that is March will be upon us.

Normally this final stretch of in-conference games is important when it comes to receiving a bid to the NCAA tournament.

Currently the Georgia Southern University women's basketball team sits at a record of 7-15 overall, and 5-6 in the Southern Conference, which currently puts them seventh in the standings.

Every team that wins its conference tournament receives an automatic bid to the "Big Dance," no matter the team's record.

The Eagles are a surprising team in that they, in fact, play better away from home. Luckily for them, five of the final seven games will be on the road.

This is a make-or-break part of the schedule

as a majority of the teams GSU will play are ahead of them in-conference, which should be looked at as a good thing because they can make up ground on teams ahead of them.

Four of the five wins that GSU has this season in-conference are against teams that the Eagles will have another chance at.

Of the remaining three games, GSU has lost to the teams they will be playing by an average of 13 points, all of which were at home.

In conference, the Eagles are more competitive on the road, outscoring opponents by an average margin of 2.5 points compared to at home where they have been outscored by 7.4 points.

The Eagles have been a very streaky team and although the inconsistency poses a problem, the potential for them to get on a hot streak could result in a deep Southern Conference tournament run should the matchups be favorable.

I look at the last seven games of the season and see GSU come out with four wins and position



Trevor McNaboe

Women's Basketball SoCon Standings

TEAM	OVERALL RECORD (SOCON RECORD)	HOME	AWAY	NEUTRAL
UTC	19-3 (11-0)	9-0	9-2	1-1
DAVIDSON	11-11 (8-3)	6-5	5-6	0-0
FURMAN	12-10 (6-5)	8-1	4-9	0-0
APP. STATE	9-12 (6-5)	5-4	4-8	0-0
ELON	9-12 (5-5)	7-3	2-8	0-1
WCU	11-11 (5-6)	7-3	4-7	0-1
GSU	7-15 (5-6)	3-7	4-6	0-2
SAMFORD	6-16 (4-7)	2-5	3-10	1-1
WOFFORD	5-16 (3-8)	5-2	0-13	0-1
UNCG	5-16 (1-9)	4-7	1-8	0-1

Alexandra Tobia | The George-Anne

themselves well for the SoCon tournament by going .500 in-conference for the first time in the Chris Vozab era as head coach.

The Eagles will begin the final stretch of the season at Elon University on Saturday at 4 p.m. The game will also be aired on ESPN3.

Planters Row

912.681.1170
www.hendleyproperties.com

3 bedroom bath house

\$365/month per person

GEORGIA SOUTHERN SOFTBALL

=VS=

OAKLAND

AT EAGLE FIELD

FEBRUARY 7, 2014 5 P.M.

CAMPUS EVOLUTION VILLAGES. A 4.0 IN STUDENT LIVING!



**AWESOME VALUE. CLOSE TO CAMPUS.
CALL ABOUT OUR "SPRING SEMESTER SPECIAL"!**



CAMPUS EVOLUTION VILLAGES

NEW FOR 2014/15 SCHOOL YEAR:

- NEW KITCHEN APPLIANCES
- BRAND NEW FITNESS CENTER
- NEW HIGHER SPEED INTERNET
- UPDATED KITCHENS AND LIVING ROOMS
- NEW BBQ GRILLING STATIONS AND FIREPIT
- SPACIOUS CLUBHOUSE AND LOUNGE AREA

TEXT: "LIVEBIGGSU" TO 47464 • 912.200.6115 • WWW.CEVILLAGES.COM • 1699 STATESBORO PLACE CIRCLE