

Georgia Southern University

Digital Commons@Georgia Southern

The George-Anne

Student Media

11-12-2013

The George-Anne

Georgia Southern University

Follow this and additional works at: <https://digitalcommons.georgiasouthern.edu/george-anne>

Recommended Citation

Georgia Southern University, "The George-Anne" (2013). *The George-Anne*. 2819.
<https://digitalcommons.georgiasouthern.edu/george-anne/2819>

This newspaper is brought to you for free and open access by the Student Media at Digital Commons@Georgia Southern. It has been accepted for inclusion in The George-Anne by an authorized administrator of Digital Commons@Georgia Southern. For more information, please contact digitalcommons@georgiasouthern.edu.



**EAGLES
ADVANCE**

PAGE 19



**EAGLES
SEEK
RUSH**

PAGE 8



**BUY AND
SELL ON
FACEBOOK**

PAGE 12

Tuesday, November 12, 2013
Georgia Southern University
www.thegeorgeanne.com
Volume 84 • Issue 37

THE GEORGE-ANNE

Eagles win last home game of SoCon



Christal Riley | The George-Anne
Senior quarterback Jerick McKinnon (1) and fellow Eagle senior slotback Jonathan Bryant (23) along with redshirt freshman quarterback Kevin Ellison (4) celebrate a Homecoming victory in GSU's final home game in the SoCon.

BY RANDALL HAMPTON

The George-Anne staff

The seniors put on a show as the Georgia Southern University football team cruised to a 35-19 victory over the Western Carolina University Catamounts.

The team came out firing on all cylinders in

front of a Homecoming crowd that witnessed the Eagles' last home game at the Football Championship Series level. On the second play from scrimmage, senior cornerback Lavelle Westbrook intercepted a pass and set GSU up with the ball on the WCU 38 yard line.

Senior quarterback Jerick McKinnon would put the Eagles on the board first with a

23-yard touchdown run. McKinnon faked the pitch and burst up the right side line for the first of his two rushing touchdowns on the day.

"We knew they were going to try to slow-play the pitch and run to the pitch late," McKinnon said. "Watching film all week we knew some tips on what they might do."

McKinnon was one of several seniors to have a big day in his last game at Allen E. Paulson Stadium. Senior linebacker Kyle Oehlbeck had a career-high 14 tackles, while Westbrook caught two interceptions and tipped another one to sophomore safety Matt Dobson.

See FINAL SOCON, Page 22



**thegeorge
anne.com**



**Follow us on Twitter
@TheGeorgeAnne**



Newsroom 478-5246
Advertising 478-5418
Fax 478-7113

PO Box 8001
Statesboro, GA
30460

“Uhhh, Mom, Dad, what happened was...”



Starting college away from home is a big life change. Sometimes stuff happens and the semester doesn't turn out the way you planned.

Georgia Perimeter College has experience helping students who need a “do-over,” and we do it without judgment or criticism. We don't know how your parents will take your news, but here's some free advice that might help: It's REALLY a good idea to provide a solution whenever you share a problem.

Go to **<http://admissions.gpc.edu/restart>** and give us some basic information. A recruiter will contact you to review your options. We can help make your solution a reality before you have to tell Mom and Dad, “What happened was...”



Police Beat

Thursday, Nov. 7

9:53 a.m.: Officers responded to a panic alarm at the Auxiliary Warehouse. Maintenance responded. Contact was made with an employee and no problems were found.

7:49 p.m.: Officer assisted with a warrant service at Aspen Heights. Amanda Celeste Cappell, 22, Statesboro, Ga., was arrested pursuant to an arrest warrant from Kennesaw Municipal Court.

8:48 p.m.: An incident report was taken for lost/mislaid property in Lot 42 or the College of Education Building.

9:36 p.m.: An incident report was taken for found property at Hendrix Hall.

2:03 a.m.: Officers initiated a traffic stop at Sports Page, 200 Lanier Drive. The driver of the vehicle, Shane Dillon Watts, 20, Statesboro, Ga., was arrested and charged with Headlights Required and DUI 1st.

2:48 a.m.: Officers made contact with an intoxicated subject at Eagle Village. The intoxicated subject was judicially referred for an alcohol violation.

Friday, Nov. 8

9:41 p.m.: An incident report was taken for a theft at Southern Pines Building 4 laundry room. This case was assigned to criminal investigations.

3:21 p.m.: An incident report was taken for lost/mislaid property possibly at Chick-fil-A.

3:47 p.m.: Officers assisted in an escort from the Counseling

Center to East Georgia Regional Medical Center.

6:38 p.m.: Officers responded to a burglar alarm at the Center for Art and Theater. Contact was made with an employee. No problems were found.

7:46 p.m.: A motor vehicle accident report was taken for a motor vehicle accident in the University Villas parking lot.

8:14 p.m.: An incident report was taken for a towed vehicle at Freedom's Landing.

Saturday, Nov. 9

12:15 a.m.: Officers responded to University Villas – the gazebo in reference to a drug complaint. Two subjects were arrested:

Jacquelyne Clarke Robinson, 18, Statesboro, Ga., was charged with Possession of Alcohol – Under 21 Years of Age & Obstruction – misdemeanor.

Jamontay Qwa'dre Ballard-Mark, 19, Savannah, Ga., was charged with Possession of Alcohol – Under 21 Years of Age & Obstruction – misdemeanor.

12:30 a.m.: Officers discovered an intoxicated subject on Knight Drive. The intoxicated subject, Raul Eduardo Roel, 19, Statesboro, Ga., was arrested and charged with Possession of Alcohol – Under 21 Years of Age.

12:38 a.m.: Officers made contact with two GSU students on the roof of the Carroll Building. Both were judicially referred.

2:50 a.m.: Officer conducted a traffic stop on Tillman Road. The driver of the vehicle, Nicholas J.

Dominguez, 22, Atlanta, Ga., was arrested and charged with Failure to Maintain Lane & DUI 1st.

3 p.m.: Officers escorted an intoxicated subject from Paulson Stadium during the football game.

3 p.m.: An incident report was taken for found property at Paulson Stadium.

3:12 a.m.: Officers responded to a sick person at Southern Pines Building 1. EMS responded and transported the sick person.

4:51 a.m.: An incident report was taken for a battery at Kennedy Hall. This case was assigned to criminal investigations.

5:01 a.m.: Officers responded to a burglar alarm at the Center for Art and Theater. No problems were found.

6:25 p.m.: An incident report was taken for a criminal trespass in Lot 21.

8:15 p.m.: An incident report was taken for a simple battery at Kennedy Hall. The victim signed a Release of Prosecution form. One subject was judicially referred.

9:15 p.m.: Officers responded to the Center for Art & Theater in reference to a burglar alarm. No problems were found.

9:18 p.m.: Officers responded to an affray at the water tower on Malecki Drive. The affray was over upon the officer's arrival. Parties involved were advised of warrant procedures.

9:41 p.m.: An incident report was taken for a theft at Southern Pines Building 4 laundry room. This case was assigned to criminal investigations.

Statement of Operations

The George-Anne is the official student newspaper of Georgia Southern University, owned and operated by GSU students using facilities provided by the university. The newspaper is the oldest continuously published newspaper in Bulloch County. The newspaper is a designated public forum for the Georgia Southern community. The newspaper is published twice weekly, on Tuesdays and Thursdays, during most of the academic year. Any questions regarding content should be directed to the student editor by phone at 912.478.5246 or at gaeditor@georgiasouthern.edu.

ADVERTISING: The newspaper accepts advertising. Inquiries may be made by calling 912.478.5418 or 912.478-0566. Fax any questions to 912.478.7113 or e-mail ads1@georgiasouthern.edu.

The George-Anne receives additional support, in part, from the Student Activities Budget Committee.

The deadline for reserving space and submitting advertising copy is noon, one week prior to the intended publication date. For more information, rate cards, sample publications, contact

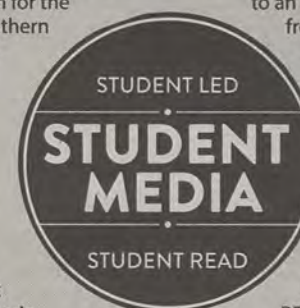
the advertising manager or student media director. The advertiser is responsible for any errors in advertisements and its liability for adjustments is limited to the amount of space the error occupied in the ad. Further, the newspaper is not responsible for any damages caused due to an ad's omission from a particular edition and its responsibility solely is to reschedule the ad in the next regular edition at the regular advertising rates.

STUDENTS BEWARE: The

George-Anne screens all advertisements prior to publication. The newspaper strives to accept ads for legitimate products and services only. Students are urged to exercise caution when replying to ads—particularly those that require personal information. Students are also urged to report to the newspaper any suspicious offers which they might see in an ad.

PUBLICATION INFORMATION: The newspaper is printed by The Brunswick News in Brunswick, Ga.

NOTICE: Unauthorized removal of multiple copies from a distribution site constitutes theft under Georgia law, a misdemeanor offense punishable by a fine and/or jail time.



Editorial Staff

Editor-in-Chief Shelby Farmer
Managing Editor Jackie Gutknecht
Multimedia Editor Lindsay Gaskins
Opinions Editor James Farmer
News Editor Will Price
News Chief Lauren Gorla
A&E Editor Kimeko McCoy
A&E Chief Lilly McCann
Sports Editor Shakeem Holloway
Sports Chief Robert Huitt
Football Editor Randall Hampton

Copy Chief Anna Wells
Copy Editor Taylor Cooper
Business Manager Chloe Douglas
Sr. Account Executive Jeremy Williams
Marketing Manager Marissa Martin
Distribution Manager Bradley York
Production Manager Jose Gil
Photo Editor Jessica Stanfield
Design Editor Matt Veal
Web Editor Darius Alexander
Ads Designer Kelly Slyfield

Corrections

Contact the editor at gaeditor@georgiasouthern.edu for corrections and errors.

Our View

War Games good model to follow

Students often are worried about the real-world application of their majors and classes, but there are things that their professors can do to assure them of the value of their degree. Jordan Shropshire, Ph.D., a professor in the Information Technology department, created a scenario called War Games. In this scenario, students are divided into teams that attack each other's systems, while simultaneously trying to defend their own over a period of 48 hours.

The War Games provide a situation where students do what they would be doing in a post-graduate job while in school, something more classes should try to follow. Professors should try to put students in real-world scenarios as often as possible in their classrooms. Not only will this prepare students for jobs later in life, it also allows for a more interesting classroom for students and professors alike. It may be more difficult for some majors to have classes that have a real-world angle to them, but the professors at Georgia Southern University can live up to that challenge. Perhaps professors can also give students a taste of what graduate school in their particular field feels like as well, giving students a better idea of what both options hold for them.

The War Games are a classroom model that other professors should follow in their own manner so that their students have a better idea of the real-world demands of their degrees.

The George-Anne welcomes letters to the editor and appropriate guest columns. All copy submitted should be 350 words or fewer, typed, and sent via e-mail in Microsoft Word format to letters@georgiasouthern.edu. All submissions must be signed and include phone number for verification. GSU students should include their academic major, year and hometown. The editors reserve the right to reject any submission and edit submissions for length.

Opinions expressed herein are those of the Board of Opinions or columnists themselves and DO NOT necessarily reflect those of the faculty, staff or administration of GSU, the Student Media Advisory Board, Student Media or the University System of Georgia.



Braves to chop Turner Field

The Atlanta Braves are moving out of Atlanta proper for the first time in team history, and into the Cobb County suburbs starting in 2017. While the fans of the Braves will have their own sentimental reasons for supporting the team staying in Turner Field, the economic and political reasons for the move are also in play.

In a statement by Atlanta mayor Kasim Reed, he states, "There was simply no way the team was going to stay in downtown Atlanta without city taxpayers spending hundreds of millions of dollars to make that happen." Cobb County offered a monetary contribution of \$450 million in public money to help fund the new stadium, also according to Reed.

Economically, the team will be moving a county with an average household income that is nearly \$9,000 more than Fulton County, the team's

THE FARM LIFE



JAMES FARMER

previous home. The franchise will also sell off naming rights for the stadium. Don't be surprised when the Braves are playing at Delta Airlines Stadium in 2017. The team will also benefit greatly from remaining on the I-75 route that acts as an artery for fans coming from both the north and the south of the Atlanta area from all parts of the state.

There have been a few posts on social media about how the move is apparently "racist" as the area around Turner field is home to increasingly more minorities than before. To the

people who subscribe to this theory, it is a conspiracy to take the jobs brought about by the stadium and businesses that thrive on fans away from the minorities and to the whiter suburbs of Marietta in Cobb County.

The reality of the matter is that the mayor of Atlanta, a black man, did not want to tax his constituents more than was necessary. With the Falcons already moving stadiums, partially at the taxpayer expense, keeping taxes down should be at the top of the city's priorities for the upcoming years.

The Braves may benefit financially from the move, but as the proposed stadium has 10,000 less seats than Turner Field, it remains to be seen if the move will pay off.

Farmer is a senior international studies and political science double major from Thomasville. He is the current Opinions Editor.

ACA has good intentions

On March 23, 2010, President Barack Obama signed the Affordable Care Act into law, reforms that were set to improve access to affordable health coverage for everyone and also focused on guarding consumers from unfair practices by insurance companies. On Oct. 1, 2013, the enrollment period began for the new healthcare, and even though health coverage starts on Jan. 1, 2014, many people are against the Affordable Care Act, claiming that the law is slowly becoming an expansion of a costly entitlement program. Due to countless claims of discontinued coverage, many are second-guessing the word "affordable," and the president himself.

According to the U.S Department of Health and Human Services, The Affordable Care Act essentially refers to two separate pieces of legislation: the Patient Protection and Affordable Care Act and the Health Care and Education Reconciliation Act of 2010. Together, those are supposed to expand Medicaid coverage to millions of low-income Americans and make a number of improvements to both Medicaid and the Children's Health Insurance Program (CHIP). If an individual were to actually read these pieces of legislation, that individual could infer that President Barack Obama had nothing but good intentions when signing this into law. Although, that same individual can infer that all the important details of this law were not 100 percent sorted out before enrollment began, which exposed many mistakes and created angry consumers,

THE SANCHEZ SNIPPET



JOYCE SANCHEZ

mainly because the law was more than likely misjudged the consumers, not getting what they were expecting. Let's be real here. There are more positives than negatives to the Affordable Care Act. Yes, some are paying more for their healthcare and a few people may have even lost their coverage, but the make-up of this law is essentially for the future.

According to the U.S Department of Health and Human Services, Insurance companies can no longer deny coverage to children because of a pre-existing condition and young adults can stay covered on their parents health plan until the age of 26, which was a much-needed benefit for every college student. Ultimately, the ACA helps more than hurts, and when it is fixed up, it could possibly be considered by the majority of the population as a stepping stone that was needed to a better healthcare system.

Sanchez is a sophomore political science major from Vineland, N.J. She is currently president of the 100 Collegiate Women of America and is involved with the McCollar for Mayor Campaign.

ACA bad for Americans

A full month has passed since healthcare.gov launched. By now, people should have been able to buy any type of health insurance they wanted because they could do so easily. Unfortunately, that is not the case. Only now are people realizing how badly government control over something so vast could cause problems. The website itself should be allowed to have a few bugs in the beginning, but two months later, there should not be any problems.

On top of the website glitches, insurance agencies began dropping people from their plans by the thousands. This coming after speeches on speeches from the president saying no one's plans would change. This law was doomed to fail. No insight took place when they were writing it or jamming it through Congress. President Obama wanted to pass his legacy before he realized what it would entail. Thousands of people are without health coverage, which is the exact opposite of what he is trying to accomplish. He apologized and conceded this loss, but said that most people can get better coverage for less. Unfortunately, the process is impeded by the website glitches.

One Louisiana Congressman introduced legislation that would require insurance agencies to reissue health plans and some states are asking agencies to wait until the

MY ELEPHANT OPINION



AMBER PORTER

website could be fixed. Senate Democrats looking at the upcoming election cycle are getting worried. This is the time when all politicians begin listening and pleasing their constituencies as much as possible, and they have a lot to worry about now. As I have said multiple times, people will realize how awful this law is once it is fully implemented. They are now seeing that Democrats have just gone along with the president even though they had bad feelings against it. Some have even asked to delay the law until they can fix everything.

President Obama may have apologized for lying, but he has not come out with any plan to make it any better. All Americans must have health insurance, but how can they when they are being dropped?

Porter is a junior international studies major from Zebulon. She spent spring semester as a Capitol Hill intern.

ACA needs more than just an apology

One summer day I solitarily sat in the sandbox of a playground I frequented as a youth. There, I contently played with my favorite toy police car while lost in the fantasies of my 3-year-old mind. But, in my childhood ignorance, I remained blissfully unaware of the all-consuming devastation walking my way in the form of a little boy about my age.

That little tyrant marched into the peaceful adobe that was the sandbox and promptly stole my police car. His reply to my screams and demands to give it back was a cold "I'm sorry." His stupid, smug grin is still burned in the back of my mind and here I am 18 years later still upset. I want my toy back.

I cannot help but imagine this is the sentiment shared by the millions of

THE BOOK OF ELI



ELIJAH ANDERSON

Americans who have had their insurance plans ripped away by the Affordable Care Act. After all, much like the reply that devilish little boy gave me, President Obama has responded to these Americans with a petty and empty "I'm sorry." Likewise, as much as I loved my police car and wanted to keep it, it was taken away by unstoppable force just as many prized insurance packages

have been stripped away by this legislation that Mrs. Pelosi told us had to be passed to know what was in it...

Jokes aside, President Obama broke a promise to the American people. How many times did we hear him assure us that if you "like your health care plan... you will be able to keep your health care plan [and] no one will take it away...no matter what." Granted, a politician breaking a promise is nothing revolutionary and is in fact expected. But a broken promise on such a large scale as this is nothing to gloss over. Thus, how many Americans is this going to effect?

According to CNN, there are an estimated 12 million Americans who are in danger of having their current insurance coverage dropped. These are Americans who are

mandated to buy an insurance plan, but do not meet the subsidy requirements for lower premiums and have been dropped by their previous insurer for a variety of reasons. Thus, they face having to pay more money for worse coverage. Talk about an unfortunate turn of events for a law that was supposedly implemented to supply affordable health care all around.

Hopefully, Mr. Obama can gain some trust back with his new promise to do all in his power to fix this unexpected issue. Until then, 12 million other Americans and I will be longing for our toy police cars to return. I won't be holding my breath.

Anderson is a senior political science major from Cumming. He is writing a thesis paper on U.S. interventions.

\$1.1 million grant to expand GSU city campus

BY LAUREN GORLA

The George-Anne staff

Georgia Southern University and the city of Statesboro have been awarded a \$1.1 million grant to expand City Campus in the downtown area, according to a news release.

"This is a golden opportunity to help new businesses in our community generate new jobs and put more people to work," Brooks Keel, Ph.D., president of GSU, said in the release. "City Campus can be a catalyst for economic change in our region."

The grant was awarded by the U.S. Economic Development Administration to help entrepreneurs design, build and send their products into the market place while also creating new jobs, according to the

release.

With this grant, GSU and Statesboro will be able to work together to renovate two buildings downtown that will eventually house an innovation incubator with full business incubation capabilities and a fabrication laboratory, Charles Patterson, Ph.D., vice president for research and economic development, said in the release.

The facility will include office space and also a planned space for a fabrication lab with 3-D printing capabilities.

"As an emerging research university, we find that many of our faculty and students are engaged in activities of entrepreneurial nature, creating technologies, devices and inventions that a university of our size and magnitude has the ability to license, patent

and protect," Patterson said in the release.

The city of Statesboro put forward \$800,000 in addition to the grant to purchase the Yard and Haus building from Farmers and Merchants Bank and the City Campus building from the Downtown Statesboro Development Authority, according to the release.

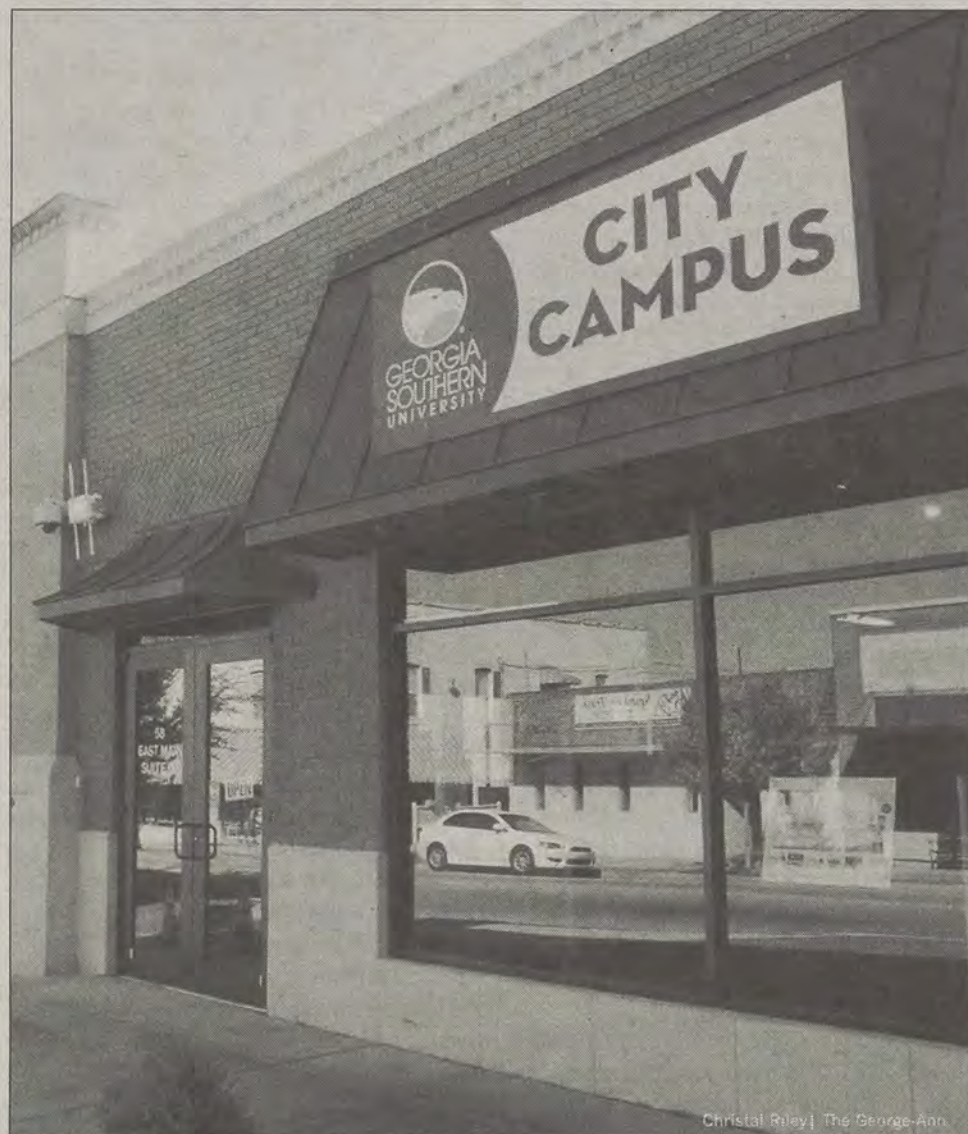
The city council also agreed to commit \$50,000 annually for three years to help cover operational fees at the facility.

"We feel the collaboration with Georgia Southern through the City Campus is important to the continued improvement of downtown Statesboro. These investments in our city will undoubtedly pay off many times over as we move forward," Joe Brannen, former mayor of Statesboro, said in the release.

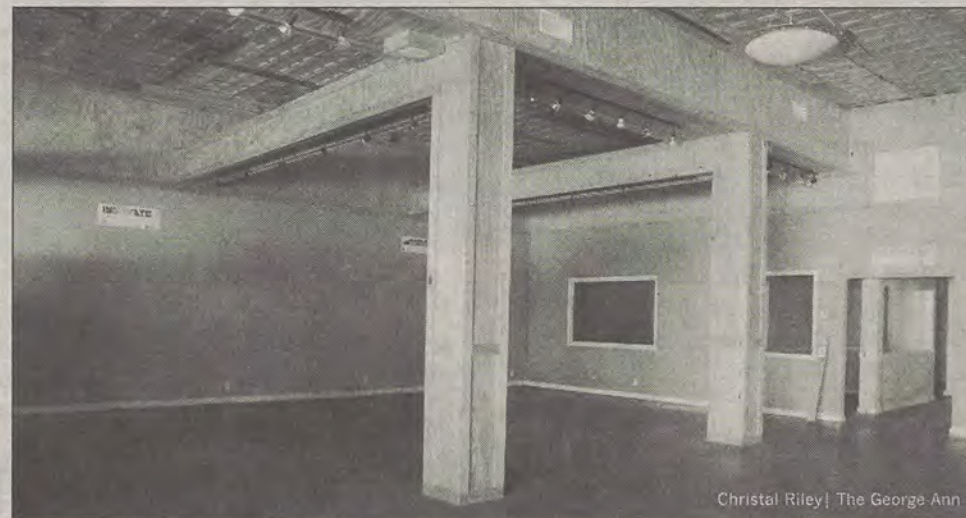
In total, the expansion will cost \$1.8 million. Once finished, the facility will hold the Bureau for Business Research and Economic Development, the Statesboro office of the Small Business Development Center and the University's Center for Entrepreneurial Learning and Leadership, according to the release.

John Barrow, U.S. Representative, attended the announcement ceremony last Thursday at City Campus.

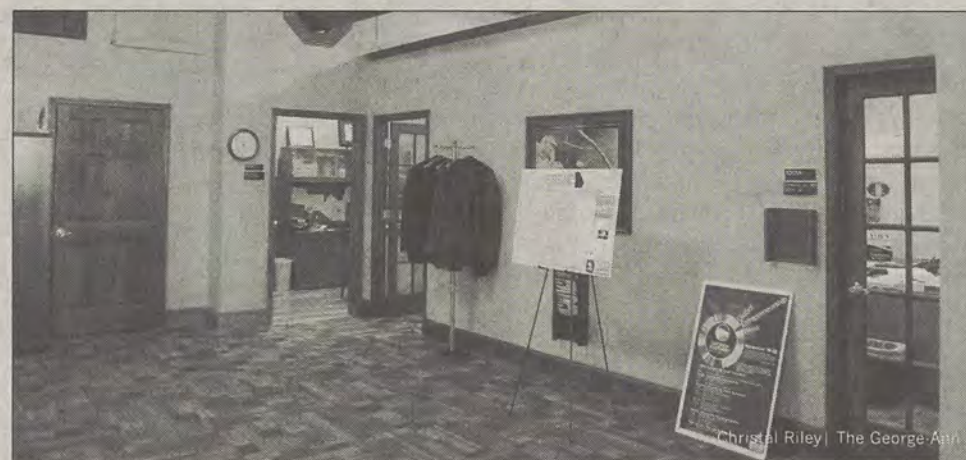
"This is a tremendous opportunity for the small business owners who are going to find the resources here that they need to compete and to grow," Barrow said in the release. "It's going to be a huge opportunity for Georgia Southern to break out and be a leader in business development."



Christal Riley | The George-Anne



Christal Riley | The George-Anne



Christal Riley | The George-Anne

The City Campus building in downtown Statesboro plans to foster entrepreneurial growth for GSU students. Left: City Campus is located on East Main Street, downtown. **Top:** Money from the \$1.1 million grant will be used to renovate the City Campus building. **Bottom:** The city of Statesboro and GSU have worked together to purchase two buildings that will expand the complex.

Groundbreaking at shooting range Thursday



Courtesy of gseagles.com

The GSU rifle team will utilize the new Shooting Sports Education Center for practice and home games. Groundbreaking on the new facility will take place this Thursday and expected completion is in spring 2015.

BY LAUREN GORLA

The George-Anne staff

The new Shooting Sports Education Center will break ground this Thursday and will include a public indoor archery range, an outdoor archery range and a firing range.

The center is located at the corner of Old Register Road and Veterans Memorial Parkway, across from the M.C. Anderson Pavilion at the RAC.

Construction on the center is expected to take place from January through November 2014 and open in spring 2015.

Georgia Southern University and the Georgia Department of Natural Resources collaborated on this project to educate hunters and archers to be more responsible shooters and to promote safe shooting activities, according to a news release.

The goal of the Shooting Sports Education Center is to assist the public and students with developing knowledge and skills of shooting in order to promote safe and responsible archery and firearms handling,

according to the CRI website.

The objectives laid out for the Shooting Sports Education Center include providing indoor and outdoor shooting facilities, provide space for academic shooting sports programs for students and serve as a training site or nationally competitive collegiate shooting sports teams.

A particular focus of the facility will be to develop programs that will provide opportunities for growth and competition to shooting sports learners, according the website.

Once completed, the center will offer courses on shooting, such as hunter education, archery instructor training, safety classes and beginner shooting classes, according to the website.

The women's rifle team was formed this year as part of the move to the Sun Belt Conference and will utilize the space as a practice facility.

The Shooting Sports Education Center was made possible by multiple grants, with the initial money put forward by the Georgia Department of Natural Resources.

Planters Row

912.681.1170
www.hendleyproperties.com

3 bedroom
bath
house

\$365
/month per person





The Sir Shop
Statesboro Mall
912.764.6924
STATE TRADITIONS
SOUTHERN TIDE



Sky's not the limit for students

BY MAUREEN O'LEARY

The George-Anne contributor

"Welcome to our office," Kyle Drew, junior mechanical engineering major and founder of Soaring Eagles Skydiving Club, said as he flew 10,000 feet above Statesboro in a Cessna 182, a propeller plane with no chairs except for the pilot's.

Drew and Travis Alexander, senior construction management majors, see the aerial view of Georgia Southern University, tucked between green and brown patches of farmland, every weekend while skydiving and working at The Jumping Place.

"I was already a skydiver and knew Georgia Tech had a good skydiving club, and I wanted to make one for GSU," Drew said.

The Soaring Eagles currently has close to 30 members, but only a handful jump on a regular basis.

"A lot of colleges have club teams that go compete on a national level. We are eventually trying to get to that level, but since we just started we are slowly building," Alexander said. "Our whole purpose for the club is to open up the opportunity for students to come do tandem jumps."

A tandem jump is a jump done strapped to an instructor that requires no prior training.

Alexander and Drew did not know each other before the club's formation in January, but now they skydive and work together every weekend from Friday until sundown on Sunday.

"I started packing [parachutes] here in March or April and then I started practicing videography and I found out that's what I love to do. Now my favorite types of jumps to do

are video jumps where I get to be a part of someone's first skydive," Alexander said.

"I coach students who are just getting into skydiving to get better, I pack and I just help out," Drew said.

Erica Pearson, junior international business major and club member, also works at The Jumping Place as a parachute-packer, though she has no prior experience in skydiving.

"It helps if you're a skydiver but you don't have to be," Cathy Kloess, owner of The Jumping Place, said.

Kloess opened up The Jumping Place in Statesboro last September when she moved from St. Mary's, but has been in business since 2006.

In addition to owning The Jumping Place, Kloess also pilots the two Cessna 182s used for skydiving.

"They say if you do what you love to do you'll never work a day in your life, and I haven't," Kloess said.

"She's a master rigger, she's a pilot, a skydiver, an instructor, she's done it all," Drew said.

The Jumping Place plans to have a student's day in the spring when skydiving rates will be discounted for those at GSU.

Students always have a \$10 discount at The Jumping Place, and members of the military are given a more significant discount.

Alexander said, "Going up there is something different. Skydiving is one of the hardest things to describe. Everything goes away for that sixty seconds when you're falling- work problems, week problems, school problems- they all go away."

Did you know...

- Skydivers fall at more than 100 mph.
- On average, skydivers jump about 10,000 to 13,000 feet above ground.
- Skydivers free fall for about 45 to 60 seconds.
- After the parachute opens, skydivers fall for another five minutes before landing.

Information from the U.S. Parachute Association



Ryan Woodham | The George-Anne



Ryan Woodham | The George Anne

The Soaring Eagles Skydiving Club consists of more than 30 GSU students. **Top:** Kyle Drew, club founder, prepares his parachute before a jump at The Jumping Place at the Statesboro Municipal Airport. **Bottom:** The Cessna 182 prepares for takeoff before a skydiving session.



Want To Be
Kissable
This Flu Season?

Influenza Vaccination Clinics

No out of pocket costs for students covered
by the following insurance companies:

Aetna; AmericaGroup [GA Medicaid]; BeechStreet; Cigna;
Coventry/First Health/ CNN Southcare; Health Smart HPO; Humana Choice Care;
Tricare; United HealthCare; United HealthCare-Student
Resources [USG Student Health Insurance Program]; Wellcare [GA Medicaid].

\$5 for Students with no Health Insurance

\$5 for Faculty/Staff and Retirees
[Reimbursable if covered by USG Health Insurance]

Please bring your Insurance Card and Eagle ID

OCT. 3, 5-7 p.m.
Centennial Place Café

OCT. 8, 5-7 p.m.
Library Rm. 1300

OCT. 10, 3-7 p.m.
RAC Lobby

OCT. 15*
10-11 a.m. & 2-3 p.m.
Tent Event outside Health
Services [inside if necessary]

OCT. 17, 2-5 p.m.
Russell Union Room 2080

OCT. 23*
10-11 a.m. & 2-3 p.m.
Health Services

NOV 6, 5-7 p.m.
Eagle Village Clubhouse

NOV 13, 5-7 p.m.
Southern Pines Clubhouse

NOV. 19*
10-11 a.m. & 2-3 p.m.
Health Services

***STUDENTS ONLY**



**GEORGIA SOUTHERN
UNIVERSITY**

SPONSORED BY GEORGIA SOUTHERN UNIVERSITY HEALTH SERVICES
AND THE UNIVERSITY WELLNESS PROGRAM

TRANSIT

MISCELLANY MAGAZINE'S
FEATURED ARTIST: ALEXANDER SMITH
MEDIUM: 2D DESIGN

SEE MORE ON
NOVEMBER 20
MISCELLANY
RELEASE PARTY



CHOPS
ON MAIN



7-9 P.M



Spike's Sports Grill scores a touchdown

Food Review ★★★★★

BY LILLY MCCANN

The George-Anne staff

In the midst of Ballooncitiy, the bowling lanes, the laser tag arena and childrens' squeals, there sits a big-kid sports bar and grill front and center.

The Clubhouse may offer family-fun activities, but Spike's Sports Grill brings grown-up fun to foodies and sports fans alike.

Simple yet sophisticated in both food and atmosphere, Spike's takes you away from the bustle of the arcade and into the world of sports. Cleanly framed sports memorabilia share the wall with flat screen TVs that broadcast a game on each and every one.

Spike's takes the art of bar food to another

level while conforming to a college budget. The menu features popular American cuisine including wings, burgers, hot dogs, pizza and even classic ice cream floats.

Don't see something you like? Spike's has it covered by allowing patrons to craft their own chicken breast, Angus burger or hot dog masterpiece.

With a variety of appetizers like homemade deep fried potato chips and piled-high nachos, there is plenty to snack on between drafts and innings.

While Spike's Sports Grill satisfies that big kid hunger for lunch or dinner, the dessert options cater to everyone's sweet tooth and tastes from childhood. Patrons can design their own ice cream mountain, sip on smoothies or nibble on a variety of homemade cookies.

Food Ratings for Spike's Sports Grill

Clubhouse Sandwich ★★★★★

Generously portioned, this classic sandwich features ham, oven-roasted turkey, bacon and melted American cheese stacked between three slices of toasted and buttered bread and snuggled next to the side of your choice. As the name implies, The Clubhouse Sandwich is a signature sandwich that combines simplicity and flavor, like its atmosphere.

Spike's Wings ★★★★★

The options are plentiful for these wings both in size, flavor choices and style while keeping it affordable. Spike's offers a moderate array of traditional wing sauce choices. The mild Buffalo wings lives up to its competitors in flavor but could use some more sauce.

Mint Chocolate Chip Shake ★★★★★

Mean and green, the mint chocolate chip shake is just one of the many shake combinations patrons can sip on. The mint chocolate chip shake has a refreshing mint flavor that won't taste like you've just used Listerine. The shake is topped with a mountain of whip cream, speckled with chocolate chips and a cherry on top.

9th Inning Nachos ★★★★★

Smothered in cheese, topped with chili and scattered with tomatoes, onions, black olives and jalapenos, the 9th Inning Nachos fall short of a homerun. The nachos are graciously covered in toppings but are skimpy in flavor. While the flavor is lacking some, the portion makes up for it, making it an ideal appetizer to share among friends.



Christal Riley / The George-Anne



Christal Riley / The George-Anne



Christal Riley / The George-Anne

Statesboro features upcoming writers

BY LAURIANNA CULL

The George-Anne staff

This Thursday will mark the third annual Write Place Festival, where the Statesboro community can gather together at the Averitt Center to enjoy music and readings from featured writers.

The festival is a three-day collaboration event organized by Statesboro Magazine, The Averitt Center, Statesboro Convention & Visitor's Bureau and the Writing and Linguistics Department, which will take place Nov. 14-16. The event will start at 7 p.m. on the 14th with readings by the featured authors and music by award-winning songwriter, Tony Arata.

"Georgia Southern is the only university in the state of Georgia that offers writing and linguistics as a major. We believe Statesboro is the birthplace of future writers. We're not just the 'write' place once a year. The 'write' place is who we are," Statesboro Magazine editor Jenny Foss said.

The Write Place readers include Georgia Southern University faculty from the Writing and Linguistics Department, Zach Bush, Sarah Domet and Christina Olson. The other readers include GSU alumni Jordan Fennell and Statesboro High School student Maya Van Wagenen.

"I'm really excited about the featured readings. I'm especially excited to hear Maya read. I read her essay last year, and it just blew me away," previous featured writer and Georgia High School creative writing competition judge Emma Bolden said.

15-year-old Maya has a DreamWorks movie deal and her first book coming out in 2014 titled "Popular: Vintage Wisdom for a Modern Geek." Maya was discovered after winning the high school creative writing contest that The Write Place sponsors.

The Write Place Festival will feature multiple different styles of writing including fiction, nonfiction, poetry and creative writing.

"This is a really awesome event. It showcases a very diverse and talented group of writers with very different genres. All the writers are connected to the Statesboro area in some way. This event shows that writing is not just important to the university but to the community as a whole," Bolden said.



Maya Van Wagenen, author of "Popular: Vintage Wisdom for the Modern Geek"



Christina Olson, author of "Before I Came Home Naked"



Sarah Domet, author of "90 Days to Your Novel"



Jordan Fennell, past president of Georgia Southern University's Creative Writing Club



Zach Bush is a visiting assistant professor in the Department of Writing & Linguistics

'Flyin' West' play to be performed in CAT

Culture

BY CHARLES RUDISON

The George-Anne contributor

The Theatre and Performance Department at Georgia Southern University plans to take students on a touching journey through time with its upcoming play "Flyin' West."

The play will open tomorrow and will run until next Wednesday. Performances will be in the Center for Arts and Theatre's Black Box Theatre. All shows begin at 7:30 p.m. with a special matinee performance at 2:00 p.m. on Sunday. Tickets for students and youth are \$5 at the door, and faculty, staff and community tickets will be \$10.

The play is set in the all-black town of Nicodemus, Kan. in 1898. The story revolves around the lives of four sisters: two former slaves and two who have been free their entire lives.

The women live in the free state of Kansas with the hope that all will be well. However, they soon find out that even after the Civil War is over their new surroundings are not free of trouble and danger.

Cast members for "Flyin' West" include Araba DeGraft, Marissa Casey, Khadijah Carter, Matessia Murray, J. J. Lamay and Leonard Morrow III, with scenic design by Patrick Galletta, costume design by Sarah McCarroll and lighting and sound design by Kelly Berry.

Atlanta playwright Pearl Cleage shaped the fictional drama around the complications and causes of the Homestead Act, the Emancipation Proclamation and the 13th Amendment to the U.S. Constitution.

Cleage has written several novels and plays, most of which have either won awards or have been on the New York Times bestseller list. "Flyin' West" received top honors at the Black Theatre Alliance Award in 1997.

The theatre department will introduce a creative set.

"The set offers a mixture of abstract and realism. My hope is that the set draws you in to the play," Patrick Galletta, junior fashion and marketing major and set designer, said.

The play wants to take students on a surreal journey.

"It is very dynamic. The play is a beautiful work of art with just the right amount of comedy and suspense," Khadijah Carter, sophomore

communication arts major and the actress playing Fannie Mae Dov, the middle sister, said.

Georgia Theatre Conference Hall of Fame director Emeritus Mical Whitaker directs the play. Whitaker was once a professor at GSU and is returning to direct the play.

"The play is an overall masterpiece. It contains drama, excitement, and love. I am enthusiastic about returning to GSU and having the opportunity to direct this play," Whitaker said.

Although retired from GSU, Whitaker is the director of the Youth Theatre Program at the Averitt Center of the Arts in downtown Statesboro and is a frequent guest lecturer and director with GSU's Theatre and Performance Department.

The play features a theme of domestic violence. The Safe Haven Center will have a donation box for old winter clothes. All clothes will be donated to the Safe Haven Center in Statesboro for victims of Domestic abuse.

Whitaker said, "I urge you all to come join us and witness a part of history. We have a lot of talent and I know the story will touch you. I hope viewers will enjoy the play as much as I will."



Courtney Bonacci | The George-Anne

GSU students perform a scene from "Flyin' West." "Flyin' West" follows the lives of four sisters living in an all black town in Kansas after the Civil War.



NOVEMBER 11-16, 2013

INTERNATIONAL EDUCATION TAKES YOU PLACES!

Theme: "Revolution and Reflection: Viewing the Past from the 21st Century"

Mon	Tues	Wed	Thurs	Fri	Sat
<p>11</p> <p>4:00 p.m.</p> <p><u>Korea Today: 60 Years After the Armistice</u></p> <p>Hear from Georgia Southern students who have lived or studied in Korea. Sponsored by the GSU Korean Club and the International Club.</p> <p><u>Russell Union Rm. 2041</u></p> <p>7:15 p.m.</p> <p><u>L'Enfant d'en haut</u></p> <p>Award-winning 2012 crime drama set in a Swiss ski resort. Part of the 15th Annual National French Week activities at Georgia Southern.</p> <p><u>Russell Union Theater</u></p>	<p>12</p> <p>2:00 p.m.</p> <p><u>The Good and Bad of NAFTA</u></p> <p>Join Greg Brock, Dept. of Finance and Economics, Anna Alexander, Dept. of History, and Matthew Flynn, Center for International Studies, as we discuss the successes and failures of NAFTA, 20 years after its implementation.</p> <p><u>Russell Union Rm. 2080</u></p> <p>5:00 p.m.</p> <p><u>Dr. Mohja Kahf</u></p> <p>Arab American poet & author talks about Non-Violent Peace Movements in Syria. Sponsored by the GSU Arabic Club.</p> <p><u>Russell Union Ballroom A</u></p>	<p>13</p> <p>12:30 p.m.</p> <p><u>Iraq: Mission Still Ongoing?</u></p> <p>Experts from ROTC, the Dept. of History, and the Center for International Studies discuss the state of Iraq today, 10 years after the start of the conflict.</p> <p><u>Russell Union Rm. 2047</u></p> <p>7:15 p.m.</p> <p><u>The Iran Job</u></p> <p>U.S. basketball player Kevin Sheppard accepts a job to play in Iran. Kevin's season culminates in something much bigger than basketball: the uprising and subsequent suppression of Iran's reformist Green Movement – a powerful prelude to the sweeping changes across the Middle East in the wake of the Arab Spring.</p> <p><u>Russell Union Theater</u></p>	<p>14</p> <p>12:30 p.m.</p> <p><u>South Africa: Challenges and Legacies of Apartheid</u></p> <p>Cathy Skidmore-Hess from the Department of History will present on the challenges faced by South African society 20 years after the election of Nelson Mandela forced the end of Apartheid.</p> <p><u>Russell Union Rm. 2080</u></p> <p>7:00 p.m.</p> <p><u>Muslim Journeys: Faculty Panel Discussion</u></p> <p>Join an enlightened discussion about faith and culture. Panelists: Hemchand Gossai and Nicole Karapangiotis from the Dept. of Literature and Philosophy, Ahmet Akturk from the Dept. of History, and Youssef Salhi from the Dept. of Foreign Languages.</p> <p><u>Nesmith Lane Assembly Hall</u></p>	<p>15</p> <p>11:30-1:00 p.m.</p> <p><u>International Conversation Hour</u></p> <p>Sponsored by <u>The Grove at Statesboro</u> (Proclamation to be given by the Mayor Joe Brannen at noon)</p> <p><u>Russell Union Ballroom</u></p> <p>1:00 p.m.</p> <p><u>UNICEF Campus Initiative: You Can Make a Difference</u></p> <p>Yenny Darmajaya</p> <p><u>Russell Union Rotunda</u></p>	<p>16</p> <p>10:00-4:00 p.m.</p> <p><u>International Festival</u></p> <p><u>Mill Creek Regional Park</u></p> <p>FREE ADMISSION!</p>

Mohja Kahf to speak on Syrian conflict

BY ERIKA RICHARDS

The George-Anne contributor

Yesterday kicked-off the start International Educational Week and a collaboration of Georgia Southern University organizations will bring Mohja Kahf, an Arab-American poet and author, to speak.

GSU organizations including the Arabic Club, Center for International Studies and the Campus Life Enrichment Committee (CLEC) worked together in order to bring the speaker to campus.

The event will take place today at 5 p.m. in the Russell Union Ballroom.

Kahf will speak about the non-violent peace movements in Syria and issues regarding the daily lives of women and what they go through.

Mohja Kahf was born in Damascus, Syria and attended Rutgers University where she acquired her Ph.D. in comparative literature.

She is now an associate professor at the University of Arkansas and is a faculty member of the King Fahd Center for Middle East and Islamic Studies.

Kahf wrote a collection of poetry called "Emails from Scheherazad" and a novel called "The Girl in the Tangerine Scarf." She breaks stereotypes and barriers for Arab women.

A lecturer of Arabic, Youssef Salhi would like for everyone come and support this event because it would give students knowledge on the conflicts happening in Syria.

"This event will, most importantly, bring diversity to Georgia Southern University," Salhi said.

Not only is the event free of charge and



Arab-American poet, Mohja Kahf presents a reading to an audience. Kahf will speak on peace movements and daily lives of women in Syria in the Russell Union Ballroom at 5 p.m. today.

students will learn about Kahf's different experiences, but they will also get to know more about the GSU Arabic Club and also relate to the Arab world and culture.

Associate professor and Director of the Center for International Studies and friend of Kahf, Jacek Lubecki believes she is a great person and even greater speaker.

"She doesn't lecture. She performs and has an artistic mind," Lubecki said. "Kahf is a test of quality of being a good speaker."

"Kahf is well known and we are very fortunate to have her speak with us. She is different than other speakers," Salhi said.

Salhi said, "You will learn that Arab-American women are active in Syria."

“ She doesn't lecture. She performs and has an artistic mind.

Kahf is a test of quality of being a good speaker.

”

-Jacek Lubecki,

director of the Center for International Studies

NOVEMBER 2013 DECEMBER



FREE MOVIE SERIES



EVENTS

- 11/1 - FREE MOVIE: THE GOONIES - 6 P.M. & 8 P.M. @ RU THEATER
- 11/5 - COMEDIAN: LIL DUVAL - 7:30 P.M. @ HANNER FIELDHOUSE
- 11/6 - DOO DAH DANCE&STEP SHOW - 7 P.M. @ HANNER FIELDHOUSE
- 11/8 - HOMECOMING PARADE - 4 P.M. - 5 P.M. @ SWEETHEART
- 11/8 - HOMECOMING CELEBRATION - 5 P.M. @ SWEETHEART
- 11/8 - FREE MOVIE: MONSTERS UNIVERSITY - 8:15 P.M. @ SWEETHEART
- 11/12 - UNPLUGGED - 6:30 P.M. - 8:30 P.M. @ RU COMMONS
- 11/15 - FREE MOVIE: WE'RE THE MILLERS - 6 P.M. & 8 P.M. @ RU THEATER
- 11/19 - UNPLUGGED - 6:30 P.M. - 8:30 P.M. @ RU COMMONS
- 11/20 & 11/21 - MISS GSU INFO SESSIONS - 7 P.M. @ RU 2042 & 2075
- 12/5 - LIGHTING OF SWEETHEART CIRCLE - 4 P.M. - 6 P.M. @ SWEETHEART
- 12/9 - FINALS FEAST - 6 P.M. @ RU BALLROOM/RU COMMONS
- 12/12 - LANTERN WALK - 7 P.M. - 9 P.M. @ WILLIAMS CENTER MPR



Homecoming 2013

NOVEMBER 4-9 www.GeorgiaSouthern.edu/homecoming

FOR MORE INFORMATION OR ACCOMMODATIONS RELATED TO ACCESS OR PARTICIPATION, PLEASE CONTACT UPB AT 478-7270 AT LEAST TWO WEEKS PRIOR TO THE EVENT

EAGLE ID REQUIRED

GeorgiaSouthern.edu/upb

f GSUpb • t GSUpb • GSUpb

**YOUR STUDENT ACTIVITY
FEES AT WORK!**

GSU students swap and sell on Facebook

BY ALEXANDRA MCCRAY

The George-Anne staff

It is no news that Facebook has revolutionized the way people connect with each other, but Georgia Southern University has found a new way to use Facebook to bring its students closer together.

Students who are Facebook members can join Groups at Georgia Southern, a collection of hundreds of groups for students based on everything from their favorite class this term to events and parties. So far over 9,000 students are members of Groups at Georgia Southern.

Once students join, they are prompted to join groups based on the dorm they live in, their major and the year they are expected to graduate. Students can search for groups to join based on interest or organizational involvement and also have the power to create groups within the GSU community.

While some groups are small and exclusive, others are open and growing everyday, such as the Free and For Sale

group. The group has over 2,500 members from students graduating and moving, selling used furniture to students looking to clean out closets and make some extra cash.

"I think that that the groups are a good thing. They can help people find roommates, textbooks, or furniture. They also can help the person selling the items. They might get better deals on selling their stuff to other student as opposed to what they would get on another site," Mary Parton, junior middle grades education major, said.

Students have also begun to use the Free and For Sale group to buy and sell textbooks, clickers and access codes amongst each other at the beginning and ending of each semester.

The growing Facebook group community has created a virtual community for students to utilize to save money, provide each other with tips, create connections for jobs and internships and help start new organizations on campus.

"Through the Georgia Southern Facebook groups, I've used them to find members for my new organization, Friends of Girl Scouts.

I've posted information about the organization as well as links to the membership application. I also created a page in which students who are both members and nonmembers can keep up-to-date with everything the organization is and will be doing," Briana Holmes, junior accounting major, said.

The groups have not only brought students

together over the Internet but in-person as well. Earlier in the semester students were rescued from a car crash but didn't know the name of their rescuers. They posted all over GSU Facebook groups to help find them, and eventually did.

Holmes said "The GSU Facebook pages have been a tremendous help when it comes to connecting with other students, both organization-wise and personally. Plus it allows me to get to know peers better."



Alexandra Tobia | The George-Anne

**NELNET TUITION PAYMENT PLAN
WILL BE AVAILABLE FOR
SPRING 2014 SEMESTER**

**STARTING
NOVEMBER 5, 2013
LAST DAY TO ENROLL
JANUARY 17, 2014**

**SIMPLE STEPS
TO ENROLL:**

**Go to WINGS
Student and select:
Nelnet Payment Plan**

More information at: <http://mycollegepaymentplan.com/gsu>



2013 CENTER FOR INTERNATIONAL STUDIES
International Festival

Saturday, November 16
10am - 4pm
MILL CREEK REGIONAL PARK

IT'S FREE!

GEORGIA SOUTHERN UNIVERSITY LEARN MORE GeorgiaSouthern.edu/intfest

'Thor: The Dark World' lacks thunder

Film Review ★★★★★☆

BY PEYTON CALLANAN

The George-Anne contributor

There is no stopping the Marvel Studios gravy train. After taking a lesser-known superhero and turning him into a Spiderman-or-Batman-sized box-office smash with 2008's "Iron Man," the studio has successfully continued to turn out hit after hit.

Now the studio is in the beginning of its "phase two" on the path to pop culture domination, and "Thor: The Dark World" is the second film in a post-Avengers world. Thor's second outing as a solo hero is much more successful than the first, but in the grand scheme of Marvel Studios plans, it won't be particularly memorable.

Of all the Marvel properties,

Thor was always the most risky. The first film featured a then-unknown actor, Chris Hemsworth ("Rush"), as the title character, and was the only hero in "phase one" that was not from earth. This meant that the film's creators not only had to introduce viewers to the origins of a new superhero but also had to include insight into the world of Asgard, which Thor hales from.

Setting the movie largely in Asgard may be a big departure for the studio, but the plot didn't deviate too far from the winning formula. The major focus of "Thor: The Dark World" is not on Thor's relationship with Jane, but instead his relationship with Avengers' villain and breakout character Loki, Thor's half-brother.

Tom Hiddleston ("War Horse") reprises his role as the devious and

power-hungry Loki and continues to have great chemistry with his on screen brother Hemsworth. But three movies in, their relationship is beginning to feel a bit repetitive. The screen time devoted to the brothers' complicated relationship is also at the cost of developing Thor's other relationships.

Thor is willing to risk everything for Jane but viewers don't get to know much about her other than the fact that she is a scientist whose love life has been lacking since Thor left her for Asgard in the last film. It is also a shame that the movie takes place in Asgard, yet so little time is spent with Thor's colorful side characters, like his very loyal

band of soldiers.

Having this film set in Asgard also meant creating a fantastical new world, which looks like a strange mix between the sets of "Star Wars," "Power Rangers" and "Xena: Warrior Princess."

Thankfully Taylor embraced the campiness of this

magical realm by keeping the tone of the film light and humorous. Despite the title, this may be the lightest-hearted Marvel film so far.

Overall, this movie feels like it was meant to ease audiences into the direction Marvel is heading with the rest of their "phase two" films. "Thor: The Dark World" is essentially just fluffy filler between two bigger films.



Alexandra Tobia | The George-Anne

Thank you for supporting
REFLECTOR
magazine



THE **GEORGE-ANNE**
& JOE

**FREE COFFEE
WITH YOUR COPY**

LOCATED BY THE RUSSELL UNION
EVERY THURSDAY 8 A.M. TO 11 A.M. OR UNTIL SUPPLIES LAST

CLASSIFIEDS

www.thegeorgeanne.com

Tuesday, November 12, 2013 17

Housing

Female subleser needed for apartment in Hawthorne II during Spring 2014. Rent is \$250/month before utilities; Internet and cable are already paid for. Contact (678) 848-3526 for more information.

SUBLEASER WANTED: Huge unfurnished room in charming & spacious house. Two closets w/ built in shelving. hardwood floors. Connected Full bathroom. \$300 a month. Two other roommates so utilities are split 3 ways. contact Lorenzo Soler @ (912)506-4556 or at ls04113@georgiasouthern.edu

Need a roommate for the Spring Semester, no preference in gender. Rent is 275 a month without Utilities. My phone number is 706-726-3474. No pets and furniture is needed only for their bedroom.

Lease for spring semester in the Forum at Statesboro: 3 bedroom 3 bathroom, 475 a month no utility overages Indoor basketball court. Contact Randall 404-643-8097 email: rh01900@georgiasouthern.edu

Housing

Sublease Available for Spring!! The Connection of Statesboro. 4 BR/4 BA. Second floor apartment right next to basketball court and pool. Clean. Two male roommates, one empty room still available. Rent is \$444/month, utilities included. Call/ text: 912-237-4491 Email: ws01114@georgiasouthern.edu

Need a good deal on an apartment? Search no further! Sublease this one at The Grove and 3 months of your rent will be PAID IN FULL! It is a three bedroom apartment on the second floor, but currently there is only ONE other roommate! You personally have the fastest internet speed of the entire complex for free (10 MB all to yourself!) Rent is \$490/month and all inclusive. Feel free to email my Georgia southern email address for more details. rb02726@georgiasouthern.edu (Robert)

I'm looking to sublease my room in a 2 bed/2 bath apartment. 2 minute drive from campus. Rent is \$510 per month. Email me at jh08368@georgiasouthern.edu if interested.

For Sale

Will proof papers for grammar, punctuation, spelling, sentence structure. Must have enough lead time to do job efficiently. Reasonable rates. Email auntre01@gmail.com.

Apartment: Fully furnished living room and bedroom 3 bedroom/3 bathroom. Other 2 roommates are working on their masters degrees at GSU. \$410 all inclusive. Rent includes, internet, cable, water, electricity, and trash. Email: mm04286@georgiasouthern.edu

Housing

Subleasing garden district apartment. One room available in 3 bedroom 3/4 furnished flat. \$380a month with a small subleasing fee of \$150. This fee is one time fee! Everything is furnished except living room. The bedroom, kitchen, and bathroom are fully furnished. Everything is inclusive. The lease is up in aug. 2014 . 1 month rent is free if called or contacted by email before Feb 2014 . contact me at 7069888232 (jimmy gray) or email me at diesaltruck2006@gmail.com Serious inquiries only

For Sale

Moderately used EVO FX -25 Motorized Treadmill, in excellent condition
Multiple programing for varied routines, speed and incline. Easily folded and stored. \$750.00
| Call 912-587-7338 | e-mail: gb00812@georgiasouthern.edu

Jobs

Now hiring a part time sales position. Must have flexible availability. Send resumes along with your class schedule to wirelesshiring@gmail.com

BARTENDERS WANTED!!! \$250 a day potential. No experience necessary. Training Provided. Age 18+ OK Call 1-800-965-6520 ext 296.

Miscellaneous

Ahoy Sailor! Interested in sailing? In search of students, faculty, and staff to help start and be involved in a GSU Sailing Club. Contact gsu-sailingclub@gmail.com for more information.

Have something to get rid of?

Make some money by putting it in
The George-Anne's classifieds ads.

FREE to students, faculty and staff!

PUZZLES&COMICS

18 Tuesday, November 12, 2013

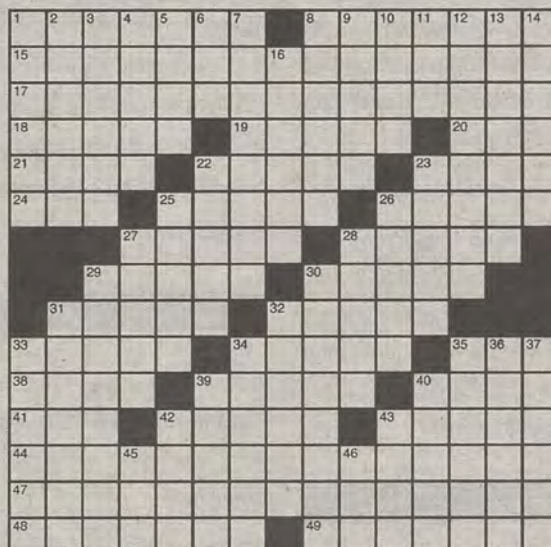
The George-Anne

Los Angeles Times Daily Crossword Puzzle

Edited by Rich Norris and Joyce Lewis

ACROSS

- 1 "An almond in every bite" candy
- 8 Magic Johnson's 10,141
- 15 Solution for repairing snagged nylons
- 17 Fitness-focused parent's purchase
- 18 Rueful exclamation
- 19 Ecstatic hymn
- 20 1950s Reds nickname
- 21 "The Whiffenpoof Song" sound effects
- 22 Jersey's environs
- 23 Matching
- 24 Paris-to-Vichy dir.
- 25 Post-larval insects
- 26 Item with which Osiris is usually pictured
- 27 Clinton's FBI director
- 28 It can have a tail but never legs
- 29 House: Pennsylvania Ave. guest quarters
- 30 Blowout substitute?
- 31 Cut-up
- 32 Be a Scrooge
- 33 Cassidy who played a Hardy Boy
- 34 Knighted mystery writer who championed the Boer War
- 35 Enter the pool
- 38 Sultry "Mink, Shmink" singer
- 39 Coppers in London
- 40 Assembled
- 41 Ducks' home, on the ticker
- 42 Event where lumberjacks get wet
- 43 Spock specialty
- 44 Spider web's abundance
- 47 Fail to get caught
- 48 Red fox of medieval lore



By Brad Wilber

- 49 1993 Kentucky Derby winner sired by Polish Navy

DOWN

- 1 They're often filled with teens
- 2 Some hellos ... and goodbyes
- 3 Marley's music
- 4 Gurus
- 5 Some French wheels
- 6 Novelist Beattie
- 7 Incongruous-sounding high-end stationery
- 8 Tweaks, say
- 9 Surf feature
- 10 Directly
- 11 Down with something
- 12 Source of soft fabric
- 13 "The Hollow Men" poet
- 14 Dwindled
- 16 Old Testament prophet
- 22 Expected to land
- 23 Basic chord
- 25 Tasty crustacean
- 26 Beloved, in Bordeaux

Last Edition's Puzzle Solved

A	L	E	R	T	P	L	A	T	O	C	B	S
R	E	S	A	W	L	O	G	O	N	U	L	T
M	A	C	H	O	M	A	N	U	R	E	L	O
					C	O	N	G	A	A	C	T
P	O	P	P	E	R	S		A	L	L	U	D
S	H	R	I	N	E		D	O	L	L	A	R
A	G	E	N	T		H	O	P	S	P	E	D
L	E	S		S	H	O	R	T	O	F	F	O
M	E	S	A		E	R	A	S		A	M	I
					U	S	F	L	A	G	S	T
I	T	R	I	E	D		L	A	T	I	M	E
N	O	E	A	R		L	I	E	G	E		
O	A	K			R	O	O	F		V	E	N
I	D	I			E	R	A	S	E	U	H	A
L	S	T			T	E	N	O	R	P	E	L

- 27 Thumb one's nose at
- 28 Shopworn
- 29 Glaring quality
- 30 Stops patronizing
- 31 Like many a 12-Down
- 32 Forthcoming
- 33 Button, notably
- 34 Remove element #82 from
- 35 Hefty product
- 36 One working on drafts
- 37 Prefix with babble
- 39 Gondolier, e.g.
- 40 Number before a slash, maybe
- 42 Strahan co-host
- 43 Hyena in "L'il Abner"
- 45 Japanese surname addition
- 46 Mr. !: old whodunit game



Calamities of Nature by Tony Piro

IN PLATO'S WRITINGS HE DISCUSSED SUCH ISSUES AS THE FUNDAMENTALS OF KNOWLEDGE, THE NATURE OF REALITY, LANGUAGE, THOUGHT, THE SENSES, THE ROLE OF GOVERNMENT, AND THE MEANING OF VIRTUE.

IT'S AMAZING TO THINK THAT PLATO BASICALLY ANTICIPATED ALMOST EVERY MAJOR QUESTION THAT IS STILL DEBATED BY TODAY'S PHILOSOPHERS.

UNFORTUNATELY, HE NEVER CAME TO ANY CONCLUSIONS THAT EVERYONE COULD AGREE UPON--

ALSO LIKE TODAY'S PHILOSOPHERS.



7		9	4		2		8
8						3	9
	2		9				1
						4	
		7	2		5	1	
	6						
1					3		7
9	5						6
6		4			1		2

Sudoku

SEE MORE OF THE GEORGE-ANNE

HTTP://WWW.THEGEORGEANNE.COM



Heather Yeomans | The George-Anne

Senior defender Nick Lane (15) anticipates the movements of an opposing player in order to stop the offensive attack. The Eagles' defense will have to contend with Elon University in the semifinals of the Southern Conference Tournament.

Eagles look to buck the trend

Men's Soccer (9-9)

BY TREVOR MCNABOE

The George-Anne staff

History repeated itself as the Georgia Southern University men's soccer team dropped the University of North Carolina at Greensboro by a score of 1-0.

For the second straight year, the Eagles took on the Spartans in the opening round of the Southern Conference Tournament and once again came away the victor.

GSU and UNCG faced off earlier in the regular season in the same venue. In that matchup the Spartans got the best of the Eagles by a score of 2-1.

The Eagles broke the nil-nil deadlock in the 65th minute when senior forward Witt Carlisle stepped up to take a penalty kick

and buried it for a team-leading seventh goal of the season.

"It's tournament time," GSU head coach Kevin Kennedy said. "There was a lot of pressure on the guys, but credit to them. They saw it as an opportunity tonight to go out, play loose and get a big result."

The Eagles defense recorded the team's fourth shutout of the season and third on the road.

"Getting the win was the goal, but the clean sheet was icing on the cake. It really is a testament to how well [senior goalkeeper] Neal Bates has played for us this season," Kennedy said.

Bates bounced back this matchup as he recorded seven saves while facing 16 shots from the Spartans.

The Eagles will have almost a week until they take on Elon University in a 2012

semifinal rematch on Friday.

GSU is the sixth seed in the conference tournament and will take on the No. 2 seed Elon in Greenville.

The Phoenix are coming off a close win in the opening round as they had to defeat No. 7 seed Appalachian State University in penalty kicks by a score of 8-7.

The Eagles lost to Elon by a score of 1-0 on the road, however, this matchup will be played at a neutral site where both teams have had success.

GSU is 1-0 at neutral sites while Elon is 3-0-1. Both teams have played close games in recent history with the Phoenix winning the last three by an average margin of one goal.

GSU will look to continue its quest for the program's first conference championship on Friday as they play the first of two semifinal games starting at 5:30 p.m.

Weekend in Review

Friday



Men's Basketball

GSU vs. CIU
110-74 Win

Saturday



Football

GSU vs. WCU
35-19 Win



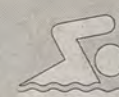
Women's Basketball

GSU vs. Auburn
59-69 Loss



Swimming and Diving

GSU vs. CofC
152-147 Win



Swimming and Diving

GSU vs. ECU
121-173 Loss



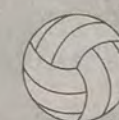
Women's Rifle

GSU vs. NGA
GSU=2233 Win



Men's Soccer

GSU vs. UGA
0-3 Loss



Volleyball

GSU vs. Davidson
3-2 Loss

Brittni Favorite | The George-Anne

New possibilities await women's soccer in Sun Belt



Ryan Woodham | The George-Anne

Senior midfielder Emily Archer (26) uses her speed to get past a Mercer University player. The Eagles' season ended after they failed to defeat Davidson University in the final game of the season.

Women's Soccer (5-11-2)

BY HAYDEN BOUDREAUX

The George-Anne contributor

The final Southern Conference season has ended for the Georgia Southern University women's soccer team.

After multiple injuries and disappointing losses, the Eagles finished ranked ninth in the SoCon.

It was a somber goodbye for the Eagles after they lost three straight games at the end of the season to eliminate themselves from tournament play. They will now bring their talents into the Sun Belt Conference to play against 10 other teams and take another shot at a NCAA tournament bid.

The season was plagued with injuries, specifically in goal, which sidelined four separate players including 2012 SoCon player of the year senior Katie Merson. There is a potential position battle in goal this offseason between junior Molly Williams and sophomore Heather Kirkover. Kirkover started the first half of the season before a head injury allowed Williams to walk on to the team and start the rest of the season.

Experience will be an advantage for the Eagles. Eight starters will return next season, including leading scorer sophomore forward Nora El-Shami and walk-on junior

goalkeeper Molly Williams. Some of the younger players will have a chance to build on the playtime they got this season such as freshmen forwards Jennifer Wittick and Taylor Burns, who combined for four goals.

There are several key seniors that helped the Eagles gain the prestige required to enter the Sun Belt. Among the players leaving are forward Alex Murphy, who scored four goals on the season and two assists, and defenders Sydney Keer and McKenna Storey. The midfield will lose the assistance given by Lindsay Hammer and Emily Archer.

Statistically, the Eagles stack up with the current members of the Sun Belt. They have scored 21 goals this season which is better than five Sun Belt schools, but under the 29.4 average. However, on defense GSU allowed 32 goals, which was only better than one team in the future conference.

Despite that, these statistics do not reflect difference in the level of competition between the SoCon and the Sun Belt. They do show that the Eagles will have their work cut out for them this offseason.

Rival Appalachian State University is also leaving for the Sun Belt Conference. In addition to the Mountaineers, GSU will have the opportunity to take on in-state opponent Georgia State University in Atlanta. This could be the first of many new rivalries the Sun Belt will offer.

Intramural Scores

Flag Football

Sunday, November 3

Pi Kappa Phi-27, Sigma Chi-0
Dirty Birds-16, Good D-6
Magic Mike and the Girls-23, Ramrod-10
A-Team-25, Blitz Crew-6
RUF-19, 1017-0

Monday, November 4

Kappa Delta-6, Zeta Tau Alpha-0
RAC City-20, Taco Twerkers-14
Alpha Tau Omega-19, Kappa Sigma-6
Finesse-43, Don't CRI When We Win-34
BENA JONES 7-20, Team Kobe-7

Tuesday, November 5

Alpha Delta Pi-7, Kappa Delta-6
Pi Kappa Phi-20, Alpha Tau Omega-0
H.F.T.O.Y-42, Finesse-6
Turn Upfield-13, A-Tema-6
Don't Make Us Get RUF-19, RAC City-12

Indoor Soccer

Sunday, November 3

HK-8, Celtic FC-5
Zulu Outcasts-10, SC Crew-4
Kicking and Screaming-9, CCF Marry Me-1
Prairie Doggin-4, E.V. Barcelona-3
The Abusement Park-9, SigEp Athletics-2

Monday, November 4

Messi Loads-4, BackDatPassUp-0
Fuchsia Fairies-11, Keystone United-3
Trap Stars-2, GSU Wesley-0
Juggs and Thugs-9, Free-agents United-4
Booyashaka-6, Kickin' Chickens-4

Tuesday, November 5

Petr Cech Youtself-6, Afternoon Delights-1
The Big Green-4, Tom Brokaw's A Punk-0
The Grovies-9, Honduras FC-0
Soc It To 'Em-7, # swag FC-1
Produce-2, Smokin Aces-1

Wednesday, November 6

Some Call Me Juevos Grande-5, Green Street Hooligans-4
Goombas-5, Blood Sweat and Balls-2
Barca Reserves-10, Cobra Kai Dojo-1
Balls to the Wall-7, Channel 4 News Team-4

Thursday, November 7

Pi Alpha Omega-5, Alpha Tau Omega-0
Mighty Ducks-10, CP Pink Panthers-4
LINK-5, Southern Bulldogs Co-Rec-0
Sigma Phi Epsilon-4, Kappa Sigma-0
Delta Chi-5, Tau Kappa epsilon-0



Scores provided by CRI

Brittni Favorite | The George-Anne

Upset-minded Eagles to take to Lexington

Women's Basketball (0-1)

BY TREVOR MCNABOE

The George-Anne staff

The 2013 women's basketball season began on a sour note as the Georgia Southern University women's basketball team fell to Auburn University on Saturday.

GSU will look to turn the loss around and get back on track as it takes on another Southeastern Conference foe in the University of Kentucky tomorrow.

After an 8-23 record in 2012 including a 2-13 record on the road, it's safe to say the Eagles are looking to improve.

The Eagles hope playing against big opponents can provide valuable experience for when the team gets into the latter parts of the season.

Senior All-SoCon guard MiMi Dubose who is currently leading the team averaging 15 points and five assists per game is the offensive catalyst for GSU.

In the season opener the Eagles struggled with turnovers as they committed 16 of them, with 12 coming in the first half.

"We know they want to force turnovers with their (the UK) press," head coach Chris Vozab said.

The Wildcats are currently forcing their opponents to turnover the ball 24 times a game.

KU sits high atop the national rankings coming in ranked at No. 7 in the country.

They have gotten off to a hot start already with two wins over Wagner University and Marist University by an average margin of 26.5 points.

KU features multiple threats as four players are averaging over 10 points a contest.

Senior forward DeNesha Stallworth heads up the bunch as she is the teams scoring leader with 13.5 points a game, along with a team-leading two steals a game and eight rebounds.

Sophomore guard Janee Thompson runs the offense as she leads the team with five assists per game and has a 3-1 assist to turnover ratio.

Eagle sophomore forward Briana Jones will most likely have to match up against Stallworth. Jones is averaging almost a double-double as she comes in with 10 points and nine rebounds a contest.

Collectively, GSU will need to play solid, turnover-free basketball in a very tough environment to pull this off. It is very early in the season and the Eagles are still putting the pieces together to find a winning formula.

The game will tip off tomorrow at 11 a.m. in Lexington.



File Photo
Junior guard Anna Claire Knight (24) follows through after pulling up for a mid-range jumper at the free-throw line. Knight ranked 17 in the league in scoring last year as a sophomore.

Tigers take a chunk out of Lady Eagles at home



File Photo
Sophomore guard Alexis Sams (23) stands in triple threat position as she squares up with a defender. Sams, one of four Eagles in double-digits posted 11 points in the Lady Eagles' season opener.

Women's Basketball (0-1)

BY CASEY CARGLE

The George-Anne contributor

The Georgia Southern University women's basketball team put up a fight against the Auburn University Tigers, but fell short on Saturday.

Senior guard MiMi DuBose lead the Eagles putting up 15 points accompanied with seven rebounds and five assists, while junior guard Anna Claire Knight racked up 14 points. Sophomore guard Alexis Sams ended the night with 11 points and five rebounds, and sophomore forward/center Briana Jones recorded 10 points with nine rebounds in her GSU debut.

"I loved how we came out with such fire and intensity, we really took it at them for a full 40 minutes," head coach Chris Vozab said.

However these efforts could not secure

a victory against the Tigers. With great performances like senior guard Tyrese Tanner's 17 points, seven rebounds and five assists, and senior center Peyton Davis' 15 points and 11 rebounds, it was hard for the Eagles to come back in the second half.

GSU cut down the 13-point second half deficit to just five with consecutive free throws from freshman guard Angel McGowan, but the Eagles could not close the gap thanks to an 8-0 Auburn run sparked by sophomore forward/center Tra'Cee Tanner, giving the Tigers back a 13-point lead.

The Eagles downfall would be the 16 turnovers throughout the game, but only four occurred during the second half, which shows GSU came out a little flat footed in the first half.

For full story see
thegeorgeanne.com

FINAL SOCON, from page 1

Dobson had his best day of the season in making the first two interceptions of his career. The Eagles picked off four passes from two different WCU quarterbacks on their way to the team's first win in its last three games.

"We've struggled against the pass a little

bit this year, but we had a great game plan this week and came out and executed," Dobson said. "It was the seniors last time here at Paulson and we just wanted to put them out on a high note."

The Eagles kept reigning Southern Conference Freshman of the Week Garry Lewis bottled up with only nine yards rushing. They also forced a season-high four turnovers

and held WCU to 271 yards of total offense.

"We took advantage in the first half of a couple of turnovers and we really have not gotten enough of those this year," head coach Jeff Monken said. "Those really made a big difference and we made them count."

With the game in hand, Monken put McKinnon back in the game to kneel on the ball and run out the clock. McKinnon took

the last snap in the final SoCon home game for the Eagles from the victory formation.

Monken said, "I think it was just appropriate to send him out there and let him take the last snap. He has done a lot for our program."

GSU will travel to Elon University in search of a second straight win on Nov. 16. Kickoff is scheduled for 3 p.m.



Riley

"He reminded me (Oehlbeck) that this is the last time you are going to be on this field and it's a great feeling just being out here with the rest of the team."

Heather Yeomans | The George-Anne



Oehlbeck

"The beginning of the fourth quarter I just kind of took some time to walk down to the other side and take it all in. It was cool to just go out on a win and I'm going to miss it."

Heather Yeomans | The George-Anne



Jerick McKinnon

"We got a lot of guys who are fourth and fifth year seniors that were able to accomplish a lot in the duration of time that they've been here. We wanted to be able to come out and make this last time special."

Courtney Bonacci | The George-Anne



Heather Yeomans | The George-Anne

In the final game at Allen E. Paulson Stadium as members of the Southern Conference, the Georgia Southern University football team prevented Western Carolina University from spoiling a true homecoming for many GSU seniors, with a 35-19 win. **Bottom-left:** Senior quarterback Jerick McKinnon (1) looks to gain yardage while scrambling away from a defender. **Top-right:** Senior linebacker Kyle Oehlbeck (38) takes down a WCU offensive player. **Bottom-right:** Redshirt freshman quarterback Kevin Ellison (4) celebrates a GSU victory with a rowdy crowd of fans. **Top-left:** Senior defensive tackle Blake Riley (96) stands on the sidelines among teammates while receiving further instructions from his coach.



File Photo

The Georgia Southern University swimming team pushes off the wall looking to get ahead of the competition. The swim team registered one win and one loss over the weekend.

Eagles swim past CofC

Swimming and Diving (3-1)

BY EMILY ARNOLD

The George-Anne contributor

The Georgia Southern University swimming and diving team took a loss from East Carolina University (173-121), but locked in a win against the College of Charleston (152-147) last Saturday in Charleston.

The Eagles' swim team took home three first-place finishes. Junior Amber Juncker dominated the 800-meter freestyle event, finishing with a time of 9:16.20. Sophomore Christina Moran placed first in the 200-meter backstroke with a time of 2:20.39 and took third in the 100-meter backstroke. Sophomore Rebecca Alves also took a first-place finish in the 200-meter IM with a time of 2:28.42.

"I thought [the team] battled really well against two really tough teams," head coach Nathan Kellogg said. "We won a lot of close races and that's something you always like to see."

There were also three second-place finishes for the Eagles. Junior Abbie Lavallin finished second with the time 1:13.70 in the 100-meter breaststroke and was closely followed by senior Megan Ostrom who had a time of 1:15.47. Lavallin brought in another second place finish in

the 200-meter breaststroke with the time 2:42.56.

The last second-place finish came from the 400-meter freestyle relay team. Made up of Moran, junior Megan Heller, senior Devin White and junior Elaina Lanson, who brought in a time of 4:03.20.

"It comes down to racing and that's kind of what we focus on," Kellogg said.

The diving team did a remarkable job on Saturday as well, bringing home first place finishes in both the one-meter and three-meter diving events. Senior Sara Meisenholder snatched first place in the one-meter dive with a score of 259.98. Senior Amanda Macchio scored a 270.25 in the three-meter dive and also took home first place.

Meisenholder also finished third in the three-meter dive with a score of 262.35. Macchio took sixth place in the one-meter dive, and junior Brittany Swanson took seventh.

"I thought our seniors did a really good job of stepping up and our divers did a really nice job on the boards as well," Kellogg said. "We'll try to work on cleaning up some details, like starts, turns, finishes, relay exchanges, the little things that add up to make a big difference."

The swim team's next meet is in Charlotte at the Wingate Fall Frenzy Nov. 22-24. Next for the diving team is the Dowd Nike Cup in Chapel Hill, N.C. on Nov. 21-23.

Georgia Southern Volleyball

Friday, November 15th, 6 pm

-Georgia Southern vs. Western Carolina

*Canned Food Drive

Triple Header Saturday, November 16th Hanner Fieldhouse

Volleyball vs. Appalachian State, 3 PM

-SENIOR NIGHT

*FINAL GAME OF SEASON

Women's Basketball vs. Jacksonville State, 5:30 PM

-CANNED FOOD DRIVE

Men's Basketball vs. Toccoa Falls, 8 PM

-CANNED FOOD DRIVE

TRUE
GEORGIA
SOUTHERN
BLUE

Our Neighborhood!

Find any housing information
you need all in one place!

Pick up a free copy of our
magazine at the housing fair

Tuesday, November 12th