

Georgia Southern University

Digital Commons@Georgia Southern

The George-Anne

Student Media

10-1-2013

The George-Anne

Georgia Southern University

Follow this and additional works at: <https://digitalcommons.georgiasouthern.edu/george-anne>

Recommended Citation

Georgia Southern University, "The George-Anne" (2013). *The George-Anne*. 2812.
<https://digitalcommons.georgiasouthern.edu/george-anne/2812>

This newspaper is brought to you for free and open access by the Student Media at Digital Commons@Georgia Southern. It has been accepted for inclusion in The George-Anne by an authorized administrator of Digital Commons@Georgia Southern. For more information, please contact digitalcommons@georgiasouthern.edu.

GOALIE STEPS UP

PAGE 15



FARM TOUR RETURNS

PAGE 9



'BORO ECONOMY ON DECLINE

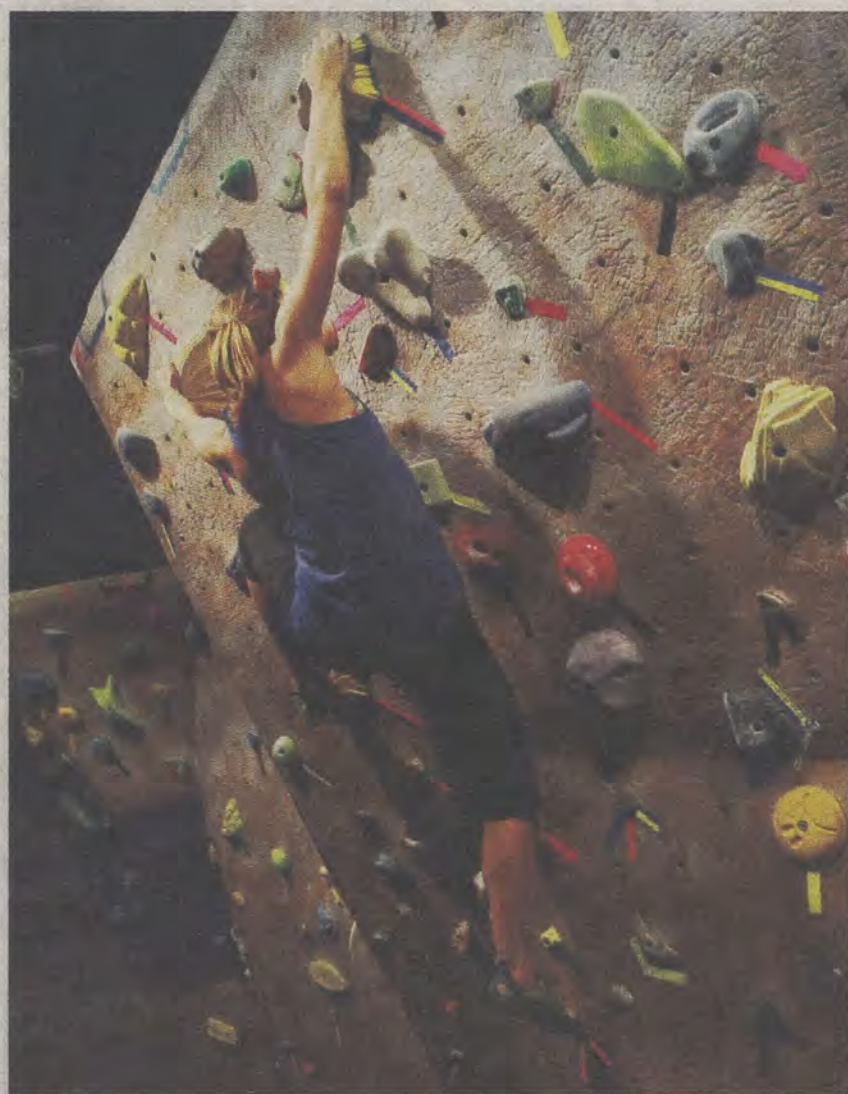
PAGE 7



Tuesday, October 1, 2013
Georgia Southern University
www.thegeorgeanne.com
Volume 84 • Issue 25

THE GEORGE-ANNE

NIGHT ON THE WALL



Heather Yeomans | The George-Anne

Junior exercise science major Katelyn Wehner participates in Bouldering Night Out (BNO). BNO takes place on the last Thursday each month of every semester.

Swope out for season

BY RANDALL HAMPTON

The George-Anne staff

An already depleted backfield took a serious blow when Georgia Southern University head football coach Jeff Monken announced junior fullback Dominique Swope would miss the rest of the season with a shoulder injury.

Monken broke the news after the 23-21 victory over the University of Tennessee at Chattanooga.

"He played in the Wofford game with it and we were hoping that we could rehab, give him treatment and get him through the year," Monken said. "We had an MRI done and he just wasn't going to be able to make it through the year."

With Swope out, players like senior fullback William Banks will have to step up.

Banks is more than capable of producing at the B-back position. He is coming off 86 rushing yards against UTC and is tied for the team lead with four rushing touchdowns this season.

"I feel bad for him but people are going to step up. I'll try my best to step up and the guys behind me are going to step up as well," Banks said.

The guys behind Banks include sophomore fullback Nardo Govan, who saw his first ever college football action Saturday, and redshirt freshman fullback Irving Huggins, who has yet to carry the ball in a game for GSU.

Injuries have forced Monken to trust Banks with more of the load at B-back, but senior quarterback Jerick McKinnon's versatility means he could see more action at running back.

See **SWOPE**, Page 19

Spring concert vote opens

BY MATT SOWELL

The George-Anne contributor

Big names such as Macklemore & Ryan Lewis, Carrie Underwood, Imagine Dragons and OneRepublic are on the list of potentials for Georgia Southern University's spring concert next semester.

One of the deciding factors determining who performs lands with students voting on the MyInvolvement page for the performer they want to see.

The poll opened yesterday and will close

Monday, Oct. 7. Specific details about the concert will be decided after voting. The University Programming Board is organizing the voting process.

Eric Church, Darius Rucker, Carrie Underwood, Rascal Flatts and Miranda Lambert round out the country music genre, while Kelly Clarkson, Jason Mraz, Imagine Dragons and OneRepublic complete the pop/rock genre. Flo Rida and Macklemore & Ryan Lewis represent the hip-hop field.

See **CONCERT**, Page 11



thegeorge
anne.com



Follow us on Twitter
@TheGeorgeAnne



Newsroom 478-5246
Advertising 478-5418
Fax 478-7113

PO Box 8001
Statesboro, GA
30460

GSU professors bring Newtown the gift of music



BY JENNIFER ARTHURS

The George-Anne contributor

Earlier in September, two Georgia Southern University professors had a heartwarming experience while performing for the citizens of Newtown, Conn. as part of the Healing Newtown Project.

The husband-and-wife duo, Larisa Elisha, Ph.D., and Steven Elisha, Ph.D., both professors of music, traveled to the small town in Connecticut to perform at the Newtown Arts Festival.

"The town has amazing people," Steven said. "You can sense a tremendous amount of bonding between the community and an outpouring of love between everyone."

The experience was filled with nothing but love and the strength of the community, the Elishas said.

From the moment they entered the town, they were greeted with hugs, love and felt part of the community's family, Larisa said.

"We were embraced and welcomed like a family," Larisa said. "It was very touching because you come in not knowing anybody and people just treated you like they knew you for forever."

From performing for Healing Newtown to teaching high school students, the professors felt nothing but joy and a sense of camaraderie with each new place.

The professors could see how much their gift of music helped the community.

"The performance will hopefully fill lives with joy and beauty after such a tragic incident," Steven said.

The connection between GSU and Newtown extended past just the Elishas performing at the festival.

Terry Sagedy, head of the Newtown Arts Festival, graduated from GSU in 1981.

In addition, a family with a son who is currently a student at GSU decided to contribute to the Healing Newtown project after hearing about the Elishas' performance.

Lee and Doris Wortham have contributed money to the Healing Newtown project. When the family learned about the two professors performing, they wanted to contribute to the cause, Steven said.

"There are many connections including the alumni and it will be interesting to see how this relationship continues," Steven said.

The event will stay with the Elishas for the rest of their lives and they felt lucky to be able to attend. The Elishas will attend next year's festival and look forward to returning once more to perform for the town.

"Music has the power of healing," Steven said. "When there are no words to be said, there is music to be played."



Heather Yeomans | The George-Anne

Professors Larisa and Steven Elisha traveled to Newtown, Conn. as part of the Healing Newtown Project. **Top:** The Elishas played the violin and cello as part of their performance **Bottom:** The music played during the performance was meant to fill the town with joy and love after the tragedy that occurred last year.

Police Beat

Thursday, Sept. 26

8:15 a.m.: An incident report was taken for lost/mislaidd property at Housing Storage.

10:11 a.m.: An incident report was taken for lost/mislaidd property at the softball fields.

11:00 a.m.: An incident report was taken for lost/mislaidd property at Health Services.

11:36 a.m.: An incident report was taken for damage to property at Freedom's Landing.

1:13 p.m.: Officers responded to a fire alarm at the Biological Sciences Building 1120. Maintenance and the Statesboro Fire Department responded. The alarm was activated by dust.

4:28 p.m.: An incident report was taken for a theft at Centennial Place Building 4. This case was assigned to criminal investigations.

6:25 p.m.: An incident report was taken for a suspicious incident at Dining Commons.

10:22 p.m.: Officers made contact with a suspicious vehicle/person in Paulson Parking. Contact was made with the suspicious person. He was identified and released.

10:35 p.m.: Officers responded to the College of Education 2158 in reference to a burglar alarm. An employee accidentally activated the alarm.

11:10 p.m.: Officers conducted a traffic stop on Lanier Drive and Harvey Drive. A traffic citation was issued for Headlights Required.

12:21 a.m.: Officers responded to Lot 33 in reference to a report of an intoxicated person. The intoxi-

cated person, Crystal Noel Hodge, 19, Statesboro, Ga., was located, arrested and charged with Possession of Alcohol – Under 21 Years of Age.

12:58 a.m.: An incident report was taken for found property located in the Hanner Sports Complex.

4:27 a.m.: Officers observed a suspicious person in the area of the Fast & Easy on Lanier Drive. Officers attempted to make contact with the suspicious person but failed to locate him.

Friday, Sept. 27

9:27 a.m.: Eric Alan Levingood, 21, was arrested and charged with leaving the scene of an accident in reference to a hit and run accident reported on 9/24/2013.

10:07 a.m.: Officers responded to a fire alarm at the Child Development Center. Maintenance and the SFD responded. The facility was checked and it was determined the pull station had malfunctioned.

11:01 a.m.: Officers responded to a motor vehicle accident (hit & run) in Parking Lot 21. A motor vehicle accident report was taken.

12:18 p.m.: An incident report was taken for a theft near the Foy Building. This case was assigned to criminal investigations.

2:03 p.m.: An incident report was taken for a theft at Centennial Place. This case was turned over to criminal investigations.

4:35 p.m.: Officers responded to a sick person report at Eagle Village. EMS responded and transported subject.

5:48 p.m.: Officers responded to a panic alarm at Eagle Village. No one was found in the room and maintenance reset the alarm.

8:33 p.m.: Officers responded to a sick person report at Campus

Crossing. A GSU counselor was contacted to meet with the subject.

Saturday, Sept. 28

12:17 a.m.: Officers conducted a traffic stop in Parking lot F. The driver was served with a notice of driver license suspension.

3:07 a.m.: Officers responded to a report of an alcohol violation at University Villas. Four students were referred to Judicial Affairs and one minor was turned over to their parent.

4:01 a.m.: Officers conducted a traffic stop on Lanier Drive. Tyler Alexander Duke, 21, was arrested and charged with DUI (.138 BAC) and a stop sign violation.

11:51 a.m.: Officers responded to a motor vehicle accident in Parking lot J. A motor vehicle accident report was taken.

8:21 p.m.: An incident report was taken for lost property.

9:31 p.m.: Officers responded to a panic alarm at Eagle Village. Upon arrival, officers found the resident was involved in a verbal altercation. Parties advised everything was okay.

9:47 p.m.: A student was reported using offensive language at Paulson Stadium. The student was referred to Judicial Affairs.

11:24 p.m.: Officers conducted a traffic stop on Georgia Avenue. Anthony Lee Lane, 31, was arrested and charged with DUI (.204 BAC).

Sunday, Sept. 29

12:28 a.m.: An incident report was taken for criminal trespass at Eagle Village. This case was assigned to criminal investigations.

12:29 a.m.: Officers assisted SPD with a report of an armed robbery at The Avenue At Southern.

2:42 a.m.: Officers assisted SPD with a report.

Statement of Operations

The George-Anne is the official student newspaper of Georgia Southern University, owned and operated by GSU students using facilities provided by the university. The newspaper is the oldest continuously published newspaper in Bulloch County. The newspaper is a designated public forum for the Georgia Southern community. The newspaper is published twice weekly, on Tuesdays and Thursdays, during most of the academic year. Any questions regarding content should be directed to the student editor by phone at 912.478.5246 or at gaeditor@georgiasouthern.edu.

ADVERTISING: The newspaper accepts advertising. Inquiries may be made by calling 912.478.5418 or 912.478-0566. Fax any questions to 912.478.7113 or e-mail ads1@georgiasouthern.edu.

The George-Anne receives additional support, in part, from the Student Activities Budget Committee.

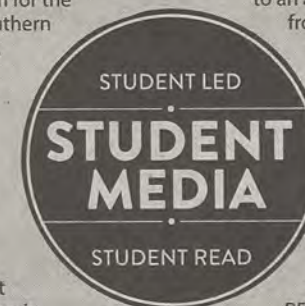
The deadline for reserving space and submitting advertising copy is noon, one week prior to the intended publication date. For more information, rate cards, sample publications, contact

the advertising manager or student media director. The advertiser is responsible for any errors in advertisements and its liability for adjustments is limited to the amount of space the error occupied in the ad. Further, the newspaper is not responsible for any damages caused due to an ad's omission from a particular edition and its responsibility solely is to reschedule the ad in the next regular edition at the regular advertising rates.

STUDENTS BEWARE: The George-Anne screens all advertisements prior to publication. The newspaper strives to accept ads for legitimate products and services only. Students are urged to exercise caution when replying to ads-particularly those that require personal information. Students are also urged to report to the newspaper any suspicious offers which they might see in an ad.

PUBLICATION INFORMATION: The newspaper is printed by The Brunswick News in Brunswick, Ga.

NOTICE: Unauthorized removal of multiple copies from a distribution site constitutes theft under Georgia law, a misdemeanor offense punishable by a fine and/or jail time.



Editorial Staff

Editor-in-Chief Shelby Farmer
Managing Editor Jackie Gutknecht
Multimedia Editor Lindsay Gaskins
Opinions Editor James Farmer
News Editor Cydney Long
News Chief Lauren Gorla
A&E Editor Will Price
A&E Chief Kimeko McCoy
Sports Editor Shakeem Holloway
Sports Chief Robert Huitt
Football Editor Randall Hampton

Copy Chief Anna Wells
Copy Editor Taylor Cooper
Business Manager Chloe Douglas
Sr. Account Executive Jeremy Williams
Marketing Manager Marissa Martin
Distribution Manager Bradley York
Production Manager Jose Gil
Photo Editor Jessica Stanfield
Design Editor Matt Veal
Web Editor Darius Alexander
Ads Design Chief Kelly Slyfield

Corrections

Contact the editor at gaeditor@georgiasouthern.edu for corrections and errors.

Our View

Change is not always needed

Patrick Combs' annual visit to Georgia Southern University illustrates that even during a time of transition and change within the university, some things should remain the same. Combs is a student favorite at GSU and has been visiting here for eight years in a row. While some speakers have not come back and others have been added, Combs continually brings quality, encouraging words to GSU.

Although the school's campus and athletic programs are changing, it is important that the traditions and long-standing aspects that make the school great not be forgotten. Although there are two new dining halls, most of the places to get food on campus have not changed. Despite the changes in the athletic department and football field, the traditional uniforms of the football team remains the same.

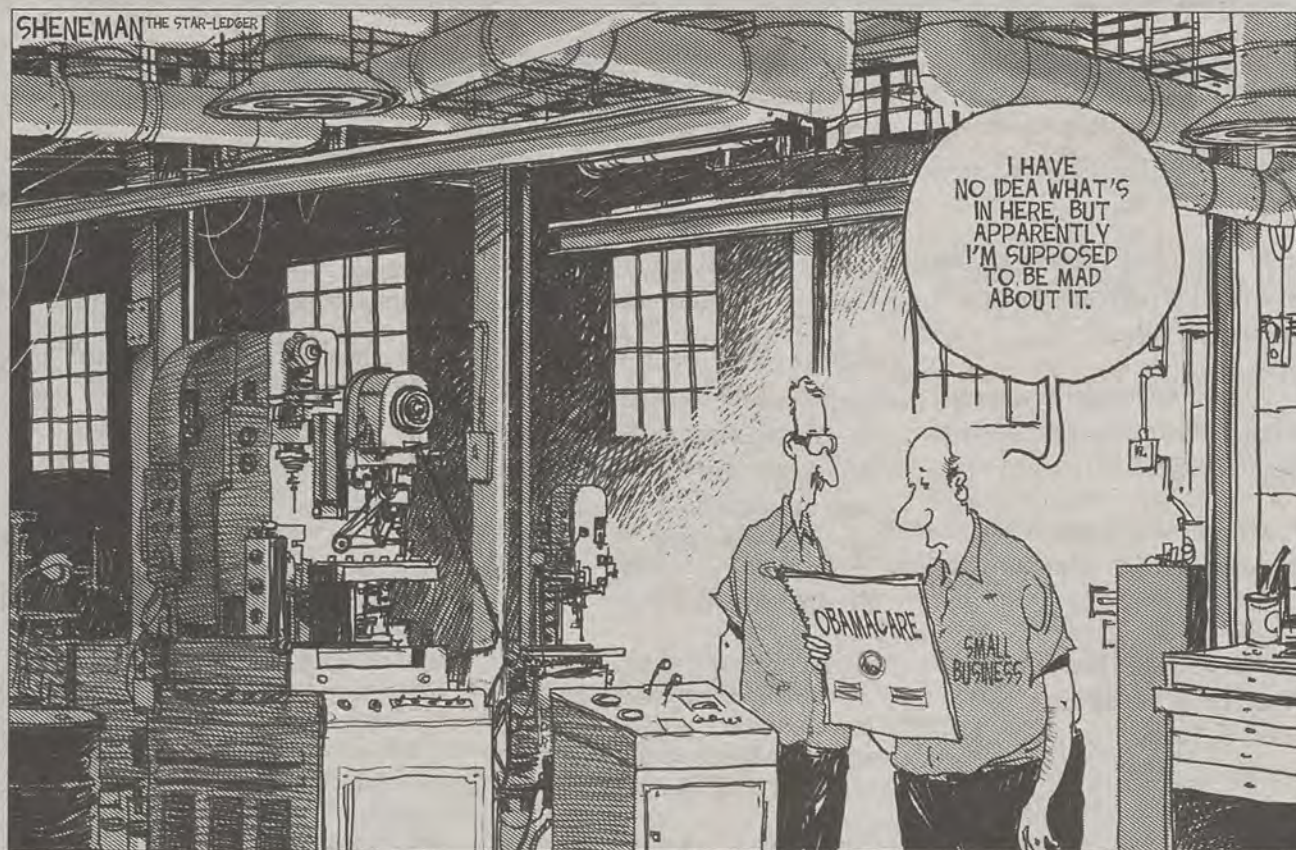
Even academically, things are changing. Colleges have started adding dedicated advisors, though the classes that are being offered are often the same as ever. The new Biology Building shows the need for expansion to accommodate the growing student population, but the biology degree has the same requirements as ever.

However, that does not mean that everything needs to stay the same. Forest Drive Building is still a trailer, the Math/Physics Building is still confusing to many students and tuition continues to rise while teacher pay remains stagnant.

It is important for the university to not throw out everything when moving ahead, although not everything needs to stay the same.

The George-Anne welcomes letters to the editor and appropriate guest columns. All copy submitted should be 350 words or fewer, typed, and sent via e-mail in Microsoft Word format to letters@georgiasouthern.edu. All submissions must be signed and include phone number for verification. GSU students should include their academic major, year and hometown. The editors reserve the right to reject any submission and edit submissions for length.

Opinions expressed herein are those of the Board of Opinions or columnists themselves and DO NOT necessarily reflect those of the faculty, staff or administration of GSU, the Student Media Advisory Board, Student Media or the University System of Georgia.



Congress sinks to new lows

Let me ask you a question. When do you think it is appropriate to get really drunk? If your answer was, "When I have a really important job to do or problem to solve. That's when I like to get hammered!" you may be an alcoholic avoiding your problems or you are like our members of Congress.

According to reporters around Washington, numerous Congress members have been seen in and out of liquor stores last weekend and walking off the floor of the Congress reeking of booze. A potential crisis looms because our government cannot create and agree upon a viable solution to our broken health care system. But like a spoiled child that gets what they want regardless of their behavior, Congress still got to enjoy their weekend and will still get paid if they fail to reach an agreement.

Ironically, the behavior displayed by Congress is pretty consistent with the behavior patterns of alcoholics and addicts alike. They have problems and

THE GREEN VIEW



Brittney Walker

difficulties in their life, but instead of facing them they escape into alcohol or drugs. According to prlog.org, alcoholics also "play the blame game and constantly argue to distract from their own poor behavior." Sounds pretty spot on to how they are handling this crisis. The comparison here is definitely satirical; I don't mean to really say Congress is a bunch of alcoholics. The rampant addiction afflicting our government is actually much less tangible than alcohol or drugs. It is an addiction to power. It is that addiction that has us in the mess we are in now.

I say this because the way they are behaving right now is just a big ruse to keep them all in power. Obamacare has flaws. So does our current health care system. Instead of coming up with good legislation like they should have done in the first place, both sides will just argue and both sides will blame each other if they fail. Come next voting season, citizens will vote for whichever side they are gullible enough to believe. Everyone still hates each other, no problems have been solved, but the members of Congress still don't get fired from their job.

I'm writing this on Sunday, so if the shutdown occurs, I hope it doesn't affect liquor sales. There will be a lot of American citizens wanting to forget about our failure of a government.

Walker is a senior sociology major with a specialization in sustainability from Brunswick. She is an officer in the Green Ambassadors.

Worst is yet to come

Three years after the Affordable Care Act was signed, this law is still not ready for implementation. Today the insurance exchanges open up for Obamacare. You can now go online, compare and purchase insurance available in your area. Unfortunately, there have already been problems and setbacks. Small business owners cannot fully apply for health insurance for another month at the least. Glitches and fraudulent websites have been popping up for the past week. Furthermore, the insurance quotes provided may not be accurate at all; families and individuals might have to shell out way more for insurance. The Department of Health and Human Services said they are unsure how many people will utilize the exchanges. Estimates have consistently fallen and many people don't even know what they do.

Obamacare is a quagmire of mandates and subsidies. You can ask almost any small business owner how this law is affecting them and it's pretty bad. My uncle owns a chiropractic clinic here in Statesboro. Already he has seen premiums rise and more of his patients paying out of pocket. While I was in DC, small business owners called almost daily telling me that since they must cover their employees, they have hardly any money to buy insurance for themselves. Other constituents would call and tell me about how

MY ELEPHANT OPINION



AMBER PORTER

their employers weren't giving them enough hours to qualify for benefits at all. Others saw their co-pays raised to \$1,500, which is ridiculous.

Although most Americans have already felt the effects of Obamacare, many are unaware of how much it might cost them. I honestly believe people will not see how awful this law is until it goes into effect. We've been trying to delay it because everything it should do, like lower premiums and provide healthcare to those who cannot afford it, cannot happen at the same time. Some doctors will not take certain insurances, which rules out keeping your doctor. Nothing President Obama promised we would get out of this law has come true. Health care will be forever changed when this law goes into effect, but not in a good way.

Porter is a junior international studies major from Zebulon. She spent spring semester as a Capitol Hill intern.

A go for Obamacare

I don't understand why so many people are outraged over Obamacare. I'm sure some of the confusion can be attributed to misinformation like death panels, and a host of other lies used by the right wing to disrupt the implementation of a law our country needs to have.

There are some things you should know about Obamacare. If you already have insurance, you will not be affected at all. Obamacare is for those who are totally uninsured and provides them with affordable healthcare options. These plans will allow individuals to receive basic coverage for such things like annual checkups and doctor visits. These checkups will allow doctors to catch potential problems before they become serious and become much more expensive to care for. Without Obamacare, that expensive treatment someone would have to undertake because they did not cure a previous problem could be passed on to the taxpayer.

If you do not obtain health insurance through the private sector or by buying into the public exchanges by a certain deadline, you will face a tax penalty. This is due to the fact that if you get sick and you can't pay for your medical expenses because you never got health insurance, you will at least have paid something into the system to justify the health services you will receive.

A LIBERAL DOSE



CHRIS WARE

We are the greatest country in the world, but up until a few years ago, healthcare, the most vital aspect to human survival, was labeled as a privilege in our country. Part of being the greatest country in the world means your people are cared for in the most basic ways, and through Obamacare, our country will be one step closer to making sure people in our country can expect to live in good health and dignity. I urge you to go research the upcoming changes before you decide if this good or bad law. Obamacare has already affected millions of Americans positively and I am sure many uninsured Americans across the country will find very few problems when it comes to finding an affordable private or public health care option, thanks to Obamacare.

Ware is a sophomore political science major from Griffin. He is involved in the Young Democrats and has worked on various political campaigns.

Time will tell true effects of Obamacare

Today, we'll finally have our first glimpse as to what the Affordable Care Act is all about. This is when the state health insurance exchanges will be open for registration.

These healthcare exchanges will essentially be like what is advertised in those Progressive Car Insurance commercials. You know the ones with Flo talking about how you can go online and compare the different rates offered by various providers? Supposedly, that's how these exchanges are designed to work. There, in one central online location you can pick and choose from competing insurance plans to suit your needs.

For those of us who are currently insured with Medicare, Medicaid or employer-administered insurance, the opening of the state insurance exchanges really doesn't mean all that much at face value. The health

THE BOOK OF ELI



ELIJAH ANDERSON

care exchanges meant to be used by the uninsured. To encourage the uninsured to buy insurance, those who make up to 400 percent of the poverty level will be able to take advantage of federal subsidies that will lower the price of insurance plans. It is here where we encounter our first snafu.

When an individual lacking health insurance goes to receive medical care it comes at the expense of the taxpayers. By

subsidizing insurance premiums for the disadvantaged they have made insurance more affordable for the uninsured, but at the same time the cost of subsidizing those rates will be passed on to the taxpayer. So in essence the American taxpayer will still be paying for the uninsured. Likewise, those individuals who make above 400 percent of the poverty level are expected to have health care premiums rise as a result to make up for the difference, thereby proving that this law certainly does not benefit everyone.

Another aspect of the Affordable Care Act that remains troublesome is the provision that companies with at least 50 employees offer health insurance to its employees. While many companies already do this, the mandate that insurance cover things previously not included in healthcare packages, like

contraceptives, will undoubtedly decrease revenues. Thus, it's not unrealistic to assume that such an increase in a company's costs might cause negative implications such as pay cuts, loss of hours and even layoffs.

It seems to me that for every bit of good the new and idealistic health care law does, it causes pain elsewhere. After all, Obama's main goal was to provide insurance for the uninsured, which this law will do. As for everyone else, Obama only promised to make insurance more "affordable" and we all know the relative nature of that term. While the uninsured stand to benefit from this historic legislation, many Americans should be bracing for impact.

Anderson is a senior political science major from Cumming. He is writing a thesis paper on U.S. interventions.



Jessica Stanfield | The George-Anne

Orchid Asian restaurant will be opening its doors today to the public during limited hours. **Left:** Orchid's will open in Southwind Plaza on Fair Road. **Right:** Workers make final preparations inside before the formal opening.

New Asian food option to open today

BY CAITLYN OLIVER

The George-Anne contributor

Students on a budget with a craving for Asian food will have another option in Statesboro today with the opening of Orchid's Asian Restaurant, a Vietnamese-Japanese restaurant.

"I saw the need for a good place and I wanted to focus some of my country's food in the area because there was a variety of so many others but no Vietnamese food," Lan Doan, owner of Orchid's, said.

The restaurant is located on Fair Road

inside Southwind Plaza.

The types of food will center on a Vietnamese-Japanese theme, including sushi, traditional noodles and soups and salads, among multiple other options, Doan said.

Doan grew up in Vietnam but has lived in Statesboro for the past 17 years. Her restaurant has a similar design to what she saw at home.

Eagle Express will be accepted as a payment option, along with Visa, Discover and MasterCard.

Pricing is intended to be cheap but the food itself will be just as delicious as more

expensive Asian cuisine, Doan said.

For example, an easy chicken, rice and veggie plate will amount to seven dollars.

"We want students to be able to share the experience as well so the prices are reasonable," Doan said.

Many Georgia Southern University students eat Asian food often and are excited about a new Asian restaurant opening in the area.

"Yeah, of course [I like Asian food]. I eat Asian food say, once every two weeks," Rogette Sands, junior accounting major, said.

Having an Asian restaurant available is good

because it provides something different, Blake Brunson, freshman biology major, said.

Hiring took place in August and many GSU students were hired on, accounting for about 80 percent of workers at Orchid.

"There were many applicants, mostly Georgia Southern students," Doan said.

Orchid's hours will be Monday through Thursday from 11 a.m. to 9 p.m., Friday and Saturday from 11 a.m. to 10 p.m. and Sunday from 11 a.m. to 3 p.m.

There will be a soft opening today from 11 a.m. to 2 p.m. and 5 p.m. to 7 p.m.

Back-to-back alerts sent out over weekend

BY LAUREN GORLA

The George-Anne staff

An Eagle Alert and Campus Alert were sent out to Georgia Southern University students around midnight Saturday regarding two separate off-campus armed robberies.

Chief Michael Russell, director of Public Safety, was unable to comment on the case because it falls under the Statesboro Police Department's (SPD) jurisdiction.

"(University Police) respond because a

lot of times they're in apartment complexes that are close by, it's very near campus so we're going to try to keep the students aware," Russell said.

Students did not receive the Campus Alert directly after the incident occurred because the information was received at a later time from the SPD.

"They don't normally call us immediately," Russell said. "They've got priorities that they've got to do."

The crime in the Campus Alert was described as an armed robbery, taking place

at The Avenue at Southern apartments with the suspects being three black males and one black female.

The Eagle Alert was sent about 10 minutes after the Campus Alert and was also for an armed robbery.

The robbery was of a pedestrian walking on Chandler Road near The Cove apartments by suspects described as four black males in a white Escalade.

The Eagle Alert was sent out quickly because the information was available on the robbery and students could have possibly

been in immediate danger, Russell said.

There are certain rules that Public Safety follows when sending out Eagle Alerts.

"You go by the campus itself or public property that is adjoining, so an adjoining sidewalk was close enough," Russell said. "But the other one, if given in a timely manner, we may have sent one out for that one as well."

Russell was unable to comment as to if the two events were a coincidence or committed by the same people due to the incidents falling under the jurisdiction of the SPD.

Statesboro economy struggles to keep up with students

BY DARRION BANKS

The George-Anne contributor

Bulloch County, as of July 2013, has an unemployment rate of 11 percent and Statesboro in particular has a higher unemployment rate of 14.3 percent, according to the U.S. Bureau of Labor.

"Most economists like to see the economy at what we call the natural rate of unemployment, which is in the high five percent, 5.8 or 5.9 percent zone," Greg Brock, Ph.D., professor of finance and economics, said.

In a town like Statesboro, the ideal unemployment would be around six percent, Brock said.

"[In] small towns, college towns, Statesboro, you would think it would be lower," William Amponsah, Ph.D., professor of international economics, said. "That is very high, especially for the city."

The rate could be from cutbacks Georgia Southern University made to its faculty and staff.

"Georgia Southern is such an engine for growth in the area, and our hiring has slowed because of the economy," Brock said.

The high rate could also be due to increasing competition, which may be pushing businesses to close their doors.

"We had a Caribbean restaurant around here not too long ago, but then it collapsed within a year," Amponsah said. "If the students are not going there in huge numbers, then it collapses."

In other words, businesses are coming to Statesboro and adding jobs, but closing almost as quickly as they arrive. As an end result, jobs are being subtracted from the overall community.

This can be seen in the silhouettes of former businesses in vacant lots around Statesboro.

"There's a lot of new construction, [but] there also seems to be a lot of buildings where business has gone under and nothing has come in," Brock said.

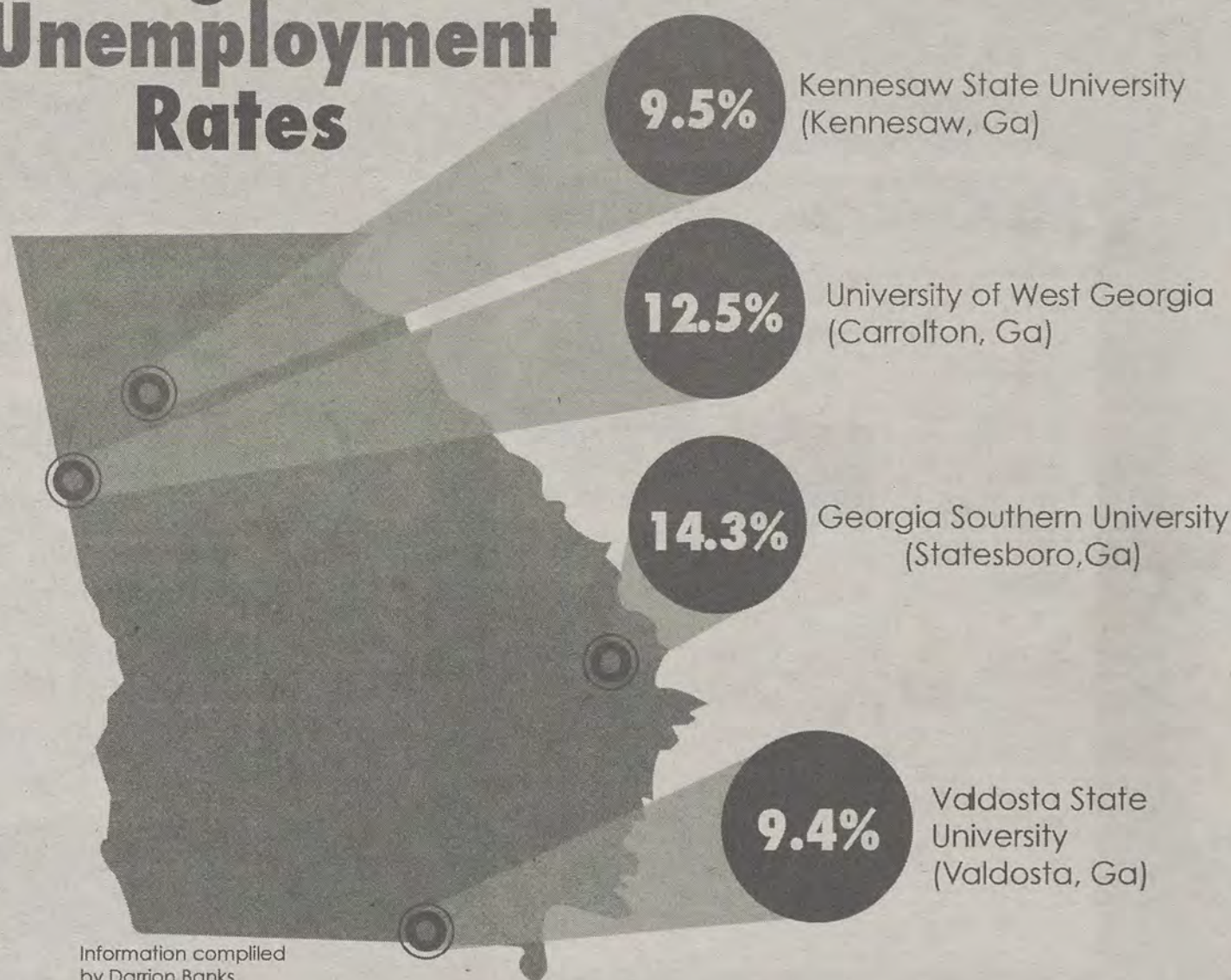
Another problem could be that the service sector in Statesboro is not expansive enough.

The airports, highways and Savannah port around here should be a major attraction for businesses in the area of logistics and transportation, Amponsah said.

But even if Statesboro was to expand its service sector, there is a possibility that the workers would not be skilled enough.

Normally, unemployment is cyclical, meaning when the economy is up,

College Town Unemployment Rates



Information compiled by Darrion Banks

Brandon Coe | The George Anne

unemployment is down and vice versa, Amponsah said.

The unemployment Statesboro is experiencing could be structural, meaning that workers are simply not skilled enough for the jobs in a new interconnected global economy.

This makes the solution even more difficult and it may come back around to GSU.

Amponsah said, "What will be [GSU's] role? The future looks good if this university can strategically position itself to offer training, and that will be required going into the next century."

The Sir Shop
Statesboro Mall
912.764.6924

Cole Haan



There's more where this came from

There is more game coverage online at thegeorgeanne.com. If you're looking for the latest sports coverage online our website has what you need. You can also find us on Twitter and Facebook for minute-by-minute updates. Wherever you are, we're there with you. Enjoy the game.



@thegeorgeanne



The George-Anne



Sports Talk with
The George-Anne

South Georgia kicks off Farm Tour



Luke Bryan performs his hit songs on stage for fans. The country artist will be performing for GSU students and fans during his Farm Tour tomorrow night.

Courtesy of GAC.com

Music

BY ALEXANDRA MCCRAY

The George-Anne staff

Luke Bryan will be making Statesboro his first stop on his fifth annual Farm Tour tomorrow night at Perry's Field.

Tickets will be available for \$35 until the day of the concert. Day-of tickets will increase to \$40 a piece.

"We'll be up here [Rum Runners/Plantation Room] every day from 2-5 p.m., selling tickets and also our open hours we'll

be selling them. We'll have people on campus, like Greeks, at their sorority and fraternity houses will be selling them up until Tuesday," Deven Bradford, Rum Runners/Plantation Room general manager, said.

The concert will be at Perry's Field in Claxton. Guests will be able to start parking and tailgating at 2 p.m. and doors will open at 7 p.m.

"Claxton is my hometown, so it's just kind of like a thing that comes to town that everybody goes to. Me and my girlfriend and a bunch of buddies from high school are going this year. And when we go we always see a lot of people from Southern and

back home," John Kemp, sophomore civil engineering major at GSU, said.

Chanice Neal, Cole Swindell and the song writing team, the Peach Pickers, which consists of Rhett Akins, Dallas Davidson and Ben Hayslip will accompany Luke Bryan on this year's tour.

Bryan started his Farm Tour five years ago to raise money for scholarships of children of farmers in the college towns where his tour stops. In 2012 the Farm Tour attendance doubled that of previous years, and Bryan performed in front of 100,000 fans.

The tour includes eight stops over the

course of two weeks. Five stops are in Georgia, Bryan's home state. Bryan and songwriter Ben Hayslip are GSU alumni.

"A lot of people say that they don't like that it's in the middle of the week, and around this time of the semester it's pretty stressful and it's a good chance to go out with some buddies and have a good time," Connor Kasten, junior economics major at GSU said.

Kasten said, "When you graduate you don't get the opportunities to go out with your closest friends to go and party with your friends, dance around and just listen to good music. Take advantage of it while you're in college."

New boutique in 'Boro caters to students

Fashion

BY MEAGAN GREENE

The George-Anne contributor

The 'Boro has a new addition to the fashion scene which has caught the eye of many students around Georgia Southern University campus.

The store Cutique opened up shop at the end of the summer off of Fair Road in College Plaza, selling affordable new age women's apparel to the public.

Cutique owner, Natessa Williams, is a GSU graduate with a master's degree in professional counseling.

This past Saturday, Cutique hosted a "Cupcakes and Fashions" event where customers were treated to cupcakes while they browsed the shop's selections, Williams said she plans on hosting more, similar events to bring in new clientele.

"All the clothes that are sold at Cutique come from either the mart in Atlanta [AmericasMart] or Los Angeles [LA Mart].

Each item comes from different vendors in these areas selling high fashion. Nothing cheap or cheesy," Williams said.

Cutique's business picked up dramatically when school came back in session this fall.

"Our slogan for Cutique is 'Chic, Contour, Cute,'" Williams said. "I pay attention to what girls are wearing. There are different shipments bi-weekly. We always have different items coming in, I will restock if the vendor still has it in stock and I get many requests for it."

"As a kid I always loved fashion. Always. Actually I wanted to design, but then I decided just to open a store and sell clothes. But I always had the passion for fashion," Williams said.

Williams adjusts the stores hours to accommodate her student-heavy customer base.

"Since most people seem to shop at the end of the week, having the store open Thursday to Saturday from 10 a.m. to 6 p.m. works out well. For the future my goal is to branch out and have a second store in the next two or three years," Williams said.

"The hours are really convenient because you can get something last minute or have a causal shopping day," Savannah Krueger, freshman double major in communication arts and public relations

frequent and Cutique shopper, said.

"Cutique is cute and fun for a college town," Krueger said. "They have things for a night out with friends, my sorority events and concerts. I got my outfit for Luke Bryan there."



Ryan Woodham | The George-Anne

Cutique sells a variety of accessories and jewelry. Cutique hosted "Cupcakes and Fashions" at the boutique this past Saturday and plan to hold more events like this in the future.

Howard's 'Rush' sees checkered flag

Film Review



BY PEYTON CALLANAN

The George-Anne contributor

Everyone loves a great sport rivalry. There is something about watching two titans give each other a run for their money that excites crowds and brings even more passion to a sport.

Ron Howard ("The Da Vinci Code") manages to capture this magic in his latest directorial effort "Rush," which retells the 1976 rivalry between very different Formula One champions James Hunt and Niki Lauda. Howard's well-seasoned technique, along with a strong cast, brings the heated rivalry to life again in this exciting and fast-paced film.

The cast is headed up by Chris Hemsworth ("The Avengers") playing James Hunt, the British Formula One driver who had a larger-than-life playboy reputation off the track.

Hemsworth may be best known for playing the god of thunder in several Marvel films, but proves here that he is capable of

being the leading man in a film where he doesn't have to wear a cape. He is extremely charming as the arrogant and reckless Hunt.

Though Hemsworth's face is on the movie's poster, the real scene-stealer of this film is Daniel Bruhl ("Inglorious Basterds") as type-A Austrian racer Niki Lauda.

Bruhl gives a captivating performance as the brutally honest Lauda, not playing him as hero or a villain, but rather a truly complex and focused man who believed in himself when no one else did.

Lauda's story is one that is fascinating to watch unfold on the big screen, not only for his rivalry with Hunt, but also his amazing comeback after a serious crash.

Bruhl and Hemsworth work as a perfect yin and yang. Their characters are vastly different, but both strive for the same goal. Their strong acting is what really paints this rivalry for the viewers,

and the film simply would not have worked as well if one actor were much weaker than the other.

Howard, along with his two leading men, brought the world of Formula One to the screen with skill and authenticity.

Formula One is nowhere near as popular in the U.S. as it is in

Europe, but Howard has always been able to adapt his filmmaking style to create a believable setting for any viewer.

With "Rush," Howard told an inspiring sports story without ever crossing the line into a cheese fest. The movie is honest, enthralling and fun to watch.

"Rush" really does the great rivalry between Hunt and Lauda justice and is a victory for all involved.



Alexandra Tobia | The George-Anne

CONCERT, from page 1

"We really looked at what's hot right now, we used a third party source who does shows on college campuses, that's her job" Tina Powellson, executive director of student activities, said. "She helps us get a pretty good list of various artists to perform at our school."

None of the potential performers have played on GSU's campus before, UPB made sure that there were new artists to bring to the students, Powellson said.

In past years the university has brought acts such as Tim McGraw, Ludacris, The Band Perry and The Fray.

"We really want to encourage students to vote and really have their voice heard about who they want to be here in the spring," Powellson said.

Depending on budget restrictions and

timing there may be more than one artist, depending on how the voting process goes, Powellson said.

"I think that the concert will be a very exciting event for campus. The list of possible artists is very exciting and any of them would be a great end of the year event for all students" Justin Jeffery, assistant director of UPB, said.

UPB is aiming for the concert to be around April or May of next semester.

"I'm excited because there are more artists to choose from this year, it's going to be difficult to choose just one" Kimberly White, senior justice studies major at GSU said.

White said, "This year seems to have the best choices out of all my years at Southern, I'm glad we have the opportunity to vote on stuff like this, I can't wait."



CARRIE ☐
UNDERWOOD

FLO RIDA ☐

JASON MRAZ ☐

ERIC CHURCH ☐

DARIUS ☐
RUCKER

IMAGINE ☐
DRAGONS

MIRANDA ☐
LAMBERT

RASCAL ☐
FLATTS

MACKLEMORE ☐
& RYAN LEWIS

KELLY ☐
CLARKSON

ONE REPUBLIC ☐



Want To Be *Kissable* This Flu Season?

Influenza Vaccination Clinics

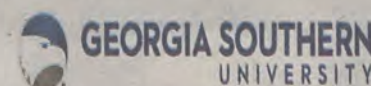
No out of pocket costs for students covered
by the following insurance companies:

Aetna; AmericaGroup (GA Medicaid); BeechStreet; Cigna;
Coventry/First Health/ CNN Southcare; Health Smart HPO; Humana Choice Care;
Tricare; United HealthCare; United HealthCare-Student
Resources (USG Student Health Insurance Program); Wellcare (GA Medicaid).

\$5 for Students with no Health Insurance

\$5 for Faculty/Staff and Retirees
(Reimbursable if covered by USG Health Insurance)

Please bring your Insurance Card and Eagle ID



SPONSORED BY GEORGIA SOUTHERN UNIVERSITY HEALTH SERVICES
AND THE UNIVERSITY WELLNESS PROGRAM

WED., SEPT. 25

STUDENTS ONLY

10 -11 a.m. & 2-3 p.m.

Health Services Conference Room

TUES., OCT. 1

9 a.m. - 12 p.m.

Russell Union Room 2080

THURS., OCT. 3, 5-7 p.m.

Centennial Place Café

TUES., OCT. 8, 5-7 p.m.

Library Display Area Rm. 1300

THURS., OCT. 10, 3-7 p.m.

RAC Lobby

TUES., OCT. 15

STUDENTS ONLY

10 -11 a.m. & 2-3 p.m.

Tent Event outside Health
Services (inside if necessary)

THURS., OCT. 17, 2-5 p.m.

Russell Union Room 2080

WED., OCT. 23

STUDENTS ONLY

10 -11 a.m. & 2-3 p.m.

Health Services Conference Room

WED., NOV 6, 5-7 p.m.

Eagle Village Clubhouse Classroom

WED., NOV 13, 5-7 p.m.

Southern Pines Clubhouse

TUES., NOV. 19

STUDENTS ONLY

10 -11 a.m. & 2-3 p.m.

Health Services Conference Room

'Boro film fest winner to make film debut

Film

BY CHARLES RUDISON

The George-Anne contributor

A group of Georgia Southern University students and creators of the winning film at the Statesboro Film Festival are set to debut their new film, "Chance."

The film will be shown tomorrow at 7 p.m. in the Russell Union Theater. Christian Washington, senior communications and film major, directed the film. Fellow senior communication majors Mallory Taylor and

" 'Chance' is a film about a college-aged student who takes a chance that will affect him for the rest of his life. It's about how the chances we take at our age could have a negative or positive impact on our future

"

-Christian Washington,
"Chance" director and GSU senior

Ben Proctor produced it.

"'Chance' is the type of film that will create a discussion within you, the film is so powerful that it will eventually divide the audience," Proctor said. "We intend to leave our audience with lingering questions in their minds."

'Chance' is a short narrative drama that was nominated for best film, best editing, best director and best cinematography at the Statesboro Film Festival in April. Washington took home the award for best director. It will also be entered at the Macon Film Festival, Atlanta

Underground Film Festival and Atlanta ShortsFest.

"'Chance' is a film about a college-aged student who takes a chance that will affect him for the rest of his life. It's about how the chances we take at our age could have a negative or positive impact on our future," Washington said.

The showing of the film on Wednesday will be the second time that GSU will show a student-made film.

"We hope we can start the trend of having GSU students' work publicly shown on campus," Taylor said, "We hope the premiere

will get people talking and create a buzz around Statesboro."

The production of "Chance" was done this past summer. Filmmakers organized a crew of 20 individuals who attend or graduated from GSU. The production lasted three weeks. Post-production lasted a month.

When Washington left military college he knew he wanted the rest of his life to involve film, so he enrolled in GSU's communications program with an emphasis on film. Washington is one of the founding members of Aspiring Filmmakers United at GSU.

"[The Aspiring Filmmakers United] support originality. We don't want to be any of those famous directors. We want to be ourselves," Proctor said, "We hope to show the students and all of Statesboro that GSU students can and will make films, and that you don't have to go to New York or California to be successful filmmakers. It can all start here."

"It's either film or nothing," Washington said. "This is what I want to do with my life and I will perfect my craft."



Courtesy of Christian Washington

The film's plot revolves around the experiences of a man named Jeremy following a major car accident. **Left:** Zach Spruill stars in the film as Jeremy Livingston, Spruill is a senior history major at GSU. **Right:** Briona Johnson co-stars as Candace in the film, Johnson is a senior theater major at GSU.

CLASSIFIEDS

This page brought to you by Career Services
Explore • Experience • Excel

www.thegeorgeanne.com

Tuesday October 1, 2013 13

Miscellaneous

Statesboro Main Street Farmer's Market Open every Saturday from 9am - 12:30pm through October. 2 East Main Street (in the Sea Island Bank parking lot). For more information on vendors and seasonal produce: www.statesborofarmersmarket.com

Housing

Female sublesser needed for apartment in Hawthorne II during Spring 2014. Rent is \$250/month before utilities; Internet and cable are already paid for. Contact (678) 848-3526 for more information.

SUBLEASER WANTED: Huge unfurnished room in charming & spacious house. Two closets w/ built in shelving. hardwood floors. Connected Full bathroom. \$300 a month. Two other roommates so utilities are split 3 ways. contact Lorenzo Soler @ (912)506-4556 or at ls04113@georgiasouthern.edu

Housing

Subleasing garden district apartment. One room available in 3 bedroom 3/4 furnished flat. \$380a month with a small subleasing fee of \$150. This fee is one time fee! Everything is furnished accept living room. The bedroom, kitchen, and bathroom are fully furnished. Everything is inclusive. The lease is up in aug. 2014 . 1 month rent is free if called or contacted by email before Feb 2014 . contact me at 7069888232 (jimmy gray) or email me at diesaltruck2006@gmail.com Serious inquiries only

Jobs

Nanny needed for 3 energetic kids (7,5,3) at least 2 to 3 afternoons a week, some weekends, family lives 15 miles outside of Statesboro. Email school schedule and resume to south-erntan@gmail.com

For Sale

2008 Volkswagen (VW) Passat Komfort Sedan 4D. \$12,000 negotiable. Mileage: 40,500, Blue Exterior Black Leatherette Interior One Owner. Email designjj@gmail.com or call at 912-478-2343

Will proof papers for grammar, punctuation, spelling, sentence structure. Must have enough lead time to do job efficiently. Reasonable rates. Email auntre01@gmail.com.

Jobs

BARTENDERS WANTED!!! \$250 a day potential. No experience necessary. Training Provided. Age 18+ OK Call 1-800-965-6520 ext 296.

For Sale

FOOTBALL TICKETS FOR SALE: Sept 28 GSU vs Chattanooga -- 2 tickets for sale at \$20 each, Section G, Row 15, Seats 3 and 4. Tickets also available for Oct 12(The Citadel), Nov 2 (Furman), and Nov 9 (Western Carolina). Email: sgallimore@georgiasouthern.edu or aimao@georgiasouthern.edu.

2 AKC REGISTERED ENGLISH BULLDOGS FOR FREE.. IF INTERESTED CONTACT; f123.anderson@gmail.com

Housing

Lease for spring semester in the Forum at Statesboro: 3 bedroom 3 bathroom, 475 a month no utility overages Indoor basketball court. Contact Randall 404-643-8097 email: rh01900@georgiasouthern.edu

Miscellaneous

Ahoy Sailor! Interested in sailing? In search of students, faculty, and staff to help start and be involved in a GSU Sailing Club. Contact gsusailingclub@gmail.com for more information.

Brand new Ray Ban Wayfarer 2140 black sunglasses. \$70
Text 404-834-2123 if interested

Have something
to get rid of?

Make some money by putting it in
The George-Anne's classifieds ads.

FREE to students,
faculty and staff!

**Planters
ROW** 912.681.1170
www.hendleyproperties.com

3 bedroom
bath
house

\$365
/month per person



PUZZLES&COMICS

14 Tuesday October 1, 2013

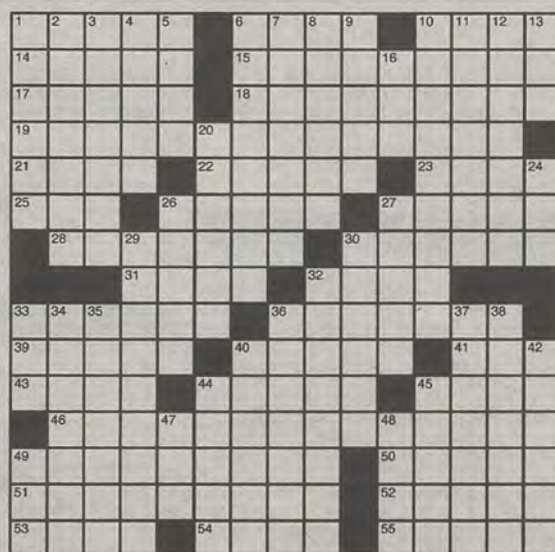
The George-Anne

Los Angeles Times Daily Crossword Puzzle

Edited by Rich Norris and Joyce Lewis

ACROSS

- 1 Island witchcraft
- 6 On The Border restaurant offering
- 10 Fabian, for one
- 14 "La donna è mobile" composer
- 15 Harmonics
- 17 Storyteller's admission
- 18 Symbolic honor
- 19 Power source
- 21 Ab... absent
- 22 Statistical calculations
- 23 High order
- 25 "... nuff!"
- 26 Practice grounder, say
- 27 Pacific island nation
- 28 How a lot of bad decisions are made



By Barry C. Silk

DOWN

- 30 Sift
- 31 Nails down
- 32 ... sci
- 33 The River Foyle runs through it
- 36 Gulf of Guinea island
- 39 Energy acronym
- 40 Rolls and binds
- 41 Derisive call
- 43 "Diplomacy for the Next Century" author
- 44 Mosey
- 45 Maintenance
- 46 Shades-wearing drummer
- 49 Pittsburgh Steelers' founder
- 50 Dangerous, probably
- 51 Argentite, e.g.
- 52 Type of crown
- 53 Host of the 24th Academy Awards
- 54 '90s Mariners star
- 55 Equine

Last Edition's Puzzle Solved

R	A	P	A	T	L	A	S	T	T	V	A	D
A	L	A	P	A	E	L	L	A	H	I	H	O
F	L	U	O	R	I	N	E	A	R	S	E	N
T	A	L	L	V	I	S	C	I	D			
H	Y	D	R	O	G	E	N	I	O	D	I	N
	S	I	T	H		T	E	E	U	P		
P	B	J		F	R	O	W	N	S	A	S	T
R	O	E		F	A	S	H	I	O	N	E	S
I	T	R		S	T	O	P	B	Y	L	O	S
M	O	R	O	N		A	E	R	I			
O	X	Y	G	E	N	N	I	T	R	O	G	E
	W	A	V	E	I	N		E	G	O	S	
E	L	E	M	E	N	T	S	O	F	S	T	Y
L	I	S	A		E	T	U	D	E	S	P	I
M	U	T	T		S	I	M	O	N	E	T	E

- 33 Article in Le Monde?
- 34 Its flag resembles the U.S. flag but with only one star
- 35 Barely sufficiently
- 36 Arctic
- 37 Where kyat are spent

- 38 Tax targets
- 40 Key of Brahms's Piano Sonata No. 3
- 42 Golden age
- 44 Old marketplace
- 45 Flea market pickup
- 47 Shad output
- 48 ... mat
- 49 Pop the question

CLIFF: MARRIAGE COUNSELOR

TOR, BRIDE OF TOR, YOU WERE MADE FOR EACH OTHER!

WE GROWN APART.



FIRE BAD!

FIRE NOT BADI



WE NO LONGER COMPATIBLE.



Calamities of Nature by Tony Piro

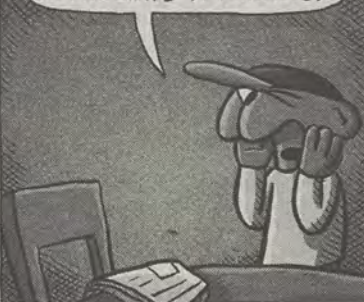
AARON, YOU'LL NEVER GUESS THE MIND BLOWING THING THAT HAPPENED TO ME TODAY! I SAW A CAR WITH THE LICENSE PLATE BZR128!



DO YOU REALIZE WHAT THE ODDS ARE OF SEEING THAT EXACT LICENSE PLATE?! MANY MILLIONS TO ONE!



WHAT?! CAN'T YOU APPRECIATE A MIRACLE?!



9	7		8				1	
							3	
3		2			9	4		7
5			6	4				
		4				5		
				9	8			4
6		3				7		2
		7						
	9				5		4	1

Sudoku

THE GEORGE-ANNE

<http://www.thegeorgeanne.com>

see more online



Eagles face stressful decisions in goal

Women's Soccer (2-5-2)

BY HAYDEN BOUDREAUX

The George-Anne contributor

Conference play began this weekend for the Georgia Southern University women's soccer team, and it found itself battling with a unique situation at the goalkeeper position.

Last season, senior goalkeeper Katie Merson won the Southern Conference Championship Most Outstanding Player Award and was selected to be on the SoCon All-Championship Team. Along with those accolades, she also played every minute in goal last season for the Eagles.

However, due to an injury in the preseason, Merson has been sidelined up to this point in the season. Additionally, sophomore goalkeeper Emily Gosson fell to a preseason injury. After these major setbacks head coach Brian Dunleavy was left with one healthy goalie, sophomore Heather Kirkover.

To stay on the safe side, at the beginning of the season coach Dunleavy had a conversation with a club team junior goalie Molly Williams. They came to the agreement that Williams would try out for the team so they could have a goalie in the event that Kirkover had to leave a game.

This started the process of getting Williams cleared for NCAA eligibility. During this time, lady luck seemed to avoid GSU.

On Sept. 22 the Eagles took on Mercer University, with Heather Kirkover unable to take the field due to an injury in practice. Coach Dunleavy found himself away from home, with no goalie.

"I asked the team who could take over in goal, the team decided it should be [Alanna] Rudd," Dunleavy said.

Despite her inexperience at the position Rudd managed 11 saves but the Eagles could not pull off the victory.

Last week relief came for GSU as Molly Williams was cleared for eligibility and was able to make her college debut against Samford University. Williams had a spectacular coming out, nabbing 13 saves and holding off the top-ranked opponent as the teams came to a 0-0 draw.

The Eagles will take on Appalachian State University (3-4-2) this Friday in their third conference match of the season. Kirkover's injury timeline was not disclosed so it is not clear whether Kirkover or Williams will be in the net for GSU. The game will be at 7 p.m. at Eagle Field.



File Photo

Senior goalkeeper Katie Merson (00) stands in goal. Multiple injuries to goalkeepers have tested the Eagles depth at the position. Merson has yet to play this season.

GSU wins hard-fought game against UTC

Football (3-1)

BY WILL CHENEY

The George-Anne staff

The Georgia Southern University football team defeated the University of Tennessee at Chattanooga 23-21 on Saturday in a game filled with storylines.

One of the major storylines from Saturday's game was that McKinnon, with his 172 rushing yards, passed GSU legend Tracy Ham for seventh all-time on GSU's career rushing yards list. McKinnon now has 3,264 rushing yards in his career.

The atmosphere after the win was dampened after news came of junior All-American running back Dominique Swope being sidelined for the rest of the season due to shoulder surgery. Swope will be placed on the medical redshirt list.

The Eagles were looking for redemption after the loss to Wofford College two weeks ago in the Southern Conference opener. With the bye week last week, GSU had two weeks to bury the Wofford loss in the past and prepare for a tough UTC team.

GSU senior Jerick McKinnon returned as the starting quarterback on Saturday and would put together a memorable evening. McKinnon drew the first points of the game as he punched in a one-yard touchdown to put the Eagles up 7-0 early.

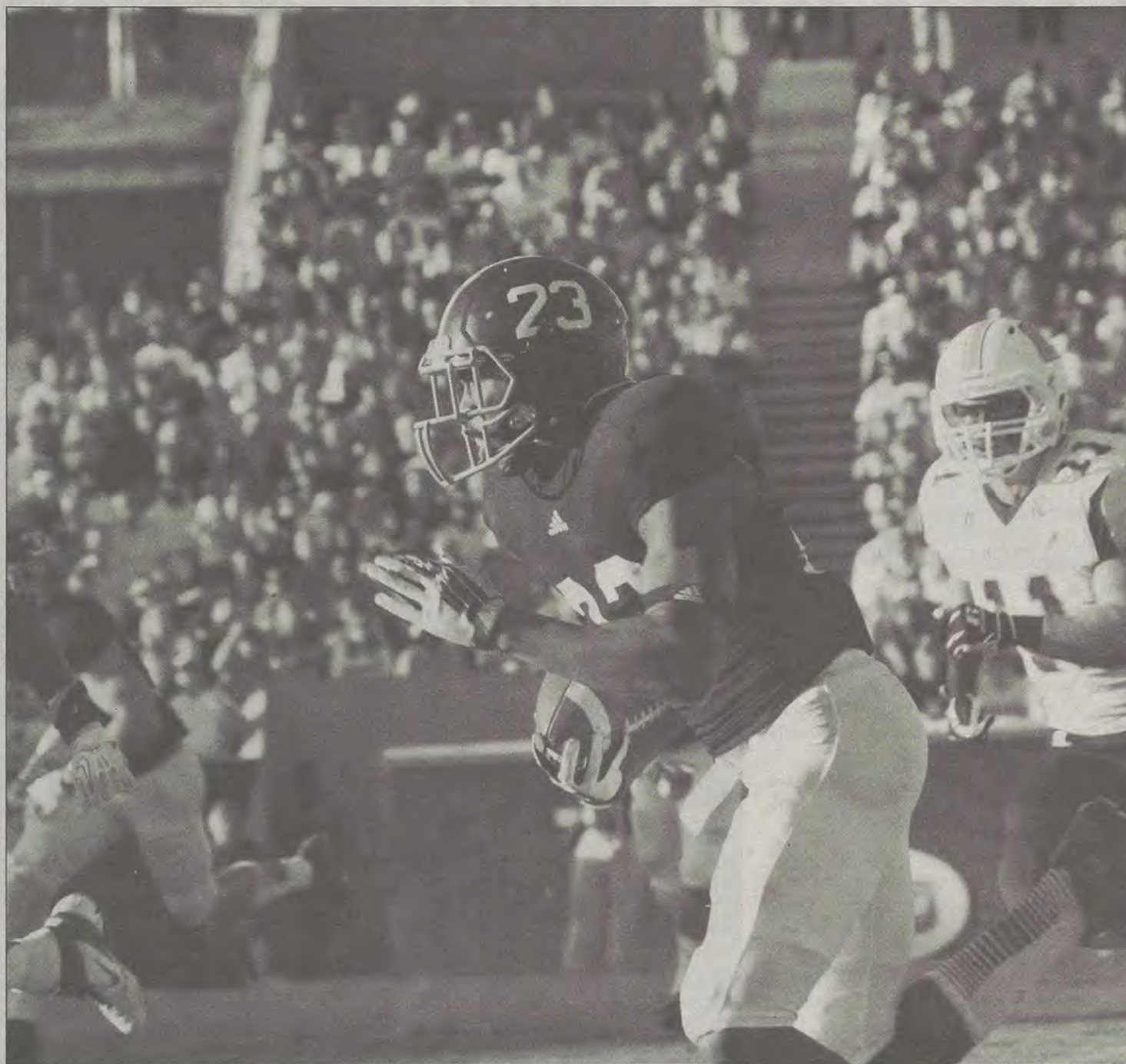
In the next possession, however, UTC sophomore quarterback Jacob Huesman would have an answer. Huesman, who was a nuisance to the Eagles' defense for the second year in a row, broke a 51-yard touchdown run to tie the score up at 7-7.

A reversal play to GSU redshirt freshman receiver Montay Crockett would lead to a 10-yard touchdown run and a 14-7 Eagle lead after the first quarter of action. The score was Crockett's first career rushing touchdown.

The second quarter would see a 32-yard field goal by GSU freshman kicker Younghoe Koo and a rushing touchdown by UTC junior running back Keon Williams to bring the score to 17-14 in the Eagles' favor at halftime.

UTC began the second half with fireworks, as Williams broke a 57-yard reception to the end zone to give UTC its first lead of the game at 21-17. That was, however, the last that would be heard from the Mocs' offense.

In an interesting sequence of events in the third quarter, the GSU Southern Pride



Brandon Warnock | The George-Anne

Georgia Southern University running back Jonathan Bryant (23) looks to run past defenders. Bryant ran for 26 yards on four carries against the University of Tennessee at Chattanooga.

Marching Band was given a warning by officials for playing while UTC's offense was in formation at the line of scrimmage. This prompted the crowd of 16,827 fans at Allen E. Paulson Stadium to become even louder. The level of noise stayed that way for the rest of the game, which contributed to the Mocs' 11 penalties for 75 yards.

"Any time Paulson gets cranked up like that, it only pumps us up more on defense,"

senior linebacker Kyle Oehlbeck said.

The fourth quarter of Saturday's conference matchup became somewhat of a coming-out party for Koo, who was named SoCon Special Teams Player of the Week. He drilled two key field goals in the fourth quarter to put GSU ahead. The first was a career-long 40 yarder and the second was a 26-yarder to put the Eagles ahead by two points with less than two minutes to go.

"He did a nice job and I'm glad we had him," GSU head coach Jeff Monken said. "He stepped right in there and drilled them through and it's a credit to him. He's worked really hard and he's a good kicker. It's a thrill for him and hopefully that's a good sign for us."

The game ended just after 8:30 p.m. as a Huesman pass was intercepted by GSU senior defensive end Josh Gebhardt with two seconds left on the clock.

Eagles sweep SoCon opponents over weekend

Volleyball (14-2)

BY HAYDEN BOUDREAUX

The George-Anne contributor

It was another dominant weekend for the Georgia Southern University volleyball team (14-2) as the Eagles opened Southern Conference play 2-0.

Friday night the Eagles faced Elon University (9-8, SoCon 1-1) in their first conference game of the year.

The first game of the match was hard fought on both sides. After dominating most of the set, senior middle Enjoli Johnson managed to record the final kill with a score of 25-20.

Game two featured GSU junior outside hitter Jamie DeRatt and senior outside hitter Nicole Jeschelnik putting on a show for the crowd. Sophomore setter Katalin Minnerly assisted the two attackers and ended the round 25-17.

Elon made adjustments to its game plan and mounted a comeback, trading scores most of the third game. The Eagles fought back, tying the game at 25-25 before the Phoenix fit in two consecutive points sending the match to game four.

DeRatt continued her solid performance into game four. Assisted by the defense of sophomore libero Alex Beecher, GSU held off a late rally by Elon and finished the match 25-21.

Jeschelnik described the importance of securing their first SoCon win as making a statement. She said, "This sets the tone for conference. If we come ready to play every game and if we play our best things will go our way."

Statistically the Eagles were solid on the night. Jeschelnik recorded 16 kills and 14 digs along with DeRatt racking up 15 kills and 13 digs.

Sophomore Crysten Curry denied Elon attackers with five block assists and one solo block.

Saturday afternoon the University of North Carolina at Greensboro (8-7, SoCon 1-1) rolled into the Hanner Fieldhouse looking to snap the Eagles seven game win streak.

With the help of Minnerly, the Eagles easily put down the Spartans 25-18.

UNCG shook off its pre game jitters and took the court for game two. With a combination of devastating spikes and a mass of Eagle errors the Spartans were able to pull ahead and grab game two 25-20.

The Spartans attempted to battle back late in game three but GSU senior right side Katie Bange sent a ball to the middle of the court giving her team a 25-23 victory.

Game four was a repeat of game two. The Spartans took advantage and won 25-20, forcing the Eagles' first five-game match of the season.

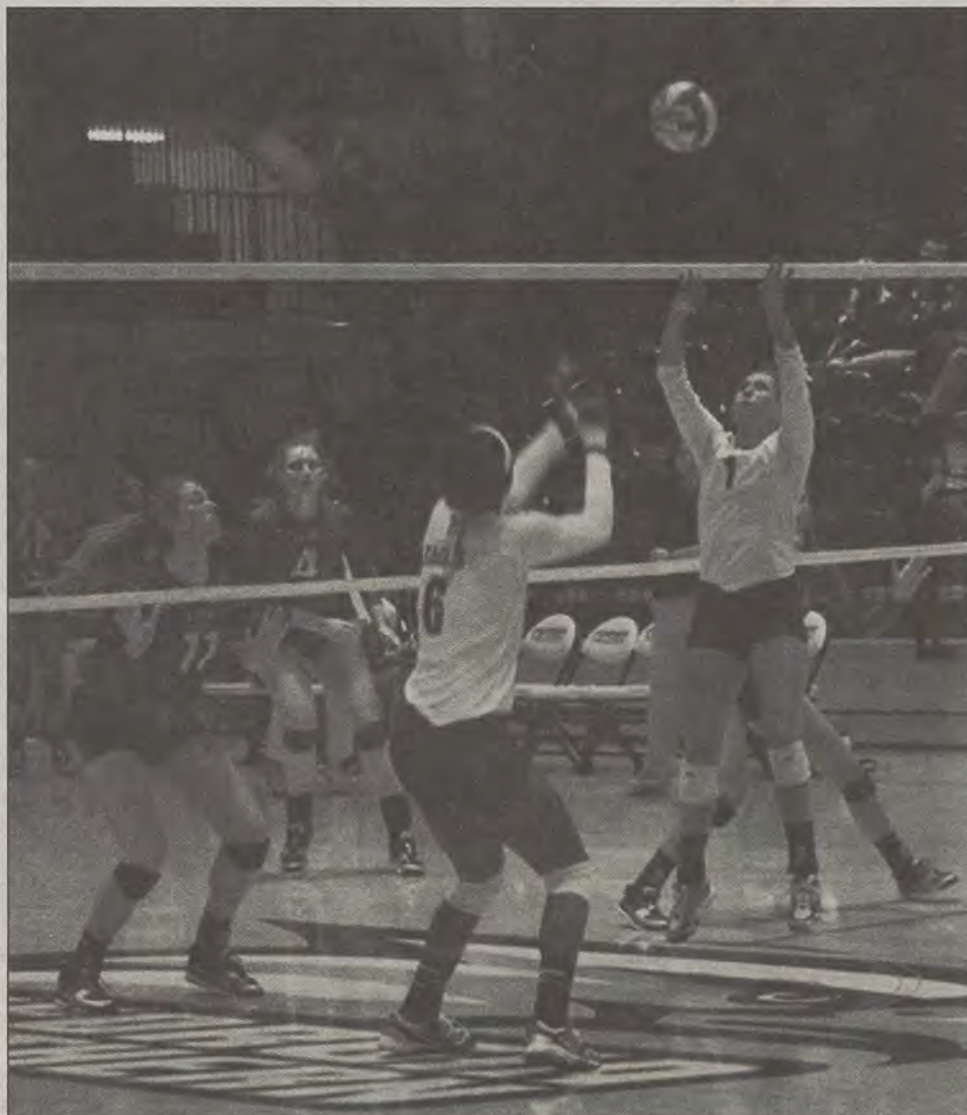
GSU hunkered down in game five. The 15-10 set gave the Eagles a 3-2 victory over the Spartans.

DeRatt led the team with 23 kills, with Beecher leading in digs with 27. Curry had another dominant game, defensively blocking a total of 8 spikes.

Minnerly acknowledged a distinct difference between the typical three-game matches and the five-game match they played Saturday.

"It's definitely harder, and it's a lot more intense because there is more stress, especially in that fifth set when you are out of breath," Minnerly said.

The Eagles are riding high after two straight SoCon wins and they hope to carry their momentum into Tuesday against The Citadel (4-13). The game will be at 6 p.m. in Hanner Fieldhouse.



Brandon Warnock | The George-Anne

Sophomore setter Katalin Minnerly (1) sets up junior middle Kym Coley (6) for a spike. Minnerly totaled 96 assists in two games over the weekend.

GSU volleyball to play The Citadel tonight

BY ZAKYRA COLVIN

The George-Anne staff

In its next Southern Conference match, Georgia Southern University's volleyball team (14-2, SoCon 2-0) will play against The Citadel (4-13, SoCon 0-2) Bulldogs at home in Hanner Fieldhouse.

GSU is ranked No.1 in the SoCon and are looking to win their ninth straight game.

The Citadel has had a tough season so

far after losing its first two SoCon matches against Elon University and the University of North Carolina at Greensboro this past weekend. The Bulldogs are ranked No. 11 in the SoCon.

The Bulldogs are led offensively by sophomore middle hitter Bailey Kernodle with 94 kills, senior middle blocker Katie Briggs with 92 kills and junior middle hitter Lauren Hurt with 90 kills. Senior setter Erin Bucherl is a defensive standout, leading the

Bulldogs with 241 digs.

The Eagles will look for their next win behind the offensive attack of junior outside hitter Jamie DeRatt with 194 kills, sophomore right side Katie Bange and senior outside hitter Nicole Jeschelnik who both have 142 kills and Kym Coley with 109.

DeRatt was named SoCon Volleyball Offensive Player of the Week for the second time this semester. DeRatt averaged 4.22

kills, 3.56 digs and .078 blocks per set over the weekend. DeRatt posted career highs in kills, with 23, and digs, with 19, against Elon University.

Since last season, GSU has won 27 of its last 30 matches and are 14-1 at home in that time span.

The Eagles will play The Citadel, which is looking for its first victory against GSU after meeting 29 times in the past, tonight at 6 p.m. in Hanner Fieldhouse.



Ryan Woodham | The George-Anne

GSU junior forward Sydnie Van Curen (29) chases down the ball. The Eagles earned three points in their two games over the weekend, as they escaped without any losses on their record.

Eagles show improvement opening conference play

Women's Soccer (2-5-2)

BY HAYDEN BOUDREAUX

The George-Anne contributor

The Georgia Southern University women's soccer team (2-5-2) opened conference play with a 0-0 tie against Samford University (6-2-1) and a 2-1 victory over the University of Tennessee at Chattanooga (4-5-0) over the weekend.

The Eagles had to enter both games without starting sophomore goalkeeper Heather Kirkover. Head coach Brian Dunleavy made the call to go with junior goalkeeper Molly Williams, who was called up from club soccer.

On Friday, GSU made the trip up to Birmingham to take on Samford. The Bulldogs entered the game with six wins out of its last eight games while the Eagles had only captured one win this season.

After only 45 seconds, Bulldogs' senior midfielder Trine Taule launched a shot towards the Eagles' goal but it collided with the crossbar.

The Bulldogs continued to attack Williams in goal. Sophomore defenders Katey Lippitt, Jessie Eberhardt and Renee Nance had their stamina put to the test, being forced into one-on-one matchups.

Meanwhile, the Eagle offense struggled to get around the Samford defense. Junior forward Sydnie Van Curen and senior forward Alex Murphy combined for five of the six shots, with only one recorded as a shot on goal.

GSU managed to hold off Samford in regulation, forcing the game into two overtime periods, which both resulted in no scores from either team ending the match in a 0-0 tie.

The theme for the first game of the weekend was the steadfast determination and resiliency of the Eagle defense. The defenders anchored by Lippitt took on 33 shots and

Williams, in her college debut, stepped up for her team in goal with 13 saves including a last second shot by Samford on the final play of the second overtime.

Coach Dunleavy commended his defenses' effort.

"The defense was amazing, they did a really good job of blocking shots and stayed organized," Dunleavy said.

Sunday GSU traveled to Chattanooga to clash with the University of Tennessee at Chattanooga. Over 3100 fans arrived to help rally their home team against the visiting Eagles.

Twelve minutes into the game UTC forward Loryn Queen took a charging shot up the right side of the field taking the lead 1-0. The rest of the first half featured multiple changes of possession, with no team pulling away.

The Eagles started the second half with a vengeance. Five minutes after the whistle blew sophomore midfielder Cori Dulmage

sent a pass over to Alex Murphy, who guided her shot across to the left side of the net, tying the game 1-1.

At the 80 minute mark freshman forward Jennifer Wittick advanced the ball over midfield then rifled a pass over to sophomore forward Nora El-Shami who slammed it past the Chattanooga goalie, taking the lead 2-1.

With only a minute left in the game UTC sent a final charge toward Lippitt and her defense. A final shot went up and was saved by Williams, ending the bout 2-1.

Coach Dunleavy was elated by the win and how well his team performed.

"We came out flat in the first half and really stepped it up in the second half and played good soccer," Dunleavy said.

GSU will try to duplicate its defensive success as they come back home this Friday to battle Appalachian State University (3-4-2, SoCon 0-0-2) at 6 p.m. at Eagle Field.



File Photo

Junior running back **Dominique Swope (6)** gets taken down by two players from The Citadel. Swope had amassed 174 yards and two touchdowns before being sidelined with a season-ending injury.

SWOPE, from page 1

"Those other guys have no experience," Monken said. "Irv Huggins has never played in a college game and Cam Lewis is a true freshman so it's slim pickings."

The forgotten man on the roster, former starting quarterback Ezayi Youyoute is playing running back in his junior season and could eventually contribute on the field.

He has been dealing with his own injuries this year and did not see any playing time last week.

"I don't know that he was ready. He could have gone in an emergency but I don't know that he was completely ready," Monken said. "Eventually you have to overcome that there is going to be some pain and play through it, and he will."

The Eagles are banged up but still capable of winning football games the best way they know how: on the ground.

GSU drops close game

Men's Soccer (4-5)

BY TREVOR MCNABOE

The George-Anne staff

A thrilling double overtime win earlier in the week over Presbyterian College could not carry over this past weekend as the Georgia Southern University men's soccer team fell in its Southern Conference opener to Davidson College by a score of 2-1.

The Eagles opened up the SoCon campaign with a goal as freshman forward Jeremy Rector found a cross for senior forward Witt Carlisle for a goal in the seventh minute of the game.

The lead was not long-lived, as less than a minute later the Wildcats found an equalizer provided by junior midfielder Alex Feliciano, assisted by senior midfielder Chris Pettiglo, in the form of a cross from the wide area and into the box to tie it at one apiece.

Both teams continued to be

deadlocked until halftime. DC came out in the second half and would find an advantage over the home side as sophomore forward Valeriy Sviderskiy scored his fifth goal of the season off a rebound.

The Wildcats outshot the Eagles by a tally of 18-14 and were ahead 11-4 in shots on target.

GSU would not be able to overcome this final goal and dropped to 4-5 on the season.

A positive for GSU was the goalkeeping as senior goalkeeper Neal Bates added eight more saves to his season total to put him at 59 saves and a .849 save percentage.

This is the second straight year that GSU has lost to DC by a score of 2-1 and the first time that the Wildcats have won in Statesboro since 2009.

The Eagles will look to bounce back to .500 in both overall and conference record this Saturday as they take on Wofford College at 7 p.m. at Eagle Field.

Georgia Southern Volleyball Tonight!

EAGLES VS. THE CITADEL


6 P.M.

HANNER FIELDHOUSE

GATA GAME!

GUS, FREEDOM, THE BAND, CHEER-LEADERS, AND ALL STUDENT-ATHLETES WILL BE IN ATTENDANCE!

TRUE BLUE
GEORGIA SOUTHERN



NOW ACCEPTING MISCELLANY SUBMISSIONS

FALL 2013

ALL GSU STUDENTS, FACULTY AND STAFF
WELCOME TO SUBMIT

ALL MEDIUMS ACCEPTED

PRIORITY DEADLINE 9/20 | \$5 SUBMISSION FEE

STANDARD DEADLINE 9/27 | \$10 SUBMISSION FEE

LATE DEADLINE 10/4 | \$15 SUBMISSION FEE

SEND TO GSUMISCELLANY.SUBMITTABLE.COM
CONTACT MISCELLANY@GEORGIASOUTHERN.EDU