

Georgia Southern University

Digital Commons@Georgia Southern

The George-Anne

Student Media

8-27-2013

The George-Anne

Georgia Southern University

Follow this and additional works at: <https://digitalcommons.georgiasouthern.edu/george-anne>

Recommended Citation

Georgia Southern University, "The George-Anne" (2013). *The George-Anne*. 2803.
<https://digitalcommons.georgiasouthern.edu/george-anne/2803>

This newspaper is brought to you for free and open access by the Student Media at Digital Commons@Georgia Southern. It has been accepted for inclusion in The George-Anne by an authorized administrator of Digital Commons@Georgia Southern. For more information, please contact digitalcommons@georgiasouthern.edu.

ROUGH START FOR EAGLES

PAGE 12

'YOU'RE NEXT' REVIEW

PAGE 8

REFUNDS AFTER LABOR DAY

PAGE 3

Tuesday August 27, 2013
Georgia Southern University
www.thegeorgeanne.com
Volume 84 • Issue 15

THE GEORGE-ANNE

TRUE BLUE



Andy Morales | The George-Anne

Georgia Southern University students celebrated the start of a new season at Day Six at Allen E. Paulson Stadium. The homecoming theme for this year was announced as "The Magical World of Georgia Southern." For full coverage of the event check out thegeorgeanne.com.

GSU hires 25 advisors

BY TAYLER CRITCHLOW

The George-Anne staff

The new school year brings a change in the advisement process for Georgia Southern University students.

GSU hired 25 professional advisors to start working directly with students and help them understand what their specific responsibilities are.

"We are really trying to increase the contact that students are able to have with advisors, decrease the time it takes for you to see an advisor, and to ensure the accuracy of advising because you have that direct contact," Jean Bartels, Ph.D., provost and vice president of Academic Affairs, said.

The idea for the additional amount of professional advisors has been in the process for the past few years.

"We were really trying to keep the ratio of students and advisors to the ratio recommended by the National Advising Association which is something like 300 to 1," Bartels said.

The 25 new advisors were distributed to the colleges with the most need for professional advisors.

"I think because we have professional advisors who are up to date and knowledgeable about the programs of study for their majors, this also frees up time for the faculty members to be back in the classroom teaching and doing research and being mentors to our students," Lisa Vance, director of the College of Science and Mathematics Advisement Center and pre-health professional advisement, said.

See ADVISORS, Page 2

Stadium construction progresses slowly

BY ROBERT HUITT

The George-Anne staff

Paulson Stadium's makeover has slowly progressed over the summer and Georgia Southern University football fans will have to adjust on game days.

With the ongoing construction, fans attending football games can expect some inconveniences this season.

The GSU Athletic Department

released a guide and map to help fans navigate around the stadium. Maps can be found at ticket windows and will highlight construction zones, ticket booths, open gates and the tailgate zone.

Construction zones around the stadium will be off limits to fans. The area for grass seating behind the east end zone will be closed due to the construction of the Football Operations Center.

James Woodward, the jobsite

superintendent for Evans General Contractors, said the poor weather Statesboro has received the past two months has been the primary holdup.

"The rain has had a tremendous effect on the progress," Woodward said. "We can't work in the rain, especially with the lightning and thunderstorms we've been having."

See STADIUM, Page 12



thegeorge
anne.com



Follow us on Twitter
@TheGeorgeAnne



Newsroom 478-5246
Advertising 478-5418
Fax 478-7113

PO Box 8001
Statesboro, GA
30460

Lewis honored through scholarship

BY LAUREN GORLA

The George-Anne staff

The Georj Lewis Scholarship, created by the Student Government Association for Georgia Southern University student leaders, will go into affect after working on it for two years.

"In 2011, the Student Government executive board created this scholarship in honor of Dean Lewis," Azell Francis, executive vice president of academic affairs for SGA, said.

Before a scholarship can go into effect

and start being distributed to students, a certain amount of money must be collected to fund the scholarship, Garrett Green, president of SGA, said.

That amount of money was finally reached this past summer.

Lewis was the director of the multicultural



Georj Lewis

student center from 2002 to 2003 and was then promoted to the dean of students in 2003 and served in this position until February 2012.

Lewis was extremely involved in the lives of students while serving on campus, Green said.

"Dean Lewis was really able to relate to students and connect to them," Green said. "He played intramural sports, like flag football, which brought him down to the student level."

Interested applicants must have attended GSU for at least one semester and have a

GPA of 2.75 or better. Applicants also need to submit a leadership essay of at least 500 words, Francis said.

The scholarship amount will be for \$1,000 for a year and distributed in two \$500 increments, Green said.

"We're really looking for involved student leaders," Green said. "There are so many scholarships available for incoming freshmen and we wanted to reward involved students."

Applications will open around February or March. The winner will be announced in the spring of 2014 and will go into effect fall 2014.

Advisors, from page 1

The qualifications for advisors have always been the same, the university is now just referring to them in terms of what they do, Bartels said.

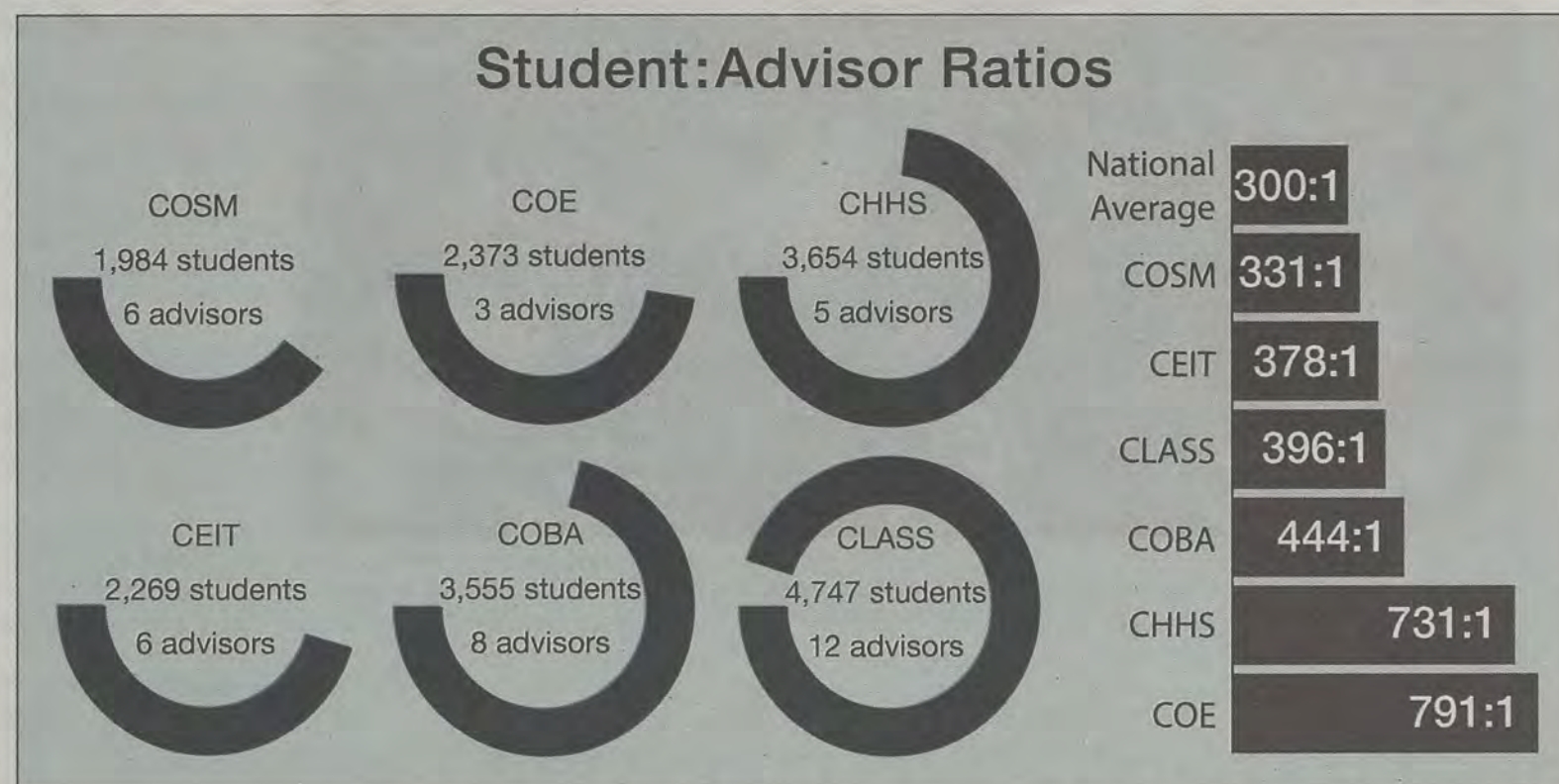
The Board of Regents provided GSU with the funding to expand the advisement program, Bartels said.

"As enrollment goes up you need more manpower, and so the university feels that this is so important to help students succeed and keep the number of advisees to the advisor ratio down; you know we really needed more advisors," Vance said.

There is not a set number of times that a student must meet with their advisor over the course of the semester, nor is there a set amount of time that a student must spend in an advising session, Bartels said.

"Our major objective here is to be able to facilitate the students' experience with getting the courses that they need to take in the right sequence, to make sure they are on target, that there aren't any mistakes in the way their program of study is laid out for them, they have a smooth transition and they are able to progress well through their program of study and graduate in a timely fashion," Bartels said.

The needs of at-risk students were also addressed with the additional advisors, providing those



Brittni Favorite | The George-Anne

students with more personalized attention that they may not have received previously.

"Every advisement center got an advisor for intervention to really be the advisor for at-risk students and to help guide them so that they can be successful," Vance said.

Along with the increase in the number of advisors, there is also a plan to start using faculty for advising in a different capacity.

While the professional advisor would be used for receiving a student's RAN and understanding which courses to take in which semesters, the faculty advisor would be used as more of a career advisor for students, Bartels said.

"We want students to still be involved and still have access to their faculty members but we're here to do the guiding on the class selection, careers and find the extra

learning opportunities as far as programing goes," Vance said.

Each college operates its advisement center in its own way while following a similar system.

Some colleges have professional advisors that work with a student through all four years with a faculty advisor as just an additional resource, while other colleges have a professional advisor stay with a student for the first two years and

then the student is then shifted to a faculty advisor.

Bartels said, "I think we are going to see more shift towards professional advisors for all four years and then the faculty having a different role being able to do different things with students that are much more helpful to a student. But again that will vary from college to college and probably will for some time."

Police Beat

Friday, Aug. 23

8:55 a.m.: Officers assisted Statesboro Police Department with serving a warrant. The subject was located at the Rosenwald Building and was turned over to a Statesboro P.D. officer.

12:00 p.m.: Quinton R. Gilchrist, 19, Atlanta, Ga., was arrested and charged with theft of mislaid property in reference to a theft reported in April 2013.

1:03 p.m.: Officers responded to a suspicious person at Southern Courtyard. The subject was not located and the complainant was advised to contact University P.D. if they came back. This case was assigned to criminal investigations.

10:47 p.m.: An incident report was taken for harassment. The complainant reported a few minutes later that the harassment was a prank.

Saturday, Aug. 24

12:54 a.m.: Officers observed a vehicle impeding the flow of traffic at Lanier Drive. The driver was cited for impeding the flow of traffic and vehicle registration expired.

2:18 a.m.: Officers responded to a report of suspicious persons at Southern Pines. A description was given and officers located a subject in the parking lot fitting the description. Thomas C. Barszcz, 18, New Jersey, was arrested and charged with underage possession of alcohol and possession of a false I.D.

Sunday, Aug. 25

12:57 a.m.: Officers observed a verbal altercation in Parking Lot J. Kelly Breanne Dykes, 18, Statesboro, Ga., and Scott Michael Bowman, 19, Statesboro, Ga., were arrested and charged with underage possession of alcohol.

2:19 a.m.: Officers conducted a traffic stop on Georgia Avenue. Dylan Oscar Hickox, 19, Waycross, Ga., was arrested and charged with DUI and impeding the flow of traffic.

2:43 a.m.: Officers responded to a fight at Southern Pines. Austin William Coleman, 18, Grovetown, Ga., was arrested and charged with underage possession of alcohol.

Refund checks to come soon

BY ALANNA NAVIN

The George-Anne staff

For many students on campus, financial aid refund checks are a way to pay for other necessities, however, some issues can arise concerning refund check disbursement.

"The first refund checks will come out Wednesday, September fourth," Kristie Sanders, assistant director of financial aid, said. "After that we will continue to run dispersal every Tuesday, and if the student's financial aid is complete and ready for dispersal then that aid will pay out."

The refund checks are not just limited to traditional students.

International students are eligible to get refund checks if they are under scholarship, Sanders said.

Many students expect checks to be sent out on a Tuesday because of past procedures.

This semester's first disbursement of checks are going out on Wednesday instead of Tuesday because of Labor Day, Elise Bogett, associate director of

financial aid, said.

Refund checks can be used however the student wishes.

Generally students use their refund checks on books, rent, gas and other miscellaneous school costs, Sanders said.

Student verification, or the lack thereof, is often a hindrance in the disbursement process.

"Hopefully within the first two weeks students are verified in all of their classes," Sanders said.

"That's why we wait until 10 days after classes start to send out the first disbursement," Bogett said.

However, students are at risk of returning their federal refund if they withdraw from classes or school altogether.

"When students withdraw from classes or from college altogether, they don't get to take their financial aid refund money and run," according to the howstuffworks.com website.

"Failure to complete courses may result in students actually owing financial aid money back to the institution since they didn't technically earn the award,"

according to the website.

On other occasions, students will come in with complaints about how much money their refund check does not contain, Sanders said.

For example, refund checks for HOPE scholarship students are awarded at the 15-hour rate and if a student is only attending 12 hours worth of classes, that student will not receive as much as a 15-hour student, Bogett and Sanders said.

Students receiving refunds from federal loans can also experience delays in disbursement due to incomplete pre-loan documents.

"For loans, if they haven't done their promissory note or entrance loan counseling that will hold up the loans from paying," Bogett said.

Students can view how much their refund is going to be by going to their WINGS account and setting up direct deposit, Sanders said.

Cindy Durden, administrative director of the office of student accounts, could not be reached for comment by press time.

Statement of Operations

The George-Anne is the official student newspaper of Georgia Southern University, owned and operated by GSU students using facilities provided by the university. The newspaper is the oldest continuously published newspaper in Bulloch County. The newspaper is a designated public forum for the Georgia Southern community. The newspaper is published twice weekly, on Tuesdays and Thursdays, during most of the academic year. Any questions regarding content should be directed to the student editor by phone at 912.478.5246 or at gaeditor@georgiasouthern.edu.

ADVERTISING: The newspaper accepts advertising. Inquiries may be made by calling 912.478.5418 or 912.478-0566. Fax any questions to 912.478.7113 or e-mail ads1@georgiasouthern.edu.

The George-Anne receives additional support, in part, from the Student Activities Budget Committee.

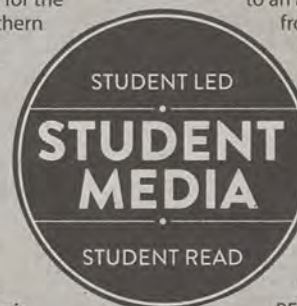
The deadline for reserving space and submitting advertising copy is noon, one week prior to the intended publication date. For more information, rate cards, sample publications, contact

the advertising manager or student media director. The advertiser is responsible for any errors in advertisements and its liability for adjustments is limited to the amount of space the error occupied in the ad. Further, the newspaper is not responsible for any damages caused due to an ad's omission from a particular edition and its responsibility solely is to reschedule the ad in the next regular edition at the regular advertising rates.

STUDENTS BEWARE: The George-Anne screens all advertisements prior to publication. The newspaper strives to accept ads for legitimate products and services only. Students are urged to exercise caution when replying to ads-particularly those that require personal information. Students are also urged to report to the newspaper any suspicious offers which they might see in an ad.

PUBLICATION INFORMATION: The newspaper is printed by The Brunswick News in Brunswick, Ga.

NOTICE: Unauthorized removal of multiple copies from a distribution site constitutes theft under Georgia law, a misdemeanor offense punishable by a fine and/or jail time.



Editorial Staff

Editor-in-Chief Shelby Farmer
Managing Editor Jackie Gutknecht
Multimedia Editor Lindsay Gaskins
Opinions Editor James Farmer
News Editor Cydney Long
News Chief Alanna Navin
A&E Editor Will Price
A&E Chief Kimeko McCoy
Sports Editor Shakeem Holloway
Sports Chief Robert Huit
Football Editor Randall Hampton

Copy Chief Anna Wells
Copy Editor Taylor Cooper
Business Manager Chloe Douglas
Sr. Account Executive Jeremy Williams
Marketing Manager Marissa Martin
Distribution Manager Bradley York
Production Manager Jose Gil
Photo Editor Jessica Stanfield
Design Editor Matt Veal
Web Editor Darius Alexander
Ads Design Chief Kelly Slyfield

Corrections

In the Thursday, Aug. 22 edition, the helmet technology featured in the Our View was misidentified. The helmet technology is HITS (Helmet Impact Telemetry System) by Riddell.

Our View

ZipCar a good change for GSU transportation

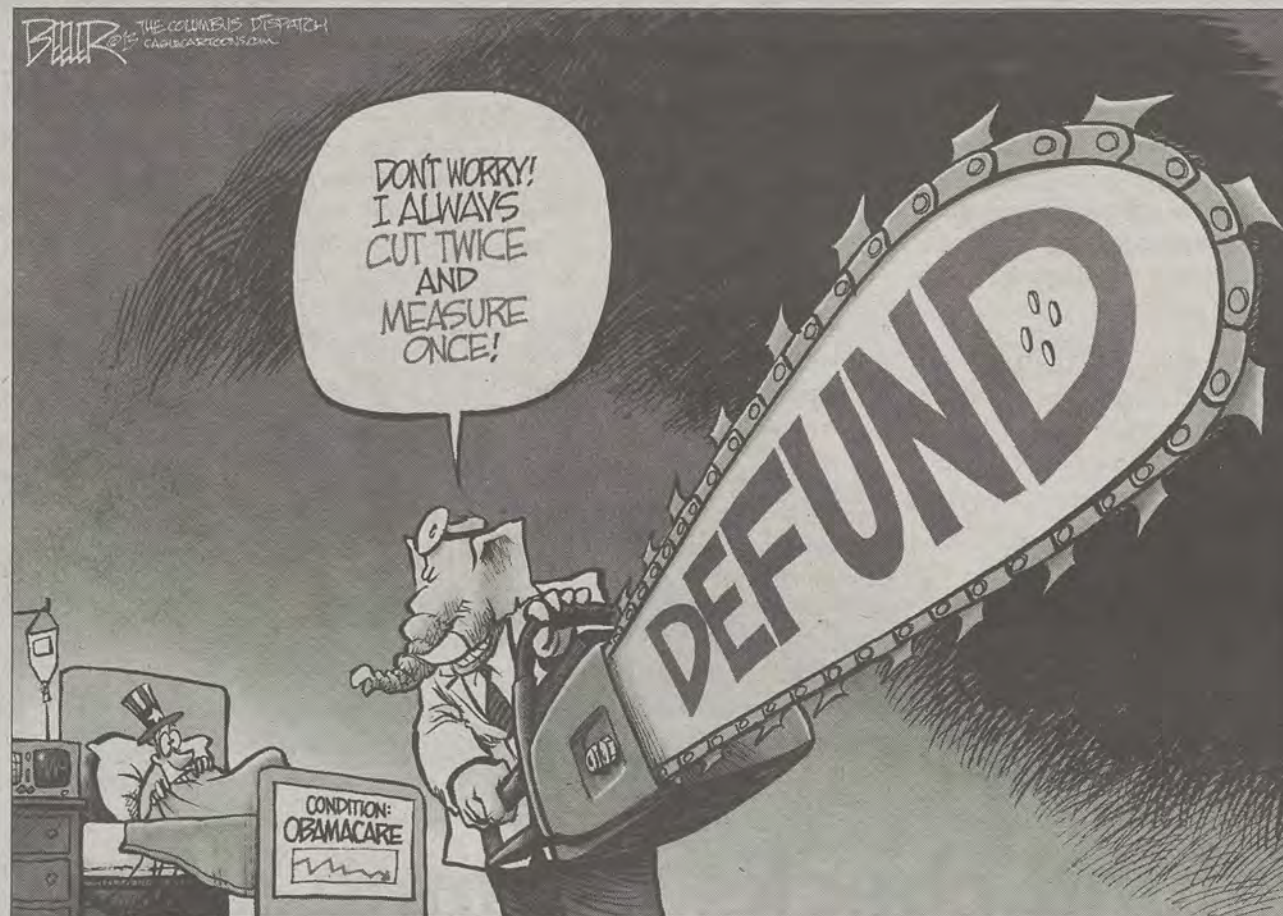
Georgia Southern University's acquisition of the ZipCar service to replace WeCar is a move that provides a better service to help alleviate the transportation issues that plague GSU and Statesboro. Students, for various reasons, including the price, were not fond of WeCar's service. Students without cars did not have many options besides the charity of their friends when they needed to go get groceries or even wanted to see a new movie in the theatres.

The ZipCar move is the latest in a series of moves designed to improve the transportation issues in Statesboro by both the school and community. In the past year, two new taxi services and an apartment shuttle service came to the community and GSU purchased new buses and implemented new tracking technology for the busses. The impact of these improvements are yet to be fully seen, but should help the multitude of students that do not have cars on campus.

GSU did the right thing in realizing that WeCar was not working after only a year and made the change to a different service that can better suit the student body. Too often, institutions want to stick with what they want to work, rather than what actually works. While ZipCar is not guaranteed to be a roaring success, the fact that it is different from the previous car service offered at the school shows that the parking and transportation is not trying to ditch a great idea, rather alter it to be the best service possible.

The George-Anne welcomes letters to the editor and appropriate guest columns. All copy submitted should be 350 words or fewer, typed, and sent via e-mail in Microsoft Word format to letters@georgiasouthern.edu. All submissions must be signed and include phone number for verification. GSU students should include their academic major, year and hometown. The editors reserve the right to reject any submission and edit submissions for length.

Opinions expressed herein are those of the Board of Opinions or columnists themselves and DO NOT necessarily reflect those of the faculty, staff or administration of GSU, the Student Media Advisory Board, Student Media or the University System of Georgia.



Al-Jazeera America arrives

Last week saw the launch of Al-Jazeera America, the biggest new name to come to TV news since Fox News launched in the 1990s. The network made ripples across the news world, with almost every major TV news source posting articles about it, as well as many traditional publications and internet-only sources. Oddly enough, it seems that whether or not the launch was seen as a positive or a negative depends on the bias of the news source. For example, Glen Beck's site, theblaze.com, made fun of the opening, while the right-wing "National Review" claimed it was not serious about the news and disappointing. On the blue end of the spectrum, Mother Jones called the network promising for its coverage of climate change. The Guardian, the UK paper that broke the NSA spying story, called the network "the news channel America deserves."

Al-Jazeera America poses some issues, notable among which are less

THE FARM LIFE



JAMES FARMER

ads than traditional news sources and Al-Jazeera's association with the release of terrorist videos, notably Al-Qaeda. AJAM's business model calls for less commercials, but that means less ad revenue for the network, which has the benefit of Qatari oil money to prop it up. But at the same time, networks look at ad revenue when determining which channels to carry, and the coverage of AJAM will be an issue for the network going forward, as it had been dropped by at least two cable providers.

The "association" of the network with Al-Qaeda is also an issue. The network became famous for distributing

the videos made by Osama bin Laden and other terrorist officials in the early 2000s. However, the distribution of the videos did not mean that Al-Jazeera supports terrorist groups, rather that the network was (and is) the most visible and important network in the Middle East. As well, Americans have a predisposition against any channel that sounds foreign not named BBC. The fact that many comments about the network have been rants against "Muslim news" shows that the channel may have issues appealing to Bible Belt America, regardless of content.

But at the end of the day, Americans' disappointment with cable news at the moment opens up a door for AJAM, but it's up to the network to make it work.

Farmer is a senior political science and international studies double major from Thomasville. He is the former Copy Editor and current Opinions Editor.

Egypt not an easy fix 'Wait and see' fails

There has been much speculation surrounding the current state of Egypt and how the continued revolution ultimately affects the United States. Senators such as John McCain are calling to suspend monetary aid to Egypt due to the law that stipulates the United States must disrupt all aid to any country that undergoes a military coup. I find it somewhat hard to label this situation as a military coup due to the fact that former President Morsi found it necessary to usurp many powers from other branches of the Egyptian government and consolidated those powers to be used exclusively by the executive branch (mainly Morsi). Some would say that action alone is enough to justify the "military coup," but that's not really the issue that needs to be discussed when our leaders start to think about what needs to happen concerning the military aid we give to Egypt.

In September 1978, Egyptian President Anwar Sadat signed the Camp David Accords that started a then unprecedented peace treaty between Egypt and Israel. The Camp David treaty however, was contingent upon one main thing; U.S. aid to Egypt. Keep in mind that Egypt and Israel were in a perpetual state of war since Israel was created. But this peace treaty would keep each country in their respective corners and usher in a new era of peace and cooperation between the two states.

But now that Egypt is experiencing a political upheaval that is labeled as a military coup, this crucial relationship between the two countries could be disrupted if the

A LIBERAL DOSE



CHRIS WARE

money is cut off.

The Israelis are lobbying heavily to keep the aid going to Egypt to keep the Camp David accords in place but with people such as John McCain who apparently don't see or understand the whole situation concerning Egypt, peace relations between Egypt and Israel are no longer concrete.

The Egyptian situation is not a black and white issue; there are many gray areas to it. There will be no easy solution as the Egyptian people fight to create the country they can be proud to be a part of.

I am not saying aid to Egypt should never be disrupted, but Egypt is going through something very similar to what our founding fathers experienced- revolution, and in revolution things will get ugly, but our leaders must look at the greater picture before making drastic decisions that can cause major foreign policy relations to be dissolved.

Ware is a sophomore political science major from Griffin. He is involved in the Young Democrats.

For the past two years, states in the Middle East have defined the word unstable. Citizens have risen against oppressive governments and defended their right to choose who represents their interests. Unfortunately, some of the states have yet to resolve the issue, specifically Egypt and Syria. In each case, civilians are dying and being displaced. Both countries struggle with terrorist groups infiltrating either side, which complicates distribution of aid. Either way, both conflicts have gone on for too long. A resolution would be closer if the Obama Administration had taken decisive action in the beginning.

Initially in 2011, citizens of Egypt forced out their president of forty years, Hosni Mubarak, and held democratic elections. Citizens elected Mohamed Morsi, a member of the Muslim Brotherhood, which is known to have ties with terrorist organizations. After a year with no progress in the state, the military decided to take control of the government until another round of elections could take place. Since, supporters of Morsi and their opposition have held violent protests leading to multiple civilian deaths. The main problem with this situation, besides what is almost a military coup, is that it could have been prevented. President Obama received intelligence on the issue, but he utilized a "wait-and-see" approach, which led to increasing violence in the region.

The Arab Spring has ended in the Middle East, except in Syria. President

MY ELEPHANT OPINION



AMBER PORTER

Bashar al-Assad has refused to appease his citizens and has even referred to them as terrorists. Two years ago, those rebels were fighting for freedom, but now true terrorist organizations have infiltrated their ranks. Once again, America did not take a decisive stance on the situation, but instead gave arms to the rebels. More weapons in a fight don't help end it, but prolongs it. President Obama stated that chemical weapon use would be his "red line" in the situation. However, videos and reports have shown symptoms of a sarin gas attack on citizens. The only action taken has been sending a fourth navy ship toward Syria. Obviously, President Obama cares more about the situation in Egypt than Syria.

However, after two years of death and displacement, it's time to take concrete action in both states, rather than sit back and wait to see what happens.

Porter is a junior international studies major from Zebulon. She spent spring semester as a Capitol Hill Intern.

Limbaugh shows God-awful ignorance

Rush Limbaugh has clearly not run out of his hot air that helps to churn our nation into an over-politicized circus. Earlier this month, he showed us that he is talented enough to misrepresent climate change and belief in God in one statement.

Recently on his radio show, Limbaugh spoke about climate change, saying, "If you believe in God, then intellectually you cannot believe in manmade global warming. You must be either agnostic or atheistic to believe that man controls something that he can't create."

There are several flaws in Rush's logic. First, man has controlled things he has not created

THE GREEN VIEW



BRITTANY WALKER

for many years now. Did man create organisms or clouds? No, but man can genetically modify organisms and "seed" clouds to change the amount of precipitation that falls from it. Did man create rivers? No, but he can "control" them

by damming them and regulating their flow. By Rush's logic, if you are a believer in God then you must deny the existence of all capabilities like these. Because according to Rush, a believer in God must also believe a man can't control something he can't create.

Secondly, what does God have to do with it? Agnostics and atheists may not believe God created the world and its climate, but they still don't believe that humans created it. And by his logic, to believe in climate change you must also believe humans can create a climate.

If Limbaugh was trying to persuade Christian listeners, he should do his research first. Most

Christians today believe in environmental stewardship.

The real problem here is that statements like these are completely anti-progress in their nature. They serve to distract people from thinking about issues like climate change in a rational manner by tying them in with emotionally charged topics, like one's belief in God. If you want to make an informed decision on anything, I suggest a different source than Rush Limbaugh.

Walker is a senior sociology major with a specialization in sustainability from Brunswick. She is an officer in the Green Ambassadors.

Favorite shows fall back onto the small screen

Television

BY KIMEKO MCCOY

The George-Anne staff

The fall season will be in full effect in a few short weeks and that means television is going to get better. It has been a painful couple of months for those waiting for the popular shows of the small screen to come back. Returning shows will come hopefully back bigger and better to keep up with the action, drama and comedy from the previous seasons.

There are plenty of shows to pick and choose from that are suited to a variety of tastes for a variety of audiences. Drama shows like "The Walking Dead" keep viewers on pins and needles at the closing of every episode while competitive shows like "The Voice" keep viewers coming back to see who is moving up and who is going home.

Other big names in fall television have audiences excited and ready to dim the lights and bring the popcorn.

Two of the biggest names in television are back. "Dancing with the Stars" is on their seventeenth season. Stars dancing this year will have their names announced on "Good Morning America" next Wednesday. The premiere date for the show is Monday, Sept. 16 on ABC. The other big name is "Grey's Anatomy" which has a running of ten seasons, including the current season. "Grey's Anatomy" will air on Thursday, Sept. 26 on ABC.

These shows are established and have a loyal following as they air each week of the season but there are four newer series that are gaining more popularity with each season.

"Modern Family," "Scandal," "The Walking Dead" and "Awkward" are all collecting their own dedicated following.



Courtesy of ABC.com

Modern Family Season 5 Wednesday Sept. 25 on ABC

When two families come together, there is mischief to be had. Season four concluded with a death in the modern family. Grandma Gracie Dunphy, a character that the audience has not met, dies and the entire family flocks to Florida in mourning. Grandma Dunphy, however, has one final wish. She wants her newly widowed husband to get with a neighbor and Phil puts that plan into action. Upon doing this, grief sets in on the whole family. Will the modern family pull through?



Courtesy of AMC.com

The Walking Dead Season 4 Sunday Oct. 13 on AMC

After waking up in a world no longer presented as it was, the remaining survivors must pull together and evaluate if the real threat is zombies or themselves. Season three wraps up with Philip Blake, otherwise known as "the Governor," being what may be the biggest threat yet. Survivor Andrea is captured and that is when Officer Rick Grimes gets involved. There is a showdown (Woodbury/Prison) and at the end, Andrea is dead and The Governor is missing in action. Most likely, the Governor will be back.



Courtesy of ABC.com

Scandal Season 3 Thursday Oct. 3 on ABC

Olivia Pope must protect and keep the secrets and reputations of America's most elite. This is all until she ends up with a secret of her own. Olivia has been in a secret affair with the president of the United States. After coming to terms with the fact she could not work with President Grant because it could put both of their lives in jeopardy, she opened her own crisis management firm. Season two ends with Olivia entangled in a romantic relationship with President Grant's friend, Jake. It turns out Jake has been working for Olivia's father, the mysterious Rowan. Cue jaw drop.



Courtesy of MTV.com

Awkward. Season 3 Tuesday Oct. 22 on MTV

The show follows teen Jenna Hamilton through her trials and triumphs of secretly dating a popular guy, mean girls and misunderstanding parents all after going through an accident. At the end of season three, Jenna betrays her beau, Matty, who has been the perfect boyfriend from the very beginning. Her crush, Collin, is getting in the way of what she is feeling for Matty. His face also got in the way of hers and they kissed. Passionately. What does this mean for Matty and Jenna? What does this mean for Collin and Jenna? Will she pick one and leave the other?

MTV's Video Music Awards shock and appall

BY KIMEKO MCCOY

The George-Anne Staff

There was supposed to be no sleep until the premiere of the 2013 MTV Video Music Awards but most of the show may have left some with nightmares.

Let's do a full recap of the entire night.

- Lady Gaga- Lady Gaga started the night off with her latest song, "Applause." But there was no meat dress, no egg to emerge from and no fireworks from her chest. There was, however, a two-piece G-string bikini that she stripped down to at the end of the performance that bore her entire backside. In fact, she wore that little number the entire night.

- Miley Cyrus- "We Can't Stop" was performed by Miley, bears and girls with big butts. Miley starts by emerging from an enormous bear's stomach in a bear onesie. She then starts to do some dance that resembles a mixture between an animals mating call and the inflatable dancing advertisements

that car dealerships use. She screams her song with her tongue out and her face in the rear end of her dancers. As if all of this was not enough for the audience and viewers at home, some of who looked very unimpressed, Miley strips from the bear suit to a latex two-piece.

- Robin Thicke- Robin Thicke appears to do a duet with Miley for the summer hit "Blurred Lines." The old Disney star manages to ruin that by continued screaming and making too much bodily contact with Robin Thicke. Miley twerks, grinds, nuzzles and basically violates him. He is not much better. Robin is wearing a suit that is almost an exact replica of Beetlejuice's get up.

- Kanye West- Kanye West, aka Yeezus, comes out with his Kanye best in an attempt to Kanye impress. He sings his song and performs with his pumped up Kanye chest. Everyone loves his Kanye zest with the backdrop that resembles a Kanye quest. At the end, there was a Kanye fest. He dropped the mic and Kanye left. Kim wasn't there. She stayed at the Kanye nest.

- Justin Timberlake- JT was honored at this year's MTV's Video Music Awards. He performed a montage of his music throughout the years and it was great. N'SYNC came out and performed with him for a few seconds and it was great.

- Taylor Swift- During and in between every other event, the camera panned over to Tay Tay Swift and her BFF Selena Gomez. We got to see her dance, laugh, swap secrets and curse under breath at One Direction's award. Upon receiving her own award, she said, "I also wanna thank the person who inspired ['I Knew You Were Trouble'], who knows exactly who he is, because now I got one of these!"

- Rihanna- Rihanna remained unimpressed throughout the entire show.

The VMA's always bring that shock factor to its award shows. This year's shock was Hannah Montana's transformation into twerking Miley Cyrus. It would be nice to say that there has been worse. But this was it.



Courtesy Flickr.com

MTV's Video Music Awards draws a crowd with fans from all over the country.

On-campus rave shines spotlight on social issue

BY ERINN WILLIAMS

The George-Anne staff

Flashing lights and music will take over the Williams Center on Thursday when the Rainbow Rave brings Georgia Southern University students a night of fun and education.

The Rainbow Rave is hosted by the Multicultural Student Center and will take place from 8 p.m. to midnight in the Williams Center Multipurpose Room.

The event is an opportunity for students to dance the night away with friends and become informed about the LGBTQ community.

"The purpose of the rave is to provide a welcoming and inclusive

atmosphere for members of the LGBTQ community and its allies as well as other students" Doug Peters, graduate assistant and program director, said.

The rave will feature strobe lights, glow sticks, black lights, mock-tinis, free food and a DJ to keep students entertained.

It is open to all students and will educate them on the issues faced by the LGBTQ community as well as other social issues, Peters said.

The rave is sponsored by GSU Health Services, the Counseling Center and the GSU Gay-Straight Alliance.

"We want to educate students and provide them with the opportunity to work with different cultures in

the same place," Peters said.

The Rave will bring different types of students together and in a safe space where they can gain a better understanding of each other, Peters said.

"I think that things like this are good for the LGBTQ community because it's good for us to know we are not alone and just have fun," Harrison Hogan, sophomore chemistry

and French major and LGBTQ community member, said.

Hogan said, "It provides us with an opportunity to meet others who

share our same struggles. It's also great that there are others out there who are supportive of us and our issues."



THE SIR SHOP
STATESBORO MALL 912-764-6924

RUSH SPECIAL



SALE
NAVY BLAZER &
STRIPED GEORGIA
SOUTHERN TIE

REGULARLY PRICED \$225
NOW \$125

'You're Next' steps up the classic slasher

Film review ★★★★★

BY ALEXANDRA MCCRAY

The George-Anne staff

"You're Next" deviates from the typical slasher movie formula just enough to stay interesting but not enough to be anything groundbreaking.

The movie hardly spends any time creating a story line, opening with an eye roll-worthy sex scene in a secluded cabin. Director Adam Wingard ("V/H/S") gets right into the blood and gore before the main title has even made its way across the screen.

The main characters are members of a rich and fragmented family who begin to arrive at the cabin for a weekend away. Erin, played by

Sharni Vinson ("Step Up 3D"), the girlfriend of Crispian, played by AJ Bowen ("The Signal"), along with every other family member and guests, will soon realize this will be the worst weekend of their lives.

The long and ominous screen shots do a good job of building the tension in close encounters with the masked intruders that occur behind closet doors and open windows.

The movie also reflects the tension of the imperfect but refreshingly realistic family. This swiftly comes to a boiling point at the families first dinner together. The feast turns into a massacre thanks to animal-masked killers toting weapons ranging from crossbows to an axe.

"You're Next" is definitely a step up from classic teen-scream horror

movies. This isn't the movie for "Final Destination" or "Scream" fans. "You're Next" has just the right amount of gore to make the audience cringe but never goes over the top.

The last

half is where the film begins to get interesting and the already fast paced action picks up even more. Just enough dark humor is thrown in to save the horrible dialogue and provide the audience with a few unexpected laughs.

The characters' true

motives are soon revealed as their loved ones begin to die off one by one, and surprising survivors begin to emerge.

"You're Next" leaves the slasher fan satisfied while providing a good scare for the less seasoned horror movie viewer.



Alexandra Tobia | The George-Anne

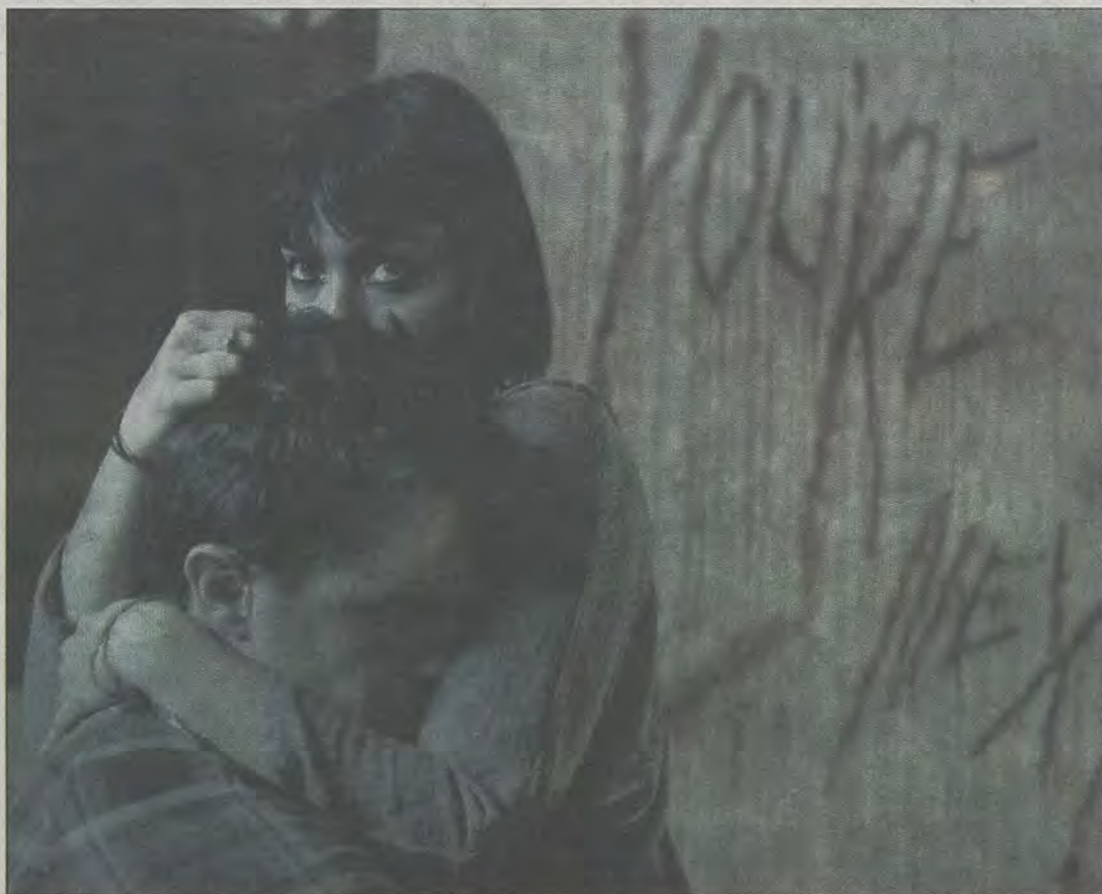
SPEEDY EATS!



100 BRAMPTON AVE. ~ 912.681.6868

FREAKY FAST DELIVERY!

© 2011 JIMMY JOHN'S FRANCHISE, LLC. ALL RIGHTS RESERVED.



Courtesy of Lionsgate Entertainment

Nicholas Tucci ("Choose") and Wendy Glenn ("11-11-11") play a couple surviving the night from a group of murderers in Lionsgate Entertainment's newest horror flick "You're Next".

CLASSIFIEDS

www.thegeorgeanne.com

Tuesday, August 27, 2013 9

Miscellaneous

Statesboro Main Street Farmer's Market Open every Saturday from 9am – 12:30pm through October. 2 East Main Street (in the Sea Island Bank parking lot). For more information on vendors and seasonal produce: www.statesborofarmersmarket.com

Great Luxury apt 111 South has a room available for \$530 includes utilities and furniture. Email la01249@georgiasouthern.edu for more info. Hurry spaces are filling fast.

Looking for one or two female roommates to share a furnished 3 BR/2 BTH 2500 sq. ft. house w/ covered parking in an upscale Statesboro subdivision. House is located in Hazelwood off of Cypress Lake Rd. Rent is \$399/ month utilities included. Short term lease OK. Small dogs OK. No pet deposit required. 1 mile to GSU. If interested please email kenphil8@gmail.com

Nanny needed for 3 energetic kids (7,5,3) at least 2 to 3 afternoons a week, some weekends, family lives 15 miles outside of Statesboro. Email school schedule and resume to southerntan@gmail.com

Email classifieds to
ads1@georgiasouthern.edu.



Have something to get rid of?

Make some money by putting it in The George-Anne's classifieds ads.



FREE

to students,
faculty and staff!

PUZZLES&COMICS

10 Tuesday, August 27, 2013

The George-Anne

Los Angeles Times Daily Crossword Puzzle

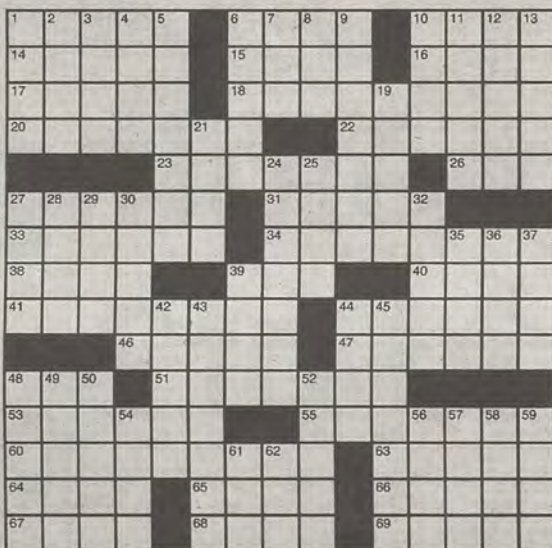
Edited by Rich Norris and Joyce Lewis

ACROSS

- 1 Actor Lorenzo
- 6 Crumbly cheese
- 10 Mt. Rushmore's state
- 14 Where Crockett famously fought
- 15 Disappearing Asian sea
- 16 Running rate
- 17 Design theme
- 18 "Ginger ale brand
- 20 "It gets you a ticket to ride
- 22 Badminton target
- 23 "Arrested Development" star Jason
- 26 Rushing units: Abbr.
- 27 "Star Trek" weapon
- 31 Makes an appearance
- 33 Investor's online destination
- 34 "Hold that might precede a noogie
- 38 Give out, as a signal
- 39 Loser to DDE
- 40 School near Burlington, North Carolina
- 41 "Umpire's call
- 44 Fix on a stake
- 46 Loggers' contest
- 47 Get the better of
- 48 Cup rim
- 51 Tom Brokaw's domain
- 53 French president's palace
- 55 "Sack with letters
- 60 "Neck-and-neck election campaign
- 63 "Cheers" barmaid
- 64 Broadway auntie
- 65 Bleacher feature
- 66 To no fruitlessly
- 67 Nestlé ice cream brand
- 68 Air France hub
- 69 Drink with steamed milk

DOWN

- 1 Baby bleater
- 2 1966 N.L. batting champ Matty
- 3 Protective floor coverings



By Neville Fogarty

- 4 "I ___ you are!"
- 5 Convenience for an overnight guest
- 6 Emerald side
- 7 Hurler's stat
- 8 Sunbather's shade
- 9 The Heart of Dixie
- 10 Practice with gloves
- 11 Papa
- 12 Harsh-smelling
- 13 Conservative pundit Alan
- 19 Ate in style
- 21 Hard to come by
- 24 Level of authority
- 25 "The Simpsons" watering hole
- 27 Nestling noise
- 28 Webmaster's file type
- 29 Verdi's "Caro nome," e.g.
- 30 Lascivious cloven-hoofed creature
- 32 Took a siesta
- 35 Name of several Norwegian kings
- 36 Neb. neighbor

Last Edition's Puzzle Solved

MEAD STORE TYPE
EXPO CODAS WOOD
CHOP ARENA EURO
COGENT ARGUMENT
ARE ASH ANGRY
STEAK DIPS MAO
BEDSIDE RAIN
THE DENVER MINT
TROT COASTED
LOT ROWS DEGAS
COSTA ASI RUT
PERFUME FACTORY
BEAU SIXTY AWOL
ORTS SKIES PERU
PSST RETRO ERAS

- 37 Plastic construction toy
- 39 Novelist Waugh
- 42 Lisa of "A Different World"
- 43 2005-'07 attorney general Gonzales
- 44 Nebraska neighbor
- 45 Broadway fare
- 48 "I insist!"
- 49 Trojan War epic
- 50 Miniature
- 52 Nail file material
- 54 Mariners' pronouns
- 56 Volcanic flow
- 57 Sitter's handful
- 58 Hit the ground
- 59 Powerful wind
- 61 Word that can precede either part of each starred clue's answer
- 62 Animation frame

ASTRONOMERS HAVE ASKED FOR HELP NAMING THE RECENTLY DISCOVERED MOONS OF PLUTO.



UM, NO ... IN KEEPING WITH PLUTO'S NAME, I THINK THEY'RE LOOKING FOR SOMETHING A LITTLE MORE ... GREEK.



GYRO! AND LESS FOODY.



UGH, EVERYTHING ABOUT MY DAY TODAY HAS GONE WRONG SOMEHOW.



NOT TRUE! THE SUN ROSE RIGHT ON SCHEDULE THIS MORNING!



I SHOULD KNOW BY NOW NOT TO COME TO YOU FOR SYMPATHY.



Sudoku

4			2			5		
6	3	4		8	2			
					9			
					1	6	8	
			9					
1	9	6						
		4						
3	7	2				8	4	
			8			1		

We're hiring
designers
photographers
videographers

email: prodmgr@georgiasouthern.edu

Take Student
Media to new
heights

Analyzing two sides of the same coin

GSU heads for 8-3 again

Georgia Southern University football and the Southern Conference are parting ways after this season, and for its final act GSU would love to win the regular season conference title outright.

Before GSU can worry about conference play, the team will have to beat Savannah State University in front of a raucous home crowd at Paulson Stadium. This should not be very tough considering the Eagles have never lost to SSU.

The Eagles shared a 6-2 conference record last year with Wofford College and Appalachian State University, but with GSU and App. State both heading to the Sun Belt Conference all three teams have a little more incentive to prove who runs the SoCon.

GSU opens conference play against Wofford in week three on the road. The Eagles have won the last three meetings between the two teams, but last year's game was 10-6 before a touchdown midway through the fourth quarter gave GSU some breathing room.

Last year, The Citadel gave GSU its first loss of the season in a mistake-filled 23-21 contest. Unless GSU fumbles five times and misses two field goals for the second year in a row, The Citadel will not beat GSU this

year.

The App. State game will be a battle as always with the memory of last season's 31-28 home loss still fresh in

the minds of GSU head football coach Jeff Monken's squad. GSU will be looking for a measure of revenge when it heads up to on Boone, North Carolina on Oct. 26.

A penalty on the Eagle's final possession saw what could have been the game-winning drive stall. GSU is 1-3 in its last four games against App. State, and has not won at Kidd Brewer Stadium since 2007. I believe App. State pulls out a close one on its home field.

I see GSU finishing this season 8-3, the same record the team had at the end of the regular season last year.



Randall Hampton

Hampton is a senior journalism major from Chicago Ill. He is the current football editor.

Eagle football to go 9-2

The Georgia Southern University football team opens its 2013 campaign against Savannah State University on Saturday.

GSU has a handful of key players returning for this season including senior quarterback Jerick McKinnon, junior running back Dominique Swope and senior defensive end Javon Mention, just to name a few.

McKinnon is coming off a junior season in which he ran for 1,817 yards and 20 touchdowns accompanied with seven passing touchdowns and only three interceptions. Swope gained 1,246 yards on the ground in addition to 17 total touchdowns. Both should contribute to another high-powered offense in 2013.

On the defensive side of the ball, Mention is coming off a season in which he sacked the opposing quarterback 6.5 times. Mention will surely cause a handful of problems for offensive lines again in 2013.

With the aforementioned student-athletes all being included on preseason national watch lists, GSU could be poised for a successful final act in the Southern Conference.

I believe GSU will handle SSU in the season opener. They will come out on top against Wofford College, who lost Eric Breitenstein, who rushed for over 2,000 yards in 2012. They will, however, hit a speed bump in Boone on

Oct. 26 and lose another close one to Appalachian State University.

Playing App. State the past few seasons has not been an easy task for

GSU, especially in Boone. Georgia Southern is 4-10-1 all-time on the road against App. State. An App. State team that is returning its starting quarterback and leading receiver matching up against a GSU defense that has lost the likes of Brent Russell and J.J. Wilcox could spell trouble for Coach Monken's squad.

I see GSU closing out the season with a loss in Gainesville to the University of Florida and ending the 2013 season with a 9-2 mark.

Even though GSU is not eligible for the playoffs this season, a successful last season in the SoCon could propel the Eagles to hit the ground running next year when they enter the



William Cheney

Cheney is a senior journalism major from Augusta. He is the current football reporter.

Defense will need a tune-up before regular season starts

BY TREVOR MCNABOE

The George-Anne staff

The Georgia Southern University men's soccer team finished off its preseason in a bittersweet way as it fell to the University of Central Florida by a score of 4-3.

The Eagle offense came together in the final tune up before the regular season, more so for senior forward Witt Carlisle, who scored all three of the GSU goals.

While the offense came together, the defense fell apart. Right out of the gate the Eagles conceded a goal off a penalty kick in

the fourth minute to go down 1-0.

GSU responded in the 28th minute with Carlisle scoring off a shot that deflected off the goalie and found the back of the net to pull the Eagles level with the Knights.

GSU once again found itself behind; as halftime was approaching they conceded a second goal off of a header to head into the break down 2-1.

The momentum continued to be on the Knight's side as GSU conceded a third goal minutes into the second half to put GSU down 3-1.

The Eagles offense began to pick it up

later in the half as Carlisle found the net for a second time that day in the 70th minute when sophomore defender Reed Norton built up the run and led Carlisle with a pass that the senior finished, cutting the lead down to 3-2.

Despite Carlisle's performance the Eagles fell behind at 4-3 when UCF had a free kick from 20 yards away that was deflected in.

The Eagles will continue to tweak and figure out their lineups. They will have a full week of practice before their first game of the season on Friday, as they are hosting the Southern Conference/Big South Challenge.



File Photo

Sophomore midfielder Rocco Bagley (24) reacts after a missed shot. The Eagles lost their final preseason game 4-3 to the University of Central Florida.

GSU's women's soccer team falls twice

BY ZAKYRA COLVIN

The George-Anne staff

Georgia Southern University women's soccer team had a tough weekend, as it lost to the Indiana State University Sycamores and the Indiana University Hoosiers within a three-day span.

Up against the Hoosiers on Sunday, GSU started off giving up back-to-back goals in the 10th and 12th minutes. The first goal was scored by Monica Melink from 40 yards, and the second goal was an Abby Smith shot from the penalty spot.

The Hoosiers scored their third goal on 18 minutes by Tori Keller for

a 3-0 advantage.

The Eagles defense held the Hoosiers to three goals at halftime. The Hoosiers scored their fourth goal in the 56th minute, a cross from the right side, struck into the net by Jordan Woolums, and their fifth goal was scored by Kristen Leist in the 75th minute.

"It was a tough game, Indiana was dominant today," head coach Brian Dunleavy said in a news release. "We dug ourselves an early hole and it was always going to be an uphill climb after they scored two quick goals. Our team never stopped working, never stopped fighting and I'm proud of their effort, but the execution right now is really lacking. We'll get it right

because the players believe in each other and work hard for the team."

Indiana took 22 shots to GSU's two and landed 13 shots on goal with sophomore goalkeeper Heather Kirkover, recording eight saves.

In the Indiana State game on Friday, the Eagles scored first but the Sycamores scored in the 38th minute, which tied the game and ultimately led to overtime.

The Sycamores secured the lead with six minutes left on the clock when midfielder Kate Johnson scored from 28 yards.

See full story online at thegeorgeanne.com



File Photo

Senior goalkeeper Katie Merson (0) prepares to deliver a pass up field. The Eagles finished their opening weekend of games with a record of 0-2.

STADIUM, from page 1

There are two major construction projects currently in progress at the stadium – the construction of a Football Operations Center and the

addition of 6,000-6,200 new seats to the stadium.

Evans General Contractors is handling the construction of the \$10

million Football Operations Center, which will be 50,000-square feet. The privately funded center will house new locker rooms, offices, training

facilities and a Hall of Fame to honor the gridiron heroes of yesteryear.

The Brasfield & Gorrie construction firm is focused primarily

on the stadium's expansion. Last year, Georgia Southern University students voted for a \$25 fee to fund the expansion.

An upper deck will be built to provide 4,000 additional seats. There will also be two lower-level areas with about 1,000-1,100 new seats each.

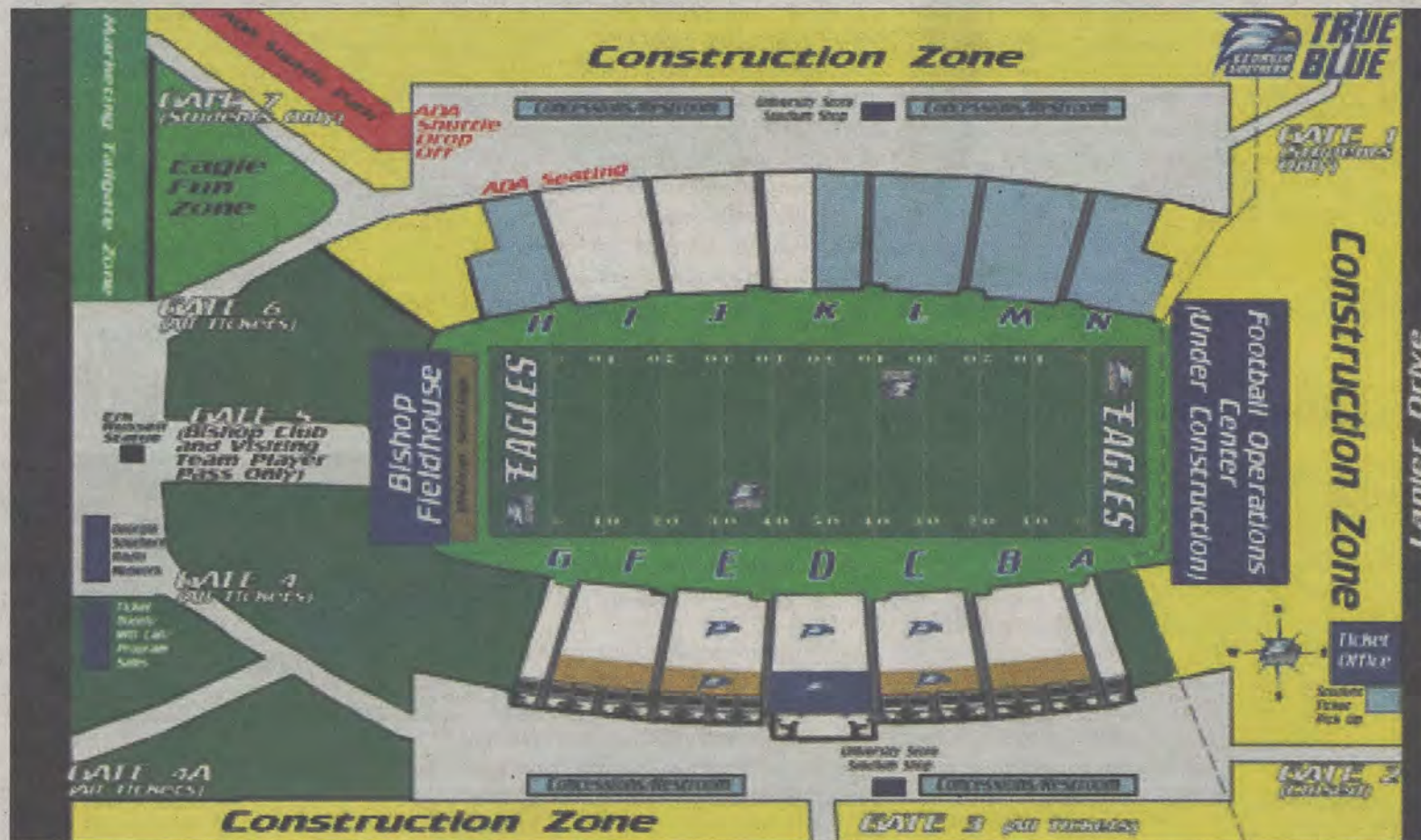
Despite the recent weather, Woodward said they have been able to install storm drains and begin work on the concrete foundation of the Football Operations Center.

To control the flow of people entering the stadium, there have been changes made to the entrance gates.

Gates 1 and 7 will serve students only. Gate 1 is near the Chandler Road and Lanier Drive intersection, across the street from Parker's. Gate 7 can be found near Malecki Drive, on the opposite side of the stadium from Gate 1.

Gate 2, located near the Cowert Building on Lanier Drive, will be closed for the season. Gate 3 will serve as the best alternative for those who used Gate 2 in the past due to its proximity. Gates 3, 4, 4A, and 6 will serve as general admission gates and will be open to all fans.

Construction began on June 12 and is expected to be complete by May 2014.



Courtesy of gseagles.com