

Georgia Southern University

Georgia Southern Commons

The George-Anne

8-22-2013

The George-Anne

Georgia Southern University

Follow this and additional works at: <https://digitalcommons.georgiasouthern.edu/george-anne>

Recommended Citation

Georgia Southern University, "The George-Anne" (2013). *The George-Anne*. 2804.
<https://digitalcommons.georgiasouthern.edu/george-anne/2804>

This newspaper is brought to you for free and open access by Georgia Southern Commons. It has been accepted for inclusion in The George-Anne by an authorized administrator of Georgia Southern Commons. For more information, please contact digitalcommons@georgiasouthern.edu.



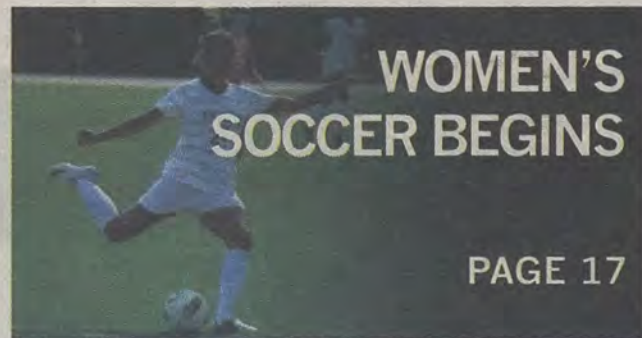
ERK RUSSELL
CLASSIC
PREVIEW

PAGE 16



STATEBORO
SURVIVAL GUIDE

PAGE 9



WOMEN'S
SOCCER BEGINS

PAGE 17

Thursday, August 22, 2013
Georgia Southern University
www.thegeorgeanne.com
Volume 84 • Issue 14

THE GEORGE-ANNE

Banned from Bulloch

Former GSU student pleads guilty to terroristic threat via computer, gets five years probation



Photo courtesy of kingaffeloffer.tumblr.com

Former Georgia Southern University student, Caleb Clemmons, pled guilty to one count of terroristic threat via computer Tuesday. He was held in the Bulloch County Jail for approximately six months.

BY CYDNEY LONG
AND ALANNA NAVIN

The George-Anne staff

Former Georgia Southern University student Caleb Clemmons, 20, pled guilty on Aug. 20 for the count of writing terroristic threats via computer.

Clemmons received five years probation and six months in jail. The six months that he spent in prison since his arrest will be credited toward his sentencing, according to documents received from Bulloch County Criminal Court.

During the probation period, Clemmons is forbidden from using social

media, drugs and alcohol.

Clemmons was also sentenced to 150 – 180 days in a detention center. This can be suspended if he complies with completing a mental health evaluation as well as a drug and alcohol evaluation.

See BANNED, Page 3

HIV threat hits GSU

BY LINDSAY GASKINS

The George-Anne staff

Georgia Southern University officials have not been able to comment on the current HIV threat to campus due to the severity of the ongoing investigation.

"The Department of Public Safety has been informed of a potential danger in the form of an HIV positive individual who may be knowingly and intentionally infecting his sexual partners," Dean of Students Patrice Jackson said in the news release.

The Dean of Students Office sent out a Campus Alert Tuesday morning in reference the possibility of HIV spreading across campus.

The subject is reported as being an attractive African American male who is in his mid-thirties, but could appear to be in his mid-twenties. He has tattoos, sometimes wears glasses and may have facial hair. He has been known to target men, but all should take precautions, according to the Campus Alert.

GSU is taking every action possible to ensure the safety of this campus and its students, Jackson said.

"Any time we have a threat to our students and there is any credibility to it at all, it is our responsibility to let the students know," Jackson said.

Anyone that believes they may be a victim should contact the Office of Public Safety.

GSU Department of Public Safety could not comment.



thegeorge
anne.com



Follow us on Twitter
@TheGeorgeAnne



Newsroom 478-5246
Advertising 478-5418
Fax 478-7113

PO Box 8001
Statesboro, GA
30460

BRO, DO YOU EVEN RENT?

From July 1, 2012 through June 30, 2013
University Store helped

8,582 STUDENTS SAVE

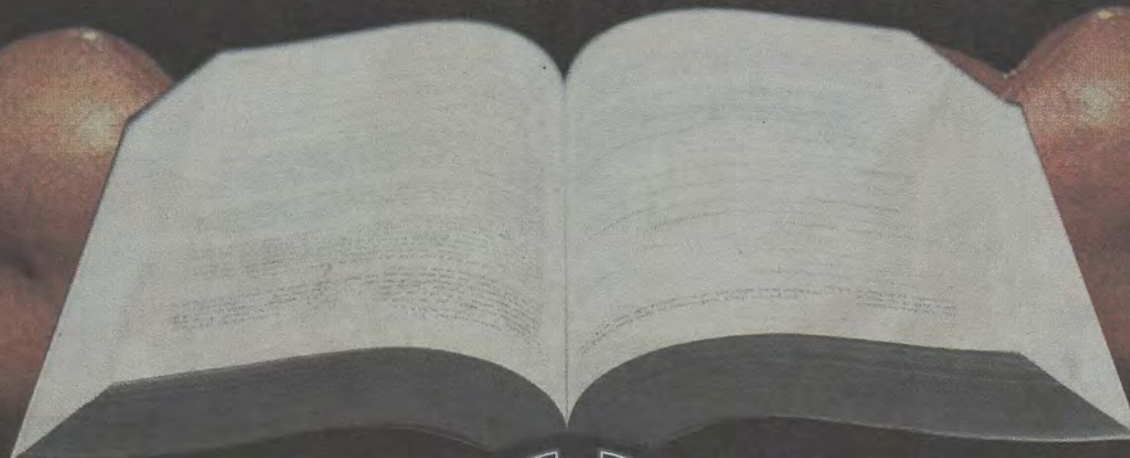
an estimated

\$1,139,478.00

by renting

15,397 TEXTBOOKS

online and in-store.



The University Store



@GSUstore

912.478.5181

GSUSTORE.COM

Police Beat

Monday, Aug. 19

12:00 p.m.: An incident report was taken for the theft of a bike from the Henderson Library bike rack. This case was assigned to criminal investigations.

12:48 p.m.: An incident report was taken for lost/mislaid property. The property was possibly lost/mislaid in the area of the pedestrian and the Henderson Library.

3:15 p.m.: Officers responded to a drug complaint at Freedom's Landing. Two occupants were arrested: Malik Hakeem Robinson, 18 years old, Statesboro, Ga., was arrested and charged with obstruction – misdemeanor. Devon Darren Armstrong, 18, Statesboro,

Ga., was arrested and charged with possession of marijuana – misdemeanor, obstruction – misdemeanor, possession of drug related object, and was found to have an active arrest warrant from the Statesboro Police Department.

7:53 p.m.: Officers conducted a traffic stop on Plant Drive at Chandler Road. The driver of the vehicle, Benjamin Clayton Chestnut, 18, Statesboro, Ga., was arrested and charged with possession of alcohol under 21 years of age, false ID, failure to yield to pedestrians in crosswalk, possession of a drug related object and possession of marijuana – misdemeanor. The passenger, Matthew Jordon Davis, 18, Statesboro, Ga., was arrested and charged with possession of alcohol under 21 years of age, pos-

session of a drug related object and possession of marijuana – misdemeanor.

12:47 a.m.: Officers responded to Watson Pods in reference to a panic alarm. Maintenance responded.

Tuesday, Aug. 20

7:30 a.m.: A welfare check was conducted at Centennial Place. The subject of the welfare check was located in class and found to be fine.

12:57 a.m.: Officers conducted a traffic stop in C-Lot. The driver of the vehicle, Laura Wells Chapin, 23, Tybee Island, Ga., was arrested and charged with failure to obey a traffic control device and DUI 1st.

BANNED, from page 1

Clemmons has also been banished from Bulloch, Effingham, Jenkins and Screven counties.

On May 6, Clemmons was officially charged with one count of terroristic threat via computer, according to the criminal court documents.

Students were officially notified of Clemmons' threat on March 14 via a message from the Dean of Students Office.

Clemmons posted a threatening message on the social media site Tumblr.

"We got an email, an anonymous email, that said someone had seen a posting on the blogging site Tumblr, and that there was a threatening message

about 'shooting up' Georgia Southern University," Chief Michael Russell, director of public safety, said.

Authorities then searched Clemmons' residence but found no weapons or any signs of a plan or plot to attack, Russell said.

Clemmons posted the threat to Tumblr on Feb. 7 and was arrested and taken into custody on Feb. 8, according to the criminal court documents and the GSU Public Safety Report.

Clemmons told authorities that he made the post as a joke to see how long it would take him to be arrested, which only took around three hours, Russell said.

Although students had been notified in March, the message said that the threat had been resolved in early February.

"I felt in order to answer any questions about a perceived threat or a fear of a threat, I needed to let students know we had resolved the issue," Patrice Jackson, dean of students, said.

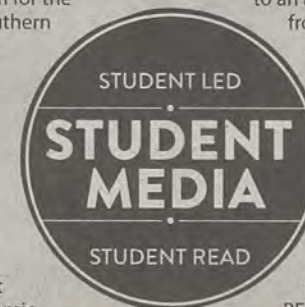
On March 5, Clemmons was granted bail set at \$20,000, provided he comply with the following terms: no alcohol, drugs or weapons of any kind, a mental health evaluation and only release to a close relative, according to the criminal court documents.

Clemmons was unable to make bail and remained in the Bulloch County Jail, which caused controversy as the case went viral.

Lauren Gorla and Shelby Farmer contributed to this article.

Statement of Operations

The George-Anne is the official student newspaper of Georgia Southern University, owned and operated by GSU students using facilities provided by the university. The newspaper is the oldest continuously published newspaper in Bulloch County. The newspaper is a designated public forum for the Georgia Southern community. The newspaper is published twice weekly, on Tuesdays and Thursdays, during most of the academic year. Any questions regarding content should be directed to the student editor by phone at 912.478.5246 or at gaeditor@georgiasouthern.edu.



The advertising manager or student media director. The advertiser is responsible for any errors in advertisements and its liability for adjustments is limited to the amount of space the error occupied in the ad. Further, the newspaper is not responsible for any damages caused due to an ad's omission from a particular edition and its responsibility solely is to reschedule the ad in the next regular edition at the regular advertising rates.

STUDENTS BEWARE:

The George-Anne screens all advertisements prior to publication. The newspaper strives to accept ads for legitimate products and services only. Students are urged to exercise caution when replying to ads-particularly those that require personal information. Students are also urged to report to the newspaper any suspicious offers which they might see in an ad.

ADVERTISING: The newspaper accepts advertising. Inquiries may be made by calling 912.478.5418 or 912.478-0566. Fax any questions to 912.478.7113 or e-mail ads1@georgiasouthern.edu.

The George-Anne receives additional support, in part, from the Student Activities Budget Committee.

The deadline for reserving space and submitting advertising copy is noon, one week prior to the intended publication date. For more information, rate cards, sample publications, contact

PUBLICATION INFORMATION: The newspaper is printed by The Brunswick News in Brunswick, Ga.

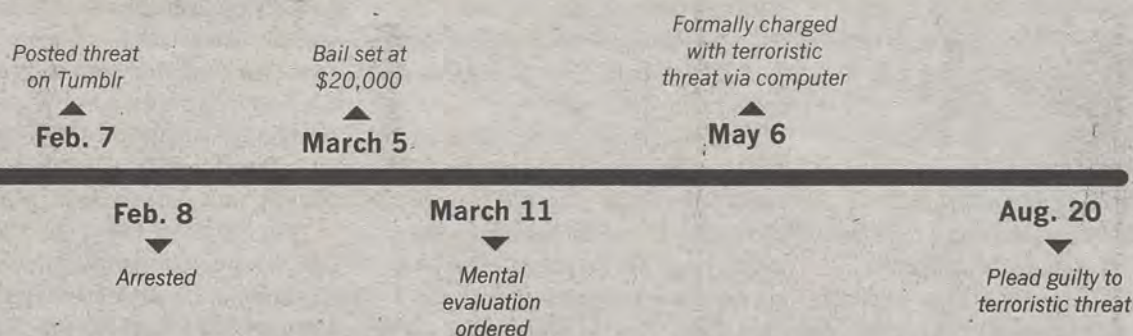
NOTICE: Unauthorized removal of multiple copies from a distribution site constitutes theft under Georgia law, a misdemeanor offense punishable by a fine and/or jail time.

Editorial Staff

Editor-in-Chief Shelby Farmer
Managing Editor Jackie Gutknecht
Multimedia Editor Lindsay Gaskins
News Editor James Farmer
News Chief Alanna Navin
A&E Editor Will Price
A&E Chief Kimeko McCoy
Sports Editor Shakeem Holloway
Sports Chief Robert Huitt
Football Editor Randall Hampton

Copy Chief Anna Wells
Copy Editor Taylor Cooper
Business Manager Chloe Douglas
Sr. Account Executive Jeremy Williams
Marketing Manager Marissa Martin
Distribution Manager Bradley York
Production Manager Jose Gil
Photo Editor Jessica Stanfield
Design Editor Matt Veal
Web Editor Darius Alexander
Ads Design Chief Kelly Slyfield

Clemmons jailed 6 months before guilty plea



Corrections

Contact the editor at gaeditor@georgiasouthern.edu for corrections and errors.

Our View

GSU looks ahead with new helmets

Georgia Southern University's move to use the Guardian Cap during practice is a sound investment of the increased revenue that the FBS move will generate for the school. The Guardian Cap's increased protection against concussions addresses a hot-button issue at all levels of football and shows that the athletics program is willing to go the extra mile (and spend the extra buck) to protect its student-athletes. The extra visibility that the switch garnered for the school from major news outlets is a boon for the university as well.

It is good to see that the university does not view its student-athletes, especially the profit-generating football players, solely as revenue-generating machines. The extra money spent on player safety will not only reduce injuries while in school, but can possibly cut down on the long-term health effects of head injuries. As well, improved safety measures can be a great recruiting pitch for concerned parents of potential players.

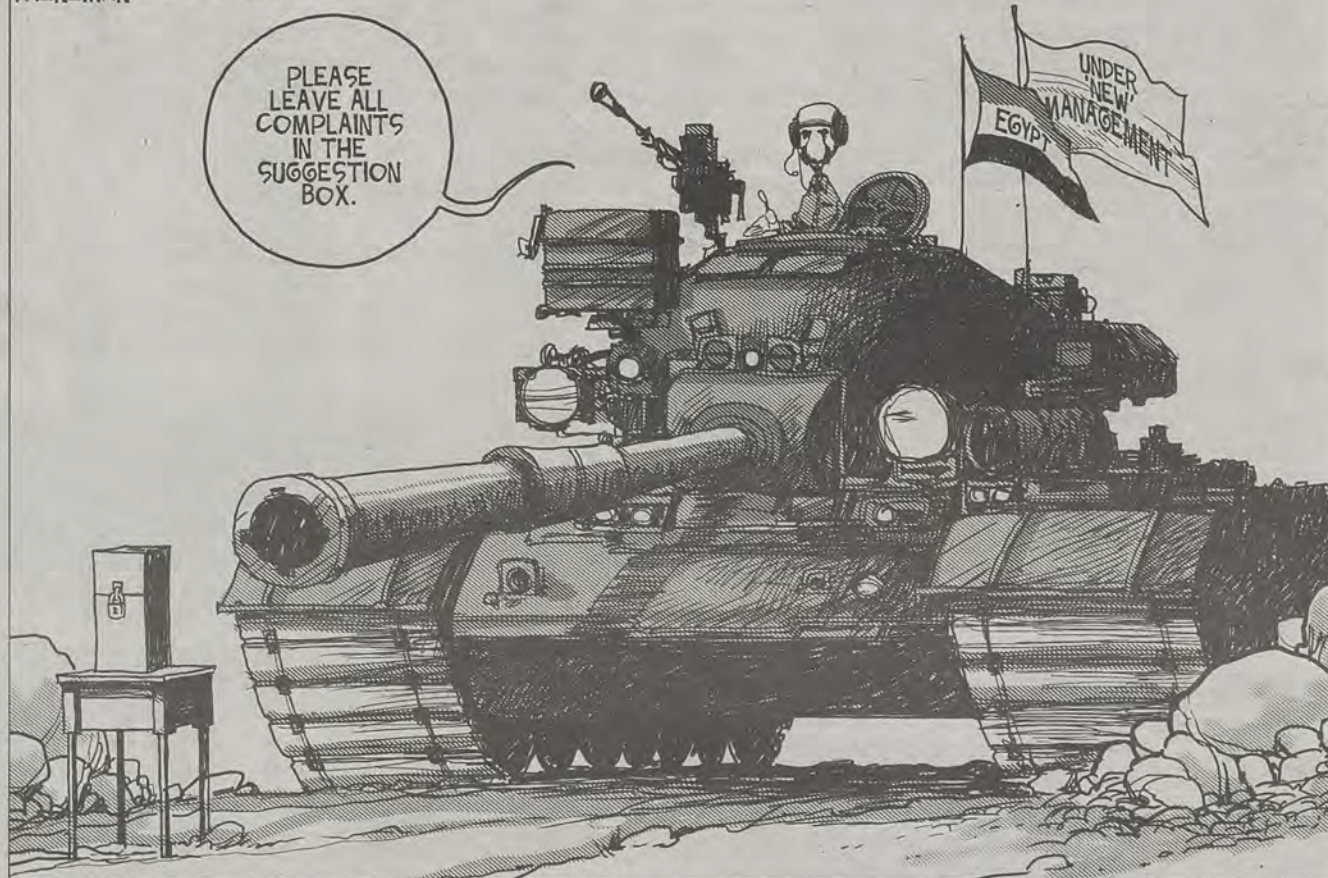
The visibility gained by news coverage of GSU's use of the Guardian Cap is a great side effect of doing the right thing. The school has already been rewarded for the extra money spent on protection by coverage of the new gear by NBC. Any time a school can get coverage on a major network in a positive light, it is a huge benefit for all parties involved.

The move to use Guardian Caps has already benefited the school, but the most important benefits will happen down the road from the players using the helmet to reduce brain injuries. GSU deserves credit for putting player safety above a profit margin.

The George-Anne welcomes letters to the editor and appropriate guest columns. All copy submitted should be 350 words or fewer, typed, and sent via e-mail in Microsoft Word format to letters@georgiasouthern.edu. All submissions must be signed and include phone number for verification. GSU students should include their academic major, year and hometown. The editors reserve the right to reject any submission and edit submissions for length.

Opinions expressed herein are those of the Board of Opinions or columnists themselves and DO NOT necessarily reflect those of the faculty, staff or administration of GSU, the Student Media Advisory Board, Student Media or the University System of Georgia.

SHENEMAN TRIBUNE CONTENT AGENCY



Time management is key

For many students, the hardest part of college is time management. There's a photo online of a triangle with its angles labeled social life, academics and sleep. The caption of the photo reads: "College, you can only pick two." This is true for many students, especially those who have to work full-time jobs on top of their studies, or like to go party (or both).

But college doesn't have to be this impossible task of managing your time. Here are a few easy tips to help you make the most out of college.

Don't worry about getting all your sleep at one time. Seriously, take a note from the Spaniard's book on this one. Five hours of sleep a night are more than enough if you can grab a siesta in the afternoon. A little schedule adjusting can make this work nicely, especially if you live on campus. When

THE FARM LIFE



JAMES FARMER

you are making your next schedule, or adjusting this one, give yourself a few hours between afternoon classes. Just don't deviate from your schedule too much or you will regret it.

Find your study spot. Everyone studies differently, so not everyone needs to go to the library. If you are like me, and need background noise, you can study in Sweetheart Circle or in your dorm room just fine. If you need silence, try the fourth floor of the library; it's peaceful with a great view.

It's also good to find the right time to study. If you are a morning person, wake up early and knock that stuff out. If you are a night owl, go ahead and study until 2 a.m. You'll be better for it.

Find your niche and go wild with it. When it comes to your social life, finding what you want to do is the most rewarding thing. Do your friends want to go to the bars, but you'd rather go LARPing? Go crazy with some wooden swords then. Go to house parties, go to the bars and find out which one you like better or if they are all the same to you. Just go out and enjoy yourself. It's college after all. If you don't make friends, you aren't doing it right.

Farmer is a senior political science and international studies double major from Thomasville. He is the former Opinions Editor and current Copy Editor.

GSU is a leader in LEED and sustainability

This fall semester, students arrived to Georgia Southern University to find three new buildings in line to receive the Gold LEED Certification. It is something every Eagle should be proud of. To obtain the necessary points for the Gold LEED Certification, the Biological Sciences Building, Main Commons Dining and Lakeside Commons Dining must display an impressive number of sustainable features. Some of the features – between the different buildings – include extensive natural lighting, bioswales for overflow regulation, solar panels, natural vegetation for landscaping, reduced water usage toilets, rain chains and sustainable building materials. The new buildings on campus will join the ranks of other notable Gold LEED Certified buildings, including the Empire State Building and the

largest “green” building in the world, the David L. Lawrence Convention Center. Plans have been made for an electronic display in the Biological Sciences Building that will show water usage and electricity usage in real time. This not only inspires environmentally friendly behaviors by faculty and staff, it showcases the large reductions in water and electricity usage.

The original goal was for the new Biological Sciences Building to earn a Silver LEED Certification. Surpassing this goal is not only impressive; it shows Georgia Southern University’s strong commitment to sustainability in both the present and future. Environmentally friendly practices have been present on the campus in past years also. Some of the many years-old features on campus include permeable paving (for

THE GREEN VIEW



BRITTANY WALKER

rainwater absorption and filtration), white roofing, an extensive recycling program, bioswales, native vegetation, and the LEED certified RAC. However, with completion of the three Gold LEED buildings, along with last semester’s passing of the Green Fee with the highest percentage of all the proposed fees, Georgia Southern has been solidified

as an exceptional example of a sustainably minded university. In Georgia and across the nation, universities should look to Georgia Southern for inspiration and direction in their environmentally friendly practices.

Georgia Southern’s commitment to sustainability grows in tandem with its growth in enrollment, infrastructure and influence. It has been refreshing and inspiring to witness over my four years here at Georgia Southern. I graduate this semester, and I feel confident that when I come back to visit I will have even more reason to be proud to be an alumnus from Georgia Southern University.

Walker is a senior sociology major with a specialization in sustainability from Brunswick. She is an officer in the Green Ambassadors.

Surviving the semester

As I sit listening to “The Walker” by Fitz and the Tantrums on my laptop, knowing I saw them live in Vegas a few weeks ago, I mourn the loss of my summer. Rehearsals, parties, work-that-doesn’t-feel-like-work, road trips, bar trips, getting tipsier than life with my parents, writing music for gits and shiggles and all the other magical things are now behind me. School has once more begun, and I’ve never felt more ashamed of my struggle than in class Monday afternoon, whilst nodding off during the ever-popular first day syllabus party. Other than my horrendous sleep schedule (asleep at 6 a.m., awake at 9 a.m....anyone?), I decided there were several other things I’m going to fix before it’s too late in the semester. These are my healins and blessins for this week.

I always say it, but I will be wearing the pants in the relationship that is me and homework/assignments. In semesters past, and my, how many there have been, I’ve put any and all things off until last minute. Memorizing lines always got done, but I’d spend many evenings and mornings in Club Hendy. Freshmen, this is the library. If you’re smart, you will make dear friends with Club Hendy. Hopefully you will not start paying rent and utilities there, as I do, but you should definitely start racking up frequent flyer points there. Your grades will thank you.

I’m pretty sure I hit the junior plateau last year. That’s basically when you are active because you have to be (hauling your cookies from class to class, strutting past tasty people

HEALIN AND BLESSIN CORNER



SAVANNAH ROGERS

treats, etc.) and you rarely eat, but you eat nothing but garbage, making you stay the same weight for what seems like entirely too long. I can guarantee if you make a turkey sandwich and pack some fruit and a water, it has monumentally less sugar and calories than the tasty and sinful sesame chicken from say, the carry out Chinese restaurant near “that bar on the corner” that only takes cash. I know you know what I’m talking about. Also, there’s a good chance the turkey sandwich won’t trick you into feeling full and then feeling like a vacant ravaged desert an hour later. Just saying. I’ll still probably eat that garbage, because one does not get this figure from looking at food, but I will try harder to not do it so often.

I could go on for days, but I’d rather we all improve ourselves together, as a student body, at a realistic pace. I will beat Senioritis, and we will get through the year like champs, because Hail Southern, that’s why. Healins and blessins, y’all.

Rogers is a senior theater major from Eufaula, Alabama.

Senior advice for freshmen

Dear freshmen,

First I would like to say, welcome to Georgia Southern University. This is by far the best college you could have chosen to go to.

I would also like to say, you are a freshmen, meaning that you most likely do not know your way around town, the bars, campus or anywhere for that matter. That is going to become a problem for everyone else, especially me. At this point in time you have been on campus for almost an entire week, which gives you plenty of time to know where the library and Union are, so quit asking.

As for you driving around town, please take one day and get lost in Statesboro and figure it out. This town is tiny; you can do it.

The bars are a different story completely though. Since you are a freshman that means that you are (probably) not 21 yet, which means that you cannot drink. I am not saying it is impossible; I am just stating the law so we all know. Everyone knows this law, which includes bouncers, bartenders and police officers.

If you are okay with getting the bar in trouble for serving minors or getting

THE STATESBORO STANDARD



JACKIE GUTKNECHT

yourself in trouble for being drunk, then go right ahead, but don’t ruin the fun for those of us who are old enough.

Freshmen year is meant for you to have fun and live it up, so do just that, but don’t be stupid.

Everyone on this campus has been a freshman once so we know just how excited you are, but you don’t want that excitement to turn into mistakes that will forever scar you, so be careful.

Sincerely,
A senior

PS: You better believe if “Beat the clock” gets shut down, I will find you, whichever freshman is responsible, and shut them down personally.

Hail Southern.

Gutknecht is a senior journalism major from Conyers. She is the current managing editor.

College football needs new rulers

Forget for a second about the fact that Texas A&M quarterback Johnny Manziel may (or may not) have sold his signature for cash, and focus in on what the

THE SPORTS SCOOP



BRIAN STONE

NCAA's been doing outside of that particular situation. The governing body for college athletics has made some controversial decisions about the game of football as of late that makes them look less than reputable.

The NCAA recently made a ruling that former Marine and current Middle Tennessee State freshman Steven Rhodes was ineligible to play college football this year due to the fact that he played intramural or recreational football on a military base. Then just a short time ago, the NCAA ruled that he was eligible to play, due to pressure from the public through social media.

Is that all it takes to reverse an NCAA decision? It shows how uncommitted and easily manipulated the NCAA and its President Mark Emmert are when it comes to making rulings like the Rhodes case. If they want to be taken seriously as an organization, they have to be able to make firm decisions in the face of controversy and be non-wavering in their rulings. And that is why college sports needs new governing bodies – the NCAA has shown that they are almost incompetent in every facet of their business.

Back in early August, the NCAA was shown to be even more incompetent by NCAA-basher Jay Bilas. Bilas found that if an athlete's name was entered into the search box of the NCAA online shop, the athlete's uniform would come up for purchase right away. However, that would violate the current lawsuit the NCAA is involved in, because the NCAA claims that no money is made off the likeness of student athletes. So in response, the foolish NCAA simply removed the search function from their website in order to attempt to sweep the problem under the rug as they always do.

Personally, I believe that all athletes should be able to market themselves in any way they see fit. A change such as this would show that the NCAA can see what needs to be changed and correct themselves without having people on social media sites do it for them. However, it is more likely that the NCAA will keep clutching onto its archaic rulebook which only changes when it further benefits the NCAA. This organization needs to go the way of the BCS and cease to exist.

Stone is a senior journalism major from St. Mary's. He is a former sports reporter.

SHENEMAN TRIBUNE CONTENT AGENCY



The George-Anne is searching for cartoonists and additional columnists. If you are interested in the positions, please email a sample of your work to letters@georgiasouthern.edu

GSU to offer new transportation solution



Andy Morales | The George-Anne

The new ZipCar system will replace WeCar as an alternative option for transportation.

BY ALANNA NAVIN

The George-Anne staff

This year, Georgia Southern University is teaming up with ZipCar to offer students, faculty and staff another option of transportation.

Last year GSU offered students the ability to use WeCar, by Enterprise Rent-A-Car, as a car sharing service. Since then, the university has switched to ZipCar.

"In comparison to WeCar, it's a much better service in my opinion," Charles Glover, vice president of auxiliary affairs in the Student Government Association, said.

GSU was the first university or business in 2011 to offer this kind of service to students and faculty in the state, according to a news release.

The vehicles themselves feature more advanced technology than the average car. In some cars, the dashboard has a touchscreen interface. Students can reserve cars on the mobile app, and students can

lock the car door and blow the horn through the app.

For security purposes, each car must have the keys inside it at all times but a keycard is used to start the engine, Glover said.

Student members will have access to cars 24/7, the vehicles being right on campus, and reservations can be made online. GSU students pay \$25 for membership and gain \$40 worth of credit during the promotional period, which ends in October.

The rates range from \$8.25 per hour and \$70 for a day, which also includes gas and insurance. Members must be at least 18 years of age in order to use the service, according to the ZipCar website.

Benefits of ZipCar for the university include reducing the strain on parking, access to fuel-efficient vehicles and reducing the carbon footprint produced by a large number of vehicles, according to the website.

"Using the service is much

cheaper than owning a car, for gas and insurance purposes," Glover said.

Having this kind of service will be helpful for freshman, Glover said.

"It's beats having my mom drive down here, I guess," Jenelle Loweres, freshman computer science major, said.

"The only thing I feel that people wouldn't use it if they want to go home or something for the weekend. I don't know if they want to pay \$8.25 an hour for that," Loweres said.

Being a freshman without a car, Glover found finding a ride to places such as Wal-Mart a hassle.

With a service like ZipCar in place, Glover believes that freshmen especially will find this transportation option useful and convenient.

"All of it is taken care of for you," Glover said.

Javil Downer, freshman computer science major, said, "If I didn't have a car I probably wouldn't use the service right now, but later down the road I would."

Plan now for weather problems later

BY LAUREN GORLA

The George-Anne staff

The recent heavy rainfall has created immense amounts of stagnant water across campus and University Police are urging students to defend themselves against the possible dangers by planning now.

"Worry about it now and think about it now. If you think and practice, you'll react quicker and better," Michael Russell, chief of University Police, said.

Students need to plan where the safest location would be and what supplies they need with them while they wait out the severe weather. Russell suggests moving to higher ground to ride out the storm.

Drivers need to be especially

careful because water can cause a car to stall and stop, or even be carried away by the high waters.

Low-lying areas can be especially dangerous because these areas end up holding large amounts of water that can overflow into roads and block roadways.

"Don't drive through rushing water because you can't always see if the road is underneath it. Water is very powerful and it can wash away cars," Russell said.

If a student's car stalls while driving on the roadway, the driver first needs to assess whether or not it is safe to exit the vehicle. If not, the best bet is to stay put and wait until assistance comes to help, Russell said.

The rainfall was so severe on Monday night that the Bulloch

County chapter of the Red Cross opened a station for displaced victims due to flooding.

"When we have a number of people that have been affected by disaster, it makes more sense to open up a shelter where we can make some meals in larger quantity in a large space. Mary Roche, disaster services specialist for the Bulloch County Red Cross chapter, said.

The station was open from around 11:30 p.m. Monday to 9 a.m. Tuesday, Roche said.

"We're always prepared for the worst. We're assuming tonight (Tuesday) it will flood out again so we're already rounding up volunteers to run the station," Roche said.

The Red Cross also sent a Disaster Assessment Team to Statesboro to



Courtesy of Suzette Hartzog

Statesboro experienced severe amounts of flooding this week.

look at the possible damage on West Johnson Street and the apartments on Fair Road, Roche said.

According to the Red Cross website, "On-call DAT volunteers

travel together to the disaster site, assess the scope of the disaster, and if necessary, work with the victims to identify and meet the immediate needs of the displaced residents."



Andy Morales | The George-Anne

The Blue Bean Bistro will open Labor Day Weekend and hopes to attract many customers. Owners Jody Cason and Kas Burris opened the Steak and Shake in Statesboro in 2012.

New bistro opening close to campus

BY MADISON ROESEL

The George-Anne Staff

One of the first of its kind in Statesboro, The Blue Bean Bistro, located within walking distance of campus, will be open for business on Labor Day weekend.

After spending many years in the food and beverage industry, Jody Cason and Kas Burris have teamed up to open up a one-of-a-kind bistro in hopes of providing a new hang-out spot for Georgia Southern Students and Statesboro locals alike.

"There is no other place in town that serves our combos. It's a coffee house but we also plan on serving beer and wine," Cason said.

Cason, a 1999 graduate of Georgia Southern with a degree in hotel and restaurant management, opened the bistro with Burris after opening the Steak and Shake in Statesboro in 2012.

"After seeing all of these food and beverage establishments do well, especially in Statesboro which we consider the world's largest small town, we decided it was time for us to venture out and open

up our own business," Cason said.

Cason describes The Blue Bean Bistro as an extension of your office, your apartment, or your dorm room.

"We want to be a place where you can come hang out and listen to good music," Cason said.

The menu features breakfast, lunch and dinner items from chai cupcakes, zucchini bread and paninis to candied tomatoes and Italian stuffed chicken.

"The sunshine panini is going to be a really good one. We also have a pastry chef on board to have in-house, chef's choice desserts made every day," Cason said.

According to Cason, Kass will be in the kitchen cooking up seasonal dishes that will pair well with beer and wine. For the coffee lovers that want to come in and grab lunch they will have salads and paninis as well.

Cason says that they are open to suggestions if anybody has ideas for dishes they would like to see on the menu.

"We don't want to be a franchise store where we can only serve a certain thing. We can do whatever, we're flexible," Cason said.

Alongside many other teas and drinks, Juva is one of the roasts that they offer that is very high in antioxidants. They will offer Kilimanjaro, French roast and decaf for just a few base flavors but will rotate others out as seasonal flavors, Cason said.

"Currently we are just sampling and giving out menus," Cason said.

"We are not just a mainstream coffee shop," Burris says. "We've been doing little test runs and samples throughout

the week because we aren't fully set up yet. However it is more than a coffee shop, there is a little bit of everything."

According to Cason, the bistro will also offer a drive-thru service.

"I'm an alumnus and I'm a part of Eagle Nation," Cason said. "Obviously we've got East Georgia and Ogeechee Tech down the road from us but my favorite is right across the street. We're trying to keep Eagle Nation going."

Statesboro Survival Guide

Trouble this weekend is easily avoidable

BY LEIGHLAN MCCANN

The George-Anne staff

With the first weekend of the Fall 2013 semester getting off the ground tonight, students are expected to venture out after a slow first week back to class.

While going hard is a tempting way to forget the stress of a

tough syllabus week, there are alternatives that don't involve arrests and marks on your driver's license.

If you choose to distress at the bar, at a house party or even by yourself, there are a few steps you can take that will make your weekend safe and enjoyable. Take it from these Eagles:



File Photo

GSU students put their DJ skills to the test at the Red Bull Play & Destroy event at Rude Rudy's this past February.



Charles Bowen,
public safety officer

"Women should be extra careful about drinks, always order directly from the bar."



Dr. Andrea Poling,
German professor

"Since some of those going out are under age, I would strongly discourage it. But if they are drinking I would caution anybody, especially the girls, from drinking to the point of passing out because it leaves them very vulnerable."



Kristen Fisher, senior,
bartender

"Keep track of how many drinks you have, whether you put beer tops in your pocket or stack cups, just make sure you don't go over your limit."



Matt Herman,
DJ Hurricane

"If there is one thing I want to stress to Eagle Nation that is to designate a sober driver when going out or take a taxi home. Set aside \$5 in a pocket from your other money, walking home can be very dangerous."



Jamie Helms, senior,
history student

"Basically, know your limit. Make your own drinks, use the buddy system and have a way home."

The Buzz List

■ **Kanye West** and his baby mama will be revealing their baby



Kimeko McCoy

North on the "Kris Jenner Show" this Friday. Unfortunately, North is not where I see Kris Jenner's show going.

■ **Lindsay Lohan** skips wearing pants to dinner in New York on Tuesday. Kind of like how we skipped out on watching her Oprah special.

■ **Beyonce** spends \$2,200 for her and her entourage to enjoy Nando's chicken. It seems she adopted Marie Antoinette's outlook, "Let them eat chicken."

■ **Zayn Malik** of One Direction became officially engaged on Sunday. I guess all the One Directioners will have to settle for Harry and his hair.

■ **Amber Rose** released a video of her twerking in her wedding dress. Maybe her and Miley Cyrus can team up. Twerk team.

Information compiled by Arts & Entertainment Chief Kimeko McCoy from perezhillton.com and TMZ.com.

THE 'BORO BEAT



HAPPY HOUR



LIVE BAND



SPECIAL EVENT

THURSDAY

GATA's

Happy Hour 5-8 p.m.
\$2 bourbon, vodka,
domestic beers and
margaritas
Ent. Live Band

Retriever's

Happy Hour 5-8 p.m.
\$1.50 Miller, Coors, PBR
\$2 Bud, Yuengling
\$2.25 Imports
\$2 Shots
1/2 Priced top shelf
Crown, Jack, Absolut, Jim
Bean, Jose Cuervo
\$2.50 Singles, \$3
Doubles, \$4.50 Quads
Beat the Clock at 10 p.m.

Gnat's Landing

Happy Hour 5-7 p.m. and
9-11 p.m.
\$3 Doubles
\$10 Pitchers

Mellow Mushroom

4-7 \$2 draft beer, spe-
cialty pizzas-medium
\$13, large \$17

Millhouse

prime rib \$16.95, \$2
draft beer, margaritas,
martinis and cocktails,
\$2.49 house wine

Applebees

\$3.75 domestic draft
beer and long islands, \$1
off main street margari-
tas

Dingus MaGees

Happy hour 5-7, \$2
double wells, \$2 for one
bombs, \$2 double wells

SATURDAY

Retriever's

Happy Hour 5-8 p.m.
\$1.50 Miller, Coors, PBR
\$2 Bud, Yuengling
\$2.25 Imports
\$2 Shots
1/2 Priced top shelf
Crown, Jack, Absolut, Jim
Bean, Jose Cuervo
\$2.50 Singles, \$3
Doubles, \$4.50 Quads
\$1 Bourbon
\$3 Bombs

Loco's Bar and Grill

\$6 Miller Lite Pitchers

GATA's

Happy Hour 5-8 p.m.
\$2 bourbon, vodka,
domestic beers and
margaritas
Ent. Live Band

El Sombrero

\$2.25 margaritas

Gnat's Landing

Happy Hour 5-7 p.m. and
9-11 p.m.

Mellow Mushroom

4-7 \$2 draft beer

Millhouse

\$2 draft beer, margaritas,
martinis and cocktails,
\$2.49 house wine

Applebees

\$3.75 domestic draft
beer and long islands
\$1 off sangrias

Dingus MaGees

Happy hour 5-7, \$2
double wells, \$2 for one
bombs, \$2 double wells

FRIDAY

Gnat's Landing

Happy Hour 5-7 p.m. and
9-11 p.m.
Ent. Live Music

Loco's Bar and Grill

\$3 Sangria
\$4 Crown Royal

GATA's

Happy Hour 5-8 p.m.
\$2 bourbon, vodka,
domestic beers and
Margaritas
Ent. Live Band

El Sombrero

\$3 Sex on the Beach

Retriever's

Happy Hour 5-8 p.m.
\$1.50 Miller, Coors, PBR
\$2 Bud, Yuengling
\$2.25 Imports
\$2 Shots
1/2 Priced top shelf
Crown, Jack, Absolut, Jim
Bean, Jose Cuervo
\$2.50 Singles, \$3
Doubles, \$4.50 Quads
\$1 Vodka 9-11 p.m.

Mellow Mushroom

4-7 \$2 draft beer

Millhouse

\$2 draft beer, margaritas,
martinis and cocktails,
\$2.49 house wine

Applebees

\$3.75 domestic draft
beer and long islands, \$1
off martinis

Dingus MaGees

Happy hour 5-7, \$2
double wells, \$2 for one
bombs, \$2 double wells

SUNDAY

El Sombrero

\$3 Tequila Sunrise

Mellow Mush- room

4-7 \$2 draft beer

Applebees

\$1 off shot clock brutes

Millhouse

\$2 draft beer, margaritas,
martinis and cocktails, \$2.49
house wine

Fuzzy's Taco Shop

Happy hour all day- \$1 top
shelf tequila
\$2 miller light pints
\$1 off Mexican bottled beer

DEPARTMENT OF HUMAN RESOURCES
STUDENT EMPLOYMENT CENTER
 GEORGIA SOUTHERN UNIVERSITY

STUDENT EMPLOYMENT

JOB FAIR

Fall 2013

Get on target...
**MEET POTENTIAL
 EMPLOYERS!**

Thursday, August 22
 9 a.m.-12 noon

Russell Union Ballroom

+On-site Interviews
 +Business casual
 dress is required



GASouthernSEC



@GASouthernSEC



GEORGIA SOUTHERN
 UNIVERSITY

'Kick-Ass 2' alive but barely kicking

Film Review ★★☆☆☆

BY WILLIAM PRICE

The George-Anne staff

When the first film installment of Mark Millar's comic book "Kick-Ass" was released expectations were low, but were exceeded to a great degree. Unfortunately, the second chapter, "Kick-Ass 2," simply doesn't live up to its predecessor.

"Kick-Ass 2" resumes the story of Kick-Ass, the troubled, self-made high school superhero David Lizewski, and now orphaned Hit-Girl, the infinitely badass and playfully brutal Mindy Macready.

The film revolves around the two leading lives going in opposite directions. Where Kick-Ass is trying to get back in to crime fighting by joining a team of other local superheroes and Hit-Girl is being pressured to hang up the cape by her new parental guardian and act more her age.

I'm not sure if it's the shine of the first film's playfully vicious portrayal of violence wearing off but the second film just doesn't draw you in like its forerunner. In the first film it feels like the good guys are fighting for something, not just rampaging around random alleyways and crime rings beating, slashing and tearing criminals to a pulp.

The drop in quality could be explained by a change in directors, with the relatively unproven Jeff Wadlow ("Never Back Down")

replacing Matthew Vaughn ("X-Men: First Class," "Lock, Stock and Two Smoking Barrels").

Wadlow's "Kick-Ass" differed from Vaughn's not because of a lack of good fight scenes or witty ways to kill someone, but more the shortage of good humor to go along with it. It's not very fun to watch someone have his or her fingers cut off when there isn't a cheesy one-liner following it.

Fortunately the movie is not void of bright spots. The two stars, Kick-Ass, played by Aaron Taylor-Johnson, and Hit-Girl, played by Chloe Grace Moretz, nail their respective roles as awkward high school senior who wears spandex and justice-obsessed 14-year-old orphan with a knife fetish.

Maybe the brightest point in the whole movie is the short-lived performance of Jim Carrey ("The Truman Show," "Ace Ventura") as the soulful, old school Colonel Stars and Stripes. Among the pile of bodies the movie leaves behind, his is the only one I found myself caring about. It's unfortunate the source material dictated we didn't get to see more of the Colonel but Carrey certainly brings it.

Overall the movie will be reasonably entertaining based purely on the well done fight scenes and solid special effects, but it's doubtful you'll think about the movie much after you leave the theatre.

Perhaps the novelty of incessant and over-the-top violence wore off or the dark humor dimmed too much, but "Kick-Ass 2" kicks a lot less ass than its precursor.



Sarah Horne | George-Anne

Boutique lands in 'Boro

Fashion

BY ALEXANDRA MCCRAY

The George-Anne staff

The economy may be bad for the rest of the country, but for the newly opened boutique The Feathered Nest located in downtown Statesboro business is booming.

The store has been open for two weeks and business has been flourishing so much that even storeowner Sara Woodard is surprised.

"Business has been very good, I thought it'd be much slower. I haven't even started advertising or anything yet, and I'll have someone come in during the morning and want a product, and by the afternoon it's gone," Woodard said.

The Feathered Nest is a store for anyone looking to create a wardrobe or apartment that looks like it walked straight off of a Pinterest board.

"One day I'll have all college kids shopping for clothes and the next day it'll be all grandmas, and still everybody finds something. I'm trying to be super fun but at the same time affordable so that no matter what your price point you can find something super cool to wear or for your house,"

Woodard said.

Every piece is hand picked by the owner. Including vintage, recycled furniture and chic embellishments tucked into even the smallest detail.

"I have a lot of vendors from Etsy. I have a girl that does copper jewelry, one that does Georgia Southern tumblers and another one that does monogrammed pendants. And every day it changes because I have so much stuff coming from vendors, so it's always different," Woodard said.

Travae Zachary, a sophomore fashion merchandising and apparel design major said she likes The Feathered Nest because it offers unique, high quality items that aren't mass produced and can't be found at other boutiques in Statesboro.

Woodard's sister Casey Arnett owns consignment shop DeJa'Vu across the street. Arnett attributes both stores' quick success to South Main Street's close-knit community, and willingness for owners to encourage each other's success.

Arnett said, "We refer all our customers to The Feathered Nest and they always come back and say how great it is. South Main is a very close community. We all know how to run each other's business in case of an emergency."

FRANKLIN
TOYOTA • SCION

10% OFF
service with your Student ID

888-695-8165

500 Commerce Drive
beside the new Holiday Inn

PROTECT YOUR VEHICLE!

Regular maintenance and upkeep is crucial to your car's optimal performance, best possible gas mileage, and highest resale value.

Our service department offers the best in automotive service for all makes and models.

PLUS we provide a free shuttle to and from campus!

- Oil Change
- Tire Services
- Tune-Up & Transmission Service
- A/C & Radiator Service
- Brake Service
- Engine Repair
- Body Shop Services



**BUY OR LEASE
A NEW TOYOTA, GET A**

\$1,000

COLLEGE GRAD REBATE

SCHEDULE YOUR SERVICE ONLINE! www.FranklinToyota.com

BEST PLACE TO PLAY!

OVER 60 ARCADE GAMES, BALLOCCITY, BOWLING, MINI-GOLF, LASER TAG & RESTAURANT!



GSU NIGHTS

Join Us SUNDAY - THURSDAY for Exclusive GSU Deals!
Unlimited Bowling, Laser Tag and Mini Golf

ONLY \$9.99

6 PM TO CLOSE • WITH YOUR GSU ID

Scan this code to see more deals!



THE CLUBHOUSE

GAMES • BOWLING
FOOD • FUN



ClubhouseStatesboro.com • 912-871-1000

Food & Fun Combos, Group and Individual Packages Available!

CLASSIFIEDS

www.thegeorgeanne.com

This page brought to you by Career Services
Explore • Experience • Excel

Thursday August 22, 2013 13

Miscellaneous

Statesboro Main Street Farmer's Market Open every Saturday from 9am – 12:30pm through October. 2 East Main Street (in the Sea Island Bank parking lot). For more information on vendors and seasonal produce: www.statesborofarmersmarket.com

Housing

Great Luxury apt 111 South has a room available for \$530 includes utilities and furniture. Email la01249@georgiasouthern.edu for more info. Hurry spaces are filling fast.

Looking for one or two female roommates to share a furnished 3 BR/ 2 BTH 2500 sq. ft. house w/ covered parking in an upscale Statesboro subdivision. House is located in Hazelwood off of Cypress Lake Rd. Rent is \$399/ month utilities included. Short term lease OK. Small dogs OK. No pet deposit required. 1 mile to GSU. If interested please email kenphil8@gmail.com

Have something to get rid of?

Make some money by putting it in
The George-Anne's classifieds ads.

FREE to students, faculty and staff!

INTERVIEWS AND INTERROGATION LSTD 4633
SPRING & FALL SEMESTERS

WHITE COLLAR CRIME LSTD 3630
SUMMER B & FALL SEMESTERS

FRAUD AND THE LAW LSTD 3631
SUMMER A & FALL SEMESTERS

**STUDENTS OF
ALL MAJORS:
DO YOU NEED AN
ELECTIVE OR A MINOR?**

FRAUD

**THE FRAUD EXAMINATION MINOR CAN
BE COMPLETED AND LEAD TO YOUR
CFE (CERTIFIED FRAUD EXAMINER)**

WITH:

MACRO FRAUD EXAMINATION
ACCT 4631

MICRO FRAUD EXAMINATION
ACCT 4632

Master of Accounting students
continue on to pursue their
Forensics Accounting Concentration

Learn more at www.Fraudforensicsacct.com
Email: Jwilliamson@GeorgiaSouthern.edu

PUZZLES/COMICS

14 Thursday August 22, 2013

The George-Anne

Los Angeles Times Daily Crossword Puzzle

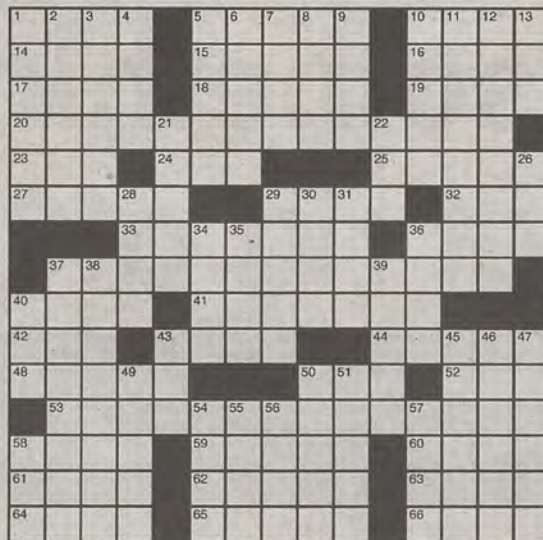
Edited by Rich Norris and Joyce Lewis

ACROSS

- 1 Fermented honey drink
- 5 Put in the pantry
- 10 Prepare email
- 14 Fairly large fair
- 15 Symphonic wrap-ups
- 16 Fuel for a firepit
- 17 Take an ax to
- 18 Place for sporting events
- 19 Money in Milan
- 20 It makes sense
- 23 Roses-red link
- 24 Firepit residue
- 25 Seeing red
- 27 au poivre
- 29 Takes a downturn
- 32 "Little Red Book" chairman
- 33 Nightstand spot
- 36 Camping trip dampener
- 37 It makes cents
- 40 Easy pace
- 41 Rested on one's laurels
- 42 Parking facility
- 43 Lines of pews
- 44 Painter of ballerinas
- 48 California's Mesa
- 50 "Just thought!"
- 52 Wagon wheel groove
- 53 It makes scents
- 58 Boyfriend
- 59 Threescore
- 60 GI sought by MPs
- 61 Uneaten morsels
- 62 They're blue when they're fair
- 63 Inca territory
- 64 Hissed "Hey!"
- 65 Fashionably dated
- 66 Periods in history

DOWN

- 1 Popular tourist destinations
- 2 Caution earnestly
- 3 Highest point in a satellite's orbit
- 4 Info



By Dave Sarpola

Last Edition's Puzzle Solved

P	A	T	I	S	S	E	R	I	E	J	U	D	O	
D	R	A	G	Q	U	E	E	N	S	E	R	I	N	
A	N	N	O	U	N	C	E	R	S	M	A	S	T	
S	O	A	R	E	F	E	E	S	N	T	H			
	S	A	A	B				S	Q	U	I	R	E	
I	T	T		K	M	A	R	T	U	S	U	A	L	
M	R	E		Y	A	Z	O	O	A	A	M	C	O	
P	I	E		C	H	A	N	G	E	R	O	T	O	
E	X	T	O	L	A	D	O	R	E	R	E	S		
C	R	O	W	E	R	O	U	N	D	E	D	E		
C	A	T	N	A	P			T	E	A	L			
A	B	A		N	A	T	S		N	O	F	A	T	
B	B	L	S		T	R	A	N	S	C	R	I	B	E
L	I	E	U		H	O	L	Y	T	E	R	R	O	R
E	T	R	E		S	P	E	E	D	D	E	M	O	N

- 5 Sings like Ella Fitzgerald
- 6 Synagogue reading
- 7 Poland-Germany border river
- 8 Sounded the bell
- 9 Biblical twin
- 10 Many a junior high student
- 11 Violin-playing comedian
- 12 Rogues' gallery item
- 13 Shogun's capital
- 21 In the buff
- 22 English Lit. majors' degrees
- 26 Over there, back when
- 28 Act the accessory
- 29 Opera headliners
- 30 Foreboding March day
- 31 Fresh-mouthed
- 34 Artistic style of the Empire State Building
- 35 Hoped-for Christmas weather
- 36 Ferris wheel, e.g.
- 37 Speed trap setters
- 38 Under-the-gun situations
- 39 Company doctor
- 40 Comfort from mom, briefly
- 43 WWII fliers
- 45 Produce producer
- 46 borealis
- 47 Touchscreen-touching tool
- 49 Expect loyalty from
- 50 In pursuit of
- 51 Last word
- 54 Georgia was a part of it: Abbr.
- 55 Emcee's need
- 56 Leave
- 57 Sprinter's goal
- 58 Jazz genre



	8		2				
			7	5		3	8
			9		7	4	
	6		4	3	2		
5							4
	1	9	7		6		
	1	9		3			
4	2		6		9		
			8				2

Sudoku

We're hiring
designers
photographers
videographers

email: prodmgr@georgiasouthern.edu

Take Student
Media to new
heights

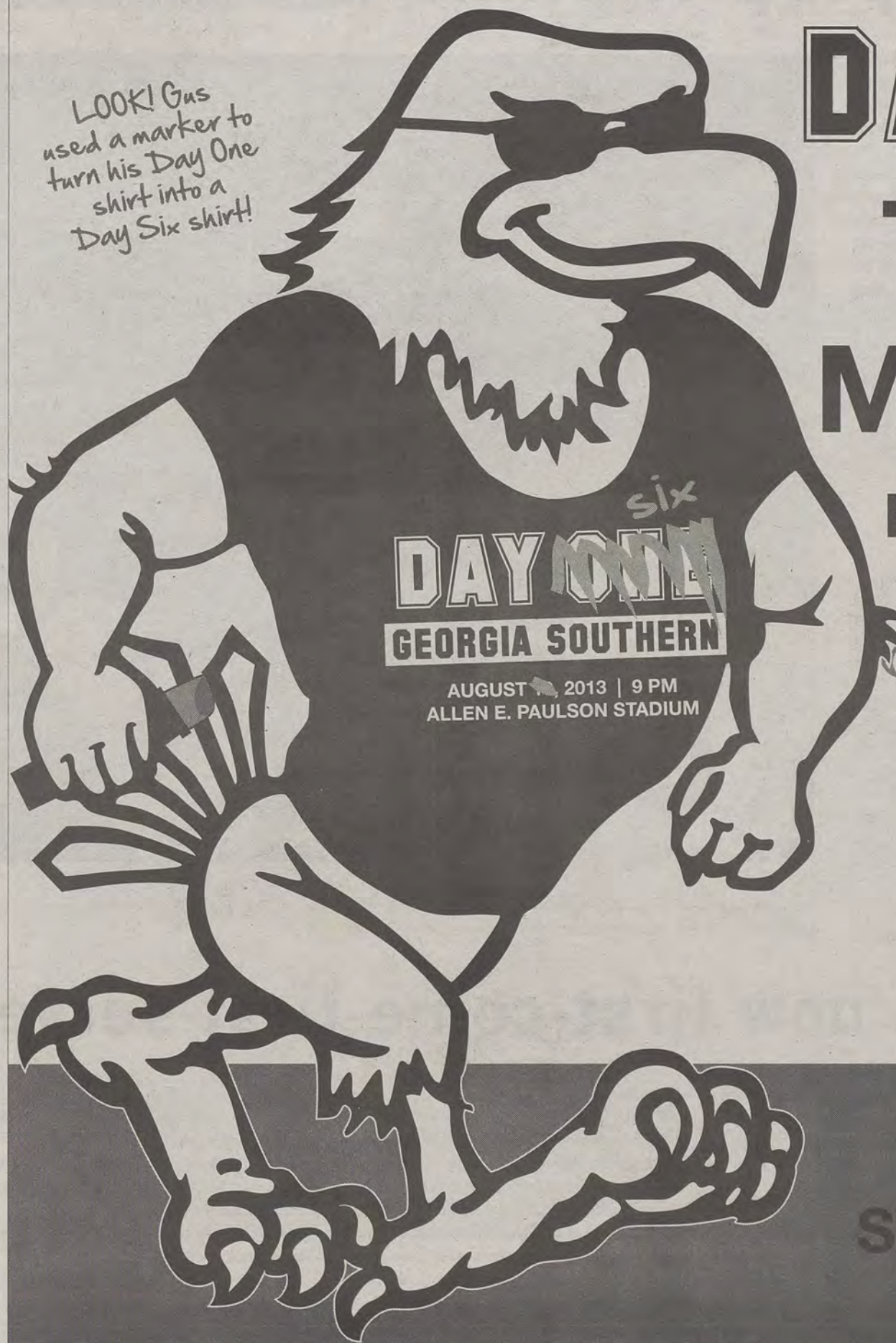
WEAR YOUR

DAY ~~ONE~~^{Six}

T-SHIRT *August 26* MONDAY

FOR A CHANCE TO WIN SOME SUNGLASSES!

*You will need them
because of all the
sunshine!!*



*LOOK! Gus
used a marker to
turn his Day One
shirt into a
Day Six shirt!*

TAILGATING STARTS AT 7 PM

High schools prep to shine at Paulson

BY RANDALL HAMPTON

The George-Anne staff

With bragging rights on the line, four teams are set to square off this Saturday at Allen E. Paulson Stadium for the second annual Erk Russell High School Classic.

Game one is scheduled for 5 p.m. when the Jenkins County High School War Eagles play against the Johnson County High School Trojans. Head coach Ashley Harden will lead Jenkins County into battle against Don Norton, who will call the shots for Johnson County.

Last season, these two teams split the season series 1-1 with Johnson County shutting out Jenkins County 14-0 in the season opener. Jenkins County could only manage six first downs and 106 yards of total offense for the entire game.

Payback time came in the final game of the season for Jenkins County as it pulled out a 22-18 victory.

The win pushed Jenkins County to 6-4 and dropped Johnson County to 8-3 for the season. When these two teams play each other, the games are hard fought defensive battles with each team holding the other team's high powered offense well below its season average.

Jenkins County posted scores of 60, 48, 45 and 42 points during last season but failed to break 25 against Johnson County. Johnson County

could not score more than 18 points against Jenkins County even though the team had games of 53, 49, 46 and 42 points.

Once the score is settled between Jenkins County and Johnson County, the final game of the night will kick off at 8 p.m. between the Metter High School Tigers and the Emanuel County Institute High School Bulldogs.

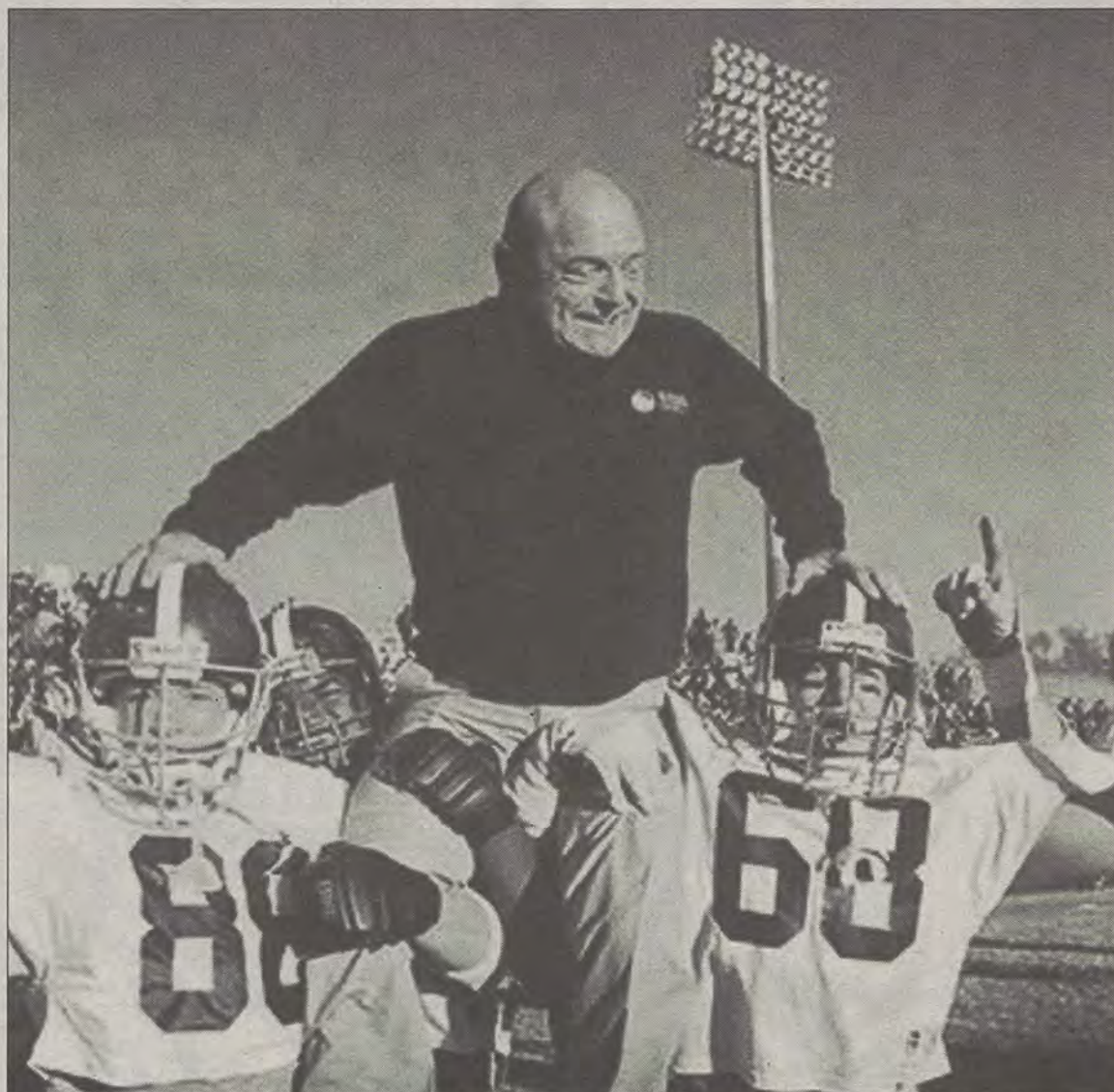
ECI is the reigning Class A State Champions after its 47-7 destruction of Dooly County High School in the state championship game last December. En route to the championship, ECI nearly blanked Metter winning 42-7 in the inaugural Erk Russell High School Classic.

Metter will have the advantage of not being rusty after a 13-0 win over the Claxton Tigers last Friday. Unfortunately, that may not be enough to stop the potent running game of ECI, led by senior running back James Brown.

Last season Brown rushed for 993 yards and 12 touchdowns according to Maxpreps.com. Brown was one of five players to score a touchdown against Metter last year.

Tickets for the games are available at the Georgia Southern University ticket office for \$10 in advance. Tickets at the gate will be \$15.

A portion of the proceeds from the event will go to the Eagle Football Alumni Association.



Courtesy of Georgiasouthern.edu

Georgia Southern University legendary football coach Erk Russell celebrates with GSU football players. The second annual Erk Russell classic will be held this Saturday.

Student tickets now first-come-first-serve

Football

BY WILL CHENEY

The George-Anne staff

The Georgia Southern University 2013 policy for obtaining student tickets for football games has been released.

Students that have paid their athletic fees will be allowed one ticket upon showing their GSU or East Georgia State College student I.D. card. The I.D. and ticket must be present at either Gate 1 or Gate 7 on game day.

For the season opener against Savannah State University on Aug. 31, the first students will be able to pick up tickets will be at Day Six at Allen

E. Paulson Stadium from 4 p.m. to 10 p.m.

After Day Six, the Gate 4 ticket booth will be open from 9 a.m. to 12 p.m. on Monday through Wednesday. The Russell Union building will also serve as a distribution location on Monday through Wednesday from 9 a.m. to 9 p.m.

The lobby of the RAC will be a distribution center on Tuesday and Wednesday from 3 p.m.

to 9 p.m. Tickets can also be picked up Friday nights at the Allen E. Paulson Stadium ticket booth by Gate 4 from 5 p.m. to 9 p.m.

Students will also be able to obtain a ticket on game day at the Cowart Building ticket window starting four hours before kickoff.

All student tickets will be distributed until there are not any left.

GSU women's soccer team to travel to Indiana

Women's Soccer

BY ZAKYRA COLVIN
AND SHAKEEM HOLLOWAY

The George-Anne staff

The Georgia Southern University's women soccer team will take on the Indiana State University Sycamores in its first regular season game tomorrow in Terre Haute, Ind.

After winning the Southern Conference Championship for the first time in GSU

history and booking a ticket to the NCAA Tournament, the Eagles enter the season ranked seventh in the 2013 SoCon preseason poll.

Brian Dunleavy will take charge of the team in his first season as head coach after two seasons as an assistant.

Entering the season, senior goalkeeper Katie Merson ranks second in active career saves with 246, trailing senior goalkeeper Taylor Mangrum who ranks first with 252 saves. Merson also ranks first among active players in shutouts (14) and wins (17).

Sophomore forward Nora El-Shami led GSU in goals (5) and points (13) as a freshman last season. Shami also boasted a shot percentage of .094.

As a team, the Eagles averaged 1.17 goals per game with a shot percentage of .094 while holding their opponents to one goal per contest and a shot percentage of .084.

The team finished last season with a 10-8-5 overall record and 4-6-1 conference record. They return with 23 players, eight of which are starters and added six new players.

Last season, the Sycamores finished with a

record of 8-10-3. This preseason the Sycamores finished off its preseason winning both of their exhibition matches over Bowling Green (3-0) and Northern Kentucky (3-1).

Senior midfielder Taylor Reed led the Sycamores in goals (4) and points (9) with senior midfielder/defender Shelby Trover coming close with three goals and nine points.

The defending SoCon champions will also play Big Ten opponent, Indiana University, on Sunday, at 1 p.m. in its second game of the season.

The Eagles have a total of 19 games this season, which includes 10 home games.



File Photo

Georgia Southern University women's soccer player Nora El-Shami (24) goes for the steal. Shami led the Eagles in goals and points as a freshman.

Season underway for men's soccer

Men's Soccer

BY TREVOR MCNABOE

The George-Anne staff

The 2013 campaign for the Georgia Southern University men's soccer team is nearing. On slate for the Eagles is the second leg of preseason games that will take place next Saturday against the University of Central Florida.

GSU looks to bounce back this year after last year's 6-12-1 record overall and a 3-3-1 record in the Southern Conference.

The Eagles brought back 10 starters from last year along with five new faces on their roster.

"We return the core part of our team from last year so we have an idea of what most everyone can do," head coach Kevin Kennedy said.

Seniors with experience are prevalent on this roster as this senior class logged a total of 96 games played for the 2012 season. They also accounted for one quarter of the teams total goals scored and assists.

Winning the SoCon Championship has been a top priority for GSU since coach Kennedy took over in 2006.

"We have set a number of goals but that is the number one thing driving the guys along with the goals that they've set," Kennedy said.

The main focus going into this year is the team's defensive focus as the Eagles gave up 36 goals in 18 games last year. Experience in the back line along with veteran goalies senior Neal Bates and redshirt sophomore Jack Falle will be back this year.

"We know we're going to score goals, we've got personnel that can make things happen in the attacking third, we've just got to get better defensively," Kennedy said.

The emergence of sophomore defender Reed Norton, after a stellar freshman campaign leading



File Photo

Eric Dinka (12) avoids a Mercer defender and delivers a shot on goal. GSU will open the season by hosting the annual SoCon/Big South Challenge.

the team in five goals and 13 points, leads the Eagle Nation to wonder who will be the next player to have a breakout year.

"I think Josh Ward is going to turn a lot of heads, he's a junior college transfer that's coming in as a junior and he was an All-American

at Jefferson College, that's a terrific leader and terrific kid, he could be a big part of our defense this year," Kennedy said.

GSU will open up by hosting the annual SoCon/Big South Challenge on Friday Aug. 30, and will take on Winthrop University.

Eagle practice in full swing

Football

BY WILL CHENEY

The George-Anne staff

With the wet weather that has been plaguing Statesboro the past two days, the Georgia Southern University football team's schedule has also been affected.

Due to lightning, the team's Tuesday practice had to begin indoors at Hanner Field House. Practicing indoors can, however, hinder a team's practice regimen.

"The weather during camp wasn't so bad. We had one afternoon on a two-a-day where we had to go over to the gyms at the RAC. Luckily those were available because school hadn't started yet," GSU head football coach Jeff Monken said. "It affects our preparation tremendously in a negative way. We just can't get done in the gym what we can out here. We have to try to make that up over the next several practices."

Practicing on a hardwood floor with no contact can set a team back as far as preparing for an upcoming game.

An indoor football practice mostly consists of a walk-through of different plays that the coordinators are planning to use in the upcoming

game. The use of scout teams during practices is crucial. Scout teams consist of players that are, more than often, not on the active roster.

A scout team's purpose is to emulate the tendencies of what the opponent might do in the upcoming game. The offense practices against a scout team that emulates upcoming opponents' defenses plays and tendencies, and the defense practices against a scout team that emulates upcoming opponents' offensive plays and tendencies.

If the remaining days leading up to the season opener bring sunny skies, those couple of days will have just been a speed bump on GSU's road to the 2013 football season.

With the rest of this week and all of next week to prepare, weather permitting; Monken's squad will have an abundance of knowledge about how to react to Savannah State University's playcallers on Aug. 31.

With former GSU quarterback Jaybo Shaw returning to GSU as an assistant coach, Monken believes it can only help his already successful team.

Monken said, "He brings leadership. He's a great kid, our guys really respect Jaybo. He loves Georgia Southern, and I think he'll be a great mentor and leader."

NEW!

BBQ PULLED PORK

Limited Time Only.

Pairs perfectly with our NEW **Peach Tea!**



BBQ SPUD

BBQ NACHOS

BBQ SANDWICH

McALISTER'S

DELI

1100 Brampton Ave., Suite A • Statesboro, GA • (912) 681-3354

We accept the Eagle Express Card

www.mcalistersdeli.com

We have the ingredients for a great year!

GET YOUR BOOKS FOR LESS!

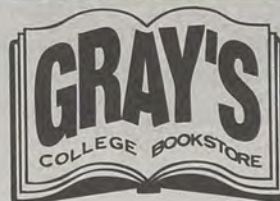
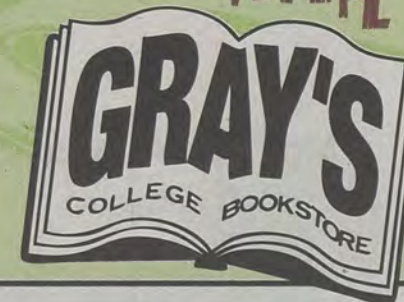
BUY NEW, USED OR RENT

FINANCIAL AID FRIENDLY!

WE CAN HOLD YOUR CHECK, DEBIT OR CREDIT CARD!

SEE ASSOCIATE FOR DETAILS

NOW
YOU'RE
COOKIN'
WITH



Like us on **facebook** at WWW.FACEBOOK.COM/GRAYSGSU

FOR EXCLUSIVE DEALS
& DISCOUNTS

1550 CHANDLER RD, STATESBORO * (912)681-2655 * WWW.GRAYSBOOKS.COM



Take Student Media to new heights

land a job with us

Candidate Program tryouts
Williams Center Rm 2023

Monday, August 26

10 - 11 a.m.

1 - 2 p.m.

2 - 3 p.m.

5:30 - 6:30 p.m.

Tuesday, August 27

11 a.m. - 12 p.m.

2 - 3 p.m.

3 - 4 p.m.

Wednesday, August 28

10 - 11 a.m.

1 - 2 p.m.

2 - 3 p.m.

5:30 - 6:30 p.m.

