

Georgia Southern University

Digital Commons@Georgia Southern

The George-Anne

Student Media

4-30-2013

The George-Anne

Georgia Southern University

Follow this and additional works at: <https://digitalcommons.georgiasouthern.edu/george-anne>

Recommended Citation

Georgia Southern University, "The George-Anne" (2013). *The George-Anne*. 2794.
<https://digitalcommons.georgiasouthern.edu/george-anne/2794>

This newspaper is brought to you for free and open access by the Student Media at Digital Commons@Georgia Southern. It has been accepted for inclusion in The George-Anne by an authorized administrator of Digital Commons@Georgia Southern. For more information, please contact digitalcommons@georgiasouthern.edu.

SERVICE GREEKS RELOCATING

PAGE 2

EAGLES FACE MID-WEEK GAMES

PAGE 15

SHOW CHOIR TICKETS ON SALE

PAGE 9

Tuesday, April 30, 2013
Georgia Southern University
www.thegeorgeanne.com
Volume 83 • Issue 73

THE GEORGE-ANNE

FAFSA no longer required for HOPE

BY CYDNEY LONG

The George-Anne contributor

Georgia college students will no longer be required to complete a Free Application for Federal Student Aid in order to receive lottery-funded state financial aid.

House Bill 324, the bill proposing the cancelation of the FAFSA requirement, passed and was signed by Governor Nathan Deal on April 24, amending the law.

"This will help the students who only want HOPE," Elise Boyett, associate director of student affairs, said.

The HOPE Scholarship is available to Georgia residents who demonstrate academic achievement and provides money to assist students attending a HOPE-eligible college in Georgia, according to the GACollege411 website.

To qualify for HOPE in college a student must earn a 3.0 cumulative GPA at the end of each spring semester to continue eligibility.

The amount of money the HOPE Scholarship provides to recipients is determined by the number of hours that a student is enrolled in and it covers up to 127 credit hours.

The HOPE application carries over from year-to-year, but you have to complete the FAFSA each year until now, Boyett said.

This helps the financial aid office because it offers loans to students. Upon completion of the FAFSA application, students who qualify are given a federal loan, even if they do not want it. By omitting the FAFSA requirement, the financial aid office will not

See FAFSA, Page 8

Russell finished as Georgia Southern University's all-time sacks leader with 25 and was second on the Eagles' career tackles for loss list at 54.5.

Eubanks was third on the team with 77 total tackles and tied two others for most passes broken up with seven.

Wilcox finished second on the team with 88 total tackles adding two interceptions and three pass breakups.

GSU to be nationally recognized

BY SHAKEEM HOLLOWAY

The George-Anne staff

After the announcer of the National Football League's draft called J.J. Wilcox's name he said "Georgia Southern University," and fans of the NFL were introduced to the university. With the selection of Wilcox in the

third round (18th pick, 80th overall), and the eventual arrival of GSU in the Football Bowl Subdivision by way of the Sun Belt Conference, GSU is on its way to becoming a household name.

A study on GSU rival, Appalachian State University, showed that as a school's athletic program becomes more successful, admissions increase

as the school gains more prominence by defeating bigger schools.

At the Mar. 27 press conference to announce GSU's move to the Sun Belt Conference President Brooks Keel conveyed to the audience that he wanted to make GSU a nationally recognized research institution.

See FOOTBALL, Page 17



thegeorge
anne.com



Follow us on Twitter
@TheGeorgeAnne



Newsroom 478-5246
Advertising 478-5418
Fax 478-7113

PO Box 8001
Statesboro, GA
30460

United Greek Council to split between offices

BY LAUREN GORLA

The George-Anne staff

Seven service-based sororities and fraternities in the United Greek Council will be moving from the Office of Fraternity and Sorority Relations to the Office of Student Activities at the end of this semester.

Splitting up the council and having some as student organizations, the groups are still fraternities and sororities, the only change will be to whom the organizations report to, Jessica Turuc, interim director of Fraternity and Sorority Relations, said.

The seven organizations that are relocating are three service-based organizations, Alpha Phi Omega, Gamma Sigma Sigma and Omega Phi Alpha, two music-based organizations, Phi Mu Alpha Sinfonia and Sigma Alpha Iota, one Christian sorority, Alpha Delta Chi, and one Eagle Scout fraternity, Epsilon Tau Pi.

"They all have a specific focus that is still in the lines of brotherhood and sisterhood and having that support system on campus, but it's a little separate from our social Greek organizations," Turuc said.

Originally, these seven organizations fell under the Office of Student Activities but moved to the Office of Fraternity and Sorority

Relations two years ago because of a change in the offices.

"We recently, as the Office of Fraternity and Sorority Relations, moved from reporting to the Dean of Students Office to the Office of Student Activities. Now everybody is protected by that Title Nine," Turuc said.

Title Nine is a part of the Education Amendments of 1972 that protect university athletic teams by maintaining a balance between men's and women's teams but also protects the rights of fraternities and sororities to have gender-specific membership.

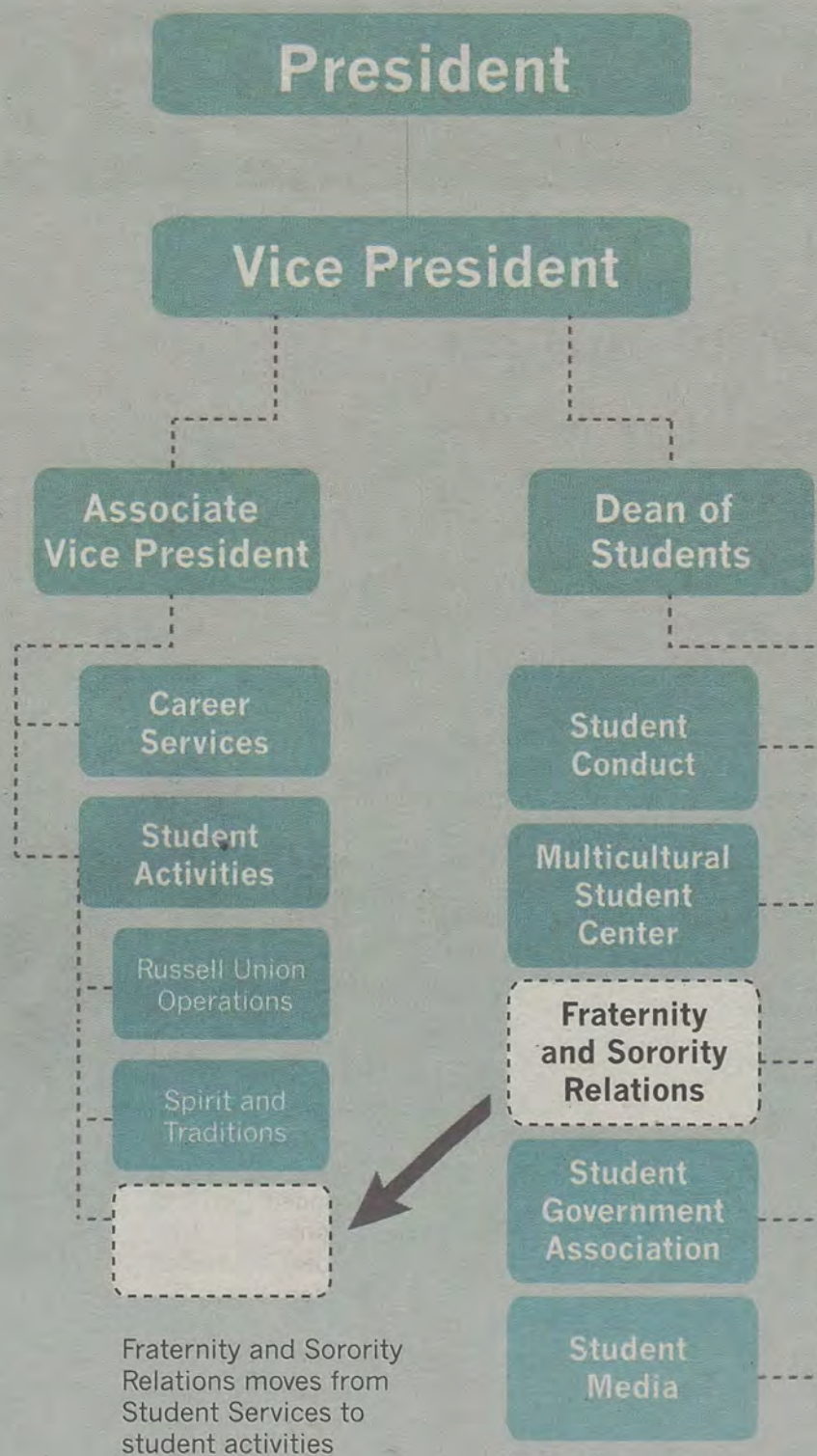
"The reason the move was made in 2011 to have the organizations part of our office was to protect all of the organizations on our campus, all forty of them, that are social Greek-lettered organizations," Turuc said.

The Office of Fraternity and Sorority Relations and the Office of Student Activities discussed the move for a few weeks during this semester. The two offices looked at what would be the best way for GSU to support these organizations, Turuc said.

Turuc said that this amount of movement is not typical of all universities and this will hopefully be the last time it will happen.

"We recently... moved from reporting to the Dean of Students Office to the Office of Student Activities."

-Jessica Turuc,
interim director of Fraternity
and Sorority Relations



*Organization chart

Matt Veal/The George-Anne

Police Beat

Wednesday, April 24

9:38 a.m.: Officers responded to a domestic dispute in E-Lot.

12:06 p.m.: An incident report was taken for harassment at Freedom's Landing.

1:17 p.m.: An incident report was taken for theft of lost/mislaid property and financial transaction card fraud. This case was turned over to criminal investigations.

2:15 p.m.: An incident report was taken for a theft at the RAC. This case was turned over to criminal investigations.

6:26 p.m.: An incident report was taken for a theft at the RAC. This case was turned over to criminal investigations.

8:33 p.m.: An incident report was taken for lost/mislaid property at the Forest Drive Building.

Thursday, April 25

12:57 p.m.: An officer conducted a traffic stop on Chandler Road at Parker's. The driver was issued traffic citations for no insurance and expired tag. The vehicle was towed.

1:11 p.m.: Officers responded to an injured person at the RAC fields. EMS responded but did not transport.

18:25 p.m.: Officers responded to a report of an activated alarm and a burning smell at the College of Science and Technology. The smell was identified as a lab experiment, and the alarm was part of the fire alarm system being worked on.

7:07 p.m.: An incident report was taken for a theft at the RAC. This case was assigned to criminal investigations.

7:25 p.m.: An incident report was

taken for a theft at The NEST. This case was assigned to criminal investigations.

8:22 p.m.: Officers assisted the Statesboro Police with a missing juvenile case. A Georgia Southern University Police Officer located the missing juvenile in G-Lot and returned the juvenile to the Statesboro Police.

10:05 p.m.: An incident report was taken for a theft from the bench located at the bus stop near the Russell Union. This case was assigned to criminal investigations.

12:08 a.m.: Officers responded to a drug complaint at Southern Pines. One occupant was judicially referred.

Friday, April 26

7:46 a.m.: An incident report was taken for a criminal trespass at the Kappa Kappa Gamma house.

8:50 a.m.: An incident report was taken for found property at the Lakeside Café construction site. An investigation led to the judicial referral of two persons.

12:06 p.m.: An incident report was taken for a theft at Einstein's Bagels. This case was assigned to criminal investigations.

12:08 p.m.: Officers responded to C-Lot in reference to a physical altercation. The offender was identified and judicially referred.

12:16 p.m.: An incident report was taken for a theft at the RAC. This case was assigned to criminal investigations.

2:02 p.m.: An incident report was taken for found property at the Nursing/Chemistry Building. The owner of the found property could not be located. The found property was placed in the police department property room.

4:11 p.m.: An incident report was taken for forgery 1st degree (counterfeit money) at Deal Hall. This case was assigned to criminal investigations.

4:26 p.m.: Officers responded to a motor vehicle accident at Lanier and Harvey. During the investigation, a subject not involved in the motor vehicle accident, Vernon Williams, 49, was found to be a wanted person out of Effingham County. Williams was arrested and held for Effingham County. A motor vehicle accident report was completed.

Saturday, April 27

12:19 a.m.: An incident report was taken for found property at Public Safety. The owner of the found property could not be located and the found property was placed in the police department property room.

2:02 a.m.: An officer discovered an intoxicated female standing in traffic on Georgia Avenue near J-Lot. The intoxicated person, Katrin Marie Walker, 20, was arrested and charged with possession of alcohol (under 21 years of age) and false ID.

2:20 a.m.: Officers responded to a physical altercation in J-Lot. The two subjects involved were judicially referred.

8:56 a.m.: Officers responded to a burglar alarm at the housing storage unit on South Main Street. An employee entered the wrong security code.

5:55 p.m.: Officers responded to Centennial Place in reference to a criminal trespass. Seth Edgar Prieto, 20, was arrested and charged with possession of alcohol (under 21 years of age).

9:24 p.m.: Officers assisted the Statesboro Police with an incident at the University Pointe Apartments.

Statement of Operations

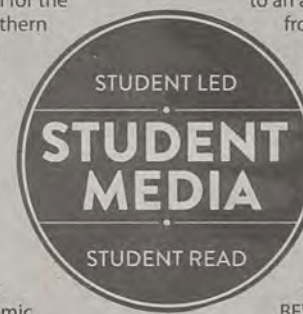
The George-Anne is the official student newspaper of Georgia Southern University, owned and operated by GSU students using facilities provided by the university. The newspaper is the oldest continuously published newspaper in Bulloch County. The newspaper is a designated public forum for the Georgia Southern community. The newspaper is published twice weekly, on Tuesdays and Thursdays, during most of the academic year. Any questions regarding content should be directed to the student editor by phone at 912.478.5246 or at gaeditor@georgiasouthern.edu.

ADVERTISING: The newspaper accepts advertising. Inquiries may be made by calling 912.478.5418 or 912.478-0566. Fax any questions to 912.478.7113 or e-mail ads1@georgiasouthern.edu.

The George-Anne receives additional support, in part, from the Student Activities Budget Committee.

The deadline for reserving space and submitting advertising copy is noon, one week prior to the intended publication date. For more information, rate cards, sample publications, contact

the advertising manager or student media director. The advertiser is responsible for any errors in advertisements and its liability for adjustments is limited to the amount of space the error occupied in the ad. Further, the newspaper is not responsible for any damages caused due to an ad's omission from a particular edition and its responsibility solely is to reschedule the ad in the next regular edition at the regular advertising rates.



STUDENTS BEWARE:

The George-Anne screens all advertisements prior to publication. The newspaper strives to accept ads for legitimate products and services only. Students are urged to exercise caution when replying to ads-particularly those that require personal information. Students are also urged to report to the newspaper any suspicious offers which they might see in an ad.

PUBLICATION INFORMATION: The newspaper is printed by The Brunswick News in Brunswick, Ga.

NOTICE: Unauthorized removal of multiple copies from a distribution site constitutes theft under Georgia law, a misdemeanor offense punishable by a fine and/or jail time.

Editorial Staff

Editor-in-Chief Arielle Coambes
Managing Editor Shelby Farmer
Multimedia Editor Gianna Carme
Opinions Editor Taylor Cooper
News Editor Tayler Critchlow
News Chief Alanna Navin
A&E Editor Marissa Martin
A&E Chief Alex LaSalle
Sports Editor Jackie Gutknecht
Sports Chief Trevor McNaboe

Copy Chief Courtney Tielking
Copy Editor James Farmer
Business Manager Chloe Douglas
Sales Manager Phillip Scroggin
Marketing Manager TJ Jackson
Distribution Manager Nick Garcia
Production Manager Kelsey Paone
Photo Editor Tasha Lund
Design Editor Jose Gil
Web Editor Darius Alexander

Corrections

Contact the editor at gaeditor@georgiasouthern.edu for corrections and errors.

Our View

Administration denying faculty proper respect

As we reported in Thursday's edition, students were given a survey to determine if the new dining plan was desirable, but Georgia Southern University's faculty was not consulted or included in the meal plan deliberations in any way.

In the Lakeside or Landrum dining halls, which are still under renovation, entry will cost \$8.50 in lieu of a meal plan, which will cover any food eaten while in the dining hall. In previous years, faculty and staff could go to Lakeside and grab a single cup of coffee for a fair price, but not under the new plan.

The unfairness in this is obvious. It ensures that faculty will not be eating at either of the new dining halls. This is not only a disservice to our faculty, but also cuts out a large source of revenue for the dining halls.

Last year, in response to an open letter to all of GSU, Dr. David Dudley, the head of the literature and philosophy department, detailed the problems that have developed between the faculty and administration. Part of President Brooks Keel's response was to open his office at regular times and consult faculty more often on major changes.

The fact that faculty were not consulted on this change shows that at least some of the tension between administration and faculty has not eased. We encourage the university to give the faculty more credence, as there are no individuals more devoted to the institution and to students.

The George-Anne welcomes letters to the editor and appropriate guest columns. All copy submitted should be 350 words or fewer, typed, and sent via e-mail in Microsoft Word format to letters@georgiasouthern.edu. All submissions must be signed and include phone number for verification. GSU students should include their academic major, year and hometown. The editors reserve the right to reject any submission and edit submissions for length.

Opinions expressed herein are those of the Board of Opinions or columnists themselves and DO NOT necessarily reflect those of the faculty, staff or administration of GSU, the Student Media Advisory Board, Student Media or the University System of Georgia.

**The semester is almost over.
Be sure to give it your best!**



Collins' coming out a big deal

The NBA playoffs are in full swing. The Lakers have just been eliminated and the Heat has swept the Bucks in convincing fashion. However, something happened yesterday morning that overshadowed all of this. Jason Collins, currently a free agent, came out as homosexual via Sports Illustrated. Collins is the first active player in any American team sport to come out as homosexual. This is a momentous occasion for American sports, but why did it happen now and what does it mean for the future of sports?

Collins decided to come out of the closet when he simply became tired of hiding who he is. He said that a devotion that he read from a book his grandmother gave him inspired him to stop hiding who he was and live freely. He said that he wanted to make the announcement of who he is to the press, not have TMZ find out and publish it everywhere.

THE FARM LIFE



JAMES FARMER

A change in climate helped him too. He wrote in his article that he's glad he's coming out now instead of in 2003, when such an announcement would have been met with much more resistance. However, gay advocates in professional sports such as Vikings punter Chris Kluwe and former Raven Brendon Ayanbadejo have helped pave the way for a gay athlete. Also retired players who have come out of the closet to positive receptions in the past few years have set a tone of acceptance for an openly gay player.

So what is next for professional sports and LGBT athletes? The fact of the matter is that professional athletes will always

be on rosters if they can play, regardless of sexual orientation. There will always be individuals in the clubhouse or locker room that won't be fine with having a gay teammate, just as there are still players who go on racist rants against opponents and teammates of different races today. But as the attitude in America changes about gay rights and marriage, more people will be accepting of having teammates and favorite players who are homosexuals.

Nobody should have to hide who they are in order to be accepted. As more and more LGBT players start playing professional sports in America it's important to view them as who they really are: simply great athletes playing a sport they love.

Farmer is a senior political science and international studies double major from Thomasville. He is the current Copy Editor and former Opinions Editor.

Griner may change advertising

WNBA draft pick Brittney Griner just signed an endorsement deal with Nike. She became the first openly gay athlete to sign with the giant sports brand. Nike isn't the only company to be finally making moves to appeal to the LGBT buying market—Nordstrom, Microsoft, J.C. Penney, General Motors and more are all using advertising to show their support of LGBT rights while at the same time exploring a new audience.

It was not that long ago back in 2008 that a humorous Heinz Mayo commercial showing two men peck each other on the lips was banned, and the company was sent hate mail with people threatening to bomb their headquarters. The Advertising Standards Authority said that the goodbye kiss was "offensive," "inappropriate" and "unsuitable to be seen by children." Such claims seem ridiculous when you

FROM THE MARGINS



ADRIANA PULLEY

think of all the other things we allow children to watch on television.

Unlike beloved television shows, the world of advertising was a bit slow in reaching out to a gay audience. Of course they have a lot more risk involved because the purpose of an advertisement is to sell a certain product to as many people as possible. If they were to alienate a specific group they may lose those buyers. But now more than ever there are smart, tasteful and fun ads popping up that endorse same-sex relationships. Perhaps so many companies feel safer to make

a statement on these issues because support of LGBT rights and the lifestyle are at a high. Before the number of supporters may have been too low to encourage such advertising, but now we're at the point where companies may suffer if they take an anti-homosexual stance—like the backlash aimed at Chick-fil-A not too long ago.

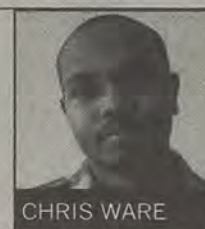
I believe it is important to pay attention to media, advertising and the Internet because the first signs of change in a social consciousness will be seen there. When being gay becomes more main stream and a part of daily life then will there be a growth in acceptance and welcoming. Hopefully one day we'll treat this issue with the same disbelief as we do bans on interracial marriage.

Pulley is a junior English major from Florence, S.C. Adriana is also the vice-president of International Club.

Maintaining a bright future

There has been great debate from both parties on what

A LIBERAL DOSE



CHRIS WARE

should be done to ensure a prosperous and thriving future for the next generation. However, none of those suggestions involve environmental innovation or energy independence as the forefront of their plans.

Our leaders have short-term mindsets. They only support ideas that are popular with their constituents at that particular time, regardless of the ramifications of the ideas they seek to put a legislation.

The private sector definitely has begun cashing in on environmental innovation and energy independence. Car companies from Detroit to Japan are looking to create the most environmentally friendly and technologically advanced vehicles in the world. Chevy has achieved many of its goals through its Chevy Volt and Sequel. Nissan has created a car, the Nissan Leaf, which needs no fossil fuels to operate. Their investments in preserving our planet will pay off greatly in the next few years as gas prices continue to increase and they will be reducing the emissions produced by automobiles by selling these vehicles to the public. Businesses across the country are beginning to cease the use of paper and are starting to go the electronic route. Some businesses are even looking to install alternate energy sources to meet their energy needs.

Now is the time for the government to protect our environment. We only have a certain amount of resources. That we are wasting those natural resources without a plausible backup plan is irresponsible. Our government also needs to recognize global warming as a fact and support industries that seek to curb pollution and create marketable technology that will ensure a safe future for us. Many of our leaders won't be around to see the ugly effects of global warming. It's our responsibility to pressure our leaders to make sure we have common sense laws that protect and preserve our environment.

Ware is a freshman political science major from Griffin. He is involved in the Young Democrats and has worked on political campaigns in Griffin and Statesboro.

The Left's war on seersuckers

We all stood idly by when Barack Obama increased our taxes at the start of the year after he campaigned on a platform that stated that not a single tax would be raised. We watched as the Left, led by Senator Feinstein, tried to infringe our constitutional rights by regulating our rights to firearms. Now the left has gone too far in their fight to impose more useless regulations on society. Senator Ryan McKenna of Missouri has proposed an amendment to Senate bill 437 that would ban the wearing of Seersucker suits for anyone in the state of Missouri over the age of 8. His reasoning behind this heinous proposal is that, in his opinion, adults look ridiculous in seersucker suits.

This is absolutely unacceptable; the seersucker is one of the oldest and most dapper traditions of our nation. While many assume that seersucker is a strictly Southern form of attire, they don't realize that it was originally worn in the United States around the Cincinnati area. During the hot months of the year, gentlemen have been donning this light cotton material since the 1830's. It wasn't until the 1920's that the material started to be

IN MY HUMBLE OPINION



BLAIR MUTIMER

associated with the South. As hot as it gets down here during the summer, it is perfectly reasonable to assume such things.

When Senator McKenna says that people look ridiculous wearing seersucker I would like to remind him of all the thugs that live among us today. I can guarantee that as soon as you walk out of whatever classroom you're reading this in, or any store you go in today, even walking out of Senator McKenna's office building in Missouri you will see some thug wearing pants that sag around their knees and a shirt/undershirt that is about 4 sizes too big that looks like a dress. Better yet, what about those gauges that some men decide to put in that puts five-inch holes in their earlobes? I find it hard to call a

striped cotton suit that is worn with a pressed shirt and tie "ridiculous" when you can drive down the street and see people that walk out of their house half naked claiming to be dressed even though they have to hold the front of their pants up to keep them from falling around their ankles.

We see fewer and fewer people dressing professionally today, there are even people that are about to graduate from this university in two weeks that don't even know how to tie a necktie. So while the left has once again taken regulations to an extreme I think they should be reminded that there are far more important things that should be addressed instead of how gentlemen are dressed. Though if they insist on continuing their war on seersucker they should look out they should just remember that there are plenty of Southern men that are willing to fight for their striped suits!

Mutimer is a senior construction management major from Augusta. He is involved in the College Republicans and has worked on political campaigns in Augusta.

Plant explosion cartoon makes legitimate point

In 2011, Republican Texas Governor Rick Perry said, "Somebody has to tell the EPA

THE GREEN VIEW



BRITTNEY WALKER

that we don't need you monkeying around and getting in our business with every kind of regulation you can dream up. You're doing nothing more than killing jobs. It's a cemetery for jobs at the EPA"

How ironic of a quote, considering the recent Texas fertilizer explosion killing 14 people, injuring 200, and destroying more than 100 homes.

Gov. Perry is now demanding an apology for a cartoon published in a California newspaper that draws attention to his push for deregulation as playing a role in the disaster. The cartoon features Perry on the left, flanked by signs calling for low regulation. He is saying, "Business is booming in Texas!" Then to the right is an actual "boom" because the fertilizer plant is exploding.

The cartoon was a little too soon after such a tragedy. But the message of the cartoon has a valid point.

This disaster was largely the result of regulatory failure. The EPA was one of the main regulatory agencies meant to oversee the plant. However, in West Fertilizer Co.'s risk management plan, they were allowed to "self-report" to the EPA on the types of chemicals stored and sold there. The plant did not mention ammonium nitrate, the same highly explosive chemical used in the Oklahoma City bombing. If they had reported truthfully, the EPA would have likely made them reduce the amount stored to a safer size.

Gov. Perry and others have decried the EPA as an overbearing agency that cares more about the environment than businesses. They call for a reduction in its power and size. It is not that we need more or less of an EPA, however. We need a more efficient one, one with authority to see inside plants for themselves, instead of just being told blatant lies that endanger citizens.

Perry may still think the EPA is a cemetery for jobs, but the family and friends of these 14 victims had to lay their loved ones to rest in real cemeteries.

It begs the question to us as a nation, are we willing to risk lives for the pursuit of higher and higher corporate profits?

Walker is a senior sociology major with a concentration in sustainability from Brunswick. She is an officer in the Green Ambassadors.

Another case of faculty neglect

Having read the front-page story on Thursday's George-Anne, I wrote this response to the GSU Faculty Senate Moderator's blog. I would like all of you to read this, too.

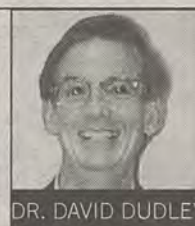
Well, the GSU Olympians have struck again. According to the front-page article in today's "George-Anne," "While determining the type of meal plan to establish, Eagle Dining Services only surveyed students and did not include faculty and staff."

If this is true, and I have no reason to suppose it is not, then I declare:

How typical. How characteristic. How depressingly familiar.

I would guess that nearly 1,500 faculty and staff work on this campus—maybe more, maybe less, I don't know—and no one thought or bothered to ask us if we'd enjoy the privilege of purchasing a bowl of cereal, a frozen yogurt or an apple at Landrum? Or gather at Lakeside for daily coffee as my colleagues, both

GUEST COLUMN



DR. DAVID DUDLEY

currently employed here and retired, have done for years? To enjoy fellowship, to talk about current events, to be friends, without having their retinas scanned for admission into the sacred student precincts and ponying up nearly ten bucks for a cup of Joe?

I don't accept the excuse that faculty and staff have other places to purchase a la carte beverages and food on campus. I have worked in Newton for nearly 24 years, and I remember how much my fellow denizens welcomed an attractive new eating facility next door. How convenient and pleasant it was to

snag that mid-morning snack or caffeine pick-me-up, then sit on the patio and watch the turtles and ducks! But apparently, come August, such an inexpensive privilege will no longer be possible for me or any of my colleagues.

I'm angry about this, and I believe faculty and staff have just cause to be angry, too.

I call upon the administrators who hold the power to overturn this insulting policy, enacted, as our student paper proclaims, "without surveying faculty or staff."

This is another stinging reminder, as if we needed one, that we faculty and staff just work here.

Utterly exasperated,
David Dudley
Writing and Linguistics
Department

Letters to the Editor

Suicide prevention paramount

Dear Editor,

My student nurse colleagues and I are currently working on a community nursing presentation in which we examine the student body of Georgia Southern University in regards to suicide. The information we gathered shows that the GSU Counseling and Career Center is integral in the reduction of suicide rates on our campus. In an effort to spread the word of their services, especially during the stressful time of finals and graduation, we contacted The George-Anne several weeks ago about advertising for their free crisis hotline for students.

Because advertising a free service to students would still cost us, we were unable to present this information in The George-Anne.

Then last Tuesday, April 23, The George-Anne printed a news article regarding a suicide prevention walk to be held on campus. The article highlighted many sobering statistics on suicide, spoke of the most recent suicide on campus last semester and spoke of fundraising to increase awareness of suicide. But nowhere in the article did it give current students who might be contemplating suicide a way to get help. Oh, but how a little collaboration could go such a long

way.

GSU students, if you are in a crisis, contemplating suicide, or in need of any help, please call the GSU Counseling and Career Center's 24-hour hotline at 912-478-5541. Or go to www.georgiasouthern.edu, search "suicide" and find the first link to the Suicide Help page on the Counseling and Career Center's website. Please know that we care!

Because even one suicide is too many,

Julie Morris
Senior nursing major
Statesboro

To submit a Letter to the Editor, please send a letter with your name, hometown, major and academic year of no more than 350 words to letters@georgiasouthern.edu

Service Greek organizations react to office changes

BY LAUREN GORLA

The George-Anne staff

Seven service Greek organizations are moving back to the Office of Student Activities from the Office of Fraternity and Sorority Relations and feel mixed emotions about the move.

"Speaking for my organization, we just hope that nothing has changed and that it's the same as when we were first there," Sienna Sewell, president of Gamma Sigma Sigma, said.

One fear that Sewell expressed was that the Office of Student Activities would try to adopt some of the rules and regulations under Greek Life that were more selective.

The seven organizations moved to the Office of Fraternity and Sorority Relations two years ago in order to be protected by Title Nine guidelines, a

part of the Educational Amendment of 1972 that regulates gender-specific organizations.

"I would have to say we really hated (being under the Office of Fraternity and Sorority Relations Office) if I can be completely honest," Sewell said.

There were more rules going into Greek life that made organizations selective and the rules went against the organization's national constitution, Sewell said.

Earlier this month, the organizations were informed of the move at the Organizations Renewal Fair and also at a United Greek Council meeting.

"I went to the renewal workshop sometime in April, and that's when they told us it would be dissolved and we would be put in category three along with some of the club sports on

campus. That was really the first we really heard about being part of OSA and the new move," Daryl Johnson, president of Alpha Phi Omega, said.

At the UGC meeting, the organizations were told of the move and were asked of their experience in being part of a council and also how they felt about moving back to the Office of Student Activities, Sewell said.

"Even though it was forced, we didn't feel forced because this is what we wanted to do as opposed to when they first put us in Greek life. Then it was a forced situation," Sewell said.

While in the Office of Fraternity and Sorority Relations, there were some perks involved such as networking with other Greek organizations, Sewell said.

While under the Office of Fraternity and Sorority Relations,

Alpha Phi Omega had to balance following its constitutional guidelines and following the guidelines of the office.

Under the national by-laws, Alpha Phi Omega was meant to be non-selective, while under the Office of Fraternity and Sorority Relations, it had to follow new guidelines when recruiting members, Johnson said.

"The hardest thing was just being selective and trying to recruit different kinds of people and finding people with the GPA and the requirements that we had to go along with," Johnson said.

"We're founded on leadership, friendship and service, and your intellect really doesn't have anything to do with giving back to your community. You don't have to have a 4.0 to have a good heart," Johnson said.

Other organizations moving to the Office of Student Activities did not mind being in the Office of Fraternity and Sorority Relations or are neutral on the topic.

"We're not in any way opposing or supporting the Office of Student Activities or the Office of Fraternity and Sorority Relations. We are very neutral on the whole issue," Gerred Bell, vice president of Epsilon Tau Pi, said.

Melissa Huntley, president of Omega Phi Alpha, said that this move is not a real shock because it will not affect how Omega Phi Alpha functions or take away their sorority status.

"It was great being in the Office of Fraternity and Sorority Relations," Huntley said. "We colonized in 2006 so back then we weren't really known. Being in UGC helped us."

Students struggle as state aid falls, tuition rises

BY RENEE SCHOOF

McClatchy Newspapers

(MCT) WASHINGTON - Making college more affordable to more people continues to be elusive, and the recent recession hasn't made it any easier.

States have cut their support for public colleges and universities and schools have raised tuition as a result. They've also dropped classes, eliminated faculty and reduced other services to compensate.

"A lot of groups are calling for states to figure out a long-term strategy for funding higher ed," said Julie Bell, the education program director for the National Conference of State Legislatures. "Almost nobody thinks states are going to return to where they were."

States began trimming their budgets after the recession took hold in 2008, according to the center, a research group that studies the impact of government spending on low- and moderate-income people.

Few took steps, such as raising taxes, to replace what they'd lost, it noted. "It's a really dangerous trend" because tuition will keep growing beyond what increasing numbers of people can pay, said Phil Oliff, an author of the report.

More than three-quarters of U.S. undergraduates are enrolled in public colleges and universities, according to federal data. More than half of the money those schools received last year came from local governments, and most of that was tax revenue, the center reported.

States on average are spending less per student, about \$2,350 a year, or 28 percent, than they did five years ago, the center said.

Eleven have cut their financial support per student by more than a third, it found, while states such as Florida, Idaho, South Carolina and Washington have slashed even deeper, cutting back college support by nearly 40 percent or more.

Meanwhile, annual tuition at four-year public colleges increased by an average of \$1,850, 27 percent, from 2008 to 2013, adjusting for inflation.

The College Board reported last fall that the average tuition and fees at four-year public universities totaled \$8,655 for the 2012-13 school year.

Beyond tuition, the report noted that schools have found other ways to compensate for the loss in state aid: "Public colleges and universities also have cut faculty positions, eliminated course offerings, closed campuses, shut down computer



Courtesy of sxc.hu

labs and reduced library services, among other cuts."

At the same time that states and the schools they support grapple with money problems, student loan debt has been growing.

Two-thirds shoulder an average debt of \$26,600.

Ahser said, "The big driver of student debt is college costs have risen faster than family income and the availability of grant aid."

Gov. Deal to visit GSU affiliate Herty Center

BY CYDNEY LONG

The George-Anne contributor

Herty Advanced Materials Development Center, an affiliate of Georgia Southern University, will celebrate its 75th anniversary on May 8 at 11 a.m.

Georgia Governor Nathan Deal will be in attendance at the Herty Center in Savannah, according to a news release from GSU.

Deal and others will commemorate how Herty continues in the tradition of innovation by expanding its scope into new markets, developing innovative products and creating novel processes, with a focus on green processes, biomass and alternative energy solutions, according to a news release.

For GSU, the commemoration may draw attention to the material science engineering major and attract students. Right now, Georgia Institute of Technology is leading in having over 300 students in the major, Brenda Beckler, sophomore material science engineering, said.

The material science engineering major has the smallest amount of students in the engineering department, Beckler said.

Many objects and everyday items that people use are made from recycled materials, such as t-shirts, Beckler said.

Material science engineering is a field that people need to know about, Beckler said, because plastics are the future.

Herty, located on 10 acres in Savannah, is an international leader in advanced materials

innovation.

Herty is a new product and process accelerator that provides technical, market and manufacturing expertise within a 120,000 square foot facility.

Manufacturers from around the world look to Herty for assistance with fiber recycling, roll-based composites, hydrophobic pellet development and wood-paper conversion, according to a news release.

Considerable contributions have been made to the pulp and paper industry by preparing recycled fibers, adding strength to building and paper products and developing synthetics for the medical industry, according to its website.

According to the news release the center offers a range of contract manufacturing, research and cooperative development services.

Herty continues to expand its scope and capabilities as it leverages its expertise in fibers and pilot scale production into new markets and industrial products, according to its website.

Alanna Navin contributed to this report.



NATHAN DEAL

FAFSA, from page 1

automatically apply the loans just to remove them if the student opts out, Boyett said.

"It helps the parents too because sometimes they don't want to disclose their tax information on the FAFSA," Boyett said.

"The FAFSA is more complicated to fill out than a HOPE application is," Boyett said.

The financial aid office will be able to award HOPE sooner without FAFSA involved, Boyett said.

If a student chooses not to submit a FAFSA, they can use the Georgia Student Financial Aid Application System to

apply for Georgia Student Finance Commission administered aid.

FAFSA was implemented in 2010 by the GSFC because of a state law requesting the verification of the lawful residency of students applying for financial aid.

Students feel the change will be beneficial to their already stressful lives.

"It's just one less thing for students to worry about," Tray Yette, sophomore exercise science major, said.

DiArron Morrison, freshman public relations major, said, "This will make entering college and continuing education easier."

Federal student aid offered in the 2013-2014 school year

NOT requiring FAFSA application

HOPE Scholarship
Zell Miller Scholarship
HOPE Grant
Accel program

Requiring FAFSA application

Federal Supplemental Educational Opportunity Grant
Federal Pell Grant
Federal Work-Study
Federal Perkins Loan
Direct Subsidized Loan
Direct Unsubsidized Loan
Direct PLUS Loan

HOPE Scholarship requirements

Legal Georgia resident for one year
Attend a HOPE-eligible Georgia university or college
Maintain a 3.0 cumulative GPA
Maintain full-time student status
In compliance with the Georgia Drug-Free Postsecondary Education Act of 1990

Information compiled from StudentAid.gov and GACollege411.org

Beautiful Black Creek Golf Club

All College Students
(with student i.d.)

Monday-Thursday
after 2 p.m.



18 holes including cart

ONLY \$25

912-858-GOLF

277 Canterwood Drive, Black Creek, GA 31308

Less than 30 minutes from Georgia Southern (just off I-16 East/Exit 143)

Also now open: Bogey's Bar & Grill (inside club house)

Adrenaline Show Choir to take the stage

Performing Arts

BY ZAKYRA COLVIN

The George-Anne contributor

Adrenaline Show Choir will fill the Performing Arts Center with its rendition of "Against All Odds" Thursday at 7 p.m.

Tickets are \$5 and can be purchased from any Adrenaline Show Choir member or at the box office in the PAC. Members from Adrenaline will sell tickets in the rotunda until Thursday. The show will be two hours long with a 15-minute intermission.

The show will be comprised of various songs and dances to show the work and practice that the show choir put in throughout the year, Michael Bailey, president and director of Adrenaline Show Choir and junior sociology major, said.

There will be a large variety of songs and genres showcased, with influences from Broadway, current pop, 80's, R&B, childhood favorites and "Glee."

"I'm singing a song called 'Panic Station' by Muse. It's from their new album, so I'm super excited, but it's going to be a little bombastic," Taylor Tyson, secretary for Adrenaline show choir and sophomore writing and linguistics major, said.

The show will be more extensive than the previous year. Adrenaline



Courtesy of Michael Bailey

Adrenaline Show Choir aims to provide the student body with a new style of performing arts and promote a better understanding of musical performance.

Show Choir has been working on group numbers from the beginning of the year, which has everyone in it. There will be six or seven group numbers with the entire cast, Bailey said.

"It's looking really promising

this year. We started off slower this year because we had a transfer of leadership from our old director to our current director, but we have a lot of fresh talent this year and a lot of really talented individuals," Tyson said.

There will also be small groups compiled of solos, duets, trios, quartets, instrumentalists and dancers, Bailey said.

"I went last year, and it was awesome. My jaw was on the floor, and I was dancing the whole time,"

Libby Butgereit, sophomore public relations major, said.

Bailey said, "At first glance it's a performance group, an opportunity to sing and dance and work on what you love to do. In the end we like to consider it a family."

Student directors to present scene showcase

Performing Arts

BY LAURIANNA CULL

The George-Anne staff

Twelve students will present scenes they have directed from shows ranging from "A Street Car Named Desire" to "Mirror Mirror."

The presentation of these scenes will be held in the Black Box Theater Friday at 7 p.m.

"We're all different directors working in the same space, with many of the same actors and the same equipment. I'm really interested to see how each director uses the different elements. The creativity is really on the director," Alex Smith, director in the showcase and senior multimedia communications major, said.

This scene showcase is a product of professor Lisa Abbott's play

direction class. Her students each picked a scene they wished to direct, held auditions and will now present the final product.

The scene actors commented on how their experiences with professors' directing styles differed from the student directors.

"It's a lot different working under a student director rather than a professor here. I get the sense that I play a bigger part in it compared

to other shows, and I feel more subject to talk to the director. I can relate to them better," Alex Bowser, freshman accounting major and student actor, said.

"It has been a pleasure working with the student directors and seeing all of their different styles and techniques," Leonard Morrow, freshman theater major and student actor, said.

Some of the actors like

Sam Russell, GSU alumni, are participating in multiple scenes and have had the privilege of experiencing different student directing styles.

Russell said, "Students are working through the process for the first time. They take on the challenge of their scenes and bring their different backgrounds into what they envision for their scenes."

Phoenix shines with bigger sound but lacks bouncy pop

Music Review



BY ALEX LASALLE

The George-Anne staff

Phoenix has arrived with "Bankrupt!" a big, glossy affair that continues its run of success and popularity.

The French band made it big in 2009 with songs like "Lisztomania" and "1901." Radio hits that are as original as they are infectious, they brought fame to a group that had impressed a mostly European audience. Four years later, Phoenix has released "Bankrupt!" It sounds bigger and shinier, but lacks the bouncy pop of its predecessor.

Still, it's a good album. The opening song "Entertainment" is a catchy chunk of pop, opening with a vaguely oriental synth pattern and moving into a familiar muted-verse-and-soaring-chorus pattern. "Chloroform" has a

repetitive rising synth riff over a slow-stomp groove. Parts of "Don't" come close to the bounce of "Lisztomania" but stays fresh with a retro keyboard line.

Phoenix's earlier work is tight, recorded in a basement or a closet. 2009's "Wolfgang Amadeus Phoenix" sounded more inviting. "Bankrupt!" tosses that out completely in favor of soaring, chiming synthesizers and drums that are full of more boom and less dance.

On "Entertainment" and "Drakkar Noir," the synths and drums work well. On the other hand, "Trying to Be Cool" sounds like something you'd listen to in the lounge of a moon-themed casino. The title track "Bankrupt!" is a mostly instrumental, seven-minute space-trip interlude that you will only really listen to if you're too lazy to get up and skip a song.

Vocalist Thomas Mars has one of the more recognizable voices in music and on this album



Jose Gil/The George-Anne

he continues his style of singing catchy melodies with little extra flair. It's all melody, actually. The lyrics have never meant much for Mars, whose songs beg listeners to mouth along with the melody in spite of not knowing any of the lyrics.

Everyone has, at one point, tried to sing "A Lisztomania/ thing less something something/ like a rhino." No, those are not the actual lyrics.

But it's so catchy it doesn't matter. "Bankrupt!" continues the trend with success, if a slightly tempered success due to slightly less catchy songs.

It is destined to sit in the shadow of the album before it, but "Bankrupt!" does a good job keeping Phoenix's poppy, irresistible melodies and turning them into a strong album.

now leasing
for 2013-14

CAMBRIDGE
SOUTHERN

\$0
DOWN
no deposit, no fees
LIMITED TIME

perfect location.

912.681.1300 Cambridge-Southern.com

Step up the pace.
Be Fearless.

Transient summer student
Lindsay Little enrolled in an
online accounting course
while studying abroad.

Move closer to graduation.
Take classes at GPC this summer.
Full- and half-term classes start May 29.
Second half-term classes start June 27.

Georgia
Perimeter
College

admissions.gpc.edu/transient

GPC
JAGUARS

Soulful student artist releases debut album



Courtesy of Lydia Thomas

Jake Manahan, sophomore foreign language major at GSU, releases his band's first full-length album titled "Note to Self" today.

Music

BY WILL PEEBLES

The George-Anne staff

With a background in acoustic music combined with a love for soul and R&B, Georgia Southern University student Jake Manahan is capable of manifesting an accessible yet creative sound.

Manahan, sophomore foreign language major, describes his music as "relatable and organic."

A regular in the Statesboro music scene, Manahan has performed in many of the town's more popular venues including Loco's Grill & Pub, Dingus McGee's

and The Daily Grind.

Manahan exhibits his soulful acoustic pop on his first full-length album "Note to Self." The album was recorded last summer in Tennessee with band mates Patrick Warren and Kyle Law, and was released today.

Q: The album is called "Note to Self," what does that mean?

A: I feel like this album is something I want to be able to look back on and say, "These are things that I've learned from, and a lot of songs on this album are experiences that I've learned from." I want the listeners to feel the same way and say, "I've felt that feeling before." I've

built myself from those experiences.

Q: There's a song on the album called "In Line at the ATM." Is that one of those experiences?

A: It was actually at the ATM in Russell Union. There was this girl I'd been attracted to for a while, and I finally decided to talk to her. The song sort of developed from that. When I write, it has to be something personal. All your material as a songwriter comes from experiences like that. I love building the scene like that.

Q: When did you start recording the album?

A: We went to Tennessee for a

week. Prior to that the band and I tried to develop all the structure of the songs. At the end of the day I wanted to show that if I'm given a decent budget and enough time that I could write a good album. I'm really happy with the way it turned out because it shows a wide range of what I can do.

Q: What is your writing process?

A: The writing process is a weird process. Sometimes you have an experience you want to write about and it just doesn't manifest itself, and you get frustrated with it. Other times you'll write five or six songs in a matter of a few weeks.

That happened with this album. I wrote a lot of those songs two years ago. What I usually do is try to dig into something organic. You want to stay true to your sound and stay true to your experiences, and that's really hard to do sometimes as a songwriter.

Q: What is it about your music that makes it organic? What is your style?

A: I grab a lot of stuff from other influences. I'm big into soul and R&B. John Mayer has influenced me a lot too. At the same time, I have those DeAngelo-type influences. I like artists who have conquered the essence of groove and vibe. I have the love for that, as well as a love for pop. I like when stuff is palatable to people and they can really relate. I love those pop hooks, but I love the intricacies of the other stuff, so when I'm looking to develop my style I'm continuously trying to evolve. My style is really just a compilation of the music that I enjoy listening to.

Q: Out of the ten songs on the album, which do you enjoy playing the most?

A: My favorite song on the album is probably the opening track. When the chorus gets going, there's a groove on that, and it's just exactly the way I pictured it.

Q: What makes you want to be a musician?

A: For me, it's the perfect medium for expressing ideas and expressing experiences that you want to share with people. Music is something everybody can relate to. I do it because I feel like I can really share something that people can relate to. I can provide something that can make them connect with themselves. They can put themselves in the music and say: "Well that's an experience I've had before. He's just a regular guy." That's so special to me, and it's beautiful that I can be a part of something like that.



Tasha Lund/ The George-Anne

Bi-Lo best grocery store in the Boro

Some students might go home to shop for groceries, others might buy local from farmer's markets, but the majority of students shop at the three main grocery stores in Statesboro: Wal-Mart, Harvey's Supermarket and Bi-Lo.

After considering quality, convenience, price and availability of all three, Bi-Lo is the best overall.

One of the most important things to students when shopping for groceries is price. In a culture where it's cheaper to grab processed over produce, students gravitate to megastores like Wal-Mart that have the cheapest price.

Yet when buying fresh produce, it's smart to invest in quality. Fruits and vegetables at Bi-Lo may seem more expensive, but

the cheaper, lower quality produce from superstores like Wal-Mart will likely rot faster. Regularly tossing out cheaper produce past its prime is more expensive in the long run.

In addition to having largest produce section of any grocery store in Statesboro, Bi-Lo has a deli, bakery, meat and seafood section, wine and beer aisle and pharmacy sections. The produce area also features a separate natural and organic section that is unique to Statesboro.

Bi-Lo's natural and organic section includes the Full Circle brand that includes organic dairy products, pastas and sauces, snack foods, vitamins and more.

Harvey's selection has a more traditional approach with the store brand Southern Home. Southern Home offers a cheaper option from expensive name brands, but doesn't extend past the same dishes you tend to see repeatedly in your grandmother's kitchen.

While Bi-Lo and Harvey's offer better groceries, some students still prefer Wal-Mart for one-stop shopping.

Wal-Mart has the potential to have a good selection, yet often has poor availability. Despite the fact that Wal-Mart distribution center for all of southeast Georgia is located in Statesboro, there are still gaps in the aisles by noon every day.

With parking lot traffic and foot traffic inside Wal-Mart, it may not be as convenient as it seems. Wal-Mart has recently added more self-checkout registers, but peak hours still result in long lines. Many students try to shop at night to avoid the crowds during the day, only to have to dodge large palettes used for restocking.

CULINARY CRITIQUE



GRACE HUSETH

While checking out with Harvey's pleasant staff has charm, the store lacks the convenience of self-checkout counters. Those in a hurry might benefit from a friendly chat at the register, but will most likely be agitated by even a slight wait.

The Bi-Lo staff makes sure that there are at least two or three Bi-Lo employees maintaining the aisles and restocking throughout the day. This allows customers to simply ask an employee nearby for assistance which leads to good customer service.

The discount card incentive programs at both Bi-Lo and Harvey's help customer satisfaction. Any actual or assumed higher prices can be negated when customers use their Harvey's Key or Bi-Lo Bonuscard and might even save more money than they would at Wal-Mart.

Regardless, a grocery bill from Bi-Lo or Harvey's that might be a dollar higher is a small price to pay for quality and convenience.

The final distinction that sets Bi-Lo apart from the rest of the grocery stores in Statesboro is the Fuelperks incentive program. Bi-Lo customers can immediately receive five cents off a gallon of gas at participating gas stations for every \$50 of groceries they buy when using a Bonus card.

FREE
Legal
Advice

Every
Tuesday
3-5 p.m.
Russell
Union 2073

Call (912)764-
7388 for an
appointment

TROY MARSH
Attorney at Law



Sponsored By



CLASSIFIEDS

This page brought to you by Career Services
Explore • Experience • Excel

www.thegeorgeanne.com

Tuesday, April 30, 2013 13

Miscellaneous

Having trouble in your classes? Do you find yourself wasting your time studying on your own and need help studying effectively? Check out McGraw-Hill's Connect and LearnSmart programs. They have guided studying, practice quizzes, flash cards and more. Stop wasting your time and check out <http://connect.customer.mcgraw-hill.com/today!>

! Bartenders Wanted !
\$250 a day Potential. No Experience Necessary. Training Provided. Age 18+ OK Call 1-800-965-6520 ext 296.

Housing

Two females searching for roommates for the 2013-2014 year at The Forum. It is a 4-bedroom, 4-bath, pet-friendly, non-smoking, fully furnished and utilities are included. Call or text 678-936-5797 or 229-947-0663 for more information.

Housing

Summer 2013 sublease at The Avenue unfurnished 1bd available in a 4bd/2bt. Located 10 mins from the campus. It includes pool, tanning bed, gym, computer lab, theatre, basketball/volleyball court. \$309/month (price is neg.) everything included. The room will be available by May 15th. Contact Leatitia at is00398@georgiasouthern.edu.

Female sublease available for Summer 2013 (May, June and July) in Campus Crossings. 3BD/3BT - one room available. Rent is only \$494/month with utilities, cable INCLUDED! Two great roommates! With a spacious bedroom and closet. Personal bathroom as well. Price neg. Contact Lindsay Barnette for more info. Call/text 404-401-3752.

Looking for 1 male roommate. 4BR/4BTH in Copper Beech. Rent is \$410 with utilities. 12 month lease starting May 1st, 2013. If interested contact Ben Smith 770-826-6589 or bsmith2191@gmail.com.

Housing

1, 2, 3, 4, 5, 6 and 7 bedroom houses for rent. Repairs in 24 hours. Contact 912-682-7468 or 912-764-6076. Available Aug. 1st.

Looking for a female sublease, spring/summer semester 2013! 4BR/4BT. \$400/month (price neg.) Brand new apartments with great amenities. The Forum at Statesboro. Amazing roommates! Call/text and or email Ketonnia 706-201-1035 ka01879@georgiasouthern.edu.

Summer sublease at the Woodlands. 2bd/2ba. Female roommate, but males or females can sublease. Rent is \$420/month. Utilities average less than \$50/month. May rent has been paid. Pet friendly. Move in as early as May 12. If interested or would like to see the apartment contact Anna-Marie at 770-546-6560 or at01770@georgiasouthern.edu.

Housing

Looking for a male to take over my apartment! 2 bedroom 2 bath in The Woodlands. \$485/month, but I can give you a discount! Call 912-682-8364 for more information.

Townhouse for Rent. The village at Mill Creek. No roommate for sublease! Rent is \$363/month. March rent is already paid for, so its free! Located at 552 E. Main St. Phone: 478-918-5837 Email: ng00515@georgiasouthern.edu Craigslist ad with pictures: <http://statesboro.craigslist.org/roo/3657317419.html>.

Summer sublease at The Grove. The entire 2bd/2bt is available. The apartment is very clean and fully furnished. Everything inclusive, \$505/month per person. Lease is available May-July 2013 and May rent is free. Please email sk00363@georgiasouthern.edu with any questions.

Housing

Apartment in Campus Crossings that I am looking to sublease for the summer 2013. The rent for MAY will already be paid and I am willing to negotiate rent costs for the months of June and July. It is a 4 bedroom apartment with your own bathroom, full kitchen, and washer and dryer are in the room. Please let me know ASAP if you are interested! Contact Kaylah Ibidapo 678-612-1087.

Jobs

Personal Payroll Assistant Needed Full Time: I need someone that can work from home as a payroll personal assistant, and am willing to pay \$550 weekly. Applicant must be English speaking trustworthy, reliable person with computer and typing skills. Any job experience can apply. Benefits available. Contact Email at dingie.heather@mail.com for info

EDUCATION FAIR



Meet with School Systems and other educational services employers

Thursday, May 2

2:00 pm to 4:00 pm

Russell Union Ballroom

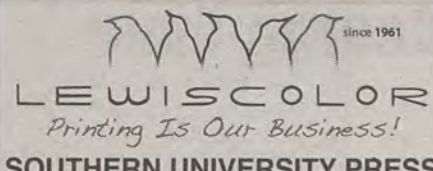
www.georgiasouthern.edu/career



TEXT/LAB BOOK PUBLISHING

that puts money BACK into your department

Call Arv Vogel (912.764.7421) or Janet Anderson (912.681.6824) to find out how.



www.lewiscolor.com/textbook

30 Joe Kennedy Blvd.
Statesboro, GA 30458
800.346.0371 • 912.681.8817 fax

PUZZLES/COMICS

14 Tuesday, April 30, 2013

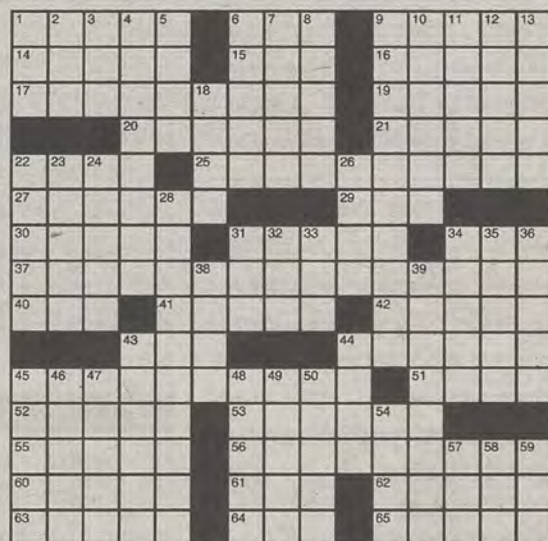
The George-Anne

Los Angeles Times Daily Crossword Puzzle

Edited by Rich Norris and Joyce Lewis

ACROSS

- 1 Sitcom's test episode
- 6 Sitcom interrupters
- 9 Holy Roman emperor crowned in CMLXII
- 14 In on, with "to"
- 15 Keg attachment
- 16 "Yep"
- 17 Corfu or Crete
- 19 Hopping mad
- 20 Close again, as a Ziploc bag
- 21 Volkswagen sedan
- 22 Scary Nile snakes
- 25 Salute heard at the Forum
- 27 Friend of Monica and Rachel on "Friends"
- 29 Dumbbell abbr.
- 30 Selfish sort
- 31 Snow-block home
- 34 Ab ____ from day one
- 37 Classic Frances Hodgson Burnett children's novel
- 40 CIA precursor
- 41 Arkin and Alda
- 42 Queen, in France
- 43 End of a professor's email address
- 44 Makes sense
- 45 Once-common childhood ailment
- 51 Flower stalk
- 52 Boca ____
- 53 Young bird of prey
- 55 Primitive calculators
- 56 Entrée go-with, or the aptly placed part of 17-, 25-, 37- or 45-Across
- 60 Spiced rice dish
- 61 Cinque meno due
- 62 Prefix with -dactyl
- 63 Keep in the warehouse
- 64 IRS W-4 info
- 65 Saudi Arabia neighbor



By Adam Prince

DOWN

- 1 NBA scoring stat
- 2 Like some reduced mdse.
- 3 Commit perjury
- 4 Supervises
- 5 Trike rider
- 6 On the ocean
- 7 ____ Lama
- 8 Wizard's incantation
- 9 Séance accessory
- 10 Good scores on par-fours
- 11 "____ a wrap!"
- 12 "____ sight!"
- 13 "Word on the street is ____"
- 18 "____ Dead?": Mark Twain play
- 22 Probably will, after "is"
- 23 Persian sovereigns
- 24 Jabs in the ribs
- 26 Thick-soled shoe
- 28 Serrated kitchen tool
- 31 Pension supplement, for short
- 32 First Bible bk.
- 33 USN officers

Last Edition's Puzzle Solved

| | | | | | | | | | | | | | |
|---|---|---|---|---|---|---|---|---|---|---|---|---|---|
| C | O | C | O | A | B | E | A | C | H | S | T | I | R |
| A | D | A | M | S | A | P | P | L | E | W | I | N | O |
| W | I | T | N | E | S | S | B | O | X | A | M | C | S |
| S | E | T | I | H | O | S | T | A | L | E | O | I | |
| | | | | M | E | N | | G | O | E | T | H | E |
| S | T | R | O | U | D | | A | L | O | U | | R | E |
| C | R | E | W | S | | I | D | O | N | T | C | A | R |
| R | I | V | E | T | | L | E | G | | W | A | V | E |
| A | X | I | S | S | A | L | L | I | | I | R | E | N |
| P | R | E | | E | S | S | E | | S | T | O | L | T |
| H | A | W | S | E | S | | A | H | S | | | | |
| E | B | A | N | | E | L | I | D | E | | Y | O | D |
| A | B | B | E | | R | O | G | E | R | M | A | R | I |
| P | I | L | E | | T | W | O | P | R | I | N | C | E |
| S | T | E | R | | S | E | T | T | I | N | G | S | U |

- 34 Keats, notably
- 35 Change of ____ trial request
- 36 Early aft. hour
- 38 Game with rooms and weapons
- 39 Republican region, on a political map
- 43 Toyota Prius, e.g.
- 44 Wheel-supporting shaft
- 45 High roller's game
- 46 Nun's wear
- 47 ____-Turkish War
- 48 Homes in trees
- 49 Sock purchases
- 50 Humorous poet Nash
- 54 Catch sight of
- 57 NASA moon craft
- 58 "We ____ the World"
- 59 Mafia boss



| | | | | | | | |
|---|---|---|---|---|---|---|---|
| 7 | | | 6 | | | | 3 |
| | 4 | | | | 9 | | |
| 1 | 9 | | | | | 4 | 7 |
| | | | 3 | 4 | | | |
| 2 | 5 | | 6 | | | 9 | 4 |
| | | | 2 | 1 | | | |
| | 1 | | | | | 3 | 8 |
| | | 3 | | | | 7 | |
| | | | | 7 | | | 1 |

Sudoku

| | | | | | | | | |
|--|--|--|--|--|--|--|--|--|
| | | | | | | | | |
| | | | | | | | | |
| | | | | | | | | |
| | | | | | | | | |
| | | | | | | | | |
| | | | | | | | | |
| | | | | | | | | |
| | | | | | | | | |
| | | | | | | | | |

Sports Talk

with The George-Anne

Georgia Southern Sports
News and Analysis

Coming with new episodes
Fall 2013



Eagles at UNF today, home vs. CSU tomorrow



Demario Cullars/The George-Anne

Senior pitcher Drew Johnson (17) launches a pitch at the plate. Johnson is 1-0 in 13 appearances on the mound this season.

Baseball (23-20)

BY COLIN RITSICK

The George-Anne staff

Coming off of its first series win in the last five attempts, the Georgia Southern University baseball team will look to keep up its momentum with a pair of mid-week contests.

The Eagles (23-20, 12-12 Southern Conference) will travel to the University of North Florida today before returning to host Charleston Southern University tomorrow.

The meeting with the Ospreys (32-12, 14-4 Atlantic Sun Conference) will be the first this season for the Eagles with another coming up on May 14.

GSU defeated the Buccaneers (17-24, 8-7 Big South Conference) earlier this season in the only other matchup between the two teams.

Today's matchup with UNF could pose to be problem for Eagle pitching. GSU has allowed a total of 64 runs in its last 10 games and sports a 5.21 ERA on the season. The Ospreys are a team that has batted .328 this year and plated 318 runs.

The offense that earned them a victory against the University of Florida and a series win against No. 23 Mercer University will be something that the GSU pitchers will have to be conscious of. And as if the big bats of the Ospreys that average over seven runs per game were not enough, UNF has found a nice rhythm by emerging victorious in 13 of its last 15 games.

Tomorrow's home contest will field a familiar, less accomplished foe. The Buccaneers will be looking for revenge on the Eagles who outlasted them 3-2 on April 9. The end score of that game did not properly reflect how GSU played even though the Eagles won. GSU struck for 10 hits on top of 13 walks but were unable to put any more than three runs on the board because of 18 runners left on base.

Senior pitcher Josh Stevenson was solid in his six innings of one-run baseball that game and provided GSU with a blue print for this game: pitch well enough to outlast the small amount of damage CSU can do, and the Eagles should come out with a win. That is if the inconsistency of GSU's bats remains at bay.

First pitch for today in Jacksonville, Fla. is set for 6 p.m. Tomorrow's home game is also a 6 p.m. start.

Eagles' bats come alive, beat Elon for series

Baseball (23-20)

BY SHAKEEM HOLLOWAY

The George-Anne staff

After dropping eight games in a row with its offense struggling, the Georgia Southern University baseball team's (23-20, 12-12 SoCon) bats finally came alive taking the series 2-1.

The Eagles' offense was held to four runs or less in eight of its

last nine games, but in this series GSU managed to score 28 runs in three games. With this series win the Eagles were able to get their conference record back at .500, winning their first conference series in the month of April.

Senior pitcher Justin Hess (4-4) picked up the win in game one allowing two runs on six hits and two walks, while posting a season-high of 10 strikeouts.

Although Hess pitched a good

game, he was not the catalyst for the Eagles. The offense is what propelled the Eagles to a 15-4 win over the Phoenix.

GSU recorded 15 runs on 15 hits while drawing nine walks in the contest. All 15 runs were scored before the sixth inning including a four-run second inning and a six-run fifth inning.

Sophomore second baseman Tyler Avera and junior shortstop Ben Morgan combined for five hits,

five RBIs and four runs scored.

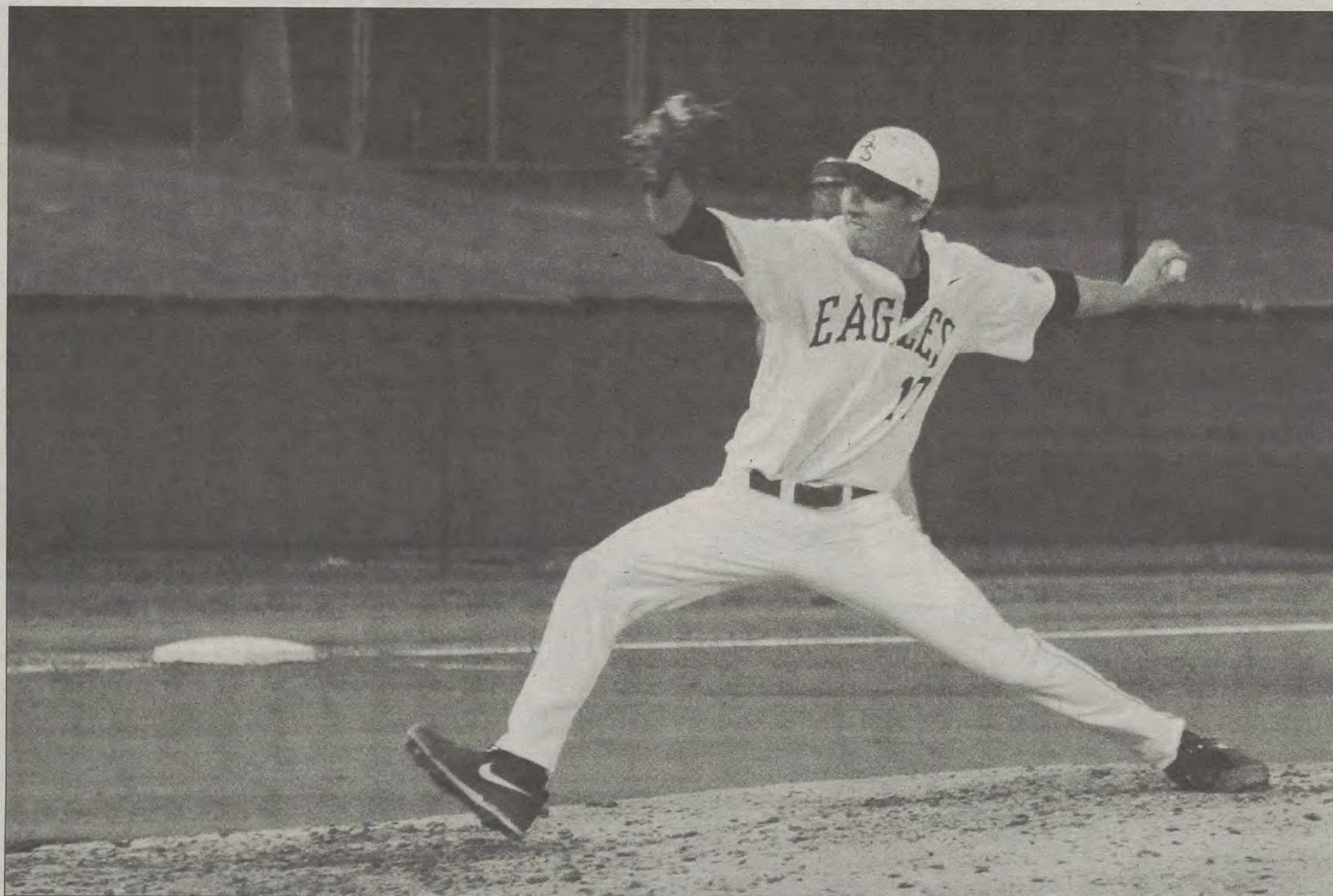
The Eagles brought their hot bats to game two recording 15 hits for the second straight game and posting 12 runs, 10 of which came in the fourth inning beginning with a grand slam by senior first baseman T.D. Davis.

Defensively the Eagles were equally strong, despite giving up 25 hits through the first two games. The Eagles pitching was able to scatter runners and hold the Phoenix to four runs in each of the first two games.

In game three the Eagles finally stalled offensively and defensively, dropping the game 9-1 allowing 14 Phoenix hits.

All of the Phoenix's nine runs came in the middle innings after the Eagles scored the first run with Morgan crossing the plate in the second inning.

Today at 6 p.m. the Eagles will look to keep their offensive flow steady as they face the University of North Florida.



Demario Cullars/The George-Anne

Senior pitcher Drew Johnson (17) launches a pitch at the plate. Johnson is 1-0 in 13 appearances and 22 innings pitched on the mound this season and has 17 strikeouts with a 5.32 ERA.



Lindsay Hartmann/The George Anne

Former Eagle J.J. Wilcox (19) returns a kickoff for GSU. Wilcox racked up 780 yards on kickoffs and had an average of 25.2 yards per return this past year.

FOOTBALL, from page 1

"Our job is to put our institution on a bigger platform so that we can begin to talk about the great academic things that are done on this campus," Keel said at the press conference.

Wilcox will compete for a starting job with the Cowboys and subsequently the Eagles will look to increase recognition of its athletes.

"Our student-athletes deserve to perform on a national stage to compete on a national stage," Athletic Director Tom Kleinlein said at the press conference.

The Dallas Cowboys, the Minnesota Vikings and the Chicago Bears have each added a former GSU football player to their rosters with the additions of Wilcox at safety, defensive back Darius Eubanks and defensive lineman Brent Russell respectively.

"With what we accomplished as a team, and with three players signing with NFL teams, there are big things in the future for Georgia Southern," Russell said in a news release.

Being taken in the third round made Wilcox the highest-ever NFL draftee in GSU history. After converting to safety from

running back, Wilcox was second overall in total tackles for GSU last season, adding two interceptions and three pass breakups during the 2012 season.

Similar to his former teammate, at 6'2 and 220 pounds Eubanks transitioned from linebacker to safety for the 2012 season. Although he was not drafted like Wilcox, Eubanks, who was signed as an undrafted free agent shortly after the draft, is elated to have the opportunity to earn a spot on the Vikings' roster.

"I am very excited to be a part of the Minnesota Vikings organization, and I can't wait to get up there and prove myself," Eubanks said in a news release.

As an Eagle, Eubanks was third on the team in tackles with 77 and was tied with two other players for most passes broken up with seven last season. Eubanks ranks sixth all-time on the Eagles' career list for fumbles forced.

The 2011 Southern Conference defensive player of the year and four-time All-American Russell signed with the Bears as an undrafted free agent. When his career came to an end as an Eagle, Russell finished as GSU's all-time sacks leader with 25.

M.A. in ENGLISH STUDIES

FOR LANGUAGE ARTS TEACHERS

The Valdosta State University Masters of Arts in English Studies for Language Arts Teachers is an innovative online degree program designed specifically for language arts teachers who wish to expand their content knowledge in the major subfields of the discipline, including literature, composition, rhetoric, linguistics and creative writing.

A fully accredited, fully online program housed in a major regional state university

Courses are designed for K-12 language arts teachers working full-time

Degree can be completed in two years including summers

Course content covers all major subfields in English studies



Application deadline for Fall 2013 is July 13, 2013. For more information, visit www.valdosta.edu/maeslat



Golf team brings new recruit

Golf

BY WILL CHENEY

The George-Anne contributor

Georgia Southern University's head golf coach Larry Mays announced today in a news release that golfer Kim Koivu will transfer to GSU from Brevard College.

Koivu is from Helsinki, Finland. While there, he finished with low-amateur honors at the 2011 Gant Open, a Nordea Professional Tour event. In 2012, he tied for 10th at another professional event, Paltamo Open, as an amateur.

While at Brevard, Koivu was named South Atlantic Conference Freshman of the Year and first-team all-conference in 2011-2012. He recorded three individual wins, including a win at the Cherokee Valley Invitational.

"Kim is a very experienced player who has proven he can compete on a high level," Mays said in a news release. "He will bring that experience to Georgia Southern and will be a great asset to our program during the next two years."

Koivu will be a junior and will have two years of eligibility remaining.



Courtesy of Brevard College Athletics

Brevard college sophomore Kim Koivu lines up a put. Koivu is transferring to GSU to join the golf team. Koivu will have two years of eligibility left.

STAT SHEET

The statistics are compiled weekly by the George-Anne sports staff. The statistics include sports that occurred over the weekend.

4

Rayane Djouad became the 4th SoCon Freshman of the Year in GSU history (men's tennis)

7

errors the softball team has committed in the past two weekends

8

total number of runs the softball team scored in the sixth inning of its three games last weekend

26

runs scored by the baseball team in the previous nine games

27

runs scored by the baseball team on Friday and Saturday against Elon

32

RBIs Tabby Douberley has this season (softball)

45.44

seconds time the Eagles achieved to win 4x100 meter relay at Samford open (track and field)

4x100 meter relay team wins at Samford

Track and Field

BY ROBERT HUITT

The George-Anne staff

The Georgia Southern University track and field team sent its 4x100 meter relay team to Birmingham, Ala. Saturday and came away with a win at the Samford Open.

The team of sophomore Jasmine Walker, freshman Alyssa Felton and seniors Ebony Carter and Amber Vaughn bested the University of Tennessee and crossed the finish line in 45.44 seconds.

The Eagles were able to clip .02 seconds off the winning time that was set last weekend at the

“

I was happy to see that we were consistent this week.

”

-Marlo Mincey,
head track and field coach

Southern Conference Outdoor Championships and moved into the No. 2 spot in GSU history for the event.

"I was happy to see that we were consistent this week," head coach Marlo Mincey said in a news release. "We are still planning to go to our next two meets and keep racing to see if we can move up because the rest of the country is going

to continue to race also. A difference in one-tenth of a second can have a big effect on the rankings."

The Eagles have their sights set on the opportunity to race in the NCAA Division I preliminary rounds in May.

This weekend the Eagles will continue their quest at the Florida State Seminole Twilight Invitational in Tallahassee, Fla.



Christal Riley/The George-Anne

Freshman catcher AJ Hamilton (11) catches a pitch at home. Hamilton leads the team with three hundred fifty put-outs, a fielding percentage of .997.

Eagles kick Spartans out of Statesboro

Softball (26-26)

BY RANDALL HAMPTON

The George-Anne staff

The Georgia Southern University softball team found some sixth inning magic against the University of North Carolina at Greensboro to take two of three at home over the weekend.

GSU pushed its Southern Conference record to 12-8 and now sits a full game ahead of UNCG for third place as the SoCon tournament approaches.

Things got underway on Saturday then GSU took the opening game of the series 5-2. The Eagles found themselves tied at 2-2 going into the

sixth inning thanks to two runners batted in from UNCG junior catcher Katelyn Bedwell.

UNCG gift-wrapped a scoring opportunity for the Eagles with a third base error to start the inning and a first base error to put two runners in scoring position.

Senior first baseman Tabby Douberley broke the tie with an RBI single, and senior third baseman Andrea Tarashuk's RBI double right behind it gave GSU a 4-2 lead.

Tarashuk would go on to score on a sacrifice fly by freshman catcher AJ Hamilton to make the final score 5-2.

"Some things go your way and sometimes they don't, so it was important to get that first win. We

played well, and I was proud of how we played this game," head coach Annie Smith said.

Game three saw GSU recapture the sixth inning magic that propelled the team to victory in game one to knock off UNCG 7-3.

The Eagles were down 3-2 going into the bottom of the sixth inning, and they had managed just three hits at that point in the game.

GSU took a 4-3 lead with a walk and then a hit batter, followed by another walk and then a hit batter. The fourth and final hit for GSU came with compliments of an RBI double from senior left fielder Alexa Lewis.

Sophomore pitcher Brooke Red would pitch wire-to-wire in game

two, which went to extra innings. She gave up just two earned runs in eight innings of work, but the Eagles could only score once.

The game was knotted at 1-1 after the third inning and would stay that way until UNCG junior left fielder Aisha Figueroa decided to take over in the top of the eighth.

Figueroa scored both UNCG runs, and her single followed by a stolen base put her teammate, freshman catcher Lindsay Thomas, in position to win the game with her RBI single to left field.

The Eagles could only muster four hits between three players because UNCG sophomore pitcher Erica Navarette had it working to the tune of

seven strikeouts in eight innings.

"I don't know if there is a lot we could do different. Obviously get more hits, but they would have probably liked to have got more hits too. Sometimes you get it when you need to, sometimes you don't," Smith said.

The stage is now set for last year's SoCon champs to lock horns with current SoCon leader Appalachian State University beginning May 4.

Tarashuk said, "We always have it in the back of our minds that everybody is out to get us. We just have to keep playing our game because they are going to be after us, they don't want to lose that number one seed."

Pushing the Limits

GSU grad. student gears up for Spartan Death Race

BY JACK MAGRUDER

The George-Anne staff

This June, Louis Turnbull, Georgia Southern University alumni turned graduate student, will compete in the Spartan Death Race in Vermont.

The Spartan Death Race is tough and boasts its difficulty with confidence. Out of last year's 300 competitors, only 10 percent actually finished the race.

The race is an intense test of strength and both physical and mental endurance. Strategy and working smartly is key to being competitive in this event, Turnbull said.

The race is typically themed, and this year's theme is "The Year of the Gambler," but the competitors do not have any clue what that means for them until the beginning of the race. There are almost no rules in the Death Race, and the competitors have no knowledge of the events or missions that they will be participating in ahead of the race.

Turnbull competed in last year's Spartan Death Race but was unable to finish. This year he is in the hunt for redemption. Last year's grueling event kept the competitors who were able to remain in the race on the run for 60 hours for a distance over 100 miles.

Turnbull's original plan was to begin training for the race in January, but was forced to take it slow due to an injury. He has since ramped up his workout routine and has spent four vigorous weeks training for the race. He continues his training with running and various cardio exercises, lifting weights, regulating protein intake and eating healthy, although a weakness to peanut M&M's can make this challenging at times.

Turnbull recently competed in the S.E.R.E Assault Challenge and was the unofficial winner of that

event. He used the event to help him train for the coming Death Race in Vermont.

Turnbull graduated in 2009 with a degree in mechanical engineering. He is currently a graduate student studying applied engineering and mechatronics.

Turnbull is in his final year of graduate school at GSU and is set to walk in May and will defend his thesis in June on a Monday and arrive in Vermont on a Friday to compete in the Spartan Death Race.

"I am competing again because I want to finish what I started last

year by becoming a part of the elite ten percent finisher's list, and I am not leaving Vermont this time without a finisher's skull. Period," Turnbull said.

This year, out of a love for the challenge, Turnbull is returning to the race with better strategy

and tactics, better gear and the confidence of having done it before.

The Spartan Death Race will run June 21 - 23 of this summer. The winners of the race, one male and one female, will win a prize of \$10,000 and a finisher's skull.



Courtesy of Louis Turnbull

GSU grad student Louis Turnbull competes in the 2012 Spartan Death Race in Vermont. Only 10 percent of the participants completed last year's race.