

Georgia Southern University

Digital Commons@Georgia Southern

The George-Anne

Student Media

10-2-2012

The George-Anne

Georgia Southern University

Follow this and additional works at: <https://digitalcommons.georgiasouthern.edu/george-anne>



Part of the [Higher Education Commons](#)

Recommended Citation

Georgia Southern University, "The George-Anne" (2012). *The George-Anne*. 2780.
<https://digitalcommons.georgiasouthern.edu/george-anne/2780>

This newspaper is brought to you for free and open access by the Student Media at Digital Commons@Georgia Southern. It has been accepted for inclusion in The George-Anne by an authorized administrator of Digital Commons@Georgia Southern. For more information, please contact digitalcommons@georgiasouthern.edu.

70.4%
SUPPORT
STADIUM
EXPANSION

61.2%
SUPPORT
THE MOVE
TO FBS

74.7%
SUPPORT
SUSTAINABILITY
MOVEMENT

NOW WHAT?

BY LAUREN GORLA

The George-Anne contributor

Georgia Southern University administration and the Student Government Association are discussing plans to move forward now that all three student fees voted yes.

"The next step would be to present the proposed fees to the Board of Regents. Any student fee has to be approved by the Board

of Regents before it's added to the students' account," Patrice Jackson, dean of students, said.

President Brooks Keel will be presenting these fees to the Board of Regents in the near future and will ask for them to be applied to student accounts in the fall of 2013, Jackson said.

"Right now there's not a specific timeline that has been told to SGA so far," Christina Belge, SGA executive vice president, said.

GSU will be proposing the approved fees to the University System Board of Regents to review. If approved, the expansion and green fees will be going into effect fall 2013, according to GSU's website.

If the Board of Regents approves these fees, the expansion fee and green fee would add \$35 onto the student account. With the FBS fee, students will be paying an additional \$110 in the coming years.

"I'm not sure how long the Board

of Regents takes to get something approved, but the goal is to get it done throughout this year so the fees can be assessed in fall 2013," SGA President Dominique Quarles said.

The green fee is expected to have a large impact on students because it will give the opportunity to educate students about sustainability and make them more productive citizens, Jackson said.

"First we'll form two committees. One will be the physical project

committee and another committee will be more academic," Belge said.

The physical project committee will work on projects around campus, like solar panels and low flow showerheads in dorm rooms. The academic committee will be focused on educating students about the importance of sustainability, Belge said.

The green fee will be divided into four sections, each one covering a

See FEES, page 9



thegeorge
anne.com

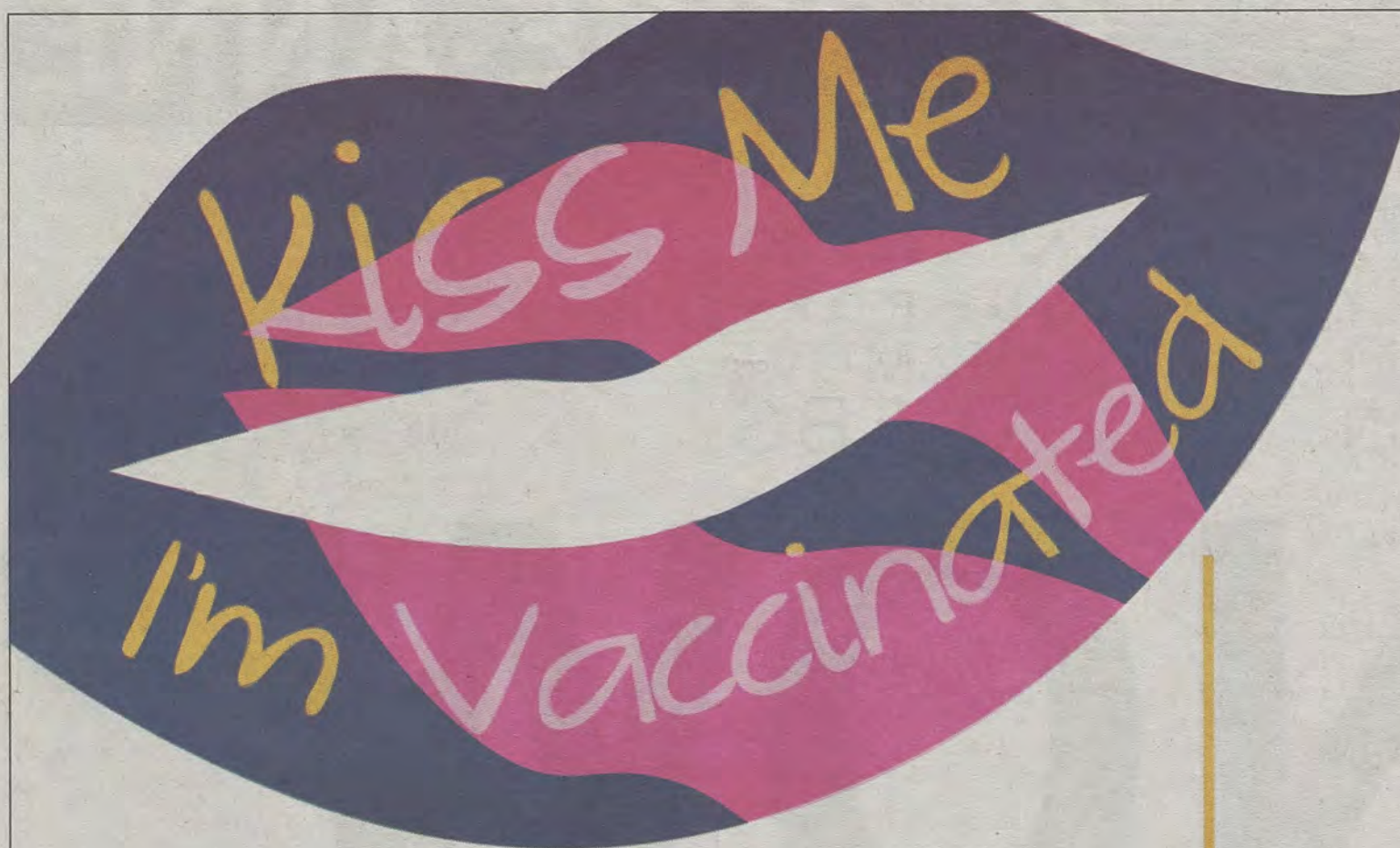


Follow us on Twitter
@TheGeorgeAnne



Newsroom 478-5246
Advertising 478-5418
Fax 478-7113

PO Box 8001
Statesboro, GA
30460



Want To Be **Kissable** This Flu Season?

Influenza Vaccination Clinics

\$5 for students

\$10 for faculty/staff/retirees

Cash, Check, MasterCard/Visa/American Express accepted

Insurance claims will be filed with the following companies:

Aetna, AmeriGroup, BeechStreet, Cigna, Coventry/First Health/CCN Southcare, Health Smart HPO, Humana Choice Care, Tricare, United HealthCare, and WellCare.

**** You must have a copy of your insurance card in order for a claim to be filed.****

Please bring your Eagle ID



**GEORGIA SOUTHERN
UNIVERSITY**

SPONSORED BY GEORGIA SOUTHERN UNIVERSITY HEALTH SERVICES
AND THE UNIVERSITY WELLNESS PROGRAM

TUESDAY, OCT. 2

10 a.m.–1 p.m.

Russell Union Room 2084

THURSDAY, OCT. 4

5–7 p.m.

Centennial Place Cafe
(Bldg 2)

TUESDAY, OCT. 9

5–7 p.m.

Eagle Village Clubhouse
(Classroom)

WEDNESDAY, OCT. 10

4–8 p.m.

RAC Lobby

THURSDAY, OCT. 25

5–7 p.m.

Southern Pines Clubhouse
(Classroom)

WEDNESDAY, OCT. 31

11:30 a.m.–3:30 p.m.

IT Building Lobby

WEDNESDAY, NOV. 7

2–4 p.m.

Russell Union Room 2084

Police Beat

Wednesday, Sept. 26

-Officers made contact with two subjects exiting the woods on Old Register Road. The two subjects were leaving the ROTC training area following a class.

-Officers responded to a motor vehicle accident at Paulson Parking. A motor vehicle accident report was completed.

-An officer took an incident report for an Entering Auto in Lot 42. This case was turned over to criminal investigations.

-A wallet was found in Lot 42 and turned over to the police department. An incident report was completed and the wallet placed in the police department property room.

-Officers responded to the Sigma Nu house on Olympic Blvd in reference to subjects on the roof shooting a BB gun. The subjects were shooting cans lined up in the back yard. They were advised to discontinue.

-An officer discovered a subject attempting to steal a bike from the bike rack in J Lot. Marquels Cedregas Lee, 19, was arrested and charged with Theft by Taking - misdemeanor Criminal Attempt, Possession of Tool for the Commission of Crime and Criminal Trespass. Lee was also banned from all Georgia Southern University property.

-Criminal Investigations arrested Macenzi Jazz Holmes-Morton, 18, and charged him with Criminal Trespass in reference to Mr. Holmes-Morton burning a plastic placard at University Villas on Sept. 24.

-Officers responded to Southern Pines in reference to a sick person. EMS was notified, responded and transported the sick person to East Georgia Regional Medical Center.

-Officers made contact with a suspicious vehicle and two suspicious persons within the vehicle in Lot 21. The passenger was found to be intoxicated and was judicially referred.

Friday, Sept. 28

-An officer took an incident report for Financial Transaction Card Theft/Fraud. This case was turned over to criminal investigations.

-An officer took an incident report for a suspicious incident at The NEST. An unknown person put food in a Tupperware container and left.

-An officer took an incident report for a stolen phone from the Russell Union. This case was turned over to criminal investigations.

-Officers conducted a traffic stop on University Place. The driver was issued traffic citations for Failure to Dim Lights and Revoked Registration. The vehicle was towed.

-Officers discovered the mail-center unsecured and activated the burglar alarm while attempting to secure the building. The alarm was reset.

-An officer discovered an intoxicated pedestrian in G Lot. The subject was judicially referred.

-Officers assisted the Statesboro Police Department with the arrest of a subject found to have an active warrant out of Bryan County.

-An officer took an incident report for a found cell phone at the RAC. The cell phone was placed in the police department property room.

Saturday, Sept. 29

-Officers assisted Statesboro Police Department in the apprehension of a subject that stole a Domino's Pizza sign from the roof of a Domino's Pizza delivery vehicle.

-A vehicle was towed from Paulson Parking in reference to Game Day Parking.

-An officer took an incident report for criminal trespass at the Southern Courtyard parking lot. This case was turned over to criminal investigations.

-A vehicle was towed from the RAC parking area for parking on the grass.

-Officers responded to the Sigma Alpha Epsilon house on Olympic Blvd in reference to fire alarm activation. Residents of the house broke off a sprinkler head while throwing a football in the residence. The Statesboro Fire Department responded.

Sunday, Sept. 30

-Officers made contact with a subject on Chandler Rd in reference to a fight that had been reported earlier.

-Officers made contact with an intoxicated subject in G Lot. The subject was judicially referred.

-Officers responded to Centennial Place in reference to a sick person. EMS was notified and responded. The sick person was not transported by EMS.

-Officers responded to Freedom's Landing in reference to a drug complaint. Three occupants were judicially referred.

-Officers assisted the City of Statesboro with a busted water pipe located at Chandler Road and Fair Road.

-An officer conducted a traffic stop at University Pointe in reference to loud music. The driver of the vehicle, Travendra Mangal, 22, was arrested and charged with Excessive Volume from a Motor Vehicle and Driving with a Suspended License 2nd Offense.

-Officers responded to Eagle Village Community Room in reference to a smoke generated fire alarm. The Statesboro Fire Department and maintenance responded. The alarm was activated by smoke from cooking.

-An officer took an incident report for found property at Hendricks Hall. The found property was placed in the police department property room.

-An officer took an incident report for a stolen phone at the Zach S. Henderson Library. This case was turned over to criminal investigations.

Statement of Operations

The George-Anne is the official student newspaper of Georgia Southern University, owned and operated by GSU students using facilities provided by the university. The newspaper is the oldest continuously published newspaper in Bulloch County. The newspaper is a designated public forum for the Georgia Southern community. The newspaper is published twice weekly, on Tuesdays and Thursdays, during most of the academic year. Any questions regarding content should be directed to the student editor by phone at 912.478.5246 or at gaeditor@georgiasouthern.edu.

ADVERTISING: The newspaper accepts advertising. Inquiries may be made by calling 912.478.5418 or 912.478-0566. Fax any questions to 912.478.7113 or e-mail ads1@georgiasouthern.edu.

The George-Anne receives additional support, in part, from the Student Activities Budget Committee.

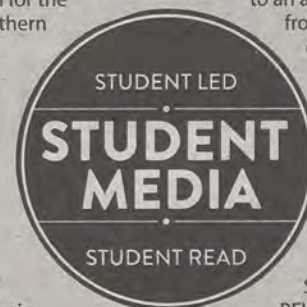
The deadline for reserving space and submitting advertising copy is noon, one week prior to the intended publication date. For more information, rate cards, sample publications, contact

the advertising manager or student media director. The advertiser is responsible for any errors in advertisements and its liability for adjustments is limited to the amount of space the error occupied in the ad. Further, the newspaper is not responsible for any damages caused due to an ad's omission from a particular edition and its responsibility solely is to reschedule the ad in the next regular edition at the regular advertising rates.

STUDENTS BEWARE: The George-Anne screens all advertisements prior to publication. The newspaper strives to accept ads for legitimate products and services only. Students are urged to exercise caution when replying to ads-particularly those that require personal information. Students are also urged to report to the newspaper any suspicious offers which they might see in an ad.

PUBLICATION INFORMATION: The newspaper is printed by The Brunswick News in Brunswick, Ga.

NOTICE: Unauthorized removal of multiple copies from a distribution site constitutes theft under Georgia law, a misdemeanor offense punishable by a fine and/or jail time.



Editorial Staff

Editor-in-Chief Arielle Coambes
Managing Editor Jennifer Curington
Multimedia Editor Jessie Reese
Opinions Editor James Farmer
News Editor Lindsay Gaskins
News Chief Taylor Cooper
Arts Editor Gianna Carme
Arts Chief Kimeko McCoy
Sports Editor Jackie Gutknecht
Football Editor Jannah Bolds

Copy Chief Courtney Tielking
Copy Editor Anna Wells
Business Manager Chloe Douglas
Sales Manager Phillip Scroggin
Marketing Manager TJ Jackson
Marketing Associate Amber Gordon
Production Manager Kelsey Paone
Photo Editor Lindsay Hartmann
News Design Chief Tyler Fleider
Ad Design Chief Jose Gil

Corrections

Contact the editor at gaeditor@georgiasouthern.edu for corrections and errors.

Our View

Open bottle could benefit students

The Statesboro City Council's decision to discuss an open alcohol bottle policy downtown is a great consideration to attract more people to participate in downtown events.

Many students at Georgia Southern University do not venture downtown any more than they absolutely have to. Downtown Statesboro has very few attractions that stick out for the average college student, which is why student nightlife is mainly contained within a half mile of campus. Even at these limited student-friendly locations, alcohol cannot be brought outside the establishments. However, there are many stores and activities downtown that just need to get in the students' attention.

Downtown could transform into a great destination for the student population that does not like the plaza bar scene. First Friday and other events could provide a nice night walking downtown with an adult beverage for students who desire a relaxed setting.

Downtown is currently a hangout of mostly Statesboro residents. If this proposal passes and more students start heading downtown on the weekends instead of to the plaza, then there will be increased interactions between students and residents. This might change opinions of Statesboro residents towards GSU students, hopefully for the better. The best way to dispel stereotypes of any group is to interact with them. This holds true for the GSU student body as well.

This proposal might inspire other areas of the town to pursue an open bottle ordinance, something that will definitely make the student body happy.

If this proposal passes, it could start a change in the culture of Statesboro. This could be a big step forward for the town, and The George-Anne hopes it passes.

The George-Anne welcomes letters to the editor and appropriate guest columns. All copy submitted should be 350 words or fewer, typed, and sent via e-mail in Microsoft Word format to gaeditor@georgiasouthern.edu. All submissions must be signed and include phone number for verification. GSU students should include their academic major, year and hometown. The editors reserve the right to reject any submission and edit submissions for length.

Opinions expressed herein are those of the Board of Opinions or columnists themselves and DO NOT necessarily reflect those of the faculty, staff or administration of GSU, the Student Media Advisory Board, Student Media or the University System of Georgia.



Turning 21 is a big occasion

We downplay age nowadays. Age is just a number, time is relative and a host of other sayings downplay age. Well I'm turning 21 day today, and I can tell you it's a big deal.

For starters, every birthday is a big deal. It's the new years of our lives, the point by which we measure ourselves. You can look back every birthday on the year that was and see what you would have done differently and what you did right. You realize how you'll never be as young as you were yesterday. You either find that to be an awesome, encouraging sign of maturity and things to come, or you look at the calendar and all the days you'll never get back and think of your crippling mortality.

But 21 is a different kind of birthday in American culture. It's the year that we can finally drink, legally; even if we have to wait three

THE FARM LIFE



JAMES FARMER
OPINIONS EDITOR

years after we're draft-eligible. It's when an American finally gets to stop worrying about Minor in Possession charges and ways to beat the band system at the bars. Or if you are the rare person who decides not to drink until you can do so legally, it's the night you buy your first beer and grimace at the taste.

There's a certain amount of maturity that comes into play when you turn 21 though. You're a year removed from the follies of being a teen, though not quite so mature to settle down and get married – at

least for the majority of us. After all, at 21 we are fully legal adults, whatever that means.

Really, it's the last year we celebrate. When the 30th birthday rolls around, it's a tongue-in-cheek celebration of how your youth is finally over, and 40 is not-so-subtly called "over the hill" for a reason.

I want you guys to celebrate my birthday with me. Look back on your last year and celebrate your maturity or lack thereof. Enjoy the day, celebrate life. Tonight, I'm raising my glass to you, Georgia Southern. Keep doing what you're doing, and a year from today I'll have even more great memories of the greatest student body anywhere.

Farmer is a junior international studies and political science double major from Thomasville, Ga.

From the Left

Marriage, a right for some

A few weeks ago I read Dr. Martin Luther King's *Letter from Birmingham City Jail* for one of my classes. It was a fabulously written piece that I recommend to anyone both for its historical significance and its applicable message. In his letter, Dr. King does not lash out against the zealous segregationists that firmly oppose his efforts for equality, but he instead addresses the white moderates that acknowledge his struggle and recognize the injustice of the law but remain quiet.

This piece draws a striking parallel to what we see today with same-sex marriage. There are a substantial amount of heterosexual individuals, I believe, that see a group of marginalized people suffer legal discrimination and patiently wait for their day of equality to come, rather than taking action. Similarly to Dr. King, my goal is not to attack those that disagree with my stance because that has historically proved unproductive. Instead I offer heterosexual individuals, for or against the equal treatment of homosexual individuals, an alternative perspective to consider.

To begin, I ask the question, when did you *decide* you were attracted to the opposite sex? Chances are you didn't; it was something you discovered through your development. With that in mind, imagine a world where your heterosexual behavior is seen as taboo. When you go on a date with someone of the opposite sex and hold his or her hand, someone asks you

to not flaunt in public. When your hetero-phobic boss finds out, since the Employment Non-Discrimination Act doesn't protect sexual preference, he fires you. When your center of worship finds out you've been seeing someone of the opposite sex, they tell you it is morally wrong and ask you to leave. When you "come out" to your parents, they send you to a counselor. When your homosexual friends find out, they no longer associate with you. When you love someone of the opposite sex, it is illegal to enjoy the same rights as someone else who happened to be born a different way.

Interestingly, the opponents to King used similar justification for their discrimination as those who oppose marriage equality today. We see their xenophobic behavior 50 years ago as inexcusable, embarrassing, inadequate and wrong. What will we say about today's discrimination 50 years from now?

Markley is a senior geography major from Marietta, Ga.



SCOTT MARKLEY

Religion defines marriage

Equal rights have been fought over for as long as we have been a country. Who gets the right to vote, who gets to own land, where somebody gets to go to school are all things that have been fought over and triumphed over the shackles of inequality. The biggest equal rights issue that is being fought over is the right to wed whomever somebody chooses. While this has been played out in the political arena, I believe this is wrong. I believe the sacred institution of marriage is something that your religious faith, if you have one, is in charge of determining what is right and wrong.

Since the beginning of this country, it has been seen as a place where everyone has his or her fair share of equality and religious freedom. The pilgrims came over here to escape the crushing weight of the English church and its practices. That is why after this great land won its freedom; we established that there would be a separation of church and state in both the First Amendment and in Article IV of the Constitution. This was done so that the ideologies of one religion dominate the rules and laws of our new great country founded on personal liberties.

Marriage is one of those things that religion is in charge of, not the state. A religious leader conducts most, if not all marriage services. It's not something that the state needs to get into. I do understand,

however, that the state has given married couples certain benefits for being married. These include certain tax incentives, the ability to be

an unstated power of attorney if the party is incapable of making a lucid decision and custody rights over children that are in the family. I fail to see where any of these places have anything to do with sexual orientation in order to receive and benefit from these rights. If a man and a woman can get a joint mortgage together for their home, is a homosexual couple going to be more of a default risk if they are married?

I personally don't believe in homosexual marriage, but that is because my religious faith forbids it. It isn't because I feel that homosexuals are bad people or would make bad parents/spouses. I think we should leave it to the church to not allow homosexuals to be married, but the government should just back off.

Chapin is a senior political science major from Roswell, Ga.



FRITZ CHAPIN

From Data to Discussions

Judgement Day won't come if homosexuals can get married

In case you haven't heard, the Democrats recently added the acceptance of same sex marriage to the party platform at their convention in Charlotte. As the debate over homosexuality begins, which it very well may during the debate on Wednesday, it is interesting to look at same sex relationships in a global and historical context.

Although the same sex marriage argument has been relatively recent, homosexuality certainly has not been. Same sex marriage and acts have dated back to the ancient Romans. Julius Caesar himself was said to have had a homosexual affair with



WILLIAM BRYAN

King Nicomedes, which was, for the most part, socially acceptable at that time. Roman attitudes towards homosexuality changed around the 3rd century, when Christianity spread to the region and criminal persecution of same sex relationships began. Native

tribes in both Africa and Papua New Guinea practice, and have practiced, homosexual acts during rituals and traditions.

Globally, 11 countries have completely legalized and accepted same sex marriages, including Spain, Portugal, Sweden and Canada. Six states currently allow it. In a controversial legal case regarding same sex marriage in Austria, Schalk and Kopf vs. Austria, the European Court of Human Rights had an interesting opinion on the matter. They note that in the constitution that binds all members, the wording, looked at in isolation, does in fact say that "Article

12 grants the right to marry men and women." But looked at more broadly, the Court says, the Articles also state that "no one is to be subjected to certain types of prohibited treatment." They also note that this document was written in the 1950s, when marriage was "clearly understood in the traditional sense of being a union between partners of a different sex." The court did not, however, oblige Austria to accept same sex marriage.

Most of the opposition to same-sex marriage comes from social conservatives, claiming that same-sex marriage is a threat to both the cultural norms that we are accustomed

to and values outlined in the Bible. Well, no area that has accepted same sex marriage has seen any quantifiable "cultural decline." Dr. Richard Florida has conclusively found that areas with larger homosexual populations are doing better than those with predominately straight populations. As for the religious aspect, the Bible condemns homosexuality or homosexual acts seven times. It condemns various heterosexual acts between 250 and 400 times, most notably premarital sex.

Bryan is a senior economics major from Fayetteville, Ga.

Letters to the Editor

What have we wrought with this vote?

Dear Editor,

Columnist and editor of The Georgia Report Tom Crawford recently reported Georgia's dismal condition: no money for education, no money for health care, roads or highways. Still, citizens will vote on raising sales tax (again) while Georgia found \$300 million for a retractable roof for Arthur Blank's football stadium in Atlanta. In my government class this news appalled my students, yet they couldn't connect this outrage with our recent football vote and GSU's dismal state of affairs.

Ask students whether they prefer a rigorous university to football and they will look at you as though: 1) they don't "get" the question, and 2) you must have lost your mind! Students say they want pedigree degrees and they will with BIG football. Hey, Dartmouth, MIT, Emory graduates *where* is your

football??

This vote was led with surgical precision, breathtaking really. Students didn't stand a chance with slick commercials, the campaigns to "vote yes!" and by the deliberate absence of discussion either by our student council or newspaper. It was a "shock" and "awe" campaign worthy of national politics.

I am a football enthusiast yet an educator first. There are serious challenges at GSU that football and a better stadium will not fix. President Keel argues that big football will mean big attention and big growth. How can one imagine that greater student growth is desirable when classes are crammed beyond meaningful teaching capacity in fire hazard classrooms with equipment that does not work? Our president argues that football will attract the country's best scholars. Unlike students,

scholars will not choose an institution with poor faculty moral with inadequate classrooms, faculty, equipment and budgets.

How many students' futures has this vote sealed? Some will not be able to afford the hike and won't return while other future hopefuls may find it economically impossible. GSU's priorities are upside down and inside out.

Shame on us! Shame on the administration for its misplaced priorities, shame on the professoriate for not speaking out and especially shame on the Student Council and The George-Anne for not providing students with meaningful information for an informed choice.

Dr. Debra Sabia
professor of political science

Chapin is dead wrong

Dear Editor,

Are you SERIOUS? The latest article from Fritz Chapin is absolutely ridiculous. Why The George-Anne allows him to continue to contribute his stupidity to our paper is beyond me. Who is he to preach on what women can or cannot do? I am absolutely pro-choice, and I believe that men should not be able to dictate women's rights on abortion when they are not the ones who must carry the child. No matter the circumstance surrounding the abortion, WOMEN should decide what gets to happen in their own bodies. I think Mr. Chapin needs to take a moment to look between his legs, remember he is not a woman and stop trying to tell women what to do with their bodies.

Sabrina Wright
junior psychology and Spanish major
Augusta, Georgia

Leave women's rights to women

Dear Editor,

[In regards to Fritz Chapin's abortion column] How something so horribly offensive gets printed is astounding (freedom of the press, yadda yadda). What really caught my attention was when Chapin says "(a)llowing (women who can't handle the consequences of their actions) to use abortion as their get out of jail free card to avoid the consequences of their stupidity is simply unacceptable." What of rape victims besides the case you mentioned? I suppose it is the burden of the mother to deal with the consequences of her

stupidity.

However this is not just a question of actions and consequences, this is a matter of women's rights. Who are you, Fritz, to say what a woman can do with her body? What is congress, a conglomeration of 80-year-old white males to say what a woman is allowed to with her body? Abortion has been around much longer than the United States. By the way, I also have a friend that was raped, but she got an abortion, the stupid girl.

Nathan Fetsch
senior economics major
Kennesaw, GA

Abortion is a choice, not murder

Dear Editor,

Every time I read a Fritz Chapin piece, I experience a face-palm moment. I have often wanted to respond but have held back. After reading his recent piece on abortion, however, I cannot keep quiet. Not since the creation of contraceptives has there been so much guilt infused by a political party into a woman's right to control her reproductive cycle. I have had the misfortune of reading a litany of conservative, male point of views on what is and is not appropriate for a female to do with her body, and Chapin's is no different. The three most offensive points he made were: 1. What having an abortion means- Chapin makes the common error of the scientifically ignorant by claiming that a newly

conceived fetus or embryo is the same thing as a baby, a position which ignores what scientific research has shown us about the nature of early-stage fetuses. There is a HUGE difference between a fetus and a baby, and Chapin completely fails to see any nuance in this area whatsoever.

2. Making statements about what is and is not a viable option for rape victims- Come on, do I really need to point out the obvious here?! I am glad you have a friend who is comfortable with her decision. That does not at all mean that all women should do that or that they would have the same experience.

3. Making blanket judgment calls on other people's morality- I think the most incorrect idea surrounding abortion is that there are women for whom getting an

abortion means nothing — that it is as routine as taking out the garbage. Let's get this straight: having an abortion is an amazingly stressful and difficult decision to make. For you, Chapin, to demonize women who have gone through an experience that you will never be able to understand, by accusing them of "murder," no less, is beyond offensive. Help all of us Georgia Southern students who have suffered through your judgmental and narrow-minded drivel for years and answer me this:

When do you finally graduate?

Leah Lemberg
senior Spanish major
Oxford, N.C.

Bacon lovers, brace yourselves

First, the good news: We have finally reached the season when the temperature in Statesboro begins to drop below volcanic levels. The bad news: We are running out of bacon.

Yes, a world shortage of pork and bacon next year is now unavoidable, says Britain's National Pig Association, which is a real organization that I did not just make up. At the root of the impending shortage is the cost of pig-feed, which has become unaffordable following disastrous growing and harvesting weather for maize and soya crops. The high cost of feed means that the cost of marinating – er, I mean maintaining – crops of pigs aka “future bacon” has risen and many farmers simply cannot keep running at current costs.

The NPA believes that slaughters could fall by as much as 10 percent in the second half of next year, which indicates a doubling of the price of European pork and pork products.

Yes, this is a big deal. Not only will our stomachs sorely miss the comforting pleasure of delicious bacon – and bacon-based products such as bacon and eggs, the bacon cheeseburger and the bacon cheeseburger with extra bacon

ALEXANDER THE PRETTY GOOD



ALEX LASALLE

– but bacon has long been one of the most affordable meats, well below the price of quality beef or lamb.

What can we do to fix this? Well, it will be tough. We may have to ration our current bacon intake. I know, I know, but these are desperate times. Maybe Georgia Southern University can adopt some pigs, to keep until their time has come.

Whatever happens, we will get through this. Just brace yourselves – no bacon is coming.

LaSalle is a senior writing and linguistics major from Cumming, Ga.

Fun with CHARTS at the UN!!!

THE COLUMBUS DITCH
COLUMBIACARTOON.COM



Write a letter to the editor of 350 words or less at gadaily@georgiasouthern.edu. Please include your hometown, classification, name and major.

Voted Best Mattress Store
in the 'Boro!

Deal's

Great Gift Shop

GSU: Decals, Flags
Jewelry, Tervis
Aging Eagle Totes,
T-shirt's

Tervis Tumbler
Headquarters

Great selection
of tin signs

Fashion Handbags,
Jewelry, & Wraps

Christmas
Ornaments, Flags
& Gifts

and much, much
more!

Furniture and Mattress Outlet
17083 GA Hwy 67, Statesboro,
GA (912)681-3824 (Near
Mon-Fri : 10am-6pm
Sat: 10am-5pm

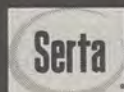
**2nd Great Location Now Open
Deal's Downtown**
64 E. Main Street
(912) 243-9999

• Honest, Dependable
Same Day Delivery

• Locally Owned &
Operated by GSU
Graduate

• Serving GSU Students
for 34 years

**Best Furniture, Mattress
& Gift "DEALS" in the 'Boro**



Complete
Mattress
Outlet

See Craig before you
buy any Serta
mattress!

New Furniture
at Discounted
Prices

25% Off
Used Furniture,
Smalls, and
Antiques!

George-Anne & Joe

brought to you by



This Thursday
Williams Center Gazebo
From
8:15a.m.-10:00a.m.

Don't forget to stop by Starbucks at Georgia Southern for
great coffee, pastries, sandwiches, parfaits, and fresh fruit cups!



twitter.com/GSUStarbucks

Keel implements office hours for faculty

BY SARAH RYNIKER

The George-Anne contributor

Thursday, Sept. 27, President Brooks Keel opened his door for faculty office hours for the first time since announcing in June his proposal for office hours after an open letter was published about the lack of communication between faculty members and administration.

On June 14, Dr. David Dudley, chair of the Department of Literature and Philosophy, sent an open letter recounting the flaws he saw with administrative policies at Georgia Southern University. The letter began as an invitation for dialogue across campus but soon spread nationwide.

Keel will now host faculty hours in thirty-minute blocks for three-hour periods, three times a month, Dr. Michael Moore, PhD. in language communications and curriculum foundation and reading professor, said.

Moore's office hours appointment with Keel is set for Nov.

"A lot of the frustration that I think we're seeing among everybody, faculty and staff, is due to a lack of understanding of what the issues are," Keel said.

He hopes faculty office hours will increase conversation.

"It's an experiment," Keel said.

There have been positive changes in communication, but it is still in the early stages, Keel said.

"You fix it by listening. These problems can be fixed," Paul Michaud, associate vice president for Human Resources, said.

"When people don't know what those reasons are, they see it as the administration doesn't care about them. Until you understand how money flows at a university, what our limitations are on spending it, it looks like the administration doesn't care," Keel said.

Dudley wrote the letter in response to a

Faculty/Senate meeting this summer after witnessing the separation between faculty members and the administration.

"If it matters, let your voice be heard. And a lot of people aren't. When we don't let our voices be heard, we might have well have given up. I can't, and I won't," Dudley said.

"The president's goal is to make Georgia Southern bigger. His opinion is that bigger is better, but it might mean sacrifice," Moore said.

"All the power is at the top, and I have no trust for a system with no checks and balances," Dudley said.

Keel said he saw positive improvement after this year's first Faculty/Senate meeting.

Dudley said that the administration is overlooking a lot of smaller problems, such as vomit stains inside the Newton Building.

Dudley said, "Do you see this vomit? It's been here for a week, but at least we'll have a bigger football team."

June 14, 2012

Dudley writes open letter

June 18, 2012

Dudley's letter is published in Inside Higher Education article

June 20, 2012

Keel responds to letter and announces plan of action

Sept. 27, 2012

Keel's plan is implemented with the start of office hours

Two new taxi companies come to Statesboro

BY TAYLOR COOPER

The George-Anne staff

Two new taxi companies, Boro D.D. and About Town Non-Emergency Shuttle Service, were approved for business licenses in Statesboro on Saturday, Sept. 20.

Boro D.D. opened Tuesday, Sept. 25 and was created with the intention of being a taxi company that focused on students by accepting Eagle Express, but a system for accepting Eagle Express has not been implemented yet, Nicholas LaVan, owner of Boro D.D., said.

"Students could say to their parents, 'Hey, I'm in college, you know what I'll be doing, so put some money on my Eagle Express so I don't get in an accident or a DUI,'" LaVan said. "No one else takes it. In the world of business, if you can get something your competitor doesn't have, then you can get a leg up."

"GSU students are what we're targeting. I'm working with the university to take Eagle Express, but currently we take all major credit cards," LaVan said.

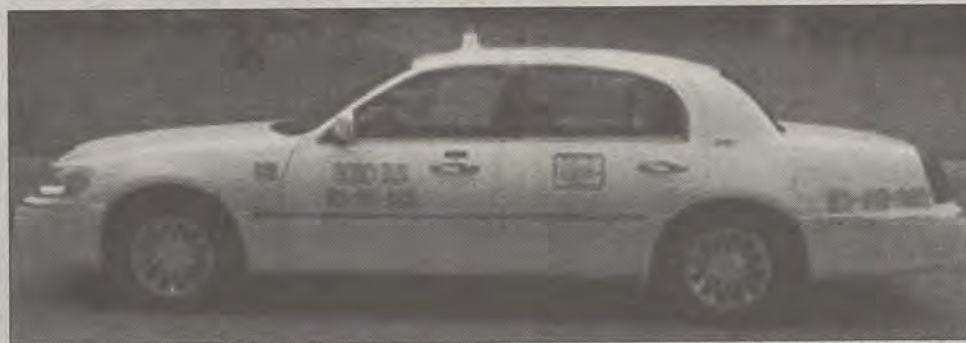


Photo courtesy of Boro-DD.com

Boro D.D.'s Lincoln Town Car, running Tuesday through Saturday, is in the process of attempting to allow students to use Eagle Express as payment.

"Being that the students are our main target, it just gives them another option for payment," LaVan said.

Boro D.D. operates from 8:00 p.m. to 4:00 a.m. Tuesday to Saturday. On game nights, operating hours run until Paulson Stadium is empty.

Boro D.D.'s meter charges include an initial charge, a mileage charge, a wait time charge and a minimum charge.

• Initial charge is \$2.50.

- Additional charge for every sixth of a mile: \$0.40
- Every hour of waiting: \$24.00
- Minimum charge: \$6.00.
- Savannah Airport flat rate: \$100.00

Currently, Boro D.D. has one Lincoln Town Car, according to its website.

"I'd like to see people driven home who shouldn't be driving. They're an asset to the community," John Riggs, Statesboro city councilman, said.

"With 5,000 new students coming in this year, I thought it would be a good time to get involved," LaVan said.

For a taxi company to get a business license in Statesboro, the owners must give the name of the proposed company, the number of taxis in the fleet, the area of service and the insurance information of the taxis, according to Statesboro's code of ordinances.

The city council held an extra session to approve the two new companies.

"The city council members were very helpful. When I went in front of them to be approved, there wasn't a majority vote, but I was able to get a meeting two days later instead of having to wait two weeks for the next city council meeting," LaVan said.

Roosevelt Jones, manager of Flash Jones Taxi Company, wishes them luck.

"We've been open for 39 years," Jones said. "If they can handle the situations that students need rides in, I take my hat off to them."

About Town Non-Emergency Shuttle Service could not be reached for comment.

FEES, from page 1

different area of sustainability.

One part will cover sustainable efforts on campus, like retrofitting buildings and re-lamping.

The second part will be promotional, which will aid in putting up posters and other announcements promoting a green lifestyle.

A third part will focus on curriculum and environmental education.

Lastly, a fourth part of the fee will be used to hire personnel for the Center for Sustainability, which is currently being run by one professor, volunteers and unpaid interns, Belge said.

"It's good to see that students care about the Earth and the environment," Garrett Green, SGA vice president of Auxiliary Affairs, said.

The expansion fee will allow students and parents to have more breathing room, both at graduation and football games, Quarles said.

"We're above and beyond capacity for graduation and football games, so I feel like it will allow students some personal space," Quarles said. "Some people don't come to games because they know if they don't get there at a certain time, they have to get on the grass, and I feel like it affects our attendance."

According to the GSU website, the expansion

fee will only be part of the total student fees until the cost of construction is completely paid for.

Previous discussion by a professor about the stadium expansion beginning in January 2013 is a rumor, Belge said.

GSU is unsure of when exactly the FBS fee will be applied to the student account because the invitation to join the FBS could come at any time, Jackson said.

"If the fees are approved then we would just work with the business office in Deal Hall to have it added to student fees, all except the FBS fee of course," Jackson said.

"It will do wonders for our viewers all over who are looking at universities. It would put Georgia Southern on the forefront and put us at national recognition," Quarles said.

The FBS fee will only be added to the student fees if the University receives and accepts and invitation from the FBS, Quarles said.

There are currently no plans to charge students for game tickets during regular season play, according to the GSU's website.

Students have mixed responses on the results of the fees.

"I think the school should focus more on education, but voting 'no' wouldn't have put the money towards education," Grainne Hutton,

sophomore international affairs and French major, said.

"I'm actually more happy about sustainability. I just think that's more important than football," Melissa Montcalvo, freshmen nursing major, said.

"I'd rather be a powerhouse in our division than move up," Kathryn Beasley, sophomore psychology major, said.

Cliff Padgett, sophomore mechanical engineering major and SGA senator for the College of Engineering and Information Technology, said, "I'm excited for what they will bring to the university. We'll get more money through donations from people who are into athletics. The green fee is great because we'll become cleaner and be well known as an environmentally friendly school!"

Dr. Lissa Leege, biology professor and director of the Center for Sustainability, could not be reached for comment.

President Brooks Keel could not be reached for comment.

Sam Baker, athletic director, declined to comment.

Christian Flathman, director administrative of Marketing and Communication, declined to comment.

Student vote breakdown

Georgia Southern University administration members are pleased that 55 percent of the student population participated in the voting process for possible future fees.

"I am ecstatic about the number of students who have participated in this vote. It's a record for this university and it may be a record in Georgia," Dean of Students Patrice Jackson said.

Over 9,000 students voted last week through their WINGS account.

Sustainability fee

■ 74.7 percent (7,018) of students voted yes to the \$10 green fee in support of sustainability on campus.

Athletic Expansion fee

■ 70.4 percent (6,612) of students voted yes to the \$25 fee for the expansion of Paulson stadium.

Athletic Operations fee

■ 61.2 percent (5,748) of students voted yes to the \$75 FBS fee, which will not be implemented until the school is invited to move up.

Chow Time Buffet

410 Northside Drive 912-489-6188

Steak, Sushi, Spare Ribs,
Seafood, Snow Crab

Lunch Buffet
Mon.-Fri. \$6.25

Dinner Buffet
Mon.-Sun. \$9.99

Free drinks with Student I.D.

Historical tragedy inspires actors

BY MARISSA MARTIN

The George-Anne staff

The streets of Manhattan lit up with horror as hundreds of immigrant women jumped to their death while the building they jumped from was consumed by flames.

The Triangle Factory Fire Project tells a tragic story of a real event that happened 101 years ago because of unsafe working environments and disregard for workers safety.

"They said the building was fire proof just not death proof," Zoe Campbell, senior theatre and Spanish major and set designer, said.

The theatre's seating arrangement changed to fit an edgy metal structure that imitates the setting for Triangle Factory Fire Project, where hundreds of women die in the metal contraption. Campbell designed and built the frame to accommodate the setting.

The fire scene lights up with illusions that there are real flames on stage by lighting techniques, James Harbour, director for the production, said.

"I designed it with triangular objects to give it its sharp edges and structural feel," Campbell said. "It is made fully of metal and was designed around the setting where the fire took place on the eighth, ninth and tenth floors."

The metal structure designed by Campbell includes the two doors and a fire escape that is true to life to the event but the women inside only had one escape route, Campbell said.

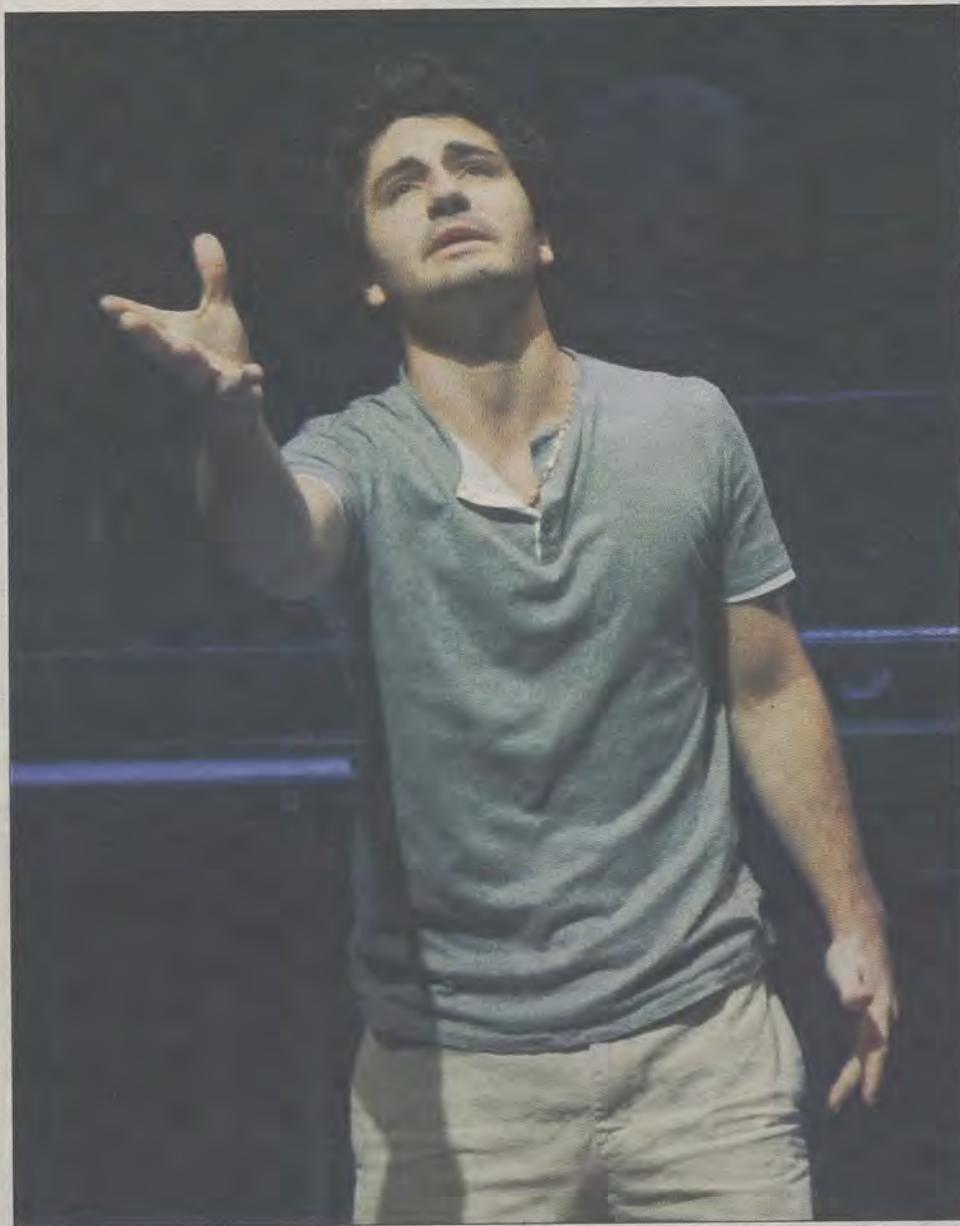
The Triangle Factory Fire Project is based on real events that happened 101 years ago in Manhattan, Harbour said.

This production tells a story about a group of female employees who worked under harsh conditions and died because of them, Harbour said.

"The factory owners kept the doors locked to stop them from taking breaks," Harbour said. "The scene that's the biggest part of the play is the fire itself, and this production has an expressionist set for it."

Many of the cast members did not hear about this real event until they started working on the performance.

"I didn't know about this until I was in the play and this was the biggest event in New York City before nine-eleven," Julianne Norkus, junior theatre major and performer, said.



Chad Kenney/The George-Anne

Sophomore undeclared major Gregory Hernandez performs as William Shepherd in the play *Triangle Fire Factory Project* that opens in the Black Box Theater on Oct. 3, 2012.

The cast members compared the production's story on the true event to the happenings of 9/11.

"Working on this definitely put things into perspective on nine-eleven. These factory workers jumped out of the factory's building at ten floors and nine-eleven victims jumped out higher than that," Christina Shores, freshmen communication arts major, said.

Immigrant women died in the accident,

and many jumped to their death. Because of poor working conditions, 146 girls died in the fire, Harbour said.

"This incident brought about government regulation on safety laws for work place conditions," Harbour said.

The Triangle Factory Fire Project production opens Wednesday, Oct. 3 and runs through Oct. 10 with a matinee performance on Sunday at 2 p.m. Tickets for students are \$5 and \$10 for faculty and staff.

The Buzz List

- **Jason Aldean** apologized after getting caught making out with a woman who was not his wife. On the bright side, once his wife leaves him he can write a song about it.



Gianna Carme

- **Honey Boo Boo** and the rest of her family have received a raise after high ratings for the first season of "Here Comes Honey Boo Boo." Hopefully they will use this money to eat real meat rather than eating road kill.
- **Paris Jackson**, daughter of the late Michael Jackson, drew inspiration from Miley Cyrus by cutting her hair the same style. Miley drew inspiration from that one time she decided to cut and dye her hair in the dark.
- **Drew Barrymore** and **Will Kopelman** welcomed a baby girl, Olive, last week. Jury's still out if they're changing their last name to oil.
- **Usher** is evicting his ex-wife from his Georgia home, the same ex-wife who just lost her son in a boating accident. I thought you were supposed to "let it burn," not be cold.

- **Justin Bieber** vomited on stage during his "Believe" tour in Arizona this weekend. His back-up dancers kept dancing as Bieber violently threw up while on stage.

Information compiled by Arts & Entertainment Editor Gianna Carme and Arts & Entertainment Chief Kimeko McCoy from perezhilton.com and TMZ.com.



Photo courtesy of Flickr

Luke Bryan is a Platinum selling artist and former GSU student from Leesburg, Ga.

Country boy shakes it for Claxton

BY GIANNA CARME
and KIMEKO MCCOY
The George-Anne staff

Cowboy boots, cutoffs and camouflage will flood Longneedle Farm in Claxton, Ga. this Wednesday evening for one former Georgia Southern University country boy.

Luke Bryan kicks off his annual Farm Tour approximately 20 miles away from where he spent his college days as a brother of Sigma Chi.

"He puts sigma on the map," Rob Pennington, senior marketing major, said. "He represents us well wherever he goes."

During his days at GSU, Bryan would perform with his band on the weekends. He made his way to Nashville after leaving GSU, eventually making it big.

"He started playing here in bars like any other college kid with a dream," Tanner Parker, senior construction management and business major and Sigma Chi president, said.

The annual tour began in Claxton, Ga. in 2009 and spread to other college campuses in the years since.

"It was a good concert all together," Adam Barlow, senior mechanical engineering major said, who attended Bryan's concert last year in Macon, Ga.

Since his days at GSU, Bryan has created hits including "Country Girl (Shake It For Me)," "I Don't Want This Night To End" and "Drunk On You."

Luke Bryan Farm Tour 2012

WHEN

October 3, 2012
at 7 p.m

WHERE

Longneedle Farm
3032 L J Road
Claxton, GA 30417

WEATHER

Mostly sunny with a
high of 86 degrees.

Barlow said, "He does his own thing, and he's a Georgia boy. There's nothing wrong with that."

**Peyton Callanan contributed to this story.*

FREE

**Legal
Advice**

**Every
Tuesday
3-5 p.m.**

**Russell
Union 2073**

**Call (912)764-
7388 for an
appointment**

**TROY MARSH
Attorney at Law**



Sponsored By



Saturday, October 20

**SOUTHERN
Collegiate
Leadership Conference**



GeorgiaSouthern.edu/sclc
Office of Student Leadership & Civic Engagement
Your Student Activity Fees at Work

*Self
Leadership
Workshop Track*



SCAN ME!

Downtown Friday festivities

October kicks off with 'Care on The Square'

BY HANNAH RAWLES

The George-Anne contributor

Statesboro kicks off the fall season with their monthly First Friday event, shedding light on Domestic Violence Awareness month with "Care on the Square" hosted by United Way.

Held in downtown Statesboro, students and families are invited to come out to learn about organizations while having a good time.

"We try to make each event interactive, family friendly and a complete experience," Allen Muldrew, executive director of the downtown Statesboro development authority, said.

Food and beverages will be provided from a diverse group of local vendors including Simply Sweet Bakery selling gourmet cupcakes, Elliano's Coffee Company and New York Pizza. Panera Bread is also partnering up with the Statesboro Bulloch County Breast Cancer Foundation.

The organization Safe Haven, a group set up to promote an end to violence, is starting off the event at 5:30 p.m. with a memorial service to raise awareness for domestic abuse victims.

Alzheimer's Association and Pineland Behavioral Health/Development Disabilities will sell merchandise to event goers to raise awareness for their causes.

A DJ, booths and even the girl scouts will also be present at the event, Elena McLendon, events coordinator and office manager of Mainstreet Statesboro, said.

Members from the American Red Cross, the Alcohol and Drug Council and the Statesboro Bulloch County Breast Cancer Foundation will also be present.

This event is way of informing the community about various organizations, Muldrew said.

"College students are some of the best volunteers and have great participation when they know about it," Muldrew said.

United Way is an organization driven from volunteers. Volunteers determine how to raise and distribute money to other organizations to promote healthy lives, education and well being in communities.

This is an opportunity for these organizations to provide information about their respective



File Photo

GSU students and Statesboro locals gather for March's First Friday, "Green Grits." This month's First Friday will take place this Friday 5:30-8 p.m.

organizations and volunteer opportunities, Bob Olliss, executive director of United Way, said.

"There are misconceptions as to what these agencies do, so now they will be able to educate and heighten awareness about themselves," Olliss said.

These groups are always looking for volunteers because it's never known when volunteers will be needed, Muldrew said.

This is the second year First Friday has hosted

this theme and will hopefully become an annual event for October, Olliss said.

This local-based event continues throughout the year. On the last Saturday of this month, Scare on the Square will be held to celebrate Halloween, followed by Recycle on the Square in November and Holiday Celebration in December for the Christmas holiday.

Olliss said, "This event brings a lot of people to Downtown."

IRON EAGLE CHALLENGE

OCTOBER 19, 2012

REGISTER AT WWW.GEORGIA SOUTHERN.EDU / CRI

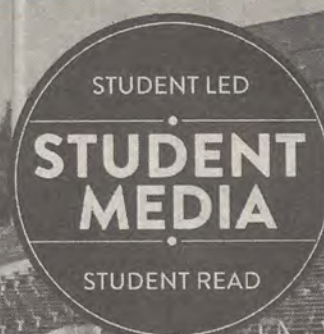
CRI
CHALLENGE RECREATION & INTRAMURALS

GAMEDAY MAYDAY TAILGATE

COME ON OUT
ANY TIME
BETWEEN
2 PM - 5 PM.

FIND US AT THE RAC
IN FRONT OF THE BISHOP BUILDING

SPONSORED BY:



STOP BY FOR FREE FOOD, GAMES AND MUSIC

COME PICK UP OUR BRAND **NEW** GAMEDAY MAYDAY
INCLUDING:
TEAM MATCHUPS COACH INFORMATION TEAM STATISTICS

CLASSIFIEDS

This page brought to you by Career Services
Explore • Experience • Excel

14 Tuesday, October 2, 2012

The George-Anne

Housing

Looking for 3rd roommate in Planter's Row, 1308 Magnolia Way. \$365 plus 1/3 of the utilities. Private bedroom and bath. Close to campus. Existing window covering. Two college age males currently live here. Contact: pm01393@georgiasouthern.edu

A female sub-leaser needed for Spring 2013 semester ASAP! A 4 bedroom, 2 bath at Cambridge apartments with a beautiful view of the pond and right on the bus route! Please contact Sydney be email: sr01982@georgiasouthern.edu or phone: 770-500-6485 if you are interested!

Looking for female to sublease Spring semester 2013! 4 BR/BA, \$500/month. Brand new apartments with great amenities. The Forum at Statesboro. Amazing Roommates! Call/text and/or email Ketonna: 706-201-1035 ka01879@georgiasouthern.edu

Housing (cont.)

Attention Ladies! Sublease at The Forum for \$476 during the Spring 2013 semester. If you like the place so much, stay after the sublease is up! Live with three great roommates and enjoy the various amenities the apartment complex has to offer. If interested, contact Ashley Dotson at ad02391@georgiasouthern.edu

Help Wanted

BARTENDERS WANTED! \$250 a day Potential. No Experience Necessary. Training Provided. Age 18+ OK Call 1-800-965-6520 ext 296.

For Sale

2000 Lincoln Continental, 129,000 miles, good condition. 687-4171.

Something to sell?

Visit thegeorgeanne.com or email ads1@georgiasouthern.edu It's free for students, staff and faculty!

HELP WANTED

Special Projects Assistant Part Time

POSITION DESCRIPTION: Student Media. This position will serve as an ad advisor for students in the Business Division. Duties will include coordinating training for all new students hires, meeting with business staff weekly, offering advice regarding sales approaches and serving as a role model for student staffers. Perform additional job-related duties as required by director.

MINIMUM REQUIREMENTS: High School Diploma or equivalent plus three or more months of post-secondary education (additional experience may substitute for some of the education requirement); three or more years of related work experience; proficiency with computers and Microsoft Office applications, including word processing, spreadsheet and databases; effective communication (verbal and written), organization and human relations skills; ability to work well in a diverse environment; successful completion of background investigation prior to employment.

PREFERRED QUALIFICATIONS: Sales certification training, associate's degree in business; sales experience, ideally in media ad sales

SALARY: Commensurate with experience and qualifications

APPLICATION DEADLINE: September 21, 2012

TO APPLY: Please visit the Georgia Southern University employment website and complete the application process at <https://employment.georgiasouthern.edu/>. The application process must be completed by the deadline to be considered. For more information, call the 24-hour job line at (912) 478-0629. Georgia is an open records state. Individuals in need of reasonable accommodations under the ADA to participate in the search process should notify Human Resources: 912-478-5468 or HR-TDD: (912) 478-0791. Georgia Southern is an Equal Opportunity/Affirmative Action Institution.

PAID ADVERTISEMENT

Explore Your Options

By: Taylor D. Terrell
Public Relations/Events Intern

The first year of college may be the hardest year to deal with for some students. Between balancing classes, adjusting to college-life, and finding out which path is best for you, it can be difficult to make choices-professionally-that lead to a successful college career.

Careers Services recommends that freshmen students seek career advice and guidance early. In order to answer the timeless question (that all students ponder) "what do I want to do?" Career Services suggests exploring these steps:

- ☐ Identify interests, skills and personal/work values
- ☐ Take the Career Assessments to figure out your strengths/weaknesses, professional skills, personality, and emotional intelligence, such as: FOCUS, True Colors, EQi
- ☐ Review the 'Freshmen Checklist' online at georgiasouthern.edu/careers
- ☐ Meet with your Academic Advisor to discuss a plan of action and the

requirements of your program of study

- ☐ Get Active! Participating in campus activities and exploring organizations that interest you will benefit your growth as a student and add valuable leadership experience to your resume
- ☐ Conduct informational interviews with professionals or upperclassmen in your career field of interest
- ☐ Seek part-time, summer and volunteer jobs to explore career interests and gain valuable experience.

To assist you in preparing for the next four-years, the Career Development Specialists advise students to explore their options during their freshman year by being proactive and get hands on experience of the field they wish to enter.

Other resources and guides like the 'What Can I Do with a Major In...' can be found in the CRC located in the first floor of the Williams Center. Jumpstart your career during your freshman year by taking advantage of Career Services and explore your options!

ARE YOU CONNECTED?



:Georgia Southern University Career Services



:Georgia Southern University Career Services



:GeorgiaSouthern CareerServices



:@gsucareers



:gasoutherncareservices.blogspot.com

Williams Center 1047

(912) 478-5197 georgiasouthern.edu/career

PUZZLES/COMICS

www.thegeorgeanne.com

Tuesday, October 2, 2012 15

Los Angeles Times Daily Crossword Puzzle

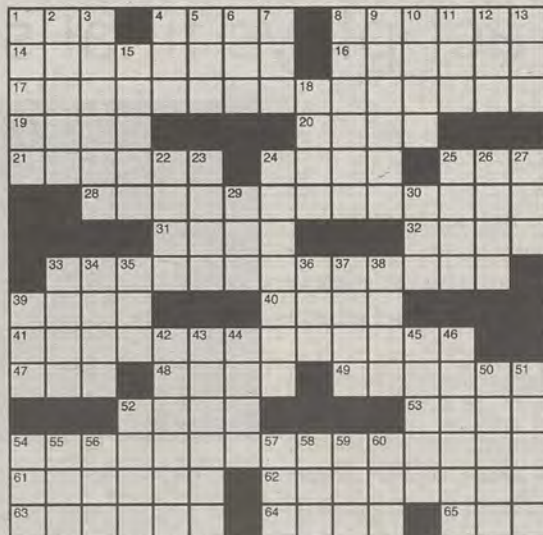
Edited by Rich Norris and Joyce Lewis

ACROSS

- 1 Shake in reproach, as a finger
- 4 E-junk
- 8 Beats handily
- 14 Raymond Burr's TV sleuth
- 16 Speed up
- 17 Easter song title critter
- 19 Plenty of poetry?
- 20 Facility
- 21 Seattle's Field
- 24 Not likely to bite
- 25 Mischievous moppet
- 28 Rich chocolate dessert with a crust
- 31 Expensive
- 32 City east of Wichita
- 33 Under-the-sink cleaners
- 39 Nasty
- 40 Bit of carpenter's gun ammo
- 41 Dessert sometimes colored with beet juice
- 47 Massage facility
- 48 Some necklines
- 49 It's often closed for the night
- 52 Safecracker
- 53 Vocal range
- 54 Important trial figure, or what you'll be when you read this puzzle's other four longest answers
- 61 1887 La Scala debut
- 62 Feminist poet Rich
- 63 Novelist Waugh
- 64 "Check this out!"
- 65 33-Across brand

DOWN

- 1 Diaper bag supply
- 2 Bowl game venue
- 3 Escaped punishment
- 4 Old geopolitical abbr.
- 5 JPEG file, usually
- 6 Hue and cry
- 7 Confronted



By Jack McInturff

- 8 Guessing game question
- 9 Grimm brother
- 10 Prefix meaning "bone"
- 11 L.A. bus-and-rail org.
- 12 Canada's smallest prov.
- 13 NBC weekend revue
- 15 Later
- 18 They may be black or green
- 22 Give up
- 23 Answer to "How do you Yanks spell 'travelling'?"
- 24 Seats of power
- 25 Device with earbuds
- 26 Wire measures
- 27 Princess provoker
- 29 Cry from a crow's nest
- 30 Sportage supplier
- 33 Leak slowly
- 34 "Look what I did!"
- 35 It needs to be addressed: Abbr.
- 36 Heart-healthy grain
- 37 Layers of nits
- 38 Quarterback's call

Last Edition's Puzzle Solved

A	D	D	I	N	S	H	A	M	G	A	F	F
S	E	E	N	O	A	U	R	A	L	U	R	E
L	A	B	O	R	O	F	H	E	R	C	U	L
O	R	D	R	E	A	T	L	E	A	S	T	
T	A	N	G	I	E	R	I	O	D	I	N	E
I	S	A	A	C	S	S	A	N	S	T	O	R
A	S	I	N	P	I	X	I	E	S			
T	R	I	B	E	O	F	I	S	R	A	E	L
C	O	V	E	T	S	N	T	S	B			
A	D	O	L	E	T	S	R	E	D	A	T	E
M	E	R	M	E	N	S	U	N	R	I	S	E
U	N	E	A	R	T	H	T	I	D	A	L	
S	I	G	N	O	F	T	H	E	Z	O	D	I
E	R	O	S	U	T	E	P	W	E	N	C	H
D	O	N	E	L	P	N	S	S	E	G	U	E

- 39 Old Miss
- 42 Either "Bye Bye Love" singer
- 43 Troop group
- 44 1970s Chevy subcompact
- 45 "The Family Circus" cartoonist
- 46 Actress Barkin et al.
- 50 "use!"
- 51 Teaspoons, perhaps

- 52 Make oneself heard
- 54 Curly tormentor
- 55 Suzuki offering, briefly
- 56 Kickoff helper
- 57 Runner's circuit
- 58 Sentence fragments?: Abbr.
- 59 Form letters?
- 60 Bearded small bird

FOR THIS POLITICAL SEASON, CANDIDATES WILL ALSO COMPETE IN THE GALACTIC GAMES.



Richard

WHAT'S THIS COMPETITION?



THE 50-YARD GAFFE.



CANDIDATES TRY TO DISTANCE THEMSELVES FROM THEIR EARLIER, STUPID REMARKS.

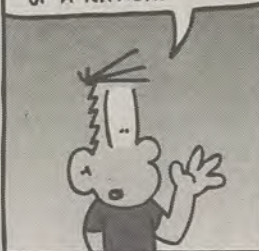


I WAS TAKEN OUT OF CONTEXT!

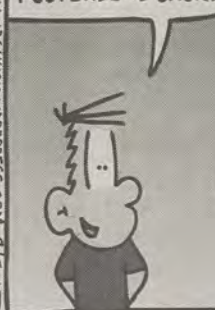
IT'S 2012, AND ONCE AGAIN WE'RE ENTERING AN EXCITING TIME IN OUR COUNTRY. A SEASON OF COMPETING WILLS, DIVIDED LOYALTIES AND PASSIONATE STRUGGLES.



AMERICANS WILL CHOOSE SIDES IN A LONG-FOUGHT BATTLE FOR ULTIMATE SUPREMACY IN THE EYES OF A NATION.



THAT'S RIGHT... FOOTBALL IS BACK.



WOOHOO!



	7					6	1	3
		8			1	4	9	
4		1						
				2	4			
	1				8		4	
				7	3			
						3		1
	6	7	9			5		
8	5	3					7	

Sudoku



The Sir Shop
Statesboro Mall
912.764.6924



Blood is Thicker Than Gatorade

Norton duo shines for Eagles

BY TREVOR MCNABOE

The George-Anne staff

Freshman defender Reed Norton and junior midfielder Hunter Norton have a bond that goes beyond just teammates.

The duo is in a lineage that is unique to Georgia Southern University. Even before Hunter came on campus another Norton was a key figure in GSU Soccer, father Tom Norton coached soccer from 1990-2003 here at GSU.

"I don't think that there's any pressure on us just because our dad coached here, any pressure we have comes from ourselves," Hunter said.

Reed was part of this past year's freshmen recruiting class. Coming out of high school he was a highly touted recruit with 29 goals and 38 assists on his career and was named all-state his senior year. He also missed his junior year of high school soccer due to training with the United States U-17 National team.

Hunter, coming out of high school led his club team, the Augusta Arsenal, to three State Cup Semifinals and was a two time Columbia County News Times Player of the Year.

Hunter has started every game since arriving in Statesboro two years ago and is now the captain. This year both brothers have cracked into the starting line up.

"It's nothing new us playing together. I enjoy



Mark Barnes II/ The George-Anne

Freshman defender Reed Norton (4) has started every game since arriving at GSU.



Mark Barnes II/ The George-Anne

Junior midfielder Hunter Norton (13) is team captain for the Eagles.

it, but we've played high school and club soccer together so playing together in college isn't anything new," Hunter said.

With brothers you can expect competitiveness and a drive to be better than one another and these brothers are no different.

"When we were younger, things were really intense between us, both of us didn't want to lose in any of the sports we played," Hunter said.

Both brothers are at different points in their playing careers, Hunter, the captain and two years of college experience, and Reed, a young and emerging presence on this team.

An older brother is often thought of as a mentor for the younger one, and that is exactly what Hunter is for Reed. One piece of advice that the older Norton would give to the younger is to stay on top of things.

"The most important thing is to control your life off the field. Academics and social life play a key factor in your performance on the field," Hunter said.

The Norton duo is here to stay at GSU, and we will have to wait and see what becomes of the two as they continue their careers together here.

By press time, Reed did not respond to request for interview.

Sister act plays final season

BY ERIN DENMARK

The George-Anne staff

The sisterly bond that senior midfielder Carlee Storey and junior midfielder McKenna Storey share give a stronger hold to the union of the Georgia Southern University women's soccer team.

"From a young age, we've always played soccer together, and we've pretty much shared the same dream that we wanted to play division one soccer, and we always hoped that we'd be able to play together. It was like the ultimate dream come true when we ended up on the same team," McKenna said.

"It's really exciting and really nice to know, no matter what, I'm going to have someone that will always have my back and who will always be there besides my other teammates," Carlee said.

When the girls' parents got a divorce, McKenna took it and transformed it into



Demario Cullars/ The George-Anne

Junior midfielder McKenna Storey (9) has only seven regular season games left to play with her sister Carlee Storey at GSU.

a great opportunity. Their parents lived in different districts, and the girls decided to live separately to play at different schools.

Even though they had some distance between them, C

"I was able to make it to pretty much all of her high school games because mine was earlier in the afternoons and hers were at night. I would play and drive across town and be able to watch her play," Carlee said.

Carlee initially went to Samford University for college, and McKenna decided GSU was the perfect choice.

Carlee transferred to GSU after her freshman year to join her sister as an Eagle.

According to Carlee and McKenna, their most memorable moment at GSU is one they shared together.

"The first round of playoffs last year against the University of North Carolina at Greensboro, we beat them. When we played them early in the season, they beat us pretty badly, so it was a great feeling to come back as the last seed of the tournament and defeating the first seed on their home field. It was my first goal. It was an incredible feeling," McKenna said.

Not only was this McKenna's first goal, but her sister assisted her with a corner kick for McKenna to put it away with her head.

Carlee said, "My sister and I connected for her first career goal. It was really exciting because we knocked them out and went on."



Mark Barnes II/ The George-Anne

Senior midfielder Carlee Storey (3) works for wins in her final season as an Eagle.

GSU athletics' future now rests with Board of Regents

BY JACKIE GUTKNECHT

The George-Anne staff

The fate of Georgia Southern University's opportunity to expand Allen E. Paulson Stadium and move up to the Football Bowl Subdivision is now in the hands of the University System of Georgia Board of Regents.

"It is an exciting opportunity for athletics in general," President Brooks Keel said.

FBS fee: \$75

- Estimated 4.4 million dollars required for conference move

- Fund 22 new athletic scholarships

- Fund additional women's athletic team

Many students voted yes, 5,748 to be exact, to support the potential move up to the FBS and support a \$75 fee to move to a new level of competition. The fee will allow for more student-athlete scholarships and an additional women's sport.

"Long-term, it certainly raises the profile of Georgia Southern Athletics. It provides an opportunity for our more than 400 student-athletes to compete at the highest level," Christian Flathman, director of Marketing and Communications, said.

"Being at the FBS level will allow all of our sports to be more competitive in recruiting absolutely the best talent that we can," Keel said.

The state of Georgia does not fund athletic department operations, so this fee will ensure that GSU has the funding to make the move up if a conference invitation is presented.

"Georgia Southern's reputation, as it has continued to grow, I think the opportunity for athletes to be a part in that and to take the next step is an important one — I think long term. I think it also helps our reputation and the overall impact of the institution but specifically with athletics the opportunity to take the Georgia Southern brand, not just regionally, but nationally, by competing with some of the top teams in the country certainly will have an impact," Flathman said.

There are no current plans to charge students for tickets.

"We've said all along its going to take about 4.4 million dollars, this is what we have figured as an addition to the athletic budget, and that is across the board, that's mostly scholarships, about half of that is going to

be scholarships, the move from the FCS to the FBS we go from 63 to 85 scholarships in football, that's 22, and we have to have an equal number of scholarships in women's sports as well for title nine which will go to the existing women's sports and also allow us to add another team," Keel said.

There is not a set date for when the FBS fee will go into effect. It is all-dependent on an invitation.

"The NCAA requires you to have 16 teams to play in a league at the FBS level. We were looking at adding another team in women's sports. We were looking at sand volleyball, golf or competitive rifle," Keel said.

Seventy-point-four percent of the students that voted said yes to the expansion of Paulson Stadium. This expansion will not only affect athletics but other aspects of GSU, including graduations and future concert opportunities.

"The additional seats will benefit far beyond just athletics. Certainly, athletics will be impacted in a positive way by expanding the seating capacity of the stadium, but I think obviously it has a further impact that reaches into other areas in the institution," Flathman said.

The vote to support the expansion of Paulson Stadium supports a \$25 fee to add more than 6,300 seats to the student/visitor side of the stadium was supported by 6,612 students.

The stadium has 4,000 seats currently dedicated to students, but with more than 20,000 students at GSU only 25 percent of the student body was able to sit during football games. This expansion will position GSU for a future move to the FBS, but the expansion was supported by 864 more students than the FBS fee.

"This past weekend we had 21,000 announced attendance at the game to watch Georgia Southern beat Samford, of that 14,444 had a seat, so 7,000 individuals were either in the grass or standing," Flathman said.

Breaking ground for Paulson Stadium depends on the timeliness of the Board of Regents approval.

"It will take us over 20,000 actual seats in the stadium, all dedicated to student seating, we don't have enough seats for the students that are showing up now. We have more than 6,000 students that are showing up for games every week, so it will create seats for all of

the students that are coming, as well as the people that are sitting on the grass," head coach Jeff Monken said.

The vote to expand the stadium is a vote to add 6,300 seats dedicated solely to student use.

"Having an expanded stadium also helps with recruiting expected athletes. I think coming in and seeing a larger facility certainly as we compete for outstanding athletes across the country, I think seeing a larger facility will help recruit perspective athletes to Georgia Southern. It will have a very positive impact from an amateur reputation as well," Flathman said.

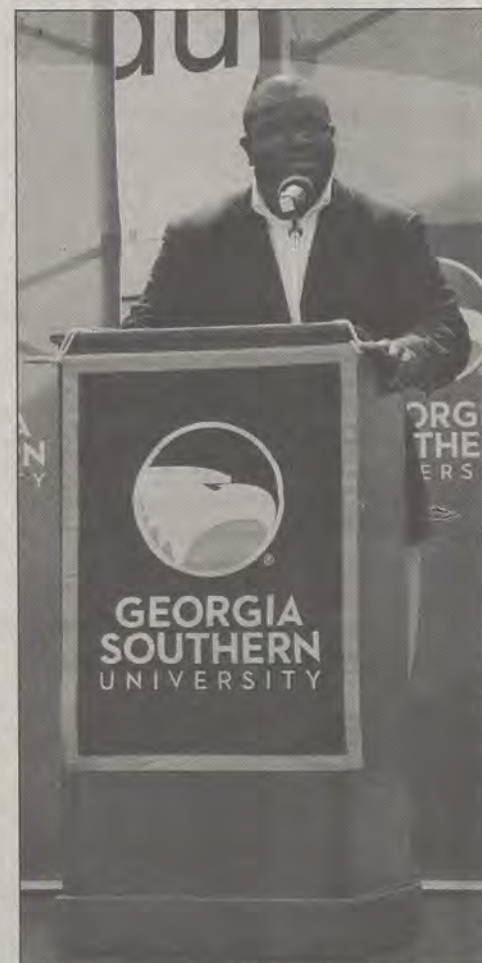
"With this vote, our students are excited about it, they're going to want to see the change, they're going to want to see that fee be put into action," Monken said.

The majority student vote gives confidence that the Board of Regents will approve the student fees.

"I think anytime you have a majority of students, especially in the case of this vote, where such a large majority of students voted and voted in favor certainly does not hurt its chances, but we are not presumptuous enough to think that that alone will get these fees approved. Certainly it is up to the Board of Regents to make that decision, but we are certainly optimistic that given the strong vote of confidence from the Georgia Southern student body displayed at the vote this past week that they will take that into consideration," Flathman said.

"I think it says that the students want their voices to be heard, and they made it loud and clear that they were in strong support of this," Flathman said.

Monken said, "I am happy to know there's a majority of students on campus



Tasha Lund/The George-Anne

SGA president Dominique Quarles announces the student fee voting results at the Russel Union rotunda on Sept. 28, 2012.

that support our program and want to see it succeed and want to give us the resources as a football program to be able to compete and compete for championships and play at as high of a level that we can."

Saturday, October 20
SOUTHERN
Collegiate
 Leadership Conference



GeorgiaSouthern.edu/sclc
 Office of Student Leadership & Civic Engagement
 Your Student Activity Fees at Work

Social
 Justice
 Issues
 Workshop Track



SCAN ME!

UGA vs GSU game tickets still on sale

BY JACKIE GUTKNECHT

The George-Anne staff

Students now have a their second chance to purchase tickets to the Georgia Southern University against the University of Georgia game.

The remaining tickets for the game on Nov. 17 are currently on sale through Friday.

"I had to work during the original sale date, so I am so excited that I can actually buy a ticket in the Georgia Southern section and go to the game now," Samantha Shore, senior communication arts major, said.

"I waited for two hours and skipped class to get my ticket, so it kind of makes me mad that they're still for sale," Shelby Loo, junior

biology major, said.

Faculty and staff, Eagle Fund donors and students are able to buy tickets at the Athletic Ticket Office on Lanier Drive.

The tickets cost the same amount from the original sale of \$47.50 after taxes.

"It is kind of expensive, but my parents are huge fans and can't wait to go to a big game," Brooke Wood, senior chemistry major, said.

A valid Eagle ID is required for all faculty, staff and student tickets. Tickets can be bought with cash, American Express, Visa or Mastercard and all ticket sales are final.

The game time is not set yet but is to be released at a later date.

Intramural Sports Scores

Softball

Monday, September 24

Pitch Slap- 20, Scared Hitless- 10
Lick My Cleat- 5, Grip It and Stroke It- 15
Hit for Brains- 26, Cunning Stunts- 27
Delta Sigma Phi- 5, Malicious Prostitution- 22

Tuesday, September 25

Positive for PED- 21, Backyard Studs- 10
Delta Tau Delta- 0, Bad News Beers- 7
STACK- 12, Natty Daddys- 5
FUBARED- 9, Rolled and Shaved- 7

Wednesday, September 26

Slappin' Pitches- 8, The Ball Busters- 6
Legend Dairy- 14, PIKE- 1
Walla Walla Weasel Wackers- 14,
Where My Pitches At?- 13
Delta Chi- 8, Big Test Icicles- 15

Sunday, September 30

Balls Deep- 3, Pitch Slap- 19
Sigma Alpha Epsilon- 0, Kappa Sigma- 7
The Custodians- 7, Droppin Dong- 23
Valor- 0, Dilligaf- 7

Flag Football

Monday, September 24

Avengers- 12, Show me your TDs- 13
Dirty Birds- 7, Bankwalkers- 27

Tuesday, September 25

Pink Panters- 7, Univ Villas Co-Rec- 34
Cadets- 0, New Team- 40
Straight Outta Compton- 19, chaos- 26
Ball So Hard University- 12, Won and Done- 33

Wednesday, September 26

Back That Pass Up- 0, Sacks and Racks- 13
BCM- Co-Ed- 21, Kiss My Pass- 6
Deep Throw- 19, Flag Patrol- 7

Thursday, September 27

University Programming Board- 15, Soft in the Paint- 6
Half and Half- 21, Goin HAM- 2
UV Rays- 0, da_squard_dynasty2- 42

Sunday, September 30

Bomb Squad- 7, H.F.T.O.Y- 0
Chopped and Screwed- 0, Wait...What?- 25

Scores Provided by CRI.

Planters Row

912.681.1170
www.hendleyproperties.com

3 bedroom
cottage
house

\$365
(month per person)



R. J. Pope Men and Ladies Apparel

Greek Formal wear rental specials

MOUNTAIN
KHAKIS

Cole Haan

THE
NORTH
FACE

vineyard vines
martha's vineyard

SOUTHERN CUBE

patagonia

POLO

Chaco

Mens and Ladies Gameday Apparel



Like us on Facebook

840A Buckhead Drive | 912.764.6973
5 South Main St. | 912.764.4306

Eagles defeat Bulldogs 35-16 at Paulson



Demario Cullars/The George-Anne

Junior quarterback Jerick McKinnon (1) gets set to call for a snap from sophomore offensive lineman Manrey Saint-Amour (75)

One Week, One Vote Initiative:
October 1 - October 4:
All events will be held in the Russell Union Theatre @ 7:00pm

Oct. 1st: (Monday) National Debt Forum: Young Americans for Liberty

Oct. 2nd: (Tuesday) Health Forum: Young Democrats

Oct. 3rd: (Wednesday) Debate Round 2: SGA (Union Stage @12:00pm)

Social Issues Forum: NAACP @7pm

Oct. 4th: (Thursday) Foreign Policy Forum: Young Republicans

2012 DECISION

Football

BY KEVIN GREGAN

The George-Anne staff

The Georgia Southern University Eagles weathered the Samford University Bulldogs and came out of the rain victoriously by a final score of 35-16 on Saturday.

"I thought our defense played a really solid, good football game. Offensively, we're still making mistakes that we got to eliminate," head coach Jeff Monken said. "The effort and just the desire of our football was so apparent out there, they were fighting. It was a tough football game. They were fighting, and they had the right attitude about not being denied victory."

The Bulldogs, who were undefeated coming in, were aggressive early in the game. Thanks to three penalties and a 12-yard touchdown from sophomore B-back Dominique Swope, the Eagles took the early lead.

The Bulldogs responded with an impressive 77-yard drive that ate up 5:02 of the clock, but the Eagle defense proved that they were a force to be reckoned with by holding SU to a field goal.

During the second quarter, the Bulldogs took a 10-7 lead when SU quarterback Andy Summerlin gained some rhythm and connected with receiver Kelsey Pope.

Throughout the entire game, the Eagles struggled to maintain some offensive rhythm were 0 of 10 on third down.

Junior quarterback Jerick McKinnon, who helped provide a spark, replaced GSU quarterback Ezayi Youyoute. The Eagle offense responded quickly to playing from behind with a 41-yard touchdown run from McKinnon.

"We really put Jerick in there just to settle

things down, give him an opportunity to carry the ball some, and he really did a nice job. As he started to have some production, we just left him in there," Monken said.

Later in the second quarter, McKinnon threw an interception but shortly after, Eagle cornerback Lavelle Westbrook got his second interception of the season and returned it 72 yards for a touchdown.

After halftime, the Eagles led 21-10 and both offenses struggled to get anything going in the rain.

Still struggling on third-down, the Eagles ended up converting a 4th and 2 but the next play Swope fumbled the football. SU safety Jaquiski Tarrt recovered the ball and returned it 80 yards for a touchdown. SU went for a two-point conversion but failed which brought the score to 21-16.

On the very next drive, the Eagle offense responded yet again. McKinnon scored his second touchdown of the day after breaking loose for 67 yards. To finish the day, McKinnon gained 162 yards on 13 carries.

Going into the fourth quarter, the Eagle defense locked down on the Bulldogs. SU put an impressive drive together and had the ball on the GSU 5-yard line but failed to convert on a 4th and 1.

The Eagles punched the nail in the coffin when Swope broke loose for 40-yard touchdown to settle the score at 38-16 with 1:30 to go in the game. Swope finished the day with 133 yards off 21 carries and two touchdowns.

With the win, GSU rose to third-place thanks to a 2-1 record in the Southern Conference. The next game for the Eagles will take place Oct. 6 against Western Carolina University.

COUTURE
galore boutique

Everything you'll need to complete your look 912.681.4142

Check us out on Facebook | Couture Galore Boutique

couturegaloreboutique@gmail.com

We Carry M.A.C Products



Lindsay Hartmann/The George-Anne

Junior quarterback Jerick McKinnon (1) sprints toward the endzone on a designed triple option rush play. During the Samford game, McKinnon rushed for a total of 163 yards.

McKinnon shines against Samford Bulldogs

Football

BY JANNAH BOLDS

The George-Anne staff

Eagle head coach Jeff Monken decided to exchange junior quarterback Jerick McKinnon for sophomore starting quarterback Ezayi Youfoute only at 11:45 in the second quarter of the game last weekend.

"Izzy didn't get into the groove, and it's not like we lack any confidence in him, but it's a team effort. McKinnon just got the offense to flow,

and he started making plays, so we left him in," Monken said.

From then on, McKinnon tallied his fourth 100-yard rushing game of his career, his longest touchdown run of the season in the third quarter for 67 yards and completed a 34-yard pass in the fourth quarter, which was the longest of his career.

By the end of the second quarter, McKinnon lead his team in rushing yardage. The second string quarterback rushed a total of 62 yards, which was 23 more than sophomore running back Dominique Swope in second place.

At quarterback in the second half, McKinnon attempted to throw two passes, one of which was intercepted by Samford University's freshman defensive back Trey Wesley.

During his time at quarterback, McKinnon scrambled and rushed the ball all the opportunities he could get. With 5:40 to go in the third quarter, McKinnon was able to break away from the cluttered line of scrimmage on first and ten and sprint 67 yards to the endzone to put another six on the score board for GSU.

"All the credit goes to the whole offense. It was

just a great offensive unity. The whole offense did a great job tonight," McKinnon said.

By the end of the game, the junior quarterback had topped the charts in two categories for his team: rushing and passing. McKinnon ended his night with 163 total rushing yards, two touchdowns and three attempted passes with completion and was intercepted once.

"Jerick is a great leader and athlete," senior linebacker Darius Eubanks said.

Monken said, "Tonight we were a better football team than Samford, and Samford is a good football team. I am proud of our team."