

Georgia Southern University

Digital Commons@Georgia Southern

The George-Anne

Student Media

9-27-2012

The George-Anne

Georgia Southern University

Follow this and additional works at: <https://digitalcommons.georgiasouthern.edu/george-anne>



Part of the [Higher Education Commons](#)

Recommended Citation

Georgia Southern University, "The George-Anne" (2012). *The George-Anne*. 2781.
<https://digitalcommons.georgiasouthern.edu/george-anne/2781>

This newspaper is brought to you for free and open access by the Student Media at Digital Commons@Georgia Southern. It has been accepted for inclusion in The George-Anne by an authorized administrator of Digital Commons@Georgia Southern. For more information, please contact digitalcommons@georgiasouthern.edu.

**PBS TO FILM
AT CAMP
LAWTON**

PAGE 2

**FOOTBALL
TO FACE
SAMFORD**

PAGE 16

**OPEN
CONTAINER
DISCUSSED**

PAGE 12

Thursday, Sept. 27, 2012
Georgia Southern University
www.thegeorgeanne.com
Volume 83 • Issue 27

THE GEORGE-ANNE

Alpha Sigma Phi set to debut for Greek life

BY TAYLER CRITCHLOW

The George-Anne contributor

Alpha Sigma Phi will be at Georgia Southern University recruiting young men at the Rotunda between Oct. 9 and Nov. 7 as they add its 101st chapter on campus.

Justin Ferriera, coordinator of Expansion

and Growth, will be recruiting and informing young men of what it means to be a member of Alpha Sigma Phi. After he has organized an interest group, another staff member will take his place and help the new group to establish themselves and to get things running.

In regards to housing, Ferriera says that it is up to the group.

"In a year or two maybe a house can be built, but it is the groups decision," Ferriera said.

Alpha Sigma Phi is a social fraternity that bases strong values in academics and scholarship, Ferriera said. The fraternity's motto is 'To Better The Man.'

"We hope to recruit men who embody

these values and through our organization are able to make their experiences better in college and beyond," Humberger said. "We are looking for men who want to be apart of something new and who want an opportunity to leave their mark on campus and have something to look back on in in

See **FRATERNITY**, page 7

Eagles to sport new look for Military Appreciation

BY KEVIN GREGAN

The George-Anne staff

The Georgia Southern University Athletics Department, the Army National Guard and the ROTC Eagle Battalion revealed special uniforms at the Rotunda that the Eagles will wear on Military Appreciation Day, Oct. 13, against Wofford College.

"It's with great pride and great pleasure that I know our guys will put these uniforms on, wear them with pride and go to battle, represent Georgia Southern, the Army National Guard and all of those who wear the uniform that fight for the red, white and blue," head coach Jeff Monken said.

The jersey is digitally camouflaged and it features the colors from each branch in the military. The helmet features a Marine-red stripe down the middle.

The uniforms have garnered a lot of praise on Twitter and a huge roar was heard coming from the Russell Union during the unveiling.

The U.S. Army parachute team, The Golden Knights, will give the Eagle fans an exciting opening as members of this elite group will parachute onto the field during kickoff against the Terriers.

With more than 600 active duty, reserve and veteran soldiers attending GSU, it has become important for the university to show its appreciation.

"The longstanding relationship between Georgia Southern and the military is one aspect of our campus that we take great pride in," GSU President Dr. Brooks Keel said.

The Eagle Battalion here on campus has been honored amongst the top eight ROTC programs for the last two years. During those two years, GSU has also been named amongst the most military-friendly schools in the nation.

The National Guard is starting Snacks for Soldiers on the same day, which is a program that sends donations of non-perishable snacks to members of the military deployed overseas.

See photo, page 17

SLIME TIME LIVE



Lindsay Hartmann/The George-Anne

Jess Turuc, interim director of Fraternity and Sorority Relations (left), and **Kristin Grebel**, senior general studies major (right), get slimed for United Greek Council's fundraiser sponsoring Eagles For Eagles at the Rotunda.



thegeorge
anne.com



Follow us on Twitter
@TheGeorgeAnne



Newsroom 478-5246
Advertising 478-5418
Fax 478-7113

PO Box 8001
Statesboro, GA
30460

Camp Lawton chosen for PBS documentary

BY GRACE HUSETH

The George-Anne contributor

On Oct. 1, the Public Broadcasting Service will come to the site of Camp Lawton to film a documentary on the nationally recognized Civil War camp with artifacts found by many Georgia Southern University students.

Camp Lawton, a Civil War prisoner of war camp at nearby Magnolia Springs State Park, is a project that GSU's Department of Anthropology and Sociology has been undertaking for the past three years.

"The students are the key to the work being done at Camp Lawton," Kevin Chapman, graduate supervisor for the Camp Lawton/Magnolia Springs project, said.

Chapman is an archeological technician who, after discovering the first artifact, knew this camp had the potential to hold numerous pieces of importance. He now oversees GSU research as the Graduate Supervisor.



Matt Veal/The George-Anne

PBS will be bringing a crew of 40 production staff and scientists to create the documentary, "Time Team America." It will jumpstart research that the Department of Anthropology has wanted to perform.

"Because we have a lot more people, we

can do a lot more in a shorter amount of time," Dr. Lance Greene, assistant professor in the Department of Anthropology, said.

PBS will also be bringing high-tech research methods including subsurface technologies, electrode resistivity and ground penetrating radar.

This addition of technology will be made available to undergraduate anthropology majors who show interest and are ready to work with these professional instruments.

Josh Mackrill, sophomore anthropology major, is not intimidated by using the new technology.

"I'm excited that we get to use this new technology. That's something that I am so very happy about," Mackrill said.

If students are not ready to use high tech equipment there is still a place for them in writing Camp Lawton history.

Kaitlynn Ball, junior anthropology major, is in charge of organizing student volunteers who

will be able to experience traditional excavating and perform metal detection surveys.

"We have about 15 volunteers planned for each day," Ball said.

Though the addition of PBS will benefit research, it may pose problems with the logistics the anthropology students have planned.

"The hardest part in my mind is meshing the science with the production. They want to do a TV show about science, while we are doing science and letting them film us," Chapman said.

The GSU community hopes that the PBS documentary will not only show the research performed at Camp Lawton but will also bring awareness to the cultural impact Camp Lawton has on the Statesboro and GSU communities.

"When news about Camp Lawton hit, it really was world news," Chapman said. "It really has a national scope. There is a good chance that if someone had an ancestor in the Civil War that that person was either in Camp Lawton or had been involved with Camp Lawton."

The Sir Shop



Statesboro Mall

(912) 764-6924

Email: sirshop@nctv.com

FRANKLIN
TOYOTA • SCION

10% OFF
service with your
Student ID

888-695-8165

500 Commerce Drive
beside the new Holiday Inn

PROTECT YOUR VEHICLE!

Regular maintenance and upkeep is crucial to your car's optimal performance, best possible gas mileage, and highest resale value.

Our service department offers the best in automotive service for all makes and models.

PLUS we provide a free shuttle to and from campus!

- Oil Change
- Tire Services
- Tune-Up & Transmission Service
- A/C & Radiator Service
- Brake Service
- Engine Repair
- Body Shop Services



**BUY OR LEASE
A NEW TOYOTA, GET A**

\$1,000

COLLEGE GRAD REBATE

SCHEDULE YOUR SERVICE ONLINE! www.FranklinToyota.com

Police Beat

Sunday, Sept. 23

-Officers discovered a male subject carrying a female subject on Knight Drive near Kennedy Hall. The female subject was found to be intoxicated. EMS was notified, responded and transported the female. The female was then judicially referred.

-Officers discovered an intoxicated subject in C Lot. Matthew Keith Luke, 18, was arrested and charged with Possession of Alcohol - Under 21 Years of Age.

-Officers responded to Freedom's Landing in reference to an unconscious subject. The subject was found to be intoxicated and was transported to his residence off campus.

-Officers assisted Statesboro Police Department at an off-campus apartment complex (Campus Crossings) in reference to an armed robbery call.

-An officer took an incident report for criminal trespass at University Villas. Two occupants were judicially referred.

-Officers responded to Eagle Village in reference to a motor vehicle accident - hit and run. A motor vehicle accident report was taken.

-Officers conducted a traffic stop for a vehicle speeding 50 mph in a 25 mph zone at Maleki Drive and Akins Blvd.

-Officers responded to a motor vehicle accident at Freedom's Landing. A motor vehicle accident report was completed.

Monday, Sept. 24

-An officer discovered a broken security gate arm between Lot 12 and Lot 13. This case was turned over to criminal investigations.

-An officer assisted a physical plant supervisor in reference to an intoxicated employee. An incident report was completed and the employee was escorted to his residence.

-Officers responded to Eagle Dining Services in reference to a burglary alarm. The alarm was accidentally activated by an employee.

-Officers responded to the Center for Art and Theater in reference to a fire alarm. A faulty sprinkler head activated the alarm. Maintenance was contacted and responded.

-An officer responded to the RAC Field Support building in reference to a sick person. EMS was notified and responded. The sick person was not transported by EMS for further medical treatment.

-Officers responded to the College of Education in reference to a burglar alarm. Officers checked the room and building with no problems found.

-An officer took an incident report for a theft of a bike at Southern Pines. This case was turned over to criminal investigations.

-An officer attempted to make a traffic stop on Lanier Drive. The vehicle failed to stop for the officer and fled into Freedom's Landing. The vehicle was later reported as stolen.

-Officers responded to Centennial Place in reference to a verbal argument between a boyfriend and girlfriend.

Tuesday, Sept. 25

-An officer took an incident report for found property at Paulson Parking. The item was placed in the police department property room.

-An officer took an incident report for lost/misplaced property on one of the transit buses.

-Officers responded to the Housing Storage Facility in reference to a burglar alarm. The building was checked with no problems found.

-An officer took a report for criminal trespass at University Villas. One occupant was judicially referred.

-Officers responded to the RAC in reference to the theft of an iPhone. The case was turned over to criminal investigations. Tamiya Latrice Jordan, 18, was arrested and charged with Theft by Taking - misdemeanor. The stolen iPhone was recovered and returned to the owner.

-Officers responded to Southern Pines in reference to a drug complaint. There were no occupants at the room and no evidence of illegal drugs detected.

-Officers responded to the Georgia Southern University Museum in reference to a burglar alarm. The building was checked with no problems found.

-An officer took a report for theft of an iPhone 4 from the RAC. The case was turned over to criminal investigations.

-Officers responded to Southern Courtyard clubhouse in reference to a sick person. The sick person received treatment.

Statement of Operations

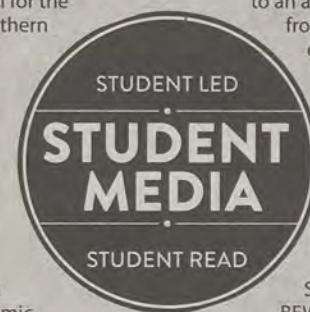
The George-Anne is the official student newspaper of Georgia Southern University, owned and operated by GSU students using facilities provided by the university. The newspaper is the oldest continuously published newspaper in Bulloch County. The newspaper is a designated public forum for the Georgia Southern community. The newspaper is published twice weekly, on Tuesdays and Thursdays, during most of the academic year. Any questions regarding content should be directed to the student editor by phone at 912.478.5246 or at gaeditor@georgiasouthern.edu.

ADVERTISING: The newspaper accepts advertising. Inquiries may be made by calling 912.478.5418 or 912.478-0566. Fax any questions to 912.478.7113 or e-mail ads1@georgiasouthern.edu.

The George-Anne receives additional support, in part, from the Student Activities Budget Committee.

The deadline for reserving space and submitting advertising copy is noon, one week prior to the intended publication date. For more information, rate cards, sample publications, contact

the advertising manager or student media director. The advertiser is responsible for any errors in advertisements and its liability for adjustments is limited to the amount of space the error occupied in the ad. Further, the newspaper is not responsible for any damages caused due to an ad's omission from a particular edition and its responsibility solely is to reschedule the ad in the next regular edition at the regular advertising rates.



STUDENTS

BEWARE: The George-Anne screens all advertisements prior to publication. The newspaper strives to accept ads for legitimate products and services only. Students are urged to exercise caution when replying to ads-particularly those that require personal information. Students are also urged to report to the newspaper any suspicious offers which they might see in an ad.

PUBLICATION INFORMATION: The newspaper is printed by The Brunswick News in Brunswick, Ga.

NOTICE: Unauthorized removal of multiple copies from a distribution site constitutes theft under Georgia law, a misdemeanor offense punishable by a fine and/or jail time.

Editorial Staff

Editor-in-Chief Arielle Coambes	Copy Chief Courtney Tielking
Managing Editor Jennifer Curington	Copy Editor Anna Wells
Multimedia Editor Jessie Reese	Business Manager Chloe Douglas
Opinions Editor James Farmer	Sales Manager Phillip Scroggin
News Editor Lindsay Gaskins	Marketing Manager TJ Jackson
News Chief Taylor Cooper	Marketing Associate Amber Gordon
Arts Editor Gianna Carme	Production Manager Kelsey Paone
Arts Chief Kimeko McCoy	Photo Editor Lindsay Hartmann
Sports Editor Jackie Gutknecht	News Design Chief Tyler Fleider
Football Editor Jannah Bolds	Ad Design Chief Jose Gil

Corrections

Contact the editor at gaeditor@georgiasouthern.edu for corrections and errors.

Our View

Teachers should heed student advice

The new lockdown program on the Folio course tool has been received to mixed reviews. Professors seem to be in favor of the program and like its ability to prevent cheating during exams and quizzes taken online.

However, students feel that the program is ill designed and potentially harmful to their computers. The main issue that students are finding with the program is that a break in the Internet connection will cause the program to freeze. This is an issue for many students who use wireless Internet, especially as signal strength can come and go. The issues with the program will be resolved, but it is important that the professors heed student concerns with the system. This is especially important during the first year of a program when unforeseen problems first come into the view of the users or the program. These issues have the potential to overshadow the advantages of the program if they are not addressed correctly. Students already have enough things on their minds as they take important exams and quizzes online without the worry of their Internet freezing and getting kicked out of their assignment with no answers saved. The professors should listen to the concerns of the students and take that into account when assigning online assessments.

The George-Anne welcomes letters to the editor and appropriate guest columns. All copy submitted should be 350 words or fewer, typed, and sent via e-mail in Microsoft Word format to gaeditor@georgiasouthern.edu. All submissions must be signed and include phone number for verification. GSU students should include their academic major, year and hometown. The editors reserve the right to reject any submission and edit submissions for length.

Opinions expressed herein are those of the Board of Opinions or columnists themselves and DO NOT necessarily reflect those of the faculty, staff or administration of GSU, the Student Media Advisory Board, Student Media or the University System of Georgia.



Responsibility can only go so far

Personal responsibility takes many forms and is not as straightforward as many would like to think. In today's political climate, the call for welfare payments to be cut and for individuals to take more personal responsibility for their lives and choices is being heard loud and clear from the political right. This is a perfectly reasonable request for most Americans, as it is a clearly asinine statement for anyone to say, "I shouldn't have to deal with the consequences of my own actions."

However, not all who have to depend on the government have reached there by any choices of their own. Some people have done everything right with their planning and choices: Going to college, getting married after obtaining steady jobs, having kids with the financial means to support the children, etc. and are still relying on the government due to life's curveballs. For example, one cannot plan on having a special needs child –

THE FARM LIFE



JAMES FARMER
OPINIONS EDITOR

which is an expensive experience both financially and emotionally – nor can many Americans predict the collapse of their fields of labor. Injuries that are attained through accidents or unsafe work conditions are both unfortunate ways that people wind up on government assistance. As well, being born into poverty is a tough ditch to climb out of especially with no outside aid.

But how do we manage to keep the government handouts in the hands of those who cannot provide for themselves? We need to change the culture of the certain individuals who

see the welfare system not as a safety net, but as a hammock. Perhaps if they see the single mother struggling to buy food for her family, they'll be more inclined to think their anxiety isn't worth jeopardizing the system that the former needs to survive. Maybe if more non-profit organizations were to take the tax-deductible contributions of the better-off in America and redistribute that voluntary wealth to the poor, less government intervention would be necessary.

So when we talk about the intertwined issues of the welfare state and personal responsibility, remember that not all who need outside help are freeloaders, many of them are hard-working individuals who just want that boost to help them reach their goals.

Farmer is a junior international studies and political science double major from Thomasville, Ga.

From the Left

Fact vs Fiction on abortion

The abortion debate is the argument whether it is the mother or the fetus that deserves rights, and it has circulated through philosophical discussion since Aristotle. Since his time, we have seen incredible advances in science and woman's rights, but the topic often remains void of any empirical or historical evidence. Among the least qualified to make policy about women's bodies are male politicians that have proved repeatedly that they need not buttress their claims with fact so long as they can stimulate emotion.

A college education provides fact-based analyses and critical thinking techniques that act as a remedy for this deception, and it is through this education that it becomes possible to discern fact from groundless emotional appeals. To decide on a stance with abortion, as with anything else, it remains imperative to become informed on the topic. So here's what we know.

Abortion was legal and regularly practiced in the U.S. in the 18th and most of the 19th century until the American Medical Association, not Christians, lobbied for anti-abortion laws, in large part to establish their supremacy over midwives. Prior to *Roe v. Wade*, New York legalized abortion, and the maternal-mortality rate dropped by 45 percent the following year. In 2001, Professors John Donohue and Steven Levitt performed a study that directly correlated reduced crime rates with the legalization of abortion. Briefly, their conclusion was that unwanted children are the most likely to commit crime. We also know

that embryos are not capable of feeling any pain until about 10 weeks or so into the pregnancy, and consciousness doesn't arrive until much later. This evidence supports pro-choice advocates, and it is all based on fact, not foundationless ideology.

I encourage you to spot and question the substance-lacking, hypothetical arguments that plague politics. For instance, Paul Ryan states openly that he opposes abortion, even in cases of rape and incest, but he also proposes cutting medical care assistance to impoverished children. So I guess he only cares about people before they're born?

Recalling isolated accounts of women regretting their abortion, using erroneous phrases like "baby killer" and applying personal Biblical interpretations as legal justification in a secular and religiously diverse nation should all be immediately rejected because they are not based on fact. They distract from the real issue of a woman's right to choose what's best for her life.

Markley is a senior geography major from Marietta, Ga.



SCOTT MARKLEY

From the Right

Abortion: A choice to murder

Life. It is the one thing all of us have in common. It is one of our inalienable rights guaranteed by both God and government. However, there are those that feel that determining who gets life is a choice onto us. This is ludicrous. What makes us so special that we can decide who gets life and who does not?

There are many who feel that it is one's choice to do what they want with their bodies. This is true in most cases but not in pregnancy. Once conception happens, you are now dealing with another life inside your body. What gives you the right to decide what to do with that life?

I can understand many people not being ready for parenthood when they indulge in sexual behavior. However, that does not excuse them from the consequences of their actions. There are several other options for an unwanted pregnancy than abortion. There are currently hundreds of thousands of families that are currently seeking to adopt a child. These are anywhere from people wishing to have multicultural families to those who are reproductively challenged.

People have also made the case that in instances of rape and other unpreventable circumstances that abortion is a viable option. This is also wrong. It is not fair to punish the unborn child for a terrible tragedy that it had no part of. I actually know a Georgia Southern University alumna — who for privacy reasons will remain unnamed — who, was raped during her tenure at this

school several years ago. She decided to keep the baby of that inconceivable event and raise him herself. He is now a 13-year-old young man who is excelling both at school and sports.

The belief that "not everyone is responsible with his or her body, and some young women can't handle the consequences of their actions" is also outrageous. Everyone knows where babies come from and if they are not willing to be responsible and take the preventative measures to engage in safe sex to avoid a pregnancy, then these individuals should not be engaging in sexual behavior at all. Allowing them to use abortion as their get out of jail free card to avoid the consequences of their stupidity is simply unacceptable.

At the end of the day, abortion is legal. *Roe v. Wade* made that happen and when a Supreme Court makes a ruling it is pretty concrete. That being said, I just don't know if I could live knowing I chose to murder my potential son or daughter.

Chapin is a senior political science major from Roswell, Ga.



FRITZ CHAPIN

From Data to Discussions

When it comes to abortion rights, religion offers double-standard

When President Obama's plan to require insurance companies to cover free birth control pills went public, religious institutions had a fit. Although it may be technically against some religious values to use birth control that generally doesn't stop people from using it, and it certainly doesn't stop people from having sex.

The same goes for abortion; of all the women who receive abortions every year, about 78 percent of them claim some form



WILLIAM BRYAN

of Christianity. 22 percent have no religious affiliation. Although this is probably unrelated to religious opposition to birth control, a great way to prevent abortions would

be for influential institutions to promote healthy birth control practices.

Many conservative lawmakers have proposed "zero-tolerance" policies regarding abortions. Regardless of how you feel about abortion, laws that restrict the use of discretion are generally not good policies. Although most abortions are for social reasons — the parents don't want the child, — many of them are for medical reasons, and excluding abortion as a medical

tool could end up killing the child and the mother. Education and easy access to contraception are better alternatives that don't lead to a potential black market for abortions.

On the issue of morals, our society seems to have moved only to support moral stances represented by their political party, while claiming they are supported by religion. Many people that take a hard stance against abortion are in favor of other contradictory policies,

like the death penalty. Both parties have moral disparities like this, but none of it is explained by any kind of religious doctrine. Where is the death penalty opposition from churches and mosques that preach forgiveness? There has been plenty of gay marriage opposition, but much less for the wars and social injustices that happen away from home.

Bryan is a senior economics major from Fayetteville, Ga.

WEEKLY BUZZ

A weekly calendar listing sponsored by The Division of Student Affairs and Enrollment Management

SEPT 27 - OCT 3

THURSDAY 9.27.2012

12:30 - 1:30 P.M.,
2 - 3 P.M.
3:30 - 4:30 P.M.

ROAD TRIP TO MY MAJOR

RUSSELL UNION ROOM 2084 AND 2080

Attend Road Trip to My Major and participate in a series of interactive activities to create your career roadmap. Learn about your personality and major matches, how to get an internship, and how to help your parents understand its your dream - not theirs.

Sponsored by Career Services

7 P.M.

HOT WINGS AND HOT TOPICS

WILLIAMS CENTER MULTIPURPOSE ROOM

Panel representatives from various highly recognized religions will engage with audience participants to discuss a variety of contemporary "hot topics" while enjoying hot wings. The purpose of this event is to promote mutual understanding and appreciation of diverse religions. Hear and discuss answers to gay marriage, abortion, and creationism versus evolution. Proof of attendance will be provided.

Sponsored by the Multicultural Student Center

7 P.M.

BOULDERING NIGHT

THE RAC

Come grab some free food and learn some new moves at the RAC's Boulderling Cave.

FRIDAY 9.28.2012

11:30 A.M. - 1 P.M.

INTERNATIONAL CONVERSATION HOUR

RUSSELL UNION BALLROOM

Come and enjoy free refreshments in a casual environment while interacting with people from all over the world to discuss international issues.

Sponsored by the Multicultural Student Center

SATURDAY 9.29.2012

8 A.M. - 5 P.M.

BLACK MALE EMPOWERMENT SUMMIT

RUSSELL UNION

Join us for the 5th annual Black Male Empowerment summit - "From Mis-Education to Authentic Education." The summit, which is open to all middle, high school and college students, will address the issues and challenges associated with being a black male in America. Workshops will educate African American men and others on identity, financial empowerment, leadership, relationship building, networking, mentoring, wellness, academic achievement, community development, and social activism.

Registration is \$20 (\$15 with a college student ID, \$10 for middle and high school students) and will include a continental breakfast, lunch, and access to all sessions. To register please visit www.georgiasouthern.edu/MS

Sponsored by the Multicultural Student Center

6:00 PM

GSU FOOTBALL VS. SAMFORD

THE RAC

Visit the Student Media tailgate this weekend to pick up a copy of a new publication, Gameday Mayday, which offers extensive analysis of the upcoming game as well as player statistics for both teams. There will also be music and a pre-game show from 91.9 The Buzz, free Jimmy John's sandwiches and games.

SUNDAY 9.30.2012

NO EVENTS SCHEDULED

MONDAY 10.1.2012

4 - 7 P.M.

OPEN HIGH COURSE CHALLENGE

THE RAC

The Open High Course Challenge allows participants to experience the high challenge course without having to organize a group to complete it with. Individuals can register for free during Southern Adventures office hours. You will enjoy crossing the high challenge course elements and finishing our course with a zip line.

Sponsored by Campus Recreation and Intramurals

TUESDAY 10.2.2012

6:30 P.M.

GSU UNPLUGGED

STARBUCKS

Looking for something fun to do on campus? Want to watch some live performers? Maybe even want to try out that new song of yours? Georgia Southern Unplugged is a coffeehouse series sponsored by the University Programming Board held every Tuesday. Come see the talented students of the Georgia Southern community. Free Starbucks coffee for attendees with your student ID. Your student activity fees at work.

Sponsored by the University Programming Board

WEDNESDAY 10.3.2012

5:30 - 6:30 P.M.

SOLD WORKSHOP: ICEBREAKERS AND TEAMBUILDING

RUSSELL UNION 2048

SOLD (Student Organization and Leadership Development) is a weekly leadership development workshop series. This workshop will teach participants will learn fun activities aimed to strengthen relationships and improve the functioning of teams. Students will also learn different icebreakers and teambuilding activities. Presented by Marr McBride, Southern Adventures Director and CRI.

Sponsored by the Office of Student Leadership and Civic Engagement and the Office of Student Activities

Student Affairs
Enrollment
Management

Brought to you by Georgia Southern University VALUES. Georgia Southern V.A.L.U.E.S. is the culture shared by our students, faculty, and staff. We endeavor to share our V.A.L.U.E.S. inside and outside of the classroom with faculty, staff, students, alumni and all other community members. In order to produce productive citizens with an informed set of ethics and community standards as well as create an environment of respect and civility, we pledge to live by our V.A.L.U.E.S.

"Kiss Me, I'm Vaccinated" comes to GSU

BY LAUREN GORLA

The George-Anne contributor

The flu season is approaching, and health professionals across campus are urging students to get vaccinated by announcing the "Kiss Me, I'm Vaccinated" campaign.

Every Tuesday and Thursday from Oct. 2nd thru Nov. 7th, flu vaccinations will be given on campus in different locations for \$5 for students and \$10 for faculty and staff members.

"It's better to get vaccinated sooner than later because it takes about two weeks to build up antibodies in your body after vaccination to actually prevent against the flu," Ali Shropshire, family nurse practitioner-board certified at the Georgia Southern University Health Center, said.

By getting a flu shot, patients can keep themselves from getting sick and missing at least two weeks of class or work.

"The virus will multiply for about five days and another five to 10 days to get over it, plus you're very contagious in the first 48 hours," Teresa Cheney, nurse practitioner-board certified and nursing clinic director, said.

"What we're doing here at health services is looking at how a mass media campaign can impact the vaccination rate among students," Cheney said.

Appointments can also be made year-round to receive the flu shot at the Health Services building using MyGeorgiaSouthern, but walk-ins are also accepted.

In 2011, the health clinic was able to increase the vaccination rate by over 25 percent. There was also a 55 percent decrease in flu diagnoses

on campus, Shropshire said.

Katie Thatcher, physician's assistant, certified, at the health services clinic also shared her personal experience with the flu when she was a student at GSU.

"I got the flu when I was 18, and I was sick as a dog. I've gotten the shot every year since," Thatcher said.

Students of the School of Nursing also expressed their concern about the importance of getting vaccinated against the flu.

Amanda Sharp, junior nursing major, said she thought that the vaccine was necessary.

"We all live in close proximity and everyone is around each other, especially freshmen living in dorms," Sharp said.

"Stress can load your immune system so you're more susceptible to catch the flu," Ellie Finch, junior nursing major, said.

The Zach S. Henderson Library staff is also taking their own measures to inform students about the flu and prevent it from spreading. In addition to regularly wiping down keyboards and having hand sanitizer easily accessible, the staff is looking to place printouts at the front desk from the Center for Disease Control about the flu.

"We want to bring the flu season to the students attention. That time of year is coming," Ruth Baker, Learning Commons supervisor, said.

The flu season typically begins around Oct. and will last until March, but the most active months for the flu are Jan. and Feb. Touching infected objects or inhaling respiratory droplets that spray when a person coughs or sneezes most commonly spreads the flu virus,

Myth

"I can get the flu by getting the flu shot"

"I'm healthy so I don't need to get the flu shot"

"If I have flu-like symptoms, then I must have the flu"

Medical Fact

The flu vaccine cannot give you the flu. The most common side effect is a sore arm after the shot.

Everyone is susceptible to the flu virus. Even healthy people can get the flu and experience serious complications.

Many symptoms of the flu could just be the result of a cold or bronchitis, both of which are common during the flu season.

Tyler Fleider/The George-Anne

Shropshire said.

The symptoms of the flu include fever, body ache, shaking, chills, coughing and runny nose. Sometimes these symptoms can be misleading and cause a patient to believe that they have contracted the flu when in reality they only have a cold or bronchitis.

"If you can keep on doing what you're doing,

then you don't have the flu," Cheney said.

The flu makes a patient feel like a total wimp, Cheney said.

Cheney said, seek medical attention as soon as the symptoms manifest and remember that the key time to go to the doctor is 48 to 72 hours after symptoms begin showing in the patient.

FRATERNITY, from page 1

the future."

It will be all up to the group as to what events this chapter hosts, however in all of the other chapters, philanthropy is a strong quality, Humberger said. Georgia Institute of Technology and Augusta State University are two universities in Georgia that have recently acquired Alpha Sigma Phi.

The process that Alpha Sigma Phi will be going through is in fact a very informal process to start and join a fraternity, compared to the extensive procedures in place to install a new sorority, Jess Turuc, interim director for GSU's Greek Life, said. All that is needed

for the fraternity to begin is an agreement between the fraternity's national office and the University's Greek Life office.

"As we look at the growing enrollment it makes sense to add more (fraternities and sororities) in order to revitalize the community," Turuc said.

Expanding Greek Life can be beneficial for the school as a whole as well, Aron Randall, vice president of the Inter-Fraternity Council, a Delta Chi Fraternity member and a senior majoring in political science and engineering, said.

"If you are involved in a chapter, then you have all those people supporting you and wanting you to succeed. It is where you fit in

and find a home," Randall said.

Overall, people in Greek Life maintain a higher GPA due to the requirements set to join a sorority or fraternity, the graduation rate for those involved in Greek Life is 70 percent, where as the graduation rate for non-Greeks was 50 percent or less, Randall said.

Randal said that, on a national average, Greek Alumni are the second biggest donors to schools, next to Athletic Alumni. A growing greek life means more involvement, and it is better for the school.

Turuc said the most recent fraternity to join GSU was Pi Kappa Theta, and it was founded in the spring of 2011. Since there

was just an additional sorority added this past spring, Delta Phi Epsilon, it will be another three or five years before another one is added.



Photo courtesy of Alpha Sigma Phi

Vote for student fees nears conclusion

BY LAUREN GORLA

The George-Anne contributor

Today is the last day that Georgia Southern University students can access WINGS to make their voice heard on the three proposed student fees for 2013.

"I can see all three getting passed, and I personally hope all three pass," Christina Belge, SGA executive vice president said.

Students across campus have been logging onto their WINGS accounts and voting 'yes' or 'no' for three different fees on sustainability, the possible move to FBS if GSU receives an invitation and expanding Allen E. Paulson Stadium.

"It's your money so therefore you should have a say," Belge said.

Patrick Teate, senator for the College of Science and Mathematics, agreed with Belge on students needing to vote.

"It's a lot of money, and it's a lot of change," Teate said.

"I think it's important for the student voice to be heard," Patrice Jackson, dean of students, said.

Many students may have heard that if a student does not vote at all, then an automatic yes will be submitted for the three fees. These rumors are not true and should not be taken seriously by students, Jackson said.

The student vote is not the final say on whether or not these fees will definitely be applied to student's bills in the upcoming years. If students vote yes to the new fees, then it will go on to the Board of Regents to make the final decision. If students vote no, then the fee will be put to rest, Jackson said.

"We are making a decision on the majority of voters. Whatever the majority decides will determine whether or not we propose it to the Board of Regents or not," Jackson said.

Students on campus shared how they voted and reasons why they agree or

disagree with the three fees up for vote.

Expanding the stadium seems like the right thing to do, Gavin Brown, junior finance major, said.

"I think it will attract more people and show off the school," Brown said.

Brown voted yes to all three fees.

Some students feel like too much attention is being placed on football and education is being ignored.

"I don't see how football is going to help me after graduation," Taleesa Davis, junior early childhood education major, said.

Davis voted no to the \$75 FBS and \$25 expansion fees but did vote yes to the \$10 green fee.

One student felt that the football team should stay in the Football Championship Subdivision.

"I don't think we'll do as good if we move up," Lindsay Frantz, freshman undeclared, said.

Marching band members like Michael

Johnson, junior psychology major, appreciate the potential of having a larger stadium. He voted yes to all three of the fees.

"This year the marching band got compressed because it's really hard to put us all in there," Johnson said.

"The green fee is really necessary because from what I understand there's no budget (for the Center for Sustainability)," Johnson said.

Hall council members in Centennial Place have also been working this week to make sure every student has the chance to vote and understands what he or she is voting for.

"All we're trying to do is have students make an informed vote," Aubrey Trevathan, freshman public relations major and director of marketing for Centennial Place, said.

Trevathan said Southern Pines is having a voting party for the student-voting fee.

GSU alligator stolen

BY TAYLOR COOPER

The George-Anne staff

An American alligator was stolen from the Georgia Southern University Center for Wildlife Studies on Thursday, Sept. 20 and has yet to be located.

According to an incident report that was released by the Office of Public Safety, an unidentified male, who attempted to sell a red boa constrictor to the museum, approached a staff member.

That same afternoon, one of two American alligators was taken from an aquarium.

"He was the only person in the area at the time of the theft," Scott Courdin, curator of the Center for Wildlife Studies, said.

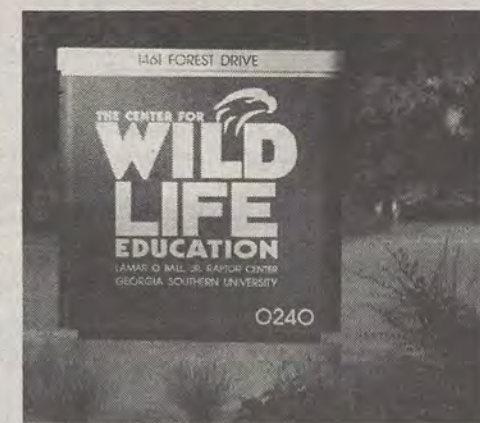
The alligator was last seen one hour before it was discovered missing, according to the report.

"It was a baby, barely a foot and four inches, a little older than a year," Courdin said.

The individual that took the alligator was probably not a student, Courdin said.

"It probably wasn't a student, but I have not been informed if the person we suspect has been charged with anything," Courdin said.

The alligator's disappearance won't affect the center very much, but it will affect what



Lindsay Hartmann/The George-Anne

The alligator theft is still an open investigation.

people learn from it.

"A lot of our guests and visitors won't be able to see two alligators interacting. We still have the one alligator, so the educational component is there," Courdin said.

There are multiple reasons someone might have taken the animal.

"People might like them as a pet. Someone might sell them," Courdin said.

Michael Russell, division head of the Office of Public Safety, said no one has been charged with the crime yet.

★ ★ ★ Sports ★ ★ ★ EMPORIUM

"Your largest selection of athletic footwear in Statesboro"



Buckhead Place across from the Big El Som

912.764.4449



Login to WINGS **SEPT. 25-27**



\$25

**ATHLETIC FACILITY
EXPANSION**

\$75

**FOOTBALL BOWL
SUBDIVISION**

\$10

**SUSTAINABILITY
EFFORTS**



For video and fee details, visit: GeorgiaSouthern.edu/vote

THE 'BORO BEAT



HAPPY HOUR



LIVE BAND



★ SPECIAL EVENT

THURSDAY

Applebee's

Happy Hour 3-6 p.m. 9 p.m. to close
\$3 margaritas
\$3 long island
\$3 domestic draft

Dingus Magee's

Happy Hour 5-7 p.m.
Happy Hour 9-11 p.m. (no apps)
\$2 Wells
Buy 1 Get 1 Bomb
Buy 1 Get 1 Appetizer
Looters

El Sombrero

\$2.50 draft beer

Gnat's Landing

Happy Hour 5-7 p.m. and 9-11 p.m.

Holiday's Greek and Italian

Yang and wings (pitcher of beer and 12 wings for \$12.99)
\$10.99 for two 12 inch one topping pizzas

Loco's Grill and Pub

\$2 Draft Pints

Mellow Mushroom

Happy Hour 5-7 p.m.
\$2.75 Draft
\$2 Margaritas
\$3 Wells
\$3 Wine

Millhouse

\$1.99 Drinks All Day Every Day

SATURDAY

Applebee's

Happy Hour 3-6 p.m. 9 p.m. - close
\$3 margaritas
\$3 long island
\$3 domestic draft

Dingus Magee's

\$2 Wells
Buy 1 Get 1 Bomb
Buy 1 Get 1 Appetizer
Eddie and the Public Speakers

El Sombrero

\$2 margaritas

Millhouse

\$1.99 Drinks All Day Every Day

Gnat's Landing

DJ Benjamin
\$10 Liquor Pitchers
\$10 Bucket Domestic Beer

Holiday's Greek and Italian

Yang and wings (pitcher of beer and 12 wings for \$12.99)
\$10.99 for two 12 inch one topping pizzas

Loco's Grill and Pub

\$5 Miller Light Pitcher
Kermit and Bob

Mellow Mushroom

Happy Hour 5-7 p.m.
\$2.75 Draft
\$2 Margaritas
\$3 Wells
\$3 Wine

FRIDAY

Applebee's

Happy Hour 3-6 p.m. 9 p.m. to close
\$3 margaritas
\$3 long island
\$3 domestic draft

Dingus Magee's

Happy Hour 5-7 p.m.
Happy Hour 9-11 p.m. (no apps)
\$2 Wells
Buy 1 Get 1 Bomb
Buy 1 Get 1 Appetizer
Those Cats
★ Chippers Last Game

El Sombrero

\$2 sex on the beach

Gnat's Landing

Happy Hour 5-7 p.m.
DJ Out of Town

Holiday's Greek and Italian

Yang and wings (pitcher of beer and 12 wings for \$12.99)
\$10.99 for two 12 inch one topping pizzas

Loco's Grill and Pub:

\$4 Crown

Mellow Mushroom:

Happy Hour 5-7 p.m.
\$2.75 Draft
\$2 Margaritas
\$3 Wells
\$3 Wine

Millhouse

\$1.99 Drinks All Day Every Day

SUNDAY

Applebee's

Happy Hour 3-6 p.m. 9 p.m. to close
\$3 margaritas
\$3 long island
\$3 domestic draft

Dingus Magee's

Happy Hour 5-7 p.m.
Happy Hour 9-11 p.m. (same w/ no appetizers)
\$2 Wells
Buy 1 Get 1 Bomb
Buy 1 Get 1 Appetizers

El Sombrero

\$3 wells mixed drinks

Gnat's Landing

Happy Hour All Day

Holiday's Greek and Italian

Yang and wings (pitcher of beer and 12 wings for \$12.99)
\$10.99 for two 12 inch one topping pizzas

Loco's Grill and Pub

Happy Hour 5-7 p.m.

Mellow Mushroom

Happy Hour 5-7 p.m.
\$2.75 Draft
\$2 Margaritas
\$3 Wells
\$3 Wine

Millhouse

\$1.99 Drinks All Day Every Day

- Eye Exams
- Glasses
- Contacts

Boomers
Vision Center
Statesboro

912-489-6655

820 HWY 80 E. (in front of Lowes)
www.boomersvisioncenter.com

Orient Express

15 University Plaza
(912) 681-9777 or (912) 681-9888

WE DELIVER!!!

(\$10 minimum)

**10% off
DINNER
ONLY***

if you bring in this clipout
*delivery not included

www.orientexpressofgsu.com

YOUR OFF CAMPUS GUIDE

SEPT. 27 – OCT. 2

MONDAY

Applebee's
 Happy Hour 3-6 p.m. 9 p.m. - close
 \$3 Margaritas
 \$3 Long Island
 \$3 domestic draft

Dingus Magee's
 Happy Hour 5-7 p.m.
 Happy Hour 9-11 p.m. (no apps)
 \$2 Wells
 Buy 1 Get 1 Bomb
 Buy 1 Get 1 Appetizer
 All you can eat beer and wings \$14

El Sombrero
 \$2 Margaritas

Gnat's Landing
 Happy Hour All Day

Holiday's Greek and Italian
 Yang and wings (pitcher of beer and 12 wings for \$12.99)
 \$10.99 for two 12 inch one topping pizzas

Loco's Grill and Pub
 ★ Coach's Show w/ Jeff Monken
 \$5 Bud Light Pitcher

Mellow Mushroom
 Happy Hour 5-7 p.m.
 \$2.75 Draft
 \$2 Margaritas
 \$3 Wells
 \$3 Wine

Millhouse
 \$1.99 Drinks All Day Every Day

TUESDAY

Applebee's
 Happy Hour 3-6 p.m. 9 p.m. to close
 \$3 Margaritas
 \$3 Long Island
 \$3 domestic draft

Dingus Magee's
 Happy Hour 5-7 p.m.
 Happy Hour 9-11 p.m. (no apps)
 \$2 Wells
 Buy 1 Get 1 Bomb
 Buy 1 Get 1 Appetizer

El Sombrero
 \$2 Daiquiri

Gnat's Landing
 ★ Trivia @ 7 p.m.
 Happy Hour 5-7 p.m.

Holiday's Greek and Italian
 Yang and wings (pitcher of beer and 12 wings for \$12.99)
 \$10.99 for two 12 inch one topping pizzas

Loco's Grill and Pub
 \$3 Absolut

Mellow Mushroom
 Happy Hour 5-7 p.m.
 \$2.75 Draft
 \$2 Margaritas
 \$3 Wells
 \$3 Wine

Millhouse
 \$1.99 Drinks All Day Every Day

TO REQUEST SPACE FOR YOUR RESTAURANT OR BAR
 IN THE GEORGE-ANNE'S 'BORO BEAT,
 EMAIL FEATURES@GEORGIASouthern.EDU

FREE

R.J. Pope T-shirt with
 a \$50 Purchase

R. J. Pope
 Men and Ladies Apparel



f Like us on Facebook

840A Buckhead Drive
 5 South Main St. 912.764.6973



"BAD TO THE BONE"

5 Piece \$3.99 Wednesday is Wingsday
 10 Piece \$6.99 2 for 1 wings!



Located next to Wal-Mart
 912.764.6556

FREE FRIES

With a purchase of
 Boneless Wings!

med. fries
 one per customer
 Expires 12.14.12
 Must present coupon

Open container permits in talks for downtown events

BY MARISSA MARTIN

The George-Anne staff

Savannah's alcoholic privileges may come to the streets of downtown Statesboro as the Downtown Development Authority discusses permitting open container in downtown Statesboro.

The permits would allow open container, in conjunction with bars and restaurants, on South Main St., West Main St., East Main St. and Vine St. during designated events as a promotional tool to attract higher volumes of customers to the surrounding businesses.

"It is something that has been discussed for appropriate times like First Friday," Allen Muldrew, director of Downtown Statesboro Development Authority, said.

Open containers are currently not allowed in Statesboro without a permit.

The conversation has begun, but finalizing the details won't take place until the end of this year, Muldrew said.

"It is subject to how the conversation goes.

It's a possibility that this would be something our merchants would want," Muldrew said. "We want to see who would oppose this and who supports this."

South and Vine Public House, a new restaurant opening later this year, supports the discussion.

"Personally I'm all for it. I'd like to get my doors open before I put my opinion for my business out there but this would encourage people to come downtown and create a more vibrant atmosphere," Seni Alabi-isama, owner of South and Vine Public House, said.

This would benefit all the businesses in the downtown area, not just the bars, Alabi-isama, said.

"It would be good for all the businesses down here: shops, restaurants, everything," Alabi-isama said.

A new scene is emerging in the downtown area, and Statesboro needs something new like a barhopping scene besides the area next to the dorms, Emily Glass, senior public relations major and former intern at the

Downtown Development Authority, said.

The regulation of alcoholic consumption outside of the restaurants will not be controlled by the city, Muldrew said.

"They are trying to see how to make money and keep the drinking contained inside the parameters of the downtown area," Glass said.

"This is not something the city or downtown would regulate. We would regulate it through the restaurants who want to work with this," Muldrew said.

A new bar scene in the downtown area has slowly emerged as the DDA pushes for new restaurants and special events, Glass said.

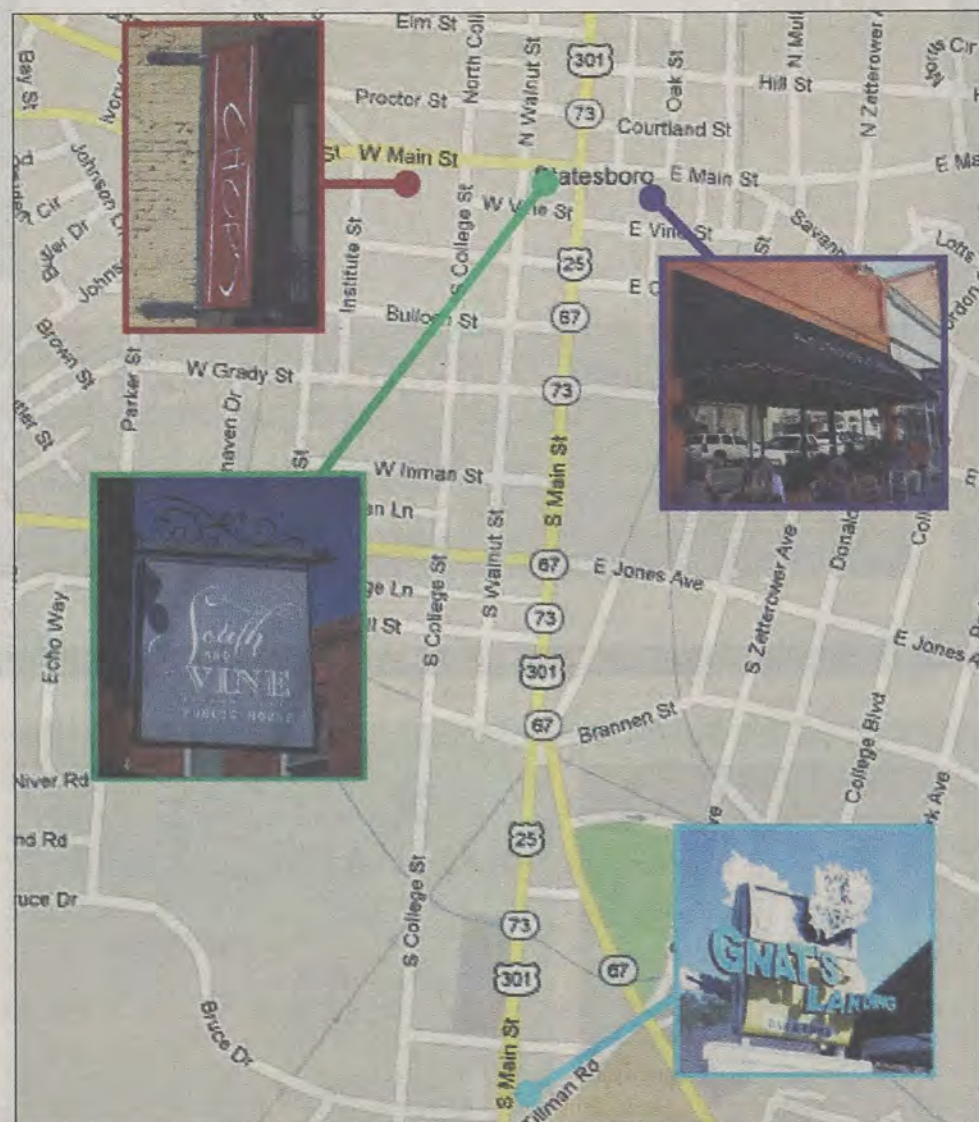
"We are looking at successful communities who have them and communities that this did not work well in," Muldrew said.

Georgia Southern University students have agreed that making this move would bring more business to the area.

"My PR research class did research for a client in downtown, and the whole class basically agreed that people would go down there more often if it was like River Street in downtown Savannah," Glass said.

"I think it would if they did the right type of advertising. You don't hear much about downtown besides the Averitt Center," Jasmine Hayes, junior graphic design major, said.

Kevin Tornillo, freshman political science major, said, "It depends on the type of atmosphere down there. You wouldn't go to a restaurant but if it was like a party then maybe."



Photos by Rebecca Farris/The George-Anne and graphic by Tyler Fleider/The George-Anne

Open container permits in Downtown Statesboro would influence restaurants such as 119 Chops, Gnat's Landing, South & Vine and 40 East Grille.

Not going to class.
In bad shape 2day.

SWYP?

IDK. Allergies? Sick?

U should go 2
South Georgia Immediate
Care Center. They r really
gr8 and fast.

K cya l8r.

No matter what's wrong,
let us take good care of you.

**SOUTH GEORGIA
IMMEDIATE
CARE CENTER**

1096 Bermuda Run Road
(next to Mellow Mushroom)
Statesboro, GA 30458
p - 912-871-5150
yourimmediatecarecenters.com

CONVENIENTLY LOCATED MINUTES FROM GSU.
CARING AND CONFIDENTIAL TREATMENT.
HOURS:
Monday - Friday 9:00 am - 8:00 pm
Saturday 9:00 am - 5:00 pm
Sunday 12:00 pm - 5:00 pm

Most insurance accepted - bring your insurance card and
Driver's License. Please call with co-pay and insurance questions.
Cash patients also welcome.

Rhythm and Brews to bring life to garden



File Photo

Rhythm and Brews will be held at the GSU Botanical Gardens on Friday.

**BY KALEY RANDOLPH
and ANDRE YANDOW**

The George-Anne contributors

Beer, BBQ and music will bring the community together at the Garden of the Coastal Plain at Georgia Southern University.

The third annual Rhythm and Brews event will take place on Friday from 7-10 p.m. featuring food from Big Bad Wolf BBQ, music from bluegrass jam fusion band The Mosier Brothers Band and beer from various vendors.

"It's an amazing band in a beautiful place, and it's a good cause to benefit the university and the community," Carolyn Altman, garden director, said.

Front man of the band, Jeff Mosier, has worked with the popular jam-band Phish, tutoring them in the ways of bluegrass.

Mosier's daughter is a freshman at GSU, which prompted the band's decision to play at the event, Altman said.

Pulled pork, smoked chicken, cole slaw, potato salad, vegetarian baked beans, chocolate cake, banana pudding and tea by Big Bad Wolf BBQ are all included in the menu for the night.

Individuals involved with Rhythm and Brews would like the event to become a fall tradition incorporated into homecoming week or the family weekend, Altman said.

"The beer is great and the food is terrific," Altman said.

Bill Thomas, co-owner of Big Bad Wolf BBQ, is excited to be catering the event for the second year in a row.

"Last year was so much fun, and the staff out there was wonderful," Thomas said.

Altman and Thomas agreed that students and community members should come out to Rhythm and Brews in support of the Garden of the Coastal Plain.

"It's hard to be there and not smile," Thomas said.

Thomas is a graduate of GSU and became the first eagle mascot as a student.

The ties with the community of Statesboro run deep and make the event's purpose that much sweeter, Thomas said.

Altman stressed the importance of coming to the event because fundraisers such as Rhythm and Brews fund all of the garden's upkeep and growth.

"The garden is the heart of where Statesboro came from," Altman said.

The Garden of the Coastal Plain offers a lot to the community, including educational tours and holds occasional weddings.

The garden serves over 1,200 GSU students per year, providing them classes and jobs and also sees 2,000 school children per year for field trips, Altman said.

Tickets are \$50 per person, including the unlimited beer tasting of brand new craft beers and dinner. All event goers must be 21 or older.

GSU student to inspire painters at Sip and Dip

BY PEYTON CALLANAN

The George-Anne contributor

The Averitt Center for the Arts will provide a painting workshop taught by a Georgia Southern University student that will allow attendees to explore their creative side while they sip on the beverage of their choice.

The "Sip and Dip" workshop will consist of three separate classes on Sept. 27, Oct. 11 and Oct. 25 each with a different theme, and will be taught by GSU student Haley Tam, junior graphic design major.

"The students will be given a template to follow, a quick lesson on color theory, a canvas and access to all the paint they want. The students are also invited to bring the beverage of their choosing to sip on while they paint," Tony Phillips, program director at the Averitt Center, said.



Haley Tam

The event costs \$35 for members and \$44 for non-members of the Averitt Center and no prior experience in painting is required. Though the event is open to anyone over the age of 16, patrons 21 or older can bring alcoholic beverages.

"It's not just for artist; you could have never picked up a brush before. You can have fun and leave with your own master piece," Tam said.

Tam will guide students through all three classes from 7 to 9 p.m., each with their own special theme, the first is "Swirly Tree," the second "Rooster" and the third "Funky Flower Vase."

Tam taught similar classes during the summer in Thomson, Ga. and wanted to provide them to the Statesboro community at the Averitt Center where she volunteers.

"I had several people tell me about similar classes they had taken, and they told me to look into it, so I did a little research and started them back home in Thomson through the McDuffie Arts Council," Tam said.

Tam, who also teaches private lessons and does commissioned artwork, has had a love of

art all of her life.

"Since preschool I have stood up at career day and said I want to be an artist. I have taken lessons my whole life and always known I want to work in graphic design. Painting just came along with that," Tam said.

The Averitt Center offers a wide variety of

programs and classes for the local community that allows them to explore the world of art in a way they might not otherwise be able to in Statesboro.

Victoria Barlow, junior fashion design major, said, "I think as far as arts go it's really relaxing. You can just let go."

SOUTHERN
Collegiate
Leadership Conference

Saturday, October 20



GeorgiaSouthern.edu/sclc
Office of Student Leadership & Civic Engagement
Your Student Activity Fees at Work

Workshop
Track

Emerging
Leadership



SCAN ME!

CLASSIFIEDS

This page brought to you by Career Services
Explore • Experience • Excel

14 Thursday, Sept. 27, 2012

www.thegeorgeanne.com

Housing

Looking for 3rd roommate in Planter's Row, 1308 Magnolia Way. \$365 plus 1/3 of the utilities. Private bedroom and bath. Close to campus. Existing window covering. Two college age males currently live here. Contact: pm01393@georgiasouthern.edu

A female sub-leaser needed for Spring 2013 semester ASAP! A 4 bedroom, 2 bath at Cambridge apartments with a beautiful view of the pond and right on the bus route! Please contact Sydney by email: sr01982@georgiasouthern.edu or phone: 770-500-6485 if you are interested!

Looking for female to sublease Spring semester 2013! 4 BR/BT, \$500/month. Brand new apartments with great amenities. The Forum at Statesboro. Amazing Roommates! Call/text and/or email Ketonna: 706-201-1035 ka01879@georgiasouthern.edu

Help Wanted

BARTENDERS WANTED!
\$250 a day Potential. No Experience Necessary. Training Provided. Age 18+ OK Call 1-800-965-6520 ext 296.

For Sale

2000 Lincoln Continental, 129,000 miles, good condition. 687-4171.

Something to sell?

Visit thegeorgeanne.com or email

ads1@georgiasouthern.edu
It's free for students, staff and faculty!

HELP WANTED

Special Projects Assistant Part Time

POSITION DESCRIPTION: Student Media. This position will serve as an ad advisor for students in the Business Division. Duties will include coordinating training for all new students hires, meeting with business staff weekly, offering advice regarding sales approaches and serving as a role model for student staffers. Perform additional job-related duties as required by director.

MINIMUM REQUIREMENTS: High School Diploma or equivalent plus three or more months of post-secondary education (additional experience may substitute for some of the education requirement); three or more years of related work experience; proficiency with computers and Microsoft Office applications, including word processing, spreadsheet and databases; effective communication (verbal and written), organization and human relations skills; ability to work well in a diverse environment; successful completion of background investigation prior to employment.

PREFERRED QUALIFICATIONS: Sales certification training, associate's degree in business; sales experience, ideally in media ad sales

SALARY: Commensurate with experience and qualifications

APPLICATION DEADLINE: September 21, 2012

TO APPLY: Please visit the Georgia Southern University employment website and complete the application process at <https://employment.georgiasouthern.edu/>. The application process must be completed by the deadline to be considered. For more information, call the 24-hour job line at (912) 478-0629. Georgia is an open records state. Individuals in need of reasonable accommodations under the ADA to participate in the search process should notify Human Resources: 912-478-5468 or HR-TDD: (912) 478-0791. Georgia Southern is an Equal Opportunity/Affirmative Action Institution.

PAID ADVERTISEMENT

Road Trip to My Major

By: Taylor Terrell
Public Relations/Events Intern

Bring your friends and get ready to begin making the road trip to find your perfect major! Join the discussion and learn how to gain relevant experience, land your dream job, or how to make your own road trip. On **Thursday, September 27, in the Russell Union Career Development Specialist** will conduct various sessions that will encourage students to learn more about who they are and their personal interests that will set them on the right path to finding their passion!

Below are the session, locations and times:

12:30 p.m. – 1:30 p.m.

Session A: *Discovering Your Dream Job: True Colors?* – RU 2084

You could be gold, blue, green, or yellow? No matter which "true color" you are, learn how your personality, work ethics, and decisions play a part in your career choice.

Session B: *Getting Experience: What, Why and How* – RU 2080

Finding an internship and/or co-ops are avail-

able for every major. Learn the "ins and outs" of these experiences while receiving tips and resources for finding the best opportunities for your major.

2:00 p.m. – 3:00 p.m.

Session A: *Make Your Own Road Trip!* – RU 2084

Learn how to shape your destiny by making insightful choices that are a reflection of your personal interests and skills. If your parents, salary expectations, society, or friend are choosing your major for you...think about attending this session!

Session B: *Discovering Your Dream Job: What about your Personality?* – RU 2080

Come and learn about your personality type and what career options can make you one step closer to your final destination.

3:30 p.m. – 4:30 p.m.

Session A: *Getting Experience: What, Why and How* – RU 2084 (See above)

Session B: *Discovering Your Dream Job: What about your Personality?* – RU 2080 (See above)

Bring your friends!

Road Trip to My Major

KEEP RIGHT

FIND YOUR MAJOR HERE

bit.ly/roadtriptomymajor

PUZZLES/COMICS

www.thegeorgeanne.com

Thursday, Sept. 27, 2012 15

Los Angeles Times Daily Crossword Puzzle

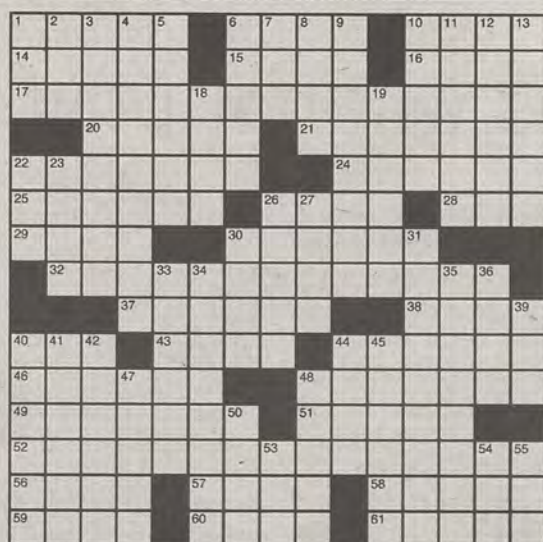
Edited by Rich Norris and Joyce Lewis

ACROSS

- 1 Use as an ingredient
- 6 Coordinating pillowcase
- 10 Big fishhook
- 14 "evil ..."
- 15 Something in the air
- 16 Fisherman's gadget
- 17 One in a dozen difficult jobs
- 20 Command from le général
- 21 If nothing else
- 22 Strait of Gibraltar port
- 24 Antiseptic element
- 25 "As Husbands Go" novelist Susan
- 26 Without
- 28 Mountain goat's perch
- 29 V... Victor
- 30 Mischievous sprites
- 32 One in a dozen old family lines
- 37 Wrongly desires
- 38 Fed. crash investigator
- 40 Commotion
- 43 "Nothing's stopping us"
- 44 Change the expiration of, as milk
- 46 Fishy fellows?
- 48 Event after morning twilight
- 49 Find after digging
- 51 ... pool
- 52 One in a dozen constellations
- 56 Cupid's counterpart
- 57 The Miners of Conf. USA
- 58 Shakespearean barmaid
- 59 No longer in the oven
- 60 Some hosp. staffers
- 61 Seamless transition

DOWN

- 1 Subj. taught in silence
- 2 Justice Dept. division



By Norfleet Pruden

Tuesday's Puzzle Solved

S	T	A	R	T	E	D	T	B	A	E	T	A
C	H	E	E	R	I	O	Y	E	T	N	O	R
R	O	T	T	E	N	A	P	P	L	E	L	A
A	R	N	I	E	C	O	I	L	S	A	S	S
M	O	A	N	C	A	R	S	O	N	C	I	T
A	D	A	M	T	W	O	A					
P	L	O	E	R	E	I	H	B	O	M	B	
J	O	H	N	N	Y	O	N	T	H	E	S	P
S	A	M	O	A	S	O	I	L	T	O	W	
C	A	S	H	I	N	H	A	N	D	H	A	S
O	N	U	S	D	O	E	S	H	E	I	N	E
R	N	A	B	E	N	C	H	W	A	R	M	E
G	U	V	C	A	D	I	S	R	A	E	L	I
I	L	E	E	R	A	P	U	M	M	E	L	S

- 3 Sophisticatedly charming
- 4 Like ammonia, chemically
- 5 Alternative to Alpine, in skiing
- 6 Not as dangerous
- 7 "What'd you say?"
- 8 Cordoned-off space
- 9 Bond's were shaken
- 10 Bonded, in a way
- 11 Café specification
- 12 California's largest inland city
- 13 Rankle, as resentment
- 18 Metal-yielding rocks
- 19 The Yankees' Mariano Rivera, e.g.
- 22 Niña's aunt
- 23 Mgr.'s helper
- 26 Puts through a strainer
- 27 Center of rotation
- 30 One who "can survive everything but a misprint": Wilde
- 31 "A Summer Place" actress
- 33 Ravel classic
- 34 Momentous
- 35 Online stores, collectively
- 36 WWII carriers
- 39 Comb user
- 40 Pleasantly diverted
- 41 Young Vito Corleone portrayed in "The Godfather Part II"
- 42 End of an old trail
- 44 Phillies catcher Carlos
- 45 Provides funding for
- 47 Pastor's place
- 48 Instruction manual segments
- 50 URL leader
- 53 Feathery layer
- 54 Start to puncture?
- 55 Cohort of Fidel

IN THE GALACTIC GAMES, PRESIDENTIAL CANDIDATES COMPETE WITH EACH OTHER...



IN EVENTS LIKE THE POLL VAULT, NEGATIVE AD TOSSES, THE PASS-THE-BUCK RELAY, AND SYNCHRONIZED FUNDRAISING.



KNOW WHAT THIS COMPETITION NEEDS? ARCHERY.



HEY CHUCK, ARE YOU FREE TO HELP THE COLLEGE REPUBLICANS LATER?



OF COURSE I'M FREE!



THIS IS AMERICA!



3			1			5	
		5		6			
	2	4			8		
						5	1
6		7					9
		9	7				
			5			3	2
				4		7	
8				2			6

Sudoku

JOIN
THE
TEAM
BEHIND THE SCENES

WOULD YOU LIKE TO BE A



Designer



Photographer

Submit your resume to Williams Center, RM 2023

If you have any questions, contact Student Media Director John Harvey at 912.478.0059 or email johnharvey@georgiasouthern.edu.

Sports Talk

Another close one? Really? | Eagles will not play fetch

THE BOLD OPINION



JANNAH BOLDS
FOOTBALL EDITOR

Georgia Southern University won against the unranked Elon University by a hair, just three points, and this next matchup will be a rough one against Samford University.

Not only are the Bulldogs undefeated, but they are also in the number one spot that the Eagles claimed at the beginning of the season.

Last week the Eagle secondary had some difficulty keeping up with the Phoenix aerial attacks because that was basically their go-to type of play. This time the Eagles will hit the same wall but with the addition of a fierce running back.

Fabian Truss has already scored seven touchdowns by his lonesome this season

and he will stop at nothing just because GSU players stand in his way. As a matter of fact, his last game was so impressive against Western Carolina University that the Southern Conference named him Offensive Player of the Week.

That deadly offensive package that the Bulldogs possess could be fatal to GSU's success. However, the Eagle defense is looking pretty solid and has been practicing nonstop to reach perfection. Even though it will be another close game that Eagle Nation will have to endure, I still believe the Eagles will come out on top 21-18 when the final clock hits zero.



Lindsay Hartmann/The George-Anne

The Georgia Southern University football team will be hounded by the second team of Bulldogs it has faced this season on Saturday, and the Eagles have a good chance to win this week.

Play on the field is expected to get very physical, and parents who attend Family Weekend are not likely to approve.

The Eagle defense is ranked seventh nationally in total offense, and they will look to subdue a Bulldog offense that is well rounded and capable of scoring over the ground and through the air.

On offense, the

THE KG IMPRESSION



KEVIN GREGAN
FOOTBALL REPORTER

Eagles will rely on their rushing game that is ranked second nationally so far this season.

The Samford University Bulldogs are rabid on the road. They're coming off a fourth-quarter comeback on the road at Western Carolina University, are 2-0 on the road so far and they're coming into Paulson with a lot of confidence.

While the Eagles lost against the Citadel Bulldogs, the Eagles can beat the Samford Bulldogs if they don't drop the football. Everybody knows how dogs love to play fetch.

The Eagles hold the advantage in both offensive and defensive categories, and these factors should allow for another close win by a score of 31-28.

Eagles look to take down No. 1 in SoCon

BY JANNAH BOLDS

The George-Anne staff

Head coach Jeff Monken and his Georgia Southern University Eagles will look to keep the momentum from the win against Elon University going this weekend against Samford University.

The Bulldogs are coming off of a win similar to that of the Eagle's over the weekend. Samford defeated the University of Western Carolina Catamounts 25-21 while GSU won by a hair against the Elon University Phoenix 26-23.

Samford sits at the top of the Southern Conference rankings after winning all four

regular season games, two of which are SoCon matches. The Eagles lost their spot quickly after the Citadel upset a few weeks ago, and now they stand in the No. 4 spot in the SoCon.

The Eagles will face a team with a different quarterback from last season, senior Andy Summerlin, who is still capable of putting up similar numbers. The Bulldogs had quarterback Dustin Taliaferro who put up three times the amount of completions and attempts than GSU's former quarterback Jaybo Shaw.

However, now that Samford has Summerlin, the Eagles have a new focus for this match up. Summerlin, in 2011,

completed 49 of 94 passes for a total of 469 yards. This season so far he has completed 89 of 129 passes for 817 total yards and four touchdowns. His longest pass so far was for 51 yards.

Although Samford recorded more passing yardage than GSU with 277-95 yards, in 2011, the Eagles out-rushed the Bulldogs 263 to 61 yards.

GSU junior SLOT Robert Brown led his team with the most rushing yardage against the Bulldogs with 140 yards. Samford's junior running back Fabian Truss ran significantly less yardage last season with 76 yards.

Junior quarterback Jerick McKinnon

came closest to Brown's numbers with 83 total rushing yards, still more than Samford's Truss.

The Bulldogs did have the advantage last season regarding receiving yardage with junior wide receiver Kelsey Pope. Pope had six catches for 71 yards with his longest being 15 yards. The leader for the Eagles was sophomore wide receiver Kentrellis Showers with only two catches for 18 total yards with his longest being 13 yards.

For this matchup, not only will the Eagles have to look out again for their opponents' aerial attacks offensively, but they will also have to keep an eye on the ground for rushing.



Mark Barnes II/The George-Anne

The new football uniform design for Military Appreciate day was unveiled yesterday by President Brooks Keel and coach Jeff Monken at the Rotunda. The uniforms will be worn on Oct. 13 during the game against Wofford.

GSU aims to continue SoCon winning streak

Volleyball

BY JACKIE GUTKNECHT

The George-Anne staff

The Georgia Southern University volleyball team looks to continue its Southern Conference winning streak on home turf against The Citadel Bulldogs on Friday and the College of Charleston Cougars on Saturday.

The Bulldogs and Cougars faced off against each other Tuesday night, with the Cougars sweeping the Bulldogs 3-0. The Cougars carry a 9-5 record, and is 2-0 in the SoCon, while the Bulldogs are 2-13 and 0-2 in the SoCon.

The Bulldogs are currently on a three game losing streak, while GSU is hoping to catch its fifth win in a row. The challenge will come against the Cougars who are on a three game winning streak.

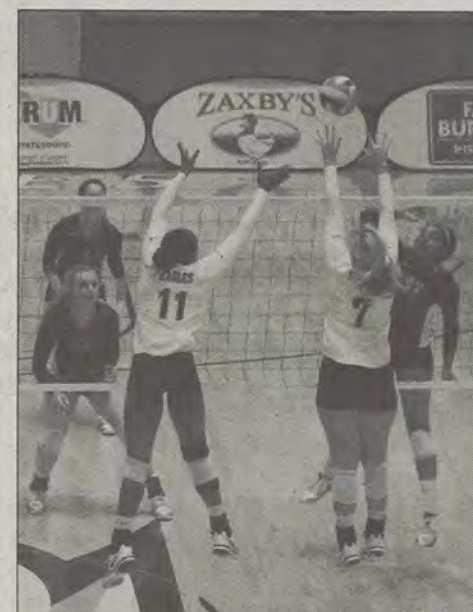
The Eagles have a 4-1 record at home and look to continue that with CofC who has a 3-1 record on the road and The Citadel who has a 1-4 record on the road.

GSU's offense is going to be forced to use their strong hitters to throw off the equally matched defenses of The Citadel and CofC.

GSU sophomore middle Kym Coley and sophomore outside Jamie DeRatt both recorded 10 kills in their last match against Furman University. CofC notched nine team blocks in its match against The Citadel, who tallied six.

Eagles' freshman libero Alexandra Beecher currently averages 4.62 digs per set, while Shelton records 5.31 digs per set, and The Citadel senior libero Emily Dalton holds 3.13 digs per set.

GSU senior setter Kate Van Dyke, who



Mark Barnes II/The George-Anne

Junior middle Enjoli Johnson (11) and senior setter Kate Van Dyke (7) go up for a block.

currently holds the school record for career assists, averaged 11.86 assists per set in the pair of SoCon wins for the Eagles.

The Citadel is currently holding a young freshman setter, Mikeala Tracy, who recorded 20 assists and seven digs in her last match against the Cougars. Junior setter Taeler Davis represents CofC, marking 37 assists in her last match.

CofC has the reigning SoCon Freshman of the Week, Melissa Morello, who has averaged 3.0 kills per set and 2.45 digs per set. This award is the second consecutive weekly award for the Cougars after senior libero Emily Shelton was last week's SoCon Defensive Player of the Week.

One Week, One Vote Initiative:

October 1 - October 4:

All events will be held in the Russell Union Theatre @ 7:00pm

Oct. 1st: (Monday) National Debt Forum: Young Americans for Liberty

Oct. 2nd: (Tuesday) Health Forum: Young Democrats

Oct. 3rd: (Wednesday) Debate Round 2: SGA
(Union Stage @12:00pm)

Social Issues Forum: NAACP @7pm

Oct. 4th: (Thursday) Foreign Policy Forum: Young Republicans

2012

SOUTHERN Collegiate Leadership Conference

Saturday, October 20



GeorgiaSouthern.edu/scic
Office of Student Leadership & Civic Engagement
Your Student Activity Fees at Work

Workshop
Track

Leadership
in Greek
Organizations



SCAN ME!

Adrian Peterson to release book exclusively at GSU

BY RYAN RAMSEY

The George-Anne contributor

Georgia Southern University alumni Adrian Peterson, the NCAA's Division 1 all-time rushing leader, will be signing copies of his new autobiography *Don't Dis My Abilities* at The University Store this Friday and Saturday.

Peterson's book talks about his hard work and success as a football player, as well as his current difficulty with a speech impediment and infant daughter's medical issues. Chuck Dipolito, assistant manager at the University Store, said Peterson will be signing copies Friday from 4-6 p.m. and Saturday from 1-3 p.m.

The book is set to release on Sept. 28. Pre-orders are available exclusively through the University Store for \$23.95 for the first

month of its release. A portion of the proceeds will go to fund GSU student scholarships.

"We can't guarantee he will sign your book, but we can guarantee anyone that pre-orders the book will have a copy, guaranteed," Dipolito said.

Peterson will be accompanied by teammates from the 2000 National Championship team at the book signing. Also in attendance will be Tracy Ham, another two time National Champion from GSU. Ham and Peterson are the only two eagles to ever have their jerseys retired in GSU history.

Peterson played for four years as an Eagle and each of those years he was a consensus All-American.

He became the first sophomore to win the Walter Payton Award and won two National Championships in 1999 and 2000.

Peterson's weekend in Statesboro will wrap up at the football game against Samford University, where at halftime he will be recognized as a Georgia Southern University Athletics Hall of Fame inductee.

Many Eagles remember Peterson, or "A.P.," by his iconic play nicknamed "The Run" against Youngstown State in the 1999 National Championship game.

He ended his career at GSU with 7,590 rushing yards and 93 touchdowns.

After graduating, Peterson was drafted by the Chicago Bears in the sixth round, where he played for eight years, including the 2006 NFC Championship season and Super Bowl XLI, and ran for over 1,200 yards in his career.

Jackie Gutknecht contributed to this article.

DON'T DIS MY ABILITIES

Foreword by Tracy Ham



Photo courtesy of The Georgia Southern University Store.

Adrian Peterson, legendary GSU running back, will release his autobiography this Friday at GSU's University Store.



Present this Ad at the time of service to receive an oil change for the low price of

\$21.95

This price is for 5 quart oil changes. It also excludes diesels, synthetic oil changes, and special oil changes. Ask for more details

Super Service at a Super Price

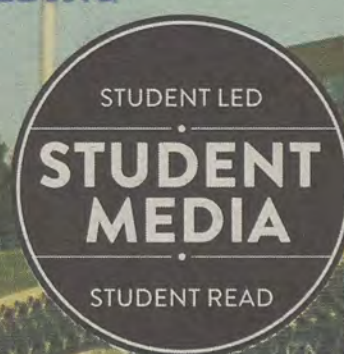
912.489.2222

Gameday Mayday TAILGATE

COME ON OUT
ANY TIME
BETWEEN
2 PM - 5 PM

SPONSORED BY:

FIND US AT THE RAC
IN FRONT OF THE BISHOP BUILDING



STOP BY FOR FREE FOOD, GAMES AND MUSIC

COME PICK UP OUR BRAND **NEW** GAMEDAY MAYDAY
INCLUDING:

TEAM MATCHUPS

COACH INFORMATION

TEAM STATISTICS

INTRODUCING  OUR NEW

Domino's™
÷ HANDMADE ÷
PAN
PIZZA



MADE FROM FRESH
NEVER FROZEN
DOUGH

2 LAYERS of REAL CHEESE
IN EVERY BITE

CRISPY GOLDEN CRUST
AND A
BUTTERY TASTE

TOPPINGS ALL THE WAY
TO THE EDGE

GET A  **MEDIUM 2-TOPPING
HANDMADE PAN PIZZA** FOR

\$7.99
9184

ORDER. TRACK. REVIEW.

DOMINOS.COM

OH YES WE DID.™

STATESBORO
912-681-4326
1550 Chandler Rd.
(Next to Gray's Bookstore)