

Georgia Southern University

Digital Commons@Georgia Southern

The George-Anne

Student Media

9-20-2012

The George-Anne

Georgia Southern University

Follow this and additional works at: <https://digitalcommons.georgiasouthern.edu/george-anne>

Recommended Citation

Georgia Southern University, "The George-Anne" (2012). *The George-Anne*. 2783.
<https://digitalcommons.georgiasouthern.edu/george-anne/2783>

This newspaper is brought to you for free and open access by the Student Media at Digital Commons@Georgia Southern. It has been accepted for inclusion in The George-Anne by an authorized administrator of Digital Commons@Georgia Southern. For more information, please contact digitalcommons@georgiasouthern.edu.

POSSIBLE PAYMENT PLAN

GSU DISCUSSES NEW OPTION

PAGE 7

'BORO BEER GUIDE

PAGE 10

PAYNE PLAYS IN MINORS

PAGE 19

Thursday, Sept. 20, 2012
Georgia Southern University
www.thegeorgeanne.com
Volume 83 • Issue 25

THE GEORGE-ANNE

Eagles seek for redemption vs Elon

BY KEVIN GREGAN

The George-Anne staff

The Eagles look to soar victoriously over the Elon University Phoenix on Saturday after getting the wind knocked out of their wings against The Citadel Bulldogs two weeks ago.

The Phoenix is coming into Allen E.

Paulson after a 48-14 win last week against West Virginia State University. This will be Elon's first Southern Conference game after starting their season 2-1.

The Eagle defense will be facing a factor they have not seen so far this season — an experienced quarterback. Senior quarterback Thomas Wilson will look to lead the Phoenix for an impressive offensive performance.

Last year, Wilson led the SoCon in passing yards and was ranked 13th in the nation after putting up 3,057 passing yards. He threw 23 passing touchdowns, which tied for the most in the Southern Conference for 2011.

Wilson leads the SoCon with six passing touchdowns three weeks into this season. Senior All-American receiver Aaron

Mellette, who has caught three of Wilson's TD passes this year, has the ability to pose a problem for the Eagle defense.

Mallette torched the Eagle secondary last year with nine catches for 104 yards and a touchdown.

The Eagles are 9-3 against Elon since the Phoenix joined the SoCon in 2003 and

See ELON, page 20

UP IN FLAMES



Demario Collars/The George-Anne

The Statesboro Fire Department demonstrates how fast a dorm room can engulf in flames. Three rooms were burned, representing a typical residence hall dorm. For more photos see page 8.

Famous Andy Warhol works come to Averitt

BY HANNAH RAWLES

The George-Anne contributor

The Averitt Center for the Arts is hosting a whimsical, colorful and unique event new to Statesboro featuring the work of artist Andy Warhol.

The center is hosting a private gala to the Andy Warhol exhibit tonight at 7 p.m. The exhibition opens to the public Sept. 21 and runs until Nov. 10.

"This exhibition is unique to anything ever shown at the center before," Shelia Stewart-Leach, exhibit curator, said.

The gala is open to everyone. Prices vary for students, faculty and patrons. Dinner and music under the stars will be held on Siebald Street.



ANDY WARHOL

Attendees will then have an opportunity to view the exhibit, bid on several auction items and create their

own silk screens of local legends, Melinda Roell, development director, said.

"Attire for the gala is also either 1960s themed or chic cocktail attire," Roell said.

Collectors Missy and Wes Cochrane have lent their collection of Warhol's prints for a limited time to the center, Stewart-Leach, said.

With the visual arts committee constantly on the lookout for new

See WARHOL, page 11



thegeorge
anne.com



Follow us on Twitter
@TheGeorgeAnne



Newsroom 478-5246
Advertising 478-5418
Fax 478-7113

PO Box 8001
Statesboro, GA
30460

Albright speaks on the "importance of education"



Lindsay Hartmann/The George-Anne

Madeleine Albright captivated the audience at GSU Tuesday night. **Left:** Albright gives her speech to students, faculty and staff at Hanner Fieldhouse. **Right:** In the Nessmith-Lane conference center Albright speaks to the press at a roundtable.

FRANKLIN

TOYOTA • SCION

10% OFF
service with your
Student ID

888-695-8165

500 Commerce Drive
beside the new Holiday Inn

PROTECT YOUR VEHICLE!

Regular maintenance and upkeep is crucial to your car's optimal performance, best possible gas mileage, and highest resale value.

Our service department offers the best in automotive service for all makes and models.

PLUS we provide a free shuttle to and from campus!

- Oil Change
- Tire Services
- Tune-Up & Transmission Service
- A/C & Radiator Service
- Brake Service
- Engine Repair
- Body Shop Services

BUY OR LEASE
A NEW TOYOTA, GET A

\$1,000

COLLEGE GRAD REBATE

*See Dealer for Details

SCHEDULE YOUR SERVICE ONLINE! www.FranklinToyota.com

The Sir Shop

Fraternity Rush Special

Navy Blazer, GSU Tie & Sir Shop Coozie
Regular Price: \$205 - Save \$80

Starting at \$124.99

Statesboro Mall

(912) 764-6924

E-mail: sirshop@nctv.com

Albright graces GSU's Hanner

BY TAYLOR COOPER

The George-Anne staff

Hanner Fieldhouse was filled with faculty and students Tuesday night as the former first female U.S. Secretary of State Madeleine Albright discussed leadership and women in the work force.

"One thing we learn from experience is that you can be completely sure of something and at the same time be completely wrong," Albright said. "Bigotry and contempt must be taught, and the attitudes are often treated as truth. Certainty and truth do not always go hand in hand."

In some countries schools teach that their culture is without blemish and that other cultures are inferior, along with regular studies, Albright said.

Albright went on to talk about opposing viewpoints, and that we should not be divided by different opinions, but should use them as a platform for discussion.

"The challenge for our leaders is not to make everyone think the same,

but to unite us in our differences," Albright said.

Jennifer Hendrix, budget analyst for the Office of Student Activities, asked Albright to give advice to women who are trying to balance their home and work activities.

"It's just a matter of figuring out what works for your family, your conscience and your interests," Albright said.

"The only word I can apply to all women is choice," Albright said. "Every woman should be allowed to choose and have that choice respected."

Colleen McNally, a junior journalism major, asked what Albright's favorite pin is, and the symbolism it holds.

Albright has been known over the years to wear decorative pins when speaking at public venues.

"I have a lot of great pins, but I have two favorites. I have a ceramic heart that my daughter made when she was five. The other one is what I call the Katrina Pin," Albright said.

The Katrina Pin was given to her at the World War II memorial in Washington D.C. by a man whose mother had died in New Orleans during hurricane Katrina. Her husband, on their 60th wedding anniversary, gave the pin to the man's mother.

Todd Deal, Director of Student Leadership and Civic Engagement, made a few closing remarks.

"I've taken a lot from this. One quote that I'm going to put on my Facebook page later tonight is 'Opinions should be used to start conversations, not end them,' Deal said.

Students gave differing opinions on Albright's presentation.

"She used strong comedic elements, and she definitely made sure to talk nice about GSU," Michael Lauer, senior multimedia communications major, said.

Eric Smith, senior biology major, said, "I didn't go. I know who she is, I respect who she is, but I decided that I wasn't going to hear anything terribly controversial."

Statement of Operations

The George-Anne is the official student newspaper of Georgia Southern University, owned and operated by GSU students using facilities provided by the university. The newspaper is the oldest continuously published newspaper in Bulloch County. The newspaper is a designated public forum for the Georgia Southern community. The newspaper is published twice weekly, on Tuesdays and Thursdays, during most of the academic year. Any questions regarding content should be directed to the student editor by phone at 912.478.5246 or at gaeditor@georgiasouthern.edu.

ADVERTISING: The newspaper accepts advertising. Inquiries may be made by calling 912.478.5418 or 912.478-0566. Fax any questions to 912.478.7113 or e-mail ads1@georgiasouthern.edu.

The George-Anne receives additional support, in part, from the Student Activities Budget Committee.

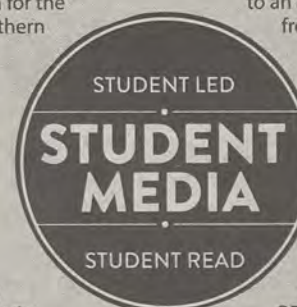
The deadline for reserving space and submitting advertising copy is noon, one week prior to the intended publication date. For more information, rate cards, sample publications, contact

the advertising manager or student media director. The advertiser is responsible for any errors in advertisements and its liability for adjustments is limited to the amount of space the error occupied in the ad. Further, the newspaper is not responsible for any damages caused due to an ad's omission from a particular edition and its responsibility solely is to reschedule the ad in the next regular edition at the regular advertising rates.

STUDENTS BEWARE: The George-Anne screens all advertisements prior to publication. The newspaper strives to accept ads for legitimate products and services only. Students are urged to exercise caution when replying to ads—particularly those that require personal information. Students are also urged to report to the newspaper any suspicious offers which they might see in an ad.

PUBLICATION INFORMATION: The newspaper is printed by The Brunswick News in Brunswick, Ga.

NOTICE: Unauthorized removal of multiple copies from a distribution site constitutes theft under Georgia law, a misdemeanor offense punishable by a fine and/or jail time.



Police Beat

Monday, Sept. 17

-Officers wrote five traffic citations.

-Officers wrote 10 traffic warnings.

-Officers responded to a drug complaint at Freedom's Landing where they observed a bag containing a green leafy substance and stems (believed to be marijuana) in a room. The students were referred to Judicial Affairs.

Tuesday, Sept. 18

-Officers wrote three traffic citations.

-Officers wrote nine traffic warnings.

-Officers assisted six motorists.

-Officers responded to a sick person at the Hollis building. EMS

was notified and responded. The sick person declined transportation by EMS to East Georgia Regional Medical Center.

-A report was taken for suspicious activities at the Williams Center. An unknown caller was soliciting money over the phone. This case was turned over to criminal investigations.

-Officers responded to the RAC in reference to an injured person. EMS was contacted and responded. The injured person was transported by EMS to East Georgia Regional Medical Center.

-Officers conducted a welfare check on a student. The student was located and advised to make contact with family members.

-Officers took a report for a lost/misplaced wallet at The Nest. -Officer responded to a drug complaint at Centennial Place. Officers did not locate any drug violations.

-Officers took a report for the theft of a motor vehicle tag in Lot 42. This case was turned over to criminal investigations.

-Officers responded to Eagle Village in reference to a smoke detector alarm. Maintenance was notified and responded. The building was checked with no problems discovered.

-Officers responded to a loud noise complaint at Kennedy Hall. Housing personnel was contacted and responded. No one was in the room. The music was turned down and the room secured.

Editorial Staff

Editor-in-Chief Arielle Coambes
Managing Editor Jennifer Curington
Multimedia Editor Jessie Reese
Opinions Editor James Farmer
News Editor Lindsay Gaskins
News Chief Taylor Cooper
Arts Editor Gianna Carme
Arts Chief Kimeko McCoy
Sports Editor Jackie Gutknecht
Football Editor Jannah Bolds

Copy Chief Courtney Tielking
Copy Editor Anna Wells
Business Manager Chloe Douglas
Sales Manager Phillip Scroggin
Marketing Manager TJ Jackson
Marketing Associate Amber Gordon
Production Manager Kelsey Paone
Photo Editor Lindsay Hartmann
News Design Chief Tyler Fleider
Ad Design Chief Jose Gil

Corrections

In Sept. 18's edition, "Eagles scuffle for a draw vs CSU," should have contained the following: The match was on Friday. The team's record is 4-1-3.

Contact the editor at gaeditor@georgiasouthern.edu for corrections and errors.

Our View

Constitutional education important

The Constitution Day debate forum was a great opportunity for students and faculty to be educated on the U.S. Constitution. The forum showed both the foresight the framers of the Constitution had when they drafted and signed the document and the shortcomings that are being debated as a result of a document that is over 200 years old.

In this day and age, the knowledge of the Constitution and the rights that it guarantees citizens is of utmost importance in our lives. The amount of laws being judged on their constitutionality right now is high. The list of laws includes collective bargaining restrictions, voter ID laws, anti-illegal immigration bills and until recently, the Affordable Care Act and NDAA.

While the average citizen should not be expected to know the fine details of the legal system, he should educate himself on the nuances of the rights guaranteed to him. Self-education and research can provide educated opinions on the laws in question and allow individuals to form their own views on the laws and the lawmakers who argue for or against them.

If citizens can develop these educated views of our laws and protected rights, this nation can make an educated and intelligent choice for our next term of leaders at the local, state and national levels.

Georgia Southern University does its students a favor annually on Constitution Day with this debate. This year the favor could pay dividends during the November elections. We should all know our rights and responsibilities of citizens and let our votes speak for our views this election.

The George-Anne welcomes letters to the editor and appropriate guest columns. All copy submitted should be 350 words or fewer, typed, and sent via e-mail in Microsoft Word format to gaeditor@georgiasouthern.edu. All submissions must be signed and include phone number for verification. GSU students should include their academic major, year and hometown. The editors reserve the right to reject any submission and edit submissions for length.

Opinions expressed herein are those of the Board of Opinions or columnists themselves and DO NOT necessarily reflect those of the faculty, staff or administration of GSU, the Student Media Advisory Board, Student Media or the University System of Georgia.



The G-A launched new site

Yesterday, The George-Anne accomplished a task that has been long awaited: We (finally!) launched a new website.

Not to knock the last one, but guys, this one is awesome.

During my first campaign to be voted editor-in-chief, I made it a personal mission to revamp our website. The team, though, hit wall after wall. The fact that I'm now editor for the second year tells you how long this project has been ongoing.

But yesterday, after a year and a half of working with HTML, coding and technology that I don't understand — but thankfully our IT team does understand — we got a check mark next to that task on our to-do list.

To give you a brief rundown of the thing, I'll tell you about some of my favorite features. Each

FROM THE EDITOR



ARIELLE COAMBES
EDITOR-IN-CHIEF

day's edition is posted in the top left corner of the site as a PDF document that readers can flip and zoom through. So, if you want to show that photo we snapped of you at the football game to your mom in Atlanta, you can just show her the link to the PDF.

Our Twitter feed runs along the right side just next to the news content, so readers will never miss a beat of Georgia Southern University coverage.

There's also more space, so be ready for our photo editor to unleash the 30+ pictures that didn't

fit in the print edition as a slideshow of the event or game you missed. If a picture is worth a thousand words, imagine what these slideshows will tell us.

And finally, with the faster interface, we can now support video, so our multimedia editor and videographers are collaborating to get instant coverage of visual footage.

And those are just my favorite features! There are a lot more that our team is very excited to share with you, so check it out as soon as you can.

Let us know what you think of it by tweeting us @thegeorgeanne.

You might even get a retweet and end up on our homepage's Twitter feed.

Coambes is a writing and linguistics major from Covington, Ga.

From the Left

Regulations save the planet

In 1970, Republican President Richard Nixon signed the National Environmental Policy Act and initiated the Environmental Protection Agency, marking a landmark triumph in U.S. environmental policy. Today, it remains necessary to have public agencies in place to stop ozone depletion, minimize acid deposition, reduce hazardous waste build-up and ensure our water does not kill us because the market has no incentive to do so, similar to how the market has no incentive to build roads, offer the economically disadvantaged an education or health care, prohibit monopolies or pay low-skill workers a livable wage.

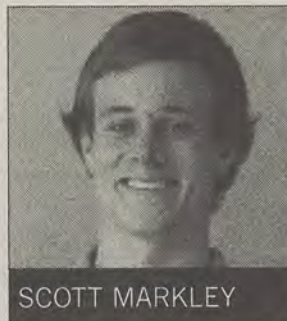
In spite of these inadequacies, capitalism has made an undeniably important contribution to humanity. It is, after all, more responsible for increased wealth and innovation than any other economic system in the history of mankind. But to operate, it is dependent on the exploitation of labor and the interests of avaricious capitalists are often times misaligned with the interests of society, individuals and the future. The selfish endeavors necessary to perpetuate capitalism often excrete detrimental by-products, and that injustice is only rectifiable through government action. Anyone pushing for a purely free market either does not understand the chronic implications of such or belongs to the Scrooge-like class of the elite.

A perfect example of private interests perversely endorsing environmental destruction can be exemplified in the political involvement of the Koch brothers. Koch Industries owns several companies involving the refining and distribution

of petroleum, manufacturing and more. Each Koch brother is estimated at a net worth of \$25 billion, and environmental restrictions necessary for Earth's survival would impose a burden on these billionaires. Since the Democratic Party historically promotes environmental sustainability, the Kochs have funded radical right-wing organizations such as the Tea Party Patriots and Americans for Prosperity to rally against all government spending, including environmental protection. These groups' astonishing economic, social and scientific illiteracy combined with their middle-class mobility provides the ideal combination for targets of the Kochs' propaganda. This environmental disregard has further been maintained by the fact that the Kochs have also funded climatologists to publically denounce human caused global warming, something that a large percent of climatologists agree is happening.

Sustainability is mandatory for our survival and wellbeing, and corporations pushing to do otherwise are cancerous to our long-term humanitarian goals.

Markley is a senior geography major from Marietta, Ga.



SCOTT MARKLEY

From the Right

Loosen regulations, grow our economy

The environment is one of the most precious commodities that we have. It supports all life and unfortunately it is the only one we have. I believe that we must protect our environment, but we must do so in a fiscally responsible and logical way. Right now, we have more regulations on fossil fuel and nuclear energy production and use than any point in history. We have regulations such as how much coal we can extract and use, how many new oil wells we can drill for and we have such strict laws against nuclear power that we have built two new nuclear facilities since 1974. This has caused the cost of energy and transportation to skyrocket. This hurts us both in our homes and our bottom line. People right now can barely afford the goods and services that are necessary to survive, and with these regulations in place, it is putting people in tough economic situations.

The Obama administration is pushing green energy on us, but the fact of the matter is that green energy in its current form is not ready to take on the demands of U.S. energy consumption. According to Massachusetts Institute of Technology, we won't have sufficient energy with the

green energy programs we have now for at least 25 years. I don't know about you, but 25 years is a long time to wait while our

economy suffers under regulations. What we need to do is to use the resources that we have on hand in concert with the energy possibilities of tomorrow. We can use our abundant natural gas resources, which burn 1,000 times cleaner than traditional fossil fuels, to power our cars. This possibility is only five years away, according to Car and Driver editor Eddie Alterman. We can use a combination of coal, nuclear power and other forms of green energy to power our homes and business. We must use the resources we have now while the energy of tomorrow is being developed.

Chapin is a senior political science major from Roswell, Ga.



FRITZ CHAPIN

From Data to Discussions

Government can make green energy efficient

Possibly the biggest reason for the slow implementation of green energy solutions in America is the high cost of production and installation of the actual devices and the relatively low cost of other energy sources like coal. Because of the cost, the average American would rather not "go green" unless there was an additional incentive that would make green energy technology worth the investment. Several years ago, Germany found a unique and successful solution to this problem, called feed-in tariffs.



WILLIAM BRYAN

The idea behind a feed-in tariff is that after a household or business buys solar panels and begins producing their own energy, they can sell the excess energy that

they produce back to the grid at a fixed rate in order to compensate them for the initial investment of the technology. To make it more appealing to consumers, the rates are often offered in long term contracts. The government's role here is slightly complicated, but feed-in tariffs are basically a way to subsidize green energy without using taxpayer money.

Feed-in tariffs have been wildly successful in Europe, despite their relatively recent implementation. The UK reported earlier this year that since the implementation of their

program in 2010, solar production has grown 41 times larger. Germany has been just as successful, with solar energy production equivalent to 20 nuclear power stations, according to Reuters. So much energy is produced using green alternatives there that they no longer need the full feed-in tariff, and the UK announced in August that they will be cutting some of the program. In Germany, the average additional cost of the tariff per household was about \$1.69 per month.

Lawmakers in Gainesville, Fla.,

after a comprehensive study on Germany's program, unanimously passed legislation setting up a feed-in tariff program. 11 other states since then have considered legislation, with seven of them starting programs.

Big energy companies will undoubtedly hate the idea, but this is a plan that can appeal to both sides of the aisle and could be a big step towards becoming a clean and energy independent country.

Bryan is a senior economics major from Fayetteville, Ga.

Letters to the Editor

Elderly still have life

Dear Editor,

Your Sept. 13th article was a good piece of writing, and I apologize for my late response. That happens when one is old. Allow me a tad of space for rebuttal. I don't smell of pee; I will elaborate eventually. In my 76 years, I have earned a BBA, Masters and Doctorate even though I was told I was stupid by a teacher, been in the U.S. Navy long enough to earn and use the G. I. Bill for my education, been a successful retail executive who took Miss Universe out for supper, used to be able to read and write biblical Hebrew and Greek, sang for President Eisenhower while in the Navy travelling choir, made three holes-in-one, built and sailed my own boat, retired as a Pastor Emeritus, sired three handsome children who have given my wife and me six exceptional grandchildren and have been teaching on the college level since retirement.

Oh, I receive a retirement check, work on the side for some extra bucks and have lived long enough to spend a good bit of my Social Security, which you won't have because us old folks will spend it. My legs are bowed and my knees shot from

over-use. I've visited places like France, England, Scotland — love the Haggis — Israel, Nicaragua, Mexico, Canada and lived in Italy for two years and was blessed by the Pope even though I'm not Catholic.

Yes, I helped screw our country by electing some politicians but improved our land by electing some politicians who try to correct mistakes. I was brave some times and cowardly at other moments. I accept some blame and hope for some forgiveness.

I've tried to be a good man, you may judge that as you see fit, which means I like to set high aspirations and hold equally high standards.

Yes, some of us are fogies, nit-pickers, critical, don't understand young folks, change, Hunger Games, Avatar and Abraham Lincoln-Vampire Hunter, but not all of us smell like cat pee. I am proudly an old fart! If you see me on campus, pull my finger. I'm happy to share.

Keep up the good writing!

Dr. John Wesley Bressler

Professor of Student Success at East Georgia State College
Statesboro, Ga

Is there no one else?

Dear Editor,

I never really used to read The George-Anne. Until this year, I would just pick up a copy of the Wall Street and head to class. What has caught my eye lately are the opinion pieces. Specifically from Fritz Chapin. Seriously, where did you find this guy? I usually consider myself somewhat of a conservative, but there is a difference between believing in traditional, conservative values and blatant ignorance. Everything I have read from Mr. Chapin thus far has no basis in fact. I know it's an opinion piece, but even with your opinions you should have some semblance of fact to back them up.

There was one article in particular that really made me lose some respect for the G-A: "Border security is key," printed in the Sept. 13 issue. My first qualm with this, and the same goes for the majority of Chapin's articles, is his grammar. The first sentence of paragraph three states "(t)he left also believes that those who are lawbreakers and disregard the procedures our country puts in place to protect its citizens." These mistakes not only make Chapin look bad, but all College Republicans that he supposedly represents, and the George-Anne as a respectable university newspaper.

In lieu of the grammar mistakes, this writer

also completely disregards historical fact in order to better make sense of his argument. Fritz claims in the last paragraph that "our ancestors came (to America) by the book". Oh, you mean when we came here and kicked the natives off their land because "God said it was okay?" What about our black friends? Oh, their ancestors definitely came here by the book, whatever that means. Fritz contradicts himself over and over in each article that I have read this year. He said, "(e)verybody in this country is an immigrant..." but then again, we all did it the right way...right? Of course, I'm only choosing certain aspects of this article in order to fit in the allotted space.

Why, George-Anne, are you allowing someone who watches Fox News to write about economic and public policy? This goes for the most recent article about marijuana laws, as well. It's embarrassing. Let him write about why we should vote for Mitt Romney and why Obama is slowly turning America into a people's republic. If you just want better writing for the opinion pieces, I can pretend to be a Republican for a day.

Nathan Fetsch

Senior economics major
Kennesaw, Ga.

Be thankful for your rights and Constitution

America is a country that likes Days. We celebrate many, many days, including birthdays, Mother's Day, St. Patrick's Day, Arbor Day and so on. This past Monday was Constitution Day.

Many of you likely have a casual knowledge of the Constitution — you know, that old document that says you can own guns and look at porn — and every year on Sept. 17, all publicly funded educational institutions provide educational programming on the history of the American Constitution.

Nothing is more American than being forced to listen to someone tell you what you cannot be forced to do.

But, there may be more that you don't know about the holiday. For example, its origins date back to 1911, when schools

ALEX
THE
PRETTY
GOOD



ALEX LASALLE

in Iowa recognized the day that, for most of its history, was known as "Citizenship Day." Much like a modern political election, various states passed laws regarding Citizenship Day or similar holidays in an effort to appear as patriotic as possible without literally dyeing the state's territory red, white and blue.

The idea of the holiday really took off in 1939, when William Randolph Hearst

— a famous newspaper magnate — ran a campaign through his newspapers that advocated the creation of this holiday.

To give you an idea of what kind of swagger Hearst had, consider this: his group of newspapers became known for their general disregard for facts and reality, with a focus on sensationalism and popularity. He used this sway to drum up popular support for, among other things, the Spanish-American War. Mostly because war leads to good headlines lead to selling more papers.

In 1940 the Congress created "I Am an American Day" to be celebrated in the third Sunday in May. Why the 4th of July was not substantial America-loving, I do not know. Perhaps what really won World War II was that the country with the most self-

congratulating holidays was the best?

On February 29, 1952, President Harry Truman signed into law "Citizenship Day." It was established to replace "I Am an American Day." A few laws later and in 2004, Senator Robert Byrd amended the annual Omnibus spending bill to make the holiday what it is today.

As always, the more you know, the better life goes. On a serious note, don't underestimate the importance of the Constitution — without it, my writing would probably get me sent to a government prison camp in North Dakota. It is seriously cold up there.

LaSalle is a writing and linguistics major from Cumming, Ga.

Possible tuition payment plan in GSU's future

BY SARAH RYNIKER

The George-Anne contributor

Georgia Southern University may install a payment plan similar to what the Board of Regents is piloting for tuition at Georgia Technical Institute of Technology.

Future installment plans at Georgia Southern University will reflect on the outcome of Georgia Tech's plan, Cindy Durden, bursar at the GSU Bursar's office, said.

"We would not be able to develop a plan until the pilot program has proven successful and the Board provides us with the options available to our institution," Durden said.

"I'm interested in how it will be applied here. Georgia Southern's tuition is relatively low compared to other state intuitions. I'm interested to see how the interest will work here. Could it cost more later? And how much more? Would it make students worse off in the long run?" Mary Jill Lockwood, professor and interim director, School of Accountancy, said.

In the past, the Board of Regents policies required full payment for tuition, meal plans,

fees and other expenses.

The released statement from the Board of Regents' vote in April states that an institution filing an approved plan with the Office of Fiscal Affairs may elect to collect tuition and mandatory fees on an installment basis, in advance of the service provided.

At Georgia Tech, students who participate will pay a \$75 fee and half the tuition bill up front, satisfying the Regent's clause, which states tuition must be paid before attending the university.

A study done previously by Georgia Tech found that over 70 percent of competitive public universities already have payment plan options in service.

Students may use their payroll checks to pay tuition and other fees. Students must already have a tuition fee waiver and must apply by a set date. This program is already in effect at Georgia Tech.

Vice Chancellor at Georgia Tech John Brown said the temporary plan would provide an opportunity to fix the issues that may arrive in the new program.

"We won't have 35 different plans. We will have 'the plan,'" Brown said.

Another quarter of the bill is due one-fourth into the semester, and the final balance will be due during midterms.

The Board of Regents states that a plan must be submitted and approved before it can be put into action at a Georgia university. This includes the 35 public universities in the state of Georgia.

"The University System of Georgia does not allow individual institutions to make the decision to develop payment plans on our own," Kim Thompson, associate vice president of finance at GSU, said.

There are students who feel like a set payment plan would benefit the school in several aspects in the long run.

"The price of college is going up. These plans will help many students afford college in the long run," Tavia Carter, junior marketing major, said.

"I definitely feel like it will make college more affordable. People have had trouble in the past paying for college. I'm interested to see what affect payment plans will have on the Financial Aid budget. They won't have the money that

they usually have when school starts. I wonder how the SGA will feel about that," James Kelley, junior accounting major, said.

"It will give students a chance to go through college first, without worrying about paying it all upfront. Although it's beneficial to an extent, it might be more harmful when people miss a payment," Daniel Martin, sophomore pre-business major, said.

The payment plan could also be dangerous to student's budget as well as future financial aid recipients, Lockwood said.

"The best and the brightest of this country messed up the financial market. They lost 40 percent of the Nation's wealth. I don't know if I would really trust students, or anyone to budget that much. It really shakes confidence," Lockwood said.

Lockwood said, "The tooth fairy isn't going to give you money. You're going to have to save it."

The GSU Financial Aid could not be reached for comment.

Georgia Tech could not be reached for comment.

**JOIN
THE
TEAM
BEHIND THE SCENES**

WOULD YOU LIKE TO BE A

☒ Photographer

☒ Videographer

☒ Designer

☒ IT/Web Design

Submit your resume by Sept. 25
Williams Center, RM 2023

If you have any questions, contact Student Media Director John Harvey at 912.478.0069 or email johnharvey@georgiasouthern.edu

'Up in Flames' promotes fire awareness



Demario Cullars/ The George-Anne

The University Wellness Program sponsors the "Up in Flames" event to show students the importance of fire awareness. **Left:** Students and faculty gathered in the PAC parking lot to watch Statesboro Fire Department set fire to room displays. **Right:** Gus helps freshman education major Shakaira Dolman pull a full-size dummy across the PAC parking lot.



Present this Ad at the time of service to receive an oil change for the low price of **\$21.95**

This price is for 5 quart oil changes. It also excludes diesels, synthetic oil changes, and special oil changes. Ask for more details

Super Service at a Super Price

912.489.2222

SGA fee committee promotes the vote

BY LAUREN GORLA

The George-Anne contributor

Student Government Association discussed last night how the Fee Educational Campaign Committee is working to promote awareness among students about the upcoming vote on student fees.

"We're really proud of what they've been doing. They will be putting up posters all across campus between now and Friday so that way on Monday, Tuesday, Wednesday and Thursday no one will have an excuse for why they didn't vote," SGA President Dominique Quarles said.

The committee has been taking posters around to every building on campus and has placed table tents on several dining places, SGA Senator At-Large Ellen Hogan said.

The campaign has also visited organizations on campus, showing members an informational video about the fees and answering any questions regarding what the actual fees are.

The fee committee will attempt to flood all



DOMINIQUE
QUARLES



ELLEN
HOGAN

social media in an event called "Power Hour" taking place next Monday-Thursday from 8-9 p.m.

During Power Hour, students are encouraged to post about voting on student fees on any social networking site like Facebook, Twitter or Instagram.

Hogan said members of the Fee Educational Committee will knock on the doors of every dorm room on campus, handing out flyers and making sure that every student knows about the vote on student fees.



Grand Opening

Thursday, September 20th
4pm - 8pm

DRINKS

MUSIC

PIZZA

10% OFF

ALL ITEMS IN STORE

* no other discount can be applied

DIRECTIONS?



1200A Brampton Ave., Statesboro, GA 30458
(Next to Video Warehouse)



Tues., Sept. 25
10:00 am - 2:00 pm
Union Ballroom

For Details, Contact: The Study Abroad Resource Room
(Forest Drive Building Room, 1316)

Phone: (912) 478-7728

Email: stdyabrd@georgiasouthern.edu



Lindsay Hartmann/The George-Anne

Statesboro houses a variety of locations to purchase beer, but not all locations maintain the same prices. Students sometimes must choose between convenience, budget and selection.

Time to Pre-Game

GSU students' guide to beer runs on a budget in the 'Boro

BY MARISSA MARTIN

The George-Anne staff

Beer runs can be the most important task to make a good pre-game, but before emptying your wallet consider how much you're willing to blow on beer and if you're getting your money's worth.

Purchasing the right amount of beer for the right price sounds like more homework than a trip to the 'beer cave'.

To get a budget friendly weekend started know where to go when buying your beer.

"I definitely consider prices when buying beer and I try not to spend more than twenty dollars every week," Natalie Kramer, junior pre-nursing major, said. "I don't know who has the best prices but I would have to say the Fast and Easy."

Contrary to Kramer's belief, gas stations have the highest average prices on commercial beers and offer little selection when it

comes to craft beers. A 24 pack of Budweiser is \$18.99 at Parker's across from Paulson stadium and the Hot Stop gas station near Southern Pines.

"I try to save money where I can and I usually buy bud light. I spend around twenty dollars for a twenty-four pack," Molly Edenfield, senior hotel and restaurant management major, said.

Overall, Wal-Mart had the lowest prices with a 24 pack of Budweiser for \$17.97.

This Statesboro hot spot had the lowest average prices on commercial beer but they do not offer a large selection of craft brews.

A new beer and wine seller opened this year, Tom's Beverage and Tobacco in College Plaza behind Zaxby's on Fair Road that offers the variety that Statesboro was missing.

"I thought Statesboro needed a bigger, nicer store," Tom Driskell, owner of Tom's Beverage and Tobacco, said.

Tom's has the largest selection of craft brews and place the ratings of beer from beeradvocate.com above each one.

"We have 290 different kinds of beer in the store: craft, imports and the whole nine yards," Driskell said.

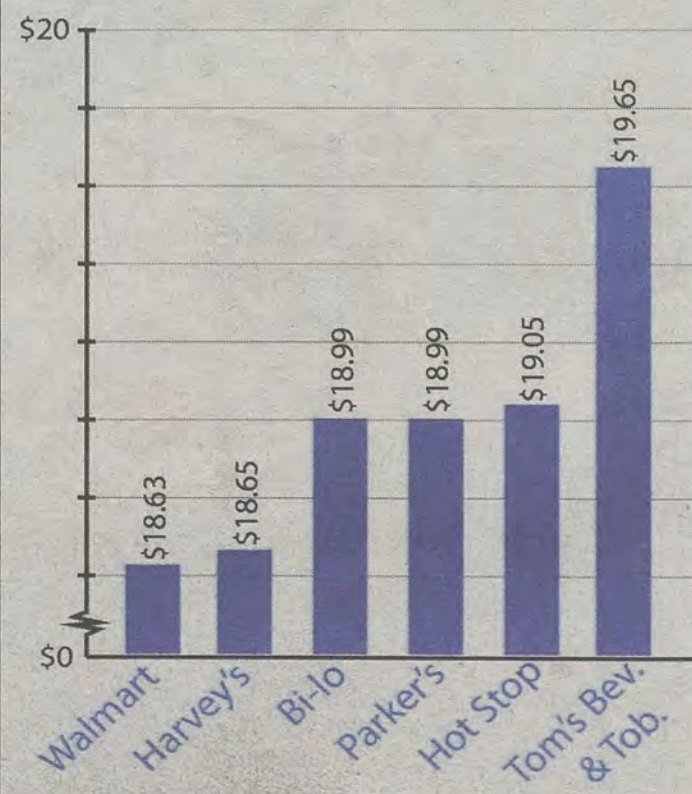
Tom's offers variety with select beers but this unique variety comes with a price. The average cost for a 24 pack of Budweiser was \$19.49, which is \$2.03 more than Wal-Mart.

"I try to spend as little as possible, about 10 dollars every week," Pamela Munoz, junior recreational therapy major, said.

Grocery stores that offer the convenience, Harvey's and Bi-LO, have lower prices than the gas stations. Their prices for a 24 pack of Bud Light were \$18.49 and they have member discounts.

Tonight, journey a little farther than the nearest gas station to get your budget friendly week started, and remember, "We pre-game harder than you play."

Average price of a 24 pack of beer
(Average of Budweiser, Miller, and Yuengling)



Tyler Fleider/The George-Anne

WARHOL, from page 1

and/or exciting works, this event has been planned in advance for several years, Roell said.

After seeing an article in *Southern Living* nearly three years ago about their extensive collection, the Averitt Center approached the Cochranes about renting their exhibit. The Cochranes will be in attendance, Roell said.

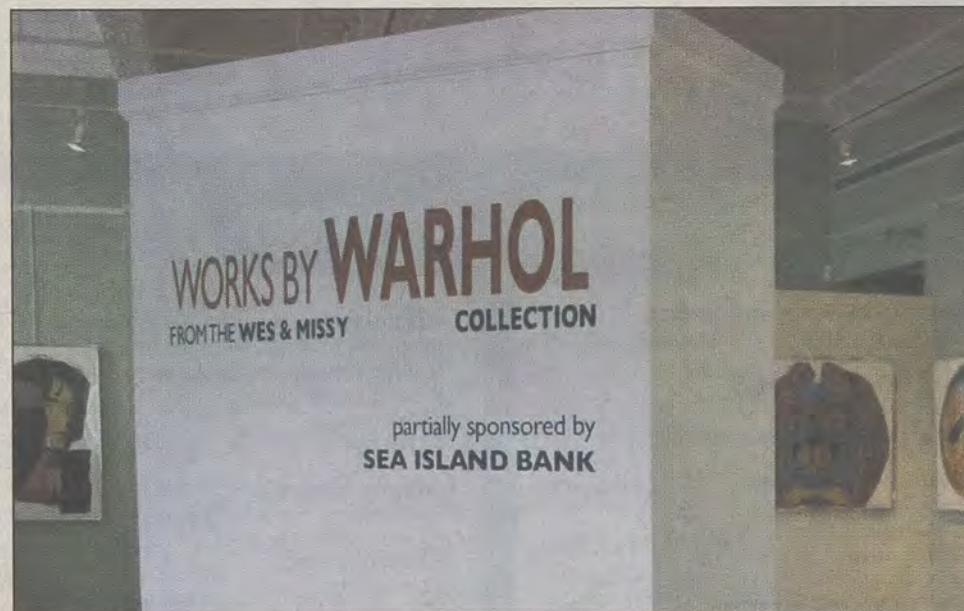
Based on other community museums and art centers that have hosted the event, it has become a small-scale blockbuster. Through 20 years of Warhol's art, the center has set up a large scale exhibit with the brightly colored art placed close together, Stewart-Leach said.

Along with this gala being dedicated to the famous pop artist, it is also the first exhibition of the Averitt Center's fall fundraiser.

"Sponsors help cover the costs so that the Averitt Center can continue to offer great exhibitions free of charge to the public," Roell said.

Andy Warhol started as an illustrator and went on to start the pop art movement of the 1950s and 1960s. As he became the first post modernistic artist, he grew to be internationally respected as well through his large prints.

"Warhol wanted art to be accessible



The Andy Warhol exhibit at the Averitt Center for the Arts opens Sept. 21 through Nov. 10 showcasing many of Warhol's popular pieces.

to everyone and easily recognized like Campbell's Soup or Mickey Mouse," Stewart-Leach said.

Stewart-Leach said, "Anyone who comes to see it will enjoy it. It is not limited by age and there are plenty of bright colors and

recognizable figures like Mickey Mouse, Donald Duck, John Wayne and musician Mick Jagger."

Gianna Carme and Jennifer Curington contributed to this article.

The Buzz List

- Lindsay Lohan was arrested this week for leaving the scene of an accident. Looks like someone is a little jealous of Amanda Bynes' recent criminal behavior.



Gianna Carme

- Shakira has announced she's pregnant with her first child, serving as proof that her hips don't lie.
- Shaun White was arrested after allegedly drunkenly kicking someone and then running. He was caught red handed-handed.

Information compiled by Arts & Entertainment Editor Gianna Carme and Arts & Entertainment Chief Kimeko McCoy from perezhilton.com and TMZ.com.

Legislative Internship Program

Accepting applications now for Spring and Summer 2013

Georgia House and Senate
Georgia Governor's Office
Eagles in D.C.



legislative internship opportunities

Information Session:

Fri, Sept. 21 @ 2pm in Union Room 2044

Wed, Sept. 26 @ 6pm in Union Room 2048

Spring Internship Application Deadline: October 1

GeorgiaSouthern.edu/

LegislativeInternships

Open to Any Major

Must have completed 48 credit hours.

THE 'BORO BEAT

 **HAPPY HOUR**
 **LIVE BAND**
 **SPECIAL EVENT**

THURSDAY

Applebee's

Happy Hour 3-6 p.m. and 9 p.m. to close
Half price appetizer with any drink purchase
\$3 Long Island
\$3 Margarita
Live DJ

Dingus Magee's

Happy Hour 5-7 p.m.
Happy Hour 9-11 p.m.
2 for 1 Wells
2 for 1 Bombs

El Sombrero

\$2.50 32 oz. Domestic

GATA's Sports Bar and Grill

Happy Hour 5-8 p.m.

Gnat's Landing

Reverse Happy Hour 5-7 p.m. and 9-11 p.m.

Holiday's Greek and Italian

12 wings and a pitcher of Yuengling \$12.99

Loco's Grill and Pub

Happy Hour 5-7 p.m.
Half price regular wings, chips and queso

Mellow Mushroom

Happy Hour 5-7 p.m.
\$2 Wells Margaritas
\$2 Wells Singles
\$2.75 Draft Beers
\$13 Medium specialty pizza
\$17 Large specialty pizza

Millhouse

\$1.99 Drinks all day everyday
Daniel Johnson

SATURDAY

Applebee's

Happy Hour 3-6 p.m. and 9 p.m. to close
Half price appetizer with any drink purchase
\$3 Long Island
\$3 Domestic
\$3 Margarita

Dingus Magee's

Wally Brown

El Sombrero

\$2 Margaritas

GATA's Sports Bar and Grill

Happy Hour 5-8 p.m.

Gnat's Landing

Happy Hour 5-7 p.m.
Daniel Johnson

Holiday's Greek and Italian

12 wings and a pitcher of Yuengling \$12.99

Loco's Grill and Pub

Happy Hour 5-7 p.m.

Mellow Mushroom

Happy Hour 5-7 p.m.
\$2 Wells Margaritas
\$2 Wells Singles
\$2.75 Draft Beers

Millhouse

\$1.99 Drinks all day everyday
Ogeechee Mud

FRIDAY

Applebee's

Happy Hour 3-6 p.m. and 9 p.m. to close
Half price appetizer with any drink purchase
\$3 Long Island
\$3 Domestic
\$3 Margarita
★ Trivia

Dingus Magee's

Happy Hour 5-7 p.m.
Happy Hour 9-11 p.m.
2 for 1 Wells Drinks
2 for 1 Bombs
Plan B

El Sombrero

\$2 Sex on the Beach

GATA's Sports Bar and Grill

Happy Hour 5-8 p.m.

Gnat's Landing

Happy Hour 5-7 p.m.
Gavin McCoy

Holiday's Greek and Italian

12 wings and a pitcher of Yuengling \$12.99

Loco's Grill and Pub

Happy Hour 5-7 p.m.
Half price regular wings, chips and queso

Mellow Mushroom

Happy Hour 5-7 p.m.
\$2 Wells Margaritas
\$2 Wells Singles
\$2.75 Draft Beers

Millhouse

\$1.99 Drinks all day everyday
Nickelback Funk

SUNDAY

Applebee's

Happy Hour 3-6 p.m. and 9 p.m. to close
Half price appetizer with any drink purchase
\$3 Long Island
\$3 Domestic
\$3 Margarita

Dingus Magee's

Happy Hour 5-7 p.m.
Happy Hour 9-11 p.m.
2 for 1 Wells Drinks
2 for 1 Bombs

El Sombrero

\$3 16 oz. Bahama Mamas

GATA's Sports Bar and Grill

Happy Hour 5-8 p.m.

Gnat's Landing

Happy Hour all day
★ NFL Redzone

Holiday's Greek and Italian

12 wings and a pitcher of Yuengling \$12.99

Loco's Grill and Pub

Happy Hour 5-7 p.m.

Mellow Mushroom

Happy Hour 5-7 p.m.
\$2 Wells Margaritas
\$2 Wells Singles
\$2.75 Draft Beers

Millhouse

\$1.99 Drinks all day everyday

- Eye Exams
- Glasses
- Contacts



912-489-6655

820 HWY 80 E. (in front of Lowes)
www.boomersvisioncenter.com

Orient Express

15 University Plaza
(912) 681-9777 or (912) 681-9888

WE DELIVER!!!

(\$10 minimum)

**10% off
DINNER
ONLY***

if you bring in this clipout
*delivery not included

www.orientexpressofgsu.com

YOUR OFF CAMPUS GUIDE

SEPT. 20 – SEPT. 25

MONDAY

Applebee's

Happy Hour 3-6 p.m. and 9 p.m. to close
 Half price appetizer with any drink purchase
 \$3 Long Island
 \$3 Domestic
 \$3 Margarita

Dingus Magee's

Happy Hour 5-7 p.m.
 Happy Hour 9-11 p.m.
 2 for 1 Wells Drinks
 2 for 1 Bombs

El Sombrero

\$2 Margaritas

GATA's Sports Bar and Grill

Happy Hour 5-8 p.m.

Gnat's Landing

Happy Hour all day

Holiday's Greek and Italian

12 wings and a pitcher of Yuengling \$12.99
 Like Holiday's on Facebook, buy 1 two or more topping pizza and get another free

Loco's Grill and Pub

Happy Hour 5-7 p.m.
 Half price regular wings, chips and queso

Mellow Mushroom

Happy Hour 5-7 p.m.
 \$2 Wells Margaritas
 \$2 Wells Singles
 \$2.75 Draft Beers

Millhouse

\$1.99 Drinks all day everyday

TUESDAY

Applebee's

Happy Hour 3-6 p.m. and 9 p.m. to close
 Half price appetizer with any drink purchase
 \$3 Long Island
 \$3 Domestic
 \$3 Margarita

Dingus Magee's

Happy Hour 5-7 p.m.
 Happy Hour 9-11 p.m.
 2 for 1 Wells Drinks
 2 for 1 Bombs

El Sombrero

\$2 Daiquiris

GATA's Sports Bar and Grill

Happy Hour 5-8 p.m.

Gnat's Landing

★ Trivia 7 p.m.

Holiday's Greek and Italian

12 wings and a pitcher of Yuengling \$12.99
 Like Holiday's on Facebook, buy 1 two or more topping pizza and get another free

Loco's Grill and Pub

Happy Hour 5-7 p.m.
 Half price regular wings, chips and queso

Mellow Mushroom

Happy Hour 5-7 p.m.
 \$2 Wells Margaritas
 \$2 Wells Singles
 \$2.75 Draft Beers
 \$5 Large Salads
 \$6 Chicken Caesar Salad/Brutus Salad

Millhouse

\$1.99 Drinks all day everyday

TO REQUEST SPACE FOR YOUR RESTAURANT OR BAR
 IN THE GEORGE-ANNE'S 'BORO BEAT,
 EMAIL FEATURES@GEORGIASOUTHERN.EDU

FREE

R.J. Pope T-shirt with
 a \$50 Purchase

R. J. Pope
 Men and Ladies Apparel



patagonia

vineyard vines



Like us on Facebook

840A Buckhead Drive

5 South Main St.

912.764.6973



"BAD TO THE BONE"

5 Piece \$3.99 Wednesday is Wingsday
 10 Piece \$6.99 2 for 1 wings!



Located next to Wal-Mart
 912.764.6556

FREE FRIES

With a purchase of
 Boneless Wings!

med. fries
 one per customer
 Expires 12.14.12
 Must present coupon

White Like Me to reveal perspectives on racism



File Photo

Tim Wise is an activist against racism and a writer. He has visited 48 states and over 350 college campuses.

BY LAURIANNA CULL
and JAKE HUNSBUSHER

The George-Anne contributors

The minds of Georgia Southern University students are going to be poked, prodded and provoked by the seminar "White Like Me" by Tim Wise, hosted by the Multicultural Student Center.

Tim Wise, a writer and activist against racism in the U.S., will speak and initiate conversation today at 3:30 p.m. and 7 p.m. in the Russell Union Ballroom.

"It's very interactive; it gives students the opportunity to become engaged from varied backgrounds and the chance to have meaningful dialogue about important issues of race," Dorsey Baldwin, MSC director, said.

Wise speaks from the point of view of a privileged white male in today's society and uses this prospective to shed light on the broader spectrum of racism in America.

"Students and faculty have greatly appreciated what he has to offer, and whether it be with their peers, professors or family the 'White Like Me' seminar always sparks discussion between our students and gets people talking," Michelle Allen, Multicultural Student Center representative, said.

Tim Wise's "White Like Me" is one of the success series seminars provided by MSC in hopes that it will provide a forum for students to discuss and broaden their views on poverty, racial profiling and status based on race.

Although the seminar has provided a chance for meaningful dialogue between students in the past, it has also been a source of controversy, Christopher Pugh, faculty member of the MSC, said.

"Some people are really thankful for the seminar, and some people just don't like it and usually tell us so. But that's fine, we're not trying to change anyone or force

anything on them," Pugh said.

Wise has spoken in 48 states and over 350 college campuses.

"The reason Tim Wise has been invited back to Georgia Southern for several years is because his seminar always provides a different perspective. And though everyone may not agree, it causes them to look at things differently," Allen said.

He has also provided training to teachers, physicians and medical industry professionals as well as corporate, government and law enforcement officials nationwide on how to combat racial iniquities not only in the work place but in everyday life.

Whether the students agree or disagree with the thoughts and ideas presented by Tim Wise, the event will incite free thought and open conversation among students.

Pugh said, "We just want them to be exposed to this material in the hopes that it will challenge them to become free-thinkers."

Welcome TO THE EAGLE NATION

WEEKS OF WELCOME
EVENTS ONLINE AT:

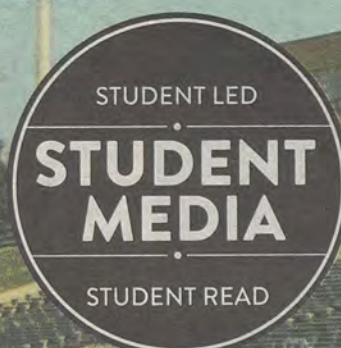
GeorgiaSouthern.edu/wow

GAMEDAY MAYDAY TAILGATE

COME ON OUT
ANY TIME
BETWEEN
2PM - 5PM

SPONSORED BY:

FIND US AT THE RAC
IN FRONT OF THE BISHOP BUILDING



STOP BY FOR FREE FOOD, GAMES AND MUSIC

COME PICK UP OUR BRAND **NEW** GAMEDAY MAYDAY
INCLUDING:
TEAM MATCHUPS COACH INFORMATION TEAM STATISTICS

CLASSIFIEDS

This page brought to you by Career Services
Explore • Experience • Excel

16 Thursday, Sept. 20, 2012

www.thegeorgeanne.com

Housing

Looking for 3rd roommate in Planter's Row, 1308 Magnolia Way. \$365 plus 1/3 of the utilities. Private bedroom and bath. Close to campus. Existing window covering. Two college age males currently live here. Contact: pm01393@georgiasouthern.edu

A female sub-leaser needed for Spring 2013 semester ASAP! A 4 bedroom, 2 bath at Cambridge apartments with a beautiful view of the pond and right on the bus route! Please contact Sydney be email: sr01982@georgiasouthern.edu or phone: 770-500-6485 if you are interested!

Looking for female to sublease Spring semester 2013! 4 BR/BA, \$500/month. Brand new apartments with great amenities. The Forum at Statesboro. Amazing Roommates! Call/text and/or email Ketonna: 706-201-1035 ka01879@georgiasouthern.edu

Help Wanted

BARTENDERS WANTED!
\$250 a day Potential. No Experience Necessary. Training Provided. Age 18+ OK Call 1-800-965-6520 ext 296.

For Sale

2000 Lincoln Continental, 129,000 miles, good condition. 687-4171.

Something to sell?
Visit thegeorgeanne.com
or email
ads1@georgiasouthern.edu
It's free for students,
staff and faculty!

HELP WANTED

Special Projects Assistant Part Time

POSITION DESCRIPTION: Student Media. This position will serve as an ad advisor for students in the Business Division. Duties will include coordinating training for all new students hires, meeting with business staff weekly, offering advice regarding sales approaches and serving as a role model for student staffers. Perform additional job-related duties as required by director.

MINIMUM REQUIREMENTS: High School Diploma or equivalent plus three or more months of post-secondary education (additional experience may substitute for some of the education requirement); three or more years of related work experience; proficiency with computers and Microsoft Office applications, including word processing, spreadsheet and databases; effective communication (verbal and written), organization and human relations skills; ability to work well in a diverse environment; successful completion of background investigation prior to employment.

PREFERRED QUALIFICATIONS: Sales certification training, associate's degree in business; sales experience, ideally in media ad sales

SALARY: Commensurate with experience and qualifications

APPLICATION DEADLINE: September 21, 2012

TO APPLY: Please visit the Georgia Southern University employment website and complete the application process at <https://employment.georgiasouthern.edu/>. The application process must be completed by the deadline to be considered. For more information, call the 24-hour job line at (912) 478-0629. Georgia is an open records state. Individuals in need of reasonable accommodations under the ADA to participate in the search process should notify Human Resources: 912-478-5468 or HR-TDD: (912) 478-0791. Georgia Southern is an Equal Opportunity/Affirmative Action Institution.

The Office of Career Services

Fall 2012 WALK-IN HOURS

Need a résumé critiqued?
Questions about the job search?
Curious about internships?
Need a quick mock interview?
Wondering what you should do with your major?

MONDAY - FRIDAY

12 pm to 4 pm

1047 Williams Center

Career Services | 912.478.5197 | www.georgiasouthern.edu/career

Frequently Asked: The Resume Edition

By: Taylor D. Terrell
Public Relations/Events Intern for Career Services

Career Development Specialists at the Office of Career Services advise resume tips tailored for students' needs. Resumes aim to highlight relevant skills, experiences, and qualities that are valuable to the company or the position in which they are applying for. Talondria Jenkins, a Career Educator, answers students' frequently asked questions.

Students: What are the components of a resume?

Talondria: A resume may consist of a heading (including contact information), an objective, work, volunteer, and leadership experience, relevant coursework, technical skills, as well as activities and honors.

Students: Do I include my high school information?

Talondria: No, employers are not inter-

ested in what you did in high school. They look for your higher education experience and professional development. **Students: My resume exceeds one page. What do I do?**

Talondria: A typical undergraduate resume should only be one page long. If it exceeds one page, consider including only the most relevant information for the specific job your applying for.

Students: I don't have any references. Who can I use?

Talondria: Refer to the people that know your work ethics, leadership abilities, or have witnessed your personal growth, such as: professors, past employers, professional or personal mentors. Always make sure your references are aware that you are using them as references and include their e-mail and phone number on a separate sheet from your resume.

For more answers to your questions, visit the Career Educators at Career Services located in the Williams Center!

PUZZLES/COMICS

www.thegeorgeanne.com

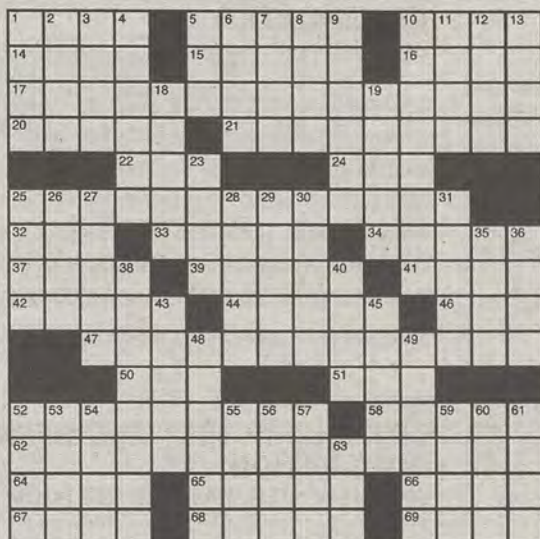
Thursday, Sept. 20, 2012 17

Los Angeles Times Daily Crossword Puzzle

Edited by Rich Norris and Joyce Lewis

ACROSS

- 1 Captain after a white whale
- 5 Former "Idol" judge Paula
- 10 Glove compartment items
- 14 Pro ____ free, as legal work
- 15 Mild cigar
- 16 Juan's water
- 17 Vacillates
- 20 Gossip spreader
- 21 America's national bird
- 22 Belief: Suff.
- 24 "____ the land of the free ..."
- 25 Goes out with periodically
- 32 Make a mistake
- 33 "____ be sorry!"
- 34 Porcine sniffer
- 37 Name of 12 popes
- 39 Trick alternative
- 41 "The ____-bitsy spider ..."
- 42 Florida coastal city
- 44 "____ at 'em!"
- 46 www connection co.
- 47 Acts nervously in the waiting room
- 50 B&O et al.
- 51 Gun lobby org.
- 52 "A ____ Named Desire"
- 58 Smells
- 62 Searches all over
- 64 Drink buyer's words
- 65 Use at mealtime, as dishes
- 66 When tripled, a story shortener
- 67 Lay eyes on
- 68 Martini's partner in vermouth
- 69 Bakery appliance



By Vanessa Michaels

Wednesday's Puzzle Solved

W	E	S	T	E	R	N	U	S	A	P	P	A	L
I	P	H	O	N	E	A	P	P	S	A	L	T	I
T	E	A	R	S	I	N	T	O	H	Y	A	T	T
S	E	R	I	O	G	O	T	A	L	I	G	H	T
C	U	D	M	E	N	I	A	L					
N	O	D	L	E	A	P	D	A	Y	A	T	E	
O	N	U	S	A	R	R	O	Z	E	R	R	S	
T	E	R	I	D	O	O	N	E	V	I	A	L	
T	M	A	X	C	A	P	E	D	A	S	T	A	
H	A	N	C	A	R	S	E	A	T	M	E	M	
E	N	D	A	L	L	T	A	J					
B	R	U	N	O	M	A	R	S	L	E	G	I	T
E	U	R	O	S	Q	U	I	C	K	T	I	M	E
S	L	A	D	E	U	M	B	R	E	L	L	A	S
T	E	N	E	T	A	S	S	Y	R	I	A	N	S

- 6 Oozy horror film menace
- 7 Number-cruncher's input
- 8 Russian river
- 9 Big Ben's city
- 10 Tubes with cheese
- 11 Eagerly excited
- 12 Yank
- 13 One-named Nigerian singer
- 18 Back-talking
- 19 Owners' documents
- 23 No longer at issue
- 25 Men's or Women's, e.g.: Abbr.
- 26 Opera highlight
- 27 Noted TV firer
- 28 Rolls up, as a flag
- 29 Admiral's command
- 30 Car rental giant
- 31 "____ I have anything to say about it"
- 35 Cold War country: Abbr.
- 36 "Teh" for "The," say
- 38 One may be hidden in a fake rock
- 40 IRS employee
- 43 Farm size units
- 45 2000s Houston-based scandal subject
- 48 Bible book named for a woman
- 49 Bro, to a beatnik
- 52 Blackthorn fruit
- 53 Heavy weights
- 54 Play friskily
- 55 "So long, signore"
- 56 FBI personnel
- 57 Letters after pis
- 59 Norwegian saint
- 60 Went on horseback
- 61 Tchaikovsky's "____ Lake"
- 63 "Star Wars" saga nickname

DOWN

- 1 "Dear" columnist
- 2 Golfer's target
- 3 Soon, to Shakespeare
- 4 Neckwear with a tux
- 5 Coblenz complaint

PAM DISABLED DIRK RAIDER'S DEATHSHIP AND YOU DEFEATED HIS FORCES WITH YOUR PENGUIN ARMY!



THAT MEANS WE WIN! GATORADE DUMP!



PROBABLY NOT A GOOD IDEA TO DO THAT IN ANTARCTICA.



COLLEGE GRADUATES SHOULD NOT HAVE TO LIVE OUT THEIR 20s IN THEIR CHILDHOOD BEDROOMS, STARING UP AT FADING OBAMA POSTERS & WONDERING WHEN THEY CAN MOVE OUT AND GET GOING WITH LIFE.

				2	5			
5	8				6		7	
4		2						3
	9	8						
	7		1				6	
						3	2	
7						9		4
	4		9				3	2
				5	3			

Sudoku

Buy / Rent / Sell

Now Selling Gameday Apparel !!!

TEXTBOOK BROKERS

on Chandler Road next to Dingus Magee's

Saturday, October 20

SOUTHERN Collegiate

Leadership Conference

GeorgiaSouthern.edu/sclc

Office of Student Leadership & Civic Engagement

Your Student Activity Fees at Work

Self Leadership Workshop Track

SCAN ME!

WEEKLY BUZZ

A weekly calendar listing sponsored by The Division of Student Affairs and Enrollment Management

SEPT 20 - SEPT 26

THURSDAY 9.20.2012

3:30 PM and 7:00 PM

WHITE LIKE ME

RUSSELL UNION BALLROOM

Tim Wise is among the most prominent anti-racist writers and activists in the U.S. He has spoken in 48 states and on over 350 college campuses, including Harvard, Stanford, and the Law Schools at Yale and Columbia. Wise has provided anti-racism training to teachers nationwide, and with physicians and medical industry professionals on how to combat racial inequities in health care. He was trained corporate, government, and law enforcement officials on methods for dismantling racism in their institutions and has served as a consultant for plaintiff's attorneys in federal discrimination cases in New York and Washington State. Proof of attendance will be provided.

8:00 PM

BELAY CLINIC

RAC

For More Information go to <http://services.georgiasouthern.edu/cri/southernAdventures/skillsClinics>

FRIDAY 9.21.2012

2:00 - 5:00 PM

OPEN HIGH ROPES COURSE

RAC

Always wanted to try our high ropes course but never had a group? Now you can with the Open High Ropes Course. It's free but you must register in advance with Southern Adventures.

SATURDAY 9.22.2012 TUESDAY 9.25.2012

6:00 PM

GSU FOOTBALL VS. ELON

Come out to Paulson Stadium and support your Georgia Southern football team as they take on Elon. Various departments such as Betty Foy Sanders Department of Art, COBA and the Graduate Students Organization will be hosting tailgates at the game. For tickets contact the Athletics Ticket Office at athletics@GeorgiaSouthern.edu or by calling (912) 478-9467.

6:30 PM

GSU UNPLUGGED

STARBUCKS

Looking for something fun to do on campus? Want to watch some live performers? Maybe even want to try out that new song of yours? Georgia Southern Unplugged is a coffeehouse series sponsored by the University Programming Board held every Tuesday. Come see the talented students of the Georgia Southern community. Free Starbucks coffee for attendees with your student ID. Your student activity fees at work.

Sponsored by the University Programming Board

SUNDAY 9.23.2012

NO EVENTS SCHEDULED

MONDAY 9.24.2012

5:00 - 7:00 PM

MADNESS IN THE MEADOW

RAC

Madness in the Meadow is a workout program designed to provide RAC members with an alternative means of training. Equipment such as tractor tires, sledgehammers, kettle bells and concrete stones give you a chance to breakout of your normal routine. This equipment is also an excellent way to increase power, strength and endurance.

For more information, please go to, <http://services.georgiasouthern.edu/cri/fitness/madnessInTheMeadow>

REGISTRATION OPENS: INDOOR SOCCER

Don't forget to get involved in intramurals this fall. Indoor soccer registration begins on this date at 8 a.m.

For more information, please go to <http://services.georgiasouthern.edu/cri/intramuralSports/sports#fall>

6:00 PM

INTRO TO OUTDOOR ROCK CLIMBING

RAC

This clinic is geared to help you learn more about outdoor climbing. This class will cover basics and will serve as a great start for you to gain rock climbing technical skills.

7:00 PM

CITIZENSHIP TEST AND OPEN FORUM ON IMMIGRATION

WILLIAM CENTER MULTIPURPOSE ROOM

The U.S. Citizenship and Immigration Services administer a test to all immigrants seeking citizenship. This is a great opportunity to experience what it is like to migrate to the United States. Afterwards, join the discussion on current immigration issues. Proof of attendance will be provided.

7:00 - 8:30 PM

WOMEN AND WEIGHTS BEGINS

RAC

If you already signed up, get ready to start the program that will help you reach your goals and motivate you moving forward in changing your routine and body.

Sponsored by Campus Recreation and Intramurals

WEDNESDAY 9.26.2012

2:30 PM and 7:30 PM

MAJOR IN SUCCESS WITH PATRICK COMBS

PERFORMING ARTS CENTER

The Office of Career Services is proud to bring back award winning author, Patrick Combs for the 7th year. His dynamic presentation, "Major in Success" will focus on how to find the right job, how to discover your passion, how to triumph over your fears and more. Students are encouraged to arrive early as seating is first come, first served.

Sponsored by the Office of Career Services

Student Affairs
Enrollment
Management

Brought to you by Georgia Southern University VALUES. Georgia Southern V.A.L.U.E.S. is the culture shared by our students, faculty, and staff. We endeavor to share our V.A.L.U.E.S. inside and outside of the classroom with faculty, staff, students, alumni and all other community members. In order to produce productive citizens with an informed set of ethics and community standards as well as create an environment of respect and civility, we pledge to live by our V.A.L.U.E.S.

Former Eagle Shawn Payne grows in the pros

Baseball

BY JANNAH BOLDS

The George-Anne staff

Former Georgia Southern University baseball player Shawn Payne just completed his first full season as an Augusta Green Jacket and will participate in this year's post-season instructional league.

Payne spent his junior and senior year under the Eagles after transferring from Middle Georgia College and was drafted his junior year to the Kansas City Royals but decided to return to college shortly afterward.

"I was drafted my junior year, but I wanted to come back to Georgia Southern to get closer to my degree, and it was an honor to be drafted, and I'm thankful for the

opportunity to take my career to the next level," Payne said.

"I was very excited for him because I know how hard he worked to get to where he was," GSU baseball Head Coach Rodney Hennon said. "Also to even pass up the opportunity as a junior was a big decision, but it gave him the chance to improve his draft status."

"Shawn was an outstanding player and awfully fun to watch especially with his speed," Hennon said.

This week, Payne started the instructional league, which lasts from Sept. 18 through Oct. 18 in order to stay sharp for the off-season.

"I was invited to the instructional league to help get better, and that lasts a month, and then pre training starts in March for the beginning of the season in April," Payne said.

Since the season was already underway

when Payne began his rookie year with the Green Jackets in summer of 2011, there were many things he had to get adjusted to.

"Coming in in a short season, I had to establish myself if I wanted to keep getting opportunities to play," Payne said.

Payne soon started settling down with his position and began to rack up on his achievements and milestones with the Green Jackets.

"I hit over 300 at the end of the year and my on-base percentage was over 400 so, if you keep doing that, you'll end up in the majors fast," Payne said.

With Payne playing a complete full season from April through Sept. with the Green Jackets, he had plenty of opportunities to add to his collection of accomplishments.

Payne was named the South Atlantic

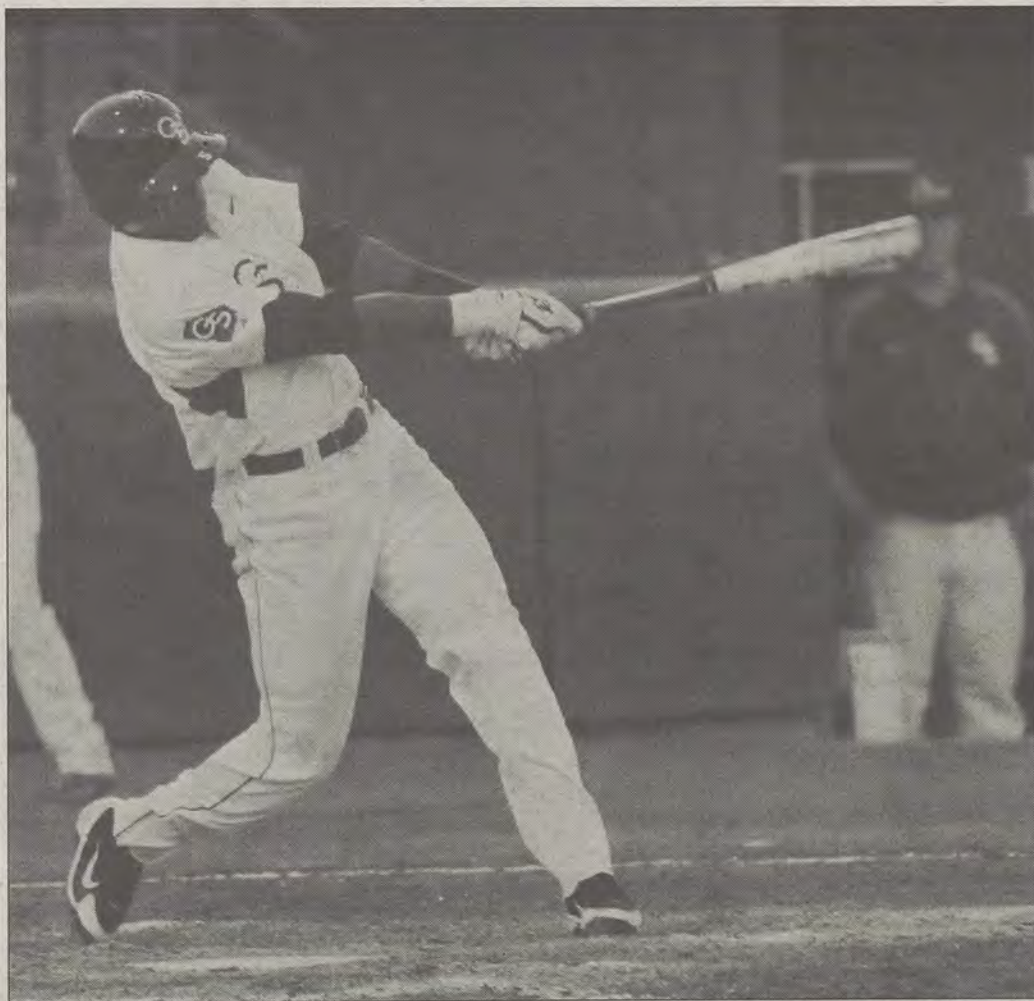
League Post Season All-Star 2012 for Low A, reached second in the league for stolen bases for Low A with 53 for 56 in 2012 and racked up 34 straight stolen bags in 2012, which is the best in the major and minor leagues.

After his regular season, Payne was also promoted to the High A San Jose Giants to help the team compete in the playoffs.

Payne hopes to work his way through the minor leagues and reach the majors to the San Francisco Giants and make the Eagle Nation proud.

"I just wanted to reach back to the community and let everyone know how and what I'm doing, and that I am doing something positive post college," Payne said.

Hennon said, "I'm awfully proud, and he's a fine young man, and I think he'll work hard to chase his dreams."



File Photo



Photo courtesy of the Augusta Green Jackets.

Shawn Payne, former Georgia Southern University baseball player, just finished his first full season as an Augusta Green Jacket. He was drafted by the Green Jackets during his senior year.

Sports Talk

Eagles to smother the Phoenix fire | GSU will maintain control of season

The Eagles have had two weeks to think over the Citadel game, where two fumble-rooski's gave the Bulldogs a two-touchdown lead that proved the Bulldog bite was worse than their bark by the end of the game.

This week against the Elon University Phoenix, the Eagles will have the memory of their last-second loss two weeks ago, and a boost of energy given by a bye week, to come out ready to dominate.

The Phoenix has made quite a name for its passing attack. However, any student of football would say that the best strategy to combat a pass-heavy offense is to keep it off the field.

The Eagles could win if they run the ball effectively and dominate time of possession. Something quite possible considering that so far this season Elon has been held to a 40 percent 3rd down conversion percentage.

THE BOLD OPINION



JANNAH BOLDS
FOOTBALL EDITOR

For the superstitious Eagle fan that likes stats that ultimately can't guarantee anything, it'd be encouraging to know that Jeff Monken is 7-1 coming off a loss. Additionally, the Eagles are 5-1 against Elon in Statesboro and are on an 11-game winning streak at Allen E. Paulson Stadium.

Assuming the Eagles hold onto the ball and the superstitious voodoo odds are forever in GSU's favor, the Eagles are expected to beat the team of mythical birds by a score of 33-21.

Since the Eagles are looking to bounce back from the upset two weeks ago against the Citadel, there's no doubt that GSU is going to come out throwin' bows.

Last season, the Eagles stomped that Elon Phoenix fire out winning 41-14 and this year with the same, if not more, drive, they will do it again. However, the Eagles will absolutely have to stay on top of their game if they don't want Elon to catch them slipping.

Two weeks ago against the Bulldogs, the Eagles must have eaten some popcorn before the game because they had the case of the butter fingers. They juggled and lost the ball five times offensively and if they don't want Elon to take advantage of them, they should probably play ball hog and keep the pigskin to themselves.

Another thing the Eagles are on the scout

THE KG PROGNOSIS



KEVIN GREGAN
FOOTBALL REPORTER

for is that Elon is a very pass aggressive team, unlike the Eagles. Elon's senior quarterback has a cannon attached to his torso and J.J. Wilcox, along with the rest of the Eagle secondary, will have to be on their toes, literally, to keep up.

With all this said, The Eagles have had plenty of time to prepare and are ready to redeem themselves. The Eagles are going to finish the game on top 35-17.

ELON, from page 1

GSU has dominated the last two meetings between the teams, winning 38-21 in 2010 and 41-14 last year.

The Eagles outgained Elon by 331 yards combined in the last two games, thanks in big part to 300 rushing yards and a breakout performance by sophomore Dominique Swope in 2011.

In the first game of his career, Swope put up 74 rushing yards and scored two touchdowns against Elon. Senior running back Robert Brown contributed 110 additional rushing yards and a touchdown.

The Eagles are ranked 2nd nationally in rushing so far this year, with 432.0 yards per game.

One person who made major contributions to last year's win and will be missed on Saturday is former quarterback Jaybo Shaw, who threw three touchdowns against Elon.

Sophomore quarterback Ezayi Youyoute is certainly capable of throwing touchdowns but so far, the Eagles have only completed 5-18 pass attempts for a total of 57 yards.

Where he lacks in passing stats, Youyoute makes up for it on the ground. He's currently ranked 8th among all rushers in the Football Championship Subdivision, averaging 132.5 yards per game.



Lindsay Hartmann/The George-Anne

Sophomore quarterback Ezayi Youyoute (11) looks down field for an open receiver during game against the Citadel on Sept. 8, 2012.

Eagles look for first road win at Jacksonville

Men's Soccer

BY TREVOR MCNABOE

The George-Anne staff

This Saturday Georgia Southern University men's soccer (2-5) looks to snap their four game losing streak when they travel to Florida to take on Jacksonville University Ospreys (0-6-1).

This game will be the third of seven straight road games that GSU will have to play before their next home match. Away matches have not been kind to the Eagles, as they have lost all four of the games they have played on the road.

JU on the other hand has not won a game at home this year to put them at 0-4 at games they play in friendly confines.

Offensively GSU has struggled lately and have made a total of four goals in the past four games. The good news is that the offensive attacking and philosophy have been there, however the end result and finishing of the goal have not.

The Eagles take on a JU defense that has allowed 14 goals this year in the seven games they have played in. GSU needs to get their

offense going early as opponents have outscored JU by a total of five goals compared to zero goals scored in the first half for the Ospreys.

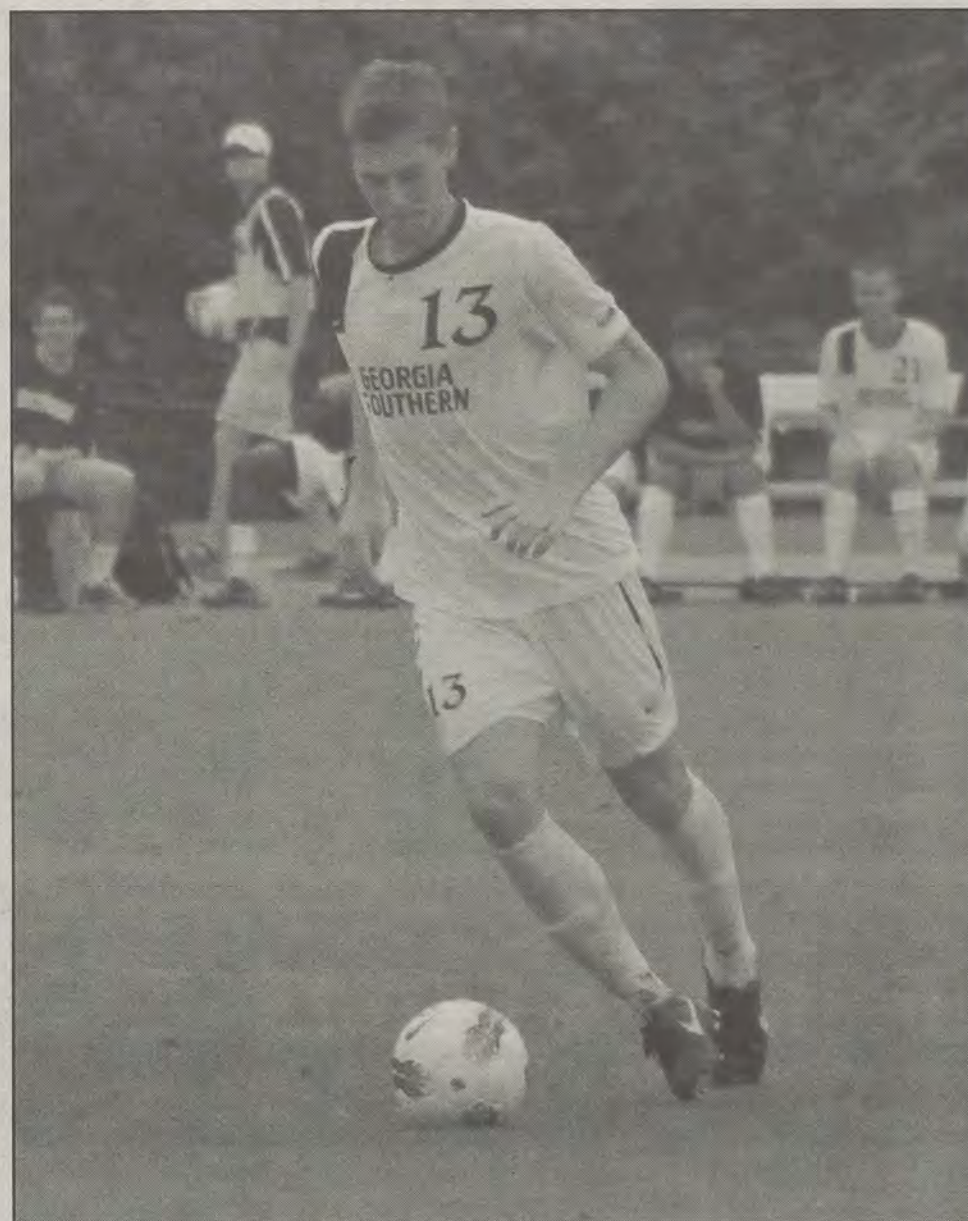
Defensively GSU has given up a total of 15 goals in a span of seven games. The Eagles have one victory when they give up two goals or more. It will be key that they limit the amount of opportunities and shots that JU takes.

JU has scored a total of three goals this season with all of them coming in the second half. Two of the three goals this year have come from junior midfielder Nick Rodriguez. Rodriguez should be the main focus of the Eagles defense, and if GSU can hold him scoreless that would alleviate any pressure offensively from JU.

The key point in this game is that GSU does not have a true road win yet this season. If GSU can put together a full 90 minutes of play, they could record their first win on the road. With four more road games after this one, a win could carry some momentum for the rest of the road trip.

Prediction:

GSU gets their first road win over a winless JU team by the score of 2-1.



Mark Barnes II/ The George-Anne

Junior midfielder Hunter Norton (13) dribbles the ball down the field toward the Eagles' goal.

★★★ Sports ★★★ — EMPORIUM —

"Your largest selection of athletic footwear in Statesboro"



Buckhead Place across from the Big El Som

912.764.4449

Saturday, October 20

SOUTHERN Collegiate Leadership Conference



GeorgiaSouthern.edu/scic
Office of Student Leadership & Civic Engagement
Your Student Activity Fees at Work

Social
Justice
Issues
Workshop Track



SCAN ME!

Beecher named SoCon Freshman of the Week

Volleyball

BY KATIE TOLBERT

The George-Anne contributor

Georgia Southern University's Alexandra Beecher has started out her first season with the award of the Defensive Player of the Week, followed by the Southern Conference volleyball Freshman of the Week award.

Beecher's Freshman of the Week award was due to her performance in the SpringHill Suites Eagle Invitational. When deciding the winner of this award, the overall performance of the player was analyzed in all aspects.

Throughout the four games of the invitational GSU played, Beecher had 10 service aces, a total of 81 digs, averaging 5.06 digs per game, and 12 assists.

"I'm not letting (the awards) get to my head. I'm just trying to do my best. It is very flattering and such an honor to win these things, but I am not trying to make myself over confident. I just want to keep pushing and keep myself humble, so I can fight as hard as everyone else," Beecher said.

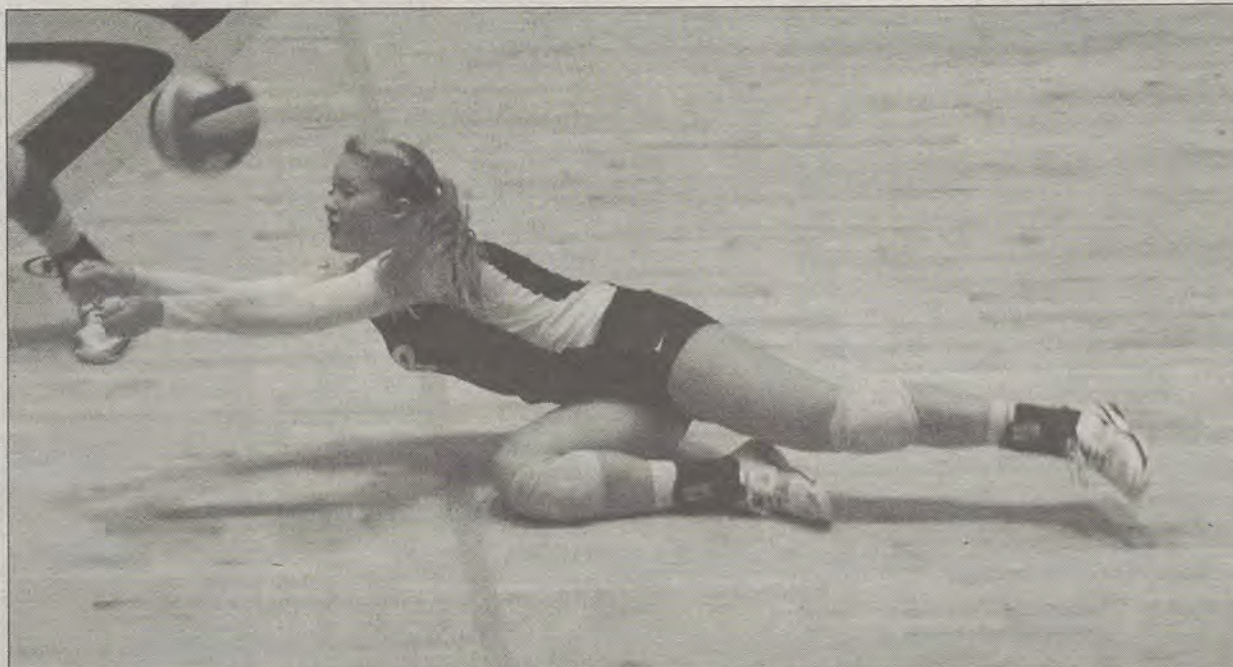
Overall, Beecher has the leading role in digs with 265 in the season so far and posted a match high of 23 digs in her last game against Jacksonville University.

"We've been really pleased with our defense this year. She has definitely added to the ability to keep the rallies extended and give us more opportunities to score, and that is the ultimate goal, point scoring opportunities, and we have given ourselves more opportunities to do that. It was a good weekend for her, and we are proud of her for the accolades, and we hope that she just continues to get better," GSU volleyball Head Coach Chad Callihan said.

Beecher success started in her hometown, Orlando, Fla., at Bishop Moore High School. During her seasons there, she lettered and earned a position on the All-Central Florida Top Team as well as being voted the best libero in Central Florida.

"It's so exciting because as a freshman you never know if you're going to earn that spot, and I've worked really hard, so I feel really accomplished. Its been awesome I love playing with this team. They have helped me so much," Beecher said.

Senior setter Kate Van Dyke said, "It feels good because she has been doing so great this whole season, and pre season she came in and really stepped up and has helped our team so much. We try not to put too much pressure on her because she has been playing so great the way she has been playing for our team."



Mark Barnes II/ The George-Anne



Georgia Southern University volleyball team looks forward to its first Southern Conference play of the season against Wofford College and Furman University. **Top:** Freshman libero Alexandra Beecher (8) dives for a ball saving GSU a point, and pushing her one step closer to SoCon freshman of the week. **Left:** Sophomore outside Jamie DeRatt (9) spikes a ball down at the SpringHill Suites Invitational.

GSU prepares to go on the road for SoCon opener

Volleyball

BY JACKIE GUTKNECHT

The George-Anne staff

The Georgia Southern University volleyball team looks to a road trip for its Southern Conference opener against Wofford College on Friday Sept. 21 and Furman University on Saturday Sept. 22.

The WC Terriers currently hold an 8-3 record, and a five match winning streak, winning eight of its last nine matches. Having not played a home game yet this season, this will be the home opener for the Terriers.

WC's junior outside Amanda Liquori looks to be a big threat for GSU, with nine kills and 10 digs in her last match.

GSU's senior setter Kate Van Dyke racked up 56 assists in her last match, while WC's junior

setter Beckah Dorsey handed out 22 assists.

The Eagles will then get set to play the Furman Paladins in their second SoCon game of the season. The Paladins currently hold a 10-3 record, and maintain the highest winning percentage (.769) in the SoCon.

Furman's freshman setter Jo Wilks was named the SoCon volleyball freshman of the week for the first three weeks of the season, while GSU's freshman libero Alexandra

Beecher just ended that streak, being named the volleyball freshman of the week for week four of the season.

Furman is currently holding an at home winning streak of 18 games, while GSU has won five games on the road this season.

Prediction:

GSU will defeat WC 3-1, but will fall to the Paladins 2-3, bringing their record to 10-6, and 1-1 in the SoCon.

GSU to battle Samford and Chattanooga at home

Women's Soccer

BY ERIN DENMARK

The George-Anne staff

Georgia Southern University's women's soccer team will be hosting Samford University on Friday at 4 p.m. and University of Tennessee at Chattanooga on Sunday at 2 p.m.

The Eagles have a good standing so far with their current record of 4-3-1. The SU Bulldogs have lost more games than they've won this year with 3-5 record. The UTC Mocks are at a current of standing of 2-1-3, which leaves the Eagles as the highest ranked out the three teams so far for this season.

"Every point matters with only eight teams making the conference tournament every year. Four teams get left out in the cold, so you want to make sure that you take care of every single game. Out of all 11 games, you got to make sure you get your points in," head coach Lindsey Vanderspiegel said.

All week the team is focusing on preparation and learning what to expect from SU and UTC.

"We are preparing to face both conference opponents, starting to watch the films on both of them and making sure we prep the team, so we know what to expect from both

sides. We feel ready," Vanderspiegel said.

SU had an exceptional record last year, which makes this game a much-anticipated rivalry. UTC has history of being a talented team, but last season they didn't do as well.

"Samford is very good. Last year, they ran the table and didn't have a loss and went all the way to the NCAA tournament. Chattanooga didn't have as good a season as maybe they can. They are both good teams, and they should provide a pretty good test," Brian Dunleavy, assistant coach, said.

Vanderspiegel has assurance from the team's current record the players' performances on the field with only one loss.

"It's nice to come out in the non-conference play and get a bit of confidence. We would have liked to have a few more wins as opposed to what turned out to be ties. It's nice going into conference play with only one loss," Vanderspiegel said.

Dunleavy shows pride from the Eagles' performance this season.

"It's been very good so far. We are done with non-conference, and it was a close game that loss. We've got to be proud to a certain extent of the record. I think as a team we are trying to measure ourselves to a level of performance, and I feel like we've done that

in the majority of the games, so I think that's more important," Dunleavy said.

The Eagles are to face vicious opponents this weekend but gives them the opportunity to obtain two wins to get a possible six points.

"Any weekend you go into this conference playing two games in one weekend, if you come off with two wins that's massive. So, that's the goal every time we play, but realistic expectations we need to perform on Friday and get ready for Chattanooga after that," Dunleavy said.

On the other side of opportunity there is risk of defeat against SU and UTC. This would put the team in a tough position and would require a lot more focus to catch back up.

"There's going to be ups and downs for teams throughout the next five weeks or so, but we want to make sure that we get a strong footing so start at the top of the conference," Vanderspiegel said.

Dunleavy said, "A good thing about the conference is that we play 11 games, so there are opportunities for you to get back into it. So, starting off poor doesn't mean they will finish off poor but, you got to do the things along the way to make sure you take care of yourselves as a team cause it's a quick turn around."



Mark Barnes II/The George-Anne

Freshman defender Katey Lippitt (22) juggles an airborne kick from across the field.

MICELL ANY

MAGAZINE FOR THE ARTS

Now Accepting Submissions

Photography, Prose, Sculpture, Painting, Poetry, Fashion Design, Short Stories, Cartoons, Music, Sketches, & any other art form

Submit to: gsmicellany.submittable.com

Deadline: **20** September

OMG I feel so sick today. What should I do?

WWMD?

?!?

What would mom do?

Good one. THX :)

No matter what's wrong, let us take good care of you.

**SOUTH GEORGIA
IMMEDIATE
CARE CENTER**

1096 Bermuda Run Road
(next to Mellow Mushroom)
Statesboro, GA 30458
p - 912-871-5150
yourimmediatecarecenters.com


CONVENIENTLY LOCATED MINUTES FROM GSU. CARING AND CONFIDENTIAL TREATMENT.

HOURS:
Monday - Friday 9:00 am - 8:00 pm
Saturday 9:00 am - 5:00 pm
Sunday 12:00 pm - 5:00 pm

Most insurance accepted - bring your insurance card and Driver's License. Please call with co-pay and insurance questions. Cash patients also welcome.

JOIN THE INTEREST LIST TODAY AT myaspenheights.com

ASPEN
• HEIGHTS •

THE  **ANTI APARTMENT**