

Georgia Southern University

Digital Commons@Georgia Southern

The George-Anne

Student Media

9-4-2012

The George-Anne

Georgia Southern University

Follow this and additional works at: <https://digitalcommons.georgiasouthern.edu/george-anne>



Part of the [Higher Education Commons](#)

Recommended Citation

Georgia Southern University, "The George-Anne" (2012). *The George-Anne*. 2764.
<https://digitalcommons.georgiasouthern.edu/george-anne/2764>

This newspaper is brought to you for free and open access by the Student Media at Digital Commons@Georgia Southern. It has been accepted for inclusion in The George-Anne by an authorized administrator of Digital Commons@Georgia Southern. For more information, please contact digitalcommons@georgiasouthern.edu.

EAGLES DOUBLE VICTORY

PAGE 15



GSU SPENDING CRITICIZED

PAGE 2



NEW EXHIBIT IN CAT

PAGE 8



Tuesday, September 4, 2012
Georgia Southern University
www.thegeorgeanne.com
Volume 83 • Issue 20

THE GEORGE-ANNE

GSU's low student fees could increase

BY KELSEY ELAM

The George-Anne contributor

Georgia Southern University students will vote on four new fees this month, but currently pay less in fees than Valdosta State University, the Georgia Institute of Technology and the University of Georgia.

GSU students enrolled in a fall or spring semester taking more than four credit hours, pay roughly \$936 in mandatory student fees during the 2012-2013 school year, Cindy Durden, director administrative for the Bursar's Office, said.

Student fees total are lower for the 2012-2013 school year than Valdosta State

University's \$955, University of Georgia's \$1,098 and Georgia Institute of Technology's \$1,190, according to each university's website.

If the fees currently paid remain the same, then GSU students will be paying \$1,046 after the new fees are added, which is \$52 less than fees that UGA students pay.

The fees that are being put forward are for

athletic expansion, athletic operation and a green fee.

The new fees have to go through an approval process before they are brought to a public vote.

"These fees are voted on by a committee that includes students and faculty, and must be approved by the Board of Regents,"

See FEES, page 7

DOMINATION



Mark Barnes II/The George-Anne

The Georgia Southern University football team passes under the GATA banner as part of their pre-game traditions in their home opener against Jacksonville University on Saturday. The Eagles defeated Jacksonville 58-0.

Youyoute leads GSU offense

BY JANNAH BOLDS

The George-Anne staff

One of the major mysteries before the Georgia Southern University versus Jacksonville University home opener this weekend was who was going to be leading the Eagles offense as quarterback.

Junior Jerick McKinnon and sophomore Ezayi Youyoute have been battling for first since summer camp began. Head Coach Jeff Monken struggled to make the decision as to who he would choose to start the season as first-string quarterback. When game time arrived, the crowd cheered as Youyoute stepped up to the line of scrimmage to lead the offense.

"I'm just thankful for the opportunity,"

See YOUYOUTE, Page 14



thegeorge
anne.com



Follow us on Twitter
@TheGeorgeAnne



Newsroom 478-5246
Advertising 478-5418
Fax 478-7113

PO Box 8001
Statesboro, GA
30460

Quarles responds to criticism over funding decisions

BY JENNIFER CURINGTON
The George-Anne staff

Wednesday night, the Student Government Association president responded to criticism over Georgia Southern University's funding of the stadium expansion and shooting range instead of replacing temporary building Forest Drive.

In the last five years, the temporary building Forest Drive, which was constructed in 1994, has been pushed down the capital projects list that Board of Regents consults when deciding how to fund universities in Georgia, Project Architect Haroun Homayun said.

Money from other accounts at GSU cannot be used to build a replacement for Forest Drive either.

"If student activity fees or student

RAC fees have accumulated and you have a couple million dollars left over, you cannot take money from student recreational activity fees and build another Forest Drive building," SGA President Dominique Quarles said.

Since extra money from other accounts cannot be used for academic buildings, it is unfair to compare the Forest Drive situation to the construction of the archery facility, Quarles said, and students should be thankful and appreciative for what GSU currently has.

"The university system of Georgia is backed up on building requests as it is," Quarles said. "The biology building is one of the buildings that they said would be their last academic building that they would fund at the time it was funded."



File Photo

Forest Drive is a temporary building that was constructed in 1994. Funding for a replacement can not come from a surplus of money in another department at GSU.

Although there are no immediate plans for Forest Drive, the current master plan for GSU shows Forest Drive will be removed and become open green

space, since the soil there cannot support a multiple-story building, Information System Specialist Dustin Sharber said.

When funding becomes available,

a three-story building between the IT building and Carroll will replace Forest Drive and house multiple departments, Geographic Sharber said.

"Right now on the list of capitol projects [a Forest Drive replacement] is not at the top of the list. But looking in my crystal ball I would say you're looking at a range of five to 10 years with five years being the earliest," Homayun said.

Legislation is currently deciding on whether to fund a new Health and Counseling Center for GSU and that building is the number one priority, Homayun said.

Architect Carrie Thorne said that the Physical Plant is looking into installing a new air conditioning system in Forest Drive but it is uncertain due to funding.

BLISS BERRY
FROZEN YOGURT • GELATO • SORBET • SMOOTHIES

5% Off Students Everyday!

Mon & Thurs: Double Punch Card Days!

Come Try our New Delicious, Fresh, Fruit Smoothies!

1 oz FREE*

*Valid through 12/31/2012. Cannot be combined with any other discounts.

721 SOUTH MAIN ST. #9
STATESBORO, GA
LOCATED IN QUIZNOS SHOPPING CENTRE
CONTACT # 912-681-2547

HOURS:
MON-THURS: 11AM-10PM
FRI-SAT: 11AM-11PM
SUN: 12PM-10PM



JOIN ON FACEBOOK TO
LEARN MORE ABOUT
SPECIALS @ BLISSBERRY

Police Beat

Tuesday, Aug. 28

- Officer took a report for the theft of a GSU banner on Sweetheart Circle. The case was turned over to GSU Police Criminal Investigations.

- Officers conducted a traffic stop on Maleki Drive at Paulson Stadium. The driver Kevin John Newbold, 18, was arrested and charged with Reckless Driving, Speeding 61 mph in a 25 mph zone, and Laying Drag.

- Officers responded to the Russell Union for a Fire Alarm Zone 0 Trouble Zone 18. Officers checked the building with no problems found. Maintenance was contacted and responded. The alarm was determined to be caused by a malfunction in the alarm system.

- Officers responded to a motor vehicle accident – hit and run in A Lot. A motor vehicle accident report was completed.

- Officers responded to a motor vehicle accident on Maleki Drive. A motor vehicle accident report was completed.

- Officers responded to Eagle Village in reference to a drug complaint. Two occupants were judicially referred and one occupant was arrested: Kieran Frank Fisk, 18, charged with Possession of Marijuana – Less Than 1oz.

- Officers assisted Statesboro Police Department with an injured female at Centennial Place. The injury to the female occurred off the GSU campus. EMS responded and treated the female. The case was turned over to Statesboro Police Department for further investigation.

Wednesday, Aug. 29

- Officers responded to the new

biology building construction site in reference to a motor vehicle accident. A motor vehicle accident report was completed.

- Officers responded to a motor vehicle accident – hit and run at Eagle Village. A motor vehicle accident report was completed.

- Officers responded to a low temperature alarm at Southern Courtyard. Maintenance personnel were on scene. The room and building were checked with no problems found.

- Officers conducted a traffic stop at the Baptist Student Center for a vehicle on the roadway without headlights on. The driver was issued a warning for Headlights Required After Dark.

Thursday, Aug. 30

- Criminal Investigations took a report of harassment of a student. Case is under investigation.

- Officers responded to an accident between a golf cart and bicycle on Plant Drive. EMS responded and transported the bicyclist for treatment.

- Officers responded to the Ceramics Parking Lot-Lot #33 for a report of a Hit and Run accident. Both drivers were contacted by officers. Drivers had already exchanged information before meeting with the officer. An accident report was taken.

- Officers took a report for a stolen Eagle ID card from the RAC. Case was turned over to Criminal Investigations.

- Officers responded to a sick person call for a male having seizures near the bus stop at Russell Union Student Center. EMS responded and transported victim for treatment.

- Officers responded to a suspicious activity call at Freedom's Landing. Complainant came home to find patio door open. Officers checked the residence and found nothing missing and no one in the apartment.

- Officers responded to a suspicious activity complaint at Southern Pines. Complainant stated someone had taken a nametag off the front door. The nametag was later located in a neighbor's apartment and returned. Complainant declined to press charges.

- Frances Noelle Marshall, 21, was arrested and charged with Failure to Maintain Lane, Driving Without a License on Person, False Statement and Writing and DUI as a result of an accident that occurred on Old Register Road.

- Officers responded to a Trouble Alarm at the Engineering Technology Building. The building was checked with no problems found.

- Officers responded East Georgia Medical Center to take a report of Simple Battery. Complainant stated he was "jumped" somewhere near the bus stop at Paulson Stadium. Case was turned over to Criminal Investigations.

- Eric Wesley Sikes, 18, was arrested and charged with Underage Possession of Alcohol.

- Ethan Lewis Tolbert, 18, was arrested and charged with Underage Possession of Alcohol, Giving False Identity, and Possession of a False ID.

Editor's Note: Reports for Aug. 31-Sept. 3 will not be available until Sept. 4 because of Labor Day weekend.

Statement of Operations

The George-Anne is the official student newspaper of Georgia Southern University, owned and operated by GSU students using facilities provided by the university. The newspaper is the oldest continuously published newspaper in Bulloch County. The newspaper is a designated public forum for the Georgia Southern community.

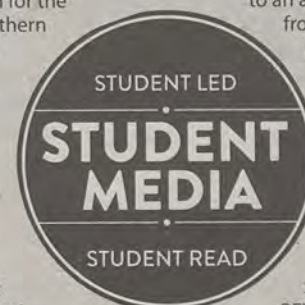
The newspaper is published twice weekly, on Tuesdays and Thursdays, during most of the academic year. Any questions regarding content should be directed to the student editor by phone at 912.478.5246 or at gaeditor@georgiasouthern.edu.

ADVERTISING: The newspaper accepts advertising. Inquiries may be made by calling 912.478.5418 or 912.478-0566. Fax any questions to 912.478.7113 or e-mail ads1@georgiasouthern.edu.

The George-Anne receives additional support, in part, from the Student Activities Budget Committee.

The deadline for reserving space and submitting advertising copy is noon, one week prior to the intended publication date. For more information, rate cards, sample publications, contact

the advertising manager or student media director. The advertiser is responsible for any errors in advertisements and its liability for adjustments is limited to the amount of space the error occupied in the ad. Further, the newspaper is not responsible for any damages caused due to an ad's omission from a particular edition and its responsibility solely is to reschedule the ad in the next regular edition at the regular advertising rates.



STUDENTS BEWARE:

The George-Anne screens all advertisements prior to publication. The newspaper strives to accept ads for legitimate products and services only. Students are urged to exercise caution when replying to ads-particularly those that require personal information. Students are also urged to report to the newspaper any suspicious offers which they might see in an ad.

PUBLICATION INFORMATION: The newspaper is printed by The Brunswick News in Brunswick, Ga.

NOTICE: Unauthorized removal of multiple copies from a distribution site constitutes theft under Georgia law, a misdemeanor offense punishable by a fine and/or jail time.

Editorial Staff

Editor-in-Chief Arielle Coambes
Managing Editor Jennifer Curington
Multimedia Editor Jessie Reese
Opinions Editor James Farmer
News Editor Lindsay Gaskins
News Chief Taylor Cooper
Arts Editor Gianna Carme
Arts Chief Kimeko McCoy
Sports Editor Jackie Gutnecht
Football Editor Jannah Bolds

Copy Chief Courtney Tielking
Copy Editor Anna Wells
Business Manager Chloe Douglas
Sales Leader Phillip Scroggin
Marketing Manager TJ Jackson
Marketing Associate Amber Gordon
Production Manager Kelsey Paone
Photo Editor Lindsay Hartmann
News Design Chief Tyler Fleider
Ad Design Chief Jose Gil

Corrections

Contact the editor at gaeditor@georgiasouthern.edu for corrections and errors.

Our View

Greek Life regulations too strict

Last week, we reported that Delta Tau Delta was judicially referred after the fraternity held a party without obtaining proper permits.

This incident spotlights the heavy restrictions on Georgia Southern University's Greek Life. Greeks have multiple hoops to jump through just to host a social event, like turning in forms and guest lists weeks in advance.

These regulations are overly restrictive and hinder the ability of the fraternities and sorority to engage in social activities. It is unfortunate that the organizations that put thousands of dollars towards their houses cannot use them easily for the social events that they were partially built for.

We believe that the Greek students are competent and able enough to self-regulate and maintain a safe and enjoyable environment without the university looking over their shoulders.

The regulations and paperwork should be simplified but not completely abandoned. There is still a need to register parties and other social events if there are large groups of people involved, especially if police assistance is necessary. However, regulations like a guest list that has to be submitted 48 hours in advance is unnecessary and adds to the unfortunate exclusionary stereotype that often befalls Greek life.

With these reduced regulations, though, we feel that the punishments should also be increased. With a greater responsibility for one's actions comes a greater responsibility to bear the consequences of those actions.

The university should try to keep social events safe, but the brunt of the burden should lie with the Greek Orgs themselves.

The George-Anne welcomes letters to the editor and appropriate guest columns. All copy submitted should be 350 words or fewer, typed, and sent via e-mail in Microsoft Word format to gaeditor@georgiasouthern.edu. All submissions must be signed and include phone number for verification. GSU students should include their academic major, year and hometown. The editors reserve the right to reject any submission and edit submissions for length.

Opinions expressed herein are those of the Board of Opinions or columnists themselves and DO NOT necessarily reflect those of the faculty, staff or administration of GSU, the Student Media Advisory Board, Student Media or the University System of Georgia.



Remember Labor Day significance

If you are like me, you thoroughly enjoyed your Labor Day weekend. The football game was great, the weather was just as hot as everyone expected and best off, we didn't have class on Monday. But let's not forget the importance of this holiday. In order for this legislation to be passed, 13 workers died at a Pullman Strike.

The idea for a Labor Day started with Peter J. McGuire in 1882. At the time, there was no holiday celebrating the accomplishments of the average working class man – women were not in the workforce in high numbers at this point in time – and McGuire started to push for legislation giving workers their own holiday. By 1894, 30 states had established their own labor days, but it was not recognized as a national holiday.

Then the Pullman Strike happened. Railroad workers across the nation decided to strike for more

THE FARM LIFE



JAMES FARMER
OPINIONS EDITOR

affordable rent for workers – at the time, many railroads provided for housing on top of wages. The strikers, who were at times out of control and violent against those who crossed the picket line, refused to stop their strike, even in the face of federal troops. Before order was restored, 13 strikers were killed by federal troops.

President Grover Cleveland, who had called in the troops under the constitutional responsibility of the federal government to keep the mail running, responded to the killing of Americans by creating a national Labor Day and pushing

it through Congress in six days. This holiday was a way to repair labor-government relations in the aftermath of the killings.

It is important to realize that things weren't always the way they are now in this country, especially with workers' rights and labor relations. Sure, we may have our issues with corporate management or labor unions, but thankfully we haven't felt the need to die for higher wages or better conditions lately.

So I hope we all take time to respect the sacrifices the working class made to receive better working conditions and to establish workers' rights. No matter how you feel about politics or political parties, we can all agree that having a day off every first Monday of Sept. is a good thing. Let's remember that next time we celebrate the last day to wear white.

Farmer is a junior political science major from Thomasville, Ga.

From the Left

Debt is nothing to worry about

We've all heard it over and over again. "At nearly \$16 trillion, the national debt is out of control. The federal government needs to slash spending." This has become the platform of the Republican campaign, and they have done a pretty good job so far of distracting the people from issues that actually affect our lives.

Republicans pretend the national debt is an urgent matter and then use it as justification for cutting social services to fund tax breaks for the rich. They like to deceive voters by speaking of the national debt as if it were a household debt. They use this confusion to their advantage. Maybe that's why Paul Ryan consistently votes to cut education.

Comparing the national debt to a household debt is ridiculous. To summarize Nobel Laureate Paul Krugman, household debts have to be paid back; government debts do not. Debt from World War II, which was a much higher percentage of the US GDP than the current debt, was never repaid. It just became irrelevant as the economy grew and taxable incomes grew. Second, households owe their debt to someone else, but a large portion of the US debt is owned by US citizens who have bought savings bonds. Third, for every dollar the US owes foreigners, 89 cents is owed to the US from foreigners.

However, the debt is not completely harmless. Taxes must be levied to pay off the interest on the debt, and that takes money away from potentially productive spending. But

there is "zero probability" of the US defaulting on its debt, as Nobel Laureate Joseph Stiglitz puts it, and government spending is absolutely necessary to pull America out of the unemployment trap. That's economics 101 — or 2105 at GSU — the lack of government spending is what made the Great Depression possible. When dealing with the economy, conventional wisdom about how individuals, households or firms conduct their finances does not apply and Republicans need to stop pretending it does.

The radical anti-tax conservative movement is dangerous. The Congressional Budget Office reported that the largest portion of our debt, and of our future debt, comes from the Bush-era tax cuts. And I have no idea why Ronald Reagan has been chosen as the figurehead of conservatives. The debt increased by 188 percent during the Reagan administration, while Obama has only increased it 41.4 percent.

Markley is a senior geography major from Marietta, Ga.



SCOTT MARKLEY

From the Right

Debt out of control

Every moment that passes by, the national debt is skyrocketing upward. By the time we reach the Democratic National Convention, we will have passed the \$16 trillion mark. It is this crisis that is making us look like a joke to the rest of the world.

According to a new poll out of China, 61 percent of Chinese believe that China has surpassed the United States as the lone superpower of the world. The most stated reasons being the out of control debt and soft economy.

In order to retake our standing in the world, we must solve the debt crisis. The best way to do so is to cut the indiscriminate spending of this administration.

Since he came into office, President Obama has added more to the national debt than all the other presidents combined. Now, this is where liberals would say, "Cut the defense budget." But, that spending comes third right behind the Democrats golden cow, Medicare/Medicaid and Social Security. These two combined are \$1.5 trillion compared to the \$667 billion in defense spending according to usdebtclock.org.

Next, we need to reform the tax code. Right now the U.S. has a total population of 314,289,692 citizens. Of that, just over half of the population pays income taxes.

Yet everyone gets benefits from the government. This is truly unfair. We cannot have the entire nation supported by half of the population. We must

reform the tax code to make sure everyone pays into the system. By putting a National Sales Tax, flat tax and/or a graduated flat tax into place, we make sure that everyone pays into the system and that tax shelters and loopholes are filled for a truly fair system.

Finally, we must put measures in place to make sure this doesn't happen again. We must pass a Balanced Budget Amendment to the Constitution with a stipulation that a budget must actually get passed. Asinine, I know but as we've seen in the past three years, if they're not required to have a budget, the Senate won't pass one.

Chapin is a senior political science major from Roswell, Ga.



FRITZ CHAPIN

From Data to Discussions

National debt has been worse, will get better

Some of the first heated debates that our country ever had were in regards to the debt by Alexander Hamilton and Thomas Jefferson. Today the debate is wrought with misinformation and used as a scare tactic among politicians to gain votes.

The traditional economic thought is that, during times of recession, we run budget deficits in order to boost the economy. As people lose their jobs and businesses slow, tax revenues decrease, but government payouts automatically



WILLIAM BRYAN

increase because people are collecting unemployment insurance and income assistance. This helps to reduce the severity of recessions and is the reason that deficit spending

is necessary sometimes. This is exactly why a balanced budget amendment to the constitution would be disastrous.

One thing to know is that the United States handles its debt completely differently from the way an individual does, and has unique responsibilities to look out for the best interests of its citizens as a collective. Most of our debt is in the form of bonds, and when these bonds mature, we pay the debt by issuing more bonds, essentially "rolling over" the debt. Since the

US is not going anywhere anytime soon, this is the system that we use. Borrowing now does not necessarily mean that our children will be paying this debt, but rather refinancing it — and hopefully paying some.

Government borrowing can create some problems, especially in a good economy. When the government needs to borrow, the higher demand for loan-able funds can increase interest rates and discourage potential borrowers that could put the money to better use.

This is commonly referred to as the crowding out effect.

Our debt now represents just over 100 percent of our GDP, compared with 122 percent after World War II in 1945 and 38 percent in 1970. If there is any hope in bringing that number back down, we will need to start focusing on policies that provide both long run returns and boost the economy in the short run.

Bryan is a senior economics major from Fayetteville, Ga.

Letters to the Editor

Absentee fraud deserves attention

Dear Editor,

I read an article in The George-Anne about the recent laws passed in certain states concerning Voter Identification. Lately, there has been a lot of buzz about this issue, but we may be barking up the wrong tree.

According to the Wichita Eagle, in the last 12 years, throughout the entire United States, only 10 cases of in-person voter fraud have occurred. Conservatives fail to mention is that most of the cases of voter fraud have nothing to do with whether or not a voter has an ID. Truth-out.org states that a larger number of cases, 491 since 2000, of legitimate fraud occur because of absentee ballots.

So, why such a push for the carding laws, while ignoring the absentee fraud? Well, that answer is simple: Voter suppression. The Republicans know that these laws are in their favor as long as they focus on Photo ID.

11 percent of United States citizens (Only 8 percent of Whites) do not possess a valid

photo ID. When you break the number down demographics further: 25 percent of African-Americans, 20 percent of Asians, 19 percent of Latinos, 18 percent of 18-24-Year-Olds, 18 percent, and 15 percent of those earning under \$35,000 do not have the proper ID. These laws target and specific groups — groups that lean Democrat.

In Pennsylvania, where photo ID laws were just passed, more than 758,000 registered voters (9 percent of total voters) will be unable to vote unless they can comply. This could drastically change the election.

I will end on a quote by Republican Penn State House Majority Leader, Mike Turzai: "Voter ID, which is going to allow Governor Romney to win the State of Pennsylvania... Done!"

Signed,
Zack Norman
Sophomore Mechanical Engineering major
Tifton, GA

'Delta Tau Delta under review' story unfair

Dear Editor,

We are issuing this statement to address the recent article about Delta Tau Delta (Delt) going under Judicial Review with the school. This is the kind of article that disturbs us as Greek members of Georgia Southern University. We do understand that provocative headlines are good in attracting readers into reading the rest of the article, but alarmist headlines are not good for anyone.

Delt and other IFC Fraternities contribute to a number of good things in the Greek and Statesboro community. Delt specifically contributes to multiple community service and philanthropy projects, raising over \$5,000 last semester alone. This really disturbs us, when our Greeks try to get articles in the George-Anne about the positive things our organizations do, they are just to be told that there are more important stories.

News is news and it should be reported, but we would like to know why almost every other student interaction with the police is placed in the police blotter, yet Greek related events are front page news? The article we are referencing could have been summed up in four lines. There

was no substance to that article, perhaps you should wait to print a feature until you have something to actually report. Why don't you try writing positive things about Greek Life rather than only bad?

All we ask is that you afford Greeks the same rights as other students and organizations, to talk about the positive contributions they make within the community. The George-Anne is a student paper; start talking about positive events that students need to hear about. We do not believe that the way sorority girls dress or alleged parties fall into this category. We understand movies portray IFC fraternities as the worst organizations on campus, however that is not the case at GSU. Here we hold ourselves to the highest standards, regularly achieve better grades than the All-male average on campus, and commit more time, money and service to the Statesboro community than most student run organizations.

-The Executive Board of Interfraternity Council, including Hall Martin III, junior public relations major from Athens, Ga and Aron Randall, senior political science major from Milton, Ga

Voter ID requirement valid

Dear Editor,

Comparing Voter ID laws to laws of the Jim Crow era is ridiculous and blatantly wrong. As a Republican, I grow more and more tired and frustrated when the race card is thrown around to make us appear as old plantation owners that want nothing more than to oppress minorities for our own personal gain.

An ID to be used for voting purposes is free of charge to those that wish for their voices to be heard, the DMV that issues ID cards do not discriminate against blacks, whites, Hispanics or any other person who wishes to acquire one. We do not want to keep people from voting; we just want to ensure that the voters are who they say they are. Voting is a treasured privilege that we have as US citizens and it is important that we ensure that it is those who are eligible to vote that are doing so.

The only requirements to acquire said ID card is a birth certificate and a social security number, the same requirements that employers

require me to provide when they hire me to work for them. If I am required to provide this information for things as basic as applying for a job then shouldn't these voters do the same when they essentially have the say in where my tax dollars are spent? Or better, when they apply for a job are we as employers supposed to hire them on the word that they are who they say they are?

It doesn't matter if the person is black or white or Asian, if they can't provide proof of their identity they do not need to be voting. The decisions are too important just to assume everyone is who they say they are. If this were the case we wouldn't need security guards because the terrorists would simply say "I'm a law-abiding citizen."

Conservatively Yours,

Blair L. Mutimer
Senior, Construction Management Major
Augusta, Ga.



Live, learn, and work
with a community overseas.

What will you be doing after graduation?

Attend this information session to learn how Peace Corps service can augment your career path.

TUESDAY, SEPTEMBER 11TH

College of Business Administration
Room 1107
Starts @ 5pm

Submit an online application by **September 30th** to be considered for an assignment departing before October 2013.



www.peacecorps.gov/apply

For more information, contact Emily Webster: ewebster@peacecorps.gov

www.peacecorps.gov / 1.855.855.1961

Stay Connected || Facebook || Twitter || YouTube || Flickr || Tumblr || LinkedIn

FEES, from page 1

The Board of Regents has approved six mandatory fees for all institutions, which include an athletic fee, health fee, institution fee, transportation or parking fee, student activity fee, technology fee and facility fees, according to their policy manual.

Each university can determine the amount of the fee and can also add fees if they can justify them, said Durden.

"Fees can only be approved if they support the institution's mission and if the university is not receiving money from the state along with the student fee," said Durden.

UGA requires their students to pay a green fee, recreation fee and a student center-facility fee, on top of the six pre-approved fees, according to their website.

VSU requires their students to pay additional fees, which include an access card fee, a parking facility fee and a health facility fee, according to their website.

Durden said the only student fee that GSU has added is the RAC fee, which pays for campus recreation and intramurals. Also, GSU has the lowest institution fee.

Rob Todd, a senior multimedia

communications major and public relations minor, knows GSU students pay less than students attending other institutions, but he said some of our fees are confusing.

"Why are we paying a hundred-something dollars to get a parking space on campus, when other institutions pay \$20 in parking fees?" Todd said. "And then I have to pay a transit fee on top of that, when I don't even ride the buses."

Some students suggest paying for the things they use.

"I'm really glad GSU has the lowest total in student fees, but I feel we should be able to choose which fees we want to pay for instead of paying for something we might not use," Brittany Todd, a junior accounting major, said.

Durden said she has heard these complaints before, but wants to remind students that these fees were voted on by former students.

Durden said, "I understand their concern, unfortunately, because it is board approved and because the fees were voted on by students, the student government and approved by a committee, the fees are subject to everyone that it applies to."

THANKS, TROY!

TROY MARSH
THE MARSH LAW FIRM

WHAT: FREE LEGAL HELP

WHERE: ROOM 2073 IN THE RUSSELL UNION

WHEN: EVERY TUESDAY 3:00-5:00 PM

TO SCHEDULE AN APPOINTMENT, CALL (912) 764-7388

SPONSORED BY



STUDENT GOVERNMENT ASSOCIATION
YOUR STUDENT ACTIVITY FEES AT WORK.

KA

Congratulations to our newest pledge class, Fall 2012!

We are so lucky to have such amazing girls added to our chapter!

Sara Abercrombie
Alyssa Alsobrooks
Alise Anderson
Amelia Aptheker
Ashlyn Boyd
Lindsay Brannon
Haley Burke
Christine Campbell
Christen Carter
Alivia Chesnut
Meagan DeFreece
Brianna Doering
Michelle Doval
Devin Drury
Abbey Duncan

Megan Economos
Abbi Faircloth
Lauren Geiger
Marisa Griffiths
Caroline Haupt
Holly Hawkins
Kelsey Heller
Jennifer Heslin
Caroline Hodge
Crystal Hodge
Sam Holt
Elizabeth Huggins
Allison Jackson
Bailee Jordan
Kaitlin Kidwell

Kierstin Kidwell
Ariel Klauss
Aspen Krupp
Savannah LeClair
Sarah Marchman
Samantha Martin
Lindsey Massey
Kaitlyn Matthewson
Traci McCoy
Kelly McKeon
Rachael McLellan
Morgan Mercer
Austen Moore
Lindsey Morse
Tatum Penn

Sassy Perry
Kalyn Pittman
Bailey Ponder
Natalie Robinson
Brittany Roley
Lena Sansonetti
Maddie Sherer
Ivy Singleton
Abby Southerland
Taylor Spung
Caitie Thomas
Kayla Tricarico
Corley Turner
Kelly Warren
Kenzie Webb
Ciera Williamson
Peyton Witcher

Life and Times exhibit opens in CAT

BY ROBYN STILLS

The George-Anne contributor

Paintings with vibrant colors, different dimensions and different connections to place create the new exhibit being shown at Georgia Southern University.

The Life and Times: Contemporary Notions of Place exhibit features artists Karla Wozniak, Anthony "Tony" Csavas, and Thomas Dahlberg. On display in the Center for Art and Theatre, the exhibit consists of three different interpretations of place and one's environment.

The exhibit is showing in the Contemporary Gallery in the CAT from now until Sept. 27. There will be gallery talks scheduled for Sept. 13 with Karla Wozniak and Tony Csavas on Sept. 20, both are at 5 p.m. and free to the public.

"This exhibition is a great opportunity for people to come to an art exhibition without feeling they need any special training or tools. These images are so diverse and strong that you're almost guaranteed to find something you can relate to, partly because of the caliber of artists and also because of

the various subjects and content," Curator, gallery director and creator of the exhibit, Marc Mitchell, said.

Place is most commonly attached to a geographical location but it can be interpreted and represented by many things. With the base of the concept being that for centuries artists of different disciplines have been making work about their environment, Mitchell said.

The title of the exhibit originates from the title of a Jay-Z album *The Life and Times of Sean Carter Vol. 3*. The concept itself developed with the help of others in different areas of expertise that includes, but not limited to, sociology and anthropology, Mitchell said.

Mitchell credits Barbara Hendry, associate professor for Anthropology, as being an important part in bringing the exhibition together.

"I wanted to bring in art work that was drastically different than what we normally see here," Mitchell said.

Karla Wozniak is a professor at the University of Tennessee in Knoxville. In her work, as described by Mitchell, she documents her sense of place through social, natural

and commercial landscapes. Wozniak tends to capture her environment in bold sometimes whimsical colors.

Her piece "Extended Stay Knoxville" (2012) has a plethora of colors and layers that give depth and a whimsical flare to it.

"Super contemporary and colorful, I think the color is the star of the show here. The content is super cohesive, but the color is excellent," Sarah Edwards, senior art history major, said.

Thomas Dahlberg, the youngest of the three artists, graduated from Brown University and lives and works out of Boston. Drawing from his immediate surroundings for material he creates his own view of the daily scene he encounters. His painting "For Sale" (2010) is a distinct example of that and his use of a pallet knife instead of a brush gives his work a dimension different from the other two featured artists, Mitchell said.

"I'm really fond of orderly art. I think the other two are interesting, but there's something about Thomas's pieces that are orderly," Elaine Chambers, sophomore 2D studio major, said.

Anthony "Tony" Csavas teaches at

Charleston University in South Carolina. His particular view on place is established through objects he associates with his environment, Mitchell said.

He has been likened to a modern day Matisse by Mitchell for his technique of making a painting seem simpler than it is.

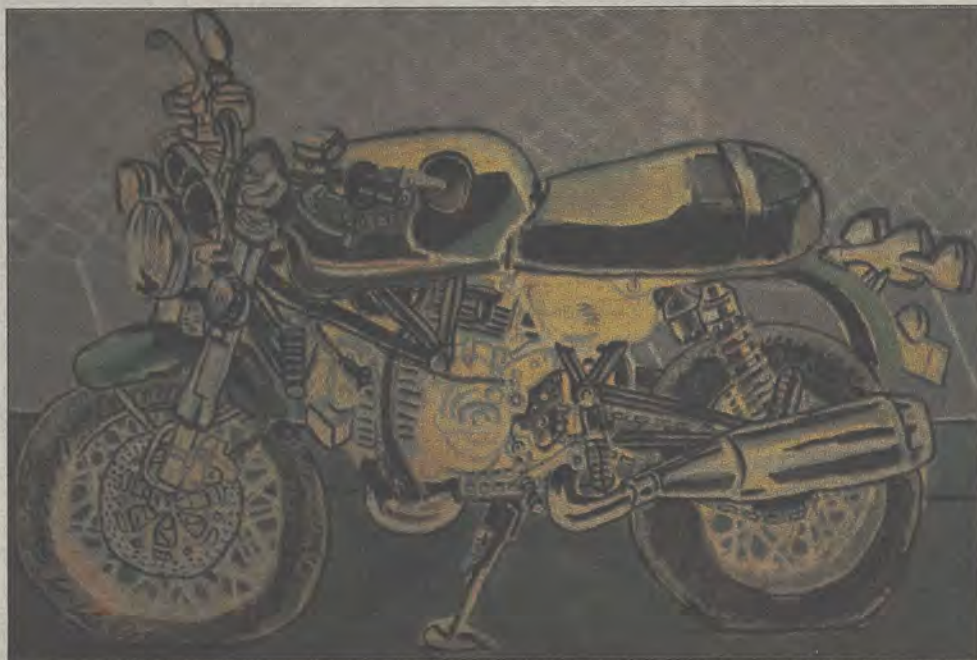
It is shown through many of his works that Csavas creates his notion of place through objects that he feels represent his environment, Mitchell said.

"He has a very unique talent of doing something extremely complex and sophisticated and making it look effortless," Mitchell said.

The exhibit is received well by students.

"I really enjoyed the exhibit. The one that struck me the most was Airplane by Tony Csavas," Billy Simpson, senior marketing major, said.

Kenny Olowoyo, senior 2D studio and apparel design major, said, "They are all interesting styles of painting. I think each way the artists drew on the idea of space is interesting, there is a very human quality to the paintings everyone can relate to."



Mark Barnes/The George-Anne

The Life and Times: Contemporary Notions of Place exhibit is open in the CAT. **Left:** Tony Csavas, professor at Charleston University, interprets his idea of place in his work titled "Jim Hussey's Motorcycle II." **Right:** Karla Wozniak, a professor at the University of Tennessee in Knoxville, displays her sense of place using bold and whimsical colors.



Conquering College Dating

A student's guide to date night locations in Statesboro

BY BRITTANY MOORE

The George-Anne staff

The Statesboro date night scene is in full effect since Georgia Southern University freshmen have arrived ready to explore and conquer college dating.

From picnics in Sweetheart Circle to watching competitive sporting events, Statesboro and GSU have many things to do when it comes to date night activities.

"Going for a walk around Sweetheart Circle would bring back some tradition to the campus. There has been an increased number of workout dates happening so the RAC is a good place too," Larry Stalcup, associate professor of hotel and restaurant management, said.

"Walking around Sweetheart Circle is very romantic because they say whenever you do that you will marry your sweetheart," Canecia Gordon, sophomore biology major, said.

"We also have the RAC if you are into

working out. If not they still provide tennis, racquetball, and also other amenities like the swimming pool and rock climbing," Solomon Crawford, junior biology major, said.

"On campus there are a lot of picnic areas. Since I do not want to be cooped up in the house all the time, and I do not like spending a lot of money, I think picnics are great. Yes, it takes a little more effort than taking a girl out to the movies, but it is inexpensive so all you really have to do is put forth the effort," Kristen Robinson, senior education major, said.

There are movies on campus that are cheap, there are concerts, and the music department and theater always have lots of activities. It is easy walking and really cheap for students. Just be creative, walking from bar to bar is unnecessary. There is an awful lot to do here, Dr. Stalcup said.

GSU sporting events can also bring romance.

"I am very competitive and I really like

sports. I remember one time a guy took me to watch a girls and guys basketball game, and I enjoyed it. Football and baseball games are great too," Robinson said.

The Bulloch County Park is a potential place for lovers as well.

"The park is a quiet and subtle place. You can still have your privacy in a public place, and it is very romantic at night time," Gordon said.

The Clubhouse at Hacker's is another date night hot spot.

"I like The Clubhouse. They have free bowling and free laser tags on some Thursday nights, and so it is very inexpensive. It also is a place where you do not have to have a very intimate date. It can be more friend-based date. A group of friends can go have a good time and it is also good for double dating," Robinson said.

"I would say it depends on the person. If you are looking for a good night the clubhouse would be a great choice. They have laser tag

and bowling. If you are fun loving you would enjoy that," Crawford said.

Statesboro offers some great student dating options like the theatre downtown and a variety of different restaurants.

"The theatre downtown is something different and inexpensive. I feel like if a guy took me to a play it means he put time into thinking about where he was going to take me out on a date instead of us just going to the movies," Robinson said.

Applebee's is also a good place. Depending on the day of the week they will have karaoke or bingo. Students can partake in the activities while enjoying food, Crawford said.

"The restaurants in Statesboro like Applebee's and Olive Garden are good places for dates. They are very nice and are also public. You do not want to go anywhere private with someone you do not know," Gordon said.

Crawford said, "There are plenty of places to go on dates, it is all about what you make it."

Former Secretary of State

Madeleine Albright

September 18, 2012

7 p.m. - Hanner Fieldhouse

GeorgiaSouthern.edu/Albright

TICKET DISTRIBUTION

Students: September 4 - 7
Faculty & Staff: September 6 - 7

Tickets are complimentary and will be distributed from the Office of Student Leadership and Civic Engagement from 8 a.m. to 5 p.m., Union 1056.

Community: September 10 - 11

Tickets are complimentary and will be distributed from Hanner Fieldhouse from 11 a.m. to 6 p.m. Tickets will also be available at the Georgia Southern University City Campus, located at 58 E. Main Street, next to Statesboro City Hall.



GEORGIA SOUTHERN
UNIVERSITY

YOUR STUDENT ACTIVITY FEES AT WORK!

Farmer's Market returns to GSU campus



The Farmer's Market, usually downtown, will come back to Georgia Southern University today from 10 a.m. — 1 p.m. in the Williams Center square.

Left: Bobby J. Colson, the owner of B&G Honey Farm, displays his many bottles of honey at Saturday's Farmer's Market downtown.

Right: Dana Cook prepares fresh popcorn for sale by tossing it in seasoning.

See page 11 for the full story on the Farmer's Market's return to GSU.

Demario Cullars/The George-Anne staff

Chow Time Buffet

410 Northside Drive 912-489-6188

Steak, Sushi, Spare Ribs,
Seafood, Snow Crab

Lunch Buffet
Mon.-Fri. \$6.25

Dinner Buffet
Mon.-Sun. \$9.99

Free drinks with Student I.D.

Farmer's Market opens on brink of peanut season

BY MARISSA MARTIN

The George-Anne staff

Peanuts are the celebrated produce at this year's opening day for the Farmer's Market located outside the Williams Center today starting at 10 a.m. until 1 p.m.

Opening day will consist of True Blue giveaways, such as cups and t-shirts and boiled peanuts to commend peanut season. The Farmer's Market will be a reoccurring event every first and third Tuesday of the month and will present a theme for each event.

"Eagle dining will be providing cooking ideas for each of the market vendors. So, instead of people asking what to do with their brussell sprouts, they will have different ideas on what to do with the sustainable food after they buy it," Lissa Leege, professor of biology and director for the Center of Sustainability, said.

Aside from giveaways, this Farmer's Market will provide a healthy lunch at an outdoor café that sells hamburgers, chips and a drink for \$5, Michelle Martin, University Wellness Program

director, said.

"A farmer will provide a lunch option of grass fed beef hamburgers at a café that we will be setting up with chairs and tables," Martin said.

A variety of vendors will provide produce, baked goods and other various food items, Martin said.

"There will be vendors who have honey, corn meal, organic produce, Italian sauces and pasta, cupcakes and a variety of bakery items," Martin said.

"There is a lot of peanuts, peaches, apples, tomatoes, lettuce, peas, beans, cucumbers, squash, onions and anything that is in season will be there," Sarah Farmer, senior biology major and marketing manager for Main Street Farmer's Market, said. "There will be a dairy vendor with ice cream and milk."

The price range at the Farmer's Market will be different for each vendor but students will get more for their money, Farmer said.

"I got a pound of squash for a dollar but the meat in particular is more expensive. Students

can definitely buy products for the \$5 category and under," Farmer said.

"One of the biggest excuses on healthier foods is the cost. Farmer's markets you can buy four cucumbers for a dollar but if you go to Wal-Mart you can buy one cucumber for 79 cents," Amy Jo Riggs, professor of nutrition and food science, said. "You are getting more bang for your buck."

Farmer's markets do not operate on the same system, Riggs said.

"A lot of food providers are run by large corporations and it is more about money making then providing nutrient laden foods," Riggs said.

"If you buy local you are buying it closer to the time that it is picked and the nutrient value is higher in particular vitamins," Riggs said.

The first Farmer's Market was brought to campus during No Impact Week in the spring of 2011, Leege said.

"That spring with No Impact Week I worked with Main Street Farmer's Market to get a group of vendors here. People absolutely loved it and

they came to me and asked if they could make this a regular thing," Leege said.

Campus Recreation and Intramural's Wellness Program adopted the Farmer's Market this year, Leege said.

"Campus farmer's market became a part of the Wellness Program and we made a cooperative partnership with the Center for Sustainability. The Wellness Program has new things planned for this, like farmer's market themes," Leege said.


Every Farmer's Market will attribute the event to a vendor, Leege said.

"We will be having an ice cream social from one of the dairy farmers. We have different focuses on each type of food for farmer's market," Leege said.

Students can have the opportunity to buy locally produced goods and get involved with this event, Farmer said.


Farmer said, "The on-campus market always gets a good response because it is easy access. Students can easily get there and there are great volunteer opportunities."

George-Anne & Joe

brought to you by 

This Thursday
Williams Center Gazebo
From
8:15a.m.-10:00a.m.

Don't forget to stop by Starbucks at Georgia Southern for great coffee, pastries, sandwiches, parfaits, and fresh fruit cups!

 twitter.com/GSUStarbucks

R. J. Pope Men and Ladies Apparel

Greek Formal wear rental specials

MOUNTAIN
KHAKIS

Cole Haan

THE
NORTH
FACE

vineyard vines
martha's vineyard

SOUTHERN
COUNTRY

patagonia

POLO

Chaco

Mens and Ladies Gameday Apparel



Like us on Facebook

840A Buckhead Drive | 912.764.6973
5 South Main St. | 912.764.4306

CLASSIFIEDS

This page brought to you by Career Services
Explore • Experience • Excel

12 Tuesday, September 4, 2012

www.thegeorgeanne.com

Jobs

BARTENDERS WANTED!
\$250 a day Potential. No Experience Necessary. Training Provided. Age 18+ OK Call 1-800-965-6520 ext 296.

Worship/Music Leader Needed at Lawrence Baptist Church near Pembroke Ga. Sunday mornings, Sunday Nights and Choir Practice on Sunday Nights. Send Resume to Debbie Hodges at debhodges1013@gmail.com. Questions call 912-667-3972.

Seeking an Assistant, excellent opportunity if looking to work in a friendly atmosphere. Self-Motivated, Positive Attitude, Ability to Multi task. Send resume to Martgay@gmail.com.

Fourth year writing & ling. major will proof papers/ tutor in writing, Cheapest rates, at least three days notice on assignments.

Misc.

Research Participants are needed for a study on resiliency in undergraduate college students with ADHD diagnoses. Please call the researcher at 912-506-0390 or send an email message to judith.driggers@waldenu.edu if you may be interested in participating in this study. Participation in this study is voluntary and you may withdraw at any time. Each participant will be provided a \$30 Walmart gift card as a "thank you" gift after participation.

American Shorthair Cats (AKC Reg.Male and Female)free to good home,contact bpills12@gmail.com if interested.

Will proof papers for reasonable prices. Will also type short projects. Must have ample lead time. E-mail auntre01@gmail.com.

Houses for Rent

Male roommate needed. One months free rent plus deposit already made. Fall/Spr 12/13. 4 bdrm/4 bth, close to campus. Great house for price \$375. Contact Brad 678-294-5888.

2, 3, 4, 5, 6, and 7 BR houses available Aug 1, 2012 24 hr repairs guaranteed 912-682-7468

2000 Talons Lake 4BR/4BH \$1000/month. 16 Tillman St. 4 BR/ 3BT \$1000/month. Call 912-484-4763 for more information.

217 Booster Blvd. and Berkhalter 2 4BR/BT \$375/month for Fall 2012 call 770-722-4708.

Furnished apartment Located just past Mill Creek Park. \$500/month. Call 912-531-1319 for more information.

For Sale

Nikon/Nikor AS Lenses 50 mm, 35-105, 28-80. +Speed Flash. Great buy, \$250. 912-681-2393.

For sale: 2009 BMW 328i, hardtop convertible in great condition. Black with tan interior. Call 912-293-1909.

Used Fender Blues Jr. All-tube guitar amp, \$350, negotiable, Perfect working order/condition (912) 536-1610

Subleases

Hammocks Townhouse. 3BR/3BH Upstairs. Start in August \$383.33/mo plus utilities. E-mail av00248@georgiasouthern.edu

3BR/2BT within 2 miles campus. You can sublease the other 2 rooms. No smoking or pets. Call (706) 951-1427.

Subleases, cont.

626 B at the Exchange. Female Roommate needed. \$519.00 per month. Contact (706) 523-6001.

4BR/2BT apartment in the Avenue is only \$320 Contact Tanera tm01729@georgiasouthern.edu

All inclusive, two story, fully furnished, 4 BR for \$330/month Contact (229) 326-4291.

Fall Semester at the Avenue 4BR/2BH, fully furnished, \$325/mo. Contact Deandre at dc03436@georgiasouthern.edu.

Subleases, cont.

Fall 2012 \$340/month. Gently Road, 210 South Edgewood Drive. Contact at 229-291-4002 or e-mail ab05279@georgiasouthern.edu.

Garden District with 2 roommates looking for a female. I'm only asking for \$300/month. Call 404-764-6490 ask for Monica.

Sublease at Cambridge for Reduced Price 1 BR/BTH available in a 3 BR. \$350/month Email shortiecutie102@yahoo.com.

Something to sell?
Visit thegeorgeanne.com or email
Gaiclass@georgiasouthern.edu
It's free for students, staff and faculty!

ARE YOU CONNECTED?



:Georgia Southern University Career Services



:Georgia Southern University Career Services



:GeorgiaSouthern CareerServices



:@gsucareers



:gasoutherncareservices.blogspot.com

Williams Center 1047

(912) 478-5197 georgiasouthern.edu/career

6 TIPS for Using Social Media in Your Job Search

By: Taylor D. Terrell

Public Relations/Events Intern for Career Services

We've all heard the phrase "it's not what you know, it's who you know". If the job hunt or internship search has been overwhelming you, utilizing non-traditional platforms like social media to connect with employers may be another avenue that will increase your network. Social networking is just as important, if not more important, than using traditional job searching tools. In a survey completed by The National Association of Colleges and Employers (NACE) in 2010, 92 percent of college seniors have a social media profile online, but approximately 30 percent have actually used social networking in their job search. According to this statistic, only one-third of students are taking advantage of social media benefits.

Many employers use social media platforms such as LinkedIn, Twitter, and other sites in the most effective way possible to screen candidates for jobs. In order to build your professional presence and effectively use social media in your job search, follow these 6 tips:

1. Create a professional persona. What do people find when they Google your name? Are the results professional? As a student who aspires to graduate and land a dream career, it is imperative that you refrain from posting statuses or tagging photos that professionals may not see as "potential". You are creating your brand every time you post, tag, tweet, etc. Being aware of your online professional presence can strengthen or weaken employer's attitude toward you.

2. Search for web forums. Various sites such as LinkedIn, Monster.com, and other job sites have online communities within their databases that allow users to

have more "interpersonal communication". Professionals offer a plethora of information that relates to leadership and development, work ethics, advice, and other tips that generates insight on forums and webinars.

3. Publicize your voice. Once you have joined these sites, let your voice be heard. The majority of users do not know who you are, so engage in effective conversations that allow people to understand your personality. Make yourself known!

4. Be a contributor. Another way to publicize your voice is to be a contributor. Begin conversations on new topics that encourage readers to think critically and inform them of current information that is useful and relevant.

5. Keep up to date. Most students and professionals have more than one profile, but how many of us update each profile every day? Choosing one or two social media platforms to showcase your professionalism can be more beneficial than joining several sites and only updating one every-so-often.

6. Enhance your interviews. Before a job interview, study the blogs, Twitter feed, or LinkedIn profiles of the company and their employees. This will boost your confidence by preparing you to make a good impression on the organization and become more familiar with their associates.

Finally, using social media can increase your interaction with professionals, but remember that executives and HR employees still value students that contact them in-person and use other traditional methods of career research as well. Combining both methods-traditional and non-traditional-will increase your chances of obtaining your dream job.

PUZZLES/COMICS

www.thegeorgeanne.com

Tuesday, September 4, 2012 13

Los Angeles Times Daily Crossword Puzzle

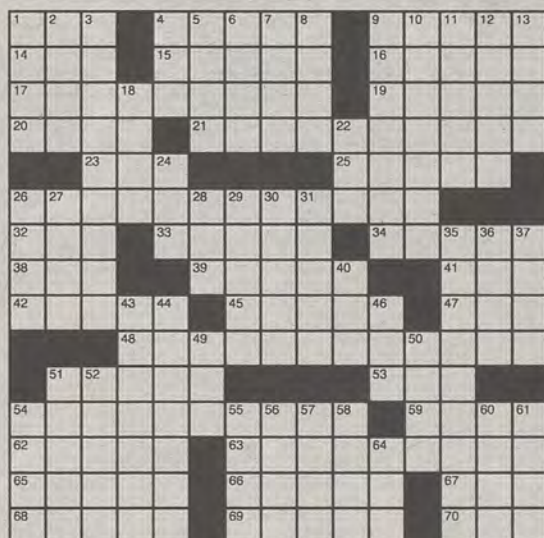
Edited by Rich Norris and Joyce Lewis

ACROSS

- 1 Nittany Lions' sch.
- 4 Tara family name
- 9 Plant-sucking pest
- 14 Heavy weight
- 15 Scots' fishing spots
- 16 Witchy woman
- 17 Casual dining chain
- 19 Having melody and harmony
- 20 "Get outta here!"
- 21 Annual Florida football game
- 23 Bldgs. for mailers
- 25 Be wild about
- 26 Nice work if you can get it
- 32 Mark Twain portrayer
- 33 Health insurance giant
- 34 "In your dreams!"
- 38 Physicians' gp.
- 39 Joe's pal in "Midnight Cowboy"
- 41 Prefix with friendly
- 42 Contract stipulations
- 45 Pave again
- 47 Outback runner
- 48 Truck with a bucket
- 51 Half a '60s pop quartet
- 53 Tom Collins liquor
- 54 Elongated bike saddle
- 59 Small songbirds
- 62 D-Day beach
- 63 Celeb's domain
- 65 1950s vice president
- 66 Bakery lure
- 67 "Psst!"
- 68 Actress Davis
- 69 Guys in cuffs, hopefully
- 70 ___-Mex cuisine

DOWN

- 1 Sch. book fair organizers
- 2 Former frosh
- 3 Out of favor



By Ed Sessa

- 4 Bullfight "Bravo!"
- 5 Freight train stowaway
- 6 Strong server on the court
- 7 Perlman of "Cheers"
- 8 Part of NBA: Abbr.
- 9 Followed, as advice
- 10 Like some legal services
- 11 See 37-Down
- 12 Blown away
- 13 Computer giant
- 18 Weaver's contraption
- 22 Merry, in Metz
- 24 Mud wrap venue
- 26 Cool, in slang
- 27 Weak, as excuses go
- 28 "___" the ramparts
- 29 Comics reporter Brenda
- 30 Put in a sepulcher
- 31 "Delish!"
- 35 Working-late time, usually
- 36 Wile E. Coyote's supplier

Wednesday's Puzzle Solved

D	I	R	G	E	P	E	T	A	N	N	O
I	N	O	I	L	A	R	O	D	L	I	E
S	C	U	B	A	I	S	L	E	T	N	U
D	E	N	T	H	R	E	E	C	H	E	E
A	N	D	R	E	I	D	A	Y	P	O	I
I	S	E	E	T	W	O	O	F	A	K	I
N	E	R	D	O	A	T	E	N	S	E	
S	I	N	C	E	R	I	T	Y			
W	I	R	E	D	R	I	D	O	F	F	S
O	N	E	A	T	A	T	I	M	E	F	R
O	F	T	A	D	E	S	O	C	I	A	L
Z	E	R	O	G	R	A	V	I	T	Y	E
I	R	A	E	U	S	A	F	V	A	N	C
E	N	I	D	M	E	I	N	E	L	D	E
R	O	N	S	L	O	O	Y	E	S	E	S

(c)2012 Tribune Media Services, Inc.

- 37 With 11-Down, court address
- 40 "Alley ___"
- 43 "Heeeeere's Johnny!" announcer
- 44 Doo-woppers in "Grease"
- 46 Oinker
- 49 Mexican "that"
- 50 ___ Field: Mets' ballpark
- 51 1950s first lady
- 52 Have ___ to grind
- 54 Big Ben sound
- 55 Offended smack
- 56 Land of leprechauns
- 57 Latin love
- 58 Summer sub
- 60 Old-fashioned pronoun
- 61 River of Hades
- 64 Spanish article

CONTINUED FROM LAST WEEK...

WE WILL TURN ANTARCTICA INTO A GIANT SNOW CONE AND THEN TAKE IT WITH US!



WE WILL STORE THE FROZEN TREAT IN THE GIANT FREEZER ABOARD MY DEATHSHIP!



THINK A CONTINENT WILL FIT IN OUR FREEZER?



WE MIGHT HAVE TO TAKE OUT THE BOX OF FISH STICKS.



EXPELLIARMUS!



WHAP!



SERIOUSLY? EXPELLIARMUS!



		6	5			1	
3						6	2
9		2	8				
	4		7				
		6		5			
	5		4		9		
				7		2	
2	8						
	4				7		8

Sudoku

JOIN
THE
TEAM
BEHIND THE SCENES

WOULD YOU LIKE TO BE A

- ☒ Photographer
- ☒ Videographer
- ☒ Designer
- ☒ IT/Web Design

Submit your resume by Sept. 25 to Williams Center, RM 2023

If you have any questions, contact Student Media Director John Harvey at 912-478-0069 or email johnharvey@georgiasouthern.edu



Lindsay Hartmann/The George-Anne

The Georgia Southern University football team fights to shut out Jacksonville University in season opener on Saturday. **Top Left:** Junior QB Jerick McKinnon (1) gets tackled by a host of Jacksonville's defense for another Eagle first down. **Bottom Left:** Junior cornerback Lavelle Westbrook (18) leaps to intercept a pass thrown by Jacksonville's quarterback. **Right:** Sophomore QB Ezayi Youyoute releases a pitch pass to one of his running backs for an attempt at another Eagle first down.

Eagles shut out Dolphins in season opener 58-0

Football

BY JANNAH BOLDTS

The George-Anne staff

The third ranked Georgia Southern University football team dominated with a 58-0 win over Jacksonville University on Saturday.

It was the Eagles' 11th straight home win at Allen E. Paulson

Stadium, which brought the Eagles record to 15-2 in season openers at home.

GSU sophomore quarterback Ezayi Youyoute rushed 123 yards and scored two touchdowns for the Eagles in the first quarter of his first career start.

Jacksonville's best chance to put something on the board came in their first kick return with an 89-

yard return, but a flag for block in the back was thrown which ruined any chances they had.

GSU fumbled the ball on their first possession of the second quarter. The ball was returned to the GSU 41-yard line by the Dolphins, but quickly intercepted by sophomore Valdron Cooper two plays later and took it 60 yards for a touchdown. This was

the first interception return for a touchdown by an Eagle since Laron Scott against Elon in 2010.

GSU went into the half with 41-0 lead over the Dolphins.

With an interception from senior J.J. Wilcox, the Eagles had control of the ball in the 3rd. Junior Jerick McKinnon took the ball down the field for a touchdown to raise the score to 48-0 Eagles.

The Eagles scored another touchdown in the 3rd, going into the 4th 55-0 against the Dolphins.

To finish the game in redshirt freshman Ryan Nowicki kicked a field goal ending the game with a GSU 58, JU 0 score.

The Eagles hope to continue their strong lead with their first conference game against The Citadel.

YOUYOUTE, from page 1

Youyoute said, "The coaches gave us the equal opportunity because both of us are capable of executing."

"I knew Ezayi was going to start, and he did a good job managing the offense,"

McKinnon said. "He's a great athlete and like a brother to me and I salute him for today."

Being more of a scramble type of quarterback, Youyoute was able to get the Eagles their first touchdown on the second play of the game. In a quarterback keeper, Youyoute broke away from the line and

sprinted 79 yards to the endzone.

Youyoute went on through the game to run in a total of three touchdowns for the Eagles. He gained 169 yards for the game and rushed for 164 of the 169.

Youyoute was able to run the offense for 16 plays compared to McKinnon's 11 plays.

"Both quarterbacks did some good things tonight. Ezayi made some really nice runs and nice reads. He's a great kid and will settle into his position," said Monken.

Sophomore running back Dominique Swope said, "We had a great game and we just wanted to let loose and do our best."

Eagles finish 2-0 in weekend tournament

Men's Soccer

BY TREVOR MCNABOE

The George-Anne staff

This past weekend Georgia Southern University's men's soccer team won the pair of games they played at the SoCon/Big South Challenge in Spartanburg, S.C. bringing their season record to 2-0-1.

GSU took on Winthrop University in the opening round of SoCon/Big South Challenge on Friday. The score remained level until senior Joe Hughes broke into the scoring column with a goal on a penalty kick in the 21st minute of the game for the only goal of the first half. Winthrop came out and responded with an equalizer in the 54th minute.

GSU took on the challenge and 12 minutes later in the 66th minute a second goal was scored by the Eagles after good play between Junior Defender Nick Lane and Freshman Defender Reed Norton. Norton in turn crossed the ball into the box and found the foot of junior forward Witt Carlisle to put GSU up 2-1. Winthrop responded back with a second goal in the 72nd minute.

However the game-winning goal that pushed GSU to victory occurred in the 75th minute where freshman Reed Norton was on the far post and received the ball off a kick from Seth Prieto that deflected off the goalies fingertips.

In the second game of the SoCon/Big South Challenge GSU faced off against Gardner-Webb University. The game was a defensive struggle in the first half as both teams could not find an advantage and went into the locker room tied at zero. In the 63rd minute Witt Carlisle broke the scoreless streak with a score from eight yards out from inside the box.

Two minutes later the Eagles doubled their delight with another goal off a penalty kick goal scored from Drew Ruggles, scoring his first goal of the year. The Eagles held off any attacks from the Runnin' Bulldogs and goalie Jack Falle got his first shutout of the season.

The Eagles improve to 2-0-1 on the season with the two weekend wins. Four Eagles, Witt Carlisle, Joe Hughes, Drew Ruggles and Jack Falle, were named to the All-Tournament team.

GSU plays their first home game of the season on Saturday vs. North Florida University at 4 p.m.



Mark Barnes II/ The George-Anne

Georgia Southern University junior midfielder Hunter Norton (13) intercepts the ball from Lander University junior midfielder Chris Hobbs (8).



Domino's

{ MON-WED UNTIL 2AM }

{ THU-SAT UNTIL 3AM }

{ SUN UNTIL 1AM }

912-681-4326

1550-F Chandler Rd. (Next to Gray's Bookstore)

ORDER NOW AT DOMINOS.COM



Eagles 2-1 at Auburn tournament

Women's Volleyball

BY JACKIE GUTKNECHT

The George-Anne staff

The Georgia Southern University volleyball team ended 2-1 at the War Eagle Invitational this past weekend to improve their overall record to 4-2.

The Eagles faced Auburn University, Jacksonville State University and High Point University.

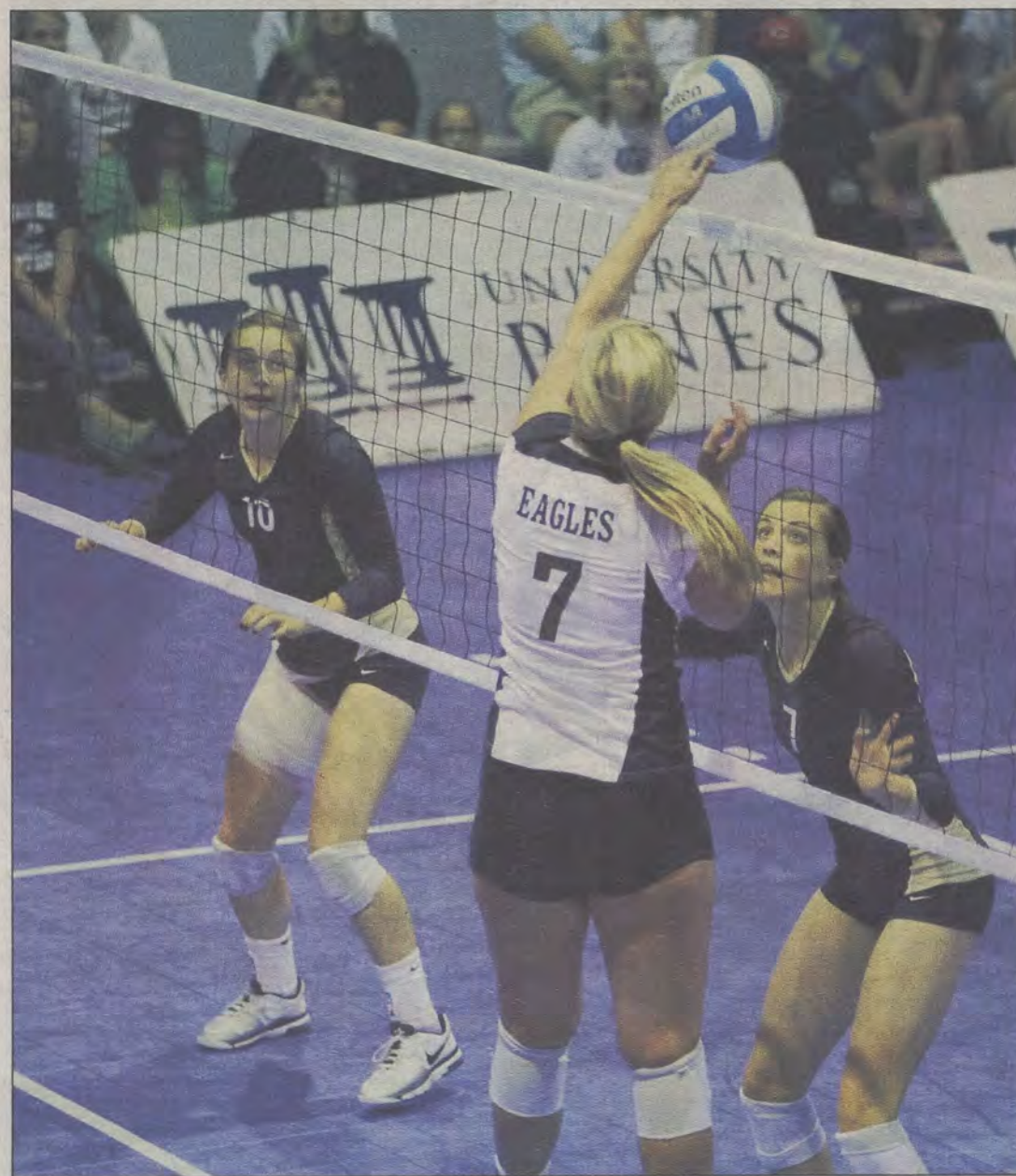
GSU started the tournament playing the undefeated Auburn team, where senior setter Kate Van Dyke was able to break the school's career assist record. The Eagles fell to the Tigers 3-1.

Next the Eagles were set to face undefeated JSU in their second match of the tournament. GSU topped JSU 3-0. Senior outside hitter Moriah Bellissimo gained 10 kills and eight digs to lead the Eagles to a victory against the Gamecocks.

Rounding out the tournament, GSU came up against HPU. GSU was able to pull out a 3-1 volleyball victory in their final game of the weekend.

Senior outside hitter Meredith Paskert posted a match-high 21 kills against High Point and was named all-tournament, finishing the weekend with 40 kills in three matches.

GSU continues to prepare for the home opener against Mercer University on Tuesday September 4.



File Photo

GSU senior setter Kate Van Dyke (7) leaps to reach beyond the net to spike the ball past opposition.

SHOULD A NURTURING
PERSONALITY AND LEADERSHIP
ABILITY BE MUTUALLY EXCLUSIVE?



U.S. AIR FORCE



In the U.S. Air Force, we never forget that nurses — professionals known for caring and compassion — also have the knowledge and character to lead the team. The same passion that makes a great healer also makes a great leader. If you're looking for professional growth and development through leadership experience, come practice nursing in the Air Force.

AIRFORCE.COM/Healthcare

800-588-5260