

Georgia Southern University

Digital Commons@Georgia Southern

The George-Anne

Student Media

8-23-2012

The George-Anne

Georgia Southern University

Follow this and additional works at: <https://digitalcommons.georgiasouthern.edu/george-anne>

Recommended Citation

Georgia Southern University, "The George-Anne" (2012). *The George-Anne*. 2767.
<https://digitalcommons.georgiasouthern.edu/george-anne/2767>

This newspaper is brought to you for free and open access by the Student Media at Digital Commons@Georgia Southern. It has been accepted for inclusion in The George-Anne by an authorized administrator of Digital Commons@Georgia Southern. For more information, please contact digitalcommons@georgiasouthern.edu.

STATESBORO'S SWEET TREATS

PAGE 9

PICKLE BARREL MOVES TO UNION

PAGE 8

EAGLES FACE UAB

PAGE 17

Thursday, August 23, 2012
Georgia Southern University
www.thegeorgeanne.com
Volume 83 • Issue 17

THE GEORGE-ANNE

FCS poll ranks GSU third

BY KEVIN GREGAN

The George-Anne staff

The coaches of the Football Championship Subdivision have voted and the Georgia Southern University football team will head into this season ranked third.

Last year's national champion, the North Dakota State Bison, were given the first place ranking after receiving 19 of 26 first-place votes. The national champion runner-up, Sam Houston State University, was ranked second.

According to Head Coach Jeff Monken and his team, the rankings don't really mean much.

"It doesn't mean anything at this point. All that matters is the end of the season and where you rank then," Monken said. "Hopefully we'll do the things we need to, to have the chance to compete for the top spot."

Appalachian State University was ranked

See THIRD, page 18

On-campus pirating ban enforced

BY JENNIFER CURINGTON

The George-Anne staff

Georgia Southern University has implemented a program that will judicially refer students after four offenses of illegal downloading on campus.

The program, Audible Magic, costs \$20,000 a year with funds coming from the Information Technology budget.

This is a network device that sits between GSU network and the Internet and will look at content coming through. It will be able to tell the difference between copyrighted content downloaded legally and illegally, Vice President of Information Technology and Chief Information Officer Steve Burrell said.

Audible Magic will only monitor activities done through GSU's network and will not be able to monitor off-campus connections.

Audible Magic can only monitor downloads as they occur and cannot detect illegally downloaded content already existing on a device.

"This is a fed law that we have to comply with and if we don't then financial aid becomes jeopardized and all sorts of other things at the university," Burrell said. "It's not a position that we can be relaxed about because that's a serious

See PIRACY, page 7

BEATING THE HEAT



Lindsay Hartmann/The George-Anne

The line grows for free ice cream from Bruster's with the dean at the rotunda for Weeks of Welcome. These events are designed to prepare new students for success and shows them how to get involved.



thegeorge
anne.com



Follow us on Twitter
@TheGeorgeAnne



Newsroom 478-5246
Advertising 478-5418
Fax 478-7113

PO Box 8001
Statesboro, GA
30460

PINCH YOUR PENNIES THEY WON'T CRY

amazon



**RENT
TEXTBOOKS
FROM AMAZON**
SAVE UP TO 70%

Police Beat

Saturday, Aug. 18

• Officers responded to the College of Business building reference to an alarm. A check of the building showed no problems. False alarm.

• Officers made contact with a suspicious person on Harvey Drive. The suspicious person, Nathananiel Stewart Best, 20 years old, was carrying a yard sign belonging to GSU. Mr. Best had a blood alcohol level of 0.085gms. The GSU yard sign was recovered and Mr. Best was judicially referred.

• Officers responded to Hanner Fieldhouse in reference to an alarm. A check of the building showed no problems. False alarm.

• Officers responded to a motor vehicle accident in Lot 21. A Motor Vehicle Accident Report was completed.

• Officers responded to a motor vehicle accident in C Lot. A Motor Vehicle Accident Report was completed.

• Officers responded to Southern Courtyard room #4130 in reference to a fire alarm. A check of the room and building showed no problems. False alarm.

• Officers responded to Centennial Place room #1114 in reference to a panic alarm. The resident advised she accidentally activated the alarm. False alarm.

• Officers escorted a subject from East Georgia Regional Medical Center to Georgia Regional in Savannah, Ga.

Sunday, Aug. 19

• Officers responded to Eagle Village building 2, 3rd floor, in reference to a drug complaint.

Officers investigated but did not discover any drug violation.

• Officers took a report of a damaged bike at Southern Courtyard. The case was turned over to GSU Criminal Investigations.

• Officers responded to Health Services in reference to an injured person. A student fell off her bike receiving minor injuries to the left side of her face, her knee, and wrist. EMS initially treated the injuries. The student went to the emergency room via personal vehicle.

• Officers responded to the Alpha Tau Omega House in reference to a criminal trespass. The complainant advised that he saw an unknown black male in the house earlier in the day. The case was turned over to GSU Criminal Investigations.

• Officers responded to Eagle Village room #4224 in reference to a drug complaint. Officers discovered a small amount of marijuana in the room of GSU student, Garrett Reynolds Sizemore, 18 years old. Mr. Sizemore was judicially referred.

Monday, Aug. 20

• Criminal Investigations opened a case reference to a complaint of suspicious activity at Residential Facilities. The case was unfounded.

• Officers responded to a motor vehicle accident in Lot 21. A motor vehicle accident report was completed.

• Officers responded to a motor vehicle accident at Southern Pines. As a result of an investigation the following subject was arrested: Evans Alexander Armstrong, 18 years old, charged with Posses-

sion of a Controlled Substance – Class IV, Driving Under the Influence – Drugs 1st Offense, and Possession of Drug Related Objects.

• Officers responded to a motor vehicle accident at the Math/Physics Building. A motor vehicle report was completed.

• Officers responded to the Engineering Technologies Building reference to an alarm. The building was checked with no trouble discovered. False alarm.

• Officers took a report for a lost/mislaidd iPhone at the Carroll Building. The iPhone was turned in and returned to the owner.

• Officers took a report for Damage to Property at Freedom's Landing. A resident's vehicle was damaged by a metal pipe protruding from a parking barrier.

• Officers responded to the Zeta Tau Alpha House on Olympic Blvd in reference to an alarm. A resident exited an alarmed door without deactivating the alarm. False alarm.

• Officers made contact with an intoxicated person in the bushes at Kennedy Hall. The subject was judicially referred for Possession of Alcohol – Under 21 Years of Age.

• Officers responded to Eagle Village in reference to a suspicious incident and a sick person. The suspicious incident was resolved and the sick person provided with an alternate place to sleep during the night.

• Officers responded to Kennedy Hall in reference to an alarm. A check of the buildings revealed no trouble. False alarm.

Statement of Operations

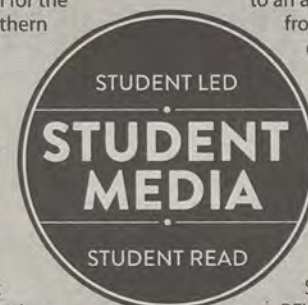
The George-Anne is the official student newspaper of Georgia Southern University, owned and operated by GSU students using facilities provided by the university. The newspaper is the oldest continuously published newspaper in Bulloch County. The newspaper is a designated public forum for the Georgia Southern community. The newspaper is published twice weekly, on Tuesdays and Thursdays, during most of the academic year. Any questions regarding content should be directed to the student editor by phone at 912.478.5246 or at gaeditor@georgiasouthern.edu.

ADVERTISING: The newspaper accepts advertising. Inquiries may be made by calling 912.478.5418 or 912.478-0566. Fax any questions to 912.478.7113 or e-mail ads1@georgiasouthern.edu.

The George-Anne receives additional support, in part, from the Student Activities Budget Committee.

The deadline for reserving space and submitting advertising copy is noon, one week prior to the intended publication date. For more information, rate cards, sample publications, contact

the advertising manager or student media director. The advertiser is responsible for any errors in advertisements and its liability for adjustments is limited to the amount of space the error occupied in the ad. Further, the newspaper is not responsible for any damages caused due to an ad's omission from a particular edition and its responsibility solely is to reschedule the ad in the next regular edition at the regular advertising rates.



STUDENTS BEWARE: The

George-Anne screens all advertisements prior to publication. The newspaper strives to accept ads for legitimate products and services only. Students are urged to exercise caution when replying to ads-particularly those that require personal information. Students are also urged to report to the newspaper any suspicious offers which they might see in an ad.

PUBLICATION INFORMATION: The newspaper is printed by The Brunswick News in Brunswick, Ga.

NOTICE: Unauthorized removal of multiple copies from a distribution site constitutes theft under Georgia law, a misdemeanor offense punishable by a fine and/or jail time.

Editorial Staff

Editor-in-Chief Arielle Coombes
Managing Editor Jennifer Curington
Multimedia Editor Jessie Reese
Opinions Editor James Farmer
News Editor Lindsay Gaskins
News Chief Taylor Cooper
Arts Editor Gianna Carme
Arts Chief Kimeko McCoy
Sports Editor Clinton Hinely
Football Editor Jannah Bolds

Copy Chief Courtney Tielking
Copy Editor Anna Wells
Business Manager Chloe Douglas
Sales Leader Phillip Scroggin
Marketing Manager TJ Jackson
Marketing Associate Amber Gordon
Production Manager Kelsey Paone
Photo Editor Lindsay Hartmann
News Design Chief Tyler Fleider
Ad Design Chief Jose Gil

Corrections

Contact the editor at gaeditor@georgiasouthern.edu for corrections and errors.

Our View

Take advantage of fee voting

Granting students the right to vote on student fees is a tremendous step in the right direction for Georgia Southern University.

The Board of Regents is largely behind the student vote, whatever it might be. Without student support, President Brooks Keel said, the fees will not be supported by the BOR or by GSU.

The solidarity to vote has just begun to infiltrate campus, and the opportunity to vote has pushed influential people all over campus to speak out.

Head Football Coach Jeff Monken is pushing hard for students to side with the FBS move fee, which will only be applied if we receive a bid to join the conference. His recent tweets have all been in great support of the proposed fee.

The Student Government Association has been working to educate the student body on the upcoming vote, and they have made a video to raise student awareness that can be seen online.

This is a rare time for your voice to be heard on campus, and it is much more important than homecoming voting, which is the only other school-wide voting event this fall. We encourage you to use your right as a GSU student and help shape this school for years to come.

The George-Anne welcomes letters to the editor and appropriate guest columns. All copy submitted should be 350 words or fewer, typed, and sent via e-mail in Microsoft Word format to gaeditor@georgiasouthern.edu. All submissions must be signed and include phone number for verification. GSU students should include their academic major, year and hometown. The editors reserve the right to reject any submission and edit submissions for length.

Opinions expressed herein are those of the Board of Opinions or columnists themselves and DO NOT necessarily reflect those of the faculty, staff or administration of GSU, the Student Media Advisory Board, Student Media or the University System of Georgia.



Let students choose what to improve

The future of the Georgia Southern University campus is being shaped right now. The new Biology building is under construction, a shooting range has been approved, stadium expansion and a new health center are all on the table as well. While these are all potentially great improvements and advancements, the students should have a voice in what gets improved and built.

The problem with this system is that the buildings that need the most improvement are being ignored. Forest Drive Classroom Building, for example, is in a trailer. It's a nice trailer, granted. If Bill Gates were to buy a trailer, it might look something like Forest Drive, but it is still a trailer. Even more depressing is the fact that the school seems to be entrenching itself to stay there long term.

Last semester, the school reconstructed the steps and ramps to the building, an investment that wouldn't be made for a temporary space. This building houses a large group of majors for GSU, including foreign languages, history and the Center for International Studies... and it's in a trailer. I don't think I can repeat that fact enough.

THE FARM LIFE



JAMES FARMER
OPINIONS EDITOR

Furthermore, the International Student Resource Center is located in the building. So we ask for the best and brightest from the rest of the world, and when they arrive... we direct them to a trailer. I'm not saying that's a little insulting, but if the school thinks they can attract great international minds — and wallets — to the campus with a permanent home in a trailer, it is in for a rough surprise.

Now, I'm all for improvements around campus, especially the proposed health care center. The current building has a history of horror stories of long waiting lines and the spread, not the prevention, of illness.

I would rather see the students have a bigger voice in the improvement of the school. Imagine a world where every

year, all of the buildings go through a tournament, with the students voting on which building needs the most improvement. It's like *The Hunger Games*, but instead of getting to survive, the winner gets to be ripped down and replaced with a better building or just renovated. One of the slots of course would go to proposed buildings, which might very well win.

But wouldn't you like to see roach-proofing our dining halls versus a new stadium in the finals? I can't honestly give either side an automatic win in this case.

If this never comes to fruition, the fact that the Board of Regents is now considering the vote of the student body as a factor in their decisions means that now is the time to make our voice heard. So go out and let the head honchos around here know what you'd like to see improved. Start a Facebook group, create a petition, wear a crazy outfit around and hold signs, it really doesn't matter.

Even if we don't get to see our buildings slug it out for state funds, we might be able to get Forest Drive out of the realm of Jeff Foxworthy jokes and into a permanent home.

From the Left

Privitization too expensive

Since Mitt Romney's selection of Paul Ryan as his running mate, concerns over the future of Medicare have surfaced as a focal point of the campaign.

Various projections have estimated that Ryan's original proposal to transform Medicare into a voucher program, a plan Mitt claims is "probably close to identical" to his own plan, will eventually cost seniors about \$6,400 out of pocket each year. That's \$6,400 that fixed-income seniors do not have to get the medical treatment they need.

Ryan suggests that a reduction in Medicare costs — along with cuts to programs that help the economically disadvantaged and students — will help put America on track to reduce the debt. However, the nonpartisan Congressional Budget Office and Tax Policy Center have calculated that Ryan's plan will actually raise the annual deficit due to his substantial tax cuts on corporations and the highest tax bracket.

Paul Krugman estimates that Ryan's proposed cuts to Medicare — \$1.7 trillion cuts in all — will be offset by his \$4.3 trillion loss of tax revenue from his tax cuts. So essentially, Ryan's plan cuts care for sick and elderly people to fund his tax breaks on the wealthiest, further polarizing America's socio-economic classes.

In response to attacks on Republican Medicare cuts, especially from the age-heavy swing states of Florida and Pennsylvania, the Romney-Ryan campaign has thrown the argument back to the presumed cuts to Medicare that will supposedly result from the implementation of Obama's Affordable Care Act. Romney has insisted



SCOTT MARKLEY

repeatedly that \$716 billion dollars will come out of Medicare to fund "Obamacare."

However, Obama's health care law does not literally cut funding to beneficiaries. It cuts funding for private insurance companies as a part of the Medicare Advantage program with the idea that private competition would reduce healthcare costs for seniors. Those private insurance companies have actually had higher costs than Medicare and have proved a wasteful effort.

Even though Medicare is a relatively socialistic program, Republicans have been politically forced to uphold it because of the high percentage of 65 and older voter turn-out. Seniors vote and organize coalitions and as a result receive generous benefits. What could college students gain if they were more politically involved? Free education?

Markley is a senior geography major from Marietta, Ga.

From the Right

Vouchers benefit patients

Last year, the Democrats spent a good part of the year attacking Congressman Paul Ryan for his plan to reform the failing Medicare system. They scared people with talks that Ryan was "ending the system as we know it." Ryan was branded a "Granny killer" and was forced to spend the rest of the year defending his plan.

What Paul Ryan simply wants to do is move Medicare to a voucher system for people who have not reached the age of 55 yet. However those who are 55 and over would keep their current plan. This allows the consumer to pick how to spend their Medicare money. They can choose which doctors they want to see, get specialized help and truly get the best care without punitive cost controls and unelected bureaucrats getting in the way.

The Ryan plan would open up competition among doctors that Obamacare and the traditional Medicare plan does not. Doctors are now going to be competing for the business they receive from Medicare patients instead of it being guaranteed due to lack of options. Doctors are going to have to perform better services at competitive costs. This causes the patient to win, instead of doctors and bureaucrats. This plan also replaces most of the \$700 million that Obama cut out of Medicare.

But now with Obamacare released, that boomerang is coming back to hit the Obama camp at a time when they can't afford it. Mitt Romney shocked the nation when he picked the Wisconsin Congressman to be his running mate for president, bringing Ryan's Medicare plan



FRITZ CHAPIN

front and center in the election. With that move Ryan has got the Dems on the run. A recent Rasmussen poll in all-important Florida shows that folks are a bit more terrified right now — and seniors even more so — of the president's healthcare law and its affect on Medicare than of Ryan's proposal.

At the end of the day, Medicare is going to have to change. It is a hospital trust fund that is predicted to become insolvent in 12 years, according to the Congressional Budget Office. The same study found that Obama's plan, which takes \$700 million from Medicare to pay for Obamacare, would drain Medicare in half of that estimate. So the choice is either to allow competition to drive down costs and let the patients make their own health choices or allow another choice to be made by faceless, unelected bureaucrats in D.C.

Chapin is a senior political science major from Roswell, Ga.

From Data to Discussions

American culture and rising costs put a strain on Medicare

Paul Ryan's Medicare proposal that would change the system from one in which the government pays money directly to hospitals and doctors to one in which citizens are granted a certain amount of money from the government to pay for private insurance premiums is, for lack of a better term, flawed. Unfortunately, there is no simple solution.

It is very difficult and expensive for health insurance companies to profit from keeping people well, especially in a country where more than a third



WILLIAM BRYAN

of all adults are overweight or obese. This forces insurance companies to screen and deny people who have pre-existing conditions and increase premiums or drop people completely

from plans if they are costing too much. Insurance companies have an entire sector dedicated to figuring out who should be insured and who would be too expensive. Also, if elderly people all switch to private insurance companies, you now have more sick people being paid out at a rate higher than they are paying in, and no additional healthy people entering the system to balance out the costs. I am all for free markets, but unfortunately the free market produces many losers in healthcare.

Here is how we compare to

other countries as far as healthcare spending. The United States is the only modernized country in which private insurance is the main payer of healthcare. As a percent of GDP, we spend 17.6 percent toward healthcare, while the number two country, France, spends less than 12 percent. Switzerland has a market-based system, similar to Obamacare, but most countries have single-payer, government-run insurance programs. Not all of them are perfect, but none are as broken as ours.

It isn't that we just need healthcare

payer reform; we need nationwide reforms. We need a culture that values being healthy, a sensible and affordable insurance program that covers everyone and competition. To find a feasible solution, we need the smartest people in the country working on this — no offense, politicians. My diagnosis of the bigger problem is the fact that a Twinkie costs less than an apple. But that is a conversation for another day.

Bryan is a senior economics science major from Fayetteville, Ga.

Be a positive impact at GSU

Reflecting on Newton and common sense

I am honored to serve as Dean of Students here at Georgia Southern University. At this great institution, we enjoy internationally recognized faculty experts, passionate and experienced staff members and students who offer proud accomplishments to our reputation. When I joined this staff in 2007, I was drawn to the community that is Georgia Southern: large-scale amenities with a hometown feel. We genuinely care and wear our pride on our sleeves.

However, I find myself in a conflict of emotions as we begin this new academic year. I thrive on the energy created as students embark on a new year. The excitement in the air is contagious! In contrast, I am embarrassed and disappointed by some of the recent behavior I have observed from students. I will share just a few examples. Before classes even began, I received a complaint of male students taunting female students by calling them such names as "whores" as they walked by. What impression does this behavior give our newest Eagles? What does this say about who we are in the Eagle Nation? I have been here long enough to know that this behavior is not a true reflection of our community, but I am sure it felt very true for the women who experienced this taunting.

I was very excited to attend Day One this week. I think this event is a fantastic way to kick off our year. However, I was greatly disheartened when I overheard students who seemed to be friends address



PATRICE JACKSON

each other using vulgar names and profanity.

I was further disappointed at the closing of the ceremony as students chose to leave the stadium while our alma mater was being

sung. We had endured the rain for the entire event. A few more minutes of respect for the chorale and the band was not too much to ask. Where are our Georgia Southern V.A.L.U.E.S.?

Georgia Southern University is a great institution. We have a proud heritage and a strong desire to have a positive impact on this world. However, in order for these aspirations to become reality we have to be conscious of how our decisions affect our community. At Georgia Southern University, where we believe "Every Voice Has the Right to be Heard, and Every Word Will Be Spoken with Respect," we must be aware of the consequences of our words. Further, we must take pride in the lasting traditions of this great institution. Wear the Georgia Southern logo with pride. Sing our alma mater and fight song with excitement. Respect our community members and the great legacy we are so fortunate to have inherited. Wake up every day and intentionally decide "Who You Will Be!"

On Tuesday morning, the Newton Building fire alarm went off. As usual, there was no fire and class resumed after students spent a few minutes standing around outside.

The cause for the false alarm? Paint fumes set off the smoke detectors.

Paint fumes. I'm not even surprised.

Most students know the Newton Building as the place they had to take English their freshman year.

Like the Fig Newton snack the building was named after – or should be named after – the Newton Building is plain and simple. The rooms are small and sparsely decorated. There are no desks, either; Newton is a table-and-chair place. The chairs are loud when dragged across the floor, and the tables are usually arranged in the most inconvenient way possible. If you're lucky, you get a room with the new trapezoid-shaped – yes, trapezoid – tables that are too narrow, tip over with little more than the weight of your backpack and stab anyone sitting at the end in the gut.

It's all part of the down-home charm. The same goes for the bathrooms, where Newton does its part for the environment by never containing any paper towels to dry your hands with. The exterior of Newton has seen some upgrades in the past year with fresh landscaping and sidewalks that are almost even. It is also strategically located in low dip in the terrain, so when it rains, the water makes Newton home as much as writing

**ALEXANDER
THE
PRETTY
GOOD**

ALEX LASALLE/
COLUMNIST

students, English students and gnats do.

But that isn't all that makes Newton special. After I graduate, I will still have fond memories of the bulletin boards that have posters advertising events from three years ago, the bench-type structure on the second floor that is too high to comfortably sit on but too low to lean against.

I suppose Writing and English majors should be glad to even have a building to call home. It wasn't long ago that Communication Arts students were banished from the six-inch-wide hallways of Veazey Hall and its bi-polar air conditioner.

I would call for a complete renovation – other than a new paint job, obviously – but by the time GSU could afford that, there would be about three professors left employed here.

Still, when smoke detectors are being set off by paint fumes... something has to be fixed. Don't paint when students are in class. Open the doors when painting is being done so it's ventilated. That should at least be common sense, right?

Letter to the Editor

Guns are an American necessity for freedom and safety

To Scott and Will,

Let's remember how the United States got started; it was neither by decree nor grant, but by force. I was not around when our founder wrote the Constitution, thus I cannot speak for what they had in mind. Although it is my belief that our founders believed so whole-heartedly in the ideals of freedom that they wanted to insure those rights remained protected down to each and every last citizen. Regarding militias, I would like to point out that over half of the states have provisions for or operate active militias. Yes, the U.S. has

police and by far the best military in the world. But who guards the guards?

The US does have the highest per capita gun rate, but when we look at other stable and developed countries on the top 10 list we see that more guns equals less crime. Take Switzerland, which is number two. In the words of the BBC, "(the swiss) gun crime rate is so low that statistics are not even kept."

Guns make us safer. Take Kennesaw, which in 1982 required every household to keep a firearm in the house. Residential burglaries dropped 89 percent, compared to the modest 10.4 percent drop in

Georgia as a whole. Ten years later it was still 72 percent lower.

Now look at D.C. With the strictest gun laws in the country, yet it is the murder capital of the nation. In the 25 years following the D.C. gun ban, its murder rate INCREASED 51 percent, while the national rate DECREASED 36 percent.

It is important that we protect ourselves from robbers and rapist or foreign invaders but also from our very own government. There's a correlation between gun control and totalitarian regimes. In 1929, the Soviet Union established gun control. From 1929 to

1953, about 20 million were rounded and killed. Germany did it in 1938 as a prelude to the Holocaust.

Hundreds of millions have been killed because their governments took their abilities to defend themselves.

To insist on strength is not fear mongering. It's peace mongering. We are citizens with guns, servants without them.

Lawyered.

Aron Randall
Senior Political Science
Milton, GA

2 University Store staffers to face court

BY TAYLOR COOPER

The George-Anne staff

Two University Store employees will face court soon after being charged with felonies this summer.

The report states that University Store Operations Manager John Dotson Jr. was accused of stealing \$72,020.56 from the bookstore by taking products that were supposed to be sold to students, such as laptops, software and textbooks and selling them on eBay.com, according to a report released by the Department of Public Safety.

A second related report states that Assistant Director Administrative of the University Store Mehmet Samiratedu was accused of theft by conversion. He stole a \$1,670.00 Samsung Smart TV.

Mehmet was charged with theft by conversion and Dotson was charged with theft by taking.

Mehmet is scheduled for court Aug. 30 and Dotson's court date has not been scheduled.

Richie Akins, administrative director of the University Store, alerted University Police to the fact that some stock had gone missing on June 22, and that one of the employees may have stolen it, according to the report.

The second report states that Akins called University Police

again on June 27 to report the missing TV.

The crimes that Dotson was accused of may have been committed as early as March 10, 2009.

Of the \$72,020.56 stolen, \$18,524.57 was recovered.

University Police cannot comment on the incidents because they are still under investigation, Captain Michael Russell of

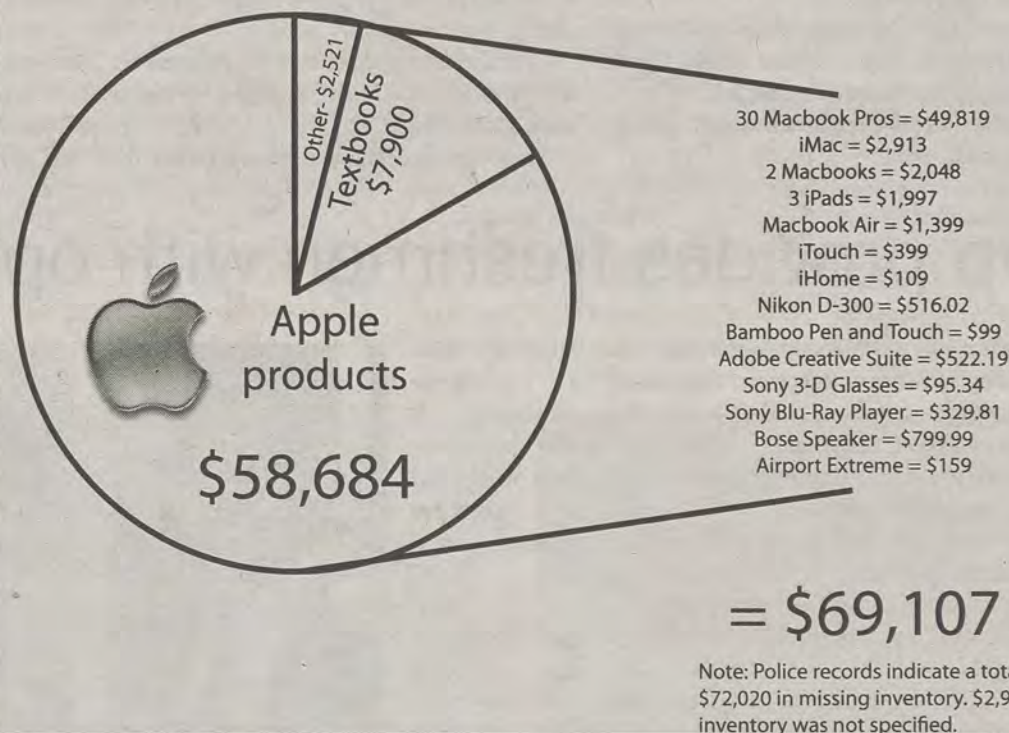
University Public Safety said.

Dotson and Samiratedu have both been removed from the GSU online directory.

The total amount of merchandise has not yet been recovered.

Missing University Store Inventory

Richie Akins charged with theft by taking



Arielle Coombes / The George-Anne

PIRACY, from page 1

crime."

The program will warn users three times of their illegal actions. On the user's fourth attempt, Internet access will be revoked and the user will be referred to Judicial Affairs.

When the alert system intercepts an illegal downloading attempt, it will send out a warning in message form on that open browser. After four of those warnings, it shuts off a student's Internet access and refers them to Judicial Affairs, Burrell said.

Because the university does not want to interfere with students' academic progress, once students reaches the fourth warning, their Internet access can still be restored, though the offender will still be reported to Judicial Affairs, Burrell said.

Planning to implement this program began over a year ago and it took nine months to integrate the program due to special programming needed, Burrell said.

"It's a polite way of saying we know who you are and we know what you're doing. When that fourth warning comes in it says your network access has been disabled and you need to go deal with this," Burrell said.

Judicial Affairs could not be reached for comment.



saves \$1,000 per year on average
compare every online store in one place
new, used, rentals, eBooks
every coupon, every offer

BIGWORDS doesn't sell, rent, or buy anything. BIGWORDS searches every other site, relentlessly. BIGWORDS is your friend who speaks the truth.
www.BIGWORDS.com or "BIGWORDS.com" Apps on iPhone, iPad, and Android phones and tablets.

Pickle Barrel settles into new home in Union

BY SHELBY FARMER

The George-Anne staff

The Pickle Barrel, an Eagle Dining option, moved into its new location after replacing Snackers in Russell Union earlier this month.

"It was the best location outside of Landrum to put it," Michael Murphy, eagle dining marketing coordinator, said.

A new location for the Pickle Barrel was decided upon when plans for Landrum Center's remodeling were finalized, Murphy said.

"When it was located in Landrum, not a whole lot of students knew that it was there and that it had been reopened as a health food

store," Brittany Parham, eagle dining nutritional coordinator, said.

"So now that it's essentially center-stage, we hope that students enjoy the healthier option of fresh produce that we offer there," Murphy said.

Eagle Dining hopes that with its new location, the Pickle Barrel will be more visible in the Union compared to the area of Landrum, and previous home of the Pickle Barrel, that students did not frequent, Murphy said.

"There's a lot more traffic and a lot of people who didn't know where we were before," Glynn Edwards, food services supervisor, said.

Students are not losing any snack options Murphy said.

"A lot of the things that were in Snackers are seen over in the University Store, so it's not like they're losing any of the items or access to those items," Murphy said.

"We have vending machines all over campus and the bookstore does sell the same products that were in Snackers, so (students) are able to get those items," Parham said.

"Snackers never took the dining plan because it was part of the bookstore, not part of Eagle Dining," Parham said.

"I understand that some of the students are slightly disappointed that Snackers is no longer there," Parham said.

There are students who have accepted the

transition well, Murphy said.

"I think the reception has been pretty good," Murphy said. "We've got a lot of positive feedback from students during the two weeks before school started, and students now seem to really enjoy it and really frequent that place."

"I like it because it has healthier food," Keyaira Hunt, freshmen food and nutrition major, said. "I think (students) will like it better than Snackers because it is healthier for groceries."

Murphy said, "I don't believe it's currently moving into the new dining center. For now, the Union is the home of the Pickle Barrel, and if we do decide to move it again, we'll inform people and let them know."

1906 Scholarship provides freshmen with opportunities

BY ASHLEY WOODWARD

The George-Anne staff

For 45 students, 1906 is more than Georgia Southern University's founding year.

For the recipients of the 1906 Scholarship Award, the number represents a prestigious honor given to the best entering freshmen each year.

"We look for great students who are curious and interested in developing a broad perspective on their education. We look for applicants with a strong GPA, no lower than a 3.5 cumulative from high school, however most interviewed have a much higher GPA," Steven Engel, director of the GSU Honors Program, said.

"This is the top scholarship for freshman honor students. The purpose of this scholarship is to attract and keep quality students," Engel said.

To earn the scholarship, applicants are put through a series of interviews. The award lasts for eight semesters and it equals the amount of tuition, Engel said.

To earn the scholarship, applicants are put through a series of interviews.

220 students applied for the honors program in 2012 and 50 were chosen for interviews by the Southern Scholars. Six students were chosen for the scholarship, Engel said.

"All applicants must have at least a 1300 on their SAT math and critical reading. We also look for strong essays and writing skills and we also look at creativity in the structure and argument of the essay," Engel said.

"The applicants are also put through a group interview. During the group interview Dr. Desiderio and I give about seven or eight of the students a task and we sit back and watch how they interact with each

other to solve a particular problem. It also shows how they would act in a classroom setting," Engel said.

"To keep the scholarship the recipients must maintain a 3.3 grade point average.

That may seem low to some people for our school's most prestigious scholarship but we don't want them to just focus on grades. We want them to focus on rich educational experiences as well, and that involves taking risk," Engel said.

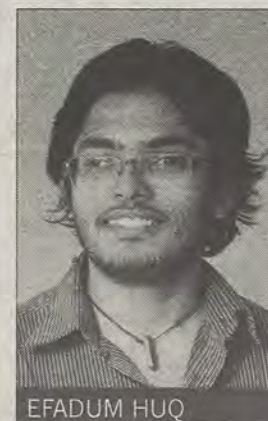
"After completing the lengthy application process, I was startled to learn that I was selected to attend the Southern Honors Showcase. Although the interviews were intense and nerve-racking, I thoroughly enjoyed the event and getting to meet professors, students and potential members of the Honors Program," Dylan Mulligan, sophomore history major and 1906 scholar recipient, said.

Mulligan was surprised and humbled when he found out he was chosen out of the countless students for this award.

"The benefits of being a 1906 Scholar are immeasurable, and I am realizing it more with each semester. I am honored and humbled to be a recipient of the 1906 Scholarship, and I



STEVEN ENGEL



EFADUM HUQ

will be eternally grateful to the University Honors Program, its staff and my family and teachers who encouraged me along the way," Mulligan said.

Senior civil engineering major Efadum

Huq originally thought he had only received the research fund, but when he found out he was also a recipient of the 1906 scholarship he was thrilled.

"I was very happy to receive this award. I am just excited and grateful," Huq said.

This award has benefited Huq in many ways including helping him with his research and experimental projects.

Ty Von Plinsky, senior IT major and 1906 scholarship recipient, said he would not have the opportunity to attend GSU without this award.

"The 1906 scholarship itself, I would not be in college without it. I would not have anywhere near enough money to fund my experience here," Plinsky said.

Engel said the scholarship was created in the 1980s as the Bell Honor Scholarship Program, but by the 2000's there were no longer funds for the Bell scholarship, so the name was changed to the 1906 scholars in 2004, in honor of GSU's founding year.

Buy / Rent / Sell

We Accept Financial Aid!!!

TEXTBOOK

BROKERS

on Chandler Road next to Dingus Magee's

Cupcakes, frosting and a dash of passion

Culinary Arts

BY MARISSA MARTIN

The George-Anne staff

Jahala Akins graduated from Georgia Southern University in 2004 with a degree in finance and worked at University Pines as a property manager until her life's path went in another direction.

She started mapping out a plan to open up a bakery after she realized her talent lies in baking.

"I started doing it on the side and posting things on Facebook. People started paying attention to what was being done. So I decided to open up a shop," Akins said.

Akins opened Sweet Cheeks Bakery in downtown Statesboro on Nov. 4, 2011. She has been whipping up unique cupcakes since opening day.

Akins struck a passion for baking growing up by watching her mother's catering business.

"My mom has always baked. She has a catering business and I've always seen her do it," Akins said. "I wanted to focus on childhood flavors I grew up with and turn them into a cupcake."

Flavors like cinnamon roll and apple pie, Jahala's childhood favorites, are made fresh at the bakery every day, Akins said.

"I like to make people smile and

its fun to see people's faces at the variety of stuff that we do," Akins said.

Akins is proof that students don't have to look very far to find success after college.

"People have nominated us for Cupcake Wars about a month ago. We plan on sending emails and pictures to them," Jodi Akins, sister-in-law to Jahala and Sweet Cheeks employee, said.

The bakery offers more flavors on their menu like blueberry pancake, grasshopper, pink lemonade and white velvet. They fill these cupcakes with just about anything: chocolate raspberry, banana pudding, and key lime to name a few.

"We're a cupcakery but we do specialty cakes for birthdays, wedding cakes and we do corporate gift baskets with sweets and different goodies," Jahala Akins said.

Jahala and her four employees make unique cupcakes, especially during the holidays.

"We did a margarita cupcake for Cinco de Mayo," Tia Betsill, employee and sophomore studio art major, said.

"One that was a really good seller was the Irish car bomb. We did that around St. Patty's day. It had three different liquors including Irish whiskey, we'll be doing that one again," Jahala Akins said.

"We've done so many unique

kinds of cupcakes," Jahala Akins said.

"Our most popular cupcakes are chocolate strawberry cheesecake, salted caramel and key lime," Jodi Akins said.

Sweet Cheeks Bakery bakes a fresh batch of cupcakes every day, Betsill said.

"We get to keep the cupcakes if they don't sell that day. My neighbors love me," Betsill said.

Students can come by and eat some sweets while they study or do homework on the Internet.

"Students can get on Wi-Fi because we pick it up from campus," Betsill said.

Jahala Akins decided on the name "Sweet Cheeks Bakery" after juggling with six others, Akins said.

"I've been in the marketing world and I came up with 6 different names for this bakery. This one kept coming back to me. I wanted something people would remember and get a kick out of," Jahala Akins said.

The five girls that run Sweet Cheeks put their own unique spin on the bakery.

Betsill designs wine glasses that are sold inside as wedding gifts, bridal gifts or can be specially made for any occasion, Jodi Akins said.

Sweet Cheeks made a special deal with the wine glasses by placing a cupcake inside and selling them as a set.

"There are five girls that work here. It has been the most fun I've ever had at a job," Jodi Akins said.

The girls promise that they won't tell if someone wants to indulge in a cupcake every once in a while.

"We keep secrets here. People swear they don't eat all of the cupcakes they buy," Jodi Akins said.

Betsill said, "We need to start a CA: a cupcakes anonymous."



Photo courtesy of Jahala Akins

Sweet Cheeks Bakery specializes in unique and flavorful cupcakes. **Left:** Located in downtown Statesboro, Sweet Cheeks Bakery has been baking up sweetness since opening on Nov. 11, 2011 by former GSU student Jahala Akins. **Right:** The inside of this bakery houses all of Akins' baking hopes and dreams.

Fabric, frames and a canvas to spice up living space

BY BRITTANY MOORE

The George-Anne staff

Dorms and apartments are a Georgia Southern University student's final stop after a day of meetings, long classes and library visits, so making your place into a home is must.

A unique dorm room or apartment does not mean a tremendous amount of money has to be spent.

There are inexpensive items and projects that can be purchased to make a room both different and fun.

"The number one thing a student should do is personalize their space. A dorm room needs to be you," Diane Phillips, interior design assistant professor, said.

In an age of photos, possibilities are endless when it comes to dorm decor.

"I use my camera and take pictures of things that I like. One time, I went around town and took pictures of different scenes in nature; you can go get them printed at Wal-Mart and hang them up in your room," Phillips said.

"Printing pictures off the Internet and websites like Pinterest give students a lot of options. They also can print off monograms to make their space unique," Meghan McGahee,



Lindsay Hartmann/The George-Anne

Small living spaces can be brightened with accent colors, lights, and simple DIY crafts.

senior interior design major, said.

Students should also add something that reminds them of their hometown to their rooms. However, beware of going overboard.

A student's room needs to reflect a here-in-the-moment theme because you want to become a part of the community you live in. Phillips tells students to never make their room a shrine to

their hometown, but one or two pieces are great.

Students can also make their own art work. "You can buy a canvas and glue and find some newspaper articles. Buy some paint and spray glue and make your own art. It is a chance to get creative," Melissa Smith, senior interior design major, said.

"Fabric is another option. You can make a

bed skirt or bulletin board out of it. You can even frame it," Courtney Dahlin, senior interior design major, said.

Pops of color are also a great way to spice up a room. Accent walls can be used in an apartment, while accent pillows and lamps are suitable for dorm rooms.

In terms of most colors, grays have been proven to be a good color to study and learn in. Blues are great for a calm atmosphere and green promotes healing and nurturing. You can just Google colors and find out their meaning and effects, Phillips said.

Apps on smart phones are even helpful when it comes to understanding what colors are best for the room.

"The Color Snap App by Sherwin Williams allows people to take pictures and upload them to help them decide what color would look best in their rooms. In the end you have to decide what is right for you," Phillips said.

There are many things a student can do to spice up their dorm, however the main thing that matters is being satisfied with the space.

Phillips said, "In the end when you walk into your dorm room or apartment you want to be happy, so find something that is pleasing to you and focus on that."

BLISS BERRY
FROZEN YOGURT • GELATO • SORBET • SMOOTHIES

5% Off Students Everyday!

Mon & Thurs: Double Punch Card Days!

Come Try our New Delicious, Fresh, Fruit Smoothies!

1 oz FREE*

*Valid through 12/31/2012. Cannot be combined with any other discounts.

721 SOUTH MAIN ST. #9
STATESBORO, GA
LOCATED IN QUIZNOS SHOPPING CENTRE
CONTACT # 912-681-2547

HOURS:
MON-THURS: 11 AM - 10 PM
FRI-SAT: 11 AM - 11 PM
SUN: 12 PM - 10 PM



JOIN ON FACEBOOK TO
LEARN MORE ABOUT
SPECIALS @ BLISSBERRY

GSU gets rights to musical

Performing Arts

BY KIMEKO MCCOY

The George-Anne Staff

Statesboro is ahead of the curve by being the first to purchase the rights and put on the production of 9 to 5 the Musical.

The rights to the production were released last fall. Out of the entire state of Georgia, Averitt Stars, a Statesboro community theatre group, were the first to purchase the rights with the intent to put on the production at the Averitt Center for the Arts this Thursday through Saturday starting at 7:30 p.m.

"The music is very fun and we wanted to be the first to do it in Georgia," Sharon Altany, director and president of the

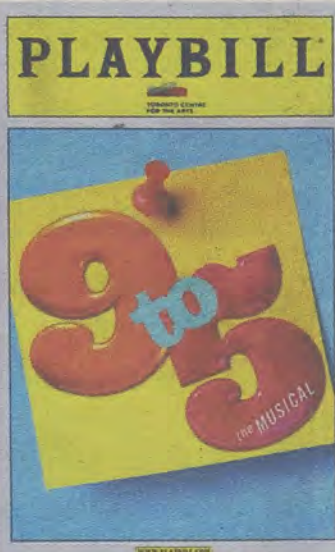


Photo courtesy of socialtcentre.com

Averitt Stars, said.

9 to 5 the Musical is based on a 1980s film titled Nine to Five starring Dolly Parton, Jane Fonda and Lily Tomlin.

"It's a fun show, great music

and the lyrics were written by Dolly Parton," Altany said.

The production focuses on three women who must cope with a sexist boss. The girls get mad and then get even.

This production boasts several awards including a Tony Award and Drama Desk awards.

After the show spent time on film, it was adapted and sent to Broadway in 2009 and traveled on a U.S. National Tour in 2010.

Those involved in the production remember the movie from the 80s and decided to purchase the rights for the show, Altany said.

Now, the show is being brought to Statesboro to be directed by Eddie Frasier and Sharon Altany. Frasier is the Statesboro High School drama

director.

Georgia Southern University even lent a helping hand in the production of the musical.

The show has a cast of 24 and several of those are members of GSU's own Adrenaline Show Choir.

Brooks Adams, GSU's internal auditor, is taking the part of one of the main characters, Franklin Hart. Hart is the sexist boss that the ladies are up against.

The show will include comedy, suspense and music. Tickets can be purchased at the door or in advance from the Averitt Center for the Arts.

Show dates are from Aug. 23 beginning at 7:30 p.m. and Aug. 26 beginning at 2:00 p.m.

The Buzz List

■ **Ryan Lochte** invited a random Twitter follower to lunch in celebration of his one-millionth tweet. Let's hope he keeps his shirt off the whole time to compensate for the conversation he won't be carrying.



Gianna Carme

■ **Prince Harry** is under criticism after naked pictures were leaked of him while vacationing in Vegas. Some guys just can't handle Vegas.

■ **LL Cool J** took down an intruder in his Los Angeles home. Looks like his use of steroids has finally paid off.

Information compiled by the Arts & Entertainment Editor Gianna Carme, Arts & Entertainment Chief Kimeko McCoy and Opinions Editor James Farmer from perezhilton.com and TMZ.com.

BLISS BERRY
FROZEN YOGURT • GELATO • SORBET • SMOOTHIES

5% Off Students Everyday!

Mon & Thurs: Double Punch Card Days!

Come Try our New Delicious, Fresh, Fruit Smoothies!

1 oz FREE*

*Valid through 12/31/2012. Cannot be combined with any other discounts.

721 SOUTH MAIN ST. #9
STATESBORO, GA
LOCATED IN QUIZNOS SHOPPING CENTRE
CONTACT # 912-681-2547

HOURS:
MON-THURS: 11AM-10PM
FRI-SAT: 11AM-11PM
SUN: 12PM-10PM



JOIN ON FACEBOOK TO
LEARN MORE ABOUT
SPECIALS @ BLISSBERRY

THE 'BORO BEAT

YOUR GUIDE TO OFF-CAMPUS ENTERTAINMENT

THURSDAY

Gnat's Landing

- Happy Hour 5-7 p.m.
- Reverse Happy Hour 9-11 p.m.

GATA's Sports Bar and Grill

- Happy Hour 6-8 p.m.
- Boobs, Balls, and Bru Ha Ha Comedy Show
- \$5; 5-10 percent of proceeds benefit Breast and Testicular Cancer

Applebee's

- \$3 margaritas
- \$3 long islands

Dingus Magee's

- \$10 Champagne

Holiday's Greek and Italian Restaurant

- \$10.99 for 2-topping pizza
- \$12.99 for 3-topping pizza
- \$14.99 for 4-topping pizza
- \$18.99 for Supreme pizza
- Happy Hour 6-8 p.m.

FRIDAY

Gnat's Landing

- Happy Hour 5-7 p.m.
- Traveling Riverside Band

GATA's Sports Bar and Grill

- Happy Hour 6-8 p.m.
- Matt McKinney

Applebee's

- \$3 margaritas
- \$3 long islands

Dingus Magee's

- ½ drafts
- Jason White

Holiday's Greek and Italian Restaurant

- \$10.99 for 2-topping pizza
- \$12.99 for 3-topping pizza
- \$14.99 for 4-topping pizza
- \$18.99 for Supreme pizza

Loco's Grill and Pub

- ½ drafts

SATURDAY

Gnat's Landing

- Happy Hour 5-7 p.m.
- Daniel Johnson

GATA's Sports Bar and Grill

- Happy Hour 6-8 p.m.

Applebee's

- \$3 margaritas
- \$3 long islands

Dingus Magees

- 2 for 1 appetizer

Holiday's Greek and Italian Restaurant

- \$10.99 for 2-topping pizza
- \$12.99 for 3-topping pizza
- \$14.99 for 4-topping pizza
- \$18.99 for Supreme pizza

- Eye Exams
- Glasses
- Contacts


912-489-6655

820 HWY 80 E. (in front of Lowes)
www.boomersvisioncenter.com

FREE

R.J. Pope T-shirt with
a \$50 Purchase

R. J. Pope
Men and Ladies Apparel



Like us on Facebook

840A Buckhead Drive

5 South Main St.

912.764.6973

Sleepless night at the Black Box Theatre

BY MARISSA MARTIN

The George-Anne staff

The Black Box theatre will house another sleepless night at the second annual Wham! Bam! Play! Slam! 24-hour playwright event on Saturday at 7:30 p.m.

Alpha Psi Omega, national theatre honor society, and Theatre South, student organization for theatre, are hosting Wham! Bam! Play! Slam!, and the event begins Friday, Aug. 24. Directors, actors and playwrights are split into groups to devise a theatrical performance within 24 hours. On Saturday night, a series of 10-minute plays will be acted out to audience members.

"These tend to be for mature audiences, something about lack of sleep," Lisa Abbott, faculty advisor for Theatre South and assistant professor of theatre, said.

First, the playwrights, directors and actors are assigned groups randomly, Abbott said.

"We have a list of playwrights and directors. The volunteer directors pull the name of a playwright out of a hat and partner with them. Then the directors pull the actors names out of a hat," Abbott said.

The groups will get to know each other while the director and playwright determine what type of play would fit best with the type of actors they have, Abbott said.

"The plays are made specifically for the actors. They want to get to know the actors and see what they can do," Abbott said.

Alpha Psi Omega is throwing a slumber party with complimentary pizza and snacks while everyone waits for the playwrights to finish the script, Austin Bolay, president of Alpha Psi Omega, said.

The script from the playwright is turned in by 3 p.m. on Saturday, Abbott said.

"This amount of time pushes you to make a choice. You just go with it," Bolay said.

The event allows those who are interested in theatre a chance to be seen, Abbott said.

"This is a great ice-breaker for those who want to be involved in acting or writing," Abbott said. "You get a sense for who is who at this event, and it is an opportunity to open some doors."

"The main purpose is to meet people and have a good time. We want to highlight what we're capable

of," Bolay said.

The concept of a 24-hour play festival is not a new idea in the theatre world, Abbott said.

"Twenty-four-hour play festivals are all over the country. People have used this technique in theatre to promote creativity and find new writers," Abbott said.

The idea to bring a 24-hour play festival to Georgia Southern was brought up over a year ago in the spring of 2011 to begin the semester's performances in a creative way, Abbott said.

"This is what theatre is about. Twenty-four-hour play festivals showcase the core of what it is, art. People create it," Bolay said.

Bolay thinks there is a comparison between popular

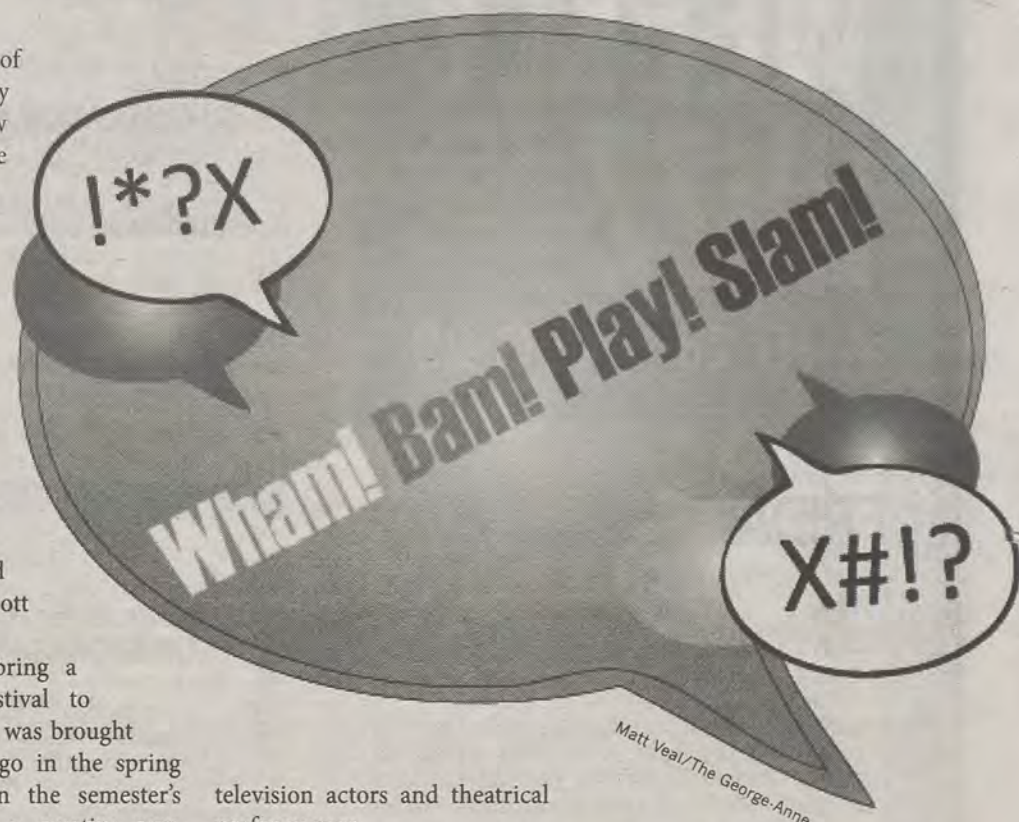
television actors and theatrical performances.

"People love the actors they see on the big screen, but they shun theatre students," Bolay said. "It doesn't make sense."

The performances can be seen on Saturday night at 7:30 p.m. inside the Black Box theatre. Those who are

interested in performing can show up outside the theatre on Friday at 7 p.m.

Bolay said, "It is going to be a great night of theatre with a lot of real language which makes for a much better drama."



Boobs, Balls and Bru Ha Ha comedy show coming to GATA's

BY KRYSHA MCGARITY

The George-Anne Staff

GATA's Sports Bar and Grill will be turned into a comedy club tonight as Colleges Against Cancer host Boobs, Balls and Bru Ha Ha.

"This is a fun way to welcome back the students and spread cancer awareness," Robin Peeples, community manager at the American Cancer Society, said.

Anyone aged 18 or older can attend. The show starts at 7:30 p.m. and will end at 9:30 p.m. There will be a \$5 cover charge.

The event is being held to raise awareness for breast and testicular cancer and GATA's will donate five to 10 percent of their earnings to Relay For Life.

"This is their way of giving back to our

organization," Peeples said.

This fundraising event is unlike any other that has been held at GATA's.

"This is a new event. We are hoping to make it a yearly thing but it just depends on how many people come out and support it," Peeples said.

Colleges Against Cancer came up with the title and comedic theme.

"I'm just the staff person from the American Cancer Society who worked with the Colleges Against Cancer on campus. I was in charge of the finding the venue, the comedians. Things like that," Peeples said.

Featured comedians include Richie Wallace as the emcee, Lace Larabee as the headliner, DJ Delgado, Chris is Lane, Chris Davison, Stephen Lacienski, Will Scott,

Phillip Keeling, Drew Anthony and Blair Renfrow.

"A couple of the comedians come from the Atlanta area and others are from the Savannah and Hilton head area," Peeples said.

Richie Wallace has officially been in stand up for three years.

"I'm from New Orleans but I started my career in Atlanta. Robin has been to my shows multiple times, and she asked me to do the show, and I said yes. I wanted to do it because it's for a good cause," Wallace said.

As the emcee, Richie Wallace will start off the show by introducing all of the comedians and doing a seven-minute set.

"My job is to take care of the house, keeping rules like what's appropriate behavior from the audience and what isn't. I'm also the

filler between acts. I keep the show flowing," Wallace said.

Wallace will be followed by the other comedians who will also do seven-minute sets of their own. Rounding up the show will be Larabee, who is very excited about being the headliner of the show.

"It's very flattering to be asked to be the headliner of any show. Comedy is usually a man's game so this is truly an honor," Larabee said.

Information about breast and testicular cancer will be discussed and handed out during the show.

Whitney Norman, senior general studies major, said, "I think it's a unique way to fundraise and raise money for Relay For Life. I think it's going to be a great show."

WEEKLY BUZZ

A weekly calendar listing sponsored by The Division of Student Affairs and Enrollment Management

AUG 23 - AUG 29

FRIDAY 8.24.2012

8:00 AM

BELAY CLINIC

THE RAC

After this clinic, including passing the top-rope belay test, you may belay as many of your friends that you wish during our open hours of operation. Sign up at the Southern Adventures Center prior to the clinic starting.

Sponsored by the Campus Recreation and Intramurals

SATURDAY 8.25.2012

8:00 AM

GSU RUN 8K

THE RAC

The 3rd annual Fall Back into Running 8K road race hosted by the GSU RUN supports the running club at Georgia Southern. The proceeds of this race will help benefit the Georgia Southern running club and provide them the money to travel to various cross country competitions this upcoming fall semester.

Sponsored by the Campus Recreation and Intramurals

MONDAY 8.27.2012

INTRAMURAL FLAG FOOTBALL REGISTRATION BEGINS

THE RAC

Get your team together for our largest intramural sport. Flag football is as Georgia Southern University tradition. We have leagues divided into A, B and C leagues as well as divisions for Greek Life, Residence Halls, Co-Ed, Men's and Women's. Be sure to sign up early in order to have the most time slots to select from for your games. You can register online at <http://cri.gs/IMtrack>.

Sponsored by the Campus Recreation and Intramurals

6:00 PM - 9:00 PM

CLUB SPORTS FAIR

THE RAC

Come learn about CRI's 28 unique club sports. Representatives from all 28 clubs will be at the fair to answer your questions and explain how you can become involved.

Sponsored by the Campus Recreation and Intramurals

6:00 PM - 9:00 PM

ABC'S OF GREEK LIFE

RUSSELL UNION THEATER

Ever wondered what the difference between the National PanHellenic Association, and the United Greek Council? This event aims to provide a brief history of Greek lettered organizations and their respective councils, dispelling stereotypes, and illustrate the similarities in the organizations represented under each council. It will feature video clips, a panel of council Presidents, and a moderated Q&A session. The event is open to all students and guaranteed to be informative.

Admission is free and proof of attendance will be provided.

Sponsored by the Multicultural Student Center

TUESDAY 8.28.2012

INTRAMURAL SOFTBALL AND ULTIMATE FRISBEE REGISTRATION DEADLINE

THE RAC

Registration for both of these sports will close at 8 PM on this date. Register your team prior at <http://cri.gs/IMtrack>.

WEDNESDAY 8.29.2012

11:00 AM - 2:00 PM

THE BORO BROWSE

RUSSELL UNION ROTUNDA

The Boro Browse gives on-campus departments, Statesboro area businesses and non-profit agencies an opportunity to share information about their goods and services with new and returning Georgia Southern students. The Boro Browse is a collaborative effort that strengthens relationships between GSU and the Statesboro community.

Rain date will be Sept. 5

Sponsored by the Office of Student Activities

8:00 PM

BELAY CLINIC

THE RAC

After this clinic, including passing the top-rope belay test, you may belay as many of your friends that you wish during our open hours of operation. Sign up at the Southern Adventures Center prior to the clinic starting.

Sponsored by the Campus Recreation and Intramurals

Student Affairs
Enrollment
Management

Brought to you by Georgia Southern University VALUES. Georgia Southern V.A.L.U.E.S. is the culture shared by our students, faculty, and staff. We endeavor to share our V.A.L.U.E.S. inside and outside of the classroom with faculty, staff, students, alumni and all other community members. In order to produce productive citizens with an informed set of ethics and community standards as well as create an environment of respect and civility, we pledge to live by our V.A.L.U.E.S.

CLASSIFIEDS

www.thegeorgeanne.com

This page brought to you by Career Services
Explore • Experience • Excel

Thursday, August 23, 2012 15

Jobs

BARTENDERS WANTED!
\$250 a day Potential. No Experience Necessary. Training Provided. Age 18+ OK Call 1-800-965-6520 ext 296.

Worship/Music Leader Needed at Lawrence Baptist Church near Pembroke Ga. Sunday mornings, Sunday Nights and Choir Practice on Sunday Nights. Send Resume to Debbie Hodges at debhodges1013@gmail.com. Questions call 912-667-3972.

Seeking an Assistant, excellent opportunity if looking to work in a friendly atmosphere. Self-Motivated, Positive Attitude, Ability to Multi task. Send resume to Martgay@gmail.com.

Fourth year writing & ling. major will proof papers/ tutor in writing. Cheapest rates, at least three days notice on assignments.

Misc.

Research Participants are needed for a study on resiliency in undergraduate college students with ADHD diagnoses.

Please call the researcher at 912-506-0390 or send an email message to judith.driggers@waldenu.edu if you may be interested in participating in this study. Participation in this study is voluntary and you may withdraw at any time. Each participant will be provided a \$30 Walmart gift card as a "thank you" gift after participation.

American Shorthair Cats (AKC Reg. Male and Female) free to good home, contact bpills12@gmail.com if interested.

Will proof papers for reasonable prices. Will also type short projects. Must have ample lead time. E-mail aunte01@gmail.com.

Houses for Rent

2, 3, 4, 5, 6, and 7 BR houses available Aug 1, 2012 24 hr repairs guaranteed 912-682-7468

4BR/ 2BH Robin Hood Trail
4BR/ 2BH Tillman Street
4BR/ 2BH - Talons Lake
www.wildoakinvestments.com
Call: 912-682-9515

2000 Talons Lake 4BR/4BH \$1000/month. 16 Tillman St. 4 BR/ 3BT \$1000/month. Call 912-484-4763 for more information.

217 Booster Blvd. and Berkhalter 2 4BR/BT \$375/month for Fall 2012 call 770-722-4708.

Furnished apartment Located just past Mill Creek Park. \$500/month. Call 912-531-1319 for more information.

For Sale

Firewood for Sale. Delivery available! Call 912-690-0872 or 912-690-4956.

For sale: 2009 BMW 328i, hardtop convertible in great condition. Black with tan interior. Call 912-293-1909.

Used Fender Blues Jr. All-tube guitar amp, \$350, negotiable, Perfect working order/condition (912) 536-1610

Subleases

Planter's Row for \$365/month; utilities not included. Contact at at01770@georgiasouthern.edu or call (770) 546-6560

Fall 2012 \$340/month. Gently Road, 210 South Edgewood Drive. Contact at 229-291-4002 or e-mail ab05279@georgiasouthern.edu.

Subleases, cont.

Sublease at Cambridge for Reduced Price 1 BR/BTH available in a 3 BR. \$350/month Email shortiecutie102@yahoo.com

4BR/2BT apartment in the Avenue is only \$320 Contact Tanera tm01729@georgiasouthern.edu

3BR/2BT within 2 miles campus. You can sublease the other 2 rooms. No smoking or pets. Call (706) 951-1427.

Hammocks Townhouse. 3BR/3BH Upstairs. Start in August \$383.33/mo plus utilities. E-mail av00248@georgiasouthern.edu

Subleases, cont.

626 B at the Exchange. Female Roommate needed. \$519.00 per month. Contact (706) 523-6001

Garden District with 2 roommates looking for a female. I'm only asking for \$300/month. Call 404-764-6490 ask for Monica.

All inclusive, two story, fully furnished, 4 BR for \$330/month Contact (229) 326-4291.

Fall Semester at the Avenue 4BR/2BH, fully furnished, \$325/mo. Contact Deandre at dc03436@georgiasouthern.edu.

Something to sell?
Visit Gadaily.com or email
Gaclass@georgiasouthern.edu
It's free for students, staff and faculty!

The Office of Career Services

Fall 2012 WALK-IN HOURS

Need a résumé critiqued?
Questions about the job search?
Curious about internships?
Need a quick mock interview?
Wondering what you should do with your major?

MONDAY - FRIDAY

12 pm to 4 pm

1047 Williams Center

Career Services | 912.478.5197 | www.georgiasouthern.edu/career

This semester Career Services is already booking employers to come on campus for interviews. More will be added throughout the semester. To view the detailed job descriptions and application instructions, log into your Eagle Career Net account at www.georgiasouthern.edu/career.

Interview Date	Employer	Positions	Deadline
9/6	Northwestern Mutual Financial Network	Finance Intern, Sales/Marketing Intern, Financial Rep (FT)	9/3
9/19	Brasfield & Gorrie		See at STEM Fair
9/20	Elliott Davis	Intern, Staff Accountant (Tax & Audit)	9/9
9/25	Frito-Lay - Kathleen, GA		See at STEM Fair
9/25	Gifford, Hillegass & Ingwersen	Spring & Fall 2013 Intern and FT Positions	9/16
9/26	ABF FREIGHT SYSTEM, INC.	Management Trainee	9/13
9/26	DRAFFIN & TUCKER, LLP	Intern and FT Positions	9/16
9/27	Mauldin & Jenkins CPAs	Intern and FT Positions	9/16
9/28	Porter Keadle Moore, LLP	Intern and FT Positions	9/16
10/4	PNC Financial Services Group	ACCEL Program Associate	9/23
10/11	JE Dunn Construction	Project Engineer	9/27
10/23	PNC Financial Services Group	C *Retail Banking Internship	10/11
11/1	Consolidated Electrical Distributors, Inc.	Management Trainee	
11/1	Frito-Lay - Kathleen, GA		See at Expo Fair
11/1	Hormel Foods Corp.	Associate Quality & Process Control Supervisor	10/14
11/1	Quad/Graphics		See at Expo Fair
11/1	Target Stores	DC Intern, Stores Intern, Group Leader and Store Team Leader	See at Expo Fair
11/1	Total Quality Logistics	National Logistics Account Executive	10/18
11/7	Georgia-Pacific		See at Expo Fair

PUZZLES/COMICS

16 Thursday, August 23, 2012

www.thegeorgeanne.com

Los Angeles Times Daily Crossword Puzzle

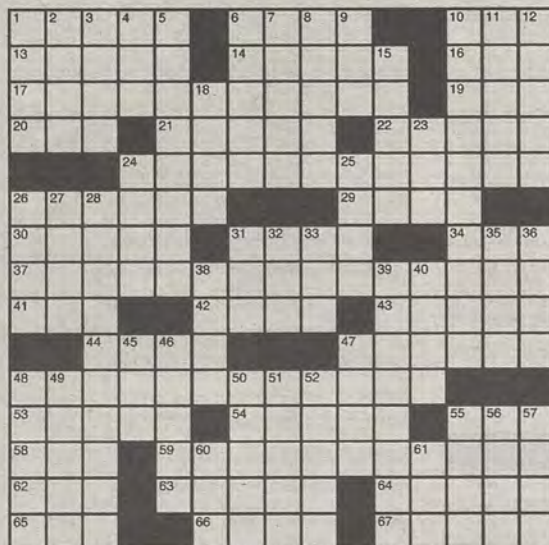
Edited by Rich Norris and Joyce Lewis

ACROSS

- 1 Throw
- 6 Capts.' inferiors
- 10 Homeric outburst?
- 13 Honolulu hangout
- 14 Toiletary product endorsed by pitcher Mariano Rivera
- 16 Great
- 17 Calm and kind
- 19 Era units: Abbr.
- 20 Bygone AT&T rival
- 21 Heady quaffs
- 22 Utah landscape features
- 24 Earn a living
- 26 Algebra subject
- 29 Posting often seen in a window
- 30 Goldfinger: 007 enemy
- 31 Suva is its capital
- 34 Code letters
- 37 Completely different situation
- 41 Farm enclosure
- 42 Movie mogul Marcus
- 43 Insight provider?
- 44 Schoolyard comeback
- 47 Like some Latin nouns
- 48 Suddenly stopping
- 53 "I'm all ears!"
- 54 Sister of Terpsichore
- 55 NASDAQ or NYSE
- 58 Thumb in folklore
- 59 Ones responsible for what's missing from certain puzzle answers?
- 62 Santa
- 63 Florida wader
- 64 TV spot seller
- 65 Bug-eyed TV dog
- 66 Unpleasant, as details
- 67 Graph lines

DOWN

- 1 Hail, with "down"
- 2 Far from the front
- 3 1953 Pulitzer-winning playwright
- 4 Highland denial



By David Steinberg

- 5 Newt with a large vocabulary
- 6 Dryer place
- 7 Shorthand pioneer
- 8 Give one star, say
- 9 Family nickname
- 10 Non-dorm resident
- 11 Queen of Talk
- 12 State bordering Thuringia
- 15 "Kickboxer" actor Jean-Claude Van

- 18 Rabbit's food?
- 23 Bard's time of day
- 24 Broily carrier
- 25 Forget to mention
- 26 Barnyard bleats
- 27 Family gathering visitor
- 28 Super Bowl XXVII MVP
- 31 Do that's picked, briefly
- 32 Much-liked prez
- 33 Yeshiva student
- 35 Botanical knot
- 36 Way in the distance
- 38 Morlock prey

Tuesday's Puzzle Solved

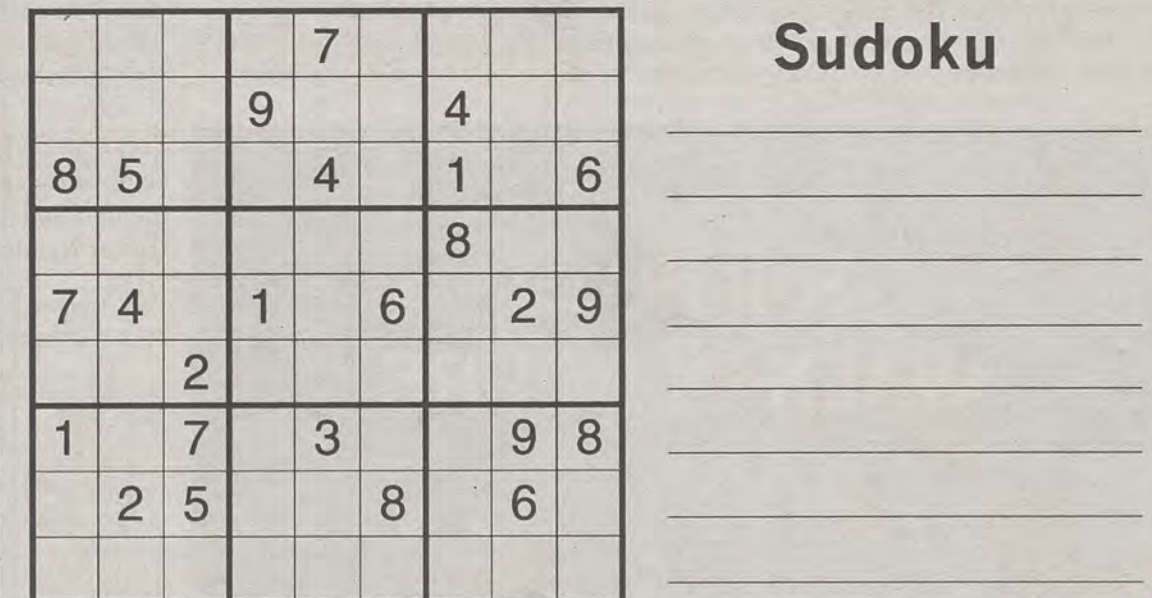
R	U	N	G	A	S	C	A	P	G	O	B	I
E	V	A	W	H	O	O	S	H	R	B	I	S
B	U	N	N	Y	S	L	O	P	E	O	J	A
E	L	N	I	N	O	I	N	Q	U	E	S	T
L	A	Y	O	N	R	E	C	O	U	N	T	
			B	E	A	U	T	M	E	D	D	L
			B	A	N	E	I	M	E	D	U	S
			A	T	E	E	M	B	R	A	C	E
			N	O	W	I	N	A	N	N	S	A
			D	I	S	H	U	P	A	C	I	D
			P	A	R	A	B	L	E	O	P	E
			P	A	R	V	E	N	U	C	U	E
			A	L	I	E	T	O	O	T	H	B
			L	O	N	I	E	N	S	E	A	T
			L	E	T	T	D	A	U	N	T	S

(c)2012 Tribune Media Services, Inc.

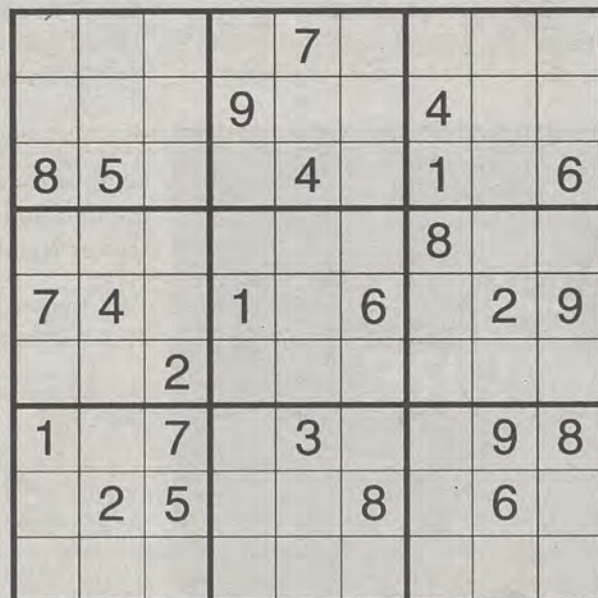
7/20/12

- 39 2012 animated movie promoted by IHOP
- 40 Clamorous
- 45 "Rhoda" production co.
- 46 Forbes, for one
- 47 "chance!"
- 48 Country once known for pearl diving
- 49 East Coast rte.
- 50 Part of UNCF

- 51 "Madame Curie" star Garson
- 52 Like some gossip
- 55 "Those are my principles. If you don't like them I have others" speaker
- 56 Joint with a cap
- 57 Baker's amts.
- 60 It's legal to poach one
- 61 Pocatello's st.



Sudoku



LOOK OUT FOR

Sales Rep. positions are available within the
Student Media Business Department on MyGSU
under Student Employment

Apply by August 31st



GSU running club hosts third annual 8k

BY KEVIN GREGAN

The George-Anne staff

The Georgia Southern University running club will be hosting its third annual Fall Back into Running 8k this Saturday to begin the semester with a running start.

The 8k is slated to start at 8 a.m. at the RAC, and the course will take students through and around the heart of the GSU campus.

There is a \$10 registration fee for students who sign up before race day and a running club t-shirt with Gus on it is included.

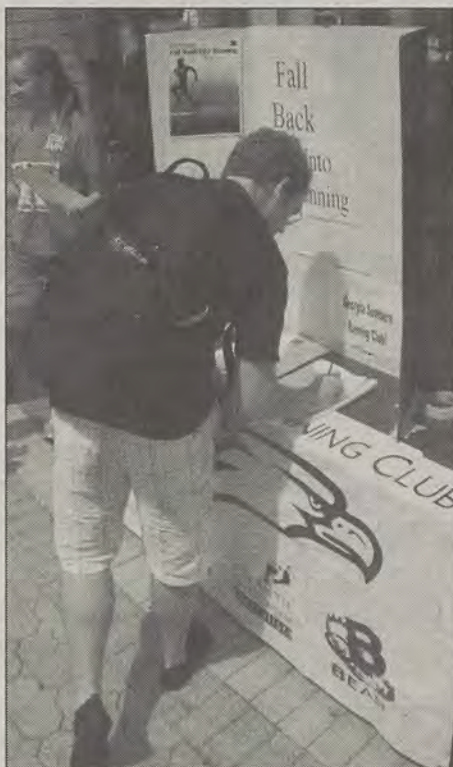
People interested can sign up at the RAC member services.

Students can also sign up on race day at 7 a.m. but it will cost \$15 for students and t-shirts are on a first-come first-serve basis.

In its fourth year as a club on campus, membership has steadily risen, but junior mechanical engineering major and president of the club Joey White hopes that this year's 8k will help the club grow even more.

"We're a pretty chill, laid back group and not as formal. You're not in trouble if you don't show up," White said. "We're there to encourage each other and keep each other motivated."

To go along with the 8k, the running club is active throughout the year. Just this semester



Demarion Cullars/The George-Anne

Scott Oswald signs up at the GSU running Club booth that was located at the Russell Union Rotunda on Tuesday.

alone, the club will be participating in three

cross-country events against other schools. The club also meets on Tuesdays with the Pacers, a group of faculty and community members, on the track at Eagle Field to work on techniques. Also, practice is held every Monday, Wednesday and Thursday at the RAC at 7 p.m.

The term "practice" is a loose term for the club because the members really just consider it a chance to get together for run sessions, Molly McBrearty, senior nutrition major and former president of the club, said.

"We're there if you just need a group of people to run with and if you've ran earlier in the day or have finals, it's okay if you can't make it. But we're there," McBrearty said.

"We want to make sure that people understand that we're not some hardcore group of runners. We understand that people have lives and we just try to have fun. We're a diverse group of people too," White said.

Membership in the club is \$30 per year and it's a cheap price for a club and the experience you get is worth it, White said.

Amanda Bastien, sophomore exercise science major and club member, said, "You meet a lot of really cool people. We've got people who are really into it, and we've got some that are more laid back. It's nice to have someone like you in the group."

Meet Monken at Harvey's

BY JANNAH BOLDS

The George-Anne staff

Fans will have yet another chance to meet Georgia Southern University football Head Coach Jeff Monken, who will be available at Harvey's Supermarket this Saturday at 10 a.m.

For the second weekend in a row Monken, Gus and his cheerleading squad will be available to the public to meet fans, hand out schedule cards and posters, provide season ticket information and possibly sign autographs.

Fans will also have the chance to converse with the head coach and others representing Eagle Nation at the event. Harvey's Supermarket and Coca-Cola both sponsor the event.

"This is something that our marketing and promotion team does each year," Monken said. "It's also another great opportunity to promote Georgia Southern football and its program."

Fans will have a chance to discuss players and tactics with Coach Monken before Sep. 1 season opening game.

Eagles begin new season against ranked UAB

Men's Soccer

BY TREVOR MCNABOE

The George-Anne staff

The Georgia Southern University men's soccer team will have to shake off any rust or lack of focus that they had in the exhibition matches as they take on the No. 23 ranked team in the nation, University of Alabama at Birmingham, on Sunday.

"We have to stress to the guys that now that the exhibition are over, they mean nothing towards regional rankings, and this Sunday the real season starts," Head Coach Kevin Kennedy said.

GSU returns four of its five top goal-scorers from last year but lost their top goal scorer and 2011 Southern Conference Co-Player of the Year Luigi Clendening due to graduation.

What the team does not have in offensive

firepower it makes up in experience as

GSU returns nine players that started more than ten games last year.

The preseason presents a good opportunity for incoming freshmen to get acclimated to the different tactics and speed of the college game, and it allows upperclassmen the chance to hone their skills and develop chemistry with their teammates.

Competition drives players to obtain their potential and the incoming class of freshmen has already made its mark by pushing the upperclassmen and having two freshmen break into the starting eleven. Freshmen defender Reed Norton started both preseason games while forward Emmanuel Raji started the last preseason game.

"Both Reed and Emmanuel will give us a lot of minutes, and there are some other guys in that freshman class that we think

with time will too. Our philosophy has been if you're good enough you are old enough," Kennedy said.

The Eagles finished last season with an 8-8-1 record overall, and were 4-3 in conference, which was enough to finish third in the SoCon. However, they had an early exit in the SoCon tournament after being knocked out in the first round at home against Elon University.

This year GSU looks to erase last year's misfortune and achieve something that no other team has during the Kennedy era here at GSU: win a SoCon championship.

Junior midfielder and team captain Hunter Norton said, "Our expectation is to win a Southern Conference championship, and this year I think we can do it."

After the UAB game, the Eagles will stay on the road to play Winthrop University on Aug. 31 and Gardner-Webb University Sep. 2 in Spartanburg, S.C.



File Photo

Georgia Southern University junior defender Mathew Brennan (6) scoops the ball as he prepares to change directions during a preseason game at Eagle Field.

Crowd gets coached

BY JACKIE GUTKNECHT

The George-Anne Staff

The second annual Day One event served as a way to celebrate the end of the first day of class and gave a forum for coaches to stress how important student support is to the athletic programs.

Georgia Southern University Head Football Coach Jeff Monken spoke on the importance of fans at every football game and how students can affect Eagle Nation for years to come.

"Last year, what a great job this student body did, 8-0 at Paulson Stadium last year and we don't intend to ever loose again in this place," Monken said.

Monken enforced how hard the football team has been working to bring home another title for the Eagles.

"This team has been here practicing everyday, sometimes twice a day, and they have one thing on their mind, and that is the seventh championship flag to represent Georgia Southern," Monken said.

Charlton Young, GSU men's basketball head coach, focused on all of the athletics on campus and the important role they play.

"We all know we have a phenomenal football program, we all know that, but what



Charlton Young

you don't know, we have an unbelievable group of coaches in the other sports at this university right now," Young said.

"We have to raise our pride level. Before we can obtain greatness we have to improve our pride level," Young said. "Our pride level as a university right now is about a 78, and that is a high C. We need to raise that, and we need a sea of blue at every event."

Students were instructed on GSU traditions, chants, cheers, what it means to be a member of the Eagle nation and also how they too can play a part in the future of GSU athletic programs.

President of the Student Government Association Dominique Quarles stressed the importance for student involvement in the upcoming vote for a stadium expansion and the move to the Football Bowl Series.

"It is our house, and I would like to see each and every one of you take responsibility and vote on September 25 through the 27," Quarles said.

Monken backs the opportunity the students have to advance the university athletically.

"All of you freshmen, you are going to experience something really special here at Paulson Stadium," Monken said. "We have the opportunity at this university as a student body to change the face of Georgia Southern football forever. You have the opportunity to change this stadium, change the face of our football program and do something that is going to remain here forever and stay here forever."

Students will get their first chance Sept. 1 against Jacksonville University to pack the prettiest little stadium in America.



File Photo

Fans get excited as Freedom is displayed between quarters at last season's Wofford game.

THIRD, from page 1

fifth in the poll but that really makes no difference to Monken, he said.

"It wouldn't matter if they were 105th, they're well coached, it's a great rivalry and they're always a great game," Monken said.

All-American senior defensive tackle Brent Russell wasn't worried about the rankings either, he said.

"You got to come out here and work. Rankings don't mean anything on Saturdays because the other team's going to come out there hungry and we're going to come out hungry," Russell said.

"If you know Coach Monken you know it doesn't matter what our rank is. He's going to expect the best effort out of all of us," Russell said.

Monken seems to have his team on the same page going into the first game of the season next Saturday against Jacksonville University.

"Anytime you're ranked in the top five it's a great position, definitely honored that people think that highly of us," junior quarterback Jerick McKinnon said.

McKinnon's psyche was not affected by the poll and he reiterated the philosophy that Monken seems to have his team following.

"At the end of the day, the rankings don't matter. It only matters where you finish and not where you begin," McKinnon said.

Last year, the Eagles made it to the national semifinals where they were eliminated by ND State. This year, assuming both teams make the playoffs, it is possible that the two teams could meet again.

"I think that's one of the best coached football teams I've ever seen," Monken said. "Not only are they talented and well-coached, but they're tough and physical. They run the ball well, and they stop the run."

Russell and McKinnon would like to see the Bison again.

"They had a great team going into last year's game. We'd love to play them again, but if we have the opportunity we'll see," McKinnon said.

Russell said, "Whoever we get, we'll take it one game at a time. If we can make it that far to see them, I'll be happy with it."

★ ★ ★ Sports ★ ★ ★ — EMPORIUM —

"Your largest selection of athletic footwear in Statesboro"



Buckhead Place across from the Big El Som

912.764.4449

Volleyball journeys to Athens to begin season

Volleyball

BY JACKIE GUTKNECHT

The George-Anne Staff

The Georgia Southern University volleyball team is set to start their season off at the Benson Hospitality Bulldog Invitational in Athens this weekend.

The first game for the Eagles will be against the University of Georgia on Friday beginning at 7 p.m.

"We've been practicing a lot to prepare, and we have also been watching film of ourselves just to see where we can improve," senior outside hitter Moriah Bellissimo said.

The Eagles will face a lot of stiff competition in the opening tournament.

"On paper Georgia will be the top team. They return quite a few players and had some good newcomers come into their program," Head Coach Chad Callihan said.

"But the first weekend or two every team is a threat, teams are trying to figure out their

identity, what they do well, teams play up and down and you generally see quite a few upsets at the beginning of the season. I think it is going to be important for us to try to play as consistent as possible and try to maintain some composure," Callihan said.

The team will then face off against Georgia State University at 10 a.m. and The Slovenia National Team at 4 p.m. Both games are on Saturday.

"Our team went to play in Costa Rica in May, so we have played against international teams before, so its interesting to see the different styles, but we are always excited to play whoever, and it will be interesting to see another international style. I don't think it will throw us off," Bellissimo said.

"Other countries are really different it seems, than coming to America, so it's always good to see diversity, especially in the first weekend," senior outside hitter Meredith Paskert said.

The weekend tournament will end with the team playing Troy University beginning at 10 a.m. on Sunday.

"We haven't spent very much time on any of our opponents. We are just concentrating on ourselves here and trying to work on our individual skills and get our fitness back up and make sure that we are in the best shape that we can be as we begin to enter the season," Callihan said. "Also, (we) try not to over-train because we want to be healthy going into the season."

Senior setter Kate Van Dyke, who was named preseason All-Southern Conference for the second straight season, will lead the Eagles through the tournament.

"It's an honor, but it's just the preseason. We have to work hard all season to get to that point, and hopefully we will as a team all be on top in the end," Van Dyke said.

Callihan said, "Kate has been incredibly consistent for us for three years now and we don't expect anything different as she enters her senior year. I think the big thing that she provides is on court leadership, she is a very steady player, leads by example, can be somewhat of a calming influence and there is not anything that is going to happen that she hasn't experienced already in



File Photo

The GSU volleyball team huddles together during a game last season.

her career."

The Eagles will then head to Auburn University on Aug. 31 to begin the Auburn Invitational.

FRANKLIN

TOYOTA • SCION

10% OFF
service with your Student ID

888-695-8165

500 Commerce Drive
beside the new Holiday Inn

PROTECT YOUR VEHICLE!

Regular maintenance and upkeep is crucial to your car's optimal performance, best possible gas mileage, and highest resale value.

Our service department offers the best in automotive service for all makes and models.

PLUS we provide a free shuttle to and from campus!

- Oil Change
- Tire Services
- Tune-Up & Transmission Service
- A/C & Radiator Service
- Brake Service
- Engine Repair
- Body Shop Services

**BUY OR LEASE
A NEW TOYOTA, GET A**

\$1,000

COLLEGE GRAD REBATE

*See Dealer for Details

SCHEDULE YOUR SERVICE ONLINE! www.FranklinToyota.com

THANKS, TROY!



TROY MARSH
THE MARSH LAW FIRM

WHAT: **FREE** LEGAL HELP

WHERE: ROOM 2073 IN THE RUSSELL UNION

WHEN: EVERY TUESDAY 3:00-5:00 PM

TO SCHEDULE AN APPOINTMENT, CALL (912) 764-7388

SPONSORED BY



STUDENT GOVERNMENT ASSOCIATION
YOUR STUDENT ACTIVITY FEES AT WORK.



ANTI APARTMENT