

Georgia Southern University

Digital Commons@Georgia Southern

---

The George-Anne

Student Media

---

4-26-2012

## The George-Anne

Georgia Southern University

Follow this and additional works at: <https://digitalcommons.georgiasouthern.edu/george-anne>

---

### Recommended Citation

Georgia Southern University, "The George-Anne" (2012). *The George-Anne*. 2739.  
<https://digitalcommons.georgiasouthern.edu/george-anne/2739>

This newspaper is brought to you for free and open access by the Student Media at Digital Commons@Georgia Southern. It has been accepted for inclusion in The George-Anne by an authorized administrator of Digital Commons@Georgia Southern. For more information, please contact [digitalcommons@georgiasouthern.edu](mailto:digitalcommons@georgiasouthern.edu).



## STUDENT HOUSING

FREEDOM'S LANDING TO TRIPLE  
ON CAMPUS HOUSING OPTIONS

PAGE 9

## EAGLES TO PLAY BULLDOGS

PAGE 23

## BILL BOWERS TO VISIT GSU

PAGE 11

Thursday, April 26, 2012  
Georgia Southern University  
www.thegeorgeanne.com  
Volume 83 • Issue 4

# THE GEORGE-ANNE

## Wrapsody and Talon's Grille to close over summer terms

BY CHRISTLE YOUNG

The George-Anne contributor

Talon's Grille and Wrapsody Grill will close for the summer, resulting in student jobs cuts as well as fewer dining options for SOAR visitors and the 10,032 remaining students.

Talon's and Wrapsody will be closed throughout the entire summer, and

Landrum and Lakeside will be closed for renovations beginning in July, Jeff Yawn, director of eagle dining services, said.

"We've just found it to not be feasible to keep all of our same options open," said Yawn.

The part-time student employees currently working at Talon's and Wrapsody will not be working over the summer or offered jobs at other Eagle Dining locations,

Yawn said.

"We reduce our student employment down to a minimum every summer. We have very few students or temporary employees working for us in the summer because of our reduced participation," Yawn said.

"We have contemplated reducing the number of options we have available

See DINING, page 10

## Football starts FBS transition

BY CLINTON HINELY

The George-Anne staff

The promise land of the Football Bowl Subdivision is on the radar for the Georgia Southern University football team but the interest in the move is not just from an athletic standpoint.

"I think there are a couple of pros, the biggest one I think is that it helps us from a reputation and marketing point of view," Keel said. "It puts us on more of a national stage and the way the NCAA is structured and TV contracts are structured, this is really about TV."

"For us to get a nationally televised game on ESPN would do wonders for us from a reputational point of view, it would get the Georgia Southern name across the entire country in ways we could never do here," Keel said.

The move to the FBS can affect the university in more ways than just on the field. The effects of costs and recognition would be felt on the athletic and academic sides of the university.

"Using athletics as the venue to do that, it's not just athletics that gets promoted through an ESPN broadcast," Keel said, "We would get a 30-second spot on ESPN to advertise the university and that would do wonders for our reputation and national recognition."

The move to the FBS would expand the university's national outreach, but the cost of playing teams from across the country will also force the athletic budget to be increased.

"That is also part of the con, as you increase your geographic footprint, you also increase all the

See FBS, page 20

## PLAYIN' CATCH ON SWEETHEART



Lindsay Hartmann/The George-Anne

Michael Gavora, freshman electrical engineering major, throws a baseball with his two friends in Sweetheart Circle while enjoying the spring weather at Georgia Southern University.



thegeorge  
anne.com



Follow us on Twitter  
@TheGeorgeAnne



Newsroom 478-5246  
Advertising 478-5418  
Fax 478-7113

PO Box 8001  
Statesboro, GA  
30460



# DON'T SELL **YOUR** BOOKS TO STRANGERS

THE OTHER GUYS OFTEN OFFER SUB-PAR PRICING

## Sell Them to Your Bookstore



We pay fair prices based on campus  
and national demand.



### CASH FOR YOUR BOOKS!!

**Monday, 5/7 - Friday, 5/11**

The University Store  
Paulson Stadium  
I.T. Building  
& Other On-Campus Locations



# Obama to speak at Ft. Stewart

BY TAYLOR COOPER

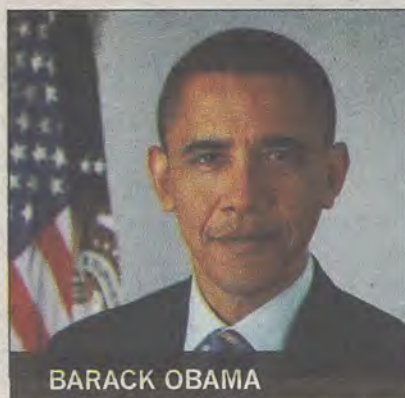
The George-Anne staff

This Friday, President Barack Obama and First Lady Michelle Obama will speak to soldiers of the Third Infantry Division at Fort Stewart, in Hinesville, Ga.

The president and first lady will travel to Ft. Stewart to deliver remarks and meet with troops, veterans and military families. The president's event is closed to the public, according to the press release.

It is unconfirmed what the president or the first lady will be talking about or why civilians are not allowed to attend.

"It's not like he's only going to Fort



BARACK OBAMA

Stewart. It's not really a big deal. I think it should be open to the public, though," Miles Walker, a cadet corporal in Georgia Southern University's ROTC and a senior nutrition major, said.

"I think it's an appropriate venue, if that's the audience he's looking for," said Heather Allen, a cadet corporal in GSU's ROTC and a sophomore business management major, said. "I'll probably be going."

Students not involved in ROTC had positive reactions.

"I feel like it's a good thing he's in Georgia. I think he should talk to other people, though. You know, get the young voters involved," David Piggue, a junior business management major, said.

"I think it's good. He should try to make a presence here," Blaine Humphries, a senior public relations major, said. "It's good that he's making an effort."

## Student arrested for resident gunfire

BY LINDSAY GASKINS

The George-Anne staff

Georgia Southern University police arrested student Zachary Darrell Floyd on April 19 and charged him with possession with a weapon in a school safety zone in University Villas.

"A resident over at University Villas called us and said they had discovered a bullet in their apartment; we responded and it was evident that the bullet had come from the adjacent apartment," Chief Michael Russell of GSU Police Department said.

"Officers went next door, spoke with the suspect and were able to identify that he did in fact have a

“ It was accidentally discharged, sending the bullet through the wall into the next apartment.”

-Michael Russell,  
chief of GSU Police Department

weapon in the apartment and it was accidentally discharged, sending the bullet through the wall into the next apartment," Russell said.

Officers recovered the bullet and arrested and charged Floyd with possession of a weapon in a school safety zone and reckless conduct, Russell said.

Floyd was booked in Bulloch County Jail and, as far as police know, is still residing there, Russell said.

Russell said, "(Floyd) has been referred to Judicial Affairs and, from my understanding, has been suspended and pending a hearing."

The Dean of Students Office was not available for comment.

## Statement of Operations

The George-Anne is the official student newspaper of Georgia Southern University, owned and operated by GSU students using facilities provided by the university. The newspaper is the oldest continuously published newspaper in Bulloch County. The newspaper is a designated public forum for the Georgia Southern community. The newspaper is published twice weekly, on Tuesdays and Thursdays, during most of the academic year. Any questions regarding content should be directed to the student editor by phone at 912.478.5246 or at [gaeditor@georgiasouthern.edu](mailto:gaeditor@georgiasouthern.edu).

**ADVERTISING:** The newspaper accepts advertising. Inquiries may be made by calling 912.478.5418 or 912.478-0566. Fax any questions to 912.478.7113 or e-mail [ads1@georgiasouthern.edu](mailto:ads1@georgiasouthern.edu).

The George-Anne receives additional support, in part, from the Student Activities Budget Committee.

The deadline for reserving space and submitting advertising copy is noon, one week prior to the intended publication date. For more information, rate cards, sample publications, contact the advertising manager or student

media director.

The advertiser is responsible for any errors in advertisements and its liability for adjustments is limited to the amount of space the error occupied in the ad. Further, the newspaper is not responsible for any damages caused due to an ad's omission from a particular edition and its responsibility solely is to reschedule the ad in the next regular edition at the regular advertising rates.

**STUDENTS BEWARE:** The George-Anne screens all advertisements prior to publication. The newspaper strives to accept ads for legitimate products and services only. Students are urged to exercise caution when replying to ads-particularly those that require personal information. Students are also urged to report to the newspaper any suspicious offers which they might see in an ad.

**PUBLICATION INFORMATION:** The newspaper is printed by Signature Offset in Jacksonville, Fla.

**NOTICE:** Unauthorized removal of multiple copies from a distribution site constitutes theft under Georgia law, a misdemeanor offense punishable by a fine and/or jail time.

**Editor-in-Chief** Arielle Coambes  
**Managing Editor** Jennifer Curington  
**Opinions Editor** Alex LaSalle  
**News Editor** Jessie Reese  
**Asst. News Editor** Courtney Tielking  
**Arts Editor** Quaniqua Epps  
**Asst. Arts Editor** Gianna Carme  
**Sports Editor** Jannah Bolds  
**Asst. Sports Editor** James Farmer

**Copy Chief** Matthew D'La Rotta  
**Business Manager** Holly Hillhouse  
**Asst. Business Manager** Vicki Tucker  
**Marketing Manager** Aria Gabol  
**Production Manager** Mallory McLendon  
**Photo Editor** Lindsay Hartmann  
**Design Editor** Kelsey Paone

## Corrections

Contact the editor at [gaeditor@georgiasouthern.edu](mailto:gaeditor@georgiasouthern.edu) for corrections and errors.



The Sir Shop  
Statesboro Mall  
912.764.6924





## Our View

### Faculty should be prepared for Folio

In Tuesday's edition of The George-Anne, we reported on the impending transition from GaView to Folio.

We commend the decision to improve upon the current GaView system, but we also believe that faculty will need to be prepared to effectively utilize the new software.

Folio will start being used over the summer and will be in full use by January 2013. It is intended to be an improvement over GaView, especially with a better email system and fewer maintenance down times.

It will also have a simplified user interface, according to information systems coordinator Ashlea Anderson.

Anderson also said that training materials will be available inside Folio for students.

We believe that in order for Folio to be used as effectively as possible, faculty need to be prepared and knowledgeable before they begin to teach classes with Folio.

Most importantly, they need to be as prepared as possible before they begin to teach with it, so students are not disadvantaged during their first semester with it.

Technology like Folio is an important and potentially useful part of learning at Georgia Southern University, but it is only useful as long as users are properly prepared for its use.

The George-Anne welcomes letters to the editor and appropriate guest columns. All copy submitted should be 350 words or fewer, typed, and sent via e-mail in Microsoft Word format to [gaeditor@georgiasouthern.edu](mailto:gaeditor@georgiasouthern.edu). All submissions must be signed and include phone number for verification. GSU students should include their academic major, year and hometown. The editors reserve the right to reject any submission and edit submissions for length.

Opinions expressed herein are those of the Board of Opinions or columnists themselves and DO NOT necessarily reflect those of the faculty, staff or administration of GSU, the Student Media Advisory Board, Student Media or the University System of Georgia.

## Hot 'Bunz' and lame puns

In Tuesday's edition of The George-Anne, we reported that Statesboro will be graced this fall with a burger joint called Bunz. It will be replacing the End Zone.

Now, before you go making assumptions about the Bunz name, I want to make sure you know that this establishment has absolutely no relation to former NFL linebacker Dan Bunz.

Now, as honorable as Dan Bunz's place in the Funny Name Hall of Fame is — in the sports wing next to racecar driver Dick Trickle and NFL legend Dick Butkus — the true reasoning behind this name is somewhat mundane.

To put it plainly, Bunz — the restaurant, not the football player — is to butts what Hooters is to... well, hooters. Patrons get to stare at the stern end of the staff while they eat.

While I am all for the extensive use of puns, this one is disappointing for a few reasons.

First off, using the rear end as the focus of an eating establishment is simply uninspired. I can walk

### ALEXANDER THE PRETTY GOOD



ALEX LASALLE/  
OPS EDITOR

around campus most afternoons and see an ample supply of ample hams. Maybe it's due to the prevalence of tights replacing pants. My point is: I will survive my burger/wings/fries without a badonkadonk in my face the whole time.

In contrast, top-quality hooters are in much shorter supply. Thus, the success of Hooters.

Second, is Bunz really the best you can do for the name? Honestly, it would have been better to just keep the "End Zone" name. Think about it.

There are so many other options, my personal favorites being "Booty Burgers" and "Fanny's Fries" — apologies to our British readers for

that last one. Maybe they should open a Mexican cuisine joint and call it "Tush Tacos."

You could say that the possibilities are... bottomless.

At least those don't have a completely pointless "Z" in place of the "S" — a gimmick that stopped being amusing in middle school.

Third, I want to know if the Bunz that will soon be keepin' it classy in Statesboro will be hearing from anyone representing the Bunz Burgerz of Louisville, KY.

Of course, that depends on whether or not the Bunz Burgerz from Kentucky has yet to hear from the Bunz "gourmet farm to table burger joint" located in San Diego.

Oddly enough, neither of the aforementioned establishments have any sort of focus on the human posterior.

As for Statesboro's own Bunz, let's just hope the food is better than the name.

*LaSalle is a junior writing and linguistics major from Cumming, Ga.*

## The G-A has heard your concerns

Following a few Letters to the Editor and a few @GSUProblems mentions, I would like to respond to the call for The G-A staff to be more careful about accuracy.

As the Editor-in-Chief, I agree. Errors are unacceptable. You deserve a spot-free newspaper to represent your university.

So, following your concerns, we have implemented a few changes here, some that are visible and some that are not.

First of all, you'll see an email address to contact at the bottom of every page. This is the section editor's email, the head editor of the page you just read. They are teaching student reporters the style of journalism as well as learning themselves. If you see

### FROM THE EDITOR



ARIELLE COAMBES/  
EDITOR-IN-CHIEF

a problem, either email the section editor or email me personally at [gaeditor@georgiasouthern.edu](mailto:gaeditor@georgiasouthern.edu). We would love to turn these mistakes into teachable moments.

Speaking of mistakes, we have recently implemented new internal policies at The George-Anne in the case of errors. Reporters and editors are being held responsible for their actions through disciplinary action.

We are also adding new copy editors to screen for errors. Currently, there is one guy sitting alone in a room trying to catch every error that runs through this newsroom. Needless to say, we appreciate you, Matt.

Next semester, though, we will have a total of three copy editors, which we hope will ensure even more accuracy.

We do not take these errors lightly, and we have heard the concerns around campus. I encourage every student to help The G-A learn from our mistakes by contacting us if you see a problem.

*Coambes is a writing and linguistics major from Covington, Ga.*



## Course evaluations: An ode

As the giant Scantrons with pink and black writing circulate around the classrooms, we think to ourselves: Finally, revenge!

We quickly and sloppily fill out the areas that designate who and what course this evaluation pertains to.

We loosen up and prepare to bubble in answers with spite — Oh, you will certainly pay Professor Insertnamehere.

And then we read.

How much effort did you put into learning the material covered compared to other classes? None whatsoever. You get a one. Take that!

To what degree were you intellectually challenged? Well, I mean the tests were hard but the class was really boring and I felt like I already knew everything. About the same.

How difficult was this course? Crap. About the same.

Overall, how would you rate this course? Well, now that I realize that I did zero work and just had to try hard on the tests to get an A, very good.

Okay, so maybe we waver a little when it comes to revenge on the course itself. I mean, hey, how much can they really change the required curriculum? It's not the course's fault. No, it's the professor. That's the reason this class was garbage.

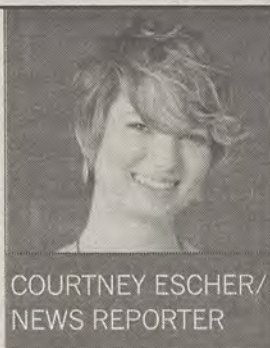
We read on.

The degree to which the important points were stressed in this course was... Come on! I'm trying to make up for the tons of hours from my life that I will never get back. Ugh. Good.

“ Oh, you will certainly pay Professor Insertnamehere. ”

-Courtney Escher,  
news reporter

### MODEST FINDINGS



COURTNEY ESCHER/  
NEWS REPORTER

The instructor's availability to students was... Decent enough. They let us know when their office hours were; it was just my choice not to go. Good.

The instructor's helpfulness... NO! I want revenge! I want to let them know my pain, my suffering! Good.

How would you rate this instructor overall? I hate you course evaluation. Good.

What was your interest level? Aha! Now I can get my revenge. No interest at all.

Success. We move on to the open ended questions.

What did you like best about this instructor/course? How could this instructor/course be improved? Well now, I'm the last one here and this person collecting these probably thinks I'm being an a-hole to their favorite teacher. It was fine.

Damn you course evaluations!

Escher is a sophomore journalism major from Canton, Ga.

## Letters to the Editor

### Columnist to be commended

Dear Editor,

Hi, Chris Brenneman here, Georgia Southern University graduate, former George-Anne columnist and A&E Editor/Reflector Editor-in-Chief/WVGS Station Manager/Miscellany Editor and general rabble-rouser. Just wanted to drop a line and weigh in on the whole Courtney Escher "GTSNP" thing.

I would like to commend Courtney Escher. Not for her column, per se, but more for her voice, her budding talent and the attempt she made at humor.

Writing is a pain in a way that non-writers will never understand, and putting yourself out there is never easy, especially when it results in the townsfolk showing up at your door with torches and pitchforks demanding blood.

It is my sincere hope that Escher not only continues to write for the Op-Ed page, but keeps working on a voice and style that's already shining through in what will one day be referred to and studied as "Courtney Escher: The Early Years."

But, I think my favorite part of this entire affair is the reaction as posted on The George-Anne website. If people can get this worked up over a column making fun of shirt styles, then they must get absolutely devastated whenever they read about or see images of actual atrocities.

Hell, judging by the reactions she got,

you would think Courtney had denied the Holocaust or something equally reprehensible. But, no, she just made fun of how sorority girls wear their T-shirts.

I also have to admit, it always does the heart good to see university students and alumni demand prior review and outright censorship while talking about journalistic integrity in the same breath. I mean, that's a whole new level of asinine and ignorant. Way to go on that.

And Greeks? We get it. Besides throwing bitchin' parties, hosting spectacular formals and keeping the Dixie Cups industry afloat, you do philanthropic works and pretty much run the entire country.

Why do you care at all what a collegiate columnist thinks? Can we tone down the faux indignation? Just a little?

My only advice to Courtney Escher? Go for the jugular next time.

You have a forum. People clearly read what you have to say and from here on out, they're going to be watching even closer. Use that power and really say something.

If it pisses them off, so be it. They're clearly going to get pissed about anything and everything, so make it count.

Let's see what you can do and really get everyone talking.

Best of luck,  
Chris Brenneman  
GSU class of 2002

Due to the recent substantial increase in reader feedback, additional letters will be featured online. One of our political columnists, Fritz Chapin, will also have a column available online. These can be located at thegeorgeanne.com.

### Voted Best Mattress Store in the 'Boro!

Student Housing Available

New, Used & Antique  
Furniture

Complete Mattress Outlet

**Deal's**

Come See the Dealmaker!

17083 GA Hwy 67, Statesboro, GA  
(912)681-3824 (Near Fairgrounds)

Mon-Fri: 10am-6pm

Sat: 10am-5pm

Sun: 1Pm-5pm

- Honest, Dependable  
Same Day Delivery
- Locally Owned &  
Operated by GSU Graduate
- Serving GSU Students  
for 34 years

Tervis Tumbler Headquarters

- Collegiate Gifts
- Jewelry
- Handbags
- Placemats
- Diaper Bags
- Men's Gifts  
& Much More

Best Furniture Mattress & Gift "DEALS" in the 'Boro



## Letters to the Editor

## Students' outrage due to misplaced priorities

Dear Editor,

This letter is in response to the column labeled "Opinion column trumps news?" I am a first year biology major here at Georgia Southern and I have been an avid reader of The Georgia-Anne since I started school here and really enjoy some of the articles. I enjoy reading articles about sports and especially like reading the

"From the left and From the right" articles. Seeing these and other articles written by other students is mostly enjoyable to me as I relax on campus or in my dorm room. However, in the last couple of weeks it has been hard for me to find a Georgia-Anne since, well, it's been quite "popular."

Thanks to an opinion section, the paper has been quite hard to find and has caused a big stir. Now, to tell the truth, I too read the article and thought at first it was a little funny. It's always good to laugh at ourselves, but then I kept reading.

The author, a Ms. Escher, went way too far calling these girls who dress as so stupid. She then got even worse, specifically calling out sorority girls. I know plenty of sorority girls and they do amazing things for this university and are some of the smartest girls I know.

So, to call these girls stupid is completely "stupid" in itself.

But, this is not a response to that; this is a response to the responses of that article and specifically the response

from your editor-in-chief, Ms. Arielle Coambes.

I read all of the articles in the Anne published on Tuesday, April 24, and I have to say I don't agree to what she said. Ms. Coambes, whether she meant to or not, seems to speculate that students who responded to Ms. Escher's article didn't focus on the main issues from the previous Anne. However, in my "opinion," pun intended, she missed the main points.

I read about the tuition increase, the spring concert preview and the GSU football stadium extension, and yet the opinion section stuck out to me the most. I understand the tuition increase is important, I'm living off loans as it is.

And well, students will complain, but there isn't anything we can do about it. We just have to try and work harder and make it the best we can.

The concert, I heard, was amazing, but why is that considered a "major" story? And finally, the Paulson Stadium extensions are awesome and it's great to see Georgia Southern getting better facilities, but that doesn't affect me as a student. But, what does affect me is persecution of other students, especially when those students are persecuted by what they wear.

Growing up I had hand me downs and so I didn't always have the best, but where I'm from we judge others by who they are and how they act.

So, this discrimination against people based on what they wear, and to have it

published in what I thought was a great paper, just shows me that things are not always as they seem. Now, ask anyone who knows me and I'm always the first to crack a joke and I believe laughter is always the best medicine, but when it becomes hurtful and offensive against any minority it has gone too far.

So when it happens, I believe this is "major" news and this is why these girls took offense as they did. Look, this is a great paper and thank y'all for working so hard to bring us news coverage, and I understand you want to protect your writers, but do not go after your readers for speaking out against what they see as wrongful discrimination and tell them they didn't focus on the "right" news.

After reading this article, I lost respect for this paper and can say that y'all have lost touch with your readers.

So, to all of The Georgia-Anne editors and writers who have worked so hard to keep school news coming our way, I wish y'all luck in the future and hope that in the future maybe you can decipher what is "major" news.

So, from all of us students who have been persecuted against and will no longer stand by and let it happen, we say, "discrimination on any level is the real virus!"

With all respect,

William Keith Millians  
freshman  
biology major

Dear Editor,

Having read through the glut of student responses to Courtney Escher's "Beware the GTSNP virus" piece, only one thing concerns me. Two months ago, Fritz Chapin wrote his opinion piece "Children need full families" and managed to somehow attack single mothers while also casually disparaging same-sex couples, and there was barely a peep from the GSU community. But when Escher wrote her humorous opinion piece on fashion and calls out sororities in the process, people came out of the woodwork to howl with indignation.

So let me get this straight. Two groups of people — single mothers and homosexuals — are attacked in our school newspaper. Two groups of human beings that we ought to treat with respect and compassion, mind you, and no one has anything to say about it. Then, another group — in this case sororities — are ridiculed for their choices in this same paper. These people should receive the respect and compassion of their fellow humans as well. But, in the case of these latter individuals, they rush to defend themselves, while plenty of others step forth to cry foul on their behalf. They've got respect and compassion covered in no time flat.

Yes, those seem like proper priorities, right? A silly fashion piece surely deserves more outrage and protest than a dead-serious piece attacking two groups of human beings.

I don't really care what clothes people wear or what other people think of those clothes or how organizations respond to the low opinions of others. I do care about equality and respect for all people, which I know is a radical and outlandish idea. Please, I implore you, take a moment to evaluate what is important, not just to you, but to our species. I believe it is a fundamental right for people to express their opinions, but if you're going to criticize someone for it, think about what really needs criticizing.

Smith Holloway  
senior  
writing and linguistics major

**Planters**  
By Hendley Properties  
**ROW**  
912.681.1170  
www.hendleyproperties.com

## ATTENTION ALL STUDENTS

Planter's Row only has 4 roommate matching spots left

**3 boys | 1 girls**

**Call Holly today @**  
**912.681.1170**  
To reserve



## Letters to the Editor

## GSU students come to defense of 'GTSNP' column

Dear Editor,

I find all of this controversy over the GTSNP virus article to be laugh-worthy.

I find it ironic that out of all of the recent articles that The George-Anne has reported on as of late, this is the only one that has garnered this kind of response. The George-Anne reported on the recent hikes in tuition prices, but it would seem to me like money doesn't seem to be a concern for those attending this school.

This is an issue that affects a much larger population of Georgia Southern than those who "suffer from GTSNP." All this controversy is showing are the priorities of many of the students attending Georgia Southern. The article only makes one reference to sorority girls, yet this seems to be the group that is taking the most offense to it.

It seems that critiquing women's attire is only offensive if it is directed against those in a sorority. Just a week before this article came out, another article was published with a similar theme.

"Girls need to dress Classy" was an article that criticized women wearing short shorts and heels. This article used rather offensive language as well as criticizing women for wearing a particular style.

I think it was much more offensive than

the "GTSNP virus" article.

Can you blame women for wearing short shorts in this heat? Yet no one seemed to speak up after this article was published? Can this be blamed on the fact that there was no mention of sororities? Or could it be a race thing, as the author of this article was an African American woman? Maybe all women just assumed that it was directed at them because they are not, as the author put it, "stank."

Both articles were addressing an issue that, I think, is important, but perhaps not addressed in the most professional manner in either article.

That is the issue of falling standards of appropriate dress wear. It is undeniable that the standard of clothing has gone down. "Sunday best" used to be the term used for the nice dresses and coats and ties young women and men would wear to church every Sunday, yet wander in to any church on a Sunday morning and you will be lucky not to see young attendants in jeans and t-shirts.

There was a time when women would not dare wear pants to class and no one would wear jeans. It would be considered greatly offensive to your professors and fellow classmates. I am not saying that the changes are all bad, but it does seem to be taking a little far when students wear their pajamas to class. I am just arguing that these reporters

were discussing a real issue when they chose to write their articles.

What seems to be the biggest confusion among those reading the "GTSNP virus" article is the concept of satire. Satire is a method that has been used for generations in order to prove a point.

It has had a history of being misunderstood. In the same way many people were upset by Jonathan Smith's "A Modest Proposal," it is those which do not understand the point it is making who are getting upset.

For those who didn't understand the story when you read it in class, Smith does not actually advocate eating babies. Escher utilizes a number of stereotypes in order to make a point about the declining standards of fashion.

For those who complain about the offensiveness of the article, it may be time to look at yourselves. This article is a joke. Perhaps a bit offensive in places, but most humorous opinion articles in big name publications these days are. Just look at Time magazine for an idea.

If this article hurt you to the point of crying in the bathroom for three hours, I do sincerely apologize. But, take a minute to look at the article. Someone called you stupid and said you dress badly. I don't think this is the worst insult you will ever hear in

your life.

I know I have heard a whole lot worse on the playgrounds of elementary schools. These responses are symptomatic of a person's self-worth being a little too close to the surface.

There is so much more to you than your giant T-Shirt and shorts. In the same way that you laugh when someone else acts a little silly, so people can laugh at you. And, you should be able to laugh at yourself from time to time. This article was not damaging to the reputation of the Greek system. It had no comments on the system itself.

This article will not cause any women to leave their sororities. This article will not cause a decrease in numbers of girls going through rush. At worst, this article has ruffled some feathers.

I fully support Courtney Escher in her writing of this article. This article has been misunderstood and misconstrued from its original intent. The message intended to be taken from the article is one of satire.

The message you should be taking is, try slipping on a pair of jeans or a skirt if this article offended you. If not, keep doing what you're doing.

Parrish Turner  
freshman  
writing and linguistics major

Dear Editor,

I am a frequent reader of The George-Anne and I am writing to express my concerns over today's newspaper. I am appalled at the amount of space the paper gave to the letters to the editor bashing the GTSNP virus article printed last week.

When I pick up the paper, I expect news. Not four pages of angry letters of people that could not grasp the satire of the GTSNP virus article. No, not all sorority girls are dumb, and yes, the article could have been nicer.

However, it was supposed to be funny! I have no idea why so many find it offensive, considering the amount of people who watch things like "South Park" or "The Colbert Report," which both poke fun of different groups of people.

I enjoyed the article and thought it

expressed the opinion of many people on campus. But, one or two angry letters would have sufficed.

Four pages of letters, each letter stating the same thing, was overkill. I would appreciate it if The George-Anne stuck to mainly printing news stories and not indulging every angry sorority girl letter.

On that note, I completely agree with Bantin's letter that more news about organizations on campus needs to be published. This is news I would care about reading and that would also be beneficial to the student body. Letters to the editor are fun to read, but please give us more than that next issue.

Hayley Bean  
senior  
biology major

Dear Editor,

I just wanted to say that I found the recent article about clothing choices to be hilarious and that I honestly can't understand why people are so enraged by it.

The article was written as humor, but people obviously haven't noticed this; instead, they seem to consider it as a direct assault on them.

While it may have hit a little close to home for these people, they should still be able to take a joke.

We're all supposedly mature adults in an environment designed to challenge our ideas and force us to get along with some individuals we normally wouldn't desire to interact with.

If they take such offense at something

like this, I'd suggest that they re-evaluate their plans for the future, considering that in any work environment they'll meet people with whom they don't get along with and who may say something nasty or inflammatory.

In the end, I find it unfortunate that people are getting to the point where they just can't take a harmless joke and, instead, start a riot when they are offended.

Just as a final note, this message was not intended to insult or offend; it's just an opinion.

Respectfully,  
Scott Findley  
senior  
justice studies



## RAC permits to increase parking spaces

BY SHELBY FARMER

The George-Anne contributor

The Georgia Southern University Department of Parking and Transportation has created 250 permits for the Recreation Activity Center, which will allow students to park at the RAC and take the bus to the main campus for classes.

The Department of Parking and Transportation developed parking permits specifically for the RAC parking lot due to a large number of students who purchase permits for other lots just to park at the RAC, Kristi Bryant, director of parking and transportation, said.

The parking permits will go into effect fall 2012.

"What we have is people coming who just want to park at the RAC, so they purchase the cheapest passes which are for

lots 43 and 12," Bryant said. "This skews our numbers for other lots."

The permits are not required to park at the RAC. Vehicles with valid GSU parking permits may still park at the RAC throughout the day, and anyone may park in the lot after 3 p.m., Bryant said.

The RAC parking permits are being sold at \$100 and went on sale two weeks ago along with permits for other lots for the 2012-2013 academic year, Bryant said.

As of Monday, April 23, Lot 41, which is located near the Carroll Building, had less than 50 available permits left for purchase, Bryant said.

"Lot forty-one is one of our most popular lots, and it's always the first to sell out," Bryant said. "It will be sold out by the end of this week."

Many students think that added parking is a good step.

"Lot forty-one is one of our most popular lots, and it's always the first to sell out. It will be sold out by the end of this week."

-Kristi Bryant,  
director of parking and transportation

"I think it's a really good idea," Enrique Espada, sophomore accounting major, said.

"That kind of makes sense, I guess. It makes sense if they're going to offer a limited amount, but how is it going to affect the people who want to park at the RAC to actually go to the RAC?" Stephen

Stanley, freshman civil engineering major, said.

"That's smart on (the students') part. I think (the new passes are) good because it's fair for everybody and people can't just take advantage of the cheaper lots," Kaylee Riner, sophomore pre-nursing major, said. RAC employees refused to comment.



### Company hours

7:30 A.m. - 6:00 P.m.  
Monday -Friday

912-489-2222

102 N Zetterower Ave  
Statesboro, GA 30458



Present this Coupon at the time of service to receive a free tire rotation with a full priced oil change.

Super Service at a Super Price  
**489-2222**

Some Restrictions may apply. Call For more details.

912-489-2222

102 N Zetterower Ave  
Statesboro, GA 30458



Present this coupon at the time of service to receive an oil change for the low price of \$19.95.

Super Service at a Super Price  
**489-2222**

This price is for 5 quart oil changes. It also excludes diesels, synthetic oil changes, and special oil filters. Ask more for details.



# On-campus housing options increase

BY CHRISTLE YOUNG

The George-Anne contributor

This fall, Georgia Southern University upperclassmen will have nearly three times as many on-campus housing options to choose from.

Student housing has taken many measures to ensure students do not lose quality by choosing to live on campus, Jon Coleman, assistant director administrative of Resident Life, said.

"So, when we purchased Campus Club, it was intended to be an upper class complex and that's what it is going to be — about nine hundred and eighty beds added to what we currently had, which gives us about fourteen hundred beds for our upperclassmen," Coleman said.

The number of beds available has almost tripled with the expansion of Freedom's Landing, Coleman said.

"When we went a couple of years ago to the freshmen live-on requirement, our level of spaces available for upperclassmen was cut into about half," Coleman said.

Over the past few years, the number of upperclassmen dorms has decreased because of an increase in enrollment, Coleman said.

"Last year, there was about six hundred spaces total. So, about two and a half years ago, because we projected that this was going to continue to happen, we started looking at other options," Coleman said.

"I was very surprised that so many of our upperclassmen live on campus and want to live on campus. Because you know, there is a lottery to get on campus," President Keel said.

"Now, it's not as much of a surprise as it was when I first came here, because I've had a chance to see what we really offer on this campus," Keel said.

The benefits to being on campus may outweigh reasons to live off campus, Coleman said.

"Having that community, resources and support without having to worry about 'if my roommate paid the bill this month,' because you take care of it all at once. There's a lot more convenience to (on-campus housing)," Coleman said.

"I really believe, obviously not being an undergraduate student I can't tell you what makes upperclassmen want to stay on campus, but it just seems to me that there is so much going on. Why would you need to live anywhere else?" Keel said.

On-campus housing regulations are often seen as restricting, but Coleman believes them to

	PER MONTH	PER SEMESTER
Freedom's Landing	\$815- \$875	\$3,260- \$3,500
Campus Crossing	\$494	\$1,976

Kayla McFalls/The George-Anne

be beneficial.

There are many situations that will be handled by dorm management rather than automatically being handed over to the authorities, Coleman said.

"To deal with upstairs neighbors that are being crazy and someone going, 'Oh well, call the cops,' we're actually going to go in with that situation and talk to them and go through the correct process," Coleman said.

Room assignments can be changed for a number of reasons at any point during a student's contract.

"If you stop getting along with your roommate and you want to make a room change, we have five thousand beds (total) to choose from, and as long as you have a housing contract, we're going to work with you," Coleman said.

"As long as changes are made prior to the due date, there are no fees involved," Coleman said.

"Contracts offer flexibility. Winter break is incorporated in fall/spring contract," Coleman said.

"If you graduate in December and you have to find a place to live for one semester, we still do that. We work with the students, and as long as they give us notice by the due date, December first, there is no fee; after that, it's one hundred dollars," Coleman said.

"Students will not have to move out between semesters. They can be there Christmas day,"

Coleman said.

Preventative maintenance is the key to managing on-campus housing, Coleman said.

"Our residential facility staff has already identified the staff that they will need for that complex and we actually have our facility's people already over there identifying any concerns," Coleman said.

"So, for example, the air filters in the halls and all the units, we change them every single month. Before our facilities person got here, that was happening once a year," Coleman said.

"We have a facilities staff that works on campus from 8 a.m. to 2 a.m. everyday. They're either responding to student requests or concerns, or they're doing the preventative maintenance schedules," Coleman said.

Some of students' deepest concerns have been heard and improved upon, Coleman said.

"Parking is not going to be an issue, it is going to be an adjustment. There's a phenomenal amount of parking per resident out there," Coleman said.

"The parking lot will also be monitored," Coleman said.

"And of course, we will still be monitoring it during the year. It's going to be a residence hall lot, so parking and transportation will be out there ticketing and booting," Coleman said.

There will be planned activities for residents. "The Hall Council and Community Leaders

will be offering tailgating for its Freedom's Landing residents, and it's a convenient place to be when game time rolls around," Coleman said.

"You can just walk over, and I imagine the hall council will be doing barbecues and tailgating for every game," Coleman said.

"I wish I had a room like that when I was going to college; with a private bedroom, a private bathroom, washer and dryer, all the bells and whistles. That's the cream of the crop," Coleman said.

Despite the amenities, some students think it's cheaper to live off campus.

"Personally, I have a car. But, for people who don't have a car and wanna be close to campus, it's good. But I mean, it's way cheaper just to live off campus," Lauren McDonald, junior child and family development major, said.

"Living in off-campus apartments, which I'm looking for now, is way cheaper than on-campus. So, it's gonna be upperclassmen's choice whether they wanna spend more to stay on campus," Tsiambwom Acute, freshman theater/broadcast journalism major, said.

Chinelo Ononye, freshmen chemical engineering/pre-medical major said, "I think (on-campus housing) is awesome, but at the same time the rate of freshmen coming in is increasing, so I don't know how they're going to accommodate the incoming freshmen and accommodate upperclassmen."



**DINING,** from page 1

summer will not be offered employment at other Eagle Dining locations, Yawn said.

"We reduce our student employment down to a minimum every summer. We have very few students or temporary employees working for us in the summer because of our reduced participation," Yawn said.

"We have contemplated reducing the number of options we have available during the summer throughout the past few years, and we've just found it to not be feasible to keep all of our same options open. We believe that we can still keep some of the same options that are available at other places, so we look forward to that opportunity," Yawn said.

"We have such few students participating in dining plans that there's no need for us to have an excessive amount of temporary labor," Yawn said.

"It would be irresponsible (to stay open), because ultimately whatever cost we pass along to students is dictated by our necessity to operate. We have to be as fiscally responsible as possible to our students, so we have to minimize our labor," Yawn said.

The renovations on Landrum and Lakeside should not begin until B term, Yawn said.

"Landrum and Lakeside will not close until sometime in July. I'm not one hundred percent certain yet. We're still working with the Board of Regents for that transition," Yawn said.

The full-time employees will be moved to other venues, Yawn said.

"None of our full-time employees are students," Yawn said.

"We are able to meet the needs of students on dining plans with our full-time employment during summer," Yawn said.

"As of today, we have ten thousand and thirty-two students enrolled for the summer semester. As you know, that number is subject to change," Dr. Velma Burden, associate registrar, said.

Enrollment Services recorded last summer's enrollment count at 10,461 students.

Last summer, Talon's was open according to Talon's Grille employees.

These restaurants closing will affect whether summertime students will purchase meal plans, students said.

"I won't get a meal plan then. There's no



JEFF YAWN

point. I get tired of eating Chic-Fil-A. That's not good for you. It's too greasy," Rashon Delk, junior business management major, said.

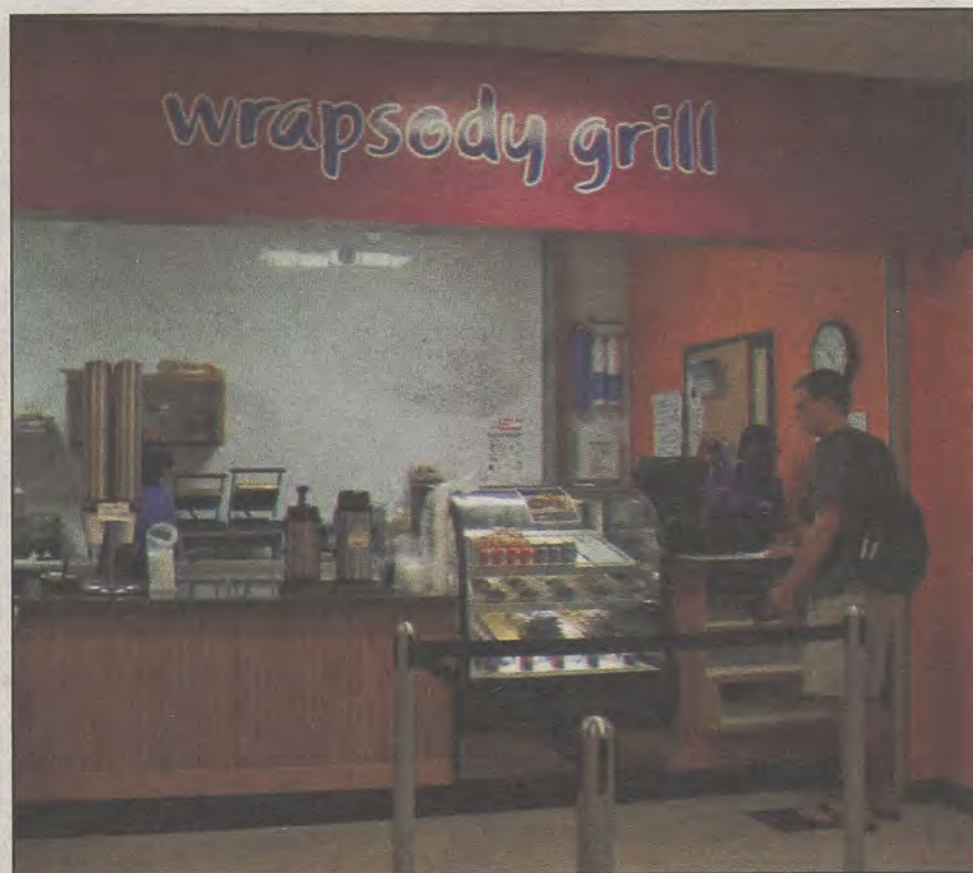
"This summer I probably won't buy a meal plan anyway. I go to Talon's sometimes, but I don't use my meal plans all the time now," Caroline Nichols, freshman exercise science major, said.

Funding for Eagle Dining comes directly from students, Yawn said.

"We're independent of any educational and grant funding, so all of our funding is generated from student participation. Of course, the freshmen requirement helps significantly," Yawn said.

"We are very dependant on all the participation we get. We are very fortunate to have more students participating in dining plans that are not required or voluntary than we do students that are required," Yawn said.

Yawn said, "For instance, this fall we had thirty-five hundred students that were freshmen and required to have dining plans and thirty-seven hundred on dining plans. This summer, A term, we have maybe a few hundred, I'm guessing."



File photos

**Two Eagle Dining restaurants** will be closed this summer. **Top:** Wrapsody Grill will be closed for renovations, according to the establishment officials. Jeff Yawn, director of Dining Services, denied the claims. **Bottom:** Talon's Grille will be closed this summer due to renovations and menu re-working.



## 'Beyond Words' to come to GSU

Mime Bill Bowers to bring newest show to campus

BY AMBER GORDON

The George-Anne staff

Absolute silence will take over Georgia Southern University as award-winning mime and professional actor Bill Bowers brings "Beyond Words" to the Black Box Theatre tomorrow evening.

Bowers' show, "Beyond Words," is set to debut tomorrow at 7:30 p.m. This performance will mark the third time that Bowers brings his abilities as a mime and actor to the GSU campus.

"This is his third time on campus. He's a terrific performer as well as a terrific teacher. His background is incredible in terms of his training as a mime. He even worked with Marcel Marceau. He's just a really amazing person for students to have some interaction with," associate professor of theatre James Harbour said.

This year's performance will provide students with something refreshing and new. Bowers will perform his most recent show, "Beyond Words."

The performance will enlighten students on the matter of silence in our society and expose them to a new kind of performing art.

Bowers plans on portraying this theme through music, dialogue and his talent as a mime, Harbour said.

"Most of his performances have some level of autobiographical quality to them and the fact that he likes to talk about things that he's experienced. However, there are also things that translate to a universal sense. The people in the audience and the people that are watching really connect with him when he does his performances," Harbour said.

On Tuesday, Bowers even offered to teach several workshops in order to help students who are interested in theater gain some experience.

The workshops are even open to students who are not actually majoring in theatre but are just curious about the art of movement on a stage.

"The real reason why I brought him here in the first place, several years ago, was because I had a couple of students that went to a conference years ago. They did a workshop with him and they came back to

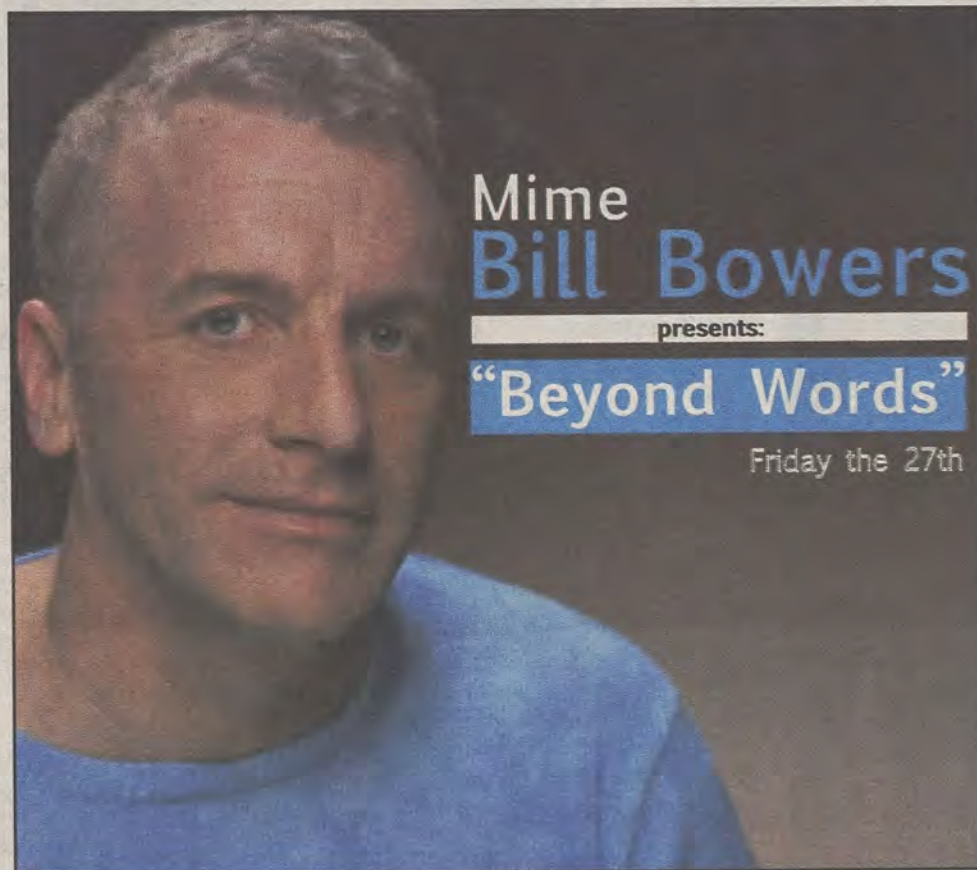


Photo Courtesy of bill-bowers.com

“ He’s just a really amazing person for students to have some interaction with.”

-James Harbour  
associate professor of theatre

me and said, 'Jim, you have to get this guy on campus because he is so terrific.' I happened to see him at a conference I went to about six months later and he was absolutely terrific. I actually went up to him right after that and we started the process of bringing him to Georgia Southern," Harbour said.

Students around campus who have seen his work know that Bowers offers his audience a chance to experience a type of art

form that is often overlooked or forgotten in today's society.

"When I saw him last year, I was amazed on how he could tell this story of his life and all that he's done and be so funny and witty. It kinda makes you wonder why there aren't more mimes running around. I honestly can't wait to see his next performance because he's a terrific performer," junior business major Amanda Brown said.

### The Buzz List

■ **Beyonce** was named World's Most Beautiful Woman by People Magazine.



Gianna Carme

People's qualifications for being "beautiful" include shutting down an entire hospital floor to give birth as well as getting sued for copyright infringement.

■ **The Kardashian family** has signed on for three more seasons of "Keeping Up With the Kardashians." In other news, we just signed on to three more seasons of not watching "Keeping Up With the Kardashians."

■ **Gotye** is dissing "Glee's" rendition of his song, "Somebody That I Used To Know," by calling it "dinky and wrong." There should be a point of success needed to surpass before an artist can complain about people covering and praising his or her music.

■ **Octomom's** check to a hairstylist has been leaked revealing that she spent \$520 of the \$2,000 she receives a month from welfare on a Brazilian blowout and a haircut. Hey, California taxpayers, if I were you, I would be calling Child Services ASAP.

■ **John Lovitz** called President Obama a "f---ing ass----" on a podcast episode of "ABC's of SNL" in response to Obama's comments on the rich and taxes. We're still trying to figure out how Lovitz is relevant and why his opinion is newsworthy.

Information compiled by Arts Editor Quaniqua Epps and Assistant Arts Editor Gianna Carme from TheHollywoodReporter.com.



# THE 'BORO BEAT

## YOUR GUIDE TO OFF-CAMPUS ENTERTAINMENT

### THURSDAY

#### Applebee's

- Happy Hour & Late Night Fun: (3 p.m.-6 p.m.) (9 p.m.-cl)
- ½ price appetizers
- \$2 Natty Light brews
- \$3 domestic brews (micros \$1 more)
- \$3 Long Islands
- DJ Jammin J Productions (10 p.m. to close)

#### Dingus Magee's

- Happy Hour (5 - 7 p.m.) (9 - 11 p.m.)
- \$2 well liquor
- 2 for 1 bombs
- 2 for 1 appetizers
- Charlie Denison (9 p.m. - cl)

#### GATA's

- Happy Hour (5 p.m. - 7 p.m.)
- ½ price bottle & draft beer
- \$1.50 single wells
- \$3 double well liquors
- Moon Taxi (\$5 cover) starts at 9 p.m.

#### Gnat's Landing

- \$10 buckets of beer
- \$3 double well liquors
- \$3 bombs
- \$3 Newcastle beer all day

### FRIDAY

#### Crabby Joe's

- Mystic Island Daydream starts at 9 p.m.

#### Dingus Magee's

- Happy Hour (5 - 7p.m.) (9 - 11 p.m.)
- \$2 well liquor
- 2 for 1 bombs
- 2 for 1 appetizers (5 - 7 p.m.)
- Those Cats starts at 9 p.m.

#### GATA's

- Happy Hour (5 p.m. - 7 p.m.)
- \$3 double well liquors

#### Loco's

- Happy Hour (5 p.m.-7 p.m.)
- Will Riner starts at 9 p.m.

#### Millhouse

- \$1.99 draft beers, cocktails, martinis and margaritas
- \$2.49 house wines
- Dirty Uncle Bob starts at 9 p.m.

#### Statesboro Fairgrounds

- Kiwanis Rodeo starts at 7:30 p.m.

#### Sugar Magnolia Bakery & Cafe

- Open-Mic Night starts at 8 p.m.

### SATURDAY

#### Applebee's

- Black Light Party (10 p.m. - cl)
- \$3 appletinis
- \$3 well liquor
- \$3 Long Island Iced Tea

#### Crabby Joe's

- Karaoke starts at 9 p.m.

#### Dingus Magee's

- Happy Hour (5 - 7 p.m.) (9 - 11 p.m.)
- \$2 well liquor
- 2 for 1 bombs
- 2 for 1 appetizers
- Wine on the Rocks (9 p.m.-cl)

#### GATA's

- Happy Hour (5-7 p.m.)
- ½ price bottle & draft beer
- \$1.50 single wells
- \$3 double well liquors

#### Loco's

- Happy Hour (5-7 p.m.)
- ½ price draft beer
- ½ price chips and salsa
- ½ price chips and queso dip
- ½ price wings

#### Manny's

- Happy Hour (5-7 p.m.)
- \$2 draft beers
- ½ price wine

myth:  
fact:

drinking is central to the  
social lives of georgia  
southern university  
students

64% of georgia southern  
students have 0-4  
drinks per week

presented by the dean of  
students office

for more information visit:  
<http://students.georgiasouthern.edu/aod>  
data collected from georgia southern  
university core survey 2010

INBERRY  
EDUCATION

OUT&ABOUT

## Express Tune & Lube

Tire, Alignment  
& Exhaust Center

612 S. Zetterower Avenue

489-4444

[www.expresstuneandlube.com](http://www.expresstuneandlube.com)

Monday - Friday 7:30am - 6:30pm

Located a half block north of Wendy's.

### OIL CHANGE SPECIAL

**\$25<sup>95</sup>**

Includes up to  
5 qts of Castrol  
5W20, 5W30, 10W30,  
or 20W50

price applies to most vehicles. Expires 5/31/12

[www.expresstuneandlube.com](http://www.expresstuneandlube.com)



# THE 'BORO BEAT

## YOUR GUIDE TO OFF-CAMPUS ENTERTAINMENT

### SUNDAY

**Applebee's**

- Guys Night Out (10 p.m. - cl)
- \$1 Natty beers
- \$3 Firefly vodka
- \$3 Jack Daniels shots

**Manny's**

- Happy Hour (5 - 7 p.m.)
- 1/2 price bottle & draft beer
- \$1.50 single wells,
- \$3 double well liquors

**Dingus Magee's**

- Happy Hour (5 - 7 p.m.) (9 - 11 p.m.)
- \$2 Well liquor
- 2 for 1 bombs

**GATA's**

- Happy Hour (5 - 7 p.m.)
- 1/2 price bottle & draft beer
- \$1.50 single wells
- \$3 double well liquors

**Kbob Kelly's**

- Trivia starts at 7 p.m.

**Millhouse**

- \$1.99 draft beers, cocktails, martinis and margaritas
- \$2.49 house wines

### MONDAY

**Applebee's**

- 1/2 price appetizers
- \$2 Natty Light brews
- \$3 domestic brews (micros \$1 more)
- \$3 Long Islands
- \$3 Main Street Margaritas (regular and flavor),
- \$3 wells

**Dos Primos**

- Poker starts at 8 p.m.

**El Sombrero Downtown**

- \$2 margaritas all day

**Gnat's Landing**

- Happy Hour all day

**Loco's**

- Happy Hour (5 - 7 p.m.)
- 1/2 price draft beer
- 1/2 price chips and salsa
- 1/2 price chips and queso dip
- 1/2 price wings

**Manny's**

- Happy Hour (5 - 7 p.m.)
- \$2 draft beers
- 1/2 price wine
- \$2 well liquors
- \$3 double well liquors
- 1/2 price pizza

### TUESDAY

**Applebee's**

- 1/2 price appetizers
- \$2 Natty Light brews
- \$3 domestic brews (micros \$1 more)
- \$3 Long Islands
- \$3 Main Street Margaritas (regular and flavor),
- \$3 wells
- \$4 Jaeger bombs
- \$2 Natty beers
- \$3 Jack Daniels
- \$3 Jim Beam

**Dingus Magee's**

- Happy Hour (5 - 7 p.m.) (9 - 11 p.m.)
- \$2 well liquor
- 2 for 1 bombs
- 2 for 1 appetizers (5 - 7 p.m.)

**GATA's**

- Happy Hour (5 - 7 p.m.)
- 1/2 price bottle & draft beer
- \$1.50 single wells
- \$3 double well liquors

**Manny's**

- Happy Hour (5 - 7 p.m.)
- \$2 draft beers
- 1/2 price wine
- \$2 well liquors
- \$3 double well liquors
- \$3 Jack Daniels shots



**ACROSS FROM GEORGIA SOUTHERN  
IN FRONT OF WOODLAND APARTMENTS**

**PHONE: 912.681.3597  
ACCEPTING EAGLE EXPRESS**

LOCATION: WOODLAND SQUARE  
ACROSS FROM GEORGIA SOUTHERN  
STATESBORO, GA 30458



**"BAD TO THE BONE"**  
Located next to Wal-mart  
912-764-6556

**WINGSDAY  
SPECIAL**

**TWO WINGS FOR THE PRICE OF ONE  
EVERY WEDNESDAY**

**BEST WINGS IN THE BORO**



# Beauty advisor gives summer makeup tips

BY TANIQUA R. RUSS

The George-Anne staff

Between the heat, pool days and classes, females at Georgia Southern University take their makeup through a lot during the summertime, but with tips from Yarkenda Payne, wearing makeup has the potential to become easy.

Junior political science major Yarkenda Payne has been working as a beauty advisor for Lancôme in Belk for a year. During this time, she has become very familiar with the application as well as the knowledge of makeup.

"Less is always good in the summer. You want a more natural look — nothing too heavy or cakey," Payne said.

A common summer makeup problem is getting lasting wear from makeup.

## SUMMER MAKE-UP —TIPS—

TINTED MOISTURIZER  
BRIGHT COLORS  
KEEP IT NATURAL

Matt Veal/The George-Anne

"As females head to their daily summer classes they should try makeup with lasting wear. So that they do not become a victim of the problem, use twenty-four-hour foundation, something that is not

going to wear off and you don't have to reapply during the day," Payne said.

The type of foundation is also important, Payne said.

"During the summer, you should get a tinted moisturizer because it is

not as heavy as a regular foundation, or go with a lighter foundation that has light coverage," Payne said. "And if you want to go ultra light, I would recommend a translucent powder. It takes the oil out of your skin and gives it a matte look, which is in season."

Shapely and clean eyebrows are another basic that becomes more difficult to execute in the summer.

Using a matte brown or brunette color on the eyebrows gives it a more natural look, Payne said.

"I would suggest filling in your brow just a little bit, because the brows are the framework of your face,"

Payne said. "I recommend a pressed pencil, not an automatic pencil or a black pencil. It makes it look too dominant."

"Once you get the shape you want, you can make it precise with a concealer. I recommend a liquid one,"

Payne said.

After handling the basics of summer makeup, girls on campus also want to be fashionable and indulge in some of the new summer trends.

"Bright is in," Payne said about summer makeup trends. "A lot of bright colors are in, a lot of people are doing up the eye lids."

In order for ladies to properly execute this trend, they should use bright colors on only one aspect of their face, Payne said.

"If you wear a bright lip, make sure to have powder or foundation for a matte face. If you are going to do a bright cheek, do a nude lip. If you are going to do bright eyes, make sure everything else is natural," Payne said.

Females can feel confident about their makeup in the heat while looking beautiful in the current trends simultaneously.

**UNLIMITED FUN  
LIMITED VACANCIES**



**CALL 912-681-3888 TODAY!**

**GREAT SPACE. GREAT RATES**

FULLY FURNISHED, SPACIOUS APARTMENTS • LARGE, LOCKABLE  
BEDROOM/BATHROOM SUITES • WASHER AND DRYER IN EACH APARTMENT  
LOADED CLUBHOUSE WITH GAME ROOM, FITNESS CENTER, TANNING BOOTHS  
POOL, VOLLEYBALL AND BASKETBALL COURTS, GRILLS AND FIRE PITS

**the grove**  
FULLY LOADED COLLEGE LIVING.

1150 Brampton Avenue  
Statesboro, GA 30458  
info@statesboro@groove.com

**CAMBRIDGE  
SOUTHERN**



**Better  
features.**



912.681.1300  
Cambridge-Southern.com



# Sigma Iota Alpha to host Salsa Night

BY TANIQUA R. RUSS

The George-Anne staff

The rhythmic sounds of Latin America will take over the William Center as Hermandad de Sigma Iota Alpha hosts another Salsa Night this evening at 7 p.m.

In the past, the Salsa Night has been the efforts of the Multicultural Student Center with the assistance of the sorority, but this time around the event will be all SIA's own.

"This semester, we've been doing it monthly because we've had such positive feedback," senior psychology major, chapter Vice President and Social Chairwoman for SIA Sophia Navedo said.

By demand of the foreign language department and students, the Latin based sorority began hosting the Salsa Night on a regular basis.

The other dance nights have been held under the Russell Union Rotunda

with bright lights and festive music. This month the Salsa Night has changed venues to the William Center to accommodate the anticipated larger crowd, Navedo said.

"We've been promoting for this one a lot and it's our week, so we want to go out with a bang," Navedo said.

The purpose of the Salsa Night and other SIA events is to teach students and faculty how to dance, while also educating them about Latino culture.

"We want to give Georgia Southern students a different perspective on Latino culture. It's something different, a fun way to learn something new," Navedo said. "Hopefully they come out appreciating Latino culture. It isn't just Mexico, Taco Bell or El Som, it's way more than that."

Members of SIA will teach attendees the fundamental steps of Salsa, Merengue and Bachata and how to distinguish between the different types of music that

goes with each dance.

"They will learn it is not your stereotypical something you would hear at El Som," Navedo said.

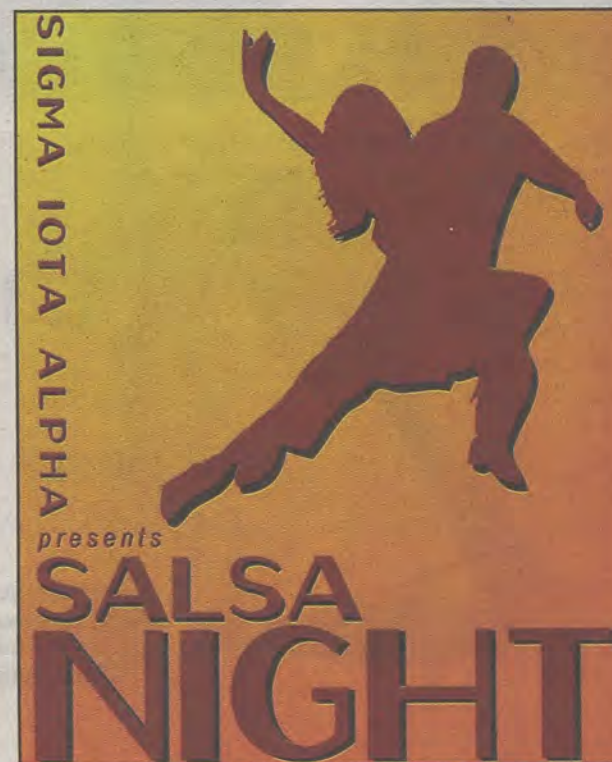
Faculty members have been the biggest supporters of the event. With a track record like this, students might even see some of their teachers join them in the fun, Navedo said.

"A lot of faculty from Forest Drive tries to come out, and they start dancing as well," Navedo said.

After cutting a rug, attendees will also experience a taste of Latin America with the different foods that will be available that night.

Authentic foods such as empanadas, besitos de coco (coconut kisses) and a traditional punch from Puerto Rico will be offered for students, Navedo said.

"It's just so fun and interactive and it's putting our culture out there. As long as we keep getting the support, we'll keep doing it," Navedo said.



Tyler Fleider/The George-Anne

Over 60 Arcade Games, Ballocity, Bowling,  
Mini-Golf, Laser Tag & Restaurant!  
Food & Fun Combos, Group and Individual Packages Available!

## BEST PLACE TO PLAY!



### GSU NIGHTS

JOIN US MONDAY, TUESDAY & THURSDAY  
for Exclusive GSU Deals!

Unlimited Bowling, Laser Tag and Mini Golf  
6 PM TO CLOSE

**ONLY \$9.99**  
(with your GSU ID)



Scan this code to  
see more deals!



ClubhouseStatesboro.com • 912-871-1000

## FRANKLIN

TOYOTA • SCION

**10% OFF**  
service with your  
Student ID

**888-695-8165**

500 Commerce Drive  
beside the new Holiday Inn

### PROTECT YOUR VEHICLE!

Regular maintenance and upkeep is crucial to your car's optimal performance, best possible gas mileage, and highest resale value.

**Our service department offers the best in automotive service for all makes and models. PLUS we provide a free shuttle to and from campus!**

- Oil Change
- Tire Services
- Tune-Up & Transmission Service
- A/C & Radiator Service
- Brake Service
- Engine Repair
- Body Shop Services



**BUY OR LEASE  
A NEW TOYOTA, GET A**

# \$1,000

COLLEGE GRAD REBATE

SCHEDULE YOUR SERVICE ONLINE! [www.FranklinToyota.com](http://www.FranklinToyota.com)





th

# ANNUAL 1<sup>st</sup> AMENDMENT FREE FOOD FESTIVAL

APRIL 26<sup>th</sup>

TWENTY • TWELVE

Sponsored By

• Student Affairs •

Bliss Berry • Papa John's • Latté Da • McAlisters

Chilis • 91.9 The Buzz • GSU Men's Rugby Team

AND MORE





# CLASSIFIEDS

www.thegeorgeanne.com

This page brought to you by Career Services  
Explore • Experience • Excel

Thursday, April 26, 2012 17

## For Sale

Firewood for Sale. Delivery available! Call 912-690-0872 or 912-690-4956.

For sale: 2009 BMW 328i, hard-top convertible in great condition. Black with tan interior. Call 912-293-1909.

Used Fender Blues Jr. All-tube guitar amp. \$350, negotiable. Perfect working order/condition (912) 536-1610

## Help Wanted

BARTENDERS WANTED! \$250 a day potential. Experience unnecessary. Training provided. 18+ Call: 1-800-965-6520 ext. 296

Seeking an Assistant, excellent opportunity if looking to work in a friendly atmosphere. Self-Motivated, Positive Attitude, Ability to Multi task. Send resume to Martgay@gmail.com

Part time sales position open at Farmer's Home Furniture. Apply in person. 110 Northside Drive E. Statesboro, Ga 30458

## Subleases

3BR/2BT within 2 miles campus. You can sublease the other 2 rooms. No smoking or pets. Call (706) 951-1427.

## Subleases, cont.

Planter's Row 1BR/1BT Cottage, \$625 a month, Available for Summer. Call 270-227-7507

Fall 2012 Female Roommate Needed at University Pines 4 BR/2BT \$409.00/month. Call: 478-251-6260 or email: rw02273@georgiasouthern.edu

1BR/1BT available in a 4BR/4BT at Campus Club \$700 for the whole summer or \$370/month. Email Shanna at shannalawson22@gmail.com

SUMMER 2012! Subleasing 1BR/1BT available in a 2BR/2BT at The Woodlands. \$409/month plus utilities. Email Sadie at sn01140@georgiasouthern.edu

Sublease at Cambridge for Reduced Price 1 BR/BTH available in a 3 BR. \$350/month \*Regular price-\$459/month.\* Email shortiecutie102@yahoo.com

2BR/2HBH at Hawthorne 2. \$350/month. Through July. Contact Shannon at 678-468-9407

"Don't pay \$1,260 for Summer 2012 housing. 4 br/ 2 bt apartment in the Avenue is only \$320 Contact Tanera @ tm01729@georgiasouthern.edu"

## Subleases, cont.

Garden District with 2 roommates looking for a female to rent my room out for the summer. I'm only asking for \$300/month. Call 404-764-6490 ask for Monica.

All inclusive, two story, fully furnished, 4 BR for \$330/month Contact (229) 326-4291.

Fall Semester at the Avenue 4BR/2BH, fully furnished, \$325/mo. Contact Deandre at dc03436@georgiasouthern.edu.

626 B at the Exchange. Female Roommate needed. \$519.00 per month. Available now. Contact (706) 523-6001

Room available 3 BR/2 BT house on Catherine Avenue. \$367/mo Contact Yale at (404) 272-7652 or yale8754@bellsouth.net

1BR/1BT available at Copper Beech apartment. Rent \$394/mo. Please call 770-639-0264.

4BR/4BT at Campus Club \$409 a month Contact Chin Herbert at ch02002@georgiasouthern.edu

Summer 2012 Subleasing 1BR/1BT available in a 4BR/4BT at Campus Club. \$370/month. Email Shanna at shannalawson22@gmail.com

## Subleases, cont.

Planter's Row for \$365/month; utilities not included. Contact at at01770@georgiasouthern.edu or call (770) 546-6560

Subleasing 3 BR/2BT house on Parker Ave in Brooklet. Contact Joyce at (912) 842-9479.

Summer 2012, individual bathroom, 3 female roommates, washer/dryer. Call Kaylah Ibdapo at 678-612-1087

Summer 2012 1br/1bt townhouse at the Avenue. Rent \$465, unfurnished. May rent and \$100 for June and July paid. Contact at kp01343@georgiasouthern.edu

1 bedroom in a 3BR Apt. in Campus Club. Available from the end of May until July. It is \$445/month Contact Alexis Flen at af02017@georgiasouthern.edu.

Summer 2012 4BR/2BT apartment in the Avenue is only \$320 Contact Tanera @ tm01729@georgiasouthern.edu

Sublease available ASAP at Copper Beach. \$389/mo. Utilities not included. Contact 478-957-1005.

Sublease my 1BR apartment ASAP at Panter's Row. It is \$625 Contact at be01181@georgiasouthern.edu or 478-455-0432.

## Houses for Rent

2, 3, 4, 5, 6, and 7 BR houses available Aug 1, 2012 24 hr repairs guaranteed 912-682-7468

Furnished apartment Located just past Mill Creek Park. \$500/month. 912-531-1319

4BR/ 2BH Robin Hood Trail 4BR/ 2BH Tillman Street 4BR/ 2BH - Talons Lake www.wildoakinvestments.com Call: 912-682-9515

HOUSE FOR RENT 3BR/ 2BT in August 405 Wendwood CT., walking distance to campus, private owner, \$895 a month. Call at 706-543-5497

## Misc.

American Shorthair Cats (AKC Reg. Male and Female) free to good home, contact bpills12@gmail.com if interested

Will proof papers. Quality work, reasonable prices. Will also type short projects. Must have ample lead time to schedule. Email auntre01@gmail.com

Fourth year writing and linguistics major will proof papers/ tutor in writing. Cheapest rates, at least three days notice on assignments

## WANTED

Good new home for  
**\$100 Frontier  
Prepaid Card.**

COMES WITH INTERNET,  
PHONE & TV SERVICE!

**Get the Frontier  
Triple Play!**

- One low monthly price
- FREE Internet Installation
- \$100 Frontier Prepaid Card

Call 1.888.596.8495  
Frontier.com/handledwithcare

**frontier**  
Communications

**A MORE DEDICATED  
CONNECTION**

Two-year agreements apply. Free Internet installation for current Frontier customers moving and returning Frontier customers.

© Frontier Communications Corporation.

## Education Career Fair

Thursday, April 26

Russell Union Ballroom

2 p.m. - 4 p.m.



## Publicizing Your Application Process

By Brianna Wagenbrenner  
Event Marketing Intern  
From Career Services

As proud Millennials we have grown up in a world of technology and since high school a world of Facebook. With Facebook we have become accustomed to posting all aspects of our life for the world to see. (Some people do have private timelines, but there are ways around the privacy settings.) Most people have been warned to keep a clean Facebook that your grandma would approve of, but there are still a few clean mistakes that you need to avoid.

While you are in the application process for a job or interview, you have to be particularly careful about your status updates. Even though you are excited about an interview, it can be a little awkward to post that information; in case you don't actually get your job. You also need to take caution not to offend multiple companies

by posting the multiple interviews you may have obtained. A phone call or mass text will work just as well to get the news to your friends.

Another important thing to avoid is posting information about how you felt the interview went. You don't actually know how the company perceived you, and you don't want to affect their decision in any negative way. If you post that you felt you had a terrible interview, but the company thought you did an amazing job, that information may cause the company to second guess your status as a possible candidate.

Finally the most important thing is not to burn any bridges via social media. Do not say anything negative about the company that you were denied a job from. Also do not post your good news until you have notified the other companies you have applied for. You never know where your career path will go, and you don't want to miss out on any future networking connection.



# PUZZLES/COMICS

18 Thursday, April 26, 2012

www.thegeorgeanne.com

## Los Angeles Times Daily Crossword Puzzle

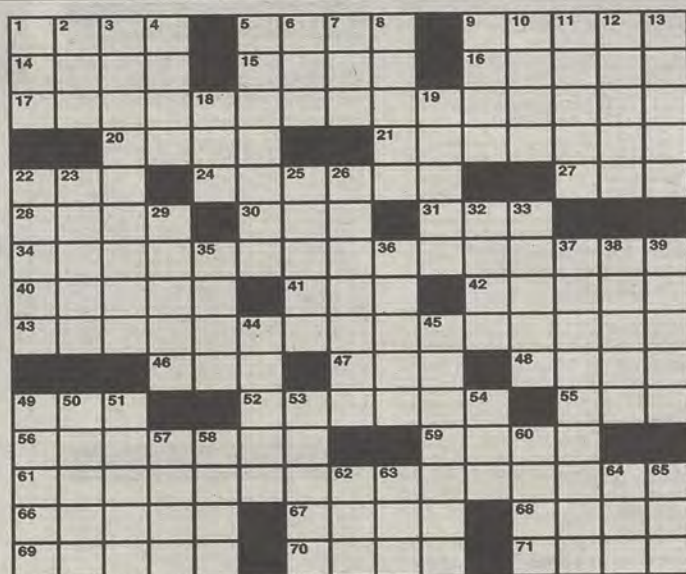
Edited by Rich Norris and Joyce Lewis

### ACROSS

- 1 Party boss?
- 5 Bunks, e.g.
- 9 Lavish meal
- 14 Wine-growing region
- 15 Neural conductor
- 16 '80s-'90s legal drama
- 17 Frustrated crossword solver's cry
- 20 Kindle competitor
- 21 Chew toy material
- 22 Scholarship, e.g.
- 24 Spits out, as a DVD
- 27 Small beef
- 28 Move through muck
- 30 Brand at Williams-Sonoma
- 31 Little songbird
- 34 Frustrated crossword solver's cry
- 40 Kindergarten rejoinder
- 41 Kan. hours
- 42 Hacienda honorific
- 43 Frustrated crossword solver's cry
- 46 Formula One racer Fabi
- 47 Enzyme suffix
- 48 Spirited horse
- 49 Shriner hat
- 52 Two-time Bond portrayer
- 55 Ph.D. seeker's exam
- 56 Keys at a bar, perhaps
- 59 Onetime larva
- 61 Relieved crossword solver's cry
- 66 Nice states
- 67 Co-star of Tom in "Angels & Demons"
- 68 Telethon request
- 69 It may be roja or verde
- 70 Shirts with slogans
- 71 Walkout walk-in

### DOWN

- 1 Yes, in Yokohama
- 2 Kosh B'Gosh



By Steven J. St. John

4/26/12

### April 24th Puzzle Solved

B	A	R		C	H	O	R	D		C	A	C	T	I
E	G	O		H	I	R	E	E		Y	A	H	O	O
A	R	T		I	S	L	A	N	D	C	H	A	I	N
L	E	A	R	N		D	E	A	L					
L	E	T	I	T	B	E		B	L	O	O	P	E	R
M	F	R		Y	O	D	E	L		S	I	R	E	N
O	R	C	S		G	O	N	O	W		O	K	R	A
B	A	U	E	R		F	A	C	E	T		S	O	L
I	M	F	R	E		S	H	E	R	P	A			
L	E	F	T	J	A	B		S	P	E	L	U	N	K
M	I	S	S	I	N	G	L	I	N	K		A	X	E
A	D	H	O	C		G	E	N	I		G	U	M	
W	A	Y	N	E		S	W	I	P	E		E	S	E

- 3 Superior talents
- 4 Save for later, in a way
- 5 Holdup
- 6 Bus. line
- 7 Track relentlessly
- 8 Show derision
- 9 One may be fatal
- 10 Per capita
- 11 Bold poker bet
- 12 Jidda native
- 13 Short online posting
- 18 Job ad abbr.
- 19 "Delicious!"
- 22 It has defs. for 128 characters
- 23 "Didn't bring my A-game"
- 25 Business biggies
- 26 By the sea
- 29 Respond smugly to 23-Down's speaker
- 32 -bitsy
- 33 Greek letter
- 35 It may be retractable
- 36 Desert trial
- 37 Like non-hydrocarbon compounds
- 38 Baseballer married to soccer's Mia
- 53 Till now

- 54 Rapa : Easter Island
- 57 "Peanuts" cry
- 58 She met Rick in Paris
- 60 UPS deliveries
- 62 Carry a balance
- 63 Brush-off on the brae
- 64 Reproductive cells
- 65 Homespun home

Welcome to Falling Rock National Park by Josh Shalek



2	3						6	7
	1						4	
		6		2		1		
	7				9		5	
			4		1			
	8		3				9	
		9		7	5	4		
	2							
7	4						8	3

## Sudoku

8	8	5	2	6	9	1	4	7
9	2	6	3	4	1	8	2	5
2	1	4	9	7	8	6	9	3
4	6	9	7	5	3	2	8	1
8	2	7	1	4	6	4	3	5
1	5	3	8	6	2	4	7	9
5	3	1	8	2	7	9	6	4
6	4	2	9	6	5	7	1	8
7	9	8	8	4	1	6	9	3

**FRANKLIN**  
CHEVROLET - CADILLAC  
PONTIAC - BUICK - GMC  
**912.764.6911**



Check out our website  
www.franklinchevrolet.com

Our experienced Body Shop can fix all of the "Dents & Dings" that your vehicle may have! We service all makes and models and accept all insurance claims, and will give you a **FREE ESTIMATE** on your body & paint repair  
**GSU STUDENTS** Show your ID and receive **10% OFF** any purchase in Parts and Service  
We offer our own in town towing service that is **FREE** with a Student ID when we do the repairs on your vehicle



# WEEKLY BUZZ

A weekly calendar listing sponsored by The Division of Student Affairs and Enrollment Management

APRIL 26 - MAY 2

## THURSDAY 4.26.2012

11 AM - 1 PM

### FIRST AMENDMENT FREE FOOD FESTIVAL

WILLIAMS CENTER, PLAZA

The first amendment free food festival will teach students about their first amendment rights using a fun and unique platform and of course providing free food!

Participants must sign away their first amendment rights, then enter the event and eat food from various, local restaurants. A squad will enforce violations to illustrate how we often take these rights for granted.

### EXHIBITION: GRAPHIC DESIGN PORTFOLIO REVEAL

CENTER FOR ARTS & THEATRE

In compliance with the Americans with Disabilities Act, Georgia Southern University will honor reasonable requests for accommodations. The Center for Art & Theatre is open Monday through Friday from 9 - 5 and by appointment. Docent tours are welcome and available upon request by calling 912 GSU-ARTS. For more information on this exhibition and other gallery programming provided by the Betty Foy Sanders Department of Art, visit <http://class.georgiasouthern.edu/art>.

2 PM

### EDUCATION CAREER FAIR

RUSSELL UNION, BALLROOM

Meet recruiters from school systems, education services organizations and graduate programs at the Education Career Fair. Employers will be looking to recruit not only undergraduate students but our graduate (masters, specialists and doctoral) level students as well.

Resumes and professional attire or business casual attire is required!

Students: to view companies attending please log into Eagle Career Net.

Employers: To register please visit <https://georgiasouthern-csm.symplicity.com/events/pid198376/Sp2012Education>

### MIDNIGHT BOWLING

CLUBHOUSE

Sponsored by Eagle Entertainment.

## FRIDAY 4.27.2012

### RECEPTION: GRAPHIC DESIGN PORTFOLIO REVEAL

CENTER FOR ARTS & THEATRE

In compliance with the Americans with Disabilities Act, Georgia Southern University will honor reasonable requests for accommodations. The Center for Art & Theatre is open Monday through Friday from 9 - 5 and by appointment. Docent tours are welcome and available upon request by calling 912 GSU-ARTS. For more information on this exhibition and other gallery programming provided by the Betty Foy Sanders Department of Art, visit <http://class.georgiasouthern.edu/art>.

### FREE MOVIE

RUSSELL UNION THEATER I

Sponsored by the Office of Student Activities.

## MONDAY 4.30.2012

6 PM

### WHEELCHAIR FOOTBALL AT THE RAC!

This event will be a 2 hr. interactive wheelchair football exhibition. There will be players and coaches from a team out of Henry County that will provide instruction on the rules, techniques, and strategies of the game. There will be sport wheelchairs for participants to use during the exhibition. At the conclusion of the event, depending on participation, teams will be formed for some scrimmage games.

For more information and a event agenda, visit <http://services.georgiasouthern.edu/cv/intramuralSports/wheelchairFootball>

This is a FREE event..

## TUESDAY 5.1.2012

7 PM

### GSU Unplugged

RUSSELL UNION STARBUCKS

Open Mike Night. Sponsored by Eagle Entertainment.

10 AM

### FARMERS MARKET ON CAMPUS

WILLIAMS CENTER, WILLIAMS CENTER PLAZA,

Sponsored by the Office of Student Activities.

## UPCOMING EVENTS....

## THURSDAY 5.3.2012

### CLUB MUD EXHIBITION & SALE

CENTER FOR ARTS & THEATRE

Sponsored by the Betty Foy Sanders Department of Art

### FREE MINI GOLF

CLUBHOUSE

Sponsored by Eagle Entertainment.

## FRIDAY 5.4.2012

### CLUB MUD EXHIBITION & SALE

CENTER FOR ARTS & THEATRE

Sponsored by the Betty Foy Sanders Department of Art

### OUTDOOR MOVIE AND BBQ

RUSSELL UNION THEATER I

Sponsored by the Office of Student Activities.

# STUDY HARD

Student Affairs  
Enrollment  
Management



Brought to you by Georgia Southern University VALUES. Georgia Southern V.A.L.U.E.S. is the culture shared by our students, faculty, and staff. We endeavor to share our V.A.L.U.E.S. inside and outside of the classroom with faculty, staff, students, alumni and all other community members. In order to produce productive citizens with an informed set of ethics and community standards as well as create an environment of respect and civility, we pledge to live by our V.A.L.U.E.S.





File Photo

**Junior defensive tackle Brent Russel (66) and sophomore defensive tackle Javon Mention (52) record a goal line stand versus the University of Alabama during the 2011-2012 season.** The University of Alabama defeated the Georgia Southern University Eagles 45-21 in Birmingham, Ala. The Eagles are now looking to join Alabama as an FBS school for football.

## FBS, from page 1

costs for that," Keel said. "It's one thing to take a bus ride from here to Wofford, its another to take a trip between here and the University of Louisiana-Lafayette."

The costs of getting to games, the salary of coaches, and the costs to recruit talent from across the nation will all increase with the potential move.

"Coaches salaries are higher at that level, and recruiting would go up because we would look to recruit more players outside the state of Georgia," Keel said, "so the coaches will have to travel further to recruit and the sheer number of scholarships will go up significantly."

To make the jump to the FBS, a lot is required in terms of monetary values and the conditions of the university's athletic fields and buildings.

"It is a \$4.4 million move and right now we don't have \$4.4 million," Keel said, "We have all sorts of plans, the athletic foundation has a four or five phase plan, about a \$36 million plan overall

Phase one of the plan is the construction

of the new Football Operations Center in and around Allen E. Paulson Stadium that is set to begin this spring.

Other phases of the plan include increasing the budget for standard athletic operating expenses and scholarships. Another step is the increase in coaching salaries, according to Keel.

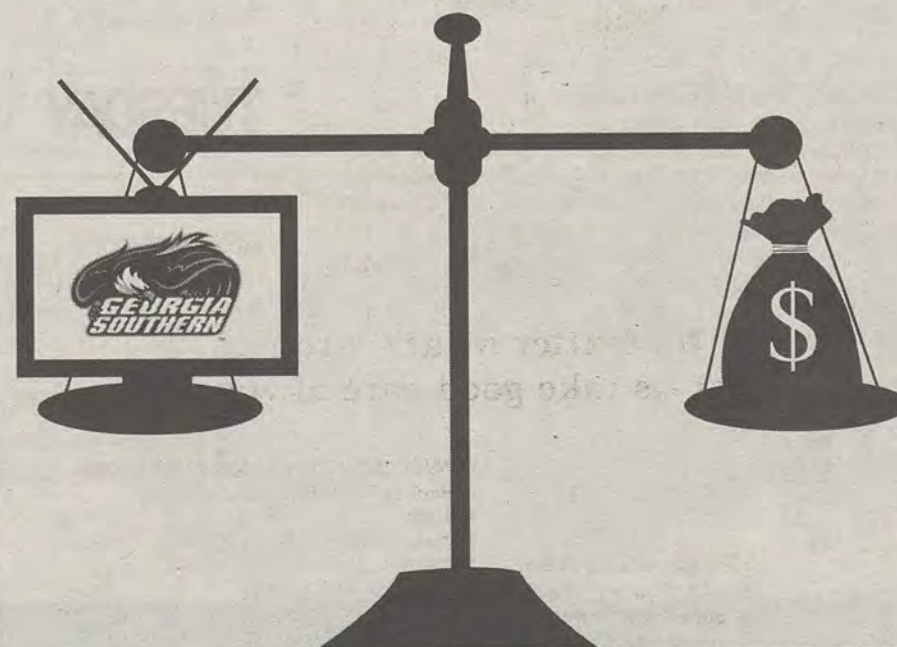
The final steps of the plan set steps for improving and adding to the capacity of Paulson Stadium, and improving the practice fields and locker rooms, according to Keel.

The time for the move is partly out of the university's hands and certain stipulations must be met before making the move to the FBS.

"A lot of the time frame is out of our hands primarily because you have to be invited to join a conference and we have not been invited to join any conferences at this time," Keel said.

"The NCAA says in order for you to move, you have to let them know by June and I highly doubt we will make a move by this June," Keel said.

## WEIGHING THE PROS AND CONS: RECOGNITION VS. ADDED COSTS



Kelsey Paone/The George-Anne



# GSU softball takes one of two versus Jacksonville

## Softball

BY ANNA WELLS

The George-Anne staff

On a cool spring day in Jacksonville, Fla., the Georgia Southern University softball team split a pair of games against the Jacksonville University Dolphins, putting its record at 32-17 overall.

**GAME 1. JU 2-0. WIN-Sigrest (17-10) LOSS-Purvis (16-9)**

The Eagles were held hitless for the first time this season, only putting a runner on base in the fourth inning on a throwing error. The game proved to be a pitcher's battle. Neither team was able to advance offensively until the sixth inning.

JU was able to take the lead in the sixth inning via a homer by sophomore Codi Kelly, which put the Dolphins on top, 1-0. The home run was followed by another run when the Dolphins loaded the bases and hit a sac fly to score another runner, ending the game with a 2-0 win for JU. This marked Dolphin pitcher Sarah Sigrest's first no-hitter of the season.

Pitcher Sarah Purvis did not allow a walk the entire game and allowed six hits, putting her record at 16-9 for the season.

**GAME 2. GSU 1-0. WIN-Miles (5-5) LOSS-TOWNSEND (3-4)**

Both teams struggled offensively at the start of the second game, but the Eagles offense opened up in the top of the third inning with a single by Alexa Lewis. Hanna Ennis followed suit with a walk that set up senior Marie Fogle with an opportunity to send Lewis home for the 1-0 lead.

JU tried to answer the Eagles' run, putting two runners in the seventh inning. However, pitcher Allie Miles worked GSU out of the jam and left the runners on base, giving Miles her first shutout of the season.

Miles threw a gem of a game for the Eagles, keeping the Dolphins scoreless and stranding nine runners in the game. The win improved her record to 5-5 for the season and dropped her ERA to 2.59.

The Eagles return to Eagle Field this weekend in a Southern Conference series against Elon University. The first game is Senior Day for the Eagles and begins this Saturday at 1 p.m.



Lauren Davis/The George-Anne

Senior infielder/outfielder Jorie Walker (21) takes off in hopes to steal a base for her team.

**Stomach pains and ankle sprains.  
Fevers, aches and yucky goo.  
Mystery rashes and deep gashes.  
Colds, flu and allergies, too.**



**No matter what's wrong,  
let us take good care of you.**



**SOUTH GEORGIA  
IMMEDIATE  
CARE CENTER**

1096 Bermuda Run Road  
(next to Mellow Mushroom)  
Statesboro, GA 30458  
p - 912-871-5150  
yourimmediatecarecenters.com

**CONVENIENTLY LOCATED MINUTES FROM GSU.  
CARING AND CONFIDENTIAL TREATMENT.**

**HOURS:**  
Monday - Friday 9:00 am - 8:00 pm  
Saturday 9:00 am - 5:00 pm  
Sunday 12:00 pm - 5:00 pm

Most insurance accepted - bring your insurance card and  
Driver's License. Please call with co-pay and insurance questions.  
Cash patients also welcome.

## Interested in Sales?

Now hiring advertising  
representatives!

Contact the Office of Student  
Media Business Dept.

**912.478.5418**

ads1@georgiasouthern.edu



# Eagles prepare to take on Elon at Eagle Field

## Softball

BY BRIAN STONE

The George-Anne staff

The Georgia Southern softball team will take on Elon University in a weekend series beginning at 1 p.m. on Saturday.

GSU will honor seniors Hanna Ennis, Marie Fogle, Jorie Walker and Mackenzie Williams during the game.

The Eagles are the owners of a 32-17 overall record this season and are still ranked first in the Southern Conference standings with a 16-2 record. Elon currently sits in the fourth spot overall in the conference with an 8-10 record in SoCon games and a 21-16 record overall.

GSU is coming off of a two-game series with the Jacksonville University Dolphins, in which the teams split the doubleheader. Elon was swept in

its three-game series against Western Carolina University this past weekend.

**HOME COOKING:** The Eagles play best when at home and are currently 15-5 when they are playing at Eagle Field. Elon owns an unimpressive 3-9 record on the road and will be looking to move up in the SoCon standings.

**HITTING:** Seniors Williams and Fogle will be looking to go out with a bang in their last home series as members of the GSU squad. Williams and Fogle have combined for 14 home runs and 58 RBI's this season, ranking first and second, respectively, for the Eagles. Ennis has also done well for herself offensively this season, adding three home runs and 11 RBI's. Elon's leading hitters are outfielders Tomeka Watson and Carleigh Nester, who have combined for 52 RBI's this season and six home runs. Watson is currently leading the team in batting average at

.370 while Nester is leading the team in on base percentage at .457.

**(SLIGHT) ADVANTAGE: GSU**

**PITCHING:** Sophomore pitcher Sarah Purvis is continuing her lights-out season on the mound for the Eagles with a 1.62 ERA this season and only allowing opponents to bat .162 at the plate against her. Freshman pitcher Brooke Red has also been fantastic, posting a 1.63 ERA and a 10-1 record as a starter this season. Elon's best pitcher is junior Kari Pervell, who currently owns a 2.03 ERA and has a team-leading 25 strikeouts this season for the Phoenix. However, after Pervell, the rest of the starting rotation looks a bit shaky, all posting ERA's of 3.00 or higher.

**ADVANTAGE: GSU**

**NUMBER TO WATCH: 24-1**

GSU knows how to get a lead and maintain it, having a record of



Lauren Davis/The George-Anne

Senior infielder/outfielder Marie Fogle (11) hits a ground ball during a recent Eagles home game.

24-1 when leading after the fourth inning. If the Eagles can start strong offensively, it will be tough for Elon's pitching staff to keep up with GSU's dynamic offense.

**PLAYER TO WATCH: SENIORS**

With seniors Ennis, Williams, Walker and Fogle being celebrated on

Saturday, all four seniors will look to have great performances against Elon this weekend, both defensively and offensively. With the offense that these four seniors provide, GSU should have no trouble winning the series.

**PREDICTION: GSU WINS SERIES 2-1**

## Georgia Southern Student Specials!

Keep your things safe and secure while you are away for the summer!

Morningstar of Statesboro  
1000 Stambuk Lane  
Statesboro, GA 30458

912-388-1562  
www.morningstarstorage.com



**morningstar  
mini-storage**

\*Formerly Monster Self Storage

3 Free  
Boxes  
With New  
Move-In!

**\$69 Special**  
5x10 Cooled Units

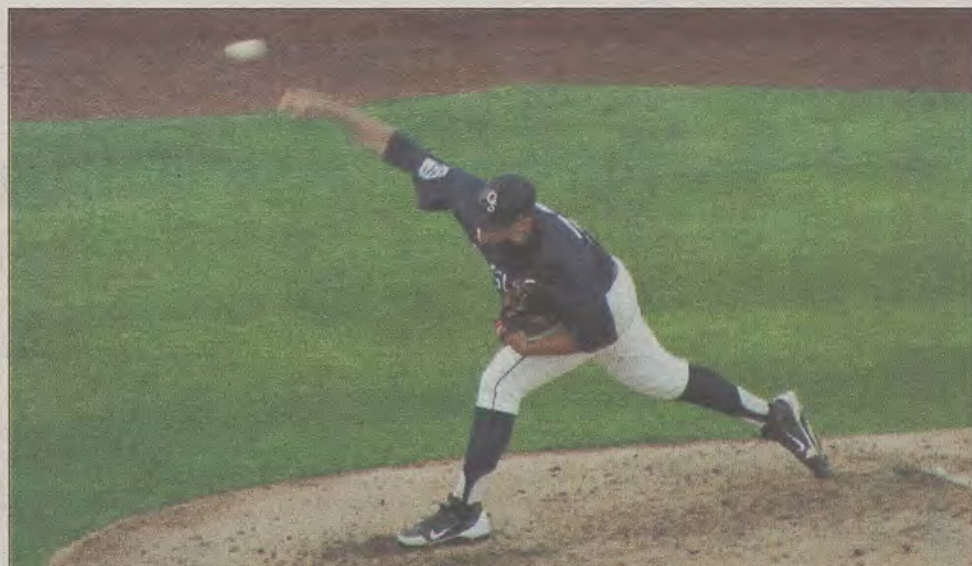
Select Units. Expires 4/30/2012.

**"Lock Me In"**  
Free Lock (\$14.99 Value)

Receive a free lock when you reserve by 4/30/2012.

- 24/7 Access
- Full Range of Unit Sizes
- Heated & Cooled Units
- Electronic Keypad Entry
- 12 Month Rent Guarantee
- Boxes & Packing Supplies





Demario Cullars/The George-Anne

Junior Pitcher Chris Beck (25) hurls the ball toward home plate hoping to record a strike.

## GSU to play Bulldogs

### Baseball

BY COLIN RITSICK

The George-Anne staff

After a short break from Southern Conference play, Georgia Southern University (23-19, 10-8 SoCon) gets right back into the action against The Citadel (17-24, 7-11 SoCon) in a three-game series starting Friday at 6 p.m.

The Eagles have already played four games of a seven-game road trip. Losing to No. 1 University of Florida and two of three to the Indiana University Hoosiers has put a bump in the road for the previously hot Eagles.

Before this road trip, GSU won 10 games in 12 tries, but have now lost three of its last four. But for all intents and purposes, this series is the most important of the road trips. It is against a SoCon foe, and the Bulldogs are just one spot behind the Eagles in the SoCon standings. GSU has a conference record of 10-8 and are currently tied for sixth place with Western Carolina University.

The Citadel has a record of 7-11 and is in seventh place. A three-game swing in favor of the Bulldogs would put them right at an even 10-11 with GSU, with the Citadel having the tiebreaker advantage. However, a three-game swing for the Eagles could mean jumping up in the standings as high as tied for third place.

GSU has struggled this year on the road but it has also won series victories against the top two teams in the SoCon. With one of the top offenses in the conference, GSU will be facing off against a much underrated pitching staff and a top-notch defense in the Citadel. The series is bound to be a great one with postseason

implications hanging in the balance.

Coming off of a tough loss against IU, which featured a 12-strikeout performance, Junior Chris Beck (4-4) will throw eight innings in Friday's game. Beck has thrown three complete games so far this season and has had a solid outing every time on the mound, regardless of the record. Thus far, he has an ERA of 3.82 and a save. His most impressive feat of the season is his total of 87 strikeouts. What is even more impressive about this is that he has fanned 87 batters in only 70.2 innings on the mound. His opponents have a .277 batting average against him on the season. This game will be a pitcher's duel, with GSU's Beck outlasting the Bulldogs.

A late Saturday afternoon game will see some sparks fly from the bats of the Eagles. GSU currently has four batters hitting over .300 including senior Eric Phillips who is hitting .384. Phillips is quickly climbing many all-time GSU offensive leader boards. One of the most prestigious is the all-time hits leader for GSU. Phillips sits at 309 hits for his career, 17 hits behind the all-time leader, Scott Henley, with 326.

Sophomore Will Middour has been on fire on the mound lately and will try to continue his dominance against the Bulldogs on Sunday. He was the only winning pitcher during the Indiana series, tying a career-high seven innings thrown. He allowed only five hits and one earned run. Senior Jarrett Leverett and junior Kyle Rowe have been fantastic out of the bullpen as of late.

The Eagles will return to Statesboro to face Charleston Southern University on Wednesday May 2, followed by a weekend series against Samford University.

**SERIES PREDICTION: 3-0 GSU SWEEP**

# EDUCATION

# UNDER

# FIRE!

What if you were forbidden to obtain a university education and your professors were not allowed to teach you?

[www.educationunderfire.com](http://www.educationunderfire.com)

See the "Education Under Fire" film and hear the panel discussion on **April 26, Thursday, 7:00 pm in Russell Union Theater**. This program will stimulate a conversation about the universal human right of education and its denial to minorities in Iran, especially Bahá'í students.

The panel, moderated by Dr. Debra Sabia, features two Iranian Bahá'ís, Evaz Fanaian and Nasrin Rouhani, sharing personal testimonies, and also a Christian Minister, Dr. Francys Johnson, and a GSU Professor of Education, Dr. Dan Rea, providing brief critiques of the Iranian government's discriminatory policies.

Nobel Laureates, Archbishop Desmond Tutu and President José Ramos-Horta, have endorsed the "Education Under Fire" (EUF) program already presented at 120 universities across the United States including Harvard, Stanford, Emory, and Georgia Tech. Come to the Georgia Southern EUF program and participate in the conversation about the importance of protecting the universal human right to education for all people.

**Sponsored by Amnesty International GSU, Bahá'ís of Statesboro, & Multicultural Student Center**  
For more information, call Dr. Dan Rea at 912-478-1547 or visit [www.educationunderfire.com](http://www.educationunderfire.com)

"Your Student Activity Fees at Work!"





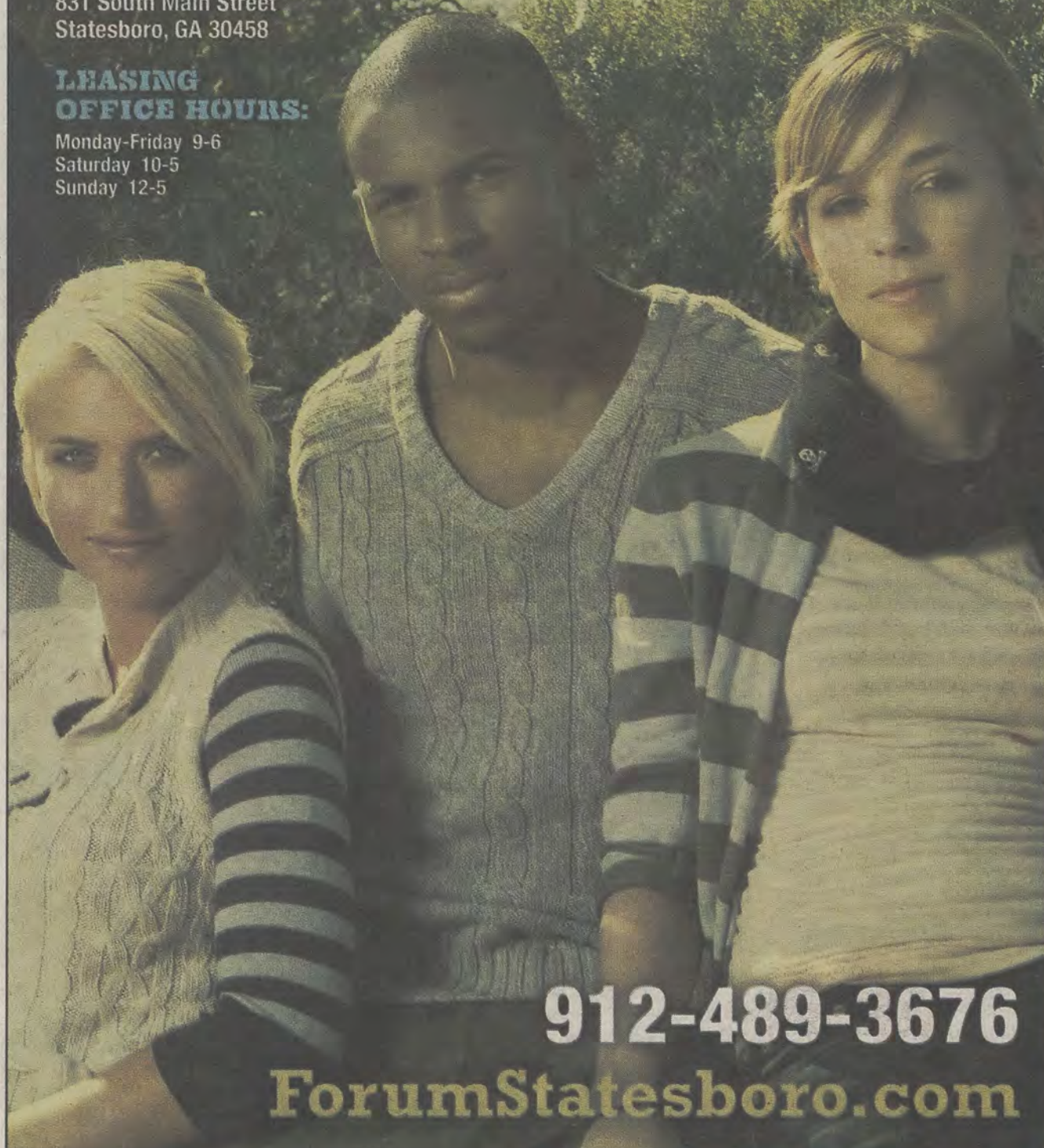
**IT'S YOUR LIFE...  
LIVE IT.**  
FORUMSTATESBORO.COM

**COMING TO:**

831 South Main Street  
Statesboro, GA 30458

**LEASING  
OFFICE HOURS:**

Monday-Friday 9-6  
Saturday 10-5  
Sunday 12-5



**912-489-3676**

**ForumStatesboro.com**

**GET A FREE T-SHIRT WITH THIS AD!**

**FORUM**

®

**AT STATESBORO**

A PREMIER STUDENT  
HOUSING COMMUNITY

**NOW  
LEASING  
FOR FALL 2012**

- Tennis Court
- Lap Pool & Spa
- Pet Friendly
- Pet Park
- Two Free Tanning Beds
- Indoor Basketball Court
- Indoor Volleyball Court
- Car Care Center
- Modern Faux-Wood Floors
- Private Bathroom in Bedrooms
- Convenient Individual Leases
- Free High Speed Internet in Bedrooms
- 24 Hour Fitness and Training Center
- Kitchens with Full Size Appliances
- Full Size Washer / Dryer Included
- Wi-Fi Cyber Cafe with Coffee Bar
- Outdoor Sand Volleyball Court
- High Speed Internet Access
- Student Center and Lounge
- Roommate Matching
- Expanded Cable
- Media Room



Residence subject to change. CREDIT: \$ 5.  
Pet deposit to be paid at move-in. Pet fees apply.