

Georgia Southern University

Digital Commons@Georgia Southern

The George-Anne

Student Media

4-19-2012

The George-Anne

Georgia Southern University

Follow this and additional works at: <https://digitalcommons.georgiasouthern.edu/george-anne>

Recommended Citation

Georgia Southern University, "The George-Anne" (2012). *The George-Anne*. 2741.
<https://digitalcommons.georgiasouthern.edu/george-anne/2741>

This newspaper is brought to you for free and open access by the Student Media at Digital Commons@Georgia Southern. It has been accepted for inclusion in The George-Anne by an authorized administrator of Digital Commons@Georgia Southern. For more information, please contact digitalcommons@georgiasouthern.edu.

DRESS FOR SUCCESS

FIRSTHAND FASHION ADVICE
FOR DRESSING PROFESSIONALLY

PAGE 12

GOLF WINS SILVER

PAGE 16



AVENUE BEGINS RENOVATIONS

PAGE 8

Thursday, April 19, 2012
Georgia Southern University
www.thegeorgeanne.com
Volume 87 • Issue 73

THE GEORGE-ANNE

SPRING CONCERT

Georgia Southern University students and the Statesboro community will fill Allen E. Paulson Stadium tomorrow night as music artists The Band Perry and The Fray hit the stage for this year's spring concert.

Page 9

BY JAZMIN DAVIS
The George-Anne staff

Tuition to increase by 2.47% per credit hour

BY COURTNEY ESCHER

The George-Anne staff

Georgia Southern University's tuition is set to increase by 2.47 percent per credit hour (\$3.80 per credit hour) in the coming fall semester.

On Tuesday, April 17, the University System of Georgia's Board of Regents announced that all public universities are to increase tuition by at least 2.5 percent.

"I do believe that the increase is at a reasonable rate," Director of the Bursar's Office, Cindy Durden said. "Since I have been here it seems that tuition has increased every year. This is the smallest increase I have seen yet."

Student fees are not set to increase, even with the tuition increase, Durden said.

The Board of Regents' decision to increase tuition was made in part due to Governor Nathan Deal's full funding formula and the goal of the board to maintain affordability, according to an article published by the University System of Georgia.

Deal's funding formula is set to provide the board with a strong financial base that can

be used to create current tuition policy, according to the article.

"The Board of Regents designates what our office does. We did not get to choose our tuition increase rate. They told us what it would be and now we have to comply," Durden said.

"Georgia Southern can not decide their own tuition rate," Durden said.

Other public institutions have been designated tuition increases by as much as 6 percent, according to the article.

The Board of Regents takes all 35 public university budgets into consideration when creating a tuition increase, Durden said.

"Governor Deal has done a great job overall with trying not to increase rates, especially in education," Durden said.

"The 2.5 percent increase is a lot lower than what I have anticipated based on the increases given to other universities," Durden said.

The Office of Financial Aid was not available for comment.

Some students are against tuition being raised, specifically because of the recent changes in the HOPE scholarship.

"They are going to raise

See TUITION, page 3



thegeorge
anne.com



Follow us on Twitter
@TheGeorgeAnne



Newsroom 478-5246
Advertising 478-5418
Fax 478-7113

PO Box 8001
Statesboro, GA
30460

Dean of COBA Ron Shiffler says goodbye after 10 years

BY ASHLEY WOODWARD

The George-Anne contributor

Ron Shiffler, Dean of the College of Business Administration and eagle of 10 years, reflects on his time at GSU as he prepares to trade his wings for a crown.

"I'm going to miss (GSU) terribly. These are people that I've lived and worked with for ten years, so this was not an easy decision. Georgia Southern is such a good university and potential is so high for the future," Ron Shiffler, Dean of COBA said.

"It is going to be very difficult my last day. I put a lot in and got a lot out, and everyone is better for it," Shiffler said.

"I will be taking a position at Queens University in North Carolina. The university shares some characteristics with GSU," said Shiffler.

"It is similar to what is at GSU. They have a strong banking flavor," Shiffler said.

"Their school is named after Hue McColl, former CEO of Bank of America. They have strong banking ties like GSU," Shiffler said.

"It is a terrific opportunity. The university poised to go in a new direction; they have great leadership, a great foundation and where they want to go with a plan is my strong suit."

"Like GSU, (McColl) emphasizes entrepreneurial leadership. It also has strong graduate MBA program. These are similar to GSU, so my skills match perfectly with what they are looking for," Shiffler said.

Queens University will have some differences from GSU because it is a private university, Shiffler said.

"(Queens University) does not have the luxury of state tax dollars," Shiffler said.

"Private schools depend on enrollment and tuition is higher. Something new for



Ron Shiffler

me is that I will be expected to actively participate in recruiting freshman," Shiffler said.

Going to North Carolina is a way of getting back in touch with my roots, Shiffler said.

"North Carolina has always had a sort of soft spot in my heart. I went to undergrad school at Greensboro, and my family is from there," Shiffler said.

Shiffler has been at GSU for 10 years and has made significant contributions to the schools growth.

"He's definitely leaving us in a better position than he found us in ten years ago," Bill Wells, associate dean of academics, said.

Since I have been here we have done a good job enlarging online graduate programs. The web MBA program has grown from about 30 to 350, Shiffler said.

"We have also started the online masters in economics and that has 50 to 60 enrolled," Shiffler said.

"Our programs have won awards and rankings at national level and international

level for online programs," Shiffler said.

"I also began the forensic accounting program, which is a response to white collar crime in the business world. That program is recognized as one of the best in the U.S.," Shiffler said.

"I feel very fortunate to have been a part of the Eagle Nation and I will always follow the GSU football team," Shiffler said.

"We're going to miss him," Carolyn Price, Shiffler's secretary, said.

"I truly love GSU and the business school," Shiffler said.

"My decision was difficult, but GSU has a good president and provost and whoever the new dean is will take the school even higher," Shiffler said.

"I feel really good about the future at GSU," Shiffler said.

Christian Flathman, director of Marketing and Communications, said, "There has been no interim dean named yet. Recommendations are being accepted until April twentieth, when Provost Ted Moore and President Keel will review them."

Over 60 Arcade Games, Ballocity, Bowling,
Mini-Golf, Laser Tag & Restaurant!
Food & Fun Combos, Group and Individual Packages Available!

**BEST PLACE
TO PLAY!**



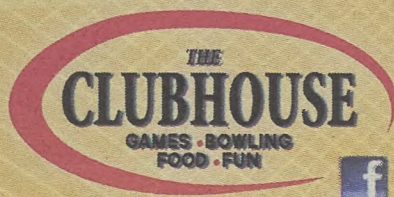
GSU NIGHTS

JOIN US MONDAY, TUESDAY & THURSDAY
for Exclusive GSU Deals!
Unlimited Bowling, Laser Tag and Mini Golf
6 PM TO CLOSE

ONLY \$9.99
(with your GSU ID)



Scan this code to
see more deals!



ClubhouseStatesboro.com • 912-871-1000

George-Anne & Joe
brought to you by

Thursday, April 19th

**Williams Center Gazebo
From
8:15a.m.-10:00a.m.**

Don't forget to stop by Starbucks at Georgia Southern for
great coffee, pastries, sandwiches, parfaits, and fresh fruit cups!

twitter.com/GSUStarbucks

TUITION, from page 1

tuition again? If they are going to increase tuition, then are they going to increase Hope or Pell grants? Or increase the amount they give out in scholarships?" sophomore graphic design major Stephanie Conmy said.

"We can barely afford school now as it is, and for those of us who don't make HOPE, it is already a stretch financially. An extra seventy dollars may not seem like much until you have a small income and barely make ends meet," Halle Hodges, freshman psychology major, said.

"It is just inconsiderate with HOPE being cut back," freshman early education major Janai Johnson said.

Some students are concerned with the changes in tuition but realize that

“ The 2.5 percent increase is a lot lower than what I have anticipated based on the increases given to other universities. ”

-Cindy Durden,
director of the Bursar's Office

there is nothing that can be done.

"Tuition has increased each year that I have been here. To not pay the extra seventy dollars would mean not getting an education or a degree — both are required to get a job these days," senior business major Kelsey Johnson said.

Some students believe that the changes in tuition are not a significant

inconvenience.

Tia Ricks, freshman sports management major, said, "Two-point-five percent isn't really that much. It isn't a big, big inconvenience. If it were ten percent or more, then it would be ridiculous. But, since it is less than a five percent increase, it is fine. I mean, you can't please everyone, you know?"

TUITION CHANGES

	CURRENT TUITION	NEW TUITION	PERCENT INCREASE PER CREDIT HOUR	PERCENT INCREASE FOR 15 CREDIT HOURS
Georgia Southern	\$2,298	\$2,367	2.47%	3.00%
Georgia Tech	\$3,641	\$3,859	5.99%	5.99%
University of Georgia	\$3,641	\$3,823	5.00%	5.00%
Georgia College and State University	\$3,236	\$3,317	2.50%	2.50%
Georgia State	\$3,641	\$3,768	3.49%	3.49%

Figures based off of 15 credit hours.

Kayla McFalls/The George-Anne

Statement of Operations

The George-Anne is the official student newspaper of Georgia Southern University, owned and operated by GSU students using facilities provided by the university. The newspaper is the oldest continuously published newspaper in Bulloch County. The newspaper is a designated public forum for the Georgia Southern community. The newspaper is published twice weekly, on Tuesdays and Thursdays, during most of the academic year. Any questions regarding content should be directed to the student editor by phone at 912.478.5246 or at gaeditor@georgiasouthern.edu.

ADVERTISING: The newspaper accepts advertising. Inquiries may be made by calling 912.478.5418 or 912.478-0566. Fax any questions to 912.478.7113 or e-mail ads1@georgiasouthern.edu.

The George-Anne receives additional support, in part, from the Student Activities Budget Committee.

The deadline for reserving space and submitting advertising copy is noon, one week prior to the intended publication date. For more information, rate cards, sample publications, contact the advertising manager or student

media director.

The advertiser is responsible for any errors in advertisements and its liability for adjustments is limited to the amount of space the error occupied in the ad. Further, the newspaper is not responsible for any damages caused due to an ad's omission from a particular edition and its responsibility solely is to reschedule the ad in the next regular edition at the regular advertising rates.

STUDENTS BEWARE: The George-Anne screens all advertisements prior to publication. The newspaper strives to accept ads for legitimate products and services only. Students are urged to exercise caution when replying to ads-particularly those that require personal information. Students are also urged to report to the newspaper any suspicious offers which they might see in an ad.

PUBLICATION INFORMATION: The newspaper is printed by Signature Offset in Jacksonville, Fla.

NOTICE: Unauthorized removal of multiple copies from a distribution site constitutes theft under Georgia law, a misdemeanor offense punishable by a fine and/or jail time.

Editor-in-Chief Arielle Coambes
Managing Editor Jennifer Curington
Opinions Editor Alex LaSalle
News Editor Jessie Reese
Asst. News Editor Courtney Tielking
Arts Editor Quaniqua Epps
Asst. Arts Editor Gianna Carme
Sports Editor Jannah Bolds
Asst. Sports Editor James Farmer

Copy Chief Matthew D'La Rotta
Business Manager Holly Hillhouse
Asst. Business Manager Vicki Tucker
Marketing Manager Aria Gabol
Production Manager Mallory McLendon
Photo Editor Lindsay Hartmann
Design Editor Kelsey Paone

Corrections

Contact the editor at gaeditor@georgiasouthern.edu for corrections and errors.

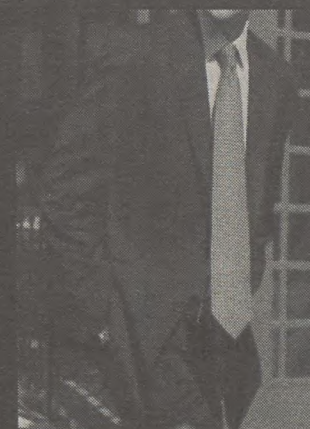
LAUREN
RALPH LAUREN



The Sir Shop

TWO LOCATIONS

Statesboro Mall Main Street Village
764-6924 871-4962



Our View

Landrum needs to ensure future sanitation

In Tuesday's edition of The George-Anne, we reported that Landrum Center received unsatisfactory marks from the Bulloch County Health Department on Tuesday, April 10. They have since risen to an "A" grade.

Points were deducted for improper hand washing, improper food temperatures and an absence of closures and sneeze shields in the cooking area. There were also signs of vermin, though the health inspector sighted none.

Unsatisfactory marks were also given last September. Grades were improved soon after.

Landrum is one of the largest dining centers on campus. The health safety of Landrum, as with other dining centers, needs to be a top priority.

College campuses, due to their crowded nature, can easily spread illnesses, and our crowded dining centers need to be the first places to focus on in regards to sanitation.

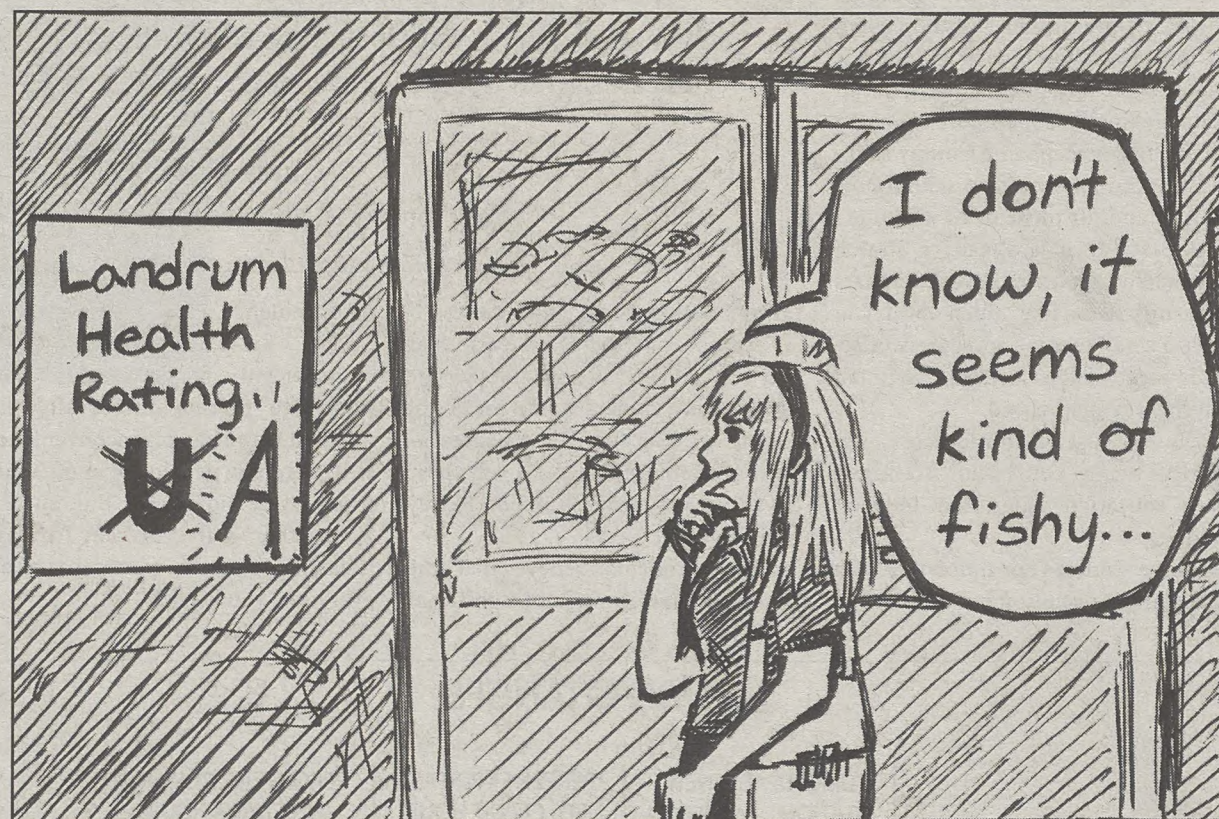
We are glad that Landrum has improved its health grade. We believe that this improvement needs to become habit. Two unsatisfactory marks in the past academic year are two too many.

Health issues in dining areas are more than concerning, since so many students count on the university's meal plans to be safe.

Landrum Dining needs to ensure healthy conditions from here out. Future negative marks should not be tolerated.

The George-Anne welcomes letters to the editor and appropriate guest columns. All copy submitted should be 350 words or fewer, typed, and sent via e-mail in Microsoft Word format to gaeditor@georgiasouthern.edu. All submissions must be signed and include phone number for verification. GSU students should include their academic major, year and hometown. The editors reserve the right to reject any submission and edit submissions for length.

Opinions expressed herein are those of the Board of Opinions or columnists themselves and DO NOT necessarily reflect those of the faculty, staff or administration of GSU, the Student Media Advisory Board, Student Media or the University System of Georgia.



Jasmine Nielsen/The George-Anne

How we should change SGA

In Tuesday's column, I addressed the topic of our Student Government Association. Specifically, how their attempt at "GSU solutions" highlighted how out-of-touch they can be.

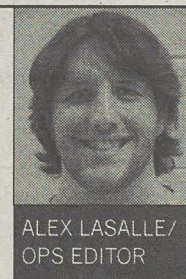
It created a bit of a stir, both positive and negative. Still, highlighting a problem is only part of what should be done. It wouldn't be fair for me to pick on SGA without proposing any solutions.

Here's the meat of it: SGA needs to change. Not the people within – for the most part – but how it is run as an on-campus organization.

Right now, SGA's use on campus is limited. Even if they vote on a measure or bill or whatever, the university can crush it like they would step on a dead leaf. I don't see that changing.

SGA's purpose, so I'm told, is to serve as a representative to GSU on behalf of the student body. Outside of approving funding for student organizations – again, something that university officials can override with ease – they have existed mostly as a faceless organization that meets in the

ALEXANDER THE PRETTY GOOD



ALEX LASALLE/
OPS EDITOR

Russell Union on a regular basis.

Yes, students should take the initiative to be more active. I encourage all of you to get involved, but if SGA truly cares about the student body, they need to do what is necessary. Arguing about who is responsible for what will accomplish nothing. We're all responsible.

But how do we close that gap? How do we turn SGA into something truly "for the students?"

Simple. Right now, SGA senators are either at-large or representing a specific college, CLASS, COST, CIT, etc. These representatives need to start functioning in that capacity outside of SGA meetings.

Why not have the senators serve as

a representative for individual students, not to SGA, but to GSU?

Let's say you're an IT student. Maybe you are having a problem finding a textbook. You could have a complaint about a teacher. You get the idea.

Instead of having to search the abyssal bureaucracy for someone that can help, you can just go and talk to your representative. They would know who to talk to, what to do and what can be done. This is how they should be representing us.

And you would know, personally, who is your representative. Your CIT senator would hang out in the IT building lobby, talking to students. He or she would make sure you know them and trust them.

SGA would effectively become a student lobbyist organization. I believe this would truly serve the students of GSU. I hope SGA and GSU consider this. Nobody ever accomplished anything by maintaining the status quo.

LaSalle is a junior writing and linguistics major from Cumming, Ga.

From the left

Legalization is the obvious choice

The Drug Enforcement Administration classifies drugs in different "schedules," based on the danger that drug presents. Schedule I drugs present the greatest threat.

According to the DEA, schedule I controlled substances "have a high potential for abuse, have no currently accepted medical use in treatment in the United States, and there is a lack of accepted safety for use of the drug or other substance under medical supervision."

Some of the substances classified as schedule I include heroin, LSD and marijuana. This is despite the multiple medical benefits and uses of the cannabis plant. This is despite the fact that there have been no addictive chemicals found in THC. The only way it could be addictive is if an individual allows it to define their daily activities or start to subconsciously associate smoking marijuana with daily activities.

Industrial hemp is also demonized and falsely identified as the cannabis plant because it's in the same family. There are so many uses for hemp that it's stupid not to use it to its potential. Hemp oil can be cultivated as bio fuel and it can be made into clothes and many other things. The first American flag was made of hemp, as were the first blue jeans.

It was actually the biggest, most widely used plant in the U.S. until the cotton industry took off.

Legalization of the cannabis plant would do wonders to help our country. Marijuana has been demonized as a criminal product and it has been said that the plant is the basis for a lot of crime here in the US. The same thing was once said about alcohol. This hasn't been a war on drugs; this has been a "war on weed".

The reason it's so dangerous is because it's illegal, not the other way around. It's not illegal because it's dangerous. If the cannabis plant



ROB ROBERTS @Robert_ARoberts

were to be legalized, people would buy it from dispensaries rather than street corners. You wouldn't have gangs selling the plant; you would have doctors selling it.

The economic implications of ending this prohibition are outstanding. If we were to package, sell and tax marijuana cigarettes as we do with regular cigarettes, our economy would get a huge boost.

People will no longer be arrested for simple possession of marijuana or for distribution, removing a large amount of people from the prison system nationwide. That alone would save a great amount of taxpayers' dollars.

The only side effects of marijuana are junk food and sleep. Not one death has ever been recorded as a result of marijuana. However, alcohol and cigarettes kill millions but are sold openly and frequently at every gas station and corner store. Our lawmakers are doing our country a grave disservice by continuing the prohibition of the cannabis plant. Think about it. Who would it really be hurting?

Roberts is a senior public relations major from Warner Robins, Ga.

From the right

Women are individual people

With all the talk this year from both sides of the aisle about the "war on women" and "he who gets the woman's vote will win the election," it got me thinking: Is there only one woman who speaks for everyone?

From what I see on the news, you would think that every single woman is only worried about getting free birth control, keeping the right to abortion and making sure that "men don't keep them down."

This is far from the truth. I would think that assuming women have a herd mentality would be almost as insulting as being called a slut. This assumption that all women agree is false and absurd.

When asked in exit polls last election, 70 percent of women described themselves as either stay-at-home mothers or only working part time while their children were at school, according to CNN polls. This starkly contrasts the "war on women" perception that the modern woman is a career-minded woman who should be in the workforce and not at home.

It should be known that there are some women who are like this, and that's fine. Whatever she wants to do, it's her option, her choice and her freedom.

Also, according to a Kaiser Insurance Group poll, 62 percent of women would be ok with paying for at least part of their contraceptive services. There goes your all-women-want-free-birth-control tactic. Conservative views on birth control are not anti-women, like many



FRITZ CHAPIN @GrandOldPartier

would have you believe.

Finally, as of last year, women of this country are split 50/50 on the abortion issue, many saying that it should be legal in only finite and special circumstances, according to a Gallup poll.

Women are just as diverse a voting group as men and need to be treated as such. There are going to be different kinds of women who want different things. In that same Kaiser poll, 86 percent of women who said they were democrats said the government should pay for all contraception while only 22 percent of republican woman said so.

They are different. Women are individuals, and they should be treated as such.

Politicians need to stop trying to get the mythical single-woman-who-speaks-for-all women's vote and go after the individual women's votes, as individuals and not a gender.

Chapin is a senior political science major from Roswell, Ga.

Voted Best Mattress Store in the 'Boro!

Student Housing Available

New, Used & Antique
Furniture

Complete Mattress Outlet

Deal's

Come See the Dealmaker!

17083 GA Hwy 67, Statesboro, GA
(912)681-3824 (Near Fairgrounds)

Mon-Fri : 10am-6pm

Sat: 10am-5pm

Sun: 1Pm-5pm

- Honest, Dependable
Same Day Delivery
- Locally Owned &
Operated by GSU Graduate
- Serving GSU Students
for 34 years

Tervis Tumbler Headquarters

- Collegiate Gifts
- Jewelry
- Handbags
- Placemats
- Diaper Bags
- Men's Gifts
& Much More

Best Furniture Mattress & Gift "DEALS" in the 'Boro

Beware the GTDNP virus

Students of Georgia Southern University, I require your full attention. An epidemic has swept our campus and taken over our ladies. I am talking of course about the Giant-T-Shirt-Non-Pants (GTSNP) virus.

Symptoms of the virus include females wearing giant T-shirts and a form of non-pants and usually include severe cerebral malfunctioning, or stupidity.

The virus seems to be spreading mostly over sorority girls but has been known to transfer to those closest to them.

Now that word is out about the virus, the main thing to do is remain calm. Some of you may be thinking, "But how can we stop the virus? How can we protect ourselves?"

A key to protecting yourself is finding those infected. This should be very simple because the virus leaves all of the infected in the same state of external decay.

First you will notice the T-shirt. It will be larger than the female wearing it by at least three sizes and will normally be a bright color, with anywhere from one to many logos for local businesses, fraternity formals and bars printed on them.

Next, you will notice the lack of pants. Anyone can wear a T-shirt and jeans but the virus calls for a lack of pants. Please be warned: Leggings and athletic shorts are not pants. Do not be confused; it could be the difference between your life and death.

Other things you may notice are Rainbow brand flip-flops or a Polo Ralph Lauren ball cap. Essentially, the infected will display signs of preparing to go to the gym, without ever going to the gym.

The infected may appear healthy by wearing full prom make-up – trust me when I say this is a trap.

The virus spreads quickly through oral transfer. The infected prey on the weak by flapping their jaws open and letting a cluster of annoying sounds fall out. This horrible phenomenon is, oddly enough, called "talking." However, these sounds

MODEST FINDINGS



COURTNEY ESCHER/
NEWS REPORTER

the infected make are not words, clauses or proper sentences.

To hunt these infected you must simply equip yourself with a T-shirt cannon and a pair of pants. Any type of pants will do, really, but jeans seem to work best – khakis or slacks agitate the infected because, "like, thaaay juss arrrn comfrrlllll."

When approached by or approaching the infected, ready your T-shirt cannon and fire to stun them. Once they have hit the ground they will become agitated. This is where things can get messy. You will need to convince the infected to wear the pants you have brought with you.

At this point the infected's only defense is to spread the virus by "talking." Because of the severe cerebral damage that has been done due to the virus, you can counter the attack with simple math and physics.

Memorize a formula — stay alive.

Once you have disarmed the infected, the next step is to kill the virus. This can only be done with an injection of sanity to the temple.

I know that times are hard and it is terrifying to be surrounded by this malicious virus every day. But, if we can stop the virus, then sanity can thrive. It is imperative that we fight back and stop the virus, humanely.

Or we could just go all Walking Dead on their asses.

Escher is a sophomore journalism major from Canton, Ga.

Letters to the Editor

Ops should push changes

Dear Editor,

I understand the idea and functionality behind the Opinions section in The George-Anne.

I also agree with them, especially when it comes to what free speech is and what it means to us.

I guess what I'm referring to is how the overall validity of an article can damage relations between organizations. Those types of articles do not try to bridge differences and they do not propose an alternative to move forward.

Now, I'm not saying that I want to impress the idea of censorship or limited speech, however I wish to reinforce the idea of sharing an opinion with thought and consideration.

In the time I have spent at this institution, I have been taught that whenever you have a discussion your viewpoint is validated as long as it is backed by some sort of logical and well thought-out answer.

An opinion that leads to a more proactive conversation will do better than when it just points fingers and name calls.

These points have been reiterated countless times before.

But if students are upset at SGA, go out to their meetings, shoot them an email, or get involved... be proactive about the issues you wish to change. Clearly pissing and moaning

hasn't gotten any of the change people want.

What I would like readers to consider is this: SGA isn't a specific person. When someone says, "Oh SGA doesn't do anything," they aren't referring to one person.

Instead you are saying that 44 people aren't doing anything.

Clearly that cannot be the case, seeing how senators and exec alike have helped provide services such as Troy Marsh, the on-campus lawyer that helps students who get in legal trouble, and Shuttle Gus.

They even provide funds for individuals and organizations and scholarship opportunities for students (John F. Nolen scholarship).

Do things go perfect in SGA? No. I agree that there are some people that could always step up their game so that in the end if inadequacies arise from certain members then it's not labeled as an SGA problem.

For those who just want the gist of this letter and prefer to go to the next article, what I'm trying to say is that we need to promote change that will improve Georgia Southern.

I ask you to come with solutions that'll encourage better unity among our campus.

With Eagle Pride,
Victor Lopez
Senior
Psychology major

**Planters
ROW**
By Hendley Properties
912.681.1170
www.hendleyproperties.com

3 and 4
Bedroom Cottage Houses

\$365

/month per person

WEEKLY BUZZ

A weekly calendar listing sponsored by The Division of Student Affairs and Enrollment Management

APRIL 18 - APRIL 25

THURSDAY 4.18.2012

APPLY TO BE ON THE V.A.L.U.E.S. TEAM

The Office of Student Conduct is now accepting applications for the V.A.L.U.E.S. Team! V.A.L.U.E.S. is our civility campaign at Georgia Southern University, and the V.A.L.U.E.S. Team will work to program, present, and promote V.A.L.U.E.S. across campus. This team is a dynamic group of students that work to educate their peers and the college community about V.A.L.U.E.S., and how we can all strive to hold ourselves to a higher set of standards. Team members must be committed to having a positive impact on Georgia Southern's campus.

To apply, submit the application found on the Office of Student Conduct's website to Amy Zieziula or return it in to the office of Student Conduct in Russell Union Room 2022. This round of applications is for current students only and is due by April 23, 2012. Applicants will later be contacted regarding interviews. Future students will have the opportunity to apply in August at the start of the fall semester. Questions? Please contact Amy Zieziula, azieziula@georgiasouthern.edu.

12:30 PM - 1:45 PM

B.Y.O.B. (BUDGET YOUR OWN BANK) LUNCH-AND-LEARN SERIES *FREE FOOD* (PART II)

The Office of Career Services is hosting two lunch-and-learns the month of April for the students of Georgia Southern University aiming to afford students with guidance on how to properly budget their finances. All comers will be welcomed; however the office will be focusing on juniors and seniors as their target audience. The series will be called the B.Y.O.B. (Budget Your Own Bank) Lunch and Learn Series, with presentations delivered by both Dr. Godfrey Gibbison (Associate Professor and Director of the School of Economic Development) and Vicki Hodges (Assistant Director of Human Resources). The event itinerary is as follows:-

Tuesday, April 17th from 12:30--1:45 in Russell Union 2080, Dr. Godfrey Gibbison will present on debt management and decision making related to debt management. He will touch briefly on home ownership, but focus primarily on:

- Student Loans
- Car Loans
- and Credit Cards

Thursday, April 19th from 12:30--1:45 in Russell Union 2080 Vicki Hodges from the Georgia Southern University Human Resources Department will speak about benefits and decision making regarding benefits. Topics will include:

- Considering leave, daycare, and comp-time policies with regard to family planning decisions
- Deciding between different sorts of health insurance plans such as HMO, PPO, high deductible, and low deductible plans
- Determining whether or not to utilize, and how much to put into, a health savings account
- Deciding between alternate job offers not just from the standpoint of salary, but also from the standpoint of benefits, to include health insurance, flexible spending accounts, pensions versus 401K versus TSP, and leave policies. Sponsored by Career Services.

FRIDAY 4.19.2012

7 PM

OUTDOOR MOVIE

SWEETHEART CIRCLE

Sponsored by the Office of Student Activities.

6 PM

SPRING CONCERT

PAULSON STADIUM

Georgia Southern University Spring Concert to Feature The Band Perry and The Fray STATESBORO, Ga., - Feb. 16, 2012 - Georgia Southern University will present a spring concert featuring The Band Perry and The Fray on Friday, April 20.

The bands will co-headline a performance at Allen E. Paulson Stadium on the Georgia Southern University campus in Statesboro, Ga. Gates open at 6:00 pm and The Band Perry to perform a full one hour and fifteen minutes starting at 7:30 pm followed by a full show by The Fray at 9:30 pm.

Tickets for Georgia Southern University students will go on sale Monday, March 19th. General admission tickets for the public will go on sale Monday, March 26. Student tickets are \$25 for the field and \$20 for the stands. General admission tickets will cost \$45 for the field and \$40 for the stands. Military and faculty discount tickets also available.

The Band Perry is a 2012 Best New Artist Grammy nominee and winner of the 2011 American Country Music Top New Vocal Group Award whose singles "If I Die Young" and "All Your Life" reached the number one spot on country charts. The Fray is a piano-based rock band whose hits include "Over My Head (Cable Car)" and "How to Save A Life." The Fray's latest album Scars and Stories was released in the United States last week with its single "Heartbeat" a quick iTunes download favorite.

For more information on ticket sales, parking, tailgate rules, and general concert information please visit <http://news.georgiasouthern.edu/concert/home>.

MONDAY 4.23.2012

APPLY TO BE ON THE V.A.L.U.E.S. TEAM

The Office of Student Conduct is now accepting applications for the V.A.L.U.E.S. Team! V.A.L.U.E.S. is our civility campaign at Georgia Southern University, and the V.A.L.U.E.S. Team will work to program,

present, and promote V.A.L.U.E.S. across campus. This team is a dynamic group of students that work to educate their peers and the college community about V.A.L.U.E.S., and how we can all strive to hold ourselves to a higher set of standards. Team members must be committed to having a positive impact on Georgia Southern's campus.

To apply, submit the application found on the Office of Student Conduct's website to Amy Zieziula or return it in to the office of Student Conduct in Russell Union Room 2022. This round of applications is for current students only and is due by April 23, 2012. Applicants will later be contacted regarding interviews. Future students will have the opportunity to apply in August at the start of the fall semester. Questions? Please contact Amy Zieziula, azieziula@georgiasouthern.edu.

TUESDAY 4.24.2012

7 PM

GSU Unplugged

RUSSELL UNION STARBUCKS

Open Mike Night. Sponsored by Eagle Entertainment.

WEDNESDAY 4.25.2012

11 AM

MULTICULTURAL VENDOR EXPO

RUSSELL UNION, COMMON

Booths with artwork, books, jewelry, food and more related to the global community will be on sale. Sponsored by Office of Multicultural Student Center.

UPCOMING EVENTS....

THURSDAY 4.26.2012

EXHIBITION: GRAPHIC DESIGN PORTFOLIO REVEAL

CENTER FOR ARTS & THEATRE

In compliance with the Americans with Disabilities Act, Georgia Southern University will honor reasonable requests for accommodations. The Center for Art & Theatre is open Monday through Friday from 9 - 5 and by appointment. Docent tours are welcome and available upon request by calling 912 GSU-ARTS. For more information on this exhibition and other gallery programming provided by the Betty Foy Sanders Department of Art, visit <http://class.georgiasouthern.edu/art>.

EDUCATION CAREER FAIR

RUSSELL UNION, BALLROOM

Meet recruiters from school systems, education services organizations and graduate programs at the Education Career Fair. Employers will be looking to recruit not only undergraduate students but our graduate (masters, specialists and doctoral) level students as well.

Resumes and professional attire or business casual attire is required!

Students: to view companies attending please log into Eagle Career Net.

Employers: To register please visit <https://georgiasouthern-csm.symplicity.com/events/pid198376/Sp2012Education>

Student Affairs
Enrollment
Management

Brought to you by Georgia Southern University VALUES. Georgia Southern V.A.L.U.E.S. is the culture shared by our students, faculty, and staff. We endeavor to share our V.A.L.U.E.S. inside and outside of the classroom with faculty, staff, students, alumni and all other community members. In order to produce productive citizens with an informed set of ethics and community standards as well as create an environment of respect and civility, we pledge to live by our V.A.L.U.E.S.

Political organizations to make voting easier

BY KARA DEES

The George-Anne contributor

The Young Democrats of Georgia Southern, in collaboration with College Republicans, have announced a new voter initiative, which promotes more student involvement in the electoral process by increasing student voter registration.

The initiative will help raise registration by simplifying the voting process and removing obstacles that may keep students from voting, President of the Young Democrats of Georgia Southern University Marc Silver said.

"We feel that the right to vote is one of the most cherished rights that we as Americans have, and we would like to take a part in helping to protect these rights in the face of

voting suppression," Silver said.

In a meeting organized by Bulloch County Democratic Party Member Bill Herring, a compromise was reached between the Bulloch County Election Board and University Leaders — including members from Young Democrats of Georgia Southern and College Republicans — so that students will have Early Voting on campus from October 23-25, Silver said.

This initiative is bridging the gap between students and the whole governmental process, Silver said.

"For example, some students have no access to transportation to the location where they can cast their ballot," Silver said.

"We want students to be a part of this big movement," said College Republican

Chairman Jeff Brown. "We are a growing student body, live here year round, are the biggest part of the economy, and we shouldn't be crowded out by local politics."

"Right now we are registering voters. After the registrant finishes their application, we ask for their permission to obtain contact information so we can contact them to tell them when they can vote," Silver said.

This is a grassroots movement that starts from the bottom up and begins with registering students to vote. Its aim is to increase the ability of students to have their voice heard, Brown said.

"One of the problems voters face is that there isn't any long-term assistance in the voting process so that student opinions can be expressed through the ballot. This

initiative assists through the whole process," Silver said.

The Young Democrats have created a hotline where students can call to ask questions throughout the voting process, Silver said.

A student who may not know about voter I.D. laws can call or text message the hotline to facilitate easy access to voting from a student's point of view, Silver said.

The movement isn't altogether new to this semester. It has been a long journey and it will continue, Silver said.

The Young Democrats of Georgia Southern will be registering students every Wednesday as a push for voter registration, their booth can be found at Russell Union in the rotunda.

The Avenue apartment complex begins renovations

BY TAYLOR COOPER

The George-Anne staff

The Avenue at Southern apartment complex, which holds 624 residents, on Georgia Avenue has begun a series of renovations.

A large portion of the residents in The Avenue are students, Bertainy Brown, senior community assistant of The Avenue and graduate student, said.

The three-bedroom apartments have already been renovated, with four-bedrooms to follow. The wi-fi network and fitness room have been upgraded and a community watch has been instituted, Dustin Shaw, property manager of The Avenue, said.

"For the three-bedroom apartments, we have completely replaced the cabinets and countertops and have all new black appliances," Shaw said.

Dustin Shaw, property manager of The Avenue, would not comment on the exact cost of the renovations.

"In the four-rooms, we are replacing the cabinet doors and counter-tops," Shaw said.

"The four-bedrooms will be done by move-in time in August. Renovations will start on them in the next few weeks," Morgan Carswell, leasing and marketing manager at The Avenue, said.

"We haven't started on the four-rooms yet because we are getting the colored doors we want that will match the housing," Shaw said. "The money is ready. It's in the budget. We're just

making sure everything is how we want it to be. We don't want the residents to be unhappy."

The renovations are going to be done while residents are still occupying the apartments, Shaw said.

"We want our residents to be happy. The kitchen is the main focus now. We renovated the common area recently, so we're moving on to the next part of the apartment," Shaw said.

Several things were added and changed in The Avenue's clubhouse fitness room.

"We have also updated the fitness area with a new floor, new treadmills, ellipticals and free weights," said Shaw.

Two plasma TVs were added to the fitness room as well, Brown said.

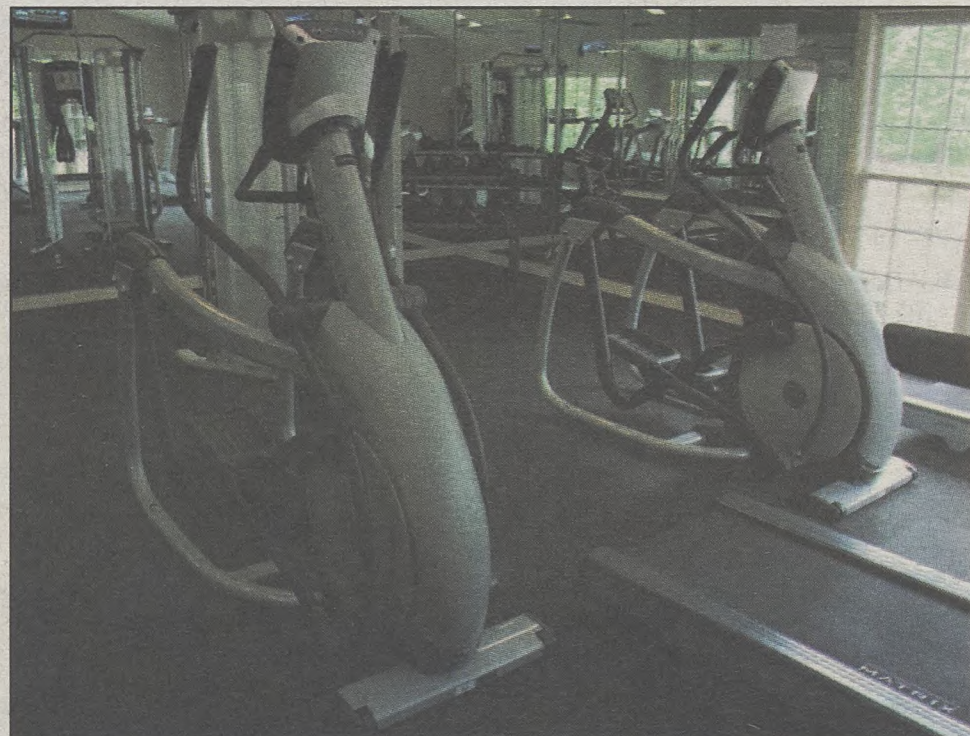
Cameras with night vision have been installed in the clubhouse and around the pool area to make sure that people using the facilities at night are actually residents, Carswell said.

"We have students that use the computer lab at 3 a.m. This will make it safer because it will be easier to tell who's a student and who's not," Brown said.

A community watch is being implemented to improve safety.

"We have a reputation of being hood and not safe," Brown said.

"A community watch is being started. We're asking the residents to get to know their neighbors so they can report any suspicious individuals," Brown said.



Lauren Davis/The George-Anne

Part of The Avenue's renovations include new workout equipment in the exercise room.

"It's sort of an unofficial community watch. It has been instituted. We're just trying to get everyone to talk to us and get involved," Carswell said.

The wireless network has also been improved and is much faster than before the upgrade, Shaw

said.

"We spent a lot of money upgrading the wireless. Now every other apartment has its own router," Brown said.

Brown said, "All of this is to help improve the image of The Avenue."

REQUESTS MADE BY THE PERFORMERS NOT NECESSARILY MET BY GSU

"1 Half
Gallon 2%
Milk
(Local if
Possible)"

"Two (2) Dozen Dark
Colored Bar Towels"

"12 BOTTLES OF MILLER HIGH LIFE (NOT MILLER LITE)"

"Large Can or Bag of Mixed Nuts,
WITHOUT PEANUTS PLEASE"

"2 Chocolate Bars
Almonds and Sea Salt in Dark Chocolate"

"RED
SOLO
CUPS"

Tyler Flieder/The George-Anne

SPRING CONCERT, from page 1

Hosted by the University Programming Board, the concert doors will open at 6 p.m. and the concert will kick off at 7 p.m. with GSU's own Carrie Loomis and Robert Cottle, the duo that recently won the opening bands competition.

Soon after, The Band Perry will take the stage at 7:45 p.m. with The Fray performing at 9:30 p.m.

"We thought that these bands would cater to the genres of music that the students liked the most. They're also really talented musicians," junior public relations major and president of UPB Kayla Tokars said.

While someone from UPB will be chosen to host the event, the rest of the team will take on the task of making sure every detail runs smoothly.

The ticket prices come from attendance at previous concerts and contributing student fees. The total expense for the concert includes \$90,000 for The Band Perry and \$100,000 for The Fray plus the cost of stage set-up and equipment. The university is using one-third of funds from student fees and the other two-thirds from ticket sales, parking and band merchandise, according

to the contract made between GSU and both bands.

With 4,500 seats already sold, out of the possible 7,500 seats that are available, tickets are still up for sale.

In case of rain, the audience does not have to worry about a canceled show. The stage is set to withstand rain, but, in case of severe weather, the concert may be canceled, according to the contract as well.

Students play a big role in the production of the event, according to the director of student affairs, Vince Miller. Today, there will be about 40 students changing shifts throughout the entire day working to set up the stage and the band equipment that the university is responsible for providing.

"There are probably about two hundred people involved in this and about one hundred and fifty of them are students," Miller said.

"Who else is going to do it? It's our stadium. We should know the drill by now," junior psychology major and member of the concessions staff for the concert Justin Harden said.

There will be a transformer stage, where a semi-truck unfolds into a stage, set in the center

of the stadium.

When The Band Perry takes the stage, Kimberly will be in the center with her acoustic guitar, while Reid will stand to her left with his bass guitar and Neil on her right interchanging between his accordion and mandolin. Behind them, a full band equipped with a piano, drums, a fiddle, electric guitar and a banjo.

For The Fray's set-up, the lead vocalist and pianist, Isaac Slade, will be center stage with his piano. Lead guitarist Dave Welsh will be to his left, bass guitarist Joe King will be to stage right and drummer Ben Wysocki will be behind them.

"I like The Fray. I like that they use the piano — it's underused in society," Harden said, "It's all electronic now."

This event seems to come at just the right time for students as they prepare for finals and the end of the semester.

"I'm interested because it's a chance to have a real concert experience and the type of music represents GSU students," sophomore information technology major Vincent Hamilton said.

Tokars believes this event is a good way to bring GSU students together and "reunites the

sense of school pride we have."

Specialty prices for the event include student prices of \$25 for field seating and \$20 for the stands, and faculty and military pricing of \$30 for field and \$35 for stands. General admission tickets will cost the community \$40 for field seating and \$45 for the stands.

"If you look at the ticket prices, they're actually lower than they've been," Miller said, "We set up a perimeter on the amount of ticket sales, so students should definitely buy tickets."

In previous years, the spring concert has not always been in Paulson Stadium. In 2010, the event, featuring rapper Ludacris, was held in the J.I. Clements Stadium. This is all up to the programming board, based on what it thinks the turnout will be like.

"We knew this would bring in a lot of students and a lot of the community as well," Tokars said. "We see that rock and country artists bring in a big crowd."

Prior to the show, tickets can be purchased at the University Store or at www.etix.com. Tickets will increase \$5 at the door. Ticket sales at the University Store will stop at 4 p.m. and the Paulson Stadium box office will open at 5 p.m. on the day of the concert.

THE 'BORO BEAT

YOUR GUIDE TO OFF-CAMPUS ENTERTAINMENT

THURSDAY

Applebees

- Happy Hour & Late Night Fun: (3 p.m.-6 p.m.) (9 p.m.-cl)
- 1/2 price appetizers
- \$2 Natty Light brews
- \$3 domestic brews (micros \$1 more)
- \$3 Long Islands
- DJ Jammin J Productions (10 p.m. to close)

Averitt Center for the Arts

- 4th annual Statesboro Film Festival starts at 6:30 p.m.

Dingus Magee's

- Happy Hour (5-7p.m.) and (9-11 p.m.)
- Tent City (9 p.m. - cl)

GATA's

- Happy Hour (5 p.m. - 7 p.m.)
- 1/2 price bottle & draft beer
- \$1.50 single wells
- \$3 double well liquors
- Passafire (\$5 cover) starts at 9 p.m.

Kbob Kelly's

- Karaoke starts at 9 p.m.

Rude Rudy's

- Dance Night starts at 9 p.m.

FRIDAY

Applebees

- Happy Hour & Late Night Fun: (3 p.m.-6 p.m.) (9 p.m.-cl)
- Trivia Night (10 p.m. - cl): \$3 Long Island, \$3 domestic beers, \$4 premium beers

Crabby Joe's

- Joe Anderson starts at 9 p.m.

Dingus Magee's

- Happy Hour (5 p.m.-7p.m.) (9 p.m.-11 p.m.)
- \$2 Well liquor
- 2 for 1 Bombs
- 2 for 1 appetizers (5-7 p.m.)
- The Other Brothers Band (Allman Brothers tribute) starts at 9 p.m.

GATA's

- Happy Hour (5 p.m. - 7 p.m.)
- \$3 double well liquors

Loco's

- Happy Hour (5 p.m.-7 p.m.)
- Will Riner starts at 9 p.m.

MillHouse

- \$1.99 draft beers, cocktails, martinis, margaritas, and \$2.49 house wines
- Andrew James Band 9 p.m.

SATURDAY

Applebees

- Black Light Party (10 p.m. - cl)
- \$3 appletinis
- \$3 well liquor
- \$3 Long Islands

Dingus Magee's

- Happy Hour (5 p.m.-7p.m.) (9 p.m.-11 p.m.)
- Plan B (9 p.m. - cl)

Dos Primos

- Stoneheart CD release party starts at 9 p.m.

Loco's

- Happy Hour (5 p.m.-7 p.m.)
- 1/2 price draft beer
- 1/2 price chips and salsa
- 1/2 price chips and queso dip
- 1/2 price wings

Manny's

- Happy Hour (5 p.m.-7 p.m.)
- \$2 draft beers
- 1/2 price wine
- \$2 well liquors
- \$3 double well liquors

MillHouse

- \$1.99 Draft beers, cocktails, martinis and margaritas
- Ogeechee River Mud starts at 9 p.m.

Southern Billiards and Burgers

- Poker tournament starts at 7 p.m.

myth:
fact:

drinking is central to the
social lives of georgia
southern university
students

64% of georgia southern
students have 0-4
drinks per week

presented by the dean of
students office

for more information visit:
<http://students.georgiasouthern.edu/eod>
data collected from georgia southern
university core survey 2010

INFORMATION
EDUCATION



"BAD TO THE BONE"
LOCATED NEXT TO WAL-MART
912-764-6556

WINGSDAY
SPECIAL

TWO WINGS FOR THE PRICE OF ONE
EVERY WEDNESDAY

MUST PRESENT COUPON
EXPIRES: 5-12-2012

THE 'BORO BEAT

YOUR GUIDE TO OFF-CAMPUS ENTERTAINMENT

SUNDAY

Applebees

- Guys Night Out (10 p.m. - cl)
- \$1 Natty beers
- \$3 Firefly vodka
- \$3 Jack Daniels shots

Dingus Magee's

- Happy Hour (5 p.m.-7p.m.) (9 p.m.-11 p.m.)
- \$2 well liquor
- 2 for 1 bombs
- 2 for 1 appetizers (5 p.m.-7 p.m.)

GATA's

- Happy Hour (5 p.m. - 7 p.m.)
- 1/2 price bottle & draft beer
- \$1.50 single wells
- \$3 double well liquors

Kbob Kelly's

- Trivia starts at 7 p.m.

Manny's

- Happy Hour (5 p.m.-7 p.m.)
- \$2 draft beers
- 1/2 price wine
- \$2 wells
- \$3 double wells

Mr. Omelette

- Live music on the Patio (11 a.m. - 12 p.m.)

Ruby Tuesday's

- Happy Hour (4 p.m.-6 p.m.) (9 p.m.-11 p.m.)
- \$5 Absolut vodka
- \$5 select wines

MONDAY

Applebees

- Happy Hour & Late Night Fun: (3 p.m.-6 p.m.) (9 p.m.-cl)
- Fraternity and Sorority Mixers: \$1 Natty beer, \$2 Corona bottled beer, \$2 Dos Equis bottled beer, \$3 Stella Artois bottled beer, \$2 Bud Light Lime bottled beer

Dingus Magee's

- Happy Hour (5 p.m.-7 p.m.) (9 p.m.-11 p.m.)
- \$2 Well liquor
- 2 for 1 bombs
- 2 for 1 appetizers (5 p.m.-7 p.m.)

El Sombrero Downtown

- \$2 Margarita's all day

Gnat's Landing

- Happy Hour All Day
- 1/2 off all alcohol and select appetizers

Loco's

- Happy Hour (5 p.m.-7 p.m.)
- 1/2 price draft beer
- 1/2 price chips and salsa
- 1/2 price chips and queso dip
- 1/2 price wings

Manny's

- Happy Hour (5-7 p.m.): \$2 draft beers, 1/2 price wine, \$2 well liquors, \$3 double well liquors
- 1/2 price pizza

Millhouse

- \$1.99 draft beers, cocktails, martinis, margaritas, and \$2.49 house wines

TUESDAY

Applebees

- Happy Hour & Late Night Fun: (3 p.m.-6 p.m.) (9 p.m.-cl)
- Karaoke night: \$4 Jaeger bombs, \$2 Natty beers, \$3 Jack Daniels, \$3 Jim Beam

Dingus Magee's

- Happy Hour (5 p.m.-7p.m.) (9 p.m.-11 p.m.)
- \$2 Well liquor

GATA's

- Happy Hour (5 p.m.- 7 p.m.)
- 1/2 price bottle & draft beer
- \$1.50 single wells
- \$3 double wells
- Beer Pong tournament starts at 7:30 p.m.

Gnat's Landing

- Trivia at 7 p.m. with cash prizes
- \$10 buckets of beer
- \$10 bucket of beer
- \$7.99 shrimp & grits

Dos Primos

- Poker starts at 8 p.m.

Kbob Kelly's

- karaoke Starts at 8 p.m.

Retrievers

- Trivia starts at 9 p.m.
- Karaoke starts at 9 p.m.

Starbucks on Campus

- Unplugged starts at 6:30 p.m.

UT&ABOUT



MDL

Embroidery & Gifts

Come see us at our new location
next to McAllister's

1300 Brampton Ave.
Suite B
Statesboro Ga. 30458

15%
OFF

valid thru 4/30/12
on \$30+

Express Tune & Lube

Tire, Alignment
& Exhaust Center

612 S. Zetterower Avenue
489-4444

www.expresstuneandlube.com

Monday - Friday 7:30am - 6:30pm

Located a half block north of Wendy's

OIL CHANGE SPECIAL

\$25⁹⁵

Includes up to
5 qts of Castrol
5W20, 5W30, 10W30,
or 20W50

price applies to most vehicles. Expires 5/31/12

www.expresstuneandlube.com

*Jerry's
Salon & Day*



SALON SPECIAL!

\$10

OFF ON HIGHLIGHTS
SPECIAL ENDS IN MAY

300 East Main St. Suite C, Statesboro, GA 312 489-6972
(Across from old Video Warehouse on Hwy 30)

Students to learn how to dress for the workplace

Fashion

BY TANIQUA R. RUSS

The George-Anne staff

As graduation and summer internships are on the horizon, our casual class wear will be laid to rest and will become professional business attire.

In hopes to teach students how to do so, Student Employment Center is hosting its first annual "What Not to Wear" fashion show tonight at 6:30 p.m.

The Department of Human Resources, Student Employment Services and Belk's will show students gathered in the Williams Center how to execute appropriate business casual and casual Friday looks and teach them how to build that perfect after college wardrobe.

Assistant professor of fashion merchandising and apparel design Hope Wallace gives Georgia

Southern University students advice for dressing professionally.

"The rule of thumb is creative professional. Typically what I tell students is research the style of the company," Wallace said. "You want to look like you fit in. It is not just based on your talents; they want to know that you can represent the company."

The "creative professional" mantra encourages creativity in professional dress and students can take cues from the company. However, there are still a few general rules that all students can benefit from when stepping into their place of work.

"Ill-fitting clothes — clothes that are too short, showing too much cleavage — are in appropriate. Now the erogenous zone is the stomach; that is an absolute no no," Wallace said. "Wherever your fingers hit your thigh, your skirt length should be two to three inches below that."

Ladies should not go above



Mark Barnes/ The George-Anne

Ronald Mack, freshman pre-dental and biology major, dresses professionally in a polo and khakis.

three inches on the heel and all students should keep themselves well groomed, according to Wallace.

Neatly clipped nails and refraining from wearing too much makeup can also help students make a good impression on any industry professional, Wallace said.

"Another thing people do a lot of is over accessorizing. You shouldn't be making noise when you are working, but you do want to have a statement piece of jewelry," Wallace said.

For the ladies who want to add some style to the corporate America dress code, incorporating layering techniques into an outfit can accomplish this.

"Layering is good because you can be kind of creative. Always keep a jacket or sweater or both, it instantly makes it look like a suit, even if it doesn't match," Wallace said.

For males, professional dress is more basic, but there is still some room for fashionable creativity.

"When you visit a company or have a face to face interview, males

should wear a suit — some sort of formal wear. The head of Tommy Hilfiger told us that," associate professor of fashion merchandising and apparel design Insook Ahn said.

"Every guy should have a sport coat and a nice pair of dress shoes," Wallace said.

"Guys can wear a suit with a really fashionable tie or no tie with a colored shirt, but it depends on the company," Ahn said. "Research the company and choose an outfit according to the company."

Companies are interested in seeing the characteristics unique to their perspective interns and employees. Students can mix these tips, along with tips from the show, with their own personal style to come up with appropriate wear for their place of business.

"The thing you want to remember is dress for who you are working for but stay true to yourself. You will always have something unique to

Sponsored By

• Student Affairs •

Bliss Berry • Papa John's • Latté Da • McAlisters

Chilis • 91.9 The Buzz • GSU Men's Rugby Team

AND MORE

Miss Black and Gold 2012 to be crowned

BY KIMEKO MCCOY

The George-Anne staff

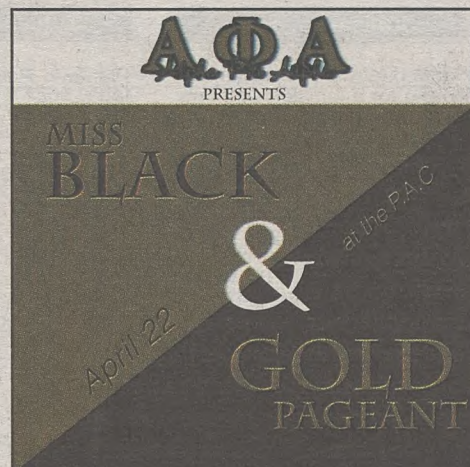
At 6:06 p.m. on April 22, there will be 16 contestants to compete for the crown in the Miss Black and Gold pageant hosted by the Alpha Phi Alpha fraternity at the PAC.

Miss Black and Gold is a pageant hosted by the Xi Tau chapter of the Alpha Phi Alpha fraternity. The pageant began in 1976 at an annual convention in New York. Since then, it gained prevalence within the fraternity as an annual pageant.

Similar to Miss GSU, the contestant who is crowned Miss Black and Gold will go on to compete at a district, regional and then national level.

In order to win, contestants must do well in various aspects of the competition, which include judges' interview, achievements and projection, swim wear, creative and performing arts, oral expression and poise as well as scholarship.

Contestants had various reasons for choosing to compete in the pageant. Contestant Christina Belge, who is a junior majoring in public



Matt Veal/The George-Anne

relations, felt as though she could help improve the pageant by offering something different.

"I'm friends with a lot of Alpha brothers, so I thought I could do something there. I thought I could be a little different," Belge said. "I'm white and it's pretty much an all-black girl pageant."

Much like Belge, contestant India Hervey, who is a freshman majoring in industrial engineering, was introduced to the pageant through Alpha

Phi Alpha fraternity members. "I met with some of them and they asked me if I was interested and I said yes," Hervey said.

Other contestants had different reasons for entering the pageant. Melissa Royal, who is a freshman majoring in international trade, and Ticley Sanders, who is a sophomore majoring in multimedia and communication, share a common view on entering the pageant.

"I was really looking for something on campus to meet new people and do something I've never done before," Royal said.

"I'm looking to interact with different people," Sanders said.

Those participating in the upcoming pageant have different feelings about their competition.

"All of the girls are great," Royal said. "It's going to be stiff competition."

Belge said she is not worried about the competition and thinks she has a good shot.

"I'm not really worried about it. I think I'll do decently, but I hope I just win something," Belge said.

Despite the competition, many of the contestants feel as though they now have a bond

that will last past the pageant.

"I think we all have a bond beyond the pageant," Sanders said. "We're more family than competition."

Those competing have been practicing on Tuesday and Thursday evenings to prepare their stage presence. Outside of the required practice time, contestants are also practicing on their own.

Both Belge and Sanders are performing dance numbers as their talents.

"I've been practicing my dance a lot," Belge said. "I'm a really bad dancer."

"I'm doing a jazz dance," Sanders said. Opposite of Belge and Sanders, Hervey and Royal are using musical instruments to impress judges.

At the end of the night, the winning contestant will be chosen along with runner-ups Miss Congeniality and Miss Talent.

Contestants feel confident in their abilities and are hopeful to win.

"I would be happy to win," Sanders said.

"It's going to come down to who shows out on pageant night," Royal said.

**Stomach pains and ankle sprains.
Fevers, aches and yucky goo.
Mystery rashes and deep gashes.
Colds, flu and allergies, too.**



**No matter what's wrong,
let us take good care of you.**



**SOUTH GEORGIA
IMMEDIATE
CARE CENTER**

1096 Bermuda Run Road
(next to Mellow Mushroom)
Statesboro, GA 30458
p - 912-871-5150
yourimmediatecarecenters.com

CONVENIENTLY LOCATED MINUTES FROM GSU.
CARING AND CONFIDENTIAL TREATMENT.
HOURS:
Monday - Friday 9:00 am - 8:00 pm
Saturday 9:00 am - 5:00 pm
Sunday 12:00 pm - 5:00 pm

Most insurance accepted - bring your insurance card and Driver's License. Please call with co-pay and insurance questions. Cash patients also welcome.

SEEKING PART TIME TOUR GUIDES...

DO YOU HAVE A PASSION FOR THE OUTDOORS???

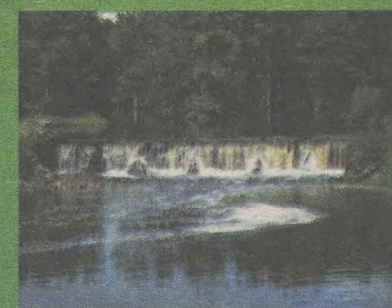
HAVE FUN SETTING YOUR OWN HOURS AS A CANOE & KAYAK TOUR GUIDE
ON A 420 ACRE WILDLIFE PRESERVE.

WEEKLY INCOME POTENTIAL FROM \$500 - \$1,000

SET YOUR OWN HOURS

GET BACK TO NATURE

LIMITED POSITIONS AVAILABLE



CALL TO SCHEDULE YOUR OPPORTUNITY
912-486-4477

**Blackwater
PRESERVE**

CLASSIFIEDS

This page brought to you by Career Services
Explore • Experience • Excel

14 Thursday, April 19, 2012

The George-Anne

Advertisement

For Sale

Scooter for sale! 2005 Honda Ruckus. Black, 49cc, 85+mpg. Original (faculty) owner, garage kept. \$1,500 OBO. Contact (912) 678-6052

Firewood for Sale. Delivery available! Call 912-690-0872 or 912-690-4956.

For sale: 2009 BMW 328i, hard-top convertible in great condition. Black with tan interior. Call 912-293-1909.

Used Fender Blues Jr. All-tube guitar amp, \$350, negotiable. Perfect working order/condition (912) 536-1610

Help Wanted

BARTENDERS WANTED! \$250 a day potential. Experience unnecessary. Training provided. 18+ Call: 1-800-965-6520 ext. 296

Seeking an Assistant, excellent opportunity if looking to work in a friendly atmosphere. Self-Motivated, Positive Attitude, Ability to Multi task. Send resume to Martgay@gmail.com

Part time sales position open at Farmer's Home Furniture. Apply in person. 110 Northside Drive E. Statesboro, Ga 30458

Help Wanted, cont.

Account manager representative wanted by our aid. Requirements: 18 and up, typing and computer skills. Will earn \$2000 monthly. E-mail me at jwalls333@gmail.com if interested.

Subleases

1BR/1BT available in a 4BR/4BT at Campus Club \$700 for the whole summer or \$370/month. Email Shanna at shannalawson22@gmail.com

3BR/2BT within 2 miles campus. You can sublease the other 2 rooms. No smoking or pets. Call (706) 951-1427.

Sublease at Cambridge for Reduced Price 1 BR/BTH available in a 3 BR. \$350/month *Regular price-\$459/month.* Email shortiecutie102@yahoo.com

2BR/2HBH at Hawthorne 2. \$350/month. Through July. Contact Shannon at 678-468-9407

"Don't pay \$1,260 for Summer 2012 housing. 4 br/ 2 bt apartment in the Avenue is only \$320 Contact Tanera @ tm01729@georgiasouthern.edu"

Subleases, cont.

Sublease for Spring 2012 in a fully furnished 4 BR/4 BT. Contact Alex at (770) 712-5377 or ao00837@georgiasouthern.edu

2 BR/2 BT sublease in Georgia Villas. \$475/month. Available Jan-May. Email tl00212@georgiasouthern.edu

Fall Semester at the Avenue 4BR/2BH, fully furnished, \$325/mo. Contact Deandre at dc03436@georgiasouthern.edu.

626 B at the Exchange. Female Roommate needed. \$519.00 per month. Available now. Contact (706) 523-6001

Room available 3 BR/2 BT house on Catherine Avenue. \$367/mo Contact Yale at (404) 272-7652 or yale8754@bellsouth.net

1BR/1BT available at Copper Beech apartment. Rent \$394/mo. Please call 770-639-0264.

4BR/4BT at Campus Club \$409 a month Contact Chin Herbert at ch02002@georgiasouthern.edu

SUMMER 2012! Subleasing 1BR/1BT available in a 2BR/2BT at The Woodlands. \$409/month plus utilities. Email Sadie at sn01140@georgiasouthern.edu

Subleases, cont.

Garden District with 2 roommates looking for a female to rent my room out for the summer. I'm only asking for \$300/month. Call 404-764-6490 ask for Monica.

All inclusive, two story, fully furnished, 4 BR for \$330/month Contact (229) 326-4291.

Summer 2012 1br/1bt townhouse at the Avenue. Rent \$465, unfurnished. May rent and \$100 for June and July paid. Contact at kp01343@georgiasouthern.edu

1 bedroom in a 3BR Apt. in Campus Club. Available from the end of May until July. It is \$445/month and is located right next to GSU Contact Alexis Flen at af02017@georgiasouthern.edu.

Summer 2012 4BR/2BT apartment in the Avenue is only \$320 & is FULLY FURNISHED! Contact Tanera @ tm01729@georgiasouthern.edu

Sublease available ASAP at Copper Beach. \$389/mo. Utilities not included. Contact 478-957-1005 for more information.

Sublease my 1BR apartment ASAP at Panter's Row. It is \$625 Contact at be01181@georgiasouthern.edu or 478-455-0432.

Subleases, cont.

Planter's Row 1BR/1BT Cottage, \$625 a month, Available for Summer semester. Call 270-227-7507

Fall 2012 Female Roommate Needed at University Pines 4 BR/2BT \$409.00/month. Call: 478-251-6260 or email: rw02273@georgiasouthern.edu

Planter's Row for \$365/month; utilities not included. Contact at at01770@georgiasouthern.edu or call (770) 546-6560

Subleasing 3 BR/2BT house on Parker Ave in Brooklet. Contact Joyce at (912) 842-9479.

Summer 2012, individual bathroom, 3 female roommates, washer/dryer. Call Kaylah Ibidapo at 678-612-1087

Houses for Rent

ATTENTION ALL STUDENTS 2, 3, 4, 5, 6, and 7 bedroom houses available Aug 1, 2012 24 hr repairs guaranteed 912-682-7468

Summer 2012 Subleasing 1BR/1BT available in a 4BR/4BT at Campus Club \$370/month. Email Shanna at shannalawson22@gmail.com

Houses for Rent, cont.

Furnished apartment Located just past Mill Creek Park. \$130/week or \$500/month. Available now. 912-531-1319

HOUSE FOR RENT 3BR/2BT in August 821 Robin Hood Trail, walking distance to campus, \$895 a month. Call at 706-543-5497

4 bd / 2 bath - Robin Hood Trail
4 bd / 2 bath - Tillman Street
4 bd / 4 bath - Talons Lake
More info at: www.wildoak-investments.com Call: 912-682-9515

Misc.

American Shorthair Cats (AKC Reg. Male and Female) free to good home, contact bpills12@gmail.com if interested

Will proof papers. Quality work, reasonable prices. Will also type short projects. Must have ample lead time to schedule. Email auntre01@gmail.com

Fourth year writing and linguistics major will proof papers/ tutor in writing. Cheapest rates, at least three days notice on assignments

HOT JOBS Cool Internships

Job Title	Company	Deadline to Apply
Network Recovery Analyst	Safe Systems, Inc.	Sept. 13, 2012
Solution Consultant	Zuora	May 11, 2012
Marketing and Management Intern	Institute of Digital Music	June 13, 2012
Nanny	NannyQuest, Inc.	May 25, 2012
Marketing and Communications Intern	Downtown Vision, Inc.	May 31, 2012
Video Journalist	WMAZ 13	May 31, 2012
Tennis Pro Shop Attendant	Horseshore Bend Country Club	April 30, 2012
RN	Pineland CSB	April 27, 2012
Transportation Logistics Summer Intern	C.H. Robinson Worldwide, Inc.	April 24, 2012
Programmer Analyst	Aon Hewitt	May 31, 2012
Sales & Marketing Coordinator	The Loxcren Company, Inc.	Sept. 28, 2012
Highway Solutions Specialist	Hub Group, Inc.	April 30, 2012
Technical Consultant	Aderant	May 31, 2012
Georgia Aquarium Intern	Georgia Aquarium	July 6, 2012
Wireless Sales Representative	Verizon Wireless	March 5, 2013
Customer Service/Sales Support	Advantage Staffing	May 16, 2012
Entry Level Engineer	Vitera Health Care	May 13, 2012

To view the detailed job descriptions application instructions or additional postings, log into the Eagle Career Net/NACElink system found at www.georgiasouthern.edu/career.

Education Career Fair

Thursday, April 26

Russell Union Ballroom

2 p.m. - 4 p.m.



PUZZLES/COMICS

www.thegeorgeanne.com

Thursday, April 19, 2012 15

Los Angeles Times Daily Crossword Puzzle

Edited by Rich Norris and Joyce Lewis

ACROSS

- 1 Historical novel, usually
- 5 CCCII x III
- 9 Digital camera option
- 13 Show signs of age, as wallpaper
- 14 Gray with age
- 16 Ohio tribe
- 17 Ventura County city
- 18 Prepare to transplant, as to the garden
- 19 Swig
- 20 Phenoms
- 23 Trip letters
- 24 Breezed through
- 25 Cut
- 29 "Death, that hath suck'd the honey breath": Shak.
- 31 Fitting
- 33 10-Down suffix
- 34 Peace in the Middle East
- 36 Ginormous
- 38 Env. info
- 39 Sardegna o Sicilia
- 41 Mine entrance
- 42 A little too clever
- 44 Physicist Tesla
- 46 64-Across spec
- 47 Shell game need
- 48 Durable cloth
- 49 Africa's northernmost capital
- 51 Suffragette who co-founded Swarthmore
- 52 "Conan" airer
- 55 Trochee and iamb
- 59 Tombstone lawman
- 62 Fishing boot
- 63 Private jet maker
- 64 Nine West product
- 65 Muscat native
- 66 Periodic table fig.
- 67 It may be rigged
- 68 "After the Thin Man" dog
- 69 Oft-misused pronoun

DOWN

- 1 Tough guy's expression



By Victor Barocas

4/19/12

April 17th Puzzle Solved

I	S	M	L	I	O	N	F	R	A	N	C
S	W	E	E	T	U	I	S	L	I	B	E
A	I	D	S	T	I	C	K	F	I	G	U
A	R	I	E	S	A	E	O	N	T	O	O
C	L	U	B	S	A	N	D	W	I	C	H
M	O	O	L	A	L	H	A	S	A	N	
T	U	R	N	O	K	E	Y	E	M	O	T
A	T	A	C	U	E	C	A	R	D	M	O
L	A	R	G	O	D	O	R	A	M	E	M
C	H	E	A	P	O	I	N	F	E	R	
B	A	T	M	A	S	T	E	R	S	O	N
O	B	I	P	O	O	P	L	E	A	S	E
P	A	D	D	L	E	W	H	E	E	L	U
E	L	E	V	E	S	I	E	V	E	L	A
C	L	A	R	A	D	E	E	R	T	R	Y

- 2 How roast beef may be served
- 3 Some living legends
- 4 "Put ___ on it!"
- 5 Exemplars of poverty
- 6 Capuchin, e.g.
- 7 Lacking sharpness
- 8 Waffle maker
- 9 Last critter in an ABC book
- 10 Raw mineral
- 11 Fry cook's supply
- 12 Bumped into
- 15 Abbr. in a CFO's report
- 21 "Do I dare to ___ peach?": Prufrock musing
- 22 This, in Tijuana
- 26 Some molars
- 27 Cybercommerce
- 28 Sedimentary formation
- 30 "Charlotte's Web" setting
- 31 Chat room inits.
- 32 Museums for astronomy buffs
- 34 "Full House" actor
- 35 "Farewell, chérie"
- 36 Coquettish
- 37 Munro's pen name
- 40 Reggae relative
- 43 ___ dixit: unproven claim
- 45 IOC part: Abbr.
- 48 Museum guide
- 50 Drive forward
- 51 Cursed alchemist
- 53 Lotto variant
- 54 Pol Thurmond
- 56 Couple
- 57 Avatar of Vishnu
- 58 Weak spot
- 59 Last letter in most plurals (but not in this puzzle's six longest answers, which are the only plurals in this grid)
- 60 Word of discovery
- 61 Palais resident

Welcome to Falling Rock National Park by Josh Shalek



		5		7		8		4
6					4			
			9	8				
		8				1	9	
5								7
	2	7		5				
				1				
			5					
2		1	8	3		5		

Sudoku

6	4	9	5	6	8	1	2	7
8	6	9	5	6	8	1	2	7
2	8	6	9	5	6	8	1	2
8	6	9	5	6	8	1	2	7
2	8	6	9	5	6	8	1	2
8	6	9	5	6	8	1	2	7
2	8	6	9	5	6	8	1	2
8	6	9	5	6	8	1	2	7
2	8	6	9	5	6	8	1	2

FRANKLIN
CHEVROLET - CADILLAC
PONTIAC - BUICK - GMC
912.764.6911



Check out our website
www.franklinchevrolet.com

Our experienced Body Shop can fix all of the "Dents & Dings" that your vehicle may have! We service all makes and models and accept all insurance claims, and will give you a **FREE ESTIMATE** on your body & paint repair
GSU STUDENTS Show your ID and receive **10% OFF** any purchase in Parts and Service
We offer our own in town towing service that is **FREE** with a Student ID when we do the repairs on your vehicle

Eagles split double-header with Ospreys

Softball

BY ANNA WELLS

The George-Anne staff

The Georgia Southern University softball team split two games with the University of North Florida Ospreys in a two-game series on Wednesday, April 17, 2012. This puts the Eagles record at 29-15 for the season.

GAME 1

The teams were at a standstill until the third inning when a throwing error sent runner Tabby Douberley to home plate, giving the Eagles 1-0 advantage over the Ospreys. Marie Fogle followed Douberley with a home run that sent her and Lexi Allen home.

This marked Fogle's sixth home run of the season, putting her just one home run behind Mackenzie Williams who leads the Eagles with seven home runs.

The rest of the game proved to be a pitcher's battle, which included



Demario Cullars/The George-Anne

Junior first baseman Tabby Douberley (13) catches a throw before the runner reaches first base to record an out.

an outstanding performance from freshman pitcher Brooke Red, who

allowed only two hits for the whole game.

Red struck out seven batters and achieved her 10th win of the season.

GAME 2

The Ospreys were able to reply early in the second game with a double that turned into a run via a wild pitch from Eagle pitcher Allie Miles.

That gave UNF an early 1-0 advantage in the first inning. GSU was able to answer in the third inning with a run of its own thanks to a hit up the middle from Fogle that sent Lewis to home plate.

In the fifth inning Allen walked and was followed by Lewis, who was able to reach base on a single.

Fogle also walked and this left the bases loaded for Eagles catcher Williams. Williams, however, hit a pop fly to right field and left the three runners stranded on base.

The Ospreys were able to take a one run advantage over the Eagles due to a throwing error by Douberley in the sixth inning, making the score 2-1 UNF.

The Eagles rallied in the seventh, putting runners on first and third. However, Ennis was forced out on third and ended the game for GSU with a 2-1 loss.

Miles saw two and a third innings of play, and allowed one run off four hits and was replaced by Marla Thompson.

Thompson, who came in the third with the bases loaded for the Ospreys and allowed no runs in the inning, replaced Miles. The loss was attributed to the Thompson, dropping her to 1-2 for the season.

"North Florida is a very good team and they got the hits at the right time to get the win today.

Brooke threw a great game in the opener and we had our chances in game two," said head coach Annie Smith.

The Eagles will hit the road this Saturday to take on Southern Conference rival Appalachian State in Boone, N.C., in a three-game series that could prove crucial for the Eagles.

GSU golf takes home second place in SoCon Champs

Golf

BY KEVIN GREGAN

The George-Anne staff

The Georgia Southern University golf team looked to defend its 2011 Southern Conference championship on Sunday through Tuesday, but the Eagles wound up taking home the second-place medal.

Scott Wolfes and Zach Hartman were in the top-five for the tournament due to their scores of 219. In addition to being named to the All-Freshman team with Hartman, Wolfes was also named Freshman of the Year.

The team captain, senior Lewis Gruber, who shot 223 in the championship, was named to the SoCon All-Conference team in his

final season, alongside Wolfes.

After the first day, the Eagles were poised to defend their title, leading the field by scoring 290 in the first round.

"I thought the first round was best because we normally struggle early in tournaments. Due to the tough conditions and tough competition, it was nice to come out with a lead," head coach Larry Mays said.

The second round is where the action really heated up. The University of Tennessee at Chattanooga, the top-ranked SoCon team going in to the tournament, came alive and established a nine-stroke lead ahead of second place Samford University on the day.

"We missed a lot of shots that we should have made and we had higher rounds than we would have liked,"

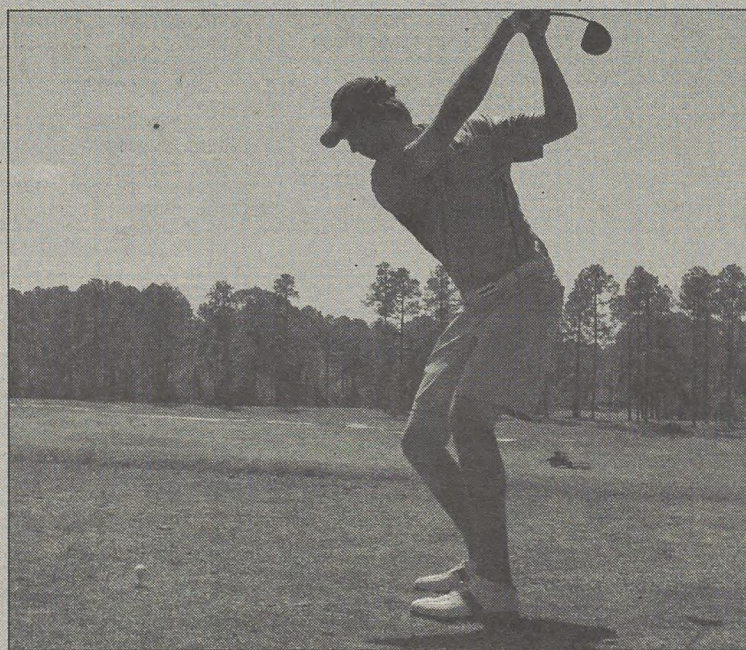
Mays said.

UTC continued to shoot well into the third round thanks to an impressive performance by the 15th-ranked collegiate golfer in the country, senior Stephen Jaeger. Along with his teammates, the Mocs were the only team to finish the tournament under par at -3.

GSU shot a 289 in the final round to take second, two strokes ahead of College of Charleston.

Play by the Eagles in the final round was highlighted by the two-under par score of freshman Wolfes.

"I'm proud of the team for sure. When you get two freshmen to receive honors like that, it gives you a good feeling about the future of the program. I'm also happy for Gruber, who finished his career here on the All-Conference team," Mays said.



Mark Barnes/The George-Anne

Redshirt freshman Matthew Mierzejewski practices for the championships.

Eagles set to compete in SoCon Championships

Track and field

BY KEVIN GREGAN

The George-Anne staff

The Georgia Southern University track and field team will be heading to Cullowhee, N.C., this weekend to compete in the Southern Conference outdoor track and field championships where it looks to make its best performance of the season.

Western Carolina University will host the 26th annual championships in which Appalachian State University will look to defend its title. The Mountaineers were chosen to be this year's favorites.

"We need to go out there and do what we're capable of. We're going to do what it takes and put our best in. That's all we can do," head coach Marlo Mincey said.

The latest power rankings place the Eagles fourth behind App. State, Samford University and WCU, but since the rankings were established on Apr. 2 the Eagles have produced solid performances that have placed them first amongst the conference in several events.

The Eagles are proud to boast the fastest 100-meter runner in the conference in junior Ebony Carter. At the Pepsi Relays, she ran a time of 11.72 seconds. She's also ranked fourth in the 200-meter dash.

One of the strongest events for the Eagles is the 100-meter hurdles. Junior Jasmine Billings leads the conference with a time of 13.83 seconds.

Sophomore Stephanie Hicks and freshman Taylor Wade are fourth and sixth respectively.

"When you go in ranked first it's tougher because of the pressure, but the standings don't really matter to me. It just comes down to doing what you've been doing all year," Mincey said.

Wade is strongest in the 400-meter hurdles, an event in which she's ranked first in the conference. Sophomore teammate Dana Edwards is ranked 10th.

For the relay events, the Eagles head to the championships ranked third in the 4x100-meter relay with a time of 46.52 seconds. In the 4x400, the team is ranked fourth due to their fastest time of 3:48.73.

"They're up against some tough competition but we're going to give our best and we're not going to be easy to beat by any means," Mincey said.

As for the long jump, freshman Jasmine Walker jumped 5.73 meters earlier this season and into the No. 1 rank in the conference.

Hicks has been consistent throughout the year in this event and she goes into the championship ranked fourth.

Senior Millicent Brooks-Millender will compete alongside her teammates ranked ninth.

Brooks-Millender is ranked third in the triple jump and Walker is ranked 11th.

Freshman field athlete Sara Hall fell from her top-five rankings held in the shot put and hammer throw from earlier in the season, but not far.

She will go into the championship ranked sixth in both events.

Fellow field athlete freshman Alexis Jacobs is ranked eighth and 14th in the shot put and hammer throw, respectively, while junior Charnelle Wray will be ranked fourth amongst her competitors in the hammer throw and 12th in the shot put.

GSU falls behind the other schools in the rankings because it doesn't compete in all of the events while schools such as App. State, Samford and WCU do.

In the events that it does run, the team makes notable performances.

"Everybody wants a well-rounded team, but it's also important to concentrate on the events that you're traditionally focused on," Mincey said.

Last year, the Eagles finished in fifth place behind Samford, Elon University, WCU and App. State despite winning the long jump and the 100-meter dash, to go along with 10 top-five finishes in other events.

If the season best time from this year's Eagle 4x400 team were earned at last year's championship, the team would have placed second.

Coach Mincey feels the team has what it takes and that it would benefit from recruiting more people to the track team. The points gained from people doing more of the events could win GSU its first SoCon track and field championship.

If the Eagles place within the top 48 of the Eastern region in their prospective event, they will be heading to the NCAA East regional finals.

The top-12 in each event will proceed to the NCAA Nationals.

"We're not looking at SoCon as the last meet of the year, but merely a chance to continue on to regionals," Mincey said.



File Photo

Georgia Southern University jumper Millicent Brooks-Millender is warming up for practice.

JAGGY'S TOP SUMMER TWEETS



Jaggy @gpctweets

Register ASAP for summer classes at GPC bit.ly/zxpTJZ. Then check out the awesome new GPC Botanical Garden on the Decatur Campus



Jaggy @gpctweets

Coffee shop hop with online courses via GPC—super-caffeinated summer credits to close gap on graduation day! bit.ly/zxpTJZ



Jaggy @gpctweets

Sign up for tough class with best friend—instant study buddy. Take a break to visit GPC Dunwoody Observatory and gaze at the stars

#SUMMERCLASSES #MULTIPLESITES #ONLINECOURSES



Georgia
Perimeter
College

Learn more today at
transient.gpc.edu.

Paulson Stadium expansion to begin late spring

Budget goal of \$10 million exceeded, student fees will not increase to fund expansion

Football

BY DERREK ASBERRY

The George-Anne staff

The financial goals for the expansion of Paulson Stadium have been met and student fees will not be used to finance the project.

"As far as I know, there haven't been any student fees raised for it," said Barrett Gilham, director of Athletic Media Relations.

Georgia Southern University and its alumni are making progress in adding a \$10 million Football Operations Center inside and around Paulson Stadium.

According to GSU President Brooks Keel, this project has already received \$5.1 million in pledges and \$5.9 million in proposals. There is no confirmed date, but construction for the project is set to start sometime in late spring.

The Football Operations Center will include a weight room, team meeting rooms, offices, locker rooms and will be home to the school's Football

Hall of Fame. Funding from the project is coming from donations and pledges from alumni and local residents.

"We're knocking on doors asking people who have been supportive of Georgia Southern to get involved in the program," said Athletic Director Sam Baker.

Baker believes that season play in Paulson Stadium will not be affected.

"It would only impact the end zone and some of the ability to go around the stadium, but it will not interfere with us being able to play any of our home games."

For GSU, the Operations Center is one step out of a number of renovation plans for the stadium.

"It's going to enhance Paulson Stadium," head coach Jeff Monken said. "It's important to our university and our community. A lot of pride goes into that stadium and means a lot to Statesboro."

Currently, football activities are scattered around campus. Baker and Monken feel that moving everything to the stadium would benefit



Lindsay Hartmann/The George-Anne

The bust of former head coach Erk Russell watches over the current structure of Paulson Stadium, which is set to expand in the spring.

the team.

"We knew we needed to improve our locker room," Baker said. "But when we started looking at it, we realized it would be better to put all of football operations under one roof. If we accomplish that, it would take the strain off our weight room and our training room."

The stadium renovations will also play a role if the team wishes to move up to the Football

Bowl Subdivision level.

"We can't move up without a renovated and updated Paulson Stadium," Monken said. "This will position us so that if a move is desired, we'll be ready."

Monken said, "It would be very difficult to find a facility at any FCS school that would be better than what we would have at Paulson Stadium."

**UNLIMITED FUN
LIMITED VACANCIES**

CALL 912-681-3888 TODAY!

GREAT SPACE. GREAT RATES

FULLY FURNISHED, SPACIOUS APARTMENTS • LARGE, LOCKABLE BEDROOM/BATHROOM SUITES • WASHER AND DRYER IN EACH APARTMENT
LOADED CLUBHOUSE WITH GAME ROOM, FITNESS CENTER, TANNING BOOTHS
POOL, VOLLEYBALL AND BASKETBALL COURTS, GRILLS AND FIRE PITS

1150 Brampton Avenue
Statesboro, GA 30458

the grove
FULLY LOADED COLLEGE LIVING.

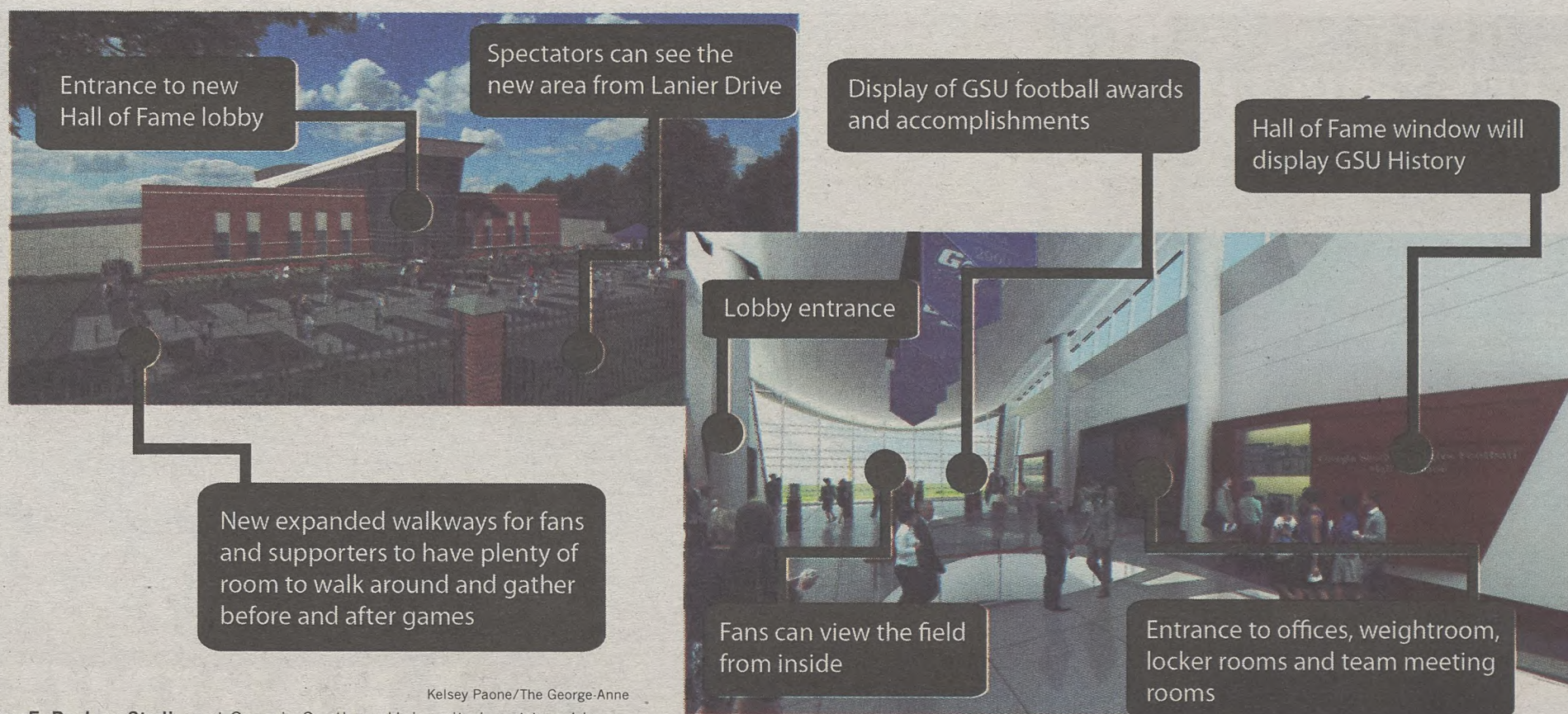
info@statesboro@thegrove.com

**CAMBRIDGE
@SOUTHERN**

Style. Features. Location.

912.681.1300

Cambridge-Southern.com



Kelsey Paone/The George-Anne

Allen E. Paulson Stadium at Georgia Southern University is set to add new additions that will help showcase the success of GSU football.

CONCERT THIS FRIDAY

The Band Perry & The Fray
CO-HEADLINING

Friday, April 20
Allen E. Paulson Stadium

TICKETS ON SALE NOW
at the University Store and GeorgiaSouthern.edu/concert

Snacks for Soldiers
5K Race ★

April 21, 2012
RAC

Scan to REGISTER

Register at GeorgiaSouthern.edu/ROTC5K

IT'S YOUR LIFE...

LIVE IT

FORUMSTATESBORO.COM

COMING TO:

831 South Main Street
Statesboro, GA 30458

LEASING
OFFICE HOURS:

Monday-Friday 9-6
Saturday 10-5
Sunday 12-5

FORUM

®

AT STATESBORO

A PREMIER STUDENT
HOUSING COMMUNITY

**NOW
LEASING
FOR FALL 2012**

- Tennis Court
- Lap Pool & Spa
- Pet Friendly
- Pet Park
- Two Free Tanning Beds
- Indoor Basketball Court
- Indoor Volleyball Court
- Car Care Center
- Modern Faux-Wood Floors
- Private Bathroom in Bedrooms
- Convenient Individual Leases
- Free High Speed Internet in Bedrooms
- 24 Hour Fitness and Training Center
- Kitchens with Full Size Appliances
- Full Size Washer / Dryer Included
- Wi-Fi Cyber Cafe with Coffee Bar
- Outdoor Sand Volleyball Court
- High Speed Internet Access
- Student Center and Lounge
- Roommate Matching
- Expanded Cable
- Media Room

**PETS
WELCOME!**



912-489-3676

ForumStatesboro.com

GET A FREE T-SHIRT WITH THIS AD!