

Georgia Southern University

## Digital Commons@Georgia Southern

---

The George-Anne

Student Media

---

4-12-2012

### The George-Anne

Georgia Southern University

Follow this and additional works at: <https://digitalcommons.georgiasouthern.edu/george-anne>



Part of the [Higher Education Commons](#)

---

#### Recommended Citation

Georgia Southern University, "The George-Anne" (2012). *The George-Anne*. 2743.  
<https://digitalcommons.georgiasouthern.edu/george-anne/2743>

This newspaper is brought to you for free and open access by the Student Media at Digital Commons@Georgia Southern. It has been accepted for inclusion in The George-Anne by an authorized administrator of Digital Commons@Georgia Southern. For more information, please contact [digitalcommons@georgiasouthern.edu](mailto:digitalcommons@georgiasouthern.edu).



**STUDENT  
EMPLOYEE  
AWARDED**

PAGE 7



**HAPPY 85TH BIRTHDAY  
THE GEORGE-ANNE**



Thursday, April 12, 2012  
Georgia Southern University  
www.thegeorgeanne.com  
Volume 87 • Issue 71

# THE GEORGE-ANNE

## YOUR MR. GSU 2012



Rebecca Farris/The George-Anne

Junior biology and Spanish major Terico Agnew takes home the crown for Mr. GSU 2012. See page 9 for the full story.

## Opening act chosen

BY JAZMIN DAVIS

The George-Anne staff

Duo Carrie Loomis, senior psychology major, and Robert Cottle, senior music education major, were chosen as the opening act for this year's spring concert featuring The Band Perry and The Fray.

"It's really exciting. We really didn't think they were going to say our names," Loomis said. "I thought we were a little lamer than everybody else."

The singer and guitarist duo performed covers of "Ironie" by Alanis Morissette and "Crazy" by Gnarles Barkely.

"We really wanted to do songs that people know. As an opener band, I really feel like the audience

should get involved," Loomis said.

The five judges for the competition were Shannin Wright, junior English major, Victor Lopez, senior psychology major, Ken Starks, a junior double majoring in Spanish and international studies, Tracy Igwebuike, junior biology major, and Kevin Maholchic.

"We were looking for someone with sound and quality and someone to get the audience pumped and going," Lopez said.

When the judges decided the winner, Bailey announced that first runner-up was The Commotions and then the winner was announced.

After the winners were announced, all competing

**SEE CONCERT, PAGE 10**

## Blue and White to face off

BY DERREK ASBERRY

The George-Anne Staff

The Georgia Southern University football team will play its annual Blue-White Spring Game this Saturday, April 14, at 1 p.m. The game will be the first opportunity for the team to play a full contact game since its impressive run to the semifinals last season.

"I think it's very exciting," said junior defensive tackle Brent Russell.

Entering his senior year, this will be Russell's last spring game.

"We're excited to have some full, live contact, get after each other and have a good game," Russell said.

One of the primary functions of a spring game is the chance for players, coaches and fans to

catch a glimpse of the team after spring practice. With several key pieces gone and others arriving, the last few weeks of practice has been great preparation for Saturday's game.

"Practice has been good," Russell said. "We're just happy to get back on the field and show the fans what we can do."

In last year's spring game, the fans saw exactly what the Eagles were made of. In a competitive battle, the White team, led by former Eagle quarterback Jaybo Shaw, beat the Blue team 21-20. However, Blue team quarterback Jerick McKinnon also contributed, connecting with wide receiver Kentrellis Showers on a 73-yard pass.

This spring, McKinnon is competing for the starting quarterback. Saturday's game will be a

**See BLUE VS. WHITE, page 20**



thegeorge  
anne.com



Follow us on Twitter  
@TheGeorgeAnne



Newsroom 478-5246  
Advertising 478-5418  
Fax 478-7113

PO Box 8001  
Statesboro, GA  
30460



## SGA to create GSU Solutions

BY COURTNEY ESCHER

The George-Anne staff

Georgia Southern University's Student Government Association plans to launch a new social networking page entitled "GSU Solutions" in the coming fall semester.

The goal of GSU Solutions is to inform SGA of major problems on campus via Facebook and Twitter, Jayne McGaughey, sophomore psychology and international studies major and senator at large, said.

The launch of GSU Solutions will be one of the ways that SGA will represent its transparency, McGaughey said.

"(The launch of GSU Solutions) has a lot to do with the issues with transparency," McGaughey said. "A lot of students still don't know exactly what SGA does for them, and I think this will be a great way to help students see what SGA does."

The idea for GSU Solutions was initially proposed by Senator At Large elect Scott Markley as a response to the Facebook and Twitter pages entitled "GSU Problems," McGaughey said.

GSU Solutions will be a Facebook and Twitter page that students can like, follow and post concerns to, McGaughey said.

"We want students to post things that they would normally post to GSU Problems to GSU Solutions so that SGA can learn about problems and work towards fixing them and finding a better solution," McGaughey said.

McGaughey hopes that students will be excited to contribute to GSU Solutions.

"I hope (students) will be enthusiastic about it. Here at GSU, we seem to have a pretty large Facebook and Twitter following, so hopefully it will catch on," McGaughey said.

GSU Solutions will be more fixated on the serious issues that strike GSU rather than satire, McGaughey said.

The decision as to which college will run the GSU Solutions pages will be decided after the SGA banquet today, McGaughey said.

McGaughey said, "It will most likely be at large running it, but it could also be the executive board or other colleges as well, so we will have to see."



JAYNE MCGAUGHEY

“ We want students to post things that they would normally post to GSU Problems to GSU Solutions. ”

- Jayne McGaughey,  
senator at large

## CVS coming to Statesboro

BY TAYLOR COOPER

The George-Anne staff

Planning is underway for the new shopping center on Fair Road, which will hold CVS and Andrew's Klean Korner, among other possibilities, and should be finished by fall of 2012.

"Once they tear down the old dry cleaners and the real estate firm and a couple of the buildings by the apartment complex, they're going to build a strip mall with the major tenant being CVS. I know the dry cleaners is going to move into the strip mall, which will free up the Snooky's location for other things," Frank Parker, Statesboro city manager, said.

"The shopping center and the real estate building will be demolished so new buildings can be built for us and for CVS," Eddie Stevens, owner of Andrew's Klean Korner, said. "We all sold our property on that corner so that a pharmacy could be built, and we will have a new drop-off center for us, Andrew's Klean Korner."

The number of stores the center will hold hasn't been confirmed, David Hendrix, assistant city engineer, said.

"We don't have a set date to begin construction, but we're going to get started as soon as we can," Dan Rottmann, Fortney & Weygandt Contracting project leader, said.

"We are in the process of mobilizing right now, so we

aren't building yet," Rottmann said. "Mobilizing involves getting the trailers ready to go, utilities disconnected and generally getting the property ready for construction."

Completion is expected in late Fall 2012, Rottman said.

Andrew's is using the old Snooky's building as a drop-off center until the new shopping center is built, Stevens said.

"The city issued the building permits on Feb. 2, so it's been good to go since then. They're doing some minor demo work, but it seems like they're just putting it off," Hendrix said.

Some students think that CVS opening a store in Statesboro is a good thing.

"It's convenient for me. I live at home and we don't have one there. It's better than Rite Aid," Peter Liapis, sophomore information systems major, said.

"I think it's a good idea. It's cheaper to get CVS to ship your prescription to another store than to try to get it filled at another pharmacy," Chris Boyette, junior construction management major, said.

Other students don't agree.

"They're already on every corner. I think we have plenty of CVS's," Josh Jones, senior recreation major, said.

Peter Carr, sophomore marketing major, said, "It's not necessary. They won't bring anything that we don't already have."

**Planters  
ROW**  
By Hendley Properties  
912.681.1170  
www.hendleyproperties.com

**3 and 4**  
Bedroom Cottage Houses

**\$365**  
/month per person



## Not all students counted in population

BY TAYLOR COOPER

The George-Anne staff

Statesboro's official population count does not accurately represent the number of students that attend Georgia Southern University, which leaves the city without many of the benefits that a large population gets.

Statesboro's official population count is too low to be accurate, according to professors and councilmen, which means that the city is ineligible for certain benefits and not as attractive to new businesses.

The more people don't fill out the census forms, the worse shape the city is in. Currently the U.S. Census Bureau has 28,422 people in Bulloch County, John Riggs, Statesboro city councilman, said.

"We know that's low, so we could have as many as 32,000 people using the roads, but only getting paid enough to maintain the roads for 28,000 people," Riggs said.

Businesses also use the census to determine if it would be profitable to open a branch in an area, according to the U.S. Census Bureau's website.

"The return rate is the percentage of people that sent in their census forms. For the 2010 census, it was sixty-nine percent for Bulloch County. For the greater Statesboro area, it was in the '70s. The areas where many college students live had a return rate of sixty-four percent and forty-nine percent, well below the national average," Darin Van Tassel, associate professor in the Center for International Studies, said.

“There's a lot of money we aren't getting that we could easily get if everyone filled out their form.”

”

-Van Tassel,

associate professor in the Center for International Studies

So if the population of a region is primarily college students, then businesses would likely make a profit in that area, Van Tassel said.

The Registrar's Office counts students living in dorms and sends the on-campus student count to the Census Bureau, Van Tassel said.

"Georgia Southern said that they had one hundred percent accuracy, which is good. The problem is students that live off campus," Van Tassel said.

"I don't think a lot of students know what to do. They assume their parents will handle it, and their parents might fill out a census form for them. The general rule is that where ever you sleep that night is where you send in a census form from," Van Tassel said.

"We did our best in 2010 to get everyone to fill out their census forms. If there's so many people living in Bulloch County, then we get raised to another statistical area where different government programs are made available. The government is all the time giving money away for programs," Riggs said.

Riggs believes that the problems

with population count stem from how people were raised.

"I think apathy would be the biggest factor. The second biggest would be cultural — the way people have been raised. Some have been raised to think that this is just a way for the government to 'keep track of me.' Some people don't want to give the government the information," Riggs said.

"If I wasn't on city council, I wouldn't have given my census form as much attention as I did. I might have waited until it was too late," Riggs said.

Four hundred billion dollars are distributed by the government as part of grants and programs for states to use to build hospitals, schools and other services, according to the U.S. Census Bureau's website.

"If Bulloch County has seventy-five thousand people living in it, it brings you into a metropolitan statistical area. Some of the rewards are government programs that give you more money for roads, education and other services," Riggs said.

Van Tassel said, "There's a lot of money we aren't getting that we could easily get if everyone filled out their form."

## Statement of Operations

The George-Anne is the official student newspaper of Georgia Southern University, owned and operated by GSU students using facilities provided by the university. The newspaper is the oldest continuously published newspaper in Bulloch County. The newspaper is a designated public forum for the Georgia Southern community. The newspaper is published twice weekly, on Tuesdays and Thursdays, during most of the academic year. Any questions regarding content should be directed to the student editor by phone at 912.478.5246 or at [gaeditor@georgiasouthern.edu](mailto:gaeditor@georgiasouthern.edu).

**ADVERTISING:** The newspaper accepts advertising. Inquiries may be made by calling 912.478.5418 or 912.478-0566. Fax any questions to 912.478.7113 or e-mail [ads1@georgiasouthern.edu](mailto:ads1@georgiasouthern.edu).

The George-Anne receives additional support, in part, from the Student Activities Budget Committee.

The deadline for reserving space and submitting advertising copy is noon, one week prior to the intended publication date. For more information, rate cards, sample publications, contact the advertising manager or student

media director.

The advertiser is responsible for any errors in advertisements and its liability for adjustments is limited to the amount of space the error occupied in the ad. Further, the newspaper is not responsible for any damages caused due to an ad's omission from a particular edition and its responsibility solely is to reschedule the ad in the next regular edition at the regular advertising rates.

**STUDENTS BEWARE:** The George-Anne screens all advertisements prior to publication. The newspaper strives to accept ads for legitimate products and services only. Students are urged to exercise caution when replying to ads-particularly those that require personal information. Students are also urged to report to the newspaper any suspicious offers which they might see in an ad.

**PUBLICATION INFORMATION:** The newspaper is printed by Signature Offset in Jacksonville, Fla.

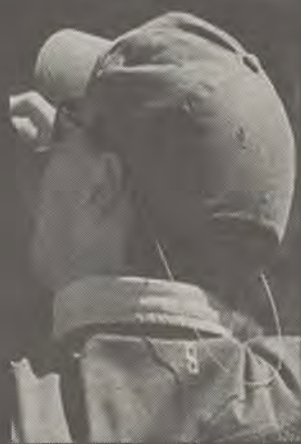
**NOTICE:** Unauthorized removal of multiple copies from a distribution site constitutes theft under Georgia law, a misdemeanor offense punishable by a fine and/or jail time.

**Editor-in-Chief** Arielle Coambes  
**Managing Editor** Jennifer Curington  
**Opinions Editor** Alex LaSalle  
**News Editor** Jessie Reese  
**Asst. News Editor** Courtney Tielking  
**Arts Editor** Quaniqua Epps  
**Asst. Arts Editor** Gianna Carme  
**Sports Editor** Jannah Bolds  
**Asst. Sports Editor** James Farmer

**Copy Chief** Matthew D'La Rotta  
**Business Manager** Holly Hillhouse  
**Asst. Business Manager** Vicki Tucker  
**Marketing Manager** Aria Gabol  
**Production Manager** Mallory McLendon  
**Photo Editor** Lindsay Hartmann  
**Design Editor** Kelsey Paone

## Corrections

Contact the editor at [gaeditor@georgiasouthern.edu](mailto:gaeditor@georgiasouthern.edu) for corrections and errors.



The Sir Shop  
Statesboro Mall  
764-6924





## Our View

### New health center should focus on students

In the Tuesday edition of The George-Anne, we reported that planning for new Health Center facilities for Georgia Southern University is underway. The new facilities should be completed in the next two to three years.

Funding for new facilities will come mostly from third-party insurance providers, with a possible increase in student health fees.

We consider these plans to be a positive development. An expanded and improved Health Center will be necessary as GSU expands.

According to Director of Health Services Paul Ferguson, Health Services is working with GSU's Student Government Association to release a survey that will serve to gain feedback from the student body.

This survey will ask students their opinion of the current facilities, as well as services they would like to see.

We believe that planning for a new Health Center needs to be centered on the needs and preferences of the student body, and this survey is a step in the right direction.

However, to ensure the student opinion is accurately measured, students will need to do their part by paying attention to any surveys put out by Health Services.

If both Health Services and the student body communicate effectively, then we will have a Health Center that fits our university.

The George-Anne welcomes letters to the editor and appropriate guest columns. All copy submitted should be 350 words or fewer, typed, and sent via e-mail in Microsoft Word format to [gaeditor@georgiasouthern.edu](mailto:gaeditor@georgiasouthern.edu). All submissions must be signed and include phone number for verification. GSU students should include their academic major, year and hometown. The editors reserve the right to reject any submission and edit submissions for length.

Opinions expressed herein are those of the Board of Opinions or columnists themselves and DO NOT necessarily reflect those of the faculty, staff or administration of GSU, the Student Media Advisory Board, Student Media or the University System of Georgia.



Jasmine Nielsen/The George-Anne

## The George-Anne's past and future

Eighty-five years ago today, the first issue of The George-Anne was published at Georgia Normal School, which stands today as Georgia Southern University.

That was in 1927, before the Great Depression reared its ugly head, when Jim Crow laws stood tall through the South and the second World War was still years off. I'm guessing it was still incredibly hot and full of gnats.

In the Williams Center, where The George-Anne's offices are located, the hallways are scattered with little exhibits about the history of Student Media at GSU. They are a profound time capsule of how history moves and changes.

In our coverage of the Apollo 11 moon landing – that “one small step for man” your parents talk about – we also mentioned how students got the following Monday off from class. At first, you may think something like, “There’s no way they would give us time off these days.” And you may be right, but I

### ALEXANDER THE PRETTY GOOD



ALEX LASALLE/  
OPS EDITOR

think the bigger question is, “What will be our generation’s moon landing?”

Our generation is the one that has grown up with the 9/11 tragedy. Hanging on the office wall are front pages of The George-Anne from the days following that atrocity. One of them contains a story on Osama bin Laden’s reign of terror.

There is now a yellow sticky note written by a former staffer on it that says, “Case closed.”

There are also stories of students from the Vietnam War era taking part in protests. There are opinion pieces that stand in favor of a woman’s right to walk outside after 10:30 p.m.

But, for every major change, there is something else that stays the same.

In December of 1970, we ran a story on our school’s parking problems. There is even a picture of Sweetheart Circle crowded with Model T-type cars from the 1930s.

There is no telling if we will ever run a story about parking problems being fixed.

We can look back at our past through the lens of our newspaper, but how will the future see today’s headlines? Tuesday’s front page talked about the new Health Center in the planning stages, and the success of our softball team.

In another 85 years, when I’m sure our school and our paper will still exist, will we look down and ponder on how things change? Or, will we be too busy complaining about not having a place to park our hovercar?

LaSalle is a junior writing and linguistics major from Cumming, Ga.



## From the left

### GOP still can't beat Obama

With Rick Santorum's departure from the presidential race, the Republican Party has all but conceded to the fact that Mitt Romney will be their candidate to face off against President Obama this November.

Personally, I believe this has been true since Herman Cain dropped out in December, but Santorum has been the only other candidate to show any life in this rugged race, thus far. Newt Gingrich is kidding himself by staying in. Two states does not a candidate make.

Ron Paul has just never gotten enough support to make a legitimate run at the nomination. Rick Santorum was the party's last-ditch effort to have some contention and suspense in the race and now that's gone.

For the party's best interest, they should have Gingrich and Paul step down so Romney can start campaigning against President Obama instead of two opponents who have no reason to remain in the race. If they start campaigning now, they may have a chance to be competitive in the election this fall. That being said, I don't think Romney stands a chance.

As I wrote last Thursday, his moderate policies will make him a less than stellar candidate to face off against President Obama. Santorum may come across as a crazy religious nut, but he is a truly conservative crazy religious nut. He would be able to really face off against President Obama in a debate, countering the President's liberal policies with his own conservative ideals. If Romney tries to do this, he will just be a hypocrite.

Now, social conservatives face



ROB ROBERTS @Robert\_ARoberts

somewhat of a conundrum. Do they vote for somebody with whom they don't identify, or should they concede the presidency and focus on the Senate and House of Representatives?

President Obama and his constituents will attack Romney viciously. He is a born and bred rich kid and has gone on record saying he doesn't care about the really poor. There is a large group of people in the United States who would find this to be offensive and will turn out in droves to oppose him. The RCP average of President Obama's approval rating has it at 48.4 percent, which puts him, according to the average, 5.3 points above Romney in the nation.

When campaigning really starts, I believe this number will grow consistently. If this circus show of a GOP race has shown us anything, it is that they have no solid candidate that can truly compete for the Presidency this fall.

*Roberts is a senior public relations major from Warner Robins, Ga.*

## From the right

### NBPP poses serious threat

While the Trayvon Martin case continues, there's another case that hasn't even started, but should. That is the criminal case against the New Black Panther Party (NBPP).

It is absurd that these domestic terrorists have not been arrested or even been condemned by the liberal media. They have put a \$10,000 dead or alive bounty on this man who, outside the court of media opinion, has not been convicted for the crimes he allegedly committed.

According to Department of Justice official and whistleblower J. Christian Adams, NBPP has committed several crimes on at least a state level. In a statement he wrote a few weeks ago, he states, "Let's start with solicitation to kidnap." In announcing a reward for the seizure of Zimmerman, the NBPP may have violated Florida Code 787.01. It makes it a felony to "by threat, confining or abducting, or imprisoning another person against his... will without lawful authority with intent to... terrorize." Merely soliciting someone else to do this is also a felony in Florida under Florida Code 777.04.

Under the PATRIOT Act, their actions constitute a terrorist action. I believe that the NBPP should be placed in this group, just as the KKK has been. But this won't happen, at least with Attorney General Eric Holder in office. The same Attorney General Eric Holder who dropped the 2008 voter-intimidation case against the NBPP after several of its members were stationed outside polling locations all over Philadelphia.

After Holder refused to prosecute them, he was quoted saying, "No matter how affluent, educated and mobile (a black person) becomes, his race defines him more particularly than anything else. ... [T]here's a common cause that



FRITZ CHAPIN @GrandOldPartier

bonds the black United States attorney with the black criminal...."

Does this mean that the NBPP gets a free pass to do whatever they want?

After that phone call, there have been outbreaks of violence all over the nation with groups of black youth beating white people within an inch of their lives calling out "This is for Trayvon" and "Kill the white man." Such instances include the beating of 78-year-old Dallas Watts in Toledo, Ohio, and a 27-year-old man in Chicago whose name would not be released. In both instances, the victims describe their attackers as wearing neo-military uniforms and yelling out hate speech toward whites and Jewish people. Is this what the civil rights leaders wanted?

Now, I don't condone any kind of racism. I think that groups based on race keep racism alive in this country. These kinds of groups divide us more than they bring us together.

All racism should be judged in the same way, regardless of who you are.

*Chapin is a senior political science major from Roswell, Ga.*



## Sports EMPORIUM

Statesboro's Intramural Sports Headquarters

*\*Show your Eagle ID to receive a student discount*

840 BC Buckhead Drive, in Buckhead plaza (912)764-4449





# Group project season has arrived at GSU

Crunch time is here.

This is the time when we attempt to make up for our lack of effort from the beginning of the semester. This is the time when our professors know that all we want to do is go to the pool, so they pile on the tests and projects. Among those weekend-killing projects are the ever-so-loved group projects.

After nearly three years of attending Georgia Southern University, I have decided that the sole reason professors assign these group projects is to teach students how to work well and respectfully with others.

To be perfectly honest, I have learned the exact opposite of that: trust no one.

There are typically four types of people you will encounter in your group project.

First is the person who delegates. This is the person who wants everything to go his or her way, but doesn't actually want to do the work. S

ometimes they call themselves an "idea person," which is studentese for "sitting around thinking is easier than actual work."

The second person is the go-with-the-flow type person. If anyone should be mildly trusted in a group, it should be this person. They won't carry you to the finish, but they will keep your group from total collapse. At least you

## My View



GIANNA CARME/  
ASST. ARTS EDITOR

know what to expect from them.

The third type is the person who does absolutely nothing, and when they do something, they make the group look like complete idiots.

So thank you, slacker, for sending those blank PowerPoint slides to the final person, the perfectionist.

The perfectionist is the most hated and most loved. Not only do they annoy you with text messages and emails at 3 a.m. (seriously, leave me alone), but they also want to do everything themselves. They are loved because they take on the tasks no one else wants to do.

Nobody cares if "I don't mind putting the presentation together" is a nice way of saying "I don't trust any of you freaks." However, this person is absolutely loathed when all eight hours of your hard work in the final presentation or paper is rewritten and reorganized.

Now, the hard work (for some) is over and payback ensues: group evaluations.

All of the late night texts,

miscommunication, laziness, missed meetings and controlling personalities are worth it when you can anonymously rant to the professor. No matter what type member you are, prepare to be thrown under the bus.

The delegator will claim that the work wasn't evenly distributed. That is why the perfectionist is ranting about how he or she did all of the work, while the go-with-the-flow person is complaining about the crazy-psycho perfectionist. And, all is well in

the world for the slacker until they find out they failed the project.

Sucks to suck, slacker.

But no matter the potential negatives of the evaluations, the one and only thing that makes the group project pure torture is when there are no group evaluations. I'm pretty sure I'd rather have to write a 25-page research paper about paint drying than work in a group project without evaluations.

The only way things get done is when your evaluation is hanging over your group members.

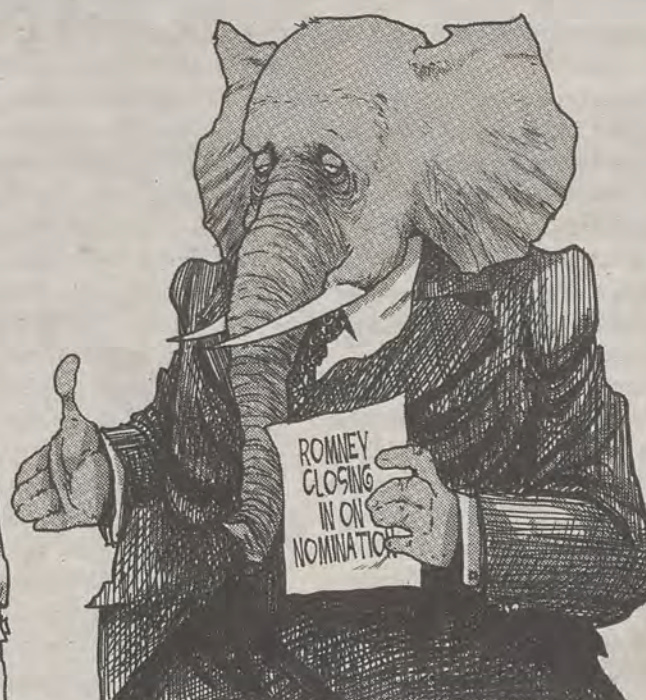
Whether the two words "group" and "project" excite or sadden, know that there is an underlying message. Working with people is part of the real world. If you can't work well with others, now is the time to learn how.

And if you want to slack, please, slack.

You will be thanked someday by the under-qualified college graduate who takes your job.

*Carme is a junior communication arts major from Cumming, Ga.*

SHENEMAN TRIBUNE MEDIA SERVICES



\*TURNS OUT FOLKS DON'T LIKE BEING PREACHED TO BY A SANCTIMONIOUS GAS BAG WITH ARCHAIC VIEWS ON WOMEN AND THEIR ROLE IN THE FAMILY... WHO KNEW?\*

## Voted Best Mattress Store in the 'Boro!

Student Housing Available

New, Used & Antique  
Furniture

Complete Mattress Outlet

# Deal's

Come See the Dealmaker!

17083 GA Hwy 67, Statesboro, GA  
(912)681-3824 (Near Fairgrounds)  
Mon-Fri: 10am-6pm

Sat: 10am-5pm

Sun: 1pm-5pm

- Honest, Dependable  
Same Day Delivery
- Locally Owned &  
Operated by GSU Graduate
- Serving GSU Students  
for 34 years

Tervis Tumbler Headquarters

- Collegiate Gifts
- Jewelry
- Handbags
- Placemats
- Diaper Bags
- Men's Gifts  
& Much More

Best Furniture Mattress & Gift "DEALS" in the 'Boro



## Eagles for Eagles reach 26.4% of fundraising goal

BY SHELBY FAMER

The George-Anne contributor

Eagles for Eagles aims to raise \$14,000 by the end of the semester, of which they have already raised around \$3,600.

Eagles for Eagles, a fundraising program developed in November by Southern Legacy, aims to reach that goal by the week before finals, Lauren White said.

"We have raised a little over three thousand six hundred dollars from one hundred and fifteen donors," White said. "That's about thirty-one dollars a piece, so that's not bad."

If Eagles for Eagles does not reach its goal, the organization may not be able to open the funds to all students, White said.

"It will still be money for students going through hardships, but we won't be able to open it for all students," White said. "We may

have to choose between those going through a tragedy and those who are trying for education opportunities."

"It could be anyone who needs [the money] and it would be sad knowing we couldn't help as many students who need it," White said.

The fund is divided into two awards, the Eagle Care Award, which is for students who have experienced a tragedy, and the Eagle Opportunity Award, which is for students who have an out-of-class educational opportunity such as an unpaid internship, White said.

Eagles for Eagles will have tables set up at the rotunda and in the Russell Union during the last week of April and students may donate through the organization's brochure or online with cash, check or card, White said.

Students who donate at least \$10 will have their names displayed online as a Southern Trailblazer.

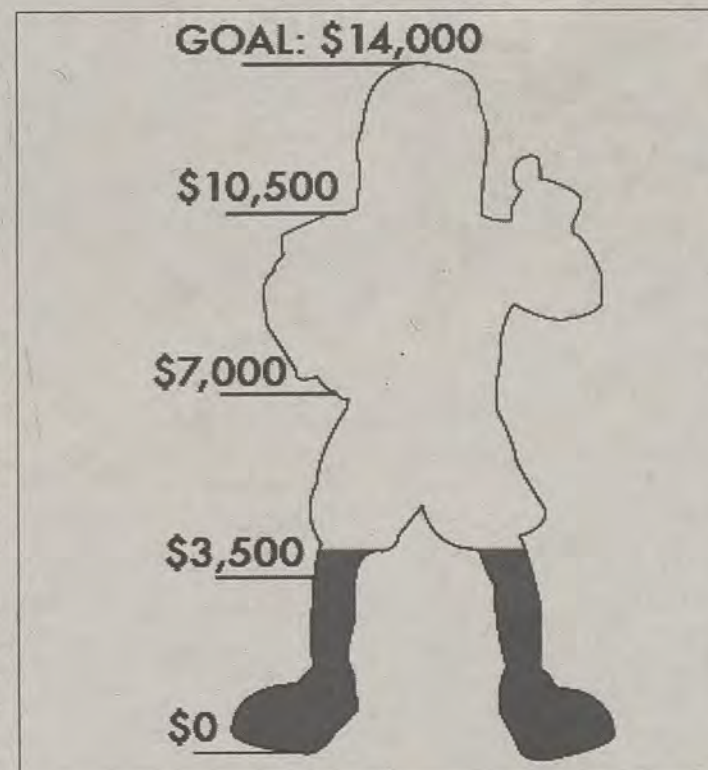
Plaques will also be made, distinguishing students by class, to permanently recognize donors to the fund, White said.

To students who are not sure about how much to donate, Eagles for Eagles recommends giving your graduation year. If you graduate in 2013, give \$20.13, White said.

"I just feel like (\$14,000) is a lot to raise in a semester," Katie Baker, sophomore business management major, said.

"It's a great idea, and I'd be willing to donate," James Johnson, sophomore business administration major, said, "but I don't know about twenty dollars."

White said Eagles for Eagles is loosely based off of K-State Proud, a student organization at Kansas State University with similar goals. K-State Proud started with a goal of \$8,000, which was exceeded by the \$110,000 it raised.



Kelsey Paone/The George-Anne

## Kelly Brown selected as Student Employee of the Year

BY COURTNEY ESCHER

The George-Anne staff

During yesterday's Student Employee of the Year ceremonies, Kelly Brown was awarded the honor of Georgia Southern University's Student Employee of the Year after a unanimous vote from judges.

Brown is a junior athletic training and exercise science major and intramural sports supervisor.

Brown was nominated among 32 other students from 20 departments on campus and was selected by a unanimous vote among eight judges.

Brown won a check for \$100 along with the title of Student Employee of the Year.

Intramural Sports Director, Tommy Segi, nominated Brown for the award.

"We are very proud of her," Segi said, "She is an outstanding role model and is top of the line in everything she does."

Brown was shocked to be awarded the honor

and never dreamed of coming this far in her job.

"I am completely shocked. When I first started working at (Campus Recreation and Intramurals) I didn't plan to do anything other than officiate for soccer," Brown said.

Being promoted was simply an act of being in the right place at the right time, Brown said.

"I was refing a game and I needed a ride home, and my ride was attending the meeting (regarding becoming a supervisor), so I went to the meeting and then applied and fell in love with it," Brown said.

Brown believes that CRI is the best department on campus to work for.

"I think we have a great department at CRI," Brown said, "I love the participants (in



KELLY BROWN

" I am completely shocked. When I first started working at (Campus Recreation and Intramurals) I didn't plan to do anything other than officiate for soccer.

"

-Kelly Brown,  
intramural sports supervisor

intramural sports) because whether you have been playing football all your life or you've never thrown a ball before, there is something for everyone."

Brown wishes to congratulate all of the other nominees for their hard work and dedication.

America Minc, associate director of CRI, was proud of Brown's accomplishments and believes that Brown epitomizes what a student employee should be.

"Students like Kelly Brown make my job easy and special," Minc said.

Minc believes that honoring student employees is what GSU is all about.

Vice President of Student Affairs and Enrollment Management, Teresa Thompson, said, "Often times institutions forget why they are there — it is for the students. At Georgia Southern, we do a good job of being student centered."





*too far away?*



*filling the pool?*



*removing workout equipment?*

# MYTHS

*freedom's landing*



*scan here  
for the facts!*

OR CHECK OUT [WWW.GSUHOUSING.COM/FACTS](http://WWW.GSUHOUSING.COM/FACTS)



*12 month lease?*



## GSU junior crowned King of Hearts

**KIMEKO MCCOY**

The George-Anne staff

The Georgia Southern University community watched on as junior majoring in Spanish and biology Terico Agnew was crowned Mr. GSU Tuesday night at the Russell Union Ballroom.

"I feel excited and humbled for the opportunity," Agnew said about his win. "I'm really humbled that I get to be Mr. GSU 2012."

Upon winning, Agnew was crowned by the current Ms. GSU, Charlene Bibeau, and the 2011 Mr. GSU, Mark Bragg.

"Charlene is a great person and I'm ready to take responsibility and be her right hand man," Agnew said.

First runner up for the Mr. GSU competition was a junior majoring in geology, Rock Gardner.

In addition to receiving the title of first runner up, Gardner also was awarded for being the people's choice of the Mr. GSU pageant after being voted as a crowd favorite by those in the audience.

"Really, the point of doing the pageant was so I could recite my poem," Gardner said.

The second runner up for the Mr. GSU competition was senior majoring in computer science and art, Demario Cullars.

All were putting forth their efforts to take home the title and the responsibility of representing GSU to their best ability. All eight competitors came out one by one for the swimsuit, talent, formal wear and question and answer portions of the show.

After everyone including judges and previous winners of the pageant had been introduced, the competition began.

The first portion of the competition was the swimsuit portion. All of the contestants showed their physical fitness in this portion. Most wore swim trunks, though there was one contestant,

Cullars, who wore a Speedo bottom swimmer's uniform to show his physique.

Contestant Adrian Marshall used a surfboard as a prop with his swim outfit.

Next, there was the talent portion. Agnew showed a different side of himself and sang our school's alma mater for his talent. Marshall performed a glow streaking show for his talent that brought applause from the crowd.

Contestant David Echeverria had the crowd sing with him as he performed his rendition of Israel Kamakawiwo'ole's "Somewhere Over the Rainbow".

Cullars showed his photography for the talent portion of the competition.

After the talent portion, the contestants showed their school

spirit through t-shirts, crazy wigs and one contestant, Zachary Rivera, came out waving the school flag to show school spirit. Another competitor, Anthony Hughes, had the crowd shout back with the infamous "Whose house, our house!" chant.

For the final portion of the Mr. GSU competition, competitors came out in their formal wear to answer questions asked by the 2012 Miss GSU.

Both questions and answers varied and received applause after each contestant.

Contestants gave very straightforward answers to the questions they were asked. Echeverria was asked what it was like being the youngest of six children.

"It was an adventure," Echeverria said.



Rebecca Farris/The George-Anne

The eighth annual Mr. GSU pageant kicked off Tuesday evening at the Russell Union Ballroom. **Top right:** Terico Agnew, the winner of the Mr. GSU competition, has conversation with previous Mr. GSU, Marc Bragg. **Left:** Rock Gardner, junior geology major, struts his stuff on stage during the swim suit portion of the competition. **Bottom right:** Jefferey Silvey, junior theater and Spanish major, performs a self-written and humorous skit about class and swag during the talent portion of event.



**CONCERT,** from page 1

bands cheered and congratulated the winners.

"I was shocked, but really excited. There were so many good people playing, but we made it our own and it turned out well," Loomis said.

Held in the Williams Center Multipurpose Room, the competition was an event open to student and alumni bands and performers put on by the University Program Board. The competition was hosted by sophomore sociology major and University Program Board member Michael Bailey.

The bands featured in the competition were all Georgia Southern University students.

The performers were Finnagin's Father, The Commotions, Jake Manahan, The Daniel Johnson Band, Carrie Loomis and Robert Cottle.

All of the competitors had one thing in common: they all played music inspired by the acoustic genre.

"They all had a really good acoustic sound. It's really natural, and you get a good vibe from it," Cameron Paschal, junior multimedia communications major, said.

Performing first, Finnagin's Father sang two original songs, which are titled "Ride On" and "Lost at Sea."

"I hope we win. All the people here I know are great musicians. I'm just happy that the students have a chance to open for them and do bigger things," Lydia Luke, junior writing and linguistics major and lead singer for Finnagin's Father, said.

Next to hit the stage was The Commotions, who performed a cover of Amy Winehouse's "Valerie" and an original song titled "Empty Words."

The third act was solo singer Jake Manahan, and he took to the stage with his acoustic guitar and he sang two original compositions, "In Line at the ATM" and "Something Better."

The Daniel Johnson Band was the next band to hit the stage. The band performed its original song, "Alabama Girl," and a cover of The Dave Matthews Band's "Ants Marching."

"We got a really good showing and group of bands that came out. I think it was a great experience to hear all the people compete for what can be a life-changing event," Zac Watson, sophomore history education major and event organizer, said.



Rebecca Farris/The George-Anne

GSU student bands took to the stage in a competition to be the opening act for the spring concert. **Top: Carrie Loomis (singer) and Robert Cottle (guitarist)** were decided as the winners of the competition and the opening act for this year's spring concert. **Bottom: The Commotion**, who sang a cover of "Valerie" by Amy Winehouse and an original song, "Empty Words," placed first runner-up in the competition.

## JAGGY'S TOP SUMMER TWEETS



**Jaggy @gpctweets**

Register ASAP for summer classes at GPC [bit.ly/zxpTJZ](http://bit.ly/zxpTJZ). Then check out the awesome new GPC Botanical Garden on the Decatur Campus



**Jaggy @gpctweets**

Coffee shop hop with online courses via GPC—super-caFFEinated summer credits to close gap on graduation day! [bit.ly/zxpTJZ](http://bit.ly/zxpTJZ)



**Jaggy @gpctweets**

Sign up for tough class with best friend—instant study buddy. Take a break to visit GPC Dunwoody Observatory and gaze at the stars

#SUMMERCLASSES #MULTIPLESITES #ONLINECOURSES



**Georgia  
Perimeter  
College**

Learn more today at  
[transient.gpc.edu](http://transient.gpc.edu).



# Exhibit Form and Content comes to GSU

BY KIMEKO MCCOY

The George-Anne staff

The Betty Foy Sanders Department of Art at Georgia Southern University is giving art students the opportunity to present their work at the sixth annual juried exhibit, Foundations: Form and Content.

The exhibit will begin April 13 and continue through the 22.

The reception and award presentation for participating students will be on April 13 from 5 p.m. through 7 p.m.

The title "Form and Content," which is the theme for the exhibit, stems from the artwork that is being presented by the students participating.

"It relates to various aspects of creating objects," assistant professor and gallery director at the Betty Foy Sanders Department of Art Marc

Mitchell said.

"Everything has a form and content is what it is about," Mitchell said.

Mitchell has made preparations and coordinated with many for the evening.

"I help coordinate. I work closely with jurors and create a forum for them to evaluate work," Mitchell said.

Throughout the evening, the work presented by the students who have been chosen to participate will be available for viewing. Soon after, there will be a reception with light snacks and small awards will be distributed.

"It's going to be a reception for students and there will be artwork on display," Mitchell said.

"All foundation students are welcome to submit work, but the juror makes the decision for who will be included," Mitchell said.

Those chosen to have their work

displayed will be publicly recognized for their work but will also be considered to set the bar for future students who share the same goals with currently participating students.

"We're trying to set the bar high," Mitchell said.

In addition to their artwork being displayed, students will also have their work judged in order to be nominated for awards and honorable mentions.

"It's an exhibition for foundation students in Drawing I, Drawing II, 2-D art and 3-D art," Mitchell said. "These exhibitions also have awards and honorable mentions."

Students interested in having their work judged and displayed at the upcoming exhibit are required to have taken art foundation courses.

Judge of the evening will be Julie Bowland, who works at Valdosta State University in a profession similar to that of Mitchell.



Tyler Fielder/The George-Anne

"(Bowland) is a professor and gallery director at Valdosta. She is the director for public arts for Tallahassee," Mitchell said.

Experience and familiarity is important to Mitchell in the process of choosing a judge for the annual juried exhibition.

Bowland provides a different way of looking and judging the artwork of the participating students.

"We wanted someone familiar with academic studies," Mitchell said.

The artwork that the students produce will be judged on more than just looks. Mitchell said Bowland will be looking for something more.

"She's going with element and principles of design," Mitchell said, "looking at technical and artistic as a good example of satisfying a visual problem."

## YOU ARE INVITED

to The Miscellany Release Party!

Thursday, April 12, 2012 @ 7pm  
Williams Center Multi-Purpose Room

### Live performances by:

Ellipse  
Finnigan's Father  
Cold Duck Time

### Open Mic!

If you are interested in an Open Mic performance contact us  
miscellany@georgiasouthern.edu

## SEEKING PART TIME TOUR GUIDES...

DO YOU HAVE A PASSION FOR THE OUTDOORS???

HAVE FUN SETTING YOUR OWN HOURS AS A CANOE & KAYAK TOUR GUIDE ON A 420 ACRE WILDLIFE PRESERVE.

WEEKLY INCOME POTENTIAL FROM \$500 - \$1,000

SET YOUR OWN HOURS

GET BACK TO NATURE

LIMITED POSITIONS AVAILABLE



CALL TO SCHEDULE YOUR OPORTUNITY  
912-486-4477

*Blackwater*  
PRESERVE



# THE 'BORO BEAT

## YOUR GUIDE TO OFF-CAMPUS ENTERTAINMENT

### THURSDAY

#### Applebees

- Happy Hour & Late Night Fun: (3 p.m.-6 p.m.) (9 p.m.-cl)
- ½ price appetizers
- \$2 Natty Light brews
- \$3 domestic brews (micros \$1 more)
- \$3 Long Islands
- DJ Jammin J Productions (10 p.m. to close)

#### Dingus Magee's

- Happy Hour (5-7p.m.) and (9-11 p.m.)
- \$2 well liquor
- 2 for 1 bombs
- 2 for 1 appetizers
- Dr. Dan (8 p.m. - cl)

#### GATA's

- Happy Hour (5 p.m. - 7 p.m.)
- ½ price bottle & draft beer
- \$1.50 single wells
- \$3 double well liquors

#### Gnat's Landing

- \$10 buckets of beer
- \$3 double well liquors
- \$3 Bombs
- \$3 New Castle beer

### FRIDAY

#### Applebees

- Happy Hour & Late Night Fun: (3 p.m.-6 p.m.) (9 p.m.-cl)
- ½ price appetizers
- \$2 Natty Light brews
- \$3 domestic brews (micros \$1 more)
- \$3 Long Islands

#### Dingus Magee's

- Happy Hour (5 p.m.-7p.m.) (9 p.m.-11 p.m.)
- \$2 Well liquor
- 2 for 1 Bombs
- 2 for 1 appetizers (5-7 p.m.)
- Familiar Faces (8 p.m. - cl)

#### GATA's

- Happy Hour (5 p.m. - 7 p.m.)
- ½ price bottle & draft beer
- \$1.50 single wells
- \$3 double well liquors

#### Loco's

- Happy Hour (5 p.m.-7 p.m.)
- ½ price Draft beer
- ½ price chips and salsa
- ½ price chips and queso dip
- ½ price wings

### SATURDAY

#### Applebees

- Black Light Party (10 p.m. - cl)
- \$3 appletinins
- \$3 well liquor
- \$3 Long Islands

#### Dingus Magee's

- Happy Hour (5 p.m.-7p.m.) (9 p.m.-11 p.m.)
- \$2 well liquor
- 2 for 1 bombs
- 2 for 1 appetizers (5 p.m.-7 p.m.)
- Corduroy Road (8 p.m.-cl)

#### GATA's

- Happy Hour (5 p.m. - 7 p.m.)
- ½ price bottle & draft beer
- \$1.50 single wells
- \$3 double well liquors

#### Loco's

- Happy Hour (5 p.m.-7 p.m.)
- ½ price draft beer
- ½ price chips and salsa
- ½ price chips and queso dip
- ½ price wings

#### Manny's

- Happy Hour (5 p.m.-7 p.m.)
- \$2 draft beers
- ½ price wine
- \$2 well liquors
- \$3 double well liquors

#### MillHouse

- \$1.99 Draft beers, cocktails, martinis and margaritas

- Eye Exams
- Glasses
- Contacts



912-489-6655

820 HWY 80 E. (in front of Lowes)  
www.boomersvisioncenter.com

myth:  
fact:

drinking is central to the  
social lives of georgia  
southern university  
students

64% of georgia southern  
students have 0-4  
drinks per week

presented by the dean of  
students office

for more information visit:  
<http://students.georgiasouthern.edu/aod>  
data collected from georgia southern  
university core survey 2010

INTEGRATION  
EDUCATION



# THE 'BORO BEAT

## YOUR GUIDE TO OFF-CAMPUS ENTERTAINMENT

### SUNDAY

#### Applebees

- Guys Night Out (10 p.m. - cl)
- \$1 Natty beers
- \$3 Firefly vodka
- \$3 Jack Daniels shots

#### Dingus Magee's

- Happy Hour (5 p.m.-7p.m.) (9 p.m.-11 p.m.)
- \$2 well liquor
- 2 for 1 bombs
- 2 for 1 appetizers (5 p.m.-7 p.m.)

#### GATA's

- Happy Hour (5 p.m. - 7 p.m.)
- 1/2 price bottle & draft beer
- \$1.50 single wells
- \$3 double well liquors

#### Manny's

- Happy Hour (5 p.m.-7 p.m.)
- \$2 draft beers
- 1/2 price wine
- \$2 wells
- \$3 double wells

#### MillHouse

- \$1.99 draft beers, cocktails, martinis and margaritas
- \$2.49 house wines

#### Ruby Tuesday's

- Happy Hour (4 p.m.-6 p.m.) (9 p.m.-11 p.m.)
- \$5 Absolut vodka
- \$5 select wines

### MONDAY

#### Applebees

- Happy Hour & Late Night Fun: (3 p.m.-6 p.m.) (9p.m.-cl)
- 1/2 price appetizers
- \$2 Natty Light Brews
- \$3 Domestic Brews (Micros \$1 more)
- \$3 Long Islands
- \$3 Main Street Margaritas (regular and flavor)
- Fraternity and sorority mixers
- \$2 Corona bottled beer
- \$2 Dos Equis bottled beer
- \$3 Stella Artois bottled beer
- \$2 Bud Light Lime bottled beer

#### Dingus Magee's

- Happy Hour (5 p.m.-7 p.m.) (9 p.m.-11 p.m.)
- \$2 Well liquor
- 2 for 1 bombs
- 2 for 1 appetizers (5 p.m.-7 p.m.)

#### El Sombrero Downtown

- \$2 Margarita's all day

#### Gnat's Landing

- Happy Hour All Day
- 1/2 off all alcohol and select appetizers

#### Loco's

- Happy Hour (5 p.m.-7 p.m.)
- 1/2 price draft beer
- 1/2 price chips and salsa
- 1/2 price chips and queso dip
- 1/2 price wings

### TUESDAY

#### Applebees

- Happy Hour & Late Night Fun: (3 p.m.-6 p.m.) (9 p.m.-cl)
- 1/2 appetizers
- \$2 Natty Light brews
- \$3 domestic brews (micros \$1 more)
- \$3 Long Islands
- \$3 main street margaritas (regular and flavor), \$3 wells
- Karaoke night: \$4 Jaeger bombs, \$2 Natty beers, \$3 Jack Daniels, \$3 Jim Beam

#### Dingus Magee's

- Happy Hour (5 p.m.-7p.m.) (9 p.m.-11 p.m.)
- \$2 Well liquor
- 2 for 1 bombs
- 2 for 1 appetizers (5 p.m.-7 p.m.)

#### GATA's

- Happy Hour (5 p.m.-7 p.m.)
- 1/2 price bottle & draft beer
- \$1.50 single wells
- \$3 double wells

#### Gnat's Landing

- Trivia at 7 p.m. with cash prizes
- \$10 buckets of beer
- \$10 bucket of beer
- \$7.99 shrimp & grits

#### Southern Billiard and Burgers

- Happy Hour (5 p.m. - 7 p.m.)
- \$1 shots
- \$2 well liquor drinks
- \$1.50 domestic drafts, \$2.50 import drafts

UT&ABOUT

## Express Tune & Lube

### Tire, Alignment & Exhaust Center

612 S. Zetterower Avenue  
489-4444  
www.expresstuneandlube.com  
Monday - Friday 7:30am - 6:30pm

Located a half block north of Wendy's.

### OIL CHANGE SPECIAL

**\$25<sup>95</sup>**

Includes up to  
5 qts of Castrol  
5W20, 5W30, 10W30,  
or 20W50

price applies to most vehicles. Expires 5/31/12

www.expresstuneandlube.com



# Japanese Taiko drummers to come to GSU

BRITTANY MOORE

The George-Anne contributor

The sounds of Taiko drumming will surround the Russell Union Rotunda today from 11 a.m. – 2 p.m. as the Multicultural Student Center brings the art of Japanese Taiko drumming to Georgia Southern University.

Taiko is a Japanese art form of drumming that has been around for thousands of years.

During the live performance, the Taiko drums are going to be played in numerous styles, such as Nagado-daiko, Shime-daiko, Hira-daiko and Oke-daiko.

The miniature concert being performed today will be courtesy of Tampa Taiko's Japanese drumming ensemble.

This is not the first time the Taiko drummers have performed at the GSU campus. Due to student excitement about the drummers from last year, the MSC decided that the drummers should come back.

"At the programming planning meeting,



Photo courtesy of [www.facebook.com/TampaTaiko](http://www.facebook.com/TampaTaiko)

**Tampa Taiko Drummers** perform in Hillsborough County, Fla., in Feb. 2012.

we listened to ideas from students, faculty and staff and realized how much good

feedback we were getting from last year's Taiko drumming event. We had students, faculty and staff personally come to our office and thank us for bringing them to campus and say how great of an experience it was." Jada Holsey, senior graduate student and graduate assistant of programming for the Multicultural Student Center, said.

The MSC has also arranged for Japanese food to be served while students watch the drummers play.

We want the same feedback from the student body, faculty and staff. So, in order to add to the Japanese cultural setting of the event, MSC will also be serving food at the Rotunda during the Taiko drumming performance," Holsey said.

The Taiko drummers' performance seems to be an event that the GSU students are highly enthused about.

Winston Bull, sophomore information technology major, said, "As a percussionist myself, I am very interested in how other cultures play drums. I am big fan of music, so I am definitely looking forward to this

event. I have never seen Japanese drummers before. I've only seen African and American drummers, so I can't wait to go."

Ashlee Collins, junior public relations major, said, "I think that Georgia Southern bringing any type of culture to campus is a great thing. I like learning about different cultures and perspectives. Every culture is important and people should be open to learning about them, so I think this is a great opportunity for people to come out and experience something different."

The Tampa Taiko drummers are very popular around the United States and perform for all types of audiences.

"The performers who are coming to GSU are from Clearwater, Florida, and are very knowledgeable in the Taiko drumming art form.

The drummers have studied the dynamics of Taiko and they have performed all over the United States, usually in a large setting. We are so excited that they are giving the GSU students an exclusive performance and are catering to them," Holsey said.

Over 60 Arcade Games, Ballocity, Bowling,  
Mini-Golf, Laser Tag & Restaurant!  
Food & Fun Combos, Group and Individual Packages Available!

**BEST PLACE  
TO PLAY!**



**GSU NIGHTS**

JOIN US MONDAY, TUESDAY & THURSDAY  
for Exclusive GSU Deals!  
Unlimited Bowling, Laser Tag and Mini Golf  
6 PM TO CLOSE

**ONLY \$9.99**

(with your GSU ID)



Scan this code to  
see more deals!



**THE  
CLUBHOUSE**  
GAMES • BOWLING  
FOOD • FUN



ClubhouseStatesboro.com • 912-871-1000

**UNLIMITED FUN  
LIMITED VACANCIES**



**CALL 912-681-3888 TODAY!**

**GREAT SPACE. GREAT RATES**

FULLY FURNISHED, SPACIOUS APARTMENTS • LARGE, LOCKABLE  
BEDROOM/BATHROOM SUITES • WASHER AND DRYER IN EACH APARTMENT  
LOADED CLUBHOUSE WITH GAME ROOM, FITNESS CENTER, TANNING BOOTHS  
POOL, VOLLEYBALL AND BASKETBALL COURTS, GRILLS AND FIRE PITS

**the grove**

1150 Hampton Avenue  
Statesboro, GA 30458

[info@statesborogrove.com](http://info@statesborogrove.com)

FULLY LOADED COLLEGE LIVING.



# Students go barefoot for charity

BY E. FEAGIN OLIVER

The George-Anne contributor

Students walked all over the Russell Union Rotunda and surrounding areas barefoot yesterday as GSU's chapter of Phi Iota Alpha sponsored its third annual Day Without Shoes event to celebrate and create awareness of the devastating effects of going barefoot.

Students and fraternity brothers abandoned their shoes to simulate the damaging and uncomfortable consequences of poverty.

"We encourage people wearing shoes to take off their shoes for the day — if not for the day, just for an hour or so," Chu Kim, fraternity brother and GSU alumni, said.

The goal was to "spread campus awareness about poverty in other countries and what kids have to go through just to get around," Kim said.

Events that took place from 10 a.m. - 1:30 p.m. under the Rotunda included the decorating of a banner and the "Poverty Walk."

Participants were encouraged to paint their bare feet and leave a colorful, signed footprint on a banner which read "4-10-12: I went barefoot"

“ A whole bunch of people — mainly children — don't have things we take for granted. ”

-Ashley "Skippy" Washington, sophomore psychology major

and sported the TOMS logo. The banner was paraded up and down the pedestrian in a shoeless 11-person march at 1:30 p.m.

The "Poverty Walk," a new addition to the program, was a strip of sand, dirt, pebble and gravel patches which allowed participants to experience walking without shoes on different terrains.

"People don't really know what it's like to walk barefoot," freshman accounting major Normary Rivera said.

The organization's event mirrored that of the nationally renowned TOMS shoe company, which promises to donate one pair of shoes to a child in need for every pair

of shoes purchased. The company hosts an annual day without shoes to educate about the need for shoes as protection against disease and injury.

"Potentially, more people who haven't heard about TOMS will look it up and get interested and try to figure out the correlation of going without shoes," Christina Belge, junior public relations major, said.

Summing up the message of the event, Ashley "Skippy" Washington, sophomore psychology major, said, "A whole bunch of people — mainly children — don't have things we take for granted. So hopefully, going without shoes will just remind people."

## The Buzz List



Gianna Carme

▪ **Titanic** has made over \$25 million since its 3D release. Let's break this down: a 3D ticket costs about \$15, or sometimes more, meaning millions of Americans paid that much to see a movie they have already seen. And people wonder how this country ended up in a recession.

▪ **Madonna's** new album, "MDNA," is expected to drop 88 percent in sales, making it the record for biggest decline in second week sales. Sadly, this still will not make her realize 53-year-olds should not frolic about half naked on stage acting as if like they're 25.

▪ **Amanda Bynes** was arrested for DUI last weekend. In other news, former actress Amanda Bynes is still alive.

Information compiled by Arts Editor Quanyia Epps and Assistant Arts Editor Gianna Carme from TheHollywoodReporter.com.

**Stomach pains and ankle sprains.  
Fevers, aches and yucky goo.  
Mystery rashes and deep gashes.  
Colds, flu and allergies, too.**



**No matter what's wrong,  
let us take good care of you.**



**SOUTH GEORGIA  
IMMEDIATE  
CARE CENTER**

1096 Bermuda Run Road  
(next to Mellow Mushroom)  
Statesboro, GA 30458

p - 912-871-5150  
yourimmediatecarecenters.com

CONVENIENTLY LOCATED MINUTES FROM GSU.  
CARING AND CONFIDENTIAL TREATMENT.

**HOURS:**

Monday - Friday 9:00 am - 8:00 pm  
Saturday 9:00 am - 5:00 pm  
Sunday 12:00 pm - 5:00 pm

Most insurance accepted - bring your insurance card and Driver's License. Please call with co-pay and insurance questions. Cash patients also welcome.

**FRANKLIN**  
TOYOTA • SCION



**888-695-8165**

500 Commerce Drive  
beside the new Holiday Inn

## PROTECT YOUR VEHICLE!

Regular maintenance and upkeep is crucial to your car's optimal performance, best possible gas mileage, and highest resale value.

**Our service department offers the best in automotive service for all makes and models.**

PLUS we provide a free shuttle to and from campus!

- Oil Change
- Tire Services
- Tune-Up & Transmission Service
- A/C & Radiator Service
- Brake Service
- Engine Repair
- Body Shop Services



**BUY OR LEASE  
A NEW TOYOTA, GET A**

**\$1,000**

**COLLEGE GRAD REBATE**

**SCHEDULE YOUR SERVICE ONLINE! [www.FranklinToyota.com](http://www.FranklinToyota.com)**



# CLASSIFIEDS

This page brought to you by Career Services  
Explore • Experience • Excel

16 Thursday, April 12, 2012

www.thegeorgeanne.com

Advertisement

## For Sale

Scooter for sale! 2005 Honda Ruckus. Black, 49cc, 85+mpg. Original (faculty) owner, garage kept. \$1,500 OBO. Contact (912) 678-6052

Firewood for Sale. Delivery available! Call 912-690-0872 or 912-690-4956.

For sale: 2009 BMW 328i, hard-top convertible in great condition. Black with tan interior. Call 912-293-1909.

Used Fender Blues Jr. All-tube guitar amp, \$350, negotiable. Perfect working order/condition (912) 536-1610

## Help Wanted

BARTENDERS WANTED! \$250 a day potential. Experience unnecessary. Training provided. 18+ Call: 1-800-965-6520 ext. 296

Seeking an Assistant, excellent opportunity if looking to work in a friendly atmosphere. Self-Motivated, Positive Attitude, Ability to Multi task. Send resume to Martgay@gmail.com

Part time sales position open at Farmer's Home Furniture. Apply in person. 110 Northside Drive E. Statesboro, Ga 30458

## Help Wanted, cont.

Account manager representative wanted by our aid. Requirements: 18 and up, typing and computer skills. Will earn \$2000 monthly. E-mail me at jjwalls333@gmail.com if interested.

## Subleases

1BR/1BT available in a 4BR/4BT at Campus Club \$700 for the whole summer or \$370/month. Email Shanna at shannalawson22@gmail.com

3BR/2BT within 2 miles campus. You can sublease the other 2 rooms. No smoking or pets. Call (706) 951-1427.

Sublease at Cambridge for Reduced Price 1 BR/BTH available in a 3 BR. \$350/month \*Regular price-\$459/month.\* Email shortiecutie102@yahoo.com

2BR/2HBH at Hawthorne 2. \$350/month. Through July. Contact Shannon at 678-468-9407

"Don't pay \$1,260 for Summer 2012 housing. 4 br/ 2 bt apartment in the Avenue is only \$320 Contact Tanera @ tm01729@georgiasouthern.edu"

## Subleases, cont.

Sublease for Spring 2012 in a fully furnished 4 BR/4 BT. Contact Alex at (770) 712-5377 or ao00837@georgiasouthern.edu

2 BR/2 BT sublease in Georgia Villas. \$475/month for both rooms, utilities not included. Available Jan-May, Email tl00212@georgiasouthern.edu

Subleasing 626 B at the Exchange. Female Roommate needed. \$519.00 per month. Available now. Contact (706) 523-6001

Room available 3 BR/2 BT house on Catherine Avenue. \$367/mo Contact Yale at (404) 272-7652 or yale8754@bellsouth.net

1BR/1BT available for rent at Copper Beech apartment. Rent \$394/month + utilities (negotiable). Please call 770-639-0264.

4BR/4BT at Campus Club \$409 a month Contact Chin Herbert at ch02002@georgiasouthern.edu

SUMMER 2012! Subleasing 1BR/1BT available in a 2BR/2BT at The Woodlands. \$409/month plus utilities. Email Sadie at sn01140@georgiasouthern.edu

## Subleases, cont.

Garden District with 2 roommates looking for a female to rent my room out for the summer. I'm only asking for \$300/month. Call 404-764-6490 ask for Monica.

All inclusive, two story, fully furnished, 4 BR for \$330/month Contact (229) 326-4291.

Summer 2012 1br/1bt townhouse at the Avenue. Rent \$465, unfurnished. May rent and \$100 for June and July paid. Contact at kp01343@georgiasouthern.edu

1 bedroom in a 3BR Apt. in Campus Club. Available from the end of May until July. It is \$445/month and is located right next to GSU Contact Alexis Flen at af02017@georgiasouthern.edu.

Summer 2012 4BR/2BT apartment in the Avenue is only \$320 & is FULLY FURNISHED! Contact Tanera @ tm01729@georgiasouthern.edu

Sublease available ASAP at Copper Beach. \$389/mo. Utilities not included. Contact 478-957-1005 for more information.

Sublease my 1BR apartment ASAP at Panter's Row. It is \$625 Contact at be01181@georgiasouthern.edu or 478-455-0432.

## Subleases, cont.

Planter's Row 1BR/1BT Cottage. \$625 a month, Available for Summer semester. Call 270-227-7507

Fall 2012 Female Roommate Needed at University Pines 4 BR/2BT \$409.00/month. Call: 478-251-6260 or email: rw02273@georgiasouthern.edu

Planter's Row for \$365/month; utilities not included. Contact at at01770@georgiasouthern.edu or call (770) 546-6560

Subleasing 3 BR/2BT house on Parker Ave in Brooklet. Contact Joyce at (912) 842-9479.

Summer 2012, individual bathroom, 3 female roommates, washer/dryer. Call Kaylah Ibidapo at 678-612-1087

## Houses for Rent

ATTENTION ALL STUDENTS 2, 3, 4, 5, 6, and 7 bedroom houses available Aug 1, 2012 24 hr repairs guaranteed 912-682-7468

Summer 2012 Subleasing 1BR/1BT available in a 4BR/4BT at Campus Club \$370/month. Email Shanna at shannalawson22@gmail.com

## Houses for Rent, cont.

Furnished apartment Located just past Mill Creek Park. \$130/week or \$500/month. Available now. 912-531-1319

HOUSE FOR RENT 3BR/ 2BT in August 821 Robin Hood Trail, walking distance to campus, \$895 a month. Call at 706-543-5497


4 bd / 2 bath - Robin Hood Trail 4 bd / 2 bath - Tillman Street 4 bd / 4 bath - Talons Lake More info at: www.wildoak-investments.com Call: 912-682-9515

## Misc.

American Shorthair Cats (AKC Reg. Male and Female) free to good home, contact bpills12@gmail.com if interested

Will proof papers. Quality work, reasonable prices. Will also type short projects. Must have ample lead time to schedule. Email auntre01@gmail.com

Fourth year writing and linguistics major will proof papers/ tutor in writing. Cheapest rates, at least three days notice on assignments



**THE RAB LUNCH & LEARN SERIES**

Tues., April 17th from 12:30 – 1:45 in Russell Union 2080

Thurs., April 19th from 12:30 – 1:45 in Russell Union 2080

Williams Center 1047 (912) 478-5197 georgiasouthern.edu/career

## Avoid These Mistakes During Your Job Hunt

By Brianna Wagenbrenner  
Event Planning Intern  
From the Office Of Career Services

At this point in the summer job hunt everyone is probably starting to divide into two categories: employed and panicking. If you are in the panic category, take a deep breath and look back at your applications. You may want to adjust your applications or interview style. To help you reevaluate are "8 Mistakes that Can Hurt Your Job Search" according to Chad Bauer posted on New Grad Life on April 10, 2012.

Mistake #1: Act as if the job search is about you. Organizations hire people because of a need within the company. You must demonstrate how your skills are relevant to the organization.

Mistake #2: Not knowing yourself and your value. It is important to know what you want and care about.

Mistake #3: Not being able to clearly communicate how you fit what the company needs. You aren't relevant to

the company unless you can demonstrate how your strengths apply to the company's needs.

Mistake #4: Not adequately researching the companies you are targeting. You cannot display your relevance to the company without knowing what the company needs in the first place.

Mistake #5: Targeting only companies with advertised job openings. Approximately 70% to 80% of opportunities are never advertised. It never hurts to ask.

Mistake #6: Sending your materials to the wrong person. Get your materials in the hands of the decision maker.

Mistake #7: Not using impact stories to bring your interviews alive. A portfolio with examples, writing samples or a demonstration of past experience can help get you noticed.

Mistake #8: Not using networking to open the door to a target company. If you know someone within the company, send your information to that person. Don't underestimate the power of networking.



# PUZZLES/COMICS

www.thegeorgeanne.com

Thursday, April 12, 2012 17

## Los Angeles Times Daily Crossword Puzzle

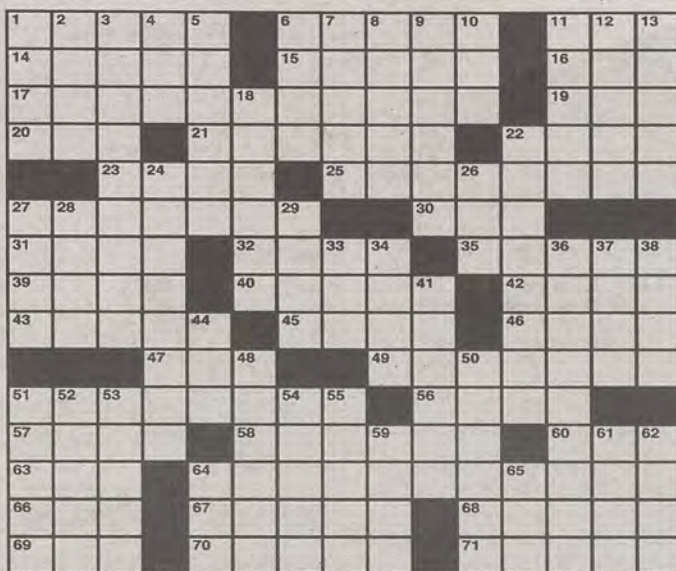
Edited by Rich Norris and Joyce Lewis

### ACROSS

- 1 Loathe
- 6 Poke into
- 11 "Blue Hawaii" prop
- 14 Rear
- 15 Houston hockey team
- 16 Frat letters
- 17 "Place for after-dinner courses"
- 19 Banned pesticide
- 20 Magic show reaction
- 21 Lots
- 22 "Ometà" author
- 23 Mystery writer John Dickson
- 25 "Repress"
- 27 Double- puzzle type
- 30 German pronoun
- 31 When many Lyon Lions are born
- 32 Brownish purple
- 35 Certain commuter's aid
- 39 Utter
- 40 See 33-Down, and word that can precede the end of the answers to starred clues
- 42 Grinder
- 43 Uncredited actor
- 45 Yani Tseng's org.
- 46 Home of Miami University
- 47 Neighbor of Leb.
- 49 Neverending
- 51 "Skating exhibitions"
- 56 Fertile Crescent land
- 57 Musty
- 58 Butter sources
- 60 American rival: Abbr.
- 63 "Fine Day": 1963 hit
- 64 "Delta's aptly named monthly"
- 66 Fly the coop
- 67 Stud
- 68 Assays
- 69 Like some looks
- 70 Put up
- 71 Sorority letters

### DOWN

- 1 River of Tuscany



By Bill Thompson

4/12/12

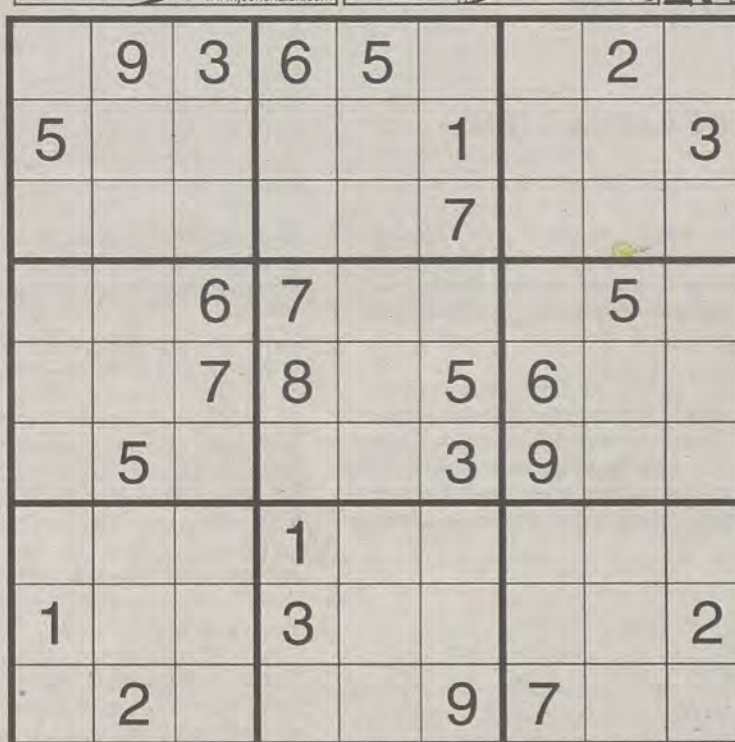
### April 10th Puzzle Solved

E	B	O	N	D	A	N	Z	A	T	O	T	S
S	A	R	A	A	L	B	E	N	O	R	I	N
C	A	B	C	O	M	P	A	N	Y	M	I	D
				H	U	S	H	E	D	T	G	I
H	O	B	O	S	A	R	A	B	C	H	I	E
E	R	E	S	T					R	O	U	N
E	E	L		S	I	D	E	A	R	M		
				A	S	E	A	S	Y	A	S	A
				N	E	U	T	E	R	S		H
A	C	H	O	O	S				Y	A	M	A
C	R	A	B	C	A	K	E	S		L	I	N
C	U	R	B		A	X	E	M	A	N		
E	S	M	E		A	B	C	R	U	N	C	H
D	O	O	R		D	U	E	T	S		E	A
E	E	N	Y		A	L	L	A	H		D	D

- 2 "Joanie Loves Chachi" co-star
- 3 Hearer of final appeals
- 4 Kosh B'Gosh
- 5 Comeback
- 6 Go to and fro
- 7 Post-op program
- 8 Maine campus town
- 9 Promotes
- 10 Immigrant's subj.
- 11 Excessive
- 12 Invasive Japanese vine
- 13 Prevent legally
- 18 What ad libbers ignore
- 22 Overabundance
- 24 Star
- 26 "My country, ..."
- 27 Horn, for one
- 28 Gravy thickener
- 29 Ringle
- 33 With "and" and 40-Across, emissions-reducing method whose first word (this answer) can follow the start of the answers to starred clues
- 34 Sidle
- 36 Burger follower
- 37 "Nessun dorma," e.g.
- 38 Combine, as assets
- 41 Using (up)
- 44 Fireplace powder
- 48 Chair on a porch
- 50 Fake
- 51 Fan club focuses
- 52 Towpath locale
- 53 She's not for you
- 54 "What did I do to deserve this?"
- 55 "Poison" plant
- 59 Harangue
- 61 Architectural pier
- 62 More, to a minimalist
- 64 Elle, across the Atlantic
- 65 Bit of a snore?



Welcome to Falling Rock National Park by Josh Shalek



## Sudoku

3	2	4	5	8	9	7	1	6
1	8	6	9	3	7	5	4	2
7	6	5	1	4	2	3	8	9
8	5	1	2	6	3	9	7	4
2	4	7	8	9	5	6	3	1
9	3	6	7	1	4	2	5	8
6	1	2	4	3	7	8	9	5
5	7	8	9	6	3	1	2	4
4	9	3	6	5	8	1	2	7

**FRANKLIN**  
CHEVROLET - CADILLAC  
PONTIAC - BUICK - GMC  
**912.764.6911**



Our experienced Body Shop can fix all of the "Dents & Dings" that your vehicle may have! We service all makes and models and accept all insurance claims, and will give you a **FREE ESTIMATE** on your body & paint repair

**GSU STUDENTS** Show your ID and receive **10% OFF** any purchase in Parts and Service

We offer our own in town towing service that is **FREE** with a Student ID when we do the repairs on your vehicle

Check out our website  
[www.franklinchevrolet.com](http://www.franklinchevrolet.com)



# WEEKLY BUZZ

A weekly calendar listing sponsored by The Division of Student Affairs and Enrollment Management

## APRIL 12 - APRIL 17

### THURSDAY 4.12.2012

7 PM

#### MISCELLANY RELEASE PARTY

WILLIAMS CENTER

Sponsored by the Office of Student Activities.

#### APPLY TO BE ON THE V.A.L.U.E.S. TEAM

The Office of Student Conduct is now accepting applications for the V.A.L.U.E.S. Team! V.A.L.U.E.S. is our civility campaign at Georgia Southern University, and the V.A.L.U.E.S. Team will work to program, present, and promote V.A.L.U.E.S. across campus. This team is a dynamic group of students that work to educate their peers and the college community about V.A.L.U.E.S., and how we can all strive to hold ourselves to a higher set of standards. Team members must be committed to having a positive impact on Georgia Southern's campus.

To apply, submit the application found on the Office of Student Conduct's website to Amy Zieziula or return it in to the office of Student Conduct in Russell Union Room 2022. This round of applications is for current students only and is due by April 23, 2012. Applicants will later be contacted regarding interviews. Future students will have the opportunity to apply in August at the start of the fall semester. Questions? Please contact Amy Zieziula, [azieziula@georgiasouthern.edu](mailto:azieziula@georgiasouthern.edu).

11 AM - 2 PM

#### TAIKO DRUMMERS

RUSSELL UNION, ROTUNDA

Come enjoy the Japanese art of Tampa Taiko's drumming. Taiko drums can be played in a variety of styles including, Nagado-daiko, Shime-daiko, Hira-daiko, and Oke-daiko! Take time out of your day to enjoy a live performance! Sponsored Multicultural Center.

### FRIDAY 4.13.2012

7 PM

#### OUTDOOR MOVIE

SWEETHEART CIRCLE

Sponsored by the Office of Student Activities.

#### RECEPTION: JURIED UNDERGRADUATE EXHIBITION / FORM & CONTENT THE CAT GALLERY

The Betty Foy Sanders Department of Art (BFSDoArt) at Georgia Southern University is pleased to present the 6th annual juried exhibition, FOUNDATIONS: Form & Content, from April 13 - 22, 2012. This exhibit showcases the exemplary work being produced by students taking art foundations courses at BFSDoArt. A reception and awards presentation will occur on Friday, April 13th from 5-7pm.

All BFSDoArt students pursuing a major in studio arts are required to take foundation courses that include drawing, two-dimensional design, and three-dimensional design. The coursework that comprises the foundations program is extremely rigorous and helps to create the solid infrastructure needed for a career in the fine arts. The mission of the exhibition is to honor the efforts of the outstanding beginning art students, as well as to demonstrate to the expectations placed on future students at BFSDoArt.

The juror for this exhibition is Julie Bowland, Associate Professor and Gallery Director, Valdosta State University. Ms. Bowland has over 20 years of experience in both the classroom and gallery. She has held teaching positions at institutions such as Tallahassee Community College, Florida State University (FSU), and Valdosta State University (VSU). Prior to running the gallery at VSU, she was the Director for Art in Public Places for Tallahassee/Leon County and Gallery 621 in Tallahassee. Her artwork has been exhibited widely throughout the United States.

The Betty Foy Sanders Department of Art (BFSDoArt) at Georgia Southern University is pleased to present the 2012 Undergraduate Juried Exhibition, on view from April 13 - 22, 2012. This exhibit showcases the outstanding work being produced by students enrolled at the BFSDoArt. An artists' reception and awards presentation will occur on Friday, April 13th from 5-7pm.

The artworks in the exhibition represent the various disciplines taught within the BFSDoArt including: sculpture, ceramics, jewelry, painting, drawing, printmaking, photography, and mixed media.

The juror for this exhibition is James Hull, Director of the Suffolk University Art Gallery at NESAD; and the Director/Curator for Laconia Gallery, Boston, MA. He has held teaching positions at institutions such as Georgia State University; Boston University; Art Institute of Boston/Lesley University; and the Rhode Island School of Design (RISD). In addition to teaching, he has held various positions for institutions such as DeCordova Museum and Sculpture Park; The List Visual Art Center at MIT; The Institute of Contemporary Art, Boston; High Museum of Art, and Fidelity Investments' Corporate Collection. Hull has written a number of critical articles and reviews for publications such as Art Papers Magazine; ArtsMedia; Art New England; and Big Red & Shiny. His artwork has been exhibited widely throughout the United States, as well as abroad.

BFSDoArt is committed to offering superb undergraduate programs that prepare students to become professional artists, designers, art educators, and art historians. Recognizing its role in training the next generation of artists and designers, students enrolled at BFSDoArt are encouraged to think independently and develop their own artistic voice.

Gallery Programming is supported by Student Activity Fees; all events are free and open to the public. In compliance with the Americans with Disabilities Act, Georgia Southern University will honor reasonable requests for accommodations. The Center for Art & Theatre is open Monday through Friday from 9 - 5 and by appointment. Docent tours are welcome and available upon request by calling (912) GSU-ARTS.

For more information on this exhibition and other gallery programming provided by the Betty Foy Sanders Department of Art, visit <http://class.georgiasouthern.edu/art>.

### SATURDAY 4.14.2012

10 AM - 1 PM

#### STRONGEST EAGLE

THE RAC

For more information or to register go to <http://welcome.georgiasouthern.edu/wellness/strongesteagle/reg.pdf>. Sponsored by Campus Recreation & Intramurals.

11 AM - 5 PM

#### ARTSFEST

SWEETHEART CIRCLE

Georgia Southern University invites you to beautiful Sweetheart Circle for a day of art, music, dance, and more at ArtsFest 2012 on Saturday, April 14th, from 11 am to 5 pm, celebrating its 30th Anniversary!! Where else can you experience renowned Flamenco dancers and a local ballet troupe? Where else can you groove to rhythms of jazz and rock, then indulge your passion for beautiful art, and along the way making art yourself - from clay to paint, then finally relaxing with a game of Ultimate Frisbee, afterward munching on BBQ and cotton candy?

The answer? Only at Georgia Southern's ArtsFest 2012, a free event, open to all.

Groove to the Music! Pladd Dot Music's School of Rock will be rockin' their talent this year on the main stage with 4 bands: Supernova, The Daisies, Relentless, and Hearts of Rebellion! These students, all under the age of 18, not only cover some of music's greatest hits, but also are responsible for writing their own original tunes. 4 & Some will belt it out old-school - a capella style - bringing something different to the stage!

Visit the Artist's Market! Watch artists demonstrating their talents in jewelry, folk art, painting, ceramics, sculpture, and photography, including the Betty Foy Sanders Department of Art's Jewelry Guild! And back by popular demand - One dollar will buy a Threads of Hope friendship bracelet made by artisans in the Philippines to raise funds to provide schooling, medical care and nutrition to those that don't have the resources to do it on their own.

STOP and Create! Make art at over 25 different Studio Stops. Create giant bubbles, print a fish, make paper, sculpt with clay, paint a masterpiece, craft jewelry or pose for a photo! The Humane Society invites all to paint Larger Than Life dog sculptures (an annual ArtsFest favorite!) and meet the many dogs and cats available for adoption.

Last But Not Least: EAT! Make it a point to eat lunch in the sunshine with the largest variety of food in great location! Jerk and curry chicken, pizza, and corn dogs are on the menu. For the sweet tooth, lots of cupcakes, cake pops, cookies, ice cream and Italian ice are mouthwatering treats! Enjoy funnel cakes, strawberry lemonade and other festival food available all day!

### TUESDAY 4.17.2012

7 PM

#### GSU Unplugged

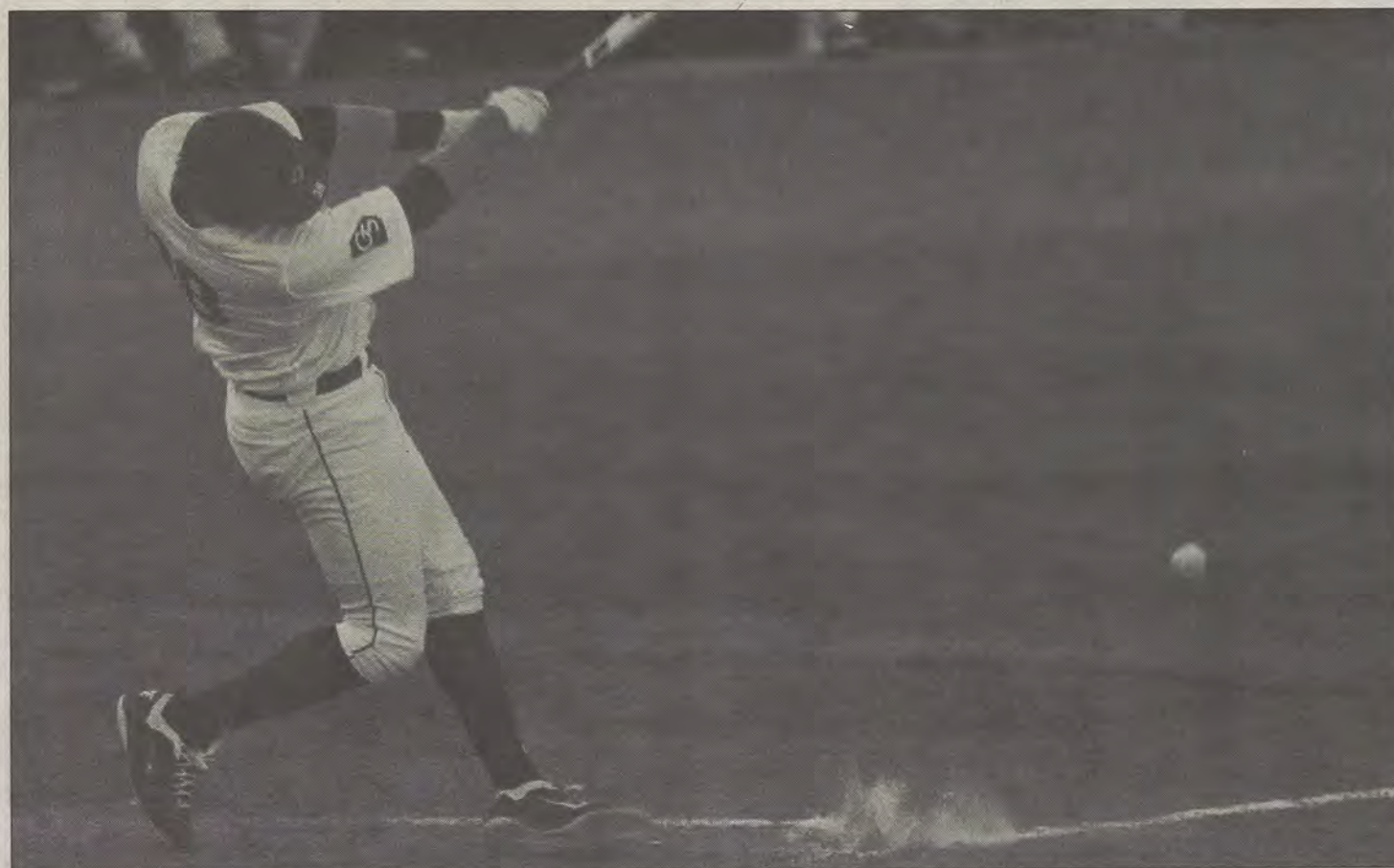
RUSSELL UNION STARBUCKS

Open Mike Night. Sponsored by Eagle Entertainment.

Student Affairs  
Enrollment  
Management

Brought to you by Georgia Southern University VALUES. Georgia Southern V.A.L.U.E.S. is the culture shared by our students, faculty, and staff. We endeavor to share our V.A.L.U.E.S. inside and outside of the classroom with faculty, staff, students, alumni and all other community members. In order to produce productive citizens with an informed set of ethics and community standards as well as create an environment of respect and civility, we pledge to live by our V.A.L.U.E.S.





Lindsay Hartmann/The George-Anne

Junior infielder T.D. Davis (38) fouls off a potential hit during the Eagles' last home game. The Eagles defeated JU last night, 7-6.

## Eagles record 7th consecutive win

### Baseball

BY CLINTON HINELY

The George-Anne staff

The Georgia Southern University baseball team defeated Jacksonville University on Wednesday night by the final score of 7-6.

Senior Eric Phillips recorded his 300th career hit in the game. Phillips became only the fifth player in GSU history to record 300 hits or more in his career. Phillips finished the game going 3-5 with one RBI.

The Eagles' offense was key on the night, getting 11 hits with three home runs to pull off the Eagles' seventh straight win.

The game started well for the Dolphins. Zachary Houck led off the game with a walk. Houck then stole second before Jonathan Murphy delivered an RBI double to centerfield, giving JU an early advantage.

Murphy attempted to steal third and a

throwing error by GSU's catcher allowed Murphy to score.

GSU got a run back in the third inning when freshman Chase Griffin grounded out, but that was enough to drive in junior centerfielder Scooter Williams from third base.

Houck began the bottom of the third inning for the Dolphins. He reached on a double and then advanced to third on a pass ball. Murphy then grounded out to drive in his second run of the game, increasing the Dolphin lead back to two runs at 3-1.

Williams scored his second run of the game and the second for GSU in the top of the fifth inning. Phillips singled through the right side of the infield to record his team-leading 38th RBI.

Sophomore Stryker Brown then evened the score in the top of the sixth inning, driving a homerun over the right field wall, his second of the season. Williams then gave the Eagles the lead with another homerun in the inning,

this time a three-run bomb over the left field fence.

Griffin made the game 7-3 in the seventh inning, when he hit his team-leading ninth home run of the season for GSU.

The Dolphins added another run in the bottom of the ninth off of a triple from Murphy, his third RBI of the game. Dan Gulbransen then hit a two-run homerun to right field to cut the Eagles' lead to just one run.

Junior Kyle Rowe entered the game with two outs in the ninth to shut the door on JU. Rowe picked up his team-leading fourth save of the season and gives GSU back-to-back one-run victories in as many days.

GSU will return to J.I. Clements Stadium to begin a three-game series against Southern Conference leading Appalachian State University. The Mountaineers are 24-7 overall and 9-3 in the conference. Game one will begin at 6 p.m. on Friday night. Game two will also begin at 6 p.m. on Saturday, and the series between the rivals will conclude on Sunday at 1:30 p.m.

## Six pitchers for 6th win

BY COLIN RITSICK

The George-Anne staff

A close ballgame at J.I. Clements Stadium on Tuesday gave Georgia Southern University (19-15, 8-7 Southern Conference) its seventh win out of the last eight games, but forced them to utilize more pitching power than normal.

Taking on in-state foe Kennesaw State University, the Eagles used a total of six pitchers to get the job done with a final score of 3-2. Lefty freshman Sam Howard (2-1) started the game for GSU. He pitched well but ended up throwing too many pitches, walking three and hitting a batter. He gave up no runs, struck out two and only allowed three hits in four innings of work. From there on, no pitcher completed more than 1.1 innings on the mound.

As a whole, the GSU pitching staff struck out 10 batters of the 27 possible outs. This was imperative on Tuesday because the Owls got on base but the effort of the pitchers kept them there. KSU left Statesboro, leaving 10 runners on base.

Had GSU not struck out as many as it did, the Owls would have had a much better chance of moving those runners over with a hit, a sacrifice fly or an Eagle error. And in a 3-2 ballgame, a runner or two makes the difference between a win and a loss.

Senior Jarret Leverett (3-1) was credited with the win and junior Kyle Rowe got his third save of the season, he leads the team in that category.

The Eagles wasted no time on the schedule as the squad traveled to Florida to take on the Jacksonville University Dolphins last night. GSU will be putting its six-game win streak on the line before coming back home to take on the SoCon leading, No. 30 ranked Appalachian State Mountaineers this weekend.



# GSU baseball prevails over KSU Owls 3-2

## Baseball

BY CLINTON HINELY

The George-Anne staff

The Georgia Southern University baseball team picked up its sixth straight win with a 3-2 victory over Kennesaw State University on Tuesday night.

Freshman Sam Howard started the game for the Eagles and pitched four scoreless innings, allowing only three hits.

The GSU bullpen then allowed four hits and two runs over the next five innings to complete the nail biting one-run victory. The bullpen also inherited six runners on base and did not allow one to score. The pitching staff as a whole struck out nine batters and only walked four.

"The guys have a better understanding of their roles in the bullpen," head coach Rodney Hennon said. "They have some confidence right now and are coming in and making some good pitches for us."

The game remained scoreless until the bottom of the fifth inning. Junior T.D. Davis grounded into a double play, but that allowed freshman

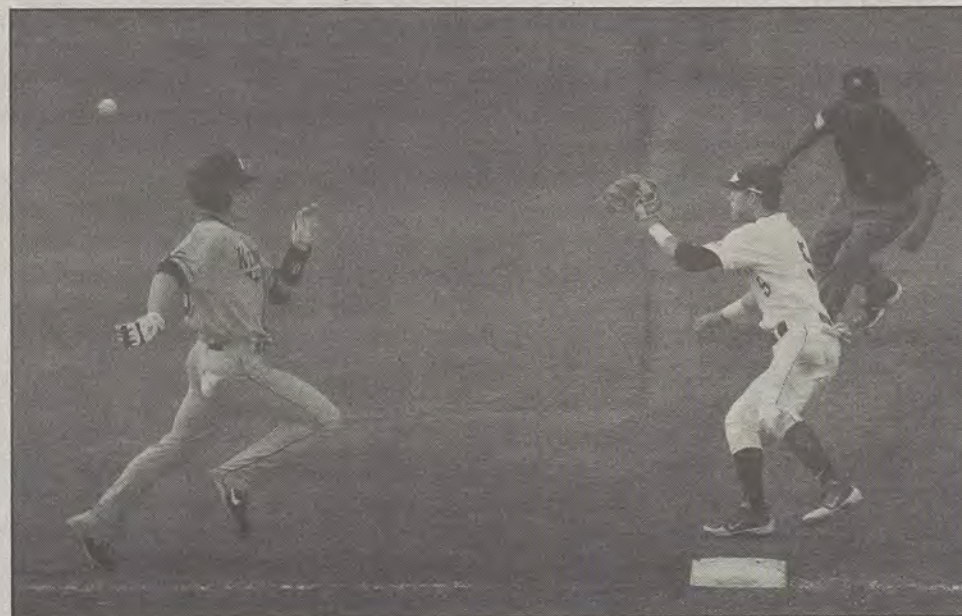
Chase Griffin to score to give GSU the 1-0 lead.

Senior Eric Phillips singled to drive in his 37th RBI of the season in the fifth inning. Phillips then stole second base, his 21st of the year, and the throw from the Owls' catcher skipped into centerfield, allowing junior Michael Burruss to score from third, giving the Eagles a 3-0 lead heading into the sixth inning.

KSU got on the board to start the sixth inning when designated hitter Max Pentecost drove the ball to deep centerfield. The ball hit off the base of the wall and that was enough for Pentecost to pick up a RBI double and also move another runner to third.

In the top of the eighth inning, KSU added another run on the board, cutting the GSU lead to just one run. The Owls' Chris McGowan hit a slow groundball to second base and was able to beat the throw to first, allowing a runner to score from third with two outs.

Pitcher Kyle Rowe entered in the eighth inning to finish the inning and end the jam. Rowe then stayed in to finish the game in the ninth and pick up his third save of the season, making GSU 15-0 on the year when leading after the seventh inning.



Lindsay Hartmann/The George-Anne

Freshman second baseman Tyler Avera (5) covers first base after a Kennesaw State player attempted a bunt during the latest Eagles homegame.

"I think our team is doing a good job right now in close games of keeping their composure and continuing to battle," Hennon said.

The Eagles will travel to Jacksonville, Fla., to face Jacksonville University on Wednesday at 6 p.m.



## Company hours

7:30 A.m. - 6:00 P.m.  
Monday -Friday

912-489-2222

102 N Zetterower Ave  
Statesboro, GA 30458





# Eagles golf to defend its 2011 SoCon title

## Golf

BY KEVIN GREGAN

The GeorgeAnne staff

The Georgia Southern University golf team is set to head to the Southern Conference Championships at the Ralston Creek Golf Course in Daniel Island, S.C., where it will defend its title this Sunday through Tuesday.

The team has been competing since the fall in preparation for this 76th annual SoCon Championship. If the Eagles win, they will have an automatic bid to enter the National Collegiate Athletic Association Division I Men's golf championship.

The championship is really anybody's to win. Last year the Eagles came from five strokes down in the final nine holes of the final round to take the victory.

"The biggest difference between this and last year's team is experience, but they're similar in that up until this point they haven't played their best golf yet," head coach Larry Mays said.

Senior and team captain Lewis Gruber recalls last year's SoCon championship as his favorite tournament as an Eagle. This year he has the chance to build on that success and graduate as a repeat champion.

Going into the championship, Gruber is ranked fifth amongst the golfers in SoCon. These rankings are determined by the average scores from each round played. He's close behind the second ranked player and his lowest round this year was a 68.

The highest finish for the Eagles during the 10 tournaments they participated in during the regular season was a third place finish at the Amelia National Intercollegiate early in November. They also placed third at the Mason Rudolf Championship in September.

The team has struggled during the spring semester, but it's important to account for the fact that GSU has been playing against many of the higher ranked teams in the nation. The Eagles are also coming off of their best finish this semester, an eighth place finish at the Gary Koch Invitational last weekend.

At practice this week, Mays has been working on the things that have been the issue for the team so far this year. Mays has been stressing patience, mental toughness, consistency and just making smart shots.

"We want to make sure we attempt shots that we can make. We don't want to push it



Mark Barnes II/The GeorgeAnne  
Senior Lewis Gruber practices his putting game in preparation for the upcoming SoCon championship.

too far and make mistakes. We've also been working on our wedges, short game and putting game," Mays said.

Amongst the teams the Eagles will face in the championship, GSU is ranked second behind the University Of Tennessee At Chattanooga. The rankings are determined by the team stroke average per round. The University of Samford, the College of Charleston and Appalachian State University are the other schools that round up the top five.

"Chattanooga has got a quality team and they've got the number one golfer in SoCon right now. If we play fifty-four solid holes we have a good shot at making a run at another title," Mays said.

Junior Blake Olson has been leading the Eagles with the hot hand as of late. He has had consistent finishes, and in the Gary Koch Invitational he led the team with a +2 finish. Freshman Scott Wolfes has also been hitting the ball well this season. He's currently ranked 10th in the SoCon rankings.

Freshman Hayden Anderson is the only other player on the team beside Gruber who will return to the SoCon Championship. In the championship last year, he shot +5 and tied for 21st amongst the field but he also shot two-under par in the final round to help the Eagles make their comeback to victory.

# Give Blood. Save Lives. Win This Car!

Georgia Southern University Blood Drive

DATE: Monday, April 16th

TIME: 11:00am-5:00pm

WHERE: Bloodmobile onsite outside of Student Union @ Landrum & Centennial

Everyone who registers to donate blood with The Blood Alliance from August 31, 2011 through June 30, 2012 will be entered into a random drawing to win this brand new 2012 Honda Civic compliments of Lucas Honda! You may donate at any one of our community donor centers or mobile blood drives to be eligible to win. Each time you donate, you are entered to win, so start donating today!

**LUCAS HONDA**  
of Jacksonville



## Blood...the Fuel of Life!

Find a Blood Drive!  
Download our  
iPhone or Droid App  
iDon8

**THE BLOOD ALLIANCE**  
Enriching Lives Since 1942

Make an appointment:  
**igiveblood.com**

Or call us at:  
**888-99-TBA-HERO**  
(888-998-2243)

*Providing Outstanding Blood Service in Florida, Georgia and South Carolina.*

\*Honda Civic promotion runs from August 31, 2011 through June 30, 2012. Car will be awarded on July 11, 2012. Honda Civic winner must be 18 years old and a licensed driver. Winner will be responsible for all necessary documents, all applicable taxes and cost of the tag and title. The pictured car is for display purposes only and color and options may vary. Employees of The Blood Alliance, Lucas Honda, 3D Second Street Media and Frontline Solutions and their immediate family members are not eligible for this promotion.



# Eagles softball wrecked by Georgia Tech

## Softball

BY ANNA WELLS

The George-Anne staff

The Georgia Southern University softball team fell to the Georgia Institute of Technology Yellow Jackets in a double header earlier this week.

### GAME 1

GT was able to take an early lead over the Eagles with a run in the first inning. GSU pitcher Sarah Purvis, however, put out the next 13 batters until the Yellow Jackets were able to gain a hit early in the sixth.

The Eagles were able to get two runners on base in the seventh, however pinch runners Jorie Walker and Nicole Benton were stranded on base and the Eagles ended the game with a 0-1 loss against the Jackets.

### GAME 2

The second game of the day started slow for both teams until the Eagles were able to load the bases in the second inning. A hit by Alexa Lewis was able to send Breanna

McLendon home and gave GSU their first run of the day.

Pitcher Allie Miles pitched a no-hitter in the fourth inning but her streak ended with a line drive from the Jackets. Purvis then returned to the field for the second time to finish the doubleheader.

The Jackets, however, were able to score off a dropped hit and tied the game at 1-1.

GT was able to take over in the sixth inning in which the Jackets were able to hit a single and load the bases.

The Jackets then took advantage of two doubles in a row to give the team four more runs, making the final score of the game 5-1.

Purvis experienced her eighth loss of the season, making her record 13-8.

The Eagles fell to 25-14 on the season.

The team will travel back home for a series against the College of Charleston Cougars beginning this Saturday at 3 p.m. The team will be wearing pink jerseys on Sunday's game to show its support in the fight against breast cancer in its annual Breast Cancer Awareness game.



Mark Barnes/The George-Anne

Sophomore infielder Kourtney Thomas (14) lays down a bunt during a recent home game.

## Eagles in D.C. Internship Program

*Accepting applications now for Fall 2012 term.*

<http://students.georgiasouthern.edu/vpsaem/internships/eaglesindc>

**Application Deadline: This Friday, April 13**



**BLUE VS. WHITE,** from page 1

great time to remind everyone of his quarterback skills.

"We've been coming out here everyday in practice and competing to the fullest," McKinnon said. "We're all good athletes and bring a lot to the table."

During the offseason, the football program has hired Kevin Corless to help coach on the defensive side of the ball. In addition, they have moved several coaches around on the high-powered offense and have signed key players to replace several GSU greats such as Shaw, kicker Adrian Mora and kickoff returner Laron Scott.

With so many changes and improvements, the spring game should be entertaining.

"We're excited about being back in Paulson Stadium and being in a game-type situation" said head coach Jeff Monken. "I know our kids are excited about that."

Monken said, "It's the culmination of fourteen days of hard work and it's a reward for those guys to go out, compete and play in front of their families and friends."



File Photos

Georgia Southern University football works hard to defeat its opponents offensively and defensively.

**Above:** Senior slotback Nico Hickey (5) breaks away from potential tacklers as he heads toward the endzone. **Right:** Junior tightend Tyler Sumner (88) turns to catch a pass while running a route.





# BLISS BERRY

FROZEN YOGURT • GELATO • SORBET • SMOOTHIES

## SELF-SERVE FROZEN YOGURT

10 FLAVORS OF FROZEN YOGURT DAILY

**Mon & Thurs:**  
Double Punch Days!

**55**  
Toppings to Choose From!

sugar-free available

1 oz FREE\*

\*Valid through 4/30/2012. Cannot be combined with any other discounts.

Come Try our  
New Delicious,  
Fresh, Fruit  
Smoothies!

dairy-free available

**721 SOUTH MAIN ST. #9**  
**STATESBORO, GA**  
LOCATED IN QUIZNOS SHOPPING CENTRE  
CONTACT # 912-681-2547

**HOURS:**  
MON-THURS: 11AM-10PM  
FRI-SAT: 11AM-11PM  
SUN: 12PM-10PM



JOIN ON FACEBOOK TO  
LEARN MORE ABOUT  
SPECIALS @ BLISSBERRY



IT'S YOUR LIFE...

**LIVE IT!**

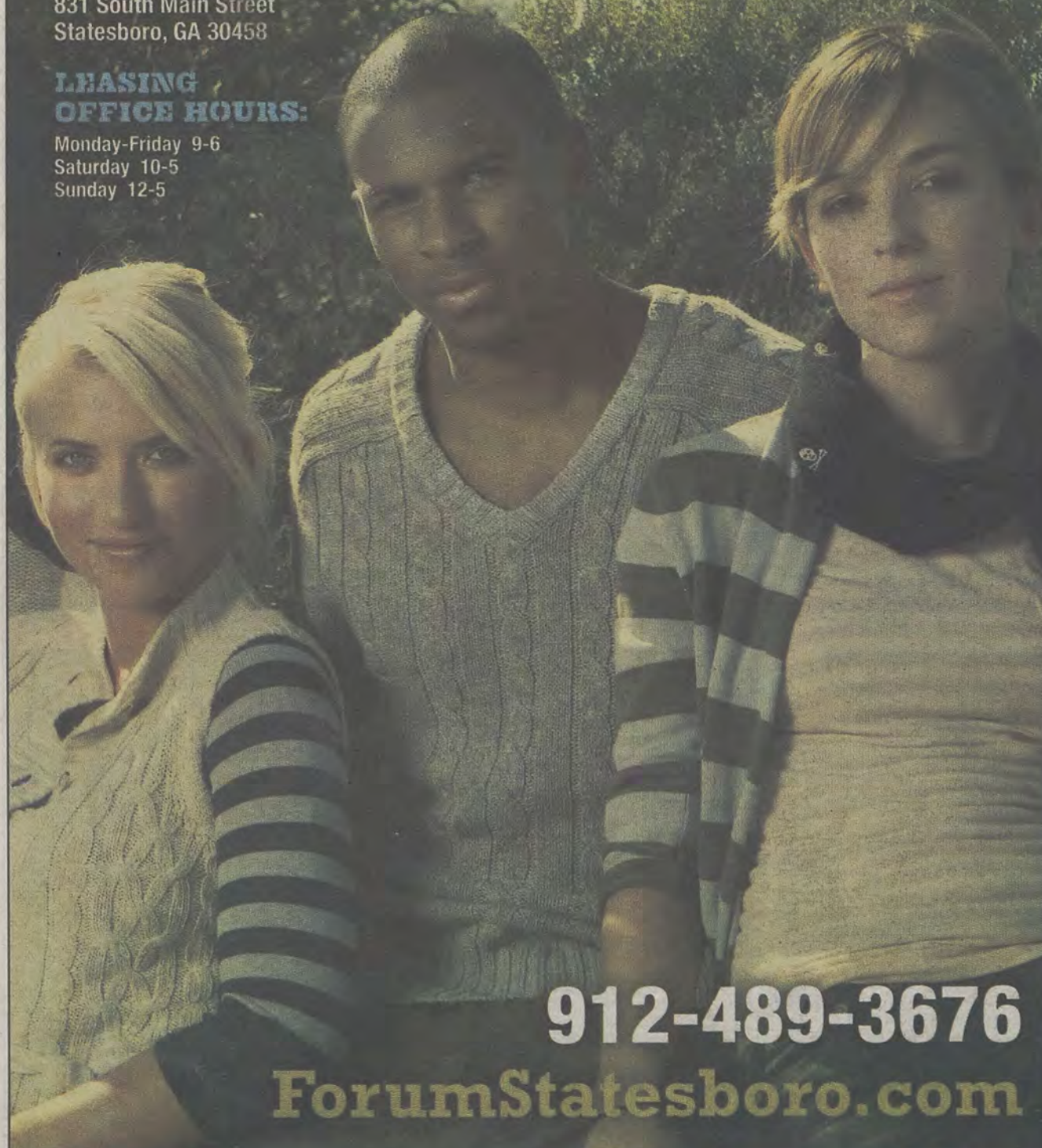
FORUMSTATESBORO.COM

COMING TO:

831 South Main Street  
Statesboro, GA 30458

LEASING  
OFFICE HOURS:

Monday-Friday 9-6  
Saturday 10-5  
Sunday 12-5



912-489-3676

ForumStatesboro.com

GET A FREE T-SHIRT WITH THIS AD!

**FORUM**

®

AT STATESBORO

A PREMIER STUDENT  
HOUSING COMMUNITY

**NOW  
LEASING  
FOR FALL 2012**

- Tennis Court
- Lap Pool & Spa
- Pet Friendly
- Pet Park
- Two Free Tanning Beds
- Indoor Basketball Court
- Indoor Volleyball Court
- Car Care Center
- Modern Faux-Wood Floors
- Private Bathroom in Bedrooms
- Convenient Individual Leases
- Free High Speed Internet in Bedrooms
- 24 Hour Fitness and Training Center
- Kitchens with Full Size Appliances
- Full Size Washer / Dryer Included
- Wi-Fi Cyber Cafe with Coffee Bar
- Outdoor Sand Volleyball Court
- High Speed Internet Access
- Student Center and Lounge
- Roommate Matching
- Expanded Cable
- Media Room



Leasing office hours: 912-489-3676  
Resident office hours: 912-489-3676