

Georgia Southern University

Digital Commons@Georgia Southern

The George-Anne

Student Media

4-10-2012

The George-Anne

Georgia Southern University

Follow this and additional works at: <https://digitalcommons.georgiasouthern.edu/george-anne>



Part of the [Higher Education Commons](#)

Recommended Citation

Georgia Southern University, "The George-Anne" (2012). *The George-Anne*. 2744.
<https://digitalcommons.georgiasouthern.edu/george-anne/2744>

This newspaper is brought to you for free and open access by the Student Media at Digital Commons@Georgia Southern. It has been accepted for inclusion in The George-Anne by an authorized administrator of Digital Commons@Georgia Southern. For more information, please contact digitalcommons@georgiasouthern.edu.

FIRST FRIDAY BRINGS FINE ARTS

PAGE 8

LADY EAGLES FALL TO WOFFORD

PAGE 12

KOONCE REMEMBERED

EAGLES REFLECT ON HIS IMPACT
DURING HIS TIME AT GSU

PAGE 7

Tuesday, April 10, 2012
Georgia Southern University
www.thegeorgeanne.com
Volume 87 • Issue 70

THE GEORGE-ANNE

RETRACTION

The front-page headline concerning Steven Damelin, Georgia Southern University calculus professor, in Tuesday, April 3's edition of The George-Anne was erroneous.

As his attorney clarified, Damelin entered a plea under North Carolina vs. Alford, which means, "I am doing this out of my best interest, not because I am guilty."

In addition, The George-Anne wishes to retract the statement made by Austin Hazan concerning Damelin in Tuesday, March 27's edition.

New Health Center planned

BY COURTNEY ESCHER

The George-Anne staff

Georgia Southern University's Health Services' plans to construct new facilities are currently underway and should be completed within the next two to three years.

The cost for the new facilities will come mostly from third-party insurance providers and student health fees, Ferguson said.

"Because we are a network healthcare provider, we make money off insurance companies rather than students, which saves the students money," Ferguson said.

Health Services may need to raise health fees,

but in comparison to other school and how they charge health fees, students will still save a lot of money, Ferguson said.

Health Services is working with GSU's Student Government Association to release a survey, which will better gain feedback from students, Ferguson said.

"From here, we plan to send out a survey to the students; one within the next few weeks, one again in the summer and one in the fall," Director of Health Services Paul Ferguson said.

"The purpose of the survey is to get the students' opinion on the facilities. We want to know their input and we will even have a section

See NEW FACILITY, page 7

HURDLING THE COMPETITION



Demario Cullars/The George-Anne

Sophomore Stephanie Hicks practices the hurdles at a recent track and field practice. The Eagles competed at the Pepsi Relays in Florida this past weekend. See page 14 for the full story.

Eagles softball No.1 in SoCon

BY ANNA WELLS

The George-Anne staff

The Georgia Southern University softball team swept Southern Conference opponent University of North Carolina at Greensboro in the team's Easter weekend series.

GAME 1

After allowing a solo home run to centerfield in the bottom of the first inning, sophomore pitcher Sarah Purvis struck out the next four batters. GSU's hitting backed her up by getting a pair of hits and two walks to score the Eagles' first run of the game but left three runners on base in the inning.

Both teams fought to a standstill at 1-1 until the fourth inning, when Alexa Lewis batted in shortstop Kourtney Thomas from second base. In the fifth frame of the game, the Eagles added

two more runs as Thomas hit a sacrifice fly to second base, plating pinch runner Breanna McLendon. Junior Andrea Tarashuk later scored on a wild pitch to bring in the last run of the game and give GSU the 4-2 win in game one.

Purvis closed out the game for the Eagles with 10 strikeouts and no walks, making this game her 13th win of the season.

GAME 2

Both teams struggled to do anything offensively until UNCG used two wild pitches from GSU to score the opening two runs of the game. The Eagles responded in a big way with six runs in the top of the third inning after Marie Fogle, Mackenzie Williams and Thomas all contributed RBI's in the inning. This marked the biggest single-inning run production of the

See SOFTBALL, page 13



thegeorge
anne.com



Follow us on Twitter
@TheGeorgeAnne



Newsroom 478-5246
Advertising 478-5418
Fax 478-7113

PO Box 8001
Statesboro, GA
30460

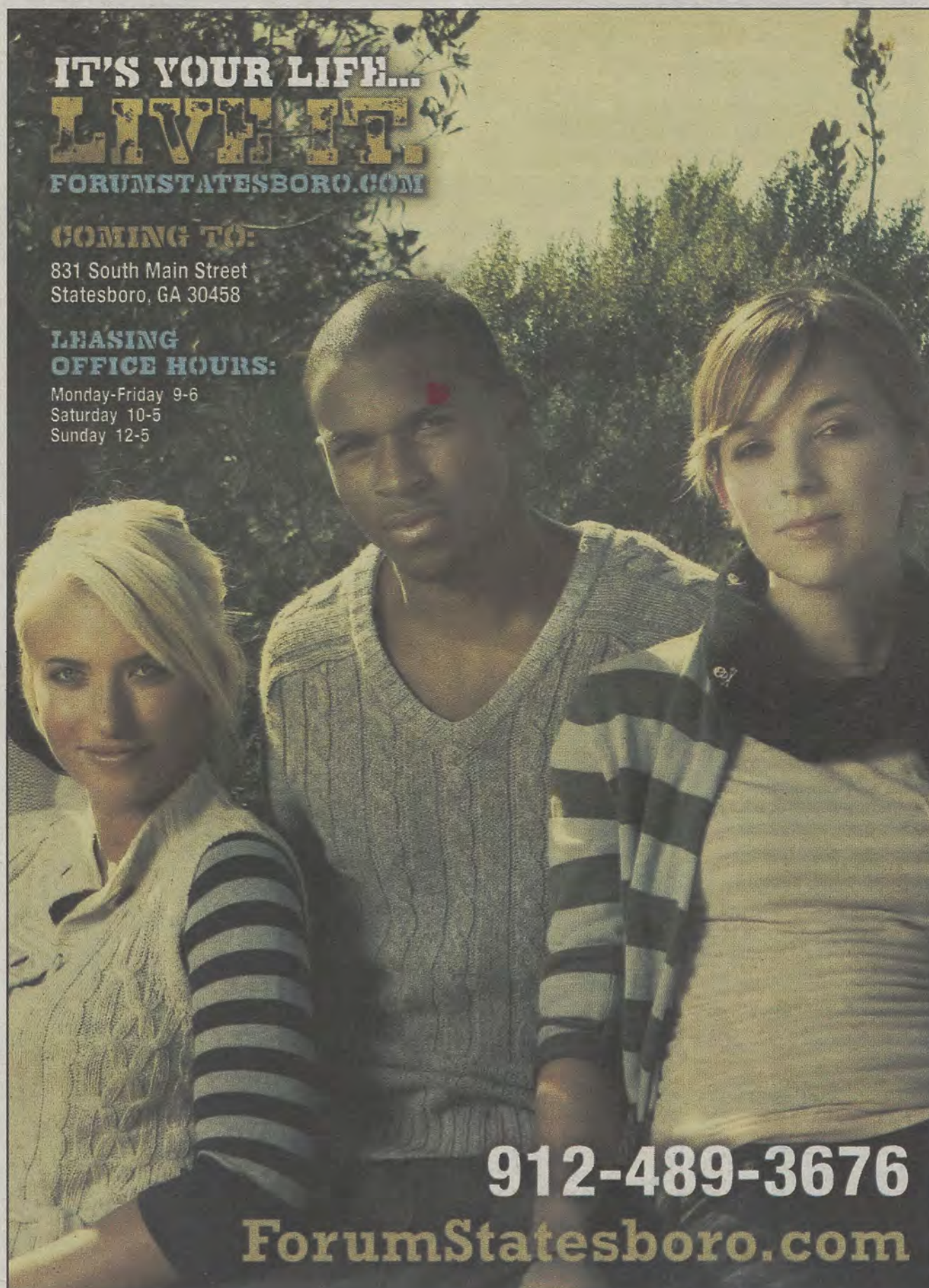
**IT'S YOUR LIFE...
LIVE IT!**
FORUMSTATESBORO.COM

COMING TO:

831 South Main Street
Statesboro, GA 30458

**LEASING
OFFICE HOURS:**

Monday-Friday 9-6
Saturday 10-5
Sunday 12-5



912-489-3676

ForumStatesboro.com

GET A FREE T-SHIRT WITH THIS AD!

FORUM

AT STATESBORO

**A PREMIER STUDENT
HOUSING COMMUNITY**

**NOW
LEASING
FOR FALL 2012**

- Tennis Court
- Lap Pool & Spa
- Pet Friendly
- Pet Park
- Two Free Tanning Beds
- Indoor Basketball Court
- Indoor Volleyball Court
- Car Care Center
- Modern Faux-Wood Floors
- Private Bathroom in Bedrooms
- Convenient Individual Leases
- Free High Speed Internet in Bedrooms
- 24 Hour Fitness and Training Center
- Kitchens with Full Size Appliances
- Full Size Washer / Dryer Included
- Wi-Fi Cyber Cafe with Coffee Bar
- Outdoor Sand Volleyball Court
- High Speed Internet Access
- Student Center and Lounge
- Roommate Matching
- Expanded Cable
- Media Room

**PETS
WELCOME!**



Resident subject to change. GREYHOUND & Co. support is not available for all breeds. Fees may apply.

Forum Statesboro is a registered service mark of Forum Statesboro, LLC.

Police Beat

Monday, April 2

•Officers issued eight traffic citations, five traffic warnings, assisted four motorists, responded to one injured person report and investigated one accident.

Tuesday, April 3

•Officers issued seven traffic warnings, nine traffic citations, assisted four motorists, aided one injured person and investigated one hit and run accident.

•Officers responded to a report of lost/mislaid property at Henderson Library.

•A vehicle was keyed in the Forest Drive faculty/staff parking lot.

•Officers responded to the Carruth Building for a complaint of bicycle tires being slashed.

•Justin Riley Kennedy, 19, was charged with possession of marijuana less than 1 oz.

•Jeffrey Maurice Weston, 34, was charged with failure to

obey a traffic control device, driving in violation of conditions of limited permit and DUI.

Wednesday, April 4

•Officers issued one traffic citation, three traffic warnings, assisted one motorist and responded to one alarm.

•Two separate drug complaints were reported at Centennial Place.

•A wallet was taken from the Nursing/Chemistry Building.

•The driver side door on a vehicle was damaged at the Paulson Stadium parking lot.

•A tail light was broken on a vehicle in Parking Lot 32.

•Alexis Ann Gibbons, 24, was charged with DUI and seat belt requirements.

Thursday, April 5

•Officers issued seven traffic warnings, five traffic citations, assisted even motor-

ists, rendered aid to one injured person and investigated one hit and run and one motor vehicle accident.

•A bank debit card was found in front of the Ros-enwald building and turned over to officers for safe keeping.

•A complaint of someone hacking into a Facebook and Twitter account was made.

•Some sporting equipment was reported stolen from the bed of a truck at Southern Courtyard.

•Officers responded to an alcohol complaint at Eagle Village.

•Officers responded to a drug complaint at Kennedy Hall.

•A bicycle was found near Einstein's Bagels and turned over to officers for safe keeping.

•Ryan Alex Jones, 24, was charged with improper lane change and DUI.

Statement of Operations

The George-Anne is the official student newspaper of Georgia Southern University, owned and operated by GSU students using facilities provided by the university. The newspaper is the oldest continuously published newspaper in Bulloch County. The newspaper is a designated public forum for the Georgia Southern community. The newspaper is published twice weekly, on Tuesdays and Thursdays, during most of the academic year. Any questions regarding content should be directed to the student editor by phone at 912.478.5246 or at gaeditor@georgiasouthern.edu.

ADVERTISING: The newspaper accepts advertising. Inquiries may be made by calling 912.478.5418 or 912.478-0566. Fax any questions to 912.478.7113 or e-mail ads1@georgiasouthern.edu.

The George-Anne receives additional support, in part, from the Student Activities Budget Committee.

The deadline for reserving space and submitting advertising copy is noon, one week prior to the intended publication date. For more information, rate cards, sample publications, contact the advertising manager or student

media director.

The advertiser is responsible for any errors in advertisements and its liability for adjustments is limited to the amount of space the error occupied in the ad. Further, the newspaper is not responsible for any damages caused due to an ad's omission from a particular edition and its responsibility solely is to reschedule the ad in the next regular edition at the regular advertising rates.

STUDENTS BEWARE: The George-Anne screens all advertisements prior to publication. The newspaper strives to accept ads for legitimate products and services only. Students are urged to exercise caution when replying to ads-particularly those that require personal information. Students are also urged to report to the newspaper any suspicious offers which they might see in an ad.

PUBLICATION INFORMATION: The newspaper is printed by Signature Offset in Jacksonville, Fla.

NOTICE: Unauthorized removal of multiple copies from a distribution site constitutes theft under Georgia law, a misdemeanor offense punishable by a fine and/or jail time.

Editor-in-Chief Arielle Coambes
Managing Editor Jennifer Curington
Opinions Editor Alex LaSalle
News Editor Jessie Reese
Asst. News Editor Courtney Tielking
Arts Editor Quaniqua Epps
Asst. Arts Editor Gianna Carme
Sports Editor Jannah Bolds
Asst. Sports Editor James Farmer

Copy Chief Matthew D'La Rotta
Business Manager Holly Hillhouse
Asst. Business Manager Vicki Tucker
Marketing Manager Aria Gabol
Production Manager Mallory McLendon
Photo Editor Lindsay Hartmann
Design Editor Kelsey Paone

Corrections

Contact the editor at gaeditor@georgiasouthern.edu for corrections and errors.

UT&ABOUT

Express Tune & Lube

Tire, Alignment
& Exhaust Center

612 S. Zetterower Avenue

489-4444

www.expresstuneandlube.com

Monday - Friday 7:30am - 6:30pm

Located a half block north of Wendy's.

OIL CHANGE SPECIAL

\$25⁹⁵

Includes up to
5 qts of Castrol
5W20, 5W30, 10W30,
or 20W50

price applies to most vehicles. Expires 5/31/12

www.expresstuneandlube.com

Our View

Fair pay for professors is needed

In last Thursday's edition of The George-Anne, we reported that Georgia Southern University has not had a pay increase for professors in at least four years.

GSU President Keel said, "We do know that there will be no pay increases for the next fiscal year coming up in July, however there has been talk about an increase for the year after. So, a year and several months, and I'm optimistic about the pay increase."

Professors form the backbone of GSU. Their experience and knowledge is the reason we have a university to attend. Ensuring that they are paid fairly needs to be a priority.

This responsibility rests on both the university and the state of Georgia. We understand that the current economy has put a strain on GSU's finances. We also understand that there needs to be money available to pay new hires being brought in to alleviate the rising student-teacher ratios.

Still, we need to ensure that professors are well paid. This includes doing what can be done to expand GSU's budget as much as possible, as well as responsible fiscal management by university officials.

If we are to continue to attract the level of talent that is the marker of a quality school, fair salaries for GSU professors need to be a priority.

The George-Anne welcomes letters to the editor and appropriate guest columns. All copy submitted should be 350 words or fewer, typed, and sent via e-mail in Microsoft Word format to gaeditor@georgiasouthern.edu. All submissions must be signed and include phone number for verification. GSU students should include their academic major, year and hometown. The editors reserve the right to reject any submission and edit submissions for length.

Opinions expressed herein are those of the Board of Opinions or columnists themselves and DO NOT necessarily reflect those of the faculty, staff or administration of GSU, the Student Media Advisory Board, Student Media or the University System of Georgia.



Jasmine Nielsen/The George-Anne

How to pay for professors' salaries

Our professors are underpaid. They have not received a raise in four years while the cost of living and student enrollment at Georgia Southern University have been rising.

The knowledge that these professors possess is the entire reason we have a university to attend. And, honestly, anyone that puts up with me every week for a semester deserves a raise.

However, I also understand that the current economy has put a strain on GSU's finances. There simply may not be enough money to go around. Well, I'm here to help.

I think it's time that GSU look into alternative methods of fundraising. For the professors.

First off, we need to take advantage of Statesboro's natural resources. Start by drilling for oil beneath Sweetheart Circle. If we're going to be paying \$4 a gallon for the stuff at the pump, we might as well make our own.

"But Alex, what if there is no oil beneath Sweetheart Circle?"

Then we sell memberships for our

ALEXANDER THE PRETTY GOOD



ALEX LASALLE/
OPS EDITOR

new outdoor pool.

Like any other fundraising effort, we also need to appeal to the emotions of potential donors. I suggest hiring Sarah McLachlan to sing for an advertising campaign. Some of my fellow writing and linguistics majors already look homeless, so we can film them and put music to it.

While we're finding celebrity help, why not bring Billy Mays back from the dead and have him run a donation drive for our professors? If the reanimation of dead corpses proves impractical, see if anyone knows the Sham-Wow guy.

It is also important to look at other examples of fundraising in our society. Specifically, politicians. I propose we form a GSU Political

Action Committee. Our PAC will have the stated goal of "Ending financial imbalance in America," which, for legal purposes, is totally true.

Another great American tradition could also be used to our advantage. I am talking about the "frivolous lawsuit." I recommend having President Keel go to McDonald's or Starbucks and spill hot coffee on his lap. It has worked before, and it's certainly better than my original idea of training the Lakeside Ducks to perform Shakespeare's "Hamlet." Duck trainers are surprisingly hard to come by.

We're already spending money on replacing dead buses on campus. Well, I can fix that cost with three words: Bus demolition derby. I would pay good money to see that, and you would to.

And if none of these ideas work out, we could just start charging exorbitant prices for our required textbooks. I'm sure that would help.

LaSalle is a junior writing and linguistics major from Cumming, Ga.

From the left

North Korea ignoring U.N.

North Korea is planning on launching a rocket, which is supposed to be carrying a satellite between this Thursday and April 16. This is believed to be a cover for a long-range missile launch later this week. This launch is believed to precede a possible nuclear test. The launch would be a clear violation of U.N. regulations.

Kim Jong Un has gone as far to invite journalists from across the globe to see the secret launch site. Are we so naive that we're going to believe that they're honestly JUST launching a satellite?

If this launch is successful, unlike their previous tests in 2006 and 2009, what's going to stop them from loading up these long-range rockets with uranium or plutonium and taking out an entire country?

This has been designated North Korea's "year of strength" by North Korea — of course — since it is the 100-year anniversary of the birth of the communist state's founder. Couple this with the fact that there wasn't a strong belief in Kim Jong Un following the death of Kim Jong Il, and there should be some suspicion that he's up to something. It makes sense that he has to do something to prove that he's a strong, powerful leader that is capable of leading North Korea.

Three years ago, they had a similar launch and the U.N. told them that it would not happen again. Now, North Korea is showing that they have no regard for the U.N. regulations. Japan has already announced that they would shoot down any type of rocket or missile that entered their airspace.



ROB ROBERTS @Robert_ARoberts

The world needs to take a stance in opposition to North Korea. Both it and Iran have basically looked at the rest of the world and said, "I don't care what you have to say, I'll just do whatever I want."

If we allow them to continue developing nuclear weapons and testing long-range missiles — covered up as satellite launches or not — then we're just allowing them to stockpile enough firepower to put us at a severe disadvantage.

I'm not suggesting the United States should play world police, but the U.N. should do more to enforce the regulations they have set. As of now, they are empty suggestions, not regulations.

This is decision time. If we wait to see if they're really making nuclear weapons — which we all know they are — or if they're planning on using them or just building them — we should already know the answer to that — then we are giving up and conceding to these countries already.

Roberts is a senior public relations major from Warner Robins, Ga.

From the right

Romney can beat Obama

It's looking more and more certain that Governor Mitt Romney will be the eventual candidate for the GOP ticket this fall. Of the 120 superdelegates — those delegates who automatically get to go to the convention and vote for whomever they chose — 114 of them are going with Romney, according to an Associated Press poll.

This is a signal for all the others to get out of the race. No one has ever gotten the nomination without the support of the superdelegates. Rick Santorum thinks that if he wins Pennsylvania on April 24, it will revitalize his campaign, but it won't. In order to beat Romney, he has to win 80 percent of the delegates left in play. With odds like that, it seems like foolish pride that keeps Santorum in the race.

That being said, Romney is facing a formidable, yet beatable opponent in Obama. Polling shows that as gas prices go up and employment numbers slow, the President's numbers go down. Still, Romney will need to do some things to help him clinch the election in the fall.

First, he needs to do more press. The last time he did a press conference was early March, in Puerto Rico. If he's going to beat Obama, he needs to do more one-on-one interviews. By doing this, the people will start to get a better understanding of who he is and what he wants to accomplish. It's much easier to do this with an hour in primetime than several 30-second snips in debates.

Another key to Romney's success is going to be his wife, Ann. Not only are her personal struggles with her health — she survived breast cancer and has multiple sclerosis — captivating and inspiring but she is also his best chance to



FRITZ CHAPIN @GrandOldPartier

close the gender gap the GOP is experiencing right now. She needs to be out on shows like "Ellen" and "The View," showing that her husband cares about women's issues.

Romney will also have to have a good answer to health care. He has gone through the primary season virtually unscathed when it comes to Romneycare being the precursor to Obamacare by not focusing on the past, but the future, by pledging to repeal Obamacare. But that won't be good enough in the general election. He needs to focus on saying that what's good for his state is not good for the whole nation.

The final key to Romney sealing this election is getting a good running mate that will keep him in good standing with the base. While many assume that Romney will float back towards the political center for the election, which I don't believe he will, he will have to have a tried and true conservative as his running mate who will help keep the base energized.

Chapin is a senior political science major from Roswell, Ga.

SPERRY
TOP-SIDER



The Sir Shop
Statesboro Mall
912.764.6924



Better roommate screening

Everyone seems to have stories about a terrible roommate. Whether they set all of your stuff on fire because you left your red shirt in the washer, which later turned all of their whites pink, or whether they just don't put their dishes away, it always happens.

There comes a point when you sit back and you wonder: Did anyone notice this person was psycho before they gave them the key to my apartment, or is it just me?

It's not just you. People are crazy, and for some unknown reason the higher-ups of roommate matching continue to match the crazies with the normals.

I propose a petition for a second set of more in-depth questions to determine the craziness of residents, before we pair up Charlie Sheen with Mother Theresa.

Here are a few suggestions for what they should ask in roommate matching forms.

First question: How acceptable do you find average tom-foolery, such as singing and dancing to popular music? A. Very acceptable, when can I start? B. When you say "popular" do you mean post-hardcore-German-thrash-death-metal or Taylor Swift?

How clean are you? A. Pretty clean. I keep up after myself and keep the common areas looking nice. B. My mom has cleaned up after me for the past 18+ years so I'm not sure yet. C. Do you have a radiation suit?

How likely are you to do something illegal, such as breaking the lease agreement or Georgia Southern University's code of conduct? A. Not likely. I don't want to risk corrupting my spotless record. B. Likely. I smoke, if you know what I mean. C. Have you ever seen a homemade shiv? I have one in my sock.

How do you feel about pyrotechnics? A. Fire is useful, but extremely dangerous so you have to be careful. B. Sometimes I play with fire when I get bored. C. Don't leave me alone with a box of matches and flammable materials, including, but not limited to, anything you own. I will set it on fire and think nothing of it.

Describe your anger management skills. A. I'm usually easygoing, but if things get out of hand I just take some time to myself and try to solve the problem. B. I get angry sometimes, but it rarely escalates above yelling. C. Remember that homemade shiv I mentioned?

Would you say that you are violent? A. No way, I solve problems with words and hugs. B. Some people just need to be hit to know their place, but I'm a big advocate of one and

MODEST FINDINGS



COURTNEY ESCHER/
NEWS REPORTER

done. After that, it's all up to the police. C. That homemade shiv has seen use before.

Again, I have to ask because it is always such a big issue, really, just how clean are you? A. I always put my dishes in the dishwasher and keep the common area clean, but my room only gets cleaned about once a week. B. It usually takes me a day to realize just how dirty I left a place, but after that I clean up. C. I could live in a New York subway station and still be comfortable. Not the nice ones that Will Smith lived in "The Pursuit of Happyness," but the real ones with rats, roaches, hobos and overflowing trash at every corner!

Some of these may seem a bit over-the-top, but you never know. The same person who has the same sleep/study/smoke habits as you may be a shiv-making pyromaniac with tendencies to live like a New York subway rat.

Escher is a sophomore journalism major from Canton, Ga.

Clean it up, GSU ladies

Platform heels? Short shorts? Shirts that leave nothing to the imagination? Last time I checked this was a university, a place of higher education, and not a casting call for "America's Raunchiest Dresser."

Everyday as I walk down the pedestrian, I see many Georgia Southern University females who have not learned the difference between club wear and class wear.

Here's a tip ladies: when you put it on in the morning BEFORE leaving home, if you think the outfit is stank, then you probably look stank in it.

This self-assessment alone will help you save your own dignity.

It is understood that this is a college and we all are away from parents, but there is still an aspect of social responsibility that should not be taken lightly, or you will end up looking a hot mess.

I, as a student who pays thousands of dollars to attend this school, don't want to see the horrendous sight of some female's butt cheeks as I am trying to get to class.

This is not cool, and should be considered indecent exposure.

What do you think your professors think of you as you stroll into class half naked?

Professors are not there to only teach and further our understanding on a subject, but they are also individuals that you can possibly network with in the future. Do you really

MY VIEW



QUANIQUA EPPS/
ARTS EDITOR

think they are going to have very nice things to say about you when you dress as if the campus is an extension of Rude Rudy's?

Let's not forget the bad reputation that you give to GSU. Prospective students are always on campus doing tours with their parents.

And, what do you think parents are thinking as they watch you flop about campus just letting it all hang out?

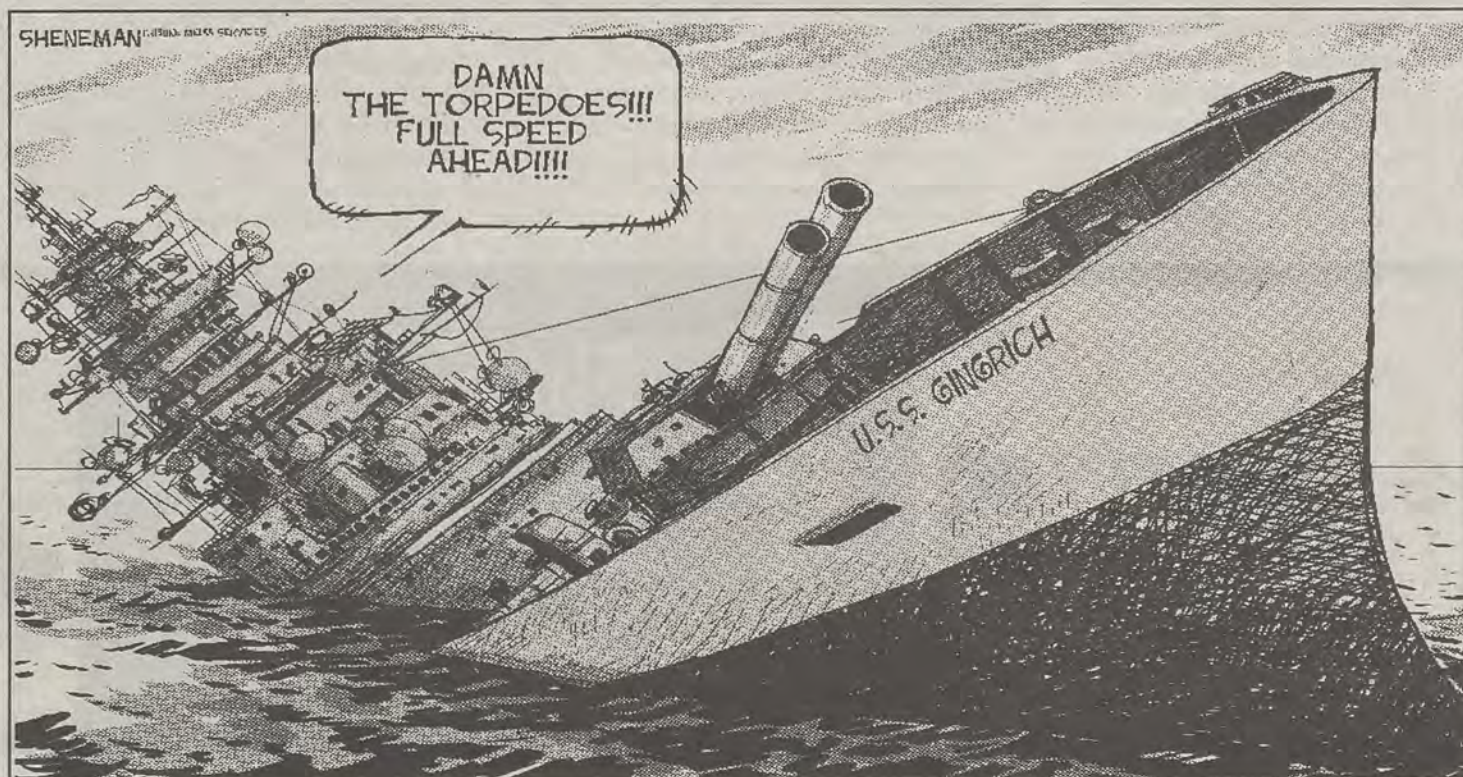
I'm not saying you need to dress like Mary Poppins or a nun, but make sensible wardrobe choices.

There is nothing wrong with showing a little skin, but when too much is shown, this results in overkill.

Ladies, have some respect for yourselves and put some flipping clothes on. Dressing hoe-ish is not a trend.

Keep it cute and classy, not sleazy and trashy.

Epps is a sophomore multimedia communications major from Atlanta, Ga.



Life of Ennis Koonce remembered

BY COURTNEY ESCHER

The George-Anne staff

On Thursday, April 5, Georgia Southern University lost a beloved mentor, colleague, friend and former resident director, Ennis Koonce.

Koonce passed away at age 33 from natural causes due to a pre-existing condition in his room at The University of Oklahoma, where he was a graduate student as well as a resident director. His death is still being investigated, according to The Oklahoma Daily.

Koonce was involved with LeaderShape, the Multicultural Student Center and Student Government Association, among many other things, Dean of Students Patrice Buckner said.

"He volunteered for (the Multicultural Student Center) all the time. He even referred a lot of our employees to us," Christopher Pugh, interim director of the Multicultural Student Center, said. "He helped me out a lot when I was hiring students for the MAP program. He knew a lot of student leaders through University Housing, so he helped a lot."

"He served as the assistant advisor to SGA for a year, alongside Dean Lewis,"

Alton Standifer, president of SGA, said.

Koonce worked in University Housing from 2008 to the summer of 2011, Mike Violette, director of University Housing, said.

"He spent his first year as a resident director for Watson and his second two years as a resident director for Southern Courtyard," Violette said.

Building connections with his students was always Koonce's top priority, Violette said.

"He was a wonderful resident director because he cared so much about having his relationship with his students," Buckner said.

"He was able to form strong relationships with students and to be a mentor for them. His main goal was always to be a resource for his students. He never pushed them away to put work first. He would always stay and listen to his students even if that meant he had to stay late," Violette said.



Ennis Koonce

"He was just a good, genuine guy. He served as a mentor to me as well as several other students. He was very honest."

-Alton Standifer
SGA president

As a mentor, Koonce was very involved and caring, Standifer said.

"He was just a good, genuine guy. He served as a mentor to me as well as several other students. He was very honest," Standifer said.

"I've been privileged to have a lot of mentors. He was one of those mentors that was very involved. He always wanted to know how you were doing and he would remember specific projects that you were working on and he always gave advice," Standifer said.

Koonce made connections with many different departments at GSU.

"He had not just colleagues, but friends all over campus," Buckner said.

Koonce's connection with people on campus is the legacy that he leaves behind.

"It's not hard to find people who connected with Ennis because he is connected with so many people," Buckner said. "From students to colleagues to supervisors, he made the best connections."

Koonce's impact on GSU can be seen all over campus, Pugh said.

Pugh said, "His passing has made me realize that what you do matters and what you say matters. And even though it may seem like no one is listening, they are. There's never really a lot of noise made about a person until after they've passed and you realize just how much of an impact they had."

NEW FACILITY, from page 1

where we will ask students what services they would like to see," Ferguson said.

The survey for the new Health Services facilities will be similar to the survey done prior to the expansion of the Recreation Activities Center in 2005, Ferguson said.

"What we're most concerned with is what do the students want, what do they want to see, because this new facility is for them," Ferguson said.

Ferguson plans to make the facilities more easily accessible for students.

"We would love to have a location that is better accessible by both shuttle bus and drive up. We would also like to have a drive thru for the pharmacy. Why not?" Ferguson said.

A prospective location is not yet known for the new Health Services facilities,

Ferguson said.

"We want to find a site that works for students. We want to put our money into the best possible space for students," Ferguson said.

Once the full meeting of the Board of Regents, in the summer, has approved the plans for the new Health Services facilities, Health Services will begin to identify a designer and contractor for the space, Ferguson said.

"We want to make sure that we have a designer who knows medical facilities, more specifically, ambulatory facilities," Ferguson said.

Ferguson's idea for the new facilities includes a separate floor for women's health and the counseling center as well as general

health.

"I would like for each department to have its own floor. And then, eventually, we would be able to bring in specialists like dermatologists, so we don't have to keep referring people out," Ferguson said.

Ferguson plans to include a physical therapy department to the new Health Services facilities.

"I think that adding physical therapy is a great idea because it will support the RAC, health and wellness education and the university's sports medical program. Plus, we won't have to refer people out when they come to the Health Center," Ferguson said.

Health Services currently does not meet the recommendations for facility size based on enrollment, Ferguson said.

"For example, we only have thirteen exam rooms, when it is recommended that a facility have three exam rooms per physician. We currently have twelve physicians, so you can see that we don't even come close to the recommendations," Ferguson said.

The current space needed by Health Services, according to the recommendations, is 38,000 square feet. Health Services is aiming to build a new facility that is 45,000 square feet, calculating for the expected growth rate of GSU, Ferguson said.

Ferguson said, "It's remarkable what we've been able to do in this space provided for us. But, what we have been doing is fitting the students around the facility, and what we really want to do is design a new facility that fits around the students."

Downtown Statesboro hosts fine arts First Friday

BY JAZMIN DAVIS

The George-Anne staff

GSU students and downtown Statesboro made a musical collision as the monthly event First Friday took place on April 6.

The groups at this month's First Friday were Cold Duck Time, Southern Quartet and Southern Saxophones.

"We usually don't have a lot of people fund-raising, so tonight it's special because we have students involved," officer manager of the Downtown Statesboro Development Authority and event coordinator of First Friday Elena McLendon said.

While children were running around and people danced to the music, Cold Duck Time began performing on the front steps of the courthouse. They sang a few of their own tunes, such as a song entitled "Little Bird," with a mix of some covers like "Superstitious" by Stevie Wonder.

"(Cold Duck Time) started as a jazz combo band at Georgia Southern and then started performing around town," drummer of Cold Duck Time, Pladd Dot Music manager and

music alumnus of GSU Sammy Warren said, "(First Friday) is a good picture of Statesboro, you get to see a lot of local business show what they can do."

The two other bands of saxophonists, Southern Quartet and Southern Saxophones, were under the direction of the GSU music department's professor of saxophone, Dr. Carolyn J. Bryan.

They performed songs like "Puttin' on the Ritz" and "The Addams Family" theme song, giving the crowd a modern view on saxophone playing.

Hosted by Downtown Statesboro Development authority, First Friday is put on every month in front of the courthouse to promote economic growth in the many small businesses in and around the downtown area.

"Our main purpose encourages economic development and preservation downtown. By having people come downtown, they'll eat, shop and maybe even decide to live downtown," McLendon said.

The array of people selling products and promoting their businesses gave the event its definition. The vendors included places like

Panera Bread selling cookies and pastries, Ellianos Coffee Company selling coffee and pastries and even GSU organizations like Bear-Cave tie-dye shirt producers.

"This is actually our first time at First Friday. We thought it'd be a great way to advertise our sauce," the Tea-potters' co-producer of the sauces Honey On! and Twangy Original Lori Beaudoin said.

Since First Friday hasn't really had too many charities or fund-raising groups on the courthouse lawn promoting their endeavors, the organizers brought in some of those groups this month.

"Because it's our sexual assault awareness month, we want to get our name out there and let people know what we're doing. Today we're focusing on kids and the topic of bullying," Executive Director of the Statesboro Regional Sexual Assault Center Christie Perry said.

After an attendee-count of over 200 people, April's First Friday event was as successful as the coordinators intended, according to McLendon. The constant conversations and the smiles on many faces reflected the turnout.



Demario Cullars/The George-Anne

Statesboro residents visit vendors at this month's first Friday

"It's a good way for Georgia Southern to interact with Statesboro, and I'm from here so I definitely think it's a good thing," junior history major Krystin Deal said.

Next month, for May's First Friday the Downtown Statesboro Development Authority will continue along the lines of the same theme of the fine arts, including more music and more GSU.

'Joe Turner's Come and Gone' to hit Black Box Theatre

BY ROBYN STILLIS

The George-Anne contributor

Cue lights, cue music and the play will begin in the Black-Box Theatre as the Department of Communication Arts and the theater students of GSU present "Joe Turner's Come and Gone."

The play written by August Wilson will premiere tomorrow evening at 7:30 p.m. and will be showing until April 18.

"I adore August Wilson. I've done several of his plays," Mical Whitaker, the director of the play, said.

The theater department geared up for casting a little before Thanksgiving break last semester. Rehearsals began along with the spring semester.

"It was my first time I went to a reading and my first time auditioning for anything, really," Billy Simpson, the character of Rutherford Selig, said.

The set was built by the scene shop

as well as by volunteers from theater classes. The wardrobe was done by Sarah McCarroll, the costume designer who is also a professor here at GSU. The list of characters in the show are Seth and Bertha Holly, a married couple played by senior theater major Jordan Lloyd and junior theater major Marissa Collier. Seth and Bertha Holly own a boarding house where the main setting of the play takes place.

"Bertha is the wife of Seth and she's the heart of the home," Collier said.

"Seth is a businessman, very stern about how he runs his house," Lloyd said.

Also among the list of characters in this production include Bynum Walker, a roots worker played by senior multimedia communications major Brian Coote, Rutherford Selig, a panhandler and people finder played by senior marketing major Billy Simpson. There is Jeremy Furlow, played by senior political science Michael Austin, and Mattie Cambell, played by

junior film major Kiara Franklin. The character of Molly Cunningham is played by junior theater major Briona Johnson.

Herald and Zonia Loomis are played by junior theater major Eric Carter and sophomore communication arts major Samira Murphy. The mother and wife of Zonia and Herald is played by freshman Chryssie Lewis.

The childhood friend of Zonia, Rueben Mercer, is played by freshman Brandon Ellison.

"They auditioned well, I have eleven of the brightest minds on this campus in this play," Whitaker said.

"Joe Turner's Come and Gone" is a play set during 1911 in Pittsburg. It was the period that is known as the Great Migration, when freed blacks were migrating north.

During this time, there was a legend about a man named Joe Turner, the brother of the governor of Tennessee. It was said

that Turner, a sheriff, captured freed black men out on the town at night and arrested them. The men were then held in bondage for seven years and forced to work the land of Turner and his friends, and upon seven years were released.

"Loomis is tortured and conflicted, in a way the heavy coat he wears symbolizes his burden," Eric Carter, junior theater major and character of Loomis, said.

"I am fascinated by the spiritual aspect of the play," Dionna Davis, the assistant stage manager, said.

Whitaker is hoping that audience members in attendance gain appreciation for the meaning behind the play.

"I hope they appreciate the hard times these people, the forefathers and great grandparents and grandparents, went through to get to where we are today. I think the students will love it, it's a fine cast and the setting is profound. I think the audience will be amazed," he said.

Film 'No Impact Man' to bring awareness to GSU

Film and television

BY AMBER GORDON

The George-Anne staff

In order to jump-start the No Impact Week, The Center of Sustainability is doing a free showing of the award winning film "No Impact Man" tonight at 6:30 p.m.

Georgia Southern University's own impact week is based off of author Collin Beavan's experience during that year.

The film "No Impact Man" will attempt to teach students that by decreasing their carbon footprint in the world, they have the ability to cut down on pollution as well as preserve resources that are being used at a rapid rate.

"It's really about using our resources in a way so that they'll still be around for the future. We have a lot on non-renewable resources that we're using at a rate much faster than the Earth can support," Director of the Center of Sustainability Dr. Lisa Leege said. "For example, we're using non-renewable fuels like gasoline, coal and natural gas. Once we use them, they're gone. So with impact

week, we're emphasizing making choices that are sustainable so that my grandchildren, your grandchildren and their grandchildren can still have fuel that they can use to support their way of life," Leege said.

"Basically, No Impact Week is a consolidation of that year experience down into a one-week, very compressed time for our university. Last year was our first year of doing no impact week. We had more than thirteen hundred participants, which is fabulous. We're hoping we can get even more people participating this year," Leege said.

While there are several common and easy ways students can decrease their impact on the environment, the film shows the family going to extremes in order to stay environmentally conscious.

"In the movie you'll see them washing their clothes in the bathtub with their feet and they walk up thirteen flights of stairs to get to their apartment because they stopped using the elevator. They don't use toilet paper, which is kind of a big thing that came out from all of this," Leege said.

Through viewing the film and participating

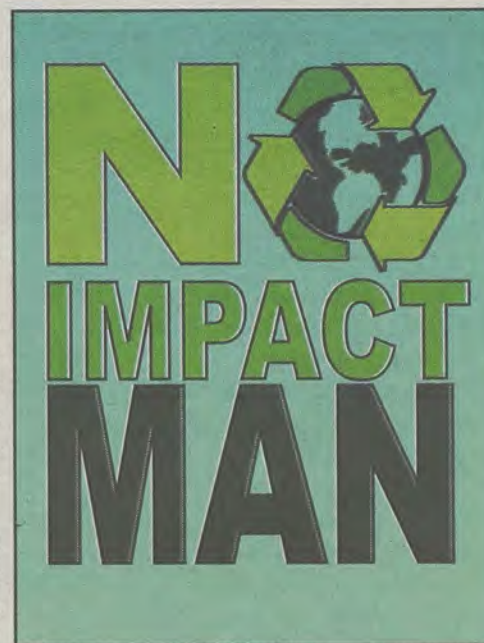
in No Impact Week, Leege hopes that students will be able to see that reducing their impact on the environment gives several benefits to their everyday life.

No Impact Week is a one-week initiative to help students reduce their impact on the world, whether students are trying to decrease their amount of trash or cleaning up trash around campus.

"No Impact Week is a one-week carbon cleanse, and so each day you reduce your impact on the earth in another way. For example, on the first day is consumption day, and from that point forward you are challenged to buy nothing new except for food," Leege said.

While there are several common and easy ways students can decrease their impact by viewing the film and participating in No Impact Week, Leege hopes that students will be able to see that reducing their impact on the environment gives several benefits to their everyday life.

"Once students start making conscious choices it becomes a lot easier to live sustainably," Leege said. "So I want people



Matt Veal/ The George-Anne

to enjoy the experience, because it's a great challenge to see if you're able to do this, but then to come away with the sense that this can actually improve the quality of life and save money too."



BLISS BERRY

FROZEN YOGURT • GELATO • SORBET • SMOOTHIES

SELF-SERVE FROZEN YOGURT

10 FLAVORS OF FROZEN YOGURT DAILY

Mon & Thurs:
Double Punch Days!

55
Toppings to Choose From!

sugar-free available

1 oz FREE*

*Valid through 4/30/2012. Cannot be combined with any other discounts.

Come Try our
New Delicious,
Fresh, Fruit
Smoothies!

dairy-free available

721 SOUTH MAIN ST. #9
STATESBORO, GA
LOCATED IN QUIZNOS SHOPPING CENTRE
CONTACT # 912-681-2547

HOURS:
MON-THURS: 11AM-10PM
FRI-SAT: 11AM - 11PM
SUN: 12PM - 10PM



JOIN ON FACEBOOK TO
LEARN MORE ABOUT
SPECIALS @ BLISSBERRY

The sun will come up at the Averitt Center

BY MARISSA MARTIN

The George-Anne contributor

The sun will come up when "Annie," the musical takes the stage at the Emma Kelly Theatre at the Averitt Center on Thursday evening at 7:30 p.m.

Adapted from the original playwright during the years of the Depression, "Annie" sends a message of hope for better days to come. "The song 'Tomorrow' says that if things are bad now, look forward to tomorrow. It's going to be a better day," Glenn Spell, co-director of "Annie," said.

"We chose 'Annie' because it offers opportunity for youth to participate and it has a good message for the Statesboro community," Tim Chapman, the producer, said. There will be two girls from the surrounding area who will be playing the role of Annie. Abbey McMillan and Macy Pruitt will share the lead role. "We have two young girls playing Annie. They will alternate nights," Spell said.

Along with the role of Annie, there will

be 15 girls who play as Annie's orphan friends.

"My friends asked me if I knew that I would be working with girls from six to ten years old, and I just laughed. The girls have been great," Helen Rosengart, co-director of "Annie," said.

"Annie" has a vast array of characters, including the dog Sandy from the comic strip "Little Orphan Annie," where this story originated.

"We have a dog who will be performing on stage, he is a really great actor," Rosengart said.

The two directors, Spell and Rosengart, chose the cast for "Annie" in February and have been working with this cast since then.

"All of the actors have been very creative during all of this. They are never late and have lots of energy for this production," Rosengart said. "Annie" portrays a fictional story of a hopeful orphan girl searching for the love of her lost parents. Luckily, a billionaire who only knows the love of money invites Annie to his home for

Christmas. During their time together, they discover what the true meaning of love is. "Daddy Warbucks was a hard working business man who found genuine love for someone," Spell said. "Love can turn someone into a caring and warm human being."

This production has taken many people to perfect this production.


"The first production of 'Annie' was a collaboration of three people. The book was written by Thomas Meehan, the music was from Charles Strouse and the lyrics were written by Martin Charnin," Spell said.

"You know the saying 'it takes a village?' Well, this production can attest to that statement," Rosengart said. "This production has been very challenging." Annie will hit the stage Thursday, April 12, at 7:30 p.m. and will continue through Saturday. There will be a matinee performance on Sunday, April 15, at 2 p.m., which will be the last day of the performance.

"It has already been a huge success, we have four sold out crowds," Chapman said.



Photo courtesy of <http://wiki.uiowa.edu>



ROOMMATE PROBLEMS?
Choose University Housing, we do it better.

Sign up now at www.gsuhousing.com/apply.
Returning residents may win an iPad3, 52" TV, or more! Go to www.gsuhousing.com/Return2012 for details.

YOU ARE INVITED

to **The Miscellany** Release Party!

Thursday, April 12, 2012 @ 7p.m.
Williams Center Multi-Purpose Room

Live performances by:

Ellipse
Finnigan's Father
Cold Duck Time

Open Mic!

If you are interested in an Open Mic performance contact us:
miscellany@georgiasouthern.edu

Professors perform at Foy

Music

BY JAZMIN DAVIS

The George-Anne staff

Classical Russian music came to life as professors Larisa Elisha and Richard Mercier showed their violin and piano skills on the Carol A. Recital Hall stage yesterday evening.

Georgia Southern University's Department of Music provided this first time solo collaboration with music chair Mercier on the piano and Russian assistant professor of music and director of upper strings Elisha playing the violin. Mercier found the main purpose was "to bring wonderful music to the Statesboro community."

"It's always a real pleasure to perform with Dr. Elisha. It's just a dream come true," Mercier said.

The performance was initially Elisha's vision. Not only do these professors of music teach, but they put on multiple performances each year as well.

Performing with a piano trio with Mercier before and with the GSU Symphony more recently, Elisha thought it'd be a good idea for the teachers to practice what they teach. Elisha even suggested the pieces that the two were going to perform.

"I'm not only teaching but performing a lot, and I enjoy collaborating with Dr. Mercier," Elisha said. "That's how performers do it, just play the next concert."

With lights dimmed, the pianist and violinist took the stage accompanied by nothing but their instruments. The repertoire began with "Suite in the Old Style" by Russian and German composer Alfred Schnittke.

Elisha's background was represented throughout the recital as the duo performed "Sonata No. 2 in D Major, Op. 94 bis" by Sergei Prokofiev, who was also a Russian composer as well as a pianist and conductor.

The final piece of the evening was actually provided by the French. "Sonata in A Minor" by composer, pianist and organist of his day Cesar Franck, left the audience in reverence to the performance given.

Many students of the professors dominated the audience in support of their teachers. Mercier thought this performance was good to show students "what high-quality music making is like and to open them to new literature."

"It was excellent. I like that professors do this because you get to see more mature talent," junior business management and entrepreneurship major Scott Thorpe said.

The University Programming Board presents:

8th Annual
Mr. Georgia Southern University
FREE ADMISSION
with your Eagle ID

King

April 10, 2012 OF RU Ballroom 7 p.m.

HEARTS

RU Ballroom 7 p.m. OF April 10, 2012

Guine

Mr. Georgia Southern University
 8th Annual
 FREE ADMISSION
 with your Eagle ID

Your Student Activity Fees at Work

THANKS, TROY!




TROY MARSH
 THE MARSH LAW FIRM

WHAT: **FREE LEGAL HELP**

WHERE: ROOM 2073 IN THE RUSSELL UNION

WHEN: EVERY TUESDAY 3:00-5:00 PM

TO SCHEDULE AN APPOINTMENT, CALL (912) 764-7388

SPONSORED BY  STUDENT GOVERNMENT ASSOCIATION
 YOUR STUDENT ACTIVITY FEES AT WORK.



Scan to REGISTER



Snacks for Soldiers

5K Race ★

April 21, 2012
RAC



GEORGIA
SOUTHERN
UNIVERSITY

Register at
GeorgiaSouthern.edu/ROTC5K

Baseball sweeps Davidson over weekend



Demario Cullars/The George-Anne

Junior infielder T.D. Davis (38) slaps down a hit during a recent Eagles home game. The Eagles moved over .500 in the SoCon with their sweep.

Baseball

BY CLINTON HINELY

The George-Anne staff

The Georgia Southern University baseball team recorded its first Southern Conference series sweep of the season over the Easter holiday weekend.

GSU (18-15, 8-7 SoCon) defeated Davidson College (11-18, 3-12 SoCon) three times to finally go above .500 in the SoCon.

The Eagles recorded two late-inning come-from-behind victories in the series.

The Eagles starting pitching has been a reason the Eagles have been able to turn around their conference fortune lately by consistently putting in quality starts over the whole series.

Thursday's opening game was postponed by rain, but that didn't stop the Eagles from picking up two important wins on Friday.

Game One. GSU 8-3. WIN-Beck, LOSS-Overcash

Junior starting pitcher Chris Beck threw a complete game shutout in the first game on Friday

afternoon, just one week after he won conference and national honors for his career-high 16 strikeouts versus the College of Charleston and picking up his first career save against the Georgia Institute of Technology. Beck allowed eight hits and three earned runs over his nine innings of work. He recorded nine strikeouts and only walked one Wildcat hitter.

GSU's sophomore outfielder Stryker Brown had a solid night at the plate, going 3-4 with two RBI's. Junior Michael Burruss continues to stay hot, going 3-5 with one RBI and scoring two runs.

Davidson didn't help its own cause, committing five errors on the night and allowing two unearned runs to cross the plate for the Eagles.

Game Two. GSU 6-3. WIN-Rowe, LOSS-Becker

Burruss went 3-5 again in the second game on Friday afternoon, this time delivering the big hit for GSU. The Eagles were losing 3-2 in the top of the ninth inning before freshman Tyler Avera's hit drove in the tying run. Then Burruss delivered a three-RBI triple to give GSU the lead and the victory.

Burruss finished the night with four RBIs.

Although starting pitcher Justin Hess did not pick up the win, he put in a solid performance. Hess struck out a career-best of 12 batters. He only allowed five hits and one run in his six innings.

Game Three. GSU 7-6. WIN-Rowe, LOSS-Lowe

The Eagles rallied in the late innings to pick up the victory and the series sweep. GSU trailed by one run entering the eighth inning before freshman Chase Griffin hit a solo home run to tie the game. Then, in the top of the ninth, junior T.D. Davis singled in the go-ahead run.

Junior Kyle Rowe entered the game in the last two innings and pitched scoreless baseball. It was enough for Rowe to pick up his team leading fifth win and his second win of the series.

The Eagles will be back in action this Tuesday at J.I. Clements Stadium to face Kennesaw State University. The game is set to start at 6 p.m.

The Eagles will then begin a three-game series against SoCon rival Appalachian State University beginning Friday at 6 p.m.

Women's tennis drops last home match of season

Women's tennis

BY TREVOR MCNABOE

The George-Anne contributor

This past Saturday the Georgia Southern University women's tennis team took on Wofford College for Senior Day and for senior Alessandra Dzuba, it would be her last match here at the Hanner Tennis Court.

The day started off with three doubles matches to determine who would win the double point. No. 1 doubles sophomore Paula Garrido and Caitlin Kitchen won handily by a score of 8-4. No. 2 doubles Taylor Jones and Scottie French lost a close match by a score of 8-6.

The point deciding match came down to No. 3 doubles Mimi Bollaci and Alexis Prickett, who took their opponents to a tiebreaker after mounting an impressive comeback and matching the opposition point for point. However, the pair ended up falling in a heartbreaker by a score of 9-8. The loss put GSU down 1-0 overall in the team competition.

The singles portion began with the Eagles coming out struggling with four of the six individuals losing their first set. However, Garrido and Junior Allison Beeler broke the losing trend and not only won their first set, but took both sets from their opponents in No.1 and No.2 singles, respectively. Garrido dominated her opponent, only giving up one

game and winning by a score of 6-1 and 6-0. Beeler outlasted her opponent and won both sets by a score of 6-4.

The two wins were the only that GSU would get today as No. 3 singles Caitlin Kitchen lost in straight sets by a score of 6-2 and 6-4. No. 4 singles Cameron Williams lost 6-3 and 6-4. In the No. 6 singles French lost 6-2 and 7-5 and Dzuba finished her last match at home, losing by a score of 6-4 and 6-4. The final tally of the match was 5-2 in favor of the Terriers.

The loss put the Eagles record at 5-13 overall and 2-7 in the SoCon. The team looks to finish out the season strong against College of Charleston in the regular season finale next Friday at 2:30 P.M.



Mark Barnes II/The George-Anne

Sophomore Caitlin Kitchen returns a volley during her last match.

SOFTBALL, from page 1

season for the Eagles with six runs from just three hits.

The Eagles remained on top and were able to extend their lead with one more run from junior Tabby Douberley, giving GSU 7-2 lead over the Spartans. To top it all off, the Eagles scored two more insurance runs in the seventh despite the final run from UNCG. The Eagles were able to end the second game with a 9-3 win over the Spartans.

Pitcher Allie Miles earned her second win of the season, allowing just three runs out of six hits.

"It is great to get the first two games of this series," said head coach Annie Smith in an interview with Georgia Southern Athletics. "We battled back in both games. We were very good defensively and our offense got the hits when we needed them. I was really happy with the bottom of the order, 7-8-9, getting hits today."

GAME 3

The Eagles began the final game of the series with a bang in the second inning thanks to a home run from Douberley that allowed three runs and gave GSU a 3-0 early lead over

the Spartans.

Tarashuk was able to add to the Eagles' lead an inning later with a double that sent Williams home and extended the team's lead to 4-0. The Eagles continued to dominate the Spartans, adding two more runs to their lead with hits from Hanna Ennis and Fogle respectively.

The Spartans got on the board in the bottom of the fourth with a two run homer, making the score 6-2 Eagle advantage. The Eagles answered with a three run homer from sophomore Shelby Morrill, her first home run of the season, that gave the Eagles four more runs and a 10-2 victory over the Spartans.

Freshman pitcher Brooke Red allowed only two runs off three hits during her five innings of play. Freshman pitcher Marla Thompson took over for Red in the final inning of the game, allowing just one hit in the sixth.

"We are very happy to get another series sweep," said Smith. "We had another solid team game today. We played well defensively and our batters continued to battle at the plate. This weekend the bottom of the order hit well and that's something we like to see," she added.

The Eagles remain first in the SoCon



Mark Barnes II/The George-Anne

Members of the GSU softball team meet at the pitcher's circle to motivate themselves.

with an 11-1 conference record. The team will hit the road to Atlanta to take on the Georgia Institute of Technology Yellow Jackets in a double-header beginning at 4

p.m. GSU will return home for a SoCon series, beginning April 13 against the College of Charleston. The first game will begin at 3 p.m. on Friday afternoon.

Eagles in D.C. Internship Program

Accepting applications now for Fall 2012 term.

<http://students.georgiasouthern.edu/vpsaem/internships/eaglesindc>

Application Deadline: This Friday, April 13

Eagles face tough competition at Florida Pepsi Relays

Track and field

BY KEVIN GREGAN

The George-Anne staff

The Georgia Southern University track and field team traveled to Tampa, Fla., over the weekend where they competed in the Pepsi Florida Relays and fared well, even against teams preparing for the 2012 Olympics.

The relays are considered one of the biggest

collegiate track and field events in the nation and have been held annually since 1939. A normal meet has 15-20 schools competing, this one had 54 different schools and sponsored teams.

The Eagles did not compete in any of the field events at this meet, so the pressure of doing well for GSU fell on the sprinters and hurdlers.

"We wanted to make sure the field unit was nice and rested for the Southern Conference Championships," first-year head coach Marlo Mincey said.

In the 100-meter dash, the difference between first and 54th place was just 1.57 seconds. Leading the Eagles in the event, junior Ebony Carter came in 18th place with a time of 11.72 seconds. Just .26 seconds later, freshman Jasmine Walker came across the line with her 11.98 second finish for 42nd place.

These times are both personal records for Carter and Walker. Her time also put Carter as the fastest 100-meter sprinter in the SoCon.

"They did well individually, but when you're going up against a lot of All-Americans and Olympians, it just comes down to doing the best you can. I think they did well," Mincey said.

The 100-meter hurdles proved to have a strong field too. The fastest time on the day among 63 runners was 12.96 seconds. As for the Eagles, sophomore Stephanie Hicks ran her hurdles in 14.43 seconds for a 27th place finish. Junior Jasmine Billings ran a 14.91 to make 42nd place.

Sophomore Cherrelle King, Billings, Carter and Walker ran one of their best times in the 4x100-meter relays this season, but it was only good enough for 33rd in the event. The team sponsored by Pure Athletics took first place with an astounding time of 43.33 seconds.

The Eagles rarely run the 4x200-meter relay,

but freshman Kimberly Thomas, Carter, King and Walker scored a 16th place finish.

The Eagles also tried out the 4x800-meter relay. Senior Azura Robillard, junior Talisha Rice, sophomore Asea Mayfield and Towns ran two laps each in 9:15.78. That finish granted them the 10th place spot in the event.

"We felt like we had a good group to run the 4x800, and they ended up with a pretty good overall time," Mincey said.

In the final event, the 4x400-meter relay, the track record was shattered by more than two seconds by the One Goal Athletics team with a time of 3:24.14. They were also four seconds ahead of second place.

The Eagles' team, made up of senior JoAnn Jaja Benson, sophomores Dana Edwards and Deanna Edwards and freshman Taylor Wade, came in 40th place amongst 48 teams with a time of 3:49.93.

There were many Eagles who ran in different events. Every Eagle ran at least one event. This was a chance for the team to see some pressure situations before going into the SoCon championships in two weeks.

"I wanted to create some pressure situations, to put them out there and see what they had and how they compete in races like that," Mincey said.



Demario Cullars/The George-Anne

The Eagles track team competed in the Pepsi Florida Relays this past weekend. Left: Senior Azura Robillard practices her javelin throw. Right: Junior Ebony Carter explodes out of the blocks.



Mark Barnes II/The George-Anne

The Eagles practice iron shots in preparation for the Southern Conference Championships.

Golf places eighth

Golf

BY KEVIN GREGAN

The George-Anne staff

At the Gary Koch Invitational in Tampa, Fla. on Saturday, the Georgia Southern University golf team was in contention until mistakes made on Sunday forced the team to settle for an eighth place finish.

"We got antsy on the back nine and we made some mistakes," head coach Larry Mays said.

The first two rounds of the three-round invitational took place on Saturday and the University of North Florida was off to a commanding lead as they shot 17 under par. By the end of the tournament, they had improved to 21-under par.

That put them 20 strokes ahead of the Georgia Institute of Technology, which was the only other team below par for the tournament.

Junior Blake Olson had a solid performance for the first day. He shot a 70 in the first round on the par 72 course. In the second round he shot a 71, which put him at three under for the tournament and tied for fifth.

After getting off to a slow start in the first round by shooting a 76, sophomore Will Evans finished two under in the second round to leave him at +2 for the tournament.

Freshman Scott Wolfes had two rounds where he scored 74 to put him at +4 after two rounds.

Sophomore Hayden Anderson was +5 in the tournament, due in part to his

first round score of 75. In the second round, he improved by one stroke and a score of 74.

In an unusual two rounds for senior Lewis Gruber, the captain found himself at +14 over par for the tournament after two rounds shooting 79.

As for the team as a whole, the Eagles had a better second round. After going +7 in the first round, the team improved in the second where they scored a +1. With their two-round score of +8, the Eagles sat in seventh place among 15 teams as the second day and the final round began early Sunday morning.

The team played well for the first half of the final round, but soon after making it to the back nine, the team started producing bogies.

"We put some good rounds together, but we didn't play well in the back nine on," Mays said.

To end the day, Olson finished at 2 over par for the tournament and a 218. Wolfes finished the tournament with a 225. Evans made a 227 and Anderson finished at 231. Gruber had another round at +7 to leave him at 237.

The day was so rough for the Eagles that they finished the tournament at +34. However, they only dropped one spot and tied for eighth on the weekend and they still bested six other teams.

"We need to clean up our mistakes, learn not to be so antsy on the back nine and learn something from it and build for next week," Mays said.

The Gary Koch Invitational was on a course similar to where the Southern Conference Championships will be held next week in Charleston, S.C.

Give Blood. Save Lives. Win This Car!

Georgia Southern University Blood Drive

DATE: Monday, April 16th

TIME: 11:00am-5:00pm

WHERE: Bloodmobile onsite outside of Student Union @ Landrum & Centennial

Everyone who registers to donate blood with The Blood Alliance from August 31, 2011 through June 30, 2012 will be entered into a random drawing to win this brand new 2012 Honda Civic compliments of Lucas Honda! You may donate at any one of our community donor centers or mobile blood drives to be eligible to win. Each time you donate, you are entered to win, so start donating today!

**LUCAS
HONDA**
of Jacksonville



Blood...the Fuel of Life!

Find a Blood Drive!
Download our
iPhone or Droid App
iDon8

**THE BLOOD
ALLIANCE**
Enriching Lives Since 1942

Make an appointment:
igiveblood.com

Or call us at:
888-99-TBA-HERO
(888-998-2243)

Providing Outstanding Blood Service in Florida, Georgia and South Carolina.

*Honda Civic promotion runs from August 31, 2011 through June 30, 2012. Car will be awarded on July 11, 2012. Honda Civic winner must be 18 years old and a licensed driver. Winner will be responsible for all necessary documents, all applicable taxes and cost of the tag and title. The pictured car is for display purposes only and color and options may vary. Employees of The Blood Alliance, Lucas Honda, 30 Second Street Media and Frontline Solutions and their immediate family members are not eligible for this promotion.

CLASSIFIEDS

16 Tuesday, April 10, 2012

This page brought to you by Career Services
Explore • Experience • Excel

www.thegeorgeanne.com

Advertisement

For Sale

Scooter for sale! 2005 Honda Ruckus. Black, 49cc, 85+mpg. Original (faculty) owner, garage kept, \$1,500 OBO. Contact (912) 678-6052

Firewood for Sale. Delivery available! Call 912-690-0872 or 912-690-4956.

For sale: 2009 BMW 328i, hard-top convertible in great condition. Black with tan interior. Call 912-293-1909.

Used Fender Blues Jr. All-tube guitar amp, \$350, negotiable. Perfect working order/condition (912) 536-1610

Help Wanted

BARTENDERS WANTED! \$250 a day potential. Experience unnecessary. Training provided. 18+ Call: 1-800-965-6520 ext. 296

Seeking an Assistant, excellent opportunity if looking to work in a friendly atmosphere. Self-Motivated, Positive Attitude, Ability to Multi task. Send resume to Martgay@gmail.com

Part time sales position open at Farmer's Home Furniture. Apply in person. 110 Northside Drive E. Statesboro, Ga 30458

Subleases

Spring 2012 Female roommate wanted. 1BR/1BT in a 3BR/3.5BT townhome. \$400/mo. Contact at 404-444-8987 or ec01442@georgiasouthern.edu

1BR/1BT available in a 4BR/4BT at Campus Club \$700 for the whole summer or \$370/month. Email Shanna at shannalawson22@gmail.com

3BR/2BT within 2 miles campus. You can sublease the other 2 rooms. No smoking or pets. Call (706) 951-1427.

Sublease at Cambridge for Reduced Price 1 BR/BTH available in a 3 BR. \$350/month *Regular price-\$459/month.* Email shortiecutie102@yahoo.com

2BR/2HBH at Hawthorne 2. \$350/month. Through July. Contact Shannon at 678-468-9407

2 BR/2 BT sublease in Georgia Villas. \$475/month for both rooms, utilities not included. Available Jan-May. Email t100212@georgiasouthern.edu

"Don't pay \$1,260 for Summer 2012 housing. 4 br/ 2 bt apartment in the Avenue is only \$320 Contact Tanera @ tm01729@georgiasouthern.edu"

Subleases, cont.

Sublease for Spring 2012 in a fully furnished 4 BR/4 BT. Contact Alex at (770) 712-5377 or ao00837@georgiasouthern.edu

Spring 2012 1 BR/1BT in a 2 BR/2.5 BT townhouse at The Avenue. \$495/month, but I will pay \$30 for each month. Or I could put \$210 towards the first month's rent. Contact Cherelle at chollan4@georgiasouthern.edu

Subleasing 626 B at the Exchange. Female Roommate needed. \$519.00 per month. Available now. Contact (706) 523-6001

Room available 3 BR/2 BT house on Catherine Avenue. \$367/mo Contact Yale at (404) 272-7652 or yale8754@bellsouth.net

1BR/1BT available for rent at Copper Beech apartment. Rent \$394/month + utilities (negotiable). Please call 770-639-0264.

4BR/4BT at Campus Club \$409 a month Contact Chin Herbert at ch02002@georgiasouthern.edu

SUMMER 2012! Subleasing 1BR/1BT available in a 2BR/2BT at The Woodlands. \$409/month plus utilities. Email Sadie at sn01140@georgiasouthern.edu

Subleases, cont.

1 BR/1 BT available in a 3 BR at The Grove. Available after Dec. 20. \$450/mo. utilities included. Call Ellen 404-694-1394 or email ej00034@georgiasouthern.edu

All inclusive, two story, fully furnished, 4 BR for \$330/month Contact (229) 326-4291.

Summer 2012 1br/1bt townhouse at the Avenue. Rent \$465, unfurnished. May rent and \$100 for June and July paid. Contact at kp01343@georgiasouthern.edu

Female roommate needed for Spring 2012: 3BR/3BT at Cambridge, \$449/mo 1st floor. Contact Angelica 404-921-4988.

Summer 2012 4BR/2BT apartment in the Avenue is only \$320 & is FULLY FURNISHED! Contact Tanera @ tm01729@georgiasouthern.edu

Sublease available ASAP at Copper Beach. \$389/mo. Utilities not included. Contact 478-957-1005 for more information.

Sublease my 1BR apartment ASAP at Panter's Row. It is \$625 and pet friendly. Utilities are not included. Contact at be01181@georgiasouthern.edu or 478-455-0432.

Subleases, cont.

Planter's Row 1BR/1BT Cottage, \$625 a month, Available for Summer semester. Call 270-227-7507

Fall 2012 Female Roommate Needed at University Pines 4 BR/2BT \$409.00/month. Call: 478-251-6260 or email: rw02273@georgiasouthern.edu

Planter's Row for \$365/month; utilities not included. Contact at at01770@georgiasouthern.edu or call (770) 546-6560

Subleasing 3 BR/2BT house on Parker Ave in Brooklet. Contact Joyce at (912) 842-9479.

Summer 2012, individual bathroom, 3 female roommates, washer/dryer. Call Kaylah Ibidapo at 678-612-1087

Houses for Rent

ATTENTION ALL STUDENTS 2, 3, 4, 5, 6, and 7 bedroom houses available Aug 1, 2012 24 hr repairs guaranteed 912-682-7468

Summer 2012 Subleasing 1BR/1BT available in a 4BR/4BT at Campus Club. \$370/month. Email Shanna at shannalawson22@gmail.com

Houses for Rent, cont.

Furnished apartment Located just past Mill Creek Park. \$130/week or \$500/month. Available now. 912-531-1319

HOUSE FOR RENT 3BR/2BT in August 821 Robin Hood Trail, walking distance to campus, \$895 a month. Call at 706-543-5497

4 bd / 2 bath - Robin Hood Trail
4 bd / 2 bath - Tillman Street
4 bd / 4 bath - Talons Lake
More info at: www.wildoak-investments.com Call: 912-682-9515

Misc.

American Shorthair Cats (AKC Reg. Male and Female) free to good home, contact bpills12@gmail.com if interested

Will proof papers. Quality work, reasonable prices. Will also type short projects. Must have ample lead time to schedule. Email auntre01@gmail.com

Fourth year writing and linguistics major will proof papers/ tutor in writing. Cheapest rates, at least three days notice on assignments

Advertisement

BYOB For Your Future

By Sarah Dixon
PR/Marketing Intern
From the Office of Career Services

This is not your typical BYOB event, but rather a chance to learn about how to secure your financial future. BYOB - Budget Your Own Bank, Lunch and Learn Series is going to provide you with an opportunity to better understand the concept of saving and management of funds.

No one wants to work forever due to financial issues of the past, but you have to be careful. Once you get a job, it is important to manage your funds and learn how to multiply them. The series will also show you ways that companies may try to take advantage of you, so beat them to the punch by joining us.

The first session is Tuesday, April 17 from 12:30-1:45 in Russell Union 2080. Dr. Godfrey Gibbison will present on

debt management and decision making related to the topic. Gibbison will touch briefly on home ownership but focus primary on student loans, car loans and credit cards.

The following session will be on Thursday, April 19 from 12:30-1:45 in Russell Union 2080. Vicki Hodges of the Georgia Southern University Human Resource Department will touch on a wide variety of topics that we can all relate to such as company benefits and decision making that affects those benefits. In addition, she will discuss considering leave, daycare, and comp-time policies with regard to family planning decisions.

The series will allow you to learn about various topics that can affect your future, so do not miss out. There will also be FREE food for those who participate. For additional information, please call Career Services at (912) 478-5197.

Want to learn more about Career Services AND get FREE ice cream?



ICE CREAM SOCIAL

TUESDAY, APRIL 17TH

1 - 4 p.m. in Career Services (Williams Center 1047)

Williams Center 1047

912.478.5197

georgiasouthern.edu/career

PUZZLES/COMICS

www.thegeorgeanne.com

Tuesday, April 10th, 2012 17

Los Angeles Times Daily Crossword Puzzle

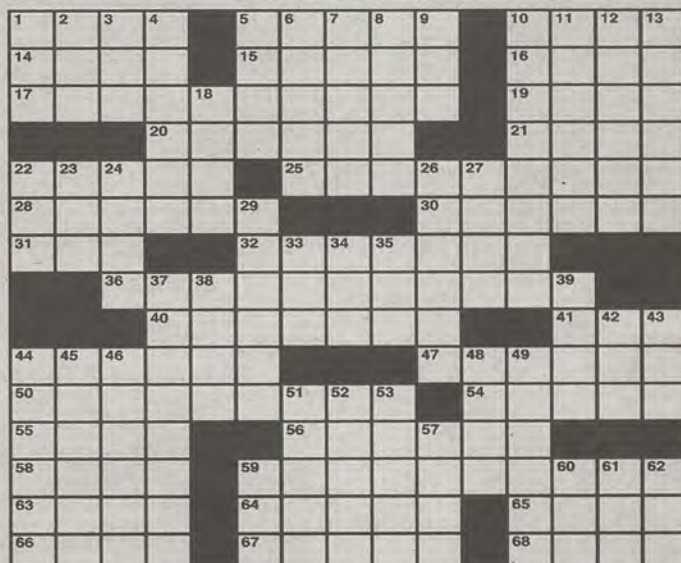
Edited by Rich Norris and Joyce Lewis

ACROSS

- 1 Dark, to a poet
- 5 Tony who played a sitcom 17-Across employee
- 10 Sitters' charges
- 14 Lee with frozen desserts
- 15 Barkley who served under 41-Across
- 16 "... thunder, lightning, rain?": "Macbeth"
- 17 It arranges pickups
- 19 Modest dress
- 20 Like a crowd in awe
- 21 End-of-week exclamation
- 22 Vagrants
- 25 Emir
- 28 Mocedades hit whose title means "you are"
- 30 Golf units
- 31 Slippery swimmer
- 32 How Dennis Eckersley pitched
- 36 Simple ... or a hint to the hidden puzzle theme in 17-, 25-, 50- and 59-Across
- 40 Desexes
- 41 FDR's successor
- 44 Outbursts that provoke blessings
- 47 Harley alternative
- 50 Maryland seafood fare
- 54 The Lusitania, e.g.
- 55 Sidewalk border
- 56 Guitarist, slangily
- 58 Carlisle's wife in "Twilight"
- 59 Sit-up relatives
- 63 It may be barred or bolted
- 64 Songs for two
- 65 English aristocrat
- 66 ..., meeny ...
- 67 Muslim god
- 68 June 6, 1944

DOWN

- 1 Key to the left of F1
- 2 Sheepish reply?



By David Steinberg

4/10/12

April 5th Puzzle Solved

L	A	T	I	N	F	R	E	E	E	L	M	S
A	L	I	V	E	R	A	G	U	S	O	A	P
C	O	P	Y	E	D	I	T	O	R	T	O	G
Y	E	S	D	U	E	S				A	K	I
			P	L	A	N	O	F	A	T	T	A
I	N	F	I	E	L	D	A	R	I	E	L	
L	E	A	N		K	N	O	T	I	M	P	
S	E	R	G	E	A	N	T	S	N	O	R	K
A	D	M	L	B	O	S			O	E	N	O
		S	O	H	I	O	S	T	E	P	S	U
K	E	Y	S	I	G	N	A	T	U	R	E	
N	A	S	T		D	A	N	A	E	D	U	
E	T	T	E		T	H	E	M	A	S	T	E
A	M	E	R		H	O	L	E	E	E	R	I
D	E	M	S		O	P	E	N	S	T	O	P

- 3 Heavenly body
- 4 Cheese-topped snacks
- 5 Electricity generators
- 6 -Bits: cereal
- 7 Pro hoopster
- 8 "The Prisoner of"
- 9 Vague quantity
- 10 Tiny fairy tale hero
- 11 Starting point
- 12 Cleaned (up)
- 13 Searches like a detection dog
- 18 Give the boot
- 22 Donkey syllable
- 23 Cinnabar or magnetite
- 24 Lugosi of "Dracula"
- 26 Having a lot of nerve
- 27 Chef Cat
- 29 Patriotic Olympics chant
- 33 Believer's suffix
- 34 Gray hair disguiser
- 35 Place for a ring
- 37 Elitism
- 38 Fed. anti-discrimination org.
- 39 Biggers's detective
- 42 54-Across pronoun
- 43 Pit goo
- 44 Acquiesce
- 45 Defoe title surname
- 46 Longtime Tiger Woods coach
- 48 Astronaut Shepard
- 49 Chopped, as garlic
- 51 Afghan capital
- 52 Stand out in a field
- 53 Mattress giant
- 57 Sled dog command
- 59 Drillers' org.
- 60 "I've been ...!"
- 61 Important time
- 62 Surreptitious



			3	9			
	1	6		2		3	
					5	6	7
7							6
6		3	5		8	9	1
8							3
1	5		2				
		4		7		8	1
				5	3		

Sudoku

2	7	2	8	9	1	8	9	6
9	1	8	6	2	9	4	8	2
6	8	9	7	8	2	2	9	1
8	2	4	1	9	2	9	6	8
1	2	6	8	4	4	5	8	2
4	4	6	8	2	8	9	1	5
2	9	2	9	1	4	7	6	8
8	5	1	9	6	8	2	2	7

Planters ROW

By Hendley Properties

912.681.1170
www.hendleyproperties.com

3 and 4 Bedroom Cottage Houses

\$365

/month per person

Intramural Scores

Softball

The Avenge Joes 0, **All-Star Pitchers 7**

Real Men of Genius 4, **The Bulls 20**

We Go 18, Hardtimes Bojangles 17
Malicious Prostitution 4, **Shredsters 15**

Wet Cats & Hard Bats 6, **GSU Geo Club 7**

RSA 0, **Bad News Beers Co-Rec 17**
Control Your Girl Dawg 7, Balls in the Wind 0

Eastbound & Down 0, We Got The Runs 0

Omega Phi Alpha 2, **Alpha Omicron Pi 17**

Real Men of Genius 7, All-Star Pitchers 0

Uggle Sticks 8, **Decent At Best 16**

Ball Bustas 0, **Philly Bunts 7**

The Great Bambinos 27, In Scoring Position 13

Scoregasms 7, Ball Bustas 0

Skillz Dat Killz 1, **Wish They Had D League 13**

No Glove No Love 2, **Kewrs 7**

Hit It and Quit It 5, **Beef and Tuna 12**

Where My Pitches At? 17, Go-Grove 11

Phi Mu 25, Zeta Tau Alpha 10

Kappa Delta 2, **Grand Slam Pieces 15**

CCF Closetalkers 7, **I'd Hit It 11**

Cunning Stunts 8, Thick Sticks 7

Team DWet 13, **Young Salads 14**

Diligaf 0, **Brew Crew 15**

Smack My Pitch Up 13, Old Salads 9

Forgiven 17, Slammin Pitches 14

Innocent Until Proven Filthy 7, Alpha Delta Epsilon 3

Soccer

Strikers FC 1, **One Shot away from scoring 2**

Tennis

John H Dickinson 2, Darius M Alexander 0

Kyle G McGoff 0, **Joshua Morgan 2**

Corey M Thompson 1, **Joshua T Hinson 2**

Caroline R Hussey 2, Andrea T Webb 0

Daniel L King 2, Christopher L Erving 1

Casey C Webb 1, **Brett Cherry 2**
Zachary T Strickland 0, **Pedro E Loera-Lopez 2**

Michael K Umeki 2, Allen D Halls 0

Dallas H Cruce 2, Jyri P Koso 0

Jeremey E Boatwright 2, Nicholas Hall 0

Terry Lester 2, Andrew C Grayson 0

Kerry C Wright 0, **William M Burch 2**

Meredith N Stark 2, Lea H Ryden 0

Taylor N Donahoo 2, Emilie Buzhardt 0

What's Happening At CRI

Tuesday, April 10

REGISTRATION CLOSES: CRI Open Golf Scramble



Thursday, April 12

Belay Clinic, 7pm

Friday, April 13

Open Golf Scramble, 1pm,
Willow Lake Golf Club

Saturday, April 14

Strongest Eagle, 10am
Southern Sendfest

Sunday, April 15

NO IMPACT WEEK [Begins]
Consumption: Book Drive

Monday, April 16

NO IMPACT WEEK
Waste: Upcycle, 11am-1pm, RU Rotunda



FOLLOW US!



facebook.com/USUCampusRec
twitter.com/USUCampusRec



www.georgiasouthern.edu/cri

The Band Perry & The Fray
CO-HEADLINING

Friday, April 20
Allen E. Paulson Stadium

TICKETS ON SALE NOW
at the University Store and online at:
GeorgiaSouthern.edu/concert



surprise birthday for her



from one of our earlier dates



my surprise visit to Destin



the day we became official :)



our latest valentine's dinner



our first official facebook profile pic



work vacation in windy pizza city



our first brunch!



our first yeast



on the 105th floor of Sears Tower



a casual breakfast in Destin

Avina,
will you
marry me?

New BUFFALO CHICKEN PIZZA

Get a Large
\$10

ONLINE PROMO
CODE: P4PIZ
LIMITED TIME ONLY

New BUFFALO CHICKEN
a combination of creamy ranch sauce, sliced chicken strips,
crispy bacon, fresh sliced onions, 100% real cheese made from
mozzarella and a tangy buffalo sauce.

John N. Schmitter
"Papa John," Founder

ORDER ONLINE
@ papajohns.com



Better Ingredients.
Better Pizza.

Offer good for a limited time at participating Papa John's restaurants only. Not valid with any other coupons or discounts. Additional toppings extra. Not valid with any other coupons or discounts. Limited delivery area. Delivery fee may apply. Customer responsible for all applicable taxes. Please enjoy responsibly. © 2012 Papa John's International, Inc. All Rights Reserved. 04/12/12



Follow us on
Facebook!



Be the 1st person to mention this ad on
our Savannah Facebook page to win a
free pizza! Only one winner!

Statesboro
620 Fair Rd.
871-7272



WE ACCEPT
EAGLE
EXPRESS!

STUDENT SPECIAL

Medium 2 Topping & Two
20 oz. Pepsi® products

\$7.99



Use promo code
SSM2TC799

CARRYOUT OR DELIVERY EXPIRES 4/30/12. Offer good for a limited time at participating Papa John's restaurants only. Additional toppings extra. Not valid with any other coupons or discounts. Limited delivery area, charges may apply. Customer responsible for all applicable taxes.



LARGE DEAL

Large One Topping
Pizza

\$10.00



Use promo code
RHHLC1T10

CARRYOUT OR DELIVERY EXPIRES 4/30/12. Offer good for a limited time at participating Papa John's restaurants only. Additional toppings extra. Not valid with any other coupons or discounts. Limited delivery area, charges may apply. Customer responsible for all applicable taxes.



PIZZA & DESSERT!

Cinnapie & Any Large Pizza
(life's uncertain, eat dessert first!)

\$14.99



Use promo code
RHHLSST4

CARRYOUT OR DELIVERY EXPIRES 4/30/12. Offer good for a limited time at participating Papa John's restaurants only. Additional toppings extra. Not valid with any other coupons or discounts. Limited delivery area, charges may apply. Customer responsible for all applicable taxes.

