

Georgia Southern University

Digital Commons@Georgia Southern

The George-Anne

Student Media

3-22-2012

The George-Anne

Georgia Southern University

Follow this and additional works at: <https://digitalcommons.georgiasouthern.edu/george-anne>



Part of the [Higher Education Commons](#)

Recommended Citation

Georgia Southern University, "The George-Anne" (2012). *The George-Anne*. 2750.
<https://digitalcommons.georgiasouthern.edu/george-anne/2750>

This newspaper is brought to you for free and open access by the Student Media at Digital Commons@Georgia Southern. It has been accepted for inclusion in The George-Anne by an authorized administrator of Digital Commons@Georgia Southern. For more information, please contact digitalcommons@georgiasouthern.edu.



CAMPUS LANDSCAPE RENOVATION

PAGE 8



FRATERNITY TO HOST PAGEANT

PAGE 12

TOBACCO ZONES

SGA SUPPORTS MAJORITY
VOTE IN FAVOR OF POLICY

PAGE 7

Thursday, March 22, 2012
Georgia Southern University
www.thegeorgeanne.com
Volume 87 • Issue 65

THE GEORGE-ANNE

Spring break thefts hit Kennedy Hall

BY LINDSAY GASKINS

The George-Anne staff

Georgia Southern University Police responded to three different occurrences of theft over spring break in Kennedy Residence Hall.

On Friday, March 9, a laptop computer was taken from Kennedy

Hall, according to the police beat for March 5-17.

On Sunday, March 18, a wallet, a cell phone, an Xbox and several games were taken from Kennedy Hall, according to the police beat for March 5-17.

"They are not robberies," Sergeant Christopher McBride of GSU

Department of Public Safety said. "They are classified as thefts. I can't exactly give too much information on it because it is an ongoing investigation."

On the March 9 incident, Officer William Kicklighter of GSU PD was dispatched to Kennedy Hall in reference to a missing laptop

belonging to Devonte Lewis, according to the police report.

Lewis's two roommates had left for the week, but Lewis noticed that their doors were open and lights turned on, as well as a T.V. and radio playing, according to the police report.

Lewis also noticed that his third

roommate, who was still on campus, had an X-Box 360 that was missing as well, according to the police report, but it has not yet been confirmed if the X-Box was also stolen.

The security cameras of the site were experiencing technical difficulty that day, according to

See THEFTS, page 3

Equestrian team takes third in region

BY JACKIE GUTKNECHT

The George-Anne contributor

The Georgia Southern University equestrian team capped its season off with a third place spot in the Region Three Show on March 4. After, regions select riders who earned enough points to move up a class will continue on to the zones competition and then on to Nationals.

English riders Sarah Gottschalk, Shelli Clay and Heather Hillstrom have all moved on to the zone competition in Virginia, along with Western riders Meredith Redlin and Sarah Rhoem.

At the regional show, horses from all over the region are nominated for the Horse of the Year award. GSU's

own Effie won the award this year.

Each semester the GSU equestrian team hosts an English show at Evermore Farm in Brooklet, and this year it also hosted the regional show, which was English and Western. Evermore Farm is owned by the team's coach Eleanor Ellis, who has help from assistant coach Teresa England.

There are many ways to get involved with the equestrian team. Meredith Ross, the team's vice president, said, "At the regional show, the Lacrosse team came out for community service and helped hold the horses. It was really fun to see them get involved."

The equestrian team was founded in 1993 with four members
See EQUESTRIAN, page 19

FRESHMAN FIREPOWER



Demario Cullars/The George-Anne

Georgia Southern Eagles baseball team celebrates after Chase Griffin's (23) homerun during Tuesday's game against Jacksonville. Chase went four-for-five with five RBI's at the plate, and the team went on to defeat Jacksonville 17-11. See page 18 for the full story.



thegeorge
anne.com



Follow on Twitter
@GeorgeAnneNews



Newsroom 478-5246
Advertising 478-5418
Fax 478-7113

PO Box 8001
Statesboro, GA
30460

GRADUATE PROGRAMS IN KINESIOLOGY.



MAT in Kinesiology: Physical Education

**COMPLETE IN
15 MONTHS!**

Graduates will:

- Earn initial teacher licensure at the master's degree level.
- Obtain a T-5 Georgia Teacher Certification

Career Options:

- Teaching
- Coaching
- Camps (developing, organizing, running)

M.Ed. in Kinesiology: Human Performance

Graduates are prepared to:

- Help individuals attain optimal physical performance through various training methods
- Utilize the latest training philosophies and techniques
- Use scientific knowledge and clinical experience to implement human performance programs

Career Options:

- Strength and conditioning coach (high school, collegiate or professional)
- Personal trainer
- Speed and agility coach
- Head coach for sporting teams

M.Ed. in Kinesiology: Health Promotion

100% ONLINE!

Graduates are prepared to:

- Promote, maintain, and improve individual and community health
- Assist individuals in adopting healthy behaviors
- Work with communities to plan, implement, administer and evaluate programs that encourage healthy lifestyles
- Serve as a resource and advocate for health and health education

Career Options:

- Colleges and universities
- Community organizations
- Government agencies
- Business and industry
- Health care settings
- Schools
- Faith-based organizations

For more information, visit gcsu.edu/Kinesiology
or call 478-445-4072



College of Health Sciences

Georgia College is Georgia's designated public liberal arts university, combining the educational experience expected at esteemed private liberal arts colleges with the affordability of public higher education.

GSU campus undergoes new landscaping changes

BY SADIE NAZWORTH

The George-Anne contributor

Georgia Southern University's landscaping staff has been working on new projects, including re-doing the sidewalks on Forest Drive, which will make the path more eco-friendly.

"The biggest project we have right now is the sidewalk project on Forest Drive," Bryan Hooks, head of ground maintenance said. "It is overall routine maintenance."

The new sidewalks that are currently being installed in front of the Forest Drive building are soon to come in other areas around campus and are made of permeable pavers, which allow water to filter through the gravel surrounding them and soak into the ground naturally, Chuck Taylor, campus landscape architect, said.

The eco-friendly, permeable paver sidewalks are only being constructed as secondary walkways and are about 10 percent more expensive to build in comparison to the primary walkways around campus. Although they are more expensive, they eliminate the need to have as many storm water drains since they significantly decrease the amount of water run-off, Taylor said.

"They end up paying for themselves," Taylor said.

"The other major project that you should see coming up is the where the bus burnt — it's an opportunity to fix that area," Hooks said.

GSU is currently in a transition phase between the different types of grass used on campus, including centipede grass, which doesn't handle foot traffic well, and Bermuda grass, which does, Hooks said.

"(Un-even sidewalks are) an all day, everyday operation," Hooks said.

The causes of the un-even and bumpy sidewalks commonly seen around campus are that of the continuous growth of roots and burrowing ants hollowing out the underneath of the bricks causing them to collapse, Hooks said.

The landscaping department is responsible for lawn care, trash pick-up, sidewalk and minor street repairs, furniture moving and other things of that nature, Taylor said.

The staff is made up of 66 workers, and is not funded by GSU, but is state funded.

"We provide routine maintenance for the campus, and that's our major mission



Lauren Davis/The George-Anne

A landscaper spreads pine straw around flowers to spruce up campus and to prevent weeds.

— to make sure everything is safe for the pedestrians," Hooks said.

"The next step is to make sure the campus has a nice curb appeal, so that's when we'll get in the flower gardens," Hooks said.

GSU's landscaping department uses a plant-friendly spray paint to give the mulch its brown color. Since GSU manufactures its own mulch, the brown color that would naturally take six to nine months to appear is immediately painted on the mulch to avoid quick decomposition, Hooks said.

Many students agree that the landscaping department does a good job with the campus keep up.

"I think that Sweetheart Circle and the Pedestrium always look very nice," Katie Pursley, freshman multi-media communications major, said. "(When choosing GSU) the gorgeous campus was definitely a big factor."

"I like it — I think they do a really good job with the up-keep," Kevin Brou, freshman pre-business major, said.

Other students think that parts of GSU are maintained more often than others.

"Some areas are good," Nicholas Radunske, senior information systems major, said. "Seems like they maintain the places that have a lot traffic, but not so much with the places that don't have as much traffic."

THEFTS, from page 1

the police report, and Community Leader Ben Kappel advised police that he was unsure if anything could be seen or not regarding the theft.

For the March 18 incident, Officer Jeff Gooding of GSU PD was dispatched to Kennedy and spoke with Richard Thillet, who stated that unknown persons entered his room and took multiple items between the dates of March 16 and March 18,

according to the police report.

These items included an X-Box 360, two controllers, PSP and charger, laptop charger, three PSP games and 11 video games, according to the police report.

Thillet was only about 95 percent sure he left his room locked, but when he left, he exited through his suite mate's room and left it unlocked, according to the police report.

Police have already gathered some evidence and information but nothing more at this point because the cases are still in their preliminary stages, McBride said.

This type of crime is not necessarily typical during spring break, but police do keep an eye on it, McBride said, who has

been assigned to investigate this case.

"I wouldn't say (theft over break) happens often. It is not an isolated event — I'll put it that way," McBride said. "(Theft) does happen over spring break or anytime there is an extended break period when students are not on campus."

"Most of the items that were taken could have been easily secured or taken with (the students)," McBride said.

Police do not know if these thefts are linked or just random occurrences, McBride said.

McBride said, "We do not know at this point. We are kind of just looking at (the cases) and analyzing to see if there is a common thread."

Statement of Operations

The George-Anne is the official student newspaper of Georgia Southern University, owned and operated by GSU students using facilities provided by the university. The newspaper is the oldest continuously published newspaper in Bulloch County. The newspaper is a designated public forum for the Georgia Southern community. The newspaper is published twice weekly, on Tuesdays and Thursdays, during most of the academic year. Any questions regarding content should be directed to the student editor by phone at 912.478.5246 or at gaeditor@georgiasouthern.edu.

ADVERTISING: The newspaper accepts advertising. Inquiries may be made by calling 912.478.5418 or 912.478-0566. Fax any questions to 912.478.7113 or e-mail ads1@georgiasouthern.edu.

The George-Anne receives additional support, in part, from the Student Activities Budget Committee.

The deadline for reserving space and submitting advertising copy is noon, one week prior to the intended publication date. For more information, rate cards, sample publications, contact the advertising manager or student

media director.

The advertiser is responsible for any errors in advertisements and its liability for adjustments is limited to the amount of space the error occupied in the ad. Further, the newspaper is not responsible for any damages caused due to an ad's omission from a particular edition and its responsibility solely is to reschedule the ad in the next regular edition at the regular advertising rates.

STUDENTS BEWARE: The George-Anne screens all advertisements prior to publication. The newspaper strives to accept ads for legitimate products and services only. Students are urged to exercise caution when replying to ads—particularly those that require personal information. Students are also urged to report to the newspaper any suspicious offers which they might see in an ad.

PUBLICATION INFORMATION: The newspaper is printed by Signature Offset in Jacksonville, Fla.

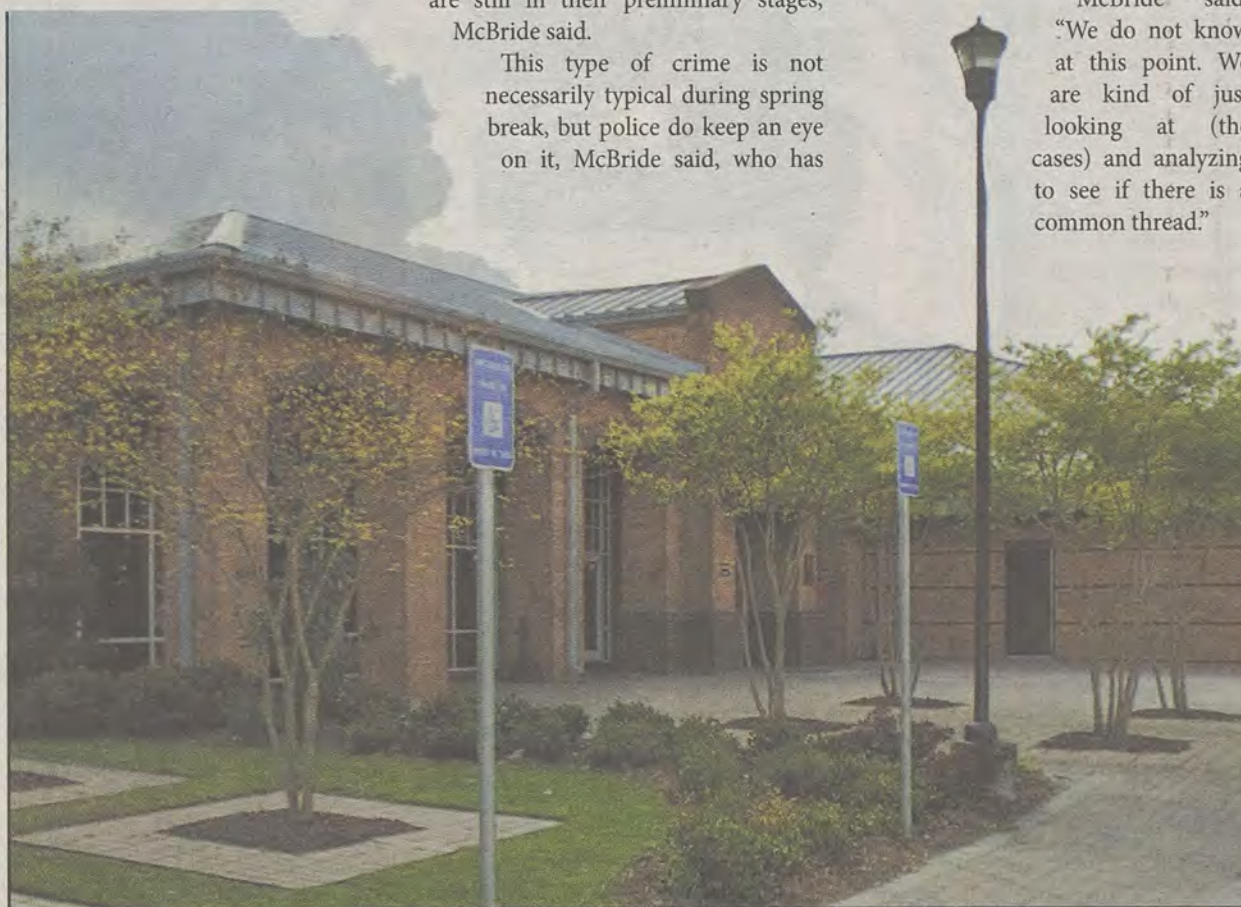
NOTICE: Unauthorized removal of multiple copies from a distribution site constitutes theft under Georgia law, a misdemeanor offense punishable by a fine and/or jail time.

Editor-in-Chief Arielle Coambes
Managing Editor Jennifer Curington
Opinions Editor Alex LaSalle
News Editor Jessie Reese
Asst. News Editor Courtney Tielking
Arts Editor Quanyiqua Epps
Asst. Arts Editor Gianna Carme
Sports Editor Jannah Bolds
Asst. Sports Editor James Farmer

Copy Chief Matthew D'La Rotta
Business Manager Holly Hillhouse
Asst. Business Manager Vicki Tucker
Marketing Manager Aria Gabol
Production Manager Mallory McLendon
Photo Editor Lindsay Hartmann
Design Editor Kelsey Paone

Corrections

Student Media's Our Neighborhood inaccurately reported prices for the following: University Pines- 4 bed/4 bath-\$439 monthly 3 bed/3bath-\$465 monthly Campus Crossings- 4x4-\$480 3x3-\$494 2x2-\$590. **Contact the editor at gaeditor@georgiasouthern.edu for corrections and errors.**



Demario Cullars/The George-Anne

GSU police responded to thefts in Kennedy Hall that occurred during spring break while the rooms were unoccupied.

UT&ABOUT

MDL
Embroidery & Gifts

"Come see us at our new location next to McAlister's!"

1100 Brampton Ave.
Suite B
Statesboro, GA 30458

15
off

Express Tune & Lube

Tire, Alignment
& Exhaust Center

612 S. Zetterower Avenue
489-4444
www.expresstuneandlube.com
Monday - Friday 7:30am - 6:30pm

Located a half block north of Wendy's.

OIL CHANGE SPECIAL

\$25⁹⁵

Includes up to
5 qts of Castrol
5W20, 5W30, 10W30,
or 20W50

price applies to most vehicles. Expires 4/30/12
www.expresstuneandlube.com



SALON SPECIAL!

\$10

OFF ON HIGHLIGHTS
SPECIAL ENDS IN APRIL

300 East Main St. Suite C, Statesboro, GA 912.489.6972
(Across from old Video Warehouse on Hwy. 80)

Our View

Students must show interest in career fairs

In the Tuesday edition of The George-Anne, we reported on students' mixed opinions about the state of career fairs at Georgia Southern University.

Primarily, we highlighted some disagreement among students about how well certain majors and areas of study are represented.

While some students felt they are well represented at these career fairs, others contend that certain majors do not receive adequate attention.

One student described a positive shift in attention received after switching majors from graphic design to English.

In the same story, we reported that GSU officials are aware that some majors lack representation and aim to fix this with "networking nights" this semester. We encourage GSU to continue to work toward networking opportunities for all majors.

We also encourage students to show interest and attend these career fairs and networking nights. Businesses send representatives with the hope of meeting potential recruits.

However, they will only do so as long as students show enough interest.

This semester's career events include the Eagle Expo, STEM and Education Fair.

If students want adequate networking opportunities, they must do their part and give businesses a good reason to come to these events at GSU.

The George-Anne welcomes letters to the editor and appropriate guest columns. All copy submitted should be 350 words or fewer, typed, and sent via e-mail in Microsoft Word format to gaeditor@georgiasouthern.edu. All submissions must be signed and include phone number for verification. GSU students should include their academic major, year and hometown. The editors reserve the right to reject any submission and edit submissions for length.

Opinions expressed herein are those of the Board of Opinions or columnists themselves and DO NOT necessarily reflect those of the faculty, staff or administration of GSU, the Student Media Advisory Board, Student Media or the University System of Georgia.



Jasmine Nielsen/The George-Anne

How we should judge Mr. GSU

In Lewis Carroll's classic work "Alice's Adventures in Wonderland," there is a character known as The King of Hearts.

"The King of Hearts" is also going to be continuing as the theme of this year's Mr. GSU pageant, as we reported online yesterday.

I should point out that, in Carroll's novel, the King of Hearts is portrayed as weak and submissive to the villainous Queen of Hearts, herself known for shouting the phrase, "Off with their heads!"

This begs the question — will our own "King of Hearts" be short and submissive?

Peculiar theme choices aside, I am intrigued by how the contestants will be judged. The competition will include displays of school spirit, talent and swimsuit wear.

Let's start with school spirit. It should be obvious that any contestant is going to be fond of their school. I love GSU, and I'm sure they do as well. But how do you judge something like that?

Would getting a permanent tattoo of Gus on your forehead give you an

ALEXANDER THE PRETTY GOOD



ALEX LASALLE/
OPS EDITOR

advantage? Or would that result in disqualification?

Personally, I think contestants should be required to recite the entire GSU Alma Mater song. The downside to that is I'm not sure anyone actually remembers the lyrics.

This brings us to the talent portion. How does one judge this? Should the talent be school-related?

How about we see which contestant can, in the shortest amount of time, consume the entirety of a six-pack — of Lakeside corndogs. (You thought I was going for an alcohol joke, didn't you?)

It would make sense to go ahead and combine the talent portion with the school spirit portion. Anyone can tell a joke or sing an off-key ballad.

I suggest we award points to

the first contestant that can coax Freedom into landing on their shoulder.

The highlight of any pageant, male or female, is the swimsuit portion of the show. Oddly enough, the swimsuit itself is the last thing being judged. It's where the swimsuit is not being worn that's key.

I've always thought that having a section that focuses on physical attributes negates the other categories. Our culture has traditionally accepted a good swimsuit figure as a substitute for any real talent or spirit.

The winner can look forward to wearing the crown, the sash, the scepter (I thought only evil villains used scepters?) and a \$500 scholarship.

Sincerely, I do want to wish good luck to all the Mr. GSU contestants. I'm sure our future "King of Hearts" will be more than qualified to do whatever it is he does.

What does he do?

LaSalle is a junior writing and linguistics major from Cumming, Ga.

From the left

Race issue not for politics

You may have heard of this story recently. There is a bumper sticker that was made here, in our own state, that has an Obama "O" logo crossed out and the words "Don't re-nig in 2012."

I get that people are passionate about their politics, believe me. I understand. I get that Georgia has a large representation of Republicans who would love nothing more than to get Obama out of office.

That being said, racial slurs and implying them as such have no place in politics, or our society.

The creator of these bumper stickers says that it's being taken out of context. She honestly believes that she didn't intend it as a racial slur, but as the dictionary meaning of a "lazy, sorry, low down person." Oh, the great minds of Southern Georgia.

In this day and age, we are supposed to be above degrading people with racial slurs. President Obama took a large leap in our history by becoming the first [half] African-American President.

But why is it that we focus on his race? It means something, yes, but is it so important that it should become the focal point of our criticisms? Along with that is religion. I read an article slamming President Obama because "he's not a real Christian, he's a Muslim who went to Pakistan."

This is ridiculous. Aren't we supposed to be the land of religious freedom? A large part of the criticism of President Obama has been on his race, his religious beliefs or the company he keeps.



ROB ROBERTS @Robert_ARoberts

Where is the criticism on his policies or actions he's taken in office? I would love to hear a good, fair criticism that has nothing to do with anything so non-political.

That being said, I feel the GOP candidates need to spend more time talking about how they're going to fix the country, not telling us how they're going to shut down Planned Parenthood.

And really, Planned Parenthood only gets some of its funding from the government. It won't shrivel up and die without it. It will be hurt, yes, but it will also live on.

We need to grow up and realize that race should not be an important factor. No matter what color somebody is, they're a person like you and me, and it's embarrassing as an American to see people sporting these bumper stickers and believing this is okay. This is a new low, even for the Deep South.

Roberts is a senior public relations major from Warner Robins, Ga.

From the right

Individual mandate is wrong

With Obamacare's day in court coming up, both sides of the issue are prepping their cases to either uphold or repeal certain parts of the controversial health care legislation. The most important part of this debate is the individual mandate clause.

If upheld, it would require every citizen to either purchase health insurance or pay a substantial penalty. The problem with this is not the fact that they're shoving health care down the throats of every single American, but they are setting a legal precedent to allow Congress to force the citizens they represent to purchase a product from a private third party.

This is a terrifying attack on free enterprise.

If this passes, Congress could use this precedent to legally mandate whatever Congress deems "necessary for the good of the nation." Gas prices too high? Congress could say that every American is required to buy a Chevy Volt because conservation of natural resources is "necessary for the good of the nation."

That sack-lunch your mother made you isn't healthy. Well, you're going to have to pay a penalty for that, unless you eat the Nannystate-approved lunch.

This is just another situation in which the government can interfere in your personal business. This also opens up a dangerous door for the lobbying community. What's to say that a silver-tongued lobbyist doesn't go into the Congress and push the product that they are representing to make it legally binding that 300 million customers buy it?

The left tries to make the case that under the Commerce Clause in the Constitution, which allows the Federal government to regulate commerce of both foreign nations with the United States and interstate commerce, the individual mandate is constitutional.



FRITZ CHAPIN @GrandOldPartier

However, several courts, including the 11th Circuit Court of Appeals in Atlanta, deemed it unconstitutional. In the case of *Virginia v. Sebelius*, Judge Henry Hudson overturned the law, claiming that failure to purchase health insurance coverage could not be considered economic activity, being rather economic "inactivity."

In *Liberty University v. Geithner*, Judge Norman Moon upheld the law, countering that, "Far from 'inactivity,' by choosing to forgo insurance, plaintiffs are making an economic decision to try to pay for health care services later, out of pocket, rather than now, through the purchase of insurance."

I understand the importance of good health coverage for the good of our nation, but this is not the way to do it. The government needs to lift the restrictions on interstate health insurance trade and allow the open market and competition to drive down the price of health insurance, just like it did with car insurance.

Capitalism is the way out of this mess, not more government control.

Chapin is a senior political science major from Roswell, Ga.



The Sir Shop
Statesboro Mall
912.764.6924



Debate put on hold due to lack of location

BY TJ JACKSON

The George-Anne staff

The Political Science Club has encountered difficulties while in attempt to organize a debate between three of the Georgia Southern University political organizations on campus.

"I'll do what I can to make sure we have a debate by the end of the semester. I'll bitch and moan till I get it done," Event Coordinator Chad Hamilton, sophomore political science major, said.

The debate will be between the Young Democrats, College Republicans and the Young Americans for Liberty. The time and location have not been set in stone due to planning difficulties, Hamilton said.

The issue of finding a location started with the organization's former president, who resigned before spring break, Hamilton said.

"We have a political science president, she told me that she had put in the request for (yesterday), and it turns out she didn't. That's why I was running around yesterday with my head on fire trying to get a place," Hamilton said.

“ Even though these parties are different in so many ways and that they hate each others' guts, they do want to work together. ”

-Chad Hamilton,
event coordinator

The only thing needed for the debate to occur is to establish a time and place, Hamilton said.

"I can't do anything until I have a place, that's a little keystone I cannot get and I don't know why," Hamilton said. "We're waiting on the administration to approve us, that's the only thing that hasn't fallen into place with this. I was hoping the administration could help us out with the freakin' theater or something."

Hamilton's request for the debate location was denied by the Reservations Office for the Russell Union Theater and Williams Center for today.

"I'm going (to the locations) tomorrow, (at) the times I wanted, to see if there's anything going on in there, and if there's not, I'll start

demanding why I was turned down because I don't get it," Hamilton said.

"Chad Hamilton called me yesterday and talked about this event to see if the space was available for this Thursday and it wasn't," Kim Kicklighter, reservations administrative, said.

"He turned in his request on Monday for an event on Thursday for the theater or the Williams Center, and those are two event spaces that get picked up rather quickly. I always try to tell student organizations to try submit requests at least a semester in advance for their spaces to make sure they can confirm a space. A good majority of organizations do," Kicklighter said.

A major issue planning the debate might be time management, Kicklighter said.

"I think what it's coming down to is they're

requesting these large spaces. They get reserved well in advance by the organizations and you can't just reserve these spaces a week, two weeks in advance," Kicklighter said.

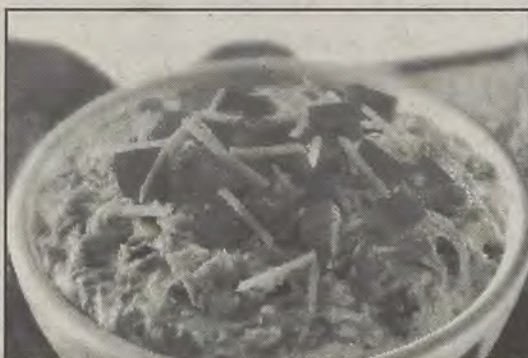
The groups hope to work together to have the debate.

"We're trying to get cooperation between the three major political parties on campus to act as an intermediary between the contentious parties, so that they can work together for a more efficient democracy and democratic change and more participation by the students," Hamilton said.

"Even though these parties are different in so many ways and that they hate each others' guts, they do want to work together," Hamilton said.

"It could have been better organized, but at the same time it's just what happens when you plan a last minute debate," Head of Libertarian Studies for the Young Americans for Liberty and freshman computer engineering major Ben Andrews said.

Kicklighter said, the next time available for the Russell Union Theater is Thursday night, April 5.



New

spinach artichoke dip

McALISTER'S
DELI

Introducing
two fresh new tastes

*For a limited time only

1100 Brampton Ave., Suite A • (912) 681-3354

www.mcalistersdeli.com f McAlister's Deli - Statesboro, GA

We Accept the Eagle Express Card

Rich and tasty
turkey florentine



Planters
By Hendley Properties
ROW

912.681.1170
www.hendleyproperties.com

3 and 4
Bedroom Cottage Houses

\$365

/month per person

There are 10 Roommate Matching Spots Available

SGA supports on-campus tobacco zones

BY COURTNEY ESCHER

The George-Anne staff

During last night's meeting, Georgia Southern University's Student Government Association voted to stand in favor of the majority vote of the staff and students for limited tobacco use on campus.

SGA stands in favor of the majority vote of the staff and students, Patrice Buckner, Dean of Students, said.

The survey was distributed to students in fall of 2011. The results of the survey show that 46 percent of students and staff voted to "limit tobacco use on campus and create tobacco friendly zones," 29 percent of students and faculty voted to "create a tobacco free campus," and 26 percent of students and staff voted to "maintain current tobacco policy."

"We, the Student Government Association of Georgia Southern University, support the implementation of smoking zones to be created across the entire campus," according to the resolution.

The earliest the policy may be implemented is summer 2012, Standifer said.

"The absolute earliest we can get students educated and start implementing the policy will be this coming summer. Students may start to see signs around," Standifer said.

SGA is not yet sure if the new smoking policy would drastically change housing contracts, Buckner said.

"Right now, smoking is not allowed inside the residence halls, but you can smoke in the courtyard or just outside. Kennedy Hall is a special exception, because its residence hall is built around its courtyard, which directly affects the rooms," Buckner said.

"Students from the Student Government Association, along with members of the faculty senate and staff council, will form a committee that will accept recommendations from all university constituents to aid in the designation of the most appropriate locations for smoking zones," according to SGA's Resolution for Recommendation to Establish Smoking Zones on Campus.

The distinction of zones will be decided by the committee, Alton Standifer, president of SGA said.

"The committee will decide on the zones

and where exactly they will be on campus. So far, no consequences are in state for violators of the zones," Standifer said.

Senator Precious Lango of the College of Health and Human Sciences expressed concern about the probability of smoking students to use the smoking zones, when no consequences will be given to students who do not use them.

"I find that it will be really hard to monitor. And if we don't give them any consequences, no one will respect it," Lango said.

Policing violators would be a difficult task, Buckner said.

"It would be difficult to police because it is not a law. We want to empower community members to challenge each other on this issue, because our first goal is health and our second is education," Buckner said.

A more appealing venue for smoking may cause more smokers to stay in the confines of the smoking zones, Jenna Sincard, web designer for SGA said.

"If we were to provide more appealing vicinities for smokers than just a sign, then maybe they would be more inclined to use

them," Sincard said

"As new constructions are developed over the years, this committee will meet annually to make modifications to the established zones if necessary," according to the resolution.

SGA believes that the new smoking policy will be more appealing to prospective students.

"Cigarette butts look bad, and as a Southern Ambassador leading students and parents around campus, I'm very aware of how bad it looks to them," Patrick Teate, College of Science and Technology senator, said.

"I'm glad we're finally able to get this done," Teate said. "We tried to do it last year, but then it fell off the way side when we started collecting the data."

SGA has been asked to propose a recommendation for a resolution for a tobacco-zone-friendly campus. The second reading of the resolution will be held next week, with the final reading and voting on the resolution being in two weeks.

SGA's second reading will include a correction of the term "smoking zones" to "tobacco zones."

Voted Best Mattress Store in the 'Boro!

Student Housing Available

New, Used & Antique
Furniture

Complete Mattress Outlet

Deal's

Come See the Dealmaker!

17083 GA Hwy 67, Statesboro, GA
(912)681-3824 (Near Fairgrounds)

Mon-Fri : 10am-6pm

Sat: 10am-5pm

Sun: 1Pm-5pm

• Honest, Dependable
Same Day Delivery

• Locally Owned &
Operated by GSU Graduate

• Serving GSU Students
for 34 years

Tervis Tumbler Headquarters

- Collegiate Gifts
- Jewelry
- Handbags
- Placemats
- Diaper Bags
- Men's Gifts
- & Much More

Best Furniture Mattress & Gift "DEALS" in the 'Boro



Sports EMPORIUM

Statesboro's Intramural Sports Headquarters

*Show your Eagle ID to receive a
student discount



Like our page on Facebook

840 BC Buckhead Drive, in Buckhead plaza (912)764-4449



Civil War Heritage Day comes to GSU

BY KRYSHA MCGARITY
The George-Anne contributor

Sweetheart Circle will blast to the past as the Georgia Southern University Museum and the Department of Sociology and Anthropology's archeology team host their second annual Civil War Heritage Day.

The event is set to take place Saturday, March 24, from 10 a.m. until 4 p.m., and will also feature history demonstration re-enactors from around the Southeast.

Civil War Heritage Day is a national event that commemorates the 150th anniversary of the Civil War.

"The actual hundred and fiftieth anniversary started last year when we held our first Civil War Heritage Day. But since the Civil War lasted from 1861 to 1865, we want to try to hold a Civil War Heritage Day for each year it lasted, if funds permit us to do so," Debbie Gleason, assistant director of the GSU Museum said.

The main theme of the event is to demonstrate life at Camp Lawton, the Confederate prison camp located in Millen, Ga. On Sweetheart Circle there will be artillery, musket firing, field surgery, blacksmithing demonstrations and crafts.

Inside the museum, GSU archeologists will guide visitors through the Archeology of Camp Lawton Exhibit.

In the exhibit, visitors will get to see actual artifacts found at the Camp Lawton site and paintings from artist and mapmaker R.K. Sneden.

Sneden, a Union soldier captured by the Confederate forces in 1863, is known for producing the largest collection of Civil War art by any soldier involved in the war.

Pictures from the GSU archeology team's excavations



File Photo

Re-enactors shoot their guns to celebrate Civil War Heritage Day 2011.

“ We started planning around December ”
and we are still planning.

-Debbie Gleason,
assistant director of GSU museum

will be available for viewing also. There will be examples of uniforms the soldiers wore and of the rations they were given.

Visitors will be allowed to ask questions about the artifacts and discuss the ongoing excavations at

Camp Lawton. The actual exhibit has been extended to go through the summer of 2012.

"Talking to the archeologists is a great opportunity for the visitors. It really puts a human face on the actual experience,"

Gleason said.

In addition to the reenactment, and the museum exhibit, guest speaker Dr. John Derden will be in attendance.

Derden is a historian and author of the soon to be released book entitled "What I Have Learned from the Researching of Camp Lawton." He will be speaking at 11 a.m. and 2 p.m. inside the museum.

"We started planning around December and we are still planning. We are very appreciative of the support we have received from the Custodial Services, Eagle Dining Services, Public Safety, Parking and Transportation and the Student Disability Resources Center," Gleason said.

The demonstration and museum admission is free for all GSU students, staff and museum members.

Admission is \$5 for the public and all proceeds will help support the GSU Museum exhibition projects.

Those who are attending the event can also look forward to being able to go to other events going on this weekend, such as the Pink Power 5K and the Statesboro Music Festival, and being able to save money on getting into those events.

"We're also doing a cross promotion with the Pink Power 5K folks and Statesboro Music Festival folks, since all three events are scheduled on the same day. But, one can attend them all. If you wear your Pink Power race shirt to our Civil War Heritage Day event, you will receive a one-dollar discount off of our five-dollar admission, if you wear your museum mosasaur admission sticker to the Statesboro Music Festival you'll receive a five-dollar discount off the music festival's twenty-five-dollar ticket." Gleason said.

The Buzz List

▪ **"The Situation," aka Mike Sorrentino**, checked into a Utah rehab for a prescription drug addiction. Snooki is pregnant and The Situation is in rehab. I guess this is what growing up feels like.



Gianna Carme

▪ **Kim Zolciak** from "The Real Housewives of Atlanta" has announced she is four months pregnant. Zolciak and husband football player Kroy Bierman, welcomed their first child just nine months ago. They really make use of his time during his offseason.

▪ **"The Hunger Games"** opens Friday and has already made \$80 million in presale tickets. That money could have fed all 12 Districts.

▪ **Lil Wayne** was issued a ticket for having an overgrown lawn in front of his Louisiana home. He wants ladies to keep their grass cut, but he can't even cut his own.

▪ **Draw Something**, an app which is similar to Pictionary, is being bought out by Zynga for \$200 million. Copying already established games seems to be an extremely lucrative business these days.

▪ **MTV** has added four new series to the network's line-up for this spring. Can two of these replace "Teen Mom" and "16 & Pregnant?"

Information compiled by Arts Editor Quanyia Epps and Assistant Arts Editor Gianna Carme from TheHollywoodReporter.com.

Sigma Alpha Iota to host Miss Ugly Pageant

BY HAYLEY MCGHEE

The George-Anne contributor

Ugly will take the crown, as the second annual Miss Ugly Pageant hosted by the Sigma Alpha Iota international music fraternity for women hits the Williams Center on March 27 at 7:03 p.m.

Although the pageant is called the Miss Ugly Pageant, it does not involve women. The contestants will be guys dressing up in dresses, skirts and heels, and working their best moves on the stage.

The pageant seeks to give audience members a laugh, but it will be in the name of a charitable cause.

"We started this event last year. It wasn't meant to make fun of drag shows, but to do something different to raise money for Relay for Life," Oluwatito Osibodu, junior music education major, said.

Osibodu is in charge of setting things up and making sure the guys are ready. What the pageant is supporting, Relay for Life, is the main cancer fundraiser for the American

Cancer Society and originated in the United States in 1985.

"The music Greeks decided to make a Relay for Life fundraising team, and we decided that the Miss Ugly Pageant would be our contribution to the Relay for Life team," Osibodu said. "Admission is free. During intermission, we are taking donations for Relay for Life."

The categories that the men will be competing in are casual wear, evening wear and a talent portion.

"I have been practicing my booty shake a lot — it has a lot to do with the abs," Alex Welk, sophomore and computer science major said. "When I put that dress on and those heels, I become a woman."

Welk is one of the contestants in the Miss Ugly Pageant and was enthusiastic about the upcoming event. Welk gave some insight to how practices have been going for the Miss Ugly Pageant.

"The funniest part, during one practice, was guys wearing skirts doing, the [penis] swing," Welk said.



Courtesy of John Makekau

Bobby Oellerich, Drew Purvis and John Makekau strike a "Charlie's Angels" pose.

"The prize is a bouquet of roses, a sash and a crown to wear. Last year's winner will present the winner of this year with the crown," Osibodu said. "The most exciting part of the show is to see

the guys struggle to walk in heels."

"I just want people to come and have fun and see the guys cutting up and having a good time," Welk said.

BLISS BERRY
FROZEN YOGURT • GELATO • SORBET • SMOOTHIES

- 5% Off Students Everyday!
- Happy Hour: Mon-Thurs (5pm-7pm)
- Mon & Thurs: Double Punch Card Days!
- Come Try our New Delicious, Fresh, Fruit Smoothies!

1 oz FREE*

*Valid through 4/30/2012. Cannot be combined with any other discounts.

721 SOUTH MAIN ST. #9
STATESBORO, GA
LOCATED IN QUIZNOS SHOPPING CENTRE
CONTACT # 912-681-2547

HOURS:
MON-THURS: 11AM-10PM
FRI-SAT: 11AM-11PM
SUN: 12PM-10PM



JOIN ON FACEBOOK TO
LEARN MORE ABOUT
SPECIALS @ YO BLISS

THE 'BORO BEAT

YOUR GUIDE TO OFF-CAMPUS ENTERTAINMENT

THURSDAY

Latte Da

-Drink of the week – Raspberry Latte

Dingus McGee's

-Tent City 9 p.m.

Dos Primos

-Karaoke 9 p.m.

GATA's

-Karnivale 2012 Spring Rave (ft. Corona/ DJ J Tera), Mastamind, Embus – T
-Ian Grover, Illuminaughty, and Ployd 8 p.m.
-\$1 shots and beer
-Power hour \$1 shots and \$3 doubles

Kbob Kelly's

-Karaoke 9 p.m.

El Sombrero (Downtown)

-Happy Hour 5 p.m. to 7 p.m.
-34 oz. beer \$2.50

El Sombrero (Buckhead)

-Happy Hour 5 p.m. to 7 p.m.
-34 oz. beer \$2.50

FRIDAY

Latte Da

-Drink of the week – Raspberry Latte

Crabby Joe's

-Joe Anderson 9 p.m.

Dingus McGee's

-Familiar Faces 9 p.m.

GATA's

-Daniel Johnson Band w/ Johnathan Tyler and The Northern Lights 8 p.m. (\$5 cover)

El Sombrero (Downtown)

-Sex on the beach \$2
-Happy Hour 5-7 p.m.

Gnat's Landing

Bastard Sons @ 10 p.m.

El Sombrero (Buckhead)

-Sex on the beach \$2
-Happy Hour 5-7 p.m.

SATURDAY

Latte Da

-Drink of the week – Raspberry Latte

Crabby Joe's

-Karaoke w/ Papa Smurf 9 p.m.

Dingus

-Eddie and the Public Speakers 9 p.m.

GATA's

-Lingo 9 p.m. (\$5 cover)

Millhouse

-Do Good Dj's 9 p.m.

El Sombrero (Downtown)

-Sex on the beach \$2
-Happy Hour 5-7 p.m.



**ACROSS FROM GEORGIA SOUTHERN
IN FRONT OF WOODLAND APARTMENTS**

**PHONE: 912.681.3597
ACCEPTING EAGLE EXPRESS**

LOCATION: WOODLAND SQUARE
ACROSS FROM GEORGIA SOUTHERN
STATESBORO, GA 30458



"BAD TO THE BONE"
LOCATED NEXT TO WAL-MART
912-764-6556

\$2.00 OFF
REG. \$6.49

**CHICKEN TENDER SALAD
GRILLED OR FRIED**

**MUST PRESENT COUPON
EXPIRES: 3-30-2012**

THE 'BORO BEAT

YOUR GUIDE TO OFF-CAMPUS ENTERTAINMENT

SUNDAY

Gnat's Landing

-Karaoke w/ DJ 8 p.m.

Kbob Kelly's

-Trivia 7 p.m.

El Sombrero (Downtown)

-Mixed drinks \$3

GATA's

-All-you-can-eat wings and pitcher of beer \$12.99

-\$2 Natural Light tall boys

-\$2 Blue Ribbon

Ruby Tuesday

-March Madness Specials

-\$2 Miller Light

-\$1 minis appetizer special

Millhouse

-Kids eat free

Dingus Magee's

-Happy hour 5-7 p.m. and 9-11 p.m.

-\$14 all you can eat draft beer and wings

Manny's

-\$7 Euro and Euto mets

-\$7 1 topping 14" pizza

-\$7 12 wings

-Happy hour 5-1 p.m.

-\$2 draft beers

-50% off wine

-kids eat free w/ purchase of adult entree

MONDAY

Dos Primos

-Poker 8 p.m.

Ruby Tuesday

-March Madness Specials

-\$2 Miller Light

-\$1 minis appetizer special

Millhouse

-Gorgenzola \$4.95

Dos Primos

-Poker Night 8 p.m.

-\$3 big beer and margaritas

-\$1 bartender shots

-Happy Hour 5-7 p.m.

-\$2 bottled beer

-\$4.50 pitcher

-2 for 1 mix drinks and shots

Dingus Magee's

-Happy hour 5-7 p.m. and 9-11 p.m.

-\$14 all you can eat draft beer and wings

Manny's

-50% off pizza

-Happy hour 5-1 p.m.

-\$2 draft beers

-50% off wine

-Kids eat free w/ purchase of adult entree

TUESDAY

GATA's

-Beer pong tourney 7:30 p.m.

-All-you-can-eat wings \$7.99

Dos Primos

-Ladies Night

Gnat's Landing

-Trivia, 7p.m.

Kbob Kelly's

-Karaoke 9 p.m.

El Sombrero (Downtown)

-\$2 daiquiris

El Sombrero (Buckhead)

-\$2 daiquiris

Ruby Tuesday

-March Madness Specials

-\$2 Miller Light

-\$1 minis appetizer special

Millhouse

-2 tacos for \$4.95

Dingus Magee's

-No cover fee

-Happy Hour 5-7 p.m. and 9-11 p.m.

Manny's

-\$3 Jack Daniel single

-Double down Manny Royalty points

- Eye Exams
- Glasses
- Contacts



912-489-6655

820 HWY 80 E. (in front of Lowes)

www.boomersvisioncenter.com

myth:

drinking is central to the
social lives of georgia
southern university
students

fact:

64% of georgia southern
students have 0-4
drinks per week

presented by the dean of
students office

for more information visit:
<http://students.gosouthern.edu/eod>
data collected from georgia southern
university core survey 2010



Miss Black and Gold pageant to come to PAC

BY KIMEKO MCCOY

The George-Anne staff

Georgia Southern University's Xi Tau chapter of the Alpha Phi Alpha fraternity is bringing together ladies of GSU for the annual Miss Black and Gold pageant.

This year's pageant will begin promptly at 7:06 p.m. at the Performing Arts Center on April 22. The names of the 17 competitors were announced at the Alpha Phi Alpha GT step show.

Alpha Phi Alpha will be the first member of the National Pan Hellenic Council to host a pageant at the PAC, said Aaron Keith, senior general studies major and pageant coordinator.

Candace Smith, senior public relations major, also has a helping hand in planning the pageant.

The two have been working closely together to organize this year's pageant as well as its contestants.

"I kind of help pick the girls," Smith said, "the theme, the walk and everything."

"I am the committee chair over the pageant," Keith said. "I have my coordinator



File Photo

Contestants at last year's Black and Gold pageant perform an opening number for GSU.

team and Candace".

This year will be Keith's second year overseeing the Miss Black and Gold pageant.

Last year's theme was the Queens of Giza, with Precious Lango crowned as the Miss Black and Gold winner.

Winning does not stop at GSU. There are several different levels of which a contestant can go on to win and have the support of the GSU Alpha Phi Alpha fraternity the entire way.

"It's not like every other pageant," Keith said. "We have a district level, a regional level and then

a national level."

Applicants for the competition went through a series of interviews and evaluations to be considered eligible to compete in the Miss Black and Gold pageant.

This year's Miss Black and Gold pageant will be themed Miss Black and Gold Forever: The first and the finest.

The 17 final chosen contestants will be judged in several different areas, which will include a 10-minute interview with judges, achievements and projection, swim wear, talent, poise and appearance, scholarship and other aspects.

"We want a girl to be able to represent us — represent Alpha Phi Alpha in its highest form," Keith said.

"(You need a) positive attitude," Smith said.

"To even be in the pageant, you have to be very outspoken and think on your feet," Keith said.

The goal of the pageant is not only to compete and crown a winner but also to bring about bonds and alliances through the contest.

"I want these girls to be cool with us and each other after it's over," Keith said.

FRANKLIN

TOYOTA • SCION

10% OFF
service with your
Student ID

888-695-8165

500 Commerce Drive
beside the new Holiday Inn

PROTECT YOUR VEHICLE!

Regular maintenance and upkeep is crucial to your car's optimal performance, best possible gas mileage, and highest resale value.

Our service department offers the best in automotive service for all makes and models. PLUS we provide a free shuttle to and from campus!

- Oil Change
- Tire Services
- Tune-Up & Transmission Service
- A/C & Radiator Service
- Brake Service
- Engine Repair
- Body Shop Services



BUY OR LEASE
A NEW TOYOTA, GET A
\$1,000
COLLEGE GRAD REBATE

SCHEDULE YOUR SERVICE ONLINE! www.FranklinToyota.com

Your mother doesn't work here.

Don't worry, our doctors and medical staff are the next-best thing.



No matter what's wrong, let us take good care of you.



**SOUTH GEORGIA
IMMEDIATE
CARE CENTER**
1096 Bermuda Run Road
(next to Mellow Mushroom)
Statesboro, GA 30458
p - 912-871-5150

yourimmediatecarecenters.com

CONVENIENTLY LOCATED MINUTES FROM GSU.
CARING AND CONFIDENTIAL TREATMENT.
HOURS:

Monday - Friday 9:00 am - 8:00 pm
Saturday 9:00 am - 5:00 pm
Sunday 12:00 pm - 5:00 pm

Most insurance accepted - bring your insurance card and Driver's License. Please call with co-pay and insurance questions. Cash patients also welcome.

Radio host speaks about classic American songs

BY JAZMIN DAVIS

The George-Anne staff

A musical, yet educational, speech was given at the Nesmith-Lane Conference Center when radio host and author, Michael Lasser, discussed classic American songs last evening.

Lasser provided Georgia Southern University with the opportunity to learn more about the origins of the traveling exhibit located in the Zach S. Henderson Library, "A Fine Romance," by telling a story of Jewish lyricists and composers.

"It was an interesting contrast because the exhibit displays the Jewish people and the song writing, but Lasser told how they wanted to reach a broader audience and have their music recognized as American," Dean of the Library Bede Mitchell said.

Introduced by Mitchell, Lasser began his lecture by asking the small audience about their knowledge on a few popular songs from the 1920s. He proceeded to illustrate how "a large number of people writing

songs were Jews and (how) their goal was to become more American," according to Lasser.

During his lecture, similar to those given in a classroom at GSU, Lasser used the recordings of famous tunes from 1910-1950 by three major Jewish composers — Irving Berlin, Jerome Kern and George Gershwin. From Windows Media Player, he played each song throughout the course of his speech, which gave an insight on how the times kept changing.

Lasser spoke on his experiences from serving as radio host of the syndicated radio program, "Fascinatin' Rhythm," since 1980 and co-author of "American Songs: The Stories Behind the Songs of Broadway, Hollywood and Tin Pan Alley."

The speaker grew up towards the end of the era he specializes in. Since he was a young boy in New Jersey who enjoyed trips to New York to see Broadway musicals, Lasser developed a fascination to this time.

"Instead of being drawn forward to rock and roll, I was drawn backward," Lasser

said.

Contrary to the traveling exhibit, Lasser was focused on describing how the few songwriters he spoke of made an important contribution to one specific thing — "the creation of a distinctive American popular song."

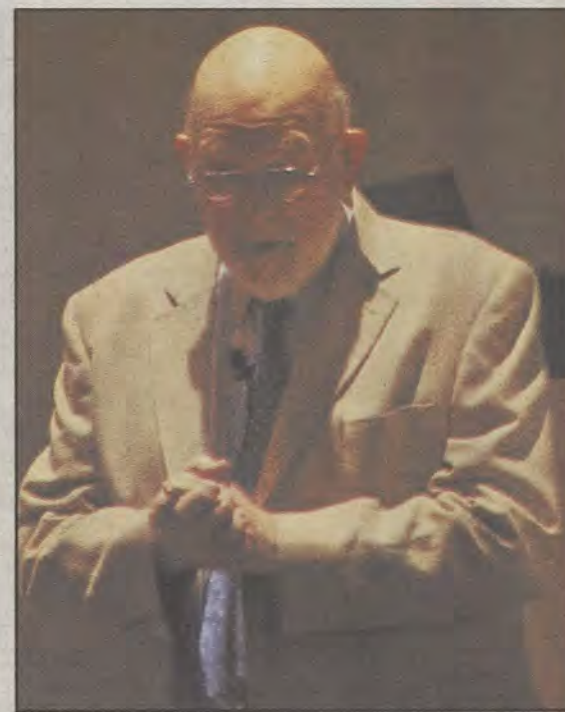
"My interest is in this period of American music, which incorporated black rhythm, Yiddish melody, conversational lyric, ragtime and jazz," Lasser said.

According to Lasser, for the short duration of his stay at GSU, he found that the students in attendance were attentive and ready to learn.

"There were a number of students in the audience that were genuinely engaged. This was ancient history and they were alert to it," Lasser said.

The audience responded throughout the performance with laughter and head nods.

"Since the library organized this, I wanted to come to hear him speak. I definitely learned a lot I didn't know," Henderson librarian Rebecca Ziegler said.



Lauren Davis/The George-Anne

Michael Lasser speaks about Jewish songwriters and the American song at the Nessmith Lane Conference Center.



Company hours

7:30 A.m. - 6:00 P.m.
Monday -Friday

912-489-2222

102 N Zetterower Ave
Statesboro, GA 30458



Present this Coupon at the time of service to receive a free tire rotation with a full priced oil change.

Some Restrictions may apply. Call For more details.

Super Service at a Super Price
489-2222



Present this coupon at the time of service to receive an oil change for the low price of \$19.95.

This price is for 5 quart oil changes. It also excludes dunks, synthetic oil changes, and special oil filters. Ask more for details.

Super Service at a Super Price
489-2222

CLASSIFIEDS

This page brought to you by Career Services
Explore • Experience • Excel

14 Thursday, March 22, 2012

The George-Anne

Advertisement

For Sale

Scooter for sale! 2005 Honda Ruckus. Black, 49cc, 85+mpg. Original (faculty) owner, garage kept. \$1,500 OBO. Contact (912) 678-6052

Firewood for Sale. Delivery available! Call 912-690-0872 or 912-690-4956.

For sale: 2009 BMW 328i, hard-top convertible in great condition. Black with tan interior. Call 912-293-1909.

Used Fender Blues Jr. All-tube guitar amp. \$350, negotiable. Perfect working order/condition (912) 536-1610

Subleases

Subleasing master bedroom in Planter's Row for \$365/month; utilities not included, pet friendly. For more information contact Anna-Marie at at01770@georgiasouthern.edu or call (770) 546-6560

Subleasing 3 BR/2BT house on Parker Ave in Brooklet. Contact Joyce at (912) 842-9479.

Summer 2012, individual bathroom, 3 female roommates, washer/dryer. Call Kaylah Ibadapo at 678-612-1087

Subleases, cont.

SPRING 2012! Female roommate wanted. 1BR/1BT in a 3BR/3.5BT townhome. \$400/mo. Contact at 404-444-8987 or ec01442@georgiasouthern.edu

1BR/1BT available in a 4BR/4BT at Campus Club \$700 for the whole summer or \$370/month. Email Shanna at shannalawson22@gmail.com

3BR/2BT within 2 miles campus. You can sublease the other 2 rooms. No smoking or pets. Call (706) 951-1427.

Sublease at Cambridge for Reduced Price 1 BR/BTH available in a 3 BR, bus stop directly across from campus, all utilities included, furnished, washer/dryer, amenities. \$350/month *Regular price \$459/month.* Email shortiecutie102@yahoo.com

2 Bedroom 2 Bathroom apartment in Hawthorne 2. Very close to campus. \$350/month. Sublease through July. Contact Shannon at 678-468-9407

2 BR/2 BT sublease in Georgia Villas. \$475/month for both rooms, utilities not included. Available Jan-May, pet friendly. Right across from Greek Row on Chandler. Email t100212@georgiasouthern.edu

Subleases, cont.

Subleasing my room for Spring 2012 in a fully furnished 4 BR/4 BT 3-story town home. Walking distance from the stadium and bus stop. Contact Alex at (770) 712-5377 or ao00837@georgiasouthern.edu

Spring 2012 1 BR/1BT in a 2 BR/2.5 BT townhouse at The Avenue. \$495/month, but I will pay \$30 for each month. Or I could put \$210 towards the first month's rent. Contact Cherelle at chollan4@georgiasouthern.edu

Subleasing 626 B at the Exchange. Female Roommate needed. \$519.00 per month. All utilities included, free tanning, free Wi-Fi, 24 hr gym included. Available now. Contact (706) 523-6001

Room available for male or female in a 3 BR/2 BT house on Catherine Avenue. Fully furnished; bed needed. \$367/mo per person, utilities not included. Spacious house. Contact Yale at (404) 272-7652 or yale8754@bellsouth.net

SUMMER 2012! Subleasing 1BR/1BT available in a 2BR/2BT at The Woodlands. \$409/month plus utilities. Email Sadie at sn01140@georgiasouthern.edu

Subleases, cont.

1 BR/1 BT available in a 3 BR at The Grove, for Spring 2012. Available after Dec. 20. \$450/mo, utilities included. Call Ellen 404-694-1394 or email ej00034@georgiasouthern.edu

All inclusive, two story, fully furnished, 4 BR townhouse for \$330/month! Includes trash, utilities, cable, wi-fi, new appliances and washer/dryer! Contact (229) 326-4291.

Subleasing a 1 BR/1 BT in 4 BR apartment in Copper Beech for Spring 2012 starting Christmas Break. \$389/mo plus utilities. Contact Singer (404) 680-7240

Female roommate needed for Spring 2012: 3BR/3BT at Cambridge. \$448/mo 1st floor. Contact Angelica 404-921-4988.

Sublease available ASAP. at Copper Beech. \$389 rent monthly. Utilities not included. 3 roommates. Fully furnished. 478-957-1005 for more information.

Sublease my 1BR apartment ASAP at Panter's Row. It is only two years old with a HUGE walk in closet. It is \$625 and pet friendly. Utilities are not included. Contact at be01181@georgiasouthern.edu or 478-455-0432.

Houses for Rent

ATTENTION ALL STUDENTS 2, 3, 4, 5, 6, and 7 bedroom houses available Aug 1, 2012 24 hr repairs guaranteed 912-682-7468

Furnished apartment - upstairs with separate entrance. Located just past Mill Creek Park. No laundry facilities. Includes utilities. \$130/week or \$500/month. Available now. 912-531-1319

3 bedroom/ 2 bedroom in August 405 Windwood Court \$895 a month Call Sue at 706-543-5497

4 bd / 2 bath - Robin Hood Trail 4 bd / 2 bath - Tillman Street 4 bd / 4 bath - Talons Lake More info at: www.wildoakinvestments.com Call: 912-682-9515 Email: rent@wildoakinvestments.com

Summer 2012 Subleasing 1BR/1BT available in a 4BR/4BT at Campus Club right next to the bus stop. \$700 for the whole summer or \$370/month. Move in date negotiable. Email Shanna at shannalawson22@gmail.com

Help Wanted, cont.

Part time sales position open at Farmer's Home Furniture. Apply in person. 110 Northside Drive E. Statesboro, Ga 30458

Help Wanted

BARTENDERS WANTED! \$250 a day potential. Experience unnecessary. Training provided. 18+ Call: 1-800-965-6520 ext. 296

Seeking an Assistant, excellent opportunity if looking to work in a friendly atmosphere. Self-Motivated, Positive Attitude, Ability to Multi task. Send resume to Martgay@gmail.com

Misc.

American Shorthair Cats (AKC Reg. Male and Female) free to good home, contact bpills12@gmail.com if interested

Will proof papers. Quality work, reasonable prices. Will also type short projects. Must have ample lead time to schedule. Email auntre01@gmail.com

Fourth year writing and linguistics major will proof papers/ tutor in writing, Cheapest rates, at least three days notice on assignments

Contact gaiclass@georgiasouthern.edu to place a classified ad.

HOT JOBS Cool Internships

Job Title	Company	Deadline to Apply
Financial Services Professional	Capstone Financial Partners	March 30, 2012
Industrial Engineer (copy)	SRG Global	March 29, 2012
Nanny	NannyQuest, Inc.	May 25, 2012
Marketing and Communications Intern	Downtown Vision, Inc.	May 31, 2012
Video Journalist	WMAZ 13	May 31, 2012
Tennis Pro Shop Attendant	Horseshore Bend Country Club	April 30, 2012
Freight Broker	Unisource Worldwide Inc.	April 12, 2012
RN	Pineland CSB	April 27, 2012
Transportation Logistics Summer Intern	C.H. Robinson Worldwide, Inc.	April 24, 2012
Programmer Analyst	Aon Hewitt	May 31, 2012
Sales & Marketing Coordinator	The Loxcreen Company, Inc.	Sept. 28, 2012
Environmental Interpretation Intern	Patuxent Research Refuge	April 11, 2012
Business Systems Analyst	Northridge Systems	April 11, 2012
Highway Solutions Specialist	Hub Group, Inc.	April 30, 2012
Technical Consultant	Aderant	May 31, 2012
Georgia Aquarium Intern	Georgia Aquarium	July 6, 2012
Wireless Sales Representative	Verizon Wireless	March 5, 2013

To view the detailed job descriptions application instructions or additional postings, log into the Eagle Career Net/NACELink system found at www.georgiasouthern.edu/career.

ARE YOU CONNECTED?



:Georgia Southern University Career Services



:Georgia Southern University Career Services



:GeorgiaSouthern CareerServices



:@gsucareers



:gasoutherncareservices.blogspot.com

Williams Center 1047

(912) 478-5197 georgiasouthern.edu/career

PUZZLES/COMICS

www.thegeorgeanne.com

Thursday, March 22, 2012 15

Los Angeles Times Daily Crossword Puzzle

Edited by Rich Norris and Joyce Lewis

ACROSS

- 1 Altar vestments
- 5 Not back down
- 11 Screw up
- 14 Boor
- 15 Shortening name
- 16 Paulo
- 17 A falsehood in every respect
- 19 Basinger of "Batman"
- 20 Congo River beast
- 21 Arson-investigating org.
- 22 Three-time WNBA MVP — Leslie
- 23 Beast of burden
- 24 Chuck Connors title role
- 28 Condemn
- 29 Passable
- 30 Common crossword clue ending
- 33 Piper's followers
- 36 D.C. hearings broadcaster
- 39 Risky activity, and what certain four-letter sequences in 17-, 24-, 49- and 61-Across are doing?
- 42 Badly cooked
- 43 Reasonable
- 44 Pilot's prefix
- 45 Summoning gesture
- 47 Plenty
- 49 "Scream" or "Halloween"
- 53 Sis, say
- 56 They're mostly fours
- 57 Tijuana relative
- 58 "Three inches is such a wretched height to be" speaker
- 60 Si, in Paris
- 61 Actor's liability
- 64 ___ pro nobis: pray for us
- 65 Mid-size Nissan
- 66 Latin 101 verb
- 67 Athlete's supporter
- 68 Have it in mind
- 69 Ad amount



By Ed Sessa

3/22/12

DOWN

- 1 Top dog
- 2 Joe the boxer
- 3 Baby's achievements?
- 4 Baby book first
- 5 Here, on the Seine
- 6 Atomic energy org.
- 7 Solo instrument in "Norwegian Wood"
- 8 Last Supper question
- 9 Jeers (at)
- 10 Heavy weight
- 11 Ice cream treat since the 1920s
- 12 Mrs. Gorbachev
- 13 numeral
- 18 Snapshot, commercially
- 22 Heart-healthy food claim
- 25 Rhino feature
- 26 Webzines
- 27 Scot's sailing site
- 28 Wine quality
- 30 LAPD alert
- 31 Primary colore
- 32 Neanderthal type
- 34 Former carrier with a JFK hub

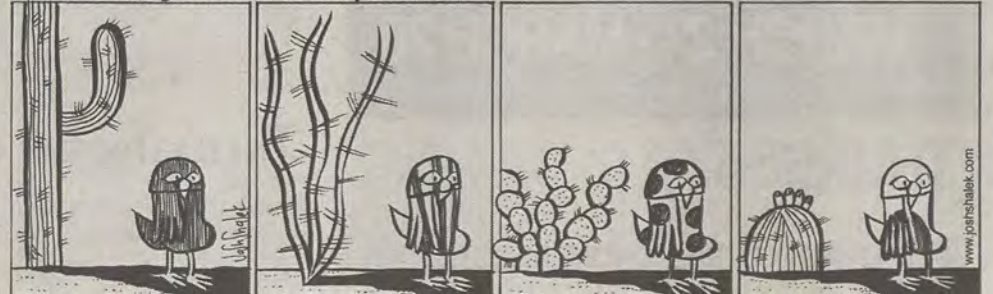
March 20th Puzzle Solved

G	A	S		A	C	C	E	D	E		A	H	S		
I	M	P		M	A	R	T	I	N	I		R	A	H	
F	R	O	N	T	P	O	C	K	E	T		A	L	A	
T	A	O	S		A	S	H		S	A	P	O	R		
E	D	N	A	S		B	A	C	K	S	T	A	G	E	
D	I	E		L	A	Y		A	N	O	T	H	E	R	
O	D	O	U	L		P	S	I		I	O	N			
				F	R	E	N	C	H	C	A	R			
			S	P	F		A	A	S		K	R	E	M	E
A	T	H	E	I	S	T		I	S	A		A	N	T	
B	A	R	N	S	T	O	R	M		L	E	N	T	O	
A	M	A	D	O			E	E	N		C	H	E	R	
C	I	S		D	O	U	B	L	E	D	O	O	R	S	
U	N	E		D	R	I	E	D	U	P		L	E	O	
S	A	S		G	E	L	A	T	I		E	D	S		

- 35 Historic peninsula
- 37 JFK posting
- 38 "The Matrix" hero
- 40 Reason to scratch
- 41 Archer of note
- 46 Boiling point?
- 48 Bridge master Sharif
- 49 Parody
- 50 Dr. with advice
- 51 Cowboy's rope
- 52 "Oliver Twist" villain
- 53 S, as in Socrates
- 54 Mac messaging program
- 55 Actress Davis
- 59 One to whom you might say, "I doubt that"
- 61 Wanted poster uncle?
- 62 CPR expert
- 63 ___ Schwarz



Welcome to Falling Rock National Park by Josh Shalek



Sudoku

6	8	5	4	7	2	7	9	1	3
1	7	2	3	8	6	3	2	7	4
3	4	1	5	6	2	7	8	9	6
2	6	1	5	3	4	7	8	9	2
7	5	8	6	1	3	2	4	9	5
4	6	3	7	2	8	1	5	9	6
5	2	7	4	9	1	8	6	3	5
8	9	6	5	4	3	2	1	7	8
9	3	8	1	7	4	9	2	5	6

FRANKLIN

CHEVROLET - CADILLAC
PONTIAC - BUICK - GMC
912.764.6911



Our experienced Body Shop can fix all of the "Dents & Dings" that your vehicle may have! We service all makes and models and accept all insurance claims, and will give you a **FREE ESTIMATE** on your body & paint repair

GSU STUDENTS Show your ID and receive **10% OFF** any purchase in Parts and Service

We offer our own in town towing service that is **FREE** with a Student ID when we do the repairs on your vehicle

Check out our website
www.franklinchevrolet.com

WEEKLY BUZZ

A weekly calendar listing sponsored by The Division of Student Affairs and Enrollment Management

MARCH 22 - MARCH 28

THURSDAY 3.22.2012

4-ON-4 FLAG FOOTBALL ONLINE REGISTRATION

THE RAC

For more information or to register go to <https://www2.sta.georgiasouthern.edu/>. Sponsored by Campus Recreation & Intramurals.

10 AM

RUDY GIULIANI STUDENT TICKET DISTRIBUTION HANNER FIELDHOUSE, TICKET BOOTH

Former New York City Mayor Rudy Giuliani will speak at Georgia Southern University's Hanner Fieldhouse on Wednesday, March 28 at 7 p.m. The event is free and open to the public.

While the event is free and open to the public, seating is limited. Tickets to reserve seats for the event will be distributed as follows:

Student Ticket Distribution: March 1, 2, 5 (10:00 a.m. - 5:00 p.m.)

Tickets will be distributed at the Hanner Ticket Booth that is located to the left of the main Hanner Entrance off of Fair Road.

FRIDAY 3.23.2012

7 PM

OUTDOOR MOVIE

SWEETHEART CIRCLE

Sponsored by the Office of Student Activities.

10 AM - 4 PM

CAREER IN STUDENT AFFAIRS AND ENROLLMENT MANAGEMENT DAY

RUSSELL UNION

Sponsored by the Office of Student Life.

MONDAY 3.26.2012

SPRING CONCERT - FACULTY, STAFF, AND PUBLIC TICKET SALES BEGIN

The Band Perry and The Fray will co-headline a performance at Allen E. Paulson Stadium on the Georgia Southern University campus in Statesboro, Ga. Gates open at 6:00 pm and The Band Perry to perform a full one hour and fifteen minutes starting at 7:30 pm followed by a full show by The Fray at 9:30 pm.

Student tickets go on-sale today at the University Store or online with e-Tix. Student tickets are \$25 for the field and \$20 for the stands. General admission tickets for the public will go on sale Monday, March 26.

For more information on ticket sales, parking, tailgate rules, and general concert information please visit www.georgiasouthern.edu/concert.

4-ON-4 FLAG FOOTBALL ONLINE REGISTRATION

THE RAC

For more information or to register go to <https://www2.sta.georgiasouthern.edu/>. Sponsored by Campus Recreation & Intramurals.

CRI OPEN GOLF

THE RAC

For more information or to register go to <https://www2.sta.georgiasouthern.edu/>. Sponsored by Campus Recreation & Intramurals.

TUESDAY 3.27.2012

7 PM

GSU Unplugged

RUSSELL UNION STARBUCKS

Open Mike Night. Sponsored by Eagle Entertainment.

4-ON-4 FLAG FOOTBALL ONLINE REGISTRATION

THE RAC

For more information or to register go to <https://www2.sta.georgiasouthern.edu/>. Sponsored by Campus Recreation & Intramurals.

CRI OPEN GOLF

THE RAC

For more information or to register go to <https://www2.sta.georgiasouthern.edu/>. Sponsored by Campus Recreation & Intramurals.

WEDNESDAY 3.28.2012

4-ON-4 FLAG FOOTBALL ONLINE REGISTRATION

THE RAC

For more information or to register go to <https://www2.sta.georgiasouthern.edu/>. Sponsored by Campus Recreation & Intramurals.

CRI OPEN GOLF

THE RAC

For more information or to register go to <https://www2.sta.georgiasouthern.edu/>. Sponsored by Campus Recreation & Intramurals.

7 PM

RUDY GIULIANI STUDENT TICKET DISTRIBUTION HANNER FIELDHOUSE, TICKET BOOTH

Former New York City Mayor Rudy Giuliani will speak at Georgia Southern University's Hanner Fieldhouse on Wednesday, March 28 at 7 p.m. The event is free and open to the public.

UPCOMING EVENTS....

THURSDAY 3.29.2012

4-ON-4 FLAG FOOTBALL ONLINE REGISTRATION

THE RAC

For more information or to register go to <https://www2.sta.georgiasouthern.edu/>. Sponsored by Campus Recreation & Intramurals.

CRI OPEN GOLF

THE RAC

For more information or to register go to <https://www2.sta.georgiasouthern.edu/>. Sponsored by Campus Recreation & Intramurals.

7 PM

GSU Unplugged

RUSSELL UNION STARBUCKS

Open Mike Night. Sponsored by Eagle Entertainment.

FRIDAY 3.30.2012

4-ON-4 FLAG FOOTBALL ONLINE REGISTRATION

THE RAC

For more information or to register go to <https://www2.sta.georgiasouthern.edu/>. Sponsored by Campus Recreation & Intramurals.

CRI OPEN GOLF

THE RAC

For more information or to register go to <https://www2.sta.georgiasouthern.edu/>. Sponsored by Campus Recreation & Intramurals.

MONDAY 4.2.2012

11 AM - 12 PM

INTERNSHIP INFORMATION SESSION

WILLIAMS CENTER, WILLIAMS CENTER CRC

This presentation is targeted to students who want to learn how to prepare, search and obtain internship experience. Student will also learn about the Career Services Internship Program - a non-academic credit University recognized internship program.

Student Affairs
Enrollment
Management

Brought to you by Georgia Southern University VALUES. Georgia Southern V.A.L.U.E.S. is the culture shared by our students, faculty, and staff. We endeavor to share our V.A.L.U.E.S. inside and outside of the classroom with faculty, staff, students, alumni and all other community members. In order to produce productive citizens with an informed set of ethics and community standards as well as create an environment of respect and civility, we pledge to live by our V.A.L.U.E.S.



File Photo

The Georgia Southern University football team coaching staff evaluates potential walk-ons for the 2012-2013 season at the walk-on tryouts earlier this year. Spring practice begins today.

Football spring training begins today amid staff changes

Football

BY DERREK ASBERRY

The George-Anne staff

The Eagles will open football training camp Thursday, March 22, through Saturday, March 24, with practices the following week on Monday, Tuesday, Saturday and Sunday to finish out the month.

The Georgia Southern University Eagle football staff has stayed busy throughout the

offseason. Earlier this year, coaches and recruiters traveled around the country, interviewing top high school football prospects. The end result is a large class that head coach Jeff Monken believes can "contribute to [the Eagles] success."

Recently, the Eagles hired defensive coordinator Kevin Corless to help protect an offense that averaged over 35 points a game last season. While this change affects the Eagles defensively, the Eagles have followed up by making several alterations on the high-powered offense.

For starters, the staff has assigned the assistant head coach position to coach Mitch Ware, in addition to his current role as the quarterback coach. Ware has been with the Eagles since 2002, starting as an offensive coordinator.

Coach Lamont Seward is also shifting on the offense. He is moving to the running back coach position, which is a transition from his role as the wide receiver coach. He started in 2010, helping the team reach FCS semifinals two years in a row.

Filling in as the receiver coach is Brett Gilliland, who has also been a part of the program

since 2010. Finally, Coach Sean Saturnio will complete the current changes by coaching tight ends.

These changes will be tested, starting today. The team will practice the first week of April, beginning Monday, April 2. They will continue on Tuesday, skip Wednesday, and practice Thursday and Saturday. The following week, the Eagles will practice Monday, Tuesday and Thursday.

All of the team's work will be on display during its annual spring game, which will be on April 14 at 1 p.m. at Paulson Stadium.

Coach Young nominated for top minority coaching award

Basketball

BY CLINTON HINELY

The George-Anne staff

Georgia Southern University men's basketball head coach Charlton Young was named a finalist for the Ben Jobe National Coach of the Year award.

The Ben Jobe award is given to the top minority coach in division one men's basketball. The Jobe award is awarded annually by CollegeInsider.com and the finalists are selected by 30 members of the Ben Jobe Award selection committee, which includes members like Tubby Smith, head coach of the University of Minnesota, and Avery

Johnson, head coach of the New Jersey Nets.

The award is named after legendary coach Ben Jobe, who won 524 games coaching at historically black colleges over 31 years. Jobe is best known for his successful years at Southern University, where he led the Jaguars to four NCAA tournaments and one NIT.

In Young's third season as head coach for GSU, he led the Eagles to a 15-15 overall record and a 12-6 record in the Southern Conference. GSU won one conference game all of last season,



Charlton Young

and the 11-win improvement is tied for the second greatest turnaround in the SoCon history.

Young also coached the Eagles to their first conference tournament victory since 2007, and the 15-15 overall record is the first time GSU has finished at .500 or better since the 2005-06 season.

Young is one of the 21 finalists for the 2012 award. The other coaches nominated come from a variety of well sized and prestigious programs, with several power conference teams and mid-major programs as well.

Florida State University head coach Leonard Hamilton, University of Missouri head coach Frank Haith and Georgetown University head coach John Thompson III lead the names from

top basketball programs around the nation. While Ron Hunter of Georgia State University and Horace Broadnax of Savannah State University join Young as coaches nominated from universities in the state of Georgia.

Past recipients of the award include the 2010 award winner Ed Cooley, former head coach of Fairfield University and current coach of Providence College. Then the 2011 winner, Cuonzo Martin, then at Missouri State University and now currently head coach at the University of Tennessee.

The award will be presented on March 30 at the CollegeInsider.com awards banquet in New Orleans. That is also the site of the 2012 men's NCAA Basketball Championship.

Eagles pitch their way back into gear

Baseball

BY CLINTON HINELY

The George-Anne staff

Although preseason All-American outfielder Victor Roache has been out due to injury, offense has not been the problem for the Georgia Southern University baseball team.

Prior to Tuesday night's game against Jacksonville University, the Eagles ranked among the top five in several offensive statistical categories of the Southern Conference.

The Eagles are fourth in the conference with a team batting average of .289, just .021 behind Western Carolina University, who ranks first. Senior Eric Phillips leads the Eagles and the conference with a .450 average.

GSU ranks fifth in on-base percentage and is just .002 from ranking third in the conference. Again, Phillips leads the team. He has reached

base in every single game the Eagles have played so far this season.

With a high batting average and on-base percentage, the Eagles have produced runs at a good rate. GSU has scored a total of 130 runs in 20 games, placing the team fourth in the SoCon.

The Eagles have not been shut out all year and have only been held to a season-low of two runs once.

GSU ranks third in the league with 46 doubles and fifth with 15 homeruns on the season. The Eagles are second in total plate appearances and second in walks.

The Eagles have used a small-ball strategy to score their runs. The Eagles rank third in the SoCon with 34 stolen bases and second with 17 sac bunts. GSU also has 10 sacrifice flies on the year.

These stats show the players are doing the little things to move runners along the bases and their efforts are a major factor in their 130 runs scored.

However, the GSU offense has to hit into many double plays. The Eagles have hit into 25 double plays. That ranks as the most in the SoCon by a long shot. The two teams tied for second, The Citadel and Furman University, have just hit into 12.

The GSU defense is another story. The Eagles rank dead last in the league, posting a 5.82 earned run average, and second to last allowing 206 hits on the year. Opponents are hitting .286 against the GSU hurlers, good for second worst in the conference.

Not only are they giving up hits, GSU pitchers are giving up the long ball. GSU has allowed 30 doubles and four triples, and ranks last with 20 homeruns allowed.

Even with these pitching problems, the Eagles are still in seventh place in the SoCon. The offense has carried the Eagles to this point, allowing them to keep their hopes of climbing up the conference standings alive.



Demario Cullars/The George-Anne

Junior Pitcher Justin Hess (8) steps to the mound to help improve his team's pitching.

CAMPUS RECREATION, INTRAMURALS AND STUDENT ACTIVITIES PRESENT

DIVE IN

Movie

FEATURING

LIMITLESS


RAC POOL DOORS OPEN AT 8:00PM
MOVIE BEGINS AT 8:30PM

MUST HAVE EAGLE I.D.
NO OUTSIDE FLOATS ALLOWED
NO FOOD OR DRINK
BLEACHERS WILL BE AVAILABLE

MARCH 24, 2012


YOUR STUDENT ACTIVITY FEELS AT WORK

George-Anne & Joe

brought to you by 

Thursday, March 22nd
Williams Center Gazebo
From
8:15a.m.-10:00a.m.

Don't forget to stop by Starbucks at Georgia Southern for
great coffee, pastries, sandwiches, parfaits, and fresh fruit cups!

 twitter.com/GSUStarbucks

EQUESTRIAN, from page 1

and a student coach. Since then, the team has grown to over 30 members and is a part of Campus Recreation and Intramurals as a club sport.

There is no prior knowledge required to join the Eagles' Equestrian Team. "It is important for the team to have all levels of riders," said Ross.

The team hosts sign-ups at intramural and club sports fairs. It helps build an understanding in equestrian activities and horsemanship and unites collegiate horse owners, riders and anyone interested in horses.

The team gets together the first Tuesday of every month for a team meeting. They also get together once a month for team dinners.

"As a team, we try to do a lot together. Every year we throw the horses a birthday party as a group and it is a lot of fun to play around with the horses instead of always just practicing," Ross said.

The team is funded mostly by its members' team fees, which include lessons and show fees. However, each year the team is also allotted a budget from CRI. Team members also must pay for their own riding attire and show clothes.



Courtesy of Meredith Ross

The Georgia Southern University equestrian team poses for a photo after a third place finish in the Round Three Show competition on March 4.





Style. Features. Location.





912.681.1300
Cambridge-Southern.com

UNLIMITED FUN
LIMITED VACANCIES



CALL 912-681-3888 TODAY!

GREAT SPACE. GREAT RATES

FULLY FURNISHED, SPACIOUS APARTMENTS • LARGE, LOCKABLE
BEDROOM/BATHROOM SUITES • WASHER AND DRYER IN EACH APARTMENT
LOADED CLUBHOUSE WITH GAME ROOM, FITNESS CENTER, TANNING BOOTHS
POOL, VOLLEYBALL AND BASKETBALL COURTS, GRILLS AND FIRE PITS

1150 Brampton Avenue
Statesboro, GA 30458



FULLY LOADED COLLEGE LIVING.

info@thegroveofga.com

**IT'S YOUR LIFE...
LIVE IT**
FORUMSTATESBORO.COM

COMING TO:

831 South Main Street
Statesboro, GA 30458

**LEASING
OFFICE HOURS:**

Monday-Friday 9-6
Saturday 10-5
Sunday 12-5



912-489-3676

ForumStatesboro.com

GET A FREE T-SHIRT WITH THIS AD!

FORUM[®]

AT STATESBORO

A PREMIER STUDENT
HOUSING COMMUNITY

**NOW
LEASING
FOR FALL 2012**

- Tennis Court
- Lap Pool & Spa
- Pet Friendly
- Pet Park
- Two Free Tanning Beds
- Indoor Basketball Court
- Indoor Volleyball Court
- Car Care Center
- Modern Faux-Wood Floors
- Private Bathroom in Bedrooms
- Convenient Individual Leases
- Free High Speed Internet in Bedrooms
- 24 Hour Fitness and Training Center
- Kitchens with Full Size Appliances
- Full Size Washer / Dryer Included
- Wi-Fi Cyber Cafe with Coffee Bar
- Outdoor Sand Volleyball Court
- High Speed Internet Access
- Student Center and Lounge
- Roommate Matching
- Expanded Cable
- Media Room



Amount subject to change. GREYHOUND & Co.
Pets subject to size and breed restrictions. Fees may apply.