

Georgia Southern University

Digital Commons@Georgia Southern

---

The George-Anne

Student Media

---

3-8-2012

## The George-Anne

Georgia Southern University

Follow this and additional works at: <https://digitalcommons.georgiasouthern.edu/george-anne>

---

### Recommended Citation

Georgia Southern University, "The George-Anne" (2012). *The George-Anne*. 2752.  
<https://digitalcommons.georgiasouthern.edu/george-anne/2752>

This newspaper is brought to you for free and open access by the Student Media at Digital Commons@Georgia Southern. It has been accepted for inclusion in The George-Anne by an authorized administrator of Digital Commons@Georgia Southern. For more information, please contact [digitalcommons@georgiasouthern.edu](mailto:digitalcommons@georgiasouthern.edu).





## PURVIS THROWS NO-HITTER

PAGE 20

## MFA EXHIBIT OPENS

PAGE 9

## LIQUOR SALES

## OFFICIALS DISCUSS POSSIBLE PACKAGE STORES

PAGE 2

Thursday, March 8, 2012  
Georgia Southern University  
www.thegeorgeanne.com  
Volume 87 • Issue 63

# THE GEORGE-ANNE

## DRESS IN THE PRESS



Lauren Davis/STAFF

Marketing major **Casena Pressley** from team Alexia celebrates her win at the 2nd annual Dress in the Press Tuesday night. Team Alexia created a unique garment combining newspapers and magazines complete with matching earrings, hairpiece and a clutch. **See page 10 for photo spread.**

# Rapes investigated

## Two students report recent resident hall rapes

BY LINDSAY GASKINS

The George-Anne staff

On Feb. 22 and March 3, Health Services called Georgia Southern University Police Department regarding reported rapes in residence halls.

The Feb. 22 Centennial Place incident involved a patient who checked into Health Services to report a sexual assault. Health

Services then reported the case to GSU PD, according to the police report.

The March 3 case occurred at Southern Pines.

GSU PD classified both cases as "acquaintance rape."

"We investigated (the rapes) as we would anything," Chief Michael Russell of GSU Department of Public Safety said. "We actively investigate (the cases) and have

forensic examinations and the whole county does it the same way."

An Eagle Alert was not issued for either instance.

Police did not send out an Eagle Alert for these two offenses because they did not believe anyone was in immediate danger, Russell said.

"If anyone was in any danger, we may have sent out an Eagle Alert, or if it was a stranger, but both of these

**See RAPES, page 3**

# Cram resigns after season

BY ANNA WELLS

The George-Anne staff

After 16 seasons of being the head coach of the Georgia Southern University women's basketball team, Rusty Cram turned in his resignation to Athletic Director Sam Baker on Monday, March 5.

Cram, who began coaching in 1990 for the Lady Eagles as an assistant coach and later became head coach in 1996, was the longest tenured coach in GSU history.

In his 22 years at GSU Cram has seen five Southern Conference championships, two of which he led as head coach in the 1997-1998 and 2000-2001 seasons. Cram also

helped make GSU history in 1993 and 1994 when the Lady Eagles made it's only appearances in the NCAA tournament.

In his second year as head coach, Cram was named coach of the year for the 1997-1998 season for the Lady Eagles' impressive 13-3 conference record and was named it once again for his 2000-2001 season when the Lady Eagles obtained a 15-3 conference record and went on to share a SoCon title with University of Tennessee at Chattanooga.

In 2006, Cram became only the third coach in SoCon history to gain 100 conference wins and is the only coach in GSU history to do so. In the 2011-2012 season, Cram led the

Lady Eagles to their 200th SoCon win with a 59-47 victory against University of North Carolina at Greensboro.

On February 3, 2007, Cram became the winningest coach in GSU history when the Lady Eagles defeated Elon University 46-37 at Hanner Fieldhouse. Two years later, on February 23, 2009, Cram experienced his 200th win as head coach after a 62-61 victory over the Wofford College Terriers.

Cram has seen 10 players on the First Team All-Conference and eight players on the All Tournament teams during his reign as head coach.

A national search for Cram's replacement will begin immediately.



thegeorge  
anne.com



Follow on Twitter  
@GeorgeAnneNews



Newsroom 478-5246  
Advertising 478-5418  
Fax 478-7113

PO Box 8001  
Statesboro, GA  
30460



# Officials discuss Statesboro alcohol sales

BY TAYLOR COOPER

The George-Anne staff

Statesboro is on its way to being a "wet" city after recently passing its Sunday alcohol sales referendum, with package sales of liquor being the next logical step, officials said.

On Tuesday's ballot, Sunday alcohol sales were voted on for Bulloch County. The unofficial results from the Bulloch County Election Summary Report state that out of 5,496 votes, 3,074 residents voted yes for county-wide Sunday sales and 2,422 residents voted no.

"That was the county that had that on the ballot, not the city," Mayor of Statesboro Joe Brannen said. "The city's already had liquor Sunday sales, about two or three months now, I guess."

"Statesboro was completely dry until 1972. It's a big part of the Bible Belt, a lot of people here don't want it in any capacity," John Riggs, Statesboro city councilman, said.

"Sunday sales had been voted down multiple times, and it wasn't until 1972 that people were

allowed to serve beer and wine Monday through Friday, and liquor by the drink wasn't available until relatively recently," Riggs said.

"Nathan Deal, the governor, made it legal to vote on the issue. We didn't have to, but he gave us the opportunity to," Riggs said. "Anything related to alcohol is always a referendum, so the people can vote on it."

"I think (Sunday sales is) a natural progression to package sales," Frank Parker, Statesboro city manager, said. "We're in a position where we're happy with what we got. I think the package shops will come in time."

The consensus of local government officials on the reason why package sales of liquor have not already been brought up for a vote is because it does not have enough support.

"I've only been approached by about ten or twenty people. If it seemed like something the people wanted, I'd be happy to put it on the ballot. It's not my job to do what I want, but what my constituents want, but I have to hear from them first. I always say, 'Get some more support, you have to be more vocal before I put it on the ballot.' I'm open for any student who

wants to contact me," Riggs said.

"It's not something that we want to do right now, we're showing people that Sunday sales hasn't impacted Statesboro in any major negative ways," Will Britt, Statesboro city councilman, said. "I think it will happen, but I can't say when. There hasn't been a large group to come forward and say, 'We want package stores.'"

"In my time in office, which has been about eighteen months, I haven't been approached about it once," Parker said. "It would take thirty-five percent of active voters to bring it to a referendum, or the council could bring it to a vote."

"There has been no real push to think about it. Let's give it some time and work together to find out what fits us best," Britt said. "Until recently, we were closer to prohibition. You can't change these things overnight."

The councilmen agree that having package stores in Statesboro would help the city more than it would hurt.

"I think it would help Statesboro. It would put more police on the streets and it would get the roads fixed. Statesboro would certainly

benefit from the taxes," Riggs said.

"We realize we're missing possible tax revenue. Now you have people driving to and from the line, but if this were passed, they wouldn't have to drive far at all. I can't see it being a big deal," Britt said.

Other things need to be taken into account after a referendum is passed.

"After it passed, we'd have to fine tune the law, taking into account things like zoning, hours and whether or not it would be confined to the business district," Parker said.

"Package stores will be well regulated. We are not in favor of any sort of seedy store that you can purchase anything from. We want package stores to be well lit and large," Britt said. "We can mandate how the store looks, where it's located and the quantity it has to maintain. We can encourage it to look nicer through some legislation."

The city councilmen are concerned with safety above all.

Brannen said, "We're concerned that our citizens and GSU students have a safe environment."

Zach S. HENDERSON  
**Library**  
library.georgiasouthern.edu

first floor  
**TRAVELING EXHIBIT**  
March 8 THROUGH April 20

## A Fine Romance

Jewish Songwriters, American Songs, 1910-1965

Peabody  
Award  
Winner

LECTURE & BOOKSIGNING: March 20. 7PM

MICHAEL LASSER speaking on

"Jewish Songwriters & the Making of American Song"  
Nessmith-Lane Room 1915

Don't forget!

He doesn't sing and he doesn't dance,  
but he knows all there is to know about  
American popular music...



PANEL DISCUSSION: March 21. 7-9PM

"Jewish Influences on the Evolution of American Musical Theatre"

Panelists: Michael Braz, Adrian Gnam, Roger Miller  
Nessmith-Lane Room 1915

A Fine Romance: Jewish Songwriters, American Songs, 1910-1965 was developed by Nextbook, Inc., a nonprofit organization dedicated to supporting Jewish literature, culture, and ideas, and the American Library Association Public Programs Office. The national tour of the exhibit has been made possible by grants from the Charles H. Revson Foundation, the Righteous Persons Foundation, the David Berg Foundation, and an anonymous donor, with additional support from Tablet Magazine: A New Read on Jewish Life.

nextbook  
ALA  
American Library Association

South 301  
**Auto Body  
Collision Center**  
In business  
for 16 years

SOUTH 301 AUTO BODY  
COLLISION CENTER

- Auto body collision repair
- Jett lube quick oil change
- Mechanical/Auto repairs
- Wheel alignments
- 24 hour towing
- Auto sales
- Life time warranty on all repairs
- Student discounts available with an eagle I.D.

12229 Highway 301 South  
Statesboro, Ga. 30458  
(912) 871-5181  
www.south301autobody.com



## RAPES, from page 1

were acquaintances, so we didn't feel that anyone was in danger," Russell said.

GSU police transferred the victim of the Feb. 22 rape from the Department of Health

Services to Dr. James Hiller's office, the director of Medical Services for the Forensic Nurses in Statesboro, according to the GSU police report.

"I don't want to downplay anything. It was an acquaintance type, which means the offender and suspect knew one another. 'Date rape' would be another word for it," Russell said.

Protocols for rape incidents differ depending on which unit is contacted first, according to the Health Services protocol for sexual assault manual.

The Health Center's policy in situations like these, if the assault has been within 120 hours, is to have each patient evaluated and examined for evidence purposes, according to the manual.

Once the victim arrives at the center, the staff is required to immediately contact the Women's

Health Unit and from there, a plan of action is decided, according to the manual.

After the evidence has been collected, the victim is encouraged to undergo a follow-up pelvic examination, laboratory tests or additional treatment at the GSU Health Center, according to the manual.

Police also followed their normal protocol when dealing with this case, Russell said.

"(Rape) is different, but it isn't different," Russell said. "It is the same way we would work a burglary anywhere. We respond, take information, collect evidence and then we see if we have a case or not."

Trust is a vital factor in these kinds of cases and it must be earned before an individual decides to be alone with someone, Russell said.

"What we try to educate people on is trust has to be earned and don't give somebody complete trust and don't be alone with somebody unless you can completely trust them," Russell said.

Russell said that both cases are still under investigation.

## Statement of Operations

The George-Anne is the official student newspaper of Georgia Southern University, owned and operated by GSU students using facilities provided by the university. The newspaper is the oldest continuously published newspaper in Bulloch County. The newspaper is a designated public forum for the Georgia Southern community. The newspaper is published twice weekly, on Tuesdays and Thursdays, during most of the academic year. Any questions regarding content should be directed to the student editor by phone at 912.478.5246 or at [gaeditor@georgiasouthern.edu](mailto:gaeditor@georgiasouthern.edu).

**ADVERTISING:** The newspaper accepts advertising. Inquiries may be made by calling 912.478.5418 or 912.478-0566. Fax any questions to 912.478.7113 or e-mail [ads1@georgiasouthern.edu](mailto:ads1@georgiasouthern.edu).

The George-Anne receives additional support, in part, from the Student Activities Budget Committee.

The deadline for reserving space and submitting advertising copy is noon, one week prior to the intended publication date. For more information, rate cards, sample publications, contact the advertising manager or student

media director.

The advertiser is responsible for any errors in advertisements and its liability for adjustments is limited to the amount of space the error occupied in the ad. Further, the newspaper is not responsible for any damages caused due to an ad's omission from a particular edition and its responsibility solely is to reschedule the ad in the next regular edition at the regular advertising rates.

**STUDENTS BEWARE:** The George-Anne screens all advertisements prior to publication. The newspaper strives to accept ads for legitimate products and services only. Students are urged to exercise caution when replying to ads-particularly those that require personal information. Students are also urged to report to the newspaper any suspicious offers which they might see in an ad.

**PUBLICATION INFORMATION:** The newspaper is printed by Signature Offset in Jacksonville, Fla.

**NOTICE:** Unauthorized removal of multiple copies from a distribution site constitutes theft under Georgia law, a misdemeanor offense punishable by a fine and/or jail time.

**Editor-in-Chief** Arielle Coambes  
**Managing Editor** Jennifer Curington  
**Opinions Editor** Alex LaSalle  
**News Editor** Jessie Reese  
**Asst. News Editor** Courtney Tielking  
**Arts Editor** Quaniqua Epps  
**Asst. Arts Editor** Gianna Carme  
**Sports Editor** Jannah Bolds  
**Asst. Sports Editor** James Farmer

**Copy Chief** Matthew D'La Rotta  
**Business Manager** Holly Hillhouse  
**Asst. Business Manager** Vicki Tucker  
**Marketing Manager** Aria Gabol  
**Production Manager** Mallory McLendon  
**Photo Editor** Lindsay Hartmann  
**Design Editor** Kelsey Paone



\*2011 numbers will be released in October

Kelsey Paone/ The George-Anne

## Corrections

Contact the editor at [gaeditor@georgiasouthern.edu](mailto:gaeditor@georgiasouthern.edu) for corrections and errors.

GUY HARVEY®



The Sir Shop  
Statesboro Mall  
912.764.6924





## Our View

### Student-faculty ratio needs to be priority

In Tuesday's edition of The George-Anne, we reported that the student-teacher ratio at Georgia Southern University for the 2010/2011 academic year was at 23 students per professor.

This ratio is a significant rise from the ratio of 19 students per professor that was reported for the 2007/2008 academic year.

Smaller class sizes are a significant benefit to both student and professor, and should be a top priority of university officials.

For professors, smaller classes allow them to give more attention to the performance of individual students as well as allowing professors to better keep track of attendance.

Students also benefit from smaller classes that allow closer interaction with professors on an individual level.

Maintaining smaller student-professor ratios also makes GSU more appealing to potential students.

The "Large Scale, Small Feel" environment is critical to GSU's identity, and having smaller class sizes is an important part of supporting that environment.

Having a low student-teacher ratio is the hallmark of a reputable university.

We highly encourage GSU to put the issue of rising student-teacher ratios at the top of their list of priorities.

The George-Anne welcomes letters to the editor and appropriate guest columns. All copy submitted should be 350 words or fewer, typed, and sent via e-mail in Microsoft Word format to [gaeditor@georgiasouthern.edu](mailto:gaeditor@georgiasouthern.edu). All submissions must be signed and include phone number for verification. GSU students should include their academic major, year and hometown. The editors reserve the right to reject any submission and edit submissions for length.

Opinions expressed herein are those of the Board of Opinions or columnists themselves and DO NOT necessarily reflect those of the faculty, staff or administration of GSU, the Student Media Advisory Board, Student Media or the University System of Georgia.



Jasmine Nielsen/The George-Anne

## An unholy religious holiday

In just under two weeks, people the world over, as well as students at Georgia Southern University, will pretend to care about Ireland by ending their Spring Break with a Saint Patrick's Day celebration.

Saint Paddy's Day is one of many holidays with traditions that are almost completely irrelevant to their deeply religious origins.

For this holiday, the people of Ireland celebrate their culture as a country and a people, although our United States prefer to celebrate with copious consumption of alcoholic beverages, parades, drinking, anything to do with the color green, more drinking, and general feasting.

Come to think of it, every holiday we celebrate, we celebrate by breaking our diet. Christmas? Big feast. Independence Day? Feast outside. Thanksgiving? Feast to celebrate another feast. Easter? Feast on chocolate eggs to celebrate the resurrection of Jesus Christ.

I should point out, the eggs on Easter Sunday are a tradition that

### ALEXANDER THE PRETTY GOOD



ALEX LASALLE/  
OPS EDITOR

we absorbed to convert pagans to Christianity back in the day. Still, that doesn't change the fact that you are eating chocolate eggs for Jesus.

The most prominent tradition of Saint Patrick's Day is the activity of making sure everything within sight is green. I'm okay with this. Green is an enjoyable color.

Until you start dyeing all my food green. On Sunday, we reported online that First Friday was kicking in March with a serving of "Green Grits". I have grown up in Georgia, I love grits, I love the butter and salt and bits of bacon I can put in them.

Grits should never be green. Green is the color of food that has been left out too long. My high school cafeteria

thought they were being cute when they tried to serve me a green taco. They weren't.

In fact, the original color associated with Saint Patrick's Day was blue, but this turned into green through history. Part of this is due the use of a three-leaved shamrock by Saint Patrick to explain the concept of the Holy Trinity. We still use shamrocks as a symbol of Ireland and Saint Patrick's Day, though in a somewhat less holy context.

"Dude, look at my hat! It has a shamrock on it! I'm Irish now!"

Does our feast-focused version of the religious Saint Patrick's Day mean we should stop? Of course not. Drink and be merry. But don't be afraid to pick up a history book once you sober up. Learn the historical origins of your hangover.

Legend has it that the original Saint Patrick was credited with driving all the snakes from Ireland into the sea. Maybe he tried to feed them green grits.

LaSalle is a junior writing and linguistics major from Cumming, Ga.



## From the left

# GOP is in a two-man race

Tuesday has come and gone and the picture of the GOP hasn't been clarified very much. On a day where Romney and Santorum duked it out, we saw Gingrich and Ron Paul slide further to the wayside.

The only surprising thing about Tuesday, for me at least, was how well Santorum did. He has quickly established himself as a viable threat to win the primary and the only thing between Romney and the nod for the GOP candidacy.

Romney is having trouble convincing the people of the United States to fully invest in him for the GOP candidacy. This should be troubling for those of you who wish to have a Republican president following this November's election. If he emerges victorious, will he garner enough support to win the ultimate fight? Will Santorum?

The longer they slug it out throughout the country, the more dirt, mud and filth will be flung about on each candidate. Now, not every negative advertisement will change somebody's mind or paint a candidate as the devil, but repeated exposure to negative ads — especially aimed toward someone you don't fully support in the first place — could make you think a little bit harder about voting for him.

I honestly don't see a candidate running who can unify the national party and compile the votes and support necessary to overthrow President Obama. It will be interesting to see this fight carry on and just how long it will take to determine a winner.

One thing seems to be certain — this is a two-man race. It's high time for Gingrich and Paul to step down and face the inevitable. It should come as absolutely NO surprise that Newt won Georgia, and even less of a surprise



ROB ROBERTS @Robert\_ARoberts

that he hasn't, and will not win — with the exception of SC — anything else. Ron Paul, has fallen so far behind that he really has no reason to continue running.

I would support him over any of the other candidates, but the front-runners have left the other two in the dust.

Regardless of who emerges victorious, I have one piece of advice for all of my readers out there — vote for the issues, not the name. It doesn't matter what party they are, what their name is, what color they are or any of that.

What matters is that their views and ideas align with yours and you're supporting them on something solid, not just superficial.

*Roberts is a senior public relations major from Warner Robins, Ga.*

## From the right

# Romney not set to win yet

Super Tuesday was yesterday, and was the day in which the most delegates, 419 in total, would be issued out. It was a lot of the same.

The biggest win of the night has to go to Mitt Romney with his win of Ohio. This puts two of the biggest swing states in his pocket. If anyone has a chance of beating Obama in the fall, they are going to need every conservative and independent vote from these two states; both deciders for the last three elections.

Newt Gingrich may have only picked up one state, but with 74 delegates for our great state of Georgia, it was the single biggest delegate prize last night. With that win, it brings Newt's delegate total to 107 delegates.

While many people are already calling this election in favor of Romney, he still needs a staggering 729 delegates to clinch the nomination with more than double that number, at 1541 delegates, still in play.

With states like Texas, which has 155 and is working on becoming a winner-take-all state, according to reports coming from the TXGOP. That could be a game changer right there. Plus, Texas won't be decided until June 5, giving candidates who have the infrastructure and cash flow to stay in the race until then an opportunity to beating Mitt.



FRITZ CHAPIN @GrandOldPartier

Many of candidates are now going into self-preservation mode, especially when it comes to funds. Newt Gingrich has shut down his website, except for the donation feature, to "better allocate his funds to other areas of his campaign" in hopes that he can take the Deep South. If he can win what he calls the Deep South, which is Alabama, Mississippi, Louisiana and Texas, he would pick up 288 delegates, putting him squarely back in the race. However, with Santorum taking Tennessee, finishing isn't as easy as Gingrich had hoped.

So the race continues. However, Super Tuesday was a good indicator that people are showing up and voting. Just in Georgia, over 900,000 people voted, an increase from 2008, according to the GAGOP. That increase was seen in most of the other states participating in Super Tuesday according to the RNC. If anything is certain, the candidates are in it for the long haul and the people are ready to vote for them.

*Chapin is a senior political science major from Roswell, Ga.*

NEWT GINGRICH	MITT ROMNEY	RICK SANTORUM
STATES WON		
Georgia	Alaska Idaho Massachusetts Ohio Vermont Virginia Wyoming	North Dakota Oklahoma Tennessee
DELEGATE COUNT		
105	415	176

Kelsey Paone/The George-Anne

# Planters ROW

By Hendley Properties

912.681.1170  
www.hendleyproperties.com

# 3 and 4 Bedroom Cottage Houses

# \$365

/month per person

There are 10 Roommate Matching Spots Available



## Letters to the Editor

### GOP is against women

Dear Editor,

I am writing in response to Mr. Chapin's March 6 column "Liberal bias returns." I have several points I would like to comment on, first of which, is Mr. Chapin's assertion, like most of the right wing media, that birth control is only used for contraception.

There are two women in my life that use birth control for medical reasons, and I am sure there are many others. One is to regulate what would be an otherwise painful menstrual cycle. With birth control, she is able to go to work and school without being burdened by unnecessary pain.

This treats the cause, not the symptoms, as aspirin would. The other uses birth control for her ovarian cysts that show up from time to time, for which she has already had one costly surgery and could threaten not only the loss of her ovaries, but also cancer.

These are medical reasons to be prescribed these medications in just the same way that Viagra is prescribed for various reasons, which is covered by insurance. Nowhere does Mr. Chapin mention this double standard.

Mr. Chapin then goes on to the false equivalency of trying to compare Mrs. Fluke to right wing darlings who are criticized in the media.

First of all, Sarah Palin and Laura Ingraham are public figures and are subject to different standards when it comes to libel and slander than a private citizen would be. Until Limbaugh thrust

her into the public eye in his attempt to discredit and marginalize her, Sandra Fluke wasn't a public figure.

Also, Limbaugh's program uses public airwaves. Maher's and Schultz's programs are on television channels that you have to pay extra to view. But it's not like Republicans to get upset over the misuse of taxpayer money.

Of course, this is all part of the GOP's wider War on Women. In statehouses all over the nation, Republicans are pushing bills that invade the medical privacy of women. There have been several bills requiring ultrasounds for abortions that must be done so early that transvaginal ultrasound is required, which is invasive, unnecessary and costly.

There is also a bill in Wisconsin making it a child abuse crime for nothing other than being a single mother. That's right, if your husband leaves you in the middle of the night, you are abusing your child by not remarrying.

It is this kind of anti-woman thinking that would put Mr. Chapin and his misogynist GOP friends right at home in places like Afghanistan or Iran, where women are marginalized in society.

Mr. Chapin whines that it "isn't fair." What isn't fair is to deny Sandra Fluke of her freedom of speech by saying she should know her role, shut up and stay out of congress.

Sincerely,  
Andrew Partain  
Senior  
Biology major

### Students unaware of SGA

Dear editor,

I am writing this letter in reference to the recent SGA coverage. First of all, in talking with my classmates and friends, I think I can speak for a vast majority of the student body when I say that I had absolutely no clue that we were even having an SGA election. This alone is aggravating because it says to me that their campaigning was minimal, if at all.

I know weeks in advance about homecoming elections, but did not even know the candidates running for SGA. Needless to say, I did not vote. So, I recently decided to get more involved with SGA and its inner workings. So, I started following our president-elect, Dominique Quarles, on Twitter.

Let me just say I was less than impressed by what I saw. Within an hour, Dominique fired off 14 different tweets completely degrading The George-Anne.

Here are a few — "The only positive articles in the @TheGeorgeAnne publications are ones that are written by SGA (which they omitted last week)"; "Well I'm done providing @TheGeorgeAnne with relevance, probably just gave them another story, which seems to be hard to find these days." Alongside these, he also called The

George-Anne "uninformed and inaccurate," even going so far as to tweet TI lyrics towards The George-Anne.

I do not appreciate that my newly elected SGA president is publicly defaming the school newspaper on his Twitter account. These tweets were unprofessional, uncalled for, immature and overall ridiculous. I am mostly wondering why he is allowed to say these things about a university organization, and why there hasn't been any disciplinary action taken against him.

When I went back to look at his platform, their slogan was "We are more," and they promised to support student organizations and be completely transparent.

Yet, his first act after being elected president is to publicly defame The George-Anne, a student organization, in the most childish way possible. I don't know about the rest of the student body, but this is not someone that I want to represent me in SGA. So far, he has not proven to be presidential material, and if I could go back and vote "opposed," I would.

Sincerely,  
Lewis Foster  
Junior  
Public relations major

“ I know weeks in advance about homecoming elections, but did not even know the candidates running for SGA. ”

-Lewis Foster,  
Junior, public relations major

*Voted Best Mattress Store in the 'Boro!*

Student Housing Available

New, Used & Antique  
Furniture

Complete Mattress Outlet

**Deal's**

*Come See the Dealmaker!*

17083 GA Hwy 67, Statesboro, GA  
(912)681-3824 (Near Fairgrounds)

Mon-Fri: 10am-6pm

Sat: 10am-5pm

Sun: 1Pm-5pm

- Honest, Dependable  
Same Day Delivery
- Locally Owned &  
Operated by GSU Graduate
- Serving GSU Students  
for 34 years

Tervis Tumbler Headquarters

- Collegiate Gifts
- Jewelry
- Handbags
- Placemats
- Diaper Bags
- Men's Gifts  
& Much More

*Best Furniture Mattress & Gift "DEALS" in the 'Boro*



## Students must be encouraged

I would like to address some of the articles written about SGA recently. First and foremost, in Thursday's edition there were two news articles and three opinion columns written against SGA — is that necessary?

Being on senate, I read all of it, even the opinion column making fun of candidates clothes and hairstyles at the debate. However, if I were a regular student, I would have discarded the paper within a minute due to lack of interest.

What we must realize is this — the 7 percent of students that voted in elections are also the same small number of students that care about what The George-Anne writes about SGA. Unfortunately, we cannot make students care; that will come with time and growth of the university. Until then, we need to be working hard to motivate students to be more involved.

I would like to challenge those who work at The George-Anne, as well as those who



HEATHER WALKER  
COST Senator

criticize SGA, to do just that — get involved. Not just as a reporter for The G-A — which is a respectable organization on campus, don't get me wrong — but as someone taking action to better the university rather than simply being a spectator or judge. Our senate meetings are open, and I would like to hear ideas on how to better reach out to the students, aside from giving elections results to The G-A.

As a senator on SGA and member of the elections committee, I can say we are working hard for transparency. We have nothing to hide. We are a group of students trying to be involved at GSU. Yet in Tuesday's "Editor addresses controversies" article, SGA was compared to a communist government.

I have respect for both of our organizations, as I think both are vital and necessary on campus. I am not against The G-A reporting on SGA meetings and what we are doing. But instead of writing articles about SGA being a communist organization, making both The G-A and SGA look ridiculous, why don't we combine our efforts to reach out to the rest of the student body who, at this point, doesn't care about what either of us do?



### Hungry Howie's

FLAVORED CRUST PIZZA

#### MEAL DEALS

<p><b>\$5</b></p>  <p>ONE SMALL TWO-TOPPING PIZZA OR ONE MEDIUM CHEESE PIZZA</p>	<p><b>\$10</b></p>  <p>ONE LARGE 3-CHEESER PEPPERONI PLEASER PIZZA OR ONE LARGE TWO-TOPPING PIZZA</p>
<p><b>\$15</b></p>  <p>TWO MEDIUM ONE-TOPPING PIZZAS WITH HOWIE BREAD AND DIPPING SAUCE</p>	<p><b>\$20</b></p>  <p>TWO LARGE ONE-TOPPING PIZZAS WITH A 2 LITER OF PEPSI® AND HOWIE BREAD WITH DIPPING SAUCE</p>

**Pick Up or Delivery**  
607 Brannen Street, Unit #4 (912)764-6565

# FRAUD

JUNIORS AND SENIORS OF ALL MAJORS  
WITH AT LEAST 45 SEMESTERS HOURS OF CREDIT

LOOKING FOR AN ELECTIVE ?

#### WHITE COLLAR CRIME LSTD 3630

Examines the investigative steps within the U.S. criminal justice system.

SUMMER TERM B 2012  
FALL 2012

#### FRAUD AND THE LAW LSTD 3631

Examines the legal issues associated with conducting fraud investigations.

SUMMER TERM A 2012  
FALL 2012

#### INTERVIEWS AND INTERROGATIONS LSTD 4633

Examines human behavior and the signals of truth and deception.

FALL 2012  
SPRING 2013

PRIOR TO ADVISEMENT, BE SURE TO ASK HOW YOU CAN COMPLETE  
THE FRAUD EXAMINATION MINOR AND EARN YOUR CFE (CERTIFIED FRAUD EXAMINER).

See: [coba.georgiasouthern.edu/forensic/](http://coba.georgiasouthern.edu/forensic/)  
Email: [berecz@georgiasouthern.edu](mailto:berecz@georgiasouthern.edu)





# SGA approves funds

BY COURTNEY ESCHER

The George-Anne staff

and ASHLEY WOODWARD

The George-Anne contributor

During last night's meeting, Georgia Southern University's Student Government Association voted to approve funds for student organizations.

In order to obtain funds, the organizations had to fill out an online request via the SGA website detailing their fund's purpose and their organization's purpose. The requests were later discussed at a meeting of the Financial Advisory Committee and then at SGA.

"Any organization can request up to six hundred dollars, and if you combine with another organization, you can request up to fifteen hundred dollars," Dante Porter, recently elected vice president of finance said.

Student organizations requesting funds included Christian Campus Fellowship, Student Council for Exceptional Children, Campus Crusades for Christ, the American Marketing Association, Biological Organization of Graduate Students and Student Affiliates of the American Chemical Society.

Each college chair had a chance to oppose any student organization's request, but they granted all.

FAC and SGA work together to ensure that student organizations get the funding they need, Porter said.

The Student Council for Exceptional Children requested funds for the CEC 2012 convention and expo, according to the FAC budget information.

"The GSU special education pre-service teachers will be participating in the convention by attending a number of education sessions that are directly applicable to future work in schools and with students with disabilities," Student Council for Exceptional Children said.

Campus Crusades for Christ requested funds for a spring break mission trip to Chicago, according to FAC budget information.

"We will be traveling to Chicago and will have time for training and development as it relates to our mission. We will also be taking students to live out our mission on college campuses there and among inner city kids," Campus Crusades for Christ said.

FAC and SGA deliberate on student organization funding each week.

## Students experience registration issues

BY TAYLOR COOPER

The George-Anne staff

Registration began this week and WINGS is still giving students issues, even with its new update.

WINGS was given a new look that was meant to streamline the system, and has also had some internal upgrades, Bobbie Williams, student advisor and coordinator of student services for the College of Business Administration, said.

"We just started registering this week, and there's been an update to WINGS — not just to the face, but to the system — that will hopefully speed things along," Williams said.

Some students are still having problems registering.

"It wouldn't let me get into my organic chemistry class — not the class itself, but the lab," Sterling Brown, sophomore biology and pre-medicine major, said.

"Everything is on the 2011 and 2012 (class) catalogue. I'm on the 2009 catalogue, which they said wouldn't be a problem when

I transferred here. It means, when I try to sign up for some classes, it tells me there are classes I haven't finished yet," Racheal Tharp, a junior Spanish major, said.

"We're working through the problems, but we don't have an answer quite yet. We are planning meetings to discuss them," Velma Burden, associate registrar, said.

Other students aren't experiencing any issues.

"It's been easy to use for me. I haven't seen the (new) layout yet, though," William Headlee, junior general studies major, said.

The usual problem advisors see with registration is with required courses, Williams said.

"A lot of things that we see as advisors are pre-req problems. Students come in and don't know that they need another class to take this one," Williams said. "I haven't heard students complain that much."

Williams said, "I don't feel that the problem with registration is the system, but that there aren't enough classes."

ON THE ATLANTIC COAST IN BRUNSWICK, GEORGIA



# Make the most of summer on the coast.

Summer Semester at College of Coastal Georgia.

**CATCH UP ON CREDITS.  
LIVE ON CAMPUS.  
GET AHEAD. GET A TAN.**



**COLLEGE of  
COASTAL  
GEORGIA**

UNIVERSITY SYSTEM OF GEORGIA

Application Deadline: May 15  
For a listing of classes offered  
visit [ccga.edu/summer](http://ccga.edu/summer).

For information: 800.675.7235



## Master of Fine Arts thesis exhibition opens

BY MARISSA MARTIN

The George-Anne contributor

The artwork of five Georgia Southern University students is on Display at the Center for Art and Theatre as the Betty Foy Sanders Department of Art debuts the Master of Fine Arts Thesis Exhibition.

The exhibition features two 2-dimensional artists: Amy Fix, and Kristin Kyzer, two 3-dimensional artists: Wesley Stewart, and Brent Williams, and one graphic design artist: Collin Smith. Altogether, the MFA candidates brought diverse variations of art into the gallery.

Amy Fix, MFA candidate and assistant art professor, explored the female body in her exhibit titled "Skin Deep: The Elusive Aphrodite." She used large brightly colored brush strokes in her paintings of nude women.

"In each picture the subject is captured in a pose inspired by Venus or Aphrodite," Fix said in the object label displayed by her exhibit.

Kristin Kyzer, MFA candidate and assistant art professor, titled her exhibit "The Last Word". She expressed this title as "how every individual has the power to specify their own last word" in the object label near her exhibit.

Kyzer chose transparent Mylar as her medium because she liked the effect it had when layered on top of another, she also created a modern appeal that mirrors many of today's artists.

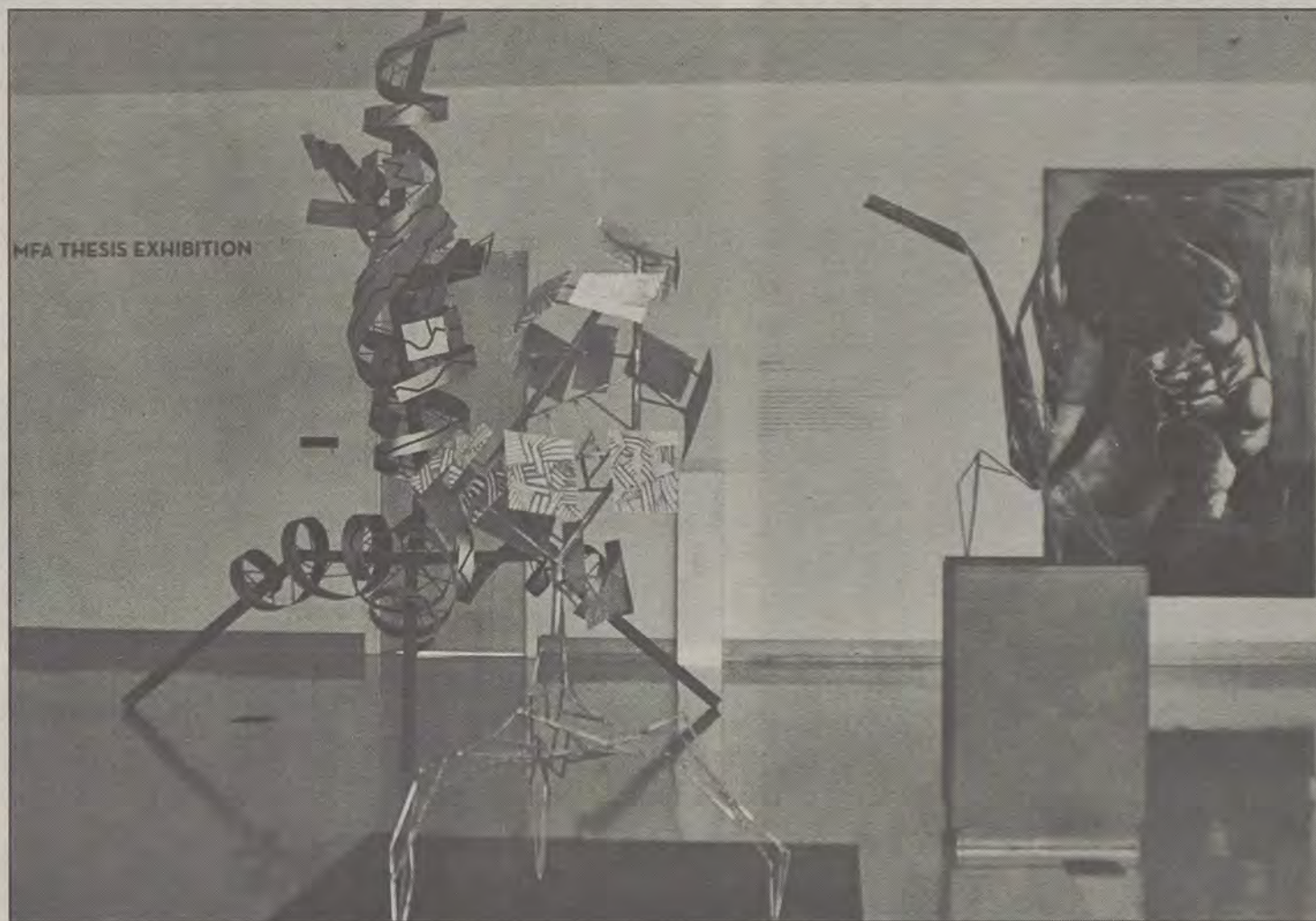
"This gallery shows what is current, and contemporary," Marc Mitchell, gallery director and assistant professor, said.

Wesley Stewart, MFA candidate and assistant art professor, used street art and video games as inspiration for his artistic research. He created brightly colored metal sculptures that almost touch the ceiling. He titled his work "Drawing In Space" because most of his ideas were based on line drawings from his sketchbook.

Brent Williams, MFA candidate and assistant art professor, used heavy weight paper to "create a sentimental timeline of objects selected from my personal history." He shaped a teddy-bear, cell phone, and a camera to name a few.

"Each piece serves as a bookmark to a collection of memories, people, or lessons that have influenced me," Williams said in the object label near his exhibit.

Collin Smith, MFA candidate and assistant



Demario Cullars/The George-Anne

The Master of Fine Arts exhibition showcases work by Georgia Southern University graduate students at the Center for Art and Theatre.

art professor, was the only candidate to represent graphic design in the gallery. His exhibit portrays black and white graphic images where the letter 'F' appears in each scenario.

"I created Feral, which combines cultural chronicles with aggressively charged imagery," Smith said in the object label near his exhibit.

The MFA exhibit allows the opportunity for Georgia Southern University students to be exposed to art. Looking at an artwork on print can be entirely different from viewing the same artwork firsthand, Amy Fix, MFA candidate and assistant art professor, said.

"Anytime you have the chance to experience art in real life, you should," Kyzer said.

On Friday afternoon the graduate students could be found in the CAT gallery arranging their artwork and lighting. This marked the end of their academic career for the MFA

program at Georgia Southern University. The requirement for students to graduate through GSU's MFA program is a written thesis and artistic research.

"Their artistic research, or artwork, has taken most of the students their entire degree program to complete," Mitchell said.

The gallery will showcase the students work, and each project will be formally critiqued before the students MFA program is complete. A master of fine arts degree is a terminal degree for studio art, which means for these students this program will be the highest form of education they can receive in the art field.

"These students will be tomorrow's artists," Mitchell said.

The process of acceptance into a graduate degree program is highly competitive, but that is only the start. The candidates from GSU's MFA program know how demanding it can be.

"Pursuing a Master's Degree is not for everyone," Kyzer said, "unless you are a serious student you won't make it."

This exhibition is a GSU tradition, especially in the Art Department. These students are showcasing high quality work, Mitchell said, this is why GSU has brought it back "for many, many years."

All five graduate students represented in the gallery will be graduating this May. Many of them hope to have their artwork exhibited in other galleries across the nation.

"I would like to continue teaching, and creating more artwork," Kyzer said.

"I think it (student's artwork) will be larger than GSU's campus," Mitchell said.

The Master of Fine Arts Thesis Exhibition will be on display from March 6 - April 6 when there will be an artist reception open to the public from 5 - 7 pm in the gallery of the CAT.



# Dress in the Press comes to Williams Center



Top Left: Team Alexia, the winner of the competition, struts her stuff for the judges. Bottom Left: Team Strawberry Electric helps their model get ready for the show. Bottom Middle: Team Les Ura Nouvelles model does her runway walk during the show. Bottom Right: Team Femme Fierce helps their model get ready before making her runway debut.

Lauren Davis/The George-Anne



# African storyteller to perform at GSU

BY E. FEAGIN OLIVER

The George-Anne contributor

The tradition of the African culture will be brought to the Georgia Southern University Russell Union Theater as the Multicultural Student Center hosts a performance by Chang'aa Mwetl on Thursday evening.

The idea to have Mwetl perform on campus came up at a meeting of several student organizations last spring.

"Every spring we have a meeting with other student organizations, and at this meeting, we come up with ideas for the next school year, and the idea of Mwetl coming to campus came from an idea that was brought up by someone from one of the organizations who was familiar with his work," Darius Robinson, graduate assistant at the MSC, said.

Mwetl will recite two oral stories presented in traditional African style — one, an autobiographical piece entitled "Coming to American," and the other, a native African folk piece called "A Father's Gift to His Children."

"His performances are interesting, when he performs, he does skits and he has music playing, while telling the story from his own perspective,



Photo courtesy of www.statesborobahais.org.

Professor Chang'aa Mwetl poses with an audience member during his visit to Savannah in 2009.

Robinson said.

Mwetl, originally from Kenya, is an assistant professor of education at the University of Minnesota.

Mwetl performed at GSU last spring and in 2009, Mwetl was featured in the Ayyam-i-Ha festivities of the Baha'I community of Savannah.

"When we brought him here last year, he did a very good job, he was awesome, students really

enjoyed themselves during his performance," Robinson said.

The MSC is hoping that this event increases student awareness about different cultures.

"After this event, we are hoping that students will leave having gained awareness and knowledge from a culture and a cultural practice that is different from their own," Robinson said.

## The Buzz List

▪ **Ashley Olsen** has declared that she will no longer be acting. If it weren't for her making this public statement, we wouldn't have known she has done any acting since "Full House."



Gianna Carme

▪ **Snooki's** baby is due on December 21, 2012, the same day the Mayans predict the world will end. I never believed in this concept before, but this leads me to believe that they knew what they were predicting.

Information compiled by Arts Editor Quamiqua Epps and Assistant Arts Editor Gianna Carme from TheHollywoodReporter.com.

## 'Beautiful Voices' to captivate

BY ANDREW BRIDGES

The George-Anne contributor

In collaboration with the V.O.I.C.Experience Foundation, Georgia Southern University is bringing the operatic sounds of "Beautiful Voices" to the GSU campus.

"There will be a workshop GSU is doing in collaboration with a very famous opera singer," Rebecca Flaherty, VOICE Workshop program manager and part-time assistant professor of voice, said.

Opera legends Sherrill Milnes and Diana Soviero will coach a group of talented singers through various exercises over the course of next week. Two of these sessions will be open to the public for anyone wanting a chance to see what goes on behind the making of an opera star.

"Milnes is a legend. He's going to help put Statesboro on the map for both opera and music," Flaherty said. "To have him coming to Statesboro is really exciting, and to be singing under his direction will be an incredible experience."

The VOICE Workshop offers the general public a glimpse behind the art of opera, as 20 professional singers from around the country will participate in public master classes.

"The audience will get to see the process of what opera singers go through while honing their craft," Flaherty said.

After a week of private lessons and the master classes, the 20 singers, backed with musical accompaniment, will put on a concert of opera and song called "Beautiful Voices," in which they will have the chance to display their growth as vocalists. Singers from around the area are also urged to participate in the concert.

"There's an open invitation to local singers interested in joining us," Flaherty said. "Anyone from the ages thirteen and up is eligible, so any young singers from the community who might be in a choir or chorus, or sing in general, are welcome. Those wanting to participate will have the chance after attending the rehearsal next Monday."

Rehearsal for those interested in joining "Beautiful Voices" will be on Monday March 12 at 5:00 p.m. in the Foy Music Building.

Milnes's public master class will be on March 10 at 7:30 p.m. in the Carter Recital Hall. Soviero's public master class will follow on March 13 at the same time and place.

"Beautiful Voices" debuts on Friday, March 16, at 7:30 p.m. in the Carter Recital Hall.

## Your mother doesn't work here.

*Don't worry, our doctors and medical staff are the next-best thing.*



**No matter what's wrong, let us take good care of you.**



**SOUTH GEORGIA  
IMMEDIATE  
CARE CENTER**

1096 Bermuda Run Road  
(next to Mellow Mushroom)  
Statesboro, GA 30458  
p - 912-871-5150  
yourimmediatecarecenters.com

CONVENIENTLY LOCATED MINUTES FROM GSU.  
CARING AND CONFIDENTIAL TREATMENT.

HOURS:

Monday - Friday 9:00 am - 8:00 pm  
Saturday 9:00 am - 5:00 pm  
Sunday 12:00 pm - 5:00 pm

Most insurance accepted - bring your insurance card and Driver's License. Please call with co-pay and insurance questions. Cash patients also welcome.



# THE 'BORO BEAT

## YOUR GUIDE TO OFF-CAMPUS ENTERTAINMENT

### THURSDAY

#### Applebees

Happy Hour & Late Night Fun: 3-6 p.m. 9 p.m.-close  
Half-price appetizers, \$2 Natty Light brews,  
\$3 domestic brews (micros \$1 more),  
\$3 Long Islands, \$3 main street margarita  
as (regular and flavor), \$3 wells.

#### Millhouse

-Jason White performing  
-\$1.99 draft beers, cocktails, martinis, margaritas  
-\$2.49 house wines

#### Manny's

-Happy Hour 5-7 p.m. \$2 draft beers, half-price  
wine, \$2 wells, \$3 double wells  
- Buy 12 wings, get 12 free

#### Dingus Magee's

-Happy Hour 5-7 p.m. 9-11 p.m. 2 for 1 wells  
2 for 1 apps 5-7 p.m.  
-Wally Brown is performing

#### Gnat's Landing

-\$10 buckets of beer, \$3 doubles, \$3 bombs, \$3  
New Castles

#### El Sombrero Downtown

-Domestic beer \$2.50

#### Loco's

-Happy Hour 5-7 p.m. Half-price draft beer, half-  
price chips and salsa, half-price chips and queso,  
half-price wings

#### Southern Billiards and Burgers

-Happy Hour 5-7 p.m. \$1 shots, \$2 well drinks,  
\$1.50 domestic drafts, \$2.50 import drafts  
-Lunch Special 11 a.m.-2 p.m.  
30 minutes free pool with lunch purchase

### FRIDAY

#### Applebees

Happy Hour & Late Night Fun: 3-6 p.m. 9 p.m.-close  
Half-price appetizers, \$2 Natty Light brews,  
\$3 domestic brews (micros \$1 more),  
\$3 Long Islands, \$3 main street margarita  
as (regular and flavor), \$3 wells.

#### Millhouse

-Harry Canary performing  
-\$1.99 draft beers, cocktails, martinis, margaritas  
-\$2.49 house wines

#### Manny's

-Happy Hour 5-7 p.m. \$2 draft beers, half-price  
wine, \$2 wells, \$3 double wells, half-price wine,  
\$2 beer, \$2 sangria

#### Dingus Magee's

-Happy Hour 5-7 p.m., 9-11 p.m. 2 for 1 wells,  
2 for 1 apps 5-7 p.m.

#### Ruby Tuesday's

Happy Hour 4-6 p.m., 9-11 p.m. \$5 Absolut vodka,  
\$5 select wines

#### Gnat's Landing

\$10 buckets of beer

#### El Sombrero Downtown

-Sex on the beach \$2

#### Loco's

-Happy Hour 5-7 p.m., half-price draft beer, half-  
price chips and salsa, half-price chips and queso,  
half-price wings

#### Southern Billiards and Burgers

-Happy Hour 5-7 p.m., \$1 shots, \$2 well drinks,  
\$1.50 domestic drafts, \$2.50 import drafts  
-Lunch Special 11am-2 p.m.  
-30 minutes free pool with lunch purchase

### SATURDAY

#### Millhouse

-DoGoodDJs performing  
-\$1.99 draft beers, cocktails, martinis, margaritas  
-\$2.49 house wines

#### Manny's

-Happy Hour 5-7 p.m., \$2 draft beers, half-price  
price wine, \$2 wells, \$3 double wells  
-\$10 domestic buckets, 26.99 for 50 wings and a  
pitcher of beer

#### Dingus Magee's

-Happy Hour 5-7 p.m., 9-11 p.m., 2 for 1 wells,  
2 for 1 apps 5-7 p.m.

#### Ruby Tuesday's

Happy Hour 4-6 p.m., 9-11 p.m. \$5 Absolut vodka,  
\$5 select wines

#### El Sombrero Downtown

-\$2 lime margarita

#### Loco's

-Happy Hour 5-7 p.m., half-price draft beer, half-  
price chips and salsa, half-price chips and queso,  
half-price wings

myth:  
fact:

drinking is central to the  
social lives of georgia  
southern university  
students

64% of georgia southern  
students have 0-4  
drinks per week

presented by the dean of  
students office

for more information visit:  
<http://students.georgiasouthern.edu/eod>  
data collected from georgia southern  
university core survey 2010

INFORMATION  
EDUCATION

- Eye Exams
- Glasses
- Contacts



912-489-6655

820 HWY 80 E. (in front of Lowes)  
[www.boomersvisioncenter.com](http://www.boomersvisioncenter.com)



# THE 'BORO BEAT

## YOUR GUIDE TO OFF-CAMPUS ENTERTAINMENT

### SUNDAY

#### Millhouse

- \$1.99 draft beers, cocktails, martinis, margaritas
- \$2.49 house wines

#### Manny's

- Happy Hour 5-7 p.m., \$2 draft beers, half-price wine, \$2 wells, \$3 double wells
- \$10 domestic buckets, \$26.99 for 50 wings and a pitcher of beer

#### Dingus Magee's

- Happy Hour 5-7 p.m., 9-11 p.m., 2 for 1 wells, 2 for 1 apps 5-7 p.m.

#### Ruby Tuesday's

- Happy Hour 4-6 p.m., 9-11 p.m., \$5 Absolut vodka,
- \$5 select wines

#### El Sombrero Downtown

- Well special \$3

#### Southern Billiards and Burgers

- Happy Hour 5-7 p.m., \$1 shots, \$2 well drinks, \$1.50 domestic drafts, \$2.50 import drafts
- Lunch Special 11 a.m.-2 p.m.
- 30 minutes free pool with lunch purchase

### MONDAY

#### Applebees

- Happy Hour & Late Night Fun 3-6 p.m. 9 p.m.-close
- Half-price appetizers, \$2 natty light brews, \$3 domestic brews micros \$1 more, \$3 Long Islands, \$3 main street margarita as (regular and flavor), \$3 wells.

#### Millhouse

- \$1.99 draft beers, cocktails, martinis, margaritas
- \$2.49 house wines

#### Manny's

- Happy Hour 5-7 p.m., \$2 draft beers, half-price wine, \$2 wells, \$3 double wells
- half-price pizza

#### Dingus Magee's

- Happy Hour 5-7 p.m., 9-11 p.m., 2 for 1 wells 2 for 1 apps 5-7 p.m.

#### Gnat's Landing

- Happy Hour All Day

#### Downtown

- \$2 margaritas all day

#### Loco's

- Happy Hour 5-7 p.m., half-price draft beer, half-price chips and salsa, half-price chips and queso, half-price wings

#### Southern Billiards and Burgers

- Happy Hour 5-7 p.m., \$1 shots, \$2 well drinks, \$1.50 domestic drafts, \$2.50 import drafts
- Lunch Special 11 a.m.-2 p.m.
- 30 minutes free pool with lunch purchase

#### Ruby Tuesday's

- Happy Hour 4-6 p.m., 9-11 p.m., \$5 Absolut vodka
- \$5 select wines

### TUESDAY

#### Applebees

- Happy Hour & Late Night Fun 3-6 p.m., 9 p.m.-close
- Half-price appetizers, \$2 Natty Light brews, \$3 domestic brews (micros \$1 more), \$3 Long Islands, \$3 main street margarita as (regular and flavor), \$3 wells.

#### Millhouse

- \$1.99 draft beers, cocktails, martinis, margaritas
- \$2.49 house wines

#### Manny's

- Happy Hour 5-7 p.m., \$2 draft beers, half-price wine, \$2 wells, \$3 double wells

#### \$3 Jack Daniels

#### Dingus Magee's

- Happy Hour 5-7 p.m., 9-11 p.m., 2 for 1 wells, 2 for 1 apps 5-7 p.m.

#### Gnat's Landing

- \$10 bucket of beer, \$7.99 shrimp and grits, trivia starts at 7 p.m.

#### El Sombrero Downtown

- \$2 strawberry daquiris

#### Loco's

- Happy Hour 5-7 p.m., half-price draft beer, half-price chips and salsa, half-price chips and queso, half-price wings

#### Southern Billiards and Burgers

- Happy Hour 5-7 p.m., \$1 shots, \$2 well drinks, \$1.50 domestic drafts, \$2.50 import drafts
- Lunch Special 11 a.m.-2 p.m.

- 30 minutes free pool with lunch purchase

#### Ruby Tuesday's

- Happy Hour 4-6 p.m., 9-11 p.m., \$5 Absolut vodka
- \$5 select wines



ACROSS FROM GEORGIA SOUTHERN  
IN FRONT OF WOODLAND APARTMENTS

PHONE: 912.681.3597  
ACCEPTING EAGLE EXPRESS

LOCATION: WOODLAND SQUARE  
ACROSS FROM GEORGIA SOUTHERN  
STATESBORO, GA 30458



"BAD TO THE BONE"  
LOCATED NEXT TO WAL-MART  
912-764-6556

**\$2.00 OFF**  
REG. \$6.49

**CHICKEN TENDER SALAD  
GRILLED OR FRIED**

**MUST PRESENT COUPON  
EXPIRES: 3-10-2012**



# Jewish traveling exhibit on display at Henderson

BY JAZMIN DAVIS

The George-Anne staff

Classic songs and films will live once more as the Zach S. Henderson Library displays the traveling exhibit "A Fine Romance: Jewish Songwriters, American Songs, 1910-1965" through March and April.

In honor of beloved songwriters from the 20th century, the American Library Association chose Georgia Southern University's library as one of 55 sites in the United States to present the exhibit. Apart from GSU, the exhibition has been traveling since May of 2011 to many other sites, mostly on the East Coast and in the Midwest.

"We're delighted to feature (exhibits) like this. We had a traveling exhibit last year also co-sponsored by the American Library Association," Dean of the Library Bede Mitchell said.

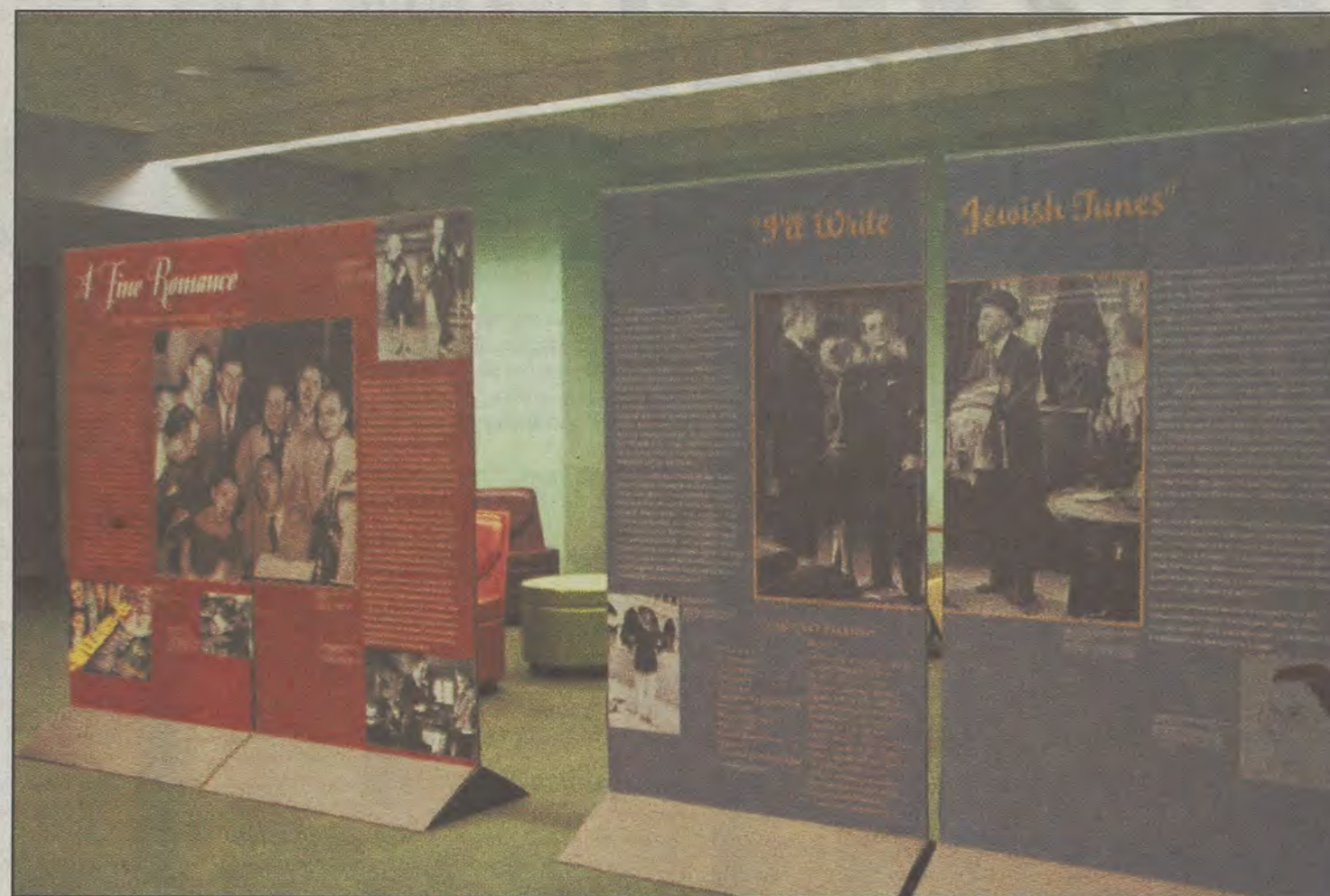
To kick off the exhibition, Henderson library will be putting on an opening reception and recital for GSU students, faculty and community members to enjoy tonight. Pianist and retired GSU professor Michael Braz and vocalist Hillary Zeigler will be reciting featured classical favorites from donated sheet music for this evening's event.

"It's always a pleasure to work with Dr. Michael Braz, who's always taking part in events in the music department," Mitchell said.

Hillary Zeigler is a teacher at Brooklet Elementary who has performed in numerous plays at the Averitt Center for the Arts, as well as being the music director for the more recent production of "Annie."

Based on a book by David Lehman, the exhibit tells a story of growth from hardship, featuring well-known tunes and images from Broadway musicals to on-screen favorites like "The Wizard of Oz" and "Mary Poppins."

The exhibition shows six stands with Lehman's story and photos of Fred Astaire and Ginger



Demario Cullars/The George-Anne

"A Fine Romance: Jewish Songwriters, American songs, 1910-1965" has made its debut to the GSU community at the Henderson Library.

Rogers, Judy Garland and Mickey Rooney and many other classic favorites.

Songwriters like Irving Berlin, Jerome Kern and the famous duo of Richard Rogers and Oscar Hammerstein provided America with some of its most favored hits, and are mainly featured in the display.

"Growing up when there was only three

channels on the television, every time they showed the 'Wizard of Oz,' it was a big deal," Mitchell said.

According to the display, Berlin went from having to change his Jewish name to making hits from 1907 to the early 1930s.

The reader can see how Jews came out of the horrors after the assassination of the czar in 1881,

to creating beloved memories for families all over America.

Lehman gives readers an outlook on the romance, optimism and even the melancholy undertones that most of the featured songwriters experienced and brought out in their music during this time.

UT&ABOUT

## Express Tune & Lube

Tire, Alignment  
& Exhaust Center

612 S. Zetterower Avenue

489-4444

www.expresstuneandlube.com

Monday - Friday 7:30am - 6:30pm

Located a half block north of Wendy's.

### OIL CHANGE SPECIAL

**\$25<sup>95</sup>** Includes up to  
5 qts of Castrol  
5W20, 5W30, 10W30,  
or 20W50

price applies to most vehicles. Expires 4/30/12

www.expresstuneandlube.com

**MDL**

Embroidery & Gifts

Come see us at our new location  
next to McAlister's!

1100 Brampton Ave.  
Suite B  
Statesboro Ga. 30458

**15%**  
**Off**

With this coupon  
present



# D.I.M.E.S. to give students a lesson in fashion and beauty

## Fashion

BY TANIQUA RUSS

The George-Anne staff

The buzz and excitement surrounding Paris Fashion Week does not have to die down, as D.I.M.E.S. fashion organization will be hosting its annual Fashion Week celebration Monday, March 19, through Saturday, March 24.

D.I.M.E.S. Fashion Week is a celebration in which the organization hosts a different fashion and beauty themed event each day.

The event started as a week of activities ending with the big spring show put on by D.I.M.E.S., but later evolved into something much bigger and was named D.I.M.E.S. Fashion week last year.

"We've always done stuff like this to lead up to the actual show," D.I.M.E.S. public relations chair and junior history and pre-law major, Monica Hughes, said.

The fashion week will kick off on Monday with Makeup 101 in the Russell Union in Room 2084 at 7 p.m. Makeup 101 shows students how to correctly apply makeup through discussions

and demonstrations. Topics include "Do's and don'ts of makeup," "The difference between day and night makeup," "Applying makeup according to face shape" and even "The basics of stage makeup."

On Tuesday, D.I.M.E.S. will bring another informational session to the students with "Exhibiting the Style in You." At the forum, D.I.M.E.S. members will explain how students can tailor celebrity trends to fit their personality and specific style.

"There are so much fashion trends and a lot of people get confused about 'what can be me,' 'what can fit my style,'" Hughes said. "We want to show our audience how to dress for their body."

The fashion celebration will then move into the "Fashion Fair" event on Wednesday night. Here D.I.M.E.S. members will showcase their work, such as designs and clothing. Handcrafted jewelry by organization members will be sold at the fair.

On Thursday evening, GSU students and faculty can dress up in their very best cocktail attire and attend The Fashion Awards at 7 p.m. in the Hospitality, Tourism and Family

and Consumer Science building. During the ceremony, D.I.M.E.S. fashion organization awards faculty and students in the fashion department for their hard work and dedication.

"They don't get the recognition they deserve," Hughes said of the fashion department.

According to Hughes, the awards presented will consist of, Teacher of the Year, Most Fashionable, Best Design, Most Stylish, Most Creative and many others.

Students can get involved in the process by sending their nominees to president of D.I.M.E.S. Dominique Francis, and then casting their votes in the ballot box located in the Hospitality, Tourism and Family and Consumer Science building.

Friday, D.I.M.E.S. will host a members only cookout to honor the members of their organization, but students will be welcomed to join the festivities again on Saturday for the big spring show, "Storeia D'amore: The Romance of Art and Fashion," when everything comes together, Hughes said.

D.I.M.E.S. Fashion week events will take place at 7 p.m. in the Russell Union in Room 2084.

## D.I.M.E.S. FASHION ORGANIZATION SPRING FASHION SHOW

### The Romance of Art and Fashion

Mon. 3/19	"Make-up 101"
Tues. 3/20	"Exhibiting the Style in You"
Wed. 3/21	"Fashion Fair"
Thurs. 3/22	"Fashion Awards"
Sat. 3/24	"Storeia D'amore" Spring Fashion Show

Matt Veal/The George-Anne



**CAMBRIDGE SOUTHERN**

**Better features.**

912.681.1300

Cambridge-Southern.com



**UNLIMITED FUN  
LIMITED VACANCIES**

**CALL 912-681-3888 TODAY!**

**GREAT SPACE. GREAT RATES**

FULLY FURNISHED, SPACIOUS APARTMENTS • LARGE, LOCKABLE BEDROOM/BATHROOM SUITES • WASHER AND DRYER IN EACH APARTMENT

LOADED CLUBHOUSE WITH GAME ROOM, FITNESS CENTER, TANNING BOOTHS

POOL, VOLLEYBALL AND BASKETBALL COURTS, GRILLS AND FIRE PITS

**the grove**

1150 Beaufort Avenue  
Statesboro, GA 30458

info@statesborogrove.com

FULLY LOADED COLLEGE LIVING.



# CLASSIFIEDS

This page brought to you by Career Services

Explore • Experience • Excel

16 Thursday, March 8, 2012

The George-Anne

Advertisement

## For Sale

Scooter for sale! 2005 Honda Ruckus. Black, 49cc, 85+mpg. Original (faculty) owner, garage kept. \$1,500 OBO. Contact (912) 678-6052

Firewood for Sale. Delivery available! Call 912-690-0872 or 912-690-4956.

For sale: 2009 BMW 328i, hard-top convertible in great condition. Black with tan interior. Call 912-293-1909.

Used Fender Blues Jr. All-tube guitar amp, \$350, negotiable. Perfect working order/condition (912) 536-1610

Bed frame, mattress, box spring, and dresser for sale! Only a \$150!! Contact Kristina: 678-770-6251

## Houses for Rent

ATTENTION ALL STUDENTS 2, 3, 4, 5, 6, and 7 bedroom houses available Aug 1, 2012 24 hr repairs guaranteed 912-682-7468

Furnished apartment - upstairs with separate entrance. Located just past Mill Creek Park. No laundry facilities. Includes utilities. \$130/week or \$500/month. Available now. 912-531-1319

## Subleases

Subleasing master bedroom in Planter's Row for \$365/month; utilities not included, pet friendly. For more information contact Anna-Marie at at01770@georgiasouthern.edu or call (770) 546-6560

Subleasing a room in 4 BR/2BT in The Avenue for Spring 2012, but available as early as Dec 16 and Dec will be paid for. \$325/MO. Furnished, utilities included with free Wifi and Cable. Contact Nikki at (678)525-0297.

Sublease at Cambridge for Reduced Price 1 BR/BTH available in a 3 BR, bus stop directly across from campus, all utilities included, furnished, washer/dryer, amenities. \$350/month. Regular price-\$459/month. Email shortecutie102@yahoo.com

2 Bedroom 2 Bathroom apartment in Hawthorne 2. Very close to campus. \$350/month. Sublease through July. Contact Shannon at 678-468-9407

2 BR/2 BT sublease in Georgia Villas. \$475/month for both rooms, utilities not included. Available Jan-May, pet friendly. Right across from Greek Row on Chandler. Email t100212@georgiasouthern.edu

## Subleases, cont.

Subleasing my room for Spring 2012 in a fully furnished 4 BR/4 BT 3-story town home. Walking distance from the stadium and bus stop. Contact Alex at (770) 712-5377 or ao00837@georgiasouthern.edu

Spring 2012 1 BR/1 BT in a 2 BR/2.5 BT townhouse at The Avenue. \$495/month, but I will pay \$30 for each month. Or I could put \$210 towards the first month's rent. Contact Cherrelle at chollan4@georgiasouthern.edu

Subleasing 626 B at the Exchange. Female Roommate needed. \$519.00 per month. All utilities included, free tanning, free Wi-Fi, 24 hr gym included. Available now. Contact (706) 523-6001

Room available for male or female in a 3 BR/2 BT house on Catherine Avenue. Fully furnished; bed needed. \$367/mo per person, utilities not included. Spacious house. Contact Yale at (404) 272-7652 or yale8754@bellsouth.net

SUMMER 2012! Subleasing 1BR/1BT available in a 2BR/2BT at The Woodlands. \$409/month plus utilities. Email Sadie at sn01140@georgiasouthern.edu

## Subleases, cont.

SPRING 2012! 1 BR/1BT available in 4 BR/4 BT at Campus Club for Jan or earlier. Utilities included. Rent is \$419/month; CHEAPER RATE CAN BE ARRANGED. Email Skyler at sh02071@georgiasouthern.edu

1 BR/1 BT available in a 3 BR at The Grove, for Spring 2012. Available after Dec. 20. \$450/mo, utilities included. Call Ellen 404-694-1394 or email ej00034@georgiasouthern.edu

All inclusive, two story, fully furnished, 4 BR townhouse for \$330/month! Includes trash, utilities, cable, wi-fi, pet park, 24/7 gym, recreation courts, computer lab, new appliances and washer/dryer! Contact (229) 326-4291.

Subleasing a 1 BR/1 BT in 4 BR apartment in Copper Beech for Spring 2012 starting Christmas Break. \$389/mo plus utilities. Contact Singer (404) 680-7240

Female roommate needed for Spring 2012: 3BR/3BT at Cambridge; \$448/mo 1st floor. Contact Angelica 404-921-4988.

3BR/2BT within 2 miles campus. You can sublease the other 2 rooms. No smoking or pets. Call (706) 951-1427.

## Subleases, cont.

SPRING 2012! Female roommate wanted. 1BR/1BT in a 3BR/3.5BT townhome. \$400/mo. Contact at 404-444-8987 or ec01442@georgiasouthern.edu

1BR/1BT available in a 4BR/4BT at Campus Club \$700 for the whole summer or \$370/month. Email Shanna at shannalawson22@gmail.com

Subleasing 3 BR/2BT house on Parker Ave in Brooklet. Contact Joyce at (912) 842-9479.

Sublease available ASAP. at Copper Beech. \$389 rent monthly. Utilities not included. 3 roommates. Fully furnished. 478-957-1005 for more information.

Sublease my 1BR apartment ASAP at Panter's Row. It is only two years old with a HUGE walk in closet. It is \$625 and pet friendly. Utilities are not included. Contact at be01181@georgiasouthern.edu or 478-455-0432.

## Help Wanted

MODELS of all weights/sizes/ages needed for figure drawing class on T&R, 2-4:30 PM. Fall and spring openings. Must be 21 and able to sit for long periods. Call 912-478-2793 or email jburke@georgiasouthern.edu

## Help Wanted, cont.

BARTENDERS WANTED! \$250 a day potential. Experience unnecessary. Training provided. 18+ Call: 1-800-965-6520 ext. 296

Seeking an Assistant, excellent opportunity if looking to work in a friendly atmosphere. Self-Motivated, Positive Attitude, Ability to Multi task. Send resume to Martgag@gmail.com

Part time sales position open at Farmer's Home Furniture. Apply in person. 110 Northside Drive E. Statesboro, Ga 30458

## Misc.

American Shorthair Cats (AKC Reg. Male and Female) free to good home, contact bpills12@gmail.com if interested

Will proof papers. Quality work, reasonable prices. Will also type short projects. Must have ample lead time to schedule. Email aunte01@gmail.com

Fourth year writing and linguistics major will proof papers/ tutor in writing. Cheapest rates, at least three days notice on assignments

# NETWORKING NIGHTS

*Media, Public Relations, Communication, Entertainment, & Sports Management/Marketing*

*Monday, March 26 from 1 - 4 pm in RU Ballroom*

*Fashion, Interior Design, & Retail Merchandising*

*Thursday, March 29 from 5 - 7 pm in RU Ballroom*

*Healthcare & Wellness Services*

*Thursday, April 12 from 5 - 7 pm in RU Ballroom*

*Museums, Art Galleries, & Cultural Centers*

*Tuesday, April 24 from 5 - 7 pm in RU Ballroom*

Williams Center 1047 (912) 478-5197 georgiasouthern.edu/career

# Gear Up For Graduation

By Sarah Dixon,  
PR/Marketing Intern

The time has come for the 2012 Graduation Gala for students graduating in spring, summer, or fall 2012 semesters. We invite you to join us for a one stop shopping experience on Tuesday, March 20 and Wednesday, March 21 from 10 a.m. - 6 p.m. in the Nessmith Lane Conference Center.

You will have an opportunity to: Order your invitations, ring, and cap & gown.

Finalize graduation requirements. Speak with a Financial Aid Counselor and learn about loan consolidation.

Pay any outstanding fees.

Take graduation portraits.

Check out how you can stay involved with alumni and athletic events.

Gather information about graduate programs.

Order professional framing for your diploma.

Gain assistance with your résumé and job search.

We accept Visa, MasterCard, Cash and Checks for all fees and other payments. Also, please bring your student ID to enjoy FREE Cokes, popcorn, and t-shirts!

For more information, please contact Karen Townsend Murphree at (912) 478-5197 or via email at townsend@georgiasouthern.edu.



# PUZZLES/COMICS

www.thegeorgeanne.com

Thursday, March 8, 2012 17

## Los Angeles Times Daily Crossword Puzzle

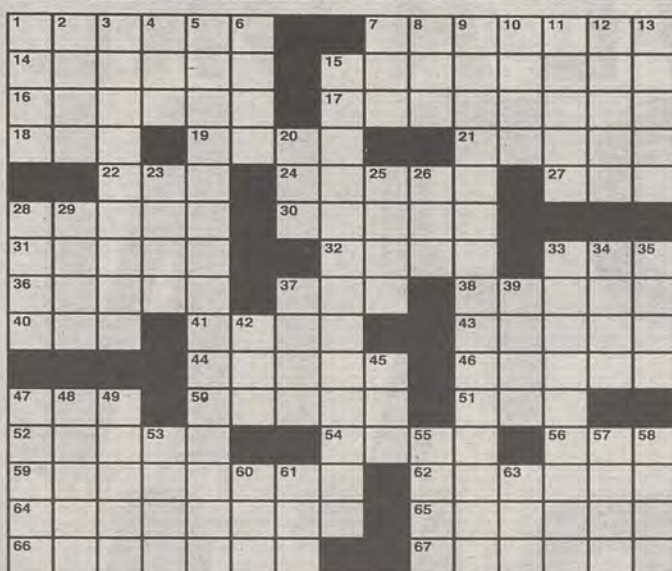
Edited by Rich Norris and Joyce Lewis

### ACROSS

- 1 Condiment often mixed with soy sauce
- 7 Cowboys-and-Indians toys
- 14 Help, metaphorically
- 15 Scrape together
- 16 Bobby \_\_\_\_ '40s-'50s adolescent girls
- 17 Teen dieter's target, perhaps
- 18 "Stop right there!"
- 19 Classic pop
- 21 Start of a personal trainer's motto
- 22 ASCAP competitor
- 24 Phrase from one who sees
- 27 \_\_\_\_-wop music
- 28 Song of thanksgiving
- 30 Workaholic's personality pattern
- 31 Talk on the street?
- 32 Zoom
- 33 Santa's laughs
- 36 And the following, in a bibliog.
- 37 James Bond's outfit
- 38 Given to gloom
- 40 Spot for a snooze
- 41 Asian soup noodle
- 43 Trump's "The \_\_\_\_ the Deal"
- 44 Vex supremely
- 46 Guggenheim Museum Bilbao architect
- 47 OPEC measure
- 50 Campfire treat
- 51 Dogfish Head product
- 52 Sought-after group
- 54 Courtroom cry
- 56 "That's the spot!"
- 59 Watchman
- 62 Much-anticipated time
- 64 Like Little League World Series qualifying games
- 65 Dealer's demand
- 66 One who decks the halls, say
- 67 Tachometer part

### DOWN

- 1 Household chore



By Julian Lim

3/8/12

### March 6th Puzzle Solved

S	C	A	B		P	L	A	N		I	D	A	H	O
E	L	I	A		E	A	V	E		M	I	L	A	N
M	I	S	T	E	R	B	I	G		M	A	I	Z	E
I	M	L	O	S	T		L	A	L	O		B	E	A
B	E	N	T		W	A	T	E	R	B	I	L	L	
					A	S	E		E	B	A			
F	O	U	R	B	I	T	S		A	L	E	G	U	P
I	N	L	A		A	S	P	E	N		A	A	R	E
B	O	T	T	O	M		F	L	O	U	R	B	I	N
					O	D	E	S		A	N	N		
G	R	A	N	D	S	L	A	M		D	A	S	H	
R	O	B		B	E	A	R		H	U	B	C	A	P
A	L	O	H	A		L	O	U	G	E	H	R	I	G
P	E	R	I	L		O	A	S	T		O	U	T	A
H	O	T	E	L		M	R	E	S		R	B	I	S

- 2 Healthy smoothie ingredient
- 3 2000 Ben Kingsley crime drama
- 4 \_\_\_\_-appropriate
- 5 "Who shot J.R.?" e.g.
- 6 \_\_\_\_dixit: unfounded claim
- 7 Hosp. area for heart patients
- 8 Alsatian dadaist
- 9 People, for one
- 10 Male people
- 11 Needing nourishment
- 12 Marsh of mysteries
- 13 Squabble
- 15 Piquant sushi choice
- 20 Google success
- 23 Hair very apparent?
- 25 Zenith
- 26 Field for a fold
- 28 Infinitesimal division of a min.
- 29 Middle harmony part
- 33 Easily angered, or what the answers to 3-, 5-, 9- and 15-Down appear to be?

- 34 Stink
- 35 "Ghost Hunters" network
- 37 Dog in Kansas
- 39 Sports analyst
- 42 River project
- 45 Mystery writer Josephine
- 47 Iraqi seaport
- 48 Go through the page
- 49 Techspeak, e.g.
- 53 Cup-a-Soup direction
- 55 Abba of Israel
- 57 Lug
- 58 Publicist's job
- 60 L.A.-to-Helena dir.
- 61 Kernel holder
- 63 Merged comm. giant

DIRK RAIDER IS RUNNING ALL KINDS OF COMMERCIALS. WE NEED TO GET YOU ON TV, TOO.



BUT WHAT CAN WE AFFORD? A THIRTY-SECOND SPOT? A TEN-SECOND SPOT?



AND THE GAME HAS BEEN DELAYED BECAUSE SOME NUT JUST RAN OUT ONTO THE FIELD ...



Welcome to Falling Rock National Park by Josh Shalek



		3				5	1	
4	9	6						
			6		8			
5				7				2
	3	4	9		5	6		
9				8				5
			1		9			
						1	3	
	1	9				2		

## Sudoku

7	5	2	8	4	6	1	9	
6	3	1	7	9	2	5	4	8
8	9	4	6	5	1	2	7	3
9	4	7	9	8	3	1	2	6
1	8	9	5	2	6	4	3	7
2	6	3	1	7	4	8	9	5
4	2	6	8	9	7	5	1	3
3	7	8	2	1	9	6	4	5
5	1	4	5	6	7	3	8	2

**FRANKLIN**  
CHEVROLET - CADILLAC  
PONTIAC - BUICK - GMC  
**912.764.6911**



Our experienced Body Shop can fix all of the "Dents & Dings" that your vehicle may have! We service all makes and models and accept all insurance claims, and will give you a **FREE ESTIMATE** on your body & paint repair

**GSU STUDENTS** Show your ID and receive **10% OFF** any purchase in Parts and Service

We offer our own in town towing service that is **FREE** with a Student ID when we do the repairs on your vehicle

Check out our website  
www.franklinchevrolet.com



# WEEKLY BUZZ

A weekly calendar listing sponsored by The Division of Student Affairs and Enrollment Management

MARCH 8 - MARCH 14

**THURSDAY** 3.8.2012

## TENNIS SINGLE ONLINE REGISTRATION

THE RAC

*Sponsored by Campus Recreation & Intramurals.*

10 AM

## RUDY GIULIANI STUDENT TICKET DISTRIBUTION

HANNER FIELDHOUSE, TICKET BOOTH

*Former New York City Mayor Rudy Giuliani will speak at Georgia Southern University's Hanner Fieldhouse on Wednesday, March 28 at 7 p.m. The event is free and open to the public.*

*While the event is free and open to the public, seating is limited. Tickets to reserve seats for the event will be distributed as follows:*

*Student Ticket Distribution: March 1, 2, 5 (10:00 a.m. - 5:00 p.m.)*

*Tickets will be distributed at the Hanner Ticket Booth that is located to the left of the main Hanner Entrance off of Fair Road.*

**FRIDAY** 3.9.2012

7 PM

## FREE MOVIE

RUSSELL UNION THEATER

*Sponsored by the Office of Student Activities.*

## TENNIS SINGLE ONLINE REGISTRATION

THE RAC

*Sponsored by Campus Recreation & Intramurals.*

# HAVE A GREAT SPRING BREAK

MARCH 12 - MARCH 17



Student Affairs  
Enrollment  
Management

Brought to you by Georgia Southern University VALUES. Georgia Southern V.A.L.U.E.S. is the culture shared by our students, faculty, and staff. We endeavor to share our V.A.L.U.E.S. inside and outside of the classroom with faculty, staff, students, alumni and all other community members. In order to produce productive citizens with an informed set of ethics and community standards as well as create an environment of respect and civility, we pledge to live by our V.A.L.U.E.S.



## GSU coaches Monken, Young compensated for success

BY TREVOR MCNABOE

The George-Anne contributor

"Show me the money." This quote from Cuba Gooding, Jr., from the movie "Jerry Maguire" sums up what sports is all about. Well, that and "What have you done for me lately?"

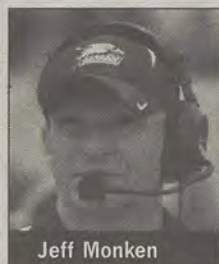
Georgia Southern University coaches Jeff Monken and Charlton Young have lived up to the latter statement.

Both Monken and Young have turned around programs in their respective sports, Monken coaching the eagles to back-to-back winning

seasons (10-5 and 11-3) after taking over a program that finished 5-6 back in 2009, and Young's

taking over the basketball program and leading them to a .500 or better record for the first time since the 2007-2008 season.

So, with two successful coaches peaking and leading their teams in the right direction, the question of money is always a topic lurking



Jeff Monken



Charlton Young

in the background.

With this in mind, comparisons of salary are large, it is hard to imagine

from GSU while Georgia Tech paid for the other \$81,000.

Now GSU basketball fans, there is no need to fret, Young is doing pretty well for himself, coming in this past year making a crisp \$174,999.96 and an equally respective \$172,980.72 in 2010. Young was paid more by GSU in 2010 than Monken.

Further research from the website <http://open.georgia.gov>, showed that Young and his basketball team received \$21,754.20 and \$16,684.00 in travel expenses for the past two years.

The <http://open.georgia.gov> is a

website that contains public records of travel expenses and salaries of all public employees of Georgia

Respectively, while Monken and his football team received \$2,227.72 and \$4,760.05 in the past two years for travel expenses.

Traditionally, school's football coaches have been paid more than the basketball coaches, especially here in the state of Georgia.

The future looks promising for these two relatively new coaches to GSU as they continue to shape and mold their programs into perennial contenders for both sports in the conference.

## Purvis throws GSU's first no-hitter since 2009 season

Softball

BY BRIAN STONE

The George-Anne staff

The Georgia Southern University softball team defeated LaSalle University 6-0 in game one of a doubleheader on Monday afternoon.

The win proved to be an important one for the team as a whole.

However, it was made entirely possible by sophomore pitcher Sarah Purvis's no-hitter.

Purvis pitched a very impressive game against LaSalle, finishing the game with 16 strikeouts in the win, one shy of tying the school record.

She started out dominant, striking out the first three batters of the game on only nine pitches.

Purvis continued to mow down batters, striking out the first nine LaSalle batters in order.

The only Explorer to reach base was senior outfielder Breanna DiTommaso in the fourth inning on an error by Purvis. If not for the error, Purvis would have finished with a perfect game.

The sophomore pitcher picked

up her fifth win in the victory, bringing her record to 5-3 on the season. As of Tuesday, she now has a miniscule 1.31 ERA. In eight games started, she has four complete games and is holding opposing batters to a very impressive .164 batting average.

"Our pitching staff did a great job today," said head coach Annie Smith. "All four of our pitchers do different things well and complement each other and are able to keep batters off balance. Now our focus is starting conference-play against Samford this weekend."

The no-hitter was GSU's first since Brianna Streetmon no-hit South Carolina State University on March 23, 2009.

The 16 strikeouts by Purvis finished one shy of former GSU pitcher Aimee Littlejohn's school record set in 2002 against Campbell University.

GSU will travel to Samford University where Purvis will take the mound against the Bulldogs in a three-game weekend series. Last season, the Eagles took on the Bulldogs three times and came away with two wins.



Mark Barnes II/The George-Anne

Sophomore pitcher Sarah Purvis (00) follows through on a pitch during her no-hitter on Tuesday vs LaSalle.



# Center fielder Fogle takes advantage of senior season

## Women's softball

BY BRIAN STONE

The George-Anne staff

While pitchers Sarah Purvis and Brooke Red have been dominant on the mound this year, senior Marie Fogle leads the Eagles in most offensive categories for the Georgia Southern University softball team.

So far this season, Fogle leads the Eagles in offensive categories such as batting average, slugging percentage, hits and multiple hit games. After registering four hits in the sweep of LaSalle University on Monday, Fogle currently has a .397 batting average. Her slugging percentage is an impressive .586 and currently has a team-high of 23 hits.

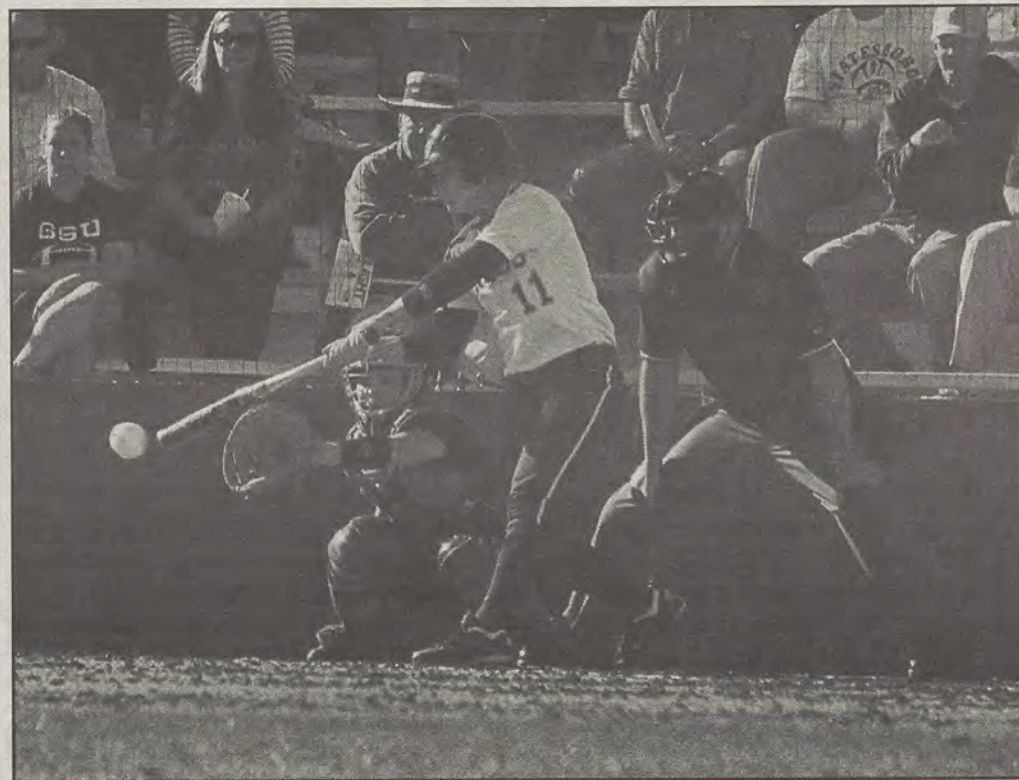
Fogle, a native of Savannah, Ga., majoring in middle grade education, attended Effingham County High. She led the Effingham Rebels to three straight 20-win seasons and earned three first team all-region and two all-state awards. As a senior, she finished with a .463 batting average and added five home runs.

As a freshman in 2009, Fogle earned the title of Southern Conference Freshman of the Year and was also named First Team All-SoCon. She finished her first year as an Eagle with a .316 batting average and 12 RBIs. She also finished her freshman season with a team-leading 12 stolen bases.

Her 2010 season was an injury-plagued one, as she missed 27 games with a hand injury. She saw her averages dip a bit as a result, batting .276 with eight RBIs and three home runs. Despite the injury, Fogle was very effective defensively, finishing the season with a .964 fielding percentage and having only committed one error.

Fogle had her most productive offensive season as a junior, being named to the All-SoCon First Team and leading the Eagles in batting average at .351. She ranked third in the SoCon in slugging percentage at .659 and hit 14 homeruns. She avoided injury entirely in 2011, and started all 57 games in centerfield for the Eagles.

Fogle will look to improve on those numbers in 2012 as she attempts to lead GSU to its first SoCon title since 2006.



Lauren Davis/The George-Anne

Senior center fielder Marie Fogle (11) swings against LaSalle University. The Eagles swept the doubleheader against the Explorers on Tuesday. GSU won 6-0 and 8-0 in the doubleheader.

Selection varies by store.



HIBBETT SPORTS®  
IS THE PLACE TO GO  
FOR THE NEWEST  
COSTA SUNGLASSES  
AND EXCLUSIVE  
APPAREL IN EPIC  
COLORS AND STYLES.

COSTA



**HIBBETT  
SPORTS®**  
GAME TESTED. ATHLETE APPROVED.™

6586  
Hwy 40 East  
St. Mary's, GA

[www.hibbett.com](http://www.hibbett.com)



# Men's basketball must improve frontcourt

## Men's basketball

### BRIAN STONE

The George-Anne staff

As the Georgia Southern University men's basketball season ended Saturday night in a loss to Elon University, one thing became evidently clear — in order to win the Southern Conference tournament, GSU will need to vastly improve its frontcourt play.



Brian Stone

According to the GSU basketball page on ESPN.com, the Eagles finished the 2011-2012 season ranked 295th in the country in rebounding, averaging 31.5 rebounds per game as a team. In comparison, SoCon rival Davidson College ranked 19th in the nation with 39 rebounds per game. In a single game, seven or eight rebounds may not make that much of a difference, but over an entire season, the

discrepancy between the two teams becomes apparent. GSU as a team pulled down 945 rebounds over the course of this past season, while Davidson grabbed 1200 rebounds in the same span.

GSU as a whole could greatly benefit from having a true power forward or center that can grab rebounds and score second chance points. Star sophomore guard Eric Ferguson led the team with 7.2 rebounds per game this past season, but ranked second after him is senior guard Willie Powers III, who averaged 4.0 rebounds per game and will be graduating. Ranked third is 6-foot-6-inch sophomore forward Marvin Baynham, who only averaged 3.5 rebounds per game coming off the bench.

Starting junior forward Cameron Baskerville started 25 games this past season for the Eagles and only averaged 2.7 rebounds per game in an average of 20.1 minutes per game. With seniors Powers III and Ben Drayton III graduating, Baskerville will need to pick up some slack on both sides of the ball.

The forward position needs improvement on the offensive end of the floor with both senior guards leaving. While Ferguson is

returning, both Drayton III and Powers III were ranked second and third on the team in scoring, respectively.

After Ferguson, only one returning player (sophomore guard Jelani Hewitt) averaged double digits in the scoring department (10.5 points per game). Forwards such as Baynham and Baskerville need to find a niche in order to complement Ferguson and Hewitt's offensive games. Baynham and Baskerville only averaged 2.5 and 4.1 points per game, respectively, this past season.

As of right now, the answer does not seem to be coming in the form of recruiting, as GSU only has one commit (guard Cleon Roberts) for the 2012-2013 season. This means that effective rebounding and scoring at the forward position will need to come from a player already on the team. Six-foot-eight-inch freshman forwards Tyrone Brown and Kameron Dunnican will most likely get a shot at being the long-term solution for the Eagles next season.

If the Eagles want to be able to defeat Davidson and get a bid to the NCAA tournament, it looks like an answer will need to be found.



Demario Cullars/The George-Anne

Senior Willie Powers III calls a play for Georgia Southern at the top of the key.



## Company hours

7:30 A.m. - 6:00 P.m.  
Monday - Friday

912-489-2222

102 N Zetterower Ave  
Statesboro, GA 30458

Present this Coupon at the time of service to receive a free tire rotation with a full priced oil change.

**Super Service at a Super Price**  
**489-2222**

Some Restrictions may apply. Call For more details.

Present this coupon at the time of service to receive an oil change for the low price of \$19.95.

**Super Service at a Super Price**  
**489-2222**

This price is for 5 quart oil changes. It also excludes filters, synthetic oil changes, and special oil filters. Ask more for details.



# Eagles face challenges in first outdoor event

## Track and field

**KEVIN GREGAN**

The George-Anne staff

While the Georgia Southern University track and field team has finished a successful indoor season, it still has a reason to be happy, having just finished its first meet of the outdoor season.

The team was in Jacksonville, Fla., last weekend where they competed in the University of North Florida Spring Break Invitational.

Individually, the team did well, but the first place finish against the University of Michigan and Florida State University in the 4x400-meter relay highlighted the success of the team at the event.

"I got pumped up before the race and I had a great feeling that we'd win," freshman Kimberly Thomas said.

Thomas knew that the Eagles would win, while screaming with excitement, when she saw senior teammate Raquel Daly running the final leg of the event. The team finished with a time of 3:48.73 seconds.

"I'm very proud that we were able to beat those teams," Thomas said.

It did rain during the event and many pauses in action occurred throughout the day.

First-year coach Marlo Mincey felt that the rain delays were helpful in achieving the goals the coach had set for the event.

The stress of having to wait around while still being ready to compete at a moment's notice was a good chance to improve mental toughness and focus, Mincey said.

"I wanted to see the mental toughness. We saw areas where we had it and saw areas where we need more. Overall, we're happy,"

Mincey said.

The team is excited about starting the outdoor season, and while the events are a little different, the team believes that it's ready to do well this spring.

The outdoor season adds another 40 meters to the event that was a big part of the success enjoyed by the Eagles — the 60-meter hurdlers.

Junior Jasmine Billings, who was the top 60-meter hurdler in the Southern Conference, had a positive adjustment to the 100-meter that allowed her to finish second with a time of 14.19 seconds.

Fellow hurdlers freshman Taylor Wade and sophomore Dana Edwards finished ninth and 23rd, respectively, in the 100-meter hurdle out of a field of 39 athletes.

The field unit led by freshman Sara Hall competed in the shot put, as usual, but also competed in the discus throw and hammer throw.

Those are two events that the team doesn't normally compete in.

Hall placed eighth in the shot put along with freshman teammate Alexis Jacobs, who finished 14th, and senior teammate Charnelle Wray, who finished 16th.

Additionally, Hall and Jacobs finished 13th and 29th in the hammer throw and 15th and 19th in the discus throw. The team expects that performances in those events will only get better as more experience comes.

In the javelin throw, freshman Jessica Moss placed 11th with a throw of 25.11 meters. Senior Azura Robillard placed 18th in the first time that the team ran the event this year.

The next time the team will be in competition will be on March 9 at the Palmetto Classic in Charleston, S.C.



Mark Barnes II/The George-Anne

**Freshman Taylor Wade** works on passing the baton before the UNF Spring Break Invitational. The GSU freshman from Loganville, Ga specializes in jumping the hurdles.



## Sports EMPORIUM

Statesboro's Intramural Sports Headquarters

*\*Show your Eagle ID to receive a student discount*

840 BC Buckhead Drive, in Buckhead plaza (912)764-4449





# GSU athletes excel beyond college careers

BY JACKIE GUTKNECHT

The George-Anne contributor

Georgia Southern University has a longstanding athletic program that has been very successful throughout the years. With student-athletes leaving here to start a professional career in their respective sports, GSU's athletic program continues to grow.

Sam Baker, GSU athletic director, said, "Anytime you have someone who has the ability to play professional sports, it is great for the university, but it is not the majority of the student-athletes, or the main focus of the department."

The athletic department slogan is "rings and diplomas," because the main goal of the department is for student-athletes to have a diploma to start their professional careers or go to graduate school.

Baker said the university has "been very fortunate that most of the student-athletes have stayed the full four years, which gives them great pride that they're Eagles."

GSU's own football legend, Adrian Peterson continued his playing career in the National

Football League for the Chicago Bears. Peterson finished his career at GSU with 6,559 rushing yards, a Division I football record and won the Walter Payton Award in 1999. Peterson was the first sophomore to win the award for most outstanding player in 1-AA football.

Baker said, "Peterson loves Georgia Southern and does as much as he can to support the school from Chicago."

GSU also has former student-athletes in the professional basketball world. Michael Curry, who holds the school record for most games played in a career, is a member of the 1,000-point club, and ranks 23rd all-time with 1,121 points, has taken the GSU name far in his career. Curry played eleven seasons in the NBA and is currently the Associate Head Coach for the Philadelphia 76ers.

Throughout his professional career, Curry has never forgot where he is from. He recently donated money to the university to help pay to renovate the locker rooms.

The Eagles also have a mark in the MLB with former catcher, Todd Greene. Greene is considered one of the greatest college baseball



Compliments Georgia Southern Athletic

Alumni Michael Curry (20) is a member of the 1,000 point club and also holds the school record for most games played.

players in NCAA history with 88 homeruns in 240 games. In 2003, he became the second individual in GSU history to have his baseball number retired. Greene is the GSU career leader in home runs with 88, total bases with 640 and runs batted in with 257. He also holds the school's single season mark for total bases with 203 in 1990.

Baker said, "Todd is still involved with Eagle athletics. He helped the Eagles in the 'Evening of All-Stars' event in February, getting John Smoltz to visit the school."

The department's main focus is getting all of its student-athletes to earn a diploma, but having the GSU name in professional sports doesn't hurt either.



**ISABELLA'S**  
*Pasta and so much more*

\*We accept Eagle Express

**Lunch Served Monday-Friday:**  
11:30a.m. - 2:00p.m.  
**Dinner Served Monday-Thursday:**  
5:30p.m. - Until  
**Friday and Saturday:**  
5:30p.m. - Until  
Closed Sunday

Mention Ad and show a  
GSU student or faculty  
I.D. and receive

**\$3.00**  
Off your total purchase

(912) 681-2355  
199 Northside Dr. East  
Statesboro GA, 30458



Like us on Facebook:  
Isabella's of Statesboro




Over 60 Arcade Games, Bolicity, Bowling,  
Mini Golf, Laser Tag & Restaurant!  
Food & Fun Combos, Group and Individual Packages Available!

**GET  
YOUR  
GAME ON!**

**GSU NIGHTS**  
JOIN US MONDAY, TUESDAY & THURSDAY  
for Exclusive GSU Deals!  
Unlimited Bowling, Laser Tag and Mini Golf  
6 PM TO CLOSE  
**ONLY \$9.99**  
*(with your GSU ID)*

**THE CLUBHOUSE**  
BOWLING • BOLLICITY • LASER TAG  
AND MORE!



ClubhouseAtHackers.com • 912-871-1000



**IT'S YOUR LIFE...**

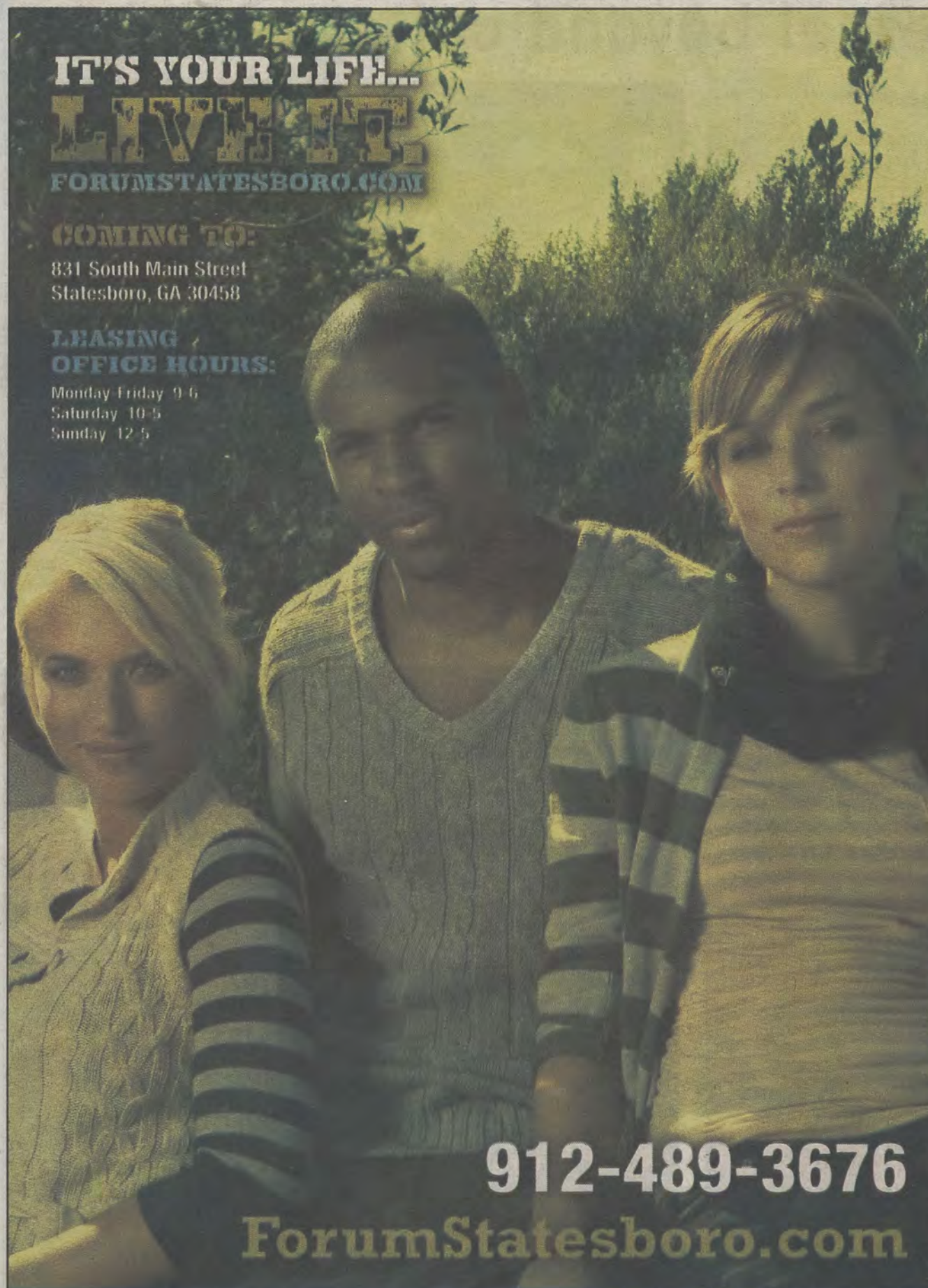
**LIVE IT!**  
FORUMSTATESBORO.COM

**COMING TO:**

831 South Main Street  
Statesboro, GA 30458

**LEASING  
OFFICE HOURS:**

Monday-Friday 9-6  
Saturday 10-5  
Sunday 12-5



**912-489-3676**

**ForumStatesboro.com**

**GET A FREE T-SHIRT WITH THIS AD!**

**FORUM**

**AT STATESBORO**

**A PREMIER STUDENT  
HOUSING COMMUNITY**

**NOW  
LEASING  
FOR FALL 2012**

- Tennis Court
- Lap Pool & Spa
- Pet Friendly
- Pet Park
- Two Free Tanning Beds
- Indoor Basketball Court
- Indoor Volleyball Court
- Car Care Center
- Modern Faux-Wood Floors
- Private Bathroom in Bedrooms
- Convenient Individual Leases
- Free High Speed Internet in Bedrooms
- 24 Hour Fitness and Training Center
- Kitchens with Full Size Appliances
- Full Size Washer / Dryer Included
- Wi-Fi Cyber Cafe with Coffee Bar
- Outdoor Sand Volleyball Court
- High Speed Internet Access
- Student Center and Lounge
- Roommate Matching
- Expanded Cable
- Media Room



Images subject to change. ©2012 Forum Statesboro, Inc. All rights reserved. For use in print and online only. Not for resale.