

Georgia Southern University

Digital Commons@Georgia Southern

The George-Anne

Student Media

3-6-2012

The George-Anne

Georgia Southern University

Follow this and additional works at: <https://digitalcommons.georgiasouthern.edu/george-anne>

Recommended Citation

Georgia Southern University, "The George-Anne" (2012). *The George-Anne*. 2753.
<https://digitalcommons.georgiasouthern.edu/george-anne/2753>

This newspaper is brought to you for free and open access by the Student Media at Digital Commons@Georgia Southern. It has been accepted for inclusion in The George-Anne by an authorized administrator of Digital Commons@Georgia Southern. For more information, please contact digitalcommons@georgiasouthern.edu.



EAGLES LOSE SERIES

PAGE 16



LADY EAGLES FINISH SEASON

PAGE 17



IRISH TRADITION CELEBRATED

PAGE 10

Tuesday, March 6, 2012
Georgia Southern University
www.thegeorgeanne.com
Volume 87 • Issue 62

THE GEORGE-ANNE

Dressing to please the opposite sex

BY TANIQUA RUSS

The George-Anne staff

From six-inch heels to a fancy bow tie, guys and girls at Georgia Southern University suit up and every once in a while catch each other's eye with their style.

GSU guys were eager to chime in on what they felt were the perfect looks that they have seen on their female peers.

"Simple is the best," Anthony Roddy, senior general studies major, said. "I don't like when girls try too hard or do extra stuff. Just because it's hot outside, don't show me that it's hot outside, I know it's hot outside."

"I like when a girl knows how to dress," Robert Wilmont, sophomore fashion merchandising and apparel design major said. "It doesn't matter the style."

At the first sight of a female, before they even make it down to see the outfit, some guys notice her hair over everything else and count it vital to the overall appearance of the girl.

"Hair is essential," freshman civil engineering major, Mike Ofili, said. "If you look nice and your hair looks bad it's depressing. It just makes a good outfit null and void."

"No lace fronts on the hair," Roddy, said.

When it comes to the hairstyles for girls, the preferences amongst GSU guys are different.

According to GSU gentlemen, long,

See FASHION, page 11

7% of students voted in SGA election

BY COURTNEY ESCHER

The George-Anne staff

In last week's SGA election, a total of 7 percent of Georgia Southern University students voted either for the Quarles/Belge ticket or opposed.

The executive board received an average

of 1178.75 votes, 1086.25 pro Quarles/ Belge ticket and 92.5 opposed.

"Do we wish the numbers we higher? Yes. Did we do everything that we could to get people to vote? Yes," Alton Standifer, lame-duck president of SGA, said.

Some reasons students did not participate in the vote may be due to the fact that they do

not believe in voting, Standifer said.

"Some people, voting isn't their thing. Voting just is not a thing that they see themselves participating in," Standifer said.

Another reason students may not have cast their vote is because of a lack of emotional connection between themselves and the

See SGA, page 8

GORILLA THRILLA



Demario Cullars/The George-Anne

The Zeta Psi chapter of Delta Sigma Theta from UGA performs a batwoman inspired routine for Gorilla Thrilla. For full coverage, see page 10.



thegeorgeanne.com



Follow on Twitter
@GeorgeAnneNews



Newsroom 478-5246
Advertising 478-5418
Fax 478-7113

PO Box 8001
Statesboro, GA
30460

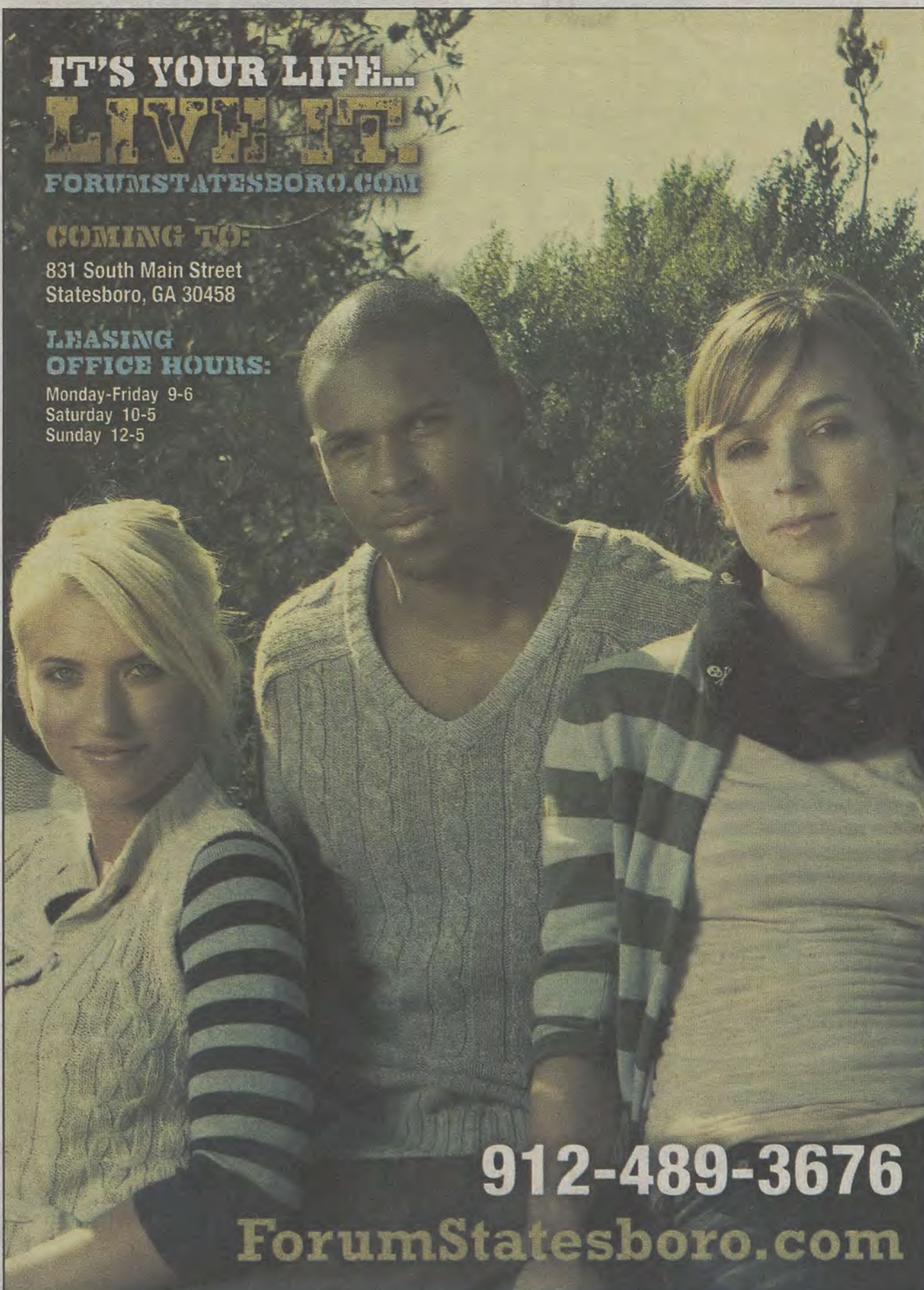
**IT'S YOUR LIFE...
LIVE IT!**
FORUMSTATESBORO.COM

COMING TO:

831 South Main Street
Statesboro, GA 30458

**LEASING
OFFICE HOURS:**

Monday-Friday 9-6
Saturday 10-5
Sunday 12-5



912-489-3676

ForumStatesboro.com

GET A FREE T-SHIRT WITH THIS AD!

FORUM[®]

AT STATESBORO

A PREMIER STUDENT
HOUSING COMMUNITY

**NOW
LEASING
FOR FALL 2012**

- Tennis Court
- Lap Pool & Spa
- Pet Friendly
- Pet Park
- Two Free Tanning Beds
- Indoor Basketball Court
- Indoor Volleyball Court
- Car Care Center
- Modern Faux-Wood Floors
- Private Bathroom in Bedrooms
- Convenient Individual Leases
- Free High Speed Internet in Bedrooms
- 24 Hour Fitness and Training Center
- Kitchens with Full Size Appliances
- Full Size Washer / Dryer Included
- Wi-Fi Cyber Cafe with Coffee Bar
- Outdoor Sand Volleyball Court
- High Speed Internet Access
- Student Center and Lounge
- Roommate Matching
- Expanded Cable
- Media Room



Police Beat

Tuesday, Feb. 28

- Officers issued four traffic citations, eight traffic warnings, assisted three motorists, responded to one alarm and investigated two accidents.
- A cell phone was taken from a GSU bus.
- A cell phone was taken from Centennial Place.
- Several items were taken from the Department of Archives and Records.
- A vehicle was keyed in Lot 21.
- Johnathan Nathaniel Heyward, 18, was charged with possession of a stolen vehicle, use of license plate to conceal the identity of a vehicle, fleeing or attempting to elude police, leaving the scene of an accident, reckless driving, driving on the wrong side of the road, failure to maintain lane, failure to yield and driving with suspended license.
- Alvin Vernard Pierce, 19, was charged with possession of a stolen vehicle.
- Jacques Dominique Perrymond, 19, was charged with theft by receiving stolen property.
- Alexander Joseph Blaze, 18, was charged with underage possession of alcohol and pedestrian under the influence of alcohol or drugs and possession of a false I.D.

Wednesday, Feb. 29

- Officers issued seven traffic citations, four traffic warnings, assisted six motorists, responded to one sick person call, responded to one alarm and investigated one accident.
- A wallet and a set of keys were taken from Starbucks.
- A cell phone was taken from the RAC.
- Olade Oluwasey Ajubola, 20, was charged with theft by taking and wanted person.

Thursday, March 1

- Officers issued three traffic citations, five traffic warnings, assisted two motorists, responded to three alarms and investigated one accident.
- A drug complaint was reported at Southern Pines.
- A case of harassment was reported at Centennial Place.
- A counterfeit \$20 bill was discovered at Lakeside Café.
- Roger Blake Wills, 19, was charged with possession of a controlled substance, possession of marijuana and original container required.
- Zachary Todd Vanotteren, 22, was charged with reckless driving.
- Christopher John Hites, 19, was charged with underage

possession of alcohol, obstruction of an officer and giving false information to an officer.

Friday, March 2

- Officers issued eight traffic citations, seven traffic warnings and investigated two accidents.
- A set of keys was taken from the Foy Building.

Saturday, March 3

- Officers issued five traffic citations, six traffic warnings, assisted five motorists, responded to two sick person calls and one injured person call and investigated one accident.
- A rape was reported at Southern Pines.
- A drug complaint was reported at Southern Pines.

Sunday, March 4

- Officers issued six traffic citations, four traffic warnings, assisted three motorists and investigated one accident.
- An alcohol violation was reported at University Villas.
- A screen was torn off of a window at University Villas.
- Several books were taken from Southern Pines.
- Nickolas Terry Eason, 18, was charged with DUI.

Statement of Operations

The George-Anne is the official student newspaper of Georgia Southern University, owned and operated by GSU students using facilities provided by the university. The newspaper is the oldest continuously published newspaper in Bulloch County. The newspaper is a designated public forum for the Georgia Southern community. The newspaper is published twice weekly, on Tuesdays and Thursdays, during most of the academic year. Any questions regarding content should be directed to the student editor by phone at 912.478.5246 or at gaeditor@georgiasouthern.edu.

ADVERTISING: The newspaper accepts advertising. Inquiries may be made by calling 912.478.5418 or 912.478-0566. Fax any questions to 912.478.7113 or e-mail ads1@georgiasouthern.edu.

The George-Anne receives additional support, in part, from the Student Activities Budget Committee.

The deadline for reserving space and submitting advertising copy is noon, one week prior to the intended publication date. For more information, rate cards, sample publications, contact the advertising manager or student

media director.

The advertiser is responsible for any errors in advertisements and its liability for adjustments is limited to the amount of space the error occupied in the ad. Further, the newspaper is not responsible for any damages caused due to an ad's omission from a particular edition and its responsibility solely is to reschedule the ad in the next regular edition at the regular advertising rates.

STUDENTS BEWARE: The George-Anne screens all advertisements prior to publication. The newspaper strives to accept ads for legitimate products and services only. Students are urged to exercise caution when replying to ads-particularly those that require personal information. Students are also urged to report to the newspaper any suspicious offers which they might see in an ad.

PUBLICATION INFORMATION: The newspaper is printed by Signature Offset in Jacksonville, Fla.

NOTICE: Unauthorized removal of multiple copies from a distribution site constitutes theft under Georgia law, a misdemeanor offense punishable by a fine and/or jail time.

Editor-in-Chief Arielle Coambes
Managing Editor Jennifer Curington
Opinions Editor Alex LaSalle
News Editor Jessie Reese
Asst. News Editor Courtney Tielking
Arts Editor Quanique Epps
Asst. Arts Editor Gianna Carme
Sports Editor Jannah Bolds
Asst. Sports Editor James Farmer

Copy Chief Matthew D'La Rotta
Business Manager Holly Hillhouse
Asst. Business Manager Vicki Tucker
Marketing Manager Aria Gabol
Production Manager Mallory McLendon
Photo Editor Lindsay Hartmann
Design Editor Kelsey Paone

Corrections

Contact the editor at gaeditor@georgiasouthern.edu for corrections and errors.

UT&ABOUT

Express Tune & Lube

Tire, Alignment
& Exhaust Center

612 S. Zetterower Avenue

489-4444

www.expresstuneandlube.com

Monday - Friday 7:30am - 6:30pm

Located a half block north of Wendy's

OIL CHANGE SPECIAL

\$25⁹⁵

Includes up to
5 qts of Castrol
5W20, 5W30, 10W30,
or 20W50

price applies to most vehicles. Expires 4/30/12

www.expresstuneandlube.com

MDL

Embroidery & Gifts

Come see us at our new location
next to McAlister's!

1100 Brampton Ave.
Suite B
Statesboro Ga, 30458

15%
OFF

Our View

Students need their safety reaffirmed

A Gold Route bus at Georgia Southern University bus was engulfed in flame due to a small electrical fire on Feb. 23rd. No students were harmed.

This incident occurred a week after we published a story regarding the current state of our bus fleet. The buses were described as being in operation past their intended lifespan.

The cause of the fire, according to university officials, was a small electrical fire in one of the headlights.

Immediately following the bus fire, the university administration said they would inspect the current fleet of buses and investigate the incident. However, no action has been taken to reassure students that their safety is a primary concern.

Describing the incident as a "small electrical fire" does not effectively comfort students who are worried about their safety after witnessing the bus being reduced to a charred frame.

We understand that a full inspection and investigation were ordered, but when the safety of students is in question GSU needs to do everything they can to be open with students about the actions they are taken.

The bus fire incident has been troubling to GSU students, many of whom depend on the bus routes for transportation to class. The university officials responsible for our safety need to let students know that their safety is at the top of their priorities.

The George-Anne welcomes letters to the editor and appropriate guest columns. All copy submitted should be 350 words or fewer, typed, and sent via e-mail in Microsoft Word format to gaeditor@georgiasouthern.edu. All submissions must be signed and include phone number for verification. GSU students should include their academic major, year and hometown. The editors reserve the right to reject any submission and edit submissions for length.

Opinions expressed herein are those of the Board of Opinions or columnists themselves and DO NOT necessarily reflect those of the faculty, staff or administration of GSU, the Student Media Advisory Board, Student Media or the University System of Georgia.

Editor addresses controversies between SGA, The George-Anne

In Thursday's edition of The George-Anne, the front page story read "SGA results withheld."

The event that prompted this story has been met with confusion from many students, who wonder, "Just what happened between SGA and The George-Anne?"

Both organizations have taken heat. Both have been accused of unprofessionalism. The George-Anne was accused of bias. SGA was accused of lacking transparency.

The SGA election was the event that sparked uproar. Traditionally, SGA's administration provides The George-Anne with election results the night before they are announced to students so that the results can be featured on our front page. This tradition was solidified when SGA President Alton Standifer and I met in the fall semester this year, when we both agreed the tradition would continue.

On Wednesday night, while The George-Anne was producing the paper that we expected to include election results, SGA's graduate assistant called my cell phone and called our agreement and the tradition a "misunderstanding."

We would no longer receive results, as they expected to announce the results at a party in the Russell Union.

To understand my frustration at this news I have to explain The George-Anne's purpose and goal.

Our goal is not to get early information for the staff's pleasure. We are not sitting in our newsroom rejoicing that we are privy to the university's secrets.

We are here to serve the student body. We are here to inform each of you and advocate for you. The George-Anne is here to make sure we represent exactly what you, the students, are looking for.

We are here to watch the people

"I encourage students to envision a government that controls the news and withholds it from the media. There is a name for this kind of government — communism."

-Arielle Coambes,
Editor-in-Chief

LETTER FROM THE EDITOR



ARIELLE COAMBES/
EDITOR-IN-CHIEF

spending your money very, very closely.

Because of SGA's decision, The George-Anne would no longer include relevant information that would affect the entire student body. This decision was made behind closed doors, and The George-Anne had no say in it. This, to me, is unacceptable, since we are trying to be the advocates for students.

After Jennifer Curington, The George-Anne's managing editor, and I approached SGA President Standifer about a lack of transparency at SGA's meeting that night, it hit the fan.

Standifer, Curington and I veered from the topic at hand, letting the conversation deteriorate into attacks on both organizations based on problems and negative relations that have built up over the years.

SGA's final decision was to distribute election results to students by sending a mass email to the student body. A similar email will be sent out once a month by

SGA, according to the email.

I'm sure both sides regret a few of the events that transpired that night.

The problem remains, though, that our student government has resorted to creating its own informational publication through emailing the student body of Georgia Southern University.

To explain this issue, I'll use an example. Do citizens receive emails directly from President Barack Obama? Would you accept if Obama withheld information from The New York Times in favor of writing his own stories?

Most people would say no to these questions because they know information from the Federal Government is usually slanted in their favor. This information is called propaganda.

SGA's decision to sidestep The George-Anne, the campus news outlet, and to send a monthly email is more than just distribution of propaganda, though.

I encourage students to envision a government that controls the news and withholds it from the media.

There is a name for this kind of government — communism.

So, as a closing thought, please consider just how much control you are willing to give up.

Coambes is a writing and linguistics major from Covington, Ga.

From the left

We must put ourselves first

While the events in Syria are a tragedy, the United States cannot afford to get involved. We have to look after ourselves before fixing the world's problems.

For starters, we are still not economically stable. We need to get our financial house in order, and fast. We have started to see a rebound in the US, and I wouldn't want that hope to fade because we used our scarce resources to help anybody other than ourselves.

Normally, I would be all for helping those in need, but we cannot afford to do so. It's tragic and our allies may opt to aide those in Syria, but that doesn't mean we have to. I know it's probably weird to hear someone of my political affiliation against helping the less fortunate, but this is a different animal.

The United States has wasted time and resources helping countries with similar situations in the past, and it hasn't helped either parties. It would be better for us to continue doing what we need to do to rebuild ourselves as a nation.

Another reason, there is an impending threat in the Middle East. Iran is quickly moving up on the threat-o-meter and it wouldn't help us to spend money, resources and troops to Syria to help them. This would put us in position for Iran to make a move.

If we were to strike Syrian forces being aided by Iran, it would only push us closer to a conflict with them. They could take this assistance as a direct threat towards them since they're doing all they can to ensure the al-Assad regime endures through this conflict.

The United States has crafted an image of being the "world police" and the protectors of the globe, but this has come at a price to us. While we are the world's lone remaining superpower, every time we enter into a conflict, go to war or aide a country in their



ROB ROBERTS @Robert_ARoberts

inner-conflicts; it takes a toll on us.

In a UN vote calling for an immediate end to attacks against civilians, Cuba, China and Russia disagreed with the rest of the world. It seems that these nations want this violence to continue and would like to allow the inhabitants of Syria to play this conflict out on their own.

The United States alone cannot be expected to solve the world's problems. The UN needs to step in and help the citizens of Syria and stop looking to the US to make a move. The UN was created, in part, to help in situations such as this. They need to get off their butts and get into action instead of waiting for the "World Police" to do something to stop the bloodshed.

We cannot afford to intervene in every conflict around the world, but we are still expected to. Something needs to be done in Syria; I just don't think we are the ones to do it. Let the UN step in and do what they're supposed to do and help those in need.

Roberts is a senior public relations major from Warner Robins, Ga.



Jasmine Nielsen/The George-Anne

From the right

Liberals bias returns

This week, the liberals had a new thing to whine and fuss about when conservative radio host Rush Limbaugh called a Georgetown University Law student, Sandra Fluke, a "slut" on air when she had a meeting before House Democrats on Georgetown providing contraceptives to students, even if it's against the school's and the students' sincere religious beliefs.

She said that paying for contraception was an "untenable burden" on college students.

I don't condone the language Mr. Limbaugh used in describing this young lady, however the media has missed the two big pictures of this story.

First, if she is paying \$50,000 a year to go to law school, I believe she can afford to spend \$12 at Wal-Mart for a 40-pack of condoms or use the new \$9 generic brand birth control pills if she needs them for a complication, which according to her, she doesn't.

But better yet, why not just abstain from sex and not need birth control altogether?

While everyone has the right to have sex to reproduce, there is no place in the Constitution that protects a citizen's right to shack up.

If you want to have the fun, then accept the consequences of your actions. It's not the government's job to do it for you.

The second thing is where is this outrage when pundits on the left attack right-wingers? Even Rush himself today on his show said that he "stooped down to the level of the left with these attacks," and he's right.

Notorious political commentator and comedian Bill Maher, who just donated \$1 million to Obama's Super PAC, has been calling Sarah Palin a bimbo, a C-word that rhymes with bunt, a dumb T-word that rhymes with swat and other derogatory slurs.

Does Obama call Sarah and comfort her and try to make her feel better for being attacked by a "hateful



FRITZ CHAPIN @GrandOldPartier

media"? Nope.

Or how about when Ed Schultz, left wing pundit on MSNBC and radio talk show host, last year called took a shot at conservative talk show host Laura Ingram by calling her a "right-wing slut"? Was Ed Schultz demonized by the media and his sponsors asked to pull their money from him?

Not only was he protected for his brave free speech, none of his sponsors dropped, even though he and Rush have overlapping sponsors like Carbonite.

The media tries to defend Fluke because she's not a media figure and thus not subjected to the same standards as a Palin or as Ingram would be, but that's also not fair.

When Fluke got invited to speak before Congress and have her speech broadcasted all over the country, especially on such a hot button issue, she instantly became a media figure and she should receive the same scrutiny as any other person who is in the same situation.

She was not allowed to testify at the official meeting because she did not have the qualifications or the expertise to do so, so the Democrats threw her a tea party to give them some speaking points.

However, now when she is getting scrutinized they go back to saying that she's just a college kid.

Well, if you can't take the heat, stay out of the Congress.

Chapin is a senior political science major from Roswell, Ga.

Letters to the Editor

SGA still has not changed

Dear Editor,

For the past several semesters, we as students of Georgia Southern University have watched as the Student Government Association has promised time and time again to show transparency. Yet, we see no such thing.

President Standifer preached throughout his spring 2011 campaign that SGA would become more transparent and open to the student body. During the fall 2011 semester I would often look to The George-Anne to see what SGA might be doing to help us students and the university achieve more.

I am sad to say I have not seen much — I am not saying I haven't seen anything, but information has been quite sparse. I was once a senator at-large for SGA. I have seen the inner workings of the organization.

During this year's election I have seen little campaigning or anything saying go vote on WINGS. How does that show SGA is reaching out to students when we don't even know of an upcoming election?

Like any great candidate running for political office, they promise so much yet give very little in return. SGA has done many great things for GSU, don't get me wrong. However

I would like to file grievances with how they have shown no effort to reach out to the student body.

I might be wrong. I might be the one who has been ignorant to all the good Standifer and SGA have done. When I ask other students in my classes if they even know who some of the senators are, I receive an answer that usually goes like, "I didn't know we had a Student Government Association".

I want to be able to hold SGA responsible for their actions, either good or bad.

Since there are no checks and balances at this level, it's the duty of news publications like The George-Anne to bring up SGA's shortcomings and be the student body's watchdog.

I see no difference between The George-Anne and SGA than I do The New York Times and the Obama Administration.

Both publications are citing what needs to be said, either positive or negative.

Respectfully,
Former Senator At-Large
Jordan Given
Junior
Justice studies major
Jesup, Ga

“ How does that show SGA is reaching out to students when we don't even know of an upcoming election? ”

-Jordan Given,
Former senator at-large

Chapin needs facts checked

Dear Editor,

First off, let me begin by applauding you and your staff at insufficiently providing a comparative set of graphics. Yet again, I am delighted to see that you have shown your obvious bias to Fritz Chapin. While Fritz's spending graphic is sharp and crystal clear, you left plenty to be desired in Rob's graphic. However, I am glad that it wasn't reversed because the graphic further establishes Chapin's bigoted train that keeps chuggin' along week after week.

Chapin's column kicked off in August with a rousing opinion on abortion — that I'm sure you ran based on his personal experience on the ability to become pregnant and deliver a child — and then moved on to politics. After a few months of spouting off totally inconsistent ideals and statistics to prove his points, Chapin recently Tweeted, "Can statistics just stop? I hate math and it's not gonna help me get America back on track. I hate this." So does Chapin only support statistics that have zero evidence to support his article? In his awe-inspiring editorial about how more families should stay together, he kept citing the general populace of psychologists but fails to mention a name or website to fact check his article.

The sheer disbelief that I encountered while reading his graphic — because Chapin's was the only one I could decipher due to the pixilation of the other graphic — started at the badge entitled "Tea Party" and ended at cutting 863 billion dollars off of Federal funding to education.

Chapin had repeatedly drilled into my

head week after week that in America you can do what you want: smoke a cigar, be forced to keep your child conceived through rape or stayed married to someone who makes you want to endure a root canal every hour in lieu of spending time with that spouse.

In Chapin's America, knowledge must have been beamed into our minds by a force greater than teachers. The state's funds have always left public education in the dust, and now he would like to further degrade our school system by cutting what little Federal funding they have? All I thought was, you have got to be kidding me.

In his fantasyland, it is all clear-cut and there is no in between when it comes to politics. Chapin wants to point fingers at Obama because it is the easy way out, but refuses to see that Bush had his hand so far stuck in the cookie jar labeled "foreign oil" it was hilarious. His small-mindedness has gotten so far out of control I'm just wondering how much Fox News is paying him to rewrite their headlines.

Before he decides to comment on another social issue, I'd appreciate an actual factual reference to be used and cited.

Kellie Beaumont
Junior
Middle grades education major
Dacula, Ga.

Editor's note: We apologize for the discrepancy in graphic quality. It was the result of having to inflate the photo. We try to maintain a balanced opinions page that does not favor either columnist.



SOUTHERN
PROPER®



The Sir Shop
Statesboro Mall
912.764.6924



Bus fire results in further investigation by GSU

BY LINDSAY GASKINS

The George-Anne staff

and KRYSTAL MCMATH

The George-Anne contributor

After the bus fire that occurred on Feb. 24, Georgia Southern University officials ordered a check on all of the university buses.

GSU had preformed earlier checks on the fleet, but decided that the problems were not life threatening.

"Those buses had just gone through an inspection, what we call preventative maintenance, in December. It was one of the older busses. We will be getting a replacement bus for that one," Kristi Bryant, director of Parking and Transportation, said.

It was recorded that one of the buses was experiencing backfiring on Feb. 22 and was taken in to have its fuel filter drained, according to maintenance records reflecting the years 2011-2012. The bus was not specified in the reports.

"That morning, and I will be honest with you, that bus blew a headlight. Its nothing that doesn't happen frequently in automobiles," Bryant said.

It was reported that on Feb. 14 that on one of the buses, one headlight blinker was out and was



Mallory McLendon/The George-Anne

Statesboro firefighters hose down the tanks on the back of the bus that caught fire to cool them down.

diagnosed with needing a new flasher, according to maintenance records.

There was no evidence that the reported malfunctions could potentially be of harm to anyone, Bryant said.

"There was no indication at that time that there was any kind of melting of wires or any kind of smells or that anything that was occurring. So yes, we did have a blown headlight," Bryant said.

Rumors about the bus fire have been

circulating around campus and officials have tried to put these statements to rest, Bryant said.

"I want to dispel a couple of rumors. The bus did not explode. Had it exploded, you would have found pieces of that bus over here at the union. The fuel tanks are in tact. I've seen them and inspected them myself," Bryant said.

The loud sound that was heard, which many attributed to an "explosion," was from the tires bursting, not the fuel, Bryant and Russell said.

That assumption is still under investigation and will be confirmed on Monday when an expert comes to do a detailed inspection of every bus, Chief Michael Russell of the GSU Department of Public Safety said.

The fire department and GSU police department did a great job of responding to the scene quickly, Bryant said.

"We responded to (the fire) similar to a car fire or a building fire," Russell said.

"We don't have set protocols for specific bus fires, car fires or house fires. A fire is a fire, so we responded to that," Russell said.

"We are going to try to incorporate bus evacuation with housing's mock burn this year, and an evacuation drill," Bryant said.

Maintenance records show that the buses have had problems recently that have been fixed.

After the fire incident, every bus has been inspected and nothing serious has been found in any of them, said Russell.

Bryant said, "We are looking to replace our entire fleet, probably within a year. I will make an announcement as to what kind of buses we'll be getting."

Shelby Farmer and Christle Young contributed to this article.

FRAUD

JUNIORS AND SENIORS OF ALL MAJORS
WITH AT LEAST 45 SEMESTERS HOURS OF CREDIT

LOOKING FOR AN ELECTIVE ?

WHITE COLLAR CRIME LSTD 3630

Examines the investigative steps within the U.S. criminal justice system.

SUMMER TERM B 2012
FALL 2012

FRAUD AND THE LAW LSTD 3631

Examines the legal issues associated with conducting fraud investigations.

SUMMER TERM A 2012
FALL 2012

INTERVIEWS AND INTERROGATIONS LSTD 4633

Examines human behavior and the signals of truth and deception.

FALL 2012
SPRING 2013

PRIOR TO ADVISEMENT, BE SURE TO ASK HOW YOU CAN COMPLETE
THE FRAUD EXAMINATION MINOR AND EARN YOUR CFE (CERTIFIED FRAUD EXAMINER).

See: coba.georgiasouthern.edu/forensic/
Email: berecz@georgiasouthern.edu



Presidential primary begins

BY TAYLOR COOPER

The George-Anne staff

The 2012 presidential primary election is today, yet many students have decided not to vote.

Students are a large part of Statesboro's population, but many students don't register to vote here. Reasons that students do not vote include time constraints, lack of information or they don't know where to go to vote.

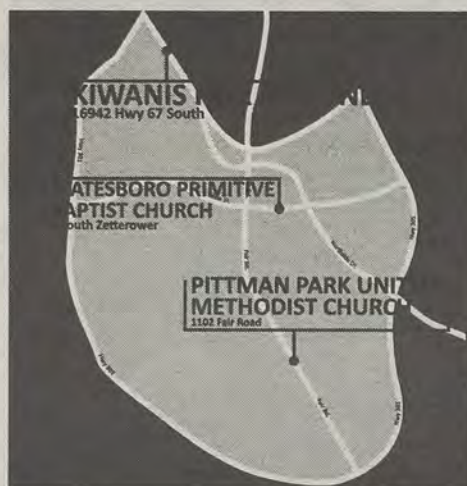
"I don't feel like I know enough. I don't even know where the nearest polling place is," Spencer Price, a freshman philosophy major, said.

"I don't have time to do it. Classes get in the way," Mallory Walden, a senior finance major, said.

"Most people I know don't know how or where to get registered," Antonio Acree, a junior accounting major, said.

There are 14.4 million students enrolled in the United States' universities, with a projected 19.7 million in 2012, according to the U.S. Census Bureau.

In 2008, 12,515 18 to 24-year-olds voted in the election, according to census.gov.



Kelsey Paone/The George-Anne

There are voting places located close to Georgia Southern University's campus where students can vote.

The voting location is specified on a card that voters are given after they register.

Mark Swartz, a senior logistics and psychology major, said, "Do it. Get your voice heard. We're lucky, not many people in the world can vote."

SGA, from page 1

candidates, Standifer said.

"When they aren't directly involved, when people in their sorority, their fraternity, their student organization, their family, their friends, if those people are not directly involved, sometimes people don't go out and vote," Standifer said.

Standifer does not believe that students at GSU choose not to vote in SGA elections because they do not care. Instead, he feels that students who do not vote in SGA elections are either not emotionally connected to the candidates, or they are uneducated about the candidates.

"To say that there are not students on this campus who don't care (about SGA elections) would be less than honest. Do I think that's the vote of the students who did not vote? No. I don't think it is the demeanor or the personality of our student body to not care about who their leaders are. I think it has to do with the emotional attachment with the candidates," Standifer said.

The style of some voters may also leave them more inclined to vote for friends and that is all, Standifer said.

"I think some voters have the style to go in and cast their vote for the their friend, and then they don't care to vote for the other candidates, nor do they have the time to gain education on the other candidates," Standifer said.

According to the SGA website, all candidates who were awarded an SGA position ran on the Quarles/Belge ticket.

"(Quarles and Belge) ran an all-in campaign based on teamwork and working together, and maybe the other candidates just didn't campaign to, as many people," Standifer said.

According to the SGA website, 92.5 students voted opposed to the Quarles/Belge executive board.

"I'm glad we had the opposed button because it gave students a chance to truly voice their opinions," Standifer said.

Conclusively, the election went well, but it is best to compare its results to a previous unopposed race, Standifer said.

"I think the election went well for the situation. With an uncontested election there is not as much drama within the election, so that factors into the voting results," Standifer said. "I'd like to compare it to a previous uncontested election, because comparing it to any other election would be comparing apples and oranges."

Students' reasoning for voting or abstaining from voting varied from time constraints to a lack of knowledge about SGA.

"I didn't vote in the election. I just didn't have time," Will Perfect, sophomore mechanical engineering major, said.

"I did vote in the election. I think that SGA does have an impact on our school and the students in SGA are more recognizable than those who aren't," Yancie Walker, junior exercise science major, said.

"I don't vote, especially for things that I don't care about or that don't matter, like SGA," Andrew Acs, sophomore pre-nursing major, said.

Expressing your opinion through voting is imperative, but not in the case of SGA, Perfect said.

"I do believe voting is important, but not for SGA," Perfect said.

Walker voted for candidates based on what they promised to do for the school.

"I went through and I read all of their descriptions and then I voted for the candidates that I thought would do the best job. I based my vote solely on what they said they would do to help the school. Some of them were on the Quarles/Belge ticket and some weren't," Walker said.

Acs did not see the point in voting for SGA because the students elected are simply a "figure head."

Whether the SGA elections are based on politics and differing opinions is not evident, Acs said.

"Do they even have political views, or is it just a popularity contest?" Acs said. "SGA just seems like another club to me."

If SGA's true values were made clearer to students, they would be more inclined to vote, Acs said.

"I would be more inclined to vote for something like Eagle Entertainment, something where I can see what they do for us," Acs said.

Confusion as to what SGA actually does is a clear theme among students.

"What do they even do? The school ultimately does things for us, like the new biology building and the shooting range. SGA just relays the message," Acs said.

"I don't even know what SGA does half the time. I think if there was a way that I could see the things around campus that they've done, and if I knew more about SGA, I would probably vote," Perfect said.

"I don't even know what they do," Charlene Bibeau, junior biology pre-medical major and reigning Miss GSU, said.

Bibeau said, "SGA, student government association, okay, what does that mean? What do they do? How do they help our school? They all say that they're the voice of the students, but what do they do about it?" Bibeau said.

Dress in The Press

Watch students as they compete to make apparel using Student Media newspapers and magazines

March 6, 2012
Williams Center Multipurpose Room
7 PM WATCH THEM CREATE
8 PM FASHION SHOW

If interested in competing in the event please e-mail
miscellany@georgiasouthern.edu

SPONSORED BY:

20 VOLUME Features Salon & Tan

Student to faculty ratio increases to 23:1

BY TJ JACKSON

The George-Anne staff

The full-time equivalent student to faculty ratio rises at Georgia Southern University as enrollment increases and class sizes grow larger each year.

The ratio for the last academic year was 23 students to one professor, which had gone up from 19 students to one professor a few years earlier. This year it will be a budget priority in Academic Affairs to undertake more hiring of new faculty, not just replacements, according to the Provost's Report to Faculty Senate Ted Moore.

"We intend to manage that number (ratio) downward and we would like to have more faculty," Moore said.

Faculty members are overwhelmed at times with their larger class sizes in terms of grading, class involvement and attendance, Julie Kuykendall, healthful living professor, said.

Hiring more faculty may help professors by lowering class sizes.

Kuykendall teaches a class in the Education Building lecture hall with 250

"It would be nice to have around one hundred and fifty versus two hundred and fifty (students)...
-Julie Kuykendall,
Healthful Living Professor"

students, the majority being freshman.

"It would be nice to have around one hundred and fifty versus two hundred and fifty (students), and that's about what normally comes to class anyways. The hard part is when you have students you never see until test days and you have a hard time making that connection one-on-one with students," Kuykendall said.

"In general, we spend about twenty-five percent of our day teaching and about thirty percent grading and inputting grades. Other time is spent with students during office hours," Kuykendall said.

"If they make a bad grade or forgot to do their quizzes on time, after a test I have ten to twenty (students) who come and see me.

With each individual student, I spend maybe about five to ten minutes with each one," Kuykendall said. "It can be overwhelming at times. Grading in-class assignments take about two hours."

Other large classes include environmental biology, which consists of 235 students taught by professor and Center of Sustainability Director Lissa Leege, Ph.D.

"I have two office hours a week, but I get volumes of emails from students and I do my very best to answer all of them," Leege said.

Large classes create a sense of anonymity, Leege said.

"It's this sense of anonymity that bothers me most about the large classes. A student can sit there and text and be like, 'Oh, she

doesn't know my name.' If I keep eye contact with every single student, they feel a little bit more responsible," Leege said.

A small class would be better to keep track of attendance, Leege said.

"In the large classes, they kind of just slip out and I can't catch it. If I have a class of twenty and John Doe is not coming to class, I'll notice it and email him. If that happens in a class of two hundred and thirty-five, I don't have that much of a connection with those students and I don't know if they're there or not. I know better what's going on with twenty students as opposed to two hundred and thirty-five. I can survey the room and know who's there and not there in a class of twenty, and I obviously can't do that with two hundred and thirty-five," Leege said.

GSU is conducting searches to drive down the ratio and, in turn, lower class sizes.

Moore said, "We have several searches to hire faculty and my expectation is that the number of faculty will not go up substantially next year compared to what is right now."



Experience what Statesboro has to offer

The Office of Student Activities presents:

Off-Campus Housing Fair

Wednesday March 7, 2012
11am - 2pm
Russell Union Commons

zach s. HENDERSON

Library

library.georgiasouthern.edu

TRAVELING EXHIBIT

March 8 THROUGH April 20

March 8 @ 6:30PM

OPENING RECEPTION & RECITAL

featuring
Vocalist Hillary Zeigler
Pianist Dr. Michael Braz

A Fine Romance

Jewish Songwriters, American Songs, 1910-1965

UPCOMING EVENTS:

Sheet Music Display: A Fine Romance, Jewish Composers 1910-1965"

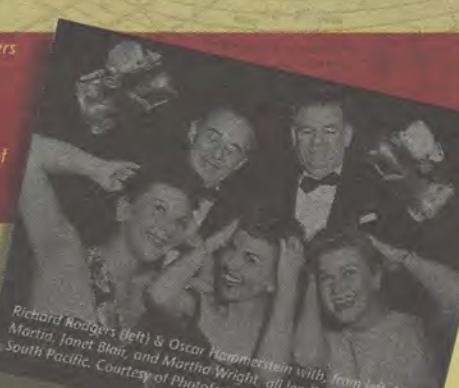
Michael Lasser speaking on "Jewish Songwriters & the Making of American Song"

Panel Discussion: "Jewish Influences on the Evolution of the American Musical Theatre"

Georgia Southern Symphony Orchestra

A Fine Romance: Jewish Songwriters, American Songs, 1910-1965 was developed by Nextbook, Inc., a nonprofit organization dedicated to supporting Jewish literature, culture, and ideas, and the American Library Association Public Programs Office. The national tour of the exhibit has been made possible by grants from the Charles H. Revson Foundation, the Righteous Persons Foundation, the David Berg Foundation, and an anonymous donor, with additional support from Tablet Magazine: A New Read on Jewish Life.

nextbook **GEORGIA SOUTHERN UNIVERSITY** **ALA** American Library Association



Richard Rodgers (left) & Oscar Hammerstein with, from left, Mary Martin, Janet Blair, and Martha Wright, all leading ladies of South Pacific. Courtesy of Photofest.

Gorilla Thrilla Step Show packs Hanner

Performing arts

KIMEKO MCCOY

The George-Anne staff

Students packed Georgia Southern University's Hanner Fieldhouse on Saturday for the 21st annual Gorilla Thrilla Step Show hosted by the Alpha Phi Alpha fraternity.

Many schools from surrounding areas including Clark Atlanta University, Savannah State University, the University of Georgia and several others came out to show support and compete in the show.

At the end of the night, it was the Alpha Phi chapter of Alpha Phi Alpha fraternity from Clark Atlanta that took home the trophy for the males, and it was the Zeta Psi chapter of Delta Sigma Theta from the UGA that took first place for the females.

When the lights dimmed and everyone had found their seats, Kenya Cabinek, who was hosting the event, came out on stage to get



The Alpha Phi chapter of Alpha Phi Alpha, the winning performers, perform a baseball game inspired step routine.

the show started. Cabine is a radio host for E-93, which is Savannah's hip hop and R&B station.

Cabine then began the show with roll call where Greek Life members are given shout outs to recognize their organizations.

Those present included Alpha Phi Alpha, Delta Sigma Theta, Zeta Phi Beta, Alpha Kappa Alpha, Phi Beta Sigma and several others.

First to hit the stage were Alphas from Clark Atlanta, who were dressed in costume as baseball

players.

Clark Atlanta Alpha Phi Alpha member Derrick King held the trophy after winning the competition with his brothers.

"Practice all the time. We practice every day all day at Clark

Atlanta," King said about the methods used by his team to take home the gold.

When asked about the experience winning at a different school, King said, "It feels pretty good. We came out and they showed us a lot of love, more than we got back home, honestly."

"I feel like we did our thing out there," UGA Delta Elisa Ivory, said. "It was definitely different, but a very welcoming crowd."

Dressed in Batman's trademark costume with a red flare, the Deltas from UGA incorporated gymnastics as well as step for their performance.

"This isn't our first show. We had four shows before this, so we pretty much used the same stuff and we just tweaked a few things for this school," Ivory said.

Every year, GSU's Alpha Phi Alpha fraternity members put this competition together with big turnouts for audience members and they strive for even better next year.

Women of Ireland brings Celtic tradition to GSU

Music

JAZMIN DAVIS

The George-Anne staff

The sounds of Ireland made their way to Georgia Southern University as female voices and blends of traditional Irish instruments attracted a large crowd to the Women of Ireland at the Performing Arts Center Saturday evening.

The PAC continued its 10th anniversary season in a more cultural sense as the group of musicians known as the Women of Ireland brought the sounds of their homeland to Statesboro with their mix of traditional and contemporary Celtic music.

"This particular show has a blend

of some blues and jazz. Ireland is an international place with an integrated music scene — you can see a lot of that," Director of the Center for Irish Studies Howard Keeley said.

Accompanied by a band with an accordion, pipes and other native instruments, three women vocalists took the stage. Color-changing backdrops and a stage arrangement with the Women of Ireland logo in the center of the entire set-up provided audiences with an all around visual concert experience. Denise Brennan, Nicola McGuire and Ciara Walton began the event in harmony with the song "A Storm in My Heart."

The show contained solo and collaborative performances in which



Rebecca Farris/The George-Anne

Women of Ireland perform traditional songs inspired by the Irish culture at the PAC.

river dancer Siobhan Manson and fiddle player Theresa Kavanagh, completing the group, joined the singers. "I hope (audiences) are very uplifted. We meet a lot of people who either have Irish relatives or are of

Irish decent and our performances usually remind them of home," McGuire said.

Female backline dancers, Sinead Fallon and Judith Clyne, and dancer Andrew Vickers pranced across

the stage as the song selections progressed throughout the program.

A performance by the uilleann piper Dan O' Calaghan exposed audience members to a different type of live, musical instrument playing.

This being one of the final performances the PAC will hold for the season, the coordinators wanted to bring in performers with a cultural background to bring to the GSU college setting.

"Me and my friends thought it'd be cool to come see the culture, and I'm actually Irish," sophomore food science major Molly Stought said.

The Women of Ireland brought the evening to a close with one last farewell performance of the gentle tune "Feels Like Home."

FASHION, from page 1

straight, short, curly and even braids make them stop in their tracks.

Comfort seems to rule over everything when it comes to style on a college campus, sweatpants or jeans and a t-shirt, but for guys the normal jeans and t-shirt combination will not suffice; they prefer something fancier.

"I'm tired of seeing the leggings and big t-shirt look," Wilmont said.

"I like jewelry like earrings, necklace, and watch; a blazer; a fitted shirt; skinny jeans and heels. That'll do it," Ofili said.

Guys are not the only ones who like to see their counter parts dressed up. Girls favor guys who are dressed up as well; according to them, it gives guys a cleaner and sophisticated look.

Some of their favorite trends in professional male style include sweater vests, bow ties, and cardigans.

"I like when guys are dressed up, like they care about their appearance," Gabriela Garcia, a sophomore fashion merchandising major, said.

"If you're dressed up, I like it, except for suit I automatically think you're in business, otherwise it's doing too much," Alexis Davis, senior international studies major, said.

Some girls prefer a more dressed down look as well.

"I like jeans, light jeans and not dark jeans or baggy jeans and simple t-shirts," Christen Trettel, junior child and family development, said. "V-necks are hot."

"I like cargo shorts, v-necks, cardigans, and bow ties," Shaquea Williams, a child and family development major, said.

The females on campus also agree with the guys when it comes to hair. It is essential to a well-kept appearance and often times the first things some girls notice.

"The way a guy maintains his hair shows that he is clean and can take care of himself," Kristen Smiley, junior psychology major, said.

Ladies at GSU are not easily impressed with just clean and polished hair. They require their guys to maintain more than just their hair; the way a guy puts together his overall outfit can cancel out great hair if not done properly.

"I notice the hair, but I look at his shirt. I like a man who can dress," Davis said. "If you look tacky now you'll look tacky later."

"His shoes. If he has dirty shoes it's a no go," Williams said.

Males and females on the GSU campus are not too different when it comes to what they like



Demario Cullars/The George-Anne

Georgia Southern students model trendy fashion on campus. **Left:** Michael Tyson, sophomore marketing major, wears a cardigan and khakis. **Right:** Nicole Mitzel, freshman psychology major, models her outfit in the Union.



Demario Cullars/The George-Anne

to see. A great hairstyle, a clean outfit, and a nice pair of shoes will win out every time.

Perfect location.

CAMBRIDGE SOUTHERN

912.681.1300 Cambridge-Southern.com

THANKS, TROY!

TROY MARSH
THE MARSH LAW FIRM

WHAT: **FREE** LEGAL HELP
WHERE: ROOM 2073 IN THE RUSSELL UNION
WHEN: EVERY TUESDAY 3:00-5:00 PM
TO SCHEDULE AN APPOINTMENT, CALL (912) 764-7388

SPONSORED BY  STUDENT GOVERNMENT ASSOCIATION
YOUR STUDENT ACTIVITY FEES AT WORK.

Award-winning musician to play at Averitt Center



Music

BY JAZMIN DAVIS

The George-Anne staff

Upbeat tempos of jazz music will soon hit the Statesboro music scene as trumpet player Jon Faddis makes his way to the Averitt Center for the Arts to enlighten audiences with his musical talent and education.

As a Grammy nominee and a pupil of the famous jazz musician Dizzy Gillespie, Jon Faddis has extended knowledge to bring to a college town full of students who are eager to learn.

"We wanted to bring in a professional artist to perform with the Georgia Southern jazz ensemble, and there was a suggestion from a local band teacher who is familiar with Faddis, so we researched him and became more familiar with his work and him as an artist and decided to have him come to Statesboro," Tim Chapman, executive director of the Averitt Center, said.

Faddis is scheduled to come to the Averitt Center for a performance with GSU's very own jazz band this Friday evening. The trumpet

player will also be teaching a master class for trumpet players here in Statesboro the day prior to the performance to give students an insight on what it takes to be a successful musician.

"Jazz is a genre of music that we really do not get a lot of exposure to here in Statesboro, and we here at the Averitt try to be as diverse as possible with the many music performers and guest artists we have here," Chapman said.

Jon Faddis has also worked with many famous musicians on popular albums playing the trumpet. In the late '70s and early '80s, he began working with familiar names such as Billy Joel, Paul Simon and the band Kool and the Gang.

Beginning to play the trumpet at the age of seven and becoming a professional at the ripe age of 18, this performer comes from a deeply rooted jazz background. Faddis moved from his home state of California to New York City as he made the first steps toward his musical career. He began by connecting with surrounding bands such as the Lionel Hampton band, and once he entered New York, the Thad Jones/Mel Lewis Big Band.

After immersing himself more, he became the conductor for the well-known Carnegie

Hall Jazz Band in 1992 in New York City and remained conductor for 10 years, according to the Averitt Center's website.

A featured artist of the Ed Keane's Agency, Faddis continues his musical career as an educator of young minds, aside from his typical trumpet playing. He travels from the East to the Midwest and back, teaching at Conservatory of Music at Purchase College State University of New York and working with Columbia College in Chicago. He is currently the artistic director for the Chicago Jazz Ensemble, originating from Columbia College itself.

"We are hoping that this performance serves not only as a night of entertainment, we also want to educate adults as well as aspiring student musicians with this performance. And what better way to do that than to have one of the best trumpet players in the United States to perform?" Chapman said.

Faddis will provide his mastery of trumpet and cultural training to Statesboro students and community members when he takes on the GSU Jazz Band under the conduction of Dr. William Schmid. Faddis will also keep his ties in Georgia as he brings Jazz to the Savannah Music Festival at the end of this month.

Trumpet player Jon Faddis will be performing in Statesboro Friday evening.

allaboutjazz.com

BLISS BERRY
FROZEN YOGURT • GELATO • SORBET • SMOOTHIES

- 5% Off Students Everyday!
- Happy Hour: Mon-Thurs (5pm-7pm)
- Mon & Thurs: Double Punch Card Days!
- Come Try our New Delicious, Fresh, Fruit Smoothies!

1 oz FREE*

*Valid through 4/30/2012. Cannot be combined with any other discounts.

721 SOUTH MAIN ST. #9
STATESBORO, GA
LOCATED IN QUIZNOS SHOPPING CENTRE
CONTACT # 912-681-2547

HOURS:
MON-THURS: 11AM-10PM
FRI-SAT: 11AM-11PM
SUN: 12PM-10PM



JOIN ON FACEBOOK TO
LEARN MORE ABOUT
SPECIALS @ YO BLISS

Intramural Scores

Inner Tube Water Polo

Monday 2-27

Darton Dropouts 7, **Team DWet 4**

Atlantacondas 0, **Hydrophobia 11**

Darton Dropouts 0, **Hydrophobia 7**

Basketball

Monday 2-27

Team Got Toooo 55, **Southern Spliffs 62**

The Cadets 47, **Court 1 60**

CP Nothin But Net 60, Cool Shoes Bro 55

Strokegame 31, **Vogel Party of 5 52**

Hibachi Makin Mariachi 35, **Stone and the Hood Rats 49**

M.O.B (Muffins Over Bagels) 44, Tau Athletics 30

F.A.M.E 32, **Underdogs 33**

Original Stokers 44, RUF 41

UV Brawlers 46, **Forgiven 66**

Self Check 55, **Austin's Team 60**

3 the Hard Way 52, DRIVE 44

Raw Talent 56, PF Changs 49

The Dream Team 69, Camp Coke 47

FLY AFI 53, **NIKE Select 65**

WE2REAL 51, **Why Are You Here 77**

Tuesday 2-28

Sour Diesel 41, **Dwight men can't jump 44**

Five White Guys 35, **The Hardwoods 53**

Jose Mesa and Friends 49, The Roy Orbisons 28

Swagger Hounds 71, The Great Whites 52

Kappa Alpha Psi 20, Kappa Sigma 0

Shawt Bread 47, Five Guys 36

Multiple ScoreGasims 53, Crack Baby Basketball 32

Sigma Phi Epsilon 30, **Delta Tau Delta 38**

Sigma Alpha Epsilon 27, **Pi Kappa Phi 54**

Delta Chi 47, **Alpha Phi Omega 51**

Alpha Tau Omega 49, Delta Sigma Phi 39

Pi Kappa Alpha 30, **Sigma Nu 31**

UV Villa Thrillas 28, **Splash in the Boro 29**

GSU Eagles 47, **Skip Bayless Hates Us! 31**

2Legit2Quit 41, **Skins 61**

SLASHERS 41, **Juice Babies 54**

Hoops! I Did It Again! 64, MonStars 55

Alpha Super Awesome Cool Wolf Swagg Squadron 39, **Toon Squad 72**

Eagle Alert Sports 59, **The South Butt 66**

Balls N Dolls 43, **The 69ers 55**

Wednesday 2-29

Ragin' Alchoballics 50, The Math Debaters 45

Malicious Prostitution 38, **Black Mamba 62**

ATLiens 51, Fast & EZ 50

The Fistin' Pistons 48, Glacial Speed 38

Ball-Stars 45, **GSU Football 47**

Space Cadets 41, **Ducks 50**

Five Black Guys 26, **#TEAMJABOY 28**

NSBE Ballas 34, **Pressure D 65**

World Domination 68, Caucasian Invasion 48

The Newcomers 79, BCM Hoops! I Did It Again 4

Showtime 20, RAC'n Crew 0

Junkyard Divas 14, **Just Do It 63**

576er's 53, Phippen Aint Easy 45

Flint Michigan Tropics 36, **The Asian Guy Sucks 48**

Zeta Tau Alpha 22, Kappa Kappa Gamma 14

Kappa Delta 31, Alpha Delta Pi 27

We Winning 43, **Pat Barker's Old Friends 52**

6ft Swag 43, Our Balls Always Drop 26

Kappa Kappa Gamma 15, **Phi Mu 32**

Fully Torqued 47, **My Dixie Wrecked 53**

Thursday 3-1

Sorry Babe I Fell Asleep 0, Backyard Studs 0

SpaceJam 34, **3 Ballin' 45**

Polo Gang 20, GSU Workers 0

Violent by Instinct 0, **Team Iphone 20**

Team Perfection 53, Rocket Power 50

Tropics 66, Eastbound & Down 54

Viscious and Delicious 20, The Young and the Rest of Us 0

Fallopian Swim Team 49, **SP Baby Swingers 52**

Diligaf 72, A.M. Lumber 41

STROKERS 27, **The Cosby Kids 64**

Philosoraptors 58, Last Chance 36

BCM Ballers 21, **BCB 60**

Sons of Beechs 58, Burdern's Ballers 56

Big Richards Academy 51, Brick Squad 43

Young Life 54, A Series of Fortunate Events 34

Wheelchair Basketball

Thursday 3-1

Ducks Eat Free At Subway 15, Shredding Queso Balls 4

wheelchair stuntin 12, **King Co-BRAHS 16**

Hot Wheelz 21, Really Stairs ____ 6

Professor X Dance Team 12, **I HATE HILLS 24**

This Week At CRI

Today
Intro to Outdoor Climbing, 8PM

REGISTRATION CLOSES:
Tennis Singles

SPRING BREAK

Monday, March 19
REGISTRATION OPENS:
4-on-4 Flag Football

FOLLOW US!  

twitter.com/GSUCampusRec
facebook.com/GSUCampusRec
www.georgiasouthern.edu/cr



FRANKLIN
TOYOTA • SCION

10% OFF
service with your
Student ID

888-695-8165

500 Commerce Drive
beside the new Holiday Inn

PROTECT YOUR VEHICLE!

Regular maintenance and upkeep is crucial to your car's optimal performance, best possible gas mileage, and highest resale value.

Our service department offers the best in automotive service for all makes and models.

PLUS we provide a free shuttle to and from campus!

- Oil Change
- Tire Services
- Tune-Up & Transmission Service
- A/C & Radiator Service
- Brake Service
- Engine Repair
- Body Shop Services



BUY OR LEASE
A NEW TOYOTA, GET A
\$1,000
COLLEGE GRAD REBATE

SCHEDULE YOUR SERVICE ONLINE! www.FranklinToyota.com

CLASSIFIEDS

This page brought to you by Career Services
Explore • Experience • Excel

14 Tuesday, March 6, 2012

The George-Anne

Advertisement

For Sale

Scooter for sale! 2005 Honda Ruckus. Black, 49cc, 85+mpg. Original (faculty) owner, garage kept. \$1,500 OBO. Contact (912) 678-6052

Firewood for Sale. Delivery available! Call 912-690-0872 or 912-690-4956.

For sale: 2009 BMW 328i, hard-top convertible in great condition. Black with tan interior. Call 912-293-1909.

Used Fender Blues Jr. All-tube guitar amp, \$350, negotiable. Perfect working order/condition (912) 536-1610

Bed frame, mattress, box spring, and dresser for sale! Only \$150!! Contact Kristina: 678-770-6251

Houses for Rent

ATTENTION ALL STUDENTS 2, 3, 4, 5, 6, and 7 bedroom houses available Aug 1, 2012 24 hr repairs guaranteed 912-682-7468

Furnished apartment - upstairs with separate entrance. Located just past Mill Creek Park. No laundry facilities. Includes utilities. \$130/week or \$500/month. Available now. 912-531-1319

Subleases

Subleasing master bedroom in Planter's Row for \$365/month; utilities not included, pet friendly. For more information contact Anna-Marie at at01770@georgiasouthern.edu or call (770) 546-6560

Subleasing a room in 4 BR/2BT in The Avenue for Spring 2012, but available as early as Dec 16 and Dec will be paid for. \$325/MO. Furnished, utilities included with free Wifi and Cable. Contact Nikki at (678)525-0297.

Sublease at Cambridge for Reduced Price 1 BR/BTH available in a 3 BR, bus stop directly across from campus, all utilities included, furnished, washer/dryer, amenities. \$350/month *Regular price-\$459/month.* Email shortecutie102@yahoo.com

2 Bedroom 2 Bathroom apartment in Hawthorne 2. Very close to campus. \$350/month. Sublease through July. Contact Shannon at 678-468-9407

2 BR/2 BT sublease in Georgia Villas. \$475/month for both rooms, utilities not included. Available Jan-May, pet friendly. Right across from Greek Row on Chandler. Email ti00212@georgiasouthern.edu

Subleases, cont.

Subleasing my room for Spring 2012 in a fully furnished 4 BR/4 BT 3-story town home. Walking distance from the stadium and bus stop. Contact Alex at (770) 712-5377 or ao00837@georgiasouthern.edu

Spring 2012 1 BR/1 BT in a 2 BR/2.5 BT townhouse at The Avenue. \$495/month, but I will pay \$30 for each month. Or I could put \$210 towards the first month's rent. Contact Cherelle at chollan4@georgiasouthern.edu

Subleasing 626 B at the Exchange. Female Roommate needed. \$519.00 per month. All utilities included, free tanning, free Wi-Fi, 24 hr gym included. Available now. Contact (706) 523-6001

Room available for male or female in a 3 BR/2 BT house on Catherine Avenue. Fully furnished; bed needed. \$367/mo per person, utilities not included. Spacious house. Contact Yale at (404) 272-7652 or yale8754@bellsouth.net

SUMMER 2012! Subleasing 1BR/1BT available in a 2BR/2BT at The Woodlands. \$409/month plus utilities. Email Sadie at sn01140@georgiasouthern.edu

Subleases, cont.

SPRING 2012! 1 BR/1BT available in 4 BR/4 BT at Campus Club for Jan or earlier. Utilities included. Rent is \$419/month. CHEAPER RATE CAN BE ARRANGED. Email Skyler at sh02071@georgiasouthern.edu

1 BR/1 BT available in a 3 BR at The Grove, for Spring 2012. Available after Dec. 20. \$450/mo, utilities included. Call Ellen 404-694-1394 or email ej00034@georgiasouthern.edu

All inclusive, two story, fully furnished, 4 BR townhouse for \$330/month! Includes trash, utilities, cable, wi-fi, pet park, 24/7 gym, recreation courts, computer lab, new appliances and washer/dryer! Contact (229) 326-4291.

Subleasing a 1 BR/1 BT in 4 BR apartment in Copper Beech for Spring 2012 starting Christmas Break. Washer/dryer included. Next to pool/volleyball court. \$389/mo plus utilities. Contact Singer (404) 680-7240

Female roommate needed for Spring 2012. 3BR/3BT at Cambridge; \$449/mo all inclusive and furnished; one building away from bus route, 1st floor. Contact Angelica 404-921-4988.

Subleases, cont.

SPRING 2012! Female roommate wanted. 1BR/1BT in a 3BR/3.5BT townhome. \$400/mo. Contact at 404-444-8987 or ec01442@georgiasouthern.edu

3BR/2BT within 2 miles campus. You can sublease the other 2 rooms. No smoking or pets. Call (706) 951-1427.

Subleasing 3 BR/2BT house on Parker Ave in downtown Brooklet. Contact Joyce at (912) 842-9479.

Sublease available ASAP. at Copper Beech. \$389 rent monthly. Utilities not included. 3 roommates. Fully furnished. 478-957-1005 for more information.

Sublease my 1BR apartment ASAP at Panter's Row. It is only two years old with a HUGE walk in closet. It is \$625 and pet friendly. Utilities are not included. Contact at be01181@georgiasouthern.edu or 478-455-0432.

Help Wanted

MODELS of all weights/sizes/ages needed for figure drawing class on T&R, 2-4:30 PM. Fall and spring openings. Must be 21 and able to sit for long periods. Call 912-478-2793 or email jburke@georgiasouthern.edu

Help Wanted, cont.

BARTENDERS WANTED! \$250 a day potential. Experience unnecessary. Training provided. 18+ Call:1-800-965-6520 ext. 296

Seeking an Assistant, excellent opportunity if looking to work in a friendly atmosphere. Self-Motivated, Positive Attitude, Ability to Multi task. Send resume to Martgay@gmail.com

Part time sales position open at Farmer's Home Furniture. Apply in person. 110 Northside Drive E. Statesboro, Ga 30458

Misc.

American Shorthair Cats (AKC Reg. Male and Female) free to good home, contact bpills12@gmail.com if interested

Will proof papers. Quality work, reasonable prices. Will also type short projects. Must have ample lead time to schedule. Email auntre01@gmail.com

Fourth year writing and linguistics major will proof papers/ tutor in writing. Cheapest rates, at least three days notice on assignments

HOT JOBS

Cool Internships

Job Title	Company	Deadline to Apply
Financial Services Professional	Capstone Financial Partners	March 30, 2012
Industrial Engineer (copy)	SRG Global	March 29, 2012
Clerk	Pineland CSB	March 15, 2012
Business Development Intern	Course Hero, Inc.	March 13, 2012
Nanny	NannyQuest, Inc.	May 25, 2012
Marketing and Communications Intern	Downtown Vision, Inc.	May 31, 2012
Video Journalist	WMAZ 13	May 31, 2012
Implementation Consultant	Reynolds and Reynolds	March 25, 2012
Software Developer	Comrise Technology	March 25, 2012
Corporate Sales Representative	Key Staffing Solutions	March 14, 2012
Camp Counselors	Pine Forest Camps	March 24, 2012
Network Administrator	Emagination Computer Camps	March 23, 2012
Assistant to Marketing Manager	Scheduling Institute	March 22, 2012
Tennis Pro Shop Attendant	Horseshore Bend Country Club	April 30, 2012
Technical Consultant	Aderant	March 23, 2012
Freight Broker	Unisource Worldwide Inc.	April 12, 2012

To view the detailed job descriptions application instructions or additional postings, log into the Eagle Career Net/NACELink system found at www.georgiasouthern.edu/career.

GRADUATION GALA 2012

Tuesday, March 20 & Wednesday, March 21
10 a.m. to 6 p.m. @ Nessmith-Lane Building

- ❖ Check on Graduation Plans and pay Graduation Fees
- ❖ Order your Graduation Ring, Cap & Gown
- ❖ Order Professional Framing for your Diploma
- ❖ Clear your parking fines or library fees
- ❖ Speak with a financial aid counselor & more!

Don't forget to bring your student ID!

Williams Center 1047

(912) 478-5197

georgiasouthern.edu/career

PUZZLES/COMICS

www.thegeorgeanne.com

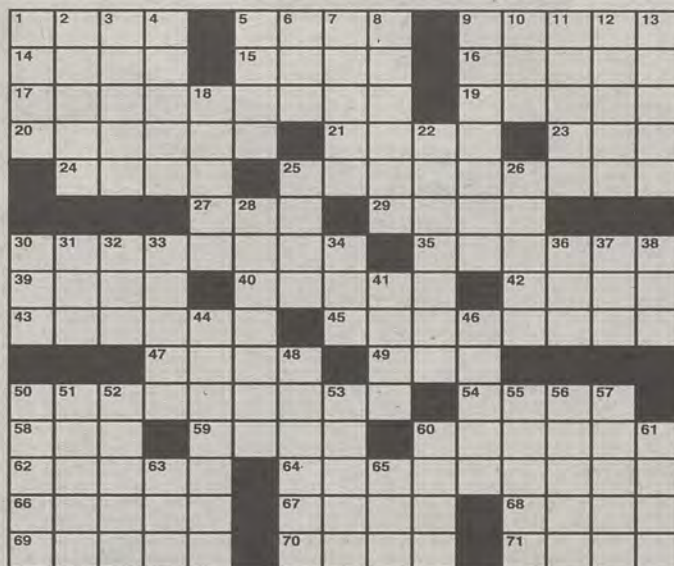
Tuesday, March 6, 2012 15

Los Angeles Times Daily Crossword Puzzle

Edited by Rich Norris and Joyce Lewis

ACROSS

- 1 Picket line crosser
- 5 Arrange, as a vacation
- 9 Washington neighbor
- 14 "Splendor in the Grass" director Kazan
- 15 Gutter site
- 16 La Scala's city
- 17 Top banana
- 19 Mayan corn crop
- 20 Observation after too many wrong turns
- 21 "Dirty Harry" composer Schiffrin
- 23 "Don't __ stranger"
- 24 Like a dog's hind leg
- 25 A low-flow showerhead will help lower it
- 27 Enzyme ending
- 29 Online auction site
- 30 50 cents, in slang
- 35 After "get," gain an advantage
- 39 Attending a Lakers game, say
- 40 Ski resort named for a tree
- 42 Longest river entirely in Switzerland
- 43 Inning half
- 45 Baker's container
- 47 Dedicated works
- 49 Taylor of fashion
- 50 Hit generating four 71-Across
- 54 Horizontal punctuation
- 58 Hold up, as a bank
- 59 Yogi, for one
- 60 Wheel cover
- 62 Hi hello
- 64 "The Iron Horse," baseball's all-time 50-Across recordholder
- 66 Jeopardy
- 67 Hops kiln
- 68 Took __ loan
- 69 It has reservations
- 70 G.I. fare
- 71 One of them is hidden in 17-, 25-, 30- and 45-Across



By Don Gagliardo and C.C. Burnikel

3/6/12

DOWN

- 1 Event before finals
- 2 Ascend
- 3 Path between rows
- 4 Conductor's wand
- 5 Cheeky
- 6 Research site
- 7 St. Teresa's city
- 8 Cancel out
- 9 Wicked
- 10 Lunes o martes
- 11 Perp's story
- 12 Eye color
- 13 "Shaq Diesel" rapper
- 18 Founded: Abbr.
- 22 Beirut's country
- 25 Licks, as a stamp
- 26 One way to play
- 28 Cat breed
- 30 White lie
- 31 Dedicatee of Lennon's "Woman"
- 32 Final: Abbr.
- 33 Inform against
- 34 Sunblock letters
- 36 Gift of the garrulous?
- 37 Ocean State sch.
- 38 Pilot product

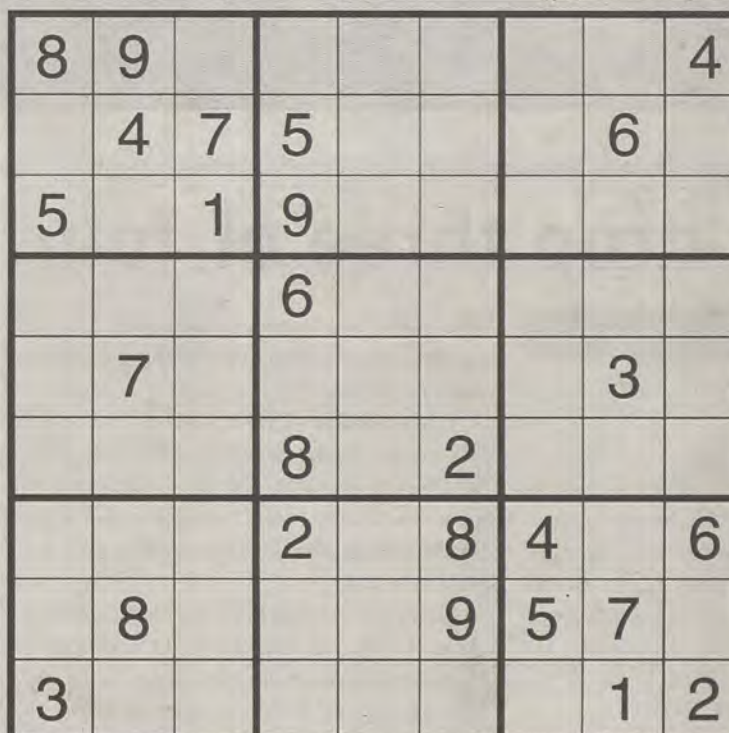
March 1st Puzzle Solved

J	U	M	B	O	R	U	P	E	E	F	I	G
A	S	I	A	N	E	S	T	E	R	O	R	E
M	A	R	K	E	T	S	H	A	R	E	R	A
L	I	M	O	N	U	T	S					
H	E	A	D	E	D	F	O	R	H	O	M	E
S	Y	L	V	A	N	E	T	U	I	S		
A	S	E	A	A	B	Y	S	S	G	A	G	
D	O	G	S	L	E	D	P	E	N	N	A	M
A	N	Y	A	L	O	N	E	O	L	I	N	
A	M	O	R	E	I	P	H	O	N	E		
W	H	I	P	I	N	T	O	S	H	A	P	E
B	R	E	D	A	L	A	S					
B	O	A	B	U	L	L	S	E	S	S	I	O
Q	T	R	A	N	I	S	E	E	L	M	S	T
S	E	T	H	O	L	D	S	D	E	P	T	H

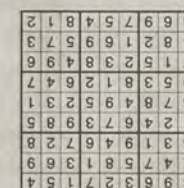
- 41 Jason with a record 63-yard field goal to his credit
- 44 Weirdo
- 46 Like inappropriate influence
- 48 Picabo Street race
- 50 It's plotted in math class
- 51 Loggers' game
- 52 Scrub the launch
- 53 Like a cheering crowd
- 55 Can't stand grease on
- 57 Part of Hispaniola
- 60 5'2", 6'3", etc.: Abbr.
- 61 Some major golf tournaments, informally
- 63 Move it
- 65 Employ



Welcome to Falling Rock National Park by Josh Shalek



Sudoku



Planters ROW

By Hendley Properties

912.681.1170

www.hendleyproperties.com

3 and 4 Bedroom Cottage Houses

\$365

/month per person

There are 10 Roommate Matching Spots Available



Demario Cullens/The George-Anne Staff

Georgia Southern University baseball team members support their teammates from the dugout during the double header on Sunday afternoon against the University of North Florida.

Eagles drop three of four against UNF

Baseball

BY COLIN RITSICK

The George-Anne staff

Dropping three of four games against the University of North Florida, Georgia Southern University's baseball team continues to struggle.

The Eagles have dropped to an overall record of 6-6, losing five of its last six games without the services of preseason All-American Victor Roache.

Thursday (Away) - UNF 8, GSU 5

A walk-off homerun lifted the Ospreys over the Eagles in the first of four games this past weekend. The bullpen kept UNF in check for four innings after GSU came back from a 5-1 deficit. As the game was tied 5-5 in the bottom of the ninth, sophomore Ryan Roberson hit a three-run long shot on two outs to end the game.

Freshman Casey Kicklighter gave GSU a jolt at the plate in this series. In his first career start he had four hits in five at bats and had three RBIs. Kicklighter was a triple shy of hitting for the cycle.

But in typical fashion, the Eagle pitching staff continued to allow too many runs on two out at bats. Every single one of the Ospreys runs

were plated with two outs. This gave UNF an early advantage and was very instrumental in its victory over GSU.

Friday (Away) - UNF 7, GSU 4

Five runs in the sixth inning for UNF lifted the Ospreys over GSU for the second game of the series. All runs from UNF were scored in the middle innings after the Eagles took an early 1-0 lead in the first.

Junior starter Chris Beck, the most consistent player on the mound for GSU and also a preseason All-American, lost in his first away start this season. Beck was responsible for all seven runs on nine hits. This was the preseason All-American's first loss this season.

The Eagles fought back and made the game interesting with some late inning production. Senior Eric Phillips hit his first home run of the season and Kicklighter continued to do damage in the middle of the GSU lineup. But three players having multiple hits in the game in addition to Kicklighter's hot bat could not provide enough runs for the Eagles.

Sunday Game 1 (Home) - UNF 7, GSU 5

GSU could not stop the bleeding in game one of Sunday's doubleheader. The Ospreys scored in every inning except for the first, second and ninth.

The Eagles continued to pitch a medley of players, throwing six in the first contest. The pitching staff combined to give up 14 hits. This loss marked the fifth dropped game in a row for GSU, a stat not seen in regular season play since 2007.

The team finished with three errors and dropped below a .500 average for the first time since the season opener last year. Sophomore Will Middour gave up two runs on two hits in his relief effort and was credited with the loss.

Sunday Game 2 (Home) - GSU 9, UNF 5

This victory ended the Eagles five-game skid and put the team back at .500 for the season (6-6).

A two-run third inning and a three run fourth inning from GSU featured two homeruns and a little bit of history. Phillips hit a single to left field in the fourth inning, putting him in the top 10 all-time hit leaders in GSU's history.

The Eagles were leading 5-1 heading to the fifth, but allowed four runs over the next two innings to let UNF tie it up at 5-5. Not long after, the bases were loaded for GSU with one out. A three-run seventh inning gave the Eagles a lot of cushion with a 9-5 lead.

Sophomore Taylor Burke got his first save of the season in the Eagle's sole win of the series.

Roache undergoes surgery

BY CLINTON HINELY

The George-Anne staff

All-American outfielder Victor Roache underwent successful surgery to repair his injured wrist on March 1.

Roache sustained a left radius fracture associated with wrist and forearm ligament injuries. He underwent surgery and is expected to make a full recovery, according to Surgeon-in-General at the University of Alabama-Birmingham University Highlands Hospital Thomas R. Hunt III, MD.

Roache injured his wrist diving for a ball in right field in the second inning against Radford University on Feb. 25.



VICTOR ROACHE



File photo

Sophomore guard Mimi DuBose (33) drives forcefully to the basket to shoot a layup.

Lady Eagles end season

Women's basketball

BY ANNA WELLS

The George-Anne staff

The Georgia Southern University women's basketball team finished its 2011-2012 season in the Southern Conference tournament with a tough loss against Western Carolina University.

After a slow start from both teams, the Lady Eagles began to pick up their momentum after scoring two back to back three-pointers with six minutes left in the first half, tying the score 14-14. Guard Mimi DuBose scored another three-pointer for the Lady Eagles, giving them their first lead of the game at 19-17 with 4:02 left in the game. GSU was able to hold onto their lead and finish out the half with a 25-20 advantage over the Catamounts.

"I thought we had good post presence in the first half, but the second half we had none. We did a good job inside and outside. We did a good job at getting to the free throw line. We weren't able to do enough of it in the second half," said head coach Rusty Cram.

The Lady Eagles came out in the second half and were able to gain a nine-point lead, their largest of the game, thanks to two baskets from freshman Anna Claire Knight and layups from Danielle Spencer and Dubose. GSU, however, was unable to keep the spark alive as the second half continued, and the Catamounts were slowly able to gain

back their momentum.

With 1:07 left in the game, WCU was able to gain its first lead of the second half, until a lay-up from Dubose tied the score 45-45 and forced the game into overtime play.

"Coach Cram told us to get to the rim, 'they'll either foul you or let you go to the rim.' Time was running down and I knew I had an open lane, so I pushed our post player out of the way and took it to the hole," said Dubose about her game-tying shot.

Despite their efforts, the Lady Eagles were unable to overcome the Catamounts and experienced a 61-56 loss in overtime.

"It's a see-saw game. Basketball is a game of runs. It's about being able to finish it and stopping those runs. You win some you lose — it's just the game of basketball," said senior guard Janay Wilson.

"You hate to see these kids put their hearts on the line every day and see the season end like this. You hate to see it end. To me, of all the losses this one is always the hardest. Hopefully the kids that are returning next year will remember this feeling and take it into the offseason and next year," Cram said.

Notable players of the game include Dubose, who scored 12 total points, including one three-pointer and five free throws. Seniors Janay Wilson and Samantha Williams both scored eight points for the Lady Eagles. Williams also led the team in three-pointers with two.

The Lady Eagles ended their season 4-16 in the SoCon and 8-22 overall and will be looking to improve for the 2012-2013 season.

ON THE ATLANTIC COAST IN BRUNSWICK, GEORGIA



Make the most of summer on the coast.

Summer Semester at College of Coastal Georgia.

**CATCH UP ON CREDITS.
LIVE ON CAMPUS.
GET AHEAD. GET A TAN.**



**COLLEGE of
COASTAL
GEORGIA**

UNIVERSITY SYSTEM OF GEORGIA

Application Deadline: May 15
For a listing of classes offered
visit ccga.edu/summer.

For information: 800.675.7235

Eagles conclude a turnaround season

Men's basketball

CLINTON HINELY

The George-Anne staff

The Georgia Southern University men's basketball team's season ended in the second round of the Southern Conference tournament.

GSU lost to Elon University 65-58 Saturday night in Asheville, N.C. to bring the season to a close. It is a disappointing end to an incredible turnaround year for the Eagles.

GSU defeated the University of Tennessee at Chattanooga on Friday night in the first round of the SoCon tournament, picking up GSU's first tournament victory since 2007.

The Eagles only had one conference win last season, compare that to the 12 victories the team posted this season and you have the second greatest increase in the history of the SoCon. GSU's 12 conference wins also tied a school record for most SoCon wins in a season, tying the 1992-93 Eagles.

GSU finished the season with an overall record of 15-15. The first time the Eagles have finished a season at .500 or better since the 2005-06 season. The Eagles were 5-27 last year, showing the rebuilding process is coming to an end and GSU is beginning to compete with its rivals in the

conference.

Sophomore Eric Ferguson established himself this season as a phenomenal player in the SoCon and in the country. Ferguson was coming off a successful freshman year but his performances this season helped lead the Eagles' turnaround. He posted five double-doubles and led the Eagles in points and rebounds, also being top or close to the top in several other categories.

Ferguson was voted to the first team All-Southern Conference by the media and the coaches, backing up his All-Freshman honors from last year. Ferguson was the 11th GSU player to receive first team honors from the coaches vote and the 18th player to receive All-Conference honors overall.

He was also voted SoCon Player of the Year and head coach Charlton Young received Coach of the Year from RushTheCourt.net.

Sophomores scored over 50 percent of the Eagles total points on the year, and now with two years of experience under their belt, GSU will go from being one of the youngest to one of the more mature, experienced teams in the SoCon.

However, GSU will lose two memorable players from this year, seniors Willie Powers III and Ben Drayton III. Their veteran leadership will be missed but after this year's turnaround, the 2012-13 season will be anticipated with excitement from GSU fans.



File photo

GSU freshman Kameron Dunnican (34) goes for a jump shot in the paint.

MARCH 23,

2012

'EVERYTHING OUTSIDE

THE CLASSROOM.'

Career in

STUDENT AFFAIRS

& ENROLLMENT

MANAGEMENT

Day

Register online @ students.GeorgiaSouthern.edu/vpsaem/csad

Spring Break is almost here!



**Limited edition official
Spring Break t-shirts!!!**

**Buy one and get
a FREE koozie!**



*Check out our Facebook page
for details about our
Spring Break photo contest!!!
Win University Store Gift Cards!*

New
FIVE SAUSAGE PIZZA

Get a Large
\$10

ONLINE PROMO
CODE: P3PZZ
LIMITED TIME ONLY

Covered with our **NEW CHORIZO SAUSAGE**,
real pork sausage, mild & spicy Italian sausage,
smoked sausage, and Mozzarella cheese.

ANY LARGE PIZZA
including our specialties **\$11**
for only

pepsi ONLINE PROMO
CODE: P1ALL

PAPA JOHN'S
Better Ingredients.
Better Pizza.

John W. Schnatter
"Papa John," Founder

Offer good for a limited time at participating Papa John's restaurants. No double toppings or extra cheese. Additional toppings may be excluded from special offer prices or require additional charge. Not valid with any other coupons or discounts. Limited delivery area. Delivery fee may apply. Customer responsible for all applicable taxes. Prices may vary in Alaska and Hawaii. © 2012 Papa John's International, Inc. All Rights Reserved. 3/31/12 FC



Follow us on
Facebook!



Statesboro
620 Fair Rd.
871-7272



WE ACCEPT
EAGLE
EXPRESS!

STUDENT SPECIAL

Medium 2 Topping & Two
20 oz. Pepsi® products

\$7.99



Use promo code
SSM2TC799

CARRYOUT OR DELIVERY EXPIRES 3/31/12. No double toppings or extra cheese. Offer good for a limited time at participating Papa John's restaurants only. Additional toppings extra. Not valid with any other coupons or discounts. Limited delivery area, charges may apply. Customer responsible for all applicable taxes.

LARGE DEAL

Large One Topping
Pizza

\$10.00



Use promo code
RHHLCT10

CARRYOUT OR DELIVERY EXPIRES 3/31/12. Offer good for a limited time at participating Papa John's restaurants only. Additional toppings extra. Not valid with any other coupons or discounts. Limited delivery area, charges may apply. Customer responsible for all applicable taxes.

PIZZA & DESSERT!

Cinnapie & Any Large Pizza
(life's uncertain, eat dessert first!)

\$14.99



Use promo code
RHHLST4

CARRYOUT OR DELIVERY EXPIRES 3/31/12. Offer good for a limited time at participating Papa John's restaurants only. Additional toppings extra. Not valid with any other coupons or discounts. Limited delivery area, charges may apply. Customer responsible for all applicable taxes.