

Georgia Southern University

Digital Commons@Georgia Southern

The George-Anne

Student Media

3-1-2012

The George-Anne

Georgia Southern University

Follow this and additional works at: <https://digitalcommons.georgiasouthern.edu/george-anne>

Recommended Citation

Georgia Southern University, "The George-Anne" (2012). *The George-Anne*. 2735.
<https://digitalcommons.georgiasouthern.edu/george-anne/2735>

This newspaper is brought to you for free and open access by the Student Media at Digital Commons@Georgia Southern. It has been accepted for inclusion in The George-Anne by an authorized administrator of Digital Commons@Georgia Southern. For more information, please contact digitalcommons@georgiasouthern.edu.



**EAGLES READY
FOR SOCON**

PAGE 26



**ABUSE
VICTIMS
HONORED**

PAGE 12

NEW SORORITY

**DELTA PHI EPSILON
TO BEGIN RECRUITING
THIS MONTH**

PAGE 9

Thursday, March 1, 2012
Georgia Southern University
www.thegeorgeanne.com
Volume 87 • Issue 61

THE GEORGE-ANNE

SGA results withheld

Grad assistant Muhammad calls election release agreement a miscommunication

BY JESSIE REESE

The George-Anne staff

The Student Government Association made the decision to withhold election results from the press, despite previous agreements between SGA president Alton Stadifer and Student Media.

The results were to be finalized at 9 p.m. last night, and SGA posted on its webpage that the results would be released to the public by 12 p.m. today at its "Elections Party" in the Russell Union Commons, which lasts from 11 a.m. to 1 p.m.

In the weekly SGA column in The George-Anne, Josh Combs confirmed the results posting time as 12 p.m. on March 1.

The "Elections Party" will be held three hours after the SGA elections guideline mandate the results to be released to the public.

"The results will be posted no later than twelve hours following the completion of the elections," according to the SGA Elections Guideline in the student handbook, as well as posted in

the SGA constitution.

Voting began on Sunday at 9 p.m. on WINGS. Voting ended last night at 9 p.m. These voting times are in violation of the guideline, according to the constitution.

"Online elections will begin at twelve a.m. on the first day and end after seventy-two hours," according to the SGA Elections Guideline in the student handbook.

Last year, The George-Anne received the election results between 9 p.m. and 10 p.m. so that the results could be printed in Thursday's edition.

During fall semester, Standifer spoke with Arielle Coambes, the editor-in-chief of The George-Anne, telling her that The George-Anne would be able to release the results for this year's election as it has done in previous years.

At 6 p.m. last night, Standifer had the SGA's graduate assistant contact Coambes to inform The George-Anne that the results were going to be held until the "Election Party" today.

"Alton and I had an

agreement that The George-Anne would receive election results Wednesday night to publish Thursday morning. At six tonight, though, I got a phone call retracting that statement from Asya (Muhammad), their grad assistant, who called it a 'miscommunication,'" Coambes said.

During last night's SGA meeting, Coambes, as well as Jennifer Curington, managing editor for The George-Anne, voiced their concerns about the way in which the results were to be delivered to the students.

Standifer then addressed SGA's constitution and the timeliness of the posting of the election results.

"Our constitution states that results must be released within twelve hours of the conclusion of the election. You can rest assured that that will happen. Every vote that was cast will be released within twelve hours of the election's conclusion. It will be done by nine p.m. tonight, and the results will be released by nine a.m. tomorrow," Standifer said.

See SGA, page 10

SLACKLINING



Lindsay Hartmann/The George-Anne

Junior anthropology and geology major Hayes Wilkinson slacklines in Sweetheart Circle. Many students have been drawn to Sweetheart Circle due to the unusually warm weather this winter.



thegeorgeanne.com



Follow on Twitter
@GeorgeAnneNews



Newsroom 478-5246
Advertising 478-5418
Fax 478-7113

PO Box 8001
Statesboro, GA
30460

Spring Break is almost here!



**Limited edition official
Spring Break t-shirts!!!**

**Buy one and get
a FREE koozie!**



*Check out our Facebook page
for details about our
Spring Break photo contest!!!
Win University Store Gift Cards!*

Police Beat

Tuesday, Feb. 21

- Officers issued five traffic warnings, 11 traffic citations, and assisted one motorist.
- Daniel Alexander Poppell, 18, public indecency, possession of a false ID.
- Gerald Zion Fils, 19, underage possession of alcohol, obstruction of law enforcement officer.

Wednesday, Feb. 22

- Officers issued two traffic warnings, three traffic citations, assisted five motorists, responded to one alarm and investigated one motor vehicle accident.
- A rape was reported at Centennial Place.

Thursday, Feb. 23

- Officers issued one parking citation, five traffic warnings, three traffic citations, aided three motorists and responded to one alarm.

Friday, Feb. 24

- Officers issued three traffic citations, four traffic warnings, assisted 12 motorists, responded to one sick person report, responded to one alarm and investigated one accident.

Saturday, Feb. 25

- Officers issued one traffic

citation, five traffic warnings, assisted two motorists, responded to two injured person reports and responded to one alarm.

- A vehicle window was broken by a baseball at the J.I. Clements Stadium parking lot.
- Julia Austin Alexander, 20, was charged with DUI, impeding the flow of traffic and possession of a false ID.

Sunday, Feb. 26

- Officers issued one traffic warning, two traffic citations, assisted five motorists, responded to one sick person report and responded to two alarms.
- Kevin Leon Lively, 21, was charged with obstruction of an officer and disorderly conduct.
- Kelly Marie Lively, 21, was charged with public drunk and obstruction of an officer.
- Byron Caleb Linto, 20, was charged with DUI, speeding and fail to maintain lane.

Monday, Feb. 27

- Officers issued one traffic citation, three traffic warnings, assisted four motorists, responded to one alarm and investigated one accident.
- Devante Alan Robinson, 19, was charged with possession of

marijuana.

- Sean Andrew Monahan, 18, was charged with possession of marijuana.

Tuesday, Feb. 28

- Officers issued four traffic citations, eight traffic warnings, assisted three motorists, responded to one alarm and investigated two accidents.
- Johnathan Nathaniel Heyward, 18, was charged with possession of a stolen vehicle, use of license plate to conceal the identity of a vehicle, fleeing or attempting to elude police, leaving the scene of an accident, reckless driving, driving on the wrong side of the road, failure to maintain lane, failure to yield and driving with suspended license.
- Alvin Vernard Pierce, 19, was charged with possession of a stolen vehicle.
- Jacques Dominique Perrymond, 19, was charged with theft by receiving stolen property.
- Zaneta Lashae Huff, 24, was charged with theft by taking.
- Alexander Joseph Blaze, 18, was charged with underage possession of alcohol and pedestrian under the influence of alcohol or drugs and possession of a false ID.

Statement of Operations

The George-Anne is the official student newspaper of Georgia Southern University, owned and operated by GSU students using facilities provided by the university. The newspaper is the oldest continuously published newspaper in Bulloch County. The newspaper is a designated public forum for the Georgia Southern community. The newspaper is published twice weekly, on Tuesdays and Thursdays, during most of the academic year. Any questions regarding content should be directed to the student editor by phone at 912.478.5246 or at gaeditor@georgiasouthern.edu.

ADVERTISING: The newspaper accepts advertising. Inquiries may be made by calling 912.478.5418 or 912.478-0566. Fax any questions to 912.478.7113 or e-mail ads1@georgiasouthern.edu.

The George-Anne receives additional support, in part, from the Student Activities Budget Committee.

The deadline for reserving space and submitting advertising copy is noon, one week prior to the intended publication date. For more information, rate cards, sample publications, contact the advertising manager or student

media director.

The advertiser is responsible for any errors in advertisements and its liability for adjustments is limited to the amount of space the error occupied in the ad. Further, the newspaper is not responsible for any damages caused due to an ad's omission from a particular edition and its responsibility solely is to reschedule the ad in the next regular edition at the regular advertising rates.

STUDENTS BEWARE: The George-Anne screens all advertisements prior to publication. The newspaper strives to accept ads for legitimate products and services only. Students are urged to exercise caution when replying to ads-particularly those that require personal information. Students are also urged to report to the newspaper any suspicious offers which they might see in an ad.

PUBLICATION INFORMATION: The newspaper is printed by Signature Offset in Jacksonville, Fla.

NOTICE: Unauthorized removal of multiple copies from a distribution site constitutes theft under Georgia law, a misdemeanor offense punishable by a fine and/or jail time.

Editor-in-Chief Arielle Coambes
Opinions Editor Alex LaSalle
Copy Chief Matthew D'La Rotta
News Editor Jessie Reese
Asst. News Editor Courtney Tielking
Arts Editor Quanyia Epps
Asst. Arts Editor Gianna Carme
Sports Editor Jannah Bolds
Asst. Sports Editor James Farmer

Business Manager Holly Hillhouse
Asst. Business Manager Vicki Tucker
Marketing Manager Aria Gabol
Production Manager Mallory McLendon
Photo Editor Lindsay Hartmann
Design Editor Kelsey Paone
Multimedia Editor Jennifer Curington

Corrections

In the Feb. 21 edition, Shelby Farmer wrote "Faculty lot to expand." In "Similar logos cause controversy between schools," accounting lecturer Charles Williamson's attribution was omitted.
Contact the editor at gaeditor@georgiasouthern.edu for corrections and errors.

LAUREN
RALPH LAUREN



The Sir Shop

TWO LOCATIONS

Statesboro Mall Main Street Village
 764-6924 871-4962



Our View

Communication depends on SGA and students

The Georgia Southern University Student Government Association held its candidates' debate on Tuesday night in the Williams Center.

However, the candidates running for executive office, all under the Quarles-Belge ticket, were running unopposed.

As a result, the debate was held more in the style of a town hall forum where candidates discussed their goals for next year.

One of the primary concerns was communication between SGA and the GSU student body, and SGA has stated that better communication is one of their top priorities.

We encourage SGA to follow up on their promise and do their part to interact with the student body. This includes election awareness to get out the vote as well as polling and interaction to gauge GSU's needs and concerns.

To ensure effective and democratic levels of communication, GSU students also need to do their part. If students have concerns for their campus groups, college or selves, they need to take steps to bring that concern to light.

Each college has senators in SGA that serve this very purpose.

Students should not be afraid to contact their senator. They may also stop by the main SGA office in the Russell Union.

Communication is essential to a fair and effective government, and both sides must do their part.

The George-Anne welcomes letters to the editor and appropriate guest columns. All copy submitted should be 350 words or fewer, typed, and sent via e-mail in Microsoft Word format to gaeditor@georgiasouthern.edu. All submissions must be signed and include phone number for verification. GSU students should include their academic major, year and hometown. The editors reserve the right to reject any submission and edit submissions for length.

Opinions expressed herein are those of the Board of Opinions or columnists themselves and DO NOT necessarily reflect those of the faculty, staff or administration of GSU, the Student Media Advisory Board, Student Media or the University System of Georgia.

SGA is not fulfilling promise

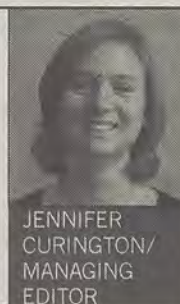
The Student Government Association of Georgia Southern University has been campaigning and making public for over a year their mission to be a transparent organization and to hear out student concerns.

"SGA is the voice of the values of the students of Georgia Southern," presidential candidate Dominique Quarles said at the Feb. 28 SGA debate.

As a student, I attended the SGA meeting last night to voice my concerns about how the organization plans to be more transparent and hear students out if SGA announces their election results at a meeting that many students may be unable to attend due to class.

The George-Anne is put on stands and published online by 7 a.m. every Tuesday and Thursday. If SGA truly wanted to complete their mission, they would utilize this medium so the student body could access the election results via a widely distributed newspaper or an online site. The past norm has been to announce the results

MY VIEW



JENNIFER CURINGTON/
MANAGING
EDITOR

via The George-Anne.

However, SGA is saying one thing while doing another.

The decision to withhold information from students about a supposedly representative organization conflicts with what Christina Belge, vice presidential candidate, said at the SGA debate on Feb. 28.

"As far as networking, we're hoping to have more involvement with The George-Anne," Belge said.

During the SGA meeting at which I voiced my concerns, Alton Standifer, current SGA president, threatened to pull the funding of The George-

Anne. This would not only affect the newspaper, but the GSU Student Media Department that offers students job opportunities that will give them valuable career experience. Journalists, magazine writers, graphic designers, photographers and advertising sales are just a few opportunities offered through GSU Student Media.

At this same meeting, senators of SGA commented on my concerns. When The George-Anne's Editor-in-Chief, and my fellow student, Arielle Coambes tried to respond to the Senators, Standifer silenced her, citing a 3-minute maximum for her to speak.

How does the future of SGA plan to offer the student body "more," the platform of their campaign, if they discontinue the existence of student organizations and job opportunities and withhold information from their student body via public media sources?

Curington is a sophomore writing and linguistics major from Warner Robins, Ga.

Debate is still up for debate

The Student Government Association held the candidates' debate Tuesday night in the Williams Center in front of an audience of the SGA and political science students that were forced to attend.

To call the event a "debate" is simply inaccurate. Each executive position only had one candidate running, all under the ticket of Dominique Quarles and Christina Belge for president and vice president, respectively.

Due the non-debate nature of the debate, the evening would have been better described as the "SGA Fashion Show." Indeed, all candidates were dressed for success.

After an introduction from current SGA president Alton Standifer, each candidate running for an executive position was allowed a few moments to talk about how much he or she have done and how much they will do. Common buzzwords included "transparency," "accountability" and "the students' voice."

ALEXANDER THE PRETTY GOOD



ALEX LASALLE/
OPS EDITOR

Between the executive candidates' speeches, all SGA senate candidates were given a few seconds each to introduce themselves and make a short statement. These short introductions were the highlight of the evening.

On the whole, potential senators from COBA were the best dressed with their well-fitting jackets and ties. They were followed by senate candidates from CLASS, who adopted a more subdued demeanor in dress and speech.

The at-large candidates also took home the award for Best Hair, thanks to a female candidate with a purple tint.

Every candidate also made sure to point out how much they loved Georgia

Southern University and how they had learned so much during their time here. This was a great relief, as I was previously worried that some of the candidates hated their school.

However, I was disappointed when only one senate candidate publicly spoke out against the issue of buses bursting into flame at GSU. How many pockets are the bus-fire lobbyists filling? Are some of the candidates hiding a pro-fire agenda?

The high point of the senator introductions came from at-large candidate Rock Gardner, who promised to be "The Rock on which you can stand." He is a geology major. I am not making this up.

Finally, the individual award for Best Hair goes to Christina Belge, who went with a simple yet refined look with her brunette bangs.

You have my vote, Ms. Belge.

LaSalle is a junior writing and linguistics major from Cumming, Ga.

From the left

Budget: No war, no waste

"Budget Hero" is a simulation that has the player choose a simplified budget for the next 10 years in the U.S., using current economic data. Players choose where to cut and spend.

This Budget Hero game is pretty interesting and I encourage all of you to try it out. What it teaches you is that everything has its benefits and its consequences. No matter what changes you make and what you think will be best, there's always something wrong with it.

My results were a 12.8 percent decrease in the debt and a 1.3 percent decrease of the Government's share in the GDP. I'll touch on the moves listed as my main impacts.

I cut troop numbers in Iraq and Afghanistan because we don't need such a strong presence there anymore. It's mainly a maintenance issue now instead of a war, so why would we need a large number of soldiers present? This is our chance to let them take control of their respective countries while maintaining a small amount of troops there to help train them.

I simplified the tax codes because I wanted to eliminate the loopholes and breaks. There weren't any other options in the tax section that appealed to me and we couldn't just say what we wanted to do, so this was the next best thing.

I required drug companies to give deeper Medicare discounts because they can afford to



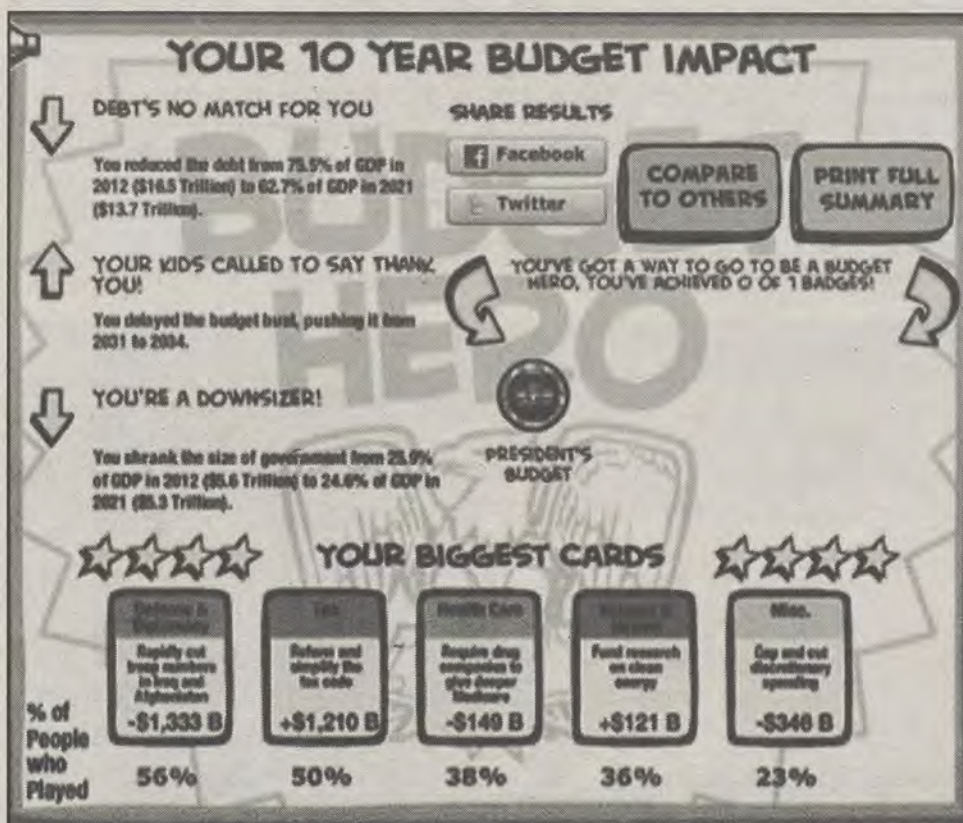
ROB ROBERTS @Robert_ARoberts

shell out the good drugs, but they don't. This is solely so they can retain a profit. While it's true that they depend on a profit to generate the research and development of new drugs, would you do this at the expense of others?

Another main goal was investment in clean energy. We need to stray away from the crutch of oil and become more self-sufficient.

I also cut discretionary spending. We spend money like a Beverly Hills housewife and need to live within our means. This will force us to move away from party politics and work together to become more efficient.

Roberts is a senior public relations major from Warner Robins, Ga.



From the right

Budget: Less government

"Budget Hero" is a simulation that has the player choose a simplified budget for the next 10 years in the U.S., using current economic data. Players choose where to cut and spend.

In this simulation, staged 10 years in the future, we each have to decide what stays and what goes in each budget. We also have an opportunity to deal with the tax code situation as well. Well, in the words of one of my personal heroes, Barney Stinson, "Challenge accepted." In my budget, I focused on keeping taxes low and cutting out as much of the wasteful spending as I could.

The first thing I did was to not only repeal Obamacare, but I also cut waste in Medicare while preserving the core of the system.

The next thing I did was, since we're 10 years in the future, we should be out of Iraq and Afghanistan, so I pulled our troops out of there, saving my economy over \$1 trillion.

I took a knife to the one thing that pleased me more than anything, discretionary spending by the executive branch and Congress.

The first I cut by 10 percent and the second by half. If the American people need to tighten their belts, then the government must do the same. I also cut spending by eliminating entitlements, like the Department of Energy, and cutting the EPA's budget in half.



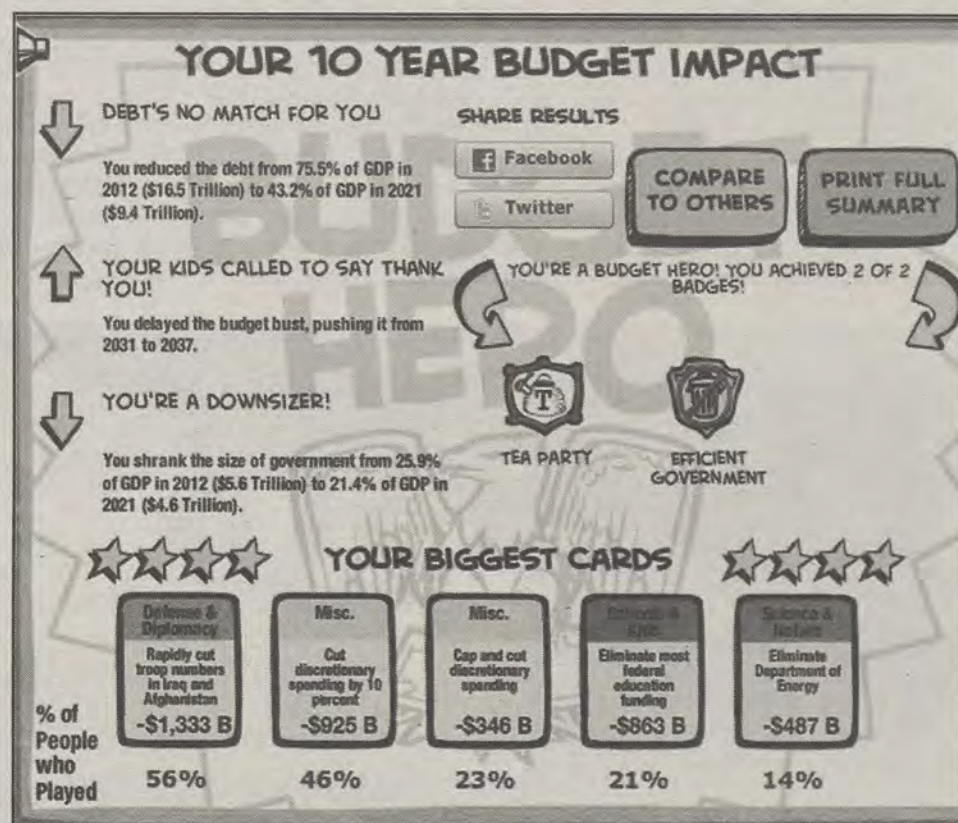
FRITZ CHAPIN @GrandOldPartier

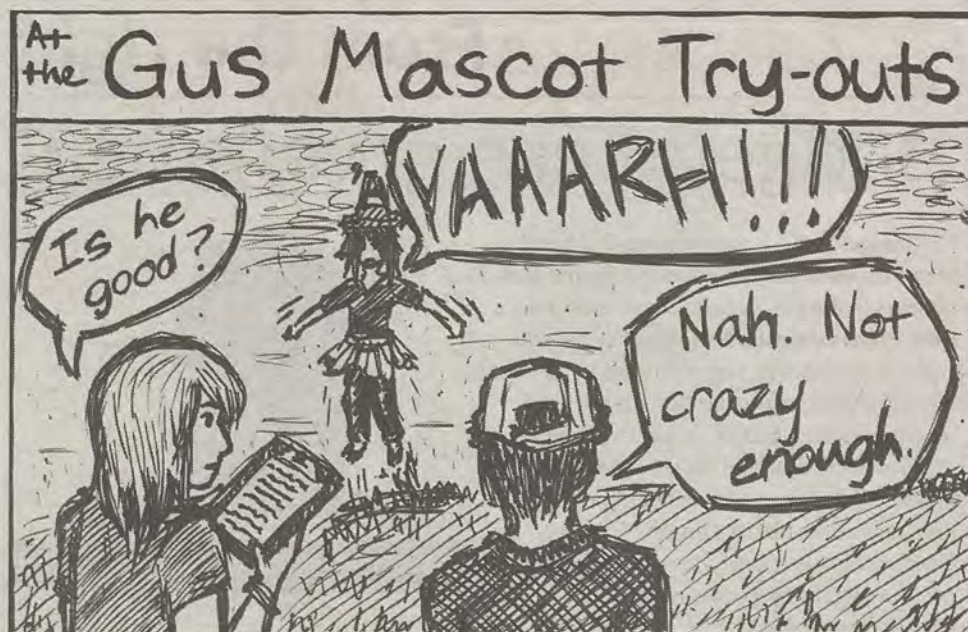
Happily, I did not raise any taxes. I did have to let the Bush Era tax cuts go away, but I did simplify the tax code.

In the end, I ended up reducing the Federal debt from \$16.5 trillion to \$9.4 trillion, and shrank the government from 25.9 percent GDP to 21.4 percent GDP. This is how you stabilize the economy without taking more money from the people — you cut spending.

Will this happen in real life? No. The liberals won't let their precious entitlement programs go away, but that's how you get the country stable.

Chapin is a senior political science major from Roswell, Ga.





Jasmine Nielsen/The George-Anne

The Washington Post
COLLECTOR'S EDITION

Letters to the Editor

Student Government Association has been hard at work for students

Dear Editor,

I am sorry that Rob Roberts feels disappointed by Student Government Association, as indicated in his recent column. I'm sorry primarily because I have no idea what that must feel like. As a senator for the college of At-Large, SGA has given me so much in the past year: a louder voice, a passion to attempt and complete change, and an environment of strong leaders to guide me.

As I read his column, I noticed 3 things that were lacking in truth and accuracy: 1) "The disappearance of SGA" 2) The lack of work done by SGA 3) The lack of passion in SGA leaders.

For the first point, I would like to illustrate the blatant irony

that this "disappearing" Student Government appears in, and is the subject of, three articles in the issue of The George-Anne that his previous column appeared in.

Secondly, he expressed a concern in the lack of work accomplished by SGA's executive board and senators.

Off the top of my head, I can think of the College of Science and Technology fixing the letters on the Herty building, At-Large working with Dining Services to adjust Finals Week hours of operation for students benefit, Christina Belge's Green Fee initiative, senators working to raise funds for Eagles for Eagles, the College of Freshman setting up online resources in conjunction with the First Year

Experience Office to guide fellow freshmen in the college experience, and endless other initiatives and projects.

Thirdly, he mentions that the leaders of SGA are quite possibly losing their "fire." Based upon this alone, I would like to invite him to sit through a few senate meetings (Wednesdays at 6:30pm in the RU Ballroom—open to all students!), where the passion for student concerns and campus betterment is alive and well. In fact, the student leaders I have encountered within SGA have taught me endless lessons about being fired-up.

Those running on the current ticket for executive board this year are excellent examples of passionate student leaders in SGA. Dominique

Quarles, Christina Belge, Dante Porter, Annalee Ashley, and Garrett Green remind me on a daily basis what it means to be a strong and competent leader that is willing to go the extra mile for their community, and maintain the passion to stay hungry for change.

While some might consider his column an attack on the possible degradation of a student association, I see it as an attack on the student leaders themselves—the same student leaders who put in their time and effort to better Georgia Southern University's community. While he may not see their work, because of a certain level of humbleness they practice while doing said work, it does not mean that it does not exist.

What have we done for you lately? We have worked hard on your behalf to better this university on an academic, physical, financial, and cultural level.

If you feel ignored, in need, or have a legitimate problem you would like to voice, please come to the Student Government Office in the Russell Union, come talk to one of senators on an individual level, attend a senate meeting, or even write an electronic concern to the SGA e-mail. I can assure Roberts that we are not, and never have been, complacent to let anyone's problems sit and stew. This is my university, this is our university, and we all want MORE.

Sincerely,
Jayne McGaughey

Planters ROW

By Hendley Properties

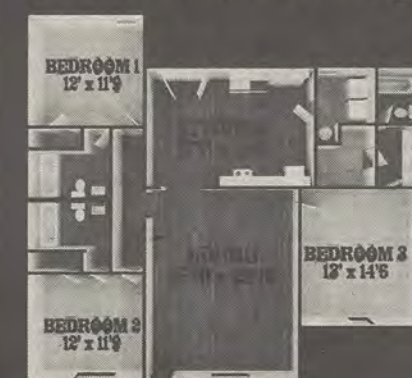
912.681.1170
www.hendleyproperties.com

3 bedroom
cottage
house

\$
365
/month per person

There are 15 Spots Available

3 Bedroom Cottage



Students: Oasis smoothies' contents surprising

Sugar content totals 31 grams, additional 21 with ice cream

BY CHRISTLE YOUNG

The George-Anne contributor

Garrett Vance, a sophomore business and logistics major, was drinking his pina colada flavored smoothie enhanced with an Echinacea supplement at the RAC.

He had just finished his fitness course as part of his class schedule when he found out the smoothies that are advertised to be healthy have at least 31 grams of sugar, according to employees at Oasis.

"That's a lot (of sugar). That's pretty shocking actually. That's in the RAC and people are thinking they are gonna get something that's healthy for them. That could be misleading," Vance said.

According to Oasis' menu, the store uses "freshly frozen fruit" for its smoothies and shakes.

"Yeah, the mix has 31 grams of sugar. The ice cream that can be added in has 21 grams of sugar. Well, there are bits and pieces of fruit in the actual mix. So if you want the healthier one, go for the yogurt or water," restaurant manager at Oasis Tracy Williams said.

The menu states that the smoothies are made with freshly frozen fruit, which may be misleading to some students because the fruit they use is pureed.

The product used at Oasis has been pureed, Michael Price, head chef of Eagle Dining Services, said.

Pureed means the fruit has been ground to the point of becoming a paste.

Oasis is not trying to be misleading, Price

“ That's pretty shocking actually. That's in the RAC and people are thinking they are gonna get something that's healthy for them. That could be misleading. ”

-Garrett Vance
sophomore business
and logistics major

said.

"I don't think it's their intent. Certainly, we will take a look at that," Price said.

During a conversation with a fellow employee regarding the menu's assertion that "fresh fruit" is used at Oasis, Price said that the menu that is in Oasis has to be old because he did not believe it was correct.

Oasis used to use real fruit through a company called Freshens, Price said.

"We go up to Freshens once a year (and) we have a good relationship with them. But, it's up to the students when deciding and voting on brands," Price said.

"Freshens was fresh fruit. They switched because the contract ran out," food service employee Stephanie Baker said.

"I don't think it was so much the cost difference. It seems like we were throwing away more product versus the demand that we had. Now, we have a product that is shelf stable, temperature stable and in its purest

form," Price said.

"Oasis didn't always carry the product we carry now. We had a product that used freshly frozen fruit, but it beat up the blenders. We had a lot of product waste, and you know what happens when a banana sits out too long?" Price said.

Some students feel that the sugar content is fine, as long as they can still get the additives in their smoothies.

"They want the additives more than anything. As long as they can come in and get some protein after they work out, they're satisfied with that," Baker said.

"It just tastes good. I think people are more looking for the supplements they get in it. People don't care as much that they're loading with sugar. People are using the meal plans so they may as well waste it anyway. I don't think it's their (Oasis') intention. I don't think they're taking advantage of us, but when you look at all the sugar that's in it, you're

really doing more harm to yourself," Matt Blackburn, a sophomore facility assistant and business major, said.

Other students said they felt misled by the menu.

"I don't like it. I feel like they're lying to me. Can they use real fruit, please? I want to eat something healthy on this campus for once. I don't have a problem with Landrum or Lakeside. I eat at Landrum every day. But I just want something healthy, like a real fruit smoothie that I can grab and keep it moving," junior business major and defensive tackle for the football team Javon Mention said.

One way students could avoid the sugar content in the smoothies at Oasis is to make smoothies at home, Daniel Membrillo, a junior business major who was exercising at the RAC said.

"A lot of people that are health conscious make their smoothies at home for that reason. That's what I do, but really I don't want to pay five dollars for a sugar-loaded smoothie. I'm a business major, so I understand it. But yeah, that sucks. But it's Georgia Southern, what do you expect? They just wanna make money off of us," Membrillo said.

Price said, "The battle to stop opening cans and using the freshest ingredients have to change. We are not the best at doing this for our students, but we are listening and willing to change. You will see a lot of change once the new Landrum and Lakeside come up. That's when we'll be able to let the chefs loose and really have some better ingredients and cooking right in front of you."

Voted Best Mattress Store in the 'Boro!

Student Housing Available

New, Used & Antique
Furniture

Complete Mattress Outlet

Deal's

Come See the Dealmaker!

17083 GA Hwy 67, Statesboro, GA
(912)681-3824 (Near Fairgrounds)

Mon-Fri: 10am-6pm

Sat: 10am-5pm

Sun: 1Pm-5pm

• Honest, Dependable
Same Day Delivery

• Locally Owned &
Operated by GSU Graduate

• Serving GSU Students
for 34 years

Tervis Tumbler Headquarters

- Collegiate Gifts
- Jewelry
- Handbags
- Placemats
- Diaper Bags
- Men's Gifts
- & Much More

Best Furniture Mattress & Gift "DEALS" in the 'Boro

IT and Engineering colleges merge in July

Keel: It makes more sense to put these two colleges together to be more successful

BY SADIE NAZWORTH

The George-Anne contributor

The creation of the new College of Engineering and Information Technology has begun and should be completed by July 1.

The new college will house civil, mechanical and electrical engineering as well as computer science and information technology, Dr. Muhammad Davoud, interim dean of the College of Engineering and Information Technology, said.

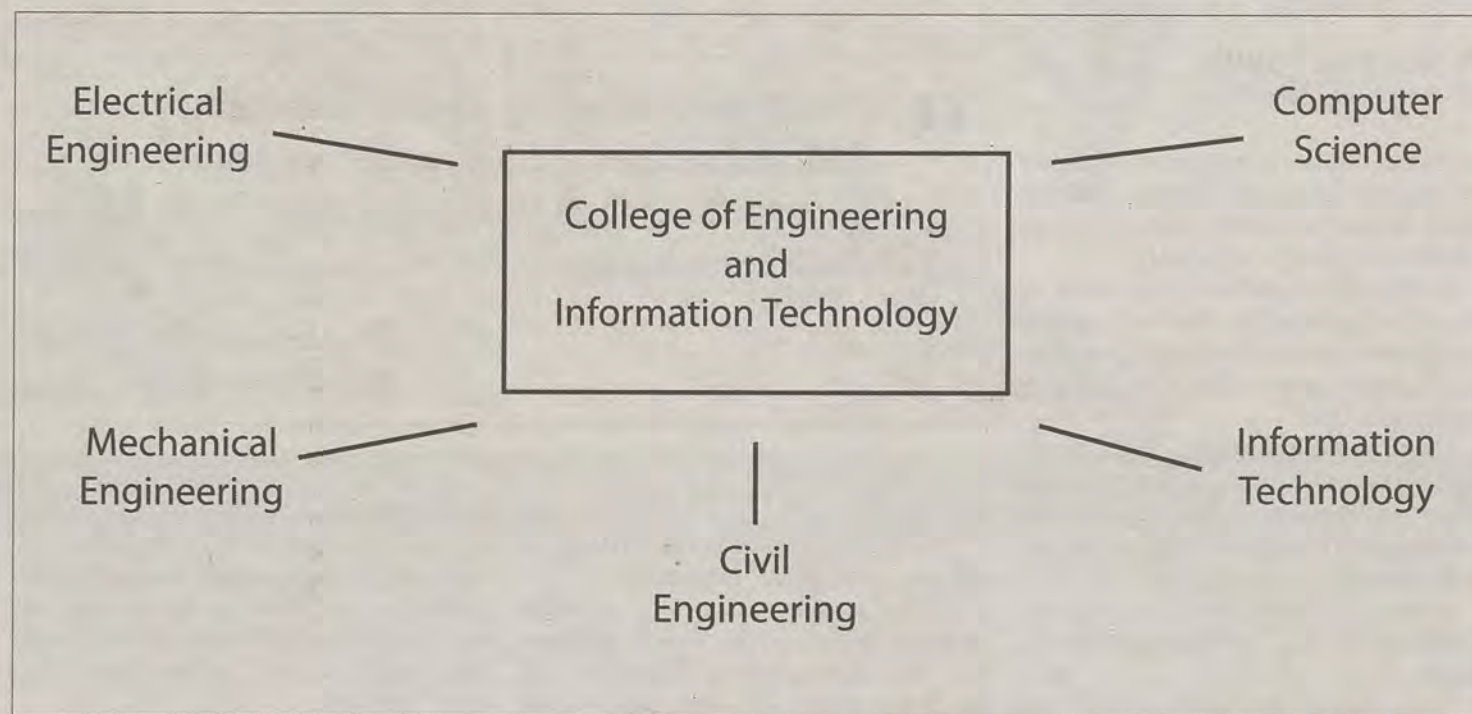
"What we are trying to do is first establish three new departments, that means to separate mechanical from electrical and separate civil engineering from construction management, and rebuild the department of mechanical engineering, electrical engineering and civil engineering," Davoud said.

"We thought it would be really interesting if we were to explore whether it made sense to, instead of creating two different colleges with two different deans and two different structures, would it make more sense to put those two groups together?" Dr. Brooks Keel, President of Georgia Southern University, said.

"We were discussing what's the best place to put those three departments of civil, mechanical and electrical engineering. How could we best put them in the position where they could be the most successful again for both now and in the future?" Keel said.

There is a lot of work that is currently being done and will continue to be done to ensure that this project is a success, Davoud said.

"It's a big process of separating budgets and distributing them among departments



Kayla McFalls/The George-Anne

and moving them from one college to another moving all the faculty positions, staff positions, inventory of all the equipment and the endowment and the scholarships," Davoud said. "This college, while it has been in existence, requires lots of work to develop the infrastructure necessary to have a successful college of engineering and information technology."

CEIT will not have an official building to call its own and its classes are already available to the students of GSU, Keel said.

"Ultimately, in the next ten or twelve months or so, the CIT building will become

the Office of Engineering and Information Technology, but it will be primarily faculty spread across a couple buildings," Keel said.

"All of these programs — computer science and engineering — are currently available to the students, even though they may not exist as separate departments," Davoud said.

CEIT is expected to impact GSU and the community in a very great way, Keel said.

"It's going to create a lot of excitement around engineering and information technology and computer science. I think by creating a separate college that is a

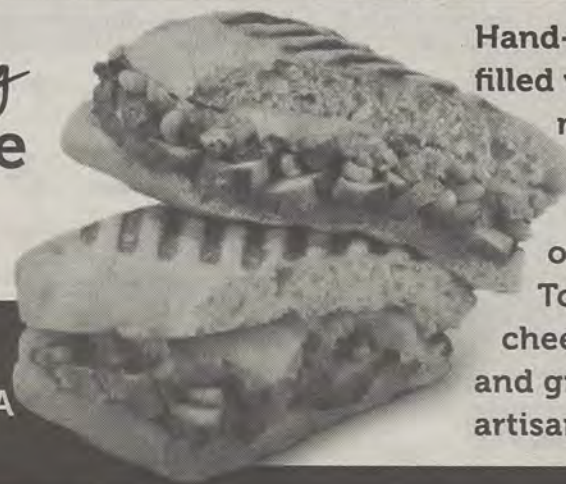
combination of both of these will allow for even more collaborations between the digital sciences and the engineering sciences, and I think that's really going to benefit the students in a tremendous way," Keel said.

Davoud said, "So, we are hoping that the introduction of this new college not only brings notoriety to Georgia Southern and popularity, but we also believe that it invites many companies to come and establish their headquarters or establish their manufacturing business right here to hire and capitalize on these highly-skilled graduates."

McALISTER'S

DELI

Introducing
a fresh taste
you'll love.



Hand-crafted sandwiches,
filled with fresh-sliced
meats like Black
Angus roast beef,
Black Forest ham
or Butterball turkey.
Topped with premium
cheeses and ingredients
and grilled on our new
artisan breads.

1100 Brampton Ave., Suite A • (912) 681-3354

www.mcalistersdeli.com f McAlister's Deli - Statesboro, GA

We Accept the Eagle Express Card

Academic dishonesty reports increase

BY LINDSAY GASKINS

The George Anne staff

Georgia Southern University has had a steady increase from 2008 to 2010 in occurrences of academic dishonesty.

This increase may not be directly related to increases of actual violations, but rather an increase in reports of each situation, Patrice Buckner, director of student affairs in the Dean of Students office, said.

"The number that's rising is academic dishonesty, cheating and plagiarism," Buckner said. "Now faculty members are aware that we are here and what we are responsible for, I'm not sure the actual cheating and plagiarism is going up. I assume that we are getting more reports now."

"This is just an assumption, because there is really no way for me to measure this," Buckner said, "but I think we have done a better job communicating to faculty about our processes and how the code of conduct works."

In 2008, 100 incidents were reported. Out of those, 92 cases were found guilty. In 2009, 112 incidents were reported. Out of those, 101 cases were found guilty. In 2010, 128 incidents were reported. Out of those, 113 cases were found guilty, Buckner said.

The statistics for 2011 have not yet been released, Buckner said.

Professors and faculty are doing a much

better job reporting these occurrences and staying on top of what students are doing in their classrooms, Buckner said.

One major outlet for academic dishonesty is the access to the Internet, Tim Giles, associate professor of writing and linguistics, said.

"It's because of the Internet. I mean, I see a lot of copying and pasting directly from the Internet and I see different ways of that happening when I reported directly to the dean's office," Giles said.

Cheating and plagiarism has expanded to multiple definitions and sources, Giles said.

"There's also other types of cheating that I hear other professors talking about," Giles said. "Students are doing things like texting questions to someone outside the classroom or taking a picture of the test," Giles said.

Professors are becoming more aware that these violations are happening and are able to identify them right away, Georj Lewis, dean of Students and Enrollment Management, said.

"The tools that professors have are much more advanced than they would be in the past, and it enables us to detect things like plagiarism," Lewis said.

The punishment for academic dishonesty is decided by the Code of Conduct at GSU and becomes more severe the more times a student is accused, Buckner said.

"Usually, it is any grade decided by the professor and disciplinary probation. On the second time, it is usually suspension from

Georgia Southern," Buckner said.

"The students may meet with the faculty member. If it is their first offense, then the student can meet face to face with the faculty member and if they can agree, then it may end there," Buckner said.

If student and faculty come to a disagreement, then that offense is forwarded to the dean's office, Buckner said.

"My policy is that when I see that something, in its entirety, or pretty much in its entirety, copy and pasted from the Internet, then I report it to the Dean of Student's office," Giles said.

"Students then have a choice as to whether or not I can assign them a grade or whether they can have a hearing," Giles said.

Within the academic school year, there are about half a dozen cases where instances like this happen, Giles said.

"I always remind (students) of what the university's rules are," William Amponsah, assistant professor of the Department of Economic Development, said.

"Normally, when I see, for example, if you have access to an exam that I've previously given in one class, then I have to call the student into question," Amponsah said.

Students are normally warned on the first offense of dishonesty, Amponsah said.

"The university's rules state that if we get it, we should report it. So if you give me a hard time, then you will go and deal with somebody

else," Amponsah said.

"Normally, I am not very destructive with my students because I know that it is tough for (them)," Amponsah said. "As a parent, I would rather have the conversation first and let them understand there are consequences to this."

For first-time freshman at GSU, students are able to take learning modules and courses that educate them on the outcomes of plagiarism and cheating, according to the First-Year Experience website.

"Students will be able to articulate what constitutes plagiarism and avoid representing work of others as their own," Christopher Caplinger, director administrative of First-Year Experience, said.

It is important for students coming into GSU to fully understand the consequences of these violations early on so that they can apply it for their future years at the university, Caplinger said.

Many times, students have difficulty figuring out what the limits are when it comes to cheating, Buckner said.

"What we hear a lot from students is that they don't know and don't understand what the boundaries are. We are trying to be as proactive as possible and help them understand where the boundaries are," Buckner said.

Lewis said, "I really think we have great students, but sometimes some of those things happen."

New sorority Delta Phi Epsilon to begin recruitment

BY KARA DEES

The George-Anne contributor
and ASHLEY WOODWARD
The George-Anne contributor

On March 19 Georgia Southern University will be home to a new sorority, Delta Phi Epsilon.

"We called in an exploratory committee who made the decision to open the campaign for the new group," Assistant Dean and Director of Fraternity and Sorority Relations, Joy Hamm said.

"When we evaluate the size of chapters on campus, we saw GSU getting bigger and chapters were getting fuller and accepting fewer girls (during rush). We presented an extension to an extension committee, which means that we opened up an interview process for other sororities not on campus

to possibly be part of the institution's Greek Life program," Pan-Hellenic Advisor Trevor Connell said.

"One of the reasons they considered it is because girls were dropping out of recruitment — roughly five hundred signed up and one hundred dropped out past fall recruitment," Connell said.

The goal of the GSU Pan-Hellenic association is to grow and expand the Greek Life program on campus, Connell said.

"I think another sorority would give more girls an opportunity to experience Greek Life at GSU and provide a wider range of sororities to choose from and offer a better fit for each girl rushing," freshman pre-med and biology major Samantha Kitchens said.

"We hope to see over six hundred girls participate in rush next fall," Connell said.

Two chapters presented interest, Alpha

Gamma Delta and Delta Phi Epsilon.

Delta Phi Epsilon was chosen because the university thought their presentation was a better fit for the Greek program and the university overall. They are not a large Southern sorority but they have a large alumni base, including chapters at Kennesaw State University and Emory University, Connell said.

"Getting this sorority has been a two-year process. The last sorority added was in either '04 or '05 and it was Kappa Kappa Gamma," Connell said.

Delta Phi Epsilon does not have a house yet, but hopefully they will have a house on Greek Row next fall, Hamm said.

"For the first 10 weeks, the national staff of Delta Phi Epsilon will be hiring a consultant to help the sorority get started. During those ten weeks, officers will be elected," Hamm

said.

The fees will be similar to other sororities — they go toward the experiences and benefits that the sorority provides. Definitely scholarships and leadership positions such as internships are benefits that may come from joining a sorority, Connell said.

Sororities provide sisterhood that goes beyond just studying for class. A girl can be involved after they graduate and they provide experiences for bonding, Connell said.

"As a former undergraduate involved in Greek Life, seeing it from the other side, which is Greek administration, I would suggest just to try it because it has such great benefits and experiences that a student would not be able to get elsewhere on campus," Connell said.

The sorority will begin its recruitment on March 26.

SGA threatens publication funding

BY JESSIE REESE

The George-Anne staff

At the Student Government Association meeting last night, opinions were voiced by members of The George-Anne regarding election results and the working relationships between the two organizations.

During the concerns from the gallery, when Arielle Coambes, editor-in-chief of The George-Anne, and Jennifer Curington, managing editor for The George-Anne, voiced concerns of transparency and relations between organizations, the funding of The George-Anne was threatened by Alton Standifer, president of SGA, after he said that The George-Anne shows negativity in their publication toward SGA.

"We are allowed, in the organization, sixty people, max, to represent all the students on campus. I think we have a right to say that we, as a person, that you portray our organization negatively," Standifer said.

"If you read your publication you will clearly understand. Look back twelve months and look at the positive things that your paper has published about the organization versus the negative. I think, if you look back at the last issue that was published, a pretty non-positive article that was published by the paper. When we talk about building a positive relationship between the two organizations, that was definitely something that was a goal for this year," Standifer said.

"I just want to point out that The George-Anne published quotes and facts obtained, when talking about SGA, from SGA senators, from the administration, so the reporter's opinion is not present in the story. It is quotes, not from the reporter," Curington said.

"I would like to point out that I think that a common misunderstanding, and a point of interest, is that they don't understand that we are trying to be a watchdog of the student government. That means, by definition, that we have to publish negative things if things are being done wrong," Coambes said.

Standifer then addressed the use of the term "watchdog" and the funding of the organization.

"One thing about watchdogs of government is that they are privately funded. One thing that I think is often misconstrued is that, annually, members of this table go to a meeting and vote to approve the budget for the newspaper. They vote to approve that there be a newspaper that goes out twice every week. They vote to approve that there be money spent on the



CHRISTINA BELGE



DOMINIQUE QUARLES



ALTON STANDIFER



ARIELLE COAMBES/
EDITOR-IN-CHIEF



JENNIFER CURINGTON/
MANAGING EDITOR

not exercise the power of a private publisher over student publications simply because they provide financial support. The fact that public universities are considered an arm of the state distinguishes them from a private publisher," according to SPLC.org

Standifer stated that the way in which the election

results would be publicized had not yet been decided as of 8 p.m., even though an earlier decision between Coambes, and Standifer had been made fall semester of 2011 for The George-Anne to receive the results prior to print on Wednesday night for publication Thursday morning.

The manner in which members of The George-Anne voiced their problems was labeled by Standifer as "boisterous."

"The decision to not post them in The George-Anne was not final before you came into the room, voicing your concerns in such a boisterous manner. The people that will make that final decision are sitting in this room and are hearing the manner in which you speak to the organization, the manner in which you speak to them as constituents of SGA. That is something to be taken into account," Standifer said.

The manner in which representatives from The George-Anne voiced their concerns should not be taken into consideration, Curington said.

"I would like to make a comment about what you said. If you think that we are being rude, or boisterous, as is my co-worker, let me tell you something. If you, as an organization, decided to walk on campus, publicly defame our message, as I have heard on the Pedestrian today by one of your senators — feel free to ask me to point them out, I would not be nervous to — then how do you expect our working relationship to stay solid, well-oiled, for us two organizations, to communicate and to reach the student body?" Curington said.

"To say that you have overheard a student that is part of this organization talking down to the mission of your organization, think about the things that you write in your paper that has a circulation of ten thousand students," Standifer said.

Many of the concerns that were brought by The George-Anne were not handled by SGA.

After assessing the term "watchdog" the time allotted by SGA for public concerns had ended and Coambes was asked to save any other concerns until after the meeting concluded.

SGA made the decision to take the discussion regarding the form in which the results would be released into a private discussion.

SGA, from page 1

"I am concerned that this decision has been made ten minutes ago when The George-Anne has a deadline that SGA is well aware of. You and I spoke last semester that you would give the results to us, so I don't understand where communication broke down between us and higher-ups in this decision," Coambes said.

Coambes then asked if the decision has been made about when the results will be released.

The results were to be released at the "Election Party" today, Standifer said.

"We want them to be able to come, see the election and then decide to go to the election party or not or to rest in their homes or weep in their sorrows, if they decide to," Standifer said.

Coambes then asked how SGA planned to inform students of the election results.

"SGA has its own website, we also have the ability to e-mail the student body, if that were a choice we decided to make. We also have an office in the Russell Union, so we will be posting the results on that," Standifer said.

The decision of how and when to release the results had still not been decided by the conclusion of the SGA meeting.

Taylor Cooper contributed to this story.

CHECK OUT SGA MEETING 2-29-12 AUDIO AND THE RESULTS OF THE SGA ELECTIONS ON THEGEORGEANNE.COM TODAY.

ATTENTION COLLEGE STUDENTS!

*** GET CASH FOR SPRING BREAK ***

FILE YOUR 2011 EDUCATION TAX CREDIT

WHERE:

HOLIDAY INN STATESBORO
455 COMMERCE DRIVE

WHEN:

SATURDAY
MARCH 3RD

9AM-7PM

SUNDAY
MARCH 4TH

9AM-7PM

BRING YOUR VALID STATE I.D.

CONTACT:

GO-PRO-TAX INC

404-590-6927

FAX: 888-296-7675

GOPROTAXINC@YAHOO.COM

Clothesline Project raises awareness

BY KRYSHA MCGARITY

The George-Anne contributor

T-Shirts of different colors decorate the Russell Union Rotunda for The Clothesline Project in honor of abuse victims and survivors.

The Clothesline Project, which kicked-off the start of Sexual Assault Awareness week at Georgia Southern University, is sponsored by the Sexual Assault Student Educators (SASE), Sexual Assault Response Team, (SART) and the Counseling and Career Development Center.

The SASE is a student organization whose main goal is to "promote discussion amongst peers when it comes to the issue of sexual violence, increase awareness and sensitivity in regards to sexual assault," according to its page on the GSU website. SART is responsible for making sure that the university effectively responds to sexual assault cases on campus.

The Clothesline Project is a program that started in Cape Cod, Mass., in 1990 to address the issue of violence against women and men alike. It is a tool used to help anyone who has been affected by abuse to express their emotions by decorating a shirt and hanging it on a clothesline. GSU has sponsored the project for 10 years.

"We set up a table in the Rotunda Monday, Tuesday and Thursday from nine a.m. to five p.m. We have different colored shirts and each one represents a type of sexual violence. We let people who are survivors of these types of violence come and create a message of their choice, whether it be a sad or empowering one, on the shirt and take it to the clothesline and hang it up," Shanna Felix, sophomore psychology major and president of SASE, said.

There are six different colored shirts involved in the project — pink represents survivors of rape, yellow represents survivors of domestic violence, purple represents violence due to sexual orientation, blue represents child sexual abuse and white represents the memory of a victim murdered due to abuse. This year, spectators may notice the color grey, which stands for new advocates of ending violence, is missing.

"We decided not to offer the option of the grey shirt this year, because last year that's all people would choose. There were so many grey shirts, it kind of took away from the message we were trying to convey," Tom Hutchison, sophomore psychology major and vice president of SASE, said.

The shirts are hung up in the Rotunda,



T-shirts made in honor of sexual assault victims hang around campus during sexual assault awareness week.

Russell Union, the RAC and some residence halls.

The student reaction to The Clothesline Project overall has been positive. Many students have come up to the table.

"There needs to be more events like this so we can all come together as one, no matter who you are or what you've been through has to be left out," Patrice Lynch, junior biology major, said.

Along with The Clothesline Project, The SASE, SART and the Counseling Career and Development Center will sponsor a march

called Take Back the Night where survivors and advocates can come together as one and raise awareness of violence. The march will start at Landrum and end at the Rotunda where a rally will be held. This rally will be a forum where survivors can tell their stories.

"Abuse affects so many types of people. People you've never expected to see came up to the table to make shirts. Abuse isn't just confined to one group of people. It can happen to anyone," Ayanna Clarke, freshman fashion merchandising major, said.

The Buzz List

- **Snooki** is reportedly pregnant. Yes, she is procreating. Can we call child services in advance?



Gianna Carme

- **David Schubert**, the district attorney who prosecuted both Paris Hilton and Bruno Mars for cocaine possession, was arrested for cocaine possession. With that level of hypocrisy, he should run for U.S. Congress.
- **Angelina Jolie's** overexposed leg at the Oscar's now has its own twitter. Sadly, it will never be as popular as Beyonce's fetus.
- **Target** is no longer selling an offensive greeting card, which said, "Next time you think of dating the bad boy, consider Whitney Houston." Too soon, Target, too soon.
- **Tim Tebow and Taylor Swift** were seen on a date this past Monday. Tebow was reportedly unimpressive until the last quarter of the date.
- **George Clooney** said in an interview with The Advocate that he doesn't mind all of the rumors that he's gay. However, millions of women care, because we ALL have a chance with him, right?

- **'Act of Valor'** got only a measly 30% on rottentomatoes.com. A movie with so much promise, until the director made the worst decision ever by depending on the poor acting skills of Navy SEALs. Missed a good chance for a great movie there.

Information compiled by Arts Editor Quania Epps and Assistant Arts Editor Gianna Carme from TheHollywoodReporter.com.

Bibeau begins her reign as Miss GSU

BY TANIQUA RUSS

The George-Anne staff

The lights have faded away and the judges are gone, but Georgia Southern University student Charlene Bibeau still strives to be an ambassador and role model on campus as Miss GSU 2012.

A junior biology pre-med major, Bibeau has been keeping busy since taking home the title of Miss GSU on Feb. 11. Bibeau continues to live her life as a normal GSU student while fulfilling her newly earned title.

"It has been exciting," Bibeau said about winning her new title. "I get to represent my school and it's an awesome feeling."

Bibeau, who was crowned Miss Houston County 2009, is no stranger to winning pageants or the busy days that come along with them.

A typical day for the new Miss GSU consists of waking up around 7:30 a.m., attending two to four classes back-to-back and attending Adrenaline Show Choir practice.

Bibeau also makes sure to catch up on homework, study current events and workout at the RAC during the day in preparation for the Miss Georgia pageant in June.

Promoting her platform is a large part of her daily schedule as Miss GSU and Bibeau has been working extensively to promote her platform of keeping fine arts in schools.

As a piano minor and member of Adrenaline Show Choir, Bibeau is personally connected to the issue of fine arts programs and a lack thereof in schools.

"Fine arts have been noted to help

cognitive development and significant skills. It's a creative outlet where you can truly express yourself in a way words cannot define. It allows you to escape into a world of your own," Bibeau said.

During her reign, she plans hosting an event where students can exhibit their art work, showcase their musical abilities and raise proceeds that will go towards maintaining the fine arts programs in local Bulloch county schools and even expand to help the nation.

"The most essential time to make an impact on a person's life is when they are young, and it would be great if we could show how much talent we have in one university," Bibeau said.

Bibeau not only wants to connect with local primary school students but also with her fellow Georgia Southern students. She is also promoting issues that affect students here on campus, such as time management, academics and campus involvement.

"Students need to be involved. Your time at GSU means so much more when you're involved," Bibeau said.

She also wants to encourage students to reach for their goals.

"Why strive for good when you can be great?" Bibeau said. "Anything is possible if you want it."

Friends and other students may refer to her as Miss GSU, but according to Bibeau, she is just a typical student who is not changing except to better herself and her university.

"My goal is to represent Georgia Southern in the best light possible, and as a student, staff member and fellow Eagle, show that GSU has a lot to offer," Bibeau said.



Lindsay Hartmann/The George-Anne

Junior biology pre-med major Charlene Bibeau talks about her plans after being crowned Miss GSU 2012.

UT&ABOUT

Express Tune & Lube

Tire, Alignment
& Exhaust Center

612 S. Zetterower Avenue

489-4444

www.expresstuneandlube.com

Monday - Friday 7:30am - 6:30pm

Located a half block north of Wendy's.

OIL CHANGE SPECIAL

\$25⁹⁵

Includes up to
5 qts of Castrol
5W20, 5W30, 10W30,
or 20W50

price applies to most vehicles. Expires 4/30/12

www.expresstuneandlube.com

Jerry's
Salon & Spa



SALON SPECIAL!

\$10

OFF ON HIGHLIGHTS
SPECIAL ENDS IN APRIL

300 East Main St. Suite C, Statesboro, GA 912.489.6972
(Across from old Video Warehouse on Hwy. 80)

THE 'BORO BEAT

YOUR GUIDE TO OFF-CAMPUS ENTERTAINMENT

THURSDAY

Manny's

- Happy Hour 5 p.m.-7 p.m.
- \$0.50 off draft beer
- Buy 12 wings, get 12 free

Millhouse

- Well liquor for \$1.99
- Domestic draft for \$1.99
- Wolly Brown
- \$4.95 Long Island and margarita pitchers

Dingus Magee's

- Happy hour 2 for 1

Gnat's Landing

- \$7 lunch and drink special
- \$10 beer buckets
- \$3 doubles, bombs, and Newcastle's
- Happy Hour 5 p.m.-7 p.m. half off alcohol and apps
- \$0.45 wings

El Sombrero (Downtown)

- Happy Hour 5 p.m. to 7 p.m.

El Sombrero (Buckhead)

- Happy hour 5 p.m. to 7 p.m.
- \$2.50 34 oz. domestic beer

GATA's

- Entertainment = Perpetual Groove
- Drink spec = reverse cover \$2.50 off total tab
- Power hour = \$1 shots and \$3 doubles

Latte Da

- Drink of the week: toasted marshmallow mocha
- Drink Special any herbal tea and scone \$3.30

Ruby Tuesday

- \$5 absolute cocktails
- \$5 appetizers
- \$1 off draft beer
- \$5 off glass wine
- Happy hour 4- 6:30 p.m. and 9-11 p.m.

FRIDAY

Ruby Tuesday

- \$5 absolute cocktails
- \$5 appetizers
- \$1 off draft beer
- \$5 off glass wine
- Happy hour 4 p.m.- 6:30 p.m. and 9-11 p.m.

Dingus Magee's

- Tent City playing

- Happy hour 2 or 1

El Sombrero (Buckhead)

- Happy Hour 5 p.m. to 7 p.m.

- \$2 sex on the beach

Gnat's Landing

- \$7 lunch and drink special
- \$10 beer buckets
- Happy Hour 5 p.m.-7 p.m. half off alcohol and apps

- \$0.45 wings

- Live band

Latte Da

- Drink of the week: toasted marshmallow mocha
- Drink Special any herbal tea and scone \$3.30

GATA's

- Entertainment = Voodoo Soup

Manny's

- 1/2 priced wine starts at 6 p.m.

SATURDAY

Dos Primos

- Stoneheart free until 9 p.m.
- \$3 after 9 p.m.
- Happy Hour \$4.50 pitcher of beer
- 2 for 1 mixed drinks and shots
- \$3 Big Beer 32oz

Ruby Tuesday

- \$5 absolute cocktails
- \$5 appetizers
- \$1 off draft beer
- \$5 off glass wine
- Happy hour 4- 6:30 p.m. and 9-11 p.m.

Dingus Magee's

- Suex playing

- Happy hour 2 for 1

El Sombrero (Downtown)

- \$2 lime margaritas all day
- Domestic beer

El Sombrero (Buckhead)

- Happy hour 5 p.m. to 7 p.m.
- Sex on the beach
- \$2 lime margarita

GATA's

- Entertainment = The Other Brothers

Gnat's Landing

- \$7 lunch and drink special
- \$10 beer buckets
- Happy Hour 5-7 p.m. half off alcohol and apps
- Live band

Latte Da

- Drink of the week: toasted marshmallow mocha
- Drink Special any herbal tea and scone \$3.30

Millhouse

- Well liquor for \$1.99
- Domestic draft for \$1.99
- Wesley and Dylan Bragg

myth:
fact:

drinking is central to the
social lives of georgia
southern university
students

64% of georgia southern
students have 0-4
drinks per week

presented by the dean of
students office

for more information visit:
<http://students.georgiasouthern.edu/eod>
data collected from georgia southern
university core survey 2010

INTEGRATION
EDUCATION

- Eye Exams
- Glasses
- Contacts



912-489-6655

820 HWY 80 E. (in front of Lowes)
www.boomersvisioncenter.com

THE 'BORO BEAT

YOUR GUIDE TO OFF-CAMPUS ENTERTAINMENT

SUNDAY

El Sombrero (Downtown)

- \$2.50 happy hour all day
- \$2 mixed drinks

El Sombrero (Buckhead)

- Happy hour 5 p.m. to 7 p.m.

Gnat's Landing

- \$7 lunch and drink special
- \$0.45 wings

Latte Da

- Drink of the week: toasted marshmallow mocha
- Drink Special any herbal tea and scone \$3.30

Ruby Tuesday

- \$5 absolute cocktails
- \$5 appetizers
- \$1 off draft beer
- \$5 off glass wine
- Happy hour 4 p.m.- 6:30 p.m. and 9-11 p.m.

GATA's

- \$2 Natural Light tall boys
- \$2 Blue Ribbon

Manny's

- Happy Hour 5 p.m.-7 p.m.
- \$0.50 off draft beer
- Kids eat free with adult entrée purchase

Millhouse

- Well liquor for \$1.99
- Domestic draft for \$1.99
- Kids eat free

Dingus Magee's

- Happy hour 2 or 1

MONDAY

Ruby Tuesday

- \$5 absolute cocktails
- \$5 appetizers
- \$1 off draft beer
- \$5 off glass wine
- Happy hour 4 p.m.- 6:30 p.m. and 9-11 p.m.

Latte Da

- Drink of the week: toasted marshmallow mocha
- Drink Special any herbal tea and scone \$3.30

El Sombrero (Buckhead)

- Happy hour 5 p.m. to 7 p.m.
- \$2 margaritas

Gnat's Landing

- \$7 lunch and drink special
- Happy Hour 5-7 p.m. half off alcohol and apps
- \$0.45 wings

Manny's

- Happy Hour 5-7 p.m.
- \$0.50 off draft beer
- 1/2 price pizza

Millhouse

- Well liquor for \$1.99
- Domestic draft for \$1.99
- \$4.95 gorgonzola app

TUESDAY

Ruby Tuesday

- \$5 absolute cocktails
- \$5 appetizers
- \$1 off draft beer
- \$5 off glass wine
- Happy hour 4- 6:30 p.m. and 9-11 p.m.

Latte Da

- Drink of the week: toasted marshmallow mocha
- Drink Special any herbal tea and scone \$3.30

El Sombrero (Buckhead)

- Happy hour 5 p.m. to 7 p.m.
- \$2 daiquiris

GATA's

- \$6.99 all you can eat wings 5 p.m. to 8 p.m.
- Beer pong tour
- \$5 Natural Light pitchers

Gnat's Landing

- Happy Hour 5-7 p.m. half off alcohol and apps
- Trashcan Tuesdays \$3 trashcan drink
- Trivia and Karaoke
- \$0.45 wings

Manny's

- Happy Hour 5-7 p.m.
- \$0.50 off draft beer
- Game Night
- \$3 Jack Daniel singles

Millhouse

- Well liquor for \$1.99
- Domestic draft for \$1.99
- \$4.95 for 2 tacos



**FREE DRINK WITH PURCHASE
OF SANDWICH & SIDE ITEM**

Offer Expires 3/19/2012

LOCATION: WOODLAND SQUARE ACROSS FROM GEORGIA SOUTHERN, STATESBORO, GA, 30458

PHONE: 912.681.3597



"BAD TO THE BONE"

LOCATED NEXT TO WAL-MART
912-764-6556

\$2.00 OFF
REG. \$6.49

**CHICKEN TENDER SALAD
GRILLED OR FRIED**

MUST PRESENT COUPON
EXPIRES: 3-30-2012

Student organizations fight against sexual assault

BY HAYLEY MCGHEE

The George-Anne contributor

What originally transpired in England and then traveled to the United States in 1978 is now a tradition that has been brought to Georgia Southern University.

Take Back the Night which is an event that will be hosted by the Sexual Assault Response Team on Feb. 23 at 7:00 p.m. will begin in front of Landrum Cafeteria. Take back the night is a march that has the purpose of raising awareness of sexual abuse throughout the GSU community. "The march will start in the grassy area in front of Landrum, then march on Georgia Avenue, up through Eagle Village, go onto Chandler Road, walk through Centennial and end at the Rotunda," Jodi Caldwell, interim director of the Counseling Center, said.

After the participants in the march conclude their journey, a rally will begin at the Rotunda and last for about an hour.

"At the rally, we open the mic to survivors of domestic and sexual abuse and let them share their story. A lot of times many people don't expect to share but do share their story of abuse and what it has been like for them," Caldwell said.

"We have been doing this on Georgia Southern's campus for twelve years and it's a way for the students to have their voices heard. This is literally saying they are not going to stand for sexual assault in the community," Caldwell said.

Take Back the Night has been a way for people around the world to express their feeling against domestic and sexual assault.

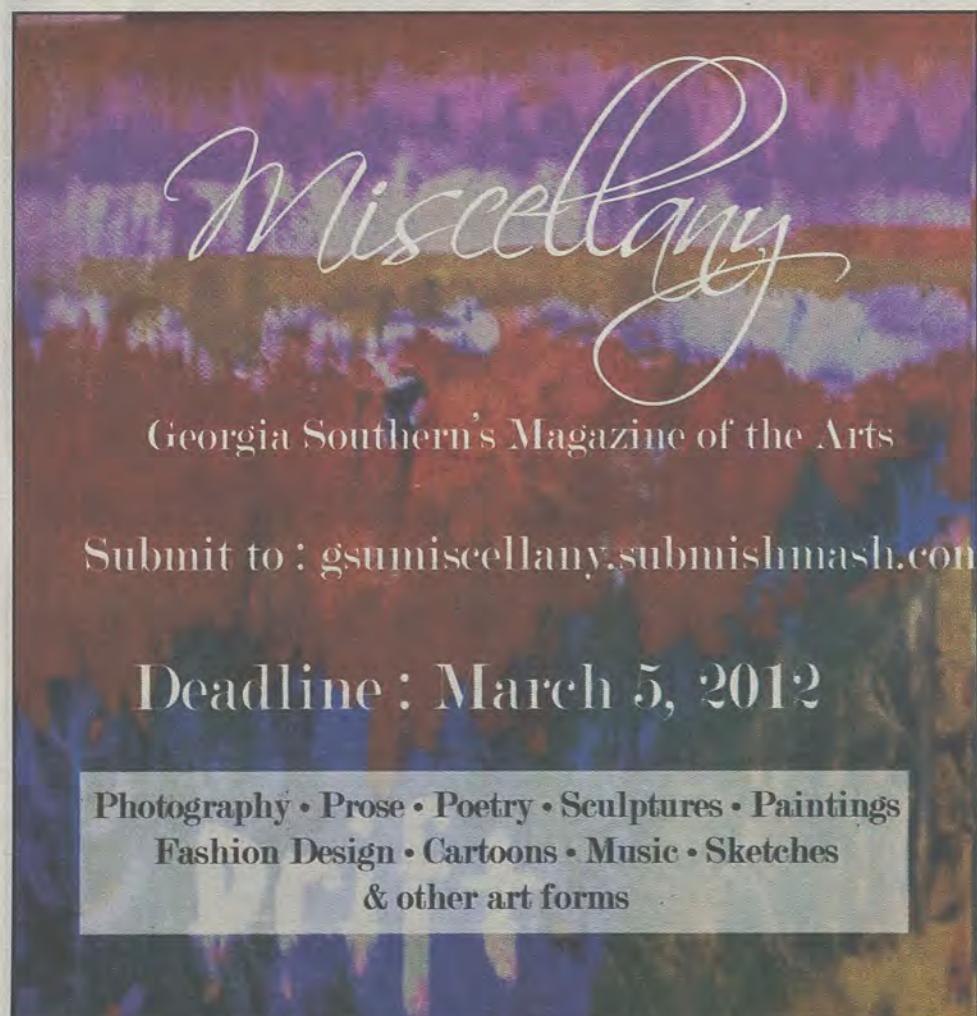
"It's always a very powerful thing for the team to put this together," Caldwell said.

Take Back the Night is free of cost for anyone who wants to come out and participate in the march against sexual assault or in the rally is with the Sexual Assault Response Team.



Take back the Night
March 1st, at 6:00 p.m.
@ Landrum hall

Akeem Hill/The George-Anne



Miscellany

Georgia Southern's Magazine of the Arts

Submit to : gsumiscellany.submishmash.com

Deadline : March 5, 2012

Photography • Prose • Poetry • Sculptures • Paintings
 Fashion Design • Cartoons • Music • Sketches
 & other art forms



Dress in The Press

Watch students as they compete to make apparel using Student Media newspapers and magazines

March 6, 2012
 Williams Center Multipurpose Room
 7 PM WATCH THEM CREATE
 8 PM FASHION SHOW

If interested in competing in the event please e-mail
miscellany@georgiasouthern.edu

SPONSORED BY:

 **Features**
 Salon & Tan

'For Colored Girls' to bring unity to GSU

Performing arts

BY ANDREW BRIDGES

The George-Anne contributor

In honor of the 2012 Women Empowerment Conference, the Multicultural Student Center will be bringing the stage production "For Colored Girls Who Have Considered Suicide When the Rainbow Is Enuf" to a Georgia Southern University audience.

The curtain will rise at the Williams Center for the production, which is free to the public, tonight and tomorrow evening at 7 p.m.

"Everybody involved in the play is hoping for the evening to be a lot of high energy and excitement," said Sarah Keith, a junior modern language major who will be performing the role of the Lady in Yellow. "You want to bring a sense of unity among the women there."

The play debuted in 1975 and became a Broadway sensation. Critics praised the

unadulterated look into the lives of female minorities in American society. In 2010, Tyler Perry directed, produced and wrote a theatrical adaptation of "For Colored Girls".

The Obie Award-winning play centers on a group of women, each with a story of her own struggles living as a woman of color in the face of adversity. With themes such as domestic violence and rape, "For Colored Girls" was a stepping stone towards bringing issues that were previously ignored into the forefront.

"It talks about the triumphs of these women, the things that they go through," said Keith of the play. "I think it will be absolutely wonderful just to kick off the women's empowerment summit."

Ntozake Shange, the playwright of "For Colored Girls," will be appearing as a keynote speaker at the Women Empowerment Conference this Saturday. This marks the second time the conference will be held at GSU since 2008.

"We wanted to give Georgia Southern

an opportunity to experience her rationale being the play, as well as the perspective of women from all different cultures," Michelle Allen, a program coordinator at the Multicultural Student Center and co-coordinator of the conference, said.

"When you see the title 'For Colored Girls,' you think about one specific group of women or one specific group of people," said Keith. "And then, when you read the monologues behind it, you realize that this can happen to anybody. The situations that happen are appropriate for any person of any race."



For Colored Girls

Thursday March 1st / Friday March 2nd

7:00 p.m. - 9:00 p.m.

Williams Center

WELLNESS NEWSLETTERS

ARE NOW AVAILABLE ONLINE



SMARTPHONE?
USE QR SCANNER
FOR QUICK LINK

<http://services.georgiasouthern.edu/cri/universityWellness>

**Stomach pains and ankle sprains.
Fevers, aches and yucky goo.
Mystery rashes and deep gashes.
Colds, flu and allergies, too.**



**No matter what's wrong,
let us take good care of you.**



**SOUTH GEORGIA
IMMEDIATE
CARE CENTER**

1096 Bermuda Run Road
(next to Mellow Mushroom)
Statesboro, GA 30458
p - 912-871-5150

yourimmediatecarecenters.com

**CONVENIENTLY LOCATED MINUTES FROM GSU.
CARING AND CONFIDENTIAL TREATMENT.**

HOURS:

Monday - Friday 9:00 am - 8:00 pm

Saturday 9:00 am - 5:00 pm

Sunday 12:00 pm - 5:00 pm

Most insurance accepted - bring your insurance card and Driver's License. Please call with co-pay and insurance questions. Cash patients also welcome.

Gorilla Thrilla to come to Hanner Complex

Performing arts

BY KIMEKO MCCOY

The George-Anne staff

As a part of Alpha week 2012, the Georgia Southern University Xi Tau chapter of Alpha Phi Alpha fraternity members are back with their 21st annual Gorilla Thrilla step show.

The Gorilla Thrilla step show is an event that showcases the stepping and dancing talents of sororities and fraternities in the National Pan-Hellenic Council from different schools all over Georgia, this event has been one to pack the Hanner Fieldhouse year after year.

This year's show is set to begin on Saturday at 7:06 p.m. At the event there will be several different chapters of the Alpha Phi Alpha fraternity from University of Georgia, Savannah State University, Morehouse College, Clark Atlanta University and even GSU Alphas will be on campus to represent their schools and take home the gold in the Gorilla Thrilla step show competition.

President of the Alpha Phi Alpha Xi Tau chapter at GSU and senior majoring in biology and pre-med, Jodie Beckford, knows all there is to know about the Gorilla Thrilla step show for this year and is in charge of the event with the help of other fraternity members.

"We hosted over 3000

attendees last year," Beckford said, considering the amount of members in the previous audience. Lines start at the doors of Hanner Fieldhouse and wind through the parking lot until the doors are opened.

The audience for the Gorilla Thrilla step show this year is predicted to be significantly larger.

"(We expect) over 4000 people this year," Beckford said.

In addition to the increase to the number of the step show competition's audience members, there will also be a new host for the evening.

Last year, the step show was hosted by GSU funny man, Christopher Pugh, this year, local radio host, Kenya Cabine, will be the host.

"This year, we have local radio host Kenya Cabine from 93.1. This year we'll be live on the radio for the show," Beckford said about the changes to this year's step show competition.

The theme of the previous show was emergency landing with Alpha Airlines where many were dressed as pilots and had a small skit to go along with their performance. The theme for this year remains unreleased until the night of the step show.

Alpha Phi Alpha fraternity members from UGA and Clark Atlanta took home first and second place at the previous GT step show with cash prizes and a trophy.

PRESENTED BY ALPHA PHI ALPHA

Gorilla Thrilla STEP SHOW

MARCH 3RD @ HANNER FIELDHOUSE
TICKETS \$10 AT GORILLATHRILLA.NET

Tyler Fleider/The George-Anne

Prizes for the competition this year include \$2,000 for those who are awarded first place and a cash prize of \$1,000 for those who win second place.

All proceeds collected from

ticket sales will benefit GSU the Xi Tau chapter of Alpha Phi Alpha and their endeavors.

"Money goes to our chapter and our scholarship endowment," Beckford said about the way

the accumulated funds will be dispersed.

The Gorilla Thrilla step show competition will be held at Hanner Fieldhouse on Saturday, March 3rd and will begin at 7:06 p.m.



Sports EMPORIUM

Statesboro's Intramural Sports Headquarters

**Show your Eagle ID to receive a student discount*

840 BC Buckhead Drive, in Buckhead plaza (912)764-4449



First Friday to bring locals and students together

BY ANDREW BRIDGES

The George-Anne contributor

Green will takeover the city tomorrow as The Downtown Statesboro Development Authority hosts their go greened themed First Friday event.

The local event is a chance for the Georgia Southern University community and Statesboro residents to gather in the historical part of downtown Statesboro to enjoy various activities and exhibitions.

"It's something that we do on Main Street to welcome people on the first Friday, a welcome event for the community. We have different themes every month, and this one is Green Grits," Allen Muldrew, executive director of the Downtown Statesboro Development Authority, said.

"Green Grits" is sending a special message in time for the spring. Inspired by St. Patrick's Day and the urge to make eco-friendly decisions, First Friday's "Green Grits" will be educating the community on sustainable practices.

"You name it, and Main Street Statesboro's got it — and it's green," Muldrew said.

Visitors are encouraged to stop by the Courthouse Square for a chance to try a helping of customary green grits. Vendors, such as Lily's Cafe, will be offering a variety of green-themed goods for purchase and sampling as well.

"I love how our vendors increase awareness of eco-friendly practices to our downtown community and make it fun," Elena McClendon, office manager and event coordinator of the Downtown Statesboro Development Authority, said.

The Averitt Center for the Arts will be

Green Grits

Downtown @ Courthouse 1
March 2nd from 5:30 to 8:00 pm

Tyler Fleider/The George-Anne

displaying works made by students from Bulloch County's surrounding high schools. GSU professor Santanu Majumdar will have an exhibit being shown in the Legends gallery.

"I am using street graphics of India and showing the old traditional graphic design existed in India before the western influence.

These traditional old method motifs are still used by people who do not have formal education in art," Majumdar said.

Those interested in creating their own pieces of art have the chance to stop by "Free Spirit Pottery." Other attractions include The Eagle Nation on Parade, which will have a selection of the eagle statues seen around campus out on display for attendants to enjoy.

"It's open for the community, and some are larger than others. It is a community event. It's very community and family event, and event friendly," Muldrew said.

First Friday will be held March 2 on East Main Street beside the Averitt Center in downtown Statesboro. The activities will kick off at 5:30 p.m. and last until 8:00 p.m.

Taylor Cooper attributed to this story.

'Women of Ireland' to premiere at PAC

BY ANDREW BRIDGES

The George-Anne contributor

The Performing Arts Center at Georgia Southern University will be filled with the sounds of "The Women of Ireland" as the stage production makes its way to campus.

"Women of Ireland," or "Mná na hÉireann," was written as a poem by Peadar Ó Doirín in the 1700s and was later transformed into song by Seán Ó Riada.

In honor of Ireland's most faithful and talented women, the original lyric became an entire concert piece seeking to bring the old Irish tradition of song into a more contemporary setting.

The 20-member cast will present a fusion of many forms of performance art, such as Celtic music and river dance, to create a stage production that extenuates Ireland's ethnic music tradition. The show maintains a balance of both classic and modern, in order to remain accessible for a younger crowd.

"Exposure to traditional Irish culture in an exciting performance of singers, dancers, musicians and performers," Lauren Zeak, house and box office manager, said of the event.

"Women of Ireland" was originally conceived, created and produced in Ireland with only the highest quality of Irish talent," Zeak said.

For the production, musicians will accompany the singers and dancers through a set of non-stop

entertainment.

Performers, such as Siobhan Manson and Zoe Conway, will share their talents for GSU students in keeping the classical Irish tradition of music alive for a new generation.

"The cast includes a lead performer in the Broadway phenomenon 'Riverdance,' as well as a world renowned female fiddle player," Zeak said. "Along with a performance band, there are five additional musicians who play traditional Irish instruments, such as the bodhrán, uilleann and Irish fiddle."

"Women of Ireland" will be showing at 7:30 p.m. on Saturday March 3 in the Performing Arts Center. Tickets are \$24 for patrons and \$10 for students.



Akeem Hill/The George-Anne

**Suzuki Polaris
SeaDoo CanAm**
22681 HWY 80 EAST 1.5 MILES PAST LOWES

AREA'S
SERVICE & REPAIR ALL MAJOR BRANDS
pick up and delivery

ACCESSORY SHOW ROOM

WWW.SPSCstatesboro.com

912.764.2547

20%
Off parts and accessories
With this coupon

CLASSIFIEDS

This page brought to you by Career Services
Explore • Experience • Excel

20 Thursday, March 1, 2012

The George-Anne

Advertisement

For Sale

Scooter for sale! 2005 Honda Ruckus. Black, 49cc, 85+mpg. Original (faculty) owner, garage kept. \$1,500 OBO. Contact (912) 678-6052.

Firewood for Sale. Delivery available! Call 912-690-0872 or 912-690-4956.

For sale: 2009 BMW 328i, hard-top convertible in great condition. Black with tan interior. Call 912-293-1909.

Used Fender Blues Jr. All-tube guitar amp, \$350, negotiable. Perfect working order/condition (912) 536-1610

Bed frame, mattress, box spring, and dresser for sale! Only a \$150!! Contact Kristina: 678-770-6251

Houses for Rent

ATTENTION ALL STUDENTS 2, 3, 4, 5, 6, and 7 bedroom houses available Aug 1, 2012 24 hr repairs guaranteed 912-682-7468

Furnished apartment - upstairs with separate entrance. Located just past Mill Creek Park. No laundry facilities. Includes utilities. \$130/week or \$500/month. Available now. 912-531-1319

Subleases

Subleasing master bedroom in Planter's Row for \$365/month; utilities not included, pet friendly. For more information contact Anna-Marie at at01770@georgiasouthern.edu or call (770) 546-6560

Subleasing a room in 4 BR/2BT in The Avenue for Spring 2012, but available as early as Dec 16 and Dec will be paid for. \$325/MO. Furnished, utilities included with free Wifi and Cable. Contact Nikki at (678)525-0297.

Sublease at Cambridge for Reduced Price 1 BR/BTH available in a 3 BR, bus stop directly across from campus, all utilities included, furnished, washer/dryer, amenities. \$350/month *Regular price \$459/month. *Email shortecutie102@yahoo.com

2 Bedroom 2 Bathroom apartment in Hawthorne 2. Very close to campus. \$350/month. Sublease through July. Contact Shannon at 678-468-9407

2 BR/2 BT sublease in Georgia Villas. \$475/month for both rooms, utilities not included. Available Jan-May, pet friendly. Right across from Greek Row on Chandler. Email t100212@georgiasouthern.edu

Subleases, cont.

Subleasing my room for Spring 2012 in a fully furnished 4 BR/4 BT 3-story town home. Walking distance from the stadium and bus stop. Contact Alex at (770) 712-5377 or ao00837@georgiasouthern.edu

Spring 2012 1 BR/2 BT in a 2 BR/2.5 BT townhouse at The Avenue. \$495/month, but I will pay \$30 for each month. Or I could put \$210 towards the first month's rent. Contact Cherrelle at chollan4@georgiasouthern.edu

Subleasing 626 B at the Exchange. Female Roommate needed. \$519.00 per month. All utilities included, free tanning, free Wi-Fi, 24 hr gym included. Available now. Contact (706) 523-6001

Room available for male or female in a 3 BR/2 BT house on Catherine Avenue. Fully furnished; bed needed. \$367/mo per person, utilities not included. Spacious house. Contact Yale at (404) 272-7652 or yale8754@bellsouth.net

SUMMER 2012! Subleasing 1BR/1BT available in a 2BR/2BT at The Woodlands. \$409/month plus utilities. Email Sadie at sn01140@georgiasouthern.edu

Subleases, cont.

SPRING 2012! 1 BR/1BT available in 4 BR/4 BT at Campus Club for Jan or earlier. Utilities included. Rent is \$419/month; CHEAPER RATE CAN BE ARRANGED. Email Skyler at sh02071@georgiasouthern.edu

1 BR/1 BT available in a 3 BR at The Grove, for Spring 2012. Available after Dec. 20. \$450/mo, utilities included. Call Ellen 404-694-1394 or email ej00034@georgiasouthern.edu

All inclusive, two story, fully furnished, 4 BR townhouse for \$330/month! Includes trash, utilities, cable, wi-fi, pet park, 24/7 gym, recreation courts, computer lab, new appliances and washer/dryer! Contact (229) 326-4291.

Subleasing a 1 BR/1 BT in 4 BR apartment in Copper Beech for Spring 2012 starting Christmas Break. Washer/dryer included. Next to pool/volleyball court. \$389/mo plus utilities. Contact Singer (404) 680-7240

Female roommate needed for Spring 2012; 3BR/3BT at Cambridge; \$449/mo all inclusive and furnished; one building away from bus route, 1st floor. Contact Angelica 404-921-4988.

Subleases, cont.

SPRING 2012! Female roommate wanted. 1BR/1BT in a 3BR/3.5BT townhome. \$400/mo. Contact at 404-444-8987 or ec01442@georgiasouthern.edu

3BR/2BT within 2 miles campus. You can sublease the other 2 rooms. No smoking or pets. Call (706) 951-1427.

Subleasing 3 BR/2BT house on Parker Ave in downtown Brooklet. Contact Joyce at (912) 842-9479.

Sublease available ASAP. at Copper Beech. \$389 rent monthly. Utilities not included. 3 roommates. Fully furnished. 478-957-1005 for more information.

Sublease my 1BR apartment ASAP at Panter's Row. It is only two years old with a HUGE walk in closet. It is \$625 and pet friendly. Utilities are not included. Contact at be01181@georgiasouthern.edu or 478-455-0432.

Help Wanted

MODELS of all weights/sizes/ages needed for figure drawing class on T&R, 2-4:30 PM. Fall and spring openings. Must be 21 and able to sit for long periods. Call 912-478-2793 or email jburke@georgiasouthern.edu

Help Wanted, cont.

BARTENDERS WANTED! \$250 a day potential. Experience unnecessary. Training provided. 18+ Call: 1-800-965-6520 ext. 296

Seeking an Assistant, excellent opportunity if looking to work in a friendly atmosphere. Self-Motivated, Positive Attitude, Ability to Multi task. Send resume to Martgay@gmail.com

Part time sales position open at Farmer's Home Furniture. Apply in person. 110 Northside Drive E. Statesboro, Ga 30458

Misc.

American Shorthair Cats (AKC Reg. Male and Female) free to good home, contact bpills12@gmail.com if interested

Will proof papers. Quality work, reasonable prices. Will also type short projects. Must have ample lead time to schedule. Email auntre01@gmail.com

Fourth year writing and linguistics major will proof papers/ tutor in writing. Cheapest rates, at least three days notice on assignments

STAY CONNECTED!



Georgia Southern University
Career Services



@gsucareers



Georgia Southern University
Career Services

Also follow our NEW blog at gasouthercareerservices.blogspot.com

Williams Center Room 1047

(912) 478-5197

georgiasouthern.edu/career

Professionals Provide Insight at Eagle Expo

By Brianna Wagenbrenner, Event Planning Intern

Last week at the Eagle Expo Career Fair at Georgia Southern University professionals gave their perspective on how social media sites are affecting applicants in the job hunt.

The employers who attended the Eagle Expo Career Fair had a wide variety of views on how social media sites affect prospective new hires. Most employers agreed social media sites allow applicants to get an understanding of the company and its culture.

Aurora Group has a Facebook page and Lauren Cox said, "It gives them a good eye into our work environment." She also recommends that applicants like their Facebook page to learn more about the company.

Lieutenant Francisco Ramirez, from the Navy, agreed with Cox and said that the Navy uses Facebook for the majority of their recruiting appointments.

Employers also recommended

LinkedIn as a site to connect with companies. LinkedIn is the world's largest professional network with over 150 million professionals.

Nick Coso, from Capstone Financial recommended LinkedIn and said that he checks it because, "it is an easy way to touch base."

However, the strongest recommendations were to be cautious when posting on social media sites.

Jamie Booth, from One Life America, said that her company looks on Facebook sites to make sure that the applicants' values carry over into their personal life. She looks for applicants who display the values One Life America is interested in 100% of the time.

For more information about what to do with your social media sites during the job search, visit Career Services in the William's Center, go online to georgiasouthern.edu/careers or call (912) 478-5197.

PUZZLES/COMICS

www.thegeorgeanne.com

Thursday, March 1, 2012 21

Los Angeles Times Daily Crossword Puzzle

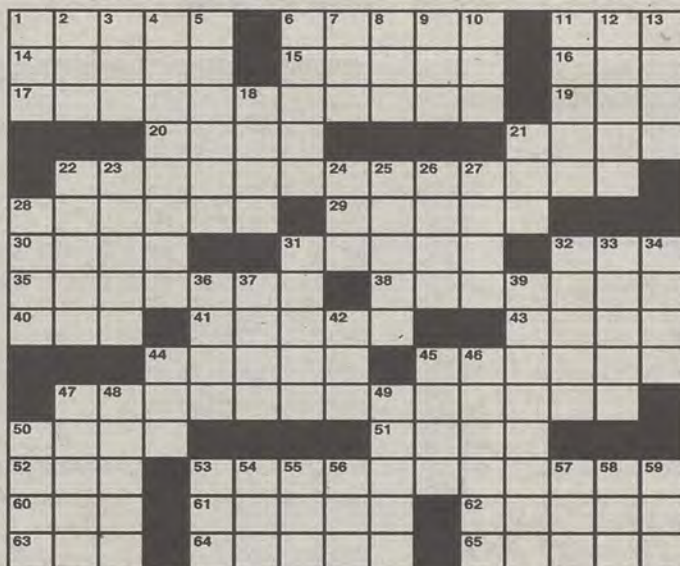
Edited by Rich Norris and Joyce Lewis

ACROSS

- 1 Huge
- 6 Capital of India
- 11 Source of some Genesis attire?
- 14 flu
- 15 Aromatic compound
- 16 Wash. neighbor
- 17 "Competitive business concern"
- 19 Farm butter?
- 20 Big wheel's wheels
- 21 Crunchy candy components
- 22 "Done with one's stint, maybe"
- 28 Woody
- 29 Fancy cases
- 30 Circumnavigating, perhaps
- 31 Deep chasm
- 32 Bit of horseplay
- 35 "Arctic racer"
- 38 "Lewis Carroll, for one"
- 40 Whatever
- 41 Isolated
- 43 Ken of "thirtysomething"
- 44 Leonardo's love
- 45 Notable 2007 communications release
- 47 "Make fit"
- 50 Raised
- 51 Sigh of regret
- 52 Striking scarf
- 53 Informal chat, and based on the starts of the starred answers, this puzzle's title
- 60 Part of a yr.
- 61 Licorice-flavored seed
- 62 Horror film locale: Abbr.
- 63 Part of a match
- 64 Storage areas
- 65 Emotional substance

DOWN

- 1 Pickle
- 2 "Psych" airer
- 3 Fallen orbiter
- 4 Layered Turkish pastries
- 5 Five Nations tribe
- 6 Patch, as a lawn
- 7 Show to a seat, slangily



By Jack McInturff

3/1/12

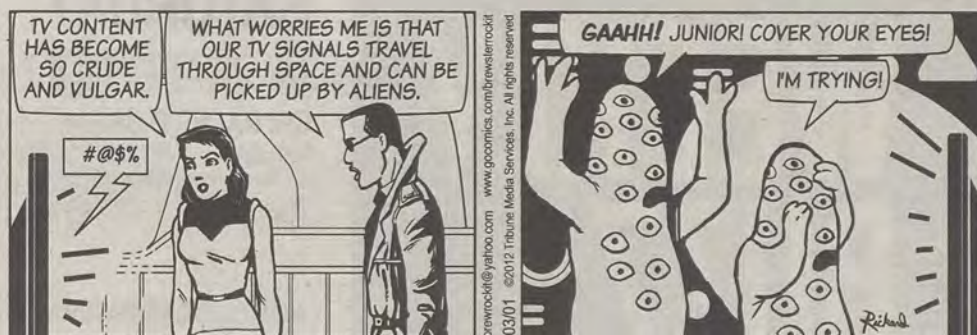
February 28th Puzzle Solved

B	I	N	S	C	A	T	O	U	P	P	E	D
A	D	A	M	O	N	E	A	N	I	E	C	E
R	E	C	E	I	V	E	R	S	E	N	R	O
B	A	L	L	R	E	T	R	I	E	V	E	R
T	A	R	E	S	M	E	Y	M	A			
O	W	S	I	M	P	I	N	T	W	O	S	
P	A	C	E	S	E	T	T	E	R	O	H	O
T	H	O	S	E	U	S	S	B	R	I	N	E
S	I	T	S	H	I	P	P	O	I	N	T	E
I	N	C	O	M	E	Y	R	S	E	D	T	
N	E	H	I	R	M	A	E	O	N			
T	H	R	E	E	D	O	G	N	I	G	H	T
S	T	A	I	R	L	E	D	A	S	T	R	A
R	E	P	R	O	B	A	I	N	E	A	R	P
S	N	E	E	R	A	R	N	O	S	M	E	E

(c)2012 Tribune Media Services, Inc.

3/1/12

- 8 Class-conscious org.?
- 9 Musket end
- 10 Poetic preposition
- 11 Discussion venue
- 12 Really mad
- 13 Masterpieces
- 18 "Untouchable" feds
- 21 Signs of resistance
- 22 Chinese green tea
- 23 Ode's counterpart
- 24 Only mo. that can begin and end on the same day
- 25 Like universal blood donors
- 26 Bait-and-switch, e.g.
- 27 Word on a boondocks towel?
- 28 Tony winner Thompson
- 31 Decorate
- 32 Double-time dance
- 33 Nitrogen compound
- 34 Heredity unit
- 36 Dorm room accessory
- 37 Morlock prey
- 39 "Piece of cake"
- 42 Green table divider
- 44 First or financial follower
- 45 Barbados, e.g.
- 46 Stopped gradually, with "out"
- 47 Kept in touch
- 48 Core
- 49 Havens
- 50 Patio parties, briefly
- 53 Word of annoyance
- 54 Game with Reverse cards
- 55 "Her name was Magill, and she called herself ___": Beatles lyric
- 56 It's illegal to drop it
- 57 Sitter's handful
- 58 Düsseldorf direction
- 59 High degree



Welcome to Falling Rock National Park by Josh Shalek



		5		4		7		
					9			4
	7		1		8		9	
		9		2			3	
4								8
5	3			8		4		
	4		7		6		2	
2								
		6		5		1		

Sudoku

6	4	1	2	5	8	9	6	7
2	5	3	7	1	6	8	4	9
6	2	5	7	3	8	9	1	4
2	1	4	1	2	6	8	9	7
8	5	6	7	1	3	2	9	4
5	9	6	3	7	4	8	1	2
5	6	2	8	9	1	7	3	4
2	1	5	6	7	3	8	4	9
9	3	7	2	4	8	5	6	1

FRANKLIN
CHEVROLET - CADILLAC
PONTIAC - BUICK - GMC
912.764.6911



Our experienced Body Shop can fix all of the "Dents & Dings" that your vehicle may have! We service all makes and models and accept all insurance claims, and will give you a **FREE ESTIMATE** on your body & paint repair
GSU STUDENTS Show your ID and receive **10% OFF** any purchase in Parts and Service
We offer our own in town towing service that is **FREE** with a Student ID when we do the repairs on your vehicle

Check out our website
www.franklinchevrolet.com

WEEKLY BUZZ

A weekly calendar listing sponsored by The Division of Student Affairs and Enrollment Management

MARCH 1 - MARCH 7

THURSDAY 3.1.2012

TENNIS SINGLE ONLINE REGISTRATION

THE RAC

Sponsored by Campus Recreation & Intramurals.

10 AM

RUDY GIULIANI STUDENT TICKET DISTRIBUTION HANNER FIELDHOUSE, TICKET BOOTH

Former New York City Mayor Rudy Giuliani will speak at Georgia Southern University's Hanner Fieldhouse on Wednesday, March 28 at 7 p.m. The event is free and open to the public.

While the event is free and open to the public, seating is limited. Tickets to reserve seats for the event will be distributed as follows:

Student Ticket Distribution: March 1, 2, 5 (10:00 a.m. - 5:00 p.m.)

Tickets will be distributed at the Hanner Ticket Booth that is located to the left of the main Hanner Entrance off of Fair Road.

FRIDAY 3.2.2012

7 PM

FREE MOVIE

RUSSELL UNION THEATER I

Sponsored by the Office of Student Activities.

TENNIS SINGLE ONLINE REGISTRATION

THE RAC

Sponsored by Campus Recreation & Intramurals.

SATURDAY 3.3.2012

8 AM - 2 PM

CRI RACE TO BREAK

THE RAC

For more information go to <http://services.georgiasouthern.edu/cri/liv/se.html>
Sponsored by Campus Recreation & Intramurals.

8 AM - 5 PM

WOMEN'S EMPOWERMENT CONFERENCE

RUSSELL UNION

You're invited to attend Georgia Southern University's Women's Empowerment Conference on March 3, 2012. This conference is opened to all but geared toward the needs of college aged Black women. Featuring luncheon keynote, Ntozake Shange, who wrote the inspiring choreopoem entitled, "For Colored Girls Who Have Considered Suicide When the Rainbow is Enuf." The conference will address a broad spectrum of topics ranging from identity, networking, leadership, activism, and strategies for spiritual, personal, and professional growth. Registration is \$20 (\$15 with a college student ID), and will include a continental breakfast, lunch, and access to all sessions. The deadline to register is February 11, 2012. For more information, please visit the Multicultural Student Center, call 912-478-5409 or email msc@georgiasouthern.edu. Register online at <http://students.georgiasouthern.edu/multicultural/>.

MONDAY 3.5.2012

TENNIS SINGLE ONLINE REGISTRATION

THE RAC

Sponsored by Campus Recreation & Intramurals.

TUESDAY 3.6.2012

5:30 PM - 7 PM

NETWORKING NIGHT (MEDIA, PR, SPORT MARKETING/MANAGEMENT)

RUSSELL UNION

Sponsored by the Office of Student Life.

TENNIS SINGLE ONLINE REGISTRATION

THE RAC

Sponsored by Campus Recreation & Intramurals.

WEDNESDAY 3.7.2012

8 AM - 2 PM

STUDENT VAN TRAINING

RUSSELL UNION, ROOM 205

Sponsored by the Office of Student Activities.

UPCOMING EVENTS....

THURSDAY 3.8.2012

TENNIS SINGLE ONLINE REGISTRATION

THE RAC

Sponsored by Campus Recreation & Intramurals.

10 AM

RUDY GIULIANI STUDENT TICKET DISTRIBUTION HANNER FIELDHOUSE, TICKET BOOTH

Former New York City Mayor Rudy Giuliani will speak at Georgia Southern University's Hanner Fieldhouse on Wednesday, March 28 at 7 p.m. The event is free and open to the public.

While the event is free and open to the public, seating is limited. Tickets to reserve seats for the event will be distributed as follows:

Student Ticket Distribution: March 1, 2, 5 (10:00 a.m. - 5:00 p.m.)

Tickets will be distributed at the Hanner Ticket Booth that is located to the left of the main Hanner Entrance off of Fair Road.

FRIDAY 3.9.2012

TENNIS SINGLE ONLINE REGISTRATION

THE RAC

Sponsored by Campus Recreation & Intramurals.

THURSDAY 3.19.2012

SPRING CONCERT - STUDENT TICKET SALE BEGINS

The Band Perry and The Fray will co-headline a performance at Allen E. Paulson Stadium on the Georgia Southern University campus in Statesboro, Ga. Gates open at 6:00 pm and The Band Perry to perform a full one hour and fifteen minutes starting at 7:30 pm followed by a full show by The Fray at 9:30 pm.

Student tickets go on-sale today at the University Store or online with e-Tix. Student tickets are \$25 for the field and \$20 for the stands. General admission tickets for the public will go on sale Monday, March 26.

For more information on ticket sales, parking, tailgate rules, and general concert information please visit www.georgiasouthern.edu/concert.

FRIDAY 3.20.2012

7 PM

FREE MOVIE

RUSSELL UNION THEATER I

Sponsored by the Office of Student Activities.

Student Affairs
Enrollment
Management

Brought to you by Georgia Southern University VALUES. Georgia Southern V.A.L.U.E.S. is the culture shared by our students, faculty, and staff. We endeavor to share our V.A.L.U.E.S. inside and outside of the classroom with faculty, staff, students, alumni and all other community members. In order to produce productive citizens with an informed set of ethics and community standards as well as create an environment of respect and civility, we pledge to live by our V.A.L.U.E.S.

Ferguson awarded All-Southern Conference honors



Mark Barnes/The George Anne

Sophomore guard Eric Ferguson(3) shows off his impressive vertical as he jumps to finish off a dunk.

Men's basketball

BY BRIAN STONE

The George-Anne staff

Georgia Southern University sophomore Eric Ferguson has been named to the All-Southern Conference team by both media and coaches' selections. Ferguson was also named SoCon Player of the Year by the college basketball blog RushTheCourt.net.

Ferguson becomes the 18th GSU player ever to be named All-SoCon. This is not his first award as an Eagle, picking up consensus All-SoCon freshman honors last season as well.

"I'm not really concerned about individual awards," said Ferguson. "As a team, we want to win a conference title."

The 6-foot-7-inch guard from Statesboro leads GSU in most statistical categories, both offensively and defensively. His production this season ranks in the top six in

the SoCon in scoring, rebounding and field goal percentage. Ferguson led the team in scoring this season, averaging 14.8 points per game while playing an average of 27.8 minutes per game.

Offensively, he also led the team in field goal percentage, shooting 56 percent from the floor. Defensively, he has led the Eagles in both rebounds and blocks, grabbing an average of 7.1 rebounds per game and finishing the regular season with 30 blocks. He also ranks second to only Ben Drayton III in steals this season with 43.

His contributions have showed in the standings as well, leading the Eagles to a turnaround from a dismal 2010 season when they finished with a 1-17 conference record and a 5-27 overall record. The Eagles are now a three-seed in the South Division and finished the season 12-6 in the conference and 14-14 overall. GSU's vast improvement from last season to this season ranks as the second

biggest turnaround in league history.

This season, the Eagles have improved noticeably from a defensive standpoint, only allowing 67.8 points per game to opponents, compared to last season's 75.7 points per game. Opponents are also shooting a lower percentage from the field than they did last season, from shooting 49 percent in 2010, compared to 46 percent this season. GSU has also done a better job holding on to the ball in 2011, only allowing 15.5 turnovers per game this season, opposed to an average of 18 turnovers per game a year ago.

"We were a really young team last year," said Ferguson. "We feel like we've gotten a lot better since last year and we want to do well in the tournament."

The Eagles face off against the sixth-seeded University of Tennessee at Chattanooga Mocs in the first round of the SoCon tournament. The game is on Friday at 8:30 p.m. in Asheville, N.C.

Eagles try to end two-game losing streak in SoCon tournament

Men's basketball

BY CLINTON HINELY

The George-Anne staff

The Georgia Southern University men's basketball team prepares to face the University of Tennessee at Chattanooga in the first round of the Southern Conference tournament Friday at 8:30 p.m.

The SoCon tournament is being held in Asheville, N.C., in the U.S. Cellular Center, beginning March 2-5, with the championship game airing on ESPN 2 at 9 p.m. on Monday. The winner of the tournament receives an automatic spot in the NCAA tournament.

The Eagles finished the regular season on a sour note, losing their last two contests. GSU held a two-game lead over Wofford College for second place in the South Division, but the two losses and Wofford's

two victories left them tied for second with a 12-6 conference record on the year.

Wofford and GSU split the season series between the two, but due to various tiebreakers stipulated by the SoCon, Wofford is the No. 2 seed and will claim the first-round bye.

"We are definitely disappointed we did not put ourselves in position to have a bye," head coach Charlton Young said.

The Eagles will now have to win four games to claim the SoCon tournament title. That's not an insurmountable challenge, but the Eagles still feel like they let an opportunity slip away to cut that magic win number to just three.

"It is no excuse," senior guard Ben Drayton III said, "we will be prepared."

Forgetting what happened to end the season will be key for the Eagles. During the conference tournament, the records are theoretically wiped clean and any team is in

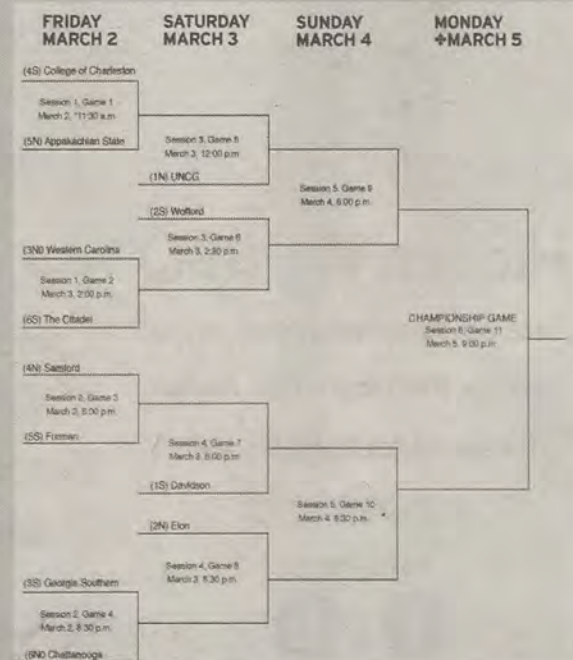
contention to take home the title.

"I think we have a good chance going into the tournament," senior guard Willie Powers III said. "We have a good chance to make history. We don't have any quitters in that locker room."

The Eagles have defeated Chattanooga twice already this season by a combined score of 159-148. The second victory in Chattanooga came down to the wire, with sophomore guard Jelani Hewitt hitting a three-pointer as time expired.

If the Eagles record the first-round win, they will take on Elon University at 8:30 p.m. on Saturday. The Eagles defeated the Phoenix 69-63 on Jan. 5, away from Hanner Fieldhouse for the team's first road win of the season. However, the regular season does not matter anymore and the Eagles will be prepared for the challenges they face.

"We are going to go to North Carolina and fight with all we got," Powers said.



Collin Schwartz/The George Anne

Freshman Hall throws Eagles ahead of competition

Track and field

BY KEVIN GREGAN

The George-Anne staff

The Georgia Southern University track and field team is lucky enough to have super freshman Sarah Hall to contribute to the success of the team by doing what she does best — field events.

"I like it, I enjoy throwing shot and weight throw," Hall said.

Ever since she was in the sixth grade, her father, and biggest fan, has been bragging about his daughter being a top-notch track and field athlete. Sometimes, he even embarrassed her with his support, but in the end, she appreciates his support. A former weight thrower himself, he has always been really enthusiastic about his daughter doing track.

She has really taken to the sport and is passionate about it. After school, she would like to coach track and field and

help bring the same joy to younger people that she has enjoyed so far in her career.

Hall is off to a great start this season. In her first collegiate event, she made a third place finish in her favorite event, the shot put. She also made a top 10 finish in the weight throw event.

She has gone on to be successful in the conference standings while never finishing out of the top 20 in any event.

Going into the Southern Conference championships, she was ranked No. 1 in the weight throw and fifth in the shot put.

At the championships, she placed seventh in the shot put and eighth in the weight throw. Hall is very tough on herself and she's not happy with how she did.

"It was not a good day. I freaked out," Hall said.

As a freshman, she knows she will have lots of chances to do better and that is what she feels will happen at future events.

Despite how Hall thought she did, it

was enough to get her named on the All-Freshman conference team for the weight throw.

For the rest of the season, she plans on getting personal bests, and getting better every meet.

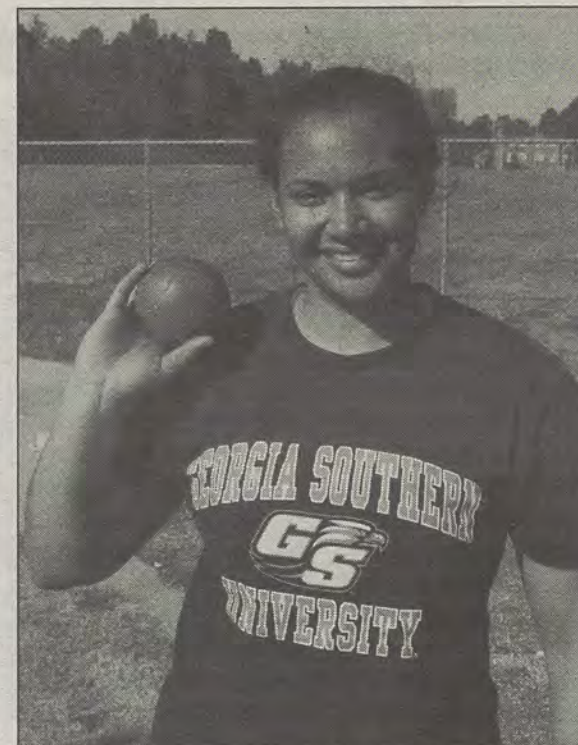
"I'd like to break some records," Hall said.

She will have plenty of time, and Eagle Nation will look forward to her providing field points for the team for another three years.

Hall has attributed a lot of her success to her teammates. She enjoys her teammates and feels that she's in the best competitive environment for everyone on the team to do well.

"They're all amazing athletes, so we kind of push each other to give it our best," Hall said.

Hall still has half of the semester and an entire outdoor season to build on her success so far. She'll be back at it on March 2 and 3 at the University of North Florida Spring Break Invitational.



Mark Barnes II/The George-Anne

Freshman Sara Hall poses with her shot put at practice.

"Praise the Lard,

that's good BBQ"



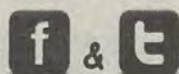
Hidden Pig BBQ

158 East Parrish Street (HWY 301 N)
inside the Statesboro Flea Market

www.hiddenpigbbq.com

912-764-PORK

Follow us on



Lunch Tuesday—Sunday 11 till 3ish

Are you ready to
get Stupid? Then
come try our
food challenge!

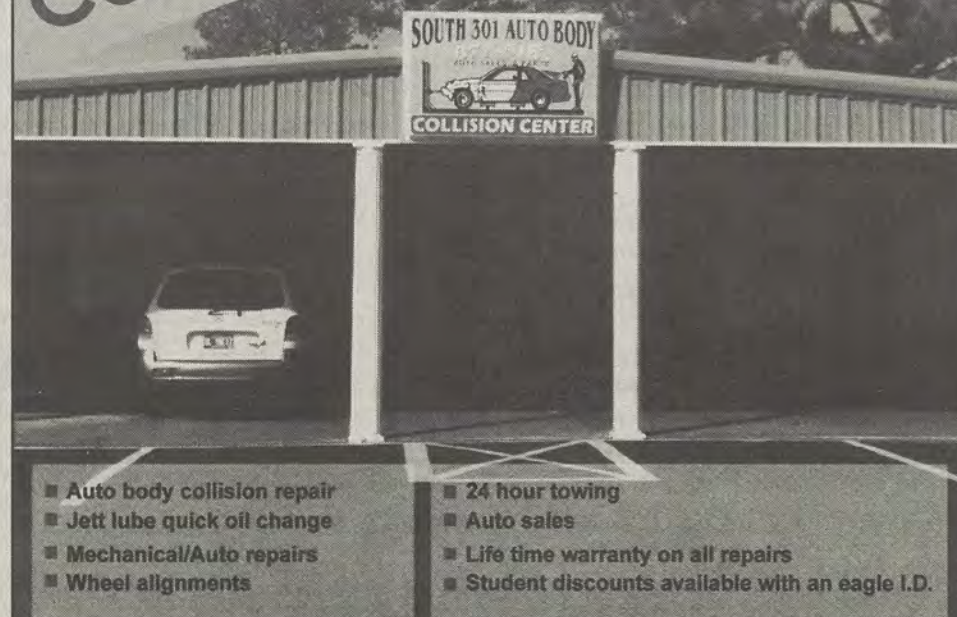
The Hades Hog

1 lb. of pulled pork
smothered in our
"Stupid Sauce",
a sauce made from
Ghost Chiles !!!

"This will burn you a new one!"

South 301
**Auto Body
Collision Center**

In business
for 16 years



- Auto body collision repair
- Jet lube quick oil change
- Mechanical/Auto repairs
- Wheel alignments

- 24 hour towing
- Auto sales
- Life time warranty on all repairs
- Student discounts available with an eagle I.D.

www.south301autobody.com

12229 Highway 301 South
Statesboro, Ga. 30458

(912) 871-5181

GSU football welcomes new defensive coordinator

Football

DERREK ASBERRY

The George-Anne staff

The Georgia Southern University Eagle football program continues making progress with the signing of a new co-defensive coordinator.

Coach Kevin Corless is the program's newest addition.

Corless spent nine years coaching on the defensive side of the ball at Arkansas State University. In addition, Corless can also help improve the Eagles' special teams, as he was in charge of the punt return unit. This will be beneficial, as Eagle standouts Laron Scott and Adrian Mora have moved on from the program.

"He coached with our defensive coordinator Jack Curtis for so many years," said head coach Jeff Monken. "They were co-defensive coordinators for thirteen years so to have two



KEVIN CORLESS

guys in the room that have worked together is promising for the future of our defense."

Corless' other accomplishments include capturing a Sun Belt Conference title in 2005, participating in the New Orleans Bowl Game and coaching his defensive unit to a No. 1 or No. 2 defensive ranking in the conference for a four-year stretch (2006-2009). In 2009, the ASU Red Wolves led their conference in red zone offense and rushing defense.

"I hope the addition will help us play better defense," said Monken. "We had some games where we played really good defense and we had some games where we struggled. So hopefully, this is going to impact our defense and give us an opportunity to play better."

While the Eagles had another impressive run last season, Corless' influence could definitely improve their chances of reaching the FCS finals. The Eagles finished sixth in the Southern Conference in total defense, last in pass defense and gave up 30 or more points in three of their last four games.

However, the team did finish third in scoring defense and rushing defense and second in



GSU's defense makes a stop versus UTC. The Eagles have hired a co-defensive coordinator to help coach the defense.

Lindsay Hartmann/The George-Anne

interceptions and total sacks. Corless' insight on the defensive end could improve the Eagles' weaknesses as well as add to their strengths.

While Corless will undoubtedly improve the team, Monken feels the Eagles should not get

away from what got them in the semifinals the last two years.

"We're going to play the same defense we played a year ago," said Monken. "We're just going to try to play it better."

FRAUD

JUNIORS AND SENIORS OF ALL MAJORS
WITH AT LEAST 45 SEMESTERS HOURS OF CREDIT

LOOKING FOR AN ELECTIVE ?

WHITE COLLAR CRIME LSTD 3630

Examines the investigative steps within the U.S. criminal justice system.

SUMMER TERM B 2012
FALL 2012

FRAUD AND THE LAW LSTD 3631

Examines the legal issues associated with conducting fraud investigations.

SUMMER TERM A 2012
FALL 2012

INTERVIEWS AND INTERROGATIONS LSTD 4633

Examines human behavior and the signals of truth and deception.

FALL 2012
SPRING 2013

PRIOR TO ADVISEMENT, BE SURE TO ASK HOW YOU CAN COMPLETE
THE FRAUD EXAMINATION MINOR AND EARN YOUR CFE (CERTIFIED FRAUD EXAMINER).

See: coba.georgiasouthern.edu/forensic/
Email: berecz@georgiasouthern.edu



Eagles pitching struggles versus Mercer Bears

Baseball

BY COLIN RITSICK

The George-Anne staff

Inconsistent pitching continues to plague the Georgia Southern University (5-3) baseball team as evidenced by the fact that five pitchers were used on Tuesday.

GSU gave up 12 runs on 15 hits in the 12-4 loss to Mercer University. The most disturbing aspect of the pitching is the continuation of two-out rallies by opposing teams.

Travis Benn hit a three-run homerun in the first inning with two outs, in addition to Nick Backlund, who hit a two-run bomb in the third, also with two outs.

Redshirt left handed freshman Sam Howard (1-1) started the game and gave up the two early inning long balls.

He showed no trouble in getting the first couple of outs in every inning he pitched, but struggled with two outs.

Howard was credited with the loss in his first start for the Eagles. But Howard is far from being the only pitcher showing signs of trouble.

In the Eagles game against The Georgia Institute of Technology, GSU used a total of seven pitchers. No one player lasted for more than two and one-third innings on the mound in that game. The Eagle pitching staff gave up 11 runs on 13 hits and six walks versus GT, losing the game 11-9.

Junior starter Chris Beck has been the only pitcher to play in a consistent manner. In the first game of a two game double-header against Radford University, Beck

started and threw for seven innings, only giving up two earned runs and one walk. But from the top of the eighth until the middle of the ninth, four pitchers had to be used.

Junior Josh Stevenson and junior Chris Meyers combined to give up four runs in that small time span.

While the Eagles pulled it out with a 7-6 victory, the bullpen erased the win and a solid day of work from Beck.

In the second game of that double-header, five pitchers were used as well. Freshman Lucas Hart came in relief for senior starter Josh Adams.

Hart threw four innings of solid ball, only giving up one earned run on four hits. But in typical fashion, the remainder of the bullpen, aided by fielding errors, squandered

away what would be Hart's second win of the season.

But alas, the Eagles still pulled off the win with a final score of 7-6.

GSU has an abundance of capable pitchers, but until these players start producing, the Eagles will not be able to compete and hold on late in games. Especially once the Southern Conference foes start rolling in. There has yet to be a game in which the offense did not provide enough runs for the pitchers to seal the deal.

If the pitchers start to pitch to their potential, the Eagles will be fine. There are enough young arms on this team to take GSU far, but consistency will be the key. has been the only pitcher to play in a consistent manner.

In the first game of a two game double-header against Radford University, Beck started and threw for seven innings, only giving up two earned runs and one walk.

But from the top of the eighth until the middle of the ninth, four pitchers had to be used.

Junior Josh Stevenson and junior Chris Meyers combined to give up four runs in that small time span.

While the Eagles pulled it out with a 7-6 victory, the bullpen erased the win and a solid day of work from Beck.

In the second game of that double-header, five pitchers were used as well. Freshman Lucas Hart came in relief for senior starter Josh Adams.

Hart threw four innings of solid ball, only giving up one earned run on four hits.

But in typical fashion, the remainder of the bullpen, aided by fielding errors, squandered away what would be Hart's second win of the season. But alas, the Eagles still pulled off the win with a final score of 7-6.

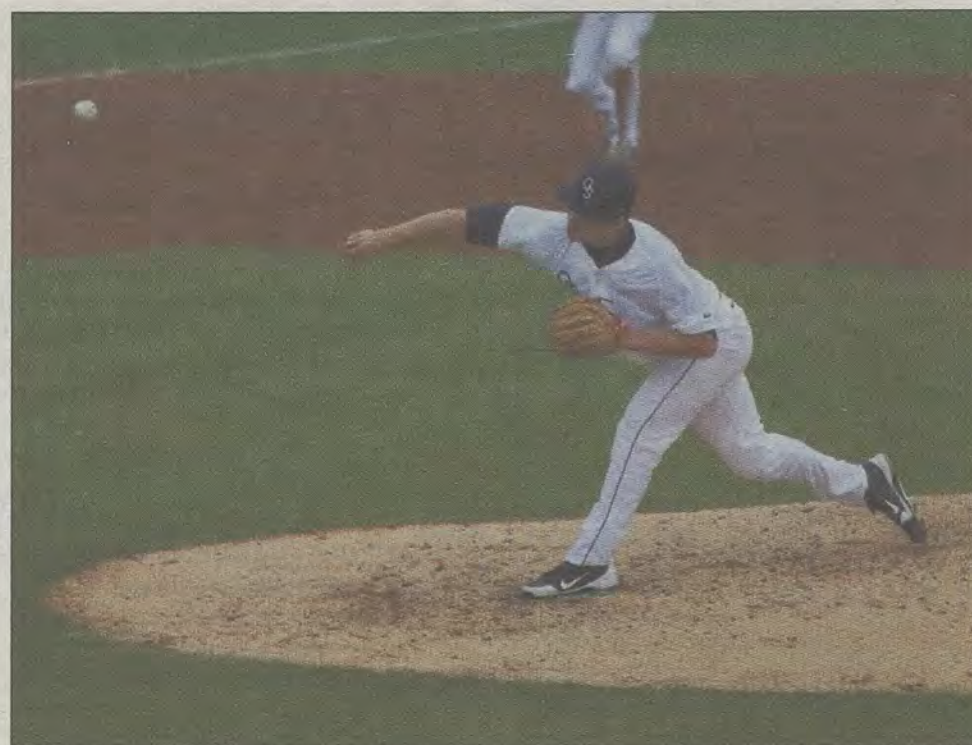
GSU has an abundance of capable pitchers, but until these players start producing, the Eagles will not be able to compete and hold on late in games.

Especially once the Southern Conference foes start rolling in.

There has yet to be a game in which the offense did not provide enough runs for the pitchers to seal the deal.

If the pitchers start to pitch to their potential, the Eagles will be fine.

There are enough young arms on this team to take GSU far, but consistency will be the key.



Lindsay Hartmann/The George-Anne

Junior pitcher Josh Stevenson (21) attempts to strike out opposing batter.

George-Anne & Joe
brought to you by

Thursday, March 1st
Williams Center Gazebo
From
8:15a.m.-10:00a.m.

Don't forget to stop by Starbucks at Georgia Southern for great coffee, pastries, sandwiches, parfaits, and fresh fruit cups!

twitter.com/GSUStarbucks

Frye ties records, reaches career high



Demario Cullens/The George-Anne
Junior guard Meredyth Frye (25) runs the offense for GSU.

Women's basketball

BY ANNA WELLS

The George-Anne staff

The Georgia Southern University women's basketball team Saturday experienced a 57-67 loss against Furman University, however, the real story of the game came from junior guard Meredyth Frye, who scored a career-high 30 points for the Lady Eagles.

Not only is this the most points scored for any GSU player this season, it is also the most points scored by any player in the Southern Conference for women's basketball.

Frye tied a record that was held by former Lady Eagle Sharon Mitchell, who scored 30 points for GSU in 1998.

Frye's previous season high was 17 points, which she scored against the University of North Carolina at

Greensboro earlier in February.

Frye was able to pass 17 points in the first half alone, scoring 19 points in the first half, and went on to pass her previous career high of 24 points by adding 11 more points in the second to give her the grand total of 30.

Frye scored two three-pointers, went 12-15 for shooting in the field and also went 4-4 with free throws.

Frye has made impressive marks throughout her years at GSU. As a freshman she saw action in every game, and averaged 3.6 points a game against conference teams and also made 70 percent of her free throws.

These statistics made a drastic leap during Frye's sophomore year when she averaged 11.6 points per game, led the team in scoring with 347 points in free throws with 111.

Frye also finished fifth all-time in GSU history with an 81.1 percent free throw average, scored in double figures

19 times throughout her sophomore season.

These impressive statistics were stepping-stones to the results that Frye has made during her third year of play for the Lady Eagles. Frye leads the team in nearly every aspect of the game.

She averages 10.7 points per game and has a total of 300 points for the season.

Frye also leads in field goals with a percentage of .438 and averages 3.5 successful field goals per game.

She also leads in free throws, averaging 3.2 per game, and in rebounds with an average of 4.9 per game.

Frye and the Lady Eagles are on the road to Asheville, N.C., to participate in the SoCon tournament where GSU is set to open play against Western Carolina University at 2p.m. on Friday afternoon.

**UNLIMITED FUN
LIMITED VACANCIES**

CALL 912-681-3888 TODAY!

GREAT SPACE. GREAT RATES

FULLY FURNISHED, SPACIOUS APARTMENTS • LARGE, LOCKABLE BEDROOM/BATHROOM SUITES • WASHER AND DRYER IN EACH APARTMENT
LOADED CLUBHOUSE WITH GAME ROOM, FITNESS CENTER, TANNING BOOTHS
POOL, VOLLEYBALL AND BASKETBALL COURTS, GRILLS AND FIRE PITS

the grove
1150 Brampton Avenue
Statesboro, GA 30458g
info@statesboro.thegrove.com
FULLY LOADED COLLEGE LIVING.

**CAMBRIDGE
a SOUTHERN**

Style. Features. Location.

912.681.1300
Cambridge-Southern.com

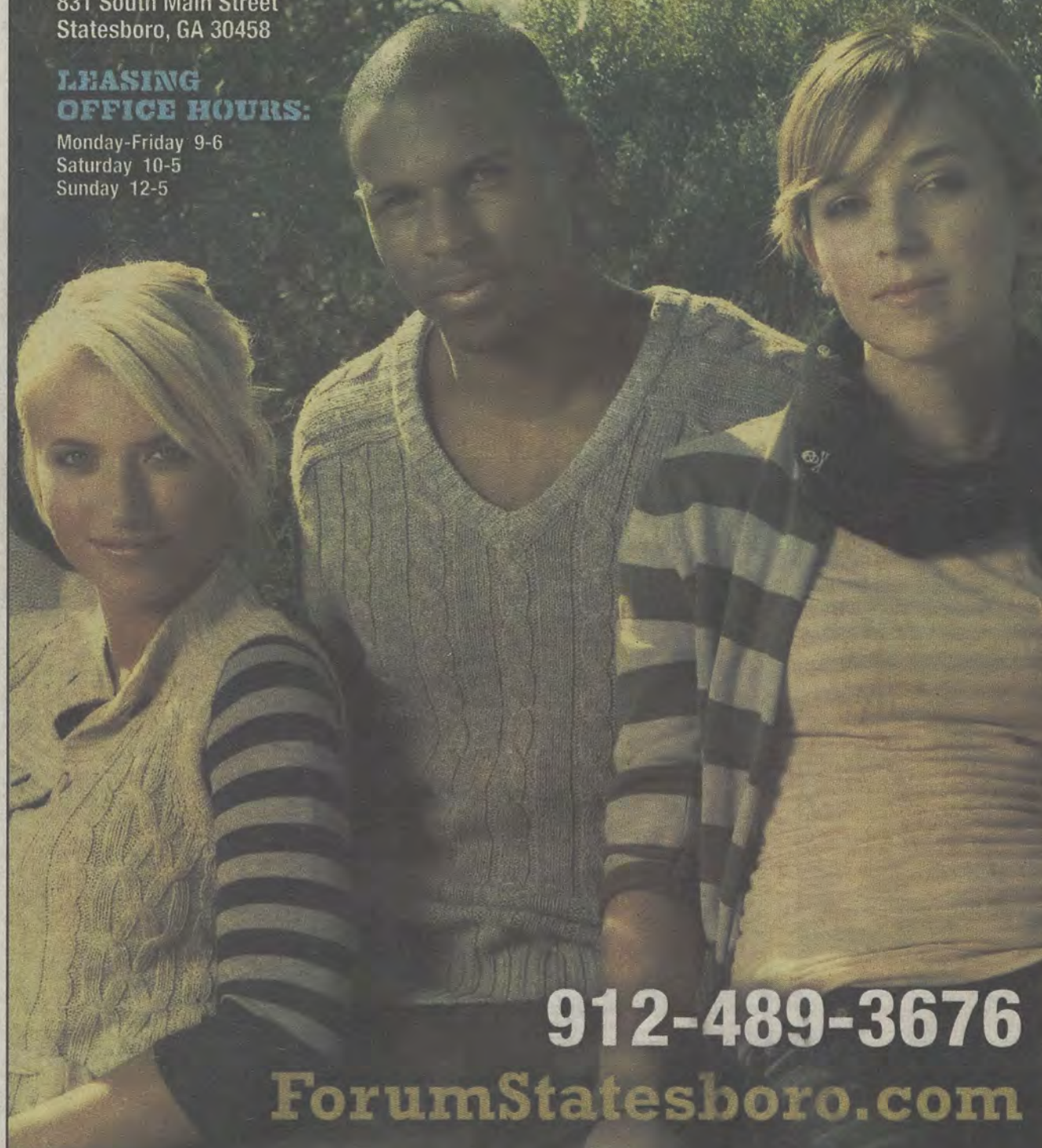
**IT'S YOUR LIFE...
LIVE IT!**
FORUMSTATESBORO.COM

COMING TO:

831 South Main Street
Statesboro, GA 30458

**LEASING
OFFICE HOURS:**

Monday-Friday 9-6
Saturday 10-5
Sunday 12-5



912-489-3676

ForumStatesboro.com

GET A FREE T-SHIRT WITH THIS AD!

FORUM[®]

AT STATESBORO

A PREMIER STUDENT
HOUSING COMMUNITY

**NOW
LEASING
FOR FALL 2012**

- Tennis Court
- Lap Pool & Spa
- Pet Friendly
- Pet Park
- Two Free Tanning Beds
- Indoor Basketball Court
- Indoor Volleyball Court
- Car Care Center
- Modern Faux-Wood Floors
- Private Bathroom in Bedrooms
- Convenient Individual Leases
- Free High Speed Internet in Bedrooms
- 24 Hour Fitness and Training Center
- Kitchens with Full Size Appliances
- Full Size Washer / Dryer Included
- Wi-Fi Cyber Cafe with Coffee Bar
- Outdoor Sand Volleyball Court
- High Speed Internet Access
- Student Center and Lounge
- Roommate Matching
- Expanded Cable
- Media Room



Reserve with this ad. Deposit \$5.
Pet subject to vet and breed/owner's responsibility.