

Georgia Southern University

## Digital Commons@Georgia Southern

---

The George-Anne

Student Media

---

2-9-2012

### The George-Anne

Georgia Southern University

Follow this and additional works at: <https://digitalcommons.georgiasouthern.edu/george-anne>

---

#### Recommended Citation

Georgia Southern University, "The George-Anne" (2012). *The George-Anne*. 2725.  
<https://digitalcommons.georgiasouthern.edu/george-anne/2725>

This newspaper is brought to you for free and open access by the Student Media at Digital Commons@Georgia Southern. It has been accepted for inclusion in The George-Anne by an authorized administrator of Digital Commons@Georgia Southern. For more information, please contact [digitalcommons@georgiasouthern.edu](mailto:digitalcommons@georgiasouthern.edu).





## EDITOR ADDRESSES CONCERNS

THE G-A'S ERROR, PROFESSOR'S CHARGE AND OUR VIEW DISCUSSED

PAGE 4

Thursday, February 9, 2012  
Georgia Southern University  
www.thegeorgeanne.com  
Volume 87 • Issue 55

# THE GEORGE-ANNE

## Buckner to serve as interim dean of students

BY TJ JACKSON

The George-Anne staff

Patrice Buckner, assistant dean for student conduct, will serve as interim for Dean Georj Lewis' position as dean of students and enrollment management after Lewis

leaves on Feb. 27.

Buckner has held her position as assistant dean for student conduct for five years, ever since she started in Oct. 2007. Buckner will become interim dean on March 1, and will remain in the position until the university finds a permanent

candidate to become dean of students and enrollment management.

"I think Dr. Lewis has built a strong professional team and each person is passionate and knowledgeable about their area. I want to definitely maintain that team," Buckner said. "Dr. Lewis

planted a vision in us that the Dean of Students Office be a center for student advocacy, so I want to build on that. I want to make sure that students feel that's what we are."

Buckner is currently in charge of supervising the Department of Student Conduct and meets with

concerning charges against them that violate the code of student conduct.

"I educate students on their rights and responsibilities as a student at Georgia Southern, but also educate students on Georgia Southern

See BUCKNER, page 3

## Financial aid dept describes process

BY COURTNEY ESCHER

The George-Anne staff

The Office of Financial Aid and the Bursar's Office work together to process and distribute financial aid to students.

This complex task involves many outstanding factors, such as student applications, student banks and the U.S. Postal service.

"What students don't realize is just how complex this process is. Everyone's processing financial aid for seventeen to eighteen thousand students, and it has to go through a process in the computer and through many offices, and then the banks have to hold on to the money until a designated date. It takes at least five days to get it all done," Kim Brown, controller said.

The financial aid process begins in the financial aid office, Brown said.

"All the aid, whether it's a Federal grant, a loan, a state grant, like HOPE or even a private scholarship, begin with the financial aid office. That office determines by the student, after they've applied for aid, if the students are eligible or not, or how much they are eligible for. That office then begins the process," Brown said.

"We run a financial aid disbursement, which runs as a process

See FIN AID, page 7

## FRATERNITY RUSH WEEK



Lindsay Hartmann/ The George-Anne

Greek Row continues to host spring rushees, a process that began on Monday, when the new batch of soon-to-be fraternity brothers began the rush process. The events will end Friday. For full coverage, see page 6.



thegeorgeanne.com



Follow on Twitter  
@GeorgeAnneNews



Newsroom 478-5246  
Advertising 478-5418  
Fax 478-7113

PO Box 8001  
Statesboro, GA  
30460





## No small feat, congratulations.

### Congratulations to this year's Star Chapters

#### 5 Star

Alpha Delta Pi  
Kappa Kappa Gamma  
Sigma Iota Alpha

#### 4 Star

Alpha Phi Alpha	Phi Mu
Delta Sigma Phi	Sigma Phi Epsilon
Delta Tau Delta	Zeta Tau Alpha
Pi Kappa Alpha	

#### 3 Star

Alpha Omicron Pi  
Kappa Delta  
Theta Xi

Georgia Southern University welcomes and supports the recognition of national fraternities and sororities as an integral part of the University community. The University sees that the founding principles of these national organizations foster the highest ideals that society would encourage of men and women. The ideals of superior scholarship, community service, philanthropy, brotherhood and sisterhood, and the development of principled leaders are very compatible with Georgia Southern University's expectations and desires for student development.

The Five Star Chapter Program has been created to improve the management, success and image of the fraternity and sorority chapters at Georgia Southern University.

The Five Star Chapter Program is a program by which chapters have the opportunity to receive "star standing" in five key areas of chapter management: 1) Scholarship, 2) Philanthropy, 3) Campus Involvement, 4) Educational & Social Programming, and 5) Public Relations. Star Standing in each of the areas is based upon a set of pertinent criteria. In each of the five areas a total of 100 points may be obtained through proper documentation and evidence of the criteria within said area. The Star Standings will be determined by point value as follows:

1. Five Star Chapters- Chapters attaining 90-100% of possible points.
2. Four Star Chapters- Chapters attaining 70-89% of possible points.
3. Three Star Chapters- Chapters attaining 50-69% of possible points.
4. Two Star Chapters- Chapters attaining 30-49% of possible points.
5. One Star Chapters- Chapters attaining 10-29% of possible points.



**BUCKNER,** from page 1

values," Buckner said. "Most of the hearing of cases happens with the student conduct staff and they are very caring and professional staff that walks the students step by step in their process. I take more of a supervisory and support role."

Buckner will keep her current student conduct responsibilities and add the responsibilities of dean of students, which includes supervision of student services, such as the Multicultural Student Center, student media, educational opportunities program and fraternity and sorority relations.

"We take student complaints and we advocate for students when they have certain situations going on campus and off campus. We do faculty notifications, so all those responsibilities, I'll be responsible for," Buckner said.

Lewis feels comfortable that Buckner will take over his position as temporary dean of students.

"I feel great with Patrice serving as interim dean of students. To me, it's all about progress and I honestly do believe that she is outstanding and I think she will do a great job," Lewis said.

"It should be an easy transition for her during this interim period, and if she is to choose, she can apply for the position as well. I definitely wish her luck on that because she definitely has some great skills," Lewis said.

The search process for the next Dean of Students will be on a national level, Lewis said.

"The normal process would

“ I feel great with Patrice serving as interim dean of students. To me, it's all about progress and I honestly do believe that she is outstanding and I think she will do a great job. ”

- Georgj Lewis  
Dean of Students

advertise in print, online and at our national organizations, our national student affair organizations," Lewis said.

"It will be a national search where any and everyone will have an opportunity to view it, and if they qualify they can apply for the position," Lewis said.

Lewis wants the next dean to have the students' best interest first and to be an advocate for students.

"You're supposed to be an advocate for students and to insure that there are minimal barriers in between them starting and finishing school, so we try to make the education environment positive. We try to make the college life experience positive and safe, so someone who's going to do that would definitely have my vote," Lewis said.

The search process will begin with a search committee going through applications from candidates, which will lead to phone interviews, then bringing three potential candidates to campus to resume the interview process, Teresa Thompson, vice

president of Student Affairs and Enrollment Management, said.

"A lot of students get to come to an interview with the dean of students, obviously SGA officers and those type things. (The candidate) will also interview with me and the directors, and other parts of the university will have an open forum, so that anybody who wants to on this campus can come and ask questions to the potential candidate," Thompson said.

Thompson has confidence that Buckner will be a great Dean of Students interim.

"I know (Buckner) will do a great job. I've worked with her for many years and I know what great judgment skills she has," Thompson said. "I know what a very dedicated work ethic she has to support our students."

The process of advertising for the Dean of Students position will possibly start this week, Thompson said.

"We would hope that maybe we would have a permanent person on board by July 1."

**Statement of Operations**

The George-Anne is the official student newspaper of Georgia Southern University, owned and operated by GSU students using facilities provided by the university. The newspaper is the oldest continuously published newspaper in Bulloch County. The newspaper is a designated public forum for the Georgia Southern community. The newspaper is published twice weekly, on Tuesdays and Thursdays, during most of the academic year. Any questions regarding content should be directed to the student editor by phone at 912.478.5246 or at [gaeditor@georgiasouthern.edu](mailto:gaeditor@georgiasouthern.edu).

**ADVERTISING:** The newspaper accepts advertising. Inquiries may be made by calling 912.478.5418 or 912.478-0566. Fax any questions to 912.478.7113 or e-mail [ads1@georgiasouthern.edu](mailto:ads1@georgiasouthern.edu).

The George-Anne receives additional support, in part, from the Student Activities Budget Committee.

The deadline for reserving space and submitting advertising copy is noon, one week prior to the intended publication date. For more information, rate cards, sample publications, contact the advertising manager or student

media director.

The advertiser is responsible for any errors in advertisements and its liability for adjustments is limited to the amount of space the error occupied in the ad. Further, the newspaper is not responsible for any damages caused due to an ad's omission from a particular edition and its responsibility solely is to reschedule the ad in the next regular edition at the regular advertising rates.

**STUDENTS BEWARE:** The George-Anne screens all advertisements prior to publication. The newspaper strives to accept ads for legitimate products and services only. Students are urged to exercise caution when replying to ads-particularly those that require personal information. Students are also urged to report to the newspaper any suspicious offers which they might see in an ad.

**PUBLICATION INFORMATION:** The newspaper is printed by Signature Offset in Jacksonville, Fla.

**NOTICE:** Unauthorized removal of multiple copies from a distribution site constitutes theft under Georgia law, a misdemeanor offense punishable by a fine and/or jail time.

**Editor-in-Chief** Arielle Coambes  
**Opinions Editor** Alex LaSalle  
**Copy Chief** Matthew D'La Rotta  
**News Editor** Jessie Reese  
**Asst. News Editor** Courtney Tielking  
**Arts Editor** Quanyia Epps  
**Asst. Arts Editor** Gianna Carme  
**Sports Editor** Jannah Bolds  
**Asst. Sports Editor** James Farmer

**Business Manager** Holly Hillhouse  
**Asst. Business Manager** Vicki Tucker  
**Marketing Manager** Aria Gabol  
**Production Manager** Mallory McLendon  
**Photo Editor** Lindsay Hartmann  
**Design Editor** Kelsey Paone  
**Multimedia Editor** Jennifer Curington

**Corrections**

Contact the editor at [gaeditor@georgiasouthern.edu](mailto:gaeditor@georgiasouthern.edu) for corrections and errors.



The Sir Shop  
Statesboro Mall  
912.764.6924





## Our View

### Support local businesses

It is not uncommon to hear students complaining about the Statesboro community's lack of activities, stores and venues geared toward college-aged individuals. Students often gripe that there is not enough to do around Statesboro, outside of going to the bars or partying, so many opt to do things like going to concerts or shopping in other cities.

With the recent change of Buffalo's Café into GATA's Sports Bar and Grille, an establishment now themed after the accolades of Georgia Southern University athletics, along with the city's plan to build a new park to draw people into the downtown area, it seems that the community is making a stronger attempt to assimilate itself with the university — and that's a good thing.

The owners of GATA's have already announced plans to expand their entrepreneurship by adding a pizzeria and microbrewery — something completely new to Statesboro — to the property on which GATA's already stands. With the recent concert performed by Archne-mesis, GATA's has held true to the idea of bringing music performers to Statesboro that students would otherwise have to travel to see and would probably never come here.

Although some think that the new park should be built closer to campus, the construction of a park in a more community-centralized area of town would allow local community members and college students more opportunities to interact. If there is more interaction between the community and the students, maybe the more permanent members of the Statesboro community will start to feel the loyalty and bond experienced by community members in college towns like Athens. Also, if students begin to frequent downtown Statesboro to visit a park, community members will be more likely to start to set up shops, restaurants and bars that students are more likely to take an interest in.

With the new and newly renovated establishments and services, both already available and still in the planning phases, GSU students should take it upon themselves to venture out into their surrounding community in an effort to support those who will, in turn, support us.

The George-Anne welcomes letters to the editor and appropriate guest columns. All copy submitted should be 350 words or fewer, typed, and sent via e-mail in Microsoft Word format to [gaeditor@georgiasouthern.edu](mailto:gaeditor@georgiasouthern.edu). All submissions must be signed and include phone number for verification. GSU students should include their academic major, year and hometown. The editors reserve the right to reject any submission and edit submissions for length.

Opinions expressed herein are those of the Board of Opinions or columnists themselves and DO NOT necessarily reflect those of the faculty, staff or administration of GSU, the Student Media Advisory Board, Student Media or the University System of Georgia.

## The G-A faltered, but continues serving students' best interest

In Tuesday's edition of The George-Anne, we published a Letter to the Editor titled "Innocent until proven guilty is essential" that was signed by a large group of students. This letter stressed the importance of upholding the standard of innocence in people charged with crimes, especially in relation to Lance Durden's recent charges.

Due to an error on The George-Anne's part that we realized after publication, the names listed as signees of this letter were not verified prior to publication. To protect students, our policy requires that we ask for another form of verification than an email, since we don't want someone whose email was left up in the library to see their name in The George-Anne unexpectedly the next day. Multiple students whose names appeared on the list told The George-Anne staff that they did not agree to sign this letter.

Because of these reports — and because we found "Daisy Durden" had also signed the letter, which is the dog in question — we began contacting the students whose names were included on this Letter to the Editor. The intent was to correct our error, find the truth and verify identities.

Apparently we created a lot of buzz here.

Strangely, we have been met by



ARIELLE COAMBES  
EDITOR-IN-CHIEF

confusion in most cases and anger in others. Students responded to our request with more than just verification. They wrote in defense.

The responses were all very similar. They read, "I knew what I was signing. I was in no way influenced to sign this letter." One email said that another professor, Dr. Lorne Wolfe, "should not be to blame for ANY thing regarding this letter to the editor." We did not mention Dr. Wolfe at any time. Note: Although most responses read this way, some students were very open to having their identity verified by a simple phone call. A few even confirmed that they never signed the letter.

The majority of these responses, though, were defensive and angry. The staff here is disheartened and confused by this reaction from students, as we always want students to see as us

their advocates. We are always on the people's side — we are, of course, students ourselves.

Our intent here was simply to verify signatures and do the job we missed — protecting students.

On the same note, we received feedback from students about the Our View in Tuesday's paper as well.

This editorial was meant to encourage the university to implement a uniform policy about criminal charges or university conflicts involving professors.

In some cases, chairs have been removed from their positions with no public statement issued. In others, professors have been cast away to teach online-only courses. In still others, no action has been taken.

Our message — What's the standard procedure? What exactly is the university responsible for during these investigations? How is the university catering to the students' interests and concerns about the professors they see every day? No one knows.

Our coverage and the Our View are not meant to implicate people who have the right to uphold a plea of innocence.

Our intent was to encourage the university by sending a clear message — it is the university's responsibility to protect the students as well as serve their best interests.

## Letters to the Editor

Dear Editor,

Regarding your view concerning a "process needed for criminal charges" from Feb. 7, I understand you feel the best interests of the students should be protected; however "innocent until proven guilty" holds supreme law. I feel that your view is somewhat convoluted in that you believe Dr. Durden is innocent, but you still feel he should be reprimanded and publicly defaced before a guilty verdict is given.

I understand the absolute necessity for a process for criminal charges, however, perhaps it should be restricted to those professors whose charged crimes are relevant to school and student matters. I am a strong believer that one's personal life should remain personal and their business life available for the public to peruse. Dr. Durden's charge poses no danger to student life, other than riling them up in public media frenzy.

Still, if you feel a process should be in place, here is an idea — give the

students of these professors the option to attend their class. Those who feel a threat or general distaste can abstain from attendance and the rest of us can attend because we go to GSU in pursuit of a higher education — not to participate in the unsupported judgment of an esteemed professor.

Respectfully submitted,

Jordanna Lundgren  
Senior  
Biology



## From the left

### 'War on religion' is non-issue

I've been asked to write on President Obama's "war on religion" today, and I'd like to start by saying that this is utterly ridiculous. This is like the "class warfare" business. So because there's been legislation passed that upsets a group, it's now classified as warfare?

President Obama has now allowed for women to obtain birth control through their insurance providers. I can understand why some religious groups oppose this, but it's based on outdated ideologies. We no longer live in a world in which we don't need contraceptives.

Sex is becoming an acceptable part of our society, and if you don't believe me, look at some of our illustrious television programming and advertisements.

Children are watching garbage such as "Teen Mom," "16 and Pregnant" and "Jersey Shore," and we want to believe that they're going to be angels?

Kids idolize people they see on TV, and in an age where we see pregnancy pacts and children are starting to experiment sexually at an earlier age, why wouldn't we want to provide our children with the proper contraception and the knowledge of how to use it?

I don't think this is a "war on religion," but just another group the conservatives are trying to steal from President Obama for the upcoming election. In 2008, Obama won the Catholic vote by a wide margin and the Republicans see this as the perfect opportunity to win some Catholic votes back.

President Obama has already hinted that there would be some room for compromise, so these groups wouldn't be punished for not



ROB ROBERTS @Robert\_ARoberts

offering birth control, but I don't think he should even do that. It's not the job of the government to make everybody happy — trying to do that would never work. What they are supposed to do is make decisions based on the greatest good for the most people.

Another shot in the "war against religion," as stated by Rick Perry, is that "gays can serve openly in the military, but our kids can't openly...pray in school." This is a non-issue because there is no national religion.

Why would we subject the other students to morning prayers if that were not their beliefs? Comparing school prayer to LGBT individuals openly serving in the military is apples to oranges and a long shot at best. This type of comparison shows why he is no longer in the race.

The "war on religion" is a work of fiction, propaganda stirred up by the Conservative media to scare voters into supporting them. Don't fall for it.

*Roberts is a senior public relations major from Warner Robins, Ga.*

## From the right

### Freedom needs protection

Continuing on what I talked about Tuesday, Obama has opened a can of worms by declaring a religious war on the Catholic Church.

By not only forcing faith-based health organizations to provide services that are against their faith, but also by forcing the followers of that faith to pay for it, he has put himself and his administration at odds with the religious world.

Even the Supreme Court, which in an unprecedented decision of 9-0 said it was unconstitutional to make these religious organizations do something against their faith under the First Amendment, is against him.

Obama needs to realize that while we are a country of religious freedom and people can worship or not worship any way they please, the government needs to stop attacking religious organizations for doing what their books tell them to.

In the case of the Catholic Church, it's to spread the word of the Gospel and protect its teachings.

They are not infringing on anyone's rights by not offering birth control or abortions.

People can simply go someplace else. As long as they are not violating anyone's rights, religion should be able to practice any way they chose.

This also includes manger scenes



FRITZ CHAPIN @GrandOldPartier

during Christmas.

If Christians want to put one up, they should be able to. It's only when the same firehouse or city doesn't allow another religion or faith to express their beliefs should they be chastised.

If the atheists want to put up a big banner that says "God doesn't exist" next to a banner that says "Merry Christmas," they have every right to under the Constitution.

I've personally never seen that, but they decide to go the opposite direction and infringe on the rights of Christians and how they worship.

We cannot allow this to happen. The first Americans came here for religious freedom, and if we take that away there's no "New World" for them to run to.

*Chapin is a senior political science major from Roswell, Ga.*

## SGA Weekly Column

This past year there have been an abundant amount of exciting changes and announcements that have or will affect our dining facilities on campus. The format of Landrum has changed from being a single entrée cafeteria to an all-you-can-eat-style facility, providing students with flexibility and value. The Pickle Barrel has been re-opened to offer students more healthy food options. The university has also recently decided to completely renovate Lakeside and reconstruct Landrum to make them more appealing and pleasing

to students. Due to the construction needed to remodel and upgrade these buildings to make them higher quality dining facilities, the university has decided to build an intermediate location that will take the place of Landrum and Lakeside for one year. This intermediate eatery will not only maintain the



DOMINIQUE  
QUARLES

quality and services currently provided to students, but it will also reduce construction to one year.

This facility will be called The Nest because this is where eagles live until they are ready to move on to their permanent setting. The Nest will be a rather large facility that will be able to accommodate the same amount of students that Lakeside and Landrum could, combined. The format of this cafeteria will be food court-style and will be comprised of four to six different diversified eateries. Jeffrey Yawn, the director of Dining Services, assures students

that the quality and the food choices offered at The Nest will be even better than what is currently at Lakeside and Landrum.

The parking area closest to the Performing Arts Center, Watson Pods and Centennial Place is where The Nest will be located. The university selected this location because it would place the building in a central area of campus that would be convenient for students to reach. This area also was one of the few available on campus where water, sewage and other necessary utilities

could be offered. Since this building will be partially placed in the Centennial and Watson parking lot, students affected by the placement of the facility will be able to park in the Eagle Village parking lot, closest to Chandler Road.

Eagle Dining is very excited to implement these changes to help provide students with higher quality dining locations, said Yawn. These changes are for the students and we will do the best we can to better their dining experience here at our university, he said.



# Fraternities explain the path of rushing

## MONDAY/TUESDAY

FEBRUARY 6/7TH

Each fraternity house is visited and the potential recruits stay 30 minutes at each to visit with its members

// They go to each house for 30 minutes and meet everyone there.

-Tom Clarke, Sigma Alpha Epsilon

## WEDNESDAY

FEBRUARY 8TH

The potential recruits can choose which fraternity houses they would like to visit a second time and visit them again

// Its kind of like a second date. They go around to the houses they most like.

-Sullivan Pollard, Theta Xi

Freshman multimedia communications major

## THURSDAY

FEBRUARY 9TH

Also called "preference night", fraternity houses invite back potential recruits that they would like to have potentially join their fraternity

// This is where we find the guys that can make us better and improve the fraternity as a whole.

-Luis Quinones, Theta Xi

Freshman computer science major

## FRIDAY

FEBRUARY 10TH

Also called "bid ceremony", fraternity houses that wish to officially invite a potential recruit to their fraternity extend a bid to them which they can then accept or deny.

// We always try to express why they are best for us and we are best for them.

-Jesse Vaudo, Sigma Phi Epsilon

Fraternity President

BY LINDSAY GASKINS and  
SADIE NAZWORTH



Tyler Fleider/The George-Anne

## IFC begins spring rush

BY LINDSAY GASKINS and  
SADIE NAZWORTH

The George-Anne staff and contributor

Pairing with the Interfraternity Council, Greek Row has been filled with dozens of potential rush recruits hoping to land a spot with one of Georgia Southern University's fraternities.

"IFC is a committee put together. We are Greek men, but we represent and speak on behalf of Greek Life," Nathan Baca, junior marketing major as well as vice president of Communication and Public Relations for IFC, said.

IFC is responsible for the planning and preparations for the rush process of each semester, Baca said.

Rush is a great opportunity to broaden friendships and meet new people, David Vater, sophomore construction management major and potential recruit, said.

"(Rush) entails meeting new people every day for a whole week while trying to match their interests with yours to fit them, obviously, into the best fraternity that would most likely suit their needs, and to have the best college experience," Steinwell said.

IFC is currently trying to establish GSU as the site with the largest Greek Life, Randall said.

Randall said, "It's our job to grow Greek Life and we want every student to be Greek."

# Hawthorne

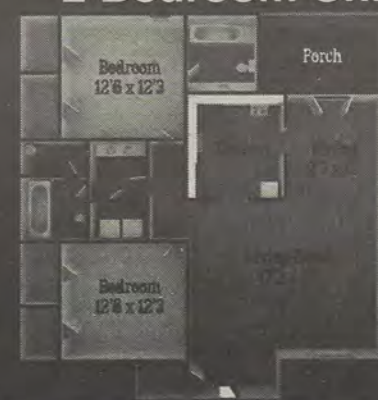
By Hendley Properties  
912.681.1170

www.hendleyproperties.com

2 bedroom  
flat

\$350  
/month per person

## 2 Bedroom Unit





## FIN AID, from page 1

starting at about ten a.m. and going into the late afternoon of the disbursement date. From there it goes to the [Bursar's] office and they handle the rest," Connie Murphy, director of Financial Aid Division of Student Affairs, said.

"One of the things that we need to look at is dispersing sounds like, we're paying the students, but that's not what it means. That's just when financial aid starts their process, after that, it still takes at least three processing days," Brown said.

"The disbursement date is set by the [Bursar's] office. They set the date to be ten days after classes start," Murphy said.

This is done because Federal financial aid requires verified student attendance before they will receive financial aid, Brown said.

After the Office of Financial Aid runs their process, the information is sent to the Bursar's Office, Brown and Murphy said.

"After disbursement, our information from our database goes to the [Bursar's] office, where they look at your invoice and do all of the calculations to determine whether you owe money or whether you will be receiving a check," Murphy said.

Once the Office of Student Accounts has applied financial aid payments, a third process is run to determine student refunds, Brown said.

"Then [the Office of Student Accounts] runs a process that generates a refund. And, really, any money that's left over is paid to the student as a refund. So [the Office of Student Accounts] runs that over and has to send that to Accounts Payable," Brown said.

Accounts Payable then either creates a file for students with direct deposit or physically writes a check for those students who do not have direct deposit, Brown said.

Finally, the U.S. Postal Service picks up the rest of the checks and distributes them to students — first with a campus P.O. Box, and second to those with a local address, then third to those with only a permanent home address in the Banner system, Brown said.

Collectively, this process takes about five business days to complete, Brown said.

"Usually financial aid will run their process and it takes all day and into the night, accounts payable takes all day long on Friday, Monday is when student accounts starts putting all of those checks into number order, then postal service picks them up on Tuesday and puts them in students mail on Wednesday," Brown said.

# Starting 10 days after classes begin...

Day 10	Financial Aid	Day 13	Postal Pick-up
Day 11	Accounts Payable	Day 14	Students Receive
Day 12	Organize Checks		

Matt Veal/The George Anne

After the disbursement date has passed, the Office of Financial Aid and the Bursar's Office repeat this process once a week, Murphy said.

"Once we have passed the disbursement date, we disperse checks every week because we know some students aren't finished with their paperwork," Murphy said. "Some schools go twice a week. I'm not sure what the limitations are on the [Bursar's] Office's end, or why we can't do that too, but I would be interested to know."

Limitations within the Bursar's Office lie within a lack of resources and a minimal number of students opting for direct deposit, Brown said.

"It's actually two things — we don't have the resources and we don't have as many students as we need on direct deposit. If we could get a greater number of students on direct deposit, then we could probably begin to disperse more than once a week, because we don't have the manual time that it takes to handle the checks," Brown said.

Other delays lie in outstanding services like the postal service and students' banks, Brown and Murphy said.

"Whether you have direct deposit or not will affect when you get your check," Murphy said.

"If you don't have direct deposit, the business office has to physically cut you a check and then send it to you. And lately, a lot of students have stopped purchasing PO boxes, so that goes into account, too. It takes a lot longer for students to receive their

checks if they are sent to their home address instead of their PO box," Murphy said.

"Each bank sets their own funds availability date. Some banks will allow you to receive your funds, if we have everything done, on Friday, then some banks will allow you to have your funds early Saturday. Some banks hold on to those funds longer," David Spillman, administrative specialist, said.

"So each bank has a different way of doing things, and that's something that students should ask their bank about," Spillman said. "If they don't think they're getting paid soon enough, they can move to another bank."

Student account information may also change during drop/add week, Angela Lang, manager of student accounts, said.

"If a student were to add or drop a class, their financial aid could absolutely change,"

Lang said.

"With the changes to HOPE, classes have to be verified as well before HOPE will disperse. So some students end up with a balance solely because of a timing issue," Lang said.

The Bursar's Office does not wish to give an accurate estimate of funds availability online because the date a student receives aid is not the same for all students, Lang said.

"We can't put an expected date that students will receive checks online because it varies from student to student, and we don't want to mislead anyone," Lang said.

However, it is the Bursar's Office goal to have all funds available for students on one consistent date, Brown said.

Brown said, "We like to have everything available for students at the same time."

## SINGING VALENTINES!

order now just \$20 for feb 10-14

3 songs, stuffed animal, candy and balloon!

912-681-2241 georgiasouthernbcm.com

proceeds support student missions



## 54th annual Grammy awards to honor musicians

### Music

BY JAZMIN DAVIS

The George-Anne staff

The music industry, celebrities and music lovers will come together once again as the 54th Annual Grammy Awards ceremony takes place this Sunday.

Held at the Hollywood Palladium in Los Angeles, this celebration of music brings together musicians from a spectrum of genres and decades. The award show, hosted by LL Cool J, will showcase many big time performances from artists such as Lil Wayne, Rihanna, Foo Fighters, Taylor Swift, Nicki Minaj and much more. With special appearances by Paul McCartney and the Beach Boys, this event is expected to display classic talent in a room full of newer entertainers.

"I expect it to be an awesome show. When I look at the nominees, the ones I'm most excited to see are the winners for Record of the Year and Album of the Year," Roberto Leon, junior computer science major, said.

The Grammys began in 1958 with the name originating from Thomas Edison's music playing invention, the 'gramophone.' The goal of this award show has always been to "honor excellence in the recording arts and sciences," according to the

organizations website. Voters of the award nominations are fellow songwriters, musicians and producers who know the industry and what goes into being an all-around accomplished artist. Organizations such as the Grammy Foundation, The Recording Academy and MusiCares aim to ensure that musicians are rightfully chosen for the awards to be presented.

Even though Georgia Southern University students won't be able to vote, they still have opinions about their favorite artists.

"I'm looking forward to Gaga, even if she doesn't perform, her outfits will," Andrew Bridges, junior arts major, said.

With this being Grammy week, celebrities are already preparing for the big night. Social events are to commence in the spirit of sharing the celebration of music. These exclusive parties include the Special Merit Awards Ceremony, the Social Media Rock Stars Summit and the Pre-Grammy Gala, as well as many others.

Many musicians find it a privilege just to be nominated for an award like the Grammys since it is such a significant honor among the musical

community.

In an interview with the rapper and winner of two Grammys, Common said, "It's one of the highest achievements you can have, and definitely one of the greatest ever as a musician, as a recording artist."

Performers and nominees will take the Grammy stage on CBS, Sunday at 8 p.m.



## STUDENT OPINIONS

"About host (LL Cool J), "I think someone like Larry the Cable Guy or Ron White should host, someone funny."

Jefferson Davis  
Freshman mechanical engineering major

"Nicki Minaj is going to be crazy in some insane costume."

Marla Thompson  
freshman undeclared major

"I love Chris Brown's music, it's upbeat a lot of the time."

Briana Stanley  
sophomore childhood & family development major

"I'd probably pick Bruno Mars for Record of the Year. He has unique music."

Sherika Heath  
Junior chemistry major

## NOMINATIONS

### Record of the Year

Rolling in the Deep- Adele  
Holocene- Bon Iver  
Grenade- Bruno Mars  
The Cave- Mumford & Sons  
Firework- Katy Perry

### Album of the Year

21- Adele  
Wasting Light- Foo Fighters  
Born This Way- Lady Gaga  
Doo-wops and Hooligans- Bruno Mars  
Loud- Rihanna

### Best Rock Performance

Every Teardrop Is A Waterfall- Coldplay  
Down By The Water- The Decemberists  
Walk- Foo Fighters  
The Cave- Mumford & Sons  
Lotus Flower- Radiohead

### Best New Artist

The Band Perry  
Nicki Minaj  
Skrillex  
Bon Iver  
J. Cole

### Best Rap Song

All Of The Lights- Kanye West, Rihanna, Kid Cudi, Fergie  
Black And Yellow- Wiz Khalifa  
I Need A Doctor- Dr. Dre, Eminem, Skylar Grey  
Look At Me Now- Chris Brown, Lil Wayne, Busta Rhymes  
Otis- Jay-Z and Kanye West  
The Show Goes On- Lupe Fiasco

### Best Pop Duo/Group Performance

Body And Soul- Tony Bennett & Amy Winehouse  
Dearest- The Black Keys  
Paradise- Coldplay  
Pumped Up Kicks- Foster The People  
Moves Like Jagger- Maroon 5 & Christina Aguilera

### Best R&B Album

F.A.M.E.- Chris Brown  
Second Chance- El DeBarge  
Love Letter- R. Kelly  
Pieces of Me- Ledisi  
Kelly- Kelly Price

### Best Dance Recording

Raise Your Weapon- Deadmau5 & Greta Svabo Bech  
Barbra Streisand- Duck Sauce  
Sunshine- David Guetta & Avicii  
Call Your Girlfriend- Robyn  
Scary Monsters & Nice Sprites- Skrillex  
Save The World- Swedish House Mafia

### Best Alternative Music Album

Bon Iver- Bon Iver  
Codes and Keys- Death Cab for Cutie  
Torches- Foster the People  
Circuital- My Morning Jacket  
The King of Limbs- Radiohead

### Best Country Solo Performance

Dirt Road Anthem- Jason Aldean  
I'm Gonna Love you Through It- Martina McBride  
Honey Bee- Blake Shelton  
Mean- Taylor Swift  
Mama's Song- Carrie Underwood



# GSU remembers favorite childhood movies

## Television and movies

BY AMBER GORDON

The George-Anne staff

Talking lions, singing mermaids and adventurous dinosaurs filled the thoughts of Georgia Southern University students as they recalled their favorite childhood movies.

Created in 1994, "The Lion King" is one of the highest grossing animated films of all time.

The story of deceit, perseverance and friendship has caused this movie to be one of the most popular and well-known Disney movies in the world, according to the Disney channel website.

"The Lion King" was my favorite because I liked Disney movies as a kid and that one was always the best," Joshua Cullen, sophomore construction management major said.

Some GSU students cherish the movie because the characters were able to make a lasting impression on them.

“As a kid, I would always reward myself for working hard at school, and this was the movie I used to reward myself.”

- Samuel Baker  
History professor

"I loved the lion king because Scar was such an awesome villain," Emily Abrams, freshman public relations major said.

"The Fox and the Hound" is another old Disney classic that was released in 1981. Featuring voices from Kurt Russell, Keith Coogan and Mickey Rooney, this movie has been considered to be one of Disney's top 100 movies of all time.

The movie has even won international acclaim when it received Germany's Golden Screen Award in 1982.

"The Fox and the Hound" was really good. It pretty much gave me every emotion you would expect from a really good movie," Donte McMichael, senior general studies major, said.

Disney's 1998 classic, "Mulan," taught

girls that they could do anything they put their minds to.

Set in China, children were able to vicariously travel to another country while learning valuable lessons in acceptance and teamwork.

In 1999, "Mulan" was nominated for an Oscar for Best Music, Original Music and Comedy Score as well as winning the Annie Award.

"Mulan" was my favorite because she was able to do everything the men could do," Reyna Santiago, senior biology major, said.

Another movie that had students looking back on their childhood was "The Land Before Time." Produced by Universal Studios, "The Land Before Time" featured five adventurous dinosaurs looking for Great Valley.

The movie made it fun for children to learn about the different types of dinosaurs during the prehistoric age.

In 1990, the movie was nominated for Best Fantasy Film in the Saturn Awards, but lost to the family film "Who Framed Roger Rabbit?"

"I used to love 'The Land Before Time.' I liked Little Foot and I was always fascinated with dinosaurs when I was a kid," Terico Agnew, junior biology major, said.

Even professors have started to look back on what movies made them smile as children.

"I've always loved the old 'Willy Wonka' movie. As a kid, I would always reward myself for working hard at school, and this was the movie I used to reward myself. It was a little creepy, but it's terribly fun to watch," Samuel Baker, professor of history, said.

With all the new CGI and 3D movies that are hitting the big screen recently, it's hard to remember the old and classic films that brought smiles to the faces of students all around campus. Having recalled their favorite movies, students might have to find their old VCR and relive their childhoods.



"I loved the movie Matilda because it inspired me to read books and it made me want to use my imagination."

Jess Nelson  
junior nutrition and science major



"I used to love the Aristocats because I love cats and animals and they had really good music."

Wendy Cappes  
freshman undeclared



"The Little Mermaid was my favorite because I watched it all the time as a child and I still watch it now."

Nicole Anthony  
freshman anthropology major



"The Toy Story was really good because it's such a quality movie and it had such a quality story."

Bradley Sheldon  
freshman business major


YOUR STUDENT ACTIVITY FEES AT WORK

\$1500 SCHOLARSHIP

THE 64<sup>TH</sup> ANNUAL  
**MISS**  
*Georgia Southern University*

GEORGIA SOUTHERN'S SWEETHEART

SATURDAY, FEBRUARY 11

7:00 P.M.  PERFORMING ARTS CENTER

FREE ADMISSION

BRING YOUR EAGLE ID



UNIVERSITY PROGRAMMING BOARD  
TRADITION'S COUNCIL



# THE 'BORO BEAT

## YOUR GUIDE TO OFF-CAMPUS ENTERTAINMENT

### THURSDAY

#### Dingus Magee's

-Evan Barber & The Dead Gamblers, 9 p.m.

#### Ruby Tuesday's

-\$5 appetizers 4 p.m. - 6 p.m., 9 p.m. - close

-Dollar-off drafts and wines

#### Millhouse

-No specials this week

-Happy hour 5 p.m. - 7 p.m.

#### Manny's

-\$2 wells, \$3 doubles, \$6 domestic pitchers,

\$10 domestic buckets

#### Gnat's Landing

-\$3 doubles, bombs, beers

-\$10 bucket beers 5 p.m. - 7 p.m.

-Happy hour 6 p.m. - 8 p.m.

#### Applebee's

-Jammin' Thursday with DJ Jammin J, 10 p.m.

-\$3 margarita, Long Island, domestic drafts, \$3

Jose, \$2 Corona, \$3 appletini, \$1 Jell-o shots

#### El Sombrero Downtown

-Happy hour 5 p.m. - 7 p.m.

-\$3.50 margarita 32 oz

#### Crabby Joe's

-Open Mic Night, 9 p.m.

#### Averitt Center

-Averitt STARS Readers' Theater, 6:30 - 8

p.m., one-time fee of \$20

#### Dos Primos

-Karaoke, 9 p.m.

#### GATA

-Twisted Thursday, 9 p.m.

### FRIDAY

#### Dingus Magee's

-Plan B, 9 p.m.

-Happy hour 5 p.m. - 7 p.m.

-2 for 1 wells

-\$3 bombs

#### Ruby Tuesday's

-\$5 appetizers 4 p.m. - 6 p.m., 9 p.m. - close

-Dollar-off drafts and wines

#### Millhouse

-Happy hour 5 p.m. - 7 p.m.

#### Manny's

-\$2 wells, \$3 doubles, \$6 domestic pitchers,

\$10 domestic buckets

-Happy hour 5 p.m. - 7 p.m.

-1/2 select wine

#### Gnat's Landing

-\$10 bucket beers

-Happy hour 5 p.m. - 7 p.m.

#### Applebee's

-Trivia Night, 10 p.m.

-\$3 margarita, Long Island, domestic drafts, \$3

Jack and Jim

#### El Sombrero Downtown

-\$2 sex on the beach

#### Crabby Joe's

-Karaoke with Papa Smurf, 9 p.m.

#### GATA

-"Love Sucks: The Unconventional Valentine's

Day Party" ft. Dirty Names, 9 p.m.

### SATURDAY

#### Dingus Magee's

-Happy Hour 5 p.m. - 7 p.m.

-2 for 1 wells

-\$3 bombs

#### Ruby Tuesday's

-\$5 appetizers 4 p.m. - 6 p.m., 9 p.m. - close

-Dollar-off drafts and wines

#### Millhouse

-Happy hour 5 p.m. - 7 p.m.

#### Manny's

-\$2 wells, \$3 doubles, \$6 domestic pitchers,

\$10 domestic buckets

#### Gnat's Landing

-\$10 bucket beers

-Happy hour 5 p.m. - 7 p.m.

#### Applebee's

-Do Good DJs, 10 p.m.

-\$3 margarita, Long Island, domestic drafts, \$3

Jose and appletini

#### El Sombrero Downtown

-\$2 lime margarita



# THE 'BORO BEAT

## YOUR GUIDE TO OFF-CAMPUS ENTERTAINMENT

### SUNDAY

#### Ruby Tuesday's

- \$5 Appetizers 4 p.m. - 6 p.m., 9 p.m. - close
- Dollar-off drafts and wines

#### Millhouse

- Happy hour 5 p.m. - 7 p.m.

#### Manny's

- \$2 wells, \$3 doubles, \$6 domestic pitchers, \$10 domestic buckets

#### Gnat's Landing

- \$8 bucket beers, pitchers

#### El Sombrero Downtown

- \$3 mixed drinks

#### KBob Kelly's

- Trivia with Mike, 7 p.m.

### MONDAY

#### Dingus Magee's

- Happy Hour 5 p.m. - 7 p.m.
- 2 for 1 wells
- \$3 bombs

#### Ruby Tuesday's

- \$5 appetizers 4 p.m. - 6 p.m., 9 p.m. - close
- Dollar-off drafts and wines

#### Millhouse

- Happy hour 5 p.m. - 7 p.m.

#### Manny's

- \$2 wells, \$3 doubles, \$6 domestic pitchers, \$10 domestic buckets

#### Applebee's

- \$3 margarita, Long Island, domestic drafts
- \$1 Natty

#### El Sombrero Downtown

- \$2 margarita

#### Dos Primos

- Poker, 8 p.m.

#### GATA

- Comedy Night ft. Phil Keeling and Garret Vanable, 7 p.m.

### TUESDAY

#### Dingus Magee's

- Cold Duck Time, 9 p.m.
- Happy Hour 5 p.m. - 7 p.m.
- 2 for 1 wells
- \$3 bombs

#### Ruby Tuesday's

- \$5 apps 4 p.m. - 6 p.m., 9 p.m. - close
- Dollar-off drafts and wines

#### Manny's

- \$2 well, \$3 doubles, \$6 domestic pitchers, \$10 domestic buckets

#### Gnat's Landing

- Trivia with Jake, 6:30 p.m.
- Karaoke, 9 p.m.

#### Applebee's

- Karaoke, 10 p.m.
- \$3 margarita, Long Island, domestic drafts
- \$3 Jack and Jager

#### El Sombrero Downtown

- \$2.25 Imported Beer

#### Dos Primos

- Poker, 8 p.m.

#### GATA

- Beer pong tourney, 7:30 p.m.

#### KBob Kelly's

- Karaoke, 9 p.m.



**WING MAXX**

"BAD TO THE BONE"  
LOCATED NEXT TO WAL-MART  
912-764-6556

**\$2.00 OFF**  
REG. \$6.49

**CHICKEN TENDER SALAD  
GRILLED OR FRIED**

**MUST PRESENT COUPON**  
EXPIRES: 3-30-2012

**myth:**

drinking is central to the social lives of georgia southern university students

**fact:**

64% of georgia southern students have 0-4 drinks per week

for more information visit:  
<http://students.gsu.edu/southern.edu/soed>  
data collected from georgia southern university core survey 2010

presented by the dean of students office

**INTEGRATION EDUCATION**



# GSU theatre department wins big

## Performing arts

BY KIMEKO MCCOY

The George-Anne Staff

The theatre program at Georgia Southern University has added another accolade to the GSU legacy with its recent win at the Region IV Theatre Festival.

The triumph took place in Daytona, Fla., at Daytona State College, who hosted the Kennedy Center American College Theatre Festival. The GSU theatre program traveled to participate in the competition.

Austin Bolay, a senior theatre major, was present for the competition and went home with the Student Dramaturgy Award for his research of Shakespeare's "The Tempest" and a ten-minute play titled "Birth Mother" by Emsley Lewis.

The award is built around the recognition of distinctiveness, impact, process and large ethics.

"Dramaturgy is an area of theater that's really big in Europe but it is still growing in the U.S.," Bolay said.

"You have to be the artistic manager and involved in every aspect. You have to do research and tie in the community and get audience members involved," Bolay said about the duties of those who practice dramaturgy, or dramaturgs.

"I had seventy-two hours to write a dramaturgy, do research, do interviews and more. These are the things I was judged on," Bolay said.

Bolay was not the only GSU student who was awarded for his talent. Many others received recognition, including stage manager Zoe Cambell, who won a new category of awards altogether. She was presented with an award for taking part in the stage management competition.

Even after winning the award, Bolay is still shocked and in awe about his achievement.



Select members of the theatre department pose after a win at the Region IV Theatre Festival.

"I'm still processing the fact that I won. I never thought I would get to nationals and I'm nervous as hell," Bolay said.

Bolay will be moving on further in the competition for the national festival and heading to the Kennedy Center in Washington to represent GSU in mid-April.

In addition to competition, there will be major opportunities available. Networking and workshops will be presented with leading artists in the categories of new play dramaturgy and production.

"I have three times as much work, but I'm super excited because to network," Bolay said.

The GSU representative plans on preparing as much as possible with all the pressure.

"I have no idea what I'll have to do," Bolay said. "I'm preparing by looking over notes and doing some research," Bolay said on the topic about his strategy for the next step in Washington. "I plan on doing everything to the best of my abilities."

Bolay will not be headed north alone.

Encouragement and a shoulder to lean on from those who work with him in the theatre department will be accompanying him.

Bolay said, "It's wonderful, I never thought I'd get to represent GSU. It'll show people we're more than just a party school."

## The Buzz List

M.I.A and NBC have apologized for M.I.A flipping the bird at the Superbowl halftime show. So much for anyone under the age of 50 ever performing at the halftime show again.



Gianna Carme

Jay Z reportedly made \$63 million in 2010, but only gave a little over \$6,000 to his charity. He's got "99 Problems," but apparently charity isn't one.

Pauly D's television spin-off from "Jersey Shore" actually has a premiere date now. This show serves as more proof of the decline in western civilization.

Information compiled by Arts Editor Quanyia Epps and Assistant Arts Editor Gianna Carme from TheHollywoodReporter.com.

## UT&ABOUT

### Express Tune & Lube

**Tire, Alignment & Exhaust Center**

612 S. Zetterower Avenue

**489-4444**

www.expresstuneandlube.com

Monday - Friday 7:30am - 6:30pm

Located a half block north of Wendy's.

#### OIL CHANGE SPECIAL

\$25<sup>95</sup>

Includes up to 5 qts of Castrol 5W20, 5W30, 10W30, or 20W50

price applies to most vehicles. Expires 3/31/12

www.expresstuneandlube.com

## \$20 FEEDS TWO

### EAT BIG. SPEND SMALL.

All Day Everyday \$2.99 Margarita Deal, Signature Oldtimer Burger Tuesdays and Fajita Monday.

SHARE AN APPETIZER	SELECT TWO FULL-SIZE ENTREES
<ul style="list-style-type: none"> <li>• FRIED CHEESE</li> <li>• CRISPY ONION &amp; JALAPEÑO STACK</li> <li>• TOSTADA CHIPS &amp; SALSA</li> <li>• TOSTADA CHIPS</li> <li>• HALF ORDER OF TEXAS CHEESE FRIES</li> </ul>	<ul style="list-style-type: none"> <li>• QUESADILLA EXPLOSION SALAD</li> <li>• CLASSIC BACON BURGER</li> <li>• MARGARITA GRILLED CHICKEN</li> <li>• HALF-RACK BABY BACK RIBS W/ HOMESTYLE FRIES</li> <li>• BACON RANCH CHICKEN QUESADILLAS</li> <li>• CHICKEN CRISPERS*</li> <li>• CRISPY CHICKEN CRISPERS* (ORIGINAL OR HONEY-CHIPOTLE)</li> <li>• 6 oz SIRLOIN</li> </ul>



# WEEKLY BUZZ

A weekly calendar listing sponsored by The Division of Student Affairs and Enrollment Management

FEBRUARY 9-FEBRUARY 15

## THURSDAY

2.9.2012

11:00 AM - 6:00 PM

### NPHC UNITY WEEK

#### RUSSELL UNION

Sponsored by Career Services.

2:30 PM

### PUBLIC SERVICE AND NON-PROFIT CAREER FAIR

#### RUSSELL UNION

Sponsored by Career Services.

5:30 PM

### WOMEN & WEIGHTS

#### BODY CONDITIONING ROOM AT THE RAC

Another class will be held next Tuesday. Sponsored by Campus Recreation & Intramurals.

## FRIDAY

2.10.2012

7 PM

### FREE MOVIE

#### RUSSELL UNION THEATER

Sponsored by the Office of Student Activities.

8 PM - 10 PM

### INNERTUBE ONLINE REGISTRATION

#### RAC

Sponsored by Campus Recreation & Intramurals.

## MONDAY

2.13.2012

11 AM - 12 PM

### INTERNSHIP INFO SESSION

#### WILLIAMS CENTER, CAREER SERVICES, RM 1047

Sponsored by Career Services.

### SOFTBALL ONLINE REGISTRATION

#### RAC

Sponsored by Campus Recreation & Intramurals.

## TUESDAY

2.14.2012

5:00 PM

### INTERNSHIP INFO SESSION

#### WILLIAMS CENTER, CAREER SERVICES, RM 1047

Sponsored by Career Services.

8 PM - 10 PM

### INNERTUBE WATER ONLINE REGISTRATION

#### RAC

Sponsored by Campus Recreation & Intramurals.

### SOFTBALL ONLINE REGISTRATION

#### RAC

Sponsored by Campus Recreation & Intramurals.

## WEDNESDAY

2.15.2012

5:00 PM

### INTERNSHIP INFO SESSION

#### WILLIAMS CENTER, CAREER SERVICES, RM 1047

Sponsored by Career Services.

### SOFTBALL ONLINE REGISTRATION

#### RAC

Sponsored by Campus Recreation & Intramurals.

7 PM

### GSU Unplugged

#### RUSSELL UNION STARBUCKS

Open Mike Night. Sponsored by Eagle Entertainment.

8 PM - 10 PM

### INNERTUBE WATER ONLINE REGISTRATION

#### RAC

Sponsored by Campus Recreation & Intramurals.

## UPCOMING EVENTS....

## THURSDAY

2.16.2012

5:00 PM

### INTERNSHIP INFO SESSION

#### WILLIAMS CENTER, CAREER SERVICES, RM 1047

Sponsored by Career Services.

5:30 PM

### WOMEN & WEIGHTS

#### BODY CONDITIONING ROOM AT THE RAC

Another class will be held next Tuesday. Sponsored by Campus Recreation & Intramurals.

## FRIDAY

2.17.2012

7 PM

### FREE MOVIE

#### RUSSELL UNION THEATER

Sponsored by the Office of Student Activities.

8 PM - 10 PM

### INNERTUBE ONLINE REGISTRATION

#### RAC

Sponsored by Campus Recreation & Intramurals.



# CLASSIFIEDS

14 Thursday, February 9, 2012

The George-Anne

## For Sale

Scooter for sale! 2005 Honda Ruckus. Black, 49cc, 85+mpg. Fantastic condition; original (faculty) owner, garage kept. No special license or insurance required. \$1,500 OBO. Contact (912) 678-6052

Firewood for Sale. Delivery available! Call 912-690-0872 or 912-690-4956.

For sale: 2009 BMW 328i, hard-top convertible in great condition. Black with tan interior. Call 912-293-1909.

## Misc.

Will proof papers (grammar, spelling, punctuation, sentence structure). Quality work, reasonable prices. Will also type short projects. Must have ample lead time to schedule. Email [auntre01@gmail.com](mailto:auntre01@gmail.com)

BARTENDERS WANTED! \$250 a day potential. No experience necessary. Training provided. Age 18 and up. Call 1-800-965-6520 ext. 296

## Subleases

Subleasing 3 BR/2BT house on Parker Avenue in downtown Brooklet. Extremely large media room! Located on two city lots. Contact Joyce at (912) 842-9479.

2 Bedroom 2 Bathroom apartment in Hawthorne 2. Very close to campus. \$350/month. Sublease through July. Contact Shannon at 678-468-9407

Subleasing master bedroom in Planter's Row for \$365/month; utilities not included, pet friendly. For more information contact Anna-Marie at [at01770@georgiasouthern.edu](mailto:at01770@georgiasouthern.edu) or call (770) 546-6560

Home Away From Home 3BR/2BT within 2 miles of Georgia Southern campus. You can sublease the other 2 rooms. No smoking or pets. Call (706) 951-1427.

Sublease at Cambridge for Reduced Price 1 BR/BTH available in a 3 BR, bus stop directly across from campus, all utilities included, furnished, washer/dryer, amenities. \$350/month \*Regular price-\$459/month. \*Email [shortiecutie102@yahoo.com](mailto:shortiecutie102@yahoo.com)

## Subleases, cont.

2 BR/2 BT sublease in Georgia Villas. \$475/month for both rooms, utilities not included. Available Jan-May, pet friendly. Right across from Greek Row on Chandler. Email [t00212@georgiasouthern.edu](mailto:t00212@georgiasouthern.edu)

Female to sub-lease Spring Sem. 5 BR, \$280 a month. Last month's rent is paid. Less than a mile from campus off of Gentilly Rd. Call, text or email Kristina: (678)-770-6251 [kf01606@georgiasouthern.edu](mailto:kf01606@georgiasouthern.edu)

Subleasing 626 B at the Exchange. Female Roommate needed. \$519.00 per month. All utilities included, free tanning, free Wi-Fi, 24 hr gym included. Available now. Contact (706) 523-6001

Room available for male or female in a 3 BR/2 BT house on Catherine Avenue. Fully furnished; bed needed. \$367/mo per person, utilities not included. Spacious house. Contact Yale at (404) 272-7652 or [yale8754@bellsouth.net](mailto:yale8754@bellsouth.net)

Subleasing a 2 BR/2 BR at the Woodlands of Statesboro for Spring 2012. \$399 a month, utilities not included. Contact Adrian at (678) 230-5144.

## Subleases, cont.

Subleasing my room for Spring 2012 in a fully furnished 4 BR/4 BT 3-story town home. Walking distance from the stadium and bus stop. Contact Alex at (770) 712-5377 or [ao00837@georgiasouthern.edu](mailto:ao00837@georgiasouthern.edu)

Spring 2012 1 BR/1 BT in a 2 BR/2.5 BT townhouse at The Avenue. Furnished and utilities included. \$495/month, but I will pay \$30 for each month. Or I could put \$210 towards the first month's rent. Contact Cherrelle at [chollan4@georgiasouthern.edu](mailto:chollan4@georgiasouthern.edu)

All inclusive, two story, fully furnished, 4 BR townhouse for \$330/month! Includes trash, utilities, cable, wi-fi, pet park, 24/7 gym, recreation courts, computer lab, new appliances and washer/dryer! Contact (229) 326-4291.

Subleasing a 1 BR/1 BT in 4 BR apartment in Copper Beech for Spring 2012 starting Christmas Break. Washer/dryer included. Next to pool/volleyball court. \$389/mo plus utilities. Contact Singer (404) 680-7240

## Subleases, cont.

SPRING 2012! Female roommate wanted. 1BR/1BT in a 3BR/3.5BT townhome. Walking distance to the stadium and bus stop. \$400/mo., gym and pool included. Cheaper rate can be arranged. Contact Emily at 404-444-8987 or [ec01442@georgiasouthern.edu](mailto:ec01442@georgiasouthern.edu)

SPRING 2012! 1 BR/1BT available in 4 BR/4 BT at Campus Club for Jan or earlier. Bus stop next to stadium. Utilities included. Rent is \$419/month; CHEAPER RATE CAN BE ARRANGED. Email Skyler at [sh02071@georgiasouthern.edu](mailto:sh02071@georgiasouthern.edu)

1 BR/1 BT available in a 3 BR at The Grove, for Spring 2012. Available after Dec. 20. \$450/mo, utilities included. Pet friendly, pool. I will pay last month's rent. Female preferred. Call Ellen 404-694-1394 or email [ej00034@georgiasouthern.edu](mailto:ej00034@georgiasouthern.edu)

Female roommate needed for Spring 2012; 3BR/3BT at Cambridge; \$449/mo all inclusive and furnished; one building away from bus route, 1st floor. Contact Angelica 404-921-4988.

## Subleases, cont.

Subleasing a room in 4 BR/2BT in The Avenue for Spring 2012, but available as early as Dec 16 and Dec will be paid for. \$325/MO. Furnished, utilities included with free Wifi and Cable. Contact Nikki at (678)525-0297.

Sublease available ASAP. at Copper Beech. \$389 rent monthly. Utilities not included. 3 roommates. Great neat and clean girls to live with. Fully furnished. 478-957-1005 for more information.

## Houses for Rent

ATTENTION ALL STUDENTS 2, 3, 4, 5, 6, and 7 bedroom houses available Aug 1, 2012 24 hr repairs guaranteed 912-682-7468

## Help Wanted

MODELS of all weights/sizes/ages needed for figure drawing class on T&R, 2-4:30 PM. Fall and spring openings. Must be 21 and able to sit still for long periods of time. Call 912-478-2793 or email [jburke@georgia-southern.edu](mailto:jburke@georgia-southern.edu)

## HOT JOBS *Cool Internships*

Job Title	Company	Deadline to Apply
Liability Claims Rep	GEICO	Feb. 11th
Area Manager	Briggs & Stratton	Jan. 20th
Sales & Leadership Program	JB Hunt	May 15th
Financial Services Intern	JP Turner	Apr. 11
Intern	Georgia Aquarium	Mar. 9th
Marketing and Communications Internship	GA Dept. of Economic Dev.	Feb. 29
Candler Country Public Health Nurse	Southeast Health District	Feb. 29
IT-SAP Co-op	Gwinnett County	Feb. 3rd
Implementation Analyst	McKesson Provider Tech.	Mar. 4th
Rotational Leadership Program	Schneider National	Feb. 29th
Management Trainee	Toys R Us	Jan. 31st
Distribution Dept. Supervisor	PetSmart, Inc.	Mar. 30th
Material Planner	Gulfstream	Feb. 3rd
Radio Internship	Cumulus Media	Apr. 01st
IT Assistant - Atlanta	GradStaff	Feb. 28,
Account Executive	Calvert Labs	Feb. 29th
Sports Advertising Sales Executive	National Sports Publications	Jan. 10,
Stores Executive Intern	Target Stores	Jun. 30th
Marketing & Communication Internship	Make-a-Wish Foundation	May 1st

To view the detailed job descriptions application instructions or additional postings, log into the Eagle Career Net/NACELink system found at [www.georgiasouthern.edu/career](http://www.georgiasouthern.edu/career).

## Mark off your to-do list with the help of Eagle Career Net

- ✓ Update your resume and cover letter
- ✓ Learn about our job shadow info sessions
- ✓ Explore various job and internship postings
- ✓ Find out what employers attend career fairs

To sign up or log in to Eagle Career Net, visit:

[www.georgiasouthern.edu/career](http://www.georgiasouthern.edu/career)

Click on the left drop-down box and select students to begin exploring!

## Quit Monkeying Around

Academic advisement can sometimes cause anxiety for students. Some wonder if the classes they are taking will prove to be beneficial on their career path. Students who have been at Georgia Southern University for a couple of semesters may find themselves wondering if the major they have chosen is really the major they want.

Students who are unhappy with their major are likely to change it several times throughout their college career. On average, each time individuals change their major, an additional semester of courses is added on.

Don't monkey around with your future. The Office of Career Services provides assistance in areas including career counseling and

assessments to help students choose a major and pursue the career that is right for them. In addition, we can even assist in identifying new paths to career goals due to unmet GPA requirements or limited space.

Come to Career Services to talk with a Career Advisor before your academic advisement meeting to choose a major and decide your career path. If you are not sure of what your interests are, Career Services provides resources that can help in the important decision-making process.

For more info, call (912) 478-5197 or visit [www.georgiasouthern.edu/career](http://www.georgiasouthern.edu/career). Career Services is located in the Williams Center room 1047 -- Office hours are weekdays from 8 a.m. - 5 p.m.



# PUZZLES/COMICS

www.thegeorgeanne.com

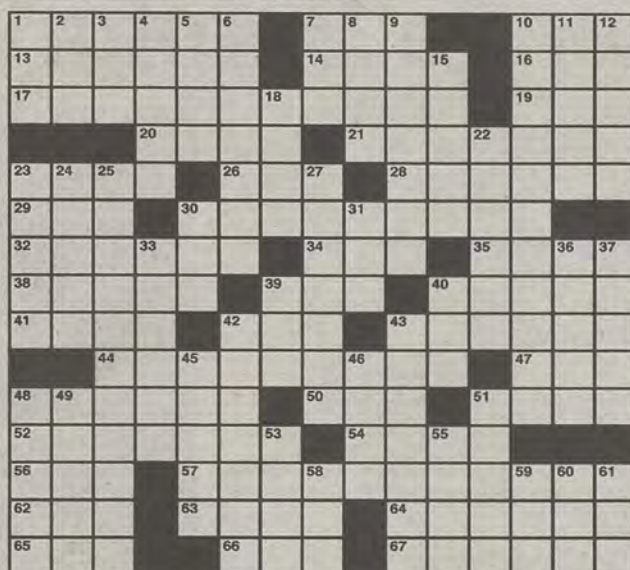
Thursday, February 9, 2012 15

## Los Angeles Times Daily Crossword Puzzle

Edited by Rich Norris and Joyce Lewis

### ACROSS

- 1 Honda Insight, e.g.
- 7 Like some mus. keys
- 10 Bale filler
- 13 2000s New Hampshire senator John
- 14 Be up against
- 16 Roth of "Inglourious Basterds"
- 17 Where pros play
- 19 Vital statistic
- 20 Actress Kudrow
- 21 Word with the 57-Across in 10-Down
- 23 Woolen caps
- 26 "This American Life" host Glass
- 28 Like some silverware
- 29 Prefix with meter
- 30 Lists of priors
- 32 Man of the cloth
- 34 Mean mutt
- 35 She, at sea
- 38 En route to the mechanic
- 39 Permit
- 40 Twangy guitarist Eddy
- 41 Word with the 57-Across in 25-Down
- 42 In great shape
- 43 Spot on a horse
- 44 Signed up
- 47 Hear here
- 48 Wish
- 50 Cleveland pro, for short
- 51 Dreyer's brand, east of the Rockies
- 52 Olympics participant
- 54 Far from fatty
- 56 Actress Charlotte
- 57 Night sky feature, and hint to a four-letter sequence hidden in 17-Across and 10-and 25-Down
- 62 Short, for short
- 63 Dry run
- 64 Peter of "My Favorite Year"
- 65 100%
- 66 Dallas opening?
- 67 Stout



By Don Gagliardo and C.C. Burnikel

2/9/12

### DOWN

- 1 Dallas closing?
- 2 Trophy, often
- 3 "Dear Yoko" dedicatee
- 4 Home perm features
- 5 One opposed
- 6 Word with the 57-Across in 17-Across
- 7 Scratch
- 8 Ill-fated brother
- 9 Gin flavoring
- 10 Like most valentines
- 11 Aquarium gunk
- 12 Right-of-way sign
- 15 Put on ice
- 18 Org. promoted by Betty White
- 22 Relishes, as gossip
- 23 Talking point
- 24 Hersey's bell town
- 25 Ammo for a simple cannon
- 27 Buddhist monk, e.g.
- 30 Steinbeck's "Cannery"
- 31 Marching syllable
- 33 It shines on the Seine

C	A	P	T	L	I	T	E	S	T	R	A	P
O	G	R	E	A	M	I	N	E	R	A	S	E
R	U	I	N	T	A	V	I	M	O	N	T	E
N	A	M	E	R	E	C	O	G	N	I	T	I
M	S	S	R	A	N	K	A	M	A	T	E	U
E	N	O	L	A	G	A	Y	O	R	E	L	S
L	O	B	O	P	O	W	R	E	A	M		
T	R	E	N	D	S	T	A	S	M	A	N	I
S	E	R	I	A	L	P	O	R	T	S	A	R
N	U	M	B	E	R	C	R	U	N	C	H	E
E	L	I	A	S	K	A	T	E	I	S	U	P
A	E	T	N	A	E	V	E	R	N	A	T	O
P	E	T	E	Y	D	I	S	S	O	U	S	T

- 36 Cabinet design feature
- 37 \_\_\_ of the realm: noblemen
- 39 Lucy of "Ally McBeal"
- 40 Pa
- 42 Stewed
- 43 Work on film
- 45 Aquafresh rival
- 46 Locker room supply
- 48 Alfalfa's sweetie

- 49 Net sales?
- 51 Belgian avant-garde painter James
- 53 Facility
- 55 Mercury or Saturn, e.g.
- 58 GPS offering
- 59 One of the small fry
- 60 Bent piece
- 61 Juan Carlos, to his subjects

AND NOW: RAMBLINGS FROM OLDBOT.

KIDS TODAY WITH THEIR FANCY GADGETS! IN MY DAY WE HAD FUN PLAYING A GAME CALLED "HIDE THE CHEESE."

ONE PERSON - CALLED THE CHEESER - WOULD GO HIDE CHEESE WHILE THE REST OF US PLAYED SCRABBLE. WE NEVER DID GO LOOK FOR THAT CHEESE.

SO, BASICALLY, YOU PLAYED SCRABBLE.

LATER, WE'D PLAY "WHAT'S THAT SMELL?"



Welcome to Falling Rock National Park by Josh Shalek



1					8			4
				5		8		
		3			9	2	1	
		4						
9	2	6				3	7	1
						6		
		8	2	6		1		
		7			9	1		
3				4				6

## Sudoku

9	8	7	5	2	4	1	6	3
3	2	4	1	6	8	7	5	9
6	5	1	3	7	9	2	8	4
2	4	9	7	1	6	8	3	5
1	7	3	4	8	5	9	2	6
8	6	5	2	9	3	1	7	4
5	1	2	6	4	7	3	9	8
7	3	8	9	5	1	6	2	4
4	9	6	8	3	2	5	7	1

**FRANKLIN**  
CHEVROLET - CADILLAC  
PONTIAC - BUICK - GMC  
**912.764.6911**



Our experienced Body Shop can fix all of the "Dents & Dings" that your vehicle may have! We service all makes and models and accept all insurance claims, and will give you a **FREE ESTIMATE** on your body & paint repair  
**GSU STUDENTS** Show your ID and receive **10% OFF** any purchase in Parts and Service  
We offer our own in town towing service that is **FREE** with a Student ID when we do the repairs on your vehicle

Check out our website  
www.franklinchevrolet.com



## Lady Eagles look to avenge Samford loss

### Women's basketball

BY ANNA WELLS

The George-Anne staff

Georgia Southern University's women's basketball team hits the road to Birmingham, Ala., to take on the Samford University Bulldogs at 2 p.m. this Saturday.

The Lady Eagles come into the contest with a 7-16 record and are 3-11 in the Southern Conference. Samford has a 13-9 record and hold an 8-5 record in the conference, as well as a perfect 7-0 record at home.

The Lady Eagles fell to Samford earlier in the season 47-53 and are looking for redemption and to end the Lady Bulldog's perfect home record.

**MOMENTUM:** The Lady Eagles recently played the top two teams in the SoCon, Appalachian State University and Davidson College, and were able to bring them down to the wire.

As of late, players such as Mimi Dubose, Anna Claire Knight and Meredyth Frye have

been able to score at least eight points a game and their efforts have allowed the team to see positive results on the court.

If the Lady Eagles play with the same spirit they did against these two top-seeded teams, they should be able to bring Samford down to the wire as well.

**SHOTS OFF THE BENCH:** The bench players have been giving GSU at least 18 points a game and have also been giving the starters some much needed fresh bursts of energy on the court.

In GSU's close loss against College of Charleston earlier in January, it was sophomore guard Lacie Dowling who gave the Lady Eagles offense a spark with her three-pointer that allowed for GSU to take a 36-34 lead with 10 minutes left in the game. These bench players like Dowling may just be the secret weapons that can give the Lady Eagles an edge over the Bulldogs.

**REBOUNDS:** GSU averages a total of 35.9 rebounds per game, meanwhile Samford only averages 29.5 a game, a statistic that could prove crucial in Saturday's meeting. Veteran guard

Frye leads the Lady Eagles with 4.8 rebounds per game, and senior guard Janay Wilson leads in offensive rebounds with 1.3. The Lady Eagles need to keep their stronghold on the defensive board and limit second-chance opportunities for the Bulldogs.

**ADVANTAGE: GSU**

**SCORING:** The Lady Eagles average 51.7 points per game, shying in comparison to Samford's average of 62.5 points per game. GSU will need to step up and out muscle the Bulldogs to force turnovers in order to gain a win Saturday afternoon.

**ADVANTAGE: Samford**

**PLAYER TO WATCH:** Dubose has played increasingly better as the season has progressed, having one of her most impressive games of the season against App. State with fourteen points.

She also averages 3.8 three-pointers a game that help give the Lady Eagles an edge on the court. Dubose will have to be on top of her game if she wants to overcome with solid Bulldog offense.

**FINAL SCORE PREDICTION: 54-51 GSU**



Rebecca Ferris/The George-Anne

**Danielle Spencer (15)** shoots against a Davidson defender.

## Basketball one big SoCon win away from reaching .500

### Men's basketball

BY CLINTON HINELY

The George-Anne staff

The Georgia Southern University men's basketball team will face Wofford College tonight in, possibly, the most important game of the season.

The Terriers beat the Eagles 88-63 at Wofford in the teams' previous matchup on Jan. 14.

The Eagles currently hold a one-game lead over Wofford for second place in the south division of the Southern Conference. If GSU can pick up a victory and finish the season strong, they can secure second place and a first-round bye in the conference tournament that begins on March 2.

**HANNER FIELDHOUSE:** The Eagles own a perfect home SoCon record of 6-0, proving home field advantage really does exist. The Eagles are only 3-4 on the road in SoCon matchups. Wofford is 3-3 in away conference games, giving a slight edge to the Eagles just by the location of

the game. Tonight's game is also a White Out for the fans and the first 300 in attendance will get a free shirt, attracting more people for a massive game is a positive for the Eagles.

**EAGLES' DEFENSE:** Wofford have three players that average over double figures in points per game, Kevin Giltner (15.2), Brad Loesing (14.6) and Karl Cochran (11.5). In the teams' last meeting, Wofford had four players score over 10 points in a blowout win over the Eagles, and the Terriers as a team shot 61.5 percent. If the Eagles don't cover their assignments in their aggressive-style, full court press defense they like to run, it could be a long night for the Eagles.

**ADVANTAGE: WOFFORD**

**SHOOTING PERCENTAGE:** GSU is currently one of the best field goal percentage teams in the nation, ranking 41st nationally at 47.1 percent per game, while Wofford averages 43.7 percent per game. The Eagles have shot well all season and there is no reason for that to stop this game. GSU shot 48.1 percent against Wofford in the first matchup. Offense, unlike defense, was not a problem for the Eagles.

**ADVANTAGE: GSU**

**KEY PLAYER: JELANI HEWITT**

Sophomore Jelani Hewitt has been on fire in his last four games, averaging 18.25 points per game. Hewitt leads the team in three-point field goals, making 48 total, at a rate of 42.1 percent. If Hewitt stays hot this game, the Eagles offense is even better. It is said the team has a "Big Three" in Eric Ferguson, Willie Powers III and Ben Drayton III, but head coach Charlton Young said, "In the last month, Jelani Hewitt has become a star in our league." Giving reason to add Hewitt into GSU's "Big Four."

**FINAL SCORE PREDICTION:** While the statistics are fairly even for both teams, enough cannot be said about a team's desire and determination. GSU enters this game with a chip on its shoulder, they are out to prove everyone wrong and that the basketball program here is on its way up. Given the team's desire to win and the fact that the game is played in Hanner with a crowd that is beginning to believe in them as well, it is hard to bet against them.

**GSU 72-70**



Demario Cullars/George-Anne

**Eric Ferguson (3)** attempts a shot from the charity stripe against rival Furman.



# Track and field's 4x400m relay achieves goals



Freshman Kimberly Thomas sprints during drills to perfect her stamina for the 4x400m relay.

Lindsay Hartmann/The George-Anne

## Track and field

BY KEVIN GREGAN

The George-Anne staff

The 4x400-meter relay team is one of the reasons why the Georgia Southern University track and field team has been setting a good pace this season.

Sophomore Cherrelle King, junior Kristiana Towns, sophomore Asea Mayfield and freshman Kimberly Thomas make up this 4x400-meter relay team that has three top-10 finishes so far this year.

The 4x400 relay is run at the end of each meet so, it's a great chance for the team to put everything they have out on the track.

"Before you run it, you're tired, but when you get that adrenaline going, it's on," Mayfield said.

The order that the 4x400 is run in is very important to the success of the team. As the first runner, Towns sets the pace for the entire race.

King runs second, Mayfield runs third and Thomas closes the race as the fourth runner.

"First is all about positioning. You set the tone for the race, and if they don't do well, it makes it harder for the second and third runners," Towns said.

Another challenge that the relay crew had to overcome was getting used to the pace that it runs in order to make the baton hand-off smooth. It didn't take the team members long to get used to each other, they said.

The ladies love competing together and they set ambitious goals that help

keep each other motivated.

"Before we started, I told the girls, 'We're breaking four minutes,'" Towns said.

The Eagles have certainly done that this season, so far their fastest 4x400 time is 3:55.12, achieved at the Birmingham Invitational.

After reaching that goal, the new goal amongst the 4x400 crew is to reach 3:40. This time would put them ahead of many schools in the Southern Conference and would allow them a chance to compete at the regional championships.

First-year coach Marlo Mincey believes the relay team has the ability to reach its goal.

"I feel like the sky's the limit right now. Watching every practice, they haven't failed to surprise me. I think the chemistry and hard work will pay off," Mincey said.

These ladies have found good qualities in their coach as well. They described that there have been a lot of improvements since Mincey has gotten here and that she definitely knows what she's doing.

The chemistry these four girls have together is undeniable when talking to them.

They enjoy laughing together, and that chemistry is something that will only help this team do better.

"The four by four hundred team unanimously loves being Eagles, especially because they get to spend so much time with each other and the rest of the team as a family," Mincey said.

The next meet for GSU will take place this weekend in Clemson, S.C. at the Tiger Paw Invitational.



## Sports EMPORIUM

Statesboro's Intramural Sports Headquarters

*\*Show your Eagle ID to receive a student discount*

840 BC Buckhead Drive, in Buckhead plaza (912)764-4449





# Ferguson, Young share special bond

## Men's basketball

BY CLINTON HINELY

The George-Anne staff

Men's basketball head coach Charlton Young and sophomore Eric Ferguson's bond goes beyond a regular coach and player relationship.

Coach Young has been Ferguson's godfather since he was born and has been around for everything in such a promising player's life.

Young played basketball with Ferguson's father, Cal Ferguson, when the two played for Georgia Southern University in the early 1990s.

"His father was a very good player and also my roommate. We lived in four ninety-nine in the Pines together," Young said. "He has been playing pro ball in Argentina and lives abroad."

Estella Washington is Ferguson's mother, while Cal Ferguson and Young were best friends, Estella will always hold a special place in Young's heart.

"I'm just proud she (Estella) thought enough of me to name me his godfather and lean on me in terms of his basketball decisions and life decisions," Young said.

**Young cannot state enough how important Eric's mother is to the situation, believing without her, neither may be where they are today.**

"She was a responsible individual beyond her years," Young said. "She was working, in school and had Eric. I always admired her work ethic and determination. She was always on my butt and made sure I was doing what I was supposed to be doing. She is a big reason I even made it through college."

"Their (Cal and Estella) relationship was just like any college relationship, make up and break up, make up and break up," Young said. "But no matter what was going on



Jannah Bolds/The George-Anne

Head coach Charlton Young instructs Eric Ferguson (3) and the team during practice in preparation for the upcoming home matchup versus Wofford.

with her and Cal, we remained very close, like brother and sister."

"When she was pregnant with Eric and my mother came to visit, she would buy Pampers and milk to help out — that's how our families became close," Young said. "One day she asked me, while she was pregnant, if I would be her baby's godfather, and of course I was like, 'Yes.'"

Young stayed in touch with the family throughout the beginning of his coaching career while he moved from place to place.

"When I started coaching in Jacksonville, I would come and get

him in the summer," Young said. "As I watched him grow up, I just wanted to make sure he was doing good in school and doing the right things."

After graduating from high school, Ferguson was pushed by his mother and Young to enroll in a prep school to mature and work academically. Ferguson attended Winchendon Prep School in Boston for two years before finally deciding to attend college.

"He had Providence, Louisville, West Virginia looking at him and other major BCS schools looking at him. He could have gone anywhere

he wanted," Young said. "He and I lived this dream together of me becoming the head coach here and him coming home, then us kind of rebuilding the program."

Ferguson impressed his freshman year, being the 19th rated freshman in the country, according to the Bleacher Report. Currently this season, Ferguson leads the team in points per game, rebounds and blocks, paving the way for an upstart GSU team.

"It was really just like a blessing being able to come back home and having my godfather here, my whole family and the Statesboro

community be able to support me and the team," Ferguson said.

Ferguson and Young believe their special bond helps improve Ferguson's skills more than hamper his development.

"He stays on me all the time," Ferguson said. "Even if I'm doing good, he wants me to be great. He has always been there to look out for me and watch over me."

Ferguson and Young's relationship continues to grow from an already inseparable bond, and their success together could help shape the GSU basketball program for years to come.



# Men's tennis struggles against three Florida teams

## Men's tennis

BY OLIVIA CLEMENTS

The George-Anne staff

The Georgia Southern University men's tennis team began its spring season with a winning home opener against Mercer University on Jan. 27, but was unable to come away with wins against its four most recent opponents from Florida universities.

The Eagles road-tripped throughout Florida on Feb. 3-5 to face their competition from Florida Atlantic University, Florida Gulf Coast University and the University of Central Florida.

In Boca Raton on Feb. 3, the Eagles faced FAU, resulting in a 6-1 loss. Although the Eagles succeeded in earning the doubles point early on in the meet, all six singles competitors were defeated by the Owls.

In doubles play, Andrew Dromsky and Alain Garrido secured an 8-4 win over their opponents. In addition, the No. 3 doubles team of Daniel Rush and Sebastien Felt played a close 8-6 match, securing the doubles point for the Eagles.



Christian Washington/The George-Anne  
Georgia Southern University senior **Alain Garrido** swings at his competition in his singles match up.

Traveling to Naples on Feb. 4, the Eagles were defeated 5-2 by opponents from FGCU.

Although the duo of Dromsky and Garrido

were unable to secure a win in doubles play, they both earned singles victories in their matches.

At No. 6 singles play, Eagles' freshman

Dromsky secured first solo collegiate victory by scores of 6-3, 7-6, ending in tiebreak victory, 7-0.

At No.1 singles, Garrido finished the match off with set scores of 7-5, 5-7, leading to another tiebreak victory, 10-4.

The Eagles were unable to pick up the play pace of their Florida road trip while competing in Orlando on Feb.5 and were defeated 7-0 by UCF.

At No.1 doubles, Kyle Hoffman and teammate Matthijs Verdam achieved the only Eagle match win of the day with a tiebreaking 8-7,8-6 win.

Although the Eagles were not victorious in recent matches, they still have time to improve before Southern Conference play begins in March.

In an interview with Georgia Southern Athletics, head coach Nick Zieziula said, "This road trip is a great weekend for us to expose areas where we need a lot more work, and it's a great opportunity for us to test our resiliency and ability to deal with adversity."

The Eagles will return to home court on Feb. 18 to host South Carolina State University at the Hanner Tennis Complex, first serve at 1 p.m.

**CAMBRIDGE SOUTHERN**

**Better features.**

912.681.1300      Cambridge-Southern.com

**Baker & Owens** Computer Solutions  
a division of Pineland Technology Solutions

**WE NOW REPAIR  
MAC  
COMPUTERS!**

**ALONG WITH PERSONAL COMPUTERS**

OTHER SERVICES INCLUDE:  
REMOTE SUPPORT BY A LOCAL TECHNICIAN • DROP OFF SERVICE  
SPYWARE & VIRUS REMOVAL • MAINTENANCE & UPDATES  
OPERATING SYSTEM INSTALLATION • FILE SYSTEM REPAIR  
DATA RECOVERY AND/OR TRANSFER • HARD DRIVE CLONE

CALL US TODAY AT: (912) 764-2741 OR TOLL FREE (888) 276-2411  
9 N. ZETTEROWER AVE. SUITE C. IN STATESBORO  
WWW.PINELANDTECH.COM



IT'S YOUR LIFE...

**LIVE IT.**

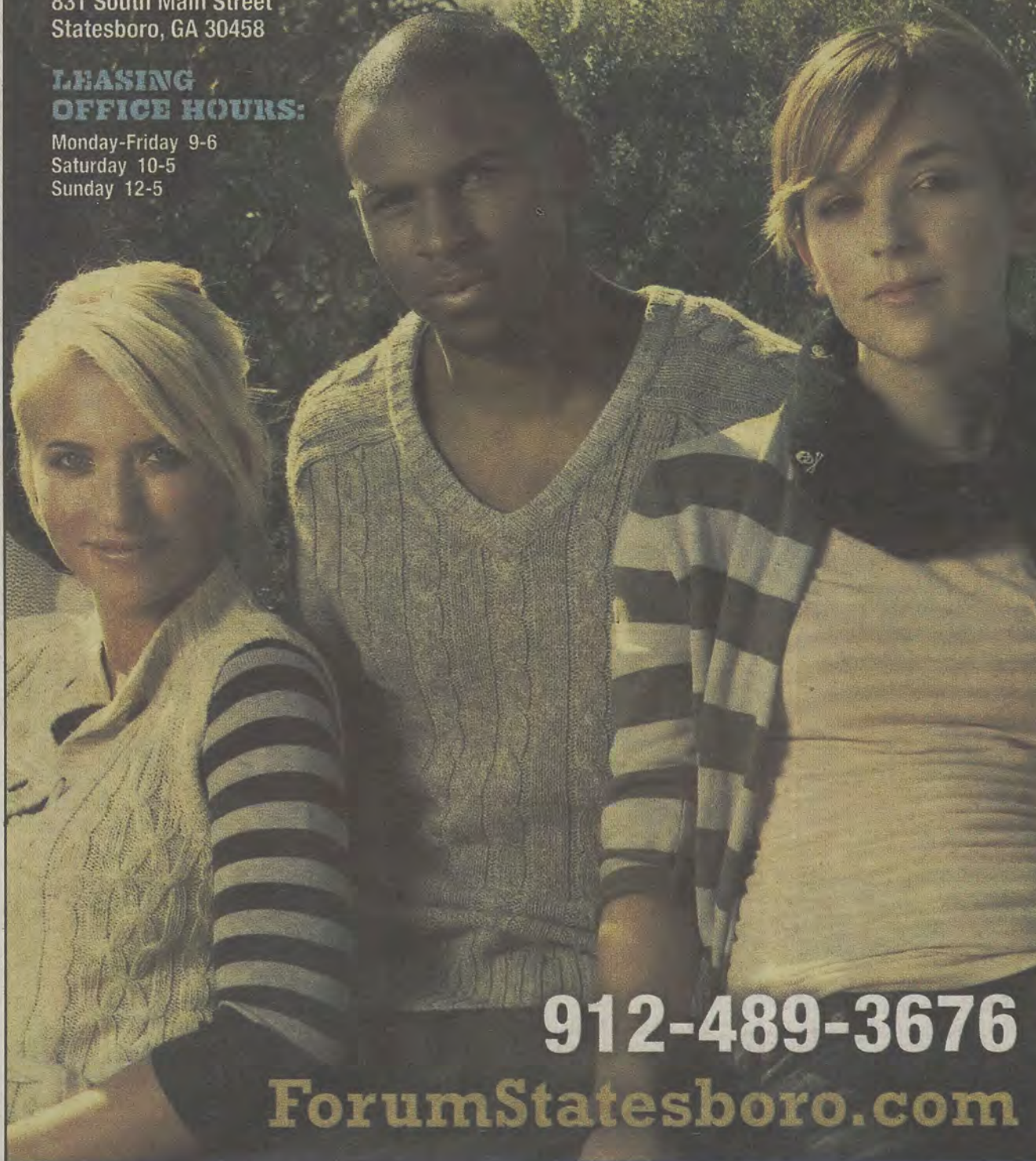
FORUMSTATESBORO.COM

COMING TO:

831 South Main Street  
Statesboro, GA 30458

LEASING  
OFFICE HOURS:

Monday-Friday 9-6  
Saturday 10-5  
Sunday 12-5



912-489-3676

ForumStatesboro.com

GET A FREE T-SHIRT WITH THIS AD!

**FORUM**

®

AT STATESBORO

A PREMIER STUDENT  
HOUSING COMMUNITY

**NOW  
LEASING  
FOR FALL 2012**

- Tennis Court
- Lap Pool & Spa
- Pet Friendly
- Pet Park
- Two Free Tanning Beds
- Indoor Basketball Court
- Indoor Volleyball Court
- Car Care Center
- Modern Faux-Wood Floors
- Private Bathroom in Bedrooms
- Convenient Individual Leases
- Free High Speed Internet in Bedrooms
- 24 Hour Fitness and Training Center
- Kitchens with Full Size Appliances
- Full Size Washer / Dryer Included
- Wi-Fi Cyber Cafe with Coffee Bar
- Outdoor Sand Volleyball Court
- High Speed Internet Access
- Student Center and Lounge
- Roommate Matching
- Expanded Cable
- Media Room



Forum Statesboro is an Equal Opportunity Housing Community.  
No discrimination on the basis of race, sex, or religion.