

Georgia Southern University

Digital Commons@Georgia Southern

The George-Anne

Student Media

12-8-2011

The George-Anne

Georgia Southern University

Follow this and additional works at: <https://digitalcommons.georgiasouthern.edu/george-anne>



Part of the [Higher Education Commons](#)

Recommended Citation

Georgia Southern University, "The George-Anne" (2011). *The George-Anne*. 2731.
<https://digitalcommons.georgiasouthern.edu/george-anne/2731>

This newspaper is brought to you for free and open access by the Student Media at Digital Commons@Georgia Southern. It has been accepted for inclusion in The George-Anne by an authorized administrator of Digital Commons@Georgia Southern. For more information, please contact digitalcommons@georgiasouthern.edu.

FINAL EDITION OF FALL SEMESTER

follow us online
www.thegeorgeanne.com

**GAMEDAY
MAYDAY**

SPECIAL PULL-OUT SECTION

FCS PLAYOFFS QUARTERFINALS

³GSU VS. MAINE

SATURDAY 2 P.M.

PAULSON STADIUM

Thursday, December 8, 2011
Georgia Southern University
www.thegeorgeanne.com
Volume 87 • Issue 47

THE GEORGE-ANNE

Audit reveals mishandled funds

Results show Department of Poli Sci not compliant with university policy

BY TJ JACKSON

George-Anne contributor

A Departmental Review of Political Science that was recently completed by the Office of Audit and Advisory Services shows that the

department misused an estimated amount of over \$19,000.

"Based upon the results of the review, the Department of Political Science is not conducting business matters in compliance with established guidelines and in

accordance with sound business practices," according to the Office of Audit and Advisory Services report signed by Jana Briley, director of the Office of Audit and Advisory Services and Jeb Tyson, auditor.

"Travel Statements (included) one

instance of traveling to a destination not specified on Request for Authority to Travel, one instance of missing hotel receipt, two instances of lodging upgrades to an executive room instead of the standard room rate, three instances of excessive taxi

expenses when less expensive travel alternatives were available and five instances of significant and excessive mileage claims," according to the audit.

The department's audit shows

See AUDIT, page 7

OPERA SCENES



Rebecca Farris/ CONTRIBUTOR

From the left: Savannah Rogers, Jasmine Hines, Rachel Hirneison and Amber Deagon participate in this semester's final performance of Opera Scenes in the Foy Building. For the full story, see page 14.

Eagles prepare for Black Bears

BY DERREK ASBERRY

George-Anne staff

In the Georgia Southern University Eagles' playoff game against the Old Dominion University Monarchs, quarterback Jaybo Shaw threw for 130 yards, gained 41 yards on the ground and had a total of three rushing and passing touchdowns.

Running back Dominique Swope recorded his third straight game of rushing for over 150 yards, and set his career high by running for 255 yards on 31 carries, and Defensive tackle Brent Russell recorded seven tackles, and another sack that moved him up on GSU's all-time list.

In a game where the winning team posts 607 yards of offense, scores 55 points and wins the time-of-possession battle by almost 15 minutes, it's hard to see the negatives as they move on to the FCS quarterfinals. However, the Eagles feel they must do several things differently against the

See PREPARE, page 11



thegeorge
anne.com

Thurs.	Fri.	Sat.	Sun.
H 59	H 63	H 59	H 55
L 31	L 39	L 32	L 33



Newsroom 478-5246
Advertising 478-5418
Fax 478-7113

PO Box 8001
Statesboro, GA
30460

DON'T SELL YOUR BOOKS TO STRANGERS

THE OTHER GUYS OFTEN OFFER SUB-PAR PRICING

Sell Them to Your Bookstore



We pay fair prices based on campus
and national demand.



CASH FOR YOUR BOOKS!!

Monday, 12/12 - Thursday, 12/15

**The University Store
Paulson Stadium**

I.T. Store

& Other On-Campus Locations

Career Services to host job fair

Fair to benefit education majors by providing potential jobs

BY TAYLOR COOPER

George-Anne contributor

Career Services will host the Education Career Fair on Dec. 8 with the purpose of connecting education majors with potential employers.

The career fair is normally part of the Eagle Expo, but because of the weaker economy, it is becoming harder for graduates to find jobs in education, said Patricia Parsons, Director of Field Experiences and Partnerships.

"Career Services has a career fair every year in the spring, and this year we asked them to pull the education fair and do it separately," said Parsons.

"Normally they have to wade through the other colleges. This gives direct contact with schools and the opportunity to share resumes and a broader understanding of what the schools' needs are," said Parsons.

"We are moving, in general, to more targeted career fairs to provide students with the employers they want," said Heather Scarboro, recruitment coordinator.

"We are giving the students an event for their own wants and needs," said Scarboro.

The fair will be held in the Russell Union Ballroom on Dec. 8 from 2-5 p.m. Attending employers will be from schools or education oriented agencies, said Stephanie

Tames, College of Education Communications Coordinator.

"The Education Career Fair is a great opportunity for students to meet officials from over 20 education organizations – including local school districts, as well as those from as far away as the Atlanta metropolitan area," said Tames.

"Even our own College of Education graduate staff will be on hand answering questions about graduate school in education," said Tames.

"It's primarily schools in Georgia and a few in South Carolina. There are also going to be a few universities advertising their education programs, as well as companies that aren't schools but have a focus on education," said Scarboro.

During the fair, there will be a session where students can listen to principles from schools talk about how to be successful in the education

job market, said Tames.

"There will be a panel discussion on interviews and attaining jobs. Back when the economy was better it was part of eagle expo, but we wanted a fair that focuses on education majors," said Parsons.

This is not an event for anyone who is not seriously looking for a job in education, however, said Tames.

"The fair is really for those interested in education, so anyone who attends should have that as their primary focus," said Tames.

"Professional attire is required to attend. Students will also have to bring their Eagle ID or know their student number," said Scarboro.

"You need to have a resume and be seriously looking for a job," said Parsons.

"Students should be professional and treat the fair as a job interview," said Tames. "Make sure you have several copies of your resume handy."

EDUCATION MAJORS

DATE: DECEMBER 8 // 2-5 p.m.
RUSSELL UNION BALLROOM
BRING EAGLE ID • DRESS PROFESSIONALLY

Kelsey Paone/STAFF

Statement of Operations

The George-Anne is the official student newspaper of Georgia Southern University, owned and operated by GSU students using facilities provided by the university. The newspaper is the oldest continuously published newspaper in Bulloch County. The newspaper is a designated public forum for the Georgia Southern community. The newspaper is published twice weekly, on Tuesdays and Thursdays, during most of the academic year. Any questions regarding content should be directed to the student editor by phone at 912.478.5246 or at gaeditor@georgiasouthern.edu.

ADVERTISING: The newspaper accepts advertising. Inquiries may be made by calling 912.478.5418 or 912.478-0566. Fax any questions to 912.478.7113 or e-mail ads1@georgiasouthern.edu.

The George-Anne receives additional support, in part, from the Student Activities Budget Committee.

The deadline for reserving space and submitting advertising copy is noon, one week prior to the intended publication date. For more information, rate cards, sample publications, contact the advertising manager or student media director. The advertiser is responsible for any errors in advertisements and its liability for adjustments is limited to the amount of space the error occupied in the ad. Further, the newspaper is not responsible for any damages caused due to an ad's omission from a particular edition and its responsibility solely is to reschedule the ad in the next regular edition at the regular advertising rates.

STUDENTS BEWARE: The George-Anne screens all advertisements prior to publication. The newspaper strives to accept ads for legitimate products and services only. Students are urged to exercise caution when replying to ads – particularly those that require personal information. Students are also urged to report to the newspaper any suspicious offers which they might see in an ad.

PUBLICATION INFORMATION: The newspaper is printed by Brunswick News at Brunswick, Ga.

NOTICE: Unauthorized removal of multiple copies from a distribution site constitutes theft under Georgia law, a misdemeanor offense punishable by a fine and/or jail time.

Editor-in-Chief Arielle Coambes
Views / Copy Editor Shauntel Hall
News Editor Jennifer Curington
Asst. News Editor Jessie Reese
Arts Editor Quaniqua Epps
Asst. Arts Editor Alex LaSalle
Sports Editor Matthew D'La Rotta
Asst. Sports Editor Jannah Bolds
Football Editor James Farmer

Business Manager Tiffany Larkin
Asst. Business Manager Holly Hillhouse
Marketing Manager Aria Gabol
Production Manager Mallory McLendon
Photo Editor Randy Hudgins
Design Editor Kelsey Paone
Web Editor Jonathan Law

Corrections

Contact the editor at gaeditor@georgiasouthern.edu for corrections and errors.



YAMAHA

Statesboro Yamaha

22815 US Hwy. 80 Statesboro, GA 30461 912-764-RIDE (1 mile past Lowe's on Right)

10% Off Parts & Accessories
with your student ID



Our View

Students, faculty should have input on shooting range

It was announced in September that a shooting and archery range is going to be built just off campus, near the RAC on Highway 301. Since then, many issues regarding safety and funding have been brought up and addressed.

We reported in October that students and faculty asked their questions during an SGA meeting. Concerns included safety and funding. The funding for the shooting range will come mostly from third-party donors, with the remaining funding coming from student recreation fees that can only be spent on recreational projects.

In November, we reported on further questions from faculty and students, as well as further details on the shooting range. The facility will be fenced in and include camera security and a full-time staff of professionals. Gun laws forbidding carrying a weapon on campus will remain in place.

Opinions on the impact the shooting range will have on campus differ. Some feel safe, and some feel threatened.

What we can agree on is that the process has been remarkably undemocratic for something so controversial. The shooting range was announced, not proposed, without any input from the very students and faculty who may or may not feel threatened by the presence of a shooting range.

The recent vote on Sunday alcohol sales highlighted the importance of student involvement in their local government. Students, as well as the faculty, need to be able to provide input in decisions that have the potential to impact our lives and our safety.

These principles are rendered moot when decisions, such as the one to build a shooting range next to campus, are made without our input, much less our consent.

A more democratic campus is necessary, especially when the issue concerns the physical wellbeing of students. While the resulting impact of the shooting range is still debatable, we agree that the students and faculty should have been given an opportunity to provide input before the decision to build a range was made, not after the fact.

The George-Anne welcomes letters to the editor and appropriate guest columns. All copy submitted should be 350 words or fewer, typed, and sent via e-mail in Microsoft Word format to gaeditor@georgiasouthern.edu. All submissions must be signed and include phone number for verification. GSU students should include their academic major, year and hometown. The editors reserve the right to reject any submission and edit submissions for length.

Opinions expressed herein are those of the Board of Opinions or columnists themselves and DO NOT necessarily reflect those of the faculty, staff or administration of GSU, the Student Media Advisory Board, Student Media or the University System of Georgia.



Jasmine Nielson/CONTRIBUTOR

SGA Weekly Column

Financial committee keeps up work

I would first like to say thank you to all organizations and individuals who submitted fund requests to Student Government Association. We take pride and honor in being able to assist you financially on your tasks at hand.

I am proud to say that this has been a great semester for Student Government Association, and more specifically for the Financial Advisory Committee.

SGA has helped students in their journey to present research that they have conducted and scholastic projects to audiences outside of Georgia Southern University and the state of Georgia.

The Financial Advisory Committee has also assisted student organizations that served hundreds of GSU students in this semester alone.

In addition, our Shuttle Gus Program has given rides to countless students and has given organizations opportunities for community service and additional financial assistance.



DOMINIQUE QUARLES

With this being said, we encourage organizations to refer to their MyOrgs account if they would be interested in operating the ShuttleGus program during the spring semester.

As the Vice President of Finance, I know how difficult it can be to go through fund requests and grant or

deny your peers funding.

For this reason I would like to publically thank Senators Jodie Beckford, Kayla Delaney, Jasmine Elder, Jayne McGaughey, Karl Miller, Aaron Phillips, Danté Porter, Demetrius Smith and Patrick Teate for a fantastic semester of servitude to the Financial Advisory Committee, but more importantly the students of our great institution

In striving for transparency, we will be hosting a "FUN'd FAIR" near the beginning of the spring semester. This will give student organizations, as well as individuals who have received allocation money from Student Government Association, an opportunity to display how they have been helped by student activity fees.

Although this fall was great, we plan on having an even better spring. If you or your student organization would like to apply for funding, please visit our website at: GeorgiaSouthernSGA.com.

Dominique Quarles



Marcus Barkley/STAFF

GOP race is a circus

The GOP race is a joke, and a pretty funny one if you ask me.

I would like to hear from somebody telling me why they think one, if any of these candidates, is truly qualified to serve as President of the United States. For the past month, there have hardly been any discussions on issues but more on who did what. It was either Herman Cain sexually harassing somebody or Newt Gingrich hanging out with Donald Trump.

Hell, the fact that the Donald Trump debate will be taken seriously says something in itself. And the fact that those who are refusing to participate are being scrutinized strikes me as ridiculous.

Gingrich, now a major player after the fall of Cain, is a character. He is a lifelong politician who certainly has the pedigree, but he's just now moving to the front of the pack in some circles and has already said he's eyeing



ROB ROBERTS

Romney to be his VP. And now, unemployment is because children don't learn any kind of a work ethic anymore.

These kids aren't victims of the system, they just think they're too good for average jobs and they don't have the work ethic to work them. So now unemployment isn't a problem with the economy or policy, it's a problem with our parents. If it weren't for them being too soft on us, we would all have jobs and the world would be great, right?

Gingrich needs to focus on policy and talk about what he would do to change America for

the better, not dream up reality TV shows with Donald Trump. He's had some issues in his past and has some skeletons being brought up, but he seems ready to press on admirably rather than run away and hide — like some other Georgian candidates.

Between him and Romney, there seems to exist a giant question mark at the top of the candidate list for the GOP. Between their collective flip-flopping of the past and their lack of definitive solutions, I feel confident that President Obama will be the first president to win reelection with an unemployment rate over seven percent since good ol' FDR.

I wish there were a stronger pool of candidates so this would be a truly competitive and politically interesting race, rather than the side show it has now become.

Roberts is a senior public relations major from Warner Robins, Ga.

Student Views on News



Jarvis Perry

Sophomore business management

How do you feel about the shooting range being built near campus?

I think the shooting range is pretty cool. People get to learn about archery, the basics about shooting. Then again, I understand how certain people feel that it wouldn't be safe for the campus environment. The opinions can go each way.

Lacey Hall

Freshman communication arts major

How do you feel about the skate park proposal?

I think the skate park proposal is pretty cool because you see everyone skating around and stuff. I thought that was a pretty good idea.

Do you have an opinion on the shooting range being built near campus?

I really don't have an opinion. I really don't think it makes a difference with keeping the campus safe and all. I don't feel like people just bring their guns on campus.



Erin Gawthrop

Freshman early childhood

You attended the lighting at Sweetheart Circle, what was that like?

I went to the lighting of Sweetheart Circle — that was awesome. It was really fun. The snow was amazing. It was awesome. I ran through it.

What do you think about the recent hazing allegations made against Pi Kappa Phi?

I think every fraternity has hazing, though it's just kept under on the down low. Or, the fact they maybe got caught — it's just a matter of time, I think.



Suzuki Polaris SeaDoo CanAm

22681 HWY 80 EAST 1.5 MILES PAST LOWES

AREA'S LARGEST ACCESSORY SHOW ROOM

SERVICE & REPAIR ALL MAJOR BRANDS

pick up and delivery

WWW.SPSCstatesboro.com

912.764.2547

20%

Off parts and accessories
With this coupon

Letters to the Editor

Football taunts are too much

As the football season nears its close, and with the playoffs looming on the horizon, the spirit of Georgia Southern students has intensified. Unfortunately, this also means that the so called "tradition" of ridiculing and berating the opposing team, staff, and fans has become even worse.

I am a freshman, and at my first home game, against Tusculum, I was shocked and disturbed by the cruel and malicious comments so carelessly hurled at the bench and sidelines. This frustration has only multiplied as the season has developed and the insults have increased.

Many also argued that this is normal behavior, exhibited by students at all college level games. However, I am a witness that this is not a fact. I recently traveled with the marching band to spectate and perform at the Bryant-Denny Stadium in our game against the University of Alabama. Upon our arrival, despite bearing the blue and gold of the Eagles, we were welcomed and greeted by many die-hard Alabama fans and students who were "so glad to have [us] there" and "excited to hear and watch the band play." Even after their victory, the gracious and hospitable people of Alabama were complimentary, both of the band and the athletes.

One man, dressed head to toe in burgundy and herringbone told us, "You must be proud of your boys. They had our defense shaking in their boots." This was only one of the countless multitudes of praises, handshakes, and pats on the back we received. Only one person booed us: a small boy, who was quickly scolded and corrected by his parents. After that he began to wave and smile at us as we passed.

There is no doubt in my mind that the assaults of our student body have a serious negative impact on the players of the opposing teams. At

every game, the opposing team is greeted onto the field with resounding boos which drown out the considerable amount of other noise in the stadium. At the game against Furman, I overheard one outraged player begging his coach to "put him in" because he "just couldn't take it anymore." More recently, while playing the Citadel, one player was pointed out by jersey number while warming up on the sideline and called a "p***y-ass retard." The coach of the team was addressed by a particularly vehement student as a "saggy old f****t."

Is this the southern hospitality with which we greet our opposing teams and fans? Are these the values of respect and sportsmanship that Georgia Southern holds so dear? A friend visiting from another college across the state told me, after witnessing this display of verbal abuse, that they were reaffirmed in their decision not to attend GSU considering the negative attitude and the ethics (or lack thereof) that it supports.

When discussing the same issue with an alumnus, they asserted that during their time at this university, this distribution of hate would never have been allowed. Perhaps students don't realize the implications of their attacks as they are reflected in the reputation of our establishment, but their actions have consequentially led many to view Georgia Southern through a negative lens. There is nothing wrong with cheering on our Eagles; support them, get in the spirit of the game, lift them up, but not by bringing down the other team. Rather than attempting to psychologically disarm our opponents, let the score speak for itself.

E. Feagin Oliver
Freshman
English Major
Warner Robins, Georgia

Know when you need to work

I am a living, breathing contradiction. In a world of Mac owning, Volkswagen driving, politically correct yuppies, I'm a bass-ackwards deer-slaying redneck. In some ways my ideas and attitude are anachronistic.

Yet, I am also a thinker. I have all the class and refinement of a Molly Hatchet album, yet I am not a hooligan. I can write somewhat articulately, and yes, I do read. I usually don't go out in public without wearing camouflage or a pocket knife. I had rather push my 1991 Camaro than drive a brand new Camry. I will give the shirt off my back to help a friend (or a stranger) in need. I feel out of place in my own generation. In some ways, I feel more like a 40-year old-man than a 20-year-old. My daddy taught me from an early age that hard work was nothing to run from.

I do not wish to lambaste the Occupy Wall Street movement. The only coherent point they seem to be conveying is that money from lobbying influencing politics is a bad thing. Everybody knows that! Beyond that, the Occupiers seem to have an incredible sense of entitlement to money and stuff that ain't theirs. Case-in-point: They made Wall Street investors the villains of the universe. I guess it's because some of them have liberal arts degrees instead of business/education/science/engineering that gives them a chance to make money. Before you art majors put a hit out on me, hear me out: sad times have befallen our country. Those that arrange and design shrubberies, weave baskets, and/or paint just simply aren't going to make lots of money right now. John Adams wrote a letter

in 1780 to his wife, stating:

"I must study Politicks and War that my sons may have liberty to study Mathematicks and Philosophy. My sons ought to study Mathematicks and Philosophy, Geography, natural History, Naval Architecture, navigation, Commerce and Agriculture, in order to give their Children a right to study Painting, Poetry, Musick, Architecture, Statuary, Tapestry and Porcelaine."

There is a place in the world for fine arts, but it is simply not a viable way to make a living. Not in 2011 and beyond. I can already hear the libertine anything-goes types breathing down my neck. Much like in the early days of our republic, these States are in a state of emergency. It's going to take nothing short of a miracle in order to pull us out of this tailspin.

Make sacrifices for your countries' future. If you won't do it for Lady Liberty, do it for yourself. And if you won't do it for yourself, please don't reproduce, because you likely won't do it for your children either. At the risk of having the ACLU coming after me with baseball bats, I will advise you all to turn to God. To pray. That's such a terrible thing to say isn't it? At least I didn't piss off Jessie Jackson's Rainbow stormtroopers of death. In the meantime, I'll continue to bitterly cling to my .243 Rifle, my Bible, my Camaro and my ideas.

Tyler Mathis
Junior
Mechanical Engineering Tech major
Sandersville, GA



OUTDOORS
YOUR HUNTING & FISHING HEADQUARTERS

Your Hunting and Fishing Headquarters

246B Northside Drive East Statesboro, Ga 30458
Between Deloach's Music and the Tile Center

TC-OUTDOORS.com • 912-489-3474



AUDIT, from page 1

that the excessive expenses were spent during faculty members' trips over a two year period.

Political science department travel statements showed excessive spending.

"Three instances of excessive taxi expenses — \$123.10 roundtrip to/from hotel/airport, \$88 roundtrip to/from hotel/airport and \$72.65 to unexplained destinations when less expensive travel alternatives were available," according to the audit.

Further into the travel statement, there were five instances of significant and excessive mileage claims, four of the five instances were to the same destination and each trip varies significantly from the estimated mileage.

The roundtrip mileage to the destination is approximately 1,430 miles. However, for the four instances, 3,636 miles, 1,998 miles, 1,635 miles and 1,640 miles were claimed for roundtrips.

Two of the five instances coincided with Thanksgiving and Winter Holidays, according to the audit.

Accounts Payable noted that the cost of flying and renting a car would be a less expensive mode of travel after the second claim of 1,998 miles.

The faculty member continued to travel by personal vehicle for the next two trips, but only requested reimbursement of \$450 and \$451 for mileage instead of \$899.25 and \$902.00.

Financial crisis concerning the Poli Science Department Audit

Three counts of excessive mileage totaling to	\$1,557.67
Three counts of excessive taxi expenses totaling to	\$281.75
Missing equipment totaling to	\$8,782.00
Website re-design	\$1,500.00
Undocumented pay for student research totaling to	\$7,799.62
Estimated total of misshandled funds	\$19,923.04

Lindsay Rowland/ STAFF

"The faculty member was a resident of the destination prior to his/her employment at Georgia Southern University. The faculty member is also involved in an ongoing domestic relation case in the destination city," according to the audit.

"Four hundred and seventy-five miles were claimed for a roundtrip to a destination for a trip that was approximately 410 miles," according to the audit.

Other aspects of the audit reveal other expenses misused by the department of political science.

Two payments totaling up to

\$1,500 were made to a student to reconstruct the department's website according to the audit.

Auditors suggest that the department's website could have been constructed at a no-charge expense.

"Political Science's web page could be maintained by an individual within the department or the department could have contacted the Center for Academic Technology Support for assistance with the department's website. The services are provided at no charge, thus saving the department money," according to the audit.

After an inventory of property within the department of political science was completed, the audit stated that there are missing items from the department's inventory.

"Six items valued at \$8,782 could not be located or accounted for. Eighteen items were in the incorrect location, as compared



Pacelle

to records maintained by Property Control," according to the audit.

Results of the review state the auditors' remarks based on the political science department's inventory.

"Based upon the results of the review, the department does not appear to have effective controls and monitoring mechanisms to ensure that equipment is properly accounted for and can be located," according to the audit.

Dr. Richard Pacelle, former department chair of the department of political science, was unavailable for comment.

Voted Best Mattress Store in the 'Boro!

Student Housing Available

New, Used & Antique
Furniture

Complete Mattress Outlet

Deal's

Come See the Dealmaker!

17083 GA Hwy 67, Statesboro, GA
(912)681-3824 (Near Fairgrounds)

Mon-Fri: 10am-6pm

Sat: 10am-5pm

Sun: 1Pm-5pm

• Honest, Dependable
Same Day Delivery

• Locally Owned &
Operated by GSU Graduate

• Serving GSU Students
for 34 years

Tervis Tumbler Headquarters

- Collegiate Gifts
- Jewelry
- Handbags
- Placemats
- Diaper Bags
- Men's Gifts
- & Much More

Best Furniture Mattress & Gift "DEALS" in the 'Boro

Ferguson takes flight with the Eagles

Basketball

BY DAVID BUTLER

George-Anne contributor

Georgia Southern University's sophomore guard, Eric Ferguson, has been running fast breaks, crossing up defenders, and slam dunking many times throughout his GSU basketball career.

Eric J. Ferguson was born on October 4, 1989, in Statesboro, Georgia and is the son of Estella Washington and Cal Ferguson. Ferguson's father played two years for Georgia Southern



Christian Washington/STAFF

and was third-team All-Trans America Conference selection in 1990-91. Ferguson Sr. is currently playing basketball in Argentina. His mother graduated from Georgia Southern University.

"It was difficult growing up in a single parent household with it only being my mom, brother and me," Ferguson said.

Ferguson always felt like he had basketball as an outlet and as a way to let his talent shine.

"I wanted to try to get a basketball scholarship to be able to get an education and to be able to help my family," says Ferguson.

Ferguson never looked at basketball as a way out because he always grew up around the game.

"I actually started playing basketball at the age of three," says Ferguson. "I was the first basketball player to enter the sixth grade and be able to play immediately on the team."

He started every year throughout middle school from that point on. Things always seemed to end up working out for him. Whether it was being able to play for his middle school team at such a young age or being the team leader in nearly every offensive category his sophomore year at Statesboro High School. During that season, Ferguson averaged 24.8 points, 6.3 rebounds, 2.3 assists and 1.5 steals per game.

Talent always played a big part in Ferguson's game as well. Ferguson graduated from Winchendon Prep School in Boston, Massachusetts and played for head coach Mike Byrnes. Ferguson led Winchendon to a 30-10 record while leading the team with 25 points in a single game. Ferguson also garnered First-Team All-NEPSAC Class A honors.

"I went to Winchendon because, academically, I wasn't eligible for any of the other schools that offered me a scholarship to play basketball," said Ferguson.

It all seemed to work out great for Ferguson because he was able to come back home and play college basketball in his hometown.

"I never actually thought I would play for Georgia Southern, but it just seemed to work out that way," Ferguson said.

Ferguson was given the opportunity to play basketball because of his exceptional skill.

"I wanted to come back from Boston to play for my hometown and to start a legacy here at Georgia Southern," Ferguson stated. "I know we haven't had some of the best years here at Southern, but I wanted to be a part of the turnaround here."

As admirable as what he is doing is, Ferguson is also in school to get his degree. He is currently pursuing a degree in sports management.

"I've always been a sports guy, but the most important thing to me right now is getting my degree. Basketball and getting my degree go hand in hand right now," said Ferguson.

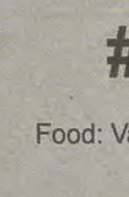
Ferguson has always had dreams of playing in the NBA, but he knows the importance of an education.

Starting five's favorites

What's your favorite food and musical artist?



#0 Ben Drayton III:
Artist: Lil Wayne
Food: Pasta



#50 Willie Powers III:
Artist: Lil Wayne
Food: Vanilla Ice Cream with Oreos



#32 Cameron Baskerville:
Artist: J. Cole
Food: Barbecue Sunflower Seeds



#5 Jelani Hewitt:
Artist: Lil Wayne
Food: Curry Chicken



#3 Eric Ferguson
Artist: Lil Boosie
Food: Chicken Alfredo

Jose Gil/CONTRIBUTOR

"I have never doubted the talent that I have but I also want to stay in school for four years in order to get my degree," said Ferguson.

Eagles prepare to take on Stetson at home

Women's basketball

BY COLIN RITSICK

George-Anne contributor

Looking to bounce back from a tough conference loss, the Georgia Southern University women's basketball team will take on Stetson University tonight at home in the Hanner Fieldhouse at 7 p.m.

GSU is coming off a loss in the conference home opener to Furman University. It was a close game in both halves and fans saw the second highest shooting percentage the Lady Eagles have put up all year with 42.4 percent.

This statistic paired with an average of over 36 rebounds per game, the highest since the 2007-2008 season, bodes well for GSU going into tonight's matchup against a tough Stetson Hatters' team.

Stetson has not played well on the road this year. The team comes in with a record of 6-3, with all three losses dealt to them away from home.

However, the Hatters do come into this contest with two key players, Shanasa Sanders and Victoria McGowan, averaging 15.8 and 15.3 points per game respectively. The Eagles, on the other hand, have no one averaging double digits in scoring.

This puts the pressure on the GSU defense to come out ready to go. So far this year, GSU has allowed an average of 63.2 points per game, while only putting up 50.4 itself. This is a number that must change if the Eagles wish to pick up their first home win of the year.

Another aspect of the game that could play a big role are steals. Stetson thus far has amassed 100 total steals, a number that swells over GSU's total of only 48.

In addition to snatching the ball only 48 times this year, GSU has allowed its opponents a total



Left: Sophomore guard Mimi DyBois (33) shoots the ball over a defender during the fourth quarter.



Right: Sophomore forward Aishya Wofford (13) goes up for a close range shot against her opponent while RoRo Smith (22) boxes out.

Lindsay Hartmann and Rebecca Farris/STAFF

of 78 steals this season. Look out for the number of takeaways to play a part in tonight's matchup.

If the Eagles manage a win tonight, that would improve them to 3-6 on the year going

into a week and a half break to prepare for Davidson College on Dec. 19, followed by Jacksonville State University on Dec. 21, and Southern Wesleyan on Dec. 30.

These teams have a combined record of 7-16. With a win tonight, there is a very good chance that GSU could ring in the New Year with a .500 record.

vibram
fivefingers®

**Sports
EMPORIUM**

Your largest selection of athletic
footwear in Statesboro



840 BC Buckhead Drive, in Buckhead plaza (912)764-4449

Monken wins second coach of the year award for 2011

Football

BY DERREK ASBERRY

George-Anne staff

The Georgia Southern University Eagles' head coach Jeff Monken earned the American Football Coaches Association's 2011 Football Championship Subdivision Region 2 Coach of the Year Award.

Monken led the Eagles to a 9-2 regular season record.

Their two losses came against the Appalachian State University Mountaineers, a top-10 FCS team, and the University of Alabama Crimson Tide, which is an FBS school.

In his two years as head coach, Monken has a combined regular season and postseason record of 20-7.

With the return of the triple option, Monken's football program quickly jumped to the top of the FCS rankings this season.

Recently, Monken's name was among a group of coaches rumored to be pursued by the

University of Alabama at Birmingham. While Monken denies these rumors, he attributes them, as well as his success, to his players.

"It has everything to do with the success that this team has had," Monken said. "That's a reflection on these players and the job that they did this year."

Last week Monken was named the Southern Conference Coach of the Year. Due to his coaching, the SoCon Awards featured several Eagles, including running back Dominique Swope as a Co-freshman of the Year, defensive tackle Brent Russell as Defensive Player of the Year, offensive lineman Brett Moore on First Team Offense and several other Eagles.

While Monken feels that the players deserve the credit, the players feel the same way about their coach.

Even with the flattery that comes with other teams showing interest, players feel that the coach is here to stay.

"Coach Monken is a great coach," said Russell. "He's the SoCon Coach of the Year, and we know why. He has big expectations



Lindsay Hartmann/STAFF

Eagles head coach Jeff Monken patrols the sidelines versus the University of Alabama. After guiding the Eagles to a 9-2 record and the No.3 playoff seed, he has been named Region 2 Coach of the Year.

for this team and for himself."

"I'm interested in only being the Georgia Southern coach," Monken said. "I'm proud

to represent this university as a coach and I'm excited about this weekend's game. I'm focused entirely on that."

introducing
Freedom's Landing

the eagle has landed!

 **GEORGIA SOUTHERN UNIVERSITY**
UNIVERSITY HOUSING





Tiffany Larkin J.C. Cox Sarah Miller

MOST WANTED GRADUATES OF 2011

THANK YOU FOR YOUR SERVICE TO STUDENT MEDIA

PREPARE, from page 1

University of Maine Black Bears.

"They're a very good football team," Shaw said. "They're really big, they're physical and they have guys that really run. We have to take care of the football. We put on the ground six times last week, and we were very fortunate to get a win with six fumbles."

While the fumbles did not lead to any points scored by the Monarchs, the Eagles feel it is a necessity to correct those mistakes against the Black Bears.

"We just have to practice with our team and get better," Swope said. "We have to have better ball control, execute assignments better and we have to play as a team and get it done."

On the defensive side of the ball, the Eagles gave up a season-high 48 points to ODU. They allowed over 500 yards of offense. While both offenses were extremely powerful and combined for over 1100 yards of offense, the defense also feels they must play better against the Black Bears.

"We have to prepare as a defense," Russell said. "They have a more balanced offense than Old Dominion. They like to run the ball and pass off of that. So we have to have a great week of practice and go out and play for 60 minutes."

"We just have to do a better job of taking care of the ball," said Eagles' head coach Jeff Monken. "If we put the ball on the ground six times again, I'm pretty confident we're not going to be fortunate enough to win."



Lindsay Hartmann/STAFF

J.J. Wilcox (19) dives for a ball versus Old Dominion University. GSU won despite fumbling the ball six times and losing two of them. The Eagles will need to clean up their mistakes to win against the University of Maine.



Company hours

7:30 A.m. - 6:00 P.m.
Monday - Friday

912-489-2222

102 N Zetterower Ave
Statesboro, GA 30458



CLASSIFIEDS

12 Thursday, December 8, 2011

This page brought to you by Career Services
Explore • Experience • Excel

The George-Anne

For Sale

FOR SALE - 17 inch custom Ford Mustang rims and 17 inch custom Chevy Impala rims. Contact Ron: (912) 486-6611

Scooter for sale! 2005 Honda Ruckus. Black, 49cc, 85+mpg. Fantastic condition; original (faculty) owner, garage kept. No special license or insurance required. \$1,500 OBO. Contact (912) 678-6052

Firewood for Sale. Delivery available! Call 912-690-0872 or 912-690-4956.

For-sale: 2009 BMW 328i, hard-top convertible in great condition. Black with tan interior. Call 912-293-1909.

Misc.

Will proof papers (grammar, spelling, punctuation, sentence structure). Quality work, reasonable prices. Will also type short projects. Must have ample lead time to schedule. Email auntre01@gmail.com

Subleases

Subleasing 3 BR/2BT house on Parker Avenue in downtown Brooklet. Extremely large media room! Located on two city lots. Contact Joyce at (912) 842-9479.

2 Bedroom 2 Bathroom apartment in Hawthorne 2. Very close to campus. \$350/month. Sublease through July. Contact Shannon at 678-468-9407

Subleasing master bedroom in Planter's Row for \$365/month; utilities not included, pet friendly. For more information contact Anna-Marie at at01770@georgiasouthern.edu or call (770) 546-6560

Home Away From Home 3BR/2BT within 2 miles of Georgia Southern campus. You can sublease the other 2 rooms. No smoking or pets. Call (706) 951-1427.

Subleasing a 2 BR/2 BR at the Woodlands of Statesboro for Spring 2012. \$399 a month, utilities not included. Contact Adrian at (678) 230-5144.

Subleases, cont.

2 BR/2 BT sublease in Georgia Villas. \$475/month for both rooms, utilities not included. Available Jan-May, pet friendly. Right across from Glee Row on Chandler. Email tl00212@georgiasouthern.edu

Female to sub-lease Spring Sem. 5 BR, \$280 a month. Last month's rent is paid. Less than a mile from campus off of Gentilly Rd. Call, text or email Kristina: (678)-770-6251 kf01606@georgiasouthern.edu

Subleasing 626 B at the Exchange. Female Roommate needed. \$519.00 per month. All utilities included, free tanning, free Wi-Fi, 24 hr gym included. Available now. Contact (706) 523-6001

Room available for male or female in a 3 BR/2 BT house on Catherine Avenue. Fully furnished; bed needed. \$367/mo per person, utilities not included. Spacious house. Contact Yale at (404) 272-7652 or yale8754@bellsouth.net

Subleases, cont.

Subleasing my room for Spring 2012 in a fully furnished 4 BR/4 BT 3-story town home. Walking distance from the stadium and bus stop. Contact Alex at (770) 712-5377 or ao00837@georgiasouthern.edu

Spring 2012 1 BR/1 BT in a 2 BR/2.5 BT townhouse at The Avenue. Furnished and utilities included. \$495/month, but I will pay \$30 for each month. Or I could put \$210 towards the first month's rent. Contact Cherelle at chollan4@georgiasouthern.edu

All inclusive, two story, fully furnished, 4 BR townhouse for \$330/month! Includes trash, utilities, cable, wi-fi, pet park, 24/7 gym, recreation courts, computer lab, new appliances and washer/dryer! Contact (229) 326-4291.

Subleasing a 1 BR/1 BT in 4 BR apartment in Copper Beech for Spring 2012 starting Christmas Break. Washer/dryer included. Next to pool/volleyball court. \$389/mo plus utilities. Contact Singer (404) 680-7240

Subleases, cont.

SPRING 2012! Female roommate wanted. 1BR/1BT in a 3BR/3.5BT townhome. Walking distance to the stadium and bus stop. \$400/mo., gym and pool included. Cheaper rate can be arranged. Contact Emily at 404-444-8987 or ec01442@georgiasouthern.edu

SPRING 2012! 1 BR/1BT available in 4 BR/4 BT at Campus Club for Jan or earlier. Bus stop next to stadium. Utilities included. Rent is \$419/month; CHEAPER RATE CAN BE ARRANGED. Email Skyler at sh02071@georgiasouthern.edu

1 BR/1 BT available in a 3 BR at The Grove, for Spring 2012. Available after Dec. 20. \$450/mo, utilities included. Pet friendly, pool. I will pay last month's rent. Female preferred. Call Ellen 404-694-1394 or email ej00034@georgiasouthern.edu

Female roommate needed for Spring 2012; 3BR/3BT at Cambridge; \$449/mo all inclusive and furnished; one building away from bus route, 1st floor. Contact Angelica 404-921-4988.

Subleases, cont.

Subleasing a room in 4 BR/2BT in The Avenue for Spring 2012, but available as early as Dec 16 and Dec will be paid for. \$325/MO. Furnished, utilities included with free Wifi and Cable. Contact Nikki at (678)525-0297.

Sublease available ASAP. at Copper Beech. \$389 rent monthly. Utilities not included. 3 roommates. Great neat and clean girls to live with. Fully furnished. 478-957-1005 for more information.

Sublease at Cambridge for Reduced Price 1 BR/BTH available in a 3 BR, bus stop directly across from campus, all utilities included, furnished, washer/dryer, amenities. \$350/month *Regular price-\$459/month.* Email shortiecutie102@yahoo.com

Help Wanted

MODELS of all weights/sizes/ages needed for figure drawing class on T&R, 2-4:30 PM. Fall and spring openings. Must be 21 and able to sit still for long periods of time. Call 912-478-2793 or email jburke@georgiasouthern.edu

HOT JOBS Cool Internships

Job Title	Company	Deadline to Apply
Mortgage Professional	Provident Funding	Jan. 3, 2012
News Director/Executive Producer	WRDW-TV News 12	Feb. 29, 2012
Environmental Studies Internships	Smithsonian Institute	Dec. 30, 2011
Community & Family Initiatives Intern	Georgia Family Council	Mar. 16, 2012
Industrial Engineer	SRG Global	Dec. 28, 2011
Intern Program	SJAC Food Groups/Zaxby's	Dec. 17, 2011
SAP Business Analyst Reporting Intern	Newell Rubbermaid	Dec. 30, 2011
Project Coordinator	Tech. College of the Lowcountry	Jan. 2, 2012
Police Officer	City of Decatur	Dec. 31, 2011
Entry Level Sales/Recruiter	TEKsystems	Dec. 26, 2011
Electrical Engineer	GSFIC	Dec. 14, 2011
Solutions Consultant	Aderant	Dec. 31, 2011
Store Management Internship	Kohl's Department Stores	Dec. 31, 2011
Subscription Sales Rep.	Black Book	Dec. 31, 2011
Internship	Cumulus Media	Dec. 31, 2012
Store Management Internship	Kohl's Department Stores	Dec. 31, 2011
Emma Graham Design Consultant	Emma Graham Designs	Dec. 23, 2011
Sports Advertising Sales Executive	National Sports Publications	Jan. 10, 2012
Gold Club Interns	Wade Hampton Golf Club	Jan. 31, 2012
Digital Sales Person	WRDW-TV News 12	Feb. 29, 2012

To view the detailed job descriptions application instructions or additional postings, log into the Eagle Career Net/NACELink system found at www.georgiasouthern.edu/career.

Advertisement

End of the semester checklist

By Sarah Dixon, PR/Marketing Intern

As we approach the end of the semester, Career Services would like for you to keep some things in mind. Your success in the future depends on the effort that you put forth right now. There are many ways to stay ahead of the game over the break:

Ask professionals various questions about workplace expectations and goals to learn what employers seek in an employee.

Volunteer in your community over the break to show that you choose to stay involved and active.

Update resume to be critiqued at Career Services.

If you have seasonal employment, take full advantage of the opportunity to have your supervisor

write you a letter of recommendation.

Stay updated on positions as they are posted on Eagle Career Net/NACELink located on www.georgiasouthern.edu/career.

Employers seek someone who is driven and take advantage of opportunities to excel. Why not spend your break having fun and gaining experience at the same time?

Become our friend on Facebook: GeorgiaSouthern CareerServices or follow us on Twitter: @gsucareers to learn more about Career Services and upcoming events. For more information on Career Services assistance, call (912) 478-5197 or visit www.georgiasouthern.edu/career.

EDUCATION CAREER FAIR

Thursday, December 8, 2011
2:00 p.m. to 5:00 p.m.
Russell Union Ballroom

Questions? Contact Career Services at 912.478.5197

PUZZLES/COMICS

www.thegeorgeanne.com

Thursday, December 8, 2011 13

Los Angeles Times Daily Crossword Puzzle

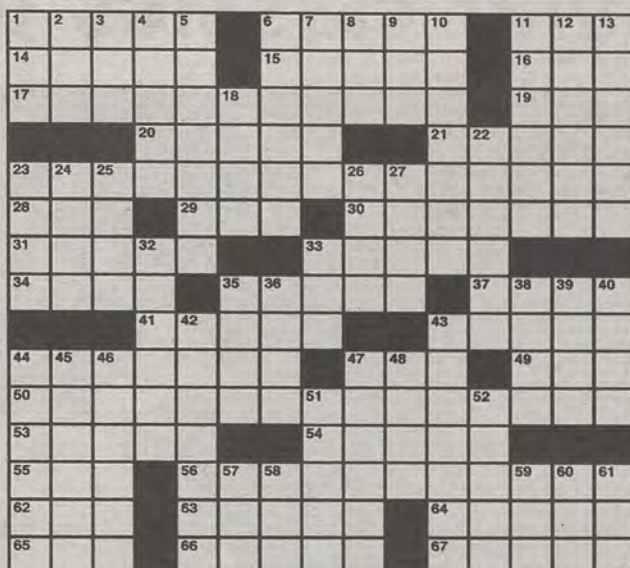
Edited by Rich Norris and Joyce Lewis

ACROSS

- 1 Bombed
- 6 Hindu title
- 11 Easy letters?
- 14 Board
- 15 Bar mixer
- 16 Mme., across the Pyrenees
- 17 Evian, in Evian
- 19 One who can't pass the bar?
- 20 Marked for removal
- 21 House coat
- 23 Thankfully credit
- 28 Org. concerned with the No Child Left Behind Act
- 29 Ambulance arrival sites, briefly
- 30 London taxi
- 31 She played Julia in "Julie & Julia"
- 33 Bohemian dance
- 34 Novelist Ferber
- 35 One way to serve beef
- 37 SASE enclosure, maybe
- 41 Weaklings
- 43 Place for a large umbrella
- 44 Mooches
- 47 She turned pro before her 16th birthday
- 49 Sch. with a Mesa campus
- 50 Sweet treat with an exclamation point in its name
- 53 One of the deadly sins
- 54 Pianist Claudio
- 55 Tomé
- 56 Classic noel
- 62 Today
- 63 Joint-forming bones
- 64 Surface with legs
- 65 Author
- 66 Tell off
- 67 Slammin' Sammy of golf

DOWN

- 1 Sailor's pronoun
- 2 Ode title words



By Don Gagliardo

12/8/11

December 6th Puzzle Solved

J	U	L	E	P		D	A	N	A		T	A	D	A
O	P	E	R	A		I	D	E	D		A	S	I	N
J	A	M	A	I	C	A	J	A	M		N	E	A	T
O	T	S		S	A	L	P	I	Z	Z	A	Z	Z	
				B	A	R	O	N		T	O	A		
G	U	Y	A	N	A	G	U	Y		O	N	C	D	
I	N	A	R	O	W		M	U	M		I	R	O	C
G	I	B	B		A	D	E	L	E		A	E	R	O
S	O	B	A		Y	E	R		G	E	T	S	I	N
		N	A	D	A		C	A	N	A	D	A	C	A
			O	T	C		L	A	T	I	N			
B	E	R	S	E	R	K		P	O	T		M	B	A
A	R	A	B		A	L	B	A	N	I	A	A	L	B
L	I	Z	A		Z	E	A	L		O	Z	Z	I	E
I	C	E	R		Y	E	S	M		N	O	E	N	D

- 3 Kwik-E-Mart guy on "The Simpsons"
- 4 plume
- 5 1999 Motorcycle Hall of Fame inductee
- 6 Takes the wheel
- 7 Prolix
- 8 Santa winds
- 9 "Cool" amount
- 10 Chipping tool
- 11 Make responsible for, as a case
- 12 19th-century literary family name
- 13 Stuffed mouse, e.g.
- 18 Card or Met
- 22 Capital south of the Black Sea
- 23 "My treat!"
- 24 Whacker's target
- 25 Merit
- 26 Grand
- 27 Dutch Golden Age painter
- 32 Showed disinterest, maybe
- 33 Early a.m. wear
- 35 AKC part: Abbr.
- 36 Daisy lead-in
- 38 Try
- 39 Plastic choice
- 40 Decant
- 42 Formed by the solidification of magma
- 43 Bookish types
- 44 Absorbs, in a way
- 45 More than words
- 46 Buckeye
- 47 Put on alert
- 48 Concerning, in memos
- 51 Erie
- 52 John Arbuckle's coffee
- 57 LPN skill
- 58 California's Nuevo State Park
- 59 16th prez
- 60 Form ending
- 61 Post-op dose

THE BATTLE OF THE CHRISTMAS DECORATIONS

SO DIRK RAIDER THINKS HE CAN OUT-CHRISTMAS US?



CLIFF! FULL POWER TO OUR LIGHTED REINDEER DISPLAY!

SHE CAN'T TAKE MUCH MORE, CAPTAIN!



OH, YEAH? PREPARE TO EAT YULETIDE DEATH!

ACTIVATE THE FIBER-OPTIC NATIVITY!



Welcome to Falling Rock National Park by Josh Shalek



	1					6	
6		2		1			
							5
4					7	5	8
		8	5		4	2	
	3	5	2				4
9			3		6		
				5		9	3
7						4	

Sudoku

9	4	8	2	6	1	3	7	5
3	1	6	8	5	7	4	9	2
5	2	7	9	4	3	8	1	6
7	6	9	1	8	2	5	3	4
4	3	2	4	9	5	8	6	1
1	5	9	7	3	6	9	2	4
9	2	1	3	7	6	4	8	5
8	4	6	1	2	4	5	3	9
6	9	4	5	2	8	7	1	3

FRANKLIN
CHEVROLET - CADILLAC
PONTIAC - BUICK - GMC
912.764.6911



Our experienced Body Shop can fix all of the "Dents & Dings" that your vehicle may have! We service all makes and models and accept all insurance claims, and will give you **FREE ESTIMATE** on your body & paint repair

GSU STUDENTS - Show your ID and recieve **10% OFF** any purchase in Parts and Service

Check out our website
www.franklinchevrolet.com

Opera Scenes bring popular classics to GSU

BY WILDA THRIFT

George-Anne contributor

Georgia Southern University students, faculty and staff gathered at the Foy Building on Saturday for the fall's Opera Scenes program.

The program is a mixture of individual scenes from many different operas, such as "Don Giovanni," "The King and I" and "Cinderella." There were a total of six operas and seven scenes, with a summary projected on the wall for the audience to read preceding each scene.

Alyssa Noel, senior music major, said, "They always put on a very good show. Tonight was really funny, more funny than usual. Sometimes they choose stuff that's more serious. But I think when it's funnier, the audience can connect more."

The cast did not have long to prepare before the opera went live because the Opera Scenes, which is held regularly, is not considered one of the major shows.

Noel said, "I thought it was very good, very well put together for only having one month to do it, and it was a joy to watch."

The six operas performed were chosen by Arikka Gregory, who directed six of the seven scenes, based on the current skill sets of the students performing.

"I start with the people that I have and the needs that they have, they all have different voice types and have different strengths and challenges. And so I dig through references, pour through scores and find the right match for the students. I try to find the best learning experience for them that I can," said Gregory.

During the scene from "Bastien and



Rebecca Farris/STAFF

Students participating in the Opera Scenes program sing various popular operatic classics in languages such as English, Spanish and Italian.

Bastienne," the male protagonist Bastien was switched out mid-scene.

"That's just meant to provide more opportunity. From the very beginning there was intended to be two casts and a continuation. There's some times that whole operas will be done that way, especially with student casts," Gregory said. "The students switch out."

While people stereotypically think that operas are sung exclusively in foreign languages, only

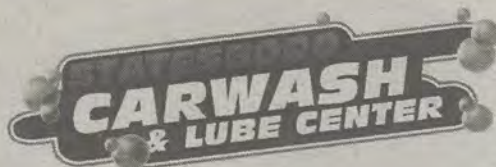
"Don Giovanni" was not performed in English.

"I suppose it offended a little bit of my tastes to hear it in English. So, it just kind of depends on the piece. So the 'Là ci Dorem la Mano' duet that you heard is very frequently done and I just can't hear it in English, it's got to be Italian," said Gregory.

Most of the opera scenes could be called love stories, even when more complicated issues were being discussed.

"You need extreme circumstance to justify singing what you're feeling or thinking. So operas tend to be either extreme love or extreme hate — murder, poverty, strife. You know, you don't sing about going to the grocery store and picking up a loaf of bread," said Gregory.

Also assisting in the performance tonight was musical director Richard Mercier who performed on piano, and student director Merritt McElroy who directed the "Too Many Sopranos" scene.



HALF PRICE FOR SHARING WITH A FRIEND!

Bring This Ad, and Two Cars
and Both Cars Get Half Price Ultimate Washes*

*NOT VALID WITH ANY OTHER DISCOUNT

**10% off All Car Wash, Detail, And Oil Change Services
WITH GSU STUDENT OR EMPLOYEE ID**



Radio show brings holiday cheer

BY GIANNA CARME and
JAZMIN DAVIS

George-Anne contributors

Statesboro will be surrounded in holiday cheer as The 1940s Christmas classic, "It's a Wonderful Life," is performed as a live radio broadcast at the Averitt Center next Friday.

"It's a Wonderful Life Radio Show," sponsored by the Queensborough Bank, will combine the liveliness of a stage performance with the narration of a radio show to tell the story of George Bailey's close call with death on Christmas Eve.

The play will encompass the original film's theme of one person's ability to impact the many lives around him or her. "It's a Wonderful Life" takes place in a town called Bedford Falls as the audience takes a trip through Bailey's life to see him succeed, fall in love and battle himself through crisis. Just before Bailey's

attempt to commit suicide, an angel appears to show him the significance of his presence in other's lives.

The live play will give an alternative experience by acting as if the movie was told through a 1940s broadcast on the radio.

"Because it's based on a movie, I think it will be an attracter versus watching it on television," said Tony Phillips, program director for the

Averitt Center for the Arts.

The Averitt Center generally features six shows per season. "It's a Wonderful Life Radio Show" is the sixth and final show of 2011. "Five by Design in Club Swing" will kick off the 2012 line of performances.

Other holiday shows featured at the Averitt Center in the past include "A Christmas Carol," "A Christmas Variety Show: The Follies," "The

Nutcracker," and "White Christmas."

The coordinators of the show hope the performance will spread holiday cheer throughout the community.

"The heart-warming ending will bring out Christmas spirit," said Phillips.

"It's a Wonderful Life Radio Show" will take place at the Averitt Center for the Arts on Friday, Dec. 16 at 7:30 p.m.

It's a Wonderful Life Radio Show

December 16 7:30 p.m. Averitt Center for the Arts

Kelsey Paone/STAFF

The Buzz List

■ **Rapper T.I.'s** new reality show "The Family Hustle" premiered Monday



Shauntel Hall

night on VH1. The new show is meant to jump start the rapper's career after his recent release from prison. Let's just hope there are no more legal surprises.

■ **Country music singer John Rich** was removed from a Southwest airplane after crew members said that he was too drunk to travel. But hey, what happens in Vegas right?

Information compiled by Assistant Arts Editor Shauntel Hall from TheHollywoodReporter.com and tmz.com

Choices of the Heart
Pregnancy Center

Pregnant?

Free and Confidential Testing and Counseling. Off Campus Location.
Hot Line: 9AM-9PM 912.764.4303
Appointments Only.

106-B Oak Street, Statesboro, Georgia • www.choicesoftheheart.org • 912.764.4303



434 South Main Street Statesboro, GA 30458

912.489.8658

\$3 off
\$10 Purchase
Bring student id
and redeem coupon

\$5 off
\$20 Purchase
Bring student id
and redeem coupon

THE 'BORO BEAT

YOUR GUIDE TO OFF-CAMPUS ENTERTAINMENT

THURSDAY

Applebee's

- \$3 Jose Cuervo shots, \$2 Coronas, \$3 Appletini's

Dingus Magee's

- Dr. Dan and the Looters

- Happy Hour 5-7 p.m., half price well shots

Dos Primos

- \$1 tequila shots, \$3 margaritas, \$3 32 oz. beer, \$2 well shots,
\$2 single wells, \$4 double wells

Millhouse

- Nun-gazers

- Happy Days all day

Moe's

- Happy Hour 5-7 p.m. buy one get one free beer

Gnat's Landing

- Happy Hour everyday 5-7 p.m.

El Sombrero Downtown/ Buckhead

- \$2.50 Big Beers All Day

Ruby Tuesday

- \$4 Jack Daniels

- \$3 Blue Moon traps

\$2 Miller Light

Buffalo's

- Stokeswood (Band)

\$1 shots

\$3 doubles

\$1 jager bombs

Manny's

\$3 double wells

FRIDAY

Applebee's

- \$3 Sam Adams, \$3 Jim Bean & Jack

Dingus Magee's

- Tent City

- Happy Hour, 5-7 p.m., half price well shots

Dos Primos

- Happy Hour 5-7 p.m., \$2 domestic bottle and draft beer, \$4.50
pitcher, 2 for 1 mixed drinks and shots, \$1 Keystone tallboys

- \$3 32oz., \$3 margaritas, \$1 bartender shots

Gnat's Landing

- \$1.75 Natural Light, \$2 Coors Light and Michelob Ultra Bottles, \$10
Liquor Pitchers

- Happy Hour everyday 5-7 p.m.

Millhouse

- Harry Canary

- Happy Days all day

Moe's

- Happy Hour 5-7 p.m. buy one get one free beer

El Sombrero Downtown/ Buckhead

- \$2 Sex on the Beach all day

Manny's

\$10 Sangrias

\$10 buckets

\$10 bottles of wine

\$6 draft pitchers



"BAD TO THE BONE"

Located next to Wal-Mart

10% OFF
any order

- Wings
 - Homestyle Tenders
 - Homemade Salad
 - Garden Salad
 - Unique WM Sauces
- ...and the best tea in the Boro

expires 12-31-2011
*Must present coupon

THE 'BORO BEAT

YOUR GUIDE TO OFF-CAMPUS ENTERTAINMENT

SATURDAY

Applebee's

- \$3 Appletini's, \$3 Jose Cuervo shots

Dingus Magee's

- Happy Hour 5-7 p.m., half price well shots

Dos Primos

- Happy Hour 5-7 p.m., \$2 domestic bottle and draft beer, \$4.50 pitcher, 2 for 1 mixed drinks and shots, \$1 Keystone tallboys
- \$3 32oz., \$3 margaritas, \$1 bartender shots

Buffalo's

- Showing playoff game on projectors

El Sombrero (Downtown)

- \$2 Margaritas

Millhouse

- Daniel Johnson Band

- Happy Days all day

Moe's

- Happy Hour 5-7 p.m. buy one get one free beer

Ruby Tuesday

- \$2 Miller Light, \$3 Blue Moon draft, \$4 Jack and Coke, \$1 Ruby Mini's

Manny's

50 wings + pitcher of beer = \$26.99

\$10 bucket beer

Gnat's Landing

- Happy hour 5-7 p.m.

- Band performance

MONDAY

Buffalo's

- 5-7 p.m. happy hour 1/2 off draft, \$3 martini's, 2 for 1 apps.

Dingus Magee's

- Happy Hour 5-7 p.m., half price well shots

Dos Primos

- Happy Hour 5-7 p.m., \$2 domestic bottle and draft beer, \$4.50 pitcher, 2 for 1 mixed drinks and shots, \$1 Keystone tallboys
- \$3 32oz., \$3 margaritas, \$1 bartender shots

El Sombrero (Downtown)

- \$2 Margaritas all day

Latte Da

- Text "Latte Da" to 99000 for free brownies through finals

Moe's

- Happy Hour 5-7 p.m. buy one get one free beer

Ruby Tuesday

- 8 p.m.-close \$2 Miller Light, \$3 Blue Moon draft, \$4 Jack and Coke, \$1 Ruby Mini's

- Free jello shots

Manny's

- \$3 wells

TUESDAY

Dingus Magee's

- Happy Hour, 5-7 p.m., half price well shots

Dos Primos

- Happy Hour 5-7 p.m., \$2 domestic bottle and draft beer, \$4.50 pitcher, 2 for 1 mixed drinks and shots, \$1 Keystone tallboys
- \$3 32oz., \$3 margaritas, \$1 bartender shots

El Sombrero (Downtown)

- \$2.25 imported bottles

Latte Da

- Text "Latte Da" to 99000 for free brownies through finals

Moe's

- Happy Hour 5-7 p.m. buy one get one free beer

Buffalo's

- Beer Pong Tournament

- \$5 Natural Light Pitchers

Manny's

- \$2 double wells



Charlie's Fried Chicken

WE DELIVER

4 UNIVERSITY PLAZA

(912) 681-2222 (912) 681-6666

**Ask about our
Tailgate Specials!**

10% off

Walk in Only

Full Menu

APPETIZERS

Cheese Stix (6) - \$3.99
Chili Cheese Fries - \$5.99
Hot Dog - \$1.89
Fried Pickles (6) - \$5.50
Chili Dog - \$2.50
Fried Jalapenos (5) - \$5.50

CHICKEN FINGERS

(3) Fingers w/ Fries - \$5.95
(5) Fingers w/ Fries - \$7.50
(8) Fingers w/ Fries - \$9.50
(10) Fingers w/ Fries - \$11.50
(12) Fingers w/ Fries - \$13.50

BASKETS

Tilapia (2 fillets) - \$7.99
Pork Chop Basket (2) - \$6.25
Hotdog Basket - \$4.50

DRINKS

Coke - \$3.00
Sprite - \$3.00
Bottled Water - \$1.00
Pepsi Products - \$2.00

DESSERT

Chocolate Pie - \$3.00
Strawberry Cheesecake - \$3.00

BURGERS & SANDWICHES

Hamburger - \$5.50
Cheeseburger - \$5.95
Bacon Cheeseburger - \$6.50
Mushroom Swiss - \$6.50
Philly Cheese Steak - \$6.95
Roast Beef & Cheese - \$4.95
BLT - \$5.95
Grilled Chicken - \$5.95
Ham & Cheese - \$4.95
Turkey & Cheese - \$4.95
Club - \$6.50

WINGS

(6) Wings - \$4.95
(12) Wings - \$8.95
(18) Wings - \$11.95
(6) Wings w/ Fries - \$5.95
(8) Wings w/ Fries - \$6.95
(10) Wings w/ Fries - \$8.50

*Mild, Hot, X-Hot,
Lemon Pep,
Teriyaki,
Honey Mustard,
BBQ*

*All drinks or flats: 100
Mix Flavors: 100*

SIDE ORDERS

French Fries - \$1.89
Fried Okra - \$2.79
Baked Beans - \$1.89
Mac and Cheese - \$2.79
Onion Rings - \$1.89
Mash Potatoes - \$1.89
(Large: \$2.99)
(Large: \$3.50)
(Large: \$2.99)
(Large: \$3.50)
(Large: \$2.99)
(Large: \$2.99)

FRIED CHICKEN

Basket:

(comes with (2) Sides)

(2) Pc Dark - \$6.50
(2) Pc White - \$7.50
(3) Pc Dark - \$8.00
(3) Pc White - \$8.50
(4) Pc Mix - \$9.00

Snack Box:

(includes fries)

(2) Pc Dark - \$4.50
(2) Pc White - \$5.50
(3) Pc Dark - \$6.00
(3) Pc White - \$6.50
(4) Pc Mix - \$7.00

WEEKLY BUZZ

A weekly calendar listing sponsored by The Division of Student Affairs and Enrollment Management

DECEMBER 8- DECEMBER 16

THURSDAY 12.8.2011

ORNAMENTS

RUSSELL UNION COMMONS

Sponsored by Eagle Entertainment.

APPLY TO GSU BIGGEST LOSER

RAC

The Biggest Loser Challenge is designed to help improve exercise and nutrition habits in order to improve total wellness along with reducing the risk of chronic disease. In order to do this, you will receive assistance and guidance to implement healthy behavior changes that will increase your quality of life. We invite you to learn more about the challenge at <http://cri.gs/rsibt7> as well as those on campus who have lived it - then decide if you are ready to accept the challenge yourself! To learn more and submit your application online visit <http://cri.gs/rsibt7> Sponsored by Campus Recreation & Intramurals.

FRIDAY 12.9.2011

SPRING BREAK BOOT CAMP REGISTRATION

RAC

Are you looking to get in shape for Spring Break or be apart of the toughest workout on campus? This 7 week program will take you through a variety of challenging and vigorous hour long workouts. Each week we will lead you through a different type of workout designed to jumpstart your fitness routine by Spring Break. Hurry! Space is limited to the first 30 paying participants. Class is held every Wednesday from 5:30pm-6:30pm starting January 26, 2012 in the Multi-purpose room of the RAC. Open to all current RAC members. SIGN UP To register for the Spring Break Training Camp program, simply complete the registration form (<http://cri.gs/veHOjx>) and return it along with \$10 registration fee to member services in the RAC. Member services is located to the right as you enter the RAC by the Oasis Smoothie Bar. Don't delay! Class is limited to 30 participants! Sponsored by Campus Recreation & Intramurals.

7 & 9 PM
MOVIE NIGHT

Russell Union, Russell Union Theater

Sponsored by Eagle Entertainment.

MONDAY 12.12.2011

ALL DAY
FINAL EXAMS

6 PM
FINALS FEAST

RUSSELL UNION BALLROOM

Sponsored by office of Student Activities

TUESDAY 12.13.2011

ALL DAY
FINAL EXAMS

WEDNESDAY 12.13.2011

ALL DAY
FINAL EXAMS

THURSDAY 12.14.2011

ALL DAY
FINAL EXAMS

6 PM
LANTERN WALK

The Lantern Walk is an event at the end of each semester to honor graduating students. Students are invited to a reception with food and then encouraged to walk through campus to revisit the memories they've made at Georgia Southern with their families. "Celebrate your legacy" is the general theme of the night. Traditions Council wishes all graduating seniors a successful life after college and gives each attendee a special lantern, letter from the Vice President of Student Affairs, and a pin to remember their time at GSU.

FRIDAY 12.15.2011

9 AM
COMMENCEMENT
HANNER FIELDHOUSE

WINTER BREAK

December 15- January 17



V.A.L.U.E.S.

VOICES • ACCOUNTABILITY •
LASTING TRADITIONS • UNITY •
ETHICAL BEHAVIOR • SCHOLARSHIP

Student Affairs
Enrollment
Management

Brought to you by Georgia Southern University VALUES, Georgia Southern V.A.L.U.E.S. is the culture shared by our students, faculty, and staff. We endeavor to share our V.A.L.U.E.S. inside and outside of the classroom with faculty, staff, students, alumni and all other community members. In order to produce productive citizens with an informed set of ethics and community standards as well as create an environment of respect and civility, we pledge to live by our V.A.L.U.E.S.

Maine prepares to take on the triple option

Football

BY ROBERT TODD

George-Anne contributor

Coming off a big 34-12 win against Appalachian State University on the road, the University of Maine Black Bears set to take on Georgia Southern University in the quarterfinals of the FCS playoffs at Paulson Stadium this Saturday.

Jack Cosgrove has been the head coach for Maine for 19 seasons. During the last nine seasons, Maine has finished either first or second in its conference five times, including two Atlantic 10 championships and three playoff appearances.

Cosgrove said that the Black Bears' main objective for Saturday is to perform to a higher level than they did against App. State.

"As you advance, the competition and performance levels have to go up if you want to continue on. The big challenge for us this week is the fact that GSU runs an offense we don't see often in our conference in the course of a season," said Cosgrove.



University of Maine senior Vinson Givans (4) leaps over his own player to keep his opponent from scoring. Maine is 9-3 during its 2011 campaign and finished third in the CAA.

Courtesy of Haley Johnston

Maine is in the Colonial Athletic Association conference, which became a football conference

in 2007. It contains no teams that run the triple option offense.

"There were times we'd see it twice a year, therefore not being new to it, but now we hardly see it at all," said Cosgrove.

Maine is 9-3 overall, averaging 29.8 points per game this year. Last week the Black Bears had 250 passing yards and 216 rushing yards for a total of 466 yards against App. State.

"We had a real good start to the game, scoring on the first possession and got a number of three-and-outs from them," said Cosgrove.

The last time Maine played GSU was during the 2002 playoffs at Paulson Stadium, which GSU won 31-7. GSU had 456 total yards with 416 rushing yards to Maine's 261 total yards.

"In 2002 and 1987, our guys were in awe of Georgia Southern as well as the facilities and hospitalities. It must be the SoCon or the south, because we were all in awe of Appalachian State's facilities and hospitalities as well," said Cosgrove.

This week the Eagles should set their sights on stopping key Black Bear players. This season, quarterback Warren Smith has almost 3,000 passing yards and 20 touchdowns and running back Pushaun Brown has over 1,000 rushing yards and 11 rushing touchdowns.

FRANKLIN

TOYOTA • SCION

888-695-8165

500 Commerce Drive
beside the new Holiday Inn

PROTECT YOUR VEHICLE!

Regular maintenance and upkeep is crucial to your car's optimal performance, best possible gas mileage, and highest resale value.
Our service department offers the best in automotive service for all makes and models.

- > Oil Change
- > Tire Services
- > Tune-Up & Transmission Service
- > A/C & Radiator Service
- > Brake Service
- > Engine Repair
- > Body Shop Services

\$1,000 COLLEGE GRAD REBATE
WHEN YOU BUY OR LEASE A NEW TOYOTA.

SCHEDULE YOUR SERVICE ONLINE! www.FranklinToyota.com

10% OFF
service with your Student ID

Traditions Council and
Office of Student Activities presents

The Lantern Walk

December 15, 2011
6:00 p.m.
Dessert Reception
Williams Center Multi-Purpose Room

GEORGIA SOUTHERN UNIVERSITY

Celebrate your legacy

YOUR STUDENT ACTIVITY DOESN'T STOP AT WORK

IT'S YOUR LIFE...

LIVE IT

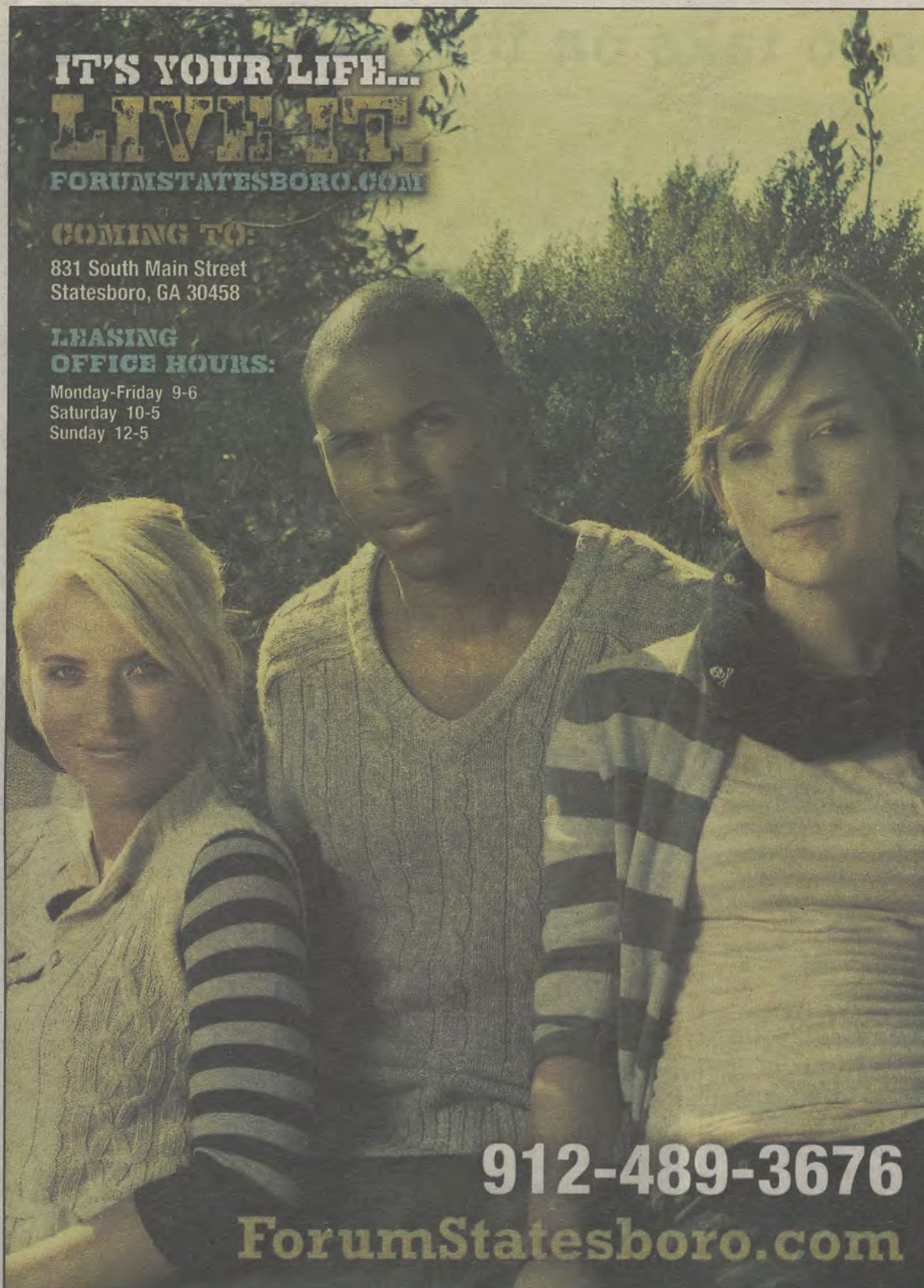
FORUMSTATESBORO.COM

COMING TO:

831 South Main Street
Statesboro, GA 30458

LEASING
OFFICE HOURS:

Monday-Friday 9-6
Saturday 10-5
Sunday 12-5



912-489-3676

ForumStatesboro.com

GET A **FREE** T-SHIRT WITH THIS AD!

FORUM®

AT STATESBORO

A PREMIER STUDENT
HOUSING COMMUNITY

**NOW
LEASING
FOR FALL 2012**

- Tennis Court
- Lap Pool & Spa
- Pet Friendly
- Pet Park
- Two Free Tanning Beds
- Indoor Basketball Court
- Indoor Volleyball Court
- Car Care Center
- Modern Faux-Wood Floors
- Private Bathroom in Bedrooms
- Convenient Individual Leases
- Free High Speed Internet in Bedrooms
- 24 Hour Fitness and Training Center
- Kitchens with Full Size Appliances
- Full Size Washer / Dryer Included
- Wi-Fi Cyber Cafe with Coffee Bar
- Outdoor Sand Volleyball Court
- High Speed Internet Access
- Student Center and Lounge
- Roommate Matching
- Expanded Cable
- Media Room



Leasing subject to change. ©2011 FORUM. All rights reserved. For more info, visit forumstatesboro.com

GAMEDAY

¹³ MAINE VS ³ GEORGIA SOUTHERN

MAYDAY

@PAULSON STADIUM, 2:00 PM

THIRD ROUND SHOWDOWN



#66 - BRENT RUSSELL

55 TACKLES
13.5 TACKLES FOR LOSS
6 SACKS



#31 - DOMINIQUE SWOPE

122 CARRIES
848 YARDS
6 TDS 6.9 AVERAGE

SPECIAL PULL-OUT SECTION

FOLLOW @THEGEORGEANNE ON TWITTER FOR LIVE GAME UPDATES

GEORGIA SOUTHERN EAGLES

No.	Name	Pos.	Year	Hometown
1	Jerick McKinnon	QB	So.	Marietta, Ga.
2	A.J. McCray	S	Sr.	St Marys, Ga.
4	Derek Heyden	S	Sr.	Atlanta, Ga.
4	Prince McJunkins	QB	Fr.	Wagoner, Okla.
5	Robert Brown	FB	So.	Macon, Ga.
6	Zeke Rozier	FB	Sr.	Cochran, Ga.
7	Darreion Robinson	RB	Jr.	Bishop, Ga.
9	Zach Walker	WR	Fr.	Wrightsville, Ga.
10	Josh Rowe	ILB	Jr.	Opelika, Ala.
11	Ezayi Youyoute	QB	RFr.	Wauchula, Fla.
12	Russell DeMasi	QB	Jr.	Savannah, Ga.
13	Darius Eubanks	OLB	Jr.	Harlem, Ga.
14	Jaybo Shaw	QB	Sr.	Flowery Branch, Ga.
15	Carlos Cave	OLB	So.	Macon, Ga.
15	Aaron Griffin	QB	Fr.	Rincon, Ga.
16	Antonio Glover	FS	Fr.	Atlanta, Ga.
17	Billy Greer	PK	Sr.	Crosby, Texas
18	Charlie Brower	WR	Unk	Dacula, Ga.
18	Lavelle Westbrook	CB	So.	Riverdale, Ga.
19	JJ Wilcox	SLOT	Jr.	Cairo, Ga.
20	Nico Hickey	SLOT	Sr.	Columbus, Ga.
21	Hudson Presume	DB	Sr.	Bradenton, Fla.
22	Seon Jones	FB	Fr.	Flowery Branch, Ga.
23	Johnathan Bryant	SLOT	Jr.	Cairo, Ga.
24	Riyahd Jones	CB	Fr.	Columbus, Ga.
25	Emmanuel Orange	CB	Fr.	Naples, Fla.
26	Tray Butler	WR	So.	Stockbridge, Ga.
26	Josh King	CB	Fr.	Stockbridge, Ga.
27	Javonte Martin	DB	So.	Tampa, Fla.
28	Devin Scott	SLOT	So.	Tucker, Ga.
29	Deion Stanley	SS	RFr.	Dry Pond, Ga.
30	K.R. Snipes	LB	RJr.	Opelika, Ala.
31	Dominique Swope	FB	Fr.	Buford, Ga.
32	Nick Wright	CB	Fr.	Lithonia, Ga.
34	Laron Scott	DB	Sr.	Warner Robins, Ga.
35	Miguel Gilmore	SLOT	Sr.	Orlando, Fla.
35	Michael Spaulding	LB	So.	Fayetteville, Ga.
36	Connell Reddick	DB	RFr.	Hephzibah, Ga.
37	Antwione Williams	LB	Fr.	Lovejoy, Ga.
38	Kyle Oehlbeck	LB	Jr.	Gainesville, Fla.
39	DeVonte Lewis	SLOT	Fr.	Dacula, Ga.
39	Deonté Watkins	DB	Sr.	Walkersville, Md.
40	Michael Butler	DB	Sr.	Stone Mountain, Ga.
41	John Stevenson	OLB	Jr.	Stone Mountain, Ga.
42	Boyd Sasser	S	Jr.	Millen, Ga.
43	Eric Worthen	LB	Fr.	Swainsboro, Ga.
44	Quaun Daniels	OLB	Fr.	Moultrie, Ga.
45	Adrian Mora	PK	Gr.	Dalton, Ga.
46	Brent Thomas	FB	Sr.	Tampa, Fla.
47	Omari Jones	DE	RFr.	Jonesboro, Ga.
48	Charlie Edwards	P	Sr.	Tifton, Ga.
49	Brandon Lane	DB	Jr.	Marietta, Ga.

No.	Name	Pos.	Year	Hometown
50	Garrett Brewer	OL	Fr.	Dixie, Ga.
51	William Maxwell	OG	Sr.	Quitman, Ga.
52	Javon Mention	DT	So.	Tampa, Fla.
53	Marcus Duvall	ILB	Sr.	Griffin, Ga.
54	Korentheus Bailey	DT	Jr.	Lula, Ga.
55	Austin Hagan	OL	Fr.	Dacula, Ga.
56	Luke Cherry	PK	So.	Jacksonville, Fla.
57	Brett Moore	OL	Sr.	Warner Robins, Ga.
58	Garrett Frye	OL	Fr.	Cumming, Ga.
59	Zach York	LB	Jr.	Hartwell, Ga.
60	Chris Gray	OT	Jr.	Landrum, S.C.
61	Jacob Bagley	TW	Jr.	Waycross, Ga.
62	Zach Lonas	OG	So.	Acworth, Ga.
63	Brandavious Mann	C	Sr.	Forsyth, Ga.
64	Hunter Lamar	OL	Fr.	Statesboro, Ga.
65	Kyle Stroud	OL	RFr.	Tucker, Ga.
66	Brent Russell	DT	Jr.	Comer, Ga.
67	Matt Mills	OL	Fr.	Johns Creek, Ga.
68	Matthew Gilbert	C	RFr.	Marietta, Ga.
69	Cole Peeples	OL	Fr.	Conyers, Ga.
70	Raymond Klugey	OT	Jr.	Norcross, Ga.
71	Dorian Byrd	OT	So.	Macon, Ga.
72	Zach Reckers	DT	Jr.	Atlanta, Ga.
73	Maurice Hunt, Jr.	OL	Fr.	Lyons, Ga.
74	Logan Daves	OL	RFr.	Blue Ridge, Ga.
75	Manrey Saint-Amour	OL	Fr.	Suwanee, Ga.
76	Trevor McBurnett	OL	RFr.	Lawrenceville, Ga.
77	Blake DeBartola	OL	Jr.	Fayetteville, Ga.
78	Josh Petkovich	OT	Sr.	Palm Harbor, Fla.
79	Oliver Kraemer	OT	RFr.	Marietta, Ga.
80	Kentrellis Showers	WR	RFr.	Dublin, Ga.
81	Mitchell Williford	WR	Jr.	Duluth, Ga.
82	Wilson Hudgins	TE	Fr.	Loganville, Ga.
83	Martin Weatherby	WR	Jr.	Roswell, Ga.
84	Patrick Barker	WR	Jr.	Ponte Vedra, Fla.
85	Allen Lee	WR	Jr.	Savannah, Ga.
85	Brian Wilcher	SLOT	Jr.	Dublin, Ga.
86	Markus Farmer	WR	Jr.	Savannah, Ga.
87	Willie Burden	TE	Jr.	Statesboro, Ga.
88	Trevor Shaw	DL	So.	Alpharetta, Ga.
88	Tyler Sumner	TE	Jr.	Pooler, Ga.
89	Carter Jones	LS	Sr.	Moultrie, Ga.
90	Josh Gebhardt	DE	So.	Douglasville, Ga.
91	Justice Ejike	DT	RFr.	Covington, Ga.
92	John Douglas	DE	Sr.	Augusta, Ga.
93	Rashad Williams	DE	RFr.	Roswell, Ga.
94	Roderick Tinsley	DT	Sr.	Soperton, Ga.
95	Edwin Jackson	LB	RFr.	Atlanta, Ga.
96	Blake Riley	DT	So.	Crescent, Ga.
97	George Osunde	LB	Jr.	Alpharetta, Ga.
98	Forrest Kelleher	DE	Fr.	Ft. Lauderdale, Fla.
99	Terico Agnew	DE	Jr.	Stockbridge, Ga.

UNIVERSITY OF MAINE BLACK BEARS

No.	Name	Pos.	Year	Hometown
1	Jerron McMillian	DB	SR	Hillside, N.J.
10B	Ryan Stroud	QB	RFR	Dover-Foxcroft, Maine
2	Pushaun Brown	RB	SR	North Brunswick, N.J.
3	Trevor Coston	DB	SR	Greenlawn, N.Y.
4	Vinson Givans	LB	SR	Cambridge, Mass.
5	Kendall James	DB	SO	Roselle, N.J.
6	Derek Session	RB	SR	Baltimore, Md.
7	Roosevelt Boone	RB	SR	Washington, D.C.
8	Warren Smith	QB	SR	Forked River, N.J.
9	Douglas Alston	DL	JR	East Orange, N.J.
10	Donte Dennis	LB	SR	Rahway, N.J.
11	John Ebeling	QB	SO	Mahwah, N.J.
12	Chris Treister	QB	SR	Cape Elizabeth, Maine
13	Jackson Taylor	FB	RFR	Windham, Maine
14	Marcus Wasilewski	QB	SO	Kulpmont, Pa.
15	Jamal Clay	DB	SO	Mahwah, N.J.
16	Gabe Hinds	DB	SR	Augusta, Maine
17	Isaiah Jones	WR	FR	Orange, Mass.
18	Chris Reagan	DB	JR	York, Pa.
19	Jeff Falvey	TE	JR	Cicero, N.Y.
20	Sherrod Baltimore	DB	FR	Fort Washington, Md.
21	Zedric Joseph	WR	JR	West Palm Beach, Fla.
22	Michael Mangiarelli	DB	SO	Warren, Ohio
23	Troy Russell	LB	JR	South Plainfield, N.J.
24	Khari Al-Mateen	DB	SO	Baltimore, Md.
25	Patrick Pascal	DB	RFR	Greenlawn, N.Y.
26	David Hood	RB	RFR	Galloway, N.J.
27	Brian Harvey	K	JR	Wayland, Mass.
28	Mike Kuhn	DB	SR	Martinsville, N.J.
29	Darlos James	DB	JR	Mt. Vernon, N.Y.
30	Shawn Bodtmann	LB	SO	Scranton, Pa.
31	Axel Ofori, Jr.	DB	RFR	Gaithersburg, Md.
32	Troy Eastman	DB	SO	Rahway, N.J.
33	Arron Achey	LB	RFR	Newmanstown, Pa.
34	Malik Walker	DB	FR	East Orange, N.J.
35	Jeffrey Ondish	K	RFR	Elkton, Md.
36	Sam Shipley	LB	JR	Santa Barbara, Calif.
37	Jordan Waxman	K	SR	Kintnersville, Pa.
38	Gavin Callahan	DB	SO	Windsor, Vt.
39	Rickey Stevens	RB	SO	Rochester, N.Y.
40	Aamad Bush	DB	FR	Montclair, N.J.
41	Randy Samuels	LB	FR	Bronx, N.Y.
42	Terrel Walker	RB	SO	Taunton, Mass.
43	Matthew LeBlanc	LB	FR	Holden, Mass.
44	Kris Enslin	DL	JR	Middletown, Del.
45	CJ Dawson	FB	FR	Natick, Mass.
46	Brian Anthony	LB	FR	Columbia, Md.

No.	Name	Pos.	Year	Hometown
47	Josiah Hartley	FB	FR	Bangor, Maine
48	Cody Simcox	TE	FR	Sinking Spring, Pa.
49	Sean Stevenson	LB	FR	Westwood, N.J.
50	Chris Howley	OL	JR	Runnemede, N.J.
51	John McCabe	LB	FR	Winslow, Maine
52	Matthew Wilson	DL	RFR	Freeport, N.Y.
53	Nicholas Cox	LB	SO	Dorchester, Mass.
54	David Higgins	LB	JR	Cumberland, Maine
55	Trevor Bates	DE	FR	Westbrook, Maine
56	Garret Williamson	OL	JR	Flemington, N.J.
58	Steve Shea	OL	SR	Corinna, Maine
59	Spencer Wood	DL	JR	Salisbury, N.H.
64	Chase Hoyt	OL	FR	West Chester, Pa.
65	Douglas Nash	OL	SO	Turner, Maine
66	Matthew Pellerin	DL	SO	Turner, Maine
68	Jeff Gakos	OL	SO	Basking Ridge, N.J.
70	Benedict Wezel	OL	FR	Berlin, Germany
72	Daniel Carriker	OL	FR	Alexandria, Va.
73	Bruce Johnson	OL	FR	Rochester, N.Y.
74	Josh Spearin	OL	JR	Limington, Maine
76	Tyler Patterson	OL	SO	Owls Head, Maine
77	Kevin Phanor	DL	SR	Brooklyn, N.Y.
78	Will Martin	OL	JR	Port Republic, N.J.
80	Derek Buttles	TE	SR	Pike, N.Y.
81	Maurice McDonald	WR	JR	Paterson, N.J.
82	Daniel Upson	WR	FR	Montgomery Village, Md.
83	Derrick Johnson	WR	SO	Hempstead, N.Y.
84	Justin Flores	WR	FR	Woburn, Mass.
85	Najee Green	WR	FR	Accokeek, Md.
86	Justin Perillo	TE	SO	Wilmington, Del.
87	John Hardy	WR	FR	Portland, Maine
88	Damarr Aultman	WR	RFR	Wheatley Heights, N.Y.
89	Arthur Williams	WR	RFR	Springfield, Mass.
90	Ryan Nani	DL	SR	Lanoka Harbor, N.J.
91	Carlton Charles	FB	RFR	Windham, Maine
92	Raibonne Charles	DL	SR	Windham, Maine
93	Brent Rice	DL	JR	Jersey City, N.J.
94	DaShaun Thomas	DL	SO	Huntington, N.Y.
95	Michael Kozlakowski	DE	FR	Lynbrook, N.Y.
96	Erwin Roach	DL	JR	Bloomfield, N.J.
97	Devin Clark	DL	RFR	Baltimore, Md.
98	Craig Capella	DL	SO	Galloway, N.J.
99	Michael Cole	DL	SO	North Brunswick, N.J.
	Cabrinni Goncalves	RB	FR	Taunton, Mass.
	Dimitri Skinsacos	TE	FR	Saco, Maine
	Derick Willis	DB	JR	Boston, Mass.

GSU to play second straight CAA foe

Football

BY JAMES FARMER

George-Anne staff

The Georgia Southern University Eagles will take on their second straight explosive Colonial Athletic Association offense on Saturday against the University of Maine.

The Black Bears and the Eagles have met twice in the playoffs before, with the Eagles winning both matchups, including the first ever overtime game in GSU history.

This season, the Black Bears have reached the playoff matchup against the Eagles after an impressive 8-3 regular season and a win at Appalachian State University.

Special Teams: Trevor Coston is a dangerous punt returner for the Black Bears, averaging slightly over nine yards a return and recording a punt return touchdown.

Brian Harvey has been a sporadic kicker this season only connecting on seven of his 13 kicks, but suffered two blocks to hurt his average. Maine has blocked nine kicks this season, but has allowed seven blocks against them.

GSU's kicking game has been vulnerable to blocks in its last two outings, giving up a field goal block versus the University of Alabama and an extra point block against Old Dominion University.

Laron Scott was relatively contained versus ODU last week, only averaging 23 yards per return after averaging 33.4 yards per return coming into the game.

Stat to watch: 2. After setting an NCAA FCS record with 151 straight extra point makes,

Adrian Mora has now missed two in a row.

Advantage: GSU

Maine offense versus GSU defense: Maine's offense has been productive all year, averaging 29.8 points throughout the season and racking up over 379 yards per game.

Warren Smith ranks 35th nationally in passing efficiency and throws for over 241 yards per game, which should challenge the GSU pass defense, which has looked subpar as of late.

Even though the passing offense is prolific, the running game has been a key factor for Maine as well. Maine has rushed for 24 touchdowns this season, and running back Pushaun Brown crossed the 1,000-yard mark versus App. State.

GSU will follow their normal game plan of shutting down the run first and forcing teams to pass. However, after surrendering 341 yards and five touchdowns to Taylor Heinicke, the Eagles might want to think about changing how they defend the pass.

Smith is not as mobile as Heinicke, which should help the Eagles defensively as they have struggled against mobile quarterbacks this season.

Stat to watch: 265. Against App. State, Maine gained 466 yards, 265 more yards than the Eagles gained against the Mountaineers.

Advantage: Maine

Maine defense versus GSU offense: The Maine defense is very similar to what GSU faced last week in ODU. Michael Cole is a force to be reckoned with on the defensive line, recording 11 sacks, 15 tackles for loss and blocking four kicks.

The defense is tied for 11th nationally in turnovers forced and is 18th in sacks. Maine ranks fourth in their conference against the run,

but still gives up over 145 yards per game.

GSU's offense won the game for them last week. The Eagles never punted the ball while rolling up 706 yards of total offense. However, the offense put the ball on the ground six times, losing two of those fumbles. With this highly disruptive Maine defense, the offense will need to be discipline and maintain ball control.

Stat to watch: 3. The Black Bears held the App. State Mountaineers to three yards rushing last Saturday in Boone.

Final Analysis: The Black Bears will prove to be a formidable opponent for the Eagles.

They have one of the most disruptive defenses in college football and can win close games, winning three games by a combined 10 points at one stretch.

The offense can pass the ball as well as any team that the Eagles have seen this season, which could prove troublesome for the Eagles' 67th nationally ranked pass defense.

If the Eagles can cut down on their turnovers, the offense should be able to run the ball against a team that does not have the advantage of being familiar with the triple option.

Even Alabama had a hard time against the triple option attack of GSU with only one week to prepare. Playing at home is a huge advantage to the Eagles who are undefeated in their last nine home games. The Eagles will be challenged in the matchup, but should emerge victorious behind a redemption-bent defense.

Stat to watch: 7-5. The Eagles are only two games over .500 in the playoffs against current CAA members and have faced a CAA team in four of their last five playoff games.

Final Score: 42-35 GSU

UT&ABOUT

myth:
fact:

drinking is central to the social lives of Georgia Southern University students

78% of Georgia Southern students typically drink once a week or less often

Express Tune & Lube

Tire, Alignment & Exhaust Center

612 S. Zettler Avenue

489-4444

www.expresstuneandlube.com

Monday - Friday 7:30am - 6:30pm

Located a half block north of Wendy's

OIL CHANGE SPECIAL

\$25⁹⁹ Includes up to 5 qts of Castrol 5W20, 5W30, 10W30.

price applies to most vehicles. Expires 12/31/11

www.expresstuneandlube.com



Formerly known as Dale's Transmission

25% off oil change
50% if you bring a friend
AND your friend can have 25% their oil change
ALL MODELS

(912) 489-3498 6762 Cypress Lake Rd Statesboro, GA 30458

FCS PLAYOFF BRACKET



Kelsey Paone/STAFF