

Georgia Southern University

## Digital Commons@Georgia Southern

---

The George-Anne

Student Media

---

12-6-2011

### The George-Anne

Georgia Southern University

Follow this and additional works at: <https://digitalcommons.georgiasouthern.edu/george-anne>



Part of the [Higher Education Commons](#)

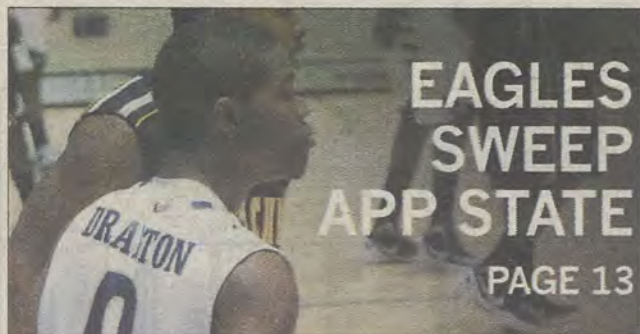
---

#### Recommended Citation

Georgia Southern University, "The George-Anne" (2011). *The George-Anne*. 2732.  
<https://digitalcommons.georgiasouthern.edu/george-anne/2732>

This newspaper is brought to you for free and open access by the Student Media at Digital Commons@Georgia Southern. It has been accepted for inclusion in The George-Anne by an authorized administrator of Digital Commons@Georgia Southern. For more information, please contact [digitalcommons@georgiasouthern.edu](mailto:digitalcommons@georgiasouthern.edu).





**EAGLES  
SWEEP  
APP STATE**  
PAGE 13



**CLUB MUD  
ENCOURAGES  
ARTS**  
PAGE 8



**SWOPE  
FUELS  
SHOOTOUT  
WIN**  
PAGE 14

Tuesday, December 6, 2011  
Georgia Southern University  
www.thegeorgeanne.com  
Volume 87 • Issue 46

# THE GEORGE-ANNE

## Suspect charged with student mail theft

BY LINDSAY GASKINS  
George-Anne contributor

Georgia Southern University police arrested 40-year-old Christopher Lee Shuman, an employee of GSU, on Nov. 29 after he had been suspected of stealing

several students' mail from the campus post office.

"He was sent to the county jail and is still under some sort of investigation," said Captain Terry Briley of GSU's Public Safety.

Shuman was charged with 41 counts of theft by taking, a misdemeanor, according

to the police report.

This investigation was opened on Nov. 22 and lasted through Shuman's arrest on Nov. 29, according to the police report.

Campus postal service workers could not comment because the incident is still under an open investigation.

## Pi Kappa Phi faces hazing allegations

BY LINDSAY GASKINS  
George-Anne contributor

An investigation has been opened for the Pi Kappa Phi fraternity due to hazing allegations that were reported through the Eagle Eye Witness tip line.

Georgia Southern University police were called to the Pi Kappa Phi fraternity house on Olympic Boulevard on Nov. 15 after a complaint was sent out regarding suspicious activities.

"We opened up an investigation to that particular fraternity in reference to an anonymous tip that we received regarding (pledging). We did not find anything criminal so we turned it over to the Dean of Students office who took action on their part," said Captain Terry Briley of the GSU Department of Public Safety.

Captain Briley met with Patrice Buckner, director of Student Affairs in the Dean of Students office, as well as Joy Hamm, director administrative of the Dean of Students office after receiving an anonymous complaint on the Eagle Eye Witness tip line, according to the GSU public safety police report.

"I received some allegations of hazing through an anonymous tip line to the police," said Buckner.

Hazing is something the university takes seriously and will continue to take seriously in order to make appropriate actions, said Buckner.

"We take hazing allegations very seriously, but we also walk through it carefully because we want to protect the rights of all of our students, so there is a balance we

See HAZING, page 6

## LIGHTS ADORN SWEETHEART CIRCLE



Randy Hudgins/ STAFF

Students enjoy the newly lit decorations at Sweetheart Circle last Thursday. Some participate in other activities, such as making cookies and crafts. In attendance were President Brooks Keel, Santa Claus and Ms. Georgia Southern, Anna Treadway. For the full story, see page 7.



thegeorge  
anne.com

| Tues. | Wednes. | Thurs. | Fri. |
|-------|---------|--------|------|
| H 76  | H 74    | H 60   | H 61 |
| L 53  | L 45    | L 36   | L 35 |



Newsroom 478-5246  
Advertising 478-5418  
Fax 478-7113

PO Box 8001  
Statesboro, GA  
30460



# THE UNIVERSITY STORE

*Congratulations Graduates!*

*Diploma Frames*

*Alumni T-Shirts*

*Alumni Decals, Car Tags, & Keychains*



GEORGIA SOUTHERN  
UNIVERSITY



91 Georgia Avenue, Statesboro, GA 30460  
[www.gsustore.com](http://www.gsustore.com) \* (912)478-5181 \* (800)861-7059



## Police Beat

### Monday, Nov. 28

- Officers issued one traffic citation, one traffic warning, assisted five motorists and responded to one alarm.
- A gate lock was damaged at the Auxiliary Services Warehouse.
- A case of harassment was reported at Transportation Services.
- Christopher Lee Shuman, 40, was charged with theft by taking.

### Wednesday, Nov. 30

- Officers issued 14 traffic citations, four traffic warnings, assisted two motorists, responded to one sick person and investigated three accidents.
- A drug complaint was reported at Kennedy Hall.
- Garrett Austin Wilson, 18, was charged with possession of marijuana.
- Brian William Jenkins, 18, was charged with possession of marijuana.
- Nathaniel Roosevelt Abrams, 24, was charged with DUI and safety restraint violation.

### Thursday, Dec. 1

- Officers issued 11 traffic citations, 15 traffic warnings,

assisted five motorists, responded to one alarm and investigated two accidents.

- A drug complaint was reported at Centennial Place.
- An alcohol violation was reported at Centennial Place.
- Corey Mikey Thompson, 20, was charged with leaving the scene of an accident.

### Friday, Dec. 2

- Officers issued four traffic citations, two traffic warnings, assisted five motorists, responded to two alarms and investigated one accident.
- A drug complaint was reported at University Villas.
- A drug complaint was reported at Eagle Village.
- Manson Jimmy Simmons, 18, was charged with DUI (drugs) and possession of a drug related object.

### Saturday, Dec. 3

- Officers issued one traffic warning, assisted one motorist, responded to one sick person and investigated one accident.
- An alcohol violation was reported at Paulson Stadium.
- Christopher Adam Todd, 21, was

charged with interfering with government property and simple battery.

- Devin James Chattman, 18, was charged with obstruction of an officer.
- McClellon Don Cox III, 18, was charged with underage possession of alcohol.

### Sunday, Dec. 4

- Officers issued one traffic warning, assisted one motorist and responded to three alarms.
- Several DVDs and video games were taken from Centennial Place.
- A window was broken on a vehicle at University Villas.
- A fight was reported at University Villas.
- A case of harassment was reported at University Villas.
- A domestic problem was reported at Southern Pines.
- John Ellis Haddad, 19, was charged with public drunk.
- Bradley Charles Taylor, 19, was charged with underage possession of alcohol.
- Emily Claire Torell, 18, was charged with underage possession of alcohol.
- A case of harassment was reported at the Henderson Library.

## Statement of Operations

The George-Anne is the official student newspaper of Georgia Southern University, owned and operated by GSU students using facilities provided by the university. The newspaper is the oldest continuously published newspaper in Bulloch County. The newspaper is a designated public forum for the Georgia Southern community. The newspaper is published twice weekly, on Tuesdays and Thursdays, during most of the academic year. Any questions regarding content should be directed to the student editor by phone at 912.478.5246 or at [gaeditor@georgiasouthern.edu](mailto:gaeditor@georgiasouthern.edu).

**ADVERTISING:** The newspaper accepts advertising. Inquiries may be made by calling 912.478.5418 or 912.478-0566. Fax any questions to 912.478.7113 or e-mail [ads1@georgiasouthern.edu](mailto:ads1@georgiasouthern.edu).

The George-Anne receives additional support, in part, from the Student Activities Budget Committee.

The deadline for reserving space and submitting advertising copy is noon, one week prior to the intended publication date. For more information, rate cards, sample publications, contact the advertising manager or student media director. The advertiser is responsible for any errors in advertisements and its liability for adjustments is limited to the amount of space the error occupied in the ad. Further, the newspaper is not responsible for any damages caused due to an ad's omission from a particular edition and its responsibility solely is to reschedule the ad in the next regular edition at the regular advertising rates.

**STUDENTS BEWARE:** The George-Anne screens all advertisements prior to publication. The newspaper strives to accept ads for legitimate products and services only. Students are urged to exercise caution when replying to ads—particularly those that require personal information. Students are also urged to report to the newspaper any suspicious offers which they might see in an ad.

**PUBLICATION INFORMATION:** The newspaper is printed by Brunswick News at Brunswick, Ga.

**NOTICE:** Unauthorized removal of multiple copies from a distribution site constitutes theft under Georgia law, a misdemeanor offense punishable by a fine and/or jail time.

**Editor-in-Chief** Arielle Coambes  
**Views / Copy Editor** Shauntel Hall  
**News Editor** Jennifer Curington  
**Asst. News Editor** Jessie Reese  
**Arts Editor** Quanyia Epps  
**Asst. Arts Editor** Alex LaSalle  
**Sports Editor** Matthew D'La Rotta  
**Asst. Sports Editor** Jannah Bolds  
**Football Editor** James Farmer

**Business Manager** Tiffany Larkin  
**Asst. Business Manager** Holly Hillhouse  
**Marketing Manager** Aria Gabol  
**Production Manager** Mallory McLendon  
**Photo Editor** Randy Hudgins  
**Design Editor** Kelsey Paone  
**Web Editor** Jonathan Law

## Corrections

Contact the editor at [gaeditor@georgiasouthern.edu](mailto:gaeditor@georgiasouthern.edu) for corrections and errors.

# Suzuki Polaris SeaDoo CanAm

22681 HWY 80 EAST | 1.5 MILES PAST LOWES

## AREA'S LARGEST ACCESSORY SHOW ROOM

SERVICE & REPAIR ALL MAJOR BRANDS

pick up and delivery

[WWW.SPSCstatesboro.com](http://WWW.SPSCstatesboro.com)

912.764.2547

# 20%

Off parts and accessories  
With this coupon



## Our View

### Skate park proposal is good idea

A group of skaters called South and East will be presenting a proposal for a skate park to the Statesboro City Council on Jan. 6, 2012.

With a sizeable skater community, as one glance at the myriad of skaters rolling to and from class during the day indicates, a skate park is a logical step forward for a passionate segment of the community. The obvious benefits of this proposal are for the local skater community.

The proposed skate park would provide a relatively safe environment for skaters, free of inattentive pedestrians and bumps in the sidewalk.

The construction of this park would also provide a legal environment for skaters. The classic "Skateboarding is not a crime" bumper sticker highlights a long-standing issue for dedicated skaters — the availability of space. A legal skating location would also benefit those who would prefer skaters to remain outside of certain areas.

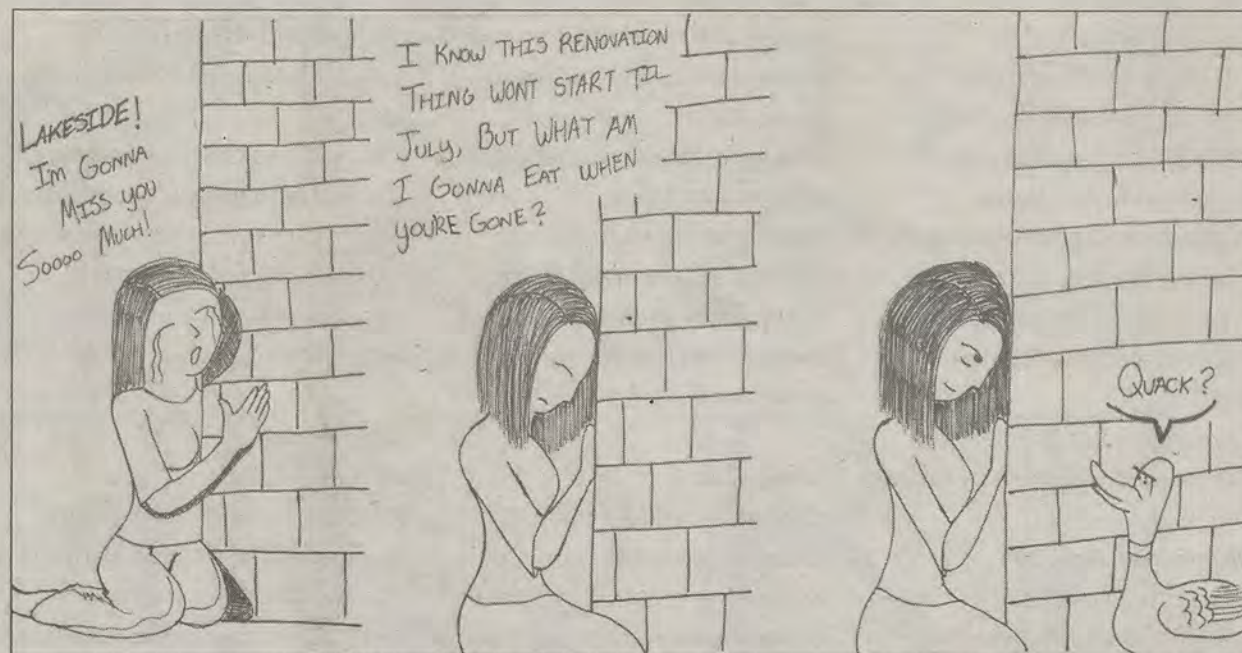
Many active skaters have voiced complaints about the availability of space, complaining about continuously being kicked out of places and taking unnecessary risks in others.

The second major benefit of the proposal is the continued involvement of students with the local government. This issue has gained visibility as of late with the recent vote on Sunday alcohol sales.

The skate park proposal is equally important, as it highlights what can result from student involvement. The passing of this proposal would show students that many positives will result from further involvement and will encourage them to continue the trend to their own, and the community's, benefit.

Campaigning for votes and continued activism will only work for so long, but providing a metaphorical carrot instead of a stick, providing a positive reward for student involvement will encourage many other students to get involved.

Between the positives for the skating community and the positives for students and local government, the skate park proposal should be a clear pass for the Statesboro City Council.



Marcus Barkley/STAFF

## Letters to the Editor

### Council not at fault for delayed law

Dear Editor,

I am writing in response to the "Our View" section of Thursday's publication regarding the city's alcohol ordinances. The feature was titled "City Council should respect votes."

The information reported in this section was absolute garbage. The article basically accused our city council of delaying the Sunday sales of alcohol. This could not be further from the truth.

I attended the city council meeting two weeks ago when alcohol sales were supposed to be discussed, but the issue was tabled because the council wanted to set some more things in order before finalizing the ordinance.

They decided to hold an extra work session (which occurred on Tuesday) to finalize the details.

In essence, the George-Anne criticized the city council for putting

in an extra effort to make sure the ordinance was correct and that everything was in order.

Rob Roberts wrote a colorful column titled "Local government shuns students."

Again, this could not be further from the truth. He argued that "few representatives have acted on the interest of the students."

On the contrary, the students have not acted in their own interest.

Everyone in this publication, the staff, contributors and the students who have been interviewed all feel that the city council doesn't care about the students at GSU.

Yet, for some reason, I never see any of these students attending city council meetings. Come to think of it, I don't recall seeing Rob Roberts at the meetings regarding Sunday alcohol sales.

I have personally spoken to every member of the city council, and every one of them has been nothing

but welcoming and inviting.

They would love to see GSU students regularly attend meetings, participating in local government, but the only ones who show up are there to get a signature for extra credit for a class.

Why should they act in the interests of the students if the students give them no input?

The staff and contributors of this publication need to get their act together and report the truth.

I noticed that there was no mention of the council's discussion on Tuesday to lift open-container laws on certain Friday nights in downtown Statesboro, or the discussion about holding large tailgates downtown on Friday nights before GSU football games.

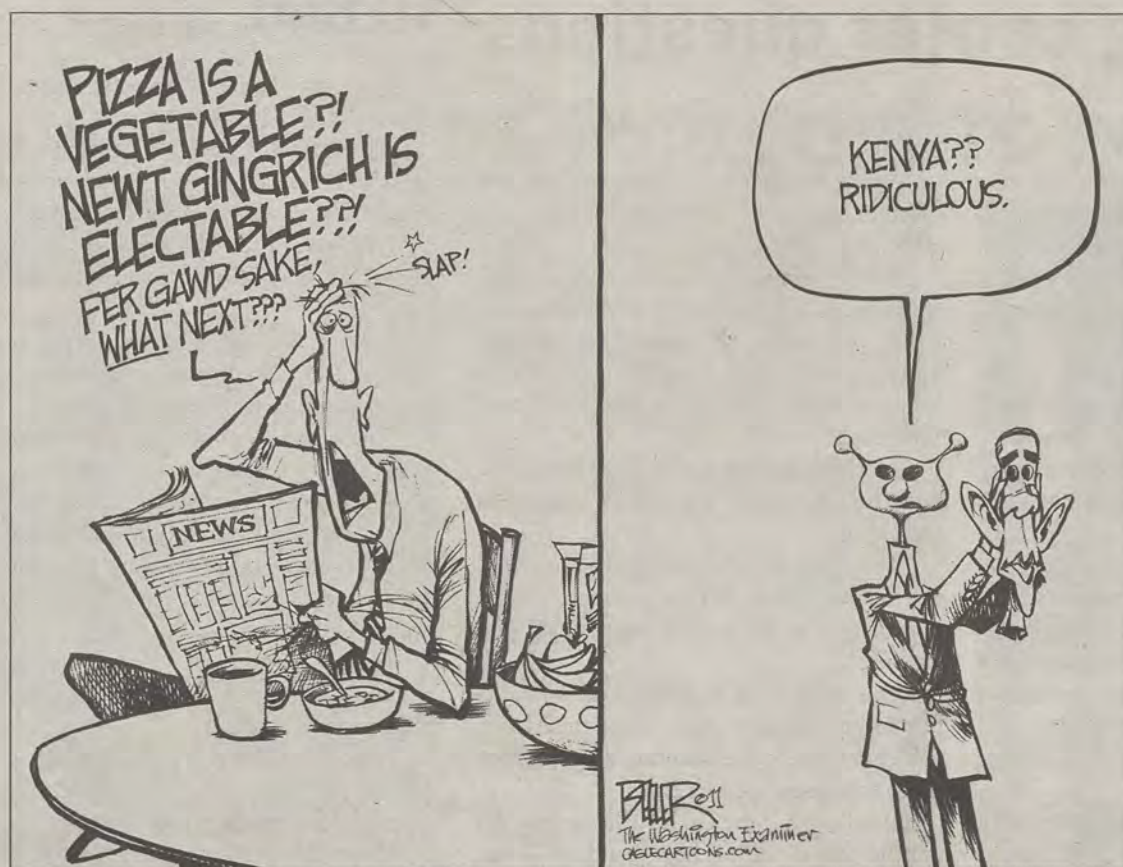
Robert Cotta  
Junior Multimedia  
Communication major  
Alpharetta, Georgia

The George-Anne welcomes letters to the editor and appropriate guest columns. All copy submitted should be 350 words or fewer, typed, and sent via e-mail in Microsoft Word format to [gaeditor@georgiasouthern.edu](mailto:gaeditor@georgiasouthern.edu). All submissions must be signed and include phone number for verification. GSU students should include their academic major, year and hometown. The editors reserve the right to reject any submission and edit submissions for length.

Opinions expressed herein are those of the Board of Opinions or columnists themselves and DO NOT necessarily reflect those of the faculty, staff or administration of GSU, the Student Media Advisory Board, Student Media or the University System of Georgia.

Submit your letters to the editor at [gadaily@georgiasouthern.edu](mailto:gadaily@georgiasouthern.edu)





## Herman Cain owes his supporters

Herman Cain's "postponement" of his campaign doesn't surprise me at all. Well, except for it being "postponed" and not done away with altogether.

Infidelity and sexual harassment are not something you just don't remember or don't think to tell your campaign staff, especially those assigned to the publicity aspect of the campaign. They got all over Clinton for smoking weed when he was 19 — of course they're going to talk about multiple accounts of sexual harassment within the past two decades.

How is it that he could honestly think to himself that he was going to run for the highest office in the United States of America without having his skeletons thrust from the closet into the limelight? It is this, among other things, why I never regarded him as a serious political candidate. Now, I do believe that he was gaining so much popularity and support that he could become a major player in the GOP, but



ROB ROBERTS

never a serious candidate for President. With his only political experience being a 2004 loss in the race for Senate in Georgia, and his talk show on what is now 95.5 in Atlanta, I doubted that he could be taken seriously.

The fact that he put his family through all these trials and tribulations, having all their personal lives put on blast, and ended up giving up says something about him. If he was doing this out of concern for his family, he would have dropped out of the race as soon as the allegations arose.

To me, this seemed like a perfect

opportunity for Cain to stand up and establish himself as a contender and a fierce competitor.

He said the allegations were false. He said he is at peace with his wife. He said his wife is at peace with him. If Herman Cain was so adamant about his innocence, why would he allow this to sway his decision to run?

Other than that, I have one thing to say: PAY BACK ALL MONEY RAISED! Cain needs to pay back all the campaign money he raised because he's done! None of the "suspended" B.S. to continue raising funds — the donors were funding the Presidential nomination, not his "Plan B". You got a lot of support, introduced some ...ideas. Now salvage some character and pay back every cent that was donated to your campaign because you never took this race seriously.

*Roberts is a senior public relations major from Warner Robins, Ga.*

## Newt Gingrich campaign is serious business

Newt Gingrich is now on top of the polls, and he is setting his sights on his election battle with Obama in 2012 with some interesting strategies. He is going after the Hispanic vote, a key demographic in winning both George W. Bush and Obama their elections.

Newt has built, over the last several years, an extensive Hispanic outreach program that none of the other candidates, Republican or otherwise, could even begin to touch. This gives him a huge head start on cutting into Obama's base in key Mountain West states like Colorado, Arizona, and Nevada.

While 2/3 of the Hispanic population is still favorable to the president, Republican officials are saying that if Newt can get at least 40% of those people to back him, it could disrupt Obama's Electoral College strategy in those states.

Newt is also doing something that I personally have never seen in this country. He is not only distributing a Spanish weekly newsletter with the subject line "Newt con nuestros" or "Newt with us," but he is learning to speak the language so he can go on Telemundo and Univision and speak to those people and make them feel like a person who can really communicate with them can represent them.

That combined with his immigration policy that allows workers with deep roots and no criminal history in this country to stay on temporary work visas could spell trouble for Obama.



FRITZ CHAPIN

Newt also plans on attacking Obama where he had the most success in the 2008 elections, in debates and public speaking. Newt plans on challenging Obama to a series of three-hour, no teleprompter, Lincoln-Douglas style debates, which are much more value-based, placing heavy emphasis on logic, ethical values, and philosophy.

This will give the well-versed Speaker a chance to show his experience and charisma against Obama who clings to his teleprompter and prewritten arguments like a child clings to his blanket.

All in all, Newt is a great threat against Obama. While Romney would make a great candidate and challenge the president about the economy, he doesn't have the conservatives convinced that he's their guy. Newt just needs to keep proving he's more conservative than Mitt, keep pushing his record in the 1990s as being one of the engineers of the Republican takeover of the Congress, and keep his personal life under control and out of the spin.

*Chapin is a political science major from Roswell, Ga.*



# Panel answers shooting center questions

BY JONATHAN QUINTYNE

George-Anne contributor

Differing opinions about the proposed Shooting Sports Center prompted a question and answer session for students and faculty to discuss the center on Dec. 2.

The meeting allowed for audience members to voice questions to a panel composed of Director of Public Safety Michael Russell, Executive Director of CRI Gene Sherry and Vice President of Student Affairs and Enrollment Management Teresa Thompson.

The panel discussed the plans for the center and then opened the meeting to questions.

"Anytime you get involved in an issue, it is a good thing to voice your opinions," said Russell.

"I appreciate them being open and setting up a place where we could talk about this," said Dr. Robert Yarbrough, an assistant professor of geography.

Questions from the audience were asked in an anonymous manner.

"Why can't the \$325,000 that goes into Rec Fee reserves go to support former military

students who have mental traumas?" asked an audience member

The \$325,000 from student fees that goes into the Recreational Fee can only be used to support recreational cost, said the panel.

"Do we really want to be known as a university for promoting the use of firearms?" asked an audience member.

"That sounds like a university policy question," said Sherry. "If you would like a university policy answer, speak to the senate."

The panel addressed the subject of guns on campus to which they stated that the gun policy will not change.

"One of the main things we want (people) to know is that the main focus here is archery, shooting will be limited," said Thompson.

The planned center will save a majority of its space for archery, with a smaller portion of the space for shooting, said Thompson.

The members of the audience had varying opinions.

A difference in opinions was expected with such a large crowd to discuss a controversial issue, said Russell.

More specific details could have been

provided in the panel's answers, said Yarbrough.

"They could have elaborated on the specifics, but they did answer what was asked," said Yarbrough.

Security measures that are currently in place are still not adequate enough, said Yarbrough.

"At this point I'm not in support. I'm not convinced that the particular security concerns have been addressed fully," said Yarbrough.

The panel defended the center effectively, said Hunter Collins, a forensics accounting sophomore.

"They were very knowledgeable, prepared and did their research. They provided valuable information to the student population," said Collins.

"This facility will hopefully take away the fear in people about guns. Guns themselves don't hurt people and shooting ranges do not mean shootings," said Collins.

Russell said, "Sure I'm for (the center). It's not that you do it, it is how you do it — just like driving a car, it's not wrong if it's done the right way."

## HAZING, from page 1

have to keep. We will respond appropriately," said Buckner.

Although anti-hazing is strongly enforced by GSU, there has been past occurrences in reference to fraternity hazing, said Buckner.

"We have had allegations of hazing before, at least one every academic year," said Buckner.

There is not yet a determination on whether this can affect other fraternities as well as future pledge classes, said Buckner.

"You never know, until all the information is out there, you never know for sure if there is going to be a change. Since we already have a procedure for how we deal with hazing, we will continue to use that same procedure until something comes to our attention that we need to address," said Buckner.

There is no set consequence set for Pi Kappa Phi until more information is gathered, said Buckner.

"The investigation is still ongoing, so we are not even at the point of deciding punishment at this time," said Buckner.

Hamm declined to comment because the allegations are still an ongoing investigation.

**BLISS BERRY**

FROZEN YOGURT • GELATO • SORBET • SMOOTHIES

"Coolest place to hang out with friends and enjoy a healthy and delicious treat!"

- 10 Flavors of Yogurt
- 55 Toppings to Choose From
- Dairy Free & No Sugar Added Flavors Available
- All Flavors are either Non-Fat or Low Fat-- Less than 140 Calories Per Serving

**1 oz FREE\***

\* Valid through the month of November 11/30/11. Cannot be combined with any other discounts.

\*VOID: \$1 off from 11/10/11 paper

721 SOUTH MAIN ST. #9  
STATESBORO, GA  
LOCATED IN TALBOTS SHOPPING CENTRE  
CONTACT # 912-681-2547

HOURS:  
MON-THURS: 11AM-10PM  
FRI-SAT: 11AM-MIDNIGHT  
SUN: 12PM-10PM



JOIN ON FACEBOOK TO  
LEARN MORE ABOUT  
SPECIALS @ YO BLISS



## Sweetheart Circle lights up for holiday spirit

BY DUSTIN TILLIGKEIT

George-Anne Contributor

The holiday spirit hit campus last Thursday with the Lighting of Sweetheart Circle, where students and the community enjoyed holiday activities and the lights that decorated the area.

The Lighting of Sweetheart Circle is a tradition that has been around at Georgia Southern University for years, and this year the event featured several tables where guests could make a variety of arts and crafts, all Christmas themed — and they could, naturally, pick up hot chocolate and candy.

Christmas carols filled the air as students and community members visited each table, making things like candy cane reindeer, decorated cookies and customized Christmas ornaments.

There was also a snow machine which spread a patch of winter weather for guests to enjoy. Snowball fights quickly ensued as both students and children alike took to the snow and fired volleys at one another.

GSU President Brooks Keel said, "Where else can you get snow in south Georgia this time of year?"

The event kicked off with Brittany Bullock, vice president of the Traditions Council, introducing none other than Santa Claus dressed in his full winter attire. Before taking his seat and taking lists of gifts for children who had come to see him, Santa brought out Ms. Georgia Southern to introduce Keel.

After a brief speech, President Keel was there to pull the ceremonial switch, and the lights decorating Sweetheart Circle came to life. The festivities continued as people got in line for hot cocoa and a table covered in blue and white candy.

"It's a great opportunity for everyone to come out and get in the Christmas spirit," said freshman education major Shaneka Hudson.

As the snow machine started back up after Keel's speech, some students were brave enough to run through the icy spray. Children from the community gathered on the snow to make snow angels and to throw snowballs at each other.

As the sun went down, the lights and wreaths that decorated the buildings lining Sweetheart Circle really started to shine and added a glow of Christmas cheer to campus.

"It gets me into the spirit of Christmas," said Shaquille Christmas, a sophomore pre-vet major.

After paying a visit to the cookie decoration table, Kacie Allen, a freshman pre-pharmacy major, said, "You get to show off your creative side and then eat your artwork."

The event was organized by the Traditions Council, with students coordinating and preparing the features of the event after the lights were set up. Freshman communication arts major Lacey Hall said, "The Traditions Council did a superb job bringing a Christmas atmosphere to campus."

The Traditions Council took time to organize the event with its volunteers lining up all the guests at the event, like President Keel and Santa Claus, and also took time to work at the tables at the Lighting itself.

The Lighting of Sweetheart Circle kicks off the Christmas season for GSU. The lights will remain on for the rest of the semester, adding a little seasonal spirit to Sweetheart Circle.



Randy Hudgins and Lindsay Hartmann/STAFF

The Lighting of Sweetheart Circle, which was Thursday, brings GSU students and the Statesboro community together to celebrate the holidays.

**Left:** The Marvin Pittman Administration Building is now decorated in wreaths, ribbons, garland and lights in celebration of the holidays.

**Top:** Children of the Statesboro community play in the snow courtesy of ice machines provided at the Lighting.

**Bottom:** President Brooks Keel pulls the switch to light the Circle.



# Annual Fraternity step show benefits charity

BY TANIQUA RUSS

George-Anne contributor

The Xi Tau Chapter of Alpha Phi Alpha Fraternity Inc. packed out the Russell Union Ballroom once again for their annual Toys for Tots Benefit Step Show.

Georgia Southern University students, Statesboro residents and students from neighboring colleges were all in attendance to see various non-Greek groups take the stage.

The show was established as a way for the organization to give back to the community. Toys were collected as admission and attendees also had the opportunity to donate money throughout the night. The toys and monetary proceeds from the night were donated to the Toys for Tots Foundation.

"We pride ourselves on not just doing things for the actual campus, but we try to reach out to the community, which is why we do events like this," said Jodie Beckford, senior biology



Taniqua Russ/STAFF

**Members of Dyverzion** dance team performed a number of popular hits during their annual Toys for Tots benefit step show to benefit the Toy for Tots Foundation.

pre-med major and the Xi Tau chapter president.

The competition opened with a Christmas themed routine by Langston Chapel Middle School.

"There was a lot of energy from the parents. The children worked

really hard and it showed tonight on stage," said Christopher Pugh, who is also the assistant director of the GSU Multicultural Student Center. "The children were doing something positive and their hard work paid off."

Then the GSU Euphoria dance

team took the stage, followed by the next competitor, Pureless Perfection, from Georgia State University.

Even though it was not a Greek step show, the divine nine sororities and fraternities had a chance to participate in the event. Pugh, no newcomer

to the stage, used his humorous personality not only to entertain the crowd, but also to initiate a Greek roll call. Afterwards, the members of Delta Sigma Theta, Kappa Alpha Psi, Zeta Phi Beta and Alpha Phi Alpha all performed a stroll.

The competition continued with S.W.A.Z.I. step team from Gordon College and Gamma Kappa Phi from Southwest Dekalb High School.

While the judges were tallying the scores, audience members were given the opportunity to take the stage for a chance to win a prize. Dyverzion dance team followed and dazzled the crowd with its performance.

"Tonight was a great success, we raised so many toys throughout the week and tonight we almost made double what we made all week," said Beckford. "It was one of the most successful Toys for Tots Benefit Step Shows that we've done."

At the end of the night Gamma Kappa Phi came out as the winners and the chapter raised over 200 toys.

## Club Mud showcases various student talent



Lindsay Hartmann/STAFF

**Junior 3D Art major Kayla McCarthy** observes a vase made to be sold during the Club Mud exhibition.

BY COURTNEY ESCHER

George-Anne contributor

As the holidays approach, people begin the hunt for the perfect, one-of-a-kind gift for the ones they love.

Club Mud, Georgia Southern University's ceramics club, sold many of their hand crafted artifacts to students, teachers and members of the community this past weekend.

"Every time I come to this I am astounded at the quality and creativity. It really is a feast for the eyes. It's also timed perfectly for the holidays," said Deborah Losina, a volunteer at the humane society. "People in the community wait all year for this. The hardest part is staying in your budget, because there's so much good stuff, you just want to buy it all."

Members of Club Mud included students from all ceramics classes, teachers and community members.

"It makes me feel good when I see my mom's stuff on display. The

students that contribute to this are so great and talented and Jane is also a really great professor," said Bethany Smith, senior English major.

Talent was seen all around the studio in the form of decorative bowls and plates, statues and figurines, and unique mugs.

"It feels really good when people buy your stuff, because you see it and you know how hard you worked on it, and to see someone loves it as much as you do. It's just awesome," said Sage Kearney, sophomore 3D design major.

Students from jewelry classes also displayed and sold their work to the public during the exhibition.

"It makes you feel important when the things you've created are on display behind a glass case. It's like, 'Hey, I made that and it's awesome and it's out here for the world to see,'" said Emily Stanley, senior studio art major.

Members of the community wait all year for the Club Mud sale and truly appreciate the one-of-a-kind

work they are receiving. Some citizens even return in hopes of finding more art from their favorite Club Mud artist.

"People come back for certain artists for random reasons. I don't know why, but they love it. It's amazing to see people love the stuff that you made," said Jamie Clarke, senior 3D design major.

Artists also found the sale helped boost knowledge of them as artists.

"It's a great opportunity to get your name out," said Toni Todd, junior 2D design major.

"It's so crazy when you're working the sale and someone comes up and asks you, 'Hey, do you know if Hannah Botts has any new stuff this year?' Because then you're like, 'No way, that's me! I'm Hannah Botts!' And it's just really exciting," said Hannah Botts, junior graphic design major.

Club Mud will be holding the same sale this time next year. Twenty percent of proceeds go to Club Mud and 80 percent go to the artists.



# Karaoke night brings students together for fun

BY TANIQUA RUSS

George-Anne contributor

Harmonies, melodies and tunes filled the Russell Union Ballroom as students gathered for karaoke fun on Thursday night.

The karaoke night, sponsored by the Student Employment Center, gave all interested students and faculty a chance to have some fun and relax, while showcasing their singing abilities.

"We wanted to give students an opportunity to relieve end of the semester stress," said Demetrius Bynes, assistant director of employment services.

Students were not shy about participating, but eagerly signed up to perform songs such as "The Real Slim Shady" by Eminem and "I Will Always Love You" by Whitney Houston.

After hearing the fun and excitement that was taking place in the Ballroom, students who were originally unaware of the event came down to sign up.

The night's fun did not just stop at singing, the crowd of students even broke out in popular dances such as "The Wobble" and "The Cha Cha Slide."

The SEC gave out prizes to students all night long, which added to the already enjoyable and unwinding experience.

According to Bynes, this is the first time the Student Employment Center has hosted a karaoke night and they are looking forward to making it an annual event.

"I was pleased with the turnout and student participation," said Bynes. "It is always good for us to see students enjoy themselves, while promoting what we do on campus."

Students were singing and dancing the whole night long, which lasted for about three hours, and really enjoyed having a good time before the final weeks of the semester.

"I think it went great. A lot of students came



Rebecca Farris/STAFF

Students gathered in the Russell Union ballroom to sing various popular hits from different genres of music at Karaoke night.

out and everyone was having a good time," said Rieshawn Williams, a personnel specialist for employment services.

The SEC prides itself on helping students work on campus and around the community, which they achieve through job fairs and other on campus events.

"We help students find jobs and we are happy to assist with any employment opportunity," said Bynes.

According to Bynes, the SEC is looking to hold an event each month next semester which will serve as a tool to assist students while also creating an environment in which they can have fun.

THE STUDENT MEDIA

## Pitch-In

SOFTBALL  
INVITATIONAL



*The Major leagues are finished. Eagle baseball doesn't start until February. To get your fix, join your classmates and colleagues from the Division of Student Affairs & Enrollment Management as we play.*

Friday, December 9, 2011

6-9 PM @ the RAC.

All proceeds go to a local charity.

*Sponsored By Papa John's, University Store, Ellianos, and more*

UT&ABOUT



### Express Tune & Lube

Tire, Alignment  
& Exhaust Center

612 S. Zetterower Avenue

489-4444

www.expresstuneandlube.com  
Monday - Friday 7:30am - 6:30pm

Located a half block north of Wendy's.

### OIL CHANGE SPECIAL

**\$25<sup>95</sup>**

Includes up to  
5 qts of Castrol  
5W20, 5W30, 10W30.

price applies to most vehicles. Expires 12/31/11

www.expresstuneandlube.com



# CLASSIFIEDS

This page brought to you by Career Services  
Explore • Experience • Excel

10 Tuesday, December 6, 2011

The George-Anne

## For Sale

FOR SALE - 17 inch custom Ford Mustang rims and 17 inch custom Chevy Impala rims. Contact Ron: (912) 486-6611

Scooter for sale! 2005 Honda Ruckus. Black, 49cc, 85+mpg. Fantastic condition; original (faculty) owner, garage kept. No special license or insurance required. \$1,500 OBO. Contact (912) 678-6052

Firewood for Sale. Delivery available! Call 912-690-0872 or 912-690-4956.

For sale: 2009 BMW 328i, hard-top convertible in great condition. Black with tan interior. Call 912-293-1909.

## Misc.

Will proof papers (grammar, spelling, punctuation, sentence structure): Quality work, reasonable prices. Will also type short projects. Must have ample lead time to schedule. Email auntre01@gmail.com

## Subleases

Subleasing 3 BR/2BT house on Parker Avenue in downtown Brooklet. Extremely large media room! Located on two city lots. Contact Joyce at (912) 842-9479.

2 Bedroom 2 Bathroom apartment in Hawthorne 2. Very close to campus. \$350/month. Sublease through July. Contact Shannon at 678-468-9407

Subleasing master bedroom in Planter's Row for \$365/month; utilities not included, pet friendly. For more information contact Anna-Marie at at01770@georgiasouthern.edu or call (770) 546-6560

Home Away From Home 3BR/2BT within 2 miles of Georgia Southern campus. You can sublease the other 2 rooms. No smoking or pets. Call (706) 951-1427.

Subleasing a 2 BR/2 BR at the Woodlands of Statesboro for Spring 2012. \$399 a month, utilities not included. Contact Adrian at (678) 230-5144.

## Subleases, cont.

2 BR/2 BT sublease in Georgia Villas. \$475/month for both rooms, utilities not included. Available Jan-May, pet friendly. Right across from Greek Row on Chandler. Email tl00212@georgiasouthern.edu

Female to sub-lease Spring Sem. 5 BR, \$280 a month. Last month's rent is paid. Less than a mile from campus off of Gentilly Rd. Call, text or email Kristina: (678)-770-6251 kf01606@georgiasouthern.edu

Subleasing 626 B at the Exchange. Female Roommate needed. \$519.00 per month. All utilities included, free tanning, free Wi-Fi, 24 hr gym included. Available now. Contact (706) 523-6001

Room available for male or female in a 3 BR/2 BT house on Catherine Avenue. Fully furnished; bed needed. \$367/mo per person, utilities not included. Spacious house. Contact Yale at (404) 272-7652 or yale8754@bellsouth.net

## Subleases, cont.

Subleasing my room for Spring 2012 in a fully furnished 4 BR/4 BT 3-story town home. Walking distance from the stadium and bus stop. Contact Alex at (770) 712-5377 or ao00837@georgiasouthern.edu

Spring 2012 1 BR/1 BT in a 2 BR/2.5 BT townhouse at The Avenue. Furnished and utilities included. \$495/month, but I will pay \$30 for each month. Or I could put \$210 towards the first month's rent. Contact Cherelle at chollan4@georgiasouthern.edu

All inclusive, two story, fully furnished, 4 BR townhouse for \$330/month! Includes trash, utilities, cable, wi-fi, pet park, 24/7 gym, recreation courts, computer lab, new appliances and washer/dryer! Contact (229) 326-4291.

Subleasing a 1 BR/1 BT in 4 BR apartment in Copper Beech for Spring 2012 starting Christmas Break. Washer/dryer included. Next to pool/volleyball court. \$389/mo plus utilities. Contact Singer (404) 680-7240

## Subleases, cont.

SPRING 2012! Female roommate wanted. 1BR/1BT in a 3BR/3.5BT townhome. Walking distance to the stadium and bus stop. \$400/mo., gym and pool included. Cheaper rate can be arranged. Contact Emily at 404-444-8987 or ec01442@georgiasouthern.edu

SPRING 2012! 1 BR/1BT available in 4 BR/4 BT at Campus Club for Jan or earlier. Bus stop next to stadium. Utilities included. Rent is \$419/month; CHEAPER RATE CAN BE ARRANGED. Email Skyler at sh02071@georgiasouthern.edu

1 BR/1 BT available in a 3 BR at The Grove, for Spring 2012. Available after Dec. 20. \$450/mo, utilities included. Pet friendly, pool. I will pay last month's rent. Female preferred. Call Ellen 404-694-1394 or email ej00034@georgiasouthern.edu

Female roommate needed for Spring 2012; 3BR/3BT at Cambridge; \$449/mo all inclusive and furnished; one building away from bus route, 1st floor. Contact Angelica 404-921-4988.

## Subleases, cont.

Subleasing a room in 4 BR/2BT in The Avenue for Spring 2012, but available as early as Dec 16 and Dec will be paid for. \$325/MO. Furnished, utilities included with free Wifi and Cable. Contact Nikki at (678)525-0297.

Sublease available ASAP. at Copper Beech. \$389 rent monthly. Utilities not included. 3 roommates. Great neat and clean girls to live with. Fully furnished. 478-957-1005 for more information.

Sublease at Cambridge for Reduced Price 1 BR/BTH available in a 3 BR, bus stop directly across from campus, all utilities included, furnished, washer/dryer, amenities. \$350/month \*Regular price-\$459/month.\* Email shortiecutie102@yahoo.com

## Help Wanted

MODELS of all weights/sizes/ages needed for figure drawing class on T&R, 2-4:30 PM. Fall and spring openings. Must be 21 and able to sit still for long periods of time. Call 912-478-2793 or email jburke@georgiasouthern.edu

## Advertisement

# Have a job? Tell us!

One of the most exciting bits of news that a student can share is that they have a new job. Be this a full-time career or an internship, the excitement of gaining that job is overwhelming.

Career Services wants to be one of the people you tell about your new achievement. Through our Eagle Career Net system you can report your exciting news. Follow the directions below to get started:

1. Log into Eagle Career Net via [www.georgiasouthern.edu/career](http://www.georgiasouthern.edu/career)
2. Click the "Profile tab at the top
3. Then select "Report Job Offer" in the

middle of the page

4. After clicking "Add New" fill out as much information as you wish.

Your Eagle Career Net username is your Eagle ID number. If you do not have your password click "Forgot Password"; it will be reset and emailed to your Georgia Southern email account.

Thank you for sharing with us your news! It is always exciting to hear what Georgia Southern University students are doing to achieve their goals. If you need help please contact Career Services at 912.478.5197.

# HOT JOBS

# Cool Internships

| Job Title                               | Company                         | Deadline to Apply |
|---|---------------------------------|-------------------|
| High School Math Teacher                | Randolph County Schools         | Dec. 30, 2011     |
| Internship: 2012 Operations Coordinator | Teach for America               | Jan. 29, 2012     |
| News Director/Executive Producer        | WRDW-TV News 12                 | Feb. 29, 2012     |
| Environmental Studies Internships       | Smithsonian Institute           | Dec. 30, 2011     |
| Community & Family Initiatives Intern   | Georgia Family Council          | Mar. 16, 2012     |
| Industrial Engineer                     | SRG Global                      | Dec. 28, 2011     |
| Intern Program                          | SJAC Food Groups/Zaxby's        | Dec. 17, 2011     |
| SAP Business Analyst Reporting Intern   | Newell Rubbermaid               | Dec. 30, 2011     |
| Project Coordinator                     | Tech. College of the Lowcountry | Jan. 2, 2012      |
| Police Officer                          | City of Decatur                 | Dec. 31, 2011     |
| Entry Level Sales/Recruiter             | TEKsystems                      | Dec. 26, 2011     |
| Store Management Internship             | Kohl's Department Stores        | Dec. 31, 2011     |
| Subscription Sales Rep.                 | Black Book                      | Dec. 31, 2011     |
| Internship                              | Cumulus Media                   | Dec. 31, 2012     |
| Store Management Internship             | Kohl's Department Stores        | Dec. 31, 2011     |
| IT Assistant - Atlanta                  | GradStaff                       | Feb. 28, 2012     |
| Emma Graham Design Consultant           | Emma Graham Designs             | Dec. 23, 2011     |
| Sports Advertising Sales Executive      | National Sports Publications    | Jan. 10, 2012     |
| National Intern                         | Project Vote Smart              | June 26, 2014     |
| Account Executive                       | Cumulus Media                   | Dec. 31, 2011     |

To view the detailed job descriptions application instructions or additional postings, log into the Eagle Career Net/NACElink system found at [www.georgiasouthern.edu/career](http://www.georgiasouthern.edu/career).

# EDUCATION CAREER FAIR

Thursday, December 8, 2011  
2:00 p.m. to 5:00 p.m.  
Russell Union Ballroom

Questions? Contact Career Services at 912.478.5197



# PUZZLES/COMICS

www.thegeorgeanne.com

Tuesday, December 6, 2011 11

## Los Angeles Times Daily Crossword Puzzle

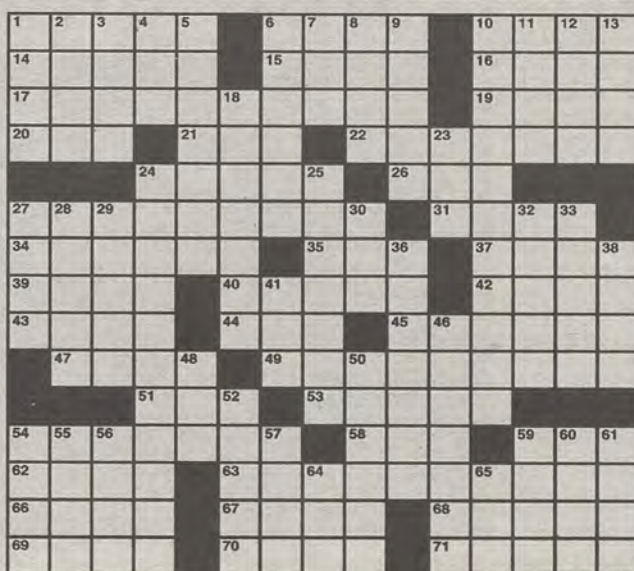
Edited by Rich Norris and Joyce Lewis

### ACROSS

- 1 Derby drink
- 6 Scully on "The X-Files"
- 10 "Wasn't I amazing?!"
- 14 Met offering
- 15 Carded at a club
- 16 "It's \_\_\_ to tell ..."
- 17 Caribbean preserves?
- 19 "Amazing!"
- 20 NBA tiebreakers
- 21 Mine of movies
- 22 Vitality
- 24 WWI's Red \_\_\_
- 26 Moths-flame connector
- 27 South American fellow?
- 31 Backed-up, in a way
- 34 Lined up
- 35 Not blabbing
- 37 \_\_\_-Z: classic Camaro
- 39 The Bee Gees' "Gee"
- 40 Fred's dancing sister
- 42 Prefix with -naut
- 43 Japanese noodle
- 44 "\_\_\_ dum tootin'!"
- 45 Arrives
- 47 Zero, to Zapata
- 49 North American food container?
- 51 Available sans Rx
- 53 Hogwarts motto language
- 54 On a rampage
- 58 Oatmeal cooker
- 59 Corp. leader's degree
- 62 Many a Saudi
- 63 Balkan priestly vestment?
- 66 Oscar winner Minnelli
- 67 Brio
- 68 Harriet's TV hubby
- 69 Bakery worker
- 70 Polite rural agreement
- 71 Ceaselessly

### DOWN

- 1 One-named singer with the debut album "Leave (Get Out)"
- 2 \_\_\_ the crack of dawn
- 3 Moon landers, briefly
- 4 Internet \_\_\_
- 5 Pal
- 6 Play exchange
- 7 Noun modifier: Abbr.
- 8 Spring tide counterpart
- 9 Allow entry
- 10 East African beachgoer's color?
- 11 On a liner, say
- 12 Cameron on camera
- 13 1998 insect-vestment? - world animated film
- 18 Seed used in sauerkraut
- 23 Cagey locale?
- 24 West Indies watering hole?
- 25 C or D, to old Romans
- 27 A cappella group bookings
- 28 Confederacy foe
- 29 Start of a Flintstone cry
- 30 Brynner of "The Ten Commandments"
- 32 Dimin.'s opposite
- 33 Andrea \_\_\_: ill-fated ship
- 36 Nuclear test unit
- 38 Yale Univ. state
- 41 Yule's mo.
- 46 Textbook update specification
- 48 Got into a stew?
- 50 Flamethrower fuel
- 52 \_\_\_ eights
- 54 Indonesian island
- 55 "Modern Family" actor Stonestreet
- 56 Demolish, as a building
- 57 Bauhaus painter Paul
- 59 Pencil puzzle
- 60 Pancake with caviar
- 61 In the sack
- 64 Eng. majors' degrees
- 65 Nitrogenous dye



By Julian Lim

December 1st Puzzle Solved 12/6/11

|   |   |   |   |   |   |   |   |   |   |   |   |   |
|---|---|---|---|---|---|---|---|---|---|---|---|---|
| A | L | O | F | T | C | R | A | M | P | T | B | S |
| K | A | Z | O | O | E | A | G | E | R | A | R | E |
| A | S | S | U | M | E | D | N | A | M | E | H | O |
|   |   |   |   |   | R | E | L | E | A | S | E |   |
| H | E | A | T |   | I | S | M |   | S | E | E | D |
| E | A | C | H |   | O | H | G | E | E |   |   |   |
| F | R | E | E |   | B | I | K | E | P | A | T | H |
| T | E | L | S | T | A | R |   | R | A | T | T | A |
|   |   |   |   |   | D | A | T | A | B | A | S | E |
|   |   |   |   |   | A | G | E | N | T |   | E | K |
| S | C | A | T | S |   | R | E | A |   | P | U | N |
| W | I | N | E |   | G | R | A | B | B | A | R |   |
| E | G | G |   |   | M | A | I | N | S | T | R | E |
| P | A | R |   |   | H | I | N | G | E |   | I | S |
| T | R | Y |   |   | O | L | D | E | N |   | A | S |

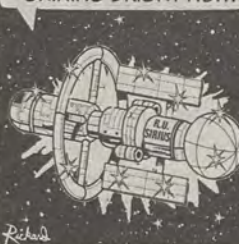
I WANNA DECORATE THE R.U. SIRIUS. OUR SPACE STATION WILL BE THE CHRISTMASIEST IN THE GALAXY.

I DON'T THINK THAT'S A WORD.



LATER ...

OUR STATION IS REALLY SHINING BRIGHT NOW!



UH ... MAYBE TOO BRIGHT.



Welcome to Falling Rock National Park by Josh Shalek



|  |   |   |   |   |   |   |   |   |
|--|---|---|---|---|---|---|---|---|
|  | 8 | 2 |   | 6 |   | 4 |   |   |
|  |   |   |   | 8 | 4 | 7 |   | 6 |
|  |   |   |   |   | 9 |   | 3 |   |
|  | 4 |   |   |   |   |   | 2 | 3 |
|  |   |   |   |   | 8 |   |   |   |
|  | 5 | 6 |   |   |   |   |   | 7 |
|  |   |   | 1 |   | 5 |   |   |   |
|  | 7 |   |   | 4 | 2 | 8 |   |   |
|  |   |   | 9 |   | 7 |   | 6 | 8 |

## Sudoku

|   |   |   |   |   |   |   |   |   |
|---|---|---|---|---|---|---|---|---|
| 5 | 9 | 1 | 7 | 3 | 6 | 2 | 4 |   |
| 3 | 1 | 6 | 8 | 2 | 4 | 5 | 7 | 9 |
| 4 | 2 | 7 | 6 | 5 | 9 | 1 | 3 | 8 |
| 1 | 7 | 8 | 4 | 3 | 6 | 9 | 5 | 2 |
| 6 | 4 | 5 | 9 | 8 | 2 | 7 | 1 | 3 |
| 9 | 3 | 2 | 5 | 1 | 7 | 8 | 6 | 4 |
| 8 | 5 | 2 | 6 | 1 | 4 | 9 | 7 | 3 |
| 7 | 9 | 1 | 7 | 4 | 8 | 6 | 9 | 5 |
| 2 | 6 | 4 | 3 | 9 | 5 | 2 | 8 | 1 |

**LATTE DA**  
Coffee Cafe



GET SPECIAL OFFERS  
AND PERKS BY TEXTING  
"LATTEDA" TO 99000

Magazines & Muffins - Every Thursday from 10:30am - 1200pm @ the Williams Center Gazebo



## Eagles survive second-round shootout

BY JAMES FARMER

George-Anne staff

The Old Dominion University offense played a nearly flawless game on Saturday, but one mistake they did make came back to haunt them in the 55-48 Eagle victory.

Nick Mayers fumbled in the fourth quarter to give Georgia Southern University a chance to extend its lead to 14 points and seal the game.

"We couldn't stop them, and we were really struggling to get them off the field, and they don't turn the ball over very much," said head coach Jeff Monken. "Our guys just knocked it out, he caught the pass and they knocked it out. It was a big play — we needed to get the ball back."

The GSU offense played one of its best games of the year, rolling up an astounding 607 yards of offense

despite fumbling the ball six times and losing it twice.

"That's just our job as an offense to put points on the board," said Jaybo Shaw. "The coaches gave us a great scheme. They got us ready in our week off."

Freshman running back Dominique Swope proved that he could rise to the pressure of being a starter at running back, rushing for 255 yards and breaking Adrian Peterson's 13-year record for most yards gained by a freshman. Ironically, Peterson's 232 yards rushing as a freshman came in the second round of the NCAA playoffs, just like Swope's.

Swope also set a new GSU playoff record for longest rush, with a 76-yard touchdown run.

"Jaybo made a great read, and he got outside linebacker leverage and I had great blocking down the field,"

said Swope.

ODU freshman quarterback Taylor Heinicke played extremely well back in his home state of Georgia. He completed 25-44 passes for 341 yards and 5 touchdowns, as well as rushing for 75 yards and an additional score.

"It was frustrating but at the same time it was fun. It was one of those games," said Heinicke.

In total, the Monarchs rolled up 48 points and 560 yards on Saturday while only punting the ball twice.

"They have a great offense, they have a great quarterback and he did some things and made plays," said Brent Russell.

ODU head coach Bobby Wilder was pleased with his team's performance, but was disappointed with a call that the referees made on his team's onside kick attempt.

"What the game came down



Lindsay Hartmann/STAFF

Blake DeBartola (77), Nico Hickey (20), William Maxwell (51) and Tyler Sumner (88) celebrate after scoring a touchdown Saturday versus Old Dominion.

to was what I'll call a call I didn't agree with at the end," said Wilder. "It's disappointing that it came down to that."

GSU will play Saturday at 2 pm versus the University of Maine at Paulson Stadium. Student tickets are \$5.



### Hungry Howie's

FLAVORED CRUST PIZZA

Pick Up or Delivery

**\$7.77 LARGE 1  
TOPPING PIZZA  
(\$3 more - make  
it a works!)**

**Free Flavored Crust!**

607 Brannen Street (912)764-6565



434 South Main Street Statesboro, GA 30458

912.489.8658

**\$3 off**

**\$10 Purchase**  
Bring student id  
and redeem coupon

**\$5 off**

**\$20 Purchase**  
Bring student id  
and redeem coupon



# Eagles dominate App State in SoCon challenge

## Men's basketball

BY CLINTON HINELY

George-Anne contributor

The Georgia Southern University men's basketball team started hot in a dominating win over Appalachian State University, 73-62.

GSU started off on a 23-5 run in the first nine minutes of the game. The team's intensity and physicality was unmatched at the beginning and throughout the game.

The Eagles shot an incredible 50 percent from behind the three-point line and forced the Mountaineers to turn the ball over 17 times. GSU also out-rebounded a larger App. State team 35-32, showing the team's hustle and determination to not be pushed around in the paint.

"I'm extremely proud of my team," said head coach Charlton Young.



Christian Washington/ STAFF

Sophomore guard **Eric Ferguson (3)** slam dunks the ball on a fast break.

"App. State is huge and they are very good. Their size and strength we were prepared for because of the tough opening schedule we have played."

The final score does not reflect

the Eagles' efforts in a game which App. State struggled to keep the score within 20 points most of the night.

"We came out here and tried to prove that we can be the best team

in the SoCon," said sophomore guard Eric Ferguson.

Ferguson had another outstanding game, leading the team with 15 points and nine rebounds, just barely missing out on his second double-double of the season. Senior guard Ben Drayton added 14 points while fellow senior guard Willie Powers contributed 11 points and eight assists. Sophomore guard Tre Bussey had a solid night with 12 points and four rebounds coming off the bench.

The Eagles are now 2-0 in the conference for the first time since the 2005. This win also doubles the Eagle's conference win total of last season.

"All the fans coming out and supporting us, it really helped us out," said Bussey. "And our bench, coaching staff and our managers are pulling for us and making us better."

The Eagles are currently 3-1 in the friendly confines of Hanner

Fieldhouse, but are yet to pick up a win on the road. The team needs to end that streak with a big four-game road trip starting Dec. 10 at Eastern Kentucky University.

"We do have to learn how to win on the road," said Young. "To win a championship you have to hold down your home court, which we have, and you have to steal at least one game every other trip."

"A way to win on the road is don't turn the ball over, make free-throws, make the easy plays and try to keep the crowd out of games," Young said.

There are no Southern Conference games for GSU until Jan. 5, therefore we can see the Eagles atop the conference standings well after Christmas.

The view from the top is beautiful, but GSU will need to continue to grow and improve from game to game to maintain their position in the conference until the season's end.

**TOKYO**  
JAPANESE RESTAURANT  
sushi, steak, seafood

912-871-8888  
912-871-6666  
100 Hampton Ave. #1A  
Savannah, GA 31405  
www.tokyooofgsu.com

**Every Tuesday 4 - Close**  
**20% off Sushi Rolls, Eat in Only!**

*Located between the Hospital and McDonalds*

**TOKYO'S LUNCH SPECIAL BOX**  
**\$7.95 FROM 11AM - 3PM**  
*Pick any two for your lunch, soup, salad, and rice included*

| ROLLS           |                          | KITCHEN                        |                      |
|-----------------|--------------------------|--------------------------------|----------------------|
| 1) California   | 10) Super Snow Crab      | 1) Chicken Teriyaki            | 5) Vegetable Tempura |
| 2) Tuna         | 11) Spicy Tuna           | 2) Beef Teriyaki               | 6) Chicken Tempura   |
| 3) Samon        | 12) Spicy Shrimp Tempura | 3) Shrimp Teriyaki             | 7) Chicken Katsu     |
| 4) Eel          | 13) Spicy Samon          | 4) Shrimp Tempura              | 8) Pork Katsu        |
| 5) Cucumber     | 14) Spicy White Tuna     | <b>SUSHI OR SASHIMI (3pcs)</b> |                      |
| 6) Avocado      | 15) Spicy White Fish     | 1) Tuna                        | 6) Octopus           |
| 7) Alaska       | 16) Samon Skin           | 2) Salmon                      | 7) Yellowtail        |
| 8) Philadelphia | 17) Spicy Crunch Shrimp  | 3) Shrimp                      | 8) White Tuna        |
| 9) Playboy      | 18) Spicy Crunch Crab    | 4) Crab                        | 9) Red Clam          |
|                 |                          | 5) Egg                         | 10) Saba             |

**FREE**  
**Edamame**  
(Steamed Soy Bean)  
**with the purchase**  
**of an entree**

**Orient Express**

**15 University Plaza**  
**(912) 681-9777 or (912) 681-9888**

**WE DELIVER!!!**  
(\$10 minimum)

**www.orientexpressofgsu.com**

**10% off DINNER ONLY\***

**if you bring in this clipout**  
**\*delivery not included**



# Swope sets career-high in first playoff game

## Football

BY DERREK ASBERRY

George-Anne staff

For freshman running back Dominique Swope, big games do not seem to bring intimidation.

In Georgia Southern University's Southern Conference title game against the Wofford College Terriers, the freshman rushed for 165 yards on 27 carries to help the team clinch the SoCon title. A week later, he rushed for 153 yards on 18 carries against the University of Alabama Crimson Tide, the highest total the Tide has given up to a player all season.

Saturday, Swope got the start against the Old Dominion University Monarchs in his first college playoff game. The freshman responded by recording his career high in rushing, gaining 255 yards on 31 carries.

While many look at the positives, Swope is focused on preventing the fumbles in Saturday's game from happening again.



Lindsay Hartmann/STAFF

**Dominique Swope (31)** rushes against Old Dominion on his way to a career-high 255 yards.

"This wasn't one of my best games, because I had two fumbles, which I will work on in

practice," Swope said. "But, offensively, I think we did a great job."

Swope started strong for the Eagles, rushing for 55 yards in the first quarter alone. He recorded the Eagles' second touchdown of the game with just over a minute left in the first quarter to give the team a 14-7 lead. Swope helped the offense move the ball down field by rushing for 85 yards by halftime.

"He makes it easy on me," said quarterback Jaybo Shaw. "He's an outstanding player and he'll be the first one to tell you the credit goes to the offensive line. He's a special player and I'm glad he's on our team."

In the third quarter, Swope broke down the Monarch defense. On the first play of the half, Swope ran the ball downfield for a 72-yard touchdown run to break the 28-28 tie. Swope added 70 more yards in the quarter, and 29 yards in the fourth to reach the 255-yard record. He is the first Eagle to reach the 200-yard milestone since quarterback Jayson Foster in 2007.

"Dominique deserved an opportunity to slug it out and see if he can be a starter," said coach Monken. "He got his opportunity and he's really performed well."

# Planters ROW

By Hendley Properties

912.681.1170  
www.hendleyproperties.com

3 bedroom  
cottage  
house

\$365  
/month per person



**R. J. Pope**  
Men and Ladies Apparel

Your supplies for mens & womens jackets

764.6973

840A Buckhead Dr. & 5 South Main St.

patagonia®

SOUTHERN TIDE

vineyard vines®  
martha's vineyard

THE NORTH FACE

POLO  
RALPH LAUREN

MOUNTAIN  
HARD WEAR



# Intramural Sports Scores

## Indoor Volleyball

Size Over Everybody 0 (0-0) **Delta Force 2.0 2 (10-10)**

Average Joes 0 (20-18) **Hit-Men 2 (25-25)**

Safe Sets 0 (11-7) **Bob Squad 2 (25-25)**

**Practice Safe Sets 2 (22-25-15)** Our Chicks Dig Our Balls 1 (25-20-12)

**Set to Kill 2 (25-25)** No Scrubs 0 (11-19)

Good Volley Ms. Molley 0 (15-19) **Back That Ace Up 2 (25-25)**

**Size Over Everybody 2 (25-27)** Hold My Digggg! 0 (19-25)

**Delta Force 2.0 2 (27-23-15)** Welp See Ya Later 1 (25-25-6)

Southern Adventures 0 (0-0) **Average**

**Joes 2 (10-10)**

Nuckin' Futs 0 (5-7) **Hit-Men 2 (25-25)**

Spike This 0 (8-19) **The One Hit Wonders (25-25)**

Set to Kill 0 (19-23), **The One Hit Wonders 2 (25-25)**

**We Always Get It Up 2 (26-26)**, Bob Squad 0 (24-24)

Alpha Delta Pi 1 (25-21-13), **Size Matters 2 (11-25-15)**

Delta Force 2.0 0 (16-20), **Hit-Men 2 (25-25)**

**Set To Kill 2 (19-25-15)**, Back That Ace Up 1 (25-14-7)

## Indoor Soccer

Didiers 3 **Aston Manpoolhamingtonlivercity Utd 5**

Blacklist 0 **STRIKERS FC 4**

**Big Bag of Ballers 4** Shredsters 5

**The Antarctica National Team 2** Stern But Fair 0

**Kickin' It Old School 8** Bro Montana and the 69ers 3

Sour Diesel 2 **Caucasian Invasion 4**

Keystone United 2 **John FC 7**

Los Leones 1 **Thunderblasts 6**

Catholic Eagles FC 3 **Jager Bombs 10**

**Five Dollar Footlongs 4** Booty Bandits 2

Dino & Friends 5, **Catholic Eagles 9**

**Scorgy 3**, Charismatic Camels 2

Lady Bugs 2, **Balls and Dolls 9**

Dynamo Athletic 3, **Just a Lil Bi-Curious 5**

**Dubriders 4**, Munchma Ballsoff 0

#YouPlaySoccer? 3, **#swag FC 4**

**Five Dollar Footlongs 8**, Jager Bombs 4

**Alpha Tau Omega 4**, Pi Kappa Alpha 0

Delta Chi 5, **Delta Tau Delta 9**

Mike Ann Deathwalkers 3, **One Shot Away From Scoring 4**

**Aston Manpoolhamingtonlivercity UTD 4**, Strikers FC 1

**John FC 3**, Thunderblast 2

Kickin' It Old School 4, **Caucasian Invasion 5**

The Antarctica National Team 1, **Shredsters 4**

**Scorgy 6**, Catholic Eagles 3

Haymakers 3, **IS 8**

Dubriders 2, **#swag FC 5**



**TROY MARSH**  
THE MARSH LAW FIRM

WHAT: **FREE** LEGAL HELP

WHERE: ROOM 2073 IN THE RUSSELL UNION

WHEN: EVERY TUESDAY 3:00-5:00 PM

TO SCHEDULE AN APPOINTMENT, CALL (912) 764-7388

SPONSORED BY



STUDENT GOVERNMENT ASSOCIATION  
YOUR STUDENT ACTIVITY FEES AT WORK.

## CRI January Preview

### INTRAMURAL SPORTS

Pre-Season Basketball, Basketball  
& Wheelchair Basketball  
Registration Opens January 9th!

### POLAR BEAR PLUNGE

Monday, January 23rd, 7-9PM

### BOOT(Y) CAMP

Registration Ends & Classes Begin  
Tuesday, Jan. 24th, 7PM

### SOUTHERN ADVENTURES TRIPS

Kayak with Manatees, Jan. 27th-29th  
Registration Opens For All Trips  
January 17th!

FOLLOW US!



facebook.com/GSUCampusRec  
twitter.com/GSUCampusRec



WWW.GEORGIASTATEUNIVERSITY.EDU/CRI



IT'S YOUR LIFE...

**LIVE IT!**

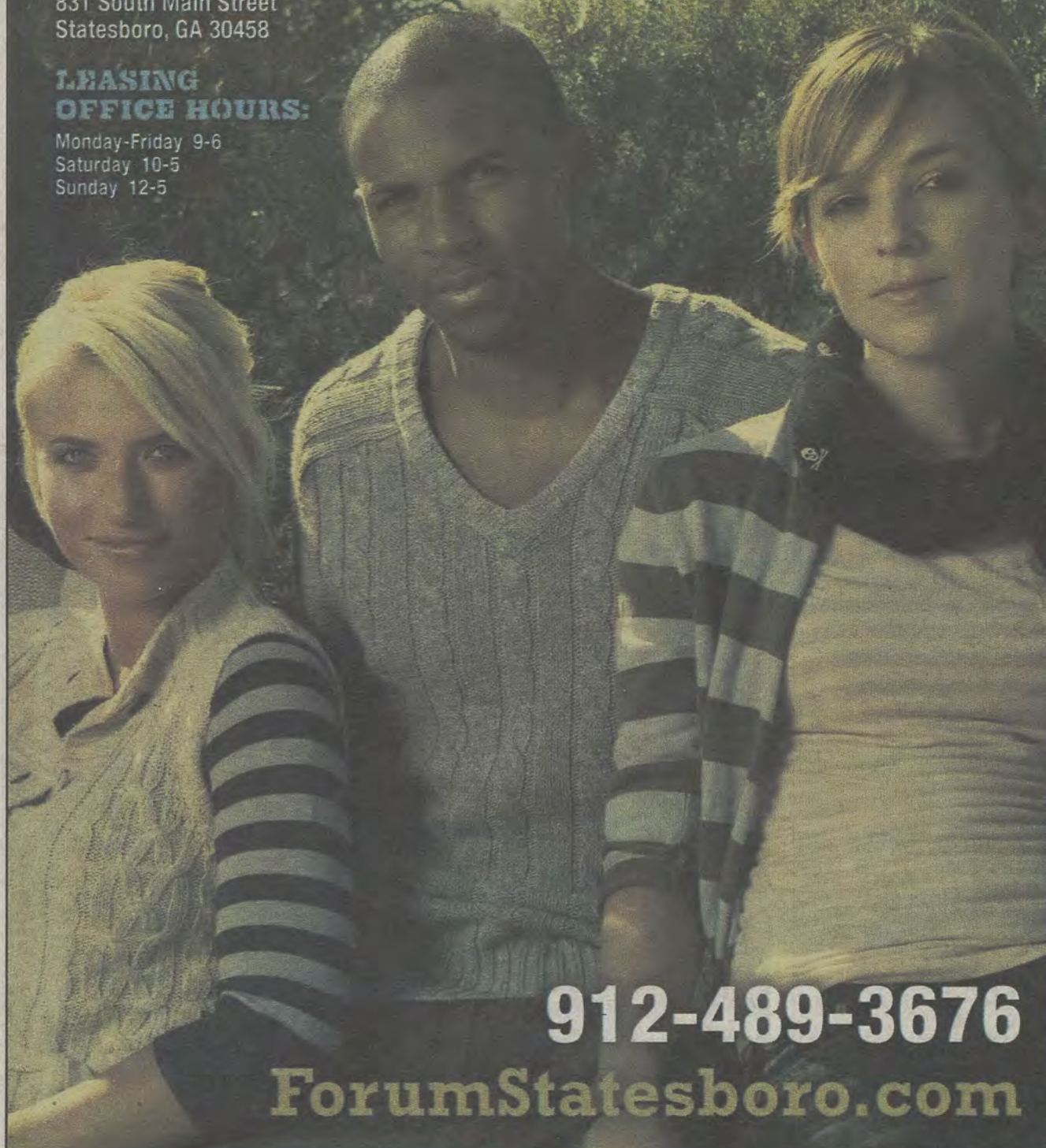
FORUMSTATESBORO.COM

COMING TO:

831 South Main Street  
Statesboro, GA 30458

LEASING  
OFFICE HOURS:

Monday-Friday 9-6  
Saturday 10-5  
Sunday 12-5



**912-489-3676**

**ForumStatesboro.com**

**GET A FREE T-SHIRT WITH THIS AD!**

**FORUM**

®

**AT STATESBORO**

A PREMIER STUDENT  
HOUSING COMMUNITY

**NOW  
LEASING  
FOR FALL 2012**

- Tennis Court
- Lap Pool & Spa
- Pet Friendly
- Pet Park
- Two Free Tanning Beds
- Indoor Basketball Court
- Indoor Volleyball Court
- Car Care Center
- Modern Faux-Wood Floors
- Private Bathroom in Bedrooms
- Convenient Individual Leases
- Free High Speed Internet in Bedrooms
- 24 Hour Fitness and Training Center
- Kitchens with Full Size Appliances
- Full Size Washer / Dryer Included
- Wi-Fi Cyber Cafe with Coffee Bar
- Outdoor Sand Volleyball Court
- High Speed Internet Access
- Student Center and Lounge
- Roommate Matching
- Expanded Cable
- Media Room



Advertisement for Forum Statesboro, GA 30458. © 2011 Forum Statesboro, Inc. All rights reserved. No part of this advertisement may be reproduced without written permission from Forum Statesboro, Inc.