

Georgia Southern University

## Digital Commons@Georgia Southern

---

The George-Anne

Student Media

---

11-29-2011

### The George-Anne

Georgia Southern University

Follow this and additional works at: <https://digitalcommons.georgiasouthern.edu/george-anne>



Part of the [Higher Education Commons](#)

---

#### Recommended Citation

Georgia Southern University, "The George-Anne" (2011). *The George-Anne*. 2733.  
<https://digitalcommons.georgiasouthern.edu/george-anne/2733>

This newspaper is brought to you for free and open access by the Student Media at Digital Commons@Georgia Southern. It has been accepted for inclusion in The George-Anne by an authorized administrator of Digital Commons@Georgia Southern. For more information, please contact [digitalcommons@georgiasouthern.edu](mailto:digitalcommons@georgiasouthern.edu).

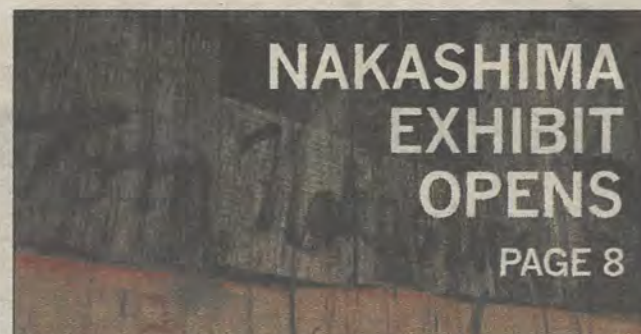




**FREEDOM  
FLIES  
AT  
WILDLIFE CENTER**  
PAGE 7



**'BAMA  
GAME  
PHOTO  
SPREAD**  
PAGE 15



**NAKASHIMA  
EXHIBIT  
OPENS**  
PAGE 8

Tuesday, November 29, 2011  
Georgia Southern University  
www.thegeorgeanne.com  
Volume 87 • Issue 44

# THE GEORGE-ANNE



Lindsay Hartmann/ STAFF

**Adrian Mora (45)** kicks his first missed field goal of the season in Nov. 19's Alabama game. Georgia Southern rushed for 302 yards in the game, the most allowed by 'Bama since 2007 versus the University of Arkansas. GSU lost 45-21.

## GSU to host playoffs

By **JAMES FARMER**  
George-Anne staff

The Georgia Southern University football team will host Old Dominion University at Paulson Stadium on Saturday at 1 p.m. for its first home playoff game since 2004.

Old Dominion defeated Norfolk State University 35-18 last Saturday in the opening round of the NCAA FCS playoffs to earn the right to play GSU in the second round.

GSU has not hosted a playoff game since

2004, when New Hampshire upset the Eagles at home in front of a crowd of only 6,053. The Eagles have only three losses in 33 home games in their playoff history, but all of them occurred since 2001.

The Eagles had a strong chance to host a playoff game last year against Wofford College. Both teams were unseeded, so whichever school put forth the best bid would win the right to host the playoff game. However, GSU failed to get its bid turned in on time, so Wofford automatically was

granted the right to host the playoff game.

This year GSU is seeded, meaning it will host all games except for games against a higher seeded opponent and the national title game, which is held in Frisco, Texas. The only team GSU could face away from home this year is North Dakota State University, who is the No.2 seed. That trip to Fargo, N.D. would happen if both NDSU and GSU win their next two games.

Tickets are \$5 for students and \$25 for General Admission Adult.

## Crime rates decrease

GSU police captain:  
Crime statistics 'great'

By **LINDSAY GASKINS**  
George-Anne contributor

Crime rates from recent years show that crime at Georgia Southern University has decreased, regardless of the numerous incidents that have happened so far this semester.

"Our crime rates are excellent. They are not through the roof at all, as a matter of fact they are great," said Captain Terry Briley of the GSU Department of Public Safety.

On-campus burglaries have decreased from 22 and 25 in 2008 and 2009, respectively, to 11 in 2010, according to the Georgia Southern Public Safety Crime Rates.

Sex offenses have gone down as well, showing seven incidents in 2008 to one incident last year.

Many students are not surprised to learn that on-campus crime rates have been decreasing each year.

"It doesn't really surprise me because I feel like with Eagle Alerts, and all of that stuff, we are just more aware of the crime and it's not necessarily that there's more of it," said Samantha Shockley, senior public relations major.

Many students feel safe and do not use the recent incidents as a reason to be afraid on campus, said Kelly Gardner, sophomore early childhood education major.

See **CRIME**, page 6



thegeorge  
anne.com

Tues.	Wednes.	Thurs.	Fri.
H 82	H 81	H 69	H 63
L 60	L 52	L 32	L 37



Newsroom 478-5246  
Advertising 478-5418  
Fax 478-7113

PO Box 8001  
Statesboro, GA  
30460



# Statesboro City Council delays Sunday alcohol sales

By **COURTNEY ESCHER**

George-Anne contributor

Statesboro City Council is still drafting the requirements that businesses will have to meet to sell alcohol on Sundays, which is delaying the sales being approved.

The goal of the city council is to find a way for the city to make the most profit out of Sunday sales, said City Manager Frank Parker.

"What we have to do is manipulate the ordinance to the point where we can really control who can serve on

Sunday," said Parker.

"Restaurants and sports (bars) will have to pay a license fee in order to serve on Sunday," said Parker.

The approval process will take at least a few more months for Sunday sales to ensue, said members of city council.

"What's going to happen is that they'll have to acquire a license and then have to go through somewhat of a trial run to ensure that they are selling correctly," said Parker. "We won't just pass the law and then people can start buying on the

following Sunday. We want to make them work for it."

The most important aspect of the ordinance is how much money it will bring into the city, said members of Statesboro City Council.

The delay of the ordinance being passed is not surprising, said Catering Manager and Assistant Manager of Millhouse Steakhouse Matt Marsengill.

"I'm not surprised at all. Actually, that's one of the things about Statesboro that I've always heard, that city council always tries to

turn it down. There is going to be opposition no matter what."

Students of Georgia Southern University also express hopefulness that the law will be passed, but are doubtful that it will happen any time soon.

"I like the idea of having restaurants serve on Sunday, but this is Statesboro and I think we've all gotten used to the fact that we can't drink on Sunday," said Cyntessa Tuoyo, junior public relations major.

Some students are offended

by council's actions regarding the ordinance.

"They need to hurry up and pass this law," said Brian Simonson, senior computer sciences major. "I'm in no hurry to get stupid drunk on a Sunday, but the fact is we voted for it and council is disrespecting the city's opinion by not letting it pass."

City council will hold a work session tonight to discuss further stipulations of the ordinance and vote on the ordinance's second reading.

## Noteworthy former chemistry department head passes

By **JENNIFER CURINGTON**

George-Anne staff

Dr. Clair Ivan Colvin passed away Nov. 16 at age 84.

Colvin became an assistant professor of chemistry at Georgia Southern University in 1964.

In 1969, he became head of the Department of Chemistry.

During his last three years serving as department head, he tried to gain American Chemical Society's accreditation for Georgia Southern's bachelor of science in

chemistry degree program and succeeded.

He retired as emeritus professor of chemistry in 1993 from GSU.

Colvin received his Ph.D. in

chemistry in 1963.

Colvin was an emeritus member of both the American Chemical Society and the Royal Society of Chemistry.



**TROY MARSH**  
THE MARSH LAW FIRM

WHAT: **FREE LEGAL HELP**

WHERE: ROOM 2073 IN THE RUSSELL UNION

WHEN: EVERY TUESDAY 3:00-5:00 PM

TO SCHEDULE AN APPOINTMENT, CALL (912) 764-7388

SPONSORED BY



STUDENT GOVERNMENT ASSOCIATION  
YOUR STUDENT ACTIVITY FEES AT WORK.

**George-Anne & Joe**  
Sponsored by: Starbucks

Every Thursday morning  
at the Gazebo





## Police Beat

### Friday, Nov. 11

- Officers issued seven traffic citations, three traffic warnings and assisted two motorists.
- Taylor Lee McGaha, 18, was charged with underage possession of alcohol.

### Saturday, Nov. 12

- Officers issued one traffic citation, one traffic warning and assisted three motorists.
- An alcohol violation was reported at Southern Courtyard. An alcohol violation was reported at Southern Courtyard.
- Phillip James Sheffield, 18, was charged with possession of marijuana.
- Joseph Daniel Dipolito, 21, was charged with aggravated battery.

### Sunday, Nov. 13

- Officers issued two traffic citations, five traffic warnings and investigated one accident.
- Deavin Arae Loggins, 18, was charged with underage possession of alcohol.

### Monday, Nov. 14

- Officers issued seven traffic citations, six traffic warnings, assisted four motorists, responded to one

injured person and investigated one accident.

- A drug complaint was reported at Southern Pines.
- An alcohol violation was reported at Centennial Place.
- Randall William McClure, 41, was charged with theft by deception.
- Clifton Engles II, 30, was charged with disorderly conduct.

### Tuesday, Nov. 15

- Officers issued five traffic citations, two traffic warnings, assisted six motorists, responded to one alarm and investigated one accident.
- Caroline Virginia Claxton, 20, was charged with leaving the scene of an accident and following too close.
- A grease fire was reported in a fryer at Lakeside Cafe.

### Friday, Nov. 18

- Officers issued 11 traffic warnings, nine traffic citations, assisted 13 motorists and responded to four alarms.
- Theft of a parking boot was reported by Parking and Transportation Services.
- Officers responded to Southern Pines for a drug complaint.
- John Dylan Coleman, 18, Sale of Marijuana, Manufacture, Distribution or Possession of Controlled

Substance In/Near a School Zone, Unlawful Use of Communication Facilities.

### Saturday, Nov. 19

- Officers responded to the Pi Kappa Phi house in reference to a suspicious incident. The front door was open and the telephone cables appeared to be pulled away from the house.

### Monday, Nov. 21

- Officers issued four traffic warnings, two traffic citations and assisted two motorists.
- A sign was reported stolen from Watson Commons.
- Officers responded to a call of a suspicious vehicle at the Auxiliary Services Warehouse.

### Tuesday, Nov. 22

- Officers issued four traffic warnings, two traffic citations, assisted two motorists and rendered aid to one injured person.
- A burglary of two apartments was reported at University Villas.
- Officers responded to a drug complaint at Southern Pines.
- A theft was reported at the campus mail center.
- Damage to property was reported from a roof leak at Hanner.

## Statement of Operations

The George-Anne is the official student newspaper of Georgia Southern University, owned and operated by GSU students using facilities provided by the university. The newspaper is the oldest continuously published newspaper in Bulloch County. The newspaper is a designated public forum for the Georgia Southern community. The newspaper is published twice weekly, on Tuesdays and Thursdays, during most of the academic year. Any questions regarding content should be directed to the student editor by phone at 912.478.5246 or at [gaeditor@georgiasouthern.edu](mailto:gaeditor@georgiasouthern.edu).

**ADVERTISING:** The newspaper accepts advertising. Inquiries may be made by calling 912.478.5418 or 912.478-0566. Fax any questions to 912.478.7113 or e-mail [ads1@georgiasouthern.edu](mailto:ads1@georgiasouthern.edu).

The George-Anne receives additional support, in part, from the Student Activities Budget Committee.

The deadline for reserving space and submitting advertising copy is noon, one week prior to the intended publication date. For more information, rate cards, sample publications, contact the advertising manager or student media director. The advertiser is responsible for any errors in advertisements and its liability for adjustments is limited to the amount of space the error occupied in the ad. Further, the newspaper is not responsible for any damages caused due to an ad's omission from a particular edition and its responsibility solely is to reschedule the ad in the next regular edition at the regular advertising rates.

**STUDENTS BEWARE:** The George-Anne screens all advertisements prior to publication. The newspaper strives to accept ads for legitimate products and services only. Students are urged to exercise caution when replying to ads—particularly those that require personal information. Students are also urged to report to the newspaper any suspicious offers which they might see in an ad.

**PUBLICATION INFORMATION:** The newspaper is printed by Brunswick News at Brunswick, Ga.

**NOTICE:** Unauthorized removal of multiple copies from a distribution site constitutes theft under Georgia law, a misdemeanor offense punishable by a fine and/or jail time.

**Editor-in-Chief** Arielle Coambes  
**Views / Copy Editor** Shauntel Hall  
**News Editor** Jennifer Curington  
**Asst. News Editor** Jessie Reese  
**Arts Editor** Quaniqua Epps  
**Asst. Arts Editor** Alex LaSalle  
**Sports Editor** Matthew D'La Rotta  
**Asst. Sports Editor** Jannah Bolds  
**Football Editor** James Farmer

**Business Manager** Tiffany Larkin  
**Asst. Business Manager** Holly Hillhouse  
**Marketing Manager** Aria Gabol  
**Production Manager** Mallory McLendon  
**Photo Editor** Randy Hudgins  
**Design Editor** Kelsey Paone  
**Web Editor** Jonathan Law

## Corrections

Contact the editor at [gaeditor@georgiasouthern.edu](mailto:gaeditor@georgiasouthern.edu) for corrections and errors.

Cole Haan



The Sir Shop  
 Statesboro Mall  
 912.764.6924





## Our View

### GSU should reward athletics

As the Thanksgiving holiday break began, the Georgia Southern University football team traveled to Tuscaloosa to face the No.1 team at the University of Alabama.

The expectations for the game weren't nearly close to that of the actual outcome. The Eagles put up a great fight during the game, even with the loss of 45-21.

Despite the numerical defeat, GSU won by creating a record of their own. They were the only team this season to score over 14 points against Alabama.

The amount of effort, dedication and hard work that the Eagles have displayed is not only applicable to this specific game but has been effortlessly shown by the team this entire season.

This season in GSU football has been a monumental one for not only the football team, but also the university, the students and the Statesboro community.

Because of the athletic actions concerning the football team this semester, GSU has gained a tremendous amount of popularity.

With a season record of 9-2, a SoCon title, a vote in AP top-25 poll, a playoff spot and a record-breaking score against the Division 1's best defense, it can be said with confidence that all the popularity was definitely earned.

Along with hard work should come a reward, and the GSU athletics department is more than deserving.

Two things that could potentially reward them would be more money to the athletic department and a new or renovated stadium.

These two ideas could not only reward the team but also in turn benefit GSU.

More money into the athletic department would be equivalent to investing in capital that has shown to be both promising and successful.

A new or renovated stadium would not only benefit the team but could also invite more spectators to the football games in the future.

With the Eagles going on to play big name universities such as UGA next fall, the amount of attention and popularity toward the athletic department is guaranteed to increase.

Judging by the success of the current and ongoing season, it would only be appropriate for GSU to come up with ways to reward this hard working, record-breaking team of students while benefiting GSU and the community simultaneously.

The George-Anne welcomes letters to the editor and appropriate guest columns. All copy submitted should be 350 words or fewer, typed, and sent via e-mail in Microsoft Word format to [gaeditor@georgiasouthern.edu](mailto:gaeditor@georgiasouthern.edu). All submissions must be signed and include phone number for verification. GSU students should include their academic major, year and hometown. The editors reserve the right to reject any submission and edit submissions for length.

Opinions expressed herein are those of the Board of Opinions or columnists themselves and DO NOT necessarily reflect those of the faculty, staff or administration of GSU, the Student Media Advisory Board, Student Media or the University System of Georgia.

## Big Brother challenges free speech

What is happening to our rights? They are being stifled by big brother in an attempt to not only control us, but to also shape the perception of the United States. I say this because what other reason would you have for the violent dispersal of a peaceful protest on a university campus in California.

At UC-Davis, students engaged in a peaceful protest were forcefully removed and pepper sprayed at point blank range. These students were harassed by their campus police before finally turning on them and backing the police force off and getting them to leave.

In Kansas, a high school senior tweeted that Kansas Governor Sam Brownback sucked and finished with the hashtag "#heblowsalot". The governor's director of communication found this tweet and contacted her school principal who mandated that the student write an apology letter to the governor. This girl was scolded and told she had to write an



ROB ROBERTS

apology "or else", all because of a tweet intended for her friends.

For starters, I find it interesting that a conservative such as Brownback would have staffers monitoring social media sites and seeking out those who post anything in opposition to his office and squash their rights to free speech.

Also, in a state of economic unrest, is it really wise to spend money to monitor social media sites rather than to do something to help their state?

Now, Brownback issued a statement apologizing for his staff's over-reaction, but this is an apology

for something that should not have happened in the first place. If this incident doesn't give you flashbacks to an Orwell classic, you must not be much of a reader. If every state government scours the web on a daily basis to seek out those with a different opinion, we are in trouble.

We're witnessing a pivotal point in our country's history in which we can rise up to protect our rights, bestowed upon us at the conception of this great nation, or we can cave and crumble to the government stripping us of our rights.

Freedom of speech and the right to peacefully protest have been cornerstones in our nation's history and we are now seeing a time in which these rights are being threatened. We cannot allow this to happen in our country when individual rights serve as the pinnacle of our great nation.

*Roberts is a senior public relations major from Warner Robins, Ga.*

## Government assistance is a privilege

A couple weeks ago, Florida among other states passed a new law regarding welfare recipients and their benefits. According to this new law, all citizens receiving welfare will be subjected to a random drug screening at any time while they remain on public assistance.

While this is a big win for those who want the reign in wasteful spending, those who wish to keep those who use their public assistance money to supply their drug habit are filing a lawsuit in Florida Supreme Court saying that this is a violation of the fourth amendment which protects citizens from unlawful search and seizures.

The concern of the American Civil Liberties Union, the plaintiff in this case, is that these will not be sealed results and that the police will get a hold of this information and charge the accused for the drug crime they



FRITZ CHAPIN

have committed.

First of all, what would be wrong with that? If you are breaking the law then you need to be punished for it. Also, if you are receiving money from hardworking taxpayers it shouldn't go to feeding your drug addiction.

Another thing people need to realize is that welfare is not a right. It is a privilege that is afforded by the hard working people who pay taxes so that if someone is down on their luck they can get a little assistance getting back on their feet and putting that money back in the system to help

others.

With it being a privilege, there have to be certain concessions made in order to make sure that the money they are receiving free of charge is being used properly to feed them and their families not doing drugs.

I understand that most people that are on the welfare system are not all people who are drug abusers and are actually trying to get a job and off welfare, but there still is a real percentage of people who use it as their only form of income and have no intention of getting off of it.

I will concede that these drug tests don't need to go to the police, but I do believe that if you are receiving public funds, they need to be used in the way they were intended and not for recreational drug use.

*Chapin is a political science major from Roswell, Ga.*



## Letters to the Editor

### Course catalog explains advisement

Dear Editor,

In response to the most recent articles concerning advisement and registration, I would like to discuss some of the points that were made.

As a Georgia Southern University graduate, I understand the frustration when trying to register for classes. I would like to stress, however, that there is a difference between advisement and registration.

Page 16 of the GSU Course Catalog states that the Advisement Philosophy "accepts the premise that ultimately a student's program is his or her own responsibility," and furthermore a role of an advisor is to help students "develop self-direction in the process of decision-making."

Most of the colleges within the university have implemented having full-time professional academic advisors. The advisors in advisement centers across campus work to ensure that their advisees are properly advised in their programs of study.

In the College of Business Administration (as stated in a prior response), advisement information is sent out to all students via their GSU email during the second week of classes—which is the official means of communication on campus (GSU

Course Catalog, p. 2). It is also posted on Facebook and Twitter pages, on bulletin boards around COBA and on our Student Services Center website.

Yes, as advisors, we are here to guide you and help in any way that we can. However, this is your education and you must take responsibility for it. I do not believe the problem lies in having all 20,000 students advised before the withdrawal without academic penalty date.

If a student believes they are not doing well in a course, then it is up to them to schedule their advisement appointment before this withdrawal date. The Academic Standing Policy through the university has also changed; students with GPAs under a 2.0 are encouraged to visit the Academic Success Center before receiving their RAN so to take every precaution in ensuring that they will be able to continue their education.

In terms of registration, this is not in the hands of the advisors. We cannot control how many seats are in a course or how many sections are offered. The statement, "in many cases students had been advised for a class that would correctly have fit within their degree, but when registering they could not get into a class so they chose another without paying close

attention to their curriculum," proves the point that the student must also know what requirements are needed for their degree.

Programs of Study sheets are posted in the Course Catalog on the GSU website, as well as in their respective advisement centers.

If you are not able to register for a course you were advised to take, you can contact your advisor to clarify the importance of the course you have registered for or you can contact the academic department to try and get an override into the course you need.

Although I am not speaking on behalf of every advisor or advisement center on campus, I do firmly believe that academic advisors are looking out for the students' best interest in completing their degree requirements in a timely manner.

You came to GSU to learn and grow as an individual, and advisors are here to help you do so. There is a range of opportunities for students to seek help through their advisors, but they must step up to the plate and take responsibility of their education.

Leslie Sheppard  
Academic Advisor  
College of Business  
Administration.

### Research needed to form opinions

Dear Editor,

I am writing regarding a Nov. 16 opinion piece by Fritz Chapin calling for harsher capital punishment, which I read on the paper's website.

Mr. Chapin doesn't specify what he means by "harsher," but I imagine from his discussion that he might be calling for more frequent executions of prisoners who are on death row.

Or perhaps he means that the death penalty should be given as a sentence more often?

Either way, I am moved to respond to three claims in particular that Chapin makes, in hopes that this will encourage your readers to look more deeply into the issue for themselves.

First, Chapin complains about the high costs of keeping someone alive in prison, implying that execution would be the cheaper route.

However, if you look deeper into the issue you will find that this is not usually the case.

When someone is facing execution, the costs to the state of moving through several appeals in court typically add up to be significantly more expensive than the cost of life in prison.

Second, Chapin argues that "harsher" capital punishment would deter crime. But in the research, there does not appear to be consensus on this matter.

While some claim that it may deter certain types of crimes, statistics show that it is not a very effective deterrent in general, especially when compared with other approaches to reducing crime.

Third, a common argument

used against capital punishment is that we risk executing innocent people.

Regrettably, we know that this does in fact happen. Chapin replies to this by citing a statistic that says only two percent of those convicted of crimes ever have their convictions overturned.

It sounds as if Chapin is arguing that if only a few of all those who are executed are innocent, well, that is such a small number that it doesn't matter.

But those who oppose capital punishment would argue that even one human life taken by mistake, at the hands of the state, is too many. Are we really willing to simply accept that a few innocent people will be executed?

I am not writing to argue for or against capital punishment.

But as someone who teaches courses in Ethics, I do believe that we have a moral responsibility to look more deeply into the details of contemporary moral problems such as these before we form our opinions.

After all, in this case, it is literally a matter of life and death — so don't we want to know what we're talking about?

Detailed information regarding capital punishment is very easy to find — you can begin right now with a Google search! I encourage your readers to start looking around for themselves.

Dr. Elizabeth Butterfield  
Assistant Professor of  
Philosophy  
Department of Literature  
and Philosophy

Submit your letters to the editor at [gadaily@georgiasouthern.edu](mailto:gadaily@georgiasouthern.edu)



Marcus Barkley/STAFF



# New writing and linguistics interim chair steps into role

By TJ JACKSON

George-Anne contributor

On Nov. 15, Phyllis Dallas, who holds a doctorate in English, was announced to faculty and staff as the new interim chair of the writing and linguistics department following Randall McClure's resignation on Nov. 11.

"I am working with very supportive, very collegial faculty and staff and colleagues across campus who are stepping in and stepping up to help in any way they can," said Dallas, who has been at Georgia Southern University for 23 years.

The process of choosing a new interim chair was decided by Dean

Smith and other faculty members, said Dallas.

"I had a conversation with Dean Smith and he had meetings with the department. He had meetings with the faculty to talk about the situation. The faculty was solicited for their feedback, so there was an effort to make sure there was faculty input," said Dallas.

The responsibilities of the interim chair position vary among supervisory, budgetary and managerial, said Dallas.

"I'm learning a lot about how various activities in the university work and I like learning things," said Dallas. "I think most faculty tend to be people who like to learn how

things work, that is enjoyable."

Other responsibilities to fall under Dallas will involve the process of selecting new faculty members to be hired in the writing and linguistics department.

"We're hiring, we're looking for six new faculty members for next year. We're hoping for the spring," said Dallas.

The interim chair position will also be essential in making sure that the process from a temporary chair to a permanent chair position is as smooth as possible, said Dallas.

"We are planning to do a search for permanent chair. The department continues to function in terms of budgetary matters, to



DR. PHYLLIS DALLAS

address student concerns, to address faculty concerns to continue the business of the department," said Dallas.

The administration and faculty

will have input of the new permanent writing and linguistics chair, said Dallas.

"It is a process that involves faculty input, the search committee's input, the administration has input so it will be a decision by many," said Dallas.

Dallas will remain as the writing and linguistics department interim chair until June 30th.

Former writing and linguistics department chair McClure's resignation caused the appointment of Dallas as interim department chair. McClure resigned as a result of an audit that revealed he stole \$1,728.78, according to a GSU Public Safety report.

## CRIME, from page 1

"I feel perfectly safe on campus," said Gardner. "When I was touring here with my mom and stuff, they said that we were the 19th safest school in the country."

"I heard that last year they had a lot of Eagle Alerts and I have only gotten three this year, so I guess it is better than last year," said Eric Dukarski, freshman accounting major.

Public Safety crime rates also show that robberies have decreased, with five cases in 2008 to three accounts in 2010.

The city of Statesboro has had an increase in property crime from 2007 up to this present year.

There were roughly 5,000 property crimes in 2007 and it increased up to almost 6,000 in 2009, according to the Statesboro city rating.

The violent crime in Statesboro decreased in the past three years and is predicted to do so through this year, according to the city rating.

With the crime rate decreasing as it has, many students do feel safe living in Statesboro and on-campus.

"(Things) happens everywhere, it's just how it gets publicized so I'm not really worried at all. As long as you're being smart, you're fine. If you aren't walking around with a cause, it's unlikely you are going to get robbed," said Dylan Whalen, freshman exercise science major.

The total crime rate of Statesboro in 2009 was at 1,630 with 380 burglary incidents, 62 robberies and numerous other miscellaneous occurrences, according to the city rating.

This year the total crime rate is predicted to be at 1,571, according to the city rating.

**TOTAL CRIME**  
Reported in 2009  
**1,630**  
2011 Expected Total  
**1,571**



Kelsey Paone/STAFF

Statesboro is a safer place to live when comparing to several other cities in Georgia, said Samantha Shockley, senior public relations major.

"I think (the crime rate) is not as bad as in Atlanta," said Shockley.

There are many resources to ensure safety

on campus, said Shockley.

"You can call campus police, and they can walk you to wherever," said Shockley.

"I don't think people should be worried, I mean, just always know there is always stuff going on," said Whalen. "I feel safe and I'm not worried."

**Planters**  
By Hendley Properties  
**ROW**  
912.681.1170  
www.hendleyproperties.com

**3** bedroom  
cottage  
house

**\$365**  
/month per person





## GSU Wildlife Center seeks to educate public

BY WILDA THRIFT

George-Anne Contributor

It all began with a turkey vulture.

In 1990 during a Georgia Southern University playoff game, an ESPN announcer honed in on a turkey vulture flying overhead and stated it was the GSU mascot.

Several alumni, angry at this misidentification, decided GSU had to get its own eagle.

Seven years later the Center for Wild Life Education was opened here at GSU for the first time.

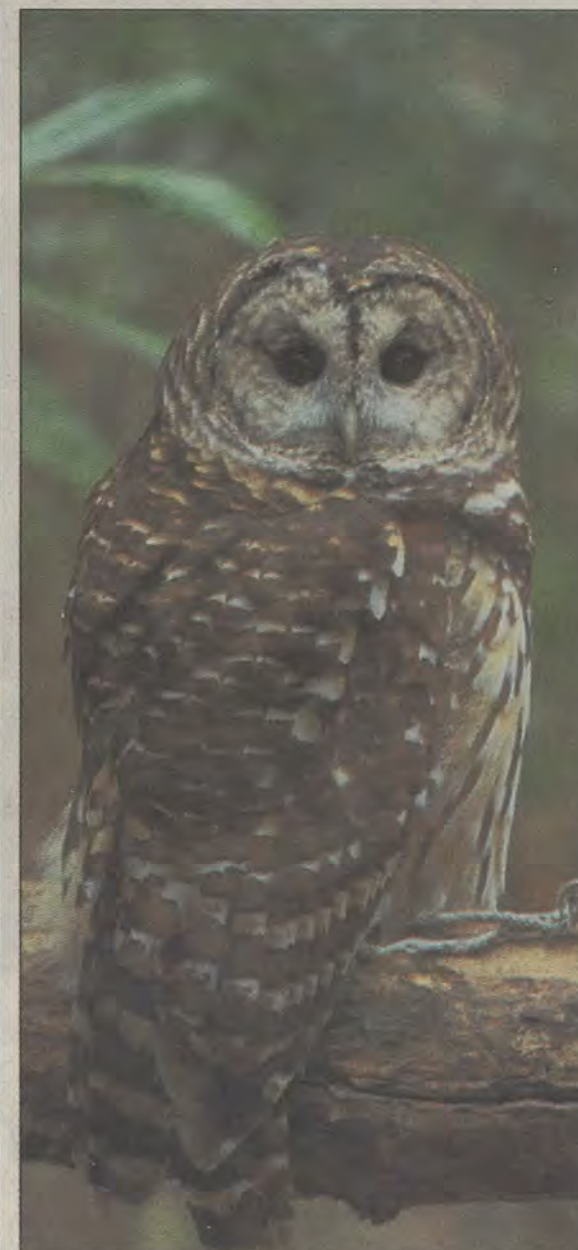
The Center for Wild Life Education has free general admission to all GSU students as long as they bring their student ID. It offers GSU students a wide variety of different programs every day as well as the choice for self-guided tours to see a large assortment of animals.

"Every day at 3:30 we have some type of program going on open to the public. Today [Friday] it's raptors; on Thursdays we fly birds in the amphitheater. Wednesday is the food chain, and we'll talk about whom eats whom. Tuesday is native animals of Georgia. Mondays it's presenter's choice, so on Mondays there could be reptiles and amphibians and mammals as well as a few birds mixed in there," said Casey Corbett, education Program Coordinator for the GSU Center for Wild Life.

Freedom, the southern bald eagle and mascot for GSU, currently stays with the director of the Center for Wild Life Education, Steve Heim. Freedom is known to fly at all of the home football games, but Freedom's presence at GSU isn't limited to just the occasional flight.

"Last year Freedom's Facebook page was started, and there was a promotional to help build up traffic to his page. It was a contest to spot Freedom around the campus where ever he showed up, it was fun because people would chime in, 'I saw Freedom here,' or 'I saw Freedom there.' And the first person who actually mentioned Freedom to Steve at a football game would get a prize," said Corbett.

Besides the regular weekly programs, the Center for Wild Life Education also hosts special events. There is an upcoming Christmas program that students are welcomed to attend.



Randy Hudgins/STAFF

**Top Left:** This bald eagle in addition to two more that inhabit the GSU wildlife center is made available for public viewing on 'Raptor Day'.

**Bottom Left:** An exotic species of bird enjoys the water from the Wildlife Center pond.

**Above:** An owl also takes part in the 'Raptor day' festivities.

The Christmas program is coming up on Dec.10th, and it will be open for the public. Santa Clause will be at the event as well as the Georgia Southern choral and also Magic Mark and Chestatee Wild Life Preserve with some unique animals.

The Center for Wild Life Education

currently has five full-time employees, but also 13 student workers. The students choose the focus of many of the programs that go on every week.

Ruth Steinbrecher, Senior in Biology at GSU and student worker for the Center for Wild Life, said, "We have guidelines for what

we can do, but ultimately it's up to the student. We cover what habitat this animal is from; where can you find this animal, but basically we have so many animals here I could choose a different animal every time. So you could come back several weeks in a row and see a different animal every week."





Christian Washington/STAFF

The above piece, "Georgia Red" (2008) is one of many pieces of art work from the Tom Nakashima exhibition that is being displayed at the Center for Art and Theater.

## Tom Nakashima art exhibition comes to GSU

By **NATALIE DEMARKO**

George-Anne Contributor

The Betty Foy Sanders Department of Art is showcasing the work of internationally renowned artist Tom Nakashima in the Contemporary Gallery at the Center for the Art & Theater until December 16th.

The exhibition, entitled Tom Nakashima: 1999-2010 contains nine pieces inspired by an epiphany Nakashima had on a trip into the woods.

"The series is based on a personal experience he had out in the environment, this event was

impactful for him and so in these pieces Nakashima is trying to draw parallels with imagery and ideas of philosophers and theologians," said Marc Mitchell, assistant professor in the department of art.

Mitchell was responsible for bringing Nakashima's artwork to Georgia Southern University's campus. Mitchell saw Nakashima's work in the Jepson Center in Savannah, Ga. and was inspired to bring his art to the GSU campus.

To date, Nakashima has had over 30 solo exhibitions and his work is in numerous public permanent collections around the United States and the world, his artwork is heavily

influenced by philosophers such as Immanuel Kant and theologians including Harvey Cox.

The highlight of the exhibition is the three large paintings, one painting measuring 10 feet tall and 30 feet wide.

"He makes very large and ambitious paintings...rare sizes to see especially around a campus such as ours," said Mitchell. "Usually paintings of this size are reserved for major museums, so we thought it would be interesting for our students to see paintings at this scale."

Also a very well known print maker, the exhibition highlights some of Nakashima's intricate small

prints. These prints were then used to influence his large-scale paintings.

"We wanted to create a relationship between the images for our students, they can see how they can use drawings and print making for a tool to make larger works," said Mitchell.

Nakashima's nine pieces are made by a variety of mediums. Nakashima uses mixed media with National Geographic photographs as his base and acrylic paint on top of the photos to create the actual image.

The pieces of the exhibition include: Monument to a Dying Plant, Westwood Road, The Brothers

Karamazou, Georgia Red, Nocturne Tree Pile, Miles and Miles, Night (Stewart's Sticks), Photographic Study for Stewart's Sticks, and Stewart's Stick Nocturne.

"I think Georgia Southern is really fortunate to have this exhibition to display an artist of this caliber and reputation," said Mitchell. "It is an opportunity for students to really see some world class artwork right here on campus without any cost and without travelling. Listening to him speak will give an opportunity for them to engage with someone that they may not have had the opportunity to meet elsewhere."



# Skyrim provides great open-world experience

## Football

BY WILDA THRIFT

George-Anne Contributor



"Freedom" is the word that best describes Skyrim, an open-world role-playing game.

After a very short opening sequence, you are pushed out into the gigantic sandbox-style countryside and are free to go anywhere you want and do just about anything you can get away with.

There are laws and guards to enforce them, but there are ways to escape from being noticed, escape capture and methods to bribe or intimidate the guards into backing down.

There are also legal activities you can have fun with. I guess.

You play a newcomer to the country of Skyrim and arrive just as a dragon outbreak begins. While the main story is to ultimately deal with the dragons, there are endless side-quests provided by the game and personalized goals to pursue.

For better and worse, there are consequences to your actions and

the actions of non-player characters around you. If you spot a thief lurking through a town at night and choose to do nothing, this thief may end up killing a shop owner – and you will never be able to buy or sell from that shop again.

Likewise, anyone you kill (with the exception of endlessly spawning town guards) is permanently removed from the game, never to be interacted with again.

On the other hand, if you choose to capture or slay thieves in the night, fight off monster attacks from cities, assist random NPCs being assaulted on the side of the road, then the people you help will end up liking you more.

Some NPCs can join you on your quest, others will allow you have their personal belongings to help you on your journey others could even become interested in marrying you.

No review of Skyrim would be complete without mentioning the bugs, which are as numerous as the day is long. The game can crash or freeze for no apparent reason, quests can become impossible to complete if objectives are met out of order and sometimes NPCs can be mute

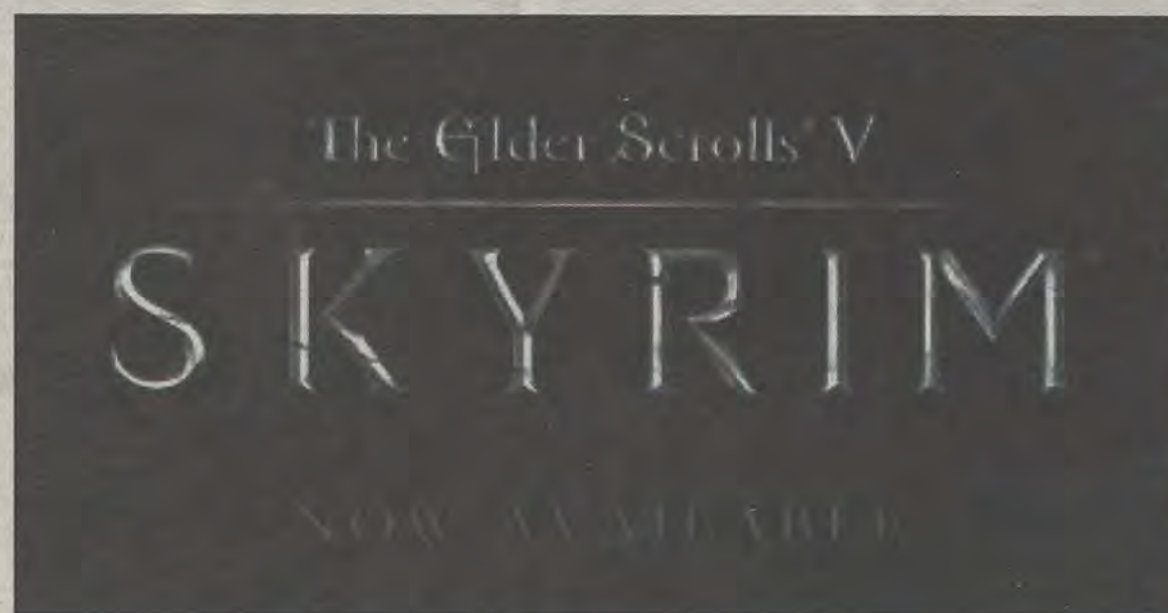


Photo from www.edelerscrolls.com

forcing the game to a stand-still if speaking to that NPC is needed to progress a storyline.

However, not all the bugs are crippling to game play; some bugs can be comical. If the skeletons of enough defeated dragons pile up in a single town and you return to that town later, the skeletons may have moved around and can show up literally anywhere. Dragon skeletons can be stuck on rooftops, knotted up

in an alleyway, or even raining out of the sky as you approach the town. If one of your NPC companions is ever slain, their corpse will appear amongst the guests at your in-game wedding, much to the surprise of everyone in attendance.

Other bugs can even be helpful. When you are on horseback, it is possible to run vertically up a mountain. If you are caught committing a crime and questioned

by a guard, an NPC can walk into you and inadvertently push you far enough away from the guard to end your conversation, allowing you to escape capture.

Regardless of its flaws, Skyrim still provides the freest, most non-linear RPG experience I have ever encountered. It will undoubtedly become one of those games that all other games of the same genre are compared.

# Christmas Spectacular brings cheer to the 'Boro

BY COURTNEY ESCHER

George-Anne Contributor

Statesboro residents were treated to visions of sugarplums dancing on the main stage of the Emma Kelly Theatre during the Statesboro Christmas Spectacular November 18 th-20th.

Kids from the Statesboro School of Dance entertained audiences all weekend long while performing to a mixture of holiday favorites and ending with an advanced nativity ballet.

"It was a great beginning to the holiday season," said Richard Gay, a farmer from Metter, Ga.

The Christmas Spectacular

replaced Statesboro's tradition of performing "The Nutcracker" and was a nice change of pace for the dancers involved.

"I love doing Nutcracker, but it was nice to finally do something different," said dancer Sarah Voiselle, a junior from Statesboro High School.

The show featured kids young and old, and even a few adults in a unique mix of holiday cheer.

Some of the younger children entertained audiences by informing them of what they would like for Christmas: a hippopotamus, of course.

"My favorite part of the song was when we say, 'mom says the

hippo would eat me up, and I say no he's a vegetarian," said eight-year-old Hayden Hughes, from Sallie Zetterower Elementary School.

"I loved seeing my students perform for the holiday season," said Todd Williford, principal at Sallie Zetterower Elementary School.

The show also included familiar a dance number from the Rockette's Christmas Spectacular: the dance of the toy soldiers.

"My favorite dance was the dance of the toy soldiers because everyone knows it and loves it and it's just so cute," said Voiselle.

"It was nice to see the familiar

song and dance, like the Rockette's dance of the toy soldiers," said Mikelle Calhoun, an assistant professor at Georgia Southern University.

The show was not all dance, however it tackled all aspects of onstage performance.

An advanced local chorus performed holiday classics and spirituals. From that chorus, a barbershop quartet amazed the audience with their talents and harmonies.

"The barbershop quartet was phenomenal, they should do their own show," said Calhoun.

"It's amazing how talented Statesboro is," said Williford.

The second act of the performance consisted of an advanced level ballet acting out the nativity scene.

"I loved playing the Angel Gabriel, it was cool to get in touch with God in that way," said Voiselle.

Audiences were moved by the dancers' talent and spirit.

"It was so touching when everyone stood up at the end of my performance, that was such a great experience, I had to hold in tears," said Voiselle.

"There was an excellent mix of the formal and traditional in the show, with the nativity ballet and the Christmas dances; a great way to bring in the season," said Calhoun.



# CLASSIFIEDS

10 Tuesday, November 29, 2011

This page brought to you by Career Services  
Explore • Experience • Excel

The George-Anne

## For Sale

FOR SALE - 17 inch custom Ford Mustang rims and 17 inch custom Chevy Impala rims. Contact Ron: (912) 486-6611

Scooter for sale! 2005 Honda Ruckus. Black, 49cc, 85+mpg. Fantastic condition; original (faculty) owner, garage kept. No special license or insurance required. \$1,500 OBO. Contact (912) 678-6052

Firewood for Sale. Delivery available! Call 912-690-0872 or 912-690-4956.

For sale: 2009 BMW 328i, hard-top convertible in great condition. Black with tan interior. Call 912-293-1909.

## Misc.

Will proof papers (grammar, spelling, punctuation, sentence structure). Quality work, reasonable prices. Will also type short projects. Must have ample lead time to schedule. Email auntre01@gmail.com

## Subleases

Subleasing 3 BR/2BT house on Parker Avenue in downtown Brooklet. Extremely large media room! Located on two city lots. Contact Joyce at (912) 842-9479.

2 Bedroom 2 Bathroom apartment in Hawthorne 2. Very close to campus. \$350/month. Sublease through July. Contact Shannon at 678-468-9407

Subleasing master bedroom in Planter's Row for \$365/month; utilities not included, pet friendly. For more information contact Anna-Marie at at01770@georgiasouthern.edu or call (770) 546-6560

Home Away From Home 3BR/2BT within 2 miles of Georgia Southern campus. You can sublease the other 2 rooms. No smoking or pets. Call (706) 951-1427.

Subleasing a 2 BR/2 BR at the Woodlands of Statesboro for Spring 2012. \$399 a month, utilities not included. Contact Adrian at (678) 230-5144.

## Subleases, cont.

2 BR/2 BT sublease in Georgia Villas. \$475/month for both rooms, utilities not included. Available Jan-May, pet friendly. Right across from Greek Row on Chandler. Email t00212@georgiasouthern.edu

Female to sub-lease Spring Sem. 5 BR, \$280 a month. Last month's rent is paid. Less than a mile from campus off of Gentilly Rd. Call, text or email Kristina: (678)-770-6251 kf01606@georgiasouthern.edu

Subleasing 626 B at the Exchange. Female Roommate needed. \$519.00 per month. All utilities included, free tanning, free Wi-Fi, 24 hr gym included. Available now. Contact (706) 523-6001

Room available for male or female in a 3 BR/2 BT house on Catherine Avenue. Fully furnished; bed needed. \$367/mo per person, utilities not included. Spacious house. Contact Yale at (404) 272-7652 or yale8754@bellsouth.net

## Subleases, cont.

Subleasing my room for Spring 2012 in a fully furnished 4 BR/4 BT 3-story town home. Walking distance from the stadium and bus stop. Contact Alex at (770) 712-5377 or ao00837@georgiasouthern.edu

Spring 2012 1 BR/1 BT in a 2 BR/2.5 BT townhouse at The Avenue. Furnished and utilities included. \$495/month, but I will pay \$30 for each month. Or I could put \$210 towards the first month's rent. Contact Cherrelle at chollan4@georgiasouthern.edu

All inclusive, two story, fully furnished, 4 BR townhouse for \$330/month! Includes trash, utilities, cable, wi-fi, pet park, 24/7 gym, recreation courts, computer lab, new appliances and washer/dryer! Contact (229) 326-4291.

Subleasing a 1 BR/1 BT in 4 BR apartment in Copper Beech for Spring 2012 starting Christmas Break. Washer/dryer included. Next to pool/volleyball court. \$389/mo plus utilities. Contact Singer (404) 680-7240

## Subleases, cont.

SPRING 2012! Female roommate wanted. 1BR/1BT in a 3BR/3.5BT townhome. Walking distance to the stadium and bus stop. \$400/mo., gym and pool included. Cheaper rate can be arranged. Contact Emily at 404-444-8987 or ec01442@georgiasouthern.edu

Subleasing a room in 4 BR/2BT in The Avenue for Spring 2012, but available as early as Dec 16 and Dec will be paid for. \$325/MO. Furnished, utilities included with free Wifi and Cable. Contact Nikki at (678)525-0297.

1 BR/1 BT available in a 3 BR at The Grove, for Spring 2012. Available after Dec. 20. \$450/mo, utilities included. Pet friendly, pool. I will pay last month's rent. Female preferred. Call Ellen 404-694-1394 or email ej00034@georgiasouthern.edu

Female roommate needed for Spring 2012; 3BR/3BT at Cambridge; \$449/mo all inclusive and furnished; one building away from bus route, 1st floor. Contact Angelica 404-921-4988.

## Subleases, cont.

SPRING 2012! 1 BR/1BT available in 4 BR/4 BT at Campus Club for Jan or earlier. Bus stop next to stadium. Utilities included. Rent is \$419/month; CHEAPER RATE CAN BE ARRANGED. Email Skyler at sh02071@georgiasouthern.edu

## Help Wanted

MODELS of all weights/sizes/ages needed for figure drawing class on T&R, 2-4:30 PM. Fall and spring openings. Must be 21 and able to sit still for long periods of time. Call 912-478-2793 or email jburke@georgiasouthern.edu

Receptionist/admin assistant position available at established construction Management/real estate development firm. Flexible 30 hours M-F.. Please send your resume to; ffbenneth@gmail.com

## HOT JOBS Cool Internships

Job Title	Company	Deadline to Apply
Advertising Coordinator	Graduate Marketing & Media	Dec. 31, 2011
Telecommunications Inform. Sys. Officer	Central Intelligence Agency	March 17, 2012
Business Development Intern	Course Hero, Inc.	Dec. 5, 2011
Mechanical Project Engineer	Walker White, Inc.	Jan. 3, 2012
Environmental Interpretation Internships	Patuxent Research Refuge	Dec. 23, 2011
Business Analyst	Vensoft Inc.	Jan. 31, 2012
Shipping & Warehouse Supervisor	Hormel Foods Corp.	Dec. 31, 2011
Marketing and Communications Internship	GA Dept. of Economic Dev.	Feb. 29, 2012
Candler County Public Health Nurse	Southeast Health District	Feb. 29, 2012
Software Engineer	Vensi Inc	Dec. 11, 2011
Teacher	Georgia Teaching Fellows	Dec. 18, 2011
Entry Level Sales/Recruiter	TEKsystems	Dec. 26, 2011
Store Management Internship	Kohl's Department Stores	Dec. 31, 2011
Summer Intern	Pace Academy Summer Prog.	Feb. 29, 2012
Subscription Sales Rep.	Black Book	Dec. 31, 2011
Consumer Insights Internship	Hormel Foods Corp.	Dec. 31, 2011
Internship	Cumulus Media	Dec. 31, 2012
Store Management Internship	Kohl's Department Stores	Dec. 31, 2011
Summer 2012 IT Internship	Chick-fil-A	April 30, 2012
IT Assistant - Atlanta	GradStaff	Feb. 28, 2012

To view the detailed job descriptions application instructions or additional postings, log into the Eagle Career Net/NACELink system found at [www.georgiasouthern.edu/career](http://www.georgiasouthern.edu/career).

## Advertisement

## Advice From Graduating Seniors

By Noele Crooks

Graduation is just around the corner for seniors. This means portfolio building, resume sending, and interview practicing is all on their to do list. The job search has begun. Next stop, a career.

Three seniors, Drew Cheshire, Skyler Henry and Jackson McGahee give their advice on following your passion, and how to prepare for life after college.

Drew Cheshire, is a multimedia communications major with an emphasis in information. Graduating in the December, Cheshire will then complete his internship at East Carolina University in the broadcasting department.

When asked why it is important to follow your passion Cheshire says, "Because you'll never be happy unless you're doing what you want to do. For example, I love sports, talking about sports, and being the center of attention so broadcasting was a natural fit."

He advises students to do something they enjoy, "Find something. Be persistent. Find out what it is you want to do and don't stop until you're there."

Students are often faced with the indecision of what they want to major in and their future career goals. By exploring different majors and completing skills and values assessments, students can have better luck in finding their passions.

Another important part of graduating, and beginning the job search is the importance of the resume.

"Your resume is very, very important because it's not enough to just have good grades," Cheshire said. "You need to come into the field with some edge, and something more to bring to the table." The resume will allow you to market and highlight that edge to potential employers.

Skyler Henry, another multimedia communica-

tions major with an emphasis in information agrees.

"Resumes are important, but so is having a great interview and many examples of your work," Henry said. "In my particular field, they also want to see what you can do, like a portfolio."

Henry has completed a mock interview at Career Services, begun the job search, and also has advice for students.

"Do everything that you possibly can on campus, whether it be student organizations or volunteering," Henry explains. "You never know who knows who and what those experiences in college will lead you to."

Jackson McGahee, a senior public relations major, explains the importance of networking.

"I feel that involvement and networking is crucial to achieve success in a field, but it assists in immersing yourself in the field," McGahee said. "Yes, a professional resume can speak volumes on the talent that you as an individual bring to a company; but quality recommendations from leaders in the field shouldn't be forgotten."

By following your passion, getting involved to gain experience for yourself and your resume, and practicing your interview, the stress level one faces while job searching can be lowered.

When searching for a job, websites such as Monster.com, Indeed.com, USAjobs.com and Eagle Career Net (offered only to Georgia Southern students/alumni) you are required to upload a resume and a cover letter. Since the application is online, it is imperative that your cover letter and resume get you noticed.

The Office of Career Services offers both cover letter and resume critiques during walk-in hours from 9 a.m. to 12 p.m. and from 1 p.m. to 4 p.m., Monday through Friday.



Tuesday, November 29, 2011 11

Edited by Rich Norris and Joyce Lewis

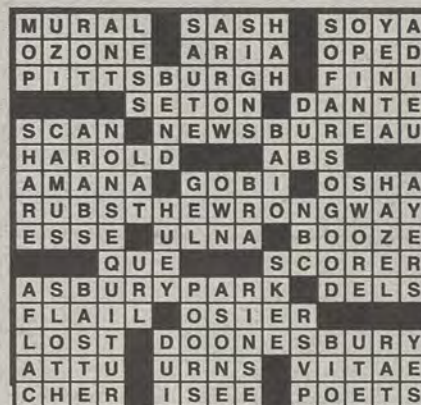
- 1 Postseason gridiron game, and a hint to the puzzle theme found in starred answers
- 5 Baseball card brand
- 10 Young men
- 14 Tiny battery
- 15 Well-honed
- 16 Vicinity
- 17 \*Sign of a typing mistake
- 19 Dogpatch possessive
- 20 Country singer Gibbs
- 21 Ostrich cousins
- 23 Quick swim
- 24 Before, before
- 25 \*Indigent's request
- 29 Nine-digit ID
- 30 Ready
- 31 Not a good area for nonswimmers
- 32 Rehab woes, briefly
- 34 Also-ran
- 35 Little demon
- 38 \*Wizard's game in the rock opera "Tommy"
- 41 B'way sellout sign
- 42 Shearer of "The Red Shoes"
- 44 ID checker's concern
- 45 An original Mouseketeer
- 48 Séance sound
- 50 Make a choice
- 53 \*Street urchin
- 55 "To Kill a Mockingbird" author Harper \_\_\_\_
- 56 AOL chats
- 57 California wine valley
- 58 Church chorus
- 60 Playwright Simon
- 62 \*Chain for plus-size women's fashion
- 65 Automaker Ferrari
- 66 "What's in \_\_\_\_?": Juliet
- 67 Orchard grower
- 68 Fret
- 69 Pert



11/29/11

November 17th Puzzle Solved

- 1 Moistens in the pan
- 2 Many John Wayne movies
- 3 President Harding
- 4 Lion's den
- 5 Taoist Lao-\_\_
- 6 "Well, lookie here!"
- 7 Road repair worker
- 8 Future doc's undergrad concentration
- 9 Smarten (up)
- 10 "Well, \_\_di-dah!"
- 11 Desert feature
- 12 Fashion world VIP
- 13 Los Angeles bay named for an apostle
- 18 Smooch
- 22 Turtle's protection
- 26 Salon service often paired with a mani
- 27 Memo-routing abbr.



28 GI's address	46 Sung syllables
33 Entrepreneur- aiding org.	47 Francia neighbor
35 Makes believe	49 Bartlett or Bosc
36 Memorial structure	50 Chicago Fire Mrs.
37 Peewee	51 In a sty, say
38 Eucharistic plate	52 Exam taker
39 Farming prefix	54 Family matriarchs
40 "Look before you "	59 Fable
43 On a pension: Abbr.	61 Sad
	63 911 response initials
	64 Ottoman governor

IIIIIEEE!

PL. L. SIRIUS

Richard

THAT WAS  
PAMI  
SOMETHING  
TERRIBLE  
MUST HAVE  
HAPPENED!

WHAT IS IT, PAM? SPACE SQUIDS? GIANT SCORPIONS?

I FOUND A WHITE HAIR!

CONTINUED ...

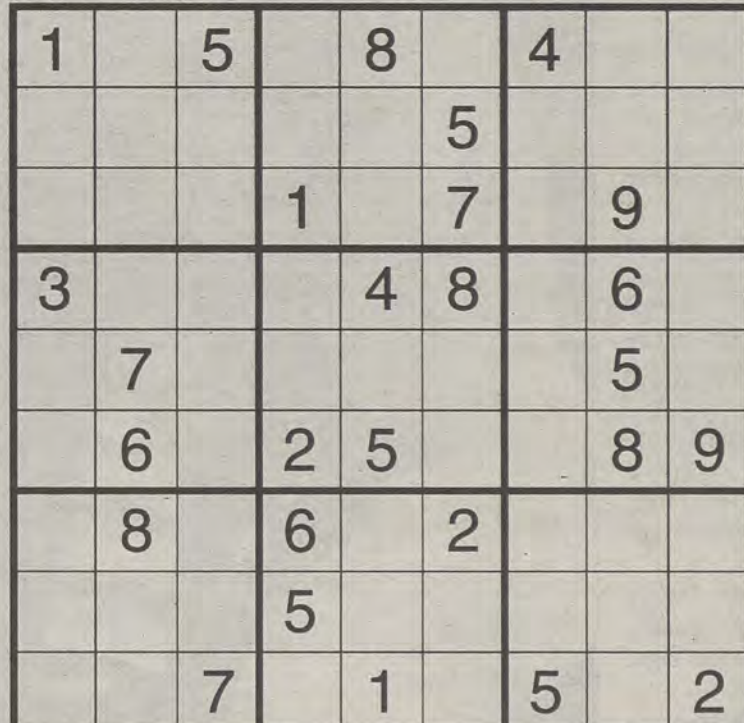
MY life would be so much better if I was a corporation.

Corporations are expected to act like the worst kind of person.

www.joeshalek.com

You'd make a great corp. I'm glad You'll never be one.

## Sudoku


**EAGLE  
EXPRESS**

GET SPECIAL OFFERS  
AND PERKS BY TEXTING  
"LATTEDA" TO 99000

**Magazines & Muffins** - Every *Thursday* from 10:30am - 1200pm @ the Williams Center Gazebo



# SPORTS

12 Tuesday, November 29, 2011

The George-Anne

## Eagles suffer two losses over the break

### Men's basketball

By CLINTON HINELY

George-Anne contributor

The Georgia Southern University men's basketball team was able to build team chemistry over Thanksgiving break, but was unable to pick up a win in its two road games.

"We had a great Thanksgiving together," head coach Charlton Young said. "That's really a time you can use to get closer and to bond."

"The traveling was tough, but us being together for Thanksgiving I think is a good thing for our basketball program," said Young.

GSU fell to the University of South Florida, 66-46, on Nov. 23 before traveling to play Southern Methodist University Sunday night. The Eagles fell to the Mustangs, 55-49, but not before making the game interesting in the last few minutes.

The Eagles shot 36 percent from the floor against USF — very poor, considering their relatively high shooting percentage at the start of the season.

Senior guard Willie Powers had another strong night, leading the team with 14 points and eight rebounds.

He also had six assists and two steals to lead the team and add to his strong performance. Powers led the Eagles in almost every statistical category.

USF was able to shoot 61 percent and never let GSU back into the game after a strong start. GSU was able to cut the lead to nine before halftime, but the Bulls came back out with a strong 11-4 run. The Eagles were never able to get under an 11-point deficit during the second half.

The Eagles were able to hold a strong SMU team to only 55 points, one of their lowest point totals of

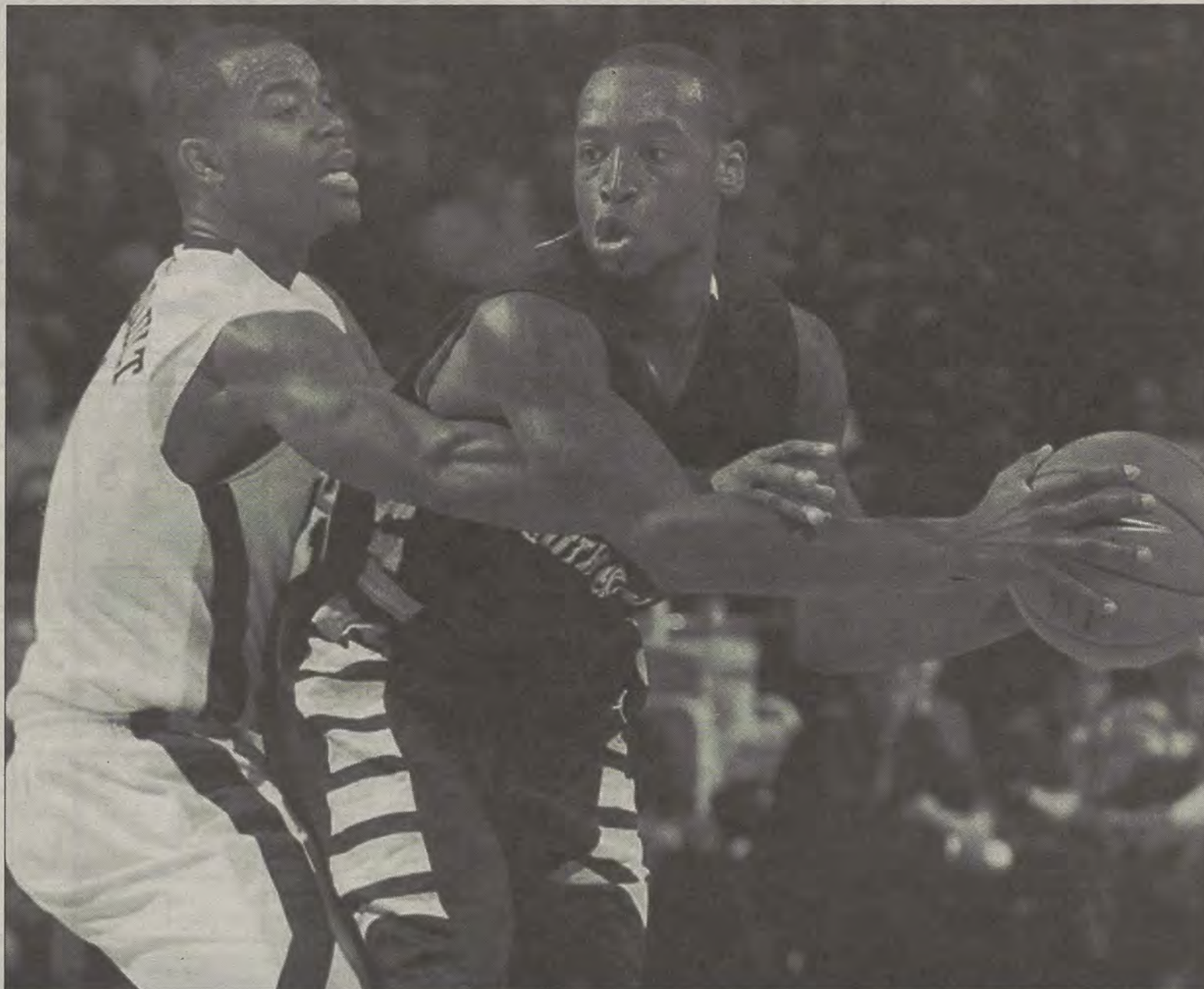


Photo courtesy of GeorgiaSouthernEagles.com

Sophomore guard Jelani Hewitt (5) looks to make a play while being covered by an opponent from Southern Methodist University in Sunday's game.

the season. The team trailed by 12 points at the 12-minute mark of the second half and was able to cut the deficit to only two points with less than two minutes remaining. Unfortunately, GSU wasn't able to overcome SMU in the final minutes to pick up the win.

Sophomore guards Jelani Hewitt and Eric Ferguson led the team with 14 points each. While

freshman guard Jessie Pernel had a breakout night, scoring eight points.

"We have had too many silly fouls and we turn the ball over too much, but we have improved in both of those areas," Young said.

"We have a ways to go, but we have a championship trait as a team that whatever we viscously attack to get better at, it shows

improvement," Young said. "There is only one game this season that I feel we went backwards and that was South Florida."

The Eagles will open Southern Conference play against the University of Tennessee at Chattanooga on Thursday at 7 p.m. in Hanner Fieldhouse.

"Guarding the three-point line will be a tough task," Young said.

"I think that and transition defense will be keys against Chattanooga."

"I think they will really struggle to keep us out of the paint, either by us entering it into the post or driving it," said Young.

The Eagles will continue conference play against Appalachian State University on Dec. 3 at 7:30 p.m. at Hanner Fieldhouse.



# Lady Eagles experience mixed results in tournament

## Women's basketball

By ANNA WELLS

George-Anne contributor

While most Georgia Southern University students were relaxing during their Thanksgiving break, the Lady Eagles were hard at work participating in the Southern Miss Tournament in Hattiesburg, Miss.

After their loss to the University of Alabama on Nov. 21, the women's basketball team's first opponent in the tournament was Stephen F. Austin on Friday, Nov. 25, at 2:30 p.m.

The Lady Jacks came on strong in the first half, taking advantage of 15 Lady Eagle turnovers. With the score being 26-18 at the half, coach Rusty Cram recognized that the team needed to adjust its game.

In an interview with Georgia Southern Athletics head coach Rusty Cram said, "The first three or four possessions we turned the ball over and had to play from behind the rest of the way. Turnovers were the difference in the ball game. We talked at halftime about doing a better job of protecting the ball, but we just didn't execute."

Player Meredyth Frye scored five straight points at the start of the second half for the Lady Eagles, cutting the deficit to eight. The team played even with the Jacks for the second half but was unable to overcome the deficit, making the final score 49-40.

The Lady Eagles then took to the court again on Saturday, Nov.

26, at 1 p.m., this time against opponent Jacksonville State.

The Lady Eagles came out with an early lead in the game on Saturday afternoon, with a scoring percentage of 52.5 percent from the field. With help from players Tashayla Steede and Aishya Wofford, the Eagles led the Gamecocks 6-0, eventually stretching their lead to 20-4 before Jacksonville State was able to come up with a response. The Lady Eagles held onto their lead, making the score 38-22 at the half.

In an interview with Georgia Southern Athletics Cram said, "I thought the first five minutes was going to dictate how the game would go. We knocked down some open shots early and kept scrapping. We were doing the fundamental things we need to do to get some great looks at the basket".

The Eagles came out strong once again in the second half, making the score 49-26 with 15:41 left on the clock. The team also forced 18 Gamecock turnovers in the second half converting them into 20 points. The Lady Eagles managed to hold onto their 23-point lead, making the final score of the game 72-49, resulting in an Eagle victory.

"We came out loose and focused today," Cram said. "We did a great job of reading the defense and executed exactly what the defense gave us. That was the difference in the game".

The Lady Eagles hit the road



Photo courtesy of GeorgiaSouthernEagles.com

Freshman forward Tashayla Steede (31) goes for a layup against the University of Alabama Crimson Tide.

again as they take on Southern Conference foe Appalachian State University on Thursday, Dec. 1.

They will then come back home to take on rival Furman University on Monday, Dec. 5 at 7 p.m. and

Stetson University on Thursday, Dec. 8, at 7 p.m. at Hanner Fieldhouse.

**R. J. Pope**

**Men and Ladies Apparel**

Your supplies for mens & womens jackets

**764.6973**

840A Buckhead Dr. & 5 South Main St.

**patagonia®**

**SOUTHERN TIDE**

**vineyard vines®**  
martha's vineyard

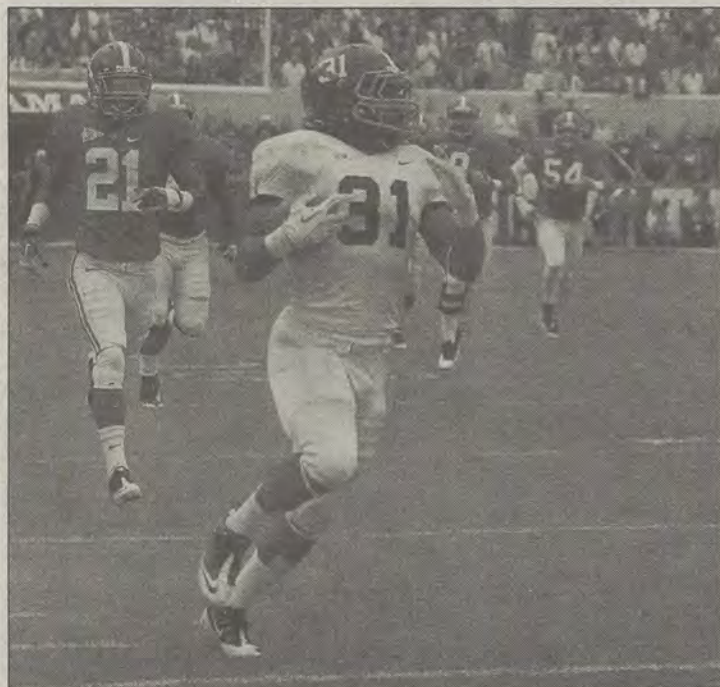
**THE NORTH FACE**

**POLO**  
RALPH LAUREN

**MOUNTAIN**



# Three Eagles named SoCon performers of the year



Lindsay Hartmann/STAFF

**Dominique Swope** receives SoCon Co-Freshman of the Year title.



Lindsay Hartmann/STAFF

**Coach Jeff Monken** is SoCon Coach of the Year.



Akeem Hill/STAFF

**Brent Russell** receives SoCon Defensive Player of the Year title.

## Eagles receive multiple SoCon recognitions

### Football

By **JAMES FARMER**

George-Anne staff

The Georgia Southern University Eagles had two players and their head coach named performers of the year for the Southern Conference.

Brent Russell went wire-to-wire as Defensive Player of the Year, beginning the season as a Co-Preseason Defensive Player of the Year and finishing the year in sole possession of the award. He accumulated 48 tackles and a team-leading 12 tackles for loss to go along with his five sacks, which are tied for the team lead. Perhaps the biggest indication of how valuable he is to the Eagles' defense came when he was suspended for a game against The Citadel and the Bulldogs ran for over 200 yards in his absence.

Running back Dominique Swope was named Co-Freshman of the Year with Terrell Robinson from the University of Tennessee at Chattanooga. He only rushed for 593 yards on the season, but it was his performance in the last two games of the season that impressed the voters. He rushed for 318 yards

against Wofford College and the University of Alabama, two extremely tough defenses to run against. His performance against Wofford won GSU the SoCon title and his performance against the Crimson Tide gained GSU respect nation-wide.

Jeff Monken was named Coach of the Year after guiding the Eagles to a 9-2 mark and winning the SoCon title in only his second year as the head coach of GSU. His team only suffered one loss to a fellow FCS team during the season, a 24-17 setback to Appalachian State University.

Brett Moore, Adrian Mora and Russell were named to the first team offense, special teams and defense respectively. Laron Scott was named to both the first team defense as a cornerback and the first team special teams as a returner.

Jaybo Shaw, Dorian Byrd and William Maxwell were all second team offense selections, while John Douglas was named to the second team defense.

Manrey Saint Amour and Dominique Swope were named to the All-Freshman Offense, while Deion Stanley capped off his first season playing for the Eagles with an All-Freshman Defense selection.



434 South Main Street Statesboro, GA 30458

912.489.8658

**\$3 off**  
**\$10 Purchase**  
Bring student id  
and redeem coupon

**\$5 off**  
**\$20 Purchase**  
Bring student id  
and redeem coupon



# The fighting Eagles challenge Alabama



Lindsay Hartmann/STAFF

**Left: Lavelle Westbrook (18)** goes to tackle his opponent's running back.

**Middle: Jerick McKinnon (1)** makes a run for the goal line before halftime.

Akeem Hill/STAFF

**Right: Quarterback Jaybo Shaw (14)** gets ready to receive the snap for his team.



## Whats going on at CRI?

### Inner Tube Water Polo

CRI will be having Inner Tube Water Polo free play on Wednesday, November 30th from 8-10 pm. Students are encouraged to bring friends and get some play time in before finals week. For More information on Inner Tube Water Polo, visit the CRI Website : <http://services.georgiasouthern.edu/cri/aquatics/innerTubeWaterPolo>

### Biggest Loser Entries Due

All applications are due for the Georgia Southern version of the Biggest Loser on December 9th by 5pm.

This 12-week workout program is comprised of weekly workouts and challenges, along with nutrition advice in order to improve workout goals. The program is open to faculty, staff and students. Applicants must submit a completed application along with a 200-word essay. Participants must be able to commit 5 hours a week, be a beginner exerciser and 20+ pounds to lose.

For more information visit the Biggest loser webpage : <http://services.georgiasouthern.edu/cri/fitness/biggestLoser>.

### Weekly Activity

CRI will be hosting an event that will allow students to enhance their social wellness by creating friendship bracelets on Wednesday, November 30, 2011 from 11 a.m.- 2p.m. in the RAC Lobby. Take advantage of this opportunity to make a bracelet for friends, family or yourself. Homemade bracelets can be used as wonderful holiday gift for friends and family.

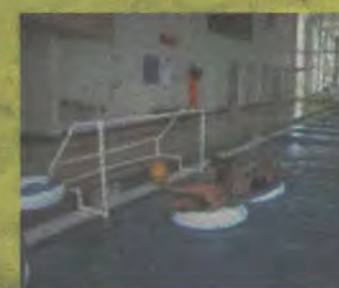
### Upcoming Events

Nov 30: Inner Tube Water Polo Free Play  
Dec 4: Yoga Clinic  
Dec 6: Club Sports Council  
Dec 8: Fitness Assessment ends  
Dec 9: Last Day of Group Fitness Classes  
Dec 9: Sprg Biggest Loser Challenge Application due  
Dec 12: Group Fitness Week Schedule Begins

## What's Happening at CRI

### AQUATICS

INNER TUBE WATER POLO  
FREE PLAY  
WEDNESDAY, 8 - 10 PM



### FITNESS

BIGGEST LOSER  
ENTRIES DUE  
DECEMBER 9<sup>th</sup>, 5 PM



FOLLOW US! **fb**

facebook.com/GSUCampusRec  
twitter.com/GSUCampusRec

[WWW.GEORGIASOUTHERN.EDU/CRI](http://WWW.GEORGIASOUTHERN.EDU/CRI)

**CRI**  
CAMPUS RECREATION  
& INTRAMURALS



**IT'S YOUR LIFE...**

**LIVE IT.**

**FORUMSTATESBORO.COM**

**COMING TO:**

831 South Main Street  
Statesboro, GA 30458

**LEASING  
OFFICE HOURS:**

Monday-Friday 9-6  
Saturday 10-5  
Sunday 12-5

**FORUM**

®

**AT STATESBORO**

**A PREMIER STUDENT  
HOUSING COMMUNITY**

**NOW  
LEASING  
FOR FALL 2012**

- Tennis Court
- Lap Pool & Spa
- Pet Friendly
- Pet Park
- Two Free Tanning Beds
- Indoor Basketball Court
- Indoor Volleyball Court
- Car Care Center
- Modern Faux-Wood Floors
- Private Bathroom in Bedrooms
- Convenient Individual Leases
- Free High Speed Internet in Bedrooms
- 24 Hour Fitness and Training Center
- Kitchens with Full Size Appliances
- Full Size Washer / Dryer Included
- Wi-Fi Cyber Cafe with Coffee Bar
- Outdoor Sand Volleyball Court
- High Speed Internet Access
- Student Center and Lounge
- Roommate Matching
- Expanded Cable
- Media Room



**912-489-3676**

**ForumStatesboro.com**

**GET A FREE T-SHIRT WITH THIS AD!**