

Georgia Southern University

Digital Commons@Georgia Southern

---

The George-Anne

Student Media

---

11-17-2011

## The George-Anne

Georgia Southern University

Follow this and additional works at: <https://digitalcommons.georgiasouthern.edu/george-anne>



Part of the [Higher Education Commons](#)

---

### Recommended Citation

Georgia Southern University, "The George-Anne" (2011). *The George-Anne*. 2734.

<https://digitalcommons.georgiasouthern.edu/george-anne/2734>

This newspaper is brought to you for free and open access by the Student Media at Digital Commons@Georgia Southern. It has been accepted for inclusion in The George-Anne by an authorized administrator of Digital Commons@Georgia Southern. For more information, please contact [digitalcommons@georgiasouthern.edu](mailto:digitalcommons@georgiasouthern.edu).





**GSU  
LOSES  
SEASON  
OPENER**  
PAGE 9



**GAMEDAY  
MAYDAY**

**SPECIAL PULL-OUT SECTION**



**TREES  
FOR  
CHARITY**  
PAGE 18

Thursday, November 17, 2011  
Georgia Southern University  
www.thegeorgeanne.com  
Volume 87 • Issue 43

# THE GEORGE-ANNE

## Eagles focus on 'Bama test

By **DERRICK ASBERRY**  
George-Anne staff

For the Georgia Southern University Eagles, Saturday's match up against No.3 University of Alabama will be the last

game of the regular season, as well as the first time the Eagles have played back-to-back road games.

While Saturday's game is definitely a major challenge for the Eagles, in many respects, it doesn't have to be. The Eagles

have already clinched the Southern Conference title last week against the Wofford College Terriers. The team is ranked No. 2 in the FCS standings, and most likely, will remain there unless this

See 'BAMA TEST, page 15

## McClure arrested, released on bond

By **LINDSAY GASKINS and TJ JACKSON**  
George-Anne contributor

Former writing and linguistics department chair Randall McClure was arrested and charged with a felony, theft by deception, on Nov. 14 before being released on bond.

McClure's lawyer, Page Pate, said he has been unable to reach Georgia Southern University in regard to the case.

"It appears to him and to me that there was some sort of misunderstanding with the administration of the validity of the particular expense, and what we're going to do now is obtain records from the university to review those records," said Pate.

Evidence leading up to his warrant was gathered between Sept. 30 and the Nov. 14 arrest, according to the police report.

"I haven't seen any warrants or any evidence of the case at all," said Pate. "It's my understanding that he doesn't owe them anything. Whether there was a reimbursement or offset, I don't know the facts of that."

Randall is charged with theft of \$1,728.78 from GSU on May 26, according to the Georgia Southern

See **McCLURE**, page 8

### SHOW OF STRENGTH



Christian Washington/ STAFF

The **Eagle Show of Strength competition** showcases student as they test their strength against others in the Georgia Southern University community. The competition includes bench pressing, squatting and deadlifting.



**thegeorge  
anne.com**

| Thurs. | Fri. | Sat. | Sun. |
|--------|------|------|------|
| H 68   | H 62 | H 73 | H 80 |
| L 36   | L 40 | L 46 | L 47 |



Newsroom 478-5246  
Advertising 478-5418  
Fax 478-7113

PO Box 8001  
Statesboro, GA  
30460



# Grease fire causes evacuation at Lakeside

By LINDSAY GASKINS

George-Anne contributor

Statesboro Fire Department was called in early Tuesday evening after being notified of a fire alarm going off at Lakeside Café.

Students who were eating inside Lakeside Café did not know what was happening, said Tyrell Dyson, a graduate accounting student.

"I just heard 'get out.' I had just gotten there and I saw everyone coming out," said Dyson.

"I just saw the lights start flashing and came out. I think it's a bomb threat. The reason I think it's a bomb threat is because there was no sound to the fire alarm and there was a police officer looking all over the dining area and under tables and stuff," said Garry Brown, freshman math major.

The incident was not a bomb threat, but a grease fire that

occurred in the back kitchen, said junior multimedia communications major and employee of Lakeside Café, Derek Bailey.

"From what I understand, there was a small grease fire in the back. No one exactly told me what it was. I just heard 'run and leave the building' so right now we are waiting on the fire department to come through and check everything out to make sure it's safe for us to go back in," said Bailey.

"We had a little grease fire over in the fries section. It was put out pretty quickly, we evacuated the building and got the fire under control. We will have to go in and throw all of the food away because they sprayed the damages," said Lakeside Café employee, Barbara Mills.

The fire came from a fryer from the back kitchen, but there were no flames reported, said Jason Scott,



Rebecca Farris/STAFF

Firefighters responded to a grease fire at Lakeside Café after students had been evacuated from the building.

senior computer science major.

"The underside of the fryer started smoking and the smoke built up so much that the smoke

detectors went off. No one was hurt, everyone got out. They just told everyone to go outside until they can contain it. I didn't even see

flames," said Scott.

The fire was put under control shortly and staff and workers were allowed back in.

# SEXED!!!

## Featuring River Huston

Thursday, November 17, 7pm

Williams Center Multipurpose Room

Attendance Verification Will Be Provided



# City Council proposes alcohol laws

By **COURTNEY ESCHER** and  
**COURTNEY TIELKING**

George-Anne contributors

Statesboro City Council discussed on Tuesday changing the alcohol ordinances to include sales on Sundays.

During the meeting, the first reading of the ordinance began, including possible law options.

"What we need to figure out is who do we want to be eligible to serve alcohol on Sundays and under what conditions. Things such as penalties are still considered a state-wide factor that restaurants and sports have to comply with," said Councilman Travis Chance of District 5.

Current stipulations for serving alcohol on Sundays will be limited to restaurants and sports, said City Manager Frank Parker.

"Restaurants and sports will have to pay a license fee in order to serve on Sunday," said Parker.

The difference between a restaurant and a sports bar for the purpose of the law would be what services they offer, said Park.

For a food service establishment to serve alcohol on Sundays, it must have a combined food and non-alcoholic beverages revenue of 50%. Cover charges will not be counted in this total, said Park.

A sports restaurant must serve meals while the business is open or until 10 p.m. to serve alcohol on Sundays. Cover charge can be counted as food sales, said Park.

The council has worked to make

the law clear and concise in order to benefit those directly involved, said Chance.

"We've reduced the ordinance from about 50 pages to 22. We've taken out all of the ambiguous garbage so that it is easier to understand and follow," said Chance.

While some restaurant owners are skeptical of the law being passed, they are optimistic that council will see the benefits of the law, said Matt Marsengill, catering manager and assistant manager of the Statesboro Millhouse.

"The opposition is not surprising at all, but hopefully the City Council sees that the community does want this and for a lot of different reasons, not just for business but for the security of their college-aged kids," said Marsengill.

Attempting to keep students in Statesboro with this new law will cut down on accidents, said Marsengill.

"I've had a lot of local parents that are concerned that their kids may be driving to Savannah on Sunday to drink and then having to drive an hour back, that is a lot of risk. If they are here in Statesboro it is easier to keep out an eye and hopefully not have as many accidents. Hopefully that will put some parents at ease," said Marsengill.

The new law could bring in more businesses in the future, said Marsengill.

"I do think over the next five to 10 years, now that we have the new alcohol law changed, we will see a few more restaurants come, which won't

just affect the college students but the overall community," said Marsengill.

The second work session will be held on Nov. 29 at 5 p.m. at Statesboro City Hall. It will be used to further discuss the details of the ordinance.

## 2 Proposed Alcohol ordinances

### ■ Restaurant/ ■ Sports Restaurant

■ 50% of income must be food and non-alcoholic beverages

■ 50% of total income excluding alcohol counts toward the requirements

### ■ All Restaurants

■ 50% of all Sunday income must be food and non-alcoholic beverages for all restaurants

Jose Gil/CONTRIBUTOR

## Statement of Operations

The George-Anne is the official student newspaper of Georgia Southern University, owned and operated by GSU students using facilities provided by the university. The newspaper is the oldest continuously published newspaper in Bulloch County. The newspaper is a designated public forum for the Georgia Southern community. The newspaper is published twice weekly, on Tuesdays and Thursdays, during most of the academic year. Any questions regarding content should be directed to the student editor by phone at 912.478.5246 or at [gaeditor@georgiasouthern.edu](mailto:gaeditor@georgiasouthern.edu).

**ADVERTISING:** The newspaper accepts advertising. Inquiries may be made by calling 912.478.5418 or 912.478-0566. Fax any questions to 912.478.7113 or e-mail [ads1@georgiasouthern.edu](mailto:ads1@georgiasouthern.edu).

The George-Anne receives additional support, in part, from the Student Activities Budget Committee.

The deadline for reserving space and submitting advertising copy is noon, one week prior to the intended publication date. For more information, rate cards, sample publications, contact the advertising manager or student media director. The advertiser is responsible for any errors in advertisements and its liability for adjustments is limited to the amount of space the error occupied in the ad. Further, the newspaper is not responsible for any damages caused due to an ad's omission from a particular edition and its responsibility solely is to reschedule the ad in the next regular edition at the regular advertising rates.

**STUDENTS BEWARE:** The George-Anne screens all advertisements prior to publication. The newspaper strives to accept ads for legitimate products and services only. Students are urged to exercise caution when replying to ads—particularly those that require personal information. Students are also urged to report to the newspaper any suspicious offers which they might see in an ad.

**PUBLICATION INFORMATION:** The newspaper is printed by Brunswick News at Brunswick, Ga.

**NOTICE:** Unauthorized removal of multiple copies from a distribution site constitutes theft under Georgia law, a misdemeanor offense punishable by a fine and/or jail time.

**Editor-in-Chief** Arielle Coambes  
**Views / Copy Editor** Shauntel Hall  
**News Editor** Jennifer Curington  
**Asst. News Editor** Jessie Reese  
**Arts Editor** Quaniqua Epps  
**Asst. Arts Editor** Alex LaSalle  
**Sports Editor** Matthew D'La Rotta  
**Asst. Sports Editor** Jannah Bolds  
**Football Editor** James Farmer

**Business Manager** Tiffany Larkin  
**Asst. Business Manager** Holly Hillhouse  
**Marketing Manager** Aria Gabol  
**Production Manager** Mallory McLendon  
**Photo Editor** Randy Hudgins  
**Design Editor** Kelsey Paone  
**Web Editor** Jonathan Law

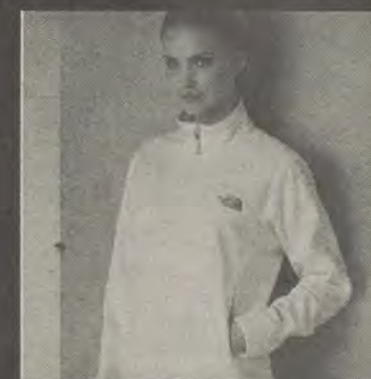
## Corrections

Contact the editor at [gaeditor@georgiasouthern.edu](mailto:gaeditor@georgiasouthern.edu) for corrections and errors.

THE  
NORTH  
FACE



The Sir Shop  
Statesboro Mall  
912.764.6924





## Our View

### Plays need more student support

Last Thursday Georgia Southern University students attended "Shakespeare on Trial" at The Averitt Center for the Arts.

The play, both written and produced by Jeremy Webb, was a one-act comedy that accused William Shakespeare of being dull and out-of-date.

Webb's goal of the show was to show all the sides of Shakespeare including the humor, the passion and most importantly the entertainment.

This national play put on by Webb was a great production that students shared with the community.

On the other hand, GSU currently has two plays in rotation, "Big Love" and "Taming of the Shrew", which will both be running until Nov. 18th.

These plays are put on by students and receive support from the university but also deserve a lot more from students.

Most of the plays students see on stage at GSU are put together primarily by students and contain a great amount of preparation and dedication from the students whose names are behind these plays.

GSU students should work harder to support the work of their fellow students and actually go to these shows, just as they support shows in the community like "Shakespeare on Trial".

These plays, just like sporting events, are a way that students are able to express themselves by doing exactly what they love in front of their counterparts and their fellow community.

Despite performing in front of their fellow classmates, members of the surrounding Statesboro community come out to enjoy these plays and provide support to these students for their hard work.

GSU students should challenge themselves to go out and support these plays that their fellow student body members work so hard to prepare for just as they would sporting events, fashion shows and even concerts.

The George-Anne welcomes letters to the editor and appropriate guest columns. All copy submitted should be 350 words or fewer, typed, and sent via e-mail in Microsoft Word format to [gaeditor@georgiasouthern.edu](mailto:gaeditor@georgiasouthern.edu). All submissions must be signed and include phone number for verification. GSU students should include their academic major, year and hometown. The editors reserve the right to reject any submission and edit submissions for length.

Opinions expressed herein are those of the Board of Opinions or columnists themselves and DO NOT necessarily reflect those of the faculty, staff or administration of GSU, the Student Media Advisory Board, Student Media or the University System of Georgia.

SHOW



## Registration issues must be solved

Every student at Georgia Southern University has to register for classes. Every student has to trust an advisor and a website to ensure that their experience runs smoothly. For many students, this process does not run as smoothly as expected.

Many students have said that WINGS is unreliable. Students have to wake up at 6 a.m. and hope that the page will load as it is getting massive numbers of students trying to sign on, and then race other students for the classes they need.

Many students do not get the schedule they had anticipated, and what should be a quick process ends up taking more than an hour and concluding in stress.

For some students, the problems with registering begin even before their RAN numbers are handed to them.

In some cases, the advisors are either not helpful or not available. It is understandable that they are people too, and may have a bad



JESSIE REESE/  
ASSISTANT NEWS EDITOR

week, but this is no excuse for the paid staff to leave the office repeatedly before office hours are over or simply not coming in at all.

For a student who has been given a late advisement appointment, it is difficult to work around both their schedule and the schedule of their advisor. If they have a set appointment, they have to trust that the advisor will show up on time. This does not always happen.

The other advisement/registration problems stem from those students who have lower GPAs and must

go through the Academic Success Center before obtaining their RAN numbers.

This step is difficult to do, also due to scheduling. A student must first show up on a day and time that someone is available to speak with them and then sit through a, while helpful, long process that they could do without, especially if the GPA is only a few points off.

Once all of these steps are complete, the student is given their RANs and must be hopeful that there are any classes available that does not require them to wake before the sun and with a professor with course work that they can handle, as well as fit in with their work schedules.

The advisement and registration process could use some tweaking and the university should think about the needs of the students when re-forming the system.

Reese is a sophomore journalism major from Newnan, Ga.



## Party disagreement costs Americans

Congress has shown once again that even in a bipartisan super committee, partisanship still dominates our political system.

Republicans and Democrats are still fighting each other to reach an agreement on a deficit reduction plan, and things have been better.

Failure to reach an agreement would end up in a \$1.2 trillion spending cut, which will be evenly divided amongst both defense and non-defense spending. These cuts would start taking place in 2013. An agreement to save at least \$1.2 trillion over the next decade must be reached so that Congress can vote to pass it before Christmas.

This deficit reduction super committee is made up of 12 congressmen, six from each party, meaning all we need is for one person to cross party lines and agree to a plan that would greatly benefit our country.

Republicans feel they have gone as far as they can go in agreeing to new terms on tax revenues,



ROB ROBERTS

agreeing to around \$250 billion in tax increases over the next decade. Democrats insist that isn't enough, while their counterparts insist on continuing giving tax breaks to the wealthiest Americans.

If a deal does not fall in place, the cuts that would ensue could be detrimental to our military. Republicans proposed a plan that had \$1.4 trillion in deficit reduction, which cut tax rates, especially from the top tax bracket. Democrats dismissed this as not being enough as it would decrease in revenue towards the end if its implementation period.

To have a plan in deficit

reduction that includes reducing the tax rates for the top tax bracket is just ridiculous to me. I don't see why it is so hard for the Republicans to see how much of a benefit it would be for the United States as a whole.

This is a major sticking point in the negotiations between the two sides and it would be so much easier to reach an agreement if they just agreed to take from those who can afford to give.

Some members of Congress had the idea of counting the several hundred billions of dollars saved from pulling out of Iraq towards the deficit.

I feel that this is not necessary because our Congress needs to stop behaving like children and arguing like little girls. This is more important than what your party wants you to do, this is the fate of the entire nation at hand.

*Roberts is a senior public relations major from Warner Robins, Ga.*

## Harsher capital punishment is needed

One of the most controversial topics facing our justice system is capital punishment, the death penalty.

In my opinion, it is one of the most vital tools that our country has to deter crime. If someone were contemplating murder, wouldn't they think twice about doing so if they knew that when they got caught they would be put to death?

Instead, many other countries and some states in the United States would rather put these cold-blooded killers in jail with a roof over their head and three meals everyday for the crime they committed.

That's more than some of these people have when they were free citizens.

Another reason we need the death penalty is it gives true closure to the families that have suffered so much from an event



FRITZ CHAPIN

that they did not deserve to be a part of.

Many families still suffer today knowing that the person that took their loved ones will be put up in a jail for the rest of their days, being taken care of by the state.

Which brings up another point regarding the cost of keeping the person in jail.

According to Jan Tankersley, 12th district state representative from Georgia, it costs over \$18,000 per year per inmate to incarcerate them compared to \$7,000 per year per student in higher education. And that number nearly triples

when the inmate reaches the age of 55.

Many people bring up the point that people are falsely accused of crimes, thus put to death falsely. The likelihood of this happening has been slashed by DNA testing and other methods of modern crime scene science.

In the past 20 years, only two percent of people convicted of a capital crime have had their sentences overturned, according to the Department of Justice. The other 98 percent of criminals did the crime and deserve the punishment they were given.

Right now, Georgia is in the top 10 list of incarcerated people and also in the top 10 of repeat violent criminals. That needs to change, and I believe that having harsher capital punishments is necessary.

*Chapin is a political science major from Roswell, Ga.*

## Student Views on News



Mazie Smith

Junior, Nursing Major

**How do you feel about the professor who was arrested for stealing money from the university?**

"It doesn't affect me. I mean the money I put in, it's for me. Whatever happens to it then I'm not sure."

**How do you feel about the football team winning the SoCon title?**

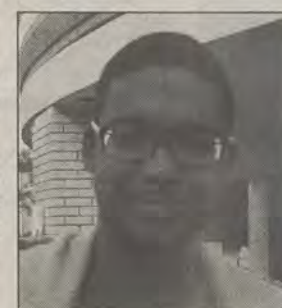
"I think it's cool because I actually know people on the team and I go to the games which is kind of fun because when I know the players I have a personal relationship with them so when I see them play it makes me happy for them. I don't really follow football as much as I wish I could but I like it."

Teddy Gandy

Junior Business Administration major

**How do you feel about the professor who was arrested for stealing money from the university?**

"I feel like it is a common occurrence with businesses period, not just on the university level. I just think that it's sad to hear but at the same time it kind of gives a window into what people are really doing behind closed doors."



Kayla Bloodworth

Sophomore Special Education Major

**How do you feel about the football team winning the SoCon title?**

"I actually didn't know because I was with my boyfriend and when I saw it I started flipping out because I'm a football person. I'm at every game I can be. I was so mad when they lost to App state and I was like I'm going to kick them in the shins. I will wait for them to get off that bus and I will kick them in the shins. Football is in my blood. I'm ecstatic. It's like I've been saying though, I went to the Delaware game last year that we played and I said Monken wants it all this year, he doesn't want a piece of cake he wants the whole cake. I'm happy about it."



Kaitlyn Ambridge

Freshman Psychology Major

**How do you feel about the football team winning the SoCon title?**

"Well I'm excited about it because my high school football team sucked. I'm excited to have a football team that's good."

**Did you attend a lot of the football games?**

"Not a lot of them. I know I went to at least half of the home games."



Brittany Cooper

Junior Health Education & Promotion Major

**How do you feel about the professor who was arrested for stealing money from the university?**

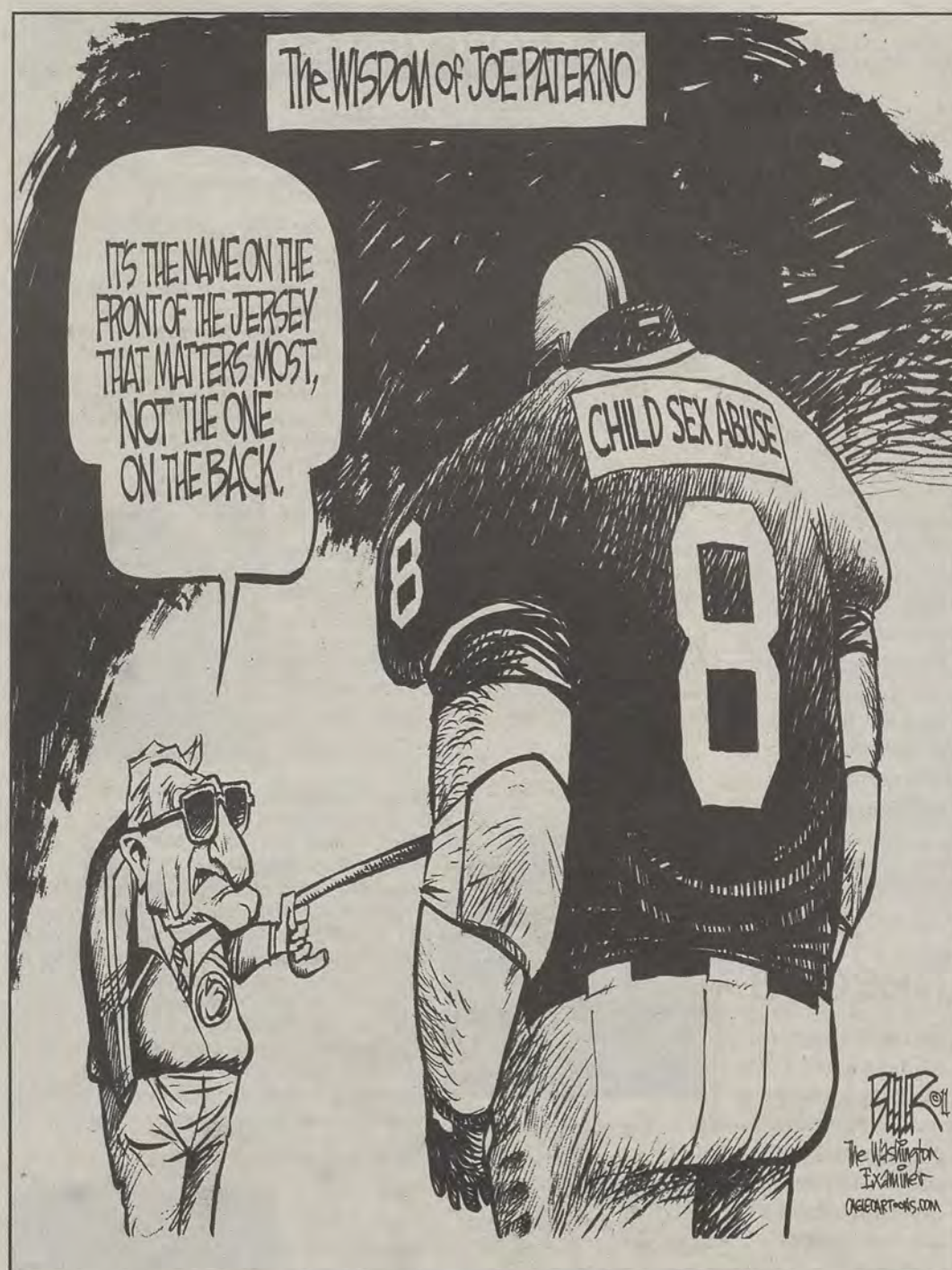
"We need to do background checks on the teachers more thoroughly before they start hiring people. Do background checks. Make sure we know who we have around our young adults."

**How do you feel other students will feel about that hearing that a professor is stealing money?**

"Angry because money is hard to come by."







## Weekly SGA Column

### Advisement stands as real issue

This past Thursday there was an article discussing a new academic policy that is being looked at by Student Government Association. The article did not go into much detail so I'd like to clarify.

College of Business Administration senators expressed in our meeting last week that they were advised in roughly the first two weeks of class. This was in no way a prescription for other colleges.

Also, the issue is really about advisement, not registration and deals with students being advised before the withdrawal date.

The policy was something I came up with based on various concerns I have received from students over the past few weeks.

Students had accidentally registered for classes that did not fit within their degree program and did not realize it until their advisor had pointed it out to them when they want to get advised for the spring.

But due to their late advisement which was past the withdrawal date, they were stuck in their classes for the rest of the semester.

Quick clarification: You can indeed withdraw from a class after the W date, but it will result in a WF- withdrawal failure and will affect your GPA.

The only exception to this is if you are in good standing in your class and your professor agrees to give you a regular W.

Why, you may ask, were these students accidentally registered for the wrong class?

In many cases the students had been advised for a class that would correctly



CHRISTINA BELGE

have fit within their degree, but when registering they could not get into that class so they chose another without paying close attention to their curriculum.

A common case is that in many degrees there are different class options to choose from to fulfill a specific section and sometimes they state that a student must pick from "Upper Division Classes".

This means that they must choose a class that is a 3000 level or higher, something that many students are not aware of. It should be specified on their degree's curriculum sheet as to prevent such problems for students and advisors alike.

After last week's discussion, colleges will talk with their deans to aide in ensuring that students are advised well before the withdrawal date and that upper division courses are specified clearly.

We hope to prevent students from wasting those precious HOPE hours, as well as their own time and energy.

**Belge** is a junior public relations major from Augusta, Ga. Belge is the Vice President of Academic Affairs of SGA.

**Boomers  
Vision Center**  
SINCE 2000

(912) 489-6655  
in front of Lowe's

# \$50 OFF

## ONE COMPLETE PAIR OF GLASSES

Coupon must be presented at time of sale. Not valid on previous sales. Minimum price of \$119.95 after discount. Cannot be combined with any other eyeglasses offer or discount. Limited time offer.

Valid through: November 19, 2011

**EYE EXAMS • GLASSES • CONTACTS**

**www.boomersvisioncenter.com**

**GSU**



# Faculty Senate changes grade appeal policy

By TJ JACKSON

George Anne contributor

The Faculty Senate voted to include the summer term in the student grade appeal process last night.

The request came from the provost office that the academic standards committee look at potentially changing the time period for which the students have the opportunity to appeal a grade, said professor of geography Robert Yarbrough, Ph.D. in geography.

"The big issue about it was how do we count summer. Summer was essentially left out of the previous policy. It wasn't as if you couldn't appeal a grade from summer, but if you wanted to appeal a grade from spring, that process really started in the fall," said Yarbrough.

“

The new policy is intended to be beneficial for both students and for faculty members so that it allows students to begin the process earlier...it doesn't require faculty members to necessarily deal with it during the summer...

”

-Robert Yarbrough, professor of geography

The addition to the policy will be easier for students to appeal their grades, said Liz Fritz, junior information technology major.

"You would have a better chance of appealing it during the summer than the fall because of the timing. It's better to do it right then when it happens versus having to wait three

months, then having to go back and get all your information together," said Fritz.

The faculty members will still have the choice of whether or not to review the student's grade during the summer, said Yarbrough.

"The new policy is intended to be beneficial for both students and

for faculty members so that it allows students to begin the process earlier and it allows it to be completed and still have a timely manner, but it doesn't require faculty members to necessarily deal with it during the summer, they may, but they don't have to," said Yarbrough.

The new policy will speed up the


appeal process, said Molly Phillips, junior early childhood education major.

"I kind of like the idea because a lot of the time teachers will just kind of put it off and they won't worry until it comes up, but if it gives students a little bit of a heads up, they can go ahead and talk to their teacher about it," said Fritz.

The teachers are busy during the summer doing research and are usually not available, said Yarbrough.

The new time period is a good idea for busy students, said Myles Chapman, junior anthropology major.

"I think it's a good idea," said Chapman. "I'm really, really busy in the fall and don't really have time to go through a bunch of work and hearings and all that kind of stuff."




## YAMAHA

### Statesboro Yamaha

# 10%

**Off Parts & Accessories**  
with your student ID



22815 US Hwy. 80 Statesboro, GA 30461 912-764-RIDE  
(1 mile past Lowe's on Right)



434 South Main Street Statesboro, GA 30458  
912.489.8658

## \$3 off

**\$10 Purchase**  
Bring student id  
and redeem coupon

## \$5 off

**\$20 Purchase**  
Bring student id  
and redeem coupon



## McCLURE, from page 1

Department of Public Safety police report.

The investigation began when Administrative Director of Audit and Advisory Services Jana Briley reported the possible crime, said Captain Terry Briley of Georgia Southern University Department of Public Safety.

McClure took an unauthorized trip, which was described as a symposium business trip, to Ohio and used state funds for unauthorized purposes, according to the police report.

"The GSU Police contacted him by telephone with an outstanding warrant. I believe Monday morning he was first informed that there was an outstanding warrant and turned himself in later Monday afternoon," said Pate.

He was released on a bond of \$3000 on Tuesday around 11 a.m. from the Bulloch County Sheriff's office, said Pate.

McClure will continue to teach at GSU, said Christian Flathman, director of office of marketing and communications.

"He's actually teaching a hybrid class this semester and so he has made arrangements that he will continue to teach and he made

arrangements for the remainder of this week to teach that class online, but we expect that he will be back in the classroom after Thanksgiving. He is scheduled to teach fully online in the spring, so he is scheduled to return back to the classroom," said Flathman.

As a result of McClure resigning as interim chair of the writing and linguistics department, a replacement has been appointed.

"They did announce the interim chair of the writing and linguistics department. Her name is Phyllis Dallas," said Flathman.

Both Public Safety and Bulloch County Sheriff's office could not provide any more additional information because this incident is still under an open investigation.

The audit of the Department of Political Science began at request after Richard Pacelle was removed as the department chair of political science by College of Liberal Arts and Social Sciences Dean Smith, according to an email sent to CLASS faculty from Smith.

After Pacelle's removal, faculty passed a vote of no confidence in Smith, but Provost William T. Moore and President Brooks Keel continue to uphold their confidence in Smith's leadership.

## Faculty questions gun range

By TJ JACKSON

George-Anne contributor

At last night's Faculty Senate meeting, faculty members questioned the administration about the safety issues of the shooting and archery range.

The administration, as well as Vice President of Student Affairs and Enrollment Management Teresa Thompson, answered questions about the location of the shooting range and gun safety.

"How can a person restrict themselves to this kind of mobility and meet (safety) requirements? I have real doubts that that can happen," said Robert Costomiris, Georgia Southern University English professor.

"It's like any other process, you cannot carry guns on campus," said Thompson. "There is no reason for anyone to come on the roads of campus because the facility will be right there on 301, Register Road."

The new facility will be located directly across the street from the RAC, but facing Highway 301 as you turn onto campus on Old Register Road, said Thompson.

The ability for security to arrest students driving on campus with guns was brought up by professor of geology Mark Welford.

"We will use the same procedure that we use now, we don't check every car that comes through campus," said Thompson.

There will never be fences or guards on GSU grounds for gun safety, said President Brooks Keel.

"We don't have fences and guards and gates and all that kind of stuff. We never will and that's one of the things about a university that it is so open so right now if a person wanted to break the law and wanted to bring a gun on campus, there is nothing we could do about it unless they were blatant about it, nor is there any way we could stop them unless we found out about it," said Keel. "So unless we go and search every car that comes on campus, and that is obviously not something we want to do, there is know way we can prevent anyone from bringing a gun on campus."



# Hungry Howie's

FLAVORED CRUST PIZZA

Pick Up or Delivery

**\$7.77 LARGE 1  
TOPPING PIZZA  
(\$3 more - make  
it a works!)**

**Free Flavored Crust!**

607 Brannen Street (912)764-6565

# Choices of the Heart

Pregnancy Center

# Pregnant?

**Free and Confidential Testing and  
Counseling. Off Campus Location.  
Hot Line: 9AM-9PM 912.764.4303  
Appointments Only.**

106-B Oak Street, Statesboro, Georgia • [www.choicesoftheheart.org](http://www.choicesoftheheart.org) • 912.764.4303



# SPORTS

www.thegeorgeanne.com

Thursday, November 17, 2011 9

## Powers scores 1,000th career point in season opener

### Men's basketball

BY CLINTON HINELY

George-Anne contributor

Senior guard Willie Powers recorded his 1,000th career point during Georgia Southern University basketball's loss to Valparaiso University, 90-81, last Thursday night.

Powers returned from a torn ACL injury he suffered before last season to play in his first regular season game in well over a year.

"I wasn't really nervous," Powers said. "It's just different being back on a regular court. You can play at practice, but there is nothing like game time. I'm just trying to get back into the flow."

"We had too many turnovers, I had six," Powers said. "I liked the way we played and shared the ball — we won't quit."

The game marked the first home opener the Eagles have lost since an overtime defeat to Austin Peay State University on Nov. 29, 1980.

The Eagles came out flat to start the game offensively with a lot of offensive turnovers and early foul trouble, which would end up plaguing the team the entire game.

"We had several opportunities to take control of the game," said head coach Charlton Young. "An offensive

rebound or an easy foul cost us."

Valparaiso's ability to get to the free throw line was the difference on the scoreboard. The Crusaders shot 32-45 from the charity stripe while the Eagles managed a respectable 23-32, but the team couldn't overcome the easy points that were given to Valparaiso.

The Crusaders also out rebounded the Eagles, leading to easy put backs for the Crusaders' big men.

"The size and strength shocked us," said Young. "But I am disappointed about us being pushed and shoved around."

"I think they had a little confidence just coming from Arizona, the 16th rated team in the country, and playing them well," Young said. "I think you can also see that they had a game under their belt. The first 20 minutes we had the jitters, quite frankly."

Two bright spots for the Eagles were the solid play by sophomore guard Eric Ferguson and the team shooting a high 54.5 percent from behind the three-point line.

Ferguson recorded a double-double on the night leading the team in points with 20. He also earned almost half of the team's total rebounds with 13. Some of the Eagles best offensive moments came when Ferguson received the ball in the post and was able to go



Lindsay Hartmann/STAFF

Sophomore guard Jelani Hewitt (5) attempts to slow down the Valparaiso Crusaders' progress down court.

against a defender in a one on one situation.

"As well as he played, he is still capable of so much more," Young said.

"We are going to get better, we

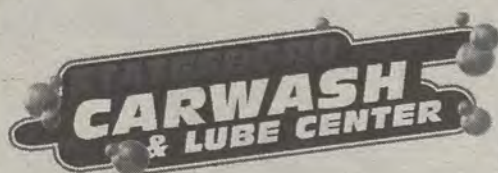
will find our chemistry and get better offensively," said Young.

"But right now, defensively is what we need to focus on."

With a game under their belt, it will be interesting to see how

this team develops as the season continues.

The Eagles will travel to Winston-Salem, N.C. on Wednesday to take on a tough ACC opponent, Wake Forest University.



**HALF PRICE FOR SHARING WITH A FRIEND!**

Bring This Ad, and Two Cars  
and Both Cars Get Half Price Ultimate Washes\*

\*NOT VALID WITH ANY OTHER DISCOUNT

**10% off All Car Wash, Detail, And Oil Change Services  
WITH GSU STUDENT OR EMPLOYEE ID**





# Eagles fall to Bulldogs 68-49 at home

## Women's basketball

By COLIN RITSICK

George-Anne contributor

The Georgia Southern University Women's Basketball team fell 68-49 to the 13th ranked Georgia Bulldogs' fast, give-and-go offense Tuesday night.

"That's why their ranked 13th in the country, they play hard the whole game," said head coach Rusty Cram. In addition to a quick-paced offense, the Bulldogs' physical defense forced the Eagles to play aggressively for the whole game. They caused GSU to make an extra pass every possession and while this worked in favor of the Eagles some of the time, it also caused turnovers and bad decisions.

"We knew they were going to give up points and there were going

to be times that we simply couldn't stop them...we knew that was going to happen," sophomore guard Mimi DuBose said. "I still feel that we did exceptionally well tonight," DuBose added. The Eagles, while committing too many turnovers, still played competitive basketball against the highly skilled UGA squad.

The Eagles underclassmen played a large part in Tuesday's game. Freshmen DuBose, Tashayla Steede and Anna Claire Knight all played extensive minutes and were the largest contributing factors for GSU. "They were what we expected them to be, they were bringing it," said Coach Cram in regards to his young athletes.

"It's because of hard work, there isn't anything special I did, it is just a product of hard work every day," Steede said about her playing

time. Steede started the game for the Eagles after playing well against Arizona last week. She finished the contest with eight points and four rebounds. DuBose had 13 total points, the team's highest of the game, a much-improved effort after her three points against Arizona. Knight, the other stand out freshman, finished with seven points in 21 minutes.

The Eagles played a solid team in UGA, they competed well, passed the ball effectively and played sound defense. However if GSU plans on being a contender in the Southern Conference this year, a cleaner game with fewer turnovers is imperative.

The Eagles will have an opportunity to get back on track Thursday night at Mercer at 7 p.m. The Eagles will be back in action at Hanner Fieldhouse on Dec. 5th to face the Furman Paladins.



Rebecca Farris/STAFF

Forward Aishya Wofford (13) shoots in the paint against her UGA opponent.



OUTDOORS

YOUR HUNTING & FISHING HEADQUARTERS

Your Hunting and Fishing Headquarters

246B Northside Drive East Statesboro, Ga 30458

Between Deloach's Music and the Tile Center

TC-OUTDOORS.com • 912-489-3474



Sports  
EMPORIUM

Your largest selection of athletic  
footwear in Statesboro



840 BC Buckhead Drive, in Buckhead plaza (912)764-4449



**'BAMA TEST,** from page 1

weekend produces some major upsets. Finally, the Eagles have been projected by many analysts to be granted a first round bye week and home field advantage for a portion of the playoffs.

Even with the multiple reasons to "take a day off," the Eagles feel that the Saturday game in Tuscaloosa is just as important as any other game.

"It's going to be a special experience being able to play in front of that huge crowd, against a great team like Alabama," said quarterback Jaybo Shaw.

"It's a great opportunity, so we're just going to go up and represent the University to the best of our ability," he said.

The Eagles have become accustomed to having home field advantage, and even outnumbering the other opponents' fans on away games.

However, they know battling the crowd in Bryant-Denny Stadium will be a challenge.

"It's going to be loud," Shaw said. "Anytime you get 100,000 plus in a

stadium, it's going to be loud. We're just going to try to embrace that and execute our offense and defense."




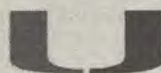

"You just have to prepare," said defensive tackle, Brent Russell. "It's going to be a great atmosphere. If you can't get energetic for this game, you shouldn't play football."

In the years to come, the Eagles will have many of these Division One challenges. Next season they are scheduled to play the University of Georgia Bulldogs. The season after that, they will be traveling south to play the University of Florida Gators.

While these teams consistently gain national attention, the Eagles feel they can't change their game plan. "You just play your assignments," Russell said. "You can't have guys wanting to be heroes. We come out, practice, focus in the film room, get our assignments right and come out playing."

"We approach it understanding that it's a great experience," said offensive lineman Brett Moore. "It's a great time for us to learn and take in an opportunity that not a lot of people have."

**GSU All-time vs. FBS Top 5**

|                                                                                       |                           |         |
|---------------------------------------------------------------------------------------|---------------------------|---------|
|    | 8/30/09<br>#1 Georgia     | L 21-45 |
|    | 9/4/04<br>#3 Georgia      | L 28-48 |
|    | 9/7/96<br>#4 Florida      | L 14-62 |
|    | 10/2/93<br>#3 Miami       | L 7-30  |
|  | 9/16/90<br>#4 Florida St. | L 6-48  |

Tyler Fleider/CONTRIBUTOR

**Company hours**

7:30 A.m. - 6:00 P.m.  
Monday - Friday

912-489-2222


102 N Zetterower Ave  
Statesboro, GA 30458



Present this Coupon at the time of service to receive a free tire rotation with a full priced oil change.

*Some Restrictions may apply. Call For more details.*

**Super Service at a Super Price**  
**489-2222**



Present this coupon at the time of service to receive an oil change for the low price of \$19.95.

*This price is for 5 quart oil changes. It also excludes diesel, synthetic oil changes, and special oil filters. Ask more for details.*

**Super Service at a Super Price**  
**489-2222**



# CLASSIFIEDS

12 Thursday, November 17, 2011

This page brought to you by Career Services  
Explore • Experience • Excel

The George-Anne

## For Sale

FOR SALE - 17 inch custom Ford Mustang rims and 17 inch custom Chevy Impala rims. Contact Ron: (912) 486-6611

Scooter for sale! 2005 Honda Ruckus. Black, 49cc, 85+mpg. Fantastic condition; original (faculty) owner, garage kept. No special license or insurance required. \$1,500 OBO. Contact (912) 678-6052

Firewood for Sale. Delivery available! Call 912-690-0872 or 912-690-4956.

For sale: 2009 BMW 328i, hard-top convertible in great condition. Black with tan interior. Call 912-293-1909.

## Misc.

Will proof papers (grammar, spelling, punctuation, sentence structure). Quality work, reasonable prices. Will also type short projects. Must have ample lead time to schedule. Email auntre01@gmail.com

## Subleases

Subleasing 3 BR/2BT house on Parker Avenue in downtown Brooklet. Extremely large media room! Located on two city lots. Contact Joyce at (912) 842-9479.

2 Bedroom 2 Bathroom apartment in Hawthorne 2. Very close to campus. \$350/month. Sublease through July. Contact Shannon at 678-468-9407

Subleasing master bedroom in Planter's Row for \$365/month; utilities not included, pet friendly. For more information contact Anna-Marie at at01770@georgiasouthern.edu or call (770) 546-6560

Home Away From Home 3BR/2BT within 2 miles of Georgia Southern campus. You can sublease the other 2 rooms. No smoking or pets. Call (706) 951-1427.

Subleasing a 2 BR/2 BR at the Woodlands of Statesboro for Spring 2012. \$399 a month, utilities not included. Contact Adrian at (678) 230-5144.

## Subleases, cont.

2 BR/2 BT sublease in Georgia Villas. \$475/month for both rooms, utilities not included. Available Jan-May, pet friendly. Right across from Greek Row on Chandler. Email tl00212@georgiasouthern.edu

Female to sub-lease Spring Sem. 5 BR, \$280 a month. Last month's rent is paid. Less than a mile from campus off of Gentilly Rd. Call, text or email Kristina: (678)-770-6251 kf01606@georgiasouthern.edu

Subleasing 626 B at the Exchange. Female Roommate needed. \$519.00 per month. All utilities included, free tanning, free Wi-Fi, 24 hr gym included. Available now. Contact (706) 523-6001

Room available for male or female in a 3 BR/2 BT house on Catherine Avenue. Fully furnished; bed needed. \$367/mo per person, utilities not included. Spacious house. Contact Yale at (404) 272-7652 or yale8754@bellsouth.net

## Subleases, cont.

Subleasing my room for Spring 2012 in a fully furnished 4 BR/4 BT 3-story town home. Walking distance from the stadium and bus stop. Contact Alex at (770) 712-5377 or ao00837@georgiasouthern.edu

Spring 2012 1 BR/1 BT in a 2 BR/2.5 BT townhouse at The Avenue. Furnished and utilities included. \$495/month, but I will pay \$30 for each month. Or I could put \$210 towards the first month's rent. Contact Cherelle at chollan4@georgiasouthern.edu

All inclusive, two story, fully furnished, 4 BR townhouse for \$330/month! Includes trash, utilities, cable, wi-fi, pet park, 24/7 gym, recreation courts, computer lab, new appliances and washer/dryer! Contact (229) 326-4291.

Subleasing a 1 BR/1 BT in 4 BR apartment in Copper Beech for Spring 2012 starting Christmas Break. Washer/dryer included. Next to pool/volleyball court. \$389/mo plus utilities. Contact Singer (404) 680-7240

## Subleases, cont.

SPRING 2012! Female roommate wanted. 1BR/1BT in a 3BR/3.5BT townhome. Walking distance to the stadium and bus stop. \$400/mo., gym and pool included. Cheaper rate can be arranged. Contact Emily at 404-444-8987 or ec01442@georgiasouthern.edu

Subleasing a room in 4 BR/2BT in The Avenue for Spring 2012, but available as early as Dec 16 and Dec will be paid for. \$325/MO. Furnished, utilities included with free Wifi and Cable. Contact Nikki at (678)525-0297.

1 BR/1 BT available in a 3 BR at The Grove, for Spring 2012. Available after Dec. 20. \$450/mo, utilities included. Pet friendly, pool. I will pay last month's rent. Female preferred. Call Ellen 404-694-1394 or email ej00034@georgiasouthern.edu

Female roommate needed for Spring 2012; 3BR/3BT at Cambridge; \$449/mo all inclusive and furnished; one building away from bus route, 1st floor. Contact Angelica 404-921-4988.

## Subleases, cont.

SPRING 2012! 1 BR/1BT available in 4 BR/4 BT at Campus Club for Jan or earlier. Bus stop next to stadium. Utilities included. Rent is \$419/month; CHEAPER RATE CAN BE ARRANGED. Email Skyler at sh02071@georgiasouthern.edu

## Help Wanted

MODELS of all weights/sizes/ages needed for figure drawing class on T&R, 2-4:30 PM. Fall and spring openings. Must be 21 and able to sit still for long periods of time. Call 912-478-2793 or email jburke@georgiasouthern.edu

Receptionist/admin assistant position available at established construction Management/real estate development firm. Flexible 30 hours M-F.. Please send your resume to; ffbenneth@gmail.com

## HOT JOBS Cool Internships

| Job Title                                | Company                       | Deadline to Apply |
|------------------------------------------|-------------------------------|-------------------|
| Marketing and Communications Internship  | GA Dept. of Economic Dev.     | Feb. 29, 2012     |
| Environmental Interpretation Internships | Patuxent Research Refuge      | Dec. 23, 2011     |
| Advertising Account Executive            | Northland Communications      | Nov. 30, 2011     |
| Software Engineer                        | Vensi Inc                     | Dec. 11, 2011     |
| Entry Level Sales/Recruiter              | TEKsystems                    | Dec. 26, 2011     |
| Electrical Engineer-Entry Level          | Jones Edmunds & Associates    | Nov. 23, 2011     |
| Process Engineer Mgr. (Group Manager)    | Anheuser-Busch InBev          | Nov. 18, 2011     |
| Assistant Financial Examiner             | GA Dept. of Banking & Finance | Nov. 19, 2011     |
| Store Management Internship              | Kohl's Department Stores      | Dec. 31, 2011     |
| Intercompany Specialist (Corp)           | UPS, United Parcel Service    | Nov. 20, 2011     |
| Social Media Intern                      | Sports Radio 790 the Zone     | Nov. 30, 2011     |
| Finance Intern                           | Coweta County                 | Nov. 19, 2011     |
| GIS Intern                               | Paulding County               | Nov. 19, 2011     |
| Summer Intern                            | Gulfstream                    | Dec. 8, 2011      |
| Radio Broadcast Internship               | Cumulus Media, Savannah       | Dec. 31, 2011     |
| Inside Advertising Sales Executive       | Professional Specialty Pub.   | Dec. 10, 2011     |
| Autism Teacher                           | Atlanta Public Schools        | Nov. 30, 2011     |
| Systems Engineer                         | Architecture Tech. Corp.      | Dec. 4, 2011      |

To view the detailed job descriptions application instructions or additional postings, log into the Eagle Career Net/NACELink system found at [www.georgiasouthern.edu/career](http://www.georgiasouthern.edu/career).

## Advertisement

## The candidate skills and qualities employers want

When it comes to the importance of candidate skills/qualities, employers are looking for team players and candidates who have strong verbal communication skills, according to respondents to NACE's Job Outlook 2012 survey.

Survey participants rated "ability to work in a team structure" and "ability to verbally communicate with persons inside and outside the organization" as the two most important candidate skills/qualities. These are followed by candidates' "ability to make decisions and solve problems," "ability to obtain and process information," and "ability to plan, organize, and prioritize work."

The least important candidate skills/qualities on the list are the "ability to create and/or edit written reports" and the "ability to sell or influence others."

Following is the list of the top 5 employer ratings. Employers rate the importance of candidate skills/qualities:

| Skill/Quality                                                                | Weighted avg. rating* |
|------------------------------------------------------------------------------|-----------------------|
| Ability to work in a team structure                                          | 4.60                  |
| Ability to verbally communicate with persons inside/outside the organization | 4.59                  |
| Ability to make decisions and solve problems                                 | 4.49                  |
| Ability to obtain and process information                                    | 4.46                  |
| Ability to plan, organize, and prioritize work                               | 4.45                  |

\*5-point scale, where 1=Not important; 2=Not very important; 3=Somewhat important; 4=Very important; and 5=Extremely important

Source: Job Outlook 2012, National Association of Colleges and Employers



# PUZZLES/COMICS

www.thegeorgeanne.com

Thursday, November 17, 2011 13

## Los Angeles Times Daily Crossword Puzzle

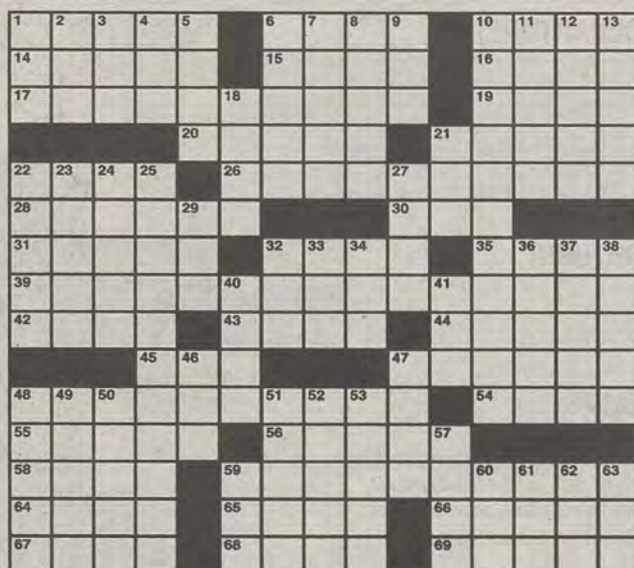
Edited by Rich Norris and Joyce Lewis

### ACROSS

- 1 Big picture
- 6 Title holder?
- 10 Bean used in Asian sauces
- 14 Protective layer
- 15 "Salome" solo
- 16 Piece of mind?
- 17 Pirates' home
- 19 Complete, in Cannes
- 20 Committed to
- 21 "Divine Comedy" poet
- 22 High-tech printer capability
- 26 Group working on tips?
- 28 Playwright Pinter
- 30 Six-pack muscles
- 31 Laundry room brand
- 32 About half a million square miles of Asia
- 35 Dept. of Labor arm
- 39 Bugs, or what's literally found in 17-, 26-, 48- and 59-Across
- 42 Caesarean infinitive
- 43 It parallels the radius
- 44 John Barleycorn
- 45 "Sera, Sera"
- 47 One with goals
- 48 Jersey Shore city popularized by Springsteen
- 54 Pol. convention attendees
- 55 Swing vigorously
- 56 Flexible wood
- 58 Down the drain
- 59 Trudeau comic
- 64 Largest of the Near Islands
- 65 Ornamental vases
- 66 Aqua \_\_: alcohol
- 67 Singer who said, "Men should be like Kleenex—soft, strong and disposable"
- 68 Enlightened response
- 69 Frost and others

### DOWN

- 1 Clean, in a way



By Gary Cee

11/17/11

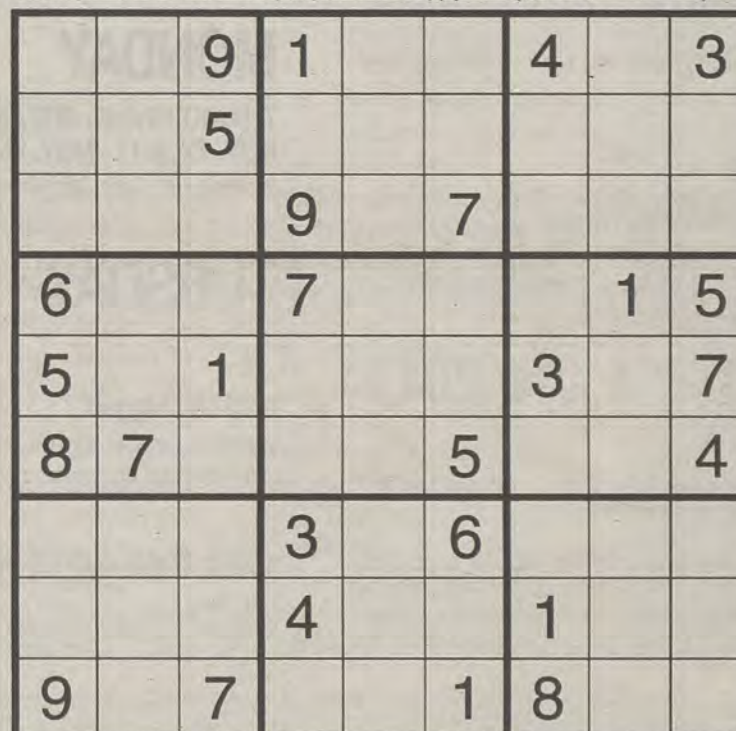
November 15th Puzzle Solved



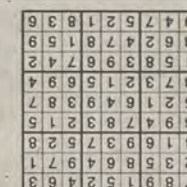
- 37 Not brown or blue, perhaps
- 38 Australia's Rock
- 40 One of three duck brothers
- 41 Letters after C or MS
- 46 www address
- 47 Arcade game starter
- 48 Company with a spokesduck
- 49 A deadly sin
- 50 Moisture while cooking
- 51 Standard partner
- 52 In cahoots
- 53 Light wash
- 57 Invitation letters
- 59 SADD focus
- 60 Theater program item
- 61 Colorado native
- 62 Informer
- 63 Celebratory cry



Welcome to Falling Rock National Park by Josh Shalek



Sudoku



**FRANKLIN**  
CHEVROLET - CADILLAC  
PONTIAC - BUICK - GMC  
**912.764.6911**



Our experienced Body Shop can fix all of the "Dents & Dings" that your vehicle may have! We service all makes and models and accept all insurance claims, and will give you **FREE ESTIMATE** on your body & paint repair

**GSU STUDENTS** - Show your ID and receive **10% OFF** any purchase in Parts and Service

Check out our website  
www.franklinchevrolet.com



# WEEKLY BUZZ

A weekly calendar listing sponsored by The Division of Student Affairs and Enrollment Management

NOVEMBER 17- NOVEMBER 30

## THURSDAY 11.17.2011

10 AM

### GEORGE-ANNE & JOE

#### GAZEBO

Get your free copy of the George-Anne and a cup of Starbucks coffee. Sponsored by Student Media.

5:30 PM

### WOMEN & WEIGHTS

#### BODY CONDITIONING ROOM AT THE RAC

Another class will be held next Tuesday. Sponsored by Campus Recreation & Intramurals.

## FRIDAY 11.18.2011

4PM

### FLAG FOOTBALL CHAMPIONSHIPS

#### THE RAC

The tournament format will consist of round robin pool play. The top two teams from each 3-team pool and the top three teams from each 4-team pool will advance to a single-elimination tournament. Tournament games will begin Friday evening and conclude on Sunday afternoon. Sponsored by Campus Recreation & Intramurals.

## SATURDAY 11.19.2011

### ROADTRIP: TUSCALOOSA (DEPARTURE)

Sponsored by tEagle Entertainment.

## SUNDAY 11.20.2011

### ROADTRIP: TUSCALOOSA (RETURN)

Sponsored by Eagle Entertainment.

4PM

### FLAG FOOTBALL CHAMPIONSHIPS

#### THE RAC

The tournament format will consist of round robin pool play. The top two teams from each 3-team pool and the top three teams from each 4-team pool will advance to a single-elimination tournament. Tournament games conclude Sunday afternoon. Sponsored by Campus Recreation & Intramurals.

## MONDAY 11.21.2011

### THANKSGIVING BREAK: NO CLASSES NOV. 21, 2011 - NOV. 25, 2011

Residence Halls Open - Administrative Offices Open November 21-23, 2011

## TUESDAY 11.29.2011

7 PM

### GSU Unplugged

#### RUSSELL UNION STARBUCKS

Open Mike Night. Sponsored by Eagle Entertainment.

8 PM

### INNER TUBE WATER POLO FREE PLAY

#### THE RAC

Sponsored by Campus Recreation & Intramurals.

## They're coming...

More delicious reasons to come back to Starbucks in the afternoon.



FREE COFFEE WITH  
GEORGE-ANNE & JOE

Every Thursday morning at  
the Williams Center Gazebo

## V.A.L.U.E.S.

VOICES  
ACCOUNTABILITY  
LASTING TRADITIONS  
UNITY  
ETHICAL BEHAVIOR  
SCHOLARSHIP



Magazines and Muffins  
Sponsored by Latte Da Coffee Café

Every Thursday  
in November  
@the Williams Center Gazebo

Student Affairs  
Enrollment  
Management

Brought to you by Georgia Southern University VALUES. Georgia Southern V.A.L.U.E.S. is the culture shared by our students, faculty, and staff. We endeavor to share our V.A.L.U.E.S. inside and outside of the classroom with faculty, staff, students, alumni and all other community members. In order to produce productive citizens with an informed set of ethics and community standards as well as create an environment of respect and civility, we pledge to live by our V.A.L.U.E.S.



## GSU sings for Botanical Garden

BY JAZMIN DAVIS and  
KIMEKO MCCOY

George-Anne contributor

University Singers and Southern Chorale lifted their voices at Trinity Episcopal Church in support of raising funds for the Georgia Southern University Botanical Garden Sunday evening.

GSU students and members of the community all came to the church to take part in this event.

The evening began with conductor Shannon Jeffreys, director of choral activities, introducing of the performing groups. University Singers had a series of pieces ready including "The Word Was God," "Hallelujah" and others for the special event.

The second group to appear on stage was a student led group of male voices that go by the name of Southern Hospitality. The group's arrangement of Robert Emerson's "For the Longest Time" had audience members singing along. The final group to perform for the evening was Southern Chorale with their pieces of the ever-famous Ave Maria and several others. Singers ranged from soprano to tenor with a few solos in between from students such as Rachael Burke, Jacob Furse and Jacqueline Iden in addition to multiple others.

"(We) always try to provide a variety, from hymn arrangements to



Christian Washington/STAFF

Students in the University Singers choir sing in donations at Trinity Episcopal church for the GSU Botanical Garden

songs people know," said Jeffreys.

Though not the typical sounds of the holiday season, the musical selections in addition to the cheery environment set the mood for the upcoming months.

"(The performance) was very good. It starts the season off just right," said Dr. Nathalie Whittle, a member of the audience.

As student's voices resounded throughout the church, audience members and performers kept a smile on their faces and a beat in their hearts. Many of those that filled the church pews were members of the Trinity Episcopal Church as well as a few students who were related to the

performers of the groups.

Attendees expressed that they have heard the singers before and were impressed at previous concerts and the fact that this one was for the benefit of the Botanical Garden made it even more worthwhile.

"The fact that it benefitted the town was amazing. They couldn't have picked any two better groups," said Administrative Secretary of Sociology and Anthropology Department, Eileen Smith, who sat in the audience.

Students were also moved by the experience of being able to help with the cause through their talents.

"It was an awesome experience benefitting someone else," said

Southern Chorale singer Mallory Fannin, a sophomore majoring in early childhood education.

Donation areas for the collection of funds for GSU Botanical Garden were placed in the entrance of the church's sanctuary for patrons to drop in cash or check.

After the performances, visitors and performers were treated to refreshments in a reception hall right next to the sanctuary. During this, members of the audience were allowed to congratulate the musicians and their efforts.

"We enjoy their performances and that one was awesome as they always are," said Smith.

## The Buzz List

■ **Billy Crystal** will host the Oscars for the 9th time after Eddie Murphy



Alex LaSalle

bowed out. He has proven himself to be a funny host, and anything can beat Franco and Hathaway's awkward-pause bonanza that put us to sleep last year.

■ **James Cameron** has released the first trailer for his 3D conversion of "Titanic" to hit theaters in April. However, they will still hit the iceberg, and I will still wish the movie was an hour shorter.

■ **Justin Beiber** is NOT the father! Surprising no one, the paternity suit against the Beibs has been dropped, probably when a lawyer remembered that two girls cannot produce a baby alone.

Information compiled by Arts Editor Quanyia Epps and Assistant Arts Editor Alex LaSalle from TheHollywoodReporter.com.

*Voted Best Mattress Store in the 'Boro!*

Student Housing Available

New, Used & Antique  
Furniture

Complete Mattress Outlet

**Deal's**

*Come See the Dealmaker!*

17083 GA Hwy 67, Statesboro, GA  
(912)681-3824 (Near Fairgrounds)

Mon-Fri : 10am-6pm

Sat: 10am-5pm

Sun: 1Pm-5pm

• Honest, Dependable  
Same Day Delivery

• Locally Owned &  
Operated by GSU Graduate

• Serving GSU Students  
for 34 years

Tervis Tumbler Headquarters

• Collegiate Gifts  
• Jewelry  
• Handbags  
• Placemats  
• Diaper Bags  
• Men's Gifts  
& Much More

*Best Furniture Mattress & Gift "DEALS" in the 'Boro*



# THE 'BORO BEAT

## YOUR GUIDE TO OFF-CAMPUS ENTERTAINMENT

### THURSDAY

#### Applebee's

-Jammin' Thursday with DJ Jammin J  
10 p.m.

-\$1 Jello Shots, \$2 Coronas, \$3 Jacks, \$3 Long Island  
Ice Tea, \$3 draft, \$3 Jim Bean, \$4 Yager bombs

#### Buffalo's

-Nickel Bag of Funk 10 p.m.

#### Crabby Joe's

-AYCE snow carb legs for \$29.99, buffalo tenders and  
a pitcher of beer \$9.99

#### Dingus Magee's

-Those Cats 10 p.m.

-Happy Hour 5-7 p.m., half price well shots

#### El Sombrero

-Any 32 oz. draft \$2.50

#### Millhouse

-Jason White Acoustic Act

-\$2 Margaritas, \$2 Bud Light, Miller Light, Michelob  
Ultra

#### Moe's

-Happy Hour 5-7 p.m. buy one get one free beer

#### Ruby Tuesday

-\$2 Miller Light, \$3 Blue Moon draft, \$4 Jack & coke

#### Manny's

-\$12 wings, buy 12 get 12 free

#### Dos Primos

- Karaoke 9 p.m.

### FRIDAY

#### Applebee's

-Trivia 10 p.m.

-\$1 Natty Brewtus, \$3 other Brewtus, half priced Mar-  
garitas and Apps

#### Buffalo's

-Domino Effect 10 p.m.

#### Dingus Magee's

-Jazz Chronic 10 p.m.

-Happy Hour, 5-7 p.m., half price well shots

#### El Sombrero

- \$2 12 oz. sex on the beach

#### Dos Primos

-Happy Hour 5-7 p.m., \$1 Bartender choice shot, \$3 Big  
beer, \$3 Margarita

#### Millhouse

-Wine on the Rocks

-\$2 Margaritas, \$2 Bud Light, Miller Light, Michelob Ultra

#### Loco's

-\$5 Bud Light pitchers

#### Gnat's Landing

-Happy Hour half-off: \$6 Bud Light pitchers, \$12 liquor  
pitchers, \$3 singles, \$5 doubles

#### Moe's

-Happy Hour 5-7 p.m. buy one get one free beer



**"BAD TO THE BONE"**

Located next to Wal-Mart

**10% OFF**  
any order

- Wings
  - Homestyle Tenders
  - Homemade Salad
  - Garden Salad
  - Unique **WM** Sauces
- ...and the best tea in the Boro

expires 12-31-2011  
\*Must present coupon



# THE 'BORO BEAT

## YOUR GUIDE TO OFF-CAMPUS ENTERTAINMENT

### SATURDAY

**Applebee's**

-Do Good DJs, 10 p.m.  
-\$3 Jacks, \$3 Long Island Ice Tea, \$3 Draft, \$3 Jack Daniels, \$4 Jager bombs

**Buffalo's**

-Thomas Wynn & The Believers, 10 p.m.

**Crabby Joe's**

-Live music 9 p.m.  
-\$0.40 wings, \$1 shots, \$9.99 margarita pitchers, \$2 wells, \$6 beer pitchers

**El Sombrero**

-\$2 Margaritas

**Millhouse**

-Tall Paul 9 p.m.  
-GSU vs. Alabama on the big screen

**Gnat's Landing**

-Wings & Beer \$.45 wings,  
-Happy Hour 5-7 p.m., \$2 Margaritas, \$4 Bloody Mary's, \$6 Pitchers

**Moe's**

-Happy Hour 5-7 p.m. buy one get one free beer

**Ruby Tuesday**

-\$2 Miller Light, \$3 Blue Moon draft, \$4 Jack & coke

**Godfather's**

-Karaoke 10 p.m.

**GSU Performing Arts Center**

-Kathy Mattea in concert, 7:30 p.m., \$35

### MONDAY

**Applebee's**

-\$1 Jello Shots, \$2 Coronas, \$3 Jacks, \$3 Long Island Ice Tea, \$3 draft, \$3 Jack Daniels, \$4 Yager bombs

**Buffalo's**

-AYCE wings \$11.99

-AYCE wings

**Dingus Magee's**

-Happy Hour 5-7 p.m., half price well shots

**El Sombrero**

-Happy Hour 5-7 p.m., \$2 Margaritas, \$2.50 draft beers \$3 Pina Colada, \$6.50 Margoronas

**KBob Kelly's**

-Cornhole Tourney 8 p.m.

**Loco's**

-\$5 Bud Light pitchers

**Moe's**

-Happy Hour 5-7 p.m. buy one get one free beer

**Ruby Tuesday**

-\$2 Miller Light, \$3 Blue Moon draft, \$4 Jack & coke

-Jello shots all night

**Manny's**

-1/2 price pizza day

### TUESDAY

**Applebee's**

-Karaoke 10 p.m.

-\$1 Natty Brewtus, \$3 other Brewtus, half priced Margaritas and Apps

**Buffalo's**

-AYCE wings 6.99

-Beer Pong Tournament

**Dingus Magee's**

-Happy Hour, 5-7 p.m., half price well shots

**Dos Primos**

-Poker 8 p.m.

-Happy Hour 5-7 p.m., \$1 Bartender choice shot, \$3 Big beer, \$3 Margarita

**Gnat's Landing**

-Trivia with Jake Hallman 6:30 p.m.

-Happy Hour, 5-7 p.m.

**El Sombrero**

-\$2 Margaritas

**Moe's**

-Happy Hour 5-7 p.m. buy one get one free beer

**Manny's**

-\$3 Jack Daniels

**The Godfather's**

-Tequila Tuesdays, tequila-your-way \$2



\$6<sup>59</sup>

## Choose ANY Two!

# McALISTER'S

• DELI •

McAlister's Deli of Statesboro  
1100 Brampton Ave., Suite A  
(912) 681-3354

Find us on Facebook!

Search "McAlister's Deli - Statesboro, GA."

We Accept the Eagle Express Card.



# Festival of Trees brings hope to local children

By SAMARIA VINCENT

George-Anne staff

Georgia Southern University has finally caught the holiday cheer as different student organizations, businesses within the community and civic groups have come together to celebrate the fourth annual Festival of Trees.

"Festival of Trees is a very family orientated event. Different local businesses like Lowes, Wal-Mart, K-mart, Big-Lots and others donated Christmas trees, so other organizations from the community as well as at Georgia Southern can decorate them," said Kelly Pye, the special project coordinator of the continuing education center. "Individuals can come out and purchase raffle tickets to win trees, tree skirts, wreaths, gingerbread houses and mini-tree decorated with gift certificates for local venues," said Pye.

The Raffles are \$1 and are located at the Performing Arts Center's front desk. Raffles are available for purchase from 11 a.m. to 7 p.m. throughout the week.

Different themed trees include a Barbie tree, a peace tree, patriotic tree, an M&M tree, a train tree, a Great Dane tree decorated by Great Dane Trailers, a ballet theme tree adorned by The Statesboro School of Dance and many more. Different organizations that decorated a tree included Georgia Southern University Football Coaching Family, Georgia Southern Softball Association, Georgia Southern Catering and more. Other stations include a snow fountain, a gingerbread table and Santa's Postal Station.

"This is the fourth year that Festival of Trees has happened. We are really excited," said Pye. "Our big event is taking place on



Christian Washington/STAFF

**Left:** Christmas decorations adorned the scene at the Festival of Trees kick-off.

**Top:** GSU students walked around in side the performing arts Center and looked at the Christmas trees decorated by student organizations and others from the Bulloch County community.

**Right:** One of many trees featured in the Festival of Trees.



Saturday from 11 a.m. to 8 p.m. Santa and Mrs. Claus will be coming and we will have cookies and hot chocolate thought out the day. At 8, we will draw the raffles and find out who won. You don't have to be in attendance to win, so if you are not going to be there

check your voicemail Saturday night."

The proceeds of the Festival of Trees go to Christmas in the 'Boro. Christmas in the 'Boro is sponsored by the Bulloch County Sheriff's Office and Statesboro Police Department with Toys for Tots, both

departments will go out and give money and gifts to local kids in need.

There is also a station accepting donations on behalf of Snacks for Soldiers.

Other activities consist of yesterday's School Day, in which local preschools and elementary schools were invited to come and see the trees after hearing a reading provided by the Statesboro library. They were also allowed to drop off their letters to Santa at Santa's Postal Station.

The Festival of Trees is located in the PAC. All the activities are free of charge for GSU students and the public.

"This goes on every year. We would love to see Georgia Southern students participate," said Pye.

# Planters ROW

912.681.1170  
www.hendleyproperties.com

3 bedroom  
cottage  
house

\$365  
/month per person





# Intramural Sports Scores

## Indoor Soccer

**Charismatic Camels 5**, Multiple Scoregasms 1  
**Haymakers 9**, Womb Raiders 4  
 Kicking and Screaming 3, **Scorgy 11**  
 F.C. Hounduras 0, **Mighty Ducks 4**  
**Aston Manpoolhaingtonlivercity UTD 6**, T.R.E.O.S 1  
**Team Howie Feltersnatch 8**, Winning 6  
 Mike Ann Deathwalkers 2, **STRIKERS FC 5**  
 Sour Diesel 4, **Kickin' It Old**

## School 5

Sorry Babe I Fell Asleep 0, Mitchell 0  
 Shredsters 2, **Big Bag of Ballers 3**  
 Snatchaholics 3, **Big Test Icicles 5**  
 Monster Milk 0, **Jager Bombs 4**  
**Balls and Dolls 10**, No Glove No Love 2  
**#swag FC 8**, Lady Bugs 3  
**Blacklist 8**, Los Chingones 5  
**Green Street Hooligans 5**, Fiesty Goats 2  
**#YouPlaySoccer? 9**, Alcobal-

## lics 1

Dubriders 3, **Green Street Elite 10**

## Volleyball

GSATA Volleyball 1 (19-25-14), **Set It Off 2 (25-17-15)**  
**EV Bodonkadonks 2 (25-25)**, Bad Ace Ballers 0 (20-20)  
**How I Set Your Mother 2 (25-26-15)**, CP Safe Sets 1 (12-27-9)  
**The One Hit Wonders 2 (26-26)**, Hot Sets 0 (24-24)  
 Size Over Everybody 0 (14-15), **Delta Force 2.0 2(25-25)**  
 Southern Adventures 0 (14-13), **Hit-Men 2 (25-25)**

Sets On The Beach 0 (0-0), **Nuckin' Futs 2 (10-10)**

Delta Sigma Phi 0 (0-0), **Average Joes 2 (10-10)**

**Spiker Chicks 2 (25-25)**, Spike My Drink 0 (11-16)

**CP Sets on the Beach 2 (25-25)**, EV Can Dig It 0 (4-9)

**Size Matters 2 (25-25)**, Omega Phi Alpha 0 (15-6)

**No Scrubs 2 (25-25)**, Who Gives a Hit 0 (12-12)

UV Volleybrawlers 0 (22-19), **Unprotected Sets 2 (25-25)**

**Spike This 2 (25-20-16)**, Spikers Unlimited 1 (16-25-14)

We Always Get It Up 0 (19-20), **Bob Squad 2 (25-25)**

Safe Sets 0 (15-17), **I'd Hit That 2 (25-25)**

## Flag Football

**Woodies 19**, Colonel Angus 13

**Bhadd Girls 8**, Kennedians 6

Bromance 19, **Bena Jones 20**

Zeta Tau Alpha 6, **Alpha Delta Pi 7**

**Pi Kappa Phi 27**, Sigma Nu 0

**RAC'n Crew 29**, Back That Pass Up 10

**Do You Know Em 49**, T and D's 0

**FRANKLIN**  
 TOYOTA • SCION

**10% OFF**  
 service with your Student ID

**888-695-8165**

500 Commerce Drive  
 beside the new Holiday Inn

## PROTECT YOUR VEHICLE!

Regular maintenance and upkeep is crucial to your car's optimal performance, best possible gas mileage, and highest resale value.

**Our service department offers the best in automotive service for all makes and models. PLUS we provide a free shuttle to and from campus!**

- Oil Change
- Tire Services
- Tune-Up & Transmission Service
- A/C & Radiator Service
- Brake Service
- Engine Repair
- Body Shop Services

**BUY OR LEASE  
 A NEW TOYOTA, GET A**

**\$1,000**

**COLLEGE GRAD REBATE**

\*See Dealer for Details

**SCHEDULE YOUR SERVICE ONLINE! [www.FranklinToyota.com](http://www.FranklinToyota.com)**

## Today at CRI

**LEAD Climbing Clinic  
 TODAY, 7PM**



**GA Collegiate Flag  
 Football Championship  
 This Weekend**

**WELLNESS WEDNESDAY  
 Friendship Bracelets  
 November 30th, 11AM-2PM**

## Thanksgiving Break Hours

Saturday, November 19 & Sunday, November 20 **CLOSED**

Monday, November 21 & Tuesday, November 22 **6AM-7PM**

Wednesday, November 23 **6AM-2PM**

Thursday, November 24 - Saturday, November 27 **CLOSED**

**CRI**  
 CAMPUS RECREATION  
 & INTRAMURALS

**FOLLOW US!**

[facebook.com/GSUCampusRec](https://facebook.com/GSUCampusRec)  
[twitter.com/GSUCampusRec](https://twitter.com/GSUCampusRec)

[WWW.GEORGIA SOUTHERN.EDU/CRI](http://WWW.GEORGIA SOUTHERN.EDU/CRI)



IT'S YOUR LIFE...

**LIVE IT.**

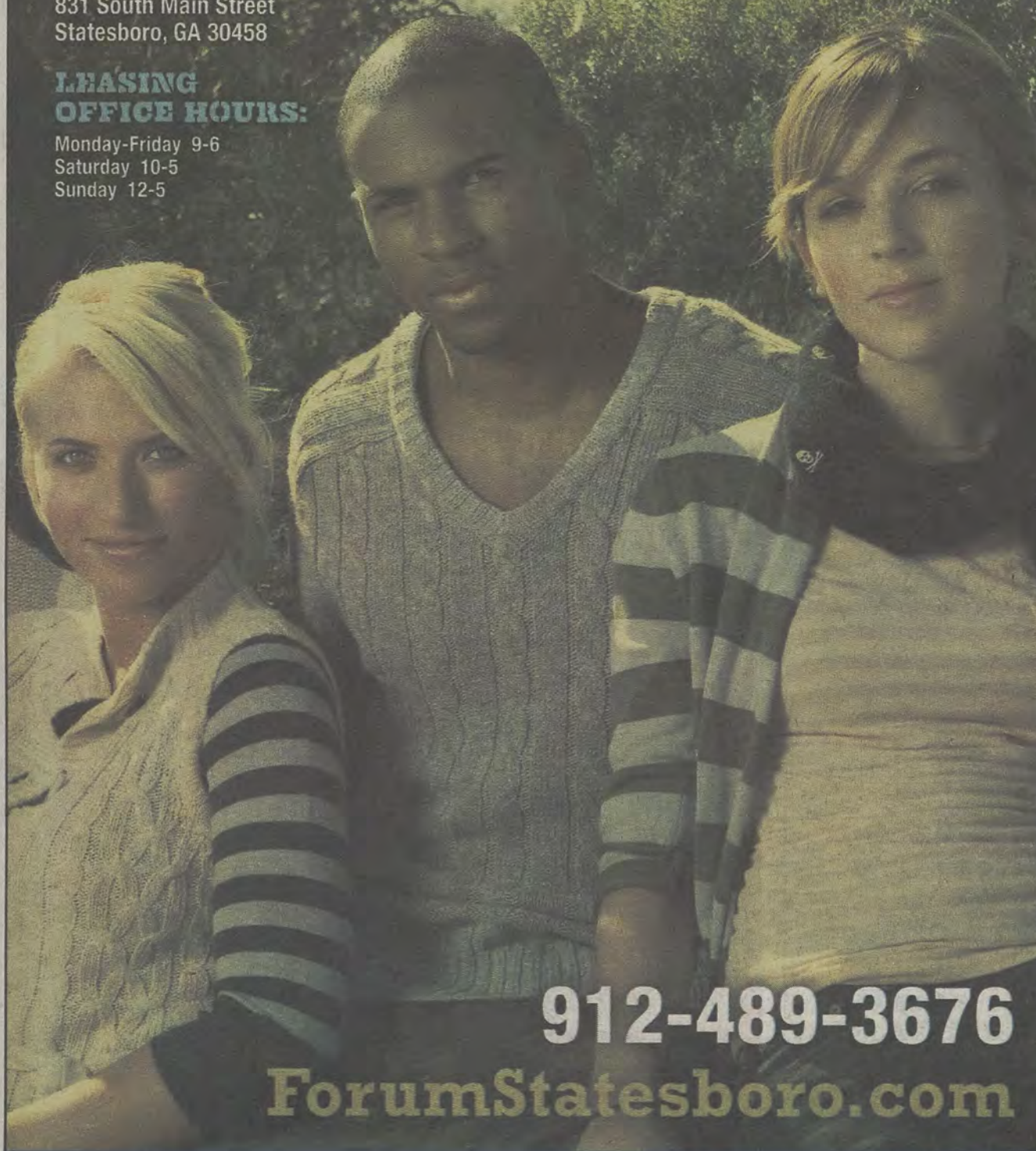
FORUMSTATESBORO.COM

COMING TO:

831 South Main Street  
Statesboro, GA 30458

LEASING  
OFFICE HOURS:

Monday-Friday 9-6  
Saturday 10-5  
Sunday 12-5



912-489-3676

ForumStatesboro.com

GET A FREE T-SHIRT WITH THIS AD!

**FORUM**

®

AT STATESBORO

A PREMIER STUDENT  
HOUSING COMMUNITY

**NOW  
LEASING  
FOR FALL 2012**

- Tennis Court
- Lap Pool & Spa
- Pet Friendly
- Pet Park
- Two Free Tanning Beds
- Indoor Basketball Court
- Indoor Volleyball Court
- Car Care Center
- Modern Faux-Wood Floors
- Private Bathroom in Bedrooms
- Convenient Individual Leases
- Free High Speed Internet in Bedrooms
- 24 Hour Fitness and Training Center
- Kitchens with Full Size Appliances
- Full Size Washer / Dryer Included
- Wi-Fi Cyber Cafe with Coffee Bar
- Outdoor Sand Volleyball Court
- High Speed Internet Access
- Student Center and Lounge
- Roommate Matching
- Expanded Cable
- Media Room



As shown subject to change. ©2011 Forum Statesboro, Inc. All rights reserved.



# GAMEDAY MAYDAY

<sup>3</sup> GEORGIA SOUTHERN VS <sup>3</sup> ALABAMA

@BRYANT-DENNY STADIUM, 2:00 PM

## BACK TO ALABAMA



### DEFENSE

NATIONAL RANKINGS

5TH-KICKOFF RETURNS 25.94 YPG  
9TH-SCORING DEFENSE 17.90 PPG  
5TH-REDZONE DEFENSE 63%  
23RD-TOTAL DEFENSE 322.5 YPG

★★★★★  
**GSU**  
FOOTBALL  
**2011**  
★★★★★

### OFFENSIVE

NATIONAL RANKINGS

2ND-RUSHING 320.4 YPG  
2ND-PASS EFFICIENCY 167.88  
3RD-SCORING OFF 37.4 PPG  
3RD-3RD DOWN CONV. 80.85%

## SPECIAL PULL-OUT SECTION

FOLLOW @GEORGEANNESPORT ON TWITTER FOR LIVE GAME UPDATES



# GEORGIA SOUTHERN EAGLES

| No. | Name              | Pos. | Year | Hometown            |
|-----|-------------------|------|------|---------------------|
| 1   | Jerick McKinnon   | QB   | So.  | Marietta, Ga.       |
| 2   | A.J. McCray       | S    | Sr.  | St Marys, Ga.       |
| 4   | Derek Heyden      | S    | Sr.  | Atlanta, Ga.        |
| 4   | Prince McJunkins  | QB   | Fr.  | Wagoner, Okla.      |
| 5   | Robert Brown      | FB   | So.  | Macon, Ga.          |
| 6   | Zeke Rozier       | FB   | Sr.  | Cochran, Ga.        |
| 7   | Darreion Robinson | RB   | Jr.  | Bishop, Ga.         |
| 9   | Zach Walker       | WR   | Fr.  | Wrightsville, Ga.   |
| 10  | Josh Rowe         | ILB  | Jr.  | Opelika, Ala.       |
| 11  | Ezayi Youyoute    | QB   | RFr. | Wauchula, Fla.      |
| 12  | Russell DeMasi    | QB   | Jr.  | Savannah, Ga.       |
| 13  | Darius Eubanks    | OLB  | Jr.  | Harlem, Ga.         |
| 14  | Jaybo Shaw        | QB   | Sr.  | Flowery Branch, Ga. |
| 15  | Carlos Cave       | OLB  | So.  | Macon, Ga.          |
| 15  | Aaron Griffin     | QB   | Fr.  | Rincon, Ga.         |
| 16  | Antonio Glover    | FS   | Fr.  | Atlanta, Ga.        |
| 17  | Billy Greer       | PK   | Sr.  | Crosby, Texas       |
| 18  | Charlie Brower    | WR   | Unk  | Dacula, Ga.         |
| 18  | Lavelle Westbrook | CB   | So.  | Riverdale, Ga.      |
| 19  | JJ Wilcox         | SLOT | Jr.  | Cairo, Ga.          |
| 20  | Nico Hickey       | SLOT | Sr.  | Columbus, Ga.       |
| 21  | Hudson Presume    | DB   | Sr.  | Bradenton, Fla.     |
| 22  | Seon Jones        | FB   | Fr.  | Flowery Branch, Ga. |
| 23  | Johnathan Bryant  | SLOT | Jr.  | Cairo, Ga.          |
| 24  | Riyahd Jones      | CB   | Fr.  | Columbus, Ga.       |
| 25  | Emmanuel Orange   | CB   | Fr.  | Naples, Fla.        |
| 26  | Tray Butler       | WR   | So.  | Stockbridge, Ga.    |
| 26  | Josh King         | CB   | Fr.  | Stockbridge, Ga.    |
| 27  | Javonte Martin    | DB   | So.  | Tampa, Fla.         |
| 28  | Devin Scott       | SLOT | So.  | Tucker, Ga.         |
| 29  | Deion Stanley     | SS   | RFr. | Dry Pond, Ga.       |
| 30  | K.R. Snipes       | LB   | RJr. | Opelika, Ala.       |
| 31  | Dominique Swope   | FB   | Fr.  | Buford, Ga.         |
| 32  | Nick Wright       | CB   | Fr.  | Lithonia, Ga.       |
| 34  | Laron Scott       | DB   | Sr.  | Warner Robins, Ga.  |
| 35  | Miguel Gilmore    | SLOT | Sr.  | Orlando, Fla.       |
| 35  | Michael Spaulding | LB   | So.  | Fayetteville, Ga.   |
| 36  | Connell Reddick   | DB   | RFr. | Hephzibah, Ga.      |
| 37  | Antwione Williams | LB   | Fr.  | Lovejoy, Ga.        |
| 38  | Kyle Oehlbeck     | LB   | Jr.  | Gainesville, Fla.   |
| 39  | DeVonte Lewis     | SLOT | Fr.  | Dacula, Ga.         |
| 39  | Deonté Watkins    | DB   | Sr.  | Walkersville, Md.   |
| 40  | Michael Butler    | DB   | Sr.  | Stone Mountain, Ga. |
| 41  | John Stevenson    | OLB  | Jr.  | Stone Mountain, Ga. |
| 42  | Boyd Sasser       | S    | Jr.  | Millen, Ga.         |
| 43  | Eric Worthen      | LB   | Fr.  | Swainsboro, Ga.     |
| 44  | Quaun Daniels     | OLB  | Fr.  | Moultrie, Ga.       |
| 45  | Adrian Mora       | PK   | Gr.  | Dalton, Ga.         |
| 46  | Brent Thomas      | FB   | Sr.  | Tampa, Fla.         |
| 47  | Omari Jones       | DE   | RFr. | Jonesboro, Ga.      |
| 48  | Charlie Edwards   | P    | Sr.  | Tifton, Ga.         |
| 49  | Brandon Lane      | DB   | Jr.  | Marietta, Ga.       |

| No. | Name               | Pos. | Year | Hometown             |
|-----|--------------------|------|------|----------------------|
| 50  | Garrett Brewer     | OL   | Fr.  | Dixie, Ga.           |
| 51  | William Maxwell    | OG   | Sr.  | Quitman, Ga.         |
| 52  | Javon Mention      | DT   | So.  | Tampa, Fla.          |
| 53  | Marcus Duvall      | ILB  | Sr.  | Griffin, Ga.         |
| 54  | Koretheus Bailey   | DT   | Jr.  | Lula, Ga.            |
| 55  | Austin Hagan       | OL   | Fr.  | Dacula, Ga.          |
| 56  | Luke Cherry        | PK   | So.  | Jacksonville, Fla.   |
| 57  | Brett Moore        | OL   | Sr.  | Warner Robins, Ga.   |
| 58  | Garrett Frye       | OL   | Fr.  | Cumming, Ga.         |
| 59  | Zach York          | LB   | Jr.  | Hartwell, Ga.        |
| 60  | Chris Gray         | OT   | Jr.  | Landrum, S.C.        |
| 62  | Zach Lonas         | OG   | So.  | Acworth, Ga.         |
| 63  | Brandavious Mann   | C    | Sr.  | Forsyth, Ga.         |
| 64  | Hunter Lamar       | OL   | Fr.  | Statesboro, Ga.      |
| 65  | Kyle Stroud        | OL   | RFr. | Tucker, Ga.          |
| 66  | Brent Russell      | DT   | Jr.  | Comer, Ga.           |
| 67  | Matt Mills         | OL   | Fr.  | Johns Creek, Ga.     |
| 68  | Matthew Gilbert    | C    | RFr. | Marietta, Ga.        |
| 69  | Cole Peeples       | OL   | Fr.  | Conyers, Ga.         |
| 70  | Raymond Klugey     | OT   | Jr.  | Norcross, Ga.        |
| 71  | Dorian Byrd        | OT   | So.  | Macon, Ga.           |
| 72  | Zach Reckers       | DT   | Jr.  | Atlanta, Ga.         |
| 73  | Maurice Hunt, Jr.  | OL   | Fr.  | Lyons, Ga.           |
| 74  | Logan Daves        | OL   | RFr. | Blue Ridge, Ga.      |
| 75  | Manrey Saint-Amour | OL   | Fr.  | Suwanee, Ga.         |
| 76  | Trevor McBurnett   | OL   | RFr. | Lawrenceville, Ga.   |
| 77  | Blake DeBartola    | OL   | Jr.  | Fayetteville, Ga.    |
| 78  | Josh Petkovich     | OT   | Sr.  | Palm Harbor, Fla.    |
| 79  | Oliver Kraemer     | OT   | RFr. | Marietta, Ga.        |
| 80  | Kentrellis Showers | WR   | RFr. | Dublin, Ga.          |
| 81  | Mitchell Williford | WR   | Jr.  | Duluth, Ga.          |
| 82  | Wilson Hudgins     | TE   | Fr.  | Loganville, Ga.      |
| 83  | Martin Weatherby   | WR   | Jr.  | Roswell, Ga.         |
| 84  | Patrick Barker     | WR   | Jr.  | Ponte Vedra, Fla.    |
| 85  | Allen Lee          | WR   | Jr.  | Savannah, Ga.        |
| 85  | Brian Wilcher      | SLOT | Jr.  | Dublin, Ga.          |
| 86  | Markus Farmer      | WR   | Jr.  | Savannah, Ga.        |
| 87  | Willie Burden      | TE   | Jr.  | Statesboro, Ga.      |
| 88  | Trevor Shaw        | DL   | So.  | Alpharetta, Ga.      |
| 88  | Tyler Sumner       | TE   | Jr.  | Pooler, Ga.          |
| 89  | Carter Jones       | LS   | Sr.  | Moultrie, Ga.        |
| 90  | Josh Gebhardt      | DE   | So.  | Douglasville, Ga.    |
| 91  | Justice Ejike      | DT   | RFr. | Covington, Ga.       |
| 92  | John Douglas       | DE   | Sr.  | Augusta, Ga.         |
| 93  | Rashad Williams    | DE   | RFr. | Roswell, Ga.         |
| 94  | Roderick Tinsley   | DT   | Sr.  | Soperton, Ga.        |
| 95  | Edwin Jackson      | LB   | RFr. | Atlanta, Ga.         |
| 96  | Blake Riley        | DT   | So.  | Crescent, Ga.        |
| 97  | George Osunde      | LB   | Jr.  | Alpharetta, Ga.      |
| 98  | Forrest Kelleher   | DE   | Fr.  | Ft. Lauderdale, Fla. |
| 98  | Jacob Bagley       | TE   | Jr.  | Waycross, Ga.        |
| 99  | Terico Agnew       | DE   | Jr.  | Stockbridge, Ga.     |



# ALABAMA CRIMSON TIDE

| No. | Name               | Pos. | Year        | Hometown           |
|-----|--------------------|------|-------------|--------------------|
| 1   | Demetrius Hart     | RB   | Fr.         | Orlando, FL        |
| 2   | Tana Patrick       | LB   | So.         | Bridgeport, AL     |
| 2   | DeAndrew White     | WR   | Fr.         | Houston, TX        |
| 3   | Vinnie Sunseri     | ILB  | Fr.         | Tuscaloosa, AL     |
| 3   | Trent Richardson   | RB   | Jr.         | Pensacola, FL      |
| 4   | Marquis Maze       | WR   | Sr.         | Birmingham, AL     |
| 4   | Mark Barron        | S    | Sr.         | Mobile, AL         |
| 5   | Ronald Carswell    | WR   | Fr.         | Maon, GA           |
| 5   | Jerrell Harris     | LB   | Sr.         | Gadsden, AL        |
| 6   | Hasean Clinton-Dix | DB   | Orlando, FL |                    |
| 6   | Blake Sims         | QB   | Fr.         | Gainesville, GA    |
| 7   | Kenny Bell         | WR   | So.         | Rayville, LA       |
| 8   | Duron Carter       | WR   | Jr.         | Ft. Lauderdale, FL |
| 8   | Jeoffrey Pagan     | DE   | Fr.         | Asheville, NC      |
| 9   | Nick Williams      | WR   | So.         | Ft. Lauderdale, FL |
| 9   | Phelon Jones       | CB   | Sr.         | Mobile, AL         |
| 10  | A.J. McCarron      | QB   | So.         | Mobile, AL         |
| 10  | John Fulton        | CB   | So.         | Manning, SC        |
| 11  | Brandon Gibson     | WR   | Sr.         | Mobile, AL         |
| 12  | Phillip Ely        | QB   | Fr.         | Tampa, FL          |
| 13  | Danny Woodson, Jr. | WR   | Fr.         | Mobile, AL         |
| 14  | Phillip Sims       | QB   | Fr.         | Chesapeake, VA     |
| 15  | Darius Hanks       | WR   | Sr.         | Norcross, GA       |
| 16  | Bradley Sylve      | WR   | Fr.         | Port Sulphur, LA   |
| 17  | Brad Smelley       | TE   | Sr.         | Tuscaloosa, AL     |
| 18  | Morgan Ogilvie     | QB   | So.         | Mountain Brook, AL |
| 18  | Levi Cook          | DB   | Jr.         | Decatur, AL        |
| 19  | Jonathan Atchison  | LB   | So.         | Atlanta, GA        |
| 20  | Nate Carlson       | TE   | Jr.         | Birmingham, AL     |
| 20  | Jarrick Williams   | DB   | So.         | Mobile, AL         |
| 21  | Brent Calloway     | RB   | Fr.         | Russellville, AL   |
| 21  | Dre Kirkpatrick    | CB   | Jr.         | Gadsden, AL        |
| 21  | Ben Howell         | RB   | Jr.         | Gordo, AL          |
| 22  | Christion Jones    | DB   | Fr.         | Adamsville, AL     |
| 24  | Nathan McAlister   | WR   | So.         | Russellville, AL   |
| 24  | DeQuan Menzie      | CB   | Sr.         | Columbus, GA       |
| 25  | Caleb Castille     | DB   | Fr.         | Birmingham, AL     |
| 26  | Jabriel Washington | DB   | Fr.         | Jackson, TN        |
| 26  | Nick Tinker        | RB   | So.         | Ralph, AL          |
| 27  | Nick Perry         | DB   | So.         | Prattville, AL     |
| 28  | Dee Milliner       | CB   | So.         | Millbrook, AL      |
| 29  | Will Lowery        | DB   | Jr.         | Hoover, AL         |
| 29  | Cody Mandell       | P    | So.         | Lafayette, LA      |
| 30  | Dont'a Hightower   | LB   | Jr.         | Lewisburg, TN      |
| 31  | John Baites        | TE   | Sr.         | Hendersonville, TN |
| 32  | C.J. Mosley        | LB   | So.         | Theodore, AL       |
| 33  | Trey DePriest      | LB   | Fr.         | Springfield, OH    |
| 34  | Hunter Bush        | DB   | Jr.         | Wetumpka, AL       |
| 35  | Nico Johnson       | LB   | Jr.         | Andalusia, AL      |
| 36  | Chris Jordan       | LB   | Sr.         | Brentwood, TN      |
| 37  | Robert Lester      | S    | Jr.         | Foley, AL          |
| 41  | Courtney Upshaw    | LB   | Sr.         | Eufaula, AL        |
| 42  | Eddie Lacy         | RB   | So.         | Geismar, LA        |
| 42  | Adrian Hubbard     | LB   | Fr.         | Lawrenceville, GA  |

| No. | Name                 | Pos. | Year | Hometown            |
|-----|----------------------|------|------|---------------------|
| 43  | Sam Kearns           | DB   | Sr.  | Mobile, AL          |
| 43  | Taylor Conant        | WR   | Jr.  | Tuscaloosa, AL      |
| 43  | Cade Foster          | K    | So.  | Southlake, TX       |
| 44  | LaMichael Fanning    | DE   | Fr.  | Hamilton, GA        |
| 44  | Jay Williams         | P    | Fr.  | Thomasville, AL     |
| 45  | Jalston Fowler       | FB   | So.  | Mobile, AL          |
| 47  | Xzavier Dickson      | LB   | Fr.  | Griffin, GA         |
| 48  | Rowdy Harrell        | LB   | Sr.  | Moundville, AL      |
| 49  | Ed Stinson           | DE   | So.  | Homestead, FL       |
| 49  | Ranzell Watkins      | DB   | So.  | Charlotte, NC       |
| 51  | Carson Tinker        | LS   | Jr.  | Murfreesboro, TN    |
| 51  | Wilson Love          | DE   | Fr.  | Mountain Brook, AL  |
| 52  | Alfred McCullough    | T    | Sr.  | Athens, AL          |
| 53  | Anthony Orr          | DL   | Fr.  | Madison, AL         |
| 54  | Russell Raines       | OL   | So.  | Satsuma, AL         |
| 54  | Jesse Williams       | NT   | Jr.  | Brisbane, Australia |
| 56  | William Ming         | DL   | So.  | Athens, AL          |
| 57  | Aaron Joiner         | OL   | Jr.  | Florence, AL        |
| 57  | DJ Pettway           | DE   | Fr.  | Pensacola, FL       |
| 58  | Nick Gentry          | DL   | Sr.  | Prattville, AL      |
| 59  | Arie Kouandijo       | OT   | Fr.  | Beltsville, MD      |
| 61  | Anthony Steen        | G    | So.  | Lambert, MS         |
| 62  | Brandon Ivory        | NT   | Fr.  | Memphis, TN         |
| 63  | Kellen Williams      | OL   | So.  | Lawrenceville, GA   |
| 65  | Chance Warmack       | G    | Jr.  | Atlanta, GA         |
| 67  | John Michael Boswell | OL   | Sr.  | Northport, AL       |
| 68  | Austin Gray          | OL   | So.  | Woodstock, GA       |
| 68  | Isaac Luatua         | OL   | Fr.  | La Marida, CA       |
| 70  | Ryan Kelly           | OL   | Fr.  | West Chester, OH    |
| 71  | Cyrus Kouandjio      | OL   | Fr.  | Hyattsville, MD     |
| 72  | Tyler Love           | T    | Jr.  | Mountain Brook, AL  |
| 73  | William Vlachos      | C    | Sr.  | Birmingham, AL      |
| 75  | Barrett Jones        | G    | Jr.  | Memphis, TN         |
| 76  | D.J. Fluker          | OL   | So.  | Foley, AL           |
| 78  | Chad Lindsay         | OL   | Fr.  | The Woodlands, TX   |
| 79  | Austin Shepherd      | OT   | Fr.  | Buford, GA          |
| 80  | Marvin Shinn         | WR   | Fr.  | Prichard, AL        |
| 81  | William Strickland   | WR   | Sr.  |                     |
| 81  | Hardie Buck          | WR   | Jr.  | Birmingham, AL      |
| 82  | Harrison Jones       | TE   | Fr.  | Memphis, TN         |
| 83  | Kevin Norwood        | WR   | So.  | D'Iberville, MS     |
| 84  | Brian Vogler         | TE   | Fr.  | Columbus, GA        |
| 85  | Malcom Faciane       | TE   | Fr.  | Picayune, MS        |
| 86  | Undra Billingsley    | DE   | Jr.  | Birmingham, AL      |
| 87  | Chris Underwood      | TE   | Sr.  | Birmingham, AL      |
| 88  | Michael Bowman       | WR   | So.  | Rossville, GA       |
| 89  | Michael Williams     | TE   | Jr.  | Reform, AL          |
| 90  | Jeremy Shelley       | K    | Jr.  | Raleigh, NC         |
| 90  | Quinton Dial         | DL   | Jr.  | Pinson, AL          |
| 91  | Alex Watkins         | LB   | Sr.  | Brownsville, TN     |
| 92  | Damion Square        | DE   | Jr.  | Houston, TX         |
| 93  | Chris Bonds          | DE   | So.  | Columbia, SC        |
| 95  | Brandon Lewis        | DL   | Jr.  | Pleasant Grove, AL  |
| 99  | Josh Chapman         | NT   | Sr.  | Hoover, AL          |



# GSU to face Division I's best defense

## Football

By JAMES FARMER

George-Anne staff

Georgia Southern University versus the University of Alabama might be the most highly anticipated matchup of GSU's regular season.

The Crimson Tide are ranked third in the FBS, while the Eagles hold that same position in the FCS. These two programs are national title contenders at their own level, and will challenge each other in all aspects of the game.

GSU will have to make some tough calls in this game. If GSU wants to win this game, they have to play their starters the entire time, however, GSU's playoff spot is already guaranteed by winning the Southern Conference. Is a win over Alabama worth it if a key player goes down?

Alabama needs a big win, if GSU sticks around and makes it too close of a game, then the computers that decide the BCS rankings will punish the squad for not winning big enough.

**Special Teams:** GSU has one of the most game changing special teams units in the country. The kick and punt returns can put points on the board, and demoralize the other team, while the kick block unit can just as easily take easy points away from opponents.

Throw in Adrian Mora's automatic leg and Charlie Edward's precise punting as of late, and this unit may be one of the best in the whole NCAA.

Alabama has lost only one game this year, and that was because the kicking game could not get the job done.

Against Louisiana State University, the Crimson Tide kickers connected on only two of six field goal attempts. Alabama has only blocked one kick this year but rank third in their conference in both kick and punt return yards.

**Stat to watch: 7-13.** Opponents of Alabama are barely hitting half of their field goals against the Crimson Tide. Mora has yet to miss this year.

**Advantage: Even**

**Alabama Offense vs. GSU defense:** Alabama's offense has been outshone by its spectacular defense this year, but it is still one of the best in college football.

Trent Richardson is running through



Lindsay Hartmann/STAFF

**Jerick McKinnon (1)** runs the ball against Wofford College. GSU will face Division I's best defense on Saturday against the University of Alabama

opponent defenses at an astounding rate, rushing for 1252 yards and 18 touchdowns. A.J. McCarron has played effectively, completing over 65 percent of his passes.

The GSU defense will face a huge challenge in the offensive line of Alabama, both figuratively and literally.

The Crimson Tide has one starter underneath 300 pounds on the offensive line. GSU has no player over 300 pounds on the team, and only one defensive player, Brent Russell, over 290 pounds.

**Stat to Watch: 21.** It has been 21 years since GSU has allowed an individual to rush for four touchdowns in a game, a feat Richardson has already accomplished once this season.

**Advantage: Alabama**

**GSU offense vs. Alabama Defense:** Georgia Southern recently snapped out of a scoring slump against Wofford College and rung up 31 points on the Terriers while dominating the time of possession.

The Eagles have four rushers with over 300 yards on the season, including Robert Brown, who has rushed for 854.

The Alabama defense surrenders 7.1 points per game and 181.4 yards per game, good for the best in Division I football.

The defense is especially good at shutting down the run, and the only reason they could have trouble against the Eagles is if the unfamiliarity with the triple-option causes defensive confusion.

**Stat to watch: 2.** In the second quarter this year, GSU has scored 58 points. Alabama has

allowed 6 second quarter points.

**Advantage: Alabama**

**Final Analysis:** The triple-option is a hard offense to game plan against because of the discipline required to execute it. However, the best way to counter a triple option offense is to have a fast and disciplined defense. Alabama has both of those characteristics on defense.

For GSU to win this game, they need to make Alabama's strength its weakness. If the offense can put together time-consuming drives like they did against Wofford last weekend, then they can keep the game close.

Special teams can keep the team in the game, and potentially even give GSU an edge that it needs to emerge victorious.

Defensively, the Eagles need to force McCarron to pass into their opportunistic secondary by shutting down the run game. That is easier said than done.

For Alabama to win the game, they just need to execute their game plan. Alabama's athletes are bigger and faster than GSU's, and if this game was played on paper, GSU would not have a chance.

If the game starts to get out of hand, expect head coach Jeff Monken to pull the starters and keep the team healthy for the playoffs. But unless things get out of hand, expect to see the starters playing hard to try to upset this huge opponent.

**Stat to watch: 29.4.** In five games against top-five FBS teams, GSU has been outscored by an average margin of 29.4 points.

**Final Score: 13-41 Alabama**

## UT&ABOUT

**myth:** drinking is central to the social lives of georgia southern university students

**fact:** 78% of georgia southern students typically drink once a week or less often

**Fixx Rite**  
Auto Repair

Formerly known as Dale's Transmission

**25% off oil change**  
**50% if you bring a friend**  
**AND your friend can have 25% their oil change**  
**ALL MODELS**

(912) 489-3499 6762 Cypress Lake Rd Statesboro, GA 30468

**Express Tune & Lube**

Tire, Alignment & Exhaust Center

612 S. Zetterower Avenue  
489-4444  
www.expresslubeandlube.com  
Monday - Friday 7:30am - 6:30pm  
Located a half block north of Wendy's

**OIL CHANGE SPECIAL**

**\$25<sup>99</sup>** Includes up to 5 qts of Castrol 5W20, 5W30, 10W30.

price applies to most vehicles. Expires 12/31/11  
www.expresslubeandlube.com

**Jerry's**  
Salon & Spa

**\$10 Feathers, \$7 Tinsel**

Bring Student I.D., get \$2 for tannings, haircuts, colors & highlights

180 East Main St Suite C, Statesboro, GA 30462  
(912) 489-4444  
(Across from old Value Warehouse on Hwy 80)