

Georgia Southern University

Digital Commons@Georgia Southern

The George-Anne

Student Media

11-15-2011

The George-Anne

Georgia Southern University

Follow this and additional works at: <https://digitalcommons.georgiasouthern.edu/george-anne>

Recommended Citation

Georgia Southern University, "The George-Anne" (2011). *The George-Anne*. 2713.
<https://digitalcommons.georgiasouthern.edu/george-anne/2713>

This newspaper is brought to you for free and open access by the Student Media at Digital Commons@Georgia Southern. It has been accepted for inclusion in The George-Anne by an authorized administrator of Digital Commons@Georgia Southern. For more information, please contact digitalcommons@georgiasouthern.edu.

Writing and linguistics chair resigns

McClure reimburses university after travel expenses audit

By JENNIFER CURINGTON
George-Anne staff

Dr. Randall McClure announced Friday that he has resigned from his

position as the department chair of writing and linguistics.

McClure's resignation followed findings from an audit of travel expenses and reimbursements,

according to an email from Dean of College of Liberal Arts and Social Sciences Michael Smith.

Legal action against McClure is possible, said Director

Administrative of Marketing and Communications Christian Flathman.

"That's potentially something that could happen," said Flathman.

The lack of legal action is a concern, said former GSU English professor Clifton Price.

"If he did steal the money, he

See CHAIR, page 3

Tuesday, November 15, 2011
Georgia Southern University
www.thegeorgeanne.com
Volume 87 • Issue 41

THE GEORGE-ANNE



Lindsay Hartmann/ STAFF

Georgia Southern University supporters celebrate another conference title after a 31-10 victory over Wofford College. The championship is the first Southern Conference crown for the Eagles since 2004. It is the sixth outright championship in GSU history.

GSU receives vote in AP top-25 poll

By JAMES FARMER
George-Anne staff

Georgia Southern University received its first Associated Press vote this week with one 25th place vote from Ray Ratto.

Ratto is a sports writer based out of San

Francisco, Calif.

In an email, Ratto said, "Simply put, I wearied of trying to find three-loss FBS teams with no signature wins and some good losses, and look at the best FCS teams, because I believe the elite FCS teams hold their own with all but the best 20 to

30 FBS teams. North Dakota State, which would have been my first choice, lost to Youngstown State, and Montana State didn't play. Thus, it was Georgia Southern or Sam Houston State and Georgia Southern was both ranked higher and play in a tougher conference."

Eagles capture SoCon title

BY JAMES FARMER
George-Anne staff

SPARTANBURG, S.C. — Georgia Southern University captured its ninth overall Southern Conference title and sixth outright on Saturday with a 31-10 victory over the Wofford College Terriers.

The nine conference titles in 19 years for GSU are an impressive statistic. The only teams with more titles are Furman University and Appalachian State University, who have been in the conference for 72 and 39 years, respectively.

"I'm proud of this football team and the effort they put in today, and all the work they put in coming up to this game," said head coach Jeff Monken. "This is a great accomplishment."

The Eagles were lead by true freshman B-back Dominique Swope, who rushed for 165 yards on 27 carries on his way to his second SoCon Freshman of the Week award.

"He did a great job running the football,

See SOCON, page 10



thegeorgeanne.com

Tues.	Wednes.	Thurs.	Fri.
H 82	H 81	H 69	H 63
L 60	L 52	L 32	L 37



Newsroom 478-5246
Advertising 478-5418
Fax 478-7113

PO Box 8001
Statesboro, GA
30460

GSU increases security after multiple crimes occur

By LINDSAY GASKINS

George-Anne contributor

Georgia Southern University is increasing campus patrols in response to recent crime as well as reporting that crime rates have not increased this year.

"We have brought in extra officers that are doing increased patrols in certain areas throughout the campus," said Sergeant Christopher McBride of Georgia Southern Department of Public Safety.

Police are taking active measures to ensure the recent crimes occurring are solved and taken care of, said Captain Terry Briley of GSU's police department.

"We do have additional protective measures in place right now on behalf of the police departments," said Briley. "The

second (Eagle Alert) you received, the investigators are working on and have some promising evidence and leads that they are working towards."

Students are also taking an effective role in reporting any suspicious activity to campus police, said Briley.

"Our crime rates are excellent," said Briley. "They are not through the roof at all, as a matter of fact, they are great. I get calls regularly from students and emails regularly from students and they tell me things, even if it's something that is just a little bit suspicious, we check it."

Students are an important asset to campus safety, said Briley.

"It is amazing how much (students) do tell us and it's great. Even if I'm not here they will call the police department and say 'listen,

I got up to go to the bathroom and I looked out the window and I see this guy downstairs and he doesn't look right' and we go out and check it," said Briley. "They are my biggest assets, the students. They're terrific."

The cause of recent crime happening around campus is not related to anything the students or faculty are doing, said Briley.

"It certainly isn't what the students are doing, or the faculty and staff," said Briley. "But, we do have predators and you get a university the size that we have, and we're an open university, we don't have a huge fence around us, they can come and go among this university as they please. We try to protect students as much as possible."

The suspects responsible for these offenses may be hard to track

because they blend in with the students and staff around them, said Briley.

Even though there has seemed to be an increase in crime this semester compared to previous years, the crime rate has actually stayed the same if not lowered, said McBride.

"The crime rate has not gone up," said McBride. "It just appears as though it has because everything is concentrated right here. Everything has happened recently and it seems like there is a lot that is going on, but it is actually not compared to this time last year," said McBride.

Campus police treat each individual misdemeanor with the same importance no matter what the magnitude of the crime is, said Briley.

"There is a huge difference

between somebody having their laptop stolen and an armed robbery, but we treat them both the same. They both have the same equal importance and we go after them just as hard, but one is far more dangerous than the other one is," said Briley.

The crime is not targeting one specific area of campus and can it cannot be concentrated to one place, said McBride.

"There is really not one particular area of crime. Things are just wide spread and it hasn't been concentrated in one area. There is not one specific area that has been impacted," said McBride.

"We at public safety are not going to tolerate it," said Briley.

"Our students are here to learn, to have fun, not to sit around and worry about a bunch of criminals walking around."



- 10 Flavors of Yogurt
- 55 Toppings to Choose From
- Dairy Free & No Sugar Added Flavors Available
- All Flavors are either Non-Fat or Low Fat-- Less than 140 Calories Per Serving

1 oz FREE*

* Valid through the month of November 11/30/11. Cannot be combined with any other discounts.

*VOID: \$1 off from 11/10/11 paper

721 SOUTH MAIN ST. #9
STATESBORO, GA
LOCATED IN TALBOTS SHOPPING CENTRE
CONTACT # 912-681-2547

HOURS:
MON-THURS: 11AM-10PM
FRI-SAT: 11AM - MIDNIGHT
SUN: 12PM - 10PM



JOIN ON FACEBOOK TO
LEARN MORE ABOUT
SPECIALS @ YO BLISS

Police Beat

Tuesday, Nov. 8

- Officers issued five traffic warnings, six traffic citations, assisted four motorists, responded to two alarms, aided one sick person and investigated one accident.
- A report of financial transaction fraud was taken at Centennial Place.
- Officers responded to a verbal altercation between roommates at Southern Courtyard.
- Officers responded to a drug complaint at Southern Pines.
- Officers responded to Southern Pines for a complaint of an alcohol violation.

Wednesday, Nov. 9

- Officers issued two traffic citations,

- four traffic warnings, assisted one motorist, responded to three alarms and investigated one accident.
- A fight was reported on a GSU bus.
- A vehicle was scratched at Eagle Village.
- Dexter Michael Dorsey, 19, was charged with false report of a crime.
- Matthew Jourdan Fraser, 21, was charged with DUI and laying drag.

Thursday, Nov. 10

- Officers issued one traffic citation, one traffic warning, assisted six motorists and responded to one sick person.
- Two separate drug complaints were reported at Southern Pines.
- A member composite was taken

from the K.A. House.

- A bicycle was taken from Centennial Place.
- Nicholas Avery White, 22, was charged with driving a vehicle with a suspended registration, without current license plate and no insurance.
- Julia Andrea Fordyce, 19, was charged with possession of marijuana.
- William Mackenzie Kitchen, 18, was charged with possession of marijuana and possession of a drug related object.
- Austin Reid Trapani, 18, was charged with possession of marijuana and possession of a drug related object.

CHAIR, from page 1

didn't just take it from some huge corporation that no one cares about. This is a public university. That's tax payers' money," said Price. "If that's the case, the public would like to know why somebody who's taking tax payers' money and spends it illegally and takes it illegally doesn't get prosecuted for it. Any way I slice it, it's stealing."

"Dr. McClure has fully reimbursed the university and will return to the faculty," said Smith in his email to CLASS faculty.

No one has currently been appointed as interim chair, said Flathman.

"We have not finalized the interim chair for the department, but we expect that an announcement will be forthcoming soon," said Flathman.

Finding this information on McClure's spending is not surprising, said Price.

"The dean and Randall both came in to Georgia Southern at the same time. All the other department heads have had backbone," said Price. "When I worked for (Randall), all the other departments would contact us and say, 'Hey, we're fighting

this. We're fighting that,' and then Randall would just walk in and tell us, 'This is what Dean wants and we're doing it.' Could we ask questions? No."

Faculty in the Department of Writing and Linguistics refused to comment and said they were instructed to not provide a comment.

The audit of Department of Political Science occurred by request after Richard Pacelle was removed as the department chair and faculty passed a vote of no confidence in Smith.

Provost Moore and President Keel have continued to stand by Smith as the dean of CLASS.

Amber Gordon contributed to this report.



MCCLURE

Statement of Operations

The George-Anne is the official student newspaper of Georgia Southern University, owned and operated by GSU students using facilities provided by the university. The newspaper is the oldest continuously published newspaper in Bulloch County. The newspaper is a designated public forum for the Georgia Southern community. The newspaper is published twice weekly, on Tuesdays and Thursdays, during most of the academic year. Any questions regarding content should be directed to the student editor by phone at 912.478.5246 or at gaeditor@georgiasouthern.edu.

ADVERTISING: The newspaper accepts advertising. Inquiries may be made by calling 912.478.5418 or 912.478-0566. Fax any questions to 912.478.7113 or e-mail ads1@georgiasouthern.edu.

The George-Anne receives additional support, in part, from the Student Activities Budget Committee.

The deadline for reserving space and submitting advertising copy is noon, one week prior to the intended publication date. For more information, rate cards, sample publications, contact the advertising manager or student media director. The advertiser is responsible for any errors in advertisements and its liability for adjustments is limited to the amount of space the error occupied in the ad. Further, the newspaper is not responsible for any damages caused due to an ad's omission from a particular edition and its responsibility solely is to reschedule the ad in the next regular edition at the regular advertising rates.

STUDENTS BEWARE: The George-Anne screens all advertisements prior to publication. The newspaper strives to accept ads for legitimate products and services only. Students are urged to exercise caution when replying to ads—particularly those that require personal information. Students are also urged to report to the newspaper any suspicious offers which they might see in an ad.

PUBLICATION INFORMATION: The newspaper is printed by Signature Offset in Jacksonville, Fla.

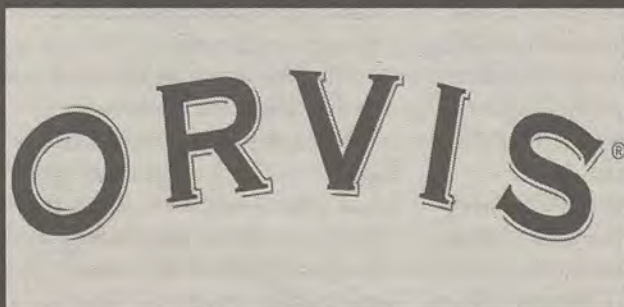
NOTICE: Unauthorized removal of multiple copies from a distribution site constitutes theft under Georgia law, a misdemeanor offense punishable by a fine and/or jail time.

Editor-in-Chief Arielle Coambes
Views / Copy Editor Shauntel Hall
News Editor Jennifer Curington
Asst. News Editor Jessie Reese
Arts Editor Julia Welch
Asst. Arts Editor Quanyia Epps
Sports Editor Matthew D'La Rotta
Asst. Sports Editor Jannah Bolds
Football Editor James Farmer

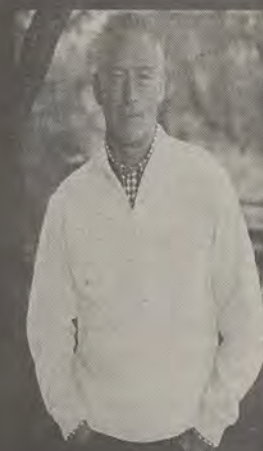
Business Manager Tiffany Larkin
Asst. Business Manager Holly Hillhouse
Marketing Manager Aria Gabol
Production Manager Mallory McLendon
Photo Editor Randy Hudgins
Design Editor Kelsey Paone
Web Editor Jonathan Law

Corrections

Contact the editor at gaeditor@georgiasouthern.edu for corrections and errors.



The Sir Shop
 Statesboro Mall
 912.764.6924



Our View

Class registration needs improvement

Last week, college senators and executive board members of Student Government Association discussed solutions for Georgia Southern University's registration and advisement at its weekly meeting held in the Russell Union.

The problems with class registration have been long standing with GSU and do not seem to be getting any better with time.

Some problems that students have with registration are being unable to log on to GeorgiaView, necessary classes are full and some advisors are not helpful.

Issues with class registration are extremely important to students because registration time is one of the busiest and most critical time, next to finals.

Students hand craft and engineer their schedules to deal with classes they need as well as other activities, involvements and outside obligations they hold outside of the university.

Flaws with registration hit students hard and create a big problem within the university.

Judging by the past problems associated with registration, there needs to be something done that will eliminate these problems for students in the future.

Repairing the wounds that are associated with registration is not only needed but can even be thought of as required for the success of the university in the future.

With a population of 20,000 students and growing, registration is only going to get more complicated as each semester goes by.

As GSU slowly migrates from its "small feel" aspect that it is now its struggling to hold onto, it is detrimental to the success of the university that major improvements be made to the advisement and registration process that guarantee both success and satisfaction to its students in the future.

The George-Anne welcomes letters to the editor and appropriate guest columns. All copy submitted should be 350 words or fewer, typed, and sent via e-mail in Microsoft Word format to gaeditor@georgiasouthern.edu. All submissions must be signed and include phone number for verification. GSU students should include their academic major, year and hometown. The editors reserve the right to reject any submission and edit submissions for length.

Opinions expressed herein are those of the Board of Opinions or columnists themselves and DO NOT necessarily reflect those of the faculty, staff or administration of GSU, the Student Media Advisory Board, Student Media or the University System of Georgia.

Candidate's skeletons removed

Amid the controversial cloud of dust that is the GOP race, there must emerge a contender to battle the struggling incumbent.

This would be prime time for the GOP to emerge victorious. President Obama's approval ratings, the economy and unemployment have been better but there isn't a legitimate candidate to combat him in his re-election year.

What we see is an emerging group of mediocre decision makers who can't even rally the appropriate support from their own political affiliation. Just as Herman Cain was gaining speed and looking like a viable threat to Obama 2012, he gets slammed with an old sexual misconduct story.

This was probably put out by somebody within the GOP to hinder his growing campaign, and I say that because the Democrats would have held on to this information until a more crucial juncture in the race.



ROB ROBERTS

Every candidate has their faults and their skeletons, they're human beings. The problem is, they don't have anything that sets them apart and makes their shortcomings somewhat okay.

Something negative could have been said about anybody who has ever run for public office, especially on such a large scale. The truth is, over 40 plus years who isn't going to have said or done something wrong. I'm not condoning Cain's actions; I'm just saying that everybody has some sort of fault.

His biggest problem is that he doesn't stand out enough to make it alright. If he was clearly the best candidate—even more so than Obama—and he had a large political portfolio with a household name, he would be able to withstand this storm.

Right now, Cain is a victim of his own vices and bad luck. It was a bad timing issue for this to come up when it did, and while no time would have necessarily been a good time, I'm sure he would have been happier if it had not come out before one of the biggest moments of his life.

Everybody has skeletons in their closet, but we hold those in and running for national office to a higher standard because they are supposed to be the best of the best.

Roberts is a senior public relations major from Warner Robins, Ga.

President passes blame to Republicans

Last night, the President spoke at the Asian-Pacific Economic Cooperation conference in Hawaii and his main focus seemed to be slamming Republicans in the House for not going along with his jobs bill.

He said, "The American people are wondering about congressional leadership at this point in their inability to pass this bill, the components of which a majority of Americans, including Republicans, think are a good idea and this is going to cost them at the polls next November."

I'm sorry Mr. President, but the reason lots of Republicans are going to be re-elected to their positions next year is because they did exactly what they were elected to do, which was reign in your spending and make sure they're not taxed out the wazoo.

And that's exactly what that jobs bill was, stimulus package 2.0. All it would do is tax successful people to pay for more government spending. What the Republicans and the Democrats who



FRITZ CHAPIN

oppose the bill are doing is making sure the people who are successful in the private sector, the funds to keep growing their businesses.

"But Fritz, if those greedy people aren't taxed more heavily, they're going to keep all the money for themselves and not help anyone else." I've heard this argument before and those people are off base completely.

Even if these successful businesses are run by greedy people, they always want more which causes them to grow their business which means people get jobs, from building new offices and retail space to actually working for the companies, businesses expanding is

how we create jobs.

Another way we create jobs is by lowering the corporate tax. It's the second highest in the world, only behind Japan at 39.4 percent which is in the process of being lowered.

It's just not good business to be stationed in America when you can pay three times less in taxes in China, Denmark, Austria and Ireland according to the Washington Post. By making America more corporations and manufacturing friendly, we could stabilize the economy and be back towards number one.

The President is trying to pin it on the Republicans that he hasn't obtained his socialist paradise and he's right. Socialism is unsustainable, just look at Europe right now. When the government starts being the biggest business in the land, that's when empires fall.

Chapin is a political science major from Roswell, Ga.



Letters to the Editor

Advisement is student's responsibility

Dear Editor,

This is a response to SGA discusses issues with class registration page 8 Thursday 11/10/11 issue.

As a peer advisor in the Office of First Year Experience, I have a window into the advisement process, particularly for freshmen and sophomores.

I've read the article in Thursday's issue of the George-Anne 11/10/11 "SGA discusses issues with class registration."

I understand some concerns about class registration and advisement times; however, there are a number of problems that must be considered about academic advisement at Georgia Southern University.

First, we have over 20,000 students enrolled and getting them advised in the first two weeks of school is just impossible.

We would have to sacrifice

our small scale feel with less personal attention during advisement.

It can also become a logistical headache for students.

Some students do need to be seen before the withdraw date, but unfortunately the students that need advisement the most often don't take the opportunity to get advised early.

Students have the option to get advised beginning in Sep., yet many choose to wait until late Oct. or Nov. after registration has begun and the withdraw date has passed.

Some students will sign up for an appointment and not show up for their scheduled appointment, and continue to do so while other students could have been seen.

You must remember that it is the student's responsibility to get advised in a timely manner.

At the Office of First-Year

Experience students are made aware in Sep. via e-mail, mail or phone call about available appointments for advisement.

At GSU our belief is that "Ultimately, each student is responsible for keeping himself or herself apprised of current graduation requirements in his or her particular degree program."

While academic advisors should be consulted regularly, students are responsible for the completion of their chosen degree programs."

This is stated in the GSU catalog on page one. Just remember that as a student you have more control over your academic future than anyone else.

Ralph Wilson
Peer advisor Office of First-Year Experience
Senior Nutrition/Food Science Major

Participation is key for registration

Dear Editor,

I would like to comment on the article in the *George-Anne* today concerning "SGA discusses issues with class registration".

It would be advantageous to have students advised before the drop date; however, it is virtually impossible with the advisor/student ratio we have at Georgia Southern.

Much of the advisement is now done in the Student Services Centers in each college and these advisors are expected to do much more than advise.

Also, there is a great deal more to advisement than sitting down with a student and going over what courses they should register for the next semester.

Our Student Services Centers are charged with increasing RPG (retention, progression, and graduation), which involves different tasks in addition to advising.

Our Students Services Center in the College of Business (like many others)

started advising the day after Labor Day and we are still advising. One big problem we have is getting students to show up for appointments.

When they do not show up, that is taking an appointment time from another student and wasting important advisement time for us.

That is why we allow students two no-show appointments and then they must do walk-in advisement after Thanksgiving holidays. This is really late for registration, but students have to assume some responsibility.

We post advisement information shortly after classes begin on our website, Facebook and Twitter pages, in our office and throughout the COBA building and through email by their advisor in order to ensure that students are aware that they must sign up for advisement.

Bobbie Williams
Director of Student Services & Retention
College of Business Administration

Submit your letters to the editor at gadaily@georgiasouthern.edu

Shakespeare on trial by his own characters

By COURTNEY ESCHER

George-Anne contributor

The past and the present collided on the main stage at the Emma Kelly Theater as the Averitt Center for the Arts hosted "Shakespeare on Trial" Thursday evening.

The play was a one-act comedy written and produced by Jeremy Webb that accused William Shakespeare of being dull and out-of-date.

"I am told that across the globe- not the Theatre Globe, but the whole globe- my characters are giving up, fading away. What sorcery is this," said actor Simon Henderson as William Shakespeare.

Webb and Henderson were a duo that taught the audience why Shakespeare is still relevant today.

Webb originally wrote the play in 2009 for high school students. But it wasn't long after he began performing for students that he realized the show could be performed for all age groups including adults.

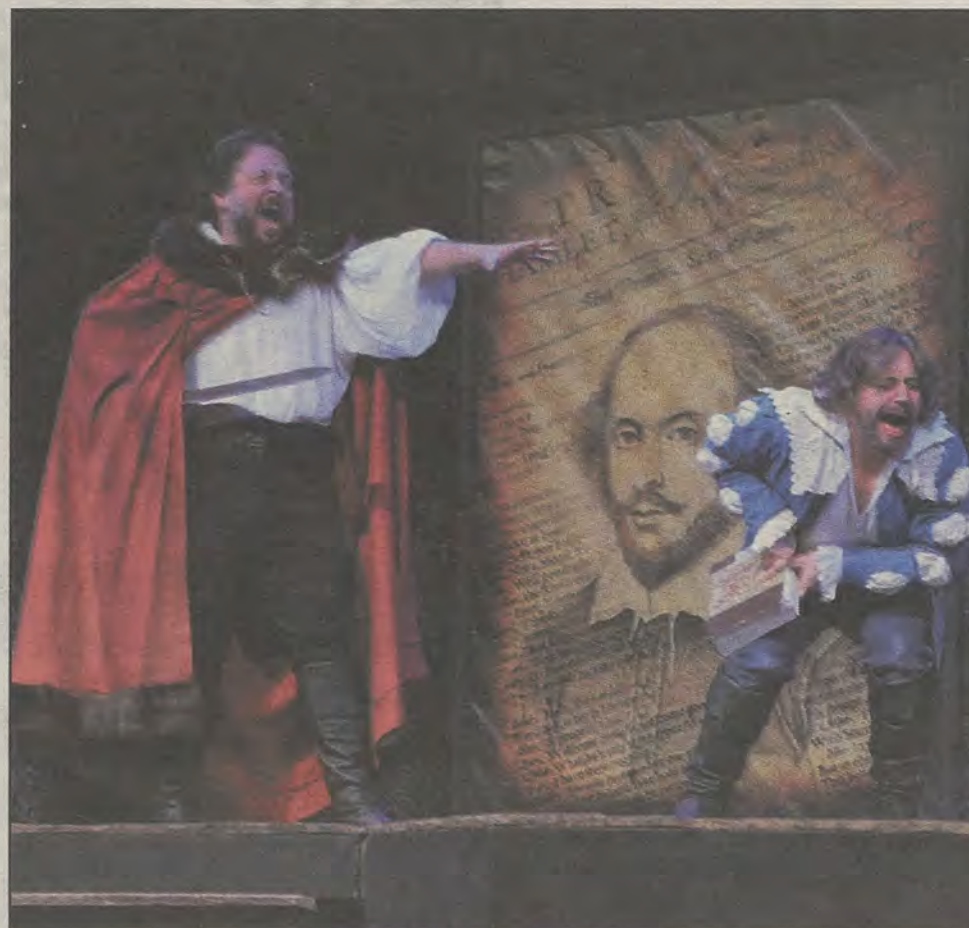
"I think that it's great for adults because it breaks all the rules," said Webb.

The show began with Shakespeare literally being thrown on trial for being a boring and irrelevant writer.

Within the first two minutes of the show the comedy was unleashed, as Shakespeare tried to convince his own characters, who were bored and unhappy with their roles, that they were still relevant.

Iago, the classic villain from "Othello", for example, confessed that he would rather be a clown or a game show host than the villain.

Audiences got the chance to see this change in character when Iago later hosted the in-show



Jessica Stanfield/STAFF

National actors Jeremy Webb and Simon Henderson perform as MacBeth and Shakespeare respectively at the Averitt Center last Thursday.

game show, "Beat the Bard."

The show's classic Vaudeville comedy mixed with modern day references and chemistry between the actors had the audience laughing from beginning to end.

"I often try to make [Henderson] laugh because it keeps the momentum going," said Webb.

Members of the audience represented all age groups from young children to retired seniors.

"I don't know that I've ever loved Shakespeare more," said Libba Smith, a retired GSU Alumni.

Members of the audience also participated in the performance during a game show portion and the famous soliloquy from "Romeo and Juliet".

"It was very accessible and fun. It reminded me of what I do know about Shakespeare," said assistant professor of counseling, Carrie Lynn Bailey.

Webb's goal was to show all sides of Shakespeare: the humor, the passion and most importantly the entertainment.

"The play's message" said Webb "is that Shakespeare is about entertainment and people are meant to watch and enjoy it rather than worship or study it."

Webb played many famous Shakespearean characters including, MacBeth, Iago, Hamlet and of course Juliet.

"O Juliet, you used to be the fairest maiden in all the land and now... Well you have let yourself go a bit. I mean seriously, the beard, the belly, the cheesy puffs," said Henderson as Shakespeare.

"It was very entertaining and a nice combination of all the famous Shakespeare plays, plus I counted that they referenced nine movies," said Will Britt from the Boy Scouts of America.

"Shakespeare on Trial" will be touring the southeast for the remainder of the winter season.

"It was absolutely hilarious; it continues to show the high quality production that the Averitt Center brings. Anyone who wasn't there missed a great show," said Theresa Novotny, president of the Statesboro Arts Council.

Planters Row

By Hendley Properties

912.681.1170
www.hendleyproperties.com

3 bedroom
cottage
house

\$365
/month per person



Poinsettia sale begins

By **DUSTIN TILLIGKEIT**

George-Anne contributor

The holiday cheer has reached the Botanical Garden at Georgia Southern University as the garden host its annual benefit Poinsettia sale.

The poinsettia is a flower that has been associated with Christmas tradition. Originating in Mexico when a poor girl was unable to provide a gift for Christmas, she took a poinsettia to church as her gift. The red of the flower represents the blood of Christ and the star shaped blossom represents the Star of Bethlehem.

This time of year is perfect for such a sale, with poinsettias being a flower that represents the holiday season.

"It's good fundraising for the garden," said Botanical Garden's director, Caroline Altman.

With the Garden receiving half of its fundraising from sources outside the university, this sale is necessary so that the garden has the funding it needs.

The money is very helpful to the garden, but it's "never enough," said Altman.

Before the sale, the garden would sell the poinsettias as ordered, but the staff found it had

too much risk and often meant that the flowers wouldn't sell.

As for the flowers themselves, the garden has six different colors that include the classic red, a speckled bloom called "Jingle Bell" and a rose-colored flower called "Monet."

Currently the flowers are being presold for \$15. This preorder requires you to pick out the colors ahead of time and then call in the order. This preordering will continue until Nov. 17. After preordering, you will be able to pick up your flowers on either Dec. 2 or Dec. 9 from 10 a.m. until 5 p.m.

The poinsettia sale began, Altman said, "We were looking for something inventive to do."

The idea behind it was the sale is something that students and faculty, as well as members of the local community could benefit from.

In fact a majority of the poinsettias sold go to the community for the holiday season. The flowers make excellent gifts especially for students returning home to their parents for the winter break.

The poinsettias will remain available for preorder for \$15 until Nov 17. Check the Botanical Garden's website for more information.



TROY MARSH
THE MARSH LAW FIRM

WHAT: FREE LEGAL HELP

WHERE: ROOM 2073 IN THE RUSSELL UNION

WHEN: EVERY TUESDAY 3:00-5:00 PM

TO SCHEDULE AN APPOINTMENT, CALL (912) 764-7388

SPONSORED BY



STUDENT GOVERNMENT ASSOCIATION
YOUR STUDENT ACTIVITY FEES AT WORK.

SEXED!!!

Featuring River Huston

Thursday, November 17, 7pm
Williams Center Multipurpose Room
Attendance Verification Will Be Provided

Sponsored by Health Services

CLASSIFIEDS

This page brought to you by Career Services
Explore • Experience • Excel

8 Tuesday, November 15, 2011

The George-Anne

For Sale

FOR SALE - 17 inch custom Ford Mustang rims and 17 inch custom Chevy Impala rims
Contact Ron: (912) 486-6611

Scooter for sale! 2005 Honda Ruckus. Black, 49cc, 85+mpg. Fantastic condition; original (faculty) owner, garage kept. No special license or insurance required. \$1,500 OBO. Contact (912) 678-6052

Firewood for Sale. Delivery available! Call 912-690-0872 or 912-690-4956.

Subleasing master bedroom in Planter's Row for \$365/month; utilities not included, pet friendly. For more information contact Anna-Marie at at01770@georgiasouthern.edu or call (770) 546-6560

Subleases

Subleasing 3 BR/2BT house on Parker Avenue in downtown Brooklet. Extremely large media room! Located on two city lots. Contact Joyce at (912) 842-9479.

2 Bedroom 2 Bathroom apartment in Hawthorne 2. Very close to campus. \$350/month. Sublease through July. Contact Shannon at 678-468-9407

For sale: 2009 BMW 328i, hardtop convertible in great condition. Black with tan interior. Call 912-293-1909.

Home Away From Home 3BR/2BT within 2 miles of Georgia Southern campus. You can sublease the other 2 rooms. No smoking or pets. Call (706) 951-1427.

Subleases, cont.

2 BR/2 BT sublease in Georgia Villas. \$475/month for both rooms, utilities not included. Available Jan-May, pet friendly. Right across from Greek Row on Chandler. Email tl00212@georgiasouthern.edu

Female to sub-lease Spring Sem. 5 BR, \$280 a month. Last month's rent is paid. Less than a mile from campus off of Gentilly Rd. Call, text or email Kristina: (678)-770-6251 kf01606@georgiasouthern.edu

Subleasing a 2 BR/2 BR at the Woodlands of Statesboro for Spring 2012. \$399 a month, utilities not included. Contact Adrian at (678) 230-5144.

Subleasing 626 B at the Exchange. Female Roommate needed. \$519.00 per month. All utilities included, free tanning, free Wi-Fi, 24 hr gym included. Available now. Contact (706) 523-6001

Subleases, cont.

Subleasing my room for Spring 2012 in a fully furnished 4 BR/4 BT 3-story town home. Walking distance from the stadium and bus stop. Contact Alex at (770) 712-5377 or ao00837@georgiasouthern.edu

Spring 2012 1 BR/1 BT in a 2 BR/2.5 BT townhouse at The Avenue. Furnished and utilities included. \$495/month, but I will pay \$30 for each month. Or I could put \$210 towards the first month's rent. Contact Cherrelle at chollan4@georgiasouthern.edu

All inclusive, two story, fully furnished, 4 BR townhouse for \$330/month! Includes trash, utilities, cable, wi-fi, pet park, 24/7 gym, recreation courts, computer lab, new appliances and washer/dryer! Contact (229) 326-4291.

Subleases, cont.

SPRING 2012! Female roommate wanted. 1BR/1BT in a 3BR/3.5BT townhome. Walking distance to the stadium and bus stop. \$400/mo., gym and pool included. Cheaper rate can be arranged. Contact Emily at 404-444-8987 or ec01442@georgiasouthern.edu

Subleasing a room in 4 BR/2BT in The Avenue for Spring 2012, but available as early as Dec 16 and Dec will be paid for. \$325/MO. Furnished, utilities included with free Wifi and Cable. Contact Nikki at (678)525-0297.

1 BR/1 BT available in a 3 BR at The Grove, for Spring 2012. Available after Dec. 20. \$450/mo, utilities included. Pet friendly, pool. I will pay last month's rent. Female preferred. Call Ellen 404-694-1394 or email ej00034@georgiasouthern.edu

Subleases, cont.

SPRING 2012! 1 BR/1BT available in 4 BR/4 BT at Campus Club for Jan or earlier. Bus stop next to stadium. Utilities included. Rent is \$419/month; CHEAPER RATE CAN BE ARRANGED. Email Skyler at sh02071@georgiasouthern.edu!

Help Wanted

MODELS of all weights/sizes/ages needed for figure drawing class on T&R, 2-4:30 PM. Fall and spring openings. Must be 21 and able to sit still for long periods of time. Call 912-478-2793 or email jburke@georgiasouthern.edu

Misc.

Will proof papers (grammar, spelling, punctuation, sentence structure). Quality work, reasonable prices. Will also type short projects. Must have ample lead time to schedule. Email auntre01@gmail.com

HOT JOBS Cool Internships

Job Title	Company	Deadline to Apply
Marketing and Communications Internship	GA Dept. of Economic Dev.	Feb. 29, 2012
Candler Country Public Health Nurse	Southeast Health District	Feb. 29, 2012
Advertising Account Executive	Northland Communications	Nov. 30, 2011
Software Engineer	Vensi Inc	Dec. 11, 2011
Entry Level Sales/Recruiter	TEKsystems	Dec. 26, 2011
Electrical Engineer-Entry Level	Jones Edmunds & Associates	Nov. 23, 2011
Process Engineer Mgr. (Group Manager)	Anheuser-Busch InBev	Nov. 18, 2011
Assistant Financial Examiner	GA Dept. of Banking & Finance	Nov. 19, 2011
Store Management Internship	Kohl's Department Stores	Dec. 31, 2011
Intercompany Specialist (Corp)	UPS, United Parcel Service	Nov. 20, 2011
Social Media Intern	Sports Radio 790 the Zone	Nov. 30, 2011
Finance Intern	Coweta County	Nov. 19, 2011
GIS Intern	Paulding County	Nov. 19, 2011
Summer Intern	Gulfstream	Dec. 8, 2011
Accounting Intern	Cynthia R. Glisson, CPA	Dec. 31, 2011
Inside Advertising Sales Executive	Professional Specialty Pub.	Dec. 10, 2011
Autism Teacher	Atlanta Public Schools	Nov. 30, 2011
Systems Engineer	Architecture Tech. Corp.	Dec. 4, 2011

To view the detailed job descriptions application instructions or additional postings, log into the Eagle Career Net/NACELink system found at www.georgiasouthern.edu/career.

Build A Résumé In Minutes

OPTIMAL RESUME

Samples • Tips • Templates • Examples • Instructions • All Online 24/7

georgiasouthern.optimalresume.com

PUZZLES/COMICS

www.thegeorgeanne.com

Tuesday, November 15, 2011 9

Los Angeles Times Daily Crossword Puzzle

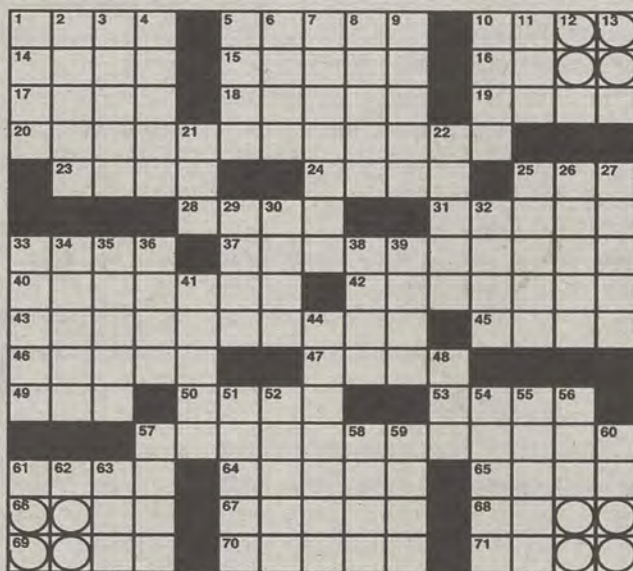
Edited by Rich Norris and Joyce Lewis

ACROSS

- 1 Onetime VHS rival
- 5 Like honed knives
- 10 Relaxed
- 14 The Earth turns on it
- 15 Swiss calculus pioneer
- 16 Hebrides hillside
- 17 Rules, in brief
- 18 Grassy Southwestern tract
- 19 "Mike and Mike in the Morning" radio station
- 20 On-the-go morning snack
- 23 Flight that may be round
- 24 Craft stabilizer
- 25 "No ___!": Mexican's "Enough!"
- 28 Story spanning decades
- 31 St. Teresa's home
- 33 Matador's cloak
- 37 Cash for a sandwich
- 40 Tenth of a sawbuck
- 42 Tailgaters' beverage carriers
- 43 Waiter's handout
- 45 Dorothy's dog
- 46 Run the show
- 47 Vidal's Breckinridge
- 49 Actress Sandra
- 50 Moan and groan
- 53 Browning work
- 57 Familiarly, nutritious trio found twice in this puzzle
- 61 Dubai big shot
- 64 Medium's card
- 65 Part of a float
- 66 Take it easy
- 67 Bacteria in rare meat
- 68 Footnote word
- 69 Biblical heirs, with "the"
- 70 Barber's chair attachment
- 71 Corporate ___

DOWN

- 1 Farm fence feature
- 2 Put into action, as effort
- 3 LSU mascot
- 4 Very, musically
- 5 ___-centered: egotistical
- 6 Luau entertainment
- 7 Sarah Palin, notably
- 8 Yvonne's income
- 9 Legislative investigation
- 10 "Good buddy"
- 11 Horace's "___ Poetica"
- 12 Comfy spot for some cats
- 13 Guys
- 21 GI mess crews
- 22 Memorable Texas landmark
- 25 "Giant" actor Sal
- 26 Ready for whatever
- 27 Final authority
- 29 Old apple spray
- 30 Frances ___
- 32 Battery unit
- 33 Encrypted
- 34 Japanese cartoon style
- 35 Pound divisions
- 36 Adolescent woe
- 38 Manhattan campus, for short
- 39 Rush ___
- 41 Bloodsucker
- 44 Invisible-clothes wearer in an Andersen tale
- 48 "The Simpsons" storekeeper
- 51 José's humanities
- 52 Show one's feelings, say
- 54 Kalahari refuge
- 55 Wear away
- 56 Jason jilted her
- 57 Taxing trip
- 58 Go it alone
- 59 You may stick it in your ear
- 60 Dan's cousin?
- 61 Street shader
- 62 Ginnie ___
- 63 Special ending?



By Pam Klawitter

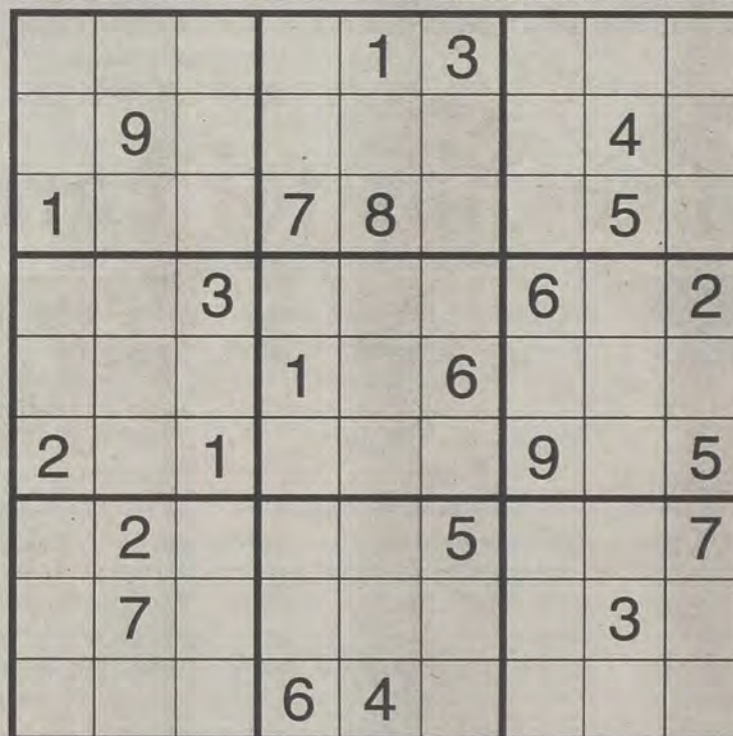
11/15/11

November 10th Puzzle Solved

B	O	L	A	B	Y	S	E	A	L	A	R	K
E	D	E	N	R	A	T	E	D	E	T	U	I
L	O	V	E	T	O	K	E	N	S	M	A	N
T	R	I	C	O	L	O	R	E	U	R	O	S
				D	R	I	V	E	T	O	D	R
S	A	M	O	A	N	R	B	I	S			
P	L	O	T		S	T	O	I	C	A	L	A
A	F	T	E	R	S	H	A	V	E	T	O	N
R	A	H		E	L	U	D	E		N	I	K
				N	E	O	N		E	C	C	L
N	A	T	I	V	E	T	O	N	G	U	E	
E	L	I	T	E		N	A	R	R	O	W	E
C	L	A	W		P	O	C	K	E	T	V	E
K	I	R	I		I	D	L	E	S	E	V	E
S	E	A	T		N	E	E	D	S	R	E	S



Welcome to Felling Rock National Park by Josh Shalek



Sudoku

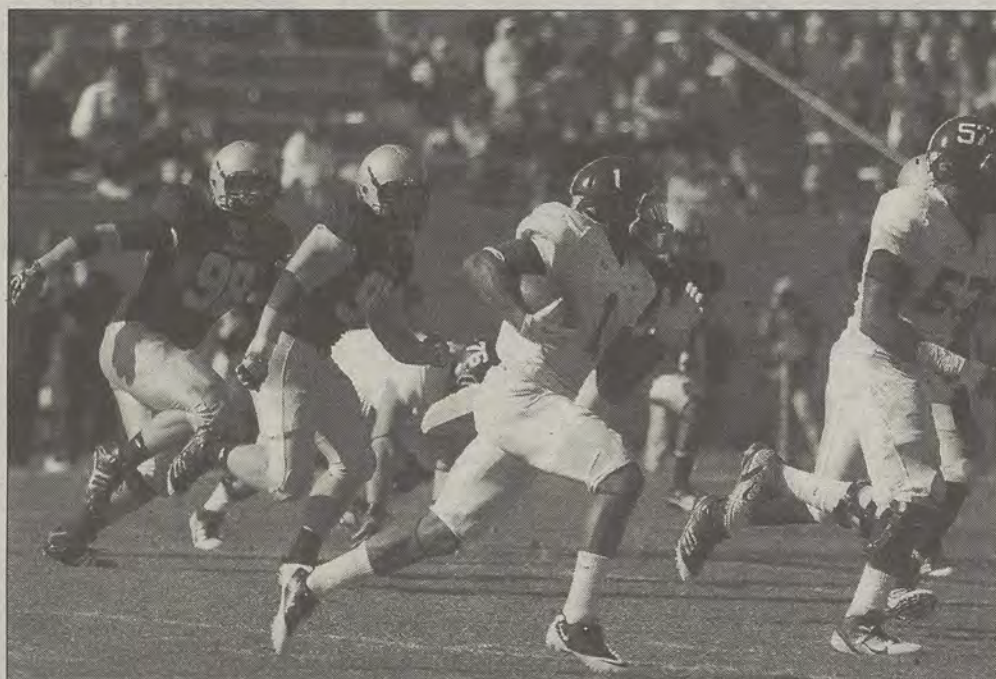
6	2	5	7	4	9	8	1	3
4	8	1	6	2	9	7	5	3
7	9	1	5	8	6	2	4	3
5	8	6	7	3	1	9	2	4
3	4	7	6	2	1	9	8	5
2	3	4	7	6	1	9	8	5
9	5	2	6	8	7	4	3	1
1	4	7	8	6	2	3	5	9
8	7	9	1	3	7	8	5	2

LATTE DA
Coffee Cafe

To get special offers
text "LatteDa" to 99000

Magazines & Muffins

Every Thursday
@ the Williams Center
Gazebo



Lindsay Hartmann/STAFF

Jerick McKinnon (1) runs the ball in the SoCon title game as Wofford's defense takes chase.

SOCON, from page 1

running the ball hard and taking care of the football," said Monken about Swope.

Jaybo Shaw accounted for all of the Eagles' touchdowns, rushing for a career-tying three scores and tossing a momentum-changing touchdown pass as the clock expired to end the first half.

Zach Walker caught Shaw's pass near the left sideline and instead of going out of bounds to stop the clock and give the Eagles a field goal opportunity, he made his defender miss and dove into the endzone for a touchdown.

"That was very very important to kind of get some momentum going," said Brett Moore. "I had a feeling we were going to go for it, because of how aggressive we were being on the plays before that."

Before the Walker touchdown reception, Wofford appeared to be in control of the game. GSU scored first on an Adrian Mora

field goal, but Wofford responded with long runs by quarterback Mitch Allen, including a 31-yard touchdown scamper off of the option.

GSU seemed to be running out of time, after driving to around midfield, but taking five minutes to do so. After GSU was forced to punt, Deion Stanley forced a fumble that John Douglas recovered with 34 seconds left. The Eagles' hurry up offense drove the ball 46 yards in 34 seconds to take a 10-7 lead into the locker room for halftime.

After halftime, the Eagles came out and simply dominated the second half, rolling up 205 yards compared to 117 for Wofford and scoring 21 points. In the fourth quarter alone, the Eagles ran 22 plays compared to nine for the Terriers.

One of most impressive parts of the game was the support of the fans, who filled up around half of Wofford's stadium.

Monken said, "If we don't have the best fans in the nation, I don't know who does."

Swope rushes for career high in title game

Football

By DERREK ASBERRY

The George-Anne staff

SPARTANBURG, S.C. — In Saturday's Southern Conference title game, the Georgia Southern University Eagles did a lot of things that have become expected of them. For example, quarterback Jaybo Shaw rushed the ball just as well as he passed, gaining 166 all-purpose yards. Cornerback Laron Scott averaged over

30 yards per kickoff return, putting the Eagles in quality field position. The Eagles' defense held the Wofford College Terriers to 10 points, which is the fifth time this season they've held a team to under 20 points.

While these things may have become somewhat of commonplace for the Eagles, one thing that is not is a freshman stepping up in a big game.

On a team that features veteran running backs like Robert Brown, J.J. Wilcox and Johnathan Bryant, freshman running back Dominique

Swope set a career high in rushing, gaining 165 yards on the ground on 27 carries.

"I'm happy to have the opportunity to play well for my team," Swope said.

Although the Eagles and the Terriers got off to slow starts, Swope showed early that he would be a big factor in the game. He gained 65 rushing yards in the first quarter alone, helping the Eagles get in position to take an early 3-0 lead. By the end of the half, Swope had 86 yards on the ground. Although his

team had secured the lead at halftime, Swope felt they had the potential to play better.

"We had a couple of mistakes, but in a game everybody does," Swope said. "We talked about it at halftime, we straightened up and came out and executed."

In the midst of the Eagles' 20-point second half, Swope put the team in good positions by gaining 79 more yards in the half, giving him the game-high 165 rushing yards. The freshman did this against the second

best rushing defense in the SoCon, while playing for the title on the road.

"Swope just made play after play," Shaw said. "The offensive line kept opening up holes for him and he ran the ball hard."

"He made some great runs to keep drives going to get first downs," said coach Jeff Monken. "He found a lot of seams in there and he played hard for us."

Swope was named Southern Conference Freshman of the Week for the second time this season.

R. J. Pope
Men and Ladies Apparel
Your supplies for mens & womens jackets

patagonia

SOUTHERN TIDE

764.6973
840A Buckhead Dr. & 5 South Main St.

vineyard vines
martha's vineyard

THE NORTH FACE

POLO
RALPH LAUREN

MOUNTAIN HARD WEAR

Intramural Sports Scores

Flag Football

Nice TD's 6, Bromance 20
Colonel Angus 21, The Beavers 7
America's Team the 69ers 6, Woodies 25
Innocent Until Proven Filthy 12, RAC'n Crew 19
Goin' Deep 0, Back that Pass Up 12
University Villas 10, Do U Know Em 15
T and Ds 31, Eagle Village 6
Southern Spliffs 6, Bena Jones 25
Kennedians 13, Eat My Grass 6
Charlie's Angels 0, Bhadd Gurlz 12
BUILD + 0, Da Squad 30

Indoor Soccer

Centennial Pound Town 10, Death is My Wingman 4
Dino & Friends 1, The Stepfathers 3
Catholic Eagles 4, The Abusement Park 0
University Villians 2, IS 12
Captain Crunch and the Cereal Killers 2, Five Dollar Footlongs 9
John FC 5, Liquor in the Front Poker in the Back 1
Didiers 5, Indoornesia 7
Liquor in the Front Poker in the Back 1, Booty Bandits 2
Indoornesia7, Los Chingones 2
Blacklist 1, One Shot Away From Scoring 6
Screamin' Ninjas 0, Anonymous 4
Dynamo Athletic 4, Life is a Beach and We

Just Wanna Eat Ice Cream 0
Hermaphrodites 0, LadiesandGents 4
Just a Lil Bi Curious 3, Munchma Ballsoff 5
Swagitus Maximus 11, Geo Club 4
Racks and Sacks 10, Stache in the Boro 4
The B.A.L.L Kickers 2, The Antarctica National Team 9
DG4L 0, Caucasian Invasion 10
When It Rains It Pours 4, Stache in the Boro 5
BAMF 5, Awesome Forever 13
Geo Club 4, Southern Adventures 0
Swagitus Maximus 10, Zales 1
Bro Montana and the 69ers 7, DG4L 5
Try no to Seem Impressed 0, The B.A.L.L Kickers 4
Stern But Fair 5, CCF Boys 2 Men 1
Caucasian Invasion 4, The Antarctica National Team 2

Volleyball

Delta Sigma Phi 0 (0-0), Average Joes 2(10-10)
Setting Ducks 2(25-15-15), Can You Dig It? 1(20-25-3)
Back That Ace Up 2 (25-25), Burden's Ballers 0 (13-11)
Can You Dig It? 1 (25-13-13), Amazeballs 2 (17-25-25)
Setting Ducks 2 (25-25), Ball and Dolls 0 (20-23)
Amazeballs 2 (25-25), Burden's Ballers 0 (13-17)
Good Volley Ms. Molly 2 (25-25), Set To Kill 0 (11-22)

Insane Iguanas 0 (24-24), Kiss my Ace 2(26-26)
Balling! 2 (25-25), Spiked Punch 0 (10-13)
Nilla Waffles 2 (25-20-15), Avada Kedavra 1 (17, 25, 11)

Fall Classic Basketball

Future 28, Nike Select 49
Hoopers 78, Nightmare 44
UNDERDOGS 60, And1 39
Polo Gang 50, Take Flight 52
Da Money Squad 50, SP Squad 27
F\$\$\$\$ The Lockout 45, Alpha Tau Omega 20
UNDERDOGS 62, JETS 58
NIKE SELECT 20, Might Morphin Flower Arrangers 0
Hoopers 82, Fab 5 36
F\$\$\$\$ The Lockout 60, ARMY 51
Polo Gang 59, Fast & EZ 33

Da Money Team 20, the Avenue 0
And 1 38, Jets 51
Future 75, Might Morphin Flower Arrangers 52
Nightmare 57, Fab 5 63
Alpha Tau Omega 48, ARMY 33
Take Flight 66, Fast & EZ 34
SP Squad 20, The Avenue 0
JETS 0, FAB 5 30
Alpha Tau Omega 35, Da Money Team 81
SP Squad 48, F\$\$\$\$ the Lockout 55
Polo Gang 57, Future 49
Fab 5 38, Nike Select 71
Da Money Team 57, Take Flight 66
F\$\$\$\$ The Lockout 48, UNDERDOGS 47
Polo Gang 67, Hoopers 73
Take Flight 49, Nike Select 63
F\$\$\$\$ The Lockout 49, Hoopers 62
Hoopers 50, Nike Select 55

Today at CRI

Adventure Movie Series Wednesday 8PM



LEAD Climbing Clinic Thursday 7PM

GA Collegiate Flag Football Championship This Weekend

CRI
CAMPUS RECREATION
& INTRAMURALS



Thanksgiving Break Hours

Saturday, November 19 & Sunday, November 20 **CLOSED**

Monday, November 21 & Tuesday, November 22 **6AM-7PM**

Wednesday, November 23 **6AM-2PM**

Thursday, November 24 - Saturday, November 27 **CLOSED**

FOLLOW US!

facebook.com/GSUCampusRec
twitter.com/GSUCampusRec
WWW.GEORGIA SOUTHERN.EDU/CRI

UT&ABOUT

Express Tune & Lube

Tire, Alignment
& Exhaust Center

612 S. Zetterower Avenue

489-4444

www.expresstuneandlube.com

Monday - Friday 7:30am - 6:30pm

Located a half block north of Wendy's

OIL CHANGE SPECIAL

\$25⁹⁵ Includes up to
5 qts of Castrol
5W20, 5W30, 10W30.

price applies to most vehicles. Expires 12/31/11
www.expresstuneandlube.com

IT'S YOUR LIFE...

LIVE IT

FORUMSTATESBORO.COM

COMING TO:

831 South Main Street
Statesboro, GA 30458

**LEASING
OFFICE HOURS:**

Monday-Friday 9-6
Saturday 10-5
Sunday 12-5

FORUM

®

AT STATESBORO

**A PREMIER STUDENT
HOUSING COMMUNITY**

**NOW
LEASING
FOR FALL 2012**

- Tennis Court
- Lap Pool & Spa
- Pet Friendly
- Pet Park
- Two Free Tanning Beds
- Indoor Basketball Court
- Indoor Volleyball Court
- Car Care Center
- Modern Faux-Wood Floors
- Private Bathroom in Bedrooms
- Convenient Individual Leases
- Free High Speed Internet in Bedrooms
- 24 Hour Fitness and Training Center
- Kitchens with Full Size Appliances
- Full Size Washer / Dryer Included
- Wi-Fi Cyber Cafe with Coffee Bar
- Outdoor Sand Volleyball Court
- High Speed Internet Access
- Student Center and Lounge
- Roommate Matching
- Expanded Cable
- Media Room

**PETS
WELCOME!**

912-489-3676

ForumStatesboro.com

GET A FREE T-SHIRT WITH THIS AD!