

Georgia Southern University

Georgia Southern Commons

The George-Anne

11-10-2011

The George-Anne

Georgia Southern University

Follow this and additional works at: <https://digitalcommons.georgiasouthern.edu/george-anne>

Recommended Citation

Georgia Southern University, "The George-Anne" (2011). *The George-Anne*. 2714.
<https://digitalcommons.georgiasouthern.edu/george-anne/2714>

This newspaper is brought to you for free and open access by Georgia Southern Commons. It has been accepted for inclusion in The George-Anne by an authorized administrator of Georgia Southern Commons. For more information, please contact digitalcommons@georgiasouthern.edu.



Thursday, November 10, 2011
 Georgia Southern University
 www.thegeorgeanne.com
 Volume 87 • Issue 41

THE GEORGE-ANNE

Crime at Georgia Southern

Investigation continues for campus robbery

By LINDSAY GASKINS
 George-Anne contributor

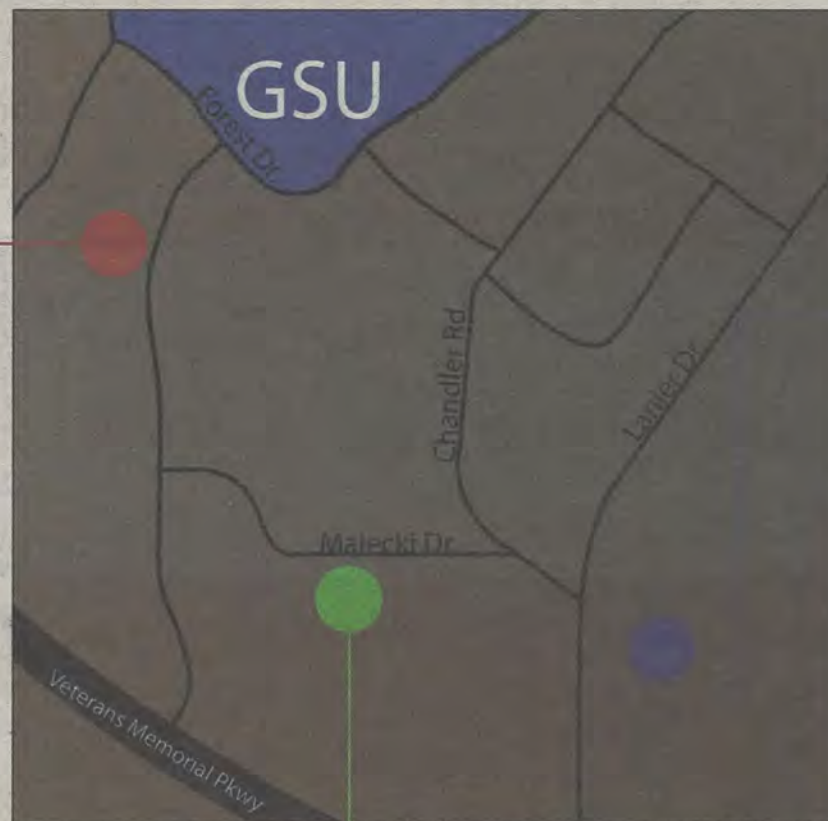
Georgia Southern University campus police are still investigating a robbery that occurred on the ROTC walking trails behind the Recreational Activity Center.

An Eagle Alert was sent to students about the robbery, which involved two male suspects stealing and using physical violence against the victim.

"On Monday, there was a student who was using the walking track and was approached by two black males out of the wooded area by the track behind the RAC, which is between Akins Boulevard and the RAC. Two black males came out of the wooded area and approached him asking for everything he had in his pockets," said Sergeant Christopher McBride of Campus Public Safety. "They both had handguns, they were wearing ski masks, they took his money and they fled the scene."

The suspects struck the student in the back of the head. The suspects have not yet been caught, said McBride.

Captain Terry Briley of Public Safety said, "We still want those who may think they have some information related to this to call us and it will remain anonymous. Or, call (Sergeant McBride), he can be emailed with anything they need to tell us."



Jose Gil / CONTRIBUTOR

Stadium Walk suspect charged

By LINDSAY GASKINS
 George-Anne contributor

Statesboro police arrested Anje Vincent on Nov. 4 as a suspect in the many Stadium Walk robberies that have occurred this semester.

"We received a complaint of some suspicious subjects in the area. We got over there and uniformed officers made contact with one of the subjects. He was carrying a backpack and they determined that the stolen property was inside the backpack," said Detective Sergeant James Winskey of the Statesboro Police Department.

Investigators also searched Vincent's apartment, number 101 of Stadium Walk, on Nov. 3 and found several electronic devices that were linked to previous burglaries, according to a Statesboro PD press release.

Vincent has been charged with two counts of burglary, one count of criminal intent to commit burglary, said Winskey.

"There are other suspects involved, so we are still investigating in the case," said Winskey.

According to the press release, Statesboro Police strongly urge everyone to document serial numbers of their possessions in order to better solve the crime.



Accuser arrested

By LINDSAY GASKINS
 George-Anne contributor

Dexter Dorsey, 19, was arrested yesterday for filing a false crime report.

Dorsey reported he

was shot in his left hand after being approached by two armed black males on Malecki Drive his way home Nov. 6. He stated the suspects attempted to rob him

See ACCUSER, page 7



thegeorgeanne.com

Thurs. H 68 L 33	Fri. H 63 L 31	Sat. H 69 L 35	Sun. H 77 L 47
------------------------	----------------------	----------------------	----------------------



Newsroom 478-5246
 Advertising 478-5418
 Fax 478-7113

PO Box 8001
 Statesboro, GA
 30460

IT'S YOUR LIFE...

LIVE IT.

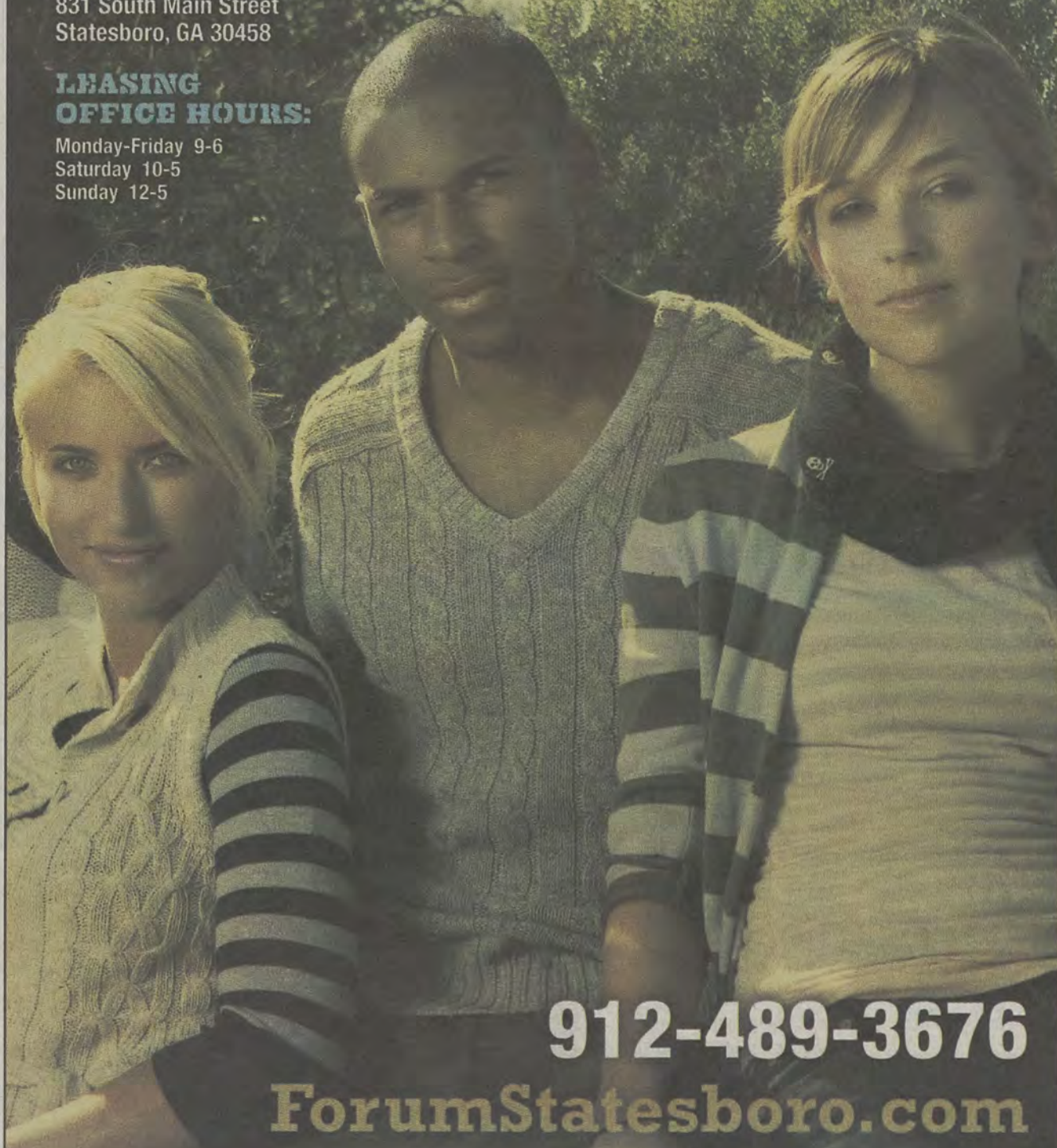
FORUMSTATESBORO.COM

COMING TO:

831 South Main Street
Statesboro, GA 30458

LEASING
OFFICE HOURS:

Monday-Friday 9-6
Saturday 10-5
Sunday 12-5



912-489-3676

ForumStatesboro.com

GET A FREE T-SHIRT WITH THIS AD!

FORUM®

AT STATESBORO

A PREMIER STUDENT
HOUSING COMMUNITY

**NOW
LEASING
FOR FALL 2012**

- Tennis Court
- Lap Pool & Spa
- Pet Friendly
- Pet Park
- Two Free Tanning Beds
- Indoor Basketball Court
- Indoor Volleyball Court
- Car Care Center
- Modern Faux-Wood Floors
- Private Bathroom in Bedrooms
- Convenient Individual Leases
- Free High Speed Internet in Bedrooms
- 24 Hour Fitness and Training Center
- Kitchens with Full Size Appliances
- Full Size Washer / Dryer Included
- Wi-Fi Cyber Cafe with Coffee Bar
- Outdoor Sand Volleyball Court
- High Speed Internet Access
- Student Center and Lounge
- Roommate Matching
- Expanded Cable
- Media Room



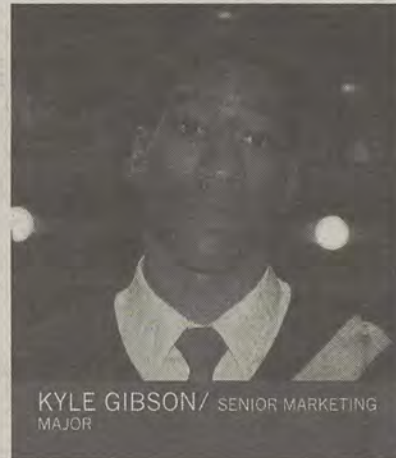
Forum Statesboro, Georgia, LLC is an Equal Opportunity Housing Provider.

Students react to alcohol law

50 students polled about
Sunday Alcohol Sales

45 Didn't
vote

5 Did
Vote



KYLE GIBSON / SENIOR MARKETING
MAJOR

"They really need to sell on Sunday.
That's a lot of revenue that will come in."

Statement of Operations

The George-Anne is the official student newspaper of Georgia Southern University, owned and operated by GSU students using facilities provided by the university. The newspaper is the oldest continuously published newspaper in Bulloch County. The newspaper is a designated public forum for the Georgia Southern community. The newspaper is published twice weekly, on Tuesdays and Thursdays, during most of the academic year. Any questions regarding content should be directed to the student editor by phone at 912.478.5246 or at gaeditor@georgiasouthern.edu.

ADVERTISING: The newspaper accepts advertising. Inquiries may be made by calling 912.478.5418 or 912.478-0566. Fax any questions to 912.478.7113 or e-mail ads1@georgiasouthern.edu.

The George-Anne receives additional support, in part, from the Student Activities Budget Committee.

The deadline for reserving space and submitting advertising copy is noon, one week prior to the intended publication date. For more information, rate cards, sample publications, contact the advertising manager or student media director. The advertiser is responsible for any errors in advertisements and its liability for adjustments is limited to the amount of space the error occupied in the ad. Further, the newspaper is not responsible for any damages caused due to an ad's omission from a particular edition and its responsibility solely is to reschedule the ad in the next regular edition at the regular advertising rates.

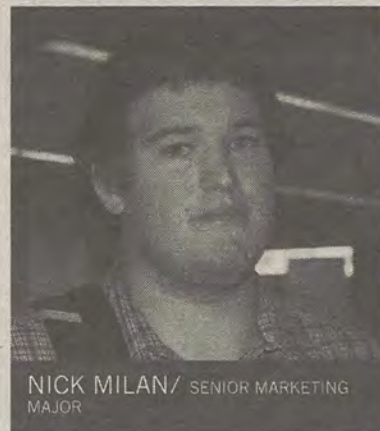
STUDENTS BEWARE: The George-Anne screens all advertisements prior to publication. The newspaper strives to accept ads for legitimate products and services only. Students are urged to exercise caution when replying to ads—particularly those that require personal information. Students are also urged to report to the newspaper any suspicious offers which they might see in an ad.

PUBLICATION INFORMATION: The newspaper is printed by Signature Offset in Jacksonville, Fla.

NOTICE: Unauthorized removal of multiple copies from a distribution site constitutes theft under Georgia law, a misdemeanor offense punishable by a fine and/or jail time.

Editor-in-Chief Arielle Coambes
Views / Copy Editor Shauntel Hall
News Editor Jennifer Curington
Asst. News Editor Jessie Reese
Arts Editor Julia Welch
Asst. Arts Editor Quaniqua Epps
Sports Editor Matthew D'La Rotta
Asst. Sports Editor Jannah Bolds
Football Editor James Farmer

Business Manager Tiffany Larkin
Asst. Business Manager Holly Hillhouse
Marketing Manager Aria Gabol
Production Manager Mallory McLendon
Photo Editor Randy Hudgins
Design Editor Kelsey Paone
Web Editor Jonathan Law



NICK MILAN / SENIOR MARKETING
MAJOR

"Now I can go out on Sunday nights and watch football and have a drink and I'm sure it's a great economic boost for this area."



OLIVIA GRISWALD / SOPHOMORE
GRAPHIC DESIGN MAJOR

"It's not really going to affect my life considering Statesboro is still in a dry county."



JOSHUA MCDONALD / SENIOR
LOGISTICS MAJOR

"I think it's a good idea for the county or whatever, but I don't really think it is going to change anything with drinking."

Corrections

Contact the editor at gaeditor@georgiasouthern.edu for corrections and errors.



State Traditions



The Sir Shop
Statesboro Mall
912.764.6924



Our View

GSU continues green initiative

In the Tuesday, Nov. 8th issue students learned the June 2013 completion date for Georgia Southern University's new biology building.

The construction for the building is currently taking place on Forest Drive.

The biggest potential green factor in the new building is going to be a decrease in energy and water consumption and better treatment of the quantity and quality of storm water, according to Sidney Ward, principal at the S/L/A/M Collaborative, the construction company engineering the building.

Alongside the actual green factors included in the new building, there will also be an Energy Dashboard, a digital display of energy use so that students will be able to monitor the efficiency.

Both new biology building and additional green factors included will be a positive addition to the campus.

In the past months, GSU along with many its student organizations have been making tremendous efforts to transform GSU into a green university; the new biology is just an extension of those efforts.

According The Princeton Review's Guide to 311 Green Colleges, which includes GSU among the seven Georgia schools that made the green list, these efforts have not gone unnoticed.

The transition into a green university fits synonymously with the recent and rapid growth of the university.

These changes and advancements are not only beneficial to the campus and the community, but also allow GSU to stand out among other universities and colleges in Georgia and even across the United States.

Looking back at the many recent green changes that have taken place and the many that are in planning for the future, there is no doubt that GSU is on its way to being a top green university serving the community and improving their campus simultaneously.

The George-Anne welcomes letters to the editor and appropriate guest columns. All copy submitted should be 350 words or fewer, typed, and sent via e-mail in Microsoft Word format to gaeditor@georgiasouthern.edu. All submissions must be signed and include phone number for verification. GSU students should include their academic major, year and hometown. The editors reserve the right to reject any submission and edit submissions for length.

Opinions expressed herein are those of the Board of Opinions or columnists themselves and DO NOT necessarily reflect those of the faculty, staff or administration of GSU, the Student Media Advisory Board, Student Media or the University System of Georgia.



Marcus Barkley/STAFF

Weekly SGA Column

Campus resources provide experience

As an SGA senator and Georgia Southern University senior, I feel it is important to urge GSU students to take advantage of the many career development and internship programs offered at our university.

Due to the turbulent economic conditions and the extremely competitive job market, it is imperative that students prepare themselves for life after college and build professional relationships before walking across the stage at Paulson stadium.

There is an assortment of exciting and beneficial programs offered to GSU students that allow them to gain professional experience and academic credit simultaneously. I was able to take advantage of the Eagles in D.C. Internship program and spend a semester in Washington, D.C. working for Congressman John Barrow; the Office of the Vice President for Student Affairs and Enrollment Management sponsors this program.

My time in this office allowed me to familiarize myself with



JOSH COMBS

the legislative process and gain experience in a professional environment. I will be forever grateful to this institution for providing a program that directly correlates to my career interests and the leadership skills I acquired there are invaluable. This is one example of a program offered at GSU that can help students have an edge when they enter the job market.

The Office of Career Services is filled with professionals who are here to help GSU students meet their professional goals. They offer many events and programs throughout the year including graduate and career fairs, Acing the Interview workshops, From Backpack to Briefcase: Making

the transition from college student to professional, How to be Successful at Career Fair workshop, etc. Those are just a few of the many beneficial programs offered by the Office of Career services.

It is up to us, as students, to take advantage of the programs offered at our university. There is nothing to gain by dwelling on the lackluster economy or high unemployment rates. Why not take a proactive approach, and utilize campus resources to build yourself as a marketable and appealing candidate to potential employers. After all, "Small opportunities are often the beginning of great enterprises." - Demosthenes

For more information on the office of career services visit <http://students.georgiasouthern.edu/career>.

For more information visit: <http://students.georgiasouthern.edu/vpsaem/internships/georgia>.

Combs is a senior political science major from Kennesaw, Ga. Combs is the CLASS Senator of SGA.

Occupy movement needs unity

The Occupy movements have been catching a lot of flack recently. This may be justified, but it may also be undeserved.

While they can be criticized for being unorganized, this large group of people have come together for a purpose. They have to be somewhat organized to show up at the same place at the same time for a cause. They have no definitive goals, but they have a reason. They're there to represent the 99 percent in opposition to the 1 percent.

This is a true American grassroots movement geared toward making a change. This is admirable in the sense that they're expressing the anger we all harbor towards the economy and how things have been going recently.

It is condemnable in the sense that they are disorganized and it seems to be a group without a purpose. If they could unify



ROB ROBERTS

nationally and find a leader to act as their voice, they could garner some credibility and respect nation wide.

One successful thing that has come out of this is the establishment of a new public for politicians to consider addressing. Like other grassroots organizations (the tea party movement), they could establish themselves as a player in the upcoming election if they continue to grow.

According to Google, amount of searches for the Occupy Wall Street group has jumped ahead of

the number of searches for the Tea Party. This is good for them because they've reached a level of exposure to really become a force in the coming years.

While it may become hard to remain outside protesting in the next months — the northeast, especially — the movement will be far from ending. I feel that when the sting of winter hits, protesters will explode onto the social media scene — more than they already have — to push their agenda.

This group is comprised of young people who have seen what went on in the Middle East and would like to be part of a memorable movement as well. What they need to do is focus and unite around a set of goals so the government can see exactly what they're all about.

Roberts is a senior public relations major from Warner Robins, Ga.

Students ignore basic civil obligations

To those of you who voted on Tuesday or earlier, I applaud you.

You took part in the most basic form of shaping your government and made sure your voice was heard. It was heard and Sunday Alcohol sales passed in both Statesboro and Bulloch County, by a very narrow margin.

It passed in the city by just over a hundred votes. In a city where 12,000+ voters live and a county where 50,000+ voters live, a hundred votes is a tiny margin to win by.

In Brooklet and Portal, the votes did not pass by less than 10 votes. It is imperative that we all vote and get our voices heard and there was no excuse for any student that was registered to vote to not vote in this election.

There was three weeks of early election time where you could go to vote for both city and county elections. If you couldn't make it, the Blue Goose was offering rides from campus. They waiting all day, and they only gave two voters rides.

Of the 500+ voters we registered this semester, two took advantage of



FRITZ CHAPIN

the bus. Granted only 800 people voted in the city election, they predominantly lived in Districts 1 and 2, where students don't live. If we want this town to take us seriously and have our voices heard on a bigger scale, we have to prove to them that we actually want to be taken seriously and that starts by doing the most basic civil obligation and that's voting.

Sitting at the Rotunda to encourage people to vote, many students said that they refused because of the content of the ballot and were making a social stand by not voting.

Well, if you disagree with the measure, then vote no on the issue. If you don't like the candidates that

are running for an office, then get involved and find a candidate that you like. This country was founded on grassroots campaigns.

Back in 1970s, Ronald Reagan started out as a grassroots candidate from California. He had been the governor but never sought to be president until folks in his community started putting the idea in his head.

We as young people need to realize that the real change doesn't come from the big publicized national elections. It comes from these local and state referendums and election. Even though MTV isn't yelling at you to "Vote or Die" for city council elections or to "Rock the Vote" for governor, these are the elections that shape the community that we live in.

I know that I'm going to vote every time and I know from the letters to the editor that some don't agree. But if you don't agree with me, then come out and vote against me on it.

Chapin is a political science major from Roswell, Ga.

Student Views on News



Aron Randall

Senior, Political Science Major

What do you think about the crime that has been taking place both on and off campus?

"Personally I think something needs to be done. I'm getting sick and tired of getting those eagle alerts that say 2 two black males wearing hoodies and something else. How does that work? How do you mug somebody at 1 o'clock in the morning at the RAC then again in the afternoon? Do you the cops go oh they mugged someone there, they won't be back! That's absurd."

Twensqueen Jean-Baptiste

Junior, Political Science Major

What do you think about the crime that has been taking place both on and off campus?

"I think they need to do a bit more to find out who is doing the crimes because it's not a coincidence that one crime happened in Maleki and another right behind the RAC. It's the same person doing those crimes so they need to do a little bit more research and students need to speak up. If you know something then say what you know. If you know you that your friend or whatever is committing crimes then you need to say it."



Taylor Tyson

Freshman, Writing & Linguistics Major

What do you think about the crime that has been taking place both on and off campus?

"I hear the description and it's always really general. I never really know if it's the same guy but I still feel pretty safe on campus. I never really go anywhere alone."

Do you feel like they [campus police] are doing a good job?

"I think they are doing a pretty good job. I don't think this could really be stopped."



Kate Griffith

Sophomore, Pre Business Major

What do you think about the crime that has been taking place both on and off campus?

"I'm sort of confused and unsafe at the same time. I don't know why it keeps happening at the same place and the time of day that it did yesterday. It was kind of awkward and random. I don't know how someone could get away with that. It makes me feel unsafe, even to go to the RAC and exercise."



Sarah Fonseca

Senior, Writing & Linguistics Major

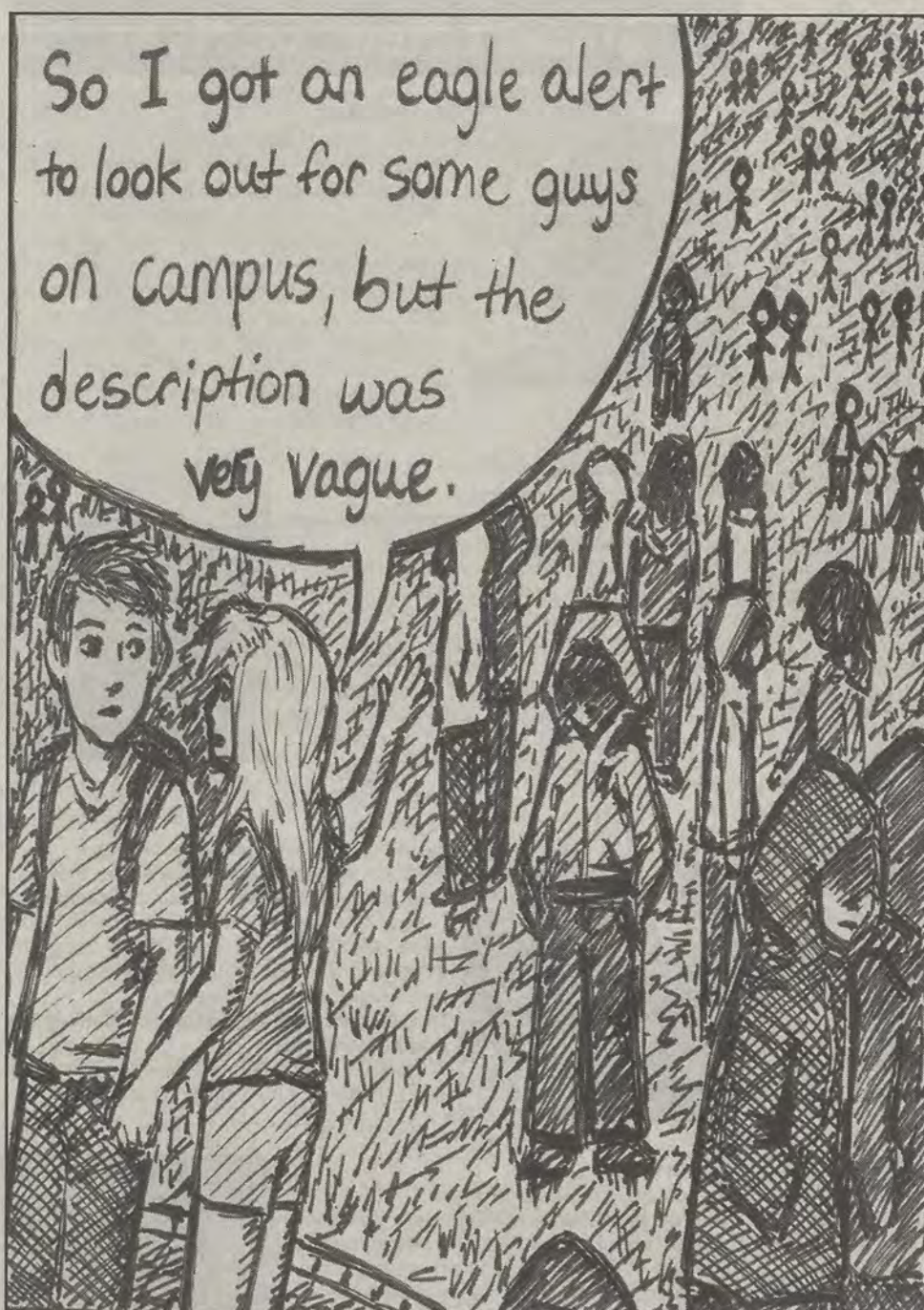
What do you think about the crime that has been taking place both on and off campus?

"It's interesting how the campus police also interact with the parents as well in terms of eagle alerts and things of that nature."

What do you think about the voting for Sunday alcohol sales?

"I think it's a good protest of separation of church and state and it is good for the economy. I think it's a nice stepping stone towards making this a wet town. I think it's a nice stepping stone towards that beca use I also find that law pointless at the end of the day so yes it's a good thing. I think that if you think of it in terms of the economy it will be a good thing."





Jasmine Nielsen/STAFF

Letters to Editor

GSU soccer coverage is lacking in sports section

Dear Editor,

I am a student that is concerned with the lack of support for the Georgia Southern Men's Soccer team by The George-Anne.

This year the Eagles were coming off of two losing seasons, in which they did not secure any SoCon wins.

In my opinion, a school newspaper should attempt to rally support for any and all teams no matter what their record is.

To my knowledge, four articles were written about the soccer Eagles this season: two were on losses, another was about an individual player, and the final article was on the Eagles elimination from the SoCon tournament.

It baffles me that in a season of 17 games, half of which were wins, our school newspaper decides to only report losses. How was the first conference win in two years surpassed in importance by a loss that did not even matter?

I was angered by this, but decided to give The George-Anne another chance only to be repeatedly disappointed. With a week until the start of SoCon tournament play I thought that The George-Anne would certainly do a write up to help

boost attendance.

Once again I was disappointed, only to be further disappointed by the final article of the season having a negative undertone.

We all go to Georgia Southern University and our degrees carry a certain weight because of that. You may not agree but the endeavors of our sports teams affect this weight.

The George-Anne is doing us all a disservice by reporting on negative aspects that are greatly outnumbered by positives.

I cannot fathom a reason as to why The George-Anne would choose to report in this manner other than that maybe some of their writers have taken a late night stroll down Mike-Anne and had a run in with the real Georgia Southern soccer fans.

In conclusion, The George-Anne should attempt to help rather than hinder the school.

Melvin La Pan
Senior
Business Management with an
Emphasis in Entrepreneurship and
Small Business
Augusta, GA

Submit your letters to the editor at gadaily@georgiasouthern.edu

R. J. Pope
Men and Ladies Apparel

Your supplies for mens & womens jackets

764.6973

840A Buckhead Dr. & 5 South Main St.

patagonia®

vineyard vines®
martha's vineyard

SOUTHERN TIDE

THE NORTH FACE

POLO
RALPH LAUREN

MOUNTAIN

Students react to recent robberies



Lottie Livsey

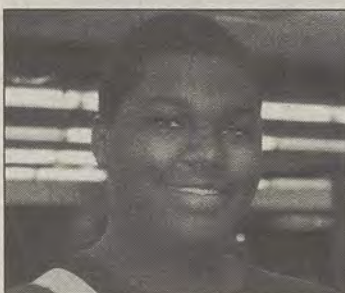
junior, hotel/restaurant management major

"I don't have a car so it scares me that I don't get (informed about) a lot of the crime that is going on since I walk everywhere."

Shelby Riggs

sophomore, undecided major

"I was scared to walk into the library by myself so I parked in faculty parking."



Dionte Williams

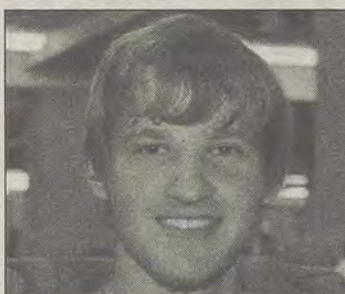
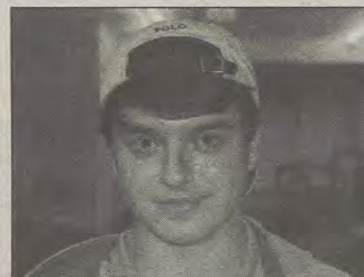
freshman, general studies major

"I don't feel that the Eagle Alerts are informing us enough about what is going on. They don't give us all of the details."

Nicholas Elia

freshman, biology major

"I didn't think it was bad when we first started. Now it's getting scary because it's in the middle of the day. I don't want to run behind the RAC now."



Daniel Ravsh

junior, chemistry major

"I think it's probably just more reported. It doesn't happen regularly. Crime happens everywhere."

ACCUSER, from page 1

before he tried to run away, according to the press release.

Dorsey's report caused an Eagle Alert to be sent to Georgia Southern University students on Nov. 6

GSU investigators discovered evidence by way of surveillance cameras and other gathered information that indicated Dorsey provided false information to GSU campus police, according to the press release.

According to the press release, Dorsey is now in Bulloch County Jail. He has been banned from the GSU campus.

DO YOU FEEL
SAFE
ON CAMPUS?

YES
24

NO
26

Kelsey Paone/STAFF



(912) 489-6655
in front of Lowe's

EYE EXAMS • GLASSES • CONTACTS

www.boomersvisioncenter.com

GSU

\$50 OFF

ONE COMPLETE PAIR OF GLASSES

Coupon must be presented at time of sale. Not valid on previous sales. Minimum price of \$119.95 after discount. Cannot be combined with any other eyeglasses offer or discount. Limited time offer.

Valid through: November 19, 2011

Interim chair faces challenges

By **AMBER GORDON**
George-Anne contributor

Eric Brooks was appointed as interim chair for the Department of Political Science in September and is the one out of ten faculty members who gave Richard Pacelle a bad review.

"Other individuals were approached and declined," said Brooks. "I saw it as a challenge and an opportunity to steer the ship until a permanent chair could be named."

The current circumstances are difficult, said Brooks.

"I have mixed emotions about being the Political Science Chair. While I'm prepared to do a work such as this, these are difficult circumstances."

There were several other people who were confronted about being interim chair, said Brooks.

One of the main goals for this

interim year is to make sure that both the students and faculty members' needs are met, said Brooks.

"As interim chair of the Department of Political Science, I am focused on making sure that the needs of our students and the faculty are met," said Brooks. "I want to make sure that our students continue to achieve in all of their scholastic endeavors. I am fully committed to leading our department through this interim period."

There is now a nation wide search to find a permanent department chair for Political Science. Brooks said that he will not apply for the new position.

"I want to focus more on the two book contracts I have now," said Brooks. "Until the new chair takes the helm, I will continue to work as hard as I can to endure that the quality of instruction and research

continues."

Being interim chair carries much responsibility from the political science faculty and from Dean Smith, said Brooks.

"I really wouldn't call myself the 'go-between' for the Department of Political Science and the Dean's office. I work with both sides equally," said Brooks. "It's difficult trying to carry out the duties on both sides. I try to be fair to both sides and do what's right. I advocate for the faculty for what needs to be done, and I try to carry out directives from the Dean."

Balancing the many responsibilities is time consuming, said Brooks.

Brooks said, "I spend half a day in the Dean's office and half a day with the political science department. I then go on to teach classes at night so that keeps me pretty busy."

SGA discusses issues with class registration

By **TJ JACKSON**
George Anne contributor

At last night's Student Government Association meeting, college senators along with the executive board discussed solutions for Georgia Southern University's registration and advisement issues.

"Some issues that have come up is that the students are being advised pass the withdraw date," said Christina Belge, vice president of academic affairs. "The concerns have been that they (students) have been registering relatively late compared to other colleges."

Belge suggested holding

advisement dates before the withdrawal date to help solve registration problems.

"Students need to be advised before the W (withdrawal date) because it would prevent a lot of issues," said Belge.

College senators were asked to discuss ways to improve the advisement dates to better registration for GSU students.

The College of Business and Administration made a recommendation to hold advisement at an earlier time.

"We recommend that the second week you're in school, you're advised," said Latravia White, senator of College of Business and Administration.



Hungry Howie's

FLAVORED CRUST PIZZA

Pick Up or Delivery

**\$7.77 LARGE 1
TOPPING PIZZA
(\$3 more - make
it a works!)**

Free Flavored Crust!

607 Brannen Street (912)764-6565

Choices of the Heart

Pregnancy Center

Pregnant?

Free and Confidential Testing and
Counseling. Off Campus Location.
Hot Line: 9AM-9PM 912.764.4303
Appointments Only.

106-B Oak Street, Statesboro, Georgia • www.choicesoftheheart.org • 912.764.4303

Eagles look to win another SoCon title

Football

BY CLINTON HINELY

George-Anne contributor

The Georgia Southern University football team looks to win the Southern Conference title with a victory this Saturday versus Wofford College.

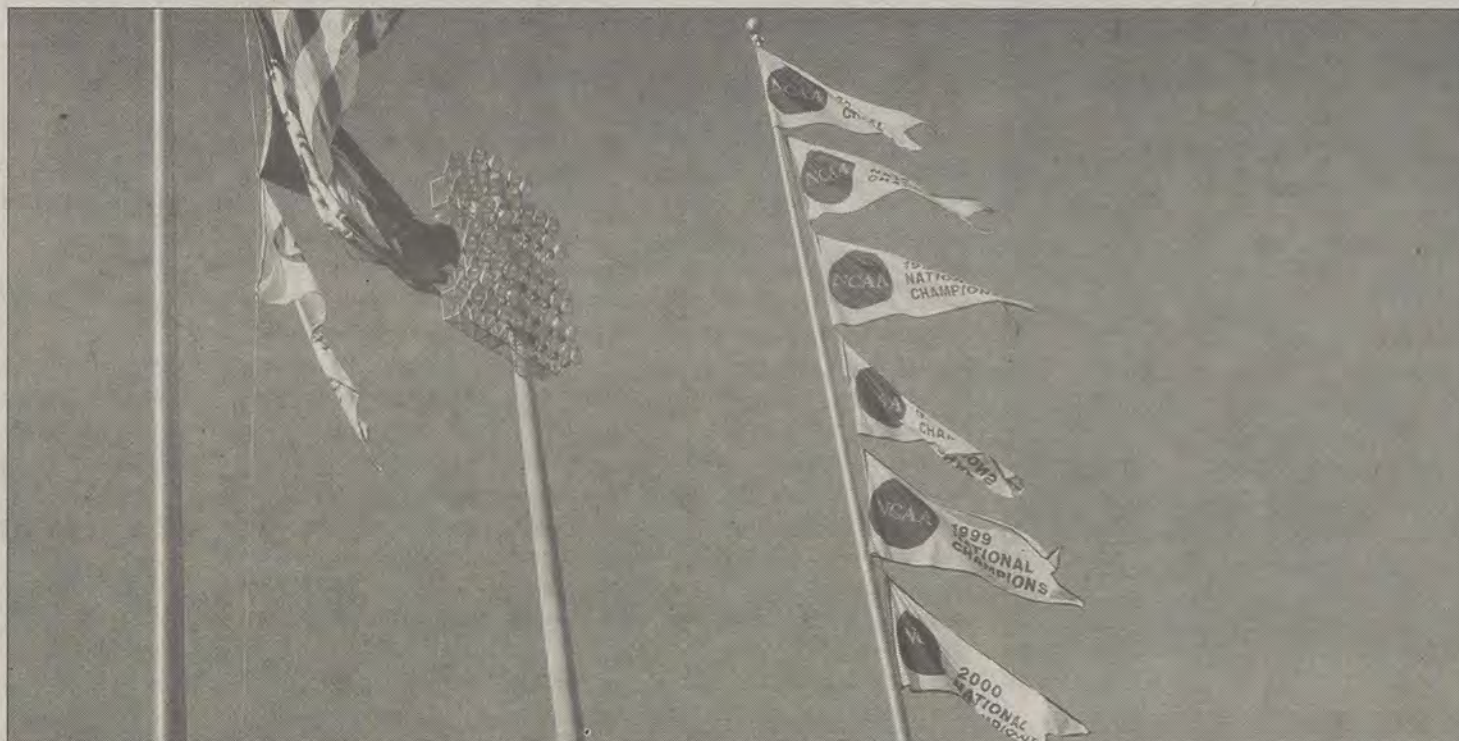
The Eagles will try to claim their first conference title since sharing the title with Furman University in 2004 and their first outright title since 2002.

"It would just mean so many great things," said senior quarterback Jaybo Shaw. "Just being with my teammates and being able to help this team get a huge win for the program. It would be a great honor and a privilege."

"Any time we play a Southern Conference game it's a big game, definitely this one is very important and we have to do everything to be prepared," said Shaw. "Turnovers will play a huge part and just executing the offense. Playing with a great effort and playing for each other, that's what we are focusing on."

GSU has the second ranked rushing offense in the FCS only trailing this weekend's opponent, Wofford. With both teams running similar offenses and having equally great success throughout the season, the defenses will play a big role in determining the outcome.

Senior defensive back, Laron Scott said, "We are just trying to focus throughout the week; they do a lot of option stuff just like



Lindsay Hartmann/STAFF

Georgia Southern University's national championship banners fly over Paulson Stadium as the Eagles aim to win another SoCon title.

we do."

"Its run, run, run and then boom, they hit you over the top," said Scott. "I'm really trying to focus on my keys and handle my responsibilities."

"What we have been working on mainly is our assignments," said junior defensive lineman Brent Russell. "Playing against an option offense you have to be an assignment sound defense. You have to have your guys take the dive, pitch and the quarterback and

focus on your assignments."

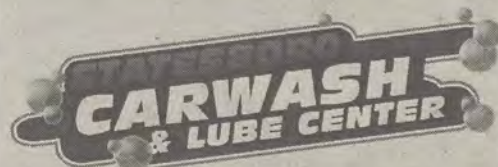
"We are doing what we normally do," said Russell. "Preparing mentally and coming out to practice ready to work and getting ready to battle for 60 minutes on Saturday."

Without winning a SoCon championship for so many years, this weekend is some of the senior's final chance to leave GSU with a title.

"It means a lot, it's the biggest thing I'll be playing for," said Brett Moore, senior

offensive lineman. "This team has just put in a lot of hard work. I believe it's shown throughout the season. This is my last chance my senior year, but more importantly it's just the next game on the schedule."

"It just means so much, all the hard work we put in," said Scott. "Now we are in the position we want to be in, fighting for a SoCon championship. It means a lot to me and I'm sure it means a lot to the whole team."



HALF PRICE FOR SHARING WITH A FRIEND!

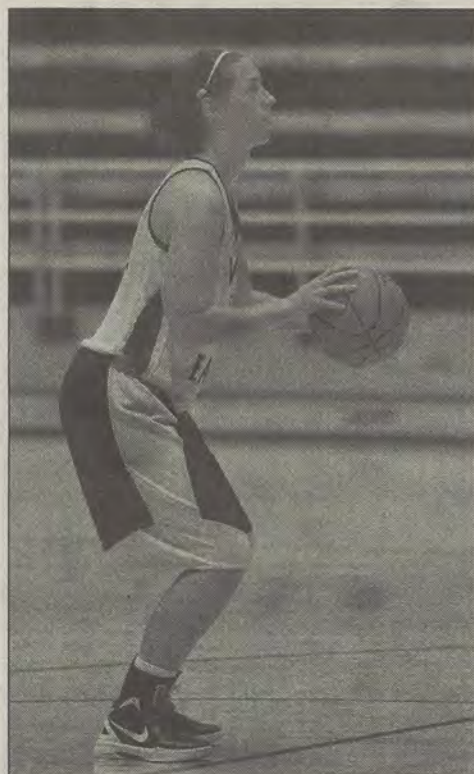
Bring This Ad, and Two Cars
and Both Cars Get Half Price Ultimate Washes*

*NOT VALID WITH ANY OTHER DISCOUNT

10% off All Car Wash, Detail, And Oil Change Services
WITH GSU STUDENT OR EMPLOYEE ID



Frye named to SoCon Preseason All-Conference team



Lindsay Hartmann/STAFF

Meredyth Frye hones her shooting skills.

Women's basketball

By ANNA WELLS

George-Anne contributor

The Georgia Southern University's women's basketball season begins this week, and all eyes are on guard Meredyth Frye to help lead the team to a successful season.

Frye, a junior graphic design major, finished last year's season with a total of 347 points, making her average 11.6 points per game. Her efforts on the court make her one of the key players for the women's team in the upcoming season.

Frye's basketball upbringing can be traced back to her family.

"My dad played basketball at James Madison in Virginia, where I'm from. Both my brothers play basketball and my dad coached at the high school where they played at," said Frye. "I've been in the gym ever since I could remember, and I always played basketball."

Frye acknowledged that during her first visit to GSU she realized that this was the

perfect school for her.

"I came down here for a weekend and I just instantly fell in love with it," she said. "I liked the campus, I liked the size of the dorm rooms, I liked the area. Everything was such a perfect fit for me, I knew I had to come here."

Although Frye is considered to be one of the leaders of the team, she feels lucky to be a part of a group that seems to be more like family than simply just a team.

"We're a close knit team. We're always together and we're always having fun, there's never a dull moment," said Frye.

In the preseason coaches' poll Frye was picked seventh overall and was also named to the Southern Conference Preseason All-Conference team. With the high scoring statistics that Frye made last season, as well as a free throw average of 81 percent, the recognition is well deserved.

"I was excited when I found that out, it shows that all the work I did last year really paid off," she said. "It's nice to know that it was recognized, and hopefully I can live up to it again this year."

Upcoming Basketball Schedule

Mens

Date	Opp.
Nov 16	@Wake Forest
Nov 18	Webber Intl.
Nov 23	@South Florida

Womens

Date	Opp.
Nov 15	Georgia
Nov 17	@Mercer
Nov 21	@Alabama

Tyler Fleider/CONTRIBUTOR



Company hours

7:30 A.m. - 6:00 P.m.
Monday -Friday

912-489-2222

102 N Zetterower Ave
Statesboro, GA 30458

Present this Coupon at the time of service to receive a free tire rotation with a full priced oil change.

Super Service at a Super Price
489-2222

Some Restrictions may apply. Call For more details.

Present this coupon at the time of service to receive an oil change for the low price of \$19.95.

Super Service at a Super Price
489-2222

This price is for 5 quart oil changes. It also excludes diesels, synthetic oil changes, and special oil filters. Ask more for details.

Lacrosse wraps up preseason undefeated

Lacrosse

By **OLIVIA CLEMENTS**

George-Anne contributor

The Georgia Southern University men's club lacrosse team came away with its second win of the fall season, beating the Georgia College and State University Bobcats 12-6 in the Nov. 6 game.

The Eagles dominated the game offensively, scoring their first six goals before the Bobcat offense finally was able to earn a spot on the scoreboard with their first successful shot on cage.

Eagle goalie Corey Philips was unsuccessful for the first time in the game when a Bobcat midfielder made a quick shot on cage after receiving the ball off a clear provided by the team's goalie.

After the first Bobcat goal was scored, it became a battle for midfield control throughout the second quarter.

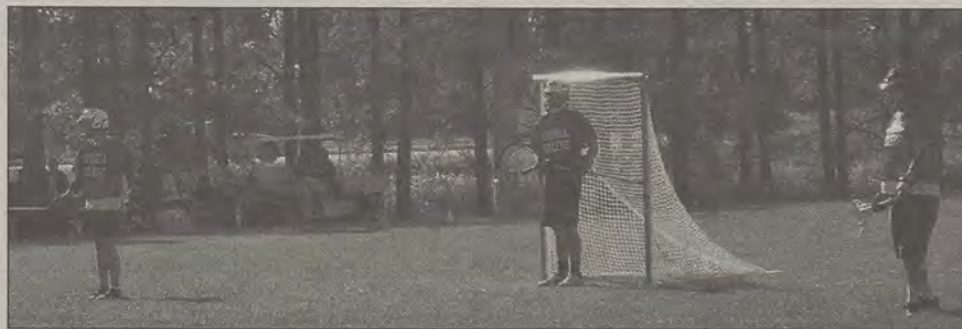


Photo courtesy of Jan Gish

The GCSU lacrosse team falls into formation at the beginning of its game against GSU.

Eagle midfielder Brandon West scored off an assist by Matt Ragnow giving the Eagles a comfortable 7-1 lead. The Bobcat offense quickly earned another goal making it clear they were here to play a competitive game bringing the scoreboard to 7-2.

Midfielder Craig Geurin recovered the ball from Bobcat possession, setting up an opportunity for another Eagle goal scored by attack player Julian Gonzalez. Gonzalez scored

off an assist from midfielder Chris Hendricks.

With few minutes remaining in the second quarter, both the Eagles and the Bobcats scored goals. Going into half time, the Eagles led the scoreboard 9-4.

Within the first five minutes of the third quarter, Eagle midfielder Evan Jarecki assisted Geurin for another successful goal for the Eagles.

Eagle midfielder Sean Goynes dominated

the faceoff throughout the first half of the game before finally losing his first faceoff in the third quarter. Possession was quickly regained for the Eagles by efforts made by defensive player Daniel Rocker.

The Eagles ended the third quarter of the game with a 10-5 lead.

In the fourth quarter of the game the Bobcats made good efforts to control possession. Several attempted shots were launched at Eagle goalie Corey Philips within the final seconds of the game, but he successfully protected the cage.

Head coach Owen Nix is confident that his players have improved compared to their last game against Georgia State University.

"Overall, it was a definite improvement from last game. They played us till the end," said Nix.

GCSU head coach and founder of both the men and women's club teams, Tim McNally, was pleased for his lacrosse team to compete against the Eagles.

"I think it's gonna make a good little, friendly rivalry," McNally said.



OUTDOORS
YOUR HUNTING & FISHING HEADQUARTERS

Your Hunting and Fishing Headquarters

246B Northside Drive East Statesboro, Ga 30458

Between Deloach's Music and the Tile Center

TC-OUTDOORS.com • 912-489-3474



**Sports
EMPORIUM**

Your largest selection of athletic
footwear in Statesboro



840 BC Buckhead Drive, in Buckhead plaza (912)764-4449

Lanson makes big splash for GSU swim team

Swimming and diving

By **OLIVIA CLEMENTS**

George-Anne contributor

Georgia Southern University swimmer Elaina Lanson was named the Coastal Collegiate Swimming Association Swimmer of the Week last Thursday.

Lanson is currently a freshman from Wadsworth, Ohio who hopes to major in broadcast journalism and multimedia communications. Lanson began swimming at the age of five and has been swimming competitively since the sixth grade.

Lanson became eligible for the CCSA honor based on her successes at swim meets held at the Recreation Activity Center pool from Oct. 24-30, where she placed first in three events.

Lanson contributes her success to effective training techniques both inside the pool and out.

"My times have dropped a lot since high school season. I believe that weights and breath control trainings helped a lot with that, especially for the spring events," said Lanson.

Lanson is the current title-holder of the RAC pool record for the 50 meter free event, which she completed with a time of 23.79 seconds.

Lanson enjoys the competition aspect of swimming in individual events.

"I really enjoy the 50 free and 100 free. They're the spring events, and I've always performed well at them," she said. "I just like the tough competition because you have to go hard the whole time, you can't let up or take another breath — every little thing matters."

Lanson's favorite event to compete in is the



Lindsay Hartmann/STAFF

Coastal Collegiate Swimmer of the Week Elaina Lanson practices at the RAC pool in preparation for this season's upcoming competitions.

200 meter free relay due to the support she receives by competing collaboratively with her teammates.

"What I like about relays is that the pressure is kind of evened out among the four of us," she said. "It really helps going up there with four different people, all of who do the same thing, rather than just going up for an individual event where you don't really have anyone else to lean on."

Lanson swam the first leg of the 200 free relay for the Eagles at the RAC meet on Oct. 28. She and her teammates won the relay event with a time of 1:38.71.

Head coach Nate Kellogg has high expectations for the upcoming Highlander Invitational.

"This is the point in the fall where we want to see them have their best performances," said Kellogg.

Kellogg knows this can be achieved by encouraging the swimmers to compete to the best of their abilities.

"We want everybody to swim as a team and compete and show some fire," he said.

The GSU swimming and diving team will travel to Radford, Va. to compete in the Highlander Invitational Nov. 17-19, where the Eagles will face competitors from eight other schools.

UT&ABOUT

Express Tune & Lube

Tire, Alignment
& Exhaust Center

612 S. Zetterower Avenue
489-4444

www.expresstuneandlube.com

Monday - Friday 7:30am - 6:30pm

Located a half block north of Wendy's

OIL CHANGE SPECIAL

\$25⁹⁵ Includes up to
5 qts of Castrol
5W20, 5W30, 10W30.

price applies to most vehicles. Expires 12/31/11

www.expresstuneandlube.com

myth:
fact:

drinking is central to the
social lives of georgia
southern university
students

78% of georgia southern
students typically drink
once a week or less often

www.georgiasouthern.edu

©2011 Georgia Southern University
All rights reserved. This advertisement is
intended to provide information only and
does not constitute an offer of insurance or
any other financial product.

ALLIANCE
INSURANCE



Formerly known as
Dale's Transmission

25% off oil change
50% if you bring a friend
AND your friend can have
25% their oil change
ALL MODELS

(912) 489-3499 6762 Cypress Lake Rd Statesboro, GA 30458

Intramural Sports Scores

Flag Football

RAC'n Crew 32, No Punt Intended 0
Golden Grahams 6, **Innocent Until Proven Filthy 12**
Goin Deep 23, Goin' H.A.M 0
Show Me Your TD's 12, **The Beavers 14**
Stop Drop and Rolling Rock 18, **Scat-tin' Pass 41**
You Made Bro 14, **My Dixie Wrecked 27**
Colonel Angus 39, Centennial Guys 6
Tallywackers
6, **America's Team the 69ers 14**
4th & Schlong 25, The Mustache Bandits 13
Diligaf 27, BCM Stack 20
Grab The Pillow 6, **Woodies 27**
Tapout 0, **Bena Jones 20**
SAAB 26, Pilgrims of Swag 20
Kappa Delta 6, **Zeta Tau Alpha 7**
Phi Mu 0, **Alpha Delta Pi 6**
Sigma Nu 19, Pi Kappa Alpha 13
Pi Kappa Phi, Alpha Tau Omega 0
Brew Crew 14, **Nice TD's 27**

Beast Mode 0, **We Go Deep 16**
Lights Out #1 0, **Bromance 33**
The True Blueskins 14, Alpha Males INC.13
Bankwalkers 13, **Southern Spliffs 20**
Free Bandz 7, Cocaine Cowboys 6

Indoor Soccer

Big Bag of Ballers 7, Mitchell 2
Kickin' It Old School 8, Sorry Babe I fell Asleep 3
Sour Diesel 0, **Shredsters 5**
Aston Manpoolhamingtonlivercity Utd 3, Mike Ann Deathwalkers
STRIKERS FC 6, Winning 1
T.R.E.O.S 5, Team Howie Feltersnatch
Haymakers 13, F.C Honduras 1
Womb Raiders 7, **Kicking and Screaming 9**
Scorgy 7, Muple Scoregasms 1
Mighty Ducks 4, **Charismatic Camels 13**
Green Street Hooligans 10, Snatchaholics 3
Delta Tau Delta 5, Alpha Tau Omega

3
Big Test Icicles 3, **Jager Bombs 16**
Fiesty Goats 6, Monster Milk 5
Balls and Dolls 11, # YouPlaySoccer? 4
No Glove No Love 6, **dubriders 7**
Green Street Elite 2, **Lady Bugs 3**
Alcoballics 0, **#swag FC 9**

Volleyball

Hot Sets 2(25-25), EV Bodonkadonks 0 (19-12)
CP Safe Sets 0 (4-19), **The One Hit Wonders 2 (25-25)**
Set It Off 2(25-15-17), How I Set Your Mother 1 (9-25-15)
Bad Ace Ballers 2 (25-25), GSATA Volleyball 0 (21-21)
Average Joes 2(25-27) Southern Adventures 0 (21-25)
Delta Force 2.0 2(25-25), Sets on the Beach 0 (21-20)
Nuckin'Futs 2(10-10), Delta Sigma

Phi(0-0)
Hit-Men 2(23-25-15), Size Over Everybody 1 (25-18-6)
Who Give a Hit 2(10-10), CRI Life-guards 0 (0-0)
Omega Phi Alpha 0 (12-13), **CP Sets on the Beach 2 (25-25)**
Spiker Chicks 0 (12-12), **Size Maters 2 (25-25)**
Spike My Drink 0 (0-0), **Size Matters 2 (25-25)**
EV Can Dig It 0 (16-15), **Spiker Chicks 2 (25-25)**
The Southern Woppers 1 (20-25-15)
Spike This 2 (25-25)
Spikers Unlimited 2 (25-25), UV Volleybrawlers 0 (13-23)
Unprotected Sets 1 (25-13-7), **No Scrubs 2 (20-25-15)**
I'd Hit That 1 (19-25-9), **We Always Get It Up 2 (25-20-15)**
10 Points for Gryffindor 2(25-25), the Megalondons 0 (7-7)
Talk Sets with Sue 2(25-25) Safe Sets 0 (15-16)
Bob Squad 2 (10-10), Holes and Poles 0 (0-0)

What's new with CRI

Intramurals

CRI will be holding an IM Champ Night on Monday, November 14, 2011 at 6 p.m. to celebrate all intramural championship teams.

There will be food and prizes provided for those who wish to participate. Also, the Fall Classic Basketball Tournament will begin on Friday, November 11, 2011.

Southern Adventures

Southern Adventures will be offering Belay Clinics for students on Thursday, November 10, 2011 at 6 p.m. and Monday, November 14, 2011 at 7 p.m.

This is an opportunity for students to learn about the different techniques that are used for climbing with one of our lead climbers and belayers.

This opportunity allows students to prepare

for a Southern Adventure Trip or a climbing trip on their own.

For more information, visit: services.georgiasouthern.edu/crisouthernAdventures/skillsClinics

On Friday, November 11, 2011 at 10 a.m., Southern Adventures will also be hosting a buy and sell event where outdoor enthusiasts can buy, sell, and trade gently used gear.

Show of Strength

CRI will be hosting the Show of Strength competition on Saturday, November 12, 2011 at 11 a.m.

Students can choose to compete in squatting, benching, or deadlifting based on their weight class.

This competition is for both male and female competitors. Registration will be open until the day of the event.

For more information visit: <http://welcome.georgiasouthern.edu/wellness/showOfStrength/>

This Week At The

RAC



SOUTHERN ADVENTURES

Belay Clinic
Thursday, November 10th @ 6pm & Monday, November 14th @ 7pm

Buy/Sell/Trade Gear Sale
Friday, November 11th @ 11am


INTRAMURAL SPORTS

Fall Classic Basketball Tournament
Begins Friday, November 11th

IM Champ Night
Monday, November 14th @ 6pm



FITNESS

Show of Strength
Saturday, November 12th @ 11am
Registration open until the day of the event





FOLLOW US!

facebook.com/GSUCampusRec
twitter.com/GSUCampusRec

11/19-11/20: CLOSED

Don't forget to check out our upcoming Thanksgiving Break Period Hours!

11/21-11/22: 6am-7pm

11/23: 6am-2pm

11/24-11/26: CLOSED

WWW.GEORGIASOUTHERN.EDU/CRI

CLASSIFIEDS

This page brought to you by Career Services
Explore • Experience • Excel

14 Thursday, November 10, 2011

The George-Anne

Subleases

Subleasing 3 BR/2BT house on Parker Avenue in downtown Brooklet. Extremely large media room! Located on two city lots. Contact Joyce at (912) 842-9479.

2 Bedroom 2 Bathroom apartment in Hawthorne 2. Very close to campus. \$350/month. Sublease through July. Contact Shannon at 678-468-9407

SPRING 2012! 1 BR/1BT available in 4 BR/4 BT at Campus Club for January (or earlier if necessary). Roommates are clean and tidy. Bus stop next to stadium. Utilities included. Rent is \$419/month; CHEAPER RATE CAN BE ARRANGED. Email Skyler Henry at sh02071@georgiasouthern.edu!

Subleases, cont.

Female to sub-lease Spring Sem. 5 BR, \$280 a month. Last month's rent is paid. Less than a mile from campus off of Gentilly Rd. Call, text or email Kristina: (678)-770-6251 kf01606@georgiasouthern.edu

Spring 2012 1 BR/BT in a 2 BR/2.5 BT townhouse at The Avenue. Furnished and utilities included. \$495/month, but I will pay \$30 for each month. Or I could put \$210 towards the first month's rent. Contact Cherrelle at chollan4@georgiasouthern.edu

Subleasing master bedroom in Planter's Row for \$365/month; utilities not included, pet friendly. For more information contact Anna-Marie at 01770@georgiasouthern.edu

Subleases, cont.

Subleasing my room for Spring 2012 in a fully furnished 4 BR/4 BT 3-story town home. Walking distance to the stadium and bus stop. Contact Alex at (770) 712-5377 or ao00837@georgiasouthern.edu

Subleasing 626 B at the Exchange. Female Roommate needed. \$519.00 per month. All utilities included, free tanning, free Wi-Fi, 24 hr gym included Available now. Contact (706) 523-6001

All inclusive, two story, fully furnished, 4 BR townhouse for \$330/month! Includes trash, utilities, cable, wi-fi, pet park, 24/7 gym, recreation courts, computer lab, new appliances and washer/dryer! Contact (229) 326-4291.

Subleases, cont.

SPRING 2012! Female roommate wanted. 1BR/1BT in a 3BR/3.5BT townhome. Walking distance to the stadium and bus stop. \$400/mo., gym and pool included. Cheaper rate can be arranged. Contact Emily at 404-444-8987 or ec01442@georgiasouthern.edu

Subleasing a room in 4 BR/2BT in The Avenue for Spring 2012, but available as early as Dec 16 and Dec will be paid for. \$325/MO. Furnished, utilities included with free Wifi and Cable. Contact Nikki at (678)525-0297.

1 BR/1 BT available in a 3 BR at The Grove, for Spring 2012. Available after Dec. 20. \$450/mo, utilities included. Pet friendly, pool. I will pay last month's rent. Female preferred. Call Ellen 404-694-1394 or email ej00034@georgiasouthern.edu

Subleases, cont.

Subleasing a 2 BR/2 BR at the Woodlands of Statesboro for Spring 2012. \$399 a month, utilities not included. Contact Adrian at (678) 230-5144.

2 BR/2 BT sublease in Georgia Villas. \$475/month for both rooms, utilities not included. Available Jan-May, pet friendly. Right across from Greek Row on Chandler. Email tl00212@georgiasouthern.edu

For Sale

FOR SALE - 17 inch custom Ford Mustang rims and 17 inch custom Chevy Impala rims Contact Ron: (912) 486-6611

Scooter for sale! 2005 Honda Ruckus. Black, 49cc, 85+mpg. Fantastic condition; original (faculty) owner, garage kept No special license or insurance required. \$1,500 OBO. Contact (912) 678-6052

For Sale, cont.

Firewood for Sale. Delivery available! Call 912-690-0872 or 912-690-4956.

For sale: 2009 BMW 328i, hard-top convertible in great condition. Black with tan interior. Call 912-293-1909.

Help Wanted

MODELS of all weights/sizes/ages needed for figure drawing class on T&R, 2-4:30 PM. Fall and spring openings. Must be 21 and able to sit still for long periods of time. Call 912-478-2793 or email jburke@georgiasouthern.edu

Misc.

Will proof papers (grammar, spelling, punctuation, sentence structure). Quality work, reasonable prices. Will also type short projects. Must have ample lead time to schedule. Email auntre01@gmail.com

HOT JOBS Cool Internships

Job Title	Company	Deadline to Apply
Multimedia Journalist	WRDW TV News 12	Feb. 29, 2012
Candler Country Public Health Nurse	Southeast Health District	Feb. 29, 2012
Online Media Intern (copy)	Colonial Properties Trust	Nov. 12, 2011
Advertising Account Executive	Northland Communications	Nov. 30, 2011
Software Engineer	Vensi Inc	Dec. 11, 2011
Hospitality Team Intern	Georgia Aquarium	Nov. 15, 2011
Entry Level Sales/Recruiter	TEKsystems	Dec. 26, 2011
Electrical Engineer-Entry Level	Jones Edmunds & Associates	Nov. 23, 2011
Process Engineer Mgr. (Group Manager)	Anheuser-Busch InBev	Nov. 18, 2011
Assistant Financial Examiner	GA Dept. of Banking & Finance	Nov. 19, 2011
Sharepoint Developer	BKY LLC	Nov. 12, 2011
Store Management Internship	Kohl's Department Stores	Dec. 31, 2011
Intercompany Specialist (Corp)	UPS, United Parcel Service	Nov. 20, 2011
Technical Recruiter	Synergis	Dec. 2, 2011
Logistics Coordinator	Miller Transporters Inc.	Nov. 12, 2011
Finance Intern	Coweta County	Nov. 19, 2011
GIS Intern	Paulding County	Nov. 19, 2011
Summer Intern	Pace Academy Summer Prog.	Feb. 29, 2012

To view the detailed job descriptions application instructions or additional postings, log into the Eagle Career Net/NACElink system found at www.georgiasouthern.edu/career.

Get updates on
jobs, internships &
career advice!

facebook

www.facebook.com/gasouthern.career

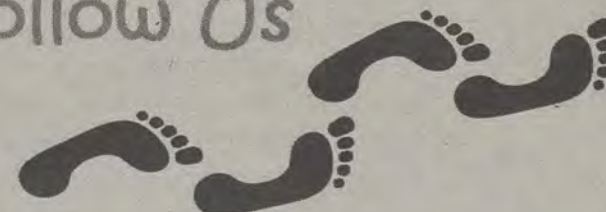
twitter

www.twitter.com/gsucareers

LinkedIn

Join our group on LinkedIn:
Georgia Southern Career Services

Follow Us



PUZZLES/COMICS

www.thegeorgeanne.com

Thursday, November 10, 2011 15

Los Angeles Times Daily Crossword Puzzle

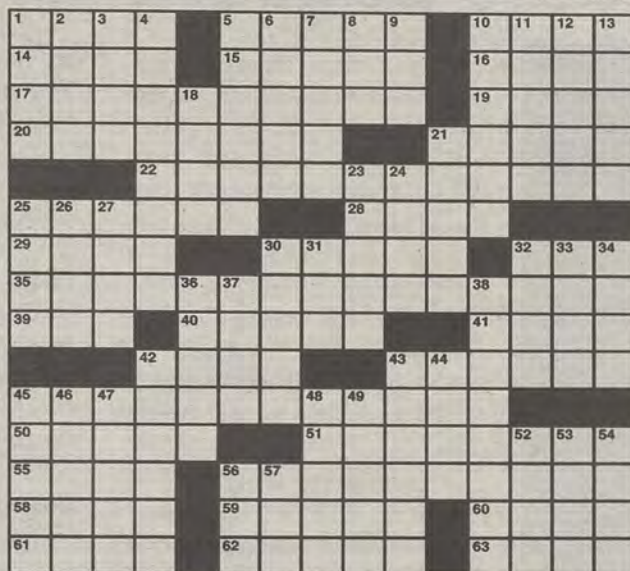
Edited by Rich Norris and Joyce Lewis

ACROSS

- 1 Gaucho's weapon
5 What two lanterns in the Old North Church signified
10 Shenanigan
14 "Paradise Lost" setting
15 Assessed
16 Holder of small tools
17 Symbolic gifts
19 José's hand
20 Like some ink cartridges
21 Vitruvian Man is on some Italian ones
22 Exasperate
25 Pago Pago resident
28 Sosa's 1,667, briefly
29 Conspiracy theorist's worry
30 Zeno, notably
32 Styled after
35 Soother for men
39 Stadium sound
40 Shake
41 Victory goddess
42 ___ Deion: NFL nickname
43 Bk. after Proverbs
45 Indigenous language
50 Selectric selection
51 Became one lane, say
55 Hammer feature
56 President's option, and a hint to the puzzle theme in 17-, 22-, 35- and 45-Across
58 Soprano Te Kanawa
59 Gets zero mpg
60 First name in bike stunts
61 Fall runner's goal, perhaps
62 Requirements
63 Take it easy

DOWN

- 1 Whack
2 Glade target



By Bill Thompson

11/10/11

November 8th Puzzle Solved

T	A	N	G	O	S	T	I	R	E	L	E	V		
I	S	A	A	C	A	I	D	E	L	A	C	E		
C	H	I	P	A	N	D	D	I	P	P	U	R	E	
S	E	R	E	N	A	D	E	L	O	A	D	U	P	
			A	T	E	T	A	O	S					
D	I	N	G	D	O	N	G	S	C	H	O	O	L	
A	T	S	E	A		N	A	E	S	S	A	W		
N	E	Y	O		H	O	A	R	D	J	O	K	E	
E	R	N	F	I	R	S		F	I	L	E	T		
S	C	R	A	T	C	H	G	O	L	F	E	R	S	
			A	L	A	S		E	R	A				
S	P	A	N	K	S		E	C	S	T	A	T	I	C
E	L	I	S		N	I	C	K	O	F	T	I	M	E
T	O	D	O		A	R	O		E	T	N	A	S	
S	W	A	M		G	E	L	S		E	N	A	C	T

- 3 "Hello, Dolly!" surname
4 Part of a best man's toast, maybe
5 Josh of "True Grit" (2010)
6 Comedian Smimoff
7 Cordwood measure
8 Bard's nightfall
9 Many pop-ups
10 Madagascar mammals
11 Asteroids maker
12 Syntax problem
13 Newsstand booth
18 When said three times, a WWII film
21 Order from on high
23 Valuable stash
24 Tony's cousin
25 Bandy words
26 It's five before
27 Light-headed insect?
30 Railroad switch
31 Smidgen
32 Indigo dye source
33 Styled after

- 34 Whizzes
36 "The Canterbury Tales" estate manager
37 Gin flavoring
38 Quick look
42 Dipstick
43 Door to the street
44 Brusque
45 Kisses and then some
46 Kate's TV roommate
47 Regal topper
48 Frère de la mère
49 Blunt, as truth
52 "Houston, ___ had a problem"
53 Nice warm times
54 Dimbulb
56 Verb associated with blame
57 Neruda's "___ to Conger Chowder"

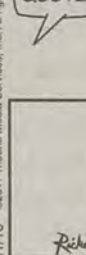
GALACTIC PRESIDENTIAL DEBATES



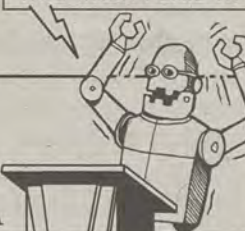
YOU TOOK THAT OUT OF CONTEXT.



IT'S A DIRECT QUOTE.



YEAH, BUT I WAS TOTALLY WAVING MY ARMS IN THE AIR LIKE THIS WHEN I SAID IT.



Welcome to Falling Rock National Park by Josh Shalek



		6				1		3
8	4					3		
	7					9	4	
				4			2	
			9		8			
3				6				4
	3	8					5	
			2				1	9
7		9				6		

Sudoku

FRANKLIN
CHEVROLET - CADILLAC
PONTIAC - BUICK - GMC
912.764.6911



Our experienced Body Shop can fix all of the "Dents & Dings" that your vehicle may have! We service all makes and models and accept all insurance claims, and will give you **FREE ESTIMATE** on your body & paint repair

GSU STUDENTS - Show your ID and receive **10% OFF** any purchase in Parts and Service

Check out our website
www.franklinchevrolet.com

Fraternities compete in all-male pageant

By COURTNEY ESCHER

George-Anne contributor

The all male pageant, "Big Man on Campus" brought back sandals and surf to the cool fall season.

The show opened on old ladies in love with Jimmy Buffett, performed by Zeta Tau Alpha girls, and nine fraternity boys dancing to a mash up of "Margaritaville," "Swag Surfin," "Can't Touch This" and "The Show Goes On."

Georgia Southern University's sorority Zeta Tau Alpha hosted its annual philanthropy Breast Cancer Awareness and Education event, Big Man on Campus, last night at the Performing Arts Center.

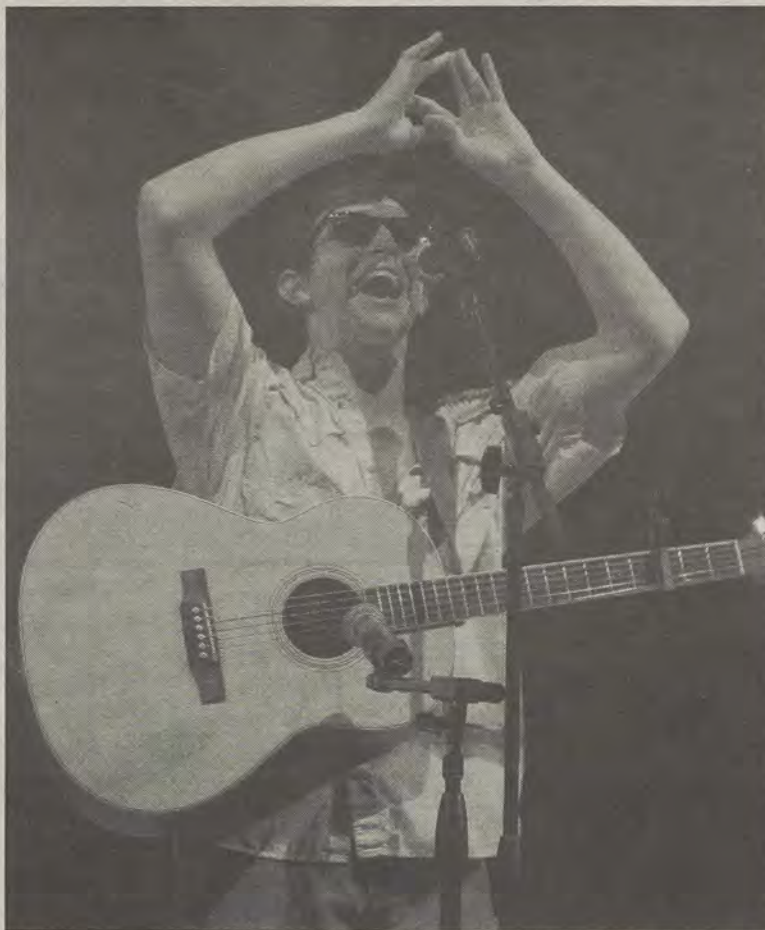
"It's entertaining and worth going to," said Kaleo Lyles, a freshman business management major.

"Big Man on Campus" is a male beauty pageant. The theme of the evening was "Big Man on Campus in Paradise," a Jimmy Buffett tribute of sorts.

"It's more embarrassing when you're in the crowd because I'm embarrassed for them," said Sean Zornig, a junior education major and past participant.

ZTA members came together to come up with a theme that would be entertaining for both the guys performing and the ladies watching.

The competition was broken



Christian Washington/ STAFF

Christian Smith, a freshman competing for Delta Tau Delta, gave an acoustic performance for the talent portion of the competition.

down into three segments: formal wear, talent and interview, allowing the judges and ladies to see all sides of the contestants.

It was clear in the formal wear

competition that some guys took the competition more seriously than others, but all were there to have fun.

One contestant graced the stage

wearing a large Hawaiian shirt, cut-off jean shorts, a straw hat and "mandles."

"Some guys wore pink suits, and some wore bathing suits. They also tend to take the theme into account," said Amanda Ross, a senior communications major.

During the talent portion contestant Adi Vaknin, a sophomore business major amazed the audience with his beat-boxing skills.

A surprising talent was a contestant's skill in a strip tease/dance-off that included mullet wigs, 1980s jams and a Chippendale's costume.

"My favorite part is the talent portion, because there is so much diversity and it is always a surprise," said Ross.

While watching the talent unfold, Becca Johnson, a junior child and family development major said, "Evan is the biggest stud I ever met. Can I marry him?"

All proceeds from the event, including ticket and t-shirt sales, go to Breast Cancer Awareness and Education, ZTA's national philanthropy.

"It's a great philanthropy event," said Johnson.

The competition will return next year and the winner from the competition will be posted online at thegeorgeanne.com.

The Buzz List

■ **The trial** is over and Dr. Conrad was found



Julia Welch

guilty of Michael Jackson's death by involuntary manslaughter. It took three years of news and gossip to pass the blame, time to move on and let it rest in peace.

■ **Lady Gaga** is developing a new perfume that she wants to smell like "blood and semen." Does that attract men these days?

■ **Lindsay Lohan** is suing Pitbull because of the line "I got it locked up like Lindsay Lohan" in his song "Tonight." She claims that the lyrics are "destined to do irreparable harm" to her image as "a professional actor of good repute." Not to be contradictory but she has been locked up multiple times, giving herself the bad reputation.

Information compiled by Arts Editor Julia Welch and Assistant Arts Editor Quanyika Epps from TheHollywoodReporter.com.

<p>Charlies Fried Chicken WE DELIVER 4 UNIVERSITY PLAZA (912) 681-2222 (912) 681-6666</p>		<h3>Full Menu</h3>		<h3>BURGERS & SANDWICHES</h3> <p><i>(comes with fries)</i> Hamburger - \$5.50 Cheeseburger - \$5.95 Bacon Cheeseburger - \$6.50 Mushroom Swiss - \$6.50 Philly Cheese Steak - \$6.95 Roast Beef & Cheese - \$4.95</p>		<h3>FRIED CHICKEN</h3> <p>Basket: <i>(comes with (2) Sides)</i> (2) Pc Dark - \$6.50 (2) Pc White - \$7.50 (3) Pc Dark - \$8.00 (3) Pc White - \$8.50 (4) Pc Mix - \$9.00</p>	
<p>APPETIZERS Cheese Stix (6) - \$3.99 Chili Cheese Fries - \$5.99 Hot Dog - \$1.89 Fried Pickles (6) - \$5.50 Chili Dog - \$2.50 Fried Jalapenos (5) - \$5.50</p>		<p>CHICKEN FINGERS (3) Fingers w/ Fries - \$5.95 (5) Fingers w/ Fries - \$7.50 (8) Fingers w/ Fries - \$9.50 (10) Fingers w/ Fries - \$11.50 (12) Fingers w/ Fries - \$13.50</p>		<p>WINGS (6) Wings - \$4.95 (12) Wings - \$8.95 (18) Wings - \$11.95 (6) Wings w/ Fries - \$5.95 (8) Wings w/ Fries - \$6.95 (10) Wings w/ Fries - \$8.50</p>		<p><i>Mild, Hot, X-Hot, Lemon Pep, Teriyaki, Honey Mustard, BBQ</i> <i>All drums or flats: 100</i> <i>Mix Flavors: 100</i></p>	
<p>BASKETS Tilapia (2 filets) - \$7.99 Pork Chop Basket (2) - \$6.25 Hotdog Basket - \$4.50</p>		<p>DRINKS Coke - \$3.00 Sprite - \$3.00 Bottled Water - \$1.00 Pepsi Products - \$2.00</p>		<p>SIDE ORDERS French Fries - \$1.89 Fried Okra - \$2.79 Baked Beans - \$1.89 Mac and Cheese - \$2.79 Onion Rings - \$1.89 Mash Potatoes - \$1.89</p>		<p>Snack Box: <i>(includes fries)</i> (2) Pc Dark - \$4.50 (2) Pc White - \$5.50 (3) Pc Dark - \$6.00 (3) Pc White - \$6.50 (4) Pc Mix - \$7.00</p>	
<p>Ask about our Tailgate Specials!</p>		<p>10% Off Walk in Only</p>		<p>DESSERT Chocolate Pie - \$3.00 Strawberry ChsCake - \$3.00</p>			

'Great Minds' lecture focuses on local moments in history

By ALEX LASALLE

George-Anne staff

This Thursday evening, Georgia Southern University's Reed Smith will be giving a lecture on local media history,

It will be focusing on three major topics, at the Averitt Center for the Arts in downtown Statesboro.

Smith's lecture is part of the ongoing GSU CLASS Great Minds Lecture Series, and will zero in on three major topics: The role newspapers played in a 1904 lynching in Statesboro and the subsequent wave of racial violence, the fight over ownership of Georgia Tech's WGST radio station during WWII, and the lasting impact of two veteran journalists from Savannah.

Newspapers in the Southern United States, especially during the Reconstruction era, are commonly seen as having played a major role in encouraging the frequent racial

“ I think that people really enjoy getting a glimpse into Georgia Southern, as it's such a local institution, and they like having the opportunity to learn something new in a familiar place. ”

-Andrea Bennet, CLASS director of Marketing and Outreach

lynching in the area.

This includes the nationally covered lynching of two black men in Statesboro for the murder of a white family and the resulting violence.

Smith, a professor in the Department of Communication Arts, in his research, has noticed a difference between the front page headlines and the editorial content of the newspapers.

“What I found in research was an argument inside the paper, that hey, this lynching is bad,” said Smith. “One of the big problems was that a lot of people then were illiterate.”

Smith will also be covering a WWII fight over ownership of WGST in Atlanta, a radio station previously owned by Georgia Tech until being sold off in the 1974.

“There have only been maybe half a dozen commercial radio stations in the country by a college,” said Smith.

The third, and most recent topic of Smith's lecture will be two veteran Savannah journalists: Doug Weathers, who has worked in Savannah television for over 40 years, and Tom Coffey, who has worked in newspapers for over 50 years. Smith will be talking about the impact journalists can have on

a region when they hold a lengthy presence.

“Men like that, in a community for a long time, can have a positive impact on the community there,” said Smith.

Discussing his overall theme, Smith said “It really hasn't changed drastically. It's always biased. I focus on the coverage of events. What is the meaning of that?”

His talk is part of the CLASS Great Minds Lecture Series, which has been ongoing since October of 2010.

“[The lecture series] is an outreach program aimed at introducing the

community and region to many of our outstanding faculty and to the exciting scholarly research that takes place in our college. These lectures give us the opportunity to connect with friends and alumni and allow us to provide a valuable service to the community,” said Andrea Bennett, CLASS director of Marketing and Outreach.

Bennett continued, “I think that people really enjoy getting a glimpse into Georgia Southern, as it's such a local institution, and they like having the opportunity to learn something new in a familiar place. Each lecture features a Q&A session at the end, and the audience usually has a ton of questions for the presenter. Sometimes there's even a little spirited debate among audience members.”

Smith's lecture will take place at 7:00 pm on Thursday, at the Averitt Center for the Arts in downtown Statesboro.

Voted Best Mattress Store in the 'Boro!

Student Housing Available

New, Used & Antique
Furniture

Complete Mattress Outlet

Deal's

Come See the Dealmaker!

17083 GA Hwy 67, Statesboro, GA
(912)681-3824 (Near Fairgrounds)

Mon-Fri : 10am-6pm

Sat: 10am-5pm

Sun: 1Pm-5pm

- Honest, Dependable
Same Day Delivery
- Locally Owned &
Operated by GSU Graduate
- Serving GSU Students
for 34 years

Tervis Tumbler Headquarters

- Collegiate Gifts
- Jewelry
- Handbags
- Placemats
- Diaper Bags
- Men's Gifts
& Much More

Best Furniture Mattress & Gift "DEALS" in the 'Boro

Planters ROW

By Hendley Properties

912.681.1170
www.hendleyproperties.com

3 bedroom
cottage
house

\$
365
/month per person



THE 'BORO BEAT

YOUR GUIDE TO OFF-CAMPUS ENTERTAINMENT

THURSDAY

Applebee's

-Jammin' Thursday with DJ Jammin J
10 p.m.

-\$1 Jello Shots, \$2 Coronas, \$3 Jacks, \$3 Long Island
Ice Tea, \$3 draft, \$3 Jim Bean, \$4 Yager bombs

Buffalo's

-The Fritz 10 p.m.

Crabby Joe's

-AYCE snow carb legs for \$29.99, buffalo tenders and
a pitcher of beer \$9.99

Dingus Magee's

-Connected Houses

-Happy Hour 5-7 p.m., half price well shots

El Sombrero

-Any 32 oz. draft \$2.50

Millhouse

-Dr. Don 9 p.m.

-\$2 Margaritas, \$2 Bud Light, Miller Light, Michelob
Ultra

Moe's

-Happy Hour 5-7 p.m. buy one get one free beer

Ruby Tuesday

-\$2 Miller Light, \$3 Blue Moon draft, \$4 Jack & coke

Manny's

-\$12 wings, buy 12 get 12 free

Dos Primos

- Karaoke 9 p.m.

FRIDAY

Applebee's

-Trivia 10 p.m.

-\$1 Natty Brewtus, \$3 other Brewtus, half priced Mar-
garitas and Apps

Buffalo's

11-11-11 Party ft. the Chris Mitchell Band 11 p.m.

Dingus Magee's

-3 Foot Swagger 10 p.m.

-Happy Hour, 5-7 p.m., half price well shots

El Sombrero

-\$2 12 oz. sex on the beach

Dos Primos

-Happy Hour 5-7 p.m., \$1 Bartender choice shot, \$3 Big
beer, \$3 Margarita

Millhouse

-Eric Dodd 9 p.m.

-\$2 Margaritas, \$2 Bud Light, Miller Light, Michelob Ultra

Loco's

-\$5 Bud Light pitchers

Gnat's Landing

-Happy Hour friday half-off:\$6 Bud Light pitchers, \$12
liquor pitchers, \$3 singles, \$5 doubles

Moe's

-Happy Hour 5-7 p.m. buy one get one free beer

Manny's

- 30 and up 1/2 price apps.



'BAD TO THE BONE'

10% off

any Order

- Wings
 - Homestyle Tenders
 - Homemade side
 - Garden Salad
 - Unique WM Sauces
- ...and the best tea in the boro

expires 12-31-2011
*Must present coupon

THE 'BORO BEAT

YOUR GUIDE TO OFF-CAMPUS ENTERTAINMENT

SATURDAY

Applebee's

-Do Good DJs, 10 p.m.

-\$3 Jacks, \$3 Long Island Ice Tea, \$3 Draft, \$3 Jack Daniels, \$4 Jager bombs

Buffalo's

-"Coyote Ugly" theme party ft. The Eric Dodd Band 8 p.m.

Crabby Joe's

\$0.40 wings, \$1 shots, \$9.99 margarita pitchers, \$2 wells, \$6 beer pitchers

El Sombrero

-\$2 Margaritas

Millhouse

-Wesley Bragg 9 p.m.

-GSU vs. Wofford on the big screen

Gnat's Landing

-Wings & Beer \$1.45 wings,

-Happy Hour 5-7 p.m., \$2 Margaritas, \$4

Bloody Mary's, \$6 Pitchers

Moe's

-Happy Hour 5-7 p.m. buy one get one free beer

Ruby Tuesday

-\$2 Miller Light, \$3 Blue Moon draft, \$4 Jack & coke

Godfather's

-Karaoke 10 p.m.

Mill Creek Park

-6th Annual International Festival 10 a.m.-4p.m.

MONDAY

Applebee's

-\$1 Jello Shots, \$2 Coronas, \$3 Jacks, \$3 Long Island Ice Tea, \$3 draft, \$3 Jack Daniels, \$4 Yager bombs

Buffalo's

-\$3 Martini's

-AYCE wings

Dingus Magee's

-Happy Hour 5-7 p.m., half price well shots

El Sombrero

-Happy Hour 5-7 p.m., \$2 Margaritas, \$2.50 draft beers \$3 Pina Colada, \$6.50 Margoronas

KBob Kelly's

-Cornhole Tourney 8 p.m.

Loco's

-\$5 Bud Light pitchers

Moe's

-Happy Hour 5-7 p.m. buy one get one free beer

Ruby Tuesday

-\$2 Miller Light, \$3 Blue Moon draft, \$4 Jack & coke

-Jello shots all night for Football Game

Manny's

-1/2 price pizza day

TUESDAY

Applebee's

-Karaoke 10 p.m.

-\$1 Natty Brewtus, \$3 other Brewtus, half priced Margaritas and Apps

Buffalo's

-\$5 Natural Light pitchers

-Beer Pong Tournament

Dingus Magee's

-Happy Hour, 5-7 p.m., half price well shots

Dos Primos

-Poker 8 p.m.

-Happy Hour 5-7 p.m., \$1 Bartender choice shot, \$3 Big beer, \$3 Margarita

Gnat's Landing

-Trivia with Jake Hallman 6:30 p.m.

-Happy Hour, 5-7 p.m.

El Sombrero

-\$2 Margaritas

Moe's

-Happy Hour 5-7 p.m. buy one get one free beer

Manny's

-\$3 Jack Daniels

The Godfather's

-Tequila Tuesdays, tequila-your-way \$2

The
Pita Pit

FRESH THINKING
HEALTHY EATING

WE ACCEPT
EAGLE EXPRESS



Mention this ad and get
10% OFF

WEEKLY BUZZ

A weekly calendar listing sponsored by The Division of Student Affairs and Enrollment Management

NOVEMBER 10- NOVEMBER 16

THURSDAY 11.10.2011

7PM

COOKING SERIES

RUSSELL UNION, 2047

Sponsored by Office of Student Activities..

10 AM

GEORGE-ANNE & JOE

GAZEBO

Get your free copy of the George-Anne and a cup of Starbucks coffee. Sponsored by Student Media.

5:30 PM

WOMEN & WEIGHTS

BODY CONDITIONING ROOM AT THE RAC

Another class will be held next Tuesday. Sponsored by Campus Recreation & Intramurals.

8 PM

AN EVENING OF JAZZ

WILLIAMS CENTER MULTIPURPOSE ROOM

Come and enjoy an elegant evening filled with the warmth and comfort of jazz tunes. In this setting you will have the opportunity to experience good company, heavy hors d'oeuvres, and the rhythmic sounds of a live Jazz band

with vocal accompaniment. To ensure that this event is truly unforgettable, there will be a dimmed glow to set the tone and simple decorations to add visuals of elegance to create the ambiance of an authentic jazz club. **PROOF OF ATTENDANCE WILL BE PROVIDED.** Sponsored by The Office of Multicultural Center.

FRIDAY 11.11.2011

3 PM - 4 PM

BUY/SALE/TRADE GEAR SALE

THE RAC

Sponsored by Campus Recreation & Intramurals.

7 PM and 9 PM

FREE MOVIE

RUSSELL UNION THEATER I

Sponsored by the Office of Student Activities.

SATURDAY 11.12.2011

9:30 AM

7TH ANNUAL SHOW OF STRENGTH

RUSSELL UNION THEATER I

Sponsored by the Office of Student Activities.

TUESDAY 11.15.2011

7 PM

GSU Unplugged

RUSSELL UNION STARBUCKS

Open Mike Night. Sponsored by Eagle Entertainment.

7 PM

MINORITIES IN MENTAL HEALTH COUNSELING

RUSSELL UNION ROOM 2041

Minority mental health professionals discuss what it takes to enter and thrive in their field. Also the panel will discuss the challenges of mental health in minority populations. **PROOF OF ATTENDANCE WILL BE PROVIDED.** Sponsored by The Office of Multicultural Center.

WEDNESDAY 11.16.2011

7 PM

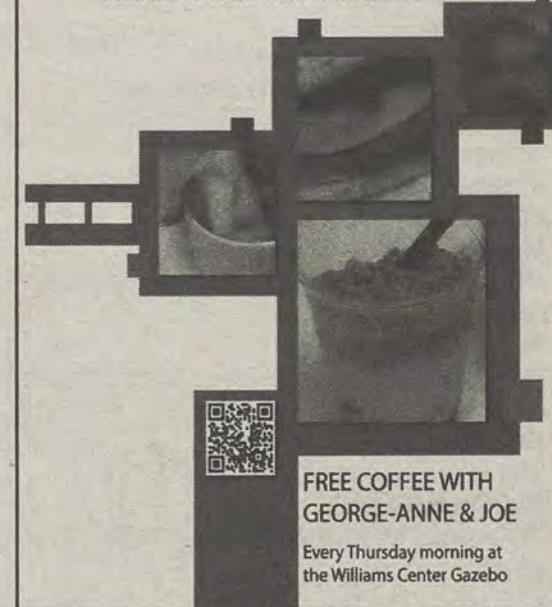
WINTER HOLIDAY CULTURAL CELEBRATION

RUSSELL UNION COMMONS

You are invited to participate in the WHCC where you can recognize and embrace the various ways in which this time of year is observed and celebrated by different cultures and religions. Various student organizations and members of the Georgia Southern and surrounding communities will demonstrate and provide information on how they celebrate their winter holidays! Sponsored by The Office of Multicultural Center.

They're coming...

More delicious reasons to come back to Starbucks in the afternoon.



FREE COFFEE WITH
GEORGE-ANNE & JOE

Every Thursday morning at
the Williams Center Gazebo

Magazines and Muffins

Sponsored by Latte Da Coffee Café

Every Thursday
in November
@ the Williams Center Gazebo!

Student Affairs
Enrollment
Management



Brought to you by Georgia Southern University VALUES. Georgia Southern V.A.L.U.E.S. is the culture shared by our students, faculty, and staff. We endeavor to share our V.A.L.U.E.S. inside and outside of the classroom with faculty, staff, students, alumni and all other community members. In order to produce productive citizens with an informed set of ethics and community standards as well as create an environment of respect and civility, we pledge to live by our V.A.L.U.E.S.

Gender roles switch for 'Taming of the Shrew' at PAC

By **DUSTIN TILLIGKEIT**

George-Anne contributor

The Black Box Theater, opened "The Taming of the Shrew," reimagined for a world where women rule, last Friday.

The play, written by Shakespeare, was changed somewhat for this performance. In this production, the men act in the societal position of women and the women act as men.

James Harbour, associate professor of theater and director of "The Taming of the Shrew," said that it was an idea that he "had been thinking about for 20 years, after having a conversation with a colleague about it."

In this reversed version, the play tells the story of a woman in Padua, Italy with two sons, who have reached the age to be married.

The younger, Bianco, has attracted the eye of every woman in Padua, while the elder, Katerino, with his surly disposition has frightened off any suitor to come near him. Their mother, Baptista, decrees that no one will marry Bianco until his brother has found a wife. As a favor to her friend, Hortentia, Petruchia decides to tame the "shrew" that is Katerino.

"They are the smartest people in the entire play," said Anastasia James, senior theater major and actress playing the role of Petruchia. Petruchia tries to show Katerino, nicknamed 'Kate' by Petruchia, that they are the most intelligent people around and they can have fun with it.

This is where part of the tension in the play comes from. While Petruchia tries to teach

Kate that he can have a great deal of fun at the expense of those around them, Kate resists, not able to understand his treatment at the hands of Petruchia.

Another part of the play is the fight over Bianco's affections. He attracts the eye of not only Hortentia and Gremia, two wealthy natives of Padua, but also Lucentia, daughter of a rich merchant from Pisa. The three scheme and plot to win Bianco and marry him.

The reversed genders in the play help to highlight the differences in gender roles in society, and it provides an interesting message to contemplate and a comedic play.

"It's nice to see the roles switch," said Cherish Orr, a senior education major.

"I like that the play presented the genders in a way that both challenges our cultural views and gives us something beautiful to watch," said Walter Jones, senior psychology major.

The opposite point that women are the boss in this play is that the men are those who are "tamed." Junior theater major Chris Hunt, who plays Kate, said that being tamed is "not as bad as it seems." He said, "It's not about an oppression of the woman as it is a game for Petruchia and Kate." Kate has to learn to keep

up with Petruchia, instead of being dominated by her.

The costumes were specially designed by Sarah McCarroll, who sought to create clothes that would evolve in a society ruled by women instead of men. James said, "The costumes are phenomenal, Sarah McCarroll did a fantastic job."

The Shakespearean language might be difficult for the audience to understand, but Harbour and James both said the language tells more about the character than any play with more modern ways of speaking. Hunt said "It's poetry."

Only six performances remain before "the Taming of the Shrew" stops playing at the Black Box Theater. There will be a special show on Sunday, Nov. 13 ending in a talk-back with the cast and crew.


The gender reversal in the Shakespearean play about the battle of the sexes adds to the entertainment of this classic and sometimes controversial comedy.

Tickets are five dollars for students, \$10 for faculty, and \$15 for general admission and the next performance is tonight at the Center for Arts and Theater, at the Black Box Theater.



Courtesy of Erin Rene Photography

Females are the dominant gender in the role reversed performance of "The Taming of the Shrew" at the PAC.




YAMAHA

Statesboro Yamaha

10% Off Parts & Accessories

with your student ID



22815 US Hwy. 80 Statesboro, GA 30461 912-764-RIDE
(1 mile past Lowe's on Right)

Museum hosts behind-the-scenes paleontology trip

By WILDA THRIFT

George-Anne contributor

The Coastal Plain Adventure trip offers students the chance to see wonders from the Ice Age with an expert in paleontology guiding their tour.

The Georgia Southern University museum is hosting this trip on Saturday, Nov. 12, from 8 a.m. to 5:30 p.m.

Admission for the tour is \$30 to museum members and \$35 for non-members.

Kristina Harbaugh, junior pre-nursing major, said, "It will be a really good learning experience, especially to someone who's interested in anthropology."

The trip is being offered as a way for students to gain exposure to outside resources that are usually more expensive and require a way to travel.

Debbie Gleason, assistant director of the museum, said, "The museum likes to take people to places that they wouldn't normally get to see on their own. Right now, there is an Ice Age mammoths and mastodons traveling exhibit named 'Tusks!' that is at the Macon Museum of Arts and Science."



Lindsay Hartmann/ STAFF

Oceanic fossils, like this bottle-nosed dolphin, are on permanent display at the Museum.

The trip will offer a deeper look into the exhibit that isn't available to everyone.

Gleason said, "People can travel to it on their own, but what they normally can't get is the behind-the-scenes look, and have a mammoths and mastodon research expert

give the tour. And our curator of paleontology here at Georgia Southern, Dr. Katy Smith, she's going to give us a specialized tour."

However, there is a limit to how many people can attend this trip.

According to Gleason, too large of crowd

makes it difficult for everyone to hear the guide.

Gleason said, "We're capping this at 36, because we want it to still be a personalized kind of experience."

Also, attendees will need to be 18 or older.

Gleason said, "And this is targeted for adults 18 and older. Because we offer so many programs to younger children, we like to periodically offer educational opportunities for adults. That's what this is geared for."

Smith said, "This trip will be a great experience, anyone interested in biology or paleontology would really enjoy it."

The idea for this trip originated over the summer after Smith visited the Macon museum and decided it would be an excellent learning opportunity for GSU's museum members.

According to Smith, the primary focus of the trip will be on mammoths and mastodons, but there will also be other prehistoric creatures with famously large teeth, such as the saber-toothed tiger.

To reserve your spot on the trip call the GSU museum at (912) 478-5444 or visit www.georgiasouthern.edu/museum.

International Festival 2011

Saturday, November 12, 2011
10 am - 4 pm
Mill Creek Regional Park
www.georgiasouthern.edu/intfest
FREE ADMISSION!

World Stage Performers

10:00-10:30	GSU Latino Greeks
10:30-11:30	Hoku-Ia Polynesian Dancers
11:30-12:30	West African Drum & Dance Experience
12:30-12:40	Welcoming Remarks - Mayor Joe Brannen
12:40-1:00	Global Village Awards Presentation
1:00-1:30	Beyond's Global Footstep
1:30-2:30	Latin Heritage Dance Company
2:30-3:30	Conjunto Folklorico Orgullo Panameño
3:00-4:00	Miguel Paul & Itopia the Band
4:00	Festival Ends

International Festival Sponsors

Rotary Club of Downtown Statesboro • Walmart • Kiwanis Club of Statesboro • BB&T • Office of the Vice President for Student Affairs & Enrollment Management (GSU) • Dr. Nancy W. Shumaker • Office of the Provost & Vice President for Academic Affairs (GSU) • East Georgia Regional Medical Center • Foreign Language Department (GSU) • College of Liberal Arts & Social Sciences (GSU) • The Clubhouse Hackers • Beyond Management Group, Inc. • Honors Program (GSU) • Statesboro Convention & Visitors Bureau • Sea Island Bank • Citizens Bank of Bulloch County • Franklin Chevrolet • Eagle Entertainment • Springhill Suites by Marriott

FRANKLIN

TOYOTA • SCION

10% OFF
service with your Student ID

888-695-8165 500 Commerce Drive
beside the new Holiday Inn

PROTECT YOUR VEHICLE!

Regular maintenance and upkeep is crucial to your car's optimal performance, best possible gas mileage, and highest resale value.

Our service department offers the best in automotive service for all makes and models.
PLUS we provide a free shuttle to and from campus!

- Oil Change
- Tire Services
- Tune-Up & Transmission Service
- A/C & Radiator Service
- Brake Service
- Engine Repair
- Body Shop Services

BUY OR LEASE A NEW TOYOTA, GET A \$1,000 COLLEGE GRAD REBATE

SCHEDULE YOUR SERVICE ONLINE! www.FranklinToyota.com

International Festival to bridge cultural gaps at Mill Creek

By **SAMARIA VINCENT**

George-Anne staff

The 6th Annual International Festival will take place this Saturday, Nov. 12 from 10 a.m. - 4 p.m.

"This event started out small, but has grown over the years," said Angie Threatte, organizer of the International Festival. "We project 30,000 in attendance this year."

The mission of the festival is to promote cross-cultural awareness and understanding through educational, cultural and international games and sports activities. The festival will also increase community awareness of the different educational and cultural programs available to them at Georgia Southern University and other local resources.

"The theme of the International Festival is the connecting cultures and uniting people," said Threatte. What makes our International Festival different from the Savannah one is our educational counterpart, the Global Village," said Threatte.

The Global Village will consist of educational booths about different countries. Each booth will be created by middle and high



INTERNATIONAL FESTIVAL

SATURDAY, NOVEMBER 12, 2011
10 AM - 4 PM
MILL CREEK REGIONAL PARK

FREE ADMISSION!

World Stage Performers

10:00 - 10:30	GSU Latino Greeks
10:30 - 11:30	Hoku-Loa Polynesian Dancers
11:30 - 12:30	West African Drum & Dance Experience
12:30 - 12:40	Welcoming Remarks - Mayor Joe Brannen
12:40 - 1:00	Global Village Awards Presentation
1:00 - 1:30	Beyond's Global Footstep
1:30 - 2:30	Latin Heritage Dance Company
2:30 - 3:30	Conjunto Folklorico Orgullo Panameno
3:00 - 4:00	Miguel Paul & Itopia the Band
4:00	Festival Ends

Tyler Fleider/ CONTRIBUTOR

school students from Bulloch, Emanuel and Screven counties with assistance from students in the GSU Global Ambassador Program. The booths will contain factual information, arts and crafts, and other educational activities.

"After the welcoming remarks from Mayor Joe Brannen, the Global Village awards ceremony will take place," said Threatte. Different awards will be most creative and

most informative, among others.

Other activities include, the International Bazaar, which will have items from Haiti, Ghana, China, Taiwan, Korea, Trinidad and the Philippines open for purchase. International Culinary Delights which will have dishes from India, Italy, Korea, Middle East, Latin America, Japan, Greece, Mexico, Caribbean, China, Argentina, Africa, and America.

Some vendors at the International Bazaar represent GSU organizations like the African Student Association and the Latino Greeks.

Children are invited to make crafts like Chinese Lanterns and play games like world map in it's a small world.

"Many volunteers from Georgia Southern will be working at It's a small world. We had excellent support from the students here, however if you would like to still volunteer I will be taking volunteers until Friday. Just let me know as soon as possible," said Threatte.

Performers from many nationalities will be on stage.

"All of the performers are very colorful, and very beautiful," said Threatte.

Sponsors from Statesboro and surrounding cities will have booths and different activities set up for attendees to participate in.

The International Festival will be taking place at Mill Creek Regional Park.

Mill Creek Regional Park is located next to Splash in the Boro and has plenty of free parking.

Admission into the International Festival is free, however Threatte suggested students bring at least \$20 for food and bazaar items.



BLISS BERRY
FROZEN YOGURT • GELATO • SORBET • SMOOTHIES

- 10 Flavors of Yogurt
- 55 Toppings to Choose From
- Dairy Free & No Sugar Added Flavors Available
- All Flavors are either Non-Fat or Low Fat-- Less than 140 Calories Per Serving

\$1 OFF *

* Valid through the month of November 11/30/11. Cannot be combined with any other discounts.

721 SOUTH MAIN ST. #9
STATESBORO, GA
LOCATED IN TALBOTS SHOPPING CENTRE
CONTACT # 912-681-2547

HOURS:
MON-THURS: 11AM-10PM
FRI-SAT: 11AM-MIDNIGHT
SUN: 12PM-10PM



JOIN ON FACEBOOK TO
LEARN MORE ABOUT
SPECIALS @ YO BLISS

New CLASSIC
SAUSAGE & PEPPERS PIZZA
or Tuscan Six Cheese Pizza

LARGE \$11
 LIMITED TIME ONLY
ONLINE PROMO CODE: P11PZ

John N. Schmitter
 "Papa John," Founder

Covered with mild Italian sausage, fresh sliced onions, red & green peppers, and a blend of three cheeses.

Offer good for a limited time at participating Papa John's restaurants. Additional toppings extra. Not valid with any other coupons or discounts. Limited delivery area. Delivery fee may apply. Customer responsible for all applicable taxes. Please see us in Alaska and Hawaii.
 © 2011 Papa John's International, Inc. All Rights Reserved. M11121C

MILLION PIZZA GIVEAWAY!

Enroll in **Papa Rewards** for your chance to WIN!
 @PAPAJOHNS.COM

NO PURCHASE NECESSARY. A PURCHASE WILL NOT INCREASE YOUR CHANCES OF WINNING. LEGAL RESIDENTS OF THE 50 UNITED STATES (Aged 13 YEARS AND OLDER, WHO WHERE PROHIBITED). Sweepstakes ends 11/11/12. For Official Rules, to opt-out, prize drawing dates and odds, visit <http://www.papajohns.com/rewards/contest.shtml>. Sponsored by Papa John's International, Inc., 2002 Papa John's Blvd., Louisville, KY 40288.
 © 2011 NFL Properties LLC. All NFL-related indicia are trademarks of the National Football League.

PAPA JOHN'S
 Better Ingredients.
 Better Pizza.

NFL

OFFICIAL PIZZA SPONSOR OF THE NFL

f
 Follow us on Facebook!

Statesboro
 620 Fair Rd.
871-7272

WE ACCEPT EAGLE EXPRESS!

LARGE DEAL

Large One Topping Pizza
\$10.00

PAPA JOHN'S ORDER ONLINE
 Use promo code **RHHLC1T10**

CARRYOUT OR DELIVERY EXPIRES 12/31/11. Offer good for a limited time at participating Papa John's restaurants only. Additional toppings extra. Not valid with any other coupons or discounts. Limited delivery area, charges may apply. Customer responsible for all applicable taxes.

ANY WAY YOU WANT IT!

Large Specialty or up to Five Toppings for only
\$12.00

PAPA JOHN'S ORDER ONLINE
 Use promo code **LS12RHH**

CARRYOUT OR DELIVERY EXPIRES 12/31/11. No double toppings or extra cheese. Offer good for a limited time at participating Papa John's restaurants only. Additional toppings extra. Not valid with any other coupons or discounts. Limited delivery area, charges may apply. Customer responsible for all applicable taxes.

TAILGATE SPECIAL

Large One Topping, Breadsticks *or* Garlic Parmesan Breadsticks & a 2 Liter of Coca-Cola®
\$15.99

PAPA JOHN'S ORDER ONLINE
 Use promo code **L1TBSP2L**

CARRYOUT OR DELIVERY EXPIRES 12/31/11. Offer good for a limited time at participating Papa John's restaurants only. Additional toppings extra. Not valid with any other coupons or discounts. Limited delivery area, charges may apply. Customer responsible for all applicable taxes.

GAMEDAY

³ GEORGIA SOUTHERN VS WOFFORD

MAYDAY

@GIBBS STADIUM, 1:00 PM

SONCON SHOWDOWN



#57 BRETT MOORE

SONCON PRE-SEASON 1ST TEAM
ALL AMERICAN PRE-SEASON 2ND
TEAM
24 STRAIGHT STARTS



#14-JAYBO SHAW

946 PASSING YARDS 6 TD 3 INT
248 RUSHING YARDS
7 TD (T-TEAM LEADS)

SPECIAL PULL-OUT SECTION

FOLLOW @THEGEORGEANNE ON TWITTER FOR LIVE GAME UPDATES

GEORGIA SOUTHERN EAGLES

No.	Name	Pos.	Year	Hometown	No.	Name	Pos.	Year	Hometown
1	Jerick McKinnon	QB	So.	Marietta, Ga.	50	Garrett Brewer	OL	Fr.	Dixie, Ga.
2	A.J. McCray	S	Sr.	St Marys, Ga.	51	William Maxwell	OG	Sr.	Quitman, Ga.
4	Derek Heyden	S	Sr.	Atlanta, Ga.	52	Javon Mention	DT	So.	Tampa, Fla.
4	Prince McJunkins	QB	Fr.	Wagoner, Okla.	53	Marcus Duvall	ILB	Sr.	Griffin, Ga.
5	Robert Brown	FB	So.	Macon, Ga.	54	Koretheus Bailey	DT	Jr.	Lula, Ga.
6	Zeke Rozier	FB	Sr.	Cochran, Ga.	55	Austin Hagan	OL	Fr.	Dacula, Ga.
7	Darreion Robinson	RB	Jr.	Bishop, Ga.	56	Luke Cherry	PK	So.	Jacksonville, Fla.
9	Zach Walker	WR	Fr.	Wrightsville, Ga.	57	Brett Moore	OL	Sr.	Warner Robins, Ga.
10	Josh Rowe	ILB	Jr.	Opelika, Ala.	58	Garrett Frye	OL	Fr.	Cumming, Ga.
11	Ezayi Youyoute	QB	RFr.	Wauchula, Fla.	59	Zach York	LB	Jr.	Hartwell, Ga.
12	Russell DeMasi	QB	Jr.	Savannah, Ga.	60	Chris Gray	OT	Jr.	Landrum, S.C.
13	Darius Eubanks	OLB	Jr.	Harlem, Ga.	62	Zach Lonas	OG	So.	Acworth, Ga.
14	Jaybo Shaw	QB	Sr.	Flowery Branch, Ga.	63	Brandavious Mann	C	Sr.	Forsyth, Ga.
15	Carlos Cave	OLB	So.	Macon, Ga.	64	Hunter Lamar	OL	Fr.	Statesboro, Ga.
15	Aaron Griffin	QB	Fr.	Rincon, Ga.	65	Kyle Stroud	OL	RFr.	Tucker, Ga.
16	Antonio Glover	FS	Fr.	Atlanta, Ga.	66	Brent Russell	DT	Jr.	Comer, Ga.
17	Billy Greer	PK	Sr.	Crosby, Texas	67	Matt Mills	OL	Fr.	Johns Creek, Ga.
18	Charlie Brower	WR	Unk	Dacula, Ga.	68	Matthew Gilbert	C	RFr.	Marietta, Ga.
18	Lavelle Westbrooks	CB	So.	Riverdale, Ga.	69	Cole Peebles	OL	Fr.	Conyers, Ga.
19	JJ Wilcox	SLOT	Jr.	Cairo, Ga.	70	Raymond Klugey	OT	Jr.	Norcross, Ga.
20	Nico Hickey	SLOT	Sr.	Columbus, Ga.	71	Dorian Byrd	OT	So.	Macon, Ga.
21	Hudson Presume	DB	Sr.	Bradenton, Fla.	72	Zach Reckers	DT	Jr.	Atlanta, Ga.
22	Seon Jones	FB	Fr.	Flowery Branch, Ga.	73	Maurice Hunt, Jr.	OL	Fr.	Lyons, Ga.
23	Johnathan Bryant	SLOT	Jr.	Cairo, Ga.	74	Logan Daves	OL	RFr.	Blue Ridge, Ga.
24	Riyahd Jones	CB	Fr.	Columbus, Ga.	75	Manrey Saint-Amour	OL	Fr.	Suwanee, Ga.
25	Emmanuel Orange	CB	Fr.	Naples, Fla.	76	Trevor McBurnett	OL	RFr.	Lawrenceville, Ga.
26	Tray Butler	WR	So.	Stockbridge, Ga.	77	Blake DeBartola	OL	Jr.	Fayetteville, Ga.
26	Josh King	CB	Fr.	Stockbridge, Ga.	78	Josh Petkovich	OT	Sr.	Palm Harbor, Fla.
27	Javonte Martin	DB	So.	Tampa, Fla.	79	Oliver Kraemer	OT	RFr.	Marietta, Ga.
28	Devin Scott	SLOT	So.	Tucker, Ga.	80	Kentrellis Showers	WR	RFr.	Dublin, Ga.
29	Deion Stanley	SS	RFr.	Dry Pond, Ga.	81	Mitchell Williford	WR	Jr.	Duluth, Ga.
30	K.R. Snipes	LB	RJr.	Opelika, Ala.	82	Wilson Hudgins	TE	Fr.	Loganville, Ga.
31	Dominique Swope	FB	Fr.	Buford, Ga.	83	Martin Weatherby	WR	Jr.	Roswell, Ga.
32	Nick Wright	CB	Fr.	Lithonia, Ga.	84	Patrick Barker	WR	Jr.	Ponte Vedra, Fla.
34	Laron Scott	DB	Sr.	Warner Robins, Ga.	85	Allen Lee	WR	Jr.	Savannah, Ga.
35	Miguel Gilmore	SLOT	Sr.	Orlando, Fla.	85	Brian Wilcher	SLOT	Jr.	Dublin, Ga.
35	Michael Spaulding	LB	So.	Fayetteville, Ga.	86	Markus Farmer	WR	Jr.	Savannah, Ga.
36	Connell Reddick	DB	RFr.	Hephzibah, Ga.	87	Willie Burden	TE	Jr.	Statesboro, Ga.
37	Antwione Williams	LB	Fr.	Lovejoy, Ga.	88	Trevor Shaw	DL	So.	Alpharetta, Ga.
38	Kyle Oehlbeck	LB	Jr.	Gainesville, Fla.	88	Tyler Sumner	TE	Jr.	Pooler, Ga.
39	DeVonte Lewis	SLOT	Fr.	Dacula, Ga.	89	Carter Jones	LS	Sr.	Moultrie, Ga.
39	Deonté Watkins	DB	Sr.	Walkersville, Md.	90	Josh Gebhardt	DE	So.	Douglasville, Ga.
40	Michael Butler	DB	Sr.	Stone Mountain, Ga.	91	Justice Ejike	DT	RFr.	Covington, Ga.
41	John Stevenson	OLB	Jr.	Stone Mountain, Ga.	92	John Douglas	DE	Sr.	Augusta, Ga.
42	Boyd Sasser	S	Jr.	Millen, Ga.	93	Rashad Williams	DE	RFr.	Roswell, Ga.
43	Eric Worthen	LB	Fr.	Swainsboro, Ga.	94	Roderick Tinsley	DT	Sr.	Soperton, Ga.
44	Quaun Daniels	OLB	Fr.	Moultrie, Ga.	95	Edwin Jackson	LB	RFr.	Atlanta, Ga.
45	Adrian Mora	PK	Gr.	Dalton, Ga.	96	Blake Riley	DT	So.	Crescent, Ga.
46	Brent Thomas	FB	Sr.	Tampa, Fla.	97	George Osunde	LB	Jr.	Alpharetta, Ga.
47	Omari Jones	DE	RFr.	Jonesboro, Ga.	98	Forrest Kelleher	DE	Fr.	Ft. Lauderdale, Fla.
48	Charlie Edwards	P	Sr.	Tifton, Ga.	98	Jacob Bagley	TE	Jr.	Waycross, Ga.
49	Brandon Lane	DB	Jr.	Marietta, Ga.	99	Terico Agnew	DE	Jr.	Stockbridge, Ga.

WOFFORD TERRIERS

No.	Name	Pos.	Year	Hometown	No.	Name	Pos.	Year	Hometown
2	Stephon Shelton	CB	Jr.	Atlanta, Ga.	49	Mitchell Warren	CB	Fr.	Frankfort, Il.
3	Blake Wylie	CB	Jr.	Fort Mill, Sc.	50	Kane Sherrill	OL	Fr.	Mooreville, Nc.
4	Alvin Scioneaux	LB	So.	Garyville, La.	52	Allen Smith	DE	Jr.	Columbia, Sc.
5	Bernard Williams	CB	Fr.	Buffalo, Ny.	53	Marcus Isom	DT	Fr.	Winter Garden, Fl.
6	Cj Turner	CB	Jr.	Chester, Sc.	54	Phillip LeGrande	LB	Jr.	Rockingham, Nc.
7	Eric Breitenstein	FB	Jr.	Valle Crucis, Nc.	55	Darius Burton	DE	Fr.	Durham, Nc.
8	Donovan Johnson	RB	So.	McDonough, Ga.	56	Zach Bobb	DE	Jr.	Marietta, Ga.
9	Mitch Allen	QB	Sr.	Cincinnati, Oh.	57	Mike McCrimon	LB	So.	Center Hill, Fl.
10	Brenton Bersin	WR	Sr.	Charlotte, Nc.	58	T.J. Chamberlin	OL	Fr.	Land O Lakes, Fl.
11	James Zotto	CB	So.	Libertyville, Il.	59	James Lane	LB	Jr.	Beaufort, Sc.
12	Bryan Youman	RB	Jr.	Montverde, Fl.	60	Joseph Ready	OL	Jr.	Charlotte, Nc.
13	Christian Reed	QB	Jr.	Hendersonville, Tn.	61	T.J. White	OL	Jr.	Troy, Oh.
14	Daniel Bennett	LB	Fr.	Spartanburg, Sc.	62	Jared Singleton	OL	So.	Lugoff, Sc.
14	Brian Kass	QB	So.	Raleigh, Nc.	63	Jeff Tucker	OL	Fr.	Berwyn, Pa.
15	Michael Weimer	QB	Fr.	Chapin, Sc.	64	Mike Nicklas	OL	Fr.	Westport, Ct.
16	Chris White	QB	Jr.	Moore, Sc.	65	Brandon Kersnowski	OL	Fr.	Waxhaw, Nc.
17	Thomas Simmons	WR	So.	Greer, Sc.	66	Calvin Cantrell	OL	Jr.	Dacula, Ga.
18	Rickman Davis	CB	Fr.	Shelby, Nc.	67	Jaynorris Thomas	OL	Jr.	Boiling Springs, Sc.
18	James Lawson	QB	Fr.	Pickens, Sc.	68	Nate Page	OL	Sr.	Charlotte, Nc.
19	Philemon Permis	CB	Fr.	Indiantown, Fl.	69	Jared Wilken	OL	Fr.	Deland, Fl.
20	Nick Crocker	RB	Fr.	Spartanburg, Sc.	70	Ethan Gaskins	DE	Fr.	Summerville, Sc.
21	Paul Inclan	K	Fr.	Spartanburg, Sc.	71	Michael Comer	C	Fr.	Conover, Nc.
22	Lavadrick Farrar	RB	Jr.	Charlotte, Nc.	72	Tony Goodwin	OL	Fr.	Charlotte, Nc.
23	Josh Davis	S	So.	Spartanburg, Sc.	73	Erik Holsen	OL	Fr.	Greenville, Sc.
24	Preston Roseboro	CB	Sr.	Shelby, Nc.	74	Jon Boyd	OL	Fr.	Fayetteville, Nc.
25	Montae Monroe	WR	Jr.	York, Sc.	75	Tymeco Gregory	OL	So.	Greer, Sc.
26	Travis Thomas	LB	Fr.	Bowie, Md.	76	Jordan Pope	DE	Fr.	Atlanta, Ga.
27	Qay Bell	LB	Fr.	Miami, Fl.	77	Jake Miles	OL	Jr.	Charlottesville, Va.
28	Zack Cole	CB	Fr.	Morganton, Nc.	78	Daniel Patton	DE	Fr.	Atlanta, Ga.
29	Alex Dunmire	RB	Jr.	Goldsboro, Nc.	78	Ben Rader	OL	Fr.	Cincinnati, Oh.
30	Jeremy Holt	LB	So.	Fayetteville, Ga.	79	Josef Grommer	OL	Jr.	Spartanburg, Sc.
31	Josh Holt	CB	So.	Fayetteville, Ga.	80	Kenny Barnes	TE	So.	Suwanne, Ga.
32	Anthony Carden	LB	Jr.	Lexington, Sc.	81	Rob Greene	WR	Fr.	Moore, Sc.
33	Octavius Harden	RB	Fr.	Conover, Nc.	82	Will Irwin	WR	Fr.	Land O Lakes, Fl.
34	Cam Flowers	RB	Fr.	Damascus, Ga.	83	Andrew Young	WR	Sr.	Vero Beach, Fl.
35	Caleb Lucas	S	So.	Benson, Nc.	84	Jamie Chappell	TE	Sr.	Columbia, Sc.
36	Jonny Martin	RB	Fr.	San Diego, Ca.	85	Michael Harpe	C	So.	Spartanburg, Sc.
37	Derek Boyce	RB	Jr.	Knoxville, TN	86	Joseph Inman	TE	Sr.	Stilwell, Ok.
38	Kasey Redfern	QB	So.	Jamestown, Nc.	88	Jeff Ashley	WR	So.	Brooks, Ga.
39	Brad Nocek	RB	Jr.	Holidaysburg, Pa.	89	Ryan Petrea	WR	Fr.	Boiling Springs, Sc.
40	Joseph McMillin	LB	So.	Inman, Sc.	90	Josh Roseborough	DT	Jr.	Jenkinsville, Sc.
41	Brion Anderson	CB	Fr.	Saint Augustine, FL	91	Zach Muller	DE	Fr.	Plymouth, Mn.
42	Tyrese Little	LB	Fr.	Ayden, Nc.	92	Josh Wright	DT	Jr.	Charlotte, Nc.
43	SeQuan Stanley	LB	Jr.	Darien, Ga.	93	Josh Hillard	DT	So.	Delaware, Oh.
44	Brodie Woodson	LB	Fr.	Yarmouth, ME	94	Ameet Pall	DE	Sr.	Montreal, Mo.
45	Mike Niam	LB	Jr.	Hudson, Oh.	95	Zach Murray	DT	So.	Avon Lake, Oh.
46	Kendall Bratcher	S	Jr.	Greensboro, Nc.	96	Alex Goltry	DE	Sr.	Knoxville, Tn.
47	Kevin Thomas	LB	Fr.	Mountain Home, Nc.	97	E.J. Speller	DT	Fr.	Chesapeake, Va.
48	Cody Burris	RB	So.	Plain City, Oh.	98	Eric Eberhardt	DE	Sr.	Suwanne, Ga.
49	Brody Hingst	RB	Fr.	Richmond, Va.	99	Tarek Odom	DT	Fr.	Saint Augustine, Fl.

Eagles and Terriers battle for SoCon crown

Georgia Southern and Wofford will play a de-facto SoCon title game Saturday in Spartanburg

Football

By **JAMES FARMER**

George-Anne staff

The Georgia Southern University football team will face a tough challenge this weekend at Wofford College.

Last year the Eagles and the Terriers split their two matchups with one win apiece, Wofford winning in the regular season in Statesboro and GSU winning in the playoffs at Spartanburg.

This year, Wofford is continuing the success they had from last season, riding on a dominating rushing attack ranked first in the nation.

GSU is looking a little weak after losing to Appalachian State University and squeaking by The Citadel at home last Saturday.

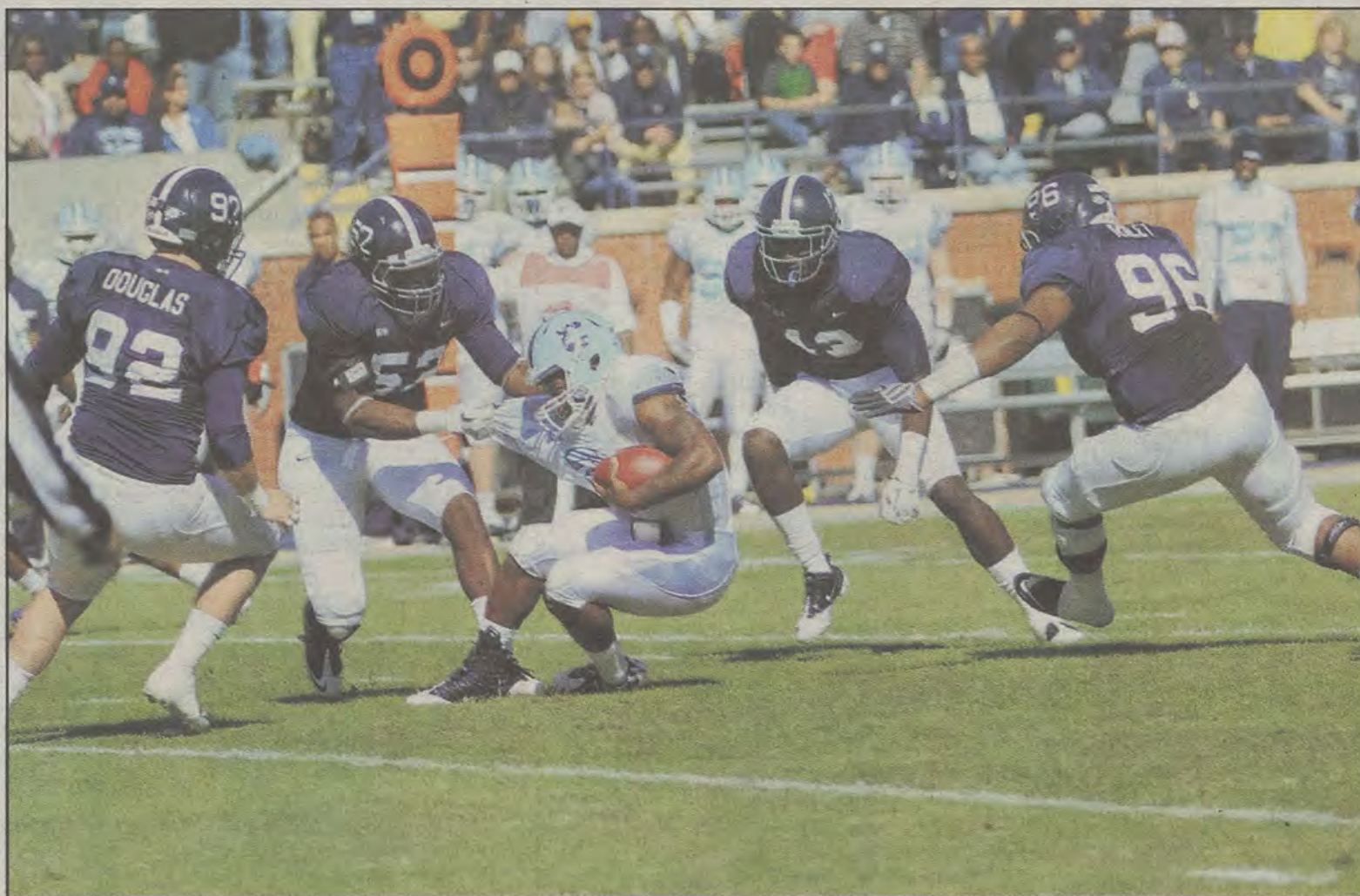
Special Teams: As has been the story all season, the GSU special teams have been performing like one of the best units in the nation. The two extra point blocks provided the winning margin for the game against The Citadel.

Wofford has only returned six punts this season, but two of them have gone for touchdowns. Their 22.2 yards per return average is best in the nation. The Terriers have only attempted four field goals all season but have converted three of them.

Stat to watch: 52. The combined number of punts by Wofford and GSU, the two lowest-punting teams in the Southern Conference.

Advantage: Even

Wofford offense vs. GSU defense: The Terriers have the best rushing attack in the nation at 374.2 yards per game, led by Preseason SoCon player of the year Eric Breitenstein, who has rushed for 1,139 yards and 15 touchdowns so far to lead the conference in both categories. Donovan Johnson has 702 yards rushing and Mitch Allen, the quarterback for Wofford has 598 yards rushing as well, giving the



Akeem Hill/ STAFF

John Douglas (92), Jevon Mention (52), Darius Eubanks (13) and Blake Riley (96) all converge on a Bulldog ball carrier during GSU's 14-12 win.

Terriers three players in the top 10 for SoCon rushing.

The GSU defense surrenders the fewest amount of rushing yards in the conference, yet was gashed by The Citadel's rushing attack for 239 yards last week. The absence of Brent Russell might have had something to do with the yards surrendered, but he should be back for this week's game.

The 11 rushing touchdowns allowed by GSU are the fewest in the conference and 24 less than Wofford has scored this season. Wofford's SoCon best red zone offense will be tested against the conference leading red zone defense of GSU.

Stat to watch: 30. Wofford's top three rushers have combined to score 30 of the 35 rushing touchdowns for

the Terriers this season.

Advantage: Even

GSU offense vs. Wofford Defense: The Eagles offense was rolling this season, averaging over 40 points per game and running around and through opponents with ease. Then they played App. State. Since App. State, the offense has yet to top the 200-yard rushing mark and has scored only two touchdowns each game.

It is possible that these numbers have to do with a great App. State defense and a Bulldog defense that was familiar with the triple-option attack. However, one game can be written off as an off game, two games are the start of a trend.

The Wofford defense gives up the second fewest rushing yards per

game in the SoCon and the second fewest rushing touchdowns as well. They are ranked second in the conference in total yards allowed, with less than 306 yards per game allowed.

Alvin Scioneaux is first in the SoCon in tackles for loss, and teammate Alex Goltry is not far behind at seventh place.

Stat to watch: 6. GSU has only been sacked six times, good for second in the SoCon. This should negate the pass rushers of Wofford.

Advantage: Wofford

Final Analysis: Wofford has dominated their last two opponents, winning by a combined score of 90-45. GSU on the other hand, has actually been outscored 36-29 in the last two games and has

looked sloppy on offense.

After giving up long runs up the middle of the defense last week, the prospects of the Eagles shutting down Breitenstein are bleak. The Eagles need to be able to break off long runs to spark the offense, something they have not done in the last two games.

If the offense can hold on to the ball and sustain drives to take the Wofford crowd out of the game, then the Eagles have a chance. If not, look for the Terriers to take this game.

Stat to watch: 9-1. The Terriers are 9-1 at home over the past two seasons, with the only loss coming against the Eagles in the playoffs last year.

Final Score: 24-21 Wofford