

Georgia Southern University

Digital Commons@Georgia Southern

The George-Anne

Student Media

11-8-2011

The George-Anne

Georgia Southern University

Follow this and additional works at: <https://digitalcommons.georgiasouthern.edu/george-anne>



Part of the [Higher Education Commons](#)

Recommended Citation

Georgia Southern University, "The George-Anne" (2011). *The George-Anne*. 2715.
<https://digitalcommons.georgiasouthern.edu/george-anne/2715>

This newspaper is brought to you for free and open access by the Student Media at Digital Commons@Georgia Southern. It has been accepted for inclusion in The George-Anne by an authorized administrator of Digital Commons@Georgia Southern. For more information, please contact digitalcommons@georgiasouthern.edu.



Tuesday, November 8, 2011
Georgia Southern University
www.thegeorgeanne.com
Volume 87 • Issue 40

THE GEORGE-ANNE

Voting for councilmen, alcohol laws to begin

By TJ JACKSON
George-Anne contributor

The Bulloch County Special Elections and Municipal Elections for the city of Statesboro will be today from 7 a.m. to 7 p.m.

Sam Lee Jones, Gary Lewis, Donald Logan and Lance Turner will be running for city council in District Two. Will Britt from District Three and Travis Chance from District Five will be running unopposed.

Jones, Logan and Turner attended an open forum to discuss issues while Lewis remained absent. Lewis refused to comment.

"I think that it is important that (students) vote," said Will Britt, incumbent city councilman for District Two. "Not only do they represent themselves as a voter, they represent other students that maybe didn't register. Students are a strong demographic in our community that need representation and one of the ways to do that is to vote."

The ballot item that is expected to pull in a lot of student voters from the community is the authorization for Statesboro and Bulloch County to permit the regulation of alcohol sales on

See VOTING, page 6

Eagle Alerts cause concern

By LINDSAY GASKINS
George-Anne contributor

In a mile and half radius of Georgia Southern University, 69 crimes have occurred off campus in the last month

and students have received three Eagle Alerts.

GSU Campus Police determine which Eagle Alerts to send out based upon if the student population as a whole is in immediate danger, said Major Laura

McCullough, assistant director of public safety.

"If it is determined that the crime was committed against a specific target and not just the general population,

See ALERT, page 6

BIG LOVE OPENS



Lindsay Hartmann/ STAFF

Lead actors Julian Norkus and Brock Vickers kiss during a scene of "Big Love," a play about 50 brides who flee their grooms to avoid incestual arranged marriages. This modern-day remaking of The Danaids is showing in the Blackbox Theater at the Center for Art and Theater.



thegeorgeanne.com

Tues.	Wednes.	Thurs.	Fri.
H 75	H 76	H 73	H 62
L 47	L 42	L 38	L 32



Newsroom 478-5246
Advertising 478-5418
Fax 478-7113

PO Box 8001
Statesboro, GA
30460

Police raid vacant Stadium Walk apartment

By **LINDSAY GASKINS**

George-Anne contributor

Statesboro police officers and S.W.A.T. teams raided a vacant Stadium Walk apartment Thursday by firing multiple gas containers in search for recent armed robbery suspects.

"They were the ones involved with all of the stealing around (Stadium Walk)," said Olivia Thompson, a junior at Georgia Southern University and resident at Stadium Walk complex.

The police were able to get a hold of about \$4,600 worth of weapons found in apartment 101 of Stadium Walk, said Thompson.

Residents surrounding the areas were immediately evacuated from their apartments because of the gunfire, said Thompson.

"They threw gas in the apartment and everything because there was nobody answering," said Thompson.

Many residents were unaware of what was happening when they were being asked to evacuate, said Richard Platt, a sophomore at

GSU and resident of Stadium Walk.

"I was just sitting in my apartment and they just turned the sirens on all of a sudden. I didn't even hear them pull up and they told us to come out of our apartments and to stand down there. They didn't really tell us what happened or what was going on," said Platt.

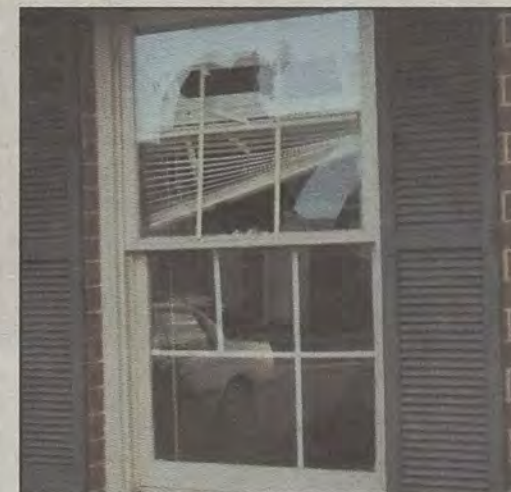
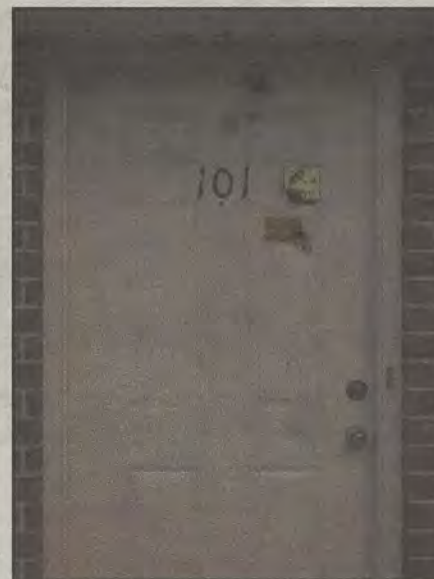
This incident happened very quickly and many of the residents did not know what to think said sophomore and resident, Adam Liu.

"I was here when it happened," said Liu. "They were trying to clear out all of the apartments next door, but I was still in mine and I was able to pull down my window. The first thing I see is the S.W.A.T. people come out with their shields and guns and stuff. It was just unbelievable what was happening."

Residents of Stadium Walk do not know why the raid occurred while the suspects were not home, said Liu.

"I remember (the residents) had left earlier during the day, I'm not really sure where," said Liu.

"I also remember they had a lot of dogs



Christian Washington/STAFF

Apartment 101 in Stadium Walk was raided and gassed by Statesboro Police on Thursday.

and I remember a police officer saying that it really smelled bad in there. The dogs would just be kept all day inside and a couple days before, a guy came with a truck and they took the dogs and moved them and that same day the police humane society came by looking for the dogs. It was oddly convenient, said

Liu.

Liu said the assumed reason for the raid was suspicious drug activity as well as the weapons.

A Stadium Walk representative refused to comment. The Statesboro police were unavailable for comment.

ADAM LEVINE
LEAD SINGER
MAROON 5

**I REMEMBER BEING
THE KID WITH ADHD.
TRUTH IS, I STILL HAVE IT.**

If you had ADHD as a kid, you may still have it. Find out more.



Take an ADHD quiz at
OwnYourADHD.com,
then talk to your doctor.

IT'S YOUR ADHD. OWN IT.



VYV-03119 09/11

Police Beat

Tuesday, Nov. 1

- Officers issued six traffic citations, nine traffic warnings, assisted five motorists and investigated two accidents.
- Two windows were damaged at a building at University Park.
- David Robert Gully, 32, was charged with DUI and driving in violation of conditions of limited permit.

Wednesday, Nov. 2

- Officers issued 10 traffic citations, two traffic warnings, assisted six motorists and responded to two injured persons.
- A drug complaint was reported at University Villas.
- An xbox was taken from Watson Hall.
- Khiry Jamaal Channer, 18, was charged with possession of marijuana.
- Deonte Demario Will, 21, was charged with possession of marijuana.

Thursday, Nov. 3

- Officers issued six traffic citations, one traffic warning and assisted one motorist.
- A Housing Facilities employee reported several terminated employees had not turned in their GSU property.
- A drug complaint was reported

at Eagle Village.

- Brandon Grady Waters, 22, was charged with theft by taking and criminal trespass.

Friday, Nov. 4

- Officers issued two traffic warnings, assisted nine motorists, responded to one alarm and investigated one accident.
- A wallet was taken from a vehicle near the College of Health And Human Science Building.
- A balance scale was taken from the Family and Consumer Science Building.
- A side mirror was broken on a vehicle at Kennedy Hall.
- Coleman Tyler Pusateri, 20, was charged with possession of marijuana.

Saturday, Nov. 5

- Officers issued two traffic warnings, assisted two motorists and responded to two alarms.
- Two separate drug complaints were reported at Eagle Village.
- A drug complaint was reported at Kennedy Hall.
- An alcohol violation was reported at Paulson Stadium.
- An alcohol violation was reported at Olympic Boulevard.
- A fight was reported at Eagle Village.
- A domestic dispute was

reported at Southern Pines.

- A gym bag was taken from the RAC.
- Thomas Noel, 18, Eagle Village, was charged with underage possession of alcohol.
- Kara Peterson Neuhaus, 18, Watson Hall, was charged with underage possession of alcohol and obstruction.
- David William Buie, 54, was charged with disorderly conduct.
- Don Robet Cox, 54, Mountain Laurel Lane, Blowing Rock, N.C., was charged with disorderly conduct.
- Carol Cox, 54, was charged with disorderly conduct.
- Guempster Guillaume Jr., 18, was charged with underage possession of alcohol.
- Brian Matthew Franks, 24, was charged with DUI and possession of marijuana.

Sunday, Nov. 6

- Officers issued two traffic citations, three traffic warnings, assisted one motorist and responded to one injured person.
- A bicycle was taken from the RAC.
- A vehicle was damaged at Eagle Village.
- Whylye Dee Williams IV was charged with criminal trespass.

Statement of Operations

The George-Anne is the official student newspaper of Georgia Southern University, owned and operated by GSU students using facilities provided by the university. The newspaper is the oldest continuously published newspaper in Bulloch County. The newspaper is a designated public forum for the Georgia Southern community. The newspaper is published twice weekly, on Tuesdays and Thursdays, during most of the academic year. Any questions regarding content should be directed to the student editor by phone at 912.478.5246 or at gaeditor@georgiasouthern.edu.

ADVERTISING: The newspaper accepts advertising. Inquiries may be made by calling 912.478.5418 or 912.478-0566. Fax any questions to 912.478.7113 or e-mail ads1@georgiasouthern.edu.

The George-Anne receives additional support, in part, from the Student Activities Budget Committee.

The deadline for reserving space and submitting advertising copy is noon, one week prior to the intended publication date. For more information, rate cards, sample publications, contact the advertising manager or student media director. The advertiser is responsible for any errors in advertisements and its liability for adjustments is limited to the amount of space the error occupied in the ad. Further, the newspaper is not responsible for any damages caused due to an ad's omission from a particular edition and its responsibility solely is to reschedule the ad in the next regular edition at the regular advertising rates.

STUDENTS BEWARE: The George-Anne screens all advertisements prior to publication. The newspaper strives to accept ads for legitimate products and services only. Students are urged to exercise caution when replying to ads—particularly those that require personal information. Students are also urged to report to the newspaper any suspicious offers which they might see in an ad.

PUBLICATION INFORMATION: The newspaper is printed by Signature Offset in Jacksonville, Fla.

NOTICE: Unauthorized removal of multiple copies from a distribution site constitutes theft under Georgia law, a misdemeanor offense punishable by a fine and/or jail time.

Editor-in-Chief Arielle Coambes
Views / Copy Editor Shauntel Hall
News Editor Jennifer Curington
Asst. News Editor Jessie Reese
Arts Editor Julia Welch
Asst. Arts Editor Quaniqua Epps
Sports Editor Matthew D'La Rotta
Asst. Sports Editor Jannah Bolds
Football Editor James Farmer

Business Manager Tiffany Larkin
Asst. Business Manager Holly Hillhouse
Marketing Manager Aria Gabol
Production Manager Mallory McLendon
Photo Editor Randy Hudgins
Design Editor Kelsey Paone
Web Editor Jonathan Law

Corrections

Contact the editor at gaeditor@georgiasouthern.edu for corrections and errors.

THE
NORTH
FACE



The Sir Shop
 Statesboro Mall
 912.764.6924



Our View

Students give back for holidays

Last week Georgia Southern University student organizations showed their school spirit and gave back to the community through participating in the event "Sculpt it for the Hungry."

For the event, students used canned goods, boxes of ramen noodles and other non-perishable food items to build a sculpture based on the homecoming theme, Mardi Gras.

The "Sculpt it" competition was one of many events that took place during homecoming week and also acted as a charity event, with proceeds going toward the Statesboro Food Bank, Safe Haven and Warren Threads.

Along with "Sculpt it," the "Holiday Helper Tree" began Wednesday, hosted by the Student Leadership and Civic Engagement department in collaboration with the Office of Sociology and Anthropology.

The "Holiday Helper Tree" works with local businesses like Safe Haven, Statesboro Head Start and DeFax to send a wish list to people in need.

Once these lists are received, organizations place the name of the individual or family with the wish list on cards that are then attached to the tree.

Students and participants then pull a tag from the tree and provide a gift for the name listed.

These two events are just small ways that GSU students are observing the upcoming holiday season.

GSU maintains a strong bond with its surrounding community and acts like those listed above are just small tokens of appreciation from GSU to the community.

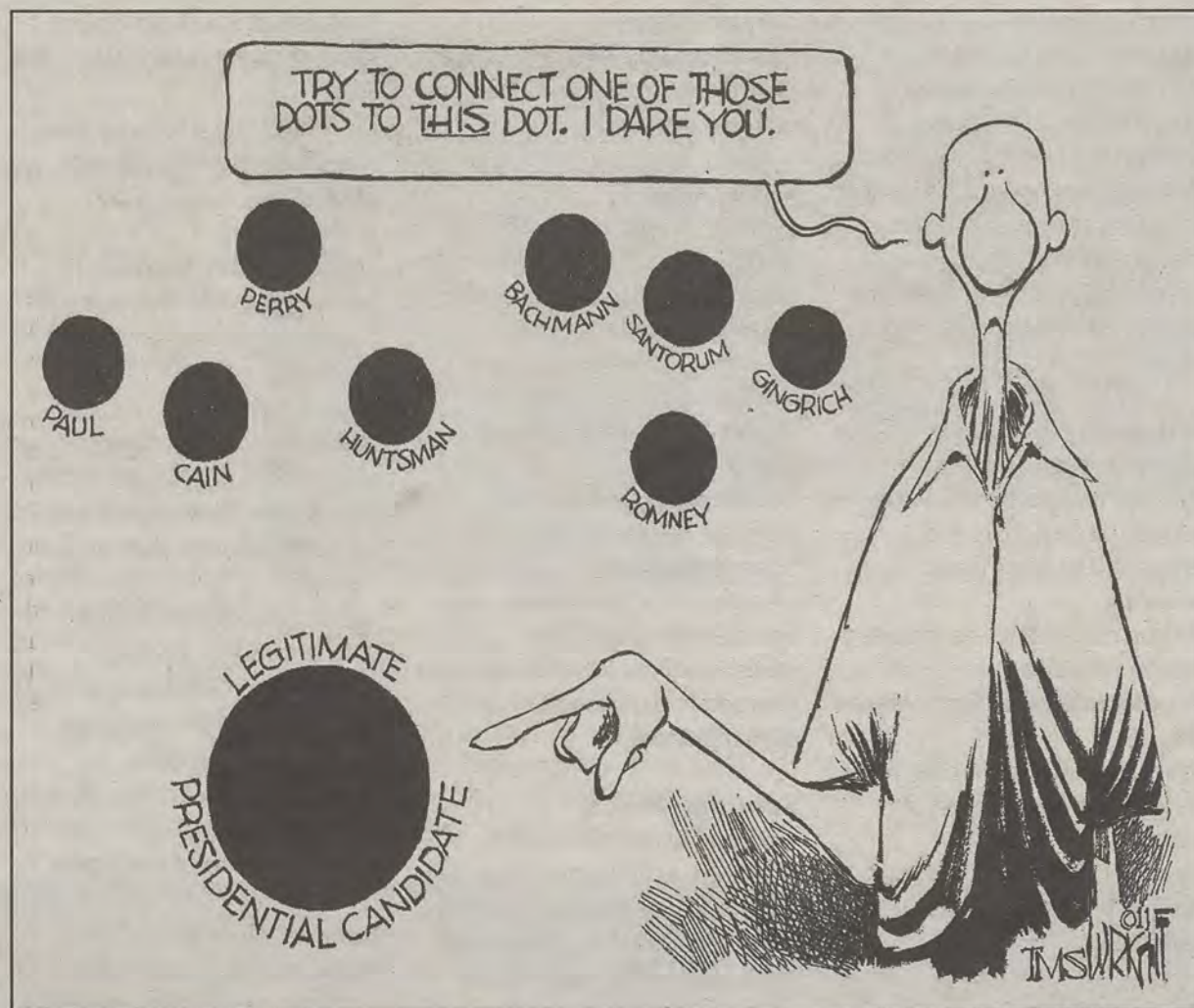
Students and organizations alike should remember the importance of giving as we quickly approach the holiday season.

Participation in these events are easy and don't require much of hassle to be involved in. Therefore, students should challenge themselves in the upcoming weeks to step up and give back to those who may not be as fortunate as themselves.

In the spirit of the season, students and organizations should band together to participate or create their own methods to give back in some way.

The George-Anne welcomes letters to the editor and appropriate guest columns. All copy submitted should be 350 words or fewer, typed, and sent via e-mail in Microsoft Word format to gaeditor@georgiasouthern.edu. All submissions must be signed and include phone number for verification. GSU students should include their academic major, year and hometown. The editors reserve the right to reject any submission and edit submissions for length.

Opinions expressed herein are those of the Board of Opinions or columnists themselves and DO NOT necessarily reflect those of the faculty, staff or administration of GSU, the Student Media Advisory Board, Student Media or the University System of Georgia.



Letters to the Editor

Army manual ineffective example of leadership

Dear Editor,

In relation to the use of the Army Leadership Field Manual (however excellent in that context) for a discussion of leadership in an academic community, I have a few cogent suggestions. First, I find it terribly unusual for such a work to be the basis of discussion of leadership in an academic context.

I rather doubt that the Army goes out of its own context for

books to lead discussions on leadership. I taught such a course on leadership for many years at GSU. Let me humbly say that the texts used in that course were far superior to the Army Manual for academic discussion.

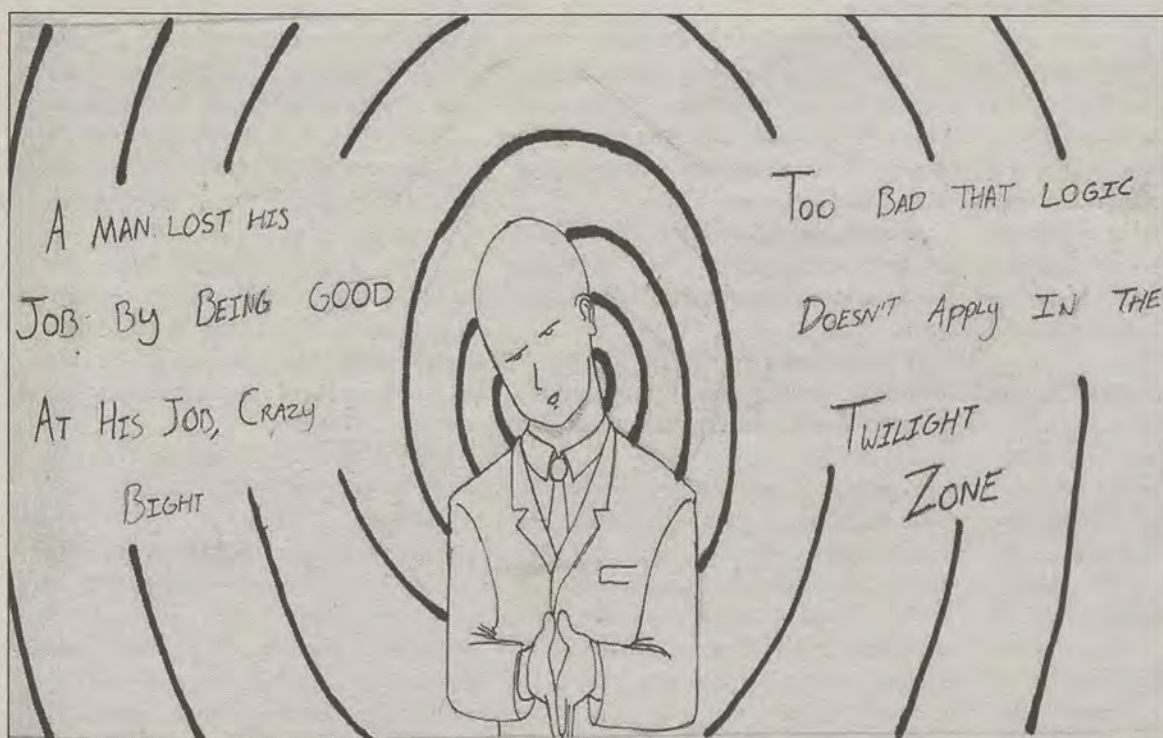
Among the dozens of books and articles within academe for such discussion, Stephen Covey's "Seven Habits for Highly Effective People" and Mitch Albom's "Tuesdays With Morrie" are among the best and far superior to any Army publication

for discussions of leadership on our campus.

Also, of important academic value are the sections of the AAUP "Redbook" having to do with collegiality, governance and leadership for such discussions. I still find it odd not to be using the best materials out of our own community of learning for any helpful discussion of leadership.

Dr. George Shriver, Professor Emeritus, GSU

Submit your letters to the editor at gadaily@georgiasouthern.edu



Marcus Barkley/STAFF

Jack Daniels tax stirs up conflict in small town

As we as a country become more and more "entitled" to the profits of the wealthy, people in small towns feel that the industry there should also give a bigger slice of the pie.

Charles Rodgers of Lynchburg, Tennessee feels that Jack Daniels, the whiskey company, there for over a century and has become the best selling spirit in the world, has proposed a \$10 per barrel tax on the fine whiskey that Jack Daniels makes every year.

"They created the image of this little old hamlet down here being the place where the fantastic whiskey is being made," Rodgers said. He feels that much like the film industry must pay a "usage" fee for a location, Jack Daniels must do the same to give back to the community.

This is an absolutely ludicrous idea. First of all, 60 percent of the price of a bottle of Jack Daniels whiskey already goes to taxes. By tacking on this new tax, it would add another 3.4 cents per bottle. This would raise over \$4 million per year, which is over a million dollars over the counties budget already.

Now while that sounds good for the county, it would not be good for it's cash cow. "All this tax would do is increase the costs of doing business and when costs go up, employees have to go," said General Manager Tommy Beam. "This company is the largest employer in Moore County and counts for over a third of the tax base. If we can't compete on a world scale, we might go out of business."

That's right, the worlds most successful liquor company which sells over 100 million bottles of amber gold every year could be put out of business by over taxation.

You would think that Mr. Rodgers would be happy with Jack Daniels and all the tourism that it brings into Lynchburg, but you



FRITZ CHAPIN

would be wrong. Even though it brings in millions of dollars in tourism money to local business, he can't stand how crowded the town gets.

"We get 25,000 to 30,000 people here on certain weekends to go to an event at the distillery and there's no place to park and traffic is backed up the road for miles," says Rodgers. But what if the distillery moved? Rodgers, who owns a job-recruiting agency, would have a lot of jobs to fill in his town.

Instead of people feeling entitled to leech off the success of others, why not strive for your own success? Why can't we as a country stop relying on the government for a hand out, when really it should be giving us a hand up on the international competition?

We used to be a country of great thinkers and doers. We used to work hard to figure out ways to make our fortunes. From innovative ideas that changed the world to the workforce that built one of the greatest infrastructures that man's ever seen, we did it because we were promised the opportunity to aspire to better things.

That opportunity was never supposed to be easy, but it's still there for people to grasp towards. So who are we going to be? Are we going to be the person that looks at a successful man and asks, "What am I going to do to become like that?" or are we going to ask, "How can I take from what he earned?"

Chapin is a political science major from Roswell, Ga.

Votes could change 'dry county'

It's finally time for everybody to vote on the alcohol referendum today. Bulloch County and the City of Statesboro have put the Sunday alcohol sales referendum on the ballot and now it's up to us to go vote for Sunday sales.

This means no more stocking up your Sunday beer on Saturday. No longer will you have to drive to Savannah to watch the big NFL game at a sports bar.

If this referendum is passed, you will not only be able to purchase your beer and wine on Sunday, but you may also be able to drink in restaurants after 1 p.m.

This would be a big step for the students, who I feel have to be a driving factor in getting this passed, in a county that hasn't seemed "college friendly".

That of course is a thinly veiled reference to Bulloch County being a dry county - liquor can only be purchased through a licensed restaurant.



ROB ROBERTS

Now before you just click yes for alcohol and submit your vote without looking at everything, know that there are two different alcohol referendums on the ballot.

Package sales would give you the opportunity to buy yourself a six-pack at the Fast and Easy on the way to your buddy's house for the game.

The liquor by the drink would let you go down to Buffalo's for beer and wings on Sunday.

Vote yes for both of these referendums. This will be a convenience for everybody, and

while I'm not insinuating that liquor sales are the next thing to vote on, a greater student voice can go a long way towards influencing those in charge.

If the bill passes that does not mean that we can go buy a six-pack this Sunday to celebrate, though.

There would still need to be new ordinances drafted, allowing Sunday sales at restaurants, grocery stores, convenience stores, so on and so forth.

The timetable that was laid out for the earliest possibility of buying a drink on Sunday was early Dec.

Keep in mind; none of this will be possible without YOUR vote. We need each and every one of you to vote yes on SB 10. Voting is the only TRUE way to make your voice heard. You have a voice, so why not be heard?

Roberts is a senior public relations major from Warner Robins, Ga.

VOTING, from page 1

Sundays, said Britt.

"I'm worried a little bit that the excitement for it has faded," said Britt.

Voter turn out is expected to be low because of candidates running unopposed and low advertisement for pro-alcohol sales, said Britt.

If Sunday alcohol sales were to be legalized, businesses in the community will benefit positively such as Your Pie and Locos, said Daniel Long owner of Your Pie.

"I think it will create a lot of gross, a lot more spending in the community," said Long.

"I think it will generate more people getting out to come in and watch NFL games. Just right down the road, you look at the Locos commercials in Savannah every Sunday and they're packed out. Versus over here, we're dark and I think it will create a lot more traffic," said Long.

Free transportation will be provided for students in need, said member of College Republicans Aron Randall.

"Students needing a ride to the polls to vote on Tuesday, Nov. 8 can get a free ride from Dingus starting at 8 a.m. and running until 5 p.m.," said Randall.

ALERT, from page 1

then we are not going to send it out. We figure that out through our investigations when we get on the scene and if we determine that there was a specific target, then we are not going to wake everybody up at three o'clock in the morning because that was the one person they were coming after, not just the population in general," said McCullough.

Campus Police gather their information given by the different Statesboro departments such as the fire department and police department, said McCullough.

"We do all of our stuff through the university marketing department. We receive the information here and we evaluate the type of threat it is, if it is an immediate threat, if it is a threat to the general population and if we deem that it is a message that needs to go out immediately and if we want students who are on campus to know, then we notify the university marketing department and they assist in sending that out," said McCullough.

The recording on each eagle alert is a

custom message, said McCullough.

"We do not just go in a push a button, because obviously we have to give out different information every time due to the location, the time, the dates, those sorts of things," said McCullough.

Students should be notified of incidents on and near campus, said Jamerson Wilson, a sophomore mechanical engineer major.

"I think that's risky," said Wilson. "I feel like we should know everything that's going on around our campus and all that kind of stuff."

Even though some of the crimes are being made into Eagle Alerts, students are still not getting all of the facts that they may need to be well informed.

The Eagle Alert regarding the aggravated assault incident on Sunday on Malecki Drive involved an Ogeechee Tech student being shot in the hand near the tennis courts of Willow Bend. Two black males approached the victim and only one was armed. The victim had to receive medical attention at the emergency room.

"It's pretty dangerous not to know stuff


that's going on every night because I could be walking home and get robbed by the guy who just robbed somebody," said Wilson.

Eagle Alerts should be sent out based on how far a student lives from GSU campus, said Steve Hughes, a senior international trade major.

"What I do want to happen is that they would say, 'these are the students that live on campus' vs. 'off campus or more than 10 miles away from school' and then send out the alerts based on distance from the school," said Hughes.

Eagle Alerts are still sent out even if it is late for the protection of students, said McCullough.

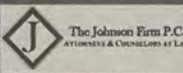
"Students are out all hours of the night and unfortunately bad things happen at night and we also have a large amount of students that are out at night," said McCullough. "That is why we end up sending out a lot of late night eagle alert messages because we know the students are still out walking around either from the library, study rooms or from some of the local establishments going back to their residence halls," said McCullough.








Shakespeare on Trial

7:30PM Thursday, November 10, 2011

Friends of the Arts: \$16 Box / \$13 Adult / \$10 Youth
Non-Members: \$18 Box / \$15 Adult / \$10 Youth

SPONSORED BY  The Johnson Firm P.C.
ATTORNEYS & COUNSELLORS AT LAW

 TICKETS 912-212-2787

Emma Kelly THEATER
33 East Main Street, Downtown Statesboro

They're coming...

More delicious reasons to come back to Starbucks in the afternoon.





**FREE COFFEE WITH
GEORGE-ANNE & JOE**

Every Thursday morning at
the Williams Center Gazebo

Biology building to meet green standards

Construction continues on Forest Drive; completion date scheduled for June 2013

"The green features of the building include a lot of natural lighting and light cycle timers. The air conditioning systems are going to be very efficient. We're trying to save power by putting in only a limited number of fume hoods and outlets," said Biology Department Chair Steve Vives.

"One of the biggest green factors is going to be a decrease in energy and water consumption. There will be better treatment of the quantity and quality of the storm water," said Sidney Ward, principal at the S/L/A/M Collaborative, the construction company engineering the building.

"The building is going to be surrounded by a natural environment, keeping the indigenous plants. There is not going to be much landscaping added. The natural environment and decrease in irrigation will not only save work, it will save water," said Ward.

"There is going to be some green landscaping around the building that will handle the runoff water in an environmentally correct way," said Vives.

By COURTNEY
TIELKING



"We will also have a digital display of energy use that students will have access to in order to monitor the efficiency," said Vives.

"In the building there will be an Energy Dashboard. Students will be able to look at the data and see if these things that we are going to implement are working," said Ward.

"The biology building will hold many things that are made of recycled materials, like some of the tiles," said Ward.

"Some of the furniture will be made of recycled materials as well," said Bonnie McMakin, a project manager at Georgia Southern.

"There will be less car parking available, but a large amount of places to put bikes. We want to encourage bike riding and walking," said Ward.

Photo courtesy
of S/L/A/M
Collaborative

TOKYO

JAPANESE RESTAURANT
Sushi, Steak, Seafood

912-871-8888

912-871-8666

100 Hampton Ave. #1A

Atlanta, GA 30458

www.tokyoofoes.com

Every Tuesday 4 - Close
20% off Sushi Rolls, Eat in Only!

Located between the Hospital and McDonalds

TOKYO'S LUNCH SPECIAL BOX

\$7.95 FROM 11AM - 3PM

Pick any two for your lunch, soup, salad, and rice included

ROLLS

- | | |
|-----------------|--------------------------|
| 1) California | 10) Super Snow Crab |
| 2) Tuna | 11) Spicy Tuna |
| 3) Samon | 12) Spicy Shrimp Tempura |
| 4) Eel | 13) Spicy Samon |
| 5) Cucumber | 14) Spicy White Tuna |
| 6) Avocado | 15) Spicy White Fish |
| 7) Alaska | 16) Samon Skin |
| 8) Philadelphia | 17) Spicy Crunch Shrimp |
| 9) Playboy | 18) Spicy Crunch Crab |

KITCHEN

- | | |
|---------------------|----------------------|
| 1) Chicken Teriyaki | 5) Vegetable Tempura |
| 2) Beef Teriyaki | 6) Chicken Tempura |
| 3) Shrimp Teriyaki | 7) Chicken Katsu |
| 4) Shrimp Tempura | 8) Pork Katsu |

SUSHI OR SASHIMI (3pcs)

- | | |
|-----------|---------------|
| 1) Tuna | 6) Octopus |
| 2) Salmon | 7) Yellowtail |
| 3) Shrimp | 8) White Tuna |
| 4) Crab | 9) Red Clam |
| 5) Egg | 10) Saba |

FREE
Edamame
(Steamed Soy Bean)

with the purchase
of an entree

Parade route leads floats and fans to Sweetheart Circle

By JAZMIN DAVIS

George-Anne contributor

Georgia Southern University showed its homecoming pride when the Traditions Council hosted the homecoming parade and celebration in Sweetheart Circle on Friday evening.

Students and the community came together to celebrate homecoming and get geared up for the game against The Citadel.

The event started with a grand announcement by the "Pope of Mardi Gras" who dedicated the parade to President Brooks Keel who couldn't make it due to his injury.

With people cheering and Mardi Gras beads being tossed around, GSU's ROTC program was the first to march in.

The football team also brought a loud roar from the crowd as they rode through on a fire truck accompanied by the school mascot, Gus.

Sororities, fraternities, organizations and university departments demonstrated Mardi Gras in a decorative way as they rode by on their floats and "krazy cars."

"It was really great. A lot of great

floats and a lot of school spirit," said Rocky Roark, a junior graphic design major.

Before the festivities began, people were waiting along Forest Drive and throughout Sweetheart Circle to engage in the excitement.

"Our job is to pump people up for the game and raise school spirit," said Olivia Barker, activities coordinator for the Spirit and Traditions Council.

Such a turn out and so many smiling faces added to the positive homecoming atmosphere.

"I think it's great to see that so many people wanted to participate in it," said Barker.

The crowd was able to get involved in the event with all of the activities the council prepared. People could take part in activities such as decorate-your-own-mask, decorate-your-own-cookie, make your own street sign or make a spin-art frisbee.

They also had free barbeque for everyone to enjoy. All of the activities put student fees to great use.

"It surpassed my expectations. Look at all this: free food, dogs, people," said junior 2D studio and apparel design major Kenny Olowoyo.



Christian Washington/ STAFF

Long lines of floats and decorated cars make their way to Sweetheart Circle for the annual homecoming parade.

After enjoying the activities, people were asked to gather in front of the stage to watch groups such as Phi Mu and Euphoria Dance Group perform.

Once the performers got

everyone's blood pumping, it was time for the announcement of Duke and Duchess and the homecoming court finalists.

"I've only been to one game so far, but after being out here, I'm

definitely going to be at the game tomorrow," said Jaye Gardner, a freshman business marketing major.

Many organizations participated in the annual event.

Students masquerade for homecoming's casino night

By SAMARIA VINCENT

George-Anne staff

On Thursday, Nov. 3 Traditions Council and Resident Hall Association hosted Masquerade Night for homecoming week.

Masquerade Night was open to all Georgia Southern University students with Eagle ID from 7 to 10 p.m.

"Masquerade Night provides students with the opportunity to come out and have a good time. We have music, food and games. It is a

great alternative for the students compared to the other things that go on Thursdays," said Olivia Barker, coordinator of spirit and traditions.

This year students were able to participate in casino games such as black jack, roulette and poker, along with activities specialized for homecoming like mask decorating, "Flash Your GSU Knowledge," a cake walk and green screen picture taking. Students from both Traditions Council and RHA ran the activities.

"We have been doing casino

nights for the past few years. Last year, we had a western casino night to fit the theme of 'Wild Wild West in the Eagles Nest.' Each year we try to have a Casino night fit the theme of that homecoming. Our goals it to make it better than before," said Barker.

Eagle Entertainment provided music. Georgia Southern Catering, Moe's Southwest Grill and Fatgirl Cupcakery sponsored a chocolate fountain and other refreshments.

"I just want to say how proud I am of my students. They worked so hard

to make this event happen. They made up the idea for the chocolate fountain and it is a huge success. We are student run, student lead," said Barker.

Throughout the night, prizes sponsored by the University Store and tickets to the Alabama game were raffled off. At the end of the night, during the balloon drop the free trips New York and Alabama were given out.

Junior Jordan Klebe, an accounting major said, "I am having a great time. Casino night provides

a fun, no risk environment to play games."

"I like to see all the alumni come back. Homecoming creates a community where we are all equal," said Klebe.

Emily Stallings, homecoming coordinator and junior international studies major said, "It is a great way to meet other Georgia Southern students. For that moment you are able to come together as students and have a fun time."

Masquerade Night went with this year's Mardi Gras theme.

Idol contestants perform for judges and students



Jessica Stanfield/ STAFF

Winner Kerry Wright, a senior marketing major throws up his arms after being announced at the conclusion of the event.

By **GIANNA CARME**

George-Anne contributor

Supporters packed the Russell Union Ballroom as 14 Georgia Southern University students showed off their singing talents this past Wednesday in hopes of earning the title of 2011 GSU Idol.

The show featured a wide variety of performance and song styles, including country, blues and pop.

Contestants greeted the audience with an opening number by performing "I'm Feeling Good" by Michael Buble.

Participants then each performed a two-minute song followed by a critique from judges in the first round.

The competition then narrowed down to five contestants after an audience vote, and then down again to the final three.

Senior Kerry Wright, marketing major was named 2011 GSU Idol.

"It [winning the competition] feels awesome," said Wright. "I learned I shouldn't underestimate myself. I just wanted to make it past the first round. I surprised myself with how confident I felt."

Wright has been singing since childhood in church choirs.

He enjoyed his overall experience in the competition and with his fellow contestants.

"I felt that all of the contestants were very good and it was a close

competition," said Wright. "I met a lot of very talented people and for that I am thankful."

Along with earning the GSU Idol title, Wright had the opportunity to sing at Friday's homecoming celebration and will sing at other various events on campus.

Jasmine Pollard, junior communication arts major came in second at this year's competition.

Pollard also came in second place in 2010's GSU Idol competition.

"I had fun this year," said Pollard. "I was able to work on what judges said from last year about stage performance and I had more support this year."

"I encourage others to try out," said Pollard. "It's a great experience and a great way to get your name out there."

Sophomore Erin Iler, early childhood education major came in third place in Idol and won the award for people's choice.

"The show was better than I had imagined it to be," said Iler. "I have never performed in front of that many people before. It was so cool to hear people I didn't even know cheer for me."

Iler plans to try out again next year to see if she can do better.

All proceeds from the Student Government Association hosted event went to Statesboro's United Way Campaign.

Orient Express

WE DELIVER!!!

15 University Plaza
(912) 681-9777 or (912) 681-9888

(\$10 minimum)

www.orientexpressofgsu.com

10% off DINNER ONLY*

if you bring in this clipout
*delivery not included

Homecoming Week 2011



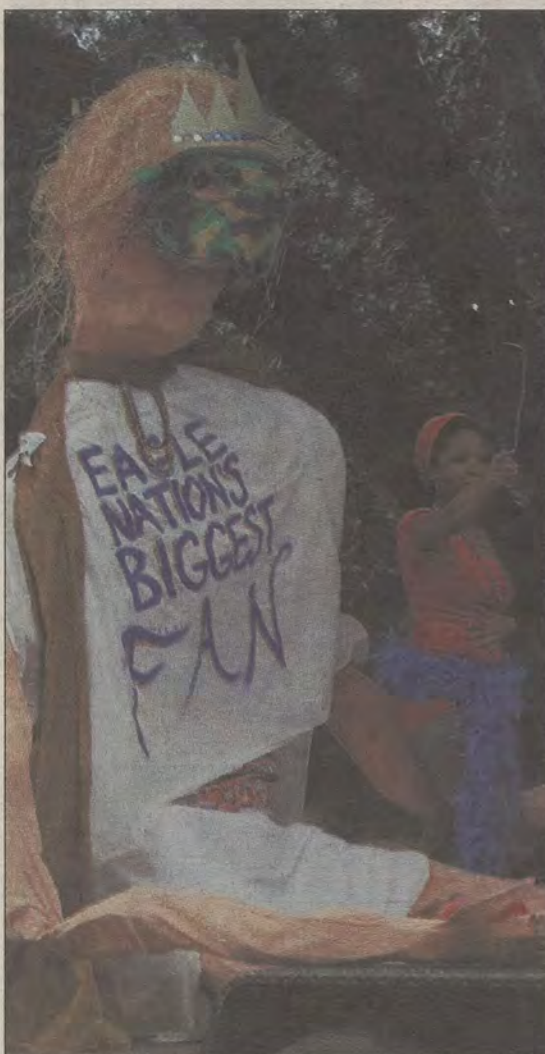
Christian Washington/STAFF

Top Left: Soul'd Out competes in the dance portion of the Doo-Dah step show. **Top Right:** Sisters step together on the Mardi-Gras themed stage.



Jessica Stanfield/STAFF

Bottom Left: Judges narrow down contestants in the first two rounds, but audience members vote for the winner. **Bottom Center:** Singers perform a variety of genres at GSU Idol, including solemn songs as well as more energetic ones. **Bottom Right:** Some singers belted out more soulful tunes.



Lindsay Hartmann/STAFF

Top Left: Kayla Wheatley rides in the parade on a Camaro SS followed by the GSU Cheerleaders. **Top Right:** Alpha Delta Pi show their spirit with a mardi-gras themed banner featuring Gus walking the parade route to Sweetheart Circle. **Bottom Left:** Eagle nation's biggest fan rides in on Theatre South's float and takes second place for best float. **Bottom Center:** The Southern Pride marching band leads the floats. **Bottom Right:** Eagle Entertainment dresses up in their best mardi-gras apparel

'Big Love' brings comedy and relationships to the Black Box

By **DUSTIN TILLIGKEIT**

George-Anne contributor

The play "Big Love," a unique study on gender roles, relationships and love opened at the Black Box Theater last Thursday, Nov. 3.

"Big Love" tells the story of fifty brides, who were promised fifty cousins by their father, flee Greece and seek refuge in a villa on the coast of Italy.

The play follows three of the fifty brides, Lydia, a level headed independent woman, Thyona, an impassioned woman who refuses to be controlled, and Olympia, a ditty blonde perfectly happy with a man's affection and protection.

The play really begins when the three grooms, left at the alter by the women promised to them, give chase and arrive at the villa.

Nikos is a sensitive groom in love with Lydia. Oed, who finds women difficult to understand chases after Olympia, and Constantine, a "man's man" according to the actor playing him, senior theater major Eric Carter, arrive in Italy seeking the women and determined to return them and all of their sisters to Greece for the marriages.

"Big Love" was written by Charles Mee. Mee drew the inspiration for his play from Aeschylus' Danaides, one of the oldest surviving Greek tragedies.

Mee however writes "Big Love" as a comedy, albeit a dark one. Mee also wrote the play in such a way that a director could manipulate the play to better suit the audience or the venue.

The director, Lisa Abbott, associate professor of theater said, "We've taken a number of liberties with the screenplay."

She added pop music from Cher and Lady Gaga among others to the play that adds both a level of familiarity and humor to the play that make it more interesting and entertaining to the audience.

Abbott said, "The play is a modern take on what it means to be in a relationship, married and in love."

Throughout the play, the grooms and brides talk with one another about women and men respectively and express their frustrations in both the complexities of love and relationships and the problems with gender roles.

These heavy subjects are balanced with humor, romance and action.

The reaction of the opening night audience was a favorable one. Jamcie Bowman, a freshman mechanical engineering major said, "I love the football scene, all the yelling and screaming was fun. I'm going to see it again."

The message of the play was also well received. Sophomore writing and linguistics major Axel Hawthorne said, "There were a lot of varied points. I enjoyed the differing opinions and how they contrast with the others."

"Big Love" is running in rotation with Shakespeare's "Taming of the Shrew." The reason for this is the Theater Conference earlier in the year cut into the time that the theater

department would normally use to rehearse and perform a play. This rotation is common among theater companies, but it has never been attempted by the Georgia Southern University Department of Theater.

After opening, the play's female lead, Julianne Norkus, a sophomore theater major said, "The performance was good." "Big Love" is Norkus's first time acting.

"Big Love" isn't done yet with four performances to come. Also, those who purchased tickets to the Sunday, Nov. 6 performance get to attend a talk-back with the cast and crew of "Big Love" and they will receive tickets to the Nov. 13 performance of "Taming of the Shrew" also with a cast and crew talk-back.

"This is a great opportunity for students with questions for the cast," said Abbott.

After nearly seven weeks of rehearsals, the cast was "so excited for an audience," said Abbott.

The audience they received also really reacted to the play, laughing at jokes and remaining silent with the more serious things.

This is something that the cast really looks for according to Norkus, who said, "We love reactions."

With four performances left, there's still time to go down to the Center for Art and Theater and check out "Big Love" at the Black Box Theater.

Tickets are \$5 for students, \$10 for faculty and \$15 for general admission.

The next performance is tomorrow night at 7:30.



Lindsay Hartmann/ STAFF

Top: Bright lights illuminate Austin Bolay, a senior theater major, as he sings in the beginning of the play.

Right: Keonnie Bettes, a sophomore theater major, is one of the three female characters that run to Italy to escape marriage.



UT&ABOUT

Express Tune & Lube

Tire, Alignment
& Exhaust Center

612 S. Zetterow Avenue

489-4444

www.expresstuneandlube.com

Monday - Friday 7:30am - 6:30pm

Located a half block north of Wendy's.

OIL CHANGE SPECIAL

\$25⁹⁵

Includes up to
5 qts of Castrol
5W20, 5W30, 10W30.

price applies to most vehicles. Expires 12/31/11

www.expresstuneandlube.com

Motown makes a comeback in tribute concert at PAC

By ALEX LASALLE

George-Anne contributor

Nostalgia was the flavor of the evening Friday at the Performing Arts Center at Georgia Southern University, where "Forever Motown" entertained an audience with a non-stop tribute to the era and style of music known as Motown.

The performance included medleys from famed artists such as The Temptations, Stevie Wonder, Gladys Knight and The Supremes, complete with a full backing band.

To create the full Motown experience, dress and choreography were taken straight from the 1960s, right down to the brightly colored, sparkling suits.

Founded in Detroit, Mich. by Berry Gordy, Jr., Motown Records has remained an icon of the Baby Boomer generation.

Riding the next two decades on a wave of popular artists and hits, the so-called "Motown Sound" revolutionized popular music with its sound, as well as the emphasis on entertaining showmanship.

Opening with the 1964 hit "Dancing in the Street", the performance moved into a medley



Christian Washington/ STAFF

Gladys Knight and the Pips get groovy on the PAC stage to commemorate Motown, its history, and the importance of it to modern music.

of hits by vocal group The Four Tops. They then worked their way through all the major Motown artists such as Smokey Robinson and the Miracles, The Supremes, Gladys Knight, Marvin Gaye and others.

With strong performances from entertainment veterans, the flashy clothing, and the tightly choreographed dancing all

helped to transform the PAC into a virtual time machine.

They closed the 90-minute show with hits from music legends The Temptations, including "My Girl", before ending on a literal high note with "Ain't No Mountain High Enough."

"Forever Motown", for our generation, is

a trip down memory lane. Revolutionary. It had that beat, that message," said PAC director Carol Thompson.

Men in sparkling pink suits would look out of place almost anywhere else, but not at the PAC on Friday.

More information on the PAC's 2011-2012 performance series can be found online.



International Festival 2011

Saturday, November 12, 2011

10 am - 4 pm

Mill Creek Regional Park

www.georgiasouthern.edu/intfest

FREE ADMISSION!

World Stage Performers

10:00-10:30	GSU Latino Greeks
10:30-11:30	Hoku-ia Polynesian Dancers
11:30-12:30	West African Drum & Dance Experience
12:30-12:40	Welcoming Remarks - Mayor Joe Brannen
12:40-1:00	Global Village Awards Presentation
1:00-1:30	Beyond's Global Footstep
1:30-2:30	Latin Heritage Dance Company
2:30-3:30	Conjunto Folklorico Orgullo Panameño
3:00-4:00	Miguel Paul & Itopia the Band
4:00	Festival Ends

International Festival Sponsors

Pottery Club of Downtown Statesboro • Walmart • Kiwanis Club of Statesboro • BB&T • Office of the Vice President for Student Affairs & Enrollment Management (GSU) • Dr. Nancy W. Shumaker • Office of the President & Vice President for Academic Affairs (GSU) • East Georgia Regional Medical Center • Foreign Language Department (GSU) • College of Liberal Arts & Social Sciences (GSU) • The Clubhouse/Hackers • Beyond Management Group, Inc. • Honors Program (GSU) • Statesboro Convention & Visitors Bureau • Sea Island Bank • Citizens Bank of Bulloch County • Franklin Chevrolet • Eagle Entertainment • Springfield Suites by Marriott



TROY MARSH
THE MARSH LAW FIRM

WHAT: **FREE** LEGAL HELP

WHERE: ROOM 2073 IN THE RUSSELL UNION

WHEN: EVERY TUESDAY 3:00-5:00 PM

TO SCHEDULE AN APPOINTMENT, CALL (912) 764-7388

SPONSORED BY



STUDENT GOVERNMENT ASSOCIATION
YOUR STUDENT ACTIVITY FEES AT WORK.

CLASSIFIEDS

This page brought to you by Career Services
Explore • Experience • Excel

14 Tuesday, November 8, 2011

The George-Anne

Subleases

Subleasing 3 BR/2BT house on Parker Avenue in downtown Brooklet. Extremely large media room! Located on two city lots. Contact Joyce at (912) 842-9479.

2 Bedroom 2 Bathroom apartment in Hawthorne 2. Very close to campus. \$350/month. Sublease through July. Contact Shannon at 678-468-9407

SPRING 2012! 1 BR/1BT available in 4 BR/4 BT at Campus Club for January (or earlier if necessary). Roommates are clean and tidy. Bus stop next to stadium. Utilities included. Rent is \$419/month; CHEAPER RATE CAN BE ARRANGED. Email Skyler Henry at sh02071@georgiasouthern.edu!

Subleases, cont.

Female to sub-lease Spring Sem. 5 BR, \$280 a month. Last month's rent is paid. Less than a mile from campus off of Gentilly Rd. Call, text or email Kristina: (678)-770-6251 kf01606@georgiasouthern.edu

Spring 2012 1 BR/1BT in a 2 BR/2.5 BT townhouse at The Avenue. Furnished and utilities included. \$495/month, but I will pay \$30 for each month. Or I could put \$210 towards the first month's rent. Contact Cherelle at chollan4@georgiasouthern.edu

Subleasing master bedroom in Planter's Row for \$365/month; utilities not included, pet friendly. For more information contact Anna-Marie at 01770@georgiasouthern.edu or call (770) 546-6560

Subleases, cont.

Subleasing my room for Spring 2012 in a fully furnished 4 BR/4 BT 3-story town home. Walking distance from the stadium and bus stop. Contact Alex at (770) 712-5377 or ao00837@georgiasouthern.edu

Subleasing 626 B at the Exchange. Female Roommate needed. \$519.00 per month. All utilities included, free tanning, free Wi-Fi, 24 hr gym included. Available now. Contact (706) 523-6001

All inclusive, two story, fully furnished, 4 BR townhouse for \$330/month! Includes trash, utilities, cable, wi-fi, pet park, 24/7 gym, recreation courts, computer lab, new appliances and washer/dryer! Contact (229) 326-4291.

For Sale

FOR SALE - 17 inch custom Ford Mustang rims and 17 inch custom Chevy Impala rims. Contact Ron: (912) 486-6611

Size 14 David's Bridal Cocktail Dress. Strapless, hot pink with gold sequins. Worn once, good condition with a few snags. \$60/OBO. Contact Holly at Hh01428@georgiasouthern.edu

Firewood for Sale. Delivery available! Call 912-690-0872 or 912-690-4956.

Scooter for sale! 2005 Honda Ruckus. Black, 49cc, 85+mpg. Fantastic condition; original (faculty) owner, garage kept. No special license or insurance required. \$1,500 OBO. Contact (912) 678-6052

For Sale, cont.

For sale: 2009 BMW 328i, hard-top convertible in great condition. Black with tan interior. Call 912-293-1909.

Help Wanted

MODELS of all weights/sizes/ages needed for figure drawing class on T&R, 2-4:30 PM. Fall and spring openings. Must be 21 and able to sit still for long periods of time. Call 912-478-2793 or email jburke@georgiasouthern.edu

Misc.


Will proof papers (grammar, spelling, punctuation, sentence structure). Quality work, reasonable prices. Will also type short projects. Must have ample lead time to schedule. Email auntre01@gmail.com

To place a classified ad please call our advertising office at (912) 478-5418 or email our classified manager at gaclass@georgiasouthern.edu. It's free for students, faculty and staff.

HOT JOBS *Cool Internships*

Job Title	Company	Deadline to Apply
Multimedia Journalist	WRDW TV News 12	Feb. 29, 2012
Candler Country Public Health Nurse	Southeast Health District	Feb. 29, 2012
Online Media Intern (copy)	Colonial Properties Trust	Nov. 12, 2011
Advertising Account Executive	Northland Communications	Nov. 30, 2011
Software Engineer	Vensi Inc	Dec. 11, 2011
Hospitality Team Intern	Georgia Aquarium	Nov. 15, 2011
Entry Level Sales/Recruiter	TEKsystems	Dec. 26, 2011
Electrical Engineer-Entry Level	Jones Edmunds & Associates	Nov. 23, 2011
Process Engineer Mgr. (Group Manager)	Anheuser-Busch InBev	Nov. 18, 2011
Assistant Financial Examiner	GA Dept. of Banking & Finance	Nov. 19, 2011
Sharepoint Developer	BKY LLC	Nov. 12, 2011
Store Management Internship	Kohl's Department Stores	Dec. 31, 2011
Intercompany Specialist (Corp)	UPS, United Parcel Service	Nov. 20, 2011
Technical Recruiter	Synergis	Dec. 2, 2011
Logistics Coordinator	Miller Transporters Inc.	Nov. 12, 2011
Finance Intern	Coweta County	Nov. 19, 2011
GIS Intern	Paulding County	Nov. 19, 2011
Summer Intern	Pace Academy Summer Prog.	Feb. 29, 2012

To view the detailed job descriptions application instructions or additional postings, log into the Eagle Career Net/NACELink system found at www.georgiasouthern.edu/career.



Graduate School Fair

Wednesday, November 9, 2011
9:00 am to 1:00 pm @ Russell Union Ballroom

MBA Programs * Law Schools * Medical Schools
Veterinary Schools * Professional Programs

Georgia Southern University Graduate Programs

Questions? Contact Career Services at:
1047 Williams Center * www.georgiasouthern.edu/career * 912.478.5197

PUZZLES/COMICS

www.thegeorgeanne.com

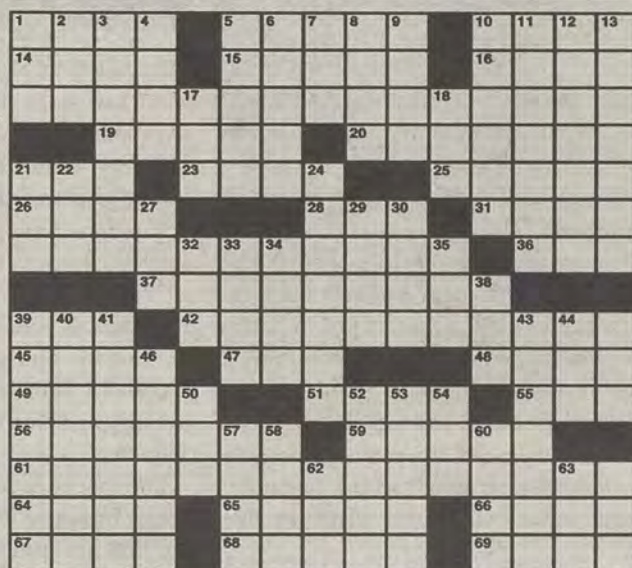
Tuesday, November 8, 2011 15

Los Angeles Times Daily Crossword Puzzle

Edited by Rich Norris and Joyce Lewis

ACROSS

- 1 Some are chocolate
- 5 Trim
- 10 1968 self-titled folk album
- 14 "My body's achin' and my time hand": James Taylor lyric
- 15 "Climb aboard!"
- 16 Israel's Iron Lady
- 19 Former Calif. base
- 20 "ChiPs" star Erik
- 21 China's Chou En-
- 23 See 24-Down
- 25 "Dogma" star
- 26 "Assuming I'm right..."
- 28 Places to treat v-fib
- 31 Not family-friendly
- 36 Prefix for Caps or Cat
- 37 Confuses
- 39 Modern owner's need: Abbr.
- 42 Lara Croft
- 45 Not very much
- 47 Hr. related to airspeed
- 48 Garr of "Mr. Mom"
- 49 Patient contribution
- 51 Spanish hors d'oeuvre
- 55 Driver's gadget
- 56 Like many bazaars
- 59 Synopsis
- 61 Historic Cold War crossing point
- 64 Offer as proof
- 65 Navel variety
- 66 Dramatic opener
- 67 Part of AMEX: Abbr.
- 68 Turn aside
- 69 Midway game word



By Scott Atkinson

October 27th Puzzle Solved

11/4/11

B	A	R	R	A	B	E	L	A	O	T	S	E
E	L	I	E	L	A	I	E	T	C	H	E	D
R	E	T	A	P	I	N	G	R	O	T	A	T
G	R	A	D	E	S	C	H	O	O	L	T	A
I	N	T	T	B	I	L	L	S				
A	G	I	N	G	L	Y	E	A	M	S	O	
R	E	N	U	A	E	S	E	T	S	A	I	L
S	I	T	T	I	N	G	I	N	A	T	R	E
O	C	E	A	N	I	A	T	O	R	T	V	A
N	O	R	M	T	A	Y	R	O	S	E	N	
T	E	A	S	E	R	S	I	N				
P	O	W	S	W	E	E	T	H	E	A	R	T
C	H	I	C	H	I	N	E	A	R	B	E	E
P	O	N	I	E	S	A	A	R	U	L	N	A
S	K	E	I	N	S	S	K	I	N	O	G	S

DOWN

- 1 Henry Blake's rank in "M*A*S*H"
- 2 Tempe sch.
- 3 Odd-shaped reef denizen
- 4 Keep one's word?
- 5 Post on Facebook, e.g.
- 6 Passport issuer?
- 7 Fitting
- 8 squad
- 9 Slaughter in the outfield
- 10 Ethically unconcerned
- 11 Handles differently?
- 12 Rest a spell, or a fitting title for this puzzle
- 13 Seat of Florida's Orange County
- 17 Emile, par exemple
- 18 Abbr. on some cheques
- 21 Landlocked Alpine principality
- 22 Pro Bowl div.
- 24 Statement before a 23-Across
- 27 Needing no Rx
- 29 React in shock
- 30 "I agree, señor!"
- 32 Stat for Cliff Lee
- 33 Share for the fourth little piggy
- 34 USMC NCO
- 35 Parochial school figure
- 38 Light touch
- 39 Big name in Chrysler history
- 40 Shout after a purse-snatching
- 41 Capital of French Polynesia
- 43 Personal transport, in science fiction
- 44 Refinery input
- 46 Comet colleague
- 50 Tibetan milk source
- 52 Links nickname
- 53 '80s baseball commissioner Ueberoth
- 54 Eastern NCAA hoops gp.
- 57 Modern music source
- 58 Don Juan sort
- 60 Cries from successful puzzle solvers
- 62 Hairy TV cousin
- 63 AAA info



6			9			1		8
		4			1			
		8					7	
				9		8	3	
	6	1	3		4	5	2	
	3	5		7				
	1					2		
			2			7		
3		9			6			1

Sudoku

1	8	4	9	5	2	6	2	3
5	2	6	1	2	9	8	4	7
6	9	2	8	3	4	7	1	5
4	1	6	2	7	9	5	3	8
7	2	5	4	8	3	1	9	6
9	6	8	5	6	1	2	4	7
2	7	9	3	4	9	8	6	1
5	6	8	1	9	8	7	2	3
8	4	1	7	2	6	5	9	3

Magazines and Muffins
Sponsored by Latte Da Coffee Café
Every Thursday in November
@the Williams Center Gazebo!

Elon eliminates GSU from SoCon Tournament



Lindsay Hartmann/Staff

Defender Nick Lane (15) battles an Elon player for ball possession.

Soccer

By BRIAN STONE

George-Anne contributor

The Georgia Southern University men's soccer team had its season ended Sunday, after being upset 1-0 in the first round of the SoCon tournament by the Elon University Phoenix at home.

The third seeded Eagles came into the game with home field advantage and were looking to make a deep run in the tournament, but ended up with the sixth seeded Phoenix handing GSU a disappointing loss.

"I'm disappointed with the result today," said head coach Kevin Kennedy. "This was a team we were able to beat 4-2 in the regular season, but today the goals just weren't there. The guys played hard, but it just wasn't enough

for us today."

Coach Kennedy noted that there are some things that need to be improved after the loss.

"We need to be more mentally focused," said Kennedy. "And we need to learn from this and move on."

Both teams played a very close, competitive game in the first half, going into halftime with a 0-0 tie before GSU allowed Elon to score the only goal of the game on a cross just three minutes into the second half.

GSU thought that it had a goal of its own, with nine minutes left to play, sophomore Thomas Valikonas seemingly scored the game-tying goal before being ruled offside by the referee.

Elon played very aggressively, out-shooting GSU 9-3 and dominating the time of possession, particularly in the second half.

GSU tried to even the game with five

minutes left to play, attempting many shots before having the clock run out.

Despite the goal that was allowed, senior goalkeeper Ryan Platt had a solid game, ending the day with nine saves.

Coach Kennedy did see great competitiveness in the Eagles, even in the loss.

"I thought our fight and character was tremendous," said Kennedy. "We never gave up, and we kept pressing to get the tying goal and it didn't come. But our guys didn't give up, and I'm extremely proud of their character."

The Eagles end the season with an 8-8-1 record, including losing three out of their last four matches heading into the tournament.

Elon will go on to face the winner of the match between Furman University and the College of Charleston in the semifinals of the Southern Conference Tournament in Boone, N.C.

Eagles pick up another preseason win

Basketball

By COLIN RITSICK

George-Anne contributor

The Georgia Southern University men's basketball team's second preseason exhibition game yielded yet another victory, beating the Paine College Lions 97-76 on Friday night.

A physical, energetic defense set the pace early for the Eagles. A total of 35 forced turnovers created fast breaks and opened up opportunities for GSU all game long. The Eagles

scored 47 points off of turnovers compared to only 13 for the Lions. The quick tempo of the Eagles' offense got the Lions into foul trouble early, allowing for easy points off of free throws towards the end of the halves.

The first half featured a shaky start from the Eagles with the score at the end of the half only 43-37 in favor of GSU. But regardless of what head coach Charlton Young calls "signs of a young team," the Eagles never surrendered a lead. Finishing the game with 97 points and 52.3 percent field goal average, GSU looks to keep up the offensive numbers heading into

Friday's match-up.

"That's how we like to play, we like to basically run teams up and down the court — that's how our offense is set up," said sophomore guard Jelani Hewitt.

The Eagles high-powered attack was just too much for the Paine's defense to handle. Senior guard Ben Drayton III was one of five who scored in the double-digits, leading the scoring attack with 22 points. Hewitt finished with 17, including three from beyond the arc.

One of the main points coach Young stressed after the game was continuing to get better,

especially on defense.

"I think we're climbing the mountain right now, we just have to keep molding the clay until we become a national championship team. I wanted to work on trapping ball screens and they stretched us, but these are the games to work on this type of stuff on," said Young.

The Eagles open the official season against the Crusaders of Valparaiso University at Hanner Fieldhouse Friday evening at 7 p.m.

"I'm excited to come back out here on Friday and see this place packed with Eagle fans," coach Young said.

R. J. Pope
Men and Ladies Apparel
Your supplies for mens & womens jackets

764.6973
840A Buckhead Dr. & 5 South Main St.

patagonia

SOUTHERN TIDE

vineyard vines
martha's vineyard

THE NORTH FACE

POLO

MOUNTAIN HARD WEAR

Blocked field goals prove crucial to Eagles' win

Football

By DERREK ASBERRY

George-Anne staff

Going into Saturday's homecoming game against The Citadel Bulldogs, the Georgia Southern University Eagles were No.1 in the Southern Conference in scoring, averaging 38.1 points a game. The Bulldogs were fourth in the Southern Conference in both passing defense and rushing defense.

While the 14-12 score indicates that defense was the primary factor in the game, it doesn't show that GSU's special teams unit is the reason the game was not sent into overtime. After both Bulldog touchdowns in the first half, the Eagle special teams unit blocked the extra point attempts. If these attempts weren't blocked, the score would have been 14-14, instead of the Eagles winning the game at the end of regulation time.

"Special teams are one third of the game, and we really take it seriously," said Eagle cornerback



Lindsay Hartmann/STAFF

The Eagles' special teams unit blocks an attempted field goal by The Citadel Bulldogs.

Laron Scott, who is one of the two players that blocked an extra point attempt. "Our guys really squeezed out hard and made those guys on the end really have to squeeze down, so I really credit those guys in the middle."

Eagle safety Deion Stanley blocked the second extra point attempt, which kept the

score at 12-7. After the Eagles responded with another touchdown on a 14-yard run by Nico Hickey, they moved ahead 14-12 in the second quarter. With no more scoring for the rest of the game, the blocked kicks became even more important.

The Eagles are making these blocked kicks

a habit this season. They recorded a blocked field goal attempt and an extra point attempt against the Furman University Paladins, and another blocked field goal attempt against Presbyterian College. If the team is looking to make another deep run this playoff season, the special teams unit will be a big part of it.

Deion Stanley records game-high tackles

Football

By DERREK ASBERRY

George-Anne staff

In an intense conference game fans are always looking for the big plays. In Saturday's homecoming game against The Citadel Bulldogs, they got their wish. Whether it was a blocked kick in the first quarter, another blocked kick in the second quarter, or key

interceptions and fumbles in the second half, there were definitely pivotal moments in the game.

In the midst of these game changing moments, there are always players that fly under the radar. Freshman safety Deion Stanley was that player Saturday against the Bulldogs. While he did block one of the extra point attempts in the second quarter, Stanley made several other contributions throughout the game.

Stanley recorded three tackles in the first quarter, and four more tackles in the second quarter. After both teams scored a touchdown in the first three plays of the game, it appeared that the game would be a high scoring affair. However, Stanley's seven tackles and blocked extra point attempt in the first half helped set an early defensive tone.

In the second half, Stanley did not let up defensively. He recorded two tackles in the third quarter and four more tackles in the

fourth, giving him a game-high 13 tackles. According to coach Jeff Monken, not too many people were aware of Stanley's game high.

"I didn't realize he had 13," Monken said. "Deion's a really smart player. He listens, he learns and he tries to do what he is coached to do. He's a good, tough player and he just kind of quietly makes plays."

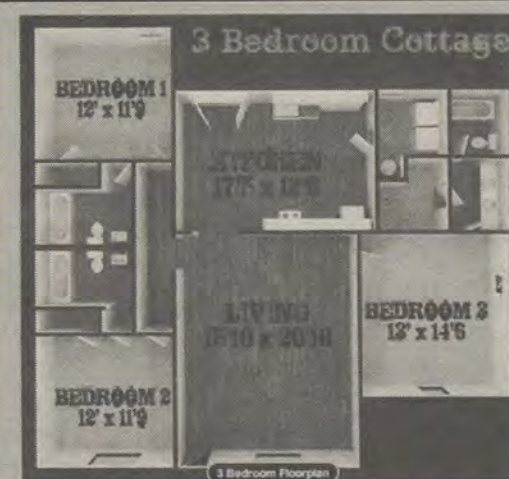
Stanley was named Southern Conference Freshman of the Week for the second time this season.

Planters Row

912.681.1170
www.hendleyproperties.com

3 bedroom
cottage
house

\$365
/month per person



'ERK HAD OUR BACK'

Eagles survive The Citadel on field goal miss

Football

By JAMES FARMER

George-Anne staff

The Citadel Bulldogs kicker Ryan Seller's field goal attempt with 18.2 seconds left in the game soared wide right, and the Georgia Southern University Eagles survived by a 14-12 margin.

"I've got so much respect for that coaching staff and those kids, the way they fought," said head coach Jeff Monken.

The Eagles' offensive struggles continued, as the offense could not even gain 200 yards rushing for the second straight game.

"We knew the defensive scheme, they were going to try to shut down the run, like every team does against us," said Jaybo Shaw.

Defensively, the Eagles appeared to miss the presence of Brent Russell, who was suspended for the game for violating team rules.

The game appeared to be an offensive affair at the start. The Citadel's Kevin Hardy took the opening kickoff back 50 yards. The Citadel would score two plays later, but that is when the Eagles began to turn things around.

Laron Scott would start the momentum shift off with a block of the extra point attempt.

"Our guys just really squeezed down hard



Akeem Hill/STAFF

Jaybo Shaw (14) lines up for the shotgun snap between Robert Brown (5) and Darreion Robinson (7) during their game versus The Citadel on Saturday.

and made those guys on the end squeeze down, they just gave me a really good edge," said Scott. "We knew it was going to be big when it first

happened."

On the first play of the next GSU possession, Shaw found Darreion Robinson for a 63-yard

touchdown pass.

Adrian Mora's extra point gave the Eagles a 7-6 margin that would stand through until Aaron Miller punched into the endzone with 8:08 left in the first half to end a 17-play 82-yard eight minute fifty eight second drive.

The Eagles would block the extra point after that drive as well.

The Eagles responded to the Bulldogs' score with a touchdown drive of their own, capped off by a touchdown run by Nico Hickey.

The third quarter was sloppy for both teams. GSU fumbled once on first and goal from the one-yard line, and also threw an interception. The Citadel fumbled on third down, but recovered and punted the ball.

"It feels like we should have played better," said Jerick McKinnon. "We had a lot of fumbles, and turnovers."

In the fourth quarter, the only offensive success was The Citadel's final drive of the game. The Citadel put together a 14-play drive that culminated with Seller's field goal attempt. The kick sailed wide right.

"It was a good range on the right hash, everyone was praying he'd miss it or we'd block it," said McKinnon. "He kicked it, looked like he was going to make it, then it tailed off to the right. Everyone was overwhelmed with joy."

Russell suspended

Football

By JAMES FARMER

George-Anne staff

Senior defensive tackle Brent Russell was suspended for Saturday's game versus The Citadel on Saturday.

"Brent was suspended for violating a team rule it's a one game suspension, as long as he's doing the things he's supposed to he'll be in the lineup again next week," said head coach Jeff Monken.

The Eagles gave up 239 yards rushing on 4.9 yards per carry to the Bulldogs after allowing slightly over 100 yards per game and less than four yards per carry with Russell starting.

"He's hard to get movement on, and they were able to do that some on the other guys.

He's disruptive, I think he's one of the best defensive football players at this level," said Monken.

His fellow defensive linemen said that his absence did not affect the team performance though.

"He's Brent, he's a great player," said defensive end John Douglas. "But we weren't thinking about it, we got great players that play behind him."

The Eagles will need Russell to perform at his usual level of excellence versus the nation's top rushing attack that Wofford College brings to the table on Saturday.



Brent Russell

Quarterbacks share snaps

Football

By COLIN RITSICK

George-Anne contributor

The Georgia Southern University football team utilized the dual-quarterback strategy in Saturday's win against The Citadel more than it has all season.

Jerick McKinnon played a considerable amount more at the quarterback position than he typically has throughout the course of this season. He finished the game with 46 yards on 11 carries.

"The way practice was going, coach told me they would have some stuff for me, but I was just happy to be out there," McKinnon said in regards to whether or not he knew if he would see as much playing time in the position as he did.

Jaybo Shaw completed four out of seven passes for 129 yards, including a 63-yard touchdown pass on the opening play from scrimmage to Darreion Robinson that provided a 7-6 lead for the Eagles.

Both quarterbacks marshaled the field on important drives, leading the Eagles to a nail-biting 14-12 victory, finalized by a missed 37-yard field goal with 18.2 seconds left on the clock.

Both quarterbacks characterized the split time as 'expected.'

"We had worked on it all week in practice, it was just something we were trying to do today," said Shaw.

Whether or not GSU will use the same strategy against Wofford College is still undecided.

"I don't really know, roads change week in and week out, we just have to go back to the drawing boards," McKinnon said.

Intramural Sports Scores

Flag Football

Brew Crew 23, The Comeback 6
 The Replacements 0, Alpha Males Inc 19
 Penetrators 0, White Boy Swag 19
 Backyard Studs 20, Lights Out #1
 Bridge Squad 12, the Beatles 32
 Krimson Kartel 0, the Pack 19
 Dirty Birds Like Roddy 13, The Show Stoppers 19
 Too Legit To Quit 0, Lights Out 20
 My Dixon Cider 0, The True Blueskins 26
 Hold My Bic 4, Grab The Pillow 25
 Claeys Mcelroy Magrder & Kitchens 14, Beasts of the Boro 33
 DEEPINIT 13, Liquor in the Front Poker in the Back 21
 Macon Babies 6, Stop Drop and Rolling Rock 44
 Fast and EZ 34, XA Pick Six 7
 6 Foot SWAG 26, My Dixie Wrecked 31
 You Mad Bro? 12, Team White Meat 7
 Payton Manthings 19, Gleep Glop and the Sloopy Doo's 26
 Vick in a Box 13, Alcoballics 12
 These Guys 32, World Domination 14
 Delta Sigma Phi 0, Be and Athlete 19
 Those Guys 0, 9 Man Wolf Pack 39
 Dial 7 For More Options 0, 4th and Schlong 19
 Hold It 0, Throw 1 Deep 19
 Walla Wall Weasel Wackers 7, Patriots 27
 Pi Kappa Phi 14, Kappa Alpha Order 12
 Sigma Chi 7, Sigma Nu 13
 Delta Chi 0, Pi Kappa Alpha 19
 Weagles Weagle 19, Whitlock 7
 How We Met Da Endzone 8, Woodies 26
 Kappa Delta 20, Kappa Kappa Gamma 6
 Patriots 0, Diligaf 27
 Throw 1 deep 18, BCM Stack 20
 My Dixie Wrecked 21, Vinegar Strokes 20
 Stop Drop and Rolling Rock 19, The Baboons 13
 Purple Flow 27, Primetime 26
 Courtyard Blue Panthers 7, Goin Deep 22
 The Usuals 0, Goin' H.A.M 6
 RAC'n CREW 29, Yo Mama 0
 So Pi So Fly 0, Bhadd Gurlz 7
 What-son 12, Charlies Angels 13
 Kennedians 19, RUF Girls 18
 Nice TD'S And Matching Pass 0, Eat My Grass 20
 Innocent Until Proven Filthy 41, Burden's Ballers 6
 Be An Athlete 6, Tallywackers 27
 Beasts of the Boro 6, America's Team the 69ers 25
 Blitz Babez 0, BUILD+ 13

Jaybirds 20, Squad Up 31
 Grab The Pillow 35, Team Swagg 27
 White Boy Swag 0, Bromance
 4th and Schlong 25, Forget the Titans 13
 9 Man Wolf Pack 0, The Mustache Bandits 21
 Liquor in the Front Poker in the Back 7, Show me Your TD's 27
 These Guys 6, The Beavers 26
 The Beatles 0, Nice TD's 26
 Varsity Blues 6, Free Bandz 18
 The Show Stoppers 31, Cocaine Cowboys 32
 The Pack 14, Southern Spliffs 33
 Bankwalkers 14, SG 7
 Show Me Your TDs CoREC 0, Eagle Village 20
 Balls N Dolls 6, University Villas 27
 T and Ds 0, One Smoove Squad 17
 Beast Mode 12, ABCDEFGHIJKLM-
 NOPQRSTUVWXYZ 7
 All Out Blitz 6, We Go Deep 33
 Gleep Glop and the Sloopy Doo's 0, Colonel Angus 35
 Red Rockets 7, Pilgrims of Swag 12
 SAAB 21, Who Dat? 18
 Little Rascals 6, Tapout 7
 Lights Out 6, Bena Jones 68

Indoor Soccer

Don't Touch The Trim 10, Bolas FC 1
 Keystone United 3, Unreal Madrid 4
 DFW 3, Thunderblast 11
 Los Leones 6, Whispering Eye 3
 Slammin Salmons 6, Catholic-Eagles FC 2
 One Shot Away From Scoring 7, Los Chingones 0
 Blacklist 1, Indoornesia 9
 Captain Crunch and the Cereal Killers 4,
 Liquor in the Front Poker in the Back 7
 Diders 1, Blacklist 5
 John FC 9, Captain Crunch and the Cereal Killers 1
 Five Dollar Footlongs 1, Booty Bandits 4
 The Stepfathers 8, Centennial Pound Town 6
 The abusement Park 0, University Villians 4
 Death is my Wingman 0, Catholic Eagles 8
 IS 6, Dino&Friends 2
 Munchma Ballsof 4, Hermaphrodites 0
 Stern But Fair 5, Bro Montana and the 69ers 3
 CCF Boys2Men 4, Try not to seem impressed 0
 Awesome Forever 14, Geo Club 4
 Zales 4, Racks and Sacks 25
 Munchma Ballsof 4, Hermaphrodites 0
 Life is a beach and we just wanna eat ice cream 0, Just A Lil Bi Curious 4
 Zales 7, Geo Club 1
 LadiesandGents 5, Dynamo Athletic 6

Stache in the Boro 4, Screamin Ninjas 0
 Racks and Sacks 9, When It Rains It Pours 4
 Anonymous 12, BAMF 4
 Southern Adventures 0, Swagitus Maximus 4
 The B.A.L.L. Kickers 2, Caucasian Invasion 9
 CCF Boys2Men 0, Bro Montana and the 69ers 1
 DG4L 4, Try not to seem impressed 0w
 The Antarctica National Team 2, Stern But Fair 3

Volleyball

Haymakers 0 (24-13), Las Baileys 2 (26-25)
 Alpha Omicron Pi 0 (0-0), Alpha Delta Pi 2(10-10)
 Blue Lightening 2 (10-10), Alpha Omicron Pi 0(0-0)
 Dolly Balls 1 (24-25-4), Haymakers 2 (26-15-15)
 Kappa Kappa Gamma 0 (11-13), Blue Lightening 2(25-25)
 Las Baileys 2 (25-25), CCF We are Menopositively Going To Beat You 0(14-12)
 Welp See Ya Later 2 (25-25), Pi Kappa Alpha

0 (15-11)
 Sigma Phi Epsilon 1 (13-25-13), Hold My Digggg! 2(25-21-15)
 Practice Safe Sets 2 (25-25), Smack My Beach Up 0 (22-10)
 Wild Sets 0 (6-20), Southern Smoke 2 (25-25)
 Always Sunny at ECM 0 (8-22), Your Chicks Dig Our Balls 2 (25-25)
 Team X 2(25-25), Wild Sets 0 (15-12)Delta Force 2.0 2 (10-10) Delta Sigma Phi 0 (0-0)
 Size Over Everybody 0 (0-0), Sets on the Beach 0(0-0)
 Sigma Phi Epsilon 0(0-0), Pi Kappa Alpha 2 (10-10)
 CCF Return From Where You Came 0 (16-20), Hold My Digggg! 2(25-25)Welp See Ya Later 2 (10-10), Sigma Phi Epsilon 0(0-0)
 Average Joes 0 (23-20), Hit-Men 2 (25-25)
 Nunkin' Futs 0 (9-24), Southern Adventures 2 (25-26)
 Nilla Waffles 0 (0-0), Set to Kill 2 (10-10)
 Good Volley Ms. Molly 2 (25-25), Spiked Punch 0 (16-22)
 Kiss My Ace 2 (10-10), Avada Kedavra 0 (0-0)
 Balling! 2 (25-25), Insane Iguanas 0 (13-8)

This Week At CRI

TUESDAY

REGISTRATION CLOSES:
 Fall Classic Basketball

WEDNESDAY

Gourmet Smores Clinic, 7 p.m.

COMING UP NEXT WEEK

IM Champ Night: Monday, Nov. 14th, 6 p.m.

SATURDAY

Show of Strength, 11 a.m.



FOLLOW US!

facebook.com/GSUCampusRec
 twitter.com/GSUCampusRec

WWW.GEORGIASTATE.EDU/CRI

CRI
 CAMPUS RECREATION
 & INTRAMURALS

IT'S YOUR LIFE...

LIVE IT

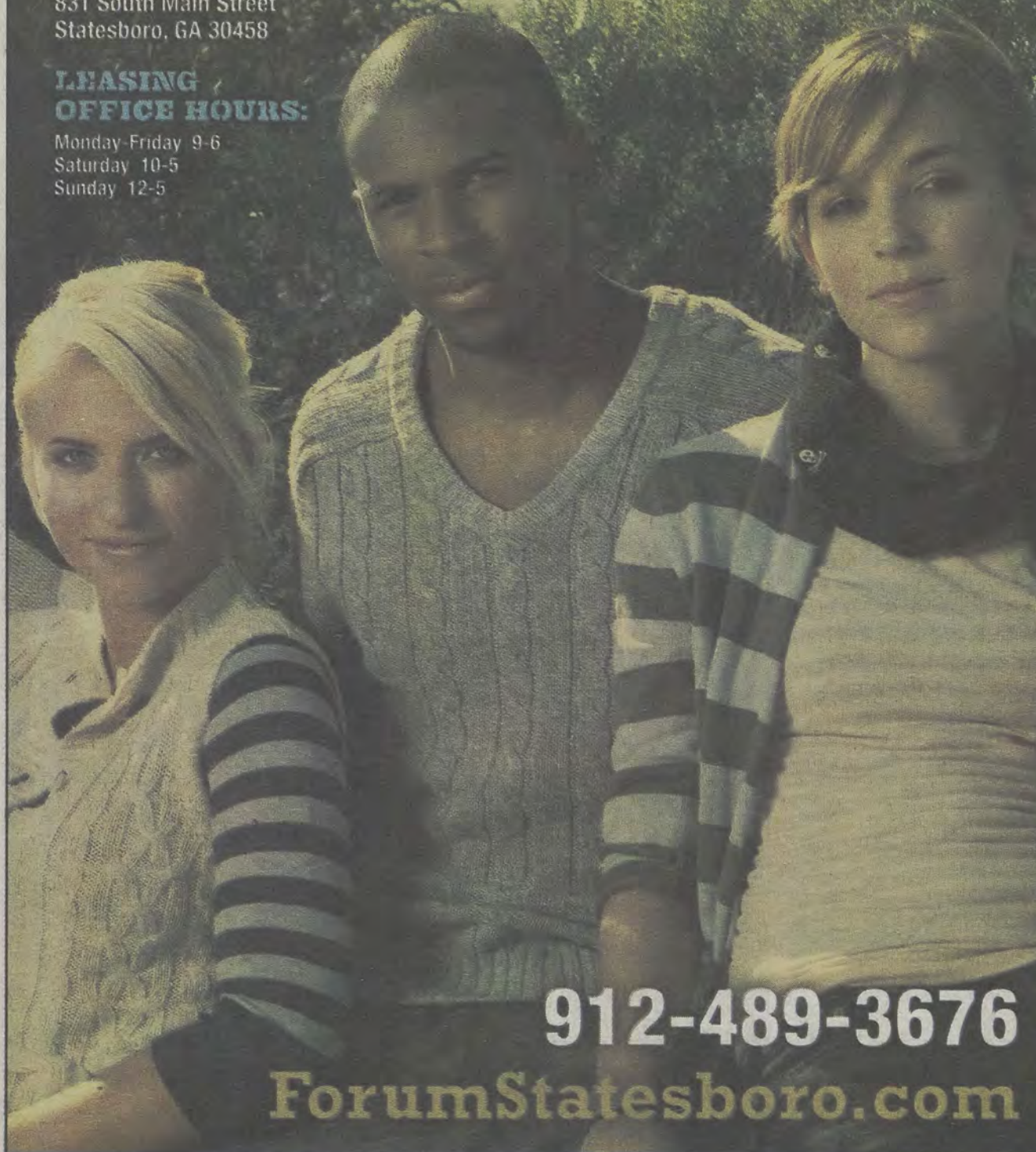
FORUMSTATESBORO.COM

COMING TO:

831 South Main Street
Statesboro, GA 30458

LEASING
OFFICE HOURS:

Monday-Friday 9-6
Saturday 10-5
Sunday 12-5



912-489-3676

ForumStatesboro.com

GET A **FREE** T-SHIRT WITH THIS AD!

FORUM

AT STATESBORO

A PREMIER STUDENT
HOUSING COMMUNITY

**NOW
LEASING
FOR FALL 2012**

- Tennis Court
- Lap Pool & Spa
- Pet Friendly
- Pet Park
- Two Free Tanning Beds
- Indoor Basketball Court
- Indoor Volleyball Court
- Car Care Center
- Modern Faux-Wood Floors
- Private Bathroom in Bedrooms
- Convenient Individual Leases
- Free High Speed Internet in Bedrooms
- 24 Hour Fitness and Training Center
- Kitchens with Full Size Appliances
- Full Size Washer / Dryer Included
- Wi-Fi Cyber Cafe with Coffee Bar
- Outdoor Sand Volleyball Court
- High Speed Internet Access
- Student Center and Lounge
- Roommate Matching
- Expanded Cable
- Media Room



Residence subject to change. Call 912-489-3676 for details. Pet and lease restrictions apply.