

Georgia Southern University

Digital Commons@Georgia Southern

The George-Anne

Student Media

11-3-2011

The George-Anne

Georgia Southern University

Follow this and additional works at: <https://digitalcommons.georgiasouthern.edu/george-anne>



Part of the [Higher Education Commons](#)

Recommended Citation

Georgia Southern University, "The George-Anne" (2011). *The George-Anne*. 2716.
<https://digitalcommons.georgiasouthern.edu/george-anne/2716>

This newspaper is brought to you for free and open access by the Student Media at Digital Commons@Georgia Southern. It has been accepted for inclusion in The George-Anne by an authorized administrator of Digital Commons@Georgia Southern. For more information, please contact digitalcommons@georgiasouthern.edu.

Thursday, November 3, 2011
Georgia Southern University
www.thegeorgeanne.com
Volume 87 • Issue 39

THE GEORGE-ANNE

Biology building begins construction

By COURTNEY TIELKING
and JESSIE REESE

George-Anne contributor and staff

Georgia Southern University's new sustainable biological sciences building began construction Monday.

The building will be located at the corner

of Forest Drive and Bunny Akins Boulevard between the Recreation Activities Center and the Education building.

"We are building a cutting-edge building that will be a good learning environment for students. The science that we do in the building, the teaching, the research will be more visible to people that pass through the building. For

a biology building, it is important to reflect characteristics of the life sciences by using the available woods there in a responsible manner. It will be a good model for people to follow," said Steve Vives, the biology department chair.

The budget amount for the project is \$41,000,000, the construction amount

See BIOLOGY, page 7

9 of 10 Pacelle reviews positive

By AMBER GORDON

George-Anne contributor

During the fall 2011 major review of Professor Richard Pacelle, nine out of 10 political science faculty and staff gave positive feedback.

University policy required that Pacelle have a major review conducted on him during the beginning of the fall semester.

The evaluation focused on Pacelle's role as an administrative chair for the Department of Political Science.

"He is an outstanding leader. Political science was tearing itself apart before Rich got there," said professor Barry Balleck. "Rich is an outstanding recruiter and he is accessible."

"I like Rich's style. He tries to be inclusive. He favors and tries to accommodate new professors and he tries to retain them," said professor Sharon Tracy. "He is kind, fair and responsive to students. The

See REVIEW, page 7

DOGS DRESS UP FOR HALLOWEEN



Lindsay Hartmann/ STAFF

Kermit is one of the many dogs dressed up to participate in the Cutest Dog Competition for Halloween at the Russell Union Rotunda on Oct. 31.



thegeorge
anne.com

| Thurs. | Fri. | Sat. | Sun. |
|--------|------|------|------|
| H 74 | H 71 | H 66 | H 76 |
| L 47 | L 45 | L 44 | L 45 |



Newsroom 478-5246
Advertising 478-5418
Fax 478-7113

PO Box 8001
Statesboro, GA
30460

THEGEORGEANNE.COM TAILGATE

SPONSORED BY:

GEORGIA SOUTHERN
THE UNIVERSITY STORE

STUDENT
MEDIA

CRI
CAMPUS RECREATION
& INTRAMURALS
www.georgiasouthern.edu/services/cr

Buffalo's
Southeast Cafe

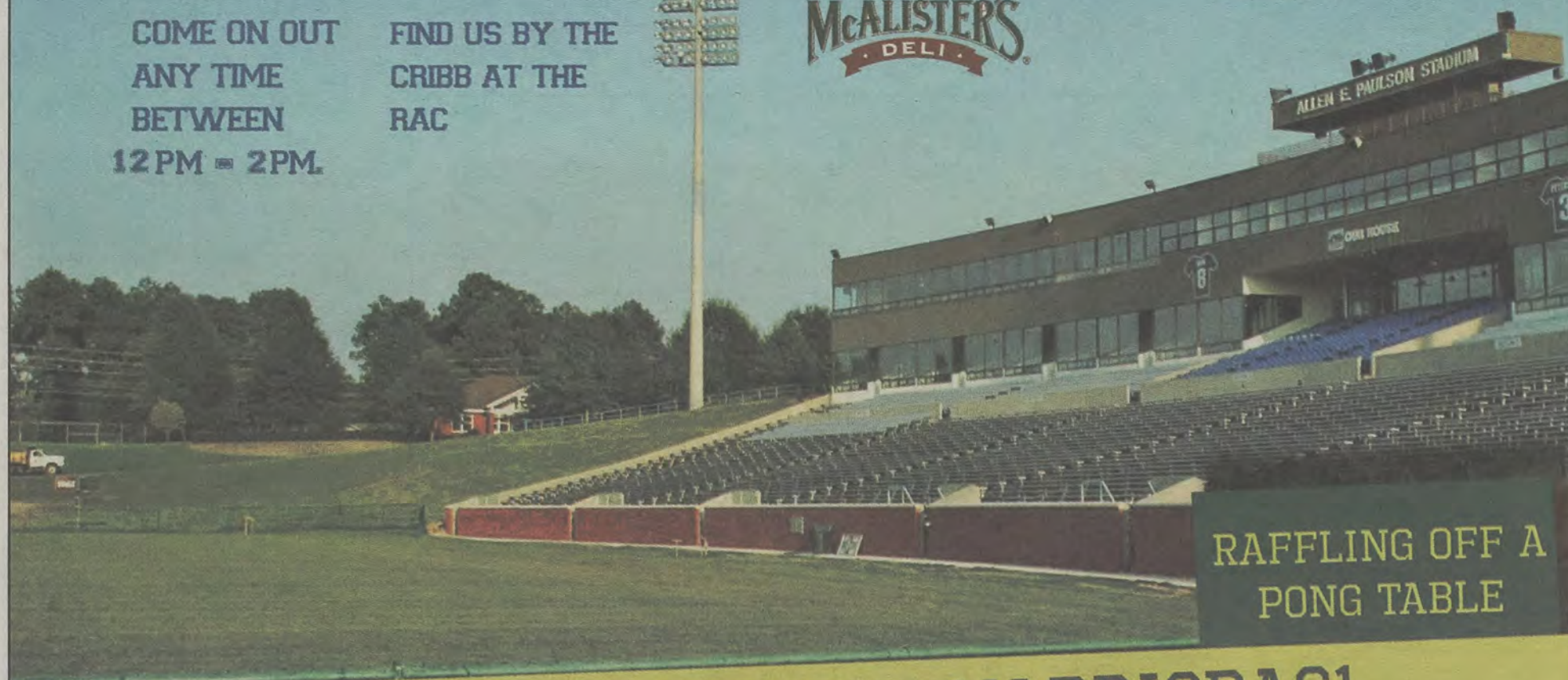
SPARKS

COME ON OUT
ANY TIME
BETWEEN
12 PM - 2 PM.

FIND US BY THE
CRIBB AT THE
RAC



McALISTER'S
DELI



RAFFLING OFF A
PONG TABLE

ENTER THE CODE: MARDIGRAS1

NOW THROUGH **NOV. 4** AT **THEGEORGEANNE.COM** FOR YOUR CHANCE TO WIN A GREAT
PRIZE PACK, FROM THE UNIVERSITY STORE, CRI, AND STUDENT MEDIA.

STOP BY FOR FREE FOOD AND CHANCE TO WIN FANTASTIC PRIZES.

Shooting range decisions made

By JONATHAN QUINTYNE

George-Anne contributor

More information about the new shooting and archery range, now called the Shooting Sports Center, has come to the surface.

The center is going to be built off of Highway 301 near the Recreation Activity Center pavilion to make sure that potentially arm carrying patrons will not have to be any where near the heart of campus to use the facility said Alton Standifer, president of the Student Government Association.

"That's a very strategic location for it, making sure that it is on a corner of campus where a student does not have to go. (They) don't have to come into the core parts of main campus to reach the facility," said Standifer. "This facility will be totally separate."

The center will be able to use the recreational fields to support any large crowds that come to the facility for special events, said Sherry.

"It made sense for both law and logistics to place the facility here. No one will have to walk through campus with a gun to get the facility," said Sherry.

The center is not set in stone at this moment and is still in the development and planning phases, said Gene Sherry, executive director of Campus Recreation and Intramurals.

"Georgia Southern University has yet to enter an agreement with the Department of Natural Resources to finalize the center, but if the contract is signed, it could be about 18 to 24 months

before the center is completed," said Sherry.

Some faculty feel that the decision was made without their knowledge, said Gregory Brock, professor in the School of Economic Development.

"Many of us learned well after the fact," said Brock.

Safety is a major concern for the center, therefore many steps have been made to ensure the security of the center said Standifer.

"There will be a fence and it will also be monitored by camera, so it will definitely be a secure location," said Standifer.

"The chief of Public Safety on campus suggested a fence, controlled access points, as well as alarms that are directly tied to the department," said Sherry.

In spite of the centers placement, guns are still not allowed on campus and all of the current campus weapon laws will remain in place in accordance with current state law, said Standifer.

Building the facility could give off the wrong impression of GSU to the community, said Brock.

"This will give the perception that the university is promoting the firearms in the homes and in the communities," said Brock.

"The president of the American Medical Association said in his inaugural address that guns in the home are 22 percent more likely to kill relatives than an actual intruder," said Brock. "We should not stand by something that brings more guns into the community."

The university's rules about firearms on campus are sure to stay the same, said

Standifer.

"Guns will not be allowed on campus, guns are not currently allowed on campus, next semester guns won't be allowed on campus, at the conclusion of this facility being built guns will still not be allowed on campus," said Standifer. "That is a state law and that is something that we will maintain."

The center will have a very competent and educated staff and extensive training will be required, said Standifer.

The staff in the facility will consist of full time professionals, graduate assistants and student employment. All will have specific job descriptions, said Sherry.

The center is expected to cost around \$3.3 million, most of which will be provided to the university from third parties. Only a small percent of money is being taken from student fees, a percentage that could only be used on recreational projects, said Standifer.

"We have \$3.3 million from the Department of Natural Resources, \$500,000 from East Sports Development Foundation, \$200,000 from the Archery Trade Association," said Sherry.

"The money given to us from student fees is to be used to expand recreation as the campus enrollment grows. With more people we should have more options. Not everyone is interested in flag football and ultimate frisbee. With this, we can reach a different population," said Sherry.

"The Shooting Sports Center is a strong, viable, option. We are not committed," said Sherry. "If an agreement is signed then we will move on."

Statement of Operations

The George-Anne is the official student newspaper of Georgia Southern University, owned and operated by GSU students using facilities provided by the university. The newspaper is the oldest continuously published newspaper in Bulloch County. The newspaper is a designated public forum for the Georgia Southern community. The newspaper is published twice weekly, on Tuesdays and Thursdays, during most of the academic year. Any questions regarding content should be directed to the student editor by phone at 912.478.5246 or at gaeditor@georgiasouthern.edu.

ADVERTISING: The newspaper accepts advertising. Inquiries may be made by calling 912.478.5418 or 912.478-0566. Fax any questions to 912.478.7113 or e-mail ads1@georgiasouthern.edu.

The George-Anne receives additional support, in part, from the Student Activities Budget Committee.

The deadline for reserving space and submitting advertising copy is noon, one week prior to the intended publication date. For more information, rate cards, sample publications, contact the advertising manager or student media director. The advertiser is responsible for any errors in advertisements and its liability for adjustments is limited to the amount of space the error occupied in the ad. Further, the newspaper is not responsible for any damages caused due to an ad's omission from a particular edition and its responsibility solely is to reschedule the ad in the next regular edition at the regular advertising rates.

STUDENTS BEWARE: The George-Anne screens all advertisements prior to publication. The newspaper strives to accept ads for legitimate products and services only. Students are urged to exercise caution when replying to ads-particularly those that require personal information. Students are also urged to report to the newspaper any suspicious offers which they might see in an ad.

PUBLICATION INFORMATION: The newspaper is printed by Signature Offset in Jacksonville, Fla.

NOTICE: Unauthorized removal of multiple copies from a distribution site constitutes theft under Georgia law, a misdemeanor offense punishable by a fine and/or jail time.

Editor-in-Chief Arielle Coambes
Views / Copy Editor Shauntel Hall
News Editor Jennifer Curington
Asst. News Editor Jessie Reese
Arts Editor Julia Welch
Asst. Arts Editor Quaniqua Epps
Sports Editor Matthew D'La Rotta
Asst. Sports Editor Jannah Bolds
Football Editor James Farmer

Business Manager Tiffany Larkin
Asst. Business Manager Holly Hillhouse
Marketing Manager Aria Gabol
Production Manager Mallory McLendon
Photo Editor Randy Hudgins
Design Editor Kelsey Paone
Web Editor Jonathan Law

Corrections

Contact the editor at gaeditor@georgiasouthern.edu for corrections and errors.

Trunk show
Statesboro mall
from 2-6 pm
Friday the 4th



The Sir Shop
Statesboro Mall
912.764.6924



**SOUTHERN
PROPER**

Homecoming Tent Show
at Paulson Stadium
12pm - until kick off
at the Tent
Free Giveaways!
Saturday the 5th

Our View

Students should practice safety during celebration

As all students, faculty and staff of Georgia Southern University know this week is homecoming and the celebration has already well began for both the campus and the community.

With this year's homecoming theme, which is Mardi Gras, the campus has already began to exhibit the bright and positive party theme that is circulating throughout the GSU campus.

As the homecoming celebration continues this week and into the upcoming weekend, it is important that the safety of students and the community are preserved in the process.

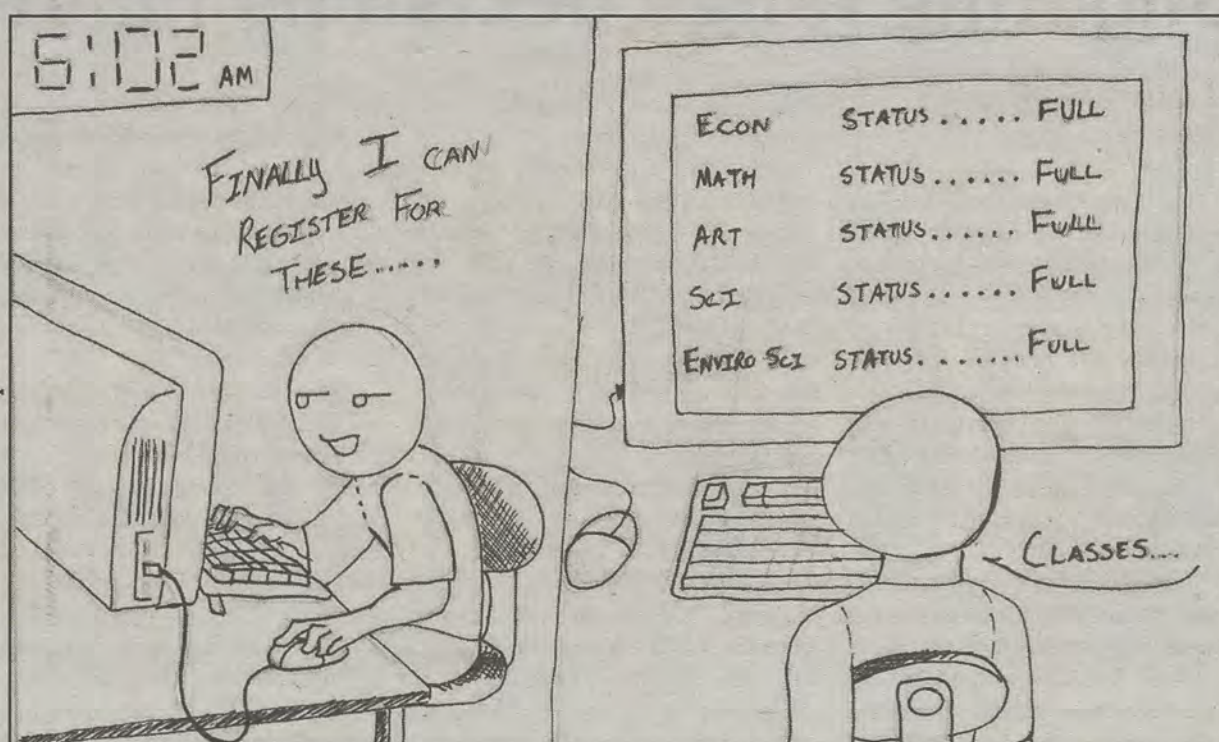
Some of the attention raising events that we have covered that have impacted both the students and the community and should be fresh on the minds of all homecoming participants.

Students should remind themselves of the do's and don'ts regarding the laws and student code of conduct while they continue their homecoming celebration.

Some of these issues for example are the legal drinking age of 21, not drinking and driving, spice now a violation of conduct code and the need respectful student behavior at the football games.

It is important for students to remember that they also share the tradition of homecoming with the community. Because many families will be apart of the celebration, students should be mindful of their actions that not only represent themselves, but also GSU.

For the rest of the week both students and the community should celebrate with an element of safety in mind.



Marcus Barkley/STAFF

Letters to the Editor

Vote and vote now

Dear Editor,

Not everyone may be aware of this, but until Friday at five o'clock everyone who is registered in Bulloch county, regardless of their district, can cast their vote at the Bulloch county courthouse. I encourage everyone, especially students, to take advantage of this opportunity to avoid the havoc and confusion of finding their polling station on election day.

Students, this is our chance to let our voices be heard!

Whether you are in favor or against Sunday alcohol sales, now is the time to have your say. So, go cast your vote now till Friday at five o'clock at the Bulloch county courthouse or on Tuesday, Nov. 8th at your respective polling location.

Aron Randall
Senior Political Science
Second Vice Chair of College Republicans

Objective sources needed

Dear Editor,

I am responding to Mr. Chapin's article "GSU tobacco compromise is needed." It is apparent the Mr. Chapin used bias in his article. Mr. Chapin lists two sources that say second hand smoking is not real: the CATO Institute and the American Council of Science and Health.

First, CATO is a political think tank, which means that its focus is publishing material that conforms to the organization's libertarian bias.

Second, the American Council of Science and Health, or ACSH, is what is often called an "industry friendly group," which means it publishes studies favorable to special interest groups. For example, ASCH has opposed organic farming and an article by ACSH employees Kathleen Meister and Ruth Kava claims the relationship between trans-fats and heart disease has been exaggerated by medical journals.

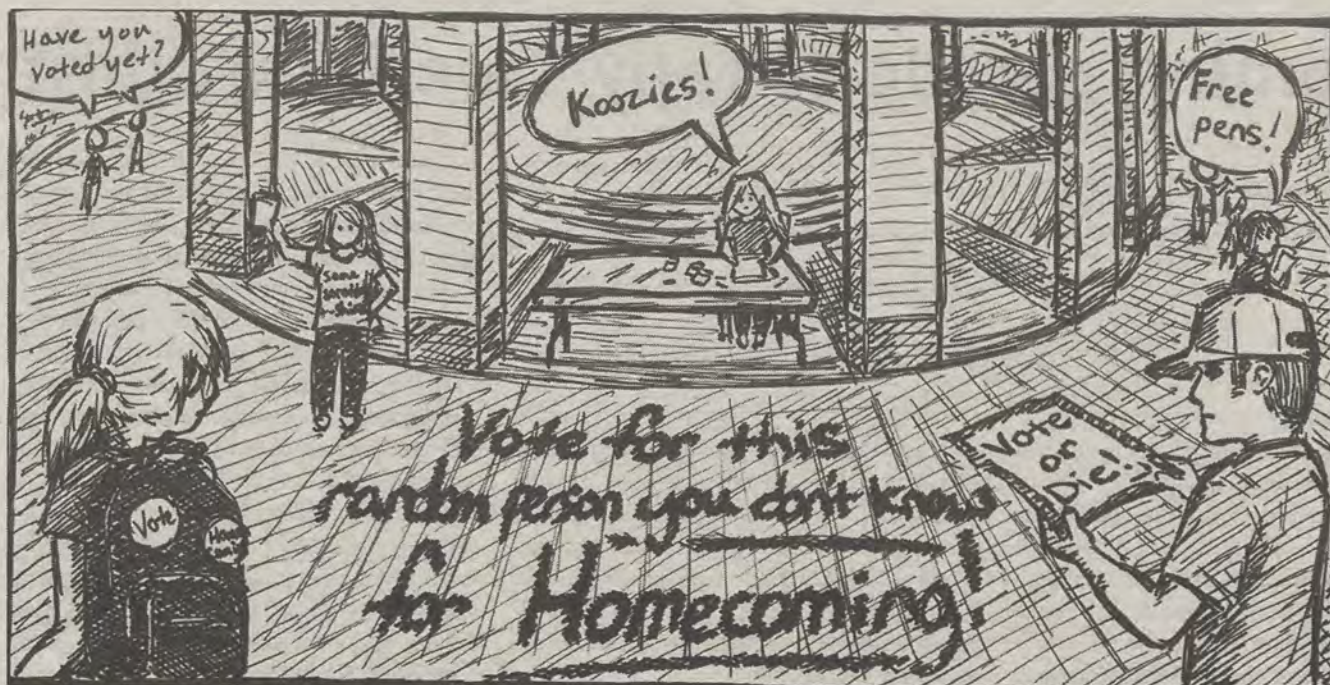
The organizations used as sources are unreliable and I am still mad at Mr. Chapin's use of my religious identity as a talking point.

Merritt Skidmore-Hess
Junior music composition

The George-Anne welcomes letters to the editor and appropriate guest columns. All copy submitted should be 350 words or fewer, typed, and sent via e-mail in Microsoft Word format to gaeditor@georgiasouthern.edu. All submissions must be signed and include phone number for verification. GSU students should include their academic major, year and hometown. The editors reserve the right to reject any submission and edit submissions for length.

Opinions expressed herein are those of the Board of Opinions or columnists themselves and DO NOT necessarily reflect those of the faculty, staff or administration of GSU, the Student Media Advisory Board, Student Media or the University System of Georgia.

Submit your letters to the editor at gadaily@georgiasouthern.edu



Jasmine Nielsen/STAFF

Election helps students shape town

As many of y'all know, this Tuesday, Nov. 8th is Election Day in Statesboro, Ga. It is super important that everyone gets out and has their voice heard. Even though this year is not a national election year, these votes matter so much more because these votes go to directly change the city and county that you live in. You can actually let the Statesboro and Bulloch County government hear what you will have to say and get things done in your community.

In the Statesboro election, voters will choose between the incumbent Gary Lewis, Sam Lee Jones, Donald Logan and Lance D. Turner for City Council District 2; Will Britt and Travis L. Chance are running unopposed for City Council Districts 3 and 5, respectively, however there is a write-in option for the ballot if one chooses.

The second part of the Statesboro election is the Sunday Alcohol Sales portion. This has been divided into two different sections. The first is whether the City of Statesboro will be allowed to permit and regulate the Sunday sale of distilled spirits or alcohol beverages by the drink. Basically this is fancy legal lingo for whether or not bars will be able to sell drinks and thus be open on Sunday. The second part asks if the City of Statesboro will be allowed to permit



FRITZ CHAPIN

and regulate package sales by retailers of malt beverages and wine on Sundays. This is asking if we can buy beer and wine at grocery stores, gas stations and other retailers on Sunday.

Keep in mind that you would vote in a Statesboro election differently from a Bulloch County election.

If you live in City Council Districts 1 and 2, you will vote at the William James Complex at 150 Williams Rd. City Council Districts 3, 4, and 5 will vote at the Honey Bowen Building at 1 Max Lockwood Dr. Most GSU students live in these districts and would vote at the Honey Bowen Building, which is in the same parking lot as the old El Sombrero next to the train track, closest to downtown.

The Bulloch County election is just as equally important as voting in the

city because the county must also vote yes to Sunday alcohol sales in retail stores. Since there are no bars in Bulloch County outside of the city of Statesboro limits, there is no vote on drinking in bars on Sunday, so the city election takes care of that.

The reason it's important to vote in both elections is if the Sunday sales pass in the county but not the city, you would have to go out of the city in order to buy beer or wine on Sunday and vice versa if would pass in city, but not county. To see which Bulloch County precinct you fall into and where you would vote, please go to the County Elections website.

If going to two different polls seems like a big deal or you just can't find time to vote on Tuesday between classes, you can go and vote early down at the courthouse on Main Street before the end of business on Friday.

If you are not registered to vote down here, they will also be more than happy to help you with an absentee ballot for wherever you are registered. But if you're not registered, then shame on you. It is important to have your voice heard and it can be now. Let your voice help shape the town you live in.

Chapin is a political science major from Roswell, Ga.

Occupy needs leadership, organization

The Occupy movements have been catching a lot of flack recently. This may be justified, but it may also be undeserved.

While they can be criticized for being unorganized, they are a large group of people who have come together for a purpose. They have to be somewhat organized to show up at the same place at the same time for a cause.

They have no definitive goals, but they have a reason. They're there to represent the 99 percent in opposition to the 1 percent.

This is a true American grassroots movement geared towards making a change. They don't like what's going on and they want something to change. This is admirable in the sense that they're doing something to express the anger we all harbor toward the economy and how things have been going recently.

It is condemnable in the sense that they are disorganized and it seems to be a group without a purpose. If they could unify nationally and find a leader to act as their voice, they could garner some credibility and respect nation wide.

One successful thing that has come out of this is the establishment of a new public for politicians to consider addressing. Like other grassroots organizations (e.g. The Tea Party movement), they could establish themselves



ROB ROBERTS

as a player in the upcoming election if they continue to grow at the rate in which they are.

According to Google, amount of searched for the Occupy Wall Street group has jumped ahead of the number of searches for the Tea Party. This is good for them because they've reached a level of exposure to really become a force in the coming years.

While it may become hard to remain outside protesting in the coming months — especially in the North East — this movement will be far from ending. I have a feeling that when the sting of winter hits, the protesters will explode onto the social media scene — more so than they already have — and push their agenda.

I believe that this group is comprised of young people who have seen what went on in the Middle East and would like to be part of a memorable movement as well. What they need to do is focus and unite around a set of goals and objectives so the government can see exactly what they're all about.

Roberts is a senior public relations major from Warner Robins, Ga.

Mardi Gras homecoming parade to rally True Blue spirit

By **TANAJA STANTON**

George-Anne contributor

Georgia Southern University will hold this year's Mardi Gras themed homecoming parade on Nov. 4 in Sweetheart Circle at 4 p.m.

Organized by Traditions Council and the Office of Student Activities at GSU, the parade was put together not only for students but to spread school spirit among the community as well said Emily Stallings, homecoming coordinator.

"Every year we have a big group of participants," said Tori Goehrig, public relations coordinator. "It stays pretty consistent every year with how many organizations and entries we have involved."

This year's theme was chosen because of the fun vibe the real Mardi Gras has. It stands for partying and having fun, which the groups wanted to tie to homecoming. The theme was chosen to excite students to participate in the events and to show school spirit, said Goehrig.

Following the homecoming parade will be

“ The parade is always fun, I’m just looking forward to seeing how people will go about expressing their school spirit this year.”

-Vincent Lanceford, graduate assistant

the Celebration which will offer students free food and activities, said Stallings.

"After the parade we have an event called the Celebration which is basically one of the focal points of the homecoming week," said Stallings. "We have activities for students like make your own street signs, spin art on a Frisbee, decorating your own cookie and homecoming masks as well as free food provided by dining services."

There are 25 homecoming candidates running for king, queen, duke and duchess. Students must be seniors to be crowned king or queen and there are 18 of the 25 are running for those crowns, said Goehrig.

"Last year with the parade, we had royalty all ride together and this year we're actually putting royalty with their organizations instead of running separately," said Goehrig. "Not only does it provide a break from the royalty cars, but it also provides stronger sponsorship that each organization gives to their royalty candidate, expressing a sense of unity."

Some students and faculty members said they are excited to see what this year's homecoming will be like compared to those in the past.

"The parade is always fun, I'm just looking forward to seeing how people will go about expressing their school spirit this year," said

graduate student Vincent Lanceford. "Most of the time the parade has a lot of the same groups but the themes are different. With this year Mardi Gras theme, it should be exciting and I hope to see a whole new group of students."

"The parade is kind of like a multi-faceted event," said Stallings. "At 4 o'clock, which is when the parade begins, that's when community members can come to Sweetheart Circle and different organizations will really have a chance to present themselves and be really creative."

Performers and the crown winners will be part of a presentation after the parade and the Celebration.

"In the presentation we are going to have the trophy winners. The spirit winners, event winners, king and queen court, duke and duchess. We are also going to have the winners of GSU idol and the Doo-Dah Step and Dance Show to perform again, just for those who couldn't make it out to actually see the winners of it," said Stallings. "We really wanted to make this event relaxed and fun for homecoming and that's what our goal really was."

Traditions Council to host Masquerade Night on Friday

By **TANAJA STANTON**

George-Anne contributor

Traditions Council will host Masquerade Night for homecoming week on Friday from 7 to 10 p.m.

Masquerade Night is a casino night with a DJ and activities such as black jack, roulette and poker said Emily Stallings, homecoming coordinator.

"The more students that come and get involved in homecoming week and activities the better," said Nikki Takemura, general member of the traditions council. "The masquerade night will be a lot of fun and will really be a great way to show support for our school."

The event will be open to all organizations and students with a school ID.

Students can participate in many ways by creating facemasks, taking pictures, enjoying free food and fun, said Stallings.

"The Mardi Gras theme was decided by members of Traditions Council," said Stallings. "(In) February we really went

through all of the options we had and decided this would be the best one to bring school spirit along with tons of fun."

"During the night, students receive tokens and will be able to turn them in and collect prizes," said Stallings.

"At 9:45 p.m., right before the event ends, we're going to have the balloon drop. There will be a lot of different prizes but the two big headliner prizes is going to be a free trip to New York and a free trip to Alabama," said Stallings.

There will be several different prizes in the balloons as well, said Stallings.

"The balloon drop is something that we have never done before," said Tori Goehrig, public relations coordinator.

"We just want to create the best possible memory and the best experience for students," said Goehrig.

Goehrig said, "A lot of people work for the things they see in others. When the people see this dedication at this event, as well as homecoming week, students will be inspired."



Keep Bulloch Beautiful

BULLOCH COUNTY

Recycle Used Technology Now!

Technology recycling drive on **Friday, November 4th 2011**
at **5:30-8:00 pm**

At the **City Recycling Center**— behind the **Downtown Statesboro Post Office** at the intersection of **Bulloch and Institute St.**






BIOLOGY, from page 1

is \$32,400,000 and the design amount is \$2,684,000, according to the Monthly Project Report for 10008 made by Bonnie McMakin, project manager at GSU.

The building will have Leadership in Energy and Environmental Design certification, or LEED, which is an internationally recognized green building certification system, said Vives.

"The different green features that the building has, you get points for each feature and you can qualify for basic LEED certification, silver, gold and platinum. We are targeting LEED Silver," said Vives.

"A lot of the LEED points you can earn are actually based on the building construction company. Where they buy the materials and how they dispose of the refuse material," said Vives.

Professors in the current building





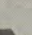
are looking forward to the new building.

"We are definitely cramped and excited for the improved space. We've been in an old building and are way

beyond capacity. The new building will be a vast improvement," said Daniel Gleason, biology professor.

Vives said the building is on track to be completed by June 2013.

LEED® for Commercial Interiors**Total Possible Points** 110***

| | |
|--|----|
|  Sustainable Sites | 21 |
|  Water Efficiency | 11 |
|  Energy & Atmosphere | 37 |
|  Materials & Resources | 14 |
|  Indoor Environmental Quality | 17 |
|  Innovation in Design | 6 |
|  Regional Priority | 4 |

*Out of a possible 100 points +10 bonus points

| | |
|-------------|------------|
| **Certified | 40+ points |
| Silver | 50+ points |
| Gold | 60+ points |
| Platinum | 80+ points |

Tyler Fleider/ CONTRIBUTOR

REVIEW, from page 1

department is more stable and there is a lack of drama."

"(Pacelle) is effective and fair. He is accessible," said Professor Debra Sabia. "His door is always open. He is responsive and leaves us alone to do our job."

"(Pacelle) takes on much of the management. Some are critical of that and would like more input, but Rich does so much and makes good decisions," said Sabia.

Professor Eric Brooks review on Pacelle reflected negative views about the ex-department head.

"(Pacelle) is not clear on his vision for the department," said

Brooks. "He is not a good mentor to the good, young faculty he recruits. He was personable an approachable. He does not communicate info to faculty. The department needs change from the outside. He should not continue as chair."

The Dean of the College of Liberal Arts and Social Sciences, Dr. Michael Smith was not available to comment.

Smith conducted the review before Pacelle's removal from his position as political science department chair.

After his removal, several faculty members of the political science department voted a motion of no confidence in Smith.

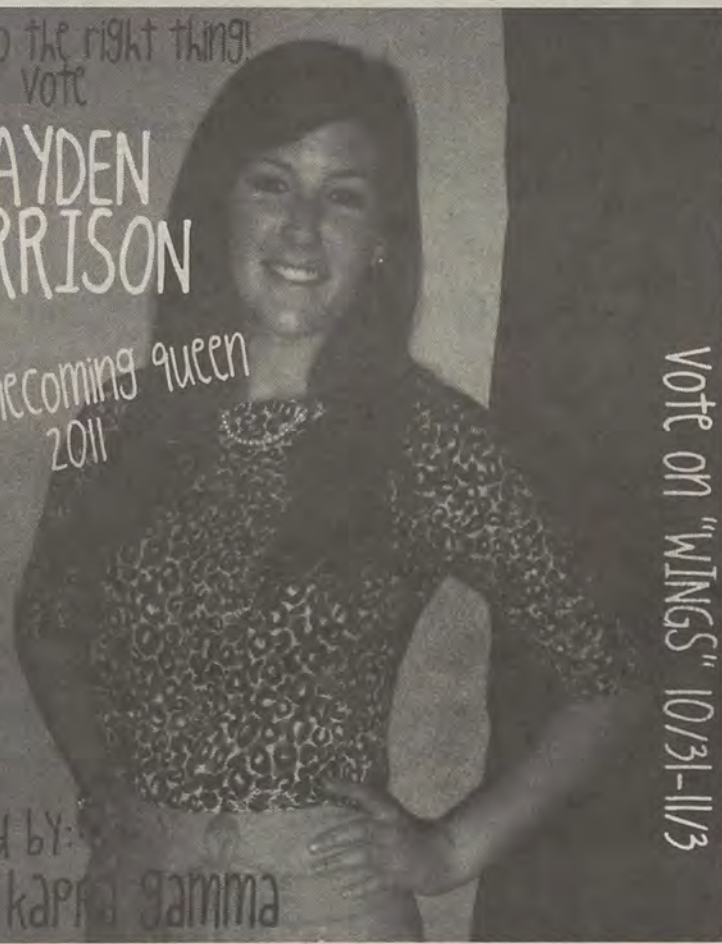
“(Pacelle) does not communicate info to faculty. The department needs change from the outside. He should not continue as chair.”

-Eric Brooks, professor of political science

G.A.T.A. do the right thing!
Vote
HAYDEN HARRISON
for homecoming queen
2011

VOTE ON "WINGS" 10/31-11/3

SUPPORTED BY:
KAPPA KAPPA GAMMA



Traditions Council
and The Office of Student Activities Present

**Rue Southern
2011
HOMECOMING**

Saturday, October 22
True Blue 5k
RAC 8am
Campus Recreation & Intramurals

Monday, October 31
Paint the Campus Blue
8am-2pm
T-Shirt Swap
Williams Center 10am-2pm

Tuesday, November 1
Sculpt It for the Hungry
Rotunda 11am-2pm
Office of Student Leadership and Civic Engagement
Doo-Dah/Step Show
Hanner 7pm

Wednesday, November 2
Blood Drive
Williams Center 11am-5pm
GSU Idol
R.U. Ballroom 7pm
Student Government Association

Thursday, November 3
Swampin' at the Rotunda
(Tailgate) Rotunda 11am-2pm
Masquerade Night
Williams Center 7pm
Residence Hall Association

Friday, November 4
Parade and Celebration
Sweetheart Circle 4pm-7pm
Movie: 30 Minutes or Less
Sweetheart Circle 7:15pm
Eagle Entertainment

Saturday, November 5
Eagle Football vs. Citadel
Paulson 2pm
Crowning
Halftime

Let the good times soar!

your student activity fees at work

SPORTS

8 Thursday, November 3, 2011

The George-Anne

Wilcox provides consistency for GSU offense

Football

By ANNA WELLS

George-Anne staff

Junior business management major and wide receiver for the Georgia Southern University football team J.J. Wilcox played high-school football for the Cairo High School Syrupmakers, a major powerhouse in the southwest region of Georgia. When asked to play for GSU, Wilcox said he couldn't think of a better place to be.

"When I came on my visit it felt like home," he said. "It's a great school and a great environment. I just felt like this was the right place for me."

Wilcox has amassed a total of 364 rushing yards, 101 receiving yards and five touchdowns just in this season alone. In the game against Western Carolina he recorded 115 yards with just six carries, making Wilcox one of the most powerful players on the Eagles' offense.

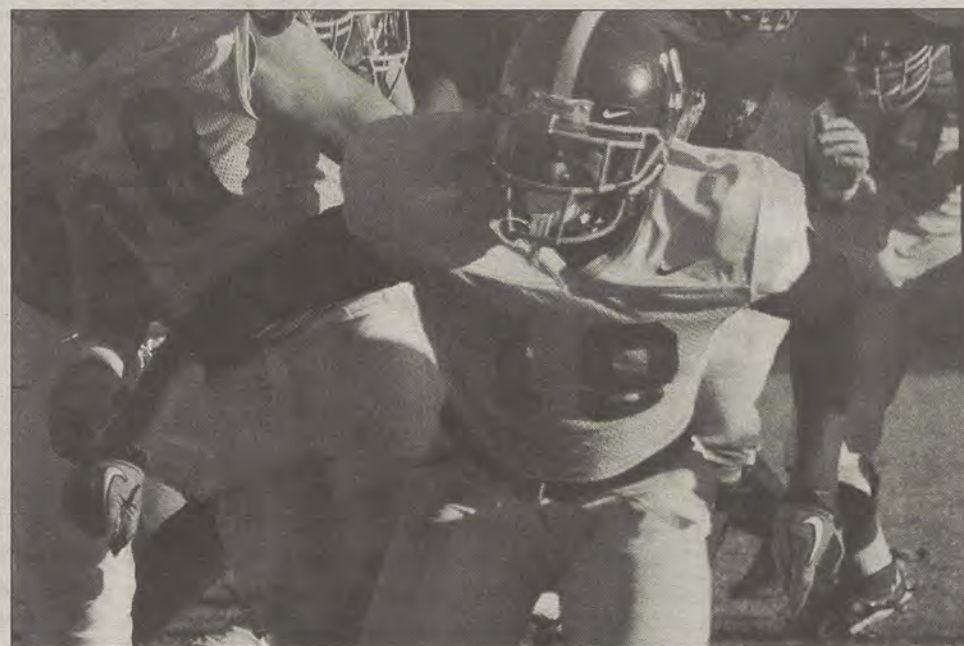
However, he just feels lucky to be a part of something that seems to be more of a family than merely just a football team.

"I'm just glad to be a part of this team. We're a great team, we have great chemistry, they're a great group of guys and I love being around them," said Wilcox.

Wilcox hopes that his strong efforts displayed for the Eagles will help get him recognition from the organization that most college athletes dream of — the NFL.

"Hopefully I'll try and pursue my goal, which is to take my game to the next level. If that works out, it will be great," said Wilcox. "I'll know that I've finally reached my childhood dream. If that doesn't work out, then I'm really just going to try and be successful."

Coming home from last week's tough loss to Appalachian State University, Wilcox and the Eagles are working hard to prepare for a win on this Saturday's homecoming game against The Citadel.



Lindsay Hartmann/STAFF

J.J. Wilcox (19) practices with the rest of the Eagles in preparation to take on The Citadel.



Hungry Howie's

FLAVORED CRUST PIZZA

Pick Up or Delivery

**\$7.77 LARGE 1
TOPPING PIZZA
(\$3 more - make
it a works!)**

Free Flavored Crust!

607 Brannen Street (912)764-6565

Choices of the Heart

Pregnancy Center

Pregnant?

**Free and Confidential Testing and
Counseling. Off Campus Location.
Hot Line: 9AM-9PM 912.764.4303
Appointments Only.**

106-B Oak Street, Statesboro, Georgia • www.choicesoftheheart.org • 912.764.4303

Eagles' building process put to the test

Basketball

By CLINTON HINELY

George-Anne staff

Since the addition of Georgia Southern University's head basketball coach Charlton Young, the team has been in a building process that the coach feels is finally about to pay off.

"The first year, I came in and I had to teach not only every single player that was in the program, but also the assistants, the trainer, the SID and everyone else involved on how we wanted to do things," said head coach Charlton Young. "The second year, we basically were teaching an entire new team because we had six new freshman that were going to play a substantial amount of minutes."

The Eagles had a tough season last year, but it gave substantial playing time to a solid freshman class. The experience the young players received will help the team this year to get off to a solid start.



Randy Hudgins/STAFF

Men's basketball team runs drills.

"Our freshman group, who are now sophomores, got a whole lot of cooperative education. They are now much improved,"

said Young. "We go from being probably the youngest team in the United States of America, to being one of the older, savvy teams in our conference."

The changes from last year to this season's team were on display against Voorhees College in an exhibition game last Thursday night, resulting in a 97-66 victory for the eagles.

"We had 97 points and eight turnovers," said coach Young. "That's foreign territory for us. We used to turn the ball over eight times per a minute last season."

"Just having Willie and Benback together in our first exhibition, you can see what a difference they make in our team."

The changes evident in the exhibition game started in practice. With higher expectations, the team is putting in the effort to accomplish all of their season goals.

"The biggest thing I've seen in practice is we get so many open shots that we never used to get," said Young. "And, a lot of it is because Ben Drayton's decision making

has improved. And Willie Powers, that's his game, he likes getting other people shots."

The Eagles begin the season on Nov. 11 against Valparaiso University and hope that all of their hard work in the preseason will pay off with a win.

"What a difference it makes to have two seniors in the backcourt," said Young. "We have our star point-guard Willie Powers back and Ben Drayton, who had a great junior year and really carried the mail for us last year."

"I feel comfortable that we are playing with basically two point-guards, which gives us good decision making," said Young. "And senior point-guards, that gives us veteran leadership."

The GSU men's basketball team has undergone a lot of changes the past few years. With Powers returning from injury and an overall more experienced and well balanced team for the season, the Eagles will be a team to watch in the Southern Conference.



Sports EMPORIUM

Your largest selection of athletic
footwear in Statesboro



840 BC Buckhead Drive, in Buckhead plaza (912)764-4449

Charlies
Fried Chicken
WE DELIVER
4 UNIVERSITY PLAZA
(912) 681-2222 (912) 681-6666

OPEN TIL 3AM!

**Ask
about
our
Tailgate
Specials!**

**TOKYO'S
LUNCH
SPECIAL
BOX**
**\$7.95 FROM
11AM - 3PM**

*Pick any two for your
lunch, soup, salad,
and rice included*

TOKYO
912-871-8888
912-871-6666
100 Hampton Ave #1A
Statesboro GA 30458
www.tokyofgsu.com

Seniors prepare for last homecoming game

Football

By DERREK ASBERRY

George-Anne staff

For most students at Georgia Southern University, homecoming is another Saturday centered around the success of the Eagle football team and the anticipated crowning of a king and queen at halftime.

As the Paulson Stadium seats fill up, the fans will undoubtedly be in good spirits and be ready to watch the Eagles clinch a playoff spot against The Citadel Bulldogs. The last time the Eagles played the Bull Dogs for a homecoming game was in 2007 when they took a 21-17 win.

The players on the field seem to feel the same way. The seniors feel the need to not only perform well for the fans, but for themselves as well to ensure their last homecoming is a memorable one.

"Anytime you get to play at Paulson it's a great experience," said offensive lineman Brett Moore. "We're expecting a big turnout, so we have to go out there and play a great game."

Although the team is excited about homecoming, Moore said they are also focused on the game. "The Citadel is another great team in the SoCon," Moore said. "They're going to come in fighting, just like we're going to come in fighting, so hopefully we can come out with a victory."

Other seniors also feel that the homecoming game will be an important one for GSU. "Playing at home in front of our fans is very special to us," said quarterback Jaybo Shaw. "We definitely have to be prepared and ready to go. But, we're always excited to play at home, especially for homecoming."

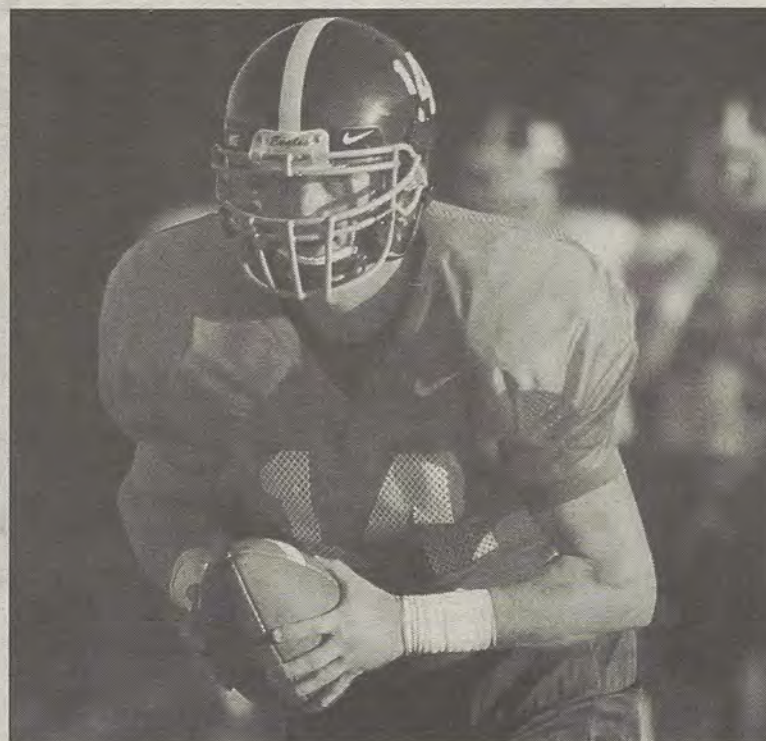
After last year's overtime

homecoming victory against the Appalachian State University Mountaineers, the Eagles are hoping to give the fans more of the same this year.

"We have a great fan base out there and it's a great feeling to play in front of them," said cornerback Laron Scott. "They do a good job of distracting the other team, even on away games."

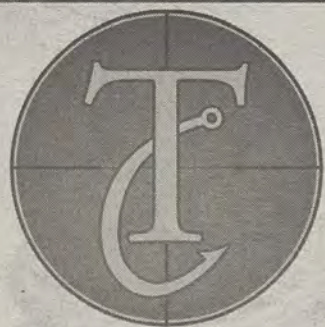
Scott, also a senior, said he feels the sentimental value in playing in his senior homecoming game. "I can't really explain just being out there with my teammates and knowing it's the last guaranteed homecoming," Scott said. "You just have to go out there and seize the moment. So I think we're going to go out there and have some fun and play a good game."

The homecoming game will begin this Saturday afternoon and two o'clock at Paulson Stadium.



Randy Hudgens/STAFF

Senior Jaybo Shaw (14) practices his plays with the team before the game.

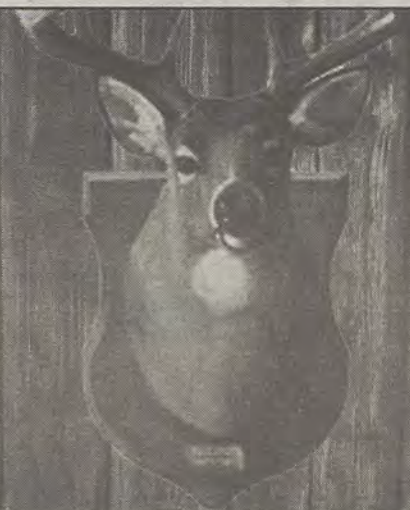


OUTDOORS
YOUR HUNTING & FISHING HEADQUARTERS

Your Hunting and Fishing Headquarters

246B Northside Drive East Statesboro, Ga 30458
Between Deloach's Music and the Tile Center

TC-OUTDOORS.com • 912-489-3474



(912) 489-6655
in front of Lowe's

\$50 OFF

ONE COMPLETE PAIR OF GLASSES

Coupon must be presented at time of sale. Not valid on previous sales. Minimum price of \$119.95 after discount. Cannot be combined with any other eyeglasses offer or discount. Limited time offer.

Valid through: November 19, 2011

EYE EXAMS • GLASSES • CONTACTS

www.boomersvisioncenter.com

GSU

Intramural Sports Scores

Flag Football

The Pack 14, Little Rascals 24
 The Slammin' Salmon 0, Third Graders 19
 Charlie's Angels 12, Racs on Racs on Racs 0
 The Slammin' Salmon 0, Brew Crew 19
 The Comeback 13, The Pack 7
 U.N. of Ready 6, Courtyard Blue Panthers 7
 Centennial Guys 28, Gleep Glop and the Sloopy Doo's 6
 RUF Girls 6, Eat My Grass 7
 Bhadd Guriz 18, Racs on Racs on Racs 7
 So Pi So Fly 0, Nice TD's and Matching Pass 12
 T.R.E.O.S. 0, Theta Xi 19
 Forget the Titans 25, Fast and EZ 13
 Cocaine Cowboys 20, The Comeback 13
 Brew Crew 20, The Show Stoppers 26
 The Show Stoppers 6, Little Rascals 12
 Cocaine Cowboys 26, Third Graders 7
 Multiple Scoregasm 18, No Punt Intended 39
 Purple Flow 29, Eagle Entertainment 6
 Goin Deep 16, Primetime 15
 Victorias Secret 0, Kennedians 33
 What son 0, Charlie's Angels 13
 BCM 6, Gleep Glop and the Sloopy Doo's 28
 Be An Athlete 24, Walla Walla Weasel Wackers 14
 Da Squad 19, Bad Girls Club 0
 BUILD+ 0, Blitz Babez 6
 RAM ROD 0, Kibbles & Vick 19
 Vick in a Box 0, The Baboons 28
 The Beavers 27, DEEPINIT 6
 SchwaagGG 0, 0, Penetrators 19
 Blitz Babez 0, Da Squad 26
 Bankwalkers 19, Ride or Dies
 T and D's 0, Do U Know Em 16
 Show Me Your TD's 19, The Gators 0
 Colonel Angus 19, Pantie Droppers 0

World Domination 19, Plaxidental Shootings 0
 Kappa Delta 12, Kappa Kappa Gamma 14
 Primetime 0, No Punt Intended 26
 Sigma Phi Epsilon 6, Alpha Tau Omega 13
 Payton Manthings 7, Throw 1 Deep 18
 Purple Flow 10, Goin Deep 33
 Blow It Up Squad 38, Too Legit To Quit 14
 Pilgrims of Swag 19
 ABCDEFGHIJKLMNOPQRSTUVWXYZ 27
 Gleep Glop and the Sloopy Doo's 42, Fast and EZ 41
 University Villas 6, Show Me Your TDs CoRec 13
 Victorious Secret Co-Rec 0, Balls N Dolls 19
 Eagle Village 12, One Smoove Squad 23
 How We Met Da Endzone 6, America's Team the 69ers 27
 Courtyard Blue Panthers 29, Multiple Scoregasm 9
 Bye 0, No Punt Intended 1

Indoor Soccer

University Villans 5, Dino & Friends 13
 The Stepfathers 2, Death Is My Wingman 6
 Captain Crunch and the Cereal Killers 1, Booty Bandits 7
 Indoornesia 4, One Shot Away From Scoring 5
 Didiers 2, One Shot Away From Scoring 7
 Catholic Eagles 2, IS 0
 The Abusement Park 0, Centennial Pound Town 4
 Liquor in the Front Poker in the Back 1, Five Dollar Footlongs 2
 John FC 5, Five Dollar Footlongs 4
 Hermaphrodites 0, Dynamo Athletic 4
 Awesome Forever 4, Screamin Ninjas 0
 LadiesandGents 6, Munchma Ballsoff 5
 Dynamo Athletic 4, Just A Lil Bi Curious 6

Screamin Ninjas 0, Racks and Sacks 4
 BAMF 2, Swagitus Maximus 9
 Bro Montana and the 69ers 7, The B.A.L.L. Kickers 2
 DG4L 0, Stern But Fair 10
 Zales 2, Southern Adventures 1
 Hermaphrodites 0, Life is a beach and we just want to eat ice cream 4
 Awesome Forever 9, Stache in the Boro 6
 Anonymous 12, When It Rains It Pours 3
 Geo Club 1, Anonymous 24
 Try not to seem impressed 0, Caucasian Invasion 11
 The Antarctica National Team 6, CCF Boys2Men 1
 Shredsters 4, Kickin' It Old School 2
 Mitchell 2, Sour Diesel 6
 Winning 6, Aston Manpoolhamingtonlivercity Utd 9
 Kicking and Screaming 10, Mighty Ducks 7
 Charismatic Camels 6, Scorgy 1
 Sorry Babe I Fell Asleep 4, Big Bag of Ballers 3
 Mike Ann Deathwalkers 8, T.R.E.O.S. 7
 Team Howie Feltersnatch 3, STRIKERS FC 4
 F.C. Honduras 4, Womb Raiders 0
 Multiple Scoregasm 2, Haymakers 10
 Jager Bombs 7, Green Street Hooligans 8
 Monster Milk 7, Big Test Icicles 6
 Dubriders 5, Alcoballics 0
 Lady Bugs 2, Balls and Dolls 3
 Snatchaholics 2, Fiesty Goats 4
 #YouPlaySoccer? 9, No Glove No Love 6
 #swag FC 7, Green Street Elite 1

Volleyball

Wild Sets 0, Practice Safe Sets 2

Southern Smoke 2, Team X 1
 Your Chicks Dig Our Balls 2, Team X 0
 Pi Kappa Alpha 1, Sigma Phi Epsilon 2
 Blue Lightening 2, CCF We are Menopositively Going to Beat You 0
 Alpha Delta Pi 2, Haymakers 0
 Smack My Beach Up 1, Your Chicks Dig Our Balls 2
 Smack My Beach Up 2, Wild Sets 0
 Always Sunny at ECM 0, Practice Safe Sets 2
 Hold My Digggg! 2, CCF Return From Whence You Came 0
 Dolly Balls 1, Kappa Kappa Gamma 2
 Las Baileys 2, Alpha Omicron Pi 0
 Back That Ace Up 2, Ball and Dolls 0
 Can You Dig It? 0, Burden's Ballers 2
 Spiked Punch 2, Kiss My Ace 1
 Nilla Waffles 2, Balling! 0
 Setting Ducks 0, Back That Ace Up 2
 Ball and Dolls 1, Amazeballs 2
 Avada Kedavra 1, Set to Kill 2
 Good Volley Ms. Molly 2, Onsan Iguanas 0
 CRI Lifeguards 0, Spike This 2
 Unprotected Sets 2, Who Gives a Hit 0
 Set it Off 0, The One Hit Wonders 2
 GSATA Volleyball 0, How I Set Your Mother 2
 Holes and Poles 0, The Megalodons 2
 I't Hit That's 0, Bob Squad 2
 The Southern Weapons 2, UV Volleybrawlers 1
 Spikers Unlimited 0, No Scrubs 2
 Hot Sets 2, Bad Ace Ballers 0
 CP Safe Sets 2, EV Bodonkadonks 0
 10 Points for Gryffindor 0, Safe Sets 2
 Talk Sets with Sue 0, We Always Get It Up 2
 The One Hit Wonders 2, EV Bodonkadonks 0
 How I Set Your Mother 0, Hot Sets 2
 Delta Sigma Phi 0, Southern Adventures 2

Hit-Men 2, Delta Force 2.0 0
 Bad Ace Ballers 0, Set It Off 2
 CP Safe Sets 1, GSATA Volleyball 2
 Sets on the Beach 0, Average Joes 2
 Nuckin' Futs 0, Size Over Everybody 2

Tennis Doubles

S squared 3, DDs 8
 FireBreathingRubberDuckies 8, Racquetearing 3
 IcouldCareLess 1, Shake n' Bake 0
 DDs 3, Some Eric and Mostly Jake 8
 Anarchy 99 0, Racquetearing 1
 IcouldCareLess 8, Deucebags 117 3
 FireBreathingRubberDuckies 3, Some Eric and Mostly Jake 8
 DDs 8, Racquetearing 5
 TM 0, Deucebags 117 1
 Lint Lickers 1, Amoking Aces 0
 Slick Friction 1, DDs 8
 Click Friction 1, anarchy 99 0
 Defending Champs 1, TM 0
 Lint Lickers 0, The Smart Aces 1
 FireBreathingRubberDuckies 8, Slick Friction 3
 Defending Champs 2, We Are Seven 8
 The Smart Aces 1, Smoking Aces 0
 Slick Friction 1, S squared 0
 IcouldCareLess 9, We Are Seven 8
 Defending Champs 8, Shake n' Bake 6
 Defending Champs 8, Deucebags 117 3
 FireBreathingRubberDuckies 11, DDs 13
 Lint Lickers 4, The Smart Aces 8
 IcouldCareLess 4, We Are Seven 8
 Defending Champs 0, We Are Seven 1
 DDs 6, Some Eric and Mostly Jake 8
 IcouldCareLess 8, We Are Seven 6



International Festival 2011

Saturday, November 12, 2011
 10 am - 4 pm

Mill Creek Regional Park

www.georgiasouthern.edu/intfest

FREE ADMISSION!

World Stage Performers

| | |
|-------------|---------------------------------------|
| 10:00-10:30 | GSU Latino Greeks |
| 10:30-11:30 | Hoku-Ioa Polynesian Dancers |
| 11:30-12:30 | West African Drum & Dance Experience |
| 12:30-12:40 | Welcoming Remarks - Mayor Joe Brannen |
| 12:40-1:00 | Global Village Awards Presentation |
| 1:00-1:30 | Beyond's Global Footstep |
| 1:30-2:30 | Latin Heritage Dance Company |
| 2:30-3:30 | Conjunto Folklorico Orgullo Panameño |
| 3:00-4:00 | Miguel Paul & Itopia the Band |
| 4:00 | Festival Ends |

International Festival Sponsors

Rotary Club of Downtown Statesboro • Walmart • Kiwanis Club of Statesboro • BB&T •
 Office of the Vice President for Student Affairs & Enrollment Management (GSU) • Dr. Nancy W. Shumaker
 Office of the Provost & Vice President for Academic Affairs (GSU) • East Georgia Regional Medical Center
 Foreign Language Department (GSU) • College of Liberal Arts & Social Sciences (GSU) • The Clubhouse/Hackers
 Beyond Management Group, Inc. • Honors Program (GSU) • Statesboro Convention & Visitors Bureau
 Sea Island Bank • Citizens Bank of Bulloch County • Franklin Chevrolet • Eagle Entertainment • SpringHill Suites by Marriott

This Week at CRI

FITNESS

Show of Strength

Saturday, November 12, 2011

INTRAMURAL SPORTS

Fall Classic Basketball Registration

Ends November 8, 2011

SOUTHERN ADVENTURES

Gourmet Smores Clinic

Wednesday, November 9, 2011 @ 7pm

Balay Clinic

Thursday, November 10, 2011 @ 6pm

FOLLOW US!



facebook.com/GSUCampusRec
 twitter.com/GSUCampusRec



WWW.GEORGIA.SOUTHERN.EDU/CRI

THE 'BORO BEAT

YOUR GUIDE TO OFF-CAMPUS ENTERTAINMENT

THURSDAY

Applebee's

- \$1 Jello Shots, \$2 Coronas, \$3 Jacks, \$3 Long Island Ice Tea, \$3 draft, \$3 Jim Bean, \$4 Yager bombs

Buffalo's

- Big Daddy Love
- Power Hour \$1 shots
- Reverse Cover \$3 doubles

Crabby Joe's

- ATCE snow carb legs for \$29.99, buffalo tenders and a pitcher of beer \$9.99

Dingus Magee's

- The Looters 10 p.m.
- Happy Hour 5-7 p.m., half price well shots

El Sombrero

- Any 32 oz. draft \$2.50

Millhouse

- Jason White 9 p.m.
- \$2 Margaritas, \$2 Bud Light, Miller Light, Michelob Ultra

Gnat's Landing

- Familiar Faces 10 p.m.

Moe's

- Happy Hour 5-7 p.m. buy one get one free beer

Ruby Tuesday

- \$2 Miller Light, \$3 Blue Moon draft, \$4 Jack & coke

Manny's

- \$12 wings, buy 12 get 12 free

FRIDAY

Applebee's

- Trivia 10 p.m.
- \$1 Natty Brewtus, \$3 other Brewtus, half priced Margaritas and Apps

Buffalo's

- 7 Bridges, the ultimate eagle experiences

Dingus Magee's

- Betsy Franck 10 p.m.
- Happy Hour, 5-7 p.m., half price well shots

El Sombrero

- \$2 12 oz. sex on the beach

Dos Primos

- Happy Hour 5-7 p.m., \$1 Bartender choice shot, \$3 Big beer, \$3 Margarita

Millhouse

- \$2 Margaritas, \$2 Bud Light, Miller Light, Michelob Ultra

Loco's

- \$5 Bud Light pitchers

Gnat's Landing

- Davin McCoy 10 p.m.
- Happy Hour friday half-off: \$6 Bud Light pitchers, \$12 liquor pitchers, \$3 singles, \$5 doubles

Moe's

- Happy Hour 5-7 p.m. buy one get one free beer

Manny's

- 30 and up 1/2 price apps.

SATURDAY

Applebee's

- Do Good DJs, 10 p.m.
- \$3 Jacks, \$3 Long Island Ice Tea, \$3 Draft, \$3 Jack Daniels, \$4 Jager bombs

Buffalo's

- Homecoming Bash
- Nickel Bad of Funk
- College Football

Crabby Joe's

- Live Music 9 p.m.

El Sombrero

- \$2 Margaritas

Millhouse

- Brent Browning and the PB & J 9 p.m.
- GSU vs. The Citadel on the big screen

Gnat's Landing

- Tent City
- Wings & Beer \$.45 wings,
- Happy Hour 5-7 p.m., \$2 Margaritas, \$4 Bloody Mary's, \$6 Pitchers

Moe's

- Happy Hour 5-7 p.m. buy one get one free beer


Ruby Tuesday

- \$2 Miller Light, \$3 Blue Moon draft, \$4 Jack & coke

- College Football pick 'em contest

Godfather's

- Karaoke 10 p.m.
- No cover



SEAFOOD, BAR, & GRILL

11218 HWY 301 SOUTH
Statesboro, GA 30458
(912) 225-3004

GAME DAY SATURDAY

\$1 SHOTS

40¢ WINGS

\$6 PITCHERS

\$9.99 MARGARITA PITCHERS



"BAD TO THE BONE"

10% off

any Order

- Wings
- Homestyle Tenders
- Homemade side
- Garden Salad
- Unique **WM** Sauces

...and the best tea in the boro

expires 12-31-2011
*Must present coupon

THE 'BORO BEAT

YOUR GUIDE TO OFF-CAMPUS ENTERTAINMENT

MONDAY

Applebee's

- \$1 Jello Shots, \$2 Coronas, \$3 Jacks, \$3 Long Island Ice Tea, \$3 draft, \$3 Jack Daniels, \$4 Yager bombs

Buffalo's

- \$3 Martini's
- Young Dro After Party 10 p.m.
- AYCE wings

Dingus Magee's

- Happy Hour 5-7 p.m., half price well shots

El Sombrero

- Happy Hour 5-7 p.m., \$2 Margaritas, \$2.50 draft beers \$3 Pina Colada, \$6.50 Margaronas

KBob Kelly's

- Cornhole Tourney 8 p.m.

Loco's

- \$5 Bud Light pitchers

Moe's

- Happy Hour 5-7 p.m. buy one get one free beer

Ruby Tuesday

- \$2 Miller Light, \$3 Blue Moon draft, \$4 Jack & coke

- Jello shots all night for Football Game

Manny's

- 1/2 price pizza day

TUESDAY

Applebee's

- Karaoke 10 p.m.
- \$1 Natty Brewtus, \$3 other Brewtus, half priced Margaritas and Apps

Buffalo's

- \$5 Natural Light pitchers
- Beer Pong Tournament

Dingus Magee's

- Happy Hour, 5-7 p.m., half price well shots

Dos Primos

- Poker 8 p.m.
- Happy Hour 5-7 p.m., \$1 Bartender choice shot, \$3 Big beer, \$3 Margarita

Gnat's Landing

- Trivia with Jake Hallman 6:30 p.m.
- Happy Hour, 5-7 p.m.

El Sombrero

- \$2 Margaritas

Moe's

- Happy Hour 5-7 p.m. buy one get one free beer

Manny's

- Game night
- \$3 Jack Daniels

The Godfather's

- Tequila Tuesdays, tequila your way \$2

WEDNESDAY

Applebee's

- \$3 Jacks, \$3 Long Island Ice Tea, \$3 Draft, \$3 Jack Daniels, \$4 Jager bombs

Buffalo's

- Happy Hour, 5-7 p.m., \$2 Light Tall Boys, \$2 Margaritas, \$2.50 Yuenglings, \$2.75 Landsharks, \$3 Domestic Beers, \$ 6.99 All you can eat wings, 5-8 p.m.

Dingus Magee's

- Happy Hour, 5-7 p.m., half price well shots

KBob Kelly's

- Karaoke 9 p.m.

El Sombrero

- \$2 Margaritas

Gnat's Landing

- Wings & Beer \$.45 wings,
- Happy Hour 5-7 p.m., \$2 Margaritas, \$4 Bloody Mary's, \$6 Pitchers

Dos Primos

- Karaoke 9 p.m.

Loco's

- \$1 PBR and Natty Light tall boys

Moe's

- Happy Hour 5-7 p.m. buy one get one free beer

The
Pita Pit

FRESH THINKING
HEALTHY EATING

WE ACCEPT
EAGLE EXPRESS



Mention this ad and get
10% OFF

CLASSIFIEDS

This page brought to you by Career Services
Explore • Experience • Excel

14 Thursday, November 3, 2011

The George-Anne

Subleases

Subleasing 3 BR/2BT house on Parker Avenue in downtown Brooklet. Extremely large media room! Located on two city lots. Contact Joyce at (912) 842-9479.

2 Bedroom 2 Bathroom apartment in Hawthorne 2. Very close to campus. \$350/month. Sublease through July. Contact Shannon at 678-468-9407

SPRING 2012! 1 BR/1BT available in 4 BR/4 BT at Campus Club for January (or earlier if necessary). Roommates are clean and tidy. Bus stop next to stadium. Utilities included. Rent is \$419/month; CHEAPER RATE CAN BE ARRANGED. Email Skyler Henry at sh02071@georgiasouthern.edu!

Subleases, cont.

Female to sub-lease Spring Sem. 5 BR, \$280 a month. Last month's rent is paid. Less than a mile from campus off of Gentilly Rd. Call, text or email Kristina: (678)-770-6251 kf01606@georgiasouthern.edu

Spring 2012 1 BR/1BT in a 2 BR/2.5 BT townhouse at The Avenue. Furnished and utilities included. \$495/month, but I will pay \$30 for each month. Or I could put \$210 towards the first month's rent. Contact Cherrelle at chollan4@georgiasouthern.edu

Subleasing master bedroom in Planter's Row for \$365/month; utilities not included, pet friendly. For more information contact Anna-Marie at 01770@georgiasouthern.edu or call (770) 546-6560

Subleases, cont.

Subleasing my room for Spring 2012 in a fully furnished 4 BR/4 BT 3-story town home. Walking distance from the stadium and bus stop. Contact Alex at (770) 712-5377 or ao00837@georgiasouthern.edu

Subleasing 626 B at the Exchange. Female Roommate needed. \$519.00 per month. All utilities included, free tanning, free Wi-Fi, 24 hr gym included. Available now. Contact (706) 523-6001

All inclusive, two story, fully furnished, 4 BR townhouse for \$330/month! Includes trash, utilities, cable, wi-fi, pet park, 24/7 gym, recreation courts, computer lab, new appliances and washer/dryer! Contact (229) 326-4291.

For Sale

FOR SALE - 17 inch custom Ford Mustang rims and 17 inch custom Chevy Impala rims. Contact Ron: (912) 486-6611

Size 14 David's Bridal Cocktail Dress. Strapless, hot pink with gold sequins. Worn once, good condition with a few snags. \$60/OBO. Contact Holly at Hh01428@georgiasouthern.edu

Firewood for Sale. Delivery available! Call 912-690-0872 or 912-690-4956.

Scooter for sale! 2005 Honda Ruckus. Black, 49cc, 85+mpg. Fantastic condition; original (faculty) owner, garage kept. No special license or insurance required. \$1,500 OBO. Contact (912) 678-6052

For Sale, cont.

For sale: 2009 BMW 328i, hard-top convertible in great condition. Black with tan interior. Call 912-293-1909.

Help Wanted

MODELS of all weights/sizes/ages needed for figure drawing class on T&R, 2-4:30 PM. Fall and spring openings. Must be 21 and able to sit still for long periods of time. Call 912-478-2793 or email jburke@georgiasouthern.edu

Misc.

Will proof papers (grammar, spelling, punctuation, sentence structure). Quality work, reasonable prices. Will also type short projects. Must have ample lead time to schedule. Email auntre01@gmail.com

To place a classified ad please call our advertising office at (912) 478-5418 or email our classified manager at gaclass@georgiasouthern.edu. It's free for students, faculty and staff.

HOT JOBS

Cool Internships

| Job Title | Company | Deadline to Apply |
|---------------------------------------|---|-------------------|
| Business Development Rep. | Niche Cubed | Nov. 3, 2011 |
| Associate Sales Agent (copy) | Tonia Kiser State Farm Ins. | Nov. 4, 2011 |
| Graphic Design Internship-Spring | Houston Astros Baseball Club | Nov. 7, 2011 |
| Online Media Intern (copy) | Colonial Properties Trust | Nov. 12, 2011 |
| Entry Level IT Consultant | CGI | Nov. 15, 2011 |
| Financial Services Representative | First Investors Corporation | Nov. 15, 2011 |
| Hospitality Team Intern | Georgia Aquarium | Nov. 15, 2011 |
| Summer Language Program Intern | National Security Agency | Nov. 15, 2011 |
| Claim Representative | GEICO | Nov. 18, 2011 |
| Process Engineer Mgr. (Group Manager) | Anheuser-Busch InBev | Nov. 18, 2011 |
| Assistant Financial Examiner | GA Dept. of Banking & Finance | Nov. 19, 2011 |
| Jr. Distribution/Logistics Consultant | CSS International | Nov. 19, 2011 |
| Energy Management Intern | Bibb County/City of Macon Fulton County | Nov. 19, 2011 |
| Legal Research Intern | County | Nov. 19, 2011 |
| Marketing Intern | Henry County | Nov. 19, 2011 |
| External Reporting Specialist (Corp) | UPS (United Parcel Service) | Nov. 20, 2011 |
| Brand Marketing Manager | Callawassie Island Club | Nov. 30, 2011 |
| Sports Advertising Sales Exec. (GA) | National Sports Publications | Nov. 30, 2011 |

To view the detailed job descriptions application instructions or additional postings, log into the Eagle Career Net/NACElink system found at www.georgiasouthern.edu/career.

Advertisement

Is graduate school your next step?

By Sarah Dixon, PR/Marketing Intern

While graduate school is appealing to some, not all students choose to continue their education.

If you are trying to determine whether or not it is the right choice for you, then let Career Services help put your mind at rest. Go over the following information to make a more confident decision about your future.

Factors to consider when thinking about graduate school:

- Some graduate programs, including many MBA programs, strongly encourage students to get work experience first.

- How do you feel about more tests, papers and reading? Does the thought of more studying make you cringe?

- Does graduate school fit into your personal and professional interests and growth?

- Which schools offer the field of study that you are interested in?

- What are the application and admission requirements?

- What about the various expenses that you would incur? (i.e. living, transportation, etc.)

- What is the job placement rate of the program?

Career Services has several online resources, books and directories related to searching and preparing for graduate and professional schools.

We also provide students with one-on-one counseling on the right decision for you. A decision this big should be well thought out, so jumpstart your future today.

For more information or to set up an appointment, call Career Services at (912) 478-5197 or visit us in the Williams Center Room 1047.

PUZZLES/COMICS

www.thegeorgeanne.com

Thursday, November 3, 2011 15

Los Angeles Times Daily Crossword Puzzle

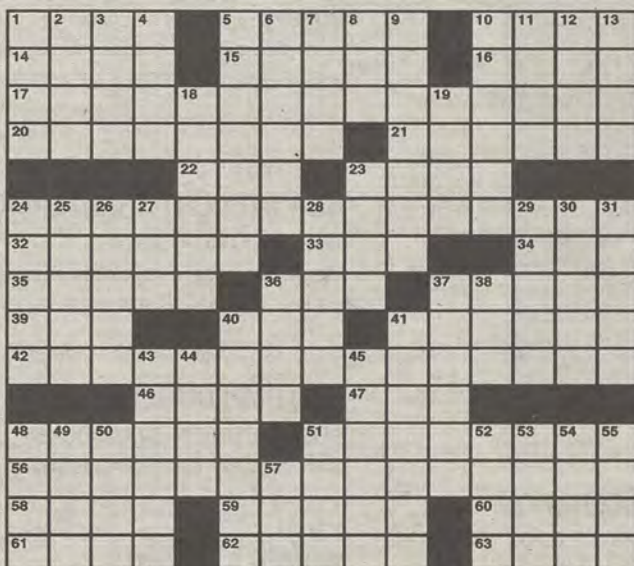
Edited by Rich Norris and Joyce Lewis

ACROSS

- 1 Like gates, at times
- 5 Wide-brimmed hat wearers
- 10 5-Across, e.g.
- 14 Pasture gait
- 15 Archaeologist's prefix
- 16 Chat room "Just a thought ..."
- 17 Much-feared economic situation
- 20 AOL feature
- 21 Like grapefruit
- 22 Cross shape
- 23 It often has two slashes
- 24 Sightseer's option
- 32 Despises
- 33 Angst
- 34 Egyptian threat
- 35 Bell, book and candle
- 36 Reunion attendees
- 37 Humeri attachments
- 39 Former station for 26-Down
- 40 Go astray
- 41 Advil alternative
- 42 It both aids and hinders
- 46 Mil. field rations
- 47 Fruity suffix
- 48 Noted
- 51 Cold ones
- 56 Optimal design for clinical trials
- 58 Tops
- 59 Wading bird
- 60 Yeats's homeland
- 61 Huck Finn-like assent
- 62 Golden, south of the border
- 63 Something on the house?: Abbr.

DOWN

- 1 Tough guy actor Ray
- 2 Make one
- 3 Laundry room item: Abbr.
- 4 -Tea: White Rose product
- 5 Manifests itself
- 6 Emulate a conqueror
- 7 "Three Lives": old TV drama
- 8 Champagne designation
- 9 Dixie breakfast fare
- 10 Convent address
- 11 Mideast chieftain
- 12 Mid-20th-century Chinese premier
- 13 Scads
- 18 Lays in a grave
- 19 Where it's at
- 23 Brand in a ratty apartment?
- 24 Ball
- 25 WWII investment choice
- 26 Povich co-anchor
- 27 Heyerdahl's "Tiki"
- 28 Basketball Hall of Fame center since 2008
- 29 Baccarat cry
- 30 Carrier renamed in 1997
- 31 Shell out
- 36 "The ___ Are All Right": 2010 Oscar nominee
- 37 Prepares to redo, as a quilt section



By Julian Lim

11/3/11

November 1st Puzzle Solved

| | | | | | | | | | | | | |
|---|---|---|---|---|---|---|---|---|---|---|---|---|
| S | T | A | G | E | D | A | L | M | S | S | M | L |
| A | R | C | H | E | R | L | O | A | N | H | A | I |
| P | E | T | E | R | I | L | O | V | E | S | I | C |
| | | T | I | V | O | S | E | E | H | E | R | E |
| F | I | F | T | E | E | N | M | E | N | E | L | A |
| I | T | O | O | W | E | A | R | W | A | D | E | S |
| A | C | C | S | A | I | L | F | A | T | | | |
| T | H | I | R | T | Y | S | O | M | E | T | H | I |
| | | E | D | S | | D | I | R | T | S | O | U |
| J | A | M | B | S | | B | O | A | R | E | B | O |
| U | V | E | A | | F | O | R | T | Y | W | I | N |
| D | I | S | T | U | R | B | | A | B | E | L | |
| G | A | M | E | F | A | C | E | | O | D | E | S |
| E | R | E | | O | M | A | N | | A | G | E | I |
| S | Y | R | | S | E | T | S | | T | E | N | N |

- 38 Court standard
- 40 Ready-to-plant plot
- 41 Augmented
- 43 "Crack a Bottle" rapper
- 44 Scott in an 1857 case
- 45 Dough maker?
- 48 Modern option for sellers
- 49 English jelly fruit
- 50 Establishes, with "down"
- 51 Ballpoint pen brand
- 52 cell research
- 53 "Timequake" author
- 54 Hipster's "Gotcha!"
- 55 Word sung on New Year's Day
- 57 Bigger than med.



Welcome to Falling Rock National Park by Josh Shalek



| | | | | | | | | |
|---|---|---|---|---|---|---|---|---|
| 1 | | | | 8 | | 7 | | 2 |
| | 3 | 6 | | | | | | |
| | 8 | | 5 | 9 | | | 6 | |
| | | 7 | | | | | 1 | |
| | | | 8 | 5 | 2 | | | |
| | 9 | | | | | 8 | | |
| | 6 | | | 3 | 4 | | 7 | |
| | | | | | | 5 | 4 | |
| 4 | | 8 | | 1 | | | | 3 |

Sudoku

| | | | | | | | | |
|---|---|---|---|---|---|---|---|---|
| 3 | 2 | 9 | 5 | 1 | 6 | 8 | 7 | 4 |
| 6 | 4 | 5 | 8 | 9 | 7 | 1 | 2 | 3 |
| 8 | 7 | 1 | 4 | 3 | 2 | 5 | 9 | 6 |
| 9 | 3 | 8 | 9 | 7 | 1 | 4 | 6 | 2 |
| 7 | 6 | 4 | 2 | 5 | 8 | 3 | 1 | 9 |
| 9 | 1 | 2 | 6 | 4 | 3 | 7 | 5 | 8 |
| 4 | 9 | 3 | 1 | 6 | 5 | 2 | 8 | 7 |
| 1 | 8 | 6 | 7 | 2 | 4 | 9 | 3 | 5 |
| 2 | 5 | 7 | 3 | 8 | 9 | 6 | 4 | 1 |

FRANKLIN
CHEVROLET - CADILLAC
PONTIAC - BUICK - GMC
912.764.6911



Our experienced Body Shop can fix all of the "Dents & Dings" that your vehicle may have! We service all makes and models and accept all insurance claims, and will give you **FREE ESTIMATE** on your body & paint repair

GSU STUDENTS - Show your ID and receive **10% OFF** any purchase in Parts and Service

Check out our website
www.franklinchevrolet.com

WEEKLY BUZZ

A weekly calendar listing sponsored by The Division of Student Affairs and Enrollment Management

NOVEMBER 3- NOVEMBER 9

THURSDAY

11.3.2011

8 PM

FALL CLASSIC BASKETBALL REGISTRATION

RAC

Sponsored by Campus Recreation & Intramurals.

10 AM

GEORGE-ANNE & JOE

GAZEBO

Get your free copy of the George-Anne and a cup of Starbucks coffee. Sponsored by Student Media.

11 AM

HOMECOMING SWAMPIN' AT ROTUNDA TAILGATE

RUSSELL UNION, ROTUNDA

Practice for Saturday and tailgate with friends, what YOU put on YOUR grill, it all depends. Which student org has the most spirit? Bring out your biggest fan to make sure we hear it! Let the Good Times SOAR! Visit: 2011 Homecoming Calendar for a full list of events! Sponsored by Traditions Council.

5:30 PM

WOMEN & WEIGHTS

BODY CONDITIONING ROOM AT THE RAC

Another class will be held next Tuesday. Sponsored by Campus Recreation & Intramurals.

7 PM - 10 PM

HOMECOMING MASQUERADE CASINO NIGHT

WILLIAMS CENTER

Black jack, poker, roulette, oh my...if your luck isn't up, prizes'll fall from the sky. Trips to Alabama, NY and so much more, you can even make your own mask when you walk through the door! Let the Good Times SOAR! Be sure to come and try your luck with our casino games and also try to win a FREE TRIP TO NEW YORK and Alabama!!! Open to all students. Be sure to bring your student ID. Visit: 2011 Homecoming Calendar for a full list of events! Sponsored by Traditions Council.

FRIDAY

11.4.2011

9:30 PM

HOMECOMING PARADE AND CELEBRATION

SWEETHEART CIRCLE

It's a parade, then a celebration, it's all in one, watch the parade as it ends on Sweetheart Circle with loads of fun! Let the Good Times SOAR! Movie sponsored by Eagle Entertainment at 7:15pm on Sweetheart Circle! Open to all students and community! Students be sure to bring your student ID!

SATURDAY

11.5.2011

11PM - 2PM

STUDENT MEDIA TAILGATE PARTY & CONTEST

Come out under the Big Tent in front of The Cribb before the Georgia Southern game against Chattanooga at Paulson Stadium. Free food from Chili's and a chance to enter our Tailgate Contest. Or go to thegeorgeanne.com for your chance to win a great prize pack from the University Store, CRI and Student Media. Enter the Code "MONKEN1."

MONDAY

11.7.2011

10 AM

HOLIDAY HELPER TREE IS OPEN!

ROTUNDA

Come visit the Holiday Helper Tree! Take a look at the requests, pull a tag for a gift that you would like to buy, buy the gift and let an underprivileged person have a happier holiday season! Sponsored by Office of Student Activities.

TUESDAY

11.8.2011

7 PM - 8 PM

DISABILITY AWARENESS PROGRAM

RUSSELL UNION, RM 2080

Panel discussion of individuals with disabilities speaking about the daily challenges they face. PROOF OF ATTENDANCE WILL BE PROVIDED! Sponsored by Multicultural Student Center.

5 PM - 7 PM

NEW STUDENT CHARTERING WORKSHOP

RUSSELL UNION, RM 2052

Interested in starting a new student organization? Attend this workshop to see how! Sponsored by Office of Student Activities.

7 PM

GSU UNPLUGGED

RUSSELL UNION STARBUCKS

Open Mike Night. Sponsored by Eagle Entertainment.

5:30 PM

WOMEN & WEIGHTS

BODY CONDITIONING ROOM AT THE RAC

Another class will be held next Tuesday. Sponsored by Campus Recreation & Intramurals.

WEDNESDAY

11.9.2011

11 AM - 5 PM

THE GRADUATE SCHOOL FAIR

RUSSELL UNION, BALLROOM

Sponsored by Office of Student Activities.

4PM - 5PM

VAN TRAINING

RUSSELL UNION 2052

This training session will provide students with the functional information needed to operate a 10, 12 or 15-passenger van as well as provide you risk management instruction in the event of an emergency. This meeting is mandatory for all students who wish to reserve a van through the Russell Union Student Center or Campus Recreation & Intramurals.



George-Anne & Joe

Sponsored by: Starbucks
Every Thursday morning
at the Gazebo.

Student Affairs
Enrollment
Management

Brought to you by Georgia Southern University VALUES. Georgia Southern V.A.L.U.E.S. is the culture shared by our students, faculty, and staff. We endeavor to share our V.A.L.U.E.S. inside and outside of the classroom with faculty, staff, students, alumni and all other community members. In order to produce productive citizens with an informed set of ethics and community standards as well as create an environment of respect and civility, we pledge to live by our V.A.L.U.E.S.

Organizations step up for 'Doo Dah' homecoming show

By NINA LIANG and
KIMEKO MCCOY

George-Anne contributor

Day two of Georgia Southern University's Homecoming Week ended with a bang Tuesday evening with the annual Doo Dah Step Show.

Hundreds of students and community members attended the show at Hanner Fieldhouse where several GSU organizations took to the stage with step, dance and vocal performances.

Doo Dah coordinators, GSU's Traditions Council and the Student Activities Center said that the show sold out and they ran out of tickets.

Kori Moorer, graduate assistant for traditions council, was pleased with the attendance.

"I think it worked out well,"

said Moorer. "We were kind of worried about if people were going to come because it's usually held on Wednesday but we got enough public relations out there and we sold all of our tickets. We had to end up selling wristbands because we ran out of tickets. We ordered 1,000 and 1,000 were gone."

The competition aspect of the show consisted of dance and step. Performers from several sororities and GSU organizations.

The show made up of three parts all together. All parts were a mixture of dance and step.

With each intermission, local bands and talents were brought out. In addition to the talents, hosts of the show promoted giveaways.

In spite of a slight difficulty at the start of their performance, the ladies



Christian Washington/ STAFF

Delta Sigma Theta takes up the whole stage in an energetic stepping performance at the Doo Dah Step Show.

of Phi Mu Sorority pulled through with a win in the Doo Dah category.

Reedi Hawkins, a junior multimedia communication major, led Phi Mu's step team to victory.

"I was responsible for the

choreography so that took a whole lot of off time for me but just the team itself, we probably put countless hours into this," said Hawkins. "We were just so glad that all the hard work paid off. You run these long

hours and then you get one shot to perform it and it's make it or break it."

In the end, Phi Mu, Alpha Delta Pi, SGA and Euphoria Dance Team won.



McALISTER'S[®] DELI Catering

McAlister's Deli of Statesboro
1100 Brampton Ave., Suite A • (912) 681-3354

Find us on Facebook!

Search "McAlister's Deli - Statesboro, GA."

We Accept the Eagle Express Card.



Let us cater for the big game. We make events delicious! catering trays • box lunches • salads • spud bars • sweet tea

Voted Best Mattress Store in the 'Boro!

Student Housing Available

New, Used & Antique
Furniture

Complete Mattress Outlet

Deal's

Come See the Dealmaker!

17083 GA Hwy 67, Statesboro, GA
(912)681-3824 (Near Fairgrounds)

Mon-Fri : 10am-6pm

Sat: 10am-5pm

Sun: 1Pm-5pm

• Honest, Dependable
Same Day Delivery

• Locally Owned &
Operated by GSU Graduate

• Serving GSU Students
for 34 years

Tervis Tumbler Headquarters

- Collegiate Gifts
- Jewelry
- Handbags
- Placemats
- Diaper Bags
- Men's Gifts
- & Much More

Best Furniture Mattress & Gift "DEALS" in the 'Boro

Donated food forms sculptures around campus

By JAZMIN DAVIS

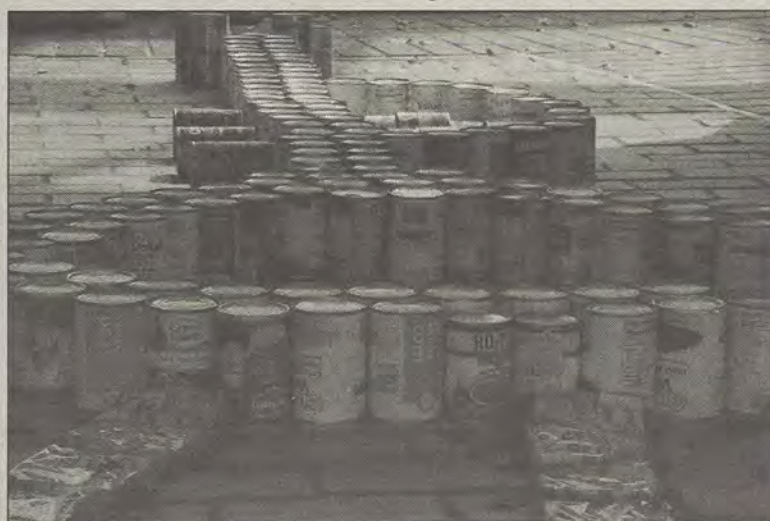
George-Anne contributor

Student organizations showed their spirit for both the school and the community when the Traditions Council paired with the Office of Student Leadership and Civic Engagement to host "Sculpt it for the Hungry" on last Tuesday.

For this homecoming event, students hauled in canned goods, boxes of ramen noodles and other non-perishable food items to the rotunda to build a sculpture based on the homecoming theme, Mardi Gras.

This competition was also a charity event with the proceeds going toward the Statesboro Food Bank, Safe Haven and Warren Threads.

Heather Jo Harralson, coordinator of Civic Engagement said, "It bridges the gap between the university and the community."



Jessica Hartmann/ STAFF

Sculptures made out of donated food items decorate walkways.

Each organization was supposed to collect these food items as well as toiletries and clothing to donate. Based on the number of items donated, there will be a trophy given to the first, second and third place winners.

Last year, over 6,000 items were donated and Harralson hopes to have more donated this year.

"It's a good thing homecoming is right before the holidays so we can stock up," said Harralson.

Students found this event

beneficial in more than one way.

Freshman early childhood education major and Zeta Tau Alpha member Emily O'Gorman said, "We get homecoming points for our queen and it's like doing a charity event while supporting our sorority."

Each group came up with an original sculpting idea unique to their idea of Mardi Gras and the Georgia Southern University homecoming.

"New Orleans is the home of Mardi Gras, of course. We're trying to throw some traditional elements in as well," said junior economics and regional economic development major Christian Perry, a Resident Housing Association member who came up with a Bourbon Street idea.

At the end of the event, the food bank came to collect all of the food items donated and all other proceeds will be taken to their locations.

Winners will be announced at the homecoming celebrations on Friday.

The Buzz List

■ **Justin Bieber** has been served with a paternity suit from



Julia Welch

a 20 year old, Mariah Yeater. So Bieber may have a "Baby, baby, baby, oh baby."

■ **Kim Kardashian** has filed for divorce after her 72 days of married life. Yeah, because we were all thinking a marriage for publicity's sake would end up working out. Maybe next time, Kimberly.

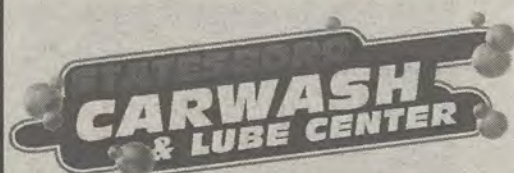
Information compiled by Arts Editor Julia Welch and Assistant Arts Editor Quaniqua Epps from TheHollywoodReporter.com.

Posters, tapestries,
Hemp and glass jewelry,
Bohemian clothing and
purses,
We even teach glass
blowing classes!



418 s main st across from baymont inn
★ 912 764 6606 ★

**15% OFF
SMOKING
ACCESSORIES
APPAREL AND
DECOR**



GOT \$5?

Try Our Express Exterior Washes Starting at \$5.

10% off All Car Wash, Detail, And Oil Change Services
WITH GSU STUDENT OR EMPLOYEE ID

830 BUCKHEAD DR. (912) 764-3692



'Holiday Helper Tree' kicks-off the season

By KIMEKO MCCOY

George-Anne contributor

Events to get us all into the holiday spirit got started Wednesday by Georgia Southern University's Student Leadership and Civic Engagement department in collaboration with the Office of Sociology and Anthropology and their Holiday Helper Tree Kick-Off.

The celebration began at 10 a.m. in the Russell Union and lasted until the kick-off's entertainment came to an end.

Onlookers in the Russell Union stopped to enjoy the sounds of the seasons by the children of Statesboro Head Start, a local daycare center, who had some vocal pieces prepared including "Twinkle Twinkle Little Star" as well as "We Wish You a Merry Christmas."

In addition to the voices of the tiny tots, the Adrenaline Show Choir performed holiday spirited pieces for the kick-off.

After the music, co-creator of the GSU's Holiday Helper Tree, Eileen Smith, offered a few words for the purpose of the tree and to encourage participation from students, faculty and others who were willing.

Towards the end of the kick-off, there was the official tree lighting followed by a sincere round of applause awarded to those who put on the production.

"It is a reason for the season," said Smith.

Every year for the past 18 years Student Leadership and Civic Engagements in cooperation with the Office of Sociology and Anthropology support the Holiday Helper Tree by asking local businesses including Safe Haven, Statesboro Head Start, DeFax and many others to send a wish list for those in need.

Upon receiving the lists, the organizations place the name of the individual or family with their wish list on colorful cards, which are then



Randy Hudgins/STAFF

Left: The Holiday Helper Tree decorates the Union and holds all the cards.

Above: Cards on the tree give details about the individual or family that is in need.

perched on the tree.

The assortments of colors on the tree represent the many different agencies that provided the wish lists of the needy.

Students and participants are asked to pull a tag from the tree and provide a gift for the name listed. There are a large number and variety of ages and individuals.

"The goal is that everyone gets a gift," Heather Jo Harralson, graduate and Coordinator of Civic Engagement, said.

When all the gifts have been brought in, agencies that provided the wish lists will come and collect donations to distribute them.

Students and staff who wish to lend a

helping hand are being offered an opportunity to gift wrap the gifts for distribution and should contact Harralson at hjharralson@georgiasouthern.edu or stop by the Student Leadership and Civic Engagement's new office location in the Russell Union room 1056. In addition to help, gifts should be brought to the new office location as well.

"Pull a tag, make a holiday wish come true for someone in need," said Harralson.

The Holiday Helper Tree lasts every day from Nov. 2 through Dec. 2 from times 9:00 a.m. - 3:00 p.m.

On Dec. 5, all gifts should be brought in and will be collected by the agencies for distribution.

UT&ABOUT

Express Tune & Lube

Tire, Alignment
& Exhaust Center
612 S. Zellerbach Avenue
489-4444
www.expresslubeandlube.com
Monday - Friday 7:30am - 6:30pm
Located a half block north of Wendy's.

OIL CHANGE SPECIAL

\$25⁹⁵ Includes up to
5 qts of Castrol
5W20, 5W30, 10W30

price applies to most vehicles. Expires 11/30/11
www.expresslubeandlube.com



Formerly known as
Dale's Transmission

25% off oil change
50% if you bring a friend
AND your friend can have
25% their oil change
ALL MODELS

(912) 489-3499 6762 Cypress Lake Rd Statesboro, GA 30458

myth:

drinking is central to the
social lives of georgia
southern university
students

fact:

78% of georgia southern
students typically drink
once a week or less often

Jerry's Salon & Tan



\$10 Feathers, \$7 Tinsel

Bring Student I.D., get
**\$2 for tannings, haircuts,
colors & highlights**

300 East Main St. Suite C, Statesboro, GA 31206-0972
(Across from old Video Warehouse on Hwy. 80)

Planters ROW

By Hendley Properties

912.681.1170
www.hendleyproperties.com

3 bedroom
cottage
house

\$365
/month per person



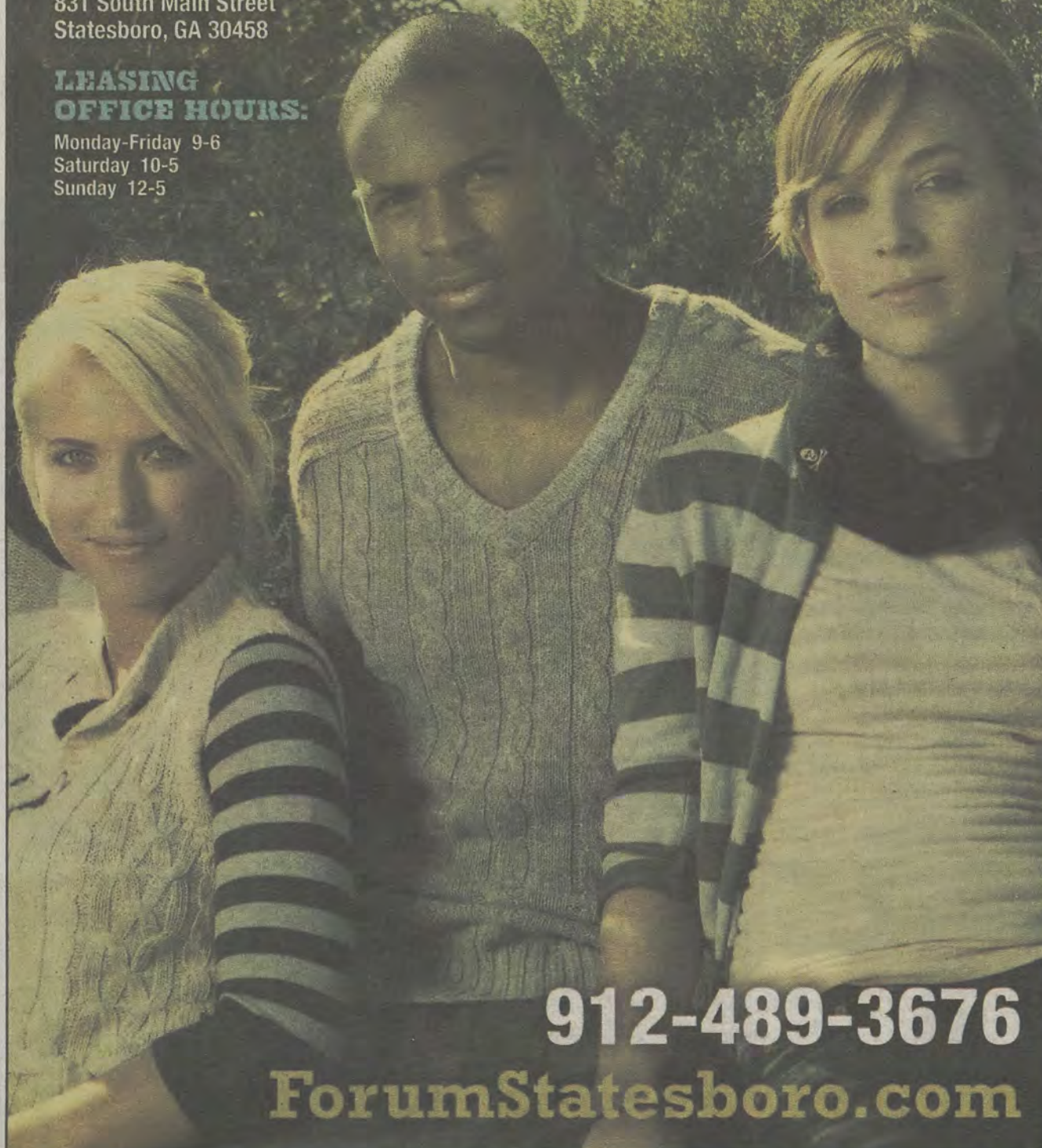
**IT'S YOUR LIFE...
LIVE IT!**
FORUMSTATESBORO.COM

COMING TO:

831 South Main Street
Statesboro, GA 30458

**LEASING
OFFICE HOURS:**

Monday-Friday 9-6
Saturday 10-5
Sunday 12-5



912-489-3676

ForumStatesboro.com

GET A FREE T-SHIRT WITH THIS AD!

FORUM[®]

AT STATESBORO

**A PREMIER STUDENT
HOUSING COMMUNITY**

**NOW
LEASING
FOR FALL 2012**

- Tennis Court
- Lap Pool & Spa
- Pet Friendly
- Pet Park
- Two Free Tanning Beds
- Indoor Basketball Court
- Indoor Volleyball Court
- Car Care Center
- Modern Faux-Wood Floors
- Private Bathroom in Bedrooms
- Convenient Individual Leases
- Free High Speed Internet in Bedrooms
- 24 Hour Fitness and Training Center
- Kitchens with Full Size Appliances
- Full Size Washer / Dryer Included
- Wi-Fi Cyber Cafe with Coffee Bar
- Outdoor Sand Volleyball Court
- High Speed Internet Access
- Student Center and Lounge
- Roommate Matching
- Expanded Cable
- Media Room



Forum Statesboro, LLC. 2011. All rights reserved. An equal opportunity and non-discrimination housing provider.

GAMEDAY MAYDAY

THE CITADEL VS⁴ GEORGIA SOUTHERN

@PAULSON STADIUM, 2:00 PM

SENIOR NIGHT



#34- LARON SCOTT

29 TACKLES
3 INTERCEPTIONS
605 (ALL PURPOSE
YARDS & 1 TD)



#66- BRENT RUSSELL

38 TACKLES
10.5 TACKLES FOR LOSS
5 SACKS

SPECIAL PULL-OUT SECTION

FOLLOW @THEGEORGEANNE ON TWITTER FOR LIVE GAME UPDATES

GEORGIA SOUTHERN EAGLES

| No. | Name | Pos. | Year | Hometown | No. | Name | Pos. | Year | Hometown |
|-----|-------------------|------|------|---------------------|-----|--------------------|------|------|----------------------|
| 1 | Jerick McKinnon | QB | So. | Marietta, Ga. | 50 | Garrett Brewer | OL | Fr. | Dixie, Ga. |
| 2 | A.J. McCray | S | Sr. | St Marys, Ga. | 51 | William Maxwell | OG | Sr. | Quitman, Ga. |
| 4 | Derek Heyden | S | Sr. | Atlanta, Ga. | 52 | Javon Mention | DT | So. | Tampa, Fla. |
| 4 | Prince McJunkins | QB | Fr. | Wagoner, Okla. | 53 | Marcus Duvall | ILB | Sr. | Griffin, Ga. |
| 5 | Robert Brown | FB | So. | Macon, Ga. | 54 | Koretheus Bailey | DT | Jr. | Lula, Ga. |
| 6 | Zeke Rozier | FB | Sr. | Cochran, Ga. | 55 | Austin Hagan | OL | Fr. | Dacula, Ga. |
| 7 | Darreion Robinson | RB | Jr. | Bishop, Ga. | 56 | Luke Cherry | PK | So. | Jacksonville, Fla. |
| 9 | Zach Walker | WR | Fr. | Wrightsville, Ga. | 57 | Brett Moore | OL | Sr. | Warner Robins, Ga. |
| 10 | Josh Rowe | ILB | Jr. | Opelika, Ala. | 58 | Garrett Frye | OL | Fr. | Cumming, Ga. |
| 11 | Ezayi Youyoute | QB | RFr. | Wauchula, Fla. | 59 | Zach York | LB | Jr. | Hartwell, Ga. |
| 12 | Russell DeMasi | QB | Jr. | Savannah, Ga. | 60 | Chris Gray | OT | Jr. | Landrum, S.C. |
| 13 | Darius Eubanks | OLB | Jr. | Harlem, Ga. | 61 | Jacob Bagley | TW | Jr. | Waycross, Ga. |
| 14 | Jaybo Shaw | QB | Sr. | Flowery Branch, Ga. | 62 | Zach Lonas | OG | So. | Acworth, Ga. |
| 15 | Carlos Cave | OLB | So. | Macon, Ga. | 63 | Brandavious Mann | C | Sr. | Forsyth, Ga. |
| 15 | Aaron Griffin | QB | Fr. | Rincon, Ga. | 64 | Hunter Lamar | OL | Fr. | Statesboro, Ga. |
| 16 | Antonio Glover | FS | Fr. | Atlanta, Ga. | 65 | Kyle Stroud | OL | RFr. | Tucker, Ga. |
| 17 | Billy Greer | PK | Sr. | Crosby, Texas | 66 | Brent Russell | DT | Jr. | Comer, Ga. |
| 18 | Charlie Brower | WR | Unk | Dacula, Ga. | 67 | Matt Mills | OL | Fr. | Johns Creek, Ga. |
| 18 | Lavelle Westbrook | CB | So. | Riverdale, Ga. | 68 | Matthew Gilbert | C | RFr. | Marietta, Ga. |
| 19 | JJ Wilcox | SLOT | Jr. | Cairo, Ga. | 69 | Cole Peebles | OL | Fr. | Conyers, Ga. |
| 20 | Nico Hickey | SLOT | Sr. | Columbus, Ga. | 70 | Raymond Klugey | OT | Jr. | Norcross, Ga. |
| 21 | Hudson Presume | DB | Sr. | Bradenton, Fla. | 71 | Dorian Byrd | OT | So. | Macon, Ga. |
| 22 | Seon Jones | FB | Fr. | Flowery Branch, Ga. | 72 | Zach Reckers | DT | Jr. | Atlanta, Ga. |
| 23 | Johnathan Bryant | SLOT | Jr. | Cairo, Ga. | 73 | Maurice Hunt, Jr. | OL | Fr. | Lyons, Ga. |
| 24 | Riyahd Jones | CB | Fr. | Columbus, Ga. | 74 | Logan Daves | OL | RFr. | Blue Ridge, Ga. |
| 25 | Emmanuel Orange | CB | Fr. | Naples, Fla. | 75 | Manrey Saint-Amour | OL | Fr. | Suwanee, Ga. |
| 26 | Tray Butler | WR | So. | Stockbridge, Ga. | 76 | Trevor McBurnett | OL | RFr. | Lawrenceville, Ga. |
| 26 | Josh King | CB | Fr. | Stockbridge, Ga. | 77 | Blake DeBartola | OL | Jr. | Fayetteville, Ga. |
| 27 | Javonte Martin | DB | So. | Tampa, Fla. | 78 | Josh Petkovich | OT | Sr. | Palm Harbor, Fla. |
| 28 | Devin Scott | SLOT | So. | Tucker, Ga. | 79 | Oliver Kraemer | OT | RFr. | Marietta, Ga. |
| 29 | Deion Stanley | SS | RFr. | Dry Pond, Ga. | 80 | Kentrellis Showers | WR | RFr. | Dublin, Ga. |
| 30 | K.R. Snipes | LB | RJr. | Opelika, Ala. | 81 | Mitchell Williford | WR | Jr. | Duluth, Ga. |
| 31 | Dominique Swope | FB | Fr. | Buford, Ga. | 82 | Wilson Hudgins | TE | Fr. | Loganville, Ga. |
| 32 | Nick Wright | CB | Fr. | Lithonia, Ga. | 83 | Martin Weatherby | WR | Jr. | Roswell, Ga. |
| 34 | Laron Scott | DB | Sr. | Warner Robins, Ga. | 84 | Patrick Barker | WR | Jr. | Ponte Vedra, Fla. |
| 35 | Miguel Gilmore | SLOT | Sr. | Orlando, Fla. | 85 | Allen Lee | WR | Jr. | Savannah, Ga. |
| 35 | Michael Spaulding | LB | So. | Fayetteville, Ga. | 85 | Brian Wilcher | SLOT | Jr. | Dublin, Ga. |
| 36 | Connell Reddick | DB | RFr. | Hephzibah, Ga. | 86 | Markus Farmer | WR | Jr. | Savannah, Ga. |
| 37 | Antwione Williams | LB | Fr. | Lovejoy, Ga. | 87 | Willie Burden | TE | Jr. | Statesboro, Ga. |
| 38 | Kyle Oehlbeck | LB | Jr. | Gainesville, Fla. | 88 | Trevor Shaw | DL | So. | Alpharetta, Ga. |
| 39 | DeVonte Lewis | SLOT | Fr. | Dacula, Ga. | 88 | Tyler Sumner | TE | Jr. | Pooler, Ga. |
| 39 | Deonté Watkins | DB | Sr. | Walkersville, Md. | 89 | Carter Jones | LS | Sr. | Moultrie, Ga. |
| 40 | Michael Butler | DB | Sr. | Stone Mountain, Ga. | 90 | Josh Gebhardt | DE | So. | Douglasville, Ga. |
| 41 | John Stevenson | OLB | Jr. | Stone Mountain, Ga. | 91 | Justice Ejike | DT | RFr. | Covington, Ga. |
| 42 | Boyd Sasser | S | Jr. | Millen, Ga. | 92 | John Douglas | DE | Sr. | Augusta, Ga. |
| 43 | Eric Worthen | LB | Fr. | Swainsboro, Ga. | 93 | Rashad Williams | DE | RFr. | Roswell, Ga. |
| 44 | Quaun Daniels | OLB | Fr. | Moultrie, Ga. | 94 | Roderick Tinsley | DT | Sr. | Soperton, Ga. |
| 45 | Adrian Mora | PK | Gr. | Dalton, Ga. | 95 | Edwin Jackson | LB | RFr. | Atlanta, Ga. |
| 46 | Brent Thomas | FB | Sr. | Tampa, Fla. | 96 | Blake Riley | DT | So. | Crescent, Ga. |
| 47 | Omari Jones | DE | RFr. | Jonesboro, Ga. | 97 | George Osunde | LB | Jr. | Alpharetta, Ga. |
| 48 | Charlie Edwards | P | Sr. | Tifton, Ga. | 98 | Forrest Kelleher | DE | Fr. | Ft. Lauderdale, Fla. |
| 49 | Brandon Lane | DB | Jr. | Marietta, Ga. | 99 | Terico Agnew | DE | Jr. | Stockbridge, Ga. |

Come Visit **GSU** Store

THE CITADEL BULLDOGS

| No. | Name | Pos. | Year | Hometown |
|-----|---------------------|------|------|------------------------|
| 1 | Sadath Jean-Pierre | CB | RSO. | Immokalee, Fla. |
| 2 | Ben Dupree | QB | So. | Harrisburg, Pa. |
| 3 | Domonic Jones | WR | RSO. | Fernandina Beach, Fla. |
| 4 | Dalton Trevino | RB | RFr. | Canton, Ga. |
| 5 | Matt Thompson | QB | So. | Ormond Beach, Fla. |
| 6 | Greg Adams | WR | Jr. | Gadsden, S.C. |
| 7 | Keith Gamble | CB | RJr. | Sumter, S.C. |
| 8 | Aaron Miller | QB | Fr. | Clover, S.C. |
| 9 | DeAndre Smith | LB | Sr. | Columbus, Ga. |
| 10 | Adrian Ranson | CB | Fr. | Snellville, Ga. |
| 11 | Douglas German | WR | Sr. | Atlanta, Ga. |
| 11 | Rod Harland | LB | Sr. | Hartwell, Ga. |
| 12 | Tolu Akindele | LB | Sr. | Houston, Texas |
| 13 | Kevin Hardy | WR | Sr. | Ocala, Fla. |
| 16 | Trevon Davis | LB | RFr. | Orlando, Fla. |
| 17 | Jamal Allen | DB | So. | Tampa, Fla. |
| 17 | Parker Gaston | QB | Jr. | Mount Pleasant, S.C. |
| 20 | Joseph Boateng | S | Jr. | Germantown, Md. |
| 21 | Rickey Anderson | RB | RSr. | Cape Coral, Fla. |
| 22 | Akeem Garnett | FS | RFr. | Fairfax, Va. |
| 22 | Christian Robertson | RB | Sr. | Savannah, Ga. |
| 23 | Terrell Dallas | FB | Sr. | Fernandina Beach, Fla. |
| 24 | Shaunn Middleton | RB | So. | Adams Run, S.C. |
| 24 | Jogn Synovec | LB | RSr. | Columbia, S.C. |
| 25 | Terrance Martin | RB | So. | Cowan, Tenn. |
| 26 | Yemi Oyegunle | LB | Jr. | Tampa, Fla. |
| 27 | Austin Crowe | DB | RFr. | Inman, S.C. |
| 27 | Christian Graham | RB | RJr. | Roebuck, S.C. |
| 28 | Julian Baxter | DB | RFr. | Lugoff, S.C. |
| 29 | Carl Robinson | LB | Fr. | Irvington, Ala. |
| 30 | Thomas Warren | K | Jr. | Mount Pleasant, S.C. |
| 30 | Timothy Woods | RB | Fr. | Salem, Va. |
| 31 | Jeremy Buncum | LB | Sr. | Charleston, S.C. |
| 32 | VanDyke Jones | RB | Jr. | Norfolk, Va. |
| 33 | Doyen Harris | LB | RFr. | Cincinnati, Ohio |
| 34 | Darien Robinson | RB | So. | McKeesport, Pa. |
| 36 | Cass Couey | P | RJr. | Tampa, Fla. |
| 38 | Martin Fosberry | S | Jr. | Charleston, S.C. |
| 39 | Alexander Wall | P | Sr. | Asheville, N.C. |
| 40 | Rock Muhammed | LB | Fr. | Gadsden, Ala. |
| 41 | Walker Smith | S | So. | Denmark, S.C. |
| 42 | Austin Boyle | DB | RJr. | Sumter, S.C. |
| 43 | Davis Boyle | DB | RJr. | Sumter, S.C. |
| 44 | Bay Amrhein | DE | RSO. | Mount Pleasant, S.C. |
| 45 | Brandon McCladdie | CB | RSO. | Martinez, Ga. |
| 46 | Ian Thompson | LB | RFr. | Goose Creek, S.C. |
| 47 | Byron Addison | FB | Sr. | St. Stephen, S.C. |
| 47 | Dylan Gidado | DT | So. | Jacksonville, Fla. |

| No. | Name | Pos. | Year | Hometown |
|-----|-------------------|------|------|----------------------|
| 48 | Malachi Evans | RB | Fr. | Douglasville, Ga. |
| 49 | Chris Vanderhorst | S | So. | Mount Pleasant, S.C. |
| 50 | Mike Sellers | OL | So. | Summerville, S.C. |
| 52 | Thomas Oswald | LS | Jr. | Clemson, S.C. |
| 55 | Keith Carter | DL | RSO. | Tallahassee, Fla. |
| 56 | Michael Mabry | OL | Fr. | Myrtle Beach, S.C. |
| 57 | Nate Gerber | OL | Sr. | Ebensburg, Pa. |
| 58 | Landon Davis | OL | So. | Greenwood, S.C. |
| 58 | Carson Smith | LB | Fr. | Simpsonville, S.C. |
| 61 | Edward Kim | DT | Fr. | Columbia, S.C. |
| 62 | Jameson Bryant | OL | Sr. | Greenville, S.C. |
| 63 | Chet Anthony | OL | Sr. | Pickens, S.C. |
| 64 | Victor Hill | DE | So. | Greenville, S.C. |
| 65 | Jim Knowles | OL | RSO. | Belle Glade, Fla. |
| 67 | Austin Wiles | LS | So. | Rock Hill, S.C. |
| 68 | Nick Rudman | OL | Fr. | Pensacola, Fla. |
| 69 | Quintin Turner | DT | RSr. | Mount Pleasant, S.C. |
| 70 | Charles Coleman | OL | RFr. | North Augusta, Ga. |
| 71 | Jack Taylor | OL | Fr. | Charlotte, N.C. |
| 72 | Cameron Mobley | DT | Fr. | Mobile, Ala. |
| 73 | Neal Strange | OL | RJr. | Columbia, S.C. |
| 74 | Robert Finke | OL | RSO. | Carrollton, Ga. |
| 75 | Tyler Thornton | OL | RSr. | Fayetteville, N.C. |
| 76 | Devin Bice | OL | RSO. | Bonifay, Fla. |
| 77 | Chris Billinglea | DE | RJr. | Fort Mill, S.C. |
| 78 | Elliot Thomas | OL | Fr. | Charleston, S.C. |
| 79 | Joel Townsend | OL | So. | Greer, S.C. |
| 80 | James Robey | OL | Sr. | Leland, N.C. |
| 81 | Alex Glover | TE | Fr. | Mount Pleasant, S.C. |
| 82 | Brandon Eakins | WR | Fr. | McClellanville, S.C. |
| 83 | Trent Butler | WR | Fr. | Greenville, S.C. |
| 84 | Cullen Brown | TE | RSO. | Cocoa Beach, Fla. |
| 85 | Capers Williamson | WR | Fr. | Greer, S.C. |
| 86 | Patrick Riley | WR | Sr. | Walkersville, Md. |
| 87 | Adger Rice | TE | Sr. | Columbia, S.C. |
| 88 | Luke Caldwell | WR | Sr. | Wilmington, N.C. |
| 89 | Preston Bailey | WR | Sr. | Duncan, S.C. |
| 90 | Austin Knisley | DE | Fr. | Charleston, S.C. |
| 91 | Derek Douglas | DT | RSO. | Garland, Texas |
| 92 | Jake Mooror | DL | Sr. | Birmingham, Ala. |
| 93 | Sammy Ojeh | DT | RFr. | Fairfax, VA |
| 94 | Aaron Perry | DE | Fr. | Melbourne, Fla. |
| 95 | Colin Parsons | DE | Fr. | Mint Hil, N.C. |
| 95 | Mason Wachter | K | Fr. | Auburn, Ala. |
| 96 | Justin Oxendine | DL | RFr. | Sumter, S.C. |
| 97 | Demarrio Sims | DT | RJr. | Reddick, Fla. |
| 99 | Ryan Sellers | K | RSr. | Mount Pleasant, S.C. |

NEW NIKE APPAREL AND ALL GSU FAN GEAR



WWW.GSUSTORE.COM

Regular Hours:

Mon - Thurs - 7:30 am - 7:00 pm

Fri - 7:30 am - 5:00 pm

Sat - 11:00 am - 5 pm

Sun - Closed

For Gameday Apparel

Eagles look to let the good times soar versus Bulldogs

Football

By JAMES FARMER

George-Anne staff

When the Georgia Southern University Eagles take on The Citadel Bulldogs on Saturday, it will be a must-win game for both squads.

The Eagles will be looking to finish their home games with a perfect record, and send their seniors out with a win on senior day.

With games left against No.8 Wofford College and FBS University of Alabama, this is the Eagles' best chance to win their seventh Division I game of the season and qualify for the playoffs.

A loss to the Eagles would knock the Bulldogs out of playoff contention entirely by giving them five losses.

Special Teams: Possibly the only thing that went right for the Eagles against the Appalachian State Mountaineers was their special

teams unit. Three great returns – one punt, one kickoff, one interception – gave the Eagles their only chance of winning the game after the offense stalled for most of the game. Adrian Mora continued his perfect kicking streak as well against App. State.

The Citadel brings in one of the best special teams in the Southern Conference and the nation. Cass Couey averages the second most yards per punt in the SoCon, and the Bulldogs have blocked an amazing eight punts.

Stat to watch: 5. Domonic Jones, the Bulldog's six foot five receiver has blocked five punts this season, setting an NCAA FCS single-season record.

Advantage: Even

The Citadel Offense vs. GSU Defense: The Bulldogs bring a very familiar triple-option attack to Paulson Stadium on Saturday, Bob Bodine, the offensive coordinator for the Bulldogs served with former Eagle head coach Paul

Johnson during his championship seasons at GSU.

Craig Candeto, the quarterbacks coach, once played under the tutelage of Monken and Johnson at the Naval Academy.

The Citadel rank third in rushing yards per game behind GSU in the conference, but rush for over 30 yards less per game.

The GSU defense tightened up its game in the second half of the App. State game, and will look to keep that intensity up. GSU still allows the fewest yards per game rushing in the SoCon, which matches up well against the rushing attack of the Bulldogs.

GSU will have a game plan for The Citadel triple-option, an offense that they face everyday in practice. Look for a very stingy defense to feed off the crowd's energy and passion.

Stat to watch: 75. The passer rating of The Citadel, worst in the FCS by over 10 points. By

comparison, GSU's passer rating, ranked third in the nation, is 164.43

Advantage: GSU

GSU offense vs. The Citadel Defense: GSU played an uncharacteristically poor game offensively versus App. State.

Do not expect a repeat performance by the offense of that game. GSU will try to establish the dive play to set up their triple-option attack, so look for Robert Brown and Dominique Swopes to get a heavy dose of plays up the middle to start things off.

Once the dive play is established, then the outside game of pitches and quarterback keepers can be run with effectiveness.

The Citadel defense has played well as of late, holding its opponents to under 20 points per game, but gave up over 40 points to Wofford and App. State, the other schools with one conference loss like GSU. The Citadel will have a well prepared defense for this game like the Eagles

due to the fact that the offense is one they have seen all year long.

Stat to watch: 58. The Eagles have outscored their opponents 103-45 in the second quarter of games.

Final Analysis: The Eagles will come into this game with the loss to App. State motivating them. They must win their next two games to secure a SoCon title.

This senior-laden squad will play with emotion and passion on the last regular-season home game of many of their careers.

The Citadel will try to play spoiler to the Eagles, and keep their slim postseason dreams alive.

Their special teams play can swing the momentum of the game into their favor, and their defensive familiarity with GSU's scheme could spell a potential letdown for the Eagles.

Stat to watch: 79.3. The Eagles have one 79.3 percent of their homecoming games since 1982.

Final Score: 41-21 GSU.



Company hours

7:30 A.m. - 6:00 P.m.
Monday - Friday

912-489-2222

102 N Zetterower Ave
Statesboro, GA 30458

Present this Coupon at the time of service to receive a free tire rotation with a full priced oil change.

Super Service at a Super Price

489-2222

Some Restrictions may apply. Call for more details.

Present this coupon at the time of service to receive an oil change for the low price of \$19.95.

Super Service at a Super Price

489-2222

This price is for 5-quart oil change. It also includes filter, synthetic oil, hoses, and special oil. Please ask prices for details.