

Georgia Southern University

Digital Commons@Georgia Southern

The George-Anne

Student Media

9-29-2011

The George-Anne

Georgia Southern University

Follow this and additional works at: <https://digitalcommons.georgiasouthern.edu/george-anne>



Part of the [Higher Education Commons](#)

Recommended Citation

Georgia Southern University, "The George-Anne" (2011). *The George-Anne*. 2724.
<https://digitalcommons.georgiasouthern.edu/george-anne/2724>

This newspaper is brought to you for free and open access by the Student Media at Digital Commons@Georgia Southern. It has been accepted for inclusion in The George-Anne by an authorized administrator of Digital Commons@Georgia Southern. For more information, please contact digitalcommons@georgiasouthern.edu.

GSU SYMPHONY OPENS

PAGE 9



MCKINNON STARTS STRONG

PAGE 10



Thursday, September 29, 2011
Georgia Southern University
www.thegeorgeanne.com
Volume 87 • Issue 29

THE GEORGE-ANNE

Eagles to face Phoenix air game

By JAMES FARMER
George-Anne staff

Georgia Southern University faces its polar opposite on Saturday, in a game that plays to strengths of both teams.

GSU is coming off of a 52-20 rout of Western Carolina last weekend, and looks to keep the division's top running game and scoring offense rolling versus the Elon University Phoenix.

Elon counters the ground-based attack of the Eagles with the Southern Conference's best passing game, at 285 yards per game.

The Eagles won the matchup last year at home, breaking a three-year win streak by the Phoenix versus GSU. The Eagles will look to start a win streak of their own on Saturday at Elon.

Special Teams: Adrian Mora has yet to miss a field goal this season, and has still never missed an extra point in his career. Charlie Edwards still leads

See PHOENIX, page 14

Faculty: Concerns over dean ignored by administration

By JENNIFER CURINGTON and
ARIELLE COAMBES
George-Anne staff

Political science faculty passed an anonymous motion saying they had no

confidence in the leadership of the dean of their college, a decision that the university president said he could not support because the faculty's grievances lacked evidence.

A letter of grievances against Dean Michael Smith of the College of Liberal Arts and Social

Sciences composed by the professors from the Department of Political Science was made public Tuesday. It described concerns over a disrespectful and hostile environment fostered by Smith and called for other CLASS

See DEAN, page 6

GSU FALLS 2-1 TO JACKSONVILLE UNIVERSITY



Randy Hudgins/STAFF

Number 12 Luigi Clendening takes a shot on Jacksonville University's goalkeeper Johnny Foley during Wednesday's upset. For the full story, see page 9.



thegeorge
anne.com

Thurs.	Fri.	Sat.	Sun.
H 88	H 87	H 74	H 73
L 62	L 53	L 47	L 48



Newsroom 478-5246
Advertising 478-5418
Fax 478-7113

PO Box 8001
Statesboro, GA
30460

New academic standing policy to affect students

By LINDSAY GASKINS

George-Anne contributor

Georgia Southern officials introduced a new Academic Standing Policy this fall that will begin to affect all students who may have a warning of academic probation.

"The committee was charged by the Provost office with simplifying the Academic Standing Policy and putting some teeth in the Academic Standing Policy," said Wayne Smith, associate to the Registrar's office.

The committee began working on these regulations since fall of 2008 and are excited to put these changes into action said Smith.

"There are a number of changes," said Smith. "During the current policy that just ended, if a student was excluded, their first exclusion was for one semester. With the new

policy, they will now be out for a year. For their second exclusion, the old policy excluded them for one year. The new policy states the student will now be out for five years."

Another change that has been made is the appeal process where a student now is only allowed one appeal said Smith.

"After that first exclusion, a student can appeal to get back into school," said Smith. "But, on the new policy, students are only going to be allowed one approved appeal."

The old policy allowed students to have two appeals passed through the Academic Standards Committee and one through the college dean. Now, a student only receives one appeal from either the ASC or the dean, not both, according to the new academic standing policy rules.

"On the previous policy, after

that second exclusion, students were allowed to come back through an appeal," said Smith.

In the new policy, they will be out for five years after the first appeal according to Smith.

"This policy also gives students the incentive to put in effort in order to stay off of academic probation and move forward towards graduation in a reasonable amount of time," said Ellen Hendrix, assistant professor of writing and linguistics.

"College is an investment, and it is an investment that this policy will help students take far more seriously and, in the long run, get more for their money," said Hendrix.

This policy allows students to work closely with their advisors by guiding them to the classes the students need to take in order to stay above the academic standings said Hendrix.

This new academic policy will affect those students who are not in good standings academically. The old policy allowed for a student to make at least a 1.5 GPA to keep academic standing, said Smith.

"They must have a 2.0 GPA or better," said Smith.

"This policy only affects undergraduate students," said Wallace Brown, assistant to the Registrar's Office.

This policy is effective starting this fall semester, said Smith.

"Any student enrolled that are below a 2.0, they will be placed on warning one," said Smith.

"Each student is basically starting off with a clean slate at the end of this semester," said Hendrix.

"Each student will begin at the same point whether or not they have been on academic probation prior to this semester."

"Those students who come back next semester after being on academic probation, they will be put on warning one going into the new semester," said Smith.

Students, or transfer students, with 30 or less credit hours and have a total GPA of 2.0 at the end of the semester will be placed on Academic Intervention. These students will need to meet certain requirements to enroll, according to the new academic standing rules.

"They must enroll in GSU 1120, Methods of Learning, until a total 2.0 Institution GPA is earned," said Smith.

Because of the Academic Intervention, students will be restricted to only 14 credit hours for that semester, according to the new academic standing rules.

Smith said, "Students need to get serious about their academics."

FRANKLIN
TOYOTA • SCION

10% OFF
service with your
Student ID

888-695-8165

500 Commerce Drive
beside the new Holiday Inn

**PROTECT
YOUR VEHICLE!**

Regular maintenance and upkeep is crucial to your car's optimal performance, best possible gas mileage, and highest resale value.

Our service department offers the best in automotive service for all makes and models.

- Oil Change
- Tire Services
- Tune-Up & Transmission Service
- A/C & Radiator Service
- Brake Service
- Engine Repair
- Body Shop Services

\$1,000
COLLEGE GRAD REBATE

WHEN YOU BUY OR LEASE A NEW TOYOTA.



SCHEDULE YOUR SERVICE ONLINE! www.FranklinToyota.com



\$20 FEEDS TWO
EAT BIG. SPEND SMALL.

\$2.99 margarita deal, old time Tuesdays and Fajita Monday.

SHARE AN APPETIZER

- FRIED CHEESE
- CRISPY ONION & JALAPEÑO STACK
- TOSTADA CHIPS & SALSA
- TOSTADA CHIPS & FIRE-GRILLED CORN GUACAMOLE
- HALF ORDER OF TEXAS CHEESE FRIES

SELECT TWO FULL-SIZE ENTREES

- QUESADILLA EXPLOSION SALAD
- CLASSIC BACON BURGER
- MARGARITA GRILLED CHICKEN
- HALF-RACK BABY BACK RIBS W/ HOMESTYLE FRIES
- BACON RANCH CHICKEN QUESADILLAS
- CHICKEN CRISPERS*
- CRISPY CHICKEN CRISPERS* (ORIGINAL OR HONEY-CHIPOTLE)
- CHICKEN FAJITAS

Technology and engineering merger may create new college and courses

By JONATHAN QUINTYNE

George-Anne contributor

Georgia Southern University is currently deciding on the possibility of creating a new College of Engineering by merging five existing departments.

"When we received the right to have engineering programs, (which) are very prestigious programs for a university, it would be really fitting if we had a program for science and engineering," said Dean Danilowicz, the academic dean of the College of Science and Technology.

"In the vast majority of cases, engineering has been kept in a separate college at different universities," said Danilowicz.

"It's because it's so important for the visibility of the university. That's the primary driver for having a separate college, to increase the visibility of those programs," said Danilowicz.

"It created a golden opportunity for us to create a College of Engineering that would allow those three degrees to really flourish, and blossom, and take off and be very productive," said GSU's President Brooks Keel.

The potential new college is to be made out of the merger of five already existing departments to use the resources that are already at GSU effectively, said Keel.

"Obviously when you create a college

“ By looking at information technology, which is cutting edge, and engineering, which have three very fine, strong departments in it, (we thought): what if we put those together, and that's what we are looking at. ”

-Provost William Ted Moore

like engineering, you have to have all of the infrastructure that goes with that. There is usually a lot of cost associated with that," said Keel.

"So does it make sense to merge those programs into one, where now all you have is just one dean, and one administrative structure in place that meets the needs of all the departments," said Keel.

"By looking at information technology, which is cutting edge, and engineering, which have three very fine, strong departments in it, (we thought): what if we put those together, and that's what we are looking at," said Provost William Ted Moore.

The creation of a new College of Engineering and the merger of multiple departments opens GSU up to many new possibilities said Keel.

"What it offers is opportunities for collaboration and research programs. You can also envision courses down the

road that sort of blend computer science and electrical engineering together," said Keel. "That could create incredibly unique programs that we couldn't even think of at this point and time."

If the new college is to be put into action GSU wants to make every effort to make sure that the process is not rushed said Keel.

"This is something that I would like to do as expeditiously as possible with out rushing it, you don't want to rush into something and then three years down the road you find out that it was not done right," said Keel.

A small team, lead by the Provost, will meet this week to make a final decision.

If a decision is made to go forth with the plans for the new college, the next steps will be recommendations and planning in the spring, actual changes during the summer, and the opening of the college early next fall said Keel.

Statement of Operations

The George-Anne is the official student newspaper of Georgia Southern University, owned and operated by GSU students using facilities provided by the university. The newspaper is the oldest continuously published newspaper in Bulloch County. The newspaper is a designated public forum for the Georgia Southern community. The newspaper is published twice weekly, on Tuesdays and Thursdays, during most of the academic year. Any questions regarding content should be directed to the student editor by phone at 912.478.5246 or at gaeditor@georgiasouthern.edu.

ADVERTISING: The newspaper accepts advertising. Inquiries may be made by calling 912.478.5418 or 912.478-0566. Fax any questions to 912.478.7113 or e-mail ads1@georgiasouthern.edu.

The George-Anne receives additional support, in part, from the Student Activities Budget Committee.

The deadline for reserving space and submitting advertising copy is noon, one week prior to the intended publication date. For more information, rate cards, sample publications, contact the advertising manager or student media director. The advertiser is responsible for any errors in advertisements and its liability for adjustments is limited to the amount of space the error occupied in the ad. Further, the newspaper is not responsible for any damages caused due to an ad's omission from a particular edition and its responsibility solely is to reschedule the ad in the next regular edition at the regular advertising rates.

STUDENTS BEWARE: The George-Anne screens all advertisements prior to publication. The newspaper strives to accept ads for legitimate products and services only. Students are urged to exercise caution when replying to ads-particularly those that require personal information. Students are also urged to report to the newspaper any suspicious offers which they might see in an ad.

PUBLICATION INFORMATION: The newspaper is printed by Signature Offset in Jacksonville, Fla.

NOTICE: Unauthorized removal of multiple copies from a distribution site constitutes theft under Georgia law, a misdemeanor offense punishable by a fine and/or jail time.

Editor-in-Chief Arielle Coambes
Views / Copy Editor Shauntel Hall
News Editor Jennifer Curington
Asst. News Editor Jessie Reese
Arts Editor Julia Welch
Asst. Arts Editor Quanyia Epps
Sports Editor Matthew D'La Rotta
Asst. Sports Editor Jannah Bolds
Football Editor James Farmer

Business Manager Tiffany Larkin
Asst. Business Manager Holly Hillhouse
Marketing Manager Aria Gabol
Production Manager Mallory McLendon
Photo Editor Randy Hudgins
Design Editor Kelsey Paone
Web Editor Jonathan Law

Corrections

The article on page 2 of the Sept. 27 edition incorrectly spelled Christian Flathman's name. The article on page 7 of Sept. 27 incorrectly attributed Ogeechee River's pollution to King American Fishing Company. It should have read King American Finishing Inc. **Contact the editor at gaeditor@georgiasouthern.edu for corrections and errors.**

THE
NORTH
FACE



The Sir Shop
 Statesboro Mall
 912.764.6924



Our View

Spice drug should not be legal

Tuesday's story involving a Georgia Southern University football player Zeek Rozier, revealed that Rozier admitted to drug use prior to being involved in an accident in a university parking lot.

Rozier admitted to using the drug spice before he crashed into a tree and two other parked cars.

The legal drug spice or otherwise known as K2 is a legal mixture of herbs and spices that is typically sprayed with a synthetic compound chemically similar to THC.

According to Clay Gracen with the Department of Public safety, spice affects different people in different ways. It is just like alcohol.

This article brings to light the brevity of the of this drug. Many people have not heard of this drug or its impact.

This story shows alone shows that this drug is very powerful. A student was able to be involved in a huge accident while on this drug.

Spice is sold at novelty stores across the state. How is it that this drug with these known effects can be legally sold.

Is it appropriate to sit and wait for the next event to see how spice would affect someone different or should someone step up and protect citizens from this drug?

It has been said that this drug is worse than marijuana. So how is it that marijuana is illegal but spice is not?

More people should be educated on the dangers of this drug.

Citizens are in the midst of a drug that is being sold at stores in the communities that they call safe, without even knowing of the presence of this new legal drug.

The drug should be evaluated by authorities so it can be kept off of the streets and future events like this or others could be less likely to occur.

The George-Anne welcomes letters to the editor and appropriate guest columns. All copy submitted should be 350 words or fewer, typed, and sent via e-mail in Microsoft Word format to gaeditor@georgiasouthern.edu. All submissions must be signed and include phone number for verification. GSU students should include their academic major, year and hometown. The editors reserve the right to reject any submission and edit submissions for length.

Opinions expressed herein are those of the Board of Opinions or columnists themselves and DO NOT necessarily reflect those of the faculty, staff or administration of GSU, the Student Media Advisory Board, Student Media or the University System of Georgia.

Herman Cain makes comeback

Watch out America, Herman Cain is making a comeback. With his stunning upset in the Florida straw poll this weekend, his campaign breathed new life.

The Atlanta native and successful CEO was all but forgotten before he wowed everyone in the Florida debate and the straw poll shows it. He got 37 percent of the vote, more than Perry and Romney combined. With this win, many people are asking if he is the one to take Obama down.

Herman Cain has a lot of things going for him that could pull an upset in the 2012 election. First of all, he's a true American dream story. When he was growing up, his parents worked a total of 5 jobs between the two of them instilling the principal of hard work in him.

After he put himself through college, Cain worked his way up the corporate ladder where he now sits as one of the most successful CEO's in the country. He has never been a politician, which gains him support with those that think that all politicians are corrupt.

He has however taken on politicians. Back in 1994, Cain represented the



FRITZ CHAPIN

National Restaurant Association in a televised town hall meeting with President Clinton. At this town hall meeting he told the president that his healthcare bill, much like Obama's, could not work in a competitive market place.

Cain has something Obama doesn't, a clear plan on how to get the economy back in shape. It's called the 999 Plan.

The plan calls for the government to get off the backs of entrepreneurs and lets them do what they do best, make money and reinvest in their businesses to make more money. It also calls for growth based on production and not spending. But most importantly, it calls for the Fair Tax system to be put in place instead of the IRS dinosaur that we have now.

Cain also takes away a big card that Obama used extensively in the 2008 election and that's the race card. With Cain being a successful black man, he can inspire the blacks to aspire to a higher place like he did. While Obama tried to do the same he actually has made things worse for the black population.

According to the Pew Research Center, the wealth gap between blacks and whites is the largest in history with black's having a mean wealth of \$5,677 compared to whites with \$113,149 mean wealth.

Herman Cain is the real symbol of hope for these people by actually working his way out of poverty into success and great wealth.

While it's still a long shot, Herman Cain still has a very good shot at becoming the Republican candidate for president. If he does get to take on Obama, as Dennis Miller said, "It will certainly be a race of Cain vs. Not Able".

Chapin is a political science major from Roswell, Ga.

Letters to the Editor

Embrace diversity and opposing beliefs

Dear Editor,

In light of some responses to Rob Roberts' "Acceptance is the Christian duty" column, I'd like to make a few comments of my own in order to share a perspective from someone of the lesbian gay bisexual and transgender community.

I fully respect other people's opinions and beliefs on same-sex marriage, even if they differ from my own. I also respect and understand that this issue is just as important to a lot of Christians as it is to me.

The only time I have issues with other people's beliefs is when they are forced upon me. Same-sex marriage is illegal throughout most of the country largely due to various religious beliefs. To me

this is not right. The United States is a nation that [supposedly] practices the separation of church and state. So, why is a part of my life being dictated by other people's religious beliefs?

This nation was not founded on one religion alone. We actually celebrate the diversity of people and beliefs here. So all I ask is a little respect in return, not just for me, but also for everyone. You may disagree with another person's beliefs, but that doesn't mean that they don't have the right to live their life how they want.

A comment that concerned me was that if same-sex marriage is allowed, then we may as well allow murder and child abuse.

This is a completely inaccurate and offensive comparison. Same-sex marriage is between two consenting

adults. It does not harm anyone. It does not affect anyone except for the two people involved.

So, the argument that it would open doors to violent things is invalid.

I think that Christians and the LGBT community need to respect each other's point of view and reach out to one another so that maybe there can be some sort of understanding between the two.

After all, we do have one thing in common — we believe in love. Let's take that common ground and do something with it.

Sincerely,

Annie Bolton

Senior

Multimedia Communications Major
President of the Gay-Straight Alliance



Marcus Barkley/STAFF

Weekly SGA Guest Column

Organizations may receive funding

Student Government Association is here to serve the students of Georgia Southern University. One way that we serve our student body is by providing students with an avenue to receive funding to enhance themselves developmentally, educationally, and professionally. Although funding is not guaranteed, we try our best to accommodate student's needs.

Individual funding is available to any graduate or undergraduate student who is regularly admitted to their program at Georgia Southern University, have paid their student activity fees, and are in good standing with the university.

The funds allocated for individuals are intended for education and/or professional advancement. The suggested award amount is \$150, but awards may go up to \$300. This award often covers a student's travel, lodging,



DOMINIQUE QUARLES

registration, workshops, as well as necessary supplies.

Organizations registered and recognized as an active student organization by the office of student activities are eligible for funding through SGA as well.

Organizational allocations are intended to be used for programming, fundraising, advertisement, travel, lodging, rentals, and conference registration fees. Organizations may

request up to \$600 however, if two organizations decide to collaborate they may request \$1,500 collectively for that project.

After funding is granted and the event has taken place students and organizations have 14 days to return receipts to remain in good standing with SGA. The process is simple, but there are some differences between the individual and organizational funding.

In attempt to make our operations as well your student activity fees transparent to the student body, SGA is currently planning a FUNd FAIR where individuals and organizations who have received allocations will come out and present how they used student activity fees.

Quarles is a graduate student mastering in business administration from Augusta, Ga. He is the Vice President of Finance of SGA.

Religion steps out of its boundaries

I don't have a problem with Christians or their religious beliefs at all. I myself am Catholic. I believe in the Father, the Son and the Holy Spirit.

I also believe that all men (and women) were created equal, and that everybody should be given a fair chance. That every human being is beautiful in his or her own way. I don't dislike somebody until they give me a reason to.

Like I said, I have no problems with your beliefs, but I believe that churches and organized religion sometimes take things too far.

I was told to read the entire bible before I threw verses out to make a point, but isn't that what Christians do when they condemn or judge somebody? Why not do that to spread love to somebody.

I realize that as a Christian, one is called upon to spread the gospel; but it says spread the word, not force it. And being a Christian, one is supposed to live their lives emulating Christ and striving to be more like Him with each passing day; not playing God and judging others, because as I understand it, only God has the right and power to judge anybody.

I feel that religion is stepping too far in some instances. Most churches are great institutions that help people out, but there are some extremist organizations that use fear as a tool for conversion. The bible is supposed to be about love, not fear.



ROB ROBERTS

So when we use that fear, judgment and condemnation to push a political agenda, that befuddles me further. It happens all the time, political figures will make promises in a speech to gain the support of a religious community. If you look up the Presidential candidates you will find their age, current position, views on issues and their religion.

President Obama was bashed for being a Muslim, but why do you care? There is no nationally established religion so I feel there is no reason for us to concern ourselves with religion when talking politics.

One of the reasons settlers came to America was freedom from religious persecution, and now we're seeing a predominantly Christian population condemning all those who don't believe what they believe to hell.

I don't try to push my political views on you and judge you based on what you believe, so don't push your religion on my political system.

Roberts is a senior public relations major from Warner Robins, Ga. He ran against Alton Standifer for SGA's presidency in 2011.

<http://students.georgiasouthern.edu/vpsaem/internships/overview>

Eagles in D.C.
Georgia House and Senate
Georgia Governor's Office

Legislative Internship Information Session

TONIGHT

(Thursday, Sept. 29)

Russell Union 2084
5:30 - 6:30 pm

<http://students.georgiasouthern.edu/vpsaem/internships/overview>

Students question Pacelle's removal

BY JESSIE REESE

George-Anne staff

Graduate students expressed concern about the recent happenings in their department, including the grievances of their professors and the removal of Dr. Richard Pacelle, former department chair of political science.

"The biggest concern is probably the lack of transparency within the department," said Krystal King, second year graduate student. "Students should be informed and they're not being informed."

"It was very vague in his dismissal," said Robert Robinson, second year graduate student.

"Dr. Pacelle is really involved with us. So you know something's up when you go to his office and he's not in there because he's no longer the department chair, and then nobody can answer your questions because nobody knows," said King. "That's really upsetting. And you know you can't go to anybody because they're not allowed to talk."

"I think it was a bad decision. He has done nothing but better the department. From my standpoint, there's no reason why he should have been removed," said King.

Students have also voiced opinions on the decisions of the administrators and whether the students should be included in some way.

"The provost and the dean both were only concerned with short term.

They're not looking at the bigger picture, and students I think should have been informed. I know that we can't be involved on a personal decision. That's fine, but ultimately, the decisions are to the detriment of the students, and the Provost and the Dean serve the students," said Molly Laughlin, first year graduate student.

"I think more students need to speak up and let the faculty, the deans and the provost know that students need to be a part of the process because essentially they're here to provide us with an education and we should be allowed to enter into what's going on. It affects us," said King.

"They just aren't thinking about the students, because it's not just Dr. Pacelle being fired, you know, but there's a larger context," said Laughlin. "All the professors are stressed out about it. All the students are stressed out about it, because there was no transparency. We don't know what's going on. If you want to find out about a situation, and you can't, then it leads you to be skeptical."

There have been concerns raised about information that is not released to students and how that makes them worry about the direction the department is headed.

"I just want to know, why haven't they informed the students? Bottom line. It makes me skeptical because they haven't informed the students," said King. "I think that ultimately, if this is having that much of an effect on our educators, it's going to affect our education."

DEAN, from page 1

departments to construct similar letters of grievances.

"I have been presented with no evidence that he uses fear and intimidation," said President Brooks Keel. "To go down a route of an anonymous vote of no confidence, to me, serves no purpose other than to further disrupt what has been a very disruptive process for everyone."

Provost William Ted Moore's response to the political science faculty's grievances created dissention about the leadership of Moore and Keel, according to an anonymous email from CLASS's concerned faculty.

"I wish to assert in the most unambiguous terms my complete confidence in and respect for the leadership of Dean Smith. President Keel echoes this message in equally unambiguous terms," Moore said in an email to all CLASS faculty members.

Dr. Lois Duke-Whitaker and Dr. Debra Sabia sent the email regarding the political science department's concerns to other CLASS departments. Moore said this effort undermined Smith's constructive efforts.

"The reaction by some Departmental faculty, as well as the call issued by Professors Duke-Whitaker and Sabia to join in, is misguided and contrary to responsible university governance," said Moore in the email to CLASS.

Moore was unavailable to comment.

The concerned faculty of CLASS found Moore's response to the their voices offensive.

"We find it to be insulting and inaccurate for Provost Moore to minimize these issues by saying they represent no more than a 'reaction to the removal of Professor Richard Pacelle as Chair of the Department of Political Science.' Many, many departments in this College have unique and significant grievances against Dean Smith," said the concerned faculty of CLASS.

"Instead of pointing fingers of recrimination, Provost Moore and President Brooks Keel have a duty to investigate these broader complaints about the Dean and take the concerns of CLASS faculty

seriously," said the email from CLASS's concerned faculty. "That is 'responsible university governance.' And maybe, just maybe, they'll figure out what everyone on campus already knows: that the wrong administrator has been fired."

The administration and Smith create an environment that leaves faculty fearful for their jobs if they voice their opinions, said an anonymous faculty member of CLASS.

"What makes the environment hostile? A lack of civility by leaders who should know better," said the anonymous faculty member of CLASS. "Faculty who express concerns or who in fact disagree with administrative decisions are, or can be made I think, to feel intimidated."

One event that spurred these claims against Smith was the removal of Dr. Richard Pacelle from his position as political science department chair.

"I think it lacked professionalism. I thought it was disrespectful," said the anonymous CLASS faculty member, who also said the removal was completely incompetent. "We are facing so many important challenges in this department this semester with our accreditation of the MPA and several searches underway. More than ever, we need a chair. We need a full-time chair and we need a chair that knows what he's doing, so I think it was an incompetent decision that's going to hurt all of those things."

Keel, however, said he hopes the university can continue to focus on the future and move forward.

"If we're so embroiled in what happened yesterday or today and are not willing to say, ok, now how can we accept this and move forward? Then, yeah, I think accreditation would be in jeopardy," said Keel.

Moore's response will hinder and censor the faculty from voicing their opinions and concerns in the future on how to better GSU, said the anonymous faculty member of CLASS.

"I think the great concern is that it will be a chilling affect, that faculty will become further aggrieved, but they'll impose their own self-censorship and I don't think that's good for an institution. I don't think that's productive for an institution."



**Boomers
Vision Center**
SINCE 2000

(912) 489-6655
in front of Lowe's

\$50 OFF

ONE COMPLETE PAIR OF GLASSES

Coupon must be presented at time of sale. Not valid on previous sales. Minimum price of \$119.95 after discount. Cannot be combined with any other eyeglasses offer or discount. Limited time offer.

Valid through: October 29, 2011

EYE EXAMS • GLASSES • CONTACTS

www.boomersvisioncenter.com

GSU

Faculty takes steps to voice concerns

Step 1: The complaints

Poli Sci composes concerns over Dean Smith

The Department of Political Science does not take lightly the decision to hold a vote of no confidence in a Dean, particularly one who possesses tenure in our own department.

Rather, our decision represents the outgrowth of what a majority of the department perceives to be both short- and long-term failures of leadership that are serious, irreparable, and directly threaten the mission of CLASS. While we acknowledge that recent developments in our department have played a significant role in this decision, our grievances are not limited

to that incident. To the contrary, this recent series of events highlights a number of serious deficiencies that have been endemic to Dean Smith's leadership of the College.

To that end, a majority of the Department's faculty recently voted to ratify the following statement: Having no confidence in his ability to continue serving as Dean of the College of Liberal Arts and Social Sciences, I request that the administration begin the process of replacing Dean Michael Smith (agree or disagree).

See the continued grievances online.

Step 2: Reaching out

Poli Sci faculty contacts CLASS colleagues

Dear CLASS Faculty,

On Friday, September 23, a majority of the Department of Political Science faculty ratified a vote of no confidence in Dean Michael Smith's leadership of the College of Liberal Arts and Social Sciences. A PDF file detailing the Political Science Department's grievances against the Dean is attached to this email for your reference.

We believe that a significant number of our colleagues in other CLASS departments lack confidence in the Dean's leadership, and that they are prepared to say so if given the

opportunity to express that view in a safe and anonymous fashion. Because we believe that many other departments in the College also harbor grave doubts about the Dean's leadership, we are asking every CLASS Department to consider generating your own list of grievances and conducting votes of no confidence in the Dean in the coming days. A copy of the ballot used in our department is attached to this email with instructions describing the process we utilized.

See the continued email online.

Step 3: The response

Provost Moore responds to faculty complaints

Dear Faculty Colleagues:

Yesterday a late-afternoon message was sent to you by Professors Lois Duke-Whitaker and Debra Sabia of the Department of Political Science reporting that "a majority of the Department of Political Science faculty" had ratified in an anonymous process a motion of no confidence in the leadership of Dean Mike Smith. This is in reaction to the removal of Professor Richard Pacelle as Chair

of the Department of Political Science.

The reaction by some Departmental faculty, as well as the call, issued by Professors Duke-Whitaker and Sabia for the other Departments to join in, is misguided and contrary to responsible university governance. Professors Duke-Whitaker and Sabia ask "every CLASS Department to consider generating your own list of grievances and conducting votes of no confidence in the Dean in the coming days."

See the continued letter online.

Step 4: Contacting media

CLASS faculty emails The George-Anne staff

Along with what we understand to be most other faculty members in GSU's College of Liberal Arts and Social Sciences, we received the following email yesterday afternoon. An attachment to that email also contained a list of grievances against the Dean of our College, Dr. Michael Smith. We, members of four departments in the College, are writing to express our outrage at Provost Ted Moore's cavalier response to these concerns. Many people in our own departments share significant

concerns about Dean Smith. These concerns are legitimate, and sentiments similar to a number of those expressed by our colleagues in Political Science are widely felt throughout the College. After reading the email and these concerns, we find it to be insulting and inaccurate for Provost Moore to minimize these issues by saying they represent no more than a "reaction to the removal of Professor Richard Pacelle as Chair of the Department of Political Science."

See the continued email online.

Full PDFs available on thegeorgeanne.com

 <p>Charlies Fried Chicken WE DELIVER 4 UNIVERSITY PLAZA (912) 681-2222 (912) 681-6666</p> <p>Ask about our Tailgate Specials!</p> <p>10% off Walk in Only</p>	<h3>Full Menu</h3> <table border="1"> <tr> <td> APPETIZERS Cheese Stix (6) - \$3.99 Chili Cheese Fries - \$5.99 Hot Dog - \$1.89 Fried Pickles (6) - \$5.50 Chili Dog - \$2.50 Fried Jalapenos (5) - \$5.50 </td> <td> CHICKEN FINGERS (3) Fingers w/ Fries - \$5.95 (5) Fingers w/ Fries - \$7.50 (8) Fingers w/ Fries - \$9.50 (10) Fingers w/ Fries - \$11.50 (12) Fingers w/ Fries - \$13.50 </td> </tr> <tr> <td> BASKETS Tilapia (2 filets) - \$7.99 Pork Chop Basket (2) - \$6.25 Hotdog Basket - \$4.50 </td> <td> DRINKS Coke - \$3.00 Sprite - \$3.00 Bottled Water - \$1.00 Pepsi Products - \$2.00 </td> </tr> <tr> <td colspan="2"> DESSERT Chocolate Pie - \$3.00 Strawberry Cheesecake - \$3.00 </td> </tr> </table>	APPETIZERS Cheese Stix (6) - \$3.99 Chili Cheese Fries - \$5.99 Hot Dog - \$1.89 Fried Pickles (6) - \$5.50 Chili Dog - \$2.50 Fried Jalapenos (5) - \$5.50	CHICKEN FINGERS (3) Fingers w/ Fries - \$5.95 (5) Fingers w/ Fries - \$7.50 (8) Fingers w/ Fries - \$9.50 (10) Fingers w/ Fries - \$11.50 (12) Fingers w/ Fries - \$13.50	BASKETS Tilapia (2 filets) - \$7.99 Pork Chop Basket (2) - \$6.25 Hotdog Basket - \$4.50	DRINKS Coke - \$3.00 Sprite - \$3.00 Bottled Water - \$1.00 Pepsi Products - \$2.00	DESSERT Chocolate Pie - \$3.00 Strawberry Cheesecake - \$3.00		BURGERS & SANDWICHES (comes with fries) Hamburger - \$5.50 Cheeseburger - \$5.95 Bacon Cheeseburger - \$6.50 Mushroom Swiss - \$6.50 Philly Cheese Steak - \$6.95 Roast Beef & Cheese - \$4.95 BLT - \$5.95 Grilled Chicken - \$5.95 Ham & Cheese - \$4.95 Turkey & Cheese - \$4.95 Club - \$6.50	FRIED CHICKEN Basket: (comes with (2) Sides) (2) Pc Dark - \$6.50 (2) Pc White - \$7.50 (3) Pc Dark - \$8.00 (3) Pc White - \$8.50 (4) Pc Mix - \$9.00 Snack Box: (includes fries) (2) Pc Dark - \$4.50 (2) Pc White - \$5.50 (3) Pc Dark - \$6.00 (3) Pc White - \$6.50 (4) Pc Mix - \$7.00
APPETIZERS Cheese Stix (6) - \$3.99 Chili Cheese Fries - \$5.99 Hot Dog - \$1.89 Fried Pickles (6) - \$5.50 Chili Dog - \$2.50 Fried Jalapenos (5) - \$5.50	CHICKEN FINGERS (3) Fingers w/ Fries - \$5.95 (5) Fingers w/ Fries - \$7.50 (8) Fingers w/ Fries - \$9.50 (10) Fingers w/ Fries - \$11.50 (12) Fingers w/ Fries - \$13.50								
BASKETS Tilapia (2 filets) - \$7.99 Pork Chop Basket (2) - \$6.25 Hotdog Basket - \$4.50	DRINKS Coke - \$3.00 Sprite - \$3.00 Bottled Water - \$1.00 Pepsi Products - \$2.00								
DESSERT Chocolate Pie - \$3.00 Strawberry Cheesecake - \$3.00									
		WINGS (6) Wings - \$4.95 (12) Wings - \$8.95 (18) Wings - \$11.95 (6) Wings w/ Fries - \$5.95 (8) Wings w/ Fries - \$6.95 (10) Wings w/ Fries - \$8.50 Mild, Hot, X-Hot, Lemon Pep, Teriyaki, Honey Mustard, BBQ All drums or flats: 100 Mix Flavors: 100	SIDE ORDERS French Fries - \$1.89 Fried Okra - \$2.79 Baked Beans - \$1.89 Mac and Cheese - \$2.79 Onion Rings - \$1.89 Mash Potatoes - \$1.89 (Large: \$2.99) (Large: \$3.50) (Large: \$2.99) (Large: \$3.50) (Large: \$2.99) (Large: \$2.99)						

Bus system to advance

By TJ JACKSON

George-Anne contributor

In last night's Student Government Association meeting, Vice President of Auxillary Affairs, Garrett Green announced new technological advances toward Georgia Southern University's bus system.

Students with smart phones who have the GSU application will be able to pin the location of where the buses are located while they wait at the bus stops, said Green.

"Next year there are to be new buses and on those new buses, there will be a GPS system. So basically, if you have the GSU mobile app, you will be able to tell where exactly the buses are and how long the wait is going to be," said Green.

There is also a possibility of a parking deck being built on campus in the next five to 10 years, said Green.

"It might not be built while we are here, but it will be here after we leave, so just think of it as something that you did," said Green.

The parking deck will cost between \$18 to \$19 million to build said Green.

Once the school reaches 25,000 students, there will be nowhere for students to park on campus, said Green.

Statements were brought up by other SGA senators concerning both physical and safety issues.

"Our campus is known for being a pretty campus. My problem is that the parking deck will be a concrete mess," said Patrick Teate, College of Science and Technology senator.

"I'm concerned that the parking deck will be a big safety risk and there's a lot that goes on within a parking deck," said DeMarco Mims, College of Business Administration senator.

"There are talks about parking decks, I don't think there are necessarily plans for a parking deck," said President of SGA Alton Standifer. "It's a big bill, I've been really conscious about adding onto the bill of our students. With economic times and tuition increases, I think we have to pay very close attention to adding additional bills and raising prices for our students. My recommendation would possibly be to look into other options we have."

Sponsored by Georgia Southern University Health Services

The Eagle Flies on Saturday but No Eagle Flu on Monday

Stay Healthy Eagles Influenza Vaccination Clinics

\$5 for students and \$10 for faculty/staff/retirees
Cash, Check, MasterCard/Visa are accepted
Please bring Eagle ID

**Sports
EMPORIUM**

Your largest selection of athletic footwear
in Statesboro

840BC Buckhead Drive, in Buckhead plaza (912)764-4449

ASK US ABOUT OUR STUDENT DISCOUNT
FREE T-SHIRT WITH EVERY PURCHASE OF \$75

Students Only:

Thursday, October 6
5-7 pm
Centennial Place Café
(BLDG 2)

Tuesday, October 11
5-7 pm
Eagle Village
Clubhouse
(Classroom)

Tuesday, November 1
5-7 pm
Southern Pines
Clubhouse
(Classroom)



Athletes Only:

Friday, September
16
9 AM- 1 PM
Hanner Training
Room

Faculty, Staff, Retirees, Students:

Tuesday, October 4
9-11:30 am
Russell Union Room
2084

Wednesday, October
19
8-12:30 pm
Russell Union Room
2084

Thursday, October 27
2-4 pm
Russell Union Room
2084

SPORTS

www.thegeorgianne.com

Thursday, September 29, 2011 9

Eagles fall to Dolphins in 2-1 upset on Wednesday

Men's Soccer

By BRIAN STONE

George-Anne contributor

The Georgia Southern men's soccer team dropped to 5-3-1 for the season after Wednesday's 2-1 loss to Jacksonville University.

GSU started quickly, with senior midfielder Alex Evert scoring his second goal of the season off a corner kick from sophomore defenseman Drew Ruggles only eight minutes into the game.

"We were excited to get the first early goal," said head coach Kevin Kennedy.

After scoring the first goal, the Eagles allowed Dolphins midfielder Predrag Ivanovich to score on an unassisted kick at the edge of the 18-yard box with 20 minutes left in the first half.

GSU took the 1-1 tie into the half, leading JU in shots on goal, 8-7. Aside from the goal that was allowed, the Eagles held strong going into halftime.

The game was a defensive struggle until the 58th minute when JU midfielder Nick Rodriguez scored his third goal of the season off an assist from defenseman Ashton Pett, giving the Dolphins a 2-1 lead, and the victory.

Both Kennedy and Evert believe that fatigue may have



Randy Hudgins/STAFF

Freshman forward Chris Claxton makes a run for the goal while Jacksonville University defender takes chase.

contributed to the Eagles' second half performance. minutes Monday, and I think as the game wore on, I felt that we were a bit tired," said Kennedy. "Our goal before our next game is to rest the tired legs on the team."

"We just played a full 90 Despite the fatigue, the Eagles

did not have a lack of effort, beating out the Dolphins in shots on goal, 14-8. JU goalkeeper Johnny Foley kept GSU out of the net, making five important saves.

The main area of concern for the Eagles was getting ahead quickly and maintaining it throughout the entire game.

"We definitely need to take care of the lead when we get it," said Evert. "Unfortunately, we let two goals in at home, which was very frustrating for us. We need to manage our lead better."

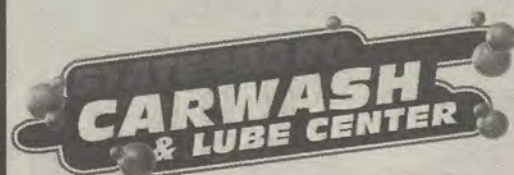
Evert said there were positives for the team as well.

"We played well as a team, and we took care of the ball very well," he said. "We just need to keep practicing attacking the net and moving the ball around quickly."

Coach Kennedy would describe the loss as disappointing given the lead and the fact that GSU was playing in front of its home crowd.

Georgia Southern will pick up conference play taking on College of Charleston at home this Saturday at 4 p.m.

The team still has seven more games left to play in its regular season before the first round of the Southern Conference Tournament begins on Nov. 5. If the Eagles fair well in their tournament play, they will advance to the semifinals, and possibly finals, in Boone N.C.



GOT \$5?

Try Our Express Exterior Washes Starting at \$5.

10% off All Car Wash, Detail, And Oil Change Services

WITH GSU STUDENT OR EMPLOYEE ID

830 BUCKHEAD DR. (912) 764-3692



Versatile McKinnon sets pace for Eagles' offense

Football

By CLINTON HINELY

George-Anne contributor

The football team's number one ranking isn't the only important number one to Georgia Southern University's team.

Jerick McKinnon, sophomore, is GSU's present day version of former great Jayson Foster. McKinnon is listed at quarterback, but lines up in a couple of positions during the game. In this past weekend's game against Western Carolina, McKinnon's athletic ability was on display with a 75-yard touchdown run and his first career passing touchdown. He is currently leading the team and is tied for first in the Southern Conference for scoring, with one passing, one receiving, and six rushing touchdowns on the season so far.

McKinnon's hustling and versatility are making him both a fan favorite and a nightmare for opposing teams. He is a big part in GSU being the nation's best rushing offense, averaging 416 rushing yards per game.

McKinnon's football upbringing can be traced back to his past and his family.

"I started playing football when I was 4 years old," said McKinnon, "It was just something you could say, was a hobby in the family. I was brought up playing sports."

"My brother taught me a lot of things with football, but things that can also relate to things outside of football, like responsibilities," said McKinnon. "I admired him playing football and as a brother."

McKinnon said that GSU's atmosphere was a deciding factor for him to join the Eagles and it's still one of his favorite things about GSU.



Lindsay Hartmann/STAFF

Sophomore quarterback Jerick McKinnon runs the ball across Western Carolina University's goal-line, blowing past the opposition's defense.

"The coaches were good, I came to down to visit, and the players were good to me and showed me around," McKinnon said. "I felt I could come here and be a real student not just a football player."

McKinnon is listed as a quarterback on the depth chart and that's his preferred position, but also the one that requires the most work.

"The responsibility that the quarterback has, everything is thrown at him, you have

to be responsible for everything," said McKinnon, "I like that part of the challenge."

"Jaybo is like another teacher to me, I can always go and question him, and he will make sure I know what to do," said McKinnon.

With players like Jaybo and the coaching staff building and assisting the growth of future players, like McKinnon, the Eagle team will continue to grow and develop.

The GSU football team has a lucrative

history, but in recent years the team hasn't been up to fan's expectations. The team now has talented and unselfish players willing to work and do anything for the team. McKinnon's abilities and attitude are essential for GSU football to be ranked number one now. He brings with him the hope that the team will once again be in the safe hands of players with the tenacity to restore it to its former glory.



Classy, Sassy or WILD
(Costumes at PI)



FUNTASTIC STUFF FOR A GREAT PARTY!

(912) 489-9946

Located across from campus at Old Register & South Main

GAMEDAY MAYDAY

¹ GEORGIA SOUTHERN VS ELON

@RHODES STADIUM, 1:30 PM

ROAD TEST



#1 - JERICK MCKINNON

	RUSH	YARD	TD	LONG	AVG.
RUSHING:	28	231	5	75	7.9
RECEIVING:	1	38	1	38	38



GSU
 FOOTBALL
 2011

#66 - BRENT RUSSELL

11 TACKLES
 4 TACKLES FOR LOSS
 2 SACKS

 SPECIAL PULL-OUT SECTION

FOLLOW @THEGEORGEANNE ON TWITTER FOR LIVE GAME UPDATES

GEORGIA SOUTHERN EAGLES

No.	Name	Pos.	Year	Hometown
1	Jerick McKinnon	QB	So.	Marietta, Ga.
2	A.J. McCray	S	Sr.	St Marys, Ga.
4	Derek Heyden	S	Sr.	Atlanta, Ga.
4	Prince McJunkins	QB	Fr.	Wagoner, Okla.
5	Robert Brown	FB	So.	Macon, Ga.
6	Zeke Rozier	FB	Sr.	Cochran, Ga.
7	Darreion Robinson	RB	Jr.	Bishop, Ga.
9	Zach Walker	WR	Fr.	Wrightsville, Ga.
10	Josh Rowe	ILB	Jr.	Opelika, Ala.
11	Ezayi Youyoute	QB	RFr.	Wauchula, Fla.
12	Russell DeMasi	QB	Jr.	Savannah, Ga.
13	Darius Eubanks	OLB	Jr.	Harlem, Ga.
14	Jaybo Shaw	QB	Sr.	Flowery Branch, Ga.
15	Carlos Cave	OLB	So.	Macon, Ga.
15	Aaron Griffin	QB	Fr.	Rincon, Ga.
16	Antonio Glover	FS	Fr.	Atlanta, Ga.
17	Billy Greer	PK	Sr.	Crosby, Texas
18	Charlie Brower	WR	Unk	Dacula, Ga.
18	Lavelle Westbrook	CB	So.	Riverdale, Ga.
19	JJ Wilcox	SLOT	Jr.	Cairo, Ga.
20	Nico Hickey	SLOT	Sr.	Columbus, Ga.
21	Hudson Presume	DB	Sr.	Bradenton, Fla.
22	Seon Jones	FB	Fr.	Flowery Branch, Ga.
23	Johnathan Bryant	SLOT	Jr.	Cairo, Ga.
24	Riyahd Jones	CB	Fr.	Columbus, Ga.
25	Emmanuel Orange	CB	Fr.	Naples, Fla.
26	Tray Butler	WR	So.	Stockbridge, Ga.
26	Josh King	CB	Fr.	Stockbridge, Ga.
27	Javonte Martin	DB	So.	Tampa, Fla.
28	Devin Scott	SLOT	So.	Tucker, Ga.
29	Deion Stanley	SS	RFr.	Dry Pond, Ga.
30	K.R. Snipes	LB	RJr.	Opelika, Ala.
31	Dominique Swope	FB	Fr.	Buford, Ga.
32	Nick Wright	CB	Fr.	Lithonia, Ga.
34	Laron Scott	DB	Sr.	Warner Robins, Ga.
35	Miguel Gilmore	SLOT	Sr.	Orlando, Fla.
35	Michael Spaulding	LB	So.	Fayetteville, Ga.
36	Connell Reddick	DB	RFr.	Hephzibah, Ga.
37	Antwione Williams	LB	Fr.	Lovejoy, Ga.
38	Kyle Oehlbeck	LB	Jr.	Gainesville, Fla.
39	DeVonte Lewis	SLOT	Fr.	Dacula, Ga.
39	Deonté Watkins	DB	Sr.	Walkersville, Md.
40	Michael Butler	DB	Sr.	Stone Mountain, Ga.
41	John Stevenson	OLB	Jr.	Stone Mountain, Ga.
42	Boyd Sasser	S	Jr.	Millen, Ga.
43	Eric Worthen	LB	Fr.	Swainsboro, Ga.
44	Quaun Daniels	OLB	Fr.	Moultrie, Ga.
45	Adrian Mora	PK	Gr.	Dalton, Ga.
46	Brent Thomas	FB	Sr.	Tampa, Fla.
47	Omari Jones	DE	RFr.	Jonesboro, Ga.
48	Charlie Edwards	P	Sr.	Tifton, Ga.
49	Brandon Lane	DB	Jr.	Marietta, Ga.
50	Garrett Brewer	OL	Fr.	Dixie, Ga.
51	William Maxwell	OG	Sr.	Quitman, Ga.
52	Javon Mention	DT	So.	Tampa, Fla.
53	Marcus Duvall	ILB	Sr.	Griffin, Ga.
54	Korentheus Bailey	DT	Jr.	Lula, Ga.

No.	Name	Pos.	Year	Hometown
55	Austin Hagan	OL	Fr.	Dacula, Ga.
56	Luke Cherry	PK	So.	Jacksonville, Fla.
57	Brett Moore	OL	Sr.	Warner Robins, Ga.
58	Garrett Frye	OL	Fr.	Cumming, Ga.
59	Zach York	LB	Jr.	Hartwell, Ga.
60	Chris Gray	OT	Jr.	Landrum, S.C.
61	Jacob Bagley	TE	Jr.	Waycross, Ga.
62	Zach Lonas	OG	So.	Acworth, Ga.
63	Brandavious Mann	C	Sr.	Forsyth, Ga.
64	Hunter Lamar	OL	Fr.	Statesboro, Ga.
65	Kyle Stroud	OL	RFr.	Tucker, Ga.
66	Brent Russell	DT	Jr.	Comer, Ga.
67	Matt Mills	OL	Fr.	Johns Creek, Ga.
68	Matthew Gilbert	C	RFr.	Marietta, Ga.
69	Cole Peebles	OL	Fr.	Conyers, Ga.
70	Raymond Klugey	OT	Jr.	Norcross, Ga.
71	Dorian Byrd	OT	So.	Macon, Ga.
72	Zach Reckers	DT	Jr.	Atlanta, Ga.
73	Maurice Hunt, Jr.	OL	Fr.	Lyons, Ga.
74	Logan Daves	OL	RFr.	Blue Ridge, Ga.
75	Manrey Saint-Amour	OL	Fr.	Suwanee, Ga.
76	Trevor McBurnett	OL	RFr.	Lawrenceville, Ga.
77	Blake DeBartola	OL	Jr.	Fayetteville, Ga.
78	Josh Petkovich	OT	Sr.	Palm Harbor, Fla.
80	Kentrellis Showers	WR	RFr.	Dublin, Ga.
81	Mitchell Williford	WR	Jr.	Duluth, Ga.
82	Wilson Hudgins	TE	Fr.	Loganville, Ga.
83	Martin Weatherby	WR	Jr.	Roswell, Ga.
84	Patrick Barker	WR	Jr.	Ponte Vedra, Fla.
85	Allen Lee	WR	Jr.	Savannah, Ga.
86	Markus Farmer	WR	Jr.	Savannah, Ga.
87	Willie Burden	TE	Jr.	Statesboro, Ga.
88	Trevor Shaw	DL	So.	Alpharetta, Ga.
88	Tyler Sumner	TE	Jr.	Pooler, Ga.
89	Carter Jones	LS	Sr.	Moultrie, Ga.
90	Josh Gebhardt	DE	So.	Douglasville, Ga.
91	Justice Ejike	DT	RFr.	Covington, Ga.
92	John Douglas	DE	Sr.	Augusta, Ga.
93	Rashad Williams	DE	RFr.	Roswell, Ga.
94	Roderick Tinsley	DT	Sr.	Soperton, Ga.
95	Edwin Jackson	LB	RFr.	Atlanta, Ga.
96	Blake Riley	DT	So.	Crescent, Ga.
97	George Osunde	LB	Jr.	Alpharetta, Ga.
98	Forrest Kelleher	DE	Fr.	Ft. Lauderdale, Fla.
99	Terico Agnew	DE	Jr.	Stockbridge, Ga.
	Garrett Blaxton	OL	Sr.	Reidsville, Ga.
	Toby Eaton	LB	Unk	
	Ricky Fawbush	LB	Unk	
	Walter Jackson	ILB	Unk	
	Nick Johnson	Line	Unk	
	KB Maison	OLB	Unk	
	Cody Rediger	TE	Unk	
	Michael Shealy	LB	RFr.	Batesburg, S.C.
	Charod Strickland	SLOT	Unk	
	Michael Wallace, Jr.	DB	Fr.	Norfolk, Va.
	Caleb Watkins	DB	Fr.	Ellenwood, Ga.
	Kendrick Wilson	DB	RFr.	Augusta, Ga.

ELON PIONEERS

No.	Name	Pos.	Year	Hometown
1	Jamal Shuman	RB	Sr.	Fayetteville, N.C.
2	Miles Williams	DB	Fr.	Roebuck, S.C.
3	Aaron Mellette	WR	Jr.	Sanford, N.C.
4	Andre Davis	WR	Fr.	Bunn, N.C.
5	Ricky Brown	WR	Fr.	Winston-Salem, N.C.
6	Blake Thompson	DB	Jr.	Elkridge, Md.
7	Mike Quinn	QB	R-Fr.	Wayne, N.J.
8	Zach Henderson	LB	Sr.	Tampa, Fla.
9	Blake Rice	QB	Fr.	Tampa, Fla.
10	Dale Riley	LB	Jr.	Charlotte, N.C.
11	Darrius McQueen	WR	Sr.	Tallahassee, Fla.
12	Thomas Wilson	QB	Jr.	Raleigh, N.C.
13	Shay Newcomer	QB	Jr.	Crystal River, Fla.
13	Joe Watkins	DB	Fr.	Hyattsville, Md.
14	David Williams	DB	So.	Chester, Va.
15	Tyler Smith	QB	R-Fr.	Easton, Pa.
17	Kyle Huff	WR	R-Fr.	Naples, Fla.
17	Luke Martin	DB	Jr.	Tampa, Fla.
18	Jeremy Peterson	WR	Jr.	Winston-Salem, N.C.
20	Adam LaFleur	QB	Fr.	Bel Air, Md.
20	David Wood	DB	Jr.	Park Ridge, N.J.
21	Jerrell Armstrong	DB	Fr.	New Bern, N.C.
22	William Hairston	DB	Sr.	Reidsville, N.C.
23	Akeem Langham	DB	R-Fr.	High Point, N.C.
24	Quinton Lightfoot	LB	So.	Crawfordville, Fla.
26	Alexander Dawson	DB	Fr.	Haw River, N.C.
27	Joe Jones	RB	Fr.	East Point, Ga.
28	John Reece	P	Jr.	Raleigh, N.C.
29	Edward Burns	DB	So.	Sylvania, Ga.
30	Dontay Taylor	RB	Sr.	Eureka, N.C.
31	Kierre Brown	WR	So.	Charlotte, N.C.
32	Adam Shreiner	K	Jr.	Marietta, Ga.
33	A.J. Harris	RB	Sr.	Ocean View, N.J.
34	Juan Burnett	DB	So.	Duluth, Ga.
35	Austin Donald	RB	Fr.	Raleigh, N.C.
35	Jordan Thompson	DB	R-Fr.	Hickory, N.C.
36	Lawson Furr	K	Fr.	Lewisville, N.C.
36	Ivan Ledesma	WR	Fr.	Santa Paula, Calif.
37	Jonathan Conner	DB	Sr.	Prairieville, La.
38	Thonda Taylor	DL	Jr.	Millington, Tenn.
39	Andrew Straus	DB	Sr.	West Chester, Ohio
40	Matt Eastman	TE	So.	Tampa, Fla.
41	Chandler WRIGHTENberry	DB	So.	Asheville, N.C.
42	Robert Davis	LB	Fr.	Thomasville, N.C.
43	Evan Kendrick	DB	Fr.	Gahanna, Ohio

No.	Name	Pos.	Year	Hometown
45	Tony Thompson	DL	So.	Simpsonville, S.C.
46	Danny Sellers	WR	R-Fr.	St. Augustine, Fla.
47	Michael Crispi	LS	Fr.	Dix Hills, N.Y.
48	Elliott Richardson	LB	Jr.	Columbia, S.C.
49	Jeremy Inglesi, Jr.	RB	R-Fr.	Charlotte, N.C.
50	Joshua Jones	LB	Sr.	Tampa, Fla.
51	Derek Vereen	OL	Fr.	Durham, N.C.
52	Jonathan Spain	LB	R-Fr.	Greensboro, N.C.
53	David Smith	LB	Fr.	Southern Pines, N.C.
55	Odell Benton	LB	Fr.	Jacksonville, N.C.
57	Logan Hardin	OL	Sr.	Grover, N.C.
59	Jordan Jones	DL	So.	Lakeland, Fla.
60	Dustin Ruff	DL	R-Fr.	Waxhaw, N.C.
61	Brian Gerwig	OL	R-Fr.	Winston-Salem, N.C.
62	Kyle Herbert	OL	Jr.	Hillsborough, N.C.
63	Jacob Roberts	OL	Fr.	Greensboro, N.C.
64	Rodney Austin	OL	Sr.	Charlotte, N.C.
65	Steven DeCarlo	DL	R-Fr.	Aecworth, Ga.
66	Drew Perkol	OL	R-Fr.	Charlotte, N.C.
69	Mark Rehbein	OL	So.	Alexandria, Va.
70	Gray Johnson	OL	So.	Hickory, N.C.
71	Austin Sowell	OL	R-Fr.	Knoxville, Tenn.
72	Dennis Wagner	OL	So.	Fredericksburg, Va.
74	Phillip Dobbins	OL	R-Fr.	Elm City, N.C.
76	Thomas McGuire	OL	Fr.	Gilbert, Iowa
77	Ned Cuthbertson	OL	Sr.	Forest City, N.C.
78	Gavin Billings	OL	So.	Kannapolis, N.C.
79	Justin Ward	OL	Jr.	Summerfield, N.C.
80	Christian Dennis	WR	Sr.	Monte Vedra Beach, Fla.
81	Rasaun Rorie	WR	So.	Morven, N.C.
83	Chris Harris	WR	Jr.	Ocean View, N.J.
84	Kenton Beal	P/K	So.	Cape Coral, Fla.
86	Taylor Berry	TE	Sr.	Oviedo, Fla.
87	Will Wentz	TE	Fr.	Virginia Beach, Va.
88	Andre Labinowicz	TE	Sr.	Charlotte, N.C.
89	Tario Hunter	WR	Fr.	Ahoskie, N.C.
90	Olufemi Lamikanra	DL	Jr.	Tallahassee, Fla.
91	Gary Coates	DL	Fr.	Irmo, S.C.
92	Tevin James	DL	So.	Newton, N.C.
93	Rob Sullivan	DL	Fr.	Scottsdale, Ariz.
94	Rushaun Byrd	DL	Jr.	Valrico, Fla.
95	Michael Pearson	DL	Fr.	Laurens, S.C.
96	Lawson Hodges	K	Fr.	Thomasville, N.C.
97	Brandon Brant	DL	So.	Stone Mountain, Ga.
99	Jay Brown	DL	So.	Sandy Springs, Ga.

PHOENIX, from page 1

the conference in punting average. The return game is still atop the SoCon kick return average, but the punt return game has slipped to third.

Elon is third in the conference in kickoff return, but the rest of their special teams are average. Their kicker has made around half of his field goals, their punt return unit is ranked sixth out of nine teams in the conference, and their punt unit is ranked fifth.

Stat to watch: 49. The number of field goals Mora has made in his career, one shy of the school record.

Advantage: GSU

Elon Offense vs. GSU Defense: Elon is the top passing team in the conference but their running game is in the bottom third of the conference. That bodes well for the Eagles' run defense, which is first in the SoCon.

But this means that GSU will need to defend the pass more, something that they have had mixed results with so far. GSU leads the conference in passing yards per game surrendered, but also passes intercepted and sacks. The GSU secondary took a hit last week with starter Derek Heyden, a senior safety, injuring his neck. He is out indefinitely.

This will lead to an interesting matchup with Elon junior quarterback Thomas Wilson, who leads the SoCon in passing yardage and total offense, but also interceptions.

Aaron Mallette will be the main target of Wilson's throws. Mallette leads the SoCon in receptions, receiving yards and is tied for the lead in receiving touchdowns.

Their running game will mostly be from

tailbacks Dontay Taylor and A.J. Harris, who combine for 92.3 yards per game. However, the Phoenix has an issue with punching the ball in the end zone. Elon ranks seventh in the SoCon in scoring this season.

Stat to watch: 121. The number of receiving yards for Mallette last season versus GSU.

Advantage: Even

GSU Offense vs. Elon Defense: Elon allows the fewest number of yards in the SoCon this year. However, their lockdown numbers are a large result of their number one ranking in pass defense, which is a large non-factor when playing the Eagles.

The defense isn't very opportunistic either, only forcing three turnovers in four games this season. The run defense is ranked sixth in the conference, and has surrendered

four rushing touchdowns so far.

Jaybo Shaw's injury could affect the GSU running game, which ran for an astounding 634 yards last weekend versus Western Carolina. However, the offense scored 28 points in his absence and ran for over 300 yards in a half.

Regardless of who is playing quarterback for the Eagles, Elon will have to figure out the triple-option and the stable of running backs that will touch the ball for the Eagles. Jerick McKinnon is tied for the lead in the SoCon for touchdowns with six, and he can line up anywhere from slot back to quarterback.

Stat to watch: 182. The number of rushing yards McKinnon had in his first start last season when Shaw went down with an injury.

Advantage: GSU

UPCOMING GAMES SCHEDULE

OCT. 1	@ ELON	(3-1, 1-0 SOCON)
OCT. 8	#17 CHATTANOOGA	(2-2, 0-1 SOCON)
OCT. 15	FURMAN	(2-1, 1-0 SOCON)
OCT. 22	PRESBYTERIAN	(1-3, 0-0 BIG SOUTH)

Kelsey Paone/STAFF

Final Analysis: The Eagles' running game will prove to be too much for a talented, yet sloppy Phoenix squad.

While they probably will not run up 634 yards again, if they can top 300 yards rushing, they should be in good shape versus Elon. Elon's quarterback seems to the pass-heavy, turnover-laden offensive game plan that the defense is used to seeing.

For Elon to win the game, they have to be able to stop the triple option, and force either Shaw or McKinnon to pass against their top-ranked pass defense. Wilson will need to have a turnover free game for a Phoenix victory.

Stat to watch: -9. The turnover margin for the Phoenix, worst in the conference and 118th in the FCS.

Final Score: 38-20 GSU

UT&ABOUT

Express Tune & Lube

Tire, Alignment
& Exhaust Center

612 S. Zellerbach Avenue
489-4444

www.expresslube.com

Monday - Friday 7:30am - 6:30pm

Located a half block north of Woody's

OIL CHANGE SPECIAL

\$25⁹⁵ Includes up to
5 qts of Castrol
5W20, 5W30, 10W30

price applies to most vehicles. Expires 11/30/11

www.expresslube.com

myth:

drinking is central to the
social lives of georgia
southern university
students

fact:

78% of georgia southern
students typically drink
once a week or less often

INTEGRITY
EDUCATION

Running backs are key

Football

By **DERREK ASBERRY**

George-Anne staff

The Georgia Southern University football team is number one in the country with a 3-0 record. The defense is holding teams to about 19 points per game and the offense is outscoring opponents by an average of 29 points per game.

While these numbers are impressive, the biggest surprise may be that in just three games the Eagles have accumulated 1,248 rushing yards, averaging 416 yards per game. If the numbers are broken down further, GSU is rushing for 104 yards per quarter.

While the triple option offense certainly allows Jaybo Shaw and Jerick McKinnon to rush from the quarterback position, much of the credit for the impressive yardage must be given to those who only run the ball: the running backs and the fullbacks.

"We come to practice to every day, preparing, doing our assignments, and doing what we have

to do," said sophomore fullback Robert Brown.

Eagles have successfully utilized the triple option offense this season. While the offensive line does in fact allow the backs to run, it has become a commonplace to see Brown, or his partner Dominique Swope, in the backfield blocking for their quarterbacks.

"It all depends on what the defense is doing," said Swope. "It depends on whether they're worried about the fullback or if they're worried about protecting the outside. So, the coaches plan based on whatever they think the defense is going to be focused on."

"As backs, we have to open holes for the quarterbacks also," Brown said. "Knowing what we have to do to allow the quarterbacks to run is a big part of our job and we take it seriously."

The Eagles will be traveling to North Carolina this weekend to defend their number one ranking against Elon University. Last season the team defeated Elon 38-21. After rushing for 634 yards this past Saturday, it's no secret that the ground game will play a big part if the Eagles hope to come home 4-0.

Intramural Sports Scores

Flag Football

Southern Assassins 15, **Dolls and Balls 26**

The Usuals 25, Unprotected Sets 0

Macon Babies 14, **Delta Sigma Phi 19**

Alcoballics 0, **Vinegar Stroked 24**

Those Guys 0, **Woodies 33**

Team Swagg 6, **Grab the Pillow 20**

Zeta Tau Alpha 12, Alpha Delta Pi 6

Phi Mu 6, **Kappa Delta 7**

Kappa Kappa Gamma 7, Alpha Omicron Pi 2

iTouchdown There 19, Your Out I'm In 0

Kappa Alpha Order 26, Kappa Sigma 0

Pi Kappa Alpha 19, Sigma Alpha Epsilon 0

Pi Kappa Phi 13, Sigma Phi Epsilon 6

Sigma Nu 28, Sigma Chi 27

Alpha Tau Omega 28, Delta Chi 6

Red Rockets 7, **Southern Spliffs 28**

Lights Out #1 12, **Alpha Males Inc. 27**

Fall Softball

Playground Posse 13, Our Balls Go Deep 12

Balls and Dolls 5, Innocent Until Proven Filthy 2

Sons of Pitches 18, Real Men of Genius 12

Shockers 5, **Team Howie Feltersnatch 9**

Pitches Be Runnin' Wild 15, Delta Sigma Phi 0

Hittin' it Hard 24, Team DWet 17

The Buls 7, Sigma Phi Epsilon 0

Bartle Doo With A Malt Licky 24, We Got the Run 15

Ultimate Frisbee

Men's C SemiFinals

Regurgitating Llamas 2, **Flyers 2.0**

CCF Fourth Meal 8, Team Blunt Force 7

Men's AB SemiFinals

El Peligro Banditos 10, Southern Adventures 0

Da Poopadoos 5, **Not F@#\$%& Around 10**

Co-Rec SemiFinals

True Blue GSU 15, CCF Boom14

The Cunning Koalas 11, BCM Boys and Girls Club

What's going on in CRI

Now that softball, flag football, and ultimate frisbee season is almost over, it is time to start assembling teams for the upcoming Intramural sports.

Intramural Volleyball registration opens on Monday, Oct. 3rd. To register visit: <https://www2.sta.georgiasouthern.edu/>.

Also, go online and check out the table tennis and cornhole schedules. The tournaments begin on Monday, Oct. 3rd. For schedules visit: <https://www2.sta.georgiasouthern.edu/im/client/home>

Southern Adventures

CRI invites all students to enjoy Bouldering Night Out Thursday, Sept. 29th at 7pm. Bouldering is an exercise climbers

use to train specific technique and to develop real climbing strength.

The theme this month is "Tights and Brights." We encourage students to come dressed in their best 80's exercise gear

Wellness

LivinGreen ends on Sept. 30th and will conclude with a prize drawing. The grand prize winners will be announced at noon on Friday and will receive a bike and Kindle.

For more information visit: <http://welcome.georgiasouthern.edu/wellness/LivinGreen/index.html>

Come join CRI to discover and take part in the recreational activities that strike your interest.



Courtesy of CRI

This Week At CRI

SOUTHERN ADVENTURES

Bouldering Night Out:
Thursday, September 29th, 7pm

INTRAMURAL SPORTS

Volleyball Registration:
Opens Monday, October 3rd

WELLNESS

LivinGreen Prize Drawing:
Friday, September 30th @ 12pm

FOLLOW US!



facebook.com/GSUCampusRec

twitter.com/GSUCampusRec



WWW.GEORGIASOUTHERN.EDU/CHI

CLASSIFIEDS

16 Thursday, September 29, 2011

This page brought to you by Career Services
Explore • Experience • Excel

The George-Anne

Advertisement

For Sale

FOR SALE - 17 inch custom Ford Mustang rims and 17 inch custom Chevy Impala rims
Contact Ron: (912) 486-6611

Scooter for sale! 2005 Honda Ruckus. Black, 49cc, 85+mpg. Fantastic condition; original (faculty) owner, garage kept and treated like a baby! No special license or insurance required. \$1,500 OBO. Call or text: (912) 678-6052

Something to sell?
Visit thegeorgeanne.com or email
GaClass@georgiasouthern.edu
It's free for students, staff and faculty!

Jobs

BARTENDERS WANTED!
\$250 a day Potential. No Experience Necessary. Training Provided. Age 18+ OK Call 1-800-965-6520 ext 296.

Seeking nanny to take care of my child, Jessy, three years. Nanny could be live-in or not; I will be providing accommodation in the main house. Nanny will work 7 hours every weekday and some additional hours; this comes with extra pay. Email zyxwaretech.comanyreps@gmail.com

Subleases

Looking for female to sublease Spring Semester! 5 BR, \$280 a month. Last month of rent is paid for. Less than a mile from campus. Right off of Gentilly Rd. Amazing roommates! Call/text and/or email Kristina: (678)-770-6251, kf01606@georgiasouthern.edu

For more information on what Career Services can do for you, visit our office in the William's Center or call us at 912.478.5197!

Conducting company research

By Sarah Dixon, PR/Marketing Intern

Company research is often something that many applicants overlook before an interview.

However, many employers recognize researching the company as a critical factor in the evaluation of an applicant because it reflects interest in the company. It will show the employer whether or not you have done your "homework" in order to prepare for the questions you will be asked throughout the interview.

The ultimate goal of researching your particular company is to not only impress the employer with knowledgeable responses to questions regarding the business but also to stand out against other applicants.

In addition, here are ulterior goals of performing research prior to your interview:

- Gather information in order to make a more informed decision

- Let the company know that you are genuinely interested

- Discover whether the company is a good match for you

- Identify the needs of the company and market yourself appropriately

You may be a little uncertain on how to go about obtaining the different information you will need to accumulate, so here are some pointers. As college students, we are accustomed to writing research papers or completing projects. In the case of company research, you would use a variety of sources just as you would to complete research assignments.

Browse through websites, magazines, periodicals, and books that include information about the company. You should obviously view the employer's homepage first and then view a similar employer's page in order to make comparisons.

How to find the right internship

By Sarah Dixon, PR/Marketing Intern

As college students, we all struggle to discover what it is that we want to do with our lives. So, how do we get to that point? One step you can take toward determining what you want is to find an internship that is suitable for you.

The point of an internship is to not only gain relevant experience, but also to discover if you want to work in a similar industry for the rest of your career.

In order to decide what internship you should apply for, you should explore your interests and think of your dream job. What experience is necessary in order to land that job?

After you have determined what type of position you would like to apply for, create a strong resume and cover letter with the help of Career Services.

Career Services provides Optimal Resume which is an online program that will help you build the perfect resume and cover letter. After creating your resume, stop by Career Services on the first floor of the Williams Center to have it critiqued by a Career Services professional.

Career Services has walk-in hours daily from 9am to 12 pm & 1pm to 4pm to received assistance with your resume. Next, post your resume on the Eagle Career Net/NACELink system located on the Career Services website at www.georgiasouthern.edu/career.

After preparing your professional documents, it is now time to begin searching for different companies that you may be interested in — do not need to limit yourself to traditional organizations.

In addition, stay updated on internship announcements from Career Services and Eagle Career Net/NACELink through email, Facebook and Twitter.

Be sure to target your cover letter and resume to each individual internship position so the potential employer knows that landing that particular internship is your ultimate goal. Also, be sure to thank everyone that has helped you throughout the process and follow-up with a phone call in a week or so.

As a result, you may be asked to come in for an interview. Take the necessary steps to prepare for the interview by acquiring proper attire, researching the organization, and even setting up a mock interview with Career Services. Finally, send thank-you letters to the employer that you interview with within next 48 hours after the interview.

If you would like to schedule a mock interview to prepare for an internship interview, call Career Services at (912) 478-5197 or stop by our office located on the first floor of the Williams Center. You can also follow us on Twitter @GSU_Intern or email the Career Services Internship Staff at gsuinterns@georgiasouthern.edu.

Hot Jobs Cool Internships

Job Title: Governor's Office Internship Company: Governor Nathan Deal's Office	Deadline to Apply: Oct 7, 2011
Job Title: Sales Account Executive Company: Georgia Chamber of Commerce	Deadline to Apply: Oct 28, 2011
Job Title: Sales Internship Company: Nestle Purina	Deadline to Apply: Oct 16 2011
Job Title: Consular Adjudicator - Mandarin/Portuguese Company: US Department of State	Deadline to Apply: Oct 15, 2011
Job Title: Entry Level IT Consultant Company: Briggs & Stratton	Deadline to Apply: Nov 15, 2011
Job Title: Summer 2012 Company: US Department of State	Deadline to Apply: Oct 31, 2011
Job Title: Sports Internship Company: Orlando Magic	Deadline to Apply: Feb 29, 2012

To view the detailed job descriptions application instructions or additional postings, log into the Eagle Career Net/NACELink system found at www.georgiasouthern.edu/career.

PUZZLES/COMICS

www.thegeorgeanne.com

Thursday, September 29, 2011 17

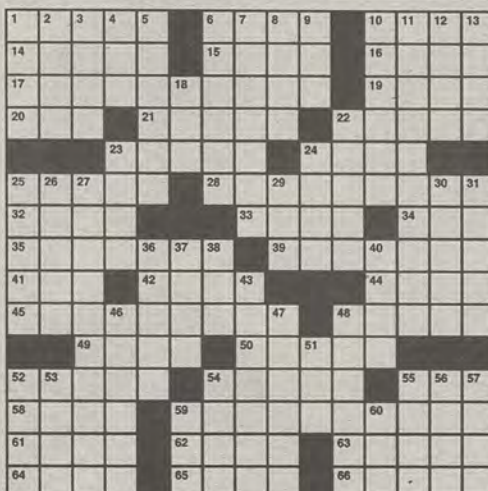
FOR RELEASE SEPTEMBER 29, 2011

Los Angeles Times Daily Crossword Puzzle

Edited by Rich Norris and Joyce Lewis

ACROSS

- 1 "Rock conqueror?"
- 6 ilk
- 10 "Soy milk brand"
- 14 Diminish, as trust
- 15 Court target
- 16 Singer with the platinum 1992 album "The Celts"
- 17 "Dental checkup freebie"
- 19 Hungarian spa city
- 20 "30 Rock" is loosely based on it, briefly
- 21 Georgia campus
- 22 Transparent personality?
- 23 Webber's partner
- 24 Sink ending
- 25 Are proper for
- 28 "Wile E. Coyote" buy
- 32 Napoleon, before seeing Elba?
- 33 Its symbol is "\$"
- 34 West Bank initials
- 35 "Gets creative"
- 39 "Extent"
- 41 "Alice" spinoff
- 42 Gives goose bumps, maybe
- 44 Pennsylvania port
- 45 "Flashy display"
- 48 Umbrella brand
- 49 Idiot
- 50 Finalize, as a comic strip
- 52 Pub drinks
- 54 Sudden outpouring
- 55 Sch. with a Phoenix campus
- 58 Comic book buyer of old?
- 59 "Beginner's piano piece"
- 61 Analogous
- 62 Forceful takeover
- 63 John who played Gomez Addams
- 64 "Forged check"
- 65 Maker of Kate Moss fragrances
- 66 It celebrates National Day on October 1 (and it's where the answers to starred clues were invented)

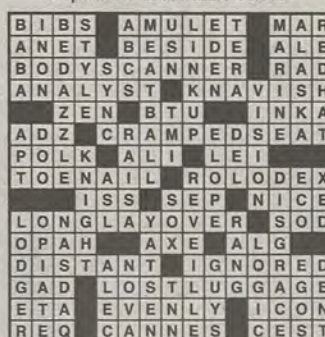


By Don Gagliardo and C.C. Burnikel

9/29/11

DOWN

- 1 Bo and Barney, e.g.
- 2 Mountain climber Ralston, subject of "127 Hours"
- 3 Hustler's game
- 4 Atlanta summer hrs.
- 5 Warm up
- 6 Crowd
- 7 Words to one on deck
- 8 Nosegay
- 9 Bk. before Philipians
- 10 Envision a way
- 11 To a great extent
- 12 Caustic fluids
- 13 Go-
- 18 ASCAP rival
- 22 Union member?
- 23 Like pinto
- 24 Lhasa
- 25 Alberta national park
- 26 "Christ Stopped at"
- 27 Amount requiring a credit card authorization
- 29 Japanese chip maker
- 30 Borden mascot
- 31 Derby prize



(c)2011 Tribune Media Services, Inc.

9/29/11

- 36 Some green acres
- 37 "Star Wars" tree-dweller
- 38 Sun, talk
- 40 Drudge
- 43 Abandon, with "on"
- 46 Oregon Ducks' home
- 47 Irritable
- 48 Pin in a shirt
- 51 Gold units: Abbr.
- 52 Mt. Rushmore's state
- 53 Joint Web project
- 54 "Buzz off!"
- 55 When Emile sings "Some Enchanted Evening"
- 56 Word with care or cream
- 57 Oliver North's alma mater: Abbr.
- 59 V x LX
- 60 -like relative

I'M SEARCHING FOR THE NEWLY DISCOVERED EXO-PLANET THAT NASA CALLS A "SUPER-EARTH."



www.gocomics.com/brewsterrockit

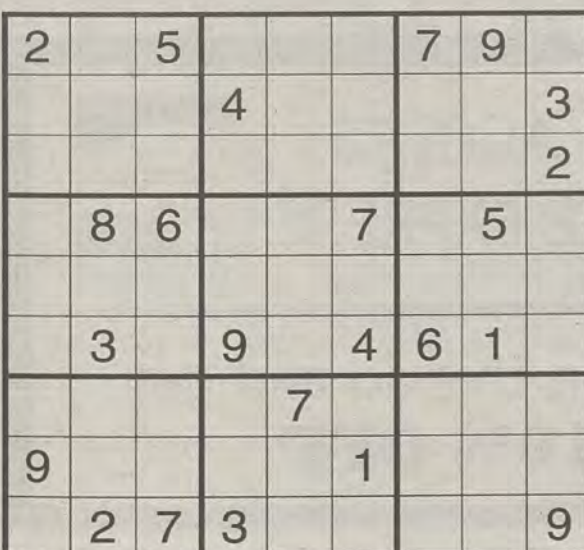


1001 ©2011 Tribune Media Services, Inc. All rights reserved.

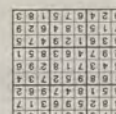
I DON'T UNDERSTAND. THERE'S NOTHING HERE BUT THE "CLARK KENT-EARTH."



Welcome to Falling Rock National Park by Josh Shalek



Sudoku



SEPTEMBER

ALL BOX MEALS

any sandwich, 2 sides & drink

\$7.50

Monday-Friday 4-7pm

we do catering

• free delivery •

607 Brannen Street, Statesboro, GA 30458

(912) 489-4267

Open: Mon-Fri (10am-7pm)
Sat (10am-3pm)

5 BOX LUNCH LIMIT PER PERSON

Symphony conducts its first season performance

By **DUSTIN TILLIGKEIT**

George-Anne contributor

Music was heard once again on campus this past Monday evening when the Georgia Southern Symphony opened with its first performance of the semester at the Performing Arts Center.

Led by Maestro Adrian Gnam, the Symphony's orchestra consists of 50 students playing a variety of instruments. The students come from a variety of colleges and majors as well, according to Maestro Gnam.

"Without the students from the other colleges and departments, we wouldn't have an orchestra," said Gnam.

Gnam is an assistant professor of music as well as the Conductor of the Georgia Southern Symphony. He has conducted several orchestras both in the United States and around the world after playing oboe for the Cleveland Orchestra.

As well as Maestro Gnam, there were four other faculty members performing in Monday's orchestra. Dr. Richard Mericier, head of the Department of Music and an accomplished pianist, Dr. Steven Elisha, an assistant professor of lower string studies and a cellist, and his wife Larisa Elisha, an assistant professor of upper string studies and a violinist.

These three faculty soloists performed Beethoven's "Triple Concerto," which was originally composed in 1803 and is Beethoven's only concerto piece that uses more than a single instrument.

As well as the "Triple Concerto," Matt Fallin, a professor of percussion and an

orchestral percussionist, performed the "Milhaud Percussion Concerto."

Violinist Kathryn Jenkins, a junior music performance major said, "It's more of an excitement than a nervousness."

The performance opened with the "Percussion Concerto," which featured strong percussion and a somber tone that was almost melancholy at times.

The second composition began in a dignified manner. The orchestra opened with low music from the string section until the faculty soloists joined in.

First, Elisha started with his cello, shortly thereafter joined by his wife. Mercier answered a second later with notes of his piano. The music rose to a fevered pace only to slow for a moment and then rise again to a crescendo.

The music swelled and slowed repetitively and each time you thought it was over it returned stronger than before.

The final performance of the night was the orchestra performing a tone poem from romantic composer Franz Liszt. The music started with quick, bright strings and trumpet calls.

"The Symphony was an absolutely beautiful performance. The 'Triple Concerto' was particularly moving and heartwarming," said Johnathon Harris, senior information technology major.

"The orchestra gets better and better each year," said Gnam.

The Symphony is scheduled to perform again with the Opera in late October as well as feature other students, faculty, and visiting performers.



Rebecca Farris/STAFF

Senior Samuel Cho, music performance major focused on performing with his cello during the GSU Symphony's first performance for the fall semester.

The
Pita Pit

FRESH THINKING
HEALTHY EATING

WE ACCEPT
EAGLE EXPRESS



Mention this ad and get
10% OFF

Rhythm and Brews will bring autumn into the gardens

By COURTNEY ESCHER

George-Anne contributor

As autumn creeps into Statesboro, beats of Rock and Roll and Folk will come from the Botanical Gardens.

Georgia Southern University's Botanical Gardens will be hosting Rhythm and Brews, Friday Sept. 30 at 7 p.m. for the second year in a row.

"The energy it's like being in a big play ground for adults," said Carolyn Altman, Director of the Botanical Gardens, describes Rhythm and Brews and recounts her experience there it's inaugural year.

The event will feature the musical styling of Statesboro's own Harry Canary.

Also making an appearance is Big Bad Wolf Barbeque and countless vendors from all over the country providing samples of some of the best brews out there.

Admission to the event is \$50, and all proceeds go towards maintaining and expanding the Botanical Gardens.

Inspired by a wine-tasting event held later in the year, Rhythm and Brews is a beer-tasting

RHYTHM & BREWS

FRIDAY, SEPT. 30TH 7:00-10:00PM

BOTANICAL GARDENS

LIVE BLUES, BEER TASTING

\$50 PER TICKET

Kelsey Paone/ STAFF

event. Because alcohol is served, the event is exclusive to adults 21 and older.

First come, first served parking will be available at the Botanical Gardens. Once those spots are filled, parking will be available in the Pittman parking lot on Fair Road.

Volunteer students will shuttle guests to the Botanical Gardens where they will be admitted to the party. Once admission is paid, everything inside is free.

Guests are welcome to eat the barbeque

available, dance the night away as Patti Kelly of Harry Canary belts her heart out, and of course partake of all the 'brewskies'.

Ronnie Little, custodian at the Botanical Gardens, describes it as a "Garden of Eden." "It's so peaceful," he said, "going there and being surrounded by the nature is a great way to escape."

Little and all of the staff at the Botanical Gardens encourage GSU students and community members to experience the

environment for themselves and see the recent additions to the grounds.

Altman believes very strongly in the educational purposes of the Botanical Gardens as well as the aesthetics.

"We love throwing great parties, but what we're really about is the education," said Altman.

This event will allow the community and students to learn more about the environment around southeast Georgia.

Rhythm and Brews is a way for the Botanical Gardens to introduce the fall season.

However, maintaining and expanding this area is a pricey endeavor that requires many hours of maintenance.

According to Altman, the Botanical Gardens run solely off of donations and funds from events such as Rhythm and Brews.

"The staff at the Botanical Gardens works very hard to make sure we can do all of the important work for GSU and the community," said Altman.

Rhythm and Brews will take place in the Botanical Gardens this Friday, Sep. 30, at 7 p.m. Tickets can still be purchased for \$50 each from the Botanical Gardens.

Choices of the Heart
Pregnancy Center

Pregnant?

Free and Confidential Testing and Counseling. Off Campus Location.
Hot Line: 9AM-9PM 912.764.4303
Appointments Only.

106-B Oak Street, Statesboro, Georgia • www.choicesoftheheart.org • 912.764.4303



Hungry Howie's

FLAVORED CRUST PIZZA

Pick Up or Delivery

**\$7.77 LARGE 1
TOPPING PIZZA
(\$3 more - make
it a works!)**

Free Flavored Crust!

THE 'BORO BEAT

YOUR GUIDE TO OFF-CAMPUS ENTERTAINMENT

THURSDAY

Applebee's

- Jammin' Thursday with DJ Jammin' J
- \$1 Jell-o Shots, \$2 Coronas, \$3 Appletinis, \$3 Joses, \$3 Draft beers, \$3 Margarita, half price apps

Buffalo's

- A Nickel Bag of Funk, 10:00 p.m.
- Happy Hour 5-7 p.m., \$2 Light Tall Boys, \$2 Margaritas, \$2.50 Yuengliens, \$2.75 Landsharks

Dingus Magee's

- The Fritz and Charlie Penison, 9:30 p.m.
- Happy Hour 5-7 p.m., half price well shots

The Clubhouse at Hackers

- Late-night bowling, 11 p.m., free with Eagle ID

KBob Kelly's

- Karaoke, 10 p.m.

Millhouse

- Will Riner, 10:00 p.m.
- 10 Items for under \$13

Crabby-Joe's

- AYCE Snow Crab Legs, \$29.99, Buffalo Tenders and Pitcher of Beer \$9.99

Gnat's Landing

- Happy Hour, Alcohol and Apps half priced

El Sombrero

- Happy Hour 5-7 p.m., \$2.50 Big Beer

Loco Grill

- Happy Hour 5-7 p.m., half priced wings, cheese dip, well lickers, long necks

Latte Da

- \$ 4.25 Regular coffee and cheese cake

FRIDAY

Applebee's

- Trivia Night, 10 p.m., \$3 Samuel Adams, \$3 Jack, \$3 Jim, half price Apps

Buffalo's

- Eric Culberson, 10 p.m.
- Happy Hour 5-7 p.m., \$2 Light Tall Boys, \$2 Margaritas, \$2.50 Yuengliens, \$2.75 Landsharks, \$3 Domestic Beer

Dingus Magee's

- Those Cats, 9:30 p.m.
- Happy Hour 5-7 p.m., half price Well shots,

KBob Kelly's

- Charlie Denison, 8 p.m.

Millhouse


- Brent Browning, 10:00 p.m.
- 10 Items for under \$13

Gnat's Landing

- Stereotype, 10 p.m.
- Happy Hour, Alcohol and Apps half priced

Crabby-Joe's

- Bucket of Steamed Oysters and a pitcher of beer \$11.99, \$2 wells, \$4 Jack Daniels, \$4 Captain Morgan, Live Entertainment



GAME DAY SATURDAY

- \$1 SHOTS**
- 40¢ WINGS**
- \$6 PITCHERS**
- \$9.99 MARGARITA PITCHERS**

11218 HWY 301 SOUTH
Statesboro, GA 30458
(912) 225-3004

If you are under the age of 21, it is against the law to buy alcoholic beverages.

THE 'BORO BEAT

YOUR GUIDE TO OFF-CAMPUS ENTERTAINMENT

SATURDAY

Applebee's

- Do Good DJs, 10 p.m.,
- \$3 Appletini, \$3 Jose, \$3 Margaritas, half priced Apps

Buffalo's

- Archneimsis, 10:00 p.m.
- Happy Hour 5-7 p.m., \$2 Light Tall Boys, \$2 Margaritas, \$2.75 Landsharks, \$3 domestic beers

Dingus Magee's

- Connected House, 9:30 p.m.
- Happy Hour 5-7 p.m., half price well shots

El Sombrero

- \$2 Margaritas

Millhouse

- 10 Items for under \$13

Dos Primos

- Rockhouse, 10 p.m.

Crabby-Joe's

- Live Music, 9 p.m.
- \$1 shots, \$6 pitchers, \$9.99 Margarita pitchers

Mainstreet Statesboro

- Farmers' Market, Sea Island Bank parking lot, 9:00 - 12:30 p.m.

MONDAY

Applebee's

- \$1 Natty Brewtus, \$3 other Brewtus, half priced Margaritas and Apps

Buffalo's

- Happy Hour, 5-7 p.m., \$2 Light Tall Boys, \$2 Margaritas, \$2.50 Yuenglings, \$2.75 Landsharks, \$3 Domestic Beers

Dingus Magee's

- Happy Hour, 5-7 p.m., half price well shots

Dos Primos

- Poker, 8 p.m.

KBob Kelly's

- Cornhole Tourney, 8 p.m.

Millhouse

- 10 Items for under \$13

Locos

- \$5 Bud Light pitchers

Crabby-Joe's

- AYCE Low Country Shrimp Bowl \$15.99, \$3 Jager and Goldschlager/Rempenintz shots

Gnat's Landing

- Happy Hour, 5-7 p.m., Alcohol and Apps half priced

TUESDAY

Applebee's

- Karaoke 9 p.m., \$3 Jacks, \$3 Long Island Ice Tea, \$3 Draft, \$3 Jack Daniels, \$4 Jager bombs

Buffalo's

- Happy Hour, 5-7 p.m., \$2 Light Tall Boys, \$2 Margaritas, \$2.50 Yuenglings, \$2.75 Landsharks, \$3 Domestic Beers, \$ 6.99 All you can eat wings, 5-8 p.m.

Dingus Magee's

- Happy Hour, 5-7 p.m., half price well shots

KBob Kelly's

- Karaoke 9 p.m.

Crabby-Joe's

- \$1.50 drafts, \$0.35 Steamed Oysters

Gnat's Landing

- Trivia Night, Happy Hour 5-7 p.m., Alcohol and Apps Half priced

Dos Primos

- Poker and Darts, 8 p.m.

Uptown Pizza

- Pizza Happy Hour, 2:30-4:30 p.m.



**THE ONLY ALL YOU CAN EAT
PIZZA, PASTA, SALAD ALL DAY
EVERY DAY FOR \$4.99...
You Created it - We Bake it**

**UPTOWN
Pizza**

Located next to Lowe's on Hwy 80 812A HWY 80 East, Statesboro, Ga 912-764-4811



Southern Palace

The Best Chinese Cuisine in Statesboro

www.southernpalace.com

Fresh, Healthy, and Tasty Special Students' Carryout Menu

100% Vegetable oil, No M.S.G.

(912) 489-8813

Dine-In, Carry out, Catering, Group party

(912) 764-5536

602 Brannen Street, Suite 9, Statesboro, GA 30458
(behind Jiffy Lube, next to Moe's)

WEEKLY BUZZ

A weekly calendar listing sponsored by The Division of Student Affairs and Enrollment Management

SEPTEMBER 29- OCTOBER 5

THURSDAY 9.29.2011

7PM

Bouldering Night Out

RAC Climbing Wall

Sponsored by Campus Recreation & Intramurals.

10PM

Midnight Bowling

THE CLUBHOUSE

Sponsored by the Office of Student Activities.

FRIDAY 9.30.2011

12 PM

LIVINGGREEN PRIZE DRAWING

RAC LOBBY

Sponsored by Campus Recreation & Intramurals.

1 AM

MIDNIGHT BOWLING

The Clubhouse

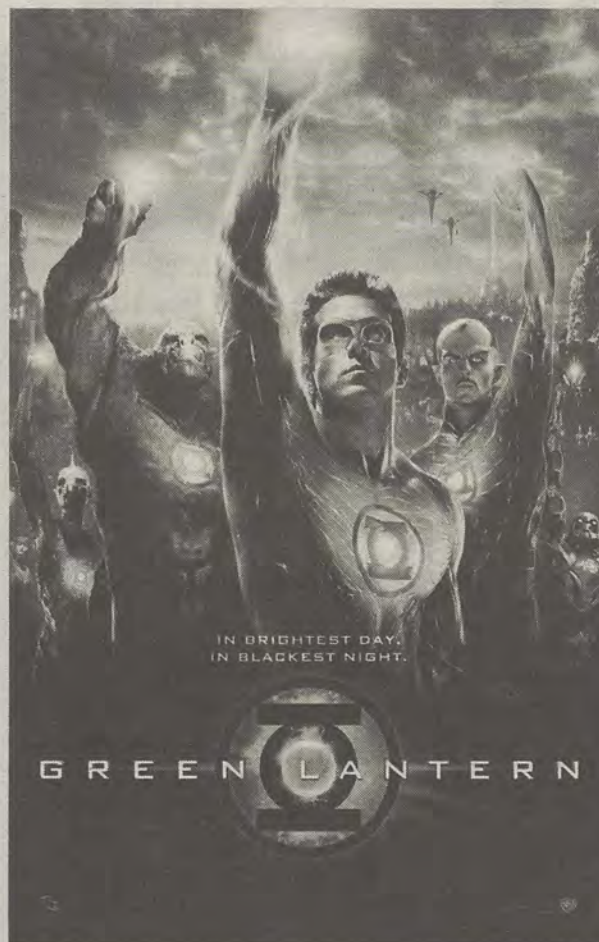
Sponsored by the Office of Student Activities.

7PM and 12AM

FREE MOVIE: GREEN LANTERN

RUSSELL UNION

Sponsored by the Office of Student Activities.



MONDAY 10.3.2011

Intramural Volleyball Registration Begins

RAC

Sponsored by Campus Recreation & Intramurals.

TUESDAY 10.4.2011

5PM - 7PM

New Student Organization Workshop

RUSSELL UNION 5052

Sponsored by the Office of Student Activities.

7 PM

GSU Unplugged

RUSSELL UNION STARBUCKS

Open Mike Night

WEDNESDAY 10.5.2011

4PM - 5PM

VAN TRAINING

RUSSELL UNION 2052

This training session will provide students with the functional information needed to operate a 10, 12 or 15-passenger van as well as provide you risk management instruction in the event of an emergency. This meeting is mandatory for all students who wish to reserve a van through the Russell Union Student Center or Campus Recreation & Intramurals.

ONGOING...

Registration for LGBTQ & Allies Conference

Featuring keynote comedian Diana Yanez, the conference will also discuss advocacy, self-care, and leadership skills which will allow for visibility of lesbian, gay, bisexual, transgender, and questioning issues in campus communities. Registration fee is \$25 (\$20 with student ID) and will include a continental breakfast, lunch, t-shirt, and access to all sessions. The deadline to register is Oct. 14. For more info, please visit <http://students.georgiasouthern.edu/multicultural/>, call 912-478-5409, or email mso@georgiasouthern.edu. Register online at <http://students.georgiasouthern.edu/multicultural/>.

Limited Financial Aid Office Hours Announcement

Running through Dec. 9, the Financial Aid Office is happy to announce extended office hours to help students with financial aid.

Our new customer service hours will be done on a limited bases for Fall 2011 term, Monday through Friday from 7:30 a.m. to 6 p.m. as follows:

Monday, Sept. 19 – Friday, Oct. 21

Monday, Oct. 31 – Friday, Nov. 18

Monday, Nov. 28 – Friday, Dec. 9

You are welcome to walk in during these times for help with your financial aid. We are excited about our extended office hours and anticipate it will improve our ability to efficiently assist our students.

Student Affairs
Enrollment
Management

Brought to you by Georgia Southern University VALUES. Georgia Southern V.A.L.U.E.S. is the culture shared by our students, faculty, and staff. We endeavor to share our V.A.L.U.E.S. inside and outside of the classroom with faculty, staff, students, alumni and all other community members. In order to produce productive citizens with an informed set of ethics and community standards as well as create an environment of respect and civility, we pledge to live by our V.A.L.U.E.S.



Photo from www.toms.com

Toms: Style your Sole is an opportunity for students to express their own style while providing children in other countries with footwear.

'Toms: Style your Sole' will decorate GSU feet and donate to others

By KIMEKO MCCOY
George-Anne contributor

Get your brand new pair of Toms now and show up to the Russell Union on Oct. 3 to create your own style in the 'Toms: Style your Sole' event.

This is the event's second year running on campus and is expected to continue annually.

The Office of Student Leadership and Civic Engagement is hosting the event with help from Dana Velasquez.

Velasquez, a graduate student in Masters of Accounting Program, will be leading the affair by planning and coordinating the events of the upcoming Social Justice Week.

The goal of the event is to encourage awareness of poverty and hunger that affect so many worldwide.

The 'Toms: Style Your Sole' event is one of the many events that will be hosted for Social Justice Week.

The Social Justice Week is sponsored by the Office of Student Leadership and Civic Engagement. The whole week is dedicated raising awareness of social issues locally and worldwide.

For this event students are asked to purchase, decorate and paint a pair of Toms shoes.

Through the purchase, a child in need is given a pair of the shoes as well.

In collaboration with the Office of Student Leadership and Civic Engagement, the D.I.M.E.S. Fashion organization will also be present to help participants with their shoe designs and creative ideas.

"Last year was the first time we had this event, celebrating the giving away of 1 million shoes. Last year we also showed a documentary of Toms. We had great turnout last year and we expect the same for this year," said Velasquez.

Similar to last year's event, there will be music and other festivities for the participants but the documentary will not be shown.

Students must sign up and order their shoes by 7 p.m. on October 3 in 2024 Russell Union.

The cost is \$45 to participate and the payment can be either cash or check.

The 'Toms: Style Your Sole' design night will be held from 5 p.m. until 7:30 p.m. in the Russell Union, room 2044.



BLISSBERRY

SELF-SERVE FROYO BLISS

5% Off Students everyday!

Special Deals

Tuesday: Teachers- 1oz on the house!

Wednesday: Greek Life
The greek organization that has
The most visits receives donation

Thursday: College Student
1oz on the house!



Join on FB to learn more
about specials ~yobliss

721 S. Main St. #9 Statesboro, Ga
Located in Talbots Shopping Centre
Contact #912-681-2547

Mon - thurs: 11am - 10pm
Fri - Sat :11am - 12 pm
Sun: 12pm - 10pm

FREE PIZZA FASTER

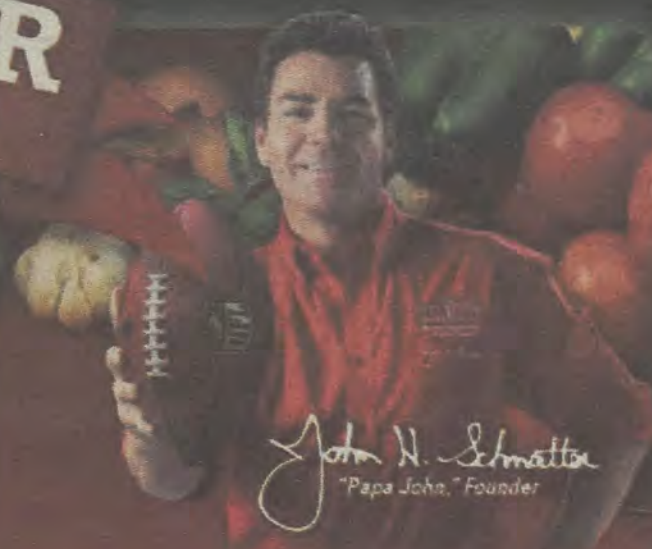
with DOUBLE POINTS EVERYDAY!

Enroll In

Papa Rewards

@PAPAJOHNS.COM

and earn **DOUBLE** points with each online order @ papajohns.com



LARGE WORKS

or TUSCAN SIX CHEESE

\$11

ONLINE PROMO
CODE: P10PZA



OFFICIAL PIZZA SPONSOR OF THE NFL

Offer good for a limited time at participating Papa John's restaurants. Not valid with any other coupons or discounts. Limited delivery area. Delivery fee may apply. Customer responsible for all applicable taxes. Prices may vary by location and time. © 2011 Papa John's International, Inc. All rights reserved. © 2011 NFL Properties LLC. All NFL-related trademarks are the property of the National Football League. NFL 2011



Follow us on
Facebook!



Statesboro

620 Fair Rd.

871-7272



WE ACCEPT
EAGLE
EXPRESS!

GSU ROCKS! SPECIAL

Two Large
Three Topping Pizzas

\$20.00

Use promo code
2L3T20



ONLINE ONLY. EXPIRES 10/31/11. Offer good for a limited time at participating Papa John's restaurants only. Additional toppings extra. Not valid with any other coupons or discounts. Limited delivery area, charges may apply. Customer responsible for all applicable taxes.



CARRYOUT SPECIAL

Large One Topping
Pizzas

\$7.99

Each.
No Limit.

Use promo code
COL1TRHH



CARRYOUT ONLY EXPIRES 10/31/11. Offer good for a limited time at participating Papa John's restaurants only. Additional toppings extra. Not valid with any other coupons or discounts. Limited delivery area, charges may apply. Customer responsible for all applicable taxes.



ANY WAY YOU WANT IT!

Large Specialty or up
to five toppings for

\$12.00

Use promo code
LS12RHH



EXPIRES 10/31/11. No double toppings or extra cheese. Offer good for a limited time at participating Papa John's restaurants only. Additional toppings extra. Not valid with any other coupons or discounts. Limited delivery area, charges may apply. Customer responsible for all applicable taxes.

